

## Answers to Referee 2:

1. *In the abstract, the statement starting with “Through numerical simulations, maximum wave heights were estimated for each event and ..... “ What is the location of the maximum wave height ? In the study domain? Along the coastal region? At the source ?*

The authors thank the reviewer for this comment. The maximum wave height refers to the maximum value computed within the entire simulation domain. This has been corrected in the revised manuscript.

Through numerical simulations, maximum wave heights were estimated for each event as the maximum value within the entire simulation domain, and used to define thresholds [...]

2. *Similarly, In line 39, the location where the Estimated Wave Amplitude (EWA) and Estimated Time of Arrival (ETA) are computed should be indicated here*

The authors thank the reviewer for this comment. The Estimated Wave Amplitude (EWA) and Estimated Time of Arrival (ETA) are typically computed at predefined tsunami forecast points used by tsunami warning centres, which are generally located along coastlines or at specific locations of interest. The text has been revised to clarify this aspect.

Additional data, such as Estimated Wave Amplitude (EWA) and Estimated Time of Arrival (ETA), are obtained at predefined tsunami forecast points (typically located along coastlines or at specific sites of interest) from pre-computed numerical scenarios or measured wave amplitudes from buoys or tidal gauges, [...]

3. *In line 138, NOAA National Centers for Environmental Information, n.d is referenced. However, there is no link either in this sentence or in Reference list.*

The authors thank the reviewer for pointing this out. The reference has been revised accordingly:

The NOAA tsunami catalogue (National Geophysical Data Center / World Data Service, 2024) provides a comprehensive [...]

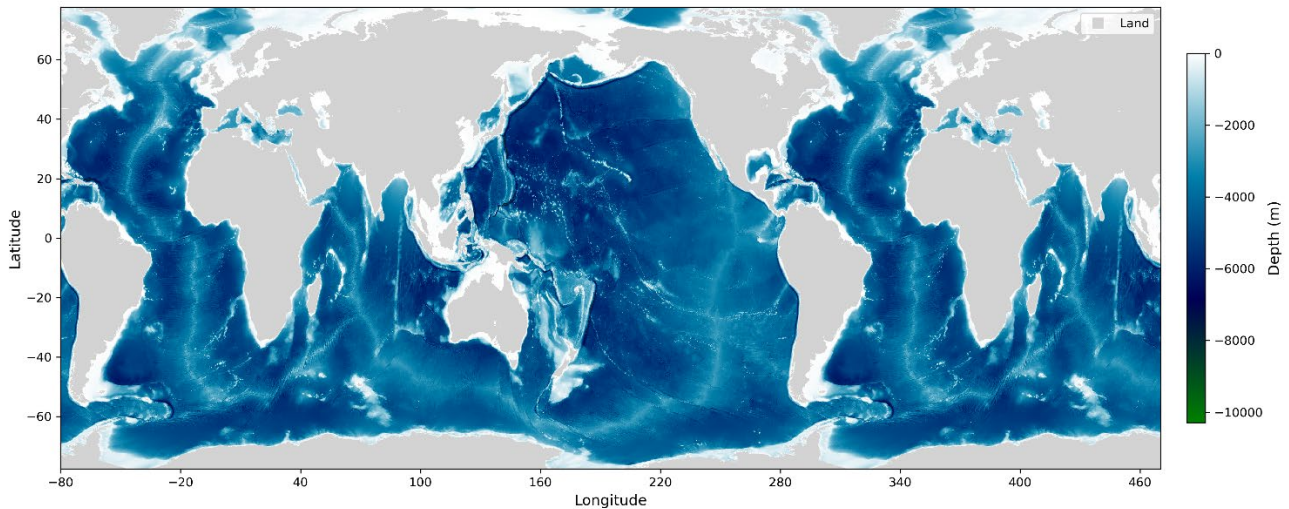
National Geophysical Data Center / World Data Service: NCEI/WDS Global Historical Tsunami Database, NOAA National Centers for Environmental Information, <https://doi.org/10.7289/V5PN93H7>, 2024.

4. *In line 155, Same as Line 148*

The authors thank the reviewer for this comment. The corresponding reference has been included as (U.S. Geological Survey, 2017), and the link has been added in the revised manuscript.

5. *In Line 266, It is better to select the tic intervals of horizontal axis as 60 degree instead of 100 degree. However, 60 degree interval should not cause conflict with 100 degree intervals in Figure 7.*

The authors thank the reviewer for this suggestion. The figure has been modified with tic intervals of horizontal axis as 60 degrees.



6. *Line 531, The title of second column may be “# of events labelled as tsunami”*

The authors thank the reviewer for this suggestion. Following the revisions made in response to Reviewer 1, this table has been removed from the manuscript as the corresponding section has been revised. The justification of the threshold has been updated accordingly. This can be seen in the final revised manuscript.

7. *Line 834, The link of this reference should also be given if applicable*

The authors thank the reviewer for pointing this out. The reference link has been added in the revised manuscript:

U.S. Geological Survey: [Earthquake Hazards Program, 2017, Advanced National Seismic System \(ANSS\) Comprehensive Catalog of Earthquake Events and Products: Various, 2017. \[accessed: 18 Feb 2024\]](#)