

## Supplementary to reply on RC2: Anonymous

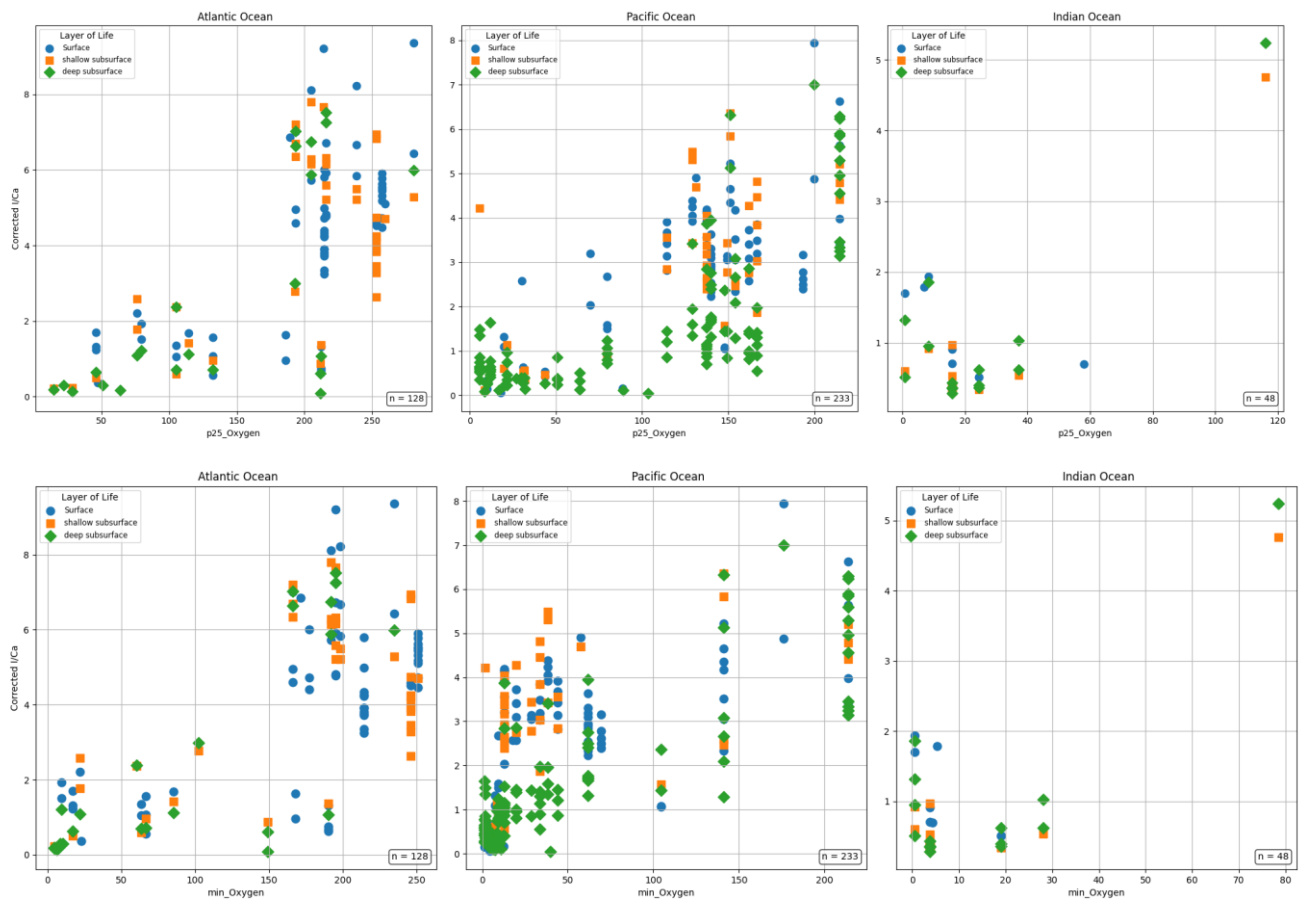


Fig. AC2.S1: Corrected I/Ca as a function of p25[O<sub>2</sub>] (top) and min[O<sub>2</sub>] (bottom), in the Atlantic, Pacific and Indian Oceans. Different depth-dwellers are represented in different colours and symbols.

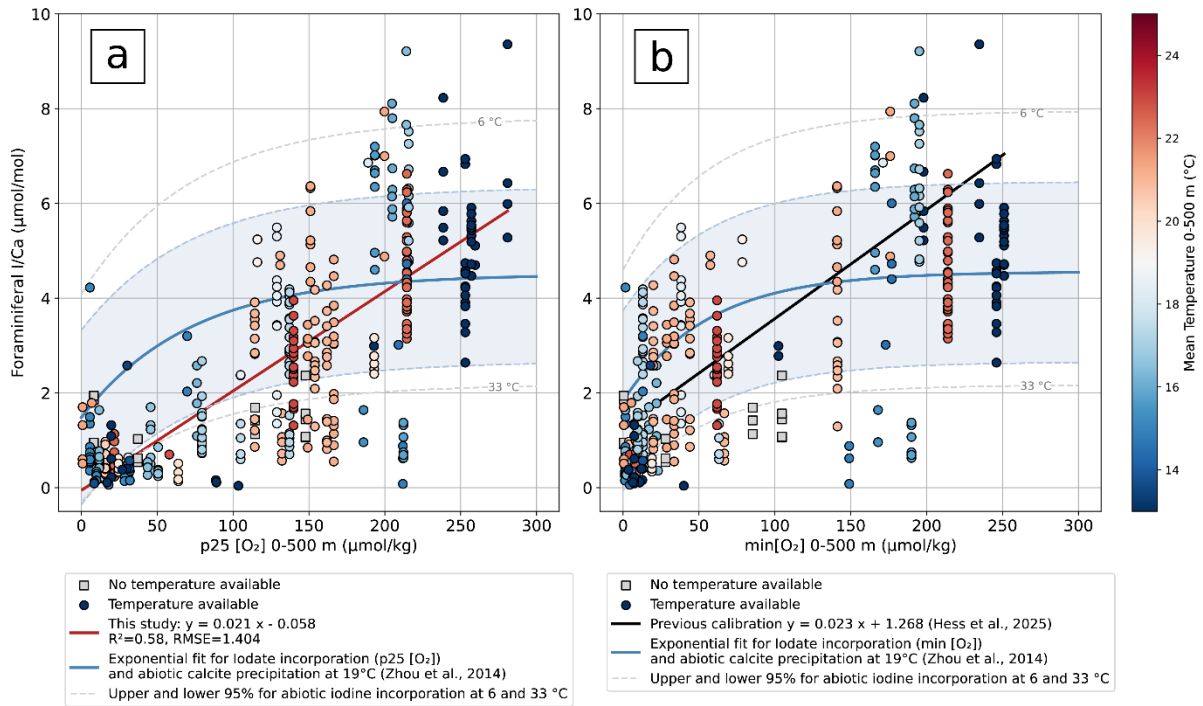


Fig. AC2.S2: Foraminiferal I/Ca <2 ka BP as a function of p25 [O<sub>2</sub>] (a) and min[O<sub>2</sub>] (b) in 0–500 m. The red line is the linear model proposed in this study. Blue curve represents the abiotic incorporation of iodine following iodate proportion in total inorganic iodine determined in Figure 3 and assuming a mean concentration of total inorganic iodine of 471 nM (Fig. 3c). The abiotic incorporation was determined following (Zhou et al., 2014). Blue area corresponds to 95% prediction interval also determined in Figure 4 for a temperature of 19 °C. 57% of the data fall in this prediction interval. Temperature from 6 to 33 °C are considered for the maximum and minimum 95% prediction interval with total iodine concentration of 471 nM (grey dashed lines).

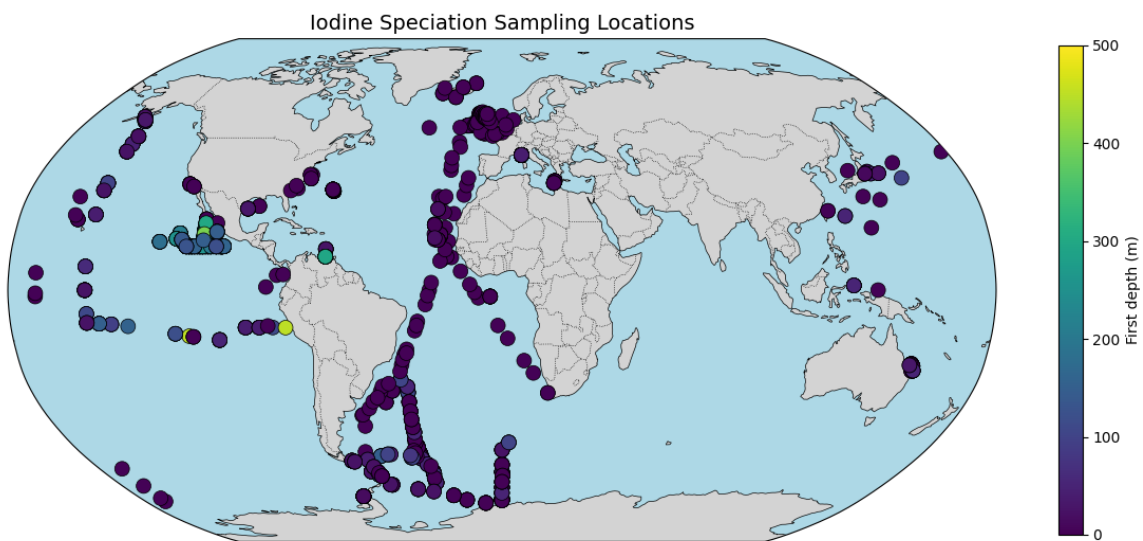


Fig. AC2.S3: Position of inorganic iodine speciation data. Colour represents the first depth at site. Indian Ocean data will be added in the next version of the manuscript.