

Supplemental Figures for Manuscript.

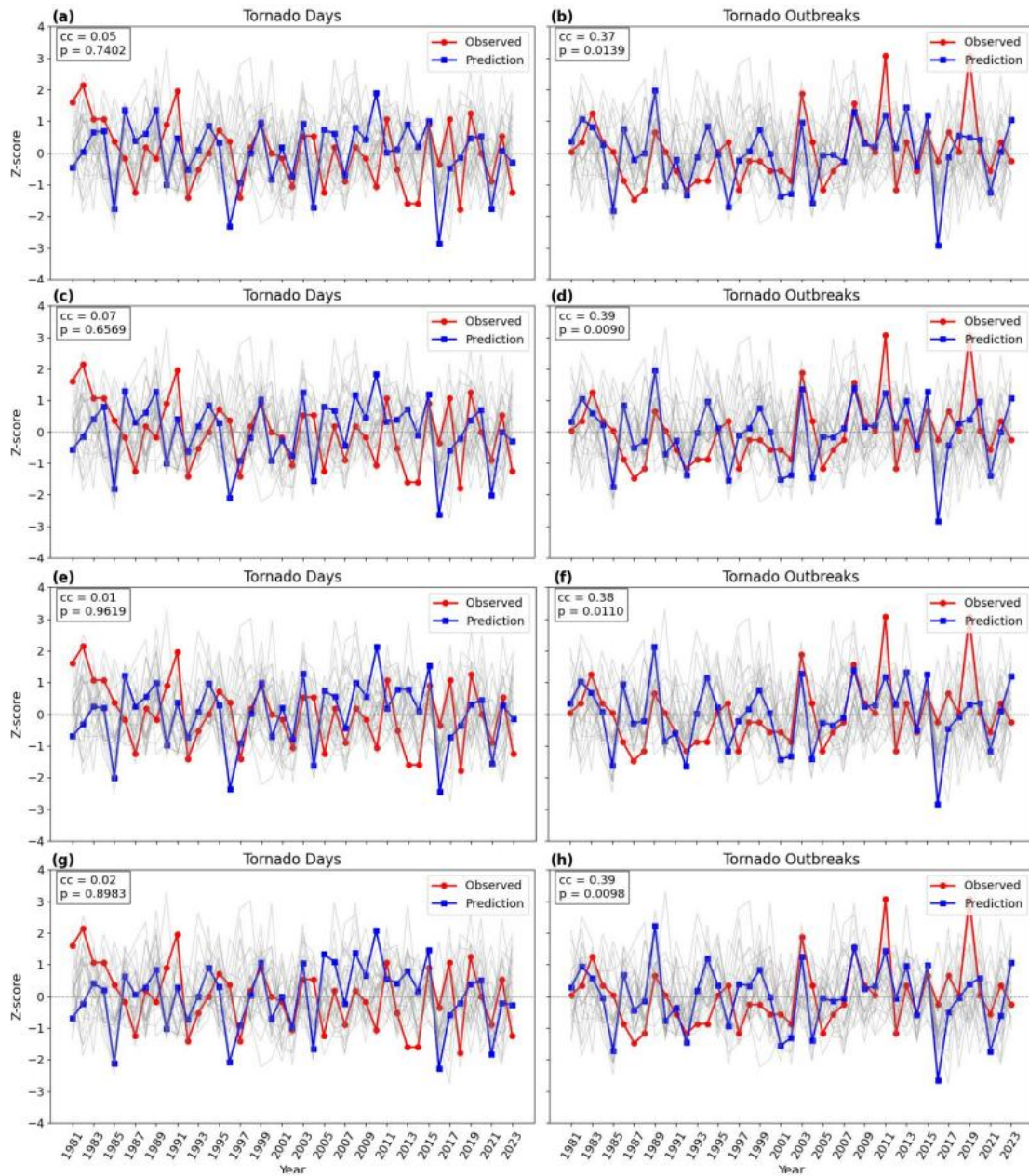


Figure S1: Cross-validation tests for tornado days and outbreaks using two-year (a-b), three-year (c-d), four-year (e-f), and six-year (g-h) testing periods. Pearson correlation and p-values are labeled on each plot.

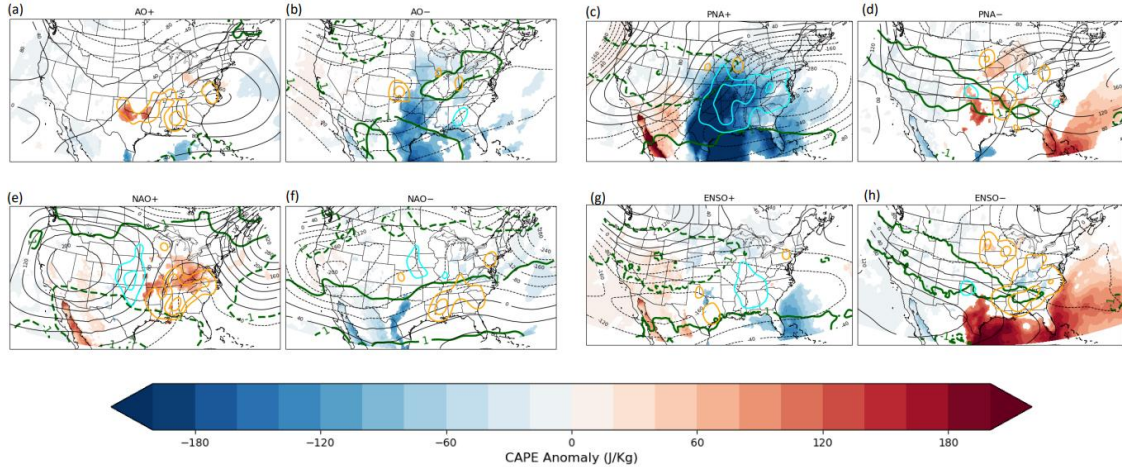


Figure S2: 500h anomalies (units: m; black contours) for positive and negative years of AO (top left), NAO (bottom left), PNA (top right), and ENSO (bottom right) overlaid with daily maximum CAPE anomalies (units: J Kg^{-1} ; red/blue filled contours), $2^\circ \times 2^\circ$ uniform-filtered daily mean vertical wind shear anomalies (units: m s^{-1} , green contours) and Gaussian smoothed tornado day probability anomalies (contour intervals: $\pm 20\%$; orange/cyan contours). Significance ($p \leq 0.05$) for anomalies is determined using a one-sample, two-sided t-test to mask out non-significant anomalies.

Standardized April-May Indices (1981-2023) with Linear Trends

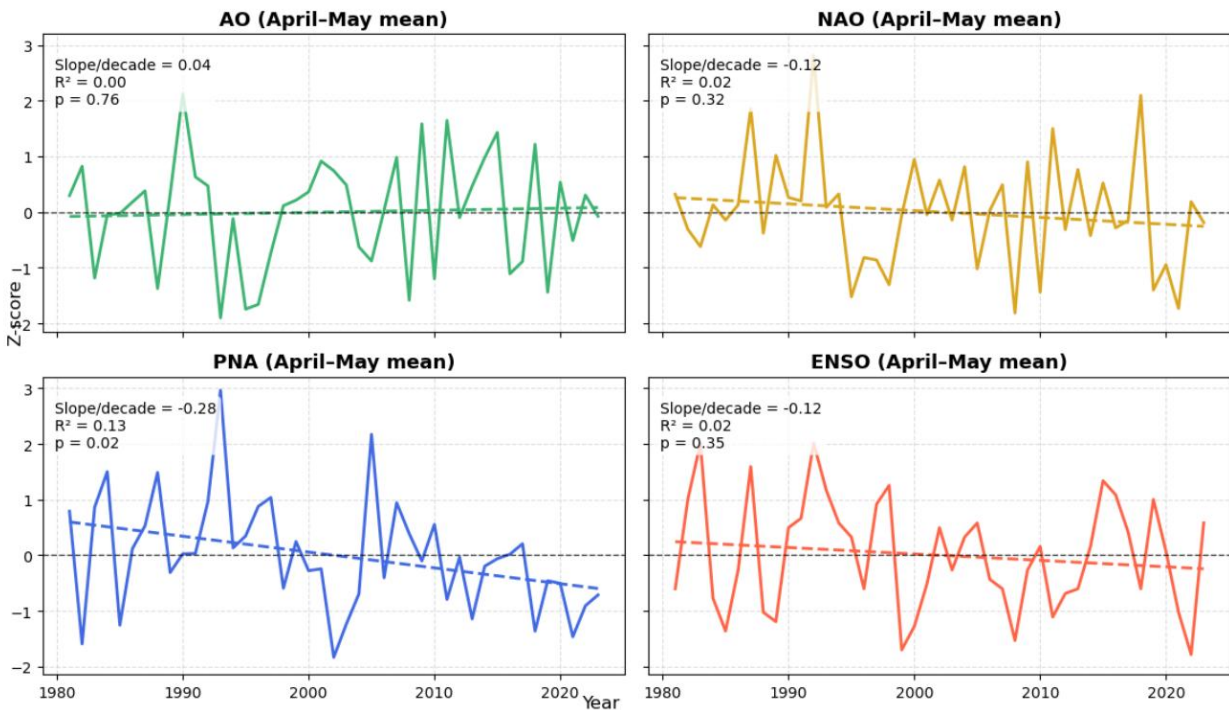


Figure S3: Time series of April-May normalized indices for AO, NAO, PNA, and ENSO with linear regression statistics in the top left of each panel.