

Enhancing hydrological hazard early warning: A 60-day streamflow forecasting framework integrating deep learning and process-based modeling

Zhijie Liu^{1,2}, Hanbo Yang^{1,2,*}, Dawen Yang^{1,2}

5 ¹Department of Hydraulic Engineering, Tsinghua University, Beijing 100084, China

²State Key Laboratory of Hydrosience and Engineering, Tsinghua University, Beijing 100084, China

*Correspondence: Hanbo Yang (yanghanbo@tsinghua.edu.cn)

10 **Abstract:** Reliable medium- and long-term streamflow forecasting is a cornerstone of hydrological hazard early warning and water resources management, yet achieving accurate predictions with sufficient lead time remains a formidable challenge. This study proposes a 60-day streamflow forecasting framework to strengthen early warning capabilities by systematically integrating a convolutional neural network (CNN) for bias correction of precipitation forecasts from the UK Met
15 Office (UKMO) numerical weather prediction model, the Geomorphology-Based Eco-Hydrological Model (GBEHM) for streamflow simulation, and an autoregressive with exogenous input (ARX) model for statistical post-processing. Applying the proposed framework to the Upper Yangtze River Basin, results indicate that the CNN model reduces the areal-averaged precipitation root mean square error (RMSE) by around 35% and elevates the temporal correlation coefficient (TCC) from
20 0.62 to 0.74 against raw UKMO forecasts across the 60-day horizon, with performance gains amplifying at longer lead times. Subsequently, when driving the GBEHM with corrected precipitation and applying ARX post-processing, the streamflow forecasts exhibit substantial enhancements with a reduction in RMSE of 36%, a decrease in relative error (RE) from 48.2% to 17.4%, and an increase in Nash–Sutcliffe efficiency (NSE) from 0.33 to 0.72 compared to those
25 driven by raw forecasts in terms of 60-day mean performance. Error decomposition identifies precipitation forecast errors which intensify with lead time as the dominant source of uncertainty for medium- and long-term streamflow forecasting, while confirming that hydrological model uncertainty remains a significant component, highlighting that the selection of a robust hydrological model is crucial for enhancing the reliability and predictive skill of the streamflow forecasts. By
30 systematically leveraging the CNN to mitigate drifting meteorological biases, the GBEHM to capture physical catchment dynamics, and the ARX to minimize residual errors, the proposed framework extends the effective early warning horizon to 60 days with high volumetric accuracy and temporal consistency, providing vital decision support for flood and drought risk management and regional water security.

35

1 Introduction

The escalating frequency and intensity of extreme hydrological events, such as devastating floods and prolonged droughts, present significant challenges to global water security and socioeconomic stability within the context of climate change (Swain et al., 2025; Sutanto et al., 2025; Kreibich et al., 2022; Tabari, 2020). Reliable medium- and long-term streamflow forecasting, typically referring
40 to predictions with lead times ranging from 3 days to 1 year (Shao et al., 2024), is recognized as a critical measure for hydrological hazard early warning by providing more substantial lead times for proactive decision-making in flood and drought mitigation, hydropower optimization and water supply security (Kondal et al., 2024; Lee et al., 2022; Jackson-Blake et al., 2022; Xu et al., 2020).

45 However, constrained by the inherent complexity of hydrological processes and atmospheric
uncertainties, the accuracy and lead time of current forecasts remain insufficient to fully meet the
rigorous demands of disaster early warning (Slater et al., 2023; Neri et al., 2020). Consequently,
enhancing the predictive skill and extending the reliable horizon of streamflow forecasts are
imperative for strengthening regional disaster resilience and safeguarding water security (Koh and
50 Galelli, 2024; Sutanto et al., 2020; Pendergrass et al., 2020).

Medium- and long-term streamflow forecasting methods are typically divided into three main
categories: time series analysis, data-driven methods and dynamical methods. Time series analysis
forecasts streamflow by extrapolating statistical patterns solely from historical observations (Wang
55 et al., 2020; Huang et al., 2020; Luo et al., 2019). For instance, Guo et al. (2023) applied a hybrid
time-series framework based on signal decomposition to forecast medium- and long-term
streamflow in the lower Yellow River. However, inherently limited to coarser temporal scales and
devoid of atmospheric drivers, this univariate approach struggles to capture both daily streamflow
variability and dynamic hydrological responses to climate change (Jamei et al., 2024; Kratzert et al.,
60 2018). Data-driven methods forecast streamflow by establishing direct quantitative mappings from
meteorological predictors (Wang et al., 2023; Hunt et al., 2022; Adnan et al., 2020; [Yuan et al., 2024](#);
[Zhou et al., 2024](#)). For example, Cheng et al. (2020) utilized long short-term memory (LSTM)
networks to map precipitation and antecedent flow to future streamflow for long lead-time
forecasting. However, lacking explicit representation of physical hydrological processes, these data-
65 driven methods are fundamentally limited in capturing non-stationary environmental impacts
thereby hindering the prediction of unprecedented hydrological hazards (Reichstein et al., 2019;
Shen, 2018). Dynamical methods generate streamflow forecasts by driving process-based
hydrological models with meteorological predictions (Lee et al., 2024; Greuell and Hutjes, 2023;
Quedi and Fan, 2020). For instance, Tian et al. (2018) employed the THREW model driven by bias-
70 corrected European Centre for Medium-Range Forecasts (ECMWF) precipitation forecasts for
seasonal prediction in the Upper Hanjiang River Basin. Among these three categories, dynamical
methods leverage their explicit physical mechanisms and interpretability to offer superior
transferability and the capability to capture climate change impacts, thereby making them
indispensable for robust hydrological hazard early warning (Falck et al., 2025; Zhang et al., 2024;
75 Andrade et al., 2024).

As the primary meteorological forcing, precipitation forecasts play a decisive role in determining
the accuracy of medium- and long-term streamflow forecasts (Ghimire et al., 2021). Currently,
medium- and long-term precipitation forecasts rely predominantly on numerical weather prediction
80 models (Adams and Dymond, 2019; Bauer et al., 2015). However, these raw outputs typically
exhibit large discrepancies and systematic biases (Siqueira et al., 2020; Lin et al., 2019). As the
forecast lead time extends, their reliability diminishes significantly, making them unsuitable for
direct application in hydrological hazard assessment (Du et al., 2025; Bogner et al., 2022).
Consequently, bias correction is essential to render these outputs usable for streamflow forecasting
85 (Vernon et al., 2025; Monhart et al., 2019; Anghileri et al., 2019). Traditional correction methods,
such as quantile mapping, have been shown to effectively correct systematic biases in precipitation
forecasts (Cannon et al., 2015; Teutschbein and Seibert, 2012). Recently, deep learning approaches
have demonstrated superior performance by leveraging their ability to model complex nonlinear

relationships within multidimensional datasets (Yin et al., 2023; Lyu et al., 2023). Nie and Sun (2024) proposed a method combining deep learning and dynamical-statistical projection model to correct ECMWF sub-seasonal precipitation forecasts, demonstrating significant skill enhancements in Southwest China for lead times of up to 30 days. Lyu et al. (2024) utilized a hybrid CSG-UNET model to refine ECMWF ensemble precipitation forecasts over the China mainland during summer, extending the effective forecast skill to approximately 4 weeks. In general, current research predominantly targets ECMWF forecasts due to their superior predictive skill (Falck et al., 2025; Dong et al., 2025; Andrade et al., 2024; Quedi and Fan, 2020). However, most studies are confined to the first 30 days, as results beyond this point are either omitted or unreliable for practical use (Nie and Sun, 2024; Lyu et al., 2024; Yin et al., 2023). In contrast, alternative models such as that from the UK Met Office (UKMO), which provide 60-day forecasts, remain under-explored due to the lower raw accuracy of their precipitation forecasts. To address this gap, this study aims to apply bias correction to 60-day precipitation forecasts, thereby enhancing reliability and extending the effective forecast horizon.

In addition to errors in precipitation forecasts, inherent uncertainties stemming from the hydrological model structural generalization and parameter estimation can also propagate into streamflow predictions (Donegan et al., 2021; Dion et al., 2021), rendering the correction of hydrological simulation errors imperative. Common correction strategies range from autoregressive methods and data assimilation to deep learning approaches (Tanguy et al., 2025; Sabzipour et al., 2023; Siqueira et al., 2021). Among these, the autoregressive with exogenous input (ARX) model is particularly suitable for addressing the systematic bias and serial correlation inherent in hydrological residuals, providing a computationally efficient and effective solution for post-processing (Mcinerney et al., 2021; Sharma et al., 2019).

Therefore, this study proposes a 60-day streamflow forecasting framework that integrates a convolutional neural network (CNN) to correct precipitation forecasts from the UKMO numerical weather prediction model, the geomorphology-based eco-hydrological model (GBEHM) to simulate hydrological processes, and an ARX model to minimize residual errors. Applying the proposed framework in the Upper Yangtze River Basin (UYRB), we expect this research to offer a practical and reliable tool for decision support with extended lead times for hydrological hazard early warning.

2 Study area and data

2.1 Study area

The Upper Yangtze River Basin (UYRB) is highly vulnerable to extreme hydrological events driven by uneven streamflow distribution, frequently triggering devastating floods and droughts that threaten downstream infrastructure and regional water security (Liang et al., 2023; Wang et al., 2022). In addition, the basin serves as a strategic hub for China's hydropower generation, playing a vital role in regional energy security (Zhong et al., 2020). Consequently, improving forecast accuracy at medium- and long-range horizons in this region is of paramount importance for integrated disaster mitigation and reservoir operation (Su et al., 2017).

This study focuses on the UYRB above the Shigu hydrological station, which spans 90° E–101° E and 26° N–36° N with a drainage area of approximately 2.2×10^5 km² (Fig. 1). The terrain is

135 complex with elevation gradually decreasing from over 6500 m in the headwaters to about 1800 m at the outlet. It is a typical alpine cold mountainous zone dominated by grassland, shrubland, and barren areas. The region has a mean annual precipitation of around 670 mm and a mean annual streamflow of around $1300 \text{ m}^3 \text{ s}^{-1}$ observed at the Shigu station.

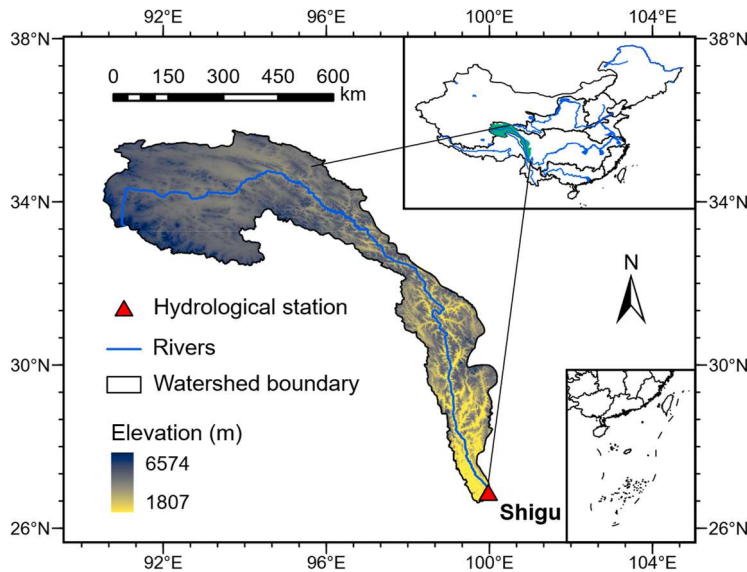


Figure 1. The upper Yangtze River Basin controlled by the Shigu hydrological station.

140 2.2 Data sources

2.2.1 Observed meteorological and hydrological data

To support model training and validation, the China Gauge-Based Daily Precipitation Analysis (CGDPA), provided by the National Meteorological Information Center, is used as the reference observational dataset. This 0.25° daily precipitation gridded product is derived from over 2,400 gauge stations across China and covers the period from 1960 to 2019. Its reliability in capturing precipitation characteristics over complex terrain has been extensively validated, and detailed station distribution density maps along with gauge information can be found in (Shen and Xiong, 2016)Shen and Xiong (2016).

150 To drive the hydrological model, additional meteorological inputs, including air temperature, wind speed, relative humidity, and sunshine duration, are obtained from meteorological stations operated by the China Meteorological Administration (CMA, <http://data.cma.cn>). To align with the hydrological model configuration, these gauge observations are spatially interpolated onto the $8 \text{ km} \times 8 \text{ km}$ simulation grid using the elevation-adjusted angular distance weighting technique
155 (Yang et al., 2004). Furthermore, to meet the temporal requirements, the daily data are disaggregated into hourly forcing series following the algorithms proposed by Gao et al. (2015).

To calibrate the hydrological model and evaluate forecast performance, daily streamflow observations from the Shigu hydrological station for 1960 to 2019 are collected from the
160 hydrological yearbook.

2.2.2 Underlying surface data

The distributed model GBEHM requires topographic data and underlying surface properties.

165 Topographically, a 90-m resolution digital elevation model (DEM) from the Shuttle Radar Topography Mission (SRTM) database (Jarvis et al., 2008) is utilized to delineate the river network

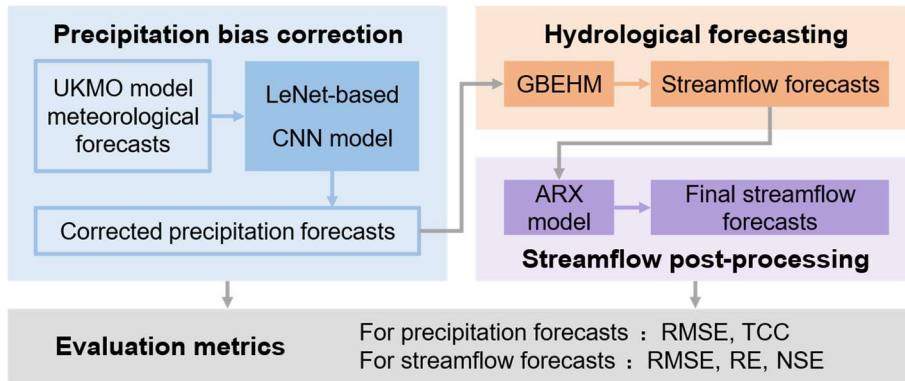


Figure 2. Flowchart of the proposed forecasting framework.

170 and basin boundaries. Regarding soil properties, soil texture distributions are derived from Shangguan et al. (2014), while key soil hydraulic parameters, including saturated hydraulic conductivity, saturated and residual water contents, and van Genuchten parameters, are sourced from the China Soil Hydraulic Parameters Dataset (Dai et al., 2013). For land surface characterization, this study uses a 100-m resolution land use map from the Resource and Environment Data Cloud Platform (<http://www.resdc.cn/>). Finally, vegetation dynamics, specifically leaf area index (LAI) and fraction of photosynthetically active radiation (FPAR), are parameterized using the GIMMS NDVI3g-based datasets developed by Zhu et al. (2013).

2.2.3 Meteorological forecast data

180 Meteorological forecast data are sourced from the Sub-seasonal to Seasonal Prediction Project (Vitart et al., 2017) which provides medium- and long-range forecasts generated by numerical weather prediction models from various international operational centers. Among the models providing a 60-day lead time (including those from CMA and UKMO), the UKMO model is selected as the source of raw precipitation forecasts due to its superior performance in the study region (Li et al., 2019). The dataset, provided at a 0.25° spatial resolution, covers the hindcast period of 1997–
185 2016 with 44 initialization dates per year. The forecast variables include the target precipitation forecasts together with a suite of predictors for correction: convective precipitation, 2-m dew point temperature, 2-m air temperature, total cloud cover, and multi-level variables (geopotential height, specific humidity, temperature, and wind speed at 200, 500, and 850 hPa). The selection of these specific predictors is based on previous studies which have demonstrated their efficacy in improving
190 forecast accuracy (Zhang et al., 2024; Zhang et al., 2023; Li et al., 2023).

3 Methods

3.1 Overview

195 In this study, we propose a framework to improve medium- and long-term forecasts of daily precipitation and streamflow with lead times of up to 60 days to enhance hydrological hazard early warning capabilities. The flowchart of the proposed framework is illustrated in Figure 2. First, a LeNet-based CNN model is developed to perform bias correction on the precipitation forecasts by modeling the relationship between local grid precipitation and predictor variables from both the

target and surrounding grids. Subsequently, the gridded precipitation forecast serves as input to drive the distributed hydrologic model GBEHM, generating daily streamflow forecasts for the 1–60 day horizon. Finally, the simulated streamflow undergoes post-processing via an ARX model to yield the final forecasts. The performance of these forecasts is quantitatively evaluated using metrics including the root mean squared error (RMSE), temporal correlation coefficient (TCC), relative error (RE) and the Nash–Sutcliffe efficiency (NSE).

205

3.2 Convolutional neural networks

A modified LeNet-based convolutional neural network (CNN) is designed to model the complex non-linear relationship between local grid precipitation and large-scale atmospheric conditions. The model input consists of a multivariate 3D tensor with dimensions of $20 \times 9 \times 9$ representing a 9×9 spatial neighborhood centered on the target 0.25° grid cell. The input comprises 20 predictor channels, including the DEM, precipitation forecasts and other meteorological variables detailed in Sect. 2.2.3. Structurally, the network integrates three primary components: embedding layers, a convolutional backbone, and fully connected layers. To explicitly capture spatial location dependencies, the latitude and longitude indices of each grid are encoded via two independent embedding layers. The convolutional backbone consists of four cascaded layers (configured with 64, 32, 16, and 8 filters, respectively), each followed by batch normalization to enhance training stability. The extracted spatial feature maps are flattened and concatenated with the spatial embeddings before passing through two fully connected hidden layers.

The final layer of the network produces three real numbers (z_1, z_2, z_3) that govern the parameters of a censored shifted gamma (CSG) distribution. This probabilistic formulation is specifically adopted to address the mixed discrete-continuous nature of precipitation, effectively characterizing zero-inflation (dry days), skewness, and the transition from light to heavy rainfall (Towler et al., 2025; Zhang et al., 2017). To ensure mathematical validity, the raw network outputs are transformed into the physical distribution parameters of shift (γ) , mean (μ) , and standard deviation (σ) via specific activation functions: $\gamma = -\sqrt{z_1^2 + \epsilon}$, $\mu = \exp(z_2)$, and $\sigma = \sqrt{\exp(z_3) + \epsilon}$, where ϵ is a small constant for numerical stability. Mathematically, the CSG distribution is defined by a latent variable $X = Z + \gamma$, where $Z \sim \text{Gamma}(\alpha, \beta)$ with shape $\alpha = (\mu/\sigma)^2$ and scale $\beta = \sigma^2/\mu$. The precipitation Y is then obtained by censoring X at zero, such that $Y = \max(0, X)$. The probability of zero precipitation is given by $P(Y = 0) = F_\Gamma(-\gamma; \alpha, \beta)$, where F_Γ is the cumulative distribution function of the Gamma distribution. Finally, the model generates a deterministic forecast by constructing a large-scale pseudo-ensemble from the predicted CSG distribution at equal quantiles and calculating the ensemble mean. [\(see Sect. S1 in the Supplement for the detailed sampling procedure\)](#). This approach enables a comprehensive quantification of uncertainty and ensures that low-probability, high-impact extreme events in the tail of distribution are adequately captured, thereby mitigating the smoothing effect inherent in deterministic forecasts.

The model is trained using the continuous ranked probability score (CRPS) as the loss function to optimize probabilistic performance:

$$\text{CRPS}(F, y) = \int_{-\infty}^{\infty} (F(x) - \mathbb{H}_{\{x>y\}})^2 dx \quad (1)$$

where F is the predicted cumulative distribution function and \mathbb{H} is the Heaviside step function

that equals 1 if $x \geq y$ and 0 otherwise. To ensure a robust generalization and unbiased evaluation, the 20-year UKMO hindcast dataset (1997–2016) is partitioned into training (1997–2008, 12 years), validation (2013–2016, 4 years), and testing (2009–2012, 4 years) subsets within a cross-validation framework. This specific testing period is strategically aligned with the final streamflow evaluation to ensure the CNN model is assessed on entirely unseen data. The optimization is performed using the Adam algorithm, with hyperparameters tuned to minimize overfitting.

3.3 Geomorphology-based eco-hydrological model

The GBEHM is a physically-based, distributed model designed to simulate hydrological processes in topographically complex catchments. To address spatial heterogeneity, the model employs a hierarchical sub-grid parameterization scheme (Yang et al., 2015), where the hillslope-valley system serves as the fundamental computational unit. Specifically, the study region is first delineated into sub-basins based on the DEM to construct the river network topology for flow routing. Within each sub-basin, the landscape is first discretized into the grid system to integrate meteorological forcing data and capture the spatial heterogeneity of land surface properties. Finally, these grids are further subdivided into hillslope-valley units. This allows the model to solve vertical water and energy balances at the hillslope scale and dynamically aggregates the runoff to the sub-basin scale for lateral river routing. Runoff generation is explicitly resolved through three primary pathways: surface overland flow, lateral subsurface flow, and groundwater discharge. Specifically, vertical soil water movement in the unsaturated zone is governed by the one-dimensional Richards' equation, while lateral flow in the saturated zone and groundwater-river exchange are quantified using Darcy's law and mass balance principles (Cong et al., 2009). To close the water and energy budget, the hydrological module is coupled with the Simple Biosphere Model 2 (SiB2), which estimates evapotranspiration losses, including canopy interception and soil evaporation, based on energy transfer within the soil–plant–atmosphere continuum (Sellers et al., 1996). To accurately simulate these complex hydrological processes, several key model parameters require careful calibration. These primarily include the evaporation parameters (C_1, C_2, C_3), soil saturated hydraulic conductivity (K_s), groundwater transmissivity (K_g) and storage coefficient, the snowmelt factor (M_f), and the hillslope shape parameter (f_{ss}).

A distinctive feature of GBEHM is its enhanced representation of cryosphere hydrology, making it particularly robust for cold regions. The model integrates a rigorous coupled heat and water balance equation (Flerchinger and Saxton, 1989) to simulate soil freeze-thaw cycles, which critically alter soil hydraulic conductivity and infiltration capacity. The vertical soil profile is discretized into a multi-layer structure extending to a depth of 50 m. Crucially, the active soil layer (top 1–3 m) features a refined mesh resolution to accurately capture the dynamics of the active layer thickness and the maximum frozen depth (Guo and Wang, 2013).

The selection of GBEHM for this study is driven by its proven efficacy in simulating complex hydrological processes within the Tibetan Plateau and other high-altitude regions (Shi et al., 2020; Gao et al., 2018). The study area is characterized by rugged terrain and a cold climate, where glacier and snow melt as well as soil freeze-thaw processes exert a dominant control on the hydrological regime. Since GBEHM explicitly accounts for phase changes in the soil and the delayed runoff response caused by the cryosphere, it is well-suited for accurate runoff forecasting in this catchment.

In this application, the UYRB is discretized into an 8 km × 8 km grid system and further delineated into 479 sub-basins based on the DEM.

3.4 Autoregressive with exogenous input

290 While the GBEHM captures the fundamental physical processes of runoff generation, hydrological simulations inevitably contain systematic biases and persistent errors due to uncertainties in model structure and parameters. To mitigate these discrepancies and improve forecast accuracy, this study implements a statistical post-processing technique. Instead of modeling the streamflow directly, an autoregressive with exogenous input (ARX) model is constructed to simulate and correct the
295 hydrological residuals.

Let $Q_{obs}(t)$ and $Q_{sim}(t)$ denote the observed and GBEHM-simulated streamflow at time t , respectively. To stabilize the variance and eliminate seasonal scale effects, both series are first standardized using the mean (μ) and standard deviation (σ) derived strictly from the calibration
300 period. The standardized hydrological error, $E_{std}(t)$, is defined as the deviation of the simulated flow from the observations:

$$E_{std}(t) = Q_{obsstd}(t) - Q_{simstd}(t) \quad (2)$$

Hydrological errors typically exhibit strong temporal autocorrelation and dependence on flow magnitude. To capture these dynamics, the error at the current time step is modeled as a function of
305 the current simulated state, antecedent simulated states, and antecedent errors. The ARX model formulation is expressed as:

$$E_{std}^*(t) = \beta_0 + \sum_{i=1}^p \phi_i E_{std}(t-i) + \sum_{j=0}^k \gamma_j Q_{simstd}(t-j) + \varepsilon(t) \quad (3)$$

where p and k are the lag orders for the autoregressive error term and the exogenous simulated streamflow term respectively, which are optimally determined by identifying the combination that
310 yields the minimum values of the Akaike Information Criterion (AIC) and the Bayesian Information Criterion (BIC) (Hipel and Mcleod, 1994); ϕ_i represents the autoregressive coefficients describing the persistence of model errors; γ_j are coefficients for the exogenous input, accounting for magnitude-dependent bias; β_0 is the intercept standing for the independent bias, and $\varepsilon(t)$ is the residual white noise. The model parameters are calibrated using the least squares method. The
315 corrected error $E_{std}^*(t)$ is generated recursively and added to the standardized forecast simulation. Finally, the post-processed streamflow is obtained by applying inverse standardization to the result.

3.5 Evaluation metrics

The accuracy of the corrected precipitation forecasts is evaluated using the RMSE to quantify error
320 magnitude and the TCC to measure phase consistency. These metrics are defined as follows:

$$\text{RMSE} = \sqrt{\frac{1}{n} \sum_{i=1}^n (S_i - O_i)^2} \quad (4)$$

$$\text{TCC} = \frac{\sum_{i=1}^n (S_i - \bar{S})(O_i - \bar{O})}{\sqrt{\sum_{i=1}^n (S_i - \bar{S})^2} \sqrt{\sum_{i=1}^n (O_i - \bar{O})^2}} \quad (5)$$

where S_i and O_i represent the simulated (or forecasted) and observed values at time step i , respectively; \bar{S} and \bar{O} denote their corresponding means; and n is the total number of samples.
325

For streamflow simulations, model performance is appraised using three standard hydrological

efficiency criteria: the RMSE (same as above), RE, and NSE. The RE and NSE are calculated as:

$$RE = \frac{\bar{s} - \bar{o}}{\bar{o}} \times 100\% \quad (6)$$

$$NSE = 1 - \frac{\sum_{i=1}^n (S_i - O_i)^2}{\sum_{i=1}^n (O_i - \bar{O})^2} \quad (7)$$

330

4 Results

4.1 Calibration and validation of GBEHM and ARX model

The GBEHM is calibrated for the period of 1990–2005 and validated for the period of 2006–2015, leveraging extended historical gauge records to robustly capture complex long-term hydrological dynamics. Figure 3 illustrates the comparison of the simulated daily streamflow and the observations at the Shigu station. The RMSE, RE and NSE values for the calibration period are $330 \text{ m}^3 \text{ s}^{-1}$, 20.2% and 0.93, respectively, and for the validation period are $347 \text{ m}^3 \text{ s}^{-1}$, 20.2% and 0.90, which indicating the high reliability of the GBEHM for daily streamflow simulation in the study area.

The ARX model is calibrated (during 2000–2008) and validated (during 2009–2012) using, striking a balance between avoiding early-stage GBEHM-simulated streamflow driven by CGDPA precipitation warm-up uncertainties and maintaining sufficient data and observed streamflow length for robust parameterization. After testing different model orders, $p = 3$ and $k = 3$ is selected based on validation results (see Sect. S1S2 in the supplement for details). For the validation period, the raw GBEHM simulation shows the RMSE of $351 \text{ m}^3 \text{ s}^{-1}$, RE of 18.9%, and NSE of 0.91. Post-correction with the ARX model, these metrics improve to $267 \text{ m}^3 \text{ s}^{-1}$, 12.5%, and 0.95, respectively. This confirms that the ARX model effectively mitigates errors in streamflow simulation.

345

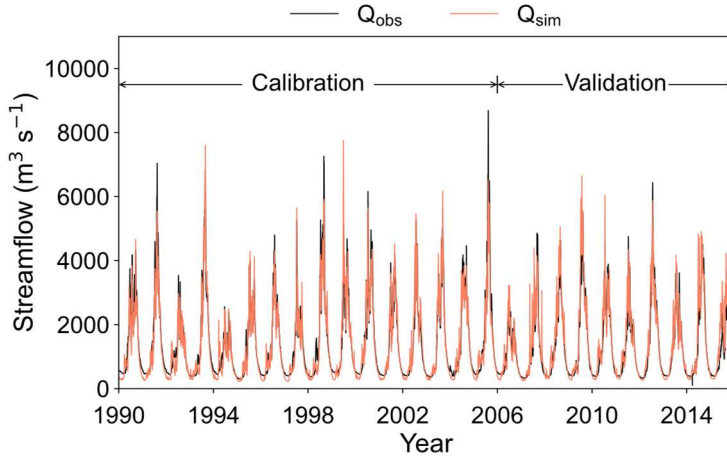


Figure 3. Comparison of observed and simulated daily streamflow at the Shigu station during the calibration (1990–2005) and validation (2006–2015) periods.

350

4.2 Evaluation of precipitation forecasts

Figure 4 illustrates the performance of the areal-averaged raw and corrected (denoted as UK and UK-CNN) precipitation forecasts in terms of RMSE and TCC across different lead time ranges for the 2009–2012 period.

355

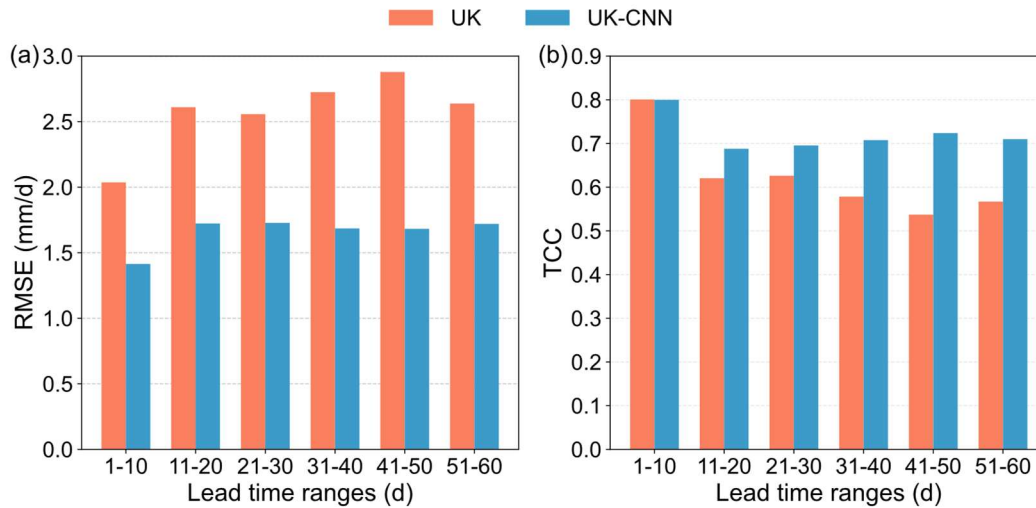


Figure 4. (a) RMSE and (b) TCC of the UK and UK-CNN precipitation forecasts, calculated for aggregated 10-day lead times.

360

In terms of overall performance averaged over all lead times, the areal-averaged UK raw forecasts exhibit an RMSE of 2.6 mm d⁻¹ and a TCC of 0.62. The UK-CNN effectively improve these metrics, reducing the average RMSE to 1.7 mm d⁻¹ (a decrease of 35%) and increasing the TCC to 0.74 (an improvement of 18%). Regarding the temporal evolution, the skill of UK raw forecasts naturally deteriorates with increasing lead time. The UK-CNN follow a similar declining trend initially but stabilize at a relatively constant level after approximately 20 days. Consequently, the relative improvement gap widens as the lead time extends. For instance, the RMSE reduction increases from 33% in the first 20 days to 35% and 38% in the middle and last 20-day periods, respectively. Similarly, the TCC improvement rises significantly from 5% to 17% and 30% over the same intervals.

370

4.3 Evaluation of streamflow forecasts

Figure 5 shows the RMSE, RE, and NSE for streamflow forecasts driven by raw UK and corrected UK-CNN precipitation, as well as the UK-CNN driven forecasts further post-processed by the ARX model (denoted as UK-ARX). In terms of overall performance averaged over all lead times, the streamflow forecasts driven by raw UK precipitation yield an RMSE of 930 m³ s⁻¹, an RE of 48.2%, and an NSE of 0.33. Using UK-CNN precipitation significantly improves these metrics to 706 m³ s⁻¹, 21.0%, and 0.61, representing relative improvements of 24%, 56%, and 87%, respectively. The UK-ARX achieves the best performance, further reducing the RMSE and RE to 596 m³ s⁻¹ and 17.4%, and increasing the NSE to 0.72. This corresponds to additional improvements of 16%, 17%, and 18% over the UK-CNN benchmark.

375

380

As the forecast lead time extends, the skill of streamflow forecasts naturally declines with increasing lead time; however, the correction methods notably mitigate the rate of this deterioration. For instance, the RE of the UK-driven forecasts rises sharply from 25.2% to 63.2% by lead day 51-60, while the NSE plummets from 0.78 to 0.09. Conversely, the RE of the UK-CNN forecasts increases only marginally from 17.6% to 24.5%, with the NSE showing a more gradual decline from 0.87 to a moderate level of 0.43. The UK-ARX further alleviates this degradation trend, maintaining the RE

385

below 20.9% and sustaining the NSE above 0.59 throughout the entire 60-day period.

390

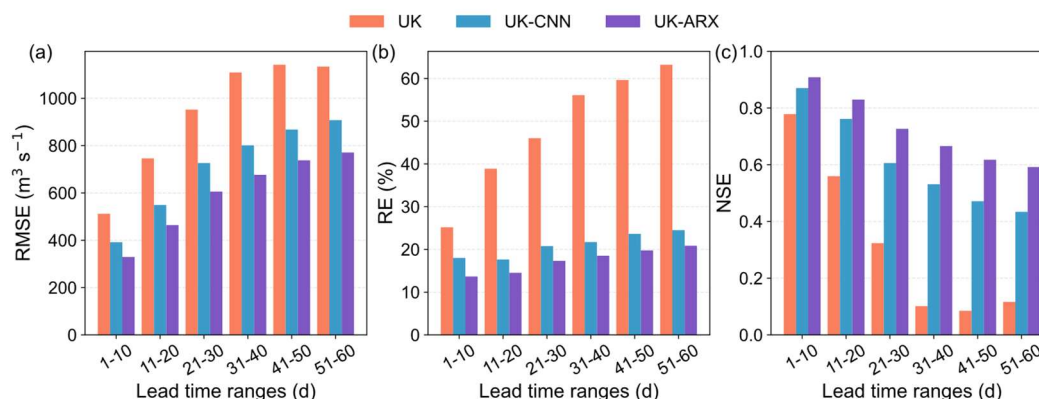


Figure 5. (a) RMSE, (b) RE and (c) NSE of streamflow forecasts driven by raw (UK) and corrected (UK-CNN) precipitation, and the streamflow subsequently post-processed by the ARX model (UK-ARX), calculated for aggregated 10-day lead times.

395

Moreover, the extent of improvement exhibits distinct trends. The performance gap between UK and UK-CNN becomes more pronounced at longer lead times. For instance, the reduction in RE achieved by UK-CNN (compared to UK) increases from around 44% in the first 20 days to 58% and 61% in the middle and last 20-day periods, respectively. Conversely, the incremental improvement from UK-ARX (relative to UK-CNN) remains stable, providing RE reductions of around 21%, 16%, and 16% across these lead time ranges.

400

5 Discussion

5.1 Efficacy of the CNN-based precipitation bias correction

405

This study extends the horizon of reliable precipitation forecasting to 60 days by employing a CNN-based deep learning model for bias correction. Specifically, the model achieves a TCC of approximately 0.70 in the extended range (days 21–30), representing a substantial advantage over the results reported by Lyu et al. (2023) who achieved a TCC of about 0.35 for the same period when correcting summer precipitation over Southern China using ECMWF data with lead times up to 30 days. More importantly, the model maintains a TCC above 0.66 even at long lead times of 51–60 days, with the RMSE stabilizing after the initial 20 days. These findings validate the model's robustness in mitigating error accumulation and sustaining forecast reliability up to 60 days.

410

415

This substantial enhancement in performance is primarily attributed to the deep learning approach and the probabilistic output scheme. First, unlike traditional point-to-point statistical correction methods (e.g., quantile mapping), that process each grid cell independently, the CNN architecture effectively extracts spatial features dependencies from surrounding atmospheric conditions using a 9×9 grid neighborhood, and captures models the complex non-linear dependencies interactions between large-scale atmospheric circulation the multiple meteorological predictors and local precipitation patterns (Baño-Medina et al., 2020; Pan et al., 2019). Second, instead of generating deterministic point predictions, this model explicitly corrects the CSG distribution optimized via CRPS. This approach not only precisely captures the mixed zero-inflated and heavy-tailed characteristics of precipitation (Ghazvinian et al., 2022) but also mitigates the smoothing effect

420

425 common in deep learning by deriving forecasts from a pseudo-ensemble (Ravuri et al., 2021; Rasp and Lerch, 2018), thereby preserving signal variability and ensuring high reliability even at extended lead times.

5.2 Added value of ARX-based hydrological post-processing

430 Our framework extends the valid streamflow forecast horizon to 60 days with the ARX post-processing model providing significant added value in mitigating hydrological residuals. Specifically, while the skill of UK-CNN forecasts naturally degrades at extended horizons (with NSE dropping to 0.43 by day 60), the ARX model effectively alleviates this decline, sustaining a reliable NSE above 0.57 and keeping RE below 22% throughout the entire period. Furthermore, the ARX model achieves a consistent performance boost (about 16–21% reduction in RE) across all
435 lead times, demonstrating its unique capability to mitigate intrinsic structural errors within the hydrological model and ensuring the validity of forecasts up to 60 days.

The efficacy of the ARX model in achieving these results stems from its capacity to mitigate intrinsic hydrological modeling uncertainties while remaining a computationally efficient solution. While
440 precipitation bias correction improves inputs, hydrological models inevitably introduce intrinsic biases due to simplified parameterizations, structural deficiencies, or uncertain initial conditions. The ARX model addresses this by exploiting error autocorrelation to effectively remove systematic and temporal discrepancies, ensuring stable correction capabilities across the entire forecast horizon. Furthermore, compared to data assimilation approaches which aim to reduce these uncertainties by
445 continuously updating internal model states via computationally intensive ensemble simulations (Nearing et al., 2022; Liu et al., 2012), the ARX model provides a more efficient alternative by bypassing these complex internal adjustments entirely, thereby serving as a straightforward post-processing solution characterized by interpretability and minimal data requirements.

450 5.3 Attribution of the streamflow forecast error

An error decomposition framework is adopted to evaluate the relative contributions of error sources. The total streamflow forecast error is decomposed into hydrological model error ($MSE_{\overline{m}}MSE_m$), defined as the MSE between observed precipitation driven simulations and observed streamflow, and precipitation forecast error ($MSE_{\overline{p}}MSE_p$), defined as the MSE between observed and forecast
455 precipitation driven simulations. It should be noted that MSE_m encompasses not only intrinsic hydrological model uncertainties but also the errors introduced by interpolating 0.25° precipitation data onto the 8-km grid. Additionally, the error reduction contribution from the ARX post-processing ($MSE_{\overline{ARX}}MSE_{ARX}$) is quantified as the MSE between the streamflow forecasts before and after ARX correction. Notably, the total forecast error is generally smaller than the arithmetic sum
460 of $MSE_{\overline{m}}MSE_m$ and $MSE_{\overline{p}}MSE_p$. This non-additivity is attributed to the interaction between error sources, where a compensation effect between precipitation biases and hydrological model deficiencies helps mitigate the overall error.

Figure 6 depicts the absolute values and relative proportions of $MSE_{\overline{m}}MSE_m$ and $MSE_{\overline{p}}MSE_p$
465 before and after ARX post-processing. Generally, the magnitudes of $MSE_{\overline{m}}MSE_m$ and the ARX-induced error reduction $MSE_{\overline{ARX}}MSE_{ARX}$ show little variation with lead time, while $MSE_{\overline{p}}MSE_p$ exhibits a steady increase. Prior to ARX post-processing, $MSE_{\overline{m}}MSE_m$ is the dominant error

source within the first week of lead time, accounting for over 50% of the total. This proportion drops rapidly and stabilizes at around 0.15 after 30 days, while the share of MSE_p inversely rises to stabilize at around 0.85. With the application of ARX, the dominance of the hydrological model error is significantly curtailed; it ceases to be the primary error source after a lead time of only 5 days and stabilizes at a proportion of roughly 0.10 after 20 days. Notably, the MSE displays a pronounced 8-day periodicity with peaks occurring at the third phase of each cycle. This pattern stems from the systematic alignment of validity dates caused by the 8-day forecast interval, where errors from sparse extreme events are systematically projected onto specific lead times, thus driving the peak formation (details provided in Sect. S2S3 in the Supplement).

The error decomposition analysis reveals a clear shift in dominance: short-term skill is constrained by hydrological modeling, while medium-to-long-term skill is limited by precipitation forecasts. In our study, hydrological model error (MSE_m) stabilizes at a notably low contribution of approximately 15% at long lead times, outperforming the about 30% reported by Dong et al. (2025) who used a hybrid deep learning-conceptual model. This superior performance is attributed to the GBEHM's capacity to resolve the spatial heterogeneity of the underlying surface and explicitly model the cryosphere hydrological processes, thereby representing the complex runoff generation mechanisms in this cold mountainous region more accurately. The ARX post-processing further compresses this error to about 10% and shortens its dominance period to just 5 days, confirming the high reliability of process-based models augmented by post-processing. Nevertheless, the upper limit of forecast skill remains constrained by meteorological forcing, which dominates the long-term error contribution (>85%). This highlights the indispensability of the proposed framework: effective medium-to-long-range forecasting demands both a high-precision hydrological model to minimize internal uncertainty and advanced precipitation bias correction to mitigate the overwhelming external forcing errors.

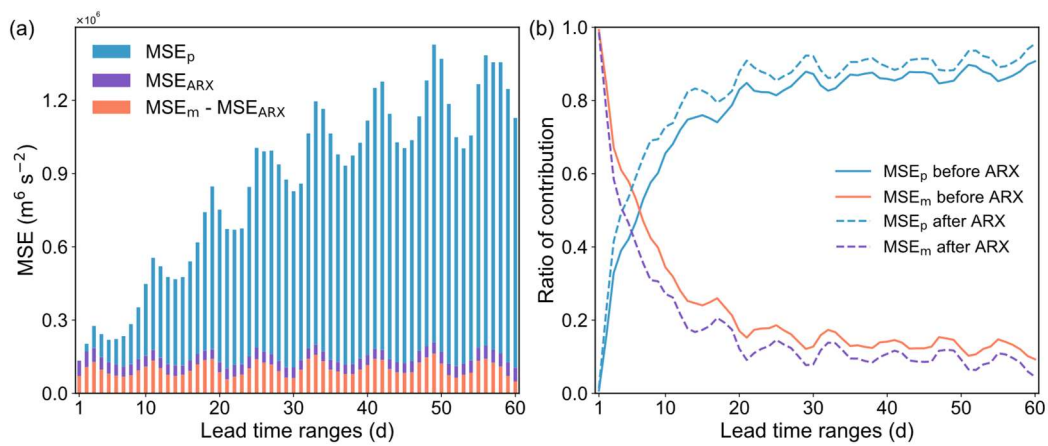


Figure 6. Decomposition of streamflow forecast errors into hydrological model (MSE_m) and precipitation forecast (MSE_p) components before and after ARX post-processing across lead times.

5.4 Limitations of this study

One limitation of this study lies in the use of an identical set of predictors across the entire 1–60 day forecast horizon. Although separate models are trained for different lead times, allowing the weights

of these predictors to adjust dynamically, previous studies indicate that the dominant atmospheric drivers often shift as the lead time extends (Lyu et al., 2023). Therefore, incorporating predictor importance ranking to select lead-time-specific predictor subsets could likely further enhance the model's fitting capability.

Beyond this specific constraint, future research could expand in ~~two aspects. First, while this study yields promising results using UKMO meteorological forecasts, the potential utility of the CMA model, which also supports a 60-day forecast horizon, deserves further evaluation. Second, as the proposed framework is validated at a single hydrological station, broader testing across diverse catchments is essential to verify its generalizability~~several directions. First, it is essential to evaluate the potential of multi-model ensembles (e.g., incorporating the CMA 60-day forecast) and verify the generalizability of our framework across more diverse catchments. Second, although this study uses the mathematical expectation of probabilistic forecasts to balance computational efficiency and extreme event retention, future research should transition to fully probabilistic streamflow forecasting, such as employing surrogate models to ultimately maximize the informational value of early warnings. Finally, while the current framework is optimized for overall streamflow simulation accuracy, it holds significant potential for extreme hydrological hazard forecasting. To fully realize its utility for flood early warning, future efforts should focus on specializing the CNN and ARX models for extreme-value optimization (e.g., by integrating extreme-value-guided loss functions in the CNN and employing threshold-based autoregression in the ARX), and adjusting GBEHM calibration objectives to prioritize high-flow precision.

6 Summary and conclusions

This study constructs a robust 60-day streamflow forecasting framework by coupling a CNN for correcting UKMO precipitation forecasts, the GBEHM for process-based hydrological simulation, and an ARX model for mitigating hydrological modelling residuals. This framework is applied to the Upper Yangtze River Basin (UYRB).

The results demonstrate a significant extension of the valid streamflow forecast horizon to 60 days. Compared to raw forecasts, the proposed method reduced the RE from a range of 25.2%–63.2% to 13.7%–20.9%, while elevating the NSE from 0.78–0.09 to a reliable 0.91–0.59. In terms of contributions, this performance boost is driven by two key components. First, the CNN-based model significantly improved meteorological inputs by reducing precipitation RMSE by 35% and elevating TCC from 0.62 to 0.74, particularly at longer lead times; this enhancement in precipitation accounts for approximately two-thirds of the total improvement in streamflow forecasts. Meanwhile, the ARX post-processing contributed the remaining 33% to the total streamflow error reduction by effectively mitigating intrinsic hydrological residuals.

Our framework highlights the distinct advantages of integrating a physically robust hydrological model with a dual-stage error correction strategy. First, the distributed GBEHM demonstrates exceptional precision in characterizing complex catchment dynamics, maintaining notably low residual errors (15%) even at extended lead times. Second, by strategically coupling deep learning (CNN) for precipitation input correction with statistical post-processing (ARX) for hydrological output refinement, the framework systematically mitigates both external meteorological biases and

internal simulation uncertainties. This synergy yields forecasts that are both volumetrically accurate and temporally consistent, ~~thereby providing~~. From an operational perspective, the pre-trained nature of the framework ensures high computational efficiency for real-time deployment, and the requisite real-time UKMO forecasts can be readily secured through professional institutional data acquisition. Therefore, the proposed framework provides a highly reliable solution with an extended 60-day horizon for hydrological hazard early warning and proactive flood and drought risk mitigation.

Code availability. The source code for the forecasting framework used in this research is available by contacting the authors upon reasonable request.

Data availability. The datasets utilized in this research and their respective sources are detailed in Sect. 2.2. All data supporting the findings of this research are publicly available online: the CGDPA precipitation data (<http://cdc.nmic.cn/sksj.do?method=ssrjscp>), the meteorological data (<http://data.cma.cn>), the DEM data (<http://srtm.csi.cgiar.org>), the soil data and soil hydraulic parameters (<http://globalchange.bnu.edu.cn>), the land use data (<http://www.resdc.cn/>), the LAI and FPAR data (<https://www.nasa.gov/nasa-earth-exchange-nex/>), the UKMO forecast data (<https://apps.ecmwf.int/datasets/data/s2s/levtype=sfc/type=cf/>), except for the streamflow records for hydrological gauging stations which are available upon reasonable request.

Author contribution. ZL designed the research, developed the code, conducted the data processing, analysis and wrote the original draft of the paper. HY designed the research and edited the manuscript. DY designed the research.

Competing interests. The contact author has declared that neither they nor their co-authors have any competing interests.

Acknowledgements. This research was supported by the China National Key R&D Program (grant no. [2021YFC30002022021YFC3000202](#)) and the Program from the State Key Laboratory of Hydro-Science and Engineering of China ([sklhse-TD-2024-A01](#)).

References

Adams, T. E., III and Dymond, R. L.: Possible hydrologic forecasting improvements resulting from advancements in precipitation estimation and forecasting for a real-time flood forecast system in the Ohio River Valley, USA, *J. Hydrol.*, 579, 124138, <https://doi.org/10.1016/j.jhydrol.2019.124138>, 2019.

Adnan, R. M., Liang, Z., Heddam, S., Zounemat-Kermani, M., Kisi, O., and Li, B.: Least square support vector machine and multivariate adaptive regression splines for streamflow prediction in mountainous basin using hydro-meteorological data as inputs, *J. Hydrol.*, 586, 124371, <https://doi.org/10.1016/j.jhydrol.2019.124371>, 2020.

Andrade, F. S. A., Arsenault, R., Poulin, A., Troin, M., and Armstrong, W.: Application of weather post-processing methods for operational ensemble hydrological forecasting on multiple

- 590 catchments in Canada, *J. Hydrol.*, 642, 131861, <https://doi.org/10.1016/j.jhydrol.2024.131861>, 2024.
- Anghileri, D., Monhart, S., Zhou, C., Bogner, K., Castelletti, A., Burlando, P., and Zappa, M.: The Value of Subseasonal Hydrometeorological Forecasts to Hydropower Operations: How Much Does Preprocessing Matter?, *Water Resour. Res.*, 55, 10159-10178, <https://doi.org/10.1029/2019wr025280>, 2019.
- 595 Baño-Medina, J., Manzananas, R., and Gutiérrez, J. M.: Configuration and intercomparison of deep learning neural models for statistical downscaling, *Geosci. Model Dev.*, 13, 2109-2124, <https://doi.org/10.5194/gmd-13-2109-2020>, 2020.
- Bauer, P., Thorpe, A., and Brunet, G.: The quiet revolution of numerical weather prediction, *Nature*, 600, 525, 47-55, <https://doi.org/10.1038/nature14956>, 2015.
- Bogner, K., Chang, A. Y. Y., Bernhard, L., Zappa, M., Monhart, S., and Spirig, C.: Tercile Forecasts for Extending the Horizon of Skillful Hydrological Predictions, *J. Hydrometeorol.*, 23, 521-539, <https://doi.org/10.1175/jhm-d-21-0020.1>, 2022.
- Cannon, A. J., Sobie, S. R., and Murdock, T. Q.: Bias correction of GCM precipitation by quantile mapping: how well do methods preserve changes in quantiles and extremes?, *J. Clim.*, 28, 6938-6959, <https://doi.org/10.1175/JCLI-D-14-00754.1>, 2015.
- 605 Cheng, M., Fang, F., Kinouchi, T., Navon, I. M., and Pain, C. C.: Long lead-time daily and monthly streamflow forecasting using machine learning methods, *J. Hydrol.*, 590, 125376, <https://doi.org/10.1016/j.jhydrol.2020.125376>, 2020.
- 610 Cong, Z., Yang, D., Gao, B., Yang, H., and Hu, H.: Hydrological trend analysis in the Yellow River basin using a distributed hydrological model, *Water Resour. Res.*, 45, W00A13, <https://doi.org/10.1029/2008WR006852>, 2009.
- Dai, Y., Shangguan, W., Duan, Q., Liu, B., Fu, S., and Niu, G.: Development of a China dataset of soil hydraulic parameters using pedotransfer functions for land surface modeling, *J. Hydrometeorol.*, 14, 869-887, <https://doi.org/10.1175/JHM-D-12-0149.1>, 2013.
- 615 Dion, P., Martel, J.-L., and Arsenault, R.: Hydrological ensemble forecasting using a multi-model framework, *J. Hydrol.*, 600, 126537, <https://doi.org/10.1016/j.jhydrol.2021.126537>, 2021.
- Donegan, S., Murphy, C., Harrigan, S., Broderick, C., Quinn, D. F., Golian, S., Knight, J., Matthews, T., Prudhomme, C., Scaife, A. A., Stringer, N., and Wilby, R. L.: Conditioning ensemble streamflow prediction with the North Atlantic Oscillation improves skill at longer lead times, *Hydrol. Earth Syst. Sci.*, 25, 4159-4183, <https://doi.org/10.5194/hess-25-4159-2021>, 2021.
- 620 Dong, N., Hao, H., Yang, M., Wei, J., Xu, S., and Kunstmann, H.: Deep-learning-based sub-seasonal precipitation and streamflow ensemble forecasting over the source region of the Yangtze River, *Hydrol. Earth Syst. Sci.*, 29, 2023-2042, <https://doi.org/10.5194/hess-29-2023-2025>, 2025.
- 625 Du, Y., Wang, Q. J., Wu, W., and Su, C.-H.: Calibration of precipitation forecasts from NWP models for ungauged locations, *J. Hydrol.*, 661, 133733, <https://doi.org/10.1016/j.jhydrol.2025.133733>, 2025.
- Falck, A. S., Tomasella, J., Diniz, F. L. R., and Maggioni, V.: Assessment of subseasonal streamflow predictions in a tropical basin, *J. Hydrol.*, 651, 132488, <https://doi.org/10.1016/j.jhydrol.2024.132488>, 2025.
- 630 Flerchinger, G. and Saxton, K.: Simultaneous heat and water model of a freezing snow-residue-soil system I. Theory and development, *Trans. ASAE*, 32, 565-571, <https://doi.org/10.13031/2013.31040>, 1989.

- 635 Gao, B., Qin, Y., Wang, Y., Yang, D., and Zheng, Y.: Modeling ecohydrological processes and spatial patterns in the upper Heihe Basin in China, *Forests*, 7, 10, <https://doi.org/10.3390/f7010010>, 2015.
- Gao, B., Yang, D., Qin, Y., Wang, Y., Li, H., Zhang, Y., and Zhang, T.: Change in frozen soils and its effect on regional hydrology, upper Heihe basin, northeastern Qinghai–Tibetan Plateau, *The Cryosphere*, 12, 657-673, <https://doi.org/10.5194/tc-12-657-2018>, 2018.
- 640 Ghazvinian, M., Zhang, Y., Hamill, T. M., Seo, D.-J., and Fernando, N.: Improving Probabilistic Quantitative Precipitation Forecasts Using Short Training Data through Artificial Neural Networks, *J. Hydrometeorol.*, 23, 1365-1382, <https://doi.org/10.1175/JHM-D-22-0021.1>, 2022.
- Ghimire, G. R., Krajewski, W. F., and Quintero, F.: Scale-Dependent Value of QPF for Real-Time Streamflow Forecasting, *J. Hydrometeorol.*, 22, 1931-1947, <https://doi.org/10.1175/jhm-d-20-0297.1>, 2021.
- 645 Greuell, W. and Hutjes, R. W. A.: Skill and sources of skill in seasonal streamflow hindcasts for South America made with ECMWF's SEAS5 and VIC, *J. Hydrol.*, 617, 128806, <https://doi.org/10.1016/j.jhydrol.2022.128806>, 2023.
- Guo, D. and Wang, H.: Simulation of permafrost and seasonally frozen ground conditions on the Tibetan Plateau, 1981–2010, *J. Geophys. Res. Atmos.*, 118, 5216-5230, <https://doi.org/10.1002/jgrd.50457>, 2013.
- 650 Guo, S. L., Wen, Y. H., Zhang, X. Q., and Chen, H. Y.: Runoff prediction of lower Yellow River based on CEEMDAN-LSSVM-GM(1,1) model, *Sci. Rep.*, 13, 1511, <https://doi.org/10.1038/s41598-023-28662-5>, 2023.
- 655 Hipel, K. W. and McLeod, A. I.: Time series modelling of water resources and environmental systems, Elsevier, ISBN 0080870368, 1994.
- Huang, Z., Zhao, T., Liu, Y., Zhang, Y., Jiang, T., Lin, K., and Chen, X.: Differing roles of base and fast flow in ensemble seasonal streamflow forecasting: An experimental investigation, *J. Hydrol.*, 591, 125272, <https://doi.org/10.1016/j.jhydrol.2020.125272>, 2020.
- 660 Hunt, K. M. R., Matthews, G. R., Pappenberger, F., and Prudhomme, C.: Using a long short-term memory (LSTM) neural network to boost river streamflow forecasts over the western United States, *Hydrol. Earth Syst. Sci.*, 26, 5449-5472, <https://doi.org/10.5194/hess-26-5449-2022>, 2022.
- Jackson-Blake, L. A., Clayer, F., de Eyto, E., French, A. S., Dolores Frias, M., Mercado-Bettin, D., Moore, T., Puertolas, L., Poole, R., Rinke, K., Shikhani, M., van der Linden, L., and Marce, R.: Opportunities for seasonal forecasting to support water management outside the tropics, *Hydrol. Earth Syst. Sci.*, 26, 1389-1406, <https://doi.org/10.5194/hess-26-1389-2022>, 2022.
- 665 Jamei, M., Jamei, M., Ali, M., Karbasi, M., Farooque, A. A., Malik, A., Cheema, S. J., Esau, T. J., and Yaseen, Z. M.: Quantitative improvement of streamflow forecasting accuracy in the Atlantic zones of Canada based on hydro-meteorological signals: A multi-level advanced intelligent expert framework, *Ecol. Inform.*, 80, 102455, <https://doi.org/10.1016/j.ecoinf.2023.102455>, 2024.
- 670 Jarvis, A., Reuter, H. I., Nelson, A., and Guevara, E.: Hole-filled SRTM for the globe Version 4, available from the CGIAR-CSI SRTN 90m Database, <http://srtm.csi.cgiar.org> (last access: 1 January 2026), 2008.
- 675 Koh, R. and Galelli, S.: Evaluating Streamflow Forecasts in Hydro-Dominated Power Systems-When and Why They Matter, *Water Resour. Res.*, 60, e2023WR035825,

<https://doi.org/10.1029/2023wr035825>, 2024.

- 680 Kondal, A., Hegewisch, K., Liu, M., Abatzoglou, J. T., Adam, J. C., Nijssen, B., and Rajagopalan, K.: Seasonal forecasts have sufficient skill to inform some agricultural decisions, *Environ. Res. Lett.*, 19, 124049, <https://doi.org/10.1088/1748-9326/ad8bde>, 2024.
- Kratzert, F., Klotz, D., Brenner, C., Schulz, K., and Herrnegger, M.: Rainfall–runoff modelling using long short-term memory (LSTM) networks, *Hydrol. Earth Syst. Sci.*, 22, 6005-6022, <https://doi.org/10.5194/hess-22-6005-2018>, 2018.
- 685 Kreibich, H., Van Loon, A. F., Schröter, K., Ward, P. J., Mazzoleni, M., Sairam, N., Abeshu, G. W., Agafonova, S., AghaKouchak, A., Aksoy, H., Alvarez-Garreton, C., Aznar, B., Balkhi, L., Barendrecht, M. H., Biancamaria, S., Bos-Burgering, L., Bradley, C., Budiyo, Y., Buytaert, W., Capewell, L., Carlson, H., Cavus, Y., Couasnon, A., Coxon, G., Daliakopoulos, I., de Ruiter, M. C., Delus, C., Erfurt, M., Esposito, G., François, D., Frappart, F., Freer, J., Frolova, N., Gain, A. K., Grillakis, M., Grima, J. O., Guzmán, D. A., Huning, L. S., Ionita, M., Kharlamov, M., Khoi, D. N., Kieboom, N., Kireeva, M., Koutroulis, A., Lavado-Casimiro, W., Li, H.-Y., Llasat, M. C., Macdonald, D., Mård, J., Mathew-Richards, H., McKenzie, A., Mejia, A., Mendiondo, E. M., Mens, M., Mobini, S., Mohor, G. S., Nagavciuc, V., Ngo-Duc, T., Thao Nguyen Huynh, T., Nhi, P. T. T., Petrucci, O., Nguyen, H. Q., Quintana-Seguí, P., Razavi, S., Ridolfi, E., Riegel, J., Sadik, M. S., Savelli, E., Sazonov, A., Sharma, S., Sörensen, J., Arguello Souza, F. A., Stahl, K., Steinhausen, M., Stoelzle, M., Szalińska, W., Tang, Q., Tian, F., Tokarczyk, T., Tovar, C., Tran, T. V. T., Van Huijgevoort, M. H. J., van Vliet, M. T. H., Vorogushyn, S., Wagener, T., Wang, Y., Wendt, D. E., Wickham, E., Yang, L., Zambrano-Bigiarini, M., Blöschl, G., and Di Baldassarre, G.: The challenge of unprecedented floods and droughts in risk management, *Nature*, 608, 80-86, <https://doi.org/10.1038/s41586-022-04917-5>, 2022.
- 690 Lee, D., Ng, J. Y., Galelli, S., and Block, P.: Unfolding the relationship between seasonal forecast skill and value in hydropower production: a global analysis, *Hydrol. Earth Syst. Sci.*, 26, 2431-2448, <https://doi.org/10.5194/hess-26-2431-2022>, 2022.
- Lee, Y., Pianosi, F., Penuela, A., and Rico-Ramirez, M. A.: Skill of seasonal flow forecasts at catchment scale: an assessment across South Korea, *Hydrol. Earth Syst. Sci.*, 28, 3261-3279, <https://doi.org/10.5194/hess-28-3261-2024>, 2024.
- 705 Li, W., Chen, J., Li, L., Chen, H., Liu, B., Xu, C.-Y., and Li, X.: Evaluation and Bias Correction of S2S Precipitation for Hydrological Extremes, *J. Hydrometeorol.*, 20, 1887-1906, <https://doi.org/10.1175/jhm-d-19-0042.1>, 2019.
- 710 Li, Y., Xü, K., Wu, Z., Zhu, Z., and Wang, Q. J.: A statistical–dynamical approach for probabilistic prediction of sub-seasonal precipitation anomalies over 17 hydroclimatic regions in China, *Hydrol. Earth Syst. Sci.*, 27, 4187-4203, <https://doi.org/10.5194/hess-27-4187-2023>, 2023.
- Liang, H., Zhang, D., Wang, W., Yu, S., and Nimai, S.: Evaluating future water security in the upper Yangtze River Basin under a changing environment, *Sci. Total Environ.*, 889, 164101, <https://doi.org/10.1016/j.scitotenv.2023.164101>, 2023.
- 715 Lin, R., Zhu, J., and Zheng, F.: The Application of the SVD Method to Reduce Coupled Model Biases in Seasonal Predictions of Rainfall, *J. Geophys. Res. Atmos.*, 124, 11837-11849, <https://doi.org/10.1029/2018jd029927>, 2019.
- 720 Liu, Y., Weerts, A. H., Clark, M., Hendricks Franssen, H. J., Kumar, S., Moradkhani, H., Seo, D. J., Schwanenberg, D., Smith, P., van Dijk, A. I. J. M., van Velzen, N., He, M., Lee, H., Noh, S. J., Rakovec, O., and Restrepo, P.: Advancing data assimilation in operational hydrologic

- forecasting: progresses, challenges, and emerging opportunities, *Hydrol. Earth Syst. Sci.*, 16, 3863-3887, <https://doi.org/10.5194/hess-16-3863-2012>, 2012.
- 725 Luo, X., Yuan, X., Zhu, S., Xu, Z., Meng, L., and Peng, J.: A hybrid support vector regression framework for streamflow forecast, *J. Hydrol.*, 568, 184-193, <https://doi.org/10.1016/j.jhydrol.2018.10.064>, 2019.
- Lyu, Y., Zhu, S. P., Zhi, X. F., Ji, Y., Fan, Y., and Dong, F.: Improving Subseasonal-To-Seasonal Prediction of Summer Extreme Precipitation Over Southern China Based on a Deep Learning Method, *Geophys. Res. Lett.*, 50, e2023GL106245, <https://doi.org/10.1029/2023GL106245>, 730 2023.
- Lyu, Y., Zhu, S. P., Zhi, X. F., Wang, J. Y., Ji, Y., Fan, Y., and Dong, F.: Significant advancement in subseasonal-to-seasonal summer precipitation ensemble forecast skills in China mainland through an innovative hybrid CSG-UNET method, *Environ. Res. Lett.*, 19, 074055, <https://doi.org/10.1088/1748-9326/ad5577>, 2024.
- 735 McNerney, D., Thyer, M., Kavetski, D., Laugesen, R., Woldemeskel, F., Tuteja, N., and Kuczera, G.: Improving the Reliability of Sub-Seasonal Forecasts of High and Low Flows by Using a Flow-Dependent Nonparametric Model, *Water Resour. Res.*, 57, e2020WR029317, <https://doi.org/10.1029/2020wr029317>, 2021.
- Monhart, S., Zappa, M., Spirig, C., Schar, C., and Bogner, K.: Subseasonal hydrometeorological ensemble predictions in small- and medium-sized mountainous catchments: benefits of the NWP approach, *Hydrol. Earth Syst. Sci.*, 23, 493-513, <https://doi.org/10.5194/hess-23-493-2019>, 740 2019.
- Nearing, G. S., Klotz, D., Frame, J. M., Gauch, M., Gilon, O., Kratzert, F., Sampson, A. K., Shalev, G., and Nevo, S.: Technical note: Data assimilation and autoregression for using near-real-time streamflow observations in long short-term memory networks, *Hydrol. Earth Syst. Sci.*, 26, 5493-5513, <https://doi.org/10.5194/hess-26-5493-2022>, 745 2022.
- Neri, A., Villarini, G., and Napolitano, F.: Intraseasonal predictability of the duration of flooding above National Weather Service flood warning levels across the US Midwest, *Hydrol. Process.*, 34, 4505-4511, <https://doi.org/10.1002/hyp.13902>, 2020.
- 750 Nie, Y. and Sun, J.: Improving dynamical-statistical subseasonal precipitation forecasts using deep learning: A case study in Southwest China, *Environ. Res. Lett.*, 19, 074013, <https://doi.org/10.1088/1748-9326/ad5370>, 2024.
- Pan, B., Hsu, K., AghaKouchak, A., and Sorooshian, S.: Improving precipitation estimation using convolutional neural network, *Water Resour. Res.*, 55, 2301-2321, 755 <https://doi.org/10.1029/2018WR024090>, 2019.
- Pendergrass, A. G., Meehl, G. A., Pulwarty, R., Hobbins, M., Hoell, A., AghaKouchak, A., Bonfils, C. J. W., Gallant, A. J. E., Hoerling, M., Hoffmann, D., Kaatz, L., Lehner, F., Llewellyn, D., Mote, P., Neale, R. B., Overpeck, J. T., Sheffield, A., Stahl, K., Svoboda, M., Wheeler, M. C., Wood, A. W., and Woodhouse, C. A.: Flash droughts present a new challenge for subseasonal-to-seasonal prediction, *Nat. Clim. Chang.*, 10, 191-199, <https://doi.org/10.1038/s41558-020-0709-0>, 760 2020.
- Quedi, E. S. and Fan, F. M.: Sub seasonal streamflow forecast assessment at large-scale basins, *J. Hydrol.*, 584, 124635, <https://doi.org/10.1016/j.jhydrol.2020.124635>, 2020.
- Rasp, S. and Lerch, S.: Neural networks for postprocessing ensemble weather forecasts, *Mon. Weather Rev.*, 146, 3885-3900, <https://doi.org/10.1175/MWR-D-18-0187.1>, 765 2018.

- Ravuri, S., Lenc, K., Willson, M., Kangin, D., Lam, R., Mirowski, P., Fitzsimons, M., Athanassiadou, M., Kashem, S., and Madge, S.: Skilful precipitation nowcasting using deep generative models of radar, *Nature*, 597, 672-677, <https://doi.org/10.1038/s41586-021-03854-z>, 2021.
- 770 Reichstein, M., Camps-Valls, G., Stevens, B., Jung, M., Denzler, J., Carvalhais, N., and Prabhat, F.: Deep learning and process understanding for data-driven Earth system science, *Nature*, 566, 195-204, <https://doi.org/10.1038/s41586-019-0912-1>, 2019.
- Sabzipour, B., Arsenault, R., Troin, M., and Martel, J.-L.: Sensitivity analysis of the hyperparameters of an ensemble Kalman filter application on a semi-distributed hydrological model for streamflow forecasting, *J. Hydrol.*, 626, 130251, <https://doi.org/10.1016/j.jhydrol.2023.130251>, 2023.
- 775 Sellers, P., Randall, D., Collatz, G., Berry, J., Field, C., Dazlich, D., Zhang, C., Collelo, G., and Bounoua, L.: A revised land surface parameterization (SiB2) for atmospheric GCMs. Part I: Model formulation, *J. Clim.*, 9, 676-705, [https://doi.org/10.1175/1520-0442\(1996\)009<0676:ARLSPF>2.0.CO;2](https://doi.org/10.1175/1520-0442(1996)009<0676:ARLSPF>2.0.CO;2), 1996.
- 780 Shangguan, W., Dai, Y., Duan, Q., Liu, B., and Yuan, H.: A global soil data set for earth system modeling, *J. Adv. Model. Earth Syst.*, 6, 249-263, <https://doi.org/10.1002/2013MS000293>, 2014.
- Shao, P., Feng, J., Lu, J., and Tang, Z.: Data-driven and knowledge-guided denoising diffusion probabilistic model for runoff uncertainty prediction, *J. Hydrol.*, 638, 131556, <https://doi.org/10.1016/j.jhydrol.2024.131556>, 2024.
- 785 Sharma, S., Siddique, R., Reed, S., Ahnert, P., and Mejia, A.: Hydrological Model Diversity Enhances Streamflow Forecast Skill at Short- to Medium-Range Timescales, *Water Resour. Res.*, 55, 1510-1530, <https://doi.org/10.1029/2018wr023197>, 2019.
- Shen, C.: A transdisciplinary review of deep learning research and its relevance for water resources scientists, *Water Resour. Res.*, 54, 8558-8593, <https://doi.org/10.1029/2018WR022643>, 2018.
- 790 Shen, Y. and Xiong, A.: Validation and comparison of a new gauge-based precipitation analysis over mainland China, *Int. J. Climatol.*, 36, 252-265, <https://doi.org/10.1002/joc.4341>, 2016.
- Shi, R., Yang, H., and Yang, D.: Spatiotemporal variations in frozen ground and their impacts on hydrological components in the source region of the Yangtze River, *J. Hydrol.*, 590, 125237, <https://doi.org/10.1016/j.jhydrol.2020.125237>, 2020.
- 795 Siqueira, V. A., Fan, F. M., Dias de Paiva, R. C., Ramos, M.-H., and Collischonn, W.: Potential skill of continental-scale, medium-range ensemble streamflow forecasts for flood prediction in South America, *J. Hydrol.*, 590, 125430, <https://doi.org/10.1016/j.jhydrol.2020.125430>, 2020.
- Siqueira, V. A., Weerts, A., Klein, B., Fan, F. M., Dias de Paiva, R. C., and Collischonn, W.: Postprocessing continental-scale, medium-range ensemble streamflow forecasts in South America using Ensemble Model Output Statistics and Ensemble Copula Coupling, *J. Hydrol.*, 600, 126520, <https://doi.org/10.1016/j.jhydrol.2021.126520>, 2021.
- 800 Slater, L. J., Arnal, L., Boucher, M.-A., Chang, A. Y. Y., Moulds, S., Murphy, C., Nearing, G., Shalev, G., Shen, C., Speight, L., Villarini, G., Wilby, R. L., Wood, A., and Zappa, M.: Hybrid forecasting: blending climate predictions with AI models, *Hydrol. Earth Syst. Sci.*, 27, 1865-1889, <https://doi.org/10.5194/hess-27-1865-2023>, 2023.
- 805 Su, B., Huang, J., Zeng, X., Gao, C., and Jiang, T.: Impacts of climate change on streamflow in the upper Yangtze River basin, *Clim. Chang.*, 141, 533-546, <https://doi.org/10.1007/s10584-016-1852-5>, 2017.

- 810 Sutanto, S. J., Wetterhall, F., and Van Lanen, H. A. J.: Hydrological drought forecasts outperform meteorological drought forecasts, *Environ. Res. Lett.*, 15, 084010, <https://doi.org/10.1088/1748-9326/ab8b13>, 2020.
- Sutanto, S. J., Duku, C., Gülveren, M., Dankers, R., and Paparrizos, S.: Future intensification of compound and consecutive drought and heatwave risks in Europe, *Nat. Hazards Earth Syst. Sci.*, 25, 3879-3895, <https://doi.org/10.5194/nhess-25-3879-2025>, 2025.
- 815 Swain, D. L., Prein, A. F., Abatzoglou, J. T., Albano, C. M., Brunner, M., Diffenbaugh, N. S., Singh, D., Skinner, C. B., and Touma, D.: Hydroclimate volatility on a warming Earth, *Nat. Rev. Earth Environ.*, 6, 35-50, <https://doi.org/10.1038/s43017-024-00624-z>, 2025.
- Tabari, H.: Climate change impact on flood and extreme precipitation increases with water availability, *Sci. Rep.*, 10, 13768, <https://doi.org/10.1038/s41598-020-70816-2>, 2020.
- 820 Tanguy, M., Eastman, M., Chevuturi, A., Magee, E., Cooper, E., Johnson, R. H. B., Facer-Childs, K., and Hannaford, J.: Optimising ensemble streamflow predictions with bias correction and data assimilation techniques, *Hydrol. Earth Syst. Sci.*, 29, 1587-1614, <https://doi.org/10.5194/hess-29-1587-2025>, 2025.
- 825 Teutschbein, C. and Seibert, J.: Bias correction of regional climate model simulations for hydrological climate-change impact studies: Review and evaluation of different methods, *J. Hydrol.*, 456, 12-29, <https://doi.org/10.1016/j.jhydrol.2012.05.052>, 2012.
- Tian, F. Q., Li, Y. L., Zhao, T. T. G., Hu, H. C., Pappenberger, F., Jiang, Y. Z., and Lu, H.: Evaluation of the ECMWF System 4 climate forecasts for streamflow forecasting in the Upper Hanjiang River Basin, *Hydrol. Res.*, 49, 1864-1879, <https://doi.org/10.2166/nh.2018.176>, 2018.
- 830 Towler, E., Stovern, D., Acharya, N., Abel, M. R., Currier, W. R., Bellier, J., Cifelli, R., Mahoney, K., Mossel, C., Scheuerer, M., Thorstensen, A., and Viterbo, F.: Implementing and Evaluating National Water Model Ensemble Streamflow Predictions Using Postprocessed Precipitation Forecasts, *J. Hydrometeorol.*, 26, 385-399, <https://doi.org/10.1175/jhm-d-24-0111.1>, 2025.
- 835 Vernon, B., Zhang, W., and Chikamoto, Y.: Improving seasonal precipitation forecasts in the Western United States through statistical downscaling, *Environ. Res. Lett.*, 20, 064008, <https://doi.org/10.1088/1748-9326/add02c>, 2025.
- Vitart, F., Ardilouze, C., Bonet, A., Brookshaw, A., Chen, M., Codorean, C., Déqué, M., Ferranti, L., Fucile, E., Fuentes, M., Hendon, H., Hodgson, J., Kang, H.-S., Kumar, A., Lin, H., Liu, G., 840 Liu, X., Malguzzi, P., Mallas, I., Manoussakis, M., Mastrangelo, D., MacLachlan, C., McLean, P., Minami, A., Mladek, R., Nakazawa, T., Najm, S., Nie, Y., Rixen, M., Robertson, A. W., Ruti, P., Sun, C., Takaya, Y., Tolstykh, M., Venuti, F., Waliser, D., Woolnough, S., Wu, T., Won, D.-J., Xiao, H., Zaripov, R., and Zhang, L.: The Subseasonal to Seasonal (S2S) Prediction Project Database, *Bull. Am. Meteorol. Soc.*, 98, 163-173, <https://doi.org/10.1175/BAMS-D-16-0017.1>, 845 2017.
- Wang, J., Wang, X., Lei, X. H., Wang, H., Zhang, X. H., You, J. J., Tan, Q. F., and Liu, X. L.: Teleconnection analysis of monthly streamflow using ensemble empirical mode decomposition, *J. Hydrol.*, 582, 124411, <https://doi.org/10.1016/j.jhydrol.2019.124411>, 2020.
- Wang, M., Wyatt, B. M., and Ochsner, T. E.: Accurate statistical seasonal streamflow forecasts developed by incorporating remote sensing soil moisture and terrestrial water storage anomaly information, *J. Hydrol.*, 626, 130154, <https://doi.org/10.1016/j.jhydrol.2023.130154>, 2023.
- 850 Wang, T., Shi, R., Yang, D., Yang, S., and Fang, B.: Future changes in annual runoff and hydroclimatic extremes in the upper Yangtze River Basin, *J. Hydrol.*, 615, 128738,

<https://doi.org/10.1016/j.jhydrol.2022.128738>, 2022.

- 855 Xu, P., Wang, D., Singh, V. P., Lu, H., Wang, Y., Wu, J., Wang, L., Liu, J., and Zhang, J.: Multivariate Hazard Assessment for Nonstationary Seasonal Flood Extremes Considering Climate Change, *J. Geophys. Res. Atmos.*, 125, e2020JD032780, <https://doi.org/10.1029/2020jd032780>, 2020.
- Yang, D., Gao, B., Jiao, Y., Lei, H., Zhang, Y., Yang, H., and Cong, Z.: A distributed scheme developed for eco-hydrological modeling in the upper Heihe River, *Sci. China Earth Sci.*, 58, 36-45, <https://doi.org/10.1007/s11430-014-5029-7>, 2015.
- 860 Yang, D., Li, C., Hu, H., Lei, Z., Yang, S., Kusuda, T., Koike, T., and Musiake, K.: Analysis of water resources variability in the Yellow River of China during the last half century using historical data, *Water Resour. Res.*, 40, W06502, <https://doi.org/10.1029/2003WR002763>, 2004.
- Yin, G. H., Yoshikane, T., Kaneko, R., and Yoshimura, K.: Improving Global Subseasonal to Seasonal Precipitation Forecasts Using a Support Vector Machine-Based Method, *J. Geophys. Res. Atmos.*, 128, e2023JD038929, <https://doi.org/10.1029/2023JD038929>, 2023.
- 865 [Yuan, D., Tan, Y., Zhu, Y., Gao, c., Liu, K., and Dong, N.: Research of monthly runoff forecast of Jinsha River Basin based on VMD-PSO-LSTM \(in Chinese\), *Water Resour. Hydropower Eng.*, 55, 28-38, <https://doi.org/10.13928/j.cnki.wrahe.2024.S1.004>, 2024.](https://doi.org/10.13928/j.cnki.wrahe.2024.S1.004)
- 870 Zhang, L., Gao, S., and Yang, T.: Adapting subseasonal-to-seasonal (S2S) precipitation forecast at watersheds for hydrologic ensemble streamflow forecasting with a machine learning-based post-processing approach, *J. Hydrol.*, 631, 130643, <https://doi.org/10.1016/j.jhydrol.2024.130643>, 2024.
- Zhang, L. J., Yang, T. T., Gao, S., Hong, Y., Zhang, Q., Wen, X., and Cheng, C. T.: Improving Subseasonal-to-Seasonal forecasts in predicting the occurrence of extreme precipitation events over the contiguous US using machine learning models, *Atmos. Res.*, 281, 106502, <https://doi.org/10.1016/j.atmosres.2022.106502>, 2023.
- 875 Zhang, Y., Wu, L., Scheuerer, M., Schaake, J., and Kongoli, C.: Comparison of Probabilistic Quantitative Precipitation Forecasts from Two Postprocessing Mechanisms, *J. Hydrometeorol.*, 18, 2873-2891, <https://doi.org/10.1175/JHM-D-16-0293.1>, 2017.
- 880 Zhong, W., Guo, J., Chen, L., Zhou, J., Zhang, J., and Wang, D.: Future hydropower generation prediction of large-scale reservoirs in the upper Yangtze River basin under climate change, *J. Hydrol.*, 588, 125013, <https://doi.org/10.1016/j.jhydrol.2020.125013>, 2020.
- 885 [Zhou, F., Yang, H., and Dong, N.: A low flow forecasting model based on recession curve and long short-term memory \(LSTM\) network \(in Chinese\), *Water Resour. Hydropower Eng.*, 55, 99-107, <https://doi.org/10.13928/j.cnki.wrahe.2024.09.009>, 2024.](https://doi.org/10.13928/j.cnki.wrahe.2024.09.009)
- 890 Zhu, Z., Bi, J., Pan, Y., Ganguly, S., Anav, A., Xu, L., Samanta, A., Piao, S., Nemani, R. R., and Myneni, R. B.: Global data sets of vegetation leaf area index (LAI) 3g and fraction of photosynthetically active radiation (FPAR) 3g derived from global inventory modeling and mapping studies (GIMMS) normalized difference vegetation index (NDVI3g) for the period 1981 to 2011, *Remote Sens.*, 5, 927-948, <https://doi.org/10.3390/rs5020927>, 2013.