

Supplementary information

Table SM 1: Efficiency of PAH Extraction

		N	Ace	Flu	Phe	An	Fla	Pyr
Sol certifié CMR170	ng/g.dw	573 ± 45	440 ± 35	318 ± 22	210 ± 14	242 ± 25	263 ± 19	389 ± 28
Lac Maudit (after 2000 cal a BP) Reunion	%	11 ± 83	25 ± 43	42 ± 43	100 ± 28	95 ± 32	100 ± 12	81 ± 19
Lac Maudit (before 2000 cal a BP)	%	12 ± 2	36 ± 11	59 ± 14	80 ± 28	59 ± 28	92 ± 45	100 ± 45
		BaA	CHR	BbF	BkF	BaP	BghiP	DBahA
		110 ± 9	213 ± 21	302 ± 22	251 ± 25	66.1 ± 5.6	173 ± 21	193 ± 23
		100 ± 53	49 ± 14	76 ± 23	100 ± 24	100 ± 49	100 ± 27	71 ± 45
		100 ± 53	98 ± 36	99 ± 36	100 ± 35	66 ± 33	89 ± 38	82 ± 37

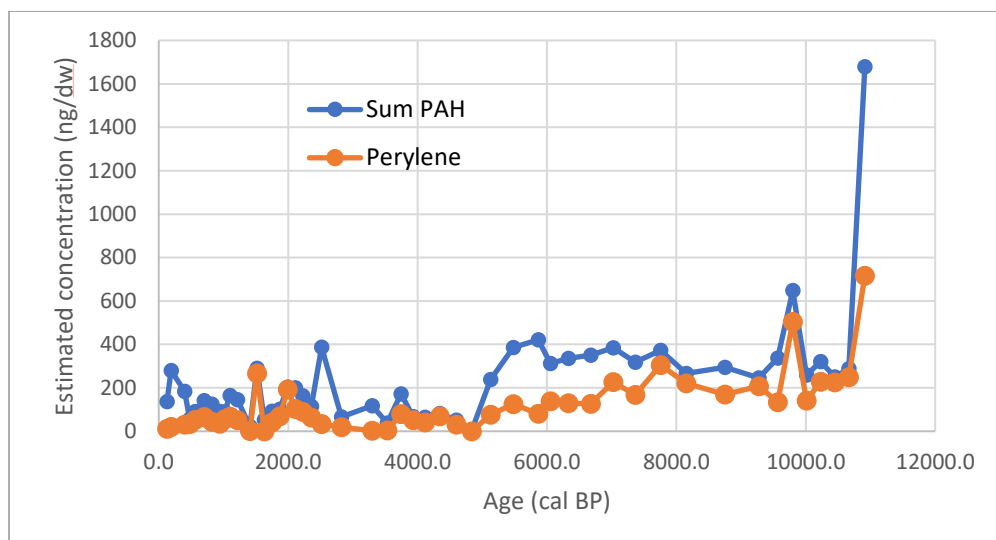


Figure SM2: Variation of the concentration in Perylene and the sum of PAH (taking into a count the Per quantity) in lake Maudit over the Holocene. Note that the concentration in perylene is not the real one but an estimation because BbF calibration curve have been used.

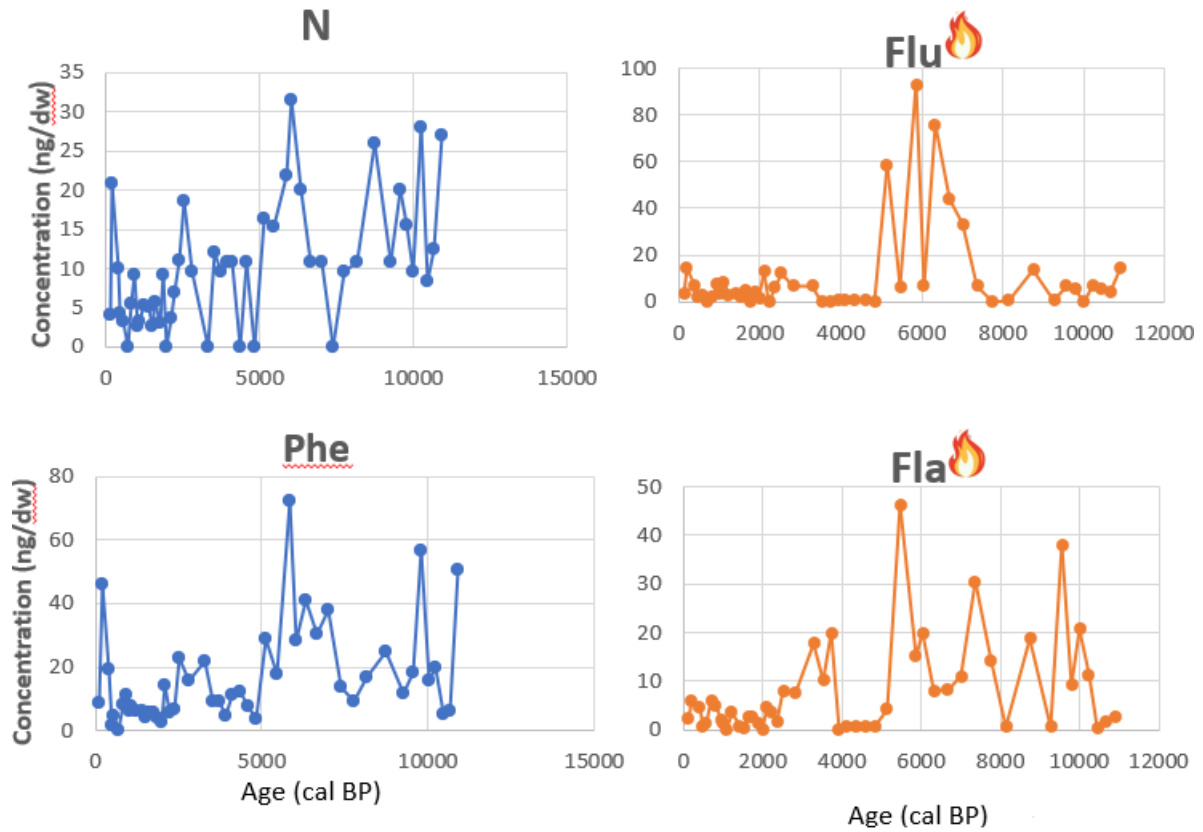


Figure SM3: Comparison of the concentration variation in Naphtalene (N) and Phenanthrene (Phe) with those of Fluoranthene (Fla) and Fluorene (Fla) which have a fire origin.

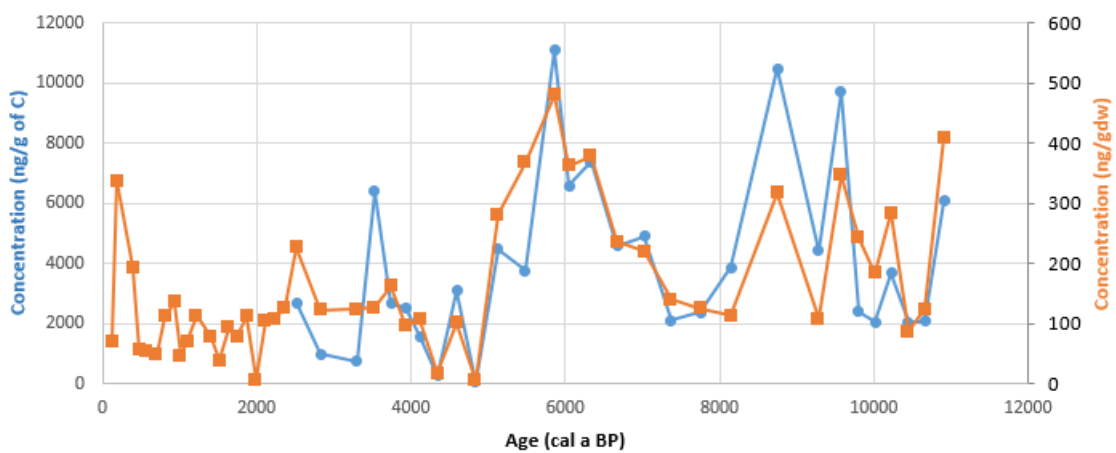


Figure SM4: Comparison between the concentration of PAH in gramme of dry sediment (orange) or in gramme of carbon content (blue).