

Supplement of

Strong winds in Poland in the 17th century and their consequences, in light of documentary evidence

Rajmund Przybylak, Janusz Filipiak, Piotr Oliński, Babak Ghazi, Andrzej Arażny

Corresponding authors: Andrzej Arażny, andy@umk.pl & Rajmund Przybylak, rp11@umk.pl



Fig. S1. The Polish–Lithuanian Commonwealth in 1635 and 1672 (source: Wikimedia Commons – Polish–Lithuanian Commonwealth in 1635 (https://upload.wikimedia.org/wikipedia/commons/0/06/Polish-Lithuanian_Commonwealth_1635.png) and Wikimedia Commons – Polish–Lithuanian Commonwealth in 1672 (https://upload.wikimedia.org/wikipedia/commons/0/06/Polish-Lithuanian_Commonwealth_in_1672.png).

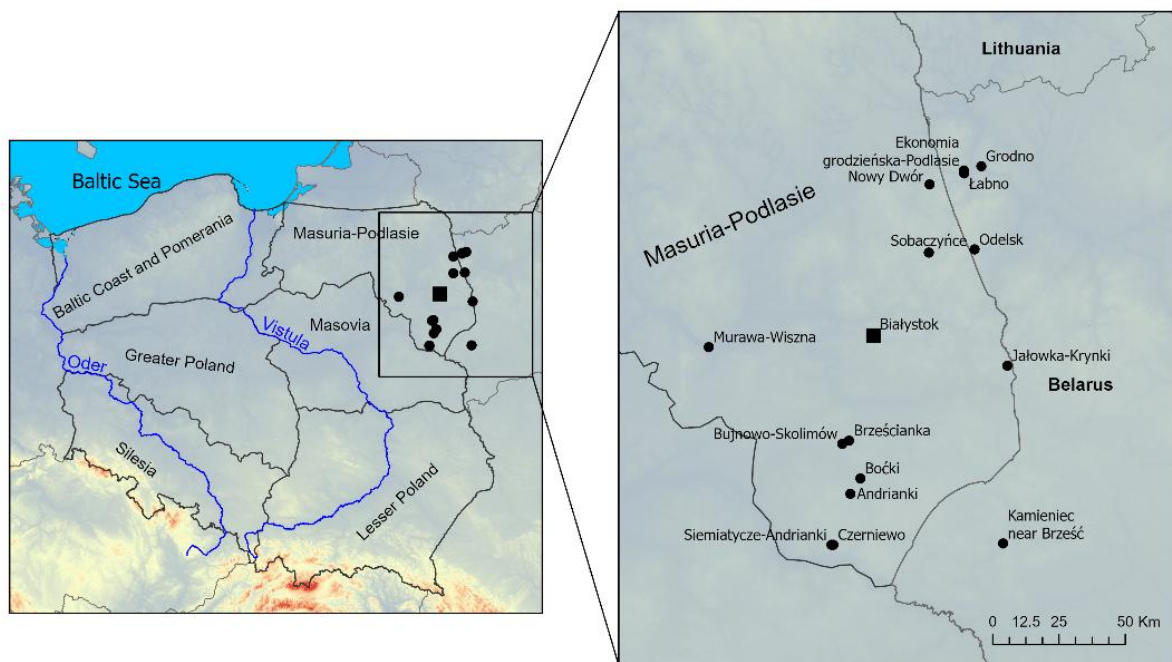


Fig. S2. Location of places for which information about strong winds exists in Chrapowicki's daily *Diary* for the years 1656–85