

Figure S1 – Base Flow Index (BFI) and catchment average rainfall (Standard Period Average Annual Rainfall, SAAR 1961-1990) for stations included in eFLaG. Darker colours indicate higher values.

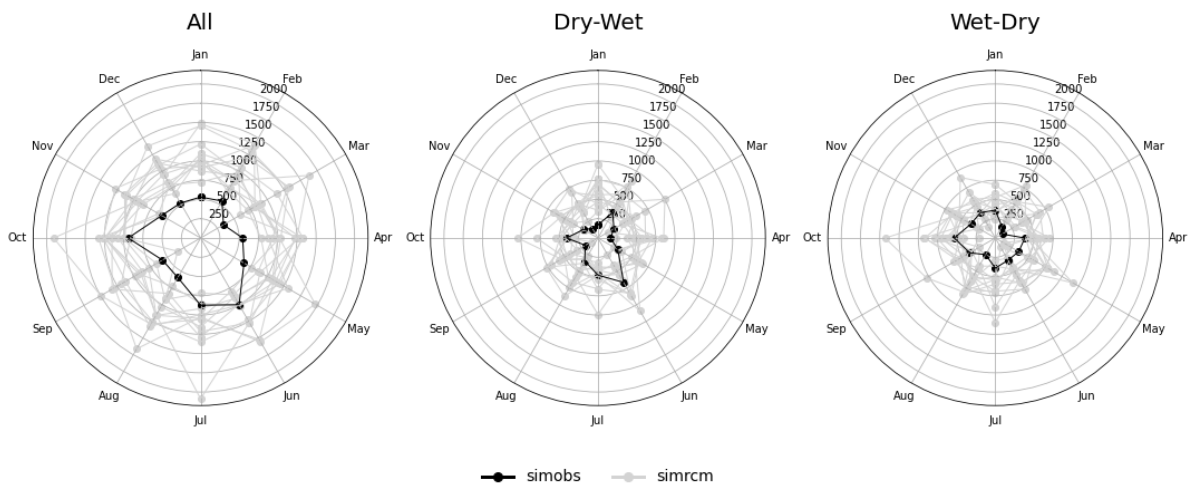


Figure S2 – Seasonality of severe (threshold ± 1.6) dry-wet and wet-dry hydrological (SSI) transitions in the baseline period (1989–2018) for SimObs and each ensemble member of SimRCM, shown by a count of transition events occurring in each calendar month, using transition end month.

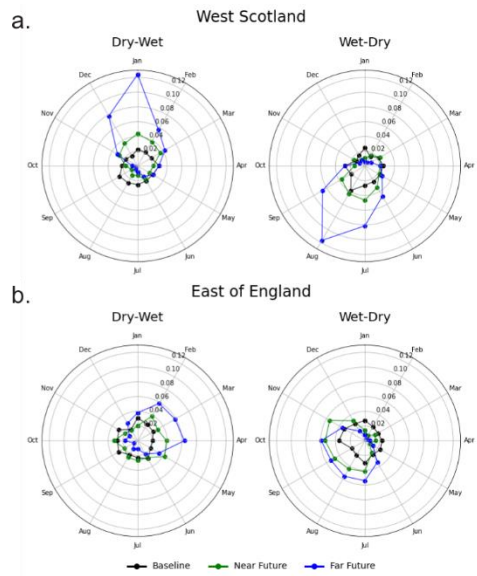


Figure S3 – Seasonality of severe (threshold ± 1.6) hydrological (SSI) transitions using SimRCM for all models, shown as a fraction of transition events ending in each calendar month for baseline, near future and far future periods for dry-wet and wet-dry transitions

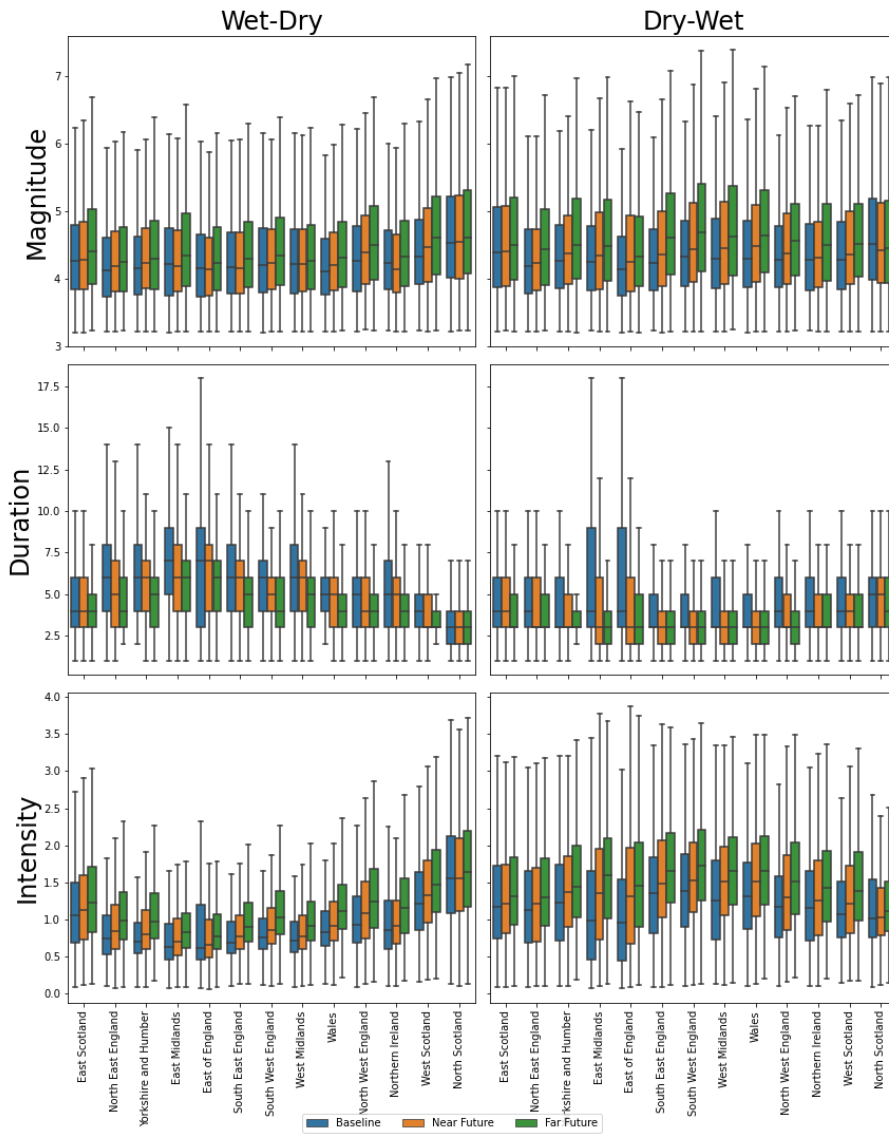


Figure S4 – Boxplot representing region-averaged magnitude (no units), duration (months) and intensity (no units) of severe (threshold ± 1.6) wet-dry and dry-wet meteorological (SPI) transitions for baseline, near future and far future with SimRCM. The spread of the boxplots (ranging from 5-95th percentile, without outliers) represents the 12 RCM scenarios. For the equivalent plot for hydrological (SSI) transitions see Figure 8.