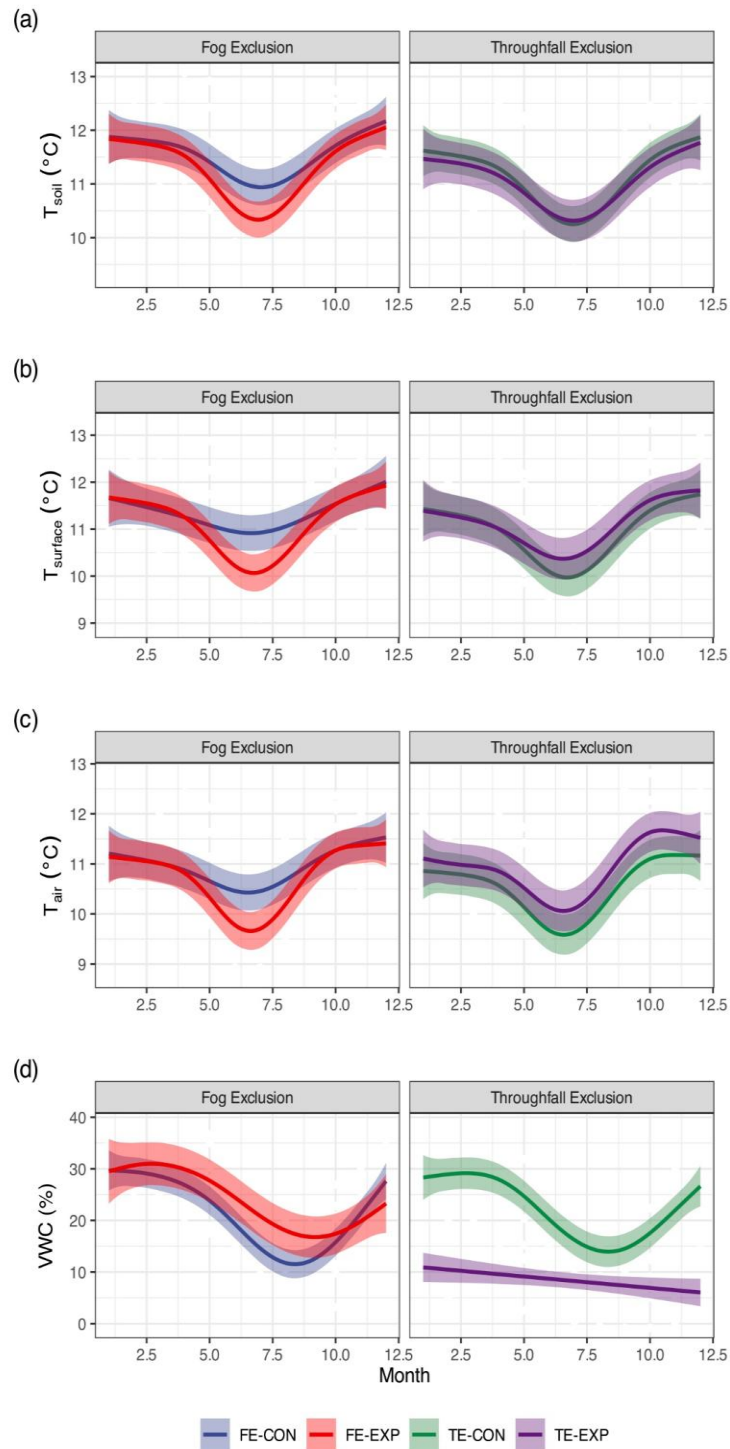


1 **Supplementary material**

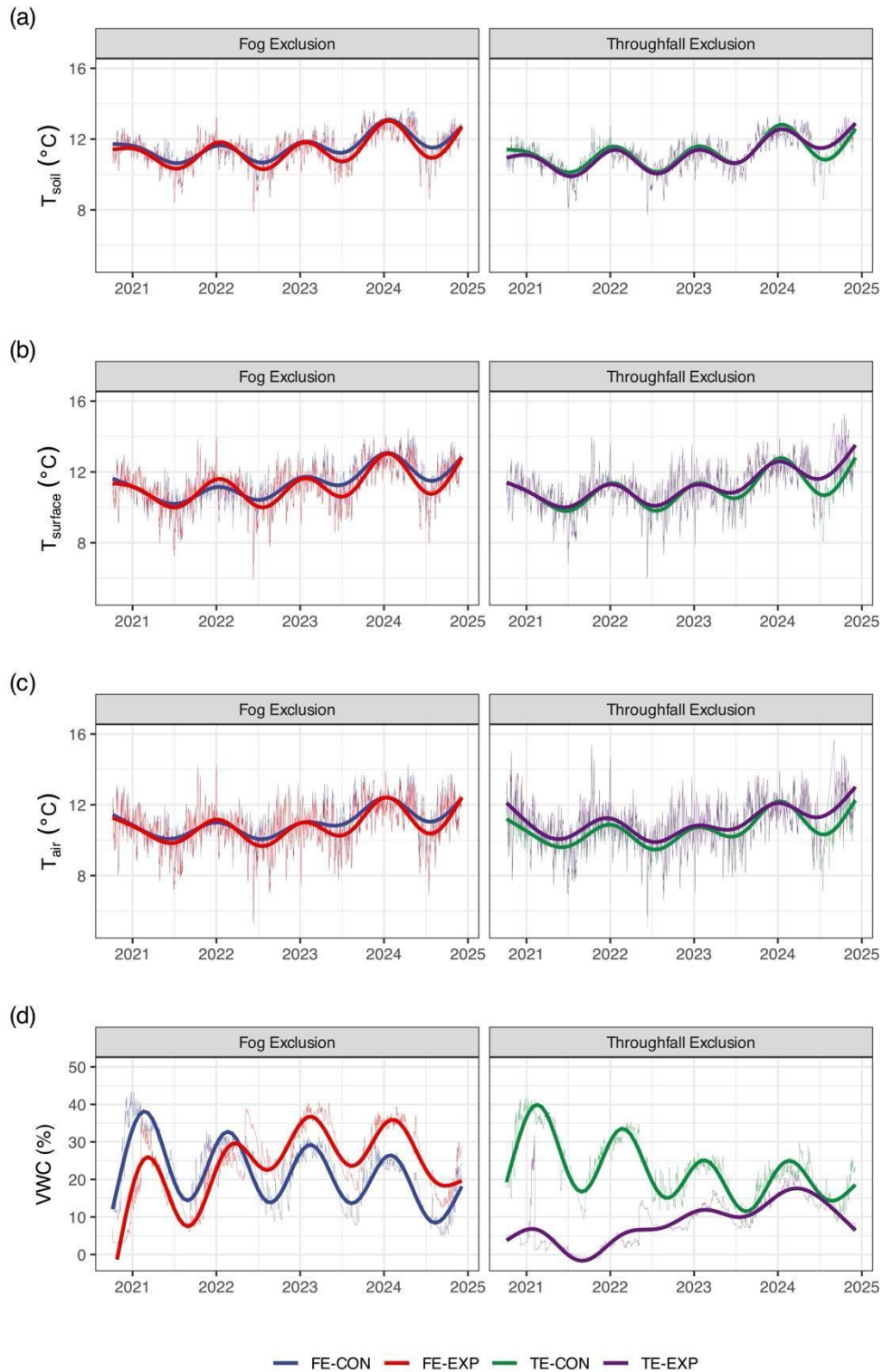


2

3 **Figure S1. (a) Monthly average variation of soil temperature ( $T_{soil}$ ) recorded at 6 cm soil depth, (b) soil**  
4 **surface temperature ( $T_{surface}$ ) at 2 cm above soil surface, and (c) air temperature ( $T_{air}$ ) at 15 cm above the**  
5 **soil surface. (d) Soil volumetric water content (VWC) recorded over 12 cm soil depth for fog exclusion**  
6 **experiment (FE-EXP), fog exclusion control (FE-CON), throughfall exclusion experiment (TE-EXP), and**

7 **throughfall exclusion control (TE-CON) plots recorded with TMS-4 dataloggers.** The coloured continuous  
 8 lines represent the average fitted with the generalised additive model for each plot and coloured bands show the  
 9 standard error of model prediction. Data were summarised between October 2020-December 2024.

10



11

12 **Figure S2. (a) Daily variation of soil temperature ( $T_{\text{soil}}$ ) recorded at 6 cm soil depth, (b) soil surface**  
13 **temperature ( $T_{\text{surface}}$ ) at 2 cm above soil surface, and (c) air temperature ( $T_{\text{air}}$ ) at 15 cm above soil surface.**  
14 **(d) Soil volumetric water content (VWC) recorded over 12 cm soil depth for fog exclusion experiment (FE-**  
15 **EXP), fog exclusion control (FE-CON), throughfall exclusion experiment (TE-EXP), and throughfall**  
16 **exclusion control (TE-CON) plots, recorded with TMS-4 dataloggers. The coloured continuous thick lines**  
17 **represent the average fitted with the generalised additive model for each plot and thin lines are the daily average**  
18 **variation of soil climatic variables. Data were summarised between October 2020-December 2024.**

19