

Supplementary material for:

Stable isotope signatures, concentrations, and potential supply of particulate organic carbon and nitrogen from summer sea ice in the Indian sector of the Southern Ocean

Keigo D. Takahashi, Ryosuke Makabe, Masayoshi Sano, Kazuki Nakata, Noriaki Kimura, Daiki Nomura, Michiyo Yamamoto-Kawai, Ryo Matsuda, Natsumi Nojiri, Masato Ito, Shintaro Takao, Naho Horimoto-Miyazaki, Aiko Tachibana, Norio Kurosawa, Takeshi Tamura, Mizuki Komatsu, Kay I. Ohshima, Kohei Mizobata, Shigeru Aoki, Masato Moteki

Correspondence to: Keigo D. Takahashi (keigo.d.takahashi@gmail.com)

Table of contents:

Figure S1. Sea ice drift and daily ice production in the Lützow-Holm Bay and Cape Darnley regions.

Figure S2. Sea ice drift and daily ice production in the Vincennes Bay region.

Figure S3. Sea ice drift and daily ice production in the Sabrina Coast.

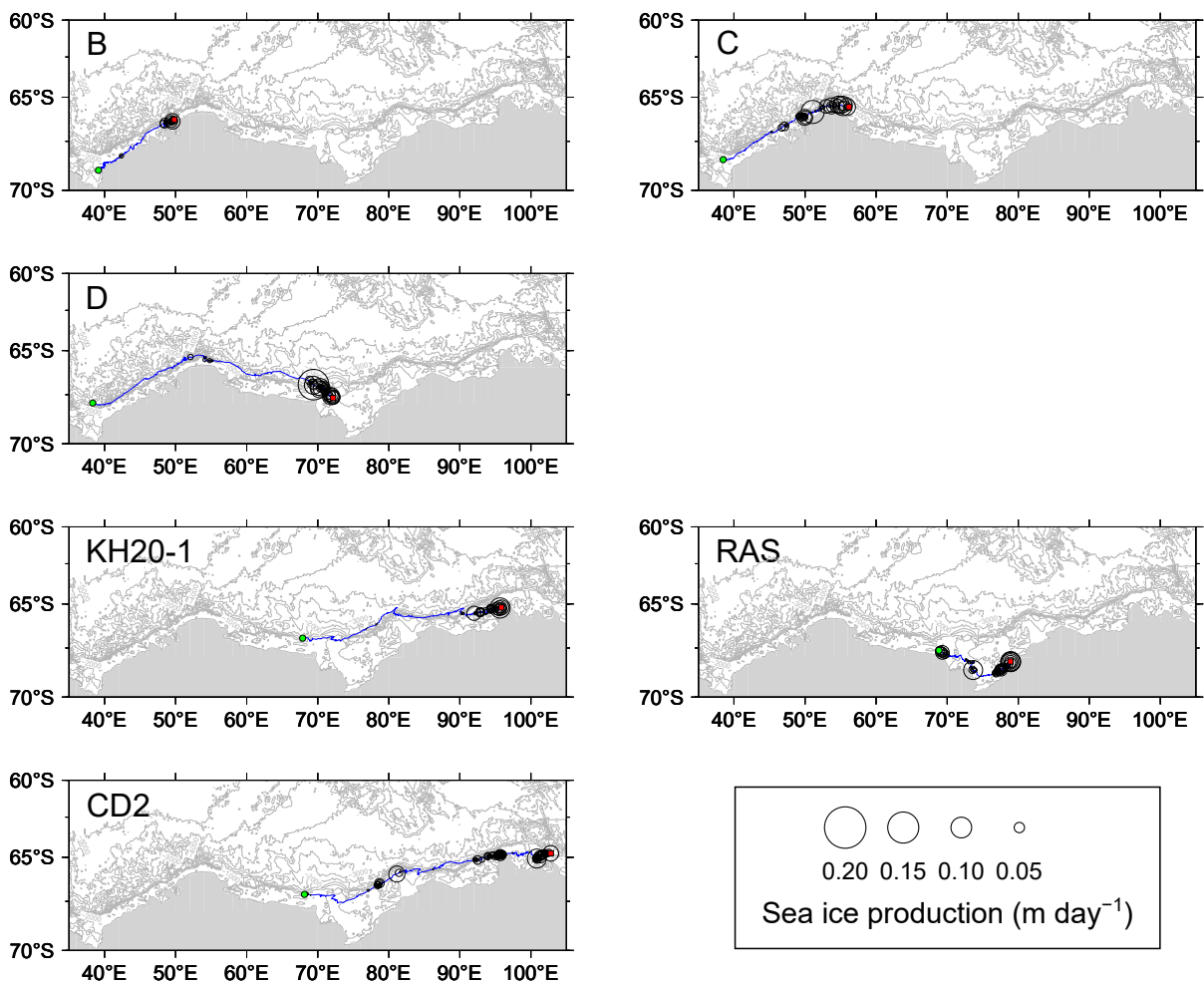


Figure S1

Sea ice drift and daily ice production in the Lützw-Holm Bay and Cape Darnley regions. The red square and green circle indicates start and end (sampling) point, respectively.

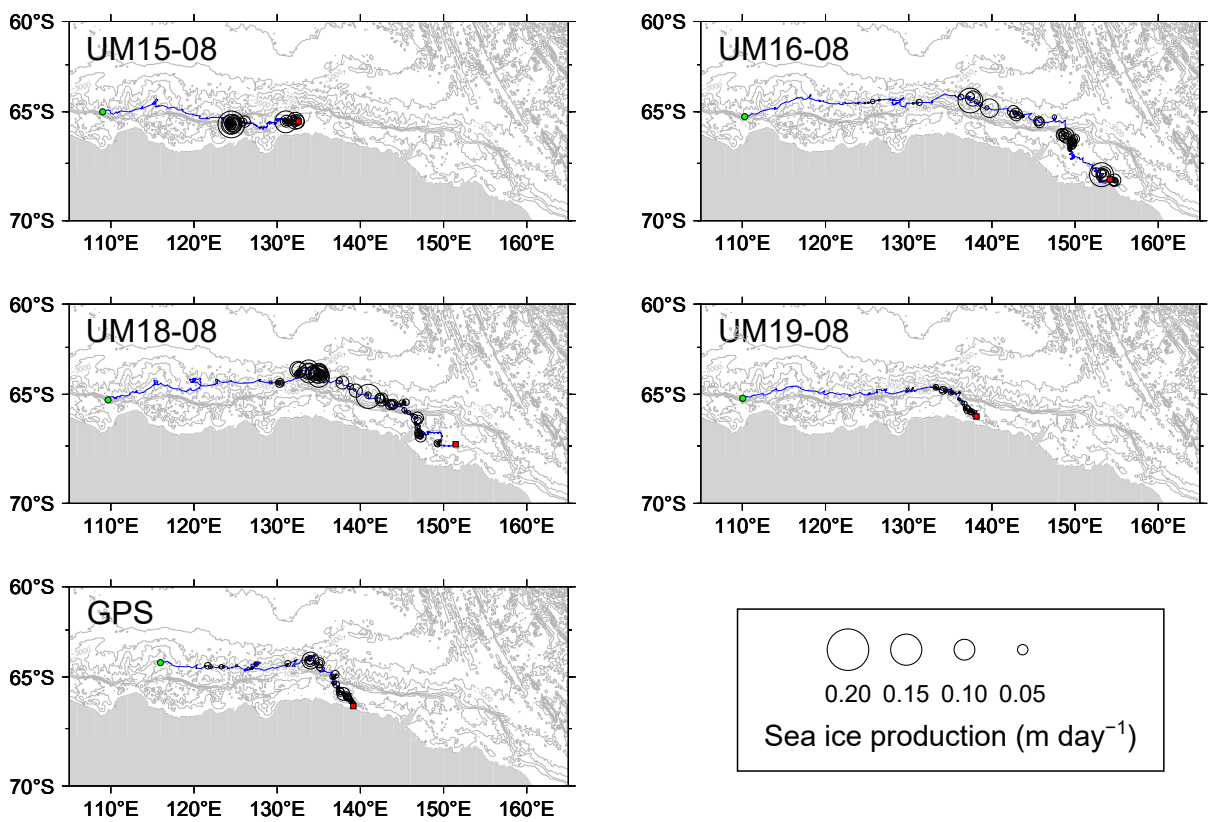


Figure S2

Sea ice drift and daily ice production in the Vincennes Bay region. The red square and green circle indicates start and end (sampling) point, respectively.

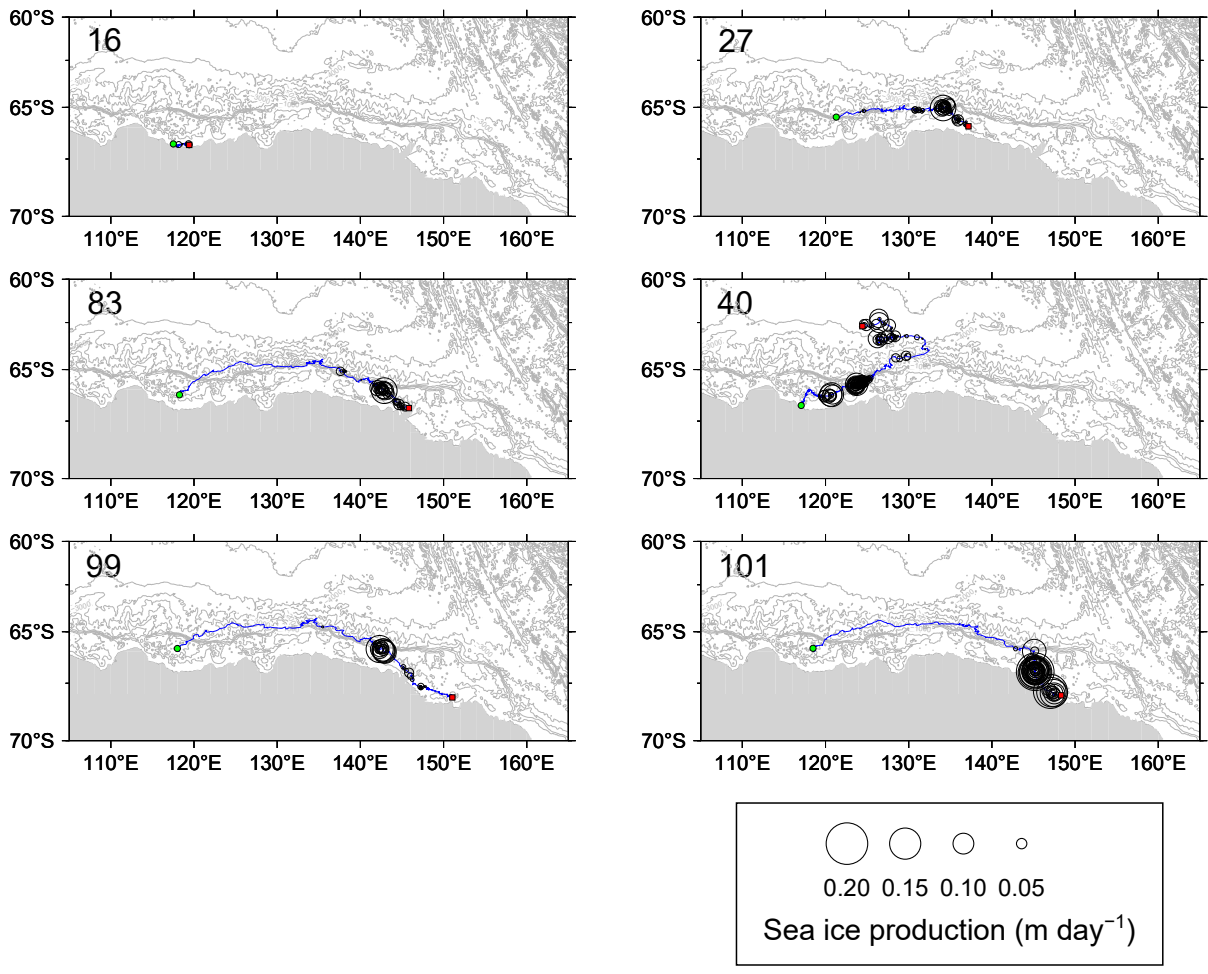


Figure S3
 Sea ice drift and daily ice production in the Sabrina Coast. The red square and green circle indicates start and end (sampling) point, respectively.