

Supplement of

Validation of the surface velocity field of mountain glaciers from ITS_LIVE V2.0 with in-situ GNSS data

Jing Zhang et al.

Correspondence to: Yang Lei (leiyang@nssc.ac.cn)

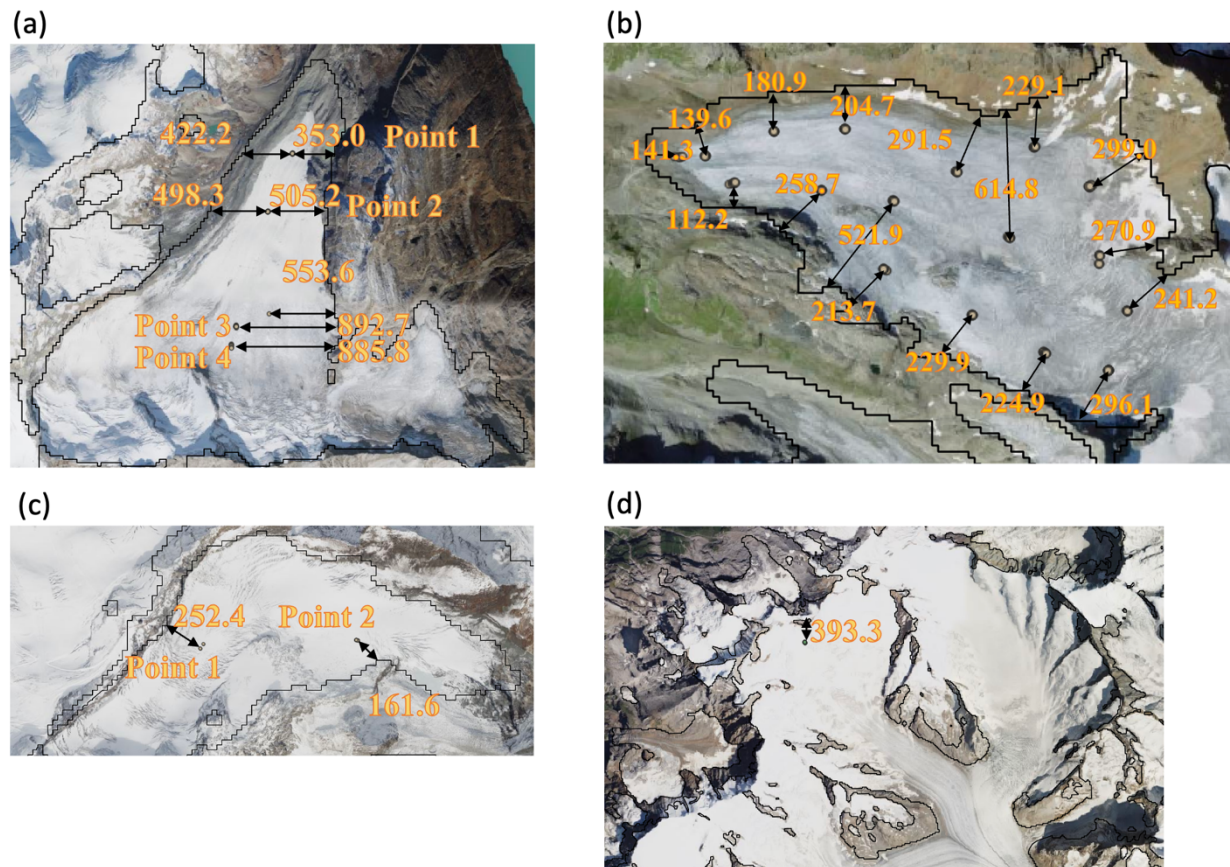


Figure S1: The GNSS site with the distance to the nearest rock in Switzerland. (a) Schwarzberggletscher; (b) Silvrettagletscher; (c) Hohlaubgletscher; (d) Grosser Aletschgletscher.

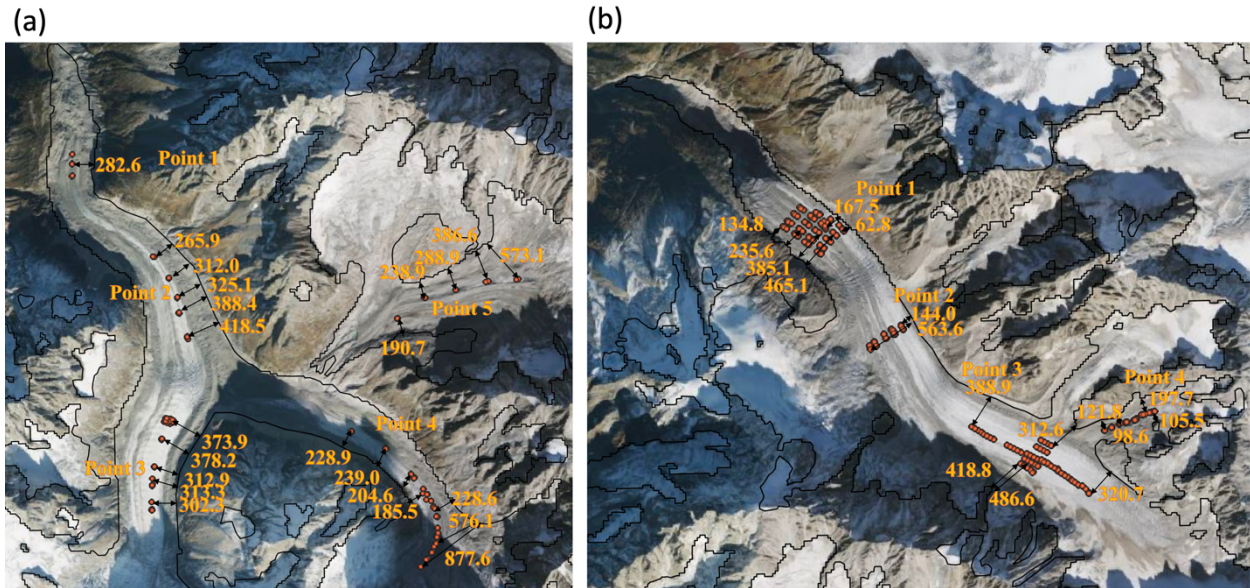


Figure S2: The GNSS site with the distance to the nearest rock in France. (a) Mer de Glace; (b) Argentière Glacier

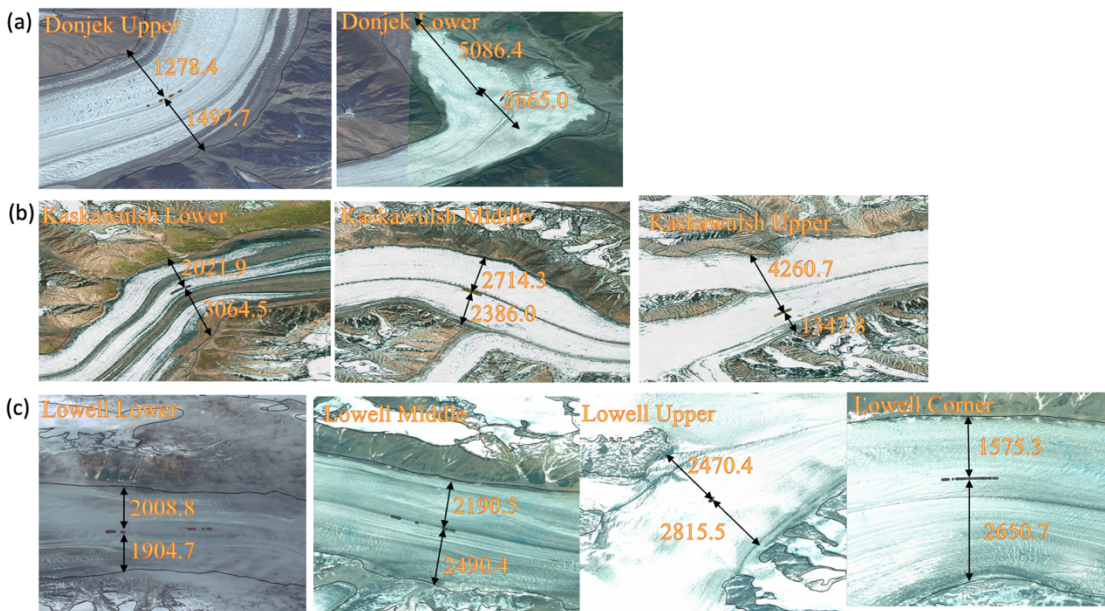


Figure S3: The GNSS site with the distance to the nearest rock in Yukon region. (a) Donjek glacier; (b) Kaskawulsh glacier; (c) Lowell glacier.

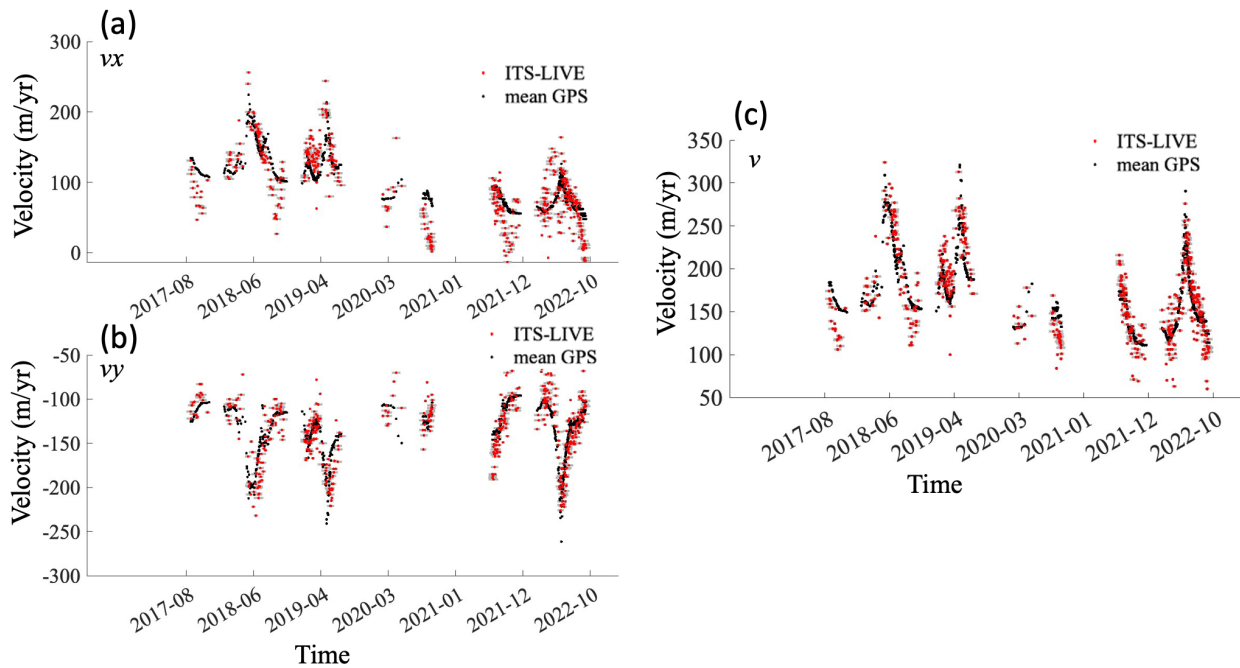


Figure S4. ITS_LIVE V2 annual velocity time series (red line) at the Kaskawulsh Glacier lower monitoring point, showing seasonal velocity variations. Black dots denote in-situ GNSS measurements. Gray bars represent ITS_LIVE V2 image-pair acquisition periods.

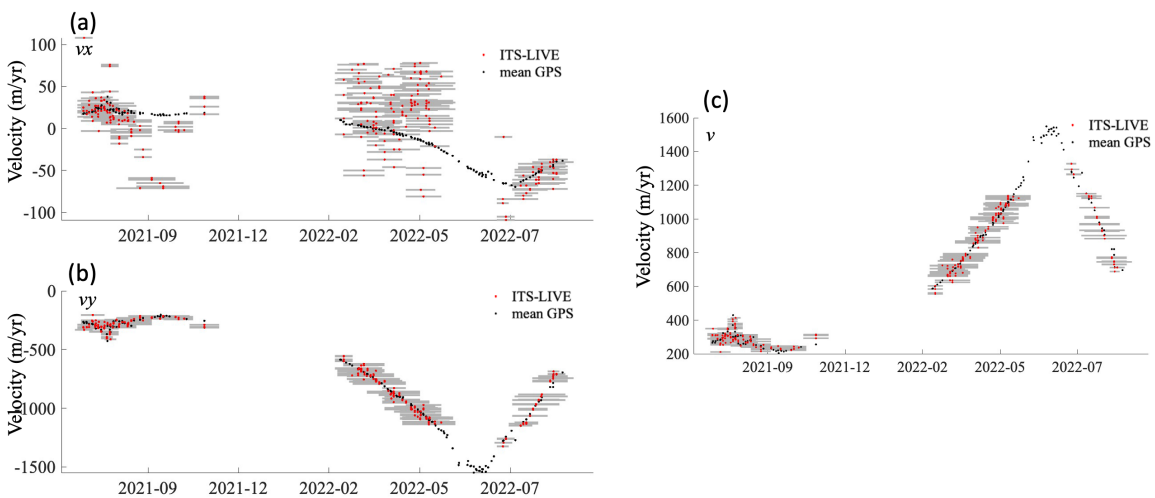


Figure S5. ITS_LIVE V2 annual velocity time series (red line) at the Lowell Glacier corner monitoring point, illustrating the velocity signature of a surge-type glacier. In-situ GNSS measurements are shown as black dots. Gray horizontal bars indicate the image-pair acquisition periods used by ITS_LIVE V2.

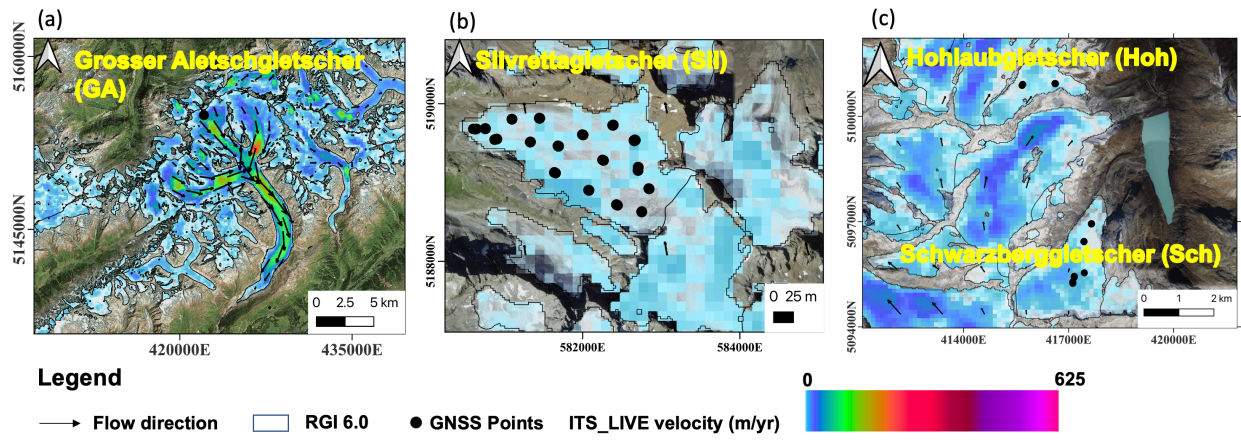


Figure S6. Location map of the study glaciers in Switzerland.