

# Interaction of AMOC and Intrinsic Multi-decadal Southern Ocean Variability

Emma J.V. Smolders<sup>1</sup>, René M. van Westen<sup>1</sup>, and Henk A. Dijkstra<sup>1</sup>

<sup>1</sup>Institute for Marine and Atmospheric research Utrecht, Department of Physics, Utrecht University, Utrecht, the Netherlands

**Correspondence:** Emma J.V. Smolders (e.j.v.smolders@uu.nl)

**Abstract.** A strongly-eddying version (0.1° horizontal resolution) of the Parallel Ocean Program (POP) shows pronounced intrinsic multi-decadal variability in the Southern Ocean, the so-called Southern Ocean Mode (SOM). This Southern Ocean multi-decadal variability is induced by eddy-mean flow interaction and deep convection. The SOM variability propagates through the global ocean and influences the strength of the Atlantic Meridional Overturning Circulation (AMOC) by about 5 3 Sv. The opposite role on how the AMOC influences the SOM is unknown, as this requires long simulations and preferably with different AMOC background states. Here, using the results of a simulated AMOC collapse in the strongly-eddying ocean-only POP version, we find that the amplitude of the SOM is substantially reduced following an AMOC collapse. Associated changes in horizontal and vertical density variations lead to a weakening of the Antarctic Circumpolar Current transport and a shutdown of deep convection in the Weddell Sea. In contrast, these changes promote deep convection events and the emergence 10 of multi-decadal variability in the Pacific sector of the Southern Ocean. A mechanical energy budget analysis shows both a reduction in the wind input and a disruption of the phase difference between wind work and the potential to kinetic energy conversion. The results highlight the strong connection between the AMOC and intrinsic multi-decadal variability in the Southern Ocean.

## 1 Introduction

15 Although observations are limited, there is now more and more evidence for the existence of multi-decadal variability in the Southern Ocean. For example, signatures of such variability have been identified in sea surface temperatures (SST) (Latif et al., 2013; Fan et al., 2014; Dalaiden et al., 2025), and are connected to polynya formation in the Weddell Sea (Latif et al., 2017; Zhou et al., 2025). Furthermore, paleoclimate data assimilation based reconstructions of Antarctic sea-ice anomalies over the period 1700-2000 (Dalaiden et al., 2023, 2025) indicate significant multi-decadal variability with dominant periods of 40–50 20 years and 80–100 years (Morioka et al., 2024).

Models that participated in the most recent Climate Model Intercomparison Projects (CMIP5 and CMIP6) have simulated multi-decadal variability in the Southern Ocean. In a 2,000 years pre-industrial control simulation of the SPEAR (GFDL) model, multi-decadal variability in the strength of the Antarctic Bottom Water cell is found (Zhang et al., 2019). The subsequent initialization phases of the model for the historical period, in particular related to convective activity, are shown to be 25 important to explain recent trends in Antarctic sea ice. The 3,000 years simulations of two versions of the SPEAR model (hav-

ing different atmospheric resolutions) also display significant multi-decadal variability with dominant time scales around 95 years (Morioka et al., 2024). The multi-decadal variability in these models is explained (Morioka et al., 2024) by the interaction of the Southern Annular Mode (SAM) and ocean deep convection. Stronger westerlies enhance upwelling of relatively warm and saline (subsurface) water that weakens the upper ocean stratification, inducing convection. This then mixes more saline and warm water in the upper layer, in a typical Welander salinity-convective feedback (Welander, 1982). Another mechanism which has been suggested is a teleconnection with El Niño variability, through the propagation of Rossby waves (Chang et al., 2020; Wang et al., 2022).

While the effects of ocean eddies were parameterised in the models mentioned above, it was shown that when strongly-eddy ocean models are used, a new mode of multi-decadal variability appears (Le Bars et al., 2016; van Westen & Dijkstra, 2020; Chang et al., 2020; Diao et al., 2022). In the ocean-only version of the Parallel Ocean Program (POP), this variability was named (Le Bars et al., 2016) the Southern Ocean Mode (SOM). The effects of the SOM extend into the North Atlantic, where it induces a  $\sim 3$  Sv ( $1 \text{ Sv} = 10^6 \text{ m}^3\text{s}^{-1}$ ) variability in the strength of the Atlantic Meridional Overturning Circulation (AMOC) at  $26^\circ\text{N}$ . The mechanism of the SOM was analysed in Jüling et al. (2018) by investigating its Lorenz Energy Cycle (LEC). Clear support was found for a mechanism suggested earlier by Hogg & Blundell (2006), where enhanced baroclinic instability in the Antarctic Circumpolar Current (ACC) region affects the mechanical energy input by the wind through a decrease of the zonality of the jet. This weakens the ACC and hence also eddy formation, leading to a more zonal jet, thereby closing the cycle. This also explains the absence of the SOM in the non-eddy version of the POP (van Westen et al., 2025), as the explicit representation of ocean eddies is required for this mechanism (Jüling et al., 2018; Le Bars et al., 2016). Apart from this eddy-mean flow interaction mechanism, [convection-deep convection in the Weddel Gyre region](#) is also modified along this cycle, and it turned out to be difficult to determine whether it plays an active or passive role in the SOM mechanism (Jüling et al., 2018; Ford et al., 2026).

While the SOM induces variability of the AMOC at  $26^\circ\text{N}$ , the role of the AMOC in the existence of the SOM has not been studied. Very recently, a quasi-equilibrium freshwater flux forcing simulation was performed using the same strongly-eddy POP model as in Le Bars et al. (2016), showing that the AMOC collapses to a weak state of about 5 Sv (van Westen et al., 2025). This simulation provides an opportunity to study the AMOC-SOM connection in more detail, which is the aim of this paper. Our main focus is on how a large decrease in AMOC strength modifies the density field in the Southern Ocean, the ACC, deep convection and the properties of the SOM. Given the strong coupling between intrinsic Southern Ocean variability and key climate processes, such as Antarctic sea-ice variability (Gwyther et al., 2018; Morioka et al., 2022; Hobbs et al., 2024), oceanic heat and carbon uptake (Mayewski et al., 2009; Wendt et al., 2024), and teleconnections to other modes of variability (van Westen & Dijkstra, 2017), the results of this study are relevant for interpreting past, present and future Southern Ocean multi-decadal climate variability.

## 2 Methods

### 2.1 Ocean model simulations

We use output from the quasi-equilibrium freshwater forcing simulation performed by van Westen et al. (2025) using a strongly-eddy configuration of the Parallel Ocean Program (POP, version 2) (Dukowicz & Smith, 1994), with a nominal horizontal resolution of  $0.1^\circ$  and 42 non-equidistant vertical levels. The model is forced using observed river run-off fields and a prescribed atmospheric state based on the repeat annual cycle (normal year) Coordinated Ocean Reference Experiment (CORE) forcing data set (Large & Yeager, 2004), with 6-hourly forcing averaged to a monthly resolution. Precipitation is also taken from the CORE forcing dataset. Wind stress is computed offline using the Hurrell Sea Surface Temperature (SST) climatology (Hurrell et al., 2008) and standard bulk formulae, whereas evaporation and sensible heat flux are calculated online using the model prescribed SST and bulk formulae. A diagnosed freshwater flux, determined from an equilibrium spin-up, is also prescribed. Sea-ice cover is prescribed based on the  $-1.8^\circ\text{C}$  isoline of the SST climatology, with both temperature and salinity restored on a timescale of 30 days under diagnosed climatological ice (Weijer et al., 2012). Apart from this, there is no salinity restoring in the model. Details on model configuration and simulation procedure can be found in the Supplementary Material of Weijer et al. (2012).

The quasi-equilibrium freshwater flux forcing simulation in van Westen et al. (2025) is branched off from the multi-century control simulation performed by Le Bars et al. (2016) at model year 300. [A-Model drift is still present \(van Westen et al., 2026\), but occurs on much longer timescales than the AMOC decline. From the start of the quasi-equilibrium simulation, a freshwater flux with strength  \$F\_H\$  is applied over the North Atlantic sector \( \$20^\circ\text{N} - 50^\circ\text{N}\$ \) with a constant rate of  \$3 \times 10^{-4} \text{ Sv yr}^{-1}\$ , similar to the hosing simulation performed in the Community Earth System Model \(CESM\) \(van Westen & Dijkstra, 2023\). The freshwater flux anomaly is globally compensated to conserve salinity. The AMOC strength is weakening under increasing  \$F\_H\$  values and collapses around  \$F\_H = 0.125 \text{ Sv}\$  \(model year 415\); more details on this simulation can be found in van Westen et al. \(2025\).](#)

### 2.2 The Southern Ocean Mode (SOM)

In the simulations of Le Bars et al. (2016), the temperature anomalies associated with the SOM (see their Figure 2) propagate eastward along the ACC in the South Atlantic, ~~eventually entering the Weddell Gyre near where they are disrupted south of Africa around  $30^\circ\text{E}$~~ . [The due to the interaction with the Agulhas Current Retroflexion \(Le Bars et al., 2016\). The anomalies then split into two pathways, where one continues along the ACC and slowly dissipates, while the other enters the Weddell Gyre, likely due to enhanced cross-stream eddy diffusivity compared to the South Atlantic \(Sallée et al., 2008\). The](#) heat anomalies also propagate northward through the Atlantic basin, thereby inducing multi-decadal variations in the AMOC strength up to 3 Sv. The SOM is associated with a peak-to-peak variability of approximately [60 ZJ \(1 ZJ  \$\equiv 10^{21}\$  Joules\)](#) in global ocean heat content (OHC), highlighting its potential significance for large-scale climate variability.

Although the spatial pattern of the SST anomalies associated with the SOM extends across the entire Southern Ocean, the largest anomalies can be found in the South Atlantic sector (Le Bars et al., 2016). To quantify this variability, it is measured

90 using the SOM index, which is defined as the SST anomaly averaged over the region 50 – 35°S, 0 – 50°W (black outlined region in Figure 2a).

### 2.3 Energetics of the SOM

Previous studies have analysed the mechanical energy budget of the SOM in the POP control simulation (Le Bars et al., 2016; Jüling et al., 2018). It was shown that eddy-mean flow interactions are central to explain the SOM, similar to that of a mode  
 95 of multi-decadal variability identified in a three-layer, eddy-resolving, quasi-geostrophic model of a zonal channel flow (Hogg & Blundell, 2006). The oscillatory behaviour arises from phase lags between mechanical energy input by the wind, generation of eddies by baroclinic instability, and the zonality of the mean flow. Below, we also apply a similar mechanical energy budget analysis to the quasi-equilibrium POP simulation to investigate the effects of an AMOC weakening on the SOM.

The Lorenz Energy Cycle (LEC) framework (von Storch et al., 2012) has proven effective for analysing the multi-decadal  
 100 variability of the SOM (Jüling et al., 2018). Further simplifications of the full LEC framework have been proposed by Sinha & Abernathey (2016), and these have been successfully applied to the POP model output to explain the oscillatory behaviour of the SOM (Jüling et al., 2020). In the following, we denote  $K$ ,  $K_m$ ,  $K_e$  as the volume-integrated total kinetic energy, mean kinetic energy and eddy kinetic energy, respectively; and  $P$ ,  $P_m$  and  $P_e$  as the volume-integrated available potential energy, mean available potential energy and eddy available potential energy, respectively.

105 The total kinetic energy  $K$  is computed according to:

$$K = \frac{\rho_0}{2} \int_V \overline{(u^2 + v^2)} dV, \quad (1)$$

where  $\mathbf{u} = (u, v)$  denotes the horizontal velocity vector,  $\rho_0$  the global average density of sea water, and  $V$  the volume over which the energetics are evaluated. The overbar represents a 5-year time average used to perform the eddy-mean decomposition. ~~The~~  
 110 [, consistent with previous studies on the energetics of the SOM \(Le Bars et al., 2016; Jüling et al., 2018\). The results are not sensitive to small changes in the averaging window \(tested for 3 – 10 year time averages\).](#) The mean kinetic energy is given by :

$$K_m = \frac{\rho_0}{2} \int_V \overline{(\bar{u}^2 + \bar{v}^2)} dV, \quad (2)$$

and the eddy kinetic energy is computed as the difference between  $K$  and  $K_m$  per gridpoint. The available potential energy is expressed as:

115 
$$P = -\frac{g}{2} \int_V \frac{1}{n_0} \overline{\rho^{*2}} dV, \quad (3)$$

where the potential density anomalies are defined as  $\rho^*(x, y, z, t) = \rho(x, y, z, t) - \rho_{ref}(z)$ , with  $\rho_{ref}(z) = \langle \rho(x, y, z, t) \rangle_{av}$  representing the global reference state (von Storch et al., 2012). In the expression for  $\rho_{ref}$ , the angled brackets indicate a global area average, while the subscript denotes a time average over one SOM cycle. Furthermore,  $g$  denotes the gravitational acceleration and  $n_0(z)$  the vertical gradient of the reference potential density. An eddy-mean decomposition can be performed to

120 determine the mean and eddy potential energies ( $P_m$  and  $P_e$ , respectively). The analysis is conducted over the entire Southern Ocean south of 30°S (SO30 region), thereby capturing the complete SOM variability and avoiding problems of boundary terms (Jüling et al., 2018).

Under the approximations outlined in detail by Jüling et al. (2020), the evolution equations for the volume integrated eddy kinetic energy  $K_e$  and available potential energy  $P$  are given by:

$$125 \quad \frac{dP}{dt} \approx G(K_m) - C(P_e, K_e) - D(K_m), \quad (4)$$

$$\frac{dK_e}{dt} \approx C(P_e, K_e) - D(K_e). \quad (5)$$

Here, the generation of mean kinetic energy by the wind forcing exerting a stress on the ocean surface  $S$  is expressed as:

$$G(K_m) = \int_S (\overline{\tau_x u} + \overline{\tau_y v}) dS, \quad (6)$$

130 with  $\tau = (\tau_x, \tau_y)$  the wind stress. The exchange of potential to eddy kinetic energy associated with baroclinic instability,  $C(P_e, K_e)$ , is determined by:

$$C(P_e, K_e) = -g \int_V \overline{\rho' w'} dV \approx C(P, K) - C(P_m, K_m), \quad (7)$$

where  $w$  denotes the vertical velocity and the prime indicates anomalies with respect to the 5-year time average. The terms in the mechanical energy budget are calculated using 5-year moving averages, while eddy contributions are determined from  
 135 monthly mean data. The terms  $D(X)$  above are dissipation terms, but are not crucial to study the SOM cycle (Jüling et al., 2018). The degree of non-zonality of the mean flow, which is a proxy for the baroclinic generation of eddies, is quantified by  $\zeta = (\int v^2 dV) / (\int u^2 dV)$ , where the squared meridional and zonal velocities are computed first and then volume integrated over the SO30 region and the top 300 m.

### 3 Results

#### 140 3.1 Changing SOM variability

In the quasi-equilibrium simulation of the POP, a gradual increase in surface freshwater forcing leads to a weakening of the AMOC (Figure 1a). The AMOC strength at 26°N decreases from a mean of 19.4 Sv during the first 50 model years to a mean of 4.8 Sv during the last 50 model years. The onset of the collapse occurs around model year 415 (van Westen et al., 2025). The SOM index (Figure 1b, black curve) exhibits distinct multi-decadal variability over the first 200 model years, with  
 145 a dominant period of ~~about 40 years~~ approximately 45 years that is statistically significant at the 95% confidence level based on a Morlet wavelet power spectrum (Figure A1b). As the freshwater forcing increases, this period becomes longer, reaching

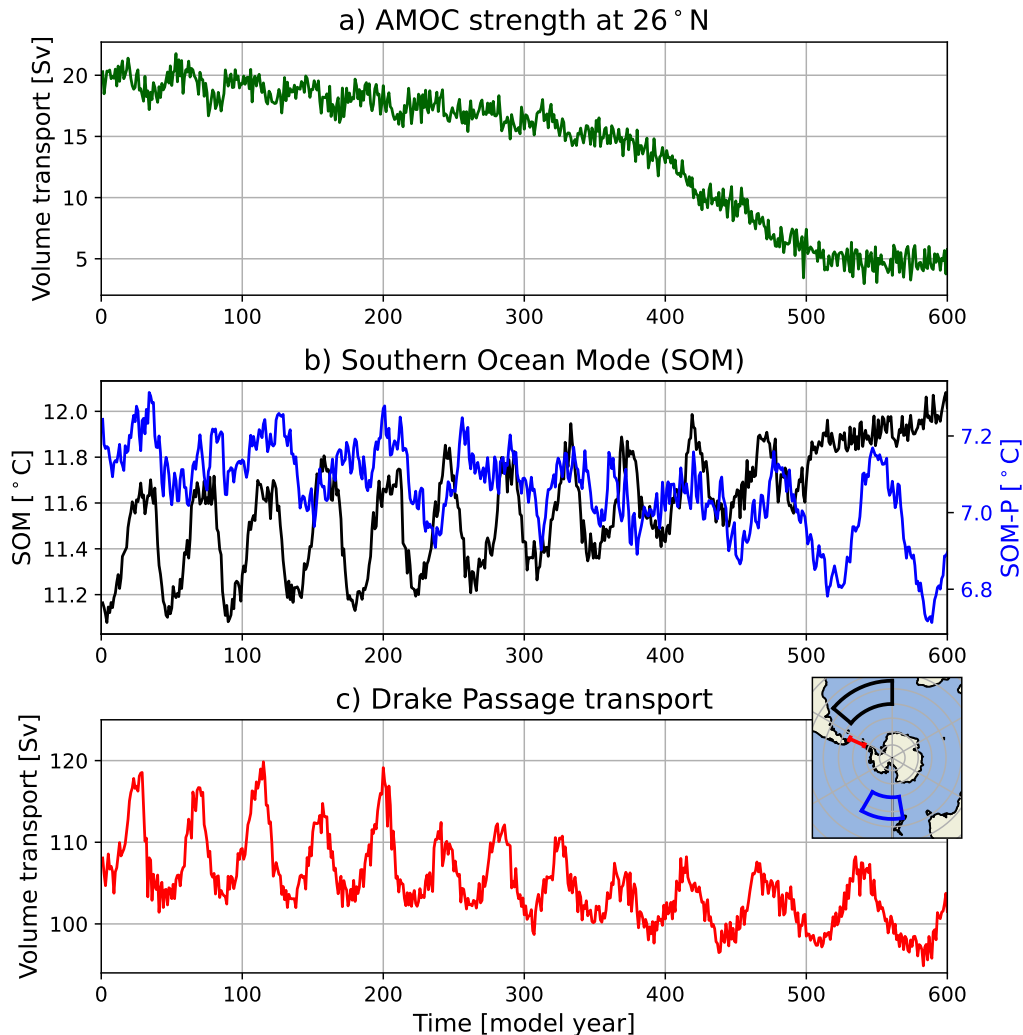
approximately 50 years between model years 300 to 500. After the AMOC collapse and over the last 100 model years, the variability in the SOM index disappears entirely (Figure A1b). The Drake Passage transport (Figure 1c) displays the same multi-decadal variability as the SOM index over the first ~~200 years~~ 300 years (Figure A1a), with a peak-to-peak amplitude of about 17 Sv. Subsequently, the mean transport and the amplitude of multi-decadal variability slightly decrease, the former by about 10 Sv and the latter being minimal just before the onset of the AMOC collapse. Interestingly, this amplitude increases again after the AMOC collapse ~~and~~, while the frequency of variability slightly decreases (Figure A1a).

To understand the disappearing ~~SOM-multidecadal~~ variability in the AMOC strength time series, we conduct an empirical orthogonal function (EOF) analysis on ~~the annual mean~~ SSTs south of 30°S for the first and last 100 model years of the simulation. All time series are first linearly detrended and normalised by their standard deviations, and subsequently weighted to their surface area prior to conducting the EOF analysis. The dominant EOF pattern and associated principle component (PC) are shown in Figure 2. During the first 100 model years (Figure 2a), the EOF exhibits relatively strong (negative) amplitudes over the Atlantic sector in the Southern Ocean. This motivates the choice of the region used for the SOM index (Le Bars et al., 2016), as indicated by the black outlined region (50 – 35°S, 0 – 50°W). The corresponding PC (Figure 2c) exhibits a similar period to that of the SOM index, highlighting the dominance of this multi-decadal variability in the SO30 region.

After the AMOC collapse (last 100 model years), the pattern of the EOF changes significantly, with the largest amplitudes now located in the Pacific sector of the Southern Ocean (Figure 2b). The period of the associated PC increases to approximately 75 years (Figure 2d), matching the period of the Drake Passage transport over the last 100 years (Figure ~~1e~~A1a). This motivates us to also study the variability in the Pacific sector, where we define the SOM-P index as the spatially-averaged SSTs over the blue outlined region (60 – 45°S, 170°E – ~~110~~150°W), which coincides with the region of largest EOF amplitudes (Figure 2b). Interestingly, a pronounced mode of multi-decadal variability emerges in the SOM-P index only after the onset of the AMOC collapse around model year 415 (blue curve in Figure 1b). The dominant period during the last 150 model years is approximately 75 years, and is statistically significant the 95% confidence level based on a Morlet wavelet power spectrum (Figure A1c). The dominant period of the SOM-P index is consistent with that of the Drake Passage transport after the AMOC has collapsed (Figure ~~1e~~A1a). This suggests that Pacific variability is associated with the multi-decadal behaviour of the Drake Passage transport after the AMOC has collapsed, as will be further explored below in section 3.4.

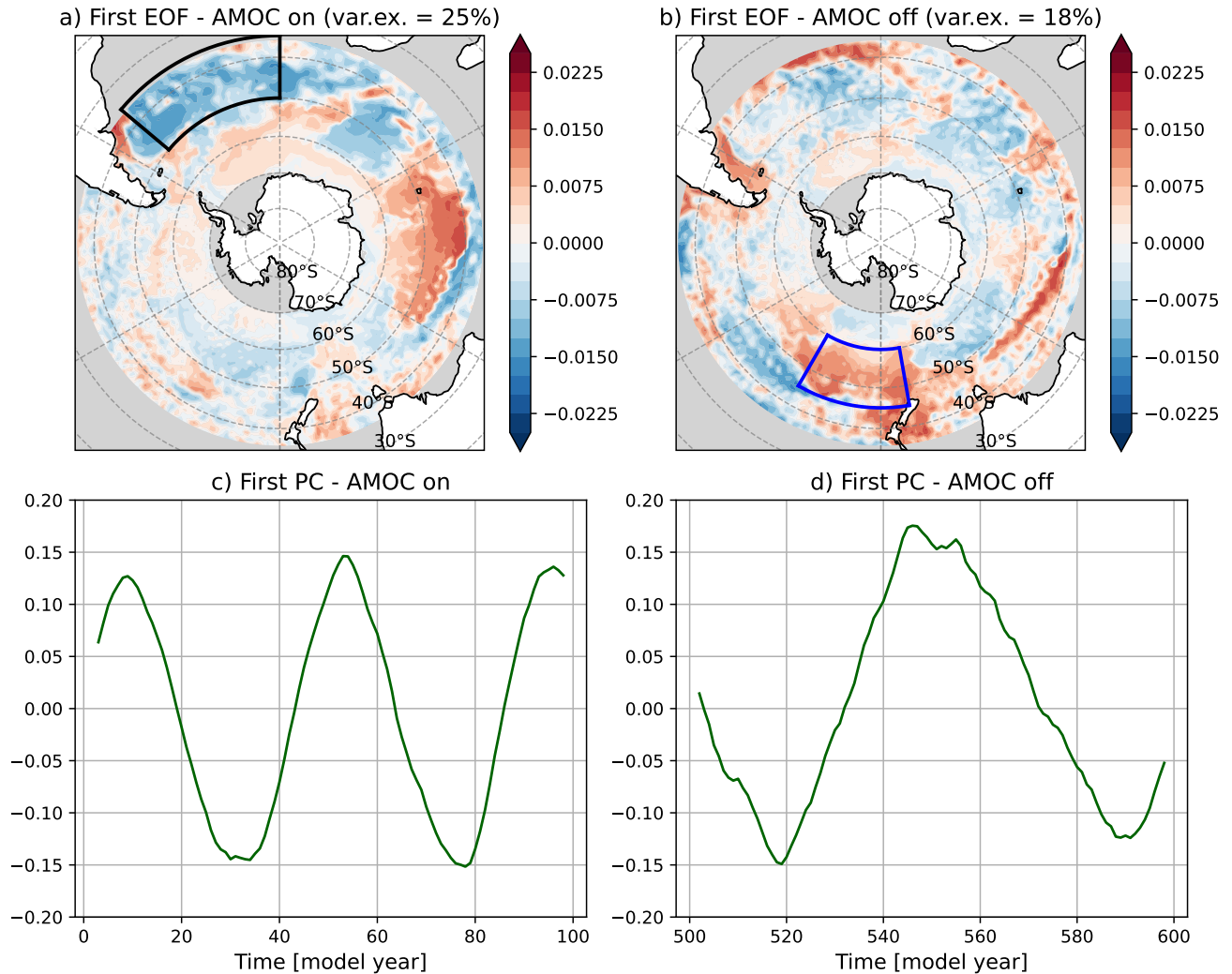
### 3.2 AMOC – SOM coupling

Density anomalies associated with the SOM ~~influence the AMOC through their northward propagation~~ propagate northward and submerge around 40°S (van Westen & Dijkstra, 2017), generating multidecadal variability in the subsurface temperature and salinity fields (Figure A2). These subsurface anomalies continue to propagate northward within the Atlantic basin (van Westen & Dijkstra, 2017), resulting in a similar 40-year period of oscillation in the AMOC, thereby influencing the strength of the upper branch of the AMOC (van Westen & Dijkstra, 2017). As a result, the AMOC strength at 26°N exhibits a similar 45-year oscillation period as the SOM index during the first 200-300 model years (Figure ~~1A~~A3a). As the AMOC weakens, the distinct temperature and salinity patterns associated with the positive and negative phases of the SOM between 70°S and 40°S disappear (Figure A1 in appendix A). Subsurface waters in the Atlantic sector (A2), and the AMOC loses its multidecadal variability (Figure A3b).



**Figure 1. Results for the quasi-equilibrium, high-resolution POP simulation.** Time series of (a): the AMOC strength at 1000 m depth and 26°N, (b): the SOM (black) and SOM-P (blue) index, and (c): the Drake Passage volume transport. The inset in panel c shows the black (blue) outlined region used to determine the SOM (SOM-P) index. The full-depth Drake Passage volume transport is determined over the red section (66 – 55°S, 66°W).

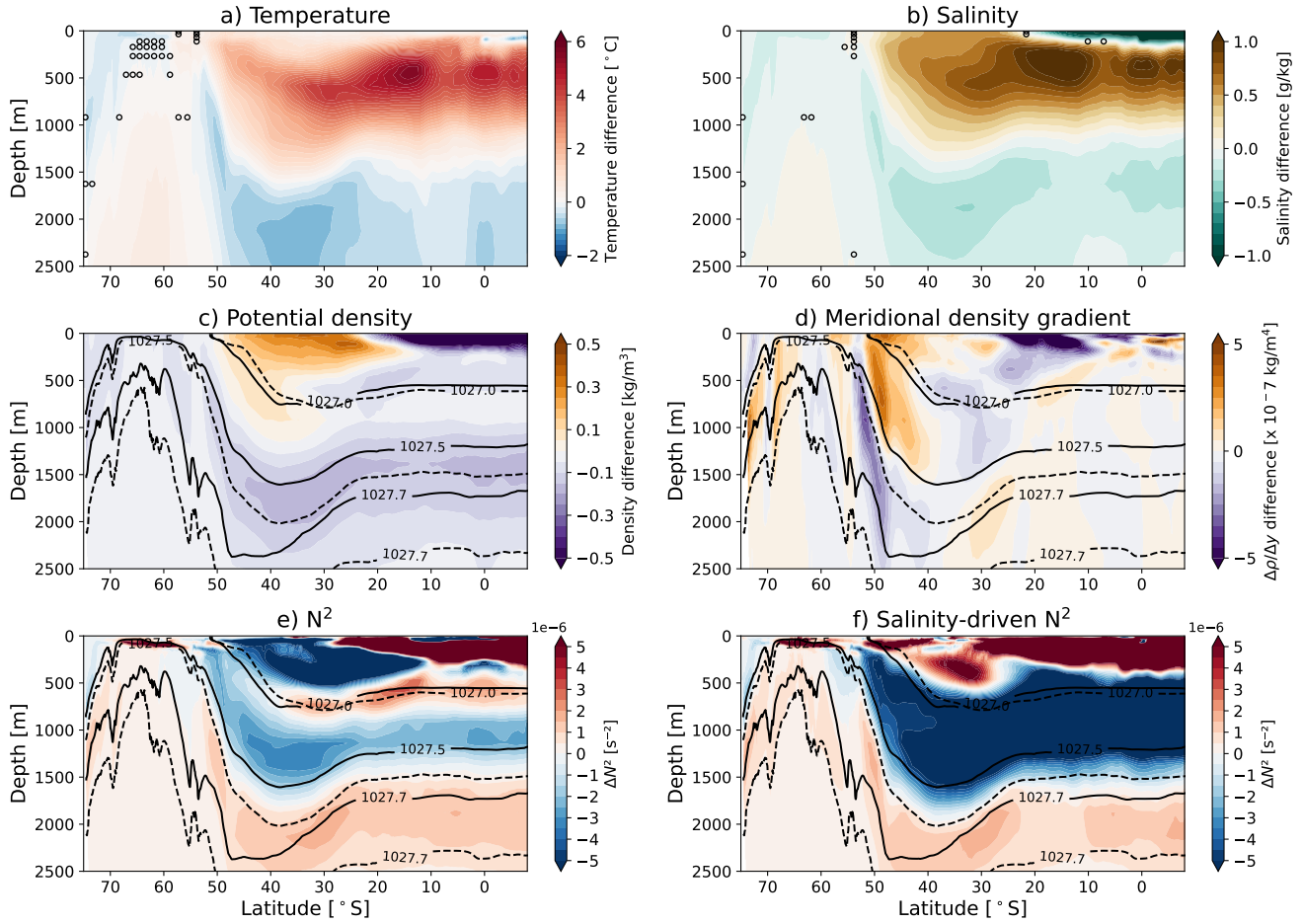
The substantially weakened AMOC leads to a pronounced reduction in meridional heat and salinity transport (van Westen et al., 2025), resulting in an accumulation of heat and convergence of salt in the Southern Hemisphere ocean interior, extending to depths up to 1000 m north of the Antarctic subpolar front (50°S) show-. This causes both warming (Figure 3a) and salinification (Figure 3b) of the subsurface waters, consistent with previous studies on a weakened AMOC (Weijer et al., 2019; van Westen et al., 2024; Diamond et al., 2025). In contrast, the deep waters experience cooling-and-freshening-a freshening and slight cooling



**Figure 2. First EOFs and PCs of Southern Ocean SST.** First EOFs of [annual mean](#) SSTs south of 30°S for the first 100 model years (a) and the last 100 model years (b), with the explained variance indicated. A moving average of 5 years has been applied to the data prior to the EOF analysis. The black (blue) outlined region shows the region used to determine the SOM (SOM-P) index. Panels (c) and (d) show the corresponding first PCs.

[related to the reduced formation of North Atlantic Deep Water \(NADW\), and a reorganization of the water masses in the Southern Ocean. The resulting density changes show an increase in the upper 1000 m between 50°S and 20°S, and a decrease further north \(Figure 3c\). At greater depths, the waters become less dense, primarily driven by salinity changes \(Figure A4\).](#)

Between 50° to 40°S and over the upper 1000 m, the isopycnals slope downward and this is indicative of the Antarctic  
 190 subpolar front (solid curves in Figure 3c–f). This meridional density gradient becomes less negative after the AMOC collapse,



**Figure 3. Temperature, salinity, meridional density gradient and zonal-velocity differences in the Atlantic sector.** Zonal-averaged Temperature, salinity, density, meridional density gradient and buoyancy frequency ( $N^2$ ) differences in the Atlantic sector. Zonally averaged ( $60^\circ\text{W} - 25^\circ\text{E}$ ) (a) temperature, (b) salinity, (c) density, (d) meridional density gradient, (e)  $N^2$ , and (f) zonal-velocity salinity-driven  $N^2$  differences in the upper 2500 m before and after the AMOC collapse (model year (500 – 600) minus model year (1 – 100)). In (c – f), the solid (dashed) black lines denote isopycnals of model year 1 – 100 (500 – 600). Plotted isopycnals are referenced to  $5^\circ\text{N}$  and the displayed (from top to bottom) ones are: 1026.2 (1025.7) 1027.0, 1027.1 (1027.1) 1027.5, and 1027.7 (1027.6)  $\text{kg}/\text{m}^3$  for model year 1 – 100 (500 – 600). In The markers in panel a & b indicate non-significant ( $p > 0.05$ , two-sided Welch’s test) differences, the vertical dashed lines denote the mean ACC latitude band for model year 1 which are not shown in panels c – f to enhance visibility.

resulting in a flattening-decrease of the isopycnal slope (shading and dashed curves in Figure 3c). By contrast, a negative meridional density gradient difference is found at subsurface depths (1000 – 2000 m) and near  $50^\circ\text{S}$ , corresponding to a steepening of the isopycnals. These density changes modify the isopycnal slope across the Antarctic-subpolar front and thereby altering the baroclinic flow (i.e., the ACC). Changes in the isopycnal slopes modify the baroclinicity, thereby influencing the

195 strength of the ACC through thermal wind balance (Figure 3d)–1c). The changes in the meridional density gradient are not uniform across the ACC latitude band (50°S - 40°S), and may therefore lead to spatially heterogeneous changes in the ACC. van Westen & Dijkstra (2020) showed that an increased meridional slope of the isopycnals near 50°S corresponds to a reduction of the SOM period in the CESM model. This is consistent with the results here, where an increase in the SOM period occurs simultaneously with the meridional isopycnal slopes becoming less negative (near 50°S and upper 1000 m).

200 The displacement of the isopycnals leads to changes in the stratification of the water masses (Figure 3e), with clear bands of increased and decreased stratification. Stratification decreases in the water mass north of 50°S between 1000 and 1500 m but, in contrast, waters below 1500 m and those that upwell south of 50°S show an overall increase in stratification. The latter increases are primarily driven by salinity-controlled changes in  $N^2$  (Figure 3f), while stratification changes north of 50°S and in the upper 1500 m result from a combination of temperature- and salinity-driven effects.

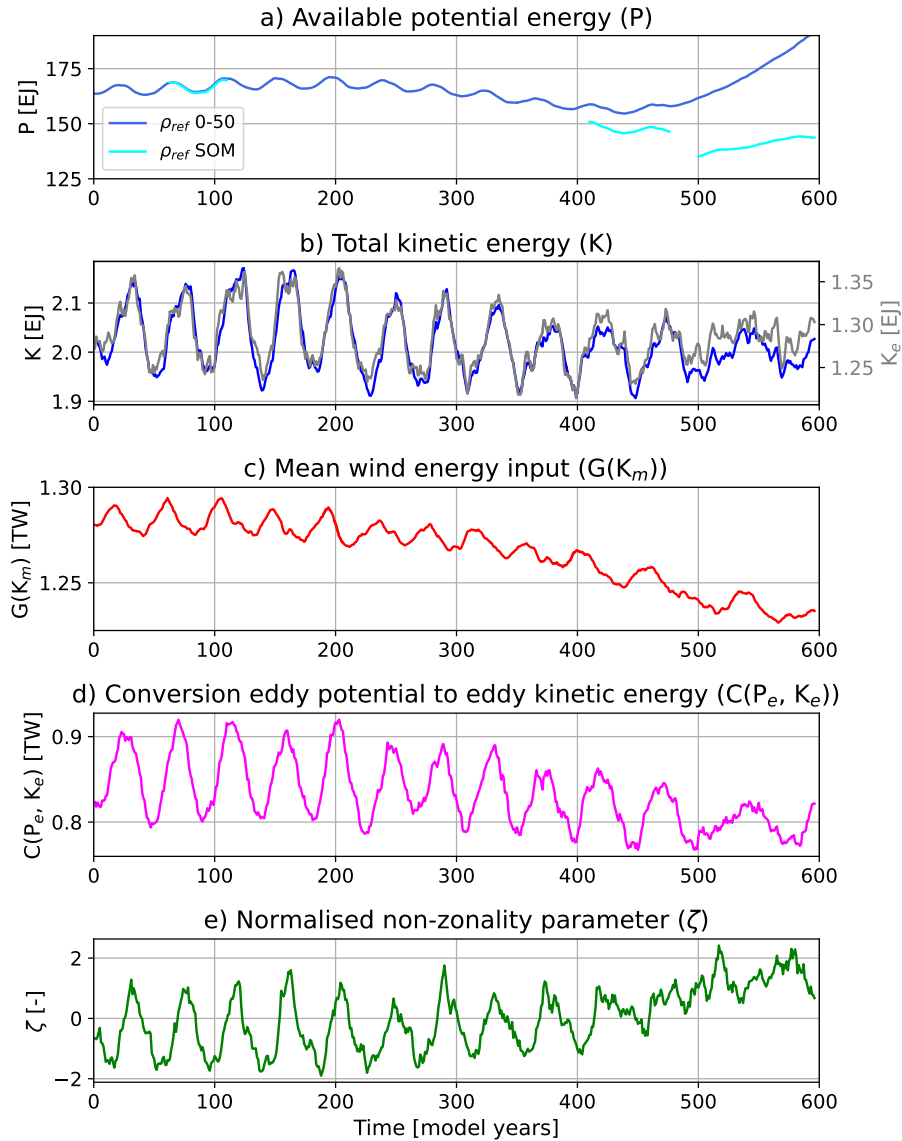
205 Similar to the Atlantic sector, the Indian and Pacific sectors of the Southern Ocean also exhibit warming and salinification over the upper 1000 m and north of 45°S (Figure A5 and A6). These changes are accompanied by a decrease of the meridional density gradient over the near-surface layer, and an increase of this gradient in the subsurface layers across the ACC latitude band –(between 50°S and 40°S). Stratification weakens north of 60°S in the upper 1500 m, while deeper waters show an overall increase in stratification. The AMOC weakening therefore leads to a basin-wide reorganization of the Southern Ocean  
210 density structure, which appears to suppress SOM-related variability in the Atlantic sector while enabling the emergence of a new mode of multi-decadal variability in the Pacific sector.

### 3.3 Mechanisms of SOM changes

To understand the reduced SOM variability after the AMOC collapse, we analysed the mechanical energy changes over the SO30 region. The dominant terms of the mechanical energy budget are evaluated over the full simulation period, and over three  
215 different SOM cycles: one early in the simulation (SOM cycle 1, model years 63 – 114), one during the AMOC collapse (SOM cycle 2, model years 410 – 480), and one during the weak AMOC state (SOM cycle 3, model years 500 – 600). The difference in cycle length reflects the increasing SOM (SOM-P) period under increasing freshwater flux forcing. The mechanical energy budget analysis is displayed in Figure 4.

The available potential energy,  $P$ , is dependent on the reference density  $\rho_{ref}$  used (see Equation (3)). We compute  $P$  over  
220 the full simulation using a fixed  $\rho_{ref}$  derived from the first 50 model years (dark blue curve in Figure 4a), while–such that all changes in  $P$  reflect variations in the density structure rather than changes in the reference state. In contrast,  $P$  for the individual SOM cycles is computed using  $\rho_{ref}$  averaged over the corresponding SOM cycle period (cyan curves in Figure 4a). The different choices of  $\rho_{ref}$  do influence the magnitude of  $P$ , but not their overall variability and tendency.

The available potential energy starts to increase in the SO30 region following the AMOC collapse, with the Atlantic, Indian,  
225 and Pacific sectors contributing approximately 29%, 30%, and 41%, respectively, to the total  $P$  in this region. An increase in  $P$  indicates that the water column is further displaced from its stable reference state. This is also consistent with the decrease in vertical stratification in the upper 1500 m in the Atlantic, Indian and Pacific sectors south of 30°S, as shown in Figure 5.



**Figure 4. Energetics in the SO30 region.** Time series of (a) volume integrated ( $90^{\circ}\text{S} - 30^{\circ}\text{S}$ ) available potential energy ( $P$ ), (b) total kinetic energy ( $K$ ), (c) energy conversion of eddy potential energy to eddy kinetic energy ( $C(P_e, K_e)$ ), (d) mean energy input by the wind ( $G(K_m)$ ) and (e) a measure of the normalised, mean-centered non-zonality of the flow field  $\zeta$ . All time series represent 5 year running averages. In panel (a), the blue line represents the time series of  $P$  calculated with a reference density  $\rho_{ref}$  taken from the first 50 model years, whereas the cyan line uses a  $\rho_{ref}$  averaged over the corresponding SOM cycle.

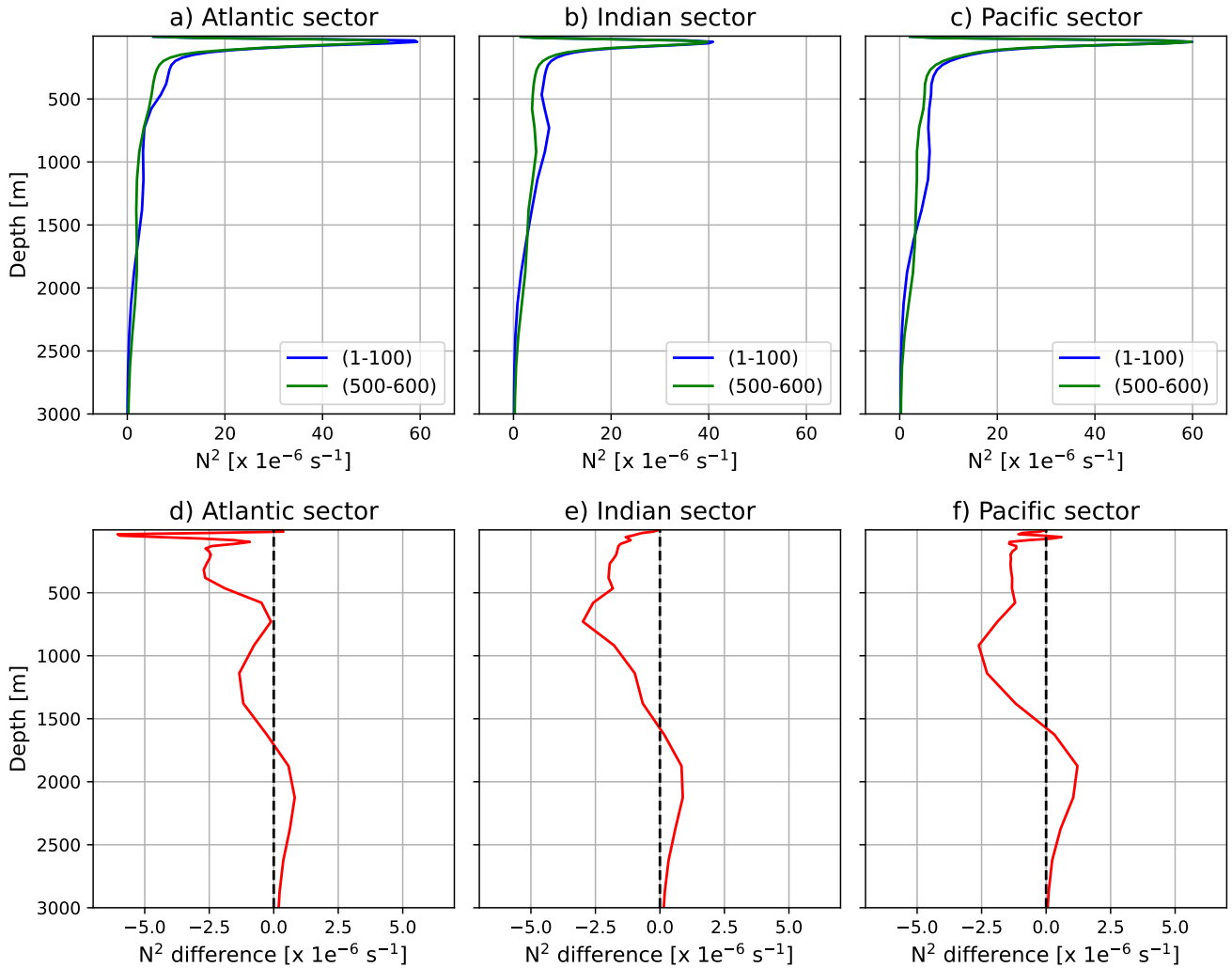
The available potential energy, however, has not yet reached an equilibrium state at the end of the simulation, as  $P$  continues to increase.

230 The tendency of  $P$  (Figure 4) is affected by the terms  $G(K_m)$ , representing the mean wind energy input, and by  $C(P_e, K_e)$ , representing conversion of eddy potential to eddy kinetic energy. An increase in  $G(K_m)$ , e.g. due to a more zonal flow with steeper isopycnals, increases  $P$ . In contrast, an increase in  $C(P_e, K_e)$  reflects enhanced eddy generation through baroclinic instability, transferring more energy from  $P_e$  to  $K_e$ , and thus reduces  $P$  over time. Figure 4 shows both a mean reduction of  $G(K_m)$  and  $C(P_e, K_e)$ , although the reduction in  $G(K_m)$  is larger (Figure 4c,d). The increase in  $P$  at the end of the simulation  
235 is therefore not driven by enhanced mean wind energy input, but instead is a consequence of changes in the density field associated with the AMOC collapse. Additionally,  $K$  and  $K_e$  primarily exhibit a reduced amplitude of variability rather than a shift in mean magnitude (Figure 4b).

The relatively zonal background ~~flow, the ACC, ACC flow~~ starts to meander more after the AMOC collapse, which is reflected in the increase of the non-zonality parameter ( $\zeta$ , Figure 4e). This increase is consistent with the reduction in mean  
240 wind energy input over time. ~~Additionally,  $K$  and  $K_e$  primarily exhibit a reduced amplitude of variability rather than a shift in mean magnitude (Figure 4b),~~ as the correlation between the zonal wind forcing and the zonal mean flow weakens. While an increased non-zonal flow is typically associated with enhanced eddy activity, this is not reflected in an overall increase of  $C(P_e, K_e)$ . The non-zonality parameter loses its multidecadal variability entirely after the AMOC collapse, suggesting that its increase is not primarily driven by variability in the eddy generation and mean wind energy input, but that mean flow changes  
245 also play a role, e.g. the reduction in the mean ACC strength or a shift in its position could lead to increased meandering of the zonal flow.

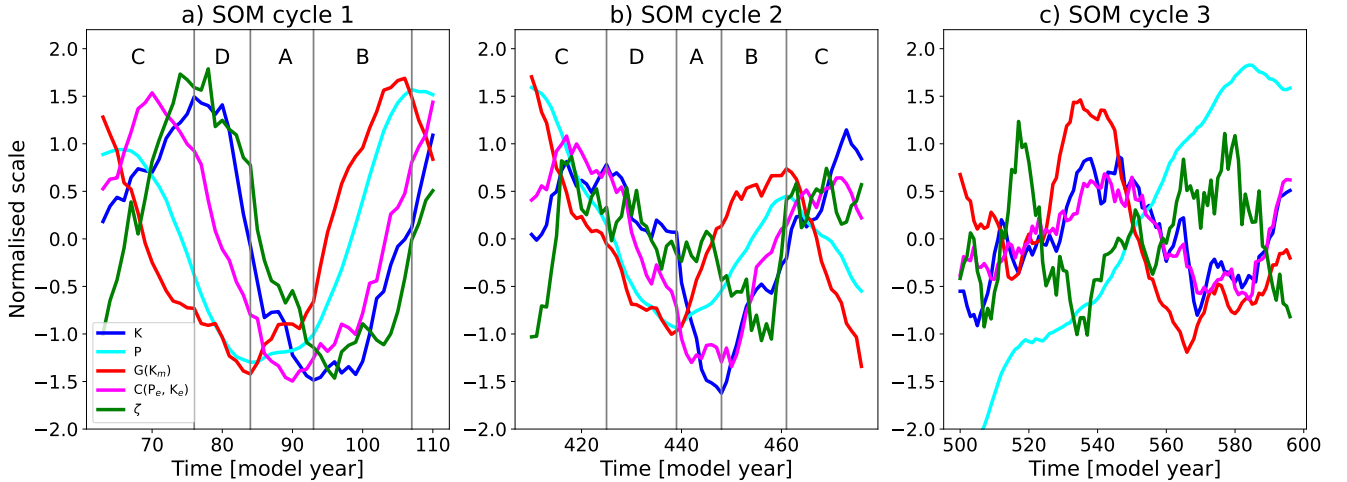
Following the framework established in earlier studies (Hogg & Blundell, 2006; Le Bars et al., 2016; Jüling et al., 2018), the SOM cycle can be divided into four distinct regimes (Figure 6a), where the vertical stratification plays a key role in setting the timescale of this SOM cycle (van Westen & Dijkstra, 2020). Note that the quantities are now centered (zero mean)  
250 and normalised by their standard deviation, to more clearly see the phase differences between the different terms. Regime A corresponds to a low-energy state with a relatively zonal ACC, starting at the minimum of the total potential energy  $P$  and ending at the minimum of the total kinetic energy  $K$ . In regime B,  $P$  increases as the zonal flow is accelerated by the wind work, leading to a maximum of  $P$ . Regime C represents the high-energy state, spanning from the maximum of  $P$  to the maximum of  $K$ . During this period, the flow undergoes enhanced baroclinic instability, leading to an increase in the generation of eddies by  
255 the mean flow. The  $P$  accumulated in regimes A and B is now converted to eddy kinetic energy. This enhanced eddy flow rearranges the flow field, making it less zonal, thereby disrupting the correlation between the surface ocean velocity and the wind stress. As a result, the wind energy input quickly decreases. Finally, regime D is characterised by declining  $P$  and  $K$ . As the storage of  $P$  becomes exhausted, the conversion of  $P$  to  $K$  begins to diminish as well. This, combined with the reduction in wind work, drives the flow back to its low-energy state, thereby completing the cycle.

260 The temporal evolution for SOM cycle 2 and 3 are shown in Figures 6b and c, respectively. Note that we normalised the quantities as  $(X - X_{mean})/\sigma_{X1}$ , where we use the standard deviation of the first cycle as reference. Equation (5) shows that the rate of change of  $K_e$ , and therefore  $K$ , is mainly influenced by  $C(P_e, K_e)$ . In Large transfers of potential to kinetic energy feed almost directly into the eddy kinetic energy field. Consistent with this, in all three SOM cycles,  $K$  and  $C(P_e, K_e)$  are positively correlated with a lag of about 10 varying between 1 – 5 years. The non-zonality parameter  $\zeta$  loses its multi-decadal



**Figure 5. Area-averaged Brunt–Väisälä frequency ( $N^2$ ).** Depth profiles of the squared Brunt–Väisälä frequency ( $N^2$ ) area-averaged in the (a) Atlantic sector ( $60^\circ\text{W} - 25^\circ\text{E}$ ), (b) the Indian sector ( $25^\circ\text{E} - 150^\circ\text{E}$ ), and (c) the Pacific sector ( $150^\circ\text{E} - 60^\circ\text{W}$ ) of the Southern Ocean ( $90^\circ\text{S} - 30^\circ\text{S}$ ). (d – f): Similar to (a – c) but now showing the difference between model year (500 – 600) and (1 – 100).

265 oscillatory behaviour in SOM cycle 3, in contrast to the pronounced variability found during SOM cycles 1 and 2 (Figure 6a,b). During SOM cycle 1 and 2, the minima and maxima of  $P$  lead the minima and maxima of  $K$  with an approximate phase difference of  $90^\circ$ . The phase offset between  $P$  and  $K$  vanishes completely in SOM cycle 3 due to the altered behaviour of  $P$  as a consequence of stratification changes in the water column. Furthermore, a clear phase difference between  $G(K_m)$  and  $C(P_e, K_e)$  is found in SOM cycle 1, which is essential to sustain the SOM (Hogg & Blundell, 2006; Le Bars et al., 2016; Jüling



**Figure 6. Energetics for three different SOM cycles in the SO30 region.** Time series of volume integrated ( $90^{\circ}\text{S} - 30^{\circ}\text{S}$ ) available potential energy ( $P$ ), total kinetic energy ( $K$ ), energy conversion of eddy potential energy to eddy kinetic energy ( $C(P_e, K_e)$ ), mean energy input by the wind ( $G(K_m)$ ) and a measure of the non-zonality of the flow field  $\zeta$  for (a) SOM cycle 1 (model year 63 – 114), (b) SOM cycle 2 (model year 324 – 378) and (c) SOM cycle 3 (model year 500 – 600). All time series represent 5 year running averages. Note that each quantity  $X$  is normalised according to  $(X - X_{mean})/\sigma_{X1}$ , where  $\sigma_{X1}$  is the standard deviation of the quantity in SOM cycle 1. The vertical lines divide the SOM cycle into the four regimes according to Hogg & Blundell (2006). Note that SOM cycle 3 cannot easily be divided into these regimes.

270 et al., 2018). In SOM cycle 3, however,  $G(K_m)$  and  $C(P_e, K_e)$  begin to co-vary, with reduced phase differences between their minima and maxima.

Figure 6 shows the energetics integrated over the entire Southern Ocean. Performing the same analysis for the Atlantic sector alone yields a similar behavior: during SOM cycles 1 and 2, the phase differences between the energy terms resemble those found in the SO30 region, while these phase relationships disappear during SOM cycle 3 (Figure A7). In contrast, in the Pacific sector the emergence of the SOM-P cycle is not accompanied by clear phase differences during SOM cycle 3 that are consistent with the established framework of Hogg & Blundell (2006) (Figure A8). This suggests that, unlike in the Atlantic sector, the SOM-P may not be strongly influenced by eddy–mean flow interactions. In conclusion, the reorganization of the Southern Ocean density field leads to a fundamental change in the mechanical energy budget, particularly affecting the phase relationships between  $P$  and  $K$ , and between  $G(K_m)$  and  $C(P_e, K_e)$ . As these phase relationships are essential for sustaining the SOM, their alteration due to the AMOC collapse leads to the disappearance of the SOM cycle in the Atlantic sector.

### 3.4 Changes in Southern Ocean deep convection

Changes in stratification likely influence deep convection across the Southern Ocean and the exact role of deep convection in the SOM variability is not completely clear (Jüling et al., 2018). The reason is that convection is parameterised (using

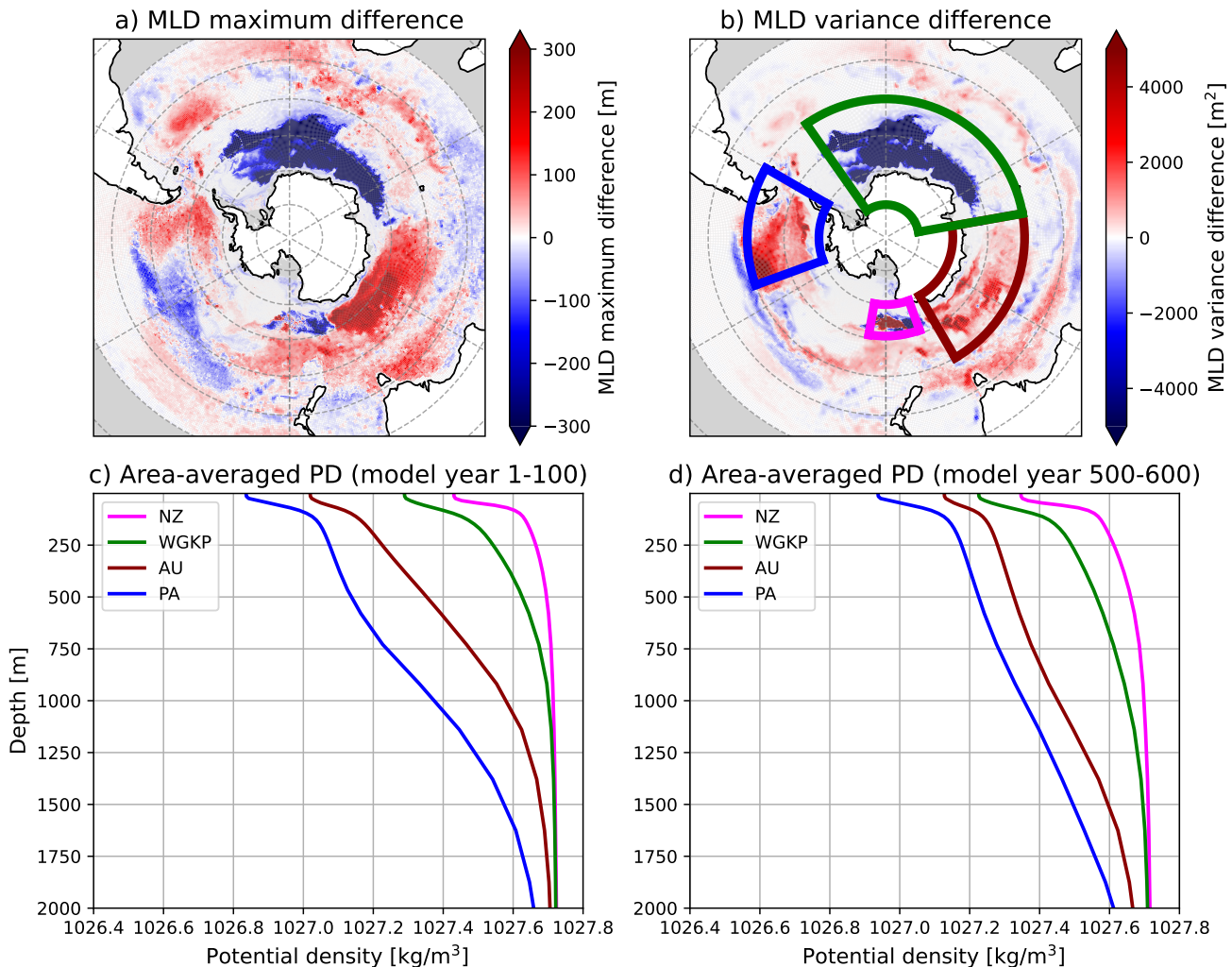
the KPP mixing scheme in POP), which provides enhanced mixing without explicitly resolving vertical velocities. Hence, the contribution by deep convection cannot be assessed using the mechanical energy pathways (Jüling et al., 2018). A recent study by Ford et al. (2026), based on the analysis of a high-resolution CESM simulation, found only weak evidence for atmosphere–ocean feedbacks contributing to Southern Ocean multi-decadal variability and instead attributed this variability primarily to oceanic processes. They propose that the SOM mechanism operates as part of a coupled oscillator involving Southern Ocean deep convection events, with salinity upwelling east of Maud Rise playing a crucial role. These findings support the finding in Jüling et al. (2018) that deep convection can also play a substantial role in sustaining the SOM.

Based on the largest differences in the maximum and variance of the mixed layer depth (MLD) between model years 500–600 and 1–100 (Figures 7a,b), four regions are identified for further analysis. Similar to Jüling et al. (2018), we define the Weddell Gyre to Kerguelen Plateau (WGKP) region as 80°S to 50°S and 35°W to 80°E (green outlined region in Figure 7b). The brown-outlined region in the eastern Indian sector south of Australia, extending from 70°S to 40°S and from 80°E to 150°E, is hereafter referred to as AU. The convective region highlighted in magenta, located at longitudes aligned with New Zealand and spanning 70°S to 60°S and 160°E to 170°W, is hereafter denoted as NZ. Finally, the blue-outlined western Pacific region, extending from 70°S to 40°S and 110°W to 60°W, is hereafter referred to as PA.

The area-averaged potential density (PD) profiles of the four regions are shown in Figures 7c,d for model year 1–100 and model year 500–600, respectively. The stratification over the upper 2,000 m is relatively weak for the NZ and WGKP regions, whereas the AU and PA regions are stronger stratified (Figure 7c). Following the AMOC collapse, stratification increases in the NZ and WGKP regions, while the opposite is true for the AU and PA regions (Figure 7d). A stronger (weaker) stratification reduces (increases) the MLD, which is found for the NZ and WGKP (AU and PA) regions.

To make the latter more explicit, we present the maximum MLD and Brunt-Väisälä frequency differences (relative to the first 100 model years) over the four regions in Figure 8. ~~Although the stratification decreases over the~~ The stratification in the WGKP region strongly increases in the upper 100 m, decreases in the layer just below (down to 250–500 m), and increases again at depths down to 2000 m (Figure 8b). The NZ region exhibits an overall increase in stratification, with the strongest anomalies occurring in the upper 100 m. In contrast, the AU and PA regions show an overall decrease in stratification in the upper 1000–1500 m, and an increase at greater depths.

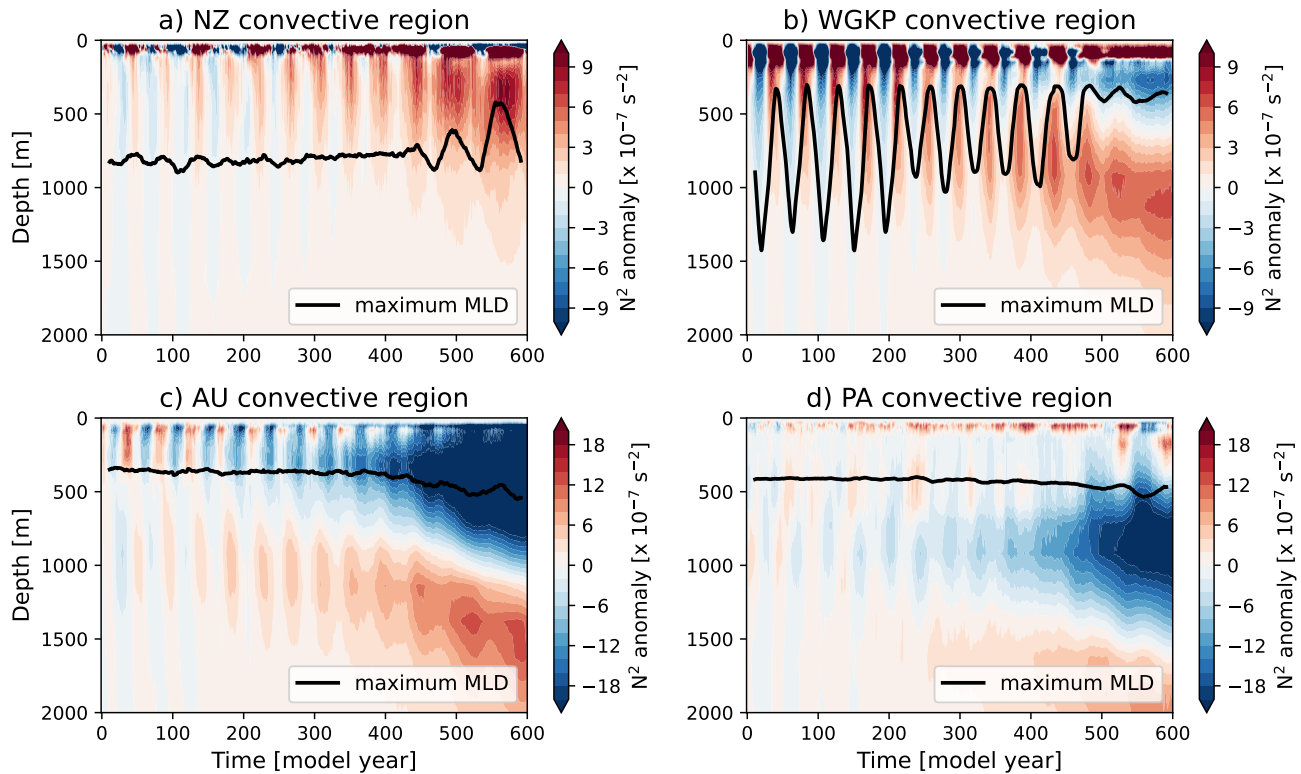
The stratification changes in the convective regions are related to a salinity-dominated reorganization of the water-column structure following the AMOC collapse (Figure A9). The increased stratification in the deeper layers of the AU and PA regions, and in the intermediate layers of the NZ and WGKP regions, can be linked to a reduced poleward advection of warm and saline Circumpolar Deep Water (CDW) after the AMOC has weakened. Furthermore, a downward displacement or reorganization of Antarctic Intermediate Water (AAIW), identified by its salinity minimum, leads to reduced vertical salinity gradients causing weakening of the stratification. This mechanism explains the reduced stratification in the upper ~1500 m of the AU and PA regions, and the weakening of stratification in the WGKP region between roughly 100 m and 250–500 m. Although the reduced stratification barely penetrates into the WGKP region (Figure A9), it dominates over the otherwise increasing stratification in the same depth range. The stratification changes north of the NZ convective region show a similar structure to those in the WGKP region.



**Figure 7. Mixed layer depth (MLD) and potential density (PD) properties in the SO30 region.** Difference in the mixed layer depth between model year 500 – 600) and model year 1 – 100 of the (a) MLD maximum, and (b) variance in the SO30 region. The outlined regions denote the WGKP (green), the AU (brown), the NZ (magenta), and the PA (blue) region. (c&d): The area-averaged PD profiles in the four convective regions time-averaged over model year 1 – 100 (c), and model year 500 – 600 (d).

320 Although the stratification weakening over the AU and PA regions induces a slightly deeper mixed-layer (Figure 8c,d), the stratification remains sufficiently strong such that the MLD responses are limited. A weak multidecadal oscillation arises after the collapse of the AMOC with comparable periods to that of the SOM-P index (Figure A10c,d). In contrast, the stratification over the NZ region remains relatively weak compared to the other three regions (Figures 7c,d), making this region the most prone to the deepest MLD events after the AMOC collapse. ~~The stratification over the WGKP is also relatively weak compared~~

325 to the AU and PA regions, but does increase such that it cannot support any deep convection ( $> 1000$  m) events anymore onset of deep convection with strong multidecadal variability (Figure A10a) in this region is closely linked to the stratification anomalies in the upper 100 m after the AMOC collapse (Figures 7a).



**Figure 8. Area-averaged  $N^2$  anomalies and maximum MLD in SO30 convective regions.** Maximum MLD (black line) and area-averaged  $N^2$  anomalies (with respect to mean  $N^2$  over the first 100 model years) in the (a) NZ, (b) WGKP, (c) AU, and (d) PA convective regions.

330 The Up to the AMOC collapse, strong MLD changes occur in the WGKP region with a period closely following that of the SOM index (Figure A10b). Over these 400 years, the MLD in the NZ region is deep ( $\sim 800$  m) but its variability is relatively small (Figure A10a). Deep convection events in the WGKP convective region follow a convection–restratification mechanism (Jüling et al., 2018; Dijkstra & van der Heydt, 2017; Latif et al., 2013). Heat originating from the inflow of relatively warm North Atlantic Deep Water (NADW) is transported into the Weddell Sea by the westward return flow in the southern branch of the Weddell Gyre, where it remains effectively trapped within the gyre circulation. The accumulation of heat at mid-depth levels destabilizes the water column and can eventually trigger deep convection. Once the mid-depth heat reservoir is depleted, convection shuts down (Figure 8b). The multidecadal recharge of this heat reservoir depends on both the AMOC and the Weddell Gyre circulation (Jüling et al., 2018), and is closely related to the SOM variability as generated by the eddy-mean flow interaction mechanism described in the previous section. The ACC is modulated by these convective episodes, with the

335

meridional pressure gradient weakening during non-convective phases due to gradual mid-depth warming of waters south of the ACC, and strengthening during convective phases as these waters cool. This variability in the pressure gradient leads to a corresponding weakening or strengthening of the ACC, typically with a lag of a few years (Figure A11).

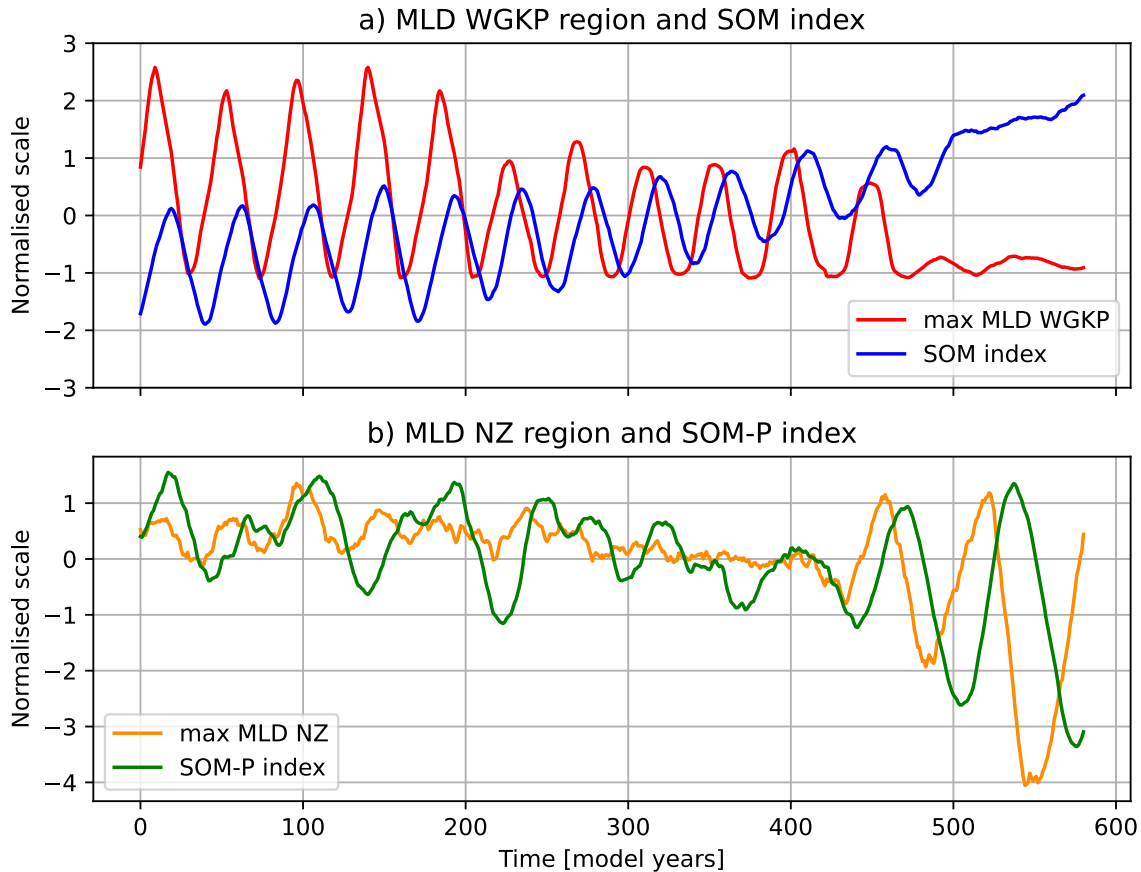
340 The stratification over the WGKP region is relatively weak compared to the AU and PA regions (Figure 7), but increases due to the reduced inflow of NADW. As a result, the water column cannot support any deep convection (> 1000 m) events anymore after the AMOC collapse. At the same time, stratification anomalies in the upper 100 m start to appear again over the NZ region, predominantly salinity-driven (not shown), and are apparently sufficient to initiate convection and support relatively strong MLD changes (Figure 8a), which in turn affect the Drake Passage transport. After deep convection ceases in  
345 the WGKP region and the SOM cycle vanishes, a pronounced oscillatory signal still persists in the Drake Passage transport with a period similar to that of the SOM-P index (Figure 1b,c). ~~Both the NZ and WGKP region show similar stratification changes during and after the AMOC collapse. The stratification increases in the upper 100 m, decreases in the layer just below (down to 250-500 m), and increases again at depths down to 1500 m (Figure 8a,b). Up to the AMOC collapse, strong MLD changes occur in the WGKP region (Figure 8b), here interpreted as being associated by the SOM variability as generated by the eddy-mean flow interaction mechanism described in the previous section. Over these 400 years, the MLD in the NZ region is deep (~ 800 m) but the variability is relatively small. During the AMOC collapse, the upper 250 m stratification changes over the NZ region are apparently sufficient to initiate convection and support relatively strong MLD changes (A1). Deep convection in the NZ region now leads the multidecadal oscillations in the Drake Passage transport (Figure A11).~~

350 The occurrence of deep convection events have been linked to an overall strengthening of the ACC, as they facilitate the conversion of potential to kinetic energy, thereby energizing the ocean circulation (Xing et al., 2023). Indeed, we find an overall decrease in mean strength of the ACC (Figure 1c), consistent with a decrease in  $C(P_e, K_e)$  (Figure 8a), which in turn affect the Drake Passage transport (4d) and the termination of deep convection events in the WGKP region.

This shift in Southern Ocean deep convection from the Atlantic to the Pacific sector is closely linked to the behaviour of the SOM-P index, which starts to exhibit pronounced multi-decadal variability around the same time deep convection in the NZ  
360 region starts (Figure 9b). The convective episodes in the NZ region now lead the oscillations in the SOM-P index, in a similar way the minima and maxima of the WGKP convective episodes led the minima and maxima of the SOM-index (Figure 9a). Whereas the SOM mechanism involves a combination of eddy-mean flow interactions and deep convection in the WGKP region, the oscillations emerging after the AMOC collapse cannot be explained by the first mechanism, as its signature is not detectable in the mechanical energy budget over the SO30 region. Instead, the SOM-P variability has a purely convective origin  
365 and in this way, the Pacific sector becomes the primary source region for multi-decadal variability of the Southern Ocean origin when the AMOC has collapsed.

## 4 Conclusions

In the strongly-eddying POP model, multi-decadal intrinsic variability appears which is not found in the non-eddying version of the same model (Le Bars et al., 2016; Jüling et al., 2018; van Westen et al., 2025). The same variability, referred to as



**Figure 9. SOM index and maximum MLD.** (a): SOM-index (blue), and the maximum MLD in the WGKP region (red). (b): SOM-P index (green), and the maximum MLD in the NZ region (orange). Note that all time series are normalised and mean-centered, and a moving average of 20 years has been applied.

370 the Southern Ocean Mode (SOM), occurs in the Community Earth System Model version with a strongly eddying ocean component (van Westen & Dijkstra, 2017; Chang et al., 2020; Wang et al., 2022; Ford et al., 2026). It is important to understand the mechanisms of this intrinsic variability in more detail, in addition to other mechanisms which have been suggested, as it is potentially relevant to interpret observed multi-decadal Antarctic sea-ice variability (Morioka et al., 2024).

In this study, we use the same strongly-eddying POP version as in Le Bars et al. (2016) to study the effect of the AMOC on 375 the SOM. Previous studies have shown that the SOM introduces multi-decadal variability (of a few Sv) in the AMOC strength at  $26^{\circ}\text{N}$  caused by northward Rossby wave propagation in the Atlantic Ocean (van Westen & Dijkstra, 2017). We demonstrated here that the SOM owes its existence to the density field in the Southern Ocean which is affected by the AMOC. A strong

weakening of the AMOC induces substantial changes in the Southern Ocean density structure, leading to the disappearance of the SOM in the Atlantic sector and the emergence of the SOM-P in the Pacific sector. Although a complete understanding of the underlying mechanisms and pathways would require detailed heat- and freshwater budget analyses, our results show consistent salinity-driven stratification changes associated with a reduced poleward advection of CDW and deepening or reorganisation of AAIW.

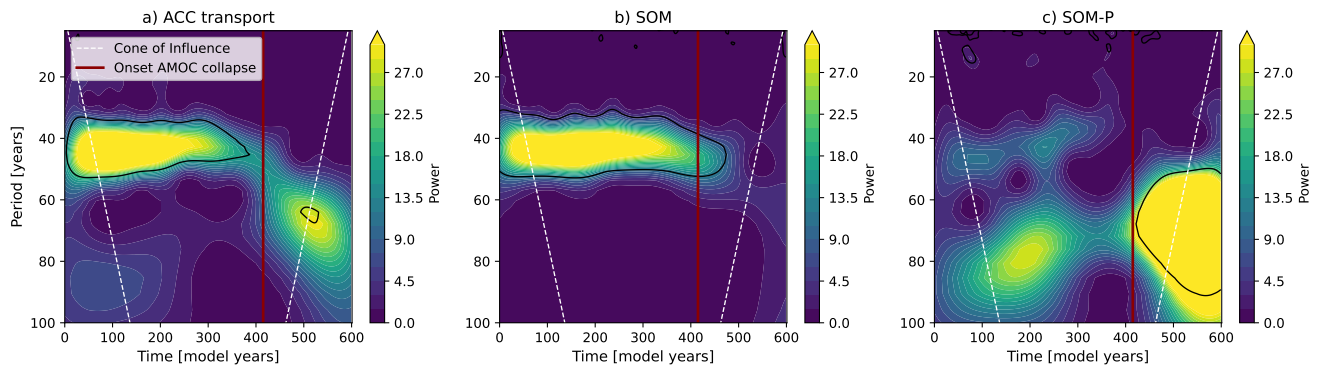
An analysis of the terms in the mechanical energy balance shows that eddy-mean flow interactions weaken under a decreasing AMOC strength and that phase differences between the input of the wind ( $G(K_m)$ ), and the baroclinic conversion term ( $C(P_e, K_e)$ ) decrease. This disrupts the coupling between eddy generation by baroclinic instability, jet zonality, and wind input. Furthermore, a weakening of the AMOC increases the stratification in the WGKP region, mainly due to reduced upper layer salinities associated with a reduced inflow of NADW, thereby weakening the deep convection events in this region. The primary source of convection appears to shift to the Pacific sector, where deep convection events begin to emerge only after the AMOC has collapsed. These convective events in the Pacific now cause the oscillatory behaviour of the Drake Passage. Although not studied here, this is also expected to affect variability in the Weddell and Ross Gyre circulations (Jüling et al., 2018).

The horizontal and vertical density structure of the Southern Ocean is thus modified in a way that weakens eddy-mean flow interactions and shifts the primary source of deep convection, leading to the disappearance of the SOM. However, despite being very localized, convection in the Pacific sector remains sufficiently strong to sustain a mode of multi-decadal variability, namely the SOM-P. Although the exact role of convection in driving multi-decadal oscillations in the Southern Ocean remains uncertain, this study also underscores the importance of deep convection events in shaping Southern Ocean multi-decadal variability in climate models Ford et al. (2026). (Ford et al., 2026).

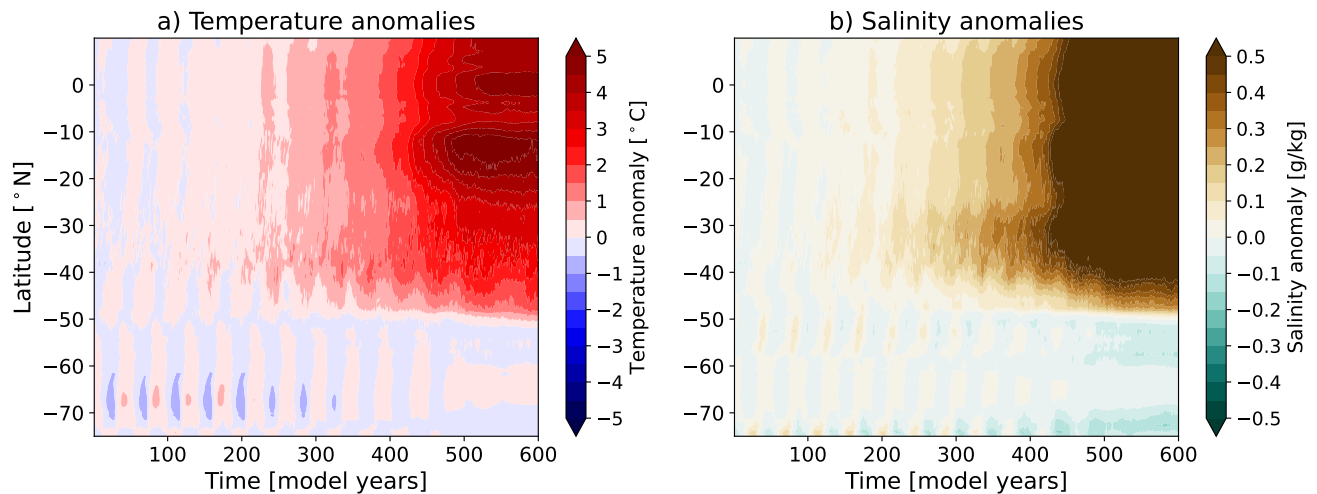
While this study is based on an ocean-only model, atmospheric variability is likely to play a role. Although Ford et al. (2026) found only weak evidence for atmosphere-ocean feedbacks contributing to Southern Ocean multidecadal variability, multidecadal variability in Southern Ocean temperatures or sea-ice extent may influence large-scale climate modes such as the Interdecadal Pacific Oscillation (IPO) through atmospheric teleconnections (Chang et al., 2020). Conversely, atmospheric variability, including changes in sea level pressure patterns such as the Amundsen Sea Low (Dalaiden et al., 2024), may feed back onto the ocean circulation and variability. This highlights the importance of understanding intrinsic multidecadal variability in the Southern Ocean and its potential coupling to the atmosphere.

Although the SOM cannot be clearly identified in the historical record (Jüling et al., 2020), its presence in the CESM (van Westen & Dijkstra, 2020; Ford et al., 2026), and the consistency of its underlying mechanism with that of a mode of multi-decadal variability identified in a quasi-geostrophic model (Hogg & Blundell, 2006) provide strong support that the SOM is a dynamically meaningful feature in the present-day ocean. The analysis here has clearly demonstrated a strong connection between the SOM and the AMOC, with pronounced changes in multi-decadal variability, ocean density field, and deep convection following an AMOC collapse. These changes have significant implications for the mean state of the Southern Ocean, including a marked cooling near the base of the Antarctic ice shelf. This, in turn, affects Antarctic sea-ice variability and basal melt, suppresses deep convection in the Weddell Sea, and may affect teleconnections with other ocean basins.

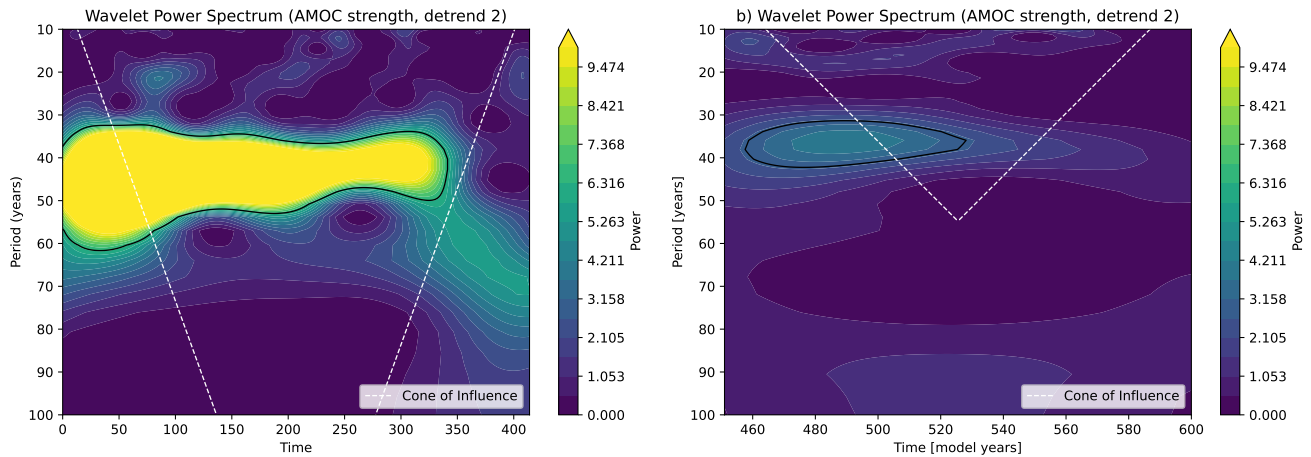
## Appendix A: Supplementary Figures



**Figure A1.** Wavelet power spectra for the ACC transport, SOM and SOM-P index. Wavelet (Morlet) power spectra for (a) the ACC transport, (b) the SOM index, and (c) the SOM-P index. Black contours indicate power significant at the 95% level relative to an AR(1) red-noise background. The vertical red line marks the onset of the AMOC collapse, and the white dashed lines indicate the cone of influence.



**Figure A2.** Hövmoller diagram of depth- and zonally-averaged (300 – 700 m, 55 – 5°W) (a) temperature and (b) salinity anomalies with respect to the first 100 model years.



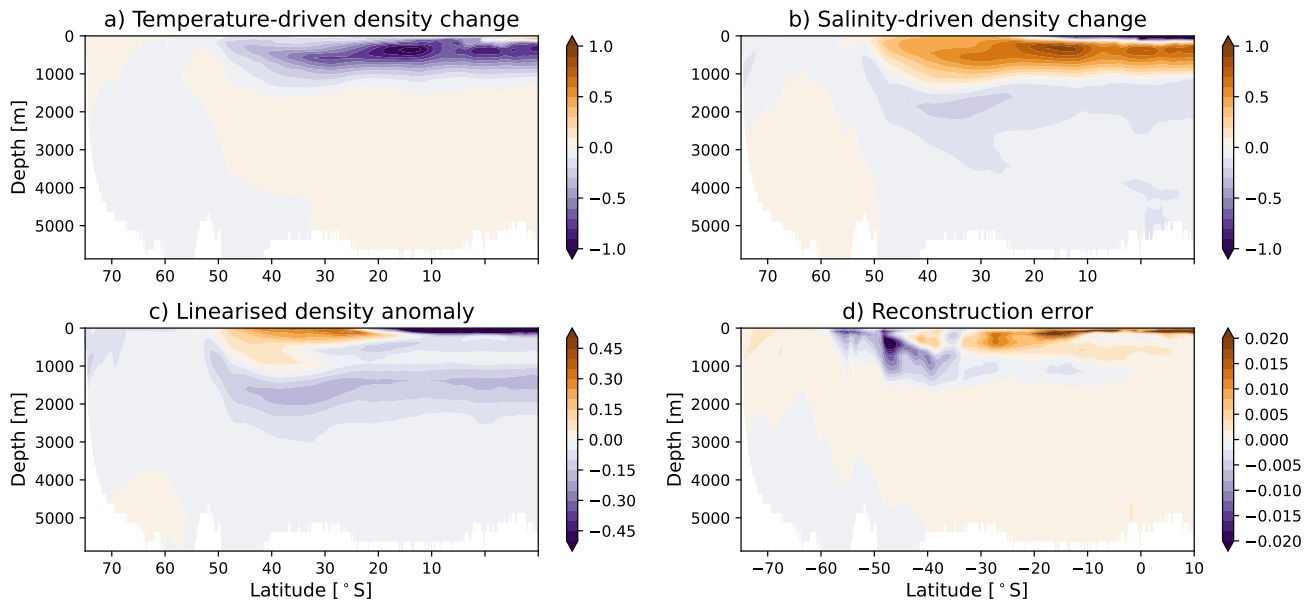
**Figure A3. Wavelet power spectra for the AMOC strength.** Wavelet (Morlet) power spectra for the quadratically detrended AMOC strength from (a) model year 0 - 415, and for (b) model year 450 to 600. Black contours indicate power significant at the 95% level relative to an AR(1) red-noise background, and the white dashed lines indicate the cone of influence.

*Author contributions.* EJVS, RMvW, and HD conceived the ideas presented in this study. EJVS performed the analysis and wrote the paper.  
 415 RMvW and HD contributed to writing the paper.

*Competing interests.* The authors declare no conflict of interest.

*Acknowledgements.* E.J.V.S. is funded by Utrecht University. R.M.v.W. and H.A.D. are funded by the European Research Council through the ERC-AdG project TAOC (PI: Dijkstra, project 101055096). The model simulation and the analysis of all the model output was conducted on the Dutch National Supercomputer Snellius within NWO-SURF project 2024.013. We thank Michael Kliphuis (IMAU, UU) for carrying  
 420 out these simulations and his support in analysing the data.

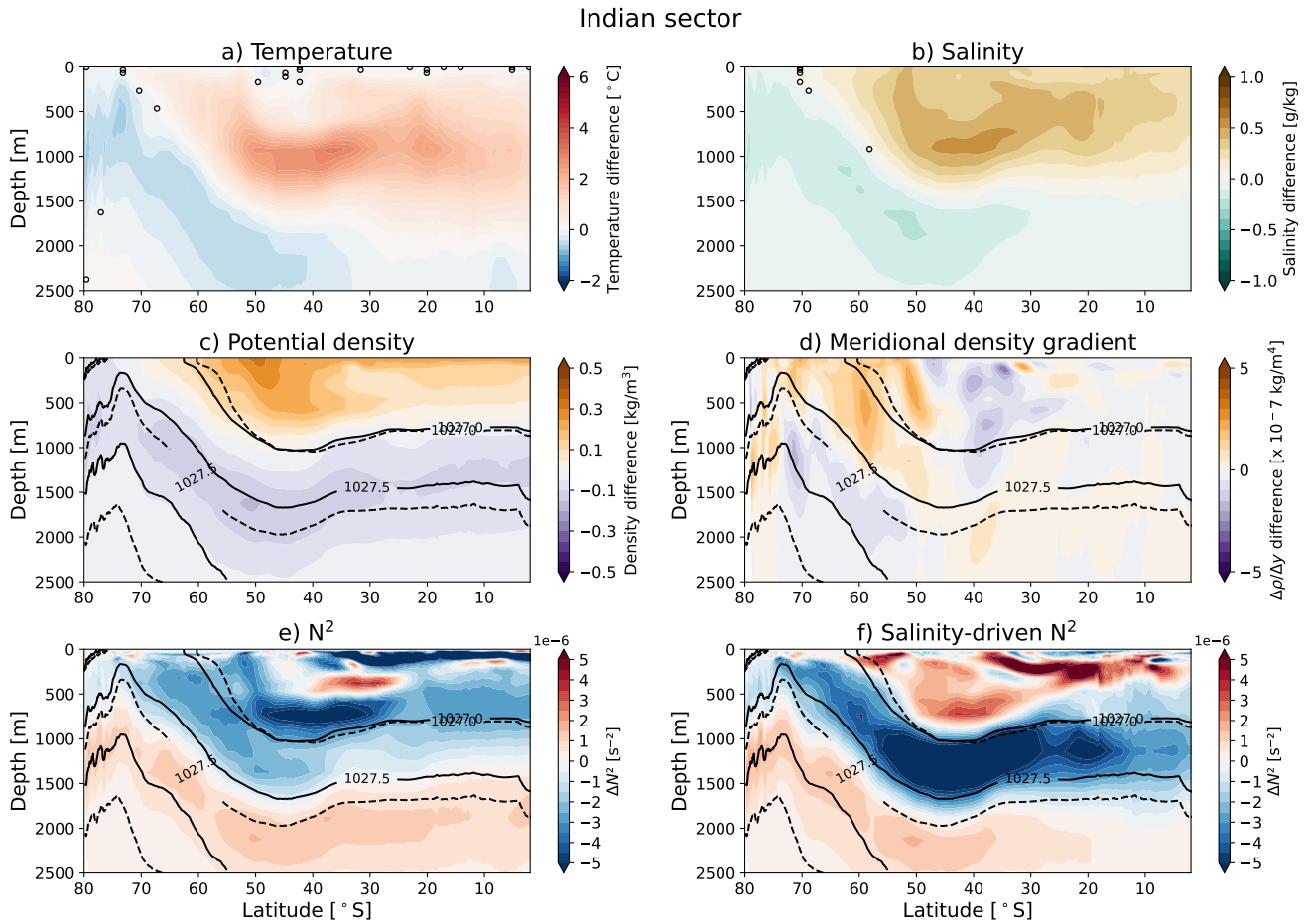
## Atlantic sector



**Figure A4. Linear density decomposition in the Atlantic sector.** Zonal-averaged (60°W – 25°E) (a) temperature-driven and (b) salinity-driven density changes (model year (500 – 600) minus model year (1 – 100)). (c) Linearised density anomaly, obtained as the sum of the temperature- and salinity-driven contributions. (d): Reconstruction error of the linearised density anomaly relative to the actual density anomaly.

## References

- Chang, P., Zhang, S., Danabasoglu, G., Yeager, S. G., Fu, H., Wang, H., & others (2020). An unprecedented set of high-resolution earth system simulations for understanding multiscale interactions in climate variability and change. *Journal of Advances in Modeling Earth Systems*, 12(12), e2020MS002298.
- 425 Dalaiden, Q., Rezsöhazy, J., Goosse, H., Thomas, E. R., Vladimirova, D. O., & Tetzner, D. (2023). An unprecedented sea ice retreat in the Weddell Sea driving an overall decrease of the Antarctic sea-ice extent over the 20th century. *Geophysical Research Letters*, 50(21). doi:10.1029/2023GL104666
- [Dalaiden, Q., Abram, N. J., Goosse, H., Holland, P. R., O'Connor, G. K., and Topál, D. \(2024\). Multi-decadal variability of the Amundsen Sea Low controlled by natural tropical and anthropogenic drivers. \*Geophysical Research Letters\*, 51\(16\), e2024GL109137. doi:10.1029/2024GL109137.](https://doi.org/10.1029/2024GL109137)
- 430
- Dalaiden, Q., Goosse, H., Holland, P. R., & Barthelemy, A. (2025). Dynamical reconstruction of Southern Ocean and Antarctic climate variability since 1700. *Scientific Data*, 12, 1574. doi:10.1038/s41597-025-05808-w
- Diamond, R., Sime, L. C., Schroeder, D., Jackson, L. C., Holland, P. R., Alastrué de Asenjo, E., Bellomo, K., Danabasoglu, G., Hu, A., Jungclaus, J., Montoya, M., Meccia, V. L., Saenko, O. A., & Swingedouw, D. (2025). A weakened AMOC could cause Southern Ocean temperature and sea-ice change on multidecadal timescales. *Journal of Geophysical Research: Oceans*, 130(7). doi:10.1029/2024JC022027
- 435

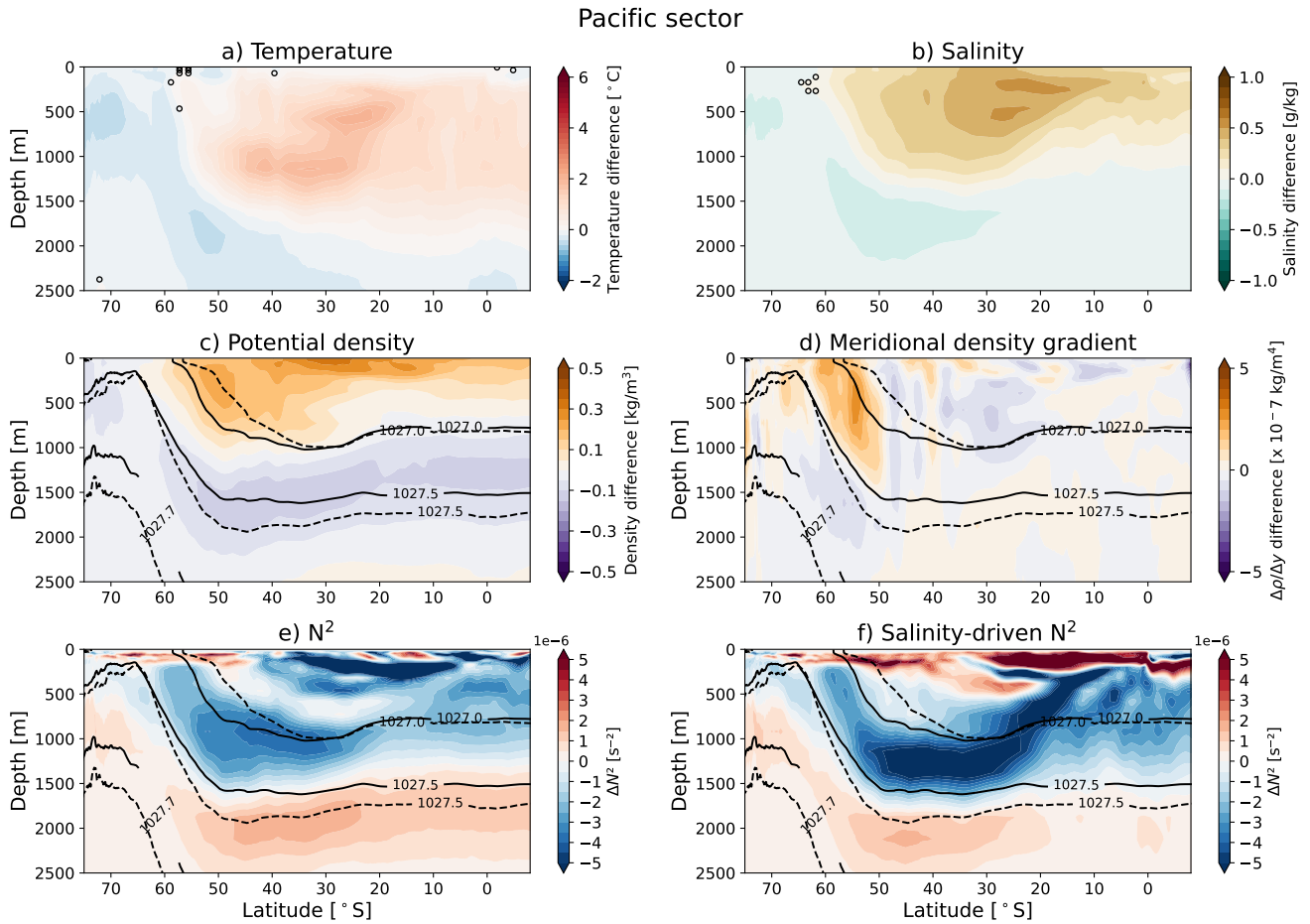


**Figure A5. Temperature, salinity, meridional density gradient and zonal velocity differences in the Indian sector.** Zonal-averaged (25 – 150°E) (a) temperature, (b) salinity, (c) meridional density gradient and (d) zonal velocity differences in the upper 2500 m before and after the AMOC collapse (model year (500 – 600) minus model year (1 – 100)). In (c), the solid (dashed) black lines denote isopycnals of model year 1 – 100 (500 – 600). Plotted isopycnals are referenced to 5°N and the displayed (from top to bottom) ones are: 1025.1 (1025.2), 1026.5 (1026.9), and 1027.6 (1027.5) kg/m<sup>3</sup> for model year 1 – 100 (500 – 600). In (d), the vertical dashed lines denote the mean ACC latitude band for model year 1 – 100.

Diao, X., Stössel, A., Chang, P., Danabasoglu, G., Yeager, S. G., Gopal, A., Wang, H. & Zhang, S. (2022). On the intermittent occurrence of open-ocean polynyas in a multi-century high-resolution preindustrial Earth System Model simulation. *Journal of Geophysical Research: Oceans*, 127. doi:10.1029/2021JC017672

[Dijkstra, H. A., and van der Heydt, A. S. \(2017\). Basic mechanisms of centennial climate variability. \*PAGES Magazine\*, 25\(3\), 150–151.](#)

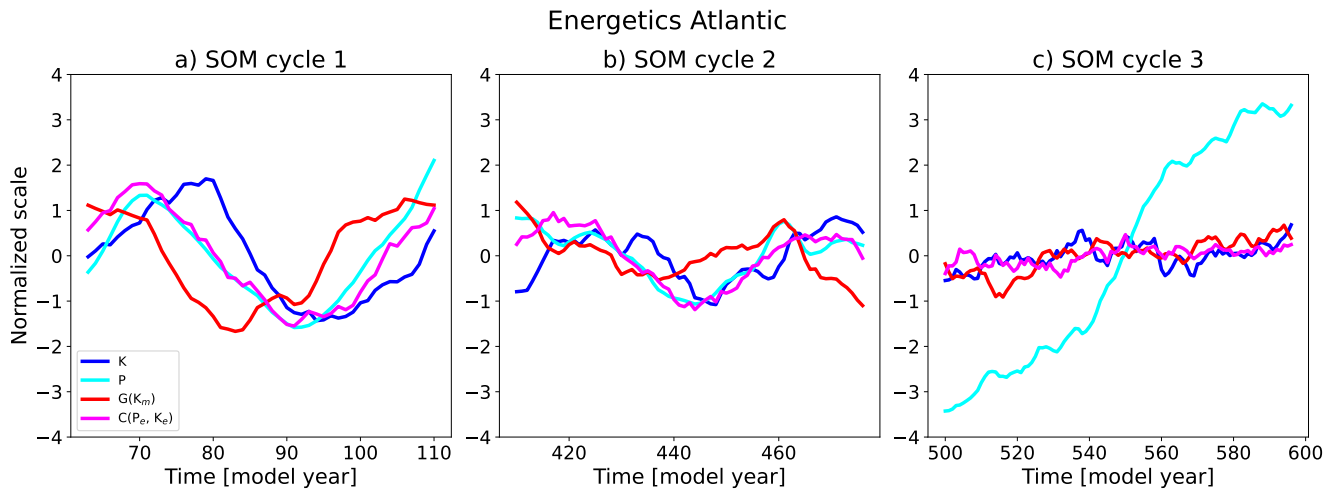
440 Dukowicz, J. K., & Smith, R. D. (1994). Implicit free-surface method for the Bryan-Cox-Semtner ocean model. *Journal of Geophysical Research: Oceans*, 99, 7991–8014.



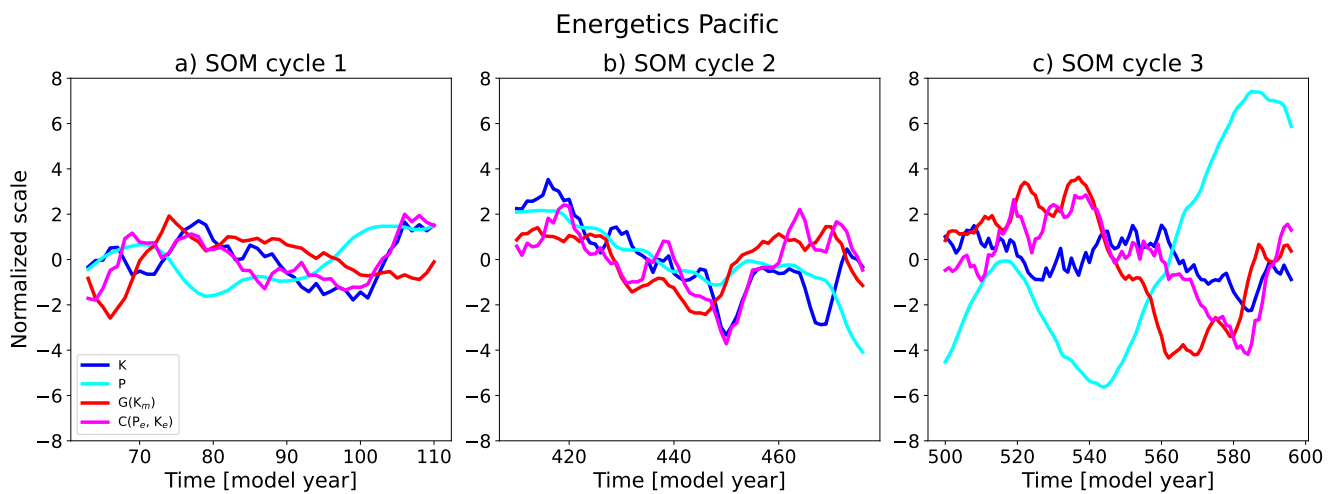
**Figure A6. Temperature, salinity, meridional density gradient and zonal velocity differences in the Pacific sector.** Zonal-averaged ( $150^{\circ}\text{E} - 60^{\circ}\text{W}$ ) (a) temperature, (b) salinity, (c) meridional density gradient and (d) zonal velocity differences in the upper 2500 m before and after the AMOC collapse (model year (500 – 600) minus model year (1 – 100)). In (c), the solid (dashed) black lines denote isopycnals of model year 1 – 100 (500 – 600). Plotted isopycnals are referenced to  $5^{\circ}\text{N}$  and the displayed (from top to bottom) ones are: 1025.6 (1025.6), 1027.0 (1026.9), and 1027.6 (1027.6)  $\text{kg/m}^3$  for model year 1 – 100 (500 – 600). In (d), the vertical dashed lines denote the mean ACC latitude band for model year 1 – 100.

Fan, T., Deser, C., & Schneider, D. P. (2014). Recent Antarctic sea ice trends in the context of Southern Ocean surface climate variations since 1950. *Geophysical Research Letters*, 41(7), 2419–2426. doi:10.1002/2014GL059239

445 Ford, R. R., & Rose, and B. E. J. (2025). Rose, 2026: A Southern Ocean Multidecadal Oscillator Forced by Deep Convection: multidecadal oscillator forced by deep convection. *ESS Open Archive Geophysical Research Letters*, preprint. doi:10.22541/essoar.176384862.21026088/v1-53(6), e2025GL120643.



**Figure A7. Energetics for three different SOM cycles in the Atlantic sector.** Similar to Figure 6, but now for the Pacific sector ( $90^{\circ}\text{S} - 30^{\circ}\text{S}, 60^{\circ}\text{W} - 25^{\circ}\text{E}$ ).

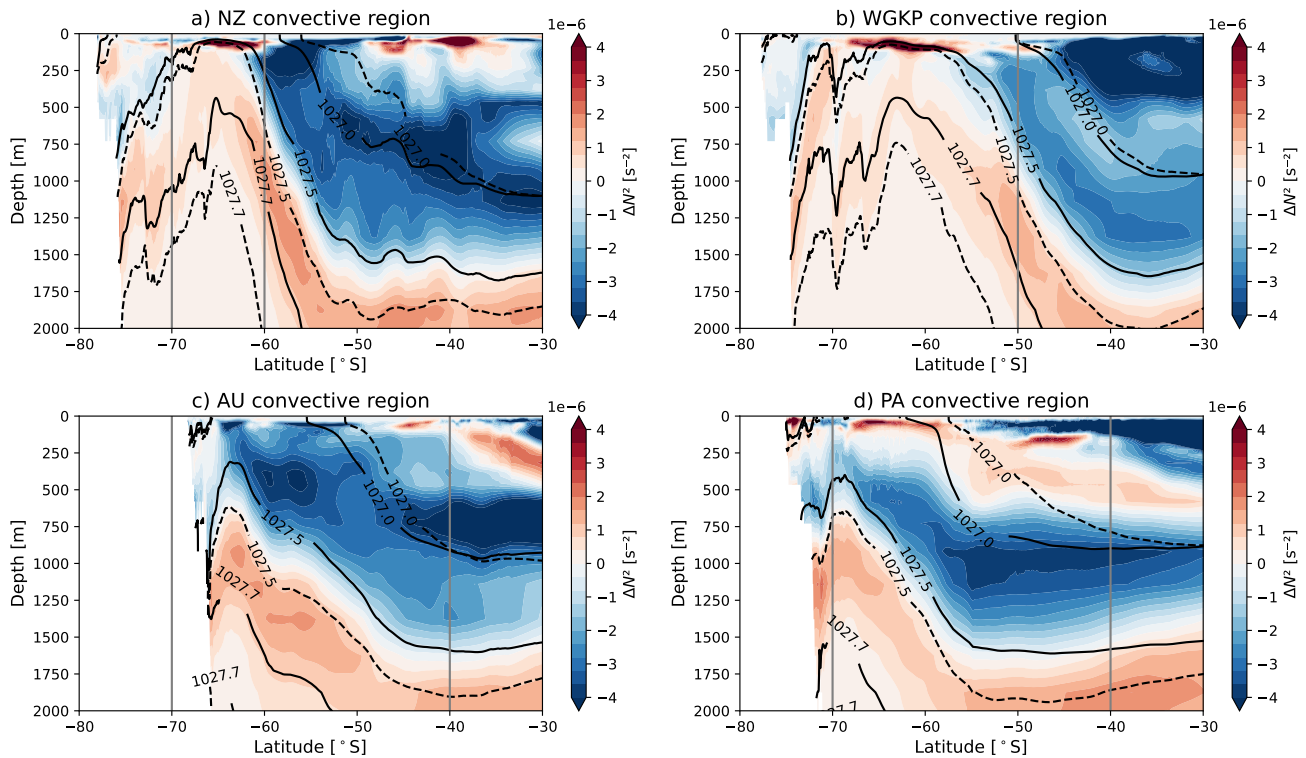


**Figure A8. Energetics for three different SOM cycles in the Pacific sector.** Similar to Figure 6, but now for the Pacific sector ( $90^{\circ}\text{S} - 30^{\circ}\text{S}, 150^{\circ}\text{E} - 60^{\circ}\text{W}$ ).

Gwyther, D. E., O’Kane, T. J., Galton-Fenzi, B. K., Monselesan, D. P., & Greenbaum, J. S. (2018). Intrinsic processes drive variability in basal melting of the Totten Glacier Ice Shelf. *Nature Communications*, 9(1). doi:10.1038/s41467-018-05618-2

450 Hobbs, W., Spence, P., Meyer, A., Schroeter, S., Fraser, A., Reid, P., Tian, T., Wang, Z., Liniger, G., Doddridge, E., & Boyd, P. (2024). Observational Evidence for a Regime Shift in Summer Antarctic Sea Ice. *Journal of Climate*, 37. doi:10.1175/JCLI-D-23-0479.1

$N^2$  anomalies ((500 - 600) minus (1 - 100))



**Figure A9. Zonally averaged  $N^2$  anomalies in SO30 convective regions.** (a) Zonally averaged ( $150^{\circ}\text{E} - 170^{\circ}\text{E}$ )  $N^2$  in the NZ convective region (model year (500 – 600) minus (1 – 100)). (b) Same as (a), but now zonally averaged over the WGKP convective region ( $35^{\circ}\text{W} - 80^{\circ}\text{W}$ ), (c) for the AU convective region ( $80^{\circ}\text{E} - 150^{\circ}\text{E}$ ), and (d) for the PA convective region ( $110^{\circ}\text{W} - 160^{\circ}\text{W}$ ). The solid (dashed) black lines denote zonally averaged isopycnals of model year 1 – 100 (500 – 600). Plotted isopycnals are (from top to bottom): 1027.0, 1027.5, and 1027.7  $\text{kg}/\text{m}^3$ . The grey vertical lines denote the meridional boundaries of the respective convective regions.

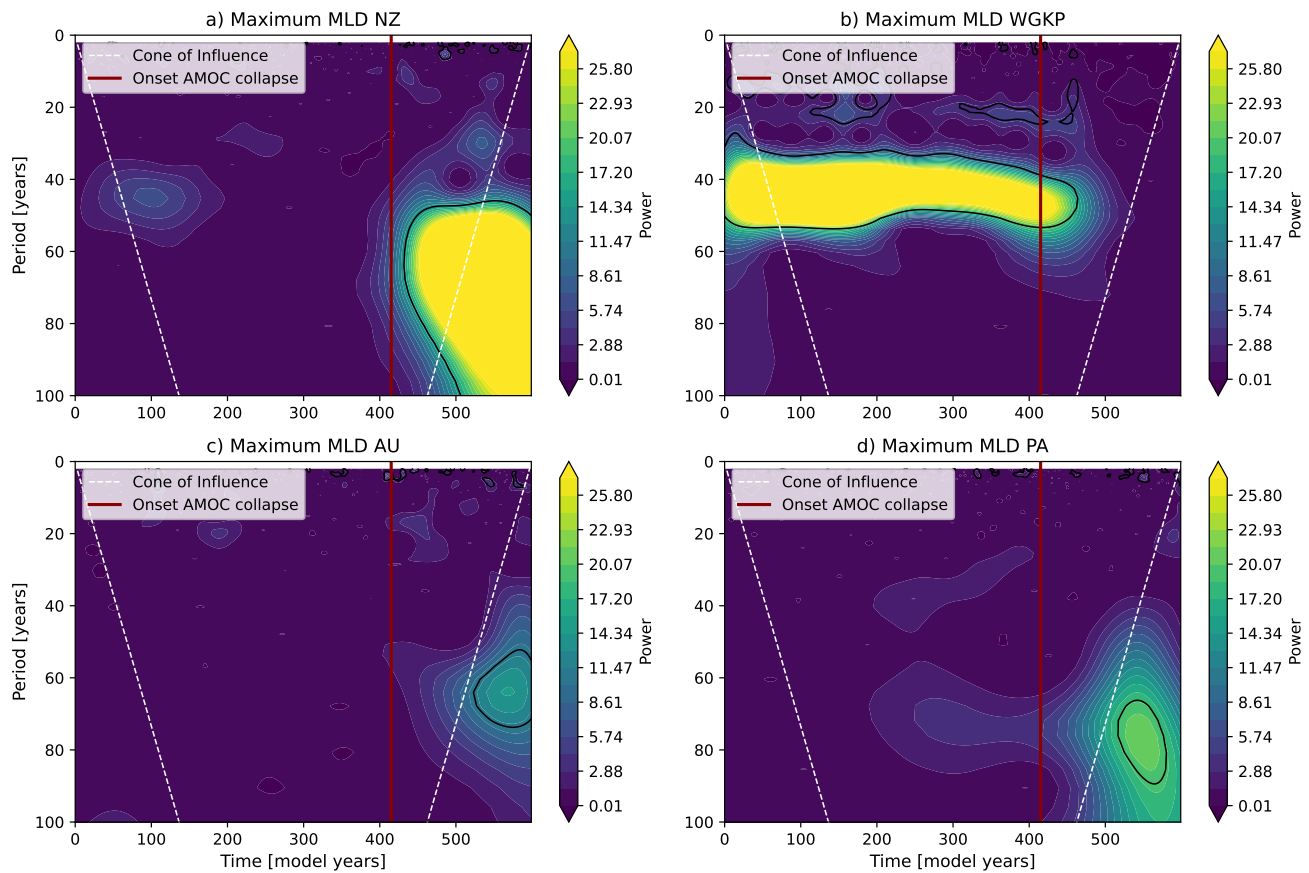
Hogg, A. M., & Blundell, J. R. (2006). Interdecadal variability of the Southern Ocean. *Journal of Physical Oceanography*, 36, 1626–1645. doi:10.1175/JPO2934.1

455 Howard, E., Hogg, A. M., Waterman, S., & Marshall, D. P. (2015). The injection of zonal momentum by buoyancy forcing in a Southern Ocean model. *Journal of Physical Oceanography*, 45(1), 259–271. doi:10.1175/jpo-d-14-0098.1

Hurrell, J. W., Hack, J. J., Shea, D., Caron, J. M., & Rosinski, J. (2008). A new sea surface temperature and sea ice boundary dataset for the community atmosphere model. *Journal of Climate*, 21(19), 5145–5153.

Jüling, A., von der Heydt, A. S. & Dijkstra, H. A. (2020). Effects of strongly eddying oceans on multidecadal climate variability in the Community Earth System Model. *Ocean Science Discussions*, 1–24. doi:10.5194/os-2020-85

460 Jüling, A., Viebahn, J. P., Drijfhout, S. S., & Dijkstra, H. A. (2018). Energetics of the Southern Ocean Mode. *Journal of Geophysical Research: Oceans*, 123(12), 9283–9304. doi:10.1029/2018JC014191



**Figure A10. Wavelet power spectra for the maximum MLD in the convective regions.** Wavelet (Morlet) power spectra for the maximum MLD in (a) the NZ convective region, (b) the WGKP convective region, (c) the AU convective region, and (d) the PA convective region. Black contours indicate power significant at the 95% level relative to an AR(1) red-noise background. The vertical red line marks the onset of the AMOC collapse, and the white dashed lines indicate the cone of influence.

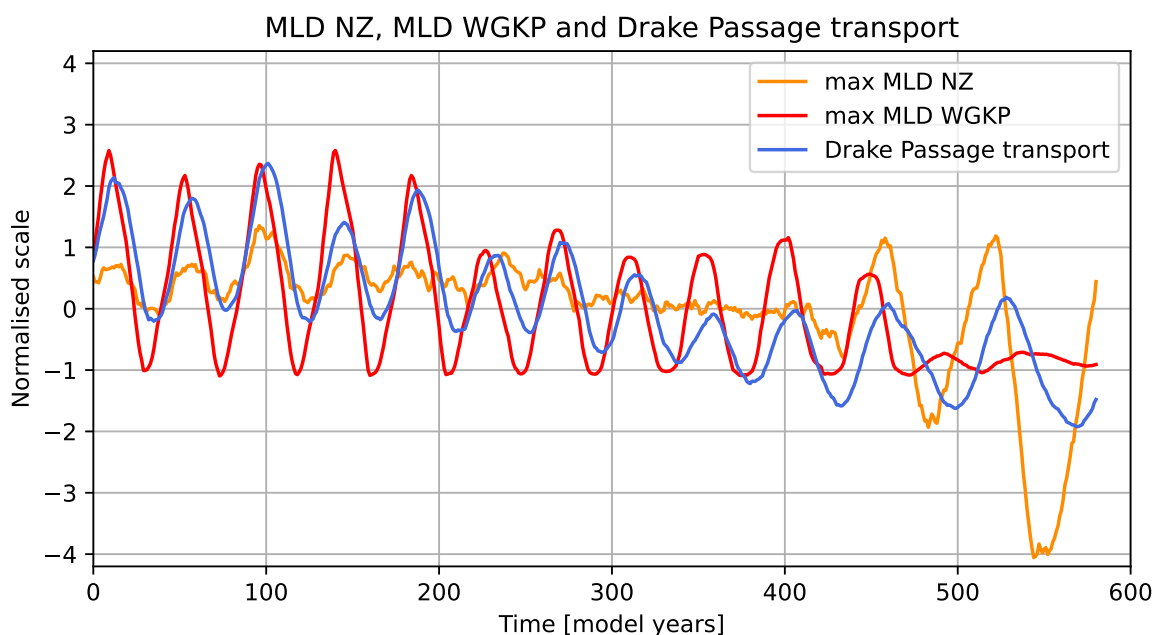
Large, W. G., & Yeager, S. G. (2004). Diurnal to decadal global forcing for ocean and sea-ice models: The data sets and flux climatologies. *National Center for Atmospheric Research, Boulder.*

Latif, M., Martin, T., & Park, W. (2013). Southern Ocean sector centennial climate variability and recent decadal trends. *Journal of Climate*, 26(19), 7767–7782. doi:10.1175/JCLI-D-12-00281.1

Latif, M., Martin, T., Reintges, A., & Park, W. (2017). Southern Ocean decadal variability and predictability. *Current Climate Change Reports*, 3(3), 163–173. doi:10.1007/s40641-017-0068-8

Le Bars, D., Viebahn, J., & Dijkstra, H. A. (2016). A Southern Ocean mode of multidecadal variability. *Geophysical Research Letters*, 43(5), 2102–2110.

470 Mayewski, P. A., Meredith, M. P., Summerhayes, C. P., Turner, J., Worby, A., Barrett, P. J., & others (2009). State of the Antarctic and Southern Ocean climate system. *Reviews of Geophysics*, 47(1). doi:10.1029/2007RG000231



**Figure A11. Drake Passage transport and maximum MLD.** Drake Passage transport (blue), and the maximum MLD in the WGKP region (red) and NZ region (orange). A moving average of 20 years has been applied to all time series.

Morioka, Y., Iovino, D., Cipollone, A., Masina, S., & Behera, S. K. (2022). Decadal sea ice prediction in the West Antarctic seas with ocean and sea ice initializations. *Communications Earth and Environment*, 3(1). doi:10.1038/s43247-022-00529-z

Morioka, Y., Manabe, S., Zhang, L., Delworth, T. L., Cooke, W., Nonaka, M., & Behera, S. K. (2024). Antarctic sea ice multidecadal variability triggered by Southern Annular Mode and deep convection. *Communications Earth and Environment*, 5(1). doi:10.1038/s43247-024-01783-z

[Sallée, J. B., Speer, K., Morrow, R., and Lumpkin, R. \(2008\). An estimate of Lagrangian eddy statistics and diffusion in the mixed layer of the Southern Ocean. \*Journal of Marine Research\*, 66\(4\), 441–463. doi:10.1357/002224008787157458](#)

Sinha, A., & Abernathy, R. P. (2016). Time scales of Southern Ocean eddy equilibration. *Journal of Physical Oceanography*, 2785–2805. doi:10.1175/JPO-D-16-0041.s1

Smolders, E. J. V., van Westen, R. M., & Dijkstra, H. A. (2025). Southern Ocean variability in HR-POP. *Zenodo* [Software]. doi:10.5281/zenodo.15746693

Stocker, T. F., Timmermann, A., Renold, M., & Timm, O. (2007). Effects of salt compensation on the climate model response in simulations of large changes of the Atlantic meridional overturning circulation. *Journal of Climate*, 20(24), 5912–5928. <https://doi.org/10.1175/2007jcli1662.1>

Timmermann, A., Okumura, Y., An, S.-I., Clement, A., Dong, B., Guilyardi, E. (2007). The influence of a weakening of the Atlantic meridional overturning circulation on ENSO. *Journal of Climate*, 20(19), 4899–4919. <https://doi.org/10.1175/jcli4283.1>

- van Westen, R. M., & Dijkstra, H. A. (2020). ~~Multidecadal preconditioning of the Maud Rise polynya region.~~ (2017). Southern Ocean origin of multidecadal variability in the North Brazil Current. *Ocean Science Geophysical Research Letters*, 16(6), 1443–1457. doi:10.1002/2017GL074815
- 490
- van Westen, R. M., & Dijkstra, H. A. (2017). ~~Southern Ocean origin of multidecadal variability in the North Brazil Current.~~ (2020). multidecadal preconditioning of the Maud Rise polynya region. *Geophysical Research Letters Ocean Science*, 44(20). doi:10.1002/2017GL074815-16(6), 1443–1457.
- 495
- van Westen, R. M., & Dijkstra, H. A. (2023). Asymmetry of AMOC hysteresis in a state-of-the-art global climate model. *Geophysical Research Letters*, 50(22). doi:10.1029/2023GL106088
- van Westen, R. M., Kliphuis, M., & Dijkstra, H. A. (2024). Physics-based early warning signal shows that AMOC is on tipping course. *Science Advances*, 10(6). doi:10.1126/sciadv.adk1189
- 500
- van Westen, R. M., Kliphuis, M., & Dijkstra, H. A. (2025). Collapse of the Atlantic Meridional Overturning Circulation in a strongly eddy ocean-only model. *Geophysical Research Letters*, 52(6). doi:10.1029/2024GL114532
- van Westen, R. M., Katsman, C. A., and Le Bars, D. (2026). Dynamic and steric sea-level changes due to a collapsing AMOC in the Community Earth System Model. *Ocean Science*, 22, 1353–1376. doi: 10.5194/os-22-1353-2026
- von Storch, J.-S., Eden, C., Fast, I., Haak, H., Hernández-Deckers, D., & Maier-Reimer, E. (2012). An estimate of the Lorenz energy cycle for the World Ocean based on the STORM/NCEP simulation. *Journal of Physical Oceanography*, 42(12), 2185–2205. doi:10.1175/JPO-D-12-079.1
- 505
- Wang, Y., Huang, G., Hu, K., Tao, W., Li, X., Gong, H., & Zhang, W. (2022). Asymmetric impacts of El Niño and La Niña on the Pacific–South America teleconnection pattern. *Journal of Climate*, 35(6), 1825–1838. doi:10.1175/JCLI-D-21-0285.1
- Weijer, W., Cheng, W., Drijfhout, S. S., Fedorov, A. V., Hu, A., Jackson, L. C., & Zhang, J. (2019). Stability of the Atlantic Meridional Overturning Circulation: A review and synthesis. *Journal of Geophysical Research: Oceans*, 124(8), 5336–5375.
- 510
- Weijer, W., Maltrud, M., Hecht, M., Dijkstra, H., & Kliphuis, M. (2012). Response of the Atlantic Ocean circulation to Greenland Ice Sheet melting in a strongly eddy ocean model. *Geophysical Research Letters*, 39(9).
- Welander, P. (1982). A simple heat-salt oscillator. *Dynamics of Atmospheres and Oceans*, 6, 233–242.
- Wendt, K. A., Nehrbass-Ahles, C., Niezgoda, K., Noone, D., Kalk, M., Menviel, L., & Buizert, C. (2024). Southern Ocean drives multidecadal atmospheric CO<sub>2</sub> rise during Heinrich Stadials. *Proceedings of the National Academy of Sciences*, 121(21). doi:10.1073/pnas.2319652121
- 515
- Xing, Q., et al. (2023). Deep convection as the key to the transition from Eocene to modern Antarctic Circumpolar Current. *Geophysical Research Letters*, 50(24), e2023GL104847. https://doi.org/10.1029/2023GL104847
- Zhang, L., Delworth, T. L., Cooke, W., & Yang, X. (2019). Natural variability of Southern Ocean convection as a driver of observed climate trends. *Nature Climate Change*, 9(1), 59–65. doi:10.1038/s41558-018-0350-3
- 520
- Zhou, L., Ayres, H., Gülek, B., Narayanan, A., de Lavergne, C., Ödalen, M., & Steiger, N. (2025). Review article: Weddell Sea polynya formation, cessation and climatic impacts. *The Cryosphere*. doi:10.5194/egusphere-2025-999