

Supplement of

Organic amine weakens chloride depletion in coastal atmosphere

Aijing Song¹, Kun Li¹, Zhaomin Yang¹, Li Xu², Narcisse Tsona Tchinda¹, and Lin Du^{1,2,3,*}

¹Qingdao Key Laboratory for Prevention and Control of Atmospheric Pollution in Coastal Cities, Environment Research Institute, Shandong University, Qingdao 266237, China

²School of Environmental Science and Engineering, Shandong University, Qingdao 266237, China

³State Key Laboratory of Microbial Technology, Shandong University, Qingdao 266237, China

Correspondence to: Lin Du (lindu@sdu.edu.cn)

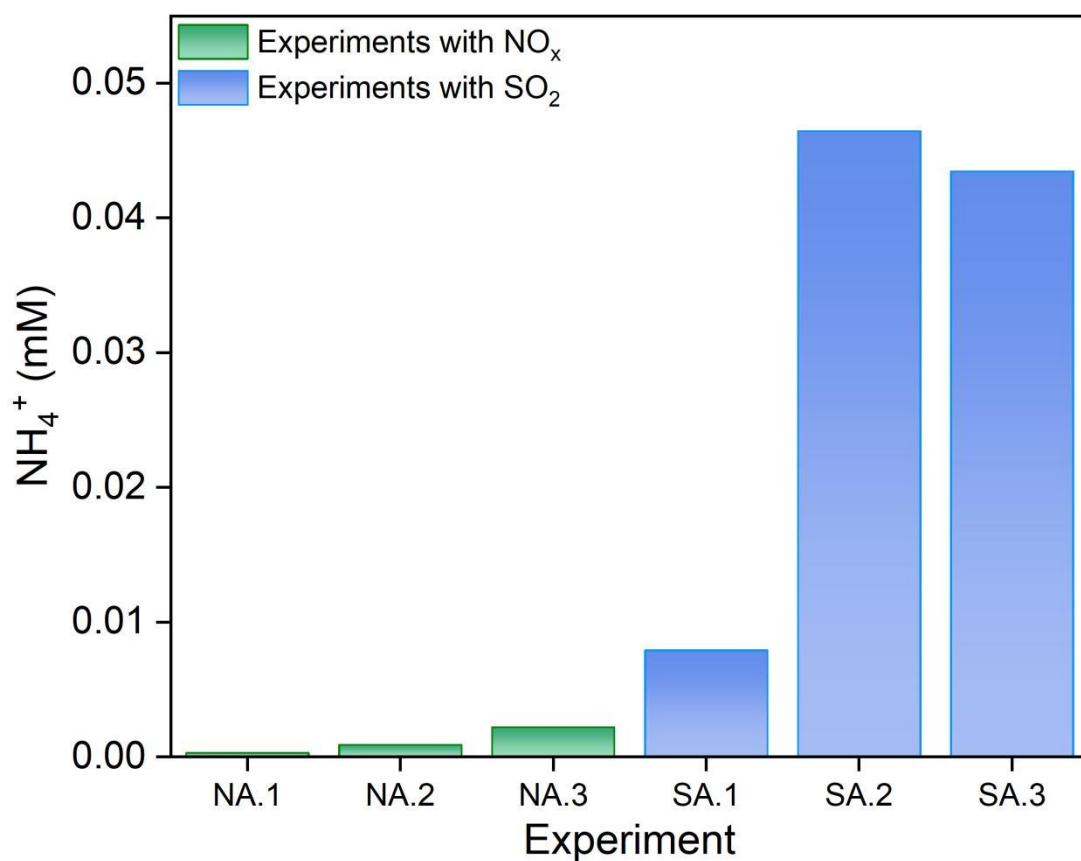


Figure S1. NH_4^+ concentration under different experimental conditions.

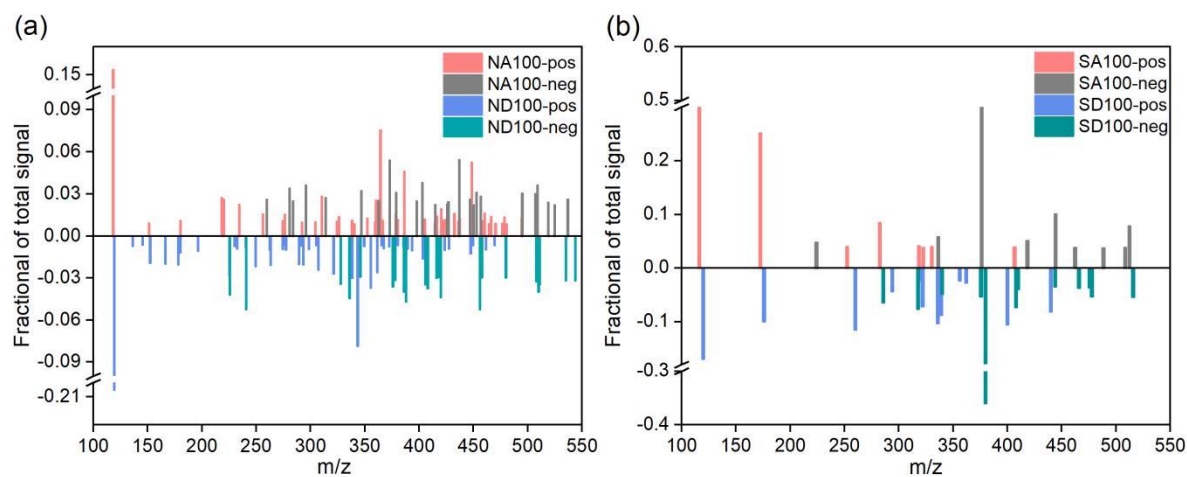


Figure S2. Mass spectra of organic chlorinated compounds for different experiments in the presence of (a) NO_x and (b) SO_2 .

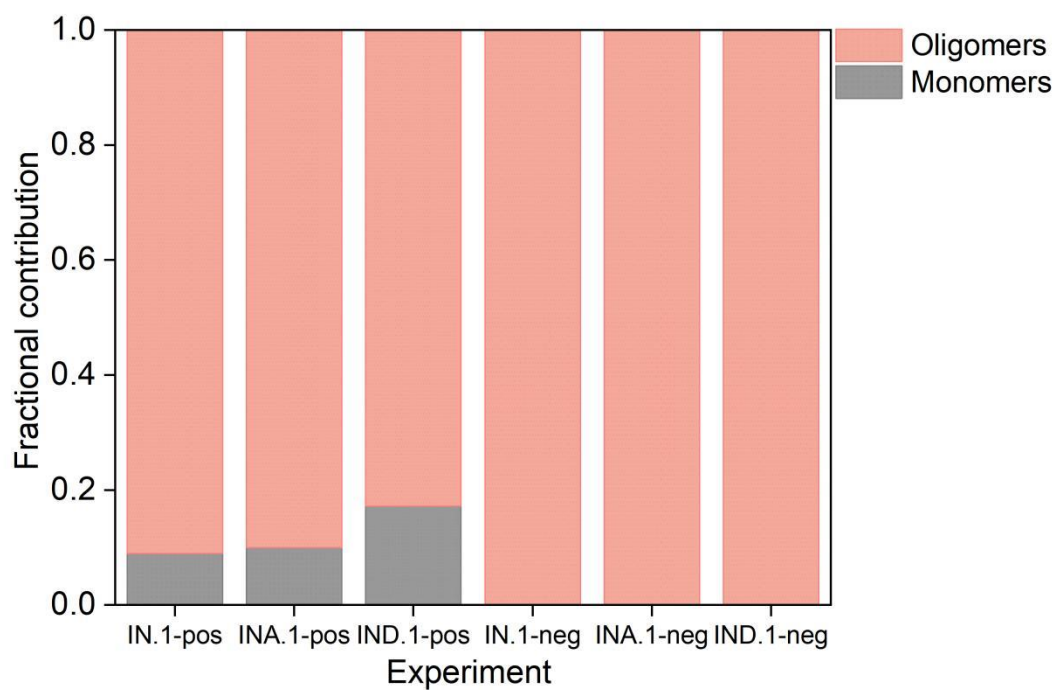


Figure S3. Fractional contribution of organic chlorinated monomers ($C \leq 5$) and oligomers ($C > 5$) for different experiments with NO_x .

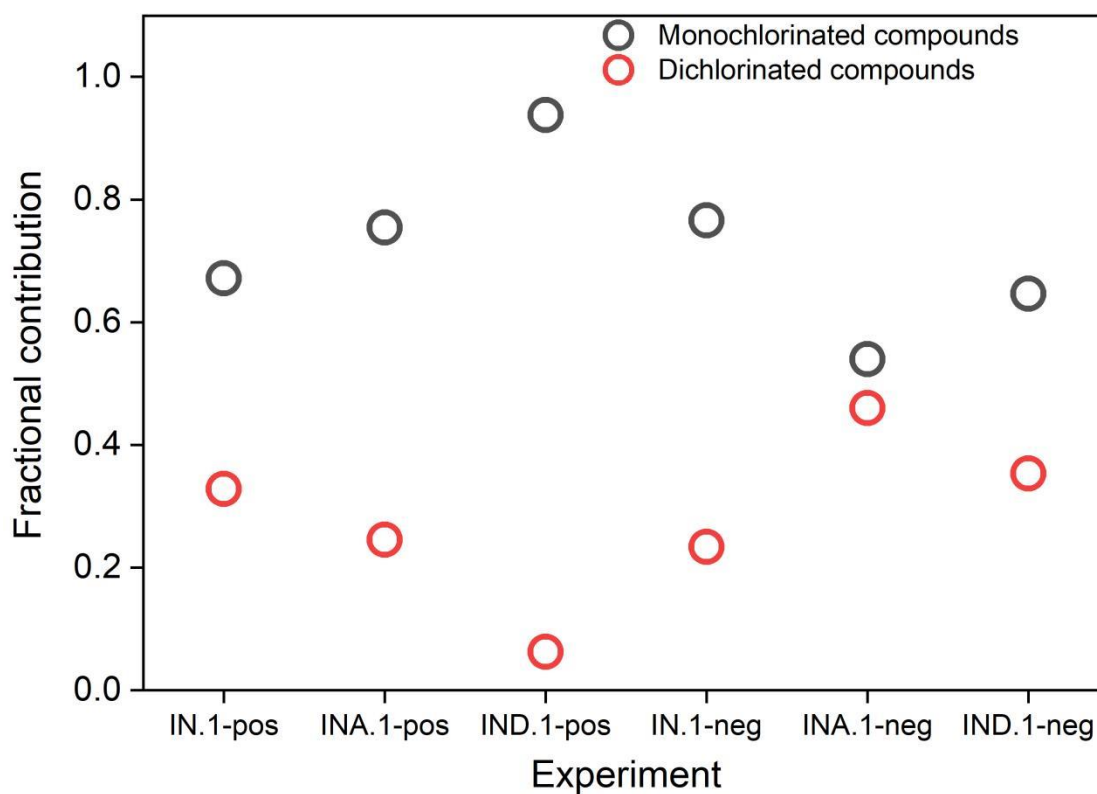


Figure S4. Fractional contribution of monochlorinated and dichlorinated compounds in the total organic chlorinated compounds for different experiments with NO_x .

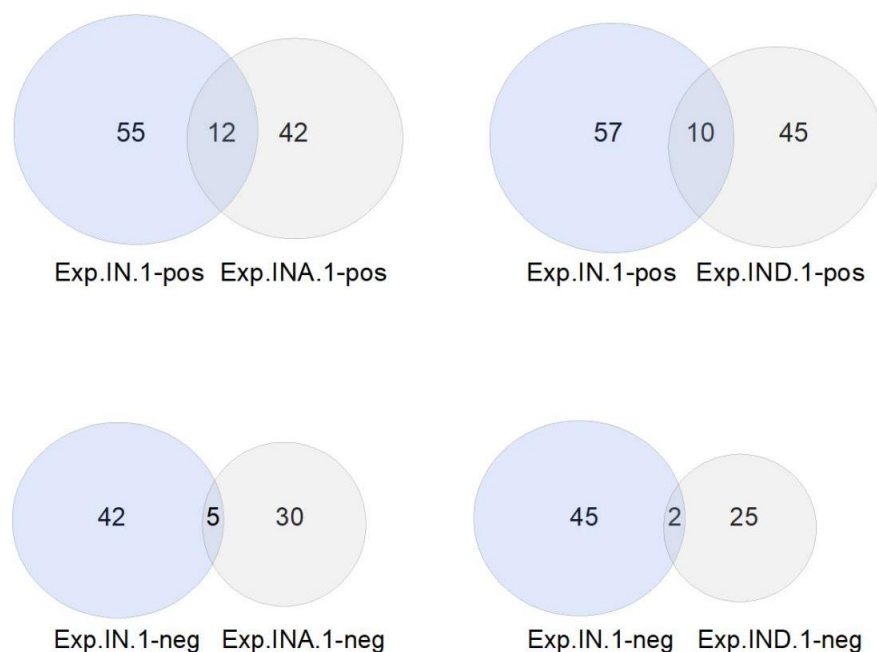


Figure S5. Venn diagram for all molecular formulas of organic chlorinated compounds between Exp.N.1 and Exp.NA.1/Exp.ND.1. Numbers represent the count of molecular formulas within each subset.

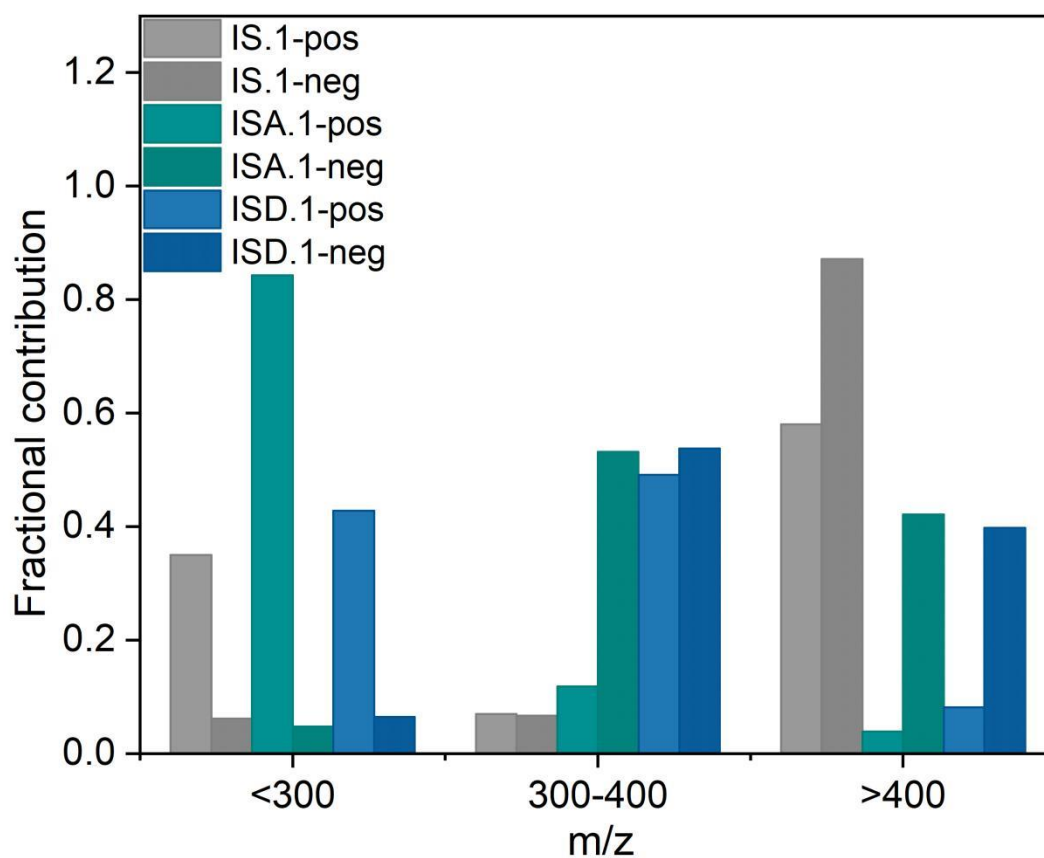


Figure S6. Distribution of identified molecules for different experiments with SO₂.