

Supplement of

**Dynamical and Microphysical Interactions in a Coastal Bow-Echo Producing
Extreme Rainfall**

Jong-Hoon Jeong et al.

Correspondence to: Seung Hee Kim (sekim@chapman.edu)

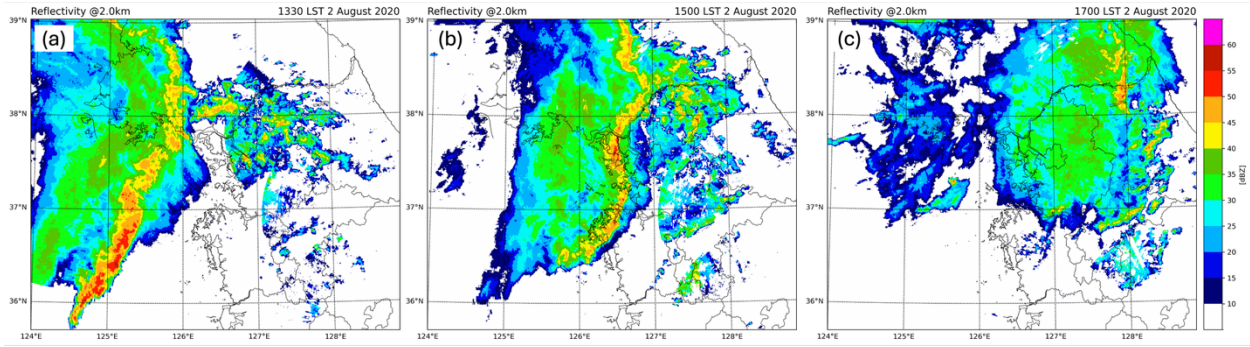


Figure S1 Radar reflectivity mosaic (dBZ, shading) at 2 km altitude (a) 1300, (b) 1500, and (c) 1700 LST on 2 August 2020.

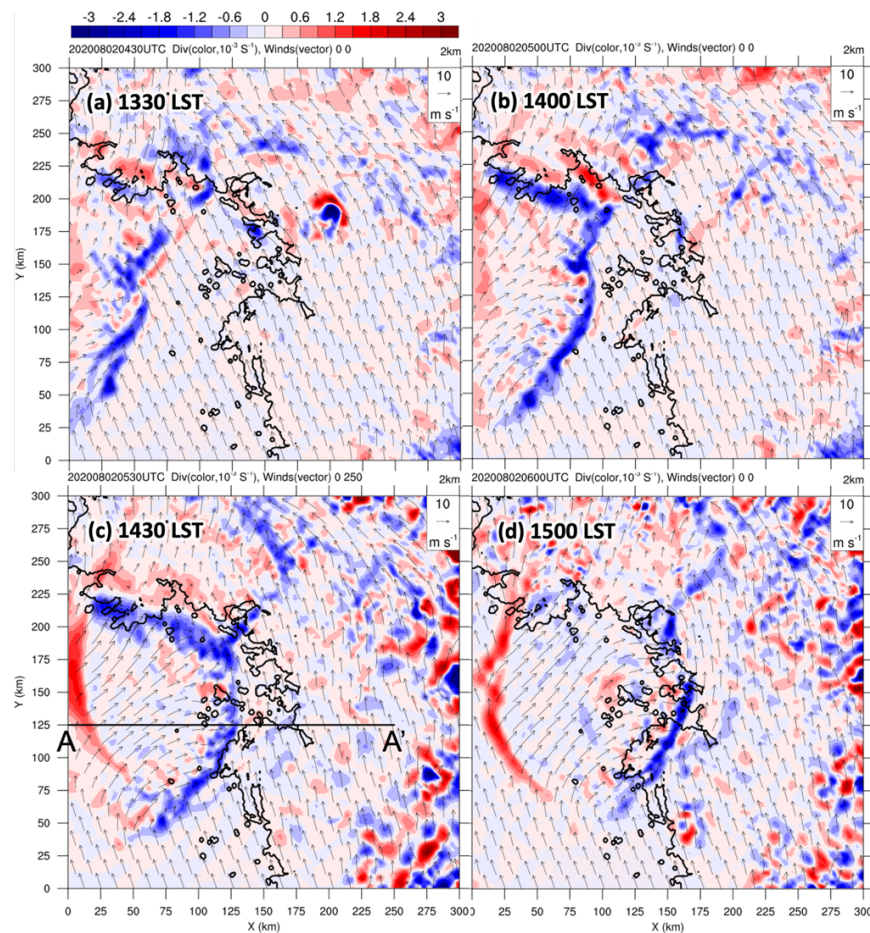


Figure S2 As in Figure 6, but for convergence and divergence fields ($\times 10^3 \text{ s}^{-1}$, shading colors). The positive values represent divergence, and the negative values indicate convergence. The line A–A' indicates the locations of the vertical cross section used in Figure 8. The reference arrow for wind (m s^{-1} , vector) magnitude is upper right.