

Supplementary Material
To
**Multiscale assessment of Indian monsoon rainfall using ICON and
CMIP6 model simulations**

Samir Pokhrel¹, Verma Utkarsh^{1,2}, Patita Kalyana Sahoo^{1,3}, Praveen Pothapakula⁴,
Anusha Sunkisala⁵, Nishant Gautam^{1,3}, KP Pribin^{1,3}, Shivamurthy Yashas^{1,2}, Hemant
Chaudhari¹, Archana Rai¹, Hasibur Rahaman⁶, Andreas F. Prein⁴, Anurag Dipankar⁴
and Subodh K Saha¹

- 1. Indian Institute of Tropical Meteorology, Pune, India*
- 2. Savitribai Phule Pune University, Pune, India*
- 3. Academy of Scientific and Innovative Research, Ghaziabad, India*
- 4. Institute for Atmospheric and Climate Science, ETH Zürich, 8092 Zurich,
Switzerland*
- 5. Independent Researcher, Zürich, Switzerland*
- 6. Indian National Centre for Ocean Information Services, Ministry of Earth
Sciences, Hyderabad, India.*

*Corresponding author: Samir Pokhrel, samir@tropmet.res.in

Contents

1. Figures S1 to S4

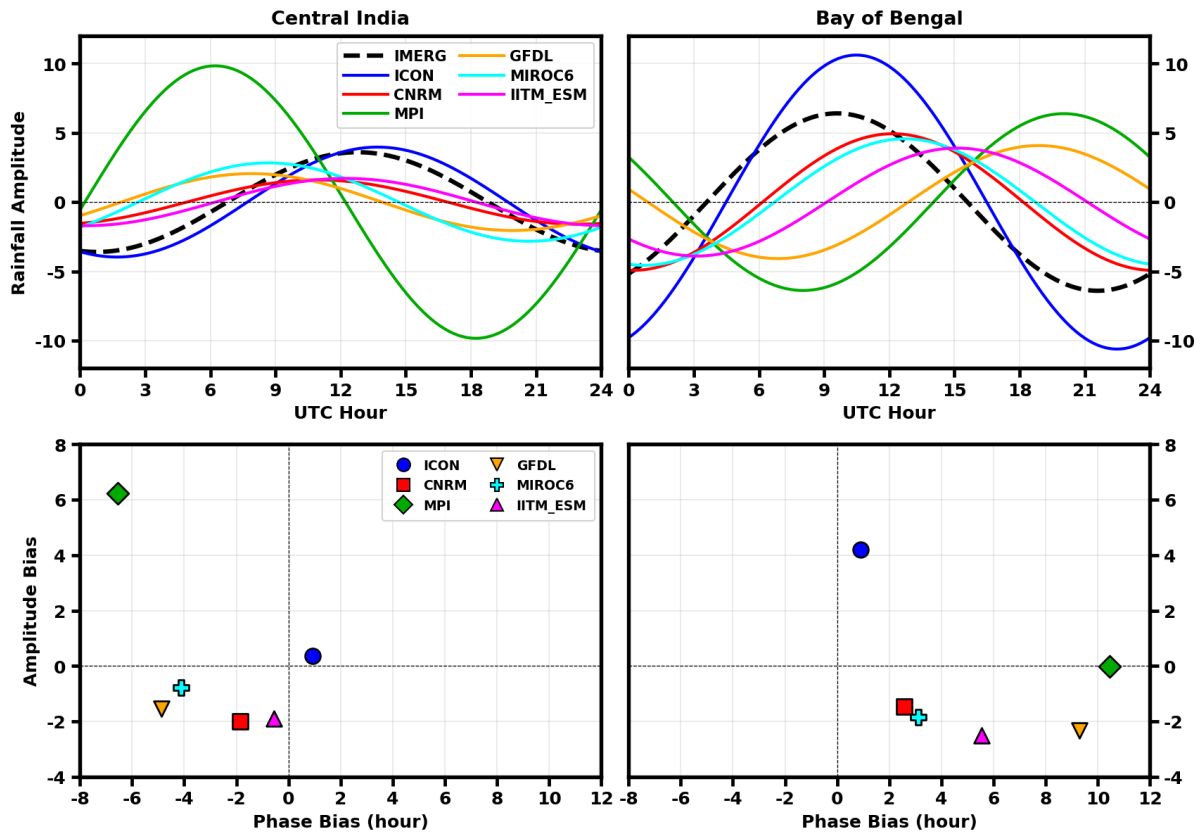


Figure S1. Diurnal cycle of precipitation over central India (CI) and the Bay of Bengal (BoB) from IMERG, ICON, and CMIP6 models. Top panels show the composite diurnal cycle (mm day⁻¹) as a function of UTC hour, and bottom panels show the corresponding phase (hours) and amplitude (mm day⁻¹) biases relative to IMERG. Positive (negative) phase bias indicates delayed (advanced) peak timing, while positive (negative) amplitude bias indicates overestimation (underestimation). CI and BoB regions are as defined in Fig 2f.

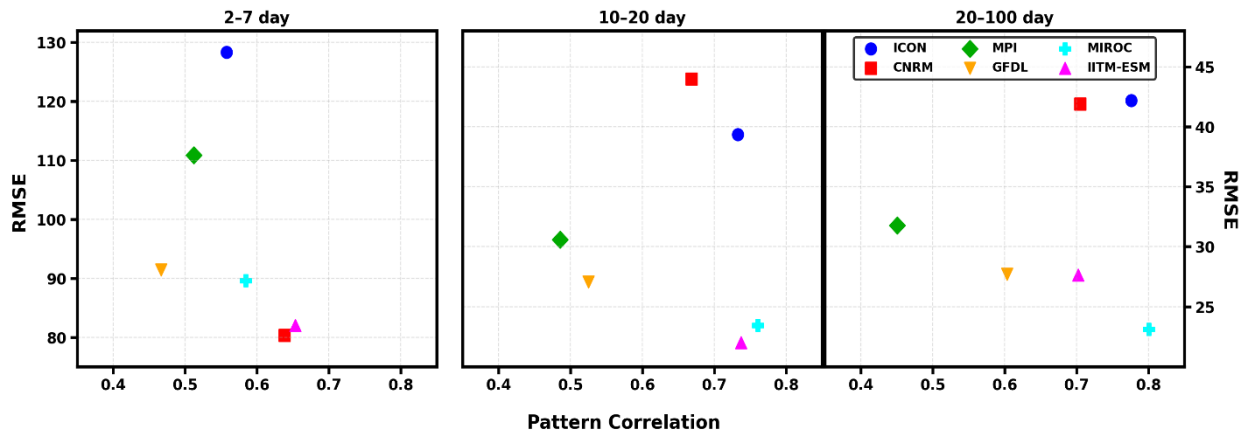


Figure S2. Pattern correlation and RMSE of rainfall variance in the synoptic (2–7 days), higher ISO (10–20 days), and lower ISO (20–100 days) bands, computed from filtered daily rainfall anomalies ($\text{mm}^2 \text{d}^{-2}$) of ICON and CMIP6 models (CNRM, MPI, GFDL, MIROC, IITM-ESM) relative to IMERG observations.

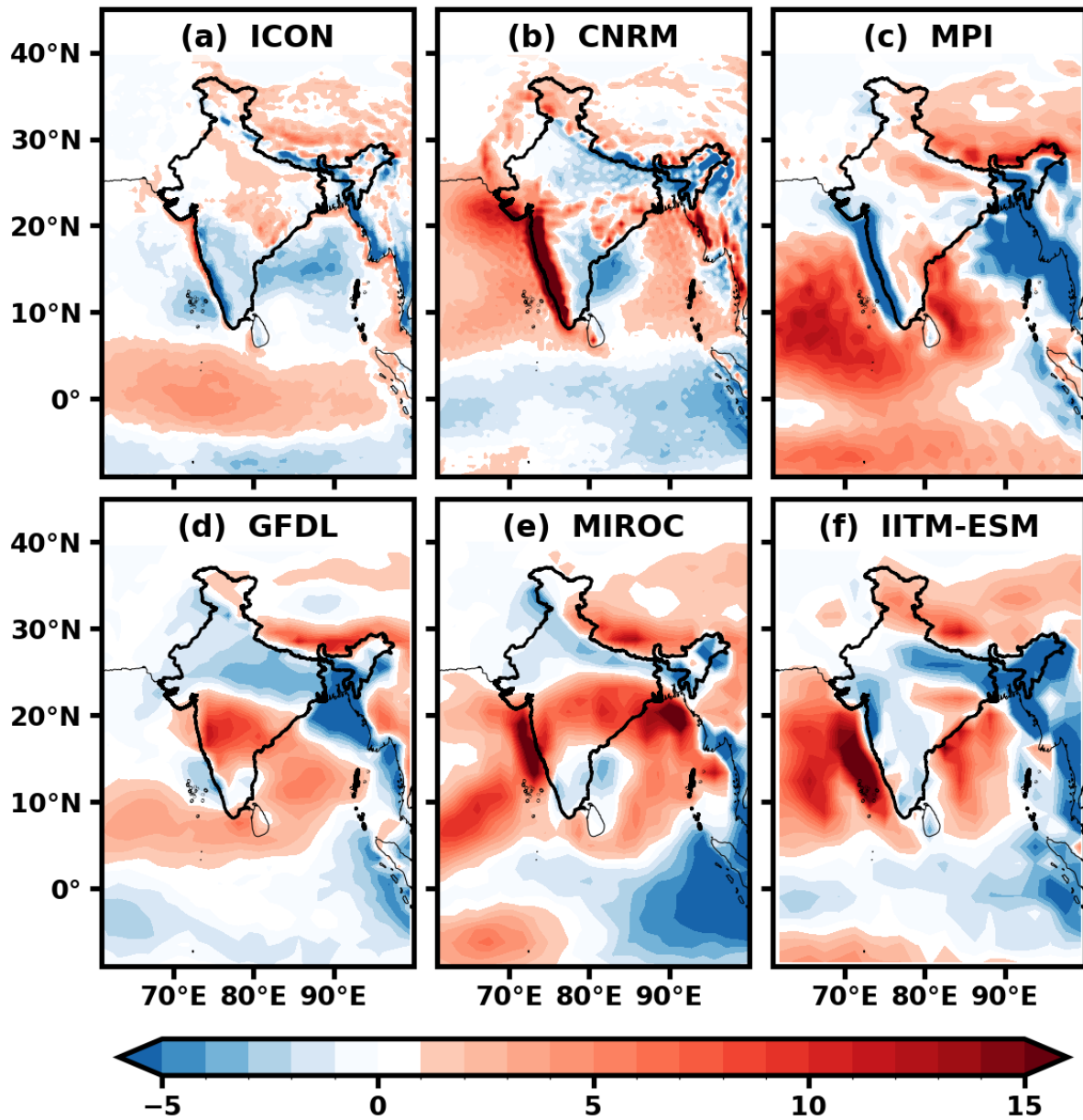


Figure S3. Seasonal bias of precipitation relative to IMERG from (a-f) ICON, CNRM, MPI, GFDL, MIROC, and IITM-ESM model simulations. Units are in mm day⁻¹.

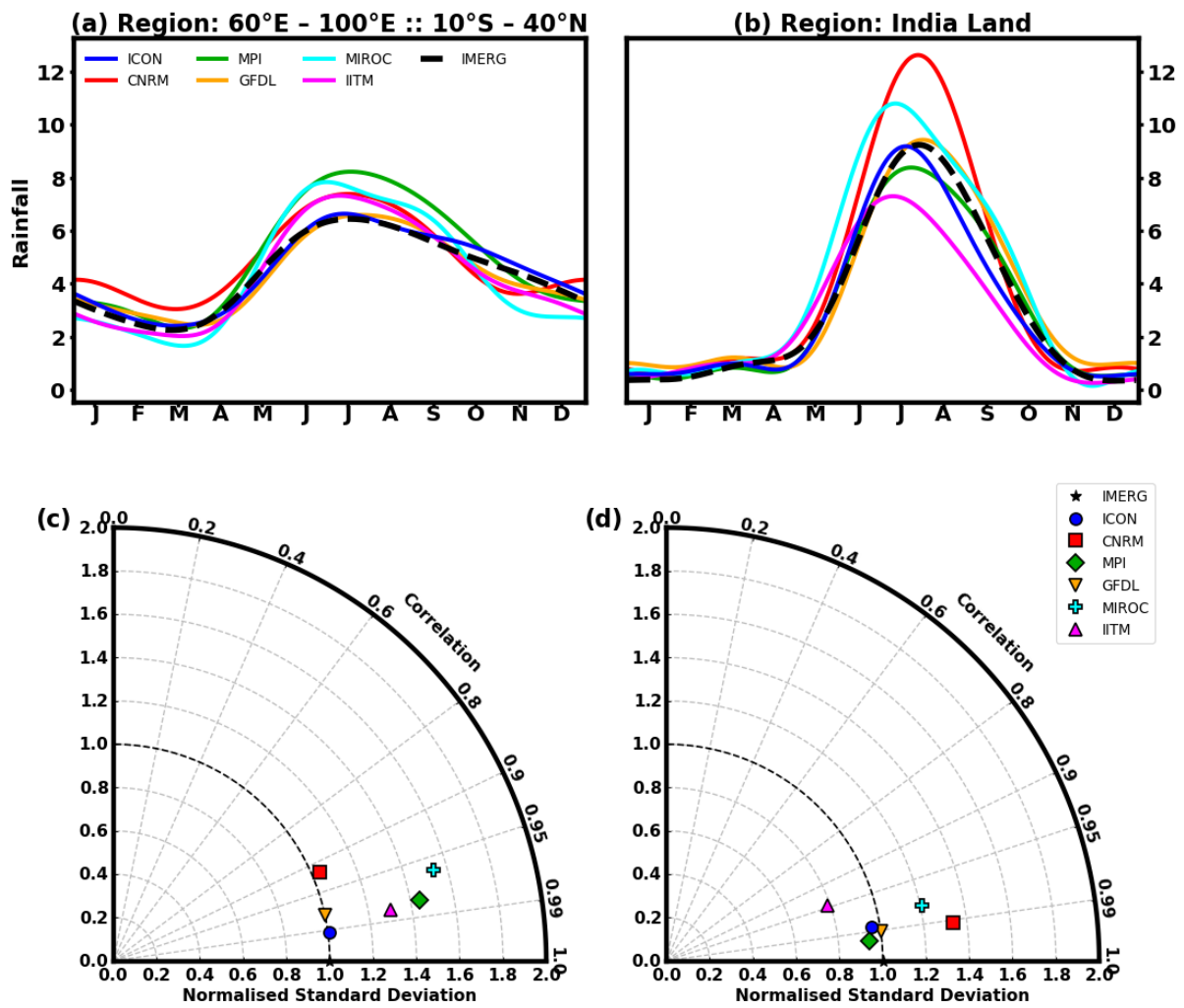


Figure S4. Annual cycle of daily rainfall (mm day⁻¹) for ICON, CNRM, MPI, GFDL, MIROC, IITM, and IMERG (reference) over (a) the region 60°E–100°E, 10°S–40°N, and (b) the Indian landmass. Panels (c) and (d) represent Taylor diagrams showing model correlation and normalized standard deviation relative to IMERG for regions (a) and (b), respectively.