

High Frequency of Urban New Particle Formation on the Tibetan Plateau: Quantifying Formation Rates, Growth Rates, and CCN Production

Qiqi Mo¹, Longjie Wen^{1,2}, Gang Zhao^{1,3*}, Chunxiang Ye^{4*}, Jie Sun¹, Weili Lin^{1,5}, Fengjun Shen¹, Tong Liu¹, Yicheng Gao¹, Yi Chen⁴, Tiantian Zhang¹, Tong Zhu⁴

¹Key Laboratory of Ecology and Environment in Minority Areas, Minzu University of China, National Ethnic Affairs Commission, Beijing 100081, China

²School of Ecology and Environment, College of Intelligence, Harbin Institute of Technology (Shenzhen), Shenzhen, 518055, China

³Key Laboratory of Biodiversity and Environment on the Qinghai-Tibet Plateau, Ministry of Education, Xizang University, Lhasa 850000, China

⁴SKL-ESPC & SEPKL-AERM, College of Environmental Sciences and Engineering, Institute of Tibetan Plateau, and Center for Environment and Health, Peking University, Beijing, China

⁵Institute of National Security, Minzu University of China, Beijing, 100081, China

Correspondence to: Gang Zhao (gangz@muc.edu.cn) and Chunxiang Ye (c.ye@pku.edu.cn)

Figure S1 to Figure S6

Class I day

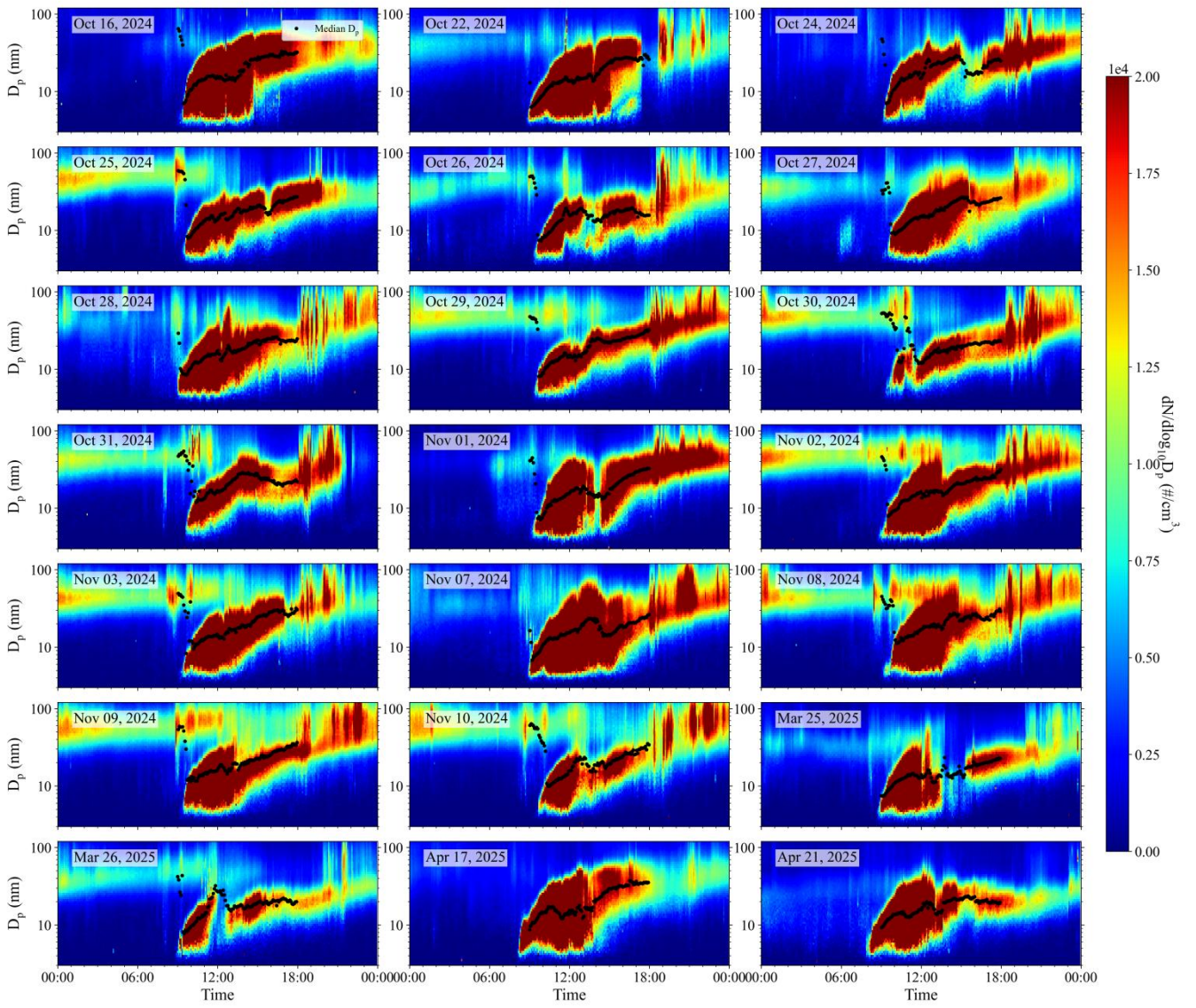


Figure S1: PNSDs for all Class I days. Each panel represents one day. The black dots indicate the median particle diameter.

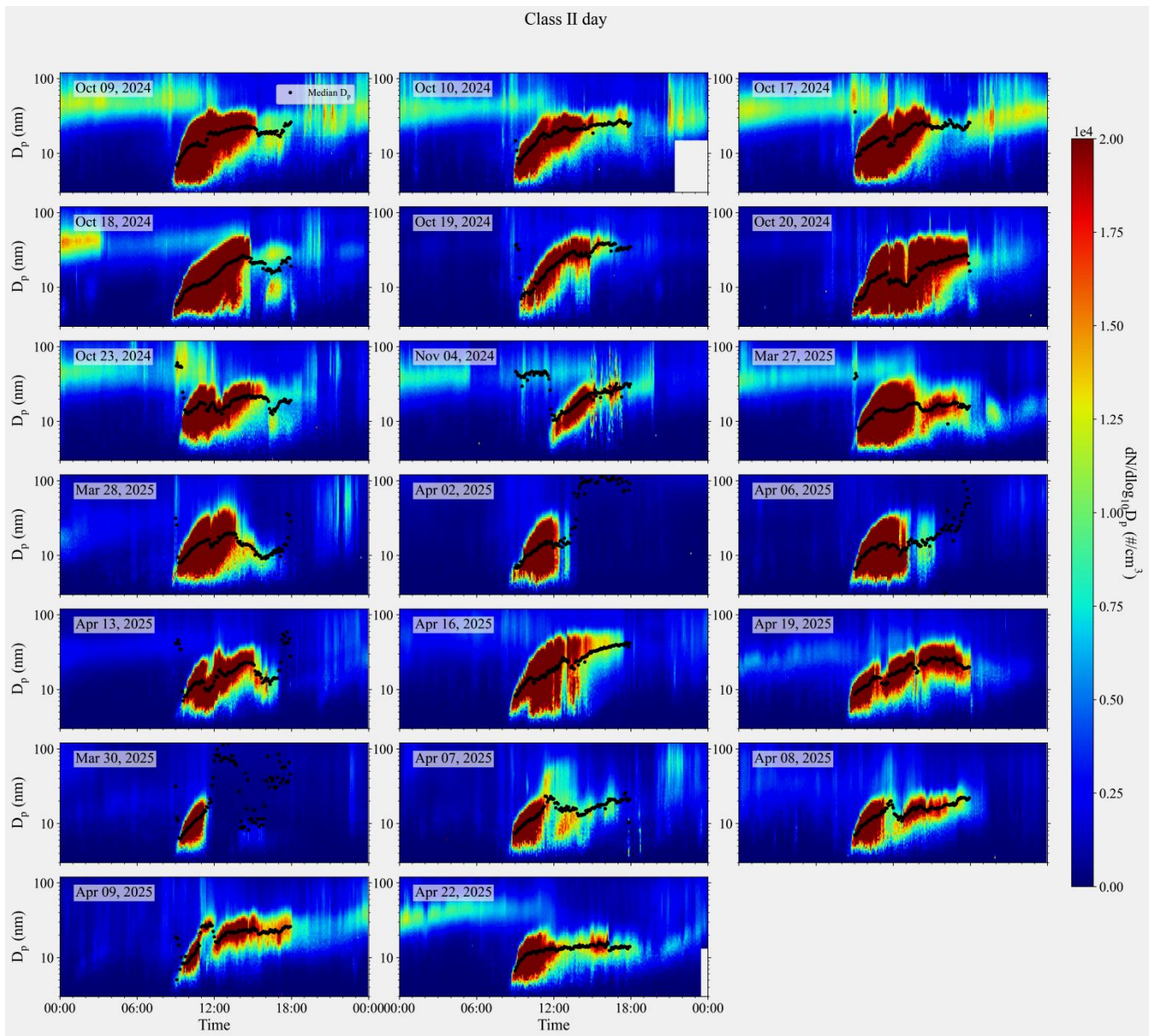


Figure S2: PNSDs for all Class II days. Each panel represents one day. The black dots indicate the median particle diameter.

Undefined day

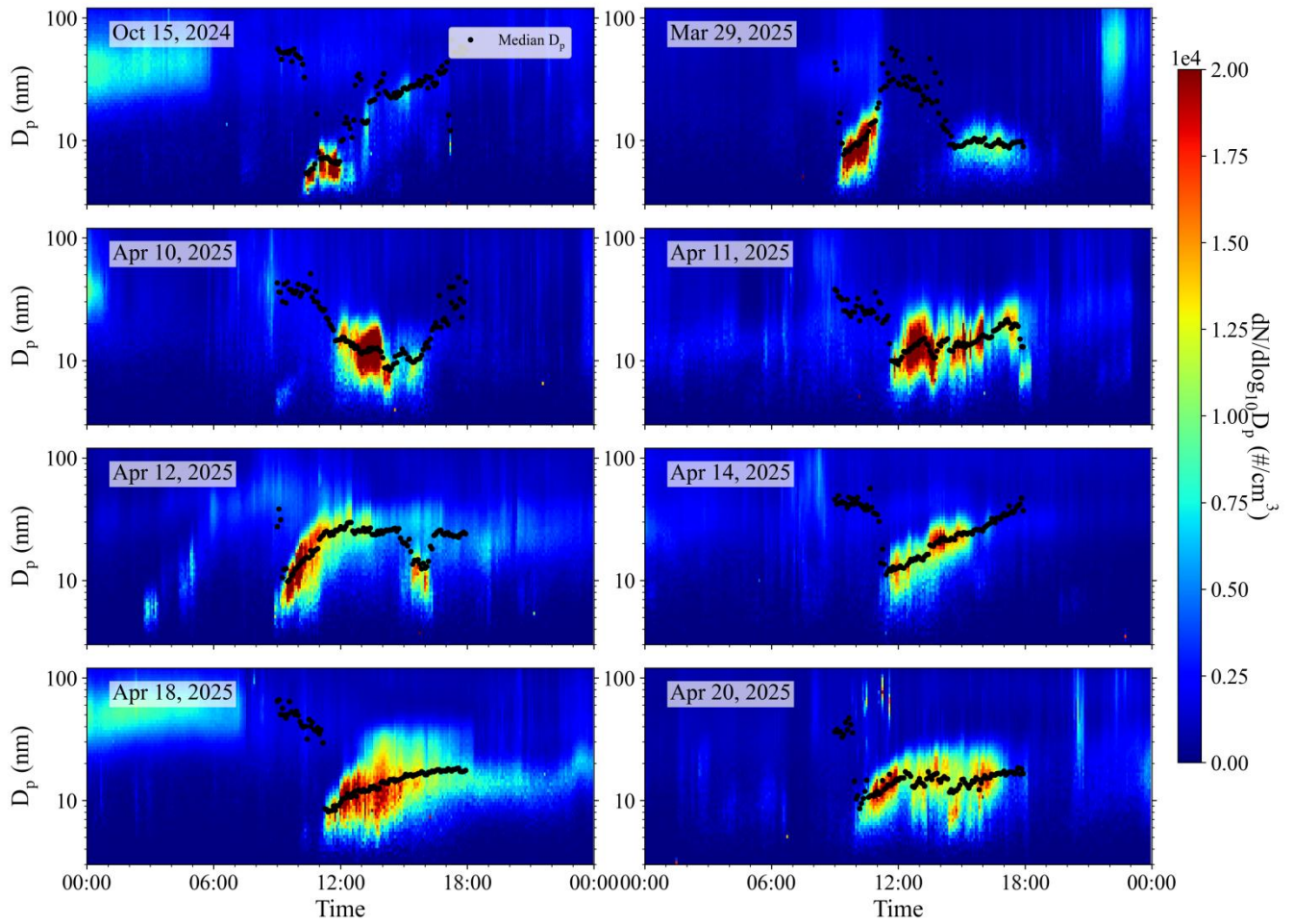


Figure S3: PNSDs for all Undefined days. Each panel represents one day. The black dots indicate the median particle diameter.

Non-Event day

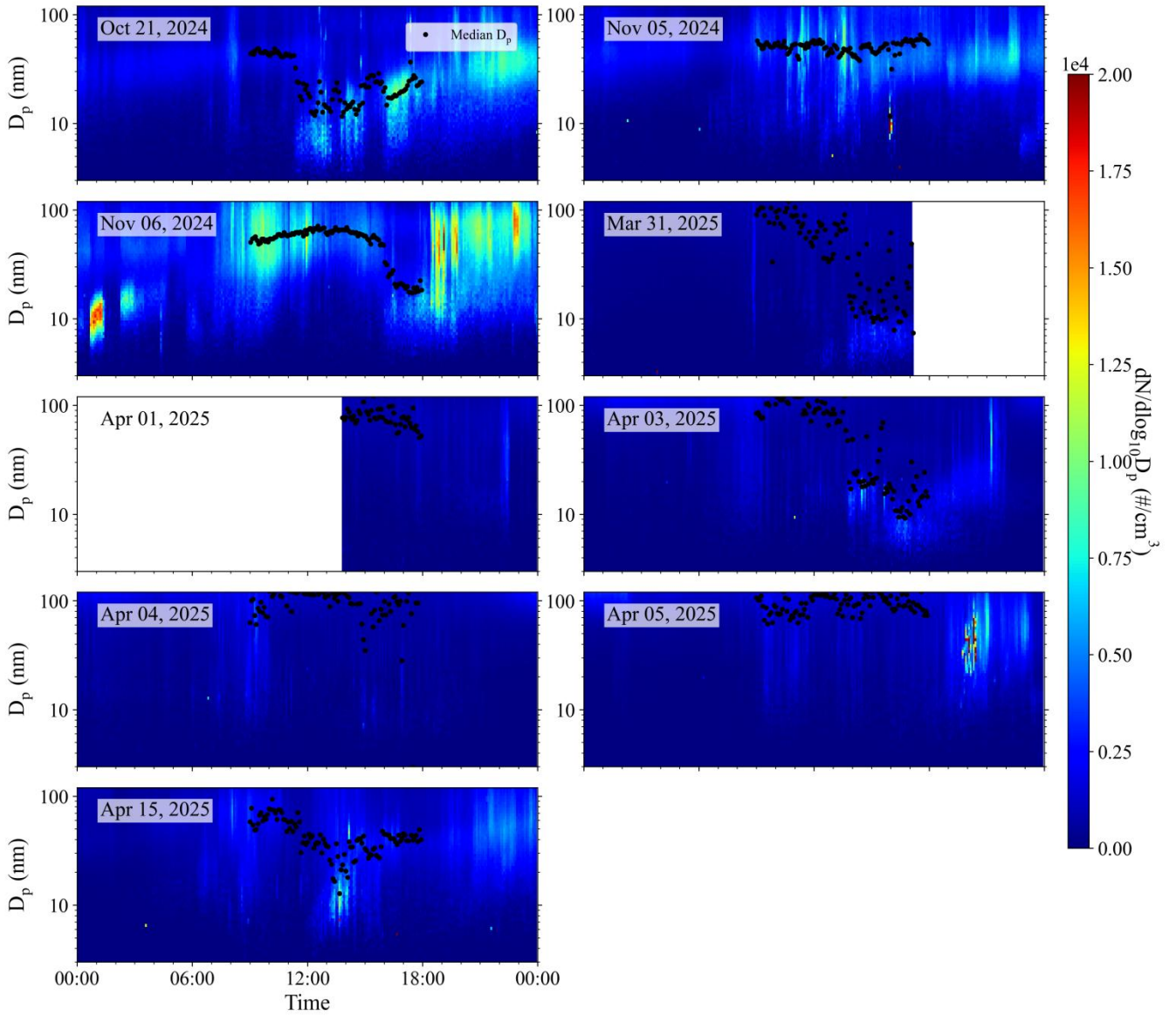


Figure S4: PNSDs for all Non-Event days. Each panel represents one day. The black dots indicate the median particle diameter.

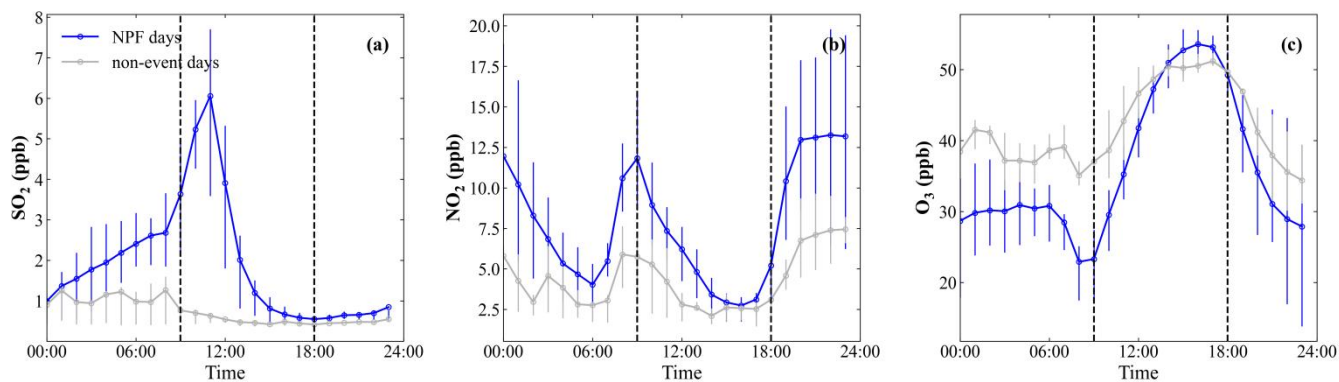


Figure S5: Diurnal variations of (a) SO₂, (b) NO₂, and (c) O₃ during the monsoon period on NPF days and non-NPF days. The upper and lower bars indicate the 75th and 25th percentiles, respectively, and the markers represent the average values.

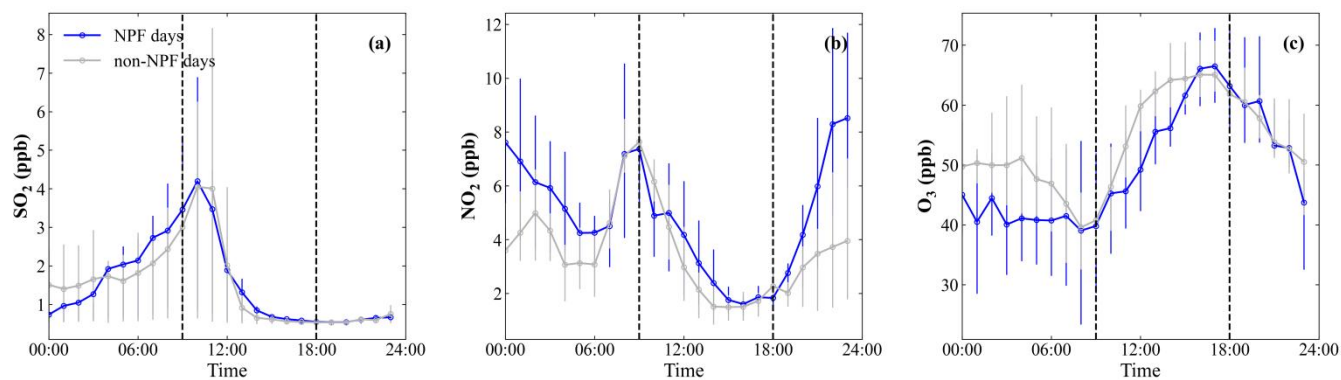


Figure S6: Diurnal variations of (a) SO₂, (b) NO₂, and (c) O₃ during the pre-monsoon period on NPF days and non-NPF days. The upper and lower bars indicate the 75th and 25th percentiles, respectively, and the markers represent the average values.