

Figure S1. Same as Fig. 3 in the main text, but for many pairs of albedo values.

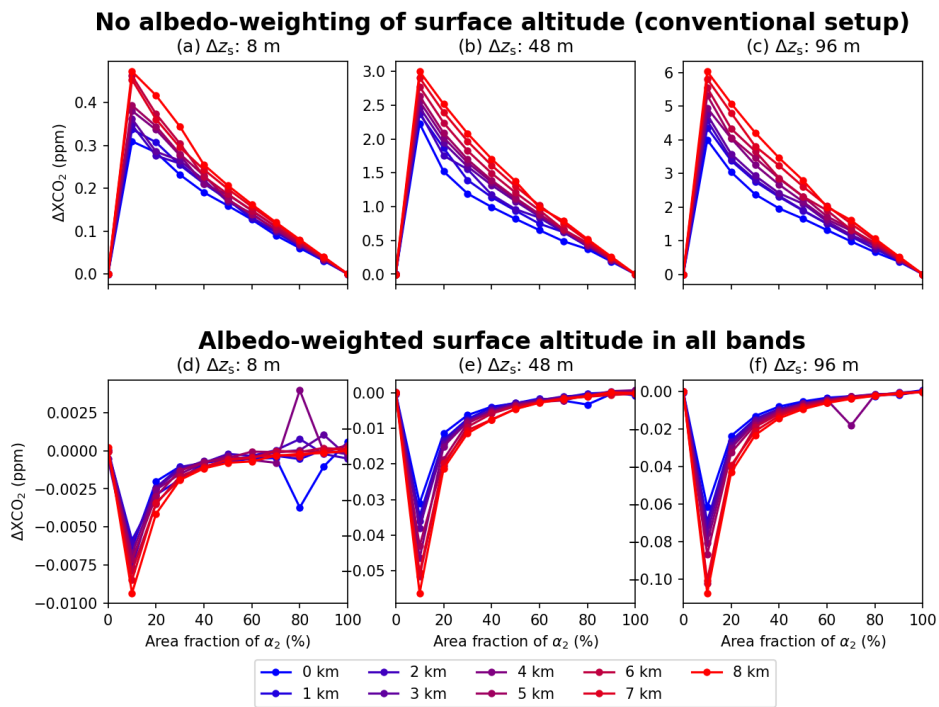


Figure S2. Same as Fig. 4 in the main text, but with different ranges on the y-axes.

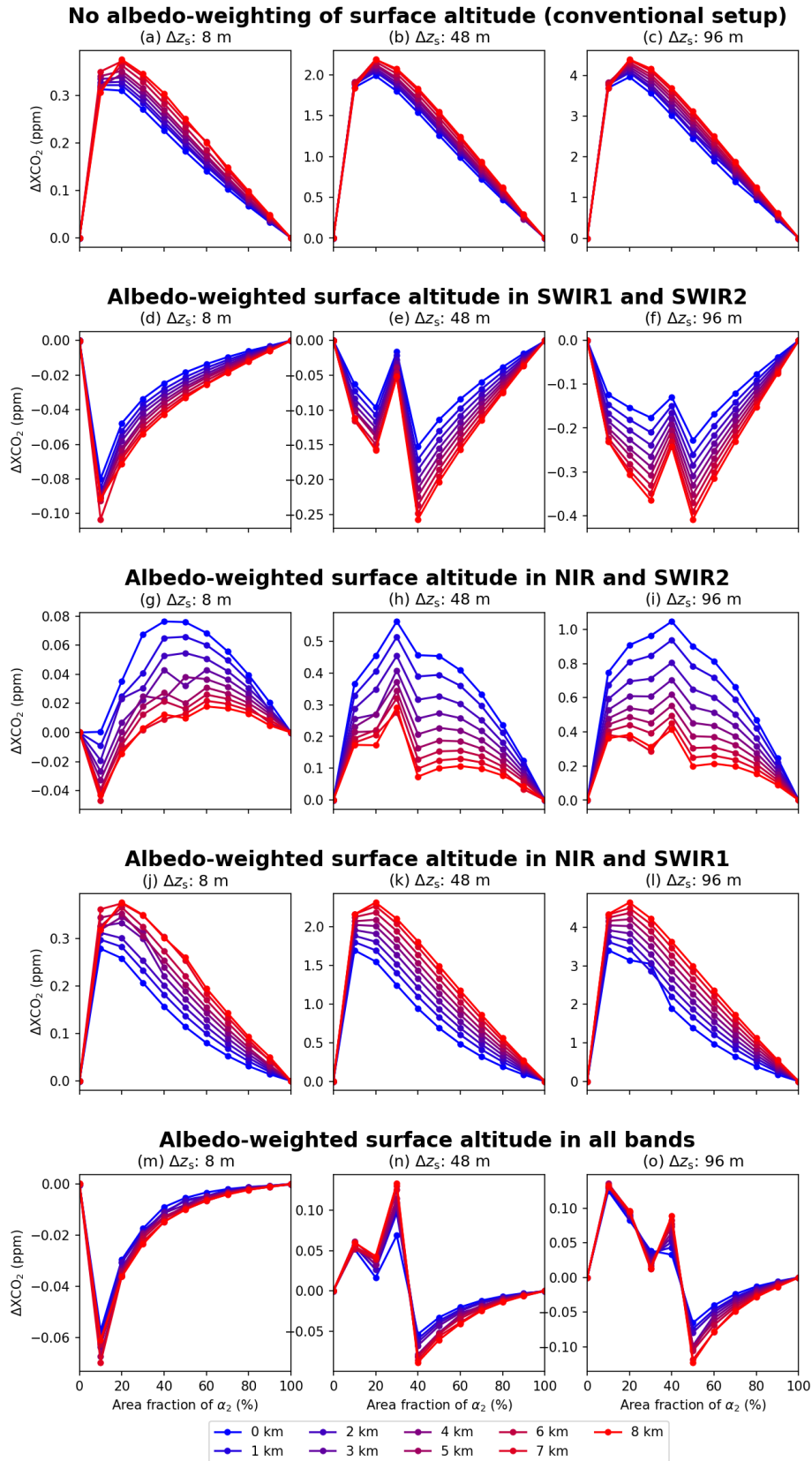


Figure S3. Same as Fig. 5 in the main text, but with different ranges on the y-axes.

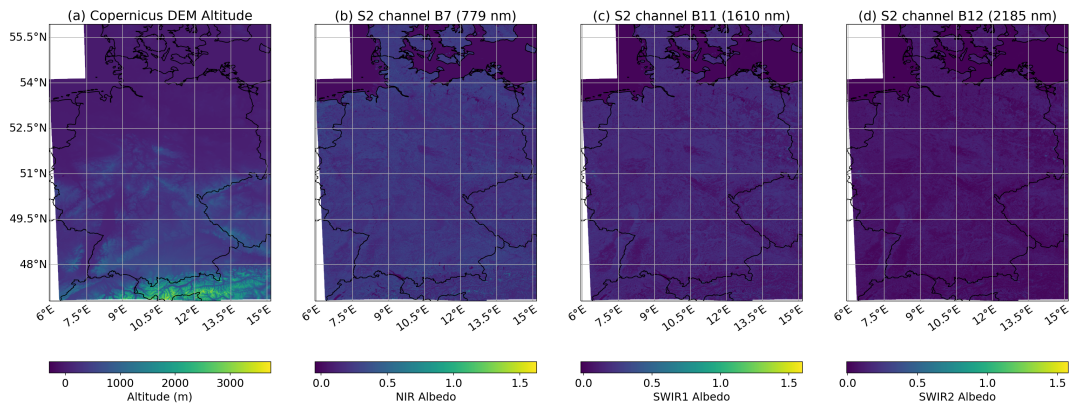


Figure S4. Same as Fig. 14 in the main text, but with color scales reflecting the minimum and maximum in each panel.

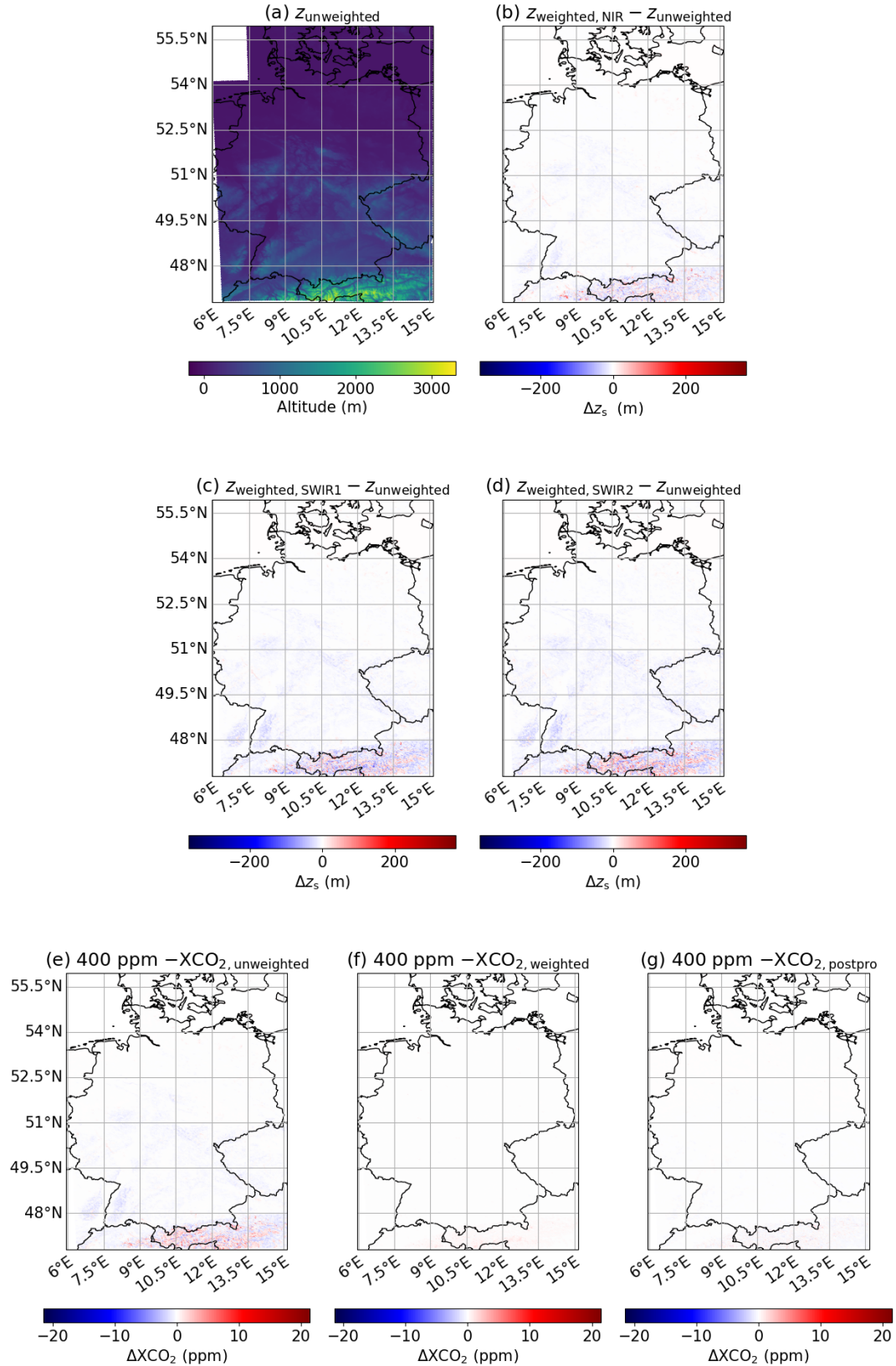


Figure S5. Same as Fig. 15 in the main text, but with color scales reflecting the minimum and maximum in each panel.

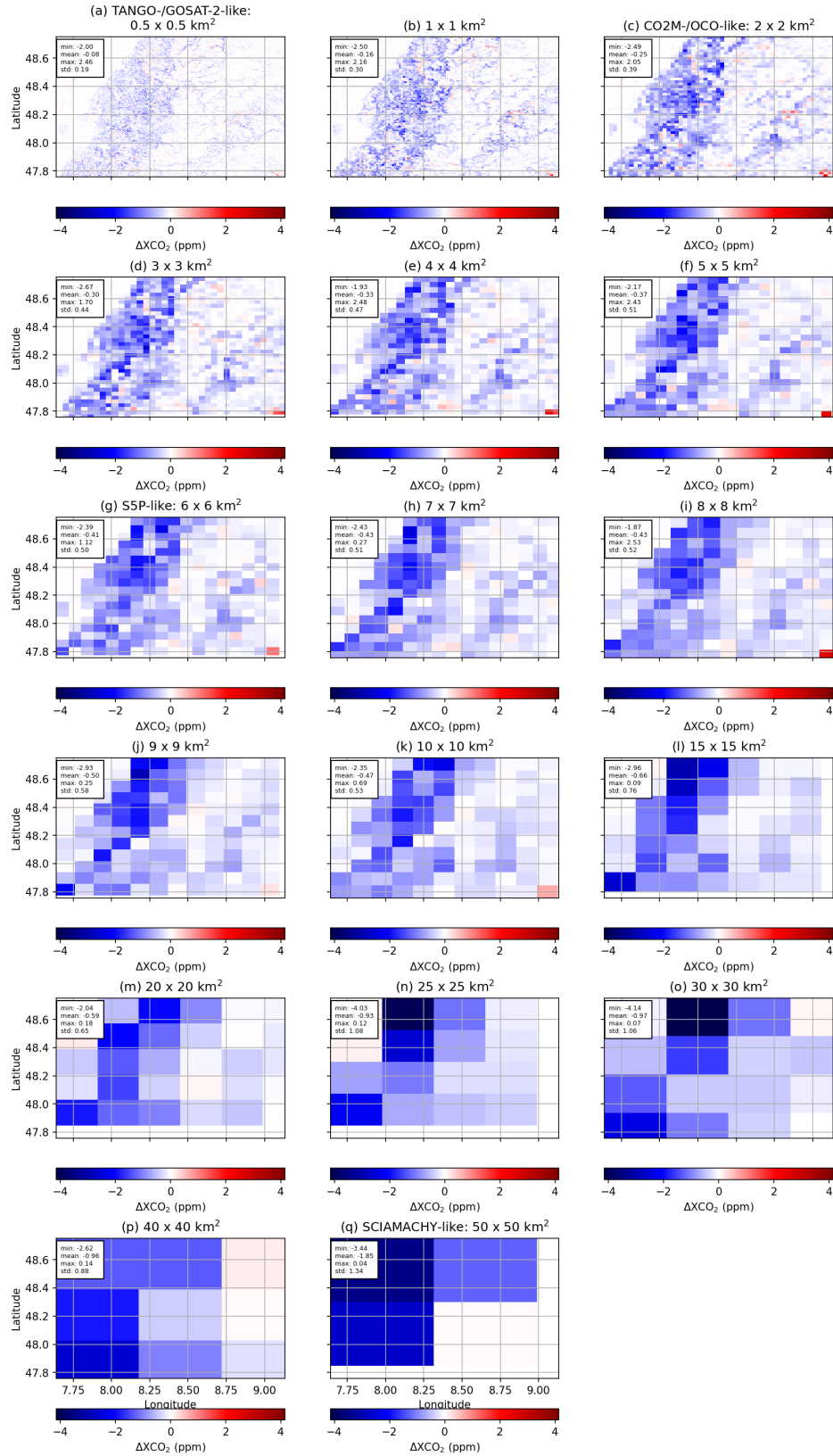


Figure S6. ΔXCO_2 with variable size of the spatial samples as in the left column of Fig. 21 of the main text, but for more spatial sample sizes.

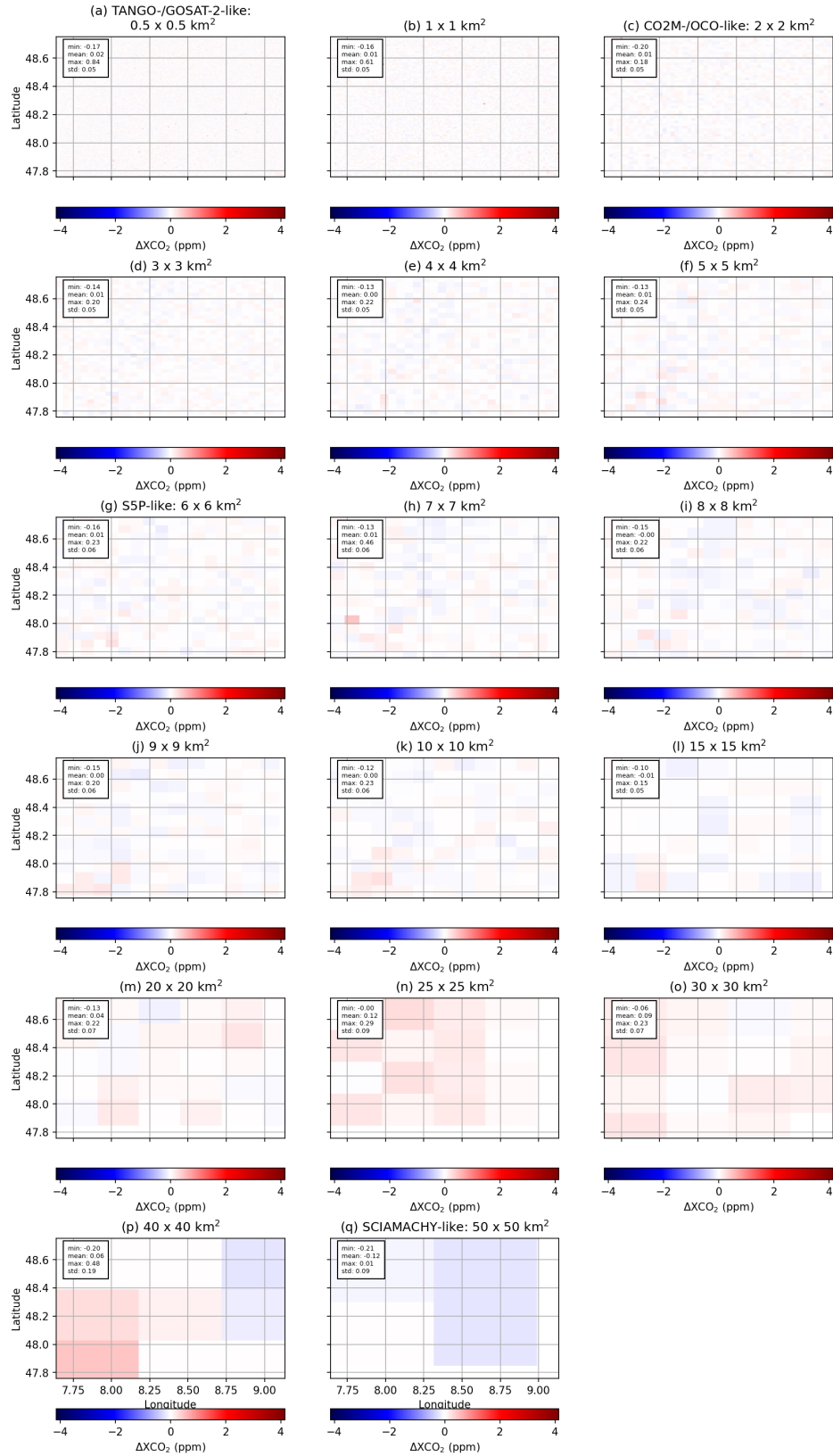


Figure S7. ΔXCO_2 with variable size of the spatial samples as in the center column of Fig. 21 of the main text, but for more spatial sample sizes.

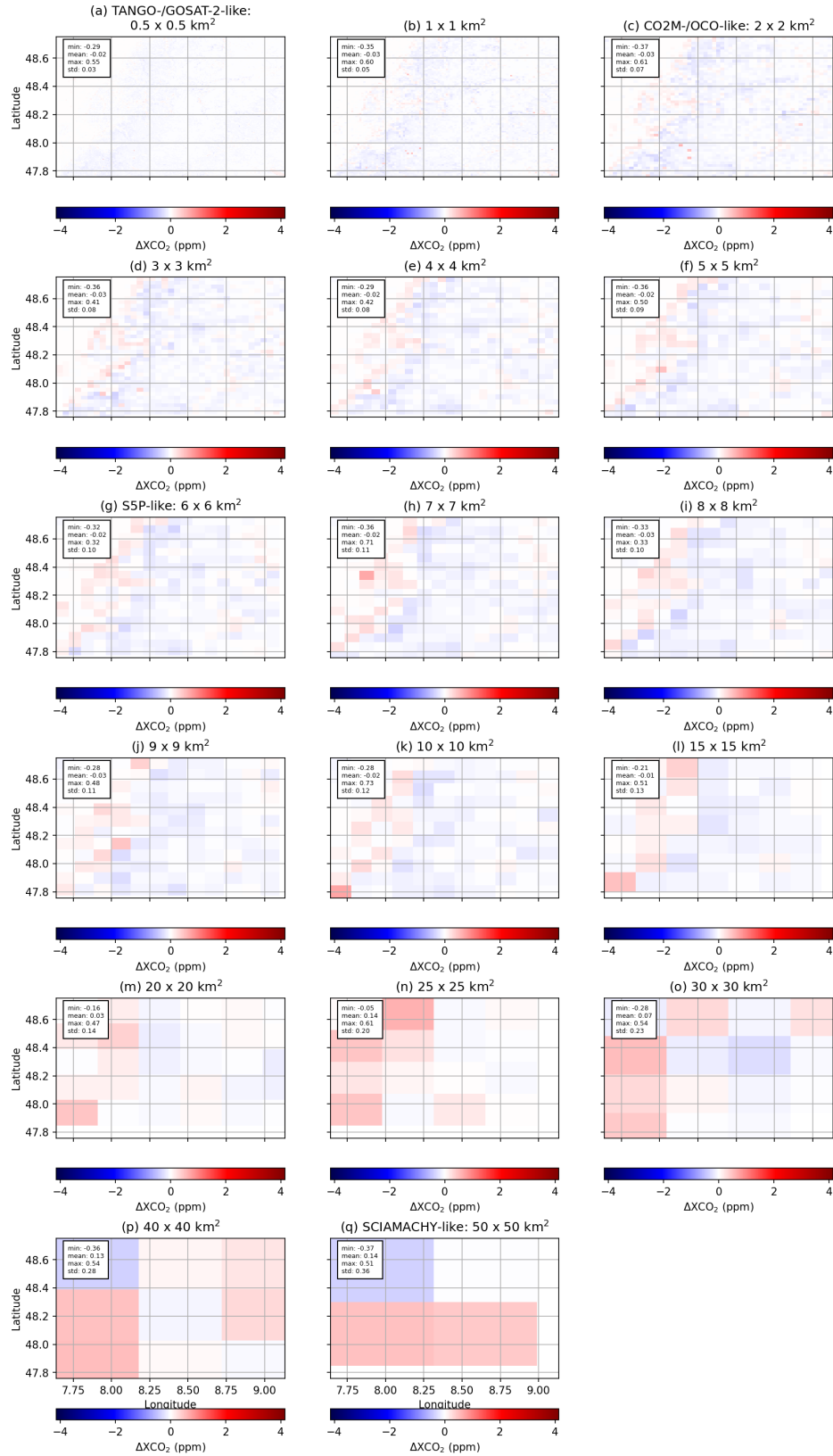


Figure S8. ΔXCO_2 with variable size of the spatial samples as in the right column of Fig. 21 of the main text, but for more spatial sample sizes.