

Mud Volcano Dynamics in Azerbaijan: The Overlooked Role of Creeping Mud Flows in Landscape Evolution

Caroline Fenske^{1*}, Petr Brož¹, Adriano Mazzini^{2,3,4}

¹Institute of Geophysics of the Czech Academy of Sciences, Boční II/1401, Prague, Czech Republic

²Institute for Energy Technology (IFE), Kjeller, Norway

³Department of Geosciences, University of Oslo, Oslo, Norway

⁴Istituto Nazionale di Geofisica e Vulcanologia, Sezione Roma 2, Rome, Italy

*Correspondence to: Caroline Fenske (fenske@ig.cas.cz)

Abstract. Azerbaijan hosts the world's highest concentration of mud volcanoes (MVs) on Earth, including some of the largest edifices that produce kilometre-scale mud breccia flows. Traditionally, such flows have been attributed to major eruptive events; however, recent study suggests that many of these flows form through prolonged creeping processes, analogous to warm-based glacier motion. To assess the prevalence and characteristics of this phenomenon, we analysed historical satellite imagery from Google Earth™ for several dozen mud volcanoes across the Caspian Basin, complemented by field observations at selected sites. Our analysis reveals that 19 mud volcanoes exhibit measurable creeping surface displacement of preexisting mud flows, with rates ranging from a few metres to tens of metres per decade. While some volcanoes, such as Goturdag, display continuous deformation across entire flow lengths, most of them exhibit only episodic motion in connection to mud volcano eruptions. While most creeping flows occur outside inhabited areas, landforms such as Bozdaq Gobu represent a potential hazard to settlements and infrastructure. These findings highlight the importance of post-eruptive creep in mud volcano evolution and emphasise the need for ongoing monitoring and hazard awareness.

Deleted: z

20 1 Introduction

Mud volcanism is a geological process in which brecciated sediments are expelled to the surface through a subsurface plumbing system. It typically occurs in hydrocarbon-rich sedimentary basins, where (a) the deep generation of hydrocarbons and (b) the gravitational instability of rapidly buried, buoyant sediments combine to produce strong overpressure and drive diapirism (Mazzini & Etiope, 2017, and references therein). Mud volcanoes (MVs) in the Caspian region, particularly those located in Azerbaijan, represent a unique case in both size and density (Jakubov et al., 1971). Azerbaijan hosts the world's highest concentration of onshore MVs, including some of the largest edifices that rise several hundred metres and generate kilometre-scale mud breccia flows (e.g., Kopf, 2002; Planke et al., 2003; Huseynov et al., 2004; Mazzini and Etiope, 2017; Baloglanov et al., 2018; Odonne et al., 2020; Ghaderi et al., 2022; Khirkam et al., 2017). These flows have traditionally been attributed to major eruptive events releasing large volumes of mud breccia. This mechanism is analogous to that producing extensive lava flows in magmatic systems (see Mazzini and Etiope, 2017 and references therein).

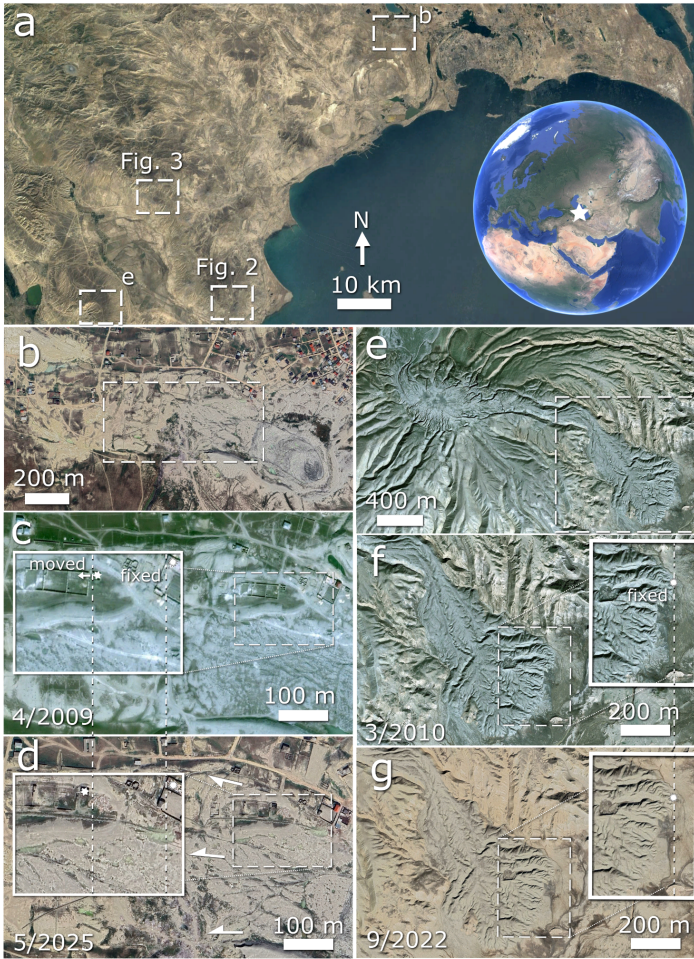
However, recent work by Mazzini et al. (under review) challenges this view. The authors conducted a study at the Lokbatan MV, featuring a >1 km long mud flow combining field observations, satellite imagery, and InSAR data. Results reveal that the MV flow did not necessarily form as a result of copious short-lived eruptions, as previously thought, but rather from gradual downslope movement of older deposits, triggered by the accumulation of newly erupted material around the crater area. This load induces slow sliding of the deposits within the mud flow prompting a creeping mechanism of the whole structure with a mode analogous to warm-based glaciers (Cuffey and Paterson, 2010). The implications for this new interpretation are that some other kilometre-scale mud flows may form through prolonged creeping and sliding rather than single high-volume eruptions. In the Mazzini et al. model, two factors are essential: (1) episodic mud effusion that increases gravitational loading, and (2) a fluid-rich basal layer that lubricates the creeping at the flow base. To evaluate how common this phenomenon is across the region, we systematically surveyed archived high-resolution Google Earth™ imagery for 47 MVs in the Caspian Basin. The aim is to determine whether other structures exhibit similar creeping behaviour, and thus whether this process is widespread or localised.

Deleted: z

2 Methods

To identify which MVs exhibit large-scale creeping flow behaviour similarly to what is observed at Lokbatan MV, we analyzed archived satellite imagery available through Google Earth™ (Google Inc., 2025). This software provides access to historical high-resolution imagery spanning from 2004 to 2025, allowing us to detect potential downslope displacement in kilometre-scale mud flows across the Caspian Basin. Our workflow proceeded as follows. First, we compiled a database of 47 MVs in Azerbaijan using existing catalogues (Jakubov et al., 1971; Aliyev et al., 2002; 2015). For each MV, we captured the most recent available image and then used the “Historical imagery” function to identify the oldest clear image of the kilometre-sized flow. The oldest and latest images were then compared to detect any surface displacement (Fig. 1). When movement in the flow was observed (Fig. 1c-d), all intermediate images were inspected and those who showed a clear look at the flow were then downloaded to construct time-lapse animations (see Tab. 1 and Supplementary Materials S1 to S19), enabling detailed analysis of flow motion. If no detectable displacement was observed between the oldest and latest images (Fig. 1f-g), no further screenshots were taken, and no animations were generated for that site. This approach allowed us to systematically assess the regional frequency and extent of creeping flow behaviour.

Deleted: GIFs and



60 *Figure 1: Two contrasting types of MV behaviours in Azerbaijan as observed using Google Earth™ images. (a) Large scale satellite view of the targeted areas. (b) Bozdag Gobu (40.43°N and 49.70°E) exhibits a clear displacement of a part of its kilometre-sized mud flow over the period of 16 years (c-d). (e) Beyuk Mishovdag complex MV 2 (38.94°N and 49.08°E) has*

remained stable, showing no detectable downslope motion along the entire length of the flow over the 12-year observation period. (f-g). Map data: Google Earth™, providers: © 2025 CNES / Airbus, © 2025 Maxar technologies.

65

Based on satellite data available in Google Earth™, we also performed morphometric measurements listed in Tab. 1. Specifically, we used the satellite images to measure the total displacement by identifying a clearly recognizable feature within the mud flow and tracking the change in its position between the oldest and the most recent image pair (see Supplementary Materials S24 GPS measurements).

70 We also used the available elevation data to determine the highest and lowest elevation points of each studied MV, from

which we calculated the average slope of the volcanic edifice. The lowest point was defined as the mean value of four measurements taken at the base of the volcano. Similarly, the width of each volcano was estimated by creating four cross-sectional profiles and averaging the obtained values. Google Earth uses DEM data obtained from NASA's Shuttle Radar Topography Mission (Farr et al., 2007), with a spatial resolution of 10–30 m for the USA and approximately 90 m for the

75 rest of the world, including Azerbaijan. The reported vertical error of these DEMs is less than 16 m (Jarvis et al., 2008).

However, it should be noted that the use of such data may introduce certain limitations. The 90 m SRTM DEM is not optimal for analysing small-scale (~500 m) or steep topographic features (Kervyn et al., 2008) as this may result in measurement uncertainties. In addition, the use of non-orthorectified historical imagery may introduce minor positional offsets between scenes, which could affect the apparent displacement of small-scale features. Nevertheless, these data are
80 adequate for deriving approximate estimates of the height, and slope of kilometre-scale landforms as well as flow movements.

We also carried out field investigations at two MVs, Goturdag (in 2022 and 2025) and Durandag (in 2025), where satellite imagery indicated signs of such movements. Our objective was to locate and directly examine in the field, the contact zone between the creeping flow and the stable flanks (Figs. 2–3) to validate the satellite-based observations.

Deleted: Nevertheless, these data are adequate for deriving approximate estimates of the height, and slope of kilometre-scale landforms. ...

#	GIF number	name of mud volcano	last eruption	creeping flow observed during the period	movement description	#	proximal observed displacement [m]	distal observed displacement [m]	latitude [°]	longitude [°]	elevation [m]	basaltic elevation [m]	relative elevation [m]	edifice morphology (Mazzini et al. 2017 nomenclature)	mean slope [°]
1		Agzybr	2022	2010-2018	gradual	6	3	39.797	48.350	111	-20	131	conical	10	
2		Ayanteken	2013	2009-2025	intermittent	55	5	39.988	48.311	280	0	280	elongated	9	
3		Boztaq Gobi	2025	2009-2025	intermittent	75	10	40.430	48.700	250	65	185	elongated	7	
4		Boztaq Quzdek	2024	2004-2022	intermittent	9	2	40.380	48.610	304	50	254	conical	10	
5		Chelakhtama	undocumented	2009-2023	gradual	5	5	40.328	48.302	256	160	96	elongated	9.5	
6		Durandag	2017	2014-2020	intermittent	15	4	40.149	48.179	284	40	244	elongated	12	
7		East Cheildag	2020	2009-2023	intermittent	24	7	40.262	48.314	275	135	140	plateau like	9	
8		Ganyja	2023	2014-2023	intermittent	23	200	40.441	48.363	382	280	102	elongated	8	
9		Goludag	2013	2004-2024	intermittent	5	30	40.129	48.407	86	-5	91	conical	15	
10		Kyrdamich	1971	2009-2023	gradual	5	5	40.296	48.113	527	400	127	conical	4.7	
11		Lokhtan	2025	2009-2024	continuous	23	6	40.304	48.708	90	-25	115	elongated	9.5	
12		Melochobani	2024	2019-2023	intermittent	14	22	40.527	48.682	643	582	61	elongated	2.5	
13		Oman Boztaq	2025	2004-2020	intermittent	30	80	40.239	48.508	387	-20	417	conical	14	
14		Rhamandag	1996	2014-2022	intermittent	12	9	39.863	48.428	48	-27	75	elongated	6	
15		Goludag	continuous	continuous	continuous	>40	37	39.972	48.359	190	-5	195	conical	12	
16		West Shekkhan	1996	2008-2023	intermittent	27	3	40.240	48.107	483	360	123	plateau like, pit shaped crater	2	
17		West Cheildag complex 1	2018	2009-2023	intermittent	21	15	40.298	48.272	267	180	87	plateau like, elongated	5.5	
18		West Cheildag complex 2	2018	2011-2023	intermittent	10	2	40.299	48.257	271	180	91	plateau like, elongated	9	
19		West Cheildag complex 3	2018	2009-2020	intermittent	26	9	40.311	48.242	270	190	80	conical	13	

90 *Table 1: Overview of the MVs displaying evidence of creeping flow movement, including their basic morphological and*
morphometric characteristics, as well as details of their observed displacements. See the main text for details on how listed
values have been measured. “Gradual” movement refers to cases where displacement becomes visible only when
comparing the earliest and latest satellite images, while year-to-year changes remain too small to be detected.
“Intermittent” movement describes MVs where each new satellite image shows a discernible change, sometimes eruption-
related, sometimes not, with possible pauses in between. “Continuous” movement is restricted to structures such as
95 *Goturdag and a few similarly behaving MVs, where clear deformation is present throughout the full satellite time series.*

3 Results

Out of the total 47 MVs (see Supplementary materials for KMZ file showing location of all studied edifices) investigated within the Caspian Basin, clear signs of creeping surface movements were identified in satellite data for 19 of them (see Tab. 1 and Fig. 4). This corresponds to ~40% of the surveyed population, indicating that creeping is not an isolated phenomenon.

100 The highest frequency of eruptive activity during the study period was recorded at Lokbatan (MV 11), with at least 9 eruptions. Although the extensive analyses and observations conducted at Lokbatan MV are provided in Mazzini et al. (under review), for completeness we include this structure in our catalogue.

For most MVs exhibiting creeping flow movement, the observed displacements can be linked to specific eruptive events (see Tab. 1 and Fig. 4). The few exceptions are Goturdag (MV 15), Prisaat Burnu (MV 14) and West Cheildag 1 and 2 (MVs 17, 105 18), which continue to display clear deformation in satellite imagery over the entire studied period (Fig. 4). Goturdag also exhibits the greatest displacement: the deformation is so extensive that the movement can be distinctly observed in satellite images throughout the entire length of the flow (Fig. 2b–c). The most noticeable movement occurs near the crater outlet (Fig. 2d). The displacement is also clearly visible at the distal flow front, where a pronounced accretionary ridge forms as the advancing mud mass pushes and overrides the underlying substrate (Fig. 2g). The observed displacement in that area is 110 approximately 37 m between 2004 and 2023. Field observations reveal a sharp boundary between the active flow and the stable flanks (Fig. 2e) with the sliding plane at their interface clearly exposed (Fig. 2f).

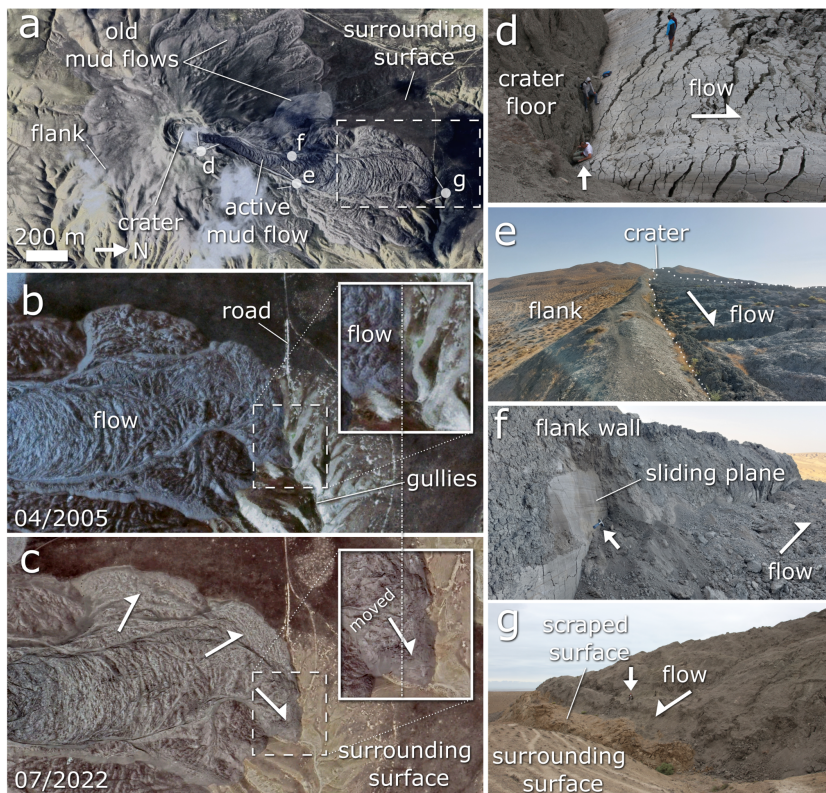


Figure 2: Mud flow displacements at Goturdag MV (formerly known as Koturdagh) (39.97°N and 49.36°E), (a) general view of the MV with its crater, flanks, and the kilometre-sized mud flow with marked position of other panels; (b) and (c) close-up views of the terminal part of the mud flow in 2005 and 2022, respectively. Comparing the images a clear downslope displacement of the entire flow is evident; (d) mud breccia extrusion at the crater site, (e) contact between the mud flow and the surrounding slopes of the volcano, (f) detail of the sliding plane developed between the flank wall and the mud flow, and (g) close-up of the mud flow terminus, showing evidence of bulldozing surface scraping the surrounding host rock. Satellite panels a-c extracted from Google Earth™, data providers: © 2025 Maxar Technologies, © 2025 CNES / Airbus.

120

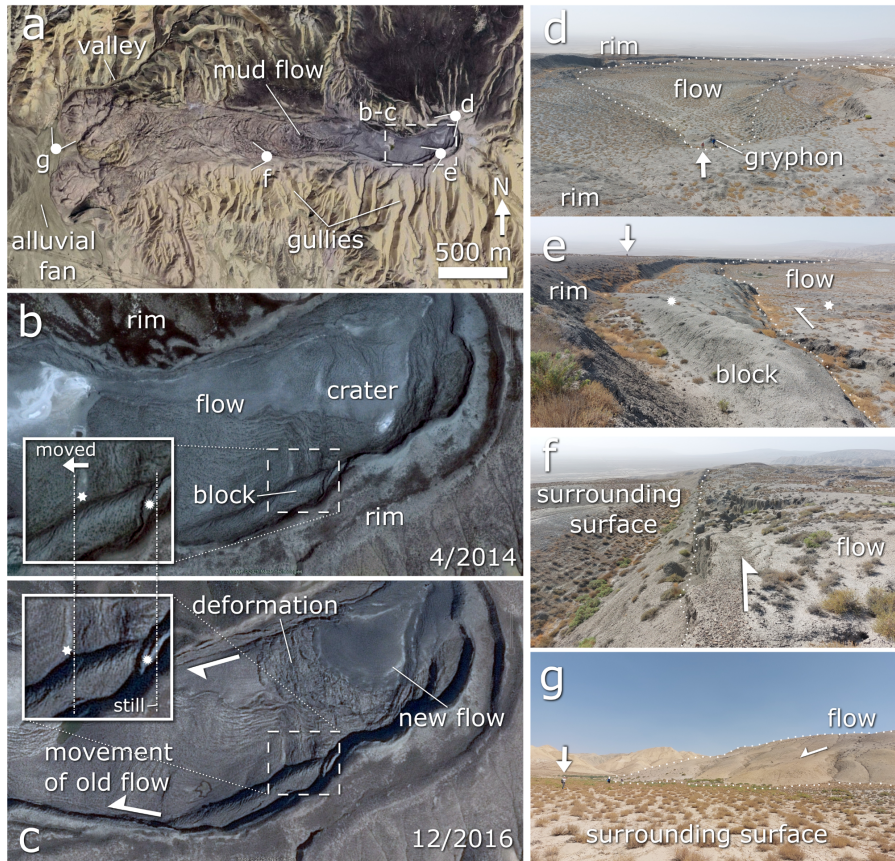
Most of the analysed MVs, however, displayed significantly lower movement rates (see Tab. 1 for details). For example, the creeping flow associated with Bozdaq Gobu (MV 3) shifted from 10 to 75 metres between 2009 and 2025 depending on the position within the flow. Similarly, the mud flow associated with East Cheildag (MV 7) moved between 7 to 24 metres between 2009 and 2023, flow on [West Shekikhhan](#) (MV 16) advanced between 3 and 27 metres from 2008 to 2023, and on Durandag (MV 6) about 4 to 15 metres between 2014 and 2020. These examples highlight the substantial variability in creeping flow velocities among different MVs.

Creeping mud flow motions were observed regardless of slope inclination — they were active on slopes as gentle as 2° as well as on steeper flanks up to 15°. Similarly, we also observe that movement occurred independently of MV morphological type, as defined by Mazzini and Etiope. (2017); displacements can be linked with elongated, conical, and plateau-like MVs alike.

Field observations revealed that although Durandag (MV 6) exhibits a surface morphology comparable to the flow associated with Goturdag (Fig. 3), no evidence of current movement was detected at the distal end of the paleo mud flow (Fig. 3g). The distal part of the flow appeared inactive, despite the occurrence of a recent eruption (Fig. 3d). The observed displacement of the flow, based on field (Fig. 3e-f) and satellite images, is (Fig. 3b-c) restricted to only part of the flow rather than its entire extent.

However, given the spatial resolution of the available imagery and DEM datasets, the minimum detectable displacement is estimated to be on the order of several metres, and smaller-scale movements may therefore remain unresolved.

Deleted: Shakhikan



140
 145 *Figure 3: Mud flow displacements at Durandag MV (40.15°N and 49.18°E). (a) General view of the MV with its crater, flanks, and the kilometre-sized mud flow with marked position of other panels, (b) and (c) close-up views of the mud flow close to the crater area in 2014 and 2016, respectively, from which a downslope displacement of the flow is visible, (d) view to the crater area with the most recent mud flow, (e-f) the contact between the rim and mud flow, and (f) the terminal part of the mud flow. Panel (a-c) based on Google Earth™ images – providers: © 2025 Maxar Technologies.*

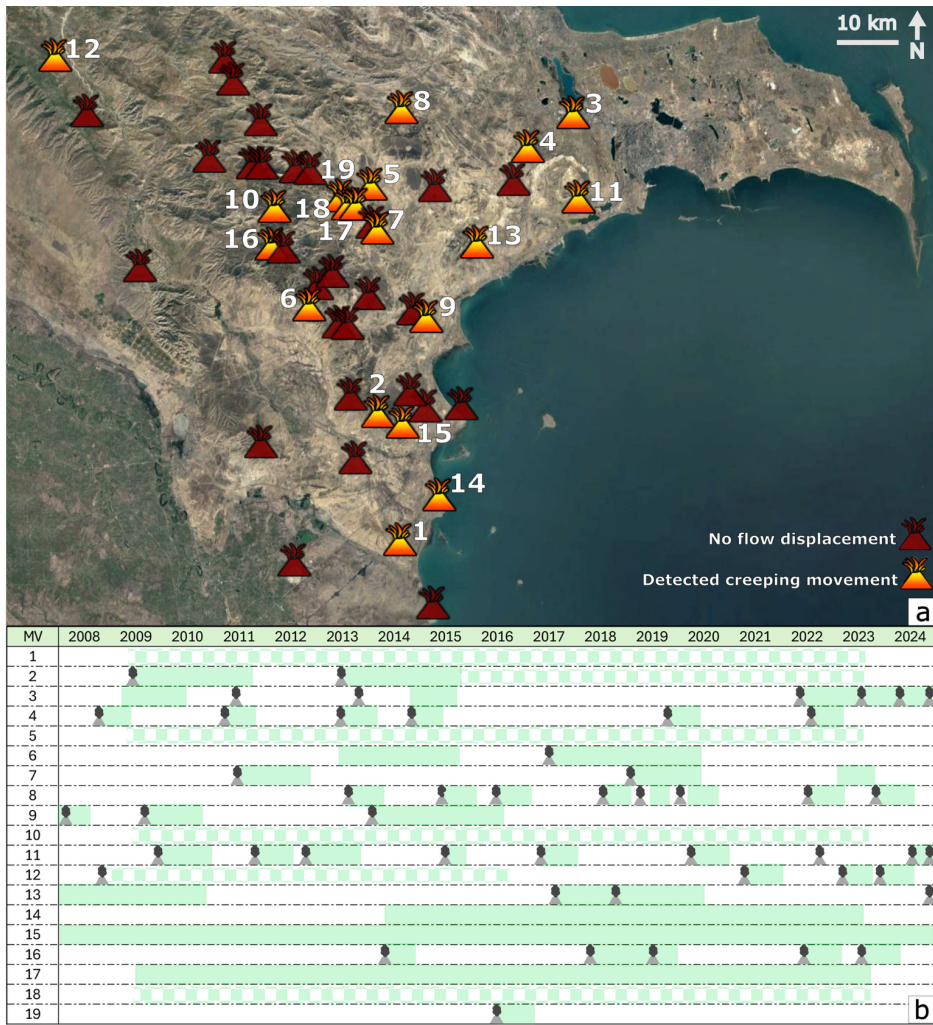


Figure 4: (a) Satellite image with indicated MV locations. It is based on © 2025 Google Earth™ Landsat imagery. (b)

150 Summary of eruption timelines based on published data, and satellite observations for each numbered MV. Periods of
movement are shown in faded green; checkered faded green indicates that movement occurred, but its duration remains
uncertain. The numbers correspond to MVs listed in Table 1 and shown in the supplementary movies: 1. Agzybir, 2.
Ayranteken, 3. Bozdaq Gobu, 4. Bozdaq Quzdek, 5. Cheilakhtarma, 6. Durandag, 7. East Cheildag, 8. Garyja, 9. Goturlug,
10. Kyurdamich, 11. Lokbatan, 12. Melickchobanly, 13. Otman Bozdaq, 14. Khamamdag, 15. Goturdag, 16. West Shekikhan,
155 17. West Cheildag complex 1, 18. West Cheildag complex 2, 19. West Cheildag complex 3.

Deleted: (for 11 – Lokbatan)

Deleted: Pirsaat Burnu

Deleted: Shakikhan

4 Discussion

Our investigations on MVs within the Caspian Basin reveals that creeping flow movements are a variably expressed
phenomenon. Out of the 47 examined edifices, 19 show measurable deformation patterns consistent with slow, gravity-
driven displacement of previously extruded mud breccia. This means that more than a third of the studied MVs exhibits this
160 behaviour, indicating that this type of movement is a relatively widespread phenomenon within the studied region among
kilometre-sized mud flows.

Among these, Lokbatan and Goturdag stand out as the most dynamically active structures. Goturdag exhibits continuous
deformation across the entire flow length, indicating ongoing extrusion of the mud breccia and basal sliding, Lokbatan
instead shows episodic movement that are periodically prompted (Mazzini et al. under review). Even if some MVs display
165 creeping behaviour without any eruptions like Goturdag, most behave similarly to the Lokbatan MV. For example, Garyja
(MV 8) and Goturlug (MV 9), show the same behaviour, where creeping mud flows are observed after eruptions (see Fig. 4
and Supplementary materials, movies S8 and S9). Our results (Fig. 4) demonstrate a clear relationship between surface
movement and eruptive events, thereby prompting the deformation of pre-existing flows. Although we cannot fully exclude
170 that some of the detected surface changes reflect processes such as erosion or local collapse, the spatial coherence of the
observed displacements and their repeated occurrence across multiple time steps strongly support a gravity-driven
mechanism. This suggests that once a MV becomes inactive, creeping motion within paleo-flows slows significantly or
ceases altogether. This conclusion agrees with Mazzini et al. (under review), who reported that the greatest displacement
occurs near the time of eruption and diminishes over time.

Our findings also emphasize that creeping deformation is not restricted to a specific morphology or slope (Tab. 1), as can be
175 seen while comparing e.g. Melickchobanly (MV12), with an approximate mean slope of 2°, and Otman Bozdaq with a mean
slope around 14°. It represents a general post-eruptive adjustment mechanism that can significantly influence the long-term
MV's evolution (Fig. 4).

Deleted: z

Deleted: bu

The observed variation in displacement rates, from a few metres up to tens of metres per decade (Tab. 1), suggests that the
efficiency of creeping flow is controlled by multiple factors, including eruption frequency, slope inclination, viscosity,
180 and/or the volume of extruded mud breccia. The interplay of these factors likely causes individual kilometre-scale mud flows

to respond differently to loading, which may explain subtle variations in the shape and behaviour of creeping flows, while the underlying movement mechanism remains consistent.

In some instances, the presence of megablocks (large portions of broken crater rims transported within the flow, i.e. Mazzini et al., 2021) can also obstruct and alter the homogeneous creeping mode of the mud flow. It is also worth noting here that the transport model proposed by Mazzini et al. (2021) suggests that these large megablocks were carried downslope during massive eruptions similar to what is observed in copious lava flows. Although the authors' model still stands, the progressive downslope movement of these blocks can also be explained by the mechanism presented herein.

Pre-eruptive ground deformations have been previously detected using InSAR on other MVs (e.g., Antonielli et al., 2014). However, our findings also demonstrate that the regions surrounding these MVs experience significant post-eruptive ground deformations associated with mud flow creep.

Although Azerbaijan is not the only region with kilometre-sized MVs (e.g., Baloglanov et al., 2018), our additional survey of major sites in Iran, Pakistan, Russia, and other locations revealed that comparable behaviour is not observed elsewhere. One exception is the Raznokol MV in Russia (45.144°N, 37.418°E), which exhibited creeping between 2017 and 2021. It remains unclear why so far this creeping phenomenon is observed only in this Caspian region.

Several factors may promote this phenomenon in Azerbaijan. For example, the exceptionally large size of the MV edifices, the biggest on Earth, enables the formation of long mud flows with substantial mass, which in turn can enhance gravitational propagation. In addition, the positions of most MVs, as well as the orientations of their flows, are strongly influenced by underlying tectonic structures, particularly anticline axes. Many of these volcanoes also feature a single, dominant crater instead of multiple smaller, aligned eruptive vents, which may affect how material is discharged and distributed. The Caspian mud breccia itself is typically heterogeneous, and the generally weak meteoric erosion, especially when compared with MVs in tropical regions, might further preserve the morphology that facilitates this behaviour. Despite these possible explanations, the primary reason for the dominance of this phenomenon in Azerbaijan remains uncertain and dedicated studies are needed.

To validate our satellite observations, we installed a simple in-situ monitoring setup in August 2025 at two MVs with confirmed creeping flow activity, Durandag and Otman Bozdaq. At both sites, wooden sticks were deployed in linear transects across the sliding planes of the mud flows. Detailed information on installation dates, GPS coordinates, and accompanying photographs is provided in Tab. S20 Supplementary Materials. This setup is intended to facilitate follow-up in situ long term measurements by future research teams, allowing independent refinement of surface displacement estimates for these creeping mud flows.

4.1 Social Impact

Although our research revealed that most creeping mud flows occur outside inhabited areas, we identified one MV(Bozdaq Gobu) whose creeping flow directly threatens nearby settlements (Fig. 1–d). Nevertheless, the discovery of this movement

mechanism, together with its widespread occurrence among Azerbaijani MVs, highlights a potentially significant geohazard, which was overlooked until now.

220 Azerbaijan hosts over 400 MVs, more than 300 of which are located on land (Jakubov et al., 1971; Aliyev et al., 2002; 2015). Many remain active and can erupt without warning, as demonstrated by recent events at Lokbatan (Mazzini et al., 2021), Bozdag-Guzdek (Odonne et al., 2020), and the Otman Bozdag eruptions in 2018 and 2025.

Our study shows that significant movement of paleo-mud flow features does not necessarily require major eruptions producing extensive mud outflows; instead even minor releases from upper crater zones can trigger renewed motion in old

225 flows, posing a risk to nearby areas.

The risk is particularly relevant when engineering structures, such as pipelines or power lines (i.e. see production installations at Lokbatan MV) are built across apparently “dead” mud flows under the false assumption that these terrains are stable (Fig. 5). [Another example is Bozdag Gobu \(MV3\) in a populated region of Baku, where house displacements can be observed \(Fig. 1 and Supplementary material movie S3\) due to renewed mud flow activity by smaller scale eruptions during the last decade.](#) Our findings highlight the need to raise awareness of this hidden hazard related to MVs, as also pointed out by Mazzini et al. (2023) for other structures.

230

[Future integration of InSAR data and in situ monitoring will be essential to quantify displacement rates with higher precision and to further constrain the underlying mechanisms.](#)



235 *Figure 5: Example of infrastructures built across the creeping mud flow at Lokbatan MV. (a-b) ongoing flow movement*
240 *causes deformation of the pipeline.*

5 Conclusions

We **show** that numerous MVs in Azerbaijan exhibit creeping movements associated with kilometre-sized mud flows. This mechanism, resembling the slow motion observed at warm-based glaciers, can be directly linked to the MV eruptive activity.

240 These episodic events can periodically reactivate the creeping that can persist for several months afterward or continue relentlessly (e.g. Goturdag MV).

Our observations indicate that the greatest displacements are prompted by eruptive events, as proposed by Mazzini et al. (under review), and subsequently decrease and/or cease over time. This highlights a post-eruptive adjustment mechanism that shapes the long-term evolution of kilometre-sized mud flows. The rate and extent of this movement vary among

245 individual MVs from few metres up to dozens of metres and appear to be influenced by factors such as eruption frequency,

Deleted: reveal

slope gradient, and/or subsurface fluid availability. While creeping mud flows are largely observed in Azerbaijan, we cannot exclude a similar behaviour in other large-scale structures elsewhere or on other planetary bodies.

250 Although many of the MVs featuring creeping mud flows are located away from highly populated areas, numerous settlements and infrastructures can be observed within or at the outskirts of some mud flows (e.g. Bozdaq Gobu, Lokbatan Otman Bozdag), posing potential hazards. These findings underscore the need for continued monitoring, broader studies, and increased awareness of this hidden risk.

Author contributions

255 Caroline Fenske: conceptualisation, investigation, methodology, visualisation, writing (original draft).
Petr Brož: conceptualisation, funding acquisition, investigation, methodology, visualisation, writing (original draft).
Adriano Mazzini: conceptualisation, funding acquisition, investigation, validation, writing (original draft)

Competing interests

The authors declare that they have no known competing financial interests or personal relationships that could have appeared to influence the work reported in this paper

260 Disclaimer

Copernicus Publications remains neutral with regard to jurisdictional claims made in the text, published maps, institutional affiliations, or any other geographical representation in this paper. While Copernicus Publications makes every effort to include appropriate place names, the final responsibility lies with the authors. Views expressed in the text are those of the authors and do not necessarily reflect the views of the publisher.

265 Financial support

PB was supported by Space for the Mankind of Strategy 21 of the Czech Academy of Sciences during the 2025 field campaign. We acknowledge the support from the Research Council of Norway through the HOTMUD project number 288299, the NCS2030 (project number 331644), and the WELLFATE (project number 344447).

References

270 Aliyev, A., Guliev, I.S., Belov, I.S., 2002. Catalogue of recorded eruptions of mud volcanoes of Azerbaijan. Nafta Press, Baku, 87 pp.
Aliyev, A., Guliev, F., Dadashov, F.G., Rahmanov, R.R., 2015. Atlas of the world mud volcanoes. Nafta Press. ISBN 978-9952-437-60-7.

- 275 [Aliyev, A., Guliyev, I.S., Rahmanov, R.R., 2019. Catalogue of mud volcanoes eruptions of Azerbaijan \(2008-2019\). Academic Council of Institute of Geology and Geophysics of Azerbaijan National Academy of Sciences 128p.](#)
- Antonielli, B., Monserrat, O., Bonini, M., Righini, G., Sani, F., Luzi, G., Feyzullayev, A.A., Aliyev, C.S., 2014. Pre-eruptive ground deformation of Azerbaijan mud volcanoes detected through satellite radar interferometry (DInSAR). *Tectonophysics* 637, 163–177.
- 280 Baloglanov, E.E., Abbasov, O.R., Akhundov, R.V., 2018. Mud volcanoes of the world: classifications, activities and environmental hazard (informational–analytical review). *European Journal of Natural History* 5, 12–26.
- Cuffey, K.M., Paterson, W.S.B., 2010. *The Physics of Glaciers*, fourth ed. Academic Press. ISBN 978-0080-919-12-6.
- Farr, T.G. et al., 2007. The Shuttle Radar Topography Mission. *Reviews of Geophysics* 45, RG2004. <https://doi.org/10.1029/2005RG000183>.
- Ghaderi, D., Rahbani, M., 2022. Mud volcano as a feature of emergence in Caspian Sea. *Oceanologia* 64, 503–513.
- 285 Google Inc., 2025. Google Earth (Version 7.3.6.10201) [Software]. Available at: <http://www.google.com/earth/>
- Huseynov, D.A., Guliyev, I.S., 2004. Mud volcanic natural phenomena in the South Caspian Basin: geology, fluid dynamics and environmental impact. *Environmental Geology* 46, 1012–1023.
- Jarvis, A., Reuter, H.I., Nelson, A., Guevara, E., 2008. Hole-filled SRTM for the globe Version 4. Available at: <http://www.cgiar-csi.org/data/elevation/item/45-srtm-90m-digital-elevation-database-v41>
- 290 Jakubov, A.A., Alizade, A.A., Zeinalov, M.M., 1971. *Mud volcanoes of the Azerbaijan SSR: Atlas (in Russian)*. Azerbaijan Academy of Sciences, Baku.
- Kervyn, M., Ernst, G.G.J., Goossens, R., Jacobs, P., 2008. Mapping volcano topography with remote sensing: ASTER vs. SRTM. *International Journal of Remote Sensing* 29, 6515–6538. <https://doi.org/10.1080/01431160802167949>.
- Kirkham, C., Cartwright, J., Hermanrud, C., Jebsen, C., 2017. The spatial, temporal and volumetric analysis of a large mud volcano province within the Eastern Mediterranean. *Marine and Petroleum Geology* 81, 1–16.
- 295 Kopf, A.J., 2002. Significance of mud volcanism. *Reviews of Geophysics* 40, 2-1–2-52. <https://doi.org/10.1029/2000RG000093>.
- Mazzini, A., Etiopie, G., 2017. Mud volcanism: An updated review. *Earth-Science Reviews* 168, 81–112. <https://doi.org/10.1016/j.earscirev.2017.03.001>.
- 300 Mazzini, A., Akhmanov, G., Manga, M., Sciarra, A., Huseynova, A., Huseynov, A., et al., 2021. Explosive mud volcano eruptions and rafting of mud breccia blocks. *Earth and Planetary Science Letters* 555, 116699. <https://doi.org/10.1016/j.epsl.2020.116699>.
- Mazzini, A., Sciarra, A., Lupi, M., Ascough, P., Akhmanov, G., Karyono, K., Husein, A., 2023. Deep Fluids Migration and Submarine Emersion of the Kalang Anyar Mud Volcano (Java, Indonesia): A Multidisciplinary Study. *Marine and Petroleum Geology* 148, 105970.
- 305

- Mazzini, A., Brož, P., Lupi, M., Břežný, M., Jodry, C., Sfalcin, J., Fenske, C., Morelli, G., Fischanger, F., Khasayeva Huseynova, A., Huseynov, A., 2025. Mud volcanism and creepy mud flows: a new model. *Geology*, under review (December 2025).
- 310 Odonne, F., Imbert, P., Dupuis, M., Aliyev, A.A., Abbasov, O.R., Baloglanov, E.E., Vendeville, B.C., Gabalda, G., Remy, D., Bichaud, V., Juste, R., 2020. Mud volcano growth by radial expansion: Examples from onshore Azerbaijan. *Marine and Petroleum Geology* 112, 104051.
- Odonne, F., Imbert, P., Remy, D., Gabalda, G., Aliyev, A.A., Abbasov, O.R., Baloglanov, E.E., Bichaud, V., Juste, R., Dupuis, M., Bonvalot, S., 2021. Surface structure, activity and microgravimetry modelling delineate contrasted mud-chamber types below flat and conical mud volcanoes from Azerbaijan. *Marine and Petroleum Geology* 134, 105315.
- 315 <https://doi.org/10.1016/j.marpetgeo.2021.105315>.
- Planke, S., Svensen, H., Hovland, M., Banks, D.A., Jamtveit, B., 2003. Mud and fluid migration in active mud volcanoes in Azerbaijan. *Geo-Marine Letters* 23, 258–268. <https://doi.org/10.1007/s00367-003-0152-z>.
- [Department of Electronic Services, Information, and Public Relations, An eruption of the Guzdek-Bozdag mud volcano was recorded. https://seismology.az/en/news/an-eruption-of-the-guzdek-bozdag-mud-volcano-was-recorded/383 \(2024\).](https://seismology.az/en/news/an-eruption-of-the-guzdek-bozdag-mud-volcano-was-recorded/383)
- 320 [Department of Electronic Services, Information, and Public Relations, The ANAS Regional Center for Seismic Monitoring of Mud Volcanoes registered an eruption of the Melikcobanly mud volcano. https://seismology.az/ru/novosti/set-seimiceskogo-monitoringa-gryazevyx-vulkanov-rcss-nana-zaregistrirovala-izverzenie-gryazevogo-vulkana-melikcobanly/366 \(2024\).](https://seismology.az/ru/novosti/set-seismiceskogo-monitoringa-gryazevyx-vulkanov-rcss-nana-zaregistrirovala-izverzenie-gryazevogo-vulkana-melikcobanly/366)
- [Azerbaijani Institute of Geology and Geophysics, OTMAN BOSDAQ MUD VOLCANO Erupts Again. http://gia.az/news/detail/4651/otmanbozdag-palciq-vulkani-yeniden-puskurub \(2025\).](http://gia.az/news/detail/4651/otmanbozdag-palciq-vulkani-yeniden-puskurub)
- 325

Supplementary materials

- Movies S1 to S19
- Table S1 (GPS positions of sticks on two mud volcanoes)
- Photos of the planted sticks (S20, S21, S22)
- 330 - Zip to google earth mud volcano pins S23_Google_earth_pins