

Indications of improved seasonal sea level forecasts for the United States Gulf and East Coasts using ocean-dynamic persistence

Xue Feng¹, Matthew J. Widlansky^{1,2}, Tong Lee³, Ou Wang³, Magdalena A. Balmaseda⁴, Hao Zuo⁴, Gregory Dusek⁵, William Sweet⁵, and Malte F. Stuecker^{2,6}

5 ¹Cooperative Institute for Marine and Atmospheric Research, School of Ocean and Earth Science and Technology (SOEST), University of Hawai‘i at Mānoa, Honolulu, HI, USA

²Department of Oceanography, SOEST, University of Hawai‘i at Mānoa, Honolulu, HI, USA

³Jet Propulsion Laboratory, California Institute of Technology, Pasadena, CA, USA

⁴European Center for Medium-Range Weather Forecasts, Reading, UK

10 ⁵National Ocean Service, NOAA, Silver Spring, MD, USA

⁶International Pacific Research Center, SOEST, University of Hawai‘i at Mānoa, Honolulu, HI, USA

Correspondence to: Xue Feng (xfeng@hawaii.edu) and Matthew J. Widlansky (mwidlans@hawaii.edu)

Abstract. Forecasting seasonal sea levels along many coasts remains challenging, with generally lower skills than forecasts for the open oceans. We investigate the influence of ocean dynamics on forecasting monthly sea level anomalies for the United States Gulf and East Coasts using the Estimating Circulation and Climate of the Ocean (ECCO) system, which is initialized monthly from 1992 through 2017 and runs forward for 12 months under climatological atmospheric forcing. This approach, which we refer to as an ocean-dynamic persistence forecast, demonstrates improved skill compared to both observed-damped persistence and the ECMWF SEAS5 climate forecast system when evaluated against observations. At a lead of 4 months, dynamic persistence has the highest anomaly correlation coefficients at 22 out of 39 coastal locations (mostly south of Cape Hatteras). However, improvement in root-mean-square error is minimal, possibly due to reduced variability in ECCO associated with its climatology forcing and coarse resolution. This study suggests dynamic persistence offers the potential to improve sea level forecasts beyond the capabilities of damped persistence and a state-of-the-art climate model.

1 Introduction

25 Forecasting monthly changes in coastal sea levels is challenging, especially along the United States (U.S.) Gulf and East Coasts, where climate models have yet to demonstrate skill at seasonal lead times (Long et al., 2021, [2025](#)). In the open ocean, using global climate models to forecast sea level variability has shown promising results (Widlansky et al., 2023; Balmaseda et al., 2024), particularly in the tropical Pacific where predictions of monthly sea level anomalies are routinely provided to island communities in the form of enhanced high-tide outlooks (Widlansky et al., 2017). Climate models such as the fifth-generation Seasonal Forecasting System (SEAS5) from the European Centre for Medium-Range Weather Forecasts (ECMWF) are also skillful for sea surface height (SSH) variability in much of the tropical and subtropical Atlantic Ocean

(Balmaseda et al., 2024), although no sea level prediction products utilizing this skill in the open-ocean Atlantic have ~~been yet to be~~ developed for the coastal U.S.

- 35 The main reason why climate model forecasts of SSH in the Atlantic Ocean are not used to improve seasonal predictions of high-tide flooding, such as NOAA’s monthly outlook, is because the state-of-the-art forecast models are not skillful at Gulf and East Coast water level gauge locations (Long et al., 2021; Widlansky et al., 2023; Balmaseda et al., 2024). Consider Charleston, South Carolina, where the anomaly correlation coefficient (ACC) at seasonal lead times (e.g., the outlook 4 months in the future, which we call the lead-4 month forecast) is nearly zero if utilizing SSH from SEAS5 or any other
- 40 climate model so far assessed (Long et al., 2025). ~~For coastal sea levels at such locations, seasonal forecast skill is perhaps limited by inaccurate initializations of the climate models (Widlansky et al., 2023; Feng et al., 2024), simulation biases in the coupled atmosphere-ocean system (Meehl et al., 2021; Roberts et al., 2021) and low predictability of the wind stress anomalies (Newman et al., 2003; Obarein et al., 2023).~~
- 45 Since climate models have yet to demonstrate skillful seasonal sea level forecasts for the Gulf and East Coasts, NOAA currently relies on ~~a~~-statistical forecasts of the monthly anomalies (i.e., the autocorrelation damping timescale of water level observations; referred to as a damped-persistence forecast), combined with long-term trends and tide predictions, to provide information for their monthly high-tide outlooks (Dusek et al., 2022). Unfortunately, including damped persistence in the NOAA outlook minimally increases skill beyond a climatology-only model for most locations on the Gulf and East Coasts,
- 50 because the statistical persistence of monthly sea level anomalies dampens to near zero by the lead-4 month, especially between Key West, Florida, and Cape Hatteras, North Carolina where the autocorrelation decay is fastest (Dusek et al., 2022).

- The apparent lack of skillful seasonal sea level forecasts for the Gulf and East Coasts contrasts with what we could expect
- 55 based on the relatively slowly evolving ocean, which provides sources of predictability on seasonal and longer timescales (e.g., Hasselmann, 1976; Deser et al., 2003). The persistence of oceanic conditions, due to the ocean’s high inertia of thermal and momentum energy, or so-called ocean memory (e.g., Frankignoul and Hasselmann, 1977; Shi et al., 2022), allows sea level anomalies to be tracked in the open ocean for months (e.g., Chelton and Schlax, 1996). Slow ocean dynamics, such as westward-propagating Rossby Waves, sometimes carry sea level anomalies across the Atlantic, which project onto the
- 60 coastal sea level variability, especially south of Cape Hatteras (Minobe et al., 2017; Calafat et al., 2018; Dangendorf et al., 2023; Wang et al., 2024). In addition, remote buoyancy forcing from high latitudes could influence sea levels along the East Coast through oceanic advections and coastal-trapped waves (Frederikse et al., 2017; Wang et al., 2022; Zhu et al., 2024). Considering these well-established physical processes and the availability of reliable initial conditions in this region from ocean reanalyses (Feng et al., 2024), it ~~seems reasonable to expect themay be possible to achieve possibility of achieving~~
- 65 more skillful seasonal sea level forecasts for the East Coast, especially for the Southeast Coast. However, certain aspects of

the coastal environment, such as the highly variable nature of nearshore winds (Lee et al., 2023), are likely to ~~continue~~ complicating efforts to skillfully forecast the sea level variability, as these winds can disrupt otherwise predictable oceanic conditions and influence local sea level responses.

70 One opportunity for improving sea level forecasts is to isolate oceanic information from atmospheric variability; the latter of which is much less predictable at leads beyond a couple of weeks (e.g., Hasselmann, 1976; Newman et al., 2003), then let the ocean evolve according to its internal dynamics. Using an adjoint sensitivities analysis derived from the Estimating Circulation and Climate of the Ocean (ECCO) model, Frederikse et al. (2022) evaluated a hybrid dynamical forecasting method consisting of atmospheric forcing from either a climate model forecast (CCSM4) participating in the North
75 American Multi-Model Ensemble or the mean annual cycle (i.e., climatology). They referred to the latter forcing approach as “ocean-dynamic persistence” and applied it to forecasting sea levels at one pilot location on the Southeast Coast (Charleston). At the lead-4 month, their study showed that both sets of retrospective forecasts had higher ACC values (and lower root-mean-square error; RMSE) than the damped-persistence forecast at the Charleston water level gauge, with the dynamic persistence approach performing best (see their Figure 6).

80

Given the promising result at Charleston in Frederikse et al. (2022), we aim to test the opportunity for expanding improvement to other parts of the Gulf and East Coasts using the dynamic-persistence approach. Different from Frederikse et al. (2022), where the sea level forecasts rely on a pre-computed sea level sensitivity to atmospheric forcing to represent ocean-dynamical responses. Our investigation utilizes a set of retrospective forecasts produced with an initialized version
85 of the ECCO model that runs forward for 12 months under climatological atmospheric conditions. This configuration allowing us to evaluate the potential of ocean-dynamic persistence in forecasting sea level anomalies everywhere along the coast at the model’s resolution (details about the model and forecasting method are described in Section 2). We will compare the performance of the ECCO dynamic-persistence model with that of the observed-damped persistence of sea levels as well as the SSH forecast from the SEAS5 climate model. Through this assessment, we seek to address current limitations in
90 skillfully forecasting coastal sea levels by exploring the potential of ocean-dynamic persistence.

2 Data and methods

This study utilizes sea level observations from NOAA’s National Water Level Observation Network as well as various satellite altimetry missions to assess the performance of different seasonal forecasting methods. For water level gauges, we obtained hourly sea level data from NOAA’s Center for Operational Oceanographic Products and Services (CO-OPS) for 39
95 stations along the Gulf and East Coasts (Figure 1), consistent with the locations used in Feng et al. (2024) to assess coastal sea level variability in ocean reanalyses. The hourly time series are averaged to daily data after removing the tide components with the Unified Tidal Analysis and Prediction functions in MATLAB (UTide). Since the present study focuses

on the dynamic sea level forecast, the local inverse barometer (IB) effect is removed from the observations using sea level pressures from the ERA5 reanalysis (Hersbach et al., 2023). For altimetry, we obtained gridded absolute dynamic topography level 4 data from the Copernicus Marine and Environment Monitoring Service (CMEMS), which has a spatial resolution of $0.25^{\circ} \times 0.25^{\circ}$ and daily temporal resolution. A dynamic atmospheric correction has been applied to the CMEMS product so that there is no IB effect. We performed monthly averaging of both observations (i.e., the ~~daily~~hourly water levels and ~~daily~~-altimetry). These monthly sea level observations cover the overlapping period of the retrospective forecasts assessed here, which begin in 1993.

105

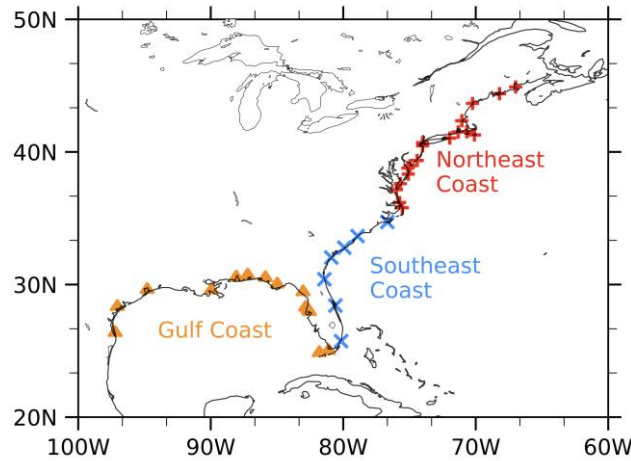


Figure 1. Study domain and water level gauge locations. The Northeast Coast extends from Eastport, ME (8410140) to Oregon Inlet Marina, NC (8652587); the Southeast Coast extends from Beaufort, NC (8656483) to Virginia Key, FL (8723214); and the Gulf Coast extends from Vaca Key, FL (8723970) to Port Isabel, TX (8779770). The 7-digit numbers following the location names denote the NOAA station IDs of the water level gauges.

110

Observations from water level gauges and altimetry are used in the damped-persistence forecasts assessed here. In the damped-persistence model, each forecast is generated using the previous month's observations to predict the target month's sea level anomalies. The damping timescale is determined from the observed rate of how sea level anomalies decay to zero. We refer to the prediction for the month after the observation as the lead-1 month forecast. Note that the dynamical models considered here are initialized on the first day of each month, and we refer to the mean output during the first month of simulation as the lead-1 month forecast.

115

The dynamic-persistence forecasts are generated by NASA's Jet Propulsion Laboratory (JPL) using the ECCO system. The initial conditions of the forecast are derived from the observation-constrained ocean state estimate from ECCO Version 4 Release 4 ([ECCO V4r4](#); Forget et al., 2015), which is based on the global MITgcm with a 1° nominal resolution. The ocean-state estimate is obtained by optimizing a set of control variables (surface forcing, mixing parameters, and initial state) in an

120

iterative process such that the forward model solution is consistent with a diverse set of satellite and in-situ ocean observations within the uncertainty estimates of the observations (Forget et al., 2015). Despite its coarse resolution, ECCO V4r4 can reasonably reproduce coastal sea level variability (Figure 2). Along the Southeast and Gulf Coasts, ECCO V4r4 shows comparable ACC and RMSE to eddy-permitting ocean reanalyses such as ECMWF's Ocean ReAnalysis System 5 (ORAS5; Zuo et al., 2019). The atmospheric state variables from the ECCO optimization are ~~also~~ used to force the ocean model, with surface fluxes of heat, momentum (wind stress), and freshwater being computed externally. For each month from January 1992 to December 2017, the model is integrated forward in time for 12 months with monthly climatological forcing to generate a set of 12-month forecasts. This flux-forced model configuration allows us to isolate the effect of ocean dynamics on the seasonal sea level forecast, while excluding the potential biased atmosphere forecast and ocean-atmosphere interactions. Because these forward simulations use climatological seasonal forcing, any interannual variations or monthly anomalies in the retrospective forecasts are due to the evolution of the initial ocean state. Note that the dynamic-persistence forecast is not an ensemble forecast, meaning that there is a single forecast for each target month at a specific lead time. We assessed the monthly dynamic sea level output, which does not include the IB effect.

The operational seasonal forecast system (SEAS5) at ECMWF is a fully coupled global climate model utilizing the NEMO ocean component with a nominal horizontal resolution of 0.25° (Johnson et al., 2019). This model was initialized monthly from January 1993 to December 2023 using ~~the ECMWF's Ocean ReAnalysis System 5 (ORAS5; Zuo et al., 2019).~~ For forecasts initialized in February, May, August, and November, SEAS5 provides a 13-month outlook with 15 ensemble members, while forecasts from other months have a 7-month outlook with 25 ensemble members. We evaluate the ensemble-mean forecast for the period overlapping the ECCO dynamic-persistence model (i.e., 1993–2017), although the SEAS5 assessment is focused on when forecasts are available from all 12 start months (i.e., lead times out to 7 months). SEAS5 excludes the IB effect.

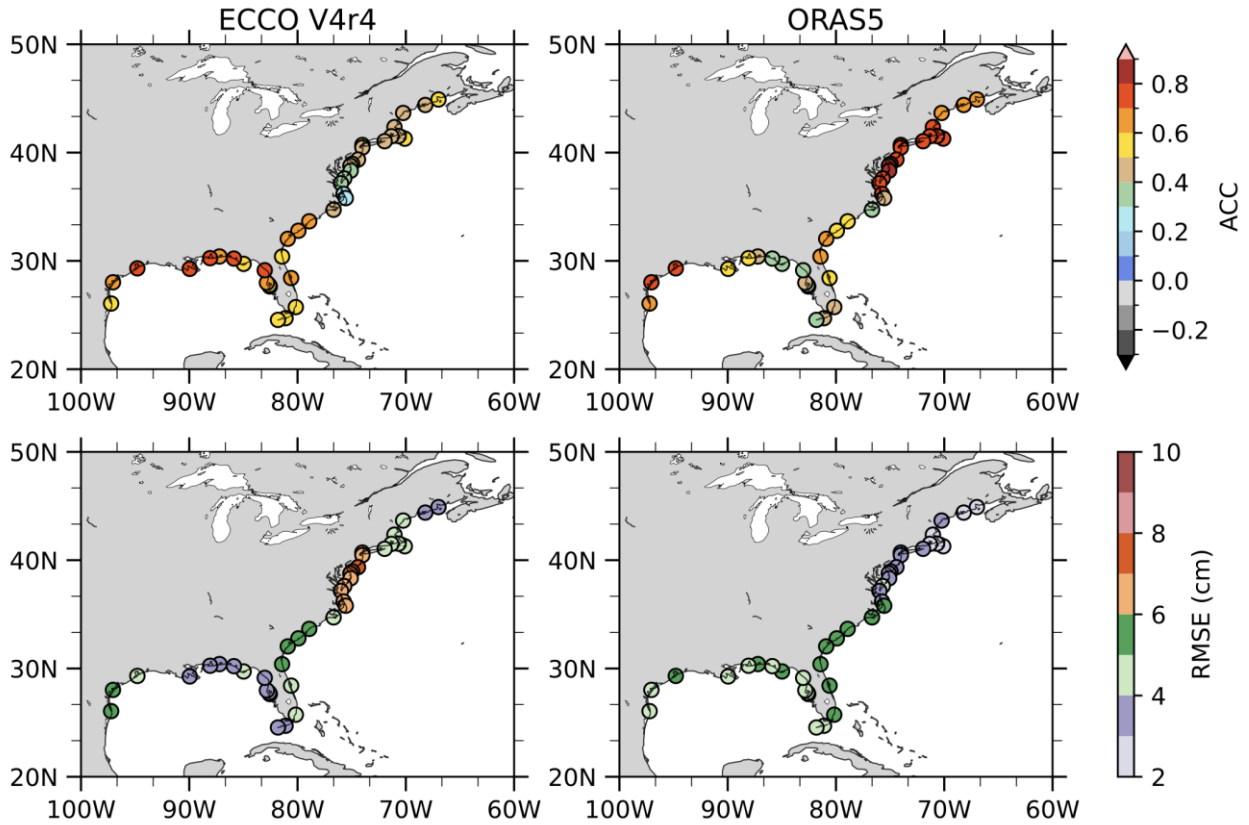


Figure 2. ACC and RMSE of monthly sea level anomalies from the ECCO state estimate and ORAS5 with water level gauge observations. The ORAS5 assessment is modified from Feng et al. (2024).

150

We evaluated the seasonal forecast skills of the damped-persistence (observed), dynamic-persistence (ECCO), and climate-forecast (SEAS5) models by comparing their monthly sea level anomalies, nearest to the locations of water level gauges, against such observations as well as altimetry interpolated to the model grids. To correct for biases caused by model drift (see Widlansky et al., 2017; Long et al., 2021), the sea level anomaly forecasts from ECCO and SEAS5 were calculated by removing the lead-time dependent monthly climatology of the retrospective epoch common to the forecast models (i.e., 1993–2017). Linear trends for that period were also removed from each forecast, respectively, which follows established methods for avoiding the influence of long-term changes on seasonal forecast skills (e.g., Widlansky et al., 2017; Long et al., 2021; Balmaseda et al., 2024; Long et al., 2025). Observed sea level anomalies were calculated relative to climatology based on the 1993–2017 period, with the trend removed accordingly. Metrics of assessment include standard deviation (SD), ACC, and RMSE, which are presented for each model as well as relative to the performance of the damped-persistence model. For the latter comparison, we tested the significance of ACC differences at each location using Fisher’s Z transformation method. We calculated the z-statistic based on the difference between the two transformed z-scores, and a two-tailed test at

160

the 0.05 significance level was applied against the null hypothesis that both models have similar skill. The sample size was set to 294, which is the number of target months available for each forecast lead time.

165 3 Results

Seasonal forecasting skill according to the ACC metric is shown in Figure 3 across the three models: damped persistence (observed), dynamic persistence (ECCO), and climate forecast (SEAS5). The sea level anomalies at lead-1 and lead-4 months were evaluated against observations from water level gauges and satellite altimetry. Results for locations of The Battery (New York; NY), Charleston (South Carolina; SC), Virginia Key (Florida; FL), and Grand Isle (Louisiana; LA) are shown to provide examples of the sea level forecast verification for the respective parts of the coastal U.S. (i.e., in the Northeast, Southeast, ~~southeastern Florida~~, and Gulf Coast regions; Figure 1).

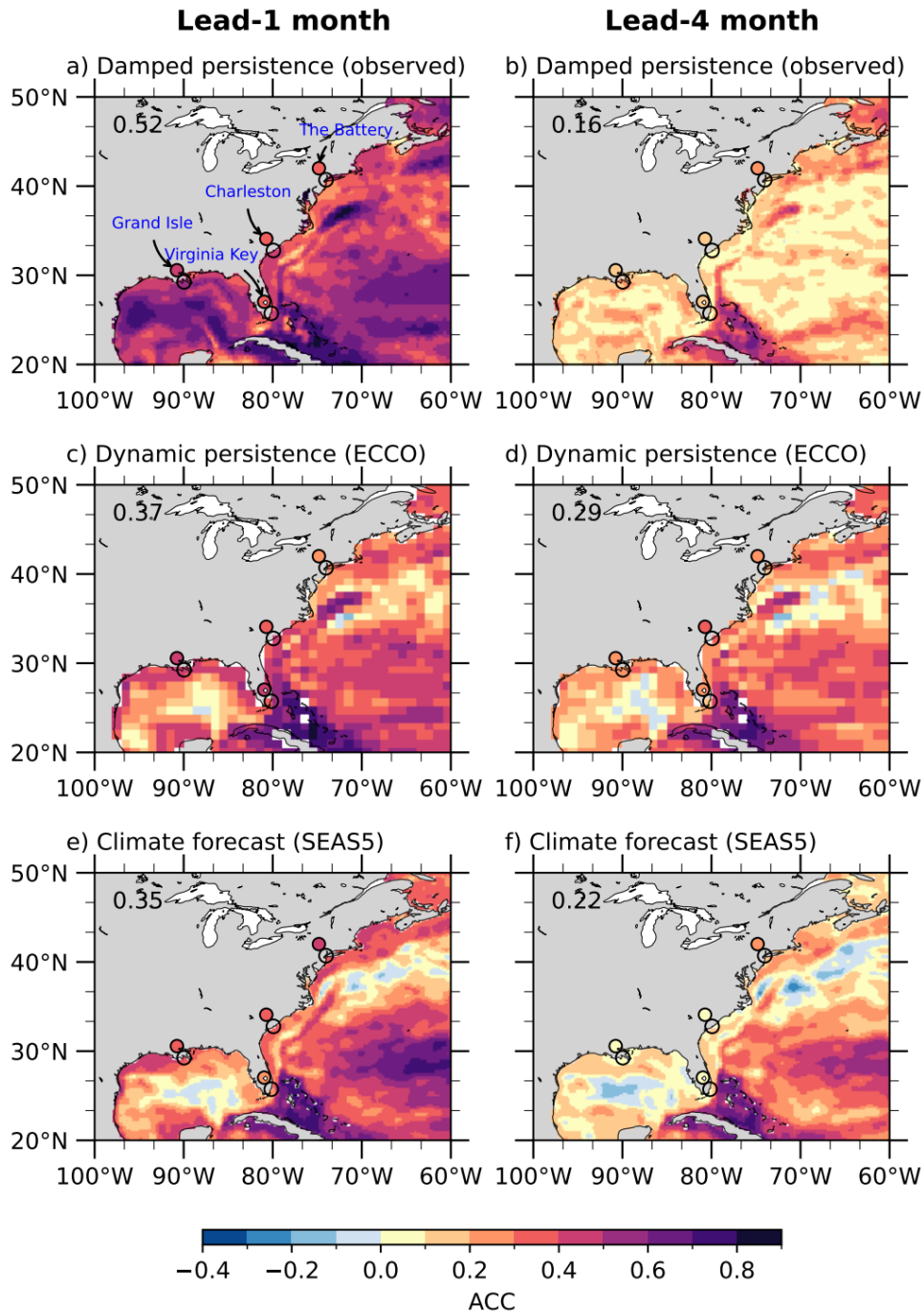


Figure 3. Retrospective forecast skill (ACC) at lead-1 and 4 months for the damped-persistence (observed; a and b), dynamic-persistence (ECCO; c and d), and climate-forecast (SEAS5; e and f) models. Forecasts of monthly sea level anomalies are compared to observations by altimetry (shading) and water level gauges (colored circles on land) at four example locations (indicated by unfilled circles on the coastline). The domain-averaged ACC is shown in the upper left of each panel.

At the lead-1 month, damped persistence (using altimetry) demonstrates fairly high ACC throughout most open-ocean areas of the northwestern Atlantic and Gulf regions (i.e., ACC values exceed 0.5 almost everywhere); however, ACC values are lower along the coast (Figure 3a). For example, the ACC of damped persistence (using water level gauges) is 0.32 at The Battery, 0.40 at Charleston, 0.39 at Virginia Key, and 0.44 at Grand Isle. There are also some offshore areas of relatively lower ACC values (and higher RMSE; Figure 4), where the monthly sea level variability is much greater than at the coast (see Figure 1 in Long et al., 2021).

Dynamic persistence exhibits similar ACC values compared to damped persistence of altimetry and water level gauges at lead-1 month for the coastal examples; however, skill is somewhat lower in most of the open ocean (Figure 3c). The Loop Current region of the interior Gulf, as well as where the Gulf Stream extends away from the coast (i.e., at about 35 °N in the Atlantic Ocean), are notable examples of where dynamic persistence ACC values are much lower than damped persistence, at the lead-1 month. The RMSE metric mostly mirrors this result (i.e., higher errors in these energetic offshore areas; Figure 42). In most other areas of the open ocean, ACC values are higher and RMSE is lower for all models relative to within the Loop Current/Gulf Stream system, although the overall skill at the lead-1 month for dynamic persistence is worse than damped persistence nearly everywhere (considering the domain-average values listed in Figure 3 and 4). ~~However, the lower skill appears to be specific to dynamic persistence model evaluated in this study. A dynamic persistence forecast using an eddy resolving resolution ocean model with more realistic initialization is presumably to outperform damped persistence in the first month.~~

The climate-forecast model has similar overall ACC values at the lead-1 month (Figure 3e), ~~overall~~, to dynamic persistence (Figure 34c). Retrospective forecasts from both models exhibit relatively low ACC values in the Loop current region and the Gulf Stream extension (i.e., offshore of Cape Hatteras), especially compared to damped persistence (Figure 3a). The climate forecast performs particularly well for a broad area of the subtropical Atlantic Ocean, where its ACC values equal or beat ~~dynamic~~damped persistence. The RMSE metric again mirrors the ACC result for the climate forecast (Figure 4). For the coastal locations, at the lead-1 month, ACC and RMSE values are similar among the three retrospective forecasts.

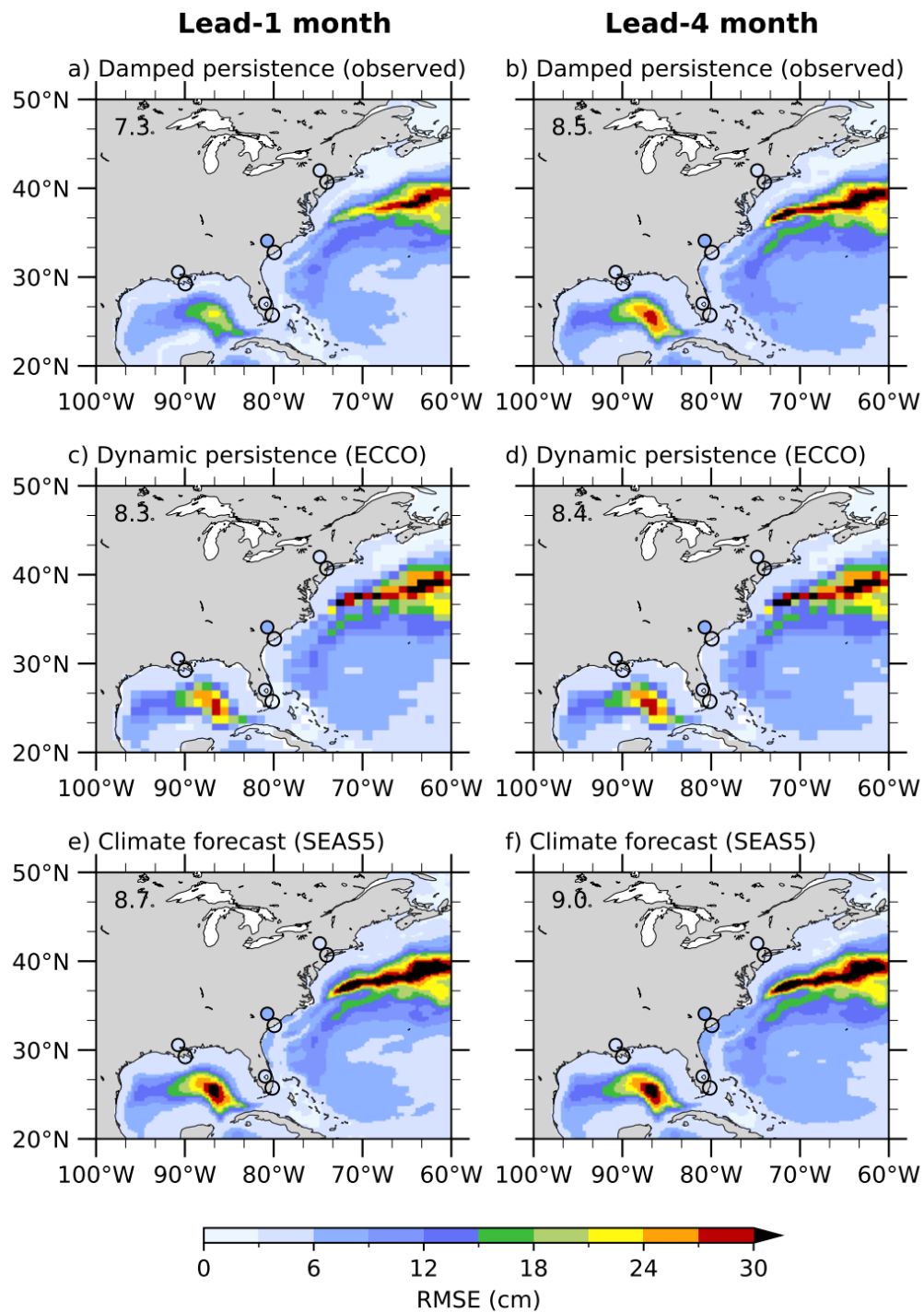


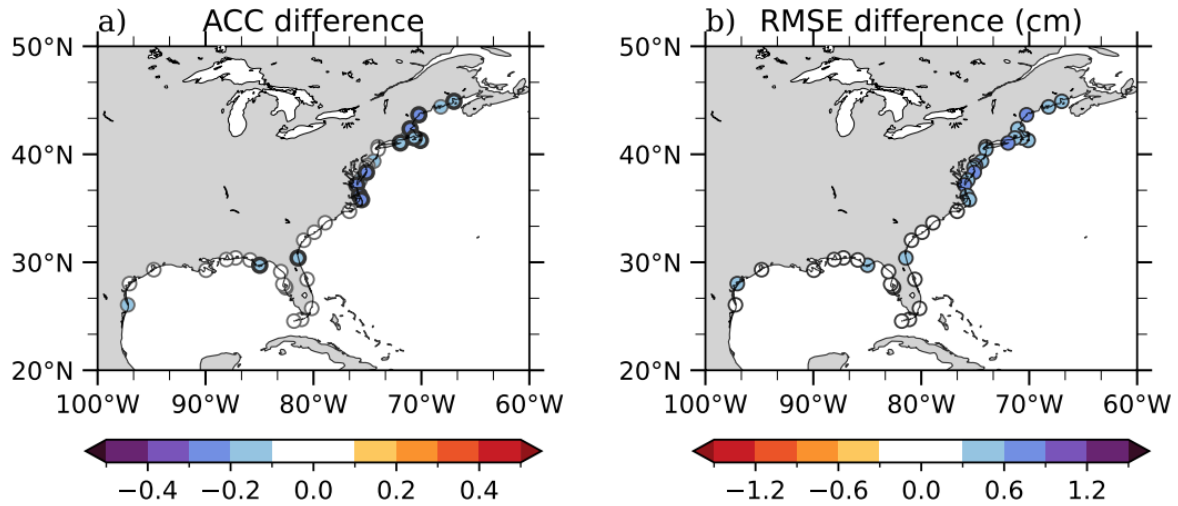
Figure 4. Same as Figure 3, but for RMSE.

By the lead-4 month, each model shows less forecast skill according to the ACC metric, both along the coast and in most offshore areas (Figure 3b, d, f). The decline in skill compared to the lead-1 month forecasts is ~~greatest~~^{worst} for the damped-persistence model. In particular, the domain-average ACC for damped persistence has declined from 0.52 at the lead-1 month to 0.16 at the lead-4 month. Along the coast, there is no evidence of damped persistence having much skill at the lead-4 month, as the ACC is only 0.22 at The Battery, 0.14 at both Charleston and Virginia Key, and 0.16 at Grand Isle. In the offshore regions, ACC values are also generally less than 0.2, except for a region of noticeably higher values around Cuba and The Bahamas. RMSE is also low in ~~the coastal regions and the changes from lead-1 to lead-4 month are smallest~~^{these areas} (Figure 4), ~~which experience small sea level variability (Long et al. 2021).~~

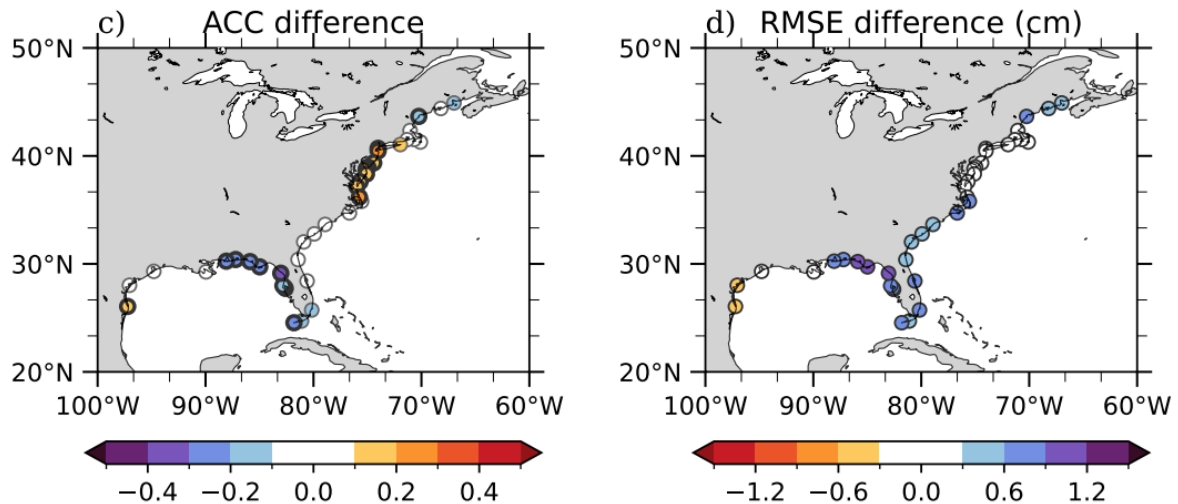
Dynamic persistence is the best-performing model at the lead-4 month, according to the ACC metric, particularly along the coast (Figure 3d). Consider the forecasts at Charleston where the lead-4 month ACC value for dynamic persistence is 0.36, compared to only 0.14 or 0.08 for damped persistence or the climate forecast, respectively. However, RMSE assessments at the lead-4 month show only modest improvements for dynamic persistence compared to the other models (e.g., at Charleston, the RMSE is 6.3 cm for dynamic persistence, which is not much better than the 6.6 cm for damped persistence and 7.3 cm for SEAS5; Figure 4). ~~Offshore, the lead 4 month RMSE values are likewise similar among the models (Figure 2).~~ Notably, the climate forecast has lower ACC values along the coast at this lead (Figure 3f), compared to dynamic persistence, although the offshore performance of the former equals or beats the other models.

Using damped persistence as a benchmark of seasonal forecasting skill (or lack thereof), Figures 5 and 6 show lead-1 and lead-4 month ACC and RMSE differences, respectively, for the dynamic-persistence and climate-forecast models. At the lead-1 month, dynamic persistence performs worse than damped persistence along the Northeast Coast, while no significant differences are found along the Southeast and Gulf Coasts (Figure 5a, b). However, by the lead-4 month, the dynamic-persistence model has better forecast skill, with significantly higher ACC compared to damped persistence for most locations along the Southeast Coast (Figure 6a). The region with higher ACC for the dynamic-persistence model extends to the northeastern Gulf Coast, though the difference there is not statistically significant. However, the spatial pattern of skill differences shows regional coherence, suggesting widespread skill improvements south of Cape Hatteras in the dynamic-persistence model, even if not passing a significance test at each specific location. Elsewhere along the coast (i.e., in the Northeast and western Gulf Coasts), the lead-4 month forecast performance is similar between dynamic persistence and damped persistence. According to the RMSE metric, skill differences between these models at the lead-4 month are minor nearly everywhere (i.e., differences of less than 1 cm; Figure 6b).

Dynamic persistence (ECCO) - Damped persistence (observed)



Climate forecast (SEAS5) - Damped persistence (observed)



235 **Figure 5.** Differences of retrospective forecast skill (ACC and RMSE) at the lead-1 month for the dynamic-persistence (ECCO; a and b) and climate-forecast (SEAS5; c and d) models compared to damped persistence of monthly sea level anomaly observations by water level gauges (colored circles). Skill of the damped-persistence model is subtracted from that of the other models at each location. Orange shading indicates more skill (higher ACC and lower RMSE) compared to the damped-persistence model. Circles with thick black outlines denote statistically significant ACC differences at the 0.05 significance level.

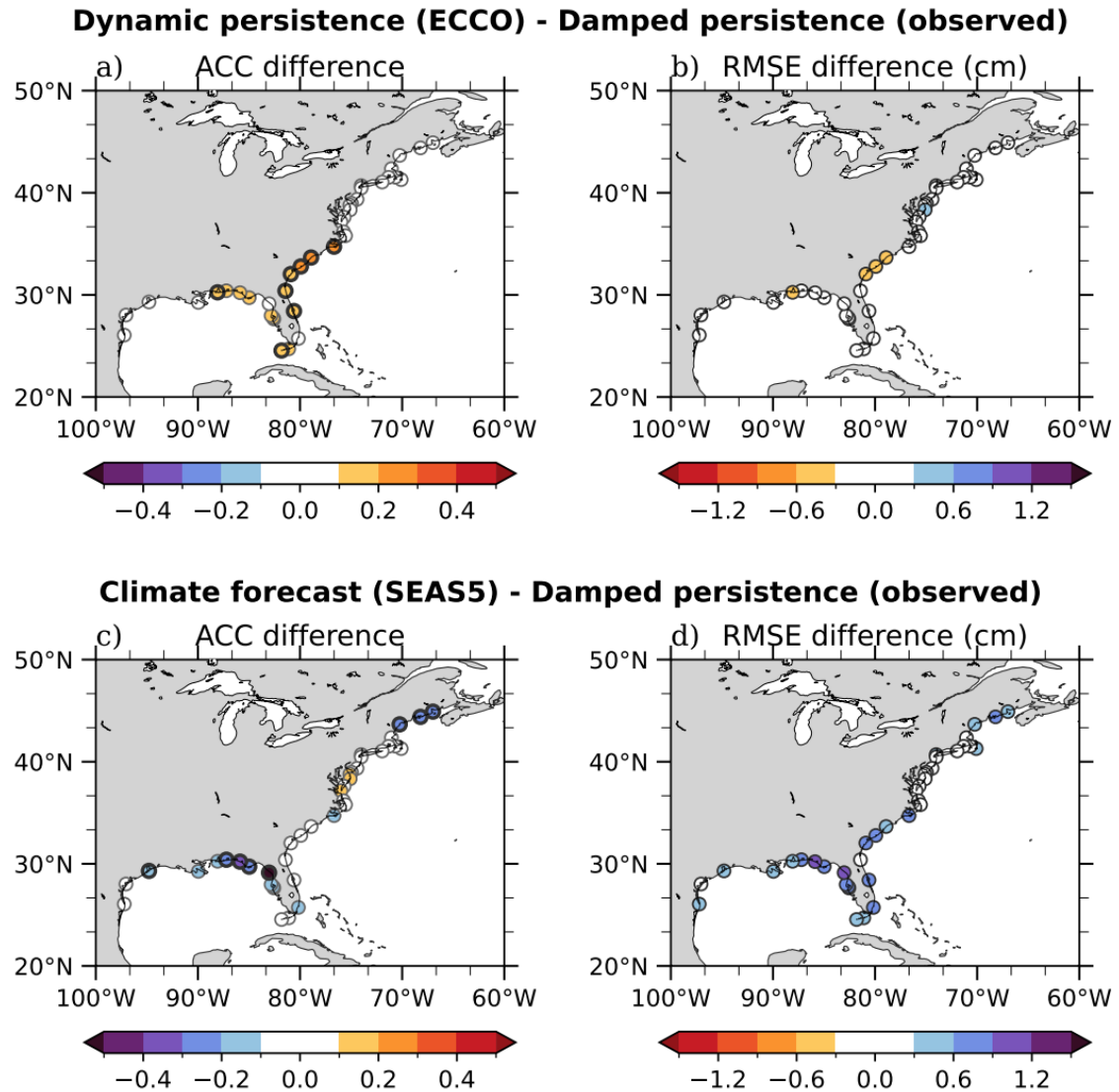


Figure 6. Same as Figure 5, but for the lead-4 month.

The climate-forecast model demonstrates utility shortly after its initialization at The Battery and several neighboring locations in the Northeast, with significantly higher ACC than damped persistence at the lead-1 month (Figure 5c, d). However, even at that early lead time, its performance is worse than damped persistence along the northeastern Gulf Coast according to the ACC and RMSE metrics, as well as the Southeast Coast according to only RMSE. At the lead-4 month, there is no wide-spread evidence that the climate forecast performs better than the other models along the Northeast Coast, nor along the Gulf and Southeast Coasts (i.e., its ACC and RMSE values are similar or worse than damped persistence at

almost all coastal locations considered here, although the climate forecast has slightly higher ACC at three locations in the Chesapeake Bay area to the north of Cape Hatteras; Figure 6c, d).

Changes in forecast skill as a function of lead time are shown in Figure 7 at the example locations for each of the models (the climate forecast ends at the lead-7 month, whereas damped persistence and dynamic persistence extend another 5 months). According to the ACC and RMSE metrics, the climate forecast performs best at only one location (The Battery), but only for the first month (Figure 7a, b). The climate forecast skill decays faster than the other models at all four locations (i.e., the ACC decreases and the RMSE increases). Whereas the skill at the lead-1 month for dynamic persistence is like the climate forecast (and damped persistence), the dynamic persistence skill has a slower decay with increasing lead, especially according to the ACC metric (its RMSE worsens at a similar rate as damped persistence). Based on ACC values, dynamic persistence becomes the best-performing model by the lead-5 month at The Battery (Figure 7a), the lead-2 month at Charleston (Figure 7c) as well as Virginia Key (Figure 7e), and the lead-3 month at Grand Isle (Figure 7g), with damped persistence being the similar- or better-performing model at earlier leads. RMSE values are similar for damped persistence and dynamic persistence, with both models generally having smaller errors than the climate forecast (Figure 7b, d, f, h).

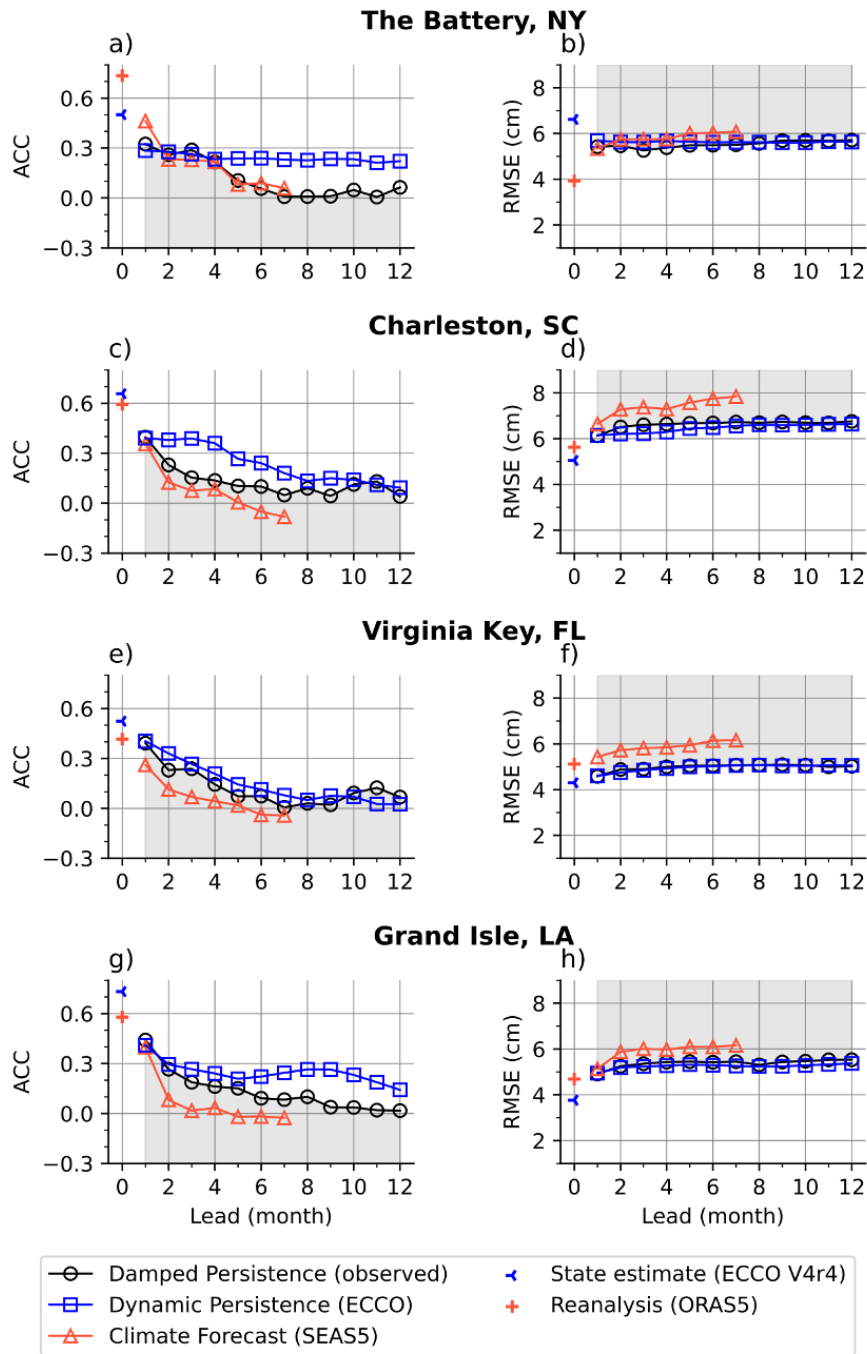


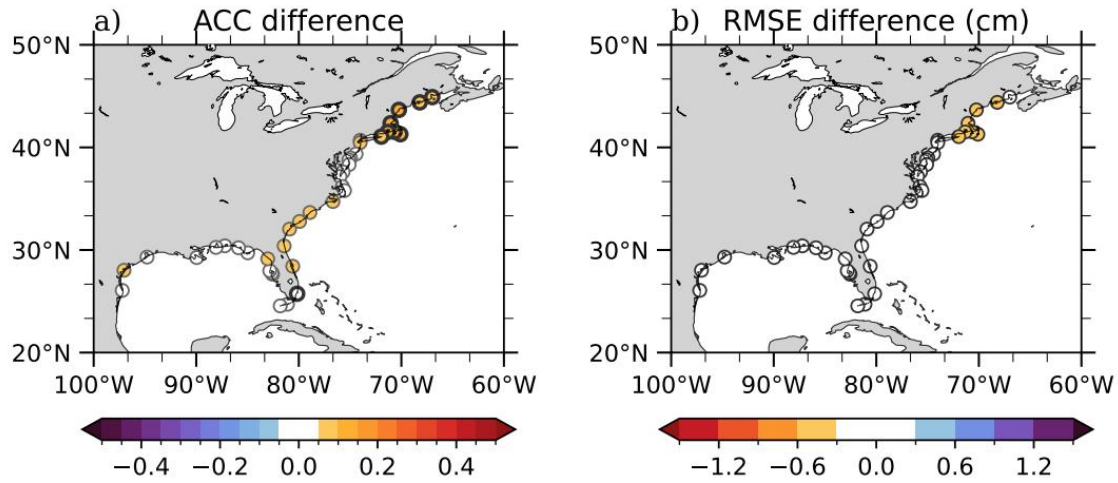
Figure 7. Retrospective forecast skill (ACC and RMSE) as a function of lead time at four example locations (labeled in Figure 1a). Markers (see legend) correspond to the damped-persistence (observed), dynamic-persistence (ECCO), and climate-forecast (SEAS5) models. Also shown are the state estimate (ECCO V4r4) and reanalysis (ORAS5), which are the initial conditions corresponding to the latter two forecasts. Monthly sea level anomalies from each product are compared to observations by water level gauges. Gray shading designates less skill than the damped-persistence model at a particular lead month (lower ACC and higher RMSE).

270 Differences in initial conditions seem to be associated with forecast skill variations between the dynamic-persistence and
climate-forecast models, at least at the earliest lead time. Model initial conditions are from ECCO [state estimate](#) for dynamic
persistence and ORAS5 for the climate forecast (ACC and RMSE metrics for the respective state estimate and reanalysis are
marked at the lead-0 month in Figure [7](#)). At the lead-1 month, there is evidence of the model with higher forecast skill at a
particular location also having the better initial condition for that area (e.g., at The Battery where ORAS5 and SEAS5
275 perform better than the ECCO state estimate and dynamic persistence). We note again though that the SEAS5 advantage at
The Battery disappears by the lead-2 month. At the other example locations, the ECCO state estimate performs better than
the ORAS5 reanalysis, and the skill for dynamic persistence is likewise better (higher ACC) than SEAS5 at the lead-1 month
as well as all longer leads.

280 To remove the effect of any biased initial conditions from the evaluation of using ocean-dynamic persistence to forecast
coastal sea levels, we compared the dynamic-persistence skill to that of damped persistence of the ECCO state estimate
instead of observations (Figure [8](#)). [Here, these forecasts are evaluated against the ECCO state estimate.](#) The advantage of
dynamic persistence compared to damped persistence is much clearer according to this comparison. Previously, we
evaluated forecasts compared to damped persistence of observations and noted that the dynamic-persistence model
285 performed worst at the lead-1 month along the Northeast Coast (Figure [5](#)). Comparing dynamic persistence to damped
persistence of ECCO itself demonstrates that there is in fact a benefit of including ocean dynamics, even for the Northeast
Coast at the lead-1 month (Figure [8a, b](#)). At the lead-4 month, compared to the damped-persistence of ECCO, dynamic
persistence has higher ACC values and similar or better RMSE nearly everywhere on the East Coast (Figure [8c, d](#)). The
benefit of dynamic persistence is less clear along the Gulf Coast, which possibly points to a limitation of ECCO's coarse
290 resolution in allowing oceanic signals to propagate into the Gulf [from the Atlantic or Caribbean](#).

Dynamic persistence (ECCO) - damped persistence (ECCO)

Lead-1 month



Lead-4 month

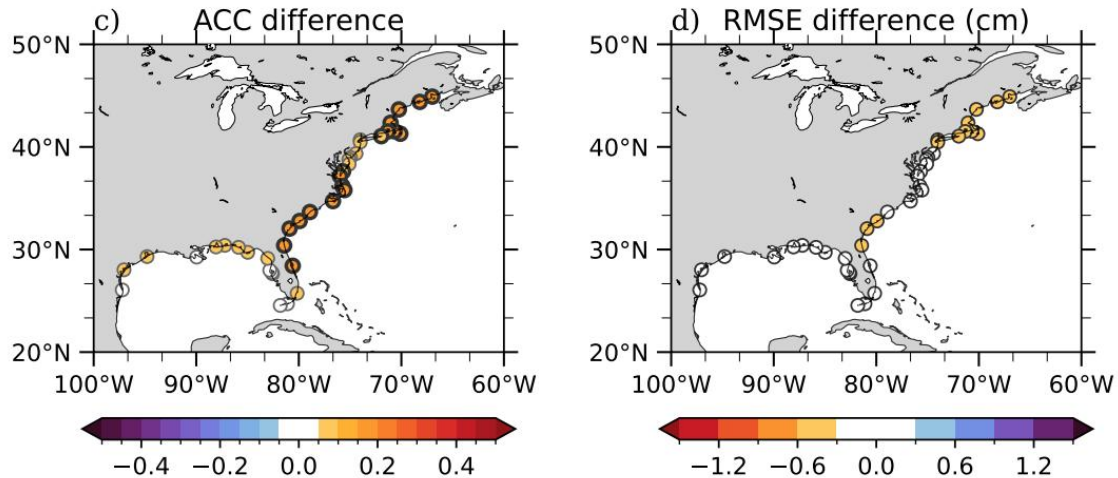


Figure 8. Difference of skill (ACC and RMSE) for the dynamic persistence (ECCO) and damped persistence (ECCO), with each product being compared to monthly sea level anomalies derived from the ECCO state estimate. Orange shadings indicate more skill (higher ACC and lower RMSE) for dynamic persistence (ECCO) compared to damped persistence (ECCO). Circles with thick black outlines denote statistically significant ACC differences at the 0.05 significance level. Note that smaller ACC differences are more likely to pass the significance test in (a) because the respective ACC values of both models are typically closer to one at the shorter lead time (e.g., at Virginia Key).

Despite dynamic persistence having the best lead-4 month forecast skill at Charleston, Virginia Key, and Grand Isle, along with most other locations south of Cape Hatteras, we noticed a lack of variability in this model's predicted monthly sea level anomalies. Figures 9 and 10 show the time series of forecasts from each model at the lead-1 and 4 months, respectively,

compared with water level gauge observations. None of the models depict the observed amounts of coastal sea level variability at either lead. For dynamic persistence at the lead-4 month, the SD values are 2.5 cm at The Battery (observed: 5.7 cm), 1.4 cm at Charleston (observed: 6.7 cm), 1.2 cm at Virginia Key (observed: 5.0 cm), and 1.6 cm at Grand Isle (observed: 5.4 cm). Considering Charleston again for further comparison, variability is only somewhat larger for dynamic persistence at the lead-1 month (2.3 cm); damped persistence similarly suffers from diminished variability, especially by the lead-4 month (0.9 cm; Figure 10b); and, the climate forecast variability is the largest of the models for both the lead-1 and 4 months (4.7 cm and 3.6 cm, respectively). The larger variability of the climate forecast does not translate to better skill at the lead-4 month, because that model deviates the most from observations, as evidenced by it having the lowest ACC and highest RMSE values for Charleston (0.08 and 7.3 cm; Figure 10b), as well as almost everywhere else on the Gulf and East Coasts (Figure 6c, d). Potential causes of the weak variability noticed in dynamic-persistence forecasts are discussed in Section 4, along with a mention about how this may concern the usability of such predictions.

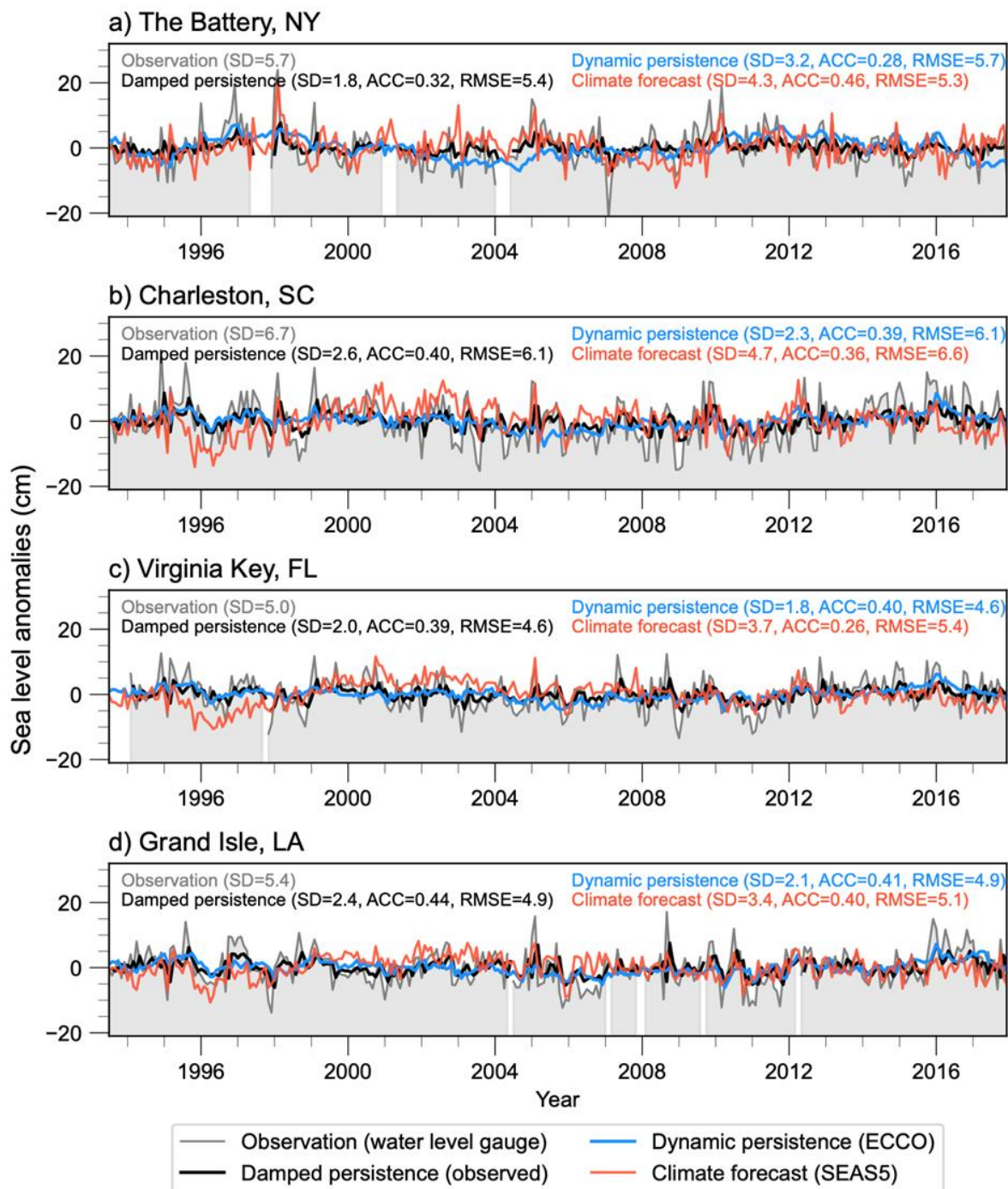


Figure 2. Time series of monthly sea level anomalies according to observations from water level gauges and the lead-1 month retrospective forecasts from the damped-persistence (observed), dynamic-persistence (ECCO), and climate-forecast (SEAS5) models. For each example location (labeled in Figure 1a), the SD (cm), ACC, and RMSE (cm) metrics are indicated for the models and observations (SD only).

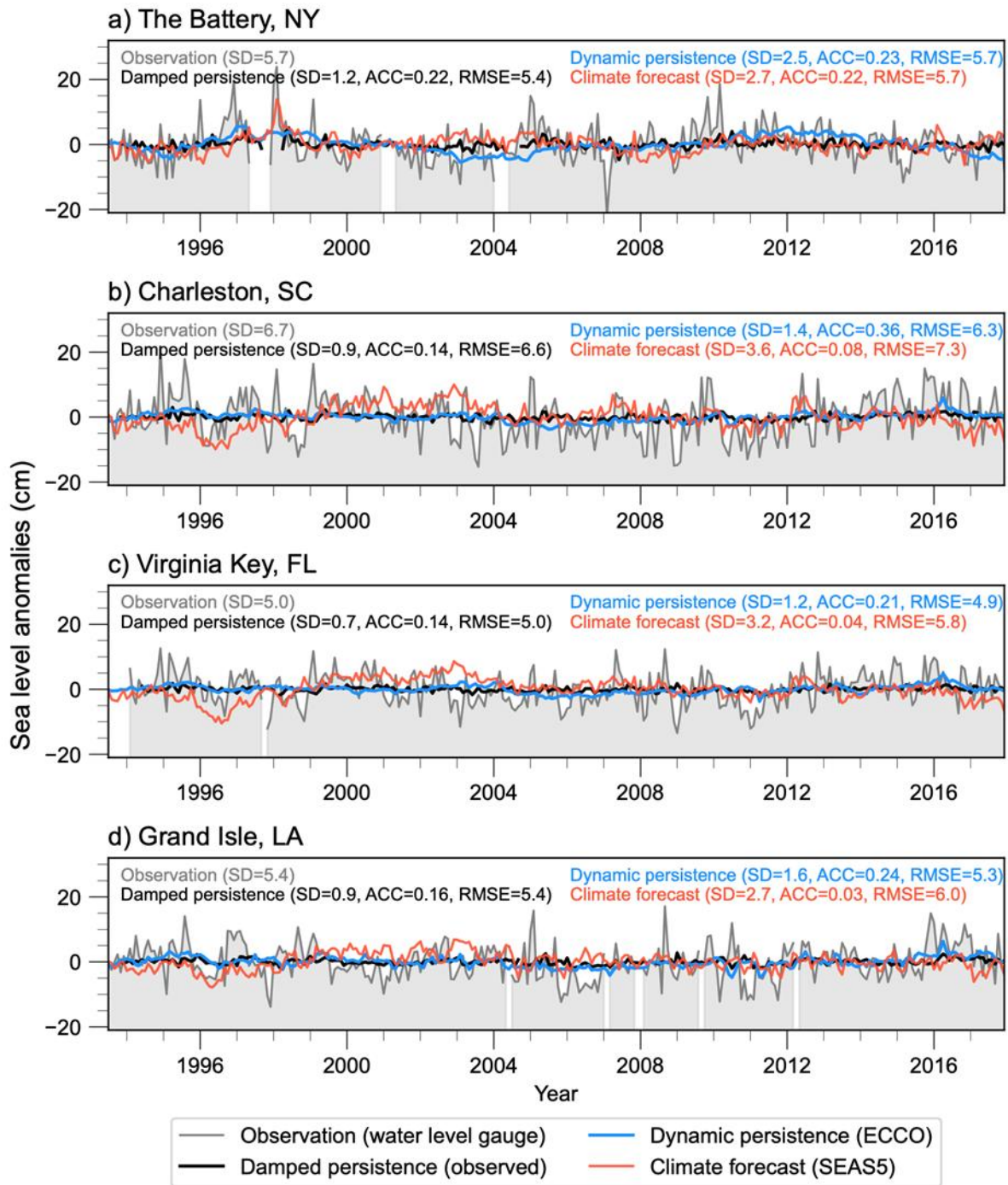


Figure 10. Same as Figure 9, but for the lead-4 month.

4 Summary and discussion

320 This study indicates the potential of using ocean-dynamic persistence to improve seasonal sea level forecasts for the U.S. Gulf and East Coasts, particularly south of Cape Hatteras. By assessing initialized ocean conditions from the ECCO framework that were run forward dynamically under climatological atmospheric conditions, we showed that dynamic persistence achieves higher forecast skill overall compared to damped persistence. Dynamic persistence also performs similar or better than the SEAS5 climate forecast nearly everywhere that we assessed. Notably, the dynamic-persistence
325 model outperforms the other models at the lead-4 month, with higher ACC values at most locations along the Southeast and Gulf Coasts (Figure 6a). Despite showing minimal improvement in RMSE, dynamic persistence exhibits similar or better skill according to this metric at longer lead times than damped persistence (e.g., at the lead-4 month; Figure 6b), and both of those models perform better than the much more sophisticated SEAS5 model (Figure 6d).

330 Better performance of dynamic persistence compared to damped persistence can be attributed to the ocean's ability to retain the memory of initial conditions, particularly through its high thermal inertia as well as processes such as Rossby waves and horizontal advection, which can influence sea levels over time. This is especially relevant along the Southeast Coast, where delayed oceanic responses to remote forcings are an opportunity to improve forecast skills (Calafat et al., 2018; Frederikse et al., 2022). However, the dynamic-persistence forecast only captures seasonally-predicable forcings on the ocean, thereby
335 simulating how oceanic initial conditions evolve according to a climatological atmosphere. As a result, sea level variability predicted by dynamic persistence tends to be much weaker compared to what is observed in the real ocean forced by actual atmospheric conditions. The climatological atmospheric forcing used in the dynamic-persistence forecast tends to restore the ocean toward a seasonally steady state, while friction and mixing gradually dissipate existing sea level anomalies, resulting in reduced sea level variability over time (Sérazin et al., 2014). ECCO's coarse resolution (nominally 1°) may also contribute
340 to its weak variability at all leads, and there is emerging evidence that much higher resolution (i.e., finer than 0.25°) is probably necessary to well resolve sea levels along the Gulf and East Coasts (Feng et al., 2024; Little et al., 2024). Our attempt to scale the dynamic-persistence forecast by its SD did not yield better skill according to the RMSE metric.

Differences between dynamic persistence and damped persistence are less pronounced along the Northeast Coast, which is
345 likely due to the relatively poor initial conditions of the former model, as evidenced by the rather low ACC at the lead-0 month for ECCO V4r4 (Figure 7a). Interestingly, when we compare the dynamic-persistence forecast to an experiment using damped persistence of the ECCO state estimate (instead of observations), much higher skills for dynamic persistence are evident along the Northeast Coast at the lead-1 and 4 months (Figure 8), which points to an opportunity of improving initial conditions as a way toward better forecasts. Yet even at The Battery location on the Northeast Coast, dynamic
350 persistence exhibits clearly higher ACC values after the lead-4 month compared to the other models (Figure 7a), which could

be due to the propagation of remote signals improving the skill of dynamic persistence over time (at least compared to damped persistence).

While for short lead times the SEAS5 climate forecast has ACC values comparable with the other models (i.e., at the lead-1 month; Figure 34e), and for at least several months longer in some open-ocean regions (Figure 3f), its performance declines rapidly at the coastal locations considered here. The mediocre initial conditions from ORAS5 near the coast (Figure 2; see also Feng et al., 2024), coupled with the limited predictability of atmospheric variability at seasonal timescales (Lee et al., 2023; Newman et al., 2003), may contribute to SEAS5's lower skill compared to damped persistence and dynamic persistence at the lead-4 month for the Gulf and East Coasts (e.g., Figure 6). The upcoming release of SEAS6, which incorporates data assimilation improvements in coastal areas from the ORAS6 reanalysis (Zuo et al., 2024), may address limitations relating to initial conditions. Plans are also underway to further quantify the role of the ocean observing system in the performance of current subseasonal-to-seasonal forecasting systems (Fujii et al., 2023), which should help to identify aspects of the coastal environment that are most important to assimilate well. For now, this study suggests that dynamic persistence is an alternative and probably better-performing option, compared to the SEAS5 climate model example, for sea level forecasting on some coasts like the regions we assessed. Despite the coarser resolution of the ECCO framework, dynamic persistence seems to capture essential sources of ocean predictability that SEAS5 struggles with, particularly along the Southeast Coast.

Although dynamic persistence shows promise, application in its current form for operational forecasting such as NOAA's monthly high-tide flooding outlook is hindered by its weak variability, which manifests in an inability to predict extreme sea level events. Furthermore, it remains to be tested whether implementing sea level anomalies from the dynamic-persistence forecast will improve the high-tide flooding outlook. It is perceivable that concerns about the utility of dynamic persistence in predicting high-tide flooding could be mitigated by improving the model, such as through better initial conditions (i.e., data assimilation improvements) and more realistic physics (i.e., increasing the resolution). Forecast models could also be made more accurate for predicting the coastal sea levels by including the IB effect (Albers et al., 2025). Nonetheless, utilizing the dynamic persistence of ECCO or probably other ocean models having realistic initial conditions, would set a higher benchmark than damped persistence and offer a more robust foundation for evaluating the performance of future seasonal forecasting systems. We hope this study encourages further evaluation of dynamic persistence as a new baseline for improving seasonal forecasts of sea levels and potentially other aspects of ocean variability.

Data availability

Water level gauge observations are available from the NOAA Tides and Currents Archive via the CO-OPS Data Retrieval API (<https://api.tidesandcurrents.noaa.gov/api/prod/>). Altimetry observations are available from the E.U. Copernicus Marine

Service (https://data.marine.copernicus.eu/product/SEALEVEL_GLO_PHY_CLIMATE_L4_MY_008_057/). ORAS5 and SEAS5 are available at <https://cds.climate.copernicus.eu/>. ECCO State Estimate is available at <https://podaac.jpl.nasa.gov/ECCO>. ECCO dynamic persistence experiments are available at https://ecco.jpl.nasa.gov/drive/files/Version4/Release4/other/flux-forced/Dyn_Persistence_Forecast.

Author contribution

XF, MW, and TL conceived the study. XF performed the analysis and produced the figures. XF, OW, MB, and HZ contributed to the data curation. XF and MW wrote the original draft. All coauthors reviewed the results and improved the writing.

Competing interests

The authors declare that they have no conflict of interest.

Acknowledgments

The authors thank NASA-JPL and ECMWF for making their retrospective forecasts available. This study was primarily supported by the NOAA Climate Program Office’s Modelling, Analysis, Predictions, and Projections (MAPP) program through grant NA22OAR4310138. Part of this research was carried out at the Jet Propulsion Laboratory, California Institute of Technology, under a contract with the National Aeronautics and Space Administration (80NM0018D0004). A large-language model (ChatGPT 4o from OpenAI) was used to clarify the writing. This is IPRC publication X and SOEST contribution Y.

References

Albers, J. R., Newman, M., Balmaseda, M. A., Sweet, W., Wang, Y., and Xu, T.: Assessing Subseasonal Forecast Skill for Use in Predicting US Coastal Inundation Risk, EGU sphere [preprint], <https://doi.org/10.5194/egusphere-2025-897>, 2025.

Balmaseda, M. A., McAdam, R., Masina, S., Mayer, M., Senan, R., de Bosissés, E., and Gualdi, S.: Skill assessment of seasonal forecasts of ocean variables, *Front Mar Sci*, 11, <https://doi.org/10.3389/fmars.2024.1380545>, 2024.

Calafat, F. M., Wahl, T., Lindsten, F., Williams, J., and Frajka-Williams, E.: Coherent modulation of the sea-level annual cycle in the United States by Atlantic Rossby waves, *Nat Commun*, 9, 2571, <https://doi.org/10.1038/s41467-018-04898-y>, 2018.

Chelton, D. B. and Schlax, M. G.: Global observations of oceanic Rossby Waves, *Science* (1979), 272, 234–238, <https://doi.org/10.13053/CyS-18-3-2043>, 1996.

- 410 Dangendorf, S., Hendricks, N., Sun, Q., Klinck, J., Ezer, T., Frederikse, T., Calafat, F. M., Wahl, T., and Törnqvist, T. E.: Acceleration of U.S. Southeast and Gulf coast sea-level rise amplified by internal climate variability, *Nat Commun*, 14, 1935, <https://doi.org/10.1038/s41467-023-37649-9>, 2023.
- Deser, C., Alexander, M. A., and Timlin, M. S.: Understanding the persistence of sea surface temperature anomalies in midlatitudes, *J Clim*, 16, [https://doi.org/10.1175/1520-0442\(2003\)016<0057:UTPOSS>2.0.CO;2](https://doi.org/10.1175/1520-0442(2003)016<0057:UTPOSS>2.0.CO;2), 2003.
- 415 Dusek, G., Sweet, W. V., Widlansky, M. J., Thompson, P. R., and Marra, J. J.: A novel statistical approach to predict seasonal high tide flooding, *Front Mar Sci*, 9, <https://doi.org/10.3389/fmars.2022.1073792>, 2022.
- Feng, X., Widlansky, M. J., Balmaseda, M. A., Zuo, H., Spillman, C. M., Smith, G., Long, X., Thompson, P., Kumar, A., Dusek, G., and Sweet, W.: Improved capabilities of global ocean reanalyses for analysing sea level variability near the Atlantic and Gulf of Mexico Coastal U.S., *Front Mar Sci*, 11, 1–21, <https://doi.org/10.3389/fmars.2024.1338626>, 2024.
- 420 Forget, G., Campin, J. M., Heimbach, P., Hill, C. N., Ponte, R. M., and Wunsch, C.: ECCO version 4: An integrated framework for non-linear inverse modeling and global ocean state estimation, *Geosci Model Dev*, 8, 3071–3104, <https://doi.org/10.5194/GMD-8-3071-2015>, 2015.
- Frankignoul, C. and Hasselmann, K.: Stochastic climate models, Part II Application to sea-surface temperature anomalies and thermocline variability, *Tellus*, 29, 289–305, <https://doi.org/10.1111/j.2153-3490.1977.tb00740.x>, 1977.
- 425 Frederikse, T., Simon, K., Katsman, C. A., and Riva, R.: The sea-level budget along the Northwest Atlantic coast: GIA, mass changes, and large-scale ocean dynamics, *J Geophys Res Oceans*, 122, <https://doi.org/10.1002/2017JC012699>, 2017.
- Frederikse, T., Lee, T., Wang, O., Kirtman, B., Becker, E., Hamlington, B., Limonadi, D., and Waliser, D.: A Hybrid Dynamical Approach for Seasonal Prediction of Sea-Level Anomalies: A Pilot Study for Charleston, South Carolina, *J Geophys Res Oceans*, 127, <https://doi.org/10.1029/2021JC018137>, 2022.
- 430 Fujii, Y., Balmaseda, M., and Remy, E.: SynObs Flagship OSEs Guideline Version 1, published from the OceanPredict website, https://oceanpredict.org/docs/Documents/SynObs/SynObs_FlagshipOSE_Guideline_Ver1.pdf, 2023.
- Hasselmann, K.: Stochastic climate models Part I. Theory, *Tellus*, 28, 473–485, <https://doi.org/10.1111/j.2153-3490.1976.tb00696.x>, 1976.
- Hersbach, H., Bell, B., Berrisford, P., Biavati, G., Horányi, A., Muñoz Sabater, J., Nicolas, J., Peubey, C., Radu, R., Rozum, I., Schepers, D., Simmons, A., Soci, C., Dee, D., Thépaut, J.-N.: ERA5 monthly averaged data on single levels from 1940 to present. Copernicus Climate Change Service (C3S) Climate Data Store (CDS), DOI: 10.24381/cds.f17050d7, 2023.
- 435 Johnson, S. J., Stockdale, T. N., Ferranti, L., Balmaseda, M. A., Molteni, F., Magnusson, L., Tietsche, S., Decremmer, D., Weisheimer, A., Balsamo, G., Keeley, S. P. E., Mogensen, K., Zuo, H., and Monge-Sanz, B. M.: SEAS5: The new ECMWF seasonal forecast system, *Geosci Model Dev*, 12, <https://doi.org/10.5194/gmd-12-1087-2019>, 2019.
- 440 Lee, C. C., Sheridan, S. C., Dusek, G. P., and Pirhalla, D. E.: Atmospheric Pattern–Based Predictions of S2S Sea Level Anomalies for Two Selected U.S. Locations, *Artificial Intelligence for the Earth Systems*, 2, <https://doi.org/10.1175/AIES-D-22-0057.1>, 2023.

- Little, C. M., Yeager, S. G., Ponte, R. M., Chang, P., and Kim, W. M.: Influence of Ocean Model Horizontal Resolution on the Representation of Global Annual-To-Multidecadal Coastal Sea Level Variability, *J Geophys Res Oceans*, 129, e2024JC021679, <https://doi.org/10.1029/2024JC021679>, 2024.
- Long, X., Widlansky, M. J., Spillman, C. M., Kumar, A., Balmaseda, M., Thompson, P. R., Chikamoto, Y., Smith, G. A., Huang, B., Shin, C. S., Merrifield, M. A., Sweet, W. V., Leuliette, E., Annamalai, H. S., Marra, J. J., and Mitchum, G.: Seasonal Forecasting Skill of Sea-Level Anomalies in a Multi-Model Prediction Framework, *J Geophys Res Oceans*, 126, e2020JC017060, <https://doi.org/10.1029/2020JC017060>, 2021.
- Long, X., Newman, M., Shin, S.-I., Balmaseda, M., Callahan, J., Dusek, G., Jia, L., Kirtman, B., Krasting, J., Lee, C. C., Lee, T., Sweet, W., Wang, O., Wang, Y., and Widlansky, M. J.: Evaluating Current Statistical and Dynamical Forecasting Techniques for Seasonal Coastal Sea Level Prediction, *J Clim*, 38, 1477–1503, <https://doi.org/10.1175/JCLI-D-24-0214.1>, 2025.
- Meehl, G. A., Richter, J. H., Teng, H., Capotondi, A., Cobb, K., Doblas-Reyes, F., Donat, M. G., England, M. H., Fyfe, J. C., Han, W., Kim, H., Kirtman, B. P., Kushnir, Y., Lovenduski, N. S., Mann, M. E., Merryfield, W. J., Nieves, V., Pegion, K., Rosenbloom, N., Sanchez, S. C., Scaife, A. A., Smith, D., Subramanian, A. C., Sun, L., Thompson, D., Ummenhofer, C. C., and Xie, S.-P.: Initialized Earth System prediction from subseasonal to decadal timescales, *Nat Rev Earth Environ*, 2, 340–357, <https://doi.org/10.1038/s43017-021-00155-x>, 2021.
- Minobe, S., Terada, M., Qiu, B., and Schneider, N.: Western boundary sea level: A theory, rule of thumb, and application to climate models, *J Phys Oceanogr*, 47, 957–977, <https://doi.org/10.1175/JPO-D-16-0144.1>, 2017.
- Newman, M., Sardeshmukh, P. D., Winkler, C. R., and Whitaker, J. S.: A Study of Subseasonal Predictability, *Mon Weather Rev*, 131, 1715–1732, <https://doi.org/10.1175/2558.1>, 2003.
- Obarein, O. A., Lee, C. C., Smith, E. T., and Sheridan, S. C.: Evaluating Medium-Range Forecast Performance of Regional-Scale Circulation Patterns, *Weather Forecast*, 38, 1467–1480, <https://doi.org/10.1175/WAF-D-22-0149.1>, 2023.
- Roberts, C. D., Vitart, F., and Balmaseda, M. A.: Hemispheric Impact of North Atlantic SSTs in Subseasonal Forecasts, *Geophys Res Lett*, 48, e2020GL0911446, <https://doi.org/10.1029/2020GL091446>, 2021.
- Sérazin, G., Penduff, T., Grégorio, S., Barnier, B., Molines, J.-M., and Terray, L.: Intrinsic Variability of Sea Level from Global Ocean Simulations: Spatiotemporal Scales, *J Clim*, 28, 4279–4292, <https://doi.org/10.1175/jcli-d-14-00554.1>, 2014.
- Shi, H., Jin, F.-F., Wills, R. C. J., Jacox, M. G., Amaya, D. J., Black, B. A., Rykaczewski, R. R., Bograd, S. J., García-Reyes, M., and Sydeman, W. J.: Global decline in ocean memory over the 21st century, *Sci Adv*, 8, eabm3468, <https://doi.org/10.1126/sciadv.abm3468>, 2022.
- Wang, O., Lee, T., Piecuch, C. G., Fukumori, I., Fenty, I., Frederikse, T., Menemenlis, D., Ponte, R. M., and Zhang, H.: Local and Remote Forcing of Interannual Sea-Level Variability at Nantucket Island, *J Geophys Res Oceans*, 127, <https://doi.org/10.1029/2021JC018275>, 2022.

- Wang, O., Lee, T., Frederikse, T., Ponte, R. M., Fenty, I., Fukumori, I., and Hamlington, B. D.: What Forcing Mechanisms Affect the Interannual Sea Level Co-Variability Between the Northeast and Southeast Coasts of the United States?, *J Geophys Res Oceans*, 129, <https://doi.org/10.1029/2023JC019873>, 2024.
- 480 Widlansky, M. J., Marra, J. J., Chowdhury, M. R., Stephens, S. A., Miles, E. R., Fauchereau, N., Spillman, C. M., Smith, G., Beard, G., and Wells, J.: Multimodel ensemble sea level forecasts for tropical Pacific Islands, *J Appl Meteorol Climatol*, 56, 849–862, <https://doi.org/10.1175/JAMC-D-16-0284.1>, 2017.
- Widlansky, M. J., Long, X., Balmaseda, M. A., Spillman, C. M., Smith, G., Zuo, H., Yin, Y., Alves, O., and Kumar, A.: Quantifying the Benefits of Altimetry Assimilation in Seasonal Forecasts of the Upper Ocean, *J Geophys Res Oceans*, 128, <https://doi.org/10.1029/2022JC019342>, 2023.
- 485 Zhu, Y., Han, W., Alexander, M. A., and Shin, S.-I.: Interannual Sea Level Variability along the U.S. East Coast during the Satellite Altimetry Era: Local versus Remote Forcing, *J Clim*, 37, 21–39, <https://doi.org/10.1175/JCLI-D-23-0065.1>, 2024.
- Zuo, H., Balmaseda, M. A., Tietsche, S., Mogensen, K., and Mayer, M.: The ECMWF operational ensemble reanalysis–analysis system for ocean and sea ice: a description of the system and assessment, *Ocean Science*, 15, 779–808, <https://doi.org/10.5194/os-15-779-2019>, 2019.
- 490 Zuo, H., Balmaseda, M. A., de Boisseson, E., Browne, P., Chrust, M., Keeley, S., Mogensen, K., Pelletier, C., Rosnay, P. de, and Takakura, T.: ECMWF’s next ensemble reanalysis system for ocean and sea ice: ORAS6, *ECMWF Newsletter*, 30–36, <https://doi.org/10.21957/hzd5y821lk>, 2024.