

Tree Growth and Water-Use Efficiency at the Himalayan Fir Treeline and lower altitudes: Roles of Climate Warming and CO₂ Fertilization

Xing Pu^{1,2}, Lixin Lyu^{1,3*}

5 ¹State Key Laboratory of Vegetation and Environmental Change, Institute of Botany, Chinese Academy of Sciences, Beijing 100093, China

²Key Laboratory of Southwest China Wildlife Resources Conservation (Ministry of Education), China West Normal University, Nanchong 637009, Sichuan, China

³China National Botanical Garden, Beijing 100093, China

10 Correspondence to: Lixin Lyu (lixinlv@ibcas.ac.cn)

Abstract. Alpine forests are increasingly exposed to rising temperatures and intensified drought, potentially pushing species beyond their tolerance limits. However, the extent to which rising atmospheric CO₂ (C_a) can mitigate these stressors by enhancing tree intrinsic water-use efficiency (iWUE) remains unclear. We investigated the growth and physiological responses of Himalayan fir (*Abies spectabilis*) using basal area increment (BAI) and δ¹³C data to track ecophysiological processes over recent decades along an altitudinal gradient in regions with hydrologically distinct regions on the Tibetan Plateau. Significant growth increases were observed at all altitudes in wet regions, while negative growth trends were noted at lower altitudes in dry regions. Climate–growth correlation analysis revealed that growth is primarily constrained by growing season temperatures and spring moisture availability. Tree iWUE increased over time at all altitudes, with a stronger increase in wet regions. Tree growth at lower altitudes in dry stands was negatively related to iWUE, whereas BAI in wet regions was positively associated with iWUE during the post-1965 period. Structural equation modeling indicated that temperature was a key driver of BAI and iWUE at all altitudes in wet regions, while temperature had negative effects on BAI at lower altitudes in dry regions. These results suggest that elevated C_a and temperature can stimulate tree growth in high-altitude forests in wet regions, but the positive effects do not compensate for the negative impacts of reduced water availability at lower altitudes in dry regions. Warming-induced drought stress may thus emerge as a more significant driver of growth compared to increasing C_a levels in comparable alpine forests. Our findings provide critical insights for refining assumptions about CO₂ fertilization and climate change effects in ecophysiological models.

1 Introduction

Forests play a crucial role in regulating terrestrial carbon fluxes and influencing the rate of atmospheric CO₂ (C_a) increase (Bonan, 2008; Pan et al., 2024), despite facing various climatic and atmospheric changes. Studies have shown that rising C_a has contributed to greater tree growth, driven by the synergistic effects of warming and increased atmospheric CO₂ (Saurer et

设置格式[Lixin Lyu]: 字体: 倾斜

删除[Lixin Lyu]: elevatio

删除[Lixin Lyu]: warming and drying site

删除[Lixin Lyu]: elevation

删除[Lixin Lyu]: elevation

删除[Lixin Lyu]: elevation

删除[Lixin Lyu]: elevation

删除[Lixin Lyu]: . Leaf intercellular CO₂ (C_i) increased proportionally to C_a

删除[Lixin Lyu]: after 1965

删除[Lixin Lyu]: elevation

删除[Lixin Lyu]: elevation

删除[Lixin Lyu]: elevation

删除[Lixin Lyu]: elevation

删除[Lixin Lyu]: Martínez-Sancho et al., 2018; Silva et al., 2016; Qi et al., 2015;

al., 2014; [Qi et al., 2015](#); [Silva et al., 2016](#); [Martínez-Sancho et al., 2018](#); Guo et al., 2022). However, this potential growth benefit is often overshadowed by growth declines induced by warming-related stressors, particularly drought, which has overridden the effects of rising CO₂ in the past decade (Peñuelas et al., 2011; Silva and Anand, 2013; Van Der Sleen et al., 2015; Liu et al., 2024; Klesse et al., 2024). Understanding the long-term physiological and growth responses of trees to global changes remains a challenge, especially in climate-sensitive areas (Lindner et al., 2010; Charney et al., 2016; Shestakova et al., 2019; Olano et al., 2023; Sterck et al., 2024).

The Tibetan Plateau, which has experienced a rapid increase in annual mean air temperature at a rate of 0.26°C per decade over the past 40 years, is warming faster than the global average (Du, 2001). The forests of the Tibetan Plateau are particularly vulnerable to warming due to the amplified temperature increases at higher [altitudes](#) (Guo et al., 2018; [Sigdel et al., 2018](#); Mu et al., 2021b; Panthi et al., 2020). Although warmer temperatures have been linked to enhanced vegetation productivity ([Piao et al., 2014](#); Silva et al., 2016; [Huang et al., 2017](#)), climate warming increases atmospheric water demand, exacerbating drought stress on plants. Water availability may therefore become increasingly critical for Tibetan Plateau forests under continued warming and rising C_a (Liang et al., 2016b; Silva et al., 2016; Zhao et al., 2023). However, the long-term effects of these changes on tree physiology and growth in Tibetan Plateau forests, particularly in relation to the unprecedented rates of modern warming and increasing C_a, have not been adequately addressed ([Xu et al., 2013](#); [Wu et al., 2015](#); [Huang et al., 2017](#); [Panthi et al., 2020](#)).

Tree-ring records provide valuable insights into long-term physiological and growth changes ([Bräuning and Mantwill, 2004](#); McCarroll and Loader, 2004). The isotopic discrimination against ¹³C that occurs in leaves (i.e., diffusion and carboxylation fractionations) is reflected in the stable carbon isotope ratios (δ¹³C) of the organic matter produced in a given year. There is a well-established relationship between carbon isotopic discrimination and leaf physiology, such that δ¹³C is directly related to assimilation rates (A) and stomatal conductance (g_s), which together define intrinsic water-use efficiency (iWUE) as the ratio between the two processes (Farquhar et al., 1982; Farquhar et al., 1989). Global studies using tree-ring δ¹³C data have shown widespread increases in iWUE due to enhanced photosynthesis and carbon availability in response to rising C_a (Saurer et al., 2004; Wang et al., 2012; Keenan et al., 2013; [Peñuelas et al., 2013](#); Frank et al., 2015). However, climatic factors, such as temperature, and [precipitation](#), may also influence iWUE and reduce the potential CO₂ fertilization effects on radial growth (Frank et al., 2015; Guerrieri et al., 2019; Liu et al., 2019; Wang et al., 2020; Zhang et al., 2018). Furthermore, the spatial variability of climate warming and decreasing moisture availability may be more influential in driving tree growth than changes in C_a in cold mountain forests (Salzer et al., 2009). Recent studies have highlighted contrasting physiological strategies among plant species and [altitudes](#) in response to environmental changes ([Klein, 2014](#); Garcia-Forner et al., 2016; Martínez-Vilalta and Garcia-Forner, 2017; Fang et al., 2020; [Wang et al., 2020](#)). Therefore, differences in water-use efficiency and ecophysiological strategies across species and regions underscore the importance of shifting from global studies to more localized, species-specific approaches for assessing the long-term effects of warming temperatures and rising C_a ([Frank et al., 2015](#); [Martínez-Sancho et al., 2018](#); [Voltas et al., 2020](#)).

删除[Lixin Lyu]: elevation

删除[Lixin Lyu]: Fang and Zhang, 2019;

删除[Lixin Lyu]: ; Sigdel et al., 2018

删除[Lixin Lyu]: Huang et al., 2017;

删除[Lixin Lyu]: 2

删除[Lixin Lyu]: Huang et al., 2017; Panthi et al., 2020; Wu et al., 2015;

删除[Lixin Lyu]: ; Peñuelas et al., 2011

删除[Lixin Lyu]:

删除[treering]: and environmental

删除[treering]: , precipitation,

删除[treering]: nutrient availability

删除[Lixin Lyu]: elevation

删除[Lixin Lyu]: Wang et al., 2020;

删除[Lixin Lyu]: Klein, 2014;

删除[Lixin Lyu]: Voltas et al., 2020; Martínez-Sancho et al., 2018;

In this study, we present annually resolved iWUE and BAI data for Himalayan fir (*Abies spectabilis*), a widely distributed conifer species of the Tibetan Plateau. Although some studies have explored the relationship between iWUE and growth of Himalayan fir on the Tibetan Plateau (Huang et al., 2017; Panthi et al., 2020; Wang et al., 2020), they have typically focused on single locations. Here, we examine a broader set of stands distributed along altitudinal gradients and in both wet and dry regions of the Tibetan Plateau, aiming to identify the climatic conditions under which trees exhibit vulnerability. Our specific objectives are: (i) to explore whether rising C_a and climate changes have induced region-specific and altitude-specific changes in tree growth and physiological parameters; (ii) to determine the extent to which changes in climate and iWUE are related to radial growth in the study area; and (iii) to assess the physiological adjustments of trees to rising temperature and increased atmospheric CO_2 over the study period.

2 Materials and methods

2.1 Site conditions and tree species

The study was conducted in the southern and southeastern regions of the Xizang Province, located on the southern and southeastern Tibetan Plateau, characterized by a typical monsoon climate. The study sites spanned a broad range across the southern and southeastern Tibetan Plateau (Fig. 1). Meteorological data, including mean temperature and precipitation, were obtained from two meteorological stations of the China Meteorological Administration (Fig. 1) for the study period (1950s–2010s). Instrumental records showed a mean annual temperature of 0.23°C and an average total precipitation of 429 mm in Pali (wet region) recent decades, while the mean temperature is 2.7°C and the average total precipitation is only 282 mm in Dingri (dry region) recent decades (Fig. S1). Additionally, we retrieved climate data including monthly mean temperature, monthly precipitation and 3-month Standardized Precipitation-Evapotranspiration Index (SPEI) data from the Climate Research Unit (CRU, University of East Anglia) TS Version 4.01 from the climate explorer (<http://climexp.knmi.nl>). The SPEI were calculated based on the climate data from the CRU TS Version 4.01 with a spatial resolution of 0.5°× 0.5° over the period from 1900 to 2014. The regional mean values of SPEI were calculated over the grids within the region 27.75°–28.25°N, 88.75°–89.25°E for SYD, and the region 27.95°–28.45°N, 86.75°–87.25°E for DJ, respectively. The regional mean climate data reveal a significant warming trend in the study area over the past century, with the rate of temperature increase accelerating from 0.007 °C/yr (1901–1964) to 0.032 °C/yr (1965–2013) at the drier site (DJ) and from 0.008 °C/yr to 0.023 °C/yr at the wetter site (SYD) (Fig. S2a). In contrast, annual precipitation remained stable since 1901 (Fig. S2b), leading to an overall decline in SPEI at both sites (Fig. S2c).

Himalayan fir (*Abies spectabilis*) is a cold-tolerant species native to the high-altitude montane forests of the Himalayas. It has a wide altitudinal distribution ranging from 2,800 m a.s.l. to the upper treeline. The species is found across the central and western Himalayas, with a significant presence on the southwestern and southern Tibetan Plateau (Panthi et al., 2020).

设置格式[treering]: 字体: 倾斜

删除[Lixin Lyu]: elevatio

删除[Lixin Lyu]: elevation

删除[Lixin Lyu]: ,

设置格式[Lixin Lyu]: 字体: (默认) Times New Roman

设置格式[Lixin Lyu]: 字体: (默认) Times New Roman, (中文) MingLiU_HKSCS-ExtB

删除[Lixin Lyu]: to represent the water conditions of the studied forests

删除[Lixin Lyu]: CRU

删除[Lixin Lyu]: -

删除[Lixin Lyu]: -

设置格式[Lixin Lyu]: 字体: (默认) Times New Roman

设置格式[treering]: 字体: 倾斜

删除[Lixin Lyu]: elevation

删除[Lixin Lyu]: elevatio

删除[treering]: Liang et al., 2016b;

2.2 Field Sampling and Tree-Ring Width Chronologies

95 The tree-ring samples used in this study were collected from healthy Himalayan fir trees growing at altitudes ranging from 3,378 m to 4,557 m a.s.l. in the southern and southeastern Tibetan Plateau (Table S1; Fig. 1). These sites were undisturbed by human activities during the study period. Tree-ring increment cores were extracted from trees along an altitudinal gradient in both dry (Dingjie) and wet (Shangyadong) regions. The cores were air-dried indoors, mounted on wooden slats, and polished with progressively finer sandpaper up to 1000 grit until the tree-ring boundaries became clearly visible. Using a microscope, tree rings from each sample were crossdated by comparing ring patterns among samples. We measured tree-ring widths using a LINTAB 6 measuring system, with a resolution of 0.001 mm. Visual crossdating was verified with COFECHA software (Holmes and Kozinn, 1983). All crossdated ring widths were processed using ARSTAN software to standardize the ring-width series, employing a negative exponential or linear growth curve to remove non-climatic signals. The detrended index series were then merged using the biweight robust mean method to create a standard (STD) chronology for each forest stand. For each tree-ring value, tree-ring width was converted into basal area increment (BAI, cm² per year) using the following formula proposed by Phipps and Whiton (1988), assuming balanced growth for each round (1 year = 1 round, early and late): $BAI = \pi \times (R_n^2 - R_{n-1}^2)$. Where R is the radius of the tree, and n is the year of tree-ring formation. The raw basal area increment (BAI) series were used to assess long-term growth trends, as BAI is less susceptible to biological trends and provides a more direct measure of stem biomass compared to tree-ring width data (Franco and Fares, 2008; Martinez-Sancho et al., 2018; Yang et al., 2022b). To further minimize age-related effects, we excluded the early growth period from both trend analysis and isotope measurements. For climate-growth relationship analysis, we applied standard detrending procedures to BAI series using either a negative exponential or a linear function. The calculation and detrending of BAI was performed using the R package dplR (Bunn, 2008).

2.3 Stable Carbon Isotope ($\delta^{13}\text{C}$) and Intrinsic Water-Use Efficiency (iWUE)

115 Five cores from different trees were selected at each forest stand, ensuring clear and continuous ring boundaries with no missing rings. The annual rings from the five samples were pooled by year to produce a single composite isotope series for each forest stand (Table S2). The wood material was ground using a centrifugal mill to ensure homogeneity and efficiency in α -cellulose extraction. The α -cellulose was extracted from the annual tree rings following standard methods (Loader et al., 1997). To maximize homogeneity, the cellulose was treated in an ultrasound unit in a hot water bath (JY92-2D, Scientz Industry, Ningbo, China) to break down the cellulose (Laumer et al., 2009). The α -cellulose was then freeze-dried for 72 hours using a vacuum freeze dryer (Labconco Corporation, Kansas City, MO, USA) prior to isotope analysis. The $\delta^{13}\text{C}$ values were determined using an element analyzer (Flash EA 1112; Bremen, Germany) coupled with an isotope-ratio mass spectrometer (Delta-plus, Thermo Electron Corporation, Bremen, Germany) at the State Key Laboratory of Vegetation and Environmental Change, Institute of Botany, Chinese Academy of Sciences. The analytical errors (standard deviations) for the isotope measurements were less than 0.05‰ for $\delta^{13}\text{C}$. Calibration was performed using the International Atomic Energy

删除[Lixin Lyu]: elevation

删除[Lixin Lyu]: elevatio

删除[Lixin Lyu]:

Agency (IAEA) standards, USGS-24 (Graphite) and IAEA-CH3 (cellulose). All $\delta^{13}\text{C}$ values are expressed relative to their respective standards (Vienna Pee Dee Belemnite for carbon isotopes and Vienna Standard Mean Ocean Water for oxygen isotopes).

The formula used to calculate $\delta^{13}\text{C}$ is:

$$\delta^{13}\text{C} = \left[\left(\frac{R_{\text{sample}}}{R_{\text{standard}}} \right) - 1 \right] \times 1000\text{‰}, \quad (1)$$

Where R represents the ratio of ^{13}C to ^{12}C ; R_{sample} and R_{standard} are the R values of the samples and the standard, respectively.

To accurately obtain tree-ring $\delta^{13}\text{C}$, the climate change effect, i.e., the increasing trend of atmospheric CO_2 concentration, was removed. The atmospheric CO_2 concentration data was derived from a combination of the reconstructed values (period 1900-2003) using ice cores (McCarroll and Loader, 2004; Boucher et al., 2014) and the direct observations of CO_2 concentration for the period 2004-2013, which were obtained from the Mauna Loa Observatory of America (<http://www.esrl.noaa.gov/gmd/obop/mlo/>). The carbon isotope fractionation sequence in the tree rings was then calculated using the following equations (Farquhar et al., 1989):

$$\Delta^{13}\text{C} = \frac{\delta^{13}\text{C}_a - \delta^{13}\text{C}_p}{1 + \frac{\delta^{13}\text{C}_p}{1000}}, \quad (2)$$

Where $^{13}\text{C}_p$ and $^{13}\text{C}_a$ were ^{13}C values of plant photosynthetic products and atmospheric CO_2 , respectively. The ratio of C_i to C_a was calculated using:

$$\frac{C_i}{C_a} = \frac{\Delta^{13}\text{C} - a}{b - a}, \quad (3)$$

Where C_i and C_a represent the concentrations of CO_2 in the leaves and atmosphere, respectively. a and b are constants representing CO_2 isotope fractionation during stomatal diffusion (4.4‰) and RuBP enzyme carboxylation (27‰). $i\text{WUE}$ was then estimated using C_i and C_a following Ehleringer (1993):

$$i\text{WUE} = \frac{A}{g_s} = \frac{C_a - C_i}{1.6}, \quad (4)$$

Where 1.6 is the ratio of diffusivities of water and CO_2 in air.

2.4 Statistical Analyses

Linear trends for annual climatic variables and tree growth variables were calculated using least-squares regressions. The relationship between the C_i and C_a trends obtained from $\delta^{13}\text{C}$ and the three theoretical gas-exchange scenarios was quantified using root mean square error (RMSE) and mean absolute error (MAE) for each study site. Mann–Kendall trend tests were conducted to identify the most recent significant warming period (1965 to the present).

To quantify the relationships between climatic factors, intrinsic water-use efficiency ($i\text{WUE}$), and basal area increment (BAI) over the past four decades, we implemented a piecewise structural equation modeling (pSEM) approach. The analysis was

删除[Lixin Lyu]:

设置格式[Lixin Lyu]: 下标

删除[Lixin Lyu]:

2.4 Theoretical Gas-Exchange Scenarios

Under rising C_a , tree assimilation rates (A) are expected to increase, while stomatal conductance (g_s) is anticipated to decrease (Franks et al., 2013). Trees regulate their stomatal aperture to either maximize carbon gain (higher A) or minimize transpiration loss (lower g_s). The temporal trends of C_i/C_a , which reflect the relationship between carbon uptake and atmospheric CO_2 , were compared to three theoretical gas-exchange scenarios during CO_2 diffusion through stomata (Saurer et al., 2004). These scenarios differ in the degree to which C_i follows changes in C_a : (i) no change ($C_i = \text{constant}$), (ii) proportional changes ($C_i/C_a = \text{constant}$), or (iii) equal rate changes ($C_a - C_i = \text{constant}$). Scenario 1 assumes that C_i remains constant, indicating reduced C_i/C_a ratios due to strong stomatal closure. Scenario 2 reflects a proportional regulation of C_i by photosynthesis and stomatal conductance, maintaining a constant C_i/C_a ratio. Scenario 3 assumes that C_i follows the increase in C_a , resulting in a relatively weak stomatal response and an increasing C_i/C_a ratio (Frank et al., 2015; Voelker et al., 2016).

删除[Lixin Lyu]: 5

performed in R version 4.1 (R Core Team, 2022) using the *pSEM* package (Lefcheck, 2016), which enables the integration of mixed-effects models within an SEM framework. We used a linear mixed-effects modeling approach (Nakagawa and Schielzeth, 2013) to partition variance contributions (R^2) from both fixed effects and random effects on BAI and iWUE. This approach allowed us to assess direct and indirect pathways while accounting for potential hierarchical dependencies in the data. Model adequacy was evaluated using Fisher's C statistic, with a non-significant result ($p > 0.05$) indicating acceptable model fit (Shipley, 2009). This analytical framework provided a robust assessment of how climatic drivers influence tree growth both directly and indirectly through physiological adjustments in iWUE.

删除[Lixin Lyu]: &
设置格式[treering]: 上标

3 Results
3.1 Temporal Variability in BAI, iWUE, and Cellulose Stable Carbon Isotopes

The basal area increment (BAI) of Himalayan fir exhibited a significant increasing trend at the treeline in the dry region and at all altitudes in the wet region after 1965 (Fig. 2). In contrast, no significant trend was detected at the middle altitude, and a decreasing growth trend was observed at the lower altitudes in the dry region (Fig. 2b). Similarly, the intrinsic water-use efficiency (iWUE) of Himalayan fir increased significantly, with a steep rise after 1965 (Fig. 3b). The carbon isotopic composition ($\delta^{13}C$) of tree rings showed a clear decreasing trend over recent decades, reflecting the rising atmospheric CO₂ concentration (C_a) across all altitudes in both dry and wet regions (Fig. S3). Our results indicate that tree growth increased with the rising iWUE in wet regions, while the relationship between iWUE and growth shifted from a significant positive correlation to a negative correlation as altitude decreased in the dry regions (Fig. 4).

删除[treering]: Structural Equation Modeling (SEM) was used to assess the effects of climate factors and iWUE on BAI over the past 40 years. SEM models were fitted using the *psem* function in the *pSEM* package (Lefcheck, 2016) with R version 4.1 (R Core Team, 2022). A piecewise structural equation model (pSEM) was applied to evaluate the (R^2) contributions of key factors and random effects in BAI and iWUE using a linear mixed model structure (Nakagawa and Schielzeth, 2013). The overall goodness of the piecewise structural equation model was assessed using Fisher's C test, with statistical significance considered at $p > 0.05$.

设置格式[treering]: 字体: 倾斜

3.2 Climate Responses of BAI

The BAI of Himalayan fir exhibited region-specific climate sensitivity, with consistent responses observed in the wet region and varying responses along the altitude gradient in the dry region. In the wet region, tree growth showed a significant positive correlation with both the previous autumn temperature and the growing season (June to September) temperature at all altitudes (Fig. 5a). In the dry region, however, tree growth was positively correlated with the previous autumn and growing season temperature at the treeline, while a significant negative correlation was observed at lower altitudes (Fig. 5a). Additionally, tree growth in the wet region was positively correlated with spring precipitation, whereas in the dry region, spring precipitation was negatively correlated with tree growth at lower altitudes (Fig. 5b). The moisture-related variables (relative humidity and SPEI) exhibited generally negative correlations with tree growth in the wet region but positive correlations in the dry region, particularly at mid- and low-altitude stands (Fig. 5c, d). Notably, when BAI chronologies were constructed using all dated core samples, rather than only those selected for isotope analysis, the resulting climate response patterns remained consistent with the above findings (Fig. S4).

删除[Lixin Lyu]: elevation
删除[Lixin Lyu]: elevation
删除[Lixin Lyu]: elevation
删除[Lixin Lyu]: elevation
删除[Lixin Lyu]: 2
删除[Lixin Lyu]: elevation
删除[Lixin Lyu]: elevation
删除[Lixin Lyu]: elevation
删除[Lixin Lyu]: elevation
删除[Lixin Lyu]: elevation

3.3 Factors Regulating Changes in BAI

Multiple regression models identified **significant** contributions of temperature, precipitation/moisture availability, and iWUE to **interannual variations in** tree growth over the past decades (Fig. 6). In the **wet** region, **regression models identified** previous autumn temperature (Tgrs) and growing season temperature (Tpaut) **as the dominant explanatory variables for** radial growth **variability**, with **supplementary** contributions from iWUE and spring precipitation at lower **altitude sites** (Fig. 6). In the dry region, tree growth was primarily influenced by spring moisture availability and temperature (Fig. 6). **Overall, the climatic and physiological factors accounted for 25-58% of the observed growth variation, as quantified through piecewise structural equation modeling (pSEM) (Fig. 7, Table S3).** The pSEM **framework elucidated distinct mechanistic pathways governing basal area increment (BAI) across climatic zones. In the wet region, Tgrs emerged as the principal determinant of BAI (Fig. 7a), while iWUE exerted significant positive direct effects on BAI at lower altitudes (Fig. 7). Notably, Tgrs demonstrated a significant positive relationship with iWUE in these humid forests (Fig. 7). Dry region stands exhibited contrasting responses, with Tgrs and spring temperature (Tspr) showing significant negative associations with BAI at mid- and low-altitude sites. Conversely, positive growth responses to spring moisture availability (RHspr and Pspr) were observed at the treeline and middle altitudes (Fig. 7), highlighting water limitation as the primary growth constraint in these environments.**

4 Discussion

4.1 Tree Growth and Its Climatic Responses

Our study reveals a distinct pattern of tree growth across different regions and **altitudes** on the Tibetan Plateau, with a strong acceleration of growth in the wet region and at higher **altitudes** in the dry region, contrasting with decreasing growth trends at lower **altitudes** in the dry region. These results diverge from the widely observed global trend of declining tree growth and increased forest mortality due to high temperatures and drought, particularly in other parts of the world (Allen et al., 2010; Hartmann et al., 2018; Mirabel et al., 2023). While numerous studies have documented the detrimental effects of warming and drought on forest ecosystems, particularly in the northeastern Tibetan Plateau (Liang et al., 2016a; Wang et al., 2018), our findings suggest that the Tibetan Plateau, particularly in its southeastern and southern regions, is undergoing a phase of warming and humidification that has benefited tree growth (Shi et al., 2020; Mu et al., 2021a; Guo et al., 2022). The acceleration of growth in the wet regions aligns with the well-established finding that increased temperature can enhance tree productivity in humid climates (Liang et al., 2016b; Silva et al., 2016; Wang et al., 2023), which is further confirmed by our results showing a positive correlation between growth and growing season temperature. However, this contrasts with the negative or stable growth trends observed in the dry region, particularly at lower **altitudes**, where warming-induced drought stress appears to inhibit growth. Our study extends existing research by highlighting that tree growth in moisture-limited ecosystems (such as the dry regions) is more constrained by water availability than by warming.

删除[treering]: 4

删除[Lixin Lyu]: the

删除[Lixin Lyu]: 7

删除[Lixin Lyu]: wet

删除[Lixin Lyu]: the

删除[Lixin Lyu]: the

删除[Lixin Lyu]: explained

删除[Lixin Lyu]:

删除[Lixin Lyu]: most of

删除[Lixin Lyu]: the variation in tree

删除[Lixin Lyu]: additional

删除[Lixin Lyu]: elevation

删除[Lixin Lyu]: 7

删除[Lixin Lyu]: 7

删除[Lixin Lyu]:

删除[Lixin Lyu]: We concluded that these variables explained ...

删除[Lixin Lyu]: analysis

删除[Lixin Lyu]: indicated that

删除[Lixin Lyu]: was the critical factor affecting

删除[Lixin Lyu]: in the wet region

删除[Lixin Lyu]: 8

删除[Lixin Lyu]: .

删除[Lixin Lyu]: Additionally, a significant positive direct ...

删除[Lixin Lyu]: was observed

删除[Lixin Lyu]: elevation

删除[Lixin Lyu]: in the wet region

删除[Lixin Lyu]: 8

215 This reinforces the growing body of literature suggesting that CO₂ fertilization effects are more likely to occur in temperature-limited ecosystems (Körner, 2015), whereas moisture-limited regions are less responsive to increased C_a (Wu et al., 2015).

This research provides novel insights into how specific regional climatic shifts may lead to divergent growth responses in montane forests. In contrast to the increasing mortality rates and growth decline observed in other high-altitude forest systems globally (Linares and Camarero, 2012; Lévesque et al., 2014), our study suggests that areas undergoing warming and increased moisture availability could experience enhanced tree growth, provided drought stress remains manageable.

删除[Lixin Lyu]: , particularly warming and humidification,

删除[Lixin Lyu]: elevation

删除[Lixin Lyu]: Lévesque et al., 2014;

删除[Lixin Lyu]: &

4.2 Spatial heterogeneity of tree growth-iWUE relationships

225 Our findings reveal a consistent decline in $\delta^{13}\text{C}$ values in Himalayan fir, corresponding to a marked increase in intrinsic water-use efficiency (iWUE), particularly in mesic regions and at treeline sites in arid zones. This trend aligns with global observations of enhanced iWUE under rising atmospheric CO₂ (C_a) (Frank et al., 2015; Huang et al., 2017; Guerrieri et al., 2019). However, our results demonstrate greater complexity in the iWUE response of Himalayan fir than previously documented, with pronounced site- and altitude-specific variability. Specifically, at the mid- and low-altitude sites in arid region, limited moisture availability appears to constrain iWUE gains despite rising C_a, whereas the forest stands with more moisture availability, including wet sites and the treeline site of the drier region, exhibit more pronounced iWUE increases. These findings provide a physiological framework for understanding how trees adjust water-use strategies under concurrent increases in CO₂ and temperature.

230 While elevated C_a is frequently associated with enhanced photosynthesis and iWUE (Cole et al., 2020; Brien et al., 2011; Saurer et al., 2014), the observed increase in intrinsic water-use efficiency (iWUE) does not necessarily correspond to enhanced radial growth, as evidenced by the non-significant relationship between basal area increment (BAI) and iWUE (Andreu-Hayles et al., 2011; Girardin et al., 2016; Reed et al., 2018), particularly in the dry regions (Peñuelas et al., 2011; Franks et al., 2013; Silva and Anand, 2013; Peters et al., 2018). This pattern suggests a drought-tolerance strategy that optimizes the trade-off between transpiration and carbon assimilation, highlighting the importance of local-scale ecophysiological adaptations to climate change (Aranda et al., 2000; Hereş et al., 2014; Panthi et al., 2020). The negative correlation between BAI and iWUE at the low-altitude stands in the dry region supports the idea that drought stress can offset the benefits of CO₂ fertilization (Granda et al., 2014; Fang et al., 2020). Moreover, previous investigations have revealed altitudinal divergence in the physiological mechanisms driving iWUE enhancement: while treeline populations primarily achieved increased iWUE through photosynthetic enhancement, populations at lower elevations predominantly relied on stomatal conductance reduction (Pu and Lyu, 2023). In this study, divergent intercellular CO₂ concentrations (C_i) across sites suggest plasticity in leaf gas exchange (Fig. S5), demonstrating that trees actively regulate physiological traits in response to rising C_a, rather than responding passively (Ainsworth and Rogers, 2007; Walker et al., 2015; Voelker et al., 2016). These adjustments reflect an adaptive capacity to balance carbon gain with water conservation under changing climatic conditions.

250 These findings emphasize the need for meso- to local-scale investigations to unravel the interactive effects of C_a, temperature, and moisture on tree physiology. This is particularly critical in high-altitude ecosystems like the Himalayas, where climatic gradients create complex, non-linear responses in tree growth and iWUE (Körner, 2003; Salzer et al., 2009). Future research should prioritize mechanistic models that integrate these spatial and temporal variations to improve predictions of forest dynamics under climate change.

删除[Lixin Lyu]: Our results show that Himalayan fir exhibited a consistent decrease in $\delta^{13}\text{C}$ values, leading to a significant increase in iWUE, particularly in the wet region and at the treeline in the dry region. These findings provide a clear physiological signature of how trees are adjusting the

设置格式[Lixin Lyu]: 英语(美国)

255 **5 Conclusions**

In summary, our study provides novel insights into the ecophysiological and growth responses of Himalayan fir to climate change on the Tibetan Plateau. By examining the effects of rising atmospheric CO₂, temperature, and drought across different regions and altitudes, we have shown that climate change has diverse effects on tree growth, with moisture availability being a critical limiting factor at lower altitudes. Our findings underscore the importance of considering spatial and regional differences when assessing the impacts of climate change on forest ecosystems, and highlight the complex interactions between temperature, moisture, and CO₂ in shaping tree growth patterns. These insights are crucial for refining our understanding of forest dynamics and carbon cycling in montane ecosystems, and for predicting the future trajectory of high-altitude forests under climate change.

设置格式[Lixin Lyu]: 字体: (中文) 黑体, 英语(美国), (中文) 中文(简体)

设置格式[Lixin Lyu]: 字体: (中文) 黑体, 英语(美国), (中文) 中文(简体)

设置格式[Lixin Lyu]: 字体: (中文) 黑体, (中文) 中文(简体)

设置格式[Lixin Lyu]: 字体: (中文) 黑体, 英语(美国), (中文) 中文(简体)

260 **Author contribution**

L.L. acquired the funding and designed the study. X.P. processed the tree-ring samples, conducted the analysis and wrote the first draft. L.L. and X.P. interpreted the results, revised the manuscript, and contributed to writing. Both authors reviewed and approved the final submission.

删除[Lixin Lyu]:

删除[Lixin Lyu]: elevation

删除[Lixin Lyu]: elevation

删除[Lixin Lyu]: elevation

265 **Acknowledgments**

This research was funded by the Natural Science Foundation of China (42271074) and the Doctoral Scientific Research Foundation of China West Normal University (412999). We are grateful to Qi-Bin Zhang for his supervision on the research. We also want to thank Hongyan Qiu for her kind assistance on the crossdating of the tree-ring samples.

Declaration of competing interest

270 The authors declare no competing interests.

Data availability

Data will be made available on request.

References

275 Ainsworth, E. A. and Rogers, A.: The response of photosynthesis and stomatal conductance to rising CO₂: mechanisms and environmental interactions, *Plant Cell Environ*, 30, 258-270, <https://doi.org/10.1111/j.1365-3040.2007.01641.x>, 2007.

Allen, C. D., Macalady, A. K., Chenchouni, H., Bachelet, D., McDowell, N., Vennetier, M., Kitzberger, T., Rigling, A., Breshears, D. D., Hogg, E. H., Gonzalez, P., Fensham, R., Zhang, Z., Castro, J., Demidova, N., Lim, J. H., Allard, G., Running, S. W., Semerci, A., and Cobb, N.: A global overview of drought and heat-induced tree mortality reveals emerging climate change risks for forests, *Forest Ecol. and Manag.*, 259, 660-684, <https://doi.org/10.1016/j.foreco.2009.09.001>, 2010.

280 Andreu-Hayles, L., Planells, O., Gutierrez, E., Muntan, E., Helle, G., Anchukaitis, K. J., and Schleser, G. H.: Long tree-ring chronologies reveal 20th century increases in water-use efficiency but no enhancement of tree growth at five Iberian pine forests, *Global Change Biol*, 17, 2095-2112, <https://doi.org/10.1111/j.1365-2486.2010.02373.x>, 2011.

Aranda, I., Gil, L., and Pardos, J. A.: Water relations and gas exchange in *Fagus sylvatica* L. and *Quercus petraea* (Mattuschka) Liebl. in a mixed stand at their southern limit of distribution in Europe, *Trees-Struct Funct*, 14, 344-352, <https://doi.org/10.1007/s004680050229>, 2000.

285 Bonan, G. B.: Forests and climate change: Forcings, feedbacks, and the climate benefits of forests, *Science*, 320, 1444-1449, <https://doi.org/10.1126/science.1155121>, 2008.

Bräuning, A. and Mantwill, B.: Summer temperature and summer monsoon history on the Tibetan plateau during the last 400 years recorded by tree rings, *Geophys Res Lett*, 31, L24205, <https://doi.org/10.1029/2004gl020793>, 2004.

290 Brien, R. J. W., Wanek, W., and Hietz, P.: Stable carbon isotopes in tree rings indicate improved water use efficiency and drought responses of a tropical dry forest tree species, *Trees-Struct Funct*, 25, 103-113, <https://doi.org/10.1007/s00468-010-0474-1>, 2011.

Bunn, A. G.: A dendrochronology program library in R (dplR), *Dendrochronologia*, 26, 115-124, <https://doi.org/10.1016/j.dendro.2008.01.002>, 2008.

295 Charney, N. D., Babst, F., Poulter, B., Record, S., Trouet, V. M., Frank, D., Enquist, B. J., and Evans, M. E.: Observed forest sensitivity to climate implies large changes in 21st century North American forest growth, *Ecol Lett*, 19, 1119-1128, <https://doi.org/10.1111/ele.12650>, 2016.

Cole, C. T., Anderson, J. E., Lindroth, R. L., and Waller, D. M.: Rising concentrations of atmospheric CO₂ have increased growth in natural stands of quaking aspen (*Populus tremuloides*), *Global Change Biology*, 16, 2186-2197, <https://doi.org/10.1111/j.1365-2486.2009.02103.x>, 2010.

300

删除[Lixin Lyu]: ogy

删除[Lixin Lyu]: ement

设置格式[Lixin Lyu]: 字体: 倾斜

设置格式[Lixin Lyu]: 字体: 倾斜

删除[Lixin Lyu]:

删除[Lixin Lyu]: DOI 10.1007/s004680050229

删除[Lixin Lyu]: Becklin, K. M., Walker, S. M., 2nd, Way, D. A., and Ward, J. K.: CO₂ studies remain key to understanding a future world, *New Phytologist*, 214, 34-40, , 2017.

删除[Lixin Lyu]: Artn

删除[Lixin Lyu]: Cailleret, M., Jansen, S., Robert, E. M., Desoto, L., Aakala, T., Antos, J. A., Beikircher, B., Bigler, C., Bugmann, H., Caccianiga, M., Cada, V., Camarero, J. J., Cherubini, P., Cochard, H., Coyea, M. R., Cufar, K., Das, A. J., Davi, H., Delzon, S., Dorman, M., Gea-Izquierdo, G., Gill ...

设置格式[Lixin Lyu]: 上标

删除[Lixin Lyu]: Chen, Z. J., Zhang, X. L., He, X. Y., Davi, N. K., Li, L. L., and Bai, X. P.: Response of radial growth to warming and CO₂ enrichment in southern Northeast China: a case of *Pinus tabulaeformis*, *Climatic Change*, 130, 559-571, , 2015.

设置格式[Lixin Lyu]: 下标

设置格式[Lixin Lyu]: 字体: 倾斜

设置格式[Lixin Lyu]: 下标

设置格式[Lixin Lyu]: 字体: 倾斜

Fang, O., Qiu, H., and Zhang, Q.-B.: Species-specific drought resilience in juniper and fir forests in the central Himalayas, Ecological Indicators, 117, 106615, <https://doi.org/10.1016/j.ecolind.2020.106615>, 2020.

Farquhar, G. D., Ehleringer, J. R., and Hubick, K. T.: Carbon Isotope Discrimination and Photosynthesis, Annu Rev Plant Phys, 40, 503-537, <https://doi.org/10.1146/annurev.pp.40.060189.002443>, 1989.

Farquhar, G. D., O'Leary, M. H., and Berry, J. A.: On the Relationship between Carbon Isotope Discrimination and the Inter-Cellular Carbon-Dioxide Concentration in Leaves, Aust J Plant Physiol, 9, 121-137, <https://doi.org/10.1071/PP9820121>, 1982.

Frank, D. C., Poulter, B., Saurer, M., Esper, J., Huntingford, C., Helle, G., Treydte, K., Zimmermann, N. E., Schleser, G. H., Ahlstrom, A., Ciais, P., Friedlingstein, P., Levis, S., Lomas, M., Sitch, S., Viovy, N., Andreu-Hayles, L., Bednarz, Z., Berninger, F., Boettger, T., D'Alessandro, C. M., Daux, V., Filot, M., Grabner, M., Gutierrez, E., Haupt, M., Hiltunen, E., Jungner, H., Kalela-Brundin, M., Krapiec, M., Leuenberger, M., Loader, N. J., Marah, H., Masson-Delmotte, V., Pazdur, A., Pawelczyk, S., Pierre, M., Planells, O., Pukiene, R., Reynolds-Henne, C. E., Rinne, K. T., Saracino, A., Sonninen, E., Stievenard, M., Switsur, V. R., Szczepanek, M., Szychowska-Krapiec, E., Todaro, L., Waterhouse, J. S., and Weigl, M.: Water-use efficiency and transpiration across European forests during the Anthropocene, Nat Clim Change, 5, 579-583, <https://doi.org/10.1038/nclimate2614>, 2015.

Franks, P. J., Adams, M. A., Amthor, J. S., Barbour, M. M., Berry, J. A., Ellsworth, D. S., Farquhar, G. D., Ghannoum, O., Lloyd, J., McDowell, N., Norby, R. J., Tissue, D. T., and von Caemmerer, S.: Sensitivity of plants to changing atmospheric CO₂ concentration: from the geological past to the next century, New Phytologist, 197, 1077-1094, <https://doi.org/10.1111/nph.12104>, 2013.

Garcia-Forner, N., Adams, H. D., Sevanto, S., Collins, A. D., Dickman, L. T., Hudson, P. J., Zeppel, M. J., Jenkins, M. W., Powers, H., Martinez-Vilalta, J., and McDowell, N. G.: Responses of two semiarid conifer tree species to reduced precipitation and warming reveal new perspectives for stomatal regulation, Plant Cell Environ, 39, 38-49, <https://doi.org/10.1111/pce.12588>, 2016.

Girardin, M. P., Bouriaud, O., Hogg, E. H., Kurz, W., Zimmermann, N. E., Metsaranta, J. M., de Jong, R., Frank, D. C., Esper, J., Buntgen, U., Guo, X. J., and Bhatti, J.: No growth stimulation of Canada's boreal forest under half-century of combined warming and CO₂ fertilization, P Natl Acad Sci USA, 113, E8406-E8414, <https://doi.org/10.1073/pnas.1610156113>, 2016.

Granda, E., Rossatto, D. R., Camarero, J. J., Voltas, J., and Valladares, F.: Growth and carbon isotopes of Mediterranean trees reveal contrasting responses to increased carbon dioxide and drought, Oecologia, 174, 307-317, <https://doi.org/10.1007/s00442-013-2742-4>, 2014.

Guerrieri, R., Belmecheri, S., Ollinger, S. V., Asbjornsen, H., Jennings, K., Xiao, J., Stocker, B. D., Martin, M., Hollinger, D. Y., Bracho-Garrillo, R., Clark, K., Dore, S., Kolb, T., Munger, J. W., Novick, K., and Richardson, A. D.: Disentangling the role of photosynthesis and stomatal conductance on rising forest water-use efficiency, P Natl Acad Sci USA, 116, 16909-16914, <https://doi.org/10.1073/pnas.1905912116>, 2019.

删除[Lixin Lyu]: Du, J.: Change of temperature in Tibetan Plateau from 1961 to 2000, Acta Geographica Sinica, 56, 682-690, 2001.

Fang, O. and Zhang, Q. B.: Tree resilience to drought increases in the Tibetan Plateau, Glob Chang Biol, 25, 245-253, , 2019.

删除[Lixin Lyu]: ,
<https://doi.org/10.1016/j.ecolind.2020.106615>

设置格式[Lixin Lyu]: 下划线, 字体颜色: 自动设置

设置格式[Lixin Lyu]: 无下划线, 字体颜色: 自动设置

设置格式[Lixin Lyu]: 字体颜色: 自动设置

删除[Lixin Lyu]: Giammarchi, F., Vacchiano, G., Bertagnolli, A., Ventura, M., Panzacchi, P., Cherubini, P., and Tonon, G.: Effects of the lack of forest management on spatiotemporal dynamics of a subalpine *Pinus cembra* forest, Scand J Forest Res, 32, 142-153, 2017.

设置格式[Lixin Lyu]: 字体: 倾斜

- Guo, M. M., Zhang, Y. D., Wang, X. C., Gu, F. X., and Liu, S. R.: The responses of dominant tree species to climate warming at the treeline on the eastern edge of the Tibetan Plateau, *Forest Ecol Manag*, 425, 21-26, <https://doi.org/10.1016/j.foreco.2018.05.021>, 2018.
- 340 Guo, Y., Zhang, L., Yang, L., Shen, W., Pan, Y., Wright, I. J., Luo, Y., and Luo, T.: Enhanced leaf turnover and nitrogen recycling sustain CO₂ fertilization effect on tree-ring growth, *Nature Ecology & Evolution*, 6, 1271-1278, <https://doi.org/10.1038/s41559-022-01811-1>, 2022. | 设置格式[Lixin Lyu]: 下标
- Hartmann, H., Moura, C. F., Anderegg, W. R. L., Ruehr, N. K., Salmon, Y., Allen, C. D., Arndt, S. K., Breshears, D. D., Davi, H., Galbraith, D., Ruthrof, K. X., Wunder, J., Adams, H. D., Bloemen, J., Cailleret, M., Cobb, R., Gessler, A., Grams, T. E. E., Jansen, S., Kautz, M., Lloret, F., and O'Brien, M.: Research frontiers for improving our understanding of drought-induced tree and forest mortality, *New Phytologist*, 218, 15-28, <https://doi.org/10.1111/nph.15048>, 2018.
- 345 Hereş, A. M., Voltas, J., Lopez, B. C., and Martinez-Vilalta, J.: Drought-induced mortality selectively affects Scots pine trees that show limited intrinsic water-use efficiency responsiveness to raising atmospheric CO₂, *Funct Plant Biol*, 41, 244-256, <https://doi.org/10.1071/Fp13067>, 2014.
- Holmes, R. L. and Kozinn, W. P.: Pneumonia and Bacteremia Associated with Hemophilus-Influenzae Serotype-D, *Journal of Clinical Microbiology*, 18, 730-732, <https://doi.org/10.1128/Jcm.18.3.730-732.1983>, 1983. | 删除[Lixin Lyu]: Doi 10.1128/Jcm.18.3.730-732.1983
- Huang, R., Zhu, H. F., Liu, X. H., Liang, E. Y., Griessinger, J., Wu, G. J., Li, X. X., and Brauning, A.: Does increasing intrinsic water use efficiency (iWUE) stimulate tree growth at natural alpine timberline on the southeastern Tibetan Plateau?, *Global Planet Change*, 148, 217-226, <https://doi.org/10.1016/j.gloplacha.2016.11.017>, 2017.
- Keenan, T. F., Hollinger, D. Y., Bohrer, G., Dragoni, D., Munger, J. W., Schmid, H. P., and Richardson, A. D.: Increase in forest water-use efficiency as atmospheric carbon dioxide concentrations rise, *Nature*, 499, 324-327, <https://doi.org/10.1038/nature12291>, 2013.
- 355 Klein, T.: The variability of stomatal sensitivity to leaf water potential across tree species indicates a continuum between isohydric and anisohydric behaviours, *Funct Ecol*, 28, 1313-1320, <https://doi.org/10.1111/1365-2435.12289>, 2014. | 删除[Lixin Lyu]: Keenan, T. F., Prentice, I. C., Canadell, J. G., Williams, C. A., Wang, H., Raupach, M., and Collatz, G. J.: Recent pause in the growth rate of atmospheric CO₂ due to enhanced terrestrial carbon uptake, *Nat Commun*, 7, 9, , 2016.
- 360 Klesse, S., Peters, Richard L., Alfaro-Sánchez, R., Badeau, V., Baittinger, C., Battipaglia, G., Bert, D., Biondi, F., Bosela, M., Budeanu, M., Čada, V., Camarero, J. J., Cavin, L., Claessens, H., Cretan, A.-M., Čufar, K., de Luis, M., Dorado-Liñán, I., Dulamsuren, C., Espelta, Josep M., Garamszegi, B., Grabner, M., Gricar, J., Hacket-Pain, A., Hansen, Jon K., Hartl, C., Hevia, A., Hobi, M., Janda, P., Jump, Alistair S., Kašpar, J., Kazimirović, M., Keren, S., Kreyling, J., Land, A., Latte, N., Lebourgeois, F., Leuschner, C., Lévesque, M., Longares, Luis A., del Castillo, Edurne M., Menzel, A., Merela, M., Mikoláš, M., Motta, R., Muffler, L., Neycken, A., Nola, P., Panayotov, M., Petritan, Any M., Petritan, Ion C., Popa, I., Prislan, P., Levanič, T., Roibu, C.-C., Rubio-Cuadrado, Á., Sánchez-Salguero, R., Šamonil, P., Stajić, B., Svoboda, M., Tognetti, R., Toromani, E., Trotsiuk, V., van der Maaten, E., van der Maaten-Theunissen, M., Vannoppen, A., Vašíčková, I., von Arx, G., Wilmking, M., Weigel, R., Zlatanov, T., Zang, C., and Buras, A.: No Future Growth Enhancement Expected at the Northern Edge for European Beech due to Continued Water Limitation, *Glob Chang Biol*, 30, e17546, <https://doi.org/10.1111/gcb.17546>, 2024. | 删除[Lixin Lyu]: al
| 删除[Lixin Lyu]: e
| 删除[Lixin Lyu]: ogy

370 Laumer, W., Andreu, L., Helle, G., Schleser, G. H., Wieloch, T., and Wissel, H.: A novel approach for the homogenization
of cellulose to use micro-amounts for stable isotope analyses, *Rapid Commun Mass Sp*, 23, 1934-1940,
<https://doi.org/10.1002/rcm.4105>, 2009.

Lefcheck, J. S.: PIECEWISESEM: Piecewise structural equation modelling in R for ecology, evolution, and systematics,
Methods in Ecology and Evolution, 7, 573-579, <https://doi.org/10.1111/2041-210X.12512>, 2016.

375 Lévesque, M., Siegwolf, R., Saurer, M., Eilmann, B., and Rigling, A.: Increased water-use efficiency does not lead to
enhanced tree growth under xeric and mesic conditions, *New Phytologist*, 203, 94-109,
<https://doi.org/10.1111/nph.12772>, 2014.

Liang, E., Leuschner, C., Dulamsuren, C., Wagner, B., and Hauck, M.: Global warming-related tree growth decline and
mortality on the north-eastern Tibetan plateau, *Climatic Change*, 134, 163-176, [https://doi.org/10.1007/s10584-015-](https://doi.org/10.1007/s10584-015-1531-y)
380 [1531-y](https://doi.org/10.1007/s10584-015-1531-y), 2016a.

Liang, E., Wang, Y., Piao, S., Lu, X., Camarero, J. J., Zhu, H., Zhu, L., Ellison, A. M., Ciais, P., and Penuelas, J.: Species
interactions slow warming-induced upward shifts of treelines on the Tibetan Plateau, *P Natl Acad Sci USA*, 113, 4380-
4385, <https://doi.org/10.1073/pnas.1520582113>, 2016b.

Linares, J. C. and Camarero, J. J.: From pattern to process: linking intrinsic water-use efficiency to drought-induced forest
385 decline, *Global Change Biol*, 18, 1000-1015, <https://doi.org/10.1111/j.1365-2486.2011.02566.x>, 2012.

Lindner, M., Maroschek, M., Netherer, S., Kremer, A., Barbati, A., Garcia-Gonzalo, J., Seidl, R., Delzon, S., Corona, P.,
Kolstrom, M., Lexer, M. J., and Marchetti, M.: Climate change impacts, adaptive capacity, and vulnerability of
European forest ecosystems, *Forest Ecol Manag*, 259, 698-709, <https://doi.org/10.1016/j.foreco.2009.09.023>, 2010.

Liu, M., Trugman, A., Penuelas, J., and Anderegg, W.: Climate-driven disturbances amplify forest drought sensitivity,
390 *Nature Climate Change*, 14, 746-752, <https://doi.org/10.1038/s41558-024-02022-1>, 2024.

Liu, X., Zhao, L., Voelker, S., Xu, G., Zeng, X., Zhang, X., Zhang, L., Sun, W., Zhang, Q., Wu, G., and Li, X.: Warming
and CO₂ enrichment modified the ecophysiological responses of Dahurian larch and Mongolia pine during the past
century in the permafrost of northeastern China, *Tree Physiol.*, 39, 88-103, <https://doi.org/10.1093/treephys/tpy060>,
2019.

395 Loader, N. J., Robertson, I., Barker, A. C., Switsur, V. R., and Waterhouse, J. S.: An improved technique for the batch
processing of small wholewood samples to alpha-cellulose, *Chemical Geology*, 136, 313-317,
[https://doi.org/10.1016/S0009-2541\(96\)00133-7](https://doi.org/10.1016/S0009-2541(96)00133-7), 1997.

Martínez-Sancho, E., Dorado-Linan, I., Merino, E. G., Matiu, M., Helle, G., Heinrich, I., and Menzel, A.: Increased water-
use efficiency translates into contrasting growth patterns of Scots pine and sessile oak at their southern distribution
400 limits, *Global Change Biol*, 24, 1012-1028, <https://doi.org/10.1111/gcb.13937>, 2018.

Martínez-Vilalta, J. and Garcia-Forner, N.: Water potential regulation, stomatal behaviour and hydraulic transport under
drought: deconstructing the iso/anisohydric concept, *Plant Cell Environ*, 40, 962-976, <https://doi.org/10.1111/pce.12846>,
2017.

删除[Lixin Lyu]: Koutavas, A.: CO₂ fertilization and
enhanced drought resistance in Greek firs from Cephalonia
Island, Greece, *Glob Chang Biol*, 19, 529-539, , 2013.

删除[Lixin Lyu]: Lavergne, A., Graven, H., De Kauwe, M. G.,
Keenan, T. F., Medlyn, B. E., and Prentice, I. C.: Observed
and modelled historical trends in the water-use efficiency of
plants and ecosystems, *Global Change Biol*, 25, 2242-2257, ,
2019.

删除[Lixin Lyu]: Liang, E. Y., Shao, X. M., and Xu, Y.:
Tree-ring evidence of recent abnormal warming on the
southeast Tibetan Plateau, *Theor Appl Climatol*, 98, 9-18, ,
2009.

删除[Lixin Lyu]: Liu, B., Wang, Y., Zhu, H., Liang, E., and
Camarero, J. J.: Topography and age mediate the growth
responses of Smith fir to climate warming in the southeastern
Tibetan Plateau, *Int J Biometeorol*, 60, 1577-1587, , 2016.

删除[Lixin Lyu]: Liu, X., Wang, W., Xu, G., Zeng, X., Wu,
G., Zhang, X., and Qin, D.: Tree growth and intrinsic water-
use efficiency of inland riparian forests in northwestern China:
evaluation via delta C-13 and delta O-18 analysis of tree rings,
Tree Physiol., 34, 966-980, , 2014.

设置格式[Lixin Lyu]: 下标

删除[Lixin Lyu]: Madrigal-González, J., Hantson, S., Yue, C.,
Poulter, B., Ciais, P., and Zavala, M. A.: Long-term Wood
Production in Water-Limited Forests: Evaluating Potential
CO₂ Fertilization Along with Historical Confounding Factors,
Ecosystems, 18, 1043-1055, , 2015.

McCarroll, D. and Loader, N. J.: Stable isotopes in tree rings, *Quaternary Sci Rev*, 23, 771-801, 405 <https://doi.org/10.1016/j.quascirev.2003.06.017>, 2004.

Mirabel, A., Girardin, M., Metsaranta, J., Way, D., and Reich, P.: Increasing atmospheric dryness reduces boreal forest tree growth, *Nature Communications*, 14, 6901, <https://doi.org/10.1038/s41467-023-42466-1>, 2023.

Mu, Y. M., Fang, O., and Lyu, L.: Nighttime warming alleviates the incidence of juniper forest growth decline on the Tibetan Plateau, *Science of the Total Environment*, 782, 146924, <https://doi.org/10.1016/j.scitotenv.2021.146924>, 410 2021a.

Mu, Y. M., Zhang, Q. B., Fang, O. Y., Lyu, L. X., and Cherubini, P.: Pervasive tree-growth reduction in Tibetan juniper forests, *Forest Ecol Manag*, 480, 118642, <https://doi.org/10.1016/j.foreco.2020.118642>, 2021b.

Nakagawa, S. and Schielzeth, H.: A general and simple method for obtaining R^2 from generalized linear mixed-effects models, *Methods in Ecology and Evolution*, 4, 133-142, <https://doi.org/10.1111/j.2041-210x.2012.00261.x>, 2013.

415 Olano, J., Sangüesa-Barreda, G., García-López, M., García-Hidalgo, M., Rozas, V., García-Cervigón, A., Delgado Huertas, A., and Hernández-Alonso, H.: Water use efficiency and climate legacies dominate beech growth at its rear edge, *Journal of Ecology*, 111, 2160–2171, <https://doi.org/10.1111/1365-2745.14164>, 2023.

Pan, Y. D., Birdsey, R. A., Phillips, O. L., Houghton, R. A., Fang, J. Y., Kauppi, P. E., Keith, H., Kurz, W. A., Ito, A., Lewis, S. L., Nabuurs, G. J., Shvidenko, A., Hashimoto, S., Lerink, B., Schepaschenko, D., Castanho, A., and Murdiyarso, D.: 420 The enduring world forest carbon sink, *Nature*, 631, 563–569, <https://doi.org/10.1038/s41586-024-07602-x>, 2024.

Panthi, S., Fan, Z.-X., van der Sleen, P., and Zuidema, P. A.: Long-term physiological and growth responses of Himalayan fir to environmental change are mediated by mean climate, *Global Change Biol*, 26, 1778-1794, <https://doi.org/10.1111/gcb.14910>, 2020.

Peñuelas, J., Canadell, J. G., and Ogaya, R.: Increased water-use efficiency during the 20th century did not translate into 425 enhanced tree growth, *Global Ecol Biogeogr*, 20, 597-608, <https://doi.org/10.1111/j.1466-8238.2010.00608.x>, 2011.

Peñuelas, J., Sardans, J., Estiarte, M., Ogaya, R., Carnicer, J., Coll, M., Barbeta, A., Rivas-Ubach, A., Llusia, J., Garbulsky, M., Filella, I., and Jump, A. S.: Evidence of current impact of climate change on life: a walk from genes to the biosphere, *Global Change Biol*, 19, 2303-2338, <https://doi.org/10.1111/gcb.12143>, 2013.

Peters, W., van der Velde, I. R., van Schaik, E., Miller, J. B., Ciais, P., Duarte, H. F., van der Laan-Luijkx, I. T., van der 430 Molen, M. K., Scholze, M., Schaefer, K., Vidale, P. L., Verhoef, A., Warlind, D., Zhu, D., Tans, P. P., Vaughn, B., and White, J. W. C.: Increased water-use efficiency and reduced CO₂ uptake by plants during droughts at a continental scale, *Nature Geoscience*, 11, 744-748, <https://doi.org/10.1038/s41561-018-0212-7>, 2018.

Piao, S., Nan, H., Huntingford, C., Ciais, P., Friedlingstein, P., Sitch, S., Peng, S., Ahlström, A., Canadell, J. G., Cong, N., 435 Levis, S., Levy, P. E., Liu, L., Lomas, M. R., Mao, J., Myneni, R. B., Peylin, P., Poulter, B., Shi, X., Yin, G., Viovy, N., Wang, T., Wang, X., Zaehle, S., Zeng, N., Zeng, Z., and Chen, A.: Evidence for a weakening relationship between interannual temperature variability and northern vegetation activity, *Nature Communications*, 5, 5018, <https://doi.org/10.1038/ncomms6018>, 2014.

设置格式[Lixin Lyu]: 上标

删除[Lixin Lyu]: Piao, S. L., Tan, K., Nan, H. J., Ciais, P., Fang, J. Y., Wang, T., Vuichard, N., and Zhu, B. A.: Impacts of climate and CO₂ changes on the vegetation growth and carbon balance of Qinghai-Tibetan grasslands over the past five decades, *Global Planet Change*, 98-99, 73-80, , 2012.

Pu, X. and Lyu, L.: Disentangling the impact of photosynthesis and stomatal conductance on rising water-use efficiency at different altitudes on the Tibetan plateau, *Agricultural and Forest Meteorology*, 341, 109659, <https://doi.org/10.1016/j.agrformet.2023.109659>, 2023.

Pu, X., Wang, X., and Lyu, L.: Recent warming-induced tree growth enhancement at the Tibetan treeline and the link to improved water-use efficiency, *Forests*, 12, 1702, <https://doi.org/10.3390/f12121702>, 2021.

Qi, Z. H., Liu, H. Y., Wu, X. C., and Hao, Q.: Climate-driven speedup of alpine treeline forest growth in the Tianshan Mountains, Northwestern China, *Global Change Biol*, 21, 816-826, <https://doi.org/10.1111/gcb.12703>, 2015.

R: A language and environment for statistical computing: <https://www.R-project.org>, last access: 2020-02-29.

Reed, C. C., Ballantyne, A. P., Cooper, L. A., and Sala, A.: Limited evidence for CO₂-related growth enhancement in northern Rocky Mountain lodgepole pine populations across climate gradients, *Glob Chang Biol*, 24, 3922-3937, <https://doi.org/10.1111/gcb.14165>, 2018.

Saurer, M., Siegwolf, R. T. W., and Schweingruber, F. H.: Carbon isotope discrimination indicates improving water-use efficiency of trees in northern Eurasia over the last 100 years, *Global Change Biol*, 10, 2109-2120, <https://doi.org/10.1111/j.1365-2486.2004.00869.x>, 2004.

Saurer, M., Spahni, R., Frank, D. C., Joos, F., Leuenberger, M., Loader, N. J., McCarroll, D., Gagen, M., Poulter, B., Siegwolf, R. T. W., Andreu-Hayles, L., Boettger, T., Linan, I. D., Fairchild, I. J., Friedrich, M., Gutierrez, E., Haupt, M., Hiltavuori, E., Heinrich, I., Helle, G., Grudd, H., Jalkanen, R., Levanic, T., Linderholm, H. W., Robertson, I., Sonninen, E., Treydte, K., Waterhouse, J. S., Woodley, E. J., Wynn, P. M., and Young, G. H. F.: Spatial variability and temporal trends in water-use efficiency of European forests, *Global Change Biol*, 20, 3700-3712, <https://doi.org/10.1111/gcb.12717>, 2014.

Shestakova, T. A., Voltas, J., Saurer, M., Berninger, F., Esper, J., Andreu-Hayles, L., Daux, V., Helle, G., Leuenberger, M., Loader, N. J., Masson-Delmotte, V., Saracino, A., Waterhouse, J. S., Schleser, G. H., Bednarz, Z., Boettger, T., Dorado-Linan, I., Filot, M., Frank, D., Grabner, M., Haupt, M., Hiltavuori, E., Jungner, H., Kalela-Brundin, M., Krapiec, M., Marah, H., Pawelczyk, S., Pazdur, A., Pierre, M., Planells, O., Pukiene, R., Reynolds-Henne, C. E., Rinne-Garmston, K. T., Rita, A., Sonninen, E., Stievenard, M., Switsur, V. R., Szychowska-Krapiec, E., Szymaszek, M., Todaro, L., Treydte, K., Vitas, A., Weigl, M., Wimmer, R., and Gutierrez, E.: Spatio-temporal patterns of tree growth as related to carbon isotope fractionation in European forests under changing climate, *Global Ecol Biogeogr*, 28, 1295-1309, <https://doi.org/10.1111/geb.12933>, 2019.

Shi, C. M., Schneider, L., Hu, Y., Shen, M., Sun, C., Xia, J. Y., Forbes, B. C., Shi, P. L., Zhang, Y. D., and Ciais, P.: Warming-induced unprecedented high-elevation forest growth over the monsoonal Tibetan Plateau, *Environmental Research Letters*, 15, 054011, <https://doi.org/10.1088/1748-9326/ab7b9b>, 2020.

Shipley, B. Confirmatory path analysis in a generalized multilevel context. *Ecology*, 90(2), 363-368, <https://doi.org/10.1890/08-1034.1>, 2009.

删除[Lixin Lyu]: Rahman, M., Islam, M., Gebrekirstos, A., and Brauning, A.: Trends in tree growth and intrinsic water-use efficiency in the tropics under elevated CO₂ and climate change, *Trees-Struct Funct*, 33, 623-640, , 2019.

删除[Lixin Lyu]:

删除[Lixin Lyu]: Shen, M. G., Wang, S. P., Jiang, N., Sun, J. P., Cao, R. Y., Ling, X. F., Fang, B., Zhang, L., Zhang, L. H., Xu, X. Y., Lv, W. W., Li, B. L., Sun, Q. L., Meng, F. D., Jiang, Y. H., Dorji, T., Fu, Y. S., Iler, A., Vitasse, Y., Steltzer, H., Ji, Z. M., Zhao, W. W., Piao, S. L., and Fu, B. J.: Plant phenology changes and drivers on the Qinghai-Tibetan Plateau, *Nature Reviews Earth & Environment*, 3, 633-651, , 2022.

- Sigdel, S. R., Wang, Y. F., Camarero, J. J., Zhu, H. F., Liang, E. Y., and Penuelas, J.: Moisture-mediated responsiveness of treeline shifts to global warming in the Himalayas, *Global Change Biol*, 24, 5549-5559, <https://doi.org/10.1111/gcb.14428>, 2018.
- 475 Silva, L. C. R. and Anand, M.: Probing for the influence of atmospheric CO₂ and climate change on forest ecosystems across biomes, *Global Ecol Biogeogr*, 22, 83-92, <https://doi.org/10.1111/j.1466-8238.2012.00783.x>, 2013.
- Silva, L. C. R., Sun, G., Zhu-Barker, X., Liang, Q. L., Wu, N., and Horwath, W. R.: Tree growth acceleration and expansion of alpine forests: The synergistic effect of atmospheric and edaphic change, *Sci Adv*, 2, e1501302, <https://doi.org/10.1126/sciadv.1501302>, 2016.
- 480 Sterck, F., Song, Y., and Poorter, L.: Drought- and heat-induced mortality of conifer trees is explained by leaf and growth legacies, *Sci Adv*, 10, ead14800, <https://doi.org/10.1126/sciadv.adl4800>, 2024.
- van der Sleen, P., Groenendijk, P., Vlam, M., Anten, N. P. R., Boom, A., Bongers, F., Pons, T. L., Terburg, G., and Zuidema, P. A.: No growth stimulation of tropical trees by 150 years of CO₂ fertilization but water-use efficiency increased, *Nat Geosci*, 8, 24-28, <https://doi.org/10.1038/Ngeo2313>, 2015.
- 485 Voelker, S. L., Brooks, J. R., Meinzer, F. C., Anderson, R., Bader, M. K. F., Battipaglia, G., Becklin, K. M., Beerling, D., Bert, D., Betancourt, J. L., Dawson, T. E., Domec, J. C., Guyette, R. P., Korner, C., Leavitt, S. W., Linder, S., Marshall, J. D., Mildner, M., Ogee, J., Panyushkina, I., Plumpton, H. J., Pregitzer, K. S., Saurer, M., Smith, A. R., Siegwolf, R. T. W., Stambaugh, M. C., Talhelm, A. F., Tardif, J. C., Van de Water, P. K., Ward, J. K., and Wingate, L.: A dynamic leaf gas-exchange strategy is conserved in woody plants under changing ambient CO₂: evidence from carbon isotope discrimination in paleo and CO₂ enrichment studies, *Global Change Biol*, 22, 889-902, <https://doi.org/10.1111/gcb.13102>, 2016.
- 490 Voltas, J., Aguilera, M., Gutiérrez, E., and Shestakova, T. A.: Shared drought responses among conifer species in the middle Siberian taiga are uncoupled from their contrasting water-use efficiency trajectories, *Science of The Total Environment*, 720, 137590, <https://doi.org/10.1016/j.scitotenv.2020.137590>, 2020.
- 495 Walker, X. J., Mack, M. C., and Johnstone, J. F.: Stable carbon isotope analysis reveals widespread drought stress in boreal black spruce forests, *Global Chang Biology*, 21, 3102-3113, <https://doi.org/10.1111/gcb.12893>, 2015.
- Wang, B., Chen, T., Xu, G. B., Wu, M. H., Zhang, G. S., Li, C. J., and Wu, G. J.: Anthropogenic-management could mitigate declines in growth and survival of Qinghai spruce (*Picea crassifolia*) in the east Qilian Mountains, northeast Tibetan Plateau, *Agricultural and Forest Meteorology*, 250, 118-126, <https://doi.org/10.1016/j.agrformet.2017.12.249>, 2018.
- 500 Wang, J., Taylor, A., and D'Orangeville, L.: Warming-induced tree growth may help offset increasing disturbance across the Canadian boreal forest, *Proc Natl Acad Sci U S A*, 120, e2212780120, <https://doi.org/10.1073/pnas.2212780120>, 2023.
- Wang, W., McDowell, N. G., Liu, X., Xu, G., Wu, G., Zeng, X., and Wang, G.: Contrasting growth responses of Qilian juniper (*Sabina przewalskii*) and Qinghai spruce (*Picea crassifolia*) to CO₂ fertilization despite common water-use

设置格式[Lixin Lyu]: 下标

设置格式[Lixin Lyu]: 下标

设置格式[Lixin Lyu]: 下标

删除[Lixin Lyu]: Voltas, J., Camarero, J. J., Carulla, D., Aguilera, M., Ortiz, A., and Ferrio, J. P.: A retrospective, dual-isotope approach reveals individual predispositions to winter-drought induced tree dieback in the southernmost distribution limit of Scots pine, *Plant Cell Environ*, 36, 1435-1448, , 2013.

设置格式[Lixin Lyu]: 字体: 倾斜

设置格式[Lixin Lyu]: 下标

505

efficiency increases at the northeastern Qinghai-Tibetan Plateau, Tree Physiol, <https://doi.org/10.1093/treephys/tpaa169>, 2020.

Wang, W. Z., Liu, X. H., An, W. L., Xu, G. B., and Zeng, X. M.: Increased intrinsic water-use efficiency during a period with persistent decreased tree radial growth in northwestern China: Causes and implications, Forest Ecol Manag, 275, 14-22, <https://doi.org/10.1016/j.foreco.2012.02.027>, 2012.

510

Wu, G. J., Liu, X. H., Chen, T., Xu, G. B., Wang, W. Z., Zeng, X. M., and Zhang, X. W.: Elevation-dependent variations of tree growth and intrinsic water-use efficiency in Schrenk spruce (*Picea schrenkiana*) in the western Tianshan Mountains, China, Frontiers in Plant Science, 6, 12, <https://doi.org/10.3389/fpls.2015.00309>, 2015.

Xu, G. B., Liu, X. H., Qin, D. H., Chen, T., An, W. L., Wang, W. Z., Wu, G. J., Zeng, X. M., and Ren, J. W.: Climate warming and increasing atmospheric CO₂ have contributed to increased intrinsic water-use efficiency on the northeastern Tibetan Plateau since 1850, Trees-Struct Funct, 27, 465-475, <https://doi.org/10.1007/s00468-013-0855-3>, 2013.

515

Zhang, X., Liu, X., Zhang, Q., Zeng, X., Xu, G., Wu, G., and Wang, W.: Species-specific tree growth and intrinsic water-use efficiency of Dahurian larch (*Larix gmelinii*) and Mongolian pine (*Pinus sylvestris* var. *mongolica*) growing in a boreal permafrost region of the Greater Hinggan Mountains, Northeastern China, Agr Forest Meteorol, 248, 145-155, <https://doi.org/10.1016/j.agrformet.2017.09.013>, 2018.

520

Zhao, D., Zhang, Z., and Zhang, Y.: Soil Moisture Dominates the Forest Productivity Decline During the 2022 China Compound Drought-Heatwave Event, Geophysical Research Letters, 50, e2023GL104539, <https://doi.org/10.1029/2023GL104539>, 2023.

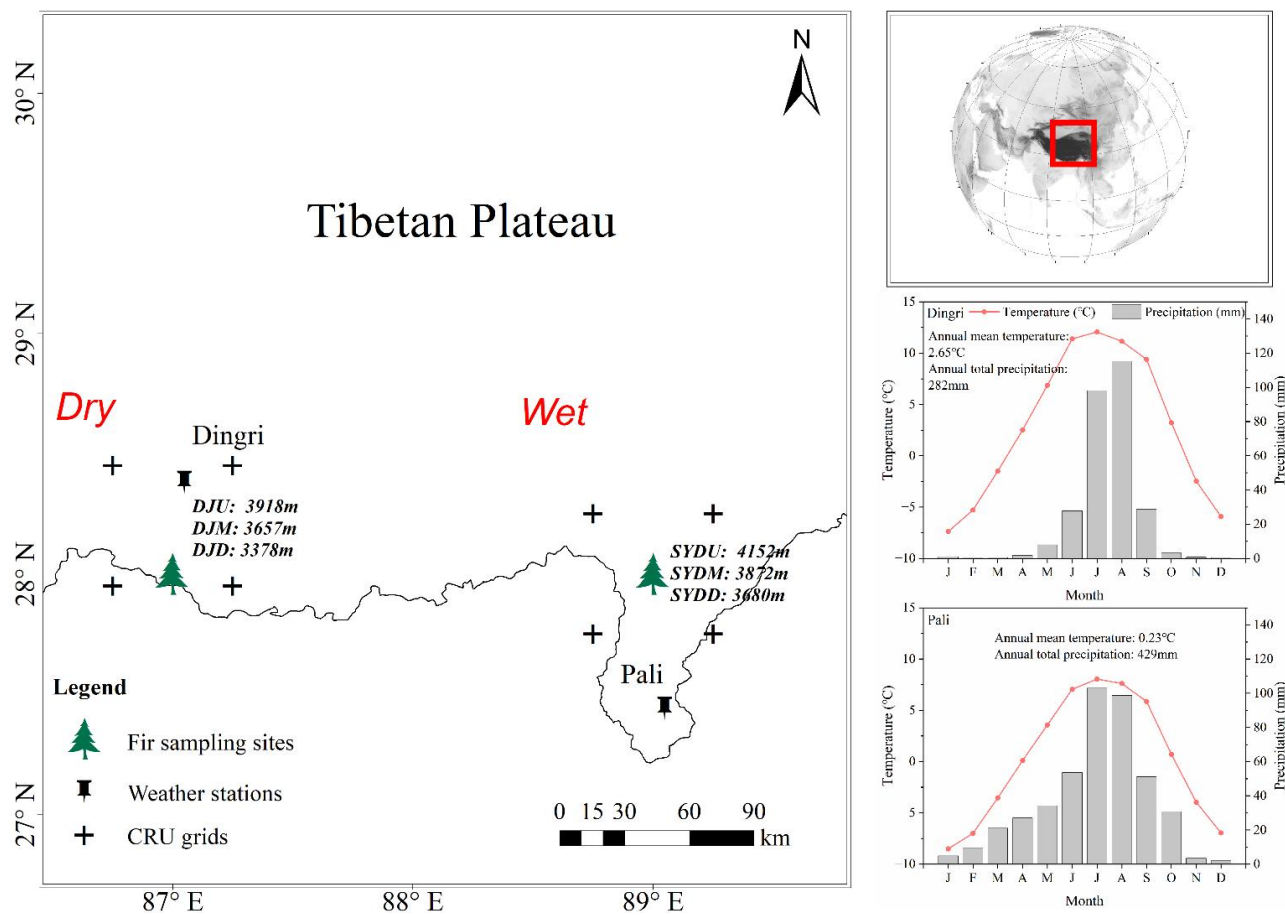
删除[Lixin Lyu]: Weber, J., King, J., Abraham, N., Grosvenor, D., Smith, C., Shin, Y., Lawrence, P., Roe, S., Beerling, D., and Val Martin, M.: Chemistry-albedo feedbacks offset up to a third of forestation's CO₂ removal benefits, Science, 383, 860-864, , 2024.

设置格式[Lixin Lyu]: 字体: 倾斜

删除[Lixin Lyu]: bc

设置格式[Lixin Lyu]: 字体: 倾斜

设置格式[Lixin Lyu]: 字体: (默认) Times New Roman



设置格式[Lixin Lyu]: 居中

525 **Figure 1. Location of the study sites and weather stations for Himalayan fir on the Tibetan Plateau. Climate diagrams are based on meteorological records from the Dingri (28°38' N, 87°5' E, 4300 m) and Pali (27°44' N, 89°5' E, 4300 m) weather stations for the period 1965–2013.**

删除[Lixin Lyu]:

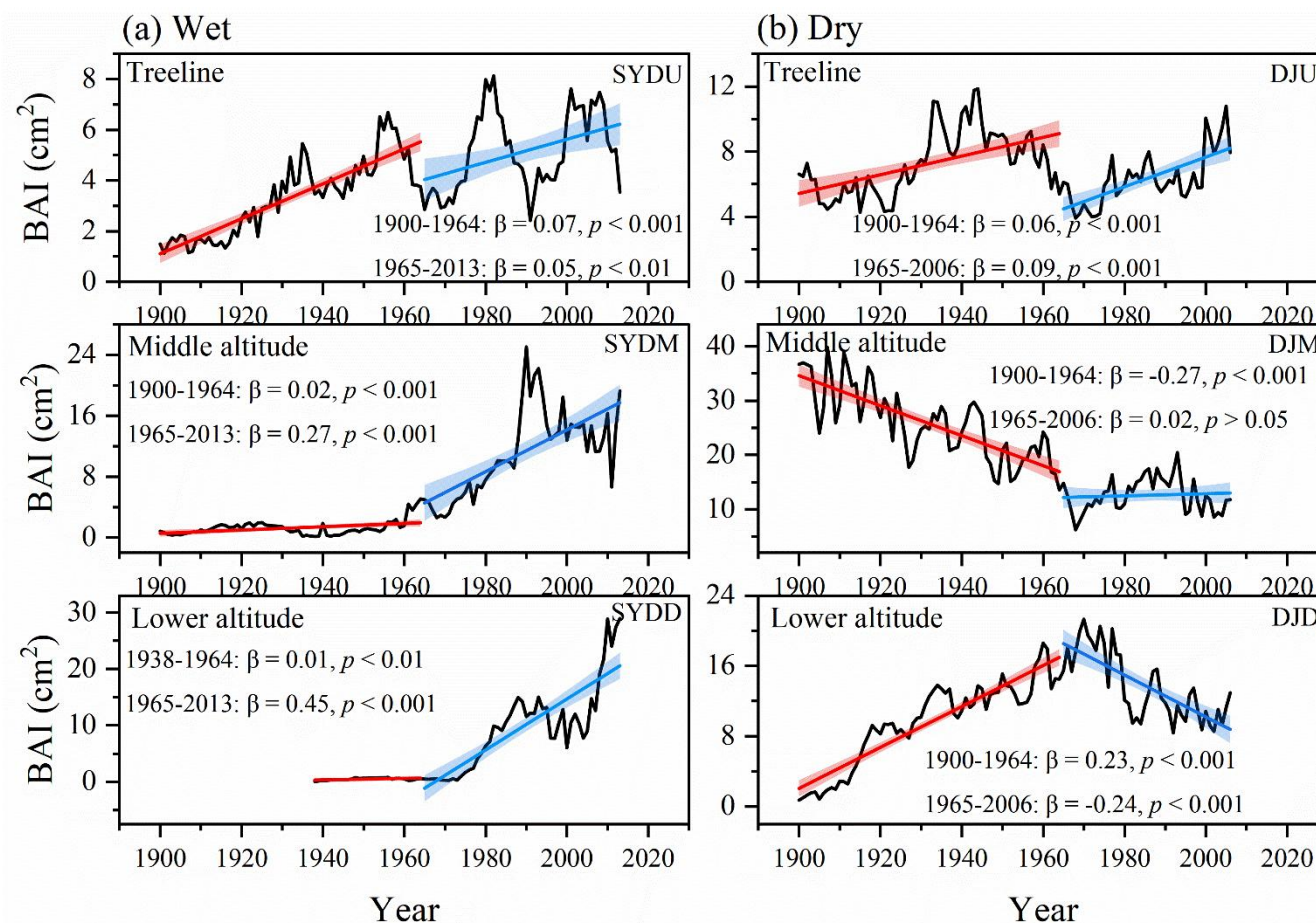


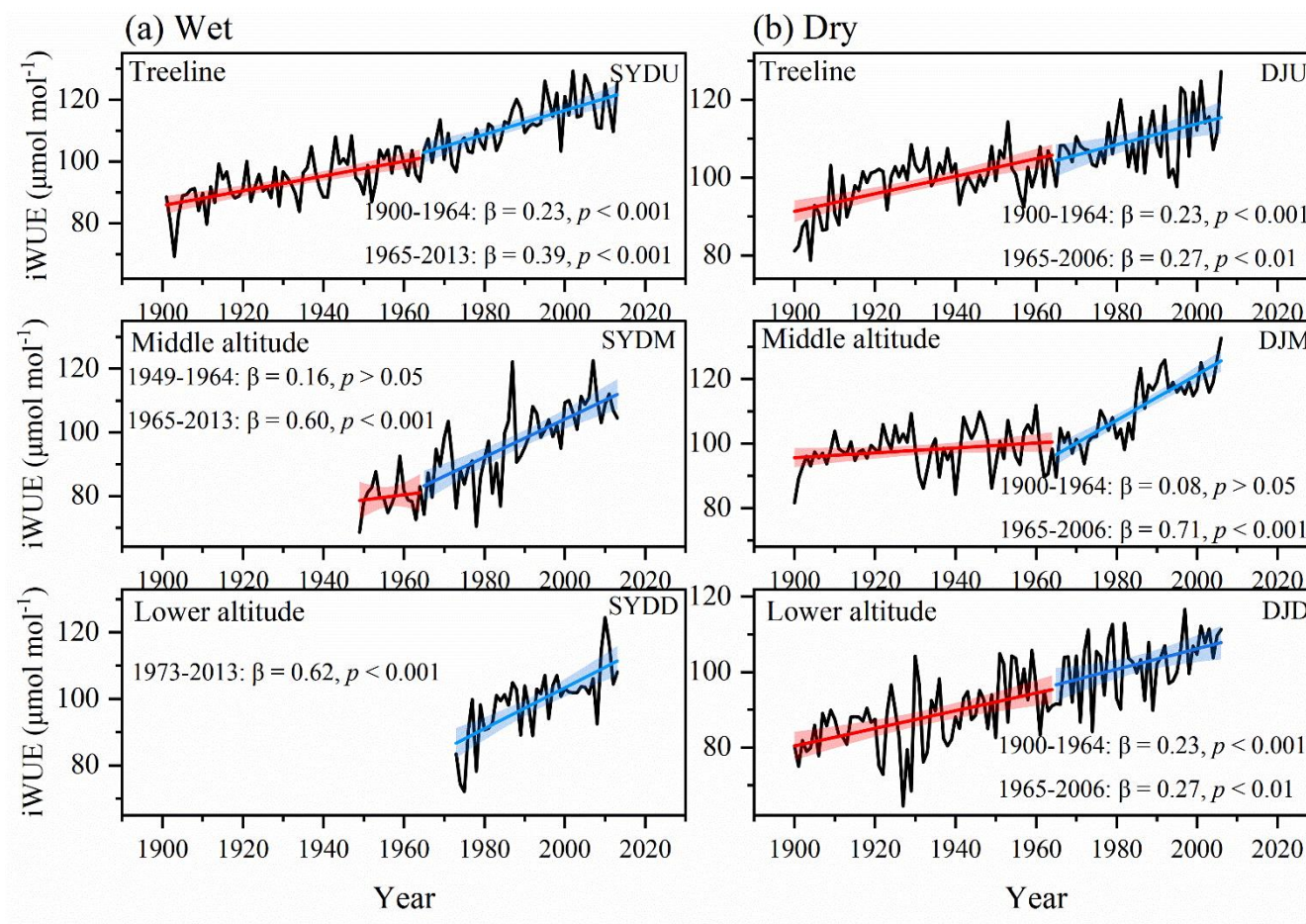
Figure 2. Temporal trends of basal area increment (BAI) for Himalayan fir at different altitudes during the period 1900–2010s.

The solid lines depict piecewise linear regression models, with a breakpoint at 1965. The model statistics include the slope of BAI (β , $\text{cm}^2 \text{ year}^{-1}$), coefficient of determination (R^2) and associated p-values. The shaded regions denote 95% confidence intervals for the regression fits.

删除[Lixin Lyu]: The symbol " β " represents the slope of BAI ($\text{cm}^2 \text{ year}^{-1}$).

设置格式[Lixin Lyu]: 字体: 非加粗

设置格式[Lixin Lyu]: 上标



535 **Figure 3. Temporal trends of intrinsic water-use efficiency (iWUE) during 1900-2010s for Himalayan fir at different altitudes. The solid lines depict piecewise linear regression models, with a breakpoint at 1965. The model statistics include the slope of BAI (β , $\text{cm}^2 \text{ year}^{-1}$), coefficient of determination (R^2) and associated p-values. The shaded regions denote 95% confidence intervals for the regression fits.**

设置格式[Lixin Lyu]: 字体: 小五, 非加粗, 字体颜色: 自动
设置

设置格式[Lixin Lyu]: 上标

删除[Lixin Lyu]: The symbol “ β ” represents the slope of
iWUE ($\mu \text{mol mol}^{-1}$).

设置格式[Lixin Lyu]: 字体: 非加粗

设置格式[Lixin Lyu]: 字体: (中文) 宋体, 非加粗, (中
文) 中文(简体)

设置格式[Lixin Lyu]: 字体: 非加粗

设置格式[Lixin Lyu]: 字体: (中文) 宋体, 非加粗, (中
文) 中文(简体)

设置格式[Lixin Lyu]: 字体: 非加粗

设置格式[Lixin Lyu]: 字体: (中文) 宋体, 非加粗, (中
文) 中文(简体)

设置格式[Lixin Lyu]: 字体: 非加粗

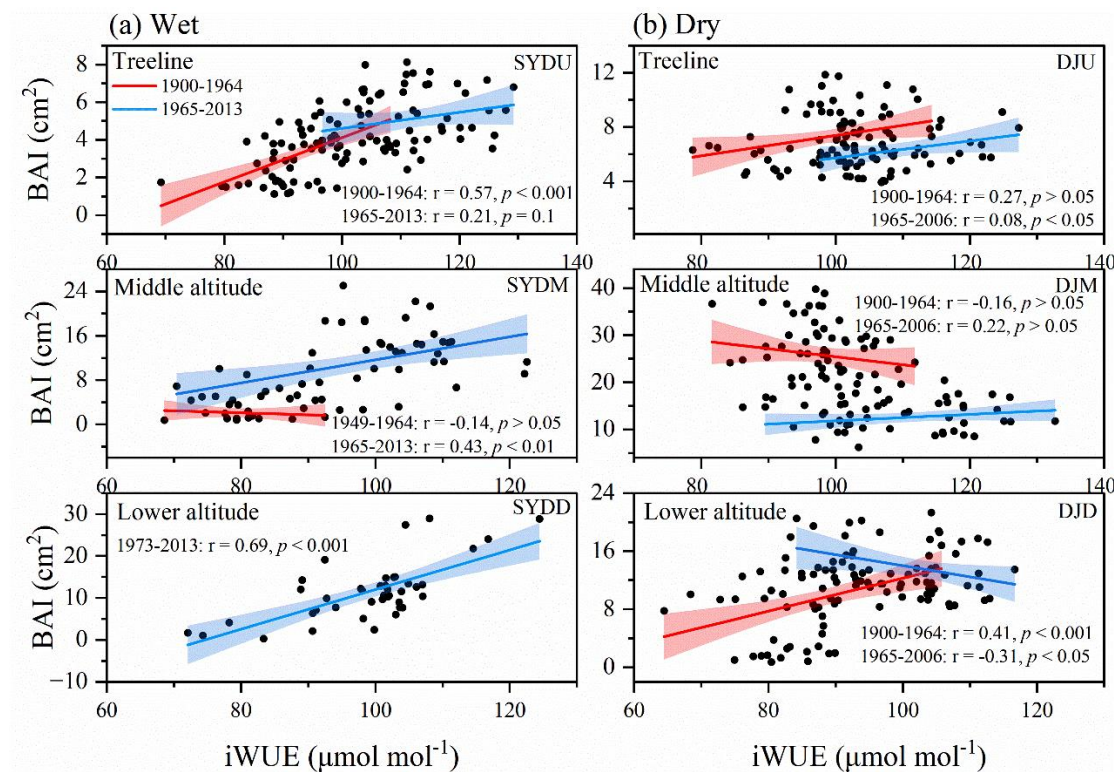
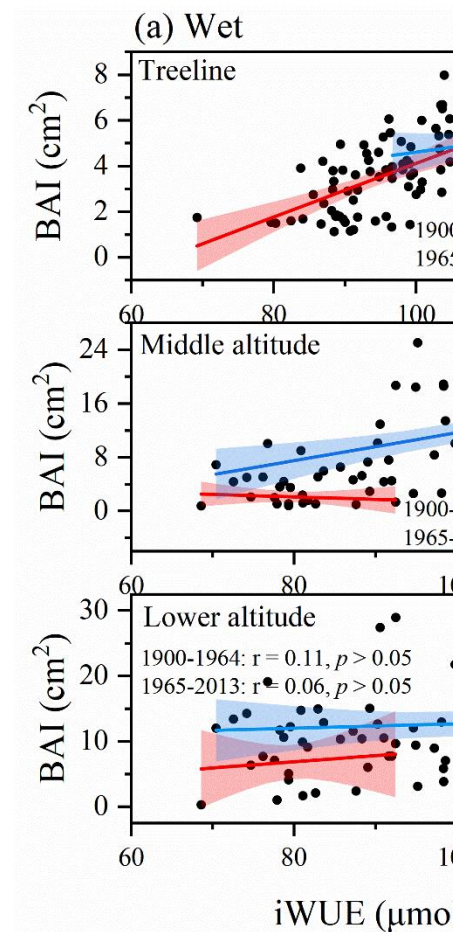


Figure 4. Long-term relationships between intrinsic water-use efficiency (iWUE) and basal area increment (BAI) of Himalayan fir at different altitudes across two hydrologically distinct sites. Linear regression results for each period are shown, along with the explained variance (R^2) and significance levels (p-values). Shaded areas represent 95% confidence intervals.

设置格式[Lixin Lyu]: 居中

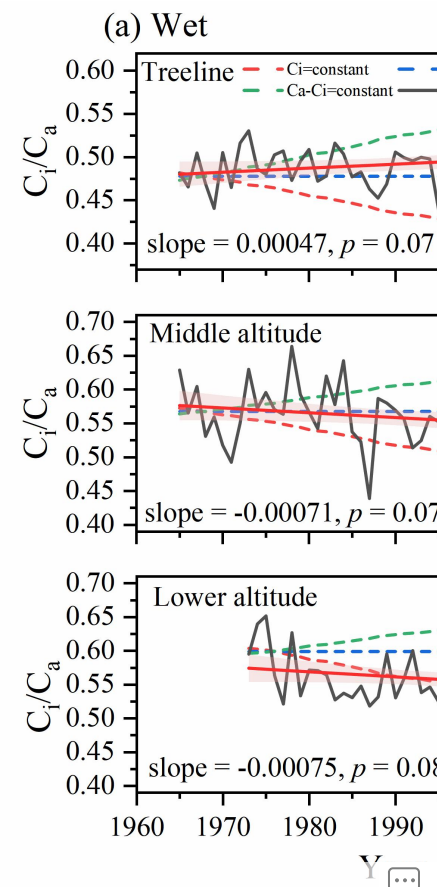
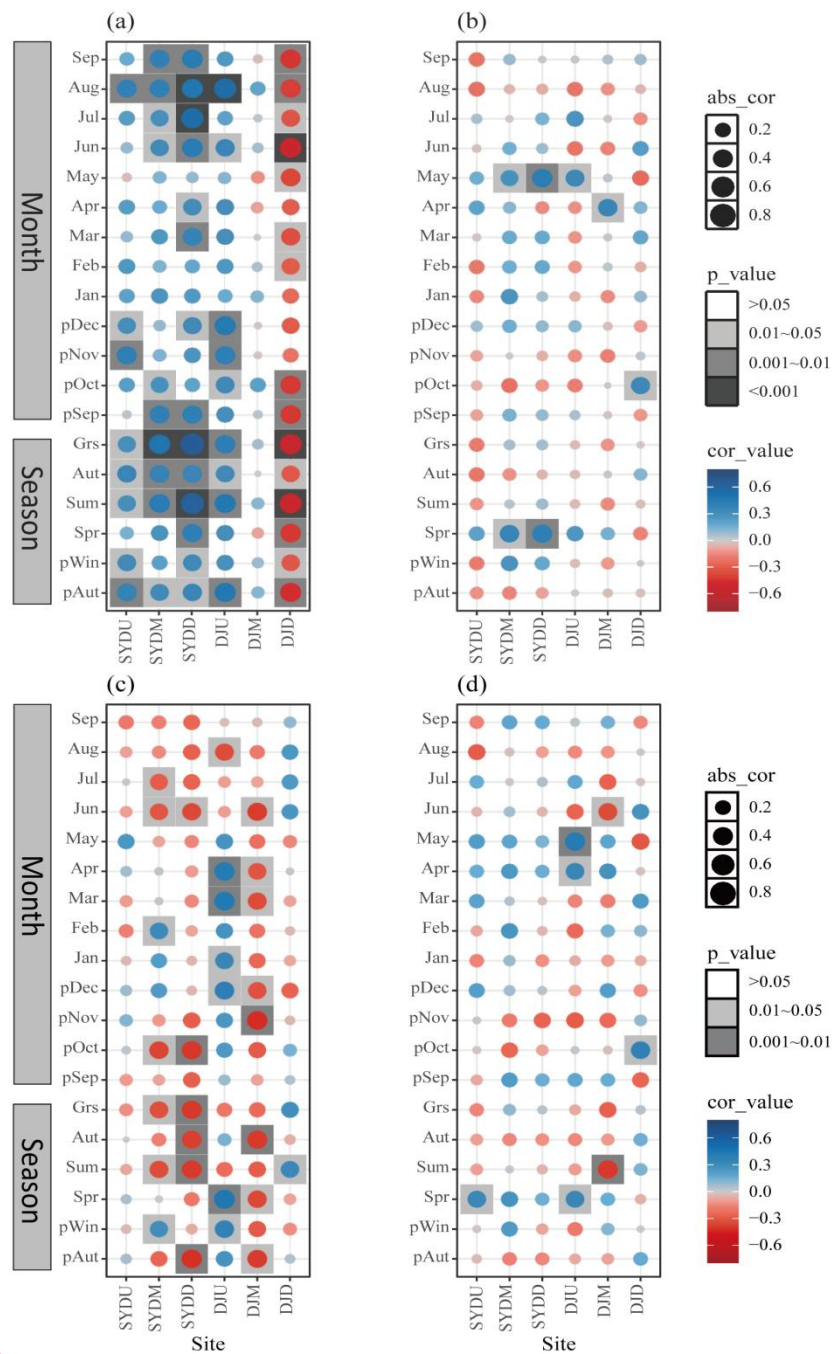


删除[Lixin Lyu]:

删除[Lixin Lyu]: R

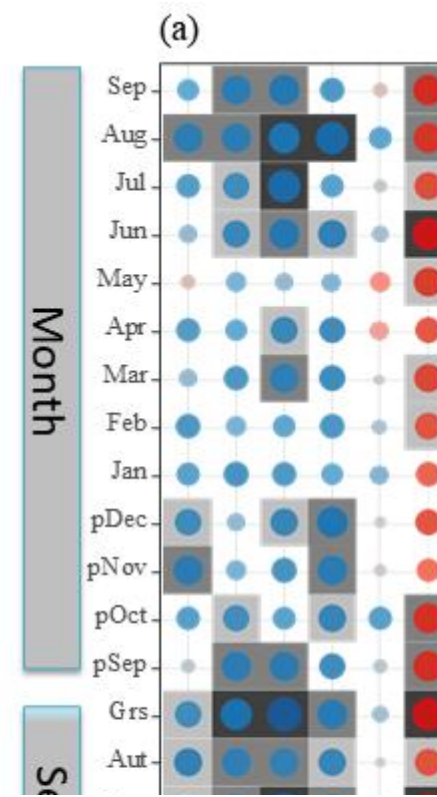
设置格式[Lixin Lyu]: 字体: 非加粗

设置格式[Lixin Lyu]: 字体: 非加粗



删除[Lixin Lyu]:

设置格式[Lixin Lyu]: 居中



545 **Figure 5.** Pearson correlation coefficients between basal area increment (BAI) and climatic variables, including (a) mean temperature, (b) total precipitation, (c) relative humidity and (d) standardized precipitation-evapotranspiration index (SPEI) on both monthly and seasonal scales for Himalayan fir during the period 1965–2013. It should be noted that the BAI chronologies were derived exclusively from samples used for isotope measurements. "Grs" denotes the growing season (June to September). "Cor_value" and "abs_value" represent the correlation coefficient value and the absolute value of the correlation, respectively.

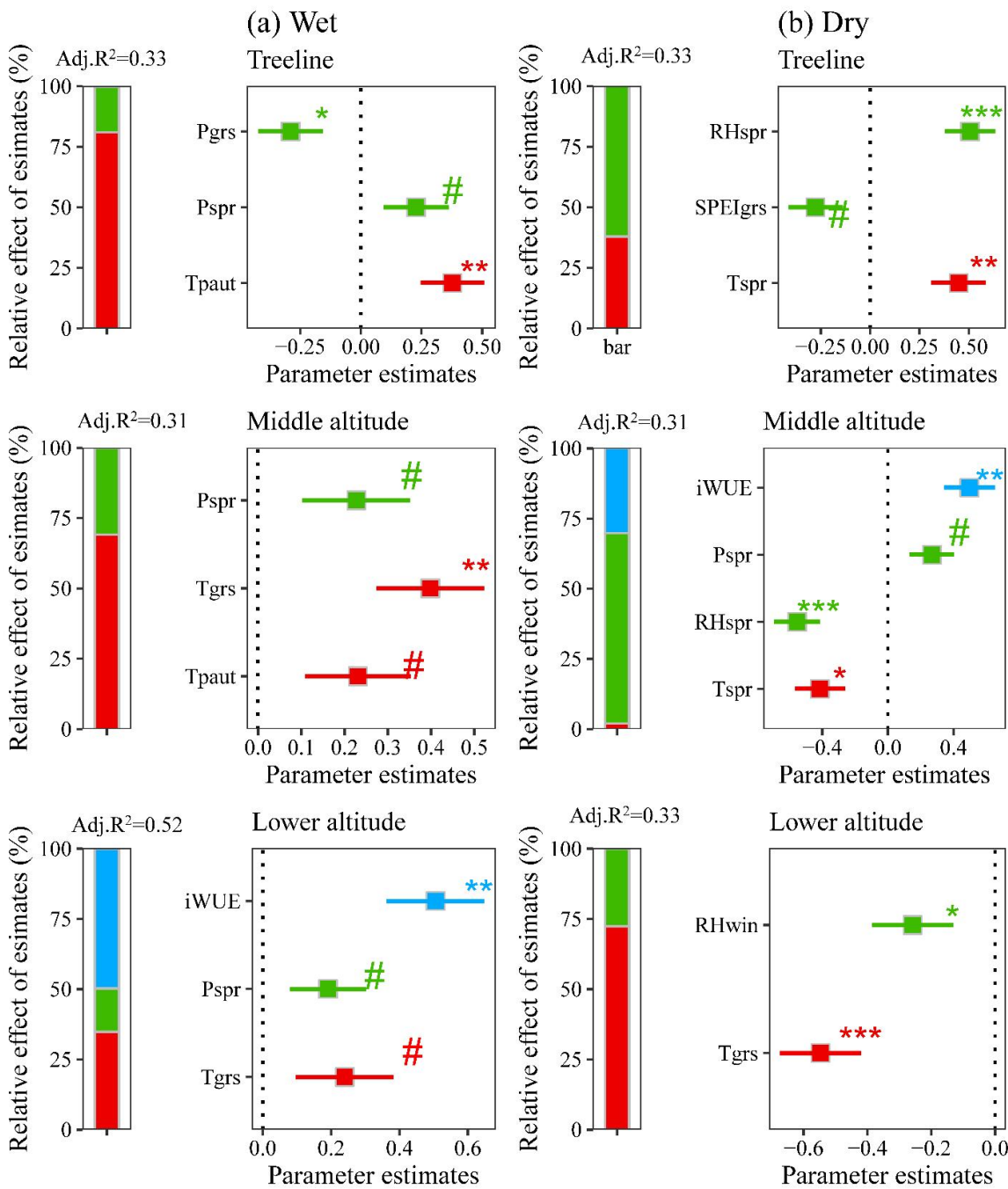


Figure 6. Effects of multiple environmental factors on fir growth at different altitudes. The symbols #, *, **, and *** denote significance levels at $p < 0.1$, $p < 0.05$, $p < 0.01$, and $p < 0.001$, respectively. Abbreviations: Tspr = spring mean temperature; Tgrs = growing season mean temperature (June to September); RHspr = spring relative humidity; RHgrs = growing season relative humidity (June to September); RHwin = winter relative humidity; SPEIspr = spring standardized precipitation-evapotranspiration index; SPEIgrs = growing season standardized precipitation-evapotranspiration index (June to September).

设置格式[Lixin Lyu]: 居中

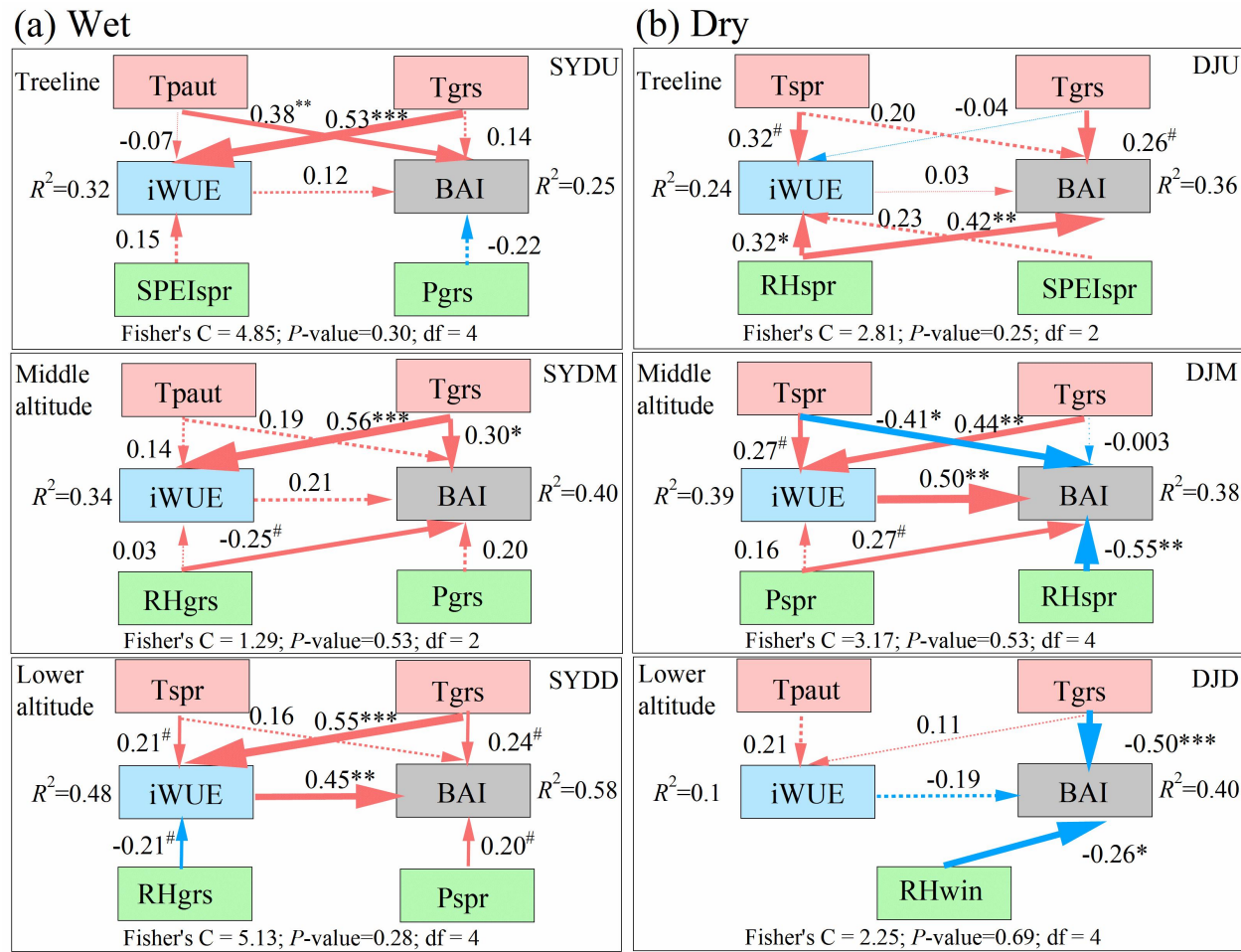


Figure 7. Piecewise structural equation meta-model (pSEM) used to assess the influences of climatic factors on basal area increment (BAI) and intrinsic water-use efficiency (iWUE) of Himalayan fir during the period 1965–2010s at different altitudes. Numbers adjacent to each arrow indicate the standardized regression coefficients for each path. Arrow thickness represents the strength of the effect, while color indicates the direction (red = positive, blue = negative). Solid arrows denote significant effects, whereas dashed arrows denote nonsignificant effects. Symbols #, *, **, and *** indicate significance levels at $p < 0.1$, $p < 0.05$, $p < 0.01$, and $p < 0.001$, respectively. Abbreviations: Tpaut = previous autumn mean temperature; Tsum = summer mean temperature; Tspr = spring mean temperature; Tgrs = growing season mean temperature (June to September); RHspr = spring relative humidity; RHgrs = growing season relative humidity (June to September); RHwin = winter relative humidity; SPEIspr = spring standardized precipitation-evapotranspiration index; SPEIgrs = growing season standardized precipitation-evapotranspiration index (June to September).

删除[Lixin Lyu]: 8

设置格式[Lixin Lyu]: 字体: 非加粗