

Invited perspective **Redefining Disaster Risk: The Convergence of Natural Hazards and Health Crises**

Nivedita Sairam¹ and Marleen C. de Ruiter²

¹ Section Hydrology, GFZ German Research Centre for Geosciences, Potsdam, Germany

² Institute for Environmental Studies, Vrije Universiteit Amsterdam, De Boelelaan 1111, 1081HV, Amsterdam, the Netherlands

Correspondence to: Marleen de Ruiter (m.c.de.ruiter@vu.nl)

Abstract. Recently, the disaster risk field has made substantial steps forward to develop increasingly comprehensive risk assessments, accounting for the incidence of multiple hazards, trickle-down effects of cascading disasters and/or impacts, and spatiotemporal dynamics.

While the COVID-19 outbreak increased general awareness of the challenges that arise when disasters from natural hazards and diseases collide, we still lack a comprehensive understanding of the role of disease outbreaks in disaster risk assessments and management, and that of health impacts of disasters. In specific, the occurrence probabilities and the impacts of disease outbreaks following natural hazards are not well-understood and are commonly excluded from multi-hazard risk assessments and management.

Therefore, in this perspective paper, we **develop a research agenda that focusses on** 1. learning lessons from **interdisciplinary communities such as** compound risks and the socio-hydrology community for modelling the occurrence probabilities and temporal element (lag times) of disasters and health/disease-outbreaks, 2. the inclusion of health-related risk metrics within conventional risk assessment frameworks, 3. improving data availability and modelling approaches to quantify the role of stressors and interventions on health impacts of disasters. **Collectively, this agenda is intended to advance our** understanding of disaster risk considering potential health crises. **The developed research agenda** is not only crucial for scientists aiming to improve risk modelling capabilities, but also for decision makers and practitioners to anticipate and respond to the increasing complexity of disaster risk.

1 Introduction

On August 14, 2021, a 7.2 Mw earthquake struck Haiti's southern peninsula, followed by smaller aftershocks, including a 5.8 Mw earthquake. The earthquake caused widespread landslides and rockfalls, damaging roads and isolating communities (Cabas et al., 2023). It resulted in over 12,000 injuries, **more than 300 missing**, and at least 2,248 deaths, with 137,000 homes destroyed or severely damaged. Key infrastructure, including schools, churches, bridges, and roads, was also impacted, disrupting access to education, water, sanitation, and healthcare services (CDEMA, 2021; GoH, 2021). As many remained outdoors due to damaged homes and aftershock fears, tropical storm Grace struck on August 16-17, causing heavy rainfall, winds, flash flooding, and landslides, which halted rescue efforts for hours (Cavallo et al., 2021; Reinhart & Berg, 2022). The storm's impact, compounded by the earthquake, made it difficult to distinguish the sources of casualties (Reinhart & Berg, 2022). Initial aid was delayed due to the remote and inaccessible regions affected (Cabas et al., 2023; Daniels, 2021). The destruction of WASH (**Water, Sanitation and Hygiene**) **infrastructure** and healthcare facilities increased the risk of waterborne diseases, contributing to a cholera outbreak a year later. By November 2022, over 230 people had died from cholera, with 12,500 suspected cases (IFRC, 2022). Additionally, many people, forced to sleep outside or in inadequate shelters, were vulnerable to storm-related hazards and aftershocks (Daniels, 2021; OCHA, 2021).

In contrast to these acute disasters in Mozambique, during 2017-2018, Kenya and Ethiopia were exposed to slow onset, chronic disasters caused by back-to-back hydrological extremes. A severe drought (Funk et al., 2019; Philip et al., 2018; Uhe et al., 2018) lasting 18-24 months was immediately followed by widespread floods (Kilavi et al., 2018; Njogu, 2021). During this time both countries also grappled with an infestation of armyworm (De Groote et al., 2020; Kumela et al., 2019) which was responsible for a reduction of food crop production. In addition to the climatic shocks and biological hazards, Kenya faced prolonged government elections that led to increased government expenses, violence and unrest. In Ethiopia, the situation was exacerbated by civil unrest and ethnic violence. These compounding factors heightened the vulnerability of communities in

Deleted: :

Formatted: Font: (Default) +Body (Times New Roman), 10 pt

Formatted: Font: (Default) +Body (Times New Roman)

Formatted: Line spacing: single

Formatted: Line spacing: single

Deleted: call for

Formatted: Font: (Default) +Body (Times New Roman)

Deleted: Based on this, we develop a research agenda

Deleted: towards an improved

Formatted: Font: (Default) +Body (Times New Roman)

Formatted: Font: (Default) +Body (Times New Roman)

Deleted: the

Deleted: is

Formatted: Line spacing: single

Deleted: +

Formatted: Font: (Default) +Body (Times New Roman)

Formatted: Font: (Default) +Body (Times New Roman)

Formatted: Font: (Default) +Body (Times New Roman)

Formatted: Font: (Default) +Body (Times New Roman)

Formatted: Font: (Default) +Body (Times New Roman)

Formatted: Font: (Default) +Body (Times New Roman)

Formatted: Font: (Default) +Body (Times New Roman)

Formatted: Font: (Default) +Body (Times New Roman)

Formatted: Font: (Default) +Body (Times New Roman)

Formatted: Font: (Default) +Body (Times New Roman)

Formatted: Font: (Default) +Body (Times New Roman)

Formatted: Font: (Default) +Body (Times New Roman)

Formatted: Font: (Default) +Body (Times New Roman)

Formatted: Font: (Default) +Body (Times New Roman)

Formatted: Font: (Default) +Body (Times New Roman)

Formatted: Font: (Default) +Body (Times New Roman)

Formatted: Font: (Default) +Body (Times New Roman)

both countries culminating in a humanitarian crisis, with four million people under food insecurity in Kenya (FEWS NET, 2018) and eight million people in Ethiopia (FEWS NET, 2019).

55 Changing climate is increasingly recognised as a health crisis (Stalhandkse et al., 2025) as it is expected to exacerbate 58% of human infectious diseases, with vector and waterborne diseases being the most affected (Mora et al., 2022). In addition to the climatic conditions, the probability of a disease outbreak following a hazard is influenced by underlying dynamics of socioeconomic vulnerability (Jutla et al., 2013, McMichael 2009, Aitsi-Selmi and Murray 2016, Mazdiyasi and AghaKouchak 2020). Socially vulnerable populations are being disproportionately affected by the mortality associated with climate change impacts (Agache et al. 2022).

60

The COVID-19 outbreak increased general awareness of the challenges that arise when disasters from natural hazards and diseases collide (Tripathy et al. 2021). However, we still lack a proper understanding of the role of health, well-being, and disease outbreaks in disaster risk assessments and management. Considering the reality of rapidly changing risk dynamics (Kreibich et al. 2022), a systemic understanding of the Disaster–Disease Outbreak dynamics – i.e., the pathways through which cascading effects of extreme weather events trigger disease outbreaks and impact human health is necessary to prevent the outbreak of diseases in the aftermath of natural hazards; develop socially-optimal and sustainable climate adaptation strategies, early warning systems, as well as relief and recovery. The examples of Mozambique, Kenya and Ethiopia demonstrate some of the health impacts of disasters and effects of consecutive disaster-disease outbreaks. These impacts will not be captured when taking a hazard-silo approach to disaster risk.

65

70

The United Nations Office for Disaster Risk Reduction (UNDRR, 2022) underscored the urgency to understand (1) changing socioeconomic vulnerability due to an earlier disaster, (2) probabilities of hazard interactions, (3) how the time-window of consecutive disasters affects impacts, and (4) the linkages between disasters, health impacts, and disease outbreaks. In response, in past years, we have seen a rise in multi-(hazard) risk studies trying to understand some of these complexities conceptually (e.g., Ward et al., 2022, Murray 2020, UNDRR 2022) and statistically (e.g., Zscheischler et al., 2018, Bevacqua et al., 2022, De Luca et al. 2017). Moreover, De Ruiter and Van Loon (2022) discuss the great potential that exists to capture dynamics of vulnerability using existing methods used in neighbouring research fields such as compound events and socio-hydrology to capture other risk dynamics. Recently, the disaster risk field has made substantial steps forward to develop increasingly comprehensive risk assessments, accounting for the incidence of multiple hazards, trickle-down effects of cascading disasters and/or impacts, and spatiotemporal dynamics (e.g., Sett et al. 2024, Jato-Espino et al., 2025, Xoplaki et al., 2025). A major challenge in modelling the co-occurrence of disasters lies in the misalignment of spatial and temporal scales between different hazard types and their associated impacts. Hazards such as earthquakes, floods, wildfires, or storms may occur concurrently or sequentially, but with varying onset times, durations, and spatial footprints (Gill and Malamud 2014). This makes it difficult to capture their combined consequences using standard modelling approaches that are often optimized for single hazards. Data availability and model resolution frequently constrain our ability to detect and represent compound or cascading impacts, particularly when interactions occur across administrative boundaries or involve delayed, indirect consequences (Hillier et al., 2020). Moreover, even when hazards occur in close succession or proximity, their impacts may interact in nonlinear ways (Ridder et al. 2022).

75

80

85

90

In addition to the multi-hazard dynamics, the importance of accounting for the temporal dynamics of socioeconomic vulnerability has been underscored in recent literature (e.g., De Angeli et al., 2022, Mora et al., 2022, Matanó et al., 2022, Kelman, 2020, Drakes and Tate 2022). Nonetheless, while in recent years many studies have focused on compound hazards (Ridder et al., 2020, Cutter 2018, Leonard et al., 2014, Zscheischler et al., 2020), the dynamics of vulnerability remain the least understood component of risk (Simpson et al., 2021, Drakes and Tate 2022, Hagenlocher et al., 2019). Owing to the complexity of health impacts, they result in heterogeneous outcomes at individual levels, requiring adaptation measures to be precisely based on time, place and context. Hence, understanding and modelling vulnerability dynamics is a critical component to develop a systemic understanding of the Disaster–Disease Outbreak dynamics and their consequences on human health. The importance of accounting for health-related outcomes is acknowledged by the Sendai Framework for Disaster Risk Reduction (SFDRR; 2018) but it typically remains unaccounted for in risk assessments (Mazdiyasi and AghaKouchak 2020, Tilloy et al., 2019).

95

100

Formatted: Font: (Default) +Body (Times New Roman)

Formatted: Font: (Default) +Body (Times New Roman)

Formatted: Font: (Default) +Body (Times New Roman)

Formatted: Font: (Default) +Body (Times New Roman)

Formatted: Font: (Default) +Body (Times New Roman)

Deleted: research suggests that

Deleted: ,

Deleted: is currently lacking. This

Formatted: Font: (Default) +Body (Times New Roman)

Formatted: Font: (Default) +Body (Times New Roman)

Deleted: The

Formatted: Font: (Default) +Body (Times New Roman)

Formatted: Font: (Default) +Body (Times New Roman)

Formatted: Font: (Default) +Body (Times New Roman)

Deleted:

Formatted: Font: (Default) +Body (Times New Roman)

Formatted: Font: (Default) +Body (Times New Roman)

Deleted:

Formatted: Font: (Default) +Body (Times New Roman)

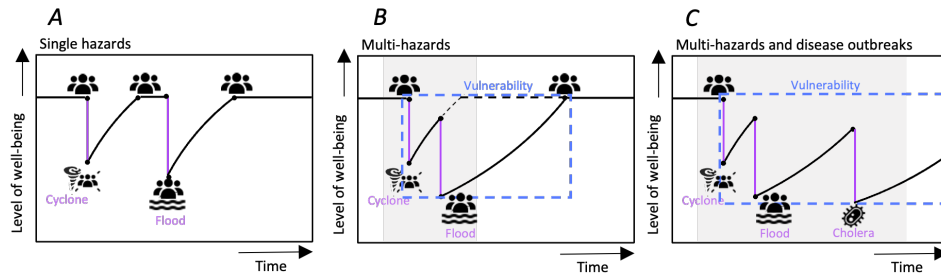


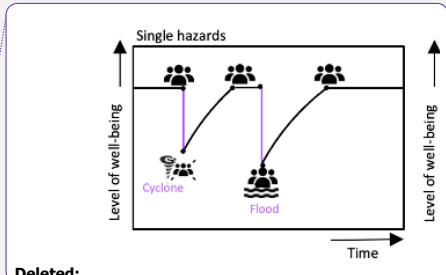
Figure 1: Increasing disaster-risk complexity. The figure shows from left to right increasing complexity from a typical single hazard perspective of impacts of hazards on the level of well-being (Panel A), to a multi-hazard perspective (Panel B), to the inclusion of disease outbreaks (Panel C).

In this perspective paper, we propose an initial research agenda that (1) collaborates with compound risks and socio-hydrology community to advance the modelling of occurrence probabilities and temporal element (lag times) of disasters and health/disease-outbreaks, (2) develops quantitative health risk metrics to be integrated within conventional risk management frameworks; (3) Identifies potential data sources and develops approaches to identify and map the role of stressors such as local socio-economic contexts (e.g. political instability, limited access to WASH infrastructure), interventions (e.g., Nature Based Solutions such as blue and green roofs that create vector breeding grounds (Krol et al., 2024), and their effects on the health of the affected populations. The research agenda is imperative to not only advance our systemic understanding of the Disaster–Disease Outbreak dynamics but also, enhance our modelling capabilities of the complexities of disaster risk and support the much-needed integration of public-health emergencies into risk assessments, as called for in recent scientific literature (Hillier et al., 2020, AghaKouchak et al., 2020, Simpson et al., 2021) and in recent international agreements and reports (UN 2015, WHO 2019).

2 State of the art and challenges

2.1 Co-occurrence of disasters and diseases

Systematic review of evidence from the public health impacts of disasters such as earthquakes, floods and tropical cyclones underscores the heterogeneity of disaster impacts, which are shaped not only by hazard intensity but also by variations in shelter conditions, access to healthcare, and the broader socio-environmental context (Mavrouli et al. 2023, Waddell et al. 2021). The cascading impacts such as the likelihood and intensity of disease emergence depend on a complex interplay of pre-existing health vulnerabilities, the primary and secondary effects of the disaster, and the physiographic and socio-economic characteristics of the affected area (Mavrouli et al. 2023). Despite the high prevalence of disease outbreaks post disasters, predictive modelling in this regard remains limited, with most insights derived from retrospective case reports rather than anticipatory frameworks (Alcanya et al. 2024). Consequently, preparedness and response efforts often rely on the presence and capacity of disease surveillance systems, which may be fragmented or absent in disaster-prone regions. In light of these limitations regarding predictive health-risk modelling, a promising avenue for advancing disaster risk frameworks lies in adapting methods from the growing field of compound hazard research. To understand the complex temporal dynamics between disasters and disease outbreaks, and to account for local socioeconomic circumstances that contribute to a community's vulnerability (Fig.1), we require methods to assess their dependency and interactions over time.



Deleted:

Deleted: 1

Formatted

... [1]

Formatted

... [2]

Formatted

... [3]

Formatted

... [4]

Formatted

... [5]

Formatted

... [6]

Formatted

... [7]

Formatted: Font: (Default) +Body (Times New Roman)

Formatted: Line spacing: single

Deleted: call for a

Deleted: .

Formatted: Font: (Default) +Body (Times New Roman)

Formatted: Font: (Default) +Body (Times New Roman)

Deleted: .

Deleted: .

Formatted: Font: (Default) +Body (Times New Roman)

Deleted: .

Deleted:)

Deleted: is

Formatted: Font: (Default) +Body (Times New Roman)

Formatted: Font: (Default) +Body (Times New Roman)

Formatted

... [8]

Formatted: Line spacing: single

Formatted: Font: (Default) +Body (Times New Roman)

Formatted

... [9]

Formatted: Font: (Default) +Body (Times New Roman)

Formatted

... [10]

Formatted: Font: (Default) +Body (Times New Roman)

Formatted

Formatted: Font: (Default) +Body (Times New Roman)

150 In recent years, compound hazard research has advanced multivariate-statistical methods, including Bayesian Networks (BNs) (e.g., Sperotto et al., 2017), to quantify hazard dependencies and joint probabilities of co-occurring disasters (Raymond et al., 2020; Tilloy et al., 2019; Hagenlocher et al., 2019; Drakes and Tate 2022; Ridder et al., 2020). These studies focus on a single hazard and co-occurring (climate-) drivers (e.g., Couasnon et al., 2020; Paprotny et al., 2020; Wahl et al., 2015; Mazdiyasn

155 These methods have also been recommended to predict disease outbreaks after a natural hazard (e.g., Tilloy et al., 2019; Hashizume et al., 2008). Despite their limited application in multi-risk, recent studies demonstrated the promising use of BNs to: (1) capture the complexities and dependencies of multi-risk due to their ability to include numerous variables with multiple dependencies, and (2) model the probability of impact chains caused by interactions between multiple variables (Sperotto et al., 2017; Tilloy et al., 2019; Liu et al., 2015; Marzocchi et al., 2012). A key limitation in using BNs for multi-hazard risk has been the challenge to incorporate temporal dynamics and feedback loops (Sperotto et al., 2017 and Tilloy et al., 2019). However, Khakzad (2015) demonstrated for a risk analysis of chemical plants that this limitation can be overcome by developing a Dynamic BN (DBN). A DBN relates variables to each other over sequential time steps which enables the modelling of time dependencies and complex interactions between variables while accounting for cascading effects (Khakzad, 2015). Additionally, causal models such as SEM - Structural Equation Modelling, though data-intensive contribute to identifying the drivers and pathways including the mediating effects (Lin et al. 2017).

170 In recent years, machine learning (ML) and artificial intelligence (AI) techniques have emerged as powerful tools for modelling hazard co-occurrence as it allows processing increasingly large and heterogeneous datasets (Ferrario et al. 2025). By leveraging historical data, these methods can uncover complex non-linear, spatial and temporal patterns of multi-hazard events and reveal correlations across spatial and temporal scales (Pugliese Vilorio et al., 2024; Reichstein et al., 2019). ML and AI-approaches have also started to be applied in for example, the modelling of infectious disease epidemics (Bauskar et al. 2022; Kraemer et al., 2025).

175 However, several key challenges remain. First, multivariate- statistical methods need long-term, high-resolution, and spatiotemporally explicit data (Tilloy et al., 2019); and ML/AI methods pose an additional requirement of large volumes of well-annotated training data, which may not be available for rare hazard combinations or in data-sparse regions (Ferrario et al. 2025). Next, while several studies are looking into increasing the interpretability of the predictions and underlying physical processes, this remains an ongoing challenge (e.g., Castangia et al., 2023). Nonetheless, recent studies do show promising data availability and methodological advances. Claassen et al. (2023) developed a global database of individual hazards and their consecutive occurrence. In recent years, global datasets on vector and waterborne diseases, WASH indicators, and socioeconomic indicators have increasingly become available, such as the Surveillance Atlas of Waterborne and Infectious Diseases (European Center for Disease Prevention and Control 2023), Burden of Waterborne Disease Estimates (Centres for Disease Control and Prevention 2023), WHO's WASH-database (WHO/UNICEF Joint Monitoring Programme 2024) and UNDP's HDI-database (UNDP 2023). Combining innovative modelling methods from natural hazard risk research with these available datasets will potentially contribute to extracting meaningful insights into the co-occurrence of disasters and diseases.

2.2 Health impacts in risk management frameworks

190 State-of-the-art risk assessment frameworks for natural hazards integrate hazard, exposure, and vulnerability components to estimate risk, often expressed in economic terms such as Expected Annual Damage (EAD) and Value at Risk (VaR) (Sairam et al., 2019; Steinhausen et al. 2021; Ye et al. 2024). However, adaptation decisions based solely on these metrics often fail to account for non-economic dimensions, including environmental, social, and health impacts. In some cases, the number of exposed individuals - a simplistic measure of human exposure is reported alongside economic losses (Alfieri et al., 2015; Scheiber et al. 2024).

195 The majority of the studies addressing negative health outcomes due to natural hazards either review past reports on impacts such as fatalities, injuries and spread of diseases (Stanke et al 2012, Kouadio et al. 2012, Suk et al. 2020, Charnley et al. 2021)

Formatted: Font: (Default) +Body (Times New Roman)

Formatted: Font: (Default) +Body (Times New Roman)

Formatted: Font: (Default) +Body (Times New Roman)

Formatted: Font: (Default) +Body (Times New Roman)

Deleted: . This enables

Formatted: Font: (Default) +Body (Times New Roman)

Formatted: Font: (Default) +Body (Times New Roman)

Formatted: Space After: 0 pt, Line spacing: single

Formatted: Font: (Default) +Body (Times New Roman), Not Italic

Formatted: Line spacing: single

Formatted: Font: (Default) +Body (Times New Roman)

Formatted: Font: (Default) +Body (Times New Roman), Not Italic

Deleted: ¶

Despite the methodological advances, one of the key challenges of using multivariate- statistical methods is the need for long-term, high-resolution, and spatiotemporally explicit data (Tilloy et al., 2019).

Deleted: water

Deleted: WAtersupply, sanitation Sanitation and hygiene Hygiene (...)

Deleted:)

Formatted: Font: (Default) +Body (Times New Roman)

Deleted:

Formatted: Font: (Default) +Body (Times New Roman)

Formatted: Font: (Default) +Body (Times New Roman)

Formatted: Line spacing: single

Formatted: Font: (Default) +Body (Times New Roman)

Deleted: —

Deleted: —

Formatted: Font: (Default) +Body (Times New Roman)

Formatted: Font: (Default) +Body (Times New Roman)

or conduct empirical analysis correlating disease trends to climate or hazard variables (Lo Iacono et al. 2017, Wu et al. 2016, Foudi et al. 2017). A very few longitudinal studies control for confounding factors (Walker-Springett et al. 2017, Bubeck et al. 2020) and quantify the effectiveness of post-disaster relief and response (Apel & Coenen, 2020). Indicators of prevalence of diseases such as risk ratio, odds ratio and incidence rate (Lee et al. 2020, Paranjothy et al. 2011) are commonly regressed against climate variables such as temperature, precipitation and socio-economic indicators such as income and gender (Speis et al. 2019, Paranjothy et al. 2011). Although significant correlation may be revealed among these attributes, they do not contribute to process/causal understanding of the pathways through which cascading effects of disease outbreaks triggered by hazards and the impact on human health.

State-of-the-art disaster risk assessments have been increasingly incorporating semi-quantitative indicators to evaluate health impacts—for instance, the number of affected health centres (Abbas & Routray, 2013). National risk assessments, such as those conducted by the Norwegian Directorate for Civil Protection (DSB), also apply semi-quantitative metrics, including counts of injuries and illness categories, based on subjective definitions (DSB, 2014). These existing approaches can be further enriched by incorporating more standardized and quantitative metrics such as health care expenses and metrics such as Disability Adjusted Life Years (DALY), which combine Years of Life Lost (YLL) due to fatalities and Years Lived with Disability (YLD) (Chatterton et al. 2010, Huynh et al. 2024). Additionally, indicators such as health-related quality of life (HRQoL), perceived recovery, and wellbeing are increasingly used to quantify the broader public health impact of disasters (Liang et al. 2014). However, these outcomes may be further modulated by socio-economic disparities (Kino et al. 2023, Sairam et al. 2025). Though these metrics enable more robust and comparable assessments, they remain largely absent from practice-oriented risk assessment frameworks. Disaster impacts, both socio-economic and health related, often create cascading effects that worsen the overall consequences (Chamley et al. 2021), for example, the cascading effects of the immediate and short-term impacts such as injuries or financial losses on long-term physical health impacts such as musculoskeletal and cardiovascular diseases and psycho-social impacts such as depression and Post-Traumatic Stress Disorder (PTSD) (Berry et al. 2018). Since health impacts are commonly only reported at the regional or national scale (Lee et al. 2020), it is challenging to attribute these impacts to mentioned drivers that are heterogeneous at the micro-scale (Beltrame et al. 2018). Hence, the drivers and processes leading to health risk dynamics are not widely analysed systematically alongside climate processes (Berry et al. 2018) and state-of-the-art impact metrics can rarely capture these complex cascading impacts. Ongoing efforts to integrate health metrics in disaster risk assessment frameworks include the Disaster Resilience Scorecard for Cities: Public Health System Resilience – Addendum which integrates health system resilience into urban disaster planning. It provides a structured framework with 23 indicators to evaluate the capacity of health systems to prepare for, respond to, and recover from disasters. The tool emphasizes multi-hazard scenarios—including epidemics, infrastructure failures, and indirect health impacts—while considering vulnerable populations and continuity of care. It also assesses coordination across sectors and the ability to adapt and learn post-disaster, ensuring health systems are not isolated but integral to overall disaster resilience strategies. Though health metrics and standardized tools for disaster risk assessment are emerging, a significant gap remains in their widespread adoption, and a comprehensive, systematic framework is still needed to fully capture the intricate and cascading impacts of natural hazards on human health. Filling this gap necessitates a shift towards multi-hazard risk management, which can account for the interconnected challenges of disasters and health crises. This approach requires understanding and managing risk across multiple threats, including both natural hazards and disease outbreaks, to ensure more robust and holistic interventions.

3 Research agenda and knowledge transfer

Impacts of recent disasters have demonstrated the clear need to better understand and model the interactions between disasters, disease outbreaks, and to account for health impacts of disasters. Therefore, we recommend the following research agenda, which is relevant for scientists seeking to enhance risk modelling capabilities, as well as for decision-makers and practitioners tasked with anticipating and addressing the growing complexity of disaster risks.

Modelling the probability of co-occurrence of disasters and disease outbreaks is critical for forecasting the impacts of disasters compounded with health crises. Such modelling is imperative to prevent and prepare for the outbreak of diseases following

Formatted: Font: (Default) +Body (Times New Roman)

Deleted: Very

Formatted: Font: (Default) +Body (Times New Roman)

Formatted: Font: (Default) +Body (Times New Roman)

Formatted: Font: (Default) +Body (Times New Roman)

Deleted: ¶

Formatted: Font: (Default) +Body (Times New Roman), Not Italic

Formatted: Font: (Default) +Body (Times New Roman)

Formatted: Font: (Default) +Body (Times New Roman), Not Italic

Formatted: Font: (Default) +Body (Times New Roman)

Formatted: Font: (Default) +Body (Times New Roman), Not Italic

Formatted: Font: (Default) +Body (Times New Roman)

Formatted: Font: (Default) +Body (Times New Roman), Not Italic

Formatted: Font: (Default) +Body (Times New Roman)

Formatted: Font: (Default) +Body (Times New Roman), Not Italic

Formatted: Font: (Default) +Body (Times New Roman)

Moved (insertion) [1]

Formatted: Font: (Default) +Body (Times New Roman), Not Italic

Formatted: Font: (Default) +Body (Times New Roman), Not Italic

Formatted: Font: (Default) +Body (Times New Roman), Not Italic

Formatted: Font: (Default) +Body (Times New Roman)

Moved up [1]: Since health impacts are commonly only reported at the regional or national scale (Lee et al. 2020), it is challenging to attribute these impacts to mentioned drivers that are heterogeneous at the micro-scale (Beltrame et al. 2018). Hence, the drivers and processes leading to health risk dynamics are not widely analysed systematically alongside climate processes (Berry et al. 2018).

Formatted: Line spacing: single

Deleted: This

580 disasters. A potential direction is to adopt the methodological advances from neighbouring fields such as multi-hazard
modelling that capture interactions and feedback across disasters by utilizing the increasingly available large-scale databases.
Methodological approaches include copulas, (dynamic) Bayesian networks, event coincidence analysis, and other multivariate
statistical analysis (Tilloy et al. 2019).

585 In addition to the probability of co-occurrences of disasters and diseases, the socio-economic dimension of the affected
populations plays a critical role in making them susceptible to disasters and diseases. Hence, we need comprehensive mapping
of the socio-economic attributes of the populations along with post-disaster relief and recovery pathways considering scenarios
of successive disaster and disease occurrences (Kouadio et al. 2012, Suk et al. 2020). The consideration of successive disaster-
disease scenarios requires adopting several methods innovated by the socio-hydrology community – for instance, mechanistic
590 models with storylines that are supported by empirical evidence and information obtained through expert knowledge (in the
form of informative priors in Bayesian models – Barendrecht et al. 2019). Mechanistic models help identify pathways
consisting of drivers and feedback of cascading impacts in the disaster-human-health system (Beltrame et al. 2018). They also
facilitate the simulation of counterfactual scenarios which help conceptualize different intervention strategies (Adshead et al
2019). In order to conceptualize adaptation strategies at local- and region-levels, interventions from both public health (e.g.,
595 health-behaviour, education and training, supportive counselling) and disaster risk management (e.g., risk transfer, institutional
framework, disaster risk reduction policy) needs to be identified and evaluated. A systemic understanding of the disaster-
human-health system in the context of financial and social capacity to cope, comorbidity and existing institutional framework
is pertinent to develop socially-optimal interventions (Savigny & Taghreed, 2009).

600 In addition to improving process understanding, exploring the use of different data types and sources would support disaster
risk reduction in data-sparse situations. Health impacts of disasters are typically assessed using reported information and survey
data. However, these data collection methods are both time-consuming and resource-intensive. Since disaster-specific impact
data is highly personal and sensitive, researchers must comply with data privacy regulations, seek approval from ethics
committees, and carefully plan fieldwork to avoid disrupting recovery efforts. Surveys offer only a time-specific snapshot of
605 society, failing to provide continuous monitoring of the evolving situation. Given these challenges and limitations, it is crucial
to explore alternative data sources to better understand the relationship between disasters, diseases, and human health systems.
For example, data sources such as remote sensing and Earth Observation (EO) data show promising results to assess
environmental health hazards as it can for example be used to detect damages WASH infrastructure or to identify long-standing
flooded areas which in turn have a higher risk of waterborne disease outbreaks or can turn into mosquito breeding sites. Sogno
610 et al. (2022) used EO data along with other publicly available datasets to map environments that impact public health, in
specific the risk of myocardial infarction. As these data types tend to cover large temporal and spatial scales, they are explicitly
useful for the assessment of the interactions between environmental factors and disaster impacts (Van Maanen et al. 2024).
For example, Nusrat et al. (2022) used EO data to forecast the risk of waterborne diseases after disasters and Shah et al. (2023)
conducted a literature review on the use of EO data for the mapping of WASH-related infrastructure and quality.

615 Leveraging these diverse data sources (e.g., Surveys, EO) and developing such mixed-method (model and data-driven)
approaches requires transdisciplinary knowledge from Natural Sciences, Public Health and Social Sciences that can be used
by these different sub-fields without making disciplinary compromises. Rather than trying to synergise different methods,
scientists need to explore opportunities to create complementary methods and approaches to better understand the interactions
between disasters and diseases, and the health impacts of disasters. In this respect, we have conceptualized a research agenda
620 (Table 1). The research agenda outlined in this paper directly contributes to multi-hazard risk management by focusing on
interlinked challenges for policy conceptualization and implementation. It emphasizes multi-level interventions and
anticipatory action, aiming to provide a systemic understanding of how disasters, diseases, and societal vulnerabilities interact
which is crucial for developing cohesive and effective strategies that prevent the maladaptation and asynergy.

625 Table 1. Agenda for advancing research into the convergence of natural hazards and health crises

Research Question	Methods	Potential Outcomes	Example references

Deleted: This

Deleted: includes approaches such as

Deleted: b

Deleted: the impacts of

Deleted: is

Deleted: calls for

Formatted: Font: (Default) +Body (Times New Roman)

Deleted:

Moved up [2]: These data collection campaigns are time-consuming and resource-intensive.

Moved (insertion) [2]

Deleted: Health impacts of disasters are predominantly modelled using reported information and survey data. However, These data collection campaigns are time-consuming and resource-intensive. collecting disaster-specific impact data is challenging, as it requires field visits following the disaster, potentially disrupting recovery efforts. ...

Deleted: Additionally, s

Formatted: Font: (Default) +Body (Times New Roman)

Formatted: Font: (Default) +Body (Times New Roman)

Deleted: ,

Deleted: ,

Deleted: ,

Deleted: ,

Formatted: Font: (Default) +Body (Times New Roman)

Deleted:

Deleted: Development

Deleted: of

Formatted: Font: (Default) +Body (Times New Roman)

Formatted: Line spacing: single

Deleted:

Formatted: Font: (Default) +Body (Times New Roman)

Deleted: ¶

Deleted: Finally, t

Deleted: . This approach

Deleted: observed when hazards are managed in isolation.

Formatted: Font: (Default) +Body (Times New Roman)

Formatted Table

655

How can we model the probability of co-occurrence of disasters and disease outbreaks?	Adapted from Multi-hazard modelling - such as, copulas, (dynamic) Bayesian networks, event coincidence analysis, multivariate statistical analysis.	Improved forecasting of disaster-induced disease outbreaks, better preparedness and prevention strategies.	Sperotto et al., 2017 ; Tilloy et al., 2019 ; Liu et al., 2015 ; Marzocchi et al., 2012 ; Khakzad 2015 .
What are the drivers and feedback mechanisms in disaster-human-health systems?	Comprehensive mapping of socio-economic variables, socio-hydrology approaches such as, storyline-based approaches, mechanistic models with Bayesian approaches with informative priors and empirical data.	Identification of vulnerable populations, pathways of cascading impacts, and improved intervention and post-disaster relief strategies	Kouadio et al. 2012 , Suk et al. 2020 ; De Ruiter & Van Loon (2022) ; Barendrecht et al. 2019 ; Savigny & Taghreed, 2009 .
What are the alternative data sources to improve disaster risk reduction in data-sparse situations?	Use of remote sensing - Earth Observation (EO) data, integration with publicly available datasets	Enhanced assessment of environmental health hazards, improved monitoring of WASH infrastructure and disease outbreak risks	Van Maanen et al., 2024 ; Nusrat et al., (2022) ; Sogno et al., (2022)
How can health impact metrics be integrated into disaster risk assessment frameworks?	Use of Disability Adjusted Life Years (DALY), Years of Life Lost (YLL), and Years Lived with Disability (YLD) in risk models, systematic analysis of cascading health impacts, micro-scale health risk attribution	More comprehensive assessment of disaster-related health burdens, improved policy decisions incorporating long-term health effects	Huynh et al. (2024) ; Chatterton et al. (2010) ; Scheiber et al. (2024) ; Sairam et al. (2025) ; Liang et al. (2014)
How can integrated frameworks for multi-hazard risk management be conceptualized and implemented to effectively address the cascading impacts of disasters and health crises on society?	Use a combination of dynamic Bayesian networks (DBNs) and event coincidence analysis; structural equation modelling (SEM); policy analysis, case studies, and expert elicitation and participatory modelling to inform DBNs and to create storylines.	The development of a conceptual framework or model that integrates health and disaster risk data, providing a holistic view of multi-hazard scenarios, and that and that support policymakers in designing interventions that prevent maladaptation and asynergy.	Schippers (2020) , Sperotto et al. (2017) ; Tripathy et al. 2021 ; Krol et al., 2024 ; De Ruiter and Van Loon (2022) ; Haer and De Ruiter 2024 .

The research agenda, which emphasizes the need for increased understanding of disasters, diseases, and health impacts, is targeted not only towards scientific advancement, but also aims to contribute to the following Sustainable Development Goals (SDGs): SDG 3 (good health and wellbeing), SDG 6 (clean water and sanitation), SDG 11 (sustainable cities and communities), SDG 13 (climate action), and SDG 16 (peace, justice, and strong institutions) (see, Figure 2).

Formatted: Font: (Default) +Body (Times New Roman), Dutch
Formatted: Line spacing: single
Formatted: Font: (Default) +Body (Times New Roman)
Formatted: Dutch

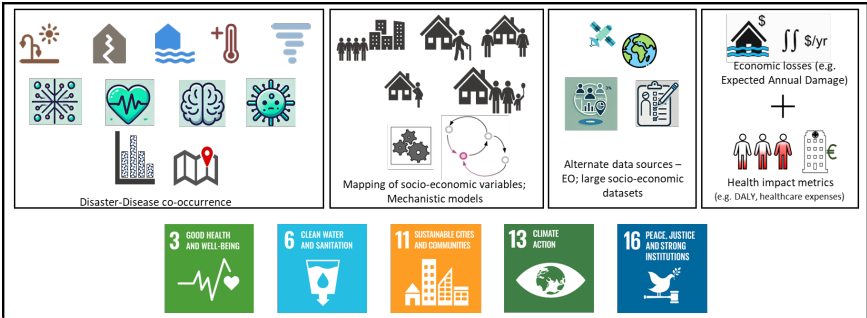
Formatted: Font: (Default) +Body (Times New Roman), Dutch
Formatted: Line spacing: single
Formatted: Font: (Default) +Body (Times New Roman)
Formatted: Font: (Default) +Body (Times New Roman), Dutch
Formatted: Font: (Default) +Body (Times New Roman)
Formatted: Dutch

Formatted: Font: (Default) +Body (Times New Roman)
Formatted: Line spacing: single
Deleted: De Ruiter & Van Loon (2022);
Formatted: Dutch

Formatted: Line spacing: single
Formatted: Dutch
Formatted: Dutch
Formatted: Dutch
Formatted: Line spacing: single
Formatted: Font: (Default) +Body (Times New Roman), Dutch
Formatted: Font: (Default) +Body (Times New Roman)

Formatted: Font: (Default) +Body (Times New Roman), Dutch
Formatted: Dutch
Deleted: and often synergistic
Deleted: natural hazards
Deleted: human health and well-being
Formatted: Font: (Default) +Body (Times New Roman), Dutch
Formatted: Line spacing: single
Deleted: calling for an
Deleted: increased understanding of disasters, diseases and health impacts
Formatted: Font: (Default) +Body (Times New Roman)
Formatted: Font: (Default) +Body (Times New Roman)

670 In the literature, the challenge of managing the risk of multiple hazards has been acknowledged. For example, challenges of
maladaptation (Schippers 2020) and asynergy of disaster risk reduction measures when measures aimed at reducing the risk
of one hazard have opposing effects on the risk of another hazard (De Ruiter et al. 2021). Recent real-world examples have
demonstrated that similar challenges can arise in the case of disasters and disease outbreaks. For example, when the Philippines
were hit by typhoon Goni during the Covid-19 pandemic, people were evacuated based on the typhoon track forecasts and
forced to huddle together in evacuation facilities, enabling the spread of Covid (Gonzalo Ladera and Tiemroth 2021; IFRC-
DREF, 2020). Our research agenda (Table 1) targeting process-based models considering societal and individual attributes
accounts for the vulnerability dynamics (heterogeneity in local circumstances) within which these events take place. The role
of vulnerability dynamics in developing comprehensive risk management measures and equitable adaptation is highlighted by
recent research (De Ruiter and Van Loon 2022, Haer and De Ruiter 2024).



680 **Figure 2. Research agenda for advancing our understanding of the Disaster-Diseases and Human Health System**

685 **4 Conclusions**

This perspective paper underscores the urgent need to improve the integration of health impacts, disease outbreaks, into multi-hazard disaster risk assessments and management. As the frequency and complexity of concurrent disasters—such as natural hazards compounded by health crises—continue to rise, it is clear that current risk assessment models are not yet sufficiently capable to capture the full range of potential impacts. Bridging this gap requires the incorporation of novel approaches from fields such as socio-hydrology and multi-hazard modelling, which focus on understanding the interdependencies and feedbacks between disasters, diseases, and health systems.

690 The research agenda outlined herein highlights the importance of modelling the probability and temporal dynamics of disaster-health interactions, particularly the likelihood of disease outbreaks following natural disasters. It emphasizes the need for a more comprehensive mapping of socio-economic vulnerabilities, which influence the resilience of affected populations. By adopting mixed-method approaches that combine remote sensing data, earth observation, and empirical field data, we can enhance our ability to predict and mitigate the health impacts of disasters. The goal is not only to improve scientific understanding but also to provide actionable insights for practitioners and policymakers to create more effective and contextually appropriate interventions.

700 Furthermore, this agenda is aligned with key Sustainable Development Goals (SDGs) related to health, climate action, and resilience. Specifically, it contributes to SDG 6 (clean water and sanitation), SDG 11 (sustainable cities and communities), SDG 13 (climate action), and SDG 16 (peace, justice, and strong institutions), all of which require an integrated and systems-level approach to risk management.

Deleted: An improved understanding and ability to assess the interactions between disasters, diseases and health impacts can support the improved risk management of disasters and diseases accounting for their interactions.

Formatted: Font: (Default) +Body (Times New Roman)

Formatted: Font: (Default) +Body (Times New Roman)

Formatted: Font: (Default) +Body (Times New Roman)

Formatted: Font: (Default) +Body (Times New Roman)

Formatted: Font: (Default) +Body (Times New Roman)

Formatted: Font: (Default) +Body (Times New Roman)

Formatted: Font: (Default) +Body (Times New Roman)

710 Ultimately, this research perspective calls for a paradigm shift in disaster risk management—one that prioritizes a holistic understanding of disaster-human-health systems and leverages the full potential of interdisciplinary knowledge and technological advances. By fostering greater collaboration across disciplines and integrating health-related metrics into conventional risk frameworks, we can enhance our preparedness and response to the growing complexity of disaster risks, ensuring more resilient communities in the face of multiple, simultaneous hazards.

Competing interests
715 NS and MCdR are guest editors of special issues in NHESS.

Acknowledgements
MCdR received support from the MYRIAD-EU project, which received funding from the European Union’s Horizon 2020 research and innovation programme under grant agreement No [101003276](#), and by the Netherlands Organisation for Scientific Research (NWO) (VENI; grant no. VI.Veni.222.169). NS is funded by BMFTR, junior research group on Climate Environment and Health (HI-CHiF) grant number - FKZ 01LN2209A.

References

725 [Abbas, H. B., & Routray, J. K. \(2013\). A semi-quantitative risk assessment model of primary health care service interruption during flood: Case study of Aroma locality, Kassala State of Sudan. International Journal of Disaster Risk Reduction, 6\(6\), 118–128. <https://doi.org/10.1016/J.IJDRR.2013.10.002>](#)

Adshead, D., Thacker, S., Fuldauer, L. I., & Hall, J. W. (2019). Delivering on the Sustainable Development Goals through long-term infrastructure planning. *Global Environmental Change*, 59, 101975.

730 Agache I, Sampath V, Aguilera J, et al. Climate change and global health: A call to more research and more action. *Allergy*. 2022; 77: 1389–1407. doi:10.1111/all.15229

AghaKouchak A, Chiang F, Huning LS, et al. Climate Extremes and Compound Hazards in a Warming World. *Annu Rev Earth Planet Sci*. Published online 2020. doi:10.1146/annurev-earth-071719-055228

735 Aitsi-Selmi A, Murray V. Protecting the health and well-being of populations from disasters: health and health care in The Sendai Framework for Disaster Risk Reduction 2015-2030. *Prehosp Disaster Med*. 2016;31(1):74–78.

[Alcayna, T., Kellerhaus, F. and Goodermote, R. Applying Anticipatory Action Ahead of Disease Outbreaks and Epidemics: A Conceptual Framework for the International Red Cross and Red Crescent Movement. Berlin: Anticipation Hub, 2024.](#)

740 [Alfieri, L., Feyen, L., Dottori, F., & Bianchi, A. \(2015\). Ensemble flood risk assessment in Europe under high end climate scenarios. Global Environmental Change, 35, 199-212.](#)

Apel, D., & Coenen, M. (2020). Physical symptoms and health-care utilization in victims of the 2013 flood disaster in Germany. *International Journal of Disaster Risk Reduction*

745 [Barendrecht, M. H., Viglione, A., Kreibich, H., Merz, B., Vorogushyn, S., & Blöschl, G. \(2019\). The value of empirical data for estimating the parameters of a sociohydrological flood risk model. Water Resources Research, 55, 1312–1336. <https://doi.org/10.1029/2018WR024128>](#)

750 [Bauskar, S. R., Madhavaram, C. R., Galla, E. P., Sunkara, J. R., & Gollangi, H. K. \(2022\). Predicting disease outbreaks using AI and Big Data: A new frontier in healthcare analytics. European Chemical Bulletin. Green Publication. <https://doi.org/10.53555/ecb.v11:i12.17745>.](#)

Formatted: Font: (Default) +Body (Times New Roman)

Formatted: Font: (Default) +Body (Times New Roman)

Deleted: BF

Formatted: Line spacing: single

Formatted: Font: (Default) +Body (Times New Roman)

Formatted: Font: (Default) +Body (Times New Roman)

Formatted: Font: (Default) +Body (Times New Roman), English (US)

Formatted: Font: (Default) +Body (Times New Roman)

Formatted: Font: (Default) +Body (Times New Roman), Dutch

Formatted: Font: (Default) +Body (Times New Roman)

Formatted: Font: (Default) +Body (Times New Roman)

Formatted: Font: (Default) +Body (Times New Roman)

Formatted: Font: (Default) +Body (Times New Roman), Not Italic

Formatted: Font: (Default) +Body (Times New Roman)

755 Beltrame L, Dunne T, Vineer HR, Walker JG, Morgan ER, Vickerman P, McCann CM, Williams DJL, Wagener T. 2018. A mechanistic hydro-epidemiological model of liver fluke risk. *J. R. Soc. Interface* 15: 20180072. <http://dx.doi.org/10.1098/rsif.2018.0072>.

760 Bevacqua E, Zappa G, Lehner F, Zscheischler J. Precipitation trends determine future occurrences of compound hot–dry events. *Nat Clim Chang*. 2022;12(4):350-355.

Berry, H. L., Waite, T. D., Dear, K. B., Capon, A. G., & Murray, V. (2018). The case for systems thinking about climate change and mental health. *Nature Climate Change*, 8(4), 282-290.

765 Bubeck, P., Berghäuser, L., Hudson, P., & Thieken, A. H. (2020). Using panel data to understand the dynamics of human behavior in response to flooding. *Risk Analysis*, 40(11), 2340-2359.

Cabas, A., Lorenzo-Velazquez, C., Ingabire Abayo, N., Ji, C., Ramirez, J., Garcia, F. E., ... & Remington, C. L. (2023). Intersectional Impacts of the 2021 Mw 7.2 Nippes, Haiti, Earthquake from Geotechnical and Social Perspectives. *Bulletin of the Seismological Society of America*, 113(1), 73-98. <https://doi.org/10.1785/0120220118>

770 Cavallo, E., Alvarez, L.G., & Powell, A. (2021). Estimating the Potential Economic Impact of Haiti's 2021 Earthquake (Technical Note No. IDB-TN-2297). Inter-American Development Bank (IDB). <https://publications.iadb.org/en/publications/english/viewer/Estimating-the-Potential-Economic-Impact-of-Haitis-2021-Earthquake.pdf>.

775 Caribbean Disaster Emergency Management Agency (CDEMA). (2021, September 9). Situation Report #11 - Haiti Earthquake. <https://reliefweb.int/report/haiti/situation-report-11-haiti-earthquake-500-pm-9-september-2021>.

Castangia, M., Grajales, L. M. M., Aliberti, A., Rossi, C., Macii, A., Macii, E., & Patti, E. (2023). Transformer neural networks for interpretable flood forecasting. Environmental Modelling & Software, 160, 105581.

780 *Charnley, G. E., Kelman, I., Gaythorpe, K. A., & Murray, K. A. (2021). Traits and risk factors of post-disaster infectious disease outbreaks: a systematic review. Scientific reports, 11(1), 1-14.*

785 Chatterton, J., Viavattene, C., Morris, J., Penning-Rowsell, E., Tapsell, S., Flood Hazard Research Centre and Cranfield University, Department of Natural Resources 2010. *The costs of the summer 2007 floods in England*. Bristol, UK Environment Agency.

790 Cutter SL. Compound, cascading, or complex disasters: what's in a name? *Environ Sci policy Sustain Dev*. 2018;60(6):16-25.

Daniels, J. P. (2021). Earthquake compounds Haiti's health challenges. *The Lancet*, 398(10304), 944-945. [https://doi.org/10.1016/S0140-6736\(21\)02009-2](https://doi.org/10.1016/S0140-6736(21)02009-2).

De Angeli S, Malamud BD, Rossi L, Taylor FE, Trasforini E, Rudari R. A multi-hazard framework for spatial-temporal impact analysis. *International Journal of Disaster Risk Reduct*. 2022;73:102829.

De Groote, H., Kimenju, S. C., Munyua, B., Palmas, S., Kassie, M., & Bruce, A. (2020). Spread and impact of fall armyworm (*Spodoptera frugiperda* JE Smith) in maize production areas of Kenya. *Agriculture, ecosystems & environment*, 292, 106804.

800 De Luca P, Hillier JK, Wilby RL, Quinn NW, Harrigan S. Extreme multi-basin flooding linked with extra-tropical cyclones. *Environ Res Lett*. 2017;12(11):114009.

de Ruiter MC, Van Loon AF. The challenges of dynamic vulnerability and how to assess it. *IScience*. Published online 2022:104720.

Formatted: Font: (Default) +Body (Times New Roman)

Formatted: Font: (Default) +Body (Times New Roman)

Formatted: Font: (Default) +Body (Times New Roman)

Formatted: Font: (Default) +Body (Times New Roman)

Formatted: Font: (Default) +Body (Times New Roman)

Formatted: Font: (Default) +Body (Times New Roman)

Formatted: Font: (Default) +Body (Times New Roman), Not Italic, Not Highlight

Formatted: Font: (Default) +Body (Times New Roman)

Formatted: Font: (Default) +Body (Times New Roman)

Formatted: Font: (Default) +Body (Times New Roman)

805 de Ruiter MC, Couasnon A, van den Homberg M, Daniell JE, Gill JC, Ward PJ. Why we can no longer ignore consecutive
disasters. Published online 2020.

Drakes O, Tate E. Social vulnerability in a multi-hazard context: a systematic review. *Environ Res Lett*. Published online 2022.

810 DSB (2014). Fremgangsmté for utarbeidelse av Nasjonalt risikobilde (NRB).
<https://www.dsbinfo.no/DSBno/2014/Tema/FremgangsmtéforutarbeidelseavNasjonaltRisikobildeNRB> (last accessed
15/07/2025)

815 Ferrario, D. M., Sanò, M., Maraschini, M., Critto, A., & Torresan, S. (2025). Harnessing Machine Learning methods for
climate multi-hazard and multi-risk assessment. *EGUsphere*, 2025, 1-72.

FEWS NET. (2019). Ethiopia: Food Security Outlook: October 2018 to May 2019. Retrieved from
820 https://reliefweb.int/sites/reliefweb.int/files/resources/ETHIOPIA_Food_Security_Outlook_October2018.pdf

Foudi, S., N. Os es-Eraso, and I. Galarraga (2017), The effect of flooding on mental health: Lessons learned for building
resilience, *Water Resour. Res.*, 53, 5831–5844, doi:10.1002/2017WR020435.

Funk, C., Hoell, A., Nicholson, S., Korecha, D., Galu, G., Artan, G., et al. (2019). Examining the potential contributions of
825 extreme “Western V” sea surface temperatures to the 2017 March–June East African Drought. *Bulletin of the American
Meteorological Society*, 100(1), S55–S60. <https://doi.org/10.1175/BAMS-D-18-0108.1>

Gill, J. C., & Malamud, B. D. (2014). Reviewing and visualizing the interactions of natural hazards. *Reviews of geophysics*,
52(4), 680-722.

830 Gonzalo Ladera, L. A., & Tiemroth, A. (2021). Typhoon Disaster Response amid the COVID-19 Pandemic: A Case Study of
Successive Typhoons in The Philippines in 2020.

Government of Haiti (GoH). (2021). Post-Disaster Needs Assessment in Haiti: Earthquake of 14 August 2021 in the southern
835 peninsula - executive summary.

Hillier JK, Matthews T, Wilby RL, Murphy C. Multi-hazard dependencies can increase or decrease risk. *Nat Clim Chang*.
2020;10(7):595-598.

Huynh, T. T. N., Hofstra, N., Nguyen, H. Q., Baker, S., Pathirana, A., Corzo Perez, G. A., & Zevenbergen, C. (2024).
840 Estimating disease burden of rotavirus in floodwater through traffic in the urban areas: A case study of Can Tho city,
Vietnam. *Journal of Flood Risk Management*, 17(1), e12955.

International Federation of Red Cross and Red Crescent Societies (IFRC). (2022, December 10). Haiti, Americas Region:
Earthquake and Cholera - Revised Emergency Appeal No. MDRHT018. [https://reliefweb.int/report/haiti/haiti-americas-](https://reliefweb.int/report/haiti/haiti-americas-region-earthquake-and-cholera-revised-emergency-appeal-no-mdrht018)
845 [region-earthquake-and-cholera-revised-emergency-appeal-no-mdrht018](https://reliefweb.int/report/haiti/haiti-americas-region-earthquake-and-cholera-revised-emergency-appeal-no-mdrht018)

Isidore K Kouadio, Syed Aljunid, Taro Kamigaki, Karen Hammad & Hitoshi Oshitani (2012) Infectious diseases following
natural disasters: prevention and control measures, *Expert Review of Anti-infective Therapy*, 10:1, 95-104, DOI:
10.1586/eri.11.155

850 Jato-Espino, D., Manchado, C., & Roldán-Valcarce, A. (2025). A compact multi-hazard assessment model to identify urban
areas prone to heat islands, floods and particulate matter. *International Journal of Disaster Risk Reduction*, 105277.

Formatted: Font: (Default) +Body (Times New Roman)

Formatted: Font: (Default) +Body (Times New Roman), Not Italic, Not Highlight

Formatted: Font: (Default) +Body (Times New Roman)

Formatted: Font: (Default) +Body (Times New Roman)

Formatted: Font: (Default) +Body (Times New Roman)

Formatted: Font: (Default) +Body (Times New Roman)

Formatted: Font: (Default) +Body (Times New Roman), Not Italic

Formatted: Font: (Default) +Body (Times New Roman)

Formatted: Font: (Default) +Body (Times New Roman), English (UK)

Formatted: Font: (Default) +Body (Times New Roman)

Formatted: Font: (Default) +Body (Times New Roman), English (UK)

Formatted: Font: (Default) +Body (Times New Roman)

855 Jiseon Lee, Duminda Perera, Talia Glickman, Lina Taing, Water-related disasters and their health impacts: A global review, Progress in Disaster Science, Volume 8, 2020, 100123, ISSN 2590-0617, <https://doi.org/10.1016/j.pdisas.2020.100123>.

Jutla A, Khan R, Colwell R. Natural disasters and cholera outbreaks: current understanding and future outlook. Curr Environ Heal reports. 2017;4(1):99-107.

860 Kelman I. Disaster by Choice: How Our Actions Turn Natural Hazards into Catastrophes. Oxford University Press; 2020.

Khakzad N. Application of dynamic Bayesian network to risk analysis of domino effects in chemical infrastructures. Reliab Eng Syst Saf. 2015;138:263-272.

865 Kilavi, M., MacLeod, D., Ambani, M., Robbins, J., Dankers, R., Graham, R., et al. (2018). Extreme rainfall and flooding over central Kenya including Nairobi city during the long-rains season 2018: Causes, predictability, and potential for early warning and actions. *Atmosphere*, 9(12), 472. <https://doi.org/10.3390/atmos9120472>.

Korswagen PA, Jonkman SN, Terwel KC. Probabilistic assessment of structural damage from coupled multi-hazards. Struct Saf. 2019;76(June 2018):135-148. doi:10.1016/j.strusafe.2018.08.001

870 [Kraemer, M. U., Tsui, J. L. H., Chang, S. Y., Lytras, S., Khurana, M. P., Vanderslott, S., ... & Bhatt, S. \(2025\). Artificial intelligence for modelling infectious disease epidemics. Nature, 638\(8051\), 623-635](#)

875 Kreibich, H., Van Loon, A.F., Schröter, K. et al. The challenge of unprecedented floods and droughts in risk management. *Nature* **608**, 80–86 (2022). <https://doi.org/10.1038/s41586-022-04917-5>.

[Krol, L., Langezaal, M., Budidarma, L., Wassenaar, D., Didaskalou, E. A., Trimpos, K., ... & Schrama, M. \(2024\). Distribution of Culex pipiens life stages across urban green and grey spaces in Leiden, The Netherlands. Parasites & Vectors, 17\(1\), 37.](#)

880 Kumela, T., Simiyu, J., Sisay, B., Likhayo, P., Mendesil, E., Gohole, L., & Tefera, T. (2019). Farmers' knowledge, perceptions, and management practices of the new invasive pest, fall armyworm (*Spodoptera frugiperda*) in Ethiopia and Kenya. *International Journal of Pest Management*, 65(1), 9. <https://doi.org/10.1080/09670874.2017.1423129>.

885 [Liang Y, Lu P. Health-Related Quality of Life and the Adaptation of Residents to Harsh Post-Earthquake Conditions in China. Disaster Medicine and Public Health Preparedness. 2014;8\(5\):390-396. doi:10.1017/dmp.2014.94](#)

[Kino, S., Aida, J., Kondo, K., & Kawachi, I. \(2023\). Do disasters exacerbate socioeconomic inequalities in health among older people?. International Journal of Disaster Risk Reduction, 98, 104071.](#)

890 [Lin L, Wang Y, Liu T \(2017\) Perception of recovery of households affected by 2008 Wenchuan earthquake: A structural equation model. PLoS ONE 12\(8\): e0183631. https://doi.org/10.1371/journal.pone.0183631](#)

Liu Z, Nadim F, Garcia-Aristizabal A, Mignan A, Fleming K, Luna BQ. A three-level framework for multi-risk assessment. Georisk. 2015;9(2):59-74. doi:10.1080/17499518.2015.1041989

895 Lo Iacono G, Armstrong B, Fleming LE, Elson R, Kovats S, Vardoulakis S, et al. (2017) Challenges in developing methods for quantifying the effects of weather and climate on water-associated diseases: A systematic review. PLoS Negl Trop Dis 11(6): e0005659. <https://doi.org/10.1371/journal.pntd.0005659>

Matanó A, de Ruiter MC, Koehler J, Ward PJ, Van Loon AF. Caught Between Extremes: Understanding Human-Water Interactions During Drought-To-Flood Events in the Horn of Africa. *Earth's Futur*. 2022;10(9):e2022EF002747.

900 [Mavrouli M, Mavroulis S, Lekkas E, Tsakris A. The Impact of Earthquakes on Public Health: A Narrative Review of Infectious Diseases in the Post-Disaster Period Aiming to Disaster Risk Reduction. Microorganisms. 2023 Feb 7;11\(2\):419. doi: 10.3390/microorganisms11020419. PMID: 36838384; PMCID: PMC9968131.](#)

Formatted: Font: (Default) +Body (Times New Roman)

Formatted: Font: (Default) +Body (Times New Roman)

Formatted: Font: (Default) +Body (Times New Roman)

Formatted: Font: (Default) +Body (Times New Roman), Dutch

Formatted: Font: (Default) +Body (Times New Roman)

Formatted: Font: (Default) +Body (Times New Roman), Not Italic, English (US), Not Highlight

Formatted: Font: (Default) +Body (Times New Roman)

Formatted: Font: (Default) +Body (Times New Roman), Dutch

Formatted: Font: (Default) +Body (Times New Roman)

Formatted: Font: (Default) +Body (Times New Roman), German

Formatted: Font: (Default) +Body (Times New Roman)

Formatted: Font: (Default) +Body (Times New Roman), German

Formatted: Font: (Default) +Body (Times New Roman), Dutch

Formatted: Font: (Default) +Body (Times New Roman)

Formatted: Font: (Default) +Body (Times New Roman)

Formatted: Font: (Default) +Body (Times New Roman)

Formatted: Font: (Default) +Body (Times New Roman)

Formatted: Font: (Default) +Body (Times New Roman)

Formatted: Font: (Default) +Body (Times New Roman)

Formatted: Font: (Default) +Body (Times New Roman)

905 Marzocchi W, Garcia-Aristizabal A, Gasparini P, Mastellone ML, Ruocco A Di. Basic principles of multi-risk assessment: A
case study in Italy. *Nat Hazards*. Published online 2012. doi:10.1007/s11069-012-0092-x

Matthews T, Wilby RL, Murphy C. An emerging tropical cyclone–deadly heat compound hazard. *Nat Clim Chang*. 2019;1.
doi:10.1038/s41558-019-0525-6

910 Mazdiyasni O, AghaKouchak A. Natural disasters are prejudiced against disadvantaged and vulnerable populations: The lack
of publicly available health-related data hinders research at the cusp of the global climate crisis. *GeoHealth*.
2020;4(1):e2019GH000219.

915 McMichael AJ. Human population health: sentinel criterion of environmental sustainability. *Curr Opin Environ Sustain*.
2009;1(1):101-106.

Moftakhari H, Schubert JE, AghaKouchak A, Matthew RA, Sanders BF. Linking statistical and hydrodynamic modeling for
compound flood hazard assessment in tidal channels and estuaries. *Adv Water Resour*. 2019;128:28-38.
doi:10.1016/j.advwatres.2019.04.009

920 Mora C, McKenzie T, Gaw IM, et al. Over half of known human pathogenic diseases can be aggravated by climate change.
Nat Clim Chang. 2022;12(9):869-875.

925 Murray V. UNDRR Hazard Definition & Classification Review. 2020. undrr.org/publication/hazard-definition-and-classification-review.

Njogu, H. W. (2021). Effects of floods on infrastructure users in Kenya. *Journal of Flood Risk Management*, 14(4), e12746.
<https://doi.org/10.1111/jfr3.12746>

930 Nusrat, F., Haque, M., Rollend, D., Christie, G., & Akanda, A. S. (2022). A High-Resolution Earth Observations and Machine
Learning-Based Approach to Forecast Waterborne Disease Risk in Post-Disaster Settings. *Climate*, 10(4), 48.
<https://doi.org/10.3390/cli10040048>

Paprotny D, Kreibich H, Morales-Nápoles O, et al. A probabilistic approach to estimating residential losses from different
935 flood types. *Nat Hazards*. Published online 2020:1-33.

Paranjothy, S., Gallacher, J., Amlôt, R., Rubin, G. J., Page, L., Baxter, T., ... & Palmer, S. R. (2011). Psychosocial impact of
the summer 2007 floods in England. *BMC public health*, 11(1), 1-8.

940 Philip, S., Kew, S. F., van Oldenborgh, G. J., Otto, F., O’Keefe, S., Haustein, K., et al. (2018). Attribution analysis of the
Ethiopian drought of 2015. *Journal of Climate*, 31(6), 2465–2486. <https://doi.org/10.1175/JCLI-D-17-0274.1>

[Pugliese Vilorio, A. D. J., Folini, A., Carrion, D., & Brovelli, M. A. \(2024\). Hazard susceptibility mapping with machine and
deep learning: a literature review. *Remote Sensing*, 16\(18\), 3374.](#)

945 Raymond C, Horton RM, Zscheischler J, et al. [Understanding and managing connected extreme events.](#) *Nat Clim Chang*.
2020;10(7):611-621.

[Reichstein, M., Camps-Valls, G., Stevens, B., Jung, M., Denzler, J., Carvalhais, N., & Prabhat, F. \(2019\). Deep learning and
950 process understanding for data-driven Earth system science. *Nature*, 566\(7743\), 195-204.](#)

[Reinhart, B.J., & Berg, R. \(2022\). National hurricane center tropical cyclone report: Hurricane Grace \(Report No. AL072021\).
National Oceanic and Atmospheric Administration \(NOAA\). \[https://www.nhc.noaa.gov/data/tcr/AL072021_Grace.pdf\]\(https://www.nhc.noaa.gov/data/tcr/AL072021_Grace.pdf\)](#)

Formatted: Font: (Default) +Body (Times New Roman)

Formatted: Font: (Default) +Body (Times New Roman)

Formatted: Font: (Default) +Body (Times New Roman)

Formatted: Font: (Default) +Body (Times New Roman)

Deleted: ¶

Formatted: Font: (Default) +Body (Times New Roman)

Formatted: Font: (Default) +Body (Times New Roman), English (US)

Formatted: Font: (Default) +Body (Times New Roman)

Formatted: Font: (Default) +Body (Times New Roman), Not Italic, Not Highlight

Formatted: Space After: 0 pt, Line spacing: single

Formatted: Font: (Default) +Body (Times New Roman), Not Italic

Formatted: Font: (Default) +Body (Times New Roman)

Formatted: Line spacing: single

Formatted: Font: (Default) +Body (Times New Roman), English (US)

Formatted: Font: (Default) +Body (Times New Roman)

955 Ridder NN, Pitman AJ, Westra S, et al. Global hotspots for the occurrence of compound events. *Nat Commun.* 2020;11(1):1-10.

Sairam, N., Brill, F., Sieg, T., Farrag, M., Kellermann, P., Nguyen, V. D., et al. (2021). Process-based flood risk assessment for Germany. *Earth's Future*, 9, e2021EF002259. <https://doi.org/10.1029/2021EF002259>.

960 [Sairam, N., Buch, A., Zenker, M.-L., Dillenardt, L., Coenen, M., Thieken, A. H., & Jung-Sievers, C. \(2025\). Health-related quality of life and everyday functioning in the flood-affected population in Germany - A case study of the 2021 floods in west Germany. *GeoHealth*, 9, e2024GH001135. <https://doi.org/10.1029/2024GH001135>.](#)

965 Savigny, D.d. & Taghreed, A. (eds) *Systems Thinking for Health System Strengthening* (World Health Organization, 2009).

Scheiber, L., Sairam, N., Hoballah Jalloul, M., Rafiezadeh Shahi, K., Jordan, C., Visscher, J., et al. (2024). Effective adaptation options to alleviate nuisance flooding in coastal megacities—learning from Ho Chi Minh City, Vietnam. *Earth's Future*, 12, e2024EF004766. <https://doi.org/10.1029/2024EF004766>.

970 Sett, D., Trinh, T. P., Wasim, T., Ortiz-Vargas, A., Nguyen, D. G. C., Büche, K., ... & Hagenlocher, M. (2024). Advancing understanding of the complex nature of flood risks to inform comprehensive risk management: Findings from an urban region in Central Vietnam. *International Journal of Disaster Risk Reduction*, 110, 104652.

975 Simpson NP, Mach KJ, Constable A, et al. A framework for complex climate change risk assessment. *One Earth*. 2021;4(4):489-501.

Sogno, P., Kuenzer, C., Bachofer, F., & Traidl-Hoffmann, C. (2022). Earth observation for exposome mapping of Germany: analyzing environmental factors relevant to non-communicable diseases. *International Journal of Applied Earth Observation and Geoinformation*, 114, 103084.

980 Sperotto A, Molina J-L, Torresan S, Critto A, Marcomini A. Reviewing Bayesian Networks potentials for climate change impacts assessment and management: A multi-risk perspective. *J Environ Manage.* 2017;202:320-331.

985 Speis, P. D., Andreadakis, E., Diakakis, M., Daidassi, E., & Sarigiannis, G. (2019). Psychosocial vulnerability and demographic characteristics in extreme flash floods: The case of Mandra 2017 flood in Greece. *International Journal of Disaster Risk Reduction*, 41, 101285

[Stalhandske, Z., de Ruiter, M. C., Chambers, J., Zimmermann, S., Colón-González, F. J., Sairam, N., ... & Kropf, C. M. \(2025\). Global assessment of population exposure to multiple climate-related hazards from 2003 to 2021: a retrospective analysis. *The Lancet Planetary Health*.](#)

990 Stanke C, Murray V, Amlôt R, Nurse J, Williams R. The Effects of Flooding on Mental Health: Outcomes and Recommendations from a Review of the Literature. *PLOS Currents Disasters*. 2012 May 30 .Edition 1. doi: 10.1371/4f9f1fa9c3cae.

995 Steinhausen, M., Paprotny, D., Dottori, F., Sairam, N., Mentaschi, L., Alfieri, L., ... & Schröter, K. (2022). Drivers of future fluvial flood risk change for residential buildings in Europe. *Global Environmental Change*, 76, 102559.

1000 Suk, J. E., Vaughan, E. C., Cook, R. G., & Semenza, J. C. (2020). Natural disasters and infectious disease in Europe: a literature review to identify cascading risk pathways. *European journal of public health*, 30(5), 928-935.

Sutanto SJ, Vitolo C, Di Napoli C, D'Andrea M, Van Lanen HAJ. Heatwaves, droughts, and fires: Exploring compound and cascading dry hazards at the pan-European scale. *Environ Int.* 2020;134:105276.

Formatted: Font: (Default) +Body (Times New Roman)

Formatted: Font: (Default) +Body (Times New Roman), German

Formatted: Font: (Default) +Body (Times New Roman)

Formatted: Font: (Default) +Body (Times New Roman)

Formatted: Font: (Default) +Body (Times New Roman)

Formatted: Font: (Default) +Body (Times New Roman)

Formatted: Font: (Default) +Body (Times New Roman)

Formatted: English (US)

Formatted: Line spacing: single

Formatted: Font: (Default) +Body (Times New Roman)

005 Tilloy, A., Malamud, B. D., Winter, H., & Joly-Laugel, A. (2019). A review of quantification methodologies for multi-hazard interrelationships. *Earth-Science Reviews*, 196, 102881.

010 Tripathy, S. S., Bhatia, U., Mohanty, M., Karmakar, S., & Ghosh, S. (2021). Flood evacuation during pandemic: a multi-objective framework to handle compound hazard. *Environmental Research Letters*, 16(3), 034034.

Uhe, P., Philip, S., Kew, S., Shah, K., Kimutai, J., Mwangi, E., et al. (2018). Attributing drivers of the 2016 Kenyan drought. *International Journal of Climatology*, 38(December), e554–e568. <https://doi.org/10.1002/joc.5389>.

015 UNDRR. (2021). Disaster Resilience Scorecard for Cities: Public Health System Resilience – Addendum Version 2.0. United Nations Office for Disaster Risk Reduction (UNDRR). https://mcr2030.undrr.org/sites/default/files/2021-06/UNDRR_Public%20Health%20Scorecard%20Addendum%20v2.0_English-Jan2021.pdf.

▲ UNDRR. *Our World at Risk: Transforming Governance for a Resilient Future.*; 2022.

020 United Nations. *Paris Agreement.*; 2015. Accessed October 11, 2018. unfccc.int/resource/docs/2015/cop21/eng/109r01.pdf.
 UNDRR. *Sendai Framework for Disaster Risk Reduction 2015 - 2030.*; 2015. Accessed November 5, 2024. [unisdr.org/files/43291_sendaiframeworkfordrren.pdf](https://www.unisdr.org/files/43291_sendaiframeworkfordrren.pdf).

025 United Nations Office for the Coordination of Humanitarian Affairs (OCHA). (2021, September 23). Haiti: Earthquake Situation Report No. 6. <https://reliefweb.int/report/haiti/haiti-earthquake-situation-report-no-6-23-september-2021>.

▼ Waddell, S. L., Jayaweera, D. T., Mirsaiedi, M., Beier, J. C., & Kumar, N. (2021). Perspectives on the Health Effects of Hurricanes: A Review and Challenges. International Journal of Environmental Research and Public Health, 18(5), 2756. <https://doi.org/10.3390/ijerph18052756>.

030 ▲ Ward PJ, Daniell J, Duncan M, et al. Invited perspectives: A research agenda towards disaster risk management pathways in multi-(hazard-) risk assessment. *Nat Hazards Earth Syst Sci*. 2022;22(4):1487-1497.

035 van Maanen, N., de Ruiter, M., & Ward, P. J. (2024). Workshop report: The role of Earth Observation for multi-(hazard-) risk assessment and management. *iScience*, 27(10).

Wahl T, Jain S, Bender J, Meyers SD, Luther ME. Increasing risk of compound flooding from storm surge and rainfall for major US cities. *Nat Clim Chang*. 2015;5(12):1093-1097. doi:10.1038/nclimate2736

040 Walker-Springett, K., Butler, C., & Adger, W. N. (2017). Wellbeing in the aftermath of floods. *Health & place*, 43, 66-74.

WHO. *Health Emergency and Disaster Risk Management Framework*. World Health Organization; 2019. apps.who.int/iris/handle/10665/326106

045 Wu, X., Lu, Y., Zhou, S., Chen, L., & Xu, B. (2016). Impact of climate change on human infectious diseases: Empirical evidence and human adaptation. *Environment international*, 86, 14-23.

Xoplaki, E., Ellsäßer, F., Grieger, J., Nissen, K. M., Pinto, J. G., Augenstein, M., ... & Wolf, F. (2025). Compound events in Germany in 2018: drivers and case studies. *Natural Hazards and Earth System Sciences*, 25(2), 541-564.

050 Ye, M., Ward, P.J., Bloemendaal, N. et al. Risk of Tropical Cyclones and Floods to Power Grids in Southeast and East Asia. *Int J Disaster Risk Sci* 15, 494–507 (2024). <https://doi.org/10.1007/s13753-024-00573-7>.

▲

Formatted: Font: (Default) +Body (Times New Roman)

Formatted: Font: (Default) +Body (Times New Roman)

Formatted: Font: (Default) +Body (Times New Roman), Not Italic, Not Highlight

Formatted: Font: (Default) +Body (Times New Roman), Not Italic

Formatted: Font: (Default) +Body (Times New Roman)

Formatted: Font: (Default) +Body (Times New Roman)

Formatted: Font: (Default) +Body (Times New Roman)

Formatted: Font: (Default) +Body (Times New Roman)

Formatted: Font: (Default) +Body (Times New Roman)

Deleted: ¶

Formatted: Font: (Default) +Body (Times New Roman), German

Formatted: Font: (Default) +Body (Times New Roman)

Formatted: Font: (Default) +Body (Times New Roman)

Formatted: Font: (Default) +Body (Times New Roman)

Formatted: Font: (Default) +Body (Times New Roman), English (UK)

Formatted: Font: (Default) +Body (Times New Roman)

Formatted: Font: (Default) +Body (Times New Roman), Dutch

Formatted: Font: (Default) +Body (Times New Roman)

Formatted: Font: (Default) +Body (Times New Roman)

Formatted: Font: (Default) +Body (Times New Roman), Dutch

Formatted: Font: (Default) +Body (Times New Roman)

Zscheischler J, Westra S, van den Hurk BJM, et al. Future climate risk from compound events. *Nat Clim Chang*. 2018;8(6):469-477. doi:10.1038/s41558-018-0156-3

Page 3: [1] Formatted **Nivedita Sairam** **9/10/25 10:08:00 AM**

Font: (Default) +Body (Times New Roman), 10 pt

Page 3: [2] Formatted **Nivedita Sairam** **9/10/25 10:08:00 AM**

Font: (Default) +Body (Times New Roman), 10 pt

Page 3: [3] Formatted **Nivedita Sairam** **9/10/25 10:08:00 AM**

Font: (Default) +Body (Times New Roman), 10 pt

Page 3: [4] Formatted **Nivedita Sairam** **9/10/25 10:08:00 AM**

Font: (Default) +Body (Times New Roman), 10 pt

Page 3: [5] Formatted **Nivedita Sairam** **9/10/25 10:08:00 AM**

Font: (Default) +Body (Times New Roman), 10 pt

Page 3: [6] Formatted **Nivedita Sairam** **9/10/25 10:08:00 AM**

Font: (Default) +Body (Times New Roman), 10 pt

Page 3: [7] Formatted **Nivedita Sairam** **9/10/25 10:08:00 AM**

Font: (Default) +Body (Times New Roman), 10 pt

Page 3: [8] Formatted **Nivedita Sairam** **9/10/25 10:08:00 AM**

Font: (Default) +Body (Times New Roman), Not Italic

Page 3: [9] Formatted **Nivedita Sairam** **9/10/25 10:08:00 AM**

Font: (Default) +Body (Times New Roman), Not Italic

Page 3: [10] Formatted **Nivedita Sairam** **9/10/25 10:08:00 AM**

Font: (Default) +Body (Times New Roman), Not Italic

Page 5: [11] Deleted **Nivedita Sairam** **9/3/25 3:42:00 PM**