

# Empirical classification of dry-wet snow status in Antarctica using multi-frequency passive microwave observations

Marion Leduc-Leballeur<sup>1</sup>, Ghislain Picard<sup>2</sup>, Pierre Zeiger<sup>2</sup>, and Giovanni Macelloni<sup>1</sup>

<sup>1</sup>Institute of Applied Physics “Nello Carrara”, National Research Council, 50019 Sesto Fiorentino, Italy

<sup>2</sup>UGA, CNRS, Institut des Géosciences de l’Environnement (IGE), UMR 5001, 38041 Grenoble, France

**Correspondence:** Marion Leduc-Leballeur (m.leduc@ifac.cnr.it)

## Abstract.

Passive microwave satellite observations are commonly used to detect liquid water in the snowpack on the ice sheet. Typically, algorithms yield a binary dry-wet indicator limiting the information. Theoretical analyses have been demonstrated that these dry-wet indicators correspond to different levels in the snowpack depending on the frequency: from surface to  $\sim 0.2$  m at 37 GHz, from surface to  $\sim 1$  m at 19 GHz and from surface to depths exceeding 1 m at 1.4 GHz. In this study, our objective is to enhance understanding of melting and refreezing processes in Antarctica. For this, we proposed an empirical method that combines several binary dry-wet indicators computed at three frequencies (1.4, 19, and 37 GHz) and for two acquisition times (afternoon/night). We also introduced another indicator to estimate if most of the pixel ( $> 80\%$ ) is subject to melt. By combining these six binary indicators, we obtained 64 possible daily “dry-wet signatures”, which were interpreted to infer whether the snowpack was dry, actively melting, or only wet below the surface, if night refreezing was occurring, and if a large proportion of the pixel was impacted. 99.6 % of the examined pixels show a consistent and physically meaningful daily dry-wet signature across Antarctica during the 2012-2023 considered period. To synthesise the 64 dry-wet signatures, we grouped the signatures conveying similar information into 10 qualitative classes of “snowpack status”. This new classification reveals a clear relationship between the various snowpack status and average surface temperature from ERA5 reanalysis, demonstrating the reliability of the empirical definition of the 10 classes. Furthermore, the classification captures the expected seasonal melt evolution: night refreezing is frequent at the beginning of the melt season, while sustained melting is observed in the middle of the summer, and remnant liquid water at depth features the end of the melt season. In the Antarctic Peninsula, over 11 years, we found an increasing trend in melting, significantly related to an increase in remnant liquid water at depth and a decrease in nighttime refreezing. This new classification offers deeper insights in melt processes for investigating extreme events and climate variations compared to previous binary indicators.

## 1 Introduction

The detection of surface melting on the ice sheets by space-borne microwave radiometry has a long history (Zwally and Gloersen, 1977). Numerous melt datasets have been built from these observations and have been used in climate studies of the polar regions, for example to reveal interannual trends or the relationship with other climatic indicators (e.g. Liu et al., 2006;

25 Picard et al., 2007; Tedesco, 2007; Kuipers Munneke et al., 2012; Nicolas et al., 2017; Wille et al., 2019; Datta et al., 2019; Banwell et al., 2021; Johnson et al., 2022; Kittel et al., 2022; Saunderson et al., 2022; Banwell et al., 2023; Gorodetskaya et al., 2023; Dethinne et al., 2023; de Roda Husman et al., 2024). The detection of surface melting is relatively straightforward because the snowpack thermal emission in the microwave domain radically changes when meltwater appears in the snow matrix (Chang and Gloersen, 1975). It is also noteworthy that microwave frequencies are sensitive to the presence of liquid water, independently of the fact that snow is actually melting or not. Thus, the detection methods usually provide a binary indicator of the presence or absence of liquid water, i.e., the dry-wet snow status, a variable defined by the World Meteorological Organization (cf. [https://space.oscar.wmo.int/variables/view/snow\\_status\\_wet\\_dry](https://space.oscar.wmo.int/variables/view/snow_status_wet_dry), last access: 28 January 2025). Most often, observations at 19 GHz in horizontal polarisation are used because the amplitude of the brightness temperature variation is maximized between wet and dry states (Zwally and Fiegles, 1994; Torinesi et al., 2003). A few combinations of frequencies, polarisations, day/night overpasses time were also tested (Abdalati and Steffen, 1997; Zheng et al., 2018).

The inception of L-band radiometry in space through the Soil Moisture and Ocean Salinity (SMOS) satellite in 2009 (Kerr et al., 2001) and the Soil Moisture Active Passive (SMAP) satellite in 2014 (Entekhabi et al., 2010) has opened up a new opportunity to detect melt. The algorithms previously developed for higher frequencies have proven effective at L-band as well (Leduc-Leballeur et al., 2020; Mousavi et al., 2022). However, the information content of the resulting dry-wet status differs significantly (Leduc-Leballeur et al., 2020). L-band is indeed characterised by a very low absorption in dry snow (Mätzler, 2006; Passalacqua et al., 2018), allowing microwaves to emerge from depths up to hundreds of meters when water is completely absent. In principle, it enables the detection of buried meltwater even when the surface is refrozen. This unique characteristic has been exploited in Greenland to detect perennial firn aquifers with SMAP (Miller et al., 2020) and to estimate the total liquid water amount with SMOS (Naderpour et al., 2020; Houtz et al., 2021; Hossan et al., 2025; Moon et al., 2025). This new perspective highlights the different information retrieved depending on the frequency.

Recent studies specifically investigated the sensitivity to the presence of meltwater as a function of frequency, especially with respect to the depth of detection. In Colliander et al. (2022), liquid water content observations at different depths up to 4 m at the DYE-2 experimental site in Greenland were correlated to the microwave signal at multiple frequencies. The data show how the melt season unfold, from initial surface melting to the percolation and refreezing of meltwater at depth, and how the microwave signals at the different frequencies follow these different stages. In Picard et al. (2022), a modeling approach is taken to compute the theoretical maximum depth of detection for a given frequency in a typical Antarctic snowpack. Whilst both studies yield different values for these depths, they both showed that frequencies lower than 19 GHz are sensitive to water at gradually greater depths. Conversely, at 37 GHz, the sensitivity is limited to a shallower zone under the surface, definitely invalidating the term “surface melting” loosely used in the past to refer to outputs of the 19 GHz-based algorithms (e.g. Zwally and Fiegles, 1994; Torinesi et al., 2003; Tedesco et al., 2007; Picard and Fily, 2006; de Roda Husman et al., 2023). These two studies illustrate the potential to provide more insight on melt processes from the large frequency range available by contemporary radiometric missions, and expected from future missions (e.g., Copernicus Imaging Microwave Radiometer (CIMR, Donlon, 2023); Advanced Microwave Scanning Radiometer 3 (AMSR3, Kachi et al., 2023)). Based on these recent findings, Colliander et al. (2023) used passive microwave observations between 1.4 GHz and 36.5 GHz available from SMAP

60 and Advanced Microwave Scanning Radiometer 2 (AMSR2) to monitor surface and subsurface meltwater vertical distribution over Greenland. Nevertheless, these recent studies highlight how difficult and uncertain are current estimations of liquid water content and wet layer depth.

In this study, we adopt an intermediate approach between the binary dry-wet detections, which have proven their usefulness in numerous polar climate studies, and the recent attempts aiming to estimate the quantity or the depth of melt. We propose an empirical classification of the dry-wet snow status, exploiting the combination of multi-frequency observations from AMRS2 and SMOS (1.4 – 37 GHz) to provide enhanced information on melt processes. Our algorithm provides for each pixel and each day the snowpack status in 10 classes from “dry” to “all day full melting” via “wet at depth without melting” and other intermediate stages. The algorithm also gives some qualitative information on the uncertainties and when the combined wet-dry indicators provide inconsistent information. We ran this algorithm on the Antarctic ice sheet from 2012 to 2023 at 12.5 km resolution. Noting that a strict validation of our classification is impossible due to the lack of adequate in situ measurements, and following the approach of other studies (e.g. Torinesi et al., 2003; Colliander et al., 2023), we performed some comparisons with air surface temperature and assessment of the seasonal variations to check their physical consistency. At last, we investigated the climatic information content of this new dataset by exploring trends and seasonal and interannual variations.

## 2 Data sets

### 75 2.1 Brightness temperature observations

#### 2.1.1 AMSR2 observations at 19 and 37 GHz

Brightness temperature at 19 and 37 GHz were obtained from the Advanced Microwave Scanning Radiometer 2 (AMSR2) on-board the Japan Space Agency (JAXA)’s Global Change Observation Mission 1 – Water “SHIZUKU” (GCOM-W1) satellite. The AMSR-E/AMSR2 Unified Level 3 daily product version 2 processed by the National Snow and Ice Data Center (NSIDC; Maslanik and Stroeve, 2004, updated 2018; [https://nsidc.org/data/au\\_si12/versions/1](https://nsidc.org/data/au_si12/versions/1), last access: 25 March 2024) is used here. This product provides the daily mean brightness temperatures acquired during all the ascending and descending passes respectively, projected onto the southern polar stereographic projection (ESPG: 3976) with a resolution of 12.5 km at vertical and horizontal polarisations for an incidence angle of  $55^\circ$ . In Antarctica, the ascending passes occur from 13:00 to 17:00 (afternoon) and the descending passes from 21:00 to 01:00 (night), local time, which enables capturing the diurnal variability (Zheng et al., 2018). However, there is a technical difficulty due to how the daily mean is calculated by the data provider. The passes are grouped by “day” according to UTC time, that is from 00:00 to 23:59 UTC, irrespective of the local time. This has negative consequences for the interpretation of our dataset, with two levels of severity. In the most favourable cases, all ascending passes in a UTC day are acquired from successive orbits, within a few hours, and are all grouped either before or after the group of descending passes. In this favourable situation, the local afternoon observations are before the following night or before the preceding night. In the worst situations, the average descending passes encompass acquisitions from two distinct nights. This situation occurs within the Atlantic sector around longitudes  $\sim 0^\circ$  (UTC+00 zone). Symmetrically, the ascending

pass average may contain acquisitions from two different days in the pacific sector around 180° longitudes (UTC+12 zone). These worse cases represent 10 % of the pixels according to our evaluation using the acquisition time recorded in the Level 3 product provided by the JAXA's Globe Portal System (G-Portal; <https://gportal.jaxa.jp>, last access: 25 March 2024). This problem can not be solved without reprocessing all low level data. Meanwhile, it implies a cautious and flexible interpretation of “day” and “night” in the following. In practice the issue is certainly minor for climate investigations (e.g., climatological occurrence of day versus night melt), but becomes critical when investigating a precise sequence of meteorological events, such as the impact of an atmospheric land-fall, which evolves at hourly time scales (e.g. Wille et al., 2021).

### 2.1.2 SMOS observations at 1.4 GHz

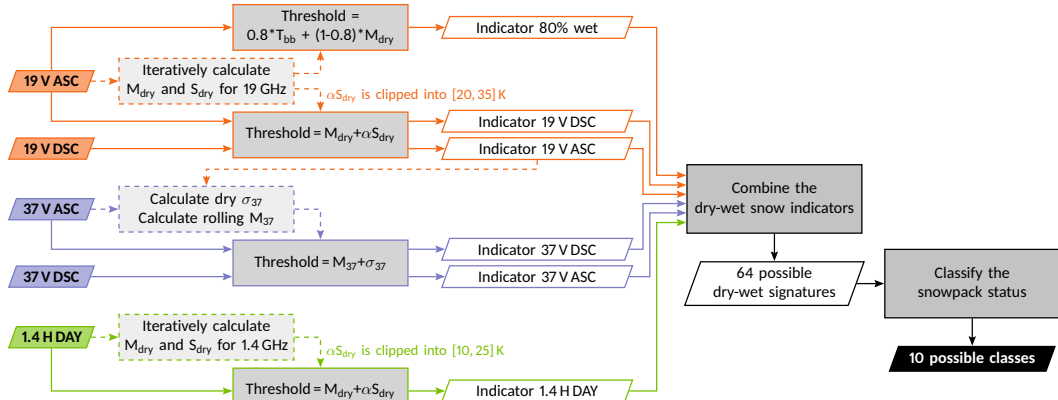
Brightness temperature at 1.4 GHz is obtained from the European Space Agency (ESA)'s Soil Moisture and Ocean Salinity (SMOS) satellite collaboratively developed with the Centre National d'Études Spatiales (CNES, France) and the Centro para el Desarrollo Tecnológico Industrial (CDTI, Spain). We used the SMOS enhanced resolution product of brightness temperature built by Zeiger et al. (2024) (last access: 05 December 2024, Zeiger and Picard, 2024) on the southern polar stereographic projection (ESPG: 3976) with a 12.5 km resolution. This product provides the brightness temperature at vertical and horizontal polarisations and 40° incidence angle with an effective spatial resolution of about 30 km. This number is twice better than the native SMOS observations (~40–70 km). It is closer to the spatial resolution of AMSR2 products (about 20 km at 19 GHz and 10 km at 36.5 GHz), which makes it suitable for input in a multi-frequency algorithm. The SMOS daily timeseries are obtained by averaging the mean morning and afternoon brightness temperatures corresponding approximately to the ascending and descending SMOS passes, respectively.

## 2.2 Skin temperature

Skin temperature was used to assess the coherency of the classification. It is taken from the European Centre for Medium-Range Weather Forecasts (ECMWF) Reanalysis v5 (ERA5) downloaded from the Copernicus Climate Change Service (C3S) (Hersbach et al., 2018, last access: 25 March 2024). ERA5 provides data in hourly temporal resolution and covers Antarctica in a regular latitude-longitude grid of 0.25°×0.25° (Hersbach et al., 2020). This dataset was projected on the southern polar stereographic grid and interpolated at a resolution of 12.5 km using nearest neighbours.

## 3 Method

The classification algorithm developed in this study proceeds in three main steps: 1) compute binary dry-wet snow status, called dry-wet snow indicator, at three frequencies (1.4, 19 and 37 GHz) quasi independently; 2) combine them to obtain a more elaborated description of the dry-wet snow status, called dry-wet signature, each one elucidated in physical terms; 3) group together in the same class the dry-wet signatures sharing physical interpretations to form 10 distinct classes, called snowpack status, with corresponding physical explanations, for every given UTC day and in every pixel independently. A land/sea mask is applied to eliminate sea and mixed pixels. The algorithm steps are depicted in Fig. 1 and described below.



**Figure 1.** Process diagram of the dry-wet snow classification. Dashed arrows are pre-processing steps to compute the brightness temperature thresholds.

### 3.1 Single frequency dry-wet snow indicators

#### 3.1.1 19 GHz-based dry-wet snow indicator

125 The 19 GHz-based dry-wet snow indicator follows the Torinesi et al. (2003) algorithm inspired by Zwally and Fiegles (1994). The algorithm determines an optimal brightness temperature threshold in every grid cell and time period from 1 April year N to 31 March year N+1. It considers that any acquisition of brightness temperature higher than this threshold indicates wet snow. The main challenge is to find an adequate threshold. Torinesi et al. (2003) proposed a simple adaptive method in which the brightness temperature threshold is:  $T_{BT} = M_{dry} + \alpha S_{dry}$  where  $\alpha = 3$ , and  $M_{dry}$  and  $S_{dry}$  are the mean and standard deviation of the brightness temperature timeseries when snow is detected as dry (called “dry days” hereinafter, and symmetrically for the wet status). To solve the circular problem of computing  $M_{dry}$  and  $S_{dry}$  for dry days in order to detect wet days, the initial step calculates the all-day mean brightness temperature  $M_{dry}^{(0)}$  for every melt year, and for each grid cell independently and set  $\alpha S_{dry}^{(0)}$  to a fixed value (10 K). Using this rough threshold, the algorithm computes a first timeseries of snow status, which is then refined by multiple iterations of the same process. The convergence is reached after three iterations (Torinesi et al., 2003). After observing that the brightness temperatures acquired from ascending or descending passes are always very close to each other during the dry season ( $< 1.3$  K on average over 2012-2023), the threshold is determined only with the ascending passes (more subject to melt), and is then applied to both the ascending and descending passes timeseries.

We implemented the Torinesi et al. (2003) method with two improvements. First, we used the vertical polarisation as suggested by Picard et al. (2022) and used in Colliander et al. (2023). The vertical polarisation offers a more stable signal during dry conditions with respect to the horizontal polarisation, which is more sensitive to surface density and stratification of the snowpack, and thus more subject to snow metamorphism variations and local peculiarities. Second, noting that a too low threshold was generating false alarms (especially obvious in the winter) and a too high one reduces the sensitivity of the algorithm, we added upper and lower bounds to the threshold by limiting  $\alpha S_{dry}$  inside the 20 – 35 K range. The upper (and lower)

bounds are used for 0.3 % (and 78 %) of pixels that experienced wet snow for at least one day during the 2012-2023 period.  
145 The upper bound was used very rarely, only in some marginal ice shelf areas. Sensitivity analysis showed that using a lower bound of 20 K instead of 15 K reduces the detection of wet snow by 6 % in winter (the July-September period) and by 18 % at surface elevation higher than 1700 m. This choice of a lower bound of 20 K results in a conservative dry-wet snow detection that tends to reduce false alarm relative to undetected events.

The choice of  $\alpha=3$  is typical for outlier detection (e.g. von Storch and Zwiers, 2001) and has been confirmed to perform  
150 well for melt detection after throughout investigation of the brightness temperature timeseries (Torinesi et al., 2003). Here, in addition, two other values (2.5 and 3.5) have been considered to assess the impact of this parameter and quantify an uncertainty range.

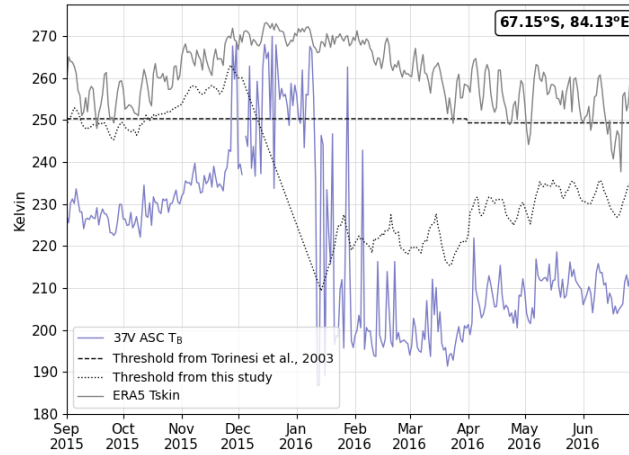
### 3.1.2 1.4 GHz-based dry-wet snow indicator

The detection of melt using 1.4 GHz observations is based on the 19 GHz algorithm with some adaptation proposed by Leduc-  
155 Leballeur et al. (2020), to take into account the lower sensitivity to liquid water at L-band (Picard et al., 2022). The threshold  $T_{BT}$  is computed from the daily brightness temperature at 1.4 GHz in horizontal polarisation with a first-guess equal to 15 K. Furthermore,  $\alpha S_{dry}$  is limited inside the 10 – 25 K range. The upper (and lower) bounds are used for 1.1 % (and 96.5 %) of pixels that experienced wet snow for at least one day during the 2012-2023 period. The upper bound was used very rarely. Sensitivity analysis showed that using a lower bound of 10 K instead of 5 K reduces the detection of wet snow by 85 % in  
160 winter (the July-September period) and by 89 % at surface elevation higher than 1700 m. The 10 K lower bound enables a significant reduction in false alarms.

Moreover, pixels with a standard deviation of brightness temperature in vertical polarisation lower than 2.8 K from 1 April year N to 31 March year N+1 are marked as dry for this period (Leduc-Leballeur et al., 2020). This filter removes numerous false alarms in the interior of the ice sheet where melt is obviously absent.

### 165 3.1.3 37 GHz-based dry-wet snow indicator

Picard et al. (2022) highlighted the potential to distinguish different stages of surface melt from 37 GHz. Brightness temperature simulations showed that a dry 10 cm thick snow layer with coarse grains (refrozen crust) over a wet snowpack is detected as dry at 37 GHz and as wet at 19 GHz. This characteristic makes 37 GHz suitable for the detection of near surface melt and night refreezing that is usually limited to the topmost centimeters of the snowpack. From this analysis, an indicator was  
170 developed to provide information on the dry-wet surface status. Nonetheless, the Torinesi et al. (2003) method previously used for melt detection at 19 GHz and 1.4 GHz is inadequate. Firstly, 37 GHz is strongly affected by snow metamorphism in the first centimeters and some large and rapid brightness temperature variations may be related to change in snow grain size and density rather than melt (Brucker et al., 2011; Champollion et al., 2019). Even at Dome C where no melt occurs some rapid variations of 5-10 K can be observed during winter at 37 GHz (Brucker et al., 2011). Moreover, the large brightness temperature seasonal  
175 cycle at 37 GHz makes it difficult to use the Torinesi et al. (2003) method, which is based on the hypothesis of moderate variations of dry brightness temperature. Secondly, the seasonal melt, refreezing cycles and precipitations change the ice



**Figure 2.** Brightness temperature at 37 GHz (purple) at 67.15°S, 84.13°E on the West ice shelf in 2015/16 and the thresholds from Torinesi et al. (2003) (dashed) and from this study (dotted). ERA5 daily maximum skin temperature (grey).

properties at the surface and can generate strong variations in brightness temperature at 37 GHz. A constant threshold over the April year N to March year N+1 period, as used at lower frequencies (Torinesi et al., 2003), is unadapted.

As we need to distinguish the brightness temperature variations related to rapid changes in the ice surface properties, such as grain size or density, from those related to the liquid water presence, we propose to use a running mean instead of a fixed annual threshold as in Torinesi et al. (2003). A new threshold definition was adopted:  $T_{37} = M_{37} + \sigma_{37}$  where  $M_{37}$  is the 5-day moving mean timeseries of the brightness temperatures when the 19 GHz indicator is dry and  $\sigma_{37}$  is its standard deviation between 1 April year N to 31 March year N+1. The  $M_{37}$  timeseries is then linearly interpolated to fill the gaps when the 19 GHz indicator is wet.  $T_{37}$  is computed from the brightness temperature in vertical polarisation acquired at ascending passes and subsequently applied to both ascending and descending passes.

Figure 2 shows an example of the new threshold definition for one grid cell from September 2015 to June 2016, with which 30 wet snow days were identified. For comparison, the Torinesi et al. (2003) threshold applied to 37 GHz timeseries detects 20 wet days, and the main differences are observed from mid-January to early February. During this period, 37 GHz brightness temperature has strong variations of more than 40 K in one day, which could be attributed to liquid water. Moreover, the ERA5 daily maximum skin temperature around 270 K also suggest the possibility of wet snow. In general, over the 2012-2023 period, the 37 GHz dry-wet indicator computed from Torinesi et al. (2003) and this study are in agreement in 99.1 % of the cases when at least one wet snow day is detected by one of the two methods. The Torinesi et al. (2003) indicator detected wet (dry) snow whereas the indicator of this study detected dry (wet) in 0.5 % (0.4 %) of cases.

Finally, note that this new threshold still exhibits a strong sensitivity to brightness temperature variations, leading to occasional unexpected melt detection during winter (e.g. 296 pixels in July-August on average, i.e. 0.13 % of the total wet days detected with 37 GHz). These false alarms underscore that melt detection at this frequency remains difficult and subject to uncertainties.

### 3.1.4 Full-partial melting pixel indicator

Finally, we established an indicator to qualify if most of the pixel is wet. For that, we designed a threshold based on the 19 GHz brightness temperature acquired in ascending passes to match to approximately 80 % of the pixel with wet snow, as follows:  
 $T_{80\%} = 0.8 * T_{bb} + (1 - 0.8) * M_{dry}$ .  $T_{bb} = 273 K$  is the theoretical maximum brightness temperature during melting (black body) at vertical polarisation near the Brewster angle (Picard et al., 2022).  $M_{dry}$  is the mean brightness temperature of the dry snow computed between 1 April year N to 31 March year N+1, as described in Section 3.1.1 from Torinesi et al. (2003). The indicator is set to one when the 19 GHz brightness temperature acquired in ascending passes exceeds it, otherwise it is set to zero. In the following, we call “partial melting” pixels with less than 80 % of melt and “full melting” otherwise.

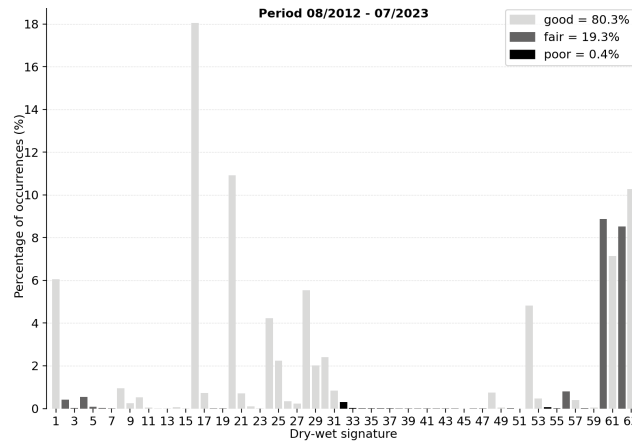
### 3.2 Dry-wet signatures

To compute the dry-wet signature, we combined the dry-wet snow indicators at three frequencies (1.4, 19 and 37 GHz), with the separation of the ascending/descending passes for AMSR2 (the two highest frequencies), and the sixth indicator of “partial/full melting”. This resulted in  $2^6 = 64$  possible daily dry-wet signatures that we interpreted in physical terms and for which a digit is attributed for identification (cf. Appendix A). Based on the theoretical analysis by Picard et al. (2022), we interpreted the 37, 19 and 1.4 GHz observations as the dry-wet snow status in the topmost 0.2 m, 1 m, and  $> 1$  m of the snowpack respectively. Note that when liquid water is present in a sufficient amount to be detected at a given level (e.g. at the surface when active melting is occurring), radiation emanating from below is blocked, and no information on the dry-wet status can be detected under the highest level. This blocking effect depends on the amount of liquid water, the thickness of the wet layer, and of the frequency. However, in practice, if liquid water is detected at a given high frequency, it is unreliable to exploit lower frequencies to determine the status below the upper wet level (Picard et al., 2022). Thus, the dry-wet signatures are qualitatively described by using “surface” or “deep” without attempt to quantify the liquid water profile (cf. Appendix A). The descending passes provide information on the occurrence of night refreezing at the surface (37 GHz) or at depth (19 GHz). The “partial/full melting” indicator reinforces the reliability of the melt detection by assessing when more than 80 % of the pixel is affected by melt.

In addition, the consistency level of each signature was qualified with a quality flag: 2 (good) is assigned when all indicators depict a physically meaningful snowpack status, 1 (fair) when one or two indicators are inconsistent, and 0 (poor) when one or more indicators are severely inconsistent (cf. Appendix A). For instance, the signature 47 corresponds to all the dry-wet indicators equal to one except the ascending 19 GHz indicator equal to zero. It means that the majority but not all the indicators are in agreement and the signature is therefore flagged as fair. In contrast, the dry-wet signature with a “partial/full melting” indicator equal to one but all the other indicators equal to zero (signature 32) is considered inconsistent and flagged as poor. The situations leading to fair and poor qualities may be due to the erroneous detection in one indicator, the difference of sensor spatial resolutions, or uncommon timing of the wet snow occurrence.

Figure 3 illustrates the percentage of each dry-wet signature among days detected as wet (hence excluding the “dry” signature, signature 0) from August 2012 to July 2023. Over this period, the 10 most frequent signatures (occurring more than





**Figure 3.** Percentage of each dry-wet signature, excluding the dry days (signature 0), between August 2012 and July 2023 in Antarctica. Their respective quality flags are indicated as grey scale.

4 % individually) contribute to 84.4 % of the time all together. Conversely, the 34 less frequent signatures (occurring less than 0.1 % individually) contribute to 0.5 % of the time. Over the whole period, the obtained wet signatures are mostly qualified as physically consistent (80.3 %), or fair (19.3 %) and only 0.4 % are poor.

### 3.3 Empirical snowpack status classification

Each signature was further assessed and grouped into one of 10 physical descriptions of the snowpack state (Table 1). This classification is defined empirically and, although the descriptions are arguably subjective, it helps reduce the complexity of the 64 dry-wet signatures into only 10 classes. One color was assigned to each class by selecting similar shades for classes with a close interpretation. This enables us to offer a quick overview while maintaining the distinctions between the detailed classes through color variations. The 10 classes are defined as follows.

The class “all day dry” (class 0) includes the signature where all indicators are zero, and also signatures where only the 37 GHz indicator (ascending or descending) is one. Although the latter may suggest superficial melting, we prioritize the agreement between the 19 and 1.4 GHz indicators over the 37 GHz indicator due to the limited reliability of the 37 GHz detection algorithm during winter. The class “wet at depth without melting” (class 1) is led by signatures with the 1.4 GHz indicator at one and the 19 GHz indicator at zero, meaning that surface is dry, but liquid water is present below in the snowpack.

Note that the depth of detection for each frequency is uncertain and is sensitive to the particular snowpack conditions in each location and year (Colliander et al., 2022; Picard et al., 2022).

Five classes are assigned to partial melting with differences related to their night refreezing status. The classes “daytime partial melting with night refreezing” (class 2) and “daytime partial melting with night surface refreezing” (class 3) are determined by the 19 GHz indicator equal to 1 in the ascending pass (i.e. daytime) and, respectively, the 19 and 37 GHz indicator equal to 0 in the descending pass (i.e. nighttime). The class “wet snow with uncertain surface” (class 4) includes signatures indicating

the presence of liquid water based on the 19 GHz indicators, but with discrepancies in the 37 GHz indicators, bringing uncertainty regarding active melting at the surface. The class “all day partial melting” (class 5) refers to signatures with the 37 GHz indicator in both passes equal to 1 and at least one 19 GHz indicator equal to 1. The class “nighttime partial melting” (class 6) includes signatures with the 19 GHz indicator equal to 0 in the ascending pass but one in the descending one, regardless of the 37 and 1.4 GHz indicators.

Three classes are defined as full melting referring to the indicator based on the brightness temperature at 19 GHz acquired at ascending passes, for which over 80 % of the surface pixel is affected by melt. The differences are linked to their refreezing status. The classes “daytime full melting with night refreezing” (class 7) and “daytime full melting with night surface refreezing” (class 8) are determined by the 19 GHz indicator at one in the ascending pass (i.e. daytime) and, respectively, the 19 and 37 GHz indicator at zero in the descending pass (i.e. nighttime). The class “all day full melting” includes signatures with the 37 GHz indicator in both passes at one and at least one 19 GHz indicator at one.

Finally, the class “invalid” (class -1) includes the signatures with a lack of physical coherency, for which the partial/full melting indicator is one, but the 19 GHz indicator acquired at ascending passes is zero. This may be due to a high threshold detection where brightness temperature remains relatively high during some winter (about  $> 230$  K). de Roda Husman et al. (2023) already identified that the threshold method tends to underestimate melt over persistent melting regions.

Two classes have a more ambiguous interpretation. First, the class “wet with uncertain surface status” (class 4) has uncertainty mainly coming from the 37 GHz melt indicator, which stems from the difficulty of using 37 GHz to detect melt. Second, the class “nighttime partial melting” (class 6) has uncertainty due to the time reference issue of the AMSR2 product raised in Sect. 2.1.1, but it may also correspond to real situations, such as when warm air is advected by atmospheric synoptic events with land-falling during the night rather than the day before. We advise future users of the classification to consider these possibilities in their statistical analysis and explore other meteorological indicators (e.g. synoptic charts) to consolidate the interpretation of this class.

### 3.4 Sensitivity of the classification to the detection threshold

To assess the stability of the classification algorithm, the impact of variations in the  $\alpha$  parameter of the 19 GHz detection algorithm is estimated. Two confusion matrices comparing the standard detection ( $\alpha = 3$ ) with the cases  $\alpha = 2.5$  and  $\alpha = 3.5$  respectively are presented in Fig. 4. In the case of a lower threshold detection ( $\alpha = 2.5$ ), an agreement higher than 92 % is observed for 7 classes, suggesting only little sensitivity to decreasing  $\alpha$ . In contrast, the highest sensitivity is observed for the class “nighttime partial melting” (class 6) with 22 % conversion into the class “wet with uncertain surface status” (class 4). Similarly, about 13 % of the class “daytime full melting with night refreezing” (class 7) is converted into the class having night refreezing limited to the surface (class 8). Finally, about 32 % (and 21 %) of dry-wet signatures identified as lacking in physical explanation (class -1) are converted into class 7 (and class 4) by using a lower threshold detection due to the class -1 definition.

In the case of a higher threshold detection ( $\alpha=3.5$ ), 7 classes are also fairly insensitive, with agreements higher than 93 %. The class “nighttime partial melting” is again the most sensitive, with 36 % conversion into no active melting presence (classes 0 and 1). 17 % of the class “daytime partial melting with night refreezing” (class 2) is also converted into “all day dry” (class 0).

**Table 1.** The 10 daily snowpack classes and their matching signatures (cf. Fig. A1) and colors. *Italic face* indicates the rare signatures, defined as with less than 250 occurrences ( $< 0.01\%$ ) from August 2012 to July 2023 over Antarctica.

	Class	Daily snowpack status	Associated dry-wet signatures
	-1	Invalid	32, 33, <i>34</i> , <i>35</i> , <i>36</i> , <i>37</i>
	0	All day dry	0, 2, 4, 6
	1	Wet at depth without melting	1, 3, 5, 7
	2	Daytime partial melting with night refreezing	16, 17, <i>18</i> , <i>19</i> , 20, 21, 22, 23
	3	Daytime partial melting with night surface refreezing	28, 29, <i>44</i> , <i>45</i>
	4	Wet with uncertain surface status	24, 25, 26, 27, <i>40</i> , <i>41</i> , <i>42</i> , <i>43</i> , 56, 57, 58, 59
	5	All day partial melting	30, 31, 38, 39, <i>46</i> , <i>47</i>
	6	Nighttime partial melting	8, 9, 10, 11, <i>12</i> , <i>13</i> , 14, 15
	7	Daytime full melting with night refreezing	48, 49, <i>50</i> , <i>51</i> , 52, 53, 54, 55
	8	Daytime full melting with night surface refreezing	60, 61
	9	All day full melting	62, 63

Due to this higher threshold, night refreezing is more frequently detected (from classes 3 and 4 into class 2 for 18 % and 13 % respectively, and from class 8 into class 7 for 6 %). Lastly, the class “wet with uncertain surface status” (class 4) is converted mainly into nighttime partial melting (4 %), partial melting with night refreezing (13 %) and dry (4 %).

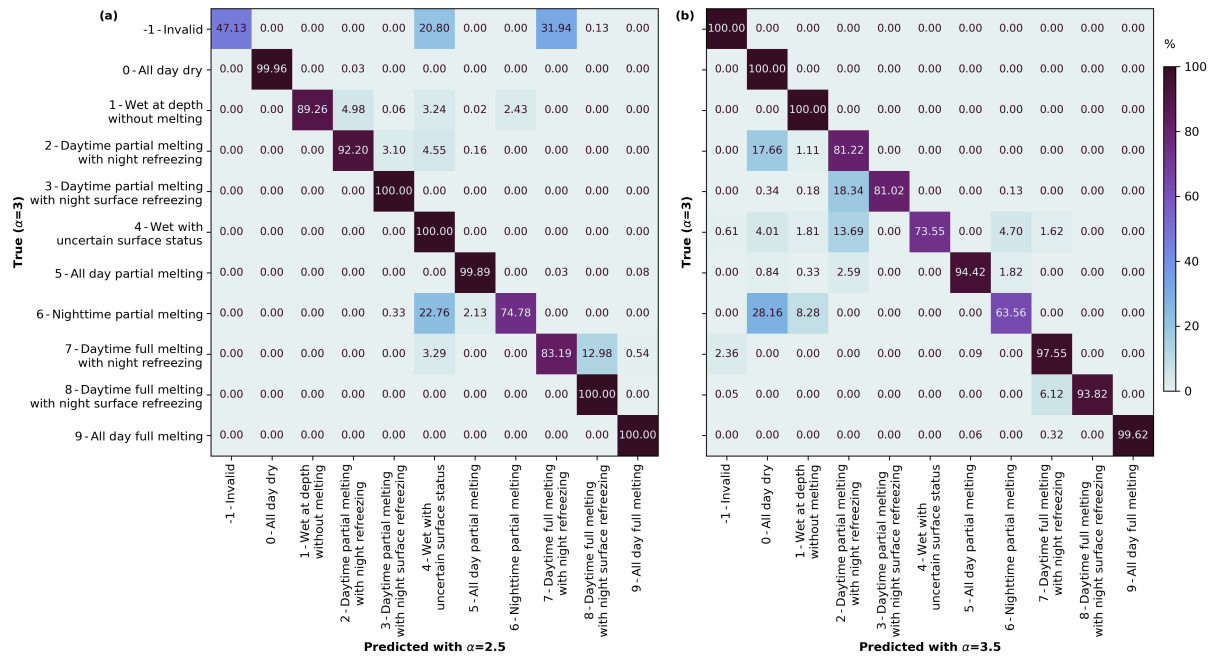
In summary, variations in  $\alpha$  at 19 GHz has an overall small impact on the classification, and the main impact is on the night refreezing status. The most affected classes are “nighttime melting” (class 6) and “wet with uncertain surface status” (class 4). Future users of the dataset interested in these most affected classes should consider using the three  $\alpha = 2.5, 3, 3.5$  to assess the robustness of their investigation.

## 4 Results and discussion

### 4.1 Comparison to ERA5 temperature

We compare the classification dataset to the ERA5 skin temperature. While a direct validation of microwave melt detection with in situ observations is inherently impossible (van den Broeke et al., 2023), a few comparisons to air temperature measurements from the Automatic Weather Station (AWS) have usually highlighted good consistency (e.g. Torinesi et al., 2003; Colliander et al., 2023; de Roda Husman et al., 2023) despite a large difference in spatial representation between AWS and satellite pixel. Here, we use the ERA5 reanalysis to benefit from its coverage over the whole continent.

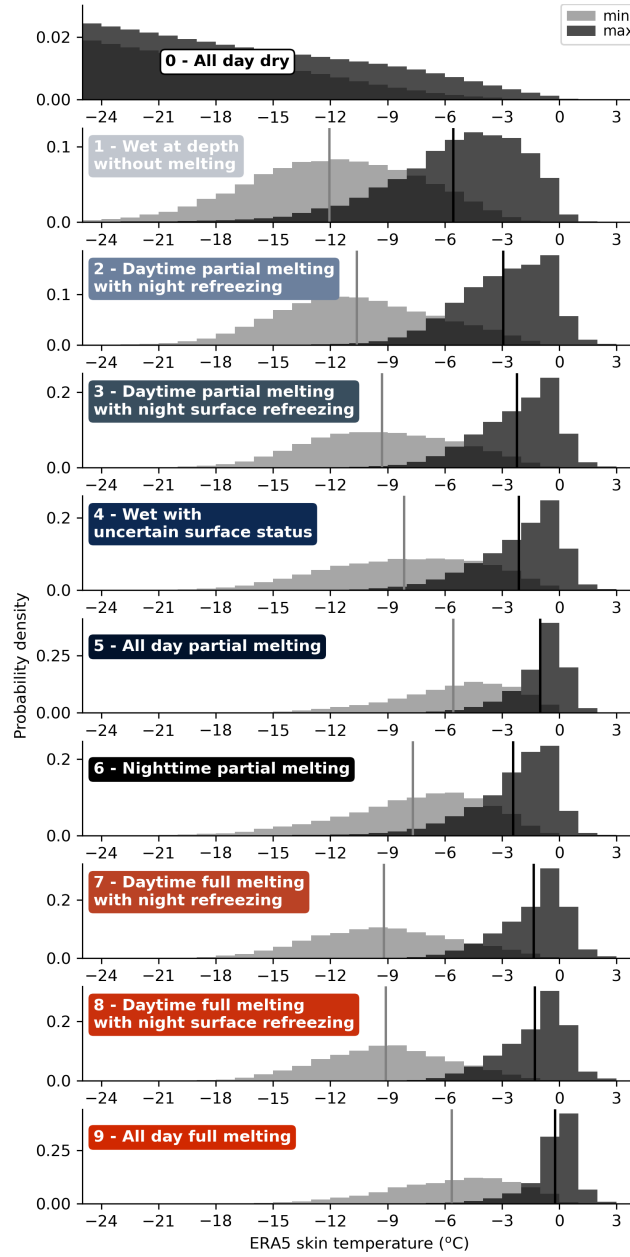
Figure 5 depicts the distribution of daily minimum and maximum temperature occurrence for each class. This distribution is obtained for all pixels over Antarctica and all days from 2012 to 2023. The dry status (class 0) presents a mean maximum temperature of  $-32.8\pm15.0^{\circ}\text{C}$  and minimum of  $-38.3\pm14.3^{\circ}\text{C}$ . On average, the presence of wet snow at depth without melting



**Figure 4.** Confusion matrix computed between the classification with  $\alpha=3$  (true condition) and predicted with (a)  $\alpha=2.5$  and (b)  $\alpha=3.5$ . Results are normalized over the true condition.

(class 1) is associated with the lowest minimum and maximum temperatures ( $-12^{\circ}\text{C}$  and  $-5^{\circ}\text{C}$  respectively), which supports the absence of liquid water detection at the surface. The mean maximum temperature in classes 2, 3, 4 and 5 increases from  $-3^{\circ}\text{C}$  to  $-1^{\circ}\text{C}$  while the mean minimum temperature increases from  $-11^{\circ}\text{C}$  to  $-6^{\circ}\text{C}$ , supporting the gradual disappearance of nighttime refreezing when temperature are tending to the freezing point. The nighttime partial melting status (class 6) has a mean minimum temperature ( $-8^{\circ}\text{C}$ ) higher than the classes with night refreezing (classes 2, 3, 4, 7, 8) and also lower diurnal temperature variations, which is expected. Similarly to classes 2-5, the three "full melting" classes (7-9) present a gradual disappearance of nighttime refreezing that is related to a  $3^{\circ}\text{C}$  increase in mean minimum temperature and a  $1^{\circ}\text{C}$  increase in mean maximum temperature. Moreover, when full melting is detected, the mean maximum temperature increases by  $1.0\text{-}1.6^{\circ}\text{C}$  and its standard deviation is reduced by  $0.4\text{-}0.7^{\circ}\text{C}$  with respect to when the partial melting occurs. Higher temperatures with less variability explain the expansion of melting to more than 80 % of the pixel.

Overall, ERA5 skin temperature supports well the physical meaning of snowpack status and highlight the consistency of the classification. Note that because of the large dispersion in each class and the overlap between different histograms, skin temperature data could not be used directly to derive information on the melting status. The classification presented here is therefore essential to monitor gradual surface refreezing, remanent liquid water, and to distinguish partial and full melting status.



**Figure 5.** Occurrence of the minimum (grey) and maximum (black) daily ERA5 skin temperature for each class from August 2012 to July 2023 over Antarctica. The vertical lines show the mean of the distribution.

## 4.2 Seasonal variability

Figure 6 presents the timeseries of brightness temperature (color plain curves) at the three frequencies (1.4, 19 and 37 GHz) for three examples. The single frequency dry-wet snow indicators are reported as colored dots for each frequency and the associated daily class is depicted by bar graphs.

The first example is from the Antarctic Peninsula for the 2015/16 melt season (Fig. 6a). From October to mid-December, a few short occurrences (3-6 days) of wet snow are observed, mainly classified in classes 2 and 5, before the main continuous melt period, which lasts more than two months between December and February. Two melt events are also observed at all frequencies in May highlighting the possibility of late autumn melting, which indeed impacts the snowpack at depth according to 1.4 GHz observations. These two events in May 2016 have been already identified in the literature with modeled liquid water up to 2-m in depth Datta et al. (2019).

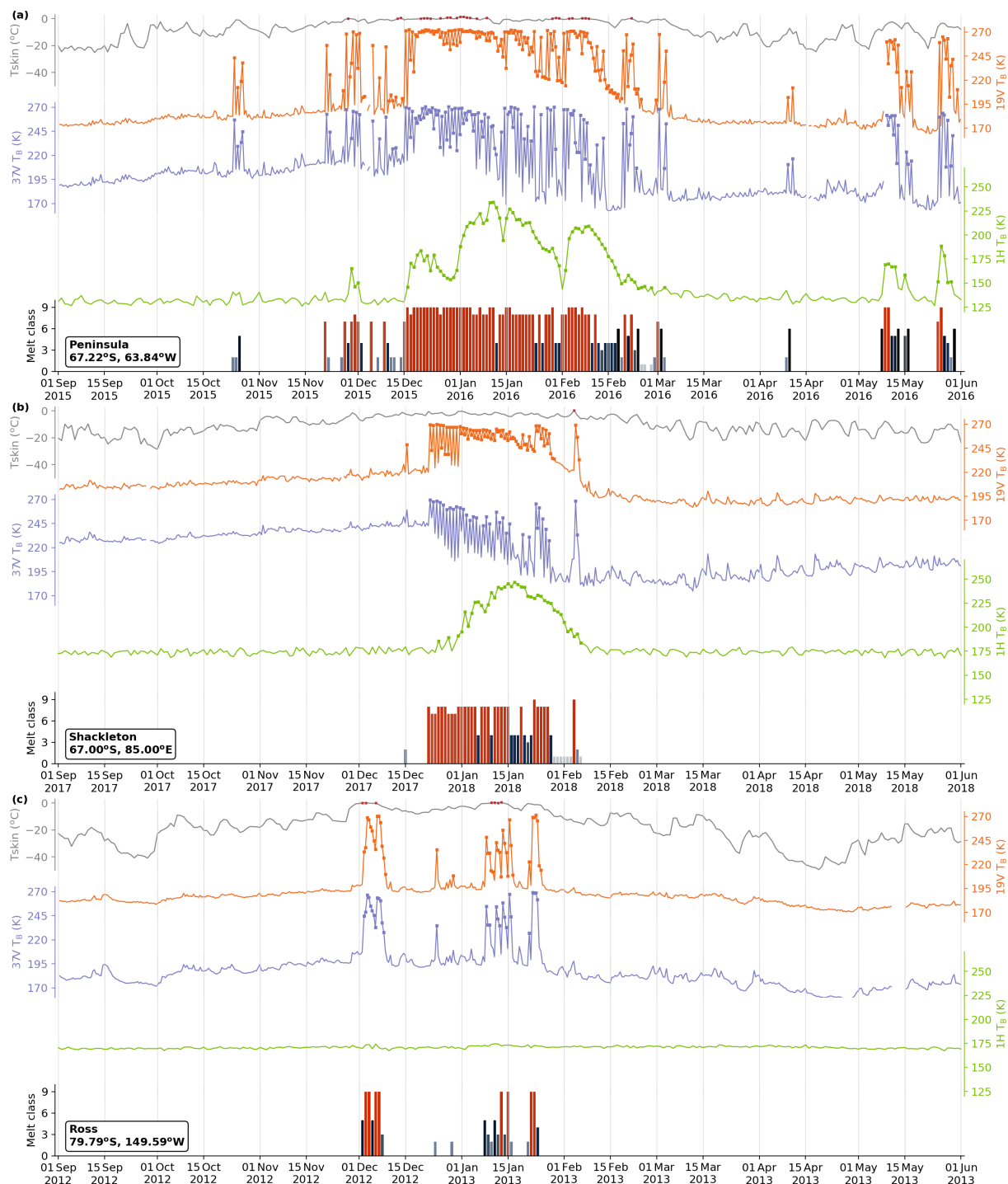
The second example is located on the Shackleton ice shelf in 2017/18 (Fig. 6b). It illustrates a much shorter melt season (less than two months) with continuous surface night refreezing. 10 days after the season begins, the melt is intense enough to be detected at 1.4 GHz, indicating that liquid water progressively penetrates the snowpack at depth. Remnant meltwater at depth (class 1, gray bars) is observed in February at the end of the wet snow season before a last brief but full melt event.

The last example is on the Ross ice shelf where only brief and sporadic melt events occur between December 2012 and January 2013 (Fig. 6c). No wet status is detected at 1.4 GHz, suggesting that the amount of liquid water is low and does not affect the snowpack at depth.

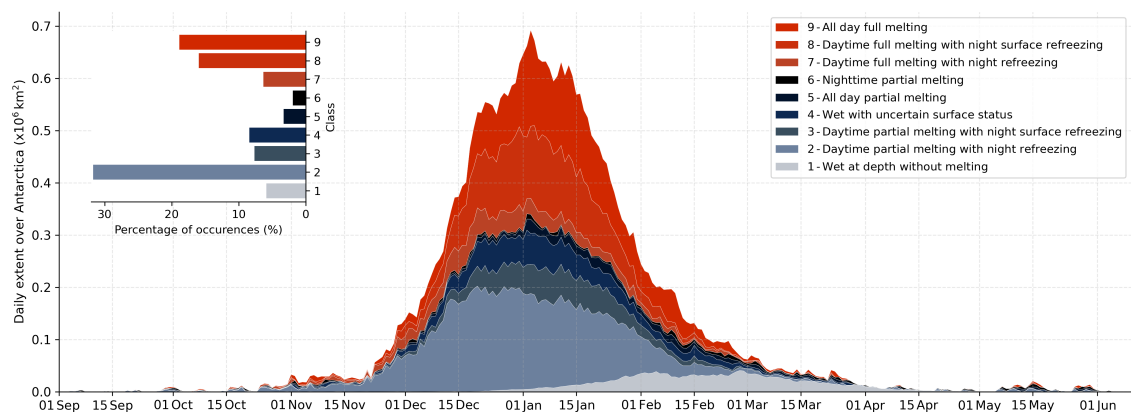
In the three examples, the daily maximum surface temperature in ERA5 (Fig. 6 grey lines) is higher than  $-7^{\circ}\text{C}$  when melt is detected, and melt is always detected when the surface temperature is higher than the freezing point.

To generalize these examples, Fig. 7 illustrates the surface area of each class in Antarctica throughout the 2012-2023 average melt season. It shows that the melt season typically begins with brief melt events, marked with night refreezing (class 2). From December, the melt quickly spreads over Antarctica (up to  $0.6 \cdot 10^6 \text{ km}^2$ ) and some periods of melting without refreezing (classes 5 and 9) appear and stretch. Nevertheless, throughout the year, the daytime melting with night refreezing is predominant (classes 2, 3, 7, 8 account for 61 %) compared to melt without refreezing (classes 5 and 9 account for 22 %). From the end of January, the extent of melting sharply decreases, and from March, melt occurs only in a few places. The class “wet at depth without melting” (class 1) is rare at the beginning of the melt season, but its occurrence increases from January onwards, representing the highest proportion from mid-February to mid-April. This is in agreement with the seasonal warming of the snowpack, producing meltwater that then percolates and remains present without refreezing (Humphrey et al., 2012). From April, isolated melt events still happen, but wet snow without melting is not detected at depth anymore. This suggests that the seasonal cooling at this stage was sufficient to refreeze the snowpack and the last melt events are too weak to produce and inject a significant amount of liquid water at depth.

In summary, Fig. 7 demonstrates that the classification depicts a consistent unfolding of the typical melt season over the continent.



**Figure 6.** Brightness temperature at 19 GHz (orange), 37 GHz (purple), 1.4 GHz (green) with wet snow depicted by square markers. Bars and colors show the resulting classification (cf. Table 1 for the color legend). On (a) the Antarctic Peninsula in 2015/16, (b) the Shackleton ice shelf in 2017/18, and (c) the Ross ice shelf in 2012/13. ERA5 daily maximum skin temperature (grey) with temperatures above 0 °C marked in red.



**Figure 7.** Daily extent of each snowpack status over Antarctica from September to June on average over 2012-2023. The percentage of occurrences of each class over this period is shown in the upper left inset plot.

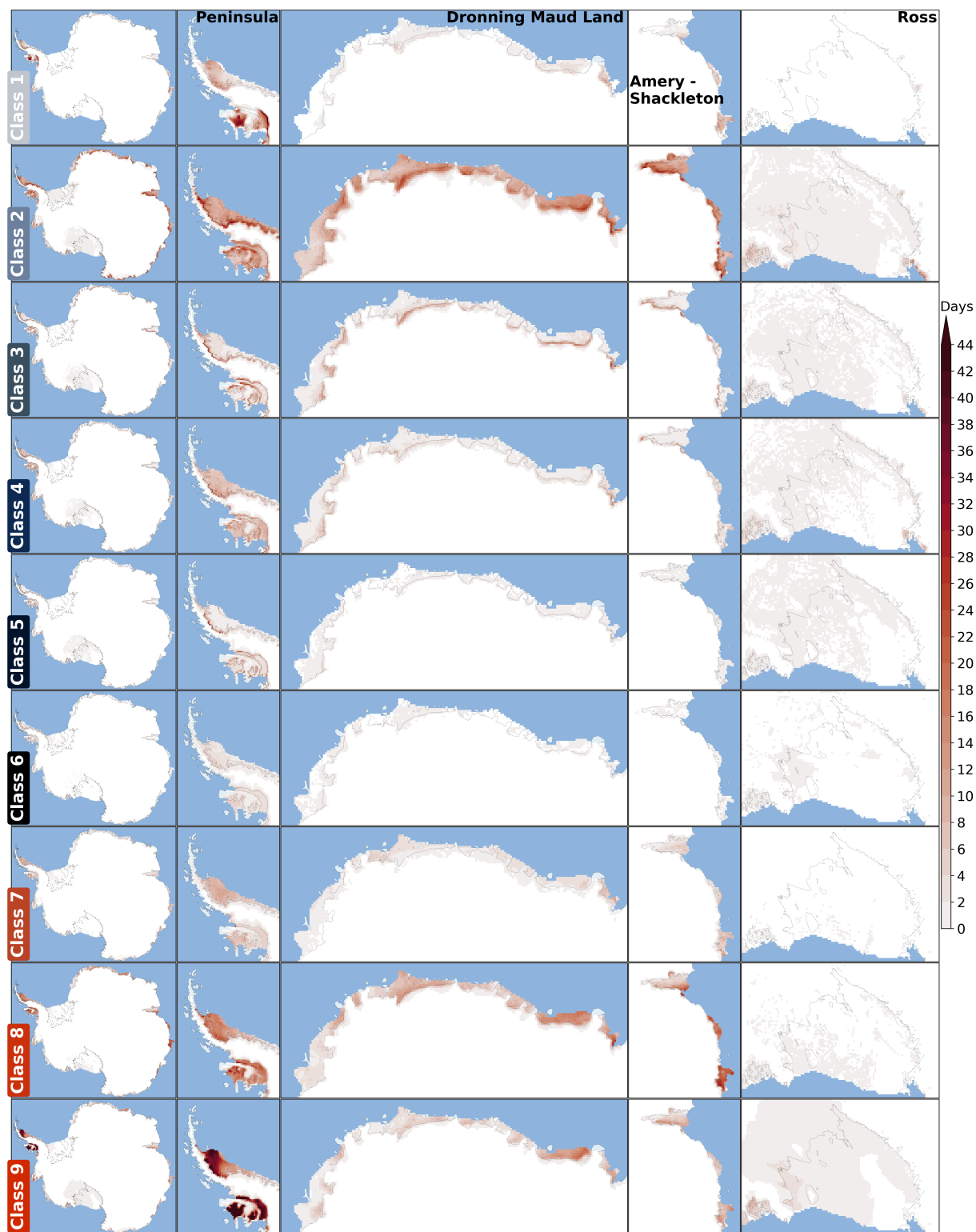
### 350 4.3 Spatial and interannual variability

The 2012-2023 averaged number of days per year for each class is depicted in Fig. 8 over Antarctica. Wet snow is confined to the coastal areas and ice shelves, a well-know fact (Zwally and Fiegles, 1994). However, the mean occurrence of each class varies depending on the location. On average, the highest number of days with wet snow occurs in the Antarctic Peninsula, the Dronning Maud Land and the Amery-Shackleton coast. In the Antarctic Peninsula, the most frequent class is “all day full melting” (class 9) with an average of 18 days per year (maximum is 69 days per year on average). It is also where the highest number of days per year with wet snow at depth without melting (class 1, maximum is 50 days per year on average) occurs. Along the Amery-Shackleton coast, the classes of daytime partial melting with night refreezing (classes 2 and 3) and full melting (classes 8 and 9) are the most observed ones, and others classes are rare, with less than 1 day per year on average. The Ross ice shelf area experiences very little melt. On average, the class “wet snow at depth without melt” is rare, and the classes of daytime partial melting with or without night refreezing occasionally happens (0.7 days per year for class 2, and about 0.3 days for classes 3, 4, 5). Few days with full melting are observed (0.8 days per year for class 9).

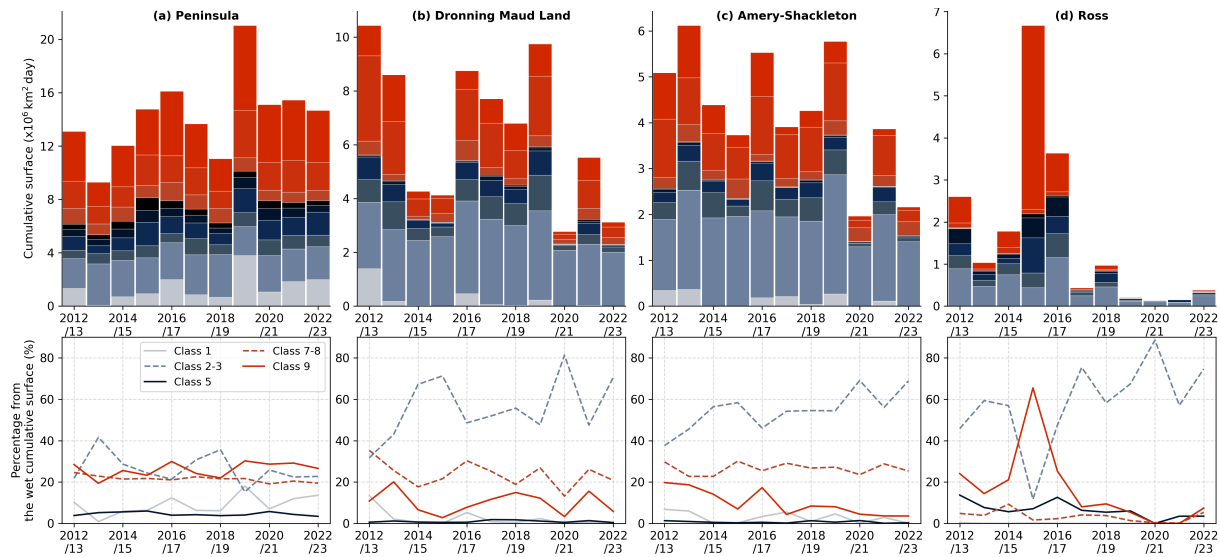
In the Antarctic Peninsula, the annual occurrence of the full melting classes (7-9) always represents more than 40 % of the total occurrence of the wet classes. In the three other areas, the melt season mainly features daytime partial melting with night refreezing for about 50-60 % (total for the classes 2-3). The Dronning Maud Land and Amery-Shackleton areas are more subject to night refreezing than the Antarctic Peninsula (classes 2-3 and 7-8), relative to their respective mean annual number of wet days.

Figure 9 highlights the interannual variability for the four main melting areas presented in Fig. 8. The annual occurrence varies by up to 60 % around the mean over all classes. In particular, over the Ross ice shelf where melt is rare (Fig. 9d), the variability is the highest (100 % on average) with an extreme variation in 2015/16 related to a strong El Niño event (Nicolas et al., 2017).





**Figure 8.** Annual number of days per year for each class on average over 2012-2023 in Antarctica, the Antarctic Peninsula, Droning Maud Land, along Amery-Shackleton coast and Ross ice shelf. The blue areas are masked out.



**Figure 9.** (top) Annual cumulative surface for each class from 2012 to 2023 over (a) the Antarctic Peninsula, (b) Dronning Maud Land, (c) Amery-Shackleton coast and (d) Ross ice shelf. See Table 1 for the color legend of each class. (bottom) Relative percentage of the class occurrence in each area.

In the Antarctic Peninsula, we find that the annual occurrence of full melting (class 9) and wet snow at depth without melting (class 1) both increase by about 10 % over 2012-2023 and have synchronized interannual variations (significant Pearson correlation  $r=0.82$ ,  $p\text{-value}=0.0018$ , Fig. 9a, bottom). At the same time, melting with night refreezing (classes 2-3) decreases by about 10 % and the variations are significantly anti-correlated with the presence of wet snow at depth without melting (class 1) ( $r=-0.89$ ,  $p\text{-value}=0.0002$ ). We explain this remarkable results by the fact that when the night refreezing decreases and full melting increases, meltwater is able to percolate and the snowpack remains wet at depth after the period with active melting. A clear significant anti-correlation between class 1 and classes 2-3 is also observed over the Amery-Shackleton coast ( $r=-0.79$ ,  $p\text{-value}=0.0035$ , Fig. 9c, bottom), but not with class 9. This could be related to the clear decreasing interannual trend of the full melting, and to the fact that the classes with night refreezing contribute for more than 60 % of the total wet occurrence.

The physical consistency of the interannual variations between some classes underscores the reliability of the proposed melt classification.

#### 4.4 Discussion and Limitations

The multi-frequency approach to better investigate melt processes has been already proposed by Colliander et al. (2022); Picard et al. (2022); Colliander et al. (2023). These studies highlight the difficulty of quantifying liquid water volume and the depth and thickness of wet snow layers due to the saturation of brightness temperature. As an alternative, we chose here to develop a qualitative classification. The limitation of this approach is that the definition of the terms “partial/full”, “surface” or “depth” used to describe the snowpack status classes are subjective and cannot be quantified precisely and uniformly over the content.

Nevertheless, we provide a physical meaning of these terms, back upon recent detailed theoretical analyses from Colliander et al. (2022); Picard et al. (2022): “partial/full” distinguishes when less/more than 80 % of the pixel has meltwater, “surface” indicates wet snow in the first 20 cm approximately and “depth” applies when the surface is dry and wet snow is below about 20 cm. The advantage of this qualitative classification is to gather the current knowledge of the sensitivity of each frequency beyond the separated single frequency binary indicators.

A critical issue is related to the validation. A strict validation of the classification is not possible because of the scarcity of in situ measurements in Antarctica, and also because measuring the surface and subsurface wetness using field techniques at large scale is extremely difficult. The same limitation applies to the binary melt products widely used by the polar community. Following the strategy adopted by previous studies (e.g., Torinesi et al., 2003; Colliander et al., 2023), we addressed this issue by comparing our classification with surface air temperature from ERA5 and we showed that its variations support our physical interpretation (Sect. 4.1). This allows us to establish the temporal (Fig. 7) and spatial (Fig. 8) consistency of the classification to reproduce the most significant snowpack status variations.

The combination of observations acquired by different sensors and at different resolution is challenging (de Roda Husman et al., 2023) and introduces uncertainties into our classification. Combining observations at different frequencies inevitably results in mixing different spatial resolutions (the ground resolution is proportional to the wavelength for a given antenna size). Here, the most stringent difference is between AMSR2 ( $\sim 10$  km at 37 GHz) and SMOS ( $\sim 40$ – $70$  km). The use of the enhanced-resolution SMOS brightness temperature product from Zeiger et al. (2024) provides an effective spatial resolution of  $\sim 30$  km for SMOS, which helps reduce the sensor differences. Moreover, the definition of a quality flag allows us to mitigate this issue, by identifying non-physical signatures that may result from the different spatial representativeness of the observations. For instance, the signatures for which 19 and 37 GHz indicate full melt whereas 1.4 GHz indicates dry snow (signatures 60 and 62) are flagged as fair and may be related to this resolution issue.

Some uncertainties are also related to the variability in penetration depth of each frequency. Defining the precise thickness for detecting meltwater is challenging due to its dependency on several snow properties (snow temperature, density, and grain size) and on their vertical profile, which change over time. These properties indeed evolve throughout the melt season: the grain size increases due to wet metamorphism (Colbeck, 1982), and the density increases during the melt-refreeze cycles. As a consequence, the microwave penetration depth is likely to be greater at the beginning of the season than at the end. Despite this difficulty, rough estimates of this thickness were given for each frequency through theoretical analysis (e.g. Picard et al., 2022) and empirical correlation (e.g. Colliander et al., 2022). Following them, we consider as an acceptable assumption to associate 37 GHz with the first centimetres of the snowpack (0-20 cm), 19 GHz with the first meters of the snowpack (1-2 m), and 1.4 GHz with depths exceeding 1 m and up to 10 m or more depending on the wet snow thickness (Picard et al., 2022; Leduc-Leballeur et al., 2020). However, more advanced modeling coupled with in situ measurements through the firm will be needed to refine the sensitivity knowledge of each frequency to depth-dependent liquid water.

Overall, despite these limitations mostly associated with the lack of in situ observations, the synthetic 10 snowpack classes are more user-friendly than the raw 64 dry-wet signatures derives from single-frequency binary indicators and permit further physical interpretation compared to existing binary melt products.

## 5 Conclusions

Dry-wet snow status in Antarctica has been explored over the period 2012-2023 using SMOS and AMRS2 observations. By combining several frequencies (1.4, 19 and 37 GHz), day and night observations, and a binary indicator on melt coverage of each pixel, we are able to deliver qualitative information on the melt processes and liquid water distribution in the snowpack. Despite some subjectivity in this process and the lack of in situ measurements for validation, the ordering of the classes from “dry” (class 0) to “full melting” (class 9) is in agreement with ERA5 skin temperature variations at large scale and over multiple years. The resulting dataset shows the expected physical behaviours of the melt evolution throughout a season, with brief events at the start and end of the season, full melting in December-January coinciding with the peak of melt extent, and persistent liquid water at depth without surface melting during the decreasing period of melt occurrences. In addition, the interannual variability in the Antarctic Peninsula indicates that years with more intense melting at the peak of the melt season exhibit persistent water at depth at the end. This new dataset provides, in a concise manner, the benefit of the current multi-frequency knowledge and opens perspectives to further explore the climate of Antarctic coastal areas.

In the future, we suggest further work to improve the robustness of the detection at the highest frequency used here (37 GHz) and potentially try to exploit higher and other intermediate frequencies commonly available (e.g., 89, 6 and 10 GHz) to refine the retrieved information on the vertical profile of the liquid water. Extending the 11-year timeseries with the upcoming JAXA AMSR3 and the future ESA Copernicus Imaging Microwave Radiometer (CIMR) will offer a continuous and multi-decade climate perspective.

*Data availability.* The single frequency dry-wet snow indicators and the classification will be available on [easydata.earth](https://easydata.earth) (as soon as validated).

*Author contributions.* MLL, GP: Conceptualization, Methodology. All authors: Formal analysis, Writing.

*Competing interests.* The authors declare that they have no conflict of interest.

*Acknowledgements.* This study benefited from European Space Agency support through the 4DAntarctica project (ESA/AO/1-9570/18/I-DT).

## Appendix A: Dry-wet signature descriptions

N.	Dry-wet signature						Description	QF	Class
	80% wet	19 ASC	19 DSC	37 ASC	37 DSC	1.4 DAY			
0	0	0	0	0	0	0	Dry	good	0
1	0	0	0	0	0	1	Deep liquid water	good	1
2	0	0	0	0	1	0	Weak night surface melting	fair	0
3	0	0	0	0	1	1	Weak night surface melting with deep liquid water	fair	1
4	0	0	0	1	0	0	Weak surface melting with night surface refreezing	fair	0
5	0	0	0	1	0	1	Weak surface melting with night surface refreezing and deep liquid water	fair	1
6	0	0	0	1	1	0	Weak surface melting	fair	0
7	0	0	0	1	1	1	Weak surface melting with deep liquid water	fair	1
8	0	0	1	0	0	0	Nighttime melting	good	6
9	0	0	1	0	0	1	Nighttime melting with deep liquid water	good	6
10	0	0	1	0	1	0	Nighttime melting and night surface melting	good	6
11	0	0	1	0	1	1	Nighttime melting and night surface melting with deep liquid water	good	6
12	0	0	1	1	0	0	Nighttime melting and daytime weak surface melting	good	6
13	0	0	1	1	0	1	Nighttime melting and daytime weak surface melting with deep liquid water	good	6
14	0	0	1	1	1	0	Nighttime melting and surface melting	good	6
15	0	0	1	1	1	1	Nighttime melting and surface melting with deep liquid water	good	6
16	0	1	0	0	0	0	Daytime melting with night refreezing	good	2
17	0	1	0	0	0	1	Daytime melting with night refreezing	good	2
18	0	1	0	0	1	0	Daytime melting with night refreezing but night surface melting	fair	2
19	0	1	0	0	1	1	Daytime melting with night refreezing but night surface melting	fair	2
20	0	1	0	1	0	0	Daytime melting with night refreezing	good	2
21	0	1	0	1	0	1	Daytime melting with night refreezing	good	2
22	0	1	0	1	1	0	Daytime melting with night refreezing but night surface melting	good	2
23	0	1	0	1	1	1	Daytime melting with night refreezing but night surface melting	good	2
24	0	1	1	0	0	0	Presence of liquid water	good	4
25	0	1	1	0	0	1	Presence of liquid water	good	4
26	0	1	1	0	1	0	Presence of liquid water and night surface melting	good	4
27	0	1	1	0	1	1	Presence of liquid water and night surface melting	good	4
28	0	1	1	1	0	0	Presence of liquid water with night surface refreezing	good	3
29	0	1	1	1	0	1	Presence of liquid water with night surface refreezing	good	3
30	0	1	1	1	1	0	Melting	good	5
31	0	1	1	1	1	1	Melting	good	5
32	1	0	0	0	0	0	Dry with high TB19	poor	-1
33	1	0	0	0	0	1	Dry with high TB19	poor	-1
34	1	0	0	0	1	0	Dry with high TB19	poor	-1
35	1	0	0	0	1	1	Dry with high TB19	poor	-1
36	1	0	0	1	0	0	Dry with high TB19	poor	-1
37	1	0	0	1	0	1	Dry with high TB19	poor	-1
38	1	0	0	1	1	0	Melting	fair	5
39	1	0	0	1	1	1	Melting	fair	5
40	1	0	1	0	0	0	Presence of liquid water	fair	4
41	1	0	1	0	0	1	Presence of liquid water	fair	4
42	1	0	1	0	1	0	Presence of liquid water	fair	4
43	1	0	1	0	1	1	Presence of liquid water	fair	4
44	1	0	1	1	0	0	Melting with night surface refreezing	fair	3
45	1	0	1	1	0	1	Melting with night surface refreezing	fair	3
46	1	0	1	1	1	0	Melting	fair	5
47	1	0	1	1	1	1	Melting	fair	5
48	1	1	0	0	0	0	Daytime full melting with night refreezing	good	7
49	1	1	0	0	0	1	Daytime full melting with night refreezing	good	7
50	1	1	0	0	1	0	Daytime full melting with night refreezing but night surface melting	poor	7
51	1	1	0	0	1	1	Daytime full melting with night refreezing but night surface melting	poor	7
52	1	1	0	1	0	0	Daytime full melting with night refreezing	good	7
53	1	1	0	1	0	1	Daytime full melting with night refreezing	good	7
54	1	1	0	1	1	0	Daytime full melting with night refreezing but night surface melting	poor	7
55	1	1	0	1	1	1	Daytime full melting with night refreezing but night surface melting	poor	7
56	1	1	1	0	0	0	Presence of liquid water but with TB1.4=0	fair	4
57	1	1	1	0	0	1	Presence of liquid water	good	4
58	1	1	1	0	1	0	Full melting but daytime surface refreezing and TB1.4=0	poor	4
59	1	1	1	0	1	1	Full melting but daytime surface refreezing	good	4
60	1	1	1	1	0	0	Full melting with night surface refreezing with TB1.4=0	fair	8
61	1	1	1	1	0	1	Full melting with night surface refreezing	good	8
62	1	1	1	1	1	0	Full melting with TB1.4=0	fair	9
63	1	1	1	1	1	1	Full melting	good	9

**Figure A1.** The 64 dry-wet signatures with their physical meaning, their associated quality flag (QF) and assigned class.

## References

- Abdalati, W. and Steffen, K.: Snowmelt on the Greenland ice sheet as derived from passive microwave satellite data, *Journal of Climate*, 10, 165–175, [https://doi.org/10.1175/1520-0442\(1997\)010<0165:SOTGIS>2.0.CO;2](https://doi.org/10.1175/1520-0442(1997)010<0165:SOTGIS>2.0.CO;2), 1997.
- 450 Banwell, A. F., Datta, R. T., Dell, R. L., Moussavi, M., Brucker, L., Picard, G., Shuman, C. A., and Stevens, L. A.: The 32-year record-high surface melt in 2019/2020 on the northern George VI Ice Shelf, Antarctic Peninsula, *The Cryosphere*, 15, 909–925, <https://doi.org/10.5194/tc-15-909-2021>, 2021.
- Banwell, A. F., Wever, N., Dunmire, D., and Picard, G.: Quantifying Antarctic-Wide Ice-Shelf Surface Melt Volume Using Microwave and Firn Model Data: 1980 to 2021, *Geophysical Research Letters*, 50, e2023GL102744, <https://doi.org/10.1029/2023GL102744>, 2023.
- 455 Brucker, L., Picard, G., Arnaud, L., Barnola, J.-M., Schneebeli, M., Brunjail, H., Lefebvre, E., and Fily, M.: Modeling time series of microwave brightness temperature at Dome C, Antarctica, using vertically resolved snow temperature and microstructure measurements, *Journal of Glaciology*, 57, 171–182, <https://doi.org/10.3189/002214311795306736>, 2011.
- Champollion, N., Picard, G., Arnaud, L., Lefebvre, E., Macelloni, G., Rémy, F., and Fily, M.: Marked decrease in the near-surface snow density retrieved by AMSR-E satellite at Dome C, Antarctica, between 2002 and 2011, *The Cryosphere*, 13, 1215–1232, <https://doi.org/10.5194/tc-13-1215-2019>, 2019.
- 460 Chang, T. C. and Gloersen, P.: Microwave emission from dry and wet snow, in: *Operational Appl. of Satellite Snowcover Observations*, pp. 399–407, <https://ntrs.nasa.gov/citations/19760009500>, 1975.
- Colbeck, S. C.: An overview of seasonal snow metamorphism, *Reviews of Geophysics*, 20, 45–61, <https://doi.org/10.1029/RG020i001p00045>, 1982.
- 465 Colliander, A., Mousavi, M., Marshall, S., Samimi, S., Kimball, J. S., Miller, J. Z., Johnson, J., and Burgin, M.: Ice sheet surface and subsurface melt water discrimination using multi-frequency microwave radiometry, *Geophysical Research Letters*, 49, <https://doi.org/10.1029/2021GL096599>, 2022.
- Colliander, A., Mousavi, M., Kimball, J. S., Miller, J. Z., and Burgin, M.: Spatial and temporal differences in surface and subsurface melt-water distribution over Greenland ice sheet using multi-frequency passive microwave observations, *Remote Sensing of Environment*, 295, 113705, <https://doi.org/10.1016/j.rse.2023.113705>, 2023.
- 470 Datta, R. T., Tedesco, M., Fettweis, X., Agosta, C., Lhermitte, S., Lenaerts, J., and Wever, N.: The Effect of Foehn-Induced Surface Melt on Firn Evolution Over the Northeast Antarctic Peninsula, *Geophysical Research Letters*, 46, <https://doi.org/10.1029/2018GL080845>, 2019.
- de Roda Husman, S., Hu, Z., Wouters, B., Munneke, P. K., Veldhuijsen, S., and Lhermitte, S.: Remote Sensing of Surface Melt on Antarctica: Opportunities and Challenges, *IEEE Journal of Selected Topics in Applied Earth Observations and Remote Sensing*, 16, 2462–2480, <https://doi.org/10.1109/JSTARS.2022.3216953>, 2023.
- 475 de Roda Husman, S., Hu, Z., van Tiggelen, M., Dell, R., Bolibar, J., Lhermitte, S., Wouters, B., and Munneke, P. K.: Physically-Informed Super-Resolution Downscaling of Antarctic Surface Melt, *Journal of Advances in Modeling Earth Systems*, 16, <https://doi.org/10.1029/2023ms004212>, 2024.
- Dethinne, T., Glaude, Q., Picard, G., Kittel, C., Alexander, P., Orban, A., and Fettweis, X.: Sensitivity of the MAR regional climate model snowpack to the parameterization of the assimilation of satellite-derived wet-snow masks on the Antarctic Peninsula, *The Cryosphere*, 17, 4267–4288, <https://doi.org/10.5194/tc-17-4267-2023>, 2023.
- 480 Donlon, C.: Copernicus Imaging Microwave Radiometer (CIMR) Mission Requirements Document, version 5, Tech. rep., ESA, <https://cimr.eu/documents>, 2023.

- Entekhabi, D., Njoku, E. G., O'Neill, P. E., Kellogg, K. H., Crow, W. T., Edelstein, W. N., Entin, J. K., Goodman, S. D., Jackson, T. J., Johnson, J., Kimball, J., Piepmeier, J. R., Koster, R. D., Martin, N., McDonald, K. C., Moghaddam, M., Moran, S., Reichle, R., Shi, J. C., Spencer, M. W., Thurman, S. W., Tsang, L., and Van Zyl, J.: The soil moisture active passive (SMAP) mission, *Proc. IEEE*, 98, 704–716, <https://doi.org/10.1109/JPROC.2010.2043918>, 2010.
- Gorodetskaya, I. V., Durán-Alarcón, C., González-Herrero, S., Clem, K. R., Zou, X., Rowe, P., Rodriguez Imazio, P., Campos, D., Leroy-Dos Santos, C., Dutrievoz, N., Wille, J. D., Chyhareva, A., Favier, V., Blanchet, J., Pohl, B., Cordero, R. R., Park, S.-J., Colwell, S., Lazzara, M. A., Carrasco, J., Gulisano, A. M., Krakovska, S., Ralph, F. M., Dethinne, T., and Picard, G.: Record-high Antarctic Peninsula temperatures and surface melt in February 2022: a compound event with an intense atmospheric river, *npj Climate and Atmospheric Science*, 6, <https://doi.org/10.1038/s41612-023-00529-6>, 2023.
- Hersbach, H., Bell, B., Berrisford, P., Biavati, G., Horányi, A., Muñoz Sabater, J., Nicolas, J., Peubey, C., Radu, R., Rozum, I., Schepers, D., Simmons, A., Soci, C., Dee, D., and Thépaut, J.-N.: ERA5 hourly data on single levels from 1940 to present, Copernicus Climate Change Service (C3S) Climate Data Store (CDS), <https://doi.org/10.24381/cds.adbb2d47>, 2018.
- Hersbach, H., Bell, B., Berrisford, P., and et al.: The ERA5 global reanalysis, *Q J R Meteorol Soc*, 146, 1999–2049, <https://doi.org/10.1002/qj.3803>, 2020.
- Hossan, A., Colliander, A., Vandecrux, B., Schlegel, N.-J., Harper, J., Marshall, S., and Miller, J. Z.: Retrieval and validation of total seasonal liquid water amounts in the percolation zone of the Greenland ice sheet using L-band radiometry, *The Cryosphere*, 19, 4237–4258, <https://doi.org/10.5194/tc-19-4237-2025>, 2025.
- Houtz, D., Mätzler, C., Naderpour, R., Schwank, M., and Steffen, K.: Quantifying Surface Melt and Liquid Water on the Greenland Ice Sheet using L-band Radiometry, *Remote Sensing of Environment*, 256, 112 341, <https://doi.org/10.1016/j.rse.2021.112341>, 2021.
- Humphrey, N. F., Harper, J. T., and Pfeffer, W. T.: Thermal tracking of meltwater retention in Greenland's accumulation area, *Journal of Geophysical Research: Earth Surface*, 117, <https://doi.org/10.1029/2011jf002083>, 2012.
- Johnson, A., Hock, R., and Fahnestock, M.: Spatial variability and regional trends of Antarctic ice shelf surface melt duration over 1979–2020 derived from passive microwave data, *Journal of Glaciology*, 68, 533–546, <https://doi.org/10.1017/jog.2021.112>, 2022.
- Kachi, M., Shimada, R., Ohara, K., Kubota, T., Miura, T., Inaoka, K., Kojima, Y., Aonashi, K., and Ebuchi, N.: The Advanced Microwave Scanning Radiometer 3 (AMSR3) Onboard the Global Observing Satellite for Greenhouse Gases and Water Cycle (GOSAT-GW) Toward Long-Term Water Cycle Monitoring, in: *IGARSS 2023 - 2023 IEEE International Geoscience and Remote Sensing Symposium*, pp. 561–564, <https://doi.org/10.1109/igarss52108.2023.10282052>, 2023.
- Kerr, Y. H., Waldteufel, P., Wigneron, J.-P., Martinuzzi, J., Font, J., and Berger, M.: Soil moisture retrieval from space: The Soil Moisture and Ocean Salinity (SMOS) mission, *IEEE Trans. Geosci. Remote Sens.*, 39, 1729–1735, <https://doi.org/10.1109/36.942551>, 2001.
- Kittel, C., Amory, C., Hofer, S., Agosta, C., Jourdain, N. C., Gilbert, E., Toumelin, L. L., Étienne Vignonand, Gallée, H., and Fettweis, X.: Clouds drive differences in future surface melt over the Antarctic ice shelves, *The Cryosphere*, 16, 2655–2669, <https://doi.org/10.5194/tc-16-2655-2022>, 2022.
- Kuipers Munneke, P., Picard, G., van den Broeke, M. R., Lenaerts, J. T. M., and van Meijgaard, E.: Insignificant change in Antarctic snowmelt volume since 1979, *Geophysical Research Letter*, 39, <https://doi.org/10.1029/2011GL050207>, 2012.
- Leduc-Leballeur, M., Picard, G., Macelloni, G., Mialon, A., and Kerr, Y. H.: Melt in Antarctica derived from Soil Moisture and Ocean Salinity (SMOS) observations at L band, *The Cryosphere*, 14, 539–548, <https://doi.org/10.5194/tc-14-539-2020>, 2020.

- 520 Liu, H., Wang, L., and Jezek, K. C.: Spatiotemporal variations of snowmelt in Antarctica derived from satellite scanning multichannel microwave radiometer and Special Sensor Microwave Imager data (1978–2004), *Journal of Geophysical Research: Earth Surface*, 111, <https://doi.org/10.1029/2005JF000318>, 2006.
- Maslanik, J. and Stroeve, J.: DMSP SSM/I-SSMIS Daily Polar Gridded Brightness Temperatures, Version 4., NASA National Snow and Ice Data Center Distributed Active Archive Center, Boulder, Colorado, USA, <https://doi.org/10.5067/AN9AI8EO7PX0>, 2004, updated 2018.
- 525 Mätzler, C.: Thermal microwave radiation: applications for remote sensing, vol. 52, Institution of Engineering and Technology, 2006.
- Miller, J. Z., Long, D. G., Jezek, K. C., Johnson, J. T., Brodzik, M. J., Shuman, C. A., Koenig, L. S., and Scambos, T. A.: Brief communication: Mapping Greenland’s perennial firn aquifers using enhanced-resolution L-band brightness temperature image time series, *The Cryosphere*, 14, 2809–2817, <https://doi.org/10.5194/tc-14-2809-2020>, 2020.
- Moon, T., Harper, J., Colliander, A., Hossan, A., and Humphrey, N.: L-Band Radiometric Measurement of Liquid Water in Greenland’s Firn: Comparative Analysis with In Situ Measurements and Modeling, *Annals of Glaciology*, pp. 1–21, <https://doi.org/10.1017/aog.2025.10012>, 2025.
- 530 Mousavi, M., Colliander, A., Miller, J., and Kimball, J. S.: A Novel Approach to Map the Intensity of Surface Melting on the Antarctica Ice Sheet Using SMAP L-Band Microwave Radiometry, *IEEE Journal of Selected Topics in Applied Earth Observations and Remote Sensing*, 15, 1724–1743, <https://doi.org/10.1109/jstars.2022.3147430>, 2022.
- 535 Naderpour, R., Houtz, D., and Schwank, M.: Snow wetness retrieved from close-range L-band radiometry in the western Greenland ablation zone, *Journal of Glaciology*, 67, 27–38, <https://doi.org/10.1017/jog.2020.79>, 2020.
- Nicolas, J. P., Vogelmann, A. M., Scott, R. C., Wilson, A. B., Cadeddu, M. P., Bromwich, D. H., Verlinde, J., Lubin, D., Russell, L. M., Jenkinson, C., et al.: January 2016 extensive summer melt in West Antarctica favoured by strong El Niño, *Nature communications*, 8, 15 799, <https://doi.org/10.1038/ncomms15799>, 2017.
- 540 Passalacqua, O., Picard, G., Ritz, C., Leduc-Leballeur, M., Quiquet, A., Larue, F., and Macelloni, G.: Retrieval of the Absorption Coefficient of L-Band Radiation in Antarctica From SMOS Observations, *Remote Sensing*, 10, 1954, <https://doi.org/10.3390/rs10121954>, 2018.
- Picard, G. and Fily, M.: Surface melting observations in Antarctica by microwave radiometers: Correcting 26-year time series from changes in acquisition hours, *Remote Sens. Environ.*, 104, 325–336, <https://doi.org/10.1016/j.rse.2006.05.010>, 2006.
- Picard, G., Fily, M., and Gallée, H.: Surface melting derived from microwave radiometers: a climatic indicator in Antarctica, *Ann. Glaciol.*, 46, 29–34, 2007.
- 545 Picard, G., Leduc-Leballeur, M., Banwell, A. F., Brucker, L., and Macelloni, G.: The sensitivity of satellite microwave observations to liquid water in the Antarctic snowpack, *The Cryosphere*, 16, 5061–5083, <https://doi.org/10.5194/tc-16-5061-2022>, 2022.
- Saunderson, D., Mackintosh, A., McCormack, F., Jones, R. S., and Picard, G.: Surface melt on the Shackleton Ice Shelf, East Antarctica (2003–2021), *The Cryosphere*, 16, 4553–4569, <https://doi.org/10.5194/tc-16-4553-2022>, 2022.
- 550 Tedesco, M.: Snowmelt detection over the Greenland ice sheet from SSM/I brightness temperature daily variations, *Geophysical Research Letters*, 34, <https://doi.org/10.1029/2006GL028466>, 2007.
- Tedesco, M., Abdalati, W., and Zwally, H.: Persistent surface snowmelt over Antarctica (1987–2006) from 19.35 GHz brightness temperatures, *Geophysical Research Letters*, 34, <https://doi.org/10.1029/2007GL031199>, 2007.
- Torinesi, O., Fily, M., and Genthon, C.: Variability and trends of the summer melt period of Antarctic ice margins since 1980 from microwave sensors, *Journal of Climate*, 16, 1047–1060, 2003.
- 555



- p>van den Broeke, M. R., Kuipers Munneke, P., Noël, B., Reijmer, C., Smeets, P., van de Berg, W. J., and van Wessem, J. M.: Contrasting
- 
- current and future surface melt rates on the ice sheets of Greenland and Antarctica: Lessons from in situ observations and climate models,
- 
- PLOS Climate, 2, e0000203,
- <https://doi.org/10.1371/journal.pclm.0000203>
- , 2023.
p>von Storch, H. and Zwiers, F. W.: Statistical analysis in climate research, Cambridge University Press, 2001.
p>560 Wille, J. D., Favier, V., Dufour, A., Gorodetskaya, I. V., Turner, J., Agosta, C., and Codron, F.: West Antarctic surface melt triggered by
- 
- atmospheric rivers, Nature Geoscience, 12, 911–916,
- <https://doi.org/10.1038/s41561-019-0460-1>
- , 2019.
p>Wille, J. D., Favier, V., Gorodetskaya, I. V., Agosta, C., Kittel, C., Beeman, J. C., Jourdain, N. C., Lenaerts, J. T., and Codron, F.: Antarc-
- 
- tic atmospheric river climatology and precipitation impacts, Journal of Geophysical Research: Atmospheres, 126, e2020JD033788,
- 
- <https://doi.org/10.1029/2020JD033788>
- , 2021.
p>565 Zeiger, P. and Picard, G.: SMOS rSIR-enhanced brightness temperature maps on Greenland and Antarctica, v1.0,
- 
- <https://doi.org/10.57932/f72f9515-3699-4fae-92fc-a350075d042f>
- , 2024.
p>Zeiger, P., Picard, G., Richaume, P., Mialon, A., and Rodriguez-Fernandez, N.: Resolution enhancement of SMOS brightness temper-
- 
- atures: Application to melt detection on the Antarctic and Greenland ice sheets, Remote Sensing of Environment, 315, 114469,
- 
- <https://doi.org/10.1016/j.rse.2024.114469>
- , 2024.
p>570 Zheng, L., Zhou, C., Liu, R., and Sun, Q.: Antarctic Snowmelt Detected by Diurnal Variations of AMSR-E Brightness Temperature, Remote
- 
- Sensing, 10,
- <https://doi.org/10.3390/rs10091391>
- , 2018.
p>Zwally, H. and Gloersen, P.: Passive microwave images of the polar regions and research applications, Polar Record, 18, 431–450,
- 
- <https://doi.org/10.1017/S0032247400000930>
- , 1977.
p>Zwally, J. H. and Fiegles, S.: Extent and duration of Antarctic surface melting, Journal of Glaciology, 40, 463–475,
- 
- 575
- <https://doi.org/10.3198/1994JoG40-136-463-375>
- , 1994.