

# Improved Simulation of Thunderstorm Characteristics and Polarimetric Signatures with LIMA 2-Moment Microphysics in AROME

Cloé David<sup>1</sup>, Clotilde Augros<sup>1</sup>, Benoit Vié<sup>1</sup>, François Bouttier<sup>1</sup>, and Tony Le Bastard<sup>2</sup>

<sup>1</sup>CNRM, Université de Toulouse, Météo-France, CNRS, Toulouse, France

<sup>2</sup>CNRM, Université de Toulouse, Météo-France, CNRS, Lannion, France

**Correspondence:** Cloé David (cloe.david@meteo.fr)

## Abstract.

Thunderstorm forecasting remains challenging despite advances in numerical weather prediction (NWP) systems. The microphysics scheme, that represents clouds in the model, partly contributes to the introduction of uncertainties in the simulations. To better understand the discrepancies, synthetic radar data simulated by a radar forward operator (applied to model outputs) are usually compared to dual-polarization radar observations, as they provide insight into the microphysical structure of clouds. However, the modelling of polarimetric values and radar signatures such as the  $Z_{DR}$  column (ZDRC) remains a complex issue, despite the diversity of microphysics schemes and forward operators, especially above the freezing level where too low values are often found.

The aim of this work is to assess the ability of the AROME NWP convective model, when coupled with two distinct microphysics schemes (ICE3 1-moment and LIMA partially 2-moment), to accurately reproduce thunderstorms characteristics. A statistical evaluation is conducted on 34 convective days of 2022 using both a global and an object-oriented approach, and a ZDRC detection algorithm is implemented. Simulations performed with LIMA microphysics showed a good agreement with observed  $Z_H$ ,  $Z_{DR}$  and  $K_{DP}$  below the melting layer in convective cores. Moreover, it demonstrated a remarkable capacity to generate a realistic number of ZDRC, as well as a distribution of (1) the ZDRC area, and (2) the first ZDRC occurrence, very close to the observations. Enhancements in the forward operator have also been suggested to improve the simulations in the mixed phase and cold phase regions.

These findings are highly encouraging in the context of data assimilation, where one could leverage the combination of advanced microphysics schemes and improved forward operators to improve storm forecasts.

## 1 Introduction

Thunderstorms are among the most damaging weather phenomena due to their capacity to generate heavy rainfall, strong winds, hail, and, to a lesser extent, tornadoes. Despite advances in convective numerical weather prediction (NWP) systems, storm forecasting remains challenging. Refining the representation of clouds is a possible area for improvement. In NWP, cloud modelling is done using either a spectral bin or a bulk microphysics scheme. Because of computational costs, single or two-

moment bulk schemes are most commonly used, where hydrometeors are partitioned into distinct categories. Depending on the number of moments, the mixing ratio and/or number concentration evolution is predicted, and physical processes between each category are parametrized. To evaluate microphysics schemes, fine scale observations pertaining to hydrometeors are needed. Since direct hydrometeor observations are relatively rare and mostly confined to field experiments, remote sensing observations, such as radar observations, are generally regarded as a key source of information on hydrometeors as they provide high temporal and spatial resolution data (Houze Jr., 2014). For radar networks that collect dual-polarized data, not only are precipitation intensities accessible via the horizontal reflectivity  $Z_H$ , but also direct information about hydrometeors such as their axis ratio via differential reflectivity  $Z_{DR}$ , their liquid water content via the specific differential phase  $K_{DP}$  or their heterogeneity inside the radar beam via the cross-correlation coefficient  $\rho_{HV}$ . Such variables can be used for hydrometeor classification algorithms (Park et al., 2009; Al-Sakka et al., 2013; Besic et al., 2016). Furthermore, these variables offer new insights into thunderstorms, where polarimetric signatures can be identified and attributed to key dynamical and microphysical processes (Höller et al., 1994; Kennedy and Rutledge, 1995; Kennedy et al., 2001; Kumjian and Ryzhkov, 2008).

In recent years, there has been a growing interest in polarimetric data and especially the  $Z_{DR}$  column signature, which is defined as a columnar enhancement of differential reflectivity above the environmental freezing level. Primarily explored by Caylor and Illingworth (1987), this signature has attracted the attention of researchers, as it indicates that supercooled raindrops and wet ice particles are lofted by updrafts (Hall et al., 1984; Ryzhkov et al., 1994; Kumjian and Ryzhkov, 2008; Kumjian et al., 2014). In particular, links have been established between  $Z_{DR}$  column (ZDRC) and hail growth (Picca and Ryzhkov, 2012; Kumjian et al., 2021). In their study, Kumjian et al. (2021) found that the quantity of hail produced by a storm was directly related to the width of the updraft. They also found that the largest hailstones were generated by stronger and narrower updrafts. The work of Kuster et al. (2019, 2020) has emphasized the usefulness of such a signature in warning decision processes, showing that ZDRCs develop and evolve prior to upper-level  $Z_H$  cores, and provide early signals of changes in updraft strength. Similarly, Lo et al. (2024) and Aregger et al. (2024) came to the same conclusions, but for different locations (UK and Switzerland respectively), further supporting the potential of ZDRCs to help forecasters issue more accurate severe weather warnings, with improved lead times. In the field of radar data assimilation, Carlin et al. (2017) demonstrated promising outcomes of using ZDRCs to provide moisture and latent heat adjustments, in a modified  $Z_H$ -based formulation of the Advanced Regional Prediction System cloud analysis (ARPS; Xue et al., 2020, 2001). Likewise, Reimann et al. (2023) indirectly assimilated polarimetric data using microphysical retrievals of the liquid and ice water content and showed improvements on 9-hour precipitation forecasts.

Before attempting to assimilate polarimetric signatures or use them for nowcasting, it is necessary to ensure that models accurately reproduce storm structures and associated polarimetric signatures. Several evaluations have been conducted to assess model ability to forecast thunderstorms. Typically, such evaluations are performed on fields of precipitation or reflectivities, and they compare different microphysics schemes against each other and against observations over a few cases (Gallus and Pfeifer, 2008; Rajeevan et al., 2010; Starzec et al., 2018). Now that dual-polarization radar data are becoming more easily available for the scientific community, evaluations tend to focus on polarimetric variables and signatures. Hence, recent studies have compared observed to simulated polarimetric signatures with several microphysics schemes, either for an ideal case (Jung et al.,

2010; Johnson et al., 2016) or a few real cases with different storm types (Putnam et al., 2017). Evaluating microphysics allows  
60 a better understanding of the model ability to reproduce known polarimetric signatures and their associated microphysical  
processes. For instance, one-moment schemes have been shown to be unable to replicate the  $Z_{DR}$  arc in supercells because of  
the lack of rime-ice (Johnson et al., 2016) and graupel size sorting (Putnam et al., 2017). Sometimes, comparisons are made  
with a single microphysics scheme in order to refine the comprehension of model biases. Thus, sensitivity tests are conducted  
as exemplified in the two studies of Shrestha et al. (2022a, b) for a 2-moments scheme including a separate hail class, with  
65 respectively a wintertime stratiform precipitation event and three convective summertime storms. The former study highlighted  
that polarimetric signals were underestimated where snow aggregates were dominant in the hydrometeor population between  
 $-3$  and  $-13$  °C. The latter study showed that the model likewise underestimated the convective area, high reflectivities and the  
width/depth of ZRDCs, all of which led to an underestimation of the frequency distribution of high precipitation values.

Going further than the usual point-based forecast evaluation, Davis et al. (2006) was among the first to define an object-  
70 based evaluation framework. The Method for Object-Based Diagnostic Evaluation (MODE) identifies objects by applying a  
convolution filter and a threshold on the concerned field. This method has the advantage of not emphasizing a precise location,  
thereby facilitating the direct comparison of different features between each other. In Davis et al. (2009) MODE is applied on  
precipitation quantities to evaluate 1-h rainfall accumulation from 24-h forecasts, while in Cai and Dumais (2015) vertically  
integrated liquid water (VIL) fields are used to evaluate storm characteristics over a 3-week period. This object-based verifica-  
75 tion approach can also be leveraged to evaluate the three-dimensional structure of forecasted thunderstorms, as demonstrated  
in Starzec et al. (2018). They used observed and forecasted 3D reflectivity fields to define convective objects where horizon-  
tal reflectivities were greater than 45 dBZ. Four months of daily summertime forecasts with either the WRF single-moment  
6-class microphysics scheme (Hong and Lim, 2006) or the partially two-moment Thompson scheme (Thompson et al., 2004)  
have been evaluated. Forecasted objects were found to be more frequent and larger above the melting layer than the observed  
80 objects for both microphysics schemes, but only the two-moment scheme simulated cores with intensities approaching the ob-  
servations. One of the first statistical evaluations of polarimetric variables within convective objects was carried out by Köcher  
et al. (2022, 2023). The total simulated precipitation, cell core height, and cell maximum reflectivity were analyzed over a  
30-day period. Of the five microphysical schemes evaluated, only one was found to simulate enough convective cells and none  
of them were able to reproduce the strongest reflectivities. Three 3-moment bulk schemes showed increased  $Z_{DR}$  values above  
85 the melting layer, which was attributed to the lofting of large raindrops. This last result suggests that ZDRCs may have been  
detected in simulations.

In this context, and preparing for the future use of polarimetric data in the assimilation system of the French operational  
convective-scale model AROME (Seity et al., 2011; Brousseau et al., 2016), the present study aims to statistically evaluate  
storms structures, not only in terms of accumulated precipitations and polarimetric fields, but also with an object-oriented  
90 approach. Therefore, a ZDRC detection algorithm was developed based on Snyder et al. (2015) and a tracking algorithm  
(Heikenfeld et al., 2019) was applied on different convective objects. To the author's knowledge, ZDRC objects characteristics  
have never been evaluated this way before. Thus, 34 convective days of 2022 in France were objectively selected from the  
European Severe Weather Database (ESWD; Dotzek et al., 2009). The corresponding dual-polarization observations from the

French radar network were compared with synthetic polarimetric data simulated with the Augros et al. (2016) radar forward operator applied to the AROME model. Simulated variables were obtained from both the operational one-moment microphysics scheme ICE3 (Pinty and Jabouille, 1998) and the partially two-moment scheme LIMA (Vié et al., 2016), which is intended to replace ICE3 in a future version of AROME.

Further details regarding the data can be found in section 2. The methodology employed to compare observations and simulations, as well as a description of the  $Z_{DR}$  column algorithm and the tracking algorithm, are explained in section 3.

Results (section 4) are organized as follows : first, a classical model evaluation is performed on accumulated precipitations fields. Secondly, an object-based evaluation is performed, focusing on convective parts of the storms, where reflectivities, cells characteristics and polarimetric fields are analyzed. Then, investigations are carried out on  $Z_{DR}$  column objects. Finally, results are discussed in section 5 and the main conclusions of the paper are presented in section 6.

## 2 Data

The following section describes the data used in this study. Precisions about the selected events are given in subsection 2.1 while subsection 2.2 and subsection 2.3 provide more information about the radar and model data compared in this evaluation. Finally, synthetic radar data are obtained using the forward operator described in subsection 2.4

### 2.1 Studied events

The European Severe Weather Database (ESWD; Dotzek et al., 2009) was used to objectively identify severe convective events in 2022. Reported events undergo quality control procedures concerning the time, location, and the veracity of the report. In this work, only reports confirmed by reliable sources or scientific case studies have been selected (classified as QC1 or QC2 in the ESWD database). To target severe convective events, we restricted the selection to days where hailstones of size equal or greater to 2 cm were reported in France in 2022, while keeping the number of cases reasonable in terms of computation and processing time. Thus, we included all convective events from April to July, a period well characterized by severe convective storms and in particular supercells. In order to incorporate a variety of storm types, three high-stakes days were added to the study sample (a major thunderstorm event all across France on August 16, the Corsica bow echo on August 18, and the Bihucourt tornado on October 23), for a total of 34 convective days analyzed. For each day, several hail events may occur at different places. In that case, the day is subdivided as necessary by hand. Each selected period has been cropped to cover the observed event only. In this paper, the term "event" will refer to each individual observed event (and the associated simulated data). A table listing the studied events, their location, and their duration, can be found in the appendix Table A1.

### 2.2 Radar observations

Observational data used here comes from the ARAMIS (Application Radar à la Météorologie Infra-Synoptique) operational radar network of Météo-France. In 2022, the metropolitan network consisted of 31 dual-polarized Doppler radars (20 C-band, 6 X-band, 5 S-band) covering mainland France. Each dual-polarization radar performs  $360^\circ$  scans at 6 elevations angles ranging

125 from a minimum of  $0.4^\circ$  to a maximum of  $15^\circ$ , depending on the radar. There is a supercycle of 15 minutes divided into  
3 cycles of 5 minutes each, where the 3 lowest elevations angles are kept the same within the supercycle. The remaining  
3 elevations angles vary within each 5 minutes cycle. Raw polarimetric data are corrected accordingly to their frequencies  
through a polarimetric processing chain (Figueroa i Ventura et al., 2012). Among the corrections, differential reflectivities are  
re-calibrated, non-meteorological echoes are identified (Gourley et al., 2007), and attenuation correction is applied to horizontal  
130 and differential reflectivities. Hydrometeors are then classified using a fuzzy logic algorithm (Al-Sakka et al., 2013, hereafter  
A13). The following variables are obtained at a  $240 \text{ m} \times 0.5^\circ$  polar resolution within a maximum radius of 255 km from each  
radar, and at a time resolution of 5 min : the horizontal reflectivity  $Z_H$ , the differential reflectivity  $Z_{DR}$ , the differential phase  
 $\phi_{DP}$ , and the co-polar correlation coefficient  $\rho_{HV}$ . From these variables, the specific differential phase  $K_{DP}$  and the echo  
classification (hereafter ECLASS) are also computed.

135 In this paper, for the evaluation of precipitation accumulations, ANTILOPE hourly aggregated quantitative precipitation  
estimations (QPE) are used (Champeaux et al., 2011). ANTILOPE is a composite product where a radar-based precipitation  
estimation is merged with rain gauges observations from the Météo-France network. The reader is referred to appendix A of  
Caumont et al. (2021) for a more detailed description of the ANTILOPE QPE algorithm. For the 3D evaluation, we only used  
C- and S-bands radar data, as X-band signal is quickly attenuated during rainy events.

## 140 2.3 Model data

To compare with observational data, reforecasts of the entire French metropolitan domain have been obtained with the convective-  
scale NWP model AROME, presented in subsubsection 2.3.1. The two microphysics schemes used in this study are described  
in subsubsection 2.3.2 and the radar forward operator used to compute synthetic polarimetric variables from the model output  
is presented in subsection 2.4. The outputs are generated at the same temporal resolution as the observations (i.e. 5 min).

### 145 2.3.1 The AROME model

AROME is a non-hydrostatic, deep convection resolving model, running operationally since December 2008 (Seity et al.,  
2011). This limited-area model is centered on France, and lateral boundary conditions come from the global model ARPEGE  
(Action de Recherche Petite Echelle Grande Echelle; Courtier et al., 1991, 1994). In April 2015, the AROME system was  
upgraded, resulting in (1) an increase in both horizontal and vertical resolutions (from 2.5 km with 60 pressure levels to  
150 1.3 km with 90 pressure levels) and (2) a reduction of the data assimilation cycle period from 3 to 1 hour (Brousseau et al.,  
2016). AROME employs a 3D-Var scheme in a continuous assimilation cycle in order to assimilate mesoscale observations.  
These include radar radial wind speeds and horizontal reflectivities via a 1D+3D-Var approach (Caumont et al., 2010; Wattrelot  
et al., 2014). Since July 2022, 51-hour forecasts are issued at a three-hourly frequency. The AROME model simulates one 2D  
prognostic variable (the hydrostatic surface pressure), and twelve 3D prognostic variables: two horizontal wind components,  
155 temperature, specific content of water vapor, rain, cloud droplets, snow, graupel, and ice crystals, turbulent kinetic energy,  
and two nonhydrostatic variables related to pressure and vertical momentum (Bénard et al., 2010). Subgrid processes are  
parametrized as follows. The surface is modelled with SURFEX (SURFace EXternalisée; Masson et al., 2013) which associates

each grid box of the model with a surface tile (nature, town, sea, or lake), using the ISBA scheme (Interaction Soil Biosphere Atmosphere; Noilhan and Mahfouf, 1996; Noilhan and Planton, 1989) for the natural continental tiles. Local turbulent mixing is computed by a TKE scheme (Turbulent Kinetic Energy; Cuxart et al., 2000) and non-local vertical mixing is performed by a shallow-convection scheme based on a mass-flux scheme (Pergaud et al., 2009). Radiation effects are parametrized by RRTM (Rapid Radiative Transfer Mode; Mlawer et al., 1997) for the long waves and the Fouquart-Morcrette scheme (Fouquart and Bonnel, 1980; Morcrette and Fouquart, 1986) for the short wave spectrum. The microphysics schemes available are described in the next section. A more detailed documentation of the AROME model is available in Termonia et al. (2018).

### 165 2.3.2 Microphysics schemes

An accurate representation of thunderstorms requires a mixed-phase microphysics scheme with riming processes and graupel (Seity et al., 2011; Shrestha et al., 2022a). In the AROME model, two bulk microphysics schemes satisfying this requirement are available : a single-moment scheme, ICE3 (Pinty and Jabouille, 1998), which is used in the operational version of AROME and a two-moments scheme, LIMA (Liquid Ice Multiple Aerosols; Vié et al., 2016; Taufour et al., 2024), currently used for research purposes (Taufour et al., 2018; Ducongé et al., 2020). A description of both schemes is provided below.

The single-moment bulk scheme ICE3 is a three-class ice parameterization coupled to a Kessler scheme (Kessler, 1969) that describes the warm phase. ICE3 manages five prognostic variables of water condensates, in addition to water vapor, to represent the cloud microphysics. The prognostic equations predict the specific contents ( $q$ ) of three precipitating species, namely rain  $q_r$ , snow aggregates  $q_s$  and graupel  $q_g$  (including different types of large-rimmed crystals like frozen drops and hail), as well as two non-precipitating species : ice crystals  $q_i$  and cloud droplets  $q_c$ . Furthermore, a generalized gamma distribution is used to represent the particle size distribution (PSD) of each hydrometeor. Power-law relationships are used to link the mass and the terminal speed velocity to the particle diameters. As ICE3 is a one-moment scheme, the total number concentration ( $N$ ) of each species is diagnostic. For the precipitating species  $N_r$ ,  $N_s$ , and  $N_g$  are deduced from the specific contents, whereas for ice crystals  $N_i$  is diagnosed based on the Meyers et al. (1992) parameterization of the heterogeneous nucleation. The total number concentration of cloud droplets  $N_c$  is a function of surface characteristics and is set to 300 particles/cm<sup>3</sup> over land and 100 particles/cm<sup>3</sup> over sea areas. Finally, ICE3 comes with a subgrid condensation scheme and performs an implicit adjustment of the cloud droplets and ice contents in clouds with a strict saturation criterion. A more complete description with the associated formulas can be found in Lac et al. (2018).

LIMA is a two-moment bulk scheme with a prognostic representation of aerosols and their interactions with clouds. Aerosol modes are defined by their chemical compositions, PSD, and their capacity to act as cloud condensation nuclei (CCN, parametrised following Cohard et al., 1998), ice freezing nuclei (IFN, parametrised following Phillips et al., 2008, 2013) or coated IFN. LIMA handles the competition between aerosol modes in the activation and nucleation parameterizations. In our experiments, CCN are initialized with a concentration of 300 particles/cm<sup>3</sup> and IFN with 1000 particles/L. The scheme inherits the six water species of ICE3, but in the version of LIMA used here, number concentrations for raindrops  $N_r$ , ice crystals  $N_i$  and cloud droplets  $N_c$  are prognostic. The PSD still follows a generalized gamma distribution. As in ICE3, a thermodynamic equilibrium is assumed between the water vapor and cloud droplets. However, the deposition and sublimation rates for ice crystals

are computed explicitly based on their mixing ratio and number concentration, allowing the supersaturation over ice to evolve freely. Some microphysical processes, such as evaporation, melting or homogeneous freezing, have been modified in LIMA to handle the number concentration while others, like the self collection of cloud droplets or the self collection and breakup of raindrops, are entirely new processes. A specificity of ICE3 and LIMA is that snow cannot be converted directly into rain when it melts, but instead is first converted into graupel. The reader can find a diagram summarizing all the microphysical processes of ICE3 and LIMA in Fig. 7 of Lac et al. (2018). For both schemes, hail can be considered either as a full sixth category or included in the graupel species to form an extended class of heavily rimed ice particles. In this study, hail is included in the graupel species.

## 2.4 Radar forward operator

Polarimetric variables are not native variables of the AROME model. Consequently, a radar forward operator is required to perform direct comparisons of simulations with dual-polarization observations. The main role of such an operator is to simulate synthetic polarimetric data at a given radar frequency from model outputs. In this paper, an enhanced version of the Augros et al. (2016) polarimetric forward operator (hereafter A16) is used. This section will first provide a concise overview of the operator, after which the enhancements will be presented in greater detail.

The AROME outputs, including temperature, pressure and hydrometeor contents, are used as inputs to simulate electromagnetic wave propagation and scattering at all three operational radars wavelengths (S, C and X bands). Back and forward scattering coefficients are calculated for pristine ice particles (considered spherical), rain, snow aggregates and graupel (modelled as oblate spheroids) with the T-matrix method (Mishchenko and Travis, 1994). The scattering coefficients are computed in advance, for different particle sizes, as a function of elevation angle, radar wavelength, temperature, liquid water fraction and hydrometeor type. For each hydrometeor category, the PSD and mass-diameter relationship is provided by the model microphysics. Additionally, the dielectric constant and shape were adjusted for each species, as these parameters are necessary in calculations of the scattering coefficients.

Thanks to the work of Le Bastard (2019), the melting scheme of the A16 radar forward operator was enhanced. In this study, only the graupel can be wet, as hail is included in the graupel class. Wet snow is not simulated, as the microphysics scheme automatically transfers the snow content into the graupel class when it starts melting. To create a (synthetic) wet graupel species, 100 % of the graupel content ( $M_g$ ) provided by the AROME microphysics is converted into the wet graupel content  $M_{wg}$ , when graupel coexists with rain (i.e.  $M_{wg} = M_g$  and  $M_g = 0$ ). There is no limit of temperature, which means that the melting scheme is also applicable at negative temperature as long as the graupel coexists with rain. This melting scheme is based on the evolution of the liquid water fraction  $F_w$ , which describes at any time the physical state of the melting particle. Thus, within the wet graupel,  $F_w$  is estimated as a function of the rain and graupel content from the model,  $M_r$  and  $M_g$ , by :

$$F_w = \frac{M_r}{M_g + M_r} \quad (1)$$

The whole melting process is based on a matrix/inclusion approach (see Fig. B1 in Appendix B). At the beginning, the graupel starts melting, with the melted water first soaking the air cavities (Ryzhkov et al., 2011). Indeed, if the initial density of the dry

225 graupel (or hail) is less than the density of a whole solid ice sphere of the same diameter, this suggests that the graupel particle (or hailstone) has air cavities. As stated by Rasmussen and Heymsfield (1987), air cavities are filled from the outside to the inside of the particle. When all air cavities are filled, a saturated water fraction  $F_w^{sat}$  is reached (see Eq. (B13) in Appendix B). Then, the particle starts forming an outer water shell (Rasmussen and Heymsfield, 1987; Ryzhkov et al., 2011), while the ongoing mixing of ice and melted water in the core continues to melt. At  $F_w = 1$ , the graupel is fully melted.

230 The consequences of the melting process are reflected in both the retrievals of the scattering coefficients, with the computation of an equivalent melt diameter, and the calculation of a new dielectric constant for the wet species. Moreover, a new particle size distribution is determined following the work of Wolfensberger and Berne (2018). Extended explanations about the graupel/hail melting process presented here, as well as the formulas of the equivalent melt diameter, the dielectric constant, and the particle size distribution of the wet specie, are described in Appendix B.

## 235 **3 Methodology**

To investigate the impact of the microphysics schemes on the storm structures and the reproduction of polarimetric signatures, both observational and model datasets have been first pre-processed (subsection 3.1). A  $Z_{DR}$  column computation algorithm has been applied (subsection 3.2) and an object tracking algorithm was used to track storm cells and  $Z_{DR}$  columns (subsection 3.3).

### 240 **3.1 Data pre-processing**

As mentioned in subsection 2.2, input radar data contains the  $Z_H$ ,  $Z_{DR}$ ,  $\phi_{DP}$ ,  $K_{DP}$ ,  $\rho_{HV}$  and the ECLASS polar fields. The first pre-processing step consists in removing the gates identified as non-meteorological echoes in the ECLASS field. Secondly, a median filter is applied on 3 gates and 3 azimuth angles to reduce the remaining noise in the polarimetric fields. All the polar radar elevations are then interpolated into a three-dimensional (3D) Cartesian grid with the open-source *Py-ART* package (Python ARM Radar Toolkit; Helmus and Collis, 2016). The Cartesian 3D grid has a horizontal resolution of 1 km and a vertical resolution of 0.5 km. The grid extends from a height of 0 to 15 km above ground level and contains all the aforementioned fields. The *Py-ART* interpolation works as follows : first the radar locations (latitude, longitude, and altitude) are projected onto the Cartesian grid. Then, for each point of the Cartesian grid, a radius of influence (ROI) is estimated based on the nearest radar. To obtain the value of each Cartesian grid point, all the radar gates values that fall within the sphere

245 defined by the ROI of the given grid point are summed. Not all radar gates contribute equally : the further the gate is from the center of the sphere (i.e. the grid point), the less weight its value has when calculating the value of the Cartesian grid point. *Py-ART* algorithm is flexible, with multiple options of ROI and weighting functions. In this study, to generate a 3D Cartesian grid of polarimetric fields, the Barnes weighting function (Barnes, 1964; Pauley and Wu, 1990) with a ROI based on virtual beam size options have been preferred. As an additional criterion, a minimum of 3 radars was required to map onto the grid.

255 Indeed, because of the radar scanning strategy (especially for the 3 highest elevations, see subsection 2.2), it is necessary to ensure enough vertical coverage within the studied domain. We have found that combining polar data from at least 3 radars



provide enough vertical coverage at high altitudes in the grid. Thus, at least one elevation angle among all elevations available (from all radars) contributes to each grid point.

Forecasts are made on the whole France domain, starting either at 00, 06 or 12 UTC depending on the observed event.  
260 To mitigate the potential spatio-temporal shifts in the model, and because most of this work evaluates storms as objects (so in terms of lifetime and characteristics), the forecasts' outputs encompass the observed domain by  $\pm 0.5^\circ$  in latitude and longitude, and the observed duration by  $\pm 2$  hours. This approach was adopted in an attempt to include mislocated predicted convection. Simulations outputs are already in a regular horizontal grid configuration. Hence, the horizontal native resolution of 1.3 km is kept but an interpolation is performed to go from model pressure levels to vertical regularly spaced grid. For easier  
265 comparisons with observations, the same 0.5 km vertical resolution is chosen.

For both observational and simulation datasets, the freezing level from the forecast is added into the grid. Beforehand, the field is smoothed with a Gaussian filter to avoid local deformations of the  $0^\circ\text{C}$  isotherm due to updrafts. It ensures the  $Z_{DR}$  column computation is made with the environmental freezing level. Finally, the radar forward operator is applied to model outputs to simulate polarimetric fields, with the frequency band chosen in accordance to the majority radar band in the  
270 corresponding observational dataset.

### 3.2 $Z_{DR}$ column detection algorithm

Based on previous work (Snyder et al., 2015; Saunders, 2018; Kuster et al., 2019), a computation of  $Z_{DR}$  columns (hereafter ZDRCs) has been implemented and applied on both models and observations pre-processed Cartesian grids. The first step is to apply thresholds on reflectivity ( $Z_H$ ) and differential reflectivity ( $Z_{DR}$ ) 3D fields. To focus on convective cells,  $Z_H$  is  
275 required to be greater than 25 dBZ, as done in the study of Krause and Klaus (2024). Usually, convective areas are detected for  $Z_H > 35$  dBZ (at least). However, the ZDRC is located within the storm's updraft, whereas highest reflectivities are observed within heavy precipitation regions (storm's downdrafts). As a result, the column appears to be slightly offset from the reflectivity core (see Fig. 8 of Kumjian, 2013) and the  $Z_H$  threshold needs to be lowered to ensure the columns won't get cropped. Regarding  $Z_{DR}$  values, multiple thresholds have been tested (1, 1.5 and 2 dB) based on the literature. Because of  
280 possible remaining biases in the  $Z_{DR}$  data and the smoothing induced by the interpolation, a good compromise was found at 2 dB, where no false alarms remain in the observations. Then, all grid points equal to or above the environmental freezing level are retained, and a 3D boolean mask is created in accordance with all previous requirements. The continuity is verified from 2 km height (not lower because of the curvature of the radar beam) to the top of the ZDRC. Nevertheless, holes may exist due to data quality, radar artifacts and/or interpolation method. Thus, a maximum of two missing grid points over the vertical  
285 is allowed. Finally, columns that fail to meet the aforementioned criteria are ignored. Relying on Kuster et al. (2019, Fig. 2c), columns whose areal extent were under  $4 \text{ km}^2$  or above  $150 \text{ km}^2$  have been excluded. Hence, the two-dimensional ZDRC depth field can be trusted for object tracking.

### 3.3 Object tracking

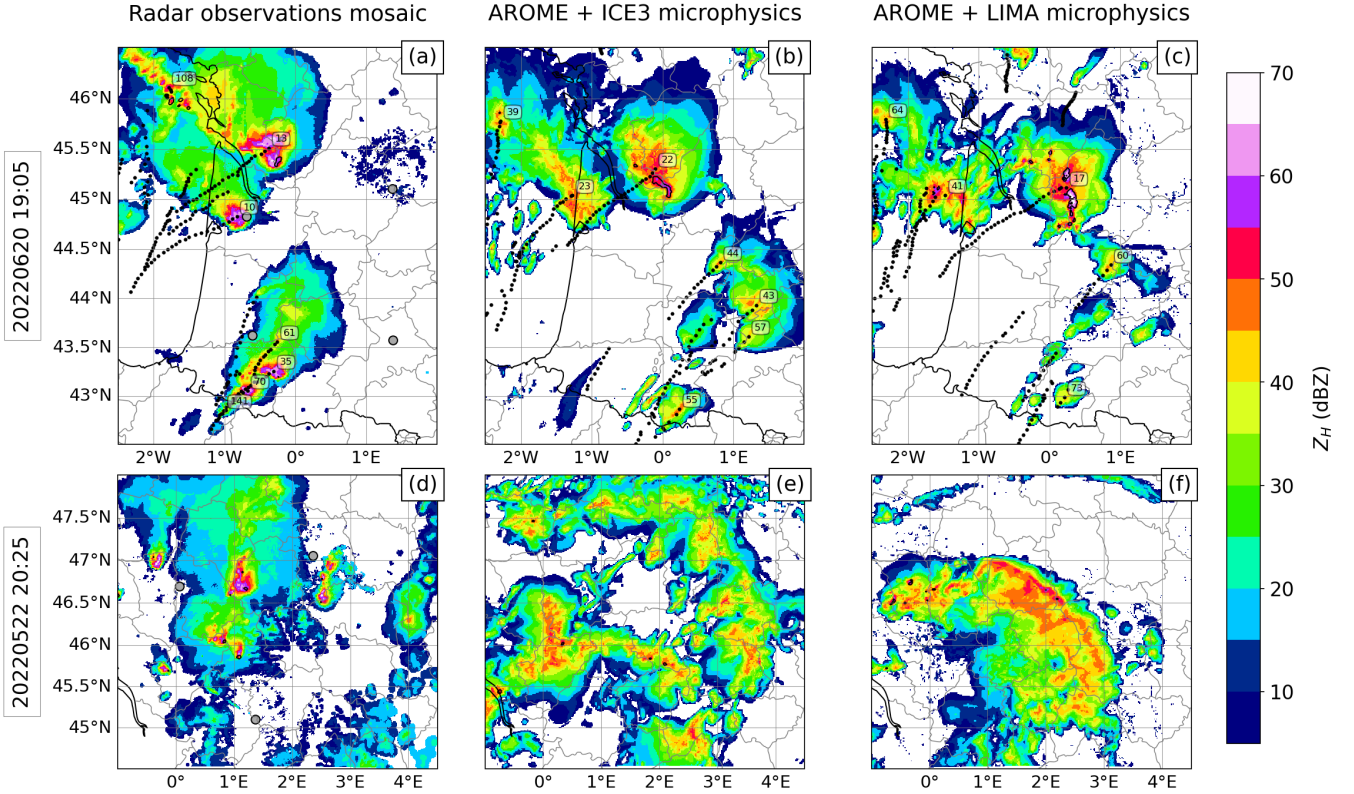
To track storm cells and  $Z_{DR}$  columns, the open-source Python package *tobac* (Tracking and Object-Based Analysis of Clouds; Sokolowsky et al., 2023) has been used. *tobac* consists of a series of functions to apply and customize. A short description of the software is given in subsection 3.3.1. Then, subsection 3.3.2 details the settings used for the cell tracking, while settings for the  $Z_{DR}$  column tracking are detailed in subsection 3.3.3. A summary of all the chosen settings is provided in Appendix D.

#### 3.3.1 The *tobac* software

First, features are identified on a 2D or a 3D field as regions above or below a sequence of thresholds. A feature is represented by its centroid, which is here determined as the center of the region weighted by the distance from the highest detected threshold value. For example, two thresholds  $t_a$  and  $t_b$  have been chosen for the feature detection with  $t_a < t_b$ . If one  $t_b$  contour is detected within the  $t_a$  contour, then the centroid is placed inside the  $t_b$  contour, otherwise it is placed inside the  $t_a$  contour. If two or more  $t_b$  contours are identified within the  $t_a$  contour (for instance during a storm splitting), then centroids are positioned inside each  $t_b$  contour, thereby creating as many objects as  $t_b$  contours. For a more visual example, see Fig. 2 of Heikenfeld et al. (2019). As a second optional step, a watershed segmentation can be performed (Carpenter et al., 2006; van der Walt et al., 2014), based on one given fixed threshold and the previous detected features. This results in a mask with the feature identifier at all pixels identified as part of the object and zeros elsewhere. Again, more details can be found in section 2.3 of Heikenfeld et al. (2019). In this study, only 2D watershed has been performed. The resulting mask can be conveniently used to select the area of each object at a specific time step for further analysis. The last step is the trajectory linking between each feature. Features to link with are looked for in a given search radius. Here the predict method is used (see Fig. 3 of Heikenfeld et al., 2019) and relies on the previous time step to predict the next position. The reader is referred to Heikenfeld et al. (2019) and Sokolowsky et al. (2023) for a more complete description of the software.

#### 3.3.2 Cell tracking

First, tracking of thunderstorms is performed. To detect them in radar observations, two thresholds of 36 and 48 dBZ were chosen and applied on a 2D field of maximum reflectivity over the vertical (hereafter  $Z_H^{max}$ ). The 36 dBZ threshold is helpful for early detection of the convection, while the 48 dBZ threshold ensure that the convection has installed. As previously stated, the application of two thresholds allows a better storm centroid placement. Consequently, it is necessary to adapt the thresholds to the data type. As shown in the results (in section 4), simulated reflectivities are typically lower. For this reason, the second threshold has been lowered from 48 to 40 dBZ for simulated  $Z_H^{max}$ . As an additional parameter, a minimum number of contiguous grid points is set, depending on the reflectivity threshold. Thus, for the 36 dBZ threshold, a minimum of 20 contiguous grid points is required in both observation and simulation datasets, and for the second threshold (40 dBZ in simulations and 48 dBZ in observations), at least 5 grid points are required. If the criterion within the 36 dBZ area is not met, the subsequent 40 – 48 dBZ area cannot be identified. Segmentation is applied twice to obtain, at each time step, a footprint



**Figure 1.** Maximum reflectivity over the vertical ( $Z_H^{max z}$ ) for two observed (a, d) and forecasted convective events, at one time instant, with respectively ICE3 (b, e) and LIMA (c, f) microphysics schemes. For the first event (a, b, c) an example of the tracking algorithm is displayed. Each black dot represent the past positions of the cells centroids. The label associated with the closest dot correspond to the number of the identified cell feature at the time step shown. Each detected  $Z_{DR}$  column is materialized with a black contour. A demonstration of the tracking is available in the supplementary materials (GIF).

of the cells envelopes and cores. In both observations and simulations datasets, envelopes are defined as contiguous regions of  $Z_H^{max z} > 25$  dBZ and cores as contiguous regions of  $Z_H^{max z} > 40$  dBZ. Then the tracking step is carried out to link all the detected storm cells between each other. To do so, two parameters are adjusted : (1) the radius search range is set to 20 km, and (2) the minimum cell lifetime is set to 9 time steps, which corresponds here to a period of 45 minutes.

Multiple combinations of thresholds, minimum grid points, and search radius have been tested. The aforementioned parameters proved to be the most relevant for our study. An example of the tracking result is presented in Fig. 1 for the 20th of June 2022. Black accumulated dots represent the identified features (centroids) from the beginning of the event to the showed time step in the observed  $Z_H^{max z}$  (Fig. 1a) and in the forecasted  $Z_H^{max z}$  with either ICE3 (Fig. 1b) or LIMA (Fig. 1c) microphysics.

### 3.3.3 $Z_{DR}$ column tracking

ZDRCs are small and fleeting objects, making them challenging to track. As for the cell tracking, a detection of the columns is applied on the ZDRC field (in meters) obtained from the algorithm described in subsection 3.2. All ZDRCs greater than 500 m are detected, and their respective areal extents are determined through the *tobac* segmentation process. Then, the linking of the ZDRCs centroids is performed with a search radius of 15 km and a memory of 4 time steps. In the specific case of ZDRCs, the memory parameter has proven to be very useful, as features are allowed to vanish for a certain number of time steps (here 4 time steps i.e. 20 min) and still get linked into a trajectory by keeping the same object identifier. Finally, to optimize their tracking, ZDRCs have been spatially linked to the identified cells by matching the ZDRC centroid with the cell footprint at each time step.

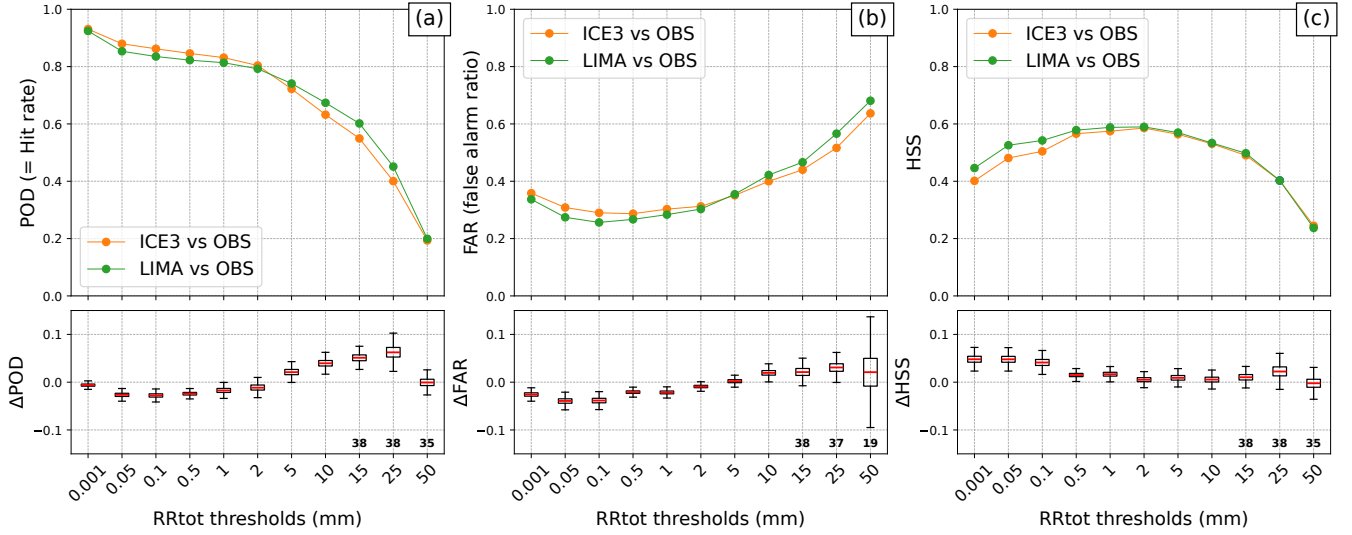
## 4 Results

This section presents the results obtained from the 34 selected convective days of 2022. A standard model evaluation is conducted, based on accumulated precipitation in subsection 4.1. Then, the evaluation is focused on storm core objects, whose characteristics are investigated in subsection 4.2, and comparisons between observed and simulated polarimetric fields are performed in subsection 4.3. Finally, the evaluation is focused on  $Z_{DR}$  column objects in subsection 4.4.

### 4.1 Precipitation

In an effort to objectively evaluate forecasts with respect to observations, skill measures are often computed. Such measures are based on counting observation-forecast "yes-no" pairs to fill in a  $2 \times 2$  contingency table that records hits, correct negatives, false positives, and misses. Then, metrics to evaluate the model performance are generated.

In this section, simulated accumulations of precipitation are compared with ANTILOPE QPE, used as observational reference (subsection 2.2), on the whole French metropolitan domain and over the same time period. The comparison is performed on a daily basis, over the 34 convective days, and restricted to time periods encompassing precipitating events. The considered events are listed in Table A1. For each day, the aggregation period (for both observations and forecasts) runs from the beginning of the first event to the end of the last event, if multiple events occurred on that day. For instance, two significant events occurred the 3rd of June 2022 : one from 15:00 to 21:00 UTC, in southwest France, and the other one between 16:00 and 22:00 UTC in eastern France. Thus, the total time period considered for the aggregation of cumulative precipitations, for this day, over France (hereafter referred to as RRtot), is from 15:00 to 22:00 UTC (7 hours). For days with only one event listed, the aggregation period corresponds to the duration of the observed event. Four dates are taken into account twice to compute the statistics, in this section only, as the initialization hours of the forecasts are different between the events. These dates are mentioned in bold in Table A1. Indeed, it is not possible to aggregate hourly precipitations issued from different AROME runs. In this specific case (same day but not same run), the author has ensured that there is no temporal or spatial overlap between the events. Consequently, the number of days considered in this section is artificially increased to 38 (34 + 4).



**Figure 2.** POD (a), FAR (b) and HSS (c) for precipitation accumulation forecasts with AROME using ICE3 (orange curves) or LIMA microphysics (green curves). The ANTILOPE QPE is the used as precipitation accumulation reference. Scores are computed using the 99th percentile within  $50 \text{ km}^2$  boxes of precipitation accumulation. For each rain rate threshold and score, the distribution from the bootstrap of the scores differences between LIMA and ICE3 ( $\Delta$ ) are shown below with box plots. The median is displayed in red. Whiskers indicate the 5th and 95th percentiles of the distribution. For the highest thresholds, the number of days involved in the bootstrap is written in bold.

To fill in the contingency table, the domain has been divided into  $50 \times 50 \text{ km}$  boxes. First, the 99th percentile of each box has been calculated for simulated and observed RRtot. This percentile has been chosen (rather than e.g. the median) in order to focus the verification on the ability of the model to accurately forecast the largest total precipitation accumulations. A set of precipitation thresholds is applied to these RRtot box percentiles, yielding "yes-no" pairs of forecasts and observations that are used to construct the contingency tables (one per accumulation threshold). The tables are summarized by the following scores: the probability of detection (POD; Swets, 1986), the false alarm ratio (FAR; Donaldson et al., 1975), and the Heidke Skill Score (HSS; Heidke, 1926; Murphy and Daan, 1985). These scores are used to compare the forecast performance of the ICE3 one-moment microphysics scheme with the partially two-moment LIMA microphysics scheme (Fig. 2). Additionally, a bootstrap test is performed using the scores' differences from all 38 cases to determine if the differences between LIMA and ICE3 are significant.

The HSS, which measures the fractional improvement of the forecast over a randomly selected forecast, is presented in Fig. 2c. At the lowest thresholds ( $\text{RRtot} < 2 \text{ mm}$ ), the HSS is greater for LIMA than ICE3, meaning that LIMA produces better forecasts. This improvement is significant, despite a lower hit rate which is compensated by a lower false alarm ratio (Fig. 2a,b). Regardless of the microphysics, the best forecasts are obtained at intermediate thresholds ( $\text{RRtot} = 1 - 2 \text{ mm}$ ), where the HSS is maximum (Fig. 2c). There is no significant difference between both schemes, since the bootstrap confidence intervals are centered close to 0. At the highest thresholds ( $\text{RRtot} > 2 \text{ mm}$ ), the HSS decreases in both schemes, and LIMA's

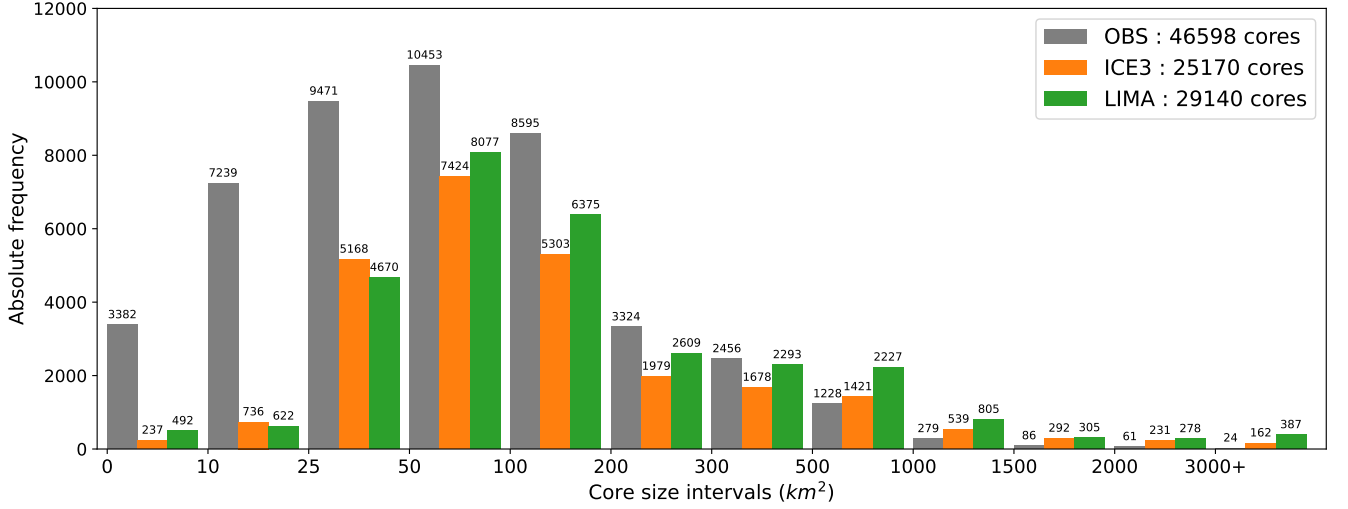
375 POD becomes significantly better than ICE3 (Fig. 2a). The POD improvement comes at the expense of higher false alarms (Fig. 2b), so that there is no significant difference in terms of HSS. On average, AROME tends to slightly underpredict the frequency of the strongest thunderstorms (not shown). Hence, the ICE3 and LIMA schemes have similar performance in terms of heavy precipitation forecasts.

## 4.2 Cell characteristics

380 Although precipitation scores offer some insight into the forecast performance, they can be difficult to interpret in terms of storm behavior. Indeed, this standard approach is influenced by the location and timing of the storms, thereby rendering any direct comparison of multiple storm objects a challenging undertaking. An object-based approach provides a deeper assessment of cell characteristics, resulting in a more straightforward comparison between observations and simulations, as illustrated below. In particular, comparisons remain valid even when the spatiotemporal structure of the objects are not identical. The  
385 object framework is complementary to the standard framework and, together, allows further analysis. Based on the storms objects defined in subsection 3.3.2, this section will focus on three key features of a cell: its convective core area, its duration and its maximum intensity.

To analyze the intensity of storms in terms of objects, the size distribution of all detected convective cores is first studied and presented in Fig. 3. In this figure, the time dimension is ignored, i.e. each core contributes as many times as the number  
390 of time steps during which it exists. Figure 3 shows that the small cores (defined here as being smaller than  $50 \text{ km}^2$ ) are too rarely simulated. This behavior is expected, as Ricard et al. (2013) diagnosed the effective resolution of AROME to be of the order of  $9 - 10\Delta x$ , where  $\Delta x = 1.3 \text{ km}$  is the grid resolution. This implies that objects of size smaller than  $136 - 169 \text{ km}^2$  cannot be fully resolved by AROME. In the observations, small cores are associated with reflectivity values ranging from 40 to 68 dBZ (not shown), which correspond to emerging/dying cells or weak isolated storms. In the ICE3 and LIMA forecasts,  
395 small cores are linked to values of  $Z_H \leq 55 \text{ dBZ}$  and  $Z_H \leq 64 \text{ dBZ}$ , respectively (not shown). On the other hand, the largest convective cores (defined here as being greater than  $1000 \text{ km}^2$ ) are overestimated in frequency by both forecast models. The same statement applies to the envelopes of the detected cells (histogram not shown). It is in agreement with Brousseau et al. (2016), who showed that AROME model tends to overestimate the objects' sizes over a sample of 48 convective days of 2012. Stein et al. (2015) also observed an overestimation of the horizontal size of the cells simulated by the Met Office Unified Model  
400 (of horizontal resolution  $1.5 \text{ km}$ ).

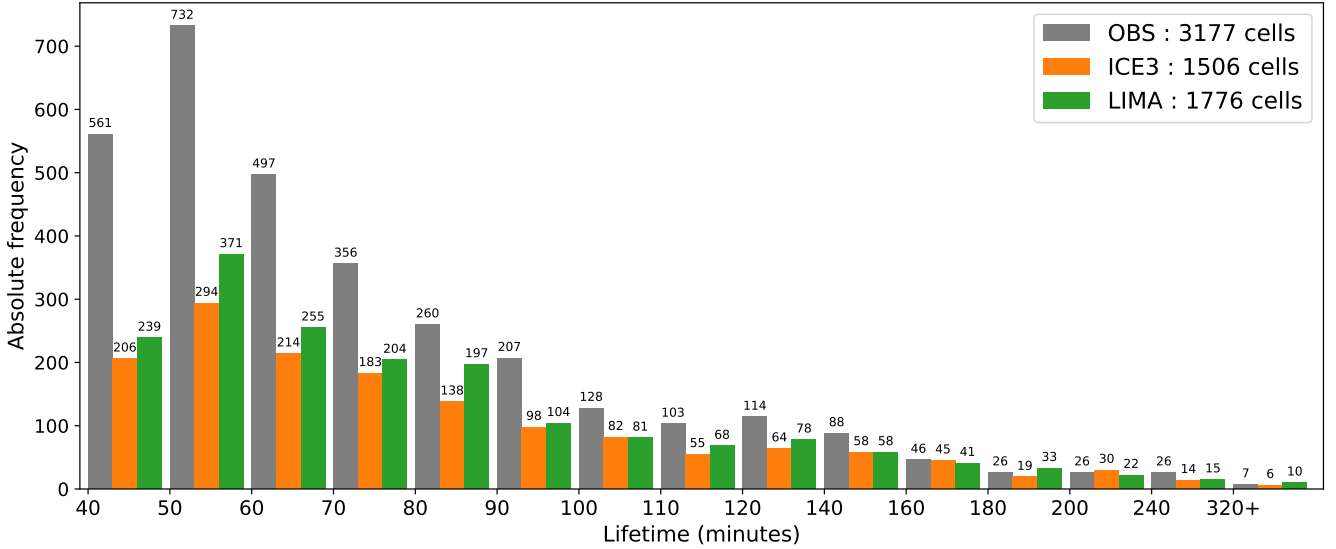
As a second key characteristic, the temporal evolution of the thunderstorms is studied. Over the 44 studied events listed in Table A1, a total of 3177 cells were observed and detected, while 1506 cells were simulated with ICE3 microphysics and 1776 with LIMA microphysics. The mean cell lifespan in our observation sample is approximately 75 minutes, while simulated cells last on average 82 minutes with LIMA and 84 minutes with ICE3. Figure 4 shows that there is an underestimation in the  
405 number of short-lived cells, defined here as cells that last less than 60 min from the birth to the death of the convective core. These short-lived cells make up 40 % of the observational dataset, against 33 % and 34 % in the ICE3 and LIMA forecast datasets, respectively. During the mature stage of these observed short-lived cells, at least 65 % of them had an observed convective core size that never exceeded  $50 \text{ km}^2$ , whereas in the forecasts, only 55 % of the ICE3 and LIMA cells met this



**Figure 3.** Size distribution of detected convective cores ( $Z_H^{max,z} \geq 40$  dBZ), over all time steps, for observations (gray bars) and simulations with ICE3 (orange) and LIMA microphysics (green). The total number of detected cores is listed in the legend. The count of each bin is displayed above the bars.

condition throughout the mature stage (not shown). The number of convective cells, and in particular the weakest ones, were also underestimated in convective scale simulations with different microphysics schemes in the study of Köcher et al. (2022) as well as in Brousseau et al. (2016) with AROME model and ICE3 microphysics. The total rainfall over all cases reached  $1.40 \times 10^5 \text{ m}^3$  for LIMA and  $1.29 \times 10^5 \text{ m}^3$  for ICE3, while only  $0.95 \times 10^4 \text{ m}^3$  of rain has been observed (not shown). This is consistent with the overestimation of size and lifespan we observed for the detected cells. The difference between the observed and simulated amount of convective precipitation is a known positive bias of the AROME model (Stein, 2011). These findings demonstrate that neither of the microphysics schemes considered is clearly superior in terms of the size and lifetime of the convective cells, which is in agreement with the precipitation scores.

Another key parameter monitored by forecasters is  $Z_H^{max,z}$ , the maximum reflectivity within the storm, which is closely related to storm intensity. A study of the  $Z_H^{max,z}$  distribution within each cell core object is herein proposed, with Fig. 5 showing the distribution of the maximum reflectivity a simulated cell can reach compared to its observed counterpart. Please note that reflectivities below 36 dBZ cannot exist, due to the tracking thresholds of at least 36 dBZ. Since the microphysics schemes considered do not have a distinct hail class, the observation curve (in black, Fig. 5) has been complemented by another curve (in gray) that only includes observed cores not associated with medium hail (5 – 20 mm) or large hail (> 20 mm) as detected by the A13 radar hydrometeor classification algorithm (see Appendix C of Forcadell et al., 2024). Comparing these curves shows that the highest reflectivities are associated with hail detection, in particular the gray curve drops to zero above 65 dBZ, while the black curve does not. The distribution peaks of the ICE3 and LIMA forecasts are similarly located at a reflectivity of 48.5 dBZ, which is lower than in the observations (around 55 dBZ). The  $Z_H^{max,z}$  distribution is narrower in the



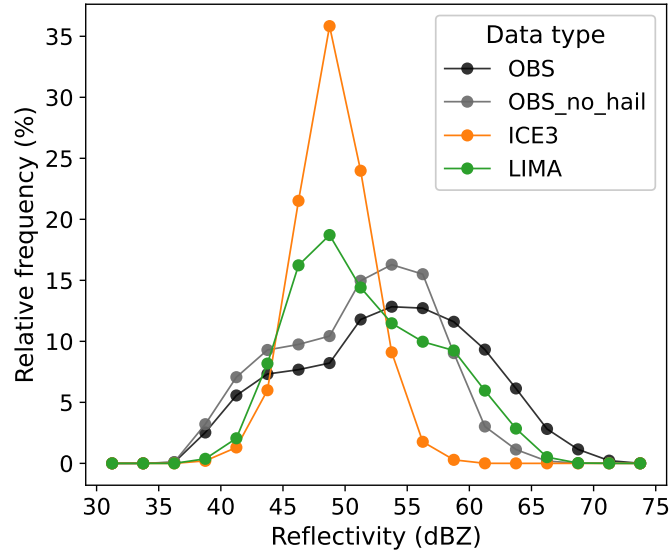
**Figure 4.** Lifetime distribution of detected cells over all convective events, for observations (gray bars) and simulations with ICE3 (orange) and LIMA microphysics (green). The total number of detected cells is listed in the legend. The count of each bin is displayed above the bars.

ICE3 forecasts (orange curve) than in the observations, whereas the LIMA distribution (green curve) is broader. Figure 5 also shows that for cores of  $Z_H^{max} z$  comprised between 58 and 68 dBZ, LIMA differs mainly from ICE3 in its ability to simulate high reflectivity. Indeed, over this interval, the LIMA distribution is more consistent with the observations, a conclusion that is even more pronounced when excluding observations associated with radar-detected hail. The underestimation of the highest reflectivities in the model (in particular with ICE3 microphysics) had already been demonstrated by Brousseau et al. (2016) within 31 and 41 dBZ reflectivity contour objects (see their Figure 8, panel e and f). Cores of the weakest intensities ( $Z_H^{max} z$  between 35 and 45 dBZ in Fig. 5) are less frequent in the forecasts, regardless of the microphysics involved. This suggests that storms develop and/or die faster in simulations than in observations.

### 4.3 3D analysis of polarimetric fields

This section analyses the 3-dimensional distribution of the reflectivity  $Z_H$ , the differential reflectivity  $Z_{DR}$  and the specific differential phase  $K_{DP}$  inside the storm's convective cores (previously defined as  $Z_H^{max} z \geq 40$  dBZ). Pre-processed polarimetric observations (see subsection 3.1) of these variables are obtained from dual-polarization radars of the Météo-France network. The same variables are simulated by applying the radar forward operator (described in subsection 2.4) on AROME forecasts coupled with either ICE3 or LIMA microphysics. Contoured frequency by altitude diagrams (CFADs; Yuter and Houze, 1995) have been generated for observed and simulated polarimetric fields, inside all detected cores and over all time steps (Fig. 6a, b, and c). In order to gain insight into the processes occurring over the vertical, CFADs are also generated for ICE3 (Fig. 6d)





**Figure 5.** Distribution of the cell maximum reflectivity inside the convective core for simulations with ICE3 (orange curve) and LIMA (green curve). The distribution of all observations is displayed in black. The gray curve corresponds to all observations that are not linked with radar-detected hail. Time dimension is omitted. Results are given in terms of relative frequency : each bin value has been divided by the total number of values (see Figure 4 legend) for each data series, and multiplied by 100.

and LIMA (Fig. 6e) hydrometeor contents. The analysis of these results revealed three distinctive regions, which are analyzed separately below.

#### 445 4.3.1 Low-levels

The first region of interest is located under the melting layer, below 3 km height, where most of the observed reflectivities ranged from 40 to 50 dBZ. In this area,  $Z_H$  (Fig. 6a),  $Z_{DR}$  (Fig. 6b), and  $K_{DP}$  (Fig. 6c) decrease with altitude in the LIMA simulations (in green), as observed (in gray), but the distributions are slightly underestimated. In contrast, ICE3 simulations (in orange) show increasing values with height, resulting in strong underestimations at ground level, where the differences between  
450 observed and simulated medians are 18 dBZ, 1.2 dB, and  $0.5^\circ/\text{km}$ , respectively. However, in both simulations with ICE3 and LIMA, the rain content increases with height (dark blue curves in Fig. 6d and e) with a steeper slope for ICE3. Figure 6b shows that raindrops are smaller with ICE3, as indicated by the  $Z_{DR}$  values which are decreasing towards the ground. Indeed,  $Z_{DR}$  is an indicator of the raindrop mean volume diameter (Seliga and Bringi, 1976) and is independent of the drop concentration. Similarly, the  $K_{DP}$  values in ICE3 simulations decrease towards the ground (Fig. 6c), as this variable is sensitive to the amount  
455 of liquid water. More specifically, Jameson (1985) demonstrated that  $K_{DP}$  can be linked to the product of liquid water content and the mass-weighted mean raindrop axis ratio, which explains the different behavior of LIMA in Fig. 6c. Indeed, when temperatures are above  $0^\circ\text{C}$ , raindrops evaporate as they fall to the surface. The evaporation process seems to be more efficient

in the ICE3 microphysics than in the LIMA microphysics. An explanation for this apparent discrepancy is that LIMA allows the simulation of bigger and more oblate raindrops under the melting layer, because its rain content and number concentration  
460 are prognostic. Thus, in similar conditions of humidity, the smaller raindrops in ICE3 will evaporate faster than those in LIMA, leading to a rapid decrease of the rain content in ICE3.

In summary, the rain characteristics are better simulated with the 2-moment representation in LIMA, and vertical profiles of  $Z_H$ ,  $Z_{DR}$ , and  $K_{DP}$  are in stronger agreement with the observations below the melting layer. Moreover, the Q25-Q75 interval shows that the ICE3  $Z_{DR}$  and  $K_{DP}$  values have less spread than the observations and the LIMA simulations, the latter having  
465 an interval width closer to that observed.

### 4.3.2 Bright-band region

The bright band region (hereafter BB) is a radar signature which highlights the layer where frozen hydrometeors melt to form rain. In our simulations the BB is visible at altitudes between approximately 3 and 3.5 km within convective core objects (according to the median curves in Fig. 6a, b and c), but not in the observations. Although the BB is not always visible in  
470 observed convective areas, other effects such as smoothing due to the beam-broadening (see Meischner et al., 2004, section 2.4.3 and Fig. 10.25 of Ryzhkov and Zrnic (2019)), or the interpolations used to map the radar data onto a 3D Cartesian grid, can explain the absence of observed BB. The microphysics schemes used in this study do not have prognostic melting species, but a wet graupel species is artificially diagnosed using the enhanced melting scheme implemented in the radar forward operator (subsection 2.4). Figure 6f shows the liquid water fraction  $F_w$  within the wet graupel in the detected convective areas.  
475 The depth of the layer where its 95th percentile is non-zero shows that wet graupel is present in a broader layer in ICE3 than in LIMA. It can also be seen that the peak of the  $F_w$  median reaches higher values in ICE3: at 3 km height, 50 % of the ICE3 wet graupel content is at least 75 % melted, whereas at 3.5 km height, 50 % of the LIMA wet graupel content is at most 15 % melted. These results explain why a more pronounced BB can be seen in ICE3 simulations, especially in terms of  $Z_{DR}$  and  $K_{DP}$  CFADs (Fig. 6b and c), because these variables are sensitive to the oblateness and liquid water content of the particles.

480 The differences found between ICE3 and LIMA (in  $F_w$  and the BB intensity) may be associated with the broader distribution in both rain and graupel contents, as well as the bigger cloud droplet content in LIMA, in the BB region. However, to better assess the representation of the BB by both microphysics schemes, an evaluation of stratiform events, where the BB is clearly visible in observations, is required (as in Shrestha et al., 2022a).

### 4.3.3 Above the melting layer

485 Just above the bright band region (around 4 km), the graupel particles are mostly dry since their liquid water fraction is close to zero (Fig. 6f). Despite significant snow and graupel contents, Fig. 6 shows that simulated  $Z_{DR}$  and  $K_{DP}$  drop to zero at levels with low to no rain content, whereas the median of observations remains positive until 8 km for  $Z_{DR}$  and 11 km for  $K_{DP}$ . This is consistent with Köcher et al. (2022) and Shrestha et al. (2022b). A weak positive  $Z_{DR}$  value can be associated with dry snow or graupel (which can potentially start to melt), and aggregated ice crystals, while a negative  $K_{DP}$  may be the sign  
490 of vertically oriented ice crystals within a strong electric field (Ryzhkov and Zrnić, 2007; Hubbert et al., 2014). In simulations,

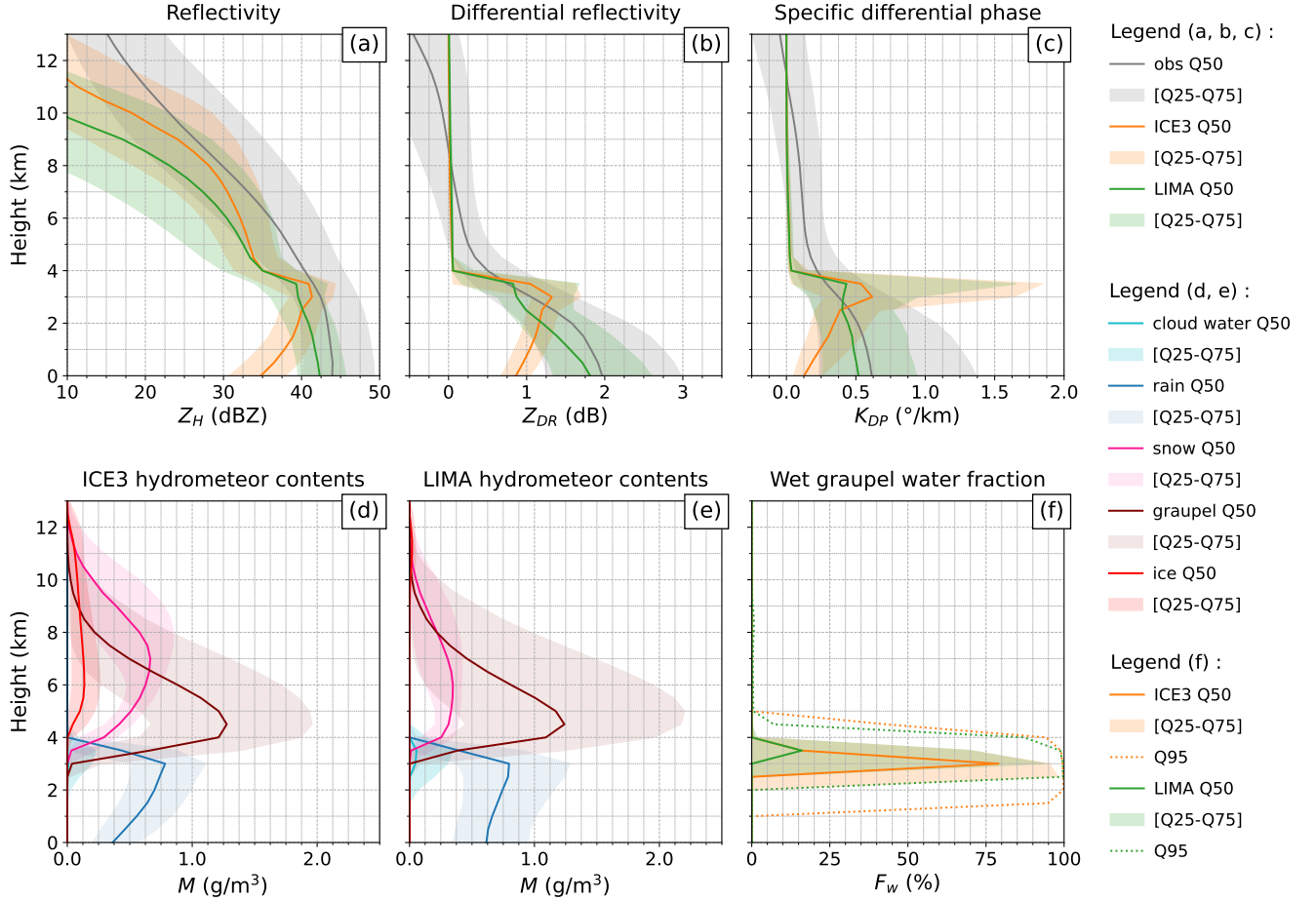
only pristine ice, snow and dry graupel are available at higher altitudes (Fig. 6d and e). However, approximations made in the forward operator results in null values of  $Z_{DR}$  and  $K_{DP}$  in pristine ice crystals, which are modelled as spheres because of their random orientation (as in Caumont et al., 2006). Very low values of simulated  $Z_{DR}$  and  $K_{DP}$  could be due to a too low density and/or dielectric constant for dry snow and dry graupel. A more exhaustive discussion of these aspects can be found in subsection 5.2.

On the other hand, observed reflectivities decrease more smoothly with altitude (Fig. 6a). This phenomenon indicates that ice growth processes are underway. Independently of the microphysics, all forecasts showed a sudden decrease of the reflectivity between 3.5 and 4 km height. Then, at higher altitudes, both microphysics schemes underestimated the reflectivities (LIMA more than ICE3). Compared with the work of Köcher et al. (2022), most of the analyzed microphysics schemes overestimated  $Z_H$  values above the melting layer. According to the author, this could be explained either by an overestimation of graupel content or the particle size, or the density set in the forward operator. However, it can be seen with Fig. 6d and e that the main difference between ICE3 and LIMA above the melting layer is the distribution of the ice and snow contents, whereas the median graupel content is relatively similar. This may be linked with the limitations of the version of LIMA used in this study. Indeed, ice production is limited by the availability of ice nuclei, and the conversion to snow occurs as soon as pristine ice crystals grow larger than 125  $\mu\text{m}$  in diameter. Thus, ice tends to disappear rapidly, resulting in lower snow contents than in ICE3 and consequently lower reflectivity values. The reader can find in Appendix C an illustration of the A16 forward operator sensitivity to different hydrometeor contents for one-moment species (e.g. snow and ice, see Fig. C1) or for a 2-moment ice class (Fig. C3). Recent improvements in LIMA (Taufour et al., 2024), such as the implementation of secondary ice production mechanisms, may improve the representation of the upper part of the convective clouds. Although simulations with ICE3 microphysics give better  $Z_H$  values, overall a negative bias still persists when the snow and ice contents are insufficiently represented in the microphysics.

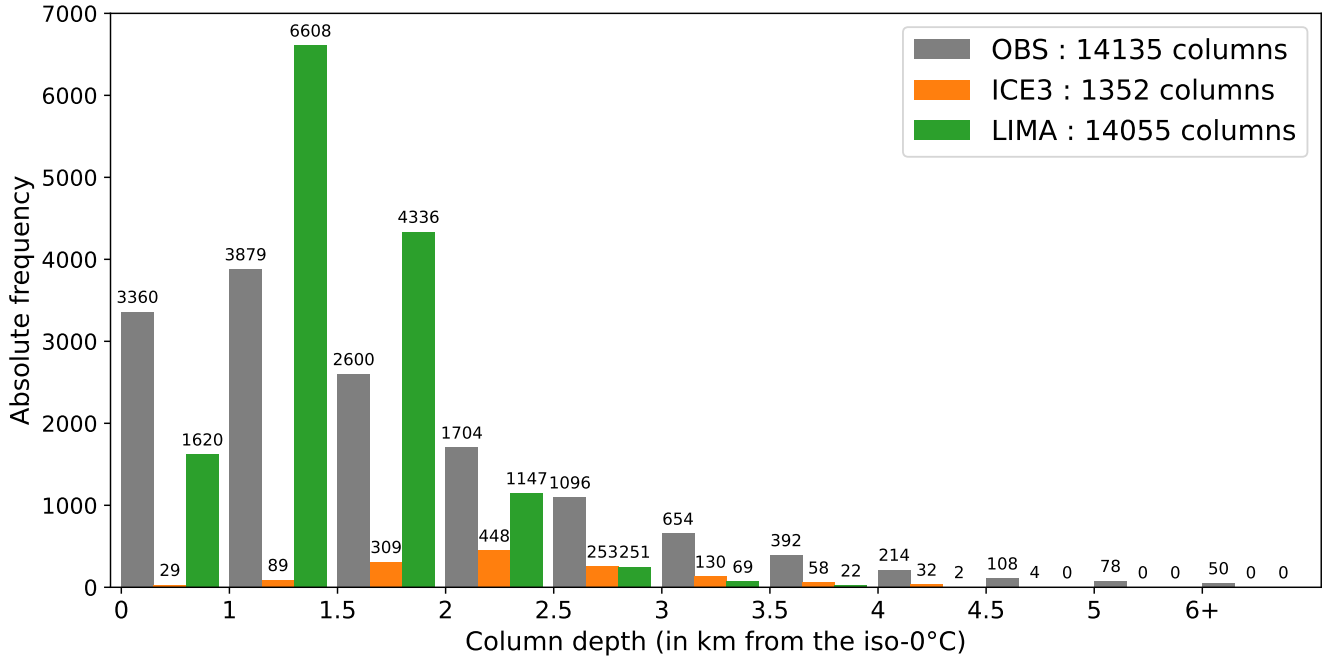
#### 4.4 $Z_{DR}$ columns

The use of dual-polarization observations coupled to an object-based detection allows the identification of specific signatures in thunderstorms. This section is focused on the  $Z_{DR}$  column (ZDRC), which highlights the location of storms updrafts and indicates the presence of supercooled liquid water being lofted above the environmental freezing level. This signature has raised interest in the scientific community, notably for nowcasting or assimilation purposes (Kuster et al., 2019, 2020; Carlin et al., 2017). Nevertheless, using ZDRCs in such contexts requires them to be correctly simulated by forecast models. This section will concentrate on the main characteristics of a ZDRC : its depth and horizontal extension. As a ZDRC is inherently linked to a convective cell, its temporal evolution will also be examined, as well as its 3D structure.

The first interesting feature about the ZDRC is its maximum height, counted from the 0°C isotherm level, and hereafter referred to as column depth. A deep column can be the sign of a very intense updraft, with an increased risk of producing large hailstones, due to a longer residency time above the melting layer, in a zone with enhanced supercooled liquid water content (Kumjian et al., 2021). Figure 7 shows that 69 % of the observed columns had a depth of 0 to 2 km above the 0°C isotherm, whereas 31 % of the columns simulated with ICE3 are included in this interval, versus 89 % for LIMA. Columns with a depth



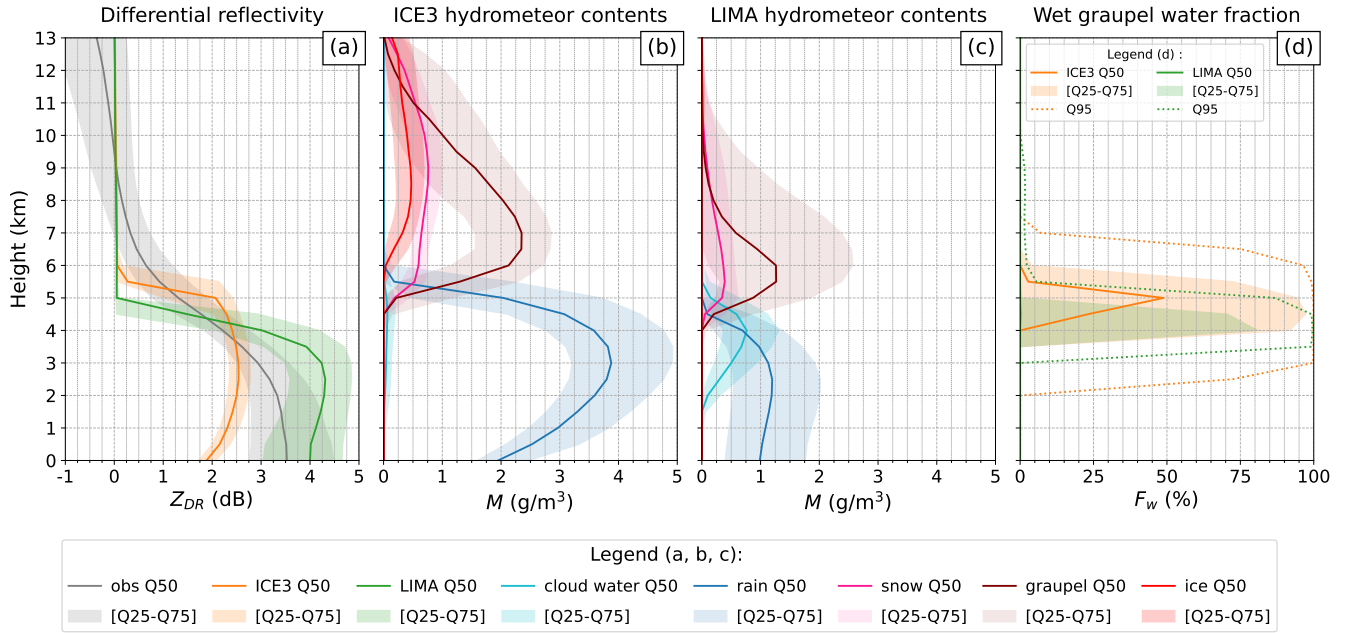
**Figure 6.** CFADs of measured and simulated reflectivity (a), differential reflectivity (b) and specific differential phase (c) inside all detected cell cores ( $Z_H^{max} \geq 40$  dBZ). CFADs of the corresponding hydrometeor contents (expressed in  $\text{g}/\text{m}^{-3}$ ) for simulations with AROME coupled to ICE3 (d) or LIMA (e) microphysics scheme. CFAD of the liquid water fraction of the wet graupel within convective cores (f) for simulations with ICE3 (orange) or LIMA (green). For all panels, plain lines correspond to the median, and the interval of the 25th and 75th percentiles of the distributions is displayed in lighter colors behind each curve. For panel (f), the 95th percentile is shown with dotted lines. Altitudes are given in km AGL.



**Figure 7.** Distribution of  $Z_{DR}$  columns maximum depth, over all time steps, for observations (gray bars), simulations with ICE3 (orange) and LIMA microphysics (green). The total number of detected columns is listed in the legend. The count of each bin is displayed above the bars.

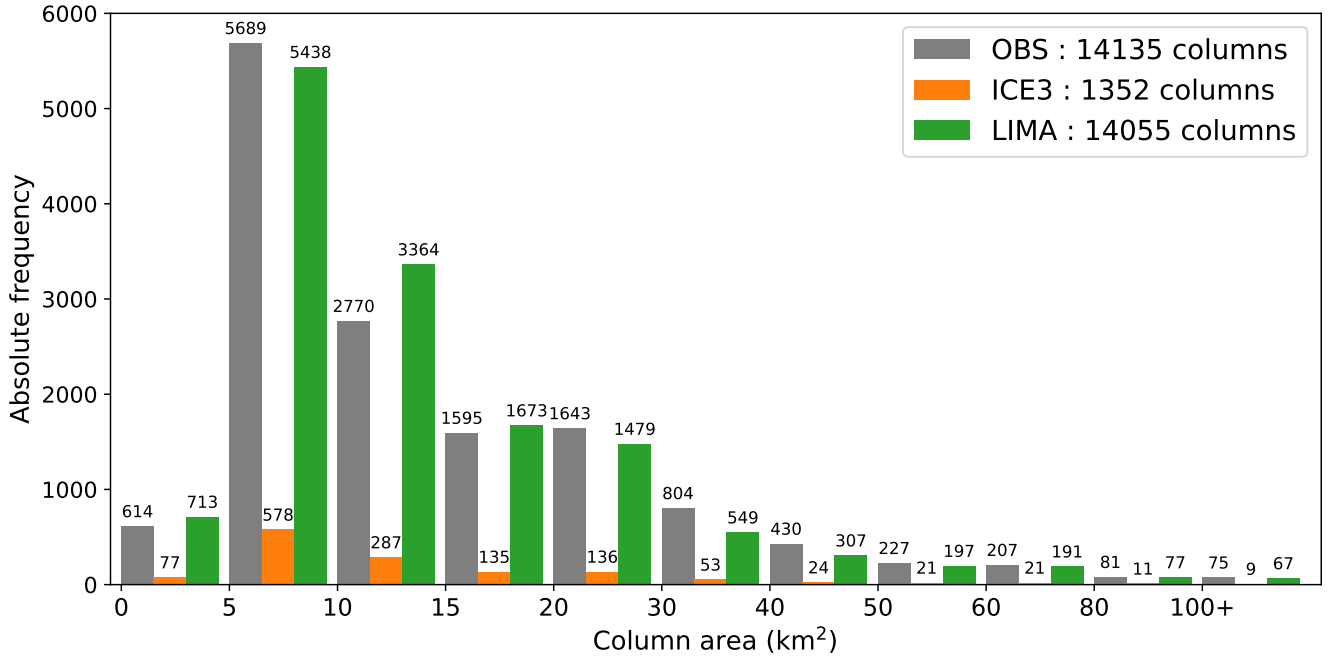
greater than 4 km account for 3.1 % of the observed sample and for 2.6 % of the ICE3 sample, which is similar. On the other hand, LIMA only simulated 2 columns with a maximum depth of 4 km. Although the LIMA simulations approximately generated the same total number of columns as the observations (see the legend in Fig. 7), the shape of the observed column depth distribution is not accurately simulated by the two microphysics schemes.

An analysis of the 3D distribution of the differential reflectivity and the hydrometeors contents over the vertical, illustrated by the CFADs within ZDRC objects in Fig. 8, shows one similarity with the results found for the storm core objects : simulated  $Z_{DR}$  values (Fig. 8a) rapidly decrease above the freezing level as well as the rain content (dark blue curves in Fig. 8b and c). While dry graupel contents (brown curves) are still significant at this level for both microphysics schemes, the distribution of the liquid water fraction within the wet graupel (Fig. 8d) shows discrepancies between the two schemes. Indeed, within the ZDRCs, rain reached higher altitudes with ICE3 (median at 6 km in Fig. 8b) than with LIMA (median at 5 km in Fig. 8c), although more cloud water (light blue) is available for LIMA (with the 75th percentile going up to 6 km). The distribution of  $Z_{DR}$  in Fig. 8a provides additional evidence of the ability of ICE3 to produce deep ZDRCs. However, it can be seen that  $Z_{DR}$  values are only slightly larger than 2 dB, the threshold chosen in this study for the ZDRC algorithm. This strict thresholding may penalize the detection of ZDRCs in ICE3 simulations and encourage the selection of only the most intense updrafts, resulting in a low number of detected columns but of a greater depth. In light of the available cloud water in the LIMA simulations, it may be



**Figure 8.** CFAD of differential reflectivity (a), and CFAD of hydrometeor contents (expressed in  $\text{g/m}^{-3}$ ) in simulations with AROME coupled to ICE3 (b) and LIMA microphysics scheme (c) inside all detected  $Z_{DR}$  columns. Similar to (a), (d) show the liquid water fraction within the wet graupel of ICE3 and LIMA. Plain lines correspond to the median, and the interval of the 25th and 75th percentiles of the distributions is displayed in lighter colors behind each curve. Altitudes are given in km AGL.

beneficial to consider incorporating this content into the forward operator melting scheme (e.g. taking into account this content in the computation of  $F_w$ ), with the aim of producing slightly higher ZDRs with LIMA microphysics. Another discrepancy between ICE3 and LIMA is the  $Z_{DR}$  signal under 4 km. While  $Z_{DR}$  values are underestimated in ICE3 compared to the observation (Fig. 8a),  $Z_{DR}$  is overestimated with LIMA whereas the rain content is clearly lower than with ICE3 (Fig. 8b and c). Compared to the observations, such high values of  $Z_{DR}$  could be the consequence of a too strong size sorting process within the ZDRs simulated by LIMA, producing too large (and oblate) raindrops. Similarly, Putnam et al. (2017) and Köcher et al. (2022) found overestimated  $Z_{DR}$  values in rain with a 2-moment microphysics, in particular with the Morrison and Thompson schemes using WRF simulations (Skamarock et al., 2008). It should be noted, however, that the overestimation of simulated  $Z_{DR}$  in this study is confined to the ZDR objects and not seen in the convective cores where the  $Z_{DR}$  values are very close to the observation and slightly underestimated as discussed in subsection 4.3 and shown in Fig. 6b. A likely explanation is that detected convective core objects also include some of the downdraft regions, where raindrops are no longer lifted by an updraft and subsequently fall, unlike updraft regions targeted by the ZDR objects. Moreover, the size sorting usually occurs at low levels, whereas the overestimated  $Z_{DR}$  values are here mainly located around 3 km high, further supporting the hypothesis of an updraft-related process. In the microphysics schemes, the size of the raindrops produced by the melting of the graupel is arbitrarily set. Adjusting this parameter could also be a way to reduce the  $Z_{DR}$  overestimation just below the melting level.



**Figure 9.** Area distribution of  $Z_{DR}$  columns, over all time steps, for observations (gray bars), and simulations with ICE3 (orange) and LIMA microphysics (green). The total number of detected columns is listed in the legend. The count of each bin is displayed above the bars.

555 The study of Kumjian et al. (2021) further highlighted the relevance of the column area as a parameter linked to storm intensification. Indeed, a large column may be indicative of a substantial quantity of supercooled lifted raindrops, which could result in an elevated production of hailstones of small to moderate size. Figure 9 shows the distribution of the column area. Approximately 64 % of the observed columns are small features (less than 15 km<sup>2</sup>), which is a known characteristic of ZDRC. Simulations with ICE3 demonstrate satisfactory results in terms of proportion, with 69 % of the ZDRC being small features

560 against 67 % with LIMA. In Shrestha et al. (2022b), the TSMP model (Gaspar et al., 2014; Shrestha and Simmer, 2020) coupled with a 2-moment bulk microphysics scheme (Seifert and Beheng, 2006) was found to underestimate the area of ZDRCs. While in the present study the area of the ZDRCs is not underestimated in terms of proportion, regardless of the microphysics, ICE3 simulations nevertheless produced an insufficient number of ZRDCs in comparison to LIMA simulations. The accuracy of LIMA regarding the ZDRC is noteworthy, both in terms of area distribution and absolute number.

565 As the ZDRC is a proxy of the updraft, it is often observed as soon as the storm core develops. Thus, the first occurrence of a ZDRC is an important marker of the life cycle of the associated storm cell. In this study, 43.8 % of the observed cells were associated with a ZDRC, against 26.8 % for ICE3 and 44.5 % for LIMA. The box plot presented in Fig. 10 shows the distribution of the first ZDRC occurrence time, relative to the lifetime of the cell to which it belongs. It is expressed as a percentage, where 0 % correspond to the emergence of the convective core and 100 % to its death. First, it can be noticed that

570 the 5th and the 25th percentiles are coincident, and equal to 0 %, both in simulations with LIMA and in the observations. This

means that in 25 % of the analyzed events, the ZDRC is formed and detected at the same time as the convective core. The relative lifetime of the cell can be approximately divided as follows: [0 – 20 %] developing stage, [20 – 80 %] mature stage, [80 – 100 %] dissipating stage. At least half of the first ZDRC detections occur during the early cell development stage. The same behavior is observed in forecasts coupled with LIMA microphysics, but not with ICE3, whose median is around 32 %  
575 of the relative cell lifetime, meaning that more than 50 % of the columns are detected during the mature and dissipating stage. Although it is uncommon for the initial ZDRC to be observed during the dissipating stage of the cell (gray box plot, Fig. 10), it occurred much more frequently with ICE3, as shown by the broader spread and the absence of outliers in its time distribution (orange box plot, Fig. 10). Some delay in the ICE3 ZDRC identification may be attributed to the strict thresholding of the detection algorithm (subsection 3.2). One can assume that, in the case where ICE3 detected updrafts are only the strongest,  
580 it should counterbalance this effect, since the deepest columns can be expected to occur before the dissipating stage or at the beginning of the mature stage. However, it should be noted that, as seen with Fig. 8b, ICE3 requires very high rain contents to simulate significant  $Z_{DR}$  values, because in a 1-moment scheme, the number concentration is unable to vary independently of the content.

To conclude, the lack of rain above the freezing level within LIMA simulations has a direct impact on the liquid water  
585 fraction in the melting scheme (wet graupel), despite the presence of liquid water at these altitudes (cloud water). Moreover, the depth of the ZDRC is not accurately reproduced by neither microphysics scheme, but the ZDRC area, which is a more significant feature, is well reproduced by both schemes in terms of relative distribution. Only LIMA was able to reproduce the correct amount of ZDRC with a precise area distribution. Finally, the temporal evolution of the ZDRC appears to be accurately forecasted by AROME in conjunction with the LIMA scheme, lending further credibility to this scheme. These findings are  
590 highly encouraging with regard to the potential use of LIMA, in particular for the column area feature used with a strict detection threshold.

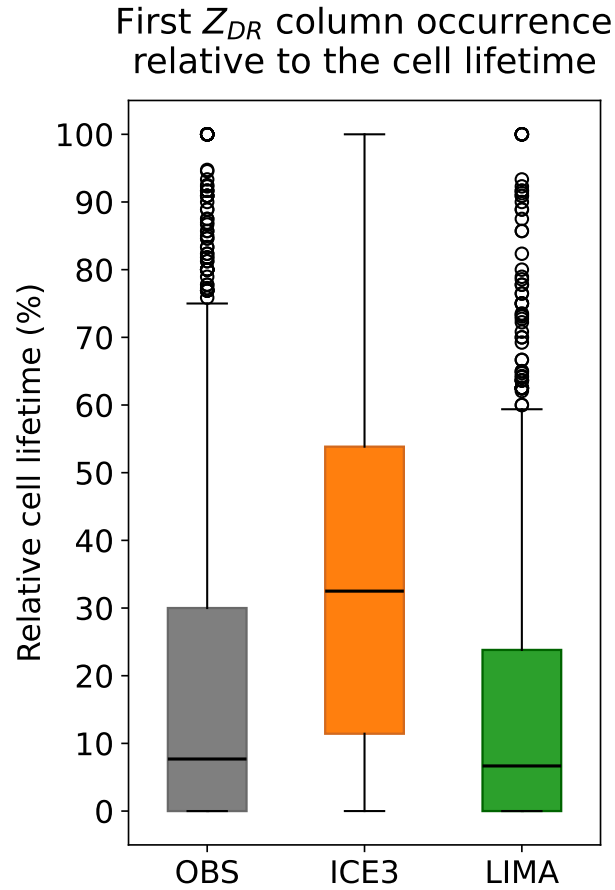
## 5 Discussion

Although the simulations performed with LIMA showed a remarkable agreement with the observations for rain in the convective cores, and a very realistic area distribution and number of ZDRC columns, the present work also revealed discrepancies  
595 between observed and synthetic radar data simulated with the A16 forward operator. These discrepancies may be introduced by the radar forward operator, the microphysics schemes, the  $Z_{DR}$  column detection method, or a combination of the three. This section is intended as an open discussion about the realistic expectations, the constraints, and possible areas for improvement.

### 5.1 Mixed phase parameterization

The results of this study have emphasized the challenges parameterizing the mixed phase. These issues are characterized by an  
600 overestimation of the bright band (BB) in the simulations within convective regions, as well as a notably low amount of rain at negative temperatures in both convective cores and ZDRC objects, which is particularly pronounced with LIMA microphysics.





**Figure 10.** First  $Z_{DR}$  column occurrence relative to the cell lifetime, for observations (gray bars), and simulations with ICE3 (orange) and LIMA microphysics (green). The cell lifetime is expressed in percentage, 0 % being the emergence of the convective core and 100 % its death. The median is shown with the thick black line. Whiskers corresponds to the 25th and the 75th percentiles. Outliers are displayed as dark circles.

To improve the melting layer simulated by the forward operator, it may be beneficial to consider modifying the estimation of the mixed phase, as various parameterization exist in the literature. For example, Jung et al. (2008) assumed the existence of a mixed phase when dry snow and rain coexist, thus converting a certain proportion of rain and snow to wet snow. On the other hand, in the A16 operator used here, the wet species is computed from the graupel and rain content, when they coexist, and a wet graupel class is created by consuming the entire graupel content only. Wolfensberger and Berne (2018) used an alternative parameterization in which wet aggregates and wet graupel exist within the melting layer. Liu et al. (2024) recently proposed a melting model, independent of ambient temperature, that relies on the mixing ratio and number concentration of rain and ice species. Such parameterizations will be tested and compared in a future work.

It is worth remembering that, initially, in the A16 forward operator, a wet graupel class was chosen to stay consistent with the microphysics : in the model, the melting snow content is transferred into the graupel class. Because of this, melting graupel output from the forward operator can be either actual melting graupel or melting snow. If the microphysics scheme cannot be modified, an alternative strategy would be to address the issue directly within the radar forward operator. Therefore, it may be worthwhile to try to differentiate a posteriori melting snow and graupel. In the hydrometeor classification algorithm of Park et al. (2009), a vertical continuity check is performed to distinguish between the convective and stratiform parts of the storm, and has proven to improve the level of discrimination between graupel and snow (dry or wet). Given that the ZDRC detection algorithm developed in this paper includes a vertical continuity check, there is the potential to conduct straightforward tests to adapt such a continuity check so that a basic discrimination is applied to both the model and observations. Then, this discrimination could be used by the forward operator to separate wet snow and wet graupel.

As a second area for improvement, the computation of the water fraction within wet species could be modified. In the A16 operator, the liquid water fraction is a function of the graupel and rain content, and is equally distributed among the whole particle size distribution. In Dawson et al. (2014) the water fraction is diagnosed with an iterative method. Based on a first guess, up to 90 % of the rain content available is added and distributed into the melting species contents (graupel and/or hail). A critical mass of water that can exist on a melting particle is estimated, and integrated over the corresponding PSDs, to determine a critical water fraction which is a function of the particle diameter (according to Fig. 2 in Dawson et al., 2014). If the available rain content exceeds this critical water mass value, then this value is used as the next guess of rain content to be added into the melting species contents. In other words, the liquid water fraction varies across the melting particle size distribution.

In pursuit of greater realism, a two-layer spheroid T-matrix code following Ryzhkov et al. (2011) could also be implemented, as ice, air, and water in a mixed phase particle are currently treated either as a matrix or an inclusion, which is known to affect the computation of the dielectric constant. Nevertheless, Ryzhkov et al. (2013) demonstrated that the T-matrix computation for two-layer and uniformly filled spheroids (assuming water as the matrix) yield similar results in terms of radar variables after an integration over all particle sizes. Moreover, this study was focused on the ability of the model to correctly simulate the radar variables within convective cores, which is not adequate to evaluate the melting scheme parameterization. Thus, improvements in the radar forward operator regarding the bright band signature should be conducted on stratiform events or, at least, focused on improving the stratiform parts of the convective storms. Therefore, the A16 forward operator is currently tested in stratiform

environments. While, under the freezing level, realistic polarimetric values were obtained with LIMA, and, with a view to more realistic modelling, it would be valuable to conduct a comparative analysis of the microphysics schemes presented in this work by including a separate hail class, as in this work, hail was included in the graupel class and hence, unable to reach the warmer  
640 levels of the atmosphere.

## 5.2 Cold phase modelling

Other challenges have emerged in the cold phase, as simulated  $Z_{DR}$  and  $K_{DP}$  dropped to almost zero at levels with low to no rain content, despite significant snow and graupel contents. Köcher et al. (2022) and Shrestha et al. (2022b) (hereafter referred to as K22 and S22b) found similar results with different microphysics schemes and radar forward operator parameterizations.  
645 Directly above the melting layer, graupel was found to be dominant in both studies. Nevertheless, the aspect ratio of the graupel is assumed to be 1 in K22, while in this study, the aspect ratio is set to 0.8 if the graupel is dry, or is determined using the formulas described in Ryzhkov et al. (2011) if the graupel is wet. In S22b the graupel axis ratio follows the same equations as in this study, but parameterizations of snow and ice are different. Especially, the axis ratio of cloud ice is set to 0.2, against an axis ratio of 1 here. However, even with a 0.2 axis ratio, near-zero  $Z_{DR}$  and  $K_{DP}$  values have been found within simulations  
650 all along the vertical above the melting layer. According to S22b, deficiencies in the forward operator may play a significant role. Shrestha et al. (2022a) showed, for a stratiform event, that snow was found to dominate above the melting layer. In their study, a variety of snow shapes and orientations were tested, but they were still unable to reproduce the observed polarimetric values at these heights. In K22 an enhanced but not realistic  $Z_{DR}$  signal has been produced between 8 and 12 km height, with two of the five microphysics schemes analyzed. These high values were caused by the cloud ice, whose assumed aspect ratio  
655 by the forward operator is 0.2.

Part of the underestimation of dual-polarization variables in snow could be due to the (too) simple representation of aggregates by homogeneous spheroids with the T-matrix method, as suggested by Trömel et al. (2023), based on the study of Schrom and Kumjian (2018). Another method, known as the discrete dipole approximation (or DDA; Purcell and Pennypacker, 1973; Draine, 1988), allows the simulation of more complex geometries. This method decomposes the particles into a collection of  
660 sub-regions, each being small enough to be considered as a dipole. With this technique, each single dipole can be arranged to form different and complex shapes of crystals or aggregates. However, the DDA method is computationally expensive due to the necessity of solving a large system of linear equations with a dense matrix. It is not implemented in our current forward operator. Hence, in order to increase the  $Z_{DR}$  and  $K_{DP}$  values in snow, a modification of the snow density-diameter relationship would be more accessible and could be investigated. Moreover, a riming factor could be included in the snow parameterization,  
665 following the formulation of Brandes et al. (2007), as it proved to simulate acceptable values in snow in the study of Carlin and Ryzhkov (2019).

Overall, this work, in conjunction with all previous related studies, show how hard it is to simulate accurate polarimetric values within and above the melting layer, with the diversity of microphysics and forward operator available. Indeed, the ICE3 and LIMA schemes used here simulate very different cloud compositions above the melting layer. ICE3 produced significant  
670 amounts of ice crystals, snow and graupel. LIMA, on the other hand, resulted in almost zero ice crystal contents, much less

snow and a little less graupel than ICE3. These differences were found both within convective objects and ZDRs, and suggest that this lies in the treatment of ice particles in the microphysics. In ICE3, ice crystals can be continuously formed in favorable thermodynamic conditions, whereas in LIMA, ice crystals are formed only when IFN are available. Thus, once IFN are depleted (used to form ice crystals, scavenged by precipitation, etc.), LIMA cannot create new ice crystals. Because of these differences, the pristine ice to snow conversion is based on the ice particle size in LIMA. This process is more efficient than the simple autoconversion process (which is only active for high ice contents) in ICE3. Consequently, pristine ice is quickly consumed in LIMA to form snow that rapidly falls out.

To address this issue, a hybrid configuration of LIMA, using a 1-moment representation of pristine ice crystals as in ICE3, coupled to improvements in the snow representation (Wurtz et al., 2021, 2023), was found to have very good results for tropical convection, retaining most of the advantages resulting from the 2-moment cloud droplets and raindrops. Another solution would be to use a secondary ice production processes (Shrestha et al., 2022a). Such mechanisms (collisional ice break-up and raindrop shattering when freezing) are available in LIMA and have been implemented since the beginning of our study. They proved very efficient at maintaining significant ice and snow contents in convective clouds. However, as long as the ice crystals are modelled as spheres by the forward operator, the ice content will have little or no effect on the simulated  $Z_{DR}$  and  $K_{DP}$  values, as illustrated by Fig. C1 and Fig. C3 of Appendix C. To improve the accuracy of the polarimetric outputs and provide a more realistic representation, ice crystals must be modelled as oblate spheroids (Matrosov et al., 1996). More general improvements of the radar forward operator are underway to better represent the ice phase.

### 5.3 $Z_{DR}$ columns

Finally, our ZDR detection methodology has shown its limitations, especially with regard to the 2 dB threshold, which contributed to difficulties in the detection of ZDRs in ICE3. As previously stated, the choice of a high threshold was a commitment made to avoid false alarms in the observations, and hence, to establish a trustworthy reference dataset. Thus, this high  $Z_{DR}$  threshold combined with a vertical continuity check partly hindered the detection of ZDRs in simulations with ICE3 microphysics. Recently, Krause and Klaus (2024) published a novel technique to detect ZDRs on radar data that only rely on a single horizontal level (constant altitude plan projection indicators or CAPPI) at the  $-10^{\circ}\text{C}$  altitude. Their technique consists in identifying the column base rather than the entire column depth. After filtering the data, the median values of two boxes (a  $7\times 7$  "outer box" and a  $3\times 3$  "inner box") centered on each grid point are compared, yielding the "hotspot" value. Then, any points that exceed the mean hotspot value by more than one standard deviation are retained. Not only did this method demonstrate enhanced performance in regions where there is a bias in differential reflectivities, but this approach is entirely adaptable to the model world. Thus, the detection of ZDRs in the model would rely on a comparison of each grid point versus the environment, potentially improving the detection in our simulations with ICE3.

As the last point of this discussion, we highlighted the inability of the AROME model, when combined with the ICE3 microphysics, to produce elevated  $Z_{DR}$  values in the ZDRs. Indeed, the detected ZDRs in the model are essentially due to wet graupel, thanks to the mixed phase parametrization in our forward operator (i.e. the "wet graupel specie" is artificially created to replace the model "dry graupel" if rain water coexists with graupel, even at negative temperatures). The term "melting

705 scheme" may not be appropriated to describe the physical state of the graupel at negative temperatures. In fact, in our representation at such temperatures, the graupel is not melting but is probably surrounded by a coat of supercooled liquid water. An alternative method to simulate ZDRs could be the implementation of a raindrops freezing process in the forward operator, based on Kumjian et al. (2012). As explained in Chapter 7, section 2.5.1 of Ryzhkov and Zrnic (2019), a raindrop freezes from the outside to the inside, and can be represented as an ice shell forming around the droplet, with the core being either purely  
 710 liquid or a mix of water and ice (embedded ice germ). Thus, the use of a matrix/inclusion approach to represent this process is absolutely relevant, and could be easily implemented as it is already available in the A16 operator. Nevertheless, given the insufficient amount of supercooled rain water available in our current microphysics schemes, this method may not be able to produce the expected results.

## 6 Conclusion

715 In this paper, an evaluation of the microphysics of the AROME NWP model was carried out with two different, but complementary, frameworks. Numerical forecasts were compared with observations using a global and an object-based approach. The main objective was to statistically assess the ability of the AROME model to reproduce thunderstorms in terms of intensity, structure, characteristics, and dual-polarization signatures. A related goal was to compare two microphysics schemes against dual-polarization radar observation : the currently operational ICE3 scheme, and the LIMA scheme currently under consideration for future implementation. Given the growing interest of  $Z_{DR}$  column in the scientific community due to its potential  
 720 applications in the fields of nowcasting and data assimilation, this dual-polarization signature was subjected to a careful investigation. To do so, various features were analyzed over a sample of 34 convective days of 2022, and a  $Z_{DR}$  column detection and tracking algorithm was implemented. Dual-polarization radar data were extracted from the French metropolitan network. Forecasts were performed with the AROME model coupled to either the ICE3 (1-moment) or LIMA (partially 2-moment)  
 725 microphysics schemes. An enhanced version of the radar forward operator of Augros et al. (2016) was applied to the forecasts to obtain synthetic polarimetric fields.

First, a global approach was used to evaluate accumulated precipitation fields. Statistical measures (POD, FAR, and HSS) were computed for different rain rate thresholds and compared between simulations with ICE3 and LIMA. The only significant improvement occurred for the smallest rain rates, with a slight decrease of the POD and the FAR, but a small increase of the  
 730 HSS score for forecasts with LIMA. For the highest rain rate thresholds, LIMA's overall contribution was fairly neutral as the POD and the FAR both increased, and the HSS remained similar to that of ICE3.

An object-based framework was defined to study polarimetric fields and hydrometeor contents within convective areas of the storms. As a first step, the characteristics of convective cores were compared. Our results show that the model, regardless of the microphysics, have difficulties simulating small and short-lived cells, which is a known issue due to the AROME effective  
 735 resolution of 9 to  $10\Delta x$  ( $\Delta x = 1.3$  km). In contrast, larger storms are often overestimated. Secondly, the 3D structure of polarimetric fields was analyzed with contoured frequency by altitude diagrams (CFADs). The use of LIMA microphysics allowed the simulation of high  $Z_H$ ,  $Z_{DR}$  and  $K_{DP}$  below the melting layer. This points to a more realistic raindrop sizes

representation thanks to the 2-moment component of rain in LIMA. On the other hand, ICE3 (1-moment) raindrops were smaller and, as a consequence, evaporated faster. This caused a reduction of the rain content, which led to a decrease of the  $Z_H$ ,  $Z_{DR}$ , and  $K_{DP}$  variables near the ground. For both microphysics schemes, the bright band was visible, but more pronounced with ICE3. This is mainly due to the creation of a wet graupel species in the radar forward operator, whose liquid water fraction was found to be greater with ICE3 than with LIMA. In the region above the melting layer, both schemes underestimated reflectivities, but ICE3 was more consistent with the observations thanks to a greater amount of snow and pristine ice in the simulations. Nevertheless, simulated  $Z_{DR}$  and  $K_{DP}$  were found to be null at these altitudes, regardless of the microphysics used. This suggests radar forward operator issues, as (1) pristine ice crystals are currently modelled as spheres, and (2) the snow density and dielectric constant is probably too low, so that the non-spheroidal axis ratio of snow has a minimal influence on the resulting signals.

Finally, the main features of the  $Z_{DR}$  column objects were also evaluated. The highest  $Z_{DR}$  columns were generated exclusively with ICE3. The analysis of the vertical distribution of  $Z_{DR}$  within the columns revealed that ICE3  $Z_{DR}$  values barely exceed 2 dB under the melting layer, but such a value is reached for altitudes up to 5 km versus 4.5 km for LIMA. The lack of raindrops above the melting layer in LIMA's  $Z_{DR}$  columns can explain part of this discrepancy. An analysis of the temporal occurrence of the first detected  $Z_{DR}$  column, with respect to the cell it belongs to, revealed that most of the columns were detected during the mature and dissipating stage of the cell in ICE3. In contrast, two-thirds of the  $Z_{DR}$  columns simulated by LIMA have been detected during the developing stage, as within the observations. Although a strict detection threshold seemed necessary to the author when comparing with observations, as it mitigates the occurrence of false alarms in the observed dataset (so it can be trusted as a reference for the evaluation), the downside is that it only permitted the strongest updrafts in ICE3 simulations to be detected, prompting the selection of regions where a great quantity of rain is lifted above the freezing level. However, this threshold did not hinder the detection of a correct number of columns in LIMA.

As a conclusion, the AROME model, coupled with the partially 2-moment microphysics LIMA, was able to reproduce, on 34 convective days, not only storms characteristics of the convective cells, but also characteristics of much more smaller objects, the  $Z_{DR}$  columns. In particular, the simulations with LIMA demonstrated an impressive ability to generate a realistic number of columns, as well as an accurate lifetime and areal extent, which is promising for their future use in both model evaluation and data assimilation. Previous studies (Li et al., 2017; Carlin et al., 2017; Augros et al., 2018; Putnam et al., 2019; Thomas, 2021; Reimann et al., 2023) have shown possible ways towards assimilation of dual-polarization observations, with different microphysics (1 or 2 moments), different techniques (direct or indirect), and different assimilation schemes (3D-Var, 1D + 3D-Var, EnFK, 1D-EnVar). Notably, these studies have demonstrated the importance of the microphysics scheme and shown limits of the forward operator, mostly in the snow. Likewise, the present study highlighted the need to further improve the Augros et al. (2016) enhanced forward operator and of the two microphysics schemes, especially at and above the melting layer. Thus, in the first place, only the warm phase should be trusted for assimilation purpose, since a lot of work remains on the cold phase, as discussed in this paper. Indeed, to produce more realistic analysis, it is essential to have a model and a forward operator with the least possible bias. Improving the consistency between observations and the model will contribute to the improvement of background corrections used to compute the analysis.

Date	Model run	Period (UTC)	Location
2022-04-08	12	13 to 18	NE
2022-04-22	06	17 to 21	SW
2022-04-23	00	08 to 16	S-SW
2022-05-03	06	10 to 21	S
2022-05-04	00	12 to 19	E
2022-05-15	06	13 to 22	SW
		15 to 00	N
2022-05-18	06	18 to 23	NW
<b>2022-05-20</b>	00	04 to 11	NE
	06	11 to 19	NW-N
2022-05-22	00	16 to 00	NE
2022-05-23	00	09 to 13	E
2022-06-01	12	20 to 10 (+1)	SW
2022-06-02	12	15 to 00	center-E
2022-06-03	12	15 to 21	SW
		16 to 22	E
<b>2022-06-04</b>	06	08 to 14	NW
	12	14 to 22	center
2022-06-05	00	06 to 11	SE
2022-06-06	12	14 to 20	S
2022-06-15	06	15 to 00	E
2022-06-18	12	17 to 02 (+1)	SW

Date	Model run	Period (UTC)	Location
2022-06-19	12	16 to 00	center-N
		17 to 21	SW
		18 to 22	SW
2022-06-20	12	17 to 23	SW
2022-06-21	00	12 to 23	center
<b>2022-06-22</b>	00	14 to 01 (+1)	SW
	06	09 to 22	E
	06	07 to 15	SW-S
<b>2022-06-23</b>	12	12 to 20	NE-SE
		14 to 20	SW
		16 to 04 (+1)	S-SE
2022-06-24	00	05 to 11	S
2022-06-25	06	13 to 20	NE
2022-06-26	12	13 to 00	NE
2022-06-28	06	09 to 19	S-SW
2022-06-30	12	12 to 19	NE
2022-07-03	00	13 to 20	SE
2022-07-04	12	14 to 20	center-E
2022-07-20	12	12 to 20	NE
2022-08-16	00	14 to 23	S-SE
2022-08-18	00	01 to 08	SE
2022-10-23	12	13 to 18	NW-N

**Table A1.** List of the studied events, with the associated date, model run (UTC), period of time, and location for each. These 44 events represent 34 convective days. Dates in bold font indicate that multiple events occurred on the same date, and that the forecasts initializations for each date in bold is different from one event to another. Dates are displayed in YYYY-MM-DD format.

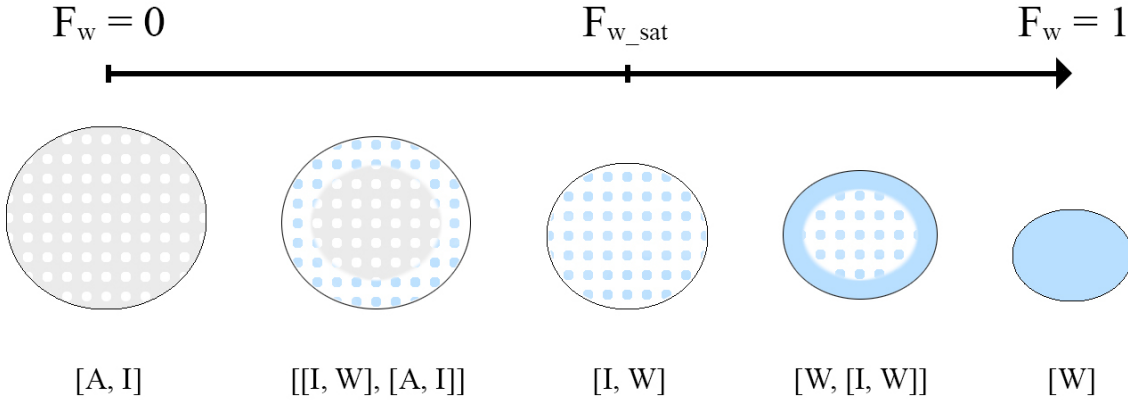
## Appendix A: List of the studied events

## Appendix B: Description of the enhanced melting scheme of the forward operator

775 As previously described in subsection 2.4, non-homogeneous hydrometeors are assimilated to matrices in which inclusions are inserted. The melting process can be divided into five steps (as shown by Fig. B1), based on the estimated liquid water fraction  $F_w$  of the particle :

- Initial state :  $F_w = 0$ , the dry graupel is considered as an ice particle with inclusions of air
- Step 1 :  $0 < F_w < F_w^{sat}$ , the graupel starts melting, with the melted water first soaking the air cavities from the outside  
780 to the inside. This outer layer plays the role of matrix for the whole particle, while the core (still an air matrix with ice inclusions) plays the role of an inclusion. The melting outer layer is considered as a matrix of ice with inclusions of water.
- Step 2 :  $F_w = F_w^{sat}$ , all air cavities are filled by melted water.
- Step 3 :  $F_w^{sat} < F_w < 1$ , the particle starts forming an outer water shell, while the core is composed of pure ice and water only.  
785 The particle is considered as a matrix of water with inclusions of ice.
- Final state :  $F_w = 1$ , the whole graupel is melted

Therefore, the estimation of the equivalent diameter  $D_{eq}$  that is needed to retrieve the scattering coefficients, as well as the dielectric constant, are tailored to the two stages of the melting process.



**Figure B1.** Illustration of the graupel melting process as a function of the liquid water fraction  $F_w$ , with a matrix/inclusion approach. Air (A), ice (I) and liquid water (W) are shown respectively in gray, white, and blue. The various combinations [matrix, inclusions] used to calculate the dielectric constant according to the Maxwell-Garnett approximation (see 2.4) are also shown. Taken with permission from Fig. 4.1 of Le Bastard (2019).



## B1 Equivalent diameter of melting graupel

790 We want to remind the reader that the only information accessible by the forward operator are the variables related to the dry species. Thus,  $\rho_g^{(i)}$  will refer to the initial graupel density, which is the density of the dry graupel provided by the model.  $\rho_g^{(i)}$  includes implicitly the contribution of air, which means that  $\rho_g^{(i)} < \rho_i$  (with  $\rho_i$  being the density of pure ice) if there are air cavities inside the particle.

### B1.1 $0 \leq F_w < F_w^{sat}$

795 To compute the scattering coefficients of the melting graupel, a spherical melted equivalent diameter is first estimated. The wet graupel volume  $V_{wg}$  is equal to the volume of a sphere of equivalent diameter  $D_{eq}$  :

$$V_{wg} = \frac{\pi}{6} D_{eq}^3 \quad (B1)$$

As the graupel melts,  $V_{wg}$  can be expressed as a function of the initial volume of the dry graupel  $V_g^{(i)}$  (of equivalent spherical diameter  $D$ ) and the volume of melted graupel  $V_{mg}$  :

$$800 \quad V_{wg} = V_g^{(i)} - V_{mg}, \text{ with } V_g^{(i)} = \frac{\pi}{6} D^3 \quad (B2)$$

By conservation of mass, the mass of melted graupel  $m_{mg}$  is equal to the mass of water created  $m_w$  :

$$m_{mg} = m_w \Leftrightarrow V_{mg} \times \rho_g = m_w \quad (B3)$$

Also, the water fraction can be defined as the mass of water out of the total mass of the wet graupel. In this operator,  $m_{wg} = m_g^{(i)}$ , thus, the mass of water created is :

$$805 \quad m_w = F_w \times m_g^{(i)} \quad (B4)$$

By combining equations B1, B2, B3, and B4, the equivalent diameter  $D_{eq}$  for  $F_w \in [0, F_w^{sat}]$  can finally be expressed as :

$$D_{eq} = D \times (1 - F_w)^{1/3} \quad (B5)$$

### B1.2 Estimation of $F_w^{sat}$

The saturation is reached when the air cavities are fully soaked by water. The volume of the cavities  $V_c$  depends on the liquid  
810 water fraction  $F_w$ . In other words,  $F_w = F_w^{sat}$  when  $V_c = 0$ .

First, we need to determine the initial volume of the cavities  $V_c^{(i)}$ , when the particle is dry (at  $F_w = 0$ ) i.e. only made of air and ice.

$$\begin{cases} V_c^{(i)} = V_g^{(i)} - V_i \\ m_g^{(i)} = m_i \end{cases} \Rightarrow V_c^{(i)} = V_g^{(i)} \left( 1 - \frac{\rho_g^{(i)}}{\rho_i} \right) \quad (B6)$$

Then, when the graupel starts melting, the new volume of air cavities  $V_c^{(*)}$  can be expressed as

$$815 \quad \forall F_w \in ]0; F_w^{sat}], V_c^{(*)} = V_{wg} - V_i - V_w \quad (\text{B7})$$

$V_i$  can be deduced by the conservation of the mass :

$$m_{wg} = m_g^{(i)} = m_i + m_w \Rightarrow V_i = V_g^{(i)} \frac{\rho_g^{(i)}}{\rho_i} - V_w \frac{\rho_w}{\rho_i} \quad (\text{B8})$$

The expression of  $V_w$  comes directly from Eq. (B4) :

$$V_w = F_w V_g^{(i)} \frac{\rho_g^{(i)}}{\rho_w} \quad (\text{B9})$$

820 By replacing  $V_i$  and  $V_w$  in Eq. (B7) :

$$V_c^{(*)} = V_g^{(i)} \left( 1 - \frac{\rho_g^{(i)}}{\rho_i} \right) + \frac{\rho_g^{(i)}}{\rho_i} F_w V_g^{(i)} - \frac{\rho_g^{(i)}}{\rho_w} F_w V_g^{(i)} \quad (\text{B10})$$

Finally, the volume of the air cavities for a liquid water fraction comprised between 0 and  $F_w^{sat}$ , is the initially available volume from which the new volume occupied is subtracted.

$$V_c = V_c^{(i)} - V_c^{(*)} \quad (\text{B11})$$

$$825 \quad = V_g^{(i)} (1 - F_w) \left( 1 - \frac{\rho_g^{(i)}}{\rho_i} \right) - V_g^{(i)} F_w \frac{\rho_g^{(i)}}{\rho_w} \quad (\text{B12})$$

As previously stated, saturation ( $F_w = F_w^{sat}$ ) is reached for  $V_c = 0$ . Thus, with Eq. (B12) it finally comes that :

$$F_w^{sat} = \frac{\frac{1}{\rho_i} - \frac{1}{\rho_g^{(i)}}}{\frac{1}{\rho_i} - \frac{1}{\rho_g^{(i)}} - \frac{1}{\rho_w}} \quad (\text{B13})$$

### B1.3 $F_w^{sat} \leq F_w \leq 1$

Once fully soaked, the particle starts building a water shell. At this stage, the graupel is composed of pure ice and water only.

830 The volume of the wet graupel is thus :

$$V_{wg} = V_i + V_w \quad (\text{B14})$$

Its mass  $m_{wg}$  can be expressed as a function of the mass of ice and the mass of water, including the water within the core and in the shell, by conservation of mass :

$$m_{wg} = m_g = m_i + m_w \Rightarrow m_g = m_i + F_w m_g \text{ using Eq. (B4)} \quad (\text{B15})$$

835 By expressing  $m_i$  as a function of  $m_g$ , Eq. (B14) can be written :

$$V_{wg} = \frac{\pi}{6} D^3 \rho_g \left( \frac{1 - F_w}{\rho_i} + \frac{F_w}{\rho_w} \right) \quad (\text{B16})$$

Finally, with Eq. (B1) and Eq. (B16), the equivalent diameter for  $F_w > F_w^{sat}$  is :

$$D_{eq} = D \times \left[ \rho_g \left( \frac{1 - F_w}{\rho_i} + \frac{F_w}{\rho_w} \right) \right]^{1/3} \quad (\text{B17})$$

## B2 Dielectric constant computation

840 The Maxwell Garnett (1904) formulation can be used to define the permittivity of the mixed phased particles, as long as the inclusions are spherical and remain small compared with the wavelength. Let  $\epsilon_{mat}$  be the matrix permittivity and  $\epsilon_{inc}$  the permittivity of inclusions. Following Maxwell Garnett (1904) and Wolfensberger and Berne (2018), the permittivity of non-homogeneous hydrometeors can be expressed as :

$$\epsilon(\epsilon_{mat}, \epsilon_{inc}, f) = \epsilon_{mat} \left( \frac{1 + 2f\alpha}{1 - f\alpha} \right), \text{ with } \alpha = \frac{\epsilon_{inc} - \epsilon_{mat}}{\epsilon_{inc} + 2\epsilon_{mat}} \text{ and } f = 1 - \frac{\rho}{\rho_{mat}} \text{ the inclusions volume fraction} \quad (B18)$$

845 Based on Fig. B1, the effective permittivity can be expressed as :

$$\epsilon_{wg} = \begin{cases} \epsilon(\epsilon_i, \epsilon_w, f_{iw}), \epsilon(\epsilon_a, \epsilon_i, f_{ai}), f_{iw/ai} & \text{if } F_w \leq F_w^{sat} \\ \epsilon(\epsilon_w, \epsilon(\epsilon_i, \epsilon_w, f_{iw}), f_{w/iw}) & \text{if } F_w > F_w^{sat} \end{cases} \quad (B19)$$

With the volume fractions involved in the calculation being respectively :

$$\begin{cases} f_{iw} = 1 - \frac{\rho_g}{\rho_i} \\ f_{ai} = \frac{\rho_g}{\rho_i} \\ f_{iw/ai} = 1 - \frac{F_w}{1 - F_w} \frac{\rho_i \rho_g}{\rho_i \rho_w - \rho_g \rho_w} \\ f_{w/iw} = \frac{\rho_g \left( \frac{1 - F_w}{\rho_i} + \frac{F_w}{\rho_w} \right)}{\rho_g \left( \frac{1 - F_w}{\rho_i} + \frac{F_w}{\rho_w} \right)} \end{cases} \quad (B20)$$

## B3 PSD for melting hydrometeors

850 As the liquid water fraction increases, the particle size distribution gradually changes from that of iced particles to that of rain. The flux-based approach used here comes from Szyrmer and Zawadzki (1999). Given the hypothesis of no aggregation of the snowflakes and no breakup of the raindrops, at a stationary state, one iced particle leads to one raindrop as the particle melts. Thus, it can be stated that the flow of particles is conserved (subscripts  $_{wp}$  and  $_p$  stand for "wet particle" and "dry particle", respectively) :

$$855 \quad N_r(D_{eq})v_r(D_{eq}) = N_{wp}(D_{eq})v_{wp}(D_{eq}) = N_p(D_{eq})v_p(D_{eq}) \quad (B21)$$

with  $N$  being the number concentration and  $v$  the terminal velocity of the corresponding hydrometeors. The terminal velocities of wet particles are computed from a combination of the terminal velocities of rain  $v_r$  and dry particles  $v_p$ , following Wolfensberger and Berne (2018) :

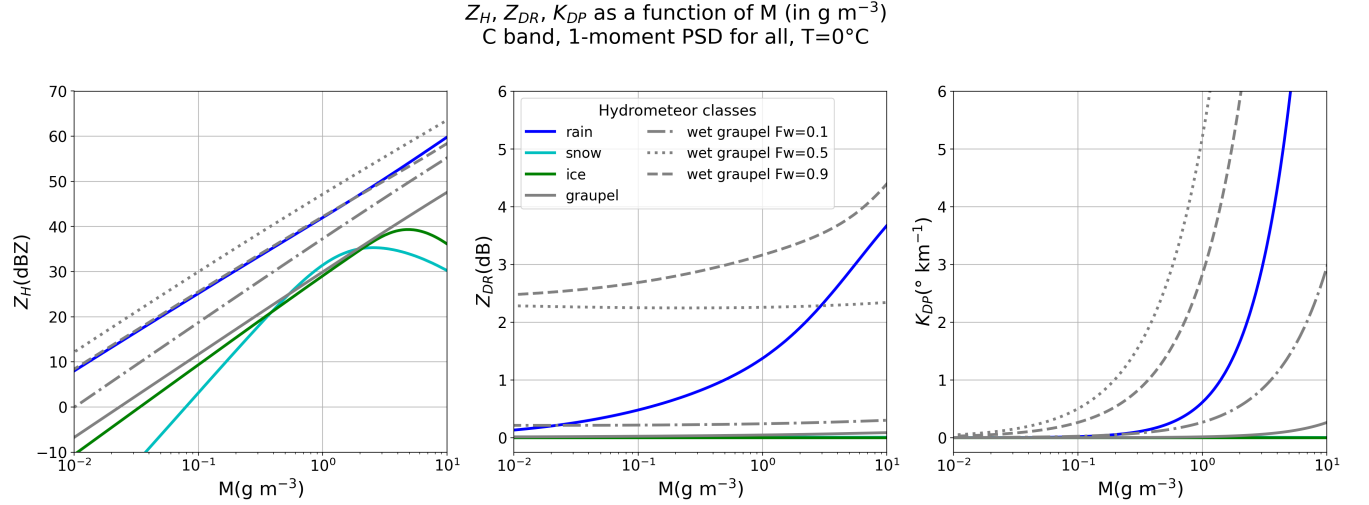
$$v_{wp} = \Phi v_r + (1 - \Phi)v_p, \text{ with } \Phi = 0.246F_w + (1 - 0.246)(F_w)^7 \quad (B22)$$

860 Then, knowing  $F_w$  for each  $D_{eq}$ , the total wet particle number concentration  $N_{wp}$  can be expressed :

$$N_{wp}(D_{eq}) = (1 - F_w) \frac{v_p}{v_{wp}} N_p(D_{eq}) + F_w \frac{v_r}{v_{wp}} N_r(D_{eq}) \quad (B23)$$

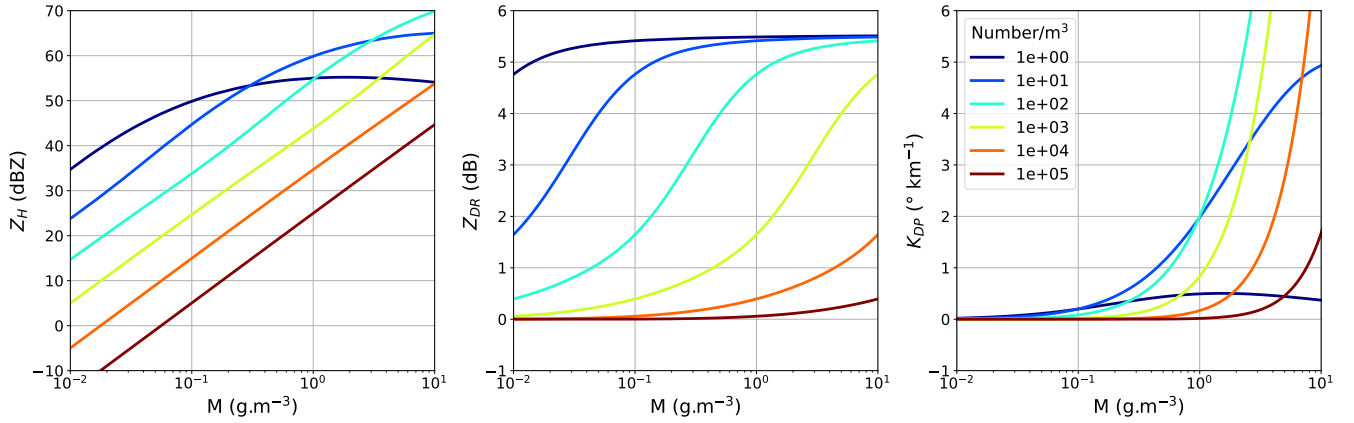
## Appendix C: Theoretical polarimetric values of the A16 forward operator

This section is only intended to provide a general overview of the theoretical polarimetric values that the A16 forward operator can reach for the range of contents and concentrations observed in this study. Values of  $Z_H$ ,  $Z_{DR}$  and  $K_{DP}$  are herein presented as a function of the content for different hydrometeor class and for a one- (Fig. C1) or two-moment PSD (Fig. C2, Fig. C3). Please note that we have compared ICE3 1-moment microphysics to LIMA microphysics, the latter being 2-moment only for rain and ice.



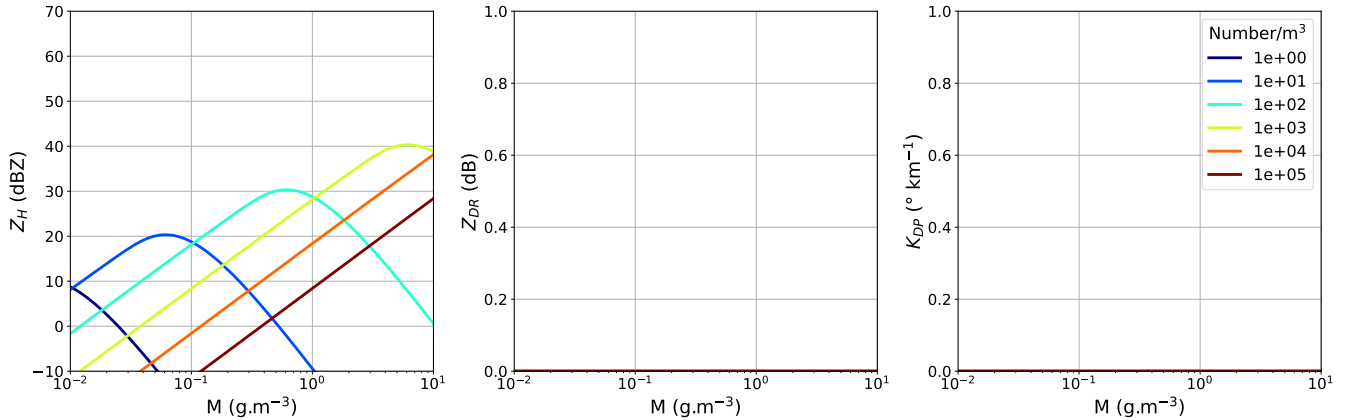
**Figure C1.** Theoretical polarimetric outputs of the A16 forward operator, for 1-moment hydrometeor species. From left to right : reflectivity, differential reflectivity, and specific differential phase as a function of the content. Values for different liquid water fractions of the wet graupel have been added to emphasize the impact of graupel wetness on polarimetric values in the A16 operator.

$Z_H, Z_{DR}, K_{DP}$  as a function of  $M$  (in  $\text{g.m}^{-3}$ )  
C band, 2-moment PSD for rain,  $T=0^\circ\text{C}$



**Figure C2.** Theoretical polarimetric outputs of the A16 forward operator, for a 2-moment rain hydrometeor class and for different number concentrations. From left to right : reflectivity, differential reflectivity, and specific differential phase as a function of the content.

$Z_H, Z_{DR}, K_{DP}$  as a function of  $M$  (in  $\text{g.m}^{-3}$ )  
C band, 2-moment PSD for ice,  $T=0^\circ\text{C}$



**Figure C3.** Theoretical polarimetric outputs of the A16 forward operator, for a 2-moment ice hydrometeor class and for different number concentrations. From left to right : reflectivity, differential reflectivity, and specific differential phase as a function of the content.

Appendix D: Summary of *tobac* settings

	cell envelope	cell core		$Z_{DR}$ column
<b>Features detection</b>		<i>obs</i>	<i>model</i>	
Threshold(s)	/	36 and 48 dBZ	36 and 40 dBZ	500 m
Minimum object(s) size	/	20 and 5 km <sup>2</sup>	23 and 6.5 km <sup>2</sup>	4 km <sup>2</sup>
<b>Segmentation</b>				
Contour threshold	25 dBZ	40 dBZ		2 dB
<b>Tracking</b>				
Search radius	/	20 km		15 km
Memory	/	5 min		20 min
Minimum lifetime	/	45 min		5 min

**Table D1.** Settings of the open-source Python package *tobac*, used in the tracking step, for cell envelope, cell core and  $Z_{DR}$  columns objects

*Author contributions.* CD designed the methodology, developed the  $Z_{DR}$  column algorithm, realized the analysis, and wrote the manuscript.

870 CA, BV and FB helped in the conceptualisation, methodology, and the supervision of the manuscript. TLB implemented the operator’s melting scheme and contributed to its description in Appendix B

*Competing interests.* The authors declare that they have no conflict of interest.

*Acknowledgements.* This study has been partially supported through the grant EUR TESS N°ANR-18-EURE-0018 in the framework of the Programme des Investissements d’Avenir. The authors would like to thank Pr. Alexander Ryzhkov, Dr Jacob Carlin, and Dr Jeffrey Snyder  
875 for the discussions and constructive feedback that helped us better understand our limitations and pave the way for future prospects. The authors would also like to express their gratitude to John Krause for his review of the manuscript, which enhanced its overall quality.

## References

- Al-Sakka, H., Boumahmoud, A.-A., Fradon, B., Frasier, S. J., and Tabary, P.: A New Fuzzy Logic Hydrometeor Classification Scheme Applied to the French X-, C-, and S-Band Polarimetric Radars, *Journal of Applied Meteorology and Climatology*, 52, 2328–2344, <https://doi.org/10.1175/JAMC-D-12-0236.1>, 2013.
- Aregger, M., Martius, O., Germann, U., and Hering, A.: Differential reflectivity columns and hail: linking C-band radar-based estimated column characteristics to crowdsourced hail observations in Switzerland, <https://doi.org/10.48550/arXiv.2410.10499>, 2024.
- Augros, C., Caumont, O., Ducrocq, V., Gaussiat, N., and Tabary, P.: Comparisons between S-, C- and X-band polarimetric radar observations and convective-scale simulations of the HyMeX first special observing period, *Quarterly Journal of the Royal Meteorological Society*, 142, 347–362, <https://doi.org/10.1002/qj.2572>, 2016.
- Augros, C., Caumont, O., Ducrocq, V., and Gaussiat, N.: Assimilation of radar dual-polarization observations in the AROME model, *Quarterly Journal of the Royal Meteorological Society*, 144, 1352–1368, <https://doi.org/10.1002/qj.3269>, 2018.
- Barnes, S. L.: A Technique for Maximizing Details in Numerical Weather Map Analysis, *Journal of Applied Meteorology and Climatology*, 3, 396–409, [https://doi.org/10.1175/1520-0450\(1964\)003<0396:ATFMDI>2.0.CO;2](https://doi.org/10.1175/1520-0450(1964)003<0396:ATFMDI>2.0.CO;2), 1964.
- Besic, N., Figueras i Ventura, J., Grazioli, J., Gabella, M., Germann, U., and Berne, A.: Hydrometeor classification through statistical clustering of polarimetric radar measurements: a semi-supervised approach, *Atmospheric Measurement Techniques*, 9, 4425–4445, <https://doi.org/10.5194/amt-9-4425-2016>, 2016.
- Brandes, E. A., Ikeda, K., Zhang, G., Schönhuber, M., and Rasmussen, R. M.: A Statistical and Physical Description of Hydrometeor Distributions in Colorado Snowstorms Using a Video Disdrometer, *Journal of Applied Meteorology and Climatology*, 46, 634–650, <https://doi.org/10.1175/JAM2489.1>, 2007.
- Brousseau, P., Seity, Y., Ricard, D., and Léger, J.: Improvement of the forecast of convective activity from the AROME-France system, *Quarterly Journal of the Royal Meteorological Society*, 142, 2231–2243, <https://doi.org/10.1002/qj.2822>, 2016.
- Bénard, P., Vivoda, J., Mašek, J., Smolíková, P., Yessad, K., Smith, C., Brožková, R., and Geleyn, J.-F.: Dynamical kernel of the Aladin–NH spectral limited-area model: Revised formulation and sensitivity experiments, *Quarterly Journal of the Royal Meteorological Society*, 136, 155–169, <https://doi.org/10.1002/qj.522>, 2010.
- Cai, H. and Dumais, R. E.: Object-Based Evaluation of a Numerical Weather Prediction Model’s Performance through Forecast Storm Characteristic Analysis, *Weather and Forecasting*, 30, 1451–1468, <https://doi.org/10.1175/WAF-D-15-0008.1>, 2015.
- Carlin, J. T. and Ryzhkov, A. V.: Estimation of Melting-Layer Cooling Rate from Dual-Polarization Radar: Spectral Bin Model Simulations, *Journal of Applied Meteorology and Climatology*, 58, 1485–1508, <https://doi.org/10.1175/JAMC-D-18-0343.1>, 2019.
- Carlin, J. T., Gao, J., Snyder, J. C., and Ryzhkov, A. V.: Assimilation of ZDR Columns for Improving the Spinup and Forecast of Convective Storms in Storm-Scale Models: Proof-of-Concept Experiments, *Monthly Weather Review*, 145, 5033–5057, <https://doi.org/10.1175/MWR-D-17-0103.1>, 2017.
- Carpenter, A. E., Jones, T. R., Lamprecht, M. R., Clarke, C., Kang, I. H., Friman, O., Guertin, D. A., Chang, J. H., Lindquist, R. A., Moffat, J., Golland, P., and Sabatini, D. M.: CellProfiler: image analysis software for identifying and quantifying cell phenotypes, *Genome Biology*, 7, R100, <https://doi.org/10.1186/gb-2006-7-10-r100>, 2006.
- Caumont, O., Ducrocq, V., Delrieu, G., Gosset, M., Pinty, J.-P., Châtelet, J. P. d., Andrieu, H., Lemaître, Y., and Scialom, G.: A Radar Simulator for High-Resolution Nonhydrostatic Models, *Journal of Atmospheric and Oceanic Technology*, 23, 1049–1067, <https://doi.org/10.1175/JTECH1905.1>, 2006.

- Caumont, O., Ducrocq, V., Wattrelot, E., Jaubert, G., and Pradier-Vabre, S.: 1D+3DVar assimilation of radar reflectivity data: a proof of concept, *Tellus A: Dynamic Meteorology and Oceanography*, 62, 173–187, <https://doi.org/10.1111/j.1600-0870.2009.00430.x>, 2010.
- Caumont, O., Mandement, M., Bouttier, F., Eeckman, J., Lebeauin Brossier, C., Lovat, A., Nuissier, O., and Laurantin, O.: The heavy precipitation event of 14–15 October 2018 in the Aude catchment: a meteorological study based on operational numerical weather prediction systems and standard and personal observations, *Natural Hazards and Earth System Sciences*, 21, 1135–1157, <https://doi.org/10.5194/nhess-21-1135-2021>, 2021.
- Caylor, I. J. and Illingworth, A. J.: Radar Observations and Modelling of Warm Rain Initiation, *Quarterly Journal of the Royal Meteorological Society*, 113, 1171–1191, <https://doi.org/10.1002/qj.49711347806>, 1987.
- Champeaux, J.-L., Laurantin, O., Mercier, B., Mounier, F., Lassegues, P., and Tabary, P.: Quantitative precipitation estimations using rain gauges and radar networks: inventory and prospects at Météo-France, in: *WMO Joint Meeting of CGS Expert Team on Surface-based Remotely-sensed Observations and CIMO Expert Team on Operational Remote Sensing*, vol. 5, pp. 1–11, 2011.
- Cohard, J.-M., Pinty, J.-P., and Bedos, C.: Extending Twomey’s Analytical Estimate of Nucleated Cloud Droplet Concentrations from CCN Spectra, *Journal of the Atmospheric Sciences*, 55, 3348–3357, [https://doi.org/10.1175/1520-0469\(1998\)055<3348:ETSAEO>2.0.CO;2](https://doi.org/10.1175/1520-0469(1998)055<3348:ETSAEO>2.0.CO;2), 1998.
- Courtier, P., Freydier, C., Geleyn, J., Rabier, F., and Rochas, M.: The ARPEGE project at Météo-France, in: *Seminar on Numerical Methods on Atmospheric Models*, pp. 193–231, ECMWF, Reading, UK, <https://www.ecmwf.int/sites/default/files/elibrary/1991/8798-arpege-project-meteo-france.pdf>, 1991.
- Courtier, P., Thépaut, J.-N., and Hollingsworth, A.: A strategy for operational implementation of 4D-Var, using an incremental approach, *Quarterly Journal of the Royal Meteorological Society*, 120, 1367–1387, <https://doi.org/10.1002/qj.49712051912>, 1994.
- Cuxart, J., Bougeault, P., and Redelsperger, J.-L.: A turbulence scheme allowing for mesoscale and large-eddy simulations, *Quarterly Journal of the Royal Meteorological Society*, 126, 1–30, <https://doi.org/10.1002/qj.49712656202>, 2000.
- Davis, C., Brown, B., and Bullock, R.: Object-Based Verification of Precipitation Forecasts. Part I: Methodology and Application to Mesoscale Rain Areas, *Monthly Weather Review*, 134, 1772–1784, <https://doi.org/10.1175/MWR3145.1>, 2006.
- Davis, C. A., Brown, B. G., Bullock, R., and Halley-Gotway, J.: The Method for Object-Based Diagnostic Evaluation (MODE) Applied to Numerical Forecasts from the 2005 NSSL/SPC Spring Program, *Weather and Forecasting*, 24, 1252–1267, <https://doi.org/10.1175/2009WAF2222241.1>, 2009.
- Dawson, D. T., Mansell, E. R., Jung, Y., Wicker, L. J., Kumjian, M. R., and Xue, M.: Low-Level ZDR Signatures in Supercell Forward Flanks: The Role of Size Sorting and Melting of Hail, *Journal of the Atmospheric Sciences*, 71, 276–299, <https://doi.org/10.1175/JAS-D-13-0118.1>, 2014.
- Donaldson, R. J., Dyer, R. M., and Kraus, M. J.: An Objective Evaluator of Techniques for Predicting Severe Weather Events., Tech. Rep. ADA015773, Air Force Cambridge Research Labs Hanscom AFB Mass, <https://ntrl.ntis.gov/NTRL/dashboard/searchResults/titleDetail/ADA015773.xhtml>, 1975.
- Dotzek, N., Groenemeijer, P., Feuerstein, B., and Holzer, A.: Overview of ESSL’s severe convective storms research using the European Severe Weather Database ESWD, *Atmospheric Research*, 93, 575–586, <https://doi.org/10.1016/j.atmosres.2008.10.020>, 2009.
- Draine, B. T.: The Discrete-Dipole Approximation and Its Application to Interstellar Graphite Grains, *The Astrophysical Journal*, 333, 848, <https://doi.org/10.1086/166795>, 1988.



- 950 Ducongé, L., Lac, C., Vié, B., Bergot, T., and Price, J. D.: Fog in heterogeneous environments: the relative importance of local and non-local processes on radiative-advective fog formation, *Quarterly Journal of the Royal Meteorological Society*, 146, 2522–2546, <https://doi.org/10.1002/qj.3783>, 2020.
- Figueras i Ventura, J., Boumahmoud, A.-A., Fradon, B., Dupuy, P., and Tabary, P.: Long-term monitoring of French polarimetric radar data quality and evaluation of several polarimetric quantitative precipitation estimators in ideal conditions for operational implementation at C-band, *Quarterly Journal of the Royal Meteorological Society*, 138, 2212–2228, <https://doi.org/10.1002/qj.1934>, 2012.
- 955 Forcadell, V., Augros, C., Caumont, O., Dedieu, K., Ouradou, M., David, C., Figueras i Ventura, J., Laurantin, O., and Al-Sakka, H.: Severe-hail detection with C-band dual-polarisation radars using convolutional neural networks, *Atmospheric Measurement Techniques*, 17, 6707–6734, <https://doi.org/10.5194/amt-17-6707-2024>, publisher: Copernicus GmbH, 2024.
- Fouquart, Y. and Bonnel, B.: Computations of solar heating of the Earth's atmosphere: A new parameterization, *Beiträge zur Physik der Atmosphäre*, 53, 35–62, <https://cir.nii.ac.jp/crid/1370017282189594910>, 1980.
- 960 Gallus, W. A. J. and Pfeifer, M.: Intercomparison of simulations using 5 WRF microphysical schemes with dual-Polarization data for a German squall line, in: *Advances in Geosciences*, vol. 16, pp. 109–116, Copernicus GmbH, <https://doi.org/10.5194/adgeo-16-109-2008>, 2008.
- Gasper, F., Goergen, K., Shrestha, P., Sulis, M., Rihani, J., Geimer, M., and Kollet, S.: Implementation and scaling of the fully coupled Terrestrial Systems Modeling Platform (TerrSysMP v1.0) in a massively parallel supercomputing environment – a case study on JUQUEEN (IBM Blue Gene/Q), *Geoscientific Model Development*, 7, 2531–2543, <https://doi.org/10.5194/gmd-7-2531-2014>, 2014.
- 965 Gourley, J. J., Tabary, P., and Chatelet, J. P. d.: A Fuzzy Logic Algorithm for the Separation of Precipitating from Non-precipitating Echoes Using Polarimetric Radar Observations, *Journal of Atmospheric and Oceanic Technology*, 24, 1439–1451, <https://doi.org/10.1175/JTECH2035.1>, 2007.
- 970 Hall, M. P. M., Goddard, J. W. F., and Cherry, S. M.: Identification of hydrometeors and other targets by dual-polarization radar, *Radio Science*, 19, 132–140, <https://doi.org/10.1029/RS019i001p00132>, 1984.
- Heidke, P.: Berechnung Des Erfolges Und Der Güte Der Windstärkevorhersagen Im Sturmwarnungsdienst (Calculation of the success and the goodness of strong wind forecasts in the storm warning service)., *Geografiska Annaler*, <https://www.tandfonline.com/doi/abs/10.1080/20014422.1926.11881138>, 1926.
- 975 Heikenfeld, M., Marinescu, P. J., Christensen, M., Watson-Parris, D., Senf, F., van den Heever, S. C., and Stier, P.: tobac 1.2: towards a flexible framework for tracking and analysis of clouds in diverse datasets, *Geoscientific Model Development*, 12, 4551–4570, <https://doi.org/10.5194/gmd-12-4551-2019>, 2019.
- Helmus, J. J. and Collis, S. M.: The Python ARM Radar Toolkit (Py-ART), a Library for Working with Weather Radar Data in the Python Programming Language, *Journal of Open Research Software*, 4, e25, <https://doi.org/10.5334/jors.119>, 2016.
- 980 Hong, S.-Y. and Lim, J.-O. J.: The WRF Single-Moment 6-Class Microphysics Scheme (WSM6), *Journal Of The Korean Meteorological Society*, 42, 129–151, 2006.
- Houze Jr., R. A.: *Cloud Dynamics*, Academic Press, ISBN 978-0-08-092146-4, 2014.
- Hubbert, J. C., Ellis, S. M., Chang, W.-Y., Rutledge, S., and Dixon, M.: Modeling and Interpretation of S-Band Ice Crystal Depolarization Signatures from Data Obtained by Simultaneously Transmitting Horizontally and Vertically Polarized Fields, *Journal of Applied Meteorology and Climatology*, 53, 1659–1677, <https://doi.org/10.1175/JAMC-D-13-0158.1>, 2014.
- 985

- Höller, H., Hagen, M., Meischner, P. F., Bringi, V. N., and Hubbert, J.: Life Cycle and Precipitation Formation in a Hybrid-Type Hailstorm Revealed by Polarimetric and Doppler Radar Measurements, *Journal of the Atmospheric Sciences*, 51, 2500–2522, [https://doi.org/10.1175/1520-0469\(1994\)051<2500:LCAPFI>2.0.CO;2](https://doi.org/10.1175/1520-0469(1994)051<2500:LCAPFI>2.0.CO;2), 1994.
- Jameson, A. R.: Microphysical Interpretation of Multiparameter Radar Measurements in Rain. Part III: Interpretation and Measurement of Propagation Differential Phase Shift between Orthogonal Linear Polarizations, *Journal of the Atmospheric Sciences*, 42, 607–614, [https://doi.org/10.1175/1520-0469\(1985\)042<0607:MIOMRM>2.0.CO;2](https://doi.org/10.1175/1520-0469(1985)042<0607:MIOMRM>2.0.CO;2), 1985.
- Johnson, M., Jung, Y., Dawson, D. T., and Xue, M.: Comparison of Simulated Polarimetric Signatures in Idealized Supercell Storms Using Two-Moment Bulk Microphysics Schemes in WRF, *Monthly Weather Review*, 144, 971–996, <https://doi.org/10.1175/MWR-D-15-0233.1>, 2016.
- 995 Jung, Y., Zhang, G., and Xue, M.: Assimilation of Simulated Polarimetric Radar Data for a Convective Storm Using the Ensemble Kalman Filter. Part I: Observation Operators for Reflectivity and Polarimetric Variables, *Monthly Weather Review*, 136, 2228–2245, <https://doi.org/10.1175/2007MWR2083.1>, 2008.
- Jung, Y., Xue, M., and Zhang, G.: Simulations of Polarimetric Radar Signatures of a Supercell Storm Using a Two-Moment Bulk Microphysics Scheme, *Journal of Applied Meteorology and Climatology*, 49, 146–163, <https://doi.org/10.1175/2009JAMC2178.1>, 2010.
- 1000 Kennedy, P. C. and Rutledge, S. A.: Dual-Doppler and Multiparameter Radar Observations of a Bow-Echo Hailstorm, *Monthly Weather Review*, 123, 921–943, [https://doi.org/10.1175/1520-0493\(1995\)123<0921:DDAMRO>2.0.CO;2](https://doi.org/10.1175/1520-0493(1995)123<0921:DDAMRO>2.0.CO;2), 1995.
- Kennedy, P. C., Rutledge, S. A., Petersen, W. A., and Bringi, V. N.: Polarimetric Radar Observations of Hail Formation, *Journal of Applied Meteorology and Climatology*, 40, 1347–1366, [https://doi.org/10.1175/1520-0450\(2001\)040<1347:PROOHF>2.0.CO;2](https://doi.org/10.1175/1520-0450(2001)040<1347:PROOHF>2.0.CO;2), 2001.
- Kessler, E.: On the Distribution and Continuity of Water Substance in Atmospheric Circulations, American Meteorological Society, Boston, MA, 10, 1–84, <https://doi.org/https://doi.org/10.1007/978-1-935704-36-2>, 1969.
- 1005 Krause, J. and Klaus, V.: Identifying ZDR Columns in Radar Data with the Hotspot Technique, *Weather and Forecasting*, -1, <https://doi.org/10.1175/WAF-D-23-0146.1>, 2024.
- Kumjian, M.: Principles and applications of dual-polarization weather radar. Part II: Warm- and cold-season applications, *Journal of Operational Meteorology*, 1, 243–264, <https://doi.org/10.15191/nwajom.2013.0120>, 2013.
- 1010 Kumjian, M. R. and Ryzhkov, A. V.: Polarimetric Signatures in Supercell Thunderstorms, *Journal of Applied Meteorology and Climatology*, 47, 1940–1961, <https://doi.org/10.1175/2007JAMC1874.1>, 2008.
- Kumjian, M. R., Ganson, S. M., and Ryzhkov, A. V.: Freezing of Raindrops in Deep Convective Updrafts: A Microphysical and Polarimetric Model, *Journal of the Atmospheric Sciences*, 69, 3471–3490, <https://doi.org/10.1175/JAS-D-12-067.1>, 2012.
- Kumjian, M. R., Khain, A. P., Benmoshe, N., Ilotoviz, E., Ryzhkov, A. V., and Phillips, V. T. J.: The Anatomy and Physics of ZDR Columns: Investigating a Polarimetric Radar Signature with a Spectral Bin Microphysical Model, *Journal of Applied Meteorology and Climatology*, 53, 1820–1843, <https://doi.org/10.1175/JAMC-D-13-0354.1>, 2014.
- 1015 Kumjian, M. R., Lombardo, K., and Loeffler, S.: The Evolution of Hail Production in Simulated Supercell Storms, *Journal of the Atmospheric Sciences*, 78, 3417–3440, <https://doi.org/10.1175/JAS-D-21-0034.1>, 2021.
- Kuster, C. M., Snyder, J. C., Schuur, T. J., Lindley, T. T., Heinselman, P. L., Furtado, J. C., Brogden, J. W., and Toomey, R.: Rapid-Update Radar Observations of ZDR Column Depth and Its Use in the Warning Decision Process, *Weather and Forecasting*, 34, 1173–1188, <https://doi.org/10.1175/WAF-D-19-0024.1>, 2019.
- 1020 Kuster, C. M., Schuur, T. J., Lindley, T. T., and Snyder, J. C.: Using ZDR Columns in Forecaster Conceptual Models and Warning Decision-Making, *Weather and Forecasting*, 35, 2507–2522, <https://doi.org/10.1175/WAF-D-20-0083.1>, 2020.

- Köcher, G., Zinner, T., Knote, C., Tetoni, E., Ewald, F., and Hagen, M.: Evaluation of convective cloud microphysics in numerical weather prediction models with dual-wavelength polarimetric radar observations: methods and examples, *Atmospheric Measurement Techniques*, 15, 1033–1054, <https://doi.org/10.5194/amt-15-1033-2022>, 2022.
- Köcher, G., Zinner, T., and Knote, C.: Influence of cloud microphysics schemes on weather model predictions of heavy precipitation, *Atmospheric Chemistry and Physics*, 23, 6255–6269, <https://doi.org/10.5194/acp-23-6255-2023>, 2023.
- Lac, C., Chaboureaud, J.-P., Masson, V., Pinty, J.-P., Tulet, P., Escobar, J., Leriche, M., Barthe, C., Aouizerats, B., Augros, C., Aumond, P., Auguste, F., Bechtold, P., Berthet, S., Bielli, S., Bosseur, F., Caumont, O., Cohard, J.-M., Colin, J., Couvreux, F., Cuxart, J., Delautier, G., Dauhut, T., Ducrocq, V., Filippi, J.-B., Gazen, D., Geoffroy, O., Gheusi, F., Honnert, R., Lafore, J.-P., Lebeaupin Brossier, C., Libois, Q., Lunet, T., Mari, C., Maric, T., Mascart, P., Mogé, M., Molinié, G., Nuissier, O., Pantillon, F., Peyrillé, P., Pergaud, J., Perraud, E., Pianezze, J., Redelsperger, J.-L., Ricard, D., Richard, E., Riette, S., Rodier, Q., Schoetter, R., Seyfried, L., Stein, J., Suhre, K., Taufour, M., Thouron, O., Turner, S., Verrelle, A., Vié, B., Visentin, F., Vionnet, V., and Wautelet, P.: Overview of the Meso-NH model version 5.4 and its applications, *Geoscientific Model Development*, 11, 1929–1969, <https://doi.org/10.5194/gmd-11-1929-2018>, 2018.
- Le Bastard, T.: Utilisation des données radar volumiques et d’un modèle de PNT à haute résolution pour une meilleure estimation quantitative des précipitations en plaine et sur les massifs montagneux, These de doctorat, Toulouse, INPT, <https://theses.fr/2019INPT0140>, 2019.
- Li, X., Mecikalski, J. R., and Posselt, D.: An Ice-Phase Microphysics Forward Model and Preliminary Results of Polarimetric Radar Data Assimilation, *Monthly Weather Review*, 145, 683–708, <https://doi.org/10.1175/MWR-D-16-0035.1>, 2017.
- Liu, P., Zhang, G., Carlin, J. T., and Gao, J.: A New Melting Model and Its Implementation in Parameterized Forward Operators for Polarimetric Radar Data Simulation With Double Moment Microphysics Schemes, *Journal of Geophysical Research: Atmospheres*, 129, 21, <https://doi.org/10.1029/2023JD040026>, 2024.
- Lo, C. H. B., Stein, T. H. M., Scovell, R. W., Westbrook, C. D., Darlington, T., and Lean, H. W.: Use of ZDR columns for early detection of severe convection within the operational radar network of the United Kingdom, *Meteorological Applications*, 31, e2159, <https://doi.org/10.1002/met.2159>, 2024.
- Masson, V., Le Moigne, P., Martin, E., Faroux, S., Alias, A., Alkama, R., Belamari, S., Barbu, A., Boone, A., Bouyssel, F., Brousseau, P., Brun, E., Calvet, J.-C., Carrer, D., Decharme, B., Delire, C., Donier, S., Essaouini, K., Gibelin, A.-L., Giordani, H., Habets, F., Jidane, M., Kerdraon, G., Kourzeneva, E., Lafaysse, M., Lafont, S., Lebeaupin Brossier, C., Lemonsu, A., Mahfouf, J.-F., Marguinaud, P., Mokhtari, M., Morin, S., Pigeon, G., Salgado, R., Seity, Y., Taillefer, F., Tanguy, G., Tulet, P., Vincendon, B., Vionnet, V., and Voldoire, A.: The SURFEXv7.2 land and ocean surface platform for coupled or offline simulation of earth surface variables and fluxes, *Geoscientific Model Development*, 6, 929–960, <https://doi.org/10.5194/gmd-6-929-2013>, 2013.
- Matrosov, S. Y., Reinking, R. F., Kropfli, R. A., and Bartram, B. W.: Estimation of Ice Hydrometeor Types and Shapes from Radar Polarization Measurements, *Journal of Atmospheric and Oceanic Technology*, 13, 85–96, [https://doi.org/10.1175/1520-0426\(1996\)013<0085:EOIHTA>2.0.CO;2](https://doi.org/10.1175/1520-0426(1996)013<0085:EOIHTA>2.0.CO;2), 1996.
- Maxwell Garnett, J. C.: Colours in metal glasses and in metallic films, *Royal Society of London*, 203, 385–420, <https://doi.org/10.1098/rsta.1904.0024>, 1904.
- Meischner, P., Guzzi, R., Imboden, D., Lanzerotti, L. J., and Platt, U., eds.: *Weather Radar, Physics of Earth and Space Environments*, Springer, Berlin, Heidelberg, ISBN 978-3-642-05561-4 978-3-662-05202-0, <http://link.springer.com/10.1007/978-3-662-05202-0>, 2004.
- Meyers, M. P., DeMott, P. J., and Cotton, W. R.: New Primary Ice-Nucleation Parameterizations in an Explicit Cloud Model, *Journal of Applied Meteorology and Climatology*, 31, 708–721, [https://doi.org/10.1175/1520-0450\(1992\)031<0708:NPINPI>2.0.CO;2](https://doi.org/10.1175/1520-0450(1992)031<0708:NPINPI>2.0.CO;2), 1992.

- Mishchenko, M. I. and Travis, L. D.: T-matrix computations of light scattering by large spheroidal particles, *Optics Communications*, 109, 16–21, [https://doi.org/10.1016/0030-4018\(94\)90731-5](https://doi.org/10.1016/0030-4018(94)90731-5), 1994.
- 1065 Mlawer, E. J., Taubman, S. J., Brown, P. D., Iacono, M. J., and Clough, S. A.: Radiative transfer for inhomogeneous atmospheres: RRTM, a validated correlated-k model for the longwave, *Journal of Geophysical Research: Atmospheres*, 102, 16 663–16 682, <https://doi.org/10.1029/97JD00237>, 1997.
- Morcrette, J.-J. and Fouquart, Y.: The Overlapping of Cloud Layers in Shortwave Radiation Parameterizations, *Journal of the Atmospheric Sciences*, 43, 321–328, [https://doi.org/10.1175/1520-0469\(1986\)043<0321:TOOCLI>2.0.CO;2](https://doi.org/10.1175/1520-0469(1986)043<0321:TOOCLI>2.0.CO;2), 1986.
- Murphy, A. and Daan, H.: Forecast evaluation, in: *Probability, Statistics, and Decision Making in the Atmospheric Sciences*, chapter 10, pp. 379–437, Westview Press, ISBN 13:978-0-367-28433 (hbk), 1985.
- 1070 Noilhan, J. and Mahfouf, J. F.: The ISBA land surface parameterisation scheme, *Global and Planetary Change*, 13, 145–159, [https://doi.org/10.1016/0921-8181\(95\)00043-7](https://doi.org/10.1016/0921-8181(95)00043-7), 1996.
- Noilhan, J. and Planton, S.: A Simple Parameterization of Land Surface Processes for Meteorological Models, *Monthly Weather Review*, 117, 536–549, [https://doi.org/10.1175/1520-0493\(1989\)117<0536:ASPOLS>2.0.CO;2](https://doi.org/10.1175/1520-0493(1989)117<0536:ASPOLS>2.0.CO;2), 1989.
- Park, H. S., Ryzhkov, A. V., Zrnić, D. S., and Kim, K.-E.: The Hydrometeor Classification Algorithm for the Polarimetric WSR-88D: Description and Application to an MCS, *Weather and Forecasting*, 24, 730–748, <https://doi.org/10.1175/2008WAF2222205.1>, 2009.
- 1075 Pauley, P. M. and Wu, X.: The Theoretical, Discrete, and Actual Response of the Barnes Objective Analysis Scheme for One- and Two-Dimensional Fields, *Monthly Weather Review*, 118, 1145–1164, [https://doi.org/10.1175/1520-0493\(1990\)118<1145:TTDAAR>2.0.CO;2](https://doi.org/10.1175/1520-0493(1990)118<1145:TTDAAR>2.0.CO;2), 1990.
- Pergaud, J., Masson, V., Malardel, S., and Couvreux, F.: A Parameterization of Dry Thermals and Shallow Cumuli for Mesoscale Numerical Weather Prediction, *Boundary-Layer Meteorology*, 132, 83–106, <https://doi.org/10.1007/s10546-009-9388-0>, 2009.
- 1080 Phillips, V. T. J., DeMott, P. J., and Andronache, C.: An Empirical Parameterization of Heterogeneous Ice Nucleation for Multiple Chemical Species of Aerosol, *Journal of the Atmospheric Sciences*, 65, 2757–2783, <https://doi.org/10.1175/2007JAS2546.1>, 2008.
- Phillips, V. T. J., Demott, P. J., Andronache, C., Pratt, K. A., Prather, K. A., Subramanian, R., and Twohy, C.: Improvements to an Empirical Parameterization of Heterogeneous Ice Nucleation and Its Comparison with Observations, *Journal of the Atmospheric Sciences*, 70, 378–409, <https://doi.org/10.1175/JAS-D-12-080.1>, 2013.
- 1085 Picca, J. and Ryzhkov, A.: A Dual-Wavelength Polarimetric Analysis of the 16 May 2010 Oklahoma City Extreme Hailstorm, *Monthly Weather Review*, 140, 1385–1403, <https://doi.org/10.1175/MWR-D-11-00112.1>, 2012.
- Pinty, J.-P. and Jabouille, P.: A mixed-phase cloud parameterization for use in a mesoscale non-hydrostatic model: Simulations of a squall line of orographic precipitation, in: *American Meteorological Society*, pp. 217–220, Everett, WA, [http://195.83.22.22/mesonh/dir\\_publication/pinty\\_jabouille\\_ams\\_ccp1998.pdf](http://195.83.22.22/mesonh/dir_publication/pinty_jabouille_ams_ccp1998.pdf), 1998.
- 1090 Purcell, E. M. and Pennypacker, C. R.: Scattering and Absorption of Light by Nonspherical Dielectric Grains, *The Astrophysical Journal*, 186, 705–714, <https://doi.org/10.1086/152538>, 1973.
- Putnam, B., Xue, M., Jung, Y., Snook, N., and Zhang, G.: Ensemble Kalman Filter Assimilation of Polarimetric Radar Observations for the 20 May 2013 Oklahoma Tornadoic Supercell Case, *Monthly Weather Review*, 147, 2511–2533, <https://doi.org/10.1175/MWR-D-18-0251.1>, 2019.
- 1095 Putnam, B. J., Xue, M., Jung, Y., Zhang, G., and Kong, F.: Simulation of Polarimetric Radar Variables from 2013 CAPS Spring Experiment Storm-Scale Ensemble Forecasts and Evaluation of Microphysics Schemes, *Monthly Weather Review*, 145, 49–73, <https://doi.org/10.1175/MWR-D-15-0415.1>, 2017.

- Rajeevan, M., Kesarkar, A., Thampi, S. B., Rao, T. N., Radhakrishna, B., and Rajasekhar, M.: Sensitivity of WRF cloud microphysics to simulations of a severe thunderstorm event over Southeast India, *Annales Geophysicae*, 28, 603–619, <https://doi.org/10.5194/angeo-28-603-2010>, 2010.
- Rasmussen, R. M. and Heymsfield, A. J.: Melting and Shedding of Graupel and Hail. Part I: Model Physics, *Journal of the Atmospheric Sciences*, 44, 2754–2763, [https://doi.org/10.1175/1520-0469\(1987\)044<2754:MASOGA>2.0.CO;2](https://doi.org/10.1175/1520-0469(1987)044<2754:MASOGA>2.0.CO;2), 1987.
- Reimann, L., Simmer, C., and Trömel, S.: Assimilation of 3D polarimetric microphysical retrievals in a convective-scale NWP system, *Atmospheric Chemistry and Physics*, 23, 14 219–14 237, <https://doi.org/10.5194/acp-23-14219-2023>, 2023.
- Ricard, D., Lac, C., Riette, S., Legrand, R., and Mary, A.: Kinetic energy spectra characteristics of two convection-permitting limited-area models AROME and Meso-NH, *Quarterly Journal of the Royal Meteorological Society*, 139, 1327–1341, <https://doi.org/10.1002/qj.2025>, 2013.
- Ryzhkov, A., Pinsky, M., Pokrovsky, A., and Khain, A.: Polarimetric Radar Observation Operator for a Cloud Model with Spectral Microphysics, *Journal of Applied Meteorology and Climatology*, 50, 873–894, <https://doi.org/10.1175/2010JAMC2363.1>, 2011.
- Ryzhkov, A. V. and Zrníc, D. S.: Radar Polarimetry for Weather Observations, Springer Atmospheric Sciences, Springer International Publishing, 1 edn., ISBN 978-3-030-05092-4, <http://link.springer.com/10.1007/978-3-030-05093-1>, 2019.
- Ryzhkov, A. V. and Zrníc, D. S.: Depolarization in Ice Crystals and Its Effect on Radar Polarimetric Measurements, *Journal of Atmospheric and Oceanic Technology*, 24, 1256–1267, <https://doi.org/10.1175/JTECH2034.1>, 2007.
- Ryzhkov, A. V., Zhuravlyov, V. B., and Rybakova, N. A.: Preliminary Results of X-Band Polarization Radar Studies of Clouds and Precipitation, *Journal of Atmospheric and Oceanic Technology*, 11, 132–139, [https://doi.org/10.1175/1520-0426\(1994\)011<0132:PROXBP>2.0.CO;2](https://doi.org/10.1175/1520-0426(1994)011<0132:PROXBP>2.0.CO;2), 1994.
- Ryzhkov, A. V., Kumjian, M. R., Ganson, S. M., and Khain, A. P.: Polarimetric Radar Characteristics of Melting Hail. Part I: Theoretical Simulations Using Spectral Microphysical Modeling, *Journal of Applied Meteorology and Climatology*, 52, 2849–2870, <https://doi.org/10.1175/JAMC-D-13-073.1>, 2013.
- Saunders, P. E.: Objective Identification and Tracking of ZDR Columns in X-band Radar Observations, Tech. rep., Purdue University, West Lafayette, Indiana, [https://docs.lib.purdue.edu/cgi/viewcontent.cgi?article=2522&context=open\\_access\\_theses](https://docs.lib.purdue.edu/cgi/viewcontent.cgi?article=2522&context=open_access_theses), 2018.
- Schrom, R. S. and Kumjian, M. R.: Bulk-Density Representations of Branched Planar Ice Crystals: Errors in the Polarimetric Radar Variables, *Journal of Applied Meteorology and Climatology*, 57, 333–346, <https://doi.org/10.1175/JAMC-D-17-0114.1>, 2018.
- Seifert, A. and Beheng, K. D.: A two-moment cloud microphysics parameterization for mixed-phase clouds. Part 1: Model description, *Meteorology and Atmospheric Physics*, 92, 45–66, <https://doi.org/10.1007/s00703-005-0112-4>, 2006.
- Seity, Y., Brousseau, P., Malardel, S., Hello, G., Bénard, P., Bouttier, F., Lac, C., and Masson, V.: The AROME-France Convective-Scale Operational Model, *Monthly Weather Review*, 139, 976–991, <https://doi.org/10.1175/2010MWR3425.1>, 2011.
- Seliga, T. A. and Bringi, V. N.: Potential Use of Radar Differential Reflectivity Measurements at Orthogonal Polarizations for Measuring Precipitation, *Journal of Applied Meteorology and Climatology*, 15, 69–76, [https://doi.org/10.1175/1520-0450\(1976\)015<0069:PUORDR>2.0.CO;2](https://doi.org/10.1175/1520-0450(1976)015<0069:PUORDR>2.0.CO;2), 1976.
- Shrestha, P. and Simmer, C.: Modeled Land Atmosphere Coupling Response to Soil Moisture Changes with Different Generations of Land Surface Models, *Water*, 12, 46, <https://doi.org/10.3390/w12010046>, 2020.
- Shrestha, P., Mendrok, J., Pejčić, V., Trömel, S., Blahak, U., and Carlin, J. T.: Evaluation of the COSMO model (v5.1) in polarimetric radar space – impact of uncertainties in model microphysics, retrievals and forward operators, *Geoscientific Model Development*, 15, 291–313, <https://doi.org/10.5194/gmd-15-291-2022>, 2022a.

- Shrestha, P., Trömel, S., Evaristo, R., and Simmer, C.: Evaluation of modelled summertime convective storms using polarimetric radar observations, *Atmospheric Chemistry and Physics*, 22, 7593–7618, <https://doi.org/10.5194/acp-22-7593-2022>, 2022b.
- Skamarock, W., Klemp, J., Dudhia, J., Gill, D., Barker, D., Wang, W., and Powers, J.: A Description of the Advanced Research WRF Version 3, Technical report, University Corporation for Atmospheric Research, <https://doi.org/10.5065/D68S4MVH>, 2008.
- 1140 Snyder, J. C., Ryzhkov, A. V., Kumjian, M. R., Khain, A. P., and Picca, J.: A ZDR Column Detection Algorithm to Examine Convective Storm Updrafts, *Weather and Forecasting*, 30, 1819–1844, <https://doi.org/10.1175/WAF-D-15-0068.1>, 2015.
- Sokolowsky, G. A., Freeman, S. W., Jones, W. K., Kukulies, J., Senf, F., Marinescu, P. J., Heikenfeld, M., Brunner, K. N., Bruning, E. C., Collis, S. M., Jackson, R. C., Leung, G. R., Pfeifer, N., Raut, B. A., Saleeby, S. M., Stier, P., and van den Heever, S. C.: *tobac v1.5: Introducing Fast 3D Tracking, Splits and Mergers, and Other Enhancements for Identifying and Analysing Meteorological Phenomena*, *EGUsphere*, pp. 1–37, <https://doi.org/10.5194/egusphere-2023-1722>, 2023.
- 1145 Starzec, M., Mullendore, G. L., and Kucera, P. A.: Using Radar Reflectivity to Evaluate the Vertical Structure of Forecast Convection, *Journal of Applied Meteorology and Climatology*, 57, 2835–2849, <https://doi.org/10.1175/JAMC-D-18-0116.1>, 2018.
- Stein, J.: Another look at the contingency tables: scores based on Manhattan distances in the phase space, *Meteorological Applications*, 18, 28–39, <https://doi.org/10.1002/met.199>, 2011.
- 1150 Stein, T. H. M., Hogan, R. J., Clark, P. A., Halliwell, C. E., Hanley, K. E., Lean, H. W., Nicol, J. C., and Plant, R. S.: The DYMECS Project: A Statistical Approach for the Evaluation of Convective Storms in High-Resolution NWP Models, *Bulletin of the American Meteorological Society*, 96, 939–951, <https://doi.org/10.1175/BAMS-D-13-00279.1>, 2015.
- Swets, J. A.: Indices of discrimination or diagnostic accuracy: Their ROCs and implied models, *Psychological Bulletin*, 99, 100–117, <https://doi.org/10.1037/0033-2909.99.1.100>, 1986.
- 1155 Szyrmer, W. and Zawadzki, I.: Modeling of the Melting Layer. Part I: Dynamics and Microphysics, *Journal of the Atmospheric Sciences*, 56, 3573–3592, [https://doi.org/10.1175/1520-0469\(1999\)056<3573:MOTMLP>2.0.CO;2](https://doi.org/10.1175/1520-0469(1999)056<3573:MOTMLP>2.0.CO;2), 1999.
- Taufour, M., Vié, B., Augros, C., Boudevillain, B., Delanoë, J., Delautier, G., Ducrocq, V., Lac, C., Pinty, J.-P., and Schwarzenböck, A.: Evaluation of the two-moment scheme LIMA based on microphysical observations from the HyMeX campaign, *Quarterly Journal of the Royal Meteorological Society*, 144, 1398–1414, <https://doi.org/10.1002/qj.3283>, 2018.
- 1160 Taufour, M., Pinty, J.-P., Barthe, C., Vié, B., and Wang, C.: LIMA (v2.0): A full two-moment cloud microphysical scheme for the mesoscale non-hydrostatic model Meso-NH v5-6, *EGUsphere*, pp. 1–36, <https://doi.org/10.5194/egusphere-2024-946>, 2024.
- Termonia, P., Fischer, C., Bazile, E., Bouyssel, F., Brožková, R., Bénard, P., Bochenek, B., Degrauwe, D., Derková, M., El Khatib, R., Hamdi, R., Mašek, J., Pottier, P., Pristov, N., Seity, Y., Smolíková, P., Španiel, O., Tudor, M., Wang, Y., Wittmann, C., and Joly, A.: The ALADIN System and its canonical model configurations AROME CY41T1 and ALARO CY40T1, *Geoscientific Model Development*, 11, 257–281, <https://doi.org/10.5194/gmd-11-257-2018>, 2018.
- 1165 Thomas, G.: Potentiel de l’assimilation des données radar à double polarisation pour la prévision numérique du temps à l’échelle convective, These de doctorat, Toulouse, INPT, <https://theses.fr/2021INPT0009>, 2021.
- Thompson, G., Rasmussen, R. M., and Manning, K.: Explicit Forecasts of Winter Precipitation Using an Improved Bulk Microphysics Scheme. Part I: Description and Sensitivity Analysis, *Monthly Weather Review*, 132, 519–542, [https://doi.org/10.1175/1520-0493\(2004\)132<0519:EFOWPU>2.0.CO;2](https://doi.org/10.1175/1520-0493(2004)132<0519:EFOWPU>2.0.CO;2), 2004.
- 1170 Trömel, S., Blahak, U., Evaristo, R., Mendrok, J., Neef, L., Pejčić, V., Scharbach, T., Shrestha, P., and Simmer, C.: Chapter 7 : Fusion of radar polarimetry and atmospheric modeling, in: *Advances in Weather Radar. Volume 2, Books*, pp. 293–344, The Institution of Engineering and Technology, ISBN 978-1-83953-624-3, [https://digital-library.theiet.org/doi/10.1049/sbra557g\\_ch7](https://digital-library.theiet.org/doi/10.1049/sbra557g_ch7), 2023.

- 1175 van der Walt, S., Schönberger, J. L., Nunez-Iglesias, J., Boulogne, F., Warner, J. D., Yager, N., Gouillart, E., and Yu, T.: scikit-image: image processing in Python, *PeerJ*, 2, e453, <https://doi.org/10.7717/peerj.453>, 2014.
- Vié, B., Pinty, J.-P., Berthet, S., and Leriche, M.: LIMA (v1.0): A quasi two-moment microphysical scheme driven by a multimodal population of cloud condensation and ice freezing nuclei, *Geoscientific Model Development*, 9, 567–586, <https://doi.org/10.5194/gmd-9-567-2016>, 2016.
- 1180 Wattrelot, E., Caumont, O., and Mahfouf, J.-F.: Operational Implementation of the 1D+3D-Var Assimilation Method of Radar Reflectivity Data in the AROME Model, *Monthly Weather Review*, 142, 1852–1873, <https://doi.org/10.1175/MWR-D-13-00230.1>, 2014.
- Wolfensberger, D. and Berne, A.: From model to radar variables: a new forward polarimetric radar operator for COSMO, *Atmospheric Measurement Techniques*, 11, 3883–3916, <https://doi.org/10.5194/amt-11-3883-2018>, 2018.
- Wurtz, J., Bouniol, D., Vié, B., and Lac, C.: Evaluation of the AROME model’s ability to represent ice crystal icing using in  
1185 situ observations from the HAIC 2015 field campaign, *Quarterly Journal of the Royal Meteorological Society*, 147, 2796–2817, <https://doi.org/10.1002/qj.4100>, 2021.
- Wurtz, J., Bouniol, D., and Vié, B.: Improvements to the parametrization of snow in AROME in the context of ice crystal icing, *Quarterly Journal of the Royal Meteorological Society*, 149, 878–893, <https://doi.org/10.1002/qj.4437>, 2023.
- Xue, M., Droegemeier, K. K., Wong, V., Shapiro, A., Brewster, K., Carr, F., Weber, D., Liu, Y., and Wang, D.: The Advanced Regional Prediction System (ARPS) – A multi-scale nonhydrostatic atmospheric simulation and prediction tool. Part II: Model physics and applications,  
1190 *Meteorology and Atmospheric Physics*, 76, 143–165, <https://doi.org/10.1007/s007030170027>, 2001.
- Xue, M., Droegemeier, K. K., and Wong, V.: The Advanced Regional Prediction System (ARPS) - A multi-scale nonhydrostatic atmospheric simulation and prediction model. Part I: Model dynamics and verification, *Meteorology and Atmospheric Physics*, 75, 161–193, <https://doi.org/10.1007/s007030070003>, 2020.
- 1195 Yuter, S. E. and Houze, R. A.: Three-Dimensional Kinematic and Microphysical Evolution of Florida Cumulonimbus. Part II: Frequency Distributions of Vertical Velocity, Reflectivity, and Differential Reflectivity, *Monthly Weather Review*, 123, 1941–1963, [https://doi.org/10.1175/1520-0493\(1995\)123<1941:TDKAME>2.0.CO;2](https://doi.org/10.1175/1520-0493(1995)123<1941:TDKAME>2.0.CO;2), 1995.