

NAAC (v1.0): A Seamless Two-Decade Cross-Scale Simulation from the North American Atlantic Coast to Tidal Wetlands Using the 3D Unstructured-grid Model SCHISM (v5.11.0)

Xun Cai¹, Qubin Qin², Linlin Cui³, Xiucheng Yang⁴, Y. Joseph Zhang⁵, Jian Shen⁵

¹School of the Environment, Yale University, New Haven, CT, 06511, USA

²Coastal Studies Institute, East Carolina University, Wanchese, NC, 27981, USA

³Lynker and NOAA/NWS/NCEP/EMC, Leesburg, VA, 20176, USA

⁴Department of Natural Resources and the Environment, University of Connecticut, Storrs, CT, 06229, USA

⁵Virginia Institute of Marine Science, William & Mary, Gloucester Point, VA, 23062, USA

Correspondence to: Xun Cai (xun.cai@yale.edu)

Contents of this file

Figures S1 to S4

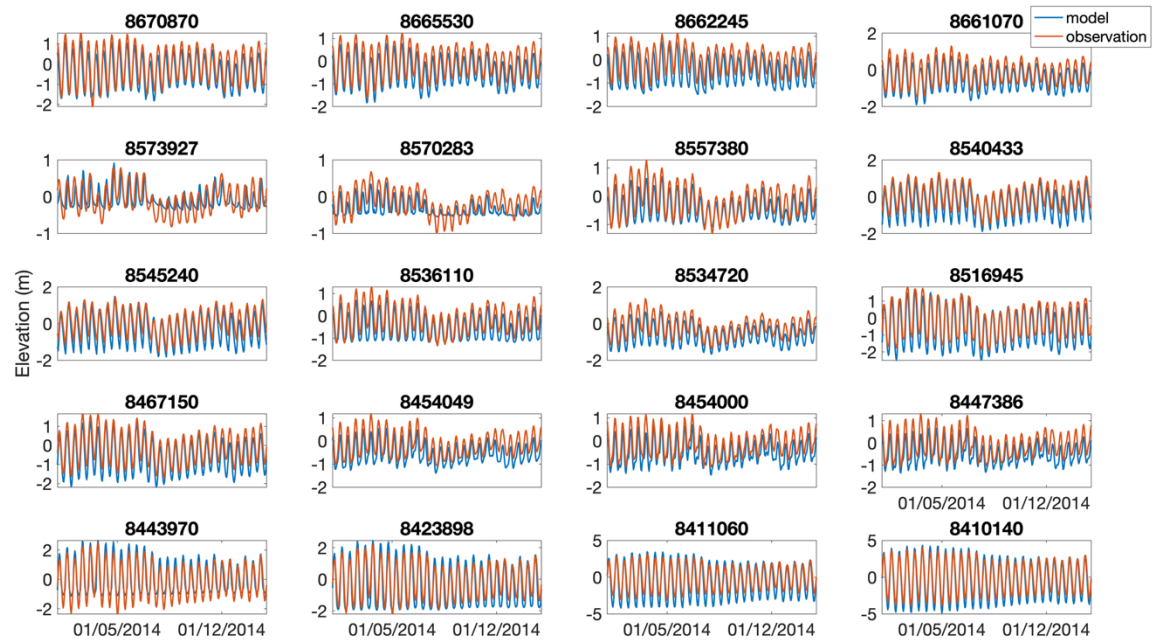
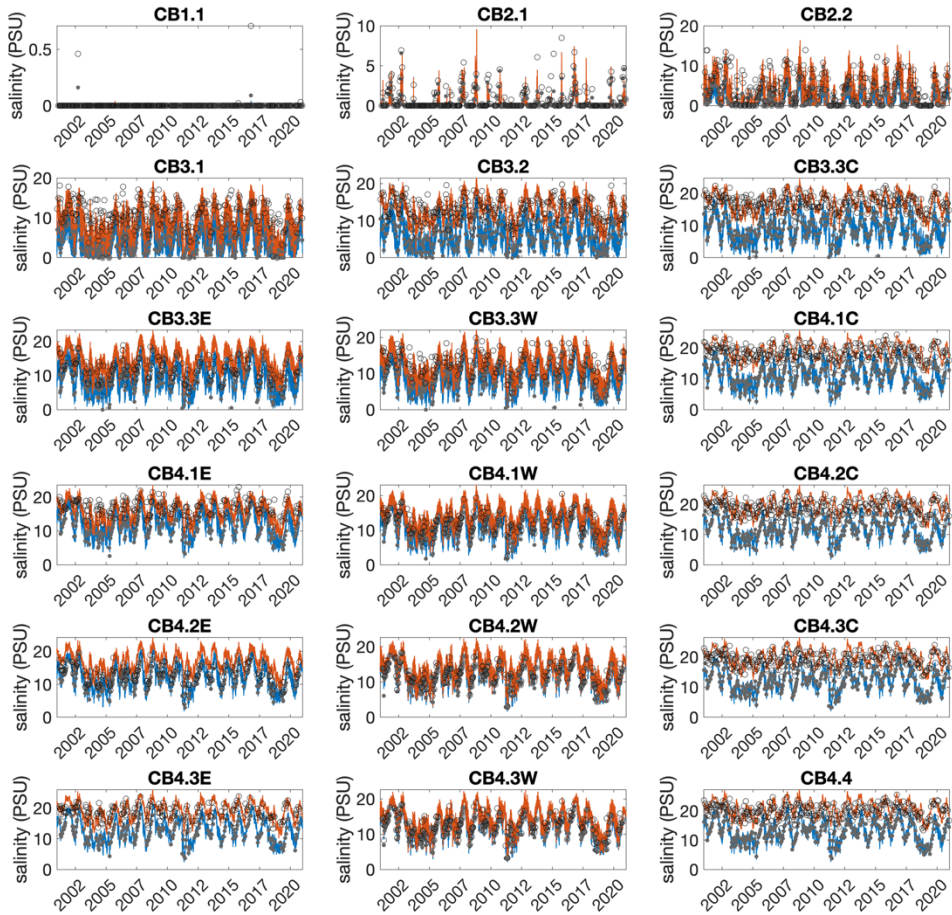
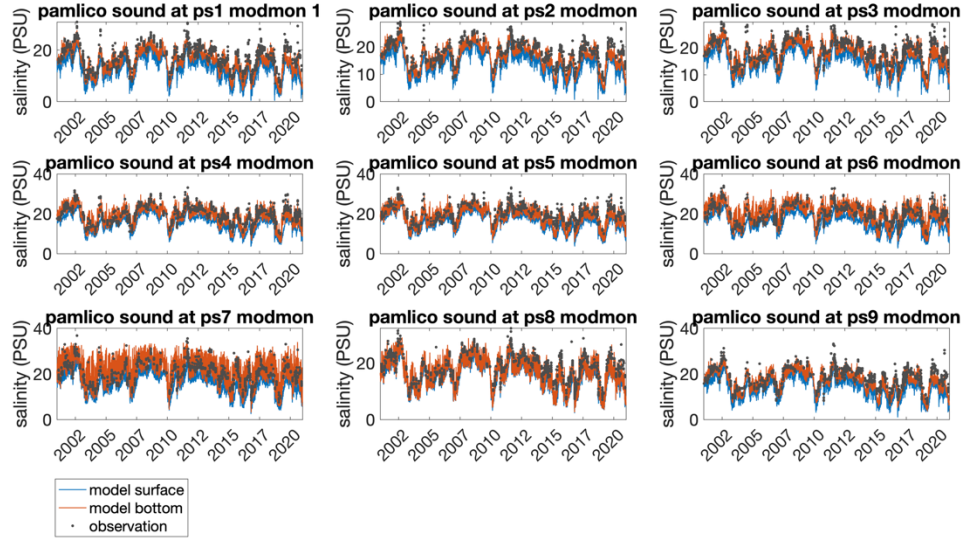


Figure S1. Time series comparison of simulated elevation with continuous observations at NOAA-COOPS.



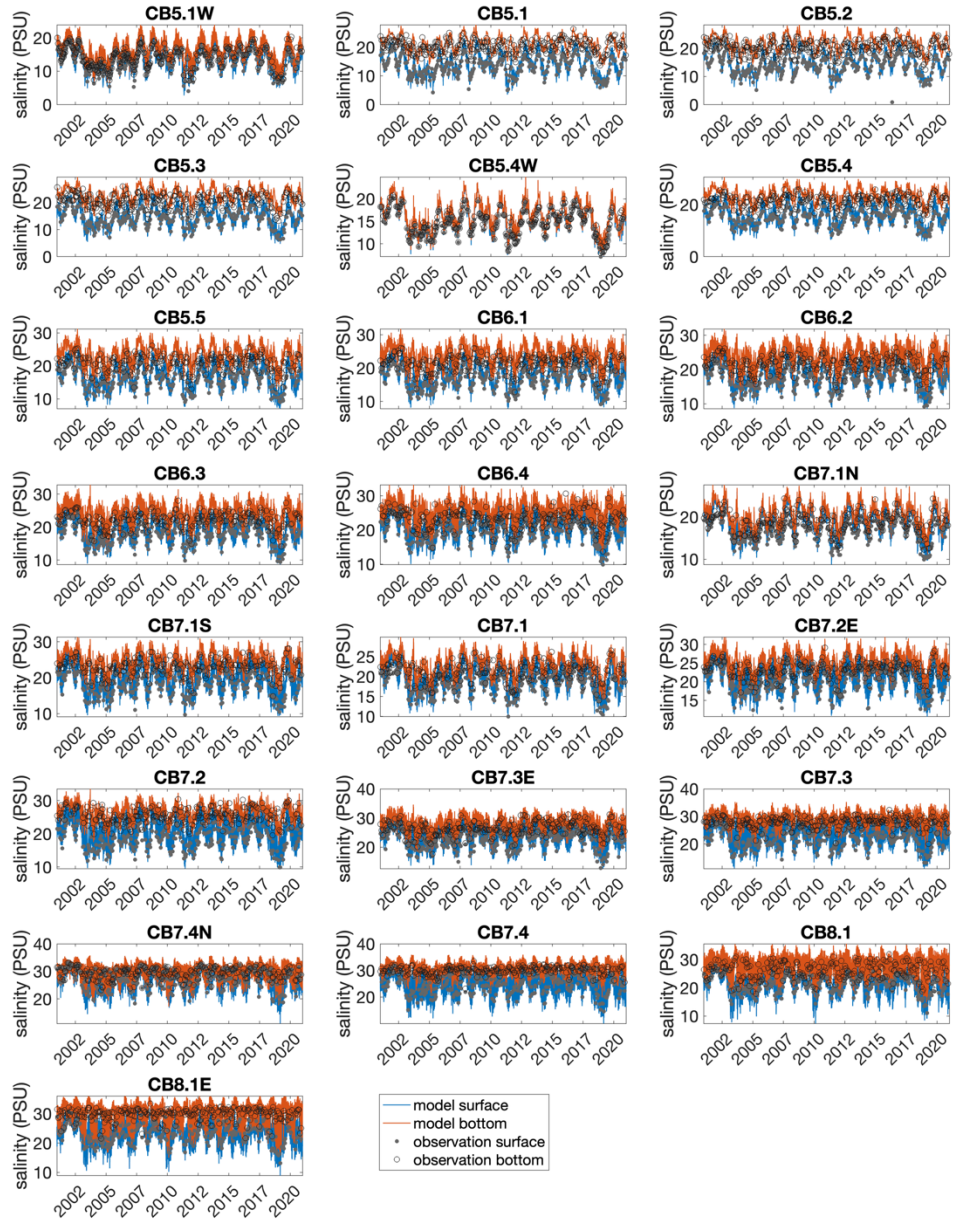
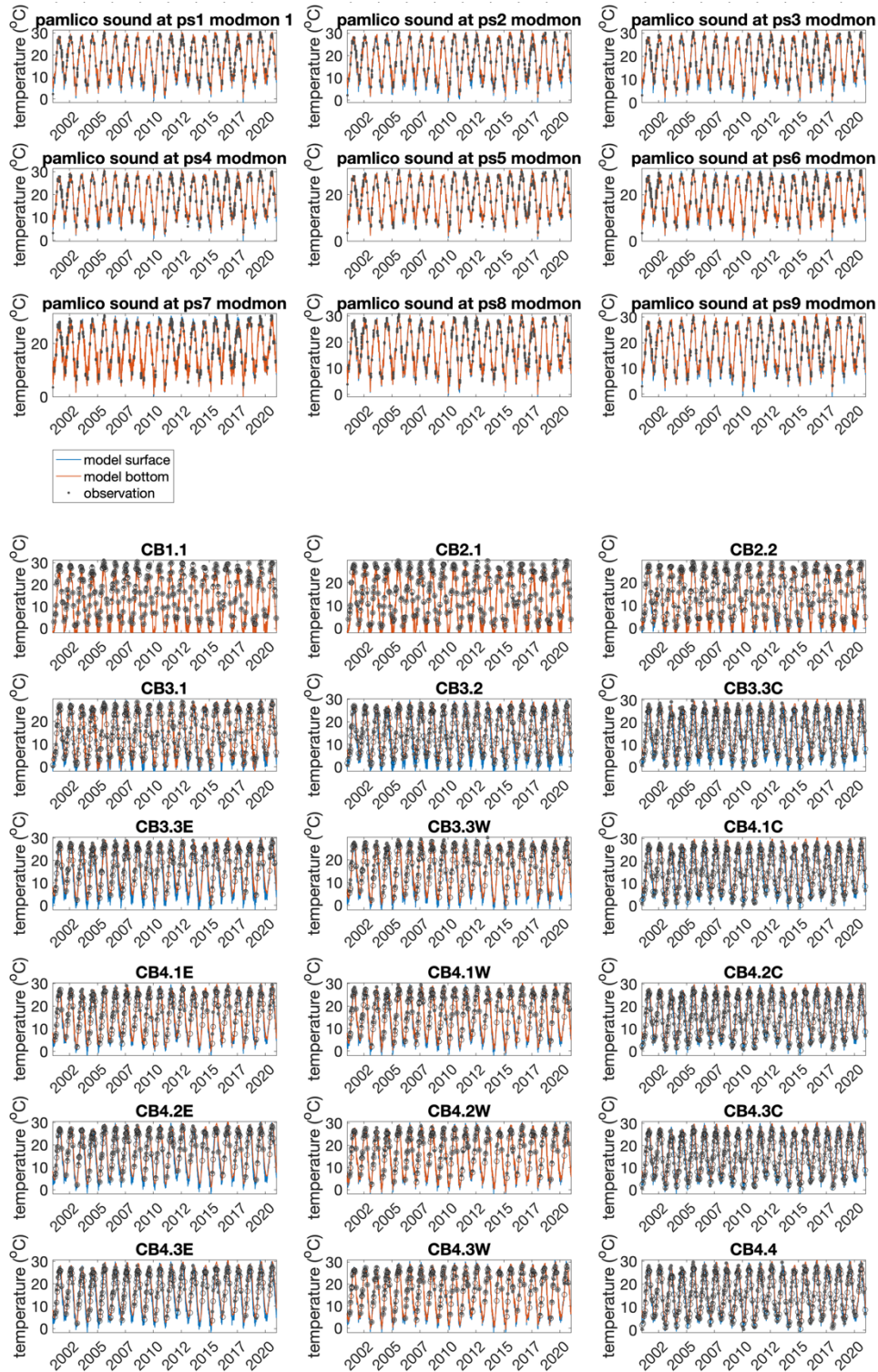


Figure S2. Time series comparison of simulated salinity with continuous observations at APES and CBP.



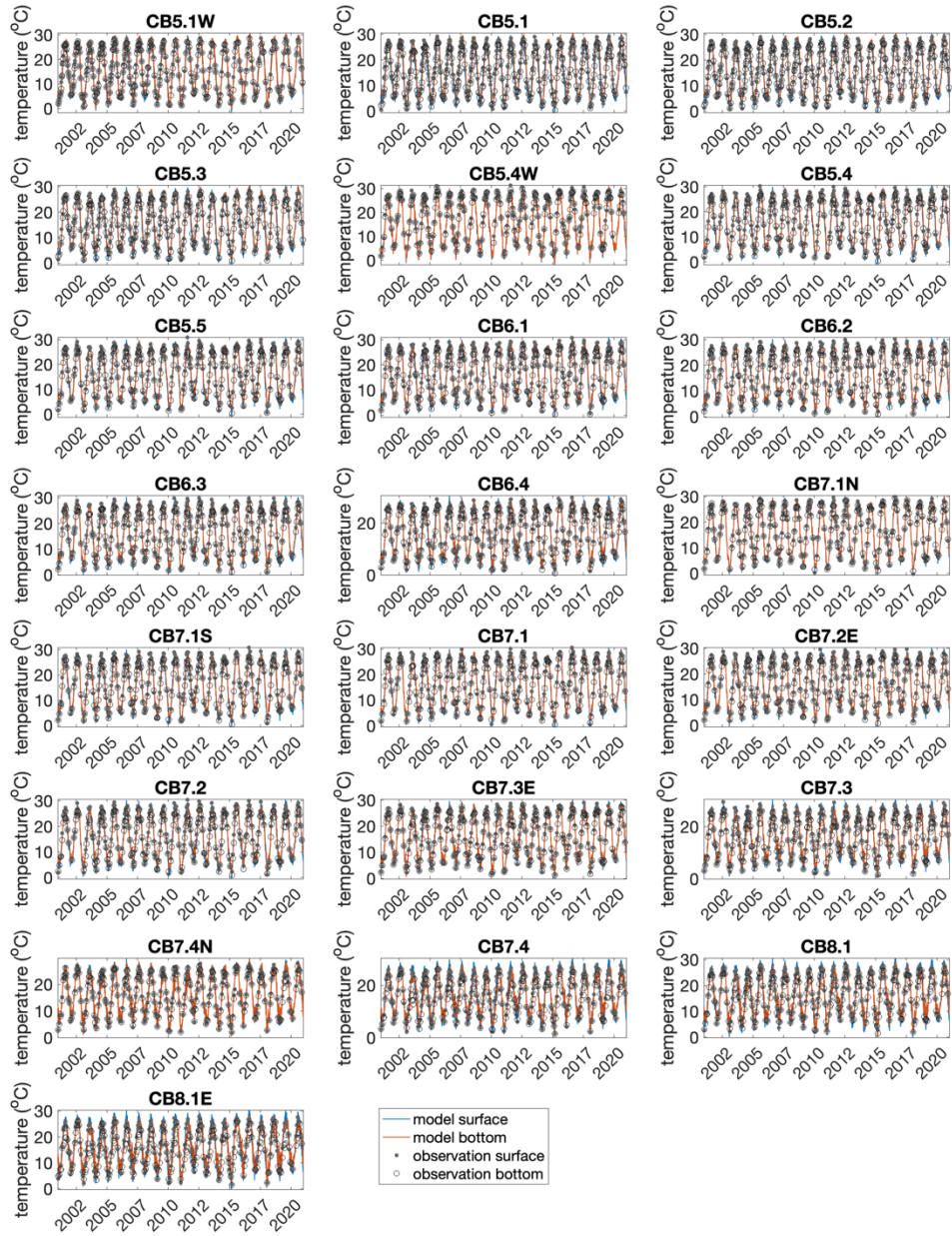
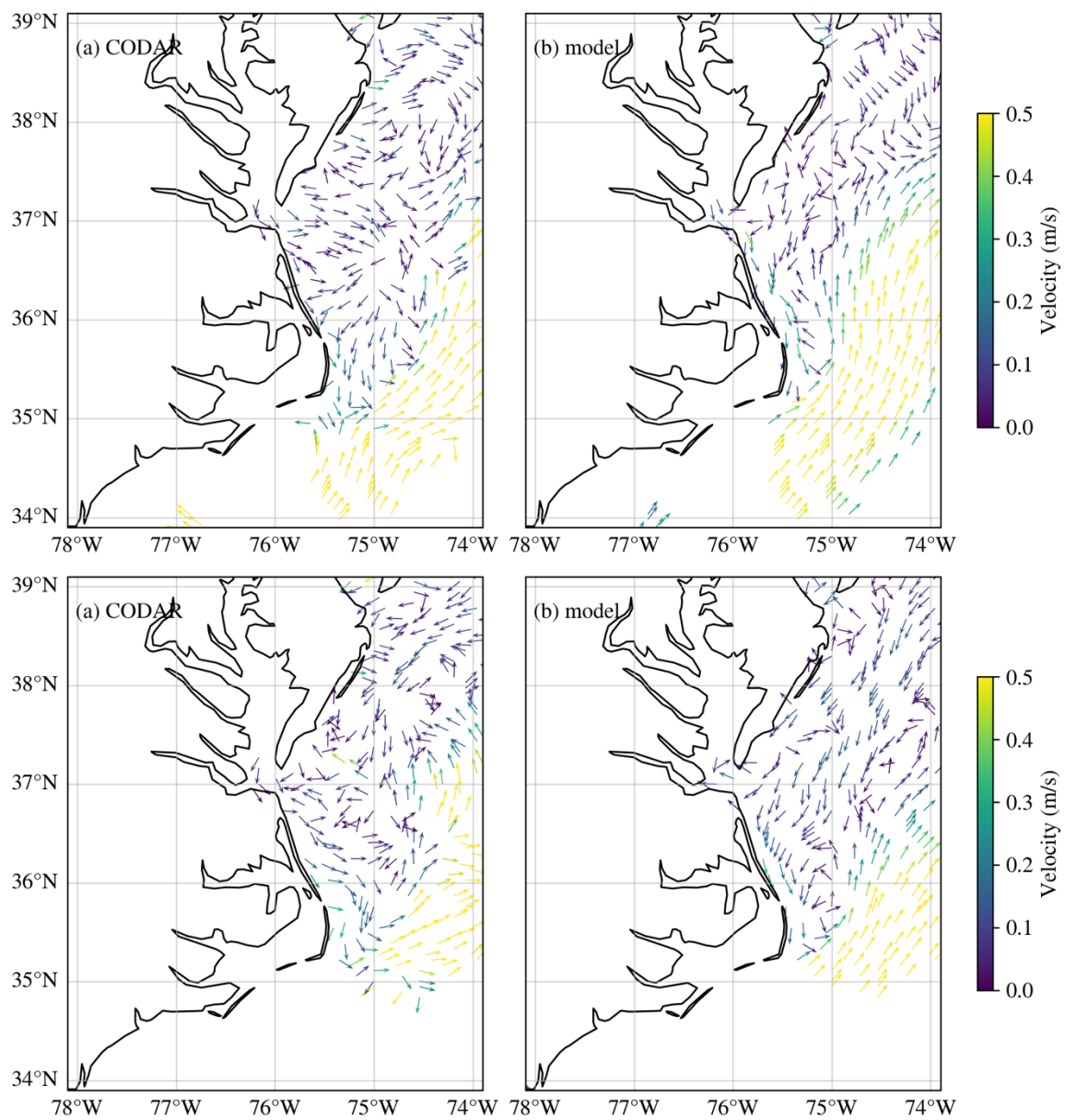
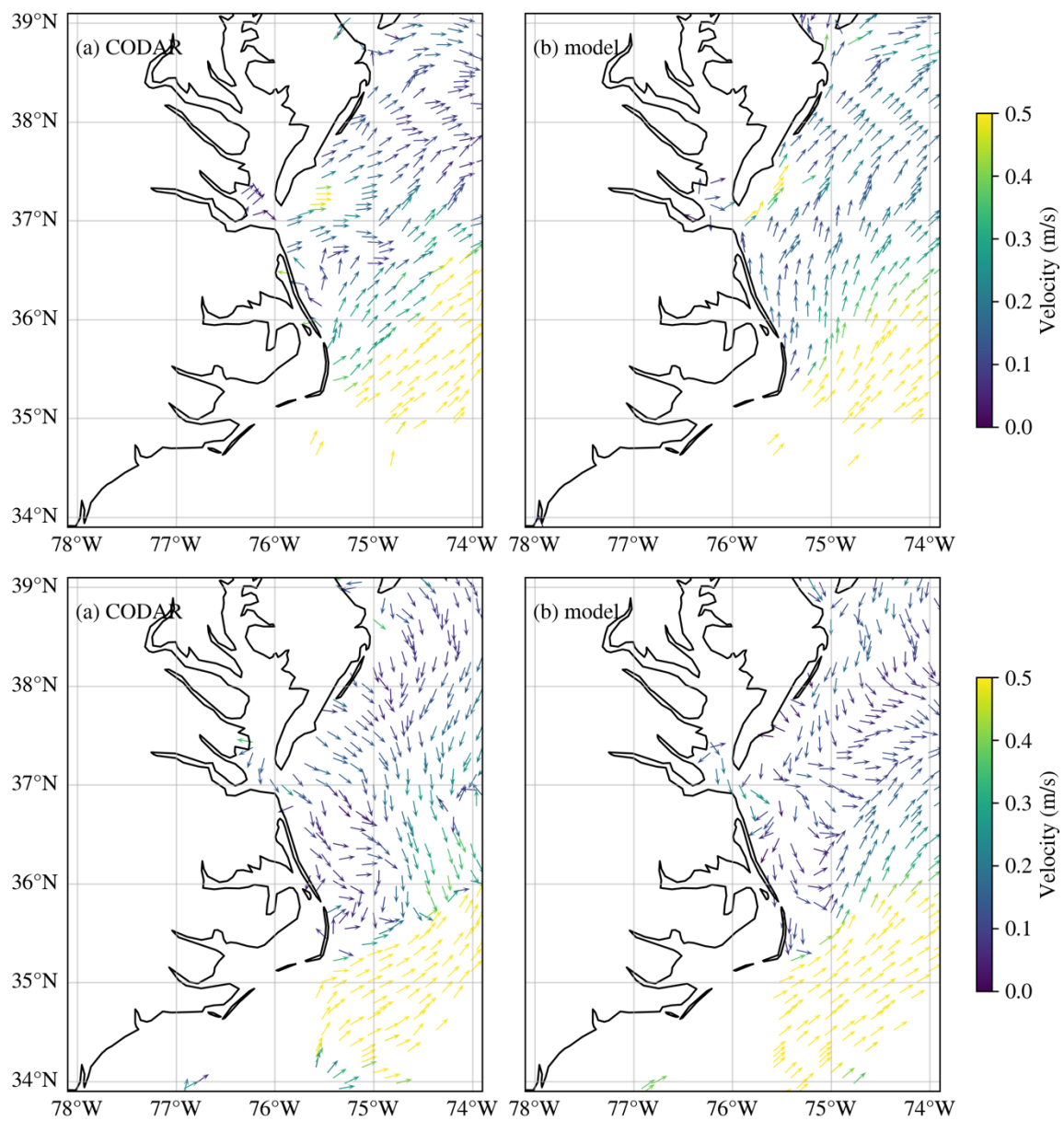


Figure S3. Time series comparison of simulated temperature with continuous observations at APES and CBP.





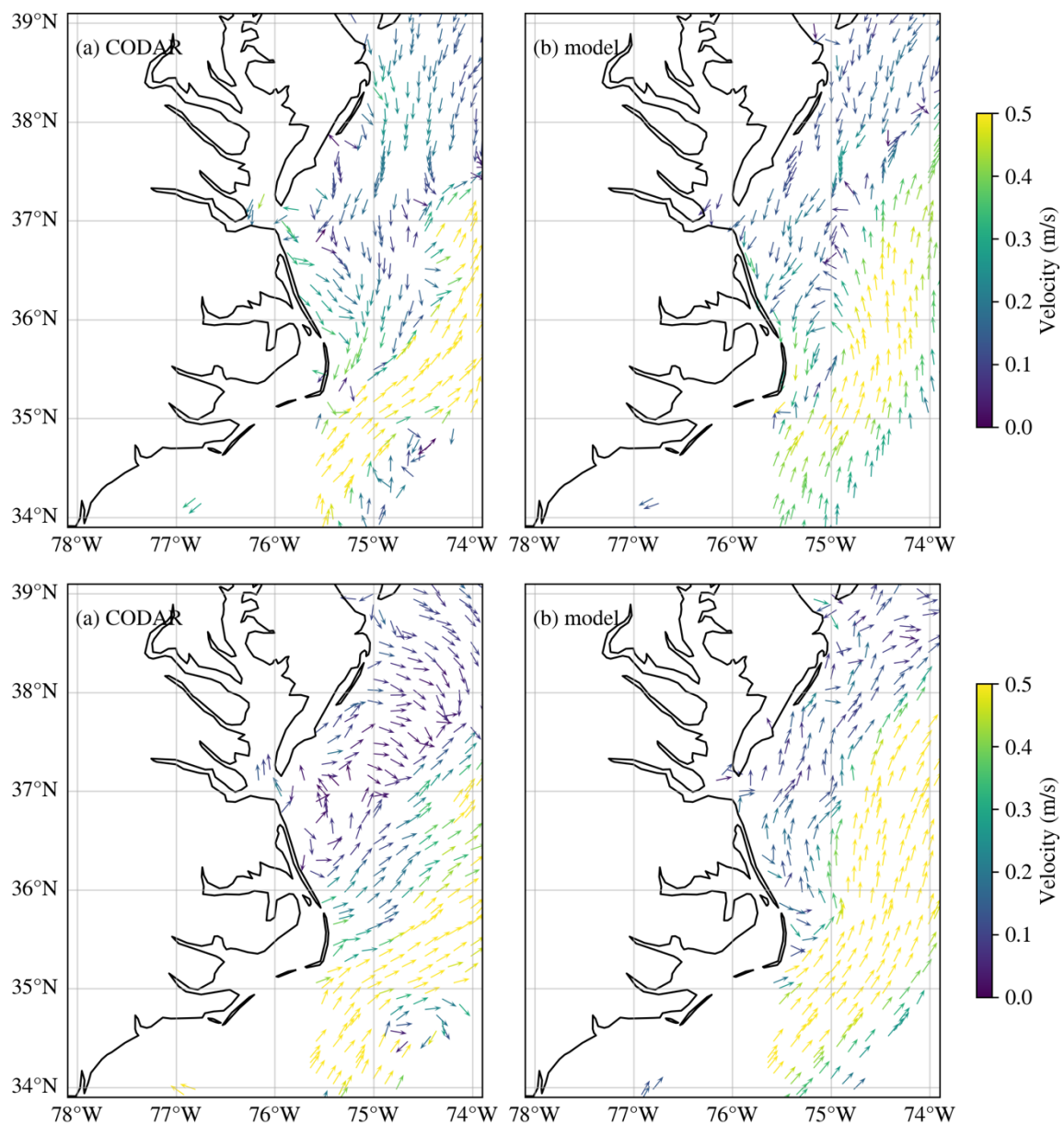


Figure S4. Time series comparison of simulated temperature with continuous observations at APES and CBP. Daily averaged surface currents over the Mid-Atlantic coast from (a) CODAR observations and (b) model outputs on the 10th and 30th (28th for February) of February, July, and August 2015.