

Impact of northward tropical cyclones on ozone in Southeastern China

Shanshan Ouyang^{1,2}, Tao Deng², Jingyang Chen³, Run Liu^{1,4}, Xiaoyang Chen², Jinnan Yuan², Yanyan Huang², Shaw Chen Liu^{1,4}

5 ¹College of Environment and Climate, Institute for Environmental and Climate Research, Jinan University, Guangzhou, 511443, China

²Guangdong Provincial Key Laboratory of Regional Numerical Weather Prediction, Guangzhou Institute of Tropical and Marine Meteorology of China Meteorological Administration, GBA Academy of Meteorological Research, Guangzhou, 510640, China

10 ³Guangdong Ecological Meteorological Centre, Guangzhou 510640, China

⁴Guangdong-Hongkong-Macau Joint Laboratory of Collaborative Innovation for Environmental Quality, Jinan University, Guangzhou, 511443, China

Correspondence to: Tao Deng (tdeng@gd121.cn) and Shaw Chen Liu (shawliu@jnu.edu.cn)

Abstract. Autumn ozone pollution over Southeastern China (SEC) is usually influenced by tropical cyclones (TCs). Based on statistical analysis, WRF-CMAQ simulation, and TC vortex filtering method, this study explores the effects of the intensity and location of northward TCs on ozone in SEC. Results show that autumn maximum daily 8 hour average ozone during 2014–2024 is strongly affected by northward TCs reaching typhoon (TY) intensity or above, especially within 120–130°E and 20–30°N. As TCs within this key subregion intensify to TY, SEC develops stronger downdraft, lower cloud, stronger solar radiation, higher boundary layer height, lower relative humidity, weaker precipitation, and weaker surface winds, which jointly enhance ozone compared to other intensities. When TC intensity exceeds TY, the favorable meteorological conditions established at TY are no longer maintained, and ozone over SEC remains high but declines slightly, as confirmed by two simulations with intensifying TCs. In addition, comparison with the sensitivity experiment combining TC vortex removal with a weaker non-TC radiative regime revealed that the dynamical and radiative effects of northward TCs elevated ozone by over 10 ppb, with changes in biogenic emissions contributing approximately 1–3 ppb. Moreover, for TCs near 20°N, they primarily enhance ozone through photochemical production and horizontal transport, with impacts on southern SEC persisting even after landfall at 30°N. Finally, it is important to recognize the non-linear interaction between TCs and large-scale circulation such as the western Pacific subtropical high, which modulates TC tracks and intensity and subsequently influences ozone over SEC and even across the eastern China.

30 1 Introduction

Tropospheric ozone (O₃) is a product of photochemical reaction between volatile organic compounds (VOCs) and nitrogen oxides (NO_x) under sunlight (Lu et al., 2019). It is a typical secondary pollutant and one of the important factors

causing the complex air pollution in China (Professional Committee of Ozone Pollution Control of Chinese Society for Environmental Sciences, 2024; Trainer et al., 2000; Zhan et al., 2023). Excessive surface ozone concentration has adverse effects on both human health (Jacob and Winner, 2009) and ecosystems (Grulke and Heath, 2020). In addition to large-scale anthropogenic emissions caused by economic development and urban expansion (Feng et al., 2025; Y. Liu et al., 2023; Xie et al., 2016), synoptic meteorological patterns that bring high temperature, intense solar radiation, low humidity, low wind speed, and other unfavorable meteorological conditions, also play an important role in the formation and accumulation of ozone in various regions (Li, et al., 2023; Liu et al., 2024; Liu et al., 2025).

As a mesoscale weather system that forms and develops over the western Pacific Ocean, Tropical cyclones (TCs) significantly influences the generation, accumulation, transport, and removal of ozone in Southeastern China (SEC) (Qu et al., 2021; J. Wang et al., 2024). Statistical analyses indicate that ozone pollution episodes are more likely to occur and persist before TCs land and after TCs dissipate (Xi et al., 2025a; Xi et al., 2025b), when the central location of TC is about 500–4500 km from land (Chen et al., 2021; Hu et al., 2023), when the intensity of at least a strong tropical storm grade (Qu et al., 2021), or when the moving track follows an offshore-turning or northward type (Deng et al., 2019; Lam et al., 2018; Ding et al., 2023). Numerical simulations have further explored the combined effects of TC and the western Pacific subtropical high (WPSH) (C. Liu et al., 2023; Ouyang et al., 2022; Shu et al., 2016), TC-induced stratospheric ozone intrusion (Chen et al., 2022; Zhan and Xie, 2022), changes in the vertical structure of the boundary layer and ozone concentration by TC (He et al., 2021; Huang et al., 2021; Li et al., 2022), enhancement of TC on biogenic emissions and cross-regional transport (Wang et al., 2022; N. Wang et al., 2024; Xu et al., 2023), and complex regional ozone variations caused by consecutive TCs (J. Wang et al., 2024; Zhan et al., 2020). Moreover, through the Integrated Process Rate (IPR) method provided by atmospheric chemical models, previous studies have elucidated the impacts of TCs on tropospheric ozone in SEC via generation, transport, and other related processes (Ouyang et al., 2022; Qu et al., 2021; Xu et al., 2024). However, current quantitative studies of TCs impact on ozone primarily focus on physical and chemical process contributions. Complex interactions with other weather systems pose challenges in isolating and quantifying the specific contribution of TC and its intensity variations (Ouyang et al., 2022; Hu et al., 2024).

To reduce vortex initial position and intensity errors on forecast accuracy in TC simulations, the vortex separation and construction theory along with subsequent improvements proposed by (Kurihara et al., 1993; Kurihara et al., 1995), are commonly used combined with TC relocation to reconstruct vortex structures (Xu et al., 2019; Huang et al., 2018; Wu et al., 2020). This method not only improves the accuracy of numerical weather prediction but also provides a foundation for quantifying the contributions of TC and its intensity. For example, Tang et al. (2023) conducted sensitivity experiments that separated the effects of multiple tropical cyclones one by one to investigate the mechanism of the extremely heavy rainfall in Henan Province in 2021. Similarly, Zhao et al. (2021) systematically analyzed the effects of Typhoon Lekima (2019) on extreme heat days along the southeastern coast of China by comparing a control WRF simulation with sensitivity experiments that removed either the entire vortex or only its horizontal wind from the initial conditions. Furthermore, Lin et al. (2024) utilized the bogus model and found that the existence of TC enhanced the regional easterly wind anomaly over the

North China Plain (NCP), thereby causing a positive anomaly in surface PM_{2.5} concentration. However, the application of vortex removal methods in quantifying TC contributions to ozone remains relatively limited.

70 The Northward TC, as an important weather pattern influencing the interannual fluctuations of autumn ozone concentrations in SEC (Hu et al., 2023; Hu et al., 2024), clarifying how its varying intensities regulate meteorological conditions and atmospheric circulation to differentially impact ozone concentration changes, can provide crucial scientific support for developing targeted ozone management strategies during periods of northward TC influence. Therefore, this study employs observational and reanalysis data to statistically analyze the effects of meteorological factors and atmospheric circulation patterns on SEC ozone under different intensities of northward TCs during autumn from 2014 to 2024. 75 Furthermore, through WRF-CMAQ numerical simulation and TC intensity sensitivity experiments, we quantitatively evaluate the contributions of TC intensity and location to SEC ozone during two severe ozone pollution episodes.

2 Data and methods

2.1 Data

Hourly ozone concentration monitoring data over SEC (105–123°E and 18–32°N) in autumn from 2014 to 2024 were 80 obtained from the China National Environmental Monitoring Centre (available at <http://www.cnemc.cn/en/>, last access: 19 November 2025). The maximum daily 8 h average (MDA8) ozone concentration is calculated based on the hourly concentration values.

The TC track information, including position and intensity at a temporal resolution of 6 h used in this study was obtained from the China Meteorological Administration (CMA) Tropical Cyclone Data Centre (available at 85 <https://tcdata.typhoon.org.cn/>, last access: 19 November 2025; (Lu et al., 2021; Ying et al., 2014). The TC intensity is classified into six categories based on the maximum sustained wind speed near its surface centre: Tropical Depression (TD: 10.8–17.1 m s⁻¹), Tropical Storm (TS: 17.2–24.4 m s⁻¹), Severe Tropical Storm (STS: 24.5–32.6 m s⁻¹), Typhoon (TY: 32.7–41.4 m s⁻¹), Severe Typhoon (STY: 41.5–50.9 m s⁻¹), and Super Typhoon (SSTY: ≥51.0 m s⁻¹).

The European Centre for Medium-Range Weather Forecasts (ECMWF) Reanalysis v5 (ERA5) dataset (available at 90 <https://cds.climate.copernicus.eu/>, last access: 19 November 2025), with a horizontal resolution of 0.25° × 0.25° and a time interval of 6 h, was used to analyze the meteorological conditions and atmospheric circulation patterns during different intensity periods of TC. The parameters extracted include 2 m temperature (T₂), surface solar radiation downwards (SSRD), boundary layer height (PBLH), 850 hPa and 10 m zonal and meridional wind speed, 850 hPa Vertical velocity, 1000 hPa relative humidity (1000 hPa RH), total cloud cover (TCC), total precipitation (TP), and 500 hPa geopotential height.

95 The 6 h Final Global Forecast System Operational Analysis (FNL) data with a resolution of 0.25° × 0.25° from the National Centre for Environmental Prediction (NCEP) were used to provide initial and boundary conditions for the WRF simulation (available at <https://rda.ucar.edu/datasets/ds083.2/>, last access: 19 November 2025). Additionally, the variables used for TC intensity sensitivity experiments include temperature (T), geopotential height (H), horizontal winds (U and V),

and relative humidity (RH) for the three-dimensional fields, as well as surface pressure (ps), surface temperature (ts), sea level pressure (pse), and surface horizontal winds (U_{10} and V_{10}) for the two-dimensional fields.

2.2 Definition of TC-related days

In this study, TCs active over the western North Pacific during autumn from 2014 to 2024 are identified at a 6 h temporal resolution, and days with at least one TC record are defined as TC Days, while the remaining days are classified as Non-TC Days. Specifically, if more than one TC is present on the same day, that day is still counted only once as a TC Day. Considering the spatial range of TC influence on SEC (Deng et al., 2019; Lin et al., 2024), we further restrict the TC domain to 105–140°E and 10–40°N. Any day with at least one TC record within this region is regarded as a “TC influence” day, including post-landfall residual circulation days. Based on the above definitions, TC tracks are further classified into three types following by (Ouyang et al., 2026): westward TCs, landfalling TCs, and northward TCs (Fig. 3b–d).

2.3 Model configuration

The WRF (v3.9.1)-CMAQ (v4.7.1) model was used to simulate two TC-related severe ozone pollution episodes that occurred in SEC (TC Mitag with maximum intensity TY: from 28 September to 2 October 2019; TC Muifa with maximum intensity STY: from 8–14 September 2022), and the track as well as intensity of two TCs are shown in Fig. 1(a). The WRF model was set with two one-way nested domains with horizontal resolutions of 27 and 9 km (Fig. 1b). The outer domain (d01) covers most of East Asia with 283×184 grids, while the inner domain (d02) covers most parts of South China with 250×190 grids with the PRD and the central-northern part of Zhejiang Province (ZJ) are represented by orange and red boxes, respectively (Fig. 1b). The model applies the WRF Single-Moment 6-class scheme microphysics scheme, Rapid Radiative Transfer Model (RRTM) longwave scheme, Goddard shortwave scheme, revised MM5 Monin-Obukhov surface layer scheme, Noah land surface model, Yonsei University planetary boundary layer scheme, and Betts-Miller-Janjic cumulus parameterization. Notably, the WRF simulations in this study were conducted using a daily re-initialization strategy follow by Dong et al. (2018): with integrating the model for 36 h starting at 1200 UTC each day, then the first 12 h of the integration were discarded as model spin-up and the remaining 24 h were stitched together for a complete simulation over the typhoon period.

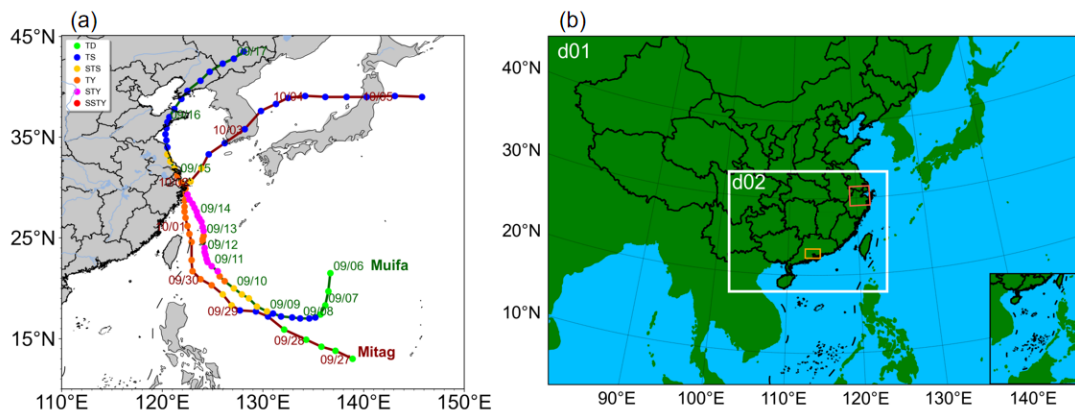


Figure 1: (a) The track and intensity of the TC Mitag (red text) and TC Muifa (green text). (b) The two nested model domains in the WRF-CMAQ model, along with the locations of the PRD (orange box) and ZJ (red box).

125

2.4 Sensitivity experiments design

In order to explore and quantify the contribution of TC to ozone, a series of experiments was conducted (Table 1). The control simulation (CTL) was performed using the settings described above to represent the original simulation results. Two sensitivity experiments were conducted to demonstrate the influence of TC on ozone in SEC. The first sensitivity experiment (IT_TC) was identical to CTL, except that the horizontal winds (U , V , U_{10} , and V_{10}) of the TC vortex were each doubled in magnitude from the initial conditions to represent a strengthened TC scenario.

130

The second sensitivity experiment (NO_TC) was designed to approximate an atmospheric state without TC influence by removing the vortex of T , H , U , V , and RH for the three-dimensional fields, as well as ps , ts , pse , and surface horizontal winds (U_{10} and V_{10}) for the two-dimensional fields. However, additional diagnostic analysis indicated that vortex removal alone may be insufficient to represent the cloud–radiation adjustment expected for periods without northward TCs, especially outside the TC core. As a result, the simulated radiation fields may remain biased relative to actual non-northward TC conditions. Statistical analysis of SSRD further showed that the average solar radiation over SEC between 12:00 and 18:00 was 15.01 MJ m^{-2} during the TC-affected periods of two severe ozone pollution episodes, but only 9.41 MJ m^{-2} during periods without northward TCs in autumn from 2014 to 2024. This indicates that solar radiation over SEC is generally weaker when there is no northward TC. To better represent this weaker radiative background, a uniform 37% reduction ($(15.01 \text{ (MJ m}^{-2}) - 9.41 \text{ (MJ m}^{-2})) / 15.01 \text{ (MJ m}^{-2}) * 100\%$) was applied to solar radiation and photolysis rate over the entire d02 domain throughout the full simulation periods of the two episodes. This was intended to partly compensate for the under-response of cloud- and radiation-related fields after vortex removal and to more accurately simulate the radiation conditions during periods without northward TCs in the NO_TC. Accordingly, NO_TC should be interpreted as a hybrid sensitivity experiment that combines dynamical (vortex removal) with radiative effects (forcing a weaker non-TC radiative regime).

135

140

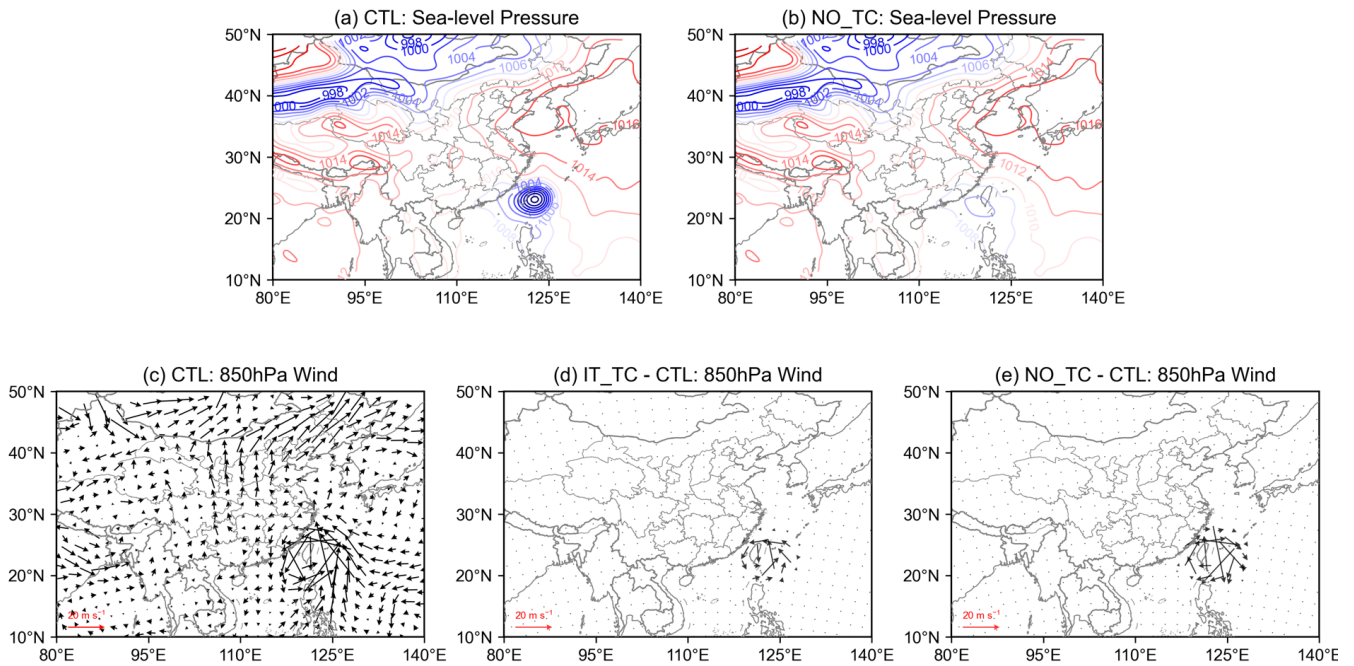
145

The vortex filtering method proposed by (Kurihara et al., 1993; Kurihara et al., 1995) was adopted in this study, with other meteorological variables adjusted through the dynamic and thermodynamic fields of the model itself to ensure better coordination between the filtering field and the model. TC intensification follows a similar procedure, except that the horizontal winds are doubled and then re-interpolated into the environmental flow. It should be noted that our intention is not to assess the ozone impact of TCs through a direct comparison between IT_TC and NO_TC. Instead, each sensitivity experiment is compared separately with CTL to diagnose the ozone responses under the strengthened-TC and no-TC scenarios, respectively. In other words, the mechanistic attribution is based on the independent comparisons of IT_TC-CTL and NO_TC-CTL, rather than on the direct comparability between IT_TC and NO_TC.

155 **Table 1: Summary of numerical experiments performed in this study.**

Experiment	Modifications
Control simulation (CTL)	Original numerical simulation.
Intensified TC (IT_TC)	Intensified TC vortex from the initial conditions, including the horizontal winds U , V , U_{10} , and V_{10} .
Removed TC along with reduced solar radiation and photolysis rate (NO_TC)	Removed TC vortex from the initial conditions (including T , H , U , V , and RH for the three-dimensional fields, as well as ps , ts , pse , U_{10} , and V_{10} for the two-dimensional fields), while simultaneously reducing both solar radiation and photolysis rate by 37%.

Taking 14:00 on 30 September 2019 as an example, the FNL analysis field was selected as the initial background field for the CTL to compare the sea-level pressure and 850 hPa wind fields of the NO_TC and the IT_TC. The results show that the CTL (Fig. 2a) exhibits a clear typhoon vortex to the east of Taiwan, whereas no or a very weak typhoon vortex is present after removing the typhoon (Fig. 2b). Comparing the 850 hPa wind fields of the CTL (Fig. 2c), the northward wind on the west side of the enhanced/removed typhoon strengthens/weakens (Figs. 2d and 2e), indicating that the vortex filtering method can effectively enhance or remove the typhoon. Moreover, the difference between the vortex-filtered background field and the initial background field only exists within the typhoon vortex component, with no changes outside this region. That is to say, the background field after vortex filtering alters only the distribution of variables within the typhoon component, while the surrounding meteorological fields remain unchanged, which ensures the consistency of the large-scale environmental field outside the typhoon component in the vortex-filtered background field. The vortex circulation after filtering maintains good coordination and continuity with the surrounding large-scale environmental field, confirming that this filtering method is both reasonable and feasible.



170 **Figure 2: Meteorological fields at 14:00 on 30 September 2019. Sea level pressure field for the CTL (a) and the NO_TC (b). Differences with the CTL (c) in the IT_TC (d) and the NO_TC (e) of the 850 hPa wind field.**

3 Results and discussion

3.1 Relationship between TC intensity and ozone in SEC

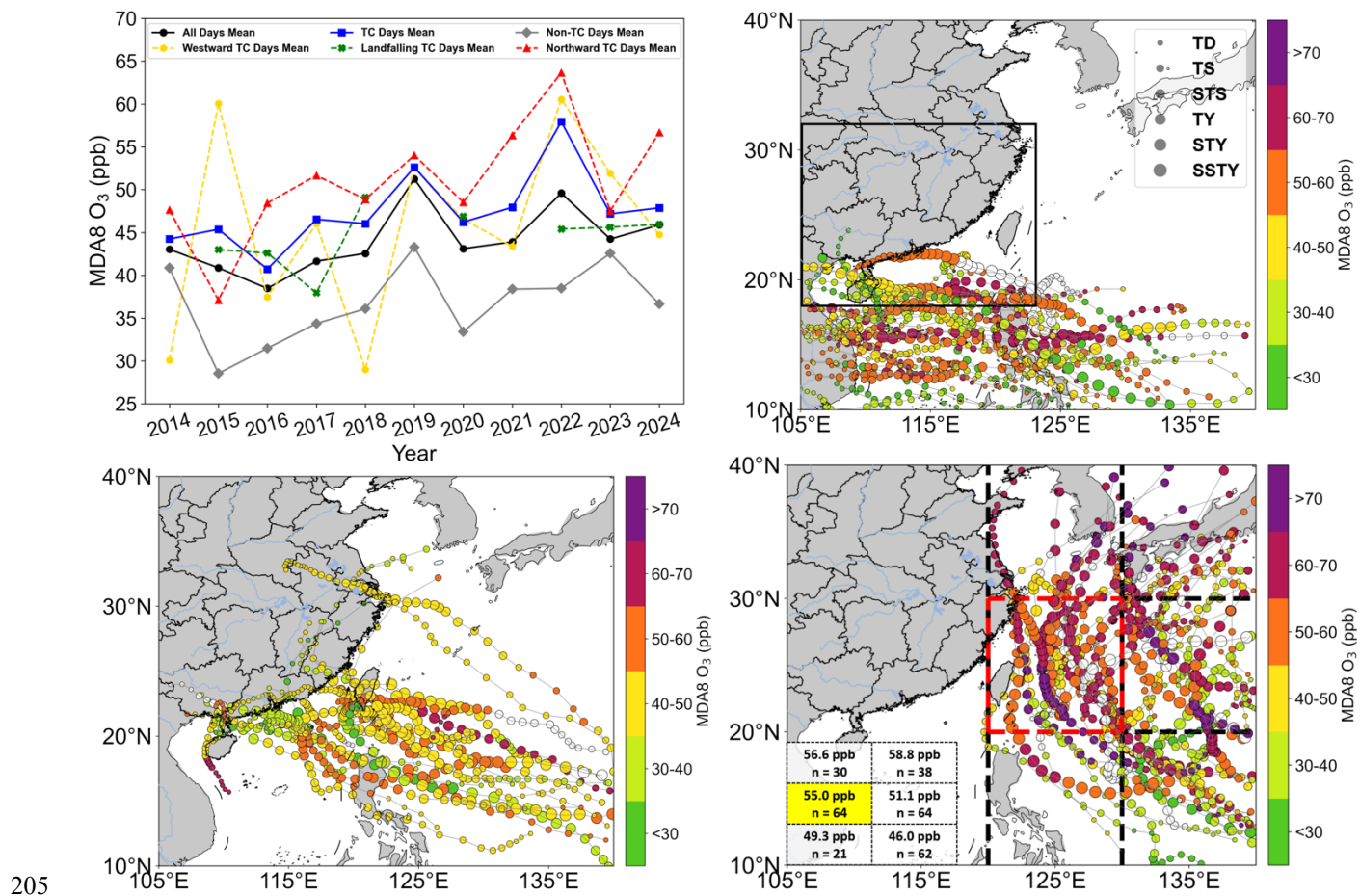
3.1.1 Characteristics of ozone concentration

175 Figure 3a shows the time series of autumn MDA8 ozone concentration over the SEC from 2014 to 2024 (All Days Mean, red line), with the blue and black dashed lines representing the average for days with TC (TC Days Mean) and without TC (Non-TC Days Mean), respectively. The interannual variation of the mean MDA8 ozone concentration reveals a fluctuating but overall increasing trend, with peak values occurring in 2019 and 2022. Throughout this period, ozone levels on TC Days Mean consistently exceeded those on All Days Mean, particularly in 2022 when the difference reached 8 ppb. In
 180 contrast, Non-TC Days Mean exhibited relatively lower ozone concentration without a significant linear trend over the 11 years period. These results demonstrate that TC activity is closely associated with elevated autumn ozone concentration in SEC.

After classifying TCs within 105–140°E and 10–40°N by track type, clear differences emerge in the interannual variability of SEC ozone among the three TC types (Fig. 3a). Ozone on westward TC days (yellow dashed line) show the
 185 largest year-to-year fluctuations, with relatively low values occur in 2014 and 2018 but much higher values in 2015, 2019, and 2022, indicating strong case-to-case variability in the ozone response to westward TCs. In contrast, ozone on landfalling

TC days (green dashed line) is generally lower and varies only weakly from year to year, remaining near 43–46 ppb in most years. In several years, no statistics are available because no landfalling TCs occurred. This suggests that, although landfalling TCs can also be associated with elevated ozone episodes, their effect on regionally averaged ozone is comparatively limited. By comparison, ozone on northward TC Days (red dashed line) stays at a high level in most years and is overall higher than that for the other two track types, especially in 2019, 2022, and 2024, with the highest value occurring in 2022 (about 63.66 ppb). This indicates that northward TCs show the strongest association with autumn high-ozone conditions over SEC, and that their interannual variability agrees better with the years of elevated regional ozone.

To directly illustrate how the three TC track types affect ozone over SEC during their movement, Figs. 3b–d show the TC positions for each TC type together with the corresponding ozone levels over SEC. The dot sizes and colors represent the intensity of TCs and the MDA8 ozone levels in SEC corresponding to the positions of TCs, respectively. Results show that westward TCs strengthen as they approach the southern side of the SEC, accompanied by varying degrees of ozone concentration enhancement. When these TCs make landfall between 12–18°N subsequently, the ozone concentration across the entire SEC remains at a relatively high level. However, landfall over Hainan (southern area of SEC) induces a clear ozone reduction in SEC (Fig. 3b). For landfalling TCs, both intensity and ozone concentration in SEC initially increase then decrease during their approach, though overall ozone levels remain relatively low among the three TC types (Fig. 3c). During the period of the northward TC influence (Fig. 3d), ozone concentrations in SEC frequently exceeded 50 ppb, significantly higher than that of the other TC types. These findings demonstrate that TC intensity also plays an important role in influencing the ozone concentration of SEC, in addition to track type and location.



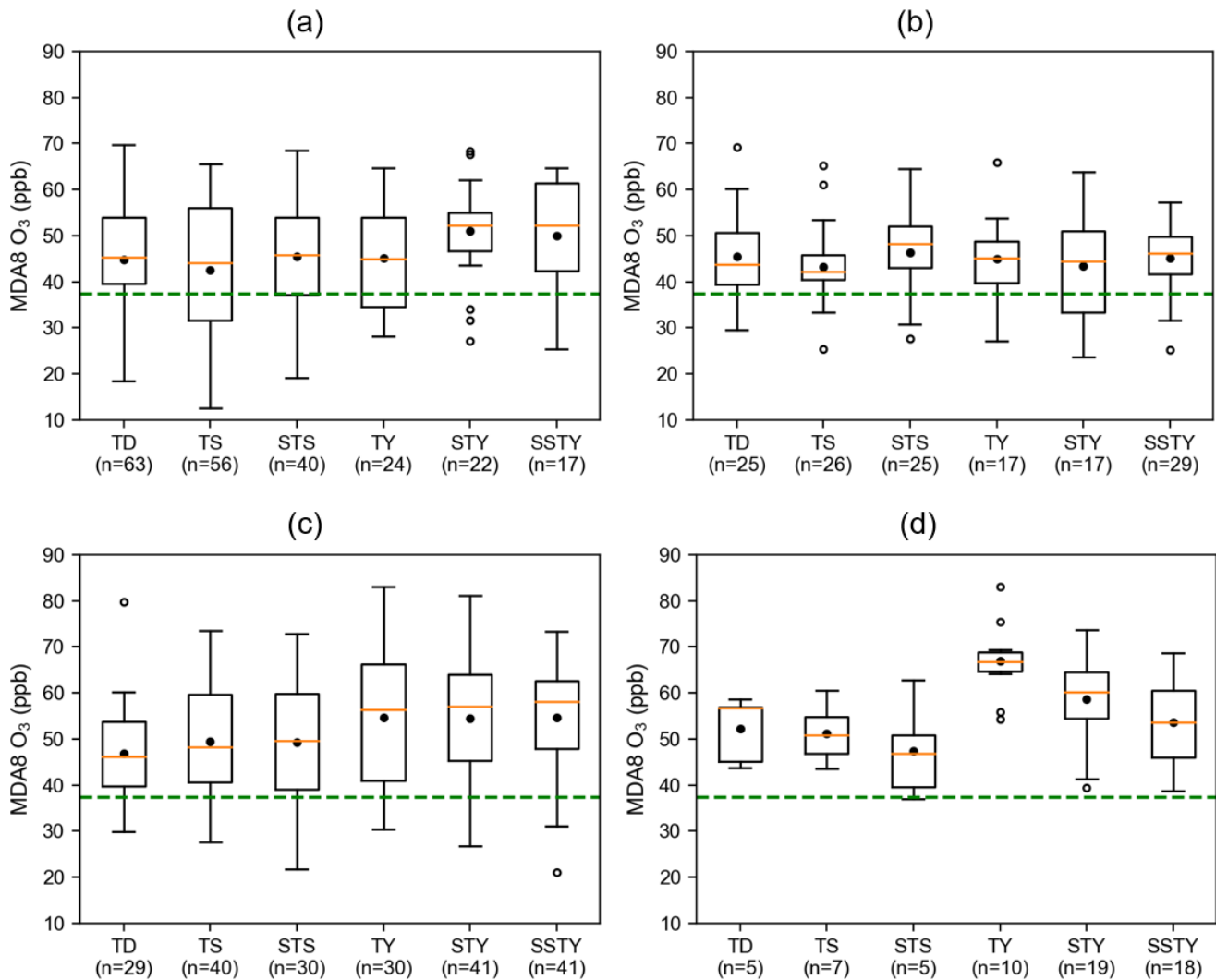
205 **Figure 3: (a)** Time series of autumn average MDA8 ozone concentration over SEC from 2014 to 2024 for all days (black line), TC days (blue line), non-TC days (grey line), westward TC days (yellow dashed line), landfalling TC days (green dashed line), and northward TC days (red dashed line). **(b–d)** Tracks of westward TCs, landfalling TCs, and northward TCs, with dot sizes representing TC intensity, and dot colors showing the ozone concentration levels in SEC corresponding to the positions of TCs. The black box in panel (b) outlines the spatial boundary of SEC. In panel (d), the activity region of northward TCs is further partitioned into six subregions at $10^\circ \times 10^\circ$ latitude–longitude intervals, with the key subregion marked by the red box. The inset table in the lower-left corner lists the number of influence days and the mean ozone concentration for each subregion, with the key subregion highlighted in yellow.

210

To further investigate the influence of TC intensity on ozone in SEC, Figure 4 presents the ozone concentration across different TC intensity categories for each TC type. For westward TCs (Fig. 4a), both mean and median ozone concentration are obviously higher when TCs reach STY or SSTY intensity, suggesting that approaching but not yet landfalling TCs are more conducive to ozone formation and accumulation in SEC. Landfalling TCs (Fig. 4b) show no clear ozone concentration trend with increasing intensity, with the mean ozone concentration at STY being even lower than that at TY. In contrast, northward TCs (Fig. 4c) maintain higher ozone concentration than the other two types. Particularly when TCs reach TY or higher intensity, the mean, median, and 85th percentile of ozone concentration all reach their highest levels. The findings above collectively identify intense northward TCs as a key contributor to elevated autumn ozone levels in SEC.

220

In addition, considering that the influence of northward TCs on SEC may vary substantially with TC location (Hu et al., 2023), we further divided the activity domain of northward TCs into six subregions at 10° latitude–longitude intervals and calculated, for each subregion, the number of TC influence days and the corresponding mean ozone concentration, in order to identify the most critical area affected by northward TCs. The results are listed in the table in the lower-left corner of Fig. 3d. When northward TCs are located within 120–130°E and 20–30°N, their combined influence on SEC is strongest (65 days with 55 ppb). As shown in Fig. 4d, the mean ozone concentration in this key subregion exceeds 50 ppb at nearly all intensities and reaches a maximum at TY. Unlike the broader-domain result shown in Fig. 3c, ozone decreases at STY and SSTY in this key subregion. This suggests that, when stronger TCs occur within this subregion, the accompanying meteorological changes may shift SEC ozone from an increasing to a decreasing tendency. On this basis, the following section focuses on how northward TC intensity affects ozone over SEC when the TC is located within the key subregion of 120–130°E and 20–30°N.



235 **Figure 4: Ozone concentration corresponding to different intensities under westward TCs (a), landfalling TCs (b), northward (c) TCs and northward TCs within the key subregion (d). The numbers on the x-axis represent the total number of days for that intensity, and the green dashed line indicates the average ozone concentration on days without TCs.**

3.1.2 Meteorological conditions and atmospheric circulation characteristics

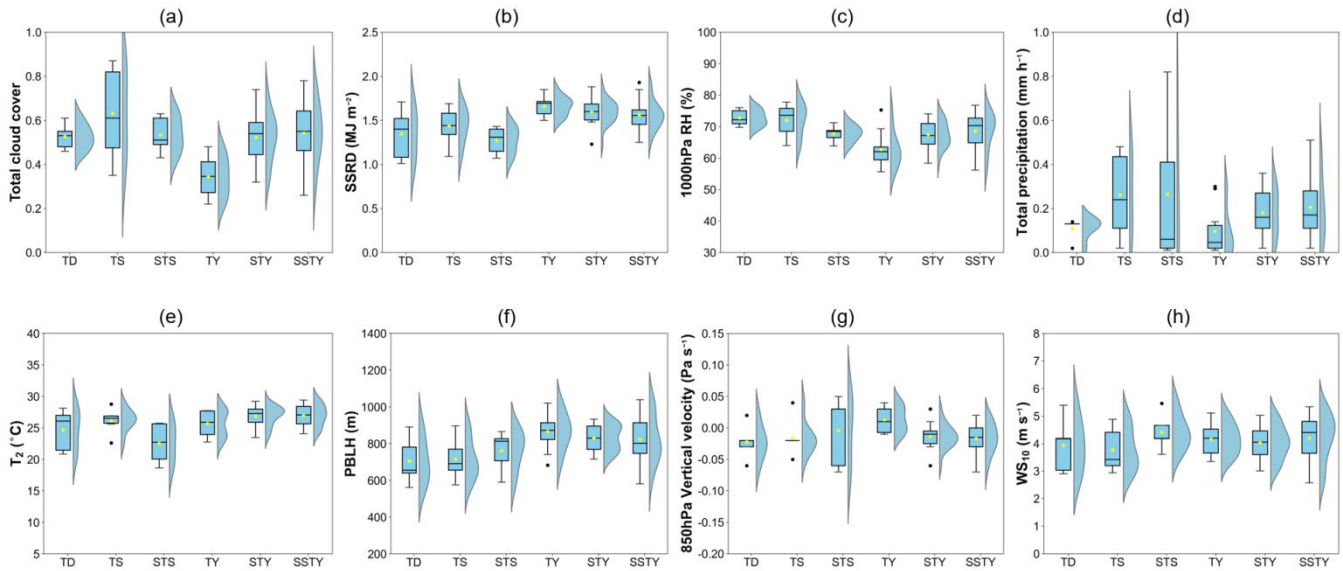
240 To further clarify how circulation changes associated with northward TCs within the key subregion at different intensity modulate local meteorological conditions and thereby affect ozone over SEC, we examined the daytime (08:00–18:00) average characteristics of meteorological variables at each intensity (Fig. 5) and the corresponding atmospheric circulation anomalies relative to the autumn climatology during 2014–2024 (Fig. 6). The variables analyzed in Fig. 5 include TCC, SSRD, 1000 hPa RH, TP, T₂, PBLH, 850 hPa Vertical Velocity, and 10 m wind speed (WS₁₀). In Fig. 6, shading denotes 500

hPa geopotential height anomalies, wind arrows indicate 850 hPa wind anomalies, and the dark red dashed lines mark the mean position of the WPSH.

245 From TD to TS (Fig. 6a–b), positive 500 hPa geopotential height anomalies dominate over SEC and the regions to its north, while the anomalous winds at 850 hPa remain relatively weak. This indicates that the mid-tropospheric circulation is still mainly controlled by a relatively stable weak anticyclonic background. It is worth noting that, the WPSH becomes split into a double-center structure under the intrusion of the northward TC from TS, and this feature also persists in other periods (Fig. 6b–f). Under this circulation configuration, SSRD and T_2 increase slightly, but TCC (0.63) and TP (0.26 mm h^{-1}) remain relatively high (Fig. 5), and ozone therefore changes little (Fig. 4d). At STS, weak negative 500 hPa geopotential height anomalies emerge over SEC, and the anomalous cyclonic circulation to its east becomes more distinct at 850 hPa, suggesting a strengthened influence of TC-induced disturbances. Although TCC and 1000 hPa RH decrease to 0.53 and 67.77%, respectively, SSRD and T_2 also drop markedly to 1.27 MJ m^{-2} and $22.54 \text{ }^\circ\text{C}$, while TP remains relatively high at 0.26 mm h^{-1} . As a result, ozone decreases to a relatively low level of 47.5 ppb.

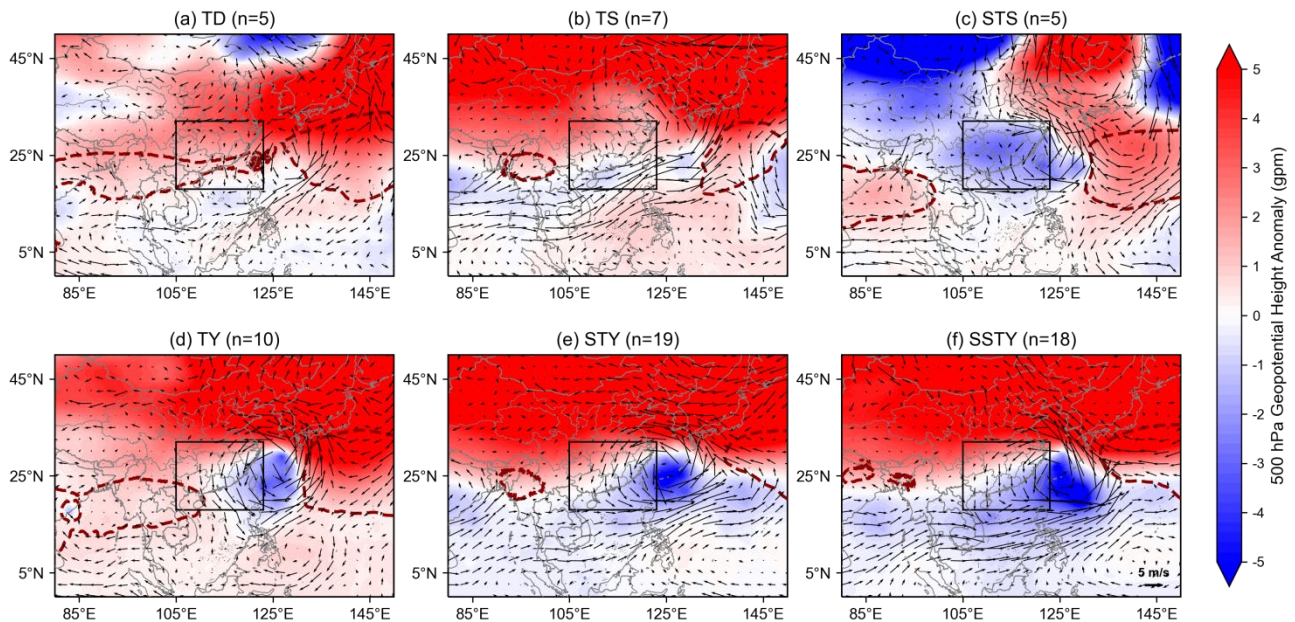
255 When TC intensifies to TY, a pronounced center of negative 500 hPa geopotential height anomalies develops over the coastal ocean east of SEC, accompanied by a well-defined anomalous cyclonic circulation at 850 hPa. SEC is located on its western flank and is influenced by a more evident anomalous northerly flow, indicating that the study region comes under stronger control of the TC peripheral circulation (Fig. 6d). Under these circulation conditions, the 850 hPa Vertical Velocity changes from negative (-0.02 Pa s^{-1}) to positive (0.01 Pa s^{-1}), favoring suppressed convection and reduced cloud and rainfall activity. Correspondingly, TCC, 1000 hPa RH, and TP decrease substantially from 0.53, 67.77%, and 0.26 mm h^{-1} at STS to 260 0.34, 62.69%, and 0.10 mm h^{-1} , respectively. At the same time, SSRD, T_2 , and PBLH increase to 1.66 MJ m^{-2} , $25.64 \text{ }^\circ\text{C}$, and 864.53 m, whereas WS_{10} remains around 4 m s^{-1} . Overall, SEC experiences a meteorological environment during TY characterized by stronger downdraft, lower cloud, stronger solar radiation, higher boundary layer height, lower relative humidity, and weaker precipitation, which is highly favorable for ozone enhancement. Consequently, ozone rises sharply to 265 67 ppb.

During STY and SSTY, the WPSH retreats eastward and weakens further. Meanwhile, the area of negative 500 hPa geopotential height anomalies over and east of SEC expands relative to TY, and the anomalous cyclonic circulation at 850 hPa becomes more complete. The area affected by anomalous northerly winds over SEC also broadens, indicating that the mid-tropospheric circulation remains strongly modulated by TC disturbances. Under such circulation pattern, the 850 hPa Vertical Velocity turns back to weak updraft (-0.01 and -0.02 Pa s^{-1}), SSRD shows a modest decrease (1.59 and 1.56 MJ m^{-2}), and TCC (0.52 and 0.54), 1000 hPa RH (67.54% and 68.66%), TP (0.18 and 0.2 mm h^{-1}), and WS_{10} (4.03 and 4.2 m s^{-1}) all increase slightly relative to TY. This suggests that the favorable meteorological configuration established at TY is no longer maintained as the TC continues to intensify. Therefore, ozone over SEC stays at a relatively high level but declines compared with TY.



275

Figure 5: Comparison of meteorological conditions between different intensities of northward TCs within the key subregion. (a–h) represent total cloud cover, surface solar radiation, 1000 hPa relative humidity, total precipitation, 2 m temperature, boundary layer height, 850 hPa vertical velocity, and 10 m wind speed, respectively. The box plot on the left shows basic statistical information about the data, while the violin plot on the right shows the distribution of the data.



280

Figure 6: Composited anomalies of 500 hPa geopotential height (color shade) and 850 hPa wind fields (wind arrow) under different intensities of northward TCs within the key subregion relative to the autumn climatology. The dark red dashed lines represents the mean position of the WPSH.

The above results suggest that northward TCs within the key subregion, when intensifying to TY, can jointly promote a
285 peak in SEC ozone concentration through lower cloud, stronger solar radiation, higher boundary layer height, lower relative
humidity, weaker precipitation, weaker surface winds, and suppressed upward motion. Although TC intensity continues to
increase during STY and SSTY, the associated meteorological conditions such as solar radiation, total cloud cover, relative
humidity, and wind speeds do not evolve further toward a state more favorable for ozone production and accumulation.
Consequently, ozone concentration over SEC shows a slight decline rather than a further increase.

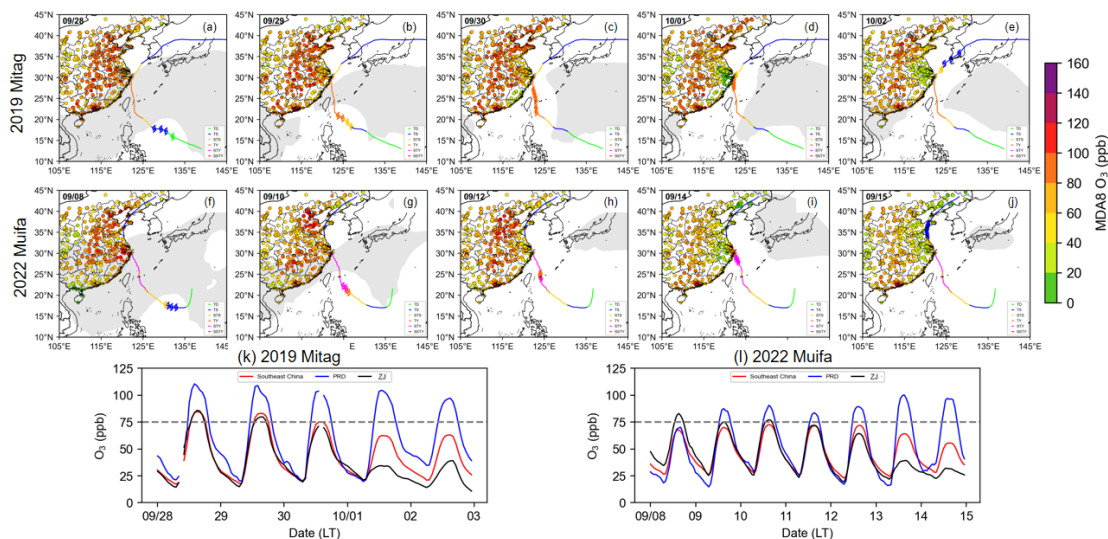
290 **3.2 Influence of TC intensity and position on ozone**

As analyzed in Section 3.1, when northward TCs intensify to TY within the key subregion, the ozone concentration in
SEC reaches its maximum. Despite the continuous strengthening of TC intensity, the ozone concentration remains at a high
level but decline slightly. Based on the two years with the highest ozone concentration (2019 and 2022) in Figure 3(a), we
select two severe ozone pollution episodes under the influence of northward TC with similar tracks to further explore the
295 impact of TC intensity and location on ozone concentration in SEC.

3.2.1 Overview of two ozone episodes

Figures 7a to 7j present the TC moving tracks, the daily 14:00 LT position of the WPSH (grey shading), and the
observed MDA8 ozone concentration across eastern China during two severe ozone pollution episodes (from 28 September
to 2 October 2019 and from 8-15 September 2022). Before 28 September 2019 (Fig. 7a) and 8 September 2022 (Fig. 7f),
300 persistent WPSH influence over southern China (not shown), which caused a downdraft that suppressed the vertical
dispersion of surface air pollutants. Enhanced solar radiation under the clear sky promoted efficient reactions of accumulated
ozone precursors, resulting in widespread high ozone levels across eastern China. As the TCs developed and intensified
rapidly over the western Pacific, they crossed the ridge of high pressure all the way northward to the southeast of Taiwan,
resulting in a break in the subtropical system (Figs. 7b and 7g). During the subsequent northward movement of TCs, SEC
305 (except Fujian Province near the TCs centre) maintained high ozone levels (Figs. 7c and 7h). When the TCs made landfall
along the coast of ZJ on 1 October 2019 (Fig. 7d) and 14 September 2022 (Fig. 7i), precipitation and strong winds
significantly reduced ozone concentrations in this area. Although the overall ozone levels in SEC decreased (particularly in
ZJ) as the TCs generally moved away, PRD sustained high values (Figs. 7e and 7j).

Figures 7k and 7l further present the observed ozone time series for the entire d02 region (red line), the PRD (blue line),
310 and the ZJ (black line) during two ozone pollution episodes. For the entire SEC, the afternoon ozone concentration
approached or exceeded 75 ppb in the early period (before 30 September 2019 and before 13 September 2022), and then
decreased significantly. The PRD region experienced afternoon ozone concentration exceeding 75 ppb throughout the TC
period. Notably, ozone concentration in ZJ showed a trend of being relatively high in the early period and decreasing
significantly later (1-2 October 2019 and 13-14 September 2022).

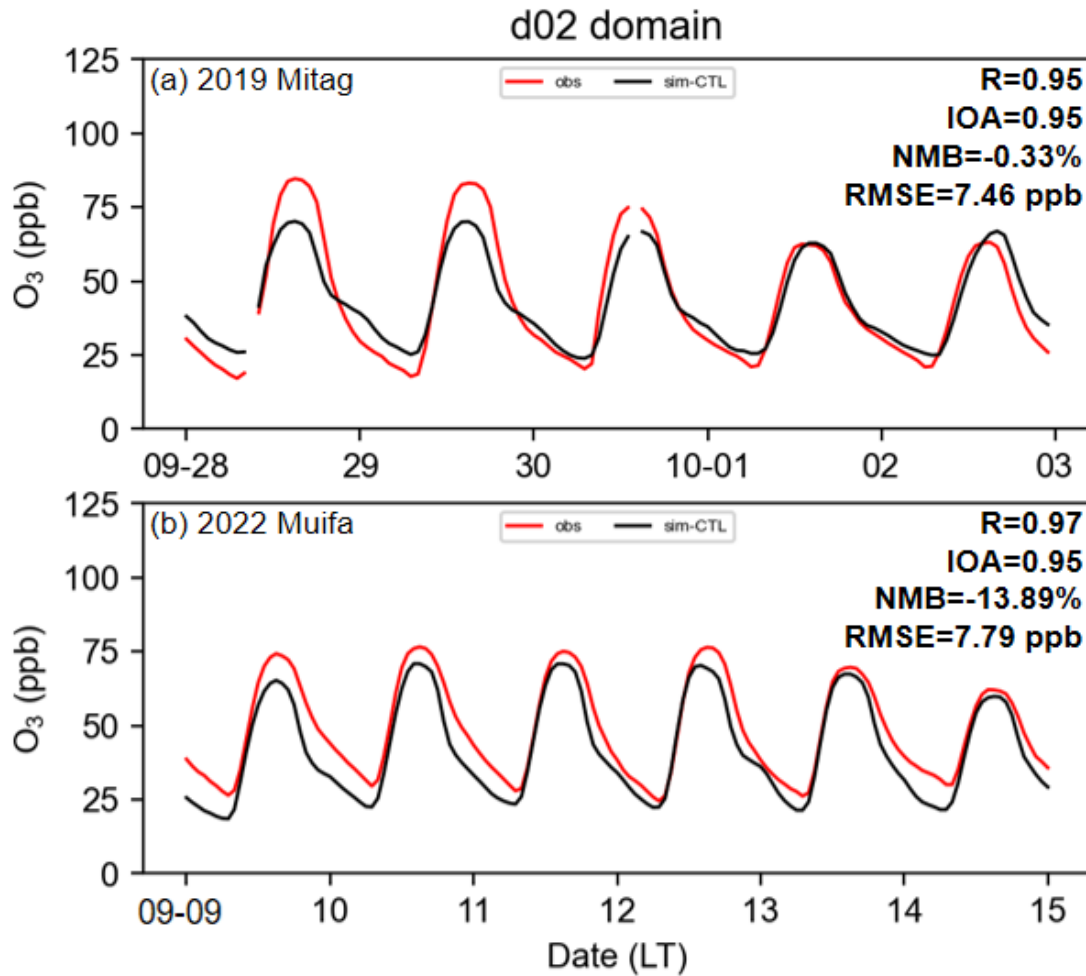


315

Figure 7: The TC moving track (line, with colors representing different intensities), the daily 14:00 LT position of the WPSH (gray shading), and the observed MDA8 ozone concentration across eastern China during two episodes (a-j). Diurnal variation in observed ozone concentrations for SEC (d02 domain, red line), PRD (blue line), and ZJ (black line) from 28 September to 2 October 2019 (k) and from 8-15 September 2022 (l).

320 3.2.2 Control and intensification/removal sensitivity simulations of TCs

The WRF - CMAQ model was utilized to simulate the two TC-related ozone pollution episodes, and the ozone in the d02 domain was evaluated (Figure 8). It can be seen that the model captures the diurnal variation of ozone concentration in two episodes, reproducing the characteristic pattern of a peak in the afternoon followed by a gradual decline at nighttime. While slightly underestimating daytime maxima, the simulations achieved good performance metrics with correlation coefficients (R) and index of agreement (IOA) as high as 0.95, normalized mean biases (NMB) of -0.33% and -13.89%, and root mean square errors (RMSE) of 7.46 and 7.79 ppb. These results demonstrate that the model performance is within an acceptable range, giving confidence for conducting further analyses.



330 **Figure 8: Hourly variations and statistical metrics of ozone in observed values (red line) compared to model simulations (black line) for SEC (d02 domain) from two ozone episodes.**

Section 3.2.1 reveals that the two ozone pollution episodes shared similar TC moving tracks and consequently exerted comparable impacts on the ozone variations in SEC. Here, we selected three paired dates with similar TC locations in two episodes: 29 September 2019 and 10 September 2022, 30 September 2019 and 12 September 2022, as well as 1 October 2019 and 14 September 2022. Then categorized them into three periods according to the latitude where TC was located
 335 (20°N, 25°N, and 30°N) to further explore the impact of TC position within the key subregion on ozone concentration in different regions of the SEC.

Fig. 9 displays the spatial distribution of near-surface ozone and 10 m wind fields at 14:00 for the CTL. Ozone concentration in SEC along the peripheral northerly airflow region of TC remained at a relatively high level, particularly in PRD and offshore areas. As TC moved northward and made landfall, ozone levels in ZJ decreased from about 100 ppb during the
 340 20°N (Figure 9a) and 25°N (Figure 9b) periods to about 40 ppb at 30°N (Figure 9c).

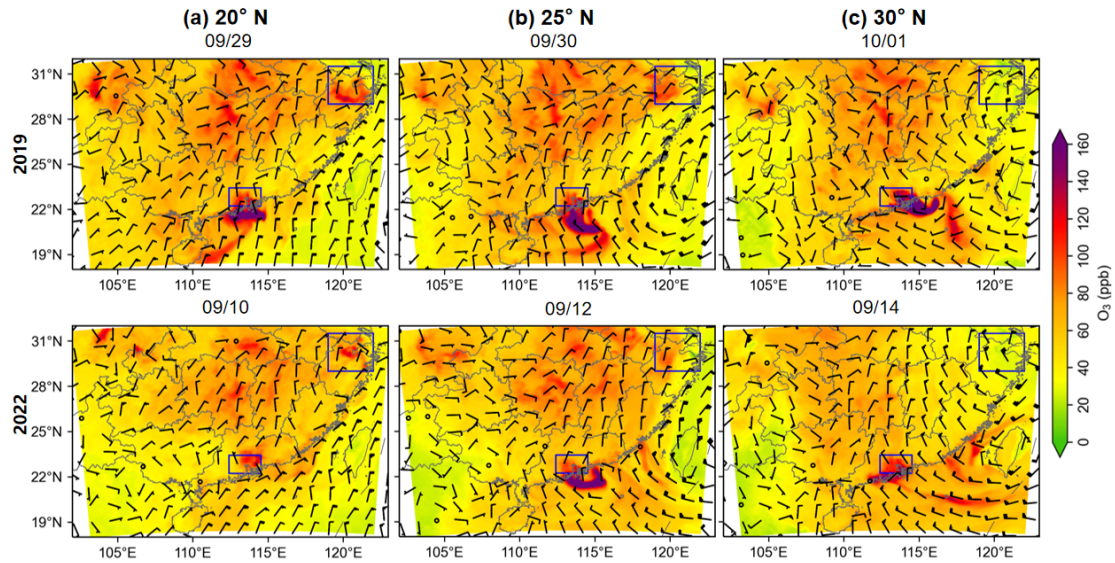
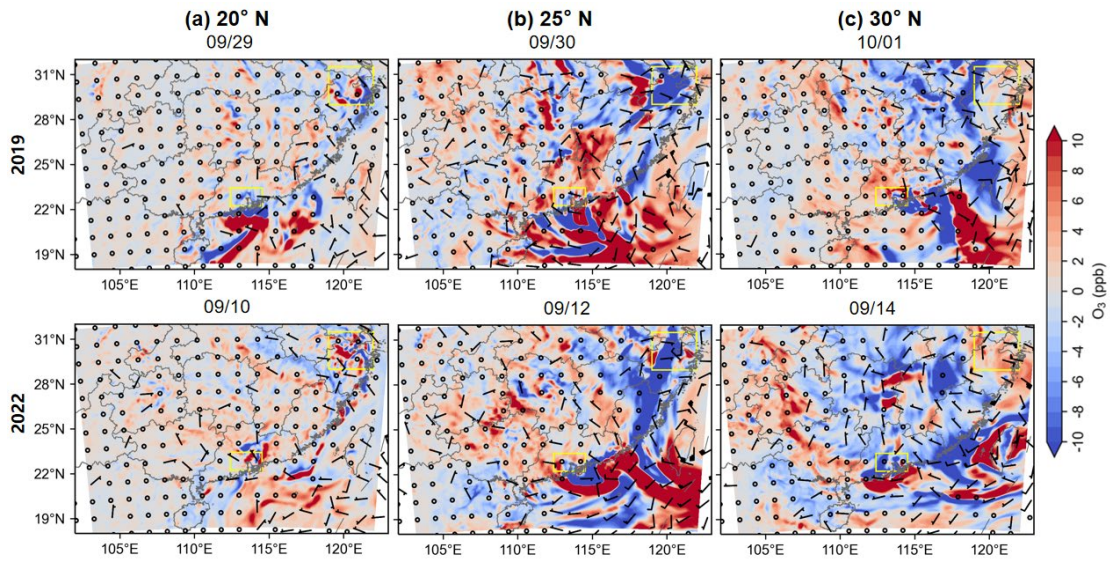


Figure 9: Spatial distribution of ozone and wind fields at ground level at 14:00 when TC was located at latitudes of (a) 20°N, (b) 25°N, and (c) 30°N during two episodes.

To investigate how TC located at different positions within the key subregion influence ozone variations over SEC at
 345 different intensities of TC, we conducted a comparative analysis of ozone differences in IT_TC (Figure 10) and NO_TC
 (Figure 11) sensitivity experiments, together with the corresponding meteorological fields (solar radiation reaching surface
 (RGRND), T_2 , and RH_2 ; Figs. S1-S6). When the intensified TC (IT_TC) is located within 20–25°N before landfall, northerly
 winds gradually strengthen (Fig. 10a and 10b), while RGRND changes little (Fig. S1a and S1b), T_2 decreases slightly overall
 (Fig. S2a and Sb), and RH_2 generally increases (Fig. S3a and S3b). Under this background, ozone concentration over most of
 350 SEC exhibit weak positive anomalies (Fig. 10a and 10b). That is to say, the TC enhancement did not lead to a significant
 increase in ozone concentration of SEC. In addition, the strong northerly wind also transported the locally high-concentration
 ozone southward, reducing ozone levels in upstream areas such as the vicinity of ZJ and some parts of the PRD, while
 increasing ozone concentration in downwind areas like offshore PRD areas (Figs. 10a and 10b). As mentioned in Section 3.1,
 when TC intensity exceeds TY level, the associated meteorological changes no longer continue to favor ozone production
 355 and accumulation. Consequently, for the TC Muifa in 2022 with a maximum intensity of STY, ozone concentration in
 coastal cities along SEC decreased by more than 10 ppb under its stronger influence on 12 September (bottom panel in Fig.
 10b). After the enhanced TC made landfall, stronger winds and enhanced near-surface moisture (Fig. S3c) alleviated the
 high-temperature conditions (Fig. S2c) and decreased ozone concentration by more than 10 ppb across western SEC
 compared to the CTL (Fig. 10c), with a greater range of decline during the 2022 Muifa TC period (bottom panel in Fig. 10c).

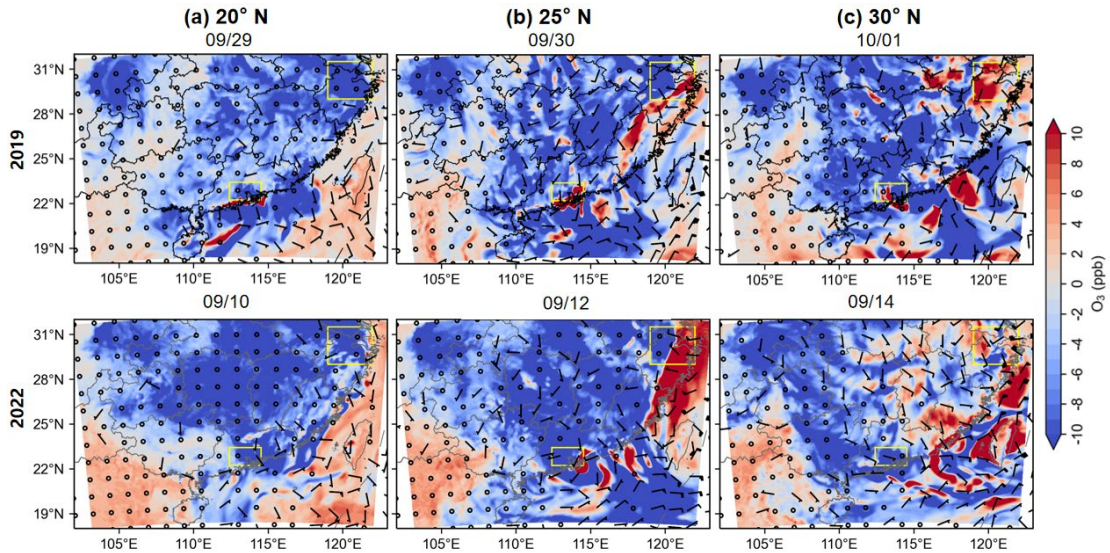


360

Figure 10: Difference in surface ozone concentration and 10 m wind fields between IT_TC and CTL at 14:00.

After removing the influence of TC, the northerly wind weakened and the southward wind component enhanced (Fig. 11). More warm and moist air from the ocean increased the relative humidity (Fig. S6), which, combined with weak solar radiation (Fig. S4), collectively led to a reduction in ozone concentration of more than 10 ppb across most regions of the SEC. This indicates that, under the combined effects of removing the TC-related dynamical influence and imposing a weaker non-TC radiative regime, the situation of high ozone concentration in most parts of the SEC would be alleviated. Notably, without the enhanced near-surface moisture (Fig. S6c) and strong winds brought by the TC landfall, RGRND (Fig. S4b and 4c) and T_2 (Fig. S5b and 5c) both increase markedly, leading to ozone concentration in ZJ and its surrounding areas on the east side of the SEC increased by more than 10 ppb (Figs. 11b and 11c).

365



370

Figure 11: Same as Fig. 10 but for the NO_TC experiment.

Further insights can be seen from Figure 12, which compares atmospheric circulation and ozone vertical distribution during two ozone pollution episodes when TCs are in similar positions. During TC intensification (panels in the third row), stronger northerly winds transport more ozone within the boundary layer from ZJ (A) to PRD (B). Consequently, ozone concentration along the line AB, particularly over PRD and the offshore sea area, increased compared to the CTL (Figs. 12a and d, b and e). As the intensified TC moved to 25°N, ozone concentration over ZJ began to decline significantly (Figs. 12b and 12e). This reduction became more pronounced upon TC landfall near 30°N (Figs. 12c and 12f), where stronger winds effectively mitigated the high ozone across a broader region of ZJ. At the same time, decreased T_2 and enhanced RH_2 near the surface (Figs. S2 and S3) indicate a cooler and moister environment after landfall, which further contributed to the ozone reduction. In NO_TC (panels in the fourth row), reduced solar radiation (Fig. S4) weakened photochemical ozone production, leading to a general decrease in ozone within the boundary layer. Meanwhile, the reduction in wind speeds weakens horizontal transport at all levels along the line AB, causing ozone to accumulate over PRD rather than being blown outside the sea. Subsequently, due to the lack of wind and rainfall brought by the TC landfall, ozone concentration over ZJ increased relative to the CTL experiment (Figs. 12c and f).

385

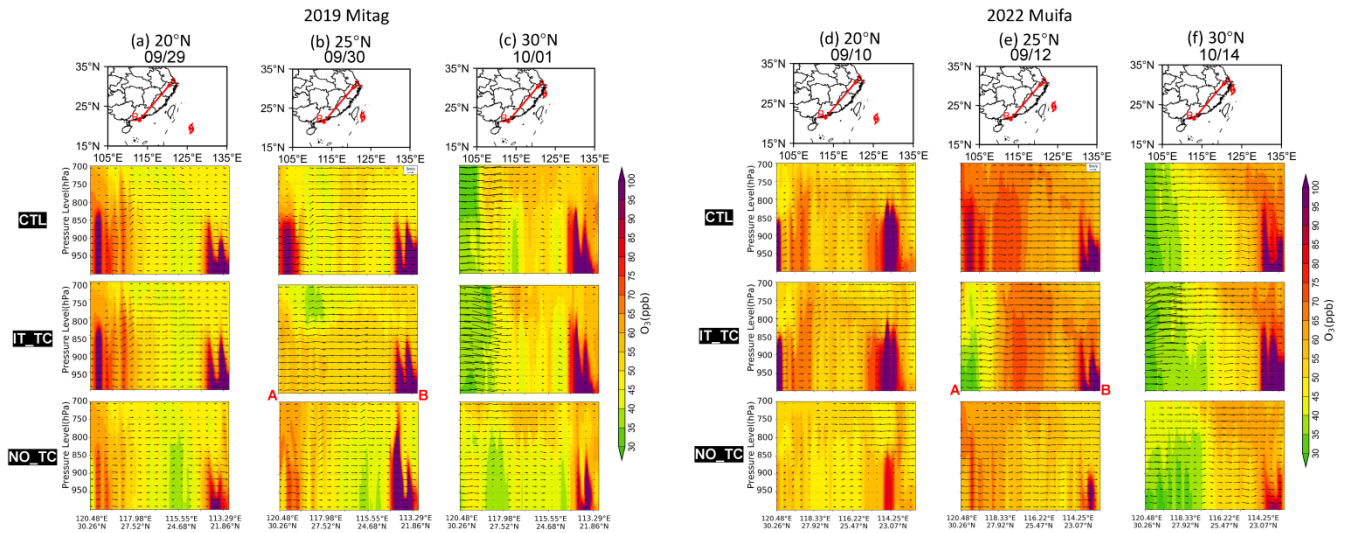


Figure 12: Vertical distribution of ozone concentration (contours) and atmospheric circulation (wind vectors) over SEC (along the cross-section marked by the red line in the top-row panels) at 14:00 on the days with similar TC positions during the two episodes.

In summary, an intensified TC initially enhances northerly winds over the SEC, leading to a slight increase in ozone concentration with downwind transport. Subsequently, as the TC makes landfall, improved diffusion conditions and precipitation lead to a more pronounced ozone reduction in ZJ and surrounding areas. Conversely, when there is no TC, strengthened southerly winds bring more warm and humid marine air, coupled with reduced solar radiation, which causes the

390

ozone concentration in the boundary layer of the SEC to decline by more than 10 ppb overall. Later, the lack of TC-induced rainfall and strong winds contributes to elevated ozone concentrations in the ZJ region.

395 3.2.3 Changes in BVOCs caused by solar radiation alterations

On the other hand, the high temperature and intense solar radiation associated with the TC periphery can induce more biogenic VOC (BVOCs) emissions from forest areas in southern China (Wang et al., 2022; Kou et al., 2023), which are important precursors to ozone formation. Since isoprene (ISOP) is the most abundant BVOC species in the forest areas of southern China (Zheng et al., 2010; Li et al., 2023; N. Wang et al., 2024), we employ ISOP as a representative indicator of
400 BVOC emissions to investigate the impact of solar radiation differences on BVOCs emissions between conditions with and without TC. Figures. 13a and 13b present the variability rate of ISOP caused by solar radiation changes before and after removing TC during two ozone pollution episodes, showing that when solar radiation changes by 37%, the ISOP concentration in SEC exhibits a corresponding linear reduction of 37%. This led to an overall decline of approximately 1 ppb in ozone concentration (averaged from 12:00 to 18:00 during the ozone pollution episodes), with a drop of about 3 ppb in the
405 PRD and the central part of SEC, followed by the ZJ of around 2 ppb (Figs. 13c and 13d). In other words, changes in BVOCs emissions due to altered solar radiation contributed approximately 1-3 ppb to the ozone production. This range of BVOCs emissions contribution is lower than Wang et al. (2022) in PRD between 2014–2018 (from an average of 16.9% in summer to 26.6% during TC periods) or Xu et al. (2023) in Beijing-Tianjin-Hebei during TC In-Fa (2021, 10 ppb), which may be related to differences in the research season or the types of TC selected.

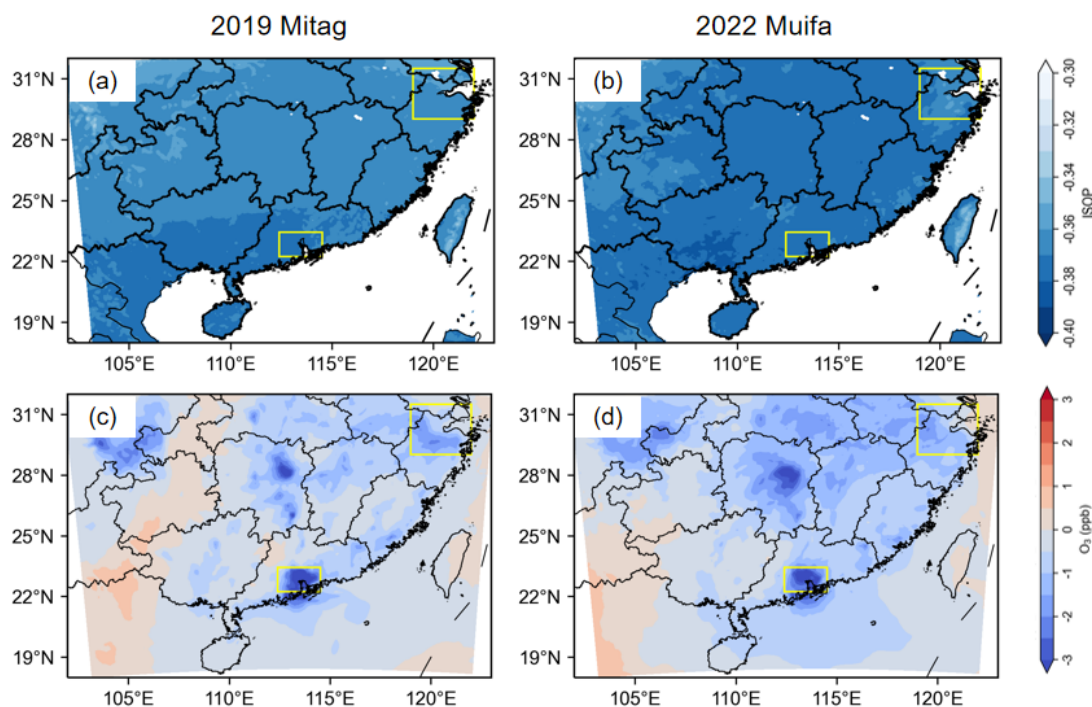


Figure 13: Variability rate of ISOP caused by radiation changes during two ozone pollution episodes (a and b). Changes in ozone concentration due to reduced BVOCs emissions resulting from decreased solar radiation (c and d).

3.2.4 Regional ozone budgets in different experiments

To further elucidate the contribution of TCs with varying intensities (different TC experiments) to ozone inside the boundary layer in different SEC regions (PRD and ZJ) at distinct latitudinal positions (TC movement across latitudes), Table 3 summarizes the daytime (08:00-18:00) average contributions of individual processes results during two ozone pollution episodes. When the TC was positioned at 20°N, photochemical production (CHEM) constituted the primary ozone source in both regions (2.13 ppb h⁻¹ for PRD and 1.64 ppb h⁻¹ for ZJ). Horizontal transport (HTRA) mainly showed negative contributions, and vertical transport (VTRA) exhibited regional variations. This indicates that even with prevailing northerly winds at the TC periphery driving southward ozone transport, photochemical processes remained dominant when TCs approached the SEC. Upon TC intensification (IT_TC), the contributions of individual processes to ozone in ZJ showed minimal changes (little change in RGRND and T₂), suggesting limited influence of enhanced TCs at lower latitudes on the northern SEC. In PRD, the positive contribution of CHEM decreased slightly (increase in RH₂ and slight decrease in T₂), while the negative contribution of HTRA weakened, demonstrating that intensified northerly winds generally enhanced ozone transport to southern SEC (PRD). For NO_TC, the reduced positive CHEM contribution (weaker RGRND) and significantly weakened negative HTRA contribution (reduced northerly winds) further confirmed that both diminished solar radiation and decreased northerly winds transport collectively led to ozone reduction across the SEC.

When the TC moved to 25°N, the contributions of various processes exhibited regional divergence with changes in TC intensity. Compared to CTL, both regions in IT_TC showed reduced CHEM contribution (slight decrease in T₂), with ZJ experiencing a more pronounced decrease. The change in HTRA is similar to that when the TC is at 20°N. This indicates that although TC enhancement still facilitated outward horizontal transport, the increase in relative humidity (Fig. S3b) simultaneously suppressed photochemical production of ozone. In NO_TC, the lack of TC-induced uplifting compensation resulted in stronger downdraft over ZJ (VTRA: 1.1 ppb h⁻¹), whereas PRD was dominated by localized updraft, yielding a more negative VTRA (-1.02 ppb h⁻¹).

As the TC made landfall at 30°N, PRD showed minimal variations in individual process contributions between CTL and IT_TC (CHEM: 1.9 and 1.94 ppb h⁻¹; HTRA: -0.23 and -0.22 ppb h⁻¹; VTRA: -1.38 and -1.49 ppb h⁻¹) due to weaker TC circulation influence. In contrast, ZJ exhibited significantly enhanced negative CHEM (lower T₂, higher RH₂, and reduced RGRND) contribution in IT_TC resulting from TC landfall-induced precipitation. Meanwhile, intensified convergence airflows caused HTRA in ZJ to shift from negative to positive (0.86 ppb h⁻¹). Under NO_TC, with the disappearance of TC-induced disturbances, the HTRA contribution in PRD transitioned from negative to positive, while CHEM in ZJ rebounded to -0.04 ppb h⁻¹ (higher RGRND and T₂, and lower RH₂).

Table 2: Daytime (08:00-18:00) mean contributions of individual processes for TCs with varying intensities to ozone within the boundary layer in different SEC regions at distinct latitudinal positions.

(ppb h ⁻¹)	CTL		IT_TC		NO_TC	
	20°N					
	PRD	ZJ	PRD	ZJ	PRD	ZJ
CHEM	2.13	1.64	1.87	1.66	1.69	0.82
HTRA	-1.35	-2.01	-1.11	-2.05	-0.25	-1.21
VTRA	-0.38	0.74	-0.33	0.74	-0.58	0.74
	25°N					
	PRD	ZJ	PRD	ZJ	PRD	ZJ
CHEM	2.04	1.15	1.68	0.79	1.9	0.8
HTRA	-1.37	-2.35	-0.62	-1.96	-0.17	-1.84
VTRA	-0.36	0.34	-0.52	0.77	-1.02	1.1
	30°N					
	PRD	ZJ	PRD	ZJ	PRD	ZJ
CHEM	1.9	-0.35	1.94	-0.51	1.44	-0.04
HTRA	-0.23	-0.15	-0.22	0.86	0.85	-0.25
VTRA	-1.38	0.42	-1.49	-0.33	-1.67	0.49

445 These results indicate that, when the TC is at 20°N, photochemical production dominates ozone formation, with TC enhancement primarily promoting southward transport of ozone. TC removal leads to concurrent radiation reduction and transport weakening, collectively decreasing regional ozone levels. As the TC moves to 25°N, while the enhanced TC favors horizontal transport, the accompanying RH increase suppresses the photochemical production of ozone. Without TC, strengthened downdraft occurs over ZJ, while ozone in the boundary layer of PRD diffuses outward to a greater extent.

450 During TC landfall at 30°N, individual process contributions in PRD remain relatively stable as the TC intensifies, whereas ZJ shows intensified chemical consumption due to precipitation and strong winds. The photochemical production in ZJ roughly recovers when TC influences are removed.

4 Summary and conclusions

Autumn ozone pollution episodes in SEC are often associated with northward TCs in the Northwest Pacific Ocean.

455 Based on observational and reanalysis data during autumn from 2014 to 2024, this study systematically examines the impacts of relevant meteorological variables and atmospheric circulation patterns associated with northward TCs of varying intensities on ozone in the SEC. Additionally, by carrying out the WRF-CMAQ model simulations with TC intensity sensitivity experiments, we quantitatively explore the contributions of TC intensity and position to ozone variations across

different regions of the SEC during two severe ozone pollution episodes. Results show that the interannual variation of
460 MDA8 ozone in autumn (2014-2024) over the SEC is consistent with TC activity, with relatively intense northward TCs
playing a crucial role, especially when they are located within 120–130°E and 20–30°N. Under the influence of these TCs
within the key subregion, ozone concentration exceeds 50 ppb at nearly all intensities. As TC intensity reaches TY, stronger
downdraft, lower cloud, stronger solar radiation, higher boundary layer height, lower relative humidity, and weaker
precipitation collectively leading to peak ozone concentration. Further intensification to STY and SSTY does not lead to
465 continued improvement in meteorological conditions for conducive to ozone, and ozone over SEC therefore remains high
but decreases slightly instead of increasing further.

By applying a vortex filtering method in the WRF numerical model to intensify the meteorological variables related to
the TC vortex, or to remove them followed by an additional 37% reduction in solar radiation and photolysis rate during two
severe ozone pollution episodes, we find that the intensification of TC enhanced northerly winds over the SEC, causing a
470 slight increase in ozone with southward transport. As TCs made landfall, improved diffusion conditions and precipitation led
to more pronounced ozone reduction in ZJ and the surrounding areas. Conversely, TC removal weakened northerly wind
transport, combined with reduced solar radiation, led to a widespread ozone decrease across the SEC by more than 10 ppb.
Changes in BVOCs emissions due to altered solar radiation contributed approximately 1-3 ppb. Moreover, the results of the
process analysis show that when the TC is at 20°N, photochemical production dominates ozone formation, with TC
475 enhancement promoting southward transport while TC removal reduces ozone concentration. As TC moved to 25°N,
although an intensified TC facilitates horizontal transport, the increase in RH suppresses photochemical production of ozone.
TC removal induces pronounced regional divergence in vertical transport. When TC makes landfall at 30°N, PRD remains
relatively unaffected, whereas enhanced TCs accelerate ozone depletion in ZJ, a pattern that reverses with TC removal and
photochemical production largely recovers.

480 Previous studies have investigated the relationship between TCs and ozone in the SEC, but most focused on qualitative
comparisons of ozone levels with and without TC influence. In this study, we reveal the impact of northward TC intensity on
ozone in the SEC and quantitatively evaluate the contribution of TCs using a vortex filtering method, which is crucial for
deepening understanding of TC roles in ozone pollution and for optimizing emission control strategies. In the context of
global warming, TCs are expected to become stronger (Wu et al., 2022; Xu et al., 2024) and more likely to move northward
485 (Cao et al., 2025; Nie et al., 2023), with extreme weather events projected to be frequent and intense. Therefore, the potential
impacts of northward TCs and associated large-scale circulation on surface ozone in SEC merit further study. Notably, TC
tracks and intensities are strongly modulated by non-linear interactions with large-scale circulation, particularly the WPSH
(Pandey, 2025; Sun et al., 2015; Wu et al., 2020). After the removal of the TCs associated with the two severe ozone
pollution episodes selected in this study, the SEC returned to the control of the WPSH (not shown). More accurate
490 quantification of TCs and WPSH impacts on ozone in the SEC and across eastern China can be achieved through further
sensitivity experiments that simultaneously consider the WPSH influences.

Data availability

Hourly surface ozone was obtained from the China National Environmental Centre (<http://www.cnemc.cn/en/>, last access: 19 November 2025). The TC best track dataset was available from the China Meteorological Administration (CMA) Tropical Cyclone Data Centre (available at <https://tcdata.typhoon.org.cn/>, last access: 19 November 2025). The ERA5 data were acquired from European Centre for Medium-Range Weather Forecasts Reanalysis v5 dataset (<https://cds.climate.copernicus.eu/>, last access: 19 November 2025). The FNL meteorological data were taken from the National Centre for Environmental Prediction (<https://rda.ucar.edu/>, last access: 19 November 2025). Model output data of this paper are available upon request.

500 Author Contributions

TD and SL proposed the essential research idea. SO and JC performed the model simulations work and carried out the model output data analysis. SO wrote the original paper with input from TD, SL and RL. TD, SL, and RL helped revised the paper. JY, YH, and XC discussed the results and offered valuable comments.

Competing interests

505 The authors declare that they have no conflict of interest.

Acknowledgments

We would like to acknowledge the China National Environmental Centre, the European Centre for Medium-Range Weather Forecasts and the National Centre for Environmental Prediction for providing datasets that made this work possible. The numerical calculations were performed on the Guangdong Meteorological Service. We also acknowledge the support of the College of Environment and Climate, Institute for Environmental and Climate Research, Jinan University and the Guangdong Provincial Key Laboratory of Regional Numerical Weather Prediction, Guangzhou Institute of Tropical and Marine Meteorology of China Meteorological Administration, GBA Academy of Meteorological Research.

Financial support

This research was supported by the National Key Research and Development Program of China (grant number 2023YFC3709201, 2023YFC3706204), the National Natural Science Foundation of China (grant number 42275123, 42405194), Guangdong Provincial Science and Technology Collaborative Innovation Project for Social Development (grant number 2024A1111120022), the Guangdong Basic and Applied Basic Research Foundation (grant number

2023A1515012448, 2023A1515012205, 2024A1515510025), the Special Fund Project for Science and Technology Innovation Strategy of Guangdong Province (grant number 2019B121205004), the Key Innovation Team of Key Innovation
520 Team of China Meteorological Administration (grant number CMA2023ZD08), the Science and Technology Research Project of Guangdong Meteorological Bureau (grant number GRMC2025M18).

References

- Chen, Z., Liu, J., Cheng, X., Yang, M., and Wang, H.: Positive and negative influences of typhoons on tropospheric ozone over southern China, *Atmospheric Chemistry and Physics*, 21, 16911-16923, doi:10.5194/acp-21-16911-2021, 2021.
- 525 Chen, Z., Liu, J., Qie, X., Cheng, X., Shen, Y., Yang, M., Jiang, R., and Liu, X.: Transport of substantial stratospheric ozone to the surface by a dying typhoon and shallow convection, *Atmospheric Chemistry and Physics*, 22, 8221-8240, doi:10.5194/acp-22-8221-2022, 2022.
- Cao, X., Wu, R., Jiang, X., Dai, Y., Wang, P., Lin, C., Deng, D., Sun, Y., Wu, L., Chen, S., Wang, Y., Xiao, X.: Future changes in tropical cyclone tracks over the western North Pacific under climate change, *npj climate and atmospheric science*,
530 8, 148, doi:10.1038/s41612-025-01036-6, 2025.
- Deng, T., Wang, T., Wang, S., Zou, Y., Yin, C., Li, F., Liu, L., Wang, N., Song, L., Wu, C., and Wu, D.: Impact of typhoon periphery on high ozone and high aerosol pollution in the Pearl River Delta region, *Science of the Total Environment*, 668, 617-630, doi:10.1016/j.scitotenv.2019.02.450, 2019.
- Ding, H., Kong, L., You, Y., Mao, J., Chen, W., Chen, D., Chang, M., and Wang, X.: Effects of tropical cyclones with
535 different tracks on ozone pollution over the Pearl River Delta region, *Atmospheric Research*, 286, doi:10.1016/j.atmosres.2023.106680, 2023.
- Dong, W., Lin, Y., Wright, J. S., Xie, Y., Xu, F., Yang, K., Li, X., Tian, L., Zhao, X., and Cao, D.: Connections Between a Late Summer Snowstorm Over the Southwestern Tibetan Plateau and a Concurrent Indian Monsoon Low-Pressure System, *Journal of Geophysical Research-Atmospheres*, 123, 13676-13691, doi:10.1029/2018jd029710, 2018.
- 540 Feng, L., Ma, D., Xie, M., and Xi, M. J. R. S.: Review on the Application of Remote Sensing Data and Machine Learning to the Estimation of Anthropogenic Heat Emissions, *Remote Sensing*, 17, 200, doi:10.3390/rs17020200, 2025.
- Grulke, N. E. and Heath, R. L.: Ozone effects on plants in natural ecosystems, *Plant Biology*, 22, 12-37, doi:10.1111/plb.12971, 2020.
- He, G., Deng, T., Wu, D., Wu, C., Huang, X., Li, Z., Yin, C., Zou, Y., Song, L., Ouyang, S., Tao, L., and Zhang, X.:
545 Characteristics of boundary layer ozone and its effect on surface ozone concentration in Shenzhen, China: A case study, *Science of the Total Environment*, 791, doi:10.1016/j.scitotenv.2021.148044, 2021.
- Hu, T., Lin, Y., Liu, R., Xu, Y., Ouyang, S., Wang, B., Zhang, Y., and Liu, S. C.: What caused large ozone variabilities in three megacity clusters in eastern China during 2015-2020?, *Atmospheric Chemistry and Physics*, 24, 1607-1626, doi:10.5194/acp-24-1607-2024, 2024.

- 550 Hu, W., Liu, R., Chen, Z., Ouyang, S., Hu, T., Wang, Y., Cui, Z., Jiang, B., Chen, D., and Liu, S. C.: Processes conducive to high ozone formation in Pearl River Delta in the presence of Pacific tropical cyclones, *Atmospheric Environment*, 307, doi:10.1016/j.atmosenv.2023.119859, 2023.
- Huang, T., Yang, Y., O'Connor, E. J., Lolli, S., Haywood, J., Osborne, M., Cheng, J. C.-H., Guo, J., and Yim, S. H.-L.: Influence of a weak typhoon on the vertical distribution of air pollution in Hong Kong: A perspective from a Doppler
555 LiDAR network, *Environmental Pollution*, 276, doi:10.1016/j.envpol.2021.116534, 2021.
- Huang, Y., Xue, J., Feng, Y., Chen, Z., Zhang, C., Li, M., and Li, J.: An initialization scheme using forecast vortexes and its application in simulation of typhoons Linfa and Chan-hom in 2015, *Journal of Tropical Meteorology*, 34, 598-609, doi:10.16032/j.issn.1004-4965.2018.05.003, 2018 (in Chinese).
- Jacob, D. J. and Winner, D. A.: Effect of climate change on air quality, *Atmospheric Environment*, 43, 51-63,
560 doi:10.1016/j.atmosenv.2008.09.051, 2009.
- Kou, W., Gao, Y., Zhang, S., Cai, W., Geng, G., Davis, S., Wang, H., Guo, X., Cheng, W., Zeng, X., Mingchen, M., Wang, H., Wang, Q., Yao, X., Gao, H., and Wu, L.: High downward surface solar radiation conducive to ozone pollution more frequent under global warming, *Science Bulletin*, 68, doi:10.1016/j.scib.2023.01.022, 2023.
- Kurihara, Y., Bender, M. A., and Ross, R. J.: An Initialization Scheme of Hurricane Models by Vortex Specification,
565 *Monthly Weather Review*, 121, 2030-2045, doi:10.1175/1520-0493(1993)121<2030:AISOHM>2.0.CO;2, 1993.
- Kurihara, Y., Bender, M. A., Tuleya, R. E., and Ross, R. J.: Improvements in the GFDL Hurricane Prediction System, *Monthly Weather Review*, 123, 2791-2801, doi:/10.1175/1520-0493(1995)123<2791:IITGHP>2.0.CO;2, 1995.
- Lam, Y. F., Cheung, H. M., and Ying, C. C.: Impact of tropical cyclone track change on regional air quality, *Science of the Total Environment*, 610, 1347-1355, doi:10.1016/j.scitotenv.2017.08.100, 2018.
- 570 Li, L., Cao, J., and Hao, Y.: Spatial and species-specific responses of biogenic volatile organic compound (BVOC) emissions to elevated ozone from 2014-2020 in China, *Science of the Total Environment*, 868, doi:10.1016/j.scitotenv.2023.161636, 2023.
- Li, T., Wu, N., Chen, J., Chan, P. W., Tang, J., and Wang, N.: Vertical exchange and cross-regional transport of lower-tropospheric ozone over Hong Kong, *Atmospheric Research*, 292, 106877,
575 doi:https://doi.org/10.1016/j.atmosres.2023.106877, 2023.
- Li, Y., Zhao, X., Deng, X., and Gao, J.: The impact of peripheral circulation characteristics of typhoon on sustained ozone episodes over the Pearl River Delta region, China, *Atmospheric Chemistry and Physics*, 22, 3861-3873, doi:10.5194/acp-22-3861-2022, 2022.
- Lin, H., Ding, K., Huang, X., Lou, S., Xue, L., Wang, Z., Ma, Y., and Ding, A.: Impacts of Northward Typhoons on Autumn
580 Haze Pollution Over North China Plain, *Journal of Geophysical Research: Atmospheres*, 129, e2023JD040465, doi:/10.1029/2023JD040465, 2024.

- Liu, B., Li, Y., Wang, L., Zhang, L., Qiao, F., Nan, P., Ji, D., Hu, B., Xia, Z., and Lou, Z.: Evaluating the effects of meteorology and emission changes on ozone in different regions over China based on machine learning, *Atmospheric Pollution Research*, 102354, doi:10.1016/j.apr.2024.102354, 2024.
- 585 Liu, C., He, C., Wang, Y., He, G., Liu, N., Miao, S., Wang, H., Lu, X., and Fan, S.: Characteristics and mechanism of a persistent ozone pollution event in Pearl River Delta induced by typhoon and subtropical high, *Atmospheric Environment*, 310, 119964, doi:10.1016/j.atmosenv.2023.119964, 2023.
- Liu, N., He, G., Wang, H., He, C., Wang, H., Liu, C., Wang, Y., Wang, H., Li, L., Lu, X., and Fan, S.: Rising frequency of ozone-favorable synoptic weather patterns contributes to 2015-2022 ozone increase in Guangzhou, *Journal of Environmental*
590 *Sciences*, 148, 502-514, doi:10.1016/j.jes.2023.09.024, 2025.
- Liu, Y., Geng, G., Cheng, J., Liu, Y., Xiao, Q., Liu, L., Shi, Q., Tong, D., He, K., and Zhang, Q.: Drivers of Increasing Ozone during the Two Phases of Clean Air Actions in China 2013–2020, *Environmental Science & Technology*, 57, 24, 8954–8964, doi:10.1021/acs.est.3c00054, 2023.
- Lu, X., Zhang, L., and Shen, L.: Meteorology and Climate Influences on Tropospheric Ozone: a Review of Natural Sources,
595 *Chemistry, and Transport Patterns*, *Current Pollution Reports*, 5, 238-260, doi:10.1007/s40726-019-00118-3, 2019.
- Lu, X., Yu, H., Ying, M., Zhao, B., Zhang, S., Lin, L., Bai, L., and Wan, R.: Western North Pacific Tropical Cyclone Database Created by the China Meteorological Administration, *Advances in Atmospheric Sciences*, 38, 690-699, doi:10.1007/s00376-020-0211-7, 2021.
- Nie, X., Tan, H., Cai, R. and Gao, X.: Projection of the tropical cyclones landing in China in the future based on regional
600 climate model, *Climate Change Research*, 19(1): 23-37, doi:10.12006/j.issn.1673-1719.2022.064, 2023 (in Chinese).
- Ouyang, S., Deng, T., Li, C., Chen, J., He, G., Zhang, X., Wang, Q., Zhang, Z., and Rao, G.: Impact of tropical cyclone intensity evolution under different tracks on ozone in the Pearl River Delta, China, *Atmospheric Research*, 337, 108972, doi: 10.1016/j.atmosres.2026.108972, 2026.
- Ouyang, S., Deng, T., Liu, R., Chen, J., He, G., Leung, J. C.-H., Wang, N., and Liu, S. C.: Impact of a subtropical high and a
605 typhoon on a severe ozone pollution episode in the Pearl River Delta, China, *Atmospheric Chemistry and Physics*, 22, 10751-10767, doi:10.5194/acp-22-10751-2022, 2022.
- Pandey, R. S.: Role of Position of Pacific Subtropical High in Deciding Path of Tropical Storms, *Atmosphere*, 16, 322, doi:10.3390/atmos16030322, 2025.
- Professional Committee of Ozone Pollution Control of Chinese Society for Environmental Sciences: *The Bluebook: Prevention and Control of Ozone Pollution in China (2023)*, Science Press, Beijing, China, ISBN 978-7-03-078184-0, 2024
610 (in Chinese).
- Qu, K., Wang, X., Yan, Y., Shen, J., Xiao, T., Dong, H., Zeng, L., and Zhang, Y.: A comparative study to reveal the influence of typhoons on the transport, production and accumulation of O₃ in the Pearl River Delta, China, *Atmospheric Chemistry and Physics*, 21, 11593-11612, doi:10.5194/acp-21-11593-2021, 2021.

- 615 Shu, L., Xie, M., Wang, T., Gao, D., Chen, P., Han, Y., Li, S., Zhuang, B., and Li, M.: Integrated studies of a regional ozone pollution synthetically affected by subtropical high and typhoon system in the Yangtze River Delta region, China, *Atmospheric Chemistry and Physics*, 16, 15801-15819, doi:10.5194/acp-16-15801-2016, 2016.
- Sun, Y., Zhong, Z., Yi, L., Li, T., Chen, M., Wan, H., Wang, Y., and Zhong, K.: Dependence of the relationship between the tropical cyclone track and western Pacific subtropical high intensity on initial storm size: A numerical investigation, *Journal of Geophysical Research: Atmospheres*, 120, 11,451-411,467, doi:10.1002/2015JD023716, 2015.
- 620 Tang, G., Liu, Y., Huang, X., Wang, Y., Hu, B., Zhang, Y., Song, T., Li, X., Wu, S., Li, Q., Kang, Y., Zhu, Z., Wang, M., Wang, Y., Li, T., Li, X., and Wang, Y.: Aggravated ozone pollution in the strong free convection boundary layer, *Science of The Total Environment*, 788, 147740, doi:10.1016/j.scitotenv.2021.147740, 2021.
- Tang, J., Xu, X., Zhang, S., Xu, H., and Cai, W.: Response of remote water vapor transport to large topographic effects and the multi-scale system during the "7.20 " rainstorm event in Henan Province, China, *Frontiers in Earth Science*, 11, doi:10.3389/feart.2023.1106990, 2023.
- Trainer, M., Parrish, D. D., Goldan, P. D., Roberts, J., and Fehsenfeld, F. C.: Review of observation-based analysis of the regional factors influencing ozone concentrations, *Atmospheric Environment*, 34, 2045-2061, doi:10.1016/S1352-2310(99)00459-8, 2000.
- 630 Wang, J., Wang, P., Tian, C., Gao, M., Cheng, T., and Mei, W.: Consecutive Northward Super Typhoons Induced Extreme Ozone Pollution Events in Eastern China, *Npj Climate and Atmospheric Science*, 7, doi:10.1038/s41612-024-00786-z, 2024.
- Wang, N., Huang, X., Xu, J., Wang, T., Tan, Z.-M., and Ding, A.: Typhoon-boosted biogenic emission aggravates cross-regional ozone pollution in China, *Science Advances*, 8, doi:10.1126/sciadv.abl6166, 2022.
- Wang, N., Wang, H., Huang, X., Chen, X., Zou, Y., Deng, T., Li, T., Lyu, X., and Yang, F.: Extreme weather exacerbates ozone pollution in the Pearl River Delta, China: role of natural processes, *Atmospheric Chemistry and Physics*, 24, 1559-1570, doi:10.5194/acp-24-1559-2024, 2024.
- 635 Wu, L., Zhao, H., Wang, C., Cao, J., Liang, J.: Understanding of the Effect of Climate Change on Tropical Cyclone Intensity: A Review. *Advances in Atmospheric Sciences*, 39, 205–221. doi:10.1007/s00376-021-1026-x, 2022.
- Wu, Q., Wang, X. and Tao, L.: Interannual and interdecadal impact of Western North Pacific Subtropical High on tropical cyclone activity. *Climate Dynamics*, 54, 2237–2248, doi:10.1007/s00382-019-05110-7, 2020.
- 640 Wu, Z., Zhang, J., Chen, J., Pang, B., Xia, Y., and Chen, F.: The study on the method of conditional typhoon vortex relocation for GRAPES regional ensemble prediction, *Acta Meteorologica Sinica*, 78, 163-176, doi:10.11676/qxxb2020.027, 2020 (in Chinese).
- Xi, M., Luo, Y., Li, Y., Ma, D., Feng, L., Zhang, S., Chen, S., and Xie, M.: Comprehensive analysis of prevailing weather patterns and high-impact typhoon tracks to reveal where and how tropical cyclone affects regional ozone pollution in the Yangtze River Delta region, China, *Atmospheric Environment*, 361, 121498, doi:doi.org/10.1016/j.atmosenv.2025.121498, 2025a.
- 645

- 650 Xi, M., Xie, M., Gao, D., Ma, D., Luo, Y., Feng, L., Chen, S., and Zhang, S.: The impact of tropical cyclones on regional ozone pollution and its future trend in the Yangtze River Delta of China, *Atmos. Chem. Phys.*, 25, 14573-14590, doi:10.5194/acp-25-14573-2025, 2025b.
- Xie, M., Liao, J., Wang, T., Zhu, K., Zhuang, B., Han, Y., Li, M., and Li, S.: Modeling of the anthropogenic heat flux and its effect on regional meteorology and air quality over the Yangtze River Delta region, China, *Atmos. Chem. Phys.*, 16, 6071-6089, doi:10.5194/acp-16-6071-2016, 2016.
- 655 Xu, D., Zhang, B., Zeng, Q., Feng, Y., Zhang, Y., and Dai, G.: A typhoon initialization scheme based on incremental analysis updates technology, *Acta Meteorologica Sinica*, 77, 1053-1061, doi:10.11676/qxxb2019.060, 2019 (in Chinese).
- Xu, J., Zhang, Z., Zhao, X., and Zhang, J.: Synthetically impacts of the topography and typhoon periphery on the atmospheric boundary layer structure and special regional pollution pattern of O₃ in North China Plain, *Atmospheric Environment*, 330, doi:10.1016/j.atmosenv.2024.120566, 2024.
- 660 Xu, J., Zhao, P., Chan, J. C. L., Shi, M., Yang, C., Zhao, S., Xu, Y., Chen, J., Du, L., Wu, J., Ye, J., Xing, R., Wang, H., and Lu, L.: Increasing tropical cyclone intensity in the western North Pacific partly driven by warming Tibetan Plateau, *Nature Communications*, 15, 310, doi:10.1038/s41467-023-44403-8, 2024.
- Xu, J., Zhou, D., Gao, J., Huang, X., Xue, L., Huo, J., Fu, Q., and Ding, A.: Biogenic emissions-related ozone enhancement in two major city clusters during a typical typhoon process, *Applied Geochemistry*, 152, doi:10.1016/j.apgeochem.2023.105634, 2023.
- 665 Ying, M., Zhang, W., Yu, H., Lu, X., Feng, J., Fan, Y., Zhu, Y., and Chen, D.: An Overview of the China Meteorological Administration Tropical Cyclone Database, *Journal of Atmospheric and Oceanic Technology*, 31, 287-301, doi:10.1175/jtech-d-12-00119.1, 2014.
- Zhan, C. and Xie, M.: Exploring the link between ozone pollution and stratospheric intrusion under the influence of tropical cyclone Ampil, *Science of the Total Environment*, 828, doi:10.1016/j.scitotenv.2022.154261, 2022.
- 670 Zhan, C., Xie, M., Huang, C., Liu, J., Wang, T., Xu, M., Ma, C., Yu, J., Jiao, Y., Li, M., Li, S., Zhuang, B., Zhao, M., and Nie, D.: Ozone affected by a succession of four landfall typhoons in the Yangtze River Delta, China: major processes and health impacts, *Atmospheric Chemistry and Physics*, 20, 13781-13799, doi:10.5194/acp-20-13781-2020, 2020.
- Zhan, Y., Xie, M., Zhao, W., Wang, T., Gao, D., Chen, P., Tian, J., Zhu, K., Li, S., Zhuang, B., Li, M., Luo, Y., and Zhao, R.: Quantifying the seasonal variations in and regional transport of PM_{2.5} in the Yangtze River Delta region, China: characteristics, sources, and health risks, *Atmos. Chem. Phys.*, 23, 9837-9852, doi:10.5194/acp-23-9837-2023, 2023.
- 675 Zhang, C., Jiang, Z., Liu, M., Dong, Y., and Li, J.: Relationship between summer time near-surface ozone concentration and planetary boundary layer height in Beijing, *Atmospheric Research*, 293, 106892, doi:10.1016/j.atmosres.2023.106892, 2023.
- Zhao, D., Lin, Y., Li, Y., and Gao, X.: An Extreme Heat Event Induced by Typhoon Lekima (2019) and Its Contributing Factors, *Journal of Geophysical Research-Atmospheres*, 126, doi:10.1029/2021jd034760, 2021.
- 680 Zheng, J., Zheng, Z., Yu, Y., and Zhong, L.: Temporal, spatial characteristics and uncertainty of biogenic VOC emissions in the Pearl River Delta region, China, *Atmospheric Environment*, 44, 1960-1969, doi:10.1016/j.atmosenv.2010.03.001, 2010.

