

Supporting Information for "Reanalyses underperform in cold regions, raising concerns for climate services and research"

Bin Cao¹, and Stephan Gruber²

¹Key Laboratory of Tibetan Plateau Earth System, Environment and Resources (TPESER), National Tibetan Plateau Data

Center, Institute of Tibetan Plateau Research, Chinese Academy of Sciences, Beijing, China

²Department of Geography and Environmental Studies, Carleton University, Ottawa, Ontario, Canada

Contents of this file

1. Figures S1

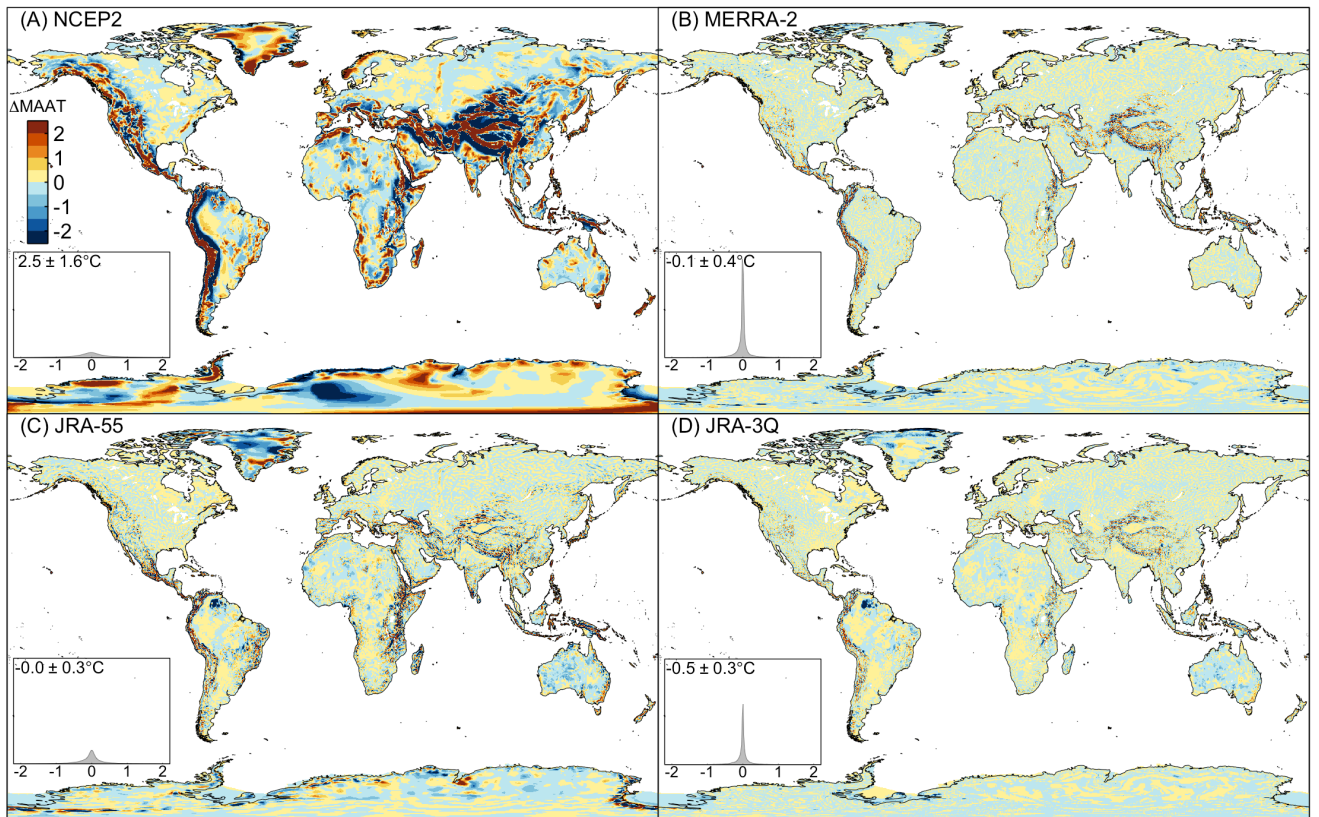


Figure S1. The MAAT difference (ΔMAAT) between 3D downscaling considering variable lapse rate (see Methods) and 2D linear interpolation. As an example, the MAAT in 2000 is shown. Insets show the distribution of differences with mean and standard deviation.