

# The Lagrangian moisture source and transport diagnostic WaterSip

## V3.2

Harald Sodemann<sup>1,2</sup>

<sup>1</sup>Geophysical Institute, University of Bergen, Norway

<sup>2</sup>Bjerknes Centre for Climate Research, Bergen, Norway

**Correspondence:** Harald Sodemann (harald.sodemann@uib.no)

**Abstract.** WaterSip is a diagnostic software tool that identifies the evaporation sources and transport pathways of precipitation or water vapour over a target area based on Lagrangian model output. In addition to the geographic location, WaterSip identifies select thermodynamic properties of the moisture sources, during atmospheric transport, and ~~during~~-arrival over the target area based on Lagrangian particle dispersion or trajectory model output. WaterSip software thereby employs the Lagrangian diagnostic algorithm for quantitative moisture source accounting of ~~?. The software tool requires output from Lagrangian particle dispersion models or trajectory models as input for the diagnostic.~~ Sodemann et al. (2008b). Moisture sources are ~~then~~-identified from changes in specific humidity along ~~these~~-trajectories at each output time step. The ratio between changes in specific humidity and the specific humidity of the air parcel allow to estimate the quantitative contribution of a moisture source to ~~the an~~ air parcel at a specific time and location. ~~Together with the temporal sequence, this~~ This contribution and its temporal sequence provides the basis for identifying moisture source contributions to the final precipitation. WaterSip ~~also identifies and aggregates further thermodynamic and geographic properties of the moisture source and during the moisture transport.~~ Designed is designed to operate on large datasets of trajectories filling regional to global ~~domain-filling trajectories.~~ WaterSip provides the results of the moisture source identification domains. The results are provided as gridded information in a variety of output files in netCDF format. This paper ~~describes revisits~~ the relevant methodological foundations, ~~the describes~~ the configuration and technical set-up ~~and configuration~~, and provides a consistent example case study to illustrate the use and interpretation of the software tool and its results. ~~Importantly, key~~ A short sensitivity study supports the choice of the main parameters of the diagnostic. Key uncertainties and caveats are described and discussed throughout the text. Users of WaterSip should be aware of these uncertainties to obtain a valid and reliable interpretation of the diagnostic results.

### 1 Introduction

20 Atmospheric dynamics transports water vapour from an evaporation source to a precipitation sink, as manifested in the global spectrum of weather systems. Knowledge about how weather systems ~~modulate~~ shape the atmospheric water cycle from source to sink is key for understanding the causes of hydro-meteorological extremes (~~e.g., Winschall et al., 2014b~~) (e.g., Brubaker et al., 2001; Winschall et al., 2014b; Holgate et al., 2020), precipitation seasonality (~~e.g., Sodemann and Zubler, 2010~~) (e.g., Sodemann and Zubler, 2010; Singh et al., 2017), and climatological ~~means~~ averages (e.g., Brubaker et al., 1993). Pro-

25 cess studies have ~~looked at for example investigated~~ how oceans contribute to precipitation on land ~~Stohl and James (2004)~~  
(~~Stohl and James, 2004~~), and how land areas recycle precipitation (~~Eltahir and Bras, 1996~~)(~~Eltahir and Bras, 1996; Dominguez et al., 2016~~  
. On paleoclimate time scales, knowledge of the variation of sources and transport pathways of water vapour are central to the  
interpretation of archives of the past hydroclimate, including ice cores (e.g., Johnsen et al., 1989; Sodemann et al., 2008a) and  
cave deposits at lower latitudes (~~e.g., Baker et al., 2015~~)(~~e.g., Breitenbach et al., 2010; Moerman et al., 2013; Baker et al., 2015~~)  
30 .

Measurements of precipitation and atmospheric water vapour do not directly reveal information about their evaporation  
sources. In specific situations ~~may~~, the stable water isotope composition of atmospheric waters ~~may~~ allow to separate the contri-  
bution of ~~source regions and different source regions from the effect of~~ phase changes during transport (~~Sodemann et al., 2008a; Aemisegger~~  
(~~Sodemann et al., 2008a; Aemisegger et al., 2014; Weng et al., 2021~~). In general, ~~though~~~~however~~, due to the multitude of in-  
35 fluences, the problem is underdetermined, ~~an then also~~. Furthermore, the interpretation of water isotope measurements ~~require~~  
~~the support of themselves can require additional~~ diagnostic numerical tools to disentangle the contribution of different pro-  
cesses and evaporation sources. As a consequence, results from moisture source studies ~~often~~ ~~generally~~ suffer from a lack of  
definitive, observable constraints.

Different approaches from atmospheric models and model data have been used over time to access information ~~about the~~  
40 ~~on water vapour's~~ sources and transport conditions ~~of water vapour~~(~~Dominguez et al., 2020~~). Conceptual studies evaluated  
the water balance in domains over a given region, for example to determine precipitation recycling over the Continental U.S.  
(Eltahir and Bras, 1994) and the Amazon region (Salati et al., 1979). ~~The opposite extreme of complexity are approaches~~  
~~where~~ ~~Much more complex approaches release~~ water vapour tracers ~~are released~~ within a numerical atmospheric model's wa-  
ter cycle (~~Numaguti, 1999; Yoshimura et al., 2004; Sodemann and Stohl, 2009~~)(~~Numaguti, 1999; Sodemann and Stohl, 2009~~).  
45 Hereby, water vapour is transported forward within a secondary water cycle of the numerical model for selected 'tagged' subsets  
of total evaporation. Such tagging approaches require a very substantial computational effort to obtain detailed representation of  
the sources, and over seasonal to inter-annual time scales. ~~To reduce the computational efforts, Eulerian offline methods with~~  
~~reduced complexity have been developed~~ (~~Yoshimura et al., 2004; van der Ent et al., 2014~~). As an intermediate in terms of  
complexity and computational demand, Lagrangian methods have been employed to diagnose the water budget along air parcel  
50 trajectories (~~Dirmeyer and Brubaker, 1999; Stohl and James, 2004~~)(~~Dirmeyer and Brubaker, 1999; Stohl and James, 2004; Gustafsson et al.~~  
. Since trajectories can be calculated off-line from stored atmospheric fields, for example reanalysis data, such an approach  
is computationally more efficient than tagging studies. In addition, Lagrangian methods can more easily provide the spatial  
extent of moisture sources, and thus provide an intuitive ~~connections~~ ~~connection~~ between source and receptor areas.

This paper describes the concepts and use of the WaterSip<sup>1</sup> software. WaterSip consists of an implementation of the widely  
55 used Lagrangian moisture source and transport diagnostic of ~~?~~. ~~Combined with programme routines to provide different gridded~~  
~~and aggregated information in output data files, WaterSip provides means to~~ ~~Sodemann et al. (2008b)~~. ~~WaterSip provides a~~

---

<sup>1</sup>The name WaterSip originates from the name of an internal research project at NILU, where the author developed large parts of the present code. The  
name can be understood as a metaphor, where increases of the water vapour mixing ratio between time steps could be imagined as sips of water taken by an  
air parcel.

means to identify and characterise the source regions and transport properties-conditions of water vapour and precipitation from Lagrangian air parcel trajectories. The algorithm of the WaterSip software includes ~~a processing step that quantifies the contribution from a moisture source to the water vapour or precipitation~~ an accounting procedure. This processing step provides  
60 quantitative estimates of the moisture source contributions to precipitation (or water vapour) in a target area. This ~~so-called accounting step also provides an additional layer of information of the moisture sources. This~~ quantitative information can then be used to provide, for example, the average sea surface temperature at the moisture source (~~(?)~~(Sodemann et al., 2008b)), the fraction of land versus ocean surface contribution (Sodemann and Zubler, 2010), the duration and transport distance from evaporation to precipitation (Laederach and Sodemann, 2016), as well as the extent of mixing and rainout during trans-  
65 port (Dütsch et al., 2018). For comparison, the algorithms of Stohl and James (2004), Dirmeyer and Brubaker (1999), and Gustafsson et al. (2010) are also available in the WaterSip tool.

A bibliographic overview of studies that have used the (Sodemann et al., 2008b) algorithm with the WaterSip software shows the global to regional coverage of previous work, and the variety of study objectives, from event-scale to climatological studies, process studies, sensitivity studies, and the interpretation of measurements and paleoclimate records (Table 1). Since the origi-  
70 nal publication of ~~the method by~~ this diagnostic method, numerous technical and conceptual developments have taken place, which are either fragmented across several publications, or not coherently described in the current literature. The main objective of this work is therefore to provide a consistent reference point for the use and interpretation of the method and software, including its wide array of additional diagnostic output of moisture transport characteristics. Users will therefore no longer need to re-implement the diagnostic algorithm behind WaterSip themselves, and can focus on the application of the tool to  
75 different subject areas. ~~A bibliography overview over studies that have used WaterSip shows the global to regional coverage of previous work, and the variety of study objectives, from event-scale to climatological studies, process studies, sensitivity studies, and the interpretation of measurements and paleoclimate records (Table 1).~~

The WaterSip software in current version 3.2 ~~presented here enables to flexibly configure the different parameters of the diagnostic algorithm, and provides easy~~ described here gives users flexibility in its configuration with regard to different  
80 threshold parameters, and gives access to a multitude of additional moisture source and moisture transport characteristics obtained from the algorithm. WaterSip currently works with two common models providing air parcel trajectories (LAGRANTO, Sprenger and Wernli (2015) and FLEXPART, Stohl et al. (2005)), and can be extended to read in trajectory files produced from other trajectory calculation tools. Implemented as a C++ code with parallelisation in openMP, and writing output files in ~~netCDF-CF~~ netCDF format, the WaterSip code can be easily integrated in common scientific computing environments and  
85 workflows.

The paper starts with a ~~coherent description overview~~ of the working principle of the algorithm and introduces key quantities (Sec. 2). This is followed by a description of the configuration of a run (Sec. 2)3, followed by practicalities such as input data, running the software (Sec. 4), and an output file description (Sec. 4.34). A case study is used as a consistent example throughout  
90 the manuscript to get users started with the diagnostic output capabilities and the interpretation, ~~thereby providing initial~~ providing guidance in applying WaterSip to new research topics. Readers ~~that who~~ are new to the method may ~~chose to first~~ take a choose to first look at the description of the results from the example case (Sec. 4.4 and Sec. 5) before reading through

the method description. Being an off-line diagnostic based on air parcel trajectories, ~~the WaterSip algorithm~~ [WaterSip](#) makes several simplifying assumptions that introduce uncertainty to the results. Causes of uncertainty are mentioned throughout the text and discussed in Sec. 6. Users are advised to think carefully about the inherent limitation of the method to obtain valid and reliable conclusions from applying WaterSip during their research efforts.

**Table 1.** Previous studies using the ~~WaterSip~~ [Sodemann et al. \(2008b\)](#) method [with the WaterSip software](#). Studies have been classified by their study region, time scale, and study topic.

Region	Time scale	Study topic	Reference
Central Europe	Climatological	Precipitation seasonality	<a href="#">Sodemann et al. (2008b)</a>
	Inter-annual	Interpretation of measurements	<a href="#">Aemisegger et al. (2013)</a>
North Atlantic	Inter-annual	Interpretation of measurements	<a href="#">Steenburgh et al. (2015)</a>
	Event-based	Precipitation extreme	<a href="#">Weng et al. (2015)</a>
	Inter-annual	Interpretation of measurements	<a href="#">Zannoni et al. (2015)</a>
Mediterranean	<a href="#">Event-based</a>	<a href="#">Method comparison</a>	<a href="#">Wunsch et al. (2014a)</a>
	Event composite	Precipitation extremes	<a href="#">Wunsch et al. (2014a)</a>
<del>Event-based Method comparison Wunsch et al. (2014a)</del>			
Greenland	Climatological	Method description	<a href="#">Sodemann et al. (2008b)</a>
	Climatological	Ice core interpretation	<a href="#">Sodemann et al. (2008b)</a>
	Inter-annual	Interpretation of measurements	<a href="#">Bonneville et al. (2015)</a>
	<del>Climatological</del>	<del>Ice core interpretation</del>	<del><a href="#">Osman et al. (2021)</a></del>
Event-based	Atmospheric river precipitation	<a href="#">Bonneville et al. (2015)</a>	
<del>Antarctica</del>	Climatological	Ice core interpretation	<del><a href="#">Wang et al. (2015)</a></del>
<a href="#">Antarctica</a>	Climatological	Precipitation seasonality	<a href="#">Sodemann et al. (2008b)</a>
	Climatological	Ice core interpretation	<a href="#">Masson et al. (2015)</a>
	Climatological	Ice core interpretation	<a href="#">Winkler et al. (2015)</a>
	Climatological	Ice core interpretation	<a href="#">Wang et al. (2015)</a>
	<a href="#">Climatological</a>	<a href="#">Ice core interpretation</a>	<a href="#">Buizerend et al. (2015)</a>
	Event-based	Atmospheric river precipitation	<a href="#">Terpstra et al. (2015)</a>
	<a href="#">Climatological</a>	<a href="#">Glacier mass balance</a>	<a href="#">Hofstra et al. (2015)</a>
East Asia	Climatological	<a href="#">Cave deposit interpretation</a>	<a href="#">Baker et al. (2015)</a>
	<a href="#">Climatological</a>	Process study	<a href="#">Fremm et al. (2015)</a>
	Climatological	Model sensitivity	<a href="#">Fremm et al. (2015)</a>
<del>Climatological Cave deposit interpretation Baker et al. (2015)</del>			
India and Pakistan	Event	Precipitation extreme	<a href="#">Martius et al. (2015)</a>
	Event composite	Precipitation extremes	<a href="#">Bohlinger et al. (2015)</a>
	Event-based	Precipitation extreme	<a href="#">Bohlinger et al. (2015)</a>
Global	Climatological	Precipitation life time	<a href="#">Laedke et al. (2015)</a>
	Climatological	Precipitation life time	<a href="#">Sodemann et al. (2008b)</a>
	Climatological	Precipitation life time	<a href="#">Gimeno et al. (2015)</a>

## 2 Method

~~Since the~~ The original publication of the ~~WaterSip method in 2008~~ diagnostic algorithm of (Sodemann et al., 2008b) was implemented as a set of FORTRAN routines and shell scripts for use with trajectories from LAGRANTO (Sprenger and Wernli, 2015). ~~Since then~~, there has been a considerable growth in studies with this algorithm (Table 1. ~~There have also~~ Alongside, there have been new conceptual and technical developments that require an updated reference publication. ~~Recent~~ These developments include the use of WaterSip with FLEXPART model output (Sodemann and Stohl, 2009), assessing the role of convection and assimilation increments Sodemann (2020); Fremme et al. (2023), the distinction of mixing and rainout events during transport Düttsch et al. (2018), the analysis of lifetime distribution of water vapour (Winschall et al., 2014b; Laederach and Sodemann, 2016; Sodemann, 2020), interpretation of stable isotope characteristics (Weng et al., 2021), the identification of water vapour in addition to precipitation, ~~prediction of stable isotope characteristics (Aemisegger et al., 2014)~~, as well as technical developments regarding input and output files, configuration and output quantities. This section provides a coherent description of the working principle of the algorithm, including the mathematical formalism that will be used in the remainder of the manuscript.

### 2.1 Description of the ~~WaterSip~~ diagnostic accounting algorithm

110 Generally, the ~~WaterSip algorithm~~ Sodemann et al. (2008b) algorithm used in WaterSip works based on trajectories of atmospheric air parcels, described by a time-dependent coordinate vector ~~of~~  $\vec{x}(t)$  of positions given by longitude  $\lambda$ , latitude  $\phi$ , and height  $z$ :

$$\vec{x}(t) = [\lambda(t), \phi(t), z(t)]. \quad (1)$$

~~Trajectories~~ Air parcel trajectories on the way to a target area  $A$  (Fig. 1a, black box) may pass over the underlying surface of either ocean (blue area) or land regions (green area), thereby acquiring moisture at the moisture sources (hatched area). Aquisition of moisture by an air parcel is termed a moisture uptake, and the ensemble of all moisture uptakes to an air parcel then comprises the moisture source. Identifying the relevant set of air parcels arriving over a target domain and their corresponding trajectories is the first step of the Sodemann et al. (2008b) algorithm (Fig. 1a). In-c, step 1).

Next, in order to determine the moisture sources of an air parcel, specific humidity  $q$  and air temperature  $T$ , or relative humidity RH and  $T$ , must be available along the same trajectory, ~~interpolated from the~~. These are commonly obtained by interpolation from four-dimensional NWP model output fields. ~~Thus,  $q$  becomes available~~. For example, the 4-D specific humidity field  $Q$  is used to obtain  $q(t)$  along the transport pathway of air parcels towards a target area at every time step interval  $i$  with time step  $\Delta t$ :

$$q_i = Q[\vec{x}(t = i \cdot \Delta t)]. \quad (2)$$

125 The conceptual starting point of the ~~WaterSip~~ algorithm is then the Lagrangian water budget, describing the change in specific humidity along an air parcel trajectory resulting from evaporation ( $e$ ) and condensation ( $c$ ) (Stohl and James, 2004):

$$\frac{Dq}{Dt} = e - p \quad (3)$$

The discretized Lagrangian water budget, giving the change in  $q$  along a trajectory with time step  $\Delta t$  of  $\sim 1 - 6$  h at time step  $i$  (~~at time  $t = i \cdot \Delta t$~~ ) is then

130 
$$\frac{\Delta q_i}{\Delta t} = e_i - p_i. \quad (4)$$

~~Since the diagnostic looks backwards in time from the arrival of a trajectory~~ The arrival time at target area  $A$ , ~~the arrival time~~ is given by  $t = 0$  at step 0, and  $i$  increases backward in time along the trajectory (Fig. 1 ~~ed~~, horizontal axis). The change in specific humidity from the previous step interval,  $i + 1$ , to step interval  $i$  is then obtained from

$$\Delta q_i = q_i - q_{i+1}. \quad (5)$$

135 Importantly,  $\Delta q_i$  can either be positive, zero, or negative (Fig. ~~??e~~1d). A positive  $\Delta q$  (i.e.,  $\Delta q > 0$ ) is interpreted as a so-called moisture uptake, while a negative  $\Delta q$  (i.e.,  $\Delta q < 0$ ) is interpreted as a moisture loss along the trajectory. Thereby,  $\Delta q_i$  is always a net effect of both  $e_i$  and  $p_i$  that may have affected the water budget of the air parcel during time step  $i$ . The ~~WaterSip~~ algorithm necessarily assumes that either evaporation or precipitation exclusively act on an air parcel during discretisation time  $\Delta t$ , which introduces uncertainties depending on the discretisation time  $\Delta t$  (see Sec. 6). In practice, a ~~threshold value~~ critical  
 140 specific humidity threshold  $\Delta q_c$  is used to filter out ~~small~~ smaller variations in  $\Delta q$  that are due to numerical noise (see Sec. 3.1, Fig. 1d).

Each moisture uptake ~~can contribute a share to~~  $\Delta q_n$  contributes a share  $f_n$  to the moisture  $q_n$  at a given time interval. Due to subsequent uptakes or rainout and mixing events along the trajectory, typically only a fraction  $f_n$  of the local moisture uptake will arrive over the target domain and contribute to the total water vapour at arrival  $q_0$ , the specific humidity at the last time step  
 145 of a trajectory. These source contributions or uptakes are expressed by the fractional contribution  $f$  of each of the  $U$  moisture uptakes to the arriving water vapour:

$$q_0 = \sum_{n=1}^U f_n \cdot \Delta q_n + q_r. \quad (6)$$

~~where~~ Thereby,  $q_r$  is a residual amount of moisture that already ~~is~~ was present in the air parcel at the earliest available time step of the trajectory with unidentified sources (see Sec. 3.3.3). The objective of the ~~WaterSip~~ accounting step of the  
 150 Sodemann et al. (2008b) algorithm is now to obtain an estimate of the fractional contributions ~~of each moisture uptake~~  $f_n$  for

of each of the  $U$  identified moisture uptakes (Fig. 1c, step 2). The so-called moisture accounting provides all  $f_n$ , which then allows to diagnose where, when, and under what conditions the air parcel water budget changed, and to what extent this is reflected in the precipitation falling from the air parcel (Fig. 1c, step 3).

At the time of a moisture uptake, the fractional contribution for any  $f_n$  for each uptake  $n$  is directly obtained from

$$155 \quad f_n = \frac{\Delta q_n}{q_n}. \quad (7)$$

However, if at a later time another moisture uptake contributes to the specific humidity in the same air parcel,  $f_n$  needs to be recalculated to reflect its decreases share. This sequential updating of the fractional contributions is referred to as the accounting of specific humidity along the trajectory. Since ? already provided a detailed example of this accounting procedure, only a short conceptual illustration is provided here. In Fig. 1d, a moisture increase between time intervals 4 and 5, for example, that is larger than the threshold value  $\Delta q_c$ , gains a smaller relative share of the arriving moisture  $q_0$  after a large uptake occurs between time steps 1 and 2. A more detailed, quantitative example is given in Sodemann et al. (2008b).

In the case of another moisture uptake at a later time step  $i$ , the fractions  $f_m$  of all previous uptakes  $m > i$  simply need to be recalculated using Eq. 7 as

$$f'_m = \frac{\Delta q_m}{q_i} \text{ for } m < i. \quad (8)$$

165 In the case of a moisture loss (due to precipitation) at a later time  $i$ , some of the moisture contributed from previous uptakes  $m < i$  will be lost. Since the WaterSip-Sodemann et al. (2008b) algorithm assumes that the water vapour is well mixed within one a given air parcel, precipitation events do not change the fractional contributions at that time. However, a moisture loss due later moisture loss  $\Delta q_i$  does remove moisture from previous uptakes  $m$   $\Delta q_m$  according to their fractional contribution  $f_m$  at time  $m$ :

$$170 \quad \Delta q'_m = \Delta q_m - f_m \cdot \Delta q_i. \quad (9)$$

The accounting is complete when the above steps in Eq. (6-8-9) have been applied from the earliest time of the trajectory up to the arrival time  $t = 0$ . Dütsch et al. (2018) compactly expressed the final result of this accounting method in two update equations. While the algorithm is presented here in a detailed representation of each of the computational steps, the equations in Dütsch et al. (2018) are almost entirely equivalent, and may facilitate a numerical implementation of the algorithm (for one exception see below). WaterSip currently implements the only this stepwise accounting procedure.

180 The vertical location of the air parcel as moisture uptakes take place can be used to infer the reliability of the assumption that water vapour stems from evaporation at the current location. If air parcels are within or close the the height of the (well-mixed) boundary layer, this assumption is considered more likely to be valid than if the uptake is detected well into the free troposphere (Fig. 1b, dashed line). The boundary-layer height scale factor  $s_z$  is used to separate between uptakes considered to be within the boundary layer or within the free troposphere (see Sec. 3.1.4).

## 2.2 Precipitation estimate

Up to this point, the algorithm has provided quantitative information about the contributions of uptakes to the ~~specific humidity in moisture within~~ an air parcel at  $\vec{x}(t=0)$  at some height  $z$ . ~~While it is possible to directly use the information about the sources of the water vapour, more commonly one would be interested in the moisture sources of surface precipitation.~~ In order to transfer ~~this the water vapour~~ information to surface precipitation at the arrival point of trajectories, ~~one needs to obtain an estimate of surface precipitation from these parcels. To this end,~~ moisture loss from a precipitating air parcel at the last time step before arrival ( $\Delta q_0 < 0$ ) is assumed to directly contribute to surface precipitation. To obtain a reliable estimate of the total precipitation in an area, a sufficiently large set of trajectories is required to faithfully represent the atmospheric column above a target area (Fig. 1b, ~~crosses~~). Then, the Lagrangian precipitation estimate  $\tilde{P}$  (in units of  $\text{kg m}^{-2}(\Delta t)^{-1}$ ) can be computed as  
 185 the column integral of all  $\Delta q_0^k$  for all  $K$  trajectories residing over the target area  $A$  at time  $t = 0$ :  
 190

$$\tilde{P} = \frac{1}{A} \sum_{k=1}^K \left( |\Delta q_0^k| \cdot m^k \right), \quad (10)$$

Here,  $m^k$  is the mass of air parcel  $k$  residing over the target area. In case that ~~trajectories are trajectory model output is~~ used rather than ~~air parcels particle dispersion model output~~, and that trajectories are started from a region that is discretised vertically in pressure intervals, Eq. 10 becomes

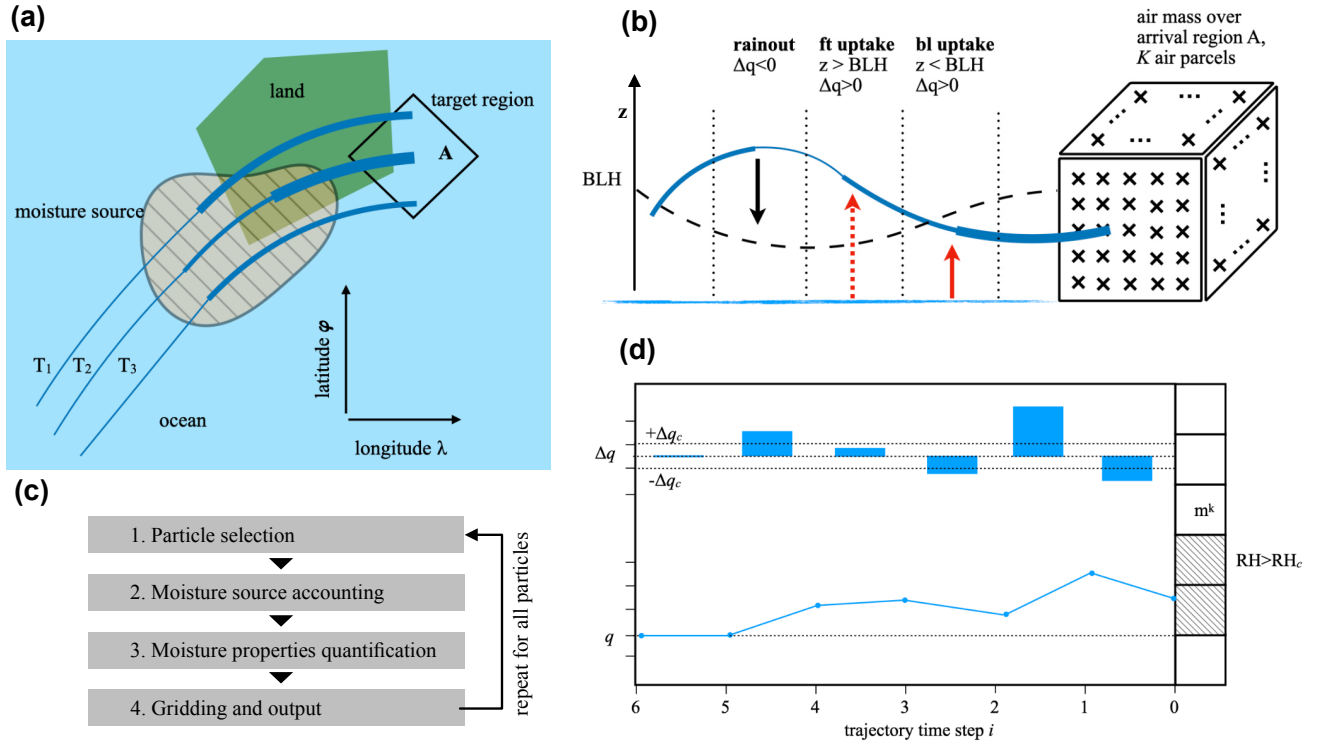
$$195 \quad \tilde{P} = \frac{1}{g \cdot A} \sum_{k=1}^K \left( |\Delta q_0^k| \cdot \Delta p^k \right). \quad (11)$$

~~In practice~~ ~~To obtain a spatially coherent view~~, the contribution of each individual particle or trajectory is gridded onto the arrival grid using a gridding kernel (see Sec. 5.3). ~~According to the above definition of  $\tilde{P}$ , Thereby~~ only air parcels ~~with  $\Delta q_0 < 0$  contribute to a precipitation event. Therefore only air parcels fulfilling this requirement~~ ~~fulfilling certain requirements~~ are considered in the analysis of precipitation moisture sources. ~~To further increase the reliability of the detection of precipitation events and computational efficiency, a minimum~~ ~~For example, to further support the presence of clouds leading to precipitation, a critical~~ relative humidity threshold ~~during arrival is typically imposed in addition~~ ~~RH<sub>c</sub> is applied, where clouds are assumed when the grid-scale relative humidity exceeds 80%~~ (see Sec. ~~3.13.1.3~~).  
 200

## 2.3 Accounted fraction

The sum of all fractional contributions  $f_i^k$  from identified moisture uptakes  $U$  along trajectory  $k$ , the total accounted fraction  
 205  $f_{\text{tot}}^k$ , provides information about the known sources of  $q_0^k$  and thus  $\Delta q_0^k$ :

$$f_{\text{tot}}^k = \sum_{k=1}^K \sum_{i=1}^U f_i^k. \quad (12)$$



**Figure 1.** Schematic illustration of the moisture source diagnostic. (a) Horizontal view of a bundle of trajectories ( $T_1, T_2, T_3$ , dark blue lines) arriving in a target region A (black box). The trajectories pass over ocean (light blue) and land regions (green). An area of moisture uptake (dashed, orange) is detected where the specific humidity increases along trajectories (broadening blue lines). (b) 3-dimensional view of an air mass represented by air parcels that are traced backward using trajectories. Crosses denote arrival points in the air mass over the arrival domain A (black box). Locations of moisture increase from evaporation above the boundary layer (dashed red arrow), within the boundary layer (solid red arrow), and decrease from precipitation (black arrow) are detected from changes in the specific humidity along trajectories (width of blue line). Moisture uptakes ( $\Delta q > 0$ ) can be within the boundary layer (bl uptake) or in the free troposphere (ft uptake). Note that many trajectories at different vertical levels contribute to the Lagrangian precipitation estimate in the arrival region. Dashed black line denotes boundary-layer height (BLH). (c) Schematic of moisture uptakes and losses along 6 time steps of an air parcel with mass  $m^k$  arriving at grid-scale saturation, identified by with  $RH > \text{aboveathresholdvalue} RH_c$  (shading). Note that some of the specific humidity changes are smaller than ~~the critical~~ a set threshold value for significant specific humidity changes  $\Delta q_c$ . See text for details.

210 Hereby,  $M$  is the number of all moisture uptake events identified along trajectory  $k$ . Based on the vertical position (particle elevation)  $z$  where the uptake is identified, the fractional contributions are subdivided into the two categories: the accounted fraction in the boundary layer,  $f_{bl}^k$ , and the accounted fraction in the free troposphere,  $f_{ft}^k$ . The sum of both fractions is the total explained fraction  $f_{tot}^k$ , which should obey the relation

$$f_{\text{tot}}^k = (f_{\text{bl}}^k + f_{\text{ft}}^k) < 1. \quad (13)$$

Then,  $f_{\text{tot}}^k$  provides information about the consistency of the algorithm. In general, and on average, this relation is found to be indeed fulfilled. However, if ~~some threshold parameters are set~~ the  $\Delta q_c$  threshold is set to values outside a meaningful range of values (see Sec. 3.1), the total explained fraction can exceed 1.0. Typically, this will happen for large values of the  
 215 precipThreshold parameter (see Sec. 3.1.2). Users are thus advised to inspect  $f_{\text{tot}}^k$  in their results and to make adjustments if needed.

The explained fractions  $f_{\text{bl}}^k, f_{\text{ft}}^k$  can be used further to subdivide the Lagrangian precipitation estimate  $\tilde{P}$  into its respective explained fractions. The total explained precipitation  $\tilde{P}_{\text{tot}}$ , ~~for example,~~ is obtained from

$$\tilde{P}_{\text{tot}} = \sum_{k=1}^K (f_{\text{tot}} \cdot \tilde{P}^k) = \frac{1}{A} \sum_{k=1}^K (f_{\text{tot}}^k \cdot \Delta q_0^k \cdot m^k). \quad (14)$$

220 Corresponding quantities  $\tilde{P}_{\text{bl}}$  and  $\tilde{P}_{\text{ft}}$  can be computed for  $f_{\text{bl}}$  and  $f_{\text{ft}}$ . A choice to consider in this respect is which precipitation should be used for weighting when averaging the weighted average of diagnosed quantities,  $\tilde{P}$  or only the explained fractions of  $(\tilde{P}_{\text{tot}}, \tilde{P}_{\text{bl}}, \tilde{P}_{\text{ft}})$ . Given that the Lagrangian precipitation estimate  $\tilde{P}$  is typically in error by about 20–30% or more (Stohl and James, 2004), this choice is probably might be secondary for the interpretation of the final results. In the ~~WaterSip algorithm~~ Sodemann et al. (2008b) algorithm as implemented in WaterSip,  $\tilde{P}$  is used, rather than  $\tilde{P}_{\text{tot}}$ .

## 225 2.4 Trajectory input data

### 3 Configuration of WaterSip

WaterSip ~~uses Lagrangian particle trajectory data as its basic input. Trajectories that contain the vectors  $\vec{x}^k$  with position and other necessary variables for the  $K$  air parcels representing an air mass over the target region (Fig. 1b). Such trajectory data can be obtained from different modelling tools. Currently, WaterSip is able to handle input from the Lagrangian trajectory model~~  
 230 ~~LAGRANTO (Sprenger and Wernli, 2015), and from the Lagrangian particle dispersion model FLEXPART (Stohl et al., 2005; Pisso et al.,~~  
~~Minimum requirements with regards to the variables that are included on the trajectories are position,  $T$ , and  $q$  or RH. The input data parameters are set in either settings group *Lagranto* (Table B7) or *Flexpart* (Table B6), depending on the used trajectory model. Here, the implications of discretisation choices of an air mass into air parcels are discussed, while further technical details for creating input data are described in~~ is has a long list of configuration parameters that control the  
 235 workings of the algorithm. The configuration is supplied as a text-based input file, that consists of sets of parameters, which are organised into thematic sections. This section describes how to control core algorithm parameters (Sec. 3.1), how to handle the discretisation of the arrival air mass (Sec. 4.

#### 3.0.1 Particle mass $m_i$

240 An important user choice for the WaterSip diagnostic is the discretisation of the studied atmospheric mass into individual particles. In general, the more particles represent a particular air mass, the smaller the mass of air associated with one air parcel ( $m^k$  3.2), and [how to configure the output grids \(Sec. 3.4\)](#). While the detailed format of the more detailed and statistically reliable the results will become. For example, Sodemann and Stohl (2009) used the global FLEXPART dataset of Stohl (2006) from a global domain-filling run with 2.4 million air parcels. With a total global atmospheric mass of  $5.14 \times 10^{18}$  kg, each air parcel represents  $2.14 \times 10^{12}$  kg of air. Laederach and Sodemann (2016) used 5 million air parcels, resulting in a particle mass of  $m^k = 1.03 \times 10^{12}$  kg. Alternatively, the mass of an air parcel can also be specified in the RELEASES file of the FLEXPART model. For FLEXPART input data, the particle mass is set by parameter *partMass* (in kg) in the settings group *Flexpart* (Table B6).

If one uses LAGRANTO for the trajectory calculation, the atmospheric mass of one air parcel results from the calculation start grid. For LAGRANTO input data, the particle mass is first computed from the chosen discretisation as

250 
$$\frac{m^k}{g} = \Delta x \Delta y \Delta p,$$

with  $\Delta p$  in units of and  $\Delta x$  [text-based input file is described in Appendix B](#), the following sections mentions the name of the relevant parameters and input file sections, exemplifies typical values,  $\Delta y$  in units of . Then,  $\frac{m^k}{g}$  is set as parameter *partMass* (in in the settings group *Lagranto* (Table B7), which is then internally in WaterSip converted to units of . For example, ? computed backward trajectories from a  $50 \times 50$  km horizontal grid over Greenland, with a vertical spacing of 25 hPa for every 255 6 h time step over a given time period. Accordingly, each trajectory on this grid represents  $680 \times 10^9$  kg of air arriving at a specific time interval. and describes relevant findings from the literature along the way. A brief sensitivity study of several key parameters is provided in Sec. 6.1.

### 3.0.1 Trajectory time interval $\Delta t$

Another important property of the input trajectory data for the WaterSip algorithm is temporal discretisation, i.e., the time interval  $\Delta t$  at which meteorological and position information from air parcel locations is available. Typically,  $\Delta t$  corresponds 260 to the time interval of NWP boundary data used during the trajectory calculation. For global reanalyses a common interval is 6 h, but also 1 to 3 h time intervals have been used (Fremme et al., 2023). While trajectory location accuracy increases with a higher input data frequency, there are also potential complications from higher time-resolution input data. As  $\Delta q_c$  is well-tested for  $\Delta t = 6$  h with regard to separating signal from noise, smaller threshold values need to be used at shorter time intervals, which 265 do not necessarily have the same filtering effect (see Sec. 3.1). The trajectory time interval  $\Delta t$  is set as parameter *timeStep* (unit h) in the settings group *Case* (Table B1).

In a sensitivity study with WaterSip and FLEXPART using climate model data at  $1.8 \times 1.8$  degree resolution as input, Fremme et al. (2023) found that the time interval influenced the moisture source distance, with substantially smaller moisture source distances for time intervals of less than 6 h. In that study, the authors then chose to compute trajectories at a time 270 resolution of 1 h to obtain smaller position errors, while the WaterSip diagnostic was run at 6 h time interval to obtain the

desired filtering of interpolation noise. With such a combination of time intervals, a compromise can be obtained between trajectory accuracy and sufficient separation between signal and noise in the WaterSip diagnostic.

### 3.0.1 Trajectory length $L$

275 One important consideration for computing trajectories is the trajectory length  $L$ , the duration over which the air parcel movement is traced. Since trajectories become increasingly uncertain for longer calculation time, the trajectory length is an important consideration for WaterSip applications (Stohl, 1998). In the approach of Stohl and James (2004), the results were strongly dependent on the chosen integration time intervals. This choice introduces a subjective element in the analysis, since such chosen time scales may not only vary with climate region, but also with seasons and weather systems. The accounting procedure implemented in WaterSip does not require a pre-defined trajectory length for its analysis. Past studies found that the  
280 accounting algorithm provides regionally differing time scales, and typically finds only minor contributions beyond about 15 days (Winschall et al., 2014b; Laederach and Sodemann, 2016). The trajectory length is set as the number of time steps along a trajectory as parameter *trajPoints* in the settings group *Case* (Table B1). One obtains the value of *trajPoints* from dividing  $L$  by  $\Delta t$ . For example, 20-day trajectories with a 6-h time interval results in *trajPoints* set to 81.

From a global budget of atmospheric water vapour and precipitation fluxes, one obtains the often-cited global mean residence  
285 time of water vapour of 8-10 days (e.g. Trenberth et al., 2007). Recent studies (based on Lagrangian moisture source diagnostics with WaterSip) provide arguments that the residence time, or life time of water vapour, may be better described by a heavily skewed life time distribution, that is characterised by a median value of about 4-5 days and a very long, thin tail at 20 days and beyond (Sodemann, 2020; Gimeno et al., 2021). Except at high latitudes, where life times are particularly long, differences in the source contributions are generally not sensitive to the trajectory length with the WaterSip algorithm beyond a trajectory  
290 length of 15 days. Using the WaterSip diagnostic with trajectories of 10, 15, or 20 days length will therefore lead to relatively less differing results than with the Stohl and James (2004) method. A generally recommended choice of trajectory length that also allows for the detection of long-range transport of water vapour is 20 days.

## 3.1 Control settings and threshold Core algorithm parameters

295 There are a number of parameter choices in the WaterSip algorithm that can be of critical importance for the results and their interpretation. These choices are now discussed, starting with the choice of the target region, and then proceeding with the threshold settings that have a variety of impacts on the obtained results. The core parameters of the Sodemann et al. (2008b) algorithm are a set of threshold parameters that determine the identification of moisture uptakes and precipitation events from the Lagrangian moisture budget along trajectories.

### 3.1.1 Target region and time period specification

300 A fundamental choice for an analysis with WaterSip is the geographic location of the target region. When used to diagnose precipitation origin, air parcels are retained for analysis if (i) they reside within the target region, (ii) during the preceding

time step had a specific humidity decrease larger than the precipitation threshold value (see Sec. 3.1.2), and (iii) had a relative humidity within chosen bounds (see Sec. 3.1.3). In the WaterSip configuration file, the target region is specified by a set of latitude and longitude bounds, namely the parameters *arrivalGridMinLon*, *arrivalGridMinLat*, *arrivalGridMaxLon*, *arrivalGridMaxLat* in the settings group *Grid* (Table B2). The grid spacing of the arrival grid in latitude, longitude increments, is defined by parameters *arrivalGridDx* and *arrivalGridDy* in the same settings group.

Moisture transport can be strongly modulated by topography, such as for example over Antarctica (Sodemann and Stohl, 2009). In order to focus the analysis on different altitude ranges within the target area, but also on selected elevation, several parameters are available in the settings group *Diagnostics*. Air parcels will only be retained for analysis if they arrive over topography with a height within the parameters *arrivalOroMin* and *arrivalOroMax*. Similarly, air parcels can be filtered according to their altitude above sea level using parameters *arrivalAltMin* and *arrivalAltMax*. In order to include all parcels arriving within a domain, the parameters should be set to an height below zero (e.g., -100 m) for the lower, and a large height (e.g., 50000 m) for the upper threshold value. The used topography is ingested from the netCDF file specified at parameter *orographyFile* in settings group *Case*.

Another fundamental setting is the start and end time of the analysis, regulated by parameters *startDate* and *endDate* in section *Case*. Since the analysis proceeds backward from the time of arrival, the start date is larger than the end date. Importantly, in order to obtain results for e.g. 10 day accounting along a trajectory, the time difference between start date and end date must be at least 10 days plus one time step. The length of the analysis period  $L$  is defined by parameter *trajPoints* in settings group *Case*, and the duration of the entire accounting period for each trajectory is then given by the parameter *timeStep* times *trajPoints* (see Sec. 3.3.3).

### 3.1.1 Uptake threshold $\Delta q_c$

Specific humidity changes along air parcel trajectories are not only reflecting  $e-p$ , but also contain spurious noise. The reasons for such noise lie in the fact that positions along trajectories are interpolated from the gridded output of NWP models provided at discrete times, as well as inaccuracies in the trajectory calculation itself due to interpolation from gridded NWP output and inaccuracies in trajectory calculations (Stohl, 1998). There may also be an impact from parameterised atmospheric processes, such as convection and turbulence, that act at a time scale shorter than the trajectory time interval, and that are only detected by their residual effects (see Sec. 3.3.2 and Sec. 6).

In order to suppress or dampen such noise, the uptake threshold  $\Delta q_c$  is introduced in the distinction of evaporation and precipitation events. Specifically, a moisture uptake is identified if  $\Delta q > \Delta q_c$ , while a moisture loss is correspondingly identified if  $\Delta q < \Delta q_c$  (Fig. 1c). The uptake threshold is set as parameter *uptakeThreshold* in the settings group *Diagnostics* of the configuration file (Table B3). Thereby, the value must be given per trajectory time step (in  $\text{g kg}^{-1} \text{h}^{-1}$ ).

At a default value of  $\Delta q_c = 0.2 \text{ g kg}^{-1} \text{h}^{-1}$  that is typically used in a broad range of mid-latitude conditions, only relatively substantial uptake events are detected by the diagnostic. In Tropical and sub-tropical regions may require a larger threshold value may be suitable, whereas in colder and drier conditions, such as in polar or high-altitude regions, a lower threshold of  $\Delta q_c = 0.1 \text{ g kg}^{-1} \text{h}^{-1}$  has been recommended (Sodemann and Stohl, 2009). A lower value for  $\Delta q_c$  will lead to the inclusion

of a larger part of the noise spectrum as moisture uptakes. A larger number of uptakes in turn leads to a higher chance of discounting previous moisture uptakes, and thus may induce a bias towards more local moisture sources.

As an alternative, WaterSip can be instructed to use a relative threshold value  $\Delta q_{cr}$ . In this case, noise is considered as a relative error, and thus the threshold value is computed at every time step as  $\Delta q_c = q_i \cdot \Delta q_{cr}$ . The relative threshold value is  
340 activated by setting the parameter *relativeThreshold*= 1 in the settings group *Diagnostics* (Table B3). The value of the uptake threshold is then interpreted as  $\Delta q_{cr}$  ([as fraction](#) with unit 1). The impact of this relative threshold option has not yet been tested extensively for different climate zones and events.

In the context of the uptake threshold, it is interesting to consider the impact of data assimilation on the specific humidity of gridded NWP data, such as reanalysis data. ~~Some data~~ [Data](#) assimilation methods can introduce ~~unphysical~~ [non-physical](#)  
345 perturbations to the moisture field, the so-called assimilation increment. Assimilation increments are another reason to apply  $\Delta q_c$  in the diagnostic. If trajectories are calculated using a model forecast without data assimilation, such as for climate model data, no assimilation increments are present in the gridded fields, and thus less noise would be expected in  $\Delta q$ . Fremme et al. (2023) investigated the impact of different  $\Delta q_c$  in CESM and NorESM climate model data compared to reanalysis data, and found quantitative but no clear qualitative differences in the result of the diagnostic that could be related to assimilation  
350 increments. Users should thus consider testing lower  $\Delta q_c$  when using trajectories based on free-running model forecast data rather than reanalyses.

### 3.1.2 Precipitation threshold $\Delta q_p$

Similar to the uptake threshold, a corresponding threshold value exists for the identification of moisture losses due to precipitation along trajectories, the precipitation threshold  $\Delta q_p$ . As the same amount of numerical noise can lead to spurious  
355 identification of moisture losses as for moisture uptakes, the value of  $\Delta q_p = -0.2 \text{ g kg}^{-1} \text{ h}^{-1}$  is commonly used in mid-latitudes (~~?)~~ [\(Sodemann et al., 2008b\)](#), while a lower value such as  $\Delta q_p = -0.1 \text{ g kg}^{-1} \text{ h}^{-1}$  appears more suitable for polar regions (Sodemann and Stohl, 2009). In general, it is recommended for reasons of consistency to use symmetric settings for the uptake and precipitation thresholds. The precipitation threshold is set as parameter *precipThreshold* in the the settings group *Diagnostics* of the configuration file (Table B3). As the detection of moisture losses along trajectories leads to a discount of the  
360 remaining contribution from earlier uptake events, a lower precipitation thresholds can lead to relatively less remote moisture sources. The parameter *relativeThreshold* also affects the interpretation of the value in *precipThreshold* as absolute or relative parameter value.

### 3.1.3 Critical relative humidity threshold $\text{RH}_c$

The Lagrangian precipitation estimate  $\tilde{P}$  is based on moisture losses during the last time step of arriving trajectories. In order  
365 to further support that a detected moisture loss is [likely](#) due to cloud processes, the critical relative humidity threshold  $\text{RH}_c$  is introduced. If  $\text{RH}_0 > \text{RH}_c$  or  $\text{RH}_1 > \text{RH}_c$ , the air parcel is associated with clouds during arrival, and thus any negative  $\Delta q$  is assumed to be due to precipitation. ~~The critical relative humidity threshold~~  [\$\text{RH}\_c\$](#)  is set as parameter *arrivalRHMin* in the the settings group *Diagnostics* of the configuration file (Table B3). The default value for  $\text{RH}_c$  is 80 (in units of %), corresponding to

a common threshold value in parameterisations of sub-grid cloud cover. Several studies indicate that depending on latitude and predominant weather regime, the Lagrangian precipitation estimate  $\tilde{P}$  increases with lowering of  $RH_c$ . Such lower threshold values may be argued for in particular in [cold](#), mixed-phase and ice cloud regimes (Terpstra et al., 2021), and in the case of predominantly convective precipitation, that are not necessarily associated with grid-scale cloud cover (Fremme and Sodemann, 2019). An additional parameter *arrivalRHMax* in the settings group *Diagnostics* allows to focus the analysis on a specified range of RH during air parcel arrival, [for example if one would be interested in the source properties of water vapour during cloud-free arrival conditions only](#) (Table B3).

Note that a decrease in specific humidity, detected as a moisture loss, can also be a consequence of mixing with drier air, for example due to dry convection. Moisture loss events that take place in an unsaturated environment, i.e., when  $RH < RH_c$  at both time steps used to calculate any  $\Delta q_i$  are therefore counted and processed as dry mixing events, rather than precipitation events (see Sec. 3.1.2). While these mixing events are written to a different output variable (see Sec. 5.1), the consequences for the accounting of moisture losses is the same for saturated and unsaturated conditions.

### 3.1.4 Boundary-layer height scale factor $s_h$

Another important parameter is the distinction between uptake events that are detected when ~~the~~ [an](#) air parcel is within the boundary layer, ~~or above~~ [and when it is in the free troposphere](#). Since air parcel trajectories are 3-dimensional, the uptakes are identified when the ~~parteeels~~ [parcels](#) are at a given height above ground. Evaporation from the surface is assumed to be most plausibly contributing to the moisture increase in an air parcel location if it is within or close to the turbulently mixed atmospheric boundary layer. This resembles the "footprint analysis" of the lowermost 100–300 m above ground, which is commonly used in atmospheric chemistry applications (e.g., Hirdman et al., 2010). Detrainment and venting of boundary-layer air to the nearby free troposphere is another likely pathway for producing moisture uptakes close to the boundary-layer top. Therefore, and to take into account diurnal boundary-layer height variability and the general uncertainty of boundary-layer height calculations, a boundary-layer height scale factor  $s_h$  with a default value of  $s_h = 1.5$  is introduced in the diagnostic. All moisture uptakes that are identified when height  $z \leq s_h \cdot z_h$  (with  $z_h$  the current boundary layer height) are assigned to the output field category of boundary-layer moisture uptake, while all other uptakes are in the free-tropospheric moisture uptake category (see Sec. 5.1). The distinction between these two categories is also carried over to the accounted fractions (Sec. 5.3), and the forward projection of different quantities (Sec. 5.4). The relative threshold value is set as parameter *blhScale*= 1.5 in the settings group *Diagnostics* (Table B3).

Studies with the WaterSip methodology have used  $s_h$  in different ways. While ~~?~~ [introduced the Sodemann et al. \(2008b\) introduced this](#) parameter to obtain more reliable results, ~~the~~ free-troposphere and boundary-layer uptakes have since been observed to commonly overlap spatially (e.g., Sodemann and Zubler, 2010). In a detailed investigation of ~~the~~ atmospheric conditions associated with free-troposphere uptakes in the Mediterranean, Winschall et al. (2014a) found that these were connected to ~~the~~ deep venting of boundary-layer air to the free troposphere due to moist convection. Furthermore, free-troposphere uptakes are generally the lesser fraction of ~~the~~ total uptakes, typically on the order of 20–40% (Sodemann and Zubler, 2010; Laederach and Sodemann, 2016). Several studies have therefore in the past considered both uptake categories jointly, in par-

405 ticular in warmer climates (e.g., Martius et al., 2012; Fremme and Sodemann, 2019; Fremme et al., 2023). Users will have to ultimately decide according to their scientific objectives on how to apply  $s_h$ , and how to make use of the boundary-layer and free-troposphere uptake categories.

### 3.1.5 **Output grids and gridding radius $r_g$ Water vapour diagnostics**

410 In addition to tracing back water vapour that leads to precipitation, WaterSip also allows to identify the source and transport properties of water vapour that resides in the atmosphere within a target area at a given time. If WaterSip is used as a water vapour source and transport diagnostic, rather than a precipitation diagnostic, the gridding weight of each traced air parcel is obtained from the total water mass  $m_w$  of an air parcel of trajectory  $k$  at arrival time  $t = 0$ , computed as

$$m_w^k = q_0^k \cdot m^k. \quad (15)$$

415 This water mass  $m_w^k$  is then used to weight different quantities during gridding, instead of the loss of water mass during the last time step ( $\Delta q_0^k \cdot m^k$ , Eq. 17). Apart from this change, the moisture source diagnostic works in the same way when tracing the sources and properties of precipitation water. The water vapour diagnostic option allows for instance to identify the transport properties of water vapour in regions where no precipitation occurs. The water vapour diagnostic is activated by setting parameter *analyzeVapour* as 1 in the setting group *Diagnostic* (Table B3).

### 3.1.6 **Other available moisture source diagnostics**

420 To enable comparison of the Sodemann et al. (2008b) algorithm to other approaches, three additional moisture source diagnostics have been implemented into the software tool. These include the  $e - p$  diagnostic by Stohl and James (2004), in which all particles arriving in a region and precipitating are gridded without further distinction according to vertical location, and without accounting. Second, the method of Gustafsson et al. (2010), where the moisture source region is identified as the trajectory segment between the first maximum and the trajectory location where the specific humidity becomes lower than the arrival specific humidity for the first time. Third, the method of Dirmeyer and Brubaker (1999) is available, where the evaporation flux below the trajectory location is continuously accumulated until reaching the value of the the arrival specific humidity. In order for this method to work, surface evaporation needs to be available on the trajectory input data. The method of Stohl and James (2004) is included by default in the output files. To select one of the two other diagnostic methods, rather than the Sodemann et al. (2008b) algorithm, the parameter *processingAlgorithm* in settings group *Diagnostics* needs to be changed from its default value 0 to a value of 1 for the Dirmeyer and Brubaker (1999) method, and to 2 for the Gustafsson et al. (2010) (Table B3).

## 430 **3.2 Air mass discretisation**

When used to diagnose precipitation origin, air parcels are retained for analysis if (i) they reside within the target region, (ii) during the preceding time step had a specific humidity decrease larger than the precipitation threshold value (see Sec. 3.1.2).

and (iii) had a relative humidity within chosen bounds (see Sec. 3.1.3). The geographic location of the target region and the considered time period are therefore fundamental choices for an analysis with WaterSip. Other important elements regarding how the air mass is discretised are the format and length of trajectories, and the time interval between particle locations.

### 3.2.1 Target region and time period specification

In the WaterSip configuration file, the target region is specified by a set of latitude and longitude bounds, namely the parameters *arrivalGridMinLon*, *arrivalGridMinLat*, *arrivalGridMaxLon*, *arrivalGridMaxLat* in the settings group *Grid* (Table B2). The grid spacing of the arrival grid in latitude, longitude increments, is defined by parameters *arrivalGridDx* and *arrivalGridDy* in the same settings group.

Moisture transport can be strongly modulated by topography, such as for example over Greenland and Antarctica. In order to focus the analysis on different altitude ranges within the target area, but also on selected elevation, several parameters are available in the settings group *Diagnostics*. The parameters *arrivalOroMin* and *arrivalOroMax* allow to only retain air parcels for analysis if they arrive over ground elevation within the two parameters. Similarly, air parcels can be filtered according to their altitude above sea level using parameters *arrivalAltMin* and *arrivalAltMax*. In order to include all parcels arriving within a domain, the parameters should be set to a height below zero (e.g., -100 m) for the lower, and a large height (e.g., 50000 m) for the upper threshold value. The used topography is ingested from the netCDF file specified at parameter *orographyFile* in settings group *Case*.

### 3.3 Time period specification

Another fundamental setting is the start- and end-time of the analysis, regulated by parameters *startDate* and *endDate* in section *Case*. Since the analysis proceeds backward from the time of arrival, the start date is larger than the end date. Importantly, in order to obtain results for, e.g., 20 day accounting along a trajectory, the time difference between start date and end date must be at least 20 days plus one time step (to enable calculating the required number of specific humidity changes). The length of the analysis period is defined by parameter *trajPoints* in settings group *Case*, and the duration of the entire accounting period for each trajectory is then given by the parameter *timeStep* times *trajPoints* (see Sec. 3.3.3).

#### 3.3.1 Trajectory input data

Trajectory input data consist of the vectors  $\vec{x}^k$  with position and other necessary variables for the  $K$  air parcels representing the air mass over the target region (Fig. 1b, box). Such trajectory data can be obtained from different modelling tools. Currently, WaterSip is able to handle input from the Lagrangian trajectory model LAGRANTO (Sprenger and Wernli, 2015), and from the Lagrangian particle dispersion model FLEXPART (Stohl et al., 2005; Pisso et al., 2019). Minimum requirements with regards to the variables that are included on the trajectories are position,  $T$ , and  $q$  or RH. The input data parameters are set in either settings group *Lagranto* (Table B7) or *Flexpart* (Table B6), depending on the used trajectory model.

465 An important user choice for the WaterSip diagnostic is the discretisation of the atmosphere above the target region into individual particles. In general, the more particles represent a particular air mass, the smaller the mass of air associated with one air parcel ( $m^k$ ), and the more detailed and statistically reliable the results will become. For example, Sodemann and Stohl (2009) used the global FLEXPART dataset of Stohl (2006) from a global domain-filling run with 2.4 million air parcels. With a total global atmospheric mass of  $5.14 \times 10^{18}$  kg, each air parcel represents  $2.14 \times 10^{12}$  kg of air. Laederach and Sodemann (2016) used 5 million air parcels, resulting in a particle mass of  $m^k = 1.03 \times 10^{12}$  kg. For FLEXPART input data, the particle mass is set by parameter *partMass* (in kg) in the settings group *Flexpart* (Table B6).

470 When using LAGRANTO for the trajectory calculation, the atmospheric mass of one air parcel results from the calculation start grid. For LAGRANTO input data, the particle mass is first computed from the chosen discretisation as

$$\frac{m^k}{g} = \Delta x \Delta y \Delta p, \quad (16)$$

475 with  $\Delta p$  in units of hPa and  $\Delta x$ ,  $\Delta y$  in units of km. Then,  $\frac{m^k}{g}$  is set as parameter *partMass* (in hPa km<sup>2</sup>) in the settings group *Lagranto* (Table B7), which is then internally in WaterSip converted to units of kg. For example, Sodemann et al. (2008b) computed backward trajectories from a  $50 \times 50$  km horizontal grid over Greenland, with a vertical spacing of 25 hPa for every 6 h time step over a given time period. Accordingly, each trajectory on this grid represents  $680 \times 10^9$  kg of air arriving at a specific time interval.

### 3.3.2 Trajectory time interval $\Delta t$

480 Another important property of the input trajectory data for the Sodemann et al. (2008b) algorithm is temporal discretisation, i.e., the time interval  $\Delta t$  at which meteorological and position information from air parcel locations is available. Typically,  $\Delta t$  corresponds to the time interval of NWP boundary data used during the trajectory calculation. For global reanalyses a common interval is 6 h, but also 1 to 3 h time intervals have been used (Fremme et al., 2023). While trajectory location accuracy increases with a higher input data frequency, there are also potential complications from higher time-resolution input data. As  $\Delta q_c$  is well-tested for  $\Delta t = 6$  h with regard to separating signal from noise, smaller threshold values need to be used at shorter time intervals, which do not necessarily have the same filtering effect (see Sec. 3.1). The trajectory time interval  $\Delta t$  is set as parameter *timeStep* (unit h) in the settings group *Case* (Table B1).

490 In a sensitivity study with WaterSip and FLEXPART using climate model data at  $1.8 \times 1.8$  degree resolution as input, Fremme et al. (2023) found that the time interval influenced the moisture source distance, with substantially smaller moisture source distances for time intervals of less than 6 h. In that study, the authors then chose to compute trajectories at a time resolution of 1 h to obtain smaller position errors, while the WaterSip diagnostic was run at 6 h time interval to obtain the desired filtering of interpolation noise. With such a combination of time intervals, a compromise can be obtained between trajectory accuracy and sufficient separation between signal and noise in the WaterSip diagnostic.

### 3.3.3 Trajectory length $L$

495 One important consideration for computing trajectories is the trajectory length  $L$ , the number of time intervals over which the air parcel movement is traced. Typical trajectory lengths in atmospheric analyses are 5–20 days. Since trajectories become increasingly uncertain for longer calculation time (Stohl, 1998), the trajectory length is an important consideration for WaterSip applications. In the approach of Stohl and James (2004), the results were strongly dependent on the chosen integration time intervals. This choice introduces a subjective element in the analysis, since results may not only vary with climate region, but also with seasons and weather systems. The accounting algorithm implemented in WaterSip does not require a pre-defined trajectory length for its analysis. The trajectory length is set as the number of time steps along a trajectory as parameter *trajPoints* in the settings group *Case* (Table B1). One obtains the value of *trajPoints* from dividing  $L$  by  $\Delta t$ . For example, 20-day trajectories with a 6 h time interval results in *trajPoints* set to 81.

500 The often-cited global mean residence time of water vapour of 8–10 days (e.g. Trenberth et al., 2007), as obtained from a global budget of atmospheric water vapour and precipitation fluxes, can provide some guidance on how long trajectories need to be. Recent studies (based on Lagrangian moisture source diagnostics with WaterSip) provide arguments that the residence time, or life time of water vapour, may be better described by a heavily skewed life time distribution with a median value of about 4–5 days and a very long, thin tail at 20 days and beyond (Sodemann, 2020; Gimeno et al., 2021). According to these findings, many relevant moisture uptakes can therefore take place within a time scale of 10 days before precipitation. Except at high latitudes, where life times are particularly long, source contributions from the Sodemann et al. (2008b) algorithm are

505 generally not sensitive to a trajectory length beyond 15 days. Using the WaterSip diagnostic with trajectories of 10, 15, or 20 days length will therefore lead to relatively less differing results that with the Stohl and James (2004) method. A generally recommended choice of trajectory length that also allows for the detection of long-range transport of water vapour is 20 days.

### 3.4 Output grid and output configuration

WaterSip uses the mass represented by each air parcel to transfer the results of the diagnostic onto a grid which will then be

515 written to an output file for further use. There are two output grids in WaterSip. The coarser source and transport grid covers the entire potential source regions of the traced moisture, and is typically of hemispheric or global dimensions. The typically smaller arrival grid covers the target region of the analysis, and has typically a finer grid spacing to reveal spatial details within the arrival domain.

Both grids are specified by a respective set of parameters in the setting group *Grids* (Table B2). The source grid is defined by the parameters *sourceGridMinLon*, *sourceGridMaxLon*, *sourceGridMinLat*, *sourceGridMaxLat*, which provides the boundaries in latitude-longitude coordinates. The parameters *sourceGridDx*, *sourceGridDy* set the grid spacing in longitude and latitude direction, respectively. A corresponding set of grid parameters exists for the arrival grid (*arrivalGridMinLon*, *arrivalGridMaxLon*, *arrivalGridMinLat*, *arrivalGridMaxLat*, *arrivalGridDx*, *arrivalGridDy*).

Quantities are gridded to onto both grids using weighting factors. The weight  $m_w^k$  for gridding a quantity  $\xi$  (for example

525 the air temperature at the time of arrival  $\Delta q_0^k$ ) is obtained from the water mass lost  $\Delta q_0^k$  from an arriving air parcel  $k$  as

$$m_w^k = m^k \cdot \Delta q_0^k. \quad (17)$$

With  $K$  trajectories arriving as a vertical stack (Fig. 1b), the weighted average of all  $\xi^k$  at a location  $\lambda, \phi$  is thus obtained as

$$\tilde{\xi}(\lambda, \phi) = \frac{\sum_{k=1}^K \xi^k \cdot m_w^k}{\sum m_w^k}. \quad (18)$$

~~In order to transfer this~~ This arrival point information ~~needs to be transferred~~ onto the arrival grid, ~~a~~. ~~Instead of simply~~  
 530 ~~gridding the information to the grid cell closest to the air parcel location, WaterSip allows to specify a spatial~~ representative-  
~~ness of this information is assumed. WaterSip uses a circular~~, which is then used to distribute it to surrounding grid cells.  
~~Representativeness is provided by a~~ gridding radius  $r_g$  ~~to transfer~~, specifying a circular distance from the arrival point. The  
~~areal overlap between the circular weight and neighbouring grid cells are then used as weights to distribute~~ air parcel quanti-  
 ties  $\xi$  onto the arrival grid. For example, with trajectories computed at a horizontal distance of  $50 \times 50$  km, quantities can be  
 535 assumed to be representative for a circular area with radius ~~35~~30 km. If the arrival grid for this setup is then chosen to be *ar-*  
*ivalGridDx=arrivalGridDy= 0.25°*, and the gridding radius is set to  ~~$r_g=40$~~  $r_g=30$  km, one can expect to ~~retain any reveal~~  
 finer interpolated structures within the arrival domain. The gridding radius is set as parameters *arrivalGridRadius* in settings  
 group *Grids*. Corresponding reasoning applies to the source grid radius *sourceGridRadius*. Here, a common combination for a  
 hemispheric output grid is *sourceGridDx=sourceGridDy= 1.0°*, and *sourceGridRadius= 110* km.

540 ~~During the gridding, it is tested how a~~ The gridding proceeds by finding the area overlaps between the circular gridding area  
~~overlaps with and~~ each grid box ~~on the grid, and a~~. A corresponding fraction of the total quantity to be gridded is then added  
 to each grid box (Škerlak et al., 2014). It is important to be aware ~~what of the~~ impact user choices have on the results. A too  
 small gridding radius for a given grid will lead to ~~information~~ gaps between grid points, while a too large gridding radius will  
 cause smoothing and potentially loss of detail in the gridded fields.

545 A final choice regarding the gridding is whether uptake events are gridded with the time stamp of the arrival in the target  
 region, or to the time when uptakes take place. The choice of the assigned time is important for later analysis of the results.  
 In the first case, moisture sources are valid for all precipitation arriving within a chosen time period in the target area, and  
 can be compared to other quantities regarding the arrival time. In the second case, the moisture sources can be compared to  
 properties at the source regions during valid time, for example total evaporation fields. The assignment time is set as parameter  
 550 *assignToUptake* in settings group *Grids*, where 0 denotes that the uptakes are assigned to arrival time, and 1 denotes assignment  
 to uptake time ~~(see Sec. 5.1 for an example)~~.

### 3.4.1 Water vapour diagnostics

~~In addition to tracing back water vapour that leads to precipitation, WaterSip also allows to identify the source and transport~~  
~~properties of water vapour that resides in the atmosphere within a target area at a given time. If WaterSip is used as a water~~  
 555 ~~vapour source and transport diagnostic, rather than a precipitation diagnostic, the gridding weight of each traced air parcel is~~  
~~obtained from the total water mass  $m_w$  of an air parcel of trajectory  $k$  at arrival time  $t=0$ , computed as~~

$$m_w^k = q_0^k \cdot m^k.$$

This water mass  $m_w^k$  is then used to weight different quantities during gridding, instead of the loss of water mass during the last time step, i.e.,  $\Delta q_0^k \cdot m^k$  (Eq. 17). Apart from this change, the moisture source diagnostic works in the same way when tracing the sources and properties of precipitation water. The water vapour diagnostic option allows for instance to identify the transport properties of water vapour in regions where no precipitation occurs. The water vapour diagnostic is activated by setting parameter *analyzeVapour* as 1 in the setting group *Diagnostic* (Table B3).

### 3.4.1 Other available moisture source diagnostics

To enable comparison of the ? algorithm to other approaches, several additional moisture source diagnostics have been implemented into the software tool. These include the e-p diagnostic by Stohl and James (2004), in which all particles arriving in a region and precipitating are gridded without further distinction according to vertical location, and without accounting. Another diagnostic is the method of Gustafsson et al. (2010), in which the last location where the trajectory gained/lost in specific humidity is gridded. Furthermore, the method of Dirmeyer and Brubaker (1999) is available (modified by an accounting step). In order for this last method to work, surface evaporation needs to be available on the trajectory input data. The method of Stohl and James (2004) is included by default in the output files. The other two diagnostic methods are available by editing the call to the corresponding processing routines in the class *Trajectory* in file *Trajectory.cpp* the C++ code.

## 4 Input data, run configuration, Setup and output data execution of WaterSip

In order to run the WaterSip diagnostic, a set of suitable input data needs to be available. In this preparatory step of the moisture source analysis, users need to make a number of necessary and optional choices as detailed below. Running the WaterSip tool then produces a set of output files in netCDF format, which are also introduced described in this section.

### 4.1 Creating and reading trajectory input data

There are some general considerations for the input data to be made such that the WaterSip diagnostic output becomes representative for the chosen target area. The setup for creating trajectory input data to WaterSip varies technically depending on whether a particle dispersion model (FLEXPART) or an air mass trajectory model (LAGRANTO) is used. There are also some general considerations to be made such that the WaterSip diagnostic output becomes representative for the chosen target area.

Commonly, When using the particle dispersion model FLEXPART, commonly, hemispheric or global domain-filling forward simulation are set up with the particle dispersion model FLEXPART. In domain-filling mode, FLEXPART automatically discretises the air mass over the chosen target area into a specified number of particles of equal mass, and distributed according to pressure. A With a larger number of particles, WaterSip will provide statistically more robust results, in particular for

more long-range and ~~long-time-long-duration~~ water vapour transport. ~~Particle trajectories are run forward indefinitely~~ Within FLEXPART, particles are advected forward continuously for the simulation time. WaterSip then extracts a sub-set of these ~~representative trajectories as given by trajectories according to~~ the run parameters. ~~Such a simulation~~ A global domain-filling setup has also been applied in the example case presented here ~~(Sec. 4.4)~~. So-called particle dump needs to be activated in FLEXPART to obtain the input data needed by WaterSip. Writing out additional variables with each particle position requires modification of the routine `partoutput_pos.f90` or `partoutput_short.f90` of the FLEXPART code. ~~An example~~ Example code for this modification for FLEXPART versions 8.2 through 10.4 is available in the online supplement ~~(?)~~ (Sodemann, 2025a). ~~The most recent version 11 of FLEXPART (Bakels et al., 2024) writes particles in netCDF output, and until WaterSip has been enabled to ingest this input directly, users may have to convert the FLEXPART version 11 particle dump from netCDF to a binary format.~~ Running FLEXPART in backward mode can be a more efficient alternative to a global domain-filling run, but requires a new release interval to be defined for every time step. General instructions for setting up and running FLEXPART are available in the respective literature (Stohl et al., 2005; Pisso et al., 2019; Bakels et al., 2024).

When used together with FLEXPART input, the WaterSip configuration file needs to contain a section *Flexpart*, where several parameters need to be specified (Table B6). The parameter *particleMass* contains the mass per particle as either specified in the FLEXPART releases file, or as is written out by FLEXPART in domain filling mode in the output file *part\_mass*. The input files need to be contained in a folder specified by parameter *inputDir* in section ~~Case~~ *Case* in the configuration file. As individual ~~partoutput~~ *particle dump* files are read in from FLEXPART output for each time step, the pathname is specified with a wild card pattern `(%s)` representing the date string, e.g. *inputDir* = `/path/to/directory/partoutput_pos_%s`.

When using output from a trajectory model, such as LAGRANTO (Sprenger and Wernli, 2015), the air mass over the target area needs to be discretized manually. This is achieved by defining the start locations of the trajectory calculations in LAGRANTO's `start.f` file. One common way to discretise a target region is to define a regular distance spacing in projected coordinates (e.g., one starting point every 25 or 50 km in both directions). In the vertical, it is recommended to space the starting points at equal pressure intervals. This way, each air parcel trajectory represents an equal amount of mass, which can be entered in the configuration file for a LAGRANTO setup ~~according to as described earlier~~ (Eq. 16 ~~and Sec. 3.3.1~~).

It is recommended to run ~~the~~ LAGRANTO program `caltra` with the flag `'-j'` to ~~make trajectories avoid prevent trajectories from intersecting with~~ topography. WaterSip currently only works with the text-based output format of LAGRANTO. Since trajectory variables such as air temperature and specific humidity can be at any column in these files, the column number for each variable needs to be specified explicitly in the configuration file as parameters (Table B7). The input path for LAGRANTO trajectory files is again specified using parameter *inputDir* in section *Case* of the configuration file, using a file name pattern with ~~placeholder wildcard~~ `%s` to match trajectory files to the desired date range.

## 4.2 Running the WaterSip diagnostic

The WaterSip code is written in the programming language C++. A sample makefile is included with the code repository <https://git.app.uib.no/GFI-public/watersip> (Sodemann, 2025b) to compile the program code, and that users may adapt to their computational environment. An installed netCDF, `netCDF-C++`, and `netCDF-C++library-4` libraries are in addition required

620 to compile the program code. Lightweight parallelisation has been included by means of OpenMP directives in the code. ~~Compiling, but compiling~~ with OpenMP is optional. [Results of some performance tests are described in Sec. 6.4.](#)

After compiling WaterSip, the input files need to be made available from an external source, such as running FLEXPART or LAGRANTO. The ~~directory input data and configuration file for the test case in Scandinavia presented throughout this manuscript is available as a supplement to this manuscript (Sodemann, 2025a). A script is included with the test dataset that~~  
625 ~~sets up a recommended directory structure to rund WaterSip. Users are invited to experiment with the test case before creating their own setup to get familiar with the usage and output from WaterSip. When running an own case, the directory names~~ for input and output data need to be ~~created and~~ specified in the configuration file. Then, all other configuration file settings, such as the time period, the target region, diagnostic parameters, need to be set [by the user](#). Importantly, the sections in the configuration file specific for the used input data need to be included and edited to match the input data (Table B6 and B7).

630 To start a diagnostic run, the compiled WaterSip program is then executed from the command line. The name of the configuration file needs [is the only argument that needs](#) to be provided ~~as only parameter~~ when WaterSip is started. WaterSip then starts executing, and provides either output to the terminal about the progress of the analysis, including a time estimate until completion, or an error message that will give an indication how the setup and configuration file need to be adjusted.

~~The input data and configuration file for the test case in Scandinavia presented throughout this manuscript is available as a supplement to this manuscript (?). Users are invited to experiment with the test case before creating their own setup to get familiar with the usage and output from WaterSip.~~  
635

### 4.3 Output files

When a diagnostic run completes, a set of output files is written to the file location specified as parameter *outputDir* in the configuration file section *Case*. The main output files, containing gridded fields and time series for different averaging times  
640 (time step, daily, monthly, annually, all), are created in netCDF format (Table 2). In particular the grid files for days and time steps can become rather large for longer runs. The creation of gridded output files for selected averaging times can therefore be deactivated by setting the respective parameters in parameter set *Output* from 1 (true) to 0 (false, see Table [2B5](#)). The series files [for different intervals](#) contain time averages ~~at different intervals for the different of the~~ gridded fields, characterized by the precipitation-weighted mean [of each quantity](#), the unweighted standard deviation, and the minimum and maximum values  ~~-~~  
645 ~~The sectorisation results in the grid grid area. A sectorisation of the results into user-specified latitude/longitude regions is~~ are also contained in the series files (Sec. 5.7). Further output files comprise histogram files (Sec. 5.8) and trajectory files (Sec. 5.9).

Which variables are contained in the output files can be controlled by the parameters in section *Variables* in the configuration file (Table B5). Output variables are included in the output by setting the corresponding parameter values from 0 to 1. Users can also ~~ehose choose~~ to include static fields, such as topography or the land-sea mask using parameter *staticFields*. The choice  
650 in the section *Variables* affects both grid and series files. If output is activated for variables that are not contained in the input file, WaterSip calculates these from the available information if possible, and otherwise fills in missing values during output. [Finally, WaterSip can optionally write out air parcel trajectories in a compact binary format to inspect the result of the moisture diagnostics in detail for individual air parcels \(Sec. 5.9\).](#)

**Table 2.** ~~Summary-Description~~ of the available output files in WaterSip, including file format, and ~~corresponding parameters in the configuration-file~~ name semantics.

Name	Content	Format	Filename
Grid files	Spatial properties of moisture sources and arrival regions	netCDF	<CASE>_grd_(allyear/month/day/step).nc
Series files	Mean/min/max/std of regionally and globally averaged moisture source and arrival region properties	netCDF	<CASE>_ser_(allyear/month/day/step).nc
Histogram files	Histograms of select quantities identified for each time step along each trajectory	text	<CASE>_hst_steps
Trajectory files	Air parcel trajectories for identified precipitation events	binary (.traj)	<CASE>_<DATE>(.traj)

#### 4.4 Example run configuration

655 ~~In order to~~ To exemplify the use of the WaterSip diagnostic, ~~an example run configuration has been set up for a domain over Scandinavia in Northern Europe. To this end, the~~ a case study for a 10-day Northern Hemisphere summer period (5 to 15 August 2022) over Scandinavia is now presented. The weather situation during the period was characterised by westerly flow, which was steered to higher latitudes by a high pressure over Eastern Europe. This flow configuration brought several low-pressure systems from the North Atlantic from southwesterly directions towards the Norwegian coast and land areas downstream, which then shed precipitation over Scandinavia.

660 In order to obtain the required input data for the WaterSip diagnostic, the FLEXPART particle dispersion model in Version 10.4 ~~has had~~ been run with input fields from the ERA5 reanalysis for a ~~northern hemisphere~~ Northern Hemisphere domain with  $10^7$  particles in domain filling mode. The simulation was initialised on 20-00 UTC on 15 July 2022 and run forward for 31 days until 20-00 UTC on 15 August 2022. FLEXPART particle output files contained latitude, longitude, height, air temperature, specific humidity, boundary-layer height, and air density at each particle's location ~~and 2m air temperature, 2m,~~ as well as skin temperature, 2 m specific humidity and topography height ~~at the surface location~~ below the particle. WaterSip was then configured to identify the moisture source and transport properties for a time period of 10 days (~~10 to 20-5~~ 5 to 15 August 2022) in the region  $54\text{--}71^\circ\text{N}$  and  $4\text{--}32^\circ\text{E}$ . A 6h time step, 20-day backward tracing, and threshold parameter values  $RH_c = 80$  and  $\Delta q_c = 0.2 \text{ g kg}^{-1} \text{ h}^{-1}$  were used for identifying moisture uptakes and losses along the trajectories. Output

670 was activated for all available variables and time steps. The WaterSip setup and output files ~~setup~~ for this example run are available ~~on the code repository (?)~~ with the sample data (Sodemann, 2025a).

#### 5 ~~Moisture Diagnosed moisture~~ source, transport and arrival ~~conditions~~ properties

Now that the factors influencing how the WaterSip diagnostic operates have been presented, what follows is a description of the following sections describe the different output fields that characterise and quantify conditions at the moisture source, during moisture transport, and during the arrival of the moisture as part of the output. The results and interpretation are thereby exemplified using the case study setup over Scandinavia as described above.

## 5.1 Source grid Moisture source quantities

The most fundamental result of the moisture source diagnostic are the moisture sources, that is the spatial distribution of the moisture uptakes that contribute to precipitation in the target region. An Figure 2 shows an example for the total moisture sources is shown for the arrival domain covering Scandinavia (Fig. 2a, of precipitation in a arrival domain over Scandinavia (yellow frame). This moisture source area (shading) may be interpreted as the subset of all evaporation at the moisture sources that ends up as precipitation in the target region. The units of  $\text{kg m}^{-2} \text{d}^{-1}$ , also corresponding to  $\text{mm d}^{-1}$ , are obtained from gridding the weighted specific humidity uptakes for trajectories precipitating contribution of moisture uptakes to precipitation in the target region ( $f_i \cdot \Delta q_0$ ). When integrated spatially, taking the area of each source grid box into account, one obtains the total precipitation mass in the target area during this time interval. If divided by the target area, the precipitation rate for the analysis period then corresponds exactly to the value of the Lagrangian precipitation estimate (see Sec. 5.3).

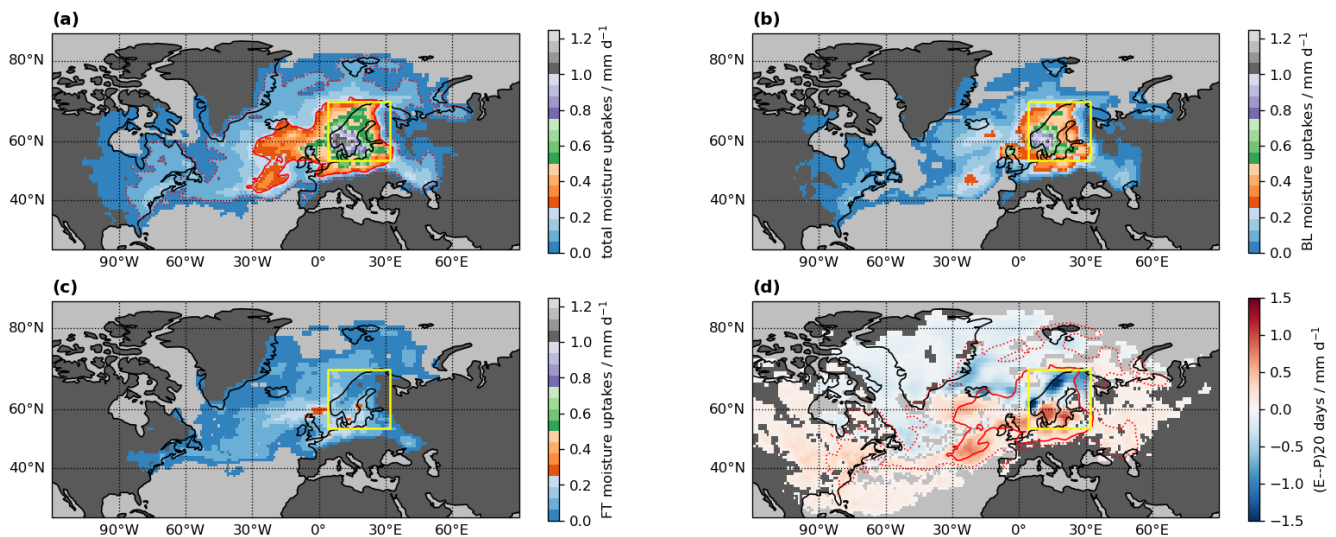
In the example case, the total moisture source has its largest values over southern Scandinavia, also stretching largest contributions to precipitating water come from southern Scandinavia and the western North Atlantic, but the moisture sources also stretch into Central and Eastern Europe (Fig. 2a, purple, green and grey to red areas). In addition, a large area is covered by moisture uptakes with  $0.25 \text{ mm dyd}^{-1}$  or less (blue shading), even reaching the East Coast of reaching deep into continental North America. In order to obtain a valid interpretation, it is important to consider the amount of moisture uptake in conjunction with the respective covered area. In the the example here, the gridding radius on the global maps with a  $1.0 \times 1.0^\circ$  spacing was set to 120 km (see Sec. 3.4). A coarser grid spacing and a larger gridding radius would give more smoothed output fields. It is important to consider that a large are with relatively small contributions can still be an overall important moisture source. To quantify the overall contributions for different areas, the source contributions can be averaged within predefined geographic sectors (Sec. 5.7).

The interpretation of moisture source maps can be greatly facilitated in a percentile representation (Fremme and Sodemann, 2019; Fremme et al., 2023). This can be obtained by determining, for example, the 50th and 80th percentiles of the accumulated moisture source contributions, sorted from largest to smallest grid point values. Such a percentile representation is particularly helpful to compare the shape of a moisture source footprint across different events or seasons. In the example for the present this example case, the 50th and 80th percentile contours for the total moisture source footprint (Fig. 2a, dashed and dotted red lines) highlight that almost half of the precipitation is contributed by areas bounded by the orange shading (contour value  $0.09 \text{ mm dy} 0.06 \text{ mm d}^{-1}$ ), and the large majority is bound by the light blue area (contour value  $0.24 \text{ mm dy} \text{ mm d}^{-1}$ ).

The moisture source detection algorithm distinguishes between uptakes that take place within or close to the boundary layer top, and such those that are in the free troposphere, above the boundary layer. For the example case, the moisture sources in the boundary layer dominate (Fig. 2b), while the free-troposphere moisture sources supplement the boundary-

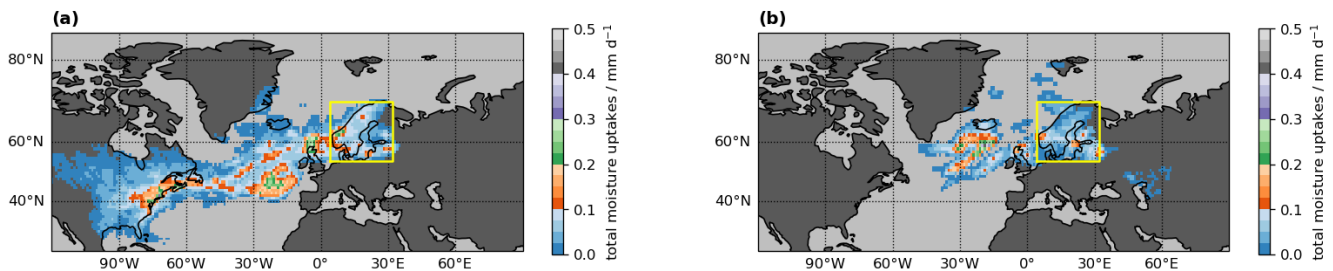
layer uptakes over the North Atlantic and Central Europe (Fig. 2c). ~~In particular the uptakes above Central Europe for this summertime case may be a reflection of convective detrainment of moist boundary layer air to the free troposphere (Sodemann and Zubler, 2010; Winschall et al., 2014a). The collocation of free-troposphere and boundary-layer sources for this event suggests that boundary-layer air may have been vented, moistening the free troposphere. The interpretation could therefore for this case focus on the total moisture uptakes (Fremme et al., 2023).~~

The moisture source footprint is here compared to the result of the Stohl and James (2004) method for the same case (Fig. 2d). The vertical integral of  $e - p$  of all the particle trajectories over 10 days (the quantity  $(e - p)_{10d}$  introduced by Stohl and James (2004))  $(e - p)_{20d}$  introduced by Stohl and James (2005) shows patches where evaporation dominates (red shading) and where precipitation dominates (blue shading). While evaporation regions dominate in further away, precipitation overcompensates closer to north of Iceland and over the arrival domain, masking potential evaporation from these regions. The presence of such compensating effects, as well as the strong dependency on a selected time scale (not illustrated here), are two of the most important differences compared to the results from the WaterSip Sodemann et al. (2008b) algorithm. The red contours, indicating the 50th and 80th percentile of total moisture sources from WaterSip, further underline the differences between the results from the two methods.



**Figure 2.** Source grid quantities identified for the case study period in 2022. (a) Total moisture uptakes (shading,  $\text{mm d}^{-1}$ ), (b) Boundary-layer moisture uptakes (shading,  $\text{mm d}^{-1}$ ), (c) Free-troposphere moisture uptakes (shading,  $\text{mm d}^{-1}$ ), (d) Lagrangian evaporation minus precipitation budget over 10-20 days, following Stohl et al. (2005)  $((e - p)_{10d} - (e - p)_{20d})$  in  $\text{mm d}^{-1}$ , shading, following Stohl et al. (2005). Red contours indicate the 50th (solid) and 80th (dotted) percentile of the total moisture uptakes from WaterSip. Yellow box denotes the target region over Scandinavia. Regions with moisture uptakes of less than  $3 \times 10^{-2}$  are masked out.

In addition to providing the moisture source footprint for an entire analysis period, the WaterSip diagnostic provides gridded moisture sources for each time step in the steps grid file (Sec. 4.3 and Table 2). At 06 UTC on 10 Aug 2022, the precipitation in the target area was sourced from a rather large banded region stretching across the North Atlantic, and reaching into Eastern North America (Fig. 3a). This map shows the moisture uptakes ~~regarding the time of arrival in the target domain corresponding~~ to precipitation on that day in the arrival region. If one wants to compare the moisture uptakes directly with, for example, gridded evaporation fields, one can use the parameter *assignToUptake* (Sec. 3.4). The corresponding plot for uptakes on 06 UTC at 10 Aug 2022 shows all evaporating moisture at the synoptically valid time, irrespective of when it will precipitate over the target area. In the given example, relevant uptakes at that time are detected south of Iceland, over Scandinavia, and over western Russia-Eurasia (Fig. 3b). The moisture from ~~these uptakes will lead to~~ uptakes at that time will end up as precipitation over the target area at a later time.



**Figure 3.** Instantaneous snapshot of source grid quantities identified during the case study period with different assignment ~~times~~ times. (a) Total moisture uptakes arriving in the target area on 06 UTC at 10 Aug 2022 (shading,  $\text{mm d}^{-1}$ ), (b) Total moisture uptakes taking place on 06 UTC at 10 Aug 2022 (shading,  $\text{mm d}^{-1}$ ). Yellow box denotes the target region over Scandinavia.

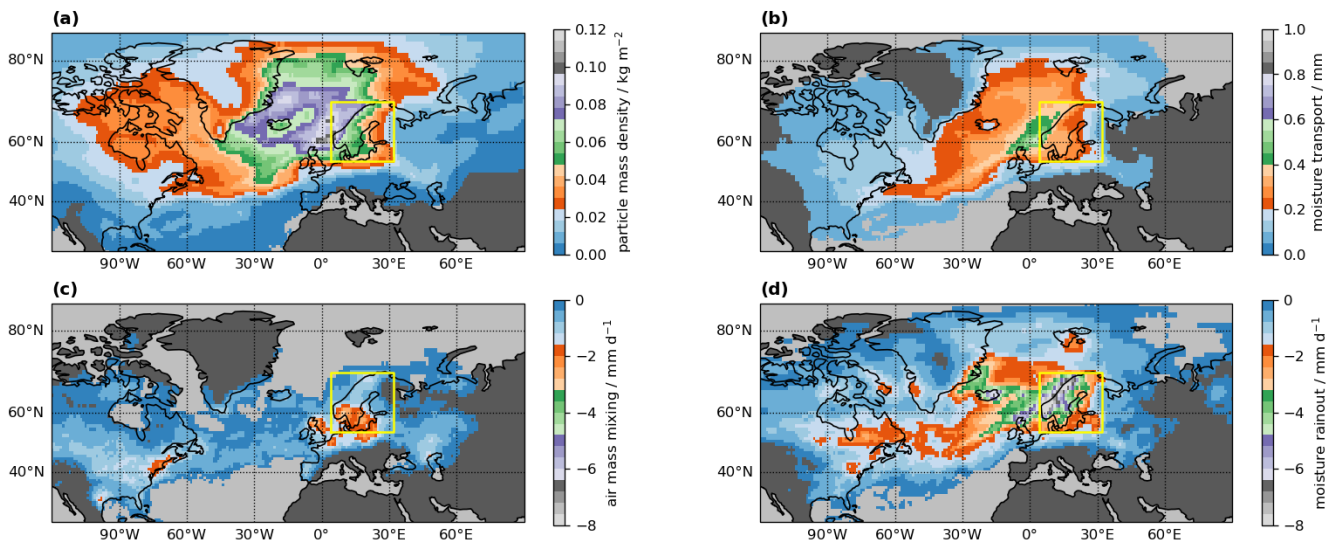
## 5.2 Transport ~~grid~~-quantities

A number of additional quantities that are indicative of the moisture transport conditions can be obtained on the same grid as the moisture source information. These ~~transport-related grid quantities~~ so-called transport quantities can support the interpretation of the obtained moisture sources in various ways.

The transport pathways of air parcels towards the target region are visible from the ~~air parcel~~ particle mass density (Fig. 4a). The ~~air parcel~~ particle mass density is an integral of ~~all particles the pathways of all particles's mass~~ bound to the target region at in a given time interval. It is obtained by gridding  $m^k/L$  for all time steps of a trajectory. The example case shows the relatively large overall area from where air ~~masses originate~~ parcels originate in a 20-day time frame, and the important role of Greenland ~~topography for limiting's~~ topography for guiding the air parcel transport. The quantity ~~moisture transport provides~~ information about "moisture transport" shows the water vapour movement in these air ~~masses~~ parcels towards the target area. The moisture transport ~~is obtained as the gridded product of the specific humidity field~~ is obtained by gridding the water mass in tracked air parcels on the way to the target area ~~,irrespective of their sources~~ using  $q_i \cdot m^k/L$  for each time step. For the

example case, the moisture transport map highlights a dense area of moist air west and south of the target area, and where the moist air crosses the North Atlantic and advances towards the target area (Fig. 4b,  $\text{mm day}^{-1}$ ). This map can be interpreted  
 745 a share of total column water bound to the Scandinavia domain. In combination, these two transport quantities allow one to assess the main pathways of air mass transport and the differences to moist air advection to the target region.

Decreases of specific humidity in air parcels during transport can be due to either precipitation events or mixing ~~–The air mass mixing and moisture rainout contain this gridded information as a result of the diagnostic with drier air~~ (Sec. 2). ~~For the present example case, air mass mixing is mostly identified over continental regions of eastern North America and over Central and Eastern Europe (Fig. 2c). In comparison~~  
 750 The moisture rainout field contains the amount of humidity lost from trajectories that are identified when  $RH_i \geq RH_c$  from the diagnostic, gridded using  $\Delta q_i \cdot m^k$  along each trajectory. In the example case, moisture rainout is events are concentrated over the arrival domain, and narrow transport pathways over the North Atlantic and across Central Europe east of Greenland (Fig. 24d), probably related to precipitation formation in air masses that ascend as they approach the target area. In contrast, mixing events are identified as moisture decreases if  $RH_i < RH_c$ , and also gridded  
 755 using  $\Delta q_i \cdot m^k$ . Both quantities are therefore easy to relate to the  $(e - p)_{20\text{days}}$  field (Fig. 2d). For the present example case, air mass mixing is mostly identified over continental North America and over Central Europe (Fig. 2c). It is interesting to note that for this case only a small part of the events are classified as mixing, while the large majority are rainout events. Note that it does not make a difference to the source identification and accounting whether a specific humidity decrease is classified as a mixing or as a rainout event.



**Figure 4.** Transport grid-quantities identified within air masses bound to the target region for the entire case study period. (a) Air parcel Particle mass density (shading,  $\text{kg m}^{-2}$ ), (b) moisture transport (shading,  $\text{mm d}^{-1}$ ), (c) air mass mixing (shading,  $\text{mm d}^{-1}$ ), (d) moisture rainout (shading,  $\text{mm d}^{-1}$ ). Yellow box denotes the target region over Scandinavia.

### 760 5.3 Moisture arrival quantities

Depending on the size of the arrival domain (or target area), it can be interesting to spatially resolve differences moisture sources and transport within the chosen region. WaterSip For larger target areas, there can be spatial differences in the atmospheric conditions during air parcel arrival within the domain. It can be interesting to investigate different quantities that are connected to the arrival time of air parcel trajectories, and which are gridded onto the arrival grid, are. These quantities are termed here arrival quantities.

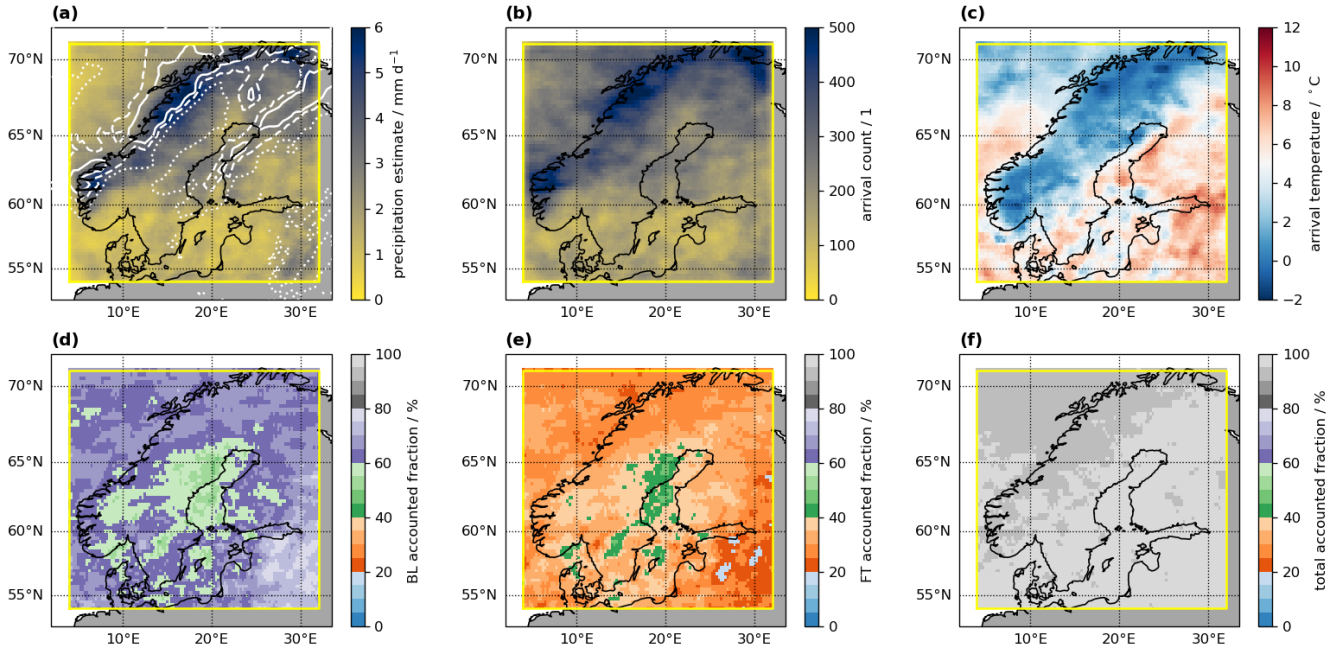
One of the most important arrival quantity quantities is the Lagrangian precipitation estimate  $\tilde{P}$  (Sec. 2.2). In the example case, there are clear distinctions between the coastal regions of western Scandinavia with an estimated precipitation of above 6 mm d<sup>-1</sup>, and large parts of the Baltic Sea, southern Sweden and Finland with below 2 mm d<sup>-1</sup> during the case study period of 10-20 Aug 2022 (Fig. 5a), shading). The diagnosed precipitation pattern corresponds qualitatively to ERA5 simulated precipitation during the period (white contours), even though the domain average during the period is about 25 % larger in ERA5 (2.43 mm d<sup>-1</sup> compared to 2.07 mm d<sup>-1</sup>). A direct comparison of the two fields shows that  $\tilde{P}$  is more smoothed out compared to the sharper pattern in ERA5 (Fig. A1). Regions with high  $\tilde{P}$  approximately correspond to locations where more air parcels arrive with precipitation that precipitate according to selection criteria, as reflected by the arrival count (Fig. 5d). In regions where only few air parcels contribute to gridded arrival quantities, gridded results may show large spatial variations that are not statistically robust. The arrival count can be used for masking such grid points.

Another set of important arrival quantities are the accounted fractions (Sec. 2.3). The total accounted fraction in the example case is uniformly above 95% (Fig. 5ef). Subdividing this quantity into the fractions accounted for by boundary layer uptakes (Fig. 5bd) and free troposphere uptakes (Fig. 5ee) shows a uniform split into approximately 60-70% boundary layer and 40-30-40% free troposphere contributions. These shares appear consistent with the corresponding moisture source maps (Fig. 2b, c).

In addition, the some thermodynamic conditions of water vapour the air parcels at the time of arrival over the target domain can are be gridded onto the arrival grid. For example, the arrival temperature is the temperature of each air parcel at arrival, gridded using weights corresponding to the precipitation estimate  $\tilde{P}_{\text{tot}}$  at arrival grid location  $(\lambda, \phi)$  for the total accounted fraction,  $\tilde{P}_{\text{tot}}$ :

$$785 \quad T_{\text{arr}}(\lambda, \phi) = \frac{\sum_{k=1}^K T_0^k \cdot f_{\text{tot}}^k \cdot \Delta q_0^k \cdot m^k}{\tilde{P}_{\text{tot}}^k} \frac{\sum_{k=1}^K T_0^k \cdot \tilde{P}_{\text{tot}}^k}{\tilde{P}_{\text{tot}}} \quad (19)$$

In the present example, arrival temperatures vary between about 2-0 and 8 °C (Fig. 5fc). Thereby, regions where least most precipitation fell have arrival temperatures that are lowest, with -20-2 °C. Correspondingly, the The air pressure at arrival is also available as gridded quantity (not shown, Table D2, not shown).



**Figure 5.** Arrival quantities identified for the example case in 2022. (a) Lagrangian precipitation estimate  $\tilde{P}$  ( $\text{mm d}^{-1}$ ), (b) accounted-fraction of  $\tilde{P}$  from boundary-layer uptakes-arrival count (shading,  $\%1$ ), (c) accounted-fraction of  $\tilde{P}$  from free-troposphere uptakes-arrival temperature (shading,  $\%C$ ), (d) arrival-count-accounted fraction of  $\tilde{P}$  from boundary-layer uptakes (shading,  $\%1$ ), (e) total-accounted fraction of  $\tilde{P}$  from free-troposphere uptakes (shading,  $\%$ ), (f) arrival-temperature-total accounted fraction of  $\tilde{P}$  (shading,  $\%C$ ). Quantities in (b)-(f) are weighted averages, using the specific humidity decrease during the last time step before arrival as a weight.

#### 5.4 Lagrangian forward projection of moisture source quantities

790 As WaterSip identifies the location of a moisture source, different properties of the source region can be computed, such as the average sea surface temperature, or its latitude and longitude. In particular for larger arrival regions, and such-for those that contain geographic or climatic gradients, the source region location and its properties may vary substantially within the arrival domain. In order to make such spatial differences in the source region properties visible, WaterSip provides Lagrangian forward projections (LFPs) of the source region properties on a spatial grid covering the arrival domain.

795 LFPs are obtained as the weighted average of a given moisture source property for each trajectory. The weighted average is then gridded on the arrival grid, weighted by  $\tilde{P}$  (or by the air parcel specific humidity in the case of water vapour diagnostics). Thus, for each trajectory  $k$ , a moisture source or transport quantity  $\zeta$  is transferred from the geographic uptake location  $(\phi_u, \theta_u)$   $(\lambda_u, \varrho_u)$  to the geographic location at the arrival region  $(\phi_a, \theta_a)$   $(\lambda_a, \varrho_a)$  using the fractional contributions  $f_i^k$  obtained from the accounting step as a weight, and resulting in LFP quantity  $\tilde{\zeta}$  for air parcel  $k$ :

$$800 \quad \tilde{\zeta}^k(\phi_a, \theta_a) = \frac{\sum_{i=1}^M \zeta^k(\phi_u, \theta_u) \cdot f_i^k \cdot \Delta q_i^k \cdot m^k}{\sum_{i=1}^M f_i^k \cdot m^k} \frac{\sum_{i=1}^U \zeta^k(\lambda_u, \phi_u) \cdot f_i^k}{\sum_{i=1}^U f_i^k} \quad (20)$$

~~The different  $\zeta^k$~~  Hereby,  $U$  is again the number of all moisture uptake events identified along trajectory  $k$ . The different  $\tilde{\zeta}^k$  are then again gridded using Eq. 19. In creating LFPs, an important choice is whether the total accounted fraction of the precipitation estimate is used in the gridding, or only the boundary layer or free troposphere fraction. Parameter *forwardProjectionMode* in parameter section *Diagnostics* determines this choice (1: boundary layer, 2: free troposphere, 3: total fraction).

805 For the case of ~~study over~~ Scandinavia, the mass-weighted moisture source latitude (centroid latitude) ranges from ~~42–58~~ 50–60 °N, with a clear latitudinal gradient (Fig. 6a). Corresponding moisture source longitudes range from -60 to 40°E (Fig. 6b). ~~In combination, the Baltic states stand out with more easterly and southerly moisture source that other regions of the arrival domain.~~ Such a forward projection ~~The source distance map for the example case shows a similar pattern as the source longitude, with more nearby sources (<1500 km) over Denmark and southern Sweden in the southwest, and patches of~~ more long-distant transport (>3500 km) in the north of the domain (Fig. 6c). The distance of the moisture sources is computed as a spherical distance for each uptake location and then gridded according to Eq. 20. These examples already illustrate how forward projections of source region properties ~~thus provides~~ provide insight into the spatial variability within the arrival domain. When used on large (global) domains, Lagrangian forward projections can provide interesting hydro-climatic insights (Laederach and Sodemann, 2016; Sodemann, 2020).

815 The source land fraction (Fig. 6d) ~~emphasises that the Baltic states are in this case dominated by land uptakes (source land fraction >80%), while sources are increasingly oceanic towards~~ reveals a northwest-southeast oriented gradient in land uptakes. While land sources in the northwest of the domain ~~(are <30%), their share reaches above 80% over the Baltic states.~~ The fraction of land sources is obtained from evaluating a land-sea mask at the locations below the moisture uptakes. In case the mask files contains fractional land cover information, values above a threshold of > 0.5 will classify the source location as

820 land.

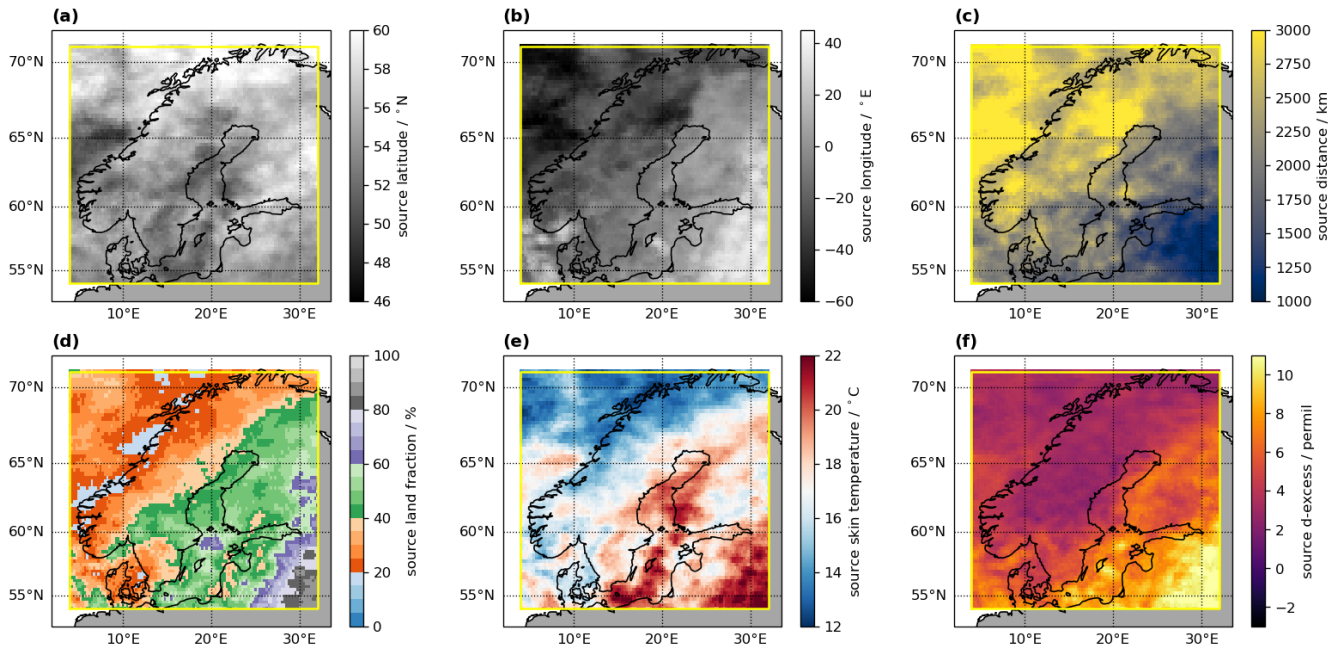
~~The source distance map for the example case shows a similar pattern as the source longitude, with more nearby sources (<1500 km) over Denmark and southern Sweden in the southwest, and patches of more long-distant transport (>3500 km) in the north of the domain (Fig. 6c). The distance of the moisture sources is computed as a spherical distance for each uptake location and then gridded according to Eq. 20.~~

825 ~~The moisture~~ moisture source temperature is obtained here from the ~~2m air temperature ( $T_{2m}$ ) over land and ocean regions~~ skin temperature (SST over ocean regions, SKT over land) using Eq. 20 (Fig. 6e). For the present case, moisture source temperatures are ~~relatively uniform, with warmest source temperatures~~ warmest in regions where land sources dominate with up to 22 °C. Additionally, the LFP of moisture source relative humidity, air pressure at the sources, ~~surface skin temperature,~~ and specific humidity at 2m ( $q_{2m}$ ) at the sources may be available, depending on ~~the~~ what has been written out to the FLEX-  
830 PART and LAGRANTO input files. ~~Further LFP quantities characterises the thermodynamic conditions at the moisture source~~ (Table D1).

Stable water isotopes are an important diagnostic in moisture source analyses (e.g., Aemisegger et al., 2014). Measurements of the secondary water isotope parameter d-excess can reflect the relative humidity environment during evaporation. In the case that source-skin temperature-SKT and  $q_{2m}$  or RH and  $T_{2m}$  are available on the input files, an approximation for the stable water isotope parameter d-excess at the moisture sources  $d_{src}$  can be computed from the relation of Pfahl and Sodemann (2014):

$$d_{src} = -0.54\text{‰} \cdot \text{RH}_{SST} + 48.2\text{‰} \quad (21)$$

Thereby, the relative humidity with respect to SST ( $\text{RH}_{SST}$ ) is obtained using saturation vapour pressure according to Flatau et al. (1992). For the example case, the computed d-excess  $d_{src}$  shows a gradient that mirrors land properties, with higher values (15–20–8–10 ‰) where land sources dominate, while ocean source dominated regions show a lower d-excess, slightly with ~4 ‰ values below the global average in precipitation of 10 ‰ (Araguás-Araguás et al., 2000). The d-excess parameter is both an interesting diagnostic for paleoclimatic studies, and can be used to relate moisture transport to water isotope measurements on meteorological time scales (e.g., Weng et al., 2021).



**Figure 6.** Lagrangian forward projection of source quantities for the example case in 2022. (a) Moisture source latitude (shading, °N), (b) moisture source longitude (shading, °E), (c) moisture source distance (shading, km), (d) moisture source land fraction (shading, %), (e) moisture source skin temperature (shading, °C), (f) d-excess of water vapour at the moisture source following Pfahl and Sodemann (2014) (shading, ‰). All quantities are weighted averages, using the Lagrangian precipitation estimate  $\tilde{P}$  as a weight.

## 5.5 Lagrangian forward projection of moisture transport quantities

In a similar way as moisture source quantities (Eq. 20), it is possible to project transport quantities onto the arrival region, with the exception that the average is obtained from the The only difference is that all trajectory points, and not just the uptake points are included, using the current accounted fraction during the moisture transport. For example,  $\tilde{\xi}^k$ , the forward projected moisture transport temperature valid during arrival of air parcel  $k$  is obtained by averaging the air parcel quantity  $\xi^k$  along the entire transport path from 1 to of  $N$ , using  $f_i^k$ , time steps, using the explained fraction at step  $i$ ,  $f_i^k$  as a weight:

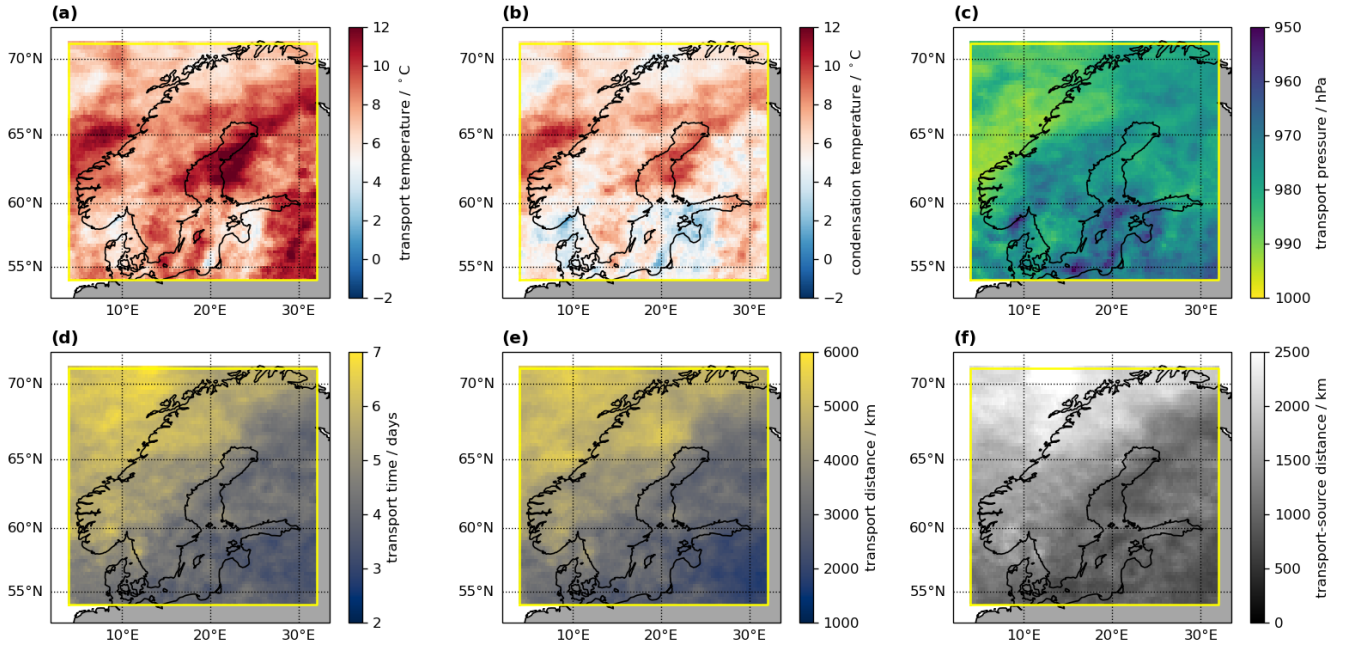
$$\tilde{\xi}^k(\phi\lambda_a, \theta\phi_a) = \frac{\sum_{i=1}^N \xi_i^k \cdot f_i^k \cdot m^k}{\sum_{i=1}^N f_i^k \cdot m^k} \frac{\sum_{i=1}^N \xi_i^k \cdot f_i^k}{\sum_{i=1}^N f_i^k} \quad (22)$$

The LFP of the moisture transport temperature obtained this way shows relatively warm transport for the majority of air masses at around 10 between 6–12 °C (Fig. 7a). In comparison, the condensation temperature, computed as transport temperature conditioned on  $\text{RH} > 80\%$ , shows that saturation is reached at colder and more variable temperatures of between 2–8 °C throughout the domain, including below-zero temperatures in the southeast (Fig. 7b). Comparison to the transport pressure shows corresponding lower-level transport transport at higher pressures in the regions of warmer condensation temperatures, with air pressure of 850 hPa and above in Northern Scandinavia above 990 hPa over the Norwegian Sea, compared to ~700–950 hPa over the Baltic states Sea (Fig. 7c).

A quantity that allows to inspect the time scale of moisture transport is the transport time, obtained as the difference between the time of each uptake event and the corresponding arrival time. For the example case, the transport time shows the largest values with above 5 largest values with 5–7 days in northern Scandinavia, whereas Denmark and southern Sweden have transport times of 3 days and below (Fig. 7d). The transport time in this case thus bears similarities with the transport distance (Fig. 7e) and the direct source distance map (Fig. 6c). In contrast to the moisture source distance, the transport distance is obtained as the total distance along an air parcel trajectory. The difference plot between both distance quantities underlines that the transport distance is always larger than the source distance, and more so for regions where transport takes more time, with a differences of up to 2000 km in Northern Scandinavia (Fig. 7f). In combination, these transport quantities enable one to interpret the transported moisture in terms of processes that occurred underway from source to sink. Such information can for example be relevant for understanding changes of isotope composition and the mixing with other air masses. For more detailed discussion of the transport time from WaterSip, see Sodemann (2020) and Gimeno et al. (2021).

## 5.6 Time series of diagnostic quantities

The temporal evolution of different diagnostic quantities in the arrival domain can provide further insight into moisture transport dynamics. WaterSip provides time series output of all arrival and forward-projected source ( $\zeta$ ) and transport quantities ( $\xi$ ) described above (Sec. 4.35.3–5.5). Thereby, the mean, median, and the maximum and minimum value are reported for different integration times, from the trajectory time step to daily, monthly, yearly, and the entire analysis time period (Table 2). Longitude is thereby converted to a Cartesian grid for the averaging operation. Averaging over time steps is done by weighting



**Figure 7.** Lagrangian forward projection of transport quantities for the example case in 2022. (a) transport temperature (shading, °C), (b) condensation temperature (shading, °C), (c) transport pressure (shading, hPa), (d) transport time (shading, days), (e) transport distance (km), and (f) difference between transport and source distance (km). All quantities are weighted averages, using the Lagrangian precipitation estimate  $\tilde{P}$  as a weight.

the contribution at each time step  $i$  of the analysis period with the corresponding precipitation estimate  $\tilde{P}$  at grid location  
 875  $(\phi_a, \theta_a)(\lambda_a, \phi_a)$ , and dividing by the total of the precipitation estimate for a given averaging period  $T$ :

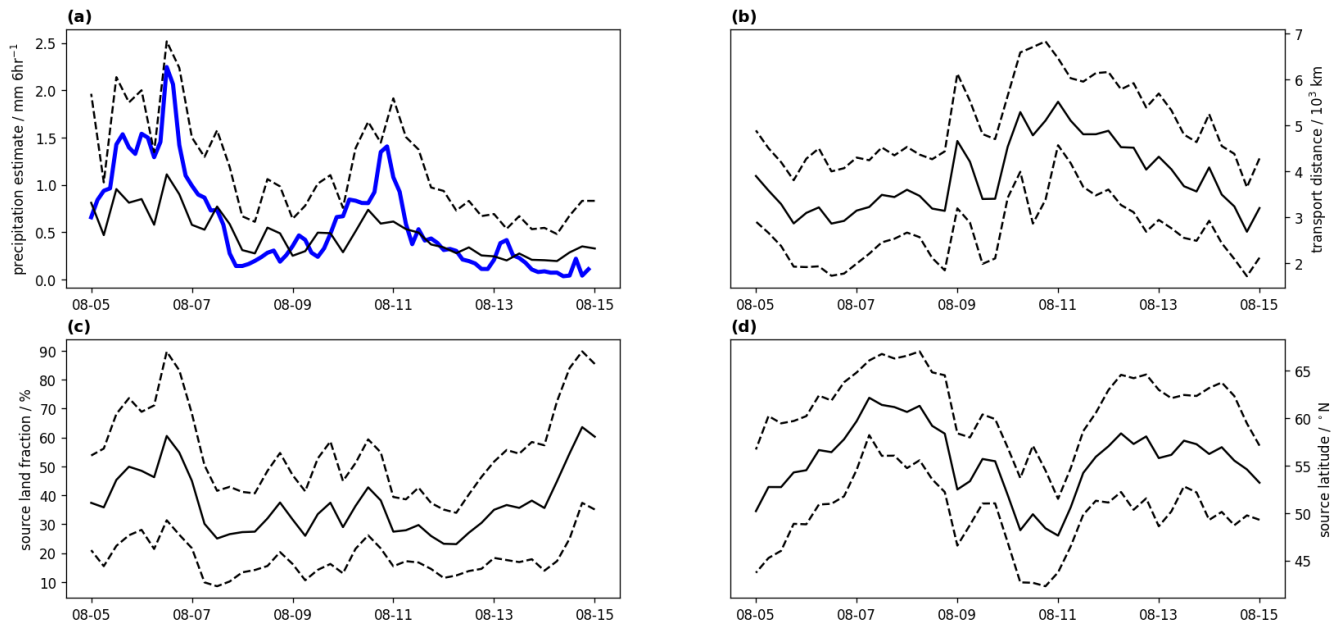
$$\bar{\zeta}(\underline{\phi}_{\lambda_a}, \underline{\theta}_{\phi_a}) = \frac{\sum_{i=0}^T \zeta_i(\phi_a, \theta_a) \cdot \tilde{P}_i(\phi_a, \theta_a)}{\sum_{i=0}^T \tilde{P}_i(\phi_a, \theta_a)} \frac{\sum_{i=0}^T \zeta_i(\lambda_a, \phi_a) \cdot \tilde{P}_i(\lambda_a, \phi_a)}{\sum_{i=0}^T \tilde{P}_i(\lambda_a, \phi_a)} \quad (23)$$

Time series of  $\tilde{P} - \bar{P}$  of the case study obtained this way show a pronounced precipitation maximum in the ~~second~~-first half of the study period on ~~16 to 17~~-5 to 7 Aug 2022 with ~~1.3~~-1.0 mm (6 h)<sup>-1</sup> (Fig. 8a)-, black solid line). A second maximum occurred with about 0.8 mm (6 h)<sup>-1</sup> on 10 Aug 2022. The ERA5 precipitation shows that WaterSip underestimates domain average precipitation during these periods, but not during weaker rainfall events (Fig. 8a, blue line). The standard deviation of the precipitation estimate in the arrival domain reflects some of the peak values present in ERA5 (dashed line).  
 880

The period with most intense precipitation was associated with gradually shorter transport distances of less than 3000 km (Fig. 8b). Land sources ~~where dominating in this second~~-were dominating in the first period, with a fraction up to ~~75%~~-on 17 ~~60%~~ on 6 Aug 2022, compared to below 30% on 12 Aug 2022 (Fig. 8c). Source latitudes ~~varied more strongly~~-were more

885 northerly during the first half of the case study, and stabilised at around 52°N after 15 Aug 2022 (Fig. 8d). Both characteristics match well with the moisture source snapshot for that day (Fig. 3a).

During the forward projection, some grid points have only a very small number of trajectories arriving, which can then lead to relatively large grid maximum and minimum values compared to the overall spread. For some applications, a more refined statistical quantification of the gridded fields may be required, for example such as excluding grid locations below a minimal precipitation estimate. In such a case, users may choose to output the gridded fields for every time step, and then follow up with their own post-processing steps.



**Figure 8.** Time series output from WaterSip for the Scandinavian precipitation event in from 5-15 August 2022 for the variables (a) precipitation estimate  $\bar{P}$  ( $\text{mm (6 h)}^{-1}$ , black line), ERA5 simulated precipitation (thick blue line), (b) transport distance ( $10^3$  km), (c) source land fraction (%), (d) source latitude ( $^{\circ}\text{N}$ ). Each panel shows the weighted mean (solid line), unweighted one- $\sigma$  standard deviation (dashed lines) over the arrival grid.

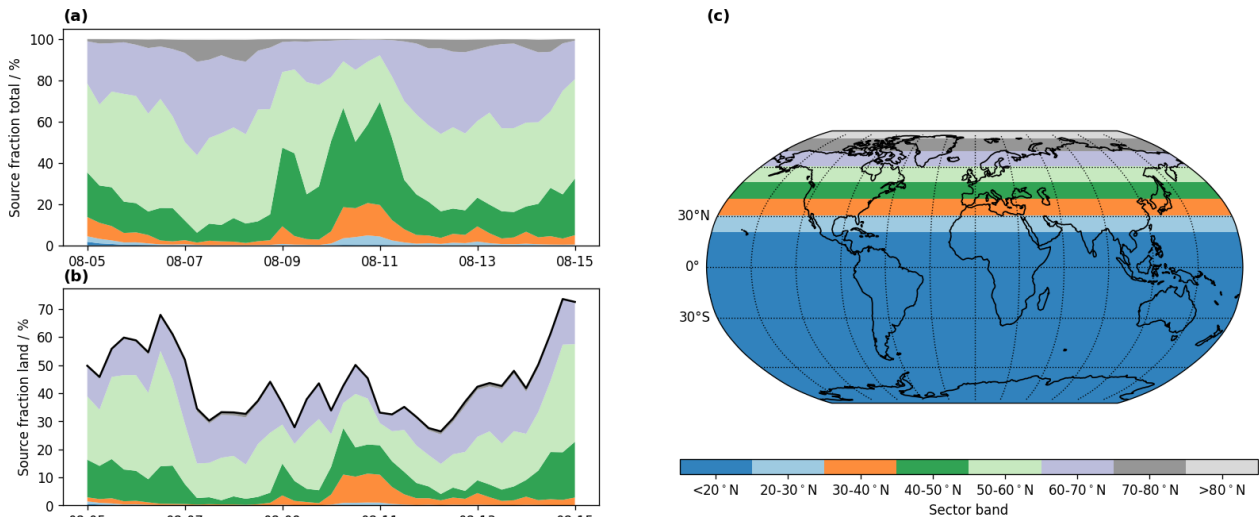
### 5.7 Sectorisation of source region maps

Another post-processing available within WaterSip is the option to categorise the moisture source maps by geographic domains, the so-called sectorisation (Sodemann and Zubler, 2010). During sectorisation, the coordinates of each uptake in the boundary layer and free troposphere are checked to be within a set of  $J$  latitude and longitude bounds  $[\lambda_j, \theta_j][\lambda_j, \phi_j]$ , which define the source sectors  $S_j$ . The geographic bounds of each sector are implemented in the program code as a function that returns the sector number corresponding to a given geographic coordinate. Currently, 11 different sectorisations are available in WaterSip

(Table C1). Implementing additional sectors requires users to modify the WaterSip code. Further details are given in the Appendix C.

900 The output from the sectorisation is included in the time series files (Table D3). All quantities available on the source and transport grids contain an additional dimension for the sector number. Furthermore, quantities are given for land regions only, sea only, and for the total. This allows to define relatively simple geographic sector shapes, that still make the important distinction between land and ocean regions, based on the land-surface information provided to WaterSip. The sector areas are also available to convert the fractional output to mass units.

905 For the case study over Scandinavia, the sectorisation 'Norway' has been chosen, which includes 8 latitude sectors (Fig. 9c). The total arriving precipitation is dominated by sources at 30–4050–60°N (Fig. 9a, light green) in the first half of the study period, before being dominated by more northerly-southerly sources in the second half (40–50°N, dark green). Splitting up the moisture originating from land areas only further emphasises that the shift to more northerly sources is driven by land contributions from 30–40°N (Fig. 9c). In a tabular summary, it becomes evident that ocean sources still dominate for the entire  
910 event period, and that less than 10% of the precipitation originate from south of 40°N (Table 3).



**Figure 9.** Sectorisation example for the Scandinavian case study for August 2022. (a) Classification of the total (land and ocean) moisture sources into latitude bands between 20–80°N during the study period. (b) Classification of the land sources only. Solid black line indicates the total fraction of all land sources. (c) Sector map of sectorisation 'Norway' (#3) used in the case study.

## 5.8 Histograms of moisture source and transport properties

For some applications, it may be valuable to have the source and transport information from WaterSip available from every single uptake event. During the gridding to source or arrival grids, this detail of information is lost. Since the number of individual

**Table 3.** Sectorisation results in percent separated into boundary layer and free-troposphere moisture sources for the total, and over land and sea regions only, for the Scandinavian case study for August 2022.

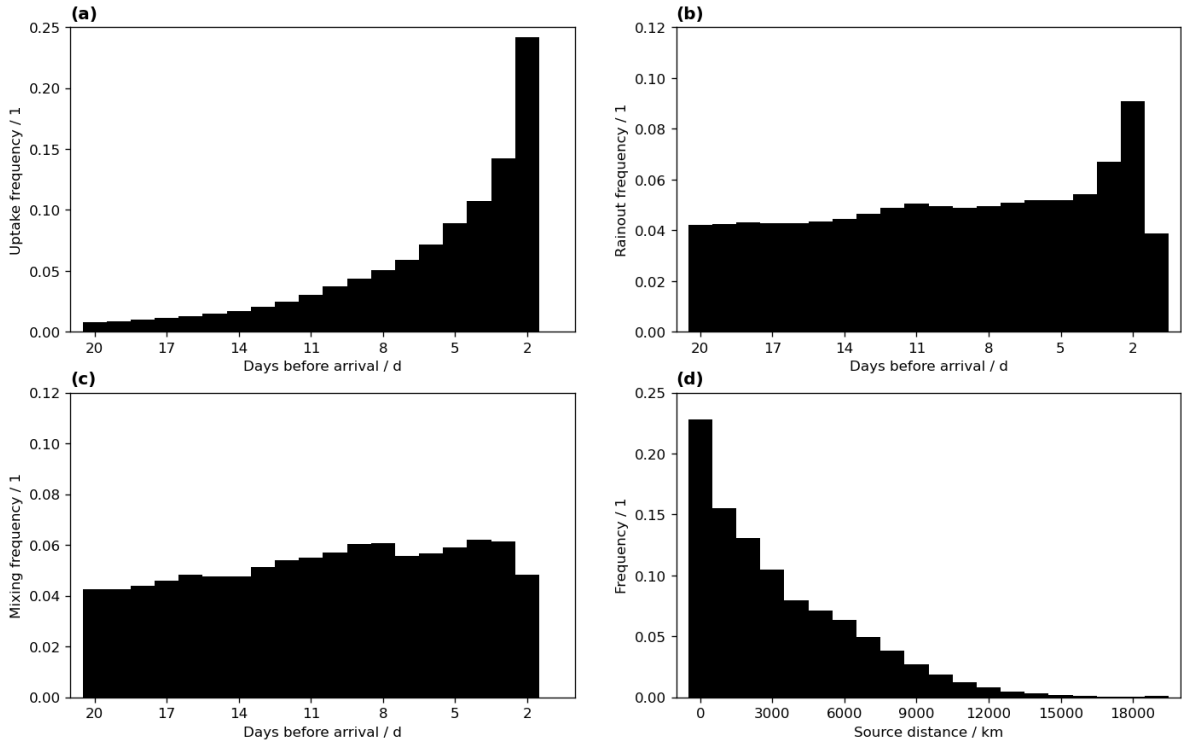
Sector	BL <sub>total</sub>	BL <sub>land</sub>	BL <sub>sea</sub>	FT <sub>total</sub>	FT <sub>land</sub>	FT <sub>sea</sub>
<20°N	0.2	0.1	0.2	0.4	0.0	0.3
20–30°N	1.2	0.3	0.9	2.0	0.1	1.9
30–40°N	5.3	2.5	2.8	5.3	1.6	3.7
40–50°N	19.9	8.5	11.4	24.4	7.4	17.0
50–60°N	42.4	21.4	21.0	40.5	12.7	27.9
60–70°N	27.4	12.4	14.9	18.8	4.8	14.1
70–80°N	3.5	0.6	2.9	7.6	0.8	6.8
80–90°N	0.1	0.0	0.1	0.9	0.1	0.8
All	100.0	45.7	54.3	100.0	27.4	72.6

uptakes can be very large, histograms are a convenient way to aggregate such data. For example, Winschall et al. (2014b) used histograms of transport time to identify the age spectrum of precipitation. Other examples for the use of such output are the distribution of SSTs at the moisture sources (Weng et al., 2021). WaterSip creates an output file in comma separated value (csv) format containing histograms of a fixed set of variables as output if the parameter *saveHistogram* in section *Output* is set to 1 (true). These variables include convection count and depth, uptakes, rainout, air mass mixing, source SST or T2m, source distance, source d-excess, and RH<sub>SST</sub> at the sources (Table 4). As the histogram classification is implemented directly within WaterSip, changes to the classification parameters, or adding more variables requires changes to the WaterSip program code in file `Water.cpp`.

For the example case of Scandinavia during August 2022, the probability density function of ~~evaporation contribution the uptake contributions~~ shows a maximum at 2 days before arrival, and a ~~shallow tail beyond rapidly decreasing tail thereafter to~~ 10 days before arrival (Fig. 10a). The distribution of rainout events ~~peaks at the same (not weighted by f) also peaks at 2~~ days before arrival time, but has otherwise an even distribution throughout the 20 day analysis period (Fig. 10b). The PDF of mixing events ~~peaks 5 (also not weighted by f) peaks at 4 and 8~~ days before arrival (Fig. 10c). Finally, the PDF of source distances shows a ~~very flat tail beyond about 9000 km, rapidly flattening tail~~ with the majority of sources within about ~~3000 5000~~ km (Fig. 10d). These examples illustrate the additional insight that one can gain from the histogram data, beyond the mass-weighted averages provided by the gridded and time series output.

### 930 5.9 Air parcel trajectory output

WaterSip processes air parcel trajectory data obtained from the Lagrangian models LAGRANTO and FLEXPART. During the processing of these data, trajectories are filtered based on criteria such as being located within the arrival domain, precipitating during arrival, and so on. Essentially, thus, the WaterSip tool creates a subset of the original trajectory data, enhanced by additional information, such as the identified uptakes, and the accounted fraction. Setting parameter *saveTraj* of settings group



**Figure 10.** Histograms of moisture source and transport quantities for the example case. (a) **Uptake**-frequency of uptake events by time before arrival, (b) **Rainout**-frequency of rainout events by time before arrival, (c) **Mixing**-frequency of mixing events by time before arrival, and (d) **source distance**-frequency of uptakes by time before arrival source distance. All histograms are valid for the entire analysis period and have been converted to probability density functions. The weighting for each quantity is listed in Table 4.

**Table 4.** Histogram variables currently built into WaterSip, with corresponding lower and upper bounds, and number of categories for the classification.

Parameter	Convection height (m)	Convection count (1)	Uptake ( $\text{g kg}^{-1}\text{time (h)}$ )	Uptake contribution ( $\text{g kg}^{-1}\text{time (h)}$ )	Rainout ( $\text{g kg}^{-1}\text{time (h)}$ )	Air mass <b>mixing</b> - ( $\text{g kg}^{-1}\text{mixing time (h)}$ )	Source distance (km)	SST (K)	d-e (pe
min	0	0	-480	-480	-480	-480	0	270	
step	10	10	20	20	20	20	20	20	
max	2000	10	0	0	0	0	20000	310	
<u>weight</u>	<u>1</u>	<u>1</u>	<u><math>\Delta q_i</math></u>	<u><math>f_i \cdot \Delta q_0</math></u>	<u><math>-\Delta q_i</math></u>	<u><math>-\Delta q_i</math></u>	<u><math>f_i \cdot \Delta q_0</math></u>	<u><math>f_i \cdot \Delta q_0</math></u>	<u><math>f_i</math></u>

935 *Output* to either 1 (output every time step) or 2 (output in monthly files) instructs WaterSip to write out these trajectory data in a compact binary format `-(*.traj)`. Since the total output size can become rather large, it is possible to use parameter `skipTraj` with a value  $n > 1$  to only write out trajectories for every  $n$ -th trajectory-particle. A python script for reading the binary format is provided in the WaterSip code repository.

The potential value of the trajectory output is illustrated here for a subset of the air masses arriving over the target area in Scandinavia at 06 UTC on 10 Aug 2022. During this time, 20-day backward trajectories tap into moist air masses near the equator in the Atlantic and in the Gulf of Mexico and the subtropical North Atlantic, and to a lesser extent into the Pacific basin (Fig. 11a). The colour shading by moisture uptakes and losses emphasises regions of moisture loss over the Rocky Mountains (red), moisture gain over eastern North America the eastern and western North Pacific (blue), and as air parcel trajectories arrive over North America, and the North Atlantic, as well as moisture loss as air parcels approach Scandinavia (red). Plotting the total accounted fraction in a time vs height diagram emphasises that moisture uptakes of The time vs. height diagram illustrates that in this case much of the moisture gained more than 10 days before arrival are mostly overwritten by later uptake events has been lost due to the vertical lifting and drying of air masses at about -10 days (Fig. 11b). Another branch of air descended from the upper troposphere between 6–10 km (dark brown colors) before taking up moisture in the lower troposphere. In some cases, the remaining moisture may also have been overwritten by uptake events during the last 10 days before arrival, as exemplified by the trajectory highlighted in red that raises and then sinks again towards the surface multiple times.

940  
945  
950

## 6 Discussion

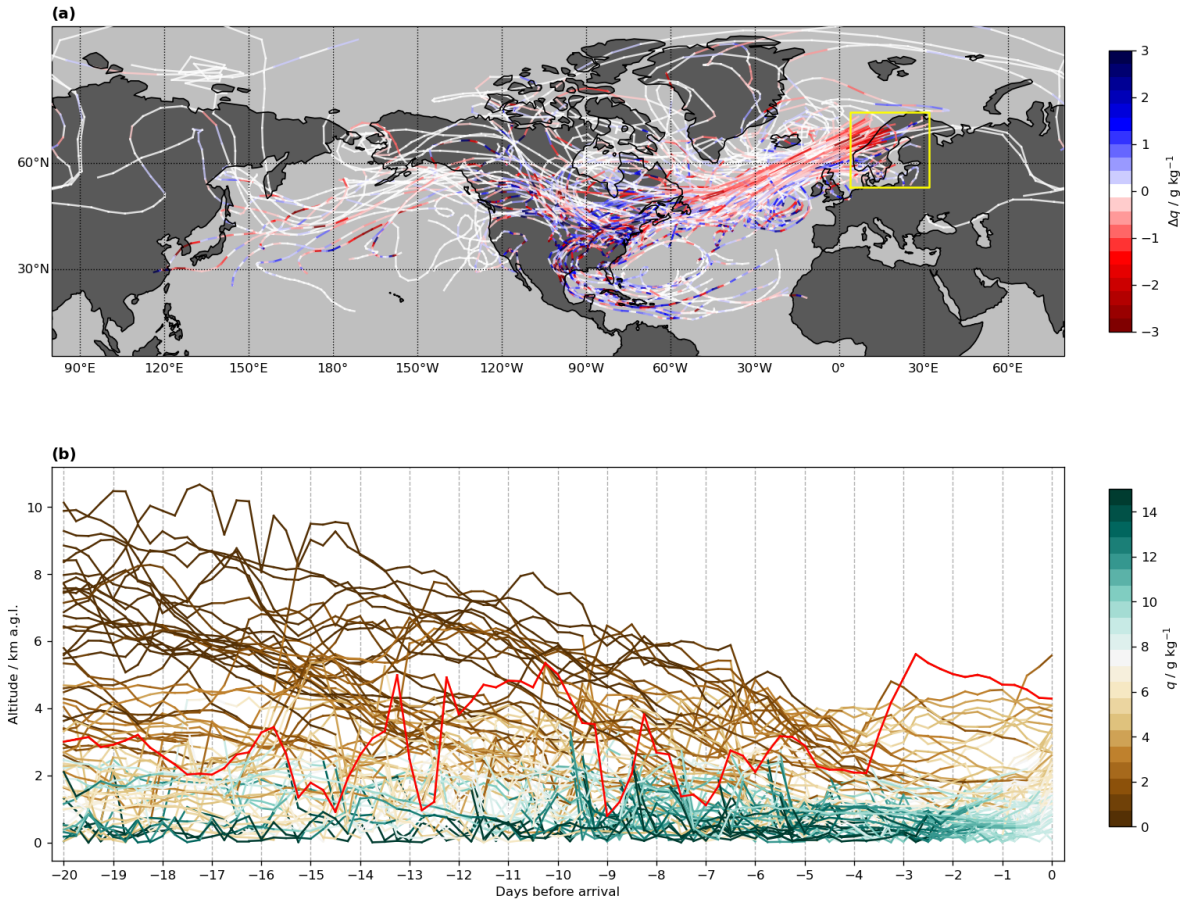
As mentioned throughout the description of the method, there are a number of uncertainties connected to the use of the WaterSip diagnostic. A sensitivity study for the Scandinavia case illustrates how WaterSip responds to variations in key parameters (Sec. 6.1). Users need to carefully consider the impact such uncertainties may have on the interpretation and validity of their results (Sec. 6.2). Underlying this uncertainty is the lack of a direct observable quantity that would serve as a reference for finding out moisture source information. In that context, method inter-comparisons and sensitivity studies can be a pathway to quantify and potentially bound uncertainty (Sec. 6.3). Lastly, some computational performance characteristics of the software are presented (Sec. 6.4).

955

### 6.1 Error sources and uncertainties Sensitivity analysis of key parameters

960 Using the Scandinavia case study discussed above, a range of sensitivity experiments was conducted to illustrate the sensitivity of the diagnostic to several core parameters. The domain averages of the precipitation estimate  $\bar{P}$ , total accounted fraction  $f_{tot}$ , and the source distance have been chosen as bulk properties of the moisture sources during the event. When the critical relative humidity  $RH_c$  was varied from the reference value 80% to 70% and 90%,  $\bar{P}$  increased or decreased about 25% compared to the reference value of  $2.074 \pm 1.162 \text{ kg m}^{-2}$  (Table 5). This can be expected due to more (less) precipitation events being detected at arrival for a lower (higher)  $RH_c$ . In comparison to the domain-average ERA5-simulated precipitation of  $2.43 \text{ kg m}^{-2} \text{ d}^{-1}$ ,

965



**Figure 11.** Trajectory output from WaterSip for 06 UTC on 10 Aug 2022. (a) Map of the moisture transport pathway of 20-day trajectories shaded by specific humidity changes per time step ( $\Delta q$  in  $\text{g kg}^{-1} \text{6h}^{-1}$ ). (b) Time vs. height diagram shaded by specific humidity ( $\text{g kg}^{-1}$ ) for water vapour arriving in the Scandinavia domain. For illustrative purposes, a random selection of 50–70 out of more than 1000 8000 air parcel trajectories is displayed. The trajectory highlighted in red illustrates the repeated vertical movement of some particles on the way to the target region.

the underestimation amounts to 17% for the reference case. The moisture source distance increases slightly with a higher  $\text{RH}_c$ , while  $f_{\text{tot}}$  remains nearly unchanged.

Sensitivity with regard to the value of  $\Delta q_c$  was tested with 0.1 and  $0.4 \text{ g kg}^{-1} \text{6h}^{-1}$ . The precipitation estimate remained unaffected by this change, since the humidity change during the last time step is set by the separate parameter *arrivalPrecipThreshold*. The total accounted fraction decreases with increasing  $\Delta q_c$ , since less events are identified as moisture uptakes. A higher  $\Delta q_c$  also favours slightly more distant moisture sources, as less discounting of remote moisture takes place for the case study.

The trajectory length has a clear imprint on  $f_{\text{tot}}$ , with 13.4% less accounted sources for 10-day ( $L = 41$ ) compared to 20-day ( $L = 81$ ) trajectories. In comparison, the difference between 15-day and 20-day trajectories is only 4.3%. The moisture source distance is also sensitive to the trajectory length, with on average 327 km closer moisture sources for the 10-day trajectories. Still, the average value is less than the  $1-\sigma$  standard deviation within the domain of 527 km, and remains within 15% of the reference value for all of the above parameter variations.

Finally, the sensitivity to the time step  $\Delta t$  has been tested using a 3-h time interval. To enable a fair comparison to the reference, this run also required adjustment of  $\Delta q_c$  to  $0.1 \text{ g kg}^{-1} \text{ 3h}^{-1}$ , and increase of the trajectory length to 161 time steps to maintain 20-day trajectories. The results for this sensitivity test deviate more markedly from the reference than the previous sensitivity experiments, with a 50% higher precipitation estimate, a 3.1% higher  $f_{\text{tot}}$ , and a 431 km closer source distance than the reference. This kind of response in the results of the diagnostic can be explained by the increasingly ambiguous distinction between variations in specific humidity from moisture uptakes that the diagnostic aims to identify, and variations from interpolation errors and other random factors. Users should carefully evaluate which time step and specific humidity thresholds are suitable for their study.

**Table 5.** Sensitivity experiments with key parameters using the Scandinavia case study from August 2022 as a reference. Source characteristics are given in terms of domain averages of precipitation estimate  $\bar{P}$ , total accounted fraction  $f_{\text{tot}}$ , and source distance. The reference experiment uses  $\text{RH}_c = 80\%$ ,  $\Delta q_c = 0.2$ ,  $\text{Len} = 81$ , and  $\text{Tstep} = 6$ . Differences are computed as Experiment - Reference. For details see text.

Experiment	Precipitation estimate		Total accounted fraction		Source distance	
	$\text{kg m}^{-2} \text{ d}^{-1}$	Diff.	%	Diff.	km	Diff.
Reference	$2.074 \pm 1.162$		$95.3 \pm 1.5$		$2314 \pm 527$	
$\text{RH}_c = 70$	2.576	0.502	95.4	0.1	2232	-82
$\text{RH}_c = 90$	1.476	-0.598	95.2	-0.1	2458	144
$\Delta q_c = 0.1$	2.074	0.000	96.5	1.3	2271	-43
$\Delta q_c = 0.4$	2.074	0.000	92.0	-3.3	2429	115
$L = 61$	2.074	0.000	91.0	-4.3	2208	-106
$L = 41$	2.074	0.000	81.9	-13.4	1987	-327
$\Delta t = 3$	3.086	1.012	98.4	3.1	1883	-431

## 6.2 Error sources and uncertainties

~~The WaterSip algorithm, as other Lagrangian diagnostics,~~ As other Lagrangian moisture source diagnostics, WaterSip calculates the Lagrangian water budget of air parcels that are moving with the atmospheric flow. At initial time  $t_0$ , these air parcels are defined by their location, an assumed spatial extent, and ~~the air parcel with mass  $m$ .~~ As the air parcels are moving represent an atmospheric mass  $m^k$ . As air parcels move horizontally and vertically, ~~the~~ their shape is assumed to be maintained, as

990 well as the total mass. However, exchange processes across the air parcel's imaginary walls can modify the amount of water  
vapour within the air parcel, as quantified by the specific humidity  $q$  ( $\text{g kg}^{-1}$ ). Interpolation errors can then, among other,  
cause spurious variations in the specific humidity. Another assumption that is made in the Sodemann et al. (2008b) algorithm  
is that during one time step, all specific humidity changes are assumed to either be due to uptakes or losses, while in fact it is  
995 a net change that may include both uptakes and losses in the time interval. While this assumption is more valid the shorter the  
time interval between trajectory points, shorter time intervals also lead to using smaller  $\Delta q_c$  between time steps, which then  
becomes more difficult to separate from interpolation noise. Another assumption in WaterSip is that diagnosed evaporation  
took place at the geographic location where the moisture uptake has been detected. However, this does not necessarily need to  
be the case, for example when water vapour that had evaporated earlier is at a later time mixed into an air parcel as a result of  
mixing from turbulence or convection.

1000 While threshold parameters, such as  $\Delta q_c$  are used to suppress some of the numerical noise introduced during the trajectory  
calculation and interpolation, there may either be ~~to~~too many uptakes diagnosed, or some uptake events may be missed. The  
total explained fraction  $f_{\text{tot}}$  can then provide important guidance whether the accounting works consistently (i.e.,  $f_{\text{tot}} \leq 1$ ) with  
the chosen threshold parameters. Spurious variations that are larger than the threshold value will lead to more remote moisture  
being discounted in the favour of later uptakes, while the assumption that either evaporation or precipitation take place during  
1005 one time step acts to overestimate remote sources. Such potential biases are important to keep in mind during interpretation.

Other important sources of uncertainty are the number of particles chosen to represent the investigated air mass, as well as the  
time step of the trajectory output. In general, a larger number of trajectories will provide better statistical representation of the  
diagnosed quantities, in particular when used with a particle dispersion model such as FLEXPART that parameterises turbulent  
and convective motions. The number of ~~trajectories~~particles should also be chosen in line with the resolution of the source and  
1010 arrival grids, providing reasonably smooth and continuous gridded output. Other considerations of offline trajectory diagnostics  
are the effects of data assimilation, which provides humidity increments during the process (Fremme et al., 2023), and from  
parameterisation schemes in the parent numerical model. Here in particular the role of convection schemes is important to  
consider, providing both a pathway for rapid specific humidity changes and vertical particle motion that are hard to capture  
in offline calculations, even when using parameterisation schemes for convection in the trajectory model (Sodemann, 2020).  
1015 Here, the use of online trajectory calculation methods (Miltenberger et al., 2013) could provide a pathway towards quantifying  
such uncertainty.

### 6.3 Quantifying and reducing uncertainty

Future development of the WaterSip software and similar approaches will benefit from quantifying uncertainty, and from iden-  
tifying the contribution of different factors to uncertainty. In the absence of a direct observable quantity for the water vapour  
1020 origin, model inter-comparison efforts are important. First steps in this direction have been made by van der Ent et al. (2013)  
who employed a regional tagged water tracer simulation as the reference standard for a Eulerian moisture source identification  
algorithm. Similarly, Winschall et al. (2014a) and Laederach (2016) compared the WaterSip diagnostic to tagged tracer simu-  
lations from a regional model. While tagged tracers do have limitations with regard to the representation of different processes

in the atmospheric water cycle at small scales, it can be expected that using such online simulations as input data for offline diagnostics can help to quantify uncertainty, essentially serving as an internal "gold standard" for such inter-comparison efforts (Sodemann, 2020). Thanks to the availability of an increasing number of approaches to provide (Lagrangian and Eulerian) offline moisture source diagnostics as open access software (van der Ent et al., 2014; Keune et al., 2022; Fernández-Alvarez et al., 2022), the feasibility of such an inter-comparison effort has greatly increased in recent years. The present description of the WaterSip diagnostic is another piece in the puzzle that may help to advance ongoing debates. On the longer run, the availability of suitable water vapour isotope measurement data sets, in particular such that connect moisture source signals with measurements along the transport pathway and the arrival region, have the potential to indeed constrain diagnostic methods by measurements (Gimeno et al., 2021).

#### 6.4 Computational performance characteristics

The test case here is run only for a short time period and over a spatially limited domain. Running on a single core on a 36-core Intel(R) Xeon(R) Gold 6140 CPU at 2.30 GHz, the diagnostic completes after about 21 min, with a peak memory use of 4.6 GB (Table 6). Important aspects of the duration of the computational time are the amount of input/output (I/O) operations, and the number of particle trajectories to be processed. The test case has at most about new 3000 particles that are qualified for tracking within each time step of the test case period. This means that here I/O dominates over the amount of time spent for evaluating the moisture source changes and gridding the results. When the amount of particles considered for analysis is reduced by a factor of 10 (Test "Stride A") or 100 (Test "Stride B"), the computation time only decreases by a factor of 0.6 or 0.4, respectively. Nonetheless, a stride larger than one provide results substantially faster, which is useful for example when testing an analysis setup. Note that results will however contain more gaps with fewer particles due to the stride setting. The memory footprint scales less than the computational time, since this demand is dominated by the output grids and thus the length of the analysis period. Finally, the parallelisation performance is illustrated with a run over the same time period, but with a larger domain covering half the Northern Hemisphere. The use of 4 cores (Test "Large B") shows a 2.75× speedup compared to the single-core run (Test "Large A"). However, performance gains quickly become lower with additional cores due to the need for processes to wait for one another (not shown). It may be possible to gain faster computation times and better scaling if the code were further optimised for parallelisation.

### 7 Summary and Final Remarks

The WaterSip software is a versatile implementation of the Lagrangian ~~diagnostics of moisture sources~~ moisture source and transport diagnostic of ~~?~~ A. Sodemann et al. (2008b). ~~Besides providing a~~ detailed, formal description of the diagnostic algorithm and its key parameters ~~will be useful in inter-comparison studies with other tools for moisture source identification, supporting the understanding of any differences between methods. Convenient data aggregation in various ways allows researchers to focus on the results and interpretation. The~~ , this manuscript provides practical information to set up and run the WaterSip tool, and serve as a reference describing the format and contents of the different output files from the diagnostic ~~are described.~~

**Table 6.** Overview over computational time and memory demand when running the WaterSip diagnostic for the Scandinavia test case and a test case covering a larger domain (0–90°N and 90°W–90°E). Sensitivity experiments with different number of particles and different cores illustrate performance characteristics. All runs were performed on a Linux machine running on a 36-core Intel(R) Xeon(R) Gold 6140 CPU at 2.30 GHz.

<u>Test</u>	<u>Particles</u>	<u>Max. qualified</u>	<u>Parallel threads</u>	<u>Wall time</u>	<u>Memory footprint</u>
<u>Default setup</u>	<u>10'000'000</u>	<u>3068</u>	<u>1</u>	<u>21:09</u>	<u>4.59 GB</u>
<u>Stride A</u>	<u>1'000'000</u>	<u>297</u>	<u>1</u>	<u>13:09</u>	<u>3.56 GB</u>
<u>Stride B</u>	<u>100'000</u>	<u>32</u>	<u>1</u>	<u>8:40</u>	<u>3.45 GB</u>
<u>Large A</u>	<u>10'000'000</u>	<u>103127</u>	<u>1</u>	<u>4:08:54</u>	<u>31.93 GB</u>
<u>Large B</u>	<u>10'000'000</u>	<u>103127</u>	<u>4</u>	<u>1:29:15</u>	<u>30.57 GB</u>

1060 ~~Furthermore, set-up for trajectory calculations and the parameters of the moisture source diagnostic are discussed. Using a~~  
Using an exemplary case study for a precipitation period over Scandinavia in August 2022, guidance on the use and interpretation of different maps and output products from the software is provided. Using the available setup with the same input data as the case study ~~(?)~~(Sodemann, 2025a), users can get quickly accustomed with the wide range of configuration options of the software tool, and the varieties of diagnostic output, before setting up their own cases.

1065 ~~Availability of the software tool enables a wider use of this diagnostic for studies of the moisture source location and properties, as well as for identifying the conditions during atmospheric transport, and during arrival target region. Making the software code available in a public repository removes the requirement for other researchers to re-implement the diagnostic algorithm, and enables future contributions from the community such as reading output from other Lagrangian models than LAGRANTO and FLEXPART. This manuscript provides essential guidance on how the algorithm works, how to set up the diagnostic, and recommends best practices for interpreting the results, and for working with uncertainties.~~

1070 ~~Being the implementation of an~~ As other off-line diagnostic with diagnostics, WaterSip and its accounting algorithm have several underlying assumptions, interpreting results from WaterSip necessitates the careful consideration of uncertainty. Uncertainty arises from the choice of different parameters in the set-up of the input data in the form of air parcel transport trajectories, but also with regard to several parameters that influence the sensitivity and performance of the method. In order to obtain physically meaningful results, threshold parameters may need to be set to different values depending on the geographic region, the season, and the height in the atmosphere that is considered during an analysis. Users are therefore advised to carefully test their particular set-up in order to determine sensitivity of their results to the chosen parameter configurations.

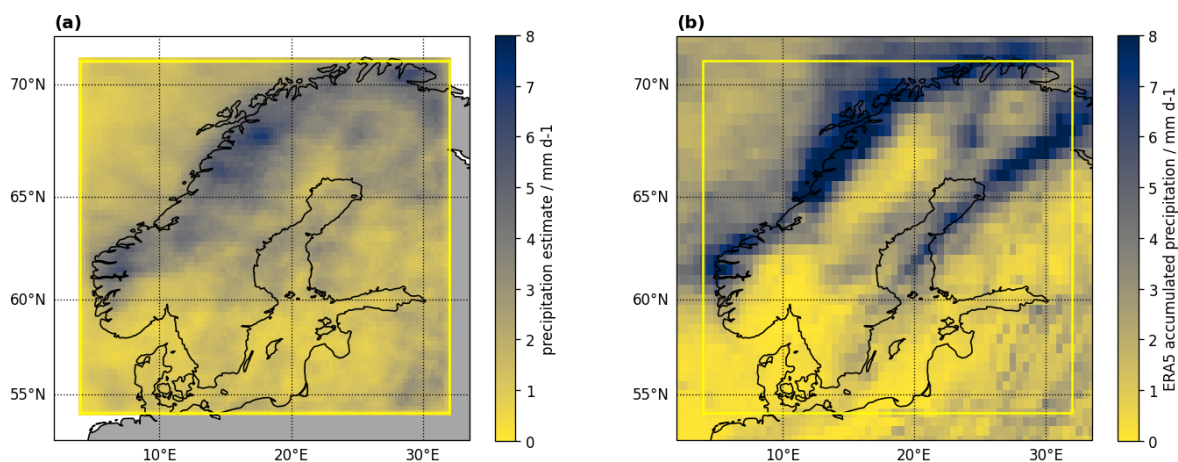
1075 Availability of the software tool enables a wider use of this diagnostic for studies of the moisture source location and properties, as well as for identifying the conditions during atmospheric transport, and during arrival at the target region. Making the software code available in a public repository removes the requirement for other researchers to re-implement the diagnostic algorithm, and enables future contributions from the community such as reading output from other Lagrangian particle and trajectory models.

It is the hope of the author that documenting and making the code of WaterSip available here will lead to the further application of the tool in a wide range of regions and scientific applications, from understanding the factors of precipitation extremes, to climatological studies, and paleoclimate studies. Furthermore, WaterSip in its current version 3.2 may be compared to the results of other available moisture source diagnostics, helping to understand the overall state of the art in this scientific branch, thereby contributing to progress in the field and future methods with reduced uncertainty.

*Code and data availability.* The model code of the WaterSip diagnostic in its current version 3.2.1 is available as archived code at <https://doi.org/10.5281/zenodo.15068065> (Sodemann, 2025b) and maintained at the git repository <https://git.app.uib.no/GFI-public/watersip>. Test data sets with FLEXPART output and corresponding WaterSip results are available at <https://doi.org/10.5281/zenodo.14836548> (Sodemann, 2025a).

### Appendix A: Spatial characteristics of Lagrangian precipitation estimate

The Lagrangian precipitation estimate for the period from 06 UTC on 5 July 2022 to 00 UTC on 15 July 2022 over Scandinavia shows a pattern that roughly follows the topography along the west coast of Norway (Fig. A1a). In contrast, southern Scandinavia and the Baltic Sea have lower total precipitation averages of  $0\text{--}1\text{ mm d}^{-1}$ . The ERA5-simulated precipitation has a much stronger contrast between coastal regions and the drier interior of the domain. The period average reaches above  $8\text{ mm d}^{-1}$  in Northern Norway, but has also a larger extent of regions where no precipitation was recorded.



**Figure A1.** Comparison between precipitation during the case study period (06 UTC on 5 July to 00 UTC on 15 July 2022) over Scandinavia (a) estimated from the WaterSip diagnostic and (b) from ERA5 in  $\text{mm d}^{-1}$ .

## Appendix B: Description of control parameters in the WaterSip configuration file

1095 The WaterSip configuration file contains all control parameters of the WaterSip diagnostic in one text file. The control parameters are each specified on one line in the format `<parameter name> = <parameter value>`. Parameters can be either a string, integer, boolean, or float value. Parameters are grouped into one of 7 settings groups. Corresponding tables referred to in the Appendix provide an overview over all parameters in this group, including example values.

1. Case: The settings in this group concern the basic settings of a diagnostic run (Table B1).
- 1100 2. Grids: The parameters in this category specify the different output grids and the gridding method (Table B2).
3. Diagnostics: The parameters in this category control the way how the diagnostic works, and which trajectories should be considered in the run (Table B3).
4. Output: The parameters in this category determine which output files should be created (Table B4).
5. Variables: The parameters in this category allow to include or exclude specific variables from the output files. Setting the  
1105 output for unused variables to 0 (disabled) will speed up computation time, reduce the memory footprint, and reduce the output file size (Table B5).
6. FLEXPART: The parameters in this category describe the properties specific to FLEXPART input files (Table B6).
7. LAGRANTO: The parameters in this category describe the properties specific to LAGRANTO input files (Table B7).

Settings groups are identified in the configuration file by their name included within in square brackets (e.g. [Case]). The  
1110 7 settings groups and control parameters within them can appear in random order in the input file. WaterSip will display an error message if a parameter name is unknown or in the wrong settings group. An error message will also be displayed if the parameter value is of wrong type. Space characters and empty lines will be ignored in the input file and can be used to format the content. In addition, comments can be added after the character '#' anywhere in the file to facilitate documentation.

## Appendix C: Sectorisation options

1115 The sectorisation parameters allow to assign quantities on the moisture source and transport grid to pre-specified regions (Sec. 5.7). ~~A total of~~ In total 14 sectorisations ~~is~~ are currently built into the program code of WaterSip, covering different regions of the globe (Fig. C1, Table C1). The sectorisation is specified in the run setup using parameter `sectorizeRegion` in settings group `Case`. Each of the sectors distinguishes between the respective land and ocean area. During post-processing, it is common to combine several sectors together to obtain desired information over a source region with more complex  
1120 shape than a box. Users can define new sectorisations by modifying the program code in class `Sectors` (files `Sectors.cpp`, `Sectors.h`).

**Table B1.** Parameters in the settings group Case.

Parameter	Type	Example	Description
caseName	s	test_global	identifier for the run, prepended to all output files
inputDir	s	./input/shortposit_%s	Search path of the input files. The inputDir string ends with a placeholder for the files to be read in. For FLEXPART this will be either shortposit_%s or partposit_%s. For LAGRANTO this will often be lsl_%s. The %s placeholder is filled with the current date at runtime.
outputDir	s	./output/test_global/	path where the output files will be created
startDate	s	20230811-000000	Initial date of the run, fixed format YYYYMMDD-HHMMSS. Start date is latest date of the run.
endDate	s	20230713-030000	Last date of the run, fixed format YYYYMMDD-HHMMSS. End date is earliest date of the run.
timeStep	i	3	Time step in hours between particles or trajectory output times.
sectorizeRegion	i	6	Region set used to divide moisture sources into different sectors.
filterBoxFile	s	" "	Path to the text file describing geographic boxes used to filter air parcels during transport.
filterIndex	i	-1	Used line from the filterBoxFile to select/deselect trajectories
orographyFile	s	./topo/etopo5.nc	Path to the orography file in netCDF format used to select arrival based on the underlying topography.
lsmFile	s	./masks/lsm_mask.nc	Path to a netCDF file with global land-sea-mask. Domain must be global.
maskFile	s	" "	Path to a netCDF file with an arrival region mask.
useMask	b	0	Use mask file (0=no, 1=yes)
trajPoints	i	161	Number of trajectory points to be considered in the analysis of arriving air parcels.
minTrajPoints	i	0	Minimum length required for trajectories to be included in analysis (only relevant for runs with LAGRANTO input).
ompThreads	i	4	Number of threads to be used with OpenMP parallelisation if compiled with flag -fopenmp (1=no parallelisation, $\$>\$1$ use parallelisation.)
showStats	b	1	Print statistics about particle processing to the command line (0=off, 1=on)

## Appendix D: Output files

WaterSip creates a range of output files with different formats (Sec. 4.3 and Table 2). The primary results from the diagnostic are contained in the grid and series files. While grid files contain the spatially resolved information for different averaging intervals (time step, daily, monthly, yearly, and whole analysis period), the series files contain statistical properties (sum or mean, standard deviation, minimum and maximum) per averaging time. The source and transport properties are contained in grid and series files (Table D1), together with arrival and forward-projected quantities (Table D2).

The series file furthermore contains the results of the sectorisation (Sec. 5.7). Sectorisation variables comprise the sector area, as well as a percent fraction of the source and transport properties available on the global map per sector (Table D3). The sector information is separated into land and sea fractions, whereby the sector number is can be accessed along the dimension *sector*.

**Table B2.** Parameters in the settings group Grid.

Parameter	Type	Example	Description
arrivalGridMinLon	f	7.5	Minimum longitude of arrival (target region) grid. Air parcel trajectories are traced backward from the arrival grid. Integrated source, transport and arrival variables are placed on the arrival grid, weighted by precipitation or water vapour of arriving air parcels.
arrivalGridMaxLon	f	11.0	maximum longitude of arrival (target region) box
arrivalGridMinLat	f	59.0	minimum latitude of arrival (target region) box
arrivalGridMaxLat	f	62.0	minimum latitude of arrival (target region) box
arrivalGridDx	f	0.25	Longitude increment of arrival (target region) grid.
arrivalGridDy	f	0.25	Latitude increment of arrival (target region) grid.
arrivalGridRadius	f	40	Gridding radius for diagnostic values from arriving air parcels.
sourceGridMinLon	f	-120	Minimum longitude of moisture source grid.
sourceGridMaxLon	f	120	Maximum longitude of moisture source grid.
sourceGridMinLat	f	0	Minimum latitude of moisture source grid.
sourceGridMaxLat	f	90	Maximum latitude of moisture source grid.
sourceGridDx	f	0.5	Longitude increment of moisture source grid.
sourceGridDy	f	0.5	Latitude increment of moisture source grid.
sourceGridRadius	f	60	Longitude increment of moisture source grid.
griddingType	i	2	Select gridding algorithm (1: fast and simple gridding, 2: more exact but slower gridding).

*Author contributions.* HS wrote the manuscript, wrote and tested the software code, and performed visualisation and data analysis.

*Competing interests.* The author declares no competing interests

1135 *Acknowledgements.* I would like to acknowledge the many colleagues who contributed through their interest and comments, curiosity and critical questions to the further development of the WaterSip tool, in particular Alexander Läderach, Astrid Fremme, Yongbiao Weng, Mika Lanzky, and Matthew Osman. Marte Hofsteenge and Costijn Zwart are kindly acknowledged for providing helpful comments to an earlier version of this manuscript. [I also want to thank Marina Dütsch and an anonymous reviewer for their detailed and constructive comments.](#)

**Table B3.** Parameters in the settings group Diagnostics.

Parameter	Type	Example	Description
uptakeThreshold	f	0.2	Threshold value for specific humidity increase (in $\text{g kg}^{-1} \Delta t^{-1}$ ) in air parcels to be considered as due to evaporation and transpiration. If the parameter relativeThresholds is set to true, the uptakeThreshold specifies the increase of the specific humidity in units of %.
precipThreshold	f	-0.2	Threshold value for specific humidity decreases (in $\text{g kg}^{-1} \Delta t^{-1}$ ) in air parcels to find precipitation events. When relativeThresholds is set to true, the precipThreshold specifies the decrease of the specific humidity in %. For consistency, it is recommended to set the values for precipitationThreshold and arrivalPrecipMin to the same number.
blhScale	f	1.5	Scaling factor for boundary-layer height, decides whether uptakes are due to surface evaporation from below, or due to free-troposphere processes, such as convection and mixing.
arrivalRHMin	f	80	Threshold value for minimum RH (in %) at the arrival location that identifies moisture losses as precipitation events. High latitude locations may require lower threshold values.
arrivalRHMax	f	120	Threshold value for maximum RH (in %) at the arrival location that identifies moisture losses as precipitation events. In combination with arrivalRHMin, this parameter can be used to focus on condensation/no condensation cases when the parameter analyzeVapour is set to true.
arrivalPrecipMin	f	-0.2	Threshold value to find precipitation events from a specific humidity decrease (in $\text{g kg}^{-1} \Delta t^{-1}$ ). When relativeThresholds is set to true, the precipThreshold specifies the decrease of the specific humidity in %. For consistency, it is recommended to set the values for precipitationThreshold and arrivalPrecipMin to the same number.
arrivalPrecipMax	f	-120	Threshold value to consider precipitation events with a specific humidity decrease of up to the value given by arrivalprecipMax. When relativeThresholds is set to true, the precipThreshold specifies the decrease of the specific humidity in %. A large negative value includes all potential precipitation events. The combination of arrivalPrecipMin and arrivalPrecipMax allows to focus on heavy or weak precipitation events.
arrivalOroMin	f	-100	Threshold value to consider only arrival locations with a topography larger than the given value (in m). Use negative value to include all global locations including ocean areas, Bangladesh and Death Valley.
arrivalOroMax	f	90000	Threshold value to consider only arrival locations with a topography lower than the given value (in m).
arrivalAltMin	f	-100	Threshold value to consider only air parcels arriving at altitudes above the given altitude (in m above sea level).
arrivalAltMax	f	90000	Threshold value to consider only air parcels arriving at altitudes below the given altitude (in m above sea level).
analyzeVapour	b	0	Parameter to choose between precipitation origin (0) or vapour origin (1). When analyzing vapour origin, the parameters precipitationThreshold, arrivalRHMin, and arrivalRHMax may need modification.
assignToUptake	b	0	Parameter determining the assignment of moisture uptake events to arrival time (0) or to uptake time step grid (1). This parameter will mostly affect time step and daily output files.
forwardProjectionMode	i	3	Parameter determining how the Lagrangian forward projection of moisture source and moisture transport properties are calculated (1: only consider boundary-layer moisture uptakes, 2: only consider free-troposphere uptakes, 3: consider both uptakes in combination).
relativeThreshold	b	0	Parameter determines whether specified threshold values are interpreted as absolute (0) or relative values (1).
<a href="#"><u>processingAlgorithm</u></a>	<a href="#"><u>i</u></a>	<a href="#"><u>0</u></a>	<a href="#"><u>Parameter allows to choose between the processing algorithm of Sodemann et al. (2008b) (0), Dirmeyer and Brubaker (1999) (1), and Gustafsson et al. (2010) (2).</u></a>

**Table B4.** Parameters in the settings group Output.

Parameter	Type	Example	Description
stepFile	b	0	Write output variables on Grid files for each time step.
dayFile	b	1	Write output variables on grid files averaged/accumulated for each day.
monthFile	b	1	Write output variables on grid files averaged/accumulated for each month.
yearFile	b	1	Write output variables on grid files averaged/accumulated for each year.
allFile	b	1	Write output variables on grid files averaged/accumulated for entire analysis period.
staticFields	b	1	Write static fields (land-sea mask and topography) to grid files.
saveTraj	i	0	Write particle positions to trajectory files in traj format. Option (1) creates one files for each time step, option (2) one file for each month (2). Option (0) disables trajectory output.
skipTraj	i	1	Only write every n-th trajectory to reduce trajectory file size. Option (1) writes all particle trajectories.
saveHistogram	b	1	Write a subset of variables to histogram files (0: disabled, 1:enabled).

## References

- 1140 Aemisegger, F., Pfahl, S., Sodemann, H., Lehner, I., Seneviratne, S. I., and Wernli, H.: Deuterium excess as a proxy for continental moisture recycling and plant transpiration, *Atmos. Chem. Phys.*, 14, 4029–4054, <https://doi.org/10.5194/acp-14-4029-2014>, 2014.
- Araguás-Araguás, L., Froehlich, K., and Rozanski, K.: Deuterium and oxygen-18 isotope composition of precipitation and atmospheric moisture, *Hydrological Processes*, 14, 1341–1355, [https://doi.org/10.1002/1099-1085\(20000615\)14:8<1341::AID-HYP983>3.0.CO;2-Z](https://doi.org/10.1002/1099-1085(20000615)14:8<1341::AID-HYP983>3.0.CO;2-Z), 2000.
- 1145 Bakels, L., Tatsii, D., Tipka, A., Thompson, R., Dütsch, M., Blaschek, M., Seibert, P., Baier, K., Bucci, S., Cassiani, M., Eckhardt, S., Groot Zwaafink, C., Henne, S., Kaufmann, P., Lechner, V., Maurer, C., Mulder, M. D., Pisso, I., Plach, A., Subramanian, R., Vojta, M., and Stohl, A.: FLEXPART version 11: improved accuracy, efficiency, and flexibility, *Geoscientific Model Development*, 17, 7595–7627, <https://doi.org/10.5194/gmd-17-7595-2024>, 2024.
- 1150 Baker, A., Sodemann, H., Baldini, J. U. L., Breitenbach, S. F. M., Johnson, K. R., van Hunen, J., and Pingzhong, Z.: Seasonality of westerly moisture transport in the East Asian Summer Monsoon and its implications for interpreting precipitation  $\delta^{18}\text{O}$ , *J. Geophys. Res.*, 120, <https://doi.org/10.1002/2014JD022919>, 2015.
- Bohlinger, P., Sorteberg, A., , and Sodemann, H.: Synoptic conditions and moisture sources actuating extreme precipitation in Nepal, *Journal of Geophysical Research: Atmospheres*, 122, 12 653–12 671, <https://doi.org/10.1002/2017JD027543>, 2017.
- Bohlinger, P., Sorteberg, A., Liu, C., Rasmussen, R., Sodemann, H., and Ogawa, F.: Multiscale characteristics of an extreme precipitation event over Nepal, *QJRM*, pp. 1–18, <https://doi.org/10.1002/qj.3418>, 2018.
- 1155 Bonne, J. L., Masson-Delmotte, V., Cattani, O., Delmotte, M., Risi, C., Sodemann, H., and Steen-Larsen, H. C.: The isotopic composition of water vapour and precipitation in Ivittuut, southern Greenland, *Atmos. Chem. Phys.*, 14, 4419–4439, <https://doi.org/10.5194/acp-14-4419-2014>, 2014.
- 1160 Bonne, J.-L., Steen-Larsen, H. C., Risi, C., Werner, M., Sodemann, H., Lacour, J.-L., Fettweis, X., Cesana, G., Delmotte, M., Cattani, O., Vallelonga, P., Kjær, H. A., Clerbaux, C., Sveinbjörnsdóttir, A. E., and Masson-Delmotte, V.: The summer 2012 Greenland heat wave: In situ and remote sensing observations of water vapor isotopic composition during an atmospheric river event, *J. Geophys. Res.*, 120, 2970–2989, <https://doi.org/10.1002/2014JD022602>, 2015.

**Table B5.** Parameters in the settings group Variables. Output of variables activated by parameter value (1) and deactivated by (0). Variables are written to grid and series output files.

Parameter	Type	Description
sourcesBoundaryLayer	b	Write accounted moisture uptakes in the boundary layer to output files.
sourcesFreeTroposphere	b	Write accounted moisture uptakes in the free troposphere to output files.
evaporationMinusPrecipitation	b	Write unweighted evaporation minus precipitation along entire trajectory length to output files.
moistureTransport	b	Write weighted moisture transport along trajectories to output files.
trajectoryLocations	b	Write <del>trajectory location</del> <u>particle mass</u> density to output files.
precipitationEstimate	b	Write precipitation estimate at arrival to output files.
sourceLongitude	b	Write weighted moisture source longitude projected to the arrival region to output files.
sourceLatitude	b	Write moisture source latitude projected to the arrival region to output files.
arrivalCount	b	Write number of arriving trajectories on the arrival region to output files.
landFraction	b	Write fraction of moisture sources over land projected to the arrival region to output files.
boundaryLayerFraction	b	Write accounted fraction of boundary layer uptakes projected to the arrival region to output files.
freeTroposphereFraction	b	Write accounted fraction of free troposphere uptakes projected to the arrival region to output files.
combinedFraction	b	Write accounted fraction of boundary layer and free troposphere uptakes projected to the arrival region to output files. This is the sum of the two previous variables.
transportTime	b	Write moisture transport time projected to the arrival region to output files.
sourceSkinTemperature	b	Write skin temperature at the moisture source projected to the arrival region to output files. Requires that skin temperature is a variable on the input files.
sourceSpecificHumidity	b	Write surface specific humidity at the moisture source projected to the arrival region to output files. Requires that source specific humidity is a variable on the input files.
transportDistance	b	Write transport distance projected to the arrival region to output files.
sourceDistance	b	Write source distance projected to the arrival region to output files.
source2mTemperature	b	Write 2m temperature at the moisture source projected to the arrival region to output files. Requires that 2m temperature is a variable on the input files.
sourceDeuteriumExcess	b	Write deuterium excess projected to the arrival region to output files. Deuterium excess is calculated from the relative humidity with respect to SST and the relationship from Pfahl and Sodemann (2014). Requires that source specific humidity and SST or 2m temperature and humidity are variables on the input files.
transportTemperature	b	Write moisture-weighted temperature during transport projected to arrival region to output files.
transportPressure	b	Write moisture-weighted pressure during transport projected to arrival region to output files.
condensationTemperature	b	Write moisture-weighted temperatures where RH with respect to liquid exceeds 80% to output files.
arrivalTemperature	b	Write temperature during moisture arrival to output files.
arrivalPressure	b	Write pressure during moisture arrival to output files.
arrival2mTemperature	b	Write temperature at 2m during moisture arrival to output files. Requires that 2m temperature is a variable on the input files.
arrivalSkinTemperature	b	Write skin temperature during moisture arrival to output files. Requires that skin temperature is a variable on the input files.

Breitenbach, S. F., Adkins, J. F., Meyer, H., Marwan, N., Kumar, K. K., and Haug, G. H.: Strong influence of water vapor source dynamics on stable isotopes in precipitation observed in Southern Meghalaya, NE India, *Earth and Planetary Science Letters*, 292, 212–220, <https://doi.org/https://doi.org/10.1016/j.epsl.2010.01.038>, 2010.

**Table B6.** Parameters in the settings groups FLEXPART.

Parameter	Type	Example	Description
inputFormat	i	5	File format of FLEXPART particle position output files. 0: regional long output format, 1: global analysis data output format, 2: regional short format, 3: global reanalysis/NorESM data short format, 4: global reanalysis data long format, 5 regional reanalysis/NorESM data short format. Formats are implemented in the WaterSip code in file readparticles.cpp.
maxPart	i	4000000	Number of particles contained in a single FLEXPART partposit or shortposit file.
partMass	f	2.54E+11	Atmospheric mass represented by each particle (in kg). Parameter value corresponds to value in file "partmass" created by FLEXPART.
allowReenter	b	0	Needs to be enabled (1) for global domain-filling simulations. In regional domain-filling runs this parameter needs to be deactivated (0) to avoid double accounting of air parcels.
partStride	i	1	Particles to skip during processing to speed up calculations for testing (1: use every particle, n>1: use every n-th particle).

**Table B7.** Parameters in the settings groups LAGRANTO. Variables are identified by column index, starting from 0. Variables not contained in trajectory files are specified as value -1.

Parameter	Type	Example	Description
partMass	f	4E+06	Particle mass per arriving trajectory, obtained as $\Delta x \cdot \Delta y \cdot \Delta p$ in units of $\text{m}^2 \text{ hPa}$ .
inputFormat	i	1	Choice between different formats of the LAGRANTO file. Format where the header contains time in HH (hours) only set by (0), format with header time in HH:MM (hours and minutes set by (1).
indexPressure	i	3	Column index of variable air parcel pressure (in hPa).
indexBoundaryLayerHeight	i	11	Column index of variable boundary-layer height (in m).
indexSkinTemperature	i	12	Column index of variable surface skin temperature (in K).
indexPotentialTemperature	i	6	Column index of variable potential temperature (in K).
indexSpecificHumidity	i	10	Column index of variable specific humidity (in $\text{g kg}^{-1}$ ).
indexEvaporation	i	-1	Column index of variable surface evaporation (in mm).
indexTemperature	i	7	Column index of variable air temperature (in K)
indexRelativeHumidity	i	8	Column index of variable relative humidity (in %)
indexHeight	i	-1	Column index of variable height (in m a.g.l.)
indexZonalWind	i	-1	Column index of variable zonal wind (in $\text{m s}^{-1}$ )
indexMeridionalWind	i	-1	Column index of variable meridional wind (in $\text{m s}^{-1}$ )
indexIntegratedWaterVapour	i	-1	Column index of variable integrated water vapour (in mm)
index2mTemperature	i	-1	Column index of variable 2m air temperature (in K)
indexOrography	i	-1	Column index of variable topography height (in m a.s.l.)

1165 Brubaker, K. L., Entekhabi, D., and Eagleson, P. S.: Estimation of continental precipitation recycling, *J. Climate*, 6, 1077–1089, [https://doi.org/10.1175/1520-0442\(1993\)006<1077:EOCPR>2.0.CO;2](https://doi.org/10.1175/1520-0442(1993)006<1077:EOCPR>2.0.CO;2), 1993.

**Table C1.** Sectorisations that are currently available in WaterSip by setting parameter *sectorizeRegion* in settings group *Case*.

sectorizeRegion	Name	Number of sectors
0	NEEM	11
1	Antarctica	21
2	Borneo	14
3	Norway	8
4	Arctic	21
5	Belize	15
6	Alps	9
7	Pakistan	6
8	Latitude	18
9	Longitude	36
10	China	19
11	Scandinavia	23
12	Arctic Seas	19
13	Pakistan 2022	13

**Table D1.** Source and transport quantities contained in the grid and series files. Each variable is available as the sum, the standard deviation over the non-zero grid points, and the minimum and maximum value of the respective averaging interval. For step files, the precipitation rate is given per time step  $\Delta t$ , for all other files the rate is per day.

Variable	Units
moisture_uptakes_boundary_layer_(sum std min max)	mm $(\Delta t \text{ or } \text{day})^{-1}$
moisture_uptakes_free_troposphere_(sum std min max)	mm $(\Delta t \text{ or } \text{day})^{-1}$
evaporation_minus_precipitation_(sum std min max)	mm $(\Delta t \text{ or } \text{day})^{-1}$
rainout_(sum std min max)	mm $(\Delta t \text{ or } \text{day})^{-1}$
air_mass_mixing_(sum std min max)	mm $(\Delta t \text{ or } \text{day})^{-1}$
moisture_transport_(sum std min max)	mm
trajectory_location_(sum std min max)	counts km <sup>-2</sup>

**Table D2.** Arrival and Lagrangian forward projected properties contained in the grid files. \* denotes variables weighted in addition by the Lagrangian precipitation estimate  $\tilde{P}$ . + denotes variables weighted by the accounted fraction.

Name	Unit	Projection	Description
precipitation_estimate	mm $\text{day}^{-1}$ or mm $\Delta t^{-1}$	arrival	Lagrangian precipitation estimate at arrival location, derived from change in specific humidity during last time step
arrival_temperature*	K	arrival	temperature at trajectory location and elevation during arrival
arrival_pressure*	hPa	arrival	pressure at trajectory location and elevation during arrival
arrival_skin_temperature*	K	arrival	SKT below trajectory location during arrival
accounted_fraction_boundary_layer	fraction	arrival	fractional contribution of BL moisture sources to $\tilde{P}$
accounted_fraction_free_troposphere	fraction	arrival	fractional contribution of FT moisture sources to $\tilde{P}$
precipitation_lifetime**+	h	transport	precipitation life time
transport_distance**+	km	transport	transport distance along trajectory
moisture_transport_temperature**+	K	transport	temperature during moisture transport
moisture_transport_pressure**+	hPa	transport	pressure during moisture transport
condensation_temperature**+	K	transport	temperature when RH > 80% during transport
source_longitude**+	degrees_east	source	latitude of the moisture source
source_latitude**+	degrees_north	source	longitude of the moisture source
land_fraction**+	fraction	source	fraction of moisture sources over land
source_skin_temperature**+	K	source	SKT at the moisture source
source_distance**+	km	source	direct distance between moisture source and arrival location
deuterium_excess**+	‰	source	estimate of deuterium excess at the source from RH and T using the Pfahl and Sodemann (2014) relation

- Brubaker, K. L., Dirmeyer, P. A., Sudrajat, A., Levy, B. S., and Bernal, F.: A 36-yr climatological description of the evaporative sources of warm-season precipitation in the Mississippi river basin, *J. Hydrometeorol.*, 2, 537–557, [https://doi.org/10.1175/1525-7541\(2001\)002<0537:AYCDOT>2.0.CO;2](https://doi.org/10.1175/1525-7541(2001)002<0537:AYCDOT>2.0.CO;2), 2001.
- 1170 Buizert, C., Sigl, M., Severi, M., Markle, B., Wettstein, J., McConnell, J., Pedro, J., Sodemann, H., Goto-Azuma, K., Kawamura, K., Fujita, S., Motoyama, H., Hirabayashi, M., Uemura, R., Stenni, B., Parrenin, F., He, F., Fudge, T., and Steig, E. J.: Abrupt ice-age shifts in southern westerly winds and Antarctic climate forced from the north, *Nature*, 563, 681–685, 2018.
- Dirmeyer, P. A. and Brubaker, K. L.: Contrasting evaporative moisture sources during the drought of 1988 and the flood of 1993, *J. Geophys. Res.*, 104, 19 383–19 397, <http://dx.doi.org/10.1029/1999JD900222>, 1999.
- 1175 Dominguez, F., Miguez-Macho, G., and Hu, H.: WRF with Water Vapor Tracers: A Study of Moisture Sources for the North American Monsoon, *Journal of Hydrometeorology*, 17, 1915 – 1927, <https://doi.org/10.1175/JHM-D-15-0221.1>, 2016.
- Dominguez, F., Hu, H., and Martinez, J. A.: Two-Layer Dynamic Recycling Model (2L-DRM): Learning from Moisture Tracking Models of Different Complexity, *Journal of Hydrometeorology*, 21, 3 – 16, <https://doi.org/10.1175/JHM-D-19-0101.1>, 2020.
- Dütsch, M., Pfahl, S., Meyer, M., and Wernli, H.: Lagrangian process attribution of isotopic variations in near-surface water vapour in a 30-year regional climate simulation over Europe, *Atmospheric Chemistry and Physics*, 18, 1653–1669, <https://doi.org/10.5194/acp-18-1653-2018>, 2018.
- 1180

**Table D3.** Sectorisation variables contained in the series files.

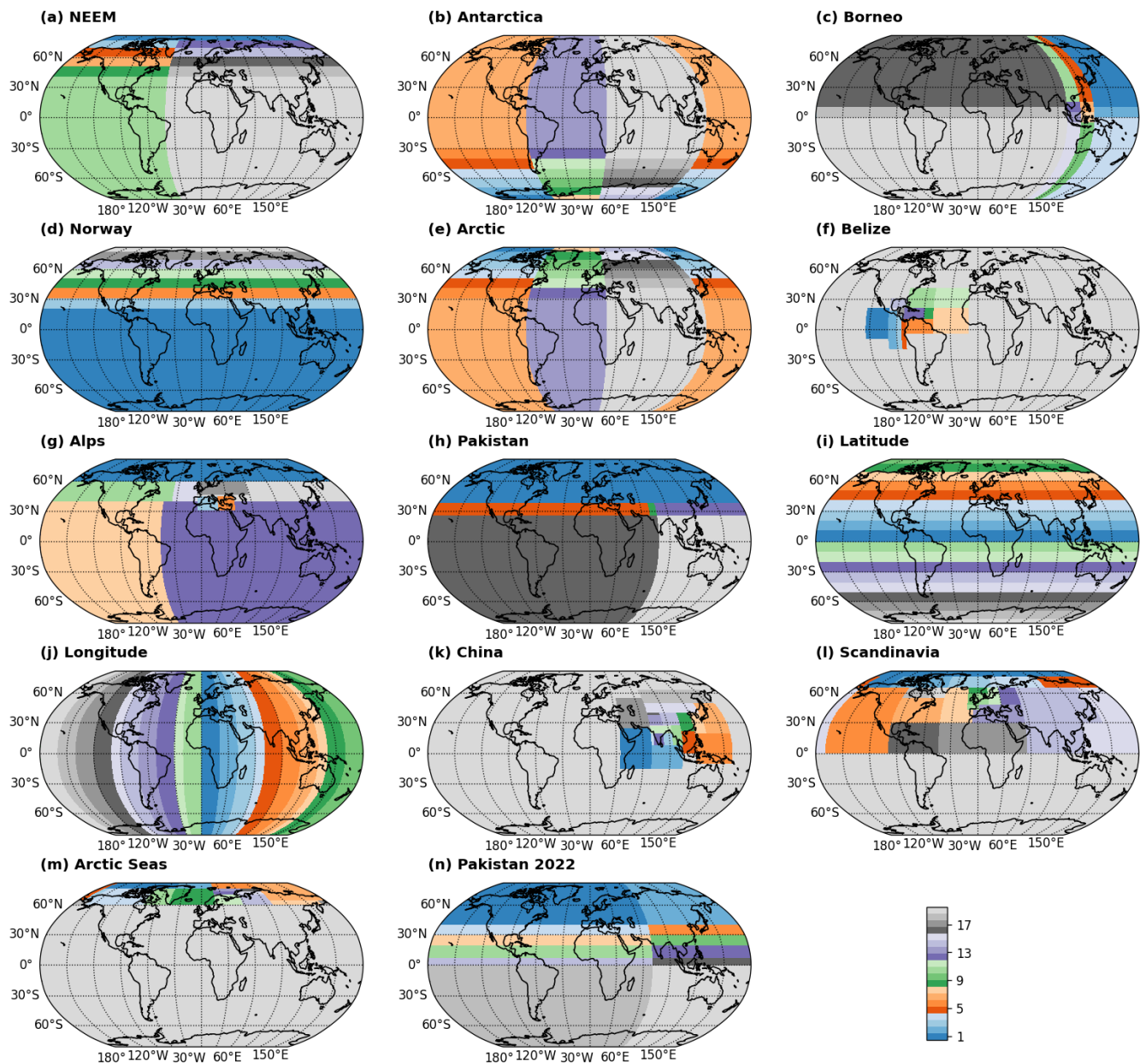
Variable	Unit
time	days since 0001-01-01 00:00:00
sector	sector number
sector_area	km <sup>2</sup>
land_fraction_moisture_uptakes_boundary_layer	%
sea_fraction_moisture_uptakes_boundary_layer	%
land_fraction_moisture_uptakes_free_troposphere	%
sea_fraction_moisture_uptakes_free_troposphere	%
land_fraction_trajectory_location	%
sea_fraction_trajectory_location	%
land_fraction_moisture_transport	%
sea_fraction_moisture_transport	%
land_fraction_airmass_mixing	%
sea_fraction_airmass_mixing	%
land_fraction_rainout	%
sea_fraction_rainout	%
land_fraction_evaporation_minus_precipitation	%
sea_fraction_evaporation_minus_precipitation	%

- Eltahir, E. A. B. and Bras, R. L.: Precipitation recycling in the Amazon basin, *Q. J. Roy. Meteor. Soc.*, 120, 861–880, <http://dx.doi.org/10.1002/qj.49712051806>, 1994.
- Eltahir, E. A. B. and Bras, R. L.: Precipitation recycling, *Reviews of Geophysics*, 34, 367–378, <https://doi.org/https://doi.org/10.1029/96RG01927>, 1996.
- 1185 Fernández-Alvarez, J. C., Pérez-Alarcón, A., Nieto, R., and Gimeno, L.: TROVA: TRansport Of water VApor, *SoftwareX*, 20, 101 228, <https://doi.org/https://doi.org/10.1016/j.softx.2022.101228>, 2022.
- Flatau, P. J., Walko, R. L., and Cotton, W. R.: Polynomial Fits to Saturation Vapor Pressure, *Journal of Applied Meteorology and Climatology*, 31, 1507 – 1513, [https://doi.org/10.1175/1520-0450\(1992\)031<1507:PFTSVP>2.0.CO;2](https://doi.org/10.1175/1520-0450(1992)031<1507:PFTSVP>2.0.CO;2), 1992.
- 1190 Fremme, A. and Sodemann, H.: The role of land and ocean evaporation on the variability of precipitation in the Yangtze River valley, *Hydrol. Earth Syst. Sci.*, pp. 2525–2540, <https://doi.org/10.5194/hess-23-2525-2019>, 2019.
- Fremme, A., Hezel, P. J., Seland, Ø., and Sodemann, H.: Model-simulated hydroclimate in the East Asian summer monsoon region during past and future climate: a pilot study with a moisture source perspective, *Weather and Climate Dynamics*, 4, 449–470, <https://doi.org/10.5194/wcd-4-449-2023>, 2023.
- 1195 Gimeno, L., Eiras-Barca, J., Durán-Quesada, A. M., Dominguez, F., van der Ent, R., Sodemann, H., Sánchez-Murillo, R., Nieto, R., and Kirchner, J. W.: The residence time of water vapour in the atmosphere, *Nature Reviews Earth & Environment*, 2, 558–569, <https://doi.org/10.1038/s43017-021-00181-9>, 2021.
- Gustafsson, M., Rayner, D., and Chen, D.: Extreme rainfall events in southern Sweden: where does the moisture come from?, *Tellus A*, 62, 605–616, <https://doi.org/https://doi.org/10.1111/j.1600-0870.2010.00456.x>, 2010.

- 1200 Hirdman, D., Sodemann, H., Eckhardt, S., Burkhardt, J. F., Jefferson, A., Mefford, T., Quinn, P. K., Sharma, S., Ström, J., and Stohl, A.: Source identification of short-lived air pollutants in the Arctic using statistical analysis of measurement data and particle dispersion model output, *Atmospheric Chemistry and Physics*, 10, 669–693, <https://doi.org/10.5194/acp-10-669-2010>, 2010.
- Hofsteenge, M. G., Cullen, N. J., Sodemann, H., and Katurji, M.: Synoptic Drivers and Moisture Sources of Snowfall in Coastal Victoria Land, Antarctica, *Journal of Geophysical Research: Atmospheres*, 130, e2024JD042021, <https://doi.org/https://doi.org/10.1029/2024JD042021>, e2024JD042021 2024JD042021, 2025.
- 1205 Holgate, C. M., Van Dijk, A. I. J. M., Evans, J. P., and Pitman, A. J.: Local and Remote Drivers of Southeast Australian Drought, *Geophysical Research Letters*, 47, e2020GL090238, <https://doi.org/https://doi.org/10.1029/2020GL090238>, e2020GL090238 2020GL090238, 2020.
- Johnsen, S. J., Dansgaard, W., and White, J. W. C.: The origin of Arctic precipitation under present and glacial conditions, *Tellus B*, 41B, 452–468, <https://doi.org/https://doi.org/10.1111/j.1600-0889.1989.tb00321.x>, 1989.
- 1210 Keune, J., Schumacher, D. L., and Miralles, D. G.: A unified framework to estimate the origins of atmospheric moisture and heat using Lagrangian models, *Geoscientific Model Development*, 15, 1875–1898, <https://doi.org/10.5194/gmd-15-1875-2022>, 2022.
- Laederach, A.: Characteristic scales of atmospheric moisture transport, Ph.D. thesis, ETH Zurich, Diss ETH No.23586, <https://doi.org/10.3929/ethz-a-010741025>, 2016.
- Laederach, A. and Sodemann, H.: A revised picture of the atmospheric residence time of water vapour, *Geophys. Res. Letters*, 43, 924–933, <https://doi.org/10.1002/2015GL067449>, 2016.
- 1215 Martius, O., Sodemann, H., Joos, H., Pfahl, S., Winschall, A., Croci-Maspoli, M., Graf, M., Madonna, E., Mueller, B., Schemm, S., Sedlacek, J., Sprenger, M., and Wernli, H.: The role of upper-level dynamics and surface processes for the Pakistan flood in July 2010, *Quart. J. Royal Meteorol. Soc.*, <https://doi.org/10.1002/qj.2082>, 2012.
- Masson-Delmotte, V., Buiron, D., Ekaykin, A., Frezzotti, M., Gallée, H., Jouzel, J., Krinner, G., Landais, A., Motoyama, A., Oerter, H., Pol, K., Pollard, D., Ritz, C., Schlosser, E., Sime, L. C., Sodemann, H., Stenni, B., R., U., and Vimeux, F.: A comparison of the present and last interglacial periods in six Antarctic ice cores, *Clim. Past*, 7, 397–423, 2011.
- 1220 Miltenberger, A. K., Pfahl, S., and Wernli, H.: An online trajectory module (version 1.0) for the nonhydrostatic numerical weather prediction model COSMO, *Geoscientific Model Development*, 6, 1989–2004, <https://doi.org/10.5194/gmd-6-1989-2013>, 2013.
- Moerman, J. W., Cobb, K. M., Adkins, J. F., Sodemann, H., Clark, B., and Tuen, A. A.: Diurnal to interannual rainfall  $\delta^{18}\text{O}$  variations in northern Borneo driven by regional hydrology, *Earth and Planetary Science Letters*, 369–370, 108–119, <https://doi.org/https://doi.org/10.1016/j.epsl.2013.03.014>, 2013.
- 1225 Numaguti, A.: Origin and recycling processes of precipitating water over the Eurasian continent: Experiments using an atmospheric general circulation model, *J. Geophys. Res.*, 104, 1957–1972, <http://dx.doi.org/10.1029/1998JD200026>, 1999.
- Osman, M. B., Smith, B. E., Trusel, L. D., Das, S. B., McConnell, J. R., Chellman, N., Arienzo, M., and Sodemann, H.: Abrupt Common Era hydroclimate shifts drive west Greenland ice cap change, *Nature Geoscience*, 14, 756–761, <https://doi.org/10.1038/s41561-021-00818-w>, 2021.
- 1230 Pfahl, S. and Sodemann, H.: What controls deuterium excess in global precipitation?, *Climate of the Past*, 10, 771–781, <https://doi.org/10.5194/cp-10-771-2014>, 2014.
- Pisso, I., Sollum, E., Grythe, H., Kristiansen, N. I., Cassiani, M., Eckhardt, S., Arnold, D., Morton, D., Thompson, R. L., Groot Zwaafink, C. D., Evangeliou, N., Sodemann, H., Haimberger, L., Henne, S., Brunner, D., Burkhardt, J. F., Fouilloux, A., Brioude, J., Philipp, A., Seibert, P., and Stohl, A.: The Lagrangian particle dispersion model FLEXPART version 10.4, *Geoscientific Model Development*, 12, 4955–4997, <https://doi.org/10.5194/gmd-12-4955-2019>, 2019.

- Salati, E., Dall'Olio, A., Matsui, E., and Gat, J. R.: Recycling of water in the Amazon Basin: An isotopic study, *Water Resources Research*, 15, 1250–1258, <https://doi.org/https://doi.org/10.1029/WR015i005p01250>, 1979.
- 1240 Singh, H. K. A., Bitz, C. M., Donohoe, A., and Rasch, P. J.: A Source–Receptor Perspective on the Polar Hydrologic Cycle: Sources, Seasonality, and Arctic–Antarctic Parity in the Hydrologic Cycle Response to CO<sub>2</sub> Doubling, *Journal of Climate*, 30, 9999 – 10017, <https://doi.org/10.1175/JCLI-D-16-0917.1>, 2017.
- Sodemann, H.: Beyond turnover time: Constraining the lifetime distribution of water vapor from simple and complex approaches, *Journal of the Atmospheric Sciences*, 77, 413–433, <https://doi.org/10.1175/JAS-D-18-0336.1>, 2020.
- 1245 Sodemann, H.: Source code of the Lagrangian moisture source and transport diagnostic WaterSip V3.3, [Dataset], <https://doi.org/10.5281/zenodo.15068065>, 2025a.
- Sodemann, H.: Particle position output from the FLEXPART dispersion model for a test case for use with the WaterSip moisture source diagnostic, [Dataset], <https://doi.org/10.5281/zenodo.14836548>, 2025b.
- Sodemann, H. and Stohl, A.: Asymmetries in the moisture origin of Antarctic precipitation, *Geophys. Res. Lett.*, 36, L22 803, 1250 <https://doi.org/10.1029/2009GL040242>, 2009.
- Sodemann, H. and Zubler, E.: Seasonal and inter-annual variability of the moisture sources for Alpine precipitation during 1995-2002, *Int. J. Climatol.*, 30, 947–961, <https://doi.org/10.1002/joc.1932>, 2010.
- Sodemann, H., Masson-Delmotte, V., Schwierz, C., Vinther, B. M., and Wernli, H.: Interannual variability of Greenland winter precipitation sources: 2. Effects of North Atlantic Oscillation variability on stable isotopes in precipitation, *J. Geophys. Res.*, 113, D12 111, <http://dx.doi.org/10.1029/2007JD009416>, 2008a.
- 1255 Sodemann, H., Schwierz, C., and Wernli, H.: Interannual variability of Greenland winter precipitation sources: Lagrangian moisture diagnostic and North Atlantic Oscillation influence, *J. Geophys. Res.*, 113, D03 107, <http://dx.doi.org/10.1029/2007JD008503>, 2008b.
- Sprenger, M. and Wernli, H.: The LAGRANTO Lagrangian analysis tool – version 2.0, *Geoscientific Model Development*, 8, 2569–2586, <https://doi.org/10.5194/gmd-8-2569-2015>, 2015.
- 1260 Steen-Larsen, H. C., Sveinbjörnsdóttir, A. E., Jonsson, T., Ritter, F., Bonne, J.-L., Masson-Delmotte, V., Sodemann, H., Blunier, T., Dahl-Jensen, D., and Vinther, B. M.: Moisture sources and synoptic to seasonal variability of North Atlantic water vapor isotopic composition, *J. Geophys. Res.*, 120, 5757—5774, <https://doi.org/10.1002/2015JD023234>, 2015.
- Stohl, A.: Computation, accuracy and applications of trajectories—A review and bibliography, *Atmos. Environ.*, 32, 947–966, <http://www.sciencedirect.com/science/article/pii/S1352231097004573>, 1998.
- 1265 Stohl, A.: Characteristics of atmospheric transport into the Arctic troposphere, *Journal of Geophysical Research: Atmospheres*, 111, <https://doi.org/https://doi.org/10.1029/2005JD006888>, 2006.
- Stohl, A. and James, P.: A Lagrangian analysis of the atmospheric branch of the global water cycle. Part I: Method description, validation, and demonstration for the August 2002 flooding in Central Europe, *J. Hydrometeorol.*, 5, 656–678, [https://doi.org/10.1175/1525-7541\(2004\)005<0656:ALAOA>2.0.CO;2](https://doi.org/10.1175/1525-7541(2004)005<0656:ALAOA>2.0.CO;2), 2004.
- 1270 Stohl, A. and James, P.: A Lagrangian analysis of the atmospheric branch of the global water cycle. Part II: Moisture transports between earth's ocean basins and river catchments, *J. Hydrometeorol.*, 6, 961–984, <https://doi.org/10.1175/JHM470.1>, 2005.
- Stohl, A., Forster, C., Frank, A., Seibert, P., and Wotawa, G.: Technical note: The Lagrangian particle dispersion model FLEXPART version 6.2, *Atmos. Chem. Phys.*, 5, 2461–2474, 2005.

- 1275 Terpstra, A., Gorodetskaya, I. V., and Sodemann, H.: Linking Sub-Tropical Evaporation and Extreme Precipitation Over East Antarctica: An Atmospheric River Case Study, *Journal of Geophysical Research: Atmospheres*, 126, e2020JD033617, <https://doi.org/https://doi.org/10.1029/2020JD033617>, e2020JD033617 2020JD033617, 2021.
- Trenberth, K. E., Smith, L., Qian, T., Dai, A., and Fasullo, J.: Estimates of the Global Water Budget and Its Annual Cycle Using Observational and Model Data, *Journal of Hydrometeorology*, 8, 758 – 769, <https://doi.org/10.1175/JHM600.1>, 2007.
- 1280 van der Ent, R. J., Tuinenburg, O. A., Knoche, H. R., Kunstmann, H., and Savenije, H. H. G.: Should we use a simple or complex model for moisture recycling and atmospheric moisture tracking?, *Hydrol. Earth Syst. Sci.*, 17, 4869–4884, 2013.
- van der Ent, R. J., Wang-Erlandsson, L., Keys, P. W., and Savenije, H. H. G.: Contrasting roles of interception and transpiration in the hydrological cycle - Part 2: Moisture recycling, *Earth Sys. Dyn. Diss.*, 5, 281–326, <https://doi.org/10.5194/esdd-5-281-2014>, 2014.
- Škerlak, B., Sprenger, M., and Wernli, H.: A global climatology of stratosphere–troposphere exchange using the ERA-Interim data set from 1979 to 2011, *Atmospheric Chemistry and Physics*, 14, 913–937, <https://doi.org/10.5194/acp-14-913-2014>, 2014.
- 1285 Wang, Y., Sodemann, H., Hou, S., Masson-Delmotte, V., Jouzel, J., and Pang, H.: Snow accumulation and its moisture origin over Dome Argus, Antarctica, *Climate Dynamics*, 40, 731–742, <https://doi.org/10.1007/s00382-012-1398-9>, 2013.
- Weng, Y., Johannessen, A., and Sodemann, H.: High-resolution stable isotope signature of a land-falling Atmospheric River in southern Norway, *Weather and Climate Dynamics*, 2, 713–737, <https://doi.org/https://doi.org/10.5194/wcd-2-713-2021>, 2021.
- 1290 Winkler, R., Landais, A., Sodemann, H., Dümbgen, L., Priéa, F., Masson-Delmotte, V., Stenni, B., and Jouzel, J.: Deglaciation records of  $^{17}\text{O}$ -excess in East Antarctica: reliable reconstruction of oceanic relative humidity from coastal sites, *Clim. Past*, 8, 1–16, 2012.
- Winschall, A., Pfahl, S., Sodemann, H., and Wernli, H.: Comparison of Eulerian and Lagrangian moisture source diagnostics &ndash; the flood event in eastern Europe in May 2010, *Atmos. Chem. Phys.*, 14, 6605–6619, <https://doi.org/10.5194/acp-14-6605-2014>, 2014a.
- Winschall, A., Sodemann, H., Pfahl, S., and Wernli, H.: How important is intensified evaporation for Mediterranean precipitation extremes?, *J. Geophys. Res.*, 119, 5240—5256, <https://doi.org/10.1002/2013JD021175>, 2014b.
- 1295 Yoshimura, K., Oki, T., Ohte, N., and Kanae, S.: Colored Moisture Analysis Estimates of Variations in 1998 Asian Monsoon Water Sources, *Journal of the Meteorological Society of Japan*, 82, 1315–1329, <https://doi.org/10.2151/jmsj.2004.1315>, 2004.
- Zannoni, D., Steen-Larsen, H. C., Peters, A. J., Wahl, S., Sodemann, H., and Sveinbjörnsdóttir, A. E.: Non-Equilibrium Fractionation Factors for D/H and  $^{18}\text{O}/^{16}\text{O}$  During Oceanic Evaporation in the North-West Atlantic Region, *Journal of Geophysical Research: Atmospheres*, 127, e2022JD037076, <https://doi.org/https://doi.org/10.1029/2022JD037076>, e2022JD037076 2022JD037076, 2022.



**Figure C1.** Pre-defined sectorisations that are currently available in WaterSp. (a) NEEM sectorisation (11 sectors), (b) Antarctica sectorisation (21 sectors), (c) Borneo sectorisation (14 sectors), (d) Norway sectorisation (8 sectors), (e) Arctic sectorisation (21 sectors), (f) Belize sectorisation (15 sectors), (g) Alps sectorisation (9 sectors), (h) Pakistan sectorisation (6 sectors), (i) Latitude sectorisation (18 Sectors), (j) Longitude sectorisation (36 sectors), (k) China sectorisation (19 sectors), (l) Scandinavia sectorisation (23 sectors), (m) Arctic Seas sectorisation (19 sectors), (n) Pakistan 2022 sectorisation (13 sectors). Colour bar symbolic.