

Identifying Dominant Parameters in SWAT Across Subbasin and HRU Scales Using a Two-Step Deep Learning-Assisted Spatial Sensitivity Analysis

5 Jing Yang^{1,2}, Jiangjiang Zhang^{3,4}, Tian Jiao², Yonghua Zhao¹, Manya Luo¹, Lei Wu⁵, Ming Ye⁶, Jinxi Song²

¹School of Land Engineering, Key laboratory of Degraded and Unused Land Consolidation Engineering of the Ministry of Natural Resources, Shaanxi Key Laboratory of Land Consolidation, and Shaanxi Province Land Consolidation Engineering Technology Research Center, Chang'an University, Xi'an 710054, China

10 ²Key Laboratory of Environmental Simulation and Ecological Health in the Yellow River Basin, College of Urban and Environmental Sciences, Northwest University, Xi'an 710127, China

³State Key Laboratory of Water Disaster Prevention, Hohai University, Nanjing 210098, China

⁴Yangtze Institute for Conservation and Development, Hohai University, Nanjing 210098, China

⁵College of Water Resources and Architectural Engineering, Northwest A&F University, Yangling 712100, China

15 ⁶Department of Earth, Ocean, and Atmosphere Science and Department of Scientific Computing, Florida State University, Tallahassee 32306, USA

Correspondence to J. Tian (tianjiao@nwu.edu.cn) and Y. Zhao (yonghuaz@chd.edu.cn)

Abstract. Distributed hydrological models require sensitivity analyses that explicitly account for spatial heterogeneity, yet such analyses are often constrained by high computational demands. This study presents a two-step, deep learning-assisted spatial sensitivity analysis (SSA) framework to identify dominant parameters across multiple spatial scales. Using the Soil and Water Assessment Tool (SWAT) in the Jinghe River Basin as a case study, the Morris method was first applied with a spatially lumped strategy to screen influential parameters. Subsequently, SSA was conducted using the Sobol' method with multilayer perceptron (MLP) surrogates to evaluate parameter sensitivities under both subbasin- and hydrologic response unit (HRU)-scale parameterizations. The surrogate models emulated SWAT with high accuracy for 195 subbasin-scale and 2,559 HRU-scale parameters, enabling efficient estimation of Sobol' sensitivity indices. Results reveal pronounced spatial heterogeneity in parameter sensitivities. Sensitivity hotspots are consistently concentrated in gauge-proximal subbasins, while HRU-scale analysis further resolves localized controls. Robustness analyses demonstrate that the identified sensitivity patterns remain stable across different performance metrics, NSE-constrained posterior parameter distributions, alternative observation configurations, and varying numbers of screened parameters. These findings confirm the reliability of the proposed two-step framework and highlight its capability to efficiently diagnose dominant hydrological controls in high-dimensional distributed models. The methodology provides a transferable and computationally feasible approach for sensitivity assessment, supporting scale-aware calibration and improving the interpretability and predictive reliability of distributed hydrological simulations.

20
25
30

1 Introduction

35 Runoff simulation underpins hydrologic prediction and decision-making, supporting applications ranging from short-term flood warnings (Su et al., 2024; Ou et al., 2025) and water allocation to ecosystem management (Dalcin and Fernandes Marques, 2020; Bai et al., 2025) to climate-adaptation planning (Hou et al., 2022; Zhou et al., 2023; Chitsaz et al., 2025). The reliability of these simulations depends critically on how hydrologic models transform rainfall into runoff. Broadly, such models fall into two classes according to their degree of spatial discretization: lumped and distributed (including semi-
40 distributed variants) formulations (Fatichi et al., 2016; Pelletier and Andréassian, 2022; Bhanja et al., 2023). Lumped models treat the entire catchment as a single or a few effective units, providing computational efficiency and requiring fewer parameters, but at the cost of neglecting spatial heterogeneity in land surface characteristics. Distributed models, by contrast, explicitly account for spatial variations in soil, land cover, and topography by partitioning the basin into Hydrological Response Units (HRUs) or grid cells with spatially varying parameters. This enhanced realism improves process representation and
45 transferability across basins but introduces high-dimensional parameter spaces and substantial computational burden. Because not all parameters exert equal influence across space, identifying where and to what extent individual parameters control model responses becomes essential for understanding and improving hydrologic simulations. Furthermore, distributed hydrologic models may adopt parameterizations at different spatial scales, such as subbasin and HRU levels, which influence how parameter sensitivities are represented and interpreted (Saint-Geours et al., 2014). Consequently, a key scientific challenge
50 arises: *how do parameter effects vary across space, and how do spatial scales reshape the sensitivity structure of distributed hydrological models?*

Sensitivity analysis (SA) provides a systematic framework to quantify how variations in input parameters affect model output. In distributed runoff modelling, SA helps identify dominant parameters, guide calibration, and enhance process understanding. **Conventional SA approaches applied to distributed hydrologic models can be grouped into spatially lumped and spatially
55 distributed methods.** Spatially lumped SA assumes uniform parameters or uniform scaling factors across the basin, offering computational efficiency but masking spatial heterogeneity (Zhang et al., 2013; Khorashadi Zadeh et al., 2017; Koo et al., 2020; Acero Triana et al., 2025). In contrast, spatially distributed SA (SSA) quantifies sensitivity at each spatial unit, revealing spatial patterns of hydrologic control and identifying sensitivity hotspots where certain parameters dominate (Tang et al., 2007; van Werkhoven et al., 2008; Rouzies et al., 2023). Beyond revealing spatial patterns of parameter influence, a key advantage
60 of SSA is its ability to evaluate sensitivities across multiple spatial scales. Changes in spatial resolution can alter hydrologic connectivity, parameter aggregation, and process representation, thereby reshaping the magnitude and distribution of parameter sensitivities (Saint-Geours et al., 2014). Consequently, sensitivity patterns may vary substantially across spatial resolutions, reflecting the scale dependence of dominant hydrologic controls.

Despite its advantages, SSA faces a major challenge associated with the high dimensionality of distributed models. When
65 parameters are defined at multiple spatial units, the total number of variables increases multiplicatively, often equalling the number of model parameters multiplied by the number of spatial units (Wu et al., 2022). As a result, hundreds or even

thousands of distributed parameters may require evaluation. This rapid expansion of the parameter space leads to the so-called “curse of dimensionality,” which substantially increases computational demands and complicates uncertainty quantification (Razavi et al., 2012; Herman et al., 2013).

70 **Recent advances in surrogate modelling have provided promising solutions for reducing the computational demands associated with high-dimensional distributed models.** Machine learning techniques, particularly deep neural networks, have been successfully employed to emulate complex hydrological models with high accuracy and significantly reduced computational cost (Razavi et al., 2012; Furong and Hossain, 2023; Jahanshahi et al., 2025; Yu et al., 2024). These approaches enable efficient exploration of high-dimensional parameter spaces and facilitate variance-based sensitivity analysis in distributed models.

75 Nevertheless, few studies have systematically integrated deep learning surrogates with spatial sensitivity analysis to investigate how parameter importance varies across spatial scales while preserving the native parameterization structure of distributed models.

To address these challenges, this study develops a two-step, deep learning-assisted spatial sensitivity analysis framework based on the Soil and Water Assessment Tool (SWAT). The workflow consists of three main steps: (1) applying the Morris method to screen influential parameters associated with runoff simulation; (2) constructing multilayer perceptron (MLP) surrogates at both the subbasin and HRU scales to emulate SWAT; and (3) conducting SSA using Sobol' methods with the screened parameters to quantify spatial patterns of parameter influence. This framework enables computationally efficient global sensitivity analysis while explicitly preserving distributed parameter structures. The methodology is applied to the Jinghe River Basin, a typical semi-arid watershed in northwest China characterized by pronounced topographic gradients and substantial spatial heterogeneity. Specifically, this study aims to: (1) develop a computationally efficient framework for spatial sensitivity analysis in distributed hydrological models; (2) identify dominant parameters and their spatial distributions controlling runoff generation; and (3) quantify how spatial scale influences sensitivity patterns at subbasin and HRU resolutions. By achieving these objectives, this research advances understanding of how distributed parameters jointly control hydrologic responses across spatial scales, thereby enhancing the diagnostic capability, calibration efficiency, and predictive reliability of physically based hydrological models.

80

85

90

2 Methodology

2.1 Study area

The Jinghe River Basin, located in the central Loess Plateau of China, drains an area of 4.4×10^4 km² between 106°14' E to 108°42' E and 34°46' N to 37°19' N (Figure 1a). The mainstem is ~455 km long and discharges to the Wei River (the largest tributary of the Yellow River). The basin typifies an agriculture-dominated region situated in the transition zone between semi-humid and semi-arid climates, characterized by severe soil erosion (Bai et al., 2022), fragile ecosystems (Xu et al., 2022), and high hydrological variability (Chang et al., 2016; Liu et al., 2024). The regional climate is strongly influenced by the East Asian monsoon, producing pronounced seasonality in rainfall. Daily records from four meteorological stations (Figure 1b)

95

during 1962–1986 indicate a mean annual temperature of 8.9 °C. Annual precipitation ranges from 381 mm to 857 mm, with a mean annual precipitation of 654 mm. Nearly 55% of rainfall occurs between July and September. Mean annual potential evapotranspiration during 1962–1986, estimated by using the Penman-Monteith method, is 972 mm. Evapotranspiration exceeds precipitation from October through June of next year when rainfall is scarce (Figure 1c). In terms of topography, the elevation declines from northwest to southeast, from 2,884 m to 219 m above sea level (Figure 1b). Consistent with this gradient, flow routes from the uplands in the northwest to the Wei River confluence in the southeast. Long-term (1956–2001) mean annual runoff was estimated at $8.36 \times 10^8 \text{ m}^3$ at the Yangjiaping (YJP) gauge station and $19.98 \times 10^8 \text{ m}^3$ at the Zhangjiashan (ZJS) station (Figure 1c), with ~55% of the annual discharge occurring between July and October (Li et al., 2015). Land cover is dominated by cropland and pasture (82.2%; Figure S1a). Calcaric cambisols are the prevailing soil group, covering 67.9% of the basin (Figure S1b). The interplay of intensive cultivation, highly erodible loess, and uneven precipitation creates persistent challenges for ecological sustainability and robust hydrologic modelling, motivating sensitivity analyses that resolve controls across spatial and temporal scales.

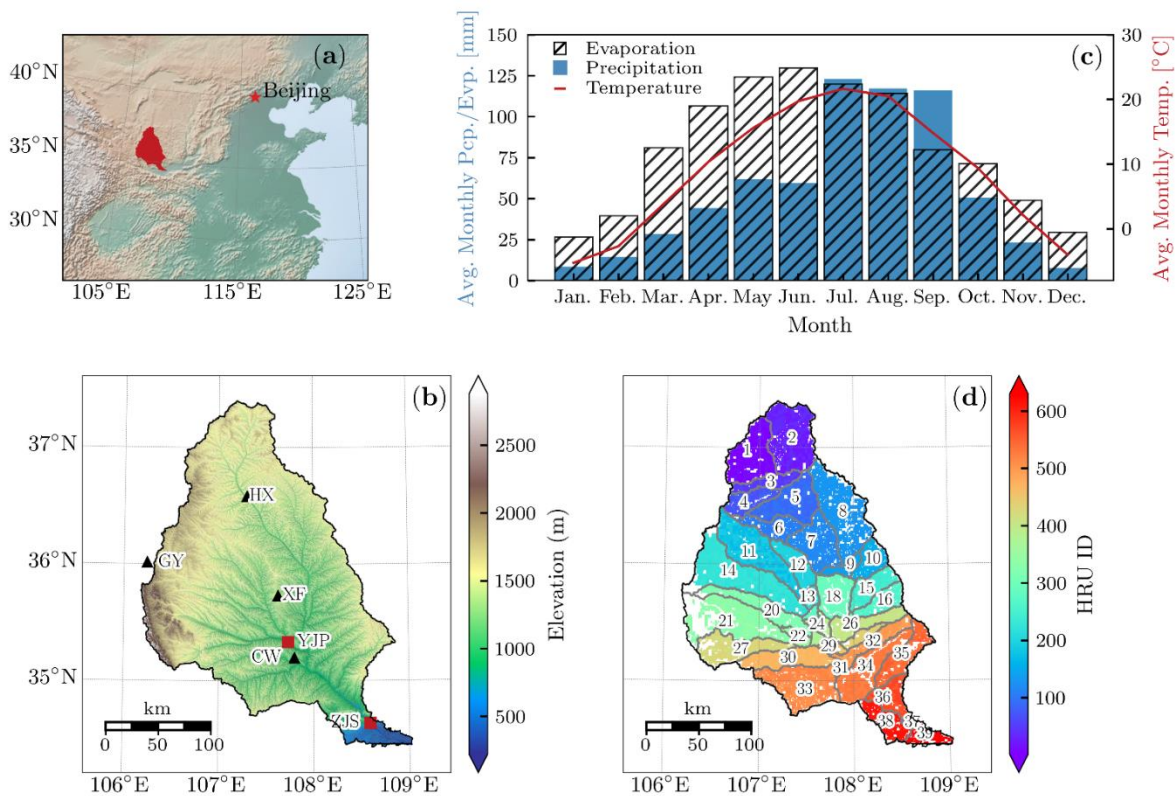


Figure 1: (a) Location of the Jinghe River Basin. (b) Basin topography based on the DEM obtained from the Geospatial Data Cloud (<http://www.gscloud.cn/>, accessed April 5, 2026). Black triangles denote four meteorological stations Huanxian (HX), Guyuan (GY), Xifeng (XF), and Changwu (CW), and the two red squares mark the Yangjiaping (YJP) and Zhangjiashan (ZJS) gauge stations. (c) Monthly mean climate characteristics during 1962–1986, including temperature (red line), precipitation (blue bars), and evaporation (black hatches). (d) Delineation of 39 subbasins and 630 HRUs. Numbers label subbasin IDs; colours indicate HRU IDs. Note a few subbasin labels are omitted to avoid overlap.

2.2 Morris and Sobol' methods for global sensitivity analysis

The Morris method, also known as the Elementary Effects (EE) method (Morris, 1991), provides an efficient, qualitative screening of influential parameters (Gao and Bryan, 2016; Wu et al., 2022). Let the model output be $y(\mathbf{x})$, with $\mathbf{x} = (x_1, x_2, \dots, x_k)$ the vector of k uncertainty parameters. Each parameter is mapped to the unit interval $[0, 1]$ (e.g., by using its cumulative distribution), which is then discretized into p levels, yielding a perturbation step size of $\delta = 1 / (p - 1)$. For a randomly selected base point on this p -level hypercube grid, the EE of x_i (denoted as EE_i) is computed by a one-at-a-time perturbation of size δ with $(x_i + \delta) \in [0, 1]$, while holding other parameters fixed (Yang and Ye, 2022):

$$EE_i = \frac{y(x_1, \dots, x_i + \delta, \dots, x_k) - y(x_1, \dots, x_i, \dots, x_k)}{\delta} \quad (1)$$

Repeating this perturbation from multiple random base points yields multiple EE_i values, from which three statistics are derived: the mean (μ_i) of EE_i , the standard deviation (σ_i) of EE_i , as well as the mean (μ_i^*) of $|EE_i|$. Following Campolongo et al. (2007), μ_i^* is preferred for identifying influential parameters because it avoids cancellation of effects with opposite signs. The σ_i reflects the dispersion of elementary effects and is used to detect parameters whose influence on the output is nonlinear or involves interactions with other parameters (Yang and Ye, 2022). Parameters with low μ_i^* and σ_i are considered non-influential and can be excluded from further analysis (Sreedevi and Eldho, 2019; Dai et al., 2024).

Equation (1) suggests that estimating a total of r EEs requires a total of $2rk$ model simulations, since each EE needs a base and a perturbed evaluation. Morris (1991) proposed a trajectory-based design to reduce this cost. Starting from a random base point, the design applies k successive one-at-a-time perturbations, each modifying a single parameter, to construct a trajectory of $(k + 1)$ points. Repeating this process r times yields r trajectories and a total of $r \times (k + 1)$ model evaluations. This design substantially lowers the computational cost compared with the naive scheme, but its results remain qualitative.

To move from qualitative screening to quantitative ranking, we use the Sobol' method. Sobol' method (Sobol', 2001; Saltelli et al., 2007) addresses this need by decomposing the total variance of model output into contributions from individual parameters and their interactions. For a model output $y(\mathbf{x})$, Sobol' sensitivity indices give a rigorous measure of parameter sensitivity. The first-order sensitivity index S_i measures the main effect of a parameter x_i , and the total-effect sensitivity index S_{Ti} quantifies both the main effect and all interactions (Saltelli et al., 2007):

$$S_i = \frac{\text{var}_{\mathbf{x}_i} [E_{\mathbf{x}_{-i}}(y|x_i)]}{\text{var}(y)}, \quad (2)$$

$$S_{Ti} = \frac{E_{\mathbf{x}_{-i}} [\text{var}_{\mathbf{x}_i}(y|\mathbf{x}_{-i})]}{\text{var}(y)}, \quad (3)$$

where $E(\bullet)$ depict the mean and $\text{Var}(\bullet)$ represent the variance; \mathbf{x}_{-i} represents all parameters except x_i . According to Saltelli et al. (2007), S_i supports “Factors Prioritization” by ranking parameters according to their direct importance, while S_{Ti} supports “Factors Fixing” by identifying parameters that can be fixed without significantly affecting model output.

In practice, efficient estimation of Sobol' S_i and S_{Ti} follows the Saltelli's sampling scheme (Saltelli et al., 2007). The procedure begins with the generation of two independent sampling matrices, \mathbf{A} and \mathbf{B} , both of size $N \times k$, representing N sample size and k input parameters. Then for the i -th parameter, a hybrid matrix \mathbf{C}_i is formed by replacing the i -th column of matrix \mathbf{B} with the

150 corresponding column from **A**. In other words, \mathbf{C}_i is a copy of **B** except for that the i -th column is taken from **A**. **The S_i and S_{T_i} indices for all k parameters are then estimated simultaneously** using $2 \times N$ model simulations from **A** and **B**, plus $k \times N$ model simulations from the hybrid matrices \mathbf{C}_i , resulting in a total cost of $N \times (k + 2)$ model runs (Yang et al., 2024). Although this remains computationally demanding, it provides a robust quantitative basis for parameter importance. This estimator is widely adopted in modern SA toolkits, including SALib (Herman and Usher, 2017) and the SAFE Toolbox (Pianosi et al., 2015).

155 2.3 SWAT model description and configuration

SWAT is a semi-distributed hydrological model that simulates water, nutrient, and pesticide transport at the catchment scale (Zhang et al., 2014; Aloui et al., 2023). In SWAT, a watershed is typically divided into spatially referenced subbasins to represent the heterogeneity of hydrological processes. Each subbasin is further subdivided into HRUs, defined by unique combinations of land use, soil type, and slope class (Golmohammadi et al., 2017; Jeong et al., 2024), and they constitute the
160 smallest computational units within the model (Arnold et al., 2012). Although they are not spatially contiguous or explicitly georeferenced within a subbasin, each HRU is assumed to be internally homogeneous with respect to land surface characteristics that govern hydrological processes. All hydrological processes are driven by the soil-water balance, which is governed by (Neitsch et al., 2011):

$$SW_t = SW_0 + \sum_{i=1}^t (R_{day,i} - Q_{surf,i} - E_{a,i} - W_{seep,i} - Q_{gw,i}), \quad (4)$$

165 where SW_t and SW_0 is the final and initial soil water content (mm), $R_{day,i}$ is daily precipitation (mm) on day i , $Q_{surf,i}$ is surface runoff (mm) on day i , $E_{a,i}$ is evapotranspiration (mm) on day i , $W_{seep,i}$ is water percolation from the soil profile into the vadose zone (mm) on day i , and $Q_{gw,i}$ is groundwater return flow (mm) on day i .

A variety of datasets were prepared to configure the SWAT model for the Jinghe River Basin, as detailed below:

- 170 (1) The DEM was derived from the ASTER GDEM V2 with a spatial resolution of 30 m, obtained from the Geospatial Data Cloud (<http://www.gscloud.cn/>, accessed April 5, 2026). It was used to delineate watershed boundaries, extract river networks and subbasins, and determine slope classes.
- (2) Soil map was obtained from the Harmonized World Soil Database (HWSD) at a spatial resolution of 1 km, available through the National Cryosphere Desert Data Center (<https://www.ncdc.ac.cn/portal/>, accessed April 5, 2026).
- 175 (3) The land use map for 1980, with a spatial resolution of 30 m, was provided by the Geographical Information Monitoring Cloud Platform (<http://www.dsac.cn/>, accessed April 5, 2026). This dataset was chosen to reduce the influence of human impacts, such as the major soil and water conservation programs (e.g., the “Grain-for-Green” project) since 1980s (Chen et al., 2007).
- (4) Monthly runoff records from the YJP and ZJS gauge stations (Figure 1c), covering the period of 1962 - 1986, were retrieved from National Earth System Science Data Center (<http://www.geodata.cn/>, accessed April 5, 2026).
- 180 (5) Daily meteorological observations, including precipitation, air temperature, relative humidity, and wind speed were collected from four meteorological stations (Figure 1c), via the Shaanxi Provincial Meteorological Bureau

(<http://sn.cma.gov.cn/>, accessed April 5, 2026) for the period of 1962–1986. Solar radiation was not directly measured and was estimated using SWAT’s built-in weather generator.

To reduce computational cost while preserving basin geometry, the effects of DEM and land use resolutions on HRU delineation were evaluated (Figure S2). The results indicate that HRU numbers are primarily controlled by DEM resolution, decreasing significantly as the DEM becomes coarser, whereas land use resolution has a comparatively minor influence. Moreover, the delineated number of subbasins and the watershed area remain essentially unchanged when the DEM resolution varies between 30 and 150 m. Therefore, the DEM and land use data were resampled to 150 m and 3000 m, respectively, representing an optimal balance between preserving key hydrological features and ensuring computational efficiency. Using a drainage-area of 80,000 ha, the watershed was delineated into 39 subbasins. These subbasins were subdivided into 630 HRUs using the *multiple HRUs* option in SWAT by overlaying soil, land use, and slope maps, with thresholds of 10% for soil, 15% for land use, and 10% for slope (Figure 1d). Note that there are blank areas during the HRU generation process (Figure 1d), which correspond to areas filtered out by these thresholds or to small spatial mismatches among layers. The full subbasin-HRU crosswalk is provided in Table S1.

The model was executed at a daily time step over 1962–1986, consistent with the daily meteorological inputs. Since observed runoff was available only at the monthly scale, simulated daily runoff was aggregated to monthly values for model evaluation and SA. The first 10 years (1962–1971) were used as a warm-up period, and the subsequent 15 years (1972–1986) were analysed for sensitivity and evaluation. Rainfall-runoff processes were simulated using the Soil Conservation Service (SCS) Curve Number (CN) method and channel flow routing was represented by the variable storage method (Neitsch et al., 2011).

2.4 Parameter screening using the Morris method

The SWAT model contains a large number of parameters, potentially hundreds, depending on spatial discretization and the complexity of represented hydrological processes. Conducting spatial sensitivity analysis across the full parameter space is computationally infeasible, making preliminary screening necessary to identify the most influential parameters governing runoff dynamics. Guided by prior studies, we selected 33 parameters commonly recognized as important for runoff generation in SWAT (Table S2). All parameters were assumed to follow uniform distribution within their corresponding uncertainty ranges, which were drawn from previous studies (e.g., Khorashadi Zadeh et al., 2017), or recommended ranges in the Theoretical Documentation of SWAT (Neitsch et al., 2011).

To reduce parameter dimensions while preserving dominant hydrological controls, a spatially lumped parameterization strategy was adopted during the screening step. Specifically, instead of perturbing each spatial instance independently at subbasin or HRU level, each parameter was controlled by a single basin-wide perturbation applied consistently across all spatial units. Two perturbation approaches were implemented based on parameter characteristics (Table S2). For parameters representing basin-wide or process-based thresholds (e.g., snowfall temperature, SFTMP), values were directly replaced with a uniform value across the watershed (the “replace” approach). In contrast, for parameters with inherent spatial heterogeneity, such as soil- and land-use-related variables (e.g., CN2 and SOL_BD), a multiplicative scaling factor was applied to their

215 original spatially distributed values (the “*factor*” approach). These parameterization schemes are widely adopted in SWAT calibration and sensitivity studies to reduce dimensionality while preserving the underlying spatial structure of model inputs (Li et al., 2021; Mao et al., 2024).

220 Parameter sensitivity was then evaluated using the Morris method, with the Nash-Sutcliffe Efficiency (NSE) between observed and simulated monthly runoff at the ZJS gauge station for the period 1972–1986 (180 months) serving as the primary performance metric. The ZJS station was selected because it is located near the watershed outlet and therefore integrates the cumulative hydrological response of upstream processes. To assess the robustness of the sensitivity results, complementary performance metrics, including percent bias (PBIAS) and Kling-Gupta Efficiency (KGE), as well as alternative parameter distributions and observations from the upper stream YJP station, were further examined and discussed in the Discussion section.

225 A total of 500 trajectories were generated, resulting in $17,000 = 500 \times (33 + 1)$ SWAT simulations. This number is substantially higher than that used in many typical Morris applications and was deliberately selected to enhance the robustness of the screening step (Figure S3). For each run, the SWAT model was executed, and the NSE was computed between the simulated and observed monthly runoff at ZJS station over the 180-month period. **The Morris method was then used to calculate μ_i^* and σ_i for each parameter, and a scatterplot of μ_i^* versus σ_i was used to screen the influential parameters (Yang and Ye, 2022).** This procedure screened five dominant parameters: CN2, CANMX, ESCO, CH_K1, RCHRG_DP (Figure S4). Descriptions of these parameters are provided in Table 1. These five parameters were subsequently retained for SSA using the Sobol' method, as described in the following section.

Table 1: Description of the five parameters screened by the Morris method

Parameter	Input file	Description	Spatial parameterization	Range
CH_K1	*.sub	Effective hydraulic conductivity in tributary channel (mm/hr)	Subbasin	[0, 300]
CN2 ^a	*.mgt	Initial SCS runoff curve number for moisture condition II	Subbasin/HRU	[0.75, 1.25]
CANMX	*.hru	Maximum canopy storage (mm H ₂ O)	Subbasin/HRU	[0, 100]
ESCO	*.hru	Plant uptake compensation factor	Subbasin/HRU	[0, 1]
RCHRG_DP	*.gw	Deep aquifer percolation fraction	Subbasin/HRU	[0, 1]

235 ^aCN2 is perturbed by “*factor*” approach to account for spatial variability. The other four parameters are perturbed using the “*replace*” approach. All parameters are assumed to follow the uniform **distribution**.

2.5 Identification of dominant parameters via the deep learning-assisted Sobol' method

2.5.1 Spatial parameterization for distributed parameters

In SWAT, model parameters can be represented at three spatial levels: (1) basin-level parameters that remain uniform across the entire watershed, (2) subbasin-level parameters that vary among subbasins, and (3) HRU-level parameters that differ across HRUs (Yu et al., 2018). This hierarchical framework allows parameters to be represented either as spatially aggregated values or as fully distributed variables, thereby facilitating multiscale investigations of hydrological processes. Based on the results of Morris method (Section 2.4), five parameters were identified, i.e., CH_K1, CN2, CANMX, ESCO, and RCHRG_DP. Among them, parameter CH_K1, representing channel hydraulic conductivity, is inherently a subbasin-level parameter and therefore could vary independently among the 39 subbasins. The other four parameters, CN2, CANMX, ESCO, and RCHRG_DP are associated with HRU-scale land surface, soil water, or groundwater processes and can be parameterized either at the subbasin scale or at the HRU scale, depending on how values are assigned in the SWAT input files (Table 1).

To investigate the influence of spatial scale on parameter sensitivity, these five parameters were defined under two distinct parameterization schemes for SSA:

- Subbasin-scale parameterization. All five parameters were independently specified for each of the 39 subbasins, resulting in a total of 195 distributed parameters ($39 \text{ subbasins} \times 5 \text{ parameters}$). For CH_K1, parameter value was assigned to each subbasin and written directly to the corresponding subbasin file (*.sub). For CN2, CANMX, ESCO, and RCHRG_DP, although these parameters are stored in HRU-related files (*.mgt, *.hru, and *.gw), they were parameterized at the subbasin scale by assigning a single value (implemented either through “replace” or “factor” approach) to all corresponding HRUs within that subbasin. Consequently, spatial variability among subbasins was preserved, while variability among HRUs within a given subbasin was intentionally suppressed. This configuration provides a coarser representation of parameter heterogeneity and reflects hydrological controls aggregated at the subbasin level.
- HRU-scale parameterization. In this scheme, CH_K1 remained parameterized at the subbasin level. The other four parameters, CN2, CANMX, ESCO, and RCHRG_DP, were instead allowed to vary independently among the 630 HRUs. This resulted in a total of 2,559 distributed parameters ($39 \text{ subbasin-specific CH_K1 parameters} + 630 \times 4 \text{ HRU-specific parameters}$). Under this configuration, each HRU received an independently sampled value, explicitly representing within-subbasin heterogeneity associated with land use, soil properties, and slope. Compared with the subbasin-scale scheme, this parameterization substantially increases dimensionality but enables a finer characterization of local controls on runoff generation and partitioning.

The two parameterization schemes differ not only in dimensionality but also in their representation of spatial heterogeneity. In the subbasin-scale parameterization, parameter perturbations are imposed at the subbasin level, so variability mainly arises from differences among subbasins without independent HRU-level perturbations. In contrast, the HRU-scale parameterization explicitly resolves additional within-subbasin variability for CN2, CANMX, ESCO, and RCHRG_DP. This comparison

enables a systematic assessment of how sensitivity patterns aggregate at the subbasin level and emerge at finer spatial resolutions, thereby elucidating the scale dependence of dominant hydrological controls.

2.5.2 Construction of deep learning surrogates

Due to the computational impracticality of applying the Sobol' method to such high-dimensional parameter spaces, particularly at the HRU scale, deep learning surrogates were constructed to efficiently emulate SWAT (Razavi et al., 2012). The task was formulated as a high-dimensional vector-to-vector regression problem, where static parameter vectors were mapped to the full 180-month runoff series at the ZJS gauge. Accordingly, fully connected MLPs were adopted because they effectively approximate complex nonlinear relationships in high-dimensional spaces. Although hydrological processes exhibit temporal dependencies, these dynamics are implicitly embedded in the SWAT-generated runoff sequences used for training. The MLP therefore learns the integrated parameter–response relationship over the entire simulation period. While sequence-based models such as LSTM networks may explicitly represent temporal dependencies (Jeong et al., 2024), the MLP achieved sufficient accuracy in this study and was selected as a parsimonious and computationally efficient surrogate model for sensitivity analysis (Yang et al., 2024; Yu et al., 2024).

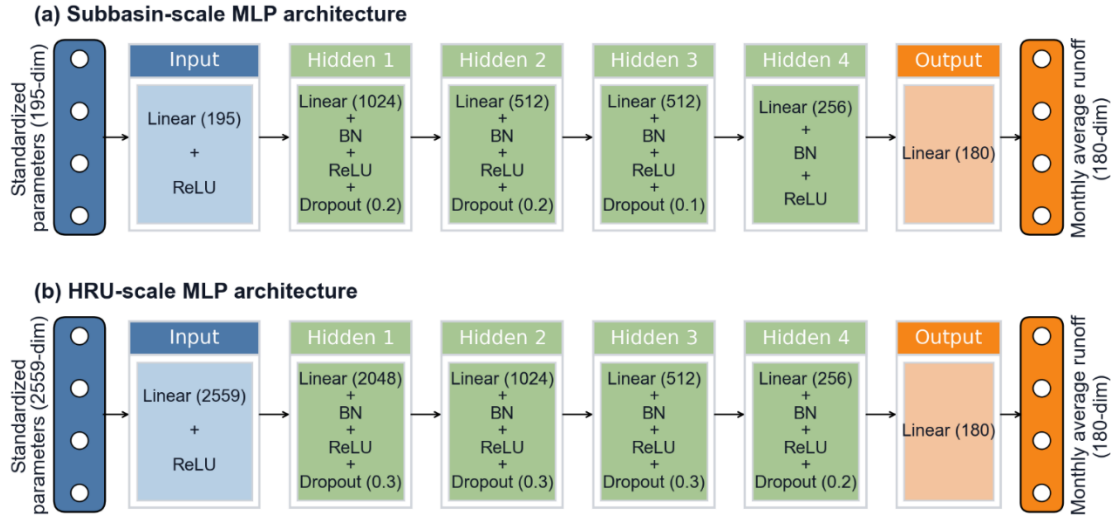
To mirror the two spatial parameterization schemes, two MLP surrogates were constructed:

- Subbasin-scale MLP surrogate. This model comprises an input layer with 195 neurons corresponding to 195 distributed parameters of subbasin-scale parameterization, four hidden layers with varying neurons, and an output layer with 180 neurons representing monthly runoff over the simulation period.
- HRU-scale MLP surrogate. Designed to accommodate higher spatial details, this model contains 2,559 input neurons corresponding to 2,559 distributed parameters of HRU-scale parameterization and four hidden layers containing more neurons to capture the higher dimensionality of the input space. The output layer likewise contains 180 neurons representing monthly runoff.

In both models, fully connected architectures were adopted to approximate the nonlinear mapping between parameter space and runoff response. Rectified Linear Unit (ReLU) activation functions were used in all hidden layers, and dropout and **batch normalization (BN)** were applied to improve generalization and training stability. The detailed architectures are shown in Figure 2. Training datasets were generated by sampling parameters from the ranges in Table 1 using Latin Hypercube Sampling (LHS) method. For the subbasin-scale surrogate, 50,000 parameter realizations were generated, forming a $50,000 \times 195$ parameter matrix. For the HRU-scale surrogate, 200,000 realizations were generated, yielding a $200,000 \times 2,559$ parameter matrix. These sample sizes balance (i) adequate coverage of the high-dimensional spaces needed for deep models and (ii) computational feasibility given the number of SWAT simulations. Preliminary experiments indicated only marginal accuracy gains beyond these sizes, confirming their adequacy.

Each sampled parameter set was evaluated using SWAT to produce the corresponding 180-month runoff series, forming paired input-output datasets for supervised learning. All simulations were executed on the High-Performance Computing (HPC) platform of Northwest A&F University, which supports parallel batch job submission, thereby greatly reducing wall-clock

time. The resulting input-output datasets were randomly split into training (80%) and testing (20%) subsets. The MLP surrogates were implemented in PyTorch (Paszke et al., 2019) and trained using the root-mean-squared error (RMSE) loss function, optimized using the Adam algorithm with initial learning rate of 0.001. Early stopping based on validation loss was employed to prevent overfitting. Model performance was evaluated on the testing set using RMSE, the coefficient of determination (R^2), and prediction error diagnostics. Once validated, the surrogates are expected to reproduce SWAT outputs with high fidelity while drastically reducing computational cost. These trained MLPs were subsequently used in place of SWAT for SSA using Sobol' method.



310 **Figure 2: MLP architectures for runoff prediction at the ZJS gauge station with spatial parameterization at (a) subbasin and (b) HRU scales. Numbers in parentheses after “Linear” give layer width (number of neurons); numbers after “Dropout” give the dropout rate. ReLU activation follows every Linear layer except the final output layer.**

2.5.3 Spatial sensitivity analysis across subbasin and HRU scales

Using the trained surrogate models, SSA was conducted to evaluate the spatial variability of parameter sensitivity. Unlike the Morris method implemented in Section 2.4, which relied on the spatially lumped strategy, the SSA employed spatially disaggregated parameter definitions across 39 subbasins and 630 HRUs. Specifically, the five screened parameters were allowed to vary independently across all subbasins and HRUs, yielding 195 distributed parameters at the subbasin scale and 2,559 distributed parameters at the HRU scale, as detailed earlier.

SSA was then performed using the Sobol' method at both subbasin and HRU scales:

- 320
- Subbasin-scale SSA. Two sampling matrices **A** and **B**, each comprised of 4,096 realizations, were first generated using Sobol' sequence. For each of the 195 parameters, an additional matrix **C_i** was constructed by replacing the *i*-th column of **A** with that of **B**. This resulted in a total of $806,912 = 4,096 \times (195 + 2)$ parameter realizations.
 - HRU-scale SSA. **Due to the substantially higher dimensionality of the HRU-scale parameter space**, each base matrix **A** or **B** contained 32,768 realizations, and corresponding **C_i** matrices were similarly generated. In total,

325 this resulted in $83,918,848 = 32,768 \times (2,559 + 2)$ parameter realizations.

For each parameter realization at either spatial scale, the corresponding MLP surrogate generated the 180-month runoff series at the ZJS gauge station. Consistent with previous SSA studies (Herman et al., 2013b; Wu et al., 2022), sensitivity was assessed using summary performance metrics, i.e., NSE computed over the full 180-month simulation period, rather than raw streamflow values, since the objective was to evaluate the controls on overall model performance rather than on runoff alone.

330 The generation of sampling matrices and the calculation of Sobol' sensitivity indices were performed using the SALib Python package (Herman and Usher, 2017). The Sobol' first-order S_i and total-effect S_{Ti} sensitivity indices were computed for the 195 distributed parameters at the subbasin scale and the 2,559 distributed parameters at the HRU scale.

To ensure numerical reliability, convergence of the sensitivity estimates was assessed by progressively increasing the sample size N , together with bootstrapping using 100 replicates to estimate 95% confidence intervals. In addition, rank stability was
335 assessed using Spearman's rank correlation coefficient by comparing the rankings of all parameters (195 parameters at the subbasin scale and 2,559 parameters at the HRU scale) obtained at each intermediate sample size N with those derived from the final reference sample size (Sarrazin et al., 2016). For visualization, subbasin-scale S_i and S_{Ti} values were reshaped into a 5×39 array, corresponding to the five parameters defined across the 39 subbasins, and mapped to their corresponding subbasins. This structure produced five geospatial maps, one for each parameter, with individual subbasins displaying the
340 spatial distribution of parameter sensitivities. At the HRU scale, CH_K1 was mapped at the 39 subbasins, while the other four parameters (CN2, CANMX, ESCO, and RCHRG_DP) were mapped across the 630 HRUs. This yielded another five geospatial maps: one for CH_K1 at the subbasin scale and four for the remaining parameters at the HRU scale. Collectively, these spatial fields reveal the magnitude and location of influence and highlight sensitivity hotspots at each spatial scale.

3 Results

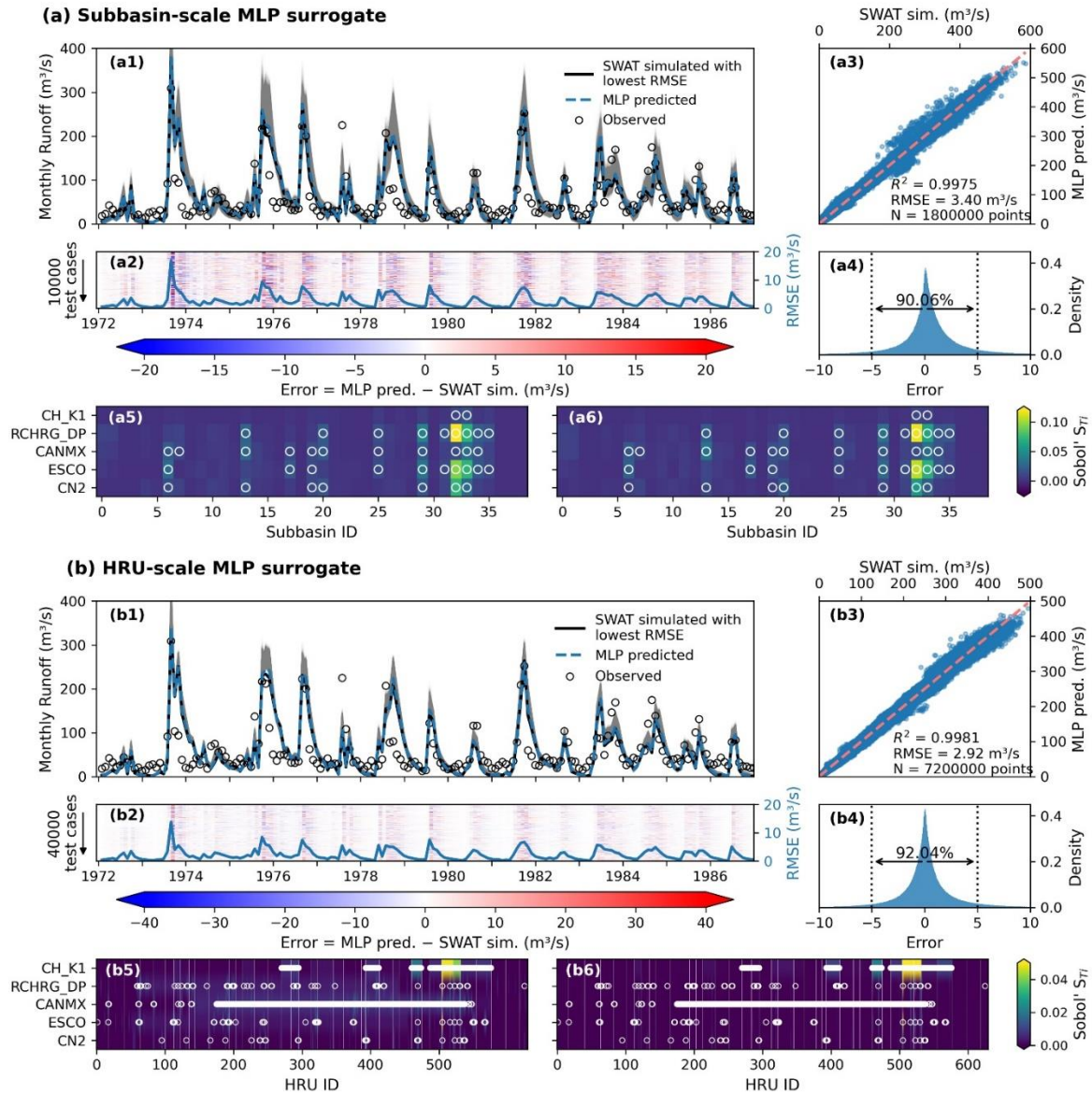
345 3.1 Performance of deep learning surrogates

Figure 3 evaluates the performance of the MLP surrogates in terms of both predictive accuracy and their ability to preserve sensitivity structures. The subbasin- and HRU-scale surrogates were tested on 10,000 and 40,000 independent realizations, respectively, each producing 180-month runoff series at the ZJS gauge station. Overall, both surrogates reproduced SWAT-simulated runoff with high fidelity (Figures 3a1 and 3b1). The global coefficient of determination R^2 reached 0.9975 and
350 0.9981 for the subbasin- and HRU-scale surrogates, respectively, with corresponding RMSE values of 3.40 and 2.92 $\text{m}^3 \text{s}^{-1}$ (Figures 3a3 and 3b3). Error distributions were centered near zero, with 90.06% and 92.04% of monthly prediction errors falling within $\pm 5 \text{ m}^3 \text{ s}^{-1}$ (Figures 3a4 and 3b4). The temporal structure of prediction errors illustrated in Figures 3a2 and 3b2 shows larger deviations during high-flow periods, reflecting the challenges of emulating nonlinear and threshold-driven hydrological processes such as saturation-excess runoff and channel routing. These discrepancies may be partly attributable to
355 the limited representation of extreme events in the training dataset. Nevertheless, such limitations do not compromise the

primary objective of this study, as the surrogate models are intended to emulate SWAT for SA rather than to replace process-based simulations of extreme hydrological events.

Beyond predictive accuracy, the ability of the surrogates to preserve sensitivity structures was explicitly evaluated using a small number of parameter realizations ($N = 64$), necessitated by the substantial computational cost of running the original SWAT model. At both the subbasin and HRU scales, SSA was conducted using the same parameter samples for both the original SWAT model and the corresponding MLP surrogate model. This produced two sets of sensitivity indices, allowing direct comparison between the SWAT-based and MLP-based sensitivity results. Figures 3a5–a6 and Figures 3b5–b6 compare the S_{T_i} values computed from SWAT outputs with those derived from the corresponding MLP surrogates at the subbasin and HRU scales, respectively. The results show strong agreement in both the magnitude and distribution of dominant sensitivity signals, with only minor discrepancies in numerical values. Notably, the ranking and identification of the top 20% most influential parameters are identical, as highlighted by the white circles. These findings confirm that the surrogate models effectively preserve the relative importance and ranking of parameters, thereby providing confidence that the subsequent surrogate-based SSA reliably capture the key controls of the original SWAT model.

From a computational standpoint, the efficiency gains through the MLP surrogates were transformative. A single SWAT simulation takes ~10 seconds of CPU time on a 2.2 GHz Intel® Core™ i7-14650HX laptop. In contrast, the trained subbasin-scale MLP surrogate completed 806,912 evaluations in ~2 seconds, corresponding to $\sim 2.5 \times 10^{-6}$ s per evaluation, and the HRU-scale MLP surrogate complete 83,918,848 evaluations in ~475 seconds, corresponding to $\sim 5.7 \times 10^{-6}$ s per evaluation. These correspond to speed-ups $\sim 4.0 \times 10^6$ and $\sim 1.8 \times 10^6$, respectively, i.e., efficiency gains exceeding six orders of magnitude relative to the original SWAT model. Such acceleration renders SA at multiple spatial and temporal scales computationally tractable. Additionally, this remarkable efficiency enables rapid parameter screening and supports downstream applications such as real-time forecasting, model-data fusion, and optimization-based decision support within distributed hydrologic modelling frameworks.



380 **Figure 3: Performance of the trained MLP surrogates at the (a) subbasin and (b) HRU scales. Panels (a1) and (b1) compare ensemble SWAT simulations for the test cases (grey lines; 10,000 cases at the subbasin scale and 40,000 cases at the HRU scale), the specific SWAT-simulated runoff with lowest RMSE relative to observed runoff (black lines) and the corresponding MLP-predicted runoff (blue dashed lines), as well as observed runoff (black circles) at the ZJS gauge station. Panels (a2) and (b2) show heatmaps of prediction errors across 180 months from 1972 to 1986 for all test cases; blue solid lines indicate the RMSE values calculated for each month across realizations. Panels (a3) and (b3) present scatter plots of MLP-predicted versus SWAT-simulated runoff, showing strong agreement with global R^2 values of 0.9975 and 0.9981, and global RMSE values of $3.40 \text{ m}^3 \text{ s}^{-1}$ and $2.92 \text{ m}^3 \text{ s}^{-1}$, respectively. Panels (a4) and (b4) show the error density, which further indicate that 90.06% and 92.04% of monthly prediction errors fell within $\pm 5 \text{ m}^3 \text{ s}^{-1}$ for the subbasin- and HRU-scale MLP surrogates, respectively, confirming high predictive fidelity. Panels (a5) and (b5) show the S_{Ti} using SWAT model outputs with small parameter realizations $N = 64$ for subbasin-scale SSA and HRU-scale SSA, respectively, and Panels (a6) and (b6) show the S_{Ti} using outputs from the corresponding MLP surrogates with the same parameter realizations. White circles denote the top 20% S_{Ti} values.**

385

390

3.2 Spatial distribution of parameter sensitivities at subbasin and HRU scales

Figure 4 maps the spatial distribution of S_i and S_{Ti} for the five screened parameters, using the NSE computed over the 180-month simulation period as the response metric in both subbasin- and HRU-scale SSA. The accompanying bar plots highlight the five most sensitive subbasins or HRUs for each parameter. Convergence is evidenced by the progressive narrowing of the 95% bootstrap confidence intervals of the sensitivity estimates and the stabilization of parameter rankings (Figure S5). Moreover, convergence analysis shows that S_{Ti} exhibits more stable convergence behaviour than S_i . Parameter rankings based on S_{Ti} became effectively identical beyond sample size of $N = 512$ for the subbasin-scale SSA and $N = 2,048$ for the HRU-scale SSA. These results indicate that the identification of dominant parameters is robust with respect to the final reference sample sizes of $N = 4,096$ and $N = 32,768$, respectively.

Several key observations can be drawn from Figure 4. First, the spatial patterns of S_i and S_{Ti} are broadly consistent at both the subbasin and HRU scales. The rankings of the most sensitive subbasins and HRUs are similar between the two indices for each parameter, indicating that the dominant controls are robust to the choice of sensitivity indices. Considering S_{Ti} accounts for both the main effects of individual parameters and their interactions (Yang et al., 2024), it provides a more comprehensive measure of parameter influence. Therefore, the following analyses focus primarily on S_{Ti} .

Second, sensitivity exhibits pronounced spatial heterogeneity. At the subbasin scale (Figures 4a and 4b), high sensitivity values are unevenly distributed and predominantly concentrated near the ZJS gauge station (outlet of subbasin 36; marked as a red square). Subbasins 33 and 34 consistently emerge as sensitivity hotspots across all parameters, highlighting their dominant role in controlling runoff variability. This pattern reflects the strong influence of gauge-proximal regions, where parameter perturbations are efficiently transmitted to the observed hydrograph, consistent with previous findings (e.g., Tang et al., 2007). Additional subbasins, such as 14, 21, and 30, and occasionally upstream subbasins, such 7 and 8, also appear among the most sensitive units for specific parameters, suggesting localized process dominance. In contrast, downstream subbasins (37 - 39), located below the gauge, exhibit near-zero sensitivity, confirming their negligible influence on the evaluated discharge. At the HRU scale (Figures 4c and 4d), sensitivity remains highly uneven across both subbasins and HRUs. Large portions of the basin, particularly upstream regions, show near-zero S_{Ti} values, partly reflecting the increased parameter dimensionality at finer spatial resolution.

Third, sensitivity patterns become more spatially localized at the HRU scale. While the most sensitive HRUs remain concentrated within subbasins 33 and 34, substantial heterogeneity is observed within individual subbasins. For example, HRU 517 (in subbasin 33) consistently ranks among the most sensitive units across multiple parameters, whereas neighbouring HRUs exhibit negligible sensitivity. This intra-subbasin variability highlights the role of local heterogeneity in soil properties, topography, and land cover, which is not captured at the aggregated subbasin scale.

Fourth, a scale-dependent redistribution of parameter importance and partial decoupling between subbasin- and HRU-scale sensitivities are observed. Certain HRUs exhibit high sensitivity even when their parent subbasins are not identified as hotspots at the subbasin scale (e.g., HRU 198 in subbasin 12 for CANMX), indicating that spatial aggregation can obscure localized

425 controls. Additionally, the relative importance of CH_K1 increases at finer spatial resolution. This behaviour reflects a scale-
 interaction mechanism: as the other four parameters (CN2, ESCO, CANMX, and RCHRG_DP) are disaggregated to the HRU
 level, the routing effect governed by CH_K1 integrates numerous heterogeneous local responses, thereby increasing its
 contribution to overall model performance. This finding is consistent with previous studies (e.g., Acero Triana et al., 2025).
 Overall, these results reveal clear scale-dependent sensitivity patterns, underscoring the importance of accounting for spatial
 430 heterogeneity when interpreting model behaviour and designing subsequent model applications.

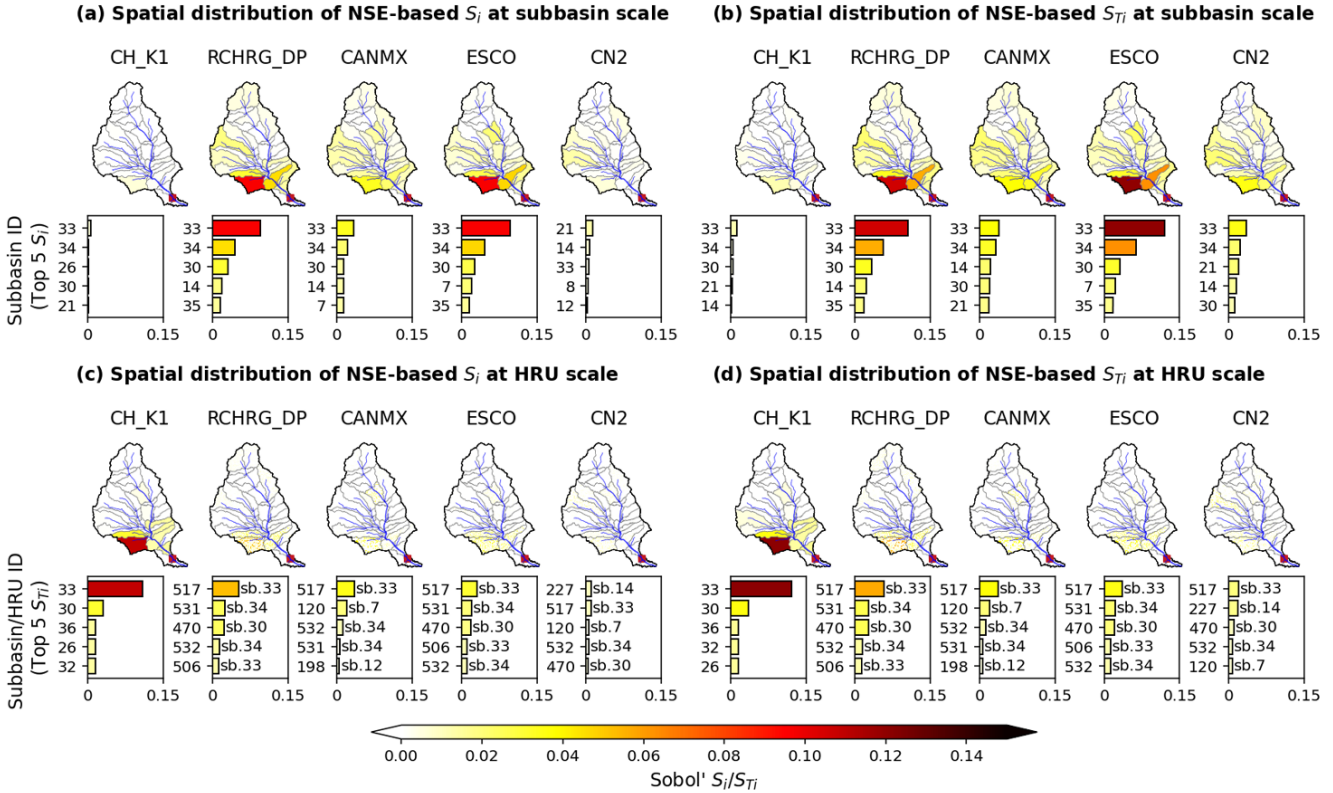


Figure 4: Spatial distribution of the total-effect sensitivity index S_{Ti} to NSE evaluated at ZJS gauge station by (a) subbasin-scale SSA and (b) HRU-scale SSA. Bar plots below each map show the top ten subbasins/HRUs ranked by S_{Ti} . For the HRU-scale plots, the text to the right of each bar indicates the parent subbasin (e.g., HRU 517 belongs to subbasin 33, denoted as sb. 33).

435 3.3 Identification of sensitivity hotspots and parameter hierarchies

To further elucidate the scale effects on this heterogeneity, we computed the sum of the total-effect sensitivity indices S_{Ti} of the five screened parameters, denoted as ΣS_{Ti} , for each spatial unit (Figures 5a and 5d). Specifically, the five S_{Ti} maps derived from subbasin- and HRU-scale SSA (Figures 4b and 4d) were overlaid and summed to derive the spatial distribution of ΣS_{Ti} respectively. Because CH_K1 is defined only at the subbasin level, its sensitivity values were uniformly distributed to the
 440 HRUs within each corresponding subbasin when calculating ΣS_{Ti} at the HRU scale. Considering S_{Ti} quantifies the total contribution of parameter i to output variance, ΣS_{Ti} provides a compact measure of a unit's overall responsiveness to model

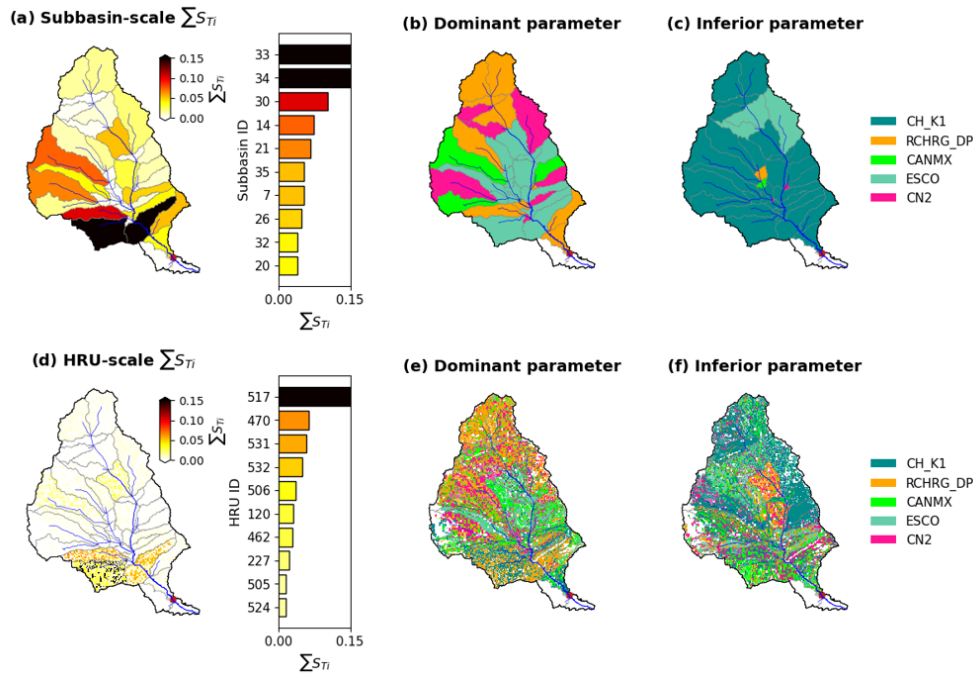
perturbations, namely, its ability to transmit parameter uncertainty into variations in NSE at the ZJS gauge station. Consequently, larger ΣS_{Ti} values delineate spatial sensitivity hotspots.

445 Figures 5a and 5d show that the overall spatial organization of sensitivity is consistent across scales, while increasing spatial resolution sharpens its localization. At the subbasin scale, subbasins 33 and 34 (and to a lesser extent subbasin 30) consistently emerge as dominant hotspots. At the HRU scale, these hotspots are further resolved into a limited number of highly sensitive HRUs nested within these subbasins, such as HRU 517 (subbasin 33), HRUs 531 and 532 (subbasin 34), and HRU 470 (subbasin 30). This indicates that increasing spatial resolution refines the localization of sensitivity rather than altering the identification of key regions. The observed refinement may reflect underlying heterogeneity in land cover, soil properties, and
450 topography, whereby only a subset of HRUs within each subbasin contributes disproportionately to the total sensitivity.

Figures 5b and 5e further characterize the spatial hierarchy of parameter influence by identifying, for each spatial unit, the dominant parameter (defined as the parameter with the maximum S_{Ti}), while Figures 5c and 5f identify the inferior parameter (defined as the parameter with the minimum S_{Ti}). At the subbasin scale, Figure 5b indicates that sensitivity hotspots are governed by different hydrological controls. While subbasins 33 and 34 are dominated by ESCO, subbasin 30 is primarily
455 controlled by RCHRG_DP. This distinction demonstrates that hotspot magnitude and dominant mechanism are related but not interchangeable, as highly sensitive subbasins may respond to different hydrological processes. As for the inferior parameter map, Figure 5c exhibits a clearer pattern: CH_K1 is consistently identified as the least influential parameter across nearly all subbasins. This reflects the limited impact of channel hydraulic conductivity on the NSE-based outlet response compared to parameters controlling runoff generation, evapotranspiration, and recharge partitioning. Perturbations in channel routing
460 processes are progressively damped through downstream aggregation, resulting in negligible contributions to hydrograph variance. At the HRU scale, the dominant parameter map (Figure 5e) becomes markedly fragmented, indicating increased local process heterogeneity. Although the subbasin-scale hotspot pattern persists, it decomposes into a mosaic of HRUs governed by different parameters. Within subbasins 33 and 34, some HRUs remain dominated by CH_K1, while others are controlled by RCHRG_DP, ESCO, or CN2. This finer-scale differentiation suggests that dominant mechanisms depend
465 strongly on local combinations of soil properties, land use, and topography. Thus, HRU-scale analysis provides a more realistic representation of distributed hydrological processes by revealing multiple coexisting controls within a single subbasin.

The inferior-parameter map at the HRU scale (Figure 5f) is also highly localized. Notably, many HRUs near the basin outlet are characterized by CANMX as the least influential parameter. This indicates that canopy interception has a comparatively minor impact on the NSE-based outlet response relative to processes governing runoff partitioning, groundwater recharge,
470 evapotranspiration, and routing. Because outlet discharge integrates upstream hydrological signals, the incremental effect of local interception storage becomes attenuated, rendering CANMX relatively insignificant in downstream HRUs. More broadly, the HRU-scale results reveal that inferior processes vary spatially: while CH_K1 frequently appears least influential in upstream regions at the subbasin scale, the HRU-scale analysis shows that inferior status can shift locally among CH_K1, CANMX, ESCO, and CN2. This demonstrates that spatial aggregation masks not only local hotspots but also local process

475 irrelevance. Consequently, the inferior parameter map complements the dominant-parameter map by identifying processes that can be deprioritized locally.



480 **Figure 5: Spatial distribution of sensitivity patterns across subbasin and HRU scales. Panels (a) and (d) show the sum of S_{Ti} of the five screened parameters, ΣS_{Ti} , at the subbasin and HRU scales, respectively. Panels (b) and (e) present the spatial distribution of the dominant parameter. Panels (c) and (f) present the spatial distribution of the inferior parameter.**

4 Discussion

4.1 Effects of performance metrics on sensitivity patterns

485 Although the primary sensitivity analysis in this study was conducted using the NSE, it is necessary to examine whether the identified sensitivity patterns are robust with respect to the choice of performance metrics. Because NSE primarily reflects variance-based agreement and is particularly sensitive to peak flow dynamics and temporal variability, two widely used complementary metrics, PBIAS and KGE, were introduced (Clark et al., 2021). These metrics provide distinct yet complementary perspectives on hydrological model performance: PBIAS quantifies systematic bias in the water balance, whereas KGE offers a balanced evaluation by integrating correlation, bias, and variability (Acero Triana et al., 2025; Tuo et al., 2018).

490 The Morris screening results based on PBIAS and KGE reveal differences in parameter identification compared with those obtained using NSE. PBIAS identifies CANMX, CN2, ESCO, RCHRG_DP, and SOL_BD as the five most influential parameters (Figures S6), whereas KGE highlights ALPHA_BF, CN2, ALPHA_BNK, CANMX, and ESCO (Figure S7). Despite these differences, a notable consistency emerges: all parameters identified as sensitive under NSE remain within the

top-ranked subset identified by PBIAS and KGE (i.e., within the top 15 of 33 candidates). This indicates that, although relative
495 rankings vary across metrics, the core set of influential parameters remains largely unchanged. In other words, the sensitivity
structure of the system is robust, and the influence of performance metric selection is primarily reflected in the magnitude and
ordering of sensitivities rather than in the identification of fundamentally different controls.

To ensure direct comparability of spatial sensitivity patterns across performance metrics, the five NSE-screened parameters
were retained for SSA, with PBIAS and KGE replacing NSE as response metrics. This offers two advantages: it enables direct
500 spatial comparison of sensitivity patterns across metrics and eliminates the need to retrain the MLP surrogates. Specifically,
the trained subbasin- and HRU- scale surrogates were used to predict runoff at ZJS station, from which PBIAS and KGE were
computed instead of NSE. Figure 6 presents the spatial distributions of S_{Ti} based on PBIAS and KGE at both subbasin and
HRU scales. At the subbasin scale, although slight differences in sensitivity magnitude and parameter ranking are observed,
the overall spatial patterns are highly consistent with those obtained using NSE (Figure 4). In particular, subbasins 33 and 34
505 consistently exhibit the highest sensitivity, while sensitivity decreases progressively toward upstream regions, and downstream
subbasins still show negligible influence. These results confirm that the locations of sensitivity hotspots are primarily governed
by hydrological connectivity and proximity to the **gauge station**, and that these spatial patterns are largely independent of the
performance metric. At the HRU scale, the sensitivity patterns derived from PBIAS and KGE are also broadly consistent with
those based on NSE. Sensitivity remains highly localized, with only a limited number of HRUs exerting significant influence,
510 while the majority of units contribute negligibly. This suggests that parameter sensitivity at the HRU scale is dominated by
local hydrological conditions rather than by large-scale aggregation effects, and that this characteristic is robust across different
performance metrics.

A notable exception is observed for the parameter CH_K1. Under NSE, CH_K1 exhibits much higher sensitivity at the HRU
scale, whereas its influence becomes substantially weaker when evaluated using PBIAS and KGE. This discrepancy cannot be
515 fully explained by spatial aggregation, as CH_K1 is consistently defined at the subbasin scale in all analyses. Instead, the
difference may arise from the distinct aspects of model behaviour emphasized by each performance metric. CH_K1 primarily
controls flow routing processes, affecting the timing and attenuation of streamflow. NSE is highly sensitive to such changes
because it strongly penalizes discrepancies in peak flow and temporal variability. In contrast, PBIAS, which measures only
cumulative bias, is largely insensitive to timing errors. Similarly, although KGE incorporates a correlation component, its
520 composite structure reduces the relative influence of timing-related effects compared to NSE. As a result, the sensitivity of
CH_K1 is significantly diminished under PBIAS and KGE.

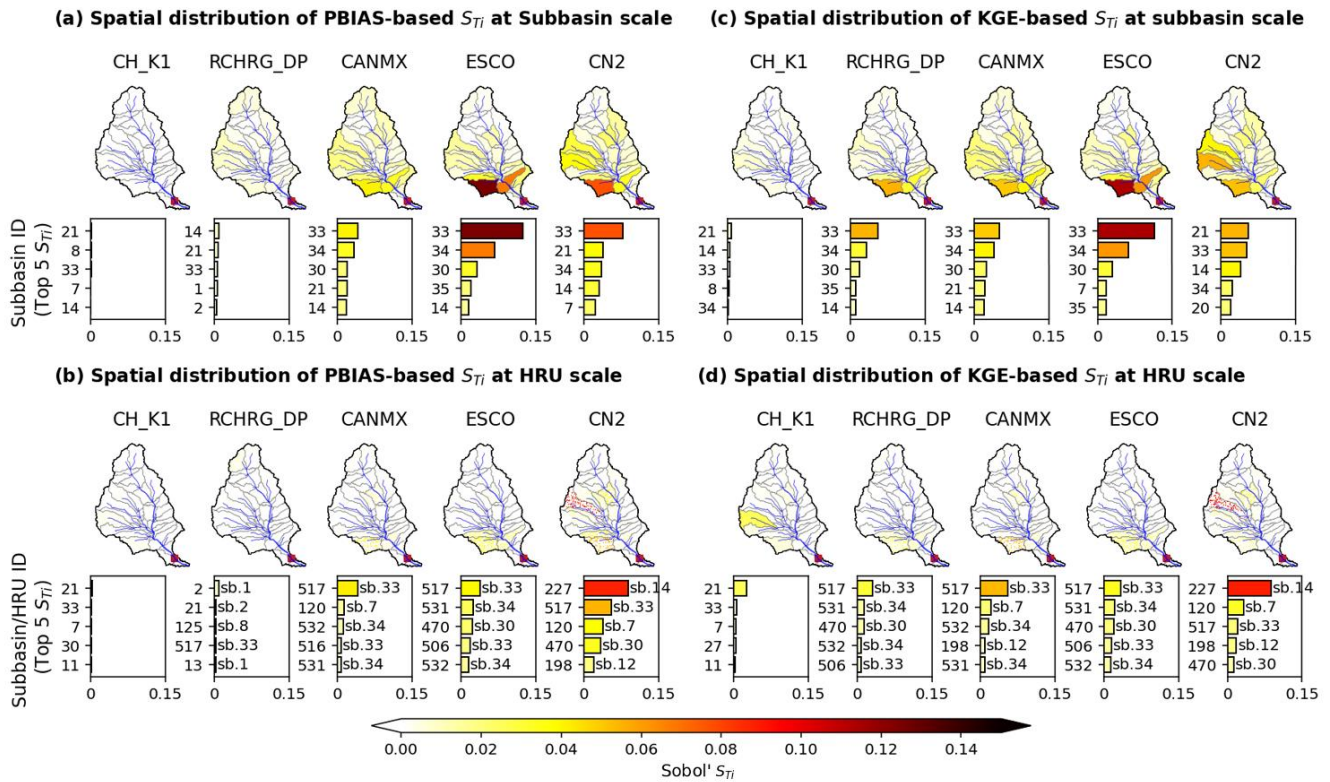


Figure 6: Spatial distribution of the total-effect sensitivity index S_{Ti} at the subbasin and HRU scales using different performance metrics. Panels (a) and (b) show results based on PBIAS, and panels (c) and (d) show results based on KGE.

525 4.2 Effects of parameter distributions on sensitivity patterns

As mentioned earlier, the sensitivity patterns presented in Section 3 were based on parameter ranges derived from previous studies and the SWAT theoretical documentation. These ranges are hereafter referred to as the prior distributions. Considering the assumed parameter distributions may affect the estimation of the sensitivity indices, an additional SSA was conducted using NSE-constrained posterior parameter distributions, in which the original prior distributions were updated by retaining

530 only parameter realizations associated with acceptable model performance (Wu et al., 2022). Specifically, NSE values were calculated for 50,000 SWAT simulations generated for the subbasin-scale parameterization and 200,000 simulations for the HRU-scale parameterization (Figure S8). Two performance thresholds were considered: $NSE > 0.1$ and $NSE > 0.3$. For each threshold, parameter realizations satisfying the criterion were extracted and treated as behavioural ensembles. Figure S9 compares the prior and posterior distributions for the four parameters with the largest Kolmogorov–Smirnov (KS) statistics,

535 together with histograms of KS values across all distributed parameters. Under the weaker constraint ($NSE > 0.1$), posterior distributions show only minor deviations from the priors, especially at the HRU scale. Under the stricter constraint ($NSE > 0.3$), noticeable departures occur for a limited subset of influential parameters, indicating stronger **performance constraints**.

Nevertheless, even under this stricter constraint, over 92% of parameters at the subbasin scale and 99% at the HRU scale exhibit KS values below 0.1, indicating minimal deviations between prior and posterior distributions.

540 Based on these NSE-constrained posterior distributions, the MLP-assisted SSA was repeated at both the subbasin and HRU scales. In practice, the posterior distributions were represented empirically by the behavioural parameter samples. New sampling matrices, **A**, **B** and **C_i**, were generated by resampling from these empirical posterior marginals prior to surrogate-based evaluation. **The trained MLP surrogate models were then used to generate the corresponding model outputs. Note the MLP surrogate models were not re-trained for the posterior-based SSA because the posterior parameter samples remained**

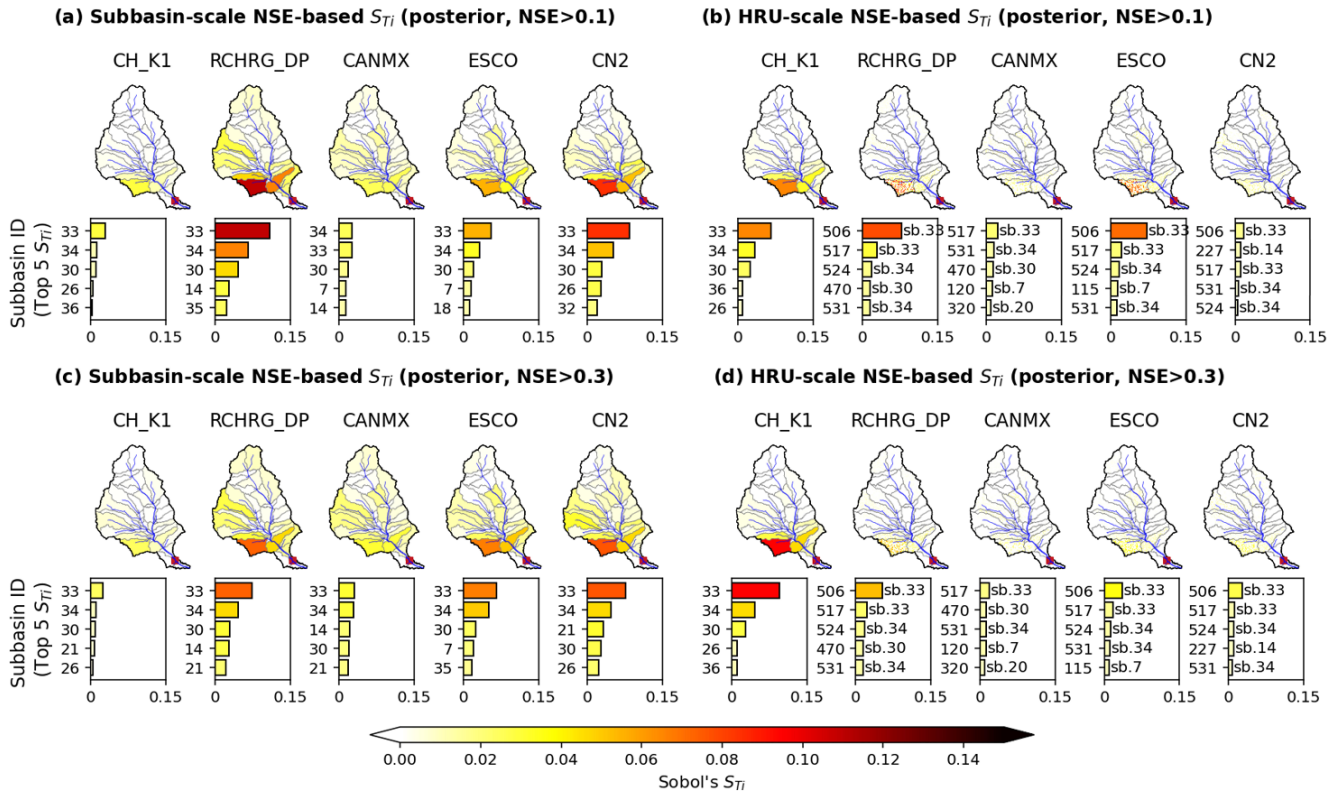
545 **within the same parameter bounds used during surrogate training, although their probability distributions changed from uniform prior distributions to empirical posterior distributions.** The resulting sensitivity maps are presented in Figure 7. Compared with the prior-based results shown in Figures 4b and 4d, the overall spatial sensitivity patterns remain remarkably consistent. At both scales, the principal sensitivity hotspots are preserved, and the same key regions continue to **exert dominant control on the runoff at the ZJS gauge station.** In particular, the gauge-proximal hotspot remains the primary area of high

550 sensitivity, and the most influential HRUs remain concentrated within the same subbasins identified under the prior analysis. The primary differences arise not in the spatial distribution of hotspots, but in the magnitude of the total-effect indices S_{Ti} and in the relative prominence of a few locally dominant parameters. This behaviour is consistent with the KS analysis. Because the vast majority of distributed parameters exhibit only minor deviations between prior and posterior distributions, the global sensitivity structure remains largely unchanged. Nevertheless, a limited subset of parameters shows stronger prior–posterior

555 differences, which are sufficient to alter the precise values of the Sobol' indices. In other words, constraining the parameter space modifies how variance is partitioned among influential parameters without fundamentally altering where sensitivity is concentrated.

Overall, these results demonstrate that the inferred spatial sensitivity patterns are robust to moderate posterior conditioning. Restricting the parameter space to behaviourally acceptable regions affect the absolute magnitude of sensitivity indices more

560 than their spatial organization. This finding confirms that the hotspot patterns identified in the prior-based analysis are not merely artifacts of broad literature-derived parameter ranges, but instead reflect persistent structural characteristics of the model and watershed response. At the same time, the posterior-based analysis indicates that stricter behavioural constraints can subtly redistribute sensitivity magnitudes, underscoring the importance of incorporating parameter realism when interpreting quantitative sensitivity results.



565

Figure 7: Spatial distribution of the total-effect sensitivity index S_{Ti} at the subbasin and HRU scales using posterior parameter distributions constrained by different NSE threshold. Panels (a) and (b) show results constrained by NSE > 0.1, and panels (c) and (d) show results constrained by NSE > 0.3.

4.3 Effects of including an upper stream gauge on sensitivity patterns

570

The preceding analyses were conducted using the ZJS gauge station, located near the watershed outlet, which integrates the cumulative hydrological response of the entire basin. While such an outlet-based evaluation provides a comprehensive assessment of basin-scale dynamics, it may obscure spatial variability in upstream processes. To investigate the influence of observation location on sensitivity patterns, an additional gauge, the YJP station, situated in the upper stream (Figure 1c), was incorporated into the analysis.

575

The Morris screening analysis based on NSE evaluated at the YJP station identified the same five most influential parameters as those obtained from the ZJS-based analysis, indicating that parameter influence is largely consistent across gauges (Figure S10). However, both the Morris indices μ^* and σ at YJP are systematically smaller than those at ZJS. This reduction can be attributed to the smaller contributing area of the YJP station, where upstream processes are less spatially aggregated and thus exhibit reduced overall variance. Subsequently, subbasin- and HRU-scale surrogate models were developed for the YJP station

580

using the same MLP architecture, with RMSE as the training objective (model performance shown in Figure S11). The resulting spatial distributions of total-effect sensitivity indices S_{Ti} are presented in Figures 8.

At both subbasin and HRU scales, the spatial patterns of S_{Ti} at the YJP station exhibit strong similarities to those obtained using ZJS (Figures 4), with sensitivity concentrated near the observation location and becoming increasingly localized at finer spatial resolution. A notable feature is that parameters located downstream of the YJP station exhibit near-zero sensitivity, confirming that downstream processes do not influence upstream observations. This result reinforces the causal structure of the hydrological system and demonstrates that sensitivity is constrained by flow direction and information propagation pathways. Another important observation is that the magnitude of S_{Ti} values at YJP is generally higher than those obtained using ZJS. This can be explained by the reduction in the effective parameter space: since downstream parameters have negligible influence on YJP, the total variance contribution is redistributed among a smaller set of influential parameters, leading to higher individual S_{Ti} values. In other words, the same total variance is partitioned among fewer effective parameters, resulting in an apparent increase in sensitivity magnitude.

To further explore the effect of multiple observation constraints, we constructed an aggregated NSE across the YJP and ZJS stations:

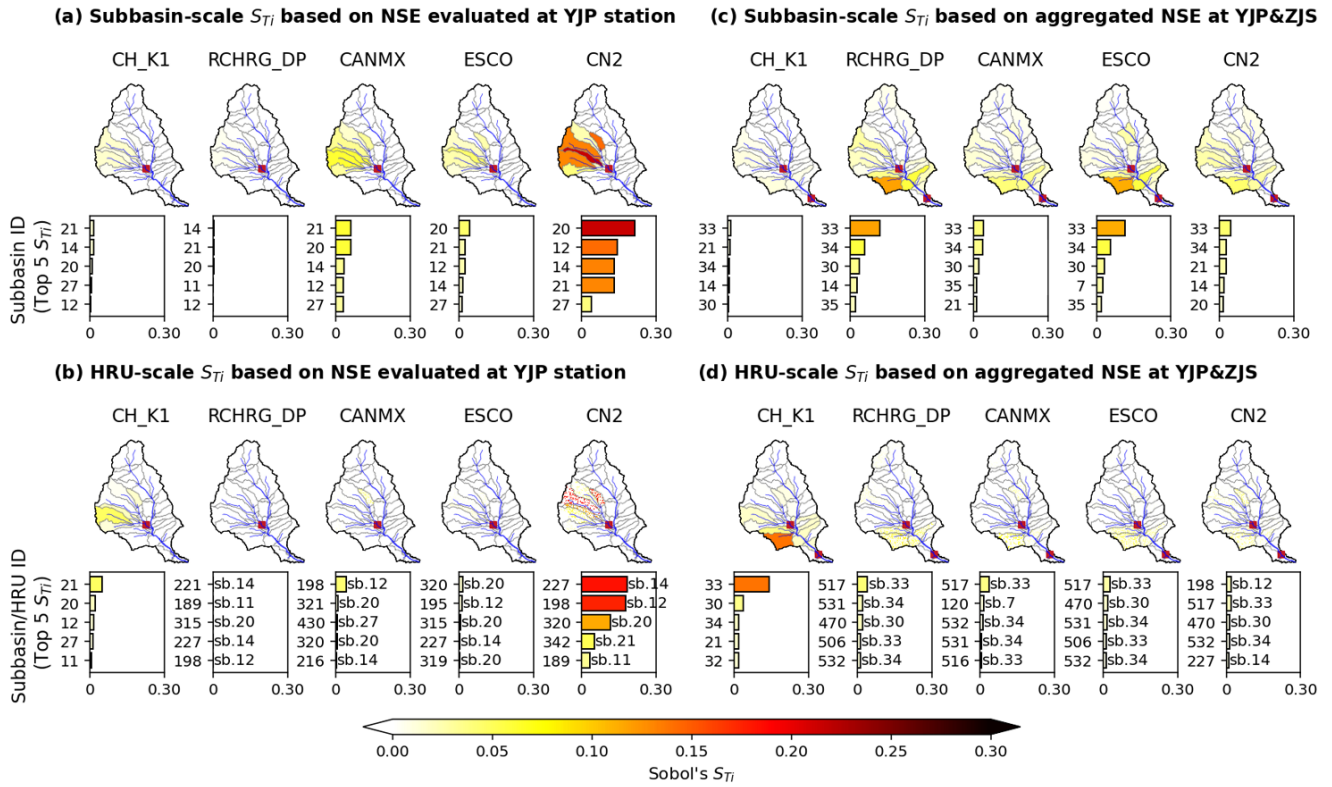
$$NSE_{agg} = 1 - \frac{\sum_{i=1}^n (Q_{o,i}^{ZJS} - Q_{s,i}^{ZJS})^2 + \sum_{i=1}^n (Q_{o,i}^{YJP} - Q_{s,i}^{YJP})^2}{\sum_{i=1}^n (Q_{o,i}^{ZJS} - \overline{Q_o^{ZJS}})^2 + \sum_{i=1}^n (Q_{o,i}^{YJP} - \overline{Q_o^{YJP}})^2}, \quad (5)$$

where $n=180$ is the number of months in the evaluation period; $Q_{s,i}$ and $Q_{o,i}$ are the SWAT simulated and observed runoff at month i for, respectively; $\overline{Q_o}$ represent the mean observed runoff over the evaluation period. This formulation extends the NSE to a multi-site context by aggregating squared errors and variances across stations, thereby preserving the variance-weighted contributions of each site.

The Morris analysis based on this aggregated NSE again identifies the same five dominant parameters (Figure S12). However, the sensitivity magnitudes exhibit an intermediate behaviour: they are larger than those obtained using the upstream YJP station alone but smaller than those derived from the downstream ZJS station. This pattern arises from the definition of NSE, as the aggregated objective combines the error structures of both stations, increasing both the numerator and denominator. Consequently, the relative contributions of individual parameters are moderated, resulting in intermediate sensitivity magnitudes. Surrogate models were then trained using the aggregated RMSE of both stations, followed by Sobol' SSA at the subbasin and HRU scales.

Figures 8c and 8d show that the spatial distribution of S_{Ti} under the aggregated NSE remains largely consistent with the patterns obtained using the ZJS station alone (Figures 4b and 4d). In particular, the most sensitive subbasins and HRUs are nearly identical to those identified in the ZJS-based analysis. This indicates that the downstream gauge exerts a dominant control on the sensitivity structure, even when additional upstream information is incorporated. The limited influence of the YJP station in the aggregated analysis can be explained by both hydrological and statistical factors. Hydrologically, the ZJS station integrates the full upstream domain, whereas YJP only reflects a subset of the basin. Statistically, the aggregated NSE is dominated by the station with larger variance and stronger signal integration, which in this case is the downstream ZJS station. Consequently, parameter perturbations that significantly affect ZJS tend to dominate the combined objective function, while

those primarily affecting YJP have a comparatively smaller impact. This result highlights an important implication: in multi-
 615 site calibration or sensitivity analysis, downstream gauges may exert disproportionate influence due to their integrative nature.
 As a result, simply combining multiple stations into a single objective function does not guarantee balanced sensitivity
 representation across the basin.



620 **Figure 8: Spatial distribution of Sobol' total-effect sensitivity index S_{Ti} at the subbasin and HRU scales using. Panels (a) and (b) show results based on NSE evaluated at the YJP gauge station, and panels (c) and (d) show results based on aggregated NSE evaluated across YJP and ZJS stations.**

4.4 Effects of screened parameters on sensitivity patterns

The present study employs a two-step sensitivity analysis approach where the Morris method is used for parameter screening prior to SSA using Sobol' method. While this approach substantially improves computational efficiency, the resulting
 625 sensitivity patterns may depend on the subset of parameters retained after screening. To evaluate the robustness of this framework, the SSA was extended to include four additional parameters, i.e., SOL_AWC, SOL_BD, GWQMN, and GW_DELAY, which exhibit lower Morris μ^* values than the original five parameters but remain more influential than the remaining candidates (Figure S4). This extension resulted in a total of nine screened parameters and consequently, the number of distributed parameters increased to 351 at the subbasin scale (39 subbasins \times 9 parameters) and 5,079 at the HRU scale (39
 630 subbasin-specific CH_K1 parameters + 630 \times 8 HRU-specific parameters).

To ensure computational feasibility, the MLP-assisted SSA framework was again employed. A total of 100,000 SWAT simulations were conducted to construct the surrogate model for the subbasin-scale parameterization, and 200,000 simulations were performed for the HRU-scale parameterization. Although the predictive performance of the surrogate models slightly decreased due to the increased dimensionality, their accuracy remained satisfactory for reliable sensitivity estimation (Figure S13). Using these trained surrogate models, the total-effect sensitivity indices S_{Ti} were computed, and their spatial distributions for the nine screened parameters are presented in Figure 9.

The inclusion of additional parameters leads to a redistribution of variance contributions but does not fundamentally alter the spatial sensitivity patterns. At both subbasin and HRU scales, sensitivity hotspots remain concentrated near the basin outlet and within key subbasins, particularly subbasins 33 and 34. The dominant parameters identified in the original five-parameter analysis remain influential, demonstrating that the primary controls on model performance are robust to the inclusion of additional parameters. These results confirm that the two-step sensitivity analysis framework effectively captures the principal sources of uncertainty while maintaining computational efficiency.

Notably, the inclusion of soil-related parameters provides additional insights into process representation. Among the newly introduced parameters, SOL_BD exhibits localized but appreciable sensitivity, particularly in regions characterized by distinct soil properties. This behaviour highlights the importance of spatial heterogeneity in distributed hydrological modelling. The apparent discrepancy between Morris screening and Sobol' sensitivity analysis can be attributed to differences in parameter perturbation strategies and spatial representation. In the Morris analysis, parameters such as RCHRG_DP and ESCO were varied using basin-wide replacement to represent their roles as global empirical controls on recharge partitioning and evapotranspiration, whereas SOL_BD was perturbed through a uniform scaling factor that preserved its spatial heterogeneity. When allowed to vary spatially in the SSA using Sobol' method, SOL_BD exerts a stronger influence on infiltration, soil moisture storage, and runoff generation, thereby increasing its sensitivity in the distributed analysis.

Despite these localized adjustments, the overall hierarchy of parameter importance remains consistent. Parameters governing runoff generation and evapotranspiration, particularly CN2, RCHRG_DP, and ESCO, continue to dominate model sensitivity, while groundwater-related parameters such as GWQMN and GW_DELAY exhibit comparatively minor contributions. At the HRU scale, sensitivity patterns become more spatially localized, reflecting the influence of fine-scale heterogeneity in soil, land use, and topography; however, the broader spatial organization of sensitivity remains unchanged.

Overall, these results demonstrate that the inferred sensitivity patterns are robust to variations in the set of screened parameters. While the inclusion of additional parameters leads to a redistribution of variance contributions and provides supplementary process insights, it does not significantly alter the dominant spatial sensitivity structures. This finding validates the reliability and efficiency of the two-step screening strategy and confirms that the original five-parameter configuration is sufficient to capture the primary controls on model performance.

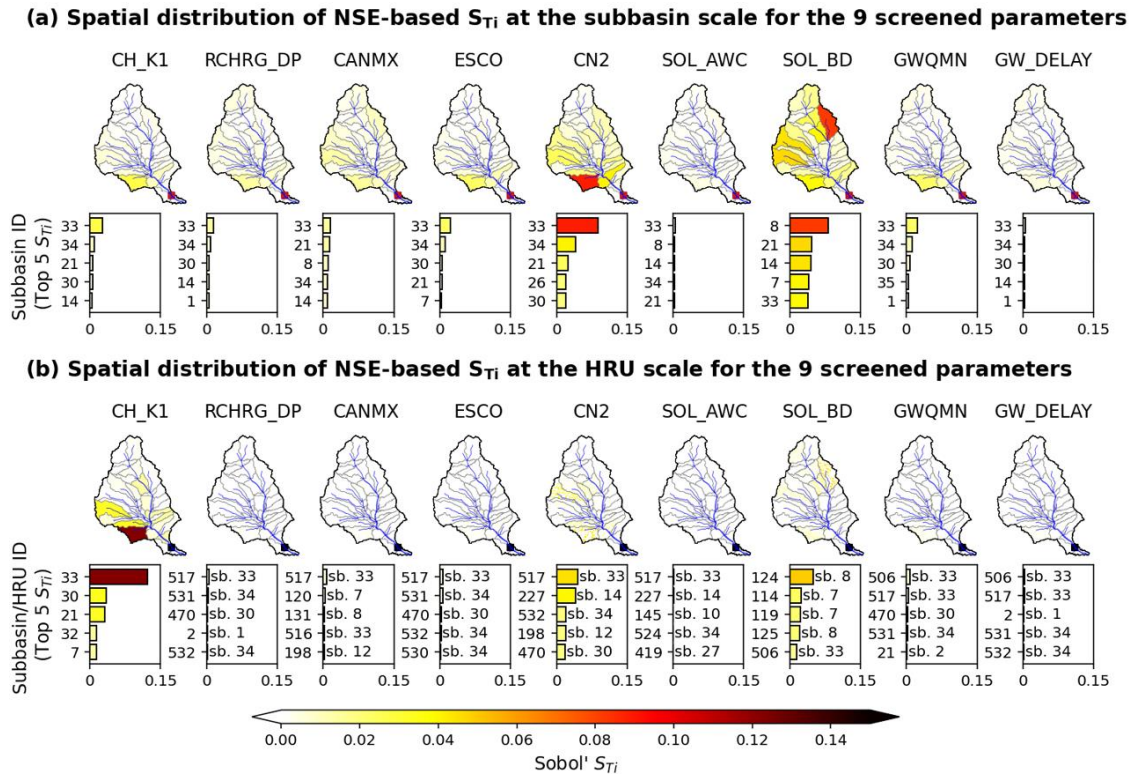


Figure 9: Spatial distribution of the total-effect sensitivity index S_{Ti} for the nine screened parameters at (a) the subbasin and (b) HRU scales.

665 4.5 Implications, limitations, and future studies

This study demonstrates that parameter sensitivity in distributed hydrologic models is inherently spatially dependent, highlighting the limitations of traditional lumped calibration strategies. The results suggest that calibration practices may benefit from explicitly considering the spatial distribution of parameters and their varying sensitivities across spatial scales. In particular, the identified spatial sensitivity patterns indicate that parameter adjustments informed by localized HRU-scale

670 sensitivities, and subsequently evaluated at aggregated subbasin and basin scales, may provide a more physically meaningful basis for model calibration. Such an approach has the potential to better constrain fine-scale processes, reduce equifinality, and maintain consistency between distributed parameters and emergent hydrologic responses. Moreover, maintaining parameters as spatially distributed fields, rather than aggregating them into lumped values, enables the model to preserve heterogeneity in

675 soils, land use, and topography while reflecting physically meaningful spatial patterns.

Despite its advantages, several limitations should be acknowledged. First, although surrogate models substantially reduce computational cost, they may introduce sensitivity estimation errors due to approximation inaccuracies under extreme high-flow conditions where highly nonlinear hydrological processes are more difficult to emulate. Second, while the proposed two-step sensitivity analysis strategy enhances computational efficiency, it may omit parameters that are weakly ranked in the

spatially lumped Morris screening but become locally influential at finer spatial resolutions. Third, the current SSA was
680 conducted using performance metrics computed over the full simulation period. However, parameter sensitivities may vary
temporally in response to changing hydrological conditions, climatic variability, and antecedent states. Consequently, potential
time-dependent sensitivity dynamics were not captured in this study. Finally, uncertainties associated with model structural
assumptions and input data, such as meteorological forcing, soil properties, and land-use information, were not explicitly
quantified and may influence the sensitivity results (Yang et al., 2022).

685 Future research should focus on translating the derived spatial sensitivity information into operational, scale-aware calibration
strategies. Integrating Bayesian inference or Markov Chain Monte Carlo (MCMC) techniques would further constrain
parameter uncertainty and enhance the realism of sensitivity estimates (Zheng and Han, 2015). The development of time-
varying SSA would enable the identification of dynamic sensitivity hotspots and improve understanding of temporally
evolving hydrological controls (Herman et al., 2013a; Massmann et al., 2014). Additionally, incorporating data assimilation,
690 remote sensing observations, and active learning approaches could further refine surrogate models and improve parameter
estimation in high-sensitivity regions. Ultimately, advancing toward spatiotemporally informed distributed calibration
frameworks will enhance model realism, reduce equifinality, and transform sensitivity analysis from a diagnostic tool into a
practical guide for robust, process-based hydrological modelling.

5 Conclusion

695 This study presents an efficient framework for quantifying spatial parameter sensitivities in distributed hydrological models
across multiple scales. Using the SWAT model in the Jinghe River Basin as a case study, a two-step sensitivity analysis strategy
was implemented. The Morris method was first employed with a spatially lumped parameterization to identify influential
parameters, followed by SSA using Sobol' method assisted by deep learning surrogates. MLP-based surrogates were developed
to emulate SWAT while preserving its spatial parameterization at both the subbasin and HRU scales. By explicitly representing
700 parameters at these levels, the framework reveals how parameter sensitivities vary across space and spatial scales, and how
spatial heterogeneity influences model responses. The integration of deep learning with the Sobol' method renders large-scale
distributed analyses computationally tractable, providing a practical and transferable tool for hydrological modelling and
uncertainty quantification.

The results demonstrate that parameter sensitivity exhibits pronounced spatial heterogeneity. Sensitivity hotspots are
705 consistently concentrated in outlet-proximal subbasins, highlighting their dominant role in controlling basin-scale runoff
dynamics. At the HRU scale, these hotspots persist but resolve into a limited number of highly sensitive HRUs embedded
within the same subbasins, confirming that spatial aggregation masks intra-subbasin variability. Parameters governing runoff
generation and evapotranspiration, notably CN2, ESCO, and RCHRG_DP, emerge as the primary controls on model
performance, while routing and groundwater parameters exhibit comparatively minor contributions.

710 The robustness of the proposed framework was further evaluated through multiple complementary analyses. Sensitivity patterns were shown to be consistent across different performance metrics (NSE, PBIAS, and KGE), demonstrating that the identified dominant controls are not artifacts of metric selection. Analyses incorporating an additional upstream gauge confirmed that spatial sensitivity is constrained by hydrological connectivity and flow direction, with downstream gauges exerting a dominant integrative influence. Furthermore, sensitivity analyses based on NSE-constrained posterior parameter
715 distributions revealed that hotspot locations remain stable despite moderate adjustments in parameter ranges. Extending the Sobol' analysis to include additional screened parameters also produced consistent spatial patterns, validating the reliability of the two-step screening strategy.

Overall, this study provides three key contributions. First, it establishes a computationally feasible framework for high-dimensional SSA in distributed hydrological models. Second, it demonstrates that sensitivity hotspots are spatially persistent
720 and primarily governed by hydrological connectivity and basin structure. Third, it offers methodological guidance for parameter prioritization and uncertainty assessment by identifying the dominant controls on model performance. The proposed approach is transferable beyond SWAT and can be applied to other distributed environmental models. By clarifying how spatially distributed parameters influence hydrological responses, this framework enhances model diagnosis, supports efficient calibration, and improves predictive reliability under changing environmental conditions.

725 **Code and data availability**

The code and data used in this study are publicly available at GitHub via https://github.com/jyangfsu/JRB_Spatiotemporal_Sensitivity.

Author contribution

Conceptualization: TJ and YZ; Methodology: JY, JZ, TJ; Data curation: JY and LW; Formal analysis: JY and TJ; Funding
730 acquisition: JY, TJ, and YZ; Writing (original draft preparation): JY; Writing (review and editing): JY, JZ, TJ, YZ, ML, LW, MY, and JS.

Competing interests

The authors declare that they have no conflict of interest.

Acknowledgements

735 We acknowledge the National Earth System Science Data Center for providing runoff data used in this study and the High-Performance Computing Platform of Northwest A&F University for providing computational resources. We are also grateful to the reviewers for their constructive comments, which have significantly improved the quality of this manuscript.

Financial support

740 This study was supported by the National Natural Science Foundation of China (Grant Nos. 42302288, 42402245, 42277073, and U25A20750), Scientific Research Project of the Education Department of Shaanxi Province (Grant No. 25JK0696), Innovation Capability Support Program of Shaanxi Province (Grant No. 2024RS-CXTD-55), and Xi'an Young Talent Support Program (Grant No. 0959202513082).

Review statement

This paper was edited by Yonggen Zhang and reviewed by two anonymous referees.

745 References

- Acero Triana, J. S., Ajami, H., and Razavi, S.: The dilemma of objective function selection for sensitivity and uncertainty analyses of semi-distributed hydrologic models across spatial and temporal scales, *Journal of Hydrology*, 650, 132482, <https://doi.org/10.1016/j.jhydrol.2024.132482>, 2025.
- Aloui, S., Mazzoni, A., Elomri, A., Aouissi, J., Boufekane, A., and Zghibi, A.: A review of Soil and Water Assessment Tool (SWAT) studies of Mediterranean catchments: Applications, feasibility, and future directions, *Journal of environmental management*, 326, 116799, <https://doi.org/10.1016/j.jenvman.2022.116799>, 2023.
- Arnold, J., Moriasi, D., Gassman, P., Abbaspour, K., White, M., Srinivasan, R., Santhi, C., Harmel, R., van Griensven, A., Van Liew, M., Kannan, N., and Jha, M.: SWAT: Model Use, Calibration, and Validation, *Transactions of the ASABE*, 55, 1491-1508, <https://doi.org/10.13031/2013.42256>, 2012.
- 755 Bai, J., Zhou, Z., Li, J., Liu, T., Zhu, Q., and Zheng, T.: Predicting soil conservation service in the Jinghe River Basin under climate change, *Journal of Hydrology*, 615, 128646, <https://doi.org/10.1016/j.jhydrol.2022.128646>, 2022.
- Bai, T., Liu, X., Liu, D., and Zhou, Y.: Water allocation and irrigation scheme considering runoff forecasting of Ulungur River, *Ecological Indicators*, 173, 113381, <https://doi.org/10.1016/j.ecolind.2025.113381>, 2025.
- Bhanja, S. N., Coon, E. T., Lu, D., and Painter, S. L.: Evaluation of distributed process-based hydrologic model performance using only a priori information to define model inputs, *Journal of Hydrology*, 618, 129176, <https://doi.org/10.1016/j.jhydrol.2023.129176>, 2023.
- 760

- Campolongo, F., Cariboni, J., and Saltelli, A.: An effective screening design for sensitivity analysis of large models, *Environmental Modelling & Software*, 22, 1509-1518, <https://doi.org/10.1016/j.envsoft.2006.10.004>, 2007.
- 765 Chang, J., Zhang, H., Wang, Y., and Zhu, Y.: Assessing the impact of climate variability and human activities on streamflow variation, *Hydrology and Earth System Sciences*, 20, 1547-1560, <https://doi.org/10.5194/hess-20-1547-2016>, 2016.
- Chen, L., Wei, W., Fu, B., and Lü, Y.: Soil and water conservation on the Loess Plateau in China: review and perspective, *Progress in Physical Geography: Earth and Environment*, 31, 389-403, <https://doi.org/10.1177/0309133307081290>, 2007.
- 770 Chitsaz, N., Shanafield, M., and Batelaan, O.: Enhanced runoff simulation with improved evapotranspiration accounting for vegetation response to climate variability, *Journal of Hydrology*, 662, 133988, <https://doi.org/10.1016/j.jhydrol.2025.133988>, 2025.
- Clark, M. P., Vogel, R. M., Lamontagne, J. R., Mizukami, N., Knoben, W. J. M., Tang, G., Gharari, S., Freer, J. E., Whitfield, P. H., Shook, K. R., and Papalexiou, S. M.: The abuse of popular performance metrics in hydrologic modeling, *Water Resources Research*, 57, e2020WR029001, <https://doi.org/10.1029/2020WR029001>, 2021.
- 775 Dai, H., Ju, J., Gui, D., Zhu, Y., Ye, M., Liu, Y., Cui, J., and Hu, B. X.: A two-step Bayesian network-based process sensitivity analysis for complex nitrogen reactive transport modeling, *Journal of Hydrology*, 632, 130903, <https://doi.org/10.1016/j.jhydrol.2024.130903>, 2024.
- Dalcin, A. P. and Fernandes Marques, G.: Integrating Water Management Instruments to Reconcile a Hydro-Economic Water Allocation Strategy With Other Water Preferences, *Water Resources Research*, 56, e2019WR025558, <https://doi.org/10.1029/2019WR025558>, 2020.
- 780 Fatichi, S., Vivoni, E. R., Ogden, F. L., Ivanov, V. Y., Mirus, B., Gochis, D., Downer, C. W., Camporese, M., Davison, J. H., Ebel, B., Jones, N., Kim, J., Mascaro, G., Niswonger, R., Restrepo, P., Rigon, R., Shen, C., Sulis, M., and Tarboton, D.: An overview of current applications, challenges, and future trends in distributed process-based models in hydrology, *Journal of Hydrology*, 537, 45-60, <https://doi.org/10.1016/j.jhydrol.2016.03.026>, 2016.
- 785 Furong, G. and Hossain, S.: Projection of monthly surface flows by an optimized SWAT-MLP: a case study, *Water Supply*, 24, 341-360, <https://doi.org/10.2166/ws.2023.265>, 2023.
- Gao, L. and Bryan, B. A.: Incorporating deep uncertainty into the elementary effects method for robust global sensitivity analysis, *Ecological Modelling*, 321, 1-9, <https://doi.org/10.1016/j.ecolmodel.2015.10.016>, 2016.
- Golmohammadi, G., Rudra, R., Dickinson, T., Goel, P., and Veliz, M.: Predicting the temporal variation of flow contributing areas using SWAT, *Journal of Hydrology*, 547, 375-386, <https://doi.org/10.1016/j.jhydrol.2017.02.008>, 2017.
- 790 Herman, J. and Usher, W.: SALib: An open-source Python library for Sensitivity Analysis, *The Journal of Open Source Software*, 2, 771-784, <https://doi.org/10.21105/joss.00097>, 2017.
- Herman, J. D., Reed, P. M., and Wagener, T.: Time-varying sensitivity analysis clarifies the effects of watershed model formulation on model behavior, *Water Resources Research*, 49, 1400-1414, <https://doi.org/10.1002/wrcr.20124>, 2013a.

- Herman, J. D., Kollat, J. B., Reed, P. M., and Wagener, T.: From maps to movies: high-resolution time-varying sensitivity analysis for spatially distributed watershed models, *Hydrology and Earth System Sciences*, 17, 5109-5125, <https://doi.org/10.5194/hess-17-5109-2013>, 2013b.
- Hou, Y., Guo, H., Yang, Y., and Liu, W.: Global evaluation of runoff simulation from climate, hydrological and land surface models, *Water Resources Research*, 59, <https://doi.org/10.1029/2021wr031817>, 2022.
- Jahanshahi, A., Asadi, H., and Gupta, H.: A data fusion approach to enhancing runoff simulation in a semi-arid river basin, *Environmental Modelling & Software*, 190, 106468, <https://doi.org/10.1016/j.envsoft.2025.106468>, 2025.
- Jeong, H., Lee, B., Kim, D., Qi, J., Lim, K. J., and Lee, S.: Improving estimation capacity of a hybrid model of LSTM and SWAT by reducing parameter uncertainty, *Journal of Hydrology*, 633, <https://doi.org/10.1016/j.jhydrol.2024.130942>, 2024.
- Khorashadi Zadeh, F., Nossent, J., Sarrazin, F., Pianosi, F., van Griensven, A., Wagener, T., and Bauwens, W.: Comparison of variance-based and moment-independent global sensitivity analysis approaches by application to the SWAT model, *Environmental Modelling & Software*, 91, 210-222, <https://doi.org/10.1016/j.envsoft.2017.02.001>, 2017.
- Koo, H., Chen, M., Jakeman, A. J., and Zhang, F.: A global sensitivity analysis approach for identifying critical sources of uncertainty in non-identifiable, spatially distributed environmental models: A holistic analysis applied to SWAT for input datasets and model parameters, *Environmental Modelling & Software*, 127, <https://doi.org/10.1016/j.envsoft.2020.104676>, 2020.
- Li, M., Di, Z., and Duan, Q.: Effect of sensitivity analysis on parameter optimization: Case study based on streamflow simulations using the SWAT model in China, *Journal of Hydrology*, 603, <https://doi.org/10.1016/j.jhydrol.2021.126896>, 2021.
- Li, X., Hu, X., and Wei, X.: Runoff characteristics analysis based on power spectrum method and detrended fluctuation analysis, *Journal of Natural Resources*, 30, 986-995, <https://doi.org/10.11849/zrzyxb.2015.06.009>, 2015. (In Chinese)
- Liu, Y., Huang, T., Qiu, Z., Guan, Z., and Ma, X.: Effects of precipitation changes on fractional vegetation cover in the Jinghe River basin from 1998 to 2019, *Ecological Informatics*, 80, <https://doi.org/10.1016/j.ecoinf.2024.102505>, 2024.
- Mao, H., Wang, C., He, Y., Song, X., Ma, R., Li, R., and Duan, Z.: Advancing SWAT model calibration: A U-NSGA-III-based framework for multi-objective optimization, *Water*, 16, <https://doi.org/10.3390/w16213030>, 2024.
- Massmann, C., Wagener, T., and Holzmann, H.: A new approach to visualizing time-varying sensitivity indices for environmental model diagnostics across evaluation time-scales, *Environmental Modelling & Software*, 51, 190-194, <https://doi.org/10.1016/j.envsoft.2013.09.033>, 2014.
- Morris, M. D.: Factorial Sampling Plans for Preliminary Computational Experiments, *Technometrics*, 33, 161-174, 1991.
- Neitsch, S. L., Arnold, J. G., Kiniry, J. R., and Williams, J. R.: Soil and Water Assessment Tool Theoretical Documentation Version 2009, Texas Water Resources Institute. Available electronically from <https://hdl.handle.net/1969.1/128050>, 2011.
- Ou, Z., Nai, C., Pan, B., Zheng, Y., Shen, C., Jiang, P., Liu, X., Tang, Q., Li, W., and Pan, M.: Probabilistic diffusion models advance extreme flood forecasting, *Geophysical Research Letters*, 52, e2025GL115705, <https://doi.org/10.1029/2025GL115705>, 2025.

- Paszke, A., Gross, S., Massa, F., Lerer, A., Bradbury, J., Chanan, G., Killeen, T., Lin, Z., Gimelshein, N., and Antiga, L.: Pytorch: An imperative style, high-performance deep learning library, *Advances in neural information processing systems*, 32, 2019.
- 830 Pelletier, A. and Andréassian, V.: On constraining a lumped hydrological model with both piezometry and streamflow: results of a large sample evaluation, *Hydrology and Earth System Sciences*, 26, 2733-2758, <https://doi.org/10.5194/hess-26-2733-2022>, 2022.
- Pianosi, F., Sarrazin, F., and Wagener, T.: A Matlab toolbox for global sensitivity analysis, *Environmental Modelling & Software*, 70, 80-85, <https://doi.org/10.1016/j.envsoft.2015.04.009>, 2015.
- 835 Razavi, S., Tolson, B. A., and Burn, D. H.: Review of surrogate modeling in water resources, *Water Resources Research*, 48, <https://doi.org/10.1029/2011wr011527>, 2012.
- Rouzies, E., Lauvernet, C., Sudret, B., and Vidard, A.: How is a global sensitivity analysis of a catchment-scale, distributed pesticide transfer model performed? Application to the PESHMELBA model, *Geoscientific Model Development*, 16, 3137-3163, <https://doi.org/10.5194/gmd-16-3137-2023>, 2023.
- 840 Saint-Geours, N., Bailly, J.-S., Grelot, F., and Lavergne, C.: Multi-scale spatial sensitivity analysis of a model for economic appraisal of flood risk management policies, *Environmental Modelling & Software*, 60, 153-166, <https://doi.org/10.1016/j.envsoft.2014.06.012>, 2014.
- Saltelli, A., Ratto, M., Andres, T., Campolongo, F., Cariboni, J., Gatelli, D., Saisana, M., and Tarantola, S.: *Global Sensitivity Analysis. The Primer*, <https://doi.org/10.1002/9780470725184>, 2007.
- 845 Saint-Geours, N., Bailly, J.-S., Grelot, F., and Lavergne, C.: Multi-scale spatial sensitivity analysis of a model for economic appraisal of flood risk management policies, *Environmental Modelling & Software*, 60, 153-166, <https://doi.org/10.1016/j.envsoft.2014.06.012>, 2014.
- Sarrazin, F., Pianosi, F., and Wagener, T.: Global Sensitivity Analysis of environmental models: Convergence and validation, *Environmental Modelling & Software*, 79, 135-152, <https://doi.org/10.1016/j.envsoft.2016.02.005>, 2016.
- 850 Sobol', I. M.: Global sensitivity indices for nonlinear mathematical models and their Monte Carlo estimates, *Mathematics and Computers in Simulation*, 55, 271-280, [https://doi.org/10.1016/s0378-4754\(00\)00270-6](https://doi.org/10.1016/s0378-4754(00)00270-6), 2001.
- Sreedevi, S. and Eldho, T. I.: A two-stage sensitivity analysis for parameter identification and calibration of a physically-based distributed model in a river basin, *Hydrological Sciences Journal*, 64, 701-719, <https://doi.org/10.1080/02626667.2019.1602730>, 2019.
- 855 Su, L., Lettenmaier, D. P., Pan, M., and Bass, B.: Improving runoff simulation in the Western United States with Noah-MP and VIC models, *Hydrology and Earth System Sciences*, 28, 3079-3097, <https://doi.org/10.5194/hess-28-3079-2024>, 2024.
- Tang, Y., Reed, P., van Werkhoven, K., and Wagener, T.: Advancing the identification and evaluation of distributed rainfall-runoff models using global sensitivity analysis, *Water Resources Research*, 43, 14, <https://doi.org/10.1029/2006wr005813>, 2007.

- 860 Tuo, Y., Marcolini, G., Disse, M., and Chiogna, G.: A multi-objective approach to improve SWAT model calibration in alpine catchments, *Journal of Hydrology*, 559, 347-360, <https://doi.org/10.1016/j.jhydrol.2018.02.055>, 2018.
- van Werkhoven, K., Wagener, T., Reed, P., and Tang, Y.: Rainfall characteristics define the value of streamflow observations for distributed watershed model identification, *Geophysical Research Letters*, 35, <https://doi.org/10.1029/2008gl034162>, 2008.
- Wu, S., Tetzlaff, D., Yang, X., and Soulsby, C.: Identifying dominant processes in time and space: Time-varying spatial sensitivity analysis for a grid-based nitrate model, *Water Resources Research*, 58, <https://doi.org/10.1029/2021wr031149>, 2022.
- 865 Xu, C., Jiang, Y., Su, Z., Liu, Y., and Lyu, J.: Assessing the impacts of Grain-for-Green Programme on ecosystem services in Jinghe River basin, China, *Ecological Indicators*, 137, <https://doi.org/10.1016/j.ecolind.2022.108757>, 2022.
- Yang, J. and Ye, M.: A new multi-model absolute difference-based sensitivity (MMADS) analysis method to screen non-influential processes under process model and parametric uncertainty, *Journal of Hydrology*, 608, 127609, <https://doi.org/10.1016/j.jhydrol.2022.127609>, 2022.
- 870 Yang, J., Ye, M., Chen, X., Dai, H., and Walker, A. P.: Process interactions can change process ranking in a coupled complex system under process model and parametric uncertainty, *Water Resources Research*, 58, <https://doi.org/10.1029/2021wr029812>, 2022.
- 875 Yang, J., Liu, Y., Dai, H., Yuan, S., Jiao, T., Wen, Z., and Ye, M.: Development of an integrated global sensitivity analysis strategy for evaluating process sensitivities across single- and multi-models, *Journal of Hydrology*, 643, 132014, <https://doi.org/10.1016/j.jhydrol.2024.132014>, 2024.
- Yu, D., Xie, P., Dong, X., Hu, X., Liu, J., Li, Y., Peng, T., Ma, H., Wang, K., and Xu, S.: Improvement of the SWAT model for event-based flood simulation on a sub-daily timescale, *Hydrology and Earth System Sciences*, 22, 5001-5019, <https://doi.org/10.5194/hess-22-5001-2018>, 2018.
- 880 Yu, Z., Dai, H., Yang, J., Zhu, Y., and Yuan, S.: Global sensitivity analysis with deep learning-based surrogate models for unraveling key parameters and processes governing redox zonation in riparian zone, *Journal of Hydrology*, 638, 131442, <https://doi.org/10.1016/j.jhydrol.2024.131442>, 2024.
- Zhang, C., Chu, J., and Fu, G.: Sobol's sensitivity analysis for a distributed hydrological model of Yichun River Basin, China, *Journal of Hydrology*, 480, 58-68, <https://doi.org/10.1016/j.jhydrol.2012.12.005>, 2013.
- 885 Zhang, H., Huang, G. H., Wang, D. L., and Zhang, X. D.: Multi-period calibration of a semi-distributed hydrological model based on hydroclimatic clustering, *Advances in Water Resources*, 34, 1292-1303, <https://doi.org/10.1016/j.advwatres.2011.06.005>, 2011.
- Zhang, X., Xu, Y.-P., and Fu, G.: Uncertainties in SWAT extreme flow simulation under climate change, *Journal of Hydrology*, 890 515, 205-222, <https://doi.org/10.1016/j.jhydrol.2014.04.064>, 2014.
- Zheng, Y. and Han, F.: Markov Chain Monte Carlo (MCMC) uncertainty analysis for watershed water quality modeling and management, *Stochastic Environmental Research and Risk Assessment*, 30, 293-308, <https://doi.org/10.1007/s00477-015-1091-8>, 2015.

Zhou, S., Yu, B., Lintner, B. R., Findell, K. L., and Zhang, Y.: Projected increase in global runoff dominated by land surface changes, *Nature Climate Change*, 13, 442-449, <https://doi.org/10.1038/s41558-023-01659-8>, 2023.