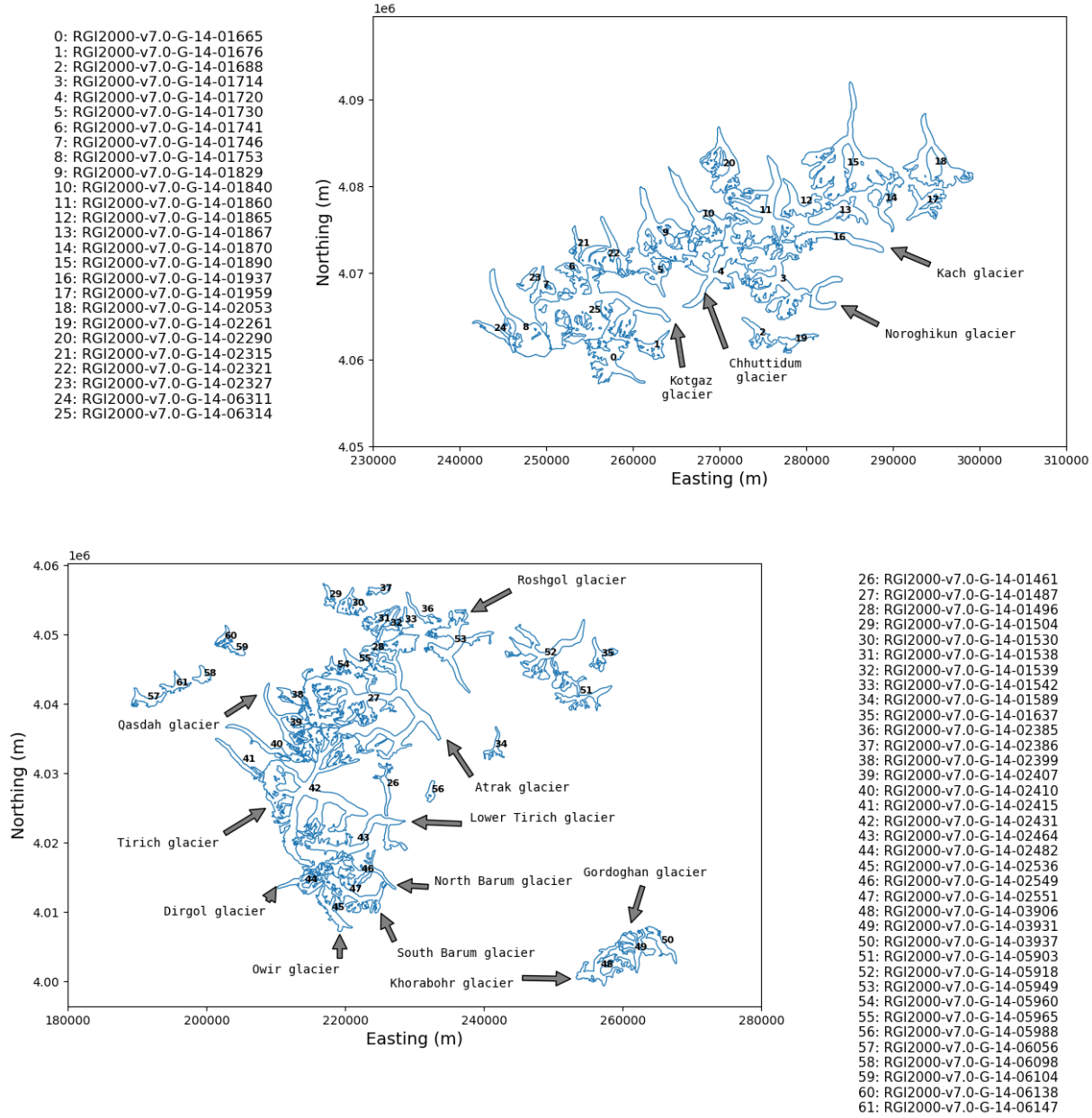
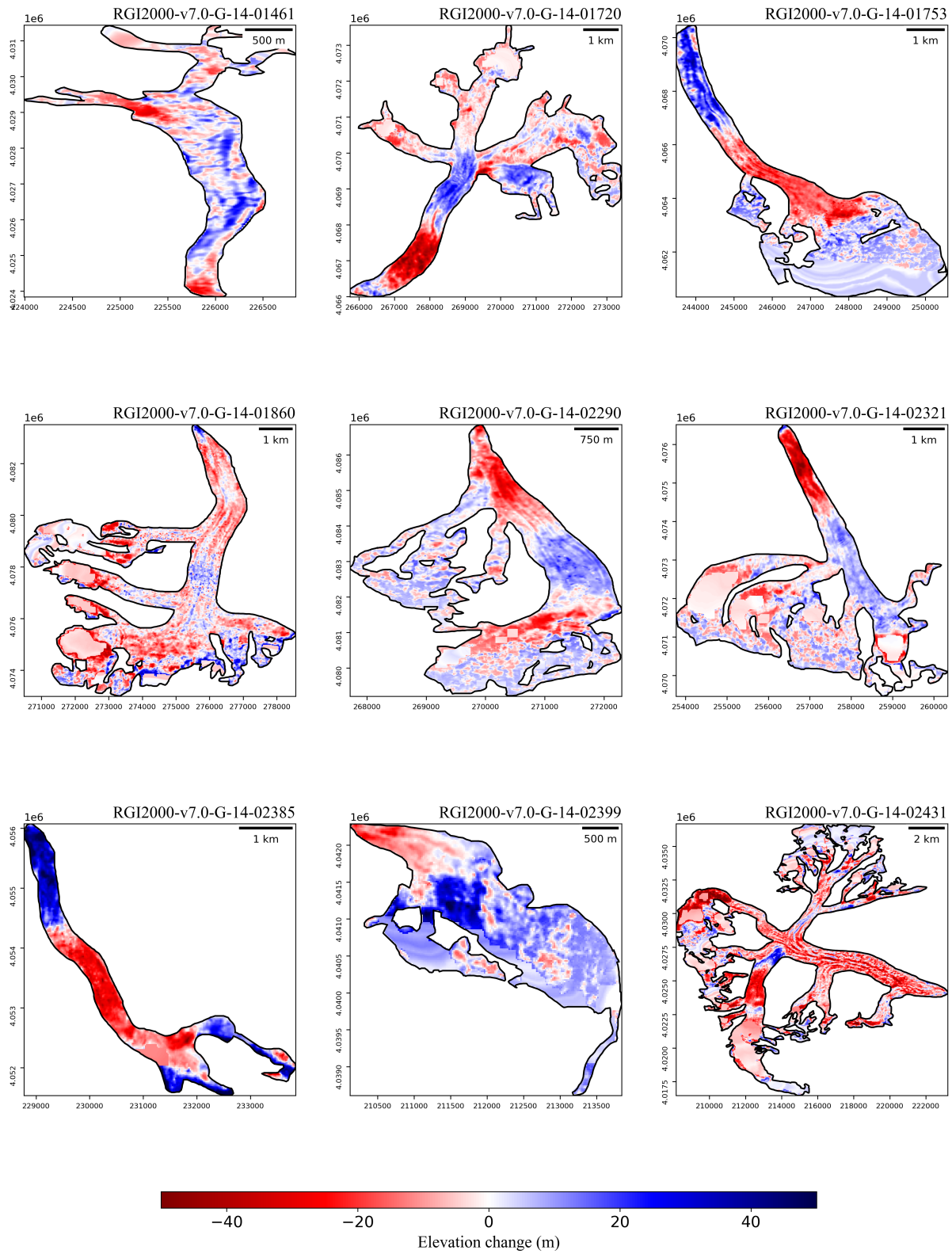


## Supplement of

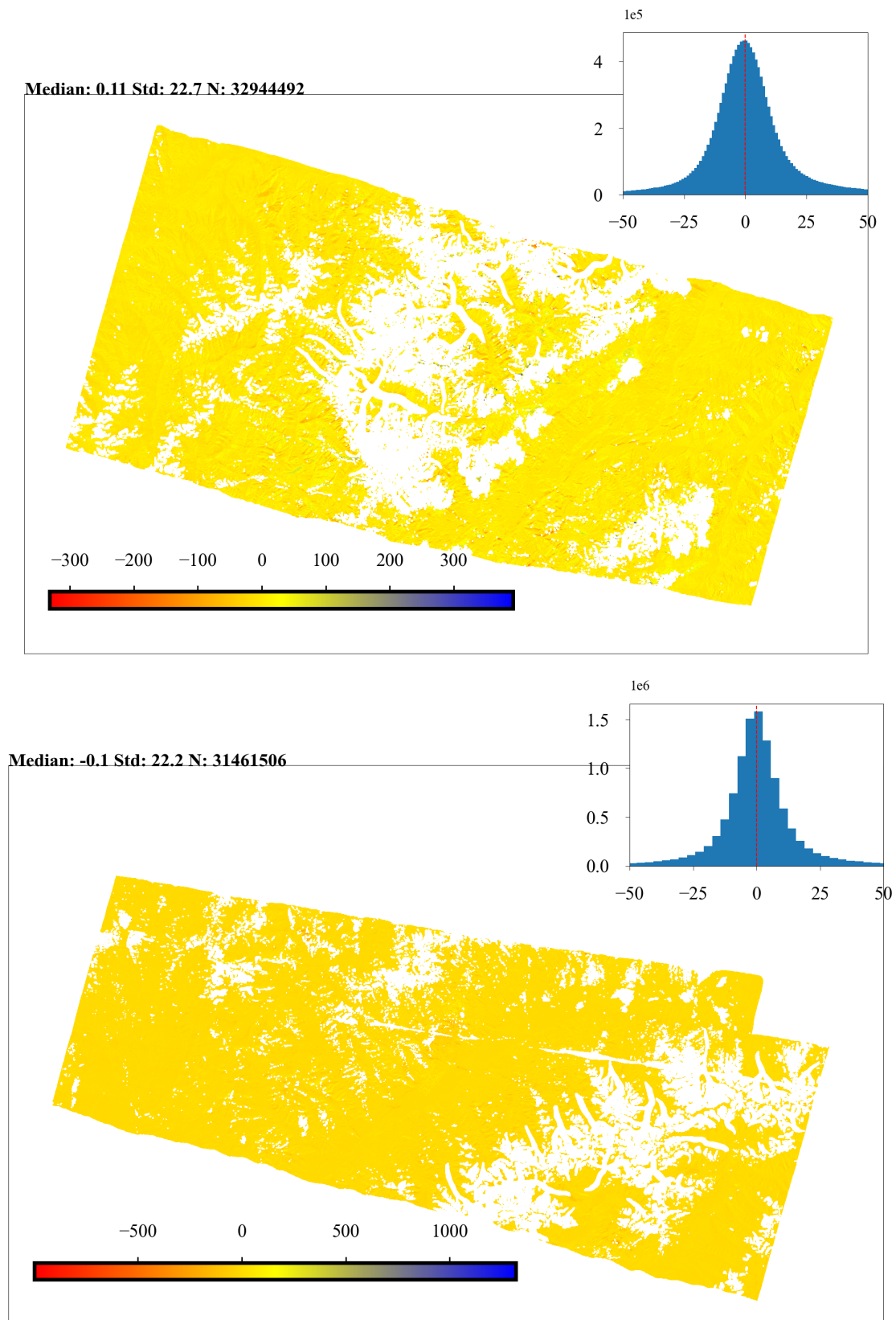
Brief Communication: Mass Balance of Glaciers in the Eastern Hindu Kush from 1979 to 2002 using KH-9 Panoramic and SPOT-5 stereo imagery



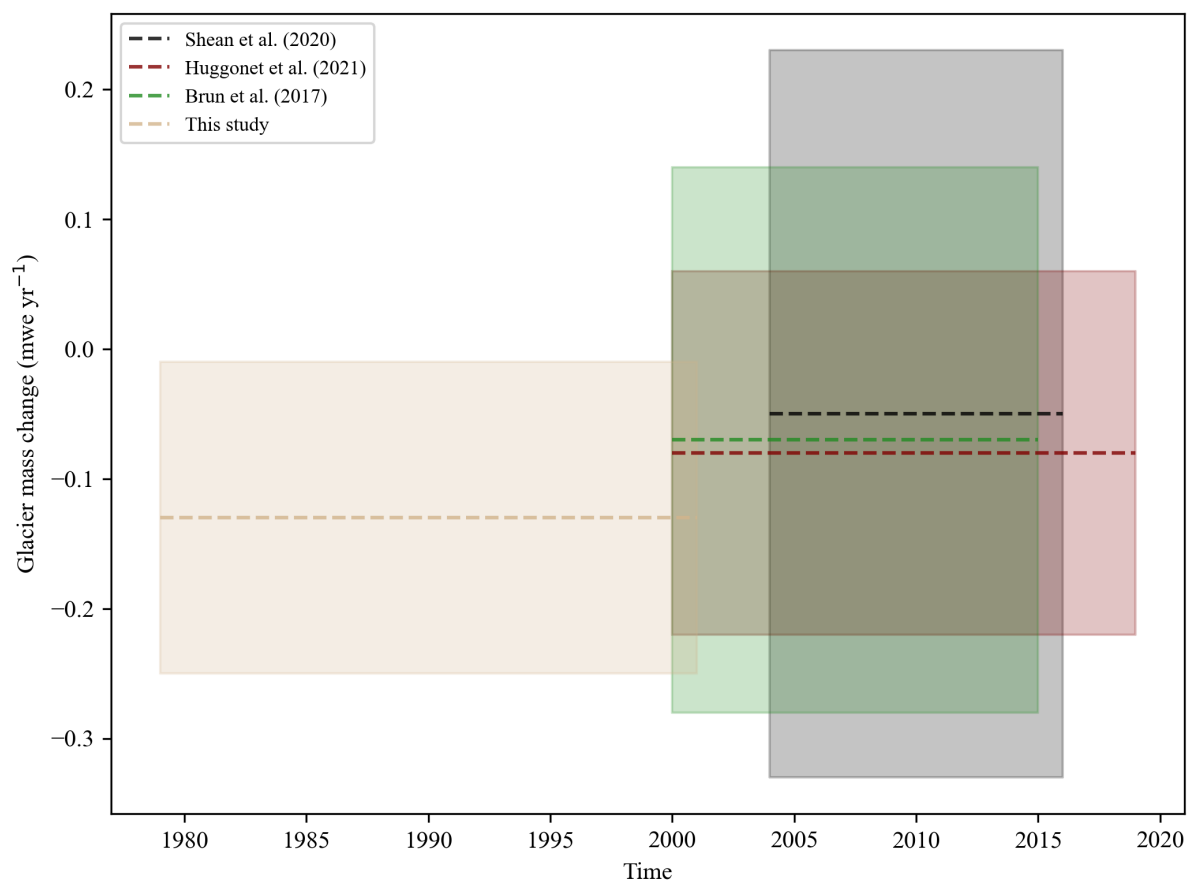
**Figure S1:** Map of glaciers with their names and RGI Ids.



**Figure S2:** The figure shows elevation change of nine surging glaciers in Hindu Kush during 1979-2002. The figure does not include Noroghikun glacier which has also been classified as a probable surging glacier in previous studies.



**Figure S3:** The figure shows elevation changes at the off-glacier terrain and the derived statistics.



**Figure S4:** Comparison of the obtained mass loss with post-2000 results.