

Referee #2

In this work, the authors introduce two new parameterizations for ice-nucleating particles (INPs) in WRF-Chem to investigate the impacts of dust INPs on mixed-phase and ice clouds and their radiative effects. Given the large uncertainties surrounding the role of dust emissions in ice formation and cloud evolution, this study is relevant to the community. The methods and results are described in detail, the manuscript is generally well written, and the inclusion of model validation is commendable.

Response: We thank the reviewer for the positive and encouraging assessment of our work. We appreciate the recognition of the relevance of this study, as well as the clarity of the presentation and the inclusion of model validation.

However, I find the paper largely descriptive, with few overarching conclusions that advance the state of the field, and I question whether it is a good fit for the journal. Several mechanisms are proposed to explain the results, but these remain mostly speculative. In addition, there may be fundamental flaws in the implementation of the ice nucleation parameterizations that warrant major revisions. These issues must be addressed before the paper can be considered for publication.

Response: We thank the reviewer for the constructive and critical assessment. We acknowledge the concerns regarding the descriptive nature of the manuscript, the lack of direct evidence supporting the proposed mechanisms, and the potential issues in the implementation of the ice nucleation parameterizations.

In response, we have substantially revised the manuscript to address these points. Specifically, we have added a dedicated process-level analysis (Section 3.2.6) to explicitly diagnose key microphysical mechanisms, including the Wegener–Bergeron–Findeisen (WBF) process and ice crystal sedimentation, using model output. These diagnostics provide direct evidence supporting the interpretations and make the proposed mechanisms central to the conclusions rather than speculative.

We have also clarified the implementation of the ice nucleation parameterizations, particularly the treatment of subgrid vertical velocity, and added a new sensitivity experiment (Section 3.2.5) using an alternative TKE-based parameterization. The results demonstrate that our conclusions are robust and not driven by the representation of vertical velocity.

In addition, the discussion has been strengthened throughout the manuscript, and Fig. 10 has been repositioned and better integrated with the supporting analysis. Together, these revisions address the reviewer's concerns and improve the overall scientific rigor and clarity of the study.

The reviewer's comments are presented in blue text, our responses are written in black text, and quotations from our manuscript are presented in italic type.

General comments:

Overall, the manuscript is clearly written, detailed, and the simulation experiments are well designed. At the same time, the discussion often falls back on straightforward descriptions of figures without deeper analysis. When mechanistic explanations are proposed (for example involving sedimentation or the WBF process) they are not supported by evidence. It should be possible to output the relevant microphysical rates from the model to demonstrate that the proposed mechanisms are actually operating. As written, these explanations are often lost in the text and do not appear central to the paper's conclusions. I encourage the authors to include a dedicated discussion section where these mechanisms can be addressed in more depth, and where Figure 10 and the hypotheses raised in the conclusions can be more fully developed.

Response: We thank the reviewer for this constructive and important suggestion. We agree that the discussion of physical mechanisms should be more explicitly supported by model diagnostics and more clearly integrated into the main conclusions.

Following this suggestion, we have added a dedicated analysis section (3.2.6 Microphysical process analysis) in the revised manuscript to directly examine the key microphysical processes underlying our interpretations, including the WBF process and sedimentation.

For the WBF process, we note that the Morrison microphysics scheme does not provide a direct diagnostic variable for the WBF rate. Instead, it represents the underlying processes through individual microphysical tendencies, including hydrometer collection, condensation, evaporation, freezing, melting, deposition, sublimation, sedimentation, and ice nucleation (Morrison et al., 2005). To diagnose the WBF process, we output the rates of cloud droplet evaporation and vapor deposition, and restrict the analysis to grid cells that satisfy WBF-favorable conditions (Pruppacher et al., 1998): supersaturation with respect to ice, subsaturation with respect to liquid water, temperatures between -37 and 0°C , and coexistence of cloud droplets and ice crystals. Under these conditions, the transfer of water from liquid to ice phase can be interpreted as a proxy for the WBF process.

Figure S19 (shown below) show that, in the MixINPs scenario, both cloud droplet evaporation and vapor deposition rates are significantly enhanced compared to the NoINPs scenario, with comparable magnitudes, indicating an accelerated transfer of water from liquid to ice phase. This provides direct evidence that the WBF process is strengthened by dust-induced ice nucleation.

For sedimentation, we analyzed the diagnosed ice crystal sedimentation flux. Figure S20 (shown below) indicates that, in the IceINPs scenario, regions with enhanced sedimentation flux correspond to areas with increased ice crystal number concentration compared to the NoINPs scenario (Fig. 5c). Meanwhile, the increase in sedimentation flux below these regions is relatively weaker, suggesting that a portion of sedimenting ice crystals is retained within the underlying mixed-phase cloud layers.

This accumulation of ice crystals in mixed-phase clouds contributes to enhanced ice number concentrations and further reinforces the WBF process, as supported by the diagnosed cloud droplet evaporation and vapor deposition rates in Fig. S19b and S19e.

These additional diagnostics confirm that the mechanisms proposed in the original manuscript are physically consistent and actively operating in the simulations. We have incorporated this analysis into a new section in the revised manuscript and expanded the discussion of Fig. 10 accordingly, making these mechanisms more central to the overall conclusions.

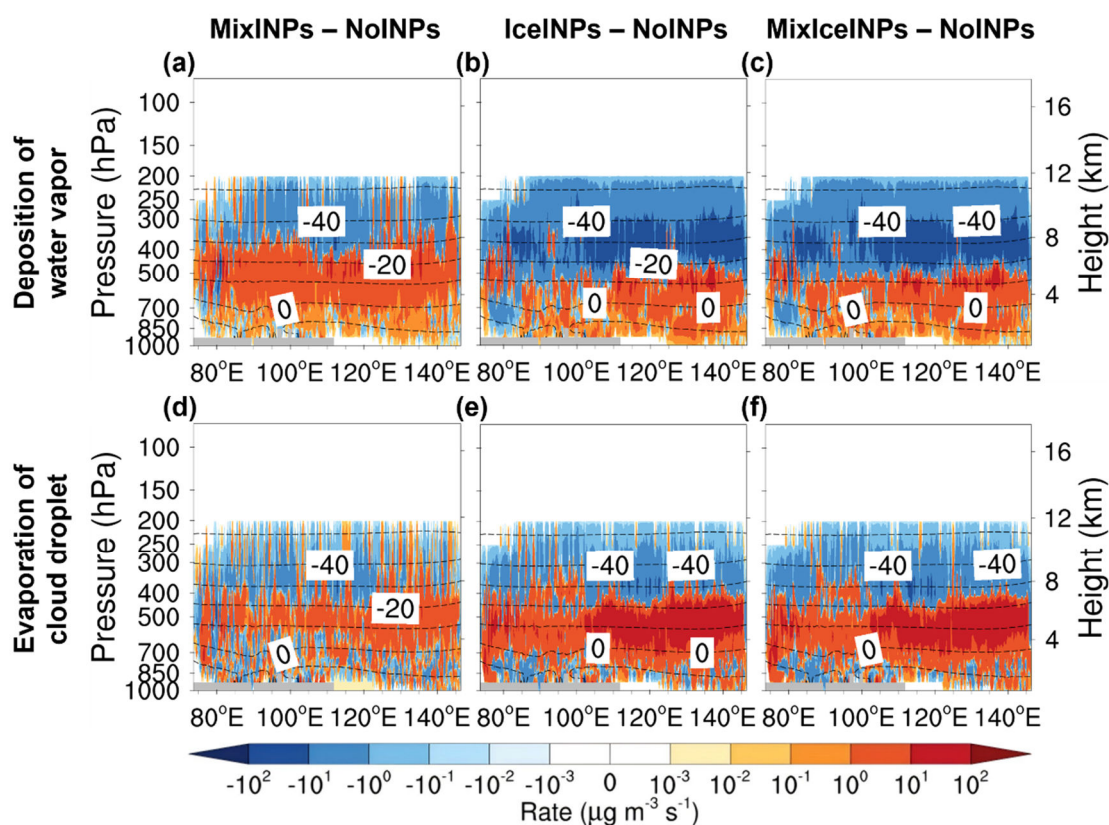


Figure S19. Simulated meridional mean vertical cross-sections of (a–c) deposition rate of water vapor, (d–f) evaporation rate of cloud droplet, for the MixINPs – NoINPs (first column), IceINPs – NoINPs (second column), and MixIceINPs – NoINPs (third column) scenarios. Dashed lines indicate isotherms, and grey shading denotes missing values due to terrain. The simulated results are averages of hourly values from March to May 2018, calculated for grid cells where WBF process occurs, defined by the conditions: (1) the air is supersaturated with respect to ice but subsaturated with respect to liquid water, (2) temperature ranges between -37 and 0°C , and (3) cloud droplets and ice crystals coexist.

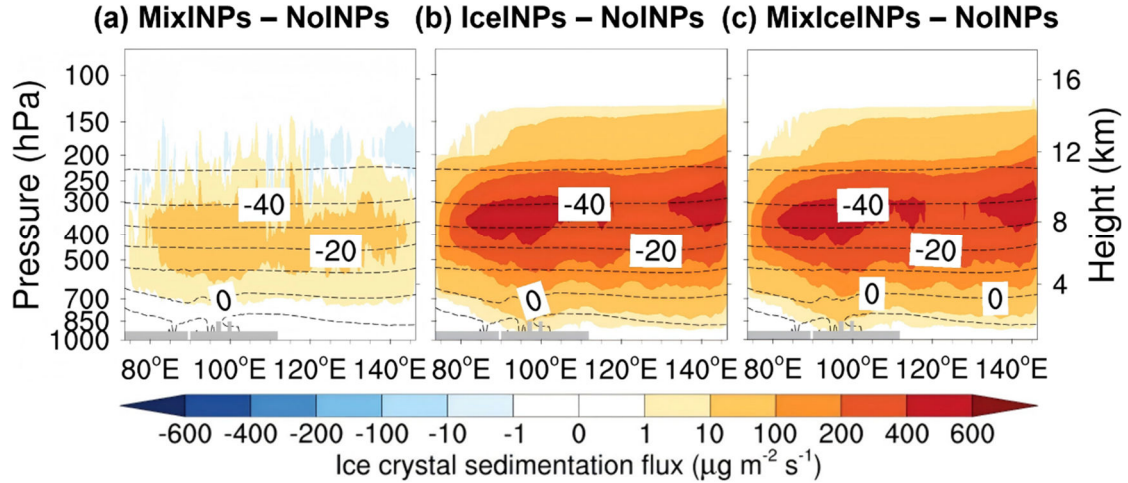


Figure S20. Simulated meridional mean vertical cross-sections of ice crystal sedimentation flux differences: **(a)** MixINPs – NoINPs, **(b)** IceINPs – NoINPs, and **(c)** MixIceINPs – NoINPs. Dashed lines indicate isotherms, and grey shading denotes missing values due to terrain. The simulated results are averages of hourly values from March to May 2018.

More fundamentally, there may be a major flaw in the implementation of the ice formation parameterizations for ice clouds. It is never clear what subgrid-scale vertical velocity is used. At the model resolution employed (27 km), the dynamics of individual parcels are not resolved; using grid-scale vertical velocities would significantly underestimate peak supersaturation and ice formation rates, particularly for homogeneous ice nucleation. This issue would strongly affect, and likely alter, the conclusions of the study. The authors should provide more detailed information on the implementation of the ice nucleation parameterizations and clearly state the assumptions made regarding subgrid-scale dynamics.

Response: We thank the reviewer for raising this important concern regarding the treatment of subgrid-scale vertical velocity in the ice nucleation parameterizations. We agree that at the model resolution used in this study (27 km), grid-scale vertical velocities cannot adequately represent the small-scale variability that governs supersaturation and ice formation, particularly for homogeneous nucleation.

In our implementation, this issue is addressed through a subgrid-scale vertical velocity parameterization following Morrison et al. (2005), based on Ghan et al. (1997). The vertical velocity used in the microphysical calculations is not the resolved grid-scale velocity, but a characteristic subgrid turbulent vertical velocity (w'), representing unresolved fluctuations associated with turbulent mixing. The subgrid vertical velocity is parameterized as:

$$w' = \sqrt{2\pi} \frac{K}{\Delta z}$$

where K (in $\text{m}^2 \text{s}^{-1}$) is the vertical eddy diffusivity and Δz is the model layer thickness.

In this framework, w' is diagnosed from turbulence properties and linked to the intensity of vertical mixing, typically through the vertical eddy diffusivity and the model layer thickness. This parameterized vertical velocity determines the local cooling rate and thus controls supersaturation and ice nucleation rates. Such approaches have been widely adopted in cloud microphysics schemes in both regional and global atmospheric models (Storelvmo et al., 2006; Morrison and Gettelman, 2008).

This treatment allows the model to account for unresolved vertical motions that are essential for cloud microphysical processes, thereby avoiding the substantial underestimation of supersaturation and ice formation that would occur if only grid-scale vertical velocities were used.

To clarify this aspect, we have revised the manuscript (Lines 317–333) to explicitly describe the role of subgrid vertical velocity, its formulation, and the associated assumptions.

Minor comments:

Line 69: Remove “simple.”

Response: We have removed the word “simple” as suggested.

Lines 92–94: Please clarify this sentence. Parameterizations derived for cirrus should be applicable wherever cirrus clouds occur.

Response: We apologize for any confusion caused by the original wording. We appreciate the reviewer’s suggestion for clarification. To address the concern, we have revised the sentence to better explain that INP parameterizations derived for cirrus clouds, which do not account for mixed-phase cloud conditions, cannot fully represent the impact of dust INPs on clouds and radiation.

The revision has been made in accordance with the reviewer’s suggestion in the revised manuscript (Lines 138–140). The revised text is shown below:

“Because most schemes are based solely on cirrus cloud conditions and neglect mixed-phase cloud conditions, they do not fully capture the impact of dust INPs on clouds and radiation.”

Line 159: Consider “the latter mechanism remains...”

Response: We appreciate the reviewer’s suggestion. We have revised the sentence in the revised manuscript (Line 205) to incorporate “the latter mechanism remains” for greater clarity and flow.

Section 2.2.1: Whether immersion freezing is restricted to the presence of liquid water has a significant impact on simulated cloud properties (see, e.g., Tan and Barahona, 2022).

Response: We appreciate the reviewer’s comment. We confirm that, in our model, the immersion freezing scheme is explicitly restricted to the presence of liquid water droplets. Immersion freezing only contributes when liquid water droplets are present, as the activation of INPs occurs within these droplets. We have revised the manuscript to better reflect this clarification.

The revised text in the revised manuscript (Lines 223–224) is shown below:

“Immersion freezing is restricted to the presence of liquid water droplets in our model, as INP activation occurs only within these droplets.”

Lines 215–217: Any droplet reaching -40°C would freeze; it is unclear why heterogeneous ice nucleation would be more likely.

Response: We appreciate the reviewer’s comment. For cloud droplets, freezing is expected to occur at temperatures below -40°C . However, for aerosol solution, the occurrence of homogeneous or heterogeneous nucleation is governed by supersaturation, and freezing does not necessarily occur below -40°C (Koop et al., 2000; Kanji et al., 2017). Heterogeneous nucleation requires lower supersaturation and is therefore easier to occur. This is because INPs provide a surface for ice formation, lowering the activation barrier for freezing. In contrast, homogeneous nucleation requires the formation of a critical ice cluster purely from water molecules, which is more difficult to occur. We have revised the sentence to better clarify this point.

The revised text in the revised manuscript (Lines 261–267) is shown below:

“In the default Morrison microphysics scheme, all cloud droplets and raindrops are assumed to homogeneously freeze into ice crystals at temperatures below -40°C . However, for aerosol solution, the occurrence of homogeneous or heterogeneous nucleation is governed by supersaturation, and freezing does not necessarily occur below -40°C . Heterogeneous nucleation requires lower supersaturation and is therefore easier to occur, as INPs provide surfaces for ice formation, thereby lowering the activation barrier for freezing (Koop et al., 2000; Kanji et al., 2017).”

Line 224: “Before” is ambiguous here.

Response: We apologize for the ambiguity in the original sentence. We have replaced “before” with “earlier than” to clearly indicate the temporal sequence of events, meaning that heterogeneous nucleation can occur prior to homogeneous nucleation. This revision clarifies the intended meaning and eliminates potential confusion.

The revised text in the revised manuscript (Lines 272–275) is shown below:

“In ice clouds, homogeneous nucleation of supercooled droplets can produce numerous small ice crystals, whereas heterogeneous nucleation requires lower relative humidity, may occur earlier than homogeneous nucleation, produces fewer but larger ice crystals, and suppresses homogeneous nucleation.”

Line 316: Please specify whether, in the NoINPs experiment, INPs are represented by the default parameterization or removed entirely.

Response: We appreciate the reviewer’s comment. In the NoINPs experiment, INPs are removed entirely, meaning that heterogeneous nucleation is completely turned off. We have clarified this in the manuscript.

The revised text in the revised manuscript (Lines 384–386) is shown below:

“NoINPs: Heterogeneous nucleation was turned off in both mixed-phase and ice clouds (INPs were removed entirely), while homogeneous nucleation of cloud droplets was active.”

Line 348: Consider “homogeneous and heterogeneous ice nucleation in ice clouds followed...”

Response: We appreciate the reviewer’s suggestion. We have revised the sentence to clarify that both homogeneous and heterogeneous nucleation processes in ice clouds are based on the same reference.

The revised text in the revised manuscript (Lines 417–418) is shown below:

“Homogeneous and heterogeneous ice nucleation in ice clouds followed Barahona and Nenes (2009).”

Line 393: This is a large number of sites. Please describe how samples are collected.

Response: We appreciate the reviewer’s comment. As mentioned in the Section 2.5 (Measurements) of the manuscript, surface PM₁₀ concentrations were obtained from the National Environmental Monitoring Center of China (<https://quotsoft.net/air/>, last access: 28 Oct. 2025). We have also clarified in this section that the data correspond to the sites shown in Fig. 1. Additionally, the figure caption has been revised to indicate the source of the observation data.

The revision to the Section 2.5 (Measurements) in the revised manuscript (Lines 420–422) is shown below:

“Surface PM₁₀ concentrations were obtained from the National Environmental Monitoring Center of China (<https://quotsoft.net/air/>, last access: 28 Oct. 2025) and

correspond to the observation sites shown in Fig. 1.”

The revision to the caption of Fig. 1 in the revised manuscript (Lines 503–508) is shown below:

Figure 1. Comparison between simulated and observed surface monthly mean PM_{10} mass concentrations in (a) March, (b) April, and (c) May 2018. Circles denote monthly mean observations from 1,035 sites, and color shading indicates the corresponding simulated monthly means. The statistics shown above each panel include the normalized mean bias (NMB), normalized mean error (NME), and correlation coefficient (R). The simulated results are from the MixIceINPs scenario and represent averages of hourly values. The observation data were obtained from the National Environmental Monitoring Center of China.

Figure 2: How is supersaturation diagnosed? What assumptions are made regarding subgrid-scale variability?

Response: We greatly appreciate the reviewer’s thoughtful comments. As mentioned in Section 2.5 (Measurements) of the manuscript: *For comparison with observations, modeled INP concentrations were diagnosed offline using parameterization schemes and simulated aerosol properties.* In the evaluation, we assume that the supersaturation used in the simulation is the same as that in the observations, and we do not consider subgrid-scale variability of supersaturation. This is because the observed INP concentrations are measured under specific temperature and ice supersaturation conditions, and including subgrid-scale variability in the simulation would not be meaningful for this comparison.

The observational INP concentrations are derived from environmental aerosol samples collected at the surface, where the ice nucleation activity is measured under controlled temperatures and ice supersaturation conditions. These observations reflect the potential of aerosols to activate as INPs, but they do not provide direct measurements of actual INP concentrations in the atmosphere. To compare the simulation results with the observational data, we apply the same activation conditions (i.e., temperature and ice supersaturation) as those used in the observations. The simulated INP concentrations are then calculated based on the INP parameterization schemes and the simulated aerosol number concentrations.

In summary, the evaluation compares the offline-diagnosed simulated INP concentrations, calculated under the same supersaturation conditions as those in the observations, with the observed INP data. As the evaluation is based on this comparison approach, subgrid-scale variability is not included in this process.

We have revised Section 2.5 (Measurements) to clarify our evaluation approach for simulated dust INP concentrations. The revision in the manuscript (Lines 454–463) is shown below:

“For comparison with observations, modeled INP concentrations were diagnosed

offline using parameterization schemes and simulated aerosol properties. The supersaturation used in the simulation is assumed to be identical to that used in the observations, and no subgrid-scale variability is considered. The observational INP concentrations are derived from aerosol samples collected at surface sites under specific temperatures and ice supersaturation conditions, reflecting the potential for aerosol activation as INP. To compare the simulation results with the observed data, the same activation conditions (temperature and ice supersaturation) as in the observations are applied in the simulation, and the modeled INP concentrations are calculated based on the simulated aerosol number concentrations and the relevant parameterization schemes.”

Lines 524–526: Low ice crystal concentrations from homogeneous ice nucleation may indicate overly weak vertical velocities.

Response: We thank the reviewer for this insightful comment. We agree that overly weak vertical velocities could potentially lead to underestimated supersaturation and thus reduced homogeneous ice nucleation.

To further examine this issue, we conducted an additional sensitivity experiment using an alternative subgrid vertical velocity parameterization based on turbulent kinetic energy (TKE), following Morrison and Pinto (2005). The subgrid vertical velocity is parameterized as:

$$w' = \sqrt{\frac{2}{3} TKE}$$

In this approach, the subgrid vertical velocity is diagnosed from TKE provided by the planetary boundary layer (PBL) scheme, which generally yields stronger vertical velocity fluctuations compared to eddy-diffusivity-based formulations, as supported by the simulated subgrid vertical velocity in Fig. S12 (shown below).

Previous studies have shown that TKE-based subgrid vertical velocity tends to produce higher updraft velocities and may even lead to overestimation of ice crystal number concentrations (Zhou et al., 2016). Therefore, this experiment provides a useful upper-bound test for the role of subgrid vertical velocity in controlling homogeneous nucleation.

Figures S13 and S14 (shown below) show that, despite the use of stronger subgrid vertical velocities in the TKE-based scheme, the overall behavior remains unchanged: the contribution of homogeneous nucleation remains much smaller than that of heterogeneous nucleation, and the low concentration of homogeneously formed ice crystals persists. This indicates that the limited occurrence of homogeneous nucleation in our simulations is not primarily caused by weak vertical velocities, but rather by the relatively low frequency of sufficiently high ice supersaturation conditions. Furthermore, the relatively low frequency of high ice supersaturation is

consistent with the climate characteristics of the dust regions of East Asia in spring, where dry conditions prevail (Gerelmaa et al., 2015).

Therefore, we conclude that our original interpretation remains valid. To clarify this point, we have added a new sensitivity experiment and corresponding discussion (Section 3.2.5: Sensitivity to subgrid vertical velocity parameterization) in the revised manuscript (Lines 877–909).

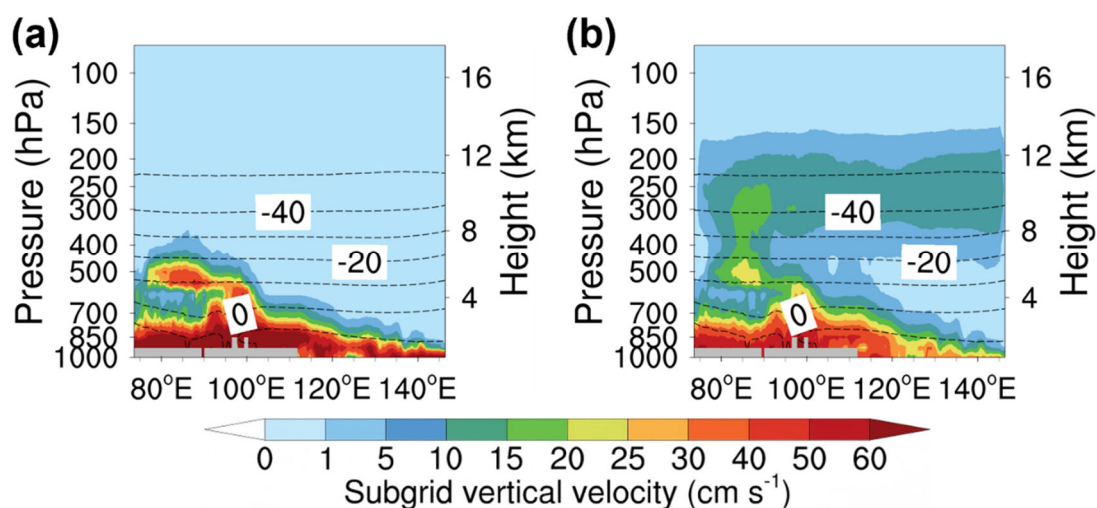


Figure S12. Simulated meridional mean vertical cross-sections of subgrid vertical velocity from (a) the eddy-diffusivity-based parameterization and (b) the turbulent-kinetic-energy-based parameterization. Dashed lines indicate isotherms, and grey shading denotes missing values due to terrain. The simulated results are averages of hourly values from May 2018. The results for May are very similar to those for the entire spring season (March–May), as shown in Fig. 3 and Fig. S13, Fig. 5 and Fig. S17, and Fig. 6 and Fig. S17, indicating that May’s results effectively represent the spring season.

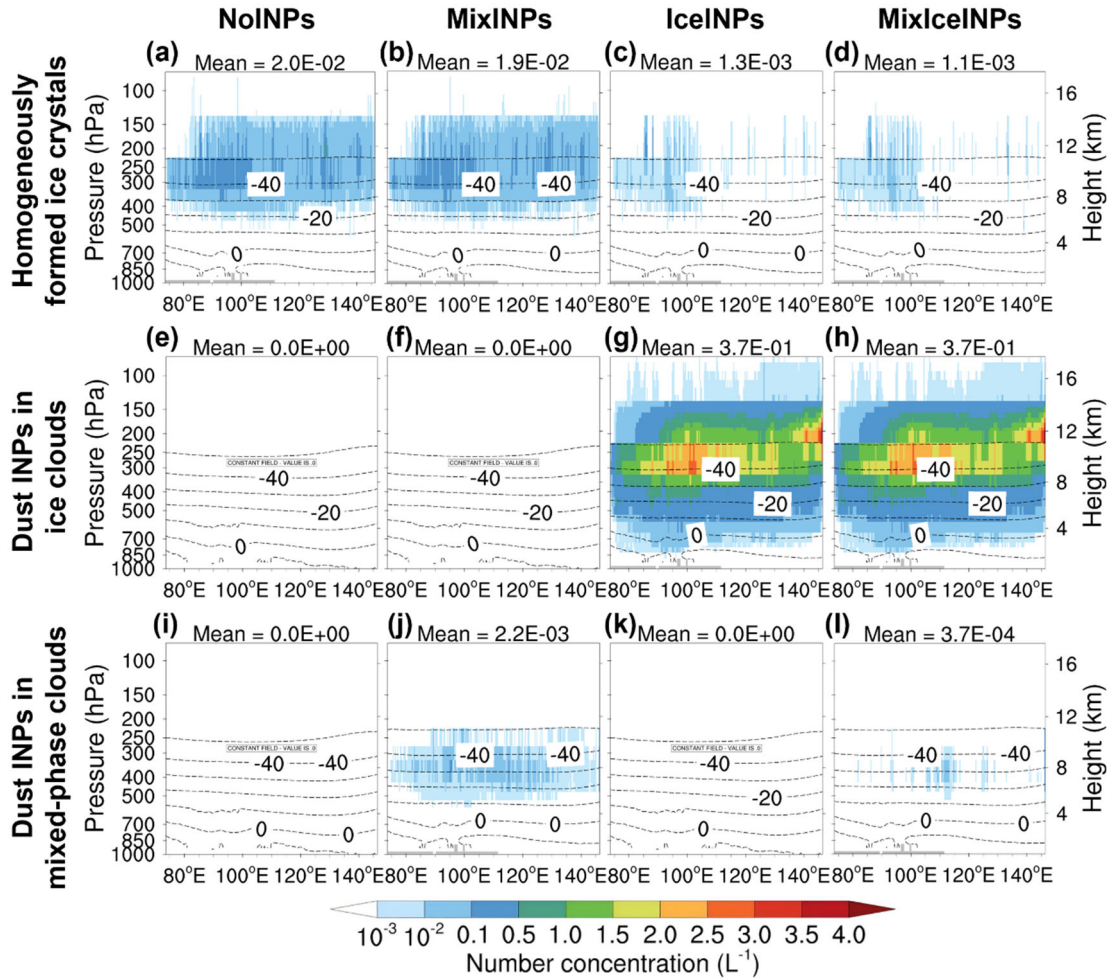


Figure S13. Simulated meridional mean vertical cross-sections of (a–d) homogeneously formed ice crystals, (e–h) dust INPs in ice clouds, and (i–l) dust INPs in mixed-phase clouds, for the NoINPs (first column), MixINPs (second column), IceINPs (third column), and MixIceINPs (fourth column) scenarios. Dashed lines indicate isotherms, and grey shading denotes missing values due to terrain. The mean value over the plotted region is shown above each panel. The simulated results are averages of hourly values from May 2018.

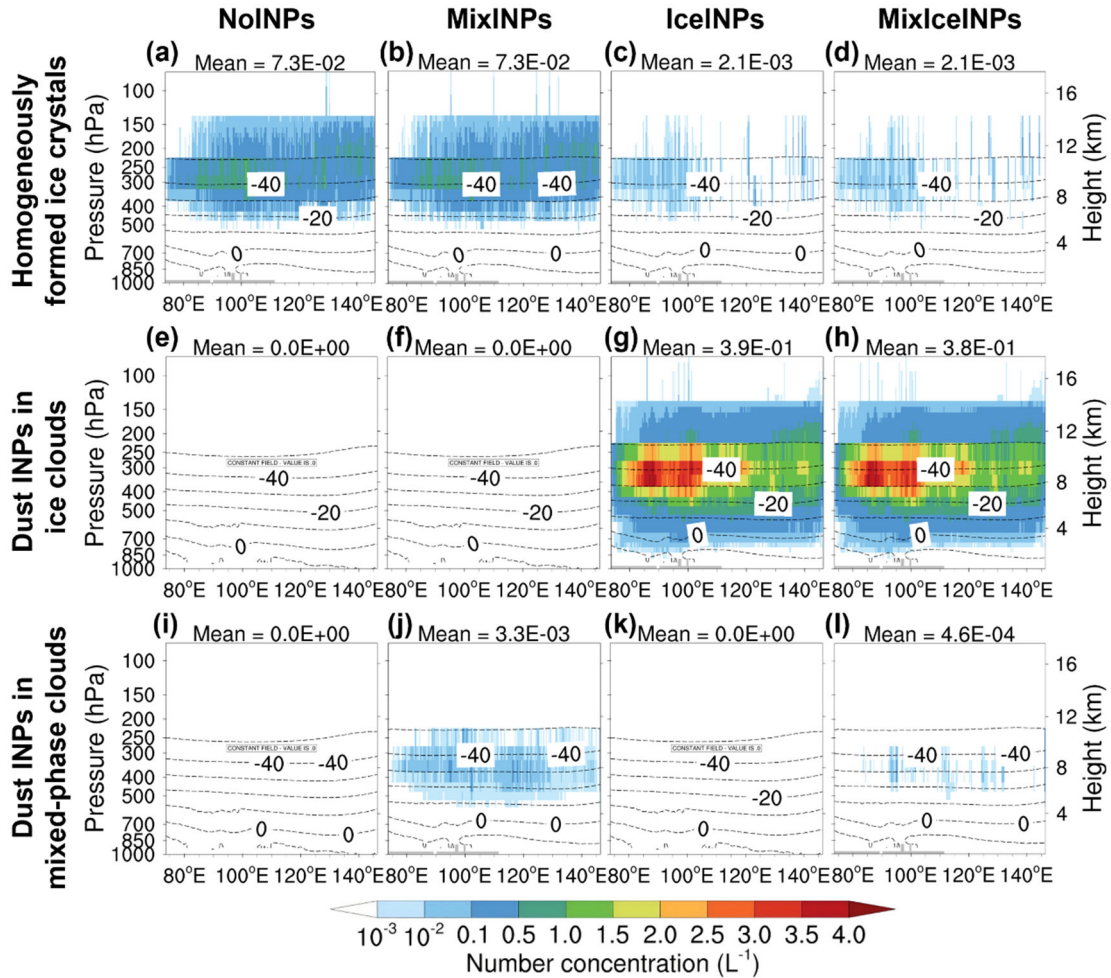


Figure S14. Same as Fig. S13, except that the subgrid vertical velocity is diagnosed using the turbulent-kinetic-energy-based parameterization, with stronger values.

Line 538: Is dust transported with cloud droplets in the convective parameterization?

Response: We thank the reviewer for this insightful question. In the WRF-Chem model (Grell et al., 2005), dust is treated as an aerosol tracer and is transported by convective mass fluxes when chemistry convective transport is activated. When convective wet scavenging is enabled, a fraction of dust is partitioned into convective cloud water, effectively coupling it to cloud droplets. This cloud-borne fraction can subsequently be transferred to precipitation and removed via wet scavenging. In our simulations, both processes are active, so dust is indirectly transported together with convective cloud droplets through the combined effect of chemistry convective transport and convective wet scavenging, even though it is not physically attached to individual cloud droplets.

Lines 600–602: Again, please ensure this result is not driven by weak subgrid-scale vertical velocities.

Response: We thank the reviewer for this helpful comment. We agree that it is important to ensure that the simulated increase in ice crystal number concentration is not an artifact of underestimated subgrid vertical velocities.

To address this concern, we performed a sensitivity experiment using an alternative subgrid vertical velocity parameterization based on turbulent kinetic energy (TKE), following Morrison and Pinto (2005). As discussed in our response above, this approach generally produces stronger vertical velocity fluctuations and has been shown in previous studies (Zhou et al., 2016) to potentially overestimate ice crystal number concentrations due to enhanced supersaturation.

The results of this sensitivity experiment, shown in Fig. S15 and Fig. S16 (shown below), indicate that the key features of our findings remain unchanged. In particular, the sharp increase in ice crystal number concentration in the IceINPs scenario persists, and the dominance of heterogeneous nucleation over homogeneous nucleation is still evident. This demonstrates that the simulated enhancement of ice crystal number concentration is not driven by weak subgrid vertical velocities.

Instead, the results are primarily controlled by the much higher concentrations of dust INPs relative to homogeneously nucleated ice crystals, which strongly favor heterogeneous nucleation. Therefore, the mechanism described in the manuscript remains robust.

We have added a sensitivity analysis and corresponding discussion (Section 3.2.5: Sensitivity to subgrid vertical velocity parameterization) in the revised manuscript (Lines 877–909) to clarify this point.

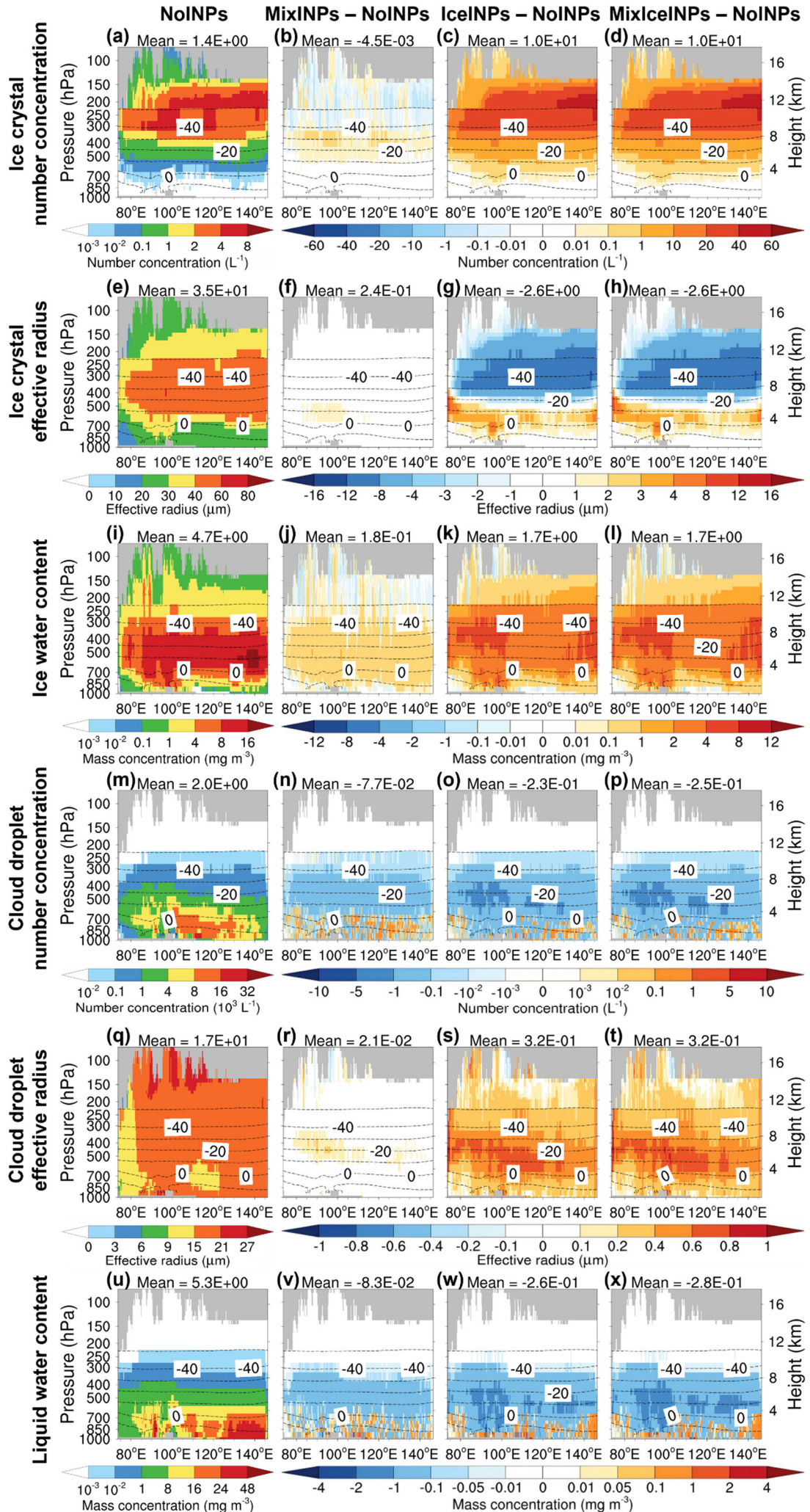


Figure S15. Simulated meridional mean vertical cross-sections of **(a–d)** ice crystal number concentration, **(e–h)** ice crystal effective radius, **(i–l)** ice water content, **(m–p)** cloud droplet number concentration, **(q–t)** cloud droplet effective radius, and **(u–x)** liquid water content, for the NoINPs (first column), MixINPs – NoINPs (second column), IceINPs – NoINPs (third column), and MixIceINPs – NoINPs (fourth column) scenarios. Dashed lines indicate isotherms, and grey shading denotes missing values due to terrain or filtering of non-cloud grid cells (where the sum of ice and liquid water mixing ratios is less than 10^{-6} kg kg⁻¹). The mean value over the plotted region is shown above each panel. The simulated results are averages of hourly values from May 2018.

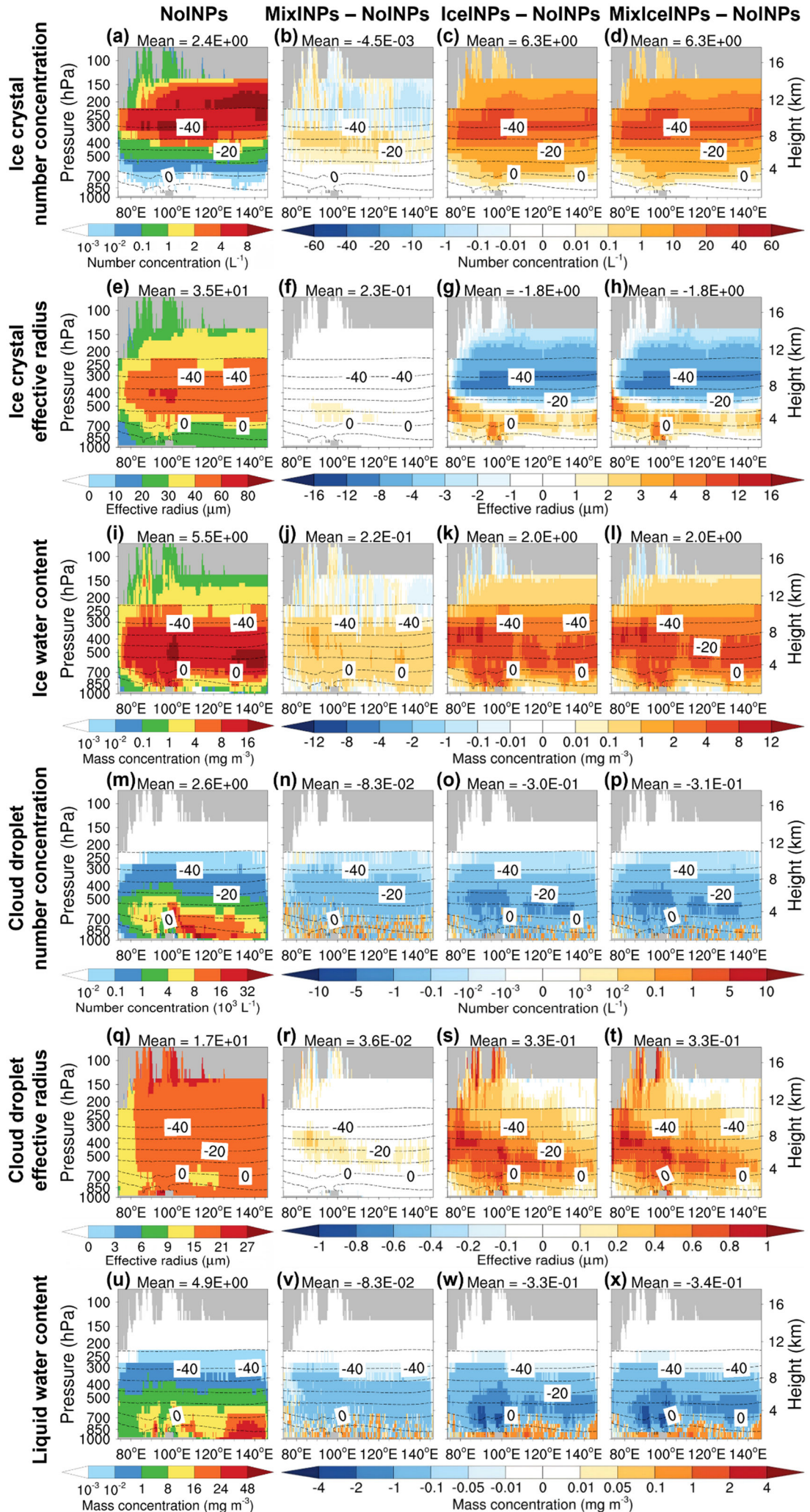


Figure S16. Same as Fig. S15, except that the subgrid vertical velocity is diagnosed using the turbulent-kinetic-energy-based parameterization, with stronger values.

Figure 10: The proposed mechanisms are largely speculative and should be supported by diagnosed WBF rates. The figure also seems misplaced in the conclusions.

Response: We thank the reviewer for this helpful comment. Detailed explanations and supporting figures have already been provided in the previous responses. Here we briefly summarize the key points. We agree that the mechanisms illustrated in Figure 10 should be supported by explicit diagnostics rather than remaining conceptual. Following this suggestion, we have added a dedicated analysis of the key microphysical processes in Sect. 3.2.3, including both the WBF process and ice crystal sedimentation.

For the WBF process, we diagnose cloud droplet evaporation and vapor deposition under WBF-favorable conditions. The results show a clear enhancement of both rates, providing direct evidence of an accelerated transfer of water from the liquid phase to the ice phase.

For sedimentation, we analyze the ice crystal sedimentation flux. The results indicate enhanced sedimentation from ice clouds, together with a weaker increase below, suggesting partial retention and accumulation of ice crystals within mixed-phase cloud layers. This supports the proposed role of sedimentation in increasing ice crystal number concentration and reinforcing the WBF process in mixed-phase clouds.

These diagnostics provide direct process-level evidence supporting the mechanisms summarized in Figure 10.

In addition, we agree that Fig. 10 was not optimally placed in the original manuscript. The figure has now been moved from the *Conclusions* section to the *Results and Discussion* section, where it is directly linked to the corresponding process-based analysis.

The manuscript has been revised accordingly to better integrate the figure with the supporting evidence and to ensure that the proposed mechanisms are clearly substantiated.

Code and data availability: At minimum, the source data for the figures should be made available. Please also indicate the sources of the model code and parameterizations, even if they were modified by the authors.

Response: We thank the reviewer for this important comment regarding code and data availability.

Following the suggestion, we have uploaded the source data used to generate all figures to a Zenodo repository and provided access via a preview link. The repository is currently in preview mode because the manuscript is still under review and the dataset may be updated in response to further reviewer comments. As Zenodo records cannot be modified after being made public, we defer final publication of the dataset until the manuscript is finalized. A permanent public link will be provided upon

acceptance of the manuscript.

Regarding the model, this study is based on the official release of WRF-Chem v4.2, which is publicly available from the WRF model repository. The model was further developed in this study as described in Sect. 2. The modified model code is available upon request from the corresponding author.

We have revised the “Code and data availability” section in the manuscript (Lines 1007–1019) to clarify both the current data access and the source of the model code.

Reference

- Gerelmaa, D., Liu, G.-R., Kuo, T.-H., and Lin, T.-H.: Analysis of aerosol properties coupled with meteorological parameters over east Asia, *Terr., Oceanic Atmos. Sci.*, 26, 301, [https://doi.org/10.3319/TAO.2014.12.03.01\(A\)](https://doi.org/10.3319/TAO.2014.12.03.01(A)), 2015.
- Ghan, S. J., Leung, L. R., Easter, R. C., and Abdul-Razzak, H.: Prediction of cloud droplet number in a general circulation model, *J. Geophys. Res.: Atmos.*, 102, 21777–21794, <https://doi.org/10.1029/97JD01810>, 1997.
- Grell, G. A., Peckham, S. E., Schmitz, R., McKeen, S. A., Frost, G., Skamarock, W. C., and Eder, B.: Fully coupled “online” chemistry within the WRF model, *Atmos. Environ.*, 39, 6957–6975, <https://doi.org/10.1016/j.atmosenv.2005.04.027>, 2005.
- Kanji, Z. A., Ladino, L. A., Wex, H., Boose, Y., Burkert-Kohn, M., Cziczo, D. J., and Krämer, M.: Overview of ice nucleating particles, *Meteorol. Monogr.*, 58, 1.1-1.33, <https://doi.org/10.1175/AMSMONOGRAPHS-D-16-0006.1>, 2017.
- Koop, T., Luo, B., Tsias, A., and Peter, T.: Water activity as the determinant for homogeneous ice nucleation in aqueous solutions, *Nature*, 406, 611–614, <https://doi.org/10.1038/35020537>, 2000.
- Morrison, H. and Gettelman, A.: A new two-moment bulk stratiform cloud microphysics scheme in the community atmosphere model, version 3 (CAM3). Part I: Description and numerical tests, *J. Clim.*, 21, 3642–3659, <https://doi.org/10.1175/2008JCLI2105.1>, 2008.
- Morrison, H. and Pinto, J. O.: Mesoscale modeling of springtime arctic mixed-phase stratiform clouds using a new two-moment bulk microphysics scheme, *J. Atmos. Sci.*, 62, 3683–3704, <https://doi.org/10.1175/JAS3564.1>, 2005.
- Morrison, H., Curry, J. A., and Khvorostyanov, V. I.: A new double-moment microphysics parameterization for application in cloud and climate models. Part I: Description, *J. Atmos. Sci.*, 62, 1665–1677, <https://doi.org/10.1175/JAS3446.1>, 2005.
- Pruppacher, H. R., Klett, J. D., and Wang, P. K.: Microphysics of clouds and precipitation, *Aerosol Sci. Technol.*, 28, 381–382, <https://doi.org/10.1080/02786829808965531>, 1998.
- Storelvmo, T., Kristjánsson, J. E., Ghan, S. J., Kirkevåg, A., Seland, Ø., and Iversen, T.: Predicting cloud droplet number concentration in community atmosphere model (CAM)-oslo, *J. Geophys. Res.: Atmos.*, 111,

<https://doi.org/10.1029/2005JD006300>, 2006.

Zhou, C., Penner, J. E., Lin, G., Liu, X., and Wang, M.: What controls the low ice number concentration in the upper troposphere?, *Atmos. Chem. Phys.*, 16, 12411–12424, <https://doi.org/10.5194/acp-16-12411-2016>, 2016.