

~~Sphagnum~~ *Sphagnum* and Herbaceous Net Ecosystem Exchanges in a Pyrenean Peatland: A Long-Term Study Using the ISBA Model

Raphael Garisoain^{1,2}, Christine Delire¹, Bertrand Decharme¹, and Laure Gandois²

¹Météo-France, CNRS, Univ. Toulouse, CNRM, Toulouse, France.

²CRBE, Université de Toulouse, CNRS, Toulouse, France

Correspondence: Raphael GARISOAIN (raphael.garisoain@univ-tlse3.fr)

Abstract. Peatlands play a crucial role in the global carbon cycle, acting as long-term carbon sinks. However, their stability is increasingly threatened by climate change, particularly through rising temperatures and the intensification of droughts. This study focuses on the Bernadouze peatland in the Pyrenees Mountains and aims to validate a newly implemented ~~Sphagnum~~ *Sphagnum* Plant Functional Type (PFT) in the ISBA land surface model, assess the temporal evolution of carbon fluxes over the past ~~70~~ *64* years, and investigate the factors influencing carbon accumulation, with a particular emphasis on drought events.

The model was validated using in situ data, demonstrating reliable carbon flux estimations. Using this validated model, we reconstructed the net ecosystem exchange (NEE) dynamics of the Bernadouze peatland from 1959 to 2022. The results reveal significant interannual variability in NEE, largely driven by air temperature and water table depth. While the peatland has remained a carbon sink, extreme droughts such as those in 1989, 1994, 2003, and most recently 2022 have led to substantial CO_2 emissions.

Our findings suggest that although increasing temperatures have extended the growing season and enhanced gross primary productivity (GPP), the rising frequency and intensity of droughts pose a long-term risk to peatland carbon storage. The dryness index developed in this study appears to be a strong predictor of summer and annual NEE, offering a potential tool for estimating carbon fluxes in peatlands lacking direct measurements.

1 Introduction

Peatlands are vital to the global carbon cycle, serving as significant carbon reservoirs and actively exchanging CO_2 and methane with the atmosphere (Gorham et al., 2012). However, the stability of these carbon stocks is increasingly threatened by global warming (Page and Baird, 2016; Carter et al., 2012; Loisel et al., 2021), highlighting the need for precise models to predict their carbon balance. This concern is particularly relevant in mountainous regions, where climate change is expected to be ~~most~~ *more* pronounced (Rogora et al., 2018), potentially affecting the functioning of mountain peatland ecosystems.

Models have been developed to represent the biophysical and biogeochemical processes that occur in peatlands. *Sphagnum* mosses are considered the dominant vegetation in Northern peatlands (Turetsky, 2003) and function differently from vascular plants, lacking stomata to regulate their water content (Clymo and Hayward, 1982). They acquire water either by absorbing atmospheric precipitation or through capillary action directly from the soil surface. Their presence is also crucial for the accumulation of organic carbon in peatlands, as they have a lower litter decomposition rate compared to vascular plants (Scheffer et al., 2001; Lang et al., 2009). As a result, various classes of models have been developed to account for the role of *Sphagnum* mosses, reflecting diverse approaches. Dynamic vegetation and ecosystem models, developed as offline tools without ~~considering~~ atmospheric, climate ~~and carbon feedbacks~~ have incorporated them into their framework, or carbon feedbacks, have since incorporated these processes into their frameworks. (Wania et al., 2009; Frohling et al., 2010; Walker et al., 2017; Gong et al., 2020; Metzger et al., 2016). Furthermore, specific Continental Surface ~~models~~ Models (CSMs) have been developed for the representation of peatlands (St-Hilaire et al., 2010; Wu and Blodau, 2013b; Wu et al., 2016; Wania et al., 2013; Park et al., 2018). There have also been ongoing efforts to improve the representation of *Sphagnum* mosses in Global Land Surface models, with varying degrees of complexity and scope (Chadburn et al., 2015; Porada et al., 2016; Druel et al., 2017; Qiu et al., 2019; Shi et al., 2015; Grant et al., 2012; Shi et al., 2021).

Efforts to study peatland responses to drought episodes increasingly rely on field measurements and mesocosm experiments (Sterk et al., 2023; Robroek et al., 2024), though research in this area remains limited. A significant limitation of these methods is the scarcity of continuous field measurements capturing medium-term carbon fluxes over decades or longer. Such data would offer critical insights into the frequency and long-term effects of episodic drought events on carbon accumulation. Current carbon flux measurements are generally restricted to contemporary dynamics, which exhibit notable interannual variability, complicating efforts to extrapolate trends over medium or long-term timescales (Young et al., 2021). To explore long-term carbon accumulation dynamics, peat coring analyses provide a reliable means of determining the ~~Average long-term apparent rates of C accumulation~~ average Long-term apparent Rates of C Accumulation (LORCA), offering insights into millennia of accumulation (Turunen, 2003). Additionally, based on the same methodology, the Actual Rate of Carbon Accumulation (ARCA) can be determined, theoretically enabling the observation of carbon accumulation over decades or centuries (Chaudhary et al., 2017). Interest in ARCA has grown recently, particularly as a means of assessing the effects of climate and environmental changes on carbon accumulation. However, its reliability has been questioned (Young et al., 2021; Frohling et al., 2014), as ARCA does not accurately reflect the net balance of organic carbon in peatlands. An alternative approach involves modeling exercises that combine peat core age data with empirical models of organic matter decomposition. This allows reconstruction of historical carbon fluxes, linking absorbed and released carbon to initial peatland carbon stock (Yu, 2011; Packalen and Finkelstein, 2014; Frohling et al., 2010; Bunsen and Loisel, 2020; Loisel and Yu, 2013). In this study, we propose another complementary approach, leveraging ~~continental surface models~~ a CSM that use atmospheric forcing data as input. Observationally-based atmospheric forcings, available with hourly resolution for some regions since the 1960s, provide a robust basis for modeling peatland evolution over the past several decades.

Against the backdrop of Europe’s severe drought in 2022 (Faranda et al., 2023), recent research on the Bernadouze peatland in the Pyrenees mountains identified a significant carbon release to the atmosphere during this event, supported by six years of field data (Garisoain et al., 2024). This drought presents a compelling case within a ~~70-year~~ 64 year record, raising questions about its severity as an isolated event versus its representation of a broader trend. Additionally, it prompts examination of whether the peatland’s functioning during 2022 aligns with long-term behavior.

To address these questions, this study pursues three key objectives: (1) Implementation and first-site evaluation of a new *Sphagnum* Plant Functional Type (PFT) within the ISBA land surface model; (2) Assessment of the temporal evolution of carbon fluxes from the Bernadouze peatland over the past ~~70 years~~ 64 years; (3) Investigation of the factors influencing carbon accumulation, with a particular focus on drought episodes.

2 MATERIALS AND METHODS

2.1 Study site

The Bernadouze peatland, located at an altitude of 1,343 m in the eastern French Pyrenees (42.80273°N; 1.42361°E), covers roughly 4.7 hectares and is part of a national biological reserve. Designated as a regional biological reserve since 1983 and a Natura 2000 site since 2007, it is one of the four sites of the French National Peatland Observatory Service SNO-Tourbieres. Characteristic of alpine and southwestern European mountainous peatlands, it is classified as a soligenous fen, continuously receiving water from precipitation and surface runoff. It has formed over the past 5000 years within a 1.4 km watershed with steep slopes averaging 50%. A beech forest surrounds the fen, extending up to 1,800 m. The peatland has an average peat depth of 2 m, reaching up to 6 m in some areas. The vegetation comprises species typical of both ombrotrophic areas, such as *Sphagnum* ~~palustre and~~ palustre and *Sphagnum capillifolium*, and minerotrophic areas, including ~~Carex demissa and Equisetum fluviatile~~ (Henry et al., 2014); see also ~~Carex demissa and Equisetum fluviatile~~ (Henry et al., 2014). This distribution is illustrated in Figure 1 ~~in Garisoain et al. (2023)~~ of Garisoain et al. (2023), which shows the spatial arrangement of vegetation types across the study site.

2.2 Environmental monitoring

Piezometer wells are 50 mm diameter PVC tubes, distributed across the peatland to cover the full spatial extent of the site (Figure 1 from Garisoain et al. (2024)), and their placement corresponds to the locations where chamber measurements were conducted. Water table depth (WTD) ~~is monitored by nine automatic piezometer probes (Orpheus Mini water level loggers), with data recorded hourly~~ data were recorded at 1-hour intervals, and the mean value from the nine piezometers is used throughout the study. As in precedent studies of the same peatland (Garisoain et al., 2023, 2024) we used the S2M reanalysis, which combines the French weather service SAFRAN meteorological reanalysis (8 km resolution) with the SURFEX/ISBA-Crocus snow cover model (Vernay et al., 2022).

The S2M chain was applied in a local mode at the scale of the "Couserans" massif ~~;~~ (a mountainous region in the central Pyrenees, southwestern France), assuming homogeneous weather conditions across the massif for equivalent altitudes but accounting for local topographic features in the calculation of shortwave radiation. ~~The~~ The S2M model has a vertical resolution of ~~the S2M model is~~ 300 m ~~;~~ ~~with an hourly frequency;~~ ~~the site's topographical features and provides hourly outputs.~~ The topographical features of the peatland, including altitude, slope, and aspect ~~of the peatland~~, were carefully ~~considered.~~ ~~This provides access to all atmospheric variables surrounding the peatland~~ accounted for to ensure that the atmospheric variables extracted for the site accurately represent local conditions.

2.3 Carbon fluxes

Hourly validated time series of CO_2 fluxes (GPP, ER, and NEE) spanning 2017 to 2022 are available, as detailed by Garisoain et al. (2024). ~~These datasets were obtained through statistical modeling.~~ These time series were derived from statistical models based on monthly CO_2 flux measurements using the static chamber technique. ~~In subsequent sections of this study, these statistical models will serve~~ The use of the statistical model allows reconstruction of daily fluxes, enabling direct comparison with the ISBA model outputs at the same temporal resolution. The reconstructed fluxes are considered spatially representative of the peatland due to the coverage and replication of the chamber measurements. In the following sections, these reconstructed datasets are used as a reference for model validation, and readers should note that the validation is performed against the derived statistical model rather than the raw measurements.

2.4 Model development

In the present study, we utilize the ISBA model, which is part of the SURFEX land surface modeling platform (Version 9) and serves as the land surface component of the global Earth System Model CNRM-ESM (Delire et al., 2020). ISBA is widely employed to simulate surface processes, but it does not currently represent mosses or *Sphagnum*, which are essential components of ecosystems such as peatlands. To address this limitation, we introduce a new plant functional type (PFT) designed specifically for modeling mosses and *Sphagnum* within the ISBA framework. This work details the implementation of this novel PFT and the associated modifications to the model to better represent the dynamics of peatland ecosystems. The other PFTs, representing vegetation types such as herbaceous plants and trees, have been thoroughly described in the existing literature (Gibelin et al., 2008).

2.4.1 Photosynthesis of ~~Sphagnum~~ Sphagnum

Plant photosynthesis is modeled according to the description by ~~(Goudriaan, 1986) and (Jacobs, 1994)~~ Goudriaan (1986) and Jacobs (1994), focusing on the equations involving ~~light dependency (2) and~~ the dependence on mesophyll conductance or CO_2 (1) and light dependency (2).

$$120 \quad Am = Am_{max} \times \left(1 - e^{-\frac{gm^*(C_i - \Gamma)}{Am_{max}}}\right) \quad (1)$$

Am is the assimilation rate under light-saturated conditions ($Kg.m^{-2}.s^{-1}$), Am_{max} is the maximum assimilation rate ($Kg.m^{-2}.s^{-1}$), gm^* is the mesophyll conductance without water stress ($m.s^{-1}$), C_i ($Kg.m^{-3}$) is the internal mesophyll CO_2 concentration (see equation [B4\(4\)](#)) and Γ ($Kg.m^{-3}$) is the CO_2 compensation point, ~~that's to say~~ [meaning](#) the CO_2 concentration below which the plant no longer fixes CO_2 , ~~both in $Kg.m^{-3}$.~~

$$125 \quad A_n = (Am + R_d) \times \left(1 - e^{-\frac{\epsilon I_a}{Am + R_d}}\right) - R_d \quad (2)$$

A_n is the net assimilation rate $Kg.m^{-2}.s^{-1}$, R_d is the "dark respiration" $Kg.m^{-2}.s^{-1}$, ϵ the light use efficiency $Kg.J^{-1}$ ~~et~~ [and](#) I_a [is](#) the photosynthetically active radiation $W.m^{-2}$.

$$R_d = \frac{Am}{9} \quad (3)$$

[R_d](#) is the mitochondrial respiration, empirically fixed.

130

In ISBA, gm^* and Am_{max} depend on the ~~type of PFT (plant type)~~ [PFT parameters](#) and the leaf surface temperature following a Q10 function, modified by Collatz et al. (1992) to account for inhibitions (Jacobs et al., 1996). Then, gm^* is replaced by gm , which allows accounting for plant water stress conditions (see Table A1). Thus, the effect of stomatal closure on photosynthesis in ISBA is controlled by gm , not by gs (the stomatal conductance), which is
 135 calculated as a function of A_n and used solely to determine transpiration fluxes (see equation [\(B5\)](#), [Appendix B](#)).

To model the photosynthesis of *Sphagnum* mosses, only mesophyll conductance has been considered to contribute to photosynthesis, even though the transfer of CO_2 within the hyaline cells is still poorly understood (Weston et al., 2015). Since *Sphagnum* mosses lack stomata, stomatal conductance is no longer defined for the *Sphagnum* PFT.
 140 Therefore, the relationship between *Sphagnum* moss photosynthesis and *Sphagnum* moss water content is accounted for through gm . ~~Shi et al. (2021); Walker et al. (2017)~~ [Shi et al. \(2021\) and Walker et al. \(2017\)](#) described *Sphagnum* moss photosynthesis using the concept of total *Sphagnum* moss CO_2 conductance, derived from measurements by Williams and Flanagan (1998) relating *Sphagnum* moss water content to *Sphagnum* moss CO_2 conductance. In our
 145 case, we relate *Sphagnum* moss mesophyll conductance and total *Sphagnum* moss CO_2 conductance. Although they are not the same physical quantity. In ~~Jacobs'~~ [Jacobs \(1994\)](#) description, gm is the closest approximation to total CO_2 conductance. Hence, ~~part of the work involved parameterizing the equation by Williams and Flanagan (1998) to link gm and g_{tot} according to equation (5), where g_{tot} is defined as the~~ [the](#) normalized total *Sphagnum* moss CO_2 conductance ([g_{tot}](#)) ~~was first defined following Gong et al. (2020) (equation (4) and Figure A1)~~ [according to](#)

(Gong et al., 2020). This variable was then used to parameterize the relationship between gm and g_{tot} proposed by Williams and Flanagan (1998) (equation (5)).

$$g_{tot} = \begin{cases} (\beta + \gamma \times w_{Sp} + \eta \times w_{Sp}^2) & \text{if } w_{opt} \geq w_{Sp} \geq w_{min} \\ (1 - 0.8 \times \frac{w_{Sp} - w_{opt}}{w_{max} - w_{opt}}) & \text{if } w_{Sp} \geq w_{opt} \\ 0 & \text{if } w_{Sp} \leq w_{min} \end{cases} \quad (4)$$

$$gm = \alpha \times g_{tot} \quad (5)$$

$$\eta = \frac{\beta - 1}{w_{opt}^2} \quad \gamma = -2 \times w_{opt} \times \eta \quad (6)$$

Where w_{Sp} is the water content of *Sphagnum* mosses ($g.g^{-1}$), g_{tot} is the normalized total conductance, β , γ , η are coefficients given in Table A2, w_{min} and w_{max} respectively the maximum and minimum water content of *Sphagnum* mosses ($g.g^{-1}$), w_{opt} ($g.g^{-1}$) is the water content of *Sphagnum* that maximizes g_{tot} and α ($m.s^{-1}$) is a parametrized coefficient given in Table A2.

2.4.2 Leaf area index - Canopy scaling

The evolution of ~~Sphagnum~~-*Sphagnum* moss biomass results from the balance between carbon assimilation through photosynthesis and ~~Sphagnum~~-*Sphagnum* moss mortality, calculated according to Equation-equation (7):

$$\frac{\Delta B}{\Delta t} = A_c - R_c - \frac{B}{\Delta t} \exp\left(\frac{-t}{\tau}\right) \quad (7)$$

where B is the active biomass of *Sphagnum* mosses in $kg.m^{-2}$, $\frac{B}{\Delta t} \exp\left(\frac{-t}{\tau}\right)$ is the mortality of the *Sphagnum* moss biomass, τ is the characteristic mortality time, Δt is a timestep of one day, A_c is the net assimilation of the *Sphagnum* mosses canopy and R_c is the respiration of *Sphagnum* mosses canopy ($A_c = LAI \times A_n$, $R_c = LAI \times R_d$).

The LAI is directly calculated from the leaf biomass reservoir B according to:

$$LAI = B \times SLA \quad (8)$$

where SLA (specific leaf area) is a foliar vegetation index representing the leaf area per unit of assimilated carbon ($m^2.m^{-2}.Kg^{-1}$).

$$SLA = e \times N_m + f \quad (9)$$

170 Here, N_m is the mass-based nitrogen concentration in the leaf (Calvet and Soussana, 2001). The SLA (~~constants e and f~~) is defined for each vegetation type.

Once net assimilation is calculated, multiplying by the LAI allows for scaling from the individual *Sphagnum* strand to the *Sphagnum* canopy. The ISBA model follows the assumption of maintaining constant temperature, humidity, and CO_2 concentration throughout the canopy. Additionally, a radiative transfer model for photosynthetically active radiation was developed by Carrer et al. (2013), allowing for the representation of light diffusion within a canopy based on its LAI. This module accounts for the decrease in light radiation along the vertical profile of the canopy (with more light at the top of the canopy) as well as the diffusion of light towards the lower parts of the canopy. The attenuation of light within the canopy thus leads to a decreasing vertical profile of photosynthesis within the canopy. Leaf respiration, on the other hand, is assumed to be constant along the vertical profile of the canopy. Canopy respiration corresponds to the respiration calculated at the leaf level multiplied by the LAI.

2.4.3 Biomass pools

In the original ISBA model, vegetation is represented by up to six biomass reservoirs: leaves, stem, wood, fine and coarse roots, and a small storage pool corresponding to nonstructural carbohydrates (Gibelin et al., 2008; Delire et al., 2020). For ~~grasses/herbaceous~~ grass/herbaceous PFTs, wood and coarse roots are excluded. Leaf biomass evolves based on photosynthetic carbon assimilation and is reduced by turnover, respiration, and allocation to other pools. Leaf area index (LAI) is derived from leaf biomass and specific leaf area, which depends on both ~~plant functional type (PFT)~~ PFT and nitrogen content. Mortality and turnover are PFT-dependent and climate-sensitive, especially for leaves. Photosynthesis and respiration are computed at sub-daily time steps, while the biomass pools evolve on a daily basis.

190 For *Sphagnum*, the structure was simplified to reflect its particular growth strategy and morphology. Only two biomass reservoirs are considered: ~~B~~B, representing the photosynthetically active green biomass, and B_{brown} the dead biomass. The latter is fed by senescence from the green biomass and follows a similar formulation to the original model's decay processes, with an adjusted decay rate specific to *Sphagnum*. This minimalist representation captures the essential dynamics of *Sphagnum* growth and decomposition, consistent with its role in peat accumulation and its lack of differentiated organs like leaves or roots.

The brown *Sphagnum* mosses (B_{brown}) are uniformly distributed over 10 cm of ~~soil~~ the soil profile, and this vertical distribution is maintained throughout the simulation.

2.4.4 Sphagnum water content

To model the evolution of the water content in *Sphagnum* mosses, we followed the work of St-Hilaire et al. (2010), considering a linear relationship between the soil water content at 10 cm and the water content of *Sphagnum* mosses.

$$w_{Sp} = b \times w_{soil,10cm} + c \quad (10)$$

where w_{Sp} is the water content of *Sphagnum* mosses in $g.g^{-1}$ and $w_{soil,10cm}$ is the soil water content at 10 cm in $m^3.m^{-3}$. The empirical coefficients b and c are given in Table A2.

The precipitation interception reservoir is considered negligible. ~~Therefore~~ Consequently, *Sphagnum* mosses ~~are supplied with water both by capillary action (water available receive water primarily through capillary action from the soil within 10 cm of soil) and by the surface. Although~~ direct interception of ~~precipitation, although the latter is not directly modeled. In the real world, Sphagnum mosses obtain water through capillary action and direct intereception of rainfall. Here we only represent rainfall also contributes in reality, this process is not explicitly modeled here. Instead, we account only for~~ the effect of capillarity by relating the ~~Sphagnum water content to the water content at water content of Sphagnum to that of the upper 10 cm of soil~~. Precipitation that would ~~have been interecepted by the intereception module instead otherwise be intercepted bypasses the moss canopy and~~ infiltrates directly into the soil, ~~thus modifying the soil water content and consequently the water content of Sphagnum mosses thereby influencing both soil and Sphagnum water content.~~

2.4.5 ~~Sphagnum~~ Sphagnum evaporation

Given that *Sphagnum* mosses do not possess stomata, we consider that the latent heat flux from the vegetation is solely due to the evaporation of water from the their epidermal cells. The plant transpiration phenomenon controlled by stomata is therefore eliminated here. Thus, we have:

$$E_{veg} = \frac{F_{veg}}{R_a + R_{sp}} \times (q_{sat}(T_s) - q_a) \times \rho_a \text{ with } R_a = \frac{1}{C_H V_a} \quad (11)$$

E_{veg} is the latent heat flux from the vegetation (see ~~equations equation (B5), Appendix B~~) in $kg.m^{-2}.s^{-1}$. R_a and R_{sp} represent the air and *Sphagnum* canopy resistances, respectively. F_{veg} is the fraction of vegetation, $q_{sat}(T_s)$ is the specific humidity at saturation at temperature T_s , T_s is the surface temperature and q_a is the specific humidity of the air at reference altitude z_a . ρ_a is the air density at altitude z_a , C_H is the drag coefficient, and V_a is the wind speed at z_a .

R_{sp} has been modeled following the work of Bond-Lamberty et al. (2011) and Gong et al. (2020), who experimentally established a relationship between the resistance of the *Sphagnum* canopy and the water content of the *Sphagnum* mosses. The *Sphagnum* moss resistance to water decreases towards low values when the water content of the *Sphagnum* mosses is high, leading to strong evaporation. Below a threshold value, as the *Sphagnum* mosses dry out, the resistance of the *Sphagnum* mosses increases linearly, allowing to retain a minimal threshold of water in the *Sphagnum* mosses. ~~Here~~ As such, we define:

$$230 \quad R_{sp} = \max\left(\frac{1}{SWI_{sp}/d}, R_{sp,min}\right) \quad (12)$$

with d in $s.m^{-1}$, d and $R_{sp,min}$ given in Table A2.

By choosing this approach, we diverge significantly from Bond-Lamberty et al. (2011) and Gong et al. (2020), who link bulk resistivity to the water content of *Sphagnum* mosses. Here, we disregard the water content of *Sphagnum* mosses and instead directly use the soil water content at 10 cm depth through the *Sphagnum* Soil ~~Water~~ Wetness Index (SWI_{sp}). However, this new formulation remains consistent with previous ones when representing the *Sphagnum* canopy resistance (R_s) as a function of the water content of *Sphagnum* mosses (Figure A2).

Following Decharme et al. (2016) to account for soil water stress by using the Soil Wetness Index we define the *Sphagnum* Soil Wetness Index :

$$SWI_{sp} = \sum_j \text{sphafrac}_j \max(10^{-4}, \min\left(\frac{w_{soil,j} - w_{wilt,j}}{w_{fc,j} - w_{wilt,j}}, 1\right)) \quad (13)$$

240 Here, sphafrac_j is the proportion of brown *Sphagnum* in layer j , $w_{soil,j}$ is the soil water content of layer j , $w_{fc,j}$ is the soil water content at field capacity of layer j , and $w_{wilt,j}$ is the soil water content at wilting point of layer j , all in $m^3.m^{-3}$. ~~Beyond 10 cm depth where we assume there are no living *Sphagnum* anymore, $SWI_{sp} = 0$.~~

SWI_{sp} varies between 10^{-4} when the soil water content of the *Sphagnum* zone is less than or equal to the wilting point, and 1 when water is not a limiting factor. Beyond 10 cm depth where we assume there are no living *Sphagnum* anymore, $SWI_{sp} = 0$.

The resistance of *Sphagnum* mosses to water is inversely proportional to the availability of water in the surface layers of the soil. The more water there is in the surface layers, the lower the resistance, with a minimum value of $R_s = 1$. The resistance then increases according to the inverse function as the water content of the soil decreases.

250 The water evaporated by the *Sphagnum* mosses is then removed from the top 10 cm of soil, proportional to the layer depth from each layer concerned.

2.4.6 Soil physics

The ISBA model resolves soil heat and water exchanges using a 14-layer scheme over 12 meters depth, minimizing numerical errors in diffusion equations. Thermal depth remains constant at 12 meters, while hydrological depth varies with vegetation. The surface energy balance combines properties of snowpack and soil/vegetation. A 12-layer snow model by Boone and Etchevers (2001) and improved by Decharme et al. (2016) simulates snow properties like energy absorption, density, and melt processes, considering surface albedo and radiation absorption. Heat transfer in soil follows Fourier's law, accounting for soil water content, porosity, and conductivity. Water mass fluxes are described using the Richards equation, incorporating precipitation, snowmelt, freezing/thawing, and vapor transport. Soil hydraulic properties relate to water content and soil texture, with adjustments for ice presence.

260 2.4.7 Carbon pools in soil

The ISBA model balances plant debris decomposition and microbial activity to represent soil carbon stocks, based on the CENTURY model (Parton et al., 1993). Plant debris, including leaves, stems, and roots, is divided into structural and metabolic litter reservoirs, above and belowground. These decompose into three types of soil carbon reservoirs: fast (less than a year), slow (about a decade), and passive (hundreds to thousands of years). This decomposition
265 process drives soil heterotrophic respiration, releasing CO_2 (see Gibelin et al. (2008)).

2.4.8 Thermal and hydraulic properties of peat soils

ISBA calculates thermal and hydraulic properties of soil by combining mineral soil attributes with those of soil organic carbon (SOC), adjusted for the organic matter proportion in each layer. We keep the same method for peat soils. Peat organic matter density is defined using porosity and the density of pure organic matter (1300 kg.m^{-3}).
270 ~~The In our simulations, the~~ SOC fraction in each layer is ~~derived from databases, with set values of 1, fixed at 1,~~ reflecting the assumption of a completely organic soil. Peat porosity ranges from 0.930 in surface fibric soil to 0.845 in deeper sapric soil, significantly affecting both the thermal conductivity and water retention capabilities of the soil. These variations influence organic matter density and overall soil properties, particularly in peat soils, ensuring accurate modeling of soil thermal and hydraulic dynamics (Decharme et al., 2016).

275 2.4.9 Biogeochemical processes in peat

The research conducted by Morel et al. (2019) has led to the development of a biogeochemical module capturing various physical and chemical processes occurring within peatlands. This module discretizes the soil into 14 layers, with soil physics resolved for each. It calculates the concentrations of O_2 , CO_2 , and CH_4 in each layer, enabling representation of biogeochemical processes across the entire vertical profile. Hence, processes such as methanogenesis
280 in anaerobic conditions, methanotrophy (methane oxidation to CO_2 in the presence of O_2), and heterotrophic respiration (production of CO_2), are described within ISBA. Soil water level and thus ~~Θ_2~~ O_2 concentration in peat regulate these chemical processes. Various equations account for the three different gas transport mechanisms in peat, including transport by plants, ebullition, and diffusion.

The carbon accumulation in the soil and its transfer between layers are represented by an advection term considered
285 constant at $2 \text{ mm} \cdot \text{yr}^{-1}$ (Guenet et al., 2013). The phenomenon of cryoturbation, i.e., the mixing of surface peat layers due to freezing and thawing, is modeled using a diffusion equation following Koven et al. (2009).

2.4.10 Ecosystem respiration

Ecosystem respiration is defined here as the combination of heterotrophic respiration across the peat profile and autotrophic respiration from surface vegetation.

290 Heterotrophic respiration is calculated for each of the 14 soil layers, based on the CO_2 concentration in each layer. Two sources of CO_2 are modeled for each layer: the production of CO_2 from organic matter decomposition ($CO_{2,oxic}$) and the production of CO_2 resulting from methane oxidation ($CO_{2,methane}$), indirectly linked to methane concentration in each layer and thus to methanogenesis.

$$CO_{2,oxic}^i(z) = \theta(z)k_i(z, Tg)C_i(z) \times \min\left(1, \frac{C_{max}(z)}{\Delta t} \frac{1}{\sum_j \theta(z)k_j(z, Tg)C_j(z)}\right) \quad (14)$$

295 Here, ~~i and j~~ i and j represent the types of carbon reservoirs (metabolic and structural litter, active C, slow C, passive C). $CO_{2,oxic}$ production is determined by the organic matter decomposition rate ($\theta(z)k_i(z, Tg)$), which initially depends on soil temperature and moisture content ~~Morel et al. (2019)~~ (Morel et al., 2019). The function $\theta(z)$, varying between 0.05 (dry soil) and 1 (above field capacity), accounts for soil moisture ~~'s~~ impact on microbial activity. In this study, ~~we didn't find a significant reduction of soil moisture did not appear to strongly constrain~~ organic matter decomposition ~~due to soil dryness. Hence we decided to remove this dependence in near surface moss dominated layers, and we aimed to preserve contrasting drought responses across vegetation types. Therefore, $\theta(z)$ was removed for *Sphagnum*, while it was retained for herbaceous to maintain drought sensitivity where moisture deficits are expected to constrain belowground carbon turnover.~~ The decomposition rate ($k_i(Tg)$) follows an Arrhenius-like equation (Q10), accounting for increased decomposition with temperature rise. The last part of the equation considers oxygen availability ~~, potentially limiting reaction, with~~ $C_{max}(z)$ ~~represents representing~~ the maximum carbon mass producible from available oxygen.

300

305

Methane oxidation $CH_4 + 2O_2 \rightarrow CO_2 + 2H_2O$ contributes to CO_2 production, especially in deeper layers. For litter above ground, CO_2 is directly released to the atmosphere. In deeper layers, diffusion, ~~gas transport by plants~~ plant-mediated transport (PMT), and evapotranspiration facilitate CO_2 escape. Gas diffusion in soil layers leads to vertical gas movements based on concentration gradients. PMT depends on leaf area index (LAI), while evapotranspiration is influenced by ~~vegetation type~~ PFT.

310

2.5 Water table depth diagnosis and dryness index development

First, based on the ISBA outputs, we derived ~~Equation 15~~ equation (15), which relates, for each soil layer, the change in volumetric water content to the change in water equivalent height, assuming the layer is saturated.

$$315 \quad w_{j,sat}(t) \frac{\partial h_j(t)}{\partial t} = d_j \frac{\partial w_{j,soil}(t)}{\partial t} \quad (15)$$

with $w_{j,sat}$ the volumetric water content of soil layer j at saturation, h_j the height of water in the layer j , d_j the vertical width of the layer j , $w_{j,soil}$ the volumetric water content of soil layer j .

Then, we derived the ISBA-diagnosed WTD by summing over the soil layers down to 2 m depth, i.e. those where variations in water content are significant. This calculation assumes that the variation of w_{sat} with depth z is

320

negligible, allowing it to be factored out of the summation (see Figure A3 (a)):

$$WTD_{ISBA} = \sum_j \Delta h_j = \sum_j \frac{\Delta w_{j,soil} \times d_j}{w_{j,sat}} \quad (16)$$

where Δh_j , and $\Delta w_{j,soil}$ represent the changes in water equivalent height and soil volumetric water content, respectively, calculated explicitly through the temporal discretization of Equation 15.

325 The dryness index is based on the work of (Garisoin et al., 2024) (see Figure A3 (b)). We first define the daily soil water deficit $dif(t)$:

$$dif(t) = Tair_{normalized}(t) - WTD_{normalized}(t) \quad (17)$$

We use the daily mean of $Tair(t)$ and $WTD(t)$ to calculate $dif(t)$. Normalization of each variable (X) was done following $X_{normalized} = \frac{X - X_{min}}{X_{max} - X_{min}}$. A minimum WTD value of 1m was imposed to elevate the normalized WTD values, since the diagnosed WTD tends to produce water tables that do not drop sufficiently during droughts. This adjustment allows the normalized WTD to better discriminate drought periods, which would otherwise be overly smoothed by the index (see Figure A3(b)).

To consider only periods of positive water deficit, we define the function $f(t)$ as:

$$f(t) = \begin{cases} dif(t), & \text{if } dif(t) > 0 \\ 0, & \text{otherwise} \end{cases} \quad (18)$$

335 The Dryness Index (DI) is then calculated by integrating $f(t)$ over the summer period:

$$DI = \int_{july}^{august} f(t) dt \quad (19)$$

This formulation ensures that only days with a positive soil water deficit contribute to the DI, providing a simple and physically meaningful measure of summer dryness.

2.6 Statistical analyses

340 To compute correlation coefficients, Pearson correlation coefficients (r^2), root mean square errors (RMSE) trends and associated p-values, we used the statsmodels Python library. In particular, the Ordinary Least Squares (OLS) (https://www.statsmodels.org/dev/generated/statsmodels.regression.linear_model.OLS.html) regression function was employed to fit a linear model and perform an F-test to assess the statistical significance of the relationship.

To assess the relative contribution of each season to interannual variability in net ecosystem exchange (NEE) (Figure 6), we applied SHAP (SHapley Additive exPlanations), a game-theoretic approach widely used for interpreting machine learning models. Specifically, we trained an Ordinary least squares Linear Regression model from sklearn python library (https://scikit-learn.org/stable/modules/generated/sklearn.linear_model.LinearRegression.html) to

predict annual NEE from seasonal values (summer, autumn, spring, and winter). We then used SHAP values to estimate how much each seasonal predictor contributed to the model output. Rather than relying on model coefficients or explained variance, we computed the mean absolute SHAP values across all observations to quantify each season's average influence. These contributions were normalized to express their relative importance as percentages. This approach provides a robust and interpretable measure of feature relevance, even for collinear predictors. The SHAP methodology is described in detail at: <https://shap.readthedocs.io/en/latest/index.html>.

A simple linear model using R^2 or an F-test tends to attribute explanatory power to the first variables entered into the model. When predictors are correlated as is the case here with seasonal NEE components (e.g., summer NEE, autumn NEE) this can lead to shared variance being unfairly credited to one variable over another. In other words, correlated variables may "steal" importance from each other, depending on the order in which they are introduced. In contrast, SHAP values, based on Shapley values from cooperative game theory, average the contribution of each variable across all possible combinations of input features. This results in a fair and consistent allocation of importance, even when variables are highly interdependent or collinear.

2.7 Experimental protocol

At the Bernadouze site, we obtained a 64-year meteorological data series (1959-2022) from the S2M reanalysis, which was used as input for the ISBA land surface model. To establish a contemporary carbon balance for the various carbon compartments, we simulated a 7000-year spin-up to account for the peatland's age, repeating the 64-year 64-year atmospheric forcing. This approach ensured a realistic accumulation of carbon in the soil reservoirs. The model was run in a one-dimensional configuration, at a single grid point corresponding to the location of the Bernadouze peatland.

For model validation (~~section~~Section 3), we contrast simulations with 100% *Sphagnum* cover and 100% herbaceous cover. Herbaceous cover was simulated with the use of the ISBA PFT boreal grassland (BOGD). For the remainder of the study (section 4), the vegetation distribution is assumed to consist of 70% herbaceous plants and 30% *Sphagnum* mosses, based on the cartography provided by Henry et al. (2014). Accordingly, the GPP, ER, and NEE values presented correspond to this vegetation mix. A subsection is dedicated to analyzing the sensitivity of carbon fluxes to vegetation composition.

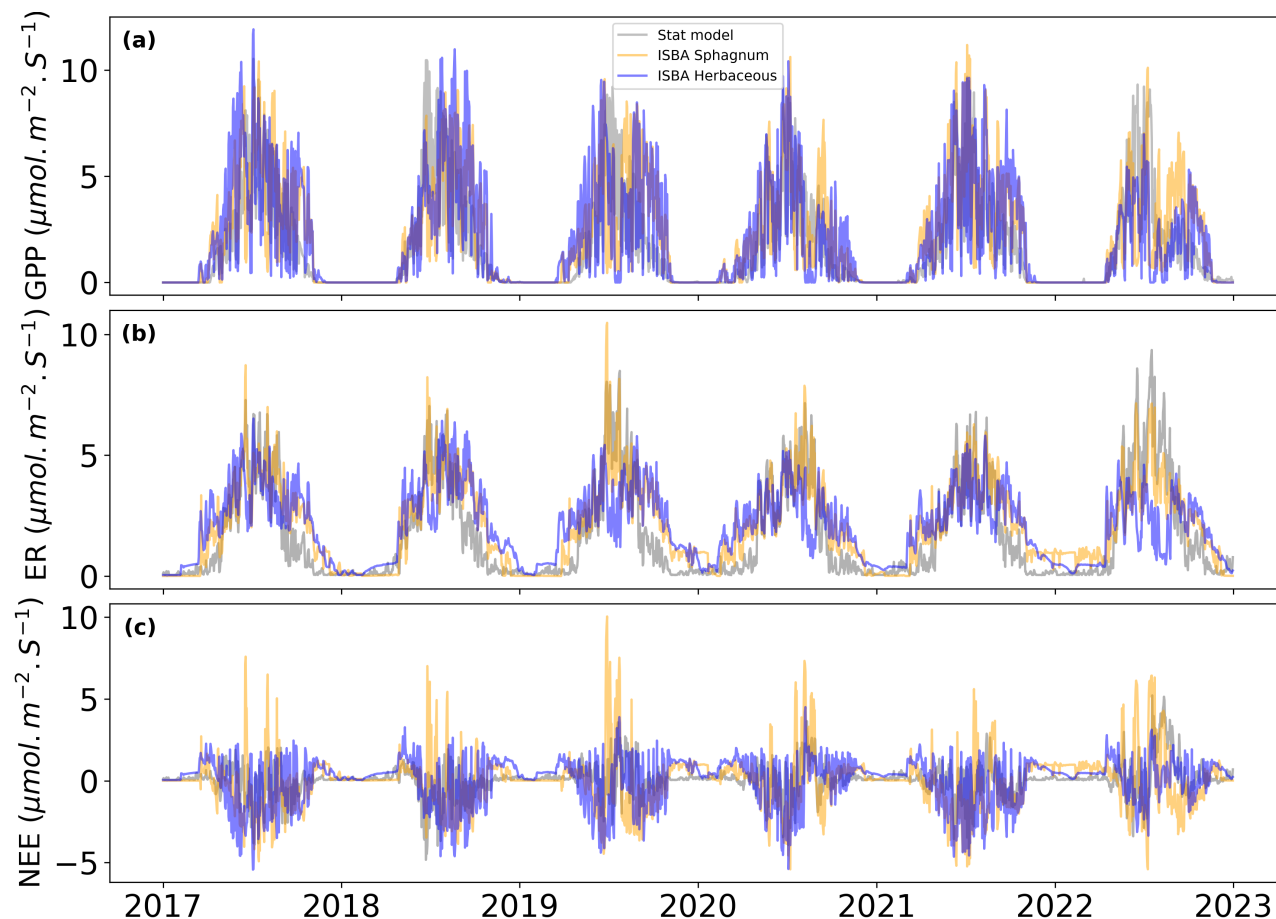
3.0.1 ~~carbon~~ Carbon fluxes

Figure 1. *Daily (a) gross primary productivity and (b) ecosystem respiration fluxes compared between statistical models (grey) (Garisoain et al., 2024) and ISBA over the 2017-2022 period for herbaceous (blue) and Sphagnum mosses (orange).* *Daily (a) gross primary productivity and (b) ecosystem respiration fluxes compared between statistical models (grey) (Garisoain et al., 2024) and ISBA over the 2017-2022 period for herbaceous (blue) and Sphagnum mosses (orange).*

Figure 1 compares three time series from 2017 to 2023, illustrating Gross Primary Productivity (GPP), Ecosystem Respiration (ER) and Net Ecosystem Exchange (NEE) modeled by a statistical model (grey) and the ISBA model for *Sphagnum* (orange) and Herbaceous (blue). The top plot (a) shows GPP with R^2 - r^2 values of 0.6 and 0.62 (RMSE of 1.9 and 1.6 $\mu\text{mol}\cdot\text{m}^{-2}\cdot\text{s}^{-1}$ $\mu\text{mol}^{-2}\text{s}^{-1}$, see Figure A4 (a), (b)), indicating moderate agreement between the models. The middle plot (b) shows ER with R^2 - r^2 values of 0.82 and 0.44 (RMSE of 0.9 and 1.6 $\mu\text{mol}\cdot\text{m}^{-2}\cdot\text{s}^{-1}$ $\mu\text{mol}^{-2}\text{s}^{-1}$, Figure

A4 (ed), (de)), revealing stronger agreement for ER, particularly for *Sphagnum* respiration. The bottom plot, Figure A4 (c), (f), shows NEE with R^2 - r^2 values of 0.1 and 0.2 (RMSE of 1.6 and 1.3 $\mu\text{mol}^{-2}\cdot\text{s}^{-1}$). Additional scatter plots for the mixed vegetation configuration (Figure A4(e), (f), g)-(i)) highlight contrasted performances across fluxes. For GPP, the mixed simulation shows a level of agreement comparable to that of herbaceous vegetation alone ($r^2 = 0.62$, RMSE = 1.58 $\mu\text{mol}^{-2}\text{s}^{-1}$). For ER, the mixed configuration exhibits an intermediate performance, but with a substantial improvement compared to herbaceous vegetation alone ($r^2 = 0.60$, RMSE = 1.32 $\mu\text{mol}^{-2}\text{s}^{-1}$). For NEE, the mixed simulation yields higher skill scores ($r^2 = 0.24$, RMSE = 1.17 $\mu\text{mol}^{-2}\text{s}^{-1}$) than either vegetation type considered separately, although overall correlations remain low.

The ISBA model captures the interannual variability of GPP, ER and NEE effectively (Figure A5), Consistently showing slightly higher values at the beginning of the growing season, much higher values at the end of the growing season, and stronger winter ecosystem respiration (ER) compared to the statistical model. Herbaceous vegetation is more sensitive to summer droughts than *Sphagnum*, leading to reduced GPP and ER in summer, especially during the 2022 drought, which caused a sharp decline in herbaceous GPP and ER.

3.0.2 Water table depth

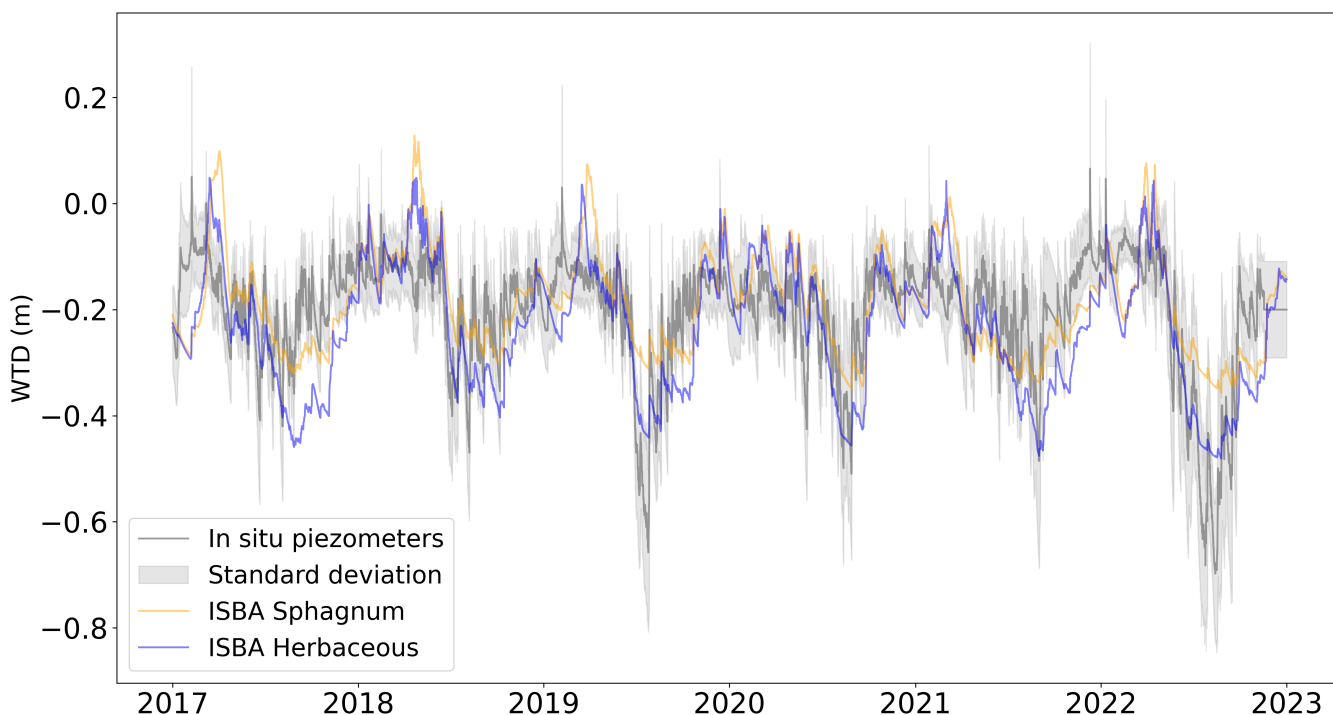


Figure 2. Hourly in situ mean water table depth is shown in grey, with its standard deviation in shaded areas, compared to the hourly diagnosed water table depth of ISBA over the 2017-2022 period for two different types of vegetation herbaceous (blue) and *Sphagnum* mosses (orange).

Figure 2 compares the mean water table depth (WTD) from in situ measurements (grey with shaded standard deviation) to the ISBA diagnosed WTD (orange for *Sphagnum* mosses and blue for herbaceous) over the period 2017-2022. The ISBA model generally follows the observed data, capturing the overall trends and seasonal variations (Figure A5) in WTD although there are occasional deviations, particularly at the end of the growing season and during drought events where the observed data shows higher variability. Overall, the ISBA model demonstrates rather satisfactory performance in simulating WTD (~~$R^2 = 0.47$~~ $r^2 = 0.47$, $RMSE = 0.09m$ for herbaceous ~~and $R^2 = 0.33$~~ $r^2 = 0.33$, $RMSE = 0.1m$ for *Sphagnum* ~~and $r^2 = 0.45$, $RMSE = 0.09m$ for the mixed vegetation~~, Figure A6). The simulated WTD with herbaceous plants is consistently lower than with *Sphagnum* mosses.

4 Results : Water and carbon balance of the peatland over the last 60 years

405 4.1 Environmental variables

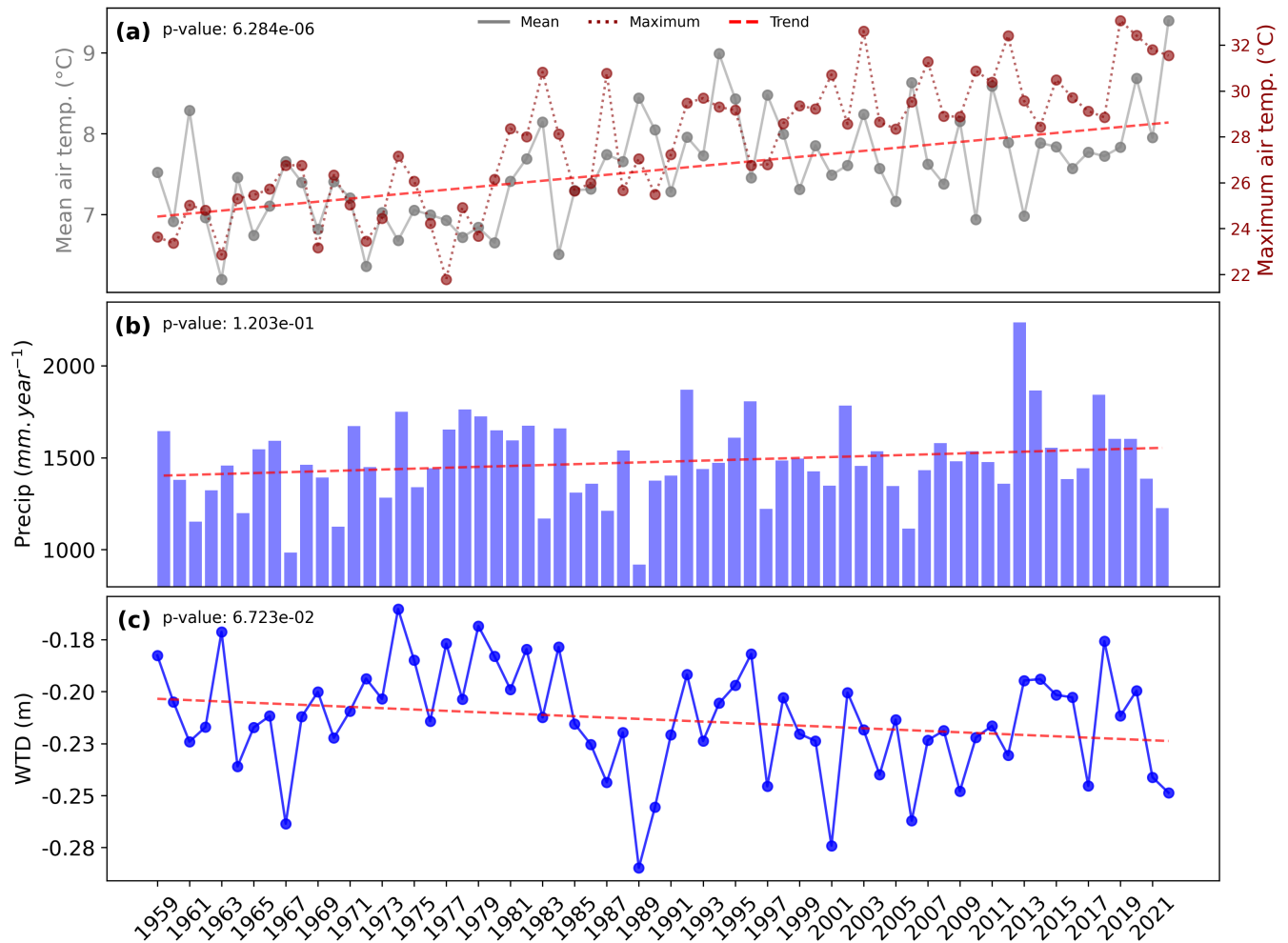


Figure 3. (a) Mean and maximum annual air temperature °C, (b) annual cumulate precipitation mm.year⁻¹ from the S2M reanalysis and (c) mean water table depth m diagnosed from ISBA outputs, along with their trends as red dashed lines and corresponding p-values. (a) Mean and maximum annual air temperature °C and (b) annual cumulate precipitation mm.year⁻¹ both from the S2M reanalysis and (c) mean water table depth m diagnosed from ISBA outputs, along with their trends as red dashed lines and corresponding p-values.

Figure 3 consists of three panels, labeled (a), (b), and (c), illustrating the evolution of mean and maximum annual temperature, annual cumulative precipitation, and annual mean water table depth (diagnosed from ISBA) from 1959 to 2022, along with their respective trends and p-values. Annual mean temperature (a) shows a **significant**

significant (p-value < 0.05) increasing trend over the years. The annual mean temperature increases from approxi-
410 mately 7°C in the early years to about 9°C by 2022. Annual maximum temperature shows a similar evolution with
an increase up to 8°C from 1959 to 2022.

Annual cumulative precipitation (b) ranges from approximately 1000 mm to 2250 mm, while the Water Table
Depth (WTD) (c) varies between -0.16 and -0.29 m over the whole period. A steady increase in the level of the
415 water table is observed from 1967 to 1983, followed by a sharp decline, reaching its minimum in 1989. After this,
the WTD rises again and stabilizes, although notable interannual fluctuations persist until the end of the period.
Interestingly, the fluctuations in annual precipitation closely mirror those of the mean annual WTD, suggesting
a strong correlation between these two variables. The trends of annual cumulative precipitation and annual mean
WTD move in opposite directions, with precipitation increasing and the level of the water table decreasing. However,
420 both trends are not significant (p-values > 0.05).

4.2 Net ecosystem exchanges

This section analyzes long term NEE dynamics and their drivers using ISBA simulations forced by the S2M reanalysis. Unless stated otherwise, all simulations and analyses presented in this section use the site vegetation distribution derived from Henry et al. (2014), i.e., 70% herbaceous plants and 30% *Sphagnum* mosses.

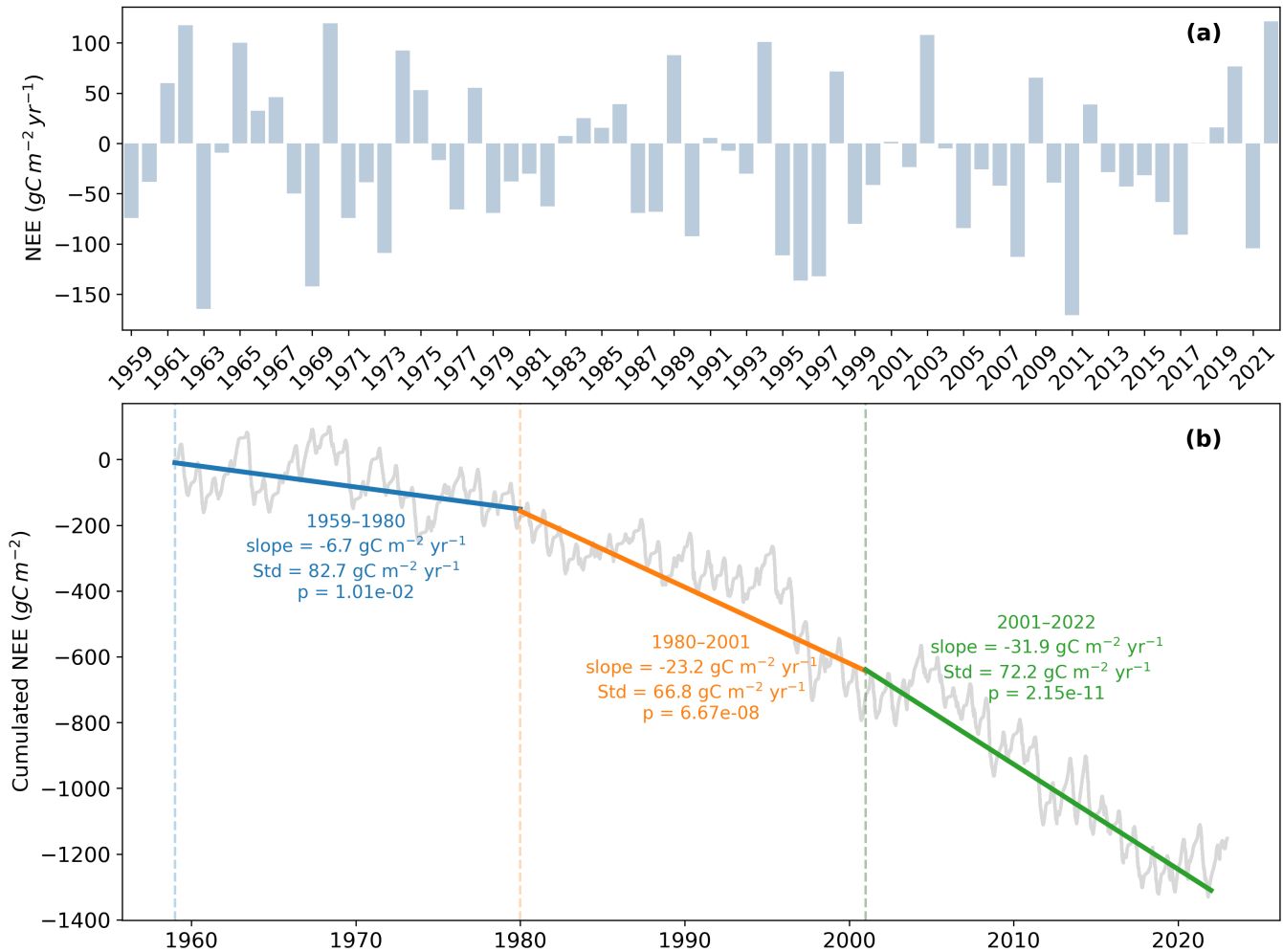


Figure 4. (a) Annual net ecosystem exchange ($\text{gC}\cdot\text{m}^{-2}\cdot\text{year}^{-1}$) from 1959 to 2022. (b) Hourly cumulated net ecosystem exchange ($\text{gC}\cdot\text{m}^{-2}$) from 1959 to 2022. (a) Annual net ecosystem exchange ($\text{gC}\cdot\text{m}^{-2}\cdot\text{year}^{-1}$) from 1959 to 2022, as simulated by ISBA. (b) Hourly cumulated net ecosystem exchange ($\text{gC}\cdot\text{m}^{-2}$) from 1959 to 2022, also from ISBA. The panel additionally reports the linear trend (slope), its p-value, and the standard deviation of annual NEE for three distinct periods: 1959–1980, 1980–2001, and 2001–2022.

Figure 4 illustrates (a) the annual ~~cumulated~~ Net Ecosystem Exchange (NEE) and (b) the ~~hourly-cumulated~~ ~~cumulative~~ NEE from 1959 to 2022. The lowest annual NEE, $-171\text{ gC}\cdot\text{m}^{-2}\cdot\text{year}^{-1}$, is modelled in 2011 ($-171\text{ gC}\cdot\text{m}^{-2}\cdot\text{yr}^{-1}$), while the highest ~~value occurs in 2022~~ ($122\text{ gC}\cdot\text{m}^{-2}\cdot\text{year}^{-1}$ in 2022).

$gC.m^{-2}.yr^{-1}$). Panel (b) ~~reveals a steady decline~~ shows a long-term decrease in cumulative NEE ~~over the study~~
430 ~~period~~, indicating that the ecosystem acts as a net carbon sink ~~by absorbing more carbon than it emits. From~~
over the entire study period. Piecewise linear trends computed for three successive 22 year periods (1959 to around
1990, the decline is gradual, but after 1990, the rate accelerates, reflecting increased carbon sequestration. This trend
persists through the 2000s and 2010s, accompanied by greater ~~1980, 1980–2001, and 2001–2022) reveal a progressive~~
435 intensification of carbon uptake, as evidenced by increasingly negative slopes of cumulative NEE. The comparison of
slopes between periods indicates that this intensification is not linear through time. The strongest increase in carbon
sequestration occurs between the first and second periods, while the rate of intensification decreases after the early
2000s, suggesting a slowdown in the acceleration of the carbon sink despite continued strengthening.

Interannual variability, quantified by the standard deviation of annual NEE and reported as text annotations for
440 each period, shows a marked temporal evolution. Variability is highest during the early period (1959–1980), decreases
substantially during the phase of strongest sink intensification (1980–2001), and slightly increases again during the
most recent period (2001–2022). This pattern suggests that the period of rapid carbon sink strengthening coincides
with a more stable interannual behaviour, whereas recent decades combine sustained carbon uptake with a renewed
increase in year-to-year variability.

445

~~Despite~~ Overall, despite substantial annual fluctuations, the ~~overall trend highlights a subtle but consistent long~~
term signal remains robust and highlights a persistent accumulation of carbon by vegetation over ~~time~~ the past six
decades.

4.2.2 Seasonality of GPP, ER and NEE over the 1959-2022 period

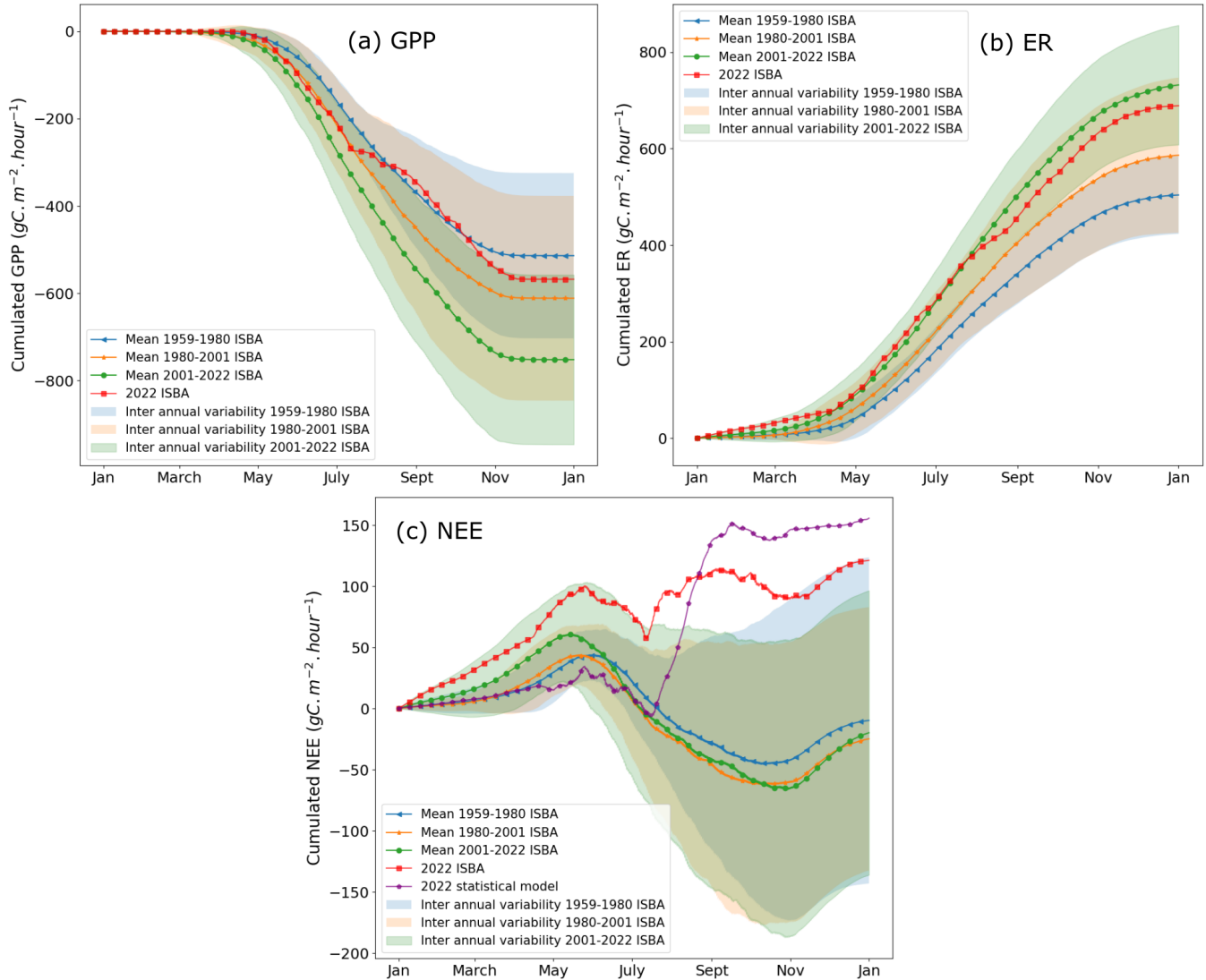


Figure 5. *Seasonal evolution of cumulated (a) minus gross primary productivity, (b) ecosystem respiration, (c) net ecosystem exchanges from ISBA over several time periods: 1959-1980 in blue, 1980-2001 in orange, 2001-2022 in green with interannual variability represented as a 90% confidence interval. Superimposed, the 2022 NEE seasonality simulated by ISBA (red curve) and the statistical model (purple curve). Seasonal evolution of cumulated (a) gross primary productivity (shown with negative sign by convention), (b) ecosystem respiration, (c) net ecosystem exchanges from ISBA over several time periods: 1959-1980 in blue, 1980-2001 in orange, 2001-2022 in green with interannual variability represented as a 90% confidence interval. Superimposed, the 2022 NEE seasonality simulated by ISBA (red curve) and the statistical model (purple curve).*

450 Figure 5 depicts the seasonal mean and interannual variability in gross primary production (a), ecosystem respiration
(b), and net ecosystem exchange (c) over several time periods, specifically 1959-1980 (blue), 1980-2001 (orange),
and 2001-2022 (green), with a focus on the year 2022 both from ISBA (red line) and the statistical model (purple
line). Periods of approximately 22 years were chosen to ensure statistically robust trend estimates, following common
455 climatological practice for analysing multi-decadal variability. Given the 64 year length of the record, three successive
periods were defined with a slight overlap, allowing each period to be long enough for robust linear trends while
maintaining three comparable intervals (World Meteorological Organization, 2017). Each subplot shows cumulative
values with their respective mean and interannual variability at 90% confidence interval. In panel (a), GPP values are
negative, indicating carbon uptake by vegetation, with more pronounced uptake during the growing season (April
to September). Panel (b) shows ER values, which are positive, representing carbon release. Respiration increases
460 during warmer months, with higher rates, suggesting intensified ecosystem respiration. Panel (c) combines GPP and
ER to show NEE. The GPP intensifies over time and becomes increasingly pronounced across the three periods.
The same trend is observed for respiration. As a combination of these two variables, NEE exhibits greater seasonal
variability, which is not necessarily easy to grasp from this graph but is more apparent in Figure 6. The mean NEE
values for the periods 1980-2001 and 2001-2022 show a similar trend, except during winter, when the NEE of the
465 2001-2022 period shifts towards positive values. Nonetheless, over the annual cycle, both of these periods display
more negative NEE values compared to the 1959-1980 period.

The seasonality of GPP (a) and ER (b) has gradually intensified over time, as observed in the three periods. For
the NEE (c), the trend is less straightforward, but its seasonality has become increasingly pronounced. Additionally,
470 the duration of the growing season has extended, as reflected by the earlier spring and later summer inflection points
of cumulative NEE (solid blue, orange and green curves (c)).

Focusing on 2022, the NEE curve (red) deviates entirely from the interannual variability of the three periods
combined, starting in July and continuing through November. Comparing this with the statistical model for 2022
475 (purple curve), we observe that despite differences in seasonality between ISBA and the statistical model, both agree
in highlighting 2022 as a year significantly outside the confidence intervals. While GPP and ER for 2022 remain
within the 2001–2022 interannual variability, the GPP is notably close to the lower limit (-GPP to the upper limit),
underscoring the exceptional nature of this year in terms of carbon flux dynamics.

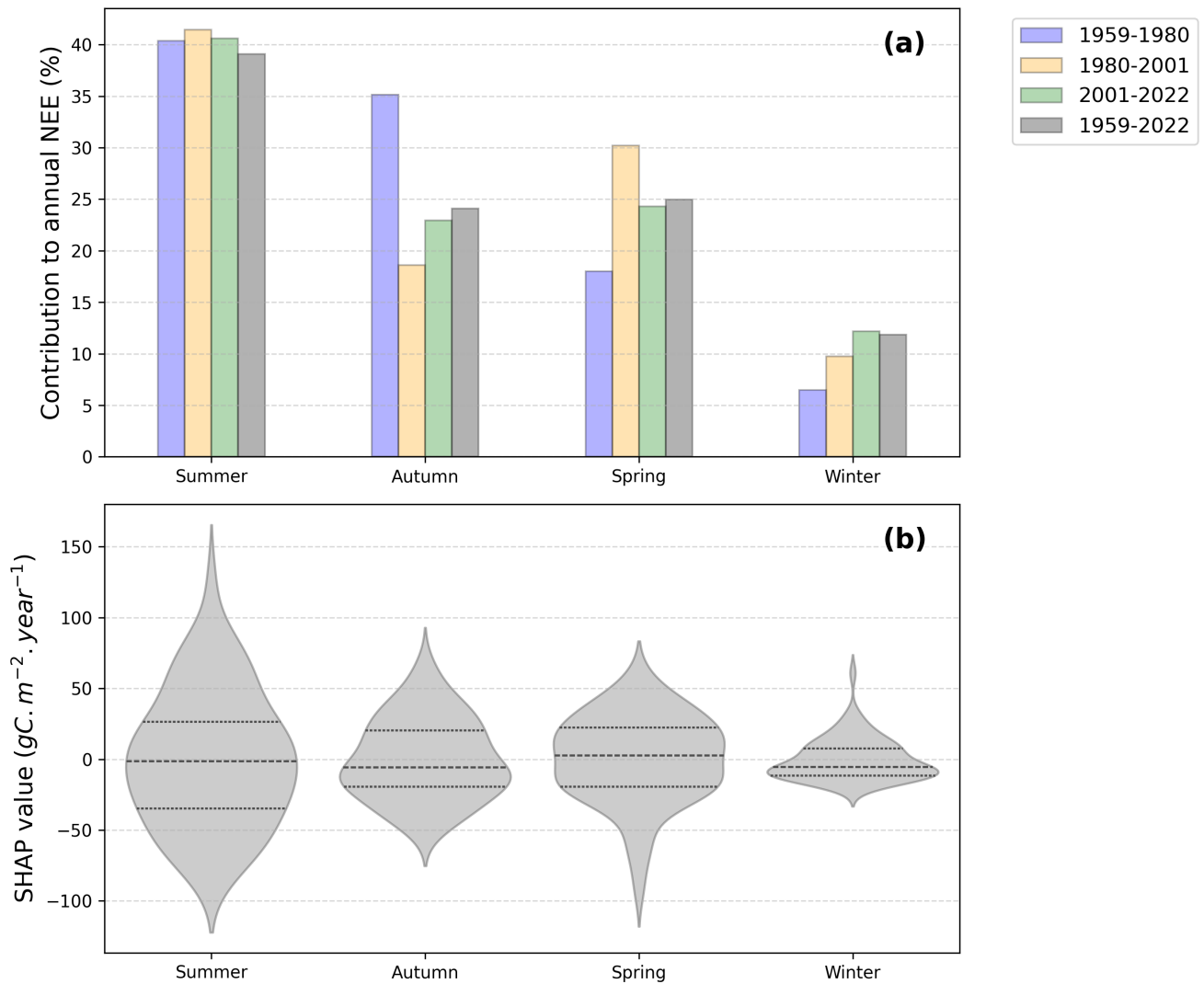


Figure 6. *Seasonal contributions to annual NEE across four time periods : 1959-1980 in blue, 1980-2001 in orange, 2001-2022 in green, 1959-2022 in grey. Each bar represents the relative importance of a season in explaining the total NEE, as determined by Shapley regression coefficients. (a) Seasonal contributions to annual NEE across four time periods : 1959-1980 in blue, 1980-2001 in orange, 2001-2022 in green, 1959-2022 in grey. Each bar represents the relative importance of a season in explaining the total NEE, as determined by Shapley regression coefficients. Seasons are defined as winter (December–February), spring (March–June), summer (July–August), and autumn (September–November). (b) Distribution of SHAP values by season for 1959–2022. Positive or negative SHAP values indicate the direction of each season’s contribution to annual NEE, showing whether a season increases or decreases the yearly flux.*

480 Figure 6 (a) shows that across all time periods, summer is the season ~~that contributes contributing~~ the most to
~~determining the annual NEE~~, with a contribution of 48% ~~annual NEE variability, accounting for approximately~~
~~39 % of the total contribution~~ over the 1959-2022 period. Autumn and spring follow, alternating in second place
depending on the ~~time-period~~, with ~~contributions of approximately 21% and 19%, respectively, over the entire period.~~
~~Finally, winter has comparable contributions of around 23-25 %.~~ Winter consistently exhibits the lowest contribution,
485 around 11 % ~~for the total period.~~

For the period 2001-2022, we observe a decrease in the summer contribution, notably at the expense of spring,
followed by autumn, and finally winter. This result is consistent with the observations in Figure ~~of the annual NEE~~
~~variability. The distribution of signed SHAP values for the full period (Figure 6 regarding the extension of the growing~~
~~season. However, the summer period remains the primary driver of the annual NEE evolution. Therefore, we have~~
490 ~~decided to focus on studying the drivers of summer NEE in the remainder of the paper, while keeping in mind the~~
~~influence of other seasons, which seem to seem to become increasingly important with rising temperatures (b)) further~~
~~highlights the seasonal dynamics. Summer displays a wide variability, with the median and central 50 % of values~~
~~slightly below zero, but with long positive tails reflecting years with strong CO_2 release to the atmosphere. Autumn is~~
~~generally shifted toward positive values, with extreme positive contributions in some years. Spring is centered slightly~~
495 ~~below zero, with extremes toward negative values. Winter shows relatively low variability, with a skewed distribution~~
~~including many negative contributions but a long positive tail, indicating occasional meaningful contributions despite~~
~~its overall smaller role. Overall, these results confirm that summer dominates the interannual variability of annual~~
~~NEE, but also reveal that other seasons particularly autumn and spring can contribute substantially in certain years.~~
~~This supports the focus on summer NEE drivers while recognizing the importance of seasonal context.~~

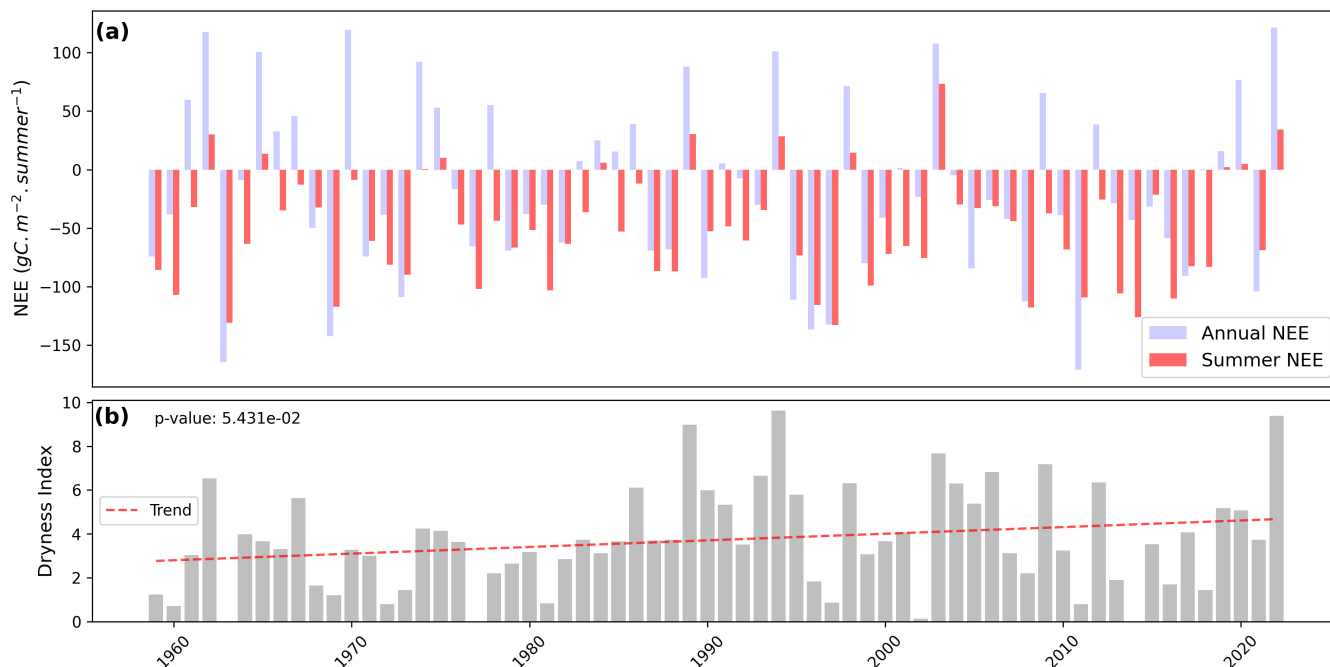


Figure 7. (a) *Summer net ecosystem exchanges (bold colormap) compared to the annual one (shaded colormap) from 1959 to 2022.* (b) *Dryness Index from 1959 to 2022 with its trend as red dashed line and associated p-value.* (a) *Summer net ecosystem exchanges (in red) compared to annual (in blue) from 1959 to 2022, as simulated by ISBA.* (b) *Dryness index, derived from water table depth combining ISBA outputs and S2M reanalysis data, from 1959 to 2022 with its trend as red dashed line and associated p-value.*

Panel (a) of Figure 7 shows the evolution of cumulative summer NEE (red) compared to cumulative annual NEE (blue) from 1959 to 2022. The cumulative summer NEE tends to "drive" the cumulative annual NEE ($R^2=0.71$ Figure A7 or contribution of 48% Figure 6), almost always sharing the same sign, except in years near equilibrium (cumulative annual NEE = 0). This relationship is supported by a strong correlation between summer and annual cumulative NEE ($r^2 = 0.71$, Figure A7) and by the fact that summer NEE contributes approximately 40 % of the interannual variability of cumulative NEE (Figure 6).

Panel (b) illustrates the evolution of the dryness index from 1959 to 2022. The trend shows an increasing pattern, with $p = 0.054$, which is slightly above the conventional significance threshold of 0.05. As the dryness index increases, the cumulative summer NEE also increases, showing a good correlation ($R^2=0.6$, $r^2 = 0.6$, Figure A8). The dryness index exceeded 6 in only one year from 1959 to 1980, in five years from 1980 to 2001, and in six years from 2001 to 2022. This suggests an increase in the frequency of high dryness index episodes, indicating a rising frequency of

summer droughts. Four years also stand out with particularly high dryness index values: 1989, 1994, 2003, and 2022, all of which occurred after the 1980s.

5 Discussions

515 4.1 Vegetation sensitivity

4.2 ~~Model validation and vegetation sensitivity~~

The primary objective of this paper was to evaluate the newly implemented *Sphagnum* plant functional type (PFT) in the ISBA land surface model. A specific parameterization was developed to represent the relationship between the photosynthetic activity of *Sphagnum* mosses and their water content. In this framework, *Sphagnum* water content is linearly related to the soil water content in the top 10 cm. The concept of total CO_2 conductance in *Sphagnum* was also incorporated, along with a model for *Sphagnum* water evaporation, in which the resistance to water loss from the moss layer depends on the soil moisture in the same top layer. The *Sphagnum* PFT was validated using available in-situ data from the Bernadouze peatland. Simulations of carbon fluxes (photosynthesis and respiration) showed good agreement with observations ($R^2 = 0.6$ and $R^2 = 0.82$, respectively). Validation of the water cycle was performed indirectly by comparing model outputs with water table height measurements. However, a more detailed validation of the water cycle remains necessary and would require a dedicated study. Eddy covariance data would be essential to directly assess the parameterization of evaporation from the *Sphagnum* layer. Similarly, extending the evaluation across multiple sites would help refine the parameter values and assess their transferability, although this was beyond the scope of the present study. The aim here was not to optimize parameter values across environments, but to assess whether a realistic site-scale behavior could be reproduced using values drawn from the literature and applied at a single, well-instrumented site.

The model for herbaceous plants is based on a parameterization that has already been validated globally in the past (Gibelin et al., 2008). This study compares ISBA model data with the results of statistical models described in Garisoain et al. (2024), which themselves have uncertainties. As for the net ecosystem exchange (NEE), since it results from the modeling of two distinct processes (GPP and ER), it accumulates the errors present in both contributions. Moreover, the NEE values in question are relatively low in intensity, as they are close to a carbon cycle equilibrium state, making small prediction errors even more significant. This explains the difficulty in obtaining high R-squared values when predicting NEE.

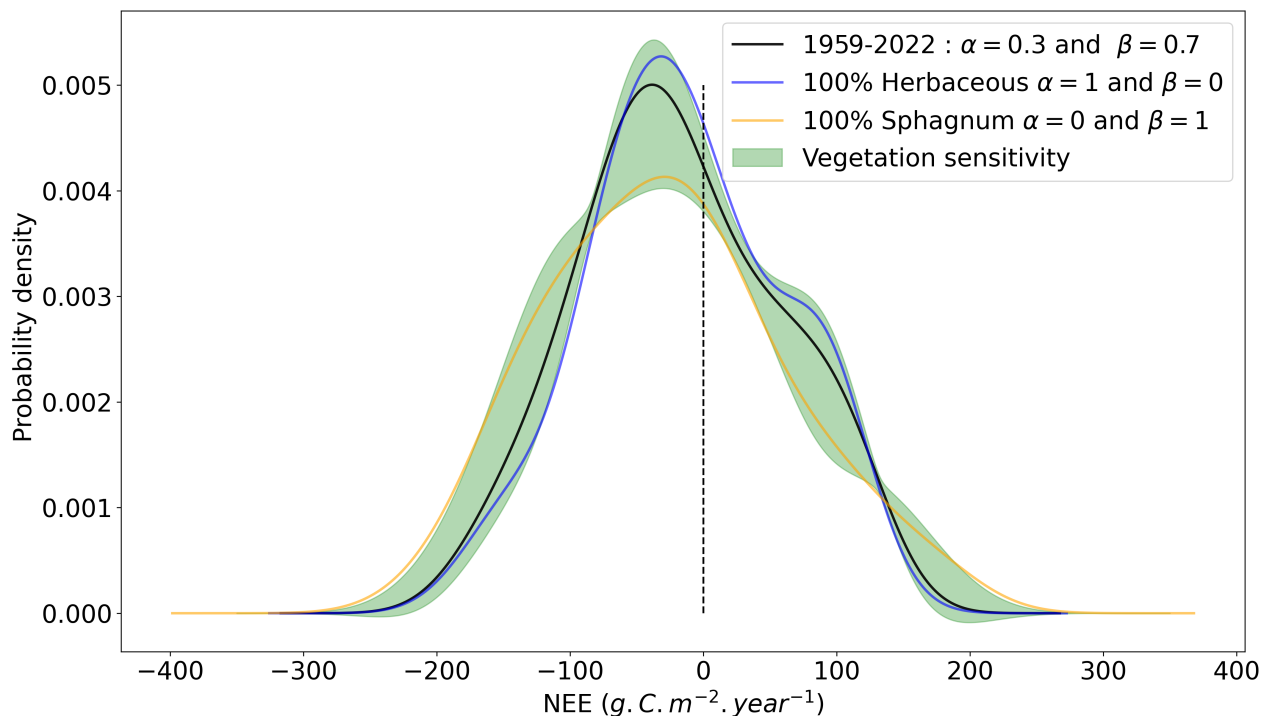


Figure 8. Probability density function of annual cumulated net ecosystem exchange over 1959-2022. In black, the vegetation mix corresponds to 70% herbaceous and 30% *Sphagnum*. In orange a 100% *Sphagnum* mix and in blue a 100 % herbaceous mix. In shaded areas, the 95% confidence intervals corresponding to the variation of the vegetation mix in the form $\alpha \times NEE_{Sphagnum} + \beta \times NEE_{herbaceous}$ with $\beta = 1 - \alpha$ and α varying from 0 to 1 in steps of 0.01.

Figure 8 highlights the changes in the distribution of the annual cumulated Net Ecosystem Exchange (NEE) over 1959–2022. The black ~~curves represent~~ curve represents the probability density of NEE for a vegetation mix of 70% herbaceous and 30% *Sphagnum*, with shaded regions representing the 95% confidence intervals accounting for variations in vegetation composition.

We observe that while the overall shape of the annual cumulative NEE probability density remains largely unchanged, significant differences arise depending on the vegetation type, particularly around the peak of the distributions. *Sphagnum* mosses amplify NEE extremes, either enhancing CO_2 absorption by vegetation or increasing CO_2 release to the atmosphere, resulting in a flatter distribution compared to herbaceous vegetation. In contrast, herbaceous plants have a buffering effect, with a distribution more concentrated around the main peak and a secondary, smaller peak slightly below $+100 \text{ gC.m}^{-2}.\text{year}^{-1}$, resulting in a bimodal pattern. These findings highlight the importance of considering different vegetation types, as they respond differently to changing environmental conditions. For completeness, the corresponding figures for GPP and ER are provided in the Supplementary Material (Figure

A10).

~~To go further, the idea would now be to develop an interactive vegetation model between~~

555 5 Discussions

5.1 Model validation and vegetation sensitivity

The primary objective of this study was to evaluate the newly implemented *Sphagnum* mosses and herbaceous, rather than considering them separately with a purely linear interaction, and thus couple their carbon and water cycles (?). This approach would also make it possible to render the vegetation partition PFT in the ISBA land surface model. *Sphagnum* photosynthetic activity is linked to water content in the top 10 cm of soil. While the model reproduces site scale carbon fluxes reasonably well, a more detailed validation of the water cycle would require eddy covariance data and multi site evaluations to assess parameter transferability. The aim was not to optimize parameters, but to test whether realistic behavior could be reproduced at a well instrumented site using literature derived values.

565

The mixed representation, combining *Sphagnum* and herbaceous PFTs, accounts for contrasting responses to soil moisture. We removed the influence of soil moisture on respiration ($\theta(z)$) for *Sphagnum*, allowing the moss layer to maintain microbial activity under dry conditions, while it was retained for herbaceous layers to preserve the soil moisture sensitivity of heterotrophic respiration. Although respiration from the herbaceous component alone is not improved, retaining $\theta(z)$ is consistent with previous validations of the ISBA model for herbaceous vegetation, ensuring the parameterization remains grounded in established formulations (Gibelin et al., 2008). Importantly, the combination of PFTs captures contrasting responses to soil moisture, introducing functional diversity that likely increases the robustness of ecosystem carbon fluxes. This mechanism is reflected in the observed improvement of NEE on the mixed vegetation dataset, even if GPP and respiration alone do not always show large gains. These results also highlight the broader uncertainty in representing heterotrophic respiration as a function of soil moisture: classical formulations derived from mineral soils may not adequately capture responses in organic soils, as noted in other peatland modeling studies (Qiu et al., 2019; Guenet et al., 2024), emphasizing the need for further research on moisture/respiration parameterizations.

575

By combining PFTs with contrasting functional responses, the model captures compensatory dynamics across vegetation types: herbaceous layers respond strongly to moisture deficits, while *Sphagnum* maintains near surface moisture and microbial activity. This functional diversity improves site scale carbon flux estimates and suggests increased model robustness under variable hydrological conditions, which could be further enhanced by including interactive dynamics between *Sphagnum* mosses and herbaceous ~~dynamic over time, by including, for example,~~

580

585 ~~competition processes between these two types of plants (Lippmann et al., 2023; Heijmans et al., 2008; Wu and Blodau, 2013a;~~
~~following the work of Kim and Verma (1996) but also competition and coupled carbon/water processes (Lippmann~~
~~et al., 2023; Heijmans et al., 2008; Wu and Blodau, 2013a; Gong et al., 2020).~~

5.2 The key predictors of annual net ecosystem exchange (NEE)

The methodology developed in this study aimed to investigate the variability and evolution of carbon fluxes in
590 the Bernadouze peatland from 1959 to 2022 using a ~~continental land surface model~~ CSM validated for the present
period (2017–2022). This approach provides insight into the long-term functioning of the peatland on a century-scale
timescale, which has been scarcely explored in the literature due to the lack of suitable tools. This novel methodology
provides access to an unprecedented temporal scale, enabling current observations to be interpreted within a broader
historical perspective.

595

Over the past 64 years, the Bernadouze peatland has shown marked variability in net ecosystem exchange (NEE),
while overall maintaining its role as a carbon sink. This variability is strongly influenced by climatic and hydrological
conditions, particularly precipitation, water table dynamics, and air temperature, as highlighted in previous research
(Yurova et al., 2007; Laine et al., 2019). The reconstruction of water table height, together with the development of a
600 dryness index that integrates both air temperature and water table depth, offers a robust explanation for the observed
fluctuations in carbon fluxes, as also supported by other studies (Helbig et al., 2022). ~~VPD (Vapor Pressure Deficit~~
~~) is also~~ (VPD) is generally an important factor to consider, particularly ~~in relation to~~ for vegetation development,
as it influences both GPP and plant transpiration. ~~In Bernadouze (Fu et al., 2022). However, at the Bernadouze~~
site, VPD is low and exhibits little variation (Figure A9 (a)), suggesting ~~that it does not have a strong impact on~~
605 ~~the resulting NEE flux. Additionally it has a limited effect on NEE. Furthermore,~~ VPD is strongly correlated with
temperature, ~~a factor that thus~~ which captures much of its potential influence. A recent study ~~(Chen et al., 2023)~~
~~has highlighted that~~ in northern hemisphere ~~peatland ecosystems,~~ peatlands (Chen et al., 2023) also indicates that
VPD has a neutral effect on vegetation and does not necessarily ~~lead to the closure of stomata~~ induce stomatal
closure in vascular plants. The humid ~~environmental conditions~~ conditions at the site, along with the presence of
610 bryophytes, help ~~meet the growing atmospheric demand for water vapor. Air~~ satisfy atmospheric water demand.
Overall, air temperature and water table depth remain the primary ~~factors explaining the variability in NEE~~ drivers
explaining NEE variability.

It is also observed that, in Bernadouze, summer NEE is the dominant contributor to the annual carbon balance,
615 though the relative influence of other seasons varies across time periods. In recent decades, transitional seasons
such as spring and autumn have become increasingly significant compared to earlier years. Understanding how
climate change influences NEE seasonality offers key insight into the complex dynamics of carbon fluxes and the
shifting balance between source and sink processes throughout the year, as also emphasized by Helbig et al. (2022).

The dryness index developed in this study also appears to be a good proxy for summer NEE and, consequently, for annual NEE (Figure A8 and A7). On other peatland sites where carbon flux measurements are not available, this index could potentially serve as a preliminary source of information to estimate the carbon balance of peatlands.

5.3 Climate change and droughts episode

Over the past 64 years, the Bernadouze peatland has experienced an increasing frequency of severe droughts, as indicated by the calculated dryness index (Figure 7 (b) and Figure A3 (b)). These events have contributed to the destabilization of the NEE balance, particularly in 2022. ~~Both the ISBA land surface model~~ Despite some differences in seasonal representation, both ISBA and the statistical model by Garisoain et al. (2024) ~~despite some differences in seasonal representation~~ agree that from July to November 2022, conditions fell completely outside the range of interannual variability. Similar dry summers have occurred in the past, notably in 1989, 1994, and 2003, and have consistently led to significant CO_2 emissions into the atmosphere. The years 1989 and 2003 are recognized as having experienced different types of drought conditions in France, ranging from multi-year precipitation deficits (1989–1990) to short, hot, and dry periods (2003) (Vidal et al., 2010). Similarly, 1994 is also identified as a year with a hot summer, preceded by a winter precipitation deficit in Southern Europe (Vautard et al., 2007). The dryness index effectively captures these hot and dry summers, which impact vegetation, its development, and consequently, the NEE flux.

As the growing season lengthens and GPP increases due to rising air temperatures, a compensatory effect appears to be at play. The peatland's greening and higher summer GPP fluxes currently help mitigate the impact of droughts, allowing it to remain a carbon sink. Over the 2001-2022 period, spring and autumn have played a growing role in shaping annual NEE, suggesting that these transitional seasons, along with winter, may become increasingly influential in the future, potentially counterbalancing summer carbon losses. However, the longevity of this balance remains uncertain. ~~Similar studies on~~ Some years, in our data, show a partial imbalance, indicating that the compensatory effect may not always fully buffer extreme conditions. Similar patterns have been observed in European forest ecosystems ~~have also identified the 2022 drought as an exceptionally severe event, with significant consequences for vegetation and, in particular, the carbon sink function of forests. Driven by climate change, such episodes are expected to become more frequent and intense (van der Woude et al., 2023), where compensatory mechanisms were insufficient to maintain carbon balance; this provides a useful analogy for interpreting the partial signals we observe in our peatland data. While greening and seasonal compensation currently mitigate summer carbon losses, prolonged or intensified droughts~~ in the future ~~(van der Woude et al., 2023). Over the long term, worsening drought conditions could eventually outweigh these compensatory mechanisms, potentially shifting peatlands from carbon sinks to carbon sources.~~ could challenge this balance and affect the peatland's long term carbon sink function.

The significant increase in annual maximum temperatures about 8°C over 64 years raises concerns about the vegetation's ability to withstand such extreme warming. Studies on potential shifts in plant composition under climate change could provide valuable insights into the future of these ecosystems (Antala et al., 2022; Dieleman et al., 2015). This further emphasizes the need to integrate a broader range of plant communities and their interactions into land surface models, to more accurately represent ecosystem dynamics and their role in the carbon cycle.

6 Conclusion

This study highlights the importance of accurately representing ~~Sphagnum~~ *Sphagnum* mosses in land surface models to simulate peatland carbon dynamics under changing climatic conditions. Validation of the new ~~Sphagnum~~ *Sphagnum* PFT within the ISBA model demonstrated its ability to reproduce observed carbon fluxes with reasonable accuracy. Analysis of the Bernadouze peatland over the past 64 years revealed that while it has remained a net carbon sink, increasing drought frequency and severity, particularly exemplified by the 2022 event, are destabilizing its carbon balance. The findings emphasize the critical role of vegetation composition, hydrological conditions, and seasonal climate dynamics in modulating peatland carbon fluxes. They also suggest that although compensatory mechanisms currently maintain peatland sink function, future intensification of droughts driven by climate change could potentially shift these ecosystems from carbon sinks to carbon sources. This underscores the urgent need to integrate interactive vegetation dynamics and drought responses into land surface models to better project peatland contributions to the global carbon cycle under future climate scenarios.

670 *Code and data availability.* The data presented in this study are available at <https://doi.org/10.5281/zenodo.16984992> (Garisoain et al., 2025).

The S2M dataset is freely accessible via the AERIS data center at <https://doi.org/10.25326/37#v2020> (Vernay et al., 2023). The S2M data are provided by Météo-France, CNRS, CNRM, and the Centre d'Études de la Neige through AERIS.

675 The model used in this study is open-source. The ISBA model, as implemented in this work, is part of SURFEX version 9 and can be downloaded from the SURFEX platform: <http://www.umr-cnrm.fr/surfex/>.

Competing interests. The contact author has declared that none of the authors has any competing interests.

Acknowledgements. The authors gratefully acknowledge Matthieu Lafaysse for providing the S2M data and for his valuable support.

680 *Author contributions.* RG, CD, BD and LG conceptualized and designed the study. RG modified and implemented the model, conducted formal analysis of the results, and led the writing of the original draft with contributions from all co-authors. All authors participated in reviewing, editing, and finalizing the manuscript.

Appendix A: Figures and Tables

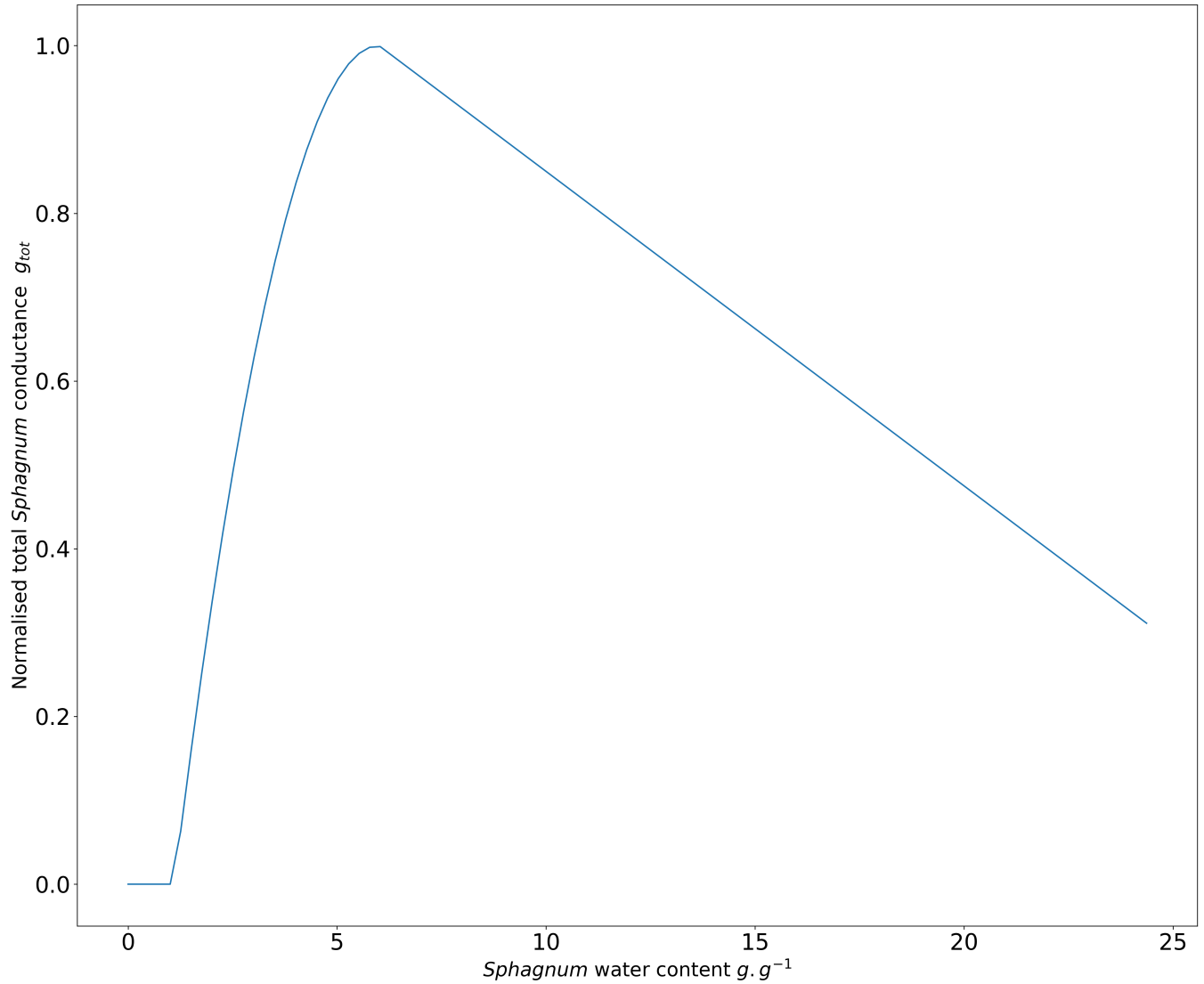


Figure A1. ~~Normalised total Sphagnum conductance as a function of Sphagnum water content~~ Normalised total Sphagnum conductance as a function of Sphagnum water content.

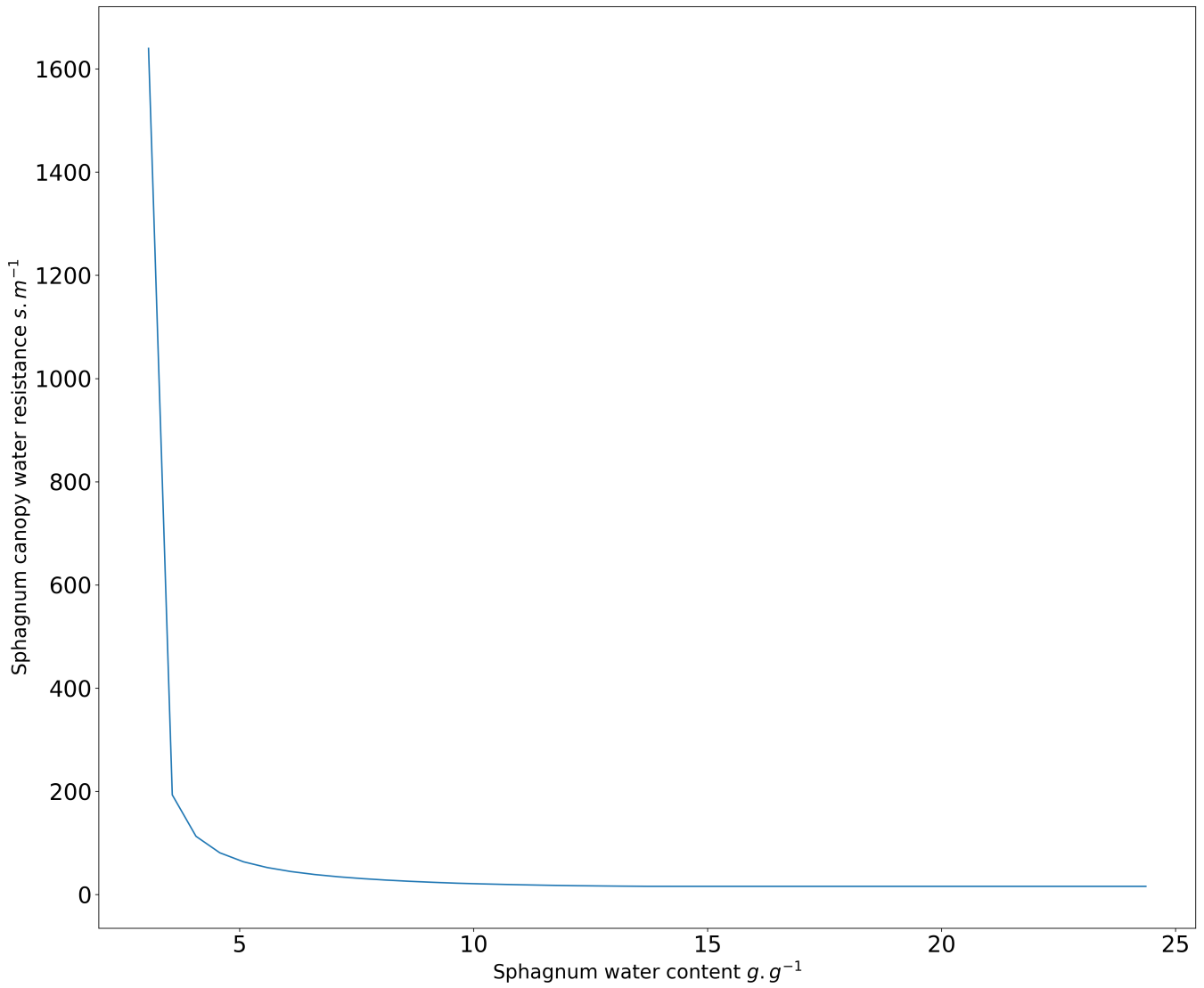


Figure A2. ~~Sphagnum canopy water resistance as a function of Sphagnum water content~~ Sphagnum canopy water resistance as a function of Sphagnum water content.

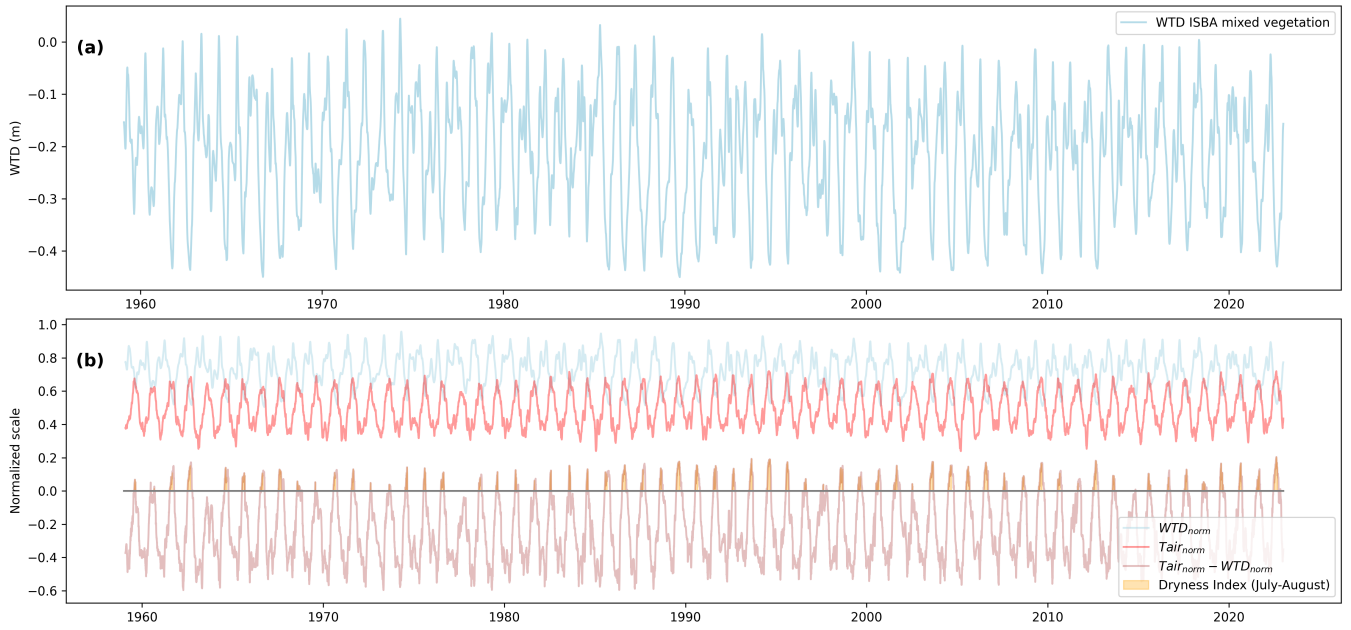


Figure A3. (a) Diagnosed water table depth (WTD) from 1959 to 2022 for the *Sphagnum-herbaceous* vegetation mix. (b) Light blue: normalized WTD, red: normalized air temperature (T_{air}), pink: normalized T_{air} minus normalized WTD, dark blue area under the curve represents the dryness index (DI). Normalization of each variable (X) was done following $X_{normalized} = \frac{X - X_{min}}{X_{max} - X_{min}}$. $WTD_{min} = 1m$ is taken from observations and not the diagnosed one from ISBA.

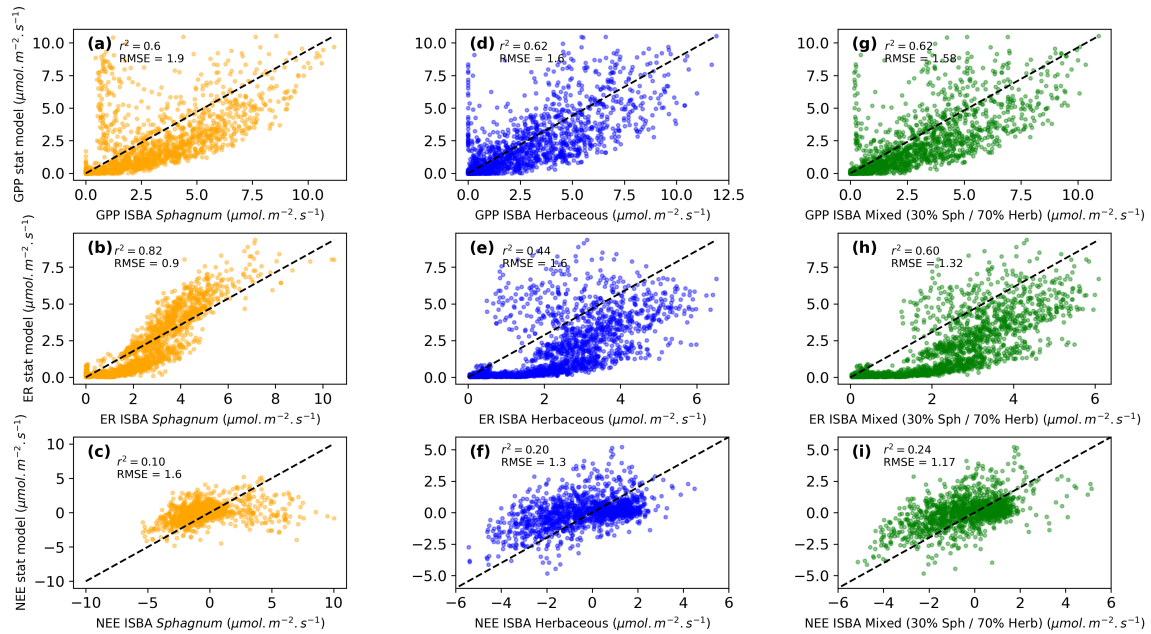


Figure A4. *Comparison of daily ecosystem photosynthesis and respiration from the statistical model with: (a) the new Sphagnum photosynthesis parameterization, (b) the new Sphagnum ecosystem respiration, (c) the previous herbaceous photosynthesis, (d) the previous herbaceous ecosystem respiration. Comparison of daily ecosystem photosynthesis, respiration and net ecosystem exchange from the statistical model with: (a) the new Sphagnum photosynthesis, (b) the new Sphagnum ecosystem respiration, (c) the new Sphagnum net ecosystem exchange, (d) the previous herbaceous photosynthesis, (e) the previous herbaceous ecosystem respiration, (f) the previous herbaceous net ecosystem exchange, (g) the mixed vegetation photosynthesis, (h) the mixed vegetation ecosystem respiration, (i) the mixed vegetation net ecosystem exchange.*

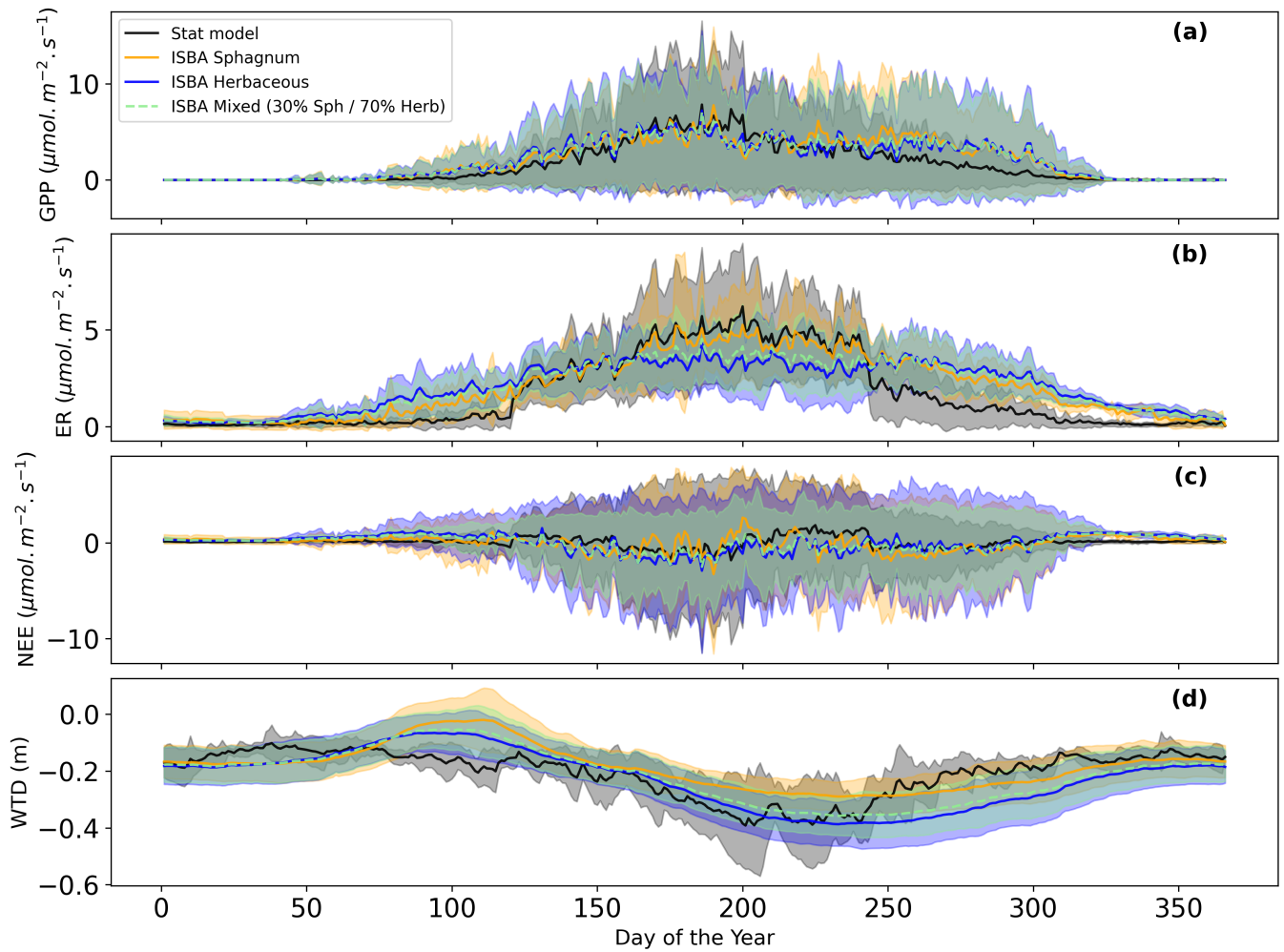


Figure A5. *Daily annual cycle of (a) Gross Primary Productivity, (b) Ecosystem Respiration, (c) Net Ecosystem Exchange, (d) Water Table Depth from the statistical model in black, the ISBA sphagnum model in orange and the ISBA herbaceous model in blue. Daily annual cycle (2017-2022) of (a) Gross Primary Productivity, (b) Ecosystem Respiration, (c) Net Ecosystem Exchange, (d) Water Table Depth from the statistical model in black, the ISBA Sphagnum model in orange, the ISBA herbaceous model in blue, and the ISBA mixed vegetation in green.*

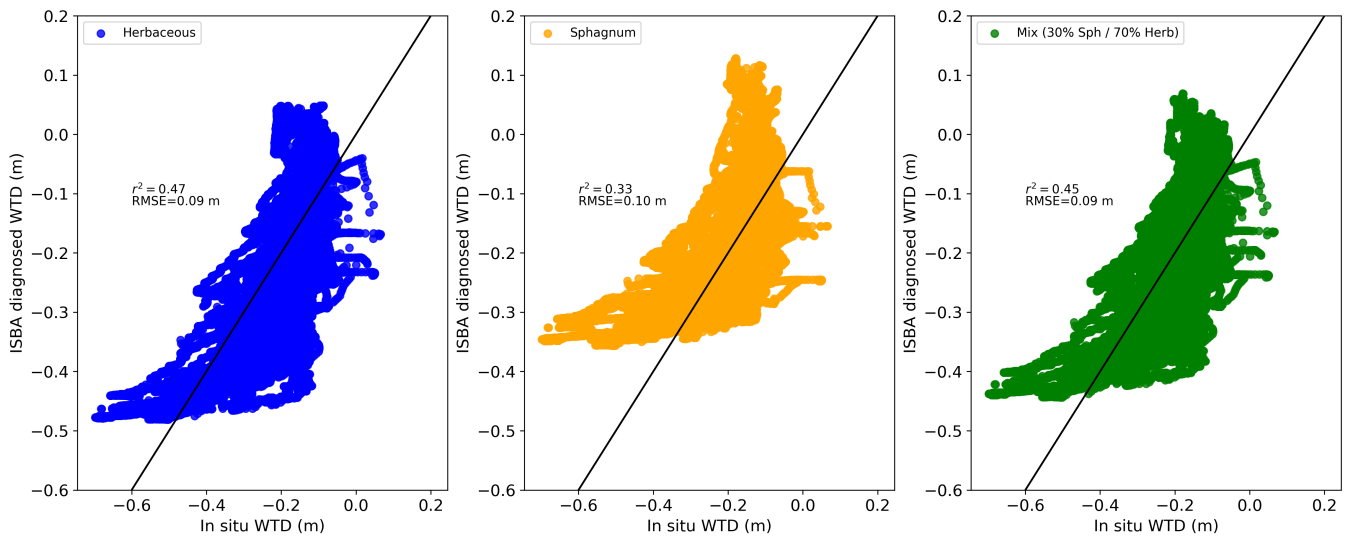
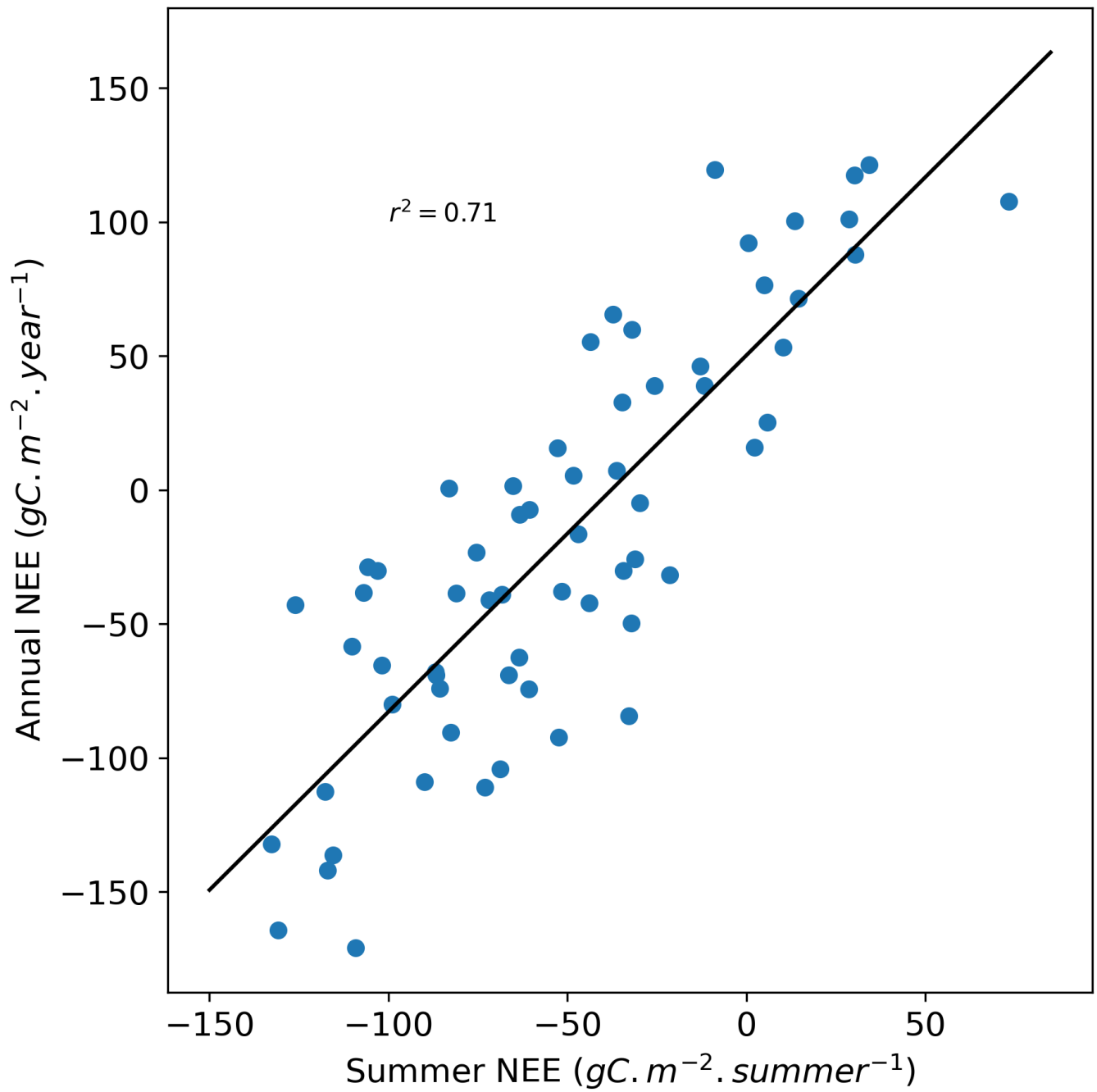


Figure A6. Hourly ISBA-diagnosed water table depth (WTD) with herbaceous vegetation as the dominant cover is compared to hourly in situ WTD in the left panel, while the right panel presents ISBA-diagnosed WTD with Sphagnum as the dominant vegetation versus in situ WTD. Hourly ISBA-diagnosed water table depth (WTD) with herbaceous vegetation as the dominant cover is compared to hourly in situ WTD in the left panel, while the right panel presents ISBA-diagnosed WTD with Sphagnum as the dominant vegetation versus in situ WTD.



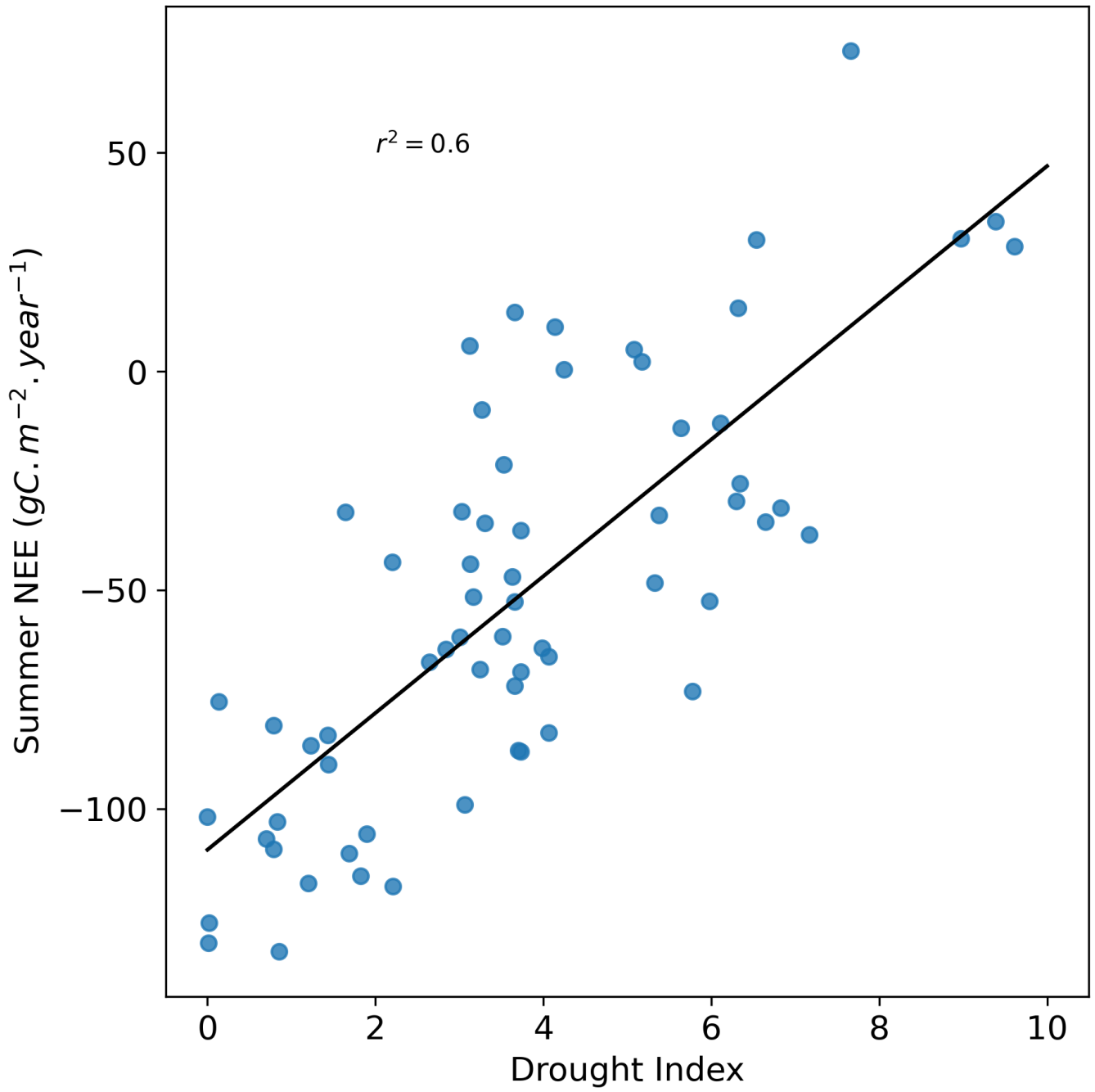


Figure A8. *Summer NEE versus Dryness Index for each year from 1959 to 2022.*

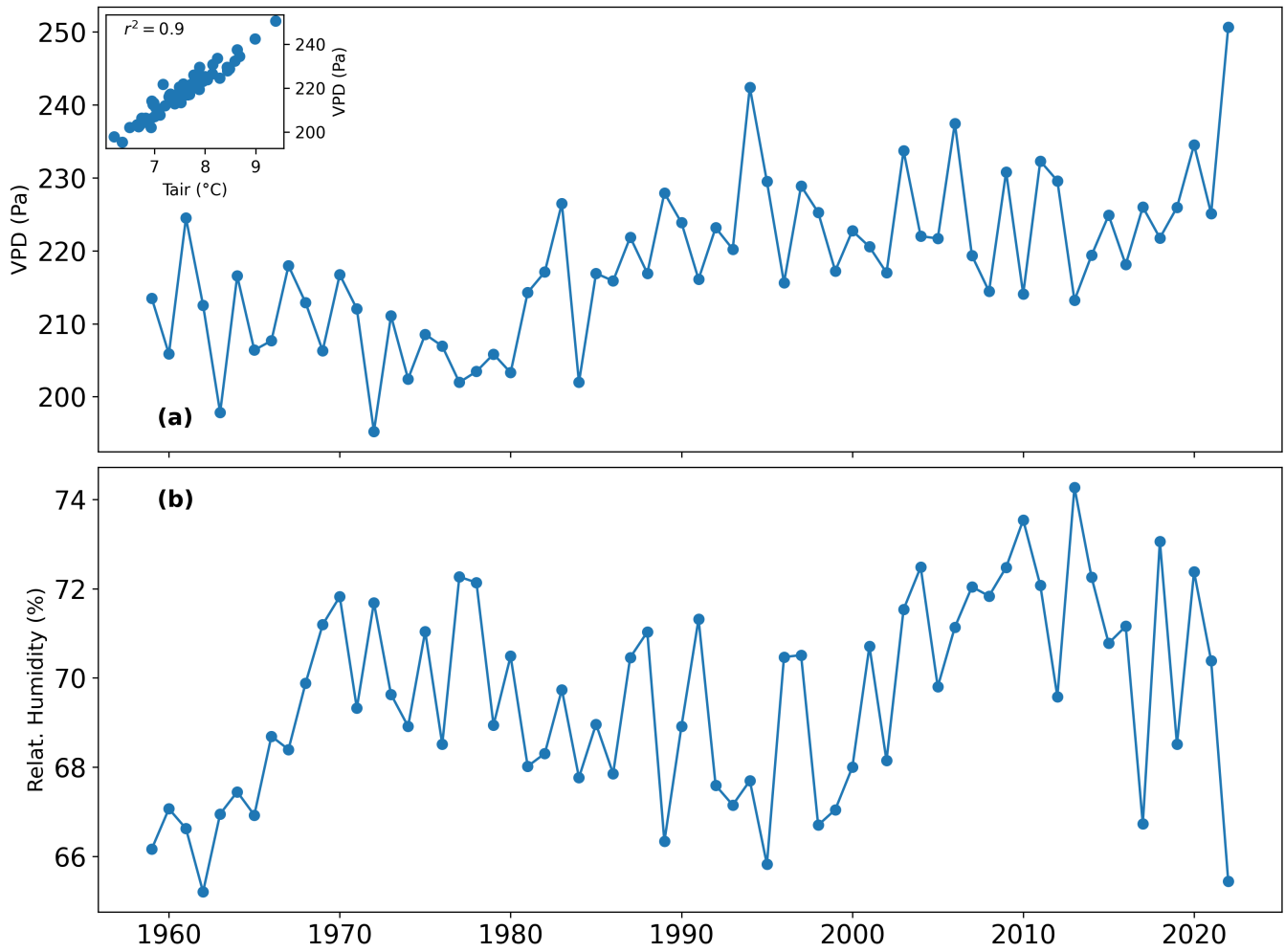


Figure A9. (a) Annual mean of vapor pressure deficit (VPD) (Pa) and scatter plot between VPD and air temperature; (b) Annual mean of relative humidity (%) from 1959 to 2022 derived from the S2M reanalysis.

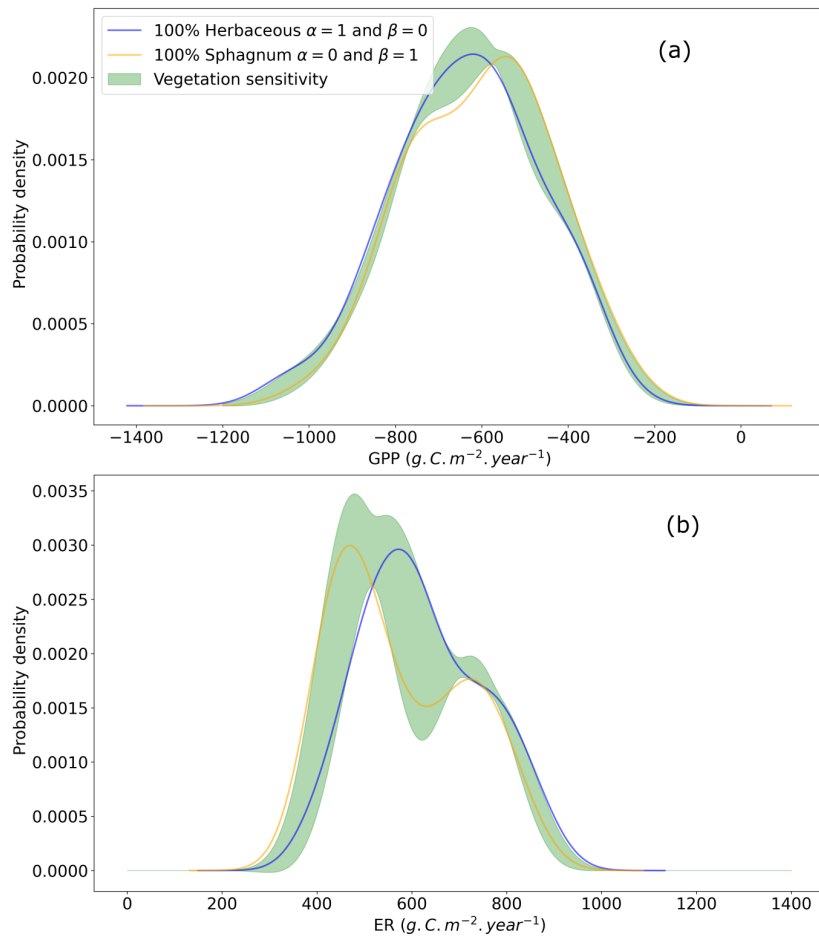


Figure A10. Probability density function of annual cumulated (a) GPP and (b) ER over 1959-2022. In black, the vegetation mix corresponds to 70% herbaceous and 30% Sphagnum. In orange a 100% Sphagnum mix and in blue a 100% herbaceous mix. In shaded areas, the 95% confidence intervals corresponding to the variation of the vegetation mix in the form $\alpha \times Y_{\text{Sphagnum}} + \beta \times Y_{\text{herbaceous}}$ with $\beta = 1 - \alpha$, α varying from 0 to 1 in steps of 0.01 and Y being GPP or ER.

Table A1. Changes between *Sphagnum* and C3 herbaceous plant ~~functional-functional~~ type in *ISBA*

Parameters	Units	C3 Herbaceous	Sphagnum	Comments
$\Gamma(25)$	ppmv	45	45	
ϵ_0	$\text{KgCO}_2 \cdot \text{J}^{-1} \cdot \text{PAR}$	0.017×10^{-6}	0.017×10^{-6}	
$Am_{max}(25)$	$\text{mg} \cdot \text{m}^{-2} \cdot \text{s}^{-1}$	1.7	1.0	Jacob's hypothesis: $Am_{max} = Vc_{max}/2$.
f	(-)	$f = f_0^* \left(1 - \frac{D_s}{D_{max}^*}\right) + f_{\min} \frac{D_s}{D_{max}^*}$	$f = f_0^*$	f does not vary with air humidity
f_0^*	(-)	$f_0^* = 0.95$	$f_0^* = 0.8$	
g_m	$\text{m} \cdot \text{s}^{-1}$	$g_m^* = e^{2.381 - 0.6103 \ln(D_{max}^*)}$	$g_m = \alpha g_{\text{tot}}$ (Eq. 5)	$SWI = 1$
		$g_m = e^{2.381 - 0.6103 \ln(D_{max})}$	$g_m = \alpha g_{\text{tot}}$ (Eq. 5)	$SWI_c < SWI < 1$
		$g_m = g_{m,\text{minimum}}$	$g_m = \alpha g_{\text{tot}}$ (Eq. 5)	$SWI \leq SWI_c$
D_{max}	$\text{KgH}_2\text{O} \cdot \text{Kg}_{\text{air}}^{-1}$	$D_{max}^* = 0.045$	Non used	$SWI = 1$
		$D_{max} = D_{max}^X + (D_{max}^* - D_{max}^X) \frac{SWI - SWI_c}{1 - SWI_c}$	Non used	$SWI_c < SWI < 1$
		$D_{max} = D_{max}^X \frac{SWI}{SWI_c}$	Non used	$SWI \leq SWI_c$
τ	Days	150	80	
SLA	$\text{m}^2 \cdot \text{Kg}_{\text{DryMass}}^{-1}$	$e = 5.56; f = 6.73; N_m = 1.3$	$e = 12; f = 5; N_m = 1.3$	
Root zone	-	20 cm, exponential profile distribution	no roots	Uniform distribution of <i>Sphagnum</i> over the top 10 cm
Vegetation height	m	$\frac{LAI}{6}$	0.05	Impacts Drag coefficient (H and LE fluxes)

Note 1: $SWI_c = 0.3 \text{ m}^3 \cdot \text{m}^{-3}$ **Note 2:** g_m^*, D_{max}^* are the same quantities as g_m, D_{max} but without hydric stress.

Note 32: $D_{max}^X = 0.4$; this is the maximum value of D_{max} . **Note 43:** The calibration of the above relationships between g_m and D_{max} was carried out with g_m expressed in $\text{mm} \cdot \text{s}^{-1}$ and D_{max} in $\text{g} \cdot \text{Kg}^{-1}$.

Parameter	Value	Equation
α	0.0004 (mol ⁻¹ .m ³)	5
β	-0.5	4
γ	0.5	4
η	-0.0416	4
b	27.6 (g.g ⁻¹)	10
c	-0.5 (g.g ⁻¹)	10
d	1 (s.m ⁻¹)	12
$R_{s,min}$	1e ⁻⁴ m.s ⁻¹	12
w_{min}	2.4 (g.g ⁻¹)	4
w_{max}	22 (g.g ⁻¹)	4
w_{opt}	6 (g.g ⁻¹)	4

Table A2. Parameters used for the Sphagnum PFT and their associated equations.

Appendix B: ISBA equations

$$Am_{max}(Ts) = \frac{Am_{max}(25) \times Q_{10}^{(Ts-25)/10}}{[1 + \exp[0.3(T1 - Ts)]] [1 + \exp[0.3(Ts - T2)]]} \quad (B1)$$

685 where $Am_{max}(25)$ is Am_{max} at 25°C, Q_{10} is fixed at 2.0, T_s is the skin temperature in °C and $T1$ and $T2$ are reference temperature values. gm in unstressed soil moisture conditions, gm^* , depends on temperature via the same Q_{10} function as Am_{max} .

$$\Gamma(Ts) = \Gamma(25) \times Q_{10}^{(Ts-25)/10} \quad (B2)$$

$\Gamma(25)$ is Γ at 25°C. Here Q_{10} is fixed at 1.5.

$$690 \quad \epsilon = \epsilon_0 \left(\frac{C_i - \Gamma}{C_i - 2\Gamma} \right) \quad (B3)$$

ϵ is the initial quantum use efficiency, where ϵ_0 is the maximum quantum use efficiency.

$$C_i = fC_a + \Gamma(1 - f) \quad (B4)$$

The internal CO_2 concentration C_i , is directly derived from the CO_2 concentration in the air C_a and from f which is detailed in table A1.

$$\begin{aligned}
E_g &= (1 - F_{veg})\rho_a C_H V a (\alpha q_{sat}(T_s) - q_a) \\
E_v &= F_{veg}\rho_a \left(\frac{\delta}{R_a}\right) (q_{sat}(T_s) - q_a) \\
E_{tr} &= F_{veg}\rho_a \left(\frac{1 - \delta}{R_a + R_s}\right) (q_{sat}(T_s) - q_a)
\end{aligned} \tag{B5}$$

The evaporation of the vegetated surface is the sum of the evaporation of the soil (E_g) and the evaporation of the vegetation (E_{veg}) : $E = E_g + E_{veg}$. The evaporation of the vegetation is itself distributed between the direct
700 evaporation (E_v) due to the fraction of foliage covered by water intercepted and the transpiration (E_{tr}) : $E_{veg} = E_v + E_{tr}$.

F_{veg} is the fraction of vegetation, δ the fraction of foliage covered by intercepted water and R_s is the canopy resistance taking into account the upscaling of the cuticular and stomatal resistance.

For the modelling of ~~Sphagnum~~Sphagnum, δ is set to 0, and R_s is changed in R_{sp} (in this context, historical
705 transpiration effectively corresponds to the evaporation from ~~Sphagnum~~Sphagnum).

References

- Antala, M., Juszczak, R., van der Tol, C., and Rastogi, A.: Impact of climate change-induced alterations in peatland vegetation phenology and composition on carbon balance, *Science of The Total Environment*, 827, 154294, <https://doi.org/https://doi.org/10.1016/j.scitotenv.2022.154294>, 2022.
- 710 Bond-Lamberty, B., Gower, S. T., Amiro, B., and Ewers, B. E.: Measurement and modelling of bryophyte evaporation in a boreal forest chronosequence, *Ecohydrology*, 4, 26–35, <https://doi.org/10.1002/eco.118>, 2011.
- Boone, A. and Etchevers, P.: An Intercomparison of Three Snow Schemes of Varying Complexity Coupled to the Same Land Surface Model: Local-Scale Evaluation at an Alpine Site, *Journal of Hydrometeorology*, 2, 374–394, [https://doi.org/10.1175/1525-7541\(2001\)002<0374:AIOTSS>2.0.CO;2](https://doi.org/10.1175/1525-7541(2001)002<0374:AIOTSS>2.0.CO;2), publisher: American Meteorological Society Section: *Journal of Hydrometeorology*, 2001.
- 715 Bunsen, M. S. and Loisel, J.: Carbon storage dynamics in peatlands: Comparing recent- and long-term accumulation histories in southern Patagonia, *Global Change Biology*, 26, 5778–5795, <https://doi.org/10.1111/gcb.15262>, 2020.
- Calvet, J.-C. and Soussana, J.-F.: Modelling CO₂-enrichment effects using an interactive vegetation SVAT scheme, *Agricultural and Forest Meteorology*, 108, 129–152, [https://doi.org/10.1016/S0168-1923\(01\)00235-0](https://doi.org/10.1016/S0168-1923(01)00235-0), 2001.
- 720 Carrer, D., Roujean, J.-L., Lafont, S., Calvet, J.-C., Boone, A., Decharme, B., Delire, C., and Gastellu-Etchegorry, J.-P.: A canopy radiative transfer scheme with explicit FAPAR for the interactive vegetation model ISBA-A-gs: Impact on carbon fluxes, *Journal of Geophysical Research: Biogeosciences*, 118, 888–903, <https://doi.org/10.1002/jgrg.20070>, 2013.
- Carter, M. S., Larsen, K. S., Emmett, B., Estiarte, M., Field, C., Leith, I. D., Lund, M., Meijide, A., Mills, R. T. E., Niinemets, U., Penuelas, J., Portillo-Estrada, M., Schmidt, I. K., Selsted, M. B., Sheppard, L. J., Sowerby, A., Tietema, A., and Beier, C.: Synthesizing greenhouse gas fluxes across nine European peatlands and shrublands – responses to climatic and environmental changes, *Biogeosciences*, 9, 3739–3755, <https://doi.org/10.5194/bg-9-3739-2012>, 2012.
- 725 Chadburn, S., Burke, E., Essery, R., Boike, J., Langer, M., Heikenfeld, M., Cox, P., and Friedlingstein, P.: An improved representation of physical permafrost dynamics in the JULES land-surface model, *Geoscientific Model Development*, 8, 1493–1508, <https://doi.org/10.5194/gmd-8-1493-2015>, 2015.
- 730 Chaudhary, N., Miller, P. A., and Smith, B.: Modelling Past, Present and Future Peatland Carbon Accumulation across the Pan-Arctic Region, *Biogeosciences*, 14, 4023–4044, <https://doi.org/10.5194/bg-14-4023-2017>, 2017.
- Chen, N., Zhang, Y., Yuan, F., Song, C., Xu, M., Wang, Q., Hao, G., Bao, T., Zuo, Y., Liu, J., Zhang, T., Song, Y., Sun, L., Guo, Y., Zhang, H., Ma, G., Du, Y., Xu, X., and Wang, X.: Warming-Induced Vapor Pressure Deficit Suppression of Vegetation Growth Diminished in Northern Peatlands, *Nature Communications*, <https://doi.org/10.1038/s41467-023-42932-w>, 2023.
- 735 Clymo, R. S. and Hayward, P. M.: The Ecology of Sphagnum, in: *Bryophyte Ecology*, edited by Smith, A. J. E., pp. 229–289, Springer Netherlands, https://doi.org/10.1007/978-94-009-5891-3_8, 1982.
- Collatz, G. J., Ribas-Carbo, M., and Berry, J. A.: Coupled Photosynthesis-Stomatal Conductance Model for Leaves of C₄ Plants, *Functional Plant Biology*, 19, 519–538, <https://doi.org/10.1071/pp9920519>, publisher: CSIRO PUBLISHING, 1992.
- 740 Decharme, B., Brun, E., Boone, A., Delire, C., Le Moigne, P., and Morin, S.: Impacts of snow and organic soils parameterization on northern Eurasian soil temperature profiles simulated by the ISBA land surface model, *The Cryosphere*, 10, 853–877, <https://doi.org/10.5194/tc-10-853-2016>, publisher: Copernicus GmbH, 2016.

- Delire, C., Séférian, R., Decharme, B., Alkama, R., Calvet, J.-C., Carrer, D., Gibelin, A.-L., Joetzjer, E., Morel, X., Rocher, M., and Tzanos, D.: The Global Land Carbon Cycle Simulated With ISBA-CTRIP: Improvements Over the Last Decade, *Journal of Advances in Modeling Earth Systems*, 12, e2019MS001886, <https://doi.org/10.1029/2019MS001886>, 2020.
- 745 Dieleman, C. M., Branfireun, B. A., McLaughlin, J. W., and Lindo, Z.: Climate change drives a shift in peatland ecosystem plant community: Implications for ecosystem function and stability, *Global Change Biology*, 21, 388–395, <https://doi.org/https://doi.org/10.1111/gcb.12643>, 2015.
- Druel, A., Peylin, P., Krinner, G., Ciais, P., Viovy, N., Peregou, A., Bastrikov, V., Kosykh, N., and Mironycheva-Tokareva, N.: Towards a more detailed representation of high-latitude vegetation in the global land surface model ORCHIDEE (ORCHIDEE-VEGv1.0), *Geoscientific Model Development*, 10, 4693–4722, <https://doi.org/10.5194/gmd-10-4693-2017>, publisher: Copernicus GmbH, 2017.
- 750 Faranda, D., Pascale, S., and Bulut, B.: Persistent anticyclonic conditions and climate change exacerbated the exceptional 2022 European-Mediterranean drought, *Environmental Research Letters*, 18, <https://doi.org/10.1088/1748-9326/acbc37>, 2023.
- 755 Frohking, S., Roulet, N. T., Tuittila, E., Bubier, J. L., Quillet, A., Talbot, J., and Richard, P. J. H.: A new model of Holocene peatland net primary production, decomposition, water balance, and peat accumulation, *Earth System Dynamics*, 1, 1–21, <https://doi.org/10.5194/esd-1-1-2010>, publisher: Copernicus GmbH, 2010.
- Frohking, S., Talbot, J., and Subin, Z. M.: Exploring the relationship between peatland net carbon balance and apparent carbon accumulation rate at century to millennial time scales, *The Holocene*, 24, 1167–1173, publisher: SAGE Publications Ltd, 2014.
- Fu, Z., Ciais, P., Prentice, I. C., Gentile, P., Makowski, D., Bastos, A., Luo, X., Green, J. K., Stoy, P. C., Yang, H., and Hajima, T.: Atmospheric Dryness Reduces Photosynthesis along a Large Range of Soil Water Deficits, *Nature Communications*, 13, 989, <https://doi.org/10.1038/s41467-022-28652-7>, 2022.
- 765 Garisoain, R., Delire, C., Decharme, B., Ferrant, S., Granouillac, F., Payre-Suc, V., and Gandois, L.: A Study of Dominant Vegetation Phenology in a Sphagnum Mountain Peatland Using In Situ and Sentinel-2 Observations, *Journal of Geophysical Research: Biogeosciences*, 128, e2023JG007403, <https://doi.org/https://doi.org/10.1029/2023JG007403>, 2023.
- Garisoain, R., Jacotot, A., Delire, C., Binet, S., Le Roux, G., Gascoïn, S., Rosset, T., Gogo, S., Granouillac, F., Payre-Suc, V., and Gandois, L.: Mountain Peatlands and Drought: Carbon Cycling in the Pyrenees Amidst Global Climate Change, *Journal of Geophysical Research: Biogeosciences*, 129, e2024JG008041, <https://doi.org/https://doi.org/10.1029/2024JG008041>, 2024.
- 770 Garisoain, R., Delire, C., Decharme, B., and gandois, l.: Sphagnum and Herbaceous Net Ecosystem Exchanges in a Pyrenean Peatland: A Long-Term Study Using the ISBA Model [Dataset], <https://doi.org/10.5281/zenodo.16984992>, 2025.
- Gibelin, A.-L., Calvet, J.-C., and Viovy, N.: Modelling energy and CO₂ fluxes with an interactive vegetation land surface model-Evaluation at high and middle latitudes, *Agricultural and Forest Meteorology*, 148, 1611–1628, <https://doi.org/10.1016/j.agrformet.2008.05.013>, 2008.
- Gong, J., Roulet, N., Frohking, S., Peltola, H., Laine, A. M., Kokkonen, N., and Tuittila, E.-S.: Modelling the habitat preference of two key *Sphagnum* species in a poor fen as controlled by capitulum water content, *Biogeosciences*, 17, 5693–5719, <https://doi.org/10.5194/bg-17-5693-2020>, publisher: Copernicus GmbH, 2020.

- 780 Gorham, E., Lehman, C., Dyke, A., Clymo, D., and Janssens, J.: Long-term carbon sequestration in North American peatlands, *Quaternary Science Reviews*, 58, 77–82, <https://doi.org/10.1016/j.quascirev.2012.09.018>, 2012.
- Goudriaan, J.: A simple and fast numerical method for the computation of daily totals of crop photosynthesis, *Agricultural and Forest Meteorology*, 38, 249–254, [https://doi.org/10.1016/0168-1923\(86\)90063-8](https://doi.org/10.1016/0168-1923(86)90063-8), 1986.
- Grant, R. F., Desai, A. R., and Sulman, B. N.: Modelling contrasting responses of wetland productivity to changes in water
785 table depth, *Biogeosciences*, 9, 4215–4231, <https://doi.org/10.5194/bg-9-4215-2012>, publisher: Copernicus GmbH, 2012.
- Guenet, B., Eglin, T., Vasilyeva, N., Peylin, P., Ciais, P., and Chenu, C.: The relative importance of decomposition and transport mechanisms in accounting for soil organic carbon profiles, *Biogeosciences*, 10, 2379–2392, <https://doi.org/10.5194/bg-10-2379-2013>, publisher: Copernicus GmbH, 2013.
- Guenet, B., Orliac, J., Cécillon, L., Torres, O., Sereni, L., Martin, P. A., Barré, P., and Bopp, L.: Spatial Biases Reduce
790 the Ability of Earth System Models to Simulate Soil Heterotrophic Respiration Fluxes, *Biogeosciences*, 21, 657–669, <https://doi.org/10.5194/bg-21-657-2024>, 2024.
- Heijmans, M. M., Mauquoy, D., van Geel, B., and Berendse, F.: Long-term effects of climate change on vegetation and carbon dynamics in peat bogs, *Journal of Vegetation Science*, 19, 307–320, <https://doi.org/https://doi.org/10.3170/2008-8-18368>, 2008.
- 795 Helbig, M., Živković, T., Alekseychik, P., Aurela, M., El-Madany, T. S., Euskirchen, E. S., Flanagan, L. B., Griffis, T. J., Hanson, P. J., Hattakka, J., Helfter, C., Hirano, T., Humphreys, E. R., Kiely, G., Kolka, R. K., Laurila, T., Leahy, P. G., Lohila, A., Mammarella, I., Nilsson, M. B., Panov, A., Parmentier, F. J. W., Peichl, M., Rinne, J., Roman, D. T., Sonnentag, O., Tuittila, E.-S., Ueyama, M., Vesala, T., Vestin, P., Weldon, S., Weslien, P., and Zaehle, S.: Warming Response of Peatland CO₂ Sink Is Sensitive to Seasonality in Warming Trends, *Nature Climate Change*, 12, 743–749,
800 <https://doi.org/10.1038/s41558-022-01428-z>, 2022.
- Henry, E., Infante Sanchez, M., and Corriol, G.: *Tourbière de Bernadouze (Suc-et-Sentenac, 09). Expérimentation d'une cartographie fine des végétations*, Tech. rep., Conservatoire botanique national des Pyrénées et de Midi-Pyrénées, Bagneres de Bigorre, 2014.
- Jacobs, C.: *Direct impact of atmospheric CO₂ enrichment on regional transpiration* | PhD Theses, 1994.
- 805 Jacobs, C. M. J., van den Hurk, B. M. M., and de Bruin, H. A. R.: Stomatal behaviour and photosynthetic rate of unstressed grapevines in semi-arid conditions, *Agricultural and Forest Meteorology*, 80, 111–134, [https://doi.org/10.1016/0168-1923\(95\)02295-3](https://doi.org/10.1016/0168-1923(95)02295-3), 1996.
- Kim, J. and Verma, S. B.: Surface Exchange of Water Vapour between an Open Sphagnum Fen and the Atmosphere, *Boundary-Layer Meteorology*, 79, 243–264, <https://doi.org/10.1007/BF00119440>, 1996.
- 810 Koven, C., Friedlingstein, P., Ciais, P., Khvorostyanov, D., Krinner, G., and Tarnocai, C.: On the formation of high-latitude soil carbon stocks: Effects of cryoturbation and insulation by organic matter in a land surface model, *Geophysical Research Letters*, 36, <https://doi.org/10.1029/2009GL040150>, 2009.
- Laine, A. M., Mäkiranta, P., Laiho, R., Mehtätalo, L., Penttilä, T., Korrensalo, A., Minkkinen, K., Fritze, H., and Tuittila, E.-S.: Warming impacts on boreal fen CO₂ exchange under wet and dry conditions, *Global Change Biology*,
815 <https://doi.org/https://doi.org/10.1111/gcb.14617>, 2019.
- Lang, S. I., Cornelissen, J. H. C., Klahn, T., Van Logtestijn, R. S. P., Broekman, R., Schweikert, W., and Aerts, R.: An Experimental Comparison of Chemical Traits and Litter Decomposition Rates in a Diverse Range of Subarctic Bryophyte,

- Lichen and Vascular Plant Species, *Journal of Ecology*, 97, 886–900, <https://doi.org/10.1111/j.1365-2745.2009.01538.x>, 2009.
- 820 Lippmann, T. J. R., van der Velde, Y., Heijmans, M. M. P. D., Dolman, H., Hendriks, D. M. D., and van Huissteden, K.: Peatland-VU-NUCOM (PVN 1.0): using dynamic plant functional types to model peatland vegetation, CH₄, and CO₂ emissions, *Geoscientific Model Development*, 16, 6773–6804, <https://doi.org/10.5194/gmd-16-6773-2023>, 2023.
- Loisel, J. and Yu, Z.: Recent acceleration of carbon accumulation in a boreal peatland, south central Alaska, *Journal of Geophysical Research: Biogeosciences*, 118, 41–53, <https://doi.org/10.1029/2012JG001978>, 2013.
- 825 Loisel, J., Gallego-Sala, A. V., Amesbury, M. J., Magnan, G., Anshari, G., Beilman, D. W., Benavides, J. C., Blewett, J., Camill, P., Charman, D. J., Chawchai, S., Hedgpeth, A., Kleinen, T., Korhola, A., Large, D., Mansilla, C. A., Muller, J., van Bellen, S., West, J. B., Yu, Z., Bubier, J. L., Garneau, M., Moore, T., Sannel, A. B. K., Page, S., Valiranta, M., Bechtold, M., Brovkin, V., Cole, L. E. S., Chanton, J. P., Christensen, T. R., Davies, M. A., De Vleeschouwer, F., Finkelstein, S. A., Frohling, S., Galka, M., Gandois, L., Girkin, N., Harris, L. I., Heinemeyer, A., Hoyt, A. M., Jones, M. C., Joos, F.,
- 830 Juutinen, S., Kaiser, K., Lacourse, T., Lamentowicz, M., Larmola, T., Leifeld, J., Lohila, A., Milner, A. M., Minkinen, K., Moss, P., Naafs, B. D. A., Nichols, J., O'Donnell, J., Payne, R., Philben, M., Piilo, S., Quillet, A., Ratnayake, A. S., Roland, T. P., Sjoogersten, S., Sonnentag, O., Swindles, G. T., Swinnen, W., Talbot, J., Treat, C., Valach, A. C., and Wu, J.: Expert assessment of future vulnerability of the global peatland carbon sink, *Nature Climate Change*, 11, 70–77, <https://doi.org/10.1038/s41558-020-00944-0>, number: 1 Publisher: Nature Publishing Group, 2021.
- 835 Metzger, C., Nilsson, M. B., Peichl, M., and Jansson, P.-E.: Parameter interactions and sensitivity analysis for modelling carbon heat and water fluxes in a natural peatland, using CoupModel v5, *Geoscientific Model Development*, 9, 4313–4338, <https://doi.org/10.5194/gmd-9-4313-2016>, 2016.
- Morel, X., Decharme, B., Delire, C., Krinner, G., Lund, M., Hansen, B. U., and Mastepanov, M.: A New Process-Based Soil Methane Scheme: Evaluation Over Arctic Field Sites With the ISBA Land Surface Model, *Journal of Advances in Modeling Earth Systems*, 11, 293–326, <https://doi.org/10.1029/2018MS001329>, 2019.
- 840 Packalen, M. S. and Finkelstein, S. A.: Quantifying Holocene variability in carbon uptake and release since peat initiation in the Hudson Bay Lowlands, Canada, *The Holocene*, 24, 1063–1074, <https://doi.org/10.1177/0959683614540728>, 2014.
- Page, S. and Baird, A.: Peatlands and Global Change: Response and Resilience, *Annual Review of Environment and Resources*, 41, 35–57, <https://doi.org/10.1146/annurev-environ-110615-085520>, 2016.
- 845 Park, H., Launiainen, S., Konstantinov, P. Y., Iijima, Y., and Fedorov, A. N.: Modeling the Effect of Moss Cover on Soil Temperature and Carbon Fluxes at a Tundra Site in Northeastern Siberia, *Journal of Geophysical Research: Biogeosciences*, 123, 3028–3044, <https://doi.org/10.1029/2018JG004491>, 2018.
- Parton, W. J., Scurlock, J. M. O., Ojima, D. S., Gilmanov, T. G., Scholes, R. J., Schimel, D. S., Kirchner, T., Menaut, J.-C., Seastedt, T., Garcia Moya, E., Kamnalrut, A., and Kinyamario, J. I.: Observations and Modeling of Biomass and Soil Organic Matter Dynamics for the Grassland Biome Worldwide, *Global Biogeochemical Cycles*, 7, 785–809, <https://doi.org/10.1029/93GB02042>, 1993.
- 850 Porada, P., Ekici, A., and Beer, C.: Effects of bryophyte and lichen cover on permafrost soil temperature at large scale, *The Cryosphere*, 10, 2291–2315, <https://doi.org/10.5194/tc-10-2291-2016>, publisher: Copernicus GmbH, 2016.
- Qiu, C., Zhu, D., Ciais, P., Guenet, B., Peng, S., Krinner, G., Tootchi, A., Ducharne, A., and Hastie, A.: Modelling northern peatland area and carbon dynamics since the Holocene with the ORCHIDEE-PEAT land surface model (SVN r5488),
- 855

- Geoscientific Model Development, 12, 2961–2982, <https://doi.org/10.5194/gmd-12-2961-2019>, publisher: Copernicus GmbH, 2019.
- 860 Robroek, B. J. M., Devilee, G., Telgenkamp, Y., Härlin, C., Steele, M. N., Barel, J. M., and Lamers, L. P. M.: More is not always better: peat moss mixtures slightly enhance peatland stability, *Proceedings of the Royal Society B: Biological Sciences*, 291, 20232 622, <https://doi.org/10.1098/rspb.2023.2622>, publisher: Royal Society, 2024.
- 865 Rogora, M., Frate, L., Carranza, M. L., Freppaz, M., Stanisci, A., Bertani, I., Bottarin, R., Brambilla, A., Canullo, R., Carbognani, M., Cerrato, C., Chelli, S., Cremonese, E., Cutini, M., Di Musciano, M., Erschbamer, B., Godone, D., Iocchi, M., Isabelon, M., Magnani, A., Mazzola, L., Morra di Cella, U., Pauli, H., Petey, M., Petriccione, B., Porro, F., Psenner, R., Rossetti, G., Scotti, A., Sommaruga, R., Tappeiner, U., Theurillat, J. P., Tomaselli, M., Viglietti, D., Viterbi, R., Vittoz, P., Winkler, M., and Matteucci, G.: Assessment of climate change effects on mountain ecosystems through a cross-site analysis in the Alps and Apennines, *Science of The Total Environment*, 624, 1429–1442, <https://doi.org/10.1016/j.scitotenv.2017.12.155>, 2018.
- 870 Scheffer, R. A., Van Logtestijn, R. S. P., and Verhoeven, J. T. A.: Decomposition of *Carex* and *Sphagnum* Litter in Two Mesotrophic Fens Differing in Dominant Plant Species, *Oikos*, 92, 44–54, <https://doi.org/10.1034/j.1600-0706.2001.920106.x>, 2001.
- Shi, X., Thornton, P. E., Ricciuto, D. M., Hanson, P. J., Mao, J., Sebestyen, S. D., Griffiths, N. A., and Bisht, G.: Representing northern peatland microtopography and hydrology within the Community Land Model, *Biogeosciences*, 12, 6463–6477, <https://doi.org/10.5194/bg-12-6463-2015>, publisher: Copernicus GmbH, 2015.
- 875 Shi, X., Ricciuto, D. M., Thornton, P. E., Xu, X., Yuan, F., Norby, R. J., Walker, A. P., Warren, J. M., Mao, J., Hanson, P. J., Meng, L., Weston, D., and Griffiths, N. A.: Extending a land-surface model with *Sphagnum* moss to simulate responses of a northern temperate bog to whole ecosystem warming and elevated CO₂, *Biogeosciences*, 18, 467–486, <https://doi.org/10.5194/bg-18-467-2021>, publisher: Copernicus GmbH, 2021.
- 880 St-Hilaire, F., Wu, J., Roulet, N. T., Frolking, S., Lafleur, P. M., Humphreys, E. R., and Arora, V.: McGill wetland model: evaluation of a peatland carbon simulator developed for global assessments, *Biogeosciences*, 7, 3517–3530, <https://doi.org/10.5194/bg-7-3517-2010>, 2010.
- Sterk, H. P., Marshall, C., Cowie, N. R., Clutterbuck, B., McIlvenny, J., and Andersen, R.: Blanket bog CO₂ flux driven by plant functional type during summer drought, *Ecohydrology*, 16, e2503, <https://doi.org/10.1002/eco.2503>, <https://onlinelibrary.wiley.com/doi/pdf/10.1002/eco.2503>, 2023.
- 885 Turetsky, M. R.: The Role of Bryophytes in Carbon and Nitrogen Cycling, *The Bryologist*, 106, 395–409, <https://doi.org/10.1639/05>, 2003.
- Turunen, J.: Past and present carbon accumulation in undisturbed boreal and subarctic mires: A review, *Suo*, 54, 15–28, 2003.
- 890 van der Woude, A. M., Peters, W., Joetzjer, E., Lafont, S., Koren, G., Ciais, P., Ramonet, M., Xu, Y., Bastos, A., Botia, S., Sitch, S., de Kok, R., Kneuer, T., Kubistin, D., Jacotot, A., Loubet, B., Herig-Coimbra, P.-H., Loustau, D., and Luijkx, I. T.: Temperature extremes of 2022 reduced carbon uptake by forests in Europe, *Nature Communications*, 2023.
- Vautard, R., Yiou, P., D’Andrea, F., de Noblet, N., Viovy, N., Cassou, C., Polcher, J., Ciais, P., Kageyama, M., and Fan, Y.: Summertime European heat and drought waves induced by wintertime Mediterranean rainfall deficit, *Geophysical Research Letters*, 34, <https://doi.org/https://doi.org/10.1029/2006GL028001>, 2007.

- Vernay, M., Lafaysse, M., Monteiro, D., Hagenmuller, P., Nheili, R., Samacoïts, R., Verfaillie, D., and Morin, S.: The S2M
895 meteorological and snow cover reanalysis over the French mountainous areas: description and evaluation (1958–2021), *Earth
System Science Data*, 14, 1707–1733, <https://doi.org/10.5194/essd-14-1707-2022>, publisher: Copernicus GmbH, 2022.
- Vidal, J.-P., Martin, E., Franchistéguy, L., Habets, F., Soubeyroux, J.-M., Blanchard, M., and Baillon, M.: Multilevel and
multiscale drought reanalysis over France with the Safran-Isba-Modcou hydrometeorological suite, *Hydrology and Earth
System Sciences*, 14, 459–478, <https://doi.org/10.5194/hess-14-459-2010>, 2010.
- 900 Walker, A. P., Carter, K. R., Gu, L., Hanson, P. J., Malhotra, A., Norby, R. J., Sebestyen, S. D., Wullschleger, S. D., and
Weston, D. J.: Biophysical drivers of seasonal variability in Sphagnum gross primary production in a northern temperate
bog, *Journal of Geophysical Research: Biogeosciences*, 122, 1078–1097, <https://doi.org/10.1002/2016JG003711>, 2017.
- Wania, R., Ross, I., and Prentice, I. C.: Integrating peatlands and permafrost into a dynamic global vegetation
model: 2. Evaluation and sensitivity of vegetation and carbon cycle processes, *Global Biogeochemical Cycles*, 23,
905 <https://doi.org/10.1029/2008GB003413>, 2009.
- Wania, R., Melton, J. R., Hodson, E. L., Poulter, B., Ringeval, B., Spahni, R., Bohn, T., Avis, C. A., Chen, G., Eliseev,
A. V., Hopcroft, P. O., Riley, W. J., Subin, Z. M., Tian, H., van Bodegom, P. M., Kleinen, T., Yu, Z. C., Singarayer, J. S.,
Zürcher, S., Lettenmaier, D. P., Beerling, D. J., Denisov, S. N., Prigent, C., Papa, F., and Kaplan, J. O.: Present state of
global wetland extent and wetland methane modelling: methodology of a model inter-comparison project (WETCHIMP),
910 *Geoscientific Model Development*, 6, 617–641, <https://doi.org/10.5194/gmd-6-617-2013>, publisher: Copernicus GmbH, 2013.
- Weston, D. J., Timm, C. M., Walker, A. P., Gu, L., Muchero, W., Schmutz, J., Shaw, A. J., Tuskan, G. A., Warren,
J. M., and Wullschleger, S. D.: Sphagnum physiology in the context of changing climate: emergent influences of genomics,
modelling and host–microbiome interactions on understanding ecosystem function, *Plant, Cell & Environment*, 38, 1737–
1751, <https://doi.org/10.1111/pce.12458>, [_eprint: https://onlinelibrary.wiley.com/doi/pdf/10.1111/pce.12458](https://onlinelibrary.wiley.com/doi/pdf/10.1111/pce.12458), 2015.
- 915 Williams, T. G. and Flanagan, L. B.: Measuring and modelling environmental influences on photosynthetic gas exchange
in Sphagnum and Pleurozium, *Plant, Cell & Environment*, 21, 555–564, <https://doi.org/10.1046/j.1365-3040.1998.00292.x>,
1998.
- World Meteorological Organization: WMO Guidelines on the Calculation of Climate Normals, Wmo-no. 1203, World Meteoro-
logical Organization, Geneva, Switzerland, <https://library.wmo.int>, 2017.
- 920 Wu, Y. and Blodau, C.: PEATBOG: a biogeochemical model for analyzing coupled carbon and nitrogen dynamics in northern
peatlands, *Geoscientific Model Development*, 6, 1173–1207, <https://doi.org/10.5194/gmd-6-1173-2013>, 2013a.
- Wu, Y. and Blodau, C.: PEATBOG: a biogeochemical model for analyzing coupled carbon and nitrogen dynamics in northern
peatlands, *Geoscientific Model Development*, 6, 1173–1207, <https://doi.org/10.5194/gmd-6-1173-2013>, publisher: Coperni-
cus GmbH, 2013b.
- 925 Wu, Y., Verseghy, D. L., and Melton, J. R.: Integrating peatlands into the coupled Canadian Land Surface Scheme (CLASS)
v3.6 and the Canadian Terrestrial Ecosystem Model (CTEM) v2.0, *Geoscientific Model Development*, 9, 2639–2663,
<https://doi.org/10.5194/gmd-9-2639-2016>, publisher: Copernicus GmbH, 2016.
- Young, D. M., Baird, A. J., Gallego-Sala, A. V., and Loisel, J.: A cautionary tale about using the apparent carbon accumulation
rate (aCAR) obtained from peat cores, *Scientific Reports*, 11, 9547, <https://doi.org/10.1038/s41598-021-88766-8>, publisher:
930 Nature Publishing Group, 2021.

Yu, Z.: Holocene carbon flux histories of the world's peatlands: Global carbon-cycle implications, *The Holocene*, 21, 761–774, <https://doi.org/10.1177/0959683610386982>, 2011.

Yurova, A., Wolf, A., Sagerfors, J., and Nilsson, M.: Variations in net ecosystem exchange of carbon dioxide in a boreal mire: Modeling mechanisms linked to water table position, *Journal of Geophysical Research: Biogeosciences*, 112,

935 <https://doi.org/https://doi.org/10.1029/2006JG000342>, 2007.