

~~Sub-kilometer Scale~~ Snow Depth Distributions on Sea Ice of Different Ages and ~~Thickness~~ Thicknesses from Regional Field Campaigns

Lanqing Huang¹, Julienne Stroeve^{2,3,4}, Thomas Newman¹, Robbie Mallett⁵, Rosemary Willatt¹, Lu Zhou⁶, Malin Johansson⁵, Carmen Nab^{1,7}, and Alicia Fallows¹

¹Centre for Polar Observation and Modelling, Department of Earth Sciences, University College London, London, UK

²Centre for Earth Observation Science (CEOS), University of Manitoba, Winnipeg, Canada

³Alfred Wegener Institute, University of Bremen, Bremerhaven, Germany

⁴National Snow and Ice Data Center (NSIDC), Cooperative Institute for Research in Environmental Sciences (CIRES), University of Colorado, Boulder, Colorado, USA

⁵Department of Physics and Technology, UiT The Arctic University of Norway, Tromsø, Norway

⁶Institute for Marine and Atmospheric Research Utrecht, Utrecht University, Utrecht, the Netherlands

⁷British Antarctic Survey, Cambridge, UK

Correspondence: Lanqing Huang (lanqing.huang93@outlook.com)

Abstract. Accurately representing the snow depth (SND) distribution on sea ice is essential for sea ice thickness (SIT) retrievals, ecological studies, and climate ~~modeling~~ modelling. Using co-located SND and SIT measurements from multiple ~~Arctic and Antarctic polar in-situ sea ice~~ campaigns, this study examines ~~sub-kilometer-scale SND variability, considering both ice type and SIT, and~~ sub-kilometre-scale SND variability and identifies the most suitable ~~statistical distributions~~ probability density function (PDF) to represent SND distributions across different ice ages and thicknesses. First, we examine the statistical properties of SND and their dependence on SIT, finding a linear increase ~~of in~~ of in SND with SIT for ~~new and~~ first-year ice, ~~reflecting concurrent seasonal growth. The ratio between the standard deviation and the mean SND is referred to as the~~ The coefficient of variation (CV). ~~A consistent CV ≈ 0.50 is observed to be independent of SIT, allowing variability to be estimated directly from the~~ standard deviation/mean SND) remains constant at 0.50 across all SIT regimes, allowing direct ~~estimation of variability from~~ mean SND. ~~Notably~~ In particular, lower-than-expected SND variability was observed ~~over the flooded site, at~~ flooded sites, where snow loading depresses the ice and allows seawater to infiltrate the snow, resulting in a reduced CV. ~~Furthermore, we investigate four probability density functions (Normal, Log-normal, Gamma, and Skew) and find that the best-fit distribution depends on ice ages, SIT, deformation, and meteorological events such as snowfall and drift. Finally, Moreover, the results reveal differences in SND distributions across ice ages and SIT during winter and summer. Specifically,~~ snow over younger ice has a shorter residence time and is best represented by a log-normal distribution, whereas progressive wind-driven redistribution shifts the SND towards a skew distribution. Accordingly, snow over older ice, which typically has a longer residence time, is better represented by a skew distribution. Notably, although the log-normal distribution performs best under specific conditions (e.g. new or melt-season snow), its performance can deteriorate substantially over older and thicker ice, whereas the skew distribution provides a robust representation across heterogeneous ice types. SND correlation lengths ~~derived from semi-variograms show a positive relation with SIT and are enhanced by snow drift events. The results reveal~~

substantial differences in SND distributions across ice types and SIT during winter and summer, underscoring drifting snow events. These results underscore the importance of ice-condition-dependent parameterizations for representing sub-kilometer SND variability. These findings support improved parameterizations of SND variability at sub-grid scale in remote sensing sub-kilometre SND distribution and improve sub-grid-scale representations of SND variability in remote-sensing retrievals and climate models.

1 Introduction

Over sea ice, snow depth (SND) distributions are controlled by the presence of snow bedforms (e.g. dunes, ripples, or sastrugi) (Filhol and Sturm, 2015), along with as well as by wind redistribution, seasonal melting, the underlying ice surface (Massom et al., 2001; Herzfeld et al., 2006), and ice ages age (Warren et al., 1999; Iacozza and Barber, 1999; Trujillo et al., 2016; Shalina and Sandven, 2018; Kochanski et al., 2018; Wagner et al., 2022). A detailed understanding of SND distributions is essential for using coarse-grid-scale SND estimates applying coarse-grid-scale SND products in biological studies, such as determining ideal habitats for ringed seals (Kelly et al., 2010; Chambellant et al., 2012; Iacozza and Ferguson, 2014) or how much light penetrates under and light penetration beneath sea ice (Perovich, 1996; Nicolaus et al., 2012; Arndt et al., 2017). Moreover, an improved understanding of sub-kilometer sub-kilometre SND distributions is essential for matching coarse-resolution snow models (tens of kilometerskilometres) with the fine spatial resolution of freeboard measurements (hundreds of metersmetres) used to derive sea ice thickness (SIT). To address this, SND redistribution approaches based on sigmoidal functions (Kwok and Cunningham, 2008) or piecewise functions (Kurtz et al., 2009; Petty et al., 2020) have been employed. Glissenaar et al. (2021) further demonstrated that small-scale snow variability exerts a significant influence on SIT estimates derived from laser freeboards. Furthermore, SND is a key parameter influencing both the thermodynamic and dynamic processes of sea ice. The spatial variation of SND is essential in for understanding snow surface morphology and controls the onset of melt pond formation on level first-year ice (FYI) (Petrich et al., 2012).

Given the high spatial variability of snow cover, even over scales of just a few metersmetres, it is often impractical to define modeling-modelling units small enough to assume a uniform snow distribution within each unit. A common approach to address this challenge is to use larger modeling-modelling units (e.g. >1 km) while representing sub-kilometer sub-kilometre variability through statistical distributions. The simplest case is to assume a uniform SND distribution. However, due to Due to various meteorological and geophysical conditions, the processes, snow cover is naturally highly uneven, thus uneven. Consequently, the assumption of being distributed uniformly can not a uniform distribution (Veyssi re et al., 2022) cannot accurately represent the snow distributions within the SND distribution within a sub-grid. As such, a distribution based on the mean depth has been deployed more recently cell. To address this, a skew normal distribution (hereafter denoted as skew distribution) based on mean SND (Mallett et al., 2022) has been used in model simulations for under-ice light estimations (Stroeve et al., 2024; Heorton et al., 2025).

Numerous studies have examined SND statistics on terrestrial snow using Normal-normal (Marchand and Killingtveit, 2005), Log-normal-log-normal (Donald et al., 1995; Kuchment and Gelfan, 1996; Marchand and Killingtveit, 2004), and Gamma

gamma distributions (Kolberg and Gottschalk, 2010; Skaugen, 2007; Skaugen and Randen, 2013; Skaugen and Melvold, 2019).
55 For snow on sea ice, Iacozza and Barber (2010) investigated SND on smooth landfast sea ice and reported that probability density functions (PDFs) evolved from a unimodal to a multimodal form with longer tails, indicating the development of deep snow accumulation. These PDFs effectively capture ~~the variability in snow thickness~~ variability in SND and reflect changes ~~in meteorological conditions, particularly under meteorological events such as~~ snowfall and drifting snow ~~events~~ (Iacozza and Barber, 2010). Abraham et al. (2015) ~~analyzed~~ analysed the effects of sub-grid-scale SND on the transmission of light and heat
60 through sea ice, and implemented Rayleigh-distributed SND to improve the simulation of light fields in sea ice. Mallett et al. (2022) ~~analyzed~~ analysed SND measurements taken in straight lines every 10 m along 500–1000 m transects across Arctic sea ice and found that ~~the skew-normal~~ skew distribution provided the best statistical fit to snow depth anomalies over multi-year ice (MYI), with ~~the an~~ average coefficient of variation ~~being~~ around 0.42. The ~~CV was then~~ coefficient of variation (CV) was also calculated for an additional 24 FYI sites by ~~who produced~~ Clemens-Sewall et al. (2024) with a similar mean CV value of
65 0.42.

~~SND distributions largely depends on the~~ Previous studies have revealed that SND distributions depend on ice types. Iacozza and Barber (1999) employed geostatistical analysis using variograms, revealing that SND ~~distribution~~ variability is associated with sea ice ~~ages~~ age. In particular, FYI showed periodic snow patterns best ~~modeled~~ modelled by Gaussian and wave variograms, while MYI and rubble ice exhibited increasingly irregular distributions, ~~modeled~~ modelled by spherical–Gaussian
70 and single Gaussian variograms, respectively (Iacozza and Barber, 1999). Liston et al. (2020) ~~suggested that ice age is strongly linked to SND and ice dynamics (i. e. snow water equivalent).~~ revealed a linear relationship between parcel age and SND, suggesting that an accurate representation of the evolution of SND on sea ice requires a detailed parcel age on weekly timescales. Itkin et al. (2023) thoroughly investigated the seasonal and ice-type dependence of the SND distribution, showing that the largest snow volumes accumulated by April ~~,~~ and that snow on the level ice exhibited a pronounced spatial heterogeneity
75 ~~characterized~~ characterised by snow dunes.

~~Besides, wind~~ Wind plays an essential role ~~on shaping the~~ in shaping SND variability and redistribution (Moon et al., 2019). Iacozza and Barber (1999) demonstrated that the geometric anisotropy in the snow distribution was consistently aligned with the prevailing wind directions, ~~indicating the dominant role of the wind in shaping snow drift patterns~~ highlighting the wind as a dominant control on snow redistribution. Wind influences the spatial distribution of SND across different ice types. For level
80 ice, wind-blown snow tends to accumulate preferentially on younger ice (Clemens-Sewall et al., 2022), where it can form a 2.5–8 cm snow layer ~~through redistribution by~~ redistributing from adjacent older ice. In addition, snow tends to be transported off level ice and deposited on ridges (Hames et al., 2022) and deformed ice (Merkouriadi et al., 2025) due to wind-driven redistribution. ~~A case study in the western Arctic observed that snow depth over level ice decreased by 40%. Despite~~ Despite the wind-driven redistribution of ~~snow depth~~ SND, Trujillo et al. (2016) examined the impact of a typical storm on SND at
85 high spatial resolution (1–10 cm) over a 100×100 m area, revealing substantial local changes in ~~snow thickness~~ SND while the overall statistical distribution of surface elevation remained ~~largely~~ stable.

The aforementioned studies demonstrated that ~~sea-ice ages and~~ deformation wind redistribution are key factors ~~affect SND distribution~~ affecting SND distributions on sea ice. Mallett et al. (2022) applied a ~~skew-normal~~ skew model to SND data from

Soviet ~~NP-North Pole (NP)~~ stations, demonstrating superior performance on MYI compared to younger ice. However, since
90 no ~~ice thickness or roughness SIT~~ data are available from these stations, they were unable to investigate the key ~~relationships~~
~~relationship~~ between SND distribution, ~~SIT, and surface roughness, and SIT~~. Using co-located SND and SIT data, this study
extends prior work by ~~incorporating SIT in addition to ice age as a determinant of SND distribution~~~~considering a wider range of~~
~~ice types and by incorporating SIT and meteorological events through time-series analyses~~. The goal is to ~~enhance knowledge~~
~~improve understanding~~ of the spatial statistical characteristics of SND on sea ice and to determine the most suitable statistical
95 distributions for ~~sub-kilometer-scale~~ ~~sub-kilometre-scale~~ SND across varying ice ages and thicknesses.

~~The study characterizes~~ ~~This study characterises~~ SND variability using data from multiple field campaigns carried out in
the Arctic and Antarctic, which are introduced in Section 2. ~~Co-located in-situ SND and SIT measurements encompass a wide~~
~~range of ice types, including newly formed ice (NI), smooth FYI, smooth second-year ice (SYI), rough SYI, thin-snow-covered~~
~~MYI in summer, and deformed MYI in winter~~ ~~Section 3 introduces the statistical distributions and variograms used to characterise~~
100 ~~SND~~. Section 4 presents SND statistics, identifies suitable PDFs for different ice conditions, and quantifies spatial variability
via correlation lengths, revealing substantial ice-type-dependent differences in ~~sub-kilometer-scale~~ ~~SND~~ ~~sub-kilometre-scale~~
~~SND variability~~. The main findings are ~~discussed in Section 5 and~~ summarized in Section 6. ~~Note that in this article, the ice age~~
~~refers specifically to FYI, second-year ice (SYI), and MYI, and the ice type denotes broader categories of ice including age~~
~~and surface condition, such as smooth FYI, deformed MYI, and flooded ice.~~

105 2 Data

2.1 Selection of in-situ field campaigns

~~We analyze SND distributions across different ice conditions and seasons using data from field campaigns in the Weddell Sea~~
~~(Two criteria were applied in selecting the datasets. First, since this study aims to investigate the influence of ice age and SIT on~~
~~SND distributions, it requires coincident in-situ measurements of SND and SIT from diverse ice types. We therefore selected~~
110 ~~field campaigns spanning a range of ice ages, surface roughness conditions, flooding states, and seasons, while maintaining a~~
~~balance among sampling sites. Campaigns with well-established contextual knowledge of meteorological events and local ice~~
~~conditions were prioritized to support the interpretation of the observations. Second, this study aims to analyse the temporal~~
~~evolution of the SND distribution, which requires time-series observations of snow and ice properties at approximately weekly~~
~~intervals. Characterizing snow and ice on this timescale is essential to capture snow accumulation and redistribution processes~~
115 ~~associated with ice growth and meteorological events (Liston et al., 2020).~~

~~Based on the above criteria, the Multidisciplinary drifting Observatory for the Study of Arctic Climate (MOSAiC) 2019-2020~~
~~dataset was selected as the primary dataset because it spans a wide range of ice types and provides time-series in-situ~~
~~measurements along repeated transects. The MOSAiC dataset includes four typical ice types: SYI and FYI from winter to~~
~~spring, newly-formed smooth FYI in winter, and SYI in summer. Beyond MOSAiC, additional datasets were selected to~~
120 ~~capture two critical snow and ice conditions that are not represented in MOSAiC. First, to better account for the effects of thick~~
~~snow on sea ice prone to flooding, we included data from the Norwegian Young Sea ICE Expedition 2015 (N-ICE2015) and~~

Table 1. Summary of sea ice thickness (SIT) and snow depth (SND) across all sites. Within each site, co-located SIT and SND measurements were collected over several transects. The number of transects at each site is given in the last column. The mean, median, and standard deviation (Std) of SIT and SND are calculated over all the transects for each site. Ice ages include first-year ice (FYI), second-year ice (SYI), and multi-year ice (MYI), with (F) denoting sites identified as susceptible to flooding.

Test sites	Primary ice age	Month	SIT			SND			No. of transects
			mean (m)	median (m)	Std (m)	mean (m)	median (m)	Std (m)	
MOSAiC - Nloop	SYI	Oct - May	2.97	2.51	1.84	0.27	0.23	0.14	24
Lincoln Sea	MYI	Apr	2.59	2.34	1.14	0.33	0.30	0.23	9
MOSAiC - Summer	SYI	Jun-Jul	2.46	2.27	1.08	0.07	0.06	0.07	25
N-ICE2015	SYI (F)	Jan-Mar	1.58	1.43	0.79	0.50	0.49	0.16	4
Weddell Sea	MYI (F)	Jun-Aug	1.43	1.48	0.57	0.53	0.53	0.17	1
MOSAiC - Sloop	FYI	Oct - May	1.47	1.35	0.66	0.22	0.18	0.15	17
Resolute Bay	FYI	Apr	1.20	-	-	0.11	0.09	0.06	2
MOSAiC - Runway	FYI	Jan - Feb	1.16	1.13	0.18	0.12	0.09	0.08	3
Weddell Sea	FYI	Jun-Aug	0.69	0.59	0.33	0.19	0.18	0.07	2

125 ~~the Weddell Sea (2013) in campaigns. Second, the Antarctic, as well as N-ICE2015 (2015), Lincoln Sea (2017), MOSAiC (2019-2020), and~~ campaign was included to represent a distinct rough MYI type, enabling a more comprehensive assessment of SND distributions across different ice ages. We note that only three transects were acquired over newly-formed smooth FYI from the MOSAiC (i.e. Runway), as this site was disrupted by ice motion (Itkin and Liston, 2025). To improve sampling for this ice type, we included the Resolute Bay (2025) in the Arctic. The geolocation of the test sites is dataset, which represents smooth FYI covered by a thin snow layer comparable to that on the MOSAiC Runway. Although co-located SIT measurements were not available for Resolute Bay, field drilling indicated similar ice conditions (see Table 1). The geolocations of the selected test sites are shown in Fig. 1-1. Table 1 summarizes the ice type, season, mean, median, and standard deviation of both SIT and SND, and the number of transects, providing an overview of snow and ice properties of the selected test sites.

130

2.2 Instruments

In all campaigns, SND measurements were carried out using ~~Magnaprob~~ automated snow-depth probes (magnaprob) equipped with a data logger and GPS (Sturm and Holmgren, 2018). The device has a maximum measurement depth of 1.2 m, with an estimated accuracy of ~ 3 mm (Sturm et al., 2006). In the Lincoln Sea, MOSAiC, ~~Resolute Bay~~, and Weddell Sea campaigns, ~~the~~ total thickness (snow + ice thickness) was sampled using a ground-based electromagnetic (EM) induction system (GEM-2, Geophex Ltd.) operating at multiple frequencies (Hunkeler et al., 2015, 2016). During the N-ICE2015 campaign, total ~~ice~~ thickness was measured with portable EM instruments (EM31 and EM31SH) mounted on a sledge (Itkin et al., 2023). ~~For all data sets, the~~ The precision of the EM measurements is approximately 0.1 m on level ice up to 4 m thick. The accuracy decreases on rough and deformed ice, and the EM can underestimate the ridge thickness by up to 50% (Haas

135

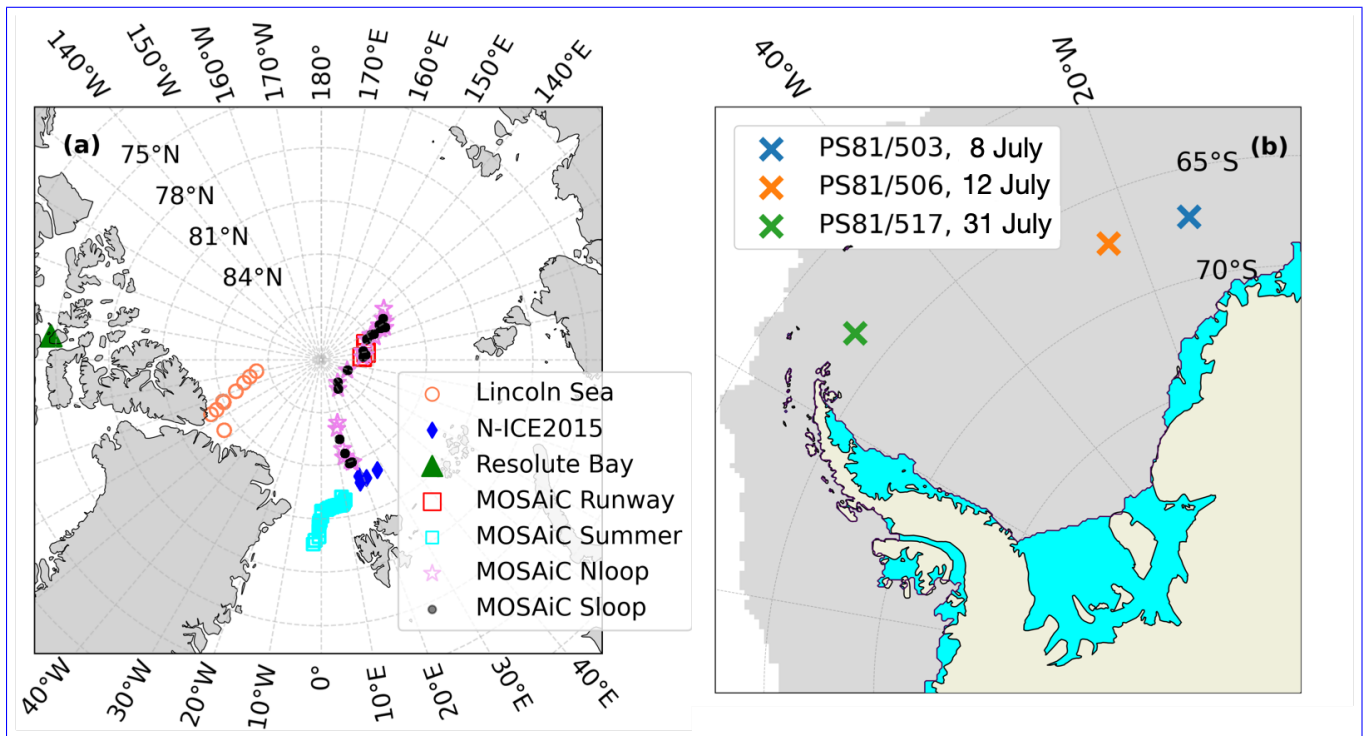


Figure 1. The geolocations Geolocations of the selected field campaigns in the (a) Arctic and (b) Antarctic. In (a), MOSAiC Nloop and Sloop denote test sites of the MOSAiC northern and southern loops, respectively. (b) Data from the Weddell Sea survey between June and August 2013 (Lemke, 2014). The data are from the three ice stations: PS81/503, grey-PS81/506 and PS81/517. Grey shading indicates ice cover on July 31, 2013 (final station)-July 2013. Blue areas represent ice shelves derived from the NSIDC EASE-Grid 2.0 Land–Ocean–Coastline–Ice Masks dataset (Meier and Stewart, 2023).

140 et al., 2009). For all datasets, SND and total thickness measurements acquired follow the same track were acquired along the same tracks.

All datasets had previously been corrected for sea ice drift following the procedures described in Itkin et al. (2023); Haas et al. (2017); Wever et al. (2021); Merkouriadi et al. (2017). SIT was Co-location between magnaprobe and EM measurements was performed using nearest-neighbour interpolation. The co-location mismatch arises from the spacing between the magnaprobe and EM measurements, which is around 1-5 m (Itkin et al., 2023; Haas et al., 2017; Wever et al., 2021; Merkouriadi et al., 2017).
 145 Given that our analyses in the following sections are based on values averaged along the transect rather than on individual measurements, the metre-scale mismatch is unlikely to influence the results. The SIT was then calculated as the co-located total thickness minus the snow depth. The SND. Examples of the co-located SND and SIT measurements at the test sites along the transects are shown in Fig. 2 and ??, respectively.

150 2.3 In-situ measurements

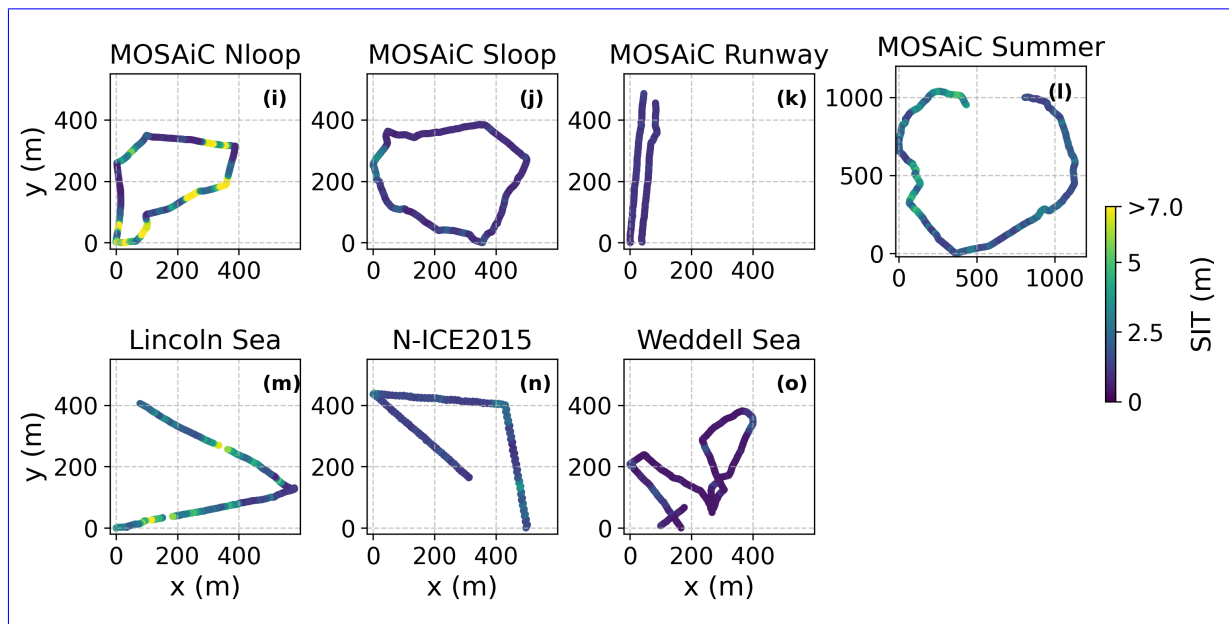
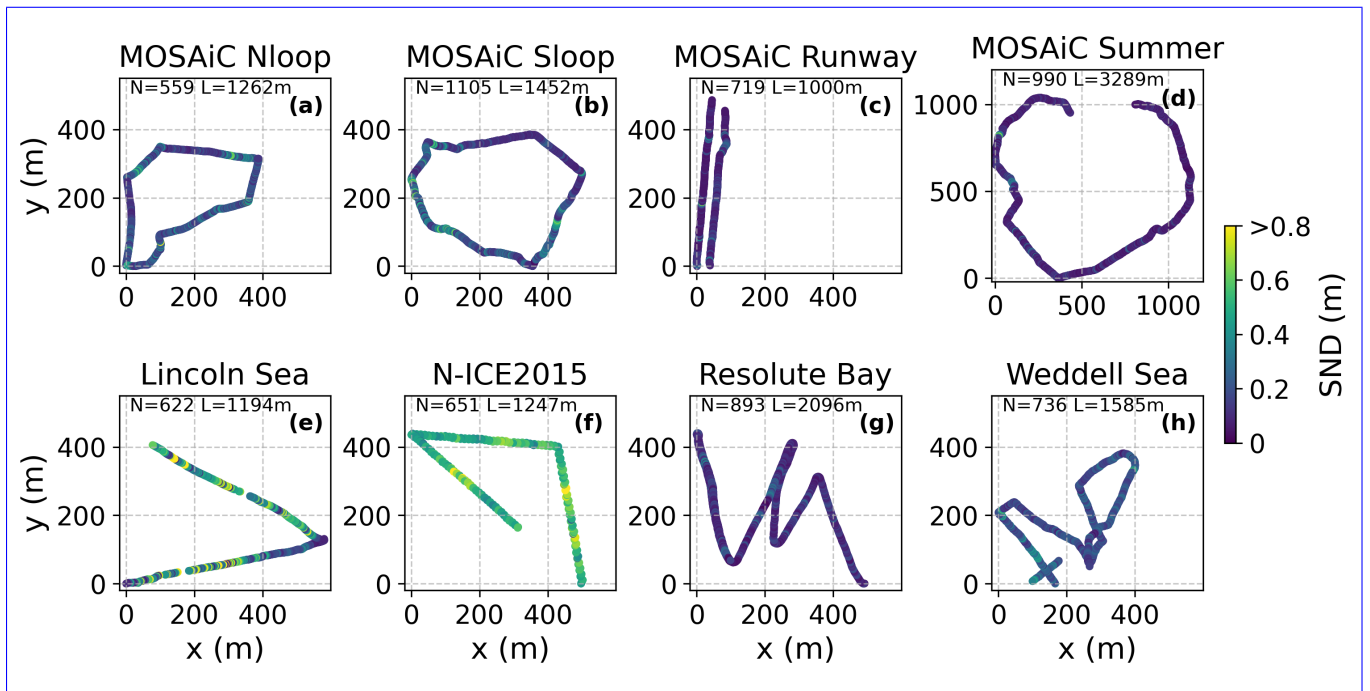


Figure 2. Examples of transects of snow depth (SND) and sea ice thickness (SIT) measurements. N is the total number of measurements and L is the total length of the transect. (a) and (i) MOSAiC northern loop (Nloop) transect on 14 November 2019. (b) and (j) MOSAiC southern loop (Sloop) transect on 26 December 2019. (c) and (k) MOSAiC Runway transect on 12 January 2020. (d) and (l) MOSAiC Summer transect on 3 July 2020. (e) and (m) Lincoln Sea 2017, transect 1. (f) and (n) N-ICE2015 transect on 28 January 2015. (g) and (o) Resolute Bay transect on 4 April 2025. (h) and (p) Weddell Sea, transect from floe 506. The x and y coordinates are shown as relative coordinates, with the bottom-left corner as the origin. The upper limit of the colorbar is set to the 99th percentile of the SND/SIT values.

Figure 3 shows an overview of the statistical distributions of SND and SIT measurements for each test site. Each test site comprises several sampling transects, and the corresponding violin plots for individual transects are provided in the supplementary information (Fig. S1–S3).

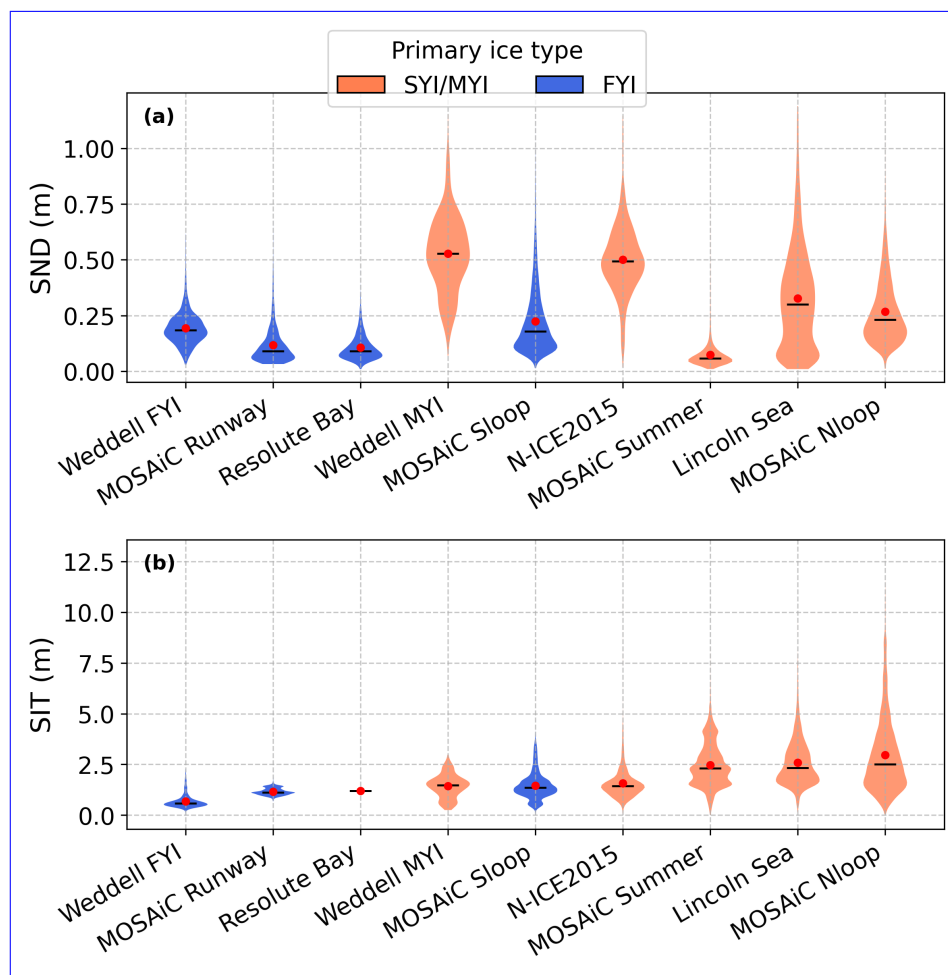


Figure 3. Examples Violin plots of transects of (a) snow depth (SND) measurements, and (a) MOSAic Nloop on 14 November 2019, (b) MOSAic Sloop on 26 December 2019, sea ice thickness (eSIT) MOSAic Runway on 12 January 2020, (d) MOSAic Summer on 3 July 2020, (e) Lincoln Sea 2017 for each study area, Site 1, (f) N-ICE2015, 28 January 2015, (g) Resolute Bay, 4 April 2025, (h) Weddell Sea, floe 506. Note that ranked in order of mean SIT. The red dot and black line represent the \bar{x} mean and \bar{y} coordinates are shown in relative median values, with the bottom-left corner as the origin, to provide an overview of the spatial scale respectively.

2.3.1 MOSAic 2019-2020

155 ~~The coincident SND and SIT observations from the study regions are presented in Fig. 1. During MOSAiC, SND and total thickness were measured weekly over transects under various ice conditions (Nicolaus et al., 2022; Itkin et al., 2023). The EM 18 kHz measurements for total thickness are used in this study due to their higher signal-to-noise ratio (Itkin et al., 2023). The sites included the Northern Loop (Nloop), Southern Loop (Sloop), and Runway during the winter to spring season (24 October 2019 -7 May 2020), as well as the Summer site from 17 June 2020 to 26 July 2020. The geolocation of these sites is shown in Fig. 1a. The GPS coordinates of the magnaprobe and EM measurements were converted to a local metric coordinate system (Itkin et al., 2023), with the ship position as the origin, using the FloeNavi toolbox (Hendricks, 2022).~~

A total of around 68000 co-located magnaprobe and EM measurements were collected across the Nloop, Sloop, Runway, and Summer sites, at a spacing of 1-3 m. We summarize the ice types, acquisition season, and the statistical descriptors including the mean, median, and standard deviation (STD) of both SND and SIT in Table 1 (Itkin et al., 2021). The Nloop and Sloop sites were located within an area of $\sim 400 \times 400$ m², providing a comprehensive overview of snow and ice properties across the surveyed fields. Note that each test site comprises several sampling transects, and the Runway site was located within a $\sim 100 \text{ m} \times 400 \text{ m}$ area. The Summer site was located within an area of $\sim 1000 \text{ m} \times 1000 \text{ m}$. The MOSAiC Nloop was mainly deformed SYI, where the ice was older and thicker compared to other sites (Nicolaus et al., 2022; Wagner et al., 2022; Itkin et al., 2023). During the winter to spring season, the mean SIT was 2.97 m with mean SND values of 0.27 m. The MOSAiC Sloop, consisting primarily of FYI and remnant SYI, covered underlying frozen melt ponds and thus represents a younger and thinner ice section compared to the Nloop (Nicolaus et al., 2022; Wagner et al., 2022; Itkin et al., 2023). The mean SIT and SND were 1.47 m and 0.22 m, respectively. The MOSAiC Runway was predominantly level FYI beginning at 0.05 m SIT on 20 October (Itkin and Liston, 2025). The formation of FYI on the Runway was observed by panoramic photography (Itkin et al., 2023) and was sampled three times in January and February 2020 until it was destroyed by ice motion. The Runway exhibited smooth and thin ice conditions, with a mean SIT and SND of 1.16 m and 0.12 m, respectively. The MOSAiC Summer sites consisted predominantly of SYI, with a small spatial overlap with the Nloop site, while the last third of the transect was on FYI (Webster et al., 2022). The Summer site had a mean SIT of 2.46 m, while the snow layer was very thin (mean of 0.07 m). Detailed SND and SIT values for along each transect are provided in Appendix S1 (Figs shown in the supplementary information (Fig. S1 and S1-2)).

180 2.3.2 Resolute Bay 2025

~~Violin plot of (a) sea ice thickness (SIT) and (b) snow depth (SND) for each study area, ranked in order of mean SIT. The red dot and black line represent the mean and median values, respectively.~~

The Antarctic Winter Ecosystem and Climate Study (AWECS, ANT-XXIX/A) recent fieldwork was conducted at two different locations of landfast ice (4 and 6), carried out aboard R/V Aurora (April 2025) in Resolute Bay, Qikiqtaaluk Region, Nunavut, Canada (Fig. 1a). This dataset represents smooth FYI covered by a thin and smooth snow layer. During data collection, air temperatures were cold and stable, with a mean of -25°C (Stroeve et al., 2026). Wind speeds were generally 10–20 km/h. Polarstern, surveyed the Weddell Sea between June and August 2013. During the campaign, h, occasionally reaching 30 km/h, and no new snowfall occurred during the sampling period (Stroeve et al., 2026).

190 A total of around 1560 magnaprobe samples were collected along two transects, at a sampling spacing of 1–4 m. Each transect covered an area of approximately 300 m×500 m. The two transects had similar mean SND values of 0.11 m. The transect on 6 April was observed to be smoother than the one on 4 April (Stroeve et al., 2026). The snow statistics (mean and standard deviation) are similar to those of the MOSAiC Runway dataset (Table 1), thereby providing a useful complement given that the MOSAiC Runway includes only three transects. Among all sites, Resolute Bay and the MOSAiC Runway exhibit the lowest mean and standard deviation of SND. Note that no coincident SIT measurements were available for individual SND samples;
195 however, ice drilling indicated a SIT of approximately 1.2 m.

2.3.3 Lincoln Sea 2017

From 11 to 18 April 2017, co-located SND and SIT measurements were collected from three ice floes: PS81/503, PS81/506, and PS81/517. 503 and 506 were FYI floes, while 517 was a MYI floe. The measurement locations and corresponding dates are shown as part of the ESA CryoSat-2 Validation Experiment (CryoVEx) 2017 campaign, including nine transects between
200 Ellesmere Island and 86.3° N (Fig. 1a). During the campaign, the sampling locations were covered by thick and deformed fast ice as well as drift MYI floes and SYI. The Lincoln Sea site captures a clear trend of decreasing SIT and ice age from the south to the north: thick and deformed landfast ice (transects 1–5), followed by drift sea ice with mixed MYI and SYI (transects 6–8), and finally a mixture of SYI and thick FYI (transect 9) (Haas et al., 2017). The transect numbers are shown later in Fig. 1b 10.

For each floe, a set of coincident SND and SIT were conducted within a ~400×400 m area at A total of around 6400
205 co-located magnaprobe and EM measurements were collected at nine transects, at a spacing of 1–5 m. For the FYI floes (503 and 506), the mean SIT and SND were 0.69–1.5 m (Haas et al., 2017). It comprises seven transects within an area of 500 m × 1000 m, and 0.19 two transects slightly above the sub-kilometre scale (i.e. 900 m, respectively. For the MYI floe (517), the mean SIT and SND were 1.43×1600 m and 1100 m× 1400 m for transects 5 and 0.536, respectively). The site had a mean SIT of 2.59 m and a mean SND of 0.33 m, respectively, shown in see Table 1 and Fig. 3. The detailed Detailed SND and SIT
210 observations along each transect are shown in the supplementary information (Fig. ??–??S3).

2.3.4 N-ICE2015

The multidisciplinary Norwegian young ICE 2015 (N-ICE2015) expedition took place from January to June 2015 aboard the Norwegian research vessel R/V Lance in the area research vessel north of Svalbard. During the campaign, Lance served as a drifting research platform, moored to a sea-ice floe and drifting with the ice. sea ice floe, and moving with the sea ice drift.
215 This study uses coincident snow and ice thickness measurements repeat transect data from the winter part of the N-ICE2015 campaign (22 January–15 March 2015), which represent SYI with significant snow load (Merkouriadi et al., 2017). The mean temperatures ranged from –27 to –14 °C (Merkouriadi et al., 2017), along with several warming and precipitation events (Merkouriadi et al., 2020). The coincident SND and SIT measurements were from Floe 1 (28 January and 7 February ,2015) and Floe 2 (28 February and 14 March ,2015) (Rösel et al., 2016a, b). Both floes were situated in an ice pack ice packs
220 primarily composed of SYI (Granskog et al., 2018), with the snow stratigraphy on Floe 1 showing more wind slabs than Floe 2 (Merkouriadi et al., 2017). The geolocation of the four transects is shown in Fig. 1a.

A total of around 2130 co-located Magnaprobe–magnaprobe and EM31 measurements were collected across the four transects, each within an about 400–600 two repeat transects, at a spacing of 1–5 m. Each transect was within an area of 600 m×100–1000 1000 m area at a spacing of ~3 m. Across the four two repeat transects, the mean SIT was 1.58 m covered by thick snow layer layers with a mean of 0.5 m, as shown in Table 1 and Fig. 3. The detailed Detailed SND and SIT observations values along each transect are shown in the supplementary information (Fig. ??–?? S3). Note that during the N-ICE2015 expedition, widespread negative freeboard and snowpack flooding were observed, resulting from thick snow over relatively thin sea ice (Rösel et al., 2021; Merkouriadi et al., 2017). Specifically, flooding was observed in 3 of the 10 drill holes (Rösel et al., 2021). The snowpacks on the Weddell Sea MYI floe and during the N-ICE2015 field campaign are the thickest snowpacks in this study.

In April 2017

2.3.5 Weddell Sea 2013

To ensure a sufficient representation of thick snow conditions comparable to N-ICE2015 (two repeat transects), we included data from the Antarctic Winter Ecosystem and Climate Study (AWECS, ANT-XXIX/6), which surveyed the Weddell Sea between June and August 2013 (Lemke, 2014). During the campaign, SND and total thickness were measured weekly over transects with various ice conditions. The EM 18kHz measurements for total thickness are used. The transects included the Northern Loop (Nloop), Southern Loop (Sloop), and Runway during the winter season (October 24, 2019–May 7, 2020), as well as the summer transects from June 17, 2020–August 30, 2020. The geolocation of these transects is shown in Fig. 1a. The GPS coordinates from the Magnaprobe and EM measurements were converted into a local metric coordinate system, with the ship position as the origin, using FloeNavi toolbox, where all transects are displayed. SIT measurements were collected from three ice floes: PS81/503, PS81/506, and PS81/517, hereafter referred to as floe 503, 506, and 517. Floes 503 and 506 were FYI, while floe 517 was MYI (Wever et al., 2021; Arndt and Paul, 2018). The locations of the floes are shown in Fig. ??1b.

A total of around 68000 samples were collected across the Nloop, Sloop, Runway, and Summer transects, all within a ~400m² area 1720 co-located magnaprobe and EM measurements were collected over three floes, at a spacing of 1–31–5 m. These transects encompass a range of ice conditions. The Nloop was located on deformed SYI, where the ice was both older and thicker compared to the other transects. Over the autumn to winter season, the mean SIT was 2.97. Each transect was within an area of approximately 400 m with mean SND values of 0.27×400 m. The Sloop, consisting primarily of FYI and remnant SYI, covered underlying frozen melt ponds and thus represents a younger, thinner ice section compared to the Nloop. For the Sloop, the For FYI floes (503 and 506), the mean SIT and SND were 1.470.69 m and 0.220.19 m, respectively. The Runway transects were on a newly refrozen lead and therefore exhibited smooth and thin ice conditions (categorized as NI), with For MYI floe (517), the mean SIT and SND being 1.16 were 1.43 m and 0.120.53 m, respectively. The Summer transects were located on a completely different ice floe due to the need to reposition the ship after the ice floe broke up in mid-May. The floe was SYI with a mean SIT of 2.46 m, while the snow layer was very thin (mean of 0.07 m). The statistical details of SIT and SND measurements are summarized, shown in Table 1 and Fig. 3. The detailed SND and SIT observations along each transect are shown in the supplementary information (Fig. ??–??).

Recent fieldwork was conducted on landfast sea ice in Resolute Bay, Qikiqtaaluk Region, Nunavut, Canada, from 4–6 April, 2025. The study area, characterized by smooth FYI, is shown in Fig. S3). Note that during the campaign, drilling measurements occasionally indicated negative freeboards for floes 506 and 517, with a median freeboard of 0 m.

SND was measured at an interval of 1–4 m, with a total of 1559 samples collected along two transects, each covering approximately 300 × 500 m. The two transects show similar mean SND values of 0.11 m. The transect on 6 April was observed to be smoother than the one on 4 April, see Fig. ??(g). Note that no coincident SIT measurements were available for each SND sample; however, ice drilling in the area indicated an ice thickness of approximately 1.2 m suggesting that both floes were close to hydrostatic balance and therefore susceptible to flooding (Wever et al., 2021). The snowpacks on the Weddell Sea MYI floe 517 and during the N-ICE2015 field campaign are the thickest snowpacks in this study.

265 3 Methods

3.1 Statistical distributions

We introduce This section introduces four statistical distributions, i.e., Normal, Log-normal, Gamma, and Skew-normal (hereafter denoted as Skew) for fitting the observed SND samples: normal, log-normal, gamma, and skew. For a Normal normal distribution with mean μ_g and standard deviation σ_g , the PDF is given as:

$$270 \quad N(x; \mu_g, \sigma_g) = \frac{1}{\sqrt{2\pi\sigma_g^2}} e^{-\frac{(x-\mu_g)^2}{2\sigma_g^2}} \quad (1)$$

The PDF of the Log-normal distribution with mean $e^{(\mu_l + \sigma_l^2/2)}$ and variance $e^{2\mu_l + \sigma_l^2}(e^{\sigma_l^2} - 1)$ log-normal distribution follows (Gaddum, 1945):

$$LG(x; \mu_l, \sigma_l) = \frac{1}{x\sigma_l\sqrt{2\pi}} e^{-\frac{(\ln(x)-\mu_l)^2}{2\sigma_l^2}} \quad (2)$$

where μ and σ are logarithm of μ_l and σ_l are the location and scale parameters in the logarithmic space, respectively. The mean and variance are $e^{(\mu_l + \sigma_l^2/2)}$ and $e^{2\mu_l + \sigma_l^2}(e^{\sigma_l^2} - 1)$, respectively.

The PDF of the Gamma distribution is defined as (Thom, 1958):

$$Ga(x; a_g, \theta) = \frac{1}{\Gamma(a_g)\theta^{a_g}} x^{a_g-1} e^{-x/\theta} \quad (3)$$

with $\alpha > 0$ being where $a_g > 0$ is the shape parameter, and $\theta > 0$ is the scale parameter. $\Gamma(\cdot)$ is the gamma function.

The PDF of the Skew-normal distribution skew distribution with standard deviation σ_s is given as (O'Hagan and Leonard, 1976; Azzalini and Capitanio, 2002):

$$280 \quad S(\sigma_s; \omega, a_s, \xi) = \frac{1}{\omega\sqrt{2\pi}} \left(1 + \operatorname{erf} \left(\frac{a_s x}{\sqrt{2}} \right) \right) e^{-(x^2/2)}, \quad (4)$$

$$x = \frac{\sigma_s - \xi}{\omega}$$

where ω is the scaling parameter, α is the shape parameter, ξ is the location parameter, and $\text{erf}(\cdot)$ is the error function.

The four PDFs are used to fit the observed SND distributions. For each transect, the PDF parameters for each distribution are estimated using maximum likelihood estimation (MLE) (Myung, 2003). Considering that each transect has hundreds of samples, we assume that MLE overfitting of the observed SND in the dataset is negligible. Figure 4a presents an example transect from MOSAiC Nloop (14 November 2019), where the histogram of the observed SND is shown as a step-line plot, while the fitted distributions are displayed in different colors.

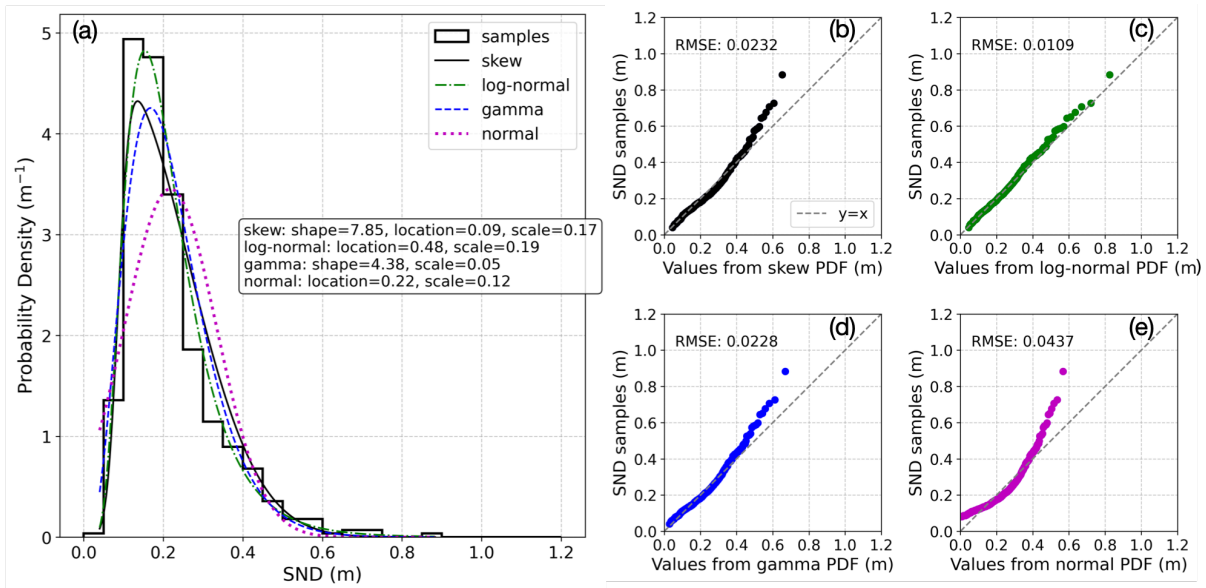


Figure 4. (a) Comparison of the Skew, Log-normal, Gamma, and Normal probability density functions (PDFs) with the histogram of measured snow depth (SND) values for of a transect from MOSAiC northern loop (Nloop) on 14 November 2019. The histogram were is generated with a bin width of 5cm for display 5 cm. (b)-(e) QQ-plot illustrates Quantile-quantile (Q-Q) plots illustrate the goodness of fit. The root-mean-squared error (RMSE) between the fitted PDF distribution and the observed SND measurements quantiles is calculated to quantify the goodness of fitting fit. The red-black dashed line is the 1:1 line.

The goodness of fit is assessed using a quantile-quantile (QQ) plot, which compares the quantiles of the observed SND values with those of the fitted distribution distributions (Wilk and Gnanadesikan, 1968). If the fitted distribution accurately represents the data, the points in the QQ-plot should lie Q-Q plot should be along the 1:1 line. Deviations from this line indicate discrepancies between the empirical and theoretical observed and fitted distributions. To quantify the goodness of fit, we calculate the root-mean-square error (RMSE) between the empirical and theoretical observed and fitted quantiles (Wilk and Gnanadesikan, 1968):

$$295 \quad \text{RMSE} = \sqrt{\frac{1}{n} \sum_{i=1}^n (Q_{\text{obs},i} - Q_{\text{fit},i})^2} \quad (5)$$

where $Q_{\text{obs},i}$ and $Q_{\text{fit},i}$ are the i th quantiles of the observed and fitted distributions (shown in the blue dots in Fig. 4bb-e), respectively, and n is the total number of quantile points considered. A lower RMSE indicates a better fit.

Note that the histogram shown in Fig. 4a is only for display. In this study, the fitting performances are quantified by the RMSE from the QQ-plot. In contrast to histograms, which are sensitive to arbitrary binning choices, QQ-plots enable choice, the Q-Q plot enables a direct quantile–quantile comparison between the observed and theoretical distributions. Consequently, fit metrics such as the RMSE derived from QQ-plot are the Q-Q plot is not affected by binning, providing a more objective basis for model evaluation evaluating model performance.

3.2 Geostatistics and variogram

Physical factors control spatial snow patterns from three aspects: Spatial variability in SND is controlled by factors such as local precipitation, wind redistribution, ice topography, and topography/deformation. Snow correlation length is the distance over which SND remains spatially correlated; beyond this scale, measurements become effectively independent. Correlation length provides a statistical measure of spatial continuity and serves as a proxy for snow deformation, with larger correlation lengths often associated with prominent surface features such as ridges and dunes.

and the amount of snow already accumulated in pre-existing bedforms that can be reworked by wind (Moon et al., 2019). Variogram A variogram provides a measure of the spatial continuity of snow cover and how it varies with distance and orientation on sea ice (Iacozza and Barber, 1999). The effective range derived from the variogram is used to calculate snow correlation lengths. A variogram can be computed by relating the semi-variance $\gamma(h)$ to the lag distance (Sturm et al., 1995):

$$\gamma(h) = \frac{1}{2N} \sum_{i=1}^N (x_i - x_{i+h})^2 \quad (6)$$

where x_i and x_{i+h} are the sample values (measured SND) at the location i and $i+h$ respectively. N denotes the number of observations at a specific lag distance h .

The In this study, the semi-variogram analyses employ analysis employs the Matheron estimator (Matheron, 1962) with an exponential model and incorporate incorporates a non-zero nugget effect, using bin widths a bin width of 3 m. The non-zero nugget reflects either measurement error or spatial variability occurring at scales smaller than the 3 m bin size (Filhol and Sturm, 2015). Note that the bin width is set to 3 m based on the median spacing of the magnaprobe measurements. This choice ensures sufficient point pairs per bin while resolving spatial variability up to the sill. A constant bin width of 3 m enables a consistent comparison of variogram parameters across sites. We adopt the exponential model to fit the semi-variogram, as it provides a good balance between simplicity and accuracy. Data screening and data quality are essential for semi-variogram analyses. In this study, measurements with distances greater than 10 m are excluded, as they correspond to periods when the magnaprobe was moved between sampling locations. In addition, measurements with snow depths <1 cm or equal to 120 cm (the operational limits of the magnaprobe) were removed.

Figure 5 presents the semi-variogram of SND measurements collected from MOSAiC Sloop transect on 14 November 2019, as an example. The fitted exponential model approaches the sill, and the effective range corresponds to the lag distance where the modeled semi-variance reaches 95% of the sill value. The sill represents the variance in SND, and is approximately equal

330 ~~to~~ In the following, this effective range is referred to as the correlation length. The snow correlation length is the distance over which the SND remains spatially correlated; beyond this scale, the square of the standard deviation. For lag distances smaller than the effective range, the semi-variance increases, reflecting sampling within spatially coherent structures. Beyond the range, however, the semi-variance levels off and approaches a constant value, indicating a loss of spatial correlation. This effective range will be referred to as the correlation length hereafter. measurements become effectively independent. The correlation length provides a statistical measure of spatial continuity. Larger correlation lengths can be associated with prominent surface features, such as ridges and snow dunes, which can extend up to tens of meters (Filhol and Sturm, 2015). The estimated correlation length can be influenced by the spacing of the magnaprobe measurements. Finer sampling intervals allow the semi-variogram to resolve small-scale snow bedforms (Filhol and Sturm, 2015), whereas coarser spacing may miss these features and instead primarily capture broader-scale snow structures, leading to a longer apparent correlation length. Moon et al. (2019) showed that a characteristic scale of around 10 m is associated with the formation of snow dunes, whereas
 340 a second scale, between 30 and 100 m, likely reflects interactions among dunes, such as merging, calving, and lateral linking.

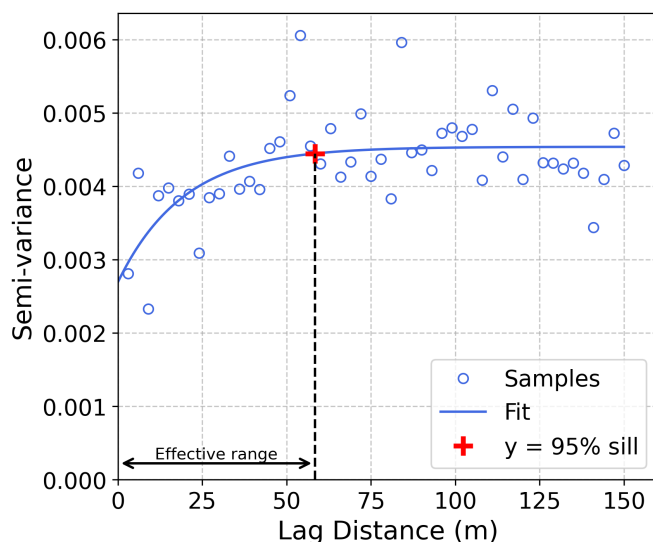


Figure 5. Semi-variogram of snow depth (SND) measurements collected on the [MOSAiC southern loop](#) (Sloop) on ~~November-14~~, [November 2019](#).

4 Results

In this section, we first examine the statistical properties of the SND distribution (mean and standard deviation) and their relationship to ice type and SIT. We then fit the SND observations using statistical PDFs and identify the most suitable model ~~across for~~ different ice types. Finally, we ~~analyze estimate~~ the SND correlation ~~length by computing lengths from~~ semi-variograms and ~~its relation~~ ~~analyze their relationship~~ to SIT and meteorological events.
 345

4.1 Statistical properties of snow depth

The relationship between the snow depth (SND) and sea ice thickness (SIT), where μ_{SND} and μ_{SIT} denote the mean SND and mean SIT values of each transect, respectively. The color and symbol ("o" and "+") represent different test sites and ice types, respectively.

350 In order to interpret the relation To examine the relationship between SND and SIT in for different ice types, we calculated the mean (μ_{SND}) and standard deviation (σ_{SND}) of SND, along with as well as the mean SIT (μ_{SIT}) for each sub-kilometer transect within each site. In transect at each site, as shown in Fig. 6, each point represents a sub-kilometer transect from a specific test site. Figure 6 shows a. A clear linear relationship is observed between μ_{SND} and μ_{SIT} for NI and FYI. This can be explained that younger and thinner ice forms and evolves alongside snow cover during the same seasonal cycle. In

355 other words, NI and FYI grow primarily through thermodynamic processes, and its snow cover is closely linked to recent snowfall events. The limited surface roughness, minimal wind redistribution, and lack of significant melt-refreeze history help to preserve a predictable linear relationship between μ_{SND} and μ_{SIT} . by the concurrent increase in SND and SIT during the ice thermodynamic growth season. In contrast, no significant linear relationship is observed for samples from SYI and MYI. This lack of correlation can be attributed to factors such as rougher surfaces with deformed ice (as reported in Lincoln Sea and MOSAiC Nloop), wind-driven snow redistribution in MOSAiC Nloop , and melt-refreeze events for MOSAiC Summer

360 loops. For these ice types, SIT is no longer controlled primarily by ongoing thermodynamic growth, as they tend to approach a quasi-equilibrium thickness. At the same time, the overlying snow has a longer residence time and is therefore increasingly modified by post-depositional processes such as wind-driven redistribution and the influence of surface roughness, rather than by concurrent snow accumulation alone.

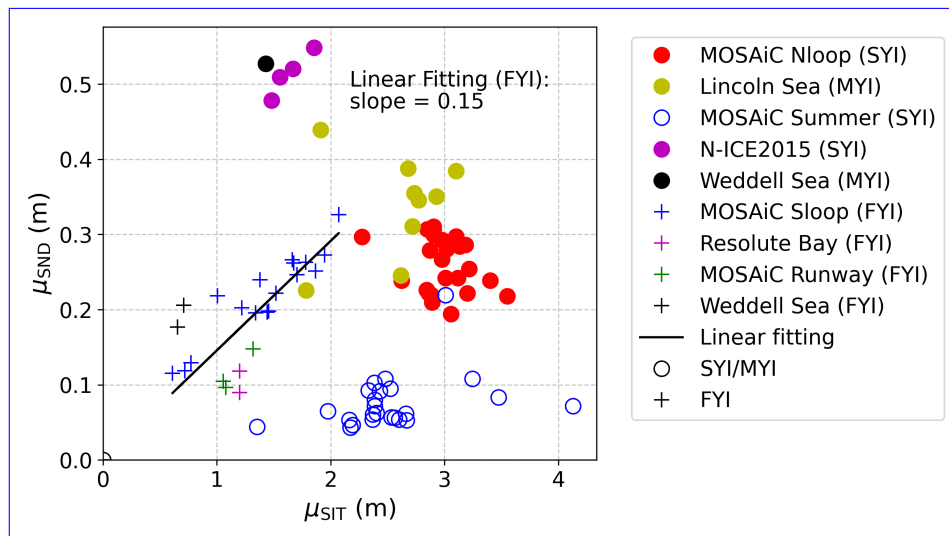


Figure 6. The relationship between the snow depth (SND) and sea ice thickness (SIT), where μ_{SND} and μ_{SIT} denote the mean SND and mean SIT values of each transect, respectively. The color and symbol ("o" and "+") represent different test sites and ice types, respectively.

~~Since CV is defined as the ratio of σ_{SND} and μ_{SND} is known as the coefficient of variation (CV). A to μ_{SND} , a linear relationship is performed as expected (Brown, 1998);~~

$$\sigma_{\text{SND}} = \text{CV} \times \mu_{\text{SND}} \quad (7)$$

which suggests that σ_{SND} can be ~~predicted where the estimated when~~ μ_{SND} is known.

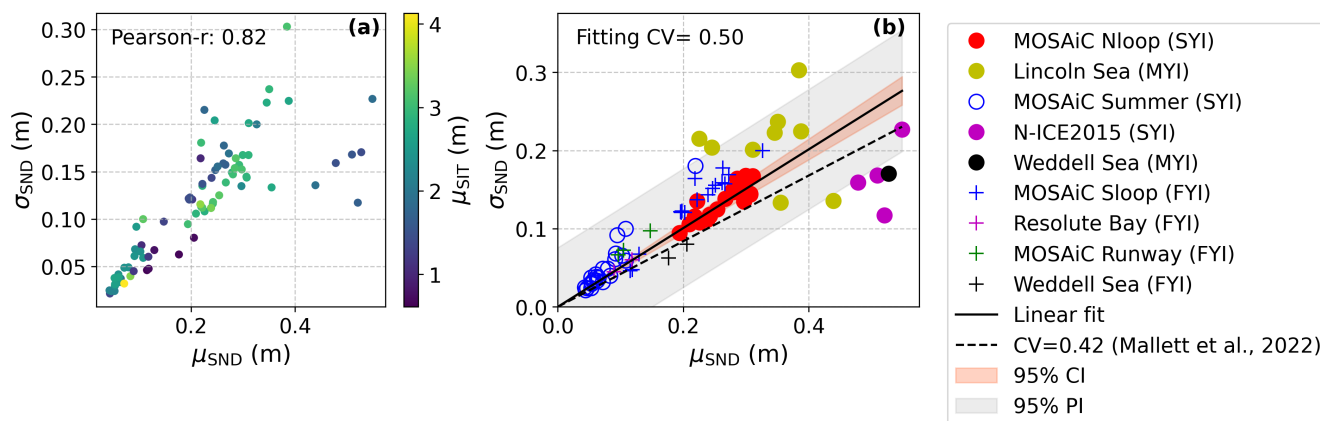


Figure 7. Relationship between each transect’s average snow depth (SND, μ_{SND}) and the corresponding standard deviation (σ_{SND}). (a) The ~~color colour~~ represents the mean ice thickness (SIT) of each transect. (b) The ~~color colour~~ and symbol (“o” and “+”) represent different test sites and ice types, respectively. ~~The 95% confidence interval (CI) and 95% prediction interval (PI) are plotted in coral and gray shade. The coefficient of variation (CV= $\sigma_{\text{SND}}/\mu_{\text{SND}}$) is calculated by linear fitting.~~

370 Figure 7a shows the relationship between σ_{SND} and μ_{SND} for all ~~the the data sets sites~~. The results do not show a dependence of CV on ~~SIT μ_{SIT}~~ , suggesting a constant value of CV across different ice ~~regime types~~. A linear ~~fitting fit~~ between σ_{SND} and μ_{SND} in Fig. 7b gives CV = 0.5. The CV can be used to estimate ~~the variability of SND -SND variability~~ from its mean value ~~which is often known from snow modeling-, as obtained from snow modelling~~ (Liston et al., 2020). ~~Note that the linear correlation becomes weaker over MYI (Lincoln Sea and Weddell Sea) and SYI ice types (N-ICE2015), as the~~
 375 ~~distribution becomes wider (Fig. 7b). These samples typically exhibit a thicker and rougher snow layer with $\sigma_{\text{snow}} > 0.2$ m or $\mu_{\text{SND}} > 0.3$ m.~~ Most of the Lincoln Sea samples lie above the fitted line, indicating enhanced SND variability which can be linked to observed ice rafting events and significantly deformed surfaces.

In contrast, samples from N-ICE2015 and the Weddell Sea (MYI) fall below the fitted line, with ~~a much lower CV than the others~~ ~~lower CV values than the other sites~~. Interestingly, these two sites experienced ~~snow flooding-, likely due to the~~
 380 ~~exceptionally thick snow cover (exceeding 0.5, m) over relatively thin sea ice of approximately 1.5, m thickness-. When flooding occurs, the overlying snow is partially “eaten away,” leading to a rapid reduction in flooding~~ (Rösel et al., 2021; Merkouriadi et al., 2017; Wever et al., 2021). ~~Flooding wets the basal snow layer, promoting wet-snow settling and densification that reduce~~ the mean SND ~~-While flooding reduces the-~~ (Colbeck, 1979; Marshall et al., 1999; Techel et al., 2008; Wever et al.,

2021). ~~Although flooding reduces mean SND, a much~~ it is also associated with a lower-than-expected snow depth variability, leading to a reduced CV. ~~Two physical mechanisms contribute to the~~

The reduced SND variability ~~observed~~ at flooded sites ~~may arise from two physical mechanisms~~. First, ~~snow overburden causes the SND to decline more in response to flooding where snow is deeper. When there is more pressure on the flooded layer, the snow can turn into~~ because overburden stress increases with SND, thicker snow can undergo greater compaction once wet (Colbeck, 1979; Marshall et al., 1999), leading to a greater reduction in SND than thinner snow and thus reducing spatial SND variability. Mallett et al. (2024) reported the lowest brine wicking in the lowest-density layer, while the denser layers tended to exhibit higher wicking heights. A plausible explanation is that smaller capillaries in denser basal snow increase capillary suction, enhancing upward brine infiltration and increasing the volume of snow that becomes slush and subsequently freezes into snow ice. ~~If snow-ice more easily, causing more decline in total depth. This interpretation is supported by the observed higher brine wicking heights in denser snow, see Fig.4 in .~~ Consequently, flooding leads to a greater loss of snow in initially deeper locations, the overall formation is more extensive in initially thicker snow, this could amplify net snow-thickness loss there and further suppress spatial SND variability. Second, ~~flooding introduces heat at the ice surface, which is conducted upward through the snowpack. Thinner snow warms more rapidly than thicker snow, promoting sintering and strengthening of the thinner layer. This increased resistance to subsequent wind redistribution can further suppress variability in snow depth. Similar processes have been described by for snow on young and old sea ice~~ snow may become more cohesive and mechanically stronger after flooding, making it less susceptible to wind-driven redistribution. In winter, upward conductive heat flux from the ocean warms the ice-snow interface, increasing the temperature gradient across the snow (for a given air temperature) and also raising the snow's mean temperature. Since sintering accelerates at higher temperatures (Blackford, 2007; Clemens-Sewall et al., 2022), snow warmed by basal flooding sinters faster, thus increasing cohesion and making the snow less susceptible to wind redistribution and thus reducing SND variability. The difference in CV between flooded and non-flooded sites suggests that flooding can imprint a measurable signature in the SND distribution. The above proposed mechanisms still require validation through sufficient in-situ SND and SIT measurements at flooded sites.

4.2 Snow depth variability through distribution fitting

~~We now investigate~~ This subsection investigates (1) temporal variability based on ~~samples from MOSAiC~~ the MOSAiC datasets; (2) the dependence of PDF fitting performance on ice ages-age and SIT across all test sites. Following the method introduced in Section 3.1, the observed SND values for each transect across the test sites are fitted using the four probability distributions: ~~Normal, Log-normal, Gamma, and Skewnormal, log-normal, gamma, and skew~~. The corresponding RMSE values derived from ~~QQ-plots~~ Q-Q plots are calculated to identify the most appropriate distribution within the sub-kilometer region for each sub-kilometre-scale transect (summarized in Table 2). ~~We also calculate the skewness and kurtosis values over the transects to further interpret the fitting performance.~~ To better capture the levels of deformation, we define the SIT range (Δ_{SIT}) as the difference between the 95th and 5th percentiles of SIT for each transect.

Table 2. Performance of probability density function (PDF) fitting for snow depth (SND) across all sites. The root-mean-square error (RMSE) values measure the goodness of fit. The mean of sea ice thickness (SIT) and SND are calculated over all the transects for each site (row). Mean SIT range refers to the difference between the 95th and 5th percentiles of SIT for all transects within the site. The best-performing PDF (i.e. smallest RMSE value) is in **bold**. RMSE values that are underlined indicate PDFs for which the difference in RMSE is less than 0.003 m, corresponding to the instrumental precision of the magnaprobe. Ice types include first-year ice (FYI), second-year ice (SYI), and multi-year ice (MYI), with (F) denoting sites identified as susceptible to flooding.

Test sites	Primary ice age	Month	Mean SIT (m)	Mean SIT range (m)	Mean SND (m)	RMSE (m)			
						skew	log-normal	gamma	normal
MOSAiC - Nloop	SYI	Oct - 30 Jan	3.06	6.79	0.23	0.016	0.012	0.018	0.039
	SYI	30 Jan - May	2.90	4.13	0.29	0.009	0.037	0.013	0.039
Lincoln Sea	MYI	Apr	2.59	3.13	0.33	0.034	0.160	0.043	0.058
MOSAiC - Summer	SYI	Jun-Jul	2.46	2.95	0.07	0.019	0.015	<u>0.017</u>	0.026
N-ICE2015	SYI (F)	Jan-Mar	1.58	2.47	0.50	0.032	0.082	0.048	0.037
Weddell Sea	MYI (F)	Jun-Aug	1.43	1.91	0.53	0.015	0.051	0.027	<u>0.016</u>
MOSAiC - Sloop	FYI	Oct - 20 Feb	1.29	1.65	0.19	0.024	0.014	0.021	0.045
	FYI	20 Feb - May	1.79	1.83	0.27	<u>0.019</u>	0.037	0.018	0.054
Resolute Bay	FYI	Apr	1.20	-	0.09	<u>0.009</u>	0.006	<u>0.008</u>	0.018
MOSAiC - Runway	FYI	Jan - Feb	1.16	0.38	0.12	0.026	0.016	0.022	0.038
Weddell Sea	FYI	Jun-Aug	0.69	0.88	0.19	0.010	0.014	<u>0.012</u>	0.015

4.2.1 Temporal variability

To ~~ensure enable~~ effective time-series ~~analyses of the PDF fitting performances, we select the time series measurements~~ ~~conducted over the same geo-location loops (see Fig. ?? for geolocation~~ analysis of PDF fitting performance, we selected repeated measurements collected along the same transects from the MOSAiC dataset. The names of the transects used in this study are listed in the supplementary information (Table S1). The fitting performances (i.e. ~~RMSE~~ RMSE values) of MOSAiC Nloop, Sloop, Runway, and Summer sites are shown in Fig. 8-9. Skewness and kurtosis values are provided to interpret the fitting performance. Kurtosis describes the tailedness of a distribution; lower kurtosis indicates a flatter distribution with fewer extreme values and more observations concentrated around the mean. Skewness quantifies the degree of asymmetry of a distribution; positive skewness indicates a longer right tail, whereas negative skewness indicates a longer left tail. The meteorological events reported in Wagner et al. (2022) are indicated in Fig. 8. Storms were closely related to ice deformation events. The first major change in ice conditions occurred around 16 November 2019, when a storm triggered strong ice deformation near the observation site. Another significant ice deformation event occurred around 11–12 March 2020 and periodically until 7 May 2020 (Wagner et al., 2022). Drifting snow events were identified by calculating the horizontal mass flux from snow particle counter (SPC) measurements. During periods of instrument downtime, a critical friction velocity threshold was applied to infer potential snow transport. The most significant drifting snow event occurred on 24–25 February 2020, during which the lower

SPC recorded a cumulative mass flux of $1.014 \times 10^6 \text{ kg m}^{-2}$. During this event, 1-hour average wind speeds at 2 m above the ice reached approximately 11 m/s, with instantaneous wind speeds at shorter temporal scales likely exceeding this value (Wagner et al., 2022).

435 ~~Root-mean-square error (RMSE) between the fitted probability density functions (PDFs) and the observed snow depth (SND) values. (a) MOSAiC Runway. (b) MOSAiC Summer. The mean sea ice thickness (SIT, μ_{SIT}) and SIT range ($\Delta_{\text{SIT}} = 95\% \text{SIT} - 5\% \text{SIT}$) over each transect are calculated.~~

~~The Nloop transect was taken over thick and deformed SYI thicker than 2 m. For the MOSAiC Nloop, we observe a temporal shift in the best-fitting distribution on 30 January 2020, with the log-normal performing best initially, followed by a transition to the skew distribution. Before 19 December, the Log-normal 2019, the log-normal distribution (green lines) provides the best fit to the observed SND, with lower the lowest RMSE compared to the other PDFs, see as shown in Fig. 8a. On Since 19 December, the performance of the Gamma and Skew improves sharply, coinciding 2019, the performances of gamma and skew improve, coincident with a notable drop in kurtosis values below 2, see as shown in Fig. ??a. Note that kurtosis describes the tailedness of a distribution; lower kurtosis indicates a flatter distribution with fewer extremes and more values spread around the mean. 8b. A possible explanation for this transition is the snow drift event reported on drifting snow events reported on 3-5~~
445 ~~December and 19 December (Wagner et al., 2022), which could can reduce the peakedness of the SND distribution and led lead to a more evenly redistributed snow layer.~~

~~From 19 December 2019 to 30 January 2020, the performance of the Gamma (blue lines) and Skew (black lines) improves and become comparable RMSE values as Log-normal. To better understand the statistical characteristic of SND distribution, the skewness and kurtosis values have been calculated and shown in Fig. ??a. gamma (blue line) and skew (black line) distributions improves, reaching RMSE values at the same level as the log-normal distribution. We observed a observe kurtosis < 2 (Fig. ??a8b) on 9 January 2020, coincident with the point where the Skew skew distribution begins to outperform the Log-normal log-normal distribution. The dates on which the Log-normal log-normal performs best are marked by green bars in Fig. ??8, suggesting that kurtosis > 2 can be represent a threshold above which the Log-normal log-normal distribution outperforms the Skew skew distribution. This threshold is confirmed at also supported at all other test sites. Note that kurtosis values are slightly below~~
455 ~~2 on 7 November, 19 December, and 26 December 2019, when the log-normal distribution still yields the smallest RMSE. However, in these three cases, the RMSE differences between log-normal and skew distributions are less than 0.003 m, which is within the instrumental precision of the magnaprobe, suggesting that both distributions perform comparably well.~~

~~After 30 January, the Log-normal's performance deteriorates significantly with a sharp 2020, coincident with a drifting snow event, the performance of the log-normal distribution deteriorates continuously, as reflected by a continuous increase in RMSE, while the Skew; while the skew distribution achieves the best fit with the lowest RMSE. Notably, during the snow drift Log-normal performance continues to decline during the drifting snow period from 20 February to 20 March 2020, including the strongest drift event on 24-25 February, the strong drifting snow on 24-25 February 2020. During this period, observed SND samples exhibit the lowest kurtosis (from $\sim 0.2-0.8$). This observation can be explained by the fact that snow drift leads to a more evenly redistributed snow layer. A notable change in the shapes of the observed SND and SIT distributions before and after 30 January, as shown in Fig. ??, further explains the shift in the best-fitting PDF. The change in SND and SIT could ~ 0.8 .~~

465

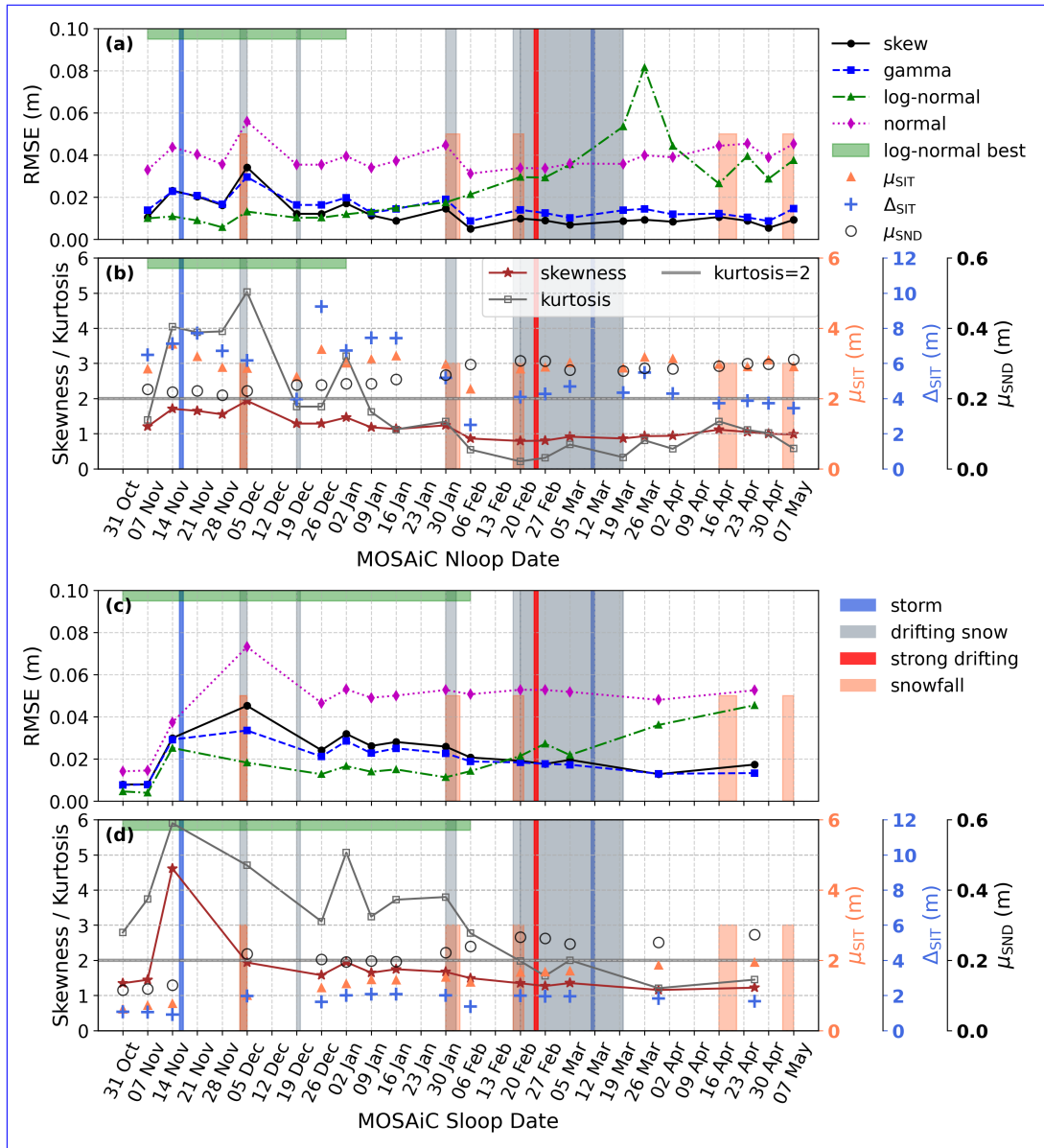


Figure 8. Root-mean-square Time-series analyses of snow depth (SND) distribution over MOSAiC northern loop (Nloop) (a-b) and southern loop (Sloop) (c-d). The relevant meteorological events such as storm, snowfall, and drifting snow are from Wagner et al. (2022). (a) and (c) are root-mean-square error (RMSE) between the fitted probability density functions (PDFs) and the observed snow depth (measured SND) values. (a) Nloop The dates on which the log-normal performs best are marked by green bars. (b) Sloop and (d) show skewness and kurtosis values calculated from the measured SND values. The mean SND (μ_{SND}), mean sea ice thickness (SIT, μ_{SIT}), and SIT range ($\Delta_{SIT} = 95\%SIT - 5\%SIT$) over of each transect are calculated also plotted.

These observations indicate that wind-driven redistribution events, such as drifting snow, cause the SND distribution to deviate from log-normal behaviour and favour a skew distribution. It can be attributed to the under-surveying of deformed ice and ridges after January 30. Although there was no obvious shift in the transects' geolocations before and after this date, slight changes in sampling positions (e.g., avoiding highly deformed ice) may have contributed to the under-representation of deformed ice and fact that Nloop was sampled on thick and deformed SYI with pronounced ridges, as shown in Fig. ??.

470 The proportion of samples with $SIT > 6\text{ m}$ is 15% before and 3% after 30 January, indicating more samples from deformed ice prior to 30 January. However, μ_{SIT} remains relatively constant all the time (see orange triangle symbols in Fig. 8a), suggesting that the deformed features cannot be adequately represented by a single mean ice thickness value. To better capture the deformation levels, we define the SIT range (Δ_{SIT}) as the difference between the 95th and 5th percentiles of ice thickness for each transect. As shown

475 in Fig. 8a, SIT range decreases substantially from an average value of 6.79 m to 4.13 m before and after 30 January, coinciding with the change in the best-fitting distribution. These results suggest that ice deformation influences SND distributions and that the SIT range metric serves as a useful parameter for identifying the most appropriate SND supported by the large SIT range reported in Table 2. Such deformed ice topography promotes a non-homogeneous SND distribution. The subsequent drifting snow event likely redistributed the snow, leading to a more homogeneous SND distribution and resulting in a distribution better

480 described by the skew distribution.

Skewness and kurtosis values calculated from the observed snow depth (SND). The dates on which the Log-normal performs best are marked by green bars. The relevant meteorological events such as storm, snowfall, and snow drift are from are shown in (a)-(b).

The histograms of the observed (a) snow depth (SND) and (b) sea ice thickness (SIT) over MOSAiC Nloops. Note that 5 cm bins for SND distribution and 0.5 m bins for SIT distribution are used for displaying histograms.

485

For MOSAiC Sloop, where FYI dominates, a the continuous increase in $SIT-\mu_{SIT}$ over time indicates seasonal thermodynamic growth of sea ice in (Fig. 8b-c). Similarly to Nloop, a temporal shift in the best-fitting distribution can be observed on 20 February 2020, with the log-normal performing best initially, followed by a transition to the gamma/skew distribution. Before 20 February 2020, when μ_{SIT} reaches approximately 1.5 m, the Log-normal-log-normal performs best, exhibiting the lowest

490 RMSE values. Similar Similarly to Nloop, a significant improvement in Gamma and Skew-gamma and skew performance is observed on 26 December 2019, after a documented snow drift drifting snow event that occurred on 19 December 2019 (Wagner et al., 2022). After 20 February 2020, μ_{SIT} is between 1.5–2 m, the Gamma and Skew reaches approximately 1.5 m. The gamma and skew distributions begin to outperform, with Gamma the log-normal, with the gamma distribution performing slightly better than Skew the skew distribution. From Fig. ??b8d, kurtosis decreases below the threshold of 2 since 20 February

495 2020, consistent with the transition of the best-fit PDF from Log-normal to Gamma or Skew distribution-log-normal to gamma or skew distribution. It supports the previous observation that $kurtosis > 2$ can represent a threshold above which the log-normal distribution outperforms the skew distribution. The deterioration in Log-normal-log-normal performance after 20 February is also likely driven by the sustained snow drift 2020 is also coincident with the drifting snow period beginning that day and the intense drift event on 24-25 February, further supporting the interpretation that the snow drifting drifting snow event leads to

500 more evenly redistributed snow layers as observed in the MOSAiC Nloop results. When Notably, unlike the Nloop over SYI

where μ_{SIT} reaches 2 m on 7 May, the Skew gives the best fit with the smallest RMSE. The remains relatively constant, the transition of the best PDF from Log-normal to Skew best-fitting PDF from log-normal to skew indicates a clear dependence of the SND distribution on SIT for FYI during the growth season, which will be. This relationship is further discussed in Section 4.2.3.

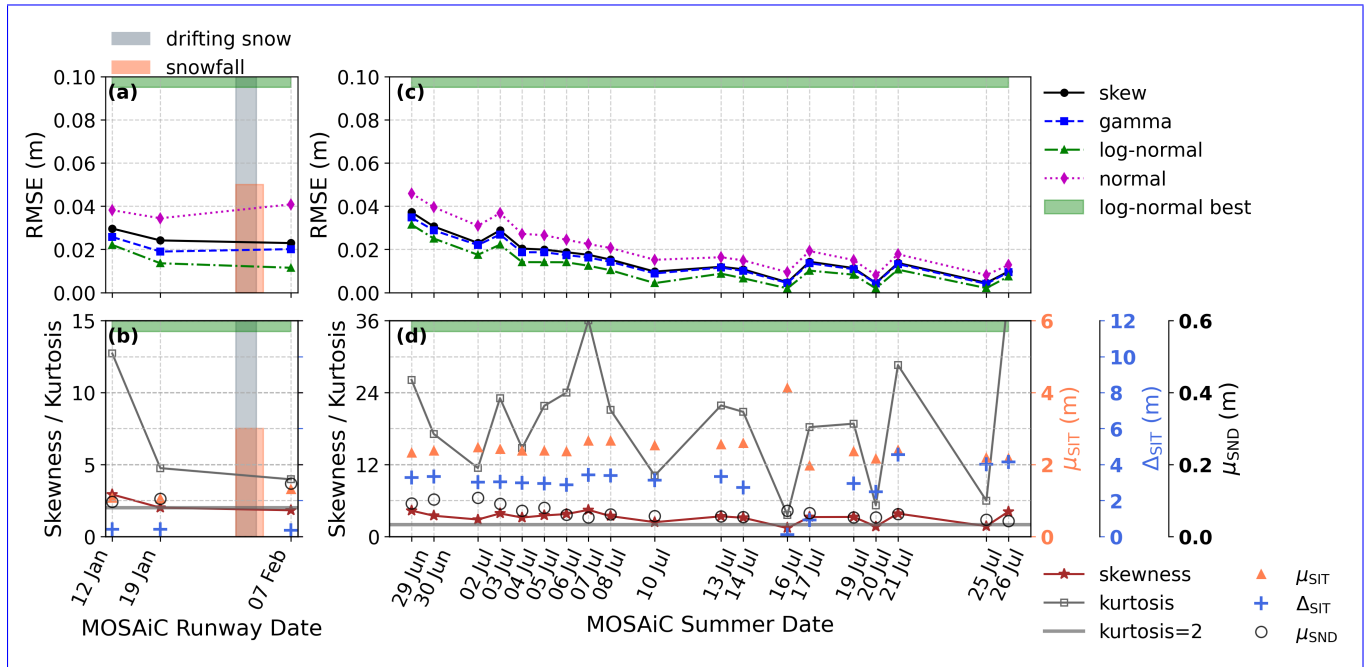


Figure 9. Time-series analyses of snow depth (SND) distribution over MOSAic Runway (a-b) and MOSAic Summer (c-d). (a) and (c) are root-mean-square error (RMSE) between the fitted probability density functions (PDFs) and the measured SND values. The dates on which the log-normal performs best are marked by green bars. (b) and (d) show skewness and kurtosis values calculated from the measured SND values. The mean SND (μ_{SND}), mean sea ice thickness (SIT, μ_{SIT}), and SIT range ($\Delta_{SIT} = 95\%SIT - 5\%SIT$) of each transect are also plotted.

505 The MOSAic Runway site is characterized by newly formed smooth ice was covered by newly formed smooth FYI, with μ_{SIT} ranging from 1–1.3 m and a relatively thin between 1 and 1.3 m and a thinner snow layer (SND- μ_{SND} from 0.1–0.15 m) compared to the MOSAic Nloop and Sloop. In Fig. 9a, the Log-normal log-normal provides the best fit of the observed SND, and the kurtosis values range from 4 to 13 (Fig. 9b), higher than those of the MOSAic Nloop and Sloop. This indicates that the observed SND distribution from the Runway is more sharply peaked and exhibits heavier tails than the Nloop and

510 Sloop, resulting in the best performance of Log-normal log-normal.

For the MOSAic Summer transects measured over SYI sites between 29 June and 26 July 2020, the snow layer was very thin ($\mu_{SND} < 0.1$ m) and smooth ($\sigma_{snow} < 0.07$ m, $\sigma_{SND} < 0.07$ m), while the underlying μ_{SIT} exceeds 2 m. In Fig. 9b, the Log-normal c, the log-normal consistently provides the best fit. The observed SND distributions are narrowly concentrated

and highly asymmetric, with more than 85% (Fig. S4), with 84% of the transects exhibiting large kurtosis > 10 (Fig. ??9d).
515 These results indicate that the ~~Log-normal~~ log-normal provides superior performance in representing very thin and smooth snow layers under summer conditions, even when measured over thick SYI.

~~For all test sites, the fit performance quantified by the mean RMSE values are summarized in Table~~In summary, at the weekly timescale over the Nloop and Sloop, the SND distribution exhibits consistently temporal variability, with the log-normal performing best initially, followed by a transition to the skew distribution. This transition from log-normal to skew is associated
520 with wind-driven redistribution events over non-smooth surfaces. In contrast, over the Runway and during Summer, where the snow cover is thin and smooth, the log-normal consistently provides the best fit. To visualize surface topography before and after the transition from log-normal to skew distribution, we used airborne laser scanner (ALS) data from MOSAiC Nloop and Sloop (Fig. 2-

~~For SYI and MYI, the Skew distribution best fits sea ice before 30 January in the MOSAiC N-loop, while the Log-normal performs better for deformed ice ($\Delta_{SIT} > 6\text{ m}$) S5). The corresponding changes in the freeboard (snow+ice above sea level), SIT, and SND distributions between 26 December 2019 and for thin snow over SYI during the MOSAiC summer (see Section 4.2.1)~~27 February 2020 are also presented in Fig. S5.

4.2.2 Regional comparison

The fitting performance ~~from other sites in addition to MOSAiC are at sites other than MOSAiC~~ is shown in Fig. 10. For the
530 Lincoln Sea where thick MYI dominates, ~~in general, the Skew distributions provide the best fits~~ the skew distribution provides the best fit of the observed SND from most transects. This result is consistent with observations from MOSAiC Nloop after 30 January, ~~where the sea ice exhibits similar SIT level.~~ 2020. Specifically, ~~Skew~~ the skew distribution yields the lowest RMSE for ~~Sites 1, 2, transects 1-7, while for transects 4, 5, 6 and NE, while for Site 3, both Gamma and Skew and 7, both gamma and skew perform comparably. For Site 7 with $\mu_{SIT} = 1.78\text{ m}$, the Gamma provides the best fit. Sites 3 and 7 exhibit~~
535 higher variability in SND ($\sigma_{\text{snow}} > 0.2\text{ m}$) but lower mean values (0.2–0.25 m) compared to the other sites. This suggests that for surfaces with rougher but thinner snow cover, the Gamma slightly outperforms the Skew distribution. Site 8 Transect 9 is located near the FYI zone and therefore contains a mixture of MYI and FYI (Haas et al., 2017). This transect exhibits kurtosis values greater than 2 in Fig. ??h10b, indicating an asymmetric and sharply peaked distribution. In this case, the ~~Log-normal~~ log-normal distribution performs best, ~~which is consistent with other FYI sites such as MOSAiC Runway and MOSAiC Sloop before 20 February 2020.~~

For N-ICE2015, the SYI was covered by a heavy snow layer as thick as 0.50 m in average with a thick snow layer with $\mu_{SND} = 0.50\text{ m}$. However, the μ_{SIT} is 1.58 m, similar to the Sloop transect but thinner than in the Lincoln Sea, MOSAiC Nloop, and MOSAiC Summer. Overall, as shown in Table 2, the ~~Skew~~ skew distribution yields the highest accuracy with the smallest RMSE ~~over N-ICE2015.~~ This result is consistent with the SYI from MOSAiC Nloop after 30 January 2020 and the MYI from the Lincoln Sea. On 7 February and 14 March 2015, PDFs exhibit ~~greater symmetry~~ symmetric shapes, with skewness ~~below 0.1 (close to 0 in Fig. ??f)10b.~~ This explains ~~that Skew and Normal~~ why skew and normal distributions perform equally better, while ~~Log-normal~~ log-normal does not provide a proper fit, ~~shown in Fig. 10b.~~

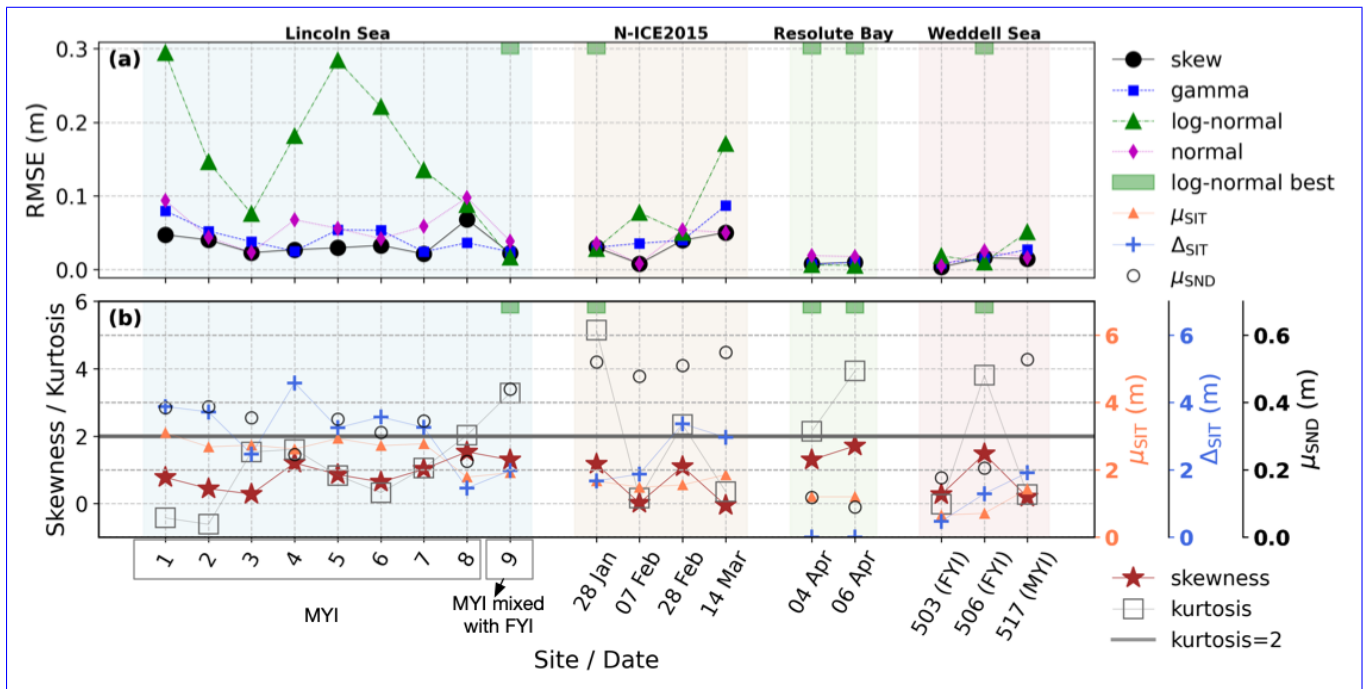


Figure 10. Time-series analyses of snow depth (SND) distribution over Lincoln Sea, N-ICE2015 (SYI), Resolute Bay (FYI), and Weddell Sea. Note that the thin lines connect samples within each test site for visual clarity only and do not imply time-series measurements. (a) Root-mean-square error (RMSE) between the fitted probability density functions (PDFs) and the measured SND values. The dates on which the log-normal performs best are marked by green bars. (b) shows skewness and kurtosis values calculated from the measured SND values. The mean SND (μ_{SND}), mean sea ice thickness (SIT, μ_{SIT}), and SIT range ($\Delta_{SIT} = 95\%SIT - 5\%SIT$) of each transect are also plotted.

550 ~~The Weddell Sea~~ For Weddell Sea samples, MYI floe 517 exhibits μ_{SIT} of 1.43m covered by ~~heavy~~ a thick snow layer ($\mu_{SND} = 0.53$ m), where the snow and ice conditions are similar to those of the N-ICE2015 samples. The ~~Skew-skew~~ provides the best fit, consistent with the performance observed in the N-ICE2015 transects.

555 For NI and FYI, Log-normal yields the best fitting performance for most cases. Resolute Bay is covered by first-year landfast sea ice, where the snow and ice conditions are similar to the MOSAiC Runway site. The fitting results shown in Fig. 10c indicate that the Log-normal distribution provides the highest accuracy, with the lowest RMSE values. This result is consistent with the results from MOSAiC Runway samples. We also tested thin, young ice from Churchill. Although no co-located ice thickness measurements were available, field observations indicated similar ice conditions to those at Resolute Bay. The results further confirm that the log-normal distribution performs best (see Supplement). For Weddell Sea samples, FYI FYI floes 503 and 506 have an average SIT of 0.69m, which is the thinnest ice in the entire dataset. Floe 506 exhibits higher skewness and kurtosis values greater than 2 in Fig. 10b than floe 503 and kurtosis > 2 , indicating an asymmetric and sharply peaked distribution (Fig. S4). In this case, the Log-normal log-normal distribution performs best, consistent with the results of FYI from MOSAiC Runway and Resolute Bay sites. However, floe 503 shows poor performance for the Log-normal

[log-normal](#) distribution. This can be explained by the near-symmetric shape of the SND histogram, with a small skewness value of only 0.26, which diminishes the advantage of [Log-normal](#)'s ability to model asymmetry. [Another exception is MOSAiC Sloop after 20 February, where the best PDF transits from Log-normal to Skew when \$\mu_{SIT}\$ reached above \$\sim 1.5\$ m, see detailed explanation in Section](#)

565 [Resolute Bay \(FYI\) has snow and ice conditions similar to those at the MOSAiC Runway. The fitting results shown in Fig. 4.2.1. It suggests that in addition to the ice age, SIT is a critical parameter to consider when choosing the most appropriate PDF for describing SND distribution](#) [10 indicate that the log-normal distribution provides the highest accuracy, with the lowest RMSE values. This result is consistent with the FYI results from MOSAiC Runway samples.](#)

4.2.3 Dependence on ice age and thickness

570 [Root-mean-square error \(RMSE\) between the fitted probability density functions \(PDFs\) and the observed snow depth \(SND\) values. \(a\) Lincoln Sea. \(b\) N-ICE2015. \(c\) Resolute Bay. \(d\) Weddell Sea. The mean sea ice thickness \(SIT, \$\mu_{SIT}\$ \) over each transect is calculated.](#)

[In order to further generalize To analyse the dependence of the fitting performance on ice age and SIT, we categorize the RMSE values based on the \$\mu_{SIT}\$ intervals by mixing samples from MOSAiC Sloop, MOSAiC Runway, Lincoln Sea,](#)
575 [N-ICE2015, Resolute Bay, and Weddell Sea sites. Note that the MOSAiC Nloop site is excluded since not only SIT but also ice deformation \(quantified by SIT range\) and meteorological events \(e.g., snow drifting\) alter the best-fit PDF. The MOSAiC Summer site is excluded since we interpret that for the very thin \(\$\mu_{SND} = 0.07\$ m\) and smooth snow layer Log-normal performs best and is independent of SIT. In interval using all samples from the non-summer datasets, shown in Fig. 11a. In general, for ice thinner than 1.5 m, the Log-normal \(mainly from FYI\), log-normal provides the most accurate fit for SND. As the ice](#)
580 [thickens, the RMSE for Log-normal increases significantly, while those for Gamma and Skew decrease, indicating improved fitting accuracy. For \$\mu_{SIT}\$ between 1.5 – 2 m, both Gamma and Skew perform well, with a slight advantage for Gamma. When the samples are a mixture of ice ages, and both the gamma and the skew distributions perform well. When the ice exceeds 2 m \(but with SIT range below 6 m\), Skew gives the all from SYI and MYI, the skew provides the best fit. Note that the choice of thresholds at 1.5 m – 2 m, 1.5 m and 2 m is based on the observed transition in the best-fitting distribution from the MOSAiC](#)
585 [Sloop site time-series observations.](#)

[We calculate the RMSE difference \(\$D_{RMSE}\$ \) between the Log-normal and Skew distributions for each transect to quantitatively identify the best-fitting PDF, as Specifically, SND fitting performance over FYI is shown in Fig. ?? The same thresholds used in Fig. 11 are applied here to examine the dependence of SND distribution 11b, where RMSE exhibits a dependence on \$\mu_{SIT}\$ and \$\Delta_{SIT}\$. From Fig. ??\(a\), \$D_{RMSE}\$ values are mostly below zero when \$\mu_{SIT} < 1.5\$ m, indicating that the Log-normal distribution](#)
590 [performs best for NI, FYI, and thinner MYI. The Skew distribution gradually outperforms the Log-normal distribution when shows the best fitting performance for \$\mu_{SIT} < 1.5\$ m; however, its performance deteriorates significantly with increasing \$\mu_{SIT}\$ is between 1.5 and 2 m. For thicker MYI with \$\mu_{SIT} > 2\$ m, while gamma and skew provide better fits. For SYI and MYI \(Fig. 11d-g\), the Skew distribution significantly outperforms the skew distribution always performs the best, and RMSE does not show dependence on \$\mu_{SIT}\$. The MOSAiC Summer results, shown in Fig. 11h-i, indicate that for a very thin \(\$\mu_{SND} = 0.07\$ m\)](#)

595 ~~and smooth snow layer, the log-normal, with D_{RMSE} deviating substantially from zero~~ provides the best fit and shows no
dependence on SIT.

In summary, we considered the ice ages, SIT, SIT range, and meteorological conditions impacts on the best PDF to describe
the SND observations. The results reveal the following patterns: We interpret the differences in SND distributions between
FYI and SYI/MYI primarily as a snow residence-time effect: snow remains on older ice for a longer period, allowing more
600 time for accumulation and wind-driven redistribution, which progressively modifies the distribution. The snow with shorter
residence time is typically well described by a log-normal distribution, evidenced by the snow over younger ice type in
our observations at MOSAiC Runway, Resolute Bay, and the early stage of MOSAiC Sloop. In contrast, longer exposure
to wind-driven redistribution progressively modifies the snowpack and can shift the SND distribution away from log-normal
behaviour, as observed from the late stages of MOSAiC Sloop (after 20 February 2020), MOSAiC Nloop (after 30 January
605 2020), Lincoln Sea, N-ICE2015, Weddell Sea (MYI).

(1) For NI and FYI where $SIT < 1.5$ m, The apparent dependence of the SND distribution on the SIT for FYI can be
attributed to the Log-normal distribution provides the best fit.

(2) For SYI and MYI which are typically thicker ice ($\mu_{SIT} > 1.5$ m) and not very deformed ($\Delta_{ice} < 6$ m), as well as FYI
610 ~~grows thicker than~~ inherent positive relationship between the ice age and the SIT during the growth season, such that the SIT
effectively serves as a proxy for the detailed ice age on a weekly scale. The observed SIT dependence therefore mainly reflects
differences in ice age (and associated snow residence time), rather than thickness alone. Consequently, the threshold of 1.5 m
(e. g., MOSAiC Sloop), the Skew is generally the best to describe SND distribution. Specifically, for SIT between 1.5—2 m,
both Gamma and Skew distributions perform comparably well, while for ice thicker than 2 m, Skew yields the best fit.

(3) For SYI and MYI which are typically thicker ice ($\mu_{SIT} > 1.5$ m) and deformed ($\Delta_{ice} > 6$ m), such as the Nloop before
615 January 30, the SND distribution can exhibit strong asymmetry, making the Log-normal distribution the best fitting.

(4) Strong snow drifting events can reduce the peakedness of the SND distribution, leading to a more evenly redistributed
snow layer that is better captured by the Skew distribution.

(5) During melting season, where the snow layer is very thin and smooth ($\mu_{SND} < 0.1$ m) should not be considered universal;
it can vary with the regional ice growth rate and the occurrence and intensity of meteorological events that promote snow
620 redistribution. It is also worth noting that although log-normal performs best for SND on younger and thinner ice, it can have a
large deviation for thicker and $\sigma_{SND} < 0.05$ m), the Log-normal distribution performs best older ice ($\mu_{SIT} > 2$ m, see Fig. 11a,
e, and g). In contrast, the skew distribution is less prone to large deviations from the observed SND distributions. Therefore, the
skew distribution can be a more robust choice for describing the SND distribution particularly over heterogeneous or unknown
ice types, offering a balance between the accuracy and stability of the SND distribution fitting.

625 4.3 Correlation length of snow depth

The correlation length of SND for each transect at all test sites was ~~computed~~ estimated using the method presented in
Section 3.2. Note ~~five transects, including MOSAiC Nloop~~ that four transects, namely the MOSAiC Nloop transect on 27
February 2020, MOSAiC Summer transect on 27 June and 30 August 2020, and Lincoln Sea Site 5 and NE, are excluded as

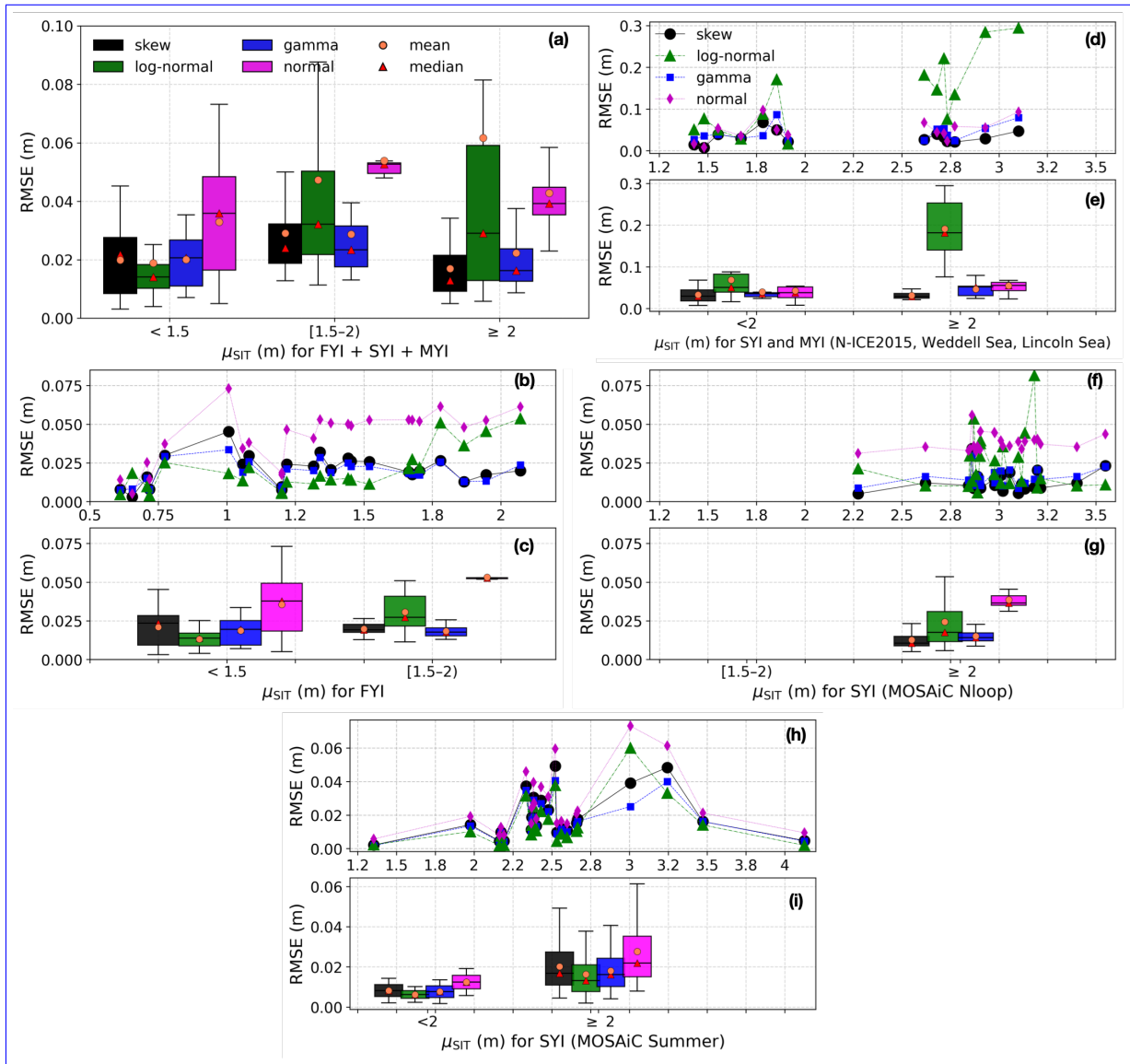


Figure 11. Boxplots of RMSE between the fitted probability density functions (PDFs) and the snow depth (SND) observations. μ_{SIT} denotes the mean sea ice thickness (SIT) of each transect. (a) All non-summer samples combined FYI, SYI, and MYI; the same samples are separated by ice types in panels (b–g). (h–i) Summer samples: MOSAiC Summer. Specifically, (b–c) FYI: MOSAiC Sloop, MOSAiC Runway, Weddell Sea, and Resolute Bay. (d–e) SYI and MYI: N-ICE2015, Weddell Sea, and Lincoln Sea. (f–g) SYI from MOSAiC Nloop. Note that SYI and MYI in panels (d) and (f) are shown separately for better visualization, as otherwise the points would be overcrowded. For each box, the top, middle, and bottom boundaries correspond to the third (Q3), median, and first (Q1) quartiles. The whiskers extend to the values within $Q1 - 1.5 \times (Q3 - Q1)$ and $Q3 + 1.5 \times (Q3 - Q1)$.

transects 4 and 5, were excluded because their semi-variograms fail to do not reach a constant semi-variance value, preventing accurate estimation of the sill and effective range (i.e., correlation length). This occurs because semi-variogram analysis can fail to detect slope-change points at large length scales due to undulations in the variogram introduced by local non-stationarities (Moon et al., 2019). In such cases, the effective range cannot be robustly estimated from the semi-variogram, and more advanced approaches such as multifractal temporally weighted detrended fluctuation analysis are required (Moon et al., 2019).

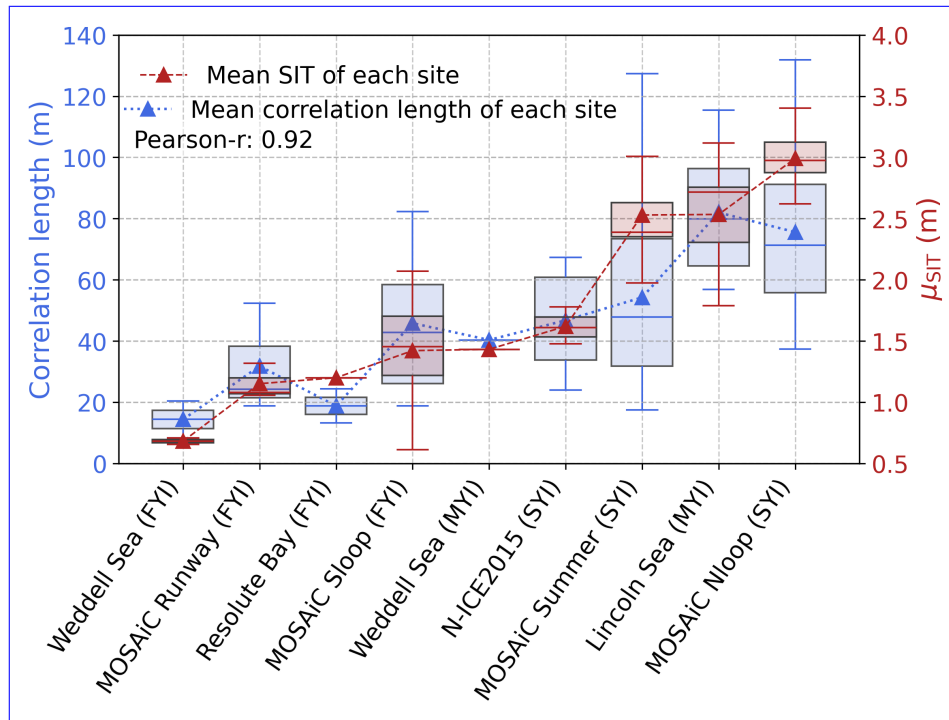


Figure 12. The relationship between snow depth (SND) correlation length and sea ice thickness (SIT). μ_{SIT} denote the mean SIT over each transect. For each box, the top, middle, and bottom boundaries correspond to the third (Q3), median, and first (Q1) quartiles. The whiskers extend to the values within $Q1 - \pm 1.5 \times (Q3 - Q1)$ and $Q3 + \pm 1.5 \times (Q3 - Q1)$. The red dash and blue dot lines indicate the mean SIT and mean correlation length for each site, with a correlation of Pearson- $r = 0.92$.

The correlation lengths of the transects within each site are plotted as boxplots shown in Fig. 12.

The relation between snow depth (SND) correlation length and sea ice thickness (SIT). μ_{SIT} denote the mean SIT over each transect. For each box, the top and bottom boundaries correspond to the third (Q3) and first (Q1) quartiles, and the whiskers extend to the values within $Q3 \pm 1.5 \times (Q3 - Q1)$. The red dash and blue dot lines indicate the mean SIT and mean correlation length for each site, with a correlation of Pearson- $r = 0.92$.

We observe that thicker ice is associated with a larger mean correlation length, shown in Fig. 12. The average. The mean correlation length and μ_{SIT} mean SIT of each site are plotted as blue and red lines, respectively, showing a high correlation of

0.92. In general, the average-mean correlation length for ~~NI and~~ FYI is 39 ± 25 m (mean \pm standard deviation). For smooth and thin snow-covered SYI in summer, ~~this (MOSAiC Summer), it~~ increases to 54 ± 28 m, while ~~snow-covered snow-covered~~ SYI and MYI in ~~winter shows the~~ the non-summer season (i.e. excluding MOSAiC Summer) exhibit the longest correlation length, averaging 72 ± 25 m.

For ~~the category of NI and~~ FYI, the correlation lengths vary between 10 – 80 m, as shown in Fig. 12. The range is consistent with ~~the observations from undeformed FYI found that where~~ the 10 m length scale is associated with wind-driven dune formation (Moon et al., 2019). ~~At On~~ larger scales (30 – 100 m), the governing processes may involve interactions between individual dunes, such as their gradual movement, merging, or dispersal over time. Specifically, for the three sites (Weddell Sea, MOSAiC Runway, and Resolute Bay) covered by thin ice with $\mu_{SIT} < 1.2$ m, the average-mean correlation length is approximately 14 ± 8 m and 19 ± 8 m for FYI in the Weddell Sea and Resolute Bay, respectively. For ~~the Runway site, which consists of NI, the average MOSAiC Runway (FYI), the mean~~ correlation length is 32 ± 18 m. For ~~the MOSAiC Sloopsite MOSAiC Sloop~~, where FYI is growing with μ_{SIT} of 1.4 m, the average-mean correlation length is 46 ± 26 m, with larger-greater variability than other ~~NI and FYI likely FYI possibly~~ due to the broader range of SIT.

For ~~the category of~~ SYI and MYI, the SIT ~~from values for~~ the Weddell Sea and N-ICE2015 ~~sites is are~~ ~ 1.5 m, similar to the MOSAiC Sloopsite. ~~The~~. The mean correlation lengths are approximately 45 ± 17 m, consistent with those observed for MOSAiC Sloop. ~~In the Antarctic, Sturm et al. (1998) reported that~~ snow-surface correlation lengths vary ~~between from~~ 3 to 70 m, averaging 13 – 23 m, based on observations from FYI and MYI in the Bellingshausen, Amundsen, and Ross Seas. In this study, the correlation lengths derived from two FYI floes and one MYI floe from the Weddell Sea are 8 m, 20 m, and 40 m, respectively, with an average a mean value of 23 m, which agrees well with the observations ~~reported by from~~ Sturm et al. (1998).

For ~~the~~ SYI and MYI thicker than 2 m ~~including the, including~~ MOSAiC Summer, Lincoln Sea, and MOSAiC Nloopsites, the correlation length shows larger mean values and greater variation compared to others. The average-mean correlation lengths are 75 ± 24 m for the MOSAiC Nloop ~~site and~~ 82 ± 21 m for the Lincoln Seasite, ~~respectively. For the MOSAiC Summersites, the average.~~ For MOSAiC Summer, the mean correlation length is 54 ± 28 m, less than that of the Lincoln Seasite, despite a similar average-mean SIT. This ~~is likely due to can result from~~ the very thin snow layer ($\mu_{SND} = 0.07$ m) during the melting season, where the surface ~~can be was~~ smooth and therefore ~~reduces exhibits reduced~~ spatial correlation.

The positive correlation between correlation ~~between the correlation~~ length and ~~the~~ SIT can be explained by the physical processes that shape the snow ~~distribution. The small correlation lengths likely reflect surface features. Small correlation~~ lengths are likely associated with the spatial scale of individual snow dunes ~~and drifts formed by wind; beyond short distances, the~~ (Filhol and Sturm, 2015), beyond which SND at one location provides little information about ~~the depth that~~ at another. In contrast, on rougher MYI, larger correlation lengths are expected, as prominent surface features, such as hummocks and ridges, affect snow accumulation over broader spatial scales.

~~Within each site, differences in correlation lengths (The surface topography of FYI (MOSAiC Sloop) and SYI (MOSAiC Nloop) captured by ALS is provided in Fig. 12) can be explained by the inherent spatial variability of snow distribution such as the anisotropic structure of snow dunes, as well as changes to these patterns temporally due to the precipitation and wind~~

events. To further S5, visualizing that SYI exhibits more pronounced surface features than FYI, which likely results in larger correlation lengths.

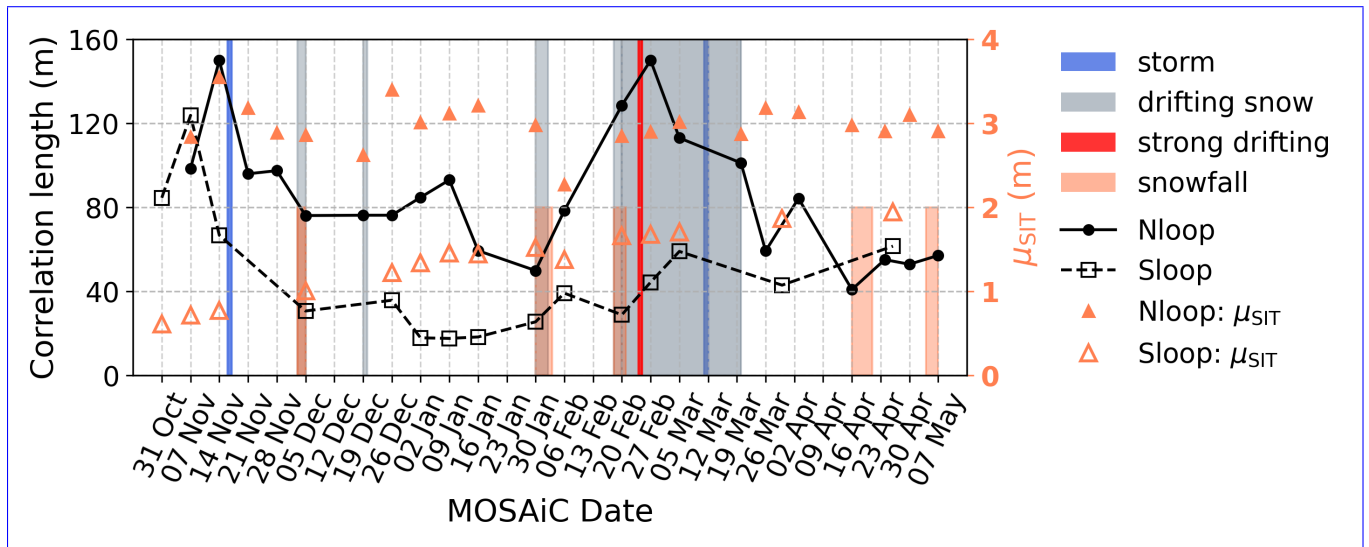


Figure 13. Time-series analysis of correlation lengths from MOSAiC northern loop (Nloop) and southern loop (Sloop). The relevant climate events such as storm, snowfall, and drifting snow are from (Wagner et al., 2022).

To investigate the temporal changes of the spatial heterogeneity of snow cover, we analyzed time-series variograms from the MOSAiC Sloop, Nloop, Runway, and Summer transects. For the MOSAiC Nloop site, we observe a significant increase in the correlation length following the snowfall and snow drift events from Nloop and Sloop sites. For MOSAiC Nloop, we observed a consistent increase in correlation length between 30 January and 27 February 2020, following snowfall and drifting-snow events that began on 30 January and 18 February 2020 (Fig. 13a). A major snow-drift drifting snow event occurred on 24-25 February 2020, coinciding with the largest correlation length observed on 27 February 2020, indicating a snow correlation length exceeding 150m. Slight increases in snow correlation length were also observed on 5 December 2019, 24 April 2020, and 7 May 2020, coinciding with snowfall or drifting snow events. The correlation length increases during these periods, suggesting growth in snowdrift size. One possible process is that, during significant snowfall or drift drifting snow events, the valleys between the snow dunes become filled (Iacozza and Barber, 2010), leading to larger and more continuous snow structures, as revealed by geostatistical analysis represented by increasing correlation lengths. This infill significantly alters the pattern of the SND distribution and influences subsequent snow redistribution processes. For MOSAiC Sloop, although we do not observe the changes in snow correlation length as pronounced as are less pronounced than those at MOSAiC Nloop, there is a steady increase from around 28m to 60m during the drifting snow event from 20 February to 20 March. In addition, small increases in correlation length were noted after snowfall events on 5 December, 30 January, and 26 April 2020. These results suggest that drifting snow events have a greater impact on increasing snow correlation length over rougher ice (MOSAiC Nloop) compared to smoother ice (MOSAiC Sloop).

~~The time-series correlation lengths over MOSAiC (a) Nloop and (b) Sloop. The relevant climate events such as storm, snowfall, and snow drift are from.~~

5 Discussion

5.1 Comparison with previous studies

700 Mallett et al. (2022) evaluated the skew distribution using SND transects spanning FYI to MYI. This study extends previous analyses by further investigating the effects of SIT and meteorological events on SND distribution. Mallett et al. (2022) showed that the skew distribution provides the best fit for SND over MYI, which is consistent with our results (Fig. 11e and g), with two exceptions. First, during summer, when the snow cover is very thin (mean 7 cm) over SYI, the log-normal distribution performs best. Second, during the early stage of snow accumulation over the MOSAiC Nloop, prior to wind-driven
705 redistribution, the log-normal again provides the best fit. These two exceptions complement the findings of Mallett et al. (2022) and demonstrate that meteorological events and seasonality are essential in regulating SND distribution. Note that in these two cases, the improvement in the log-normal over skew distribution is modest ($\approx 20\text{--}25\%$), calculated from Table 2 using $(\text{RMSE}_{\text{skew}} - \text{RMSE}_{\text{log-normal}}) / \text{RMSE}_{\text{skew}}$. However, the skew significantly outperforms the log-normal by $\approx 60\text{--}80\%$ in other SYI and MYI cases. In particular, large RMSE values of log-normal are observed for MOSAiC Nloop after 30 January
710 2020 in Fig. 8a and the Lincoln Sea and N-ICE2015 in Fig. 10. Hence, although the log-normal distribution performs best in these two exceptions, the skew distribution exhibits greater stability and is less sensitive to extreme deviations from the observed SND distributions. For practical applications, the skew distribution therefore provides a more robust representation of SND distribution over regions containing mixed ice types or lacking a priori knowledge of ice type.

Mallett et al. (2022) quantified the CV of the snow in MYI. We extend the analysis to include FYI and obtained an overall
715 CV of 0.50. The value reported by Mallett et al. (2022) ($\text{CV} = 0.42$) falls within the 95% prediction interval of our empirical fit (Fig. 7b), indicating consistency across the datasets. Additionally, we demonstrate that CV shows no dependence on SIT, suggesting that the linear relation (Eq.7) to estimate sub-grid or footprint-scale SND variability from mean SND can be applied across a range of SIT conditions. We also observe that flooding can reduce CV, revealing that flooding can imprint a measurable signature on the SND distribution.

720 Wever et al. (2021) used GEM floe-scale ($400\text{ m} \times 400\text{ m}$) and GEM TLS field measurements ($80\text{ m} \times 80\text{ m}$) to characterise spatial variability in SND and SIT. This study uses GEM floe-scale data because the $400\text{ m} \times 400\text{ m}$ coverage can represent an individual floe and is consistent with the spatial scale across other test sites. Wever et al. (2021) reported SND and total thickness (snow + ice) for each floe (503, 506, and 517) using both datasets. The violin plots (Fig. 3 and Fig. S3) summarize SND and SIT for FYI (503 and 506) and MYI (517) which are consistent with Wever et al. (2021). Beyond this, we further
725 explored the PDF that best fits the SND distributions related to ice age and SIT.

Using MOSAiC time-series data, this study analysed the weekly evolution of SND statistics, providing new insights for the snow community. Liston et al. (2020) reported a strong correlation between mean SND and ice age (in days), suggesting that it is not sufficient to know only whether the ice is FYI; we must also know the age of FYI (in days or weeks). We

730 examine how the best-fitting statistical distribution of SND evolves using weekly MOSAiC measurements (Fig.8). For the Sloop (FYI) during the growing season, we observe a clear shift in the SND distribution from log-normal to gamma/skew as SIT continues to increase. These results not only reinforce the hypothesis that ice age strongly controls snow evolution (Liston et al., 2020), but also provide new quantitative insights into the temporal variability of snow layers. Furthermore, Moon et al. (2019) indicated that topography and wind redistribution are two main factors controlling the spatial variability of SND and its correlation length. Our results support the role of wind redistribution: drifting snow events increase correlation length (Fig.13),
735 consistent with the growth of snow-dune size (Moon et al., 2019; Iacoza and Barber, 2010). We also examine the influence of surface topography on SND distributions using ALS data for MOSAiC Nloop and Sloop (Fig. S5). However, no pronounced snow-topographic features were observed from December to February, spanning the period before and after the transition in the best-fitting PDFs. Previous studies suggest a dependence of the correlation length on ice types (Iacoza and Barber, 1999; Fetterer and Untersteiner, 1998). The findings of this study are consistent with this dependence on ice types and further suggest
740 a clear relationship between correlation length and SIT (Fig. 12).

5.2 Links to sea ice models

Sea ice models within coupled climate models are key tools for quantifying high-latitude climate variability and supporting seasonal sea ice prediction (Holland et al., 2010; Hamilton and Stroeve, 2016). Because even 1 km configurations cannot explicitly resolve the strong sub-grid heterogeneity of SIT and associated processes, most models represent thickness variability
745 using an ice thickness distribution (ITD) framework (Thorndike et al., 1975). In practice, the ITD is discretized into a finite number of thickness categories. A proper selection of the number of categories is essential to ensure a meaningful simulation of key sea ice variables, such as the ice volume (Bitz et al., 2001; Lipscomb, 2001; Hunke, 2014; Massonnet et al., 2019). In addition to the ITD, snow parameterizations are a key source of uncertainty and control in sea ice models. Liston et al. (2018, 2020) showed that spatial variability in SND strongly modulates conductive heat flux, winter ice growth, and the timing
750 and magnitude of surface melt, through its control on insulation, surface temperature, and radiative processes. Castro-Morales et al. (2014) evaluated two snow representations: one in which the SND is independent of the underlying SIT, and another in which the snow is distributed proportionally to the ITD. Their results indicate that the latter approach improves the simulation of thermodynamic ice growth during the ice-formation period. Castro-Morales et al. (2014) therefore emphasized the need for large-scale field observations to establish representative and robust statistical relationships between snow and sea ice. Our
755 results provide new quantitative insights into this perspective. Specifically, Fig. 11 demonstrates that SND distributions exhibit a clear dependence on SIT for FYI, which can be used to evaluate and refine category-specific snow parameterizations in models. Moreover, our findings on SND distributions across ice ages and SIT values can be incorporated into ITD frameworks to better represent the statistical coupling between snow and ice, thereby improving simulations of thermodynamic ice growth during the ice-formation period. As a simplified alternative, a skew distribution can serve as a robust candidate when assuming
760 a single universal distribution for the snow field across the ITD categories.

5.3 Links to satellite observations

To derive SIT from satellite altimetry, SND must be combined with freeboard measurements. However, the horizontal resolution of snow depth products (25–100 km) is much coarser than that of along-track freeboard measurements (15 m–2 km) (Glissenaar et al., 2021), creating a scale mismatch that necessitates parameterized representations of sub-grid snow redistribution within altimeter footprints. Previous approaches have introduced empirical redistribution functions based primarily on freeboard (Kwok and Cunningham, 2008; Petty et al., 2020), with coefficients derived from airborne observations during Operation IceBridge (Petty et al., 2020). The findings of this article highlight that ice age, in addition to freeboard, can be a potentially important factor to consider in the empirical snow-redistribution functions for laser-altimetry-based SIT retrieval.

Because SIT retrieval from altimetry depends explicitly on SND through hydrostatic equilibrium, SND variability within the footprint directly propagates into SIT retrieval uncertainty. Given a large-scale mean SND, the standard deviation of SND can be inferred using the CV (Fig. 7). The statistical distribution of SND derived in this study provides a more comprehensive representation of sub-grid SND variability. Specifically, the most appropriate distribution (e.g. log-normal or skew) can be selected according to the ice age and SIT. For a log-normal distribution, which is defined by two parameters, the mean and standard deviation are sufficient to determine the distribution parameters and reconstruct the fitted PDF. The skew distribution requires three parameters, namely mean, standard deviation, and the skewness (as given in this study). Once the PDF is fitted, additional SND statistics, including modal values and percentiles, can be derived. From a satellite perspective, the modal SND is particularly relevant because it is the most frequently occurring SND within a satellite footprint and can be associated with the dominant surface condition. These statistics provide a more complete characterization of sub-grid snow variability and can be propagated to quantify uncertainty in SIT retrieval at sub-kilometre scale.

5.4 Limitations

A limitation of this study is the regional datasets. The analysis in this article is based on the selected test sites rather than on unified pan-Arctic and -Antarctic datasets. Nevertheless, the Log-normal best describes the SND distribution. (ii) For SYI sites were carefully chosen to span various snow and ice types and each contains thousands of samples, ensuring statistically robust analysis. However, SND distributions can be sensitive to many local factors such as ice topography, snowfall, wind redistribution, flooding, and melt processes. Consequently, extending these findings to the hemispheric scale requires thorough evaluation using large and comprehensive datasets. Despite this limitation, the regional cases analysed here, supported by high-quality in-situ measurements, provide new insights into how SND distributions depend on ice types and thicknesses at the sub-kilometre scale. To assess the regional representativeness of the findings of this study, we summarize the dominant climatic and ice-type characteristics captured at each test site in the following.

The MOSAiC Nloop and Lincoln Sea datasets represent the thick ($\mu_{SIT} > 2.5$ m) and deformed SYI and MYI conditions. The consistent PDF-fitting performance between Nloop and the Lincoln Sea supports the conclusion that the SND distribution depends on ice age. Therefore, these results are most applicable to thick and deformed SYI and MYI types. The N-ICE2015 dataset, combined with observations from the Weddell Sea (MYI) during austral winter, represents conditions of substantial snow loading ($\mu_{SND} > 0.5$ m) and susceptibility to flooding. These sites are particularly relevant for characterizing SND distributions under heavy snow accumulation and snow-ice formation processes. The MOSAiC Sloop reflects a growing FYI

800 evolving from newly-formed ice to fully developed FYI, with SIT increasing from <1 m to ~2 m between October and May. These observations are most representative of the evolution of snow over growing FYI, from initial formation through full development to the pre-melt season. The MOSAiC Runway and Resolute Bay datasets represent relatively level FYI with thin and smooth snow cover. Among all sites, they exhibit the lowest mean SND and standard deviation and are therefore most representative of newly-formed snow over young ice. The MOSAiC Summer represents SYI that persists into summer with a shallow snow layer (~7 cm). This case demonstrates that, despite the same ice type (SYI), SND distributions can differ substantially between winter and summer. These observations are most applicable to thin snow-covered SYI during the melt season.

805 Another limitation concerns the measurement accuracy of SND and SIT obtained from the magnaprobe and EM instruments. The magnaprobe has a precision of 3 mm. Given that the typical mean SND within each transect is several to tens of centimetres, 3 mm is small relative to the SND measurements. In the analyses, we use μ_{SND} computed from all samples along each transect rather than an individual sample, which further reduces the influence of measurement uncertainty. Each transect contains hundreds of samples, ensuring that the inferred PDFs are statistically robust; therefore measurement error from a single sample has a negligible effect on the overall distribution shape. When evaluating the fitting performance, the differences in RMSE
810 between two PDFs less than 3 mm are considered comparable (Table 2), consistent with the instrumental precision of the magnaprobe. The precision of the EM measurements is approximately 0.1 m on level ice. Similarly, we use μ_{SIT} calculated by averaging all samples along each transect, rather than individual measurements, thus reducing the influence of measurement uncertainty on the reported SIT-dependent relationship. The μ_{SIT} is used primarily for mean-SIT binning, so the influence of measurement uncertainty on the results is expected to be limited.

815 5.5 Recommendations for practical applications

This study examines the influence of ice age, SIT, and meteorological conditions on the most appropriate PDF to describe SND observations. In the context of practical applications, we recommend the following considerations for characterizing sub-kilometre SND distributions:

- 820 (1) The ice age should be explicitly considered. Ice age represents the effective snow residence time on a given ice floe and therefore controls the degree of snow accumulation and wind redistribution. SND distributions vary with ice age: newly accumulated snow on younger ice (often FYI) is typically well described by a log-normal distribution, whereas progressive wind redistribution, compaction, and drift processes reshape the distribution toward a skew shape. Consequently, snow over older and thicker ice (often SYI and MYI), where the snow has a longer residence time, is generally better characterised by a skew distribution.
- 825 (2) During the growth season, thicker ice generally corresponds to older FYI. Hence SIT acts as a proxy for fine-scale ice age (e.g., in days or weeks) across the evolution from newly formed to fully developed FYI. The apparent SIT dependence of PDF performance therefore mainly reflects relations to snow residence time. Accordingly, different PDFs are recommended for FYI at different growth stages. For thinner FYI ($\mu_{\text{SIT}} < 1.5$ m), the log-normal distribution is

830 generally appropriate, whereas for thicker FYI ($\mu_{SIT} > 1.5$ m), the skew and gamma distributions provide the best performance. The 1.5m threshold should not be regarded universal, as it depends on the rate of ice growth and the timing and intensity of redistribution events, which may vary regionally and seasonally.

(3) Meteorological redistribution events should be explicitly considered. Wind-driven redistribution can induce temporal transitions in SND distributions, even within the same ice type, shifting behaviour from log-normal to skew distribution. During the melting season, when the snow layer is thin and smooth, the log-normal distribution performs best.

835 (4) Although the log-normal distribution performs best for snow with a short residence time, its performance can deteriorate substantially over older and thicker ice. The skew distribution demonstrates greater robustness across types, offering a balance between fitting accuracy and stability, and is therefore suitable for applications spanning heterogeneous ice conditions or lacking a priori knowledge of ice types.

6 Conclusions

840 This study provided a systematic assessment of sub-kilometre SND distributions across diverse ice types and seasonal conditions. Based on field observations that covered FYI, SYI, MYI, flooded ice, and melt-season conditions, the results demonstrated that SND statistics are influenced by ice ages, SIT, and meteorological events.

845 During the growth season, the SND over FYI increases linearly with the SIT, reflecting the concurrent formation of ice and snow. Despite differences in ice types, CV remains approximately constant (≈ 0.50), indicating that sub-grid scales variability can be inferred from mean SND. Flooded ice exhibited reduced variability relative to non-flooded sites, suggesting that flooding can imprint a measurable signature in the SND distribution. Moreover, the PDF that best describes the SND distribution is governed by ice age, which represents the effective residence time of snow on a given ice floe and thus controls its accumulation and redistribution. New snow on young and thin FYI is best represented by a log-normal distribution, whereas redistributed snow on older and thicker ice is best represented by a skew distribution. In the MOSAiC Nloop and Sloop observations, this transition occurred after approximately three to four months of snow residence time. The threshold of approximately three to four months used to distinguish “new” from “redistributed” snow can be subjective to ice type, regional conditions, and seasonal forcing. Therefore, further validation will be required using large-scale time-series observations in the future. During the FYI growth season, the dependence of fitting performance on SIT reflects the role of SIT as a proxy for fine-scale ice age (e.g. in days or weeks). Meteorological events can induce temporal transitions in distribution shape within the same ice type, underscoring the dynamic coupling between wind redistribution and ice conditions. Although the log-normal distribution performs well under specific conditions (e.g. new or melt-season snow), its performance deteriorates significantly over older ice (e.g. SYI and MYI). The skew distribution provides a good compromise between robustness and accuracy and is therefore recommended for scenarios involving heterogeneous ice types. Semi-variogram analysis revealed that the correlation length of SND increases with SIT, indicating an association between SIT and the spatial variability of SND. Snowfall and strong drifting snow events further enhance correlation length by smoothing small-scale variability and strengthening larger snow structures.

850

855

860

All these findings identify snow residence time and ice type as key controls on sub-kilometre SND variability. By clarifying how SND distributions change with ice ages, thicknesses, and redistribution processes, this study improves our understanding of how snow evolves on different types of sea ice under various meteorological conditions. The results provide practical recommendations for representing snow variability and SND distribution at sub-kilometre scale, with potential applications in climate modelling and in improving uncertainty estimates for remote-sensing-based SIT retrievals. Future work involves further characterizing the SND characterising the regional and temporal variation in SND by integrating high-resolution surface topographic measurements (e.g. terrestrial laser scanner) of snow bedforms and incorporating the predicted SND distribution with snow models.

Code availability

The code will be made publicly available on GitHub after the manuscript is accepted.

Data availability

MOSAIC data can be accessed from the PANGAEA website (<https://doi.pangaea.de/10.1594/PANGAEA.937781>, Itkin et al. 2021). The N-ICE2015 data can be accessed from the Norwegian Polar Data Centre (<https://doi.org/10.21334/NPOLAR.2016.3D72756D> and <https://doi.org/10.21334/NPOLAR.2016.70352512>). The Weddell Sea data can be accessed from the PANGAEA website (<https://doi.org/10.1594/PANGAEA.933584>). The Resolute Bay data can be accessed from here: <https://doi.org/10.5194/egusphere-2026-212>. The Lincoln Sea datasets are available here: <https://doi.org/10.1002/2017GL075434>.

Author contributions

LH and JS were involved in the conceptualization of the study. LH, JS, TN, RM, RW, LZ and MJ participated in the development of the methodology and the analysis of the results. JS, RW, CN, and AF conducted the Resolute Bay field campaign. LH prepared the original draft. All co-authors were involved in the review and editing process.

Competing interests

The contact author has declared that none of the authors have competing interests.

Acknowledgements

The authors thank all individuals involved in the field campaigns, including AW ECS (2013), N-ICE2015, CryoVEx-2017, MOSAiC (2019–2020), and Resolute Bay (2025). We are especially grateful to Prof. Christian Haas for providing co-located snow and ice data from the Lincoln Sea 2017 campaign. Datasets used in this paper were produced as part of the MOSAiC,

with the tag ~~MOSAiC20192020~~ and the project ID ~~AWI_PS122_00~~. We thank all people involved in the expedition of the Research Vessel Polarstern () during ~~MOSAiC in 2019–2020~~, as listed in . ~~Lanqing Huang LH~~ received financial support for this research from a Swiss National Science Foundation Postdoc Mobility Fellowship (grant no. P500PN_217817). ~~Carmen Nab CN~~ acknowledges support from the Horizon 2020 CRiceS grant (#101003826). ~~Alieia-Fallows AF~~ was supported by the Natural Environment Research Council (grant number NE/S007229/1) and the NERC DEFIANT Grant (NE/W004712/1) through JS and RW. The datasets used in this article were produced as part of the international Multidisciplinary drifting Observatory for the Study of Arctic Climate (MOSAiC) MOSAiC20192020, project ID AWI_PS122_00. The authors thank all those who contributed to MOSAiC and made this endeavor possible (Nixdorf et al., 2021). The authors also thank all individuals involved in the field campaigns, including AWECS (2013), N-ICE2015, CryoVEx-2017, and Resolute Bay (2025). The authors are especially grateful to Prof. Christian Haas for providing co-located snow and ice data from the Lincoln Sea 2017 campaign. The authors sincerely thank the three anonymous referees, the editors, and Torbjörn Kagel for their helpful comments that improved the article.

References

- 900 Abraham, C., Steiner, N., Monahan, A., and Michel, C.: Effects of subgrid-scale snow thickness variability on radiative transfer in sea ice, *Journal of Geophysical Research: Oceans*, 120, 5597–5614, <https://doi.org/10.1002/2015JC010741>, 2015.
- Arndt, S. and Paul, S.: Variability of winter snow properties on different spatial scales in the Weddell Sea, *Journal of Geophysical Research: Oceans*, 123, 8862–8876, <https://doi.org/10.1029/2018JC014447>, 2018.
- Arndt, S., Meiners, K. M., Ricker, R., Krumpen, T., Katlein, C., and Nicolaus, M.: Influence of snow depth and surface
905 flooding on light transmission through Antarctic pack ice, *Journal of Geophysical Research: Oceans*, 122, 2108–2119, <https://doi.org/10.1002/2016JC012325>, 2017.
- Azzalini, A. and Capitanio, A.: Statistical Applications of the Multivariate Skew Normal Distribution, *Journal of the Royal Statistical Society Series B: Statistical Methodology*, 61, 579–602, <https://doi.org/10.1111/1467-9868.00194>, 2002.
- Bitz, C., Holland, M., Weaver, A., and Eby, M.: Simulating the ice-thickness distribution in a coupled climate model, *Journal of Geophysical
910 Research: Oceans*, 106, 2441–2463, <https://doi.org/10.1029/1999JC000113>, 2001.
- Blackford, J. R.: Sintering and microstructure of ice: a review, *Journal of Physics D: Applied Physics*, 40, R355, <https://doi.org/10.1088/0022-3727/40/21/R02>, 2007.
- Brown, C. E.: Coefficient of variation, in: *Applied multivariate statistics in geohydrology and related sciences*, pp. 155–157, Springer, https://doi.org/10.1007/978-3-642-80328-4_13, 1998.
- 915 Castro-Morales, K., Kauker, F., Losch, M., Hendricks, S., Riemann-Campe, K., and Gerdes, R.: Sensitivity of simulated Arctic sea ice to realistic ice thickness distributions and snow parameterizations, *Journal of Geophysical Research: Oceans*, 119, 559–571, <https://doi.org/10.1002/2013JC009342>, 2014.
- Chambellant, M., Stirling, I., Gough, W. A., and Ferguson, S. H.: Temporal variations in Hudson Bay ringed seal (*Phoca hispida*) life-history parameters in relation to environment, *Journal of Mammalogy*, 93, 267–281, <https://doi.org/10.1644/10-MAMM-A-253.1>, 2012.
- 920 Clemens-Sewall, D., Smith, M. M., Holland, M. M., Polashenski, C., and Perovich, D.: Snow redistribution onto young sea ice: Observations and implications for climate models, *Elem Sci Anth*, 10, 00 115, <https://doi.org/10.1525/elementa.2021.00115>, 2022.
- Clemens-Sewall, D., Polashenski, C., Perovich, D., and Webster, M. A.: The importance of sub-meter-scale snow roughness on conductive heat flux of Arctic sea ice, *Journal of Glaciology*, 70, e78, <https://doi.org/10.1017/jog.2023.105>, 2024.
- Colbeck, S.: Sintering and compaction of snow containing liquid water, *Philosophical Magazine A*, 39, 13–32,
925 <https://doi.org/10.1080/01418617908239272>, 1979.
- Donald, J., Soulis, E., Kouwen, N., and Pietroniro, A.: A land cover-based snow cover representation for distributed hydrologic models, *Water Resources Research*, 31, 995–1009, <https://doi.org/10.1029/94WR02973>, 1995.
- Fetterer, F. and Untersteiner, N.: Observations of melt ponds on Arctic sea ice, *Journal of Geophysical Research: Oceans*, 103, 24 821–24 835, <https://doi.org/10.1029/98JC02034>, 1998.
- 930 Filhol, S. and Sturm, M.: Snow bedforms: A review, new data, and a formation model, *Journal of Geophysical Research: Earth Surface*, 120, 1645–1669, <https://doi.org/10.1002/2015JF003529>, 2015.
- Gaddum, J. H.: Lognormal distributions, *Nature*, 156, 463–466, <https://doi.org/10.1038/156463a0>, 1945.
- Glissenaar, I. A., Landy, J. C., Petty, A. A., Kurtz, N. T., and Stroeve, J. C.: Impacts of snow data and processing methods on the interpretation of long-term changes in Baffin Bay early spring sea ice thickness, *The Cryosphere*, 15, 4909–4927, [https://doi.org/10.5194/tc-15-4909-
935 2021](https://doi.org/10.5194/tc-15-4909-2021), 2021.

- Granskog, M. A., Fer, I., Rinke, A., and Steen, H.: Atmosphere-ice-ocean-ecosystem processes in a thinner Arctic Sea ice regime: The Norwegian Young Sea ICE (N-ICE2015) Expedition, *Journal of Geophysical Research: Oceans*, 123, 1586–1594, <https://doi.org/10.1002/2017JC013328>, 2018.
- 940 Haas, C., Lobach, J., Hendricks, S., Rabenstein, L., and Pfaffling, A.: Helicopter-borne measurements of sea ice thickness, using a small and lightweight, digital EM system, *Journal of Applied Geophysics*, 67, 234–241, <https://doi.org/10.1016/j.jappgeo.2008.05.005>, 2009.
- Haas, C., Beckers, J., King, J., Silis, A., Stroeve, J., Wilkinson, J., Notenboom, B., Schweiger, A., and Hendricks, S.: Ice and snow thickness variability and change in the high Arctic Ocean observed by in situ measurements, *Geophysical Research Letters*, 44, 10462–10469, <https://doi.org/10.1002/2017GL075434>, 2017.
- 945 Hames, O., Jafari, M., Wagner, D. N., Raphael, I., Clemens-Sewall, D., Polashenski, C., Shupe, M. D., Schneebeli, M., and Lehning, M.: Modeling the small-scale deposition of snow onto structured Arctic sea ice during a MOSAiC storm using snowBedFoam 1.0., *Geoscientific Model Development*, 15, 6429–6449, <https://doi.org/10.5194/gmd-15-6429-2022>, 2022.
- Hamilton, L. C. and Stroeve, J.: 400 predictions: The search sea ice outlook 2008–2015, *Polar Geography*, 39, 274–287, <https://doi.org/10.1080/1088937X.2016.1234518>, 2016.
- Hendricks, S.: FloeNavi Toolbox 1.0.2, <https://gitlab.awi.de/floenavi-crs>, Alfred Wegener Institute Helmholtz Center for Polar and Marine Research (Last access: 12 February 2026), 2022.
- 950 Heorton, H., Stroeve, J., and Veyssièrè, G.: Future under sea-ice light availability and algal bloom timing from CMIP6 model simulations, *Frontiers in Marine Science*, 12, 1642506, <https://doi.org/10.3389/fmars.2025.1642506>, 2025.
- Herzfeld, U., Maslanik, J., and Sturm, M.: Geostatistical Characterization of Snow-Depth Structures on Sea Ice Near Point Barrow, Alaska—A Contribution to the AMSR-Ice03 Field Validation Campaign, *IEEE Transactions on Geoscience and Remote Sensing*, 44, 955 3038–3056, <https://doi.org/10.1109/TGRS.2006.883349>, 2006.
- Holland, M. M., Serreze, M. C., and Stroeve, J.: The sea ice mass budget of the Arctic and its future change as simulated by coupled climate models, *Climate Dynamics*, 34, 185–200, <https://doi.org/10.1007/s00382-008-0493-4>, 2010.
- Hunke, E. C.: Sea ice volume and age: Sensitivity to physical parameterizations and thickness resolution in the CICE sea ice model, *Ocean Modelling*, 82, 45–59, <https://doi.org/10.1016/j.ocemod.2014.08.001>, 2014.
- 960 Hunkeler, P. A., Hendricks, S., Hoppmann, M., Paul, S., and Gerdes, R.: Towards an estimation of sub-sea-ice platelet-layer volume with multi-frequency electromagnetic induction sounding, *Annals of Glaciology*, 56, 137–146, <https://doi.org/10.3189/2015AoG69A705>, 2015.
- Hunkeler, P. A., Hendricks, S., Hoppmann, M., Farquharson, C. G., Kalscheuer, T., Grab, M., Kaufmann, M. S., Rabenstein, L., and Gerdes, R.: Improved 1D inversions for sea ice thickness and conductivity from electromagnetic induction data: Inclusion of nonlinearities caused by passive bucking, *Geophysics*, 81, WA45–WA58, <https://doi.org/10.1190/geo2015-0130.1>, 2016.
- 965 Iacozza, J. and Barber, D.: An examination of snow redistribution over smooth land-fast sea ice, *Hydrological Processes: An International Journal*, 24, 850–865, <https://doi.org/10.1002/hyp.7526>, 2010.
- Iacozza, J. and Barber, D. G.: An examination of the distribution of snow on sea-ice, *Atmosphere-Ocean*, 37, 21–51, <https://doi.org/10.1080/07055900.1999.9649620>, 1999.
- 970 Iacozza, J. and Ferguson, S. H.: Spatio-temporal variability of snow over sea ice in western Hudson Bay, with reference to ringed seal pup survival, *Polar biology*, 37, 817–832, <https://doi.org/10.1007/s00300-014-1484-z>, 2014.
- Itkin, P. and Liston, G. E.: Combining observational data and numerical models to obtain a seamless high-temporal-resolution seasonal cycle of snow and ice mass balance at the MOSAiC Central Observatory, *The Cryosphere*, 19, 5111–5133, <https://doi.org/10.5194/tc-19-5111-2025>, 2025.

- Itkin, P., Webster, M., Hendricks, S., Oggier, M., Jaggi, M., Ricker, R., Arndt, S., Divine, D. V., von Albedyll, L., Raphael, I.,
975 Rohde, J., and Liston, G. E.: Magnaprobe snow and melt pond depth measurements from the 2019-2020 MOSAiC expedition,
<https://doi.org/10.1594/PANGAEA.937781>, 2021.
- Itkin, P., Hendricks, S., Webster, M., von Albedyll, L., Arndt, S., Divine, D., Jaggi, M., Oggier, M., Raphael, I., Ricker, R., et al.:
Sea ice and snow characteristics from year-long transects at the MOSAiC Central Observatory, *Elem Sci Anth*, 11, 00048,
<https://doi.org/10.1525/elementa.2022.00048>, 2023.
- 980 Kelly, B. P., Badajos, O. H., Kunnasranta, M., Moran, J. R., Martinez-Bakker, M., Wartzok, D., and Boveng, P.: Seasonal home ranges and
fidelity to breeding sites among ringed seals, *Polar biology*, 33, 1095–1109, <https://doi.org/10.1007/s00300-010-0796-x>, 2010.
- Kochanski, K., Anderson, R. S., and Tucker, G. E.: Statistical classification of self-organized snow surfaces, *Geophysical Research Letters*,
45, 6532–6541, <https://doi.org/10.1029/2018GL077616>, 2018.
- Kolberg, S. and Gottschalk, L.: Interannual stability of grid cell snow depletion curves as estimated from MODIS images, *Water Resources*
985 *Research*, 46, <https://doi.org/10.1029/2008WR007617>, 2010.
- Kuchment, L. and Gelfan, A.: The determination of the snowmelt rate and the meltwater outflow from a snowpack for modelling river runoff
generation, *Journal of Hydrology*, 179, 23–36, [https://doi.org/10.1016/0022-1694\(95\)02878-1](https://doi.org/10.1016/0022-1694(95)02878-1), 1996.
- Kurtz, N. T., Markus, T., Cavalieri, D. J., Sparling, L. C., Krabill, W. B., Gasiewski, A. J., and Sonntag, J. G.: Estimation of sea ice thickness
distributions through the combination of snow depth and satellite laser altimetry data, *Journal of Geophysical Research: Oceans*, 114,
990 <https://doi.org/10.1029/2009JC005292>, 2009.
- Kwok, R. and Cunningham, G.: ICESat over Arctic sea ice: Estimation of snow depth and ice thickness, *Journal of Geophysical Research:*
Oceans, 113, <https://doi.org/10.1029/2008JC004753>, 2008.
- Lemke, P.: The Expedition of the Research Vessel Polarstern to the Antarctic in 2013 (ANT-XXIX/6), vol. 679 of *Berichte zur Polar- und*
Meeresforschung = Reports on Polar and Marine Research, Alfred-Wegener-Institut, Helmholtz-Zentrum für Polar- und Meeresforschung,
995 https://doi.org/10.2312/BzPM_0679_2014, 2014.
- Lipscomb, W. H.: Remapping the thickness distribution in sea ice models, *Journal of Geophysical Research: Oceans*, 106, 13 989–14 000,
<https://doi.org/10.1029/2000JC000518>, 2001.
- Liston, G. E., Polashenski, C., Rösel, A., Itkin, P., King, J., Merkouriadi, I., and Haapala, J.: A distributed snow-evolution model for sea-ice
applications (SnowModel), *Journal of Geophysical Research: Oceans*, 123, 3786–3810, <https://doi.org/10.1002/2017JC013706>, 2018.
- 1000 Liston, G. E., Itkin, P., Stroeve, J., Tschudi, M., Stewart, J. S., Pedersen, S. H., Reinking, A. K., and Elder, K.: A Lagrangian snow-
evolution system for sea-ice applications (SnowModel-LG): Part I—Model description, *Journal of Geophysical Research: Oceans*, 125,
e2019JC015 913, <https://doi.org/10.1029/2019JC015913>, 2020.
- Mallett, R., Nandan, V., Stroeve, J., Willatt, R., Saha, M., Yackel, J., Veysi re, G., and Wilkinson, J.: Dye tracing of upward brine migration
in snow, *Annals of Glaciology*, 65, e26, <https://doi.org/10.1017/aog.2024.27>, 2024.
- 1005 Mallett, R. D., Stroeve, J. C., Tsamados, M., Willatt, R., Newman, T., Nandan, V., Landy, J. C., Itkin, P., Oggier, M., Jaggi, M., et al.:
Sub-kilometre scale distribution of snow depth on Arctic sea ice from Soviet drifting stations, *Journal of Glaciology*, 68, 1014–1026,
<https://doi.org/10.1017/jog.2022.18>, 2022.
- Marchand, W.-D. and Killingtveit,  .: Statistical properties of spatial snowcover in mountainous catchments in Norway, *Hydrology Research*,
35, 101–117, <https://doi.org/10.2166/nh.2004.0008>, 2004.
- 1010 Marchand, W.-D. and Killingtveit,  .: Statistical probability distribution of snow depth at the model sub-grid cell spatial scale, *Hydrological*
Processes: An International Journal, 19, 355–369, <https://doi.org/10.1002/hyp.5543>, 2005.

- Marshall, H., Conway, H., and Rasmussen, L.: Snow densification during rain, *Cold Regions Science and Technology*, 30, 35–41, [https://doi.org/10.1016/S0165-232X\(99\)00011-7](https://doi.org/10.1016/S0165-232X(99)00011-7), 1999.
- Massom, R. A., Eicken, H., Hass, C., Jeffries, M. O., Drinkwater, M. R., Sturm, M., Worby, A. P., Wu, X., Lytle, V. I., Ushio, S., et al.: Snow on Antarctic sea ice, *Reviews of Geophysics*, 39, 413–445, <https://doi.org/10.1029/2000RG000085>, 2001.
- 1015
- Massonnet, F., Barthélemy, A., Worou, K., Fichet, T., Vancoppenolle, M., Rousset, C., and Moreno-Chamarro, E.: On the discretization of the ice thickness distribution in the NEMO3. 6-LIM3 global ocean–sea ice model, *Geoscientific Model Development*, 12, 3745–3758, <https://doi.org/10.5194/gmd-12-3745-2019>, 2019.
- Matheron, G.: *Traité de géostatistique appliquée*, vol. 14, Editions Technip, 1962.
- 1020
- Meier, W. N. and Stewart, J. S.: NSIDC Land, Ocean, Coast, Ice, and Sea Ice Region Masks, Tech. Rep. NSIDC Special Report 25, National Snow and Ice Data Center, Boulder, CO, USA, <https://nsidc.org/sites/default/files/documents/technical-reference/nsidc-special-report-25.pdf>, 2023.
- Merkouriadi, I., Gallet, J.-C., Graham, R. M., Liston, G. E., Polashenski, C., Rösel, A., and Gerland, S.: Winter snow conditions on Arctic sea ice north of Svalbard during the Norwegian young sea ICE (N-ICE2015) expedition, *Journal of Geophysical Research: Atmospheres*, 122, 10 837–10 854, <https://doi.org/10.1002/2017JD026753>, 2017.
- 1025
- Merkouriadi, I., Cheng, B., Hudson, S. R., and Granskog, M. A.: Effect of frequent winter warming events (storms) and snow on sea-ice growth—a case from the Atlantic sector of the Arctic Ocean during the N-ICE2015 campaign, *Annals of Glaciology*, 61, 164–170, <https://doi.org/10.1017/aog.2020.25>, 2020.
- Merkouriadi, I., Jutila, A., Liston, G. E., Preußer, A., and Webster, M. A.: Investigating snow sinks on level sea ice: A case study in the western Arctic, *Journal of Glaciology*, 71, e66, <https://doi.org/10.1017/jog.2025.34>, 2025.
- 1030
- Moon, W., Nandan, V., Scharien, R. K., Wilkinson, J., Yackel, J. J., Barrett, A., Lawrence, I., Segal, R. A., Stroeve, J., Mahmud, M., et al.: Physical length scales of wind-blown snow redistribution and accumulation on relatively smooth Arctic first-year sea ice, *Environmental Research Letters*, 14, 104 003, <https://doi.org/10.1088/1748-9326/ab3b8d>, 2019.
- Myung, I. J.: Tutorial on maximum likelihood estimation, *Journal of mathematical Psychology*, 47, 90–100, [https://doi.org/10.1016/S0022-2496\(02\)00028-7](https://doi.org/10.1016/S0022-2496(02)00028-7), 2003.
- 1035
- Nicolaus, M., Katlein, C., Maslanik, J., and Hendricks, S.: Changes in Arctic sea ice result in increasing light transmittance and absorption, *Geophysical Research Letters*, 39, <https://doi.org/10.1029/2012GL053738>, 2012.
- Nicolaus, M., Perovich, D. K., Spreen, G., Granskog, M. A., von Albedyll, L., Angelopoulos, M., Anhaus, P., Arndt, S., Belter, H. J., Bessonov, V., et al.: Overview of the MOSAiC expedition: Snow and sea ice, *Elem Sci Anth*, 10, 000 046, <https://doi.org/10.1525/elementa.2021.000046>, 2022.
- 1040
- Nixdorf, U., Dethloff, K., Rex, M., Shupe, M., Sommerfeld, A., Perovich, D. K., Nicolaus, M., Heuzé, C., Rabe, B., Loose, B., et al.: MOSAiC extended acknowledgement, <https://doi.org/10.5281/zenodo.5541624>, 2021.
- O’Hagan, A. and Leonard, T.: Bayes estimation subject to uncertainty about parameter constraints, *Biometrika*, 63, 201–203, <https://doi.org/10.1093/biomet/63.1.201>, 1976.
- 1045
- Perovich, D. K.: The optical properties of sea ice., Tech. rep., U.S. Cold Reg. Res. and Eng. Lab. Monogr., Hannover, N. H., 1996.
- Petrich, C., Eicken, H., Polashenski, C. M., Sturm, M., Harbeck, J. P., Perovich, D. K., and Finnegan, D. C.: Snow dunes: A controlling factor of melt pond distribution on Arctic sea ice, *Journal of Geophysical Research: Oceans*, 117, <https://doi.org/10.1029/2012JC008192>, 2012.
- Petty, A. A., Kurtz, N. T., Kwok, R., Markus, T., and Neumann, T. A.: Winter Arctic sea ice thickness from ICESat-2 freeboards, *Journal of Geophysical Research: Oceans*, 125, e2019JC015 764, <https://doi.org/10.1029/2019JC015764>, 2020.

- 1050 Rösel, A., Divine, D., King, J. A., Nicolaus, M., Spreen, G., Itkin, P., Polashenski, C. M., Liston, G. E., Ervik, A., Espeseth, M., Gierisch, A., Haapala, J., Maaß, N., Oikkonen, A., Orsi, A., Shestov, A., Wang, C., Gerland, S., Granskog, M. A., and Institute, N. P.: N-ICE2015 total (snow and ice) thickness data from EM31, <https://doi.org/10.21334/NPOLAR.2016.70352512>, 2016a.
- Rösel, A., Polashenski, C. M., Liston, G. E., King, J. A., Nicolaus, M., Gallet, J.-C., Divine, D., Itkin, P., Spreen, G., Ervik, A., Espeseth, M., Gierisch, A., Haapala, J., Maaß, N., Oikkonen, A., Orsi, A., Shestov, A., Wang, C., Gerland, S., Granskog, M. A., and Institute, N. P.: N-ICE2015 snow depth data with Magnaprobe, <https://doi.org/10.21334/NPOLAR.2016.3D72756D>, 2016b.
- 1055 Rösel, A., Farrell, S. L., Nandan, V., Richter-Menge, J., Spreen, G., Divine, D. V., Steer, A., Gallet, J.-C., and Gerland, S.: Implications of surface flooding on airborne estimates of snow depth on sea ice, *The Cryosphere*, 15, 2819–2833, <https://doi.org/10.5194/tc-15-2819-2021>, 2021.
- Shalina, E. V. and Sandven, S.: Snow depth on Arctic sea ice from historical in situ data, *The Cryosphere*, 12, 1867–1886, <https://doi.org/10.5194/tc-12-1867-2018>, 2018.
- 1060 Skaugen, T.: Modelling the spatial variability of snow water equivalent at the catchment scale, *Hydrology and Earth System Sciences*, 11, 1543–1550, <https://doi.org/10.5194/hess-11-1543-2007>, 2007.
- Skaugen, T. and Melvold, K.: Modeling the snow depth variability with a high-resolution lidar data set and nonlinear terrain dependency, *Water Resources Research*, 55, 9689–9704, <https://doi.org/10.1029/2019WR025030>, 2019.
- 1065 Skaugen, T. and Randen, F.: Modeling the spatial distribution of snow water equivalent, taking into account changes in snow-covered area, *Annals of glaciology*, 54, 305–313, <https://doi.org/10.3189/2013AoG62A162>, 2013.
- Stroeve, J., Veyssiere, G., Nab, C., Light, B., Perovich, D., Laliberté, J., Campbell, K., Landy, J., Mallett, R., Barrett, A., et al.: Mapping potential timing of ice algal blooms from satellite, *Geophysical Research Letters*, 51, e2023GL106486, <https://doi.org/10.1029/2023GL106486>, 2024.
- 1070 Stroeve, J., Willatt, R., Downie, M., Saha, M., Nab, C., Fallows, A., Soriot, C., Mallett, R., Komarov, A., Nandan, V., Newman, T., and Yackel, J.: Mapping Snow on Northern Winter Roads: A Dual-Frequency Polarimetric Radar Approach for Snow Characterization over Land, Lake and Sea ice, *EGUphere*, 2026, 1–39, <https://doi.org/10.5194/egusphere-2026-212>, 2026.
- Sturm, M. and Holmgren, J.: An automatic snow depth probe for field validation campaigns, *Water Resources Research*, 54, 9695–9701, <https://doi.org/10.1029/2018WR023559>, 2018.
- 1075 Sturm, M., Holmgren, J., and Liston, G. E.: A seasonal snow cover classification system for local to global applications, *Journal of climate*, 8, 1261–1283, [https://doi.org/10.1175/1520-0442\(1995\)008<1261:ASSCCS>2.0.CO;2](https://doi.org/10.1175/1520-0442(1995)008<1261:ASSCCS>2.0.CO;2), 1995.
- Sturm, M., Morris, K., and Massom, R.: The winter snow cover of the West Antarctic pack ice: its spatial and temporal variability, *Antarctic sea ice: physical processes, interactions and variability*, 74, 1–18, <https://doi.org/10.1029/AR074p0001>, 1998.
- Sturm, M., Maslanik, J. A., Perovich, D., Stroeve, J. C., Richter-Menge, J., Markus, T., Holmgren, J., Heinrichs, J. F., and Tape, K.: Snow depth and ice thickness measurements from the Beaufort and Chukchi Seas collected during the AMSR-Ice03 campaign, *IEEE transactions on Geoscience and Remote Sensing*, 44, 3009–3020, <https://doi.org/10.1109/TGRS.2006.878236>, 2006.
- 1080 Techel, F., Pielmeier, C., and Schneebeli, M.: The first wetting of snow: micro-structural hardness measurements using a snow micro penetrometer, in: *Proceedings ISSW*, pp. 1019–1026, 2008.
- Thom, H. C.: A note on the gamma distribution, *Monthly weather review*, 86, 117–122, [https://doi.org/10.1175/1520-0493\(1958\)086<0117:ANOTGD>2.0.CO;2](https://doi.org/10.1175/1520-0493(1958)086<0117:ANOTGD>2.0.CO;2), 1958.
- Thorndike, A. S., Rothrock, D. A., Maykut, G. A., and Colony, R.: The thickness distribution of sea ice, *Journal of Geophysical Research*, 80, 4501–4513, <https://doi.org/10.1029/JC080i033p04501>, 1975.

- Trujillo, E., Leonard, K., Maksym, T., and Lehning, M.: Changes in snow distribution and surface topography following a snowstorm on Antarctic sea ice, *Journal of Geophysical Research: Earth Surface*, 121, 2172–2191, <https://doi.org/10.1002/2016JF003893>, 2016.
- 1090 Veyssièrè, G., Castellani, G., Wilkinson, J., Karcher, M., Hayward, A., Stroeve, J. C., Nicolaus, M., Kim, J.-H., Yang, E.-J., Valčić, L., et al.: Under-ice light field in the Western Arctic Ocean during late summer, *Frontiers in Earth Science*, 9, 643737, <https://doi.org/10.3389/feart.2021.643737>, 2022.
- Wagner, D. N., Shupe, M. D., Cox, C., Persson, O. G., Uttal, T., Frey, M. M., Kirchgassner, A., Schneebeli, M., Jaggi, M., Macfarlane, A. R., et al.: Snowfall and snow accumulation during the MOSAiC winter and spring seasons, *The Cryosphere*, 16, 2373–2402, <https://doi.org/10.5194/tc-16-2373-2022>, 2022.
- 1095 Warren, S. G., Rigor, I. G., Untersteiner, N., Radionov, V. F., Bryazgin, N. N., Aleksandrov, Y. I., and Colony, R.: Snow depth on Arctic sea ice, *Journal of Climate*, 12, 1814–1829, [https://doi.org/10.1175/1520-0442\(1999\)012<1814:SDOASI>2.0.CO;2](https://doi.org/10.1175/1520-0442(1999)012<1814:SDOASI>2.0.CO;2), 1999.
- Webster, M. A., Holland, M., Wright, N. C., Hendricks, S., Hutter, N., Itkin, P., Light, B., Linhardt, F., Perovich, D. K., Raphael, I. A., et al.: Spatiotemporal evolution of melt ponds on Arctic sea ice: MOSAiC observations and model results, *Elem Sci Anth*, 10, 000072, <https://doi.org/10.1525/elementa.2021.000072>, 2022.
- 1100 Wever, N., Leonard, K., Maksym, T., White, S., Proksch, M., and Lenaerts, J. T.: Spatially distributed simulations of the effect of snow on mass balance and flooding of Antarctic sea ice, *Journal of Glaciology*, 67, 1055–1073, <https://doi.org/10.1017/jog.2021.54>, 2021.
- Wever, N., White, S., Hunkeler, P. A., Maksym, T., and Leonard, K. C.: Snow and ice thickness measurements from Terrestrial Laser Scanning, Magnaprobe and GEM-2 on ice stations PS81/503, PS81/506 and PS81/517 from Weddell Sea, Antarctica, 2013, <https://doi.org/10.1594/PANGAEA.933584>, 2021.
- 1105 Wilk, M. B. and Gnanadesikan, R.: Probability plotting methods for the analysis for the analysis of data, *Biometrika*, 55, 1–17, <https://doi.org/10.1093/biomet/55.1.1>, 1968.