

Marine carbonate system variability from tidal to seasonal timescales at the interface between the North Sea and Wadden Sea

Yasmina Ourradi¹, Gert-Jan Reichart^{1,2}, Sonja van Leeuwen³, Matthew P. Humphreys¹

¹Department of Ocean Systems (OCS), NIOZ Royal Netherlands Institute for Sea Research, P.O. Box 59, 1790 AB Den Burg (Texel), the Netherlands

²Department of Earth Sciences, Utrecht University, Utrecht, the Netherlands

³Department of Coastal Systems (COS), NIOZ Royal Netherlands Institute for Sea Research, P.O. Box 59, 1790 AB Den Burg (Texel), the Netherlands

Correspondence to: Yasmina Ourradi (yasmina.ourradi@nioz.nl)

Abstract. Shelf seas are important for global carbon cycling, but their carbonate system dynamics remain poorly understood due to complex spatial and temporal variability driven by interacting biological, physical and hydrological processes. To understand these complex dynamics, we focused on the Marsdiep channel at the Wadden Sea-North Sea interface, where strong tidal exchange creates ideal conditions for investigating carbonate system variability across multiple timescales. High-resolution (10-min) measurements of pH, combined with discrete sampling of dissolved inorganic carbon (DIC), total alkalinity (TA) and pH, were conducted over approximately one year between February 2022 and January 2023 at this location. We developed a multi-linear regression (MLR) model based on salinity and tidal data to predict TA (TA_{pred}) (RMSD = 17.5 $\mu\text{mol kg}^{-1}$), and subsequently calculated DIC from the TA_{pred} and pH (RMSD = $19.8 \pm 1.9 \mu\text{mol kg}^{-1}$). To evaluate the performance and long-term stability of the pH sensor, we applied a semivariogram approach - an approach not commonly used in this context - to estimate pH sensor uncertainty and drift patterns over time. We propose this method as a robust approach for assessing sensors performance in short and long-term deployments at sea, particularly when calibration sampling frequency is irregular. Results revealed pronounced diel and seasonal variability in pH (seasonal range: 0.6), DIC (419 $\mu\text{mol kg}^{-1}$), and TA (213.7 $\mu\text{mol kg}^{-1}$). These fluctuations reflected the interplay of biological and hydrological processes, with pH mainly controlled by biological process, TA by hydrological processes, and DIC influenced by the combination of both. We used the Wasserstein distance to quantify the balance of processes driving DIC at any given time. During this study period, [our measurement location in the Marsdiep Channel the Wadden Sea](#) acted as a net CO_2 source to the atmosphere, with an annual release of 4.7 g-C m^{-2} . A deeper understanding of the influence of biological and hydrological controls on the marine carbonate system is still needed to unravel the relative importance of the processes involved, especially in regions of higher complexities such as the Wadden Sea. Continuous high-frequency measurements may provide a tool to capture these dynamics across multiple time scales, from hourly to seasonal and interannual, in order to refine our understanding of their role in driving the carbonate system and in regional carbon cycling under changing climatic and hydrological conditions.

1 Introduction

35 Despite covering only 7% of the global ocean surface, shelf seas are estimated to account for approximately 10 to 22% of
global marine CO₂ uptake (Borges, 2011; Le Quéré et al., 2018; Regnier et al., 2013). These ecosystems play a crucial role in
carbon cycling and contribute significantly to global carbon budgets (Cole et al., 2007; Laruelle et al., 2018; Regnier et al.,
2013). Shelf seas are particularly susceptible to ongoing climate change due to their strong natural variability driven by
complex physical and biogeochemical processes. These systems already fluctuate considerably today, and additional climate
40 driven changes may enhance this variability or lead to unexpected responses. This interplay makes it challenging to identify
long-term climate signals and complicates future predictions. Such complexity is particularly evident in the marine carbonate
system (including total alkalinity (TA), dissolved inorganic carbon (DIC), pH and partial pressure of CO₂ (*f*CO₂)) which
display considerable spatial and temporal variation (Aufdenkampe et al., 2011; Waldbusser and Salisbury, 2014). Additional
complexity arises from regional factors such as freshwater inputs from rivers and groundwater, organic matter production and
decomposition, and tidal mixing (Cai, 2011b; Da et al., 2024; Salisbury et al., 2008; Song et al., 2020; Wang and Cai, 2025).
45 Estimating the contribution of these different processes and understanding their influence on the carbonate system in coastal
environments poses significant challenges compared to open ocean but is of crucial importance to predict future changes in
the carbon cycle in shelf seas, regional seas, and the global ocean.

50 While seasonal and interannual variations in coastal carbonate systems are relatively well characterised, diel variability is often
neglected, as it requires high-frequency measurements on a timescale not possible through traditional approaches. Torres et al.
(2021) argued that *p*CO₂ diel cycles observed in the open ocean are predominantly controlled by thermal mechanisms,
especially in low productivity waters, consistent with earlier observations by Bates et al. (1998), while in coastal oceans, these
cycles are primarily governed by DIC variations and attenuated by temperature and TA (Honkanen et al., 2021; Torres et al.,
2021). This underscores the need to ~~accurately~~ quantify the variability of the carbonate system accurately enough as well as
55 to understand the mechanisms that drive these changes (Newton et al., 2015). Traditional discrete water sample collection and
laboratory analysis are insufficient to capture diel variability, nor do they allow the contribution of the different processes to
the variation of the carbonate system. Higher-resolution and high-frequency measurements are imperative to estimate the
contributions of these various processes and comprehensively assess the carbonate system dynamics in coastal regions.

60 In the context of these intricate coastal processes, the North Sea stands out as a biogeochemically important shelf sea. It has
been the subject of extensive studies, encompassing its physical, biological and chemical conditions (Bozec et al., 2006;
Thomas et al., 2005b). The Wadden Sea, situated along the North Sea coast of the Netherlands, Germany and Denmark, is a
shallow intertidal sea characterised by semidiurnal tides and high biological productivity and biogeochemical cycling (Cadée
and Hegeman, 2002; Christianen et al., 2017; Grunwald et al., 2010; Loebel et al., 2007; Van Beusekom et al., 2019).

65 Because the area is strongly controlled by semi-diurnal tidal cycles, exchange between the North Sea and the Wadden Sea plays an important role (Burchard et al., 2008; Elias et al., 2012; Hofmeister et al., 2017; Postma, 1954, 1961; Schwichtenberg et al., 2020a; Thomas et al., 2009; Voynova et al., 2019). The semi-diurnal tides consist of two high and two low tides per day and result in alternating shifts in water mass characteristics between the North Sea and Wadden Sea. Tide heights range from 1.5 m in the western and northern part and up to 4 m in the central part (van Beusekom et al., 2019; Schwichtenberg et al., 2020b), creating a large intertidal zone sheltered by barrier islands. In between these barrier islands, various channels facilitate exchange of water and biogeochemical constituents between the North Sea and the Wadden Sea. Several rivers, including the Elbe, Weser, Ems and IJssel, discharge into the Wadden Sea, and have historically contributed an annual average freshwater influx of approximately 60 km³ (van Beusekom et al., 2001). Moreover, driven by a northward circulation, the Rhine River plume flows along the Dutch coast, eventually reaching the Marsdiep within a month through tidal inlets east of Texel (Van Aken, 2008b). However, recent observations indicate a reduction in river flow in the Wadden Sea due to recurring extreme droughts in northwestern Europe in recent years (Philippart et al., 2024). Beyond their role as freshwater sources, these rivers are also major nutrient and alkalinity sources, resulting in a highly eutrophicated basin with pronounced salinity and nutrient gradients (Van Beusekom et al., 2001; Postma, 1981; Van Beusekom et al., 2012).

80 The Marsdiep channel is the largest tidal inlet in the Dutch Wadden Sea, facilitating water exchange between North Sea and western Wadden Sea (Ridderinkhof et al., 1990). With depths exceeding 40 m, the channel experiences strong tidal currents and wind-driven mixing that maintain a well-mixed water column throughout most of the tidal cycle (Buijsman and Ridderinkhof, 2008; Otto et al., 1990). Historically, residual circulation patterns in the Marsdiep showed inflow on the southern side and outflow on the northern side (Ridderinkhof et al., 1990, 2002a); however, these residual flows have decreased from approximately 1000 m³ s⁻¹ in 2009 to near zero in recent years (van der Molen et al., 2022). With volume transports at peak tidal currents reaching 5-10×10⁴ m³ s⁻¹, these residual flows are orders of magnitude smaller compared to the tidal volume transports (van der Molen et al., 2022). This tidal exchange exerts a strong influence on carbon cycling in the southern North Sea (Brasse et al., 1999; Reimer et al., 1999) and at the same time supplies saline water to the Wadden Sea. This incoming water is a mixture of North Sea water (characterised by an approximate salinity of 35, (van Leeuwen et al., 2015)) and Rhine plume water (with salinities within a range of 30-32). The water flow reverses direction with the tide, resulting in alternating dominance of North Sea and Wadden Sea waters throughout a tidal cycle. This highly dynamic interface provides a promising location for investigating the dynamics of the marine carbonate system of both the North Sea and the western Wadden Sea and their influence on each other.

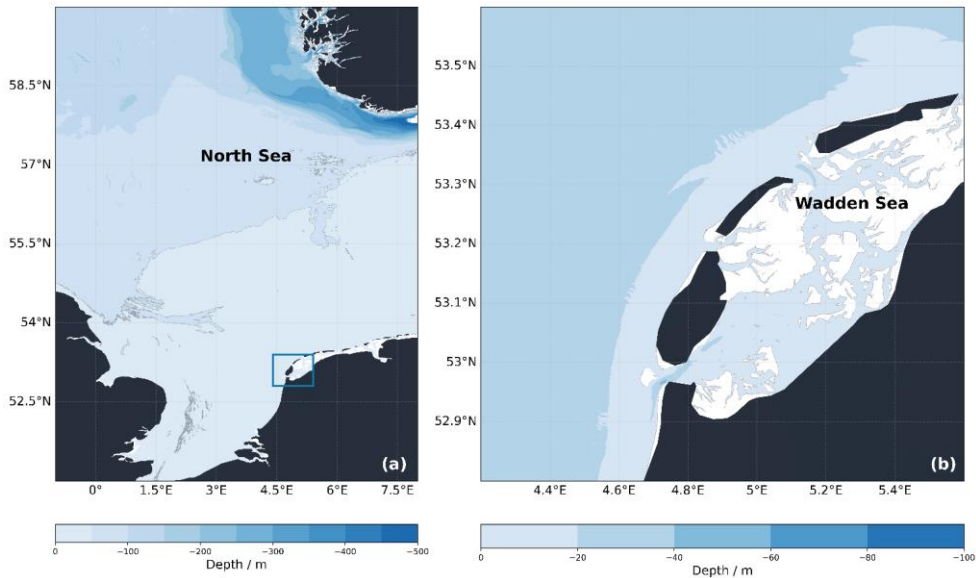
95 Here, we aim to determine the temporal variability of the marine carbonate system from diel to seasonal timescales at the interface between the North Sea and Wadden Sea and identify the processes involved. We use high-resolution (10 minutes) sensor data from a jetty in the Marsdiep channel, which are calibrated with measurements of discrete water samples. We collected a full seasonal cycle at a monitoring platform in the Marsdiep channel to capture temporal variation of the inorganic

carbon system and other supporting parameters to characterize the temporal variation in the carbonate system parameters from diel to seasonal scales. Continuous pH data, combined with TA predicted from a multilinear regression model, enabled DIC and $p\text{CO}_2$ to be calculated which allowed us to identify and determine the processes driving the pH variability in the Wadden Sea.

2 Materials and Methods

2.1 The NIOZ jetty

We deployed sensors and collected seawater samples from the NIOZ (Royal Netherlands Institute for Sea Research) jetty monitoring platform, located at the edge of the Marsdiep (53.002 °N, 4.789 °E). The platform extends 45 m into the Marsdiep channel and has a general water depth of 3 m below N.A.P. (Amsterdam Ordnance Datum) at the monitoring platform (Fig. 1). The jetty is located on the northern side of the Marsdiep channel, historically characterized by residual outflow (Ridderinkhof et al., 1990, 2002a), where strong semidiurnal tides result in both North Sea and Wadden Sea water types being observed throughout each tidal cycle. CastAway CTD profiles collected at the jetty across multiple seasons and years showed no significant vertical stratification, with density differences between surface and bottom generally remaining below 0.1 kg m^{-3} .



(Groeskamp et al., 2011) showed that in the Marsdiep channel (~30 m depth), stratification was occasional and limited to slack tide periods, lasting only 20 minutes to 3 hours before tidal currents restored well-mixed conditions.

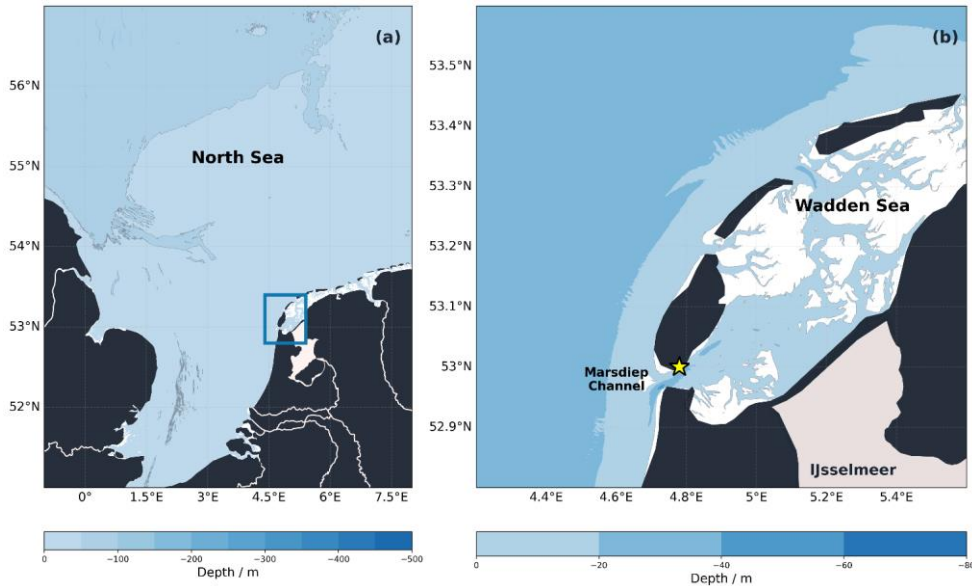


Figure 1. Bathymetry map of the Wadden Sea-North Sea region. The map on the right (b) is the zoomed-in view of the blue square indicated on the left map (a). The yellow star indicates the location of the NIOZ jetty. Bathymetry data from EMODnet Digital Bathymetry (DTM 2024) and coastline data from Natural Earth.

115

120 2.2 Sensor measurements

The monitoring platform was equipped with a YSI EXO2 Multiparameter Sonde. Continuous temperature and practical salinity data were obtained from an EXO conductivity and temperature sensor. Salinity was measured with an accuracy and resolution of $\pm 1\%$ and 0.01 respectively while temperature had an accuracy of $\pm 0.2\text{ }^\circ\text{C}$ and a resolution of $0.001\text{ }^\circ\text{C}$, according to the manufacturer's technical specifications. In order to calibrate the salinity sensor data, discrete salinity samples were collected and analysed using a salinometer (Osil Autosal). From the start of February 2022 to the end of January 2023, 49 calibration samples were collected, with higher frequency during the growth season. During analysis, the instrument was calibrated with

125

certified salinity standards (IAPSO standard seawater) at the beginning and at the end of each batch. The multiparameter sonde was also equipped with an EXO pH smart sensor. For a detailed discussion of the precision and accuracy of the pH measurements, see Section 3.1. Water level was also measured at the jetty station using a vegapulse 61 silo-radar level sensor.

130 Continuous measurements were collected by the sensors every 10 seconds; however, we used the data recorded every 10 minutes. This interval aligned with an automatic cleaning mechanism (rotating brush) designed to reduce biofouling of the sensor surfaces. By exclusively using data collected directly after cleaning, we ensured that the recorded signal accurately reflects the water signal free from interferences from biofouling. To maintain complete and constant immersion regardless of tide levels, the sensors were placed below the water surface at 1.5 m below N.A.P.

135 2.3 Discrete sampling and analysis

Discrete sampling for pH, TA and DIC was conducted between February 2022 and January 2023, covering approximately one annual cycle with only a 21-day gap. Water samples were collected from the surface using a pre-cleaned bucket deployed from the jetty platform. ~~The effective mixing of the water column due to wind and tidal currents (Buijsman and Ridderinkhof, 2008; Postma, 1954), suggests that surface water samples are generally representative of the entire water column.~~

140 Samples were collected in 250 ml or 500 ml borosilicate glass bottles following the standard protocol for ocean carbonate system measurements (Dickson et al., 2007). During filling process, the bottles were filled slowly to avoid bubble formation and minimize gas exchange. After sample collection, a headspace equivalent to 1% of the total bottle volume was created to allow for water expansion and a mercury chloride (HgCl₂) saturated aqueous solution was added to each sample (100 and 200 µl for the 250 and 500 ml bottles respectively). The samples were sealed with greased (Apiezon L) ground stoppers, secured with tape to ensure an airtight seal and prevent gas exchange, then stored in the dark at 15°C until analysis.

145 Measurements for TA and DIC were performed with a VINDTA 3C (Versatile INSTRUMENT for the Determination of Total inorganic carbon and titration alkalinity; Marianda, Germany) and following the standard procedures outlined by Dickson et al. (2007), as follows. DIC was determined using coulometric titration. A subsample volume of approximately 20 ml was extracted and purged of CO₂ by addition of 8.5% phosphoric acid (H₃PO₄). Subsequently, the CO₂ was carried through a stream of nitrogen gas through a condenser to remove any water from the gas flow, and on into a coulometric titration cell, where CO₂ reacts with the cathode solution forming an acid that is subsequently titrated coulometrically. TA was measured by potentiometric titration of approximately 100 ml subsamples with 0.1 M hydrochloric acid, made up to an ionic strength similar to seawater with 0.6 M NaCl (Dickson et al., 2007). During titration, the electromotive force (EMF) resulting from acid additions was measured by a pH electrode. The TA was calculated from the titration data by the least-squares fitting in
150 Calculate v23.5 (Humphreys and Matthews, 2023).

155 Certified reference material (CRM batches 186, 195 and 205), supplied by Andrew G. Dickson from the Scripps Institution of Oceanography (USA), was used to calibrate the measurements of both TA and DIC. Multiple analyses of the CRM measurements over the full duration of the study showed a standard deviation of 0.8 and 0.9 µmol kg⁻¹ for both TA and DIC respectively. TA and DIC analyses were performed with a 1σ precision of 1.7 and 2.0 and µmol kg⁻¹ respectively.

160 The pH samples were measured by spectrophotometry following the protocol described by Clayton and Byrne (1993) and Liu et al. (2011). The method is based on the colour changes of the pH sensitive dye, purified meta-cresol purple, when added to a seawater sample. The analysis of the pH samples was conducted at 25 °C. Absorbances were measured both with and without the manually added dye, and following the best-practice recommendations (Dickson et al., 2007). The pH results were adjusted to the in-situ temperature using PyCO2SYS v1.8.2 (Humphreys et al., 2023). Tris buffers, provided by Andrew G. Dickson, Scripps Institution of Oceanography (USA), were used as quality control for pH measurements to ensure the proper functioning of the spectrophotometer. These buffers are used to confirm the accuracy and the repeatability of the instrument within a day of analysis. Based on duplicate samples, 1σ precision for pH was 0.004 ($n = 22$) and the TRIS measurements had a standard deviation of 0.003 for TRIS batches T-34 and T-39.

2.4 pH sensor calibration and uncertainty calculations

170 2.4.1 pH sensor calibration

The pH sensor recorded continuous voltage measurement (electromotive force EMF) in mV throughout the deployment. At discrete times, water samples were collected and their pH was measured in the laboratory using spectrophotometry, providing reference pH values for calibration. The ~~pH-sensor~~EMF data, ~~given as electromotive force (EMF) in mV~~, were converted into pH using the Nernst equation (Eq. (1)), which relates pH to temperature and voltage. For each discrete pH measurement, the reference potential voltage (EMF^0) was calculated using the Nernst equation and the corresponding sensor EMF values. Afterwards, a piecewise cubic Hermite interpolating polynomial (PCHIP) was applied to obtain continuous EMF^0 values across the entire dataset. Using the interpolated values, along with the sensor's EMF values and the temperature data, the EMF values were then converted into pH using the conversion function in Calculate v23.5 (Humphreys and Matthews, 2023). This calibration process ensured accurate calibration of the sensor's values with the pH measurement obtained through spectrophotometry throughout the deployment (Fig. 2).

$$EMF = EMF^0 + (RT/F) * \ln([H^+]) \quad (1)$$

185 where R is the ideal gas constant ($8.3145 \text{ J K}^{-1} \text{ mol}^{-1}$), T is temperature (in K), and F is the Faraday constant ($96.485 \text{ kC mol}^{-1}$).

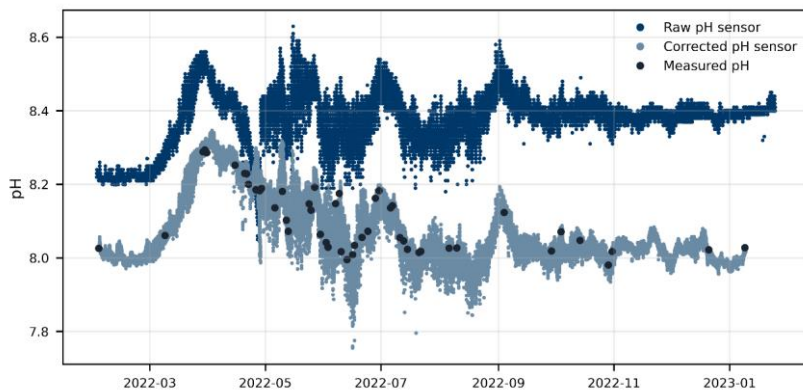


Figure 2. pH sensor correction using discrete pH samples. Raw uncorrected pH values (dark blue), corrected pH sensor data (dark grey), and discrete pH samples (dark circles). Raw pH refers to sensor EMF data converted to pH without any correction, while corrected pH sensor refers to the calibrated values obtained using the interpolated EMF⁰.

2.4.2 Uncertainty calculation

Following the calibration process described above, we estimated the uncertainty measurement of the corrected pH time-series.

Uncertainty in the pH time-series measurements was estimated by adapting principles from the kriging method, a geostatistical method generally used for spatial interpolations. In the kriging method, the spatial correlation between points is analysed to predict values at unmeasured locations based on observed data at nearby locations. The spatial relationship between the observations is calculated using a semivariogram that describes how the variance between data points changes as a function of distance. By modelling these relationships, kriging can interpolate the unknown values and estimate their associated uncertainty. Here, we adapt the kriging concept to a temporal context in order to quantify the uncertainty related to the pH measurements by examining the temporal differences between all possible pairs of measurements. This method provides a robust way for assessing uncertainty in the time-series that accounts for the time since or until the nearest calibration point, helping to understand how measurement uncertainty evolves over time. This uncertainty quantification does not apply any additional corrections to the pH values, it only estimates the uncertainty of each measurement.

Formatted: Font color: Red

220 This choice of interpolation and the modified approach we employed is particularly well-suited for this study due to the challenges presented by the pH electrode sensor used to collect pH data, which is prone to drift. Furthermore, the discrete calibration samples were unevenly distributed in time. The semivariogram approach to estimating uncertainty incorporates the effects of both of these factors.

225 First, the offsets between the uncalibrated continuous pH sensor data and the discrete calibration pH data were calculated. Then, the absolute difference between each possible pair of offsets was computed, along with their corresponding difference in time (Fig. 3 & Fig. S1). Next, these temporal differences were binned into specific time intervals. The bin width varied over time, starting with narrow intervals (containing between 120 to 40 values per bin) at the beginning and expanding over time where there were fewer pairs of observations (bin containing less than 40 to 1 value per bin). Within each bin, the mean of the offset values was calculated. The absolute values of the mean offsets were used to determine the standard
230 deviations within each bin and represent how quickly the pH offset changed through time.

To model the relationship between time and uncertainty, we used a curve fitting approach (Eq. (2)) to capture the non-linear variation in uncertainty over time (Fig. 4-d):

$$\sigma(pH) = a * \sqrt{\Delta t} + b + c * \Delta t \quad (2)$$

235 where $\sigma(pH)$ is the uncertainty as a function of time difference (Δt), a , b , and c are least-squares fitted parameters.

Equation (2) was then used to calculate the uncertainty at each sensor measurement point while accounting, for the time between the current measurement and the previous calibration point (t_0) and the time remaining until the next one (t_1). The uncertainties calculated for those intervals are expressed as σ_0 and σ_1 respectively. By weighting these uncertainties (σ_0
240 and σ_1) and their corresponding time factors (t_0 and t_1), the uncertainty at each measurement point is expressed using the following equation:

$$uncertainty = \sqrt{t_0 \sigma_0^2 + t_1 \sigma_1^2} \quad (3)$$

245 The uncertainty is the result of the combined uncertainties σ_0 and σ_1 through a weighted sum in which the weights represent t_0 and t_1 .

Formatted: Normal

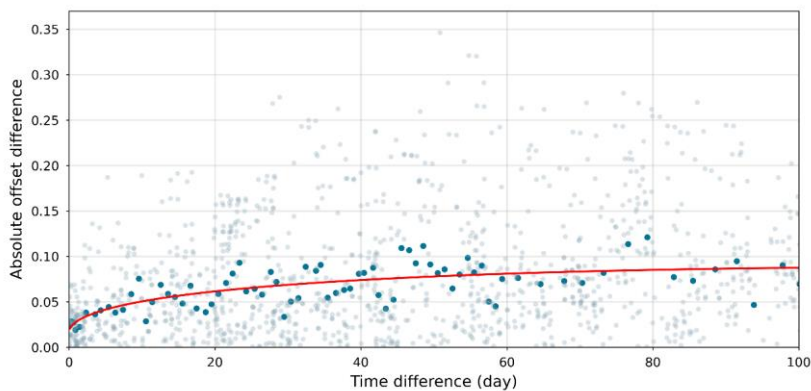


Figure 3. Semivariogram of the temporal variability of absolute pH offset differences. Light grey points in the background represent all possible pairs of pH offset differences, while blue points indicate the mean values calculated using moving bins. The red line represents the fitted model. The analysis is limited to a 100-day period. The full semivariogram, including extended time intervals, is provided in the Supplementary Information (Fig. S1).

2.5 Determination of Total Alkalinity and Dissolved Inorganic Carbon

Based on the discrete TA measurements and the continuous salinity and water level data, a multilinear regression (MLR) model was fitted (Eq. (4)) to predict TA continuously covering the entire timeframe from February 2022 to January 2023.

$$TA_{\text{pred}} = aS + b + c \sin(2\pi(t - \varphi)/365) + d \cos(2\pi(t - \varphi)/365) + fh + g\Delta h \quad (4)$$

Where TA_{pred} is the predicted alkalinity ($\mu\text{mol kg}^{-1}$), S is salinity, t is time (in days), φ is the phase shift of the seasonal cycle, h is the water level (cm), and Δh is the change in water level (cm) over the 10-minutes interval between successive measurements. Model coefficients, a through g , were optimised by least squares fitting. We note: the slope (a) = $-7.084 \mu\text{mol kg}^{-1}$, the intercept (b) = $2613.754 \mu\text{mol kg}^{-1}$, coefficient for sine term (c) = $47.424 \mu\text{mol kg}^{-1}$, coefficient for cosine term (d) = $14.630 \mu\text{mol kg}^{-1}$, coefficient for water level (f) = $-0.029 \mu\text{mol kg}^{-1} \text{cm}^{-1}$ and coefficient for water level difference (g) = $2.104 \mu\text{mol kg}^{-1} \text{cm}^{-1}$.

The equation was based on combining a linear component linking TA to salinity, with a sinusoidal and cosine functions with a wavelength of a year to capture seasonal change. Additionally, the model also accounted for water level and

its difference over time to account for hydrodynamic effects such as tidal mixing and tidal flushing. The coefficients for these variables (salinity, seasonal factors, water level and water level difference) are all adjusted for a best fit with the observed data.

280 Using these newly calculated TA_{pred} values and the pH sensor data, DIC and seawater pCO_2 (pCO_{2sw}) were calculated at 10-minute resolution with PyCO2SYS v1.8.2 (Humphreys et al., 2023), with the carbonic acid dissociation constants of Lueker et al. (2000).

2.6 CO₂ sea-air fluxes

The sea-air flux of CO₂ (FCO_2 , g-C m⁻² day⁻¹) was calculated as shown in equation (5). A positive FCO_2 indicates a release of
285 CO₂ from the ocean to the atmosphere, while a negative FCO_2 indicates an uptake of CO₂ by the ocean.

$$FCO_2 = k_w * k_0 * (pCO_{2sw} - pCO_{2air}) \quad (5)$$

Where k_w is the gas transfer velocity (cm h⁻¹), k_0 is the solubility of CO₂ in water (mol L⁻¹ atm⁻¹), calculated following Weiss
290 (1974), pCO_{2sw} and pCO_{2air} represent the partial pressure of CO₂ in seawater and the atmosphere, respectively, both expressed in μatm . The pCO_{2sw} was calculated from pH and TA while the pCO_{2air} was derived by converting the CO₂ mole fraction (xCO_2) to pCO_{2air} , using PyCO2sys v1.8.2 (Humphreys et al., 2023).

The transfer gas velocity was calculated using the formulation of Nightingale et al. (2000), which was established in the North Sea, with a Schmidt number (Sc) normalised to a Sc of 600:

$$k_w = (0.333 * U + 0.222 * U^2) * (600/Sc)^{0.5} \quad (6)$$

The U is the wind speed (in m s⁻¹). Hourly wind data was acquired from the Royal Netherlands Meteorological Institute (KNMI) for the Texelhors wind platform and interpolated to a 10-min interval, in order to match the resolution of the collected
300 dataset.

The K_0 , Sc and K_w were calculated using in-situ temperature and salinity measurements collected during the study period. All calculations were computed using pySeaFlux v2.0.0 (Gregor and Humphreys, 2021).

2.7 Wasserstein Distance

DIC was decomposed into components driven by biological and hydrological processes: DIC_{bio} and DIC_{hydro}. By examining
305 the relative contributions of each component of DIC, we can then understand how seasonal changes in these processes impact DIC, and consequently, pH.

DIC_{bio} and DIC_{hydro} were calculated using PyCO2SYS v1.8.2 (Humphreys et al., 2023). For DIC_{bio}, changes in DIC were considered to be driven by pH, while for DIC_{hydro}, variations in TA, salinity and temperature account for changes in DIC. DIC_{bio} was calculated using the daily averages for TA, salinity and temperature but with varying pH. In contrast, DIC_{hydro}, was

310 calculated using the daily averages of pH, with varying TA, salinity and temperature (Eqs. 7 and 8). The daily average TA
used for the calculation of DIC_{bio} was recalculated (as described in Section 2.5) with daily averages of salinity and water level.

$$\text{DIC}_{\text{bio}} = \text{PyCO2SYS}(\text{pH}_{\text{obs}}, \text{TA}_{\text{avg}}, \text{S}_{\text{avg}}, \text{T}_{\text{avg}}) \quad (7)$$

$$\text{DIC}_{\text{hydro}} = \text{PyCO2SYS}(\text{pH}_{\text{avg}}, \text{TA}_{\text{obs}}, \text{S}_{\text{obs}}, \text{T}_{\text{obs}}) \quad (8)$$

315

The contributions of biological and hydrological processes to the observed DIC were estimated using the Wasserstein distance, a method based on optimal transport theory. Conceptually, optimal transport theory is pictured transporting piles of sand from one location to another without any gain or loss of material. The goal is to identify the most efficient way of moving the sand, by minimising the amount of sand to be moved and the distance to be travelled. In this case, the Wasserstein distance represents the cost associated with the most efficient transport (Hyun et al., 2022; Lipp and Vermeesch, 2023; Peyré and Cuturi, 2020; Villani, 2009).

320 In the context of this study, the sand piles represent DIC values. The Wasserstein distance compares the predicted (DIC_{bio} and DIC_{hydro}) and the observed DIC, by capturing both the magnitude and timing of their differences. This is particularly important as DIC is influenced by both biological and hydrological processes over time. Standard metrics, such as the root mean square deviation (RMSD), compare values with identical points in time, which can overestimate discrepancies when the predicted and observed values are shifted in time. The Wasserstein distance overcomes this limitation by comparing the overall patterns. This approach allows us to determine which of the two processes, the biological or hydrological, follows more closely the observed patterns of DIC.

325

3 Data quality

330 3.1 pH sensor performance

Over the 12-month of study, the pH sensor recorded a total of 53203 measurements at 10-minute intervals. Of these, 292 measurements (representing 0.55% of the entire dataset) were recorded while the sensor was removed from the water for maintenance and calibration and were therefore flagged as unusable and excluded from the dataset for all subsequent analysis.

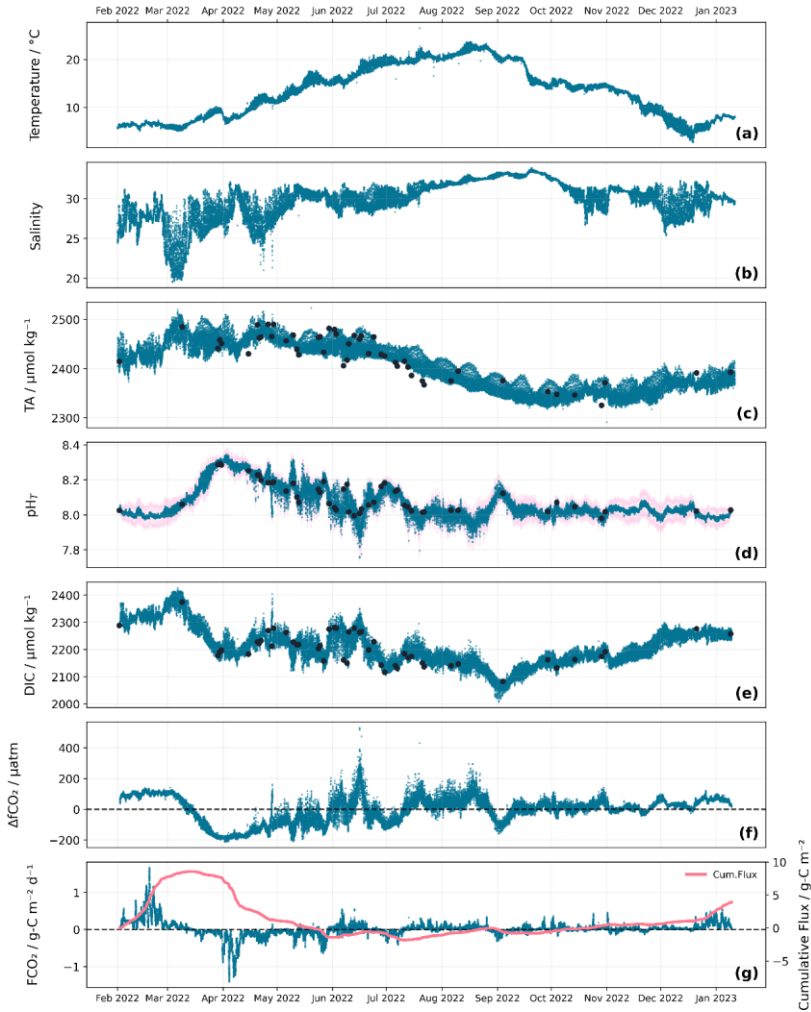
335 Throughout the study period, discrete pH samples were collected directly from the jetty to calibrate the pH sensor and correct for potential drifts. The sampling frequency varied across the year: from March to July, up to 13 samples were collected per month, while no sample was collected during November. From late October through January, only two samples were collected in total. This irregular sampling frequency is taken into considerations for sensor calibration and uncertainty estimations.

340 Comparison between raw pH sensor data (converted from mV to pH using Eq. (1)) and the calibration samples measured by spectrophotometry showed that the pH sensor consistently read higher values than the calibration measurements

(Fig. 2). The mean offset was 0.28 ± 0.09 with a total range of 0.1 to 0.42, which aligns with observations reported by Johengen et al. (2015) for the same pH sensor. Additionally, these offsets showed a temperature dependency, where higher temperatures were associated with larger offsets (Pearson's $r = 0.528$, $p < 0.001$). However, temperature accounted for only 27.9 % of the offset variance (R^2), suggesting that other processes also contributed to sensor drift. Such drift and low accuracy are common issues for glass electrodes (Dickson, 1993; Seiter and Degrandpre, 2001), particularly in field conditions (Johengen et al., 2015). This emphasizes the importance of implementing robust drift correction and uncertainty calculations, combined with regular and frequent calibration sampling, to maintain data reliability throughout extended field deployments.

In order to quantify the temporal variability of these offsets (the offset between the sensor data and the discrete pH measurements), a semivariogram analysis was applied (Fig. 3 & Fig. S1). This analysis evaluates how pH sensor calibration drift increases over time by examining how the variance of paired offset differences changes with increasing time intervals. For short time intervals (< 2 days), the mean pH offset difference ranged between 0.021 ± 0.018 and 0.032 ± 0.017 . After a week, the difference increased to approximately 0.045 ± 0.035 and continued increasing over longer time intervals, exceeding 0.061 ± 0.057 by 30 days.

The semivariogram results were then used to calculate the uncertainty (Eq. (2 & 3); Fig. 4-d). The resulting uncertainties ranged from 0.016 to 0.066, with lower uncertainties observed during periods of more frequent calibration sampling. To determine whether these uncertainties allowed for detecting seasonal and diel changes, they were compared against observed pH variations. Seasonal variation, based on monthly averages, reached 0.255 ± 0.077 , while diel fluctuations averaged 0.092 ± 0.061 . Both signals exceeded the maximum estimated uncertainty, indicating that the pH sensor data retained adequate resolution to capture these patterns.



365

370

375

380

385

390

Figure 4. Seasonal variability of temperature (a), salinity (b), TA (c), DIC, pH (d), DIC (e), $\Delta f\text{CO}_2$ (f), and FCO_2

(g). High resolution continuous data are shown in blue across all subplots for visual consistency. Temperature, salinity, and pH represent direct sensor measurements at 10-minute intervals, while TA, DIC, $\Delta f\text{CO}_2$, and FCO_2 are calculated at the same temporal resolution.

Discrete water sample measurements of TA (c), pH (d) and DIC (e) are represented by dark circles while continuous measurements are shown in blue. The pink shaded area around the pH sensor data (d) represents the uncertainty associated with the pH sensor measurements. Cumulative flux (g) is shown in a solid pink line. $\Delta f\text{CO}_2$ (f) and FCO_2 (g) are plotted with a horizontal dashed line at zero indicating the air-sea equilibrium point.

3.2 MLR validation

3.2.1 Overall performance

The MLR performance was assessed using three statistical methods: different statistical metrics, including the coefficient of determination R^2 , the RMSD and the Nash-Sutcliffe model efficiency (NSE , (Nash and Sutcliffe, 1970)), as similarly applied by (Nondal et al., 2009), which assess how well model predictions match the observed data. The NSE values close to 1 indicate perfect model performance, values near 0 suggest the model performs similarly to using mean of observations and negative values to indicate that the model performs worse than the mean.

The comparison between TA_{pred} and measured TA showed that the MLR (Eq. (4)) successfully captured the main observed pattern and variability (Fig. 4-c). The RMSD between the measured TA and TA_{pred} was $17.5 \mu\text{mol kg}^{-1}$ with an R^2 of 0.82. This RMSD is considerably smaller than both the observed seasonal TA range ($231.7 \pm 12.7 \mu\text{mol kg}^{-1}$) and the average daily range ($46.4 \pm 13.1 \mu\text{mol kg}^{-1}$), representing $7.6 \pm 0.7\%$ of the seasonal variation and $37.7 \pm 11.0\%$ of the daily variation.

The time series (Fig. 4-c) and the high-resolution data (Fig. 5-a) confirm that the model successfully tracked the seasonal and daily TA cycles, reproducing the magnitude and timing of variations accurately enough for our purposes. Across the 59 TA observations the model showed a strong linear relationship, however, tended to underestimate TA in the lower and higher ranges ($<2375 \mu\text{mol kg}^{-1}$, $>2450 \mu\text{mol kg}^{-1}$) and overestimated it in the mid-range ($\sim 2375\text{-}2450 \mu\text{mol kg}^{-1}$) (Fig. S2-a). Additionally, the MLR predictions showed some oscillation patterns that are not present in the discrete TA observations, which could be attributed to the annual harmonic terms that capture the seasonal variation across the study period. Nevertheless, the model demonstrates strong performance for seasonal scale predictions and reasonable ability to capture daily fluctuations.

To further validate the TA prediction model, we evaluated its performance on a shorter time scale where high-resolution sampling was conducted from March 29th to April 1st, during which 12 samples of TA, DIC and pH were collected (Fig. 5). These samples were not used to develop nor train the MLR, ensuring unbiased validation. Despite the reduced temporal scale, the RMSD remained smaller, representing $26.6 \pm 3.7\%$ of the daily ranges ($65.8 \pm 3.2 \mu\text{mol kg}^{-1}$), confirming the model's performance on both short and long-term scales.

Formatted: Font: Not Bold

Formatted: Font: Not Bold

Formatted: Font: Not Bold

Formatted: Font: Not Bold

Correlation analysis between the MLR components and TA revealed varying relationships (Table 1). Seasonal variability (sine component) exhibited the strongest correlation with TA, followed by temporal trends and salinity. Water level difference showed no direct significant correlation with TA. However, including it in the MLR significantly improved the MLR performance with R^2 increasing from 0.76 to 0.82, RMSD decreasing from 20.3 to 17.5 $\mu\text{mol kg}^{-1}$ and the NSE increasing from 0.76 ± 0.008 to 0.82 ± 0.006 . Model performance increased by $8.2 \pm 1.35\%$ and a reduced uncertainty of $2.8 \pm 2.5 \mu\text{mol kg}^{-1}$. While this improvement suggests that water level captured a real tidal influence on TA, its inclusion in the MLR may also create TA-tidal pattern similarities.

The MLR model was also assessed for potential biases. Results showed no significant correlations between MLR components and alkalinity residuals (TA_{res}) (Table 2), which confirms that the model accurately captures the main alkalinity variation without systematic bias. The TA_{res} times series (Fig. S2-b) confirms no temporal bias, with residual variability reflecting the irregular sampling frequency.

The monthly model performance revealed varying RMSD closely linked to sampling frequency (Fig. S2-c). During high sampling periods (March-July, $n=7-13$), RMSD estimates remained relatively consistent, ranging between 15.3 and 21.3 $\mu\text{mol kg}^{-1}$. In contrast, months with limited sampling ($n=1-2$), showed unreliable RMSD estimates. With fewer samples, the model is less well-constrained, limiting the ability to evaluate model performance in these months. Results from well-sampled periods (March-July) suggests that the MLR approach is reliable, and performance in under-sampled months would likely improve with increased sampling frequency, as insufficient observations cannot accurately capture the real monthly variability needed by the model to predict TA. These results reflect a sampling limitation rather than model deficiency.

The overall RMSD estimates ($17.5 \mu\text{mol kg}^{-1}$) are consistent with those of~~compare positively with~~ other coastal MLR studies. While global ocean TA prediction typically achieves uncertainties lower than $10 \mu\text{mol kg}^{-1}$ (Carter et al., 2016; Lee et al., 2006; McNeil et al., 2007), MLR performances vary considerably with system complexity and heterogeneity. Regional-scale coastal studies achieve lower uncertainties, where for instance Gemayel et al. (2015) reported an uncertainty of $10.6 \mu\text{mol kg}^{-1}$ across the Mediterranean Sea, while Alin et al. (2012) reported an uncertainty of $6.4 \mu\text{mol kg}^{-1}$ along the South Californian coast. Complex coastal systems exhibit substantially higher uncertainties, as indicated by Rheuban et al. (2021) with uncertainties ranging from 48 to $121.1 \mu\text{mol kg}^{-1}$ across various estuarine systems along the northeast US coast. Similarly, Fassbender et al. (2017) achieved identical performances as in this study with an uncertainty of $17 \mu\text{mol kg}^{-1}$ in Washington state nearshore and estuarine environments. Comparing the high RMSD observed in this study with the RMSD estimated for open ocean or regional coastal system reflects the biogeochemical complexity of the Wadden Sea. TA in these systems is primarily controlled by conservative mixing processes and presents a strong correlation with salinity. However, in the Wadden Sea various biogeochemical processes, such as denitrification and sulfate reduction in anoxic sediments contribute to TA generation (Thomas et al., 2009). Moreover, organic compounds in seawater can also contribute to TA (Goldman and Brewer, 1980), and this is known as organic alkalinity (OrgAlk). In order to assess the contribution of OrgAlk to the MLR prediction errors, OrgAlk was estimated from subtracting calculated TA (TA_{calc}) from measured TA, with TA_{calc} calculated from DIC and pH using PyCO2SYS v1.8.2 (Humphreys et al., 2023). OrgAlk showed weak correlation with salinity and TA_{res} (Fig. S3;

Formatted: Indent: First line: 0 cm

Formatted: Font color: Text 1

460 $R^2 = 0.292$ and $R^2 = 0.061$, respectively), indicating that OrgAlk does not explain the MLR prediction errors. Therefore, likely other processes, such as denitrification and sulfate reduction in the Wadden Sea, are affecting TA variability, which are not (fully) captured by the MLR model.

Overall, based on the conducted statistical tests and the degree of complexity of the MLR, which included tidal and temporal influences, the overall MLR is adequate for the application in this study for seasonal and daily TA variability.

465

Table 1. MLR component correlation with alkalinity. Where r is the coefficient of correlation, R^2 is the coefficient of determination and p -value is the statistical significance ($p < 0.05$ means statistically significant).

MLR component	r	R^2	p -value
$\sin(2\pi t)$	0.824	0.679	<0.001
Time (t)	-0.703	0.494	<0.001
Salinity (S)	-0.529	0.280	<0.001
$\cos(2\pi t)$	0.318	0.101	<0.05
Water Level (h)	-0.262	0.069	<0.05
Water Level Difference (Δh)	-0.135	0.018	0.309

470

Table 2. MLR component correlation with alkalinity residuals. Where r is the coefficient of correlation, R^2 is the coefficient of determination and p -value is the statistical significance ($p < 0.05$ means statistically significant).

MLR component	r	R^2	p -value
$\sin(2\pi t)$	0.000	0.000	1.000
Time (t)	0.050	0.000	0.709
Salinity (S)	-0.000	0.000	0.999
$\cos(2\pi t)$	-0.000	0.000	0.998
Water Level (h)	0.006	0.000	0.996
Water Level Difference (Δh)	-0.127	0.016	0.336

475 3.2.2 DIC calculations from TA_{pred}

DIC was calculated from TA_{pred} and the calibrated pH sensor data. The calculated DIC, DIC_{calc} , closely aligns with measured DIC through the year, effectively capturing the patterns observed in the measured DIC (Fig. 4-e). [Because measured DIC was](#)

obtained through discrete laboratory analysis, independent from the TA_{pred} model and continuous pH measurements used for DIC_{calc} , the strong agreement between DIC_{calc} and measured DIC provides confidence in both the TA_{pred} predictions and pH sensor calibration. This similarity could reflect a calculation dependency, as DIC_{calc} was estimated from pH and TA_{pred} . However, the measured DIC values exhibited comparable values and patterns, independently from TA_{pred} , confirming then that DIC_{calc} accurately capture real DIC variability, within calculation uncertainties.

The RMSD between the measured DIC and DIC_{calc} was $19.8 \mu\text{mol kg}^{-1}$, with an R^2 of 0.87. Considering the observed seasonal variation in DIC of $419.3 \pm 4.9 \mu\text{mol kg}^{-1}$, the model uncertainty accounted for only $4.7 \pm 0.5 \%$ of the seasonal range and $27.1 \pm 11.0 \%$ of the average daily variation ($73.1 \pm 28.8 \mu\text{mol kg}^{-1}$).

The high-resolution validation period, as described above, was also used to assess the DIC_{calc} (Fig. 5-b). During this period, the RMSD remained small compared to the observed daily ranges ($75.1 \pm 1.3 \mu\text{mol kg}^{-1}$), with model uncertainty representing $26.4 \pm 4.0 \%$ of the daily variation, confirming the model's performance on predicting TA_{pred} and its reliability in using the predicted values to calculate DIC_{calc} . However, the DIC_{calc} slightly overestimated the measured values by up to $25 \mu\text{mol kg}^{-1}$, especially during the first day of this high-resolution sampling period, possibly due to an underestimation of the hydrodynamic effects in TA_{pred} .

Additionally, to assess the sensitivity of DIC_{calc} to pH calibration, the pH sensor data was recalibrated by progressively omitting measured pH values, reducing the number of measured pH values used during calibration from 12 calibration samples up to scenarios where only one pH calibration sample remained. Those changes were applied only during the high-resolution sampling period. For each scenario, the recalibrated pH, combined with TA_{pred} , was then used to recalculate DIC_{calc} , and then compared to those calculated from the fully calibrated pH sensor data. The results showed that even in the most extreme scenario (with only one single pH calibration sample used), the difference in DIC_{calc} remained small, ranging between -5.23 to $14.46 \mu\text{mol kg}^{-1}$, minimal variation in DIC_{calc} across all calibration scenarios. The single point calibrated data DIC_{calc} and fully calibrated DIC_{calc} showed substantial overlap (Fig. S4-a). As expected, the pH values changed when using fewer calibration samples compared to the full calibration dataset (Fig. S4-b). Statistical analysis revealed no significant differences between the DIC_{calc} with fully pH calibrated data and DIC_{calc} under different calibration scenarios ($p\text{-value} > 0.05$). This suggests that variation in TA had a greater influence on DIC than changes in pH.

Formatted: Subscript

Formatted: Subscript

Formatted: Subscript

Formatted: Subscript

Formatted: Subscript

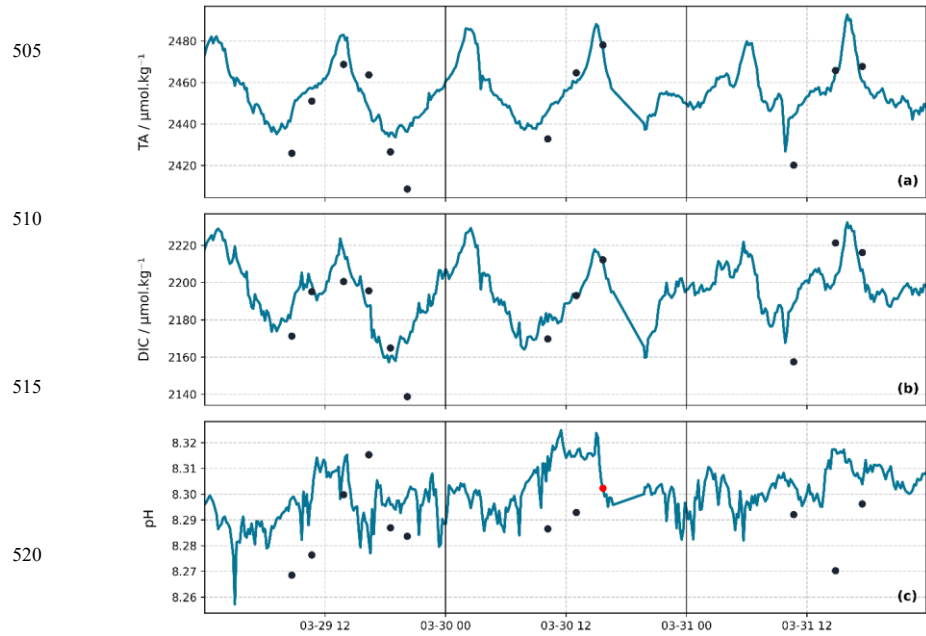


Figure 5: high-resolution data of TA, DIC and pH from March 29th to April 1st, 2022.

525 The dark circles represent collected TA, DIC and pH samples. Continuous lines depict: (a) TA_{pred} , (b) DIC_{calc} and (c) calibrated pH sensor data. The red circle in panel (c) highlights the single pH sample from this period that was used for pH sensor calibration. The data were collected over a 72-hour period. Vertical lines separate the days.

4 Results and discussion

4.1 Seasonal cycle

530 **4.1.1 Seasonal hydrological influence**

The water temperature varied from a minimum of around 4 ± 0.2 °C in December to 23 ± 0.2 °C in August (Fig. 4-a). Salinity followed a typical pattern (Ridderinkhof et al., 2002) with a less clear cycle, being lower and more variable in the winter and higher and more consistent in the summer (Fig. 4-b). Salinity is generally lower in winter because precipitation, especially

over the land, is higher, which increases the freshwater flow from the IJsselmeer, other rivers flowing directly into the Wadden Sea, and the Rhine plume entering through the Marsdiep tidal inlet. The higher variability in salinity arises because the greater precipitation is strongly linked to ephemeral stormy weather (Van Aken, 2008b). However, increased salinities during summer periods, especially during the recent years with increased extreme droughts, are likely due to reduced or completely stopped discharge of freshwater from the IJsselmeer into the Wadden Sea. This water management approach is implemented in order to preserve freshwater for agricultural use and consumption (Philippart et al., 2024).

TA presented to first order an opposite pattern to salinity, with higher values in the winter/spring ($\sim 2500 \pm 17.5 \mu\text{mol kg}^{-1}$) and lower in the summer/autumn ($\sim 2350 \pm 17.5 \mu\text{mol kg}^{-1}$), but its variability was more consistent throughout the year (Fig. 4-c). The opposite patterns of TA and salinity arose because the low-salinity endmember water ~~mass-type~~ generally had higher TA than the high-salinity endmember (Fig. 6). However, this TA-salinity relationship varied seasonally. From the regressions between TA and salinity for different months, both TA and salinity ~~at the low-salinity waters of the low-endmember~~ displayed large range of variation ($163.6 \pm 65.2 \mu\text{mol kg}^{-1}$ and 5.1 ± 2.1 respectively), while the ~~highhigh-salinity waters endmember~~ exhibited more variable TA but relatively stable salinities ($115.0 \pm 43.6 \mu\text{mol kg}^{-1}$ and 3.0 ± 1.0 respectively). This suggests ~~that the three water types (Wadden Sea, IJsselmeer, and North Sea) become more or less dominant at different times, resulting in the seasonal variability observed in both TA and salinity different Wadden Sea water masses becoming more or less dominant at different times~~ (Hoppema, 1990, 1993).

The lack of freshwater end-member data prevents us here from establishing a reliable relationship between TA, DIC and salinity. As observed in Fig. 6, different TA values were recorded for the same salinity values, indicating the influence of mixing between multiple endmembers. This variability is the result of the dominance or lack of dominance of different water ~~types masses~~ in the Wadden Sea depending on the hydrodynamic conditions. The western Wadden Sea in particular exhibits a strong gradient and highly variable hydrographic characteristics, both on tidal and longer time scales. This variability is due to multiple factors including, tidal exchange, variable freshwater discharges and changing Dutch North Sea coastal waters properties (Postma, 1954). Therefore, understanding the TA-S relationship is essential for estimating the characteristics of the different water ~~typesmasses~~ which interact based on hydrographic conditions (the Wadden Sea endmember, the IJsselmeer endmember and the North Sea endmember) and calculating the influence of biogeochemical processes on the carbonate system. Without direct measurement of the freshwater endmember, the TA and DIC seasonal variations can only provide indirect insights into potential sources and sinks of TA, independently of DIC fluctuations. Consequently, understanding the interplay between tidal cycles, freshwater discharges and biogeochemical processes is essential, yet challenging, to fully characterise and understand the carbonate system in the Wadden Sea. Further research incorporating freshwater end members, along other measurements, will be essential in order to refine our understanding of these interactions.

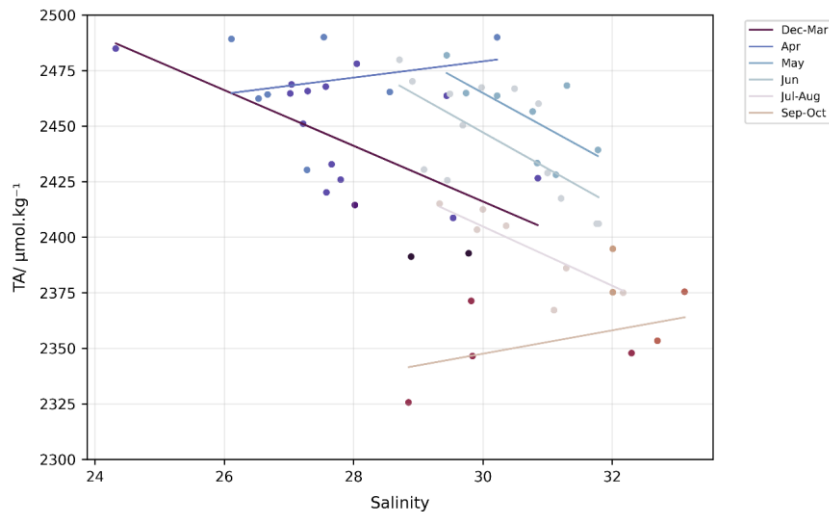


Figure 6. Regression between salinity and alkalinity in the Marsdiep Channel.

Data points are coloured by month. Regression lines are fitted for grouped months (December–March, July–August, September–October) and individual months.

Formatted: Left

4.1.2 Net community production and respiration

pH exhibited strong seasonal variations, with a maximum of 8.35 ± 0.04 during spring and a minimum of 7.75 ± 0.02 during summer (Fig. 4-d). The high pH observed in spring was likely due to a phytoplankton bloom. Through March, DIC_{calc} dropped from 2426.8 to $2180.7 \pm 19.8 \mu\text{mol kg}^{-1}$, presumably due to conversion of DIC into organic matter, increasing pH by -0.3 ± 0.06 (Soetaert et al., 2007). Analysis of the nutrient drawdown during this bloom period supports this interpretation. The C:N ratio of 6.5:1 closely matches the Redfield ratio of 6.6:1 (Redfield et al., 1963)(Redfield, 1963), suggesting that nitrate assimilation during the spring bloom was closely linked to the decline observed in DIC. Beyond the spring bloom, this inverse relationship between pH and DIC during short-term (days to weeks) excursions continued through the year, although on longer time scales (months), the pattern of DIC_{calc} was more like that of TA_{pred} , with a minimum DIC_{calc} of $2007 \pm 19.8 \mu\text{mol kg}^{-1}$ during summer and a maximum of $2426.8 \pm 19.8 \mu\text{mol kg}^{-1}$ in March 2022 (Fig. 4-e). The short-term excursions in pH and DIC suggest the occurrence of smaller, secondary plankton blooms later in the year, while the longer-term similarity with TA

600 suggests a relatively constant state of (dis)equilibrium with atmospheric CO₂ after the spring bloom (Humphreys et al., 2018), as seen from the Δ/CO_2 (Fig. 4-f).

In February, FCO₂ (Fig. 4-g) reached a maximum of 1.7 g-C m⁻² d⁻¹, a CO₂ source to the atmosphere, while through March and into early April, the decline in DIC caused Δ/CO_2 to become negative, driving FCO₂ to drop to a minimum of -1.4 g-C m⁻² d⁻¹, a CO₂ sink (Thomas et al., 2005a). Throughout the year, Δ/CO_2 was predominantly controlled by changes in DIC (Fig. 4-e,f), determining the direction of the flux, while the magnitude of FCO₂ was driven by wind speed (k_w , ranging from 0 to 96 cm h⁻¹; Fig. S5). The cumulative FCO₂ since the start of our observations on 2 February reached a maximum of 0.1 g-C m⁻² total CO₂ released to the atmosphere on 13 March, but almost as quickly returned to zero by the beginning of May.

610 From May until January, FCO₂ fluctuated moderately within a range of -0.6 to 0.5 g-C m⁻² d⁻¹ while the cumulative FCO₂ remained negative, reaching a minimum of -2.2 g-C m⁻² total CO₂ taken up from the atmosphere on 10 July. The cumulative FCO₂ showed periods of increase, interspersed with two short decreases presumably linked to the secondary blooms observed in July and September. Despite these fluctuations, an overall increase in cumulative FCO₂ from May to January illustrated the Wadden Sea's role as a source of CO₂ through summer, autumn and winter, except during brief bloom-related uptake periods (Clargo et al., 2015; Thomas et al., 2005a). The positive cumulative FCO₂ by January of 4.7 g-C m⁻², despite a 21-day gap to complete a full year, indicates a net CO₂ release to the atmosphere and suggesting that the Wadden Sea acts as a CO₂ source over the entire annual cycle, consistent with previous findings (Thomas et al., 2004).

620 The negative correlation between TA and salinity, combined with similar TA and DIC seasonal variability, highlights an important characteristic of the Wadden Sea carbonate system. Seasonal variability in both TA and DIC was dominated by hydrological process (Section 4.1.1), with the additional biological effect on DIC difficult to discern. However, because the hydrological effects on TA and DIC were well correlated with each other, they mostly cancelled each other out in terms of their effects on pH. This results in biological processes being the primary driver of seasonal pH variability.

4.1.3 Other processes

Beyond net community production (NCP) and respiration, other biological processes also influence the carbonate system in the Wadden Sea. The available nutrient data that was collected during the study (Fig. S65) exhibited similar patterns and ranges to what was observed by (Salt, 2014) Salt et al. (2014) in the Marsdiep channel, with high nutrient concentrations during autumn and winter and lowest concentrations during spring and summer. (Salt, 2014) Salt et al. (2014) identified nitrification and ammonia uptake as key drivers of TA consumption, whereas denitrification and sulfate reduction act as drivers of TA production. Additionally, their study highlighted the role of silicate and nitrate availability on NCP during diatom blooms.

630 Given the similarities (ranges and patterns) in nutrients, TA and DIC distributions with the results of (Salt, 2014) Salt et al. (2014), denitrification and sulfate reduction processes may be driving TA generation in the Wadden Sea as well. Thomas et al. (2009) estimated that these processes generate approximately 99 Gmol TA yr⁻¹ and 12-26 Gmol TA yr⁻¹ respectively. The importance of these sedimentary processes for the carbonate system of the Wadden Sea are well documented

Formatted: Subscript

Formatted: Subscript

in many previous studies (Al-Raei et al., 2009; Brenner et al., 2016; Kieskamp et al., 1991; Norbisrath et al., 2024; Thomas et al., 2009; Voynova et al., 2019). All these processes might help explaining the observed TA and DIC distributions.

As mentioned above, both TA and DIC showed similar patterns with elevated concentrations in spring, followed by a gradual

635 decrease through summer and autumn before increasing again in winter. The monthly variability in the slope of the linear regression between TA and DIC ($\delta\text{TA}/\delta\text{DIC}$) ATA/ADIC-ratio (Fig. S76) reflects the co-variability of TA and DIC within each month rather than the absolute contribution of any single biogeochemical -can-process. These slopes provide additional insights on into the dominant biogeochemical processes occurring on timescales faster than air-sea CO₂ equilibration, which restores the ratio back to approximately 1.15 in these waters (Humphreys et al., 2018). The $\delta\text{TA}/\delta\text{DIC}$ ATA/ADIC-ratio exhibits

640 a clear seasonality, with maximum value in winter (0.89 ± 0.01), lower values in spring and summer, and a negative ratio in September (-0.08 ± 0.01). The winter higher $\delta\text{TA}/\delta\text{DIC}$ ratios might coincide with TA being generated at higher rate than DIC and could result from denitrification. The peaks during winter suggest that when NCP is minimal, the influence of such sedimentary processes on the carbonate system variability becomes more apparent in the water column, as their signature is not as much obscured by NCP removal of DIC. Similar $\delta\text{TA}/\delta\text{DIC}$ ratios near 1 driven by anaerobic mineralisation have been

645 documented in other coastal systems including saltmarshes and estuaries (Miao et al., 2025; Yau et al., 2022). However, the lower ratios ratios during spring and summer, reflect on the dominance of NCP in removing DIC at rates faster than TA is generated, resulting therefore in lower $\delta\text{TA}/\delta\text{DIC}$ ATA/ADIC-values. The negative $\delta\text{TA}/\delta\text{DIC}$ ratio in September (-0.087 ± 0.01) is consistent with a transition toward conditions dominated by respiration, approaching the stoichiometry of aerobic respiration ($\delta\text{TA}/\delta\text{DIC} \sim -0.15$, (Chaillou et al., 2024; Wolf-Gladrow et al., 2007), representing could represent a transitional

650 period between the decline of NCP and an increase in organic matter remineralisation- where DIC accumulates faster than TA. Future measurements to constrain the freshwater TA and DIC endmembers would help to quantify the relative contributions of mixing and biogeochemical processes.

4.2 Diel cycles

655 4.2.1 Influence of tidal forcing

The diel cycles of TA, salinity, and water level were distinctly different from those of temperature, pH, DIC and ΔfCO_2 . Monthly-averaged hourly TA anomalies with respect to the daily mean (Fig. 7 & Fig. S87) varied between -7.2 ± 4.3 and 7.0 ± 4.3 $\mu\text{mol kg}^{-1}$. However, individual daily anomalies showed much larger variability, ranging between -43.4 ± 15.0 $\mu\text{mol kg}^{-1}$ and 44.3 ± 9.6 $\mu\text{mol kg}^{-1}$, displaying a complex, irregular pattern without a clear day-night cycle, as the tidal cycle likely conceals any underlying biological patterns, and suggesting that tidal processes dominate over NCP and respiration in controlling daily TA variation. Changes in TA appeared to be associated with the tidal cycle, with fluctuations observed in response to both high and low tides (Fig. S98). Higher TA was observed during low tide. During high tide, North Sea water, which has lower TA than the Wadden Sea, is brought into the Wadden Sea, lowering the overall TA. During low tide, the

665 dominance of the Wadden Sea water, which has higher TA, results in increased TA. Water level monthly anomalies (Fig. S98), which fluctuated between -27 ± 39 cm and 29.2 ± 45 cm (with individual daily anomalies ranging from -155 ± 55 to 149 ± 55 cm), also showed a complex and irregular diel pattern driven by the tides, and consistent with a dominant M2 tidal constituent (Ridderinkhof et al., 2002b). The Wadden Sea is characterised by asymmetrical tides, where the ebb and flood tides fluctuate in both timing and intensity (Buijsman and Ridderinkhof, 2007). This tidal asymmetry combined with the delay in TA response to changes in water level – which is typically less than 5 hours – means that the minima and maxima in water level did not correspond exactly with the those in TA, and vice versa. This further complicated the overall tidal pattern by creating uneven fluctuations in water level, making it difficult to establish regularity in the tidal cycle despite the underlying tidal control.

670 These patterns were further examined through tidal phase analysis (Fig. 8 & Fig. S109). While several months exhibited the expected pattern of higher TA at low tide and consistent with the mixing mechanism described above, other periods displayed opposite behaviours. This variability does not follow a clear seasonal pattern, as months from different seasons exhibited similar variability, while months within the same season showed different patterns. This irregularity reflects the complexity of TA dynamics in a shallow tidal system. Tidal forcings lead to strong benthic-pelagic coupling (Huettel et al., 2003), moreover, asymmetrical tides combined with the < 5 hours delay in TA responses to water level changes create variable phase relationships between tidal forcing and TA responses. The combination of the tidal coupling, with varying inputs from sediments, biological processes and water ~~typesmass~~ exchange can lead to irregular patterns that don't follow simple seasonal trends.

685 Salinity monthly anomalies (Fig. 7 & Fig. S110), which varied between -0.7 ± 1.2 and 1.0 ± 1.9 (with individual daily anomalies ranging from -5.2 ± 0.7 to 5.4 ± 1.5), displayed a clearer 12-hour periodicity compared to TA and water level. The semi-diurnal tides in the Wadden Sea (Buijsman and Ridderinkhof, 2007; van der Molen et al., 2022), consisting of two low and two high tides per day, lead to alternating shifts in TA and salinity as the system transitioned from Wadden Sea to North Sea dominance. During high tide, the influx of North Sea waters introduces higher salinity water into the Wadden Sea, resulting in a more homogeneous salinity distribution. At low tide conditions, local estuarine processes and freshwater inputs create more variable salinity conditions. However, in dry summer periods or drought conditions, particularly when freshwater discharges are reduced or completely stopped (Fig. S124), the salinity gradient between North Sea and Wadden Sea can be reversed.

690 Salinity also exhibited seasonal variation in the intensity of its diel fluctuations. These seasonal patterns were further examined across the tidal phase (Fig. 8 & Fig. S132), confirming the varying intensity of tidal influence on salinity variation. In March, salinity anomalies were particularly pronounced, reaching their minimum values at low tides and maximum values at high tide, and indicating strong tidal control of salinity variability. From May onward, this variability declined progressively until reaching near zero in August and September. The reduced salinity variability corresponds to a decrease in freshwater discharge from the IJsselmeer and the Rhine during summer (Fig. S124), resulting in a weakened and more uniform salinity gradient between the Wadden Sea and the inflowing North Sea waters.

From October to December salinity anomalies increased again, likely driven by seasonal changes in freshwater input and mixing, during which tidal control of salinity variability strengthened again as the freshwater-seawater gradient was re-established.

Formatted: Indent: First line: 1.27 cm

4.2.2 Influence of biological processes

Across the year, pH, DIC and Δ/CO_2 exhibited clearer 24-hour periodicities, particularly during the warmer months (May-august). The largest monthly amplitude pH anomalies (Fig. 7 & Fig. S143), occurred in June, with a night-time minimum of -0.03 ± 0.03 and a daytime maximum of 0.03 ± 0.04 . In winter, variations were smaller, often near zero. The diel pH cycle displayed a characteristic day-night pattern, consistent with biologically driven CO_2 dynamics associated with NCP and respiration. During the day, photosynthesis processes consume CO_2 , reducing the concentration of CO_2 and therefore increasing pH. At night, respiration and remineralisation are the dominant biological process releasing CO_2 back in the seawater, and lowering pH (Bates et al., 2009; Falkowski, 1994). These mechanisms have been widely documented in coastal systems (Baumann and Smith, 2018; Cai, 2011a; Gattuso et al., 1998), particularly in shallow tidal systems (Bauer et al., 2013; Baumann and Smith, 2018; Cai, 2011a).

The magnitude of diel pH fluctuations varied seasonally, with greater amplitude in spring and summer compared to winter. This was particularly evident in July and August where the daily peak of pH occurred several hours later compared to June, and potentially reflected the effect of temperature. In wintertime, the daily variation in pH was weaker, likely due to diminished NCP and lower sea surface temperatures. In addition, mixing between the Wadden Sea and the southern North Sea likely altered pH and obscured an already reduced biological signal.

Tidal phase analysis (Fig. 8 & Fig. S154) revealed seasonal patterns in pH variability. During winter (February, November-January), pH anomalies varied minimally across tidal phases, consistent with reduced biological activity. However, from March through July, pH anomalies displayed a more complex pattern with a distinctive w-shaped pattern across the tidal cycle. This pattern developed gradually from March, suggesting a strengthening of the biological processes during this period and creating increasing biogeochemical differences between the North Sea and Wadden Sea during the high productive season. This seasonal transition was further supported by a Fourier analysis (Fig. S165), which revealed that from June to September the 24-h frequency dominated the 12-h frequency, suggesting a much stronger influence of biological processes on the daily cycle. However, during the rest of the year, particularly in winter when NCP is lower, the 24-h/12-h ratio was smaller, suggesting that the tidal forcing played a more prominent role in timing pH variability as result of the mixing between the different water masses in the Marsdiep Channel.

The diel cycle of temperature anomalies also varied seasonally (Fig. 7 & Fig. S176). Day-night temperature differences were most pronounced from March through August, reaching a maximum in May with monthly anomaly amplitudes of 0.6 ± 0.2 °C (daily anomalies amplitude of 3.7 ± 0.4). These fluctuations decreased until reaching a minimum in January with anomaly amplitudes of 0.2 ± 0.04 °C.

Although temperature influences pH by altering CO₂ solubility, with warmer waters generally characterised with higher pH due to reduced CO₂ solubility (Zeebe and Wolf-Gladrow, 2001), this mechanism alone cannot explain the observed patterns. While the carbonate system equilibration timescale is on the order of minutes or faster (Mojica Prieto and Millero, 2002), the exchange of CO₂ between the atmosphere and sea reaches equilibrium over much longer timescales, from weeks to months (Jones et al. (2014)). Therefore, if temperature were the main driver, pH would be expected to closely follow the temperature pattern. To assess the influence of temperature, pH was recalculated using varying temperature and monthly means of TA, DIC and salinity (pH_{temp}) using PyCO2SYS v1.8.2 (Humphreys et al., 2023) (Fig. S187). The observed pH variations appeared to be primarily driven by processes other than temperature change, as key variations often occurred independently of temperature fluctuations. Additionally, pH deviated from pH_{temp} for most of the year, especially during the warmer months. For instance, pH often reached its daily maximum several hours before temperature, as observed in June (Fig. 7, Fig. S143 & Fig. S187). However, in the beginning of February, then December and January, pH tracked closely pH_{temp}, indicating that temperature's influence on pH became more prominent during the colder months, during which biological activities were reduced (Fig. S187).

If temperature were the primary driver, pH should consistently rise and fall with temperature fluctuations through the year, but this was not observed during this study. This strongly suggests that biological activities played a more dominant role in influencing pH variations. The mismatch between temperature and pH peaks is more consistent with light-driven NCP, during which CO₂ is consumed and results in a pH increase during periods of maximum light availability rather than maximum temperatures. This biological control may also (partly) explain the seasonal variation in pH amplitudes, with higher variability in spring and summer and coinciding with periods of increased NCP.

The diel cycle of DIC anomalies (Fig. 7 & Fig. S198) was opposite to that of pH. In winter, DIC monthly anomalies were smaller and ranged between -6.6 ± 3.2 and $5.9 \pm 4.0 \mu\text{mol kg}^{-1}$ (with daily anomalies ranging from $-43.4 \pm 12.6 \mu\text{mol kg}^{-1}$ to $50.4 \pm 12.7 \mu\text{mol kg}^{-1}$), consistent with weaker biological activities. Whereas, in spring and summer, these anomalies increased up to 17.6 ± 13.3 and $22.2 \pm 13.3 \mu\text{mol kg}^{-1}$ (with daily anomalies ranging from $-90.5 \pm 26.8 \mu\text{mol kg}^{-1}$ to $103.1 \pm 18.1 \mu\text{mol kg}^{-1}$). These results suggest intensified respiration during the night and NCP during the day. During these periods, pH changes closely followed DIC fluctuations, with nighttime increases in DIC corresponding to decreases in pH, and daytime DIC decreases aligning with pH increases. For instance, in June a decrease of $39.9 \pm 13.3 \mu\text{mol kg}^{-1}$ in DIC anomalies over 7 hours during the day corresponded to a pH increase of 0.06 ± 0.02 during the same period, suggesting a link between DIC and pH variability that is answering to NCP and respiration. Tidal phase analysis of DIC (Fig. 8 & Fig-S 2049) revealed similar complexity as TA which suggests that, like TA, DIC is controlled by multiple mechanisms including water mass mixing, biological processes and potentially benthic fluxes that can mask the expected tidal signal, creating a complex DIC-tidal phase relationship.

Δ/CO_2 (Fig. 7 & Fig. S210) mirrored the diel pattern of DIC. Δ/CO_2 anomalies were typically negative during daytime as the sea acted as a CO₂ sink and shifted to positive anomalies at night, likely due to respiration. This diel Δ/CO_2 cycle became more pronounced from March to October, with monthly anomalies ranging from -37 ± 49 to $43 \pm 47 \mu\text{atm}$ (with individual

765 daily anomalies ranging from -143 ± 48 to 196 ± 48), while in winter, the diel variation was minimal and close to zero. Together, these patterns in ΔCO_2 , DIC and pH suggest that biological processes, rather than abiotic factors, were the primary driver of their diel variability, with stronger day-night differences during warmer months when both extended daylight hours and higher temperatures enhance photosynthesis and respiration (Regaudie-de-Gioux and Duarte, 2012). This interpretation is further supported by the dominance of the 24-h frequency in the Fourier analysis (Fig. S165), which is characteristic of
770 biologically controlled cycles.

775

Formatted: Indent: First line: 0 cm

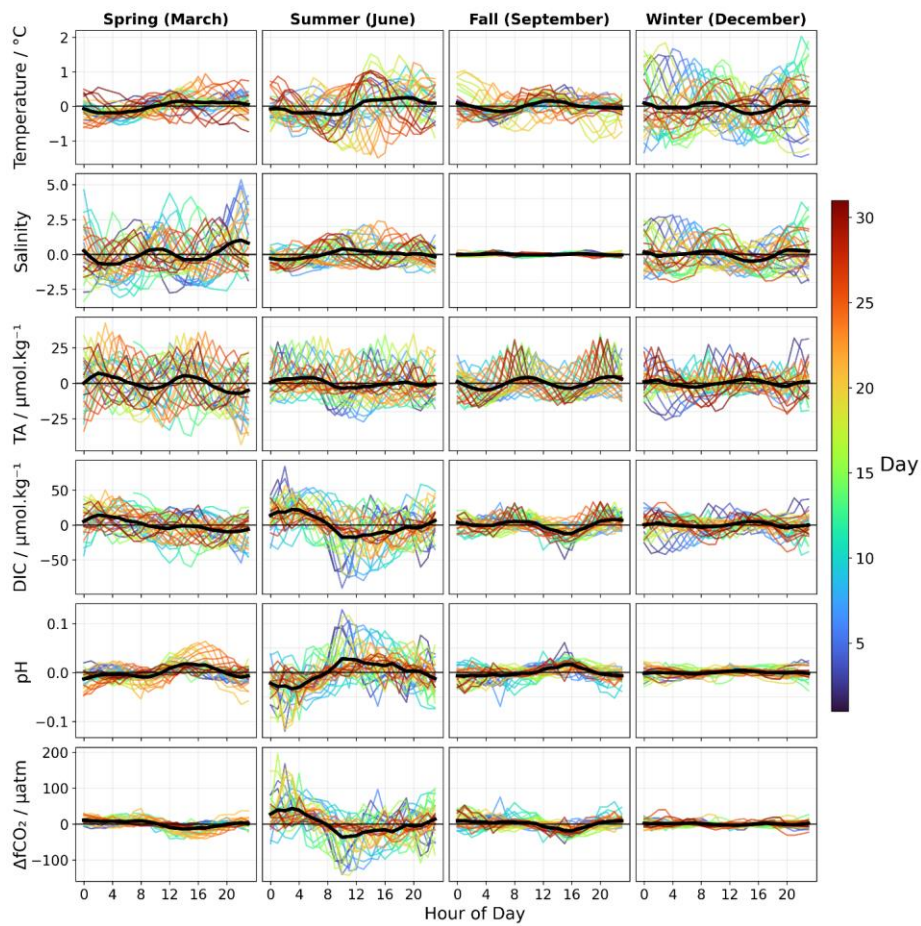
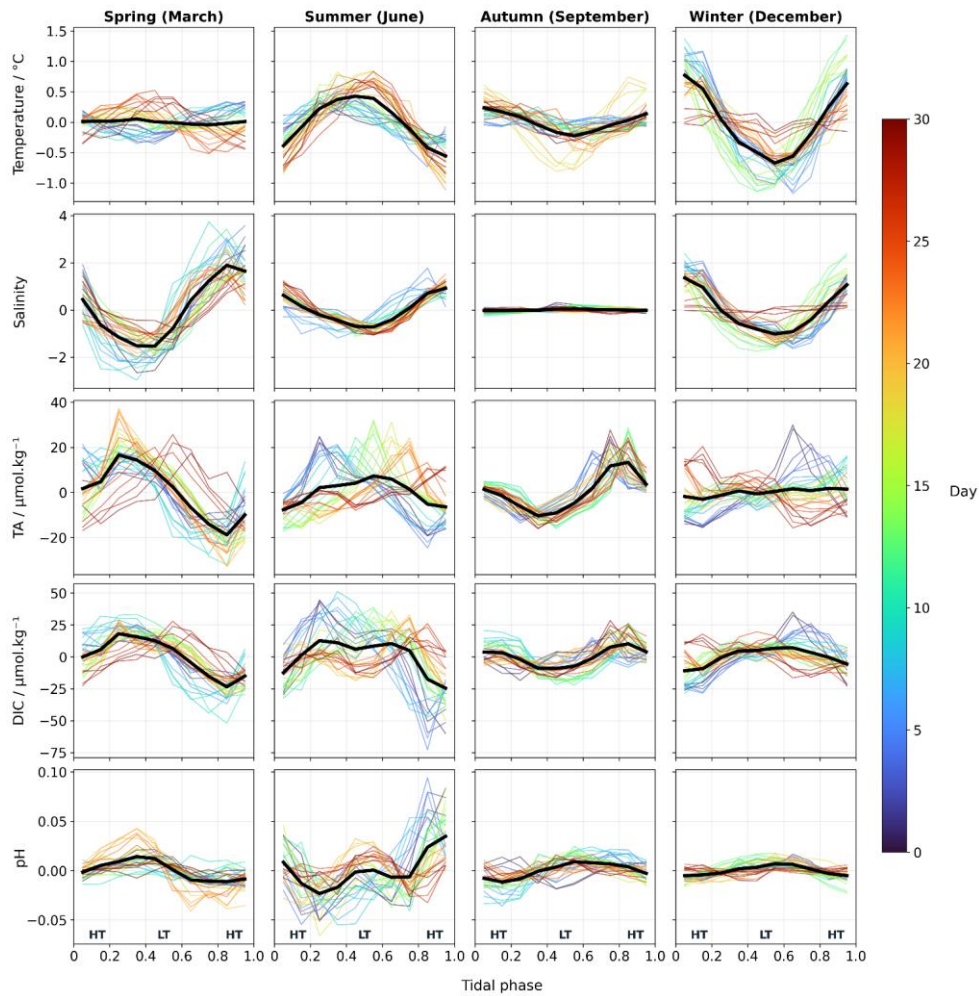


Figure 7. Monthly and daily anomalies of temperature, salinity, TA, DIC, pH and ΔfCO_2 .

785 Daily anomalies (coloured by day as shown in colorbar) and monthly anomalies cycles (black line) for four representative months: December (winter), May-March (spring), June (Junesummer) and October-September (Autumn). -The monthly means represents the average of all daily cycles for each month. Complete monthly figures are available in the supplementary information (Fig. S78-98, S110, S143, S176, S176, S198, S210).



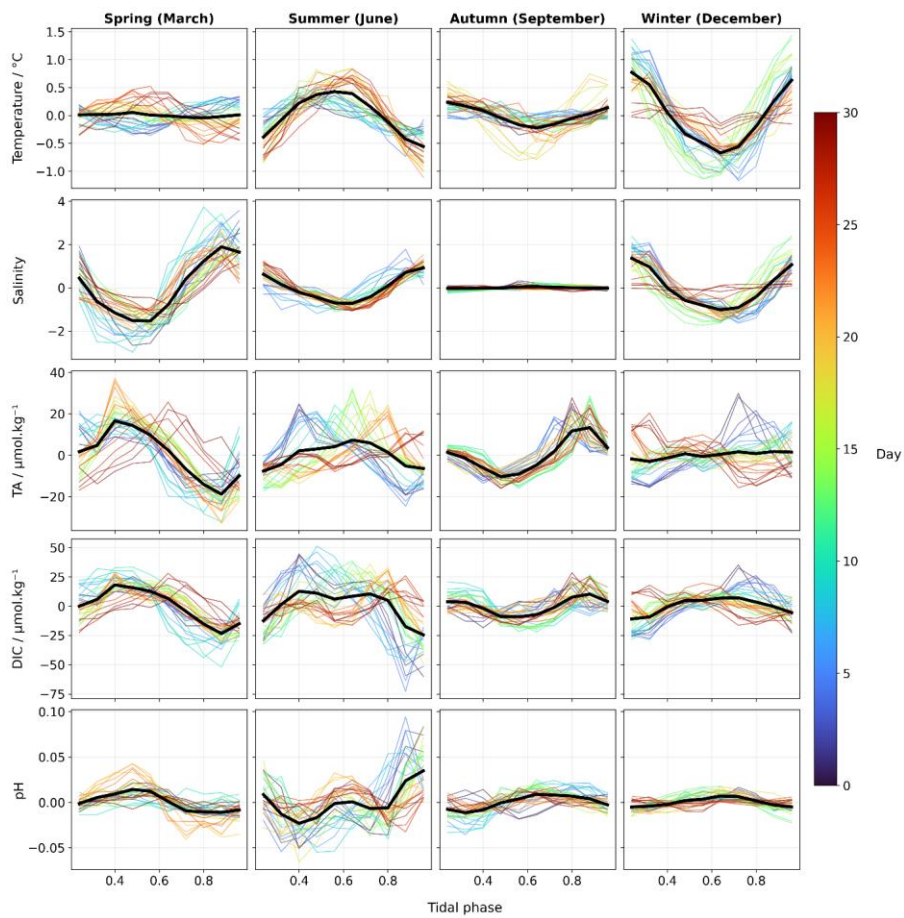


Figure 8. Monthly and daily anomalies of temperature, salinity, TA, DIC, and pH across tidal phases. Daily anomalies (coloured by day as shown in colorbar) and monthly mean anomalies (black line) for four representative months: March (spring), June (summer), September (autumn) and December (winter). Each subplot shows variations across tidal phases representing the tidal cycle. *HT and LT indicate high and low tide positions respectively.* The monthly means represent the average of all daily tidal cycles for each month. Complete monthly figures are available in the supplementary information (Fig. S109, S132, S154, S2049).

4.2.3 Combined influence of tidal and biological processes

There were periods across the year when tidal influences on DIC became more pronounced (Fig. S195), particularly in autumn and winter (February, November to January), when biological processes are generally weaker. During these months, DIC anomalies showed minimal day-night variation and followed a semi-diurnal cycle, closely resembling that of TA and water level. This suggests that during the colder months, hydrological processes exerted a stronger influence on DIC fluctuations than biological processes, and this was demonstrated by the 24-h/12-h ratio (Fig. S165), where the tidal component was dominant in winter and autumn. While the influence of these fluctuations on pH was smaller compared to the biologically driven DIC changes, pH monthly anomalies varied slightly, ranging between -0.003 ± 0.001 and 0.004 ± 0.002 (with daily anomalies ranging between -0.04 ± 0.009 and 0.03 ± 0.008).

Changes in both TA and DIC influence pH, although the underlying drivers differ. While TA was mainly driven by hydrological processes, DIC was driven by both biological and hydrological factors. The relative influence of these processes varied seasonally, with a higher biological influence during warmer months and more hydrological processes during the colder months. To quantify the influence of biological and hydrological processes on DIC, and their subsequent influence on pH, we calculated the Wasserstein distance for the two components of DIC, DIC_{bio} and DIC_{hydro} which represents the influence of biological and hydrological processes on DIC, respectively. The results (Fig. 9) show a clear seasonal pattern where the Wasserstein distance between DIC_{bio} over DIC_{hydro} was lower during winter indicating that hydrological processes exerted a stronger influence on DIC during winter period, which was also demonstrated by the Fourier analysis (Fig. S165). Conversely, the greater distance observed for the rest of the year suggests a stronger divergence between biological and hydrological influences on DIC, reinforcing then the observed seasonal differences in TA and DIC variability.

These results are consistent with seasonal scale variations discussed in Section 4.1.2 and highlight that pH is ultimately controlled by biological processes through DIC during most of the year.

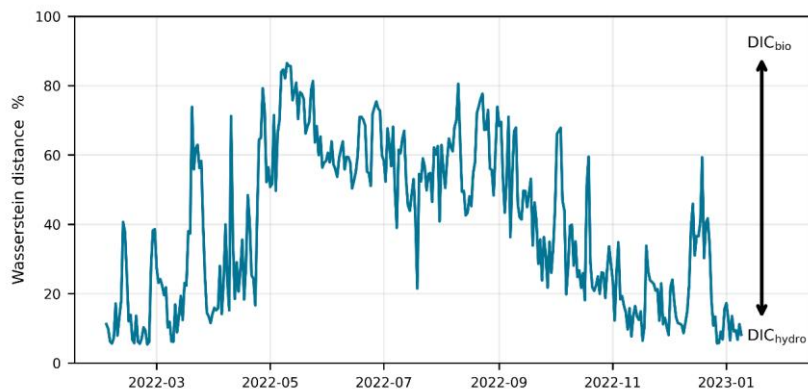


Figure 9. Seasonal variability of the Wasserstein distance between DIC_{bio} and DIC_{hydro}.

835 Lower distances indicate stronger hydrological influence, while higher distances indicate more biological influence. The Wasserstein distance is expressed as a percentage using: $(\text{Wasserstein}_{\text{hydro}} / (\text{Wasserstein}_{\text{bio}} + \text{Wasserstein}_{\text{hydro}})) \times 100$.

4.3 Climate change and the carbonate system

Understanding the carbonate system variability in the Wadden Sea also requires examining large-scale drivers such as climate drivers, that exerts regional to global influences. The North Atlantic Oscillation (NAO) significantly controls weather patterns, ocean circulation and marine biogeochemistry across the North Atlantic region. For instance, a positive NAO index delays spring blooms by 2-3 weeks due to deeper mixed layer depth (Henson et al., 2009), while a negative NAO index weakens the North Atlantic Current transport of subtropical waters, resulting in reduced CO₂ uptake (Thomas et al., 2008). These changes in CO₂ uptake directly affect DIC concentrations and pH in the water column.

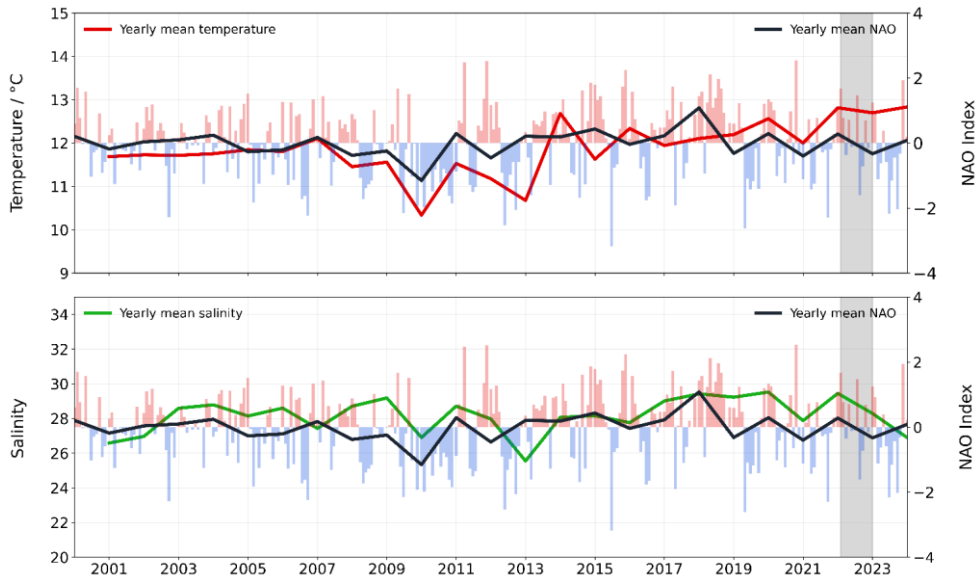
845 The Marsdiep tidal inlet, with its 164-year record of temperature and salinity, offers a valuable dataset to investigate the NAO-driven variability on different time scales. We used temperature and salinity data collected during this study and incorporated long-term data from 2001 until 2024 (Fig. 10). Sea surface temperature in the Marsdiep significantly increased (p-value < 0.005) between 2001 and 2024 at a rate of 0.045 °C per year and was showing a strong correlation with NAO (Pearson's r = 0.60). These changes in temperature, modulated by NAO variability, might have direct consequences for the marine carbonate system. Increasing temperatures result in a reduced CO₂ solubility in seawater and increasing pH levels (Zeebe and Wolf-Gladrow, 2001). Higher temperatures also result in an increased metabolic rate of marine organisms, for instance by influencing carbonate saturation states that are crucial for shell-forming species (Pörtner et al., 2004; Wickins, 1984). During this same period, salinity increased with an average rate of 0.035 per year, most likely due to reduced freshwater discharges into the Wadden Sea (Fig. S22†) and increased evaporation (Philippart et al., 2024), contrasting with the

observations of Van Aken. (2008a) for the period 1861-2003. Salinity and NAO presented a moderate correlation (Pearson's
855 $r = 0.44$) between 2001 and 2024, but higher than the correlation found by Van Aken. (2008b). Changes in salinity also
influence TA and DIC concentrations, with direct implications for pH.

The influence of NAO on the North Atlantic and North Sea has been extensively researched, however fewer studies
have explored its impact on the mixing dynamics between the southern North Sea and the Wadden Sea, particularly regarding
the marine carbonate system. The NAO has been shown to strongly affect mixing between the northern and southern North
860 Sea, with a positive NAO index resulting in a higher pH in the northern part and a lower one in the southern part, while a
negative NAO index increases mixing between the two regions and results in a more transitional pH pattern (Salt et al., 2013).
Since NAO influences the mixing between the northern and southern North Sea, we can then expect a similar effect between
the southern North Sea and the Wadden Sea.

Considering that annual pH ranges can vary by 1 in riverine-influenced coastal areas (Blackford and Gilbert, 2007),
865 changes in freshwater inputs, driven by NAO, could amplify this variability in the Wadden Sea. The combination of all these
processes (temperature effect, mixing changes, variable freshwater inputs) suggest that NAO may create an even more complex
and non-linear responses in the Wadden Sea and southern North Sea interactions that would warrant further investigation.

Our results provide important insights into the carbonate system in the Marsdiep channel; however, they may not
fully represent the entire Wadden Sea system. The Marsdiep channel is the main channel where most of the water exchange
870 occurs between the North Sea and western Wadden Sea, but we must consider regional variations, as conditions vary across
the system. The Wadden Sea exhibits a salinity gradient with freshwater influence increasing east. In the northern Wadden
Sea, the Ems and Weser rivers contribute to the local variability, whereas the western Wadden Sea is predominantly affected
by managed discharges from the Lake IJssel. These factors, among other factors such as topography, tidal exchange and barrier
islands formation, contribute to the spatial heterogeneity of the carbonate system in the Wadden Sea, and may result in different
875 responses to changes driven by NAO across the region. This highlights the need for broader-scale studies across the Wadden
Sea, as it is important to understand how climate-driven changes interact with local and regional processes in shaping the
carbonate system.



880 **Figure 10. Yearly variability of temperature, salinity and NAO index between 2001-2023.** Annual mean temperature (top, red line) and salinity (bottom, green line) alongside NAO index (yearly mean in black line and bars in red and blue for monthly data). The grey shaded area highlights the study period February 2022-January 2023.

5 Conclusions

885 Due to the combined effect of hydrological, biological, and physical processes, the marine carbonate system in the Wadden Sea exhibits complex processes on different timescales. Seasonal pH variability is primarily driven by biological processes, with maximum pH values observed in spring. TA is mainly influenced by hydrological processes, whereas DIC reflects both hydrological and biological controls. The hydrological effects of TA and DIC on pH approximately cancel each other out, leaving biological processes as the dominant driver of pH. At the diel scale, pH and DIC followed 24-hour cycles that might be linked to NCP and respiration, while TA was mainly driven by the semi-diurnal tidal cycles. While periods of CO₂ uptake occurred during bloom events, the results showed that the Wadden Sea acted as a net CO₂ source to the atmosphere, with an annual release of 4.7 g-C m⁻², over the observed period.

890

We developed an MLR model to predict TA from observed salinity and tidal cycles. The model performance was adequate for seasonal and diel applications. However, due to important spatial and temporal variability in the Wadden Sea, region-specific MLR models may be needed to fully capture TA dynamics across the different basins of the Wadden Sea.

895 In order to improve our understanding of the drivers of the marine carbonate system across the Wadden Sea, high-resolution time series are essential, ranging from minute-scale for continuous sensor measurements, to weekly or bi-weekly for discrete sampling. This is particularly important given the interplay between tidal cycles, freshwater inputs, and different biological processes which needs to be disentangled in order to assess their relative contribution to marine carbonate chemistry. Such studies are crucial, given the role of the Wadden Sea in alkalinity export towards the North Sea (Norbisrath et al., 2024; 900 Thomas et al., 2009). Furthermore, the contribution of external drivers such as global warming, potential changes in large-scale atmospheric patterns as indicated by the NAO index (Smith et al., 2025) and the changing tides in the Marsdiep channel (van der Molen et al., 2022) may alter the balance between the hydrological and biological controls over time.

Under these changing conditions, it becomes urgent to establish sustained monitoring programs from minutes to weekly timescales in order to resolve the influence of tidal cycles, biological processes and other factors on carbonate 905 chemistry. Understanding the influences of these processes is crucial for distinguishing natural variability from anthropogenic signals in this highly variable system. Only with high-resolution monitoring then we can predict how climate change will affect the Wadden Sea's role in CO₂ uptake, its regional role in alkalinity cycling and the ecosystem. While high-resolution monitoring might require substantial funding, the Wadden Sea's socio-economic and ecological importance (Baer et al., 2017) makes such monitoring essential for informed decision making under changing climate conditions. Understanding the marine 910 carbonate system will support the management of fisheries and aquaculture economies by developing adaptive strategies to different challenges that may arise from ocean acidification.

Data availability

The dataset presented in this article are freely available online at <https://doi.org/10.25850/nioz/7b.b.4j>.

The scripts for processing the data can be found in https://github.com/YOurradi/Marsdiep_data 915 https://github.com/YOurradi/jetty_processing by the time of publication.

Author contribution.

YO, MPH, GJR conceptualized the project. YO, MPH curated the data and performed the investigation. YO conceptualized the methodology, used the necessary software, visualised the data and prepared the original draft of the paper. SvL provided additional observational data. YO, MPH, GJR, SvL reviewed and edited the paper.

920 **Competing interests.**

The authors declare that they have no conflict of interest.

Disclaimer.

Publisher's note: Copernicus Publications remains neutral with regard to jurisdictional claims in published maps and institutional affiliations.

925 **Acknowledgements.**

We are grateful to Eric Wagemakers for installing the pH sensor at the NIOZ jetty and conducting all sensor maintenance. We thank Eric as well as Evaline van Weerlee for providing the hydrological and nutrient data from the NIOZ jetty, including sample collection and data processing which made this work possible. We are thankful to Sharyn Ossebaar for her invaluable assistance and support in the laboratory.

930

Financial support

This research was funded by the Netherlands Enterprise Agency (RVO), project RoboDock (MOOI20FO2JU).

References

- 935 Alin, S. R., Feely, R. A., Dickson, A. G., Hernández-Ayón, J. M., Juranek, L. W., Ohman, M. D., and Goericke, R.: Robust empirical relationships for estimating the carbonate system in the southern California Current System and application to CalCOFI hydrographic cruise data (2005–2011), *J. Geophys. Res. Oceans*, 117, <https://doi.org/10.1029/2011JC007511>, 2012.
- Al-Raei, A. M., Bosselmann, K., Böttcher, M. E., Hespeneide, B., and Tauber, F.: Seasonal dynamics of microbial sulfate reduction in temperate intertidal surface sediments: controls by temperature and organic matter, *Ocean Dyn.*, 59, 351–370, <https://doi.org/10.1007/s10236-009-0186-5>, 2009.
- 940 Aufdenkampe, A. K., Mayorga, E., Raymond, P. A., Melack, J. M., Doney, S. C., Alin, S. R., Aalto, R. E., and Yoo, K.: Riverine coupling of biogeochemical cycles between land, oceans, and atmosphere, *Front. Ecol. Environ.*, 9, 53–60, <https://doi.org/10.1890/100014>, 2011.
- Baer, J., Smaal, A., van der Reijden, K., and Nehls, G.: Wadden Sea Quality Status Report: Fisheries, Common Wadden Sea Secretariat, <https://doi.org/10.5281/ZENODO.15225400>, 2017.
- 945 Bates, N. R., Takahashi, T., Chipman, D. W., and Knap, A. H.: Variability of pCO₂ on diel to seasonal timescales in the Sargasso Sea near Bermuda, *J. Geophys. Res. Oceans*, 103, 15567–15585, <https://doi.org/10.1029/98JC00247>, 1998.

- Bates, N. R., Mathis, J. T., and Cooper, L. W.: Ocean acidification and biologically induced seasonality of carbonate mineral saturation states in the western Arctic Ocean, *J. Geophys. Res. Oceans*, 114, <https://doi.org/10.1029/2008JC004862>, 2009.
- 950 Bauer, J. E., Cai, W.-J., Raymond, P. A., Bianchi, T. S., Hopkinson, C. S., and Regnier, P. A. G.: The changing carbon cycle of the coastal ocean, *Nature*, 504, 61–70, <https://doi.org/10.1038/nature12857>, 2013.
- Baumann, H. and Smith, E. M.: Quantifying Metabolically Driven pH and Oxygen Fluctuations in US Nearshore Habitats at Diel to Interannual Time Scales, *Estuaries Coasts*, 41, 1102–1117, <https://doi.org/10.1007/s12237-017-0321-3>, 2018.
- 955 van Beusekom, J. E. E., Carstensen, J., Dolch, T., Grage, A., Hofmeister, R., Lenhart, H., Kerimoglu, O., Kolbe, K., Pätsch, J., Rick, J., Rönn, L., and Ruiters, H.: Wadden Sea Eutrophication: Long-Term Trends and Regional Differences, *Front. Mar. Sci.*, 6, 2019.
- van Beusekom, J., Fock, H., Jong, F., Christiansen, S., and Christiansen, B.: Wadden Sea specific eutrophication criteria, *Wadden Sea Ecosyst.*, 14, 1–115, 2001.
- 960 Blackford, J. C. and Gilbert, F. J.: pH variability and CO₂ induced acidification in the North Sea, *J. Mar. Syst.*, 64, 229–241, <https://doi.org/10.1016/j.jmarsys.2006.03.016>, 2007.
- Borges, A. V.: Present Day Carbon Dioxide Fluxes in the Coastal Ocean and Possible Feedbacks Under Global Change, in: *Oceans and the Atmospheric Carbon Content*, edited by: Duarte, P. and Santana-Casiano, J. M., Springer Netherlands, Dordrecht, 47–77, https://doi.org/10.1007/978-90-481-9821-4_3, 2011.
- 965 Bozec, Y., Thomas, H., Schiettecatte, L.-S., Borges, A. V., Elkalay, K., and de Baar, H. J. W.: Assessment of the processes controlling the seasonal variations of dissolved inorganic carbon in the North Sea, *Limnol. Oceanogr.*, 51, 2746–2762, <https://doi.org/10.4319/lo.2006.51.6.2746>, 2006.
- Brenner, H., Braeckman, U., Le Guitton, M., and Meysman, F. J. R.: The impact of sedimentary alkalinity release on the water column CO₂ system in the North Sea, *Biogeosciences*, 13, 841–863, <https://doi.org/10.5194/bg-13-841-2016>, 2016.
- 970 Buijsman, M. and Ridderinkhof, H.: Long-term evolution of sandwaves in the Marsdiep inlet. I: High-resolution observations, *Cont. Shelf Res.*, 28, <https://doi.org/10.1016/j.csr.2007.10.011>, 2008.
- Buijsman, M. C. and Ridderinkhof, H.: Water transport at subtidal frequencies in the Marsdiep inlet, *J. Sea Res.*, 58, 255–268, <https://doi.org/10.1016/j.seares.2007.04.002>, 2007.
- 975 Burchard, H., Flöser, G., Staneva, J. V., Badewien, T. H., and Riethmüller, R.: Impact of Density Gradients on Net Sediment Transport into the Wadden Sea, <https://doi.org/10.1175/2007JPO3796.1>, 2008.
- Cadée, G. C. and Hegeman, J.: Phytoplankton in the Marsdiep at the end of the 20th century; 30 years monitoring biomass, primary production, and *Phaeocystis* blooms, *J. Sea Res.*, 48, 97–110, [https://doi.org/10.1016/S1385-1101\(02\)00161-2](https://doi.org/10.1016/S1385-1101(02)00161-2), 2002.
- Cai, W.-J.: Estuarine and Coastal Ocean Carbon Paradox: CO₂ Sinks or Sites of Terrestrial Carbon Incineration?, *Annu. Rev. Mar. Sci.*, 3, 123–145, <https://doi.org/10.1146/annurev-marine-120709-142723>, 2011a.
- 980 Cai, W.-J.: Estuarine and Coastal Ocean Carbon Paradox: CO₂ Sinks or Sites of Terrestrial Carbon Incineration?, *Annu. Rev. Mar. Sci.*, 3, 123–145, <https://doi.org/10.1146/annurev-marine-120709-142723>, 2011b.

- Carter, B. R., Williams, N. L., Gray, A. R., and Feely, R. A.: Locally interpolated alkalinity regression for global alkalinity estimation, *Limnol. Oceanogr. Methods*, 14, 268–277, <https://doi.org/10.1002/lom3.10087>, 2016.
- 985 Chaillou, G., Tommi-Morin, G., and Mucci, A.: Production and fluxes of inorganic carbon and alkalinity in a subarctic subterranean estuary, *Front. Mar. Sci.*, 11, <https://doi.org/10.3389/fmars.2024.1323463>, 2024.
- Christianen, M. J. A., Middelburg, J. J., Holthuijsen, S. J., Jouta, J., Compton, T. J., van der Heide, T., Piersma, T., Sinninghe Damsté, J. S., van der Veer, H. W., Schouten, S., and Olff, H.: Benthic primary producers are key to sustain the Wadden Sea food web: stable carbon isotope analysis at landscape scale, *Ecology*, 98, 1498–1512, <https://doi.org/10.1002/ecy.1837>, 2017.
- 990 Clargo, N. M., Salt, L. A., Thomas, H., and de Baar, H. J. W.: Rapid increase of observed DIC and $p\text{CO}_2$ in the surface waters of the North Sea in the 2001-2011 decade ascribed to climate change superimposed by biological processes, *Mar. Chem.*, 177, 566–581, <https://doi.org/10.1016/j.marchem.2015.08.010>, 2015.
- Clayton, T. D. and Byrne, R. H.: Spectrophotometric seawater pH measurements: total hydrogen ion concentration scale calibration of m-cresol purple and at-sea results, *Deep Sea Res. Part Oceanogr. Res. Pap.*, 40, 2115–2129, [https://doi.org/10.1016/0967-0637\(93\)90048-8](https://doi.org/10.1016/0967-0637(93)90048-8), 1993.
- 995 Cole, J. J., Prairie, Y. T., Caraco, N. F., McDowell, W. H., Tranvik, L. J., Striegl, R. G., Duarte, C. M., Kortelainen, P., Downing, J. A., Middelburg, J. J., and Melack, J.: Plumbing the Global Carbon Cycle: Integrating Inland Waters into the Terrestrial Carbon Budget, *Ecosystems*, 10, 172–185, <https://doi.org/10.1007/s10021-006-9013-8>, 2007.
- Da, F., Friedrichs, M. A. M., St-Laurent, P., Najjar, R. G., Shadwick, E. H., and Stets, E. G.: Influence of Rivers, Tides, and Tidal Wetlands on Estuarine Carbonate System Dynamics, *Estuaries Coasts*, 47, 2283–2305, <https://doi.org/10.1007/s12237-024-01421-z>, 2024.
- 1000 Dickson, A. G.: The measurement of sea water pH, *Mar. Chem.*, 44, 131–142, [https://doi.org/10.1016/0304-4203\(93\)90198-W](https://doi.org/10.1016/0304-4203(93)90198-W), 1993.
- Dickson, A. G., Sabine, C. L., Christian, J. R., Barger, C. P., and North Pacific Marine Science Organization (Eds.): Guide to best practices for ocean CO₂ measurements, North Pacific Marine Science Organization, Sidney, BC, 1 pp., 2007.
- 1005 Elias, E. P. L., Spek, A. J. F. van der, Wang, Z. B., and Ronde, J. de: Morphodynamic development and sediment budget of the Dutch Wadden Sea over the last century, *Neth. J. Geosci.*, 91, 293–310, <https://doi.org/10.1017/S0016774600000457>, 2012.
- Falkowski, P. G.: The role of phytoplankton photosynthesis in global biogeochemical cycles, *Photosynth. Res.*, 39, 235–258, <https://doi.org/10.1007/BF00014586>, 1994.
- 1010 Fassbender, A. J., Alin, S. R., Feely, R. A., Sutton, A. J., Newton, J. A., and Byrne, R. H.: Estimating Total Alkalinity in the Washington State Coastal Zone: Complexities and Surprising Utility for Ocean Acidification Research, *Estuaries Coasts*, 40, 404–418, <https://doi.org/10.1007/s12237-016-0168-z>, 2017.
- Gattuso, J.-P., Frankignoulle, M., and Wollast, R.: CARBON AND CARBONATE METABOLISM IN COASTAL AQUATIC ECOSYSTEMS, *Annu. Rev. Ecol. Evol. Syst.*, 29, 405–434, <https://doi.org/10.1146/annurev.ecolsys.29.1.405>, 1998.
- 1015 Gemayel, E., Hassoun, A. E. R., Benallal, M. A., Goyet, C., Rivaro, P., Abboud-Abi Saab, M., Krasakopoulou, E., Touratier, F., and Ziveri, P.: Climatological variations of total alkalinity and total dissolved inorganic carbon in the Mediterranean Sea surface waters, *Earth Syst. Dyn.*, 6, 789–800, <https://doi.org/10.5194/esd-6-789-2015>, 2015.

- 1020 Goldman, J. C. and Brewer, P. G.: Effect of nitrogen source and growth rate on phytoplankton-mediated changes in alkalinity, *Limnol. Oceanogr.*, 25, 352–357, <https://doi.org/10.4319/lo.1980.25.2.0352>, 1980.
- Groeskamp, S., Nauw, J. J., and Maas, L. R. M.: Observations of estuarine circulation and solitary internal waves in a highly energetic tidal channel, *Ocean Dyn.*, 61, 1767–1782, <https://doi.org/10.1007/s10236-011-0455-y>, 2011.
- Grunwald, M., Dellwig, O., Kohlmeier, C., Kowalski, N., Beck, M., Badewien, T. H., Kotzur, S., Liebezeit, G., and Brumsack, H.-J.: Nutrient dynamics in a back barrier tidal basin of the Southern North Sea: Time-series, model simulations, and budget estimates, *J. Sea Res.*, 64, 199–212, <https://doi.org/10.1016/j.seares.2010.02.008>, 2010.
- 1025 Henson, S. A., Dunne, J. P., and Sarmiento, J. L.: Decadal variability in North Atlantic phytoplankton blooms, *J. Geophys. Res. Oceans*, 114, <https://doi.org/10.1029/2008JC005139>, 2009.
- Hofmeister, R., Flöser, G., and Schartau, M.: Estuary-type circulation as a factor sustaining horizontal nutrient gradients in freshwater-influenced coastal systems, *Geo-Mar. Lett.*, 37, 179–192, <https://doi.org/10.1007/s00367-016-0469-z>, 2017.
- 1030 Honkanen, M., Müller, J. D., Seppälä, J., Rehder, G., Kielosto, S., Ylöstalo, P., Mäkelä, T., Hatakka, J., and Laakso, L.: The diurnal cycle of $p\text{CO}_2$ in the coastal region of the Baltic Sea, *Ocean Sci.*, 17, 1657–1675, <https://doi.org/10.5194/os-17-1657-2021>, 2021.
- Hoppema, J. M. J.: The distribution and seasonal variation of alkalinity in the Southern Bight of the North Sea and in the Western Wadden Sea, *Neth. J. Sea Res.*, 26, 11–23, [https://doi.org/10.1016/0077-7579\(90\)90053-J](https://doi.org/10.1016/0077-7579(90)90053-J), 1990.
- 1035 Hoppema, J. M. J.: Carbon dioxide and oxygen disequilibrium in a tidal basin (Dutch wadden sea), *Neth. J. Sea Res.*, 31, 221–229, [https://doi.org/10.1016/0077-7579\(93\)90023-L](https://doi.org/10.1016/0077-7579(93)90023-L), 1993.
- Huettel, M., Røy, H., Precht, E., and Ehrenhauss, S.: Hydrodynamical impact on biogeochemical processes in aquatic sediments, in: *The Interactions between Sediments and Water*, Dordrecht, 231–236, https://doi.org/10.1007/978-94-017-3366-3_31, 2003.
- 1040 Humphreys, M. P. and Matthews, R. S.: Calculate: total alkalinity from titration data in Python, , <https://doi.org/10.5281/zenodo.8112350>, 2023.
- Humphreys, M. P., Daniels, C. J., Wolf-Gladrow, D. A., Tyrrell, T., and Achterberg, E. P.: On the influence of marine biogeochemical processes over CO_2 exchange between the atmosphere and ocean, *Mar. Chem.*, 199, 1–11, <https://doi.org/10.1016/j.marchem.2017.12.006>, 2018.
- 1045 Humphreys, M. P., Schiller, A. J., Sandborn, D., Gregor, L., Pierrot, D., van Heuven, S. M. A. C., Lewis, E. R., and Wallace, D. W. R.: PyCO2SYS: marine carbonate system calculations in Python, , <https://doi.org/10.5281/zenodo.7550236>, 2023.
- Hyun, S., Mishra, A., Follett, C. L., Jonsson, B., Kulk, G., Forget, G., Racault, M.-F., Jackson, T., Dutkiewicz, S., Müller, C. L., and Bien, J.: Ocean mover’s distance: using optimal transport for analysing oceanographic data, *Proc. R. Soc. Math. Phys. Eng. Sci.*, 478, 20210875, <https://doi.org/10.1098/rspa.2021.0875>, 2022.
- 1050 Johengen, T., Smith, G. J., Schar, D., Atkinson, M., Purcell, H., Loewensteiner, D., Epperson, Z., and Tamburri, M.: Performance Verification Statement For the Xylem EXO 2 pH Sensor, Alliance for Coastal Technologies (ACT), <https://doi.org/10.25607/OBP-307>, 2015.
- Jones, D. C., Ito, T., Takano, Y., and Hsu, W.-C.: Spatial and seasonal variability of the air-sea equilibration timescale of carbon dioxide, *Glob. Biogeochem. Cycles*, 28, 1163–1178, <https://doi.org/10.1002/2014GB004813>, 2014.

- 1055 Kieskamp, W. M., Lohse, L., Epping, E., and Helder, W.: Seasonal variation in denitrification rates and nitrous oxide fluxes in intertidal sediments of the western Wadden Sea, *Mar. Ecol. Prog. Ser.*, 72, 145–151, 1991.
- Laruelle, G. G., Cai, W.-J., Hu, X., Gruber, N., Mackenzie, F. T., and Regnier, P.: Continental shelves as a variable but increasing global sink for atmospheric carbon dioxide, *Nat. Commun.*, 9, 454, <https://doi.org/10.1038/s41467-017-02738-z>, 2018.
- 1060 Le Quéré, C., Andrew, R. M., Friedlingstein, P., Sitch, S., Hauck, J., Pongratz, J., Pickers, P. A., Korsbakken, J. I., Peters, G. P., Canadell, J. G., Arneeth, A., Arora, V. K., Barbero, L., Bastos, A., Bopp, L., Chevallier, F., Chini, L. P., Ciais, P., Doney, S. C., Gkritzalis, T., Goll, D. S., Harris, I., Haverd, V., Hoffman, F. M., Hoppema, M., Houghton, R. A., Hurtt, G., Ilyina, T., Jain, A. K., Johannessen, T., Jones, C. D., Kato, E., Keeling, R. F., Goldewijk, K. K., Landschützer, P., Lefèvre, N., Lienert, S., Liu, Z., Lombardozi, D., Metzl, N., Munro, D. R., Nabel, J. E. M. S., Nakaoka, S., Neill, C., Olsen, A., Ono, T., Patra, P., Peregon, A., Peters, W., Peylin, P., Pfeil, B., Pierrot, D., Poulter, B., Rehder, G., Resplandy, L., Robertson, E., Rocher, M., Rödenbeck, C., Schuster, U., Schwinger, J., Séférian, R., Skjelvan, I., Steinhoff, T., Sutton, A., Tans, P. P., Tian, H., Tilbrook, B., Tubiello, F. N., van der Laan-Luijkx, I. T., van der Werf, G. R., Viovy, N., Walker, A. P., Wiltshire, A. J., Wright, R., Zaehle, S., and Zheng, B.: Global Carbon Budget 2018, *Earth Syst. Sci. Data*, 10, 2141–2194, <https://doi.org/10.5194/essd-10-2141-2018>, 2018.
- 1070 Lee, K., Tong, L. T., Millero, F. J., Sabine, C. L., Dickson, A. G., Goyet, C., Park, G.-H., Wanninkhof, R., Feely, R. A., and Key, R. M.: Global relationships of total alkalinity with salinity and temperature in surface waters of the world’s oceans, *Geophys. Res. Lett.*, 33, <https://doi.org/10.1029/2006GL027207>, 2006.
- van Leeuwen, S., Tett, P., Mills, D., and van der Molen, J.: Stratified and nonstratified areas in the North Sea: Long-term variability and biological and policy implications, *J. Geophys. Res. Oceans*, 120, 4670–4686, <https://doi.org/10.1002/2014JC010485>, 2015.
- 1075 Lipp, A. and Vermeesch, P.: Short communication: The Wasserstein distance as a dissimilarity metric for comparing detrital age spectra and other geological distributions, *Geochronology*, 5, 263–270, <https://doi.org/10.5194/gchron-5-263-2023>, 2023.
- Liu, X., Patsavas, M. C., and Byrne, R. H.: Purification and Characterization of meta-Cresol Purple for Spectrophotometric Seawater pH Measurements, *Environ. Sci. Technol.*, 45, 4862–4868, <https://doi.org/10.1021/es200665d>, 2011.
- 1080 Loebl, M., Dolch, T., and van Beusekom, J. E. E.: Annual dynamics of pelagic primary production and respiration in a shallow coastal basin, *J. Sea Res.*, 58, 269–282, <https://doi.org/10.1016/j.seares.2007.06.003>, 2007.
- Lueker, T. J., Dickson, A. G., and Keeling, C. D.: Ocean pCO₂ calculated from dissolved inorganic carbon, alkalinity, and equations for K₁ and K₂: validation based on laboratory measurements of CO₂ in gas and seawater at equilibrium, *Mar. Chem.*, 70, 105–119, [https://doi.org/10.1016/S0304-4203\(00\)00022-0](https://doi.org/10.1016/S0304-4203(00)00022-0), 2000.
- 1085 McNeil, B. I., Metzl, N., Key, R. M., Matear, R. J., and Corbiere, A.: An empirical estimate of the Southern Ocean air-sea CO₂ flux, *Glob. Biogeochem. Cycles*, 21, <https://doi.org/10.1029/2007GB002991>, 2007.
- Miao, Y., Wang, B., Carstensen, J., Li, D., Ma, X., Sun, Q., Xu, Z., Jin, H., Xu, J., Zeng, J., Zhou, F., and Chen, J.: Diverging Relationships Between Acidification and Hypoxia off the Changjiang Estuary, *J. Geophys. Res. Oceans*, 130, e2025JC022675, <https://doi.org/10.1029/2025JC022675>, 2025.
- 1090 Mojica Prieto, F. J. and Millero, F. J.: The values of pK₁ + pK₂ for the dissociation of carbonic acid in seawater, *Geochim. Cosmochim. Acta*, 66, 2529–2540, [https://doi.org/10.1016/S0016-7037\(02\)00855-4](https://doi.org/10.1016/S0016-7037(02)00855-4), 2002.

- van der Molen, J., Groeskamp, S., and Maas, L. R. M.: Imminent reversal of the residual flow through the Marsdiep tidal inlet into the Dutch Wadden Sea based on multiyear ferry-borne acoustic Doppler current profiler (ADCP) observations, *Ocean Sci.*, 18, 1805–1816, <https://doi.org/10.5194/os-18-1805-2022>, 2022.
- 1095 Nash, J. E. and Sutcliffe, J. V.: River flow forecasting through conceptual models part I — A discussion of principles, *J. Hydrol.*, 10, 282–290, [https://doi.org/10.1016/0022-1694\(70\)90255-6](https://doi.org/10.1016/0022-1694(70)90255-6), 1970.
- Newton, J., Feely, R., Jewett, E., Williamson, P., and Mathis, J.: *Global Ocean Acidification Observing Network: Requirements and Governance Plan*, 2015.
- 1100 Nightingale, P. D., Malin, G., Law, C. S., Watson, A. J., Liss, P. S., Liddicoat, M. I., Boutin, J., and Upstill-Goddard, R. C.: In situ evaluation of air-sea gas exchange parameterizations using novel conservative and volatile tracers, *Glob. Biogeochem. Cycles*, 14, 373–387, <https://doi.org/10.1029/1999GB900091>, 2000.
- Nondal, G., Bellerby, R. G. J., Olsen, A., Johannessen, T., and Olafsson, J.: Optimal evaluation of the surface ocean CO₂ system in the northern North Atlantic using data from voluntary observing ships, *Limnol. Oceanogr. Methods*, 7, 109–118, <https://doi.org/10.4319/lom.2009.7.109>, 2009.
- 1105 Norbistrath, M., van Beusekom, J. E. E., and Thomas, H.: Alkalinity sources in the Dutch Wadden Sea, *Ocean Sci.*, 20, 1423–1440, <https://doi.org/10.5194/os-20-1423-2024>, 2024.
- Otto, L., Zimmerman, J. T. F., Furnes, G. K., Mork, M., Sætre, R., and Becker, G.: Review of the physical oceanography of the North Sea, *Neth. J. Sea Res.*, 26, 161–238, [https://doi.org/10.1016/0077-7579\(90\)90091-T](https://doi.org/10.1016/0077-7579(90)90091-T), 1990.
- Peyré, G. and Cuturi, M.: *Computational Optimal Transport*, <http://arxiv.org/abs/1803.00567>, 18 March 2020.
- 1110 Philippart, C., Baptist, M., Bastmeijer, K., Bregnballe, T., Buschbaum, C., Hoekstra, P., Laursen, K., van Leeuwen, S. M., Oost, A. P., Wegner, M., and Zijlstra, R.: *Wadden Sea Quality Status Report: Climate Change*, Common Wadden Sea Secretariat, <https://doi.org/10.5281/zenodo.15111640>, 2024.
- Pörtner, H. O., Langenbuch, M., and Reipschläger, A.: Biological Impact of Elevated Ocean CO₂ Concentrations: Lessons from Animal Physiology and Earth History, *J. Oceanogr.*, 60, 705–718, <https://doi.org/10.1007/s10872-004-5763-0>, 2004.
- 1115 Postma, H.: *Hydrography of the Dutch Wadden Sea*, 1954.
- Postma, H.: Transport and accumulation of suspended matter in the Dutch Wadden Sea, *Neth. J. Sea Res.*, 1, 148–190, [https://doi.org/10.1016/0077-7579\(61\)90004-7](https://doi.org/10.1016/0077-7579(61)90004-7), 1961.
- Postma, H.: Exchange of materials between the North Sea and the Wadden Sea, *Mar. Geol.*, 40, 199–213, [https://doi.org/10.1016/0025-3227\(81\)90050-5](https://doi.org/10.1016/0025-3227(81)90050-5), 1981.
- 1120 Redfield, A. C., Ketchum, B. H., and Richards, F. A.: *The influence of organisms on the composition of sea-water*, 1963.
- Regaudie-de-Gioux, A. and Duarte, C. M.: Temperature dependence of planktonic metabolism in the ocean, *Glob. Biogeochem. Cycles*, 26, <https://doi.org/10.1029/2010GB003907>, 2012.
- 1125 Regnier, P., Friedlingstein, P., Ciais, P., Mackenzie, F. T., Gruber, N., Janssens, I. A., Laruelle, G. G., Lauerwald, R., Luyssaert, S., Andersson, A. J., Arndt, S., Arnosti, C., Borges, A. V., Dale, A. W., Gallego-Sala, A., Goddérís, Y., Goossens, N., Hartmann, J., Heinze, C., Ilyina, T., Joos, F., LaRowe, D. E., Leifeld, J., Meysman, F. J. R., Munhoven, G., Raymond, P.

- A., Spahni, R., Suntharalingam, P., and Thullner, M.: Anthropogenic perturbation of the carbon fluxes from land to ocean, *Nat. Geosci.*, 6, 597–607, <https://doi.org/10.1038/ngeo1830>, 2013.
- 1130 Rheuban, J. E., Gassett, P. R., McCorkle, D. C., Hunt, C. W., Liebman, M., Bastidas, C., O'Brien-Clayton, K., Pimenta, A. R., Silva, E., Vlahos, P., Woosley, R. J., Ries, J., Liberti, C. M., Grear, J., Salisbury, J., Brady, D. C., Guay, K., LaVigne, M., Strong, A. L., Stancioff, E., and Turner, E.: Synoptic assessment of coastal total alkalinity through community science, *Environ. Res. Lett. ERL Web Site*, 16, 1–14, <https://doi.org/10.1088/1748-9326/abcb39>, 2021.
- Ridderinkhof, H., Zimmerman, J. T. F., and Philippart, M. E.: Tidal exchange between the North Sea and Dutch Wadden Sea and mixing time scales of the tidal basins, *Neth. J. Sea Res.*, 25, 331–350, [https://doi.org/10.1016/0077-7579\(90\)90042-F](https://doi.org/10.1016/0077-7579(90)90042-F), 1990.
- 1135 Ridderinkhof, H., Haren, H. van, Eijgenraam, F., and Hillebrand, T.: Ferry observations on temperature, salinity and currents in the marsdiep tidal inlet between the North Sea and Wadden Sea, in: *Elsevier Oceanography Series*, vol. 66, edited by: Fiemming, N. C., Vallergera, S., Pinardi, N., Behrens, H. W. A., Manzella, G., Prandle, D., and Stei, J. H., Elsevier, 139–147, [https://doi.org/10.1016/S0422-9894\(02\)80018-6](https://doi.org/10.1016/S0422-9894(02)80018-6), 2002a.
- 1140 Ridderinkhof, H., Haren, H. van, Eijgenraam, F., and Hillebrand, T.: Ferry observations on temperature, salinity and currents in the marsdiep tidal inlet between the North Sea and Wadden Sea, in: *Elsevier Oceanography Series*, vol. 66, edited by: Fiemming, N. C., Vallergera, S., Pinardi, N., Behrens, H. W. A., Manzella, G., Prandle, D., and Stei, J. H., Elsevier, 139–147, [https://doi.org/10.1016/S0422-9894\(02\)80018-6](https://doi.org/10.1016/S0422-9894(02)80018-6), 2002b.
- Salisbury, J., Green, M., Hunt, C., and Campbell, J.: Coastal Acidification by Rivers: A Threat to Shellfish?, *Eos Trans. Am. Geophys. Union*, 89, 513–513, <https://doi.org/10.1029/2008EO500001>, 2008.
- 1145 Salt, L. A.: Process studies of the carbonate system in coastal and ocean environments of the Atlantic Ocean., PhD Thesis, University of Groningen, Groningen (Netherlands), 2014.
- Salt, L. A., Thomas, H., Prowe, A. E. F., Borges, A. V., Bozec, Y., and de Baar, H. J. W.: Variability of North Sea pH and CO₂ in response to North Atlantic Oscillation forcing, *J. Geophys. Res. Biogeosciences*, 118, 1584–1592, <https://doi.org/10.1002/2013JG002306>, 2013.
- 1150 Schwichtenberg, F., Pätsch, J., Böttcher, M. E., Thomas, H., Winde, V., and Emeis, K.-C.: The impact of intertidal areas on the carbonate system of the southern North Sea, *Biogeosciences*, 17, 4223–4245, <https://doi.org/10.5194/bg-17-4223-2020>, 2020a.
- 1155 Schwichtenberg, F., Pätsch, J., Böttcher, M. E., Thomas, H., Winde, V., and Emeis, K.-C.: The impact of intertidal areas on the carbonate system of the southern North Sea, *Biogeosciences*, 17, 4223–4245, <https://doi.org/10.5194/bg-17-4223-2020>, 2020b.
- Seiter, J. C. and Degrandpre, M. D.: Redundant chemical sensors for calibration-impossible applications, *Talanta*, 54, 99–106, [https://doi.org/10.1016/S0039-9140\(00\)00635-4](https://doi.org/10.1016/S0039-9140(00)00635-4), 2001.
- 1160 Smith, D. M., Dunstone, N. J., Eade, R., Hardiman, S. C., Hermanson, L., Scaife, A. A., and Seabrook, M.: Mitigation needed to avoid unprecedented multi-decadal North Atlantic Oscillation magnitude, *Nat. Clim. Change*, 15, 403–410, <https://doi.org/10.1038/s41558-025-02277-2>, 2025.
- Soetaert, K., Hofmann, A. F., Middelburg, J. J., Meysman, F. J. R., and Greenwood, J.: The effect of biogeochemical processes on pH, *Mar. Chem.*, 105, 30–51, <https://doi.org/10.1016/j.marchem.2006.12.012>, 2007.

- 1165 Song, S., Wang, Z. A., Gonneea, M. E., Kroeger, K. D., Chu, S. N., Li, D., and Liang, H.: An important biogeochemical link between organic and inorganic carbon cycling: Effects of organic alkalinity on carbonate chemistry in coastal waters influenced by intertidal salt marshes, *Geochim. Cosmochim. Acta*, 275, 123–139, <https://doi.org/10.1016/j.gca.2020.02.013>, 2020.
- Thomas, H., Bozec, Y., Elkalay, K., and De Baar, H. J. W.: Enhanced Open Ocean Storage of CO₂ from Shelf Sea Pumping, *Science*, 304, 1005–1008, <https://doi.org/10.1126/science.1095491>, 2004.
- 1170 Thomas, H., Bozec, Y., Elkalay, K., De Baar, H. J. W., Borges, A. V., and Schiettecatte, L.-S.: Controls of the surface water partial pressure of CO₂ in the North Sea, *Biogeosciences*, 2, 323–334, <https://doi.org/10.5194/bg-2-323-2005>, 2005a.
- Thomas, H., Bozec, Y., De Baar, H. J. W., Elkalay, K., Frankignoulle, M., Schiettecatte, L.-S., Kattner, G., and Borges, A. V.: The carbon budget of the North Sea, *Biogeosciences*, 2, 87–96, <https://doi.org/10.5194/bg-2-87-2005>, 2005b.
- 1175 Thomas, H., Friederike Prowe, A. E., Lima, I. D., Doney, S. C., Wanninkhof, R., Greatbatch, R. J., Schuster, U., and Corbière, A.: Changes in the North Atlantic Oscillation influence CO₂ uptake in the North Atlantic over the past 2 decades, *Glob. Biogeochem. Cycles*, 22, <https://doi.org/10.1029/2007GB003167>, 2008.
- Thomas, H., Schiettecatte, L.-S., Suykens, K., Koné, Y. J. M., Shadwick, E. H., Prowe, A. E. F., Bozec, Y., de Baar, H. J. W., and Borges, A. V.: Enhanced ocean carbon storage from anaerobic alkalinity generation in coastal sediments, *Biogeosciences*, 6, 267–274, <https://doi.org/10.5194/bg-6-267-2009>, 2009.
- 1180 Torres, O., Kwiatkowski, L., Sutton, A. J., Dorey, N., and Orr, J. C.: Characterizing Mean and Extreme Diurnal Variability of Ocean CO₂ System Variables Across Marine Environments, *Geophys. Res. Lett.*, 48, e2020GL090228, <https://doi.org/10.1029/2020GL090228>, 2021.
- Van Aken, H. M.: Variability of the salinity in the western Wadden Sea on tidal to centennial time scales, *J. Sea Res.*, 59, 121–132, <https://doi.org/10.1016/j.seares.2007.11.001>, 2008a.
- 1185 Van Aken, H. M.: Variability of the water temperature in the western Wadden Sea on tidal to centennial time scales, *J. Sea Res.*, 60, 227–234, <https://doi.org/10.1016/j.seares.2008.09.001>, 2008b.
- Van Beusekom, J. E. E., Buschbaum, C., and Reise, K.: Wadden Sea tidal basins and the mediating role of the North Sea in ecological processes: scaling up of management?, *Ocean Coast. Manag.*, 68, 69–78, <https://doi.org/10.1016/j.ocecoaman.2012.05.002>, 2012.
- 1190 Van Beusekom, J. E. E., Carstensen, J., Dolch, T., Grage, A., Hofmeister, R., Lenhart, H., Kerimoglu, O., Kolbe, K., Pätsch, J., Rick, J., Rönn, L., and Rüter, H.: Wadden Sea Eutrophication: Long-Term Trends and Regional Differences, *Front. Mar. Sci.*, 6, 370, <https://doi.org/10.3389/fmars.2019.00370>, 2019.
- Villani, C.: *Optimal Transport*, Springer, Berlin, Heidelberg, <https://doi.org/10.1007/978-3-540-71050-9>, 2009.
- 1195 Voynova, Y. G., Petersen, W., Gehrung, M., Aßmann, S., and King, A. L.: Intertidal regions changing coastal alkalinity: The Wadden Sea-North Sea tidally coupled bioreactor, *Limnol. Oceanogr.*, 64, 1135–1149, <https://doi.org/10.1002/lno.11103>, 2019.
- Waldbusser, G. G. and Salisbury, J. E.: Ocean acidification in the coastal zone from an organism’s perspective: multiple system parameters, frequency domains, and habitats, *Annu. Rev. Mar. Sci.*, 6, 221–247, <https://doi.org/10.1146/annurev-marine-121211-172238>, 2014.

- 1200 Wang, Z. A. and Cai, W.-J.: The inorganic carbon system across the land-to-ocean continuum, in: *Treatise on Geochemistry* (Third edition), edited by: Anbar, A. and Weis, D., Elsevier, Oxford, 111–144, <https://doi.org/10.1016/B978-0-323-99762-1.00032-2>, 2025.
- Weiss, R. F.: Carbon dioxide in water and seawater: the solubility of a non-ideal gas, *Mar. Chem.*, 2, 203–215, [https://doi.org/10.1016/0304-4203\(74\)90015-2](https://doi.org/10.1016/0304-4203(74)90015-2), 1974.
- 1205 Wickins, J. F.: The effect of hypercapnic sea water on growth and mineralization in penaeid prawns, *Aquaculture*, 41, 37–48, [https://doi.org/10.1016/0044-8486\(84\)90388-0](https://doi.org/10.1016/0044-8486(84)90388-0), 1984.
- Wolf-Gladrow, D. A., Zeebe, R. E., Klaas, C., Körtzinger, A., and Dickson, A. G.: Total alkalinity: The explicit conservative expression and its application to biogeochemical processes, *Mar. Chem.*, 106, 287–300, <https://doi.org/10.1016/j.marchem.2007.01.006>, 2007.
- 1210 Yau, Y. Y. Y., Xin, P., Chen, X., Zhan, L., Call, M., Conrad, S. R., Sanders, C. J., Li, L., Du, J., and Santos, I. R.: Alkalinity export to the ocean is a major carbon sequestration mechanism in a macrotidal saltmarsh, *Limnol. Oceanogr.*, 67, S158–S170, <https://doi.org/10.1002/lno.12155>, 2022.
- Zeebe, R. E. and Wolf-Gladrow, D.: *CO₂ in Seawater: Equilibrium, Kinetics, Isotopes*, Gulf Professional Publishing, 382 pp., 2001.

1215