

A model of water extraction from the subglacial hydrologic system under idealized conditions

Colin R. Meyer¹, Katarzyna L. P. Warburton², Aleah N. Sommers¹, and Brent M. Minchew^{3,4}

¹Thayer School of Engineering, Dartmouth College, Hanover, NH 03755 USA

²Department of Applied Mathematics and Theoretical Physics, University of Cambridge, CB3 0WA, UK

³Department of Earth, Atmospheric and Planetary Sciences, Massachusetts Institute of Technology, Cambridge, MA 02142, USA

⁴Seismological Laboratory, California Institute of Technology, Pasadena, CA 91125, USA

Correspondence: Colin R. Meyer (colin.r.meyer@dartmouth.edu)

Abstract. Subglacial water modulates glacier velocity across a wide range of space and time scales by influencing friction at the glacier bed. Observations show ice acceleration due to supraglacial lake drainage and water draining through moulins, where both configurations involve water inputs to the bed. Here we consider the reverse: water extraction from the subglacial hydrologic system, which is a proposed intervention method intended to slow the flow of glaciers and reduce the associated sea-level rise. Removing subglacial water results in different dynamics than injecting water, and we hypothesize that understanding these processes will allow for improved characterization of the physics of subglacial hydrology. We set up these model experiments in the Subglacial Hydrology And Kinetic, Transient Interactions (SHAKTI) model coupled with the Ice-sheet and Sea-level System Model (ISSM). By analyzing the problem of an isolated borehole in a background pressure field to determine the region of extraction influence, we find an approximate analytical solution which shows that the water pressure returns to the background value approximately as a logarithm with distance. The benefit of the analytical solution is that the dependence of uncertain parameters is clear and may be used alongside data to constrain subglacial hydrology models. We find good agreement between this analytical result and numerical SHAKTI simulations. Using the coupled SHAKTI-ISSM model, we perform transient model experiments on Helheim Glacier, Greenland and Thwaites Glacier, Antarctica, to determine the effects of water extraction on glacier velocity. With continuous pumping, we simulate the impact on velocity, which is sensitive to the extraction rate and site location. The response time to pumping initiation and the recovery time, following cessation, scale according to effective pressure, with typical times on the order of hours to days. These results demonstrate that water extraction is a method of probing the subglacial hydrologic system to better constrain the uncertain physics, and that further research is required to assess its effectiveness as an intervention method.

1 Introduction

Water flowing beneath glaciers influences ice velocity on short (e.g., daily) to longer (e.g., seasonal, annual, decadal) timescales. For mountain glaciers that primarily flow over bedrock, water flow along the ice-bed interface pressurizes cavities and can coalesce into channels (Kamb, 1987; Hewitt, 2011; Flowers, 2015). For ice streams and outlet glaciers, such as the Thwaites

Glacier, Antarctica or Helheim Glacier, Greenland, nearly all of their motion comes from slip at the base, where ice flows over water-saturated sediment (Alley et al., 1986; Kamb, 2001; Minchew and Joughin, 2020; Stevens et al., 2022a). In both cases, water at the ice-bed interface can act as a lubricant, allowing glaciers to accelerate. Fast glacier slip also produces water as frictional heating melts the ice, potentially initiating a positive feedback (Schoof and Mantelli, 2021). Effective pressure, defined as the local difference between ice weight and water pressure, is a key control on glacier sliding speed. In steady state, at low effective pressure (high water pressure), additional water leads to glacier acceleration. In higher effective pressure regions (lower water pressure), additional water reduces glacier velocity due to increased efficiency in water flux (Iken and Bindschadler, 1986; Zwally et al., 2002; Schoof, 2010; Hewitt, 2013). On shorter time-scales, glaciers respond to the sudden addition of water from the drainage of supraglacial lakes and streams into moulins. Here water is added at a rate much faster than the subglacial hydrological network adapts, leading to localized acceleration (Das et al., 2008; Andrews et al., 2014; Stevens et al., 2016; Mejía et al., 2021, 2022; Stevens et al., 2022b). Understanding the response of glaciers to meltwater is an ongoing challenge as climate changes and glaciers recede, accelerate, and decay.

In the context of disappearing glaciers and sea-level rise, researchers have proposed ways of conserving glacier ice, i.e., intervention strategies that mitigate ice mass loss due to climate change (Moore et al., 2018), and these ideas have rightly sparked debate (e.g., Moon, 2018; Carey et al., 2022; Flamm and Shibata, 2025; Siegert et al., 2025). One proposed mechanism to slow the speed of glaciers is to extract water from beneath glaciers, in an effort to increase the subglacial effective pressure (i.e., lower the subglacial water pressure), thereby increasing the subglacial friction and reducing glacier velocity (e.g., Lockley et al., 2020). Although this idea could have merit at glaciers where the velocity response to added meltwater is acceleration, it would likely not work in locations with efficient drainage. Siegert et al. (2025) describe a host of issues with subglacial pumping as an intervention strategy and indicate that further research is required before further consideration. To this aim, the focus of this paper is to understand the impact of water exaction on subglacial hydrology in a model.

A natural analog for intervention in subglacial hydrology is the seasonal addition of meltwater. Observations of glacier velocity in Greenland show seasonal variation, driven by surface melt reaching the subglacial hydrologic system (Moon et al., 2014; Vijay et al., 2019; Solgaard et al., 2022). The meltwater driven seasonal patterns have frequently been categorized into two responses, although not all glaciers fit neatly into these two categories. For some glaciers, the velocity increases with meltwater, with the highest velocities observed in summer. In this case, additional meltwater decreases friction, and allows for faster glacier sliding. For other glaciers, meltwater input reduces the glacier velocity, indicating that adding water to these subglacial environments increases the friction by developing a channelized network that efficiently drains the bed. In terms of subglacial water pressure, adding meltwater increases water pressure for glaciers that accelerate over the course of the melt season, and decreases water pressure for glaciers that decelerate. As a glacier intervention strategy, extracting water from a glacier that accelerates with meltwater should theoretically reduce its velocity, but may have the opposite effect on a glacier that would decelerate. Although a glacier may respond as in aggregate, the subglacial hydrologic system below glaciers is heterogeneous and the physical processes that control whether a glacier will respond to water extraction are largely unknown.

With only sparse direct observations of subglacial water pressure, subglacial hydrology models offer a way to understand controls on effective pressure and sliding (Flowers, 2015; de Fleurian et al., 2018). The Glacier Drainage System (GlaDS)

model has been applied to numerous glacier systems to simulate the evolution of water pressure (e.g., Werder et al., 2013; Poinar et al., 2019; Dow et al., 2022; Ehrenfeucht et al., 2025). The Subglacial Hydrology and Kinetic, Transient Interactions (SHAKTI) model is a continuum model that has also been applied to numerous glaciers to determine the subglacial conduit geometry and local effective pressure (e.g., Sommers et al., 2018, 2023; Narayanan et al., 2025). By coupling SHAKTI to ice velocity in the Ice-sheet and Sea-level System Model, Sommers et al. (2024) simulated Helheim Glacier to determine the realm of influence of terminus effects on velocity patterns as compared to regions dominated by hydrology. Here we use the SHAKTI model, but focus on advances that could be generalized to all subglacial hydrology models.

Pumping water into and out of groundwater aquifers is a technique for characterizing permeability, among other properties. As water is extracted (injected), the height of the aquifer is lowered (raised), indicating a decrease (increase) in hydraulic head, i.e., the ratio of water pressure to specific gravity, $h = p_w / (\rho_w g)$. In the case of extraction, the flow results in a reduction of hydraulic head that spreads outward in time in a way that can be calculated analytically, i.e., the Theis solution (Fitts, 2002). Using time-varying borehole pressure data alongside the analytical solution allows researchers to determine unknown parameters, such as the permeability. If there is recharge in the system, i.e., water flow into the region during pumping, the solution approaches a steady balance between recharge and extraction, which can also be calculated analytically. The Theis method was used to characterize a deep subglacial groundwater system in Greenland (Liljedahl et al., 2021) where they found stratigraphic layers with differing permeability. Similarly, by characterizing the response of a subglacial hydrologic system to water extraction, it may be possible to obtain new constraints on the conductivity and melt production of the subglacial environment from borehole pressure data. A key distinction between the subglacial environment and a groundwater aquifer is that while the hydraulic conductivity of the porous media in a groundwater system remains constant, the hydraulic conductivity of the subglacial drainage system changes as the subglacial gap height opens and closes due to melt and creep closure.

Although we are not aware of any studies probing the subglacial hydrologic system via water extraction, measuring the response to water input has been tried, such as in the field experiments by Engelhardt and Kamb (1997, 1998). In a series of drilling campaigns on the Siple Coast, Antarctica, these researchers used hot water to drill holes to the bed of numerous glaciers. They measured the water pressure as the hot-water drilling fluid connected to the subglacial system and equilibrated. Then they used the pressure pulse to determine the effective permeability of the subglacial system. Characterizing the permeability as an effective water layer thickness, they found that it was on the order of 2 mm. Engelhardt et al. (1990) found water pressure to be near or slightly above the overburden ice pressure. These findings are consistent with work by Alley (1996), Weertman and Birchfield (1982), and Doyle et al. (2022).

In this paper, we analyze the effects of extracting water on the subglacial environment through mathematical analysis and computational modeling. In the following sections, we start by analyzing the results of a simulation pumping at a single location on Helheim Glacier in southeast Greenland, as motivation. We develop analytical and numerical solutions, showing the radius of influence of water extraction, the local effective pressure, and the response time to pumping. Next, we return to coupled SHAKTI-ISSM numerical simulations at Helheim, with multiple extraction sites. We then examine water extraction at Thwaites Glacier, Antarctica. Following these results, we provide context for our models in terms of subglacial hydrology and glacier intervention as well as discuss next steps and comment on avenues for further research.

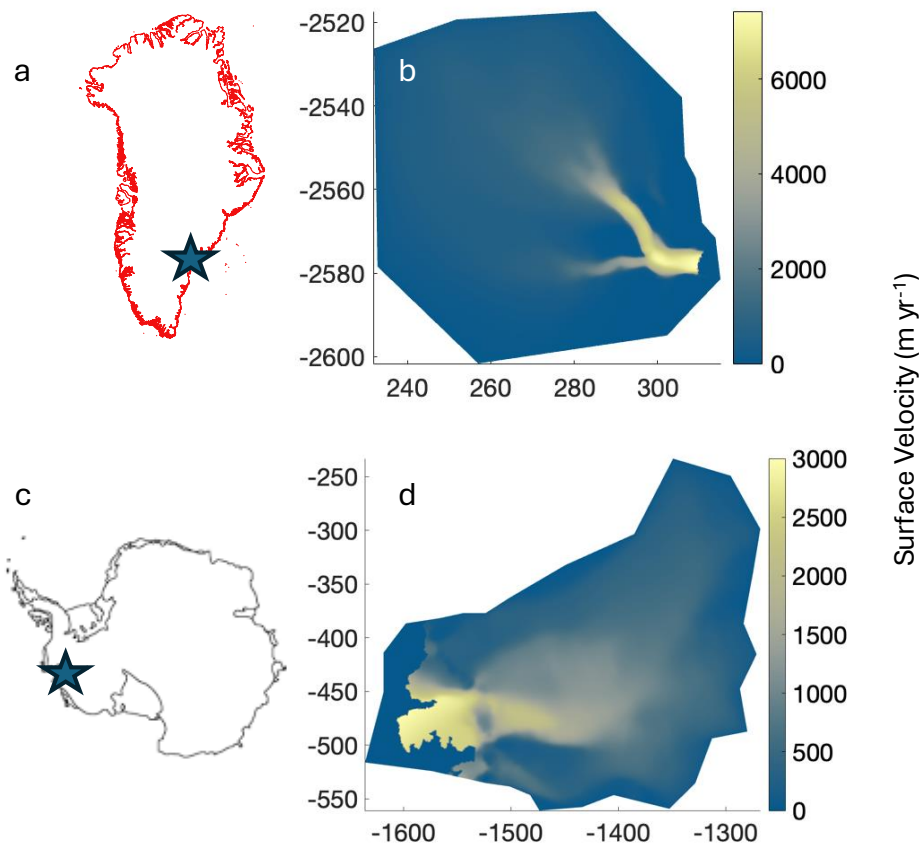


Figure 1. Simulation context: (a) Location of Helheim Glacier in southeast Greenland. (b) Modeled ice velocity on model domain. (c) location of Thwaites Glacier in West Antarctica. (d) Modeled ice velocity on the model domain. All x and y coordinates throughout the figures are given in Polar Stereographic projections with units of km.

2 Approach

Here we describe the setting and rationale for our numerical simulations. We consider two glacier systems. The first glacier is Helheim Glacier, a large, marine-terminating outlet glacier in southeast Greenland (Sermersooq, Kalaallit Nunaat; homeland of the Tunumiit, the Greenlandic Inuit of East Greenland). The location of Helheim and the simulation domain are shown in Fig. 1a,b. Helheim is among the largest contributors to sea-level rise from glaciers in Greenland (Mankoff et al., 2020), moving several km per year in its main trunk. The second glacier is Thwaites Glacier in West Antarctica (Fig. 1c,d). Thwaites is a fast-moving outlet glacier that is accelerating, retreating, and losing mass. Thwaites currently contributes meaningfully to sea-level rise. If Thwaites were to collapse, it could trigger a collapse of the wider West Antarctic Ice Sheet, which would lead to significant sea-level rise (Scambos et al., 2017).

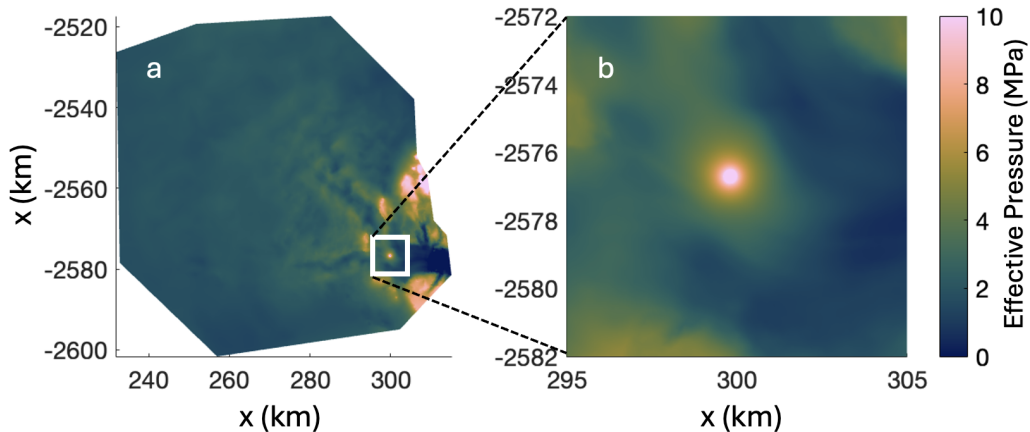


Figure 2. Single extraction site at Helheim Glacier, Greenland: Pumping test simulation at a single extraction site near the confluence of the two main branches, with a pumping rate of $1 \text{ m}^3/\text{s}$, shows high effective pressure around the pumping site.

To simulate the ice dynamics and subglacial hydrology below these glaciers, we use the Subglacial Hydrology And Kinetic, Transient Interactions (SHAKTI) model built into the Ice-sheet and Sea-level System Model (ISSM). SHAKTI-ISSM simulations have previously been conducted on Helheim Glacier (Sommers et al., 2023, 2024), yielding an established model environment for testing water extraction. Here we use the shallow-shelf approximation (SSA; Morland, 1987; MacAyeal, 1989; Morlighem et al., 2013; Sommers et al., 2024) as the stress balance solver built into ISSM to describe the ice flow dynamics. The subglacial hydrology model can either be run with prescribed ice velocity or be two-way coupled to the ice velocity through the basal stress (i.e., friction parameterization or sliding law) as in Sommers et al. (2024). When coupled, variations in sliding velocity affect pressure and vice versa: frictional heat generated by sliding over the bed leads to enhanced melt and the resulting subglacial effective pressure (i.e., ice overburden less water pressure) is incorporated into the sliding law, which affects the velocity dynamics of the glacier flow. We use a Budd-type sliding law of the form

$$\tau_b = C^2 u_b N, \quad (1)$$

where N is the effective pressure, calculated by SHAKTI, u_b is the subglacial sliding velocity calculated by the stress balance in ISSM, τ_b is the subglacial shear stress, and C^2 is the spatially variable drag coefficient that represents differences in underlying substrate. We analyze the role of the sliding law in Appendix D. From equation (1), we can see that increasing N would increase τ_b , for fixed C^2 and u_b , indicating bed strengthening.

SHAKTI parameters				variable scales		nondimensional			
ρ_i	917 kg m ⁻³	ice density	g	9.80 m s ⁻²	gravity	$[b]$	0.152 m	R	8.9×10^{-3}
ρ_w	1000 kg m ⁻³	water density	μ	1.8×10^{-3} Pa s	viscosity	$[N]$	200 kPa	M	1.6×10^{-3}
$u_b \tau_b$	0.08 W m ⁻²	basal friction	G	0.05 W m ⁻²	geothermal heat	$[r]$	10 km	D	2.4×10^{-3}
A	3.5×10^{-25} s ⁻¹ Pa ⁻³	ice softness	n	3	stress exponent	$[t]$	11 yr	\hat{D}	70
\mathcal{L}	3.34×10^5 m ² s ⁻²	latent heat	ω	0.001	friction factor	r_t	8.9 m	W	0.24
Q	1 m ³ s ⁻¹	extraction flux	N_0	200 kPa	effective pressure				
r_d	10 km	domain edge							

Table 1. Table of parameters and representative values for SHAKTI simulations.

SHAKTI solves for a gap height b that is a continuum quantity, representing a distributed, channelized, or thin-film region (Sommers et al., 2018), i.e.,

$$\frac{\partial b}{\partial t} = \frac{\dot{m}}{\rho_i} - A|N|^{n-1}Nb, \quad \text{gap height evolution} \quad (2)$$

$$120 \quad \mathbf{q} = \frac{-b^3}{12\mu \left(1 + \omega \frac{|\mathbf{q}|}{\nu}\right)} \nabla N, \quad \text{subglacial water flux} \quad (3)$$

$$\dot{m}\mathcal{L} = G + u_b \tau_b - \mathbf{q} \cdot \nabla N, \quad \text{energy conservation} \quad (4)$$

$$\nabla \cdot \mathbf{q} = \dot{m} \left(\frac{1}{\rho_w} - \frac{1}{\rho_i} \right) + A|N|^{n-1}Nb + i_{eb}, \quad \text{mass conservation} \quad (5)$$

$$N = \rho_i g H - p_w, \quad \text{effective pressure} \quad (6)$$

with melt rate \dot{m} , ice softness A , geothermal flux G , water flux \mathbf{q} , subglacial water pressure p_w , basal stress τ_b , basal velocity u_b , and input of meltwater into the system from englacial or surface sources i_{eb} . Here $|\mathbf{q}|/\nu$ is the local Reynolds number (Re) and ω is a friction factor, parameterizing the Reynolds number at which transition to turbulence occurs (centered around Re=1/ ω). For fully turbulent flow, $\mathbf{q} \propto \sqrt{\nabla h}$. Consistent with Sommers et al. (2024), we neglect opening by sliding due to cavities, pressure melting, and transient englacial storage of meltwater (cf. Creyts and Schoof, 2009; Robel et al., 2013; Kyrke-Smith et al., 2014; Brinkerhoff et al., 2016; Rempel et al., 2022). We also take the Glen’s law exponent to be $n = 3$. We impose

130 no flux boundary conditions on all edges, except the terminus where we match the ocean water pressure at the bottom of the fjord to the subglacial water pressure. We start by running a background “winter conditions” simulation, where no surface meltwater is injected nor extracted ($i_{eb} = 0$) and we find a steady state, with all subglacial water produced through basal melt.

In our first experiment, we perturbed this winter conditions steady state by extracting water at a constant rate Q from one location near the confluence of the two primary branches of Helheim. We implement this extraction flux in the same way as a

135 moulin delivers water to the bed, except with a negative sign indicating that water is leaving the subglacial system. We assume that the extraction site is fixed relative to the motion of the glacier. Later in the paper we consider extracting from multiple locations at the same time. In our initial tests of the single borehole case, we immediately found that if we extracted too much water (i.e., $Q \gtrsim 2$ m³/s), the simulations would crash due to insufficient available water. The extraction well could not laterally recharge fast enough. Without a groundwater recharge term in SHAKTI (cf. Robel et al., 2023), all of the extracted water

140 must be available in the gap between the ice and the bed or must be melted from the ice. Taking $Q = 1 \text{ m}^3/\text{s}$, we show the resulting effective pressure distribution in Fig. 2a,b, including both the entire simulation domain and an enlarged view around the extraction borehole. The effective pressure is locally elevated around the borehole and decays with distance away.

Motivated by these simulation results from extracting water at a single site, we would like to answer three primary questions about pumping water out of the subglacial system:

145 Q1. What is the radius of influence of an extraction borehole?

Q2. What is the effective pressure at the location of extraction?

Q3. How long does it take to reach a new steady state while pumping?

These questions are important for characterizing the hydrologic response to water extraction. We need to know what magnitude of pressure change we expect to see, how far it will propagate, and how long it will take to equilibrate. Answers to these
150 questions will also inform the potential efficacy of intervention.

Based on the simulation results shown in Fig. 2a,b, we see that the effective pressure distribution around the borehole is close to axisymmetric. In order to gain more insight into the physics and verify our numerical simulations, we now describe a reduced model for water extraction in an axisymmetric geometry. The structure of this section is that we first consider the full model and then we examine four simplified solutions. The takeaways from this analysis are that

155 T1. The influence of the borehole decays logarithmically with distance from the extraction site.

T2. The effective pressure at the extraction site increases weakly with the extraction flux and depends on the local gap height evolution.

T3. During extraction, a new steady state is reached on a timescale set by the creep closure of the ice, which depends on ice thickness, water pressure, and temperature.

160 In what follows, we include the important components of the mathematical derivation. Supporting calculations can be found in the appendices.

3 Axisymmetric model

In the single-borehole, water-extraction simulations at Helheim Glacier (Fig. 2), the effective pressure distribution is largely independent of direction and mainly a function of the distance from the extraction site. Inspired by these simulations, we
165 consider the axisymmetric pressure response to pumping water out of the subglacial system at a constant volume flux Q . Accordingly, we write out an axisymmetric form of the SHAKTI equations, and show the domain in Fig. 3(a).

As in Equation (2), the time-dependent gap height equation is given by

$$\frac{\partial b}{\partial t} = \frac{\dot{m}}{\rho_i} - AN^3b. \quad (7)$$

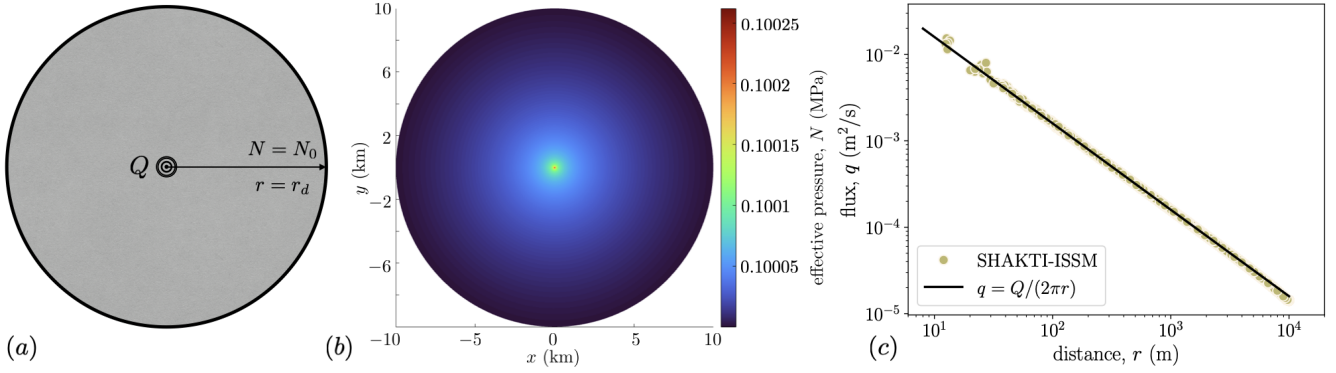


Figure 3. Axisymmetric model: (a) Schematic showing water extraction at the origin and a fixed effective pressure boundary condition at the outer edge. (b) SHAKTI-ISSM results for effective pressure in a circular domain with a radius of 10 km. (c) Water flux results from SHAKTI-ISSM with $Q = 1 \text{ m}^3/\text{s}$, $N_0 = 0.1 \text{ MPa}$, and $W = 0.1$ showing that, for these parameters, the flow follows the fixed flux model.

Mass conservation is given by

$$170 \quad \frac{1}{r} \frac{d}{dr} (rq) = -\frac{\dot{m}}{\rho_w} + \frac{\partial b}{\partial t}, \quad (8)$$

where the minus sign indicates that q is an extraction flux, i.e., it is positive when water flows inward towards the center borehole. In steady state and without melting, the solution to equation (8) is $q = Q/(2\pi r)$, which we refer to as the fixed flux solution and we explore in more detail in the next section. Writing Equation (3) in terms of the variable flux $q(r, t)$ gives

$$q \left(1 + \frac{\omega q}{\nu} \right) = -\frac{b^3}{12\mu} \frac{\partial N}{\partial r}, \quad (9)$$

175 and the melt rate \dot{m} is given by

$$\dot{m} \mathcal{L} = G + u_b \tau_b - q \frac{\partial N}{\partial r}. \quad (10)$$

The variables are b , N , q , which depend on r , t , and the boundary conditions are $N = N_0$ at $r = r_d$ (outer edge of the domain) and the imposed flux Q at $r = 0$. We set an initial condition on the gap height, $b = b_0$ at time $t = 0$. We scale the variables as

$$b = [b]b^*, \quad t = [t]t^*, \quad r = r_d r^*, \quad q = \frac{Q}{2\pi r_d} q^*, \quad N = N_0 N^*, \quad \dot{m} = \frac{G + u_b \tau_b}{\mathcal{L}} \dot{m}^*,$$

180 where the brackets are the size of the variables we choose momentarily. The scaling for q comes from the fixed flux solution.

Nondimensionalizing allows us to write the four equations as

$$\frac{1}{r^*} \frac{d}{dr^*} (r^* q^*) = -W \dot{m}^* + \frac{\partial b^*}{\partial t^*}, \quad (11)$$

$$M q^* (1 + R q^*) = -b^{*3} \frac{\partial N^*}{\partial r^*}, \quad (12)$$

$$\dot{m}^* = 1 - D q^* \frac{\partial N^*}{\partial r^*}, \quad (13)$$

$$185 \quad \frac{\partial b^*}{\partial t^*} = \dot{m}^* - N^{*3} b^*, \quad (14)$$

with the initial and boundary conditions

$$N^* = 1 \quad \text{at} \quad r^* = 1 \quad \text{and} \quad b = 1 \quad \text{at} \quad t^* = 0,$$

where we choose that $b_0 = [b]$ and

$$[t] = \frac{1}{AN_0^3}, \quad [b] = \frac{G + u_b \tau_b}{\rho_i \mathcal{L} AN_0^3}, \quad r_t = \frac{\omega Q}{2\pi \nu}.$$

190 The timescale $[t]$ is set by viscous creep closure, the gap height scale $[b]$ is a balance between melting and viscous closure, and r_t is the location where the transition to turbulence occurs. For $r \leq r_t$, the flow is dominated by turbulence, and for $r > r_t$, the flow is laminar. With these scales, we can write

$$R = \frac{\omega Q}{2\pi \nu [r]} = \frac{r_t}{r_d} \sim 10^{-2}, \quad M = \frac{12\mu Q}{2\pi [b]^3 N_0} \sim 10^{-3}, \quad D = \frac{QN_0}{2\pi [r]^2 (G + u_b \tau_b)} \sim 10^{-3}, \quad W = \frac{N_0}{\rho_w \mathcal{L} D} \sim 10^{-1},$$

where R is the fraction of the domain that is turbulent, M is the ratio of the extraction flux $Q/(2\pi[r])$ to the flux through the thin
195 gap $[b]^3 N_0/(12\mu[r])$, D is the ratio of heat generated by turbulent dissipation to geothermal and frictional heat, W is the ratio between meltwater produced in the domain and the flux extracted. The scale for the numbers comes from reasonable parameter values, cf. Table 1. We can see that R , M , and D are all small parameters, whereas W can be large or small depending on Q . We exploit the smallness of D in the next section and derive a solution that ignores the role of turbulent dissipation on melting.

In steady state, we solve Equations (11)-(14) using a root-finding algorithm to find dN^*/dr^* and a shooting method to find
200 N^* . At the nondimensional innermost point in the domain $r^* = r_i$, we impose $q^* = 1/r_i$ and guess the value of N . We then integrate to the nondimensional outermost point in the domain $r = 1$ and check if $N^* = 1$. Warburton et al. (2024) used a similar method to solve for the background state in their hydrology model. We show the results for the effective pressure and flux as a function of radial distance in Fig. 4. In the next section, we present approximate and numerical solutions to Equations (11)-(14), which we use to answer the three questions posed about water extraction: radius of influence, effective pressure
205 change, and time to steady state.

3.1 Fixed flux approximate model

We start by considering a steady state model and say that the production of meltwater does not meaningfully contribute to water mass conservation, i.e., $W \ll 1$, and we recover the fixed flux model,

$$q = \frac{Q}{2\pi r} \quad \text{and} \quad q^* = \frac{1}{r^*}, \tag{15}$$

210 which reduces Equations (12)-(14) down to

$$\frac{M}{r^*} \left(1 + \frac{R}{r^*}\right) = -b^{*3} \frac{\partial N^*}{\partial r^*}, \tag{16}$$

$$\dot{m}^* = 1 - \frac{D}{r^*} \frac{\partial N^*}{\partial r^*}, \tag{17}$$

$$\frac{\partial b^*}{\partial t^*} = \dot{m}^* - N^{*3} b^*, \tag{18}$$

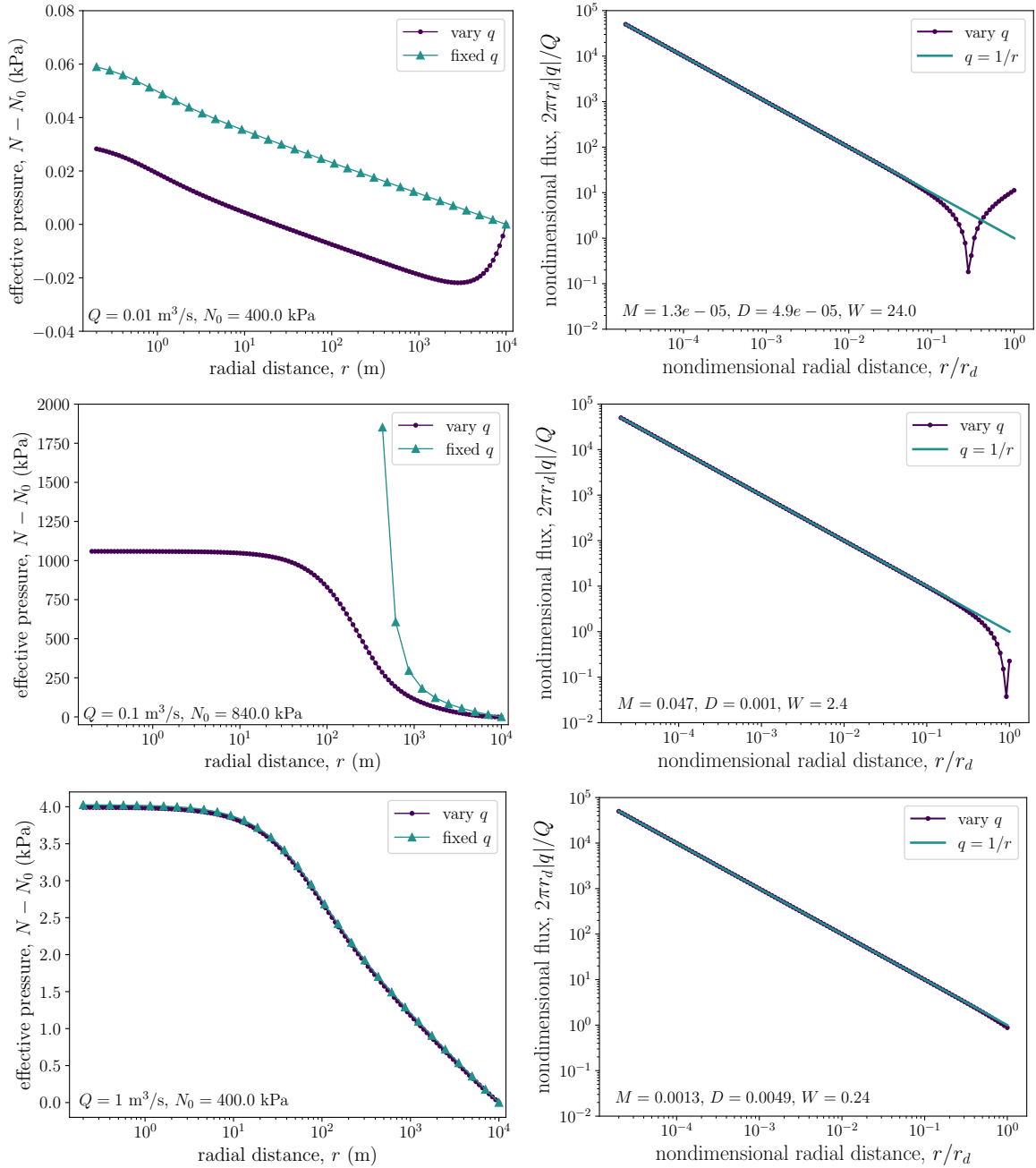


Figure 4. Solutions for effective pressure and flux from the full varying flux model and the fixed flux (i.e., $q = Q/[2\pi r]$) model. The left column shows the dimensional effective pressure $N - N_0$ with radius r and the right column shows the nondimensional flux q with r . Here we show three parameter regimes: (top) low flux and moderate N_0 , which shows a flow reversal near the outer boundary that influences effective pressure throughout the domain (see Appendix A); (middle) low flux with a large effective pressure, leads to a singularity within the domain for the fixed flux and a regular solution for the varying flux model; (bottom) larger flux with moderate N_0 and small W , here the solutions are nearly identical, with a hint of lowering at the outer edge of the domain.

We solve these equations numerically, as described in Appendix B1. A steady state example is shown in Figs. 3 and 5, where we compare the numerical solution to Equations (16)-(18) to the output of SHAKTI-ISSM on an axisymmetric domain with $N_0 = 0.1$ MPa, $Q = 1$ m³/s, and $W = 0.1$. The flux is positive into the central extraction site and follows $Q/(2\pi r)$ across four decades of radial distance. Near the center of the domain, there are some artifacts of the grid resolution. Similarly, at the outer edge, the calculated SHAKTI flux is slightly below the fixed flux model.

In Fig. 4, we show solutions for the varying flux model and compare it to the fixed flux model. We distinguish between the three regimes, where (i) W is large since the flux Q is small, so the varying flux model captures a flow reversal in the outer part of the domain, where water begins to exit (see Appendix A); (ii) W is order one, the effective pressure N_0 is large, and the the varying flux model converges whereas the fixed flux model diverges; (iii) the two models agree for moderate flux, since W is small. In all three cases, the fixed flux model is a good approximation of the fluid flow, but small changes at the edge of the domain have a large impact throughout the domain. This is the first indication of the relatively large radius of influence, which we explore more in the next section using an approximate model.

3.1.1 Far-field fixed-flux solution ignoring melt from dissipation

To understand the dynamics far away from the extraction site, we return to Equations (16)-(18) that use the fixed flux approximation. We neglect dissipation in the water flow, yielding

$$M \left(\frac{1}{r} + \frac{R}{r^2} \right) = -b^3 \frac{\partial N}{\partial r}, \quad (19)$$

$$\frac{\partial b}{\partial t} = 1 - N^3 b, \quad (20)$$

where we have again dropped the asterisks. Based on the structure of Equations (16)-(18), we notice that as r becomes small ($r \sim D$) and $\partial N/\partial r$ becomes large, this approximation of neglecting dissipation will fail.

We can derive a steady state solution analytically. Combining the melt and flux equations gives

$$M \left(\frac{1}{r} + \frac{R}{r^2} \right) = -N^{-9} \frac{\partial N}{\partial r}. \quad (21)$$

Integrating and applying the $N = 1$ at $r = 1$ boundary condition, we find that

$$N = \left[1 + 8M \left(\ln(r) + R - \frac{R}{r} \right) \right]^{-1/8}. \quad (22)$$

As we show in Figs. 4 and 5, this solution is a good approximation of the effective pressure far from the extraction location, which is consistent with our intuition about neglecting the dissipation term. Figs. 3 and 5 show that the largest pressure perturbations occur close to the extraction site, where the flow velocity is turbulent. The distance from the borehole where the flow becomes laminar is $\sim r_d R \sim 200$ m. Due to the logarithmic dependence of the outer solution, there are pressure perturbations out to the edge of the domain, which follows from the elliptic nature of the SHAKTI partial differential equations. We expect that in a larger domain SHAKTI simulation, e.g., Fig. 2, the radius of influence is the distance away when q is no longer axisymmetric, which depends on the strength of the fluid flow in the existing subglacial hydrologic system.

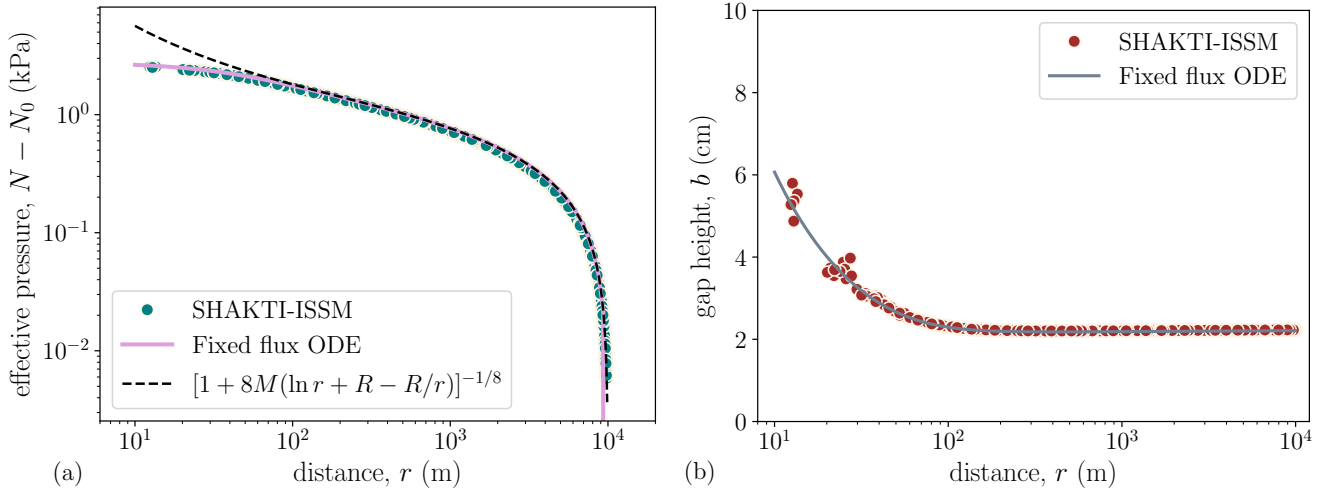


Figure 5. Idealized numerics with $Q = 1 \text{ m}^3 \text{ s}^{-1}$ and $N_0 = 200 \text{ kPa}$. (a) Comparison of steady state numerical ODE solution, SHAKTI-ISSM, and a reduced model with radial distance. (b) Gap height as a function of radius, showing turbulent melting near the borehole.

Examining the near-field of Equation (22), we see a singularity in N when the denominator approaches zero, which happens
 245 at

$$r = \frac{R}{W_0 \left\{ R \exp \left(R + \frac{1}{8M} \right) \right\}}, \quad (23)$$

where $W_0\{\cdot\}$ is the principal branch of the Lambert W function, and not related to the nondimensional group W that represents the amount of internally generated melt. This singularity is a limitation of this approximate solution because we cannot find a solution for certain parameter combinations, as shown in Appendix C.

250 In the far-field of Equation (22), i.e., $r \gg R$, where the flow is laminar and dominated by melt from geothermal flux, we have

$$N = [1 + 8M \ln(r)]^{-1/8}. \quad (24)$$

The logarithmic dependence on r implies that the effective pressure is larger than the background value throughout the entire domain but with diminishing magnitude. This is shown in Figs. 3 and 5. In particular, in Fig. 5, we compare the SHAKTI-ISSM simulations to the analytical solution (22) and a steady ODE solution to the axisymmetric equations where we do not
 255 ignore dissipation. In Fig. 5, near the borehole, we see that the dissipation regularizes the singularity in Equation (22). The gap height field is dominated by turbulent melting in the near field and decays to a constant ($b \sim [b]$) in the far field. We see that the singularity prevents us from using the approximate analytical solution to determine the effective pressure at the borehole. In Appendix B2, we describe a way to approximate the solution near the borehole to obtain a reasonable estimate. In the next
 260 section, we describe how to find the effective pressure at the borehole using the full equations.

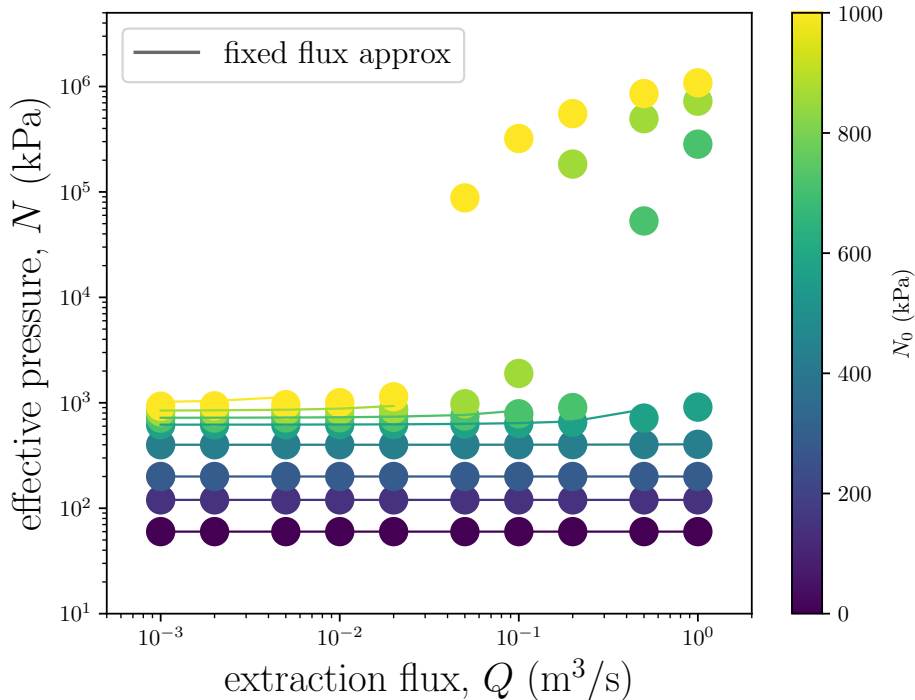


Figure 6. Varying flux solution for the effective pressure at the water extraction location, cf. Fig. B1. Each dot represents a simulation with a particular Q and N_0 . The outer radius here is 10 km. The colored curves are the fixed flux approximate solutions from equation (B7), which do not yield a solution for large fluxes at high effective pressure.

3.2 Effective pressure at the borehole

As we saw in the last section, and in Appendix C, ignoring turbulent dissipation near the borehole and fixing $q = Q/(2\pi r)$ can lead to a singularity in the domain. Relatedly, for small values of the extraction flux, we would expect all the extracted water to be sourced from basal melt in a small area around the borehole, while the fixed flux solution (i.e., $q = Q/(2\pi r)$) overestimates the radius of influence by imposing an inwards flux everywhere in the domain. Both of these drawbacks are illustrated in Fig. 4. To ameliorate these issues, in this section, we return to the axisymmetric solution where we explicitly solve for the flux q as a function of the radius r using mass conservation.

By solving for the flux using this method, we can capture the effective pressure at the water extraction site as a function of the extraction flux Q and background effective pressure N_0 , which we show in Fig. 6. For these steady state results, we find that larger values of each parameters produce elevated effective pressure at the borehole. If, however, the extraction flux or the effective pressure is small, the effective pressure is dominated by the background flow. This is important for connecting the results of the simplified axisymmetric model to the full SHAKTI simulations. We see that the varying flux model produces consistently slightly smaller effective pressures than the fixed flux model, but is able to capture the large effective pressure

275 perturbations at high values of Q and N_0 , where previously (i.e., in B1) there was a solution breakdown. Away from this regime, the colored curves, which show the approximate solution from Equation (B7), agree well with the varying flux model for small N_0 and all Q as well as large N_0 and small Q , as in Fig. 4. Large pump systems could potentially be deployed on a glacier to pump on the order of 1-10 m³/s, and these fluxes yield effective pressure changes on the order of 1-10 kPa. In the context of the chosen parameters, the effective pressure values are about 1-10% of the background effective pressure, which is a small fraction of the total. These general predictions are for a steady state model that does not include positive feedbacks
 280 involving sliding, melt generation, and freezing.

3.3 Solution for constant gap height

Another relevant simplification of the dynamics of water extraction is to consider the case where the gap height is constant and fixed, $b = \beta$. Although this limit may appear artificial, it captures the initial pumping dynamics, i.e., before the system reaches a steady state. It is also relevant to the SHAKTI simulations of Helheim and Thwaites Glaciers, where a minimum gap height
 285 is imposed. In this constant gap height limit, Equation (12) becomes

$$\frac{dN}{dr} = -\frac{M}{\beta^3} \left(\frac{1}{r} + \frac{R}{r^2} \right), \quad (25)$$

where we have rearranged the terms and dropped the asterisks. In this case, since the gap height is fixed in time, and the effective pressure response will also be independent of time. Integrating and applying the boundary condition at the outer edge, i.e., $N = 1$ at $r = 1$, we find that

$$290 \quad N = 1 - \frac{M}{\beta^3} \left(\ln(r) + R - \frac{R}{r} \right). \quad (26)$$

In this way, the effective pressure response is akin to a porous medium, where the β^3 term represents a constant permeability. We plot the analytical solution for the effective pressure as a function of r in Fig. 7. The effective pressure near the point of extraction is significantly enhanced as compared to the background value.

In Fig. 8, we revisit the SHAKTI pumping simulations in the confluence region of Helheim Glacier, Greenland, as shown in
 295 Fig. 2. We see that the constant gap height solution works well to explain the effective pressure near the water extraction site, due to the axisymmetric flux and fixed value of b . In SHAKTI-ISSM, we impose a minimum gap height for practical purposes. If the gap height is equal to this minimum, it will not shrink further, even if creep closure exceeds the melt opening rate. In practice, SHAKTI simulations do not always evolve the gap height in time and will stay at the minimum value. While we do not see a constant gap height as the best representation of the physics of the subglacial system, we leave further refinement
 300 of SHAKTI to future work. In the next section, we show that the connection between effective pressure and gap height is important in determining the effective pressure at the pumping location.

4 Influence of water extraction on ice velocity

We now return to the SHAKTI-ISSM simulations that sparked our interest in the axisymmetric problem: water extraction from model domains at Helheim Glacier, Greenland and Thwaites Glacier, Antarctica, where we use the same model and sliding

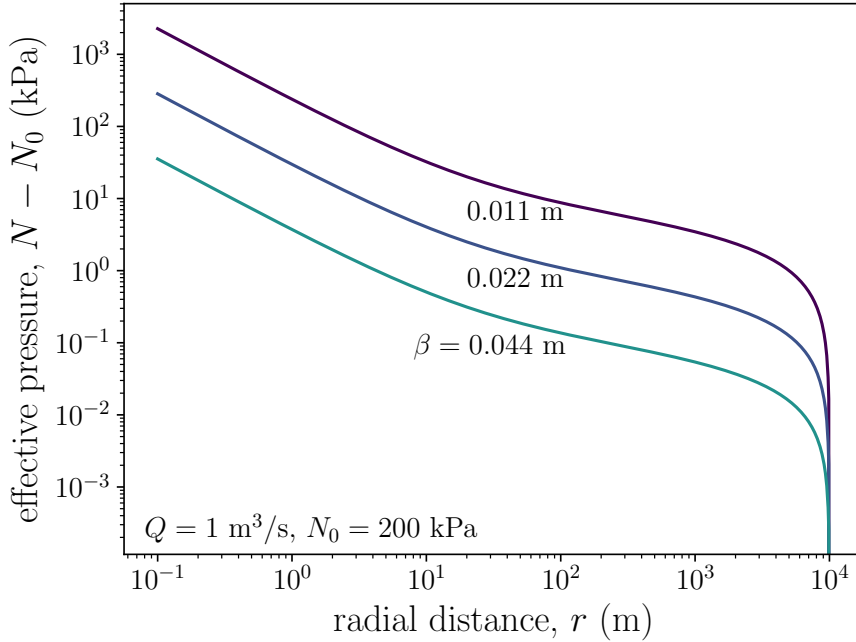


Figure 7. Effective pressure enhancement due to water extraction with a constant gap height. The domain is a 10 km circle and water is extracted from the center, with a flux given as $q = Q/(2\pi r)$. For the smallest gap height shown, the effective pressure at the extraction site exceeds 1 MPa above the background value.

305 law as described in Section 2. The question we aim to answer here is: what effect on velocity does pumping at multiple sites produce, compared to a single extraction site? We start by understanding the transient dynamics.

4.1 Time to steady state and extraction at the Helheim Glacier confluence

A pertinent question is how long is required for the subglacial system to respond fully to water extraction. From the time-dependent version of SHAKTI (Equation (2); Sommers et al., 2018), the gap height evolves according to

$$310 \quad \frac{\partial b}{\partial t} = \frac{\dot{m}}{\rho_i} - AN^3b, \quad (27)$$

where opening is caused by melt and closing is due to creep of the ice. In steady state, the two terms on the right are balanced, so that as steady state is approached both terms will have the same scaling, as described in Section 3. We find that the time to steady state is likely controlled by the creep closure timescale, i.e.,

$$[t] \sim \frac{1}{AN^3}, \quad (28)$$

315 which is the same scale we used to nondimensionalize the model in section 3. Taking a representative effective pressure value of $N_0 \sim 1$ MPa and the ice softness $A \simeq 3.5 \times 10^{-25} \text{ Pa}^{-3}\text{s}^{-1}$, the response timescale is on the order of

$$[t] \sim 33 \text{ days.}$$

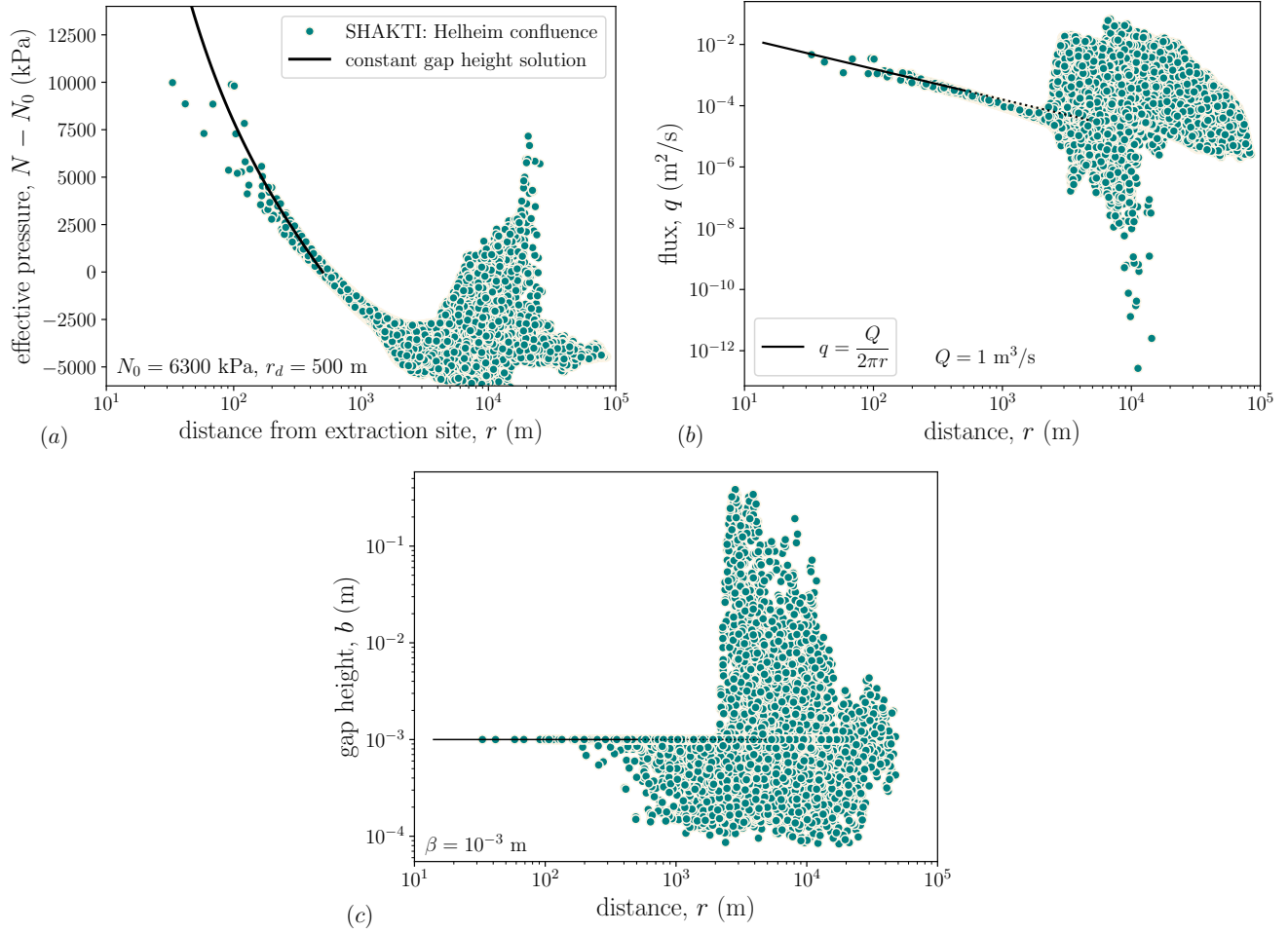


Figure 8. SHAKTI results and constant gap height model for the pumping tests in the confluence region of Helheim Glacier. (a) Effective pressure follows the analytical solution, Equation (26) near the extraction site. (b) Flux decays like $Q/(2\pi r)$. (c) The gap height is nearly constant close to the pump.

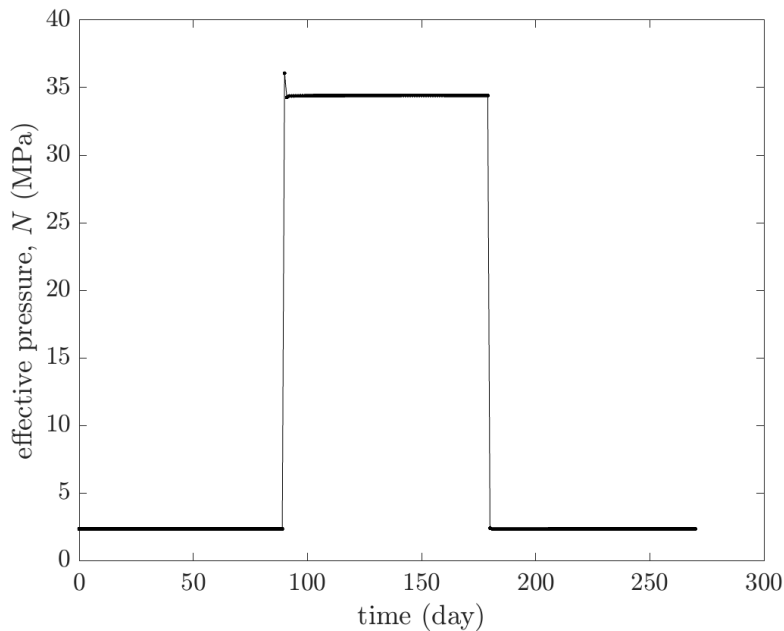


Figure 9. Change in effective pressure at the water extraction site over a pumping and recovery cycle at the “confluence point” of Helheim Glacier, Greenland (location shown in Fig. 10).

For initial effective pressure values from, for example, 0.1 – 35 MPa, the timescale to reach steady state varies from ~ 90 years to ~ 1 minute, with higher effective pressure corresponding to shorter response time. We expect that this scaling for time will also apply to the time for the system to recover (or “heal”) following cessation of water extraction. For times shorter than the Maxwell time for ice to relax (~ 12 hours, i.e., the timescale of applied forcing for ice to deform viscously rather than elastically; Ultee et al., 2020), this model for closure of subglacial gap height no longer applies. To account for these large effective pressure and rapid closure timescales, we would need to adapt SHAKTI to include elastic deformation. We leave this effort for future work, and consider the model here to be a first estimate for what could occur in this parameter regime.

To examine these response times quantitatively, we performed a simulation over 270 days, with pumping at a steady rate of $Q = 1 \text{ m s}^{-1}$ applied at the confluence extraction site at Helheim during days 90-180, in order to demonstrate the response to pumping and the subsequent healing following the pumping period. As shown in Fig. 9, the effective pressure at the pumping site exhibits a short adjustment response to initiation and cessation of pumping. The expected timescale $[t]$ from Equation (28) for this simulation is ~ 1 minute, so it is unsurprising that the adjustment occurs quickly. We did not save every timestep in the SHAKTI simulations, indicating that the simulations are more resolved than the number of points on the graph. Fig. 9 shows that the effective pressure returns to the same value after pumping. In Fig. 10, we see a change in effective pressure after 90 days of pumping. The largest impact is within a ring of about 2 km but variation in effective pressure is visible out to 5+ km away. In this coupled SHAKTI-ISSM simulation, the hydrology affects the ice velocity, which is also shown on Fig. 10. The

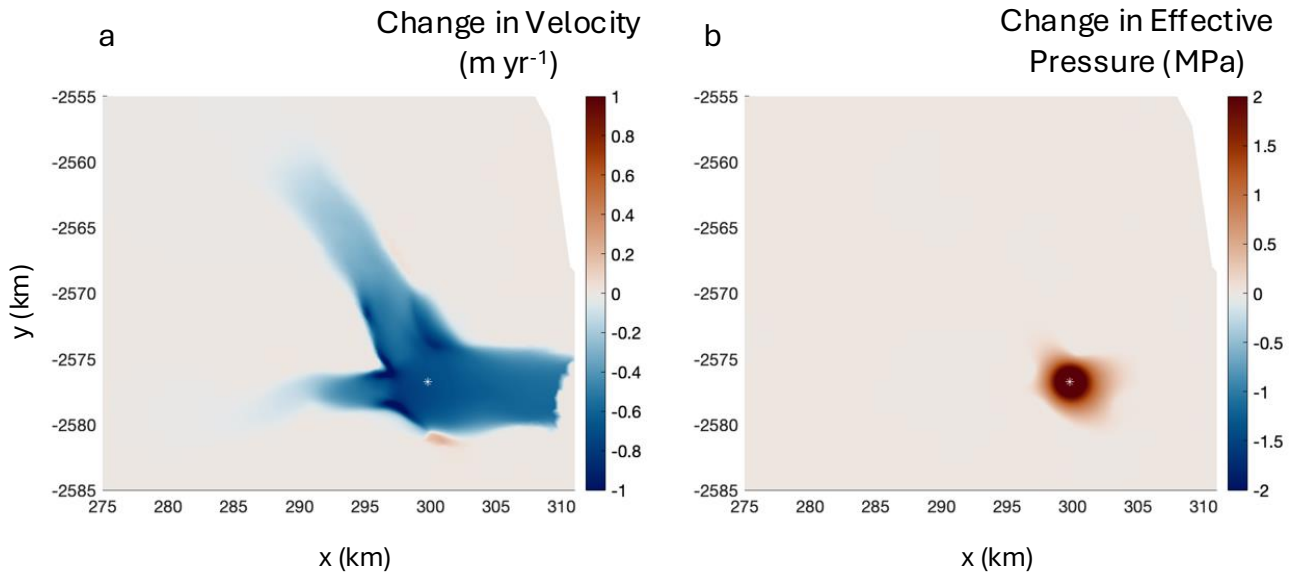


Figure 10. Pumping tests in the confluence region of Helheim Glacier, Greenland: (a) change in glacier velocity after 90 days of pumping at a rate of $1 \text{ m}^3 \text{ s}^{-1}$, and (b) change in effective pressure. The white asterisk indicates the location of the extraction site.

90-day water extraction at the confluence leads to a slowdown on the order of 1 meter per year throughout both branches. There are also a few patches of acceleration.

4.2 Water extraction from numerous sites at Helheim Glacier

Due to the physical and numerical limitations of extracting a large flux of water from a single borehole, we decided to model extracting water at $Q = 1 \text{ m}^3/\text{s}$ at 11 sites in the same 270-day pumping-and-healing experiment setup described in the previous section, with pumping employed during days 90-180, which we call the ‘pumping strategy’. Starting from the winter background state (i.e., no external water inflow, where all water at the bed is produced through basal melt), we then extract water from these 11 boreholes and allow the glacier velocity and subglacial hydrology to evolve in time, as shown in Fig. 12. The selected points are shown in Fig. 11. These points were chosen arbitrarily to be distributed along both branches and the main trunk of the glacier. There is intended overlap between some of these points and the locations analyzed by Sommers et al. (2024), where those authors show that terminus effects propagate $\sim 15 \text{ km}$ upstream at Helheim. In the simulations here, neither the pumping strategy nor the location of the individual extraction sites were optimized to give the largest velocity change; we leave this type of detailed strategy design to future work.

We find that our 11-point pumping strategy and model set up produce about 100 meters per year slowdown in the main trunks of Helheim, as shown in Fig. 11. As a fraction of the total velocity, this influence is on the order of 1% of the background velocity. We also only see deceleration, i.e., nowhere in the domain accelerates. In the Discussion (Section 6), we highlight

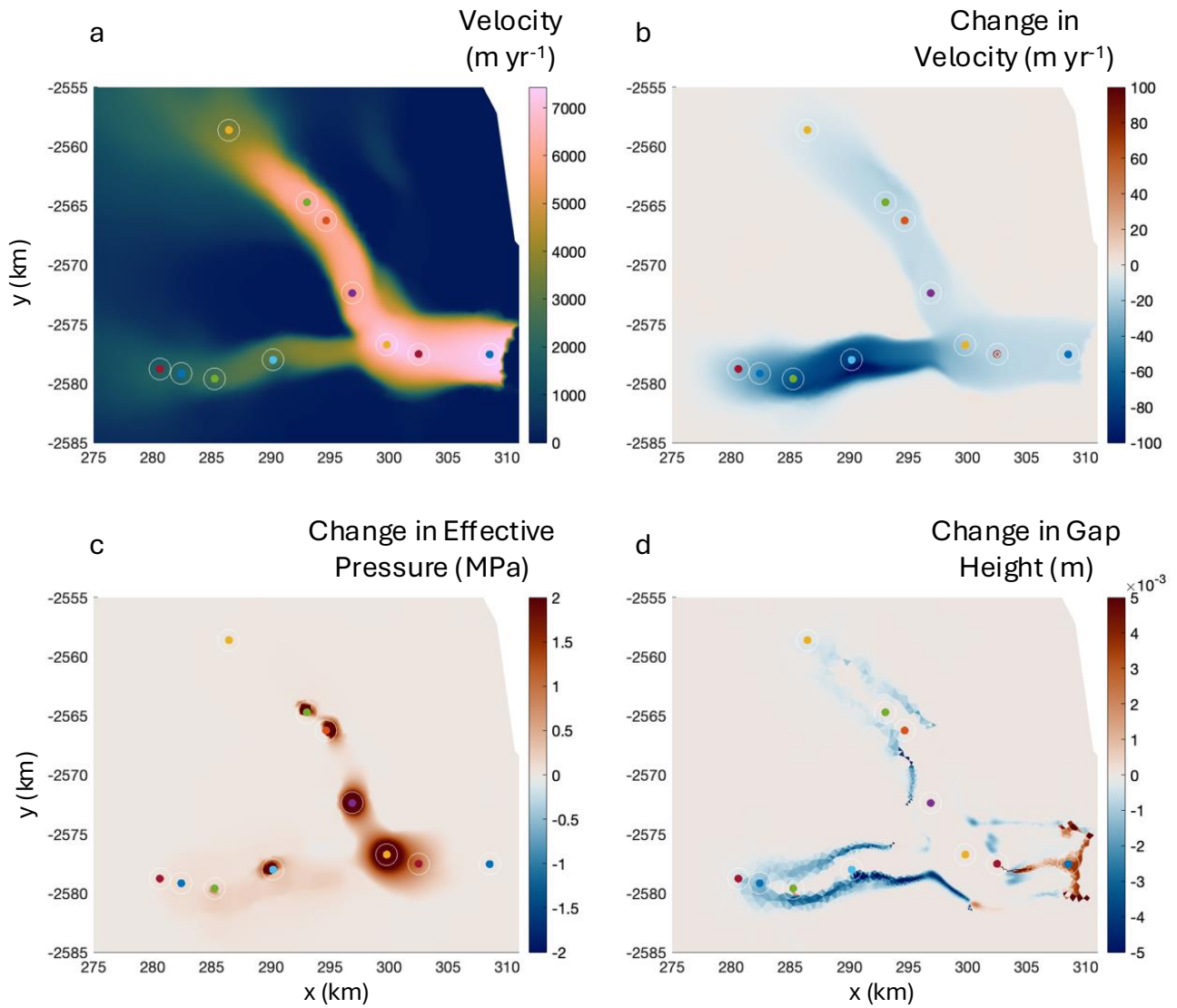


Figure 11. Pumping tests on Helheim Glacier, Greenland: (a) location of 11 extraction sites overlaid on initial glacier velocity, (b) change in ice velocity after 90 days of pumping at a rate of $1 \text{ m}^3 \text{ s}^{-1}$ at each site, (c) change in effective pressure after 90 days of pumping, and (d) change in subglacial gap height after 90 days of pumping.

350 areas of future work including longer simulations runs, seasonal effects, and pumping strategy optimization. For now, as a first test of the possibility of pumping water out to slow a glacier (as described by the model physics we incorporated), we can say that such an approach does yield a velocity reduction.

In Fig. 12, we show the evolution of effective pressure with time for four representative sites. Similar to what we saw at the confluence site, the effective pressure at all sites returns to the same value as before pumping, indicating that pumping 365 did not cause noise-induced drift (Robel et al., 2024). Some of the sites, however, do show evolution in the effective pressure during pumping. At one of the locations in the main trunk we see a distinct transition in the effective pressure, indicative of a reconfiguration of the drainage network at that site caused by the water flow due to pumping, as shown in Fig. 11. At the far upstream site, the effective pressure oscillates before equilibrating to a new steady state. These waves persist under time and space refinement, suggesting that they are not numerical artifacts but a transient reorganization of the drainage system. At 360 other sites, a spike in effective pressure is apparent (i.e., Fig. 12), which is indicative of the constant gap height solution, as discussed in §3.3 and Fig. 7. The fast ice motion results in a large amount of meltwater generation at a large effective pressure, resulting in an unchanging gap height at some locations in the main trunk of Helheim (e.g., Fig. 11). In practice, this gap height remains fixed at the minimum allowable value imposed in the model and highlights the need for improved models of this critical component of glacier systems under low-flux conditions.

365 5 Simulations of Thwaites Glacier, Antarctica

We now turn to water extraction simulations at Thwaites Glacier, Antarctica, where we perform similar model experiments as at Helheim Glacier. We use the Thwaites domain set up from Goldberg et al. (2026). First, we run the coupled SHAKTI-ISSM model to steady state with no water inputs or extraction points using the Budd sliding law (see Appendix D for a comparison of the effects of different sliding laws). Modeled results are shown in Fig. 13. The background effective pressure falls in the 370 range of $N \sim 1 - 3$ MPa, with highest subglacial water flux near the grounding line. These simulations are similar to the results using other subglacial hydrology models described in Hager et al. (2022) and Ehrenfeucht et al. (2025), where basal melt rate and water flux are highest near the grounding line.

We then simulated extraction of water at rate of $1 \text{ m}^3/\text{s}$ at 11 randomly selected sites for 1 year. The 11 extraction points are shown in Fig. 13(a) and the results are shown in Fig. 14. This pumping strategy leads to a $\sim 10 \text{ m yr}^{-1}$ slowdown, which is 375 about 1% change in velocity in the main trunk. Again, we only see velocity reduction with no apparent zones of acceleration. These results are similar to what we saw when extracting water from 11 points at Helheim, in that both models led to a $\sim 1\%$ change in velocity and only produced slowdown. In future research, we will determine how transferrable this result is and whether it is robust across different subglacial hydrology models.

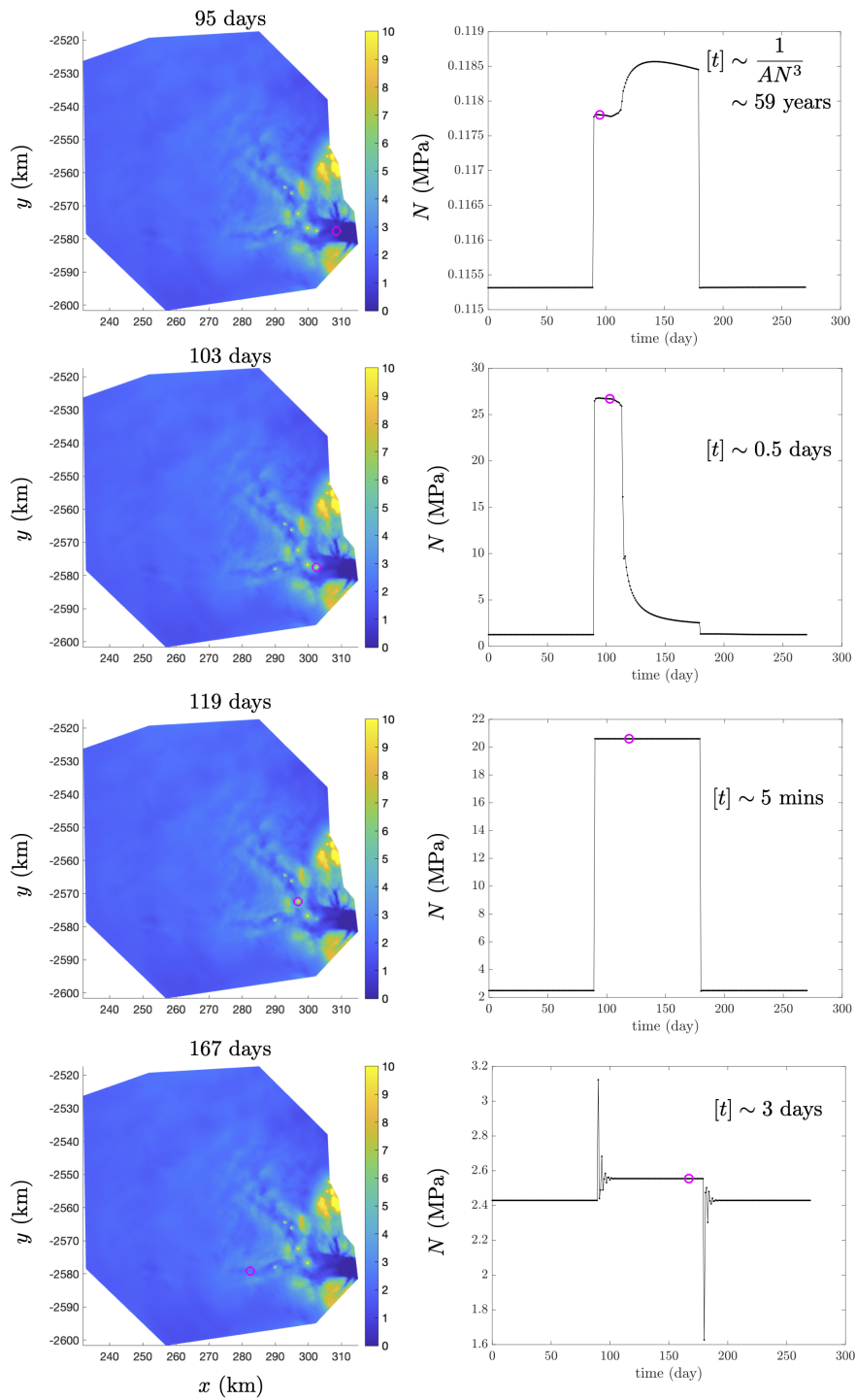


Figure 12. Change in effective pressure at 4 representative water extraction sites over a pumping and recovery cycle at Helheim Glacier. The left column shows the site locations at 4 times during the extraction period. The right column shows the effective pressure at the extraction site over time.

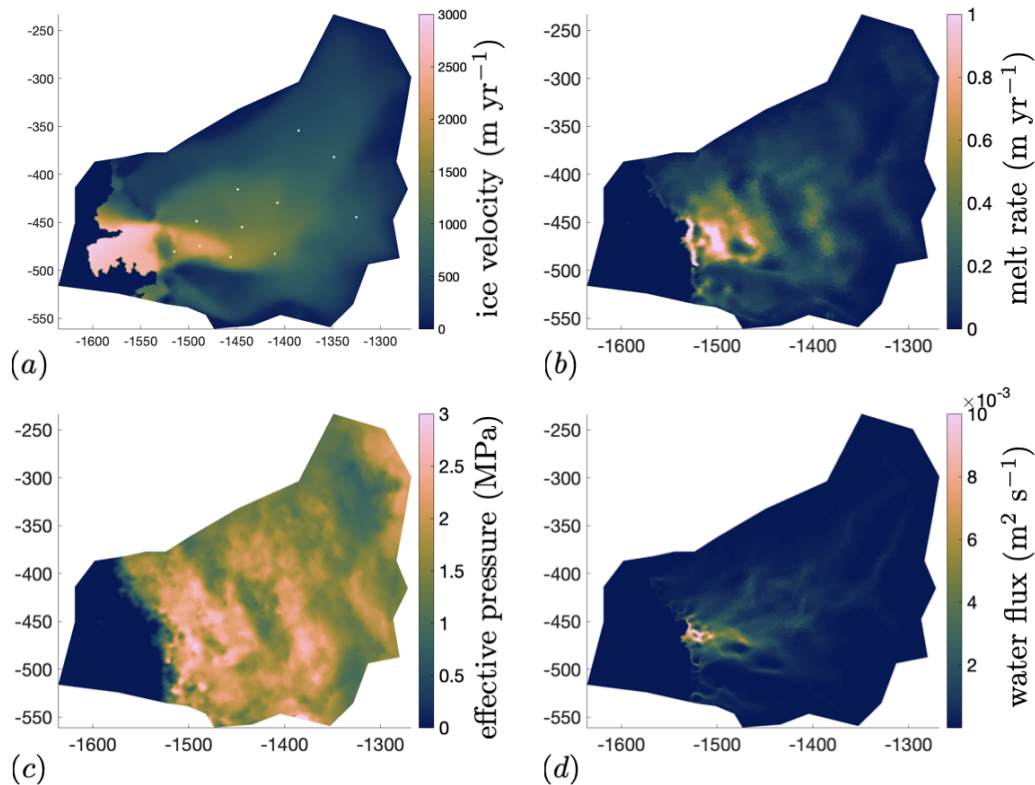


Figure 13. Simulating water extraction at Thwaites Glacier, Antarctica: (a) Modeled velocity of Thwaites Glacier resulting from an ISSM inversion using a Budd sliding law and subsequent coupled spin-up with the stress balance and subglacial hydrology. White dots indicate extraction sites. (b) Modeled subglacial melt rate. (c) Modeled effective pressure. (d) Modeled subglacial water flux, with the most significant fluxes approaching the grounding line.

6 Discussion

380 In the context of using water extraction as a method to learn more about subglacial hydrology, our results provide predictions for the time to steady state, the effective pressure at the extraction site, and radius of influence. These predictions could be used in the design of laboratory experiments involving numerous boreholes spaced out radially, with water extracted from a central borehole. The measured effective pressure distribution would allow us to compare the shape of the curve to our prediction and determine the parameters for the best-fit values of D , M , W , and R . It is also possible that these experiments could

385 demonstrate that our model does not represent the dominant physics, and the radial distribution of effective pressure could take a different form. This outcome would result in a helpful reformulation of subglacial hydrology and provide context for comparison to experiments, similar to the determination of the effective film thickness by Engelhardt and Kamb (1997).

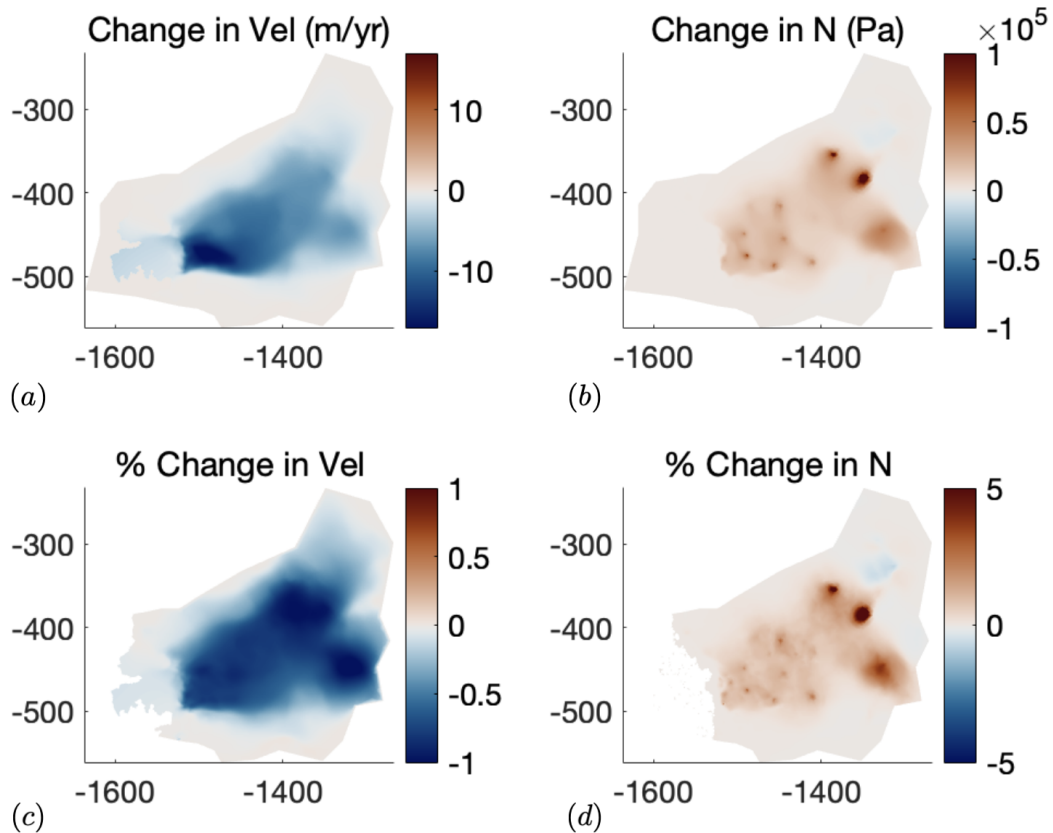


Figure 14. Impact of water extraction at Thwaites Glacier: (a) Velocity change in meters per year, showing a monotonic decrease. (b) Effective pressure change in Pa (n.b. 10^5 Pa is 0.1 MPa). (c) Velocity change as a percentage of the total velocity in Fig. 13(a), which is on the order of a 1% decrease. (d) Effective pressure change as a percentage of effective pressure in Fig. 13(c).

In our predictions for the effect of water extraction on glacier velocity, we ignored seasonal dynamics (e.g., surface meltwater draining to the bed), as well as multi-year impacts, and we did not optimize the location of the extraction points. While we
 390 leave these extensions to future work, it is worth discussing how they may affect the results. First, the seasonal water input from surface melting at Helheim is immense (on the order of 1 km^3 ; Stevens et al., 2022a) and water extraction would have a difficult time competing: it would take ~ 32 years for a single borehole with $Q = 1 \text{ m}^3/\text{s}$ to extract the surface melting of a single season. Future simulations could include surface water input and examine the most effective time period to pump. It is clear that the pumping strategy affects the relationship between water extraction and glacier slowdown, yet the simulations
 395 presented here are intended to be illustrative of the overall concept and we did not optimize the locations of extraction, the timing, or the pumping rate. For example, all of the locations in the main trunks of Helheim and Thwaites have only a small effect on the resulting velocity (cf. Fig. 11 and 13). This makes sense given the Sommers et al. (2024) results, which showed that hydrology is most influential in the upstream regions, i.e., away from the coast and out of the fast flowing sectors. On

longer timescales and over repeated seasons of water extraction, feedbacks related to sliding and freezing to the bed could kick
400 in. Water piracy is hypothesized to be the cause of the Kamb Ice Stream stagnation in Antarctica (e.g., Alley et al., 1994) and
could affect the long-term evolution of glaciers such as Helheim and Thwaites if water is extracted. Freezing to the bed due
to slowing glacier velocity would be more effective at reducing glacier flux than extracting water alone (Tulaczyk et al., 2000;
Robel et al., 2013; Meyer et al., 2018, 2019). Further research could optimize locations of water extraction (focusing on the
upstream reaches) and run multi-year simulations, where increases in basal traction could lead to flow reorganization.

405 In this work, we did not consider the practical question that arises of what becomes of the extracted water. Possibilities
include making snow (during winter pumping when air temperatures are consistently below freezing) or injecting the extracted
water down an existing moulin (during a summer deployment with seasonal surface melting), aiming to enhance an existing
efficient subglacial channel, draining pressure from the surrounding bed. Nor did we consider engineering considerations
for such a pumping strategy to be implemented, the cost-benefit analysis, or the ethical and moral considerations of such
410 an approach. This we leave for future studies, for which this present work may provide some constraints on the scale of
intervention required.

As a glacier intervention strategy, our results suggest that water extraction can slow glaciers. Attainable pumping rates over
a reasonable time span, with a drilling campaign that has precedent in the literature (e.g., Kamb, 2001), in a model that encodes
our knowledge of ice and water flow physics, results in a small slowdown of Helheim and Thwaites Glaciers, among the fastest-
415 flowing glaciers on planet Earth. As expected, water extraction did not stop them in their tracks and more research is required
to understand the mechanics by which water extraction could significantly slow a glacier. For the simulations of Helheim
Glacier, we built on an existing model configuration (Sommers et al., 2023, 2024). However, considering glacier intervention
in Greenland holds clear drawbacks: large amounts of seasonal surface meltwater and rapid glacier flow. For this reason, we
also included simulations of Thwaites Glacier, Antarctica, which is important for sea-level rise, flows more slowly, and does not
420 currently experience surface melt. Our results show a similar $\sim 1\%$ change in ice velocity at both glaciers, as a consequence of
water extraction at 11 arbitrary points on each. Even if water extraction turns out to be an ineffective or impractical intervention
strategy to produce a meaningful slowdown of mass loss from the polar ice sheets, the research spurred by this line of inquiry
will still improve subglacial hydrology models to improve accuracy of future sea-level change projections.

7 Conclusions

425 Changes in subglacial water flux and pressure affect glacier velocity. In this paper, we analyzed the effects of water extraction on
glacier velocity. We started by considering axisymmetric subglacial water flow around a single borehole. We developed a model
and used this framework to answer three key questions about the radius of influence, the extraction pressure, and the timescale
of evolution. We found that the effective pressure perturbations had a logarithmic component, allowing the effective pressure
to stay elevated far away from the borehole. We determined the relationship between extraction flux and extraction effective
430 pressure. We showed that creep closure dominates the time it takes for the pumping to reach steady state and similarly recover
following pumping, with typical response times on the order of days. Building off these results, we presented coupled subglacial

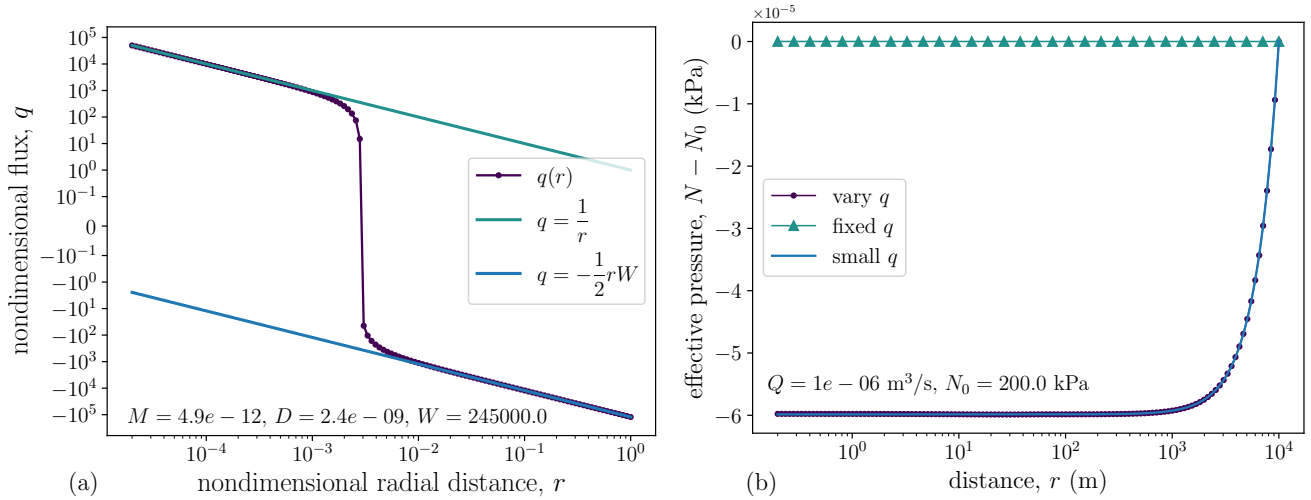


Figure A1. Asymptotic solution for a small extraction flux: (a) Flux with distance, showing a transition to the small q solution. (b) The small flux solution for the effective pressure agrees with the full solution.

hydrology–ice dynamics simulations of Helheim Glacier, Greenland and Thwaites Glacier, Antarctica using SHAKTI-ISSM. We found that the velocity reduced about 1% for a reasonable pumping strategy. Overall, we demonstrate the utility of studying water extraction as a way to learn more about the subglacial hydrologic system as well as to determine its efficacy as a glacier
 435 intervention strategy.

Code availability. Code and analysis scripts for the SHAKTI-ISSM simulations as well as solutions to the fixed and variable flux problems can be found at <<https://github.com/colinmeyer/water-extraction>>. We will add a public-release Zenodo doi after review.

Appendix A: Asymptotic solution for a small extraction flux

In Fig. 4, we observed that for small extraction fluxes, that fluid can enter from the outer edge of the domain. We can describe
 440 these dynamics in the asymptotic limit of a small extraction flux and ignore dissipation, i.e., $M \ll 1$, $R \ll 1$, $W \gg 1$, and $D = 0$. In this distinguished limit, we can reduce equations (11)-(14) to

$$Mq(1 + Rq) = -N^{-9} \frac{dN}{dr}, \quad (\text{A1})$$

$$\frac{1}{r} \frac{d}{dr} (rq) = -W. \quad (\text{A2})$$

We now integrate mass conservation to determine the flux as

$$445 \quad q = -\frac{1}{2}Wr, \quad (\text{A3})$$

where we take the constant of integration that comes from setting the inner boundary condition to be zero, since W is large. Inserting the flux into equation (A1), we find that

$$-4MW r + 2RW^2 M r^2 = \frac{d}{dr} (N^{-8}). \quad (\text{A4})$$

Integrating and applying the outer boundary condition, $N = 1$ at $r = 1$, gives

$$450 \quad N = \left[1 + 2MW (1 - r^2) - \frac{2}{3} RW^2 M (1 - r^3) \right]^{-1/8}, \quad (\text{A5})$$

which is shown in Fig. A1. The asymptotic model agrees with the full flux model. The minimum effective pressure is given by

$$N_{\min} = \left[1 + 2MW - \frac{2}{3} RW^2 M \right]^{-1/8}. \quad (\text{A6})$$

This solution works well for small fluxes, as shown in Fig. A1. The dimensionless groups that arise in this solution are given by

$$455 \quad MW = \frac{12\mu r_d (G + u_b \tau_b) r_d}{[b]^3 N_0 \rho_w \mathcal{L}} \quad \text{and} \quad RW^2 M = \frac{12\omega \rho_i \rho_w \mathcal{L} A^3 N_0^8 r_d^3}{(G + u_b \tau_b)},$$

which are independent of the flux Q . The first group can be seen as a ratio of the flux generated from melting due to sliding and geothermal heat to the expected flux through the system. The second term determines the role of turbulent melting in the system as compared to geothermal heat and sliding.

Returning to the step above where we set the inner boundary condition to zero, this choice is not required and we can derive
460 a more general analytical solution by including the inner flux. In this way, we find that

$$q = -\frac{1}{2} W r + \frac{1}{r}. \quad (\text{A7})$$

Inserting this flux into equation (A1), we find that

$$\frac{M}{r} + \frac{MR}{r^2} - MWR - \frac{1}{2} r WM + \frac{1}{4} r^2 MW^2 R = \frac{1}{8} \frac{d}{dr} (N^{-8}). \quad (\text{A8})$$

Upon integrating and applying the outer boundary condition, we find that

$$465 \quad N = \left\{ 1 + 8M \left[\ln(r) + R \left(1 - \frac{1}{r} \right) + WR(1 - r) + \frac{1}{4} W (1 - r^2) - \frac{1}{12} W^2 R (1 - r^3) \right] \right\}^{-1/8}, \quad (\text{A9})$$

which is a combination of the earlier analytical solution that neglects dissipation, i.e., equation (22), and the small-flux asymptotic solution just described, equation (A5). This solution extends the applicability of the small flux asymptotics to larger values of M , R , and smaller values of W .

Appendix B: Numerical and approximate solutions to the fixed flux model

470 B1 Shooting and relaxation methods when including dissipation

If we now include the effect of turbulent dissipation on melting, which becomes important as q increases towards the borehole, we must solve the equations numerically. To solve these equations, we employ a relaxation method: we use forward Euler to

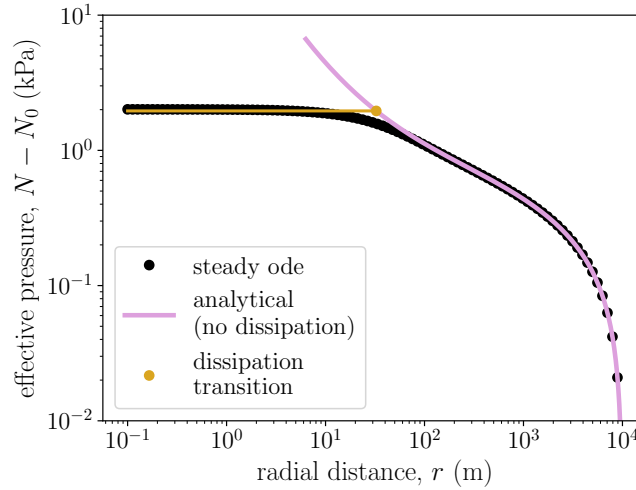


Figure B1. In steady state, extracting water increases the local effective pressure by stimulating water flow: effective pressure as a function of radial distance, showing the analytical solution where we ignore dissipation. By finding the radius where turbulent dissipation is significant, we approximate the effective pressure at the borehole (gray curves) from equation (B7).

march the gap height b forward in time, then use the value of the gap height at the previous time step to find $\partial N/\partial r$ from the equation for the water flux. We then use $\partial N/\partial r$ to find the melt rate, and use that expression to move forward in time and
 475 update b .

In steady state, we have the reduced equations given by

$$M \left(\frac{1}{r} + \frac{R}{r^2} \right) = -b^3 \frac{\partial N}{\partial r}, \quad (\text{B1})$$

$$N^3 b = 1 - \frac{D}{r} \frac{\partial N}{\partial r}. \quad (\text{B2})$$

We can combine these into a single ODE for $\partial N/\partial r$ as

$$480 \left[1 + \frac{D}{r} \left(-\frac{\partial N}{\partial r} \right) \right]^3 \left(-\frac{\partial N}{\partial r} \right) = \frac{M}{r} \left(1 + \frac{R}{r} \right) N^9, \quad (\text{B3})$$

where we solve for $-\partial N/\partial r$ using a root-finding algorithm and then integrate backward starting from $N = 1$ at $r = 1$.

B2 Approximate solution for effective pressure at extraction location

To answer the question of how large is the effective pressure at the extraction site, we numerically solve the steady ODE that includes turbulent dissipation, i.e., equation (B3), as described in the previous section. Unlike the approximate analytical
 485 solution, where there is a singularity as $r \rightarrow 0$, including dissipation regularizes the singularity and the near-field effective pressure approaches a constant. In Fig. B1, we can see the steady ODE solution to the problem, showing the approach to a constant in the near field, the singularity in the approximate analytical expression, and the logarithmic decay behavior in the far field.

Based on these results, we can see that there is a boundary layer for small r where turbulent dissipation dominates, the gap
 490 height opens due to enhanced melting, and the effective pressure is more or less constant. Matching this inner region to the
 approximate analytical outer solution, equation (22), proved intractable analytically, in part because of the singularity at finite
 r . To capture the essence of the behavior, we noticed that the value of effective pressure for the outer solution at the point where
 the dissipation is order unity, i.e.,

$$-\frac{D}{r} \frac{dN}{dr} \sim 1, \quad (\text{B4})$$

495 is close to the value of the inner solution. In this region, we assume that $r < R$, so that the effective pressure and its gradient
 are approximately given as

$$N \simeq 1 + \frac{MR}{r} \quad \text{and} \quad \frac{dN}{dr} \simeq -\frac{MR}{r^2}. \quad (\text{B5})$$

This implies that the dissipation term is order unity when the radius r is approximately

$$r \simeq (DMR)^{1/3}. \quad (\text{B6})$$

500 We then evaluate the outer effective pressure analytical expression at this radius and find that

$$N \simeq 1 + \left(\frac{M^2 R^2}{D} \right)^{1/3} \quad (\text{B7})$$

As shown in Fig. 6, this approximate approach agrees well with the full solution for low Q and N_0 .

Appendix C: Pressure divergence at high pumping rates

As the value of the outer effective pressure becomes larger in Fig. B1, we see that there is a breakdown in the numerical
 505 solution, which almost uniformly occurs for large effective pressures. To understand this breakdown, we look for the domain
 of applicability for equation (B3). To start, we can see that as the effective pressure at the outer boundary increases, the
 hydraulic permeability of the domain decreases. For a fixed form of the flux $q = Q/2\pi r$, this means the pressure gradient
 towards the borehole must increase to maintain the imposed value of Q , further increasing N and decreasing the gap height
 and permeability. If the outer boundary pressure is too large for the flux imposed, the effective pressure diverges before the
 510 before we reach $r = 0$. Physically, this corresponds to a hydrological system that collapses in on itself from the induced
 pressure gradients, like a straw collapsing shut. Indeed, for any value of Q and domain size r_d we can find the maximum N_0
 at the boundary such that this divergence occurs exactly at $r = 0$. Since $\partial N/\partial r$ is only a function of N and r , considering this
 as a 2D dynamical system, curves of $N(r)$ cannot intersect, so any solutions with a lower value of N_0 will remain bounded as
 $r \rightarrow 0$ and any with a larger value of N_0 will diverge at finite r . Practically, it is easiest to integrate outwards from $r = 0$, and
 515 continue along this bounding curve, which we refer to as the envelope, to reach any value of r_d .

We start by rescaling the variables so that

$$r = R\hat{r}, \quad N = M^{-1/8}\hat{N}, \quad \text{and} \quad \hat{D} = \frac{D}{R^2 M^{1/8}} = \frac{(2\pi)^{9/8} \nu^2}{(12\mu)^{1/8} (\rho_i L A)^{3/8} (G + u_b \tau_b)^{5/8} \omega^2 Q^{9/8}},$$

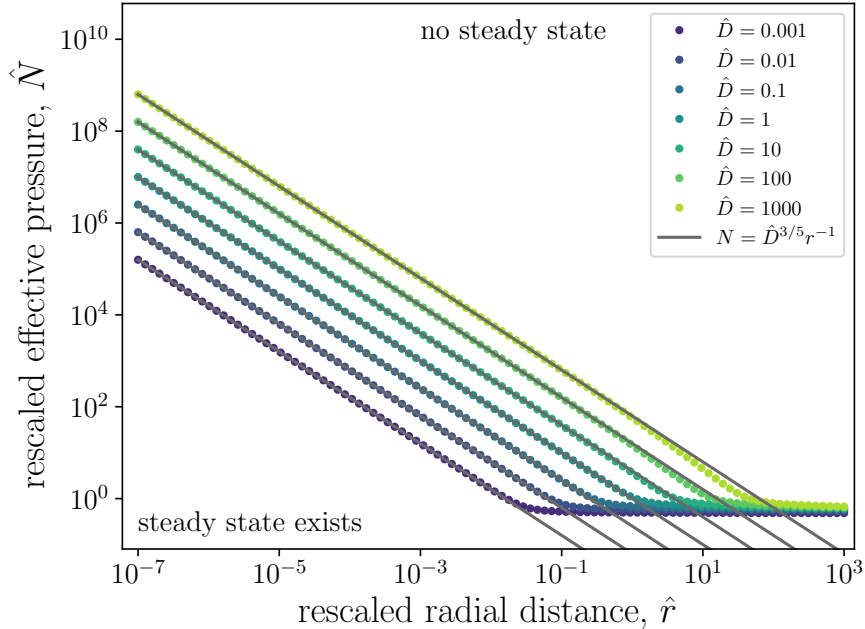


Figure C1. Curves of maximum steady state effective pressure as a function of radial distance and a unified dissipation parameter \hat{D} . Choosing initial conditions at a radius below the curve for a given \hat{D} result in a steady solution, whereas steady solutions above the curve do not exist.

which is independent of N_0 and r_d . This rescaling leads to a one-parameter version of equation (B3), i.e.,

$$\left[1 + \frac{\hat{D}}{r} \left(-\frac{\partial \hat{N}}{\partial \hat{r}}\right)\right]^3 \left(-\frac{\partial \hat{N}}{\partial \hat{r}}\right) = \frac{1}{\hat{r}} \left(1 + \frac{1}{\hat{r}}\right) \hat{N}^9, \quad (\text{C1})$$

520 which has an asymptotic solution for small \hat{r} of $\hat{N} \simeq \hat{D}^{3/5} \hat{r}^{-1}$. We integrate equation (C1), starting from a very large effective pressure at the extraction site (i.e., $\hat{N} = \hat{D}^{3/5}/\epsilon$ at $\hat{r} = \epsilon$ with $\epsilon \rightarrow 0$) and find that the curve locks onto the largest steady state effective pressure for given values of \hat{r} and \hat{D} . The result of this integration is shown in Fig. C1. The different curves on the plot in Fig. C1 represent different values for the parameter \hat{D} , corresponding different extraction fluxes Q , and parameters such as ice softness A and geothermal heat G . From this analysis, we can see that if we impose $N = N_0$ at a radius $r = r_d$ and that

525 the point falls above the curve for the associated value of \hat{D} , then there will not be a steady state solution. It is for this reason that large N_0 and large Q resulted in singularities in Fig. B1. Part of the reason that we find a region of parameter space that does not have a steady state is that we have neglected mass conservation, i.e., equation (5), by assuming that $q = Q/(2\pi r)$ and neglecting the right hand side of this equation. As the melt rate increases, due to larger Q or dN/dr , this approximation is no longer viable.

530 Appendix D: Effect of sliding law on water extraction experiments

Using the Thwaites Glacier domain as a testbed, here we compare the results of water extraction with Budd sliding, e.g., Fig. 13, with those using a regularized Coulomb sliding law. The equations for the two sliding laws are given as

$$\tau_b = C^2 u_b N \quad (\text{Budd}), \quad (\text{D1})$$

$$\tau_b = \frac{\alpha^2 u_b^{1/3}}{\left[1 + \left(\frac{2\alpha^2}{N}\right)^3 u_b\right]^{1/3}} \quad (\text{regularized Coulomb}), \quad (\text{D2})$$

535 where the unknown coefficient in the regularized Coulomb law is α . The physics encoded in the regularized Coulomb allows for rate-strengthening at sliding velocities when the stress is below a yield stress and converges to Coulomb friction at higher velocities (Schoof, 2005; Joughin et al., 2019; Zoet and Iverson, 2020; Helanow et al., 2021; Hansen et al., 2024).

In Fig. D1, we compare the results of the 11-point, 1-year pumping experiment at Thwaites for the two different sliding laws. We see that the Budd sliding law leads to a larger change in velocity. While a small difference between the two results come
540 from the fact that the inverted velocities are similar but not exactly the same, the majority of the difference arises because of the influence of effective pressure on the sliding law. In the Budd sliding law case, the basal shear stress is directly proportional to the change in effective pressure. A 5% increase in N will require a similar percentage decrease in u_b to maintain the same τ_b . For regularized Coulomb, the basal shear stress is less sensitive to effective pressure because the background effective pressure is large, as shown in Fig. 13. In this limit where the shear stress is below the yield stress, the sliding law is dominated by the
545 rate-strengthening component, and changes in the effective pressure have a muted effect on the sliding speed. Without data to constrain the effective pressure, we speculate that at smaller background effective pressures, we would see a larger velocity change. Our results show that (i) the choice of sliding law is important for determining the velocity change; (ii) the subglacial hydrology model sets the magnitude of the effective pressure, which influences the parameter regime in the sliding law; and (iii) further research into constraining sliding laws, effective pressures, and basal velocities at Thwaites will directly inform the
550 predicted velocity reduction.

Author contributions. CRM: conceptualization, analysis, methodology, original draft preparation, funding acquisition. KLPW: conceptualization, analysis, methodology, review and editing. ANS: conceptualization, analysis, methodology, review and editing. BMM: conceptualization, review and editing, funding acquisition.

Competing interests. The authors declare that they have no conflict of interest. CRM and BM are co-founders of Arête Glacier Initiative
555 (areteglaciers.org), a non-profit organization that is fiscally sponsored by Digital Harbor Foundation. Arête was founded in 2024 to provide funding to glaciological research community, develop sea-level rise forecasts, and to research glacier interventions. CRM and BM's consulting work with Arête is separate from their university research activities.

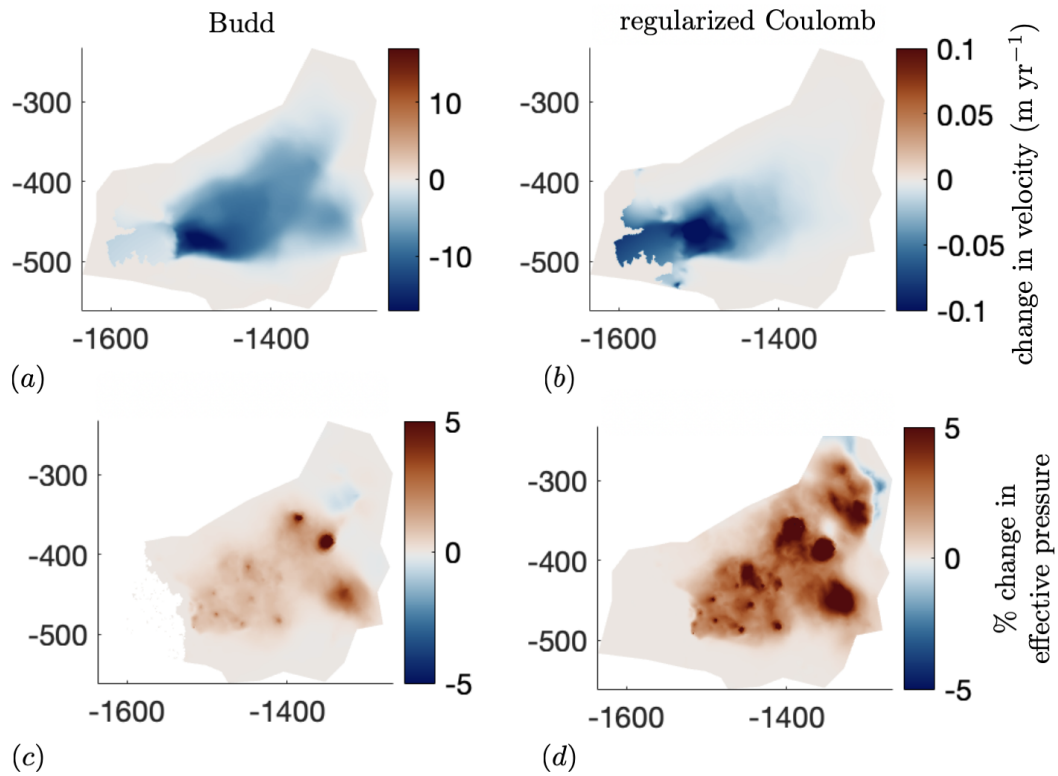


Figure D1. A comparison between the velocity change at Thwaites after one year of pumping with two different sliding laws: (a) Velocity change with a Budd sliding law. (b) Velocity change with a regularized Coulomb sliding law. (c) Percent change in effective pressure with a Budd sliding law. (d) Percent change in effective pressure with a regularized Coulomb sliding law.

Acknowledgements. We thank Alan Rempel, Aaron Stubblefield, Ken Mankoff, Doug MacAyeal, Ethan Pierce, Christine Dow, Tobias Tiecke, and Lauren Mahle for insightful conversations. This work was funded by the Grantham Foundation.

560 **References**

- Alley, R. B.: Towards a hydrological model for computerized ice-sheet simulations, *Hydrological Processes*, 10, 649–660, [https://doi.org/https://doi.org/10.1002/\(SICI\)1099-1085\(199604\)10:4<649::AID-HYP397>3.0.CO;2-1](https://doi.org/https://doi.org/10.1002/(SICI)1099-1085(199604)10:4<649::AID-HYP397>3.0.CO;2-1), 1996.
- Alley, R. B., Blankenship, D. D., Bentley, C. R., and Rooney, S. T.: Deformation of till beneath ice stream B, West Antarctica, *Nature*, 322, 57–59, <https://doi.org/10.1038/322057a0>, 1986.
- 565 Alley, R. B., Anandakrishnan, S., Bentley, C. R., and Lord, N.: A water-piracy hypothesis for the stagnation of Ice Stream C, Antarctica, *Ann. Glaciol.*, 20, 187–194, <https://doi.org/10.1017/S0260305500016438>, 1994.
- Andrews, L. C., Catania, G. A., Hoffman, M. J., Gulley, J. D., Lüthi, M. P., Ryser, C., Hawley, R. L., and Neumann, T. A.: Direct observations of evolving subglacial drainage beneath the Greenland Ice Sheet, *Nature*, 514, 80–83, <https://doi.org/10.1038/nature13796>, 2014.
- Brinkerhoff, D. J., Meyer, C. R., Bueler, E., Truffer, M., and Bartholomaeus, T. C.: Inversion of a glacier hydrology model, *Ann. Glaciol.*, pp. 570 1–12, <https://doi.org/10.1017/aog.2016.3>, 2016.
- Carey, M., Barton, J., and Flanzer, S.: Glacier protection campaigns: what do they really save?, in: *Ice humanities*, pp. 89–109, Manchester university press, <https://doi.org/10.7765/9781526157782.00012>, 2022.
- Creys, T. T. and Schoof, C.: Drainage through subglacial water sheets, *J. Geophys. Res.*, 114, 1–18, <https://doi.org/10.1029/2008jf001215>, 2009.
- 575 Das, S. B., Joughin, I., Behn, M. D., Howat, I. M., King, M. A., Lizarralde, D., and Bhatia, M. P.: Fracture Propagation to the Base of the Greenland Ice Sheet During Supraglacial Lake Drainage, *Science*, 320, 778–781, <https://doi.org/10.1126/science.1153360>, 2008.
- de Fleurian, B., Werder, M. A., Beyer, S., Brinkerhoff, D. J., Delaney, I., Dow, C. F., Downs, J., Gagliardini, O., Hoffman, M. J., Hooke, R. L., et al.: SHMIP The subglacial hydrology model intercomparison Project, *J. Glaciol.*, 64, 897–916, <https://doi.org/10.1017/jog.2018.78>, 2018.
- 580 Dow, C. F., Ross, N., Jeofry, H., Siu, K., and Siegert, M. J.: Antarctic basal environment shaped by high-pressure flow through a subglacial river system, *Nat. Geosci.*, 15, 892–898, <https://doi.org/10.1038/s41561-022-01059-1>, 2022.
- Doyle, S. H., Hubbard, B., Christoffersen, P., Law, R., Hewitt, D. R., Neufeld, J. A., Schoonman, C. M., Chudley, T. R., and Bougamont, M.: Water flow through sediments and at the ice-sediment interface beneath Sermeq Kujalleq (Store Glacier), Greenland, *J. Glaciol.*, 68, 665–684, <https://doi.org/10.1017/jog.2021.121>, 2022.
- 585 Ehrenfeucht, S., Dow, C., McArthur, K., Morlighem, M., and McCormack, F. S.: Antarctic Wide Subglacial Hydrology Modeling, *Geophys. Res. Lett.*, 52, e2024GL111386, <https://doi.org/https://doi.org/10.1029/2024GL111386>, 2025.
- Engelhardt, H., Humphrey, N., Kamb, B., and Fahnestock, M.: Physical conditions at the base of a fast moving Antarctic ice stream, *Science*, 248, 57–59, <https://doi.org/10.1126/science.248.4951.57>, 1990.
- Engelhardt, H. F. and Kamb, B.: Basal hydraulic system of a West Antarctic ice stream: Constraints from borehole observations, *J. Glaciol.*, 590 43, 207–230, <https://doi.org/10.1017/S0022143000003166>, 1997.
- Engelhardt, H. F. and Kamb, B.: Basal sliding of Ice Stream B, West Antarctica, *J. Glaciol.*, 44, 223–230, <https://doi.org/10.1017/S0022143000002562>, 1998.
- Fitts, C. R.: *Groundwater science*, Elsevier (London), 2002.
- Flamm, P. and Shibata, A.: ‘Ice sheet conservation’ and international discord: governing (potential) glacial geoengineering in Antarctica, 595 *International Affairs*, 101, 309–320, <https://doi.org/10.1093/ia/iaae281>, 2025.

- Flowers, G. E.: Modelling water flow under glaciers and ice sheets, *Proc. R. Soc. Lond. Ser. A*, 471, <https://doi.org/10.1098/rspa.2014.0907>, 2015.
- Goldberg, D. N., Morlighem, M., and Gourmelen, N.: Recent Observations of Thwaites Glacier, West Antarctica Are Consistent With High Rates of Loss in Next 50 Years, *Geophys. Res. Lett.*, 53, e2025GL118 823, <https://doi.org/10.1029/2025GL118823>, 2026.
- 600 Hager, A. O., Hoffman, M. J., Price, S. F., and Schroeder, D. M.: Persistent, extensive channelized drainage modeled beneath Thwaites Glacier, West Antarctica, *Cryosphere*, 16, 3575–3599, <https://doi.org/https://doi.org/10.5194/tc-16-3575-2022>, 2022.
- Hansen, D. D., Warburton, K. L. P., Zoet, L. K., Meyer, C. R., Rempel, A. W., and Stubblefield, A. G.: Presence of Frozen Fringe Impacts Soft-Bedded Slip Relationship, *Geophys. Res. Lett.*, 51, e2023GL107 681, <https://doi.org/https://doi.org/10.1029/2023GL107681>, 2024.
- Helanow, C., Iverson, N. R., Woodard, J. B., and Zoet, L. K.: A slip law for hard-bedded glaciers derived from observed bed topography, *Sci. Adv.*, 7, <https://doi.org/10.1126/sciadv.abe7798>, 2021.
- 605 Hewitt, I. J.: Modelling distributed and channelized subglacial drainage: the spacing of channels, *J. Glaciol.*, 57, 302–314, <https://doi.org/10.3189/002214311796405951>, 2011.
- Hewitt, I. J.: Seasonal changes in ice sheet motion due to melt water lubrication, *Earth Planet. Sci. Lett.*, 371, 16–25, <https://doi.org/10.1016/j.epsl.2013.04.022>, 2013.
- 610 Iken, A. and Bindschadler, R. A.: Combined measurements of subglacial water pressure and surface velocity of Findelengletscher, Switzerland: conclusions about drainage system and sliding mechanism, *J. Glaciol.*, 32, 101–119, <https://doi.org//10.3198/1986JoG32-110-101-119>, 1986.
- Joughin, I., Smith, B. E., and Schoof, C. G.: Regularized Coulomb Friction Laws for Ice Sheet Sliding: Application to Pine Island Glacier, Antarctica, *Geophys. Res. Lett.*, 46, 4764–4771, <https://doi.org/10.1029/2019GL082526>, 2019.
- 615 Kamb, B.: Glacier surge mechanism based on linked cavity configuration of the base water conduit system, *J. Geophys. Res.*, 92, 9083–9099, <https://doi.org/10.1029/jb092ib09p09083>, 1987.
- Kamb, W. B.: Basal zone of the West Antarctic Ice Streams and its role in lubrication of their rapid motion, in: *The West Antarctic Ice Sheet: Behavior and Environment*, edited by Alley, R. B. and Bindschadler, R. A., vol. 77, pp. 157–199, AGU, Washington, DC, <https://doi.org/10.1029/ar077p0157>, 2001.
- 620 Kyrke-Smith, T. M., Katz, R. F., and Fowler, A. C.: Subglacial hydrology and the formation of ice streams, *Proc. R. Soc. Lond. Ser. A*, 470, <https://doi.org/10.1098/rspa.2013.0494>, 2014.
- Liljedahl, L. C., Meierbachtol, T., Harper, J., van As, D., Näslund, J.-O., Selroos, J.-O., Saito, J., Follin, S., Ruskeeniemi, T., Kontula, A., and Humphrey, N.: Rapid and sensitive response of Greenland’s groundwater system to ice sheet change, *Nat. Geosci.*, 14, 751–755, <https://doi.org/10.1038/s41561-021-00813-1>, 2021.
- 625 Lockley, A., Wolovick, M., Keefer, B., Gladstone, R., Zhao, L.-Y., and Moore, J. C.: Glacier geoengineering to address sea-level rise: A geotechnical approach, *Adv. Clim. Change Res.*, 11, 401–414, <https://doi.org/https://doi.org/10.1016/j.accre.2020.11.008>, 2020.
- MacAyeal, D. R.: Large-scale ice flow over a viscous basal sediment: Theory and application to Ice Stream B, Antarctica, *J. Geophys. Res.*, 94, 4071–4087, <https://doi.org/10.1029/JB094iB04p04071>, 1989.
- Mankoff, K. D., Solgaard, A., Colgan, W., Ahlstrøm, A. P., Khan, S. A., and Fausto, R. S.: Greenland Ice Sheet solid ice discharge from 1986 through March 2020, *Earth Syst. Sci. Data*, 12, 1367–1383, <https://doi.org/10.5194/essd-12-1367-2020>, 2020.
- 630 Mejía, J. Z., Gulley, J. D., Trunz, C., Covington, M. D., Bartholomäus, T. C., Xie, S., and Dixon, T. H.: Isolated cavities dominate Greenland ice sheet dynamic response to lake drainage, *Geophys. Res. Lett.*, 48, e2021GL094 762, <https://doi.org/10.1029/2021GL094762>, 2021.

- Mejía, J. Z., Gulley, J. D., Trunz, C., Covington, M. D., Bartholomaeus, T. C., Breithaupt, C., Xie, S., and Dixon, T. H.: Moulin Density Controls the Timing of Peak Pressurization Within the Greenland Ice Sheet's Subglacial Drainage System, *Geophys. Res. Lett.*, 49, e2022GL100058, <https://doi.org/10.1029/2022GL100058>, 2022.
- 635 Meyer, C. R., Downey, A. S., and Rempel, A. W.: Freeze-on limits bed strength beneath sliding glaciers, *Nat. Commun.*, 9, 3242, <https://doi.org/10.1038/s41467-018-05716-1>, 2018.
- Meyer, C. R., Robel, A. A., and Rempel, A. W.: Frozen fringe explains sediment freeze-on during Heinrich events, *Earth Planet. Sci. Lett.*, 524, 115725, <https://doi.org/10.1016/j.epsl.2019.115725>, 2019.
- 640 Minchew, B. and Joughin, I.: Toward a universal glacier slip law, *Science*, 368, 29–30, <https://doi.org/10.1126/science.abb3566>, 2020.
- Moon, T., Joughin, I., Smith, B., van den Broeke, M. R., van de Berg, W. J., Noël, B., and Usher, M.: Distinct patterns of seasonal Greenland glacier velocity, *Geophys. Res. Lett.*, 41, 7209–7216, <https://doi.org/10.1002/2014GL061836>, 2014.
- Moon, T. A.: Geoengineering might speed glacier melt, *Nature*, 556, 436–437, <https://doi.org/10.1038/d41586-018-04897-5>, 2018.
- Moore, J. C., Gladstone, R., Zwinger, T., and Wolovick, M.: Geoengineer polar glaciers to slow sea-level rise, *Nature*, 555, 303–305, 645 <https://doi.org/10.1038/d41586-018-03036-4>, 2018.
- Morland, L.: Unconfined ice-shelf flow, in: *Dynamics of the West Antarctic Ice Sheet*, pp. 99–116, Springer, 1987.
- Morlighem, M., Seroussi, H., Larour, E., and Rignot, E.: Inversion of basal friction in Antarctica using exact and incomplete adjoints of a higher-order model, *J. Geophys. Res.*, 118, 1746–1753, <https://doi.org/10.1002/jgrf.20125>, 2013.
- Narayanan, N., Sommers, A. N., Chu, W., Steiner, J., Siddique, M. A., Meyer, C. R., and Minchew, B.: Simulating Seasonal Evolution of Subglacial Hydrology at a Surging Glacier in the Karakoram, *J. Glaciol.*, p. 1–26, <https://doi.org/10.1017/jog.2025.10078>, 2025.
- 650 Poinar, K., Dow, C. F., and Andrews, L. C.: Long-Term Support of an Active Subglacial Hydrologic System in Southeast Greenland by Firn Aquifers, *Geophys. Res. Lett.*, 46, 4772–4781, <https://doi.org/10.1029/2019GL082786>, 2019.
- Rempel, A. W., Meyer, C. R., and Riverman, K. L.: Melting temperature changes during slip across subglacial cavities drive basal mass exchange, *J. Glaciol.*, 68, 197–203, <https://doi.org/10.1017/jog.2021.107>, 2022.
- 655 Robel, A. A., DeGiuli, E., Schoof, C., and Tziperman, E.: Dynamics of ice stream temporal variability: Modes, scales, and hysteresis, *J. Geophys. Res.*, 118, 925–936, <https://doi.org/10.1002/jgrf.20072>, 2013.
- Robel, A. A., Sim, S. J., Meyer, C. R., Siegfried, M. R., and Gustafson, C. D.: Contemporary ice sheet thinning drives subglacial groundwater exfiltration with potential feedbacks on glacier flow, *Sci. Adv.*, 9, eadh3693, <https://doi.org/10.1126/sciadv.adh3693>, 2023.
- Robel, A. A., Verjans, V., and Ambelorun, A. A.: Biases in ice sheet models from missing noise-induced drift, *Cryosphere*, 18, 2613–2623, 660 <https://doi.org/10.5194/tc-18-2613-2024>, 2024.
- Scambos, T. A., Bell, R. E., Alley, R. B., Anandakrishnan, S., Bromwich, D. H., Brunt, K., Christianson, K., Creyts, T., Das, S. B., DeConto, R., Dutrieux, P., Fricker, H. A., Holland, D., MacGregor, J., Medley, B., Nicolas, J. P., Pollard, D., Siegfried, M. R., Smith, A. M., Steig, E. J., Trusel, L. D., Vaughan, D. G., and Yager, P. L.: How much, how fast?: A science review and outlook for research on the instability of Antarctica's Thwaites Glacier in the 21st century, *Global Planet. Change*, 153, 16 – 34, <https://doi.org/10.1016/j.gloplacha.2017.04.008>, 665 2017.
- Schoof, C.: The effect of cavitation on glacier sliding, *Proc. R. Soc. Lond. Ser. A*, 461, 609–627, <https://doi.org/10.1098/rspa.2004.1350>, 2005.
- Schoof, C.: Ice sheet acceleration driven by melt supply variability, *Nature*, 468, 803–806, <https://doi.org/10.1038/nature09618>, 2010.
- Schoof, C. and Mantelli, E.: The role of sliding in ice stream formation, *Proc. R. Soc. A*, 477, 20200870, 670 <https://doi.org/10.1098/rspa.2020.0870>, 2021.

- Siegert, M., Sevestre, H., Bentley, M. J., Brigham-Grette, J., Burgess, H., Buzzard, S., Cavitte, M., Chown, S. L., Colleoni, F., DeConto, R. M., Fricker, H., Gasson, E., Grant, S., Gulisano, A., Hancock, S., Hendry, K., Henley, S., Hock, R., Hughes, K., and Truffer, M.: Safeguarding the polar regions from dangerous geoengineering: a critical assessment of proposed concepts and future prospects, *Front. Sci.*, 3, 1527–393, <https://doi.org/10.3389/fsci.2025.1527393>, 2025.
- 675 Solgaard, A. M., Rapp, D., Nool, B. P. Y., and Hvidberg, C. S.: Seasonal Patterns of Greenland Ice Velocity From Sentinel-1 SAR Data Linked to Runoff, *Geophys. Res. Lett.*, 49, e2022GL100343, <https://doi.org/10.1029/2022GL100343>, 2022.
- Sommers, A., Rajaram, H., and Morlighem, M.: SHAKTI: Subglacial Hydrology and Kinetic, Transient Interactions v1.0, *Geosci. Model Dev.*, 11, 2955–2974, <https://doi.org/10.5194/gmd-11-2955-2018>, 2018.
- Sommers, A., Meyer, C. R., Morlighem, M., Rajaram, H., Poinar, K., Chu, W., and Mejía, J.: Subglacial hydrology modeling predicts high winter water pressure and spatially variable transmissivity at Helheim Glacier, Greenland, *J. Glaciol.*, p. 1–13, <https://doi.org/10.1017/jog.2023.39>, 2023.
- 680 Sommers, A. N., Meyer, C. R., Poinar, K., Mejía, J., Morlighem, M., Rajaram, H., Warburton, K. L. P., and Chu, W.: Velocity of Greenland’s Helheim Glacier Controlled Both by Terminus Effects and Subglacial Hydrology With Distinct Realms of Influence, *Geophys. Res. Lett.*, 51, e2024GL109168, <https://doi.org/10.1029/2024GL109168>, 2024.
- 685 Stevens, L. A., Behn, M. D., Das, S. B., Joughin, I., Noël, B. P. Y., Broeke, M. R., and Herring, T.: Greenland Ice Sheet flow response to runoff variability, *Geophys. Res. Lett.*, 43, <https://doi.org/10.1002/2016GL070414>, 2016.
- Stevens, L. A., Nettles, M., Davis, J. L., Creyts, T. T., Kingslake, J., Ahlstrøm, A. P., and Larsen, T. B.: Helheim Glacier diurnal velocity fluctuations driven by surface melt forcing, *J. Glaciol.*, 68, 77–89, <https://doi.org/10.1017/jog.2021.74>, 2022a.
- Stevens, L. A., Nettles, M., Davis, J. L., Creyts, T. T., Kingslake, J., Hewitt, I. J., and Stubblefield, A.: Tidewater-glacier response to supraglacial lake drainage, *Nat. Commun.*, 13, 6065, <https://doi.org/10.1038/s41467-022-33763-2>, 2022b.
- 690 Tulaczyk, S., Kamb, B., and Engelhardt, H. F.: Basal mechanics of Ice Stream B, West Antarctica: 2. Undrained plastic bed model, *J. Geophys. Res.*, 105, 483–494, <https://doi.org/10.1029/1999jb900328>, 2000.
- Ultee, L., Meyer, C., and Minchew, B.: Tensile strength of glacial ice deduced from observations of the 2015 eastern Skaftá cauldron collapse, Vatnajökull ice cap, Iceland, *J. Glaciol.*, 66, 1024–1033, <https://doi.org/10.1017/jog.2020.65>, 2020.
- 695 Vijay, S., Khan, S. A., Kusk, A., Solgaard, A. M., Moon, T., and Bjørk, A. A.: Resolving Seasonal Ice Velocity of 45 Greenlandic Glaciers With Very High Temporal Details, *Geophys. Res. Lett.*, 46, 1485–1495, <https://doi.org/10.1029/2018GL081503>, 2019.
- Warburton, K. L. P., Meyer, C. R., and Sommers, A. N.: Predicting the Onset of Subglacial Drainage Channels, *J. Geophys. Res.*, 129, e2024JF007758, <https://doi.org/10.1029/2024JF007758>, 2024.
- Weertman, J. and Birchfield, G. E.: Subglacial water flow under ice streams and West Antarctic ice-sheet stability, *Ann. Glaciol.*, 3, 316–320, <https://doi.org/https://doi.org/10.3189/S0260305500002998>, 1982.
- 700 Werder, M. A., Hewitt, I. J., Schoof, C., and Flowers, G. E.: Modeling channelized and distributed subglacial drainage in two dimensions, *J. Geophys. Res.*, 118, 1–19, <https://doi.org/10.1002/jgrf.20146>, 2013.
- Zoet, L. K. and Iverson, N. R.: A slip law for glaciers on deformable beds, *Science*, 368, 76–78, <https://doi.org/10.1126/science.aaz1183>, 2020.
- 705 Zwally, H. J., Abdalati, W., Herring, T., Larson, K., Saba, J., and Steffen, K.: Surface melt-induced acceleration of Greenland ice-sheet flow, *Science*, 297, 218–222, <https://doi.org/10.1126/science.1072708>, 2002.