

# Structural joint modeling of magnetotelluric data and Rayleigh wave dispersion curves using Pareto-based particle swarm optimization: An example to delineate the crustal structure of the southeastern part of the Biga Peninsula in western Anatolia

5 Ersin Büyük<sup>1,2</sup>, Ekrem Zor<sup>2</sup>, Mustafa Cengiz Tapırdamaz<sup>2</sup>

<sup>1</sup>Department of Geophysical Engineering, Gümüşhane University, Gümüşhane, 29100, Türkiye

<sup>2</sup>TÜBİTAK Marmara Research Center, Earth Sciences Research Group, Kocaeli, 41470, Türkiye

*Correspondence to:* Ersin Büyük (ebuyuk@gumushane.edu.tr)

**Abstract.** It is widely acknowledged that the joint inversion of magnetotelluric and seismological datasets enhances the quality of the crustal structure solution, even when the physical correlation between electrical resistivity and seismic velocity is weak or indirect. The structurally coupled joint inversion approach has received considerable attention over the past two decades for its ability to estimate such parameters by penalizing their cross-gradient vectors at similar spatial positions. Despite this interest, various structural couplings and different physical directions (incremental or decremental) have been partially overlooked. We hereby propose an approach for the joint inversion of magnetotelluric (MT) and Rayleigh wave dispersion (RWD) data to estimate uncorrelated parameters by integrating particle swarm optimization (PSO) and the Pareto optimality approach. We used the optimality framework of these methods to overcome the difficulties associated with traditional joint inversion algorithms and to obtain optimal solutions that account for both similar and contrasting physical sensitivities. The significant correlation between the inverted and synthetic models under both noise-free and noisy datasets, together with the consistent results obtained from comparison with a traditional derivative-based joint inversion algorithm, further strengthened our confidence in applying the proposed modeling approach to the field data from the southeastern Biga Peninsula, western Anatolia. The models inverted from the field data corroborate the efficacy of the presented method. A notable characteristic of the proposed methodology is its capacity to estimate uncorrelated physical parameters, such as electrical resistivity and seismic velocity, without the imposition of penalties. Therefore, the presented method not only offers advantages in joint inversion but also allows modelers to observe and analyze model parameters having different sensitivities that may indicate different physical directions.

## 1 Introduction

Joint inversion studies are becoming increasingly popular to reduce the non-uniqueness by constraining the solution, to improve the solution quality, and to determine models having structures that are difficult to solve. A growing body of literature investigated the joint inversion of different geophysical data sensitive to different physical phenomena to improve subsurface images so far (e.g., Dell'Aversana et al. 2016; Gallardo 2004; Lelièvre et al. 2012; Meju and Gallardo 2016; Stefano et al.

2011). The joint inversion of MT and RWD data has also been attempted by researchers to estimate more accurate physical parameters, to provide valuable information in modeling of the crustal structure (Aquino et al. 2022; Manassero et al. 2020; Moorkamp, Jones, and Fishwick 2010; Roux et al. 2011; Wu et al. 2018, 2020, 2022), to show their complementary relationships for the solution (Afonso et al., 2013), and to provide a direct link to geology by imaging the rock properties (Takougang et al., 2015). Furthermore, in recent studies such as Ogaya et al. (2016); Wu et al. (2018); Hu et al. (2024) demonstrated that joint inversion of such datasets is advantageous over single inversion methods, as it improves the accuracy, resolution and interpretability of subsurface models. These studies show that the joint inversion of magnetotelluric (MT) and Rayleigh wave dispersion (RWD) data significantly improved inversion results, even if inconsistencies existed between electrical and seismic boundaries in the spatial domain. This underscores the importance of integrating multiple seismological and magnetotelluric datasets to obtain a more comprehensive understanding of the subsurface. The integration of these methods provides distinct insights that collectively enhance the resolution of ambiguities present in single-method inversions.

In the joint inversion of such datasets, electrical resistivity ( $\rho$ ) and seismic velocity ( $V_s$ ) parameters, which are not physically well correlated (Carcione et al., 2007), are generally estimated in two ways: 1) structurally coupled, and 2) petrophysical joint inversion. Structurally coupled joint inversion approaches are based on the assumption that the directions of changing physical parameters are penalized by a structural term (Gallardo and Meju 2003; Moorkamp et al. 2013). As an effective method, Gallardo and Meju (2003) and Gallardo (2004) applied a cross-gradient approach, which aims to penalize model gradient vectors in different directions. This method promotes the models that exhibit spatial changes at similar spatial positions. However, since one cannot be sure that  $\rho$  and  $V_s$  parameters respond to the same or similar degree at similar spatial locations, different structural couplings may need to be considered as indicated by Wagner and Uhlemann (2021). For example, small fractions of conductive material can significantly affect bulk resistivity, while seismic velocities are strongly affected by large volumes of rocks (Moorkamp et al., 2010; Simpson and Bahr, 2005). Therefore, such decoupled models should also be considered, according to which the seismic velocity pattern remains almost unchanged despite the conductive layers. On the other hand, the cross-gradient approach also requires model gradient vectors, it may not be useful in the one-dimensional case where the resistivity and velocity parameters only change in the  $z$ -direction that exhibit zero cross-gradients (Li et al. 2019; Wu et al. 2018). The petrophysical joint inversion is based on the direct estimation of petrophysical parameters from geophysical parameters obtained from inversion algorithms (Mollaret et al., 2020; Steiner et al., 2021). The major problem with linking the geophysical parameters to petrophysical relationship is that their physical meaning cannot be guaranteed (Wagner and Uhlemann, 2021). This is because  $\rho$  and  $V_s$  may respond differently to petrophysical properties such as porosity, permeability and temperature in the crustal zone (Afonso et al., 2013; Chen et al., 2012; Gao et al., 2012). The nonlinear and unpredictable relationship between these parameters prevents a full correlation as they are strongly influenced by the rock properties in a specific study area (Linde and Sacks, 1998; Mavko et al., 1998). Therefore, it is generally a challenge to achieve a mutual coupling between such physical parameters with different sensitivities (Aquino et al., 2022). However, in many

geological settings, systematic correlations or anti-correlations emerge that can be exploited to reduce ambiguity in geophysical interpretation (Medved et al., 2021; Zabinyakova et al., 2023).

65 Joint inversion techniques used in both structural and petrophysical approaches also require simultaneously minimization of objective functions given by the misfits of different datasets. These techniques generally based on a derivative-based approach, which leads to a dependence on an initial model and local minima entrapment (Moorkamp et al., 2007) for both MT (Constable et al., 1987; Smith and Booker, 1988) and RWD (Dorman and Ewing, 1962) modeling. However, Particle Swarm Optimization (PSO), one of the modern global optimization methods, is increasingly becoming a useful method for modeling geophysical  
70 data to overcome these disadvantages. A striking feature of the PSO, as well as other global optimization methods such as the Genetic Algorithm (GA) (Goldberg and Holland, 1988), Neighbourhood Algorithm (NA) (Sambridge, 1999) and Simulated Annealing (SA) (Kirkpatrick et al., 1983), is the elimination of the trapping of local minima and/or initial model dependence that generally occurs in traditional inversion techniques (Pace et al., 2021). In the context of global optimization methodologies, the implementation of enhanced constraints is imperative to facilitate the comprehensive exploration of the model space and  
75 to ascertain that the array of viable models has been effectively constrained (Gupta et al., 2023). However, additional geophysical datasets can effectively reduce the set of acceptable models for such a global optimization that searches too large a model space, and thus increase the reliability of subsurface interpretations (Moorkamp et al., 2010). This allows a further advantage in reducing the model space, which provides meaningful models when global optimization algorithms are used. However, one of the other drawbacks of the joint inversion techniques used is the combination of objective functions that  
80 requires appropriate weights (Bijani et al., 2017). In this case, subjective and unpredictable weightings of the objective functions can lead to a misleading result (Büyük et al., 2020; Kozlovskaya et al., 2007; Lines et al., 1988). As an effective method, Moore (1897) identified a definition of Pareto optimality approach presenting Pareto-optimum solution set to summarize all solutions given by each objective function without combining with different weights (Baumgartner et al., 2004).

In this paper, an approach for the joint inversion of MT and RWD data is proposed that takes advantage of the integration of  
85 multiobjective PSO with the Pareto optimality approach (hereafter referred to as Pareto-MOPSO). Apart from Moorkamp et al. (2010); Roux et al. (2011) and Wu et al. (2022), who used GA in combination with Pareto optimality, we utilized PSO with a fast convergence rate compared to GA (Büyük et al. 2017; Gill et al. 2006; James Kennedy and Spears 1998; Yuan et al. 2009). In structurally coupled joint inversion, the physical parameters in the model space are estimated with or without prescribing the spatial locations on the common layer, grid or volume depending on the dimensional analysis (Haber and  
90 Oldenburg, 1997; Wagner and Uhlemann, 2021). In this study, common layer thicknesses of the one-dimensional models estimated by PSO provided a structurally constraint on  $\rho$  and  $V_s$  parameters, as described by Wu et al. (2018). However, no coupling or penalizing was applied to physical parameters that are also estimated by PSO in the common layers. In this way, we aimed to obtain solutions with same and/or different physical directions from the distribution of the Pareto-optimal solution set. On the other hand, we used a many-layered resistivity-depth and velocity-depth functions, unlike to Wu et al. (2018), who  
95 present modeling with few layers that may suppress important structures (Vozoff, 1990; Weaver and Agarwal, 1993).

As a preliminary measure, a series of synthetic analyses were conducted, incorporating both noise-free and noisy data. These analyses were executed employing both coupled and decoupled  $\rho(z)$  and  $V_s(z)$  models. The primary objective of this approach was to substantiate the method's viability and confirm its applicability. Subsequently, to investigate the reliability of the solution and its superiority over traditional methods, noise and a layering sensitivity test were performed, and the results were compared with the results based on traditional Gaussian-Newton method. A multitude of models were obtained through the utilization of the Pareto-optimal solution set. However, a statistical evaluation of the solution ensemble indicates that the Pareto solutions yields the closest and physically most consistent match to the synthetic reference model, preserving the correct direction of parameter variations. These experiments demonstrated that the proposed Pareto-MOPSO based joint inversion not only attains a balanced fit to both datasets, but also reliably reproduces the key characteristics of the synthetic model while explicitly characterizing uncertainty through the Pareto distribution. In the second step, RWD data obtained from paths between specific pairs of seismic stations and MT data over the paths in the south-eastern part of the Biga Peninsula in Anatolia were jointly modelled by following the approaches used in the synthetic analysis. The results from field data in conjunction with previous field studies confirmed that the presented approach can be used for joint inversion of datasets having different sensitivities. Therefore, different physical directions can be observed and obtained without penalizing of the parameters, which are estimated by PSO. Furthermore, Pareto-MOPSO provides reliable results despite the aforementioned drawbacks of traditional derivative-based algorithms and the combination of objective function terms.

## 2 Optimization Methods

### 2.1 Particle Swarm Optimization (PSO)

PSO is a modern global optimization method introduced by Kennedy and Eberhart (1995) and is inspired by the movements of flocks of birds or fish to reach the goal by the shortest route. In the PSO method, the particles, denoted by a vector of model parameters in the  $m$ -dimensional model space  $\mathbf{x} = [x_1, x_2, x_3, \dots \dots x_m]$  within a feasible search area (Figure 1a), take a position in the one-dimensional objective space  $\phi(\mathbf{x})$  as illustrated in Figure 1b. As an example, of a minimization problem, the particles that communicate and learn with each other change their positions with a velocity vector in the model space as follows:

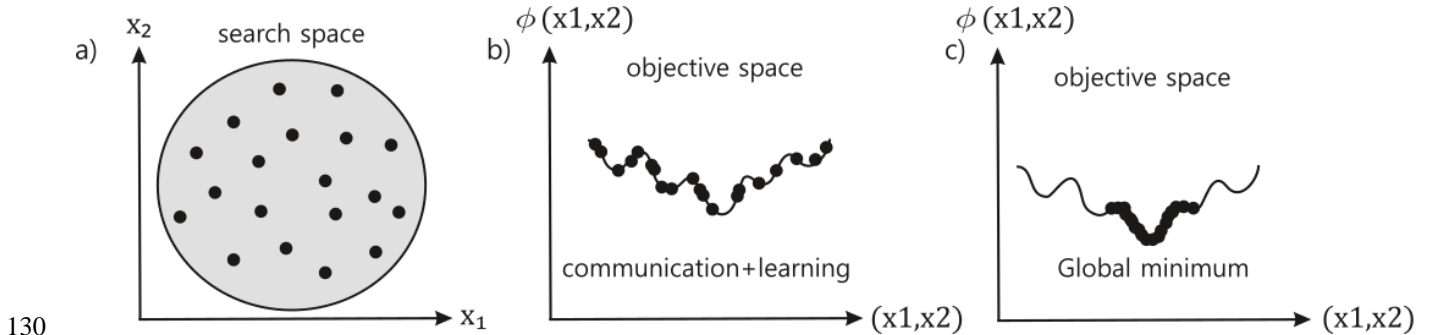
$$\mathbf{V}_i^{k+1} = \omega \mathbf{V}_i^k + c_1 \gamma_1 \odot (\mathbf{x}_{pbest,i} - \mathbf{x}_i^k) + c_2 \gamma_2 \odot (\mathbf{x}_{gbest} - \mathbf{x}_i^k). \quad (1)$$

Therefore, new position can be obtained in the following way:

$$\mathbf{x}_i^{k+1} = \mathbf{x}_i^k + \mathbf{V}_i^{k+1}, \quad (2)$$

where, subscript  $i$  is the number of particles and  $k$  is the number of iterations. The position and velocity vector of a particle  $i$  at iteration  $k$  are represented as  $\mathbf{x}_i^k$  and  $\mathbf{V}_i^k$ , respectively.  $\omega$  is the inertia weight term forced on the velocity vector.  $c_1$  and  $c_2$

are the acceleration factors of the local and global learning constants,  $\gamma_1$  and  $\gamma_2$  are uniformly random numbers in the range [0,1]. The particle that has the best fit of all evaluated particles is set as the global leader. If a particle position changed with a new velocity vector is a more optimal solution than the previous best solution determined by an objective function, the particle replaces its previous position with the new one assigned as  $\mathbf{x}_{pbest}$ . If a particle represents a more optimal solution than the global best solution, the particle is assigned as  $\mathbf{x}_{gbest}$  (Büyük and Karaman, 2024). These processes are reiterated until the maximum number of iterations or the minimum error criterion specified by the user is satisfied (Engelbrecht, 2007). Towards the end of the optimization process, all particles close to the global minimum in the objective space as illustrated in Figure 1c.



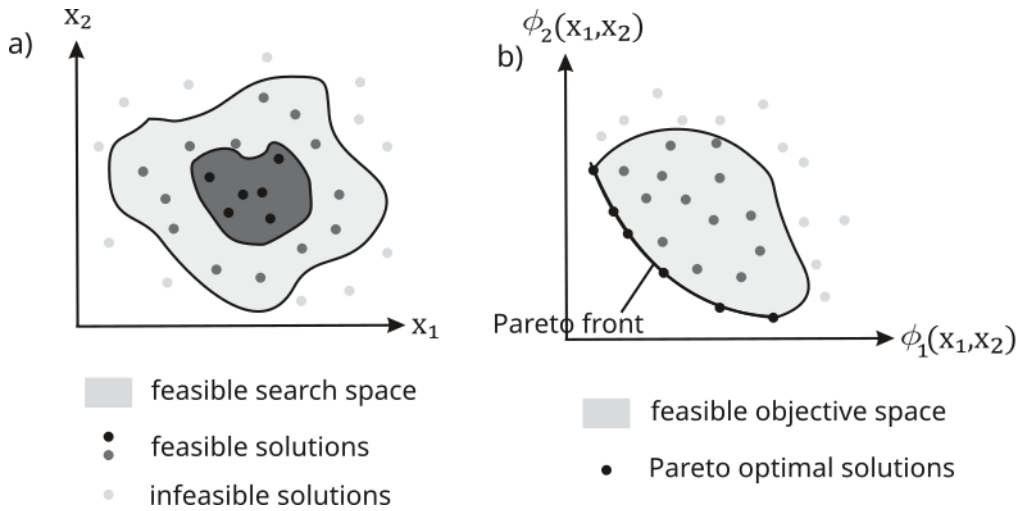
**Figure 1. Schematic illustration of a) randomly distributed particles in model (search) space within a feasible parameter domain (shown as a 2-D projection,  $x_1$ - $x_2$ ), b) projection of the particles onto the objective space and c) convergence of the particles to the global minimum (c), modified from Büyük (2021).**

To overcome drawbacks of traditional methods of inversion, PSO has seen a tremendous upsurge in the last decade to invert geophysical data, such as DC-resistivity data (e.g., Juan L. Fernández Martínez et al. 2010; Peksen et al. 2014; Shaw and Srivastava 2007), self-potential data (e.g., Fern and Garc 2010; Monteiro Santos 2010; Peksen et al. 2011), gravity data (e.g., Essa et al. 2021; Pallero et al. 2015), time-domain electromagnetic data (e.g., Amato et al. 2021; Pace et al. 2022), magnetotelluric data (Grandis and Maulana, 2017; Pace et al., 2019b); Godio and Santilano, 2018) and magnetic data (e.g., Essa and Elhussein 2018; Liu et al. 2018) and seismological data (e.g., Song et al. 2012). A detailed review on this topic can be found in Pace et al. (2021).

## 2.2 Pareto-optimal multi-objective particle swarm optimization

Multi-objective optimization, where more than one objective function is optimized, leads to trade-off solutions between competing objectives and not to a single best solution as in single-objective PSO. Multi-objective optimization is defined to obtain the model vector  $\mathbf{x} = [x_1, x_2, x_3, \dots, x_m]$  in a  $m$ -dimensional model space, while the objectives in the  $N$ -dimensional objective space  $\phi(\mathbf{x}) = [\phi_1(\mathbf{x}), \phi_2(\mathbf{x}), \phi_3(\mathbf{x}) \dots, \phi_N(\mathbf{x})]$  are optimized, simultaneously. The Pareto optimality approach is one of the most successful methods for finding a set of optimal solutions in the feasible search space, as shown schematically in Figure 2. According to Pareto optimality approach, we say that  $\mathbf{x}_a$  dominates  $\mathbf{x}_b$  if and only if  $\phi_k(\mathbf{x}_a) \leq \phi_k(\mathbf{x}_b), k = 1, \dots, N$ , where  $N$  is the dimension of the objective function. We say that  $\mathbf{x}_a$  is non-dominated and  $\phi(\mathbf{x}_a)$  is a non-dominated

150 solution set if there does not exist the condition that  $\phi(\mathbf{x}_c) < \phi(\mathbf{x}_a)$ , where  $\mathbf{x}_c$  denotes all possible model vectors. We also say that  $\mathbf{x}_a$  is Pareto-optimal (Figure 2a), and  $\phi(\mathbf{x}_a)$  is Pareto front or Pareto-optimal set illustrated in Figure 2b. This indicates the trade-off solutions that conflict with each other in the objective function space, when  $\mathbf{x}_a \in \mathcal{F}$  (feasible region as illustrated in Figure 2a) is non-dominated. The solution closest to the origin (0,0) can be considered as the Pareto-optimum solution, within the Pareto-optimal set (Baumgartner et al., 2004; Büyük, 2021, 2024; Reyes-Sierra and Coello Coello, 2006; Schnaidt et al., 2018). Although Pareto optimality is widely used for multi-objective optimization in engineering problems, only a few researchers such as Büyük et al. (2020); Pace et al. (2019b); Schnaidt et al. (2018); Akca et al. (2014); Tronicke et al. (2011); Dal Moro (2010); Kozlovskaya et al. (2007); Paasche and Tronicke (2007); Moorkamp et al. (2010); integrated global optimization algorithms with the Pareto optimality approach to jointly invert various geophysical data.



160 **Figure 2. Conceptual illustration of a) a two-dimensional feasible model (search) space showing feasible and infeasible solutions, and b) the corresponding mapping into a two-dimensional objective space highlighting the Pareto-optimal (non-dominated) solution set and the Pareto front. Modified from Kumar and Minz (2014) and Büyük (2021).**

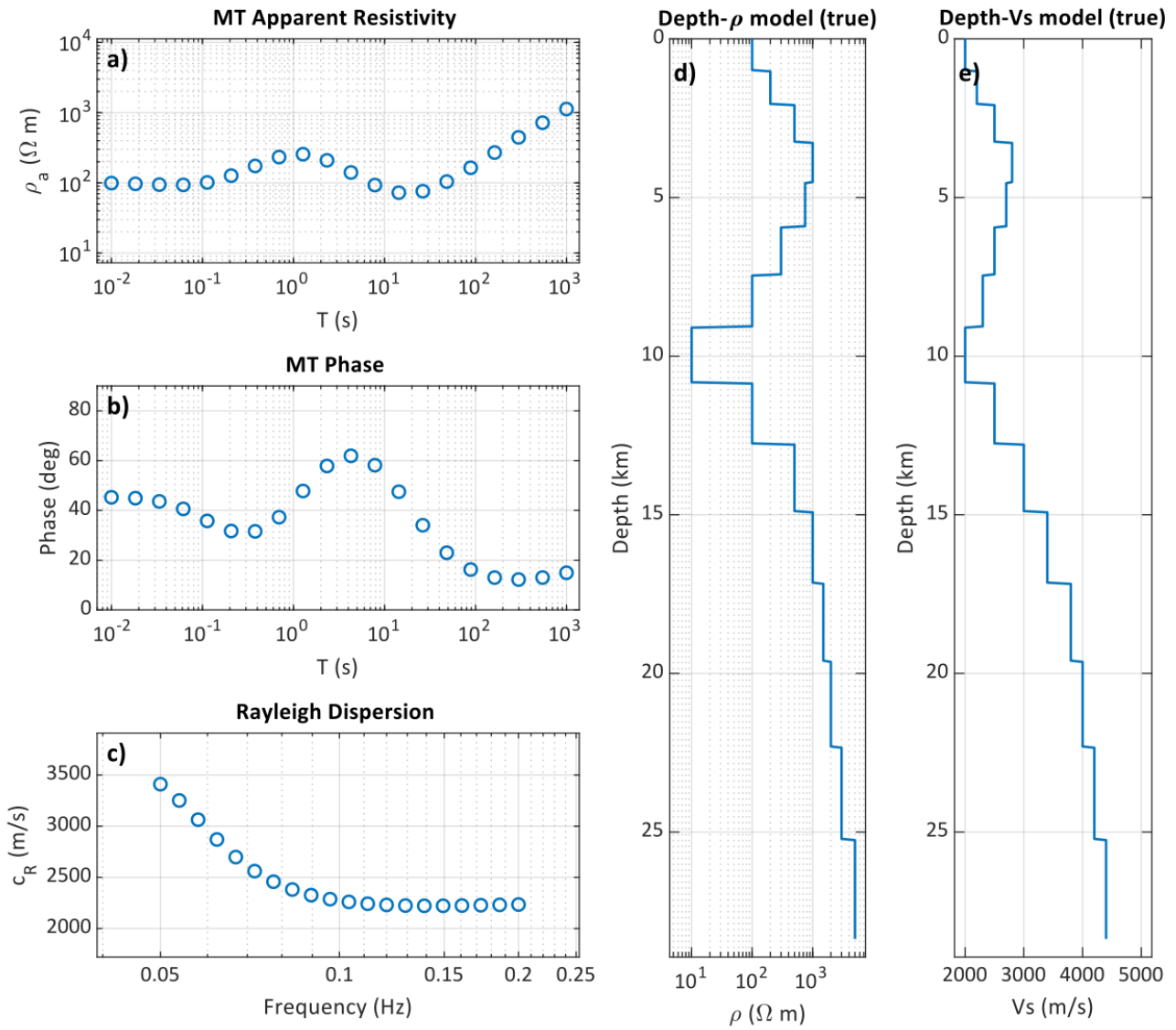
### 3 Description of Synthetic Data Examples

Figure 3a-3b present the synthetic apparent resistivity ( $\rho_a$ ) and phase ( $\varphi$ ) responses, respectively, for 20 periods spanning  
 165  $10^{-2}$ -  $10^3$  s, computed from a synthetic 1-D resistivity model  $\rho(z)$  (Figure 3d) that includes low- $\rho$  layers at  $\sim$  6-10 km depth. Figure 3c shows the corresponding synthetic RWD curve for 20 frequencies between 5 to 20 s, generated from the 1-D shear-wave velocity model  $V_s(z)$  (Figure 3e) designed to mimic the layer-to-layer physical changes implied by the resistivity model. In this example, both models exhibit consistent trends across layers (low- $\rho$  associated with low- $V_s$ , and vice versa) without applying any explicit scaling between parameter types. We refer to this configuration as the coupled case.

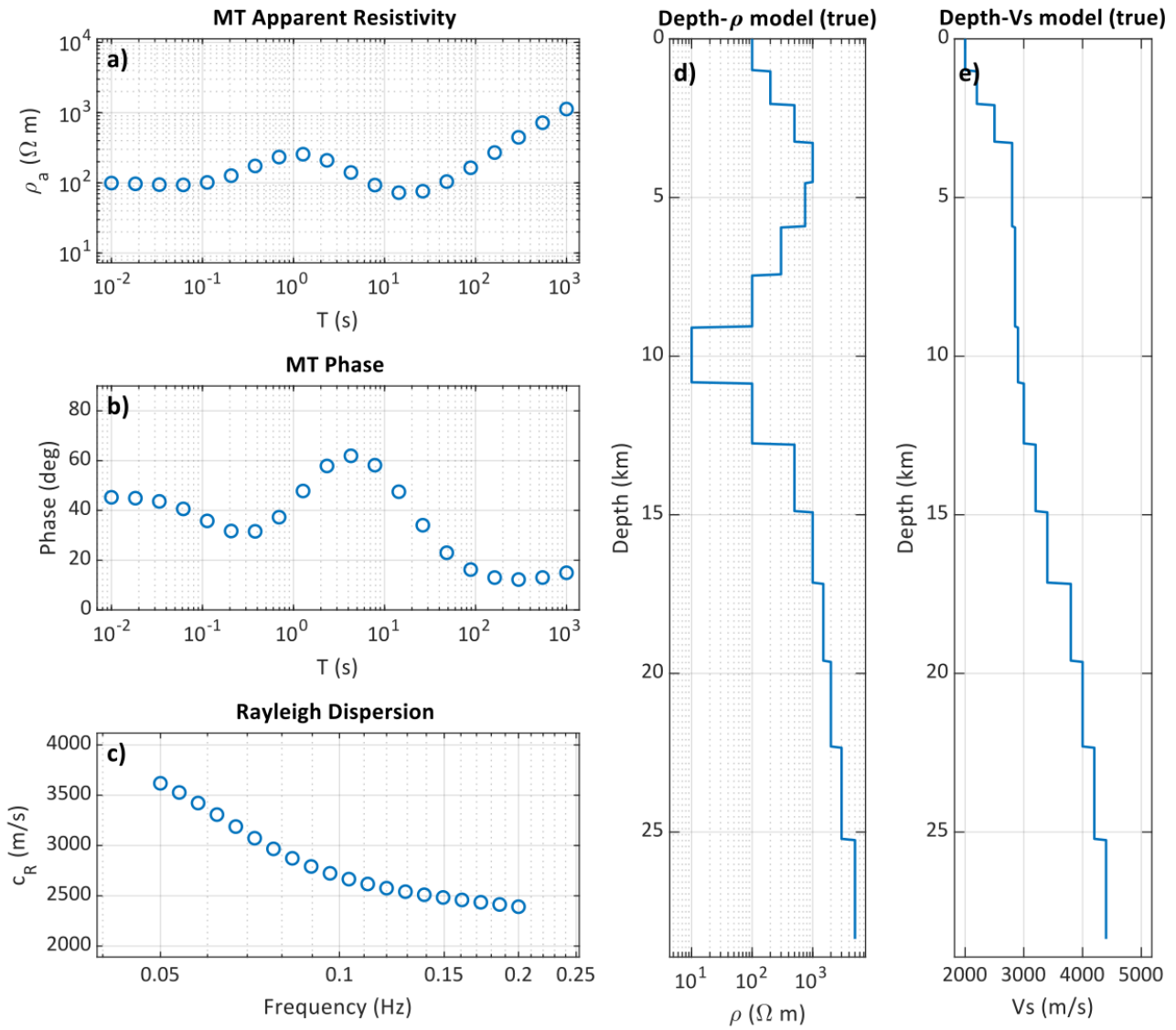
170 Figure 4a-4b show the synthetic  $\rho_a$  and  $\varphi$  responses for a  $\rho(z)$  model containing low- $\rho$  layers (Figure 4d), while Figure 4c shows the RWD data generated from a  $V_s(z)$  (Figure 4e) that is intentionally insensitive to those conductive layers. This case

is an MT-dominant decoupled scenario, where the model has a pronounced low- $\rho$  zone at  $\sim 6\text{--}10$  km depth, while  $V_s(z)$  remains nearly constant at the same depths (i.e., RWD is weakly sensitive to the resistivity anomaly). We refer to this configuration as decoupled case#1. Conversely, Figure 5 presents a  $V_s(z)$  model with a decrease (Figure 5e) for which the corresponding  $\rho(z)$  (Figure 5d) does not exhibit a conductive counterpart. This case is an RWD-dominant decoupled scenario, where the model has a pronounced low- $V_s$  zone at  $\sim 6\text{--}10$  km depth, while  $\rho(z)$  remains nearly constant at the same depths (i.e., MT is weakly sensitive to the velocity anomaly). We refer to this configuration as decoupled case #2. Figure 5a-5b show the  $\rho_a$  and  $\varphi$  response of the  $\rho(z)$ ; Figure 5c shows the RWD curve computed from  $V_s(z)$  of the decoupled case#2.

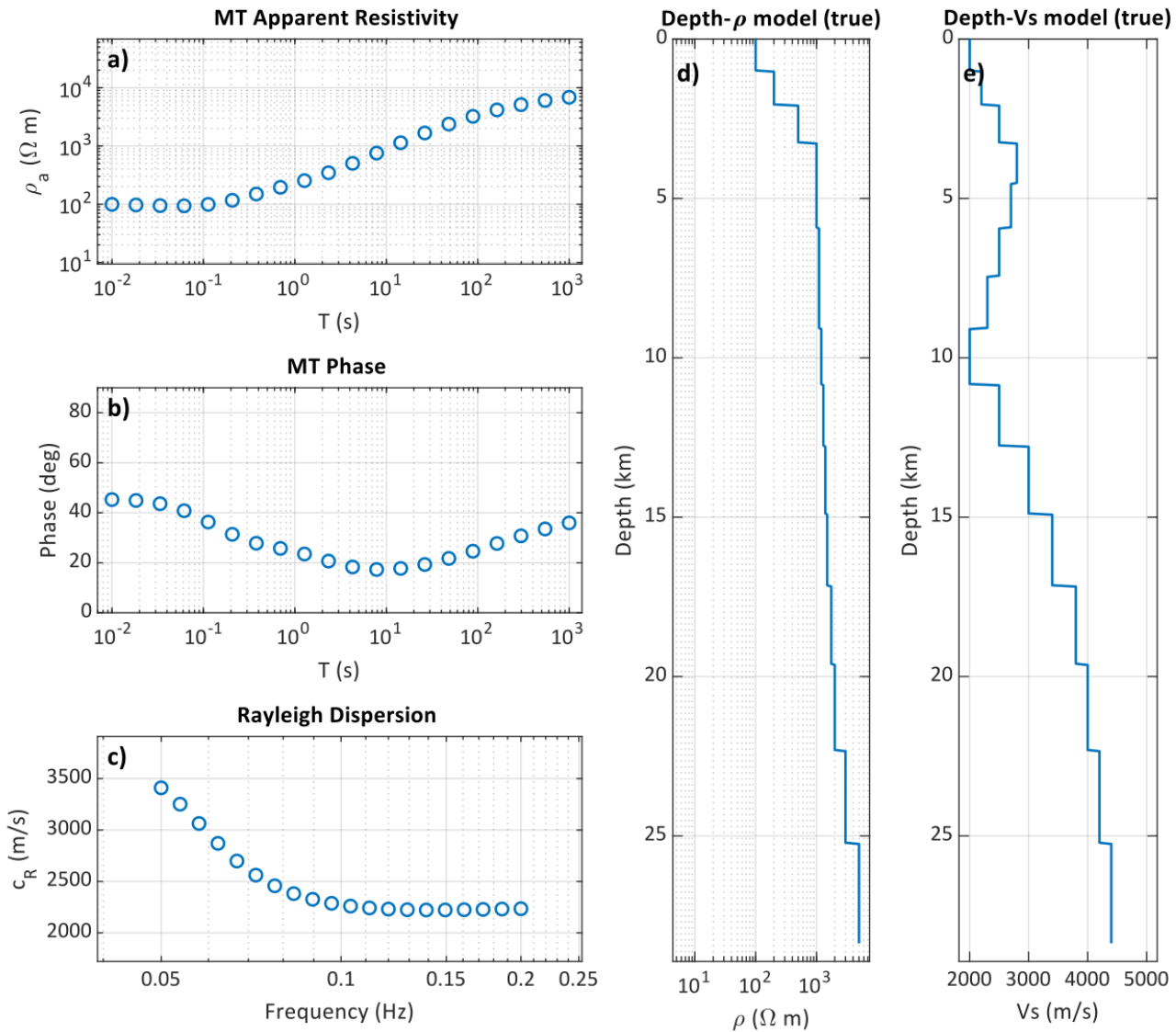
Synthetic apparent resistivities were computed from 1-D magnetotelluric responses using the effective impedance tensor formulation of Berdichevsky et al. (1989), which indicates rotationally invariant impedance derived from the determinant of the impedance tensor. Fundamental-mode dispersion curves were generated using the open-source package *SESARRAY* developed as part of the SESAME European Project presented by Bard (2000). These forward algorithms provide the synthetic observations used in the Pareto-MOPSO experiments. Although,  $\rho_a$  data are sensitive the frequency-dependent, depth-averaged resistivity of the subsurface, similar to how RWD data are sensitive to depth-averaged  $V_s(z)$  (Scherbaum et al., 2003; Simpson and Bahr, 2005), we added MT  $\varphi$  to the inversion to constrain the vertical resistivity gradients in case of complex impedance. Therefore, MT input to the inversion includes both  $\rho_a$  and  $\varphi$ . These are inverted with the RWD curve ( $c_R$ ), and the total objective function is composed of three misfit terms corresponding to three datasets of  $\rho_a$ ,  $\varphi$  and  $c_R$ .



**Figure 3.** Synthetic a) apparent resistivities b) phase and c) RWD curve generated from d)  $\rho(z)$  and e)  $V_s(z)$  models, respectively, indicating coupled case.



195 **Figure 4.** Synthetic a) apparent resistivities b) phase and c) RWD curve generated from d)  $\rho(z)$  and e)  $V_s(z)$  models, respectively, indicating decoupled case#1.



200 **Figure 5.** Synthetic a) apparent resistivities b) phase and c) RWD curve generated from d)  $\rho(z)$  and e)  $V_s(z)$  models, respectively, indicating decoupled case#2.

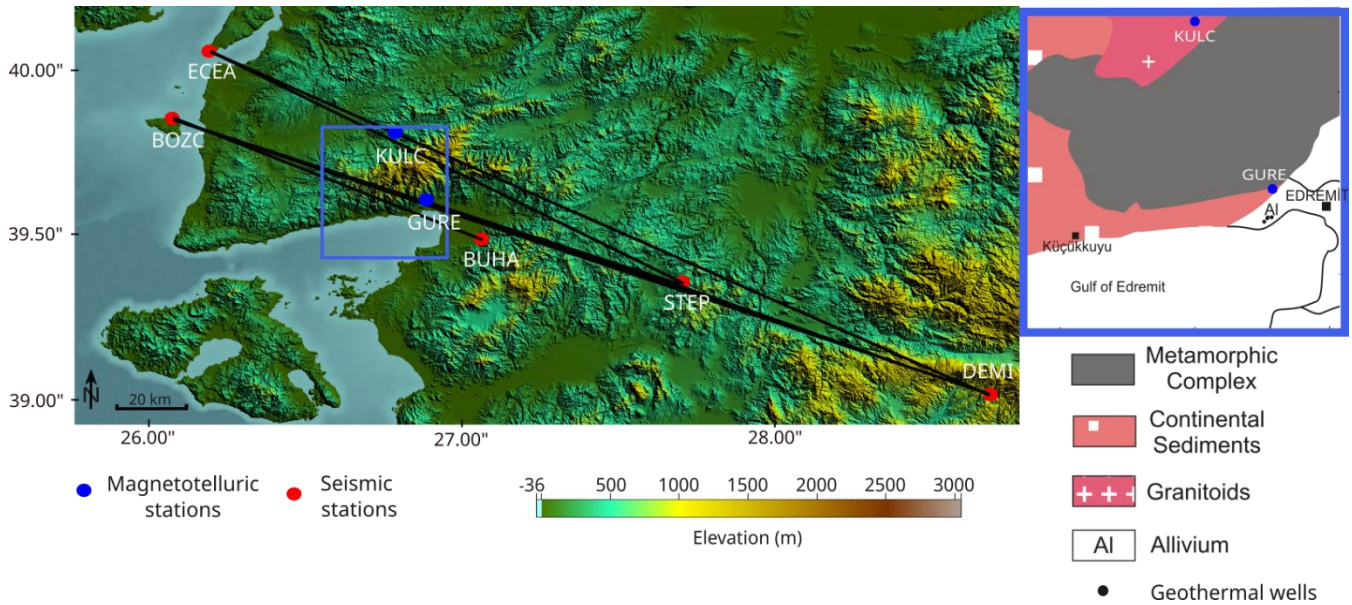
## 4 Description of the Field Datasets

### 4.1 Rayleigh wave dispersion curves from earthquake data

In this study, we applied the two-station method, which uses a technique described by McMechan and Yedlin (1981) to obtain the inter-station phase velocities using the codes provided by Hermann (2002). In this technique, the entire wavefield of the data is transferred to the slowness-frequency domain ( $p$ - $\omega$ ) to pick the RWD curve directly, which involves a linear

205

transformation of the slant stack followed by a 1D Fourier transform. We used broadband data from an earthquake with a magnitude of  $M_w = 6.5$  occurred in Italy on 30 October 2016. The earthquake is approximately 1200 km away from the study area, which is located in the south-eastern part of the Biga Peninsula between Ayvacık and Edremit bay in Çanakkale province, Türkiye. The data of this earthquake from these permanent stations are extracted from the waveform database of the Disaster and Emergency Management Presidency (AFAD). Before applying the two-station method, we first removed the mean, trend and instrument response from the earthquake recordings. This method also requires the two stations to be aligned on a path with the epicenter of the earthquake. We found three paths from station BOZC to stations BUHA, STEP and DEMI (hereafter referred to as BOZC\_paths), where the azimuthal difference between the source to station-1 and the source to station-2 is less than 2 degrees. We also found for station ECEA to stations STEP and DEMI (hereafter referred to as ECEA\_paths) with an azimuthal difference of less than 7 degrees.



**Figure 6.** MT and seismic stations over a topographic map obtained from Shuttle Radar Topography Mission (SRTM) data. Black lines indicate the seismic station pairs used to obtain RWD curves. The blue rectangular area shows the geological base map of the southeastern Biga Peninsula reconstructed from Beccaletto (2003) and Yilmaz et al. (2001). The locations of the geothermal wells are from Kaçar et al. (2017)

#### 4.2 Magnetotelluric data

MT is a passive electromagnetic method that enables to determine the subsurface electrical resistivity  $\rho(\Omega m)$  by measuring the natural variations of the wide spectrum of electric and magnetic fields induced by natural sources (e.g., solar wind, lightning) (Chave and Jones, 2012; Simpson and Bahr, 2005). Time-varying external electromagnetic fields interact with the conductive Earth and induce secondary currents, whose resulting electric and magnetic fields can be measured at the surface. In the MT method, the Earth can be considered as a transfer function that defines the ratio between orthogonal horizontal electric and magnetic field components (Buttkus, 2000; Cagniard, 1953). The MT method operates over a wide period range,

typically from  $10^{-4}$  to  $10^4$  s, allowing investigation of depths from the near-surface to the upper mantle (Chave and Jones, 2012; Romano et al., 2018). In the MT studies, periods longer than  $\sim 1$  s are mainly associated with ionospheric/magnetospheric sources, whereas periods shorter than  $\sim 1$  s are predominantly influenced by atmospheric sources such as lightning (Chave and Jones, 2012; Simpson and Bahr, 2005)

We measured MT data at GURE and KULC stations shown in Figure 4 due to their positions, which are on the BOZC\_paths and ECEA\_paths, respectively. The MT field data were obtained using a *Metronix ADU-07e* receiver unit. Sampling rates of 65536, 16384, 4096, 1024, 512 and 128 Hz were used to record electromagnetic time series with durations of 2, 4, 8, 16, 32 and 2880 minutes, corresponding to 48 hours at each MT station. The fundamental principle of the MT method is the estimation of the frequency-dependent impedance tensor from simultaneous electric and magnetic fields measurements at the Earth's surface. The Earth modifies the amplitude ratio and phase between these fields (Chave and Jones, 2012; Simpson and Bahr, 2005; Smirnov, 2003).  $\rho_a$  and  $\varphi$  are derived from the complex impedance tensor ( $Z$ ), where the apparent resistivity is frequency-dependent and can be expressed as follows:

$$\rho_a(\omega) = \frac{1}{\mu_0 \omega} |Z(\omega)|^2, \quad (3)$$

and the phase as

$$\varphi(\omega) = \tan^{-1} \left( \frac{\text{Im}[Z(\omega)]}{\text{Re}[Z(\omega)]} \right) \quad (4)$$

where,  $\omega$  is the angular frequency, defined as  $\omega = 2\pi f$ ,  $f$  is the frequency, and  $Re$  and  $Im$  denote the real and imaginary parts of the impedance, respectively.  $\mu_0$  is the magnetic permeability assumed to be that of free space ( $4\pi \times 10^{-7}$ ). Conversion of time series to spectral estimates allows extraction of impedance tensor elements and derivation of  $\rho_a$  and  $\varphi$ . MT processing steps were performed using an open-source *Python* package of *SigMT* (Ajithabh and Patro, 2023). To estimate the impedance tensor, the time series were segmented into overlapping windows and transformed to the frequency domain using the fast Fourier transform (FFT). Then, power and cross-spectra were computed and stacked to estimate the impedance tensor elements. The effective impedance formulation was used not only for the synthetic examples but also for the field-data inversions, ensuring consistency between the synthetic tests and real-data applications.

## 5 Site Description

The southeastern Biga Peninsula, with its complex structural features of tectonic and magmatic origin, has received considerable attention in several studies (e.g., McKenzie, 1978; Dewey and Şengör, 1979; Taymaz et al., 1991; Okay et al., 1996; Karacık and Yılmaz, 1998; Altunkaynak et al., 2012). As shown in Figure 6, the simplified map describes the geology of the study site with outcrops of a combination of continental and oceanic crustal units corresponding to metamorphic,

magmatic and sedimentary rocks. The magmatic process initiated with the complete closure of the Neo-Tethys Ocean  
 255 subducted into the Sakarya Zone consisting of the Kazdağ metamorphic complex and formed by the subsequent interaction  
 between crust and mantle (Okay and Satir, 2000; Şengün et al., 2011). After complete closure, a continental collision in N-S  
 compression led to partial melting of the lithospheric mantle (Aldanmaz et al., 2000; Altunkaynak and Genç, 2008; Okay et  
 al., 1996; Yilmaz, 1990). The Kazdağ metamorphic complex has a dome-shaped structure enclosed by a marble-rich sequence  
 (Beccalotto, 2003). The N-S extensional regime occurred after the N-S compressional regime from the early Miocene to the  
 260 late Pliocene triggered volcanic activities (Aslan et al., 2017; Yilmaz et al., 2001). The phases of volcanism are divided into  
 two: 1) The N-S compressional regime, the result of continental collision, produced andesitic lavas with calc-alkaline  
 characteristics through partial melting (Altunkaynak and Genç, 2008; Yilmaz et al., 2001). The second group of volcanics with  
 potassium-rich basaltic volcanics formed during the extensional regime (Altunkaynak and Genç, 2008; Fytikas et al., 1976;  
 McKenzie and Yılmaz, 1991; Yilmaz, 1990). The sedimentary rocks from the Miocene to the Pliocene were deposited as cover  
 265 units over the ignimbrites, the last product of volcanism (Seyitoğlu and Scott, 1991). Differently aged continental shallow  
 sediments unconformably cover the metamorphosed units of the Kazdağ metamorphic complex (Altıner et al., 1991).

## 6 Description of the Parameter Settings

### 6.1 Model parameters and misfit functions

The misfit of MT,  $\phi_{MT}(\mathbf{d}, \mathbf{m})$ , between the vectors of magnetotelluric data ( $\mathbf{d}$ ) and model response ( $\mathbf{m}$ ), yielding normalized  
 270 root mean square error (NRMSE) was calculated using:

$$\phi_{MT}(\mathbf{d}, \mathbf{m}) = \left( \frac{1}{n} \sum_{i=1}^n \left( \frac{\rho_{a,i}^{obs} - \rho_{a,i}^{cal}}{\Delta_{\rho,i}} \right)^2 + \frac{1}{n} \sum_{i=1}^n \left( \frac{\varphi_i^{obs} - \varphi_i^{cal}}{\Delta_{\varphi,i}} \right)^2 \right) \quad (5)$$

where  $n$  is the number of observations,  $\rho_{a,i}^{obs}$  and  $\rho_{a,i}^{cal}$  are the observed and calculated apparent resistivities expressed as  
 $\log_{10}(\rho_a/\Omega m)$ , respectively;  $\varphi_i^{obs}$  and  $\varphi_i^{cal}$  are the observed and calculated phases ( $^\circ$ ), respectively.  $\Delta_{\rho,a,i}$  and  $\Delta_{\varphi,i}$  are the  
 standard deviations of the observed apparent  $\rho_a$  and  $\varphi$ , respectively. The misfit of RWD,  $\phi_{RWD}(\mathbf{d}, \mathbf{m})$ , was also calculated  
 using as NRMSE as:

$$\phi_{RWD}(\mathbf{d}, \mathbf{m}) = \frac{1}{n} \sum_{i=1}^n \left( \frac{c_{Rp,i}^{obs} - c_{Rp,i}^{cal}}{\Delta_{c_{R,i}}} \right)^2 \quad (6)$$

275 where  $n$  is the number of observations,  $c_{Rp,i}^{obs}$  and  $c_{Rp,i}^{cal}$  are the observed and calculated Rayleigh phase velocities (km/s),  
 respectively.  $\Delta_{c,i}$  is the standard deviations of the observed phase velocities. Equations (5) and (6) were used for both the  
 synthetic tests and the field-data applications to ensure consistency when comparing the modelling results. In practice,  $\Delta$  values

act a scale factor to balance MT and RWD objectives; they can be fixed from measurement uncertainties or estimated via quick perturbation-based calibration around the starting model to stabilize objective magnitudes (Xu, 2009). We used error floors to prevent unrealistically small uncertainties from dominating the misfit. The error floors were set to 5% for  $\rho_a$ , 5° for  $\varphi$ . In regard to the  $c_R$ , the robust error-floor strategy proposed by Frederick (1992) was employed. This entailed the establishment of a minimum uncertainty level, which was derived from the median absolute deviation (MAD) of the residuals. Apart from the field data, we generated  $k$  numbers of random perturbations around the produced synthetic model ( $x_{0,j}$ ) as follows:  $x_j^{(k)} = m_{0,j} + pert(UB_j - LB_j)\epsilon_j$ , where  $UB$  and  $LB$  are the upper and lower boundaries of the model parameters,  $pert = 0.1$  and  $\epsilon_j \approx \mathcal{N}(0,1)$ . This approach is mostly to keep objectives numerically balanced and avoid huge penalties (Pace et al., 2021). Although the estimation of layer thicknesses could lead to a complicated solution (Siripunvaraporn et al., 2005), the layer thicknesses are also estimated by PSO in the modeling stage to couple the  $\rho$  and  $V_s$  parameters in the corresponding layers. Therefore, coupling is provided by layer thicknesses estimated from the PSO algorithm rather than prescribed spatial locations. Although it was necessary to control the solution sampling with different types of regularization, we used a new method proposed by Büyük (2024) without the need for a subjective and iteration-dependent regularization parameter by adding a smoothness constraint term as a new axis to the objective function space. The smoothness term  $\phi_c$ , was calculated by summing the numerical gradients of the electrical resistivity and seismic velocity parameters as follows:

$$\phi_c(\mathbf{m}) = \frac{1}{h} \sum_{h=1}^h |\Delta \log_{10} \rho_h| + \frac{1}{h} \sum_{l=h}^h |\Delta \log_{10} V_{s,h}| \quad (7)$$

with  $\Delta \log_{10} \rho_h = \log_{10} \rho_{h+1} - \log_{10} \rho_h$  and  $V_s$ . This equation indicates an additional objective function term that constrains the change in physical parameters to encourage piecewise-smooth layered models. As Equation 5 and Equation 6, this equation is the third term of the objective function and forms the third axis in the Pareto space. Therefore, independent minimizations are applied without the need for regularization parameters both in the misfit functions and in the model variation. The optimization is based on the estimation of 47 parameters, including 16 layers of  $\rho$  and  $V_s$ , as well as a common layer thickness ( $h$ ) of 15 layers, as generated by the models using synthetic data. The parameter search space of these model parameters that should be restricted to ensure a feasible solution set, was defined in the range  $\log_{10}[0, 5] \Omega m$  for  $\rho$ , and  $[1.5, 5]$  km/s for  $V_s$  to cover realistic values in the crust. The P-wave velocities and densities were calculated using the equations given by Berteussen (1977) as typically observed in the crustal zone.

## 6.2 MOPSO and Pareto optimality parameters

We used velocity limiting approach proposed by Fan and Shi (2001) to constrain the velocity of particles that tend to explode to large values if the particle is far from the global and local best position. This approach limits the particle velocities as follows:  $V_{max} = +U$  and  $V_{min} = -U$ , where  $U = (m_{max} - m_{min})/N$ .  $m_{min}$  and  $m_{max}$  are the lower and upper bounds of

the model parameters used to define the search space. For MT modeling, the resistivity bounds were defined as  $\log_{10}(\rho/\Omega m) \in [1,5]$ . For RWD modeling, the shear-wave velocity bounds were defined as  $V_s \in [1.5, 5]$  km/s.  $N$  is the interval number, which was set to 10. We used modified velocity equation of the Equation 1, proposed by Clerc and Kennedy (2002) to obtain solutions without trapping a local minimum due to premature convergence, as defined below:

$$\mathbf{V}_i^{k+1} = \chi[\mathbf{V}_i^k + c_1\gamma_1\odot(\mathbf{x}_{pbest,i} - \mathbf{x}_i^k) + c_2\gamma_2\odot(\mathbf{x}_{gbest} - \mathbf{x}_i^k)] \quad (8)$$

310 where,  $\chi$  is the constriction factor expressed as:  $\chi = 2/(k - 2 + \sqrt{k^2 - 4k})$  under the condition that  $k = c_1 + c_2 > 4$ . Therefore, we used  $c_1$  and  $c_2$  as 2.05, i.e.,  $k = 4.1$  and  $\chi = 0.7298$  following Clerc and Kennedy (2002). The number of particles was set to 100, which is consistent with the general guidance of Piotrowski et al. (2020). They recommend using an initial guess of 70-100 particles when no prior knowledge is available. The particle positions were initialized by randomly sampling within the prescribed parameter bounds for each model parameter. Initial velocities are set to zero and particles that

315 violate bound constraints are repaired by clipping them to the nearest feasible bound. A two-stage schedule was used to accelerate convergence followed by Deb and Padhye (2010). First, an exploration phase with larger velocity limits and a higher mutation probability, second, an exploitation phase with reduced step sizes and mutation was used. In Stage-1(exploration), we used larger velocity bounds:  $v_{max}^{(1)} = 0.25(UB - LB)$ . We also utilized higher mutation probability decaying linearly. If we consider that  $it_{switch} = 0.4 \times MaxIt$ , where  $MaxIt$  is the maximum number of iterations,  $p_{mut}(it) = \max(pMin_1, p0_1(1 - \tau))$ ,  $\tau = it/it_{switch}$  with  $p0_1 = 0.12$ ,  $pMin_1 = 0.04$ , where  $it$  is the iteration number. In the Stage-2

320 (exploitation) a smaller velocity bounds were defined as follows:  $v_{max}^{(2)} = 0.1(UB - LB)$ , and lower mutation probability  $p_{mut}(it) = \max(pMin_2, p0_2(1 - \tau))$ ,  $\tau = (it - it_{switch})/(MaxIt - it_{switch})$  with  $p0_2 = 0.06$ ,  $pMin_2 = 0.01$ . Therefore, mutation perturbs a randomly selected model parameters  $m_j$  with probability  $p_{mut}$  via  $m_j = m_j + 0.05(UB_j - LB_j)$ . Iteration was terminated at 150 iterations for both synthetic and field datasets as one way of limiting the maximum number of iterations

325 (Reyes-Sierra and Coello Coello, 2006) and ten experimental solutions were generated repeatedly. In all tests, we used a fixed iteration budget rather than an adaptive termination criterion. Therefore, convergence was not used as a stopping rule. After each iteration, objective function space is divided into hyper-rectangles, to each of which control solutions are added (Coello Coello et al., 2004; Coxeter, 1973). One-tenth of the number of particles was defined as the number of hyper-rectangles for each objective function. The roulette wheel selection, one of the scheme theorems proposed by Coello Coello et al. (2004),

330 which is based on the rational division of the segments of the wheel according to the number of non-dominated solutions in each of the hyper-rectangles, was used to select a leader for MOPSO. According to this theorem, the ratio decides the selection probability ( $Ps$ ) of an individual hyper-rectangle as follows:  $Ps(k) = n_k/\sum_{i=1}^N n_i$ ;  $i = 1, 2, \dots, N$ , where,  $N$  is the number of hyper-rectangles with non-dominated solutions  $n_k$  is the number of non-dominated solutions of the  $k$ th hyper-rectangle (Rao, 2009). A leader is randomly determined from the selected hyper-rectangle. In the dominance test, we used the raw misfits

335 of the objectives, however, normalized misfits were used in the grid assignment to improve the crowding grid when objectives

have different numerical scales. To improve clarity and reproducibility, we provide the pseudocode for the proposed Pareto–MOPSO joint inversion workflow in Figure S1.

The final representative solutions include a “utopia” model that minimizes the sum of two datasets  $\sqrt{\phi_{MT}^2 + \phi_{RWD}^2}$ , and a “compromise(knee/score)” model that minimizes the sum of per-iteration normalized objectives, including smoothness term as follows:  $\sum_k \phi_k - \phi_{min,k} / \phi_{max,k} - \phi_{min,k}$ . We summarize uncertainty by treating the Pareto repository as an ensemble of non-dominated solutions. After mapping all archived models onto a common depth grid, we compute the depth-wise percentiles of  $\rho(z)$  and  $V_s(z)$ . We then report the P10–P90 envelope, which contains the central ~80% of Pareto-optimal profiles (Fathy et al., 2024; Gao et al., 2023). The P10–P90 Pareto envelope offers quantitative insights into depth-dependent parameter uncertainty by delineating a plausible range of admissible models. Narrow envelopes indicate depths where the parameters are consistently recovered (higher resolution / stronger constraint), whereas wide envelopes indicate depths where non-uniqueness is significant and multiple alternative structures remain compatible with the data and the multi-objective trade-offs. The Pareto-median is plotted as a robust representative profile alongside the envelope (Brazauskas and Serfling, 2000). The Pareto-median band effectively captures the predominant depth-wise trend of the physical parameters and reliably represents the overall structural evolution with depth. To quantitatively evaluate the joint inversion outcomes, we employed the Generational Distance (GD) metric introduced by Van Veldhuizen (1999) as a convergence indicator for the obtained Pareto-optimal solution sets. The goal of the GD method is to evaluate the proximity of an estimated Pareto front to a reference front. The GD method accomplishes this by first calculating the Euclidean distance to the nearest point on the reference Pareto front. Then, the distances are aggregated to provide a comprehensive measurement of the front's deviation from the reference. (Büyüç, 2024; Coello et al., 2004). Lower GD values reflect superior solution performance, while higher values illustrate the extent to which the solution deviates from the Pareto front (Coello et al., 2004; Van Veldhuizen, 1999).

## 7 Results and Discussions

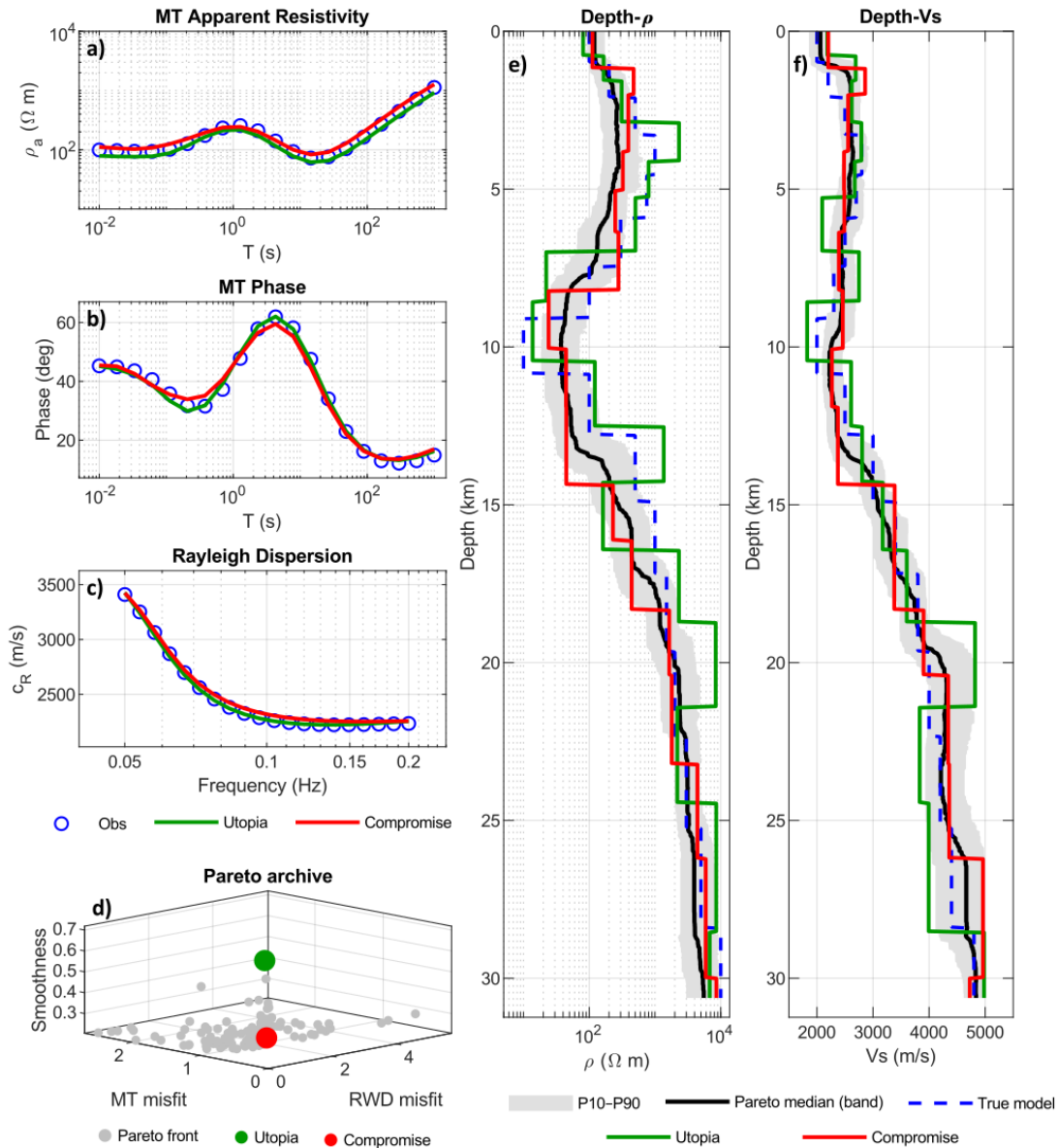
### 7.1 Coupled case

#### 7.1.1 Noise-free analysis

Figure 7a-7b-7c show the noise-free outputs of the coupled case, which agree very well with the synthetically generated observations. As illustrated in Figure 7d, the Pareto archive is indicative of the objective space, which involves the minimization of the objective function terms of the utopia and compromise within the Pareto-optimal set. Figure 7e-7f show the  $\rho(z)$  and  $V_s(z)$  models of the true, utopia, and compromise model with P10-P90 envelope and Pareto-median. As anticipated for a problem with such extensive parameterization (47-D), the findings suggest that the algorithm attained an optimal data fit, while simultaneously identifying a non-unique set of permissible models. The apparent resistivity is matched particularly well at intermediate to long periods (Figure 7a). This finding suggests that the inversion effectively recovers the bulk resistivity contrasts that govern the deeper MT response. The phase is also well reproduced, including the main peak and

the long-period decrease. Minor deviations from this pattern are observed in the transition region, where the phase exhibits a high degree of sensitivity to the precise positioning of resistivity contrasts and layer boundaries (see Figure 7b). The RWD curve demonstrates a high degree of compatibility, with predicted phase velocities that closely align with the observed curve (see Figure 7c). This indicates that the recovered  $V_s(z)$  structure within the depth sensitivity range of the dispersion is stable and strongly constrained. Since the fundamental mode primarily detects broad depth averages rather than sharp discontinuities, slight variations in layer boundaries and magnitude of steps can remain dispersion-equivalent. This is reflected by the range of acceptable  $V_s(z)$  profiles. The Pareto archive (Figure 7d) shows the expected trade-off surface between MT misfit, RWD misfit, and smoothness. The utopia solution corresponds to the archive member that is closest to the MT–RWD origin, representing the optimal balance between the two data misfits. Meanwhile, the compromise solution reflects a more balanced trade-off when smoothness is also taken into consideration. The fundamental premise is that both are derived from the Pareto optimal solution set, implying that enhancing one objective invariably leads to a corresponding degradation in at least one other objective.

Depth-dependent models (Figure 7e-f) indicate that the major trends of the true  $\rho(z)$  and  $V_s(z)$  structures are recovered, while some layer values and boundary depths differ between representative solutions. This is an expected outcome resulting from the interplay of trade-offs among  $\rho$  and  $V_s$  when thicknesses ( $h$ ) are inverted jointly. To quantify this non-uniqueness, Pareto archive is summarized by mapping all repository models onto a common depth grid. The P10–P90 envelope is then computed, along with Pareto-median profile. The P10-P90 band demonstrates a tendency to widen during certain transitions, suggesting that while the data are highly fitted, the underlying structure, particularly the precise magnitude and position of step changes, remains less uniquely determined. This phenomenon is not only permissible but also serves as a notable strength of the presented method, as it circumvents the tendency toward over-interpretation of a singular "best" layered model as indicated by (Schnaidt et al., 2018). The Pareto-median profile has been shown to closely track the true  $\rho(z)$  and  $V_s(z)$  structures over most depths. This finding suggests that the Pareto-optimal solution set ensemble produced by the Pareto–MOPSO search is capable of not only fitting the data, but also centering around the generating model in parameter space. It is imperative to acknowledge that this behavior is anticipated for idealized tests of the noise-free case, with this behavior mainly reflecting the consistency of the forward responses with the designated parameterization and bounds. In the context of field data, the Pareto-median should be interpreted as a robust representative of the non-dominated ensemble, as opposed to being regarded as a unique estimate of the true Earth model.



**Figure 7. Results for noise-free coupled case. a) Apparent resistivity and b) Phase data and c) RWD fit with the predicted responses of the selected representative solutions. d) Three-objective Pareto archive, highlighting the utopia and compromise solutions. e)  $\rho(z)$  and f)  $V_s(z)$  models for the true model and the selected utopia and compromise solutions, together with the P10–P90 envelope and the Pareto-median profile from the repository.**

395

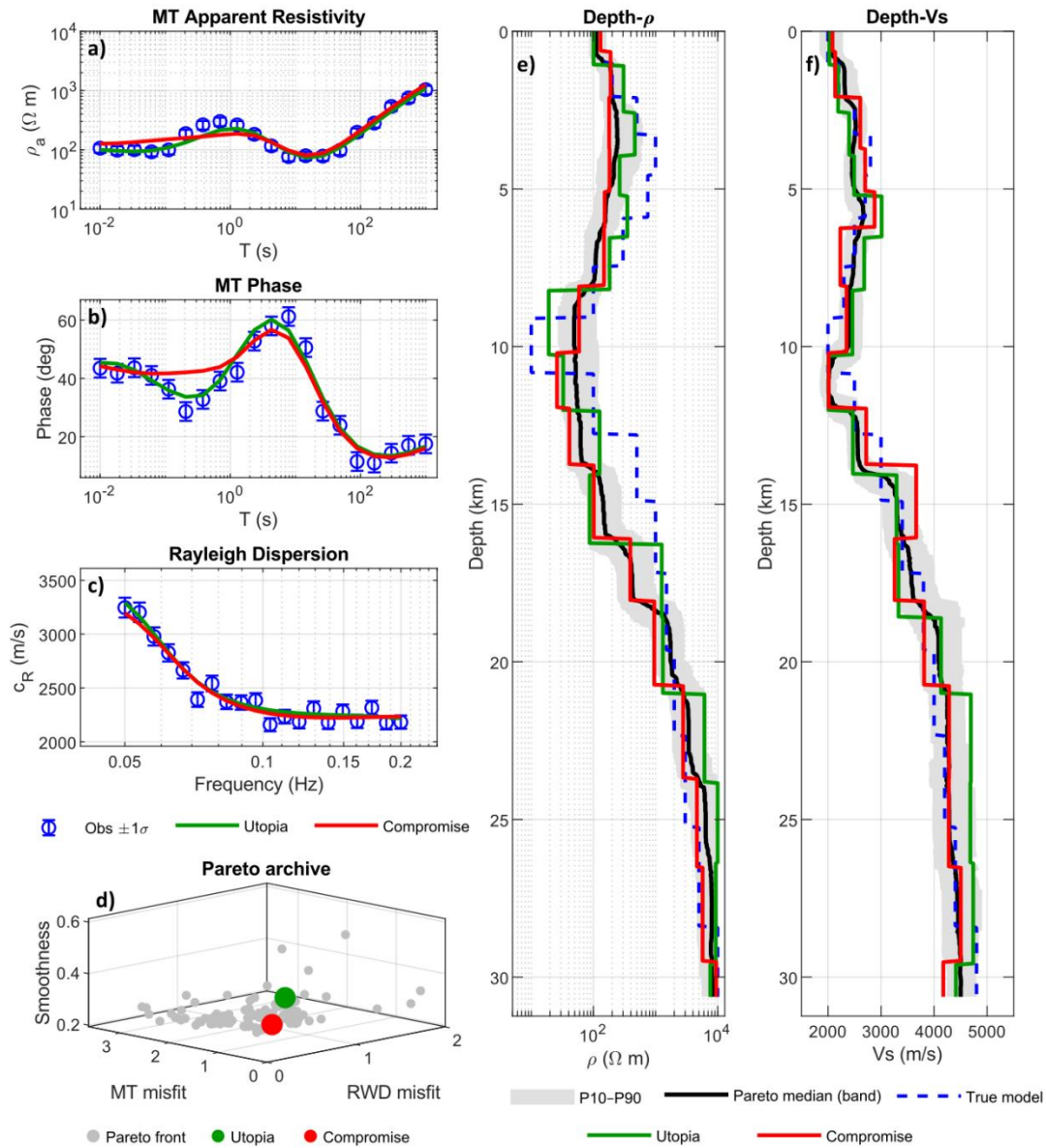
#### 400 7.1.2 Noise-sensitivity analysis

A noise-sensitivity analysis was performed by the perturbing of both MT and RWD observations with equal-amplitude, normalized Gaussian noise (0–40%). The 20% noise scenario is presented as a representative intermediate-noise example (see Figure 8), as it marks the transition where uncertainty bands broaden and Pareto trade-offs become more pronounced while

still maintaining meaningful data constraints. The remaining noise cases (5%, 10%, and 40%) are reported in the supplementary  
405 figures (see Figures S2–S4). A comparison of the compromise solution and the noise-added outputs of the utopia solution  
reveals a strong agreement with the synthetically generated observations. The apparent resistivity curves demonstrate a high  
degree of alignment across the entire period range, encompassing both the mid-period minimum and the long-period upturn.  
The phase responses demonstrate a comparable degree of agreement, exhibiting the characteristic phase peak near intermediate  
410 periods and the subsequent decay toward long periods with a high degree of precision. Minor deviations from this pattern are  
observed around the phase maximum and shoulder regions, which are traditionally the most sensitive components of the MT  
response to  $\rho - h$  trade-offs (Degroot-Hedlin and Constable, 1990; Kang et al., 2017). However, the predicted curves align  
with the data trend within the limits. The RWD curves are also fitted closely, capturing the strong decrease of phase velocity  
from low to mid frequencies and the flattening at higher frequencies. It is evident that minor residual mismatches in the  
curvature of the dispersion curve are consistent with non-uniqueness in layered dispersion inversion. In this scenario, it is  
415 observed that multiple  $V_s - h$  combinations can yield very similar fundamental-mode responses as noted by Foti et al. (2009)  
and Roy et al. (2013).

The  $\rho(z)$  and  $V_s(z)$  panels demonstrate that the representative models fall or outside within the ensemble uncertainty indicated  
by the P10–P90 envelope. At low noise levels, the utopia and compromise models remain largely confined within the P10–  
P90 envelope. This indicates that these solutions are not only optimal in the objective space, but also representative of the  
420 central tendency of the Pareto ensemble in model space. Conversely, as the noise level increases, both solutions demonstrate  
more frequent and more pronounced departures from the P10–P90 band, particularly in the  $\rho(z)$  and around layer-transition  
depths. This pattern indicates that the inversion becomes increasingly governed by noise-induced trade-offs, such that  
mathematically admissible solutions are less consistently supported by the ensemble as a whole. Concurrently, the Pareto  
archives undergo a transition from a relatively compact and organized distribution under low-noise conditions to a broader and  
425 more scattered cloud at higher noise levels as reported by Witting et al. (2012). This shift is indicative of a substantial increase  
in non-uniqueness and weakening data control on the recovered structures. Taken together, these results suggest that the  
geometry of the Pareto archive and the position of the utopia/compromise solutions relative to the P10–P90 envelope provide  
a useful diagnostic measure of inversion stability. In this context, solutions remaining within the ensemble envelope can be  
regarded as more robust and representative; whereas those falling outside this should be interpreted with caution as noise-  
430 sensitive and structurally less constrained.

435

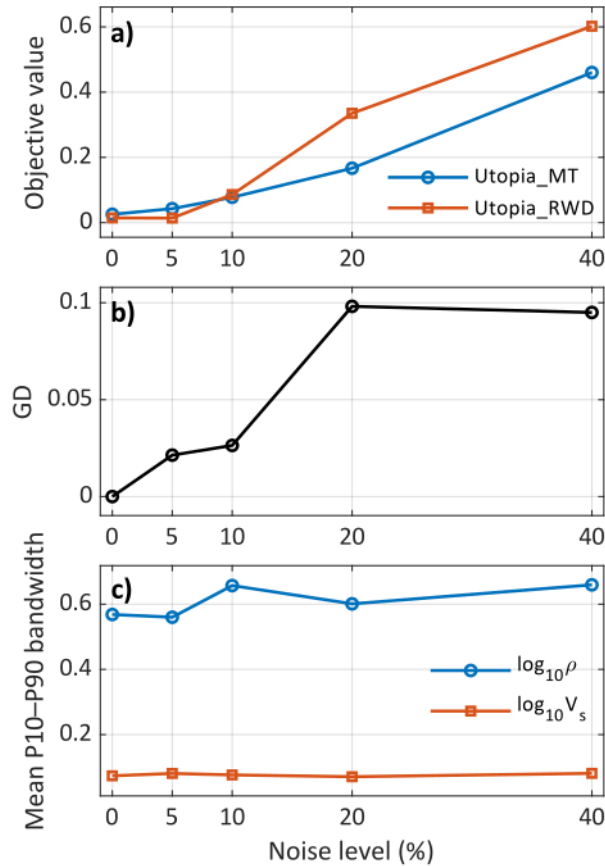


440 **Figure 8. Results of noise-sensitivity example for the 20% noisy-coupled case (representative intermediate-noise level). a) Apparent resistivity and b) Phase data and c) RWD fit with the predicted responses of the selected representative solutions. d) Three-objective Pareto archive, highlighting the utopia and compromise solutions. e)  $\rho(z)$  and f)  $V_s(z)$  models for the true model and the selected utopia and compromise solutions, together with the P10–P90 envelope and the Pareto-median profile from the repository.**

445

Figure 9 provides a summary of the impact of increasing observational noise on the joint Pareto–MOPSO inversion in terms of (a) utopia-point objective values, (b) Pareto-front drift, and (c) ensemble model uncertainty. As the noise level increases from 0% to 40%, the utopia misfits for both MT and RWD rise systematically (see Figure 9a). It is noteworthy that the RWD misfit exhibits a faster rate of inflation compared to the MT misfit at moderate-to-high noise levels. This observation indicates a greater sensitivity of the RWD objective to noise in the given configuration. The corresponding Pareto-front deviation, quantified by the Generational Distance (GD) relative to the noise-free reference Pareto-front, increases markedly up to ~20% noise and then approaches a plateau towards 40% (Figure 9b). This phenomenon indicates a shift from a data-dominated regime (low noise) to a noise-limited regime ( $\geq 20\%$ ), where additional increases in noise do not result in a significant shift of the Pareto front in normalized objective space. This robustness is a key advantage of the Pareto-MOPSO, as it allows the inversion to maintain a diverse set of viable solutions rather than collapsing to a single, potentially biased estimate, even when noise levels exceed 20%. The mean P10–P90 bandwidth across depth, which is indicative of model uncertainty, reveals a pronounced contrast between  $\rho$  and  $V_s$  parameters (Figure 9c). The  $\rho$  ensemble demonstrates significantly greater uncertainty (in log10 decades) and displays a modest increase in response to noise, which is consistent with amplified  $\rho - h$  trade-offs under noisy MT responses. In contrast, the  $V_s$  bandwidth remains comparatively small and nearly invariant across noise levels. This finding indicates that the RWD data provide relatively robust constraints on depth-averaged shear velocities relatively robustly within the tested parametrization and regularization. Nevertheless, it is important to note that RWD inversion is inherently non-unique due to the fact that numerous layered  $V_s - h$  models have the capacity to reproduce analogous fundamental-mode curves. This ambiguity is further exacerbated in the presence of noisy observations (Dal Moro, 2010; Kozlovskaya et al., 2007). The findings of this study indicate a distinct divergence between data-space sensitivity and model-space uncertainty. Despite the RWD objective demonstrating a more rapid deterioration with increasing noise, indicating stronger noise sensitivity in the RWD misfit, the MT-derived  $\rho(z)$  models exhibit a larger increase in ensemble uncertainty. The shared layer-thickness parameterization suggests that noise perturbs the RWD fit more directly, whereas in the MT branch it more strongly enhances the  $\rho - h$  trade-off, leading to broader uncertainty in the recovered  $\rho(z)$  structure.

470



475 **Figure 9.** Noise-sensitivity analysis for the Pareto-MOPSO joint inversion, a) objectives of the utopia solution, b) Generational Distance (GD) of the Pareto front, c) model uncertainty from mean P10-P90 bandwidth as a function of noise level.

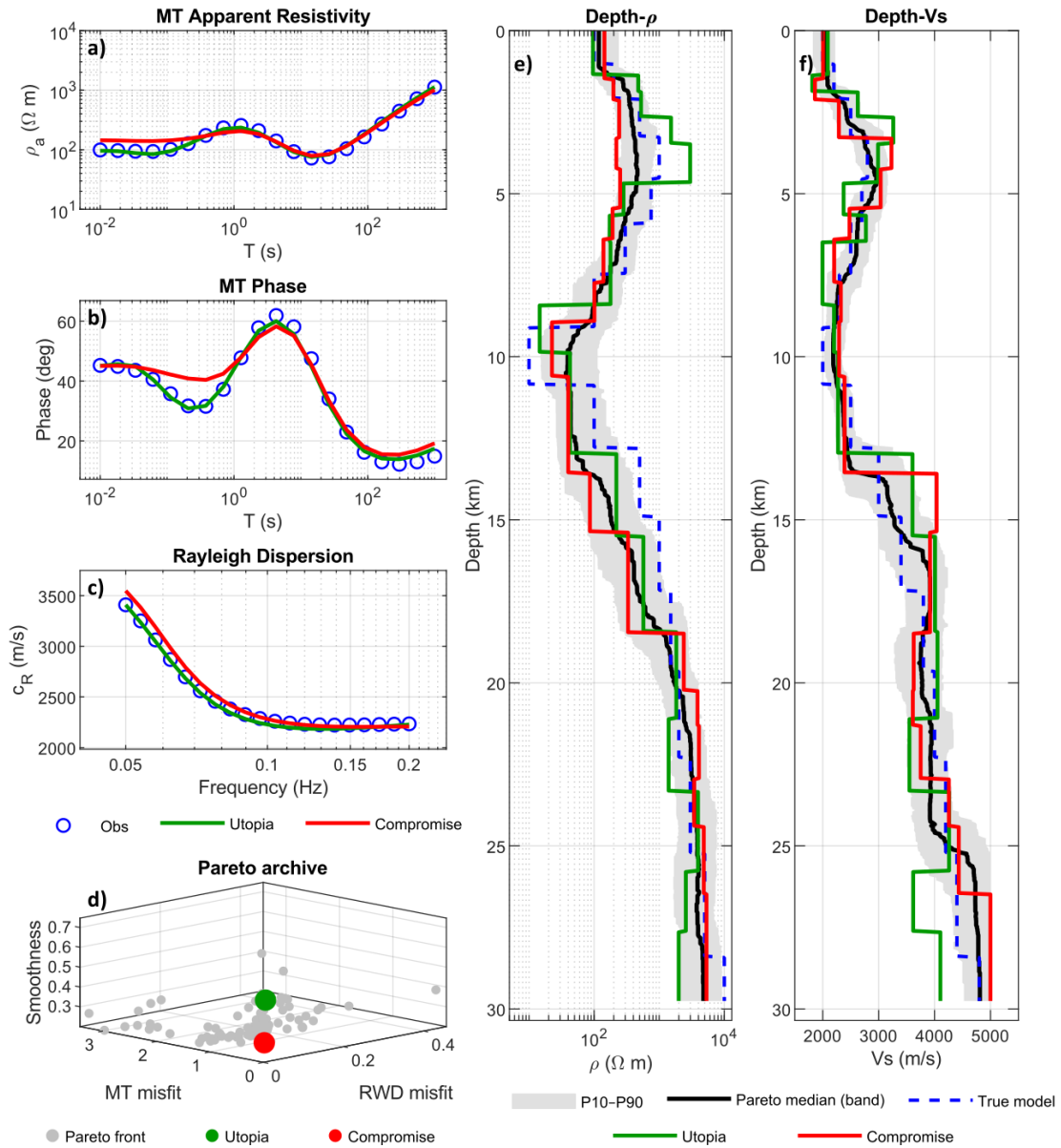
### 7.1.3 Layering-sensitivity analysis

In order to maintain identical noise-free synthetic observations and allow layer thicknesses to be optimized, a joint inversion of the datasets with varying parameterizations ( $h=8, 12, 18, 22$ ) was conducted. For the purpose of clarity, the results obtained with the reference parameterization ( $h=18$  layers) are shown in Figure 10. This parametrization is indicative of an intermediate-complexity model. The results for alternative layer numbers are provided in the supplementary figures (Figure S5-S7) to demonstrate the sensitivity of the recovered models and Pareto trade-offs to the chosen parameterization.

The findings reveal that the data-space fits for MT and the RWD curves are comparable, suggesting that the observations primarily constrain the gross-scale  $\rho(z)$  and  $V_s(z)$  structure. This indicates that the detailed layering is not uniquely determined by these observations. The primary effect of modifying the number of layers is manifested in the model domain and in the distribution of the Pareto archive. When  $h=8$ , the parameterization is relatively coarse, resulting in smoother models but also a more biased representation of sharp contrasts. A number of depth intervals exhibit systematic deviations from the true profile,

as a limited number of layers are incapable of reproducing the true stepwise structure. Furthermore, the persistence of data fidelity issues is particularly problematic in the context of compromise solutions. It is evident that increasing layer number ( $h = 12$ ) significantly enhances the capacity to depict intermediate-depth transitions with a reduced number of systematic offsets, while preserving a relatively compact ensemble (narrower P10–P90 in key intervals). This suggests a more optimal equilibrium between flexibility and stability. For higher parameterizations ( $h = 18$  and especially  $h = 22$ ), the inversion acquires supplementary degrees of freedom although the visual enhancement of the fits is evident. The phenomenon under consideration manifests as more pronounced layer-to-layer oscillations and an increasingly intricate ensemble. The P10–P90 envelope tends to broaden, although the utopia–compromise convergence becomes more pronounced. This reflects stronger trade-offs between fit and smoothness and an expansion of the non-unique solution space. In essence, the presence of additional layers, beyond an intermediate layer count, primarily leads to an increase in model ambiguity rather than enhancing the extraction of information from the same data. The findings of this study suggest that an intermediate parameterization ( $h \approx 12$ –18 layers) provides the most robust compromise. This parameterization is flexible enough to capture the main depth variations indicated by MT and RWD data, but constrained enough to avoid excessive variability in the recovered models.

500

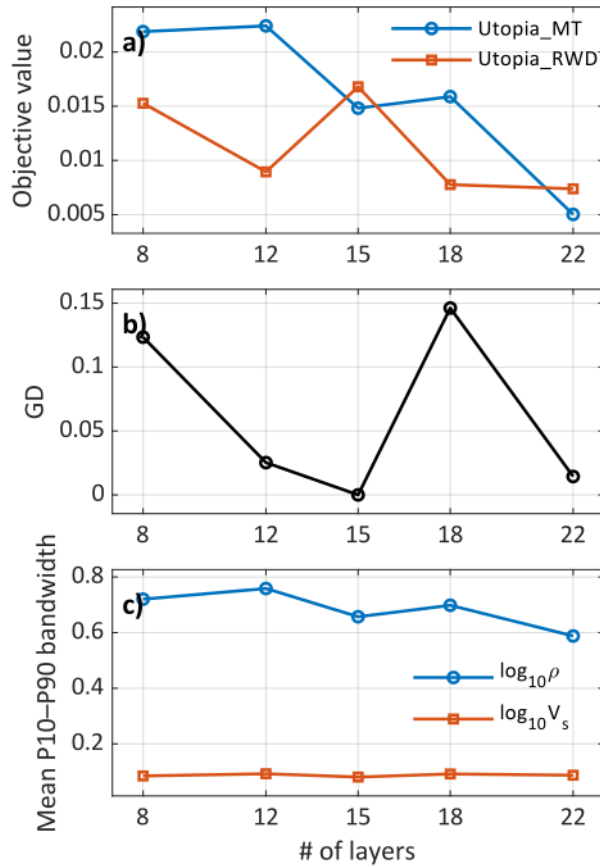


**Figure 10. Results of layering-sensitivity example for the  $h = 18$  layers (representative an intermediate-complexity model). a) Apparent resistivity and b) Phase data and c) RWD fit with the predicted responses of the selected representative solutions. d) Three-objective Pareto archive, highlighting the utopia and compromise solutions. e)  $\rho(z)$  and f)  $V_s(z)$  models for the true model and the selected utopia and compromise solutions, together with the P10–P90 envelope and the Pareto-median profile from the repository.**

Figure 11 quantifies the sensitivity of the joint Pareto–MOPSO inversion to the selected number of inversion layers using three complementary metrics: (a) the utopia-point objective values for MT and RWD, (b) the GD values of the resulting Pareto front relative to the reference ( $h = 15$ ) front, and (c) the mean P10–P90 uncertainty bandwidth of the recovered models. As demonstrated in Figure 11a, the utopia MT objective demonstrates a tendency to augment with increasing parameterization, a

finding that aligns with the augmented degrees of freedom facilitating more precise alignments with the MT responses. In contrast, the RWD utopia objective is not strictly minimized at the true layer count ( $h = 15$ ). This phenomenon can be attributed to the fact that the utopia solution is selected from a multi-objective trade-off (MT, RWD, and smoothness) rather than by minimizing the RWD misfit alone. Consequently, the "closest-to-utopia" solution at  $h = 15$  can emphasize improved MT fit and/or smoother models while accepting a slightly higher RWD misfit. This indicates that additional degrees of freedom do not simply reduce both misfits simultaneously; instead, they modify the trade-off balance between the two datasets. As illustrated in Figure 11b, the overall Pareto-front set exhibits the highest degree of consistency with the reference at  $h = 15$  ( $GD \approx 0$  by construction). Conversely, under-parameterization (e.g.,  $h = 8-12$ ) and over-parameterization (e.g.,  $h = 18-22$ ) result in increasingly larger deviations of the Pareto front. The GD results suggest that the Pareto front does not converge monotonically toward a superior solution as the number of layers increases. Instead, an intermediate parameterization yields the closest and most stable front relative to the reference, whereas both under-parameterized and over-parameterized cases deviate more strongly. As illustrated in Figure 11c, model uncertainty is found to be strongly parameter-dependent for  $\rho$  but comparatively stable for  $V_s$ . The P10–P90 envelopes reveal that the dominant effect of layer-number variation is expressed in the  $\rho(z)$  model space rather than in the  $V_s(z)$  model space. While the  $V_s$  uncertainty remains narrow and nearly invariant, the  $\log_{10} \rho$  bandwidth is consistently larger. This confirms that the MT branch remains more vulnerable to parameter trade-offs under the shared thickness parameterization.

The layer-number experiments indicate that increasing parameterization enhances data-space flexibility. However, this does not result in a monotonic improvement in joint inversion quality. While higher layer counts generally permit lower objective values, they also increase model-space ambiguity, particularly for  $\rho(z)$  models. This phenomenon is evidenced by the broader P10–P90 envelopes for  $\log_{10} \rho$  in comparison to  $V_s$ , suggesting that the MT branch is more profoundly influenced by  $\rho - h$  trade-offs within the framework of shared layer-thickness. The Pareto archives further suggest that intermediate parameterizations produce a more compact and stable trade-off structure, whereas excessively coarse models are too restrictive and excessively fine models introduce additional non-uniqueness. The GD metric consistently indicates that the closest and most stable Pareto front is obtained at an intermediate layer number rather than at the maximum complexity tested. The findings of these tests suggest that the optimal parameterization is selected by balancing the reduction of misfit with the stability of the ensemble and the representativeness of the model space. Consequently, within the framework of field-data joint inversions, it is imperative to conduct a robustness test by repeating the joint MT–RWD inversion with multiple alternative layer counts. This is primarily because, in the absence of such a test, the recovered models and uncertainty structure may be indicative of parameterization choices rather than data-driven information content.



545 **Figure 11. Layering-sensitivity analysis for the Pareto-MOPSO joint inversion, a) objectives of the utopia solution, b) Generational Distance (GD) of the Pareto front, c) model uncertainty from mean P10-P90 bandwidth as a function of layer numbers.**

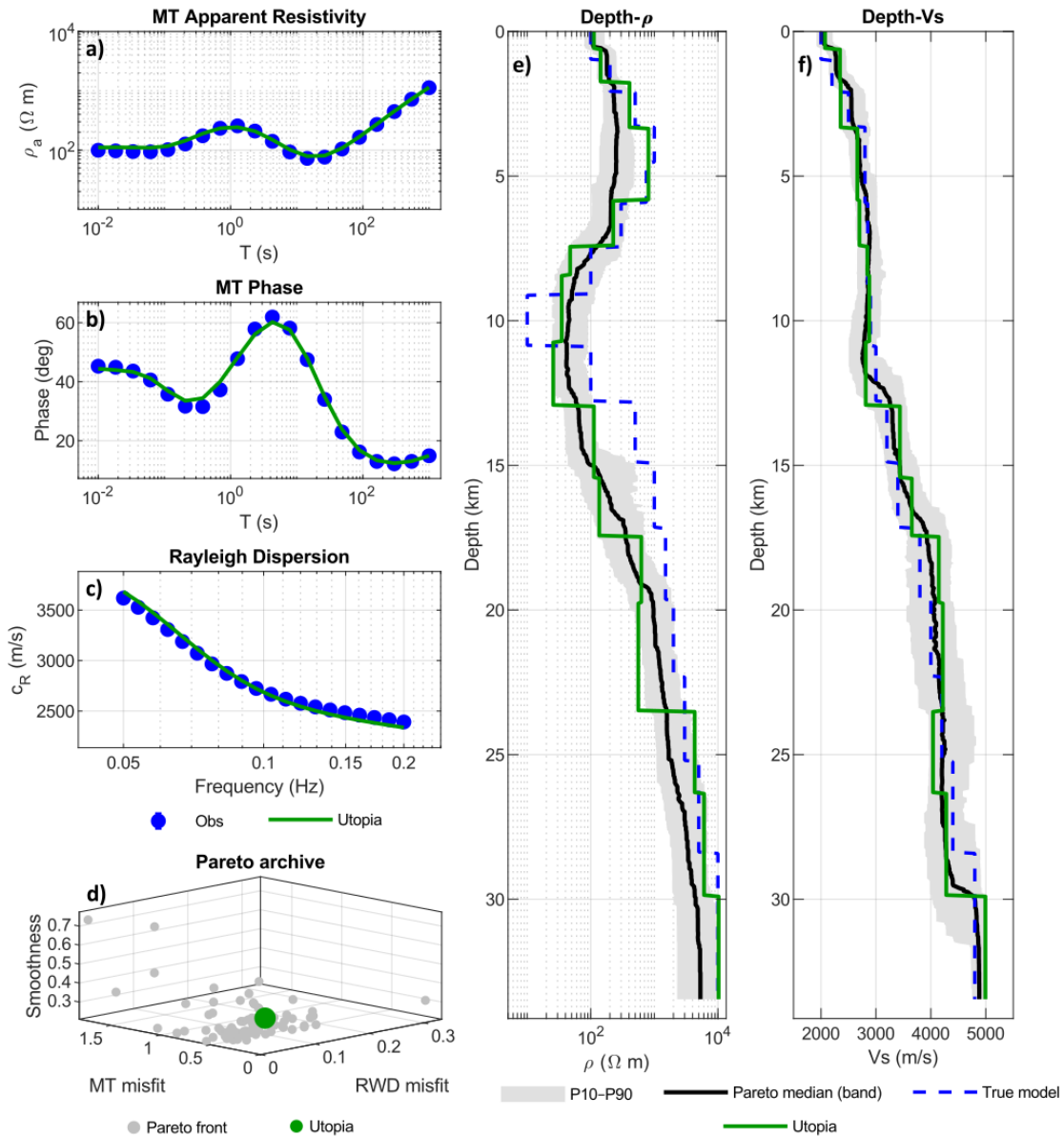
## 7.2 Decoupled cases

### 7.2.1 Case#1

In the coupled case, systematic noise- and layer-number sensitivity analyses were performed to characterize the stability of the proposed joint Pareto-MOPSO scheme. In the context of the decoupled case, our objective is not to exhaustively re-map  
 550 robustness, but rather to illustrate how the trade-off structure undergoes modification when the two datasets favor divergent structural scales. Consequently, a representative mini-test is presented at noise-free, 10%, and 20% noisy data, which is sufficient to illustrate the characteristic Pareto drift, the redistribution of misfit between MT and RWD, and the associated uncertainty envelope. Furthermore, when considering both the noise-sensitivity experiments and the layering-parameterization tests, it becomes apparent that the utopia solutions provide superior fits and demonstrate the closest convergence toward the  
 555 true model with Pareto-median within the P10-P90 envelope consistently. Consequently, we adopt the utopia solutions, with

Pareto-median and uncertainty via the Pareto ensemble (P10–P90 envelopes), as the preferred model and illustration for the subsequent inversion of the decoupled cases and field data.

560 Figure 12 summarizes the results for the decoupled case#1 under the noise-free datasets. The results of the remaining tests, incorporating both 10% and 20% noisy data, are presented in the supplementary figures (Figure S8-S9). In all cases, the selected utopia solution reproduces the MT and RWD curve trend reasonably well, indicating that a Pareto-optimal solution can achieve low misfits for both datasets simultaneously. The synthetic tests of decouple case#1 demonstrate that the joint Pareto–MOPSO inversion does not artificially enforce a common anomaly in both physical parameters when the underlying structure is genuinely decoupled. In the noise-free case, the conductive anomaly is predominantly recovered in the  $\rho(z)$ , while no equivalent low- $V_s$  feature is introduced in the  $V_s(z)$  structure. This finding suggests that the inversion preserves parameter-specific sensitivity rather than imposing a false cross-property correspondence. With increasing noise (10–20%), the  $\rho(z)$  becomes progressively more diffuse and uncertain, as reflected by the widening P10–P90 envelope, whereas the  $V_s(z)$  remains comparatively stable apart from minor noise-induced fluctuations, as observed in coupled case. The Pareto archive becomes more scattered simultaneously, indicating increased non-uniqueness. However, the solutions do not collapse into an artificially coupled low- $\rho$  / low- $V_s$  interpretation. The findings indicate that the proposed framework is capable of differentiating between  
565  
570 decoupled electrical and mechanical structures. However, a marked decline in the robustness of the model parameters of the MT branch is observed as the level of noise increases.



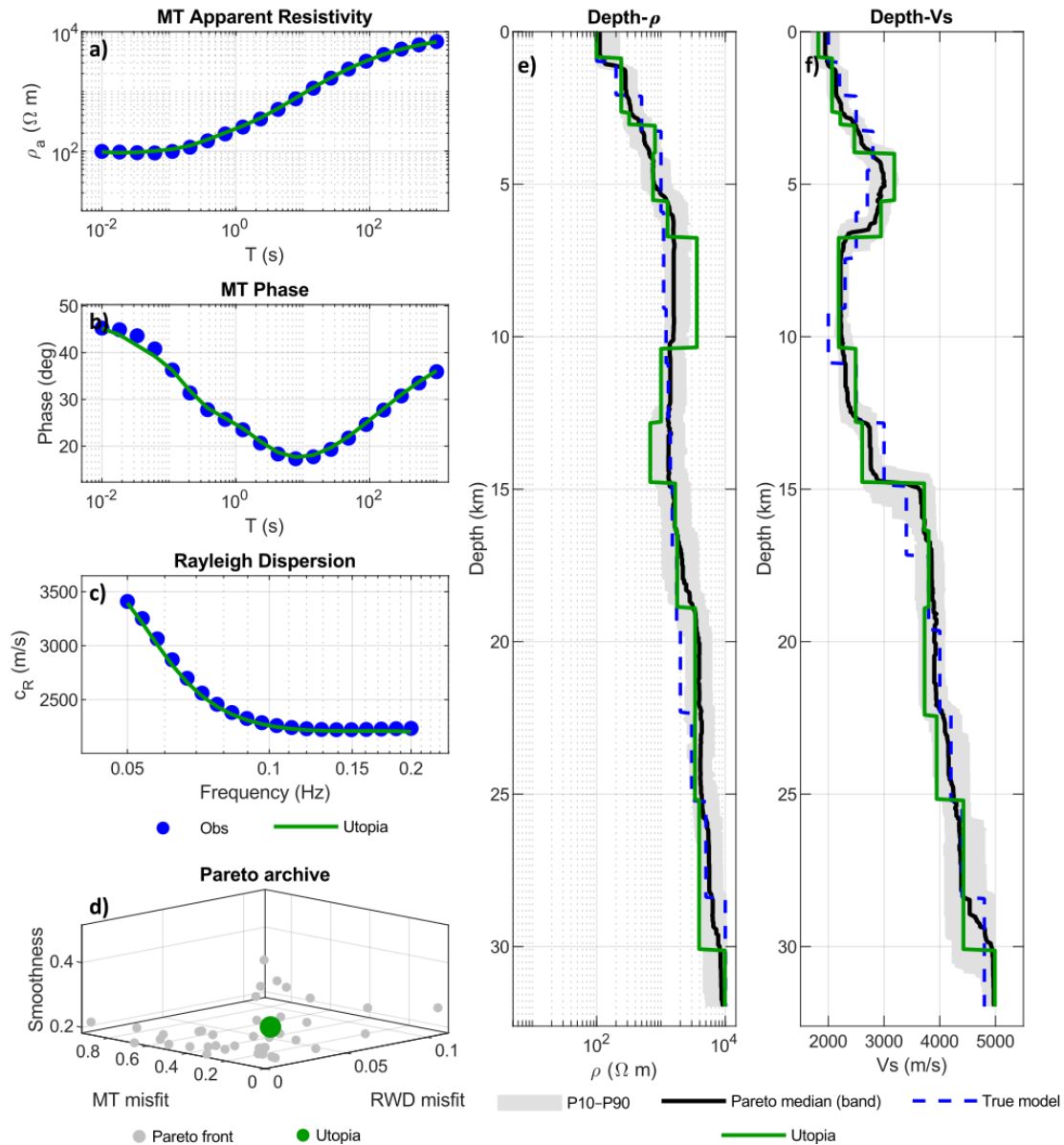
575 **Figure 12: Results of the noise-free decoupled case#1. a) Apparent resistivity and b) Phase data and c) RWD fit with the predicted responses of the utopia solution. d) Three-objective Pareto archive, highlighting the utopia solution. e)  $\rho(z)$  and f)  $V_s(z)$  models for the true model and the selected utopia solution, together with the P10–P90 envelope and the Pareto-median profile from the repository.**

### 7.2.2 Case#2

580 Figure 13 provides a synopsis of the outcomes derived from the decoupled case #2 under the noise-free datasets. The results of the remaining tests (10% and 20%) are displayed in the supplementary figures (see Figures S10 and S11). In all three cases, the selected utopia solution reproduces the MT curves and the RWD trend reasonably well, thereby confirming that the Pareto

search can still identify a low-misfit compromise in the data space even when the underlying structural sensitivities of MT and RWD are mutually inconsistent. The apparent resistivity curves are reproduced with generally good agreement, indicating that the joint inversion preserves the overall MT response even though the synthetic anomaly is not primarily expressed in  $\rho(z)$  model. The phase data are also fitted satisfactorily, suggesting that the MT branch remains stable and does not introduce a spurious conductive structure in response to the low- $V_s$  anomaly. The RWD curves effectively capture the predominant trend of the synthetic observations, thereby confirming that the low- $V_s$  anomaly is predominantly resolved by the RWD data. However, it is important to note that the quality of the fit gradually deteriorates as the level of noise increases. The Pareto archive undergoes an evolution from a compact and well-organized trade-off surface in the noise-free case to a broader and more scattered distribution under 10–20% noise. This shift reflects increasing non-uniqueness and weaker data control. The recovered  $\rho(z)$  model maintains a close approximation to the true structure and does not exhibit a significant artificial conductive anomaly, suggesting that the inversion does not force a false low- $\rho$  counterpart to the  $V_s$  anomaly. The low- $V_s$  is predominantly recovered in the  $V_s(z)$  model. However, as the noise level increases, the boundaries of the low- $V_s$  become more diffuse, and the uncertainty envelope expands.

The second decoupled tests demonstrate that the inversion framework is capable of recovering a low- $V_s$  anomaly without introducing a spurious conductive counterpart in the  $\rho(z)$  model. In the absence of noise, the  $V_s$  anomaly is accurately recovered, while the  $\rho(z)$  structure maintains proximity to the true, non-anomalous resistivity profile. As the noise level increases (10–20%), the Pareto archive becomes increasingly dispersed, and the  $V_s$  uncertainty broadens, particularly at the anomaly depths. However, the solutions maintain the inherently decoupled nature of the synthetic model. This finding suggests that the method respects parameter-specific sensitivity and does not force an artificial low- $\rho$  / low- $V_s$  correspondence when such coupling is absent in the true structure.



605 **Figure 13: Results of the noise-free decoupled case#2. a) Apparent resistivity and b) Phase data and c) RWD fit with the predicted responses of the utopia solution. d) Three-objective Pareto archive, highlighting the utopia solution. e)  $\rho(z)$  and f)  $V_s(z)$  models for the true model and the selected utopia solution, together with the P10–P90 envelope and the Pareto-median profile from the repository.**

### 7.3 Benchmark comparison and computational performance

610 Following a thorough evaluation of the Pareto-MOPSO joint inversion under both coupled and decoupled synthetic scenarios, a comparative analysis was conducted with the performance of a deterministic Gauss-Newton (GN) inversion. The GN inversion was implemented with the same forward operators and parameterization. Since GN requires a scalar objective, we

employed a normalized weighted-sum formulation that combined the same weights for the misfits in the MT and RWD data to prevent one dataset from dominating the others arbitrarily. The inversion was initialized from a homogeneous reference model, with all resistivity layers set to  $100 \Omega\text{m}$ , all  $V_s$  layers set to  $3000 \text{ m/s}$ , and all layer-thickness parameters set to  $2000 \text{ m}$ .

615 The same model was also used as the reference model for regularization. To stabilize the inversion, first-difference smoothness regularization was applied to the  $\log_{10} \rho$  and  $\log_{10} V_s$  models, together with a weaker smoothness constraint on layer thickness. The corresponding regularization coefficients were set to  $\lambda=0.25$  and  $\lambda_h=0.1$ . A Levenberg-type damping scheme was used within the Gauss-Newton iterations, with an initial damping factor of  $10^{-2}$  and allowable bounds between  $10^{-6}$  and  $10^2$ . The inversion was run for 150 iterations, consistent with the Pareto-MOPSO implementation. The Jacobian matrix was

620 calculated by finite differences, and parallel forward evaluations were employed to reduce the computational cost. Figure 14 shows the results of benchmarking the joint inversion of the MT and RWD data using the GN scheme. Overall, the GN solution demonstrates a high degree of compatibility with the observations, exhibiting an optimal alignment across the entire period and frequency ranges (see Figure 14a-c). However, Figure 14 highlights several limitations of the equal-weighted Gauss-Newton (GN) joint inversion when compared with the Pareto-MOPSO framework. The  $\rho(z)$  structure is reproduced

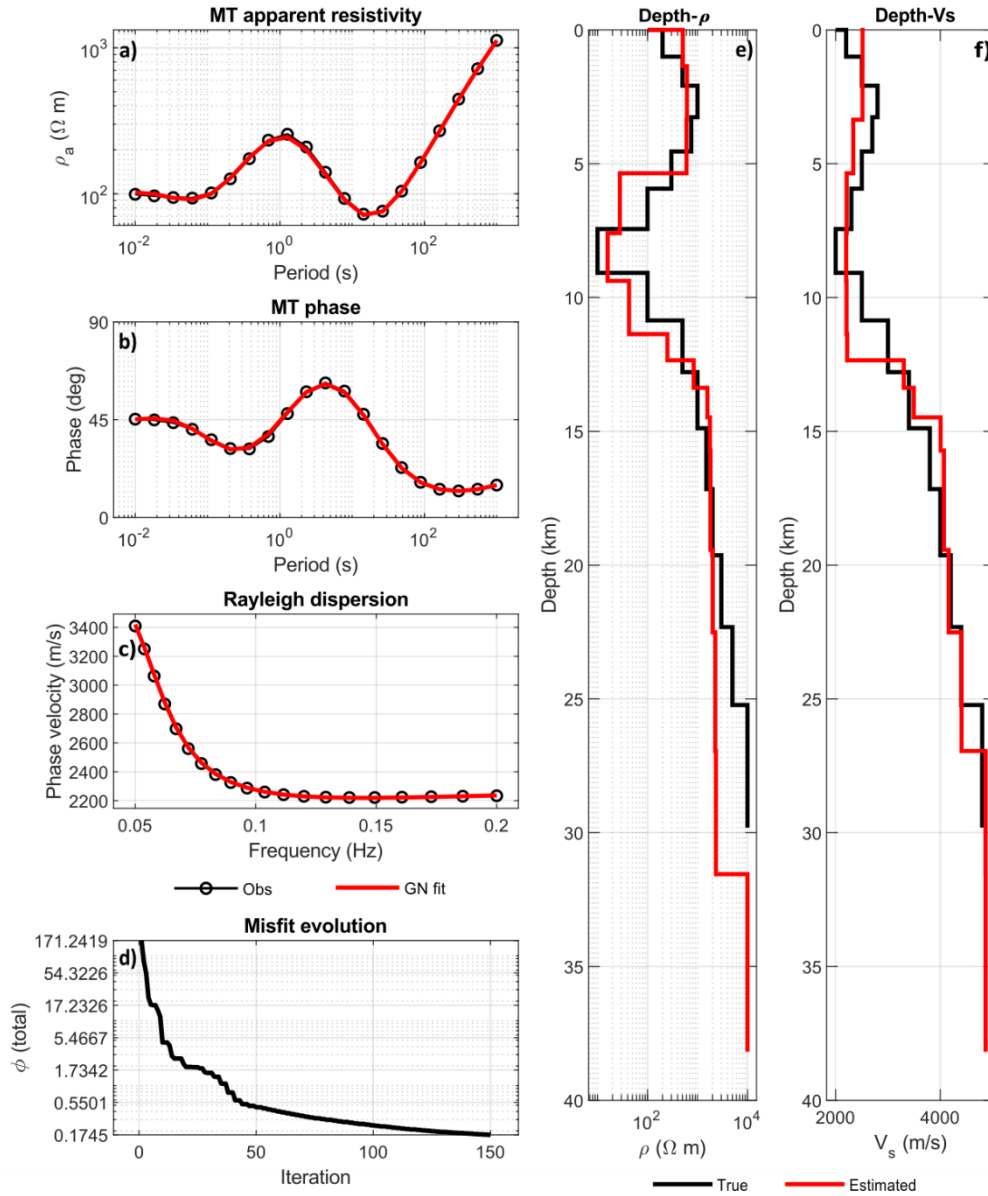
625 reasonably well (see Figure 14e), whereas the  $V_s(z)$  model converges to a smoother and partly shifted solution that departs from the true layered structure (see Figure 14f). In particular, it fails to reproduce the shallow high- $V_s$  and underestimates the intermediate-depth low- $V_s$  anomaly, yielding an overly smoothed  $V_s$  profile. By contrast, the Pareto-MOPSO solutions preserve the main velocity contrasts more clearly while maintaining a similarly strong data fit. This comparison shows that, while GN is effective at reducing total data misfit, it is still more likely to converge on a  $V_s$  model that is locally acceptable but

630 less representative of the structure as a whole. This discrepancy is likely indicative of the inherently non-unique nature of RWD inversion, wherein multiple layered  $V_s - h$  combinations can generate RWD curves with a high degree of similarity. Such non-uniqueness and inter-parameter trade-offs in joint MT-RWD inversion are well documented (e.g., Moorkamp et al., 2010) and should therefore be regarded as intrinsic to the inverse problem rather than as a limitation of the forward solver. A number of strategies can be proposed to facilitate the implementation of this process. These include the tuning of the

635 regularization applied to layer thickness or the constraining of the admissible thickness range. The misfit curve demonstrates a distinct plateau after approximately 50 iterations, indicating that the inversion has become trapped in a locally stable minimum. This behavior is consistent with the traditional inversion entering a locally stable region of model space, where further updates produce only limited reductions in misfit (Luis and Martínez, 2010; Pallero et al., 2015; Yang et al., 2018). This is likely due to the strong dependence of gradient-based optimization on the initial model. Under the

640 equal-weighted summation used in the GN formulation, the inversion is also forced to balance MT, RWD, and smoothness contributions within a single composite objective, so that the final solution may reflect a compromise among competing terms rather than the most representative structure for each dataset. In contrast, the Pareto-MOPSO approach avoids reliance on a single deterministic starting model and does not require the preselection of fixed relative weights between objective functions. Instead, it explores the trade-off space directly and returns a family of non-dominated solutions, thereby reducing sensitivity

645 to local minima and providing a more transparent representation of uncertainty and inter-objective trade-offs.



**Figure 14. Results of the joint GN inversion of MT and RWD data for coupled case. a) Apparent resistivity and b) Phase data and c) RWD fit. d) Total objective function over iterations. e)  $\rho(z)$  and f)  $V_s(z)$  models of the true and estimated models.**

650

All computations were performed in parallel on a 14-core CPU node (12th-generation Intel® Core™ i7, 2.30 GHz) with 64 GB RAM. In the Pareto-MOPSO implementation, forward evaluations were parallelized across particles in order to exploit the available multi-core resources. Both algorithms were run for 150 iterations, using the same dataset, the same forward

655 solver, and comparable stopping criteria. In the context of the specified conditions, a single GN run necessitated 1020.70 s, whereas Pareto-MOPSO completed in 525.64 s. This outcome suggests that, for the current 1-D joint inversion configuration, Pareto-MOPSO is computationally competitive and exhibits a modest advantage in terms of wall-clock time. Furthermore, in practice, obtaining a satisfactory GN solution often requires repeated trial runs to tune the initial model, relative dataset weighting, and related inversion settings. By contrast, Pareto-MOPSO reduces the need for such manual tuning by explicitly exploring the trade-off space and returning a family of Pareto-optimal solutions. This can result in significant time savings  
660 over the overall inversion workflow.

The computational cost of the Pareto-MOPSO inversion was further benchmarked by varying the swarm size  $P$ , while keeping the inversion configuration fixed at 150 iterations and using the same MT and RWD forward solvers. The measured wall-clock times for  $P = \{100, 200, 300, 400, 500\}$  particles were  $\{515.08, 868.82, 1218.28, 1569.85, 2025.76\}$  s, respectively. Over this range, the runtime increases approximately linearly with swarm size, as expected, because each particle requires two forward  
665 evaluations per iteration (one MT and one RWD). For a fixed number of iterations, the total number of forward calls is therefore approximately  $300P$ , indicating that the runtime is dominated by forward modeling and scales close to linearly with  $P$ . A simple linear fit to the measured runtimes gives  $t \approx 3.7P + 1.2 \times 10^2$  s, indicating that each increase in swarm size adds an approximately constant computational overhead. From the inversion-quality perspective, increasing  $P$  generally improves (1) the diversity and coverage of the Pareto archive, (2) the stability of the inferred utopia solution, and (3) the interpretability of  
670 the posterior summaries (Reyes-Sierra and Coello Coello, 2006; Shu et al., 2023). This behavior is expected because a denser swarm samples the trade-off surface more uniformly within the fixed iteration budget.

The near-linear dependence on swarm size is expected to hold as long as the per-particle forward cost remains approximately constant. However, when moving from 1-D layered models to 2-D or 3-D parameterizations, the dominant growth in computational cost is controlled not only by swarm size but also by the increasing complexity of the forward problem and the  
675 expansion of the search space. In 2-D, and especially in 3-D, both MT and RWD forward calculations become substantially more expensive because of larger discretizations and more demanding numerical solves. At the same time, the optimization problem becomes harder because the Pareto-optimal set should be explored in a much higher-dimensional parameter space. As a result, maintaining comparable Pareto-front quality may require larger swarms and/or more iterations, so that the total cost is expected to grow super-linearly with model dimensionality. In practice, this means that although swarm-size tuning  
680 offers a predictable cost–robustness trade-off in the present 1-D framework, extensions to 2-D/3-D inversions will likely be constrained primarily by forward-model cost and dimensionality effects. Consequently, computationally efficient parameterizations, structural regularization, and parallel forward evaluations will be essential for preserving Pareto-front stability and uncertainty interpretability within feasible runtimes. Despite the higher computational demands in larger-dimensional problems, Pareto-MOPSO still offers a practical advantage over traditional joint inversion schemes by exploring  
685 the multi-objective trade-off space directly and reducing the need for repeated re-initializations and derivative-based tuning. Overall, the proposed workflow provides a scalable framework that is naturally suited to parallel computing for high-dimensional joint inversion problems.

## 7.4 Field data

Figure 15 shows the RWD curves obtained from the pairs of BOZC\_paths and ECEA\_paths, as well as the combined curve that best represents the phase velocities of the crustal structure along the paths between the stations using the analysis of Özalaybey et al. (2011). The period range under consideration was between 8 and 60 s; however, 8 to 20 s was employed for the modeling process in order to encompass realistic values in the crust. The RWD curves indicate a crustal structure as the seismic velocities increase with increasing period, but possible low  $V_S$  structures can be identified as a result of the modeling phase. Figure 16 shows the MT apparent resistivities, phases and minimum phase of the phase tensor ( $\phi_{min}$ ) from the GURE and KULC stations located over the BOZC\_paths and ECEA\_paths, respectively. The apparent resistivity curves show a high resistivity in the first periods and a low resistivity above 1 s. The phase tensor, which is not subject to galvanic distortion in comparison to the impedance tensor (Hill et al., 2009), also exhibits a spatial variation from low to high phases, indicating high to low resistivities, as observed by Garcia and Diaz (2016) and Heise et al. (2008). However, continuous  $\rho(z)$  models can be clearly verified by the joint inversion of the datasets. Phase tensor ellipses are indicative of the fact that the MT response deviates from quasi-1-D behaviour at periods which exceed approximately 1 s. At these longer periods, the ellipses become progressively more elongated, and their orientations demonstrate increased variability. This finding aligns with the concept of enhanced lateral heterogeneity and/or multidimensional effects. In order to minimize potential bias from two- or three-dimensional structure when adopting a one-dimensional inversion framework, the inversion was restricted to the short-period band ( $T \leq 1$  s). In this particular band, the shapes of the phase tensors are more circular in shape and demonstrate increased stability. This period selection provides a pragmatic compromise by preserving robust information while reducing the risk of forcing multidimensional responses into a one-dimensional parameterization.

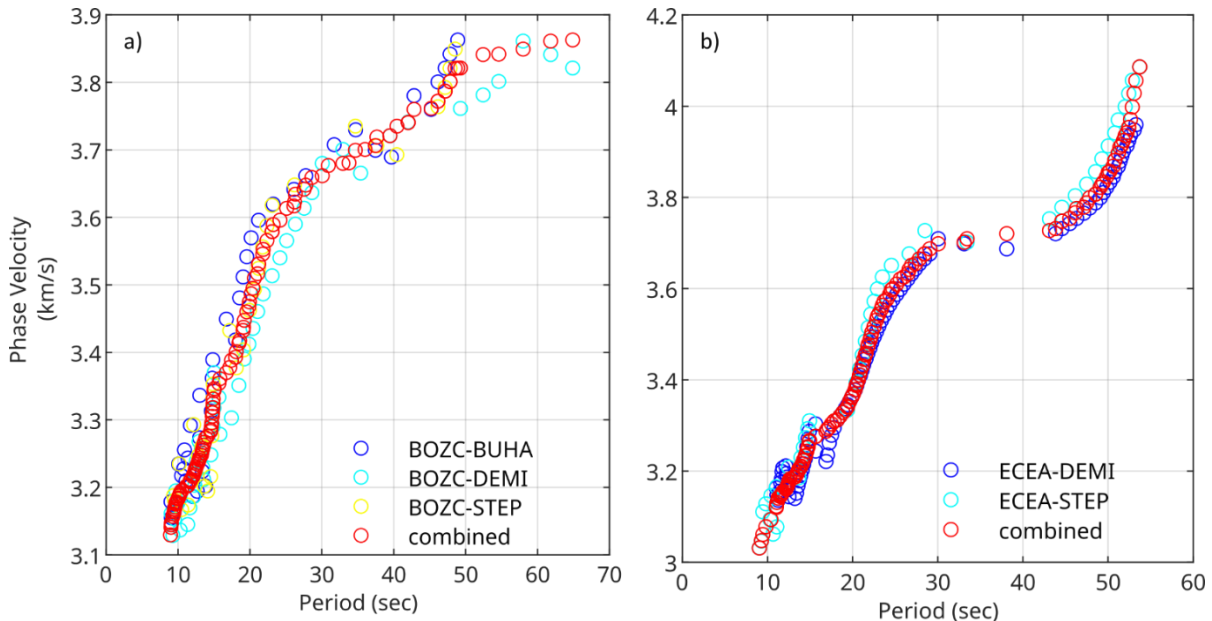


Figure 15. Measurements of an individual RWD datasets obtained from a) BOZC\_paths and b) ECEA\_paths from an earthquake with a magnitude of  $M_w = 6.5$  occurred in Italy on 30 October 2016.

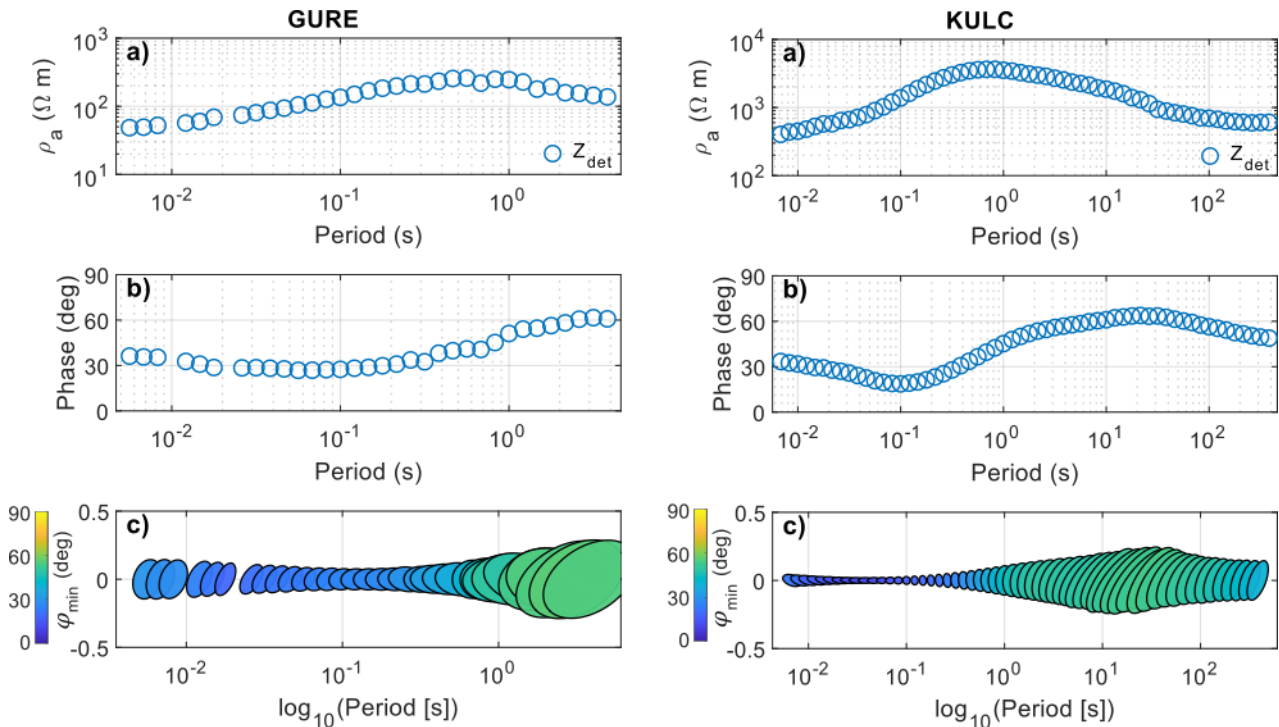


Figure 16. Measurements of individual a) apparent resistivities, b) phase and c) phase tensor  $\varphi_{min}$  angles of GURE station over the BOZC\_paths (left) and KULC station over the ECEA\_paths (right).

715 Utilizing phase tensor diagnostics, the GURE MT data is constrained to a range of  $T \leq 1$  s. For this specified range, the implied skin depth is estimated to be in the order of  $\sim 8$  km. The RWD data from BOZC\_paths (mainly 8–20 s) primarily detects depths of  $\sim 10$ –25 km (approximately  $\lambda/3$ – $\lambda/2$ ). Consequently, the two datasets (hereafter referred to as *GBp*) offer predominantly complementary constraints with minimal overlap in depth. MT primarily stabilizes the shallow resistivity structure, while RWD principally constrains the deeper  $V_s$  structure. However, the MT data from the KULC station and the RWD data from

720 the ECEA\_paths (hereafter referred to as *KEp*) exhibit substantially improved depth consistency in comparison with *GBp*. The dominant MT response at KULC is characterized by relatively high apparent resistivities (on the order of  $10^3$ – $10^4$   $\Omega$ m over the short-to-intermediate period band), which implies larger electromagnetic skin depths, even at short periods. The application of the standard approximation reveals that the  $T \leq 1$  s MT band at KULC corresponds to a characteristic sensitivity scale depth of  $\sim 15$ –20 km. This correspondence occurs while minimizing the influence of long-period, multidimensional effects, as

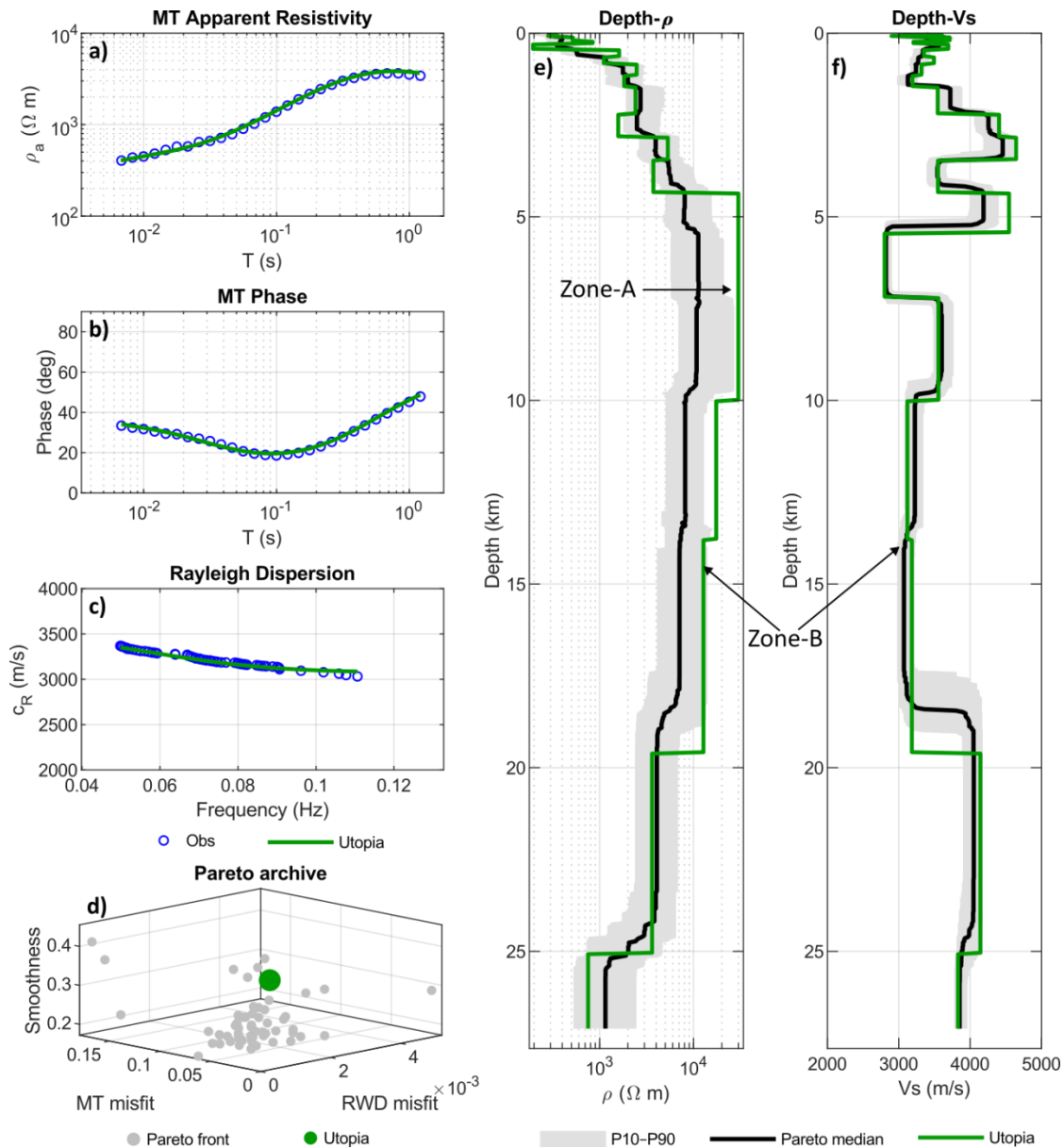
725 indicated by phase tensor diagnostics. In contrast, the ECEA RWD curve is densely sampled over a range of 8–20 s. These periods primarily sample the upper to mid-crust, situated between 10–25 kilometers, under the assumption of crustal Rayleigh

wave velocity. Consequently, the *KEp* datasets provide a strongly overlapping depth window between 10–25 km, enabling more physically consistent joint constraints in the parameter domain.

730 In the modeling stage, the 1D  $V_s$  model derived from the joint inversion is interpreted as an effective, laterally averaged structure over the propagation path/Fresnel zone, rather than as a literal point representation of the subsurface. Therefore, we do not assume that the Earth is truly 1D; rather, we extract an effective 1D model from the period band where phase-tensor diagnostics indicate quasi-1D/2D behavior and where the MT and RWD are most compatible. The purpose is to derive an effective 1D model that is commensurate with the path-averaged nature of the surface-wave dispersion data, rather than to claim a purely 1D Earth structure. This approach aligns with the established guidelines for surface-wave modeling and inversion, as outlined in the work of Foti et al. (2017). For the MT branch, the effective impedance tensor is employed to construct a 1D  $\rho(z)$  model. This model serves two purposes: it provides a physically meaningful summary of the dominant conductivity structure, and it serves as a starting point for more advanced analyses. Accordingly, first-order resistivity contrasts can be resolved and interpreted in terms of lithological variations, fluid occurrence, and/or hydrothermal alteration (Chave and Jones, 2012; Tietze and Ritter, 2013).

#### 740 **7.4.1 Joint modeling of the *KEp***

The joint MT–RWD inversions of the *KEp* were performed using six alternative 1-D parameterizations ( $h = 8, 12, 16, 20, 24,$  and 28 layers) to evaluate the impact of layer thickness and model complexity on the Pareto trade-off, data fits, and the mutual consistency of the recovered  $\rho(z)$  and  $V_s(z)$  profiles. Based on these diagnostics, we selected the 20-layer inversion (L20) as the representative field-data result (see Figure 17). This selection was made on the basis that it provides the most balanced and interpretable joint solution. Initially, findings indicated a remarkable correspondence between MT and RWD and their observations. Secondly, the Pareto distribution is relatively compact, meaning that the utopia point does not lie at an extreme. This suggests a stable trade-off rather than objective-specific overfitting. The remaining layerings (L08, L12, L16, L24, and L28) are provided in the supplementary figures (Figures S12-S16) to demonstrate robustness and document how under- and over-parameterization, respectively, broaden the trade-off and promote non-unique, oscillatory solutions that may weaken the physical coherence between  $\rho(z)$  and  $V_s(z)$  structures.



**Figure 17. Representative results of the *KEp*.** a) Apparent resistivity, b) Phase data and c) RWD fit with the predicted responses of the utopia solution. d) Three-objective Pareto archive, highlighting the utopia solution. e)  $\rho(z)$  and f)  $V_s(z)$  models for the utopia solution, together with the P10–P90 envelope and the Pareto-median profile from the repository.

755

Across all parameterizations, the responses are generally well-reproduced at short-to-long periods/frequencies. The RWD trend is also reasonably captured, yet the extent to which a single model can satisfy both datasets simultaneously depends on the selected layering. However, the field-data layer-number comparison indicates that the MT responses are more sensitive to model parameterization than the RWD curves. While the apparent resistivity and phase fits show and improvement 8 to 20 layers and are reproduced most consistently in the 20-layer case, the 24–28-layer solutions do not provide a comparable gain.

760

765 Instead, these solutions exhibit renewed systematic misfit, particularly at short-to-long periods. The Pareto archives demonstrate that low-layer parameterizations (e.g., 8 layers) produce a relatively compact but restricted trade-off structure, whereas higher-layer models (24–28 layers) become progressively more dispersed and heterogeneous, indicating increased non-uniqueness in model space. In this context, the 20-layer case provides the most balanced archive geometry, with a well-sampled yet not excessively scattered Pareto distribution and a utopia solution located within a representative part of the ensemble. The P10–P90 envelopes indicate that low-layer parameterizations may appear artificially narrow because of restricted model flexibility. In contrast, higher-layer cases, particularly 24–28 layers, show more heterogeneous and locally broader uncertainty, especially in the  $\rho(z)$  structure. In contrast, the 20-layer solution preserves a balanced uncertainty pattern, with sufficient ensemble variability for interpretation but without the excessive model-space dispersion associated with over-parameterization.

770 A focus on the preferred 20-layer solution (L20) reveals that the sensitivity partitioning between the datasets suggests that the reliability of the recovered structures is depth-dependent. In the upper crust, extending down to approximately 10 km, the MT data provide the dominant constraint, whereas the RWD data are less diagnostic of fine-scale  $V_s$  variations. Accordingly, the short-wavelength oscillations in  $V_s(z)$  within this interval are interpreted as parameterization-related artifacts rather than robust structural features. Conversely, the progressive increase in resistivity resolved by the MT data from the shallow subsurface to depths of approximately 10 km is considered as more reliable. This phenomenon aligns with the presence of a granitoid-dominated upper crust, as evidenced by previous studies (e.g., Beccaletto, 2003; Yilmaz et al., 2001). The structure exhibiting extremely high resistivity between approximately 5 and 10 kilometers in depth is designated "Zone A."

780 Below a depth 10 km, both datasets contribute structurally compatible to the joint solution. Within this depth range, the L20 models demonstrate a consistent slightly decrease in  $\rho$ , accompanied by a reduction in  $V_s$ , indicating coupled case. Therefore, the term "Zone-B" is employed to delineate a specific structure characterized by low- $\rho$  and low- $V_s$  with depth ranging from ~10 to 20 km. The  $\rho$  decreases by one order of magnitude, suggesting the presence of a conductivity-enhancing phase. Meanwhile, the  $V_s$  decreases by ~14%, indicating a mechanically softened medium. The findings from this study are consistent with those of Turunçtur et al., (2023), who reported in  $V_s$  extending from 10 km to approximately 15–16 km in the crustal structure of the southeastern Biga Peninsula, as determined by seismic noise tomography. From an electrical perspective, the slightly decrease in  $\rho$  is most consistent with a fracture, where fault-controlled without fluid bearing enhance bulk conductivity. From a mechanical perspective, the concomitant decrease in  $V_s$  suggests a thermally weakened and/or highly cracked medium. These results are consistent with those reported by Gürer et al. (2021), who proposed that the fractured internal structure of the granitoids in the Biga Peninsula is primarily the result of changes in regional tectonic loading. As granitoid structures undergo cooling towards their bulk temperatures, brittle deformation becomes the predominant deformation mechanism. This results in the formation of a fracture, joint, and fault hierarchy whose geometry is controlled by pre-existing stress evolution (Čečys and Benn, 2007). Therefore, the co-occurrence of decreased  $\rho$  and  $V_s$  can be explained by post-placement deformation and fractured system increase in bulk conductivity, as well as temperature alteration. The combined effect of these factors is a reduction in elastic moduli and a decrease in  $V_s$ .

795 In both Zone-A and Zone-B, the utopia and Pareto-median models demonstrate a significant disparity, suggesting that these structures are susceptible to the trade-off geometry of the Pareto ensemble. This finding indicates that, while the zones are expressed in the preferred solution, their detailed amplitudes and boundary positions are not uniquely constrained and should therefore be interpreted with caution. Consequently, Zones A and B were selected for targeted sensitivity tests in the Section 7.4.3 to evaluate the stability of their first-order characteristics under deliberate perturbations.

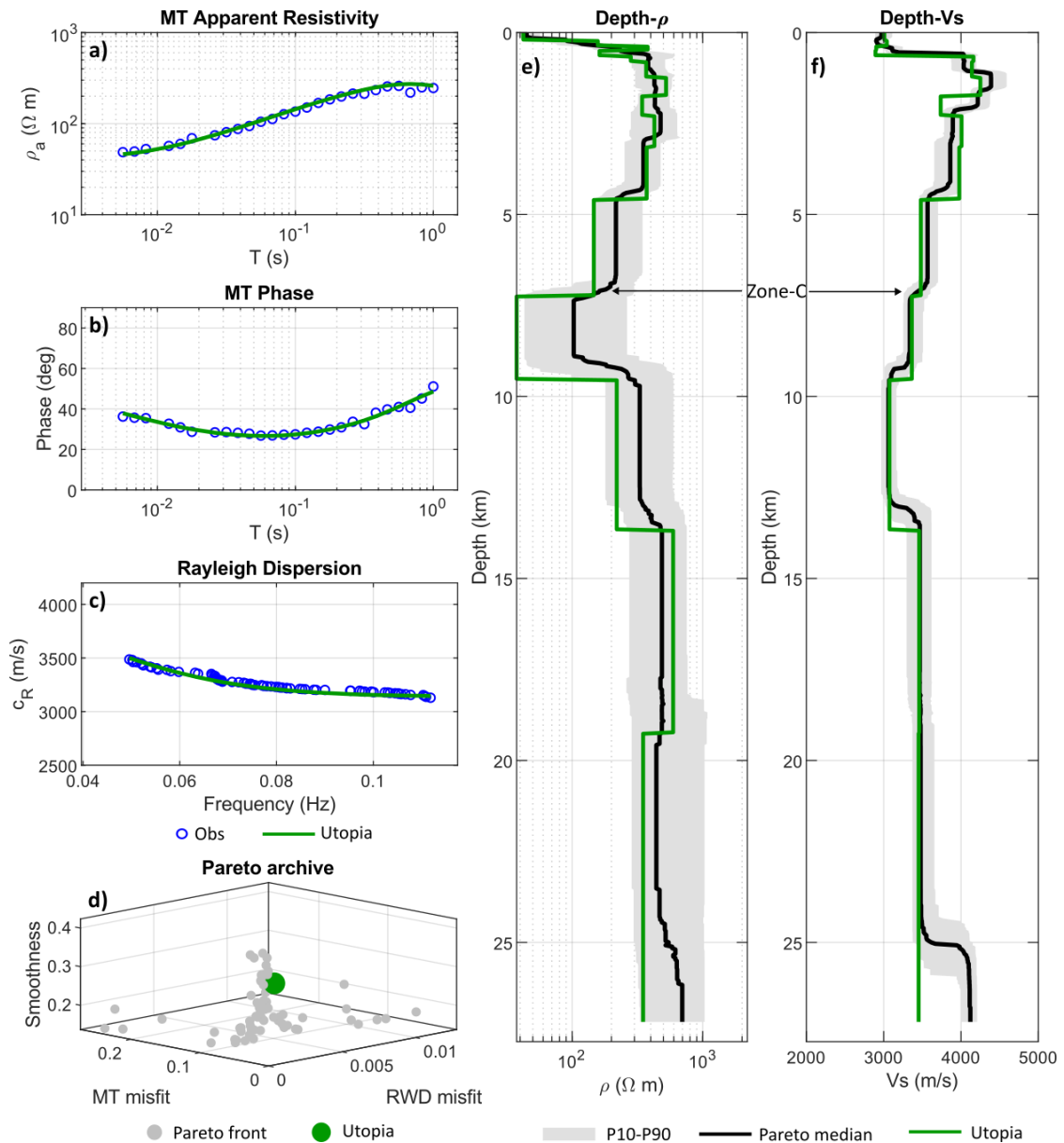
800 At greater depths (approximately 20 km and deeper), the recovered models tend to exhibit increasing  $V_s$  while resistivity remains low or decreases and the associated P10–P90 envelopes widen. Given the decline in both MT and RWD sensitivities at these depths, coupled with the increasing influence of the final layers of the one-dimensional parameterization and boundary assumptions on the solution, a cautious approach is warranted when addressing these deepest-layer features. Consequently, the L20 results are interpreted as robust primarily within the depth range where the datasets provide strong, overlapping  
805 sensitivity. However, we consider any inference regarding the lower crust and Moho based on the deepest layers to be non-unique and unreliably resolved by the present joint dataset. Consequently, the recommendation is made for subsequent receiver function studies on this subject to obtain more reliable results for the lower crust and Moho.

#### 7.4.2 Joint modeling of the *GBp*

We performed joint MT–RWD inversions on the *GBp* field dataset using six 1-D parameterizations with 8, 12, 16, 20, 24, and  
810 28 layers. This allowed us to assess the influence of layer thickness and model complexity on the Pareto trade-off, data fits, and mutual consistency between the recovered  $\rho(z)$  and  $V_s(z)$  profiles. Based on these diagnostics, we selected the 16-layer (L16) intermediate-complexity solution as the representative field-data inversion (Figure 18) because it provides the most balanced and interpretable joint solution. First, MT and RWD responses follow their observed trends. Second, it exhibits a relatively compact Pareto distribution, indicating a stable trade-off. The remaining layerings are provided in the supplementary  
815 figures (Figures S17–S21).

The coarser parameterizations (8–12 layers) reproduce the first-order MT and RWD responses but tend to oversimplify the  $\rho(z)$  and  $V_s(z)$  structures, yielding smoother and less diagnostic models. In contrast, the finer parameterizations (20–28 layers) introduce additional step-like complexity and broader ensemble spread, particularly in the  $\rho(z)$  model, without a corresponding improvement in the fit curves. The 16-layer case provides the most balanced solution, as evidenced by the  
820 following: the MT apparent resistivity, phase, and RWD curves are reproduced consistently, the Pareto archive remains well organized without becoming excessively dispersed, and the depth models retain interpretable first-order structure without the over-fragmentation seen in the higher-layer cases. In addition, the P10–P90 envelopes indicate that the 16-layer parameterization maintains an acceptable degree of ensemble variability while avoiding the artificial narrowing associated with under-parameterization and the broader, more heterogeneous uncertainty introduced by over-parameterization.

825



**Figure 18. Representative results of the *GBP*. a) Apparent resistivity, b) Phase data and c) RWD fit with the predicted responses of the utopia solution. d) Three-objective Pareto archive, highlighting the utopia solution. e)  $\rho(z)$  and f)  $V_s(z)$  models for the utopia solution, together with the P10–P90 envelope and the Pareto-median profile from the repository.**

830

Across all tested parameterizations, both the MT and RWD responses are reproduced reasonably well overall, indicating that the inversion captures the main observational trends in each dataset. However, with increasing parameterization, the MT fit begins to deviate systematically, whereas the RWD fit remains comparatively stable. This behavior as observed in *KEp* indicates that the MT responses are more sensitive to the choice of layering, and that additional model flexibility does not translate into a monotonic improvement in data-space performance. Instead, at higher layer numbers, the inversion appears to

835

sacrifice part of the MT fit while maintaining a generally robust reproduction of the RWD curves. This finding confirms the high sensitivity of the MT branch to the data space and of the RWD branch to the model space, as we observed in the synthetic tests and *KEp* dataset.

840 Focusing on the preferred solution (L16), MT data provide the dominant constraint on  $\rho(z)$  in the upper crust (approximately to 8–10 km), whereas the RWD data are less diagnostic of fine-scale  $V_s$  variations. Accordingly, shallow short-wavelength wiggles that appear in the most complex parameterizations are interpreted as parameterization-related artifacts rather than robust structure. In contrast to the *KEp*, the *GBp* reflects the influence of continental sediments and volcanic units, consistent with its surface geological setting. Compared with the granitoid-dominated *KEp*, the *GBp* models are characterized by generally lower  $\rho$  and lower  $V_s$  (see Figure 18). A particularly anomalous interval is observed at depths of approximately 4–  
845 10 km, where both  $\rho$  and lower  $V_s$  decrease simultaneously; this feature is here referred to as “Zone-C”. The co-occurrence of low  $\rho$  and low  $V_s$  is most consistently interpreted as a mechanically weak and electrically conductive upper-crustal zone.

The presence of several geothermal wells near the GÜRE station (see Figure 6) suggests that this structure may be associated with hydrothermally altered volcanic and sedimentary units, consistent with elevated geothermal gradients and anomalous heat flow reported in previous geophysical studies (Ekinçi and Yiğitbaş, 2013; Ulugergerli et al., 2007). The reservoir system  
850 develops within a complex geological framework comprising Kazdağ Group metamorphics, overlying sedimentary units, volcanic rocks, and Oligo-Miocene granitoids. In this setting, ENE–WSW-trending, south-dipping normal faults and associated fracture networks provide the main conduits for downward infiltration, deep heating, and upward discharge of thermal fluids (Akillı et al., 2025; Sözbilir et al., 2016). From an electrical perspective, the low  $\rho$  indicates the presence of conductivity-enhancing phases, such as interconnected saline fluids and/or hydrothermal alteration products (e.g., clay-rich  
855 assemblages) localized within a fracture network (Komori et al., 2013). From a mechanical perspective, the accompanying reduction in  $V_s$  suggests increased crack density and reduced elastic moduli, which are more consistent with a fluid-bearing, hydrothermally altered zone rather than with a melt-dominated origin at this shallow depth (O’Connell and Budiansky, 1974; Pereira et al., 2024).

Such an asymmetric decrease in  $\rho$  and  $V_s$  is also consistent with the absence of a universal relationship between these two  
860 parameters, because  $\rho$  can be strongly affected by even minor interconnected conductive phases, whereas  $V_s$  is more directly controlled by the rock matrix and its elastic framework (Bedrosian et al., 2007; Moorkamp et al., 2010). Given the hydrothermal surface manifestations in this area, the results support the interpretation of a weak and conductive crustal corridor at upper- to mid-crustal depths. However, the presence of low resistivity alone does not necessitate pervasive partial melt. A melt-related interpretation would require additional independent evidence, such as elevated  $V_p/V_s$ , strong attenuation, although  
865 Biga Peninsula associated with young magmatism (Altunkaynak and Genç, 2008; Aslan et al., 2017). In this context, Takei (2017) also showed that low- $V_s$  and high-attenuation zones may occur near magma source regions without requiring a large melt fraction, thereby helping to reconcile inconsistencies between seismological and geochemical observations.

An additional feature of Zone-C is the pronounced separation between the utopia and Pareto-median models, particularly in the  $\rho(z)$  profile. In this interval, the utopia solution is found close to the margins of the P10–P90 envelope rather than near its central tendency. This indicates that the detailed expression of the conductive anomaly is sensitive to Pareto trade-off geometry. This phenomenon is analogous to that previously observed in Zones-A and B, where the preferred solution also deviated from the ensemble median, particularly in the MT-derived resistivity structure. When considered as a whole, these patterns indicate that while the initial presence of the anomalous zone is confirmed, its precise amplitude is not uniquely defined and are sensitive to the ensemble. Therefore, Zone-C was selected as a target for sensitivity testing.

In comparison with the *KEp*, which manifests a coherent co-occurrence of low- $\rho$  and low- $V_s$  below  $\sim 10$  km, consistent with a mid-crustal weak-conductive corridor, the *GBp* joint inversion does not necessitate an equally pronounced low- $\rho$  /low- $V_s$  anomaly at the same depths. Conversely, the *GBp* results underscore a shallower, conductive, and mechanically weakened structure, which is consistent with active hydrothermal alteration beneath the geothermal field. This contrast is likely indicative of the varying lithological and hydrothermal regimes sampled by the two profiles. The *KEp* is distinguished by a granitoid upper crust, where comparatively resistive crystalline rocks are expected to prevail and high-resistivity layering effects can persist to mid-crustal depths. In contrast, the *GBp* crosses a more heterogeneous assemblage of continental sediments and volcanic units that commonly exhibit elevated porosity, clay-rich alteration, and fluid pathways. Consequently, the *GBp* models manifest systematically lower  $\rho$  and a more compliant (mechanically weakened) shallow structure. These disparities are also reflected in the absolute magnitudes and depth-dependent trends of the recovered the  $\rho(z)$  and  $V_s(z)$  distributions.

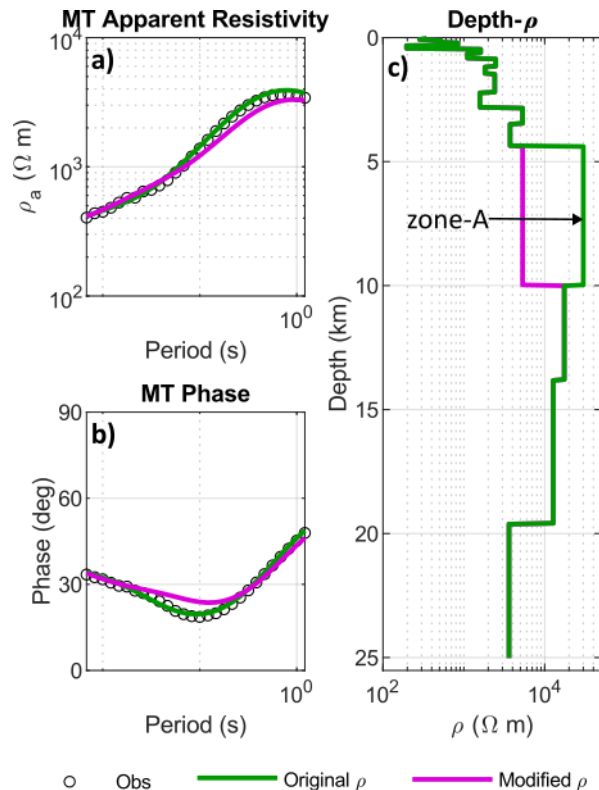
### 7.4.3 Sensitivity tests

To evaluate the sensitivity of the joint solution to the upper crustal high-resistivity Zone-A, and mid-crustal low- $\rho$  and low  $V_s$  Zone-B, we performed a targeted perturbation test in which the original utopia model was manually modified within the  $\sim 5$ –10 km and  $\sim 10$ –20 km depth interval, respectively. In consideration of the model parameters of the layers above each zone, incremental model parameters were employed if the original model exhibited decreasing properties and vice versa. The results of the sensitivity test are presented in Figure 19 and Figure 20, respectively, for Zones-A and B. We performed a sensitivity analysis to understand how variations in the input parameters affect the responses of the  $\rho(z)$  and  $V_s(z)$ . Our test follows the quantitative analysis given by Garcia et al. (2015) to evaluate the quality of the data fit as follows:  $\phi(\%) = 100 \times (\phi_m - \phi_o) / \phi_o$ , where  $\phi_m$  is the new NRMSE of the modified model,  $\phi_o$  is the NRMSE of the original (preferred) model. If the  $\phi(\%)$  is positive, it means a deterioration of the data fit compared to the original model. Table 1 shows the quantitative outcomes of the sensitivity tests, which involved the substitution of the original model with a modified model defined by new model parameters in each Zone-A and Zone-B

Zone-A was conducted to evaluate the role of the highly resistive zone resolved at  $\sim 5$ –10 km depth in the original model (see Figure 19). In this test, the original high-resistivity structure ( $\sim 30000 \Omega\text{m}$ ) was replaced by a lower-resistivity continuation of the overlying unit ( $\sim 5000 \Omega\text{m}$ ). The sensitivity test shows that the imposed resistivity perturbation within Zone-A affects the

900 MT phase most strongly at intermediate periods, whereas the apparent resistivity exhibits a broader response extending into intermediate-to-long periods. This pattern suggests that the modified layer primarily perturbs the depth-dependent transition structure sensed by the phase in its peak sensitivity band, while continuing to influence the overall impedance amplitude over a wider range of periods. The recovery of phase agreement at longer periods further indicates that the deeper bulk conductivity structure remains largely unchanged, reducing the relative impact of the Zone-A perturbation in that period range. These results support the interpretation that the presence of a highly resistive upper-crustal domain is required by the MT data, although its exact thickness and boundary geometry remain non-unique.

905 Table 1 show a clear degradation in the MT fit, with the logarithmic apparent-resistivity misfit increasing from 0.02 to 0.05, the phase misfit increasing from  $0.72^\circ$  to  $2.67^\circ$  and the total MT misfit increasing by  $\sim 268\%$ , by the resulting forward responses. These results indicate that the highly resistive body at  $\sim 5\text{--}10$  km depth is a necessary component of the preferred MT model and is particularly important for reproducing the phase response. Accordingly, this zone is interpreted as a well-constrained and physically meaningful resistive feature rather than a non-unique artifact of the inversion. These results further confirm that the very high-resistivity structure is most plausibly related to the granitoid influence in the subsurface.



915 **Figure 19. MT sensitivity test for the 20-layer model of the KEp. a) MT apparent resistivity and b) Phase of the c) modified model (magenta), obtained by replacing the  $\sim 5\text{--}10$  km high- $\rho$  zone with low- $\rho$  values, is compared with the original utopia solution (green).**

**Table 1. The sensitivity tests of Zone-A, -B and -C in the *KEp* and *GBp* solutions from updated  $\phi(\%)$  by substituting with new model parameters.**

<i>KEp</i>	Subs ( $\Omega m$ )	$\phi(\%)$	Subs ( <i>m/s</i> )	$\phi(\%)$	<i>GBp</i>	Subs ( $\Omega m$ )	$\phi(\%)$	Subs ( <i>m/s</i> )	$\phi(\%)$
<b>A</b>	5322	268			<b>C</b>	372	120	3977	170
<b>B</b>	30000	21	3555.2	853					

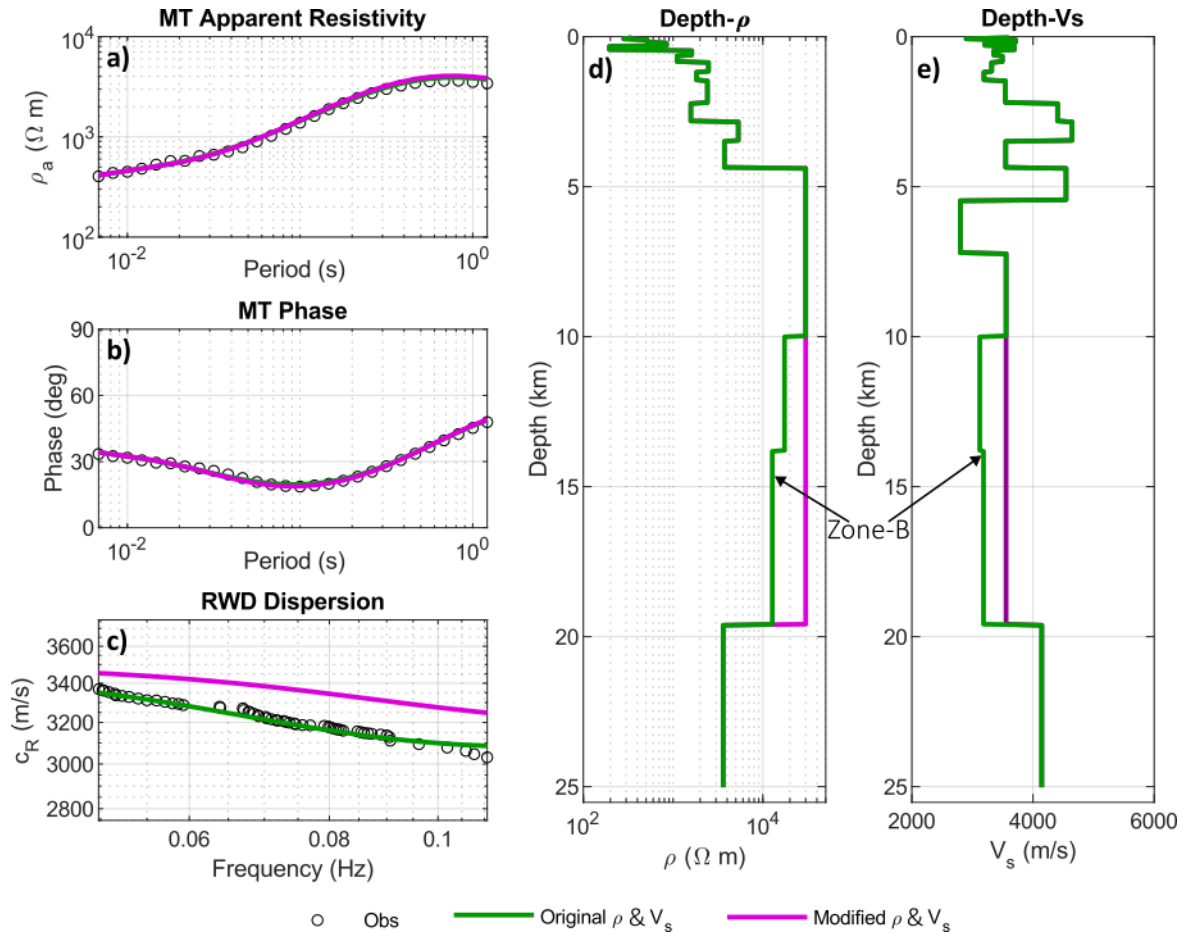
925 In the Zone-B experiment, the comparatively low- $\rho$  and low- $V_s$  structure resolved at the common depths was replaced by values closer to the more resistive and higher-velocity character of the overlying shallow crust. The outcomes of this sensitivity tests are presented in Figure 20. In contrast to the Zone-A perturbation, the Zone-B test generates a more extensive and balanced degradation of the fit curves, suggesting that this interval is expressed collectively in both the MT and RWD datasets. In the MT responses, modification of the low- $\rho$  structure slightly disturbs both the apparent resistivity and phase curves, particularly at the intermediate-to-long periods that are sensitive to mid-crustal depths. In addition, the RWD fit is also degraded, showing that the low- $V_s$  component of Zone-B contributes directly to the observed dispersion behavior. The modified model predicts consistently higher phase velocities, indicating that the relatively low- $V_s$  character of Zone-B is required by the RWD data. This behavior suggests that Zone-B is much more strongly constrained by the RWD dataset than by the MT data, and that its mechanically weakened nature is a robust feature of the preferred joint model.

935 As shown in Table 1, the subsequent forward responses demonstrate that the fit degradation is strongly data-type dependent. Specifically, the apparent resistivity misfit increases from 0.02 to 0.029 (~40%), whereas the MT phase misfit increases by only from 0.72 to 0.74 (~3%), indicating that the MT response is affected by this perturbation but remains comparatively less sensitive, especially in the phase data. The obtained results indicated an approximate 21% increase in the total MT misfit (see Table 1). This behavior suggests that the presence of a mid-crustal conductive zone is less supported by the MT observations, although the exact magnitude and sharpness of the resistivity reduction are not equally constrained by all MT attributes.

940 In contrast, the RWD response exhibits a much stronger sensitivity to the same perturbation. The RWD misfit increases from 0.016 to 0.15 (approximately 8-fold), and the modified curve departs systematically from the observations over nearly the entire analyzed frequency band. Rather than producing a localized mismatch at selected frequencies, the imposed increase in  $V_s$  alters the overall dispersive behavior of the model, indicating that the low- $V_s$  zone at ~10–20 km depth is a first-order requirement of the RWD data. This result implies that the depth-averaged  $V_s(z)$  structure is strongly controlled by the presence of a mechanically weakened mid-crustal layer.

When considered collectively, these sensitivity results suggest that the co-located low- $\rho$  and low- $V_s$  anomaly in the joint inversion is not an arbitrary artifact of the parameterization, but rather a physically meaningful component of the preferred model. However, it is important to note that the two datasets do not impose equivalent constraints on Zone-B. The RWD data impose a significantly more stringent constraint on the existence of the low- $V_s$  zone, whereas the MT data also support an associated conductive region but allow comparatively greater flexibility. The joint solution thus supports the interpretation of a weak and conductive mid-crustal corridor, with the seismic data providing the strongest evidence for its persistence and the MT data independently reinforcing its electrically anomalous character. The sensitivity test indicates that the observed anomaly may be attributed to a fault-controlled, highly fractured, and thermally weakened granitoid domain.

955



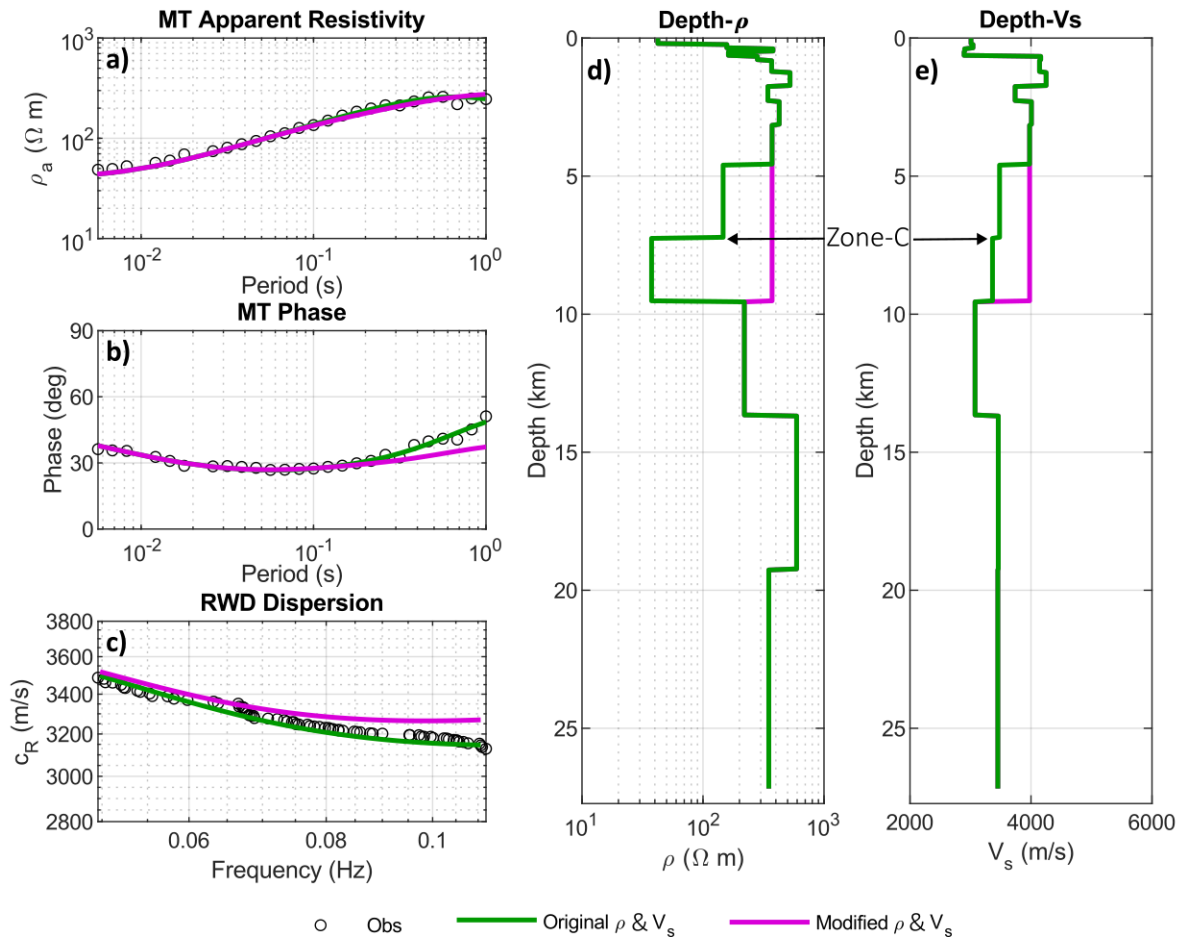
960

**Figure 20.** MT and RWD sensitivity test for the 20-layer model of the *KEp*. a) MT apparent resistivity, b) Phase, and c) RWD curves for the modified model (magenta), obtained by replacing the  $\sim 10$ – $20$  km low- $\rho$  zone with high- $\rho$  values, and d–e) for the modified model (magenta), obtained by replacing the  $\sim 10$ – $20$  km low- $V_s$  zone with high- $V_s$  values, compared with the original models of the utopia solution (green).

The outcomes of the  $GB\rho$  sensitivity is presented in Figure 21. In this test the low- $\rho$  and low- $V_s$  structure identified as Zone-C at approximately 5–10 km depth was replaced by the overlying high- $\rho$  and high- $V_s$  unit. This modification leads to a pronounced deterioration of the joint data fit, thereby confirming that Zone-C is a required and robust component of the original model. Quantitatively, the apparent resistivity misfit increases only slightly from 0.05 to 0.06, whereas the phase misfit rises  
965 much more strongly from 1.15 to 4.13, resulting in an overall increase of about 120% in the total MT misfit. This contrast indicates that the MT phase response is considerably more sensitive than apparent resistivity to the presence of Zone-C. In particular, the phase curves diverge progressively toward longer periods, while the apparent resistivity response remains comparatively closer to the observations, implying that the conductive nature of Zone-C is expressed more clearly in the phase behavior than in the amplitude response alone.

970 The RWD response also degrades substantially following this modification. The RWD misfit increases from approximately 0.023 to 0.065, corresponding to an increase of about 1.7-fold, and the RWD curve begins to separate from the original solution already at the high-frequency end, with the mismatch persisting into the intermediate-frequency range. This behavior indicates that Zone-C is also required to explain the shallow-to-intermediate depth shear-wave structure sampled by the RWD data. Accordingly, although the anomaly is most strongly demanded by the MT phase response, it is also independently supported  
975 by the RWD observations.

Taken together, these results offer an independent validation of our interpretation of Zone-C. From an electrical viewpoint, the strong sensitivity of the MT response confirms that the low- $\rho$  is not incidental. Rather, it reflects the presence of conductivity-enhancing phases, such as interconnected saline fluids and/or hydrothermal alteration products (e.g., clay-rich assemblages) localized within a fracture-controlled network. From a mechanical viewpoint, the substantial degradation in the RWD fit after  
980 removal of the low- $V_s$  interval provides support for the interpretation that Zone-C is characterized by increased crack density and reduced elastic moduli. Therefore, the sensitivity analysis thus corroborates the conclusion that Zone-C represents as a fluid-bearing, hydrothermally altered weak zone, rather than a compact a melt-dominated source at this shallow crustal level.



985 **Figure 21.** MT and RWD sensitivity test for the 16-layer model of the *GBp*. a) MT apparent resistivity, b) Phase, and (c) RWD curves for the modified model (magenta), obtained by replacing the ~5–10 km high- $\rho$  zone with low- $\rho$  values, and d–e) for the modified model (magenta), obtained by replacing the ~5–10 km high- $V_s$  zone with low- $V_s$  values, compared with the original models of the utopia solution (green).

## 8. Conclusions

This study demonstrates the application of Pareto-MOPSO for the joint inversion of MT and RWD data characterized by  
 990 fundamentally different physical sensitivities and lacking a universal petrophysical relationship. Through systematic testing  
 on synthetic and field data from two sites in the southeastern Biga Peninsula, we investigated the behavior of coupled and  
 decoupled parameterizations, noise sensitivity, and layering configurations to assess the robustness and practical utility of the  
 multiobjective framework. Despite the absence of a universal empirical law linking electrical resistivity and seismic velocity,  
 the Pareto-MOPSO approach successfully recovered subsurface models. The Pareto front and associated statistical metrics  
 995 (median, P10–P90 percentiles) provided meaningful insights into both the trade-offs between competing data types and the

uncertainties inherent in each parameter space. The Pareto-median model emerged as a robust representative of the non-dominated ensemble, effectively capturing the general trends in subsurface structure rather than representing a single "true" Earth model. The P10–P90 envelope quantified parameter uncertainty across the model space, offering a transparent measure of solution variability.

1000 Layering sensitivity tests revealed that the main recovered features remained stable within the uncertainty bounds, and the position of the knee-point solution on the Pareto front did not change materially with modest variations in layer configuration. This stability underscores the reliability of the method in capturing first-order subsurface structure even when layer discretization is not perfectly known a priori. A particularly significant finding of this study is the distinct divergence between data-space sensitivity and model-space uncertainty under increasing noise levels. Noise sensitivity tests confirm that the MT  
1005 branch remains more vulnerable to parameter trade-offs under the shared thickness parameterization, being more sensitive in the parameter space, while RWD is more sensitive to perturbations in the data space.

Application to field data from the southeastern Biga Peninsula yielded models that are compatible with known geological formations at certain depths. The obtained results indicate that joint inversion is capable of resolving compatible conductive and mechanically weak domains at different crustal levels. While their geological controls may differ in detail, their coupled  
1010 signatures consistently point to reduced elastic moduli and enhanced bulk conductivity associated with fracturing, thermal modification, and locally hydrothermal processes. However, the compatibility could be improved if the datasets exhibited stronger mutual constraints at overlapping depth ranges. Therefore, the present results should be regarded as providing only a rough overview of the crustal structure in the study area, as the focus of this work was on demonstrating the practicality of Pareto-MOPSO for joint modeling. A comprehensive crustal-scale interpretation utilizing additional datasets and higher-  
1015 dimensional modeling is beyond the scope of this study but represents a promising avenue for future work.

Although this study employed one-dimensional models, the Pareto-MOPSO framework offers significant advantages for 2-D and 3-D joint inversion of MT and RWD data. In such cases, the parameter space becomes high-dimensional, and traditional derivative-based methods (e.g., Gauss-Newton algorithms) encounter challenges related to initial model dependence, relative weighting schemes, and manual tuning. Pareto-MOPSO explicitly explores trade-offs in a multiobjective space and reduces  
1020 the need for manual tuning of initial models, data weighting, and regularization parameters.

The findings of this study encourage to consider Pareto-MOPSO for joint geophysical inversion, particularly when: 1) Multiple datasets with different physical sensitivities are available; 2) No universal petrophysical relationship exists between the measured properties; 3) Quantification of trade-offs and uncertainties is essential for interpretation; 4) High computational capacity is accessible to handle the population-based optimization. Future work should extend the methodology to 2-D and 3-  
1025 D geometries, incorporate additional geophysical datasets (e.g., gravity, seismic refraction), and explore adaptive parameterization schemes. Furthermore, integration with geological and petrophysical constraints could help narrow the solution space and enhance the interpretability of the Pareto-optimal ensemble.

## 1030 **Acknowledgements**

This work was supported by The Scientific and Technological Research Council of Türkiye (TÜBİTAK) under the 2218 National Postdoctoral Research Fellowship Programme, Project No. 118C550.

## **Data and Code Availability**

1035 The processed field datasets and MATLAB codes used in this study are openly available from Zenodo at <https://doi.org/10.5281/zenodo.20054443>.

## **Author Contributions**

Ersin Büyük designed the study, developed the Pareto-MOPSO joint modeling workflow, prepared the MATLAB codes, 1040 processed the MT and RWD datasets, performed the synthetic and field-data inversions, conducted the sensitivity analyses, generated the figures, and wrote the original manuscript draft.

Ekrem Zor contributed to the field studies, supervised the geophysical interpretation, evaluated the RWD modelling results, reviewed manuscript.

Mustafa Cengiz Tapırdamaz contributed to field studies, supervised the crustal-structure interpretation.

1045

## **Competing Interests**

The authors declare that they have no conflict of interest.

## **References**

Afonso, J. C., Fullea, J., Griffin, W. L., Yang, Y., Jones, A. G., Connolly, J. A. D., and Reilly, S. Y. O.: 3-D multiobservable 1050 probabilistic inversion for the compositional and thermal structure of the lithosphere and upper mantle. I: A priori petrological information and geophysical observables, *J. Geophys. Res. Solid Earth*, 118, 2586–2617, <https://doi.org/10.1002/jgrb.50124>, 2013.

Ajithabh, K. S. and Patro, P. K.: SigMT: An open-source Python package for magnetotelluric data processing, *Comput. Geosci.*, 171, 105270, <https://doi.org/10.1016/J.CAGEO.2022.105270>, 2023.

1055 Akca, I., Günther, T., Müller-Petke, M., Başokur, A. T., and Yaramanci, U.: Joint parameter estimation from magnetic resonance and vertical electric soundings using a multi-objective genetic algorithm, *Geophys. Prospect.*, 62, 364–376, <https://doi.org/10.1111/1365-2478.12082>, 2014.

Akıllı, H., Kayadibi, Ö., Mutlu, H., Gürboğa, Ş., Karadağlar, M., Arıkan, S., and Tan, S.: Geochemical and isotopic constraints 1060 on thermal waters around the Gulf of Edremit, western Türkiye, *Geothermics*, 127, 103257, <https://doi.org/10.1016/j.geothermics.2025.103257>, 2025.

- Aldanmaz, E., Pearce, J. A., Thirlwall, M. F., and Mitchell, J. G.: Petrogenetic evolution of late Cenozoic, post-collision volcanism in western Anatolia, Turkey, *Journal of Volcanology and Geothermal Research*, 102, 67–95, [https://doi.org/10.1016/S0377-0273\(00\)00182-7](https://doi.org/10.1016/S0377-0273(00)00182-7), 2000.
- 1065 Altuner, D., Koçyiğit, A., Farinacci, A., Nicosia, U., and Conti, M. A.: Jurassic, Lower Cretaceous stratigraphy and paleogeographic evolution of the southern part of north-western Anatolia, *Geologica Romana*, 13–80, 1991.
- Altunkaynak, Ş. and Genç, C.: Petrogenesis and time-progressive evolution of the Cenozoic continental volcanism in the Biga Peninsula, NW Anatolia (Turkey), *Lithos*, 102, 316–340, <https://doi.org/10.1016/j.lithos.2007.06.003>, 2008.
- Altunkaynak, Ş., Dilek, Y., Genç, C. Ş., Sunal, G., Gertisser, R., Furnes, H., Foland, K. A., and Yang, J.: Spatial, temporal and geochemical evolution of Oligo-Miocene granitoid magmatism in western Anatolia, Turkey, *Journal of Metamorphic Geology*, 30, 103–120, <https://doi.org/10.1016/j.jgr.2011.10.010>, 2012.
- 1070 Amato, F., Pace, F., Vergnano, A., and Comina, C.: TDEM prospections for inland groundwater exploration in semiarid climate, Island of Fogo, Cape Verde, *J. Appl. Geophys.*, 184, 104242, <https://doi.org/10.1016/j.jappgeo.2020.104242>, 2021.
- Aquino, M., Marquis, G., and Vergne, J.: Joint one-dimensional inversion of magnetotelluric data and surface-wave dispersion curves using correspondence maps, *Geophys. Prospect.*, 70, 1455–1470, <https://doi.org/10.1111/1365-2478.13239>, 2022.
- 1075 Aslan, Z., Erdem, D., Temizel, İ., and Arslan, M.: SHRIMP U–Pb zircon ages and whole-rock geochemistry for the Şapçı volcanic rocks, Biga Peninsula, Northwest Turkey: implications for pre-eruption crystallization conditions and source characteristics, *Int. Geol. Rev.*, 59, 1764–1785, <https://doi.org/10.1080/00206814.2017.1295282>, 2017.
- Bard, P.-Y.: Site EffectS assessments using Ambient Excitations (SESAME), European project reference EVG1-CT-2000-00026, 2000.
- 1080 Baumgartner, U., Magele, C., and Renhart, W.: Pareto optimality and particle swarm optimization, *IEEE Trans. Magn.*, 40, 1172–1175, <https://doi.org/10.1109/TMAG.2004.825430>, 2004.
- Beccaletto, L.: Geology, correlations, and geodynamic evolution of the Biga Peninsula ( NW Turkey ), PhD dissertation, University of Lausanne, Suisse, 2003.
- Bedrosian, P. A., Maercklin, N., Weckmann, U., Bartov, Y., Ryberg, T., and Ritter, O.: Lithology-derived structure classification from the joint interpretation of magnetotelluric and seismic models, *Geophys. J. Int.*, 170, 737–748, <https://doi.org/10.1111/j.1365-246X.2007.03440.x>, 2007.
- 1085 Berdichevsky, M. N., Vanyan, L. L., and Dmitriev, V. I.: Methods used in the U.S.S.R. to reduce near-surface inhomogeneity effects on deep magnetotelluric sounding, *Physics of the Earth and Planetary Interiors*, 53, 194–206, [https://doi.org/10.1016/0031-9201\(89\)90003-4](https://doi.org/10.1016/0031-9201(89)90003-4), 1989.
- 1090 Berteussen, K. A.: Moho depth determinations based on spectral-ratio analysis of NORSAR long-period P waves, *Physics of the Earth and Planetary Interiors*, 15, 13–27, [https://doi.org/10.1016/0031-9201\(77\)90006-1](https://doi.org/10.1016/0031-9201(77)90006-1), 1977.
- Bijani, R., Lelièvre, P. G., Ponte-Neto, C. F., and Farquharson, C. G.: Physical-property-, lithology- And surface-geometry-based joint inversion using Pareto Multi-Objective Global Optimization, *Geophys. J. Int.*, 209, 730–748, <https://doi.org/10.1093/gji/ggx046>, 2017.

- 1095 Brazauskas, V. and Serfling, R.: Robust and Efficient Estimation of the Tail Index of a Single-Parameter Pareto Distribution, *North American Actuarial Journal*, 4, 12–27, <https://doi.org/10.1080/10920277.2000.10595935>, 2000.
- Buttkus, B.: *Spectral Analysis and Filter Theory in Applied Geophysics*, 1st ed., Springer Berlin, Heidelberg, XV–667 pp., <https://doi.org/10.1007/978-3-642-57016-2>, 2000.
- Büyük, E.: Pareto-Based Multiobjective Particle Swarm Optimization: Examples in Geophysical Modeling, in: *Optimisation Algorithms and Swarm Intelligence*, edited by: Vakhania, N. and Aydin, M. E., IntechOpen, Rijeka, Ch. 7, <https://doi.org/10.5772/intechopen.97067>, 2021.
- 1100 Büyük, E.: A new method of smoothness-constrained magnetotelluric modelling with the utility of Pareto-optimal multi-objective particle swarm optimization, *Geophys. Prospect.*, 82, 1985–2004, <https://doi.org/10.1111/1365-2478.13485>, 2024.
- Büyük, E. and Karaman, A.: Caprock integrity at Çanakkale-Tuzla hydrothermal system inferred from magnetotelluric modeling using particle swarm optimization, *Geophysics*, 89, 119–129, <https://doi.org/10.1190/GEO2023-0192.1>, 2024.
- 1105 Buyuk, E., Zor, E., and Karaman, A.: Rayleigh wave dispersion curve inversion by using particle swarm optimization and genetic algorithm, 19th EGU General Assembly, EGU2017, proceedings from the conference held 23-28 April, 2017 in Vienna, Austria., p.6911, 19, 6911, 2017.
- Büyük, E., Zor, E., and Karaman, A.: Joint modeling of rayleigh wave dispersion and H/V spectral ratio using pareto-based multiobjective particle swarm optimization, *Turkish Journal of Earth Sciences*, 29, 684–695, <https://doi.org/10.3906/yer-2001-15>, 2020.
- 1110 Carcione, J. M., Ursin, B., and Nordskog, J. I.: Cross-property relations between electrical conductivity and the seismic velocity of rocks, *Geophysics*, 72, <https://doi.org/10.1190/1.2762224>, 2007.
- Čečys, A. and Benn, K.: Emplacement and deformation of the ca. 1.45 Ga Karlshamn granitoid pluton, southeastern Sweden, during ENE-WSW Danopolonian shortening, *International Journal of Earth Sciences*, 96, 397–414, <https://doi.org/10.1007/S00531-006-0114-6/FIGURES/13>, 2007.
- 1115 Chave, A. D. and Jones, A. G.: *The Magnetotelluric Method Theory and Practice*, Cambridge University Press (CUP), New York, 1–584 pp., <https://doi.org/http://dx.doi.org/10.1017/CBO9781139020138>, 2012.
- Chen, J., Hoversten, G. M., Key, K., Nordquist, G., and Cumming, W.: Stochastic inversion of magnetotelluric data using a sharp boundary parameterization and application to a geothermal site, *Geophysics*, 77, E265–E279, <https://doi.org/10.1190/geo2011-0430.1>, 2012.
- 1120 Clerc, M. and Kennedy, J.: The particle swarm-explosion, stability, and convergence in a multidimensional complex space, *IEEE Transactions on Evolutionary Computation*, 6, 58–73, <https://doi.org/10.1109/4235.985692>, 2002.
- Coello, C. a C., Pulido, G. T., and Lechuga, M. S.: Handling multiple objectives with particle swarm optimization, *Evolutionary Computation, IEEE Transactions on*, 8, 256–279, <https://doi.org/10.1109/TEVC.2004.826067>, 2004.
- 1125 Coello Coello, C. A., Pulido, G. T., and Lechuga, M. S.: Handling multiple objectives with particle swarm optimization, *IEEE Transactions on Evolutionary Computation*, 8, 256–279, <https://doi.org/10.1109/TEVC.2004.826067>, 2004.

- Constable, S. C., Parker, R. L., and Constable, C. G.: Occam's inversion: A practical algorithm for generating smooth models from electromagnetic sounding data, *Geophysics*, 52, 267–462, 1987.
- 1130 Coxeter, H. S. M.: *Regular polytopes*, Dover Publications, 321 pp., 1973.
- Dal Moro, G.: Insights on surface wave dispersion and HVSR: Joint analysis via Pareto optimality, *J. Appl. Geophys.*, 72, 129–140, <https://doi.org/10.1016/j.jappgeo.2010.08.004>, 2010.
- Deb, K. and Padhye, N.: *Improving a Particle Swarm Optimization Algorithm Using an Evolutionary Algorithm Framework*, 2010.
- 1135 Degroot-Hedlin, C. and Constable, S.: Occam's inversion to generate smooth, two-dimensional models from magnetotelluric data, *Geophysics*, 55, 1613–1624, <https://doi.org/10.1190/1.1442813>, 1990.
- Dell'Aversana, P., Bernasconi, G., and Chiappa, F.: A Global Integration Platform for Optimizing Cooperative Modeling and Simultaneous Joint Inversion of Multi-domain Geophysical Data, *AIMS Geosci.*, 2, 1–31, <https://doi.org/10.3934/geosciences.2016.1.1>, 2016.
- 1140 Dewey, J. F. and Şengör, A. M. C.: Aegean and surrounding regions: Complex multiplate and continuum tectonics in a convergent zone, *Bulletin of the Geological Society of America*, 90, 84–92, [https://doi.org/10.1130/0016-7606\(1979\)90<84:AASRCM>2.0.CO;2](https://doi.org/10.1130/0016-7606(1979)90<84:AASRCM>2.0.CO;2), 1979.
- Dorman, J. and Ewing, M.: Numerical inversion of seismic surface wave dispersion data and crust-mantle structure in the New York-Pennsylvania area, *J. Geophys. Res.*, 67, 5227–5241, <https://doi.org/10.1029/JZ067I013P05227>, 1962.
- 1145 Eberhart, R. C. and Shi, Y.: Comparison between genetic algorithms and particle swarm optimization, in: *Lecture Notes in Computer Science (including subseries Lecture Notes in Artificial Intelligence and Lecture Notes in Bioinformatics)*, 611–616, <https://doi.org/10.1007/bfb0040812>, 1998.
- Ekinci, Y. L. and Yiğitbaş, E.: A geophysical approach to the igneous rocks in the Biga Peninsula (NW Turkey) based on airborne magnetic anomalies: geological implications, *Geodinamica Acta*, 25, 1–19, <https://doi.org/10.1080/09853111.2013.858945>, 2013.
- 1150 Engelbrecht, A. P.: *Computational Intelligence: An Introduction: Second Edition*, John Wiley and Sons, 1–597 pp., <https://doi.org/10.1002/9780470512517>, 2007.
- Essa, K. S. and Elhussein, M.: PSO (Particle Swarm Optimization) for Interpretation of Magnetic Anomalies Caused by Simple Geometrical Structures, *Pure Appl. Geophys.*, 175, 3539–3553, <https://doi.org/10.1007/s00024-018-1867-0>, 2018.
- 1155 Essa, K. S., Mehane, S. A., and Elhussein, M.: Gravity data interpretation by a two-sided fault-like geologic structure using the global particle swarm technique, *Physics of the Earth and Planetary Interiors*, 311, 106631, <https://doi.org/10.1016/j.pepi.2020.106631>, 2021.
- Fan, H. and Shi, Y.: Study on Vmax of particle swarm optimization, in: *Proceedings of the Workshop on Particle Swarm Optimization*, 2001.

- 1160 Fathy, M., Kazemzadeh Haghghi, F., and Ahmadi, M.: Uncertainty quantification of reservoir performance using machine learning algorithms and structured expert judgment, *Energy*, 288, 129906, <https://doi.org/10.1016/j.energy.2023.129906>, 2024.
- Fern, J. L. and Garc, E.: Appraising the Streaming-Potential Inverse Problem, *Geophysics*, 75, <https://doi.org/10.1190/1.3460842>, 2010.
- 1165 Fernández Martínez, J. L., García Gonzalo, E., Fernández Álvarez, J. P., Kuzma, H. A., and Menéndez Pérez, C. O.: PSO: A powerful algorithm to solve geophysical inverse problems: Application to a 1D-DC resistivity case, *J. Appl. Geophys.*, 71, 13–25, <https://doi.org/10.1016/J.JAPPGEO.2010.02.001>, 2010.
- Foti, S., Comina, C., Boiero, D., and Socco, L. V.: Non-uniqueness in surface-wave inversion and consequences on seismic site response analyses, *Soil Dynamics and Earthquake Engineering*, 29, 982–993, <https://doi.org/10.1016/j.soildyn.2008.11.004>, 2009.
- 1170 Frederick, S.: Robust statistics and regularization in geophysical inverse theory, Princeton University, 1–184 pp., 1992.
- Fytikas, M., Giuliani, O., Innocenti, F., Marinelli, G., and Mazzuoli, R.: Geochronological data on recent magmatism of the Aegean Sea, *Tectonophysics*, 31, T29–T34, [https://doi.org/10.1016/0040-1951\(76\)90161-X](https://doi.org/10.1016/0040-1951(76)90161-X), 1976.
- Gallardo, L. A.: Joint two-dimensional DC resistivity and seismic travel time inversion with cross-gradients constraints, *J. Geophys. Res.*, 109, B03311, <https://doi.org/10.1029/2003jb002716>, 2004.
- 1175 Gallardo, L. A. and Meju, M. A.: Characterization of heterogeneous near-surface materials by joint 2D inversion of dc resistivity and seismic data, *Geophys. Res. Lett.*, 30, n/a-n/a, <https://doi.org/10.1029/2003GL017370>, 2003.
- Gao, G., Abubakar, A., and Habashy, T. M.: Joint petrophysical inversion of electromagnetic and full-waveform seismic data, *Geophysics*, 77, <https://doi.org/10.1190/geo2011-0157.1>, 2012.
- 1180 Gao, G., Lu, H., Wang, K., Jost, S., Shaikh, S., Vink, J., Blom, C., Wells, T., and Saaf, F.: A Practical Approach to Select Representative Deterministic Models Using Multiobjective Optimization from an Integrated Uncertainty Quantification Workflow, *SPE Journal*, 28, 2186–2206, <https://doi.org/10.2118/212242-PA>, 2023.
- Garcia, K. and Diaz, D.: Three-dimensional geo-electrical structure in Juncalito geothermal prospect, northern Chile, *Geothermics*, 64, 527–537, <https://doi.org/10.1016/j.geothermics.2016.08.001>, 2016.
- 1185 Garcia, X., Seillé, H., Elsenbeck, J., Evans, R. L., Jegen, M., Hölz, S., Ledo, J., Lovatini, A., Marti, A., Marcuello, A., Queralt, P., Ungarelli, C., and Ranero, C. R.: Structure of the mantle beneath the Alboran Basin from magnetotelluric soundings, *Geochemistry, Geophysics, Geosystems*, 16, 4261–4274, <https://doi.org/10.1002/2015GC006100>, 2015.
- Gill, M. K., Kaheil, Y. H., Khalil, A., McKee, M., and Bastidas, L.: Multiobjective particle swarm optimization for parameter estimation in hydrology, *Water Resour. Res.*, 42, 1–14, <https://doi.org/10.1029/2005WR004528>, 2006.
- 1190 Godio, A. and Santilano, A.: On the optimization of electromagnetic geophysical data: Application of the PSO algorithm, *J. Appl. Geophys.*, 148, 163–174, <https://doi.org/10.1016/j.jappgeo.2017.11.016>, 2018.
- Goldberg, D. E. and Holland, J. H.: Genetic Algorithms and Machine Learning, *Mach. Learn.*, 3, 95–99, <https://doi.org/10.1023/A:1022602019183/METRICS>, 1988.

- Grandis, H. and Maulana, Y.: Particle Swarm Optimization (PSO) for Magnetotelluric (MT) 1D Inversion Modeling, IOP  
1195 Conf. Ser. Earth Environ. Sci., 62, <https://doi.org/10.1088/1755-1315/62/1/012033>, 2017.
- Gupta, R. K., Agrawal, M., and Pulliam, J.: Joint Modelling and Uncertainty Estimation for Site Characterization of Dhanbad City (India) Using Global Optimization, Pure Appl. Geophys., 180, 3947–3969, <https://doi.org/10.1007/S00024-023-03358-Z/FIGURES/11>, 2023.
- Gürer, Ö. F., Sanğu, E., Gürer, A., and Akın, M.: Late Cenozoic shift from extension to strike-slip stress regime in the west of  
1200 the Biga Peninsula, NW Turkey, J. Struct. Geol., 148, <https://doi.org/10.1016/j.jsg.2021.104348>, 2021.
- Haber, E. and Oldenburg, D.: Joint inversion: A structural approach, Inverse Probl., 13, 63–77, <https://doi.org/10.1088/0266-5611/13/1/006>, 1997.
- Hassan, R., Cohanım, B., De Weck, O., and Venter, G.: A comparison of particle swarm optimization and the genetic algorithm, in: Collection of Technical Papers - AIAA/ASME/ASCE/AHS/ASC Structures, Structural Dynamics and Materials  
1205 Conference, 1138–1150, <https://doi.org/10.2514/6.2005-1897>, 2005.
- Heise, W., Caldwell, T. G., Bibby, H. M., and Bannister, S. C.: Three-dimensional modelling of magnetotelluric data from the Rotokawa geothermal field, Taupo Volcanic Zone, New Zealand, Geophys. J. Int., 173, 740–750, <https://doi.org/10.1111/j.1365-246X.2008.03737.x>, 2008.
- Hill, G. J., Caldwell, T. G., Heise, W., Chertkoff, D. G., Bibby, H. M., Burgess, M. K., Cull, J. P., and Cas, R. A. F.: Distribution  
1210 of melt beneath Mount St Helens and Mount Adams inferred from magnetotelluric data, Nat. Geosci., 2, 785–789, <https://doi.org/10.1038/ngeo661>, 2009.
- Hu, B., Wen, L., and Zhou, X.: Joint inversion of VES and Rayleigh wave data based on improved DE algorithm for near surface exploration, World Journal of Engineering, 21, 242–253, <https://doi.org/10.1108/WJE-05-2022-0193/FULL/PDF>, 2024.
- 1215 Kaçar, B., Özden, S., and Ateş, Ö.: Güre (Balıkesir) Jeotermal Alanının Jeolojisi, Hidrojeokimyası ve Aktif Tektonikle İlişkisi, Türkiye Jeoloji Bülteni, 60, 243–258, <https://doi.org/10.25288/tjb.302968>, 2017.
- Kang, S., Heagy, L. J., Cockett, R., and Oldenburg, D. W.: Exploring nonlinear inversions: A 1D magnetotelluric example, The Leading Edge, 36, 696–699, <https://doi.org/10.1190/tle36080696.1>, 2017.
- Karacık, Z. and Yılmaz, Y.: Geology of the Ignimbrites and the associated volcano-plutonic complex of The Ezine, Journal of  
1220 Volcanology and Geothermal Research, 85, 251–264, 1998.
- Kennedy, J. and Eberhart, R.: Particle swarm optimization, Neural Networks, 1995. Proceedings., IEEE International Conference on, 4, 1942–1948 vol.4, <https://doi.org/10.1109/ICNN.1995.488968>, 1995.
- Kennedy, J. and Spears, W. M.: Matching algorithms to problems: An experimental test of the particle swarm and some genetic algorithms on the multimodal problem generator, in: Proceedings of the IEEE Conference on Evolutionary Computation,  
1225 ICEC, 78–83, <https://doi.org/10.1109/icec.1998.699326>, 1998.
- Kirkpatrick, S., Gelatt, C. D., and Vecchi, M. P.: Optimization by Simulated Annealing, Science, New Series, 220, 671–680, 1983.

- Komori, S., Kagiya, T., Takakura, S., Ohsawa, S., Mimura, M., and Mogi, T.: Effect of the hydrothermal alteration on the surface conductivity of rock matrix: Comparative study between relatively-high and low temperature hydrothermal systems, *Journal of Volcanology and Geothermal Research*, 264, 164–171, <https://doi.org/10.1016/j.jvolgeores.2013.08.009>, 2013.
- 1230 Kozlovskaya, E., Vecsey, L., Plomerova, J., and Raita, T.: Joint inversion of multiple data types with the use of multiobjective optimization: problem formulation and application to the seismic anisotropy investigations, *Geophys. J. Int.*, 171, 761–779, <https://doi.org/10.1111/j.1365-246X.2007.03540.x>, 2007.
- Kumar, V. and Minz, S.: Multi-Objective Particle Swarm Optimization: An Introduction, *The Smart Computing Review*, 4, 1235 335–353, <https://doi.org/10.6029/smarterc.2014.05.001>, 2014.
- Lelièvre, P. G., Farquharson, C. G., and Hurich, C. A.: Joint inversion of seismic traveltimes and gravity data on unstructured grids with application to mineral exploration, *Geophysics*, 77, 1JF-Z19, 2012.
- Li, G., Cai, H., and Li, C. F.: Alternating Joint Inversion of Controlled-Source Electromagnetic and Seismic Data Using the Joint Total Variation Constraint, *IEEE Transactions on Geoscience and Remote Sensing*, 57, 5914–5922, 1240 <https://doi.org/10.1109/TGRS.2019.2903043>, 2019.
- Linde, A. T. and Sacks, I. S.: Triggering of volcanic eruptions, *Nature*, 395, 888–890, 1998.
- Lines, L. R., Schultz, A. K., and Treitel, S.: Cooperative inversion of geophysical data., *Geophysics*, 53, 8–20, <https://doi.org/10.1190/1.1442403>, 1988.
- Liu, S., Liang, M., and Hu, X.: Particle swarm optimization inversion of magnetic data: Field examples from iron ore deposits 1245 in China, *Geophysics*, 83, J43–J59, <https://doi.org/10.1190/geo2017-0456.1>, 2018.
- Luis, J. and Martínez, F.: Joint inversion of seismic and flow data for reservoir parameter assessment using particle swarm optimization, 2010.
- Manassero, M. C., Afonso, J. C., Zyserman, F., Zlotnik, S., and Fomin, I.: A reduced order approach for probabilistic inversions of 3-D magnetotelluric data I: general formulation, *Geophys. J. Int.*, 223, 1837–1863, <https://doi.org/10.1093/gji/ggaa415>, 1250 2020.
- Mavko, G., Mukerji, T., and Dvorkin, J.: *The Rock Physics Handbook: Tools for Seismic Analysis in Porous Media*, Cambridge University Press, 208–210 pp., 1998.
- McKenzie, D.: Active tectonics of the Alpine—Himalayan belt: the Aegean Sea and surrounding regions, *Geophysical Journal of the Royal Astronomical Society*, 55, 217–254, <https://doi.org/10.1111/j.1365-246X.1978.tb04759.x>, 1978.
- 1255 McKenzie, D. and Yılmaz, Y.: Deformation and volcanism in Western Turkey and the Aegean, *Bull. Tech. Univ. Istanbul*, 44, 345–373, 1991.
- McMechan, G. A. and Yedlin, M. J.: Analysis of dispersive by wave field transformation, *Geophysics*, 46, 869–874, <https://doi.org/10.1190/1.1441225>, 1981.
- Medved, I., Bataleva, E., and Buslov, M.: Studying the Depth Structure of the Kyrgyz Tien Shan by Using the Seismic 1260 Tomography and Magnetotelluric Sounding Methods, *Geosciences* 2021, Vol. 11, Page 122, 11, 122, <https://doi.org/10.3390/geosciences11030122>, 2021.

- Meju, M. A. and Gallardo, L. A.: Structural Coupling Approaches in Integrated Geophysical Imaging, *Integrated Imaging of the Earth: Theory and Applications*, 49–67, <https://doi.org/10.1002/9781118929063.ch4>, 2016.
- 1265 Monteiro Santos, F. A.: Inversion of self-potential of idealized bodies' anomalies using particle swarm optimization, *Comput. Geosci.*, 36, 1185–1190, <https://doi.org/10.1016/j.cageo.2010.01.011>, 2010.
- Moore, H. L.: *Cours d'Économie Politique*. By VILFREDO PARETO, Professeur à l'Université de Lausanne. Vol. I. Pp. 430. 1896. Vol. II. Pp. 426. 1897. Lausanne: F. Rouge, *Ann. Am. Acad. Pol. Soc. Sci.*, 9, 128–131, <https://doi.org/10.1177/000271629700900314>, 1897.
- 1270 Moorkamp, M., Jones, A. G., and Eaton, D. W.: Joint inversion of teleseismic receiver functions and magnetotelluric data using a genetic algorithm: Are seismic velocities and electrical conductivities compatible?, *Geophys. Res. Lett.*, 34, 3–7, <https://doi.org/10.1029/2007GL030519>, 2007.
- Moorkamp, M., Jones, A. G., and Fishwick, S.: Joint inversion of receiver functions, surface wave dispersion, and magnetotelluric data, *J. Geophys. Res. Solid Earth*, 115, 1–23, <https://doi.org/10.1029/2009JB006369>, 2010.
- 1275 Moorkamp, M., Roberts, A. W., Jegen, M., Heincke, B., and Hobbs, R. W.: Verification of velocity-resistivity relationships derived from structural joint inversion with borehole data, *Geophys. Res. Lett.*, 40, 3596–3601, <https://doi.org/10.1002/grl.50696>, 2013.
- O'Connell, R. J. and Budiansky, B.: Seismic velocities in dry and saturated cracked solids, *J. Geophys. Res.*, 79, 5412–5426, <https://doi.org/10.1029/JB079i035p05412>, 1974.
- 1280 Ogaya, X., Alcalde, J., Marzán, I., Ledo, J., Queralt, P., Marcuello, A., Martí, D., Saura, E., Carbonell, R., and Benjumea, B.: Joint interpretation of magnetotelluric, seismic, and well-log data in Hontomín (Spain), *Solid Earth*, 7, 943–958, <https://doi.org/10.5194/SE-7-943-2016>, 2016.
- Okay, A. I. and Satir, M.: Upper Cretaceous eclogite-facies metamorphic rocks from the Biga Peninsula, Northwest Turkey, *Turkish Journal of Earth Sciences*, 9, 47–56, 2000.
- 1285 Okay, A. I., Satir, M., Maluski, H., Siyako, M., Monie, P., Metzger, R., and Akyüz, S.: Paleo- and Neo-Tethyan events in northwest Turkey: geological and geochronological constraints, in: *The Tectonic Evolution of Asia*, edited by: Yin, A. and Harrison, T. M., Cambridge University Press, 420–441, 1996.
- Özalaybey, S., Zor, E., Ergintav, S., and Tapirdamaz, M. C.: Investigation of 3-D basin structures in the İzmit Bay area (Turkey) by single-station microtremor and gravimetric methods, *Geophys. J. Int.*, 186, 883–894, <https://doi.org/10.1111/j.1365-246X.2011.05085.x>, 2011.
- 1290 Paasche, H. and Tronicke, J.: Cooperative inversion of 2D geophysical data sets: A zonal approach based on fuzzy c-means cluster analysis, *Geophysics*, 72, <https://doi.org/10.1190/1.2670341>, 2007.
- Pace, F., Godio, A., Santilano, A., and Comina, C.: Joint optimization of geophysical data using multi-objective swarm intelligence, *Geophys. J. Int.*, 218, 1502–1521, <https://doi.org/10.1093/gji/ggz243>, 2019a.
- 1295 Pace, F., Santilano, A., and Godio, A.: Particle swarm optimization of 2D magnetotelluric data, *Geophysics*, 84, E125–E141, <https://doi.org/10.1190/geo2018-0166.1>, 2019b.

- Pace, F., Santilano, A., and Godio, A.: A Review of Geophysical Modeling Based on Particle Swarm Optimization, <https://doi.org/10.1007/s10712-021-09638-4>, 1 May 2021.
- Pace, F., Raftogianni, A., and Godio, A.: A Comparative Analysis of Three Computational-Intelligence Metaheuristic Methods for the Optimization of TDEM Data, *Pure Appl. Geophys.*, 179, 3727–3749, <https://doi.org/10.1007/s00024-022-03166-x>,  
1300 2022.
- Pallero, J. L. G., Fernandez-Martinez, J. L., Bonvalot, S., and Fudym, O.: Gravity inversion and uncertainty assessment of basement relief via Particle Swarm Optimization, *J. Appl. Geophys.*, 116, 180–191, <https://doi.org/10.1016/j.jappgeo.2015.03.008>, 2015.
- Peksen, E., Yas, T., Kayman, A. Y., and Özkan, C.: Application of particle swarm optimization on self-potential data, *J. Appl. Geophys.*, 75, 305–318, <https://doi.org/10.1016/j.jappgeo.2011.07.013>, 2011.  
1305
- Peksen, E., Yas, T., and Kiyak, A.: 1-D DC Resistivity Modeling and Interpretation in Anisotropic Media Using Particle Swarm Optimization, *Pure Appl. Geophys.*, 171, 2371–2389, <https://doi.org/10.1007/s00024-014-0802-2>, 2014.
- Pereira, M. L., Zanon, V., Fernandes, I., Pappalardo, L., and Viveiros, F.: Hydrothermal alteration and physical and mechanical properties of rocks in a volcanic environment: A review, *Earth. Sci. Rev.*, 252, 104754, <https://doi.org/10.1016/j.earscirev.2024.104754>, 2024.  
1310
- Piotrowski, A. P., Napiorkowski, J. J., and Piotrowska, A. E.: Population size in Particle Swarm Optimization, *Swarm Evol. Comput.*, 58, 100718, <https://doi.org/10.1016/j.swevo.2020.100718>, 2020.
- Rao, S. S.: *Engineering Optimization: Theory and Practice: Fourth Edition*, John Wiley & Sons, Inc., Hoboken, NJ, USA, 1–813 pp., <https://doi.org/10.1002/9780470549124>, 2009.
- Reyes-Sierra, M. and Coello Coello, C. a.: Multi-Objective Particle Swarm Optimizers: A Survey of the State-of-the-Art, *International Journal of Computational Intelligence Research*, 2, 287–308, <https://doi.org/10.5019/ijcir.2006.68>, 2006.  
1315
- Romano, G., Balasco, M., Siniscalchi, A., Gueguen, E., Petrillo, Z., and Tripaldi, S.: Geological and geo-structural characterization of the Montemurro area (Southern Italy) inferred from audiomagnetotelluric survey, *Geomatics, Natural Hazards and Risk*, 9, 1156–1171, <https://doi.org/10.1080/19475705.2018.1502210>, 2018.
- Roux, E., Moorkamp, M., Jones, A. G., Bischoff, M., Endrun, B., Lebedev, S., and Meier, T.: Joint inversion of long-period magnetotelluric data and surface-wave dispersion curves for anisotropic structure: Application to data from Central Germany, *Geophys. Res. Lett.*, 38, <https://doi.org/10.1029/2010GL046358>, 2011a.  
1320
- Roux, E., Moorkamp, M., Jones, A. G., Bischoff, M., Endrun, B., Lebedev, S., and Meier, T.: Joint inversion of long-period magnetotelluric data and surface-wave dispersion curves for anisotropic structure: Application to data from Central Germany, *Geophys. Res. Lett.*, 38, 1–5, <https://doi.org/10.1029/2010GL046358>, 2011b.  
1325
- Roy, N., SankarJakka, R., and Wason, H. R.: Effect of surface wave inversion non-uniqueness on 1D seismic ground response analysis, *Natural Hazards: Journal of the International Society for the Prevention and Mitigation of Natural Hazards*, 68, 1141–1153, <https://doi.org/10.1007/s11069-013-0677-z>, 2013.

- Sambridge, M.: Geophysical inversion with a neighbourhood algorithm—II. Appraising the ensemble, *Geophys. J. Int.*, 138, 727–746, <https://doi.org/10.1046/J.1365-246X.1999.00900.X>, 1999.
- 1330 Scherbaum, F., Hinzen, K. G., and Ohrnberger, M.: Determination of shallow shear wave velocity profiles in the cologne, Germany area using ambient vibrations, *Geophys. J. Int.*, 152, 597–612, <https://doi.org/10.1046/j.1365-246X.2003.01856.x>, 2003.
- Schnaidt, S., Conway, D., Krieger, L., and Heinson, G.: Pareto-Optimal Multi-objective Inversion of Geophysical Data, *Pure Appl. Geophys.*, 175, 2221–2236, <https://doi.org/10.1007/s00024-018-1784-2>, 2018.
- 1335 Şengün, F., Yiğitbaş, E., and Tunç, I. O.: Geology and tectonic emplacement of eclogite and Blueschists, Biga Peninsula, northwest turkey, *Turkish Journal of Earth Sciences*, 20, 273–285, <https://doi.org/10.3906/yer-0912-75>, 2011.
- Seyitoğlu, G. and Scott, B. C.: Late Cenozoic crustal extension and basin formation in west Turkey, *Geol. Mag.*, 128, 155–166, <https://doi.org/10.1017/S0016756800018343>, 1991.
- 1340 Shaw, R. and Srivastava, S.: Particle swarm optimization: A new tool to invert geophysical data, *Geophysics*, 72, F75, <https://doi.org/10.1190/1.2432481>, 2007.
- Shu, X., Liu, Y., Liu, J., Yang, M., and Zhang, Q.: Multi-objective particle swarm optimization with dynamic population size, *J. Comput. Des. Eng.*, 10, 446–467, <https://doi.org/10.1093/jcde/qwac139>, 2023.
- Simpson, F. and Bahr, K.: *Practical Magnetotellurics*, Press Syndicate of the University of Cambridge, 2005.
- 1345 Siripunvaraporn, W., Egbert, G., Lenbury, Y., and Uyeshima, M.: Three-dimensional magnetotelluric inversion: Data-space method, *Physics of the Earth and Planetary Interiors*, 150, 3–14, <https://doi.org/10.1016/j.pepi.2004.08.023>, 2005.
- Smirnov, M. Y.: Magnetotelluric data processing with a robust statistical procedure having a high breakdown point, *Geophys. J. Int.*, 152, 1–7, <https://doi.org/10.1046/j.1365-246X.2003.01733.x>, 2003.
- Smith, J. T. and Booker, J. R.: Magnetotelluric inversion for minimum structure, *Geophysics*, 53, 1565–1576, <https://doi.org/10.1190/1.1442438>, 1988.
- 1350 Song, X., Tang, L., Lv, X., Fang, H., and Gu, H.: Application of particle swarm optimization to interpret Rayleigh wave dispersion curves, *J. Appl. Geophys.*, 84, 1–13, <https://doi.org/10.1016/j.jappgeo.2012.05.011>, 2012.
- Sözbilir, H., Sümer, Ö., Özkaymak, Ç., Uzel, B., Güler, T., and Eski, S.: Kinematic analysis and palaeoseismology of the Edremit Fault Zone: evidence for past earthquakes in the southern branch of the North Anatolian Fault Zone, Biga Peninsula, NW Turkey, *Geodinamica Acta*, 28, 273–294, <https://doi.org/10.1080/09853111.2016.1175294>, 2016.
- 1355 Stefano, M. De, Andreasi, F. G., Re, S., Virgilio, M., and Snyder, F. F.: Multiple-domain, simultaneous joint inversion of geophysical data with application to subsalt imaging, *Geophysics*, 76, <https://doi.org/10.1190/1.3554652>, 2011.
- Takei, Y.: Effects of Partial Melting on Seismic Velocity and Attenuation: A New Insight from Experiments, *Annu. Rev. Earth Planet. Sci.*, 45, 447–470, <https://doi.org/10.1146/annurev-earth-063016-015820>, 2017.
- 1360 Takougang, E. M. T., Harris, B., Kepic, A., and Le, C. V. A.: Cooperative joint inversion of 3D seismic and magnetotelluric data: With application in a mineral province, *Geophysics*, 80, R175–R187, <https://doi.org/10.1190/geo2014-0252.1>, 2015.

- Taymaz, T., Jackson, J., and McKenzie, D.: Active tectonics of the north and central Aegean Sea, *Geophys. J. Int.*, 106, 433–490, <https://doi.org/10.1111/j.1365-246X.1991.tb03906.x>, 1991.
- 1365 Tietze, K. and Ritter, O.: Three-dimensional magnetotelluric inversion in practice—the electrical conductivity structure of the San Andreas Fault in Central California, *Geophys. J. Int.*, 195, 130–147, <https://doi.org/10.1093/GJI/GGT234>, 2013.
- Tronicke, J., Paasche, H., and Boniger, U.: Joint global inversion of GPR and P-wave seismic traveltimes using particle swarm optimization, 2011 6th International Workshop on Advanced Ground Penetrating Radar, IWAGPR 2011, <https://doi.org/10.1109/IWAGPR.2011.5963884>, 2011.
- 1370 Turunçtur, B., Eken, T., Chen, Y., Taymaz, T., Houseman, G. A., and Saygin, E.: Crustal velocity images of northwestern Türkiye along the North Anatolian Fault Zone from transdimensional Bayesian ambient seismic noise tomography, *Geophys. J. Int.*, 234, 636–649, <https://doi.org/10.1093/gji/ggad082>, 2023.
- Ulugergerli, E. U., Seyitoğlu, G., Başokur, A. T., Kaya, C., Dikmen, U., and Candansayar, M. E.: The geoelectrical structure of Northwestern Anatolia, Turkey, *Pure Appl. Geophys.*, 164, 999–1026, <https://doi.org/10.1007/s00024-007-0200-0>, 2007.
- 1375 Van Veldhuizen, D. A.: Multiobjective Evolutionary Algorithms: Classifications, Analyses, and New Innovations, Dept. Elec. Comput. Eng., Graduate School of Eng., Air Force Inst. Technol., 1999.
- Wagner, F. M. and Uhlemann, S.: An overview of multimethod imaging approaches in environmental geophysics, *Advances in Geophysics*, 62, 1–72, <https://doi.org/10.1016/bs.agph.2021.06.001>, 2021.
- 1380 Witting, K., Ober-Blöbaum, S., and Dellnitz, M.: A variational approach to define robustness for parametric multiobjective optimization problems, *Journal of Global Optimization* 2012 57:2, 57, 331–345, <https://doi.org/10.1007/s10898-012-9972-6>, 2012.
- Wu, P., Tan, H., Peng, M., Ma, H., and Wang, M.: Joint Inversion of 1-D Magnetotelluric and Surface-Wave Dispersion Data with an Improved Multi-Objective Genetic Algorithm and Application to the Data of the Longmenshan Fault Zone, *Pure Appl. Geophys.*, 175, 3591–3604, <https://doi.org/10.1007/s00024-018-1884-z>, 2018.
- 1385 Wu, P., Tan, H., Lin, C., Peng, M., Ma, H., and Yan, Z.: Joint inversion of two-dimensional magnetotelluric and surface wave dispersion data with cross-gradient constraints, *Geophys. J. Int.*, 221, 938–950, <https://doi.org/10.1093/GJI/GGAA045>, 2020.
- Wu, P., Tan, H., Ding, Z., Kong, W., Peng, M., Wang, X., and Xu, L.: Joint inversion of 3-D magnetotelluric and ambient noise dispersion data sets with cross-gradient constraints: methodology and application, *Geophys. J. Int.*, 230, 714–732, <https://doi.org/10.1093/gji/ggac049>, 2022.
- 1390 Xu, P.: Iterative generalized cross-validation for fusing heteroscedastic data of inverse ill-posed problems, *Geophys. J. Int.*, 179, 182–200, <https://doi.org/10.1111/j.1365-246X.2009.04280.x>, 2009.
- Yang, J., Li, Y. E., Wei, Y., Fu, H., and Liu, Y.: Full-waveform inversion based on gradient sampling algorithm with randomized space shift, *SEG Technical Program Expanded Abstracts*, 1063–1067, <https://doi.org/10.1190/segam2018-2998228.1>, 2018.
- 1395 Yilmaz, Y.: Comparison of young volcanic associations of western and eastern Anatolia formed under a compressional regime: a review, *Journal of Volcanology and Geothermal Research*, 44, 69–87, [https://doi.org/10.1016/0377-0273\(90\)90012-5](https://doi.org/10.1016/0377-0273(90)90012-5), 1990.

Yilmaz, Y., Genç, Ş. C., Karacik, Z., and Altunkaynak, Ş.: Two contrasting magmatic associations of NW Anatolia and their tectonic significance, *J. Geodyn.*, 31, 243–271, [https://doi.org/10.1016/S0264-3707\(01\)00002-3](https://doi.org/10.1016/S0264-3707(01)00002-3), 2001.

Yuan, S., Wang, S., and Tian, N.: Swarm intelligence optimization and its application in geophysical data inversion, *Applied Geophysics*, 6, 166–174, <https://doi.org/10.1007/s11770-009-0018-x>, 2009.

1400 Zabinyakova, O., Bataleva, E., and Medved, I.: Comparison Analysis of Longitudinal Electrical Conductivity Distribution and Seismic Tomography Velocity Models for the Central Tien Shan Region, *Journal of Earth Science* 2023 34:2, 34, 580–587, <https://doi.org/10.1007/s12583-022-1621-5>, 2023.

Zhu, H., Hu, Y. M., Zhu, W. D., Fan, W., and Zhou, B. W.: Multi-objective design optimization of an engine accessory drive system with a robustness analysis, *Appl. Math. Model.*, 77, 1564–1581, <https://doi.org/10.1016/j.apm.2019.09.016>, 2020.

1405