

Reviewer #1

General comments:

This study employs machine learning techniques to investigate the patterns and driving factors underlying the fluctuations in isoprene levels — a crucial precursor to surface ozone — using extensive historical datasets. The analysis demonstrates good agreement with previous short-term modeling results, while also emphasizing that vegetation expansion and temperature increases linked to climate change are key drivers of long-term variability. Moreover, by extending the model projections to the year 2100 and integrating them with a detailed chemical box model, the researchers estimated future surface ozone levels. Their results indicate a significant rise in ozone concentrations if NO_x emissions are not effectively controlled. Importantly, these conclusions were obtained using a data-driven approach that differs from conventional atmospheric chemical transport models, highlighting the robustness and novelty of the findings. I recommend acceptance for publication in ACP after minor revisions.

Response: We sincerely thank the reviewer for the positive and encouraging evaluation of our work. We appreciate the recognition of the study's novelty, the robustness of the data-driven framework, and the relevance of our findings regarding long-term isoprene variability and its impacts on ozone (O₃). We have carefully addressed all issues raised by the reviewer and revised the manuscript accordingly. We believe that these changes have further improved the clarity and quality of the paper. Below, we provide the point-by-point responses to each comment, with our replies highlighted in blue and the corresponding revisions marked in red.

Specific comments:

1. The superior performance of T-training suggests that reliable simulations can be achieved for grid cells or cities with existing isoprene observations. Furthermore, could this method also be applied to regions lacking monitoring data?

Response: We thank the reviewer for this insightful question. T-training performs best in regions with existing isoprene observations, as these provide the necessary

information to train the model effectively (Gupta et al., 2021; Theodoris et al., 2023). For regions lacking monitoring data, the model could still be applied using a transfer-learning or domain-adaptation approach, leveraging patterns learned from observationally constrained regions. However, we note that predictions in such regions may carry higher uncertainties due to the absence of local measurements, and this should be taken into account when interpreting the results (Wells et al., 2020).

Reference:

Gupta, V., Choudhary, K., Tavazza, F., et al.: Cross-property deep transfer learning framework for enhanced predictive analytics on small materials data, Nat. Commun., 12, 6595, 10.1038/s41467-021-26921-5, 2021.

Theodoris, C. V., Xiao, L., Chopra, A., et al.: Transfer learning enables predictions in network biology, Nature, 618, 616-624, 10.1038/s41586-023-06139-9, 2023.

Wells, K. C., Millet, D. B., Payne, V. H., et al.: Satellite isoprene retrievals constrain emissions and atmospheric oxidation, Nature, 585, 225-233, 10.1038/s41586-020-2664-3, 2020.

2. The decrease in vehicle emissions seems to significantly influence isoprene concentrations at traffic sites in London, as further supported by the comparison with benzene. Have prior studies presented similar evidence or discussed this effect?

Response: Our analysis indicates that traffic emissions have had a stronger influence on long-term isoprene variations at the London traffic site. To further support this finding, we examined the correlation between benzene and BC_{traffic} . As shown in the Figure R1, BC_{traffic} exhibits a strong correlation with both benzene ($R = 0.85$) and isoprene ($R = 0.79$), which further confirms the role of traffic emissions in shaping long-term isoprene variations in London_T site.

Evidence from previous studies is consistent with our findings. Khan et al. (2018) demonstrated that anthropogenic emissions from traffic in London can contribute substantially to ambient isoprene, in some cases even exceeding biogenic contributions during daytime. Similar observations have been reported across Western Europe cities (including London and Paris), where traffic-related isoprene has been identified as a

non-negligible component of urban VOC budgets (Borbon et al., 2023). These earlier results corroborate our interpretation of the traffic influence on isoprene trends in London.

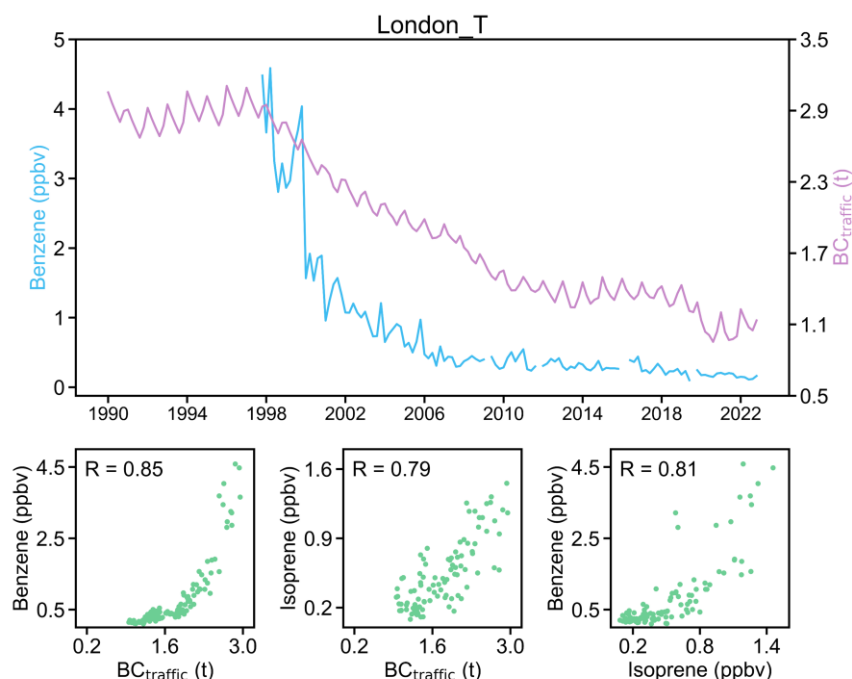


Figure R1. Correlation analysis of monthly isoprene concentrations with benzene and BC_{traffic} at London traffic site.

Reference:

Borbon, A., Dominutti, P., Panopoulou, A., et al.: Ubiquity of Anthropogenic Terpenoids in Cities Worldwide: Emission Ratios, Emission Quantification and Implications for Urban Atmospheric Chemistry, *J. Geophys. Res.-Atmos.*, 128, 10.1029/2022jd037566, 2023.

Khan, M. A. H., Schlich, B. L., Jenkin, M. E., et al.: A Two-Decade Anthropogenic and Biogenic Isoprene Emissions Study in a London Urban Background and a London Urban Traffic Site, *Atmosphere*, 9, 10.3390/atmos9100387, 2018.

3. Please include the calculation formulas for R^2 and NMAE.

Response: We have added the calculation formulas for the coefficient of determination (R^2) and the normalized mean absolute error (NMAE) in the Methods section to improve clarity and reproducibility.

Please see the revisions in Line 168-171 of the manuscript: “NMAE and R^2 are calculated as follows:

$$NMAE = \frac{\frac{1}{N} \sum_{i=1}^N |ISOP_{obs,i} - ISOP_{pred,i}|}{\overline{ISOP}_{obs}} \quad (8)$$

$$R^2 = 1 - \frac{\sum_{i=1}^N (ISOP_{obs,i} - ISOP_{pred,i})^2}{\sum_{i=1}^N (ISOP_{obs,i} - \overline{ISOP}_{obs})^2} \quad (9)$$

where \overline{ISOP}_{obs} represents the mean value of $ISOP_{obs}$.”

4. Some input variables have varying spatial resolutions. How were these differences addressed, and what were the primary criteria for selecting these variables?

Response: Input variables were selected based on the MEGAN framework to represent the primary sources, sinks, and atmospheric processes affecting isoprene. Biogenic emissions were captured through vegetation-related factors summarized as a vegetation index (VI) derived from LAI and NDVI. Meteorological variables that influence isoprene emission activity and chemical reactivity, such as temperature, solar radiation, humidity, wind, and boundary layer height, were included. Traffic emissions, identified as the most important anthropogenic source, were also selected as an input variable. To ensure consistency among all variables, datasets with different spatial resolutions (e.g., 0.1° and 0.25°) were resampled to a uniform resolution of 0.1° using bilinear interpolation.

Please see the revisions in Line 151-156 of the manuscript: “Predictor variables were selected to capture key sources and sinks of isoprene, including VI (see Text S1), meteorological parameters (e.g., temperature, solar radiation), and black carbon emitted from traffic ($BC_{traffic}$) as a proxy for anthropogenic emissions. To ensure consistency among all variables, datasets with different spatial resolutions (e.g., 0.1° and 0.25°) were resampled to achieve a uniform resolution of 0.1° using bilinear interpolation. Full variable definitions and sources are provided in Table S2.”

5. In the PINN-ResMLP model, an additional loss term was incorporated into the training process. Was the training stable across different sites, and how did the model

loss change accordingly?

Response: The PINN-ResMLP model training was stable across all sites. During training, the total loss and each individual loss component (including the additional term) consistently decreased and converged within the expected number of epochs (Figure R2). Minor fluctuations were observed early in training due to differences in site-specific data distributions, but these quickly stabilized (Figure R2). Overall, the incorporation of the additional loss term did not compromise training stability and effectively guided the model to capture the prior knowledge.

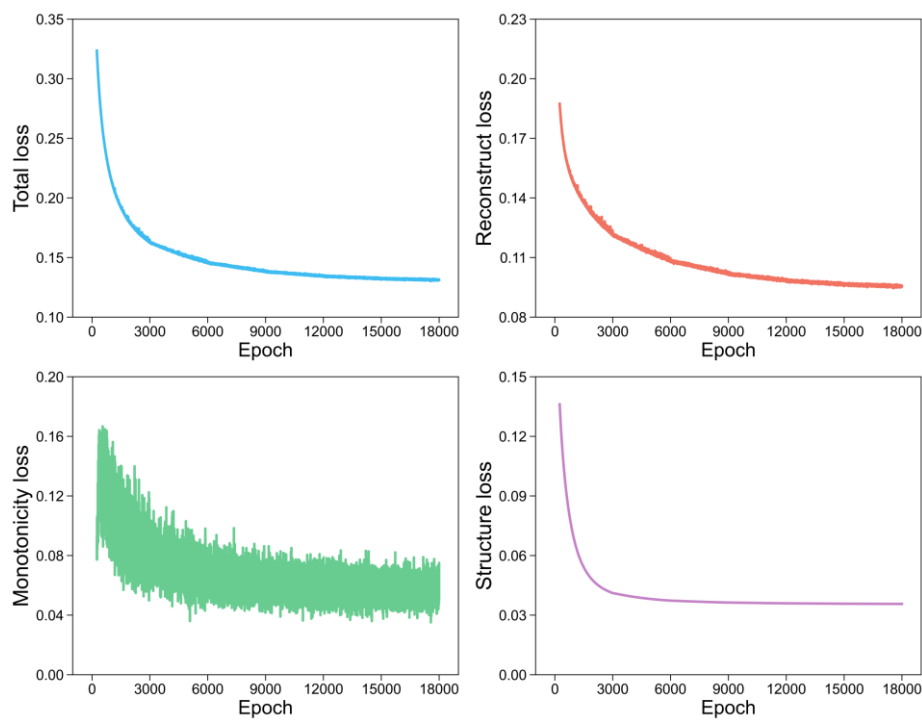


Figure R2. Training curves of the PINN-ResMLP model showing the total loss and individual loss components, including reconstruction loss, monotonicity loss, and structure loss.

6. Please ensure that the use of abbreviations is consistent between the main text and the appendix tables, such as *Radiation* vs. *SSRD* and *U10* vs. *u10*.

Response: Thank you for pointing this out. We have carefully checked all abbreviations in the main text, figures, and appendix tables, and have revised them to ensure consistency throughout the manuscript.

7. Please supply additional details regarding the isoprene measurement instruments used at each site.

Response: Additional details about the isoprene measurement instruments used at each site have been added to the Supporting Information (Table S5).

Please see the revisions of the Supporting Information:

Table S5. Summary of site characteristics and instrumentation for isoprene measurements.

Site	Latitude	Longitude	Instrument	Reference
Beijing	40.05°	116.42°	GC-FID/MS	Zhang et al., (2024)
Chengdu	30.66°	104.04°	Synspec GC955-611/811	Song et al., (2018)
Chongqing	29.62°	106.51°	Synspec GC955-611/811	Wang et al., (2024)
Guangzhou	23.08°	113.37°	AC-GCMS1000	Tong et al., (2024)
Hong Kong_TC	22.29°	113.94°	GC-PID	Wang et al., 2017)
Hong Kong_HT	22.22°	114.26°	GC-PID	Wang et al., (2017)
Nanjing	32.12°	118.96°	GC-MS/FID	Li et al., (2024)
Shanghai	31.17°	121.43°	GC-FID	Wang et al., (2020)
Wuhan_U	30.53°	114.37°	GC-FID/MS	Wang et al., (2014)
Wuhan_S	30.60°	114.28°	GC-FID/MS	Wang et al., (2014)
London_T	51.45°	0.07°	Perkin Elmer Ozone Precursor Analysers	Derwent et al., (2014)

London_B	51.52°	0.16°	Perkin Elmer Ozone Precursor Analysers	Derwent et al., (2014)
Oklahoma	36.60°	-97.49°	PTR-MS	Liu et al., (2021)
Manaus	-3.10°	-59.99°	PTR-MS	Nascimento et al., (2021)
Oxfordshire	51.46°	-1.20°	GC-PID	Ferracci et al., (2020)
New Delhi	28.45°	77.28°	PTR-TOF-MS 8000	Tripathi et al., (2022)

8. Please include a definition of SHAP in the Methods section.

Response: We have added a detailed description of SHAP (Shapley Additive Explanations) in the Methods section, including its calculation principle.

Please see the revisions in lines 172-179 of the manuscript: “Finally, the Shapley Additive Explanations (SHAP) approach (Lundberg et al., 2020) was used to quantify the contributions of input variables to model predictions. SHAP values allow us to assess the impact of each factor on isoprene concentrations. The calculation is defined as follows:

$$\varphi_i = \sum_{S \subseteq K \setminus \{i\}} \frac{|S|! (K - |S| - 1)!}{|K|!} [f(S \cup \{i\}) - f(S)] \quad (10)$$

where K represents the set of all features, $S \subseteq K \setminus \{i\}$ denotes a feature subset that excludes feature i , $|S|$ is the size of subset S , $f(S)$ is the model’s prediction under feature subset S , and $f(S \cup \{i\}) - f(S)$ is the marginal contribution of feature i .

Reference:

Lundberg, S. M., Erion, G., Chen, H., et al.: From local explanations to global understanding with explainable AI for trees, Nat. Mach. Intell., 2, 56-67, 10.1038/s42256-019-0138-9, 2020.

9. In the simulation of future scenarios with NO_x reduction, please specify the basis or

reference for the assumed reductions of 49.7% and 89.2%.

Response: In this study, the assumed NO_x reductions of 49.7% and 89.2% are derived from the emission trajectories in the Shared Socioeconomic Pathways (SSPs), as quantified by the Global Change Assessment Model (GCAM). GCAM provides future anthropogenic emission projections under different SSP narratives, reflecting varying strengths of air pollution control policies—strong controls in SSP1 and SSP5, medium controls in SSP2, and weak controls in SSP3 and SSP4 (Lou et al., 2023). The reduction ratios used in our simulations were calculated directly from GCAM-based SSP emission datasets, which include sector-resolved NO_x emissions from energy supply and demand, industry, transportation, land use, waste, and solvent use (Rogelj et al., 2018). These GCAM-derived NO_x trajectories form the basis for the reduction scenarios adopted in the box-model simulations.

Reference:

Lou, S., Shrivastava, M., Ding, A., et al.: Shift in Peaks of PAH-Associated Health Risks From East Asia to South Asia and Africa in the Future, *Earth Future*, 11, e2022EF003185, <https://doi.org/10.1029/2022EF003185>, 2023.

Rogelj, J., Popp, A., Calvin, K. V., et al.: Scenarios towards limiting global mean temperature increase below 1.5 °C, *Nat. Clim. Change*, 8, 325-332, 10.1038/s41558-018-0091-3, 2018.

10. Please add the full names of LAI and NDVI in the caption of Figure 1.

Response: We have added the full names of LAI (Leaf Area Index) and NDVI (Normalized Difference Vegetation Index) to the caption of Figure 1.

Please see our revisions in lines 255-257 of the manuscript: “Trends of LAI (Leaf Area Index) and NDVI (Normalized Difference Vegetation Index) from 2001 to 2021 in major cities around the world.”

11. Additionally, since Figure 2 includes multiple algorithm abbreviations, it would be beneficial to define them in the caption for improved clarity.

Response: Thank you for the suggestion. All algorithm abbreviations appearing in

Figure 2 have now been defined in the figure caption to enhance clarity for readers.

Please see our revisions in lines 297-300 of the manuscript: “RF, XGB, GBDT, SVM, and LR represent Random Forest, eXtreme Gradient Boosting, Gradient Boosting Decision Tree, Support Vector Machine, and Linear Regression, respectively.”

12. Line 162: provide the full term for R^2 .

Response: We have replaced “ R^2 ” with its full term, “coefficient of determination (R^2),” at the first occurrence in the manuscript.

Please see our revisions in lines 162-165 of the manuscript: “Model performance was evaluated using four-fold cross-validation (Table S3) and metrics including normalized mean absolute error (NMAE) and coefficient of determination (R^2).”

13. Line 129: add a reference

Response: A relevant reference has been added at Line 129 to support the statement.

Please see the revisions in lines 128-129 of the manuscript: “Incorporating expert knowledge and physical constraints into the model can guide the learning processes (Zhu et al., 2024).”

Reference:

Zhu, B., Ren, S., Weng, Q., et al.: A physics-informed neural network that considers monotonic relationships for predicting NO_x emissions from coal-fired boilers, Fuel, 364, 131026, <https://doi.org/10.1016/j.fuel.2024.131026>, 2024.