

Landfalling tropical cyclones significantly reduce Bangladesh's energy security

Kieran M. R. Hunt^{1,2} and Hannah C. Bloomfield³

¹Department of Meteorology, University of Reading, Reading, UK

²National Centre for Atmospheric Science, University of Reading, Reading, UK

³Department of Civil and Geospatial Engineering, School of Engineering, Newcastle University, Newcastle upon Tyne, UK

Correspondence: Kieran M. R. Hunt (k.m.r.hunt@reading.ac.uk)

Abstract. Bangladesh's rapidly expanding ~~-, yet fragile,~~ electricity grid is highly ~~exposed-vulnerable~~ to tropical cyclones. ~~However, the operational impacts of these storms on the power system are not well quantified. Here, we combine daily metered electricity demand data for-~~ yet operational impacts remain poorly quantified. In this paper, we investigate the impact of landfalling tropical cyclones and depressions on Bangladesh's nine power zones energy security by combining daily reported
5 demand met (across nine power-planning zones; December 2015 to May 2025) with cyclone track data and hazard proxies from reanalysis and satellite products. We use an event-centered composite approach for 14 named landfalling cyclones and 13 landfalling depressions, defining deficits in demand met as a percentage anomaly relative to a 60-day running mean. On cyclone landfall days, national demand met falls by an average of 19.8% , with meteorological and hazard datasets over the last decade. We find that landfalling tropical cyclones cause an average 20% reduction in national electricity supply, with
10 coastal zones the maximum recorded national deficit (69%) occurring during Cyclone Remal (28 May 2024). Coastal zones are disproportionately affected, experiencing drops with mean day-0 zone deficits of up to 38% . Analysis of case studies shows that high winds, storm surge, and extreme precipitation are all key contributors to these outages. While Bangladesh imports power from neighbouring West Bengal (India) to strengthen security, we show that cyclone impacts are often correlated and some events exceeding 90%. Depressions are associated with smaller, but still significant, deficits, averaging 8.3%. For named
15 cyclones, the magnitude of the national deficit is strongly correlated with the worst-affected zone deficit ($r = 0.80, p < 0.001$), indicating that national-scale shortfalls are dominated by near-collapse in at least one zone. Cross-border analysis with West Bengal shows that the largest cyclone-related deficits are often synchronised across both regions, limiting the reliability of this backup during major imported electricity during major stress events. We highlight the need for continued investment in climate-resilient energy infrastructure in the region, as well as adaptation to such extremes, which are projected to become
20 more severe with propose potential mitigation and adaptation policies, such as targeted hardening of coastal network assets and decentralised backup supply for critical services as cyclone-related hazards continue to intensify under climate change.

1 Introduction

Bangladesh's position at the head of the Bay of Bengal regularly exposes it to tropical cyclones and depressions. Approximately ten tropical cyclones make landfall in Bangladesh each decade (Islam and Peterson, 2009), though this is subject to substantially

25 decadal variability. Compounding this frequent hazard, more than half of Bangladesh has an elevation below 5 metres (see Fig. 1), and approximately one quarter of the population (about 40 million people) live within 500 km of the coast. Therefore, tropical cyclones and depressions, which are often associated with storm surges exceeding 5 m (Karim and Mimura, 2008; Chiu and Small, 2016), present a serious hazard to life and infrastructure in this heavily exposed region (Hossain, 2015). Although the basin-wide frequency of tropical cyclones has slightly declined in recent decades, both observation- and model-
30 based studies point to a rise in the frequency of more intense cyclones (Sahoo and Bhaskaran, 2016; Balaji et al., 2018; Singh et al., 2019; Baburaj et al., 2020; Knutson et al., 2020; Roberts et al., 2020). This trend has been ~~underseored~~ evidenced by a wealth of high-impact landfalling tropical cyclones in the last two decades, e.g., Sidr (2007), Aila (2009), Viyaru (2013), Roanu (2016), Mora (2017), Amphan (2020), Mocha (2023), and Remal (2024).

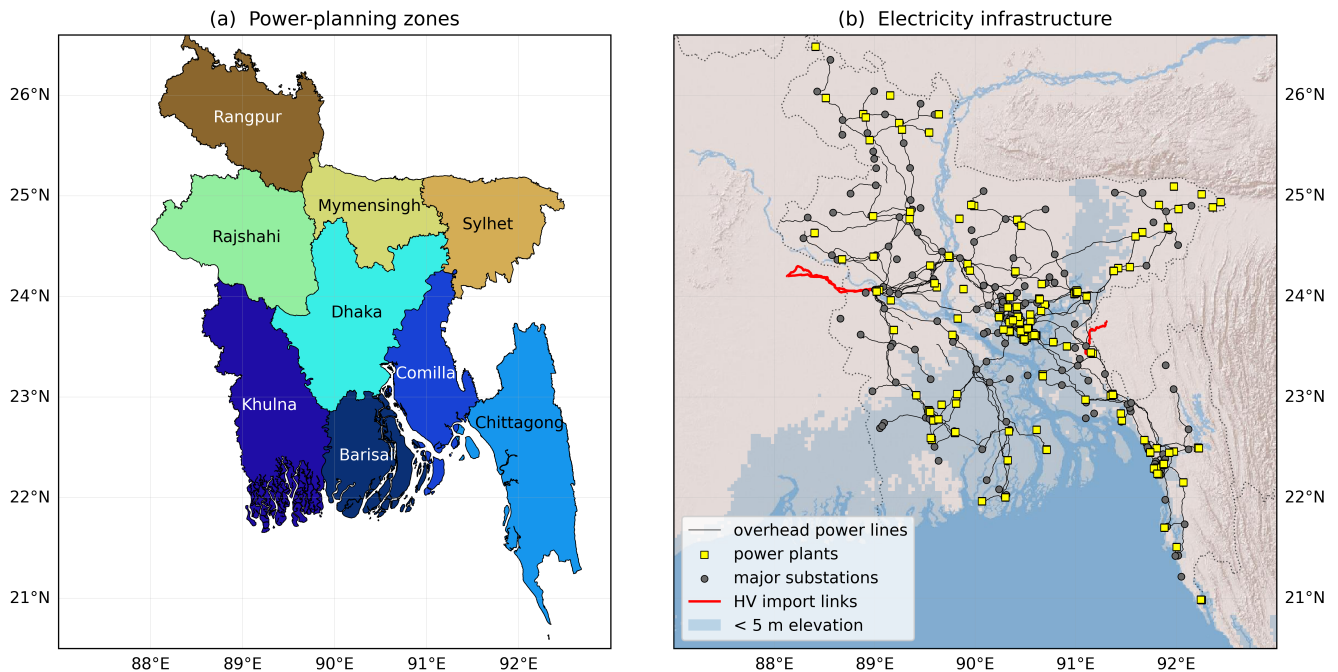


Figure 1. Maps showing (a) the power-planning zones of Bangladesh and (b) the layout of its core electricity infrastructure. The zones in (a) are identical to the divisions (i.e., largest administrative unit) of Bangladesh, except that Chittagong is split into two, with the northwestern half referred to as Comilla. Infrastructure data are taken from OpenStreetMap (see Sec. 2.3). © OpenStreetMap contributors 2025. Distributed under the Open Data Commons Open Database License (ODbL) v1.0.

National In Bangladesh, these storms strike an electricity grid (Fig. 1) that, while rapidly expanding, remains structurally
35 fragile (World Bank, 2021, 2024), impacting its energy security. Here, energy security is used in the specific sense of security of electricity supply, i.e., the ability of the power system to deliver electricity to consumers when needed, including during short-lived extreme events (International Energy Agency). Total installed power capacity stands at around 27 GW as of May 2025, a fivefold increase on ten years ago (Bangladesh Power Development Board, 2025), with over half coming from depleting

resources of domestic gas. Imported diesel, oil and coal fill most of the gap, leaving renewables (almost entirely biofuel) comprising about 15% of the mix (International Energy Agency, 2025). Bangladesh now has over 14,000 km of high-voltage transmission lines (Fig. 1(b)), increasing at a rate of about 1,000 km per year (Bangladesh Power Development Board, 2023). National planning is articulated in the Integrated Energy and Power Master Plan (IEPMP; Power Division, Government of Bangladesh, 2022).

Despite this exposure, the operational resilience of Bangladesh's power grid to these specific hazards remains under-researched. At the same time, national power system models are growing ever more sophisticated with recent increases in computing power, with hourly multi-decadal simulations now possible (Grochowicz et al., 2024). Although matching supply and demand is only part of the problem, and state-of-the art developments now incorporate network damage from tropical cyclones (Bennett et al., 2021a) and the impacts of climate change (Wohland et al., 2025). However, understanding the resilience of systems (e.g., the amount of local damage that happens from an extreme event and the recovery time) is best understood through analysis of historical data. Tropical cyclones pose the largest environmental risk to the countries bordering the Bay of Bengal, with Bangladesh (REF) and are therefore, Bangladesh is particularly vulnerable, and thus is the focus of much of the literature for the limited analysis available for our study area. As metered data is often limited, Mo et al. (2025) used satellite-based nighttime light observations across 66 countries and 396 storms and found that the median duration of blackouts resulting from storms worldwide is four days, with longer recovery times in less dense urban areas and developing regions with less stringent energy system regulation.

~~In Bangladesh, these storms strike an electricity grid (Fig. 1) that, while rapidly expanding, remains structurally fragile (World Bank, 2021, 2024). Total installed power capacity stands at around 27 GW as of May 2025, a fivefold increase on ten years ago (Bangladesh Power Development Board, 2025), with over half coming from depleting resources of domestic gas. Imported diesel, oil and coal fill most of the gap, leaving renewables (almost entirely biofuel) comprising about 15% of the mix (International Energy Agency, 2025). Bangladesh now has over 14,000 km of high-voltage transmission lines (Fig. 1(b)), increasing at a rate of about 1,000 km per year (Bangladesh Power Development Board, 2023). Tropical cyclones impact all parts of critical energy infrastructure. For example, strong winds damage or knock down transmission and distribution network equipment (Cyclone Sidr damaged 43,000 poles and 154 towers; Bangladesh Ministry of Food and Disaster Management (2008)), and seawater inundation from storm surges shorts or otherwise damages the many coastal substations and power plants (Fig. 1(b)) (Shahid, 2012).~~

While existing literature documents cyclone mortality and economic losses, we still have limited quantitative insight into (a) the operational, regional, and demand-side impacts of tropical cyclones on Bangladesh's electricity grid; and (b) the real-world reliability and feasibility of importing electricity from India when both grids face correlated stress from large-scale wind, rain, and surge impacts.

Recent work has quantified how extreme weather can negatively affect electricity systems across tropical coastal Asia. For Southeast Asia, the International Energy Agency has stated that increasingly intense tropical cyclones, flooding and sea-level rise are growing threats to energy infrastructure and reliability, and urge the need for climate-aware planning (International Energy Agency, 2022). Prior estimates of cyclone-driven risks to power-grid assets across East and Southeast Asia average about 0.07% of GDP across

75 the region and are substantially higher in some countries (0.20% in Japan; 0.17% in Laos) (Ye et al., 2024). Night-time lights have also been used to explore disruption and recovery after hazards across South and Southeast Asian countries, although reliability is limited by noise and cloud cover (Skoufias et al., 2021).

80 For Bangladesh, previous studies have quantified extreme exposure to cyclonic storm surge and coastal flooding in the Ganges–Brahmaputra–Meghna delta. For example, Bernard et al. (2022) found 1-in-50-year cyclone-surge inundation heights reached ~8 m above mean sea level near the Ganges–Meghna junction, with widespread exposure of coastal islands. Recent work has further shown shows that climate hazards threaten infrastructure service delivery in coastal Bangladesh. Using a dataset of 8.2 million households, Adshead et al. (2024) estimated that, for a baseline 1-in-50-year hazard, cyclonic winds could disrupt ~94.5% of the coastal population (across essential services on average), compared with ~39.5% for coastal flooding (including storm surge) and ~22.7% for riverine flooding, with the poorest disproportionately threatened in 69% of coastal subdistricts.

85 Bangladesh’s cyclone death tolls have historically arisen from storm-surge inundation and associated drowning, with the highest risks in low-lying coastal islands and polders and in places where embankments are absent or breached during cyclone landfall (Bern et al., 1993; Alam, 2023). Fatality is strongly reduced when people can access reinforced buildings or cyclone shelters in time, with post-event assessments following the 1991 cyclone highlighting higher mortality among those unable to access brick or concrete structures, alongside considerable age and gender disparities (Bern et al., 1993). Since the 1970
90 Bhola cyclone, Bangladesh has achieved a significant reduction in cyclone mortality (more than two orders of magnitude), which has attributed to improvements in forecasting and early-warning dissemination, their Cyclone Preparedness Programme, expanded cyclone-shelter coverage, increased coastal embankments and mangrove protection, and better public awareness (Haque et al., 2012; Paul, 2009). Nevertheless, severe cyclones still cause deaths when warnings are not or cannot be acted upon. Barriers include long distances to shelters, poor road access in remote areas, communication failures during emergencies,
95 and limited provision for elderly and disabled people (Kelman et al., 2018; Alam, 2023). Therefore, cyclone mortality in Bangladesh is sensitive not only to storm intensity and coastal exposure, but also to a range of socioeconomic constraints (Paul, 2009; Kelman et al., 2018).

To reduce shortages, Bangladesh engages in cross-border trade with India, with capacity to import up to 1.2 GW through two high-voltage links (with more planned) – about 1.0 GW via Baharampur–Bheramara and ~160–192 MW via Tripura–Comilla
100 (an upgrade to 500 MW is underway) – both of which are shown in red in Fig. 1. Reliance on these imports, however, raises its own hazards. Firstly, West Bengal lies in the same basin as Bangladesh and tropical cyclone footprints often cover parts of both regions. Cyclone Amphan resulted in widespread damage and loss of life in both West Bengal and Bangladesh (World Meteorological Organization, 2020; India Meteorological Department, 2024; Needs Assessment Working Group (NAWG) and Humanitarian Coordination Task Team (HCTT), 2020), demonstrating that simultaneous damage on both sides of the border could
105 rapidly erode the diversification benefit. Secondly, because cross-border exchanges are scheduled day-ahead or week-ahead and updated intraday subject to available transfer capability, Indian system operators may reduce the offered export in advance when a cyclone is forecast to affect eastern India. Realtime demand-side management also remains possible if grid security requires it (Central Electricity Regulatory Commission, 2023). Cross-border scheduling, access, and curtailment provisions are set out

in India's Guidelines for Import/Export (Cross Border) of Electricity (Ministry of Power, Government of India, 2018). At the regional level, the SAARC Framework Agreement for Energy Cooperation (Electricity) provides a multilateral policy frame for voluntary cross-border electricity trade among South Asian states (South Asian Association for Regional Cooperation (SAARC), 2014)

While existing literature documents cyclone mortality and economic losses, we still have limited quantitative insight into (a) the operational, regional, and demand-side impacts of tropical cyclones on Bangladesh's electricity grid; and (b) the real-world reliability and feasibility of importing electricity from India when both grids face correlated stress from large-scale wind, rain, and surge impacts. Energy security is multi-dimensional and can be framed in terms of availability, affordability, accessibility and acceptability, or more generally as the vulnerability of energy systems to disruption. In this study, we present an initial investigation into these questions by combining metered demand data across the nine power-planning zones of Bangladesh with data on landfalling nine years of daily zone-level demand data with cyclone tracks and hazard proxies. We use event-centered composites to estimate mean disruption and recovery, examine regional disparities, and assess the reliability of cross-border imports during synchronous stress events.

We focus on short-term electricity supply security during extreme events: (i) availability, quantified using observed shortfalls in daily demand met; (ii) reliability and resilience, quantified using the frequency, magnitude and recovery time of these shortfalls; and (iii) interdependence, assessed via the co-occurrence of deep dips in Bangladesh and West Bengal that sets the value of cross-border imports during cyclones. We do not attempt to quantify affordability or long-run adequacy.

2 Data

Our primary methods are (i) event-based impact assessment and (ii) compositing conditional on event types. We compute demand-met anomalies relative to a centred running-mean baseline and then analyse these anomalies around independently dated landfall events (tropical cyclones and depressions over the last decade) to estimate the mean/median day-0 impact and recovery trajectory.

3 Data

2.1 Electricity demand data

We use daily electricity demand met data—demand met (served load), i.e., the energy actually the electricity supplied by the grid to consumers—from both Bangladesh and West Bengal—. For Bangladesh this is reported as daily average load (MW); for West Bengal the source reports daily energy supplied (MU day⁻¹), which we convert to a daily-average MW equivalent where required. Because our focus is on operational disruption during cyclones (hours to days), we emphasise the availability and reliability components of energy security and treat daily demand met and its shortfalls as a proxy for these supply-security impacts, rather than attempting to quantify affordability or long-term adequacy (consistent with The World Bank Group, 2005)

140 2.1.1 Bangladesh

The Bangladesh Power Development Board publish daily totals of electricity demand for each of the country's nine power zones (Fig. 1(a)). These are archived at URLs of the form <https://misc.bpdb.gov.bd/area-wise-demand?date=DD-MM-YYYY>, from which they can be readily scraped. This gives us daily data, starting in December 2015 and running through to the present.

145 ~~With some days Some dates are~~ missing from the archive, and ~~following simple quality control, we are left with about some~~ zone entries appear as zeroes, which we treat as missing data (rather than true demand). For national totals and all subsequent composite analyses, we conservatively exclude any day where at least one of the nine zones is missing (i.e., reporting zero demand), so that the national total is always based on complete zone coverage. This leaves us with approximately 99.7% coverage.

150 ~~To identify and analyse dips in demand met, we use a centred 60-day running mean (requiring at least 30 valid days to compute the baseline). We then express anomalies as fractional deviations from this mean and define 'dip days' as those where the anomaly is less than 80% of the running mean.~~

We have made the scraped data available in machine-friendly format at ~~«Zenodo link»~~<https://zenodo.org/records/17175212>. The code to download the data and recreate all figures and analysis in this paper is available at <https://github.com/kieranmrhunt/bangladesh-renewable>. This is part of a wider research group initiative to make energy data open and accessible to all, e.g., for training large-sample demand models.

2.1.2 West Bengal

Daily demand met data for West Bengal are taken from the Indian dataset published by Hunt and Bloomfield (2025). They extracted the data from daily reports issued by the Grid Controller of India (Grid-India), known before November 2022 as the Power System Operation Corporation (POSOCO). The reports are in PDF format and contain the total energy supplied by the national grid to each state on each day. The final version of the dataset covers all Indian states from 2014 to present, and is available at <https://zenodo.org/records/14983362>.

2.2 OpenStreetMap

165 ~~OpenStreetMap (OpenStreetMap contributors, 2017) (OSM) is a collaborative project to create a free, open, editable map of the world. It allows users to view, edit and add data, and has a large user community that contributes data on a wide range of topics, including location names, road networks and points of interest. The completeness of the data can vary because it relies on the contributions of volunteers. In this study, we use OSM data for a brief qualitative analysis of the locations of power infrastructure in Bangladesh (Fig. 1(b)). These were extracted using Overpass Turbo () and extracting entities where the 'power' variable is in 'line', 'plant', 'substation', or 'tower'.~~

2.2 Weather and hazard data

170 2.2.1 ERA5

ERA5 is the fifth generation atmospheric reanalysis of global climate produced by the Copernicus Climate Change Service at the European Centre for Medium-Range Weather Forecasts (Hersbach et al., 2020). Data from ERA5 have global coverage at a horizontal resolution of ~ 25 km and resolve the atmosphere on 137 levels from the ground up to ~ 80 km in altitude. It covers from January 1940 until present at hourly frequency. We use single-level data (<https://doi.org/10.24381/cds.adbb2d47>)
175 to show the near-surface instantaneous 10-m vector wind fields associated with blackout case studies, as well as 'significant height of combined wind wave and swell' as a proxy for the magnitude of storm surges. There are global biases in ERA5's under-representation of the magnitude and intensity of surface wind gusts, particularly over complex terrain (Belmonte Rivas and Stoffelen, 2019), but here we use it qualitatively to contrast the relative intensities and structures of the cyclones.

2.2.2 GPM-IMERG

180 Global Precipitation Mission Integrated Multi-satellitE Retrievals for (GPM-IMERG) (Huffman et al., 2015) is a global satellite-based precipitation product at a half-hourly, 0.1° resolution, starting in June 2000 and continuing to the present day. Over the tropics, IMERG primarily ingests retrievals from (for 2000—2014) the now-defunct Tropical Rainfall Measuring Mission (Kummerow et al., 1998, 2000) 13.8-GHz precipitation radar and microwave imager (Kozu et al., 2001) and (for
185 use IMERG precipitation data ($0.1^\circ/30$ min) to quantify rainfall in our case studies because its finer resolution than ERA5 ($0.25^\circ/\text{hourly}$) and demonstrated skill in reproducing the spatial and diurnal structure of precipitation over Bangladesh (Ahmed et al., 2021) make it preferable for resolving small-scale extremes; more broadly, many evaluations report IMERG outperforming reanalyses such as ERA5 in convective regimes (e.g., Xin et al., 2022).

2.2.3 EM-DAT

190 The Emergency Events Database (e.g., Delforge et al., 2025) maintained by the Centre for Research on the Epidemiology of Disasters provides a homogenised catalogue of natural hazards and their reported impacts. We queried EM-DAT for the period December 2015–May 2025 and retained all events whose affected country list contains Bangladesh. We then subset to hydrometeorological classes potentially relevant to the power system: lightning, floods, coldwaves, heatwaves, and wildfires. For tropical cyclones and depressions, we additionally verified the reported event dates against the India Meteorological Department (IMD)
195 Regional Specialized Meteorological Centre metadata (https://rsmcnewdelhi.imd.gov.in/report.php?internal_menu=MzM=) to ensure that the disturbance made landfall over, or had a clearly documented direct impact on, Bangladesh. The EM-DAT catalogue is used in two ways: (i) to tag and interpret sharp demand shortfalls that are not associated with a tropical cyclone or depression (Fig. 2); and (ii) to ensure that our composites of 'other' hazards do not mix qualitatively different drivers (e.g., major river flooding versus pre-monsoon mesoscale convective systems).

OpenStreetMap (OpenStreetMap contributors, 2017) (OSM) is a collaborative project to create a free, open, editable map of the world. It allows users to view, edit and add data, and has a large user community that contributes data on a wide range of topics, including location names, road networks and points of interest. The completeness of the data can vary because it relies on the contributions of volunteers. In this study, we use OSM data for a brief qualitative analysis of the locations of power infrastructure in Bangladesh (Fig. 1(b)). These were extracted using Overpass Turbo (<https://overpass-turbo.eu/>) and extracting entities where the ‘power’ variable is in ‘line’, ‘plant’, ‘substation’, or ‘tower’.

3 Results

3.1 Quantifying National-scale impacts of extreme weather

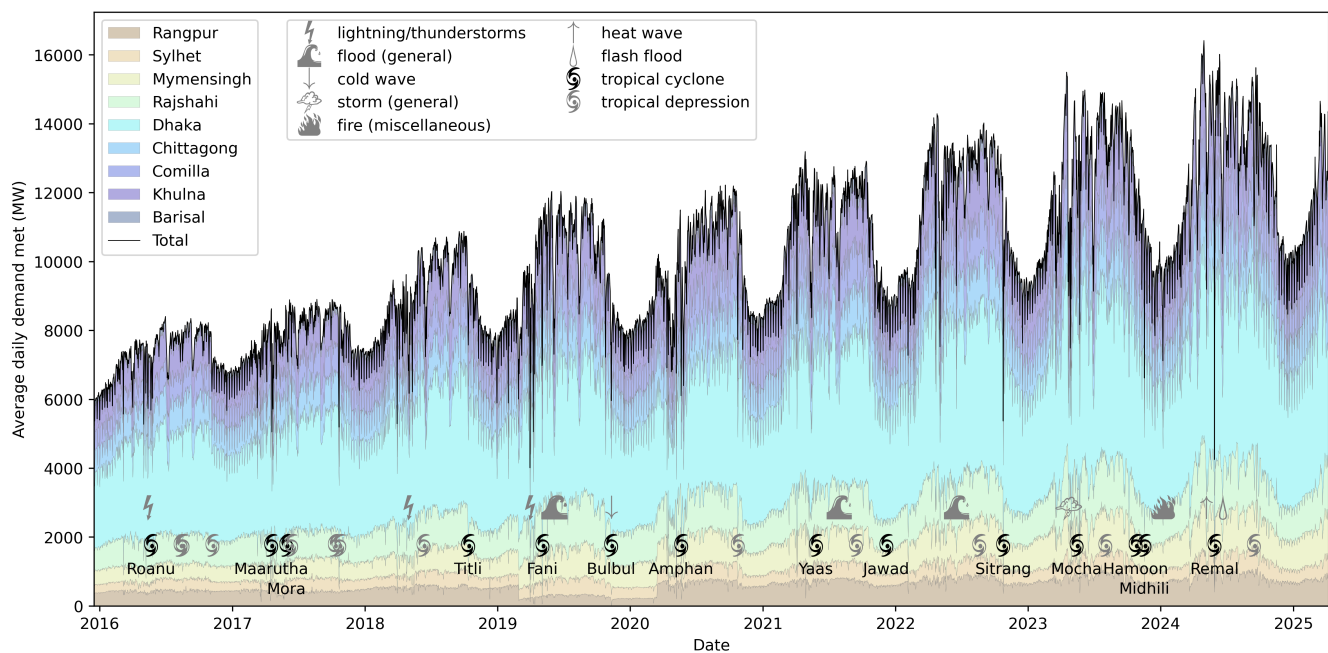


Figure 2. Timeline (2016–present) of average daily demand met for Bangladesh (MW; black line) and its nine power zones (colours, see Figure 1 for locations of each region). Along the bottom, we show all tropical cyclones (with their names; black) and depressions (grey) to have made landfall in Bangladesh in this period, whether or not they coincide with power shortages. Above this, we show all other natural hazards affecting Bangladesh during this period, so long as they co-occur with an energy dip (here defined as days where national met demand met falls below 80% of the 60-day running mean). Hazard data are taken from the EM-DAT archive (see Sec.2.2).

Energy demand in Bangladesh has increased by approximately 70% in the last ten years since 2016 (Fig. 2), from an average of 7200 MW in 2016 to 12400 MW in 2024. it has become increasingly vulnerable to short, sharp supply disruptions. Within this rapid growth, there is a pronounced annual cycle – with an average magnitude of about 3300 MW – and weekly cycle – with an average magnitude of about 580 GWMW.

Outside of these cycles, there are short drops in demand often lasting only a day or two, which almost invariably coincide with hazardous weather events, with tropical cyclones being the biggest contributor. The Cyclone Remal caused the most extreme case occurred during Cyclone Remal in our record: on 28 May 2024, when the average demand met across all of Bangladesh was only 4253 MW, down 67% from 12870 MW the day before, and 71% from 14472 MW the day before. These appear to affect all zones, implying issues with central power distribution.

The majority of these large dip events are associated with a tropical cyclone or landfalling tropical depression (Fig. 3). Of those that remain, most are associated with some other kind of natural hazard, e.g., thunderstorms – although the link between these “lesser hazards” and energy shortages are sometimes coincidental, as we shall see.

We also tested whether cyclone intensity is a useful predictor of day-0 electricity supply change. For each named tropical cyclone (Table 1), we used the IMD-reported storm class at landfall as a proxy for intensity and computed the total national day-0 demand-met deficit (again relative to the 60-day running mean). Over these 14 cyclones, deficits range from 0–69%. There is no statistically significant relationship between cyclone class and the magnitude of the day-0 deficit (Pearson $r = -0.21$, $p = 0.48$; Spearman $\rho = -0.11$, $p = 0.70$), implying that intensity class alone cannot explain the event-to-event variation in demand loss. This is consistent with the expectation that outages also depend on landfall location relative to exposed coastal infrastructure, storm size, translation speed, storm surge magnitude and location, and rainfall magnitude and location.

We now move to national-scale composite lead-lag time series of demand met, conditioned on (i) landfalling TC days, (ii) landfalling depression days, and (iii) “dip” days, defined as dates on which national demand falls below 80% of the two-month centered running mean (Fig. 4).

For Bangladesh (Fig. 4a), TCs reduce demand met by 19.8% on landfall day, partially recovering to a -8% on day +1, and -5% on day +2. Depressions, similar in number over the period, have a weaker effect, reducing demand met by 8.3% on day 0, 4% on day +1, and just 1% by day +2. Using bootstrapping, the 95% confidence intervals are, for tropical cyclones [-32.0% to -8.7%] and for depressions [-15.6% to -2.2%]. Of particular interest are the dip days. They are more numerous (by about a factor of 2.5) than TCs and depressions combined, and they exhibit the largest composite deficit: demand met falls by an average of -28% on day 0 and -12% on day +1.

These large composite dips are not predominantly due to weekly cycle effects as is sometimes seen for demand reductions in developed regions (e.g. (Drew et al., 2019); Fig. 4(d)). These are too weak, and Bangladesh’s lowest demand day, Friday, which is when Bangladesh’s energy demand is at a minimum, is associated with only about a 6% reduction relative to the weekly mean. Nor can they be attributed to public holidays. Bangladesh had 66 recognised public holidays in this period, during which demand only fell by an average of 5.5%. In fact, none of the dip days in this record coincide with national holidays in Bangladesh. Holiday composites (not shown) indicate material reductions only in the two largest urban centres: Dhaka (-11%) and Chittagong (-8%).

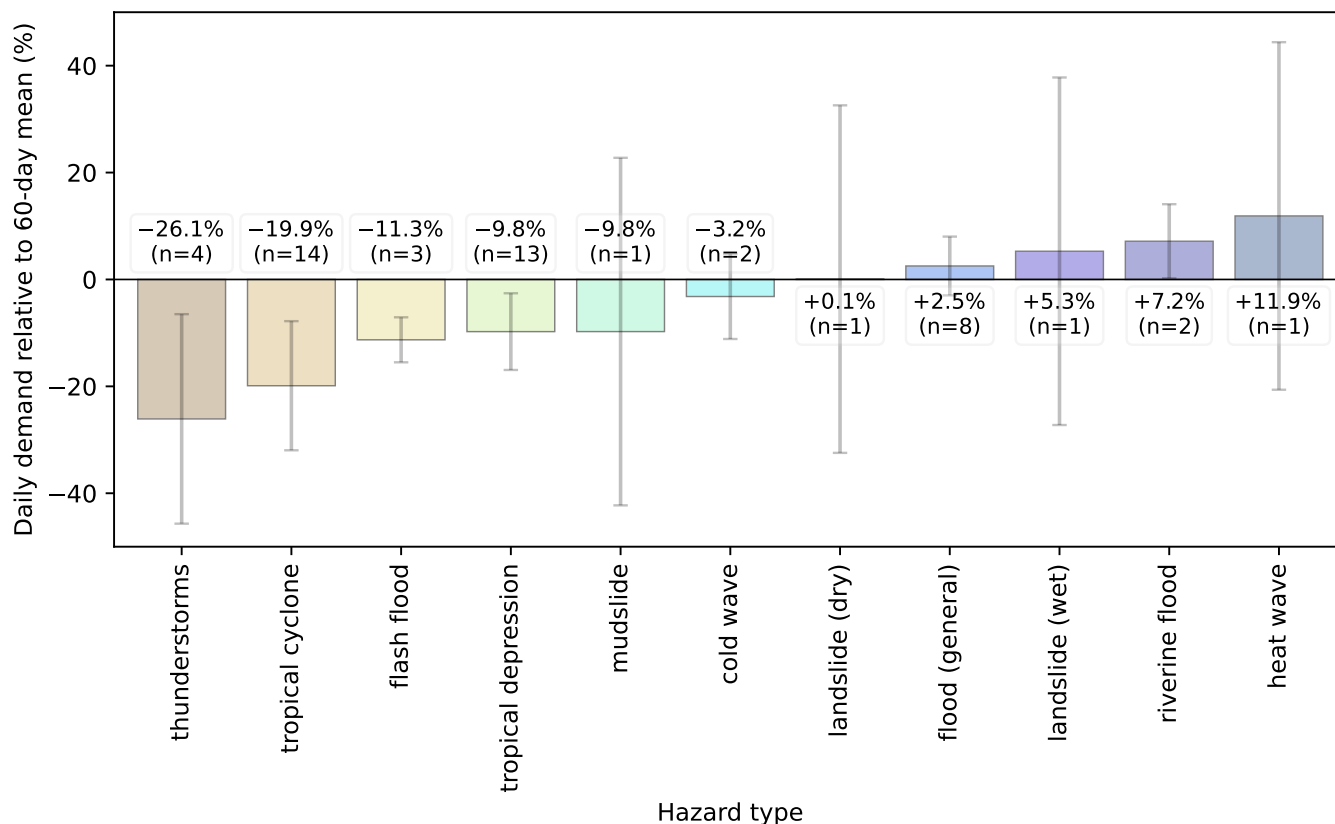


Figure 3. Mean day-0 change in Bangladesh national demand met relative to a centred 60-day running mean, stratified by hazard type (December 2015–May 2025). Bars show the average percentage change on the EM-DAT start date (or the cyclone landfall date for tropical cyclones/depressions), aligned to the nearest demand day within ± 1 day. Error bars denote 95% confidence intervals estimated using $\pm 1.96 \times$ standard error; for categories with $n = 1$ the standard error uses a pooled standard deviation from categories with $n \geq 2$. Sample sizes (n) are shown alongside each bar. Only natural hazards are shown; non-natural classes in EM-DAT are excluded (e.g., disease or transport). However, all hazard logged for Bangladesh in EM-DAT in this period are included, whether or not they coincided with anomalous demand. Negative values indicate reductions in supply.

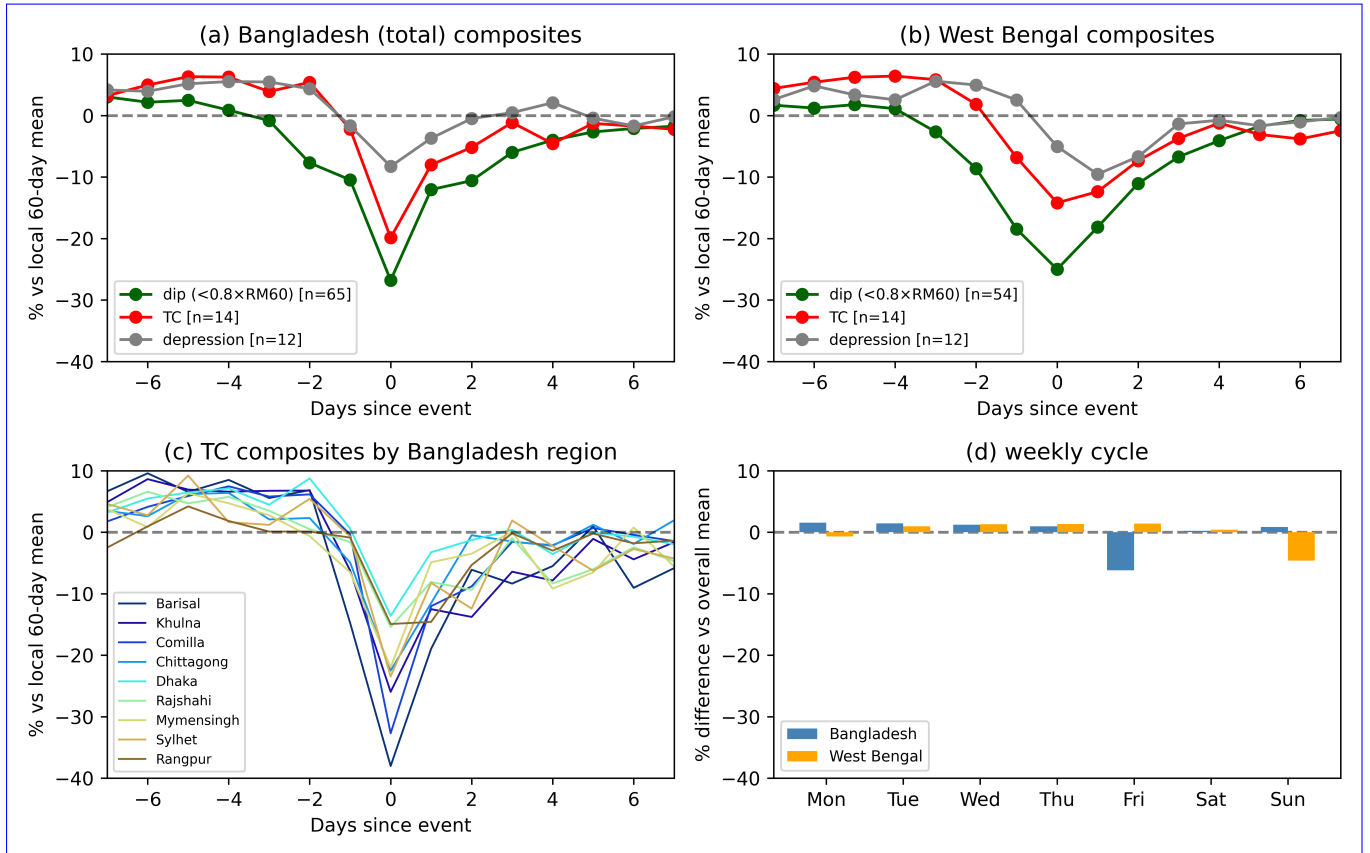


Figure 4. Composite impacts of extreme weather and the weekly cycle on demand met over Bangladesh and West Bengal. Changes in demand met, relative to a 60-day running mean, are averaged for landfalling TCs (red), landfalling depressions (grey), and demand ‘dips’ (green), and shown for (a) Bangladesh and (b) West Bengal. Dips are defined as days where demand met falls below 80% of the 60-day running mean, excluding days that fall into the TC or depression categories above. (c) the composite profile for the same TCs, separated by grid zone. (d) change in demand met relative to the mean, as a function of the day of week for Bangladesh (blue) and West Bengal (orange).

Cyclone	Landfall (date)	IMD category	Deaths	Damage (US\$ 1 million)	Max wind speed (knots)	Min pressure (hPa)	National dip (%, max)	National dip (date)	Zone dip (%, max)	Zone dip (zone)	Storm surge (m, max)
Roanu	21/05/2016	CS	28	600	60	978	-22.3	21/05/2016	-73.8	Comilla	6.40
Maarutha	17/04/2017	CS			50	985	-33.4	19/04/2017	-87.9	Comilla	2.52
Mora	29/05/2017	SCS	7		80	963	-3.3	31/05/2017	-34.5	Chittagong	4.69
Titli	11/10/2018	VSCS			105	944	-21.0	12/10/2018	-30.3	Sylhet	3.08
Fani	04/05/2019	ESCS	39		150	900	-31.8	03/05/2019	-78.4	Barisal	6.47
Bulbul	09/11/2019	VSCS	40	5.8	75	976	-33.0	10/11/2019	-97.1	Barisal	5.41
Amphan	20/05/2020	SCS	26	1500	145	901	-33.5	20/05/2020	-96.1	Barisal	9.51
Yaas	26/05/2021	VSCS	3		75	970	-3.3	26/05/2021	-41.6	Barisal	8.72
Jawad	06/12/2021	CS			40	1000	-8.0	06/12/2021	-14.8	Comilla	1.90
Sitrang	24/10/2022	CS	35		45	994	-53.3	24/10/2022	-91.4	Barisal	5.36
Mocha	14/05/2023	ESCS	3	1	145	908	-11.1	16/05/2023	-56.2	Khulna	7.10
Hamoon	24/10/2023	VSCS	3	250	90	970	-10.2	24/10/2023	-40.3	Chittagong	3.42
Midhili	17/11/2023	SCS			50	995	-37.9	17/11/2023	-89.6	Comilla	3.87
Remal	28/05/2024	SCS	16	90.7	60	977	-69.4	28/05/2024	-95.1	Mymensingh	7.06

Table 1. Summary of landfalling tropical cyclone impacts over Bangladesh (2016–2024). Landfall dates and IMD categories are from the IMD/RSMC catalogue. Deaths and damages (US\$ million) are from EM-DAT where available. Maximum wind speed and minimum central pressure are taken from IBTrACS best-track data. National and zonal electricity dips are the most negative percentage anomalies in demand met relative to a centred 60-day running-mean baseline, evaluated within ± 2 days of landfall. ‘Worst zone’ indicates the power-planning zone with the largest dip. Storm surge is taken as the maximum ERA5 significant wave height (combined wind waves and swell) within a coastal box (89–92°E, 20.5–23°N) in a -3 to $+5$ day window around landfall.

245 The prevalence and shape of dip-day composites are sensitive to how the background is removed. If the centred running-mean window is shortened from 60 to 10 days, the slow “spin-up” largely disappears and the number of dip events falls markedly, to 35 in Bangladesh and 19 in West Bengal. This sensitivity suggests that at least a subset of dip days reflects relatively long-lived processes that depress demand over longer (e.g., weekly) timescales, such as extended flooding, heat-driven demand suppression under widespread outages, or grid-internal constraints, rather than purely short, shock-like events.

250 Thus far, we have considered only demand met, ignoring load shedding. We now briefly discuss the impact of that choice. For cyclone landfall days, the average anomaly in demand met is -19.78% . This increases slightly to -19.48% if we add reported load shedding to obtain an upper-bound estimate of total demand (served + unserved). For depressions, it worsens slightly from $\sim 8.37\%$ to $\sim 8.94\%$. Framed slightly differently, the mean absolute dip in demand met on cyclone landfall days is about 2.22 GW; mean load shedding on the same days is 116 MW. Hereafter, all results will be reported as using demand met.

3.1.1 Cyclone impacts

255 Building on these composite statistics, we summarise key impacts metrics and the maximum national and zonal electricity shortfalls for each landfalling tropical cyclone in Table 1.

260 Across the 14 landfalling cyclones in Table 1, the magnitude of the national electricity deficit ('national dip') is strongly related to the severity of the worst-affected zone ('zone dip'): within ± 2 days of landfall, the maximum national dip is highly correlated with the corresponding maximum zonal dip ($r = 0.80$, $p < 0.001$). This suggests that national-scale shortfalls are not distributed evenly, but are driven by near-total collapse in the most exposed zone, preventing load balancing.

265 Correlations with human impacts are less robust, as these metrics are often missing from EM-DAT (10 of 14 cyclones have reported deaths; 6 of 14 have reported damage), but available reported deaths correlate more strongly with the worst-zone deficit ($r = -0.80$, $p = 0.006$, $n = 10$) than with the national deficit ($r = -0.56$, $p = 0.09$, $n = 10$), suggesting that mortality is more closely tied to localised, extreme disruption than to the national average. This provides evidence that mortality is driven by local infrastructure collapse and inability to access services, rather than broader national energy shortages.

Our storm-surge proxy is moderately correlated with cyclone intensity, increasing for lower minimum central pressures ($r = -0.55$, $p = 0.04$), but the apparent correlation between reported economic damage and surge is insignificant due to small sample size ($r = 0.64$, $p = 0.17$, $n = 6$). Having established the national-scale picture, we now examine how these impacts vary regionally.

270 3.2 Regional vulnerability and physical drivers

275 Finally, we look at the composite regional effect of TCs on the different zones of Bangladesh (Fig. 4)c). As we expect from our case study analysis earlier, coastal zones are much more severely impacted by TCs than inland zones: mean day 0 reductions reach -38% in Barisal, -33% in Comilla, and -26% in Khulna, compared with -15% in Rangpur, -15% in Rajshahi, and -13% in Dhaka. Dhaka is the least impacted zone in percentage terms, but it accounts for nearly 40% of national demand, so aggregating to the national scale inevitably downplays the severity of coastal impacts. By contrast, dip days show no systematic coastal-inland contrast (not shown), although the largest single-zone effect is again in Dhaka (-29%). There is no significant relationship between the timing of missing data and the occurrence (or lead/lag) of extreme weather.

3.2.1 Case studies

280 We now extract four cases from among these large dip events. These allow us to better examine, compare, and contrast the regional structure of their causes and impacts. These cases comprise two cyclones (Remal and Sitrang), which led to the largest relative reduction in ~~met-demand~~ demand met; the depression with the largest reduction in ~~met-demand~~ demand met (and landfalling deep depression in October 2017); and a major blackout (March 2019) that did not occur alongside any significant synoptic-scale circulation, but is logged in EM-DAT as a day in which an intense thunderstorm occurred.

285 We start by investigating the change in regional impacts on ~~met-demand~~ demand met across Bangladesh's nine power zones (Fig. 5). For Cyclone Remal, we are missing data from day -2 . However, on day -1 , we can already see a significant impact in coastal zones, with Barisal reporting a fall of 72% in demand met and Khulna reporting a fall of 35%. On the day of landfall itself (28 May), all zones reported a large deficit. Even the least affected – Chittagong – still had a demand met of less than ~~half~~ half of the rolling 60-day mean. After the dissipation of Remal, most zones recovered quickly, and within two days were returned

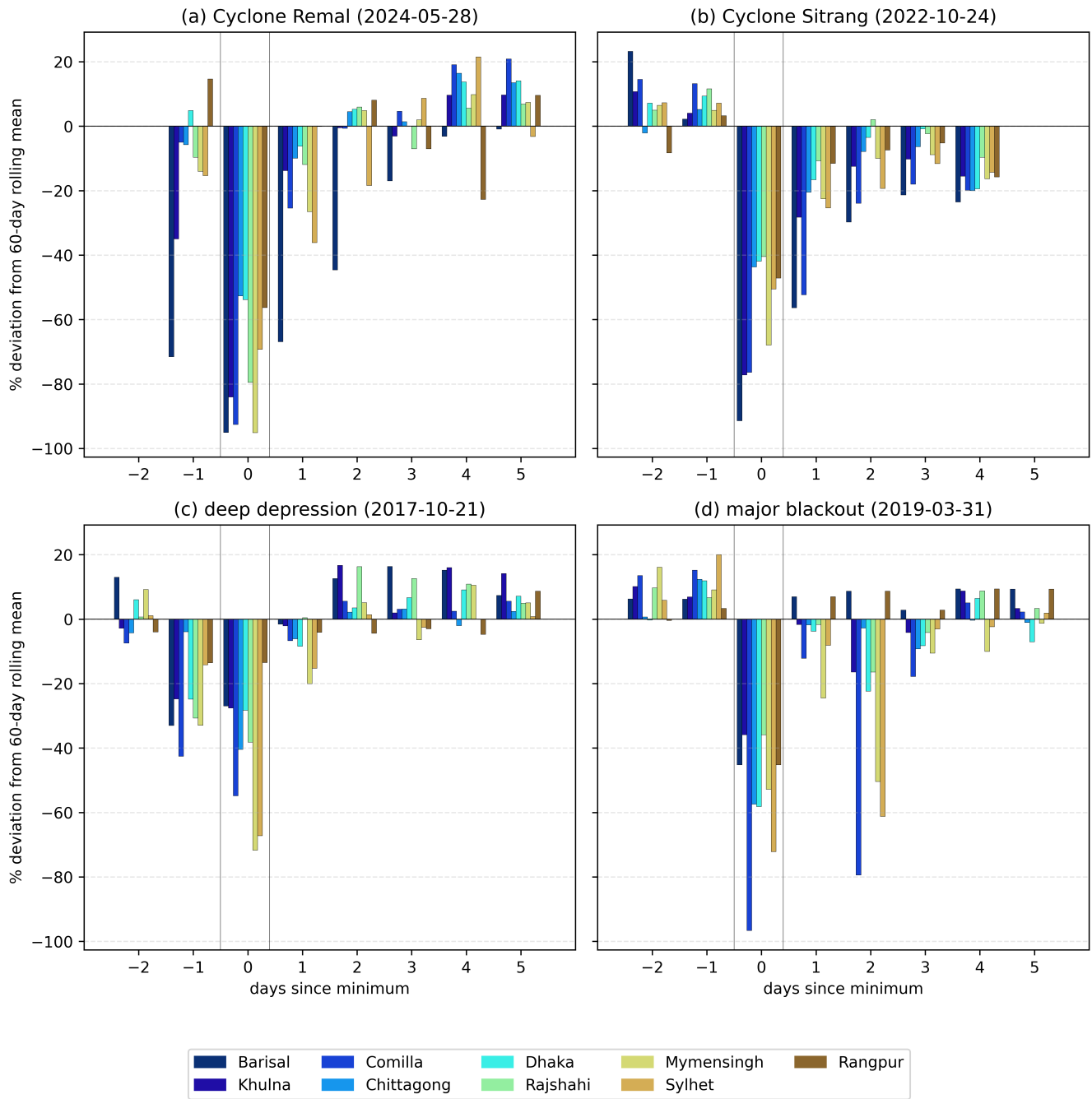


Figure 5. Relative change in $\text{met-energy-demand}_{\text{met}}$ for each of the nine grid zones in Bangladesh for four case studies: (a) Cyclone Remal, (b) Cyclone Sitrang, (c) a landfalling deep depression, and (d) a major blackout not related to a synoptic-scale weather pattern. In each case, the value given is the $\text{met-energy-demand}_{\text{met}}$ in each zone relative to a 60-day running mean. Day 0 is the local minimum for national met demand met (for each of the cyclone cases, this is also the landfall day), and we show the previous two days and the following five. Data were not available for day -2 of Cyclone Remal or day $+5$ of Cyclone Sitrang. Zones are ordered (blue to brown) approximately by their distance from the coastline, starting with the nearest, consistent with earlier figures.

to normal power. Barisal was the exception here, having been heavily damaged by Remal, even three days later (31 May), the demand met was still 17% less than the rolling mean.

The profile for Sitrang is quite different. This time there is no noticeable impact on day -1. As in Remal, on the landfall day itself (24 Oct) all zones reported a large deficit (from 40% in Rajshahi to 91% in Barisal). However, the recovery was considerably slower than for Remal, such that even four days later (28 Oct), all zones reported a deficit, with all but one reporting a deficit of more than 15%. Three of the coastal zones (Barisal, Khulna, Comilla) were disproportionately affected.

The impact of the worst deep depression (Fig. 5c, landfall on 21 Oct 2017) was considerably less than either of these tropical cyclones, and the recovery was thus quicker, with all zones returning to normal just two days after landfall. As we will see in the next section, depressions often produce heavy rain much further inland than tropical cyclones. This leads to the inland zones being more affected on day 0, and the coastal zones being more affected the day before. Despite the relatively weak synoptic signature of such depressions, they are still capable of significant disruption – Mymensingh and Sylhet reported deficits of 72% and 67% respectively on the day of landfall.

The major blackout (Fig. 5d, 31 March 2019) differs from the cyclones and depression in that on day 0, there was no significant regional pattern, with neither coastal nor inland states are more affected than the other. Recovery was almost immediate (into day 1), but then a second event hit the grid (which did not ~~coincide~~ coincide with any event in the EM-DAT catalogue) on day 2, again affecting a mix of coastal and inland states. This lack of specific regional impact suggests ~~we may be able to rule out a weather-based cause, which we will now investigate~~ a non-meteorological cause, supported by the lack of synoptic forcing, which will we show in the next section.

We now present the same four cases as synoptic weather charts on the day of maximum dip (Fig. 6). Synoptic-scale storms damage electricity infrastructure through three principal hazard pathways: (i) heavy precipitation and the ensuing pluvial and fluvial flooding; (ii) storm surge and associated coastal inundation; and (iii) destructive winds. In practice these hazards occur, making it difficult to cleanly attribute observed power-system impacts to any single component. Bangladesh's small geographic extent relative to the typical precipitation footprint of Bay of Bengal systems further complicates attribution since most events affect the majority of the country more or less simultaneously.

Nevertheless, the three case studies in Fig. 6 do allow a degree of contrast. Cyclone Remal (Fig. 6(a)) produced comparatively modest rainfall totals over Bangladesh – the heaviest precipitation fell over north-eastern India – but generated a large storm surge, with reports of water levels exceeding three metres along parts of the coast (The Business Standard, 2024). This is consistent with ERA5 significant wave heights exceeding 6 m adjacent to Bangladesh's coastline (Fig. 6(e)), and with widespread, surge- and wind-driven damage to coastal substations and distribution infrastructure. Cyclone Sitrang (Fig. 6(b)) had weaker winds and surge, yet produced substantially greater rainfall over Bangladesh than Remal. The deep depression (Fig. 6(c)) was weaker still in terms of winds and surge, but produced even heavier rain totals across the country. This behaviour is characteristic of monsoon depressions over the Indian subcontinent, which often propagate far inland under favourable environmental conditions and are a dominant source of extreme precipitation for much of India (Hunt and Fletcher, 2019; Thomas et al., 2021). Finally, synoptic charts for the March 2019 blackout (Fig. 6(d)) confirm that this was unlikely to have been caused by weather, despite thunderstorm reports on the day.

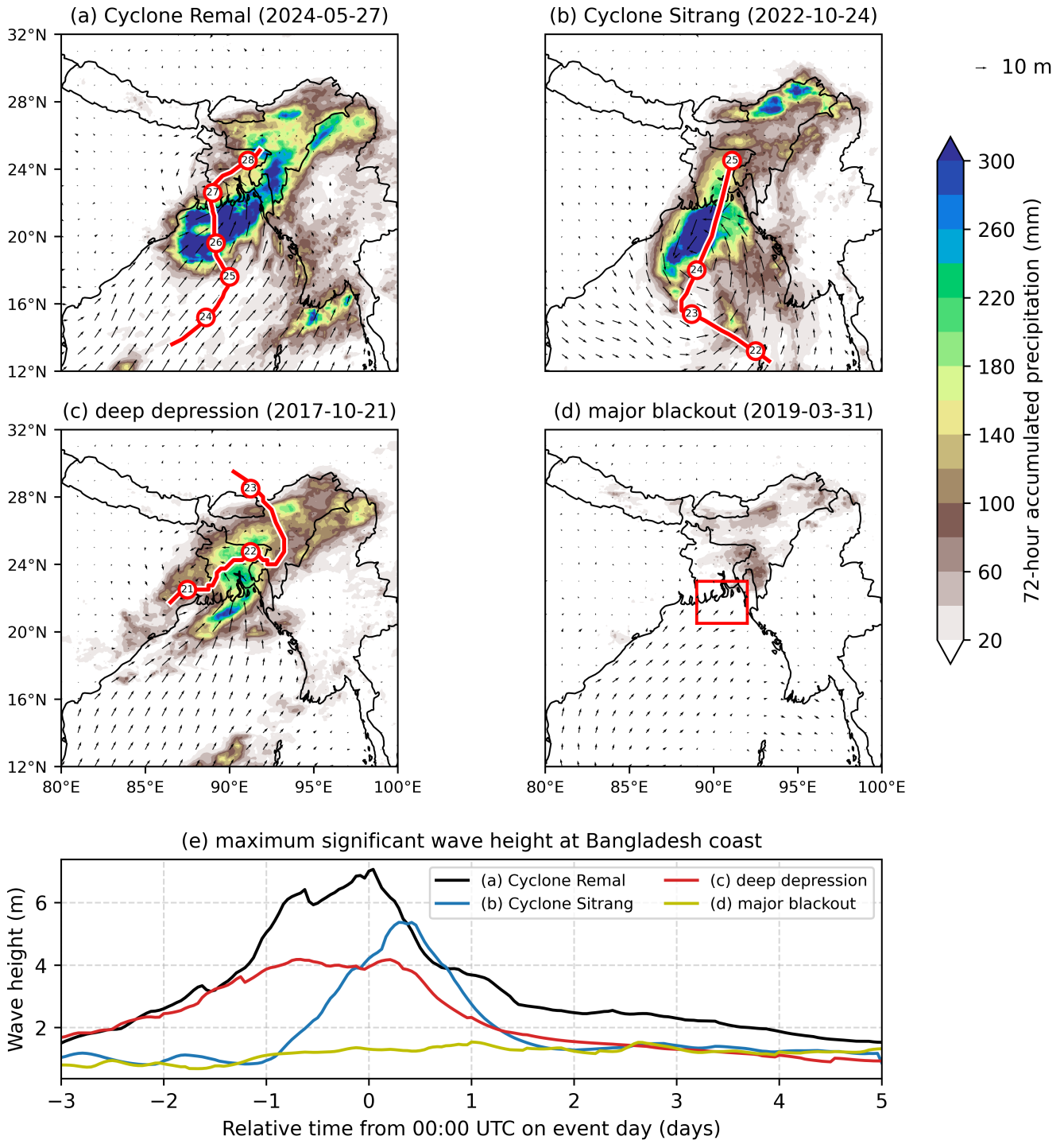


Figure 6. Composite weather maps, showing instantaneous 00UTC 10-m winds (vectors) and 72-hour precipitation (accumulated from 00UTC the day before to 00UTC two days later; filled contours) for four case studies: (a) Cyclone Remal, (b) Cyclone Sitrang, (c) a landfalling deep depression, and (d) a major blackout not related to weather. Tracks for the two cyclones and deep depression are given in red, with the location at each 00Z marked. (e) shows the maximum hourly ~~significant~~ significant wave height in ERA5, relative to the event day, in a box surrounding the Bangladeshi coast (89°–92°E, 20.5°–23.0°N; marked in red in (d)) as a proxy for storm surge strength.

Taken together, these events suggest a qualitative pattern. As precipitation increases and wind and surge severity decreases, the aggregate impact on the power system tends to be slightly smaller but still very large in absolute terms. All three pathways can produce substantial, system-wide losses on their own, and they frequently arrive in compound form. Therefore, any credible risk model for Bangladesh's national critical infrastructure must treat these hazards jointly.

3.3 Inter-regional complementarity

Composite impacts of extreme weather and the weekly cycle on met energy demand over Bangladesh and West Bengal. Changes in met energy demand, relative to a 60-day running mean, are averaged for landfalling TCs (red), landfalling depressions (grey), and demand 'dips' (green), and shown for (a) Bangladesh and (b) West Bengal. Dips are defined as days where met demand falls below 80% of the 60-day running mean, excluding days that fall into the TC or depression categories above. (c) the composite profile for the same TCs, separated by grid zone. (d) change in met energy demand relative to the mean, as a function of the day of week for Bangladesh (blue) and West Bengal (orange).

We now move to national-scale composite lead-lag time-series of met demand, conditioned on (i) landfalling TC days, (ii) landfalling depression days, and (iii) "dip" days, defined as dates on which national demand falls below 80% of the two-month centred running mean (Fig. 4).

For Bangladesh (Fig. 4a), TCs reduce met energy demand by 20% on landfall day, partially recovering to a -8% on day +1, and -5% on day +2. Depressions, similar in number over the period, have a weaker effect, reducing met energy demand by 8% on day 0, 4% on day +1, and just 1% by day +2. Of particular interest are the dip days. They are more numerous (by about a factor of 2.5) than TCs and depressions combined, and they exhibit the largest composite deficit: met demand falls by an average of -28% on day 0 and -12% on day +1.

These large composite dips are not predominantly due to weekly cycle effects as is sometimes seen for demand reductions in developed regions (e.g. (Drew et al., 2019); Fig. 4(d)). These are too weak, and Bangladesh's lowest demand day, Friday, which is when These regional disparities raise critical questions about Bangladesh's energy demand is at a minimum, is associated with only about a 6% reduction relative to the weekly mean. Nor can they be attributed to public holidays. Bangladesh had 66 recognised public holidays in this period, during which demand only fell by an average of 5.5%. In fact, none of the dip days in this record coincide with national holidays in Bangladesh. Holiday composites (not shown) indicate material reductions only in the two largest urban centres: Dhaka (-11%) and Chittagong (-8%) import strategy.

3.3 Cross-border interdependence

We see a similar pattern for West Bengal (Fig. 4b), noting that these composites are conditioned on Bangladesh landfalls. Therefore, the direct TC impact on West Bengal is weaker and temporally more drawn out (e.g., TCs reduce met demand demand met by only about 14% on day 0. For depressions, the day of maximum West Bengal impact tends to be day +1 relative to Bangladesh landfall, consistent with the tendency for these systems to propagate westward, especially during the monsoon (Boos et al., 2015). West Bengal experiences a comparable number of dip days to Bangladesh, and in both regions

their composite profiles are broader and build up over several days, in contrast to the sharper profile of TC- and depression-related dips.

360 ~~The prevalence and shape of dip-day composites are sensitive to how the background is removed. If the centred running-mean window is shortened from 60 to 10 days, the slow “spin-up” largely disappears and the number of dip events falls markedly, to 35 in Bangladesh and 19 in West Bengal. This sensitivity suggests that at least a subset of dip days reflects relatively long-lived processes that depress demand over longer (e.g., weekly) timescales, such as extended flooding, heat-driven demand suppression under widespread outages, or grid-internal constraints, rather than purely short, shock-like events.~~

365 ~~Finally, we look at the composite regional effect of TCs on the different zones of Bangladesh (Fig. 4c). As we expect from our case study analysis earlier, coastal zones are much more severely impacted by TCs than inland zones: mean day 0 reductions reach —38% in Barisal, —33% in Comilla, and —26% in Khulna, compared with —15% in Rangpur, —15% in Rajshahi, and —13% in Dhaka. Dhaka is the least impacted zone in percentage terms, but it accounts for nearly 40% of national demand, so aggregating to the national scale inevitably downplays the severity of coastal impacts. By contrast, dip days show no systematic coastal–inland contrast (not shown), although the largest single-zone effect is again in Dhaka (—29%). There is no significant relationship between the timing of missing data and the occurrence (or lead/lag) of extreme weather.~~

370 So, although West Bengal and Bangladesh are often co-affected by the same synoptic systems, their weekly demand cycles differ (Friday versus Sunday as the principal low-demand day), so when landfall coincides with one region’s weekly minimum, the joint cross-border impact can be modestly reduced.

3.3.1 Will the Bangladesh–West Bengal HV link help during shocks?

375 The new high-voltage exchange between Bangladesh (BD) and West Bengal (WB) is intended, in part, to provide resilience when production or transmission assets in Bangladesh are damaged. We therefore now ask: how often are Bangladesh’s deepest supply shortfalls not mirrored across the border, such that imports could possibly help?

380 As neighbouring regions, Bangladesh and West Bengal experience very similar weather, and consequently very similar seasonal demand profiles (Fig. 7(a)). This is bad for seasonal-scale complementarity: when one system’s demand is high (or low), so is the other’s, limiting arbitrage value. Extreme, short-lived events are more promising. A closer inspection of the joint distribution of daily ~~met demand~~ demand met (Fig. 7b) shows that large single- or few-day dips in one system are often not present in the other.

3.3.2 West Bengal-only deep dips are rare and cyclone-driven.

385 There are really only two clear episodes with very low West Bengal demand that are not matched by similarly low Bangladesh demand. The first is Cyclone Amphan (20–22 May 2020), where landfall over West Bengal led to much larger West Bengal impacts than in Bangladesh. The second is Cyclone Yaas (26–27 May 2021), where landfall over Odisha, close to West Bengal, produced a stronger West Bengal response; the system subsequently weakened before significantly affecting Bangladesh.

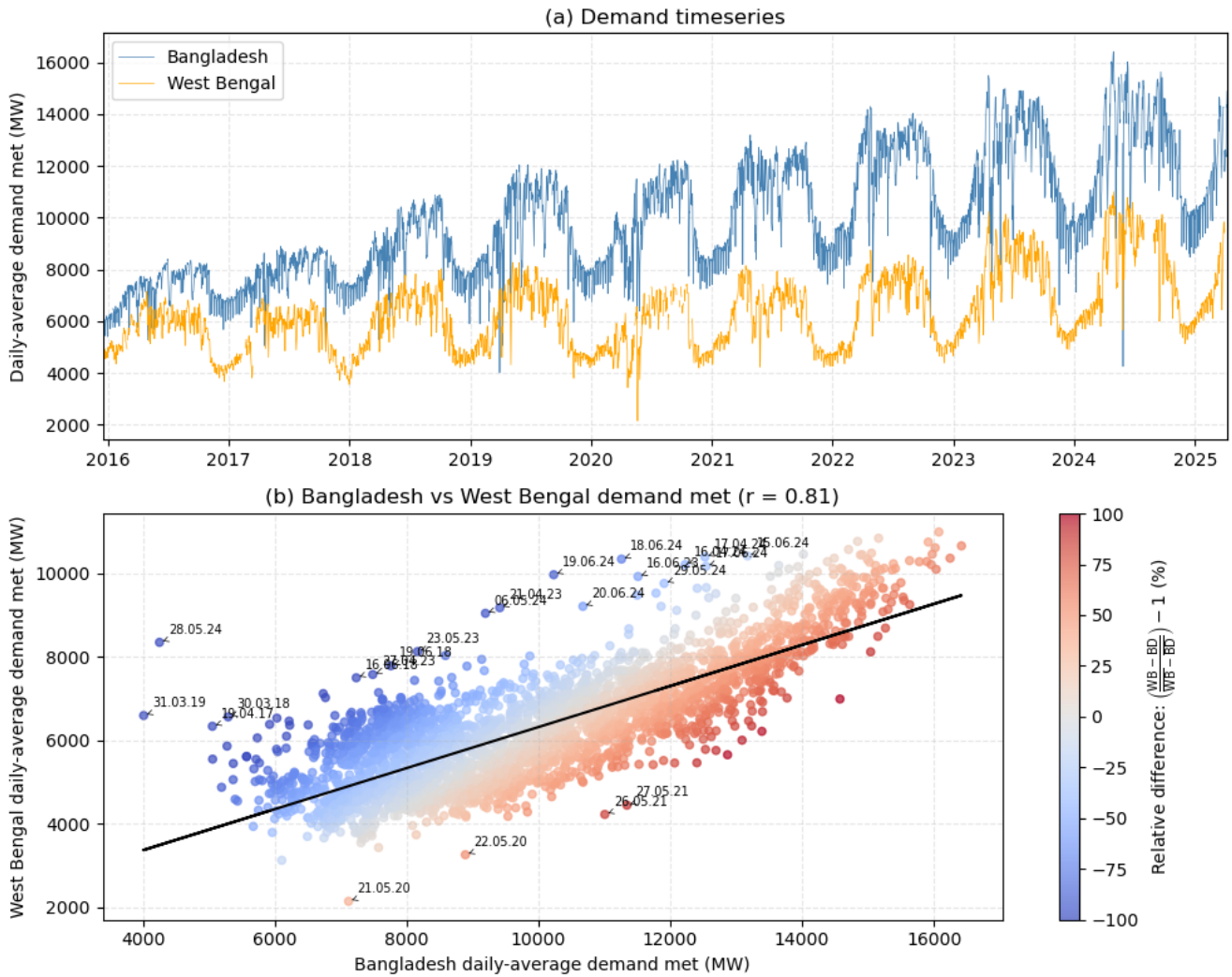


Figure 7. Comparison of daily demand met (MW) in Bangladesh and West Bengal from 2016 to the present. (a) timeseries of daily demand met. (b) a scatter plot showing West Bengal demand met against Bangladesh demand met for each day in the timeseries. Outlier days are marked, with outliers defined as days where the scatter point is at least three standard deviations away from the line of best fit, or days where the sum of both Bangladesh and West Bengal demand met is in the bottom 0.1%.

3.3.3 Bangladesh-only dips are far more common.

In contrast, there are many cases where Bangladesh ~~met-demand~~demand met is markedly reduced while West Bengal is comparatively unaffected. Firstly, pre-monsoon thunderstorm activity in Bangladesh (16 June 2018, 19 June 2018, 6 May 2024, 23
390 May 2023), with or without an accompanying synoptic low, depressed Bangladesh ~~met-demand~~demand met disproportionately. Secondly, thunderstorms over Bangladesh associated with the monsoon onset (15–20 June 2024) – during which West Bengal demand remained high, consistent with pre-monsoon heat stress there. Thirdly, there are cases with no obvious synoptic-scale driver (16–17 April 2024, 21 April 2023, 27 April 2023), where Bangladesh demand stayed high in absolute terms, suggesting temperature differences or local operational issues rather than damage.

395 There are also more extreme Bangladesh-only cases where weather clearly dominated, namely Cyclone Maarutha (19 April 2017), Cyclone Biparjoy (16 June 2023), and Cyclone Remal (28–29 May 2024); and several that were likely not weather-related (30 March 2018 and 31 March 2019).

3.3.4 Both systems low: mostly seasonal minima, not damage.

Days on which both regions reported very low ~~met-demand~~demand met occur during seasonal troughs, possibly linked to public
400 holidays: 25 December 2015, 1 January 2016, and 16 December 2019 all occurred during the climatologically coolest period of the year and are not associated with strong synoptic forcing. The notable weather-driven exception was on 10 November 2019 (Cyclone Bulbul), when both Bangladesh and West Bengal were simultaneously stressed.

~~Using almost a decade of daily, zone-resolved metered demand data, we have shown that landfalling tropical cyclones systematically and severely depress Bangladesh's electricity supply. On the day of landfall, national~~We now quantify correlated
405 stress across the border. As before, we define 'dip' days as those when demand met falls by an average of ~20%, with coastal zones bearing the brunt (mean deficits up to 38%). The most extreme event in our record, Cyclone Remal (28 May 2024), reduced national demand met to 4253 MW—a 67% drop relative to the previous day and 71% relative to two days prior. Landfalling depressions are less destructive in aggregate, but still material: they reduce national demand met by about 8% on average on the day below 80% of a centred 60-day running mean. From 2015—2025 (a total of 3393 days), Bangladesh
410 experienced 82 dip days and West Bengal experienced 46. Only 9 days (0.27% of all days; 11% of Bangladesh dips) are synchronised (occurring on the same day) and 16 out of 82 (19.5%) Bangladesh dips coincided with a West Bengal dip within ±1 day. During synchronised dips, the mean deficits are large in both systems (Bangladesh averaging 3.1 GW; West Bengal averaging 1.9 GW). While synchronised dips are rare (0.27% of landfall. We also identified a large class of short, sharp “dip” days unrelated to TCs or depressions that produce even larger composite deficits (28% on day 0). These dip days are too
415 frequent and too deep to be explained by the weekly cycle (Bangladesh's Friday minimum is only all days), they are strongly associated with major cyclones, with 5 out of 9 occurring within ±1 day of a Bangladesh landfalling cyclone. In other words, synchronicity is conditionally high during exactly those events where cross-border import is most needed. Conditional on a Bangladesh deep dip occurring within ±1 day of cyclone landfall, the probability of a same-day West Bengal deep dip rises to

~6% below the weekly mean) or public holidays (average 45%, compared with ~5.5% reduction), implying a mixture of other weather hazards, prolonged flood-driven constraints, operational curtailment, and grid-internal issues.

Case studies of Remal and Sitrang demonstrate that distinct hazard pathways — wind and surge for Remal; widespread heavy rain for Sitrang and the deep depression — can each, independently, generate system-wide losses. Recovery dynamics differ between events: following Remal, most zones recovered to within 5–10% of normal within two days, whereas after Sitrang, substantial deficits persisted four days later. Inland zones are consistently less affected in percentage terms, but Dhaka alone accounts for nearly 40% of national demand; aggregating to the national scale therefore masks the disproportionate coastal burden and the operational challenge of restoring service to smaller, more exposed systems 6% for Bangladesh deep dips not occurring with a day of cyclone landfall. No synchronised dips coincided with depression landfalls.

4 Discussion

4.1 What we learned

- Coastal zones bear the brunt
- Multiple hazard pathways
- Cross-border limits during extremes

4.2 What this means for policy

A key practical question is whether Bangladesh's 2.5 GW of interconnection capacity with India, principally via West Bengal, offers reliable insurance during these shock high-impact events. Our analysis shows that while the links can and do provide value during many non-extreme conditions, the largest TC-induced shortfalls in Bangladesh often coincide with substantial impacts in West Bengal, because both grids are exposed to the same basin-scale hazards. Bangladesh-only deep dips are far more common than West Bengal-only dips, suggesting that, in practice, the direction of needed support will more often be from India to Bangladesh. However, precisely during the tail events when that support is most valuable (e.g., Remal-like or Bulbul-like storms), correlated stress on both systems can sharply limit the availability of imports. In other words, the diversification benefit of the existing cross-border capacity is real but bounded: it improves resilience to moderate, localised, or operational shocks, but cannot be relied upon as the primary hedge against the most damaging cyclones.

~~The main limitation of this study is that we work with daily totals of met demand, which conflate physical damage, deliberate load shedding, and demand suppression (e.g., due to evacuation). Finer temporal resolution (e.g., hourly dispatch) or local-level outage logs would allow a cleaner attribution of mechanisms and recovery trajectories. Our hazard characterisation is approximate.~~

Climate change will increase the frequency and severity of the climate hazards discussed previously (Knutson et al., 2020; Emanuel, 2021) with storm-surges being exacerbated in this shallow continental shelf region by rising sea levels (Rahman et al., 2019) and an increased likelihood of compound coastal flooding (Bevacqua et al., 2020). Similarly large changes in

450 exposure, mainly driven by increasing population combined with changes hazards will further exacerbate risk (Mitchell et al., 2022). Many infrastructure risk assessment tools are currently unable to take into account impacts of climate change as well as changes to exposure and vulnerability, and this work highlights the importance of understanding all three components within this formula for risks, as well as their associated uncertainty. Our results thus carry policy relevance, which we summarise in Table 2. For example, in Tier 4, one solution is resilience through decentralisation. A real-world example of this is Bhasan Char,
455 a low-lying offshore island settlement in the Meghna estuary. As part of the island's development, solar power systems were planned and installed to provide 24-hour electricity, alongside elevated housing and cyclone shelters (Dhaka Tribune, 2019).

4.3 Limitations and future directions

The main limitation of this study is that we work with daily totals of demand met, which conflate physical damage, deliberate load shedding, and demand suppression (e.g., due to evacuation). Finer temporal resolution (e.g., hourly dispatch) or local-level
460 outage logs would allow a cleaner attribution of mechanisms and recovery trajectories. Our hazard characterisation is approximate (e.g., surge inference from significant wave height; coarse-resolution winds), the OpenStreetMap infrastructure layers are incomplete, and the analysis period (2015–2025) is short relative to low-frequency variability, all of which introduce uncertainty. These limitations also hinder our ability to diagnose compound and temporally compounding processes with confidence.

Future work could consider (i) using higher-frequency operational data and satellite night-time lights to distinguish physical
465 damage from curtailment or demand suppression; (ii) building multi-hazard risk models that convert meteorological fields into expected demand shortfalls; (iii) test temporal compounding by conditioning impacts on antecedent rainfall, soil moisture, or recent infrastructure faults/repairs, and by constructing storyline sequences (e.g., depressions followed by TCs, or TCs followed by heatwaves, that may result in increased air conditioning demand (Feng et al., 2022)); (iv) stress-test the grid with a national dispatch/network model (e.g., stochastically as in Boyle et al. (2022) or through optimisation modelling as in Bennett et al.
470 (2021b)) under contrasting climate storylines and sea-level rise; and (v) disentangling the causes of non-meteorological dip days.

~~In summary,~~

4.4 Broader implications

Our key result is that Bangladesh's power system is already experiencing cyclone-driven ~~, double-digit percentage supply~~
475 ~~shocks, and the heaviest burdens fall on its coastal zones. Cross-border links help, but cannot fully insure the system against basin-wide extremes. Building a climate-resilient electricity sector in Bangladesh will therefore demand a portfolio of measures that reduces exposure, hardens the most vulnerable nodes, decentralises critical supply, and plans explicitly for temporally compounding, and correlated hazards on both sides of the borders~~ supply shocks large enough to measurably undermine short-term electricity security, and that such events disproportionately impact coastal zones while also limiting
480 the utility of cross-border imports through correlated regional hazards. This means that continued expansion of capacity is necessary but not sufficient. Instead, ensuring that electricity is reliably delivered during extremes must be the highest priority.

This relates to both SDG 7 (Affordable and Clean Energy) and SDG 13 (Climate Action). SDG 7 is typically discussed in terms of expanding access and adequacy, but here we demonstrate the importance of the reliability of modern energy services during disasters, since large, multi-day supply shortfalls can disrupt health care, water supply, communications, education, and livelihoods even in places that nominally have grid access. SDG 13 focuses on adaptation and resilience. Cyclone-driven electricity disruptions of the magnitude we document here are clearly an immediate adaptation challenge for the energy sector. Resilience is a requirement for maintaining essential services during climate-related hazards and for preventing repeated disaster-driven setbacks.

5 Conclusions

Using almost a decade of daily, zone-resolved metered demand data, we have shown that landfalling tropical cyclones systematically and severely depress Bangladesh's demand met. On the day of landfall, national demand met falls by an average of ~20%, with coastal zones bearing the brunt (mean deficits up to 38%). The most extreme event in our record, Cyclone Remal (28 May 2024), reduced national demand met to 4253 MW—a 67% drop relative to the previous day and 71% relative to two days prior. Landfalling depressions are less destructive in aggregate, but still material: they reduce national demand met by about 8% on average on the day of landfall. We also identified a large class of short, sharp “dip” days unrelated to TCs or depressions that produce even larger composite deficits (28% on day 0). These dip days are too frequent and too deep to be explained by the weekly cycle (Bangladesh's Friday minimum is only ~6% below the weekly mean) or public holidays (average ~5.5% reduction), implying a mixture of other weather hazards, prolonged flood-driven constraints, operational curtailment, and grid-internal issues.

Case studies of Remal and Sitrang demonstrate that distinct hazard pathways – wind and surge for Remal; widespread heavy rain for Sitrang and the deep depression – can each, independently, generate system-wide losses. Recovery dynamics differ between events: following Remal, most zones recovered to within 5–10% of normal within two days, whereas after Sitrang, substantial deficits persisted four days later. Inland zones are consistently less affected in percentage terms, but Dhaka alone accounts for nearly 40% of national demand; aggregating to the national scale therefore masks the disproportionate coastal burden and the operational challenge of restoring service to smaller, more exposed systems.

In summary, Bangladesh's electricity system faces a clear and present danger: tropical cyclones already routinely reduce demand met by 20–70%, with coastal zones suffering near-total collapse during major events. As climate change continues to intensify these storms, and as the grid continues to expand rapidly into exposed areas, the window for adaptation is narrowing. Building resilience requires targeted hardening of coastal infrastructure, decentralised backup for critical services, and explicit planning for the fact that cross-border imports cannot insure against basin-wide extremes. The choice is thus not whether to adapt the power system to cyclone risk, but how quickly and how comprehensively to do so.

Data availability.

The ERA5 data used in this study can be freely downloaded from <https://doi.org/10.24381/cds.adbb2d47>. Similarly, the IMERG data used can be freely downloaded from https://disc.gsfc.nasa.gov/datasets/GPM_3IMERGHH_07/summary?keywords=%22IMERG%20final%22. Views of the EM-DAT database can be freely downloaded from <https://public.emdat.be/>. Demand data for Bangladesh at the zone level were scraped from daily data archived by the Bangladesh Power Development Board (<https://misc.bpdb.gov.bd/area-wise-demand>). Note for reviewers: we are releasing this demand dataset as part of a larger package in the next few months. In the meantime, the complete demand data used in this study are available here: https://gws-access.jasmin.ac.uk/public/wcssp_india/kieran/bangladesh-electricity-demand.csv.

520 *Author contributions.* KH conceived the study and conducted the analysis, while receiving feedback from HB. KH and HB then co-wrote the manuscript.

Competing interests. The authors declare they have no competing interests.

Acknowledgements. KMRH is supported by a NERC Independent Research Fellowship (MITRE; NE/W007924/1). HCB is funded by a Newcastle University Academic Track Fellowship.

525 **References**

- Adshead, D., Paszkowski, A., Gall, S. S., Peard, A. M., Adnan, M. S. G., Verschuur, J., and Hall, J. W.: Climate threats to coastal infrastructure and sustainable development outcomes, *Nature Climate Change*, <https://doi.org/10.1038/s41558-024-01950-2>, 2024.
- Ahmed, T., Hong, S.-H., Jin, H.-G., Lee, J., and Baik, J.-J.: Evaluation of IMERG data in Bangladesh and surrounding regions and their application to studying diurnal variation of precipitation, *Theoretical and Applied Climatology*, 146, 395–410, 2021.
- 530 Alam, E.: Factors of cyclone disaster deaths in coastal Bangladesh, *Heliyon*, 9, e18 417, <https://doi.org/10.1016/j.heliyon.2023.e18417>, 2023.
- Baburaj, P. P., Abhilash, S., Mohankumar, K., and Sahai, A. K.: On the epochal variability in the frequency of cyclones during the pre-onset and onset phases of the monsoon over the North Indian Ocean, *Advances in Atmospheric Sciences*, 37, 634–651, 2020.
- Balaji, M., Chakraborty, A., and Mandal, M.: Changes in tropical cyclone activity in north Indian Ocean during satellite era (1981–2014), *International Journal of Climatology*, 38, 2819–2837, 2018.
- 535 Bangladesh Ministry of Food and Disaster Management: Cyclone Disaster Vulnerability and Response Experiences in Coastal Bangladesh, https://www.preventionweb.net/files/9470_cyclonebangladesh.pdf, accessed: 16 May 2025, 2008.
- Bangladesh Power Development Board: Annual Report 2022–2023, https://bpd.gov.bd/sites/default/files/files/bpd.gov.bd/page/771c9a89_a06c_4c2f_9b8c_699d17ed769a/2024-01-03-06-02-dda85c69e3462d6de89b6486edd08779.pdf, accessed: 16 May 2025, 2023.
- 540 Bangladesh Power Development Board: Daily Generation Report – 14 May 2025, <https://misc.bpd.gov.bd/daily-generation?date=14-05-2025>, accessed: 16 May 2025, 2025.
- Belmonte Rivas, M. and Stoffelen, A.: Characterizing ERA-Interim and ERA5 surface wind biases using ASCAT, *Ocean Science*, 15, 831–852, 2019.
- Bennett, J. A., Trevisan, C. N., DeCarolis, J. F., Ortiz-García, C., Pérez-Lugo, M., Etienne, B. T., and Clarens, A. F.: Extending energy system
545 modelling to include extreme weather risks and application to hurricane events in Puerto Rico, *Nature Energy*, 6, 240–249, 2021a.
- Bennett, J. A., Trevisan, C. N., DeCarolis, J. F., Ortiz-García, C., Pérez-Lugo, M., Etienne, B. T., and Clarens, A. F.: Extending energy system modelling to include extreme weather risks and application to hurricane events in Puerto Rico, *Nature Energy*, 6, 240–249, 2021b.
- Bern, C., Sniezek, J., Mathbor, G. M., Siddiqi, M. S., Ronsmans, C., Chowdhury, A. M. R., Choudhury, A. E., Islam, K., Bennis, M., Noji, E., et al.: Risk factors for mortality in the Bangladesh cyclone of 1991, *Bulletin of the World Health Organization*, 71, 73–78, 1993.
- 550 Bernard, A., Long, N., Becker, M., Khan, J., and Fanchette, S.: Bangladesh’s vulnerability to cyclonic coastal flooding, *Natural Hazards and Earth System Sciences*, 22, 729–751, <https://doi.org/10.5194/nhess-22-729-2022>, 2022.
- Bevacqua, E., Vousdoukas, M. I., Zappa, G., Hodges, K., Shepherd, T. G., Maraun, D., Mentaschi, L., and Feyen, L.: More meteorological events that drive compound coastal flooding are projected under climate change, *Communications earth & environment*, 1, 47, 2020.
- Boos, W. R., Hurley, J. V., and Murthy, V. S.: Adiabatic westward drift of Indian monsoon depressions, *Quart. J. Roy. Meteorol. Soc.*, 141,
555 1035–1048, <https://doi.org/10.1002/qj.2454>, 2015.
- Boyle, E., Inanlouganji, A., Carvalhaes, T., Jevtić, P., Pedrielli, G., and Reddy, T. A.: Social vulnerability and power loss mitigation: A case study of Puerto Rico, *International Journal of Disaster Risk Reduction*, 82, 103 357, 2022.
- Central Electricity Regulatory Commission: Central Electricity Regulatory Commission (Indian Electricity Grid Code) Regulations, 2023, <https://cercind.gov.in/Regulations/180-Regulations.pdf>, regulations specifying day-ahead and intraday scheduling, and TTC/ATC assessment and revision, incl. natural-disaster assessments by NLDC/RLDC/SLDC, 2023.
- 560

- Chiu, S. and Small, C.: Observations of cyclone-induced storm surge in coastal Bangladesh, *Journal of Coastal Research*, 32, 1149–1161, 2016.
- Delforge, D., Wathelet, V., Below, R., Sofia, C. L., Tonnelier, M., van Loenhout, J. A., and Speybroeck, N.: EM-DAT: the emergency events database, *International Journal of Disaster Risk Reduction*, p. 105509, 2025.
- 565 Dhaka Tribune: Inside the Bhashan Char plan for Rohingyas, Dhaka Tribune (published 29 January 2019), <https://www.dhakatribune.com/bangladesh/rohingya-crisis/167340/inside-the-bhashan-char-plan-for-rohingyas>, accessed 20 January 2026, 2019.
- Drew, D. R., Coker, P. J., Bloomfield, H. C., Brayshaw, D. J., Barlow, J. F., and Richards, A.: Sunny windy sundays, *Renewable Energy*, 138, 870–875, 2019.
- Emanuel, K.: Tropical cyclone risk in Bangladesh, *Mausam*, 72, 27–34, 2021.
- 570 Feng, K., Ouyang, M., and Lin, N.: Tropical cyclone-blackout-heatwave compound hazard resilience in a changing climate, *Nature communications*, 13, 4421, 2022.
- Grochowicz, A., Van Greevenbroek, K., and Bloomfield, H. C.: Using power system modelling outputs to identify weather-induced extreme events in highly renewable systems, *Environmental Research Letters*, 19, 054038, 2024.
- Haque, U., Hashizume, M., Kolivras, K. N., Overgaard, H. J., Das, B., and Yamamoto, T.: Reduced death rates from cyclones in Bangladesh: what more needs to be done?, *Bulletin of the World Health Organization*, 90, 150–156, <https://doi.org/10.2471/BLT.11.088302>, 2012.
- 575 Hersbach, H., Bell, B., Berrisford, P., Hirahara, S., Horányi, A., Muñoz-Sabater, J., Nicolas, J., Peubey, C., Radu, R., Schepers, D., et al.: The ERA5 global reanalysis, *Quarterly Journal of the Royal Meteorological Society*, 146, 1999–2049, 2020.
- Hossain, M. N.: Analysis of human vulnerability to cyclones and storm surges based on influencing physical and socioeconomic factors: evidences from coastal Bangladesh, *International journal of disaster risk reduction*, 13, 66–75, 2015.
- 580 Hou, A. Y., Kakar, R. K., Neeck, S., Azarbarzin, A. A., Kummerow, C. D., Kojima, M., Oki, R., Nakamura, K., and Iguchi, T.: The global precipitation measurement mission, *Bulletin of the American Meteorological Society*, 95, 701–722, 2014.
- Huffman, G. J., Bolvin, D. T., Nelkin, E. J., et al.: Integrated Multi-satellitE Retrievals for GPM (IMERG) technical documentation, NASA/GSFC Code, 612, 2019, 2015.
- Hunt, K. M. R. and Bloomfield, H. C.: Building and explaining data-driven energy demand models for Indian states, *Environmental Research: Energy*, 2, <https://doi.org/10.1088/2753-3751/adc7bc>, 2025.
- 585 Hunt, K. M. R. and Fletcher, J. K.: The relationship between Indian monsoon rainfall and low-pressure systems, *Climate Dynamics*, 53, 1–13, 2019.
- India Meteorological Department: Disastrous Weather Events 2020, Tech. rep., Climate Research & Services, India Meteorological Department, Pune, <https://www.imdpune.gov.in/library/public/DWE-2020.pdf>, 2024.
- 590 International Energy Agency: Glossary: Energy security, IEA website, <https://www.iea.org/glossary>, accessed 14 January 2026.
- International Energy Agency: Climate Resilience for Energy Security in Southeast Asia, 2024.
- International Energy Agency: Bangladesh – Energy Mix, <https://www.iea.org/countries/bangladesh/energy-mix>, accessed: 16 May 2025, 2025.
- Islam, T. and Peterson, R. E.: Climatology of landfalling tropical cyclones in Bangladesh 1877–2003, *Natural Hazards*, 48, 115–135, 2009.
- 595 Karim, M. F. and Mimura, N.: Impacts of climate change and sea-level rise on cyclonic storm surge floods in Bangladesh, *Global environmental change*, 18, 490–500, 2008.
- Kelman, I., Ahmed, B., Esraz-Ul-Zannat, M., Saroar, M. M., Fordham, M., and Shamsudduha, M.: Warning systems as social processes for Bangladesh cyclones, *Disaster Prevention and Management*, 27, 370–379, <https://doi.org/10.1108/DPM-12-2017-0318>, 2018.

- 600 Knutson, T., Camargo, S. J., Chan, J. C. L., Emanuel, K., Ho, C.-H., Kossin, J., Mohapatra, M., Satoh, M., Sugi, M., Walsh, K., et al.: Tropical cyclones and climate change assessment: Part II: Projected response to anthropogenic warming, *Bulletin of the American Meteorological Society*, 101, E303–E322, 2020.
- Kozu, T., Kawanishi, T., Kuroiwa, H., Kojima, M., Oikawa, K., Kumagai, H., Okamoto, K., Okumura, M., Nakatsuka, H., and Nishikawa, K.: Development of precipitation radar onboard the Tropical Rainfall Measuring Mission (TRMM) satellite, *IEEE transactions on geoscience and remote sensing*, 39, 102–116, <https://doi.org/10.1109/36.898669>, 2001.
- 605 Kummerow, C., Barnes, W., Kozu, T., Shiue, J., and Simpson, J.: The Tropical Rainfall Measuring Mission (TRMM) Sensor Package, *J. Atmos. Ocean. Technol.*, 15, 809–817, [https://doi.org/10.1175/1520-0426\(1998\)015<0809:TTRMMT>2.0.CO;2](https://doi.org/10.1175/1520-0426(1998)015<0809:TTRMMT>2.0.CO;2), 1998.
- Kummerow, C., Simpson, J., Thiele, O., Barnes, W., Chang, A. T. C., Stocker, E., Adler, R. F., Hou, A., Kakar, R., Wentz, F., et al.: The status of the Tropical Rainfall Measuring Mission (TRMM) after two years in orbit, *J. Appl. Meteorol.*, 39, 1965–1982, [https://doi.org/10.1175/1520-0450\(2001\)040<1965:TSOTTR>2.0.CO;2](https://doi.org/10.1175/1520-0450(2001)040<1965:TSOTTR>2.0.CO;2), 2000.
- 610 Ministry of Power, Government of India: Guidelines for Import/Export (Cross Border) of Electricity – 2018, <https://powermin.gov.in/en/content/guidelines-importexport-cross-border-electricity-2018>, issued 18 December 2018; accessed 14 January 2026, 2018.
- Mitchell, D., Hawker, L., Savage, J., Bingham, R., Lord, N. S., Khan, M. J. U., Bates, P., Durand, F., Hassan, A., Huq, S., et al.: Increased population exposure to Amphan-scale cyclones under future climates, *Climate resilience and sustainability*, 1, e36, 2022.
- Mo, Y., Thomas, F., Rui, J., and Hall, J.: Daily night-time lights reveal prolonging global electric power system recovery times following tropical cyclone damage, *Environmental Research: Infrastructure and Sustainability*, 2025.
- 615 Needs Assessment Working Group (NAWG) and Humanitarian Coordination Task Team (HCTT): Bangladesh: Cyclone Amphan Joint Needs Assessment, https://fcluster.org/sites/default/files/documents/cyclone_amphan_joint_needs_assessment_final_draft_31_may.pdf, 2020.
- OpenStreetMap contributors: Planet dump retrieved from <https://planet.osm.org> , <https://www.openstreetmap.org>, 2017.
- Paul, B. K.: Why relatively fewer people died? The case of Bangladesh’s Cyclone Sidr, *Natural Hazards*, 50, 289–304, <https://doi.org/10.1007/s11069-008-9340-5>, 2009.
- 620 Power Division, Government of Bangladesh: Integrated Energy and Power Master Plan (IEPMP) 2023, https://powerdivision.portal.gov.bd/sites/default/files/files/powerdivision.portal.gov.bd/npfblock/IEPMP_Report_2023.pdf, accessed 14 January 2026, 2023.
- Rahman, S., Islam, A. S., Saha, P., Tazkia, A. R., Krien, Y., Durand, F., Testut, L., Islam, G. T., and Bala, S. K.: Projected changes of inundation of cyclonic storms in the Ganges–Brahmaputra–Meghna delta of Bangladesh due to SLR by 2100, *Journal of Earth System Science*, 128, 145, 2019.
- 625 Roberts, M. J., Camp, J., Seddon, J., Vidale, P. L., Hodges, K., Vanni ere, B., Mecking, J., Haarsma, R., Bellucci, A., Scoccimarro, E., et al.: Projected future changes in tropical cyclones using the CMIP6 HighResMIP multimodel ensemble, *Geophysical research letters*, 47, e2020GL088662, 2020.
- Sahoo, B. and Bhaskaran, P. K.: Assessment on historical cyclone tracks in the Bay of Bengal, east coast of India, *International Journal of Climatology*, 36, 2016.
- 630 Shahid, S.: Vulnerability of the power sector of Bangladesh to climate change and extreme weather events, *Regional Environmental Change*, 12, 595–606, 2012.
- Singh, K., Panda, J., Sahoo, M., and Mohapatra, M.: Variability in tropical cyclone climatology over North Indian Ocean during the period 1891 to 2015, *Asia-Pacific Journal of Atmospheric Sciences*, 55, 269–287, 2019.

- 635 Skoufias, E., Strobl, E., and Tveit, T.: Can we rely on VIIRS nightlights to estimate the short-term impacts of natural hazards? Evidence from five South East Asian countries, *Geomatics, Natural Hazards and Risk*, 12, 381–404, <https://doi.org/10.1080/19475705.2021.1879943>, 2021.
- South Asian Association for Regional Cooperation (SAARC): SAARC Framework Agreement for Energy Cooperation (Electricity), https://giwmscdntwo.gov.np/media/pdf_upload/04%20SAARC%20Framework%20Agreement%20for%20Energy%20Cooperation%20%28Electricity%29_euhcuu6.pdf, signed 27 November 2014; accessed 14 January 2026, 2014.
- 640 The Business Standard: Echoes of sorrow across Sundarbans after Cyclone Remal, <https://www.tbsnews.net/bangladesh/echoes-sorrow-across-sundarbans-after-cyclone-remal-862741>, accessed: 2025-06-24, 2024.
- The World Bank Group: Energy Security Issues, Tech. rep., The World Bank Group, Moscow–Washington, DC, <https://documents1.worldbank.org/curated/en/464811468175435408/pdf/361100ENGLISH01gy1Security01PUBLIC1.pdf>, briefing paper dated 5 December 2005, 2005.
- 645 Thomas, T. M., Bala, G., and Srinivas, V. V.: Characteristics of the monsoon low pressure systems in the Indian subcontinent and the associated extreme precipitation events, *Climate Dynamics*, 56, 1859–1878, 2021.
- Wohland, J., Bloin-Wibe, L., Fischer, E., Göke, L., Knutti, R., De Marco, F., Beyerle, U., and Savelsberg, J.: Climate2Energy: a framework to consistently include climate change into energy system modeling, arXiv preprint arXiv:2508.09531, 2025.
- 650 World Bank: Program Appraisal Document on a Proposed IDA Scale-Up Facility Credit and Clean Technology Fund Grant to the People’s Republic of Bangladesh for an Electricity Distribution Modernization Program, Project Appraisal Document PAD4596, World Bank, Washington, DC, <https://documents1.worldbank.org/curated/en/699101641925765708/pdf/Bangladesh-Electricity-Distribution-Modernization-Program-Project.pdf>, energy and Extractives Global Practice, South Asia Region. Project ID: P174650, 2021.
- 655 World Bank: Bangladesh — Electricity Distribution Modernization Program: Ensuring Reliable, Affordable, and Clean Electricity Supply in Rural Areas, Fact sheet in *The World Bank in Bangladesh 2024: Project Profiles*, <https://documents1.worldbank.org/curated/en/099511501032420315/pdf/IDU1efbbf15a11558149531ab5314697ca357770.pdf>, 2024.
- World Meteorological Organization: Cyclone Amphan highlights the value of multi-hazard early warnings, <https://wmo.int/media/news/cyclone-amphan-highlights-value-of-multi-hazard-early-warnings>, news release, 22 May 2020, 2020.
- 660 Xin, Y., Yang, Y., Chen, X., Yue, X., Liu, Y., and Yin, C.: Evaluation of IMERG and ERA5 precipitation products over the Mongolian Plateau, *Scientific reports*, 12, 21 776, 2022.
- Ye, M., Ward, P. J., Bloemendaal, N., Nirandjan, S., and Koks, E. E.: Risk of Tropical Cyclones and Floods to Power Grids in Southeast and East Asia, *International Journal of Disaster Risk Science*, 15, 494–507, <https://doi.org/10.1007/s13753-024-00573-7>, 2024.

Table 2. Vulnerability-ranked adaptation options for Bangladesh’s power system under tropical-cyclone hazards. Priority reflects the study’s observed impacts (largest deficits in coastal zones; system-wide drops under compound wind–surge) and implementation feasibility.

<u>Priority tier</u>	<u>Vulnerability addressed</u>	<u>Example adaptations</u>	<u>Notes and example metrics</u>
<u>Tier 1</u> <u>(Highest)</u>	<u>Coastal substations and distribution exposed to surge, seawater inundation, and high winds</u>	<u>Elevate and flood-proof substations, pressurise control rooms; raise equipment foundations (plinths); corrosion-resistant hardware.</u>	<u>Directly targets nodes consistent with largest coastal deficits.</u> <u>Metrics: Post-event recovery time; reduced demand shortfall in coastal zones.</u>
<u>Tier 2</u>	<u>Wind-driven vulnerability in transmission and distribution</u>	<u>Targeted tower reinforcement; foundation protection (e.g., surge inference from significant wave height; coarse-resolution winds), the OpenStreetMap infrastructure layers are incomplete, and the analysis period (2015–2025) is short relative to low-frequency variability, all of which introduce uncertainty. These limitations also hinder our ability to diagnose compound and temporally compounding processes with confidence. concrete cladding); regular reconductoring (i.e., replacing wires on overhead lines); redundancy in coastal regions; right-of-way vegetation management.</u>	<u>Focus on areas where loss creates system-wide drops.</u> <u>Metrics: Line-outage rate per storm; ensure network can tolerate loss of single critical line/substation during cyclones.</u>

Our results carry clear policy relevance. Firstly, adaptation planning for Bangladesh’s power system must treat wind, surge, and extreme rainfall (and flooding) as compound

Operational vulnerabilities, e.g., through contingency reserves. Thirdly, system operators would benefit from operational, probabilistic outage forecasts driven by weather forecasts. This would enable pre-emptive load shedding, maintenance, and the positioning of repair crews. Fourthly, distributed resources (e.g., rooftop solar, or local battery storage) offer a resilience pathway;

Probabilistic demand/outage forecasting; pre-positioning of repair teams; black-start preparedness; critical-load prioritisation protocols.

Relatively low cost, high impact.
Metrics: Forecast reliability; time-to-restore critical loads; reduction in day-0 dip magnitude.