

# Measurement report: Isotopic composition of CH<sub>4</sub> emitted from gas exploration sites in the Transylvanian Basin, Romania

Thomas Röckmann<sup>1</sup>, Malika Menoud<sup>1,\*</sup>, Jacoline van Es<sup>1</sup>, Carina van der Veen<sup>1</sup>, Hossein Maazallahi<sup>1,\*\*</sup>, Pawel Jagoda<sup>2</sup>, Jaroslav M. Necki<sup>2</sup>, Jakub Bartyzel<sup>2</sup>, Piotr Korben<sup>2,3</sup>, Sara Defratyka<sup>2\*\*\*</sup>, Martina Schmidt<sup>3</sup>, Marius Corbu<sup>4,5</sup>, Sebastian Iancu<sup>4</sup>, Andreea Calcan<sup>4,\*</sup>, Magdalena Ardelean<sup>4</sup>, Sorin Ghemulet<sup>4</sup>, Cristian Pop<sup>6</sup>, Andrei Radovici<sup>6</sup>, Alexandru Mereuta<sup>6</sup>, Horatiu Stefanie<sup>6</sup>, Calin Baci<sup>6</sup>

<sup>1</sup>Institute for Marine and Atmospheric Research Utrecht (IMAU), Utrecht University, the Netherlands

<sup>2</sup>Faculty of Physics and Applied Computer Science, AGH - University of Krakow, Poland

<sup>3</sup>Institute of Environmental Physics, University of Heidelberg, Germany

<sup>4</sup>National Institute for Aerospace Research "Elie Carafoli" – INCAS, Bucharest, Romania

<sup>5</sup>Faculty of Physics, University of Bucharest, Romania

<sup>6</sup>Faculty of Environmental Science and Engineering, Babes-Bolyai University, Cluj-Napoca, Romania

\*Now at International Methane Emissions Observatory (IMEO), UNEP, Paris, France

\*\*Now at Department of Renewable Energies and Environment, College of Interdisciplinary Science and Technologies, University of Tehran, Iran

\*\*\* Now at School of GeoSciences, University of Edinburgh, UK and National Physical Laboratory, Teddington, UK

Correspondence to: Thomas Röckmann (t.rockmann@uu.nl)

## Abstract

Isotope measurements are increasingly used to constrain the methane (CH<sub>4</sub>) budget on various scales, from global to regional. The success of isotope-based source attribution depends to a large degree on the knowledge of the isotope signatures of the various source categories at the point of emission, but this information is in many cases lacking. Here we report the isotopic composition of CH<sub>4</sub> emitted from 48 installations in the gas production region of Transylvania, Romania. The isotopic source signatures are quite homogeneous across the basin with average values of  $\delta^{13}\text{C} = (-65.6 \pm 0.5 \text{‰})$  and  $\delta\text{D} = (-184 \pm 1 \text{‰})$  confirming the biogenic origin of the Transylvanian gas, produced by hydrogenotrophic CO<sub>2</sub> reduction. This is similar to values reported previously from natural seeps in Transylvania, to the natural gas exploited in the Dolj region in Southwestern Romania, and to the natural gas in the distribution grid in Cluj-Napoca. However, is more depleted in heavy isotopes than the oil-associated gas emitted in the Southern Romanian Plain, and gas leakages in the city of Bucharest. In addition, we present a step-by-step derivation of the underlying "Keeling plot" mass balance approach that is used to derive isotope source signatures.

## 1. Introduction

Methane is a strong greenhouse gas and it is important to reduce its emissions to the atmosphere in order to reach the goals of the Paris climate agreement (Nisbet et al., 2019;2020;Ocko et al., 2021). Emissions from the fossil fuel sector are considered low-hanging fruit in that respect, since a large share of the emissions can be mitigated at little or even no cost (Shindell et al., 2021;Höglund-Isaksson et al., 2020). A prerequisite for emission reduction is knowledge of where the emissions are, which requires direct observations across the value chain. The ROMEO project (ROmanian Methane Emissions from Oil & gas) aimed to identify, attribute and quantify emissions from the oil and gas production infrastructure in Romania, one of the European Union's largest oil and gas production regions. Intensive measurement campaigns with ground-based observations were carried out in 2019 in the South Romanian Plain (Stavropoulou et al., 2023;Delre et al., 2022;Korben et al., 2022) and in 2021 in the Transylvanian Basin (Jagoda et al. (2025), manuscript in preparation). In addition, aircraft-borne measurements were carried out

to constrain the emissions by both in-situ measurements in 2019 (Maazallahi et al., 2024) and remote sensing in 2021 (Kuhlmann et al., 2025). Those measurements collectively demonstrated that emissions from oil and gas operations in Romania are severely underestimated in National reporting.

The isotopic composition of methane (CH<sub>4</sub>) can be used to distinguish CH<sub>4</sub> that is produced via different pathways (Sherwood et al., 2017; Schwietzke et al., 2016; Menoud et al., 2021a; Quay et al., 1999; Brenninkmeijer et al., 2003; Whiticar, 2020; Milkov and Etiope, 2018; Sherwood Lollar et al., 2006; Ojeda et al., 2023). Thermogenic CH<sub>4</sub> is usually associated with relatively high  $\delta^{13}\text{C}$  values between -55 and -30 ‰, and  $\delta\text{D}$  generally varies in the range -250 to -100 ‰. The isotopic composition of fossil reservoirs is additionally influenced by the composition of the fuels ("dry" gas, or "wet" CH<sub>4</sub> in association with oil) and the reservoir maturity (Whiticar, 2020; Menoud et al., 2022; Milkov and Etiope, 2018). Biogenic CH<sub>4</sub> formed via the hydrogenotrophic pathway is more depleted in  $^{13}\text{C}$  ( $\delta^{13}\text{C}$  between -100 and -60 ‰) whereas it has relatively similar  $\delta\text{D}$  values as thermogenic CH<sub>4</sub> (between -250 and -150 ‰). Biogenic CH<sub>4</sub> formed via the acetoclastic pathway has  $\delta^{13}\text{C}$  values between -70 and -50 ‰ and is generally depleted in deuterium ( $\delta\text{D}$  lower than -250 ‰). Abiotic CH<sub>4</sub> is relatively enriched in  $^{13}\text{C}$  ( $\delta^{13}\text{C} > -40$  ‰) and can cover a wide  $\delta\text{D}$  range between -50 and -400 ‰. Pyrogenic CH<sub>4</sub> produced mostly during biomass burning is also enriched in both  $^{13}\text{C}$  and D ( $\delta^{13}\text{C}$  between -30 and -10 ‰;  $\delta\text{D} > -250$  ‰) and thus falls in a similar range as abiotic CH<sub>4</sub> (Sherwood et al., 2017; Menoud et al., 2022; Whiticar, 2020).

Before the ROMEO campaigns, the existing methane isotopic data from oil and gas fields in Romania were limited to geologic natural emissions related to natural seepage. The measured values (discussed in detail below) may constitute a reference for the current work, as the mentioned sites are representative for the type of gas deposits in the study area.

Denser and systematic isotopic investigations all over Romania, combining analysis of samples collected from boreholes and from surface manifestations, are needed in order to geochemically characterize the hydrocarbon deposits, and also to better understand the methane transfer to the atmosphere from the oil and gas industry. During the ROMEO campaigns, air samples were collected in emission plumes to investigate the origin of the emitted CH<sub>4</sub> in more detail using stable isotope analysis. Menoud et al. (2022) reported the isotopic composition of samples collected at 83 ground locations and 24 samples collected on aircraft flights. They showed a wide range of isotope signatures and confirmed that the gas across the Romanian Plain is mostly associated with oil production and of thermogenic origin with average values of  $\delta^{13}\text{C} = -50$  ‰ and  $\delta\text{D} = -189$  ‰. A few reservoirs of microbial origin were also found. Overall, the isotope composition of gas emitted from oil and gas production sites in Romania was significantly more depleted in  $^{13}\text{C}$  than commonly used values for the global fossil fuel emissions.

This study aims to provide a better isotopic characterization of CH<sub>4</sub> emissions associated with gas production in the Transylvanian Basin. We report the isotopic composition of air samples collected during phase B of the ROMEO project, conducted in summer 2021, at 48 individual gas production locations across the Transylvanian basin.

## 2. Methods

### 2.1. Campaign region

The Transylvania region is located in the central part of Romania, enclosed between the Apuseni Mountains in the West and the Eastern and Southern Carpathians. With over 100 gas fields scattered throughout the Transylvanian Basin, it remains the foremost gas producer among Central and South-Eastern European countries. The main petroleum system in the Transylvanian Basin corresponds to Neogene deposits, mainly hosting microbial methane (Popescu, 1995; Krézsek et al., 2010). Over the past century it has generated an estimated 30 TCF (trillion cubic feet) of gas (Krézsek, 2011) and undiscovered and confirmed reserves total approximately 20 TCF (Pawlewicz, 2005). There has been no discovery of commercial oil in the region of concern. Figure 1 shows the regions of the gas reservoirs, and the locations where air samples were collected for this study.

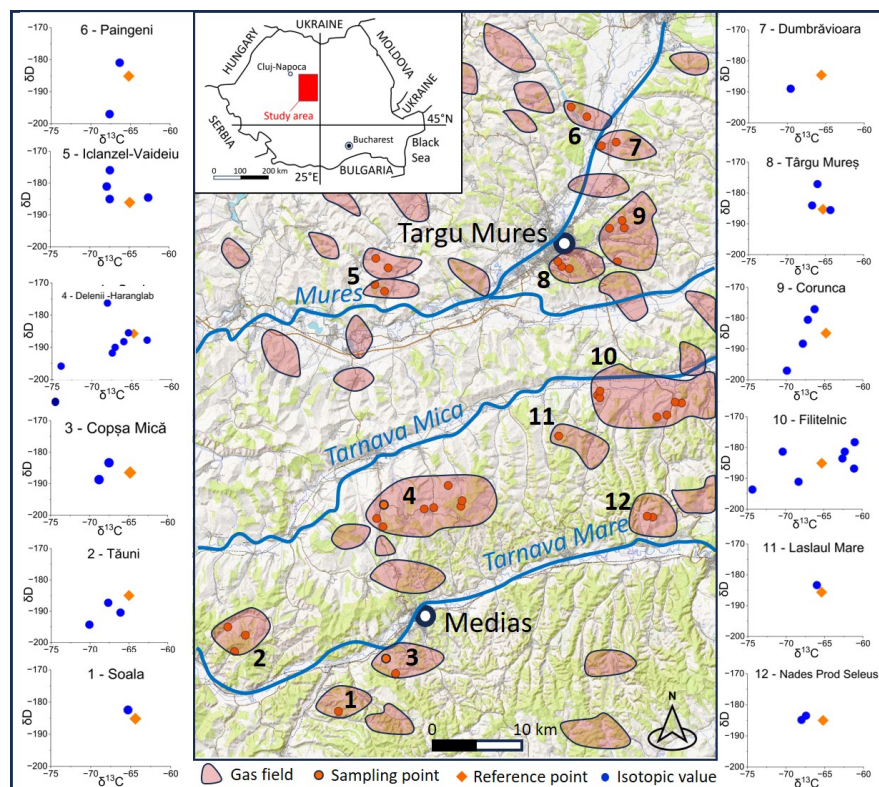
The study area is located in the central part of the Transylvanian Basin, a back-arc basin which is characterized by a substantial accumulation of Middle-Upper Miocene detrital sediments (Badenian to Pannonian). These deposits, formed due to fast subsidence, may exceed 5000 m in certain areas of the basin. A regressive event in the Middle Badenian provided optimal conditions for the accumulation of a substantial salt layer, potentially reaching 300 meters in thickness (Krézsek & Filipescu, 2005). The salt tectonics is responsible for the creation of brachyanticlines in the central part of the basin, and diapirs on the margins (Tiliță et al., 2013). The commercial gas plays are mainly associated with brachyanticlines within the post-salt Badenian-Sarmatian deposits, featuring mild flank dips, typically ranging from 2 to 6°. These multi-layered structures may encompass up to 15 gas-

bearing intervals, or even more in particular cases (e.g. Filitelnic – 23 pay levels) (Paraschiv, 1979). The depth of the pay intervals varies significantly, ranging from several hundred meters to over 3000 m.

## 2.2. Sample collection and isotope measurement

When emission plumes had been identified during ground-based surveys with real-time CH<sub>4</sub> sensors, air samples were collected in the plumes by the ground teams. Air samples were pumped into 2L volume flex-foil bags using a small pump (KNF Neuberger) via Teflon tubing and a Magnesium Perchlorate dryer. Usually, two air samples were collected in the emission plume downwind of gas production installations, and several more “background samples” in clean air in the respective region, in order to determine the isotopic source signature by a Keeling plot approach (see below). A total of 96 samples from 48 individual production installations and 30 background samples were collected across the Transylvanian Basin between June 13<sup>th</sup> to July 4<sup>th</sup>, 2021.

Fig. 1 shows a map of the production regions and the locations where samples were collected.



**Fig. 1: Orographic map of the campaign area, highlighting the sub-surface gas fields (pink areas) and the sampling locations for the samples collected in this study. The 12 small dual isotope plots on the left and right indicate the distribution of the individual source signatures derived for the 12 gas fields that were visited. The orange diamond is a common reference point ( $\delta^{13}\text{C} = -65\text{‰}$ ,  $\delta\text{D} = -185\text{‰}$ ). (Location of the gas fields: modified after Map of the mineral resources, 1:1,000,000, Institute of Geology & Geophysics, Bucharest 1984)**

The isotopic composition of CH<sub>4</sub> ( $\delta^{13}\text{C}$  and  $\delta\text{D}$ ) in the air samples was analysed at Utrecht University using a continuous-flow isotope ratio mass spectrometry system (Brass and Röckmann, 2010; Menoud et al., 2022). First, CH<sub>4</sub> is separated from ambient air samples and purified using temperature - controlled traps and gas chromatography. The isotopic composition of the purified CH<sub>4</sub> is then determined in an isotope ratio mass

**Deleted:** Orographic map of the campaign region with indication of the sub-surface gas fields (pink areas) and the sampling points of the samples collected for this study. The 12 small dual isotope plots on the left and right indicate the distribution of the individual source signatures derived for the 12 gas fields that were visited. The orange diamond is a common reference point ( $\delta^{13}\text{C} = -65\text{‰}$ ,  $\delta\text{D} = -185\text{‰}$ ) to help compared the values between the plots. Gas fields: 1 – Soala; 2 – Tauni; 3 – Copsa Mica; 4 – Delenii-Haranglab; 5 – Iclanzel-Vaideiu; 6 – Paingeni; 7 – Dumbravioara; 8 – Targu Mures; 9 – Corunca; 10 – Filitelnic; 11 – Laslaul Mare; 12 – Nades-Prod-Seleus.

spectrometer. Individual measurements have a precision better than 0.1‰ for  $\delta^{13}\text{C}$  and 2.0‰ for  $\delta\text{D}$  (Brass and Röckmann, 2010; Röckmann et al., 2016; Menoud et al., 2020). The system has been carefully calibrated and participated in inter-laboratory comparisons (Brass and Röckmann, 2010; Umezawa et al., 2018). It has been used in numerous previous projects to characterize  $\text{CH}_4$  isotopic composition (Röckmann et al., 2016; Maazallahi et al., 2020; Menoud et al., 2020; 2021a; 2021b; Lu et al., 2021; Fernandez et al., 2022; Fiehn et al., 2023; Röckmann et al., 2011).

### 2.3. Determination of isotopic source signatures

When emissions  $\text{CH}_4$  into the atmosphere lead to a clearly measurable enhancement in the  $\text{CH}_4$  mole fraction, the observed mole fraction ( $mf_{obs}$ ) is the sum of a background component ( $mf_{bg}$ ) and a source ( $mf_{src}$ ) component according to the mathematical equation

$$mf_{obs} = mf_{bg} + mf_{src} \quad (\text{Eq.1})$$

A similar equation is valid for each individual isotopologue, e.g. for the mole fraction of the  $^{13}\text{C}$ -substituted  $\text{CH}_4$   $^{13}mf$ :

$$^{13}mf_{obs} = ^{13}mf_{bg} + ^{13}mf_{src} \quad (\text{Eq.2})$$

The equation for Deuterium-substituted  $\text{CH}_4$  is exactly analogous and not shown. These two mass conservation equations can be combined to determine the isotope signature of the source that is responsible for the observed mole fraction enhancement. The approach first used in (Keeling, 1961) assumes that the background component (both mole fraction and isotopic composition) remain constant over the course of the measurement. This is valid for measurements carried out over a short time close to strong emitters like the ones presented below.

Eq. 2 can be written as

$$\begin{aligned} \frac{^{13}mf_{obs}}{^{12}mf_{obs}} \frac{^{12}mf_{obs}}{^{13}mf_{obs}} &= \frac{^{13}mf_{bg}}{^{12}mf_{bg}} \frac{^{12}mf_{bg}}{^{13}mf_{bg}} + \frac{^{13}mf_{src}}{^{12}mf_{src}} \frac{^{12}mf_{src}}{^{13}mf_{src}} \\ ^{13}R_{obs} \frac{^{12}mf_{obs}}{^{13}mf_{obs}} &= ^{13}R_{bg} \frac{^{12}mf_{bg}}{^{13}mf_{bg}} + ^{13}R_{src} \frac{^{12}mf_{src}}{^{13}mf_{src}} \end{aligned} \quad (\text{Eq.3})$$

Where  $R$  is the heavy-to light isotope ratio (in this example  $^{13}R = ^{13}\text{C}/^{12}\text{C}$ ). When the heavy isotope has a much lower abundance than the light isotope, the approximation  $^{12}mf \sim mf$  is valid and Eq. 3 can be approximated as

$$^{13}R_{obs} mf_{obs} = ^{13}R_{bg} mf_{bg} + ^{13}R_{src} mf_{src} \quad (\text{Eq.4})$$

By dividing Eq. 4 by the isotope ratio of the international standard (index ST) and subtracting Eq. 1, Eq. 4 can be formulated in terms of  $\delta$  values as follows:

$$\begin{aligned} \frac{^{13}R_{obs}}{^{13}R_{ST}} mf_{obs} &= \frac{^{13}R_{bg}}{^{13}R_{ST}} mf_{bg} + \frac{^{13}R_{src}}{^{13}R_{ST}} mf_{src} \\ \frac{^{13}R_{obs}}{^{13}R_{ST}} mf_{obs} - mf_{obs} &= \frac{^{13}R_{bg}}{^{13}R_{ST}} mf_{bg} - mf_{bg} + \frac{^{13}R_{src}}{^{13}R_{ST}} mf_{src} - mf_{src} \\ \left( \frac{^{13}R_{obs}}{^{13}R_{ST}} - 1 \right) mf_{obs} &= \left( \frac{^{13}R_{bg}}{^{13}R_{ST}} - 1 \right) mf_{bg} + \left( \frac{^{13}R_{src}}{^{13}R_{ST}} - 1 \right) mf_{src} \\ mf_{obs} * \delta^{13}C_{obs} &= mf_{bg} * \delta^{13}C_{bg} + mf_{src} * \delta^{13}C_{src} \end{aligned} \quad (\text{Eq.5})$$

Noting that  $mf_{bg}$ ,  $\delta^{13}C_{bg}$  are assumed to be constant over the period of the measurement, Eq. 5 can be expressed as linear equation of the type  $y = mx + a$  where  $y = \delta^{13}C_{obs}$ ,  $m = mf_{bg} * (\delta^{13}C_{bg} - \delta^{13}C_{src})$  and  $x = \frac{1}{mf_{obs}}$ .

$$\delta^{13}C_{obs} = \frac{mf_{bg} * (\delta^{13}C_{bg} - \delta^{13}C_{src})}{mf_{obs}} + \delta^{13}C_{src} \quad (\text{Eq.6})$$

The Keeling plot approach is a graphical approach where a linear fit is applied to a correlation plot of  $\delta^{13}C_{obs}$  versus  $\frac{1}{mf_{obs}}$ , and the y-axis intercept of the linear fit equation  $a$  then returns the isotopic signature of the source,  $\delta^{13}C_{src}$ .

We note that in cases where  $mf_{bg}$  and  $\delta^{13}C_{bg}$  are not constant, but can be specified (e.g. for analysis of longer time series), the mass conservation equations Eq. 1 and 2 can be rewritten differently in the so-called Miller-Tans approach (Miller and Tans, 2003) to determine isotope source signatures. The differences between the two

approaches have been investigated in detail recently (Defratyka et al., 2025). That study also investigated the effect of different mathematical methods to apply linear regression analysis to Eq. 6. In our study we use the orthogonal distance regression method (Boggs et al., 1988).

### 3. Results

Fig. 2 shows a dual isotope plot of all source signatures determined at the individual sampling locations visited in this study. The locations are color-coded by gas field. Table 1 provides the numerical values, and the individual  $\delta^{13}\text{C}$  values are also shown as color-coding in the map of Fig. 1. It is evident that the isotopic composition of the gas produced in the Transylvanian basin is quite homogeneous. Most of the  $\delta^{13}\text{C}$  source signatures at individual sampling locations fall in a range between -70 to -60 ‰.  $\delta\text{D}$  values at most individual locations fall within a narrow range between -200 and -280 ‰. This characterizes the Transylvanian gas as microbial, produced by the hydrogenotrophic pathway. All of the outliers have high uncertainties in the determination of the source signatures, implicating large scatter of individual air samples around the linear fits to the Keeling plots. Such large scatter usually indicates that the assumption of the mass balance model (Equations 1 and 2) may not be met, and in many cases this is because of other interfering sources. For example, the “high” outlier at the Dumbravioara gas field may be caused by an interference from combustion emissions.

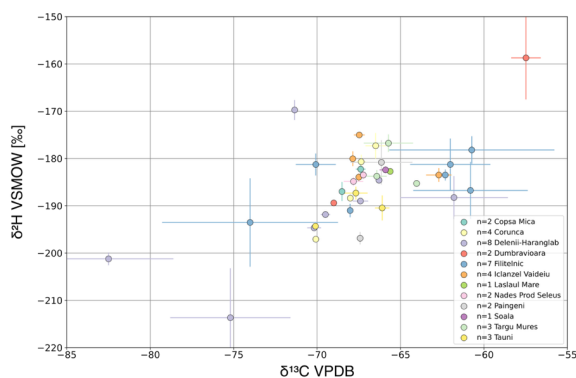


Fig. 2: Dual isotope plot ( $\delta\text{D}$  versus  $\delta^{13}\text{C}$ ) of all individual isotope source signatures derived for the different sampling locations across the Transylvanian Basin. The different symbol colours represent different gas fields.

In order to investigate possible differences between gas fields, Fig. 3 shows the derived Keeling plot intercepts for the different gas fields, i.e., all samples from a certain gas field were combined. Fig. 3 also includes the average source signature that is derived when all of the samples are combined in one single Keeling plot analysis.

A Keeling analysis of all samples collected across the Transylvanian basin returns a y-axis intercept of  $\delta^{13}\text{C} = (-65.6 \pm 0.5 \text{ ‰})$  and  $\delta\text{D} = (-184 \pm 1 \text{ ‰})$ , where the uncertainties state the 1- $\sigma$  uncertainty of the intercept. This is the average isotopic composition of the  $\text{CH}_4$  emitted from the investigated gas production installations across the Transylvanian basin.

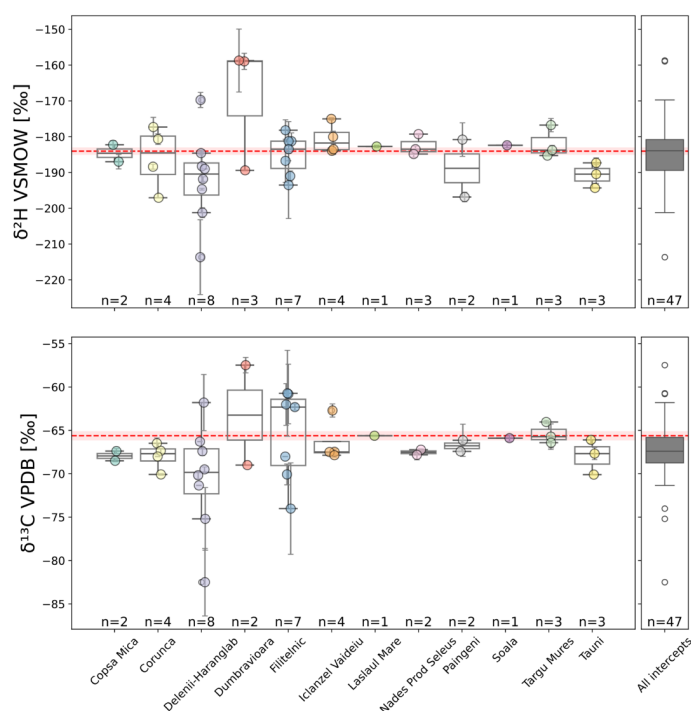


Fig. 3: Isotope source signatures of each individual gas field visited during the ROMEO-B campaign for  $\delta D$  (top) and  $\delta^{13}C$  (bottom). The circles are the individual measurements, the boxes represents the 25-75 percentile of values, the mean is indicated as horizontal line, and the whiskers show the 5-95% percentiles. Note that the boxes are more an indication than a statistically robust evaluation due to the limited number of measurements. The horizontal red line shows the source signature derived from a single Keeling plot analysis combining all samples. The final category shows the distribution of all individual source signatures estimates as box plot.

#### 4. Discussion and conclusion

Methane from several surface gas manifestations in the Transylvanian Basin has been isotopically characterized previously, showing a distinctive microbial footprint in the case of seeps for the central part of the basin, with  $\delta^{13}C$  in the range of  $-60.3$  to  $-67.4$  ‰ and  $\delta D$  between  $-189.5$  and  $-192.2$  ‰ (Etiopie, 2009; Baciuc et al., 2018). The isotopic source signatures obtained from gas production infrastructure presented above are very similar to the natural gas seeps in central Transylvania, suggesting that gas that escapes via natural seepage in Romania originates from similar underground reservoirs as the produced gas characterized in the present study. The formation pathway that is typically associated with these source signatures is hydrogenotrophic  $CO_2$  reduction (Whiticar, 2020; Milkov and Etiopie, 2018; Menoud et al., 2021a). The isotopic composition is also similar to what is found for identified gas leakages from the gas distribution network in the city of Cluj-Napoca (Es et al., 2024), confirming that the gas in the distribution grid originates from Transylvanian reservoirs. The present data allows to better define the Transylvanian reservoir in term of  $CH_4$  isotopic composition in the global  $CH_4$  isotopic dataset. The complete dataset is available at <https://doi.org/10.18160/4SJW-ST8W> (Röckmann et al., 2025).

Reported isotope values show that  $CH_4$  from surface seepage becomes more thermogenic and enriched in  $N_2$ ,  $CO_2$  and He towards the eastern margin of the Transylvanian Basin, due to the thermal influence of the volcanic range of the Eastern Carpathians (Etiopie et al., 2011). By contrast, the few available  $CH_4$  isotopic analyses from the exterior of the Carpathian arcuated range have shown a dominant thermogenic origin of the gases. To this category

belong the mud volcanoes and everlasting fires from the Carpathian Fysch and Foredeep, as Păcelele, Fierbători, Beciu, Andreiașu (Etiopie, 2009), Răiști, Lopătari, Lepșa (Baciu et al., 2018), or the seep from Bacău – Moldavian Platform (Baciu et al., 2008).

The emitted CH<sub>4</sub> associated with oil production in the southern part of Romania has a very similar δD signature (-189 ± 38 ‰) but a very different δ<sup>13</sup>C signature (-49.7 ± 6.4 ‰) (Menoud et al., 2022), confirming the different (thermogenic) sub-surface formation pathway. During the ROMEO-A city campaign in the city of Bucharest, located in the southern part of the country, Fernandez et al. (2022) measured methane isotopic values of δ<sup>13</sup>C = -50 ‰ and δD = -196 ‰ from leakages in the natural gas distribution system in Bucharest, similar to the associated gas in Southern Romania.

In summary, CH<sub>4</sub> emitted from 48 gas production sites in the Transylvanian basin exhibits a homogeneous isotopic composition of δ<sup>13</sup>C = (-65.6 ± 0.5 ‰) and δD = (-184 ± 1 ‰), confirming the biogenic origin of the gas ~~in the central part of the basin.~~

Deleted: across

## 5. Dataset availability.

The dataset is available at <https://doi.org/10.18160/4SIW-ST8W> (Röckmann et al., 2025).

## Acknowledgements

This project has received funding from the European Union's Horizon 2020 Research and Innovation programme under the Marie Skłodowska-Curie grant agreement no. 722479 - MEMO<sup>2</sup>, the HORIZON-CL5-2022-D1-02 program under Grant Agreement No 101081430 - PARIS and by UNEP's International Methane Emissions Observatory (IMEO) as part of a science studies program that aims to support methane emission mitigation strategies, actions, and policies.

## Author contributions

Field campaign and sample collection: HM, PJ, JMN, JB, PK, SD, MS, MC, SI, MA, SG, CP, AR, AM, HS, CB  
Isotope measurements: MM, CvdV, TR  
Data analysis: JvE, MM, CvdV, SD, TR  
Writing: TR, CB, JvE, SD, MS  
Study design: TR, MS, JMN, AC

## References

- Baciu, C., Etiopie, G., Cuna, S., and Spulber, L.: Methane seepage in an urban development area (Bacău, Romania): origin, extent, and hazard, *Geofluids*, 8, 311-320, Doi 10.1111/J.1468-8123.2008.00228.X, 2008.
- Baciu, C., Ionescu, A., and Etiopie, G.: Hydrocarbon seeps in Romania: Gas origin and release to the atmosphere, *Marine and Petroleum Geology*, 89, 130-143, 10.1016/j.marpetgeo.2017.06.015, 2018.
- Boggs, P. T., Spiegelman, C. H., Donaldson, J. R., and Schnabel, R. B.: A computational examination of orthogonal distance regression, *Journal of Econometrics*, 38, 169-201, [https://doi.org/10.1016/0304-4076\(88\)90032-2](https://doi.org/10.1016/0304-4076(88)90032-2), 1988.
- Brass, M., and Röckmann, T.: Continuous-flow isotope ratio mass spectrometry method for carbon and hydrogen isotope measurements on atmospheric methane, *Atmos. Meas. Tech.*, 3, 1707-1721, 2010.
- Breninkmeijer, C. A. M., Janssen, C., Kaiser, J., Röckmann, T., Rhee, T. S., et al.: Isotope effects in the chemistry of atmospheric trace gases, *Chem. Rev.*, 103, 5125-5162, 2003.
- Defratyka, S. M., France, J. L., Fisher, R. E., Lowry, D., Fernandez, J. M., et al.: Evaluation of Data Processing Strategies for Methane Isotopic Signatures Determined During Near-Source Measurements, *Tellus B: Chemical and Physical Meteorology*, 77, 10.16993/tellusb.1878, 2025.
- Delre, A., Hensen, A., Velzeboer, I., van den Bulk, P., Edjabou, M. E., et al.: Methane and ethane emission quantifications from onshore oil and gas sites in Romania, using a tracer gas dispersion method, *Elementa: Science of the Anthropocene*, 10, 10.1525/elementa.2021.000111, 2022.
- Es, J. v., Veen, C. v. d., Baciu, C., Hmoudah, M., Menoud, M., et al.: Methane sources in Cluj-Napoca, Romania: Insights from isotopic analysis, *ESS Open Archive*, DOI: 10.22541/essoar.173272758.85099453/v1, 2024.



Etiope, G.: Natural emissions of methane from geological seepage in Europe, *Atmos. Environ.*, 43, 1430-1443, <https://doi.org/10.1016/j.atmosenv.2008.03.014>, 2009.

260 Etiope, G., Baci, C. L., and Schoell, M.: Extreme methane deuterium, nitrogen and helium enrichment in natural gas from the Homorod seep (Romania), *Chem. Geol.*, 280, 89-96, <https://doi.org/10.1016/j.chemgeo.2010.10.019>, 2011.

265 Fernandez, J. M., Maazallahi, H., France, J. L., Menoud, M., Corbu, M., et al.: Street-level methane emissions of Bucharest, Romania and the dominance of urban wastewater, *Atmospheric Environment: X*, 13, 100153, <https://doi.org/10.1016/j.aeaoa.2022.100153>, <https://doi.org/10.1016/j.aeaoa.2022.100153>, 2022.

Fiehn, A., Eckl, M., Kostinek, J., Galkowski, M., Gerbig, C., et al.: Source apportionment of methane emissions from the Upper Silesian Coal Basin using isotopic signatures, *Atmos. Chem. Phys.*, 23, 15749-15765, 10.5194/acp-23-15749-2023, 2023.

270 Höglund-Isaksson, L., Gómez-Sanabria, A., Klimont, Z., Rafaj, P., and Schöpp, W.: Technical potentials and costs for reducing global anthropogenic methane emissions in the 2050 timeframe –results from the GAINS model, *Environmental Research Communications*, 2, 025004, 10.1088/2515-7620/ab7457, 2020.

Keeling, C. D.: The concentration and isotopic abundances of carbon dioxide in rural and marine air, *Geochim. Cosmochim. Acta*, 24, 277-298, [https://doi.org/10.1016/0016-7037\(61\)90023-0](https://doi.org/10.1016/0016-7037(61)90023-0), 1961.

275 Korbeň, P., Jagoda, P., Maazallahi, H., Kammerer, J., Nęcki, J. M., et al.: Quantification of methane emission rate from oil and gas wells in Romania using ground-based measurement techniques, *Elementa: Science of the Anthropocene*, 10, 10.1525/elementa.2022.00070, 2022.

Krézsek, C., Filipescu, S., Silye, L., Mafenco, L., and Doust, H.: Miocene facies associations and sedimentary evolution of the Southern Transylvanian Basin (Romania): Implications for hydrocarbon exploration, *Marine and Petroleum Geology*, 27, 191-214, 10.1016/j.marpetgeo.2009.07.009, 2010.

280 Krézsek, C.: Petroleum Systems of Romania, Search and Discovery European Region Newsletter, Article #10349, AAPG 6, 5-7, 2011.

| [Krézsek, C., Filipescu, S., 2005. Middle to late Miocene sequence stratigraphy of the Transylvanian Basin \(Romania\). \*Tectonophysics\* 410, 437–463.](#)

285 Kuhlmann, G., Stavropoulou, F., Schwietzke, S., Zavala-Araiza, D., Thorpe, A., et al.: Evidence of successful methane mitigation in one of Europe's most important oil production region, *EGUsphere*, 2025, 1-22, 10.5194/egusphere-2024-3494, 2025.

Lu, X., Harris, S. J., Fisher, R. E., France, J. L., Nisbet, E. G., et al.: Isotopic Signatures of Major Methane Sources in the Coal Seam Gas Fields and Adjacent Agricultural Districts, Queensland, Australia, *Atmos. Chem. Phys.*, 2021, 1-36, 10.5194/acp-2021-76, 2021.

290 Maazallahi, H., Fernandez, J. M., Menoud, M., Zavala-Araiza, D., Weller, Z. D., et al.: Methane mapping, emission quantification, and attribution in two European cities: Utrecht (NL) and Hamburg (DE), *Atmos. Chem. Phys.*, 20, 14717-14740, 10.5194/acp-20-14717-2020, 2020.

Maazallahi, H., Stavropoulou, F., Sutanto, S. J., Steiner, M., Brunner, D., et al.: Airborne in-situ quantification of methane emissions from oil and gas production in Romania, *EGUsphere*, 2024, 1-20, 10.5194/egusphere-2024-2135, 2024.

295 Menoud, M., van der Veen, C., Scheeren, B., Chen, H. L., Szenasi, B., et al.: Characterisation of methane sources in Lutfjewad, The Netherlands, using quasi-continuous isotopic composition measurements, *Tellus Series B-Chemical and Physical Meteorology*, 72, 20, 10.5194/acp-23-15749-2023, 2020.

300 Menoud, M., van der Veen, C., Lowry, D., Fernandez, J. M., Bakaloglu, S., et al.: Global inventory of the stable isotopic composition of methane surface emissions, augmented by new measurements in Europe, *Earth Syst Sci Data*, 10.5194/acp-23-15749-2023, 2021a.

Menoud, M., van der Veen, C., Necki, J., Bartyzel, J., Szénási, B., et al.: Methane (CH<sub>4</sub>) sources in Krakow, Poland: insights from isotope analysis, *Atmos. Chem. Phys.*, 2021, 13167–13185, 10.5194/acp-21-13167-2021, 2021b.

305 Menoud, M., van der Veen, C., Maazallahi, H., Hensen, A., Velzeboer, I., et al.: CH<sub>4</sub> isotopic signatures of emissions from oil and gas extraction sites in Romania, *Elementa: Science of the Anthropocene*, 10, 10.1525/elementa.2021.00092, 2022.

Milkov, A. V., and Etiope, G.: Revised genetic diagrams for natural gases based on a global dataset of >20,000 samples, *Org. Geochem.*, 125, 109-120, 10.1016/j.orggeochem.2018.09.002, 2018.

310 Miller, J. B., and Tans, P. P.: Calculating isotopic fractionation from atmospheric measurements at various scales, *Tellus Series B-Chemical and Physical Meteorology*, 55, 207-214, 2003.

Nisbet, E. G., Manning, M. R., Dlugokencky, E. J., Fisher, R. E., Lowry, D., et al.: Very Strong Atmospheric Methane Growth in the 4 Years 2014-2017: Implications for the Paris Agreement, *Global Biogeochem. Cycles*, 33, 318-342, 10.1029/2018gb006009, 2019.

315 Nisbet, E. G., Fisher, R. E., Lowry, D., France, J. L., Allen, G., et al.: Methane Mitigation: Methods to Reduce Emissions, on the Path to the Paris Agreement, *Reviews of Geophysics*, 58, 2020.



- Ocko, I. B., Sun, T., Shindell, D., Oppenheimer, M., Hristov, A. N., et al.: Acting rapidly to deploy readily available methane mitigation measures by sector can immediately slow global warming, *Environmental Research Letters*, 16, 054042, 10.1088/1748-9326/abf9c8, 2021.
- 320 Ojeda, L., Etiopie, G., Jiménez-Gavilán, P., Martonos, I. M., Röckmann, T., et al.: Combining methane clumped and bulk isotopes, temporal variations in molecular and isotopic composition, and hydrochemical and geological proxies to understand methane's origin in the Ronda peridotite massifs (Spain), *Chem. Geol.*, 642, 10.1016/j.chemgeo.2023.121799, 2023.
- | [Paraschiv, D., Romanian oil and gas fields. Tech. Ec. Stud., A 13, 1-382, 1979.](#)
- 325 Pawlewicz, M.: Transylvanian Composite Total Petroleum System of the Transylvanian Basin Province, Romania, Eastern Europe, Report 2204E, 2005.
- Popescu, B. M.: Romania's petroleum systems and their remaining potential, *Petroleum Geoscience*, 1, 337-350, 10.1144/petgeo.1.4.337, 1995.
- 330 Quay, P., Stutsman, J., Wilbur, D., Snover, A., Dlugokencky, E., et al.: The isotopic composition of atmospheric methane, *Global Biogeochem Cy*, 13, 445-461, 1999.
- Röckmann, T., Brass, M., Borchers, R., and Engel, A.: The isotopic composition of methane in the stratosphere: High-altitude balloon sample measurements, *Atm. Chem. Phys.*, 11, 13287-13304, 2011.
- Röckmann, T., Eyer, S., van der Veen, C., Popa, M. E., Tuzson, B., et al.: In situ observations of the isotopic composition of methane at the Cabauw tall tower site, *Atmos. Chem. Phys.*, 16, 10469-10487, 10.5194/acp-16-10469-2016, 2016.
- 335 Röckmann, T., Menoud, M., van Es, J., van der Veen, C., Maazallahi, H., et al.: Isotopic composition of methane emitted from gas production sites in Transylvania. 2025.
- Schwietzke, S., Sherwood, O. A., Ruhwiler, L. M. P. B., Miller, J. B., Etiopie, G., et al.: Upward revision of global fossil fuel methane emissions based on isotope database, *Nature*, 538, 88-91, 10.1038/nature19797, 2016.
- 340 Sherwood Lollar, B., Lacrampe-Couloume, G., Slater, G. F., Ward, J., Moser, D. P., et al.: Unravelling abiogenic and biogenic sources of methane in the Earth's deep subsurface, *Chem. Geol.*, 226, 328-339, <https://doi.org/10.1016/j.chemgeo.2005.09.027>, 2006.
- Sherwood, O. A., Schwietzke, S., Arling, V. A., and Etiopie, G.: Global Inventory of Gas Geochemistry Data from Fossil Fuel, Microbial and Burning Sources, version 2017, *Earth Syst Sci Data*, 9, 639-656, 10.5194/essd-9-639-2017, 2017.
- 345 Shindell, D., Ravishankara, A. R., Kuylenstierna, J. C. I., Michalopoulou, E., Höglund-Isaksson, L., et al.: Global MethaneAssessment: Benefits and Costs of Mitigating Methane Emissions, United Nations Environment Programme and Climate and Clean Air Coalition, Nairobi: United Nations Environment Programme., 2021.
- 350 Stavropoulou, F., Vinković, K., Kers, B., de Vries, M., van Heuven, S., et al.: High potential for CH<sub>4</sub> emission mitigation from oil infrastructure in one of EU's major production regions, *Atmos. Chem. Phys.*, 23, 10399-10412, 10.5194/acp-23-10399-2023, 2023.
- | [Tiliță, M., Matenco, L., Dinu, C., Ionescu, L., Cloetingh, S., Understanding the kinematic evolution and genesis of a back-arc continental "sag" basin: The Neogene evolution of the Transylvanian Basin. Tectonophysics, 602, 237-258, 2013.](#)
- 355 Umezawa, T., Brenninkmeijer, C. A. M., Röckmann, T., van der Veen, C., Tyler, S. C., et al.: Interlaboratory comparison of d<sup>13</sup>C and dD measurements of atmospheric CH<sub>4</sub> for combined use of data sets from different laboratories, *Atmospheric Measurement Techniques*, 11, 1207-1231, 10.5194/amt-11-1207-2018, 2018.
- Whiticar, M. J.: The Biogeochemical Methane Cycle, in: *Hydrocarbons, Oils and Lipids: Diversity, Origin, Chemistry and Fate*, 1-78, 2020.

360