

# Using different radiative transfer schemes for solar-induced chlorophyll fluorescence (SIF) in evergreen coniferous forests [with a terrestrial biosphere model](#)

Tea Thum<sup>1</sup>, Javier Pacheco-Labrador<sup>2</sup>, Mika Aurela<sup>1</sup>, Alan Barr<sup>3</sup>, Marika Honkanen<sup>1</sup>, Bruce Johnson<sup>3</sup>, Hannakaisa Lindqvist<sup>1</sup>, Troy Magney<sup>4</sup>, Mirco Migliavacca<sup>5</sup>, Zoe Amie Pierrat<sup>6,7</sup>, Tristan Quaife<sup>8</sup>, Jochen Stutz<sup>9</sup>, and Sönke Zaehle<sup>10</sup>

<sup>1</sup>Finnish Meteorological Institute, Helsinki, Finland

<sup>2</sup>Environmental Remote Sensing and Spectroscopy Laboratory (SpecLab), Spanish National Research Council (CSIC), Madrid, Spain

<sup>3</sup>University of Saskatchewan, Canada

<sup>4</sup>Department of Forest Management, University of Montana, Missoula, MT, USA

<sup>5</sup>European Commission, Joint Research Centre, Ispra (VA), Italy

<sup>6</sup>Jet Propulsion Laboratory, Pasadena, California, USA

<sup>7</sup>Department of Geography, University of Santa Barbara, California, USA

<sup>8</sup>National Centre for Earth Observation, University of Reading, Reading, The United Kingdom

<sup>9</sup>University of California Los Angeles, California, USA

<sup>10</sup>Max Planck Institute for Biogeochemistry, Jena, Germany

**Correspondence:** Tea Thum (tea.thum@fmi.fi)

**Abstract.** Solar-induced chlorophyll fluorescence (SIF) is a small light signal emitted during the initial steps of photosynthesis and can be observed across scales (from photosystem level to satellite observation footprints). To be able to model SIF, we need to understand the mechanistic processes (including both physical and biological) leading to the observed SIF signal. In this study, we implemented a representation of SIF emission and transmission processes into the terrestrial biosphere model QUINCY ('QUantifying Interactions between terrestrial Nutrient CYcles and the climate system'). We tested the model across three different boreal coniferous forests located in North America and Europe that have eddy covariance derived CO<sub>2</sub> fluxes and tower-based SIF observations. We found that different SIF radiative transfer approaches (one based on mSCOPE, one on two-stream radiative transfer model L2SM, and one empirically based) overestimated the SIF signal, but showed no large differences in the timing of their seasonal and diurnal predictions. The two-stream radiative transfer model approach, L2SM, provided stable performance while being comparatively computationally efficient. Our parameterization for sustained non-photochemical quenching was important for successfully simulating the timing of the SIF seasonal cycle. However, our parameterization did not perform equally well at all three sites, likely because of different temperature regimes at each sites. We further evaluated the potential of remote sensing -based SIF from TROPOMI (the TROPOspheric Monitoring Instrument) to provide accurate information on SIF and found that it could potentially be used in model development. This study demonstrated the usefulness of observations at various spatial scales and the linkages between SIF and GPP and their seasonal **development cycle** at three different evergreen forest sites.

## 1 Introduction

Space-based observations can monitor the entire Earth's surface, and advances in remote sensing methods and satellite technology provide more data streams for carbon cycle studies (Schimel et al., 2019). ~~The ability to observe, such as~~ sun-induced chlorophyll fluorescence (SIF) ~~from space has led to numerous applications~~ (Mohammed et al., 2019). SIF is linked to the light reactions of photosynthesis and can therefore provide information on terrestrial CO<sub>2</sub> uptake (Porcar-Castell et al., 2021). Early research on SIF showed that the relationship between SIF and photosynthesis (gross primary productivity, GPP) is linear when measured from space (Frankenberg et al., 2011; Guanter et al., 2012; Joiner et al., 2011, 2013; Sun et al., 2017). Subsequent work has challenged this assumption, showing that the relationship between SIF and GPP is more complex (Damm et al., 2015; Magney et al., 2020; Martini et al., 2022; Sun et al., 2023b) even when using space-based observations (Balde et al., 2023). Therefore, process-based approaches are useful for understanding the mechanistic drivers of the SIF-GPP relationship.

Observations of leaf-level chlorophyll fluorescence (ChlF) have been widely used in plant physiological research for decades. Consequently, there is a thorough understanding of the mechanisms governing leaf-level ChlF (Baker, 2008; Maxwell and Johnson, 2000). When photons are absorbed by plant leaves, they have three main non-damage pathways: they can be used for photochemistry, emitted as ChlF, or dissipated as heat. Since these three pathways coexist, the amount of NPQ affects the relationship between ChlF and photochemistry. In ChlF, a small fraction of photons are re-emitted after giving up some of their energy at higher wavelengths (SIF spectrum is between 650 and 840 nm, as in Fig. 1) (Porcar-Castell et al., 2021). SIF is ChlF that takes place under natural illumination conditions, and measuring it is referred to as a passive measurement of ChlF.

When moving from the leaf level to the canopy level, the interpretation of the measured signal becomes more challenging. Scattering and re-absorption ~~of ChlF take place within the canopy (Van Der Tol et al., 2019). These processes influence how much of the SIF signal located in the red part of the spectrum is absorbed compared to the near-infrared (NIR) (also called "far-red") region. The structural effects of the canopy play an important role in the transmission of the emitted SIF signal within the canopy (Paul-Limoges et al., 2018) and explain the anisotropy of the observed~~ and structural effects influence the SIF signal observed at the top of the canopy (Joiner et al., 2020; Malenovský et al., 2021). ~~The soil also contributes to the SIF signal observed at the top of the canopy, as observed signals include contributions from both vegetation and soil components (Yang et al., 2025b). The variability in radiative transfer through the canopy creates challenges for interpreting the measured SIF signal. (Joiner et al., 2020; Malenovský et al., 2021; Paul-Limoges et al., 2018; Van Der Tol et al., 2019) and also soil can contribute to the signal (Yang et al., 2025b).~~ By using radiative transfer and biological modelling, mechanistic drivers of the SIF signal can be disentangled, improving our interpretation of SIF (Damm et al., 2015).

The use of SIF in vegetation modeling has become widespread. The first leaf-level description for ChlF was in FluorMod-Leaf (Miller et al., 2005). A wide-spread leaf level model that was further developed from FluorModLeaf was within the Soil Canopy Observation of Photosynthesis and Energy fluxes (SCOPE) model (van der Tol et al., 2009). SCOPE is a site level model which combines the Farquhar photosynthesis model with a detailed radiative transfer scheme based on SAIL (van der Tol

50 et al., 2009; Verhoef, 1984). ~~A newer leaf level model, that was also implemented in SCOPE, was published a few years later (van der Tol et al., 2014) and further developments have also been made (Vilfan et al., 2016, 2018). The SCOPE model has been widely used in many applications, e.g. studying relationship of GPP and SIF in different ecosystems and under different fertilization treatments as well as water stress effects (e.g., Damm et al., 2015; Martini et al., 2019; Wang et al., 2023; Zhang et al., 2018)~~ Further developments have been done for the leaf level model used in SCOPE (van der Tol et al., 2014; Vilfan et al., 2016, 2018)

55 ~  
Recent model developments also allow the use of SIF to estimate GPP (Gu et al., 2019). These methods utilize the link between measured SIF and light reactions of photosynthesis and how these observations provide a link for actual electron transport from photosystem II to photosystem I. The model by Johnson and Berry (2021) has a tight coupling between photosynthesis and ChlF and allows ~~for two-directional modelling~~, estimating SIF from GPP and vice versa.

60 Terrestrial biosphere models (TBMs) are large-scale models used to study the biogeochemical cycles and land-atmosphere interactions. They can be run at a large scale (regional and global), but site-scale simulations are still possible. The modelling community has implemented SIF models in TBMs with varying degrees of complexity. ~~For example, Koffi et al. (2015) augmented the Biosphere Energy Transfer Hydrology (BETHY) model with the full SCOPE model. Lee et al. (2015) used a simple scheme to account for radiative transfer in the CLM implementation. Bacour et al. (2019) built a SCOPE emulator~~ for an implementation in the ORCHIDEE model. Qiu et al. (2019) implemented SIF to the BEPS model and emphasized the importance of accounting for scattering in the modelling, and (e.g., Bacour et al., 2019; Koffi et al., 2015; Qiu et al., 2019; Thum et al., 2019). Some of these and other modelling studies have used also data assimilation ~~studies have been done with the BEPS model (Wang et al., 2021).~~ (e.g., Bacour et al., 2019; Koffi et al., 2015; Wang et al., 2021).

70 These different approaches balance simplifying the complex physical phenomenon of radiative transfer in plant canopies against the length of the simulation time. However, full 1D radiative transfer based on the SCOPE model is too computationally demanding for many large scale applications (Sun et al., 2023a) and some modelling teams have needed to use parameterizations instead of the full model (Miyachi et al., 2025). The computational burden becomes even more relevant in different data assimilation approaches (Norton et al., 2019). An empirical approach used in some studies would be worth investigating (Liu et al., 2020; Zeng et al., 2019). One way to simplify the calculation of SIF signal's radiative transfer would  
75 be to use a two-stream radiative transfer model (Sun et al., 2023a). A recent two-stream radiative transfer model (Quaife, 2025) describes radiative transfer of emission originating from the canopy and therefore enables calculation of SIF signal's radiative transfer. The TBM studies mentioned used spaceborne data from Greenhouse gases Observing SATellite (GOSAT) (Kuze et al., 2009) ~~and~~ Orbiting Carbon Observatory (OCO)-2 (Frankenberg et al., 2014) and GOME-2 (Global Ozone Monitoring Experiment-2) (Munro et al., 2016).

80 The northern latitudes are experiencing stronger climatic change than the rest of the globe (Rantanen et al., 2022). Boreal forests located in these regions are an important part of the global carbon cycle (Pan et al., 2024). ~~Boreal forests~~ They are characterized by strong seasonality in environmental conditions, with harsh winter conditions and shoulder seasons when air and soil temperature and light availability drive the spring recovery and autumn drawdown of vegetation (Tanja et al., 2003; Thum et al., 2009; Vesala et al., 2010). The photosynthetic activity of evergreen forests in these ecosystems cannot be easily

85 tracked by reflectance-based remote sensing alone, as the greenness is partially decoupled from the rate of photosynthesis (Walther et al., 2016). SIF observations have proven to be more reliable proxies for tracking photosynthesis in these ecosystems (Pierrat et al., 2024).

Challenging conditions have led evergreen trees to develop different coping mechanisms. Sustained non-photochemical quenching (NPQ) is one of them and it increases in winter, at the same time as the capacity of photosystem II decreases  
90 (Porcar-Castell et al., 2008; Porcar-Castell, 2011; Adams et al., 2014). NPQ is a pH-independent mechanism associated with the retention of the xanthophyll cycle pigments zeaxanthin and antheraxanthin and allows the needles to dissipate the incoming radiation as heat (Demmig-Adams et al., 2014).

Sustained NPQ can only be estimated from the active ChlF observations, i.e. when a set of saturating light pulses are delivered to a leaf under dark- and light-adapted conditions. Therefore, it cannot be directly obtained from passive SIF observations,  
95 although progress is being made towards optical sensing of NPQ (Van Wittenberghe et al., 2024). Including description of sustained NPQ in large scale TBMs was started by Raczka et al. (2019), who used the state of acclimation, represented by a delayed temperature sum developed by Mäkelä et al. (2004), in the parameterization. ~~Climate-induced changes will alter the seasonal cycle of vegetation, and the ability to have optical data to track photosynthetic activity is very helpful in understanding the changes in the carbon cycle.~~

100 The goal of this work was to improve the ChlF modelling so that a TBM can fully exploit the information provided by the ChlF related observations at different scales to improve our understanding of ecosystem processes related to biogeochemical cycles. Our objectives were 1) to test different radiative transfer approaches for SIF and 2) to assess the role of sustained NPQ in modelling. The research questions of our study are therefore:

- Which radiative transfer model calculation methods were sufficiently robust for reliable SIF model predictions?
- 105 – How could we account for the influence of sustained non-photochemical quenching in the modeled SIF signal [across different sites](#)?
- What was the benefit of in-situ observations versus satellite observations of SIF in model development?

To answer these questions, we run simulations of TBM QUINCY ('QUantifying Interactions between terrestrial Nutrient CYcles and the climate system') ([Thum et al., 2019](#)) [with different radiative transfer approaches](#) and compared them with  
110 tower observations of SIF at three coniferous evergreen sites that experience a strong seasonal cycle with harsh winters. In addition, we tested how spaceborn TROPospheric Monitoring Instrument (TROPOMI) instrument (on board the Sentinel-5 Precursor (S5P) satellite) (Guanter et al., 2021) data capture the seasonal cycle at two of these sites and how its magnitude differs from the simulation results. The novel aspects of this study include using different radiative transfer schemes with one model, analyzing both red and far-red region observations from the tower observations of SIF, having sites in two different  
115 continents and having approaches that either include the SIF signal attenuation inside the leaf or not. Including both red and far-red regions in the analysis will help to evaluate potential challenges that the simulations will have in the red region, a fact that will become more relevant with new satellite missions covering whole SIF spectrum, [such as The Fluorescence Explorer \(FLEX\) \(Moreno, 2022\)](#).

**Table 1.** The site characteristics of the three forests. LAI is one-sided and average value over summertime. Air temperature is annual average.

Abbreviation	Location (lat, lon)	Species and age (yrs)	Period	LAI (m <sup>2</sup> m <sup>-2</sup> )	Air temp. (°C)	SIF instrument
CA-Obs	53.99, -105.12	Black spruce (>100)	2019-2020	3.8	1.3	PhotoSpec
FI-Sod	67.36°, 26.64°	Scots pine (90)	2021	1.3-1.4	0.3	FloX
US-NR1	40.03°, -105.55°	Mixed evergreen coniferous (>100)	2017-2018	3.8–4.2	2.7	PhotoSpec

## 2 Materials and methods

### 120 2.1 Site descriptions and observations

The three study sites were Niwot Ridge (US-NR1) (Bowling et al., 2018; Burns et al., 2015; Magney et al., 2019a), USA, USA (Bowling et al., 2018; Burns et al., 2015; Magney et al., 2019a), Saskatchewan (CA-Obs), Canada (Pierrat et al., 2021, 2022a) and Sodankylä (FI-Sod), Finland (Thum et al., 2007; Knorr et al., 2025). All of these sites are evergreen coniferous forests. The Canadian and Finnish sites are in the boreal zone, and Niwot Ridge is a subalpine forest. Further details about the sites are given in Table 1. All sites have eddy covariance flux observations as well as a tower-mounted in-situ SIF instrument. The Sodankylä site is part of the ICOS network (<https://www.icos-cp.eu/>) and the North American sites are part of AmeriFlux (<https://ameriflux.lbl.gov/>).

All Although all of these sites exhibit a strong seasonal cycle in vegetation activity, but it differs due to variations this varies due to differences in latitude and elevation. The forest in CA-Obs experienced exhibit a strong seasonal cycle with, characterized by low levels of photosynthetic activity between October and March. Although US-NR1 is located at a lower latitude than the other study sites, the high elevation conditions result in a pronounced seasonal cycle, including winter below freezing winters. The Photosynthesis in the forest at US-NR1 is photosynthetically active from May to September, with the shoulder season to winter occurring in October and December, and the spring recovery occurring in April and May. FI-Sod is located 100 km north of the Arctic Circle. Therefore, the winter radiation drops to zero, and air temperatures are low. Spring recovery occurs in April and May. The photosynthetically active period is from June to August and photosynthesis ceases in September and October.

### 2.2 SIF and CO<sub>2</sub> flux observations at the sites

At the North American sites, SIF was observed with PhotoSpec (Grossmann et al., 2018) in two different spectral regions. The red region of PhotoSpec is between 680 and 686 nm, and the far-red region is between 745 and 758 nm. These observations were made with a 2D scanning telescope. The retrieval method is was based on the Fraunhofer line method (Grossmann et al., 2018). The field of view (FOV) is was 0.7°. At US-NR1 a typical measurement included a scan involved scanning from nadir to the horizon in steps of 0.7° steps at two different azimuth direction directions (Magney et al., 2019a). At CA-Obs three vertical scans at three different directions (35°W, 0°N, 35°E) were done in sequence (Pierrat et al., 2021). The PhotoSpec

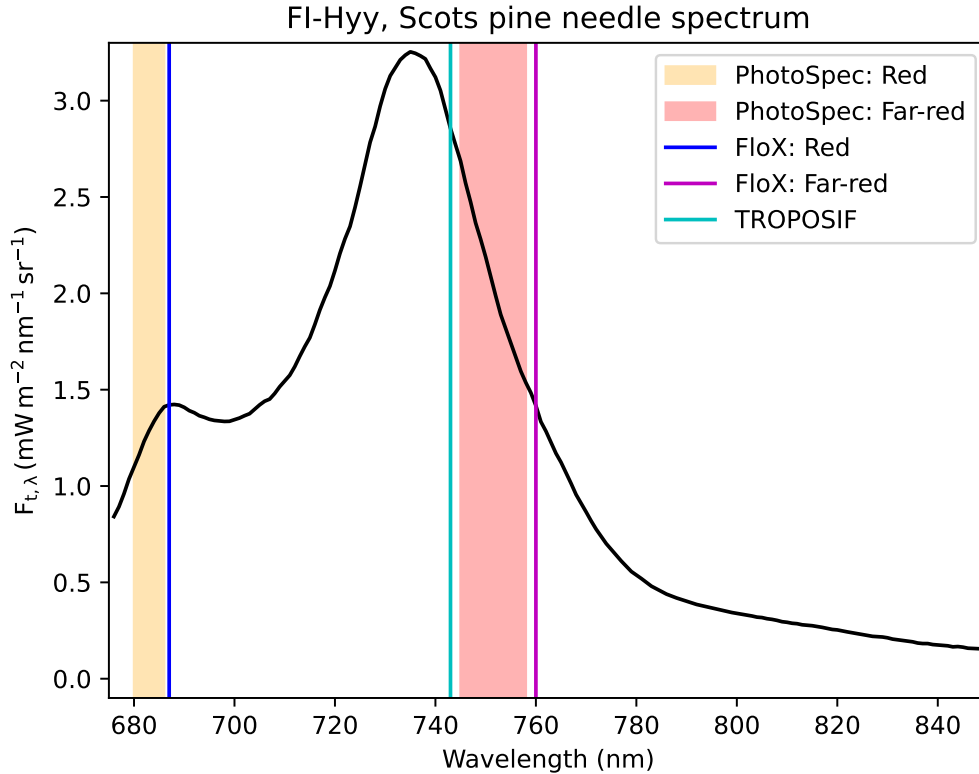
retrievals were filtered ~~by having an~~ using a Normalized Difference Vegetation Index (NDVI) based threshold to ensure that  
145 only ~~observations of vegetation~~ vegetation observations were used. In this study we averaged over all the ~~observations. More~~  
~~three scans. Further~~ details of these observations can be found in Magney et al. (2019a) (US-NR1) and Pierrat et al. (2021)  
(CA-Obs). At US-NR1, observations were available from June 2017 ~~until to~~ June 2018. At CA-Obs we used observations ~~for~~  
~~whole years from the whole of~~ 2019 and 2020. ~~In spring 2019 the eddy covariance observations were out of commission and~~  
~~until mid-2019 the GPP data was based on gap-filling.~~

150 In Sodankylä, the observations were made using a FloX box (JB Hyperspectral Devices, Düsseldorf, Germany) ([https://www.jb-](https://www.jb-hyperspectral.com/products/flox/)  
hyperspectral.com/products/flox/). These observations were used to retrieve the SIF in the O<sub>2</sub>B band at 687 nm in the red region  
and the O<sub>2</sub>A band at 760 nm in the far-red region. The retrieval method used to process the data was the improved Fraunhofer  
line method (Alonso et al., 2008; Cendrero-Mateo et al., 2019). In our study, we used observations close to nadir ~~observations~~  
from June 2021 until the end of the year. The FOV is 25°. The different wavelengths of the retrieved SIF signals by the instru-  
155 ments are shown in Fig. 1, along with the SIF spectrum from observations of Scots pine needles in Hyttiälä, southern Finland  
(Magney and Frankenberg, 2019; Magney et al., 2019b).

Net ecosystem exchange of CO<sub>2</sub> was measured by the eddy covariance method. At CA-Obs the measurement height was  
25 m, and the anemometer was CSAT3 (Campbell Scientific Inc., Logan, UT, USA) and the gas analyzer LiCor LI-7200  
~~(Pierrat et al., 2021)~~ (LiCor Inc., Lincoln, NE, USA) (Pierrat et al., 2021). ~~In spring 2019 the eddy covariance observations at~~  
160 ~~CA-Obs were out of commission and until mid-2019 the GPP data was based on gap-filling.~~ At US-NR1 measurements were  
made at 21.5 m height with the CSAT3 and an LiCor LI-6262 gas analyzer (Magney et al., 2019a). At FI-Sod, measurements  
were made at 25 m with a Gill HS-50 sonic anemometer (Gill Instruments, Lymington, UK) and a LiCor LI-7200 gas analyzer  
~~(LiCor Inc., Lincoln, NE, USA)~~ (Knorr et al., 2025). Flux partitioning and gap-filling at CA-Obs was done as described  
in Barr et al. (2004) and at US-NR1 using the Reichstein et al. (2005) method with the R package REdyProc (Wutzler  
165 et al., 2018). Gap-filling and partitioning of the measured net ecosystem exchange flux to gross primary production (GPP)  
and total ecosystem respiration was done at FI-Sod following Aurela et al. (2015). In Sodankylä, the fraction of absorbed  
photosynthetically active radiation (fAPAR) was measured using PQS1 instruments (Kipp & Zonen; Netherlands) (Knorr  
et al., 2025). Four of these sensors were installed below the canopy. These observations, together with aboveground canopy  
observations, were used to calculate fAPAR.

### 170 2.3 Remote sensing observations of SIF by TROPOMI

The TROPOMI is aboard the Copernicus Sentinel-5P mission and has been providing data since 2018 (Köhler et al., 2018).  
TROPOMI ~~has global~~ provides global, continuous spatial sampling with ~~daily revisit times, a daily revisit time~~ because it has  
a nearly sun-synchronous orbit with a ~~repeat cycle of 16 days and a wide swath of 16-day repeat cycle and a~~ 2600 km swath  
(Köhler et al., 2018). The pixel size at nadir was 3.5 x 7.5 km<sup>2</sup> at the beginning of the mission ~~and, decreasing to~~ 3.5 x 5.5  
175 km<sup>2</sup> after August 2019 (Guanter et al., 2021). We used the TROPOSIF product derived from the 743-758 nm window, at ~~743~~  
740 nm (Guanter et al., 2021). The retrieval methodology ~~is was~~ based on the Fraunhofer line in-filling principle (Plascyk and  
Gabriel, 1975) and a data-driven method ~~is was~~ used (Guanter et al., 2015).



**Figure 1.** SIF emission spectrum for Scots pine located in the southern boreal zone (from Magney and Frankenberg (2019)) with wavelength regions of the observations. The lines indicate the bands for which the SIF signal was retrieved for the FloX observations and TROPOMI (TROPOSIF) and the shaded regions indicate the wavelength regions for which the SIF with the PhotoSpec was retrieved.

In this study we used a sampling area of  $0.5^\circ \times 0.5^\circ$  ~~sampling area around around the~~ two study sites, CA-Obs and FI-Sod. This corresponds to an area of approximately 56 km x 33 km at CA-Obs and 56 km x 22 km at FI-Sod. According to the 2019 180 MODIS MCD12C1 ~~from 2018~~ data set (Friedl and Sulla-Menashe, 2022), the land cover for CA-Obs in this region ~~is was~~ 65 % woody savannah and 26 % evergreen needleleaf forest, with minor contributions from mixed forests and croplands. For FI-Sod, the land cover was 83 % woody savannah and 17 % savannah. We also tested ~~using~~ a smaller sampling area ~~around the region,~~ extending  $0.25^\circ$  around the site. ~~For In~~ in this smaller region, the land cover around CA-Obs was 45 % evergreen forest and 53 % woody savannah, with ~~small contribution of a small contribution from~~ mixed forests. For the FI-Sod site the smaller region ~~had~~ 185 comprised of 92 % woody savannah and 8 % of savannah. We did not use TROPOMI data for US-NR1 because TROPOMI observations only covered part of the in situ observational period. TROPOMI's Level 2 cloud fraction product was applied for a strict cloud filtering, removing all SIF data for which the cloud fraction exceeded 0.2, as recommended by Guanter et al. (2021). ~~In our analysis~~ For our analysis, we used daily averages that we had calculated from instantaneous values.

## 2.4 Model description of QUINCY

190 The QUantifying Interactions between terrestrial Nutrient CYcles and the climate system (QUINCY) model is a terrestrial biosphere model that can be run on a single site or ~~larger on larger scales~~, such as regional or global ~~seales~~. QUINCY uses plant functional types (PFTs) to describe different ecosystems. In site level simulations, each site is ~~described~~ represented by a single PFT. Canopy can have up to ten layers. A brief description of the model is provided here; further details can be found in Thum et al. (2019).

195 The complete version of QUINCY ~~has features~~ fully coupled carbon, energy, nitrogen and phosphorus cycles. The model has a modular structure that allows only some parts of the model to be run. We used the canopy module, which calculates the model's fast biophysical processes ~~of the model~~, including stomatal conductance, photosynthesis and radiative transfer within the canopy. Influence of ~~soil is considered~~ the soil is also considered, so that water uptake is constrained by soil moisture given a prescribed, ~~PFT-specific~~ PFT-specific root profile. ~~Leaf~~ The leaf area index (LAI) and leaf nitrogen content are prescribed  
200 with a constant value in the canopy module (otherwise these would be calculated prognostically inside the model). Leaf stoichiometry, i.e. the nitrogen to carbon ratio, is also fixed in the canopy module. The calculation of leaf chlorophyll from ~~the~~ leaf nitrogen is described in Section S1.1.

Photosynthesis is calculated according to Kull and Kruijt (1998). This approach is based on the biochemical model of Farquhar et al. (1980), but instead of the regular implementation of having the minimum of the two branches limiting photo-  
205 synthesis (light-limited rate of photosynthesis and carboxylation capacity limited rate), the amount of light-saturated region in the leaf is taken into account. In the non-light-saturated part, photosynthesis is calculated using the light-limited rate of photosynthesis based on the maximum electron transport rate parameter  $J_{max,25}$  (the parameter has been scaled to 25 °C). For the light-saturated part, photosynthesis is calculated as the minimum of electron transport rate-limited photosynthesis and the carboxylation capacity limited photosynthesis (determined by the maximum carboxylation capacity parameter  $V_{c(max),25}$ ).  
210 Photosynthesis is calculated separately for sunlit and shaded leaves in each canopy layer and coupled to the stomatal conductance (Medlyn et al., 2011), described in Section S1.2. Evergreen trees in cold environments adapt their photosynthesis during the shoulder seasons as described in Section S1.3.

### 2.4.1 Radiative transfer in QUINCY

The depth (in terms of LAI) of the canopy layers increases exponentially towards the lower canopy layers, ~~of which there are a~~  
215 ~~maximum of ten layers~~. The nitrogen gradient decreases with canopy depth according to observations (Niinemets et al., 1998), but is not connected to the leaf optical properties in the current model formulation. The fraction of sunlit and shaded leaves ~~are~~ calculated using the is calculated using a radiative transfer scheme based on the two-stream approach of Spitters (1986) ~~;~~ and extended to include canopy albedo, clumping, and attenuation of the shortwave backscatter from the ground. Radiative transfer is calculated separately for the visible (300-700 nm) and near-infrared (700-3000 nm) bands. Leaf reflectance is calculated  
220 based on the PFT-specific single leaf scattering albedo (SSA). Leaf transmissivity is assumed to be equal to reflectivity, and

absorptance is defined as one minus SSA. ~~Clumping~~ The clumping index ( $\Omega$ ), which describes non-random distribution of leaf elements, is ~~described~~ defined according to Campbell and Norman (1998):

$$\Omega = \Omega_0 / (\Omega_0 + (1 - \Omega_0) \times e^{-k_{csf} \times \cos(\gamma^*)^{\phi_{crown}}}), \quad (1)$$

where  $\Omega_0$  and  $\phi_{crown}$  are the PFT-specific clumping factor at nadir (0.5 for conifers) and the crown shape factor (2.19 for  
225 conifers), respectively, and  $k_{csf}$  is a correction factor (value with a value of 2.2). A seasonal cycle of  $\Omega$  at FI-Sod site is shown  
in Fig. S1. ~~Because~~ As all equations for leaf reflection and absorption coefficients are only valid for high solar elevation, the  
true zenith angle ( $\gamma$ ) is constrained to values larger than 10 smaller than 80° ( $\gamma^*$ ). ~~Otherwise~~, i.e. it will receive a value of 80°  
in the event of a higher zenith angle. Otherwise, the leaves are assumed to be distributed hemispherically ~~spherically~~. The soil  
albedo is set to a literature value (Bonan, 2008) for the visible and near infrared regions (Bonan, 2008).

## 230 2.5 Models for the radiative transfer of the SIF signal

The leaf chlorophyll fluorescence yield was calculated using the model developed by (van der Tol et al., 2014). ~~Its equations~~  
~~are shown in SI, Section 1.4~~ The equations can be found in Section S1.4. We did not change any of ~~this~~ the model's default  
parameter values ~~;~~ and these parameters were kept constant for all the across all sites. The only change to the standard imple-  
235 mentation of the model was caused by the different Farquhar et al. model formulation adapted to QUINCY, but this for use  
with QUINCY, which did not require any additional parameters.

The escape fraction describes how much of the emitted SIF signal reaches the top of the canopy. The total canopy SIF can  
be expressed using the escape fraction  $f_{esc}$  as (Sun et al., 2017):

$$SIF = PAR \cdot fAPAR \cdot \Phi_{F_t} \cdot f_{esc} \quad (2)$$

where SIF is the observed SIF, PAR is the photosynthetically active radiation, fAPAR is the fraction of absorbed PAR  
240 and  $\Phi_{F_t}$  is the chlorophyll fluorescence yield. This section introduces ~~three different ways to calculate the~~ the three different  
approaches to calculating radiative transfer of SIF in the canopy that ~~we were~~ used in this study. The first approach uses the  
mSCOPE model, which has been ~~implemented in~~ incorporated into the QUINCY model. This ~~approach is hyperspectral and~~  
hyperspectral approach considers the attenuation of the SIF signal within the leaf. ~~The L2SM model is not~~ Rather than being  
implemented in QUINCY; ~~rather it~~, the L2SM model uses QUINCY's output. In our case, it utilizes two spectral regions  
245 (visible below 700 nm regions and near infrared for above 700 nm). This approach considers the attenuation of the SIF signal  
within the leaf. The final approach is based on an empirical relationship and estimates the escape fraction using the fraction of  
absorbed PAR and leaf reflectance obtained from QUINCY, which considers the visible and near infrared regions in the same  
way as L2SM. All approaches ~~consider SIF emission to be~~ treat SIF emission as a diffuse flux.

### 2.5.1 mSCOPE

250 The mSCOPE model (Yang et al., 2017) is a further development of the widely used SCOPE model (van der Tol et al., 2009) that has been eventually implemented in SCOPE 2.0 (Yang et al., 2021). In mSCOPE, the canopy ~~is-allowed~~ structure is permitted to have a heterogeneous vertical canopy structure, whereas in SCOPE it is assumed to be homogeneous. The QUINCY model has a vertically varying canopy structure, as explained in Section 2.4. Therefore, the use of mSCOPE was more suitable than SCOPE for coupling with QUINCY.

255 In mSCOPE, the ~~model-Fluspect~~ Fluspect model (Vilfan et al., 2016) calculates leaf reflectance, transmittance and ChlF. The radiative transfer of mSCOPE is described by two SAIL-based models (Verhoef, 1984): one, which calculates the radiative transfer of incident radiation, and another one, which calculates the radiative transfer of emitted ChlF. Homogeneity is assumed in the horizontal direction ~~is-assumed~~, but heterogeneity of leaf properties is allowed in the vertical direction ~~is-allowed~~. The probability of sunlight on leaves is described by a Poisson model. ~~The-shaded~~ Shaded leaves are illuminated only by diffuse  
260 radiation ~~and~~, so their absorbed radiation does not depend on geometry. For the sunlit leaves, the absorbed radiation is calculated for discrete leaf orientations, including 13 leaf inclinations and 36 leaf azimuth angles relative to the solar azimuth. ~~The-soil~~ Soil optical properties are represented by a linear combination of a dry and a saturated soil reflectance factors, weighted as a function of the ratio of soil moisture content to field capacity. The mSCOPE model calculates the top of the canopy (TOC) value for ~~the~~ ChlF emission.

265 The mSCOPE model has been implemented in QUINCY (see the conceptual figure in Fig. S2). This implementation replaces the original QUINCY radiative transfer model (Spitters, 1986). The vertical profile of leaf chlorophyll, ~~that-was-calculated~~ inside-which-was-calculated-in QUINCY (S1.1), was used to calculate the radiative properties of each layer. To calculate this, mSCOPE uses the PROSPECT model (Jacquemoud and Baret, 1990). mSCOPE runs over 60 canopy layers, that were grouped to mimic the usual 10 layers in QUINCY as a function of the QUINCY layer LAI. The mSCOPE outputs were then  
270 integrated for each layer group to represent each of the 10 QUINCY layers. For stability reasons, we also ~~had-to-limit~~ limited the calculation of the radiative transfer code to solar zenith angles below 80°. To test the implementation, we performed a sensitivity analysis by running simulations with different parameter values in both mSCOPE and QUINCY-mSCOPE. The results were consistent (not shown), ~~so-we-are~~, We-are-therefore confident that there are no major technical errors in the implementation. Using QUINCY with mSCOPE instead of QUINCY with the original radiative transfer model caused ~~small~~  
275 minor differences in the simulated GPP, but ~~overall-the~~ the-overall results were similar (for CA-Obs the Pearson correlation coefficient ( $r^2$ ) was 0.99 for half-hourly values throughout the time period and the root mean squared error (RMSE) was 0.77  $\mu\text{mol m}^{-2} \text{s}^{-1}$ ). The viewing angle was set to nadir in these simulations.

### 2.5.2 Layered two-stream model (L2SM)

The Layered canopy two-Stream Model (L2SM) (Knorr et al., 2025; Quaife, 2025) is a two-stream radiative transfer model  
280 based on the solutions provided by Meador and Weaver (1980). It allows the calculation of diffuse emissions originating from plant leaves. A conceptual figure showing how it is used in combination with QUINCY is shown in Fig. S3, and the equations of

the model are in Section S1.5. The formulation of L2SM is a two-stream model, similar to the original radiative transfer model of QUINCY. ~~Therefore~~ Consequently, it calculates the radiative transfer ~~for~~ in the visible and near infrared ~~region~~ regions separately. Soil reflectance was assumed to be isotropic and leaf angle distribution was assumed ~~hemispherie~~ spherical. We  
 285 used L2SM with the leaf reflectance (which also equals transmissivity in QUINCY), the leaf area index for each layer, and the SIF emission per layer (as calculated by Eq. S15) as well as information on soil reflectance. In this implementation a novelty was that internal attenuation of the SIF signal was taken into account. While QUINCY is based on Spitters (1986), the L2SM approach is based on Meador and Weaver (1980). Therefore, the radiative transfer of incoming radiation used to calculate photosynthesis differs slightly from the way SIF is transferred within the canopy. A detailed derivation and description of the  
 290 L2SM can be found in Quaife (2025).

### 2.5.3 Liu and Zeng approaches (LZ)

In addition to modelling the transfer of the SIF signal, we have also tested some simpler formulations to estimate the SIF leaving the canopy. A more empirical approach was based on the work of Liu et al. (2020) (for the visible region) and Zeng et al. (2019) (for the near-infrared/far-red region). We used the formulation presented by Hao et al. (2021) for the escape  
 295 fraction (a conceptual figure is shown in Fig. S4 and see eq. 2). An empirically based formulation for the escape fraction  $f_{esc}$  is:

$$f_{esc}^{reg} = \frac{\rho_{can}^{reg}}{fAPAR \cdot \sigma^{reg}} \quad (3)$$

where reg is either visible (vis) or near-infrared (nir) region,  $\rho_{can}$  is the reflectance of green vegetation and  $\sigma$  is the single leaf scattering albedo ~~-, which is the sum of reflectance and transmittance~~ (SSA). Therefore, this escape fraction is calculated  
 300 separately for the visible and the near-infrared regions. The soil was assumed to be black, i.e. non-reflectant. To estimate the escape fraction from QUINCY in this way, we used the modelled vegetation reflectance for the ~~whole~~ entire canopy, fAPAR and the constants for single-leaf scattering albedo. After calculating the escape fraction, the upscaled SIF emission (calculated as the sum of canopy layer SIF emissions from Eq. (S15) which were multiplied by the canopy LAI) was multiplied by to obtain the ~~estimate of the~~ estimated SIF signal.

### 305 2.6 Converting the units of SIF from modelled to observed

The output of the radiative transfer approaches in Sections 2.5.1-2.5.3 is in flux units, i.e.  $\mu\text{mol m}^{-2} \text{s}^{-1}$ . To be able to compare the model output with the observations, which are typically in units of  $\text{W m}^{-2} \text{s}^{-1} \text{nm}^{-1} \text{sr}^{-1}$ , we need to convert the units of the model output. This procedure was similar as described in Knorr et al. (2025) -

~~In the unit conversion, the Planck equation is used to obtain the energy  $E$  of photons per mole as-~~

$$310 \quad E = \frac{N_a h c}{\lambda_\phi}$$

where  $N_a$  is Avogadro's number (value is  $6.022 \cdot 10^{23}$ ),  $h$  is the Planck's constant ( $6.626 \cdot 10^{-34} \text{ J s}$ ),  $c$  is the speed of light ( $3.0 \cdot 10^8 \text{ m s}^{-1}$ ) and  $\lambda_\phi$  is the wavelength of the SIF photons (unit  $m$ ).

The emittance of SIF from the top of the canopy is assumed to be isotropic, so the conversion to steradians is done using a constant factor of  $\frac{1}{\pi}$ . The final step is to weight the relative strength of the emissions at wavelengths  $\lambda_\phi$  compared to a reference SIF spectrum as:-

$$w = \frac{e_s(\lambda_\phi)}{\sum_i e_s(\lambda_{\phi,i})},$$

where  $e_s$  is the emission spectrum in relative units. The emission was calculated for the wavelengths of the observing instruments (PhotoSpec or FloX). Similarly to Knorr et al. (2025), we used a spectrum observed at Hyytiälä Scots pine forest, located in central Finland (Magney et al., 2019a; Magney and Frankenberg, 2019) for the LZ approach. Observations of four trees were made at a light level of 1200 and these spectra were then averaged. For the L2SM we used mathematically constructed estimate of the *in vivo* leaf spectrum (Gordon, 1979), which was based on double Gaussian curve and normalized to one. This was done, since the current version of L2SM includes the leaf attenuation of the SIF signal.

Using this information, the unit conversion of the original SIF,  $SIF_{unit,flux}$ , to the SIF in measured units,  $SIF_{unit,eng}$  is obtained as follows:-

$$SIF_{unit,eng} = SIF_{unit,flux} \frac{e_{sw}}{\pi}.$$

The and descibed also in S1.7. The QUINCY run with mSCOPE provides fluorescence radiance ChlF directly within the observed units, and is therefore independent of this approach.

## 2.7 Sustained non-photochemical quenching (NPQ<sub>s</sub>)

Sustained non-photochemical quenching (NPQ<sub>s</sub>) is a process that is relevant to plants that retain needles through the winter evergreen plants. This is another NPQ mechanism in addition to the reversible NPQ that we introduced in the Section S1.4 section (Eq. S14). In previous work with the Community Land Model (CLM) model (Raczka et al., 2019), a parameterization for sustained NPQ based on the state of acclimation was developed. We have already used previously used the concept of the state of acclimation in the photosynthesis model of QUINCY QUINCY photosynthesis model (Eq. S5). Following the earlier work and similarly to the state of acclimation, we obtained for  $K_{N_s}$ :

$$K_{N_s} = \frac{K_{N_s,max}}{1 + e^{b_{NPQ_s}(S - T_{NPQ_s})}} \quad (4)$$

where  $K_{N_s,max}$ ,  $b_{NPQ_s}$  ( $^{\circ}\text{C}^{-1}$ ) and  $T_{NPQ_s}$  ( $^{\circ}\text{C}$ ) are parameters, set to 8.0, 0.5  $^{\circ}\text{C}^{-1}$  and 5.0  $^{\circ}\text{C}$ , respectively. The difference between this equation and Eq. (S5) is that it has large values in winter, while Eq. (S5) has large values during the summer.  $S$  is

obtained from Eq. (S4). To estimate the parameters in the Eq. (4) we used SIF observations from US-NR1 and ~~tuned-adjusted~~ the values to ~~get the best~~ achieve the best possible match with our model ~~considering the whole observational time period.~~  
340 ~~The previous study by Raczka et al. (2019) had developed the parameterization for this site using active leaf level observations from coniferous forest Hyytiälä in Finland. We tested different values and chose those that best fit the data. over the entire observational period.~~ A seasonal cycle of  $K_{N_s}$  and  $S$  at Sodankylä in 2021 are shown in Fig. S5.

When both reversible and sustained NPQ were taken into account,  $K_N$  was then a sum of them, as

$$K_N = K_{N_{rev}} + K_{N_s}. \quad (5)$$

## 345 2.8 Site scale flux simulation protocol

All the sites ~~of in~~ the study were classified as a boreal coniferous evergreen forests PFT in QUINCY. ~~Therefore also the soil reflectance was described similarly for all the sites. In this work~~ For this study we took advantage of the modular structure of QUINCY and ~~used only~~ only used the canopy model in our simulations. The LAI and leaf nitrogen content were ~~prescribed so set to ensure~~ that the average summertime GPP level ~~matched the observations~~ corresponded with the observed values. The  
350 meteorological ~~foreign data~~ (air temperature, precipitation, atmospheric pressure, vapor pressure deficit, wind speed, short and longwave radiation) required to run the model ~~was were~~ obtained from the site measurements. In addition, we used atmospheric  $CO_2$  concentration and N deposition, ~~but although~~ the N cycle was not active in the canopy model simulations. The canopy model does not require any spinup, and the simulations were performed for the years of the observations. The leaf single scattering albedo used to calculate reflectance for conifers was 0.15 in the visible wavelength region and 0.73 in the near  
355 infrared (Otto et al., 2014). The soil albedo for all the sites was estimated to be 0.15 in the visible and 0.30 in the near infrared. The LAI values ~~have been were~~ set to lower ~~values than observations, to make a better match with~~ than the observed values to better match the observed magnitude of GPP. The LAI was set to  $2.5 \text{ m}^2 \text{ m}^{-2}$  in CA-Obs,  $3.6 \text{ m}^2 \text{ m}^{-2}$  in US-NR1 and  $1.2 \text{ m}^2 \text{ m}^{-2}$  in FI-Sod. When presenting the results in Section 3.1, we had used the sustained NPQ presentation for the CA-Obs and US-NR1 sites, but not for the FI-Sod site.

## 360 2.9 Evaluation methodology

The metrics to assess the model performance were coefficient of correlation ( $r^2$ ) (Wright, 1921), bias and root mean square error (RMSE) (Hastie et al., 2009) as well as its systematic and random components (Willmott, 1981). These formulas have been shown in Section S1.6.

For many of the figures we used averaging window of 15 days to smooth out the daily values, so that the seasonal cycle  
365 would be ~~easy~~ easier to distinguish. ~~Without satisfactory modelling performance of GPP, the simulation of the SIF would not be successful, as output from the photosynthesis model was used in our approach to calculate the leaf level emissions of SIF and this is why we also showed evaluation of GPP. We show~~ We showed for the subdaily time scale separately metrics for the model performance on morning (6 a.m. to 9:30 a.m.), midday (10 a.m. to 1:30 p.m.) and afternoon (2 p.m. to 5:30 p.m.). All of these times ~~are were~~ local winter time.

370 ~~Since As~~ the mSCOPE was run inside QUINCY ~~and,~~ while the two other approaches ~~outside QUINCY~~ were run outside, the wall time calculation differed. For the mSCOPE version, the wall time was calculated as the time it took for QUINCY to simulate one year at FI-Sod. For the L2SM and the LZ approaches, QUINCY was first run for one year at Sodankylä, ~~and then~~ ~~the calculation~~ FI-Sod. Then the calculation performed outside QUINCY in Python was added to this wall time value.

### 3 Results

375 The diurnal monthly cycles and the seasonal cycles of the observed and simulated SIF signals for the years 2019 and 2020 at CA-Obs are shown in Fig. 2. This was the final result we obtained after testing for different radiative transfer schemes and adding the description for sustained NPQ. The following sections describe how we arrived at these results. In the main text, we focus on the results from the CA-Obs site, for which we had the most data. In the supplement, we present the results for the other two sites.

#### 380 3.1 Performance of the radiative transfer models

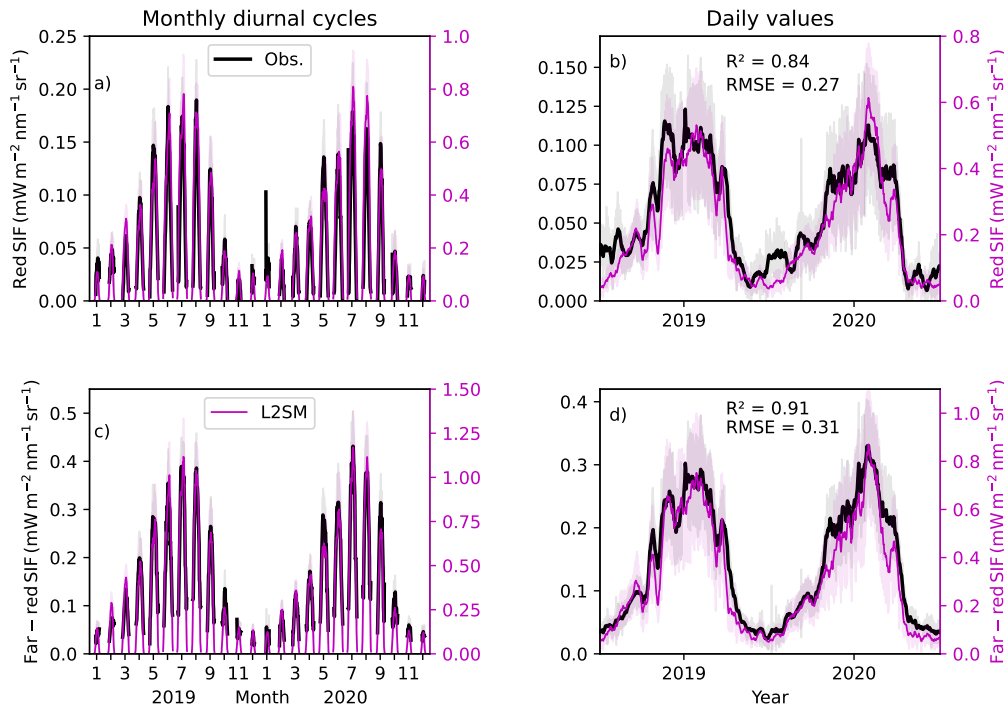
##### 3.1.1 CA-Obs

The ~~different radiative transfer schemes were all tested at all three sites.~~ The monthly diurnal cycles and midday values (10 a.m. to 1:30 p.m.) for GPP, red region SIF and far-red SIF at CA-Obs (Fig. 3) showed large overestimation with all the different SIF transfer schemes. The midday values are shown here to give a better insight into how the magnitude of the variables changes,   
385 thus removing the strong influence of the change in day length on the results. QUINCY was able to capture the seasonal behaviour at the site. The large overestimation of the SIF simulation results will ~~be discussed also~~ also be discussed later in this paper.

The model performance of GPP in CA-Obs was generally good (Table 2). The simulation of GPP was best at midday, and slightly less in morning hours. Since there was a long gap in observed GPP in and we instead used gap-filled GPP, we also   
390 checked the  $r^2$  of daily GPP values for the two years separately. For 2019 the  $r^2$  was 0.89 and for 2020 0.86, possibly reflecting the fact that simulations did not capture the turbulent nature of eddy covariance observations, but were potentially closer to gap-filled values that estimate the average behaviour of the ecosystem.

The daily  $r^2$  values for SIF were close to those of GPP (Table 2). Overall, modelling of SIF was more successful in the far-red region than in the red region. The  $r^2$  values in both wavelength regions were better in the midday and afternoon than   
395 in the morning. When investigating whether the different months showed clearly different patterns in model behaviour (Fig. 4), it was seen that the highest simulated midday values in summer were higher than the linear fit between observations and simulations would imply, suggesting that the model had a tendency to overestimate these values relative to other time periods.

The performance of the different modelling approaches was quite comparable when looking at the  $r^2$  values (Table 2). The RMSE values showed greater variation. ~~Of the three different radiative transfer approaches, L2SM appeared to have a~~   
400 ~~consistent level of performance in both wavelength ranges and different times of the day.~~ Overall, the  $r^2$  values were quite

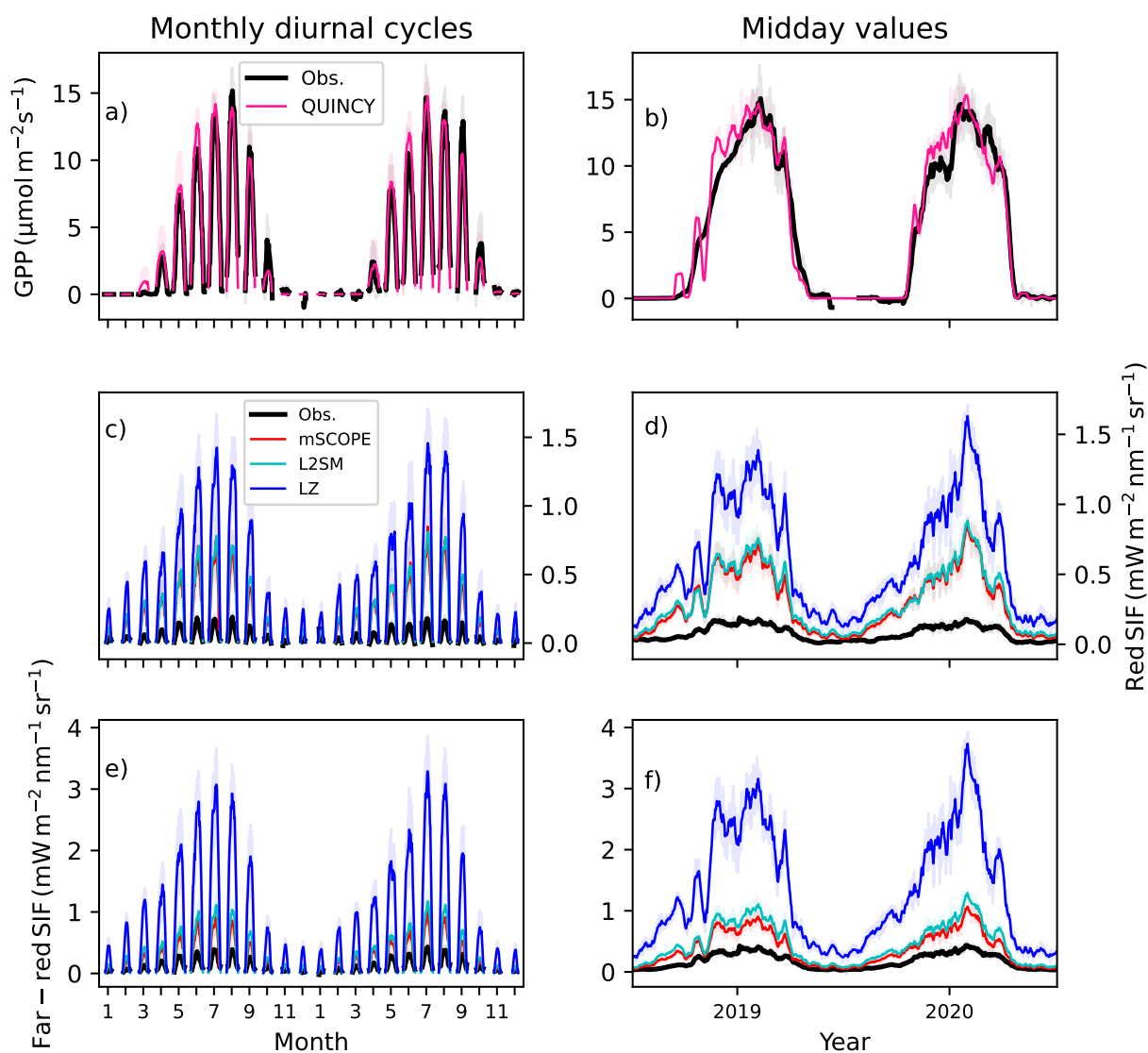


**Figure 2.** Monthly diurnal cycles for (a) red region SIF and (c) far-red SIF and daily values for (b) red region SIF and (d) far-red SIF at CA-Obs. The black line is the observation for all plots, magenta for the L2SM. All the lines for daily values have been smoothed with a 15-day long window. The shaded regions denote standard deviation. The metrics shown have been calculated from daily, non-smoothed values. The RMSE is in units  $Wm^{-2} s^{-1} nm^{-1} sr^{-1}$ .

similar between the approaches, showing that the different approaches did not have a pronounced influence on the temporal patterns of the simulated SIF.

### 3.1.2 US-NR1 and FI-Sod

Running the same simulations at other sites [allowed further evaluation of model performance and possible influences enabled us to evaluate the model's performance further and to consider the possible influence](#) of instrumentation on the diurnal dynamics. The model performance for simulating GPP and SIF was lower in US-NR1 than in CA-Obs (Table S2, Fig. S6). For SIF this is clearly seen in the amount of scatter between simulated and observed values in Fig. S7. The model seemed to have difficulty in capturing the variation in midday values during the summer months. The seasonal cycle of SIF in US-NR1 was not as well



**Figure 3.** Monthly diurnal cycles for (a) GPP, (c) red region SIF and (e) far-red SIF and midday values, calculated from winter time between 10 a.m. and 1:30 p.m., for (b) GPP, (d) red region SIF and (f) far-red SIF in CA-Obs. The black line is the observation in all plots, the pink line in the GPP plots is the QUINCY simulation. For the SIF plots the red line is the mSCOPE result, magenta cyan the L2SM and blue the LZ approach. All the lines for midday values have been smoothed with a 15-day long window.

**Table 2.** The  $r^2$  and RMSE values of simulated versus observed SIF values in the red and far-red regions in 2019-2020, according to different radiative transfer approaches at CA-Obs. The metrics are also shown for the GPP derived from the standard QUINCY configuration. The morning values are from 6 a.m. to 9:30 a.m., the midday values from 10 a.m. to 1:30 p.m., and the afternoon values from 2 p.m. to 5:30 p.m.

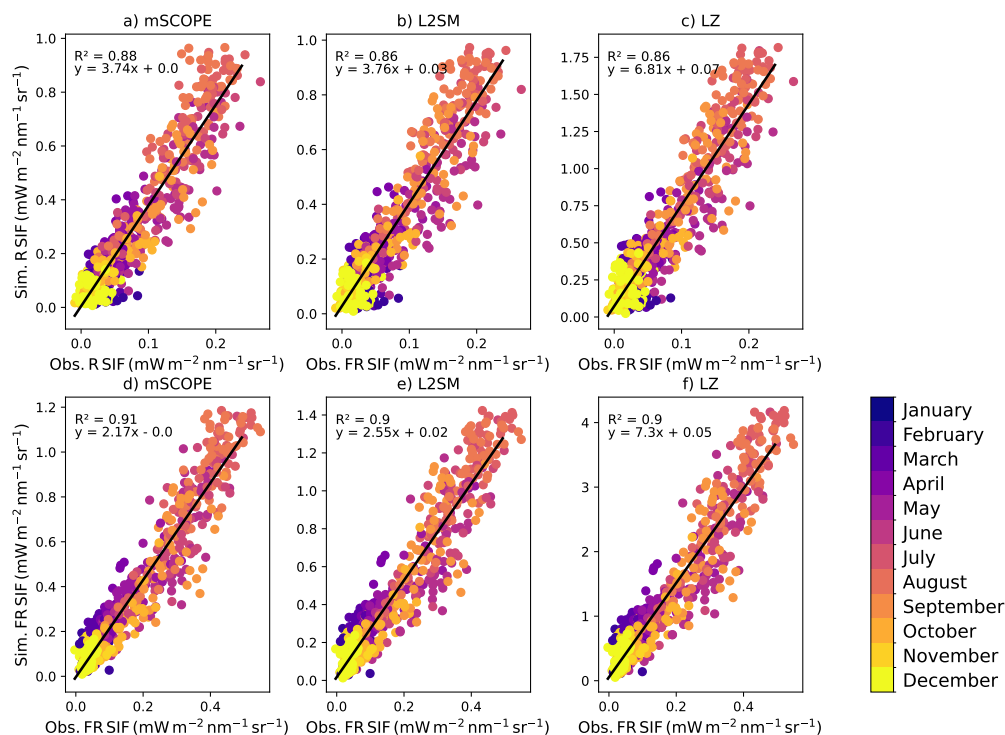
Variable (unit) / $r^2$ (RMSE)	Daily	Morning	Midday
GPP ( $\mu\text{mol m}^{-2} \text{s}^{-1}$ )	0.88 (1.47)	0.83 (2.71)	0.87 (2.19)
Red region SIF ( $\text{Wm}^{-2}\text{s}^{-1}\text{nm}^{-1}\text{sr}^{-1}$ )			
mSCOPE	0.85 (0.21)	0.68 (0.23)	0.88 (0.29)
L2SM	0.84 (0.27)	0.68 (0.27)	0.86 (0.31)
LZ	0.83 (0.59)	0.68 (0.54)	0.86 (0.66)
<del>Upscaled 0.84 (1.45) 0.68 (1.34) 0.88 (1.89) 0.84 (1.70) height</del> Far-red region SIF ( $\text{Wm}^{-2}\text{s}^{-1}\text{nm}^{-1}\text{sr}^{-1}$ )			
mSCOPE	0.92 (0.18)	0.87 (0.21)	0.91 (0.27)
L2SM	0.91 (0.31)	0.87 (0.31)	0.90 (0.38)
LZ	0.91 (1.20)	0.87 (1.13)	0.90 (1.49)

reproduced as in CA-Obs (Fig. S6b vs. Fig. 5b), although the spring recovery of GPP seemed to be well simulated (Fig. S5b).  
 410 Similar to CA-Obs, the  $r^2$  values for SIF were generally higher in the far-red region than in the red region at US-NR1 (Table S2). The model performance was best at midday.

QUINCY was more successful in simulating GPP at FI-Sod than at the other two sites (Fig. S8, Table S3). Modelling SIF was less successful than modelling of GPP in FI-Sod (Table S3, Fig. S9). In both spectral regions, the model performed best in the morning and midday, and worse in the afternoon. Differences between the radiative transfer approaches were not pronounced.

### 415 3.1.3 ~~Comparison performance between sites and computational efficiency~~ Performance comparison

The magnitude of the observed SIF was similar in both the red and far-red regions at the two sites with the PhotoSpec observations (Table S4) for the July-August midday values. Compared to these values, the FI-Sod value observed with FloX was higher in the red region and lower in the far-red region, which was consistent with what we see in the spectral shape of the SIF emission (Fig. 1). In the far-red region this difference was more pronounced and was half of the value observed with  
 420 PhotoSpec (Table S4). The overestimation of SIF by the different radiative transfer methods was most pronounced for the sites with PhotoSpec observations in the red region. In the far-red region, mSCOPE had the lowest overestimation, while the LZ approach had the highest. The same was true when looking at the metrics for all the sites combined (Table 3). The LZ approach had the highest bias and systematic RMSE across the sites. Otherwise, generally mSCOPE had the best performance metrics, but the other approaches were not much worse. ~~In the North American sites the model approaches performed better in the far~~  
 425 ~~red region.~~



**Figure 4.** Observed vs. modelled SIF midday values in the red (denoted with R in the figure) region (a: mSCOPE, b: L2SM, c: LZ) and far-red (denoted with FR in the figure) region (d: mSCOPE, e: L2SM; f: LZ) at CA-Obs. Values from different months are color-coded. The black line shows a fit with the corresponding parameters shown in each panel.

As the simulation time is relevant-important for large scale applications, we calculated the wall times for the simulations for one year at FI-Sod(Table ??). LZ, LZ (with a wall time of 10 seconds) was 419 times faster than the mSCOPE approach (with a wall time of 4191 seconds), while L2SM took twice as long as LZ while being (with a wall time of 20 seconds) was 210 times faster then than the mSCOPE approach.

430 ~~Wall times in seconds for different radiative transfer approaches- mSCOPE L2SM LZ Wall time (seconds) 4191 20 10-~~

### 3.2 Importance and generality of sustained NPQ modelling

SIF modelled without sustained NPQ showed a strong relationship with the absorbed PAR (aPAR) at CA-Obs (Fig. 5a). A CA-Obs simulation was carried out to assess done to evaluate the performance of the parameterization carried out at US-NR1. QUINCY was successful in simulating successfully simulated the aPAR at CA-Obs at midday (Fig. 5a, Table 4). The seasonal cycle was strong with winter values of aPAR-, with winter aPAR values around 200  $\mu\text{mol photons m}^{-2} \text{s}^{-1}$ . The increase towards summer values in aPAR aPAR values started earlier than for the observed GPP , as the increase, as low temperatures prevented the spring recovery of vegetation. The increase in aPAR towards summer values of aPAR started already started

435

**Table 3.** The  $r^2$ , bias,  $\text{RMSE}_{\text{sys}}$  and  $\text{RMSE}_{\text{ran}}$  values of simulated versus observed SIF values in the red and far-red regions according to different radiative transfer approaches at the three sites. The metrics are also shown for the GPP derived from the standard QUINCY configuration. The values are calculated on daily values.

Variable (unit)	$r^2$	Bias	$\text{RMSE}_{\text{sys}}$	$\text{RMSE}_{\text{sys}}$
CA-Obs: Red region SIF ( $\text{Wm}^{-2}\text{s}^{-1}\text{nm}^{-1}\text{sr}^{-1}$ )				
mSCOPE	0.85	0.15	0.21	0.01
L2SM	0.84	0.21	0.27	0.02
LZ	0.83	0.47	0.59	0.02
CA-Obs: Far-red region SIF ( $\text{Wm}^{-2}\text{s}^{-1}\text{nm}^{-1}\text{sr}^{-1}$ )				
mSCOPE	0.92	0.12	0.18	0.03
L2SM	0.91	0.24	0.31	0.03
LZ	0.91	0.95	1.20	0.03
US-NR1: Red region SIF ( $\text{Wm}^{-2}\text{s}^{-1}\text{nm}^{-1}\text{sr}^{-1}$ )				
mSCOPE	0.67	0.25	0.29	0.02
L2SM	0.62	0.27	0.30	0.03
LZ	0.63	0.60	0.67	0.03
US-NR1: Far-red region SIF ( $\text{Wm}^{-2}\text{s}^{-1}\text{nm}^{-1}\text{sr}^{-1}$ )				
mSCOPE	0.74	0.25	0.28	0.06
L2SM	0.70	0.33	0.36	0.07
LZ	0.73	1.23	1.36	0.06
FI-Sod: Red region SIF ( $\text{Wm}^{-2}\text{s}^{-1}\text{nm}^{-1}\text{sr}^{-1}$ )				
mSCOPE	0.65	0.14	0.15	0.04
L2SM	0.58	0.33	0.35	0.04
LZ	0.57	0.81	0.86	0.04
FI-Sod: Far-red region SIF ( $\text{Wm}^{-2}\text{s}^{-1}\text{nm}^{-1}\text{sr}^{-1}$ )				
mSCOPE	0.65	0.20	0.21	0.03
L2SM	0.59	0.34	0.36	0.04
LZ	0.59	1.25	1.32	0.04

in the first part of the year, much earlier than the ~~SIF values started to increase strongly~~ increase in SIF values (Fig. 5). The simulated SIF<sub>~</sub> without the described NPQ<sub>s</sub> followed the behaviour of the ~~absorbed PAR~~ aPAR. The simulated SIF with the  
440 NPQ<sub>s</sub> was more similar to the observed seasonal behaviour (Fig. 5b, Table 4). ~~The magnitudes~~ While the magnitudes differed

between the simulations and observations ~~differed~~ for SIF, ~~but~~ the general timing was better for the simulation with NPQ<sub>s</sub>. The NPQ<sub>s</sub> had a strong influence on the chlorophyll fluorescence yield ( $\Phi_F$ ) in the model (Fig. 5c).

As US-NR1 is ~~more southerly located further south~~ than CA-Obs, the ~~absorbed PAR did not show~~ ~~aPAR did not exhibit~~ a pronounced seasonal cycle (Fig. S10a). The simulated SIF without NPQ<sub>s</sub> followed the seasonal cycle of ~~absorbed PAR. In~~  
445 ~~order to aPAR. To~~ simulate the seasonal variation ~~seen in the SIF observations~~ ~~observed in SIF~~, it was necessary to include NPQ<sub>s</sub> in the modelling. However, the formulation used for NPQ<sub>s</sub> delayed the spring recovery in 2018 ~~by~~ too much. The formulated NPQ<sub>s</sub> also slightly affected the ~~summer time summertime~~ values, which is ~~physiologically~~ unlikely to happen ~~physiologically~~ in reality. ~~Inclusion of Including the~~ NPQ<sub>s</sub> improved the ~~simulations simulation~~ results considerably in terms of  $r^2$ , RMSE and bias.

450 ~~As FI-Sod is located north of the Arctic Circle and the absorbed PAR had~~, ~~where the aPAR exhibits~~ a pronounced seasonal cycle (Fig. S11a). The ~~absorbed PAR aPAR~~ caused the simulated SIF values to ~~start to increase already begin increasing~~ in February, ~~which was~~ well before the start of the ~~vegetation active active vegetation~~ period (Fig. S11). ~~There were no tower flux SIF observations at the site at that time, but it is not likely that the SIF would have increased considerably so early. Therefore, it seems that the same parameterization that gave reasonably satisfactory results at the other two sites was not as functional at~~  
455 ~~this more northern site with different climatic characteristics (Fig. S11b).~~ The aPAR observed by the above- and belowground canopy PAR sensors showed much better resemblance to simulations than the aPAR estimated from the FloX measurements (Table 4). ~~This suggests that the shadow effects in the footprint of the FloX observations likely influence the observation and in a way set the limit to which model simulations can be successful.~~ The temperature response of the chlorophyll fluorescence yield ( $\Phi_F$ ) showed further the pronounced difference depending on whether the NPQ<sub>s</sub> was included or not (Fig. S12). There  
460 were no differences between the sites. ~~Temperature~~ ~~The temperature~~ response of the ratio ~~of~~ daily far-red SIF ~~divided by to~~ GPP showed that ~~the this~~ ratio increased in cold temperatures at the North American sites ~~in both the observations and simulations~~, ~~as observed and simulated~~ (Fig. S13). The simulated values showed much larger SIF:GPP ~~values than the observations.~~ ~~Observations ratios than the observed values in low temperatures. The range of temperatures covered by the observations at~~ FI-Sod ~~did not cover enough wide range in temperature~~ ~~was not wide enough~~ to show such ~~a variation.~~ ~~variation.~~

### 465 3.3 Dependencies between far-red SIF, GPP and PAR

Noticeable differences were found comparing the relationship between GPP and far-red SIF in the observations and simulations with L2SM for June and July (Fig. 6). The observations presented equally high far-red SIF values for CA-Obs and US-NR1, although the observed GPP values were higher at CA-Obs (Fig. 6a). Both observed GPP and far-red SIF values were lower at FI-Sod compared to the North American sites (Fig. 6a). The simulated values showed much less scatter for the SIF-GPP  
470 relationship than the observations (Fig. 6b). The highest far-red SIF values were obtained at CA-Obs, although the highest GPP values were obtained at US-NR1. When ~~looking at examining~~ the GPP and far-red SIF light responses (Fig. 7 e, g) ~~it was noticed,~~ ~~it was observed~~ that the simulated far-red SIF values were ~~highly correlated with~~ ~~closely related to~~ the PAR values, ~~while whereas the~~ simulated GPP values ~~had more scatter~~ ~~exhibited greater variability~~.

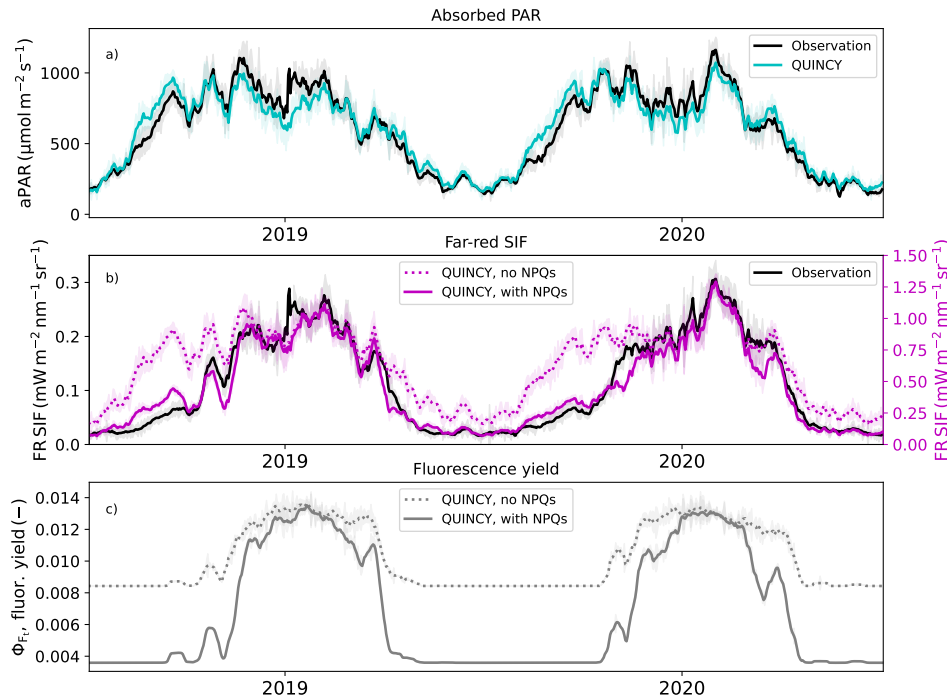
**Table 4.** The metrics ( $r^2$ , RMSE and bias) of the simulated absorbed PAR (aPAR) and far-red region (FR) SIF at the three sites for midday values with and without the formulation for NPQ<sub>s</sub>. The units of RMSE and bias are  $\text{Wm}^{-2}\text{s}^{-1}\text{nm}^{-1}\text{sr}^{-1}$  for far red region SIF and  $\mu\text{mol m}^{-2} \text{s}^{-1}$  for APAR.

Site and variable	$r^2$	RMSE	Bias
CA-Obs			
aPAR	0.94	91.6	13.4
FR SIF, no NPQ <sub>s</sub>	0.71	0.59	0.51
FR SIF, with NPQ <sub>s</sub>	0.90	0.43	0.32
US-NR1			
aPAR	0.83	256.1	205.3
FR SIF, no NPQ <sub>s</sub>	0.24	0.76	0.72
FR SIF, with NPQ <sub>s</sub>	0.71	0.42	0.37
FI-Sod			
aPAR (FloX)	0.70	159.9	71.4
aPAR (PAR sensors)	0.96	73.9	-13.2
FR SIF, no NPQ <sub>s</sub>	0.70	0.31	0.23
FR SIF, with NPQ <sub>s</sub>	0.69	0.28	0.18

We ~~made-performed~~ a hyperbolic fit ~~to-on~~ these relationships, ~~fitting-determining the~~ parameters  $a$  and  $b$  of ~~the~~ function  $y = ax/(b + x)$  (Damm et al., 2015; Pierrat et al., 2022b). The fitted lines are shown in Fig. 6 and the fitted parameter values with their associated uncertainties are shown in Table S5. ~~Goodness-The goodness~~ of the hyperbolic fits (Table S5) ~~were-was~~ better for the simulated GPP vs. SIF relationship than for the observed ~~relationship~~ (averaged over three sites  $r^2 = 0.73$  for the simulated ~~-and~~  $r^2 = 0.45$  for the observed.) Also, the RMSE of the fit was smaller for the simulations ~~vs-observations-for-all~~ ~~the-than-for-the-observations-at-all~~ three sites. The worst ~~behaviour-of-fits-fit-behaviour~~ (in terms of  $r^2$ ) ~~happened-occurred~~ at FI-Sod for the observations, ~~potentially-reflecting-which-could-reflect~~ the fact that the GPP vs. SIF relationship ~~looks-quite-linear-for-was-fairly-linear-at~~ that site.

~~Given-the-worse-Due-to-the-poorer~~ model performance for SIF at US-NR1, the diurnal cycle during the summer was examined in more detail for all three sites. First, we calculated the  $r^2$  and RMSE values for the instantaneous values over five days versus the averaged diurnal cycle ~~values~~ over five days. The improvement in ~~the~~  $r^2$  and RMSE ~~values~~ when moving from instantaneous to averaged values was considerable (Table 5).

The  $r^2$  values of the averaged diurnal cycle were comparable for GPP and SIF in the far-red region at CA-Obs (Table 5). On day of year (DOY) 187, the simulated GPP showed an almost sinusoidal diurnal behaviour, ~~which-resulted-resulting~~ from simulation under high irradiance conditions (Fig. 7a). The observed GPP showed more variation than ~~the~~ simulated GPP during



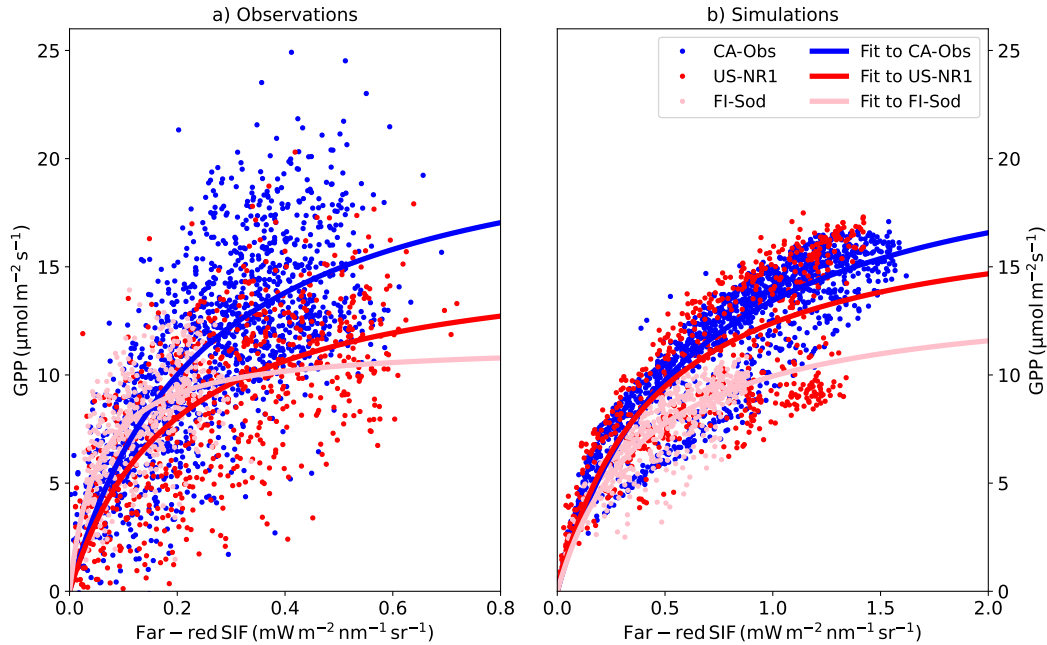
**Figure 5.** (a) The observed and simulated absorbed photosynthetically active radiation at CA-Obs, (b) far red (FR) region SIF values with and without sustained NPQ simulated with L2SM and (c) simulated chlorophyll fluorescence yields with and without sustained NPQ. Values are averages of midday values (10 a.m. to 1:30 p.m.), the standard deviation is shown as shaded areas. All the lines for midday values were smoothed with a 15-day long window.

the day. The light response of the observed GPP was much more scattered than that of the simulations (Fig. 7e). The simulated  
 490 far-red SIF values with all the approaches were able to capture variations quite successfully on DOY 189 (Fig. 7c), when  
 variations in radiation occurred.

At US-NR1 the model ~~performance remained~~'s performance was significantly lower for GPP than at the other two sites  
 (Table 5). This remained the case even after calculating the average over five days. The light response curves of the observed  
 GPP and SIF in the far-red region were quite scattered at this site (Fig. S14e, f). The model performed very well for GPP at  
 495 Sodankylä (Table 5, Fig. S15). ~~The~~ However, the modelled diurnal cycle of far-red SIF did not capture the ~~variation in the~~  
~~observations~~ observed variation (Fig. S8c, d).

### 3.4 Comparison of simulated SIF to satellite observations

The magnitude of the simulated SIF was ~~large compared to~~ larger than the tower-based observations at all the two sites (Figs.  
 3, S6, S8). ~~Comparison A comparison~~ with satellite observations at CA-Obs ~~showed a revealed~~ better agreement between the

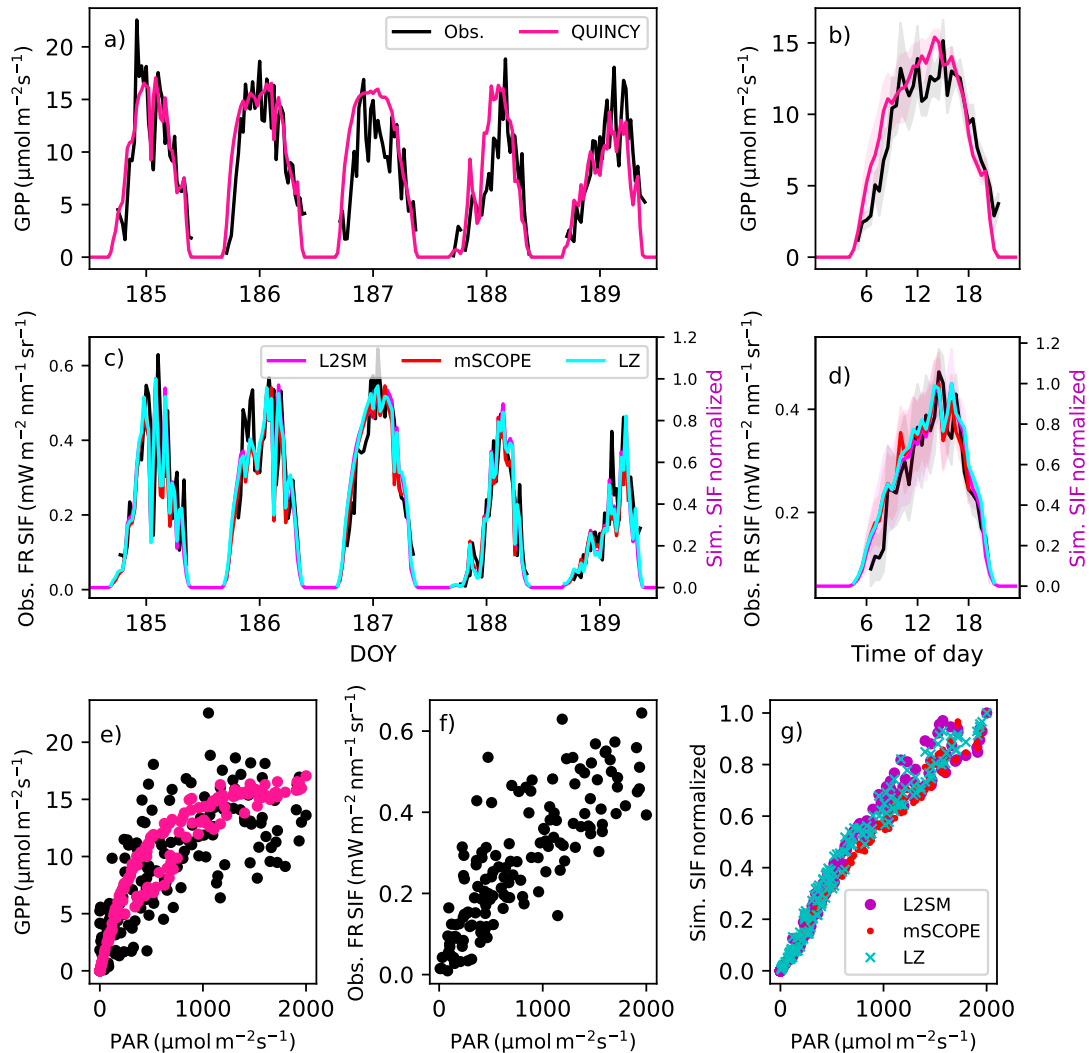


**Figure 6.** (a) The observed and (b) simulated GPP vs. far-red region SIF relationship at three different sites for half-hourly values for all points in June and July using the L2SM approach in the simulations. CA-Obs has half-hourly values and FI-Sod and US-NR1 hourly values. Hyperbolic fits are shown as solid lines in the figure.

**Table 5.** Model performance in terms of  $r^2$  and RMSE for GPP and SIF in the far-red region at three sites for half-hourly values during five summer days and the averaged diurnal cycle over the five days. Calculated for half-hourly values at CA-Obs and hourly values at US-NR1 and FI-Sod. RMSE for GPP is in units  $\mu\text{mol m}^{-2} \text{s}^{-1}$  and for SIF in  $\text{W m}^{-2} \text{s}^{-1} \text{nm}^{-1} \text{sr}^{-1}$ .

	CA-Obs	US-NR1	FI-Sod
GPP, $r^2$ (RMSE)			
half-hourly	0.60 (3.42)	0.26 (2.77)	0.98 (0.59)
averaged	0.80 (2.08)	0.51 (1.79)	0.99 (0.50)
SIF, $r^2$			
half-hourly	0.69 (0.57)	0.29 (0.52)	0.40 (0.54)
averaged	0.83 (0.51)	0.66 (0.46)	0.50 (0.53)

500 simulated and observed magnitudes (Fig. 8c) than with proximal sensing (Fig. 8b). In 2019, the seasonal cycle of TROPoSIF was smoother than that those of the simulated SIF and PhotoSpec observations at the site. In 2020, the seasonal cycle was smoother in the PhotoSpec observations and, with the simulated seasonal cycle was becoming more consistent with TROPoSIF.



**Figure 7.** (a) The observed and simulated GPP and (c) far-red (denoted as FR in the figure) region SIF for days 185-189 (5 July-8 July 2020) and averaged over these five days (b for GPP and d for far-red region SIF) at CA-Obs. The shaded regions in b and d show the standard deviations of the averaged values. (e) The light response of the observed and simulated GPP for these five days, (f) the observed far-red region SIF and the (g) simulated far-red region SIF. The observations are in black, the simulated GPP is in pink and the simulated far-red SIF from L2SM is in magenta, from mSCOPE in red and from LZ approach in cyan. The simulated SIF values have been normalized to one.

The simulation results and the TROPOSIF are shown on different scales because the magnitude of the winter TROPOSIF observations is below zero due to the retrieval method, ~~but~~. However, the minimum of the simulated SIF is zero ~~and~~, so

505 using different scales helps to see-illustrate the seasonality of the two observations together. The simulations for ~~the period~~ July-August overestimated the observations by 30-34 %.

At FI-Sod (Fig. S16) the TROPOSIF time series expanded also to spring, thus covering also for the period not available from the FloX observations. There was ~~a lot of~~ considerable variation in the ~~springtime TROPOSIF observations~~ TROPOSIF observations during spring (shaded region in Fig. S16, from April 9th to May 17th) ~~and when the values started to increase, and~~ by the time the values increased for the last time in May (the vertical line in Fig. S16 showing May 29th), the observed GPP was already at higher level than in early spring. The variation in TROPOSIF and ~~simulated SIF during summer~~ the simulated SIF followed the same pattern during the summer. Overestimation of the simulations compared to TROPOSIF observations for the July-August period was 45-41 %.

The performance metrics for the simulated SIF against the TROPOSIF were better at CA-Obs than at FI-Sod (Table ~~??~~ S6). This was partly ~~contributed due~~ to the fact that the sustained non-photochemical quenching was not simulated at FI-Sod. The FloX observations alone were not sufficient to assess that, as the spring was missing from ~~those, but one can see them.~~ However, as can be seen from the Fig. S16, ~~that~~ the increase should ~~start~~ have started later than it ~~started~~ did here. Despite the large differences observed in the springtime at FI-Sod, the RMSE and bias were quite similar at the two sites for the larger region (~~having a~~ 0.50° x 0.50° region around area surrounding the region). When ~~constraining~~ constrained to a smaller region, ~~the~~ RMSE and bias ~~got worse for both of the~~ worsened for both sites, but the  $r^2$  increased at FI-Sod, ~~even though it was~~ albeit still quite small.

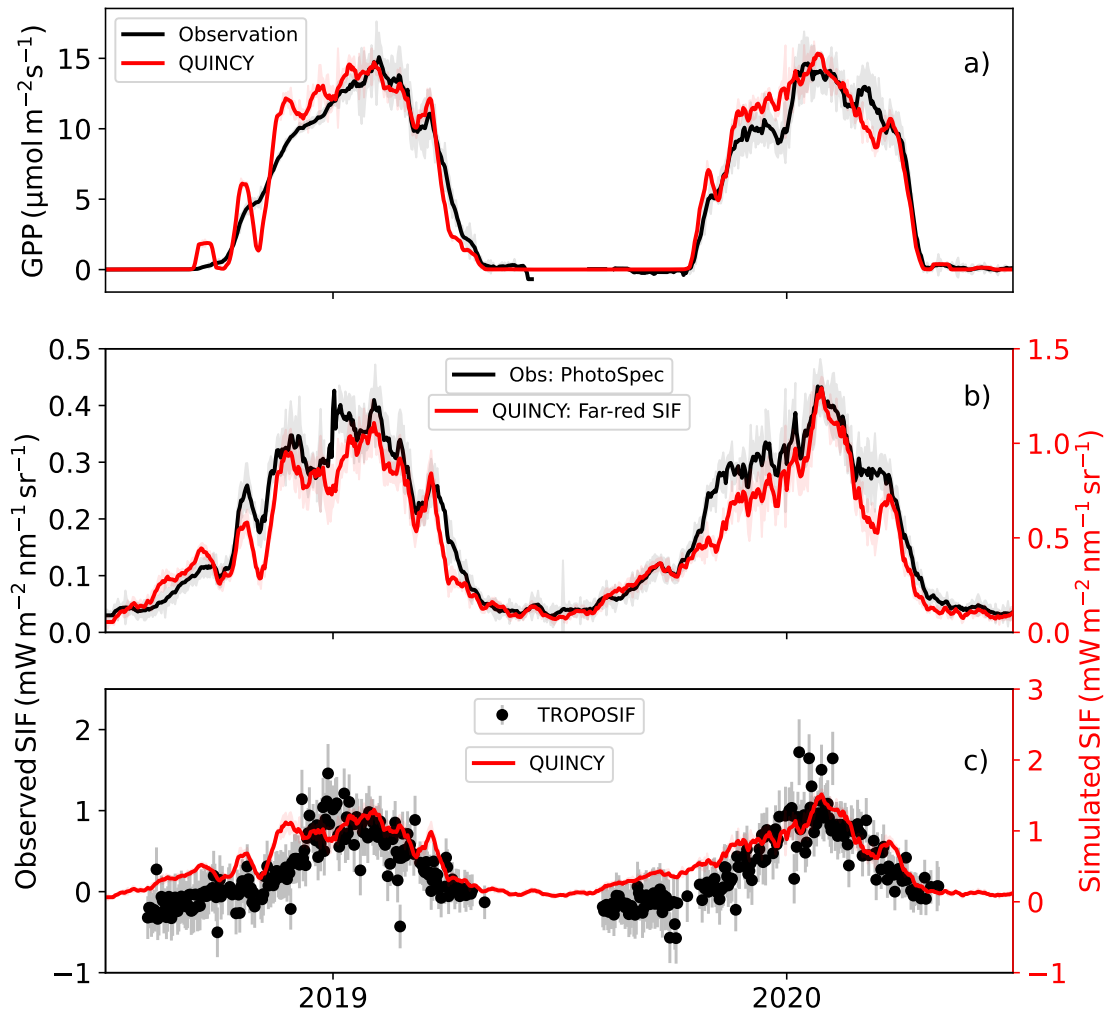
~~The metrics ( $r^2$ , RMSE and bias) of the simulated SIF at CA-Obs and FI-Sod against the TROPOSIF observations. The simulated values have been calculated from the midday values and TROPOSIF values are daily averages. The values are separately region around the site expanding to 0.50° x 0.50° or 0.25° x 0.25°. The units of RMSE and bias are-. Site and region~~  
525  ~~$r^2$  RMSE Bias CA-Obs (0.50° x 0.50°) 0.48 0.57 0.45 CA-Obs (0.25° x 0.25°) 0.46 0.64 0.55 FI-Sod (0.50° x 0.50°) 0.15 0.61 0.51 FI-Sod (0.25° x 0.25°) 0.26 0.64 0.58~~

## 4 Discussion

### 4.1 Magnitude of the simulated SIF

All of the approaches that we tested considerably overestimated the in situ observed SIF ~~considerably~~ (Table S4). The ~~differences~~ were less pronounced in the comparison against the satellite observations. The leaf level model was consistent across all our approaches. In that model, we used only the default parameters, which were held constant across all sites. The leaf level model provided the chlorophyll fluorescence yield, which was applied differently by each radiative transfer approach to obtain the top of canopy value.

Therefore, the reason for the overestimation of the SIF could originate from either the leaf level model or the radiative transfer calculation. The leaf level model provided the Ft, which was consistent with values in the literature (e.g., the original model formulation, (van der Tol et al., 2014); another modelling study for US-NR1 (Raczka et al., 2019); and site level observations (Kim et al., 2021)). However, there are other types of ~~estimates~~ estimate for these values, including for some of these sites.



**Figure 8.** In (a) the observed and simulated GPP at CA-Obs, (b) near-infrared SIF from PhotoSpec observations and simulations with L2SM and (c) and TROPOSIF observations and simulations with L2SM at 743-740 nm. The other values than TROPOSIF are averages of midday (10 a.m. to 1:30 p.m.) values, with standard deviation is shown as shaded areas and TROPOSIF uncertainty from the retrievals shown in error bars (c). TROPOSIF values are daily. All the lines for midday values have been smoothed with a 15-day long window.

For example, Pierrat et al. (2024) ~~provide~~ provided a higher leaf level chlorophyll fluorescence yield value from MoniPAM observations. ~~In any case~~ However, the magnitude is subject to ~~choices made in~~ the choices made during the post-processing of  
 540 the data, so it is ~~also not easy~~ difficult to compare the simulated value ~~to~~ with these observations.

It is likely that the overestimation originated ~~from-in~~ the radiative transfer ~~part-component~~ of the model. Despite testing different approaches, they all ~~led-to-overestimated-resulted-in-an-overestimation-of~~ SIF. Two approaches that included attenuation of the SIF signal inside the leaf (mSCOPE and L2SM) resulted in smaller overestimation than the approach that did not account for attenuation (LZ). Additionally, the ~~version-of-the-LZ-approach-employed-LZ-approach-used~~ here assumed  
545 black, or non-reflective, soil. Some recent developments may help ~~to~~ overcome this issue (Yang et al., 2025a). The simulated far-red region SIF showed lower overestimation than the simulated red region SIF. This model behaviour suggests ~~issues-with-attenuation-attenuation-issues~~ in the red region. ~~The-modelling-of-Modelling~~ SIF is also related to ~~the~~ modelling of absorbed PAR. At US-NR1, the simulations overestimated absorbed PAR, ~~whereas~~; at the other two sites, ~~however~~, the bias in aPAR was smaller (Table 4). It has been noted, that parameters related to aPAR are important for SIF modelling (Fan et al., 2025).  
550 ~~The-overestimation-of-SIF-in-evergreen-conifer-forests-Overestimation-of-SIF~~ has also occurred in other modelling studies ~~of-evergreen-conifer-forests~~ (Li et al., 2022), and our results are close to the model average shown in a model comparison study conducted at US-NR1 (Parazoo et al., 2020). Preliminary model tests with QUINCY on other ecosystems did not reveal such significant discrepancies between the magnitude of the simulation results and in situ observations (results not shown). Therefore, it ~~may-be-is-possible~~ that the characteristics of the in situ sampling in this type of ecosystem ~~to-provide-result-in~~  
555 smaller SIF signals than expected. A comparison ~~to-with~~ satellite observations did not reveal such a large overestimation of the simulated SIF. ~~One-can-keep-in-mind-that-also-It-should-be-noted-that~~ other processes may also play a role, such as reversible NPQ. The leaf level model that we used has been parameterized for cotton (van der Tol et al., 2014). (Raczka et al., 2019) used leaf level MoniPAM observations from Hyytiälä to parameterize reversible NPQ ~~and-improved-,thereby-improving~~ the performance of their SIF model. This could be a way to improve modelling for new ecosystems.

## 560 4.2 On the choice of radiative transfer approach

First, we tested different ways of describing the radiative transfer of the SIF to determine a robust method for feasible calculations in a large-scale model. When considering the  $r^2$  metric for the different approaches, we found that the simple LZ method did not perform significantly worse than the more sophisticated approaches (Tables 2, S2, S3). This justifies the rather simple approaches previously used in the radiative transfer of SIF (e.g., Lee et al., 2015; Thum et al., 2017), but it contrasts with some  
565 other studies (Li et al., 2022). The mSCOPE model performed similarly to the other approaches ~~across-at~~ all sites and often provided the most accurate estimates. However, its longer computation time (20 times longer than the other approaches in our comparison) ~~makes-renders~~ it impractical for large scale applications (Li et al., 2022). The radiative transfer model in mSCOPE is based on SAIL, which was originally developed for croplands (van der Tol et al., 2009). ~~The-As-the~~ radiative transfer model in QUINCY was also originally developed for croplands, so neither model was designed to consider the unique characteristics  
570 of radiative transfer in the conifer forests. ~~A-study-by-Li-et-al.(2022)-found-that-including-clumping-in-their-model-significantly-improved-SIF-modeling-in-CLM-compared-to-simulation-without-clumping.-Failing-to-consider-clumping-can-lead-to-significant-errors-in-SIF-modelling-(Zeng-et-al.,-2020).-QUINCY-describes-clumping-in-a-relatively-simple-way.-There-is-potentially-room-for-improvement-in-SIF-modelling-if-clumping-were-also-included-in-the-radiative-transfer-of-SIF,-e.g.-in-L2SM.-In-conifer~~

ecosystems, the challenge is that the clumping of the canopy exposes more ground vegetation visible to optical measurements, which affects the remotely sensed signal (Gopalakrishnan et al., 2023).

The structure of the vegetation affects the observed SIF signal (Magney et al., 2019b; Sun et al., 2023a). This is something that could be addressed by including vegetation NIRv, a near-infrared reflectance, in the analysis. NIRv ~~has very similar interactions within the canopy to~~ interacts with the canopy in a manner that is very similar to that of the far-red region SIF. Including NIRv in ~~helping to the analysis to help~~ interpret the SIF signal ~~in the analysis would allow would enable~~ the attribution of ~~the structural effects seen~~ structural effects observed in the SIF signal (Zeng et al., 2019; Dechant et al., 2022). This analysis could be conducted using in situ or spaceborne observations. ~~Another approach would be to consider the 3D structure of the canopy in QUINCY and the SIF RT model. This would allow for consistent modulation of both the GPP and SIF (Stretton et al., 2025).~~

### 4.3 Modelling performance of GPP and SIF at subdaily scale

Compared to the simulated GPP, the observed GPP showed more variation on a subdaily scale at the sites (Figs. 7, S14, S15). This variation may be due to canopy shading, understory vegetation and turbulence conditions. The lower performance at CA-Obs in the morning may be due to sun-view geometry and the 3D structure of the canopy, which casts shadows within the spectroradiometer's measurement footprint. These shadows were not reproduced by 1D radiative transfer models.

At FI-Sod, the FloX footprint might be partially shadowed during certain periods on sunny days, resulting in discrepancies between the observed and simulated far-red SIF (Fig. S15c,d). This may partly explain the lower model performance observed in the afternoon (Table S3), as the shadow effects may be more pronounced during the shoulder seasons at a high latitude sites. Designing an observation that excludes shadow effects would be very challenging at such high latitudes, where the days are very long days in the summer.

### 4.3 On the use of optical properties

Although L2SM supports vertically varying optical properties, this study set it up with properties that remain unchanged throughout the canopy profile. However, the vertical profile of leaf chlorophyll content could be used to adjust the optical properties of each layer. In the current version of QUINCY, the chlorophyll content increases with depth within canopy layers. The single leaf scattering albedo of forest plant functional types in QUINCY is based on a study by Otto et al. (2014). Values The values commonly used to calculate reflectance and transmittance in terrestrial biosphere models have been criticized, and some new approaches based on more extensive data have been proposed (Majasalmi and Bright, 2019). Since reflectance was also used in the calculation of the LZ approach calculation, it would also influence these results as well too. The assumption of equal reflectance and transmittance in QUINCY can be debated and is debatable and could be further developed, as discussed in Majasalmi and Bright (2019). ~~The simplification of using~~ Using only two radiative bands (visible and near infrared) may introduce biases in the results at certain wavelengths.

~~Using of the~~ The L2SM and the LZ approaches ~~requires the use of~~ require SIF spectra for unit conversion from ~~the~~ modelled to observed units (see Section 2.6). For the LZ approach, we used spectra measured in a Finnish Scots pine forest. To extend

this approach to other PFTs, ~~it would be necessary to use~~ different measured SIF spectra would need to be used. This approach ~~has limitations is limited~~ in terms of generalizability because these spectra differ between species (Liu et al., 2025; Magney et al., 2017). Therefore, using a single spectrum for a PFT may introduce uncertainties. Furthermore, the spectral shape of SIF emission changes under stress conditions. For example, photosystems I and II respond differently to stress (Magney et al., 2019a), which will further limit our approach, and require careful investigation of the stress effects. For the L2SM approach we used a theoretical estimate of the in vivo spectrum. Further testing with observed in vivo spectra would also ~~benefit improve~~ this approach. The simulated clumping index at the FI-Sod (Fig. S1) was close to the observed estimates (Chen et al., 2005; Schraik et al., 2023). The seasonal cycle was consistent with the observed increase in the clumping index with increasing solar zenith angle (Chen and Cihlar, 1995).

#### 4.4 Uncertainties in the observations

Using the Fraunhofer line method with PhotoSpec instruments ~~is makes the measurement~~ less susceptible to atmospheric attenuation than using the oxygen lines with FloX. At FI-Sod, the distance from the soil ~~for FloX to the FloX instrument~~ was around 19-20 m, and the distance to the canopy was ~~less shorter~~. Therefore, the measurement distance ~~is was~~ less than 20 meters, which is the threshold at which the data must be corrected for atmospheric effects (Sabater et al., 2018; van der Tol et al., 2023). FI-Sod has a sparser canopy than the other sites, ~~which implies that meaning~~ the footprint of the observing optical fiber is susceptible to environmental influences other than the canopy, such as the understory. The nearly linear relationship between GPP and SIF in the observations may indicate understory contribution (Fig. ??6a).

The measurements that we used have several sources of uncertainty. The tower SIF observations are relatively new observations and ~~have uncertainties related are subject to uncertainties relating~~ to instrumentation, the retrieval method, and the spatial matching of the optical and flux footprints (Buman et al., 2022; Cendrero-Mateo et al., 2019; Pacheco-Labrador et al., 2019). Our results showed that ~~using averaging for the model evaluation could be a useful method for evaluating the model averaging could be useful for the model evaluation~~. The eddy covariance observations are subject to uncertainty due to the measuring equipment, the heterogeneity of the footprint, and the stochastic nature of turbulence (Richardson et al., 2006). Gap-filling introduces ~~additional further~~ uncertainties to the data (Vekuri et al., 2025).

Comparing the satellite observations to a site level observations introduces several uncertainties. The fact that the TROPoSIF estimates remain close to zero by the end of May at FI-Sod, despite the GPP levels advancing towards summer levels, indicates that these observations must be ~~handled treated~~ with caution. Clouds make interpreting the signal more challenging, which is why we ~~used applied~~ the strict cloud filtering criterion recommended for this type of study. ~~The-There~~ is a large mismatch in scale between the satellite and flux tower observations. However, constraining the region did not improve the modelling results. This may be because ~~more points help having more data points helps~~ to smooth out the random ~~error of errors in~~ the satellite observations. When only the pixels where the site was located were ~~chosen selected~~ from the satellite retrievals, there were so few data points that no significant seasonal cycle ~~was detected at the sites could be detected~~ (data not shown). ~~The data aggregation performed Data aggregation~~ for TROPoSIF involves averaging over several viewing geometries because the viewing angle varies due to the wide swath. This introduces additional uncertainty to the data. Using the "daily corrected" values of

TROPOSIF would help limit the influence of the uneven number of observations on each day. The land cover classes within the TROPOSIF product that are derived from the MODIS product ~~obviously~~ have issues in the high latitudes, which is a known issue (Liang et al., 2019). However, the land cover class does not ~~impact~~ affect the retrieved SIF because it is only used to identify water bodies and glaciers. ~~An overall uncertainty of  $\sim 0.50$  has been found for~~ Overall uncertainty in the TROPOSIF product ~~, as reported in Du et al. (2023), has been found to be  $\sim 0.50$~~   $\text{Wm}^{-2}\text{s}^{-1}\text{nm}^{-1}\text{sr}^{-1}$  (Guanter et al., 2021; Du et al., 2023), which emphasizes that the low values during the shoulder seasons for these northern sites are ~~very uncertain. Site heterogeneity influences the the accuracy of TROPOSIF (Du et al., 2023), as do the geolocation shifts (Zeng et al., 2024).~~ highly uncertain.

#### 4.5 Model uncertainties and limitations

Our model only simulates one plant functional type per site ~~and is~~ , and it is also horizontally homogeneous. ~~Thus~~ Therefore, the influence of the understory is ~~ignored~~ disregarded, even though it may be relevant, ~~e.g., at FI-Sod, where the site has a low LAI and the footprint of the tower SIF observation is static. QUINCY has a representation of clumping, but L2SM does not. Therefore, including clumping.~~ A study by Li et al. (2022) found that including clumping in their model significantly improved SIF modeling in CLM compared to simulations without clumping. Failing to consider clumping can lead to significant errors in SIF modelling (Zeng et al., 2020). QUINCY describes clumping in a relatively simple way. There is potentially room for ~~improvement in SIF modelling if clumping were also included in the radiative transfer of SIF, e.g. in L2SM could improve the results in coniferous forests. Examining the entire diurnal cycle revealed discrepancies between the simulation results and the observations, which could.~~ improvement in SIF modelling if clumping were also included in the radiative transfer of SIF, e.g. in L2SM ~~could improve the results in coniferous forests. Examining the entire diurnal cycle revealed discrepancies between the simulation results and the observations, which could.~~ could improve the results in coniferous forests. Examining the entire diurnal cycle revealed discrepancies between the simulation results and the observations, which could. ~~In coniferous forests, the challenge is that the clumping of the canopy exposes more ground vegetation visible to optical measurements, affecting the remotely sensed signal (Gopalakrishnan et al., 2023).~~

Compared to the simulated GPP, the observed GPP showed more variation on a subdaily scale at the sites (Figs. 7, S14, S15). ~~This variation may be due to the effects of shadows, canopy shading, understorey vegetation and turbulence conditions. The lower performance at CA-Obs in the morning for the simulated SIF may be due to the sun-view geometry and the 3D structure of the canopy, which casts shadows within the spectroradiometer's measurement footprint. These shadows were not reproduced by 1D radiative transfer models. At FI-Sod shadows could also contribute to the discrepancy between FloX observations and simulations (Fig. S15c,d). Designing an observation that excludes the shadow effects would be very challenging at such high~~ latitudes, where the days are very long days in the summer. More rigorous modelling tools, such as a 3D description of forest structure, would be required to account for these effects. In reality, directional effects also influence the observed optical signal, but our approach did not account for them (Hilker et al., 2008b, a). A comparison of simulated and observation based estimates of aPAR from ~~FloX box~~ the FloX and PAR sensors revealed that the model's inability to capture certain dynamics observed by the FloX box may be due to its small footprint.

The scatter of the observed SIF against the observed GPP values, as well as the fact that model was unable to fully capture this behaviour (Fig. 6), raises questions about ~~whether the~~ the accuracy of the simulated SIF provides reasonable results in water-stressed conditions (an example of dry period shown at FI-Sod in Thum et al. (2007)). However, due to the scattered nature of the SIF observations, having a more comprehensive dataset than ~~the one that~~ used in this study would be helpful.

## 4.6 Role of sustained NPQ

675 Our results showed a strong influence of sustained NPQ ~~for at~~ these sites, where the plants cannot use the energy of the incoming radiation due to temperature constraints and winter dormancy (see also (Pierrat et al., 2024)). ~~ChlF is closely related to photosynthesis, as both result from the functioning of the leaf biochemical machinery. In the current framework, there is currently no feedback from the modelling of SIF back to the photosynthesis part of the QUINCY model, so describing the NPQs did not influence modelling of GPP. However, similar mechanism based on state of acclimation as used in NPQs has~~  
680 ~~been implemented for spring recovery of GPP in the QUINCY model already earlier.~~

In general, simulating NPQ has been a challenge ~~in to~~ the modelling community, as it is ~~composed~~ comprises of many processes (Zaks et al., 2013), and active measurements have been ~~needed~~ required to quantify it. However, recent advances in the use of spectral imaging of xanthophyll cycle pigments ~~are advancing and making it possible to quantify~~ potentially enable quantifying NPQ also from the optical observations (Pescador-Dionisio et al., 2025; Van Wittenberghe et al., 2024),  
685 thus making remote sensing of NPQ feasible. ~~Also some studies have~~ Some studies have also combined vegetation indices to ~~help in assist with the~~ parameterization of NPQ (Jiang et al., 2023). Some new parameterizations for NPQ based on site-level observations have also become available (Martini et al., 2022).

~~A more thorough analysis on additional data at Sodankylä (including longer time series of the FloX observations and active ChlF observations with MoniPAM) will be carried out to develop a formulation for sustained NPQ applicable to the site.~~

690 The current results showed ~~(when comparing the spring time against satellite observations, Fig. S16)~~ that the formulation that was successful at other sites likely caused a too early increase in simulated SIF in spring. ~~It could be that the at FI-Sod,~~ when compared with satellite observations (Fig. S16). The colder temperature and light regime ~~of high latitudes together causes at high latitudes may cause~~ the FI-Sod ~~has a different dormancy level and mechanisms for coping with stress caused by winter conditions than the sites located to exhibit different dormancy levels and coping mechanisms for winter conditions compared~~  
695 ~~to sites~~ in North America. ~~Study from~~ A study of a South Korean evergreen coniferous forest showed ~~lower values for that the~~ observed chlorophyll fluorescence yield ( $\Phi_F$ ) ~~showed lower values of  $\Phi_F$  for was lower at~~ low temperatures than our parameterization allowed (Fig. S12). Therefore, it is likely that the parameterization could be improved for the FI-Sod, while still maintaining realistic values for  $\Phi_F$ . ~~While~~ Although a similar parameterization for GPP based on the state of acclimation was successful across ~~the~~ sites, the same ~~was not true could not be said~~ for a parameterization based on similar principles  
700 for sustained NPQ. This ~~could be caused by~~ may be due to the closer link ~~of the ChlF to pigment pool changes than GPP between ChlF and changes in the pigment pool than between GPP and the pigment pool~~ (Kim et al., 2021). The cold protection mechanisms of conifers are complex and include additionally changes in the absorption cross-section of the antenna complexes, as well as ~~down-regulation~~ downregulation of photosystem II activity ~~with simultaneous energy transfer,~~ accompanied by the transfer of energy from photosystem II to photosystem I (Bag et al., 2020). ~~The ratio between GPP and SIF has been shown to vary in low temperatures in earlier studies (Chen et al., 2022, 2025) and it~~ Previous studies have demonstrated that the ratio of GPP to SIF fluctuates at low temperatures (Chen et al., 2022, 2025). It is important to ~~be able to model~~ model the dynamics of  
705 this behaviour ~~so that we in order to~~ understand the coupling between GPP and SIF.

A recent study combining PAM observations worldwide evaluated the photosynthetic capacity of photosystem II (Neri et al., 2024). The study showed that this capacity depends more on the temperature regime of the environment where the  
710 vegetation grows than on the species of plant. The study also quantified ~~of~~ this dependence. The ultimate goal is to obtain a sufficiently general parameterization for the entire coniferous evergreen forest region, using the results of (Neri et al., 2024); ~~possibly with the help of TROPOMI observations~~. Using the same model for photosynthesis and ChlF (Johnson and Berry, 2021) could potentially circumvent this problem. However, the current photosynthesis parameters in QUINCY are directly influenced by nitrogen content and ~~also~~ leaf chlorophyll content is also closely coupled to photosynthesis (Thum et al., 2025).  
715 Leaf chlorophyll content could be useful as a metric related to nitrogen cycling in model evaluation (Miinalainen et al., 2025). This is a much-needed metric (Kou-Giesbrecht et al., 2023). Additionally, the amount of leaf chlorophyll influences how much of the SIF emitted from leaves that is attenuated in the canopy within the visible spectrum. Therefore, including both leaf chlorophyll and SIF in a model such as QUINCY would be beneficial for understanding Earth system processes and their temporal variations. The amount of chlorophyll in leaves also affects the shape of the SIF spectrum. ~~Since~~ As we used a fixed  
720 SIF spectrum to convert from the total SIF flux to SIF at a given wavelength (Magney et al., 2019b), this topic could benefit from some further investigation.

## 5 Conclusions

We have implemented chlorophyll fluorescence into the QUINCY model and tested different canopy transfer approaches of the SIF signal. On a seasonal scale, many of the approaches performed similarly, and did not show clear differences in performance  
725 when looking at day-to-day variation and the ability to simulate different times of day. The magnitude of the tower-based SIF observations was greatly overestimated in the simulations, but the timing and seasonality were captured successfully. Of the approaches studied, L2SM showed consistent performance across the sites and is computationally feasible to implement in a large-scale model. We hypothesize that the consistent overestimation might arise from the misrepresentation of conifer ~~leaves and canopy with the commonly used 1D canopy, and needles and canopy. The~~ leaf plate-theory-based radiative transfer  
730 models ~~does not reproduce the cylindrical structure of needles. At the same time, the 1D canopy radiative models do not incorporate the strong clumping of conifer needles.~~ However, no fluorescence emission has been implemented in needle-like leaf radiative transfer models, and 3D canopy transfer modules are too computationally demanding for TBMs. Thus, simpler modeling solutions should be explored to improve the representation of fluorescence emission in conifer forests, with the help of proximal sensing measurements.

735 Sustained NPQ was relevant in decoupling the simulated SIF from the observed absorbed PAR and the same parameterization improved model performance at the North American sites but appeared less suitable at the Finnish site. This process is likely linked to the air temperature regime of the sites. The TROPOSIF product ~~from satellite~~ was able to capture the low spring values observed at CA-Obs and could therefore probably serve as additional data when implementing the parameterization of sustained NPQ in a global model. However, for more northern site FI-Sod the amount of points in spring was sparse and  
740 an increase in TROPOSIF occurred later than for GPP. Use of TROPOSIF observations additionally in model evaluation and

development seems feasible, given that the springtime behaviour seems to follow better site level observations of SIF than absorbed PAR.

The next step of this work will be to extend it to other ecosystems, using both in situ and satellite observations as evaluation data. Together with QUINCY's diagnostic leaf chlorophyll content, a variable which can be observed from space, this work  
745 brings QUINCY closer to being a tool for comprehensive analysis of biogeochemical cycles.

*Code and data availability.* The scientific part of the QUINCY code is available under a GPL v3 license. The source code is available online (<https://doi.org/10.17871/quincy-model-2019>), but its access is restricted to registered users. Readers interested in running the model should request a username and password via the Git repository.

L2SM-code by T. Quaife is available at Zenodo in doi: 10.5281/zenodo.13753268. The FloX observations with meteorology and CO<sub>2</sub>  
750 fluxes from Sodankylä are available at <https://zenodo.org/records/12725765>. The PhotoSpec observations and CO<sub>2</sub> flux observations from CA-Obs are available at <https://zenodo.org/records/10048770> and from US-NR1 at <https://data.caltech.edu/records/meh5c-wy279>. The meteorological data for the North American sites is available from Ameriflux (<https://ameriflux.lbl.gov/>). The simulation results of SIF are available at <https://fmi.b2share.csc.fi/records/8847a0c06c374668b01e345094d373cd>.

*Author contributions.* TT designed the study, implemented Fluspect to version of QUINCY including mSCOPE, performed all the simu-  
755 lations and analysis and was responsible for the first draft of the manuscript. ZP and JS conducted the Photospec observations at CA-Obs, where AB and BJ were responsible for the CO<sub>2</sub> flux and meteorological observations. TM and JS were responsible for the PhotoSpec observations at US-NR1. MH conducted the FloX observations at FI-Sod in collaboration with HL. HL contributed the satellite data. MA was responsible for the CO<sub>2</sub> flux and meteorological observations at FI-Sod. JPL made original implementation of mSCOPE to the QUINCY model. TQ provided the L2SM code and help with its use as well as the code for the unit conversion. SZ provided help with the QUINCY  
760 model. All the authors contributed to discussing the results and writing of the manuscript.

*Competing interests.* At least one of the (co)-authors is a member of the editorial board of Biogeosciences..

*Disclaimer.* TEXT

*Acknowledgements.* TT acknowledges funding from Research Council of Finland (RESEMON project, grant number 330165; and 337552). TQ received funding under UKRI NERC grant NE/W006596/1 Structure, Photosynthesis and Light In Canopy Environments (SPLICE)  
765 which supported development of the L2SM model. HL and MH acknowledge funding from the Research Council of Finland (grant numbers 337552, 359196, and 353082). We acknowledge the AmeriFlux sites for their data records. In addition, funding for AmeriFlux data resources was provided by the U.S. Department of Energy's Office of Science. We acknowledge the Ministry of Transport and Communications through

770 the Integrated Carbon Observing System (ICOS) research and ICOS Finland. The FloX observations were done as part of European Space Agency funded project through contract number 4000131497 within the Carbon science Cluster. We thank Tommaso Julitta for help with data processing of the FloX data. Scientific programmers Dr. Jan Engel and Dr. Julia Nabel are thanked for technical support and maintenance of the QUINCY code. TM, ZP and JS acknowledge funding by NASA's Earth Science Division IDS (awards 80NSSC17K0108 at UCLA, 80NSSC17K0110 at JPL) and ABoVE programs (award 80NSSC19M0130). ZP work was supported by a National Science Foundation Graduate Research Fellowship under Grant No. DGE-1650604 and DGE-2034835. We thank the reviewers whose constructive comments helped to improve the manuscript.

## 775 **References**

- Adams, W. W., Muller, O., Cohu, C. M., and Demmig-Adams, B.: Photosystem II Efficiency and Non-Photochemical Fluorescence Quenching in the Context of Source-Sink Balance, pp. 503–529, Springer Netherlands, Dordrecht, [https://doi.org/10.1007/978-94-017-9032-1\\_23](https://doi.org/10.1007/978-94-017-9032-1_23), 2014.
- Alonso, L., Gomez-Chova, L., Vila-Frances, J., Amoros-Lopez, J., Guanter, L., Calpe, J., and Moreno, J.: Improved Fraunhofer Line  
780 Discrimination Method for Vegetation Fluorescence Quantification, *IEEE Geoscience and Remote Sensing Letters*, 5, 620–624, <https://doi.org/10.1109/LGRS.2008.2001180>, 2008.
- Aurela, M., Lohila, A., Tuovinen, J.-P., Hatakka, J., Penttilä, T., and Laurila, T.: Carbon dioxide and energy flux measurements in four northern-boreal ecosystems at Pallas, *Boreal Environment Research*, 20, 455–473, 2015.
- Bacour, C., Maignan, F., MacBean, N., Porcar-Castell, A., Flexas, J., Frankenberg, C., Peylin, P., Chevallier, F., Vuichard, N., and Bastrikov, V.: Improving Estimates of Gross Primary Productivity by Assimilating Solar-Induced Fluorescence Satellite Retrievals in a  
785 Terrestrial Biosphere Model Using a Process-Based SIF Model, *Journal of Geophysical Research: Biogeosciences*, 124, 3281–3306, <https://doi.org/https://doi.org/10.1029/2019JG005040>, 2019.
- Bag, P., Chukhutsina, V., Zhang, Z., Paul, S., Ivanov, A. G., Shutova, T., Croce, R., Holzwarth, A. R., and Jansson, S.: Direct energy transfer from Photosystem II to Photosystem I confers winter sustainability in Scots pine, *Nature Communications*, 11, 6388,  
790 <https://doi.org/10.1038/s41467-020-20137-9>, 2020.
- Baker, N. R.: Chlorophyll Fluorescence: A Probe of Photosynthesis In Vivo, *Annual Review of Plant Biology*, 59, 89–113, <https://doi.org/10.1146/annurev.arplant.59.032607.092759>, 2008.
- Balde, H., Hmimina, G., Goulas, Y., Latouche, G., and Soudani, K.: Synergy between TROPOMI sun-induced chlorophyll fluorescence and MODIS spectral reflectance for understanding the dynamics of gross primary productivity at Integrated Carbon Observatory System (ICOS) ecosystem flux sites, *Biogeosciences*, 20, 1473–1490, <https://doi.org/10.5194/bg-20-1473-2023>, 2023.
- Barr, A. G., Black, T., Hogg, E., Kljun, N., Morgenstern, K., and Nesic, Z.: Inter-annual variability in the leaf area index of a boreal aspen-hazelnut forest in relation to net ecosystem production, *Agricultural and Forest Meteorology*, 126, 237–255, <https://doi.org/10.1016/j.agrformet.2004.06.011>, 2004.
- Bonan, G. B.: Forests and Climate Change: Forcings, Feedbacks, and the Climate Benefits of Forests, *Science*, 320, 1444–1449,  
800 <https://doi.org/10.1126/science.1155121>, 2008.
- Bowling, D. R., Logan, B. A., Hufkens, K., Aubrecht, D. M., Richardson, A. D., Burns, S. P., Anderegg, W. R., Blanken, P. D., and Eiriksson, D. P.: Limitations to winter and spring photosynthesis of a Rocky Mountain subalpine forest, *Agricultural and Forest Meteorology*, 252, 241–255, <https://doi.org/10.1016/j.agrformet.2018.01.025>, 2018.
- Buman, B., Hueni, A., Colombo, R., Cogliati, S., Celesti, M., Julitta, T., Burkart, A., Siegmann, B., Rascher, U., Drusch, M., and Damm, A.:  
805 Towards consistent assessments of in situ radiometric measurements for the validation of fluorescence satellite missions, *Remote Sensing of Environment*, 274, 112984, <https://doi.org/https://doi.org/10.1016/j.rse.2022.112984>, 2022.
- Burns, S. P., Blanken, P. D., Turnipseed, A. A., Hu, J., and Monson, R. K.: The influence of warm-season precipitation on the diel cycle of the surface energy balance and carbon dioxide at a Colorado subalpine forest site, *Biogeosciences*, 12, 7349–7377, <https://doi.org/10.5194/bg-12-7349-2015>, 2015.
- 810 Campbell, G. S. and Norman, J. M.: *An Introduction to Environmental Biophysics*, Springer, 1998.

- Cendrero-Mateo, M. P., Wieneke, S., Damm, A., Alonso, L., Pinto, F., Moreno, J., Guanter, L., Celesti, M., Rossini, M., Sabater, N., Cogliati, S., Julitta, T., Rascher, U., Goulas, Y., Aasen, H., Pacheco-Labrador, J., and Mac Arthur, A.: Sun-Induced Chlorophyll Fluorescence III: Benchmarking Retrieval Methods and Sensor Characteristics for Proximal Sensing, *Remote Sensing*, 11, 962, <https://doi.org/10.3390/rs11080962>, 2019.
- 815 Chen, J. and Cihlar, J.: Quantifying the effect of canopy architecture on optical measurements of leaf area index using two gap size analysis methods, *IEEE Transactions on Geoscience and Remote Sensing*, 33, 777–787, <https://doi.org/10.1109/36.387593>, 1995.
- Chen, J., Menges, C., and Leblanc, S.: Global mapping of foliage clumping index using multi-angular satellite data, *Remote Sensing of Environment*, 97, 447–457, <https://doi.org/https://doi.org/10.1016/j.rse.2005.05.003>, 2005.
- Chen, J., Liu, X., Ma, Y., and Liu, L.: Effects of Low Temperature on the Relationship between Solar-Induced Chlorophyll Fluorescence and Gross Primary Productivity across Different Plant Function Types, *Remote Sensing*, 14, <https://doi.org/10.3390/rs14153716>, 2022.
- 820 Chen, R., Liu, L., Liu, X., Wong, C. Y. S., and Ensminger, I.: Temperature-Dependent Relationship Between Solar-Induced Chlorophyll Fluorescence and Photosynthesis in Evergreen Needleleaf Forests, *IEEE Transactions on Geoscience and Remote Sensing*, 63, 1–11, <https://doi.org/10.1109/TGRS.2025.3620306>, 2025.
- Damm, A., Guanter, L., Paul-Limoges, E., van der Tol, C., Hueni, A., Buchmann, N., Eugster, W., Ammann, C., and  
825 Schaeppman, M.: Far-red sun-induced chlorophyll fluorescence shows ecosystem-specific relationships to gross primary production: An assessment based on observational and modeling approaches, *Remote Sensing of Environment*, 166, 91–105, <https://doi.org/https://doi.org/10.1016/j.rse.2015.06.004>, 2015.
- Dechant, B., Ryu, Y., Badgley, G., Köhler, P., Rascher, U., Migliavacca, M., Zhang, Y., Tagliabue, G., Guan, K., Rossini, M., Goulas, Y., Zeng, Y., Frankenberg, C., and Berry, J. A.: NIRVP: A robust structural proxy for sun-induced chlorophyll fluorescence and photosynthesis  
830 across scales, *Remote Sensing of Environment*, 268, 112 763, <https://doi.org/https://doi.org/10.1016/j.rse.2021.112763>, 2022.
- Demmig-Adams, B., Koh, S.-C., Cohu, C. M., Muller, O., Stewart, J. J., and Adams, W. W.: Non-Photochemical Fluorescence Quenching in Contrasting Plant Species and Environments, pp. 531–552, Springer Netherlands, Dordrecht, [https://doi.org/10.1007/978-94-017-9032-1\\_24](https://doi.org/10.1007/978-94-017-9032-1_24), 2014.
- Du, S., Liu, X., Chen, J., Duan, W., and Liu, L.: Addressing validation challenges for TROPOMI solar-induced chlorophyll fluorescence products using tower-based measurements and an NIRv-scaled approach, *Remote Sensing of Environment*, 290, 113 547, <https://doi.org/https://doi.org/10.1016/j.rse.2023.113547>, 2023.
- Fan, L., Kato, T., Miyauchi, T., Buareal, K., Morozumi, T., and Ono, K.: Data Assimilation of Solar-Induced Chlorophyll Fluorescence Improves Gross Primary Production Simulation by a Process-Based VISIT-SIF Model in a Rice Paddy, *Journal of Geophysical Research: Biogeosciences*, 130, e2024JG008 280, <https://doi.org/https://doi.org/10.1029/2024JG008280>, e2024JG008280 2024JG008280, 2025.
- 840 Farquhar, G. D., Von Caemmerer, S., and Berry, J. A.: A biochemical model of photosynthetic CO<sub>2</sub> assimilation in leaves of C<sub>3</sub> species, *Planta*, 149, 78–90, <https://doi.org/10.1007/BF00386231>, 1980.
- Frankenberg, C., Fisher, J. B., Worden, J., Badgley, G., Saatchi, S. S., Lee, J.-E., Toon, G. C., Butz, A., Jung, M., Kuze, A., and Yokota, T.: New global observations of the terrestrial carbon cycle from GOSAT: Patterns of plant fluorescence with gross primary productivity: Chlorophyll fluorescence from space, *Geophysical Research Letters*, 38, n/a–n/a, <https://doi.org/10.1029/2011GL048738>, 2011.
- 845 Frankenberg, C., O'Dell, C., Berry, J., Guanter, L., Joiner, J., Köhler, P., Pollock, R., and Taylor, T. E.: Prospects for chlorophyll fluorescence remote sensing from the Orbiting Carbon Observatory-2, *Remote Sensing of Environment*, 147, 1–12, <https://doi.org/https://doi.org/10.1016/j.rse.2014.02.007>, 2014.

- Friedl, M. and Sulla-Menashe, D.: MODIS/Terra+Aqua Land Cover Type Yearly L3 Global 0.05Deg CMG V061, <https://doi.org/10.5067/MODIS/MCD12C1.061>, data set, 2022.
- 850 Gopalakrishnan, R., Korhonen, L., Möttöus, M., Rautiainen, M., Hovi, A., Mehtätalo, L., Maltamo, M., Peltola, H., and Packalen, P.: Evaluation of a forest radiative transfer model using an extensive boreal forest inventory database, *Science of Remote Sensing*, 8, 100098, <https://doi.org/10.1016/j.srs.2023.100098>, 2023.
- Gordon, H. R.: Diffuse reflectance of the ocean: The theory of its augmentation by chlorophyll a fluorescence at 685 nm, *Applied Optics*, 18, 1161–1166, <https://doi.org/10.1364/AO.18.001161>, 1979.
- 855 Grossmann, K., Frankenberg, C., Magney, T. S., Hurlock, S. C., Seibt, U., and Stutz, J.: PhotoSpec: A new instrument to measure spatially distributed red and far-red Solar-Induced Chlorophyll Fluorescence, *Remote Sensing of Environment*, 216, 311–327, <https://doi.org/10.1016/j.rse.2018.07.002>, 2018.
- Gu, L., Han, J., Wood, J. D., Chang, C. Y., and Sun, Y.: Sun-induced Chl fluorescence and its importance for biophysical modeling of photosynthesis based on light reactions, *New Phytologist*, 223, 1179–1191, <https://doi.org/10.1111/nph.15796>, 2019.
- 860 Guanter, L., Frankenberg, C., Dudhia, A., Lewis, P. E., Gómez-Dans, J., Kuze, A., Suto, H., and Grainger, R. G.: Retrieval and global assessment of terrestrial chlorophyll fluorescence from GOSAT space measurements, *Remote Sensing of Environment*, 121, 236–251, <https://doi.org/https://doi.org/10.1016/j.rse.2012.02.006>, 2012.
- Guanter, L., Aben, I., Tol, P., Krijger, J. M., Hollstein, A., Köhler, P., Damm, A., Joiner, J., Frankenberg, C., and Landgraf, J.: Potential of the TROPOspheric Monitoring Instrument (TROPOMI) onboard the Sentinel-5 Precursor for the monitoring of terrestrial chlorophyll
- 865 fluorescence, *Atmospheric Measurement Techniques*, 8, 1337–1352, <https://doi.org/10.5194/amt-8-1337-2015>, 2015.
- Guanter, L., Bacour, C., Schneider, A., Aben, I., van Kempen, T. A., Maignan, F., Retscher, C., Köhler, P., Frankenberg, C., Joiner, J., and Zhang, Y.: The TROPoSIF global sun-induced fluorescence dataset from the Sentinel-5P TROPOMI mission, *Earth System Science Data*, 13, 5423–5440, <https://doi.org/10.5194/essd-13-5423-2021>, 2021.
- Hao, D., Zeng, Y., Qiu, H., Biriukova, K., Celesti, M., Migliavacca, M., Rossini, M., Asrar, G. R., and Chen, M.: Practical approaches
- 870 for normalizing directional solar-induced fluorescence to a standard viewing geometry, *Remote Sensing of Environment*, 255, 112 171, <https://doi.org/10.1016/j.rse.2020.112171>, 2021.
- Hastie, T., Tibshirani, R., and Friedman, J.: *The Elements of Statistical Learning*, Springer, 2009.
- Hilker, T., Coops, N. C., Hall, F. G., Black, T. A., Wulder, M. A., Nesic, Z., and Krishnan, P.: Separating physiologically and directionally induced changes in PRI using BRDF models, *Remote Sensing of Environment*, 112, 2777–2788,
- 875 <https://doi.org/https://doi.org/10.1016/j.rse.2008.01.011>, 2008a.
- Hilker, T., Coops, N. C., Schwalm, C. R., Jassal, R. S., Black, T. A., and Krishnan, P.: Effects of mutual shading of tree crowns on prediction of photosynthetic light-use efficiency in a coastal Douglas-fir forest, *Tree Physiology*, 28, 825–834, <https://doi.org/10.1093/treephys/28.6.825>, 2008b.
- Jacquemoud, S. and Baret, F.: PROSPECT: A model of leaf optical properties spectra, *Remote Sensing of Environment*, 34, 75–91,
- 880 [https://doi.org/https://doi.org/10.1016/0034-4257\(90\)90100-Z](https://doi.org/https://doi.org/10.1016/0034-4257(90)90100-Z), 1990.
- Jiang, H., Liu, Z., Wang, J., Yang, P., Zhang, R., Zhang, X., and Zheng, P.: Combining Chlorophyll Fluorescence and Vegetation Reflectance Indices to Estimate Non-Photochemical Quenching (NPQ) of Rice at the Leaf Scale, *Remote Sensing*, 15, <https://doi.org/10.3390/rs15174222>, 2023.
- Johnson, J. E. and Berry, J. A.: The role of Cytochrome b6f in the control of steady-state photosynthesis: a conceptual and quantitative model,
- 885 *Photosynthesis Research*, 148, 101–136, <https://doi.org/10.1007/s11120-021-00840-4>, 2021.

- Joiner, J., Yoshida, Y., Vasilkov, A. P., Yoshida, Y., Corp, L. A., and Middleton, E. M.: First observations of global and seasonal terrestrial chlorophyll fluorescence from space, *Biogeosciences*, 8, 637–651, <https://doi.org/10.5194/bg-8-637-2011>, 2011.
- Joiner, J., Guanter, L., Lindstrot, R., Voigt, M., Vasilkov, A. P., Middleton, E. M., Huemmrich, K. F., Yoshida, Y., and Frankenberg, C.: Global monitoring of terrestrial chlorophyll fluorescence from moderate-spectral-resolution near-infrared satellite measurements: methodology, simulations, and application to GOME-2, *Atmospheric Measurement Techniques*, 6, 2803–2823, <https://doi.org/10.5194/amt-6-2803-2013>, 2013.
- Joiner, J., Yoshida, Y., Köehler, P., Campbell, P., Frankenberg, C., van der Tol, C., Yang, P., Parazoo, N., Guanter, L., and Sun, Y.: Systematic Orbital Geometry-Dependent Variations in Satellite Solar-Induced Fluorescence (SIF) Retrievals, *Remote Sensing*, 12, <https://doi.org/10.3390/rs12152346>, 2020.
- 895 Kim, J., Ryu, Y., Dechant, B., Lee, H., Kim, H. S., Kornfeld, A., and Berry, J. A.: Solar-induced chlorophyll fluorescence is non-linearly related to canopy photosynthesis in a temperate evergreen needleleaf forest during the fall transition, *Remote Sensing of Environment*, 258, 112362, <https://doi.org/https://doi.org/10.1016/j.rse.2021.112362>, 2021.
- Knorr, W., Williams, M., Thum, T., Kaminski, T., Voßbeck, M., Scholze, M., Quaife, T., Smallman, T. L., Steele-Dunne, S. C., Vreugdenhil, M., Green, T., Zaehle, S., Aurela, M., Bouvet, A., Bueechi, E., Dorigo, W., El-Madany, T. S., Migliavacca, M., Honkanen, M., Kerr, Y. H., 900 Kontu, A., Lemmetyinen, J., Lindqvist, H., Mialon, A., Miinalainen, T., Pique, G., Ojasalo, A., Quegan, S., Rayner, P. J., Reyes-Muñoz, P., Rodríguez-Fernández, N., Schwank, M., Verrelst, J., Zhu, S., Schüttemeyer, D., and Drusch, M.: A comprehensive land-surface vegetation model for multi-stream data assimilation, D&B v1.0, *Geoscientific Model Development*, 18, 2137–2159, <https://doi.org/10.5194/gmd-18-2137-2025>, 2025.
- Koffi, E. N., Rayner, P. J., Norton, A. J., Frankenberg, C., and Scholze, M.: Investigating the usefulness of satellite-derived fluorescence data in inferring gross primary productivity within the carbon cycle data assimilation system, *Biogeosciences*, 12, 4067–4084, 905 <https://doi.org/10.5194/bg-12-4067-2015>, 2015.
- Kou-Giesbrecht, S., Arora, V. K., Seiler, C., Arneth, A., Falk, S., Jain, A. K., Joos, F., Kennedy, D., Knauer, J., Sitch, S., O’Sullivan, M., Pan, N., Sun, Q., Tian, H., Vuichard, N., and Zaehle, S.: Evaluating nitrogen cycling in terrestrial biosphere models: a disconnect between the carbon and nitrogen cycles, *Earth System Dynamics*, 14, 767–795, <https://doi.org/10.5194/esd-14-767-2023>, 2023.
- 910 Kull, O. and Kruijt, B.: Leaf photosynthetic light response: a mechanistic model for scaling photosynthesis to leaves and canopies, *Functional Ecology*, 12, 767–777, 1998.
- Kuze, A., Suto, H., Nakajima, M., and Hamazaki, T.: Thermal and near infrared sensor for carbon observation Fourier-transform spectrometer on the Greenhouse Gases Observing Satellite for greenhouse gases monitoring, *Appl. Opt.*, 48, 6716–6733, <https://doi.org/10.1364/AO.48.006716>, 2009.
- 915 Köhler, P., Frankenberg, C., Magney, T. S., Guanter, L., Joiner, J., and Landgraf, J.: Global Retrievals of Solar-Induced Chlorophyll Fluorescence With TROPOMI: First Results and Intersensor Comparison to OCO-2, *Geophysical Research Letters*, 45, 10,456–10,463, <https://doi.org/https://doi.org/10.1029/2018GL079031>, 2018.
- Lee, J., Berry, J. A., Van Der Tol, C., Yang, X., Guanter, L., Damm, A., Baker, I., and Frankenberg, C.: Simulations of chlorophyll fluorescence incorporated into the Community Land Model version 4, *Global Change Biology*, 21, 3469–3477, <https://doi.org/10.1111/gcb.12948>, 920 2015.
- Li, R., Lombardozzi, D., Shi, M., Frankenberg, C., Parazoo, N. C., Köhler, P., Yi, K., Guan, K., and Yang, X.: Representation of Leaf-to-Canopy Radiative Transfer Processes Improves Simulation of Far-Red Solar-Induced Chlorophyll Fluores-

- cence in the Community Land Model Version 5, *Journal of Advances in Modeling Earth Systems*, 14, e2021MS002747, <https://doi.org/https://doi.org/10.1029/2021MS002747>, e2021MS002747 2021MS002747, 2022.
- 925 Liang, L., Liu, Q., Liu, G., Li, H., and Huang, C.: Accuracy Evaluation and Consistency Analysis of Four Global Land Cover Products in the Arctic Region, *Remote Sensing*, 11, <https://doi.org/10.3390/rs11121396>, 2019.
- Liu, W., Möttus, M., Malenovský, Z., Shi, S., Alonso, L., Atherton, J., and Porcar-Castell, A.: An in situ approach for validation of canopy chlorophyll fluorescence radiative transfer models using the full emission spectrum, *Remote Sensing of Environment*, 316, 114490, <https://doi.org/https://doi.org/10.1016/j.rse.2024.114490>, 2025.
- 930 Liu, X., Liu, L., Hu, J., Guo, J., and Du, S.: Improving the potential of red SIF for estimating GPP by downscaling from the canopy level to the photosystem level, *Agricultural and Forest Meteorology*, 281, 107846, <https://doi.org/10.1016/j.agrformet.2019.107846>, 2020.
- Magney, T. and Frankenberg, C.: Chlorophyll fluorescence spectra for a wide range of species and conditions, <https://doi.org/10.22002/D1.1226>, funding by NASA, 2019.
- Magney, T. S., Frankenberg, C., Fisher, J. B., Sun, Y., North, G. B., Davis, T. S., Kornfeld, A., and Siebke, K.: Connecting active to passive  
935 fluorescence with photosynthesis: a method for evaluating remote sensing measurements of Chl fluorescence, *New Phytologist*, 215, 1594–1608, <https://doi.org/https://doi.org/10.1111/nph.14662>, 2017.
- Magney, T. S., Bowling, D. R., Logan, B. A., Grossmann, K., Stutz, J., Blanken, P. D., Burns, S. P., Cheng, R., Garcia, M. A., Köhler, P., Lopez, S., Parazoo, N. C., Raczka, B., Schimel, D., and Frankenberg, C.: Mechanistic evidence for tracking the seasonality of photosynthesis with solar-induced fluorescence, *Proceedings of the National Academy of Sciences*, 116, 11640–11645,  
940 <https://doi.org/10.1073/pnas.1900278116>, 2019a.
- Magney, T. S., Frankenberg, C., Köhler, P., North, G., Davis, T. S., Dold, C., Dutta, D., Fisher, J. B., Grossmann, K., Harrington, A., Hatfield, J., Stutz, J., Sun, Y., and Porcar-Castell, A.: Disentangling Changes in the Spectral Shape of Chlorophyll Fluorescence: Implications for Remote Sensing of Photosynthesis, *Journal of Geophysical Research: Biogeosciences*, 124, 1491–1507, <https://doi.org/https://doi.org/10.1029/2019JG005029>, 2019b.
- 945 Magney, T. S., Barnes, M. L., and Yang, X.: On the Covariation of Chlorophyll Fluorescence and Photosynthesis Across Scales, *Geophysical Research Letters*, 47, e2020GL091098, <https://doi.org/https://doi.org/10.1029/2020GL091098>, e2020GL091098 2020GL091098, 2020.
- Majasalmi, T. and Bright, R. M.: Evaluation of leaf-level optical properties employed in land surface models, *Geoscientific Model Development*, 12, 3923–3938, <https://doi.org/10.5194/gmd-12-3923-2019>, 2019.
- Malenovský, Z., Regaieg, O., Yin, T., Lauret, N., Guilleux, J., Chavanon, E., Duran, N., Janoutová, R., Delavois, A., Meynier, J., Medjdoub,  
950 G., Yang, P., van der Tol, C., Morton, D., Cook, B. D., and Gastellu-Etchegorry, J.-P.: Discrete anisotropic radiative transfer modelling of solar-induced chlorophyll fluorescence: Structural impacts in geometrically explicit vegetation canopies, *Remote Sensing of Environment*, 263, 112564, <https://doi.org/https://doi.org/10.1016/j.rse.2021.112564>, 2021.
- Martini, D., Pacheco-Labrador, J., Perez-Priego, O., van der Tol, C., El-Madany, T. S., Julitta, T., Rossini, M., Reichstein, M., Christiansen, R., Rascher, U., Moreno, G., Martín, M. P., Yang, P., Carrara, A., Guan, J., González-Cascón, R., and Migliavacca, M.: Nitrogen and  
955 Phosphorus Effect on Sun-Induced Fluorescence and Gross Primary Productivity in Mediterranean Grassland, *Remote Sensing*, 11, <https://doi.org/10.3390/rs111212562>, 2019.
- Martini, D., Sakowska, K., Wohlfahrt, G., Pacheco-Labrador, J., van der Tol, C., Porcar-Castell, A., Magney, T. S., Carrara, A., Colombo, R., El-Madany, T. S., Gonzalez-Cascon, R., Martín, M. P., Julitta, T., Moreno, G., Rascher, U., Reichstein, M., Rossini, M., and Migliavacca, M.: Heatwave breaks down the linearity between sun-induced fluorescence and gross primary production, *New Phytologist*, 233, 2415–  
960 2428, <https://doi.org/https://doi.org/10.1111/nph.17920>, 2022.

- Maxwell, K. and Johnson, G. N.: Chlorophyll fluorescence—a practical guide, *Journal of Experimental Botany*, 51, 659–668, <https://doi.org/10.1093/jexbot/51.345.659>, 2000.
- Meador, W. and Weaver, W.: Two-stream approximations to radiative transfer in planetary atmospheres: A unified description of existing methods and a new improvement, *Journal of Atmospheric Sciences*, 37, 630–643, 1980.
- 965 Medlyn, B. E., Duursma, R. A., Eamus, D., Ellsworth, D. S., Prentice, I. C., Barton, C. V. M., Crous, K. Y., De Angelis, P., Freeman, M., and Wingate, L.: Reconciling the optimal and empirical approaches to modelling stomatal conductance, *Global Change Biology*, 17, 2134–2144, <https://doi.org/https://doi.org/10.1111/j.1365-2486.2010.02375.x>, 2011.
- Miinalainen, T., Ojasalo, A., Croft, H., Aurela, M., Peltoniemi, M., Caldararu, S., Zaehle, S., and Thum, T.: Evaluating the carbon and nitrogen cycles of the QUINCY terrestrial biosphere model using remotely-sensed data, *EGUsphere*, 2025, 1–40, 970 <https://doi.org/10.5194/egusphere-2025-2987>, 2025.
- Miller, J., Berger, M., Goulas, Y., Jacquemoud, S., Louis, J., Mohammed, G., Moise, N., Moreno, J., Moya, I., Pedròs, R., Verhoef, W., , and Zarco-Tejada, P.: Development of a Vegetation Fluorescence Canopy Model, ESTEC Contract No. 16365/02/NL/FF, Final Report, 2005.
- Miyauchi, T., Saito, M., Noda, H. M., Ito, A., Kato, T., and Matsunaga, T.: Process-based modeling of solar-induced chlorophyll fluorescence with VISIT-SIF version 1.0, *Geoscientific Model Development*, 18, 2329–2347, <https://doi.org/10.5194/gmd-18-2329-2025>, 2025.
- 975 Mohammed, G. H., Colombo, R., Middleton, E. M., Rascher, U., Van Der Tol, C., Nedbal, L., Goulas, Y., Pérez-Priego, O., Damm, A., Meroni, M., Joiner, J., Cogliati, S., Verhoef, W., Malenovský, Z., Gastellu-Etchegorry, J.-P., Miller, J. R., Guanter, L., Moreno, J., Moya, I., Berry, J. A., Frankenberg, C., and Zarco-Tejada, P. J.: Remote sensing of solar-induced chlorophyll fluorescence (SIF) in vegetation: 50 years of progress, *Remote Sensing of Environment*, 231, 111 177, <https://doi.org/10.1016/j.rse.2019.04.030>, 2019.
- Moreno, J. F.: The Fluorescence Explorer (FLEX): Mission Status and Data Exploitation Plans, in: *IGARSS 2022 - 2022 IEEE International Geoscience and Remote Sensing Symposium*, pp. 5015–5018, <https://doi.org/10.1109/IGARSS46834.2022.9883466>, 2022.
- 980 Munro, R., Lang, R., Klaes, D., Poli, G., Retscher, C., Lindstrot, R., Huckle, R., Lacan, A., Grzegorski, M., Holdak, A., Kokhanovsky, A., Livschitz, J., and Eisinger, M.: The GOME-2 instrument on the Metop series of satellites: instrument design, calibration, and level 1 data processing – an overview, *Atmospheric Measurement Techniques*, 9, 1279–1301, <https://doi.org/10.5194/amt-9-1279-2016>, 2016.
- 985 Mäkelä, A., Hari, P., Berninger, F., Hänninen, H., and Nikinmaa, E.: Acclimation of photosynthetic capacity in Scots pine to the annual cycle of temperature, *Tree Physiology*, 24, 369–376, <https://doi.org/10.1093/treephys/24.4.369>, 2004.
- Neri, P., Gu, L., and Song, Y.: The effect of temperature on photosystem II efficiency across plant functional types and climate, *Biogeosciences*, 21, 2731–2758, <https://doi.org/10.5194/bg-21-2731-2024>, 2024.
- Niinemets, Ü., Kull, O., and Tenhunen, J. D.: An analysis of light effects on foliar morphology, physiology, and light interception in temperate deciduous woody species of contrasting shade tolerance, *Tree Physiology*, 18, 681–696, <https://doi.org/10.1093/treephys/18.10.681>, 1998.
- 990 Norton, A. J., Rayner, P. J., Koffi, E. N., Scholze, M., Silver, J. D., and Wang, Y.-P.: Estimating global gross primary productivity using chlorophyll fluorescence and a data assimilation system with the BETHY-SCOPE model, *Biogeosciences*, 16, 3069–3093, <https://doi.org/10.5194/bg-16-3069-2019>, 2019.
- Otto, J., Berveiller, D., Bréon, F.-M., Delpierre, N., Geppert, G., Granier, A., Jans, W., Knohl, A., Kuusk, A., Longdoz, B., Moors, E., Mund, 995 M., Pinty, B., Schelhaas, M.-J., and Luyssaert, S.: Forest summer albedo is sensitive to species and thinning: how should we account for this in Earth system models?, *Biogeosciences*, 11, 2411–2427, <https://doi.org/10.5194/bg-11-2411-2014>, 2014.

- Pacheco-Labrador, J., Hueni, A., Mihai, L., Sakowska, K., Julitta, T., Kuusk, J., Sporea, D., Alonso, L., Burkart, A., Cendrero-Mateo, M. P., Aasen, H., Goulas, Y., and Mac Arthur, A.: Sun-Induced Chlorophyll Fluorescence I: Instrumental Considerations for Proximal Spectroradiometers, *Remote Sensing*, 11, <https://doi.org/10.3390/rs11080960>, 2019.
- 1000 Pan, Y., Birdsey, R. A., Phillips, O. L., Houghton, R. A., Fang, J., Kauppi, P. E., Keith, H., Kurz, W. A., Ito, A., Lewis, S. L., Nabuurs, G.-J., Shvidenko, A., Hashimoto, S., Lerink, B., Schepaschenko, D., Castanho, A., and Murdiyarso, D.: The enduring world forest carbon sink, *Nature*, 631, 563–569, <https://doi.org/10.1038/s41586-024-07602-x>, 2024.
- Parazoo, N. C., Magney, T., Norton, A., Raczka, B., Bacour, C., Maignan, F., Baker, I., Zhang, Y., Qiu, B., Shi, M., MacBean, N., Bowling, D. R., Burns, S. P., Blanken, P. D., Stutz, J., Grossmann, K., and Frankenberg, C.: Wide discrepancies in the magnitude and direction of modeled solar-induced chlorophyll fluorescence in response to light conditions, *Biogeosciences*, 17, 3733–3755, <https://doi.org/10.5194/bg-17-3733-2020>, 2020.
- 1005 Paul-Limoges, E., Damm, A., Hueni, A., Liebisch, F., Eugster, W., Schaepman, M. E., and Buchmann, N.: Effect of environmental conditions on sun-induced fluorescence in a mixed forest and a cropland, *Remote Sensing of Environment*, 219, 310–323, <https://doi.org/10.1016/j.rse.2018.10.018>, 2018.
- 1010 Pescador-Dionisio, S., Cendrero-Mateo, M. P., Moncholí-Estornell, A., Robles-Fort, A., Arzac, M. I., Renau-Morata, B., Fernández-Marín, B., García-Plazaola, J. I., Molina, R. V., Rausell, C., Moreno, J., Nebauer, S. G., García-Robles, I., and Van Wittenberghe, S.: *In vivo* detection of spectral reflectance changes associated with regulated heat dissipation mechanisms complements fluorescence quantum efficiency in early stress diagnosis, *New Phytologist*, 245, 559–576, <https://doi.org/10.1111/nph.20253>, 2025.
- Pierrat, Z., Nehemy, M. F., Roy, A., Magney, T., Parazoo, N. C., Laroque, C., Pappas, C., Sonnentag, O., Grossmann, K., Bowling, D. R., 1015 Seibt, U., Ramirez, A., Johnson, B., Helgason, W., Barr, A., and Stutz, J.: Tower-Based Remote Sensing Reveals Mechanisms Behind a Two-phased Spring Transition in a Mixed-Species Boreal Forest, *Journal of Geophysical Research: Biogeosciences*, 126, e2020JG006191, <https://doi.org/10.1029/2020JG006191>, 2021.
- Pierrat, Z., Magney, T., Parazoo, N. C., Grossmann, K., Bowling, D. R., Seibt, U., Johnson, B., Helgason, W., Barr, A., Bortnik, J., Norton, A., Maguire, A., Frankenberg, C., and Stutz, J.: Diurnal and Seasonal Dynamics of Solar-Induced Chlorophyll Fluorescence, Vegetation 1020 Indices, and Gross Primary Productivity in the Boreal Forest, *Journal of Geophysical Research: Biogeosciences*, 127, e2021JG006588, <https://doi.org/10.1029/2021JG006588>, 2022a.
- Pierrat, Z. A., Bortnik, J., Johnson, B., Barr, A., Magney, T., Bowling, D. R., Parazoo, N., Frankenberg, C., Seibt, U., and Stutz, J.: Forests for forests: combining vegetation indices with solar-induced chlorophyll fluorescence in random forest models improves gross primary productivity prediction in the boreal forest, *Environmental Research Letters*, 17, 125 006, <https://doi.org/10.1088/1748-9326/aca5a0>, 2022b.
- 1025 Pierrat, Z. A., Magney, T., Maguire, A., Brissette, L., Doughty, R., Bowling, D. R., Logan, B., Parazoo, N., Frankenberg, C., and Stutz, J.: Seasonal timing of fluorescence and photosynthetic yields at needle and canopy scales in evergreen needleleaf forests, *Ecology*, 105, e4402, <https://doi.org/https://doi.org/10.1002/ecy.4402>, 2024.
- Plascyk, J. A. and Gabriel, F. C.: The Fraunhofer Line Discriminator MKII-An Airborne Instrument for Precise and Standardized Ecological Luminescence Measurement, *IEEE Transactions on Instrumentation and Measurement*, 24, 306–313, 1030 <https://doi.org/10.1109/TIM.1975.4314448>, 1975.
- Porcar-Castell, A.: A high-resolution portrait of the annual dynamics of photochemical and non-photochemical quenching in needles of *Pinus sylvestris*, *Physiologia Plantarum*, 143, 139–153, <https://doi.org/https://doi.org/10.1111/j.1399-3054.2011.01488.x>, 2011.

- Porcar-Castell, A., Juurola, E., Ensminger, I., Berninger, F., Hari, P., and Nikinmaa, E.: Seasonal acclimation of photosystem II in *Pinus sylvestris*. II. Using the rate constants of sustained thermal energy dissipation and photochemistry to study the effect of the light environment, *Tree Physiology*, 28, 1483–1491, <https://doi.org/10.1093/treephys/28.10.1483>, 2008.
- 1035 Porcar-Castell, A., Malenovský, Z., Magney, T., Van Wittenberghe, S., Fernández-Marín, B., Maignan, F., Zhang, Y., Maseyk, K., Atherton, J., Albert, L. P., Robson, T. M., Zhao, F., Garcia-Plazaola, J.-I., Ensminger, I., Rajewicz, P. A., Grebe, S., Tikkanen, M., Kellner, J. R., Ihalainen, J. A., Rascher, U., and Logan, B.: Chlorophyll a fluorescence illuminates a path connecting plant molecular biology to Earth-system science, *Nature Plants*, 7, 998–1009, <https://doi.org/10.1038/s41477-021-00980-4>, 2021.
- 1040 Qiu, B., Chen, J. M., Ju, W., Zhang, Q., and Zhang, Y.: Simulating emission and scattering of solar-induced chlorophyll fluorescence at far-red band in global vegetation with different canopy structures, *Remote Sensing of Environment*, 233, 111373, <https://doi.org/https://doi.org/10.1016/j.rse.2019.111373>, 2019.
- Quaife, T.: A two stream radiative transfer model for vertically inhomogeneous vegetation canopies including internal emission, *Journal of Advances in Modeling Earth Systems*, p. to appear, under submission, 2025.
- 1045 Raczka, B., Porcar-Castell, A., Magney, T., Lee, J. E., Köhler, P., Frankenberg, C., Grossmann, K., Logan, B. A., Stutz, J., Blanken, P. D., Burns, S. P., Duarte, H., Yang, X., Lin, J. C., and Bowling, D. R.: Sustained Nonphotochemical Quenching Shapes the Seasonal Pattern of Solar-Induced Fluorescence at a High-Elevation Evergreen Forest, *Journal of Geophysical Research: Biogeosciences*, 124, 2005–2020, <https://doi.org/https://doi.org/10.1029/2018JG004883>, 2019.
- Rantanen, M., Karpechko, A. Y., Lipponen, A., Nordling, K., Hyvärinen, O., Ruosteenoja, K., Vihma, T., and Laaksonen, A.: The Arctic has  
1050 warmed nearly four times faster than the globe since 1979, *Communications Earth & Environment*, 3, 168, <https://doi.org/10.1038/s43247-022-00498-3>, 2022.
- Reichstein, M., Falge, E., Baldocchi, D., Papale, D., Aubinet, M., Berbigier, P., Bernhofer, C., Buchmann, N., Gilmanov, T., Granier, A., Grünwald, T., Havránková, K., Ilvesniemi, H., Janous, D., Knohl, A., Laurila, T., Lohila, A., Loustau, D., Matteucci, G., Meyers, T., Miglietta, F., Ourcival, J.-M., Pumpanen, J., Rambal, S., Rotenberg, E., Sanz, M., Tenhunen, J., Seufert, G., Vaccari, F., Vesala, T., Yakir,  
1055 D., and Valentini, R.: On the separation of net ecosystem exchange into assimilation and ecosystem respiration: review and improved algorithm, *Global Change Biology*, 11, 1424–1439, <https://doi.org/https://doi.org/10.1111/j.1365-2486.2005.001002.x>, 2005.
- Richardson, A. D., Hollinger, D. Y., Burba, G. G., Davis, K. J., Flanagan, L. B., Katul, G. G., William Munger, J., Ricciuto, D. M., Stoy, P. C., Suyker, A. E., Verma, S. B., and Wofsy, S. C.: A multi-site analysis of random error in tower-based measurements of carbon and energy fluxes, *Agricultural and Forest Meteorology*, 136, 1–18, <https://doi.org/https://doi.org/10.1016/j.agrformet.2006.01.007>, 2006.
- 1060 Sabater, N., Vicent, J., Alonso, L., Verrelst, J., Middleton, E. M., Porcar-Castell, A., and Moreno, J.: Compensation of Oxygen Transmittance Effects for Proximal Sensing Retrieval of Canopy–Leaving Sun–Induced Chlorophyll Fluorescence, *Remote Sensing*, 10, <https://doi.org/10.3390/rs10101551>, 2018.
- Schimel, D., Schneider, F. D., and JPL Carbon and Ecosystem Participants : Flux towers in the sky: global ecology from space, *New Phytologist*, 224, 570–584, <https://doi.org/https://doi.org/10.1111/nph.15934>, 2019.
- 1065 Schraik, D., Wang, D., Hovi, A., and Rautiainen, M.: Quantifying stand-level clumping of boreal, hemiboreal and temperate European forest stands using terrestrial laser scanning, *Agricultural and Forest Meteorology*, 339, 109564, <https://doi.org/https://doi.org/10.1016/j.agrformet.2023.109564>, 2023.
- Spitters, C. J. T.: Separating the Diffuse and Direct Component of Global Radiation and Its Implications for Modeling Canopy Photosynthesis .2. Calculation of Canopy Photosynthesis, *Agricultural and Forest Meteorology*, 38, 231–242, 1986.

- 1070 Stretton, M. A., Quaipe, T., Wilkes, P., and Disney, M.: The influence of 3D canopy structure on modelled photosynthesis, *Agricultural and Forest Meteorology*, 366, 110437, 2025.
- Sun, Y., Frankenberg, C., Wood, J. D., Schimel, D. S., Jung, M., Guanter, L., Drewry, D. T., Verma, M., Porcar-Castell, A., Griffis, T. J., Gu, L., Magney, T. S., Köhler, P., Evans, B., and Yuen, K.: OCO-2 advances photosynthesis observation from space via solar-induced chlorophyll fluorescence, *Science*, 358, eaam5747, <https://doi.org/10.1126/science.aam5747>, 2017.
- 1075 Sun, Y., Gu, L., Wen, J., Van Der Tol, C., Porcar-Castell, A., Joiner, J., Chang, C. Y., Magney, T., Wang, L., Hu, L., Rascher, U., Zarco-Tejada, P., Barrett, C. B., Lai, J., Han, J., and Luo, Z.: From remotely sensed solar-induced chlorophyll fluorescence to ecosystem structure, function, and service: Part I—Harnessing theory, *Global Change Biology*, 29, 2926–2952, <https://doi.org/10.1111/gcb.16634>, 2023a.
- Sun, Y., Wen, J., Gu, L., Joiner, J., Chang, C. Y., Van Der Tol, C., Porcar-Castell, A., Magney, T., Wang, L., Hu, L., Rascher, U., Zarco-Tejada, P., Barrett, C. B., Lai, J., Han, J., and Luo, Z.: From remotely-sensed solar-induced chlorophyll fluorescence to ecosystem structure, function, and service: Part II—Harnessing data, *Global Change Biology*, 29, 2893–2925, <https://doi.org/10.1111/gcb.16646>, 2023b.
- 1080 Tanja, S., Berninger, F., Vesala, T., Markkanen, T., Hari, P., Mäkelä, A., Iivesniemi, H., Hänninen, H., Nikinmaa, E., Huttula, T., Laurila, T., Aurela, M., Grelle, A., Lindroth, A., Arneth, A., Shibistova, O., and Lloyd, J.: Air temperature triggers the recovery of evergreen boreal forest photosynthesis in spring, *Global Change Biology*, 9, 1410–1426, <https://doi.org/https://doi.org/10.1046/j.1365-2486.2003.00597.x>, 2003.
- 1085 Thum, T., Aalto, T., Laurila, T., Aurela, M., Kolari, P., and Hari, P.: Parametrization of two photosynthesis models at the canopy scale in a northern boreal Scots pine forest, *Tellus B*, 59, 874–890, <https://doi.org/https://doi.org/10.1111/j.1600-0889.2007.00305.x>, 2007.
- Thum, T., Aalto, T., Laurila, T., Aurela, M., Hatakka, J., Lindroth, A., and Vesala, T.: Spring initiation and autumn cessation of boreal coniferous forest CO<sub>2</sub> exchange assessed by meteorological and biological variables, *Tellus B: Chemical and Physical Meteorology*, 61, 701, <https://doi.org/10.1111/j.1600-0889.2009.00441.x>, 2009.
- 1090 Thum, T., Zaehle, S., Köhler, P., Aalto, T., Aurela, M., Guanter, L., Kolari, P., Laurila, T., Lohila, A., Magnani, F., Van Der Tol, C., and Markkanen, T.: Modelling sun-induced fluorescence and photosynthesis with a land surface model at local and regional scales in northern Europe, *Biogeosciences*, 14, 1969–1987, <https://doi.org/10.5194/bg-14-1969-2017>, 2017.
- Thum, T., Caldararu, S., Engel, J., Kern, M., Pallandt, M., Schnur, R., Yu, L., and Zaehle, S.: A new model of the coupled carbon, nitrogen, and phosphorus cycles in the terrestrial biosphere (QUINCY v1.0; revision 1996), *Geoscientific Model Development*, 12, 4781–4802, <https://doi.org/10.5194/gmd-12-4781-2019>, 2019.
- 1095 Thum, T., Miinalainen, T., Seppälä, O., Croft, H., Rogers, C., Staebler, R., Caldararu, S., and Zaehle, S.: Modelling decadal trends and the impact of extreme events on carbon fluxes in a temperate deciduous forest using a terrestrial biosphere model, *Biogeosciences*, 22, 1781–1807, <https://doi.org/10.5194/bg-22-1781-2025>, 2025.
- van der Tol, C., Verhoef, W., Timmermans, J., Verhoef, A., and Su, Z.: An integrated model of soil-canopy spectral radiances, photosynthesis, fluorescence, temperature and energy balance, *Biogeosciences*, 6, 3109–3129, <https://doi.org/10.5194/bg-6-3109-2009>, 2009.
- 1100 van der Tol, C., Berry, J. A., Campbell, P. K. E., and Rascher, U.: Models of fluorescence and photosynthesis for interpreting measurements of solar-induced chlorophyll fluorescence, *Journal of Geophysical Research: Biogeosciences*, 119, 2312–2327, <https://doi.org/10.1002/2014JG002713>, 2014.
- Van Der Tol, C., Vilfan, N., Dauwe, D., Cendrero-Mateo, M. P., and Yang, P.: The scattering and re-absorption of red and near-infrared chlorophyll fluorescence in the models Fluspect and SCOPE, *Remote Sensing of Environment*, 232, 111292, <https://doi.org/10.1016/j.rse.2019.111292>, 2019.
- 1105

- van der Tol, C., Julitta, T., Yang, P., Sabater, N., Reiter, I., Tudoroiu, M., Schuettemeyer, D., and Drusch, M.: Retrieval of chlorophyll fluorescence from a large distance using oxygen absorption bands, *Remote Sensing of Environment*, 284, 113304, <https://doi.org/https://doi.org/10.1016/j.rse.2022.113304>, 2023.
- 1110 Van Wittenberghe, S., Amin, E., Pascual-Venteo, A. B., Pérez-Suay, A., Tenjo, C., Sabater, N., Van Der Tol, C., Drusch, M., and Moreno, J.: Retrieval of leaf-level fluorescence quantum efficiency and NPQ-related xanthophyll absorption through spectral unmixing strategies for future VIS-NIR imaging spectroscopy, *Remote Sensing of Environment*, 300, 113879, <https://doi.org/10.1016/j.rse.2023.113879>, 2024.
- Vekuri, H., Tuovinen, J.-P., Kulmala, L., Aurela, M., Thum, T., Liski, J., and Lohila, A.: Improved uncertainty estimates for eddy covariance-based carbon dioxide balances using deep ensembles for gap-filling, *Agricultural and Forest Meteorology*, 371, 110558, <https://doi.org/https://doi.org/10.1016/j.agrformet.2025.110558>, 2025.
- 1115 Verhoef, W.: Light scattering by leaf layers with application to canopy reflectance modeling: The SAIL model, *Remote Sensing of Environment*, 16, 125–141, [https://doi.org/https://doi.org/10.1016/0034-4257\(84\)90057-9](https://doi.org/https://doi.org/10.1016/0034-4257(84)90057-9), 1984.
- Vesala, T., Launiainen, S., Kolari, P., Pumpanen, J., Sevanto, S., Hari, P., Nikinmaa, E., Kaski, P., Mannila, H., Ukkonen, E., Piao, S. L., and Ciais, P.: Autumn temperature and carbon balance of a boreal Scots pine forest in Southern Finland, *Biogeosciences*, 7, 163–176, <https://doi.org/10.5194/bg-7-163-2010>, 2010.
- 1120 Vilfan, N., van der Tol, C., Muller, O., Rascher, U., and Verhoef, W.: Fluspect-B: A model for leaf fluorescence, reflectance and transmittance spectra, *Remote Sensing of Environment*, 186, 596–615, <https://doi.org/https://doi.org/10.1016/j.rse.2016.09.017>, 2016.
- Vilfan, N., Van der Tol, C., Yang, P., Wyber, R., Malenovský, Z., Robinson, S. A., and Verhoef, W.: Extending Fluspect to simulate xanthophyll driven leaf reflectance dynamics, *Remote Sensing of Environment*, 211, 345–356, <https://doi.org/https://doi.org/10.1016/j.rse.2018.04.012>, 2018.
- 1125 Walther, S., Voigt, M., Thum, T., Gonsamo, A., Zhang, Y., Köhler, P., Jung, M., Varlagin, A., and Guanter, L.: Satellite chlorophyll fluorescence measurements reveal large-scale decoupling of photosynthesis and greenness dynamics in boreal evergreen forests, *Global Change Biology*, 22, 2979–2996, <https://doi.org/10.1111/gcb.13200>, 2016.
- Wang, J., Jiang, F., Wang, H., Qiu, B., Wu, M., He, W., Ju, W., Zhang, Y., Chen, J. M., and Zhou, Y.: Constraining global terrestrial gross primary productivity in a global carbon assimilation system with OCO-2 chlorophyll fluorescence data, *Agricultural and Forest Meteorology*, 304–305, 108424, <https://doi.org/https://doi.org/10.1016/j.agrformet.2021.108424>, 2021.
- 1130 Wang, N., Yang, P., Clevers, J. G., Wieneke, S., and Kooistra, L.: Decoupling physiological and non-physiological responses of sugar beet to water stress from sun-induced chlorophyll fluorescence, *Remote Sensing of Environment*, 286, 113445, <https://doi.org/https://doi.org/10.1016/j.rse.2022.113445>, 2023.
- 1135 Willmott, C. J.: On the validation of models, *Physical Geography*, 2, 184–194, <https://doi.org/10.1080/02723646.1981.10642213>, 1981.
- Wright, S.: Correlation and Causation, *Journal of Agricultural Research*, 20, 557–585, 1921.
- Wutzler, T., Lucas-Moffat, A., Migliavacca, M., Knauer, J., Sickel, K., Šigut, L., Menzer, O., and Reichstein, M.: Basic and extensible post-processing of eddy covariance flux data with REddyProc, *Biogeosciences*, 15, 5015–5030, <https://doi.org/10.5194/bg-15-5015-2018>, 2018.
- 1140 Yang, P., Verhoef, W., and van der Tol, C.: The mSCOPE model: A simple adaptation to the SCOPE model to describe reflectance, fluorescence and photosynthesis of vertically heterogeneous canopies, *Remote Sensing of Environment*, 201, 1–11, <https://doi.org/https://doi.org/10.1016/j.rse.2017.08.029>, 2017.
- Yang, P., Prikaziuk, E., Verhoef, W., and van der Tol, C.: SCOPE 2.0: a model to simulate vegetated land surface fluxes and satellite signals, *Geoscientific Model Development*, 14, 4697–4712, <https://doi.org/10.5194/gmd-14-4697-2021>, 2021.

- 1145 Yang, P., Liu, Z., Han, D., Zhang, R., Siegmann, B., Liu, J., Zhao, H., Rascher, U., Chen, J. M., and van der Tol, C.: Mitigating the black-soil problem in the reflectance-to-fluorescence (R2F) relationship: A soil-adjusted reflectance-based approach for downscaling SIF, *Remote Sensing of Environment*, 330, 114 998, <https://doi.org/https://doi.org/10.1016/j.rse.2025.114998>, 2025a.
- Yang, P., van der Tol, C., Liu, J., and Liu, Z.: Separation of the direct reflection of soil from canopy spectral reflectance, *Remote Sensing of Environment*, 316, 114 500, <https://doi.org/https://doi.org/10.1016/j.rse.2024.114500>, 2025b.
- 1150 Zaks, J., Amarnath, K., Sylak-Glassman, E. J., and Fleming, G. R.: Models and measurements of energy-dependent quenching, *Photosynthesis Research*, 116, 389–409, <https://doi.org/10.1007/s11120-013-9857-7>, 2013.
- Zeng, Q., Wu, X., Tang, R., Wang, J., Lin, X., Wen, J., and Xiao, Q.: Quantification of uncertainty caused by geometric location mismatch in the validation of TROPOMI solar-induced chlorophyll fluorescence product, *International Journal of Digital Earth*, 17, 2330 688, <https://doi.org/10.1080/17538947.2024.2330688>, 2024.
- 1155 Zeng, Y., Badgley, G., Dechant, B., Ryu, Y., Chen, M., and Berry, J.: A practical approach for estimating the escape ratio of near-infrared solar-induced chlorophyll fluorescence, *Remote Sensing of Environment*, 232, 111 209, <https://doi.org/10.1016/j.rse.2019.05.028>, 2019.
- Zeng, Y., Badgley, G., Chen, M., Li, J., Anderegg, L. D., Kornfeld, A., Liu, Q., Xu, B., Yang, B., Yan, K., and Berry, J. A.: A radiative transfer model for solar induced fluorescence using spectral invariants theory, *Remote Sensing of Environment*, 240, 111 678, <https://doi.org/https://doi.org/10.1016/j.rse.2020.111678>, 2020.
- 1160 Zhang, Y., Xiao, X., Zhang, Y., Wolf, S., Zhou, S., Joiner, J., Guanter, L., Verma, M., Sun, Y., Yang, X., Paul-Limoges, E., Gough, C. M., Wohlfahrt, G., Gioli, B., van der Tol, C., Yann, N., Lund, M., and de Grandcourt, A.: On the relationship between sub-daily instantaneous and daily total gross primary production: Implications for interpreting satellite-based SIF retrievals, *Remote Sensing of Environment*, 205, 276–289, <https://doi.org/https://doi.org/10.1016/j.rse.2017.12.009>, 2018.