

Lake anoxia, primary production and algal community shifts in response to rapid climate changes during the Late-Glacial

Stan J. Schouten^{1,2}, Noé R.M.M. Schmidhauser^{1,2}, Martin Grosjean^{1,2}, Andrea Lami³, Petra Boltshauser-
5 Kaltenrieder^{1,4}, Jacqueline F.N. van Leeuwen^{1,4}, Hendrik Vogel^{1,5}, Petra Zahajská^{1,2}

¹ Oeschger Center for Climate Change Research, Universität Bern, Hochschulstrasse 4, 3012 Bern, Switzerland

² Institute of Geography, Universität Bern, Hallerstrasse 12, 3012 Bern, Switzerland

³ Water Research Institute (CRN-IRSA), Unit Verbania, Viale Tonolli 50, 28922 Verbania, Italy

⁴ Institute of Plant Sciences, Universität Bern, Altenbergrain 21, 2013 Bern, Switzerland

10 ⁵ Institute of Geology, Universität Bern, Baltzerstrasse 1, 3012 Bern, Switzerland

Correspondence to: Stan Jonah Schouten (stan.schouten@unibe.ch)

Abstract

Lakes around the world are facing growing threats from climate change and human impacts. Rising temperatures and increased
nutrient levels are causing eutrophication and deoxygenation, harming freshwater resources and the essential ecosystem
15 services they provide. While modern impacts are well-studied, knowledge on the responses of lake ecosystems to climate
change in the pre-anthropogenic times is still sparse. Current studies often rely on models or short observation timeseries,
making it challenging to isolate the effects of warming from other factors. Lake sediments provide long-term records to study
these effects in times prior to anthropogenic impact.

We investigate the responses of aquatic primary production, lake stratification and deoxygenation to rapid climate change
20 during the Late-Glacial (18–11 ka cal. BP) using hyperspectral imaging, pigment extractions, XRF and sequential extraction
of redox-sensitive P, Mn and Fe, in a small kettle hole lake (Amsoldingensee, Switzerland).

Our record reveals that ice cover was the primary driver of hypolimnetic anoxia, while the availability of nutrients determined
the composition of algal communities. Four anoxic phases occurred in cold periods with prolonged ice cover: (i) Heinrich-1
(ca. 16.1 ka cal. BP), (ii) Aegelsee oscillation, (iii) Gerzensee oscillation, and (iv) the Younger Dryas. Aquatic primary
25 production and algal communities already responded to initial relatively weak warming during Heinrich-1 (16.1 ka cal. BP)
long before the rapid Bølling warming and synchronously to rapid climatic changes during Late-Glacial times. Responses of
the algal community to temperature were strongly modulated by nutrient limitations (P, N and Si), which have varying
importance over time, with dust and volcanic tephra (Laacher See) as major nutrient sources. Anoxic phases changed the algal
communities, but these shifts were found to be reversible once the anoxia disappeared. Further, the sediments of
30 Amsoldingensee provide a continuous record of atmospheric dust deposition (Ti, Zr, Si) covering the entire Late-Glacial period.
The similarity with the NGRIP dust record supports the view that the same large-scale atmospheric circulation regime
controlled Central Europe (Switzerland) and Greenland.

Keywords: Pleistocene, Heinrich Stadial, Younger Dryas, paleolimnology, sedimentary pigments, algal communities,
nutrients, Switzerland

35 1 Introduction

The combined effects of climate warming and anthropogenic eutrophication prompt lake stratification and oxygen depletion, threatening freshwater ecosystems globally (Jansen et al., 2024; Jane et al., 2021; Weyhenmeyer et al., 2024). It is acknowledged that climate change, nutrient loading (N, P), and biodiversity loss have crossed the limits of Planetary Boundaries (Richardson et al., 2023). The effects of eutrophication on lake ecosystems are broad, including water quality
40 deterioration, fish kills, algal and cyanobacteria blooms, sometimes releasing cyanotoxins threatening human health directly (Lévesque et al., 2014).

Oligotrophic lakes are particularly sensitive to both increasing temperatures and increasing nutrient loads (Vinnå et al., 2021) and, throughout the last decades, many of these lakes have already transitioned into eutrophic stratified aquatic ecosystems with hypolimnetic anoxia (Jenny et al., 2016; Klanten et al., 2023; Jansen et al., 2024). Persistent bottom water anoxia and
45 reducing conditions may promote efficient nutrient recycling within the water column, which may sustain eutrophication through chemical feedback once eutrophication is established (Schaller & Wehrli, 1996; Gächter et al., 1988; Carey et al., 2022; Hupfer & Lewandowski, 2008; Nürnberg, 1998). Eutrophication promotes generalist species competitiveness over specialists adapted to ecological niches in oligotrophic settings, leading to algal community shifts. Furthermore, the associated deoxygenation of the water column leads to rapid, unidirectional shifts in biological communities (Bush et al., 2017),
50 suggesting that the consequences of anoxia might even be irreversible (Carey et al., 2022).

It is increasingly recognised that rapid climate warming is an essential driver of freshwater and ecosystem deterioration (Meerhoff et al., 2022; Jane et al., 2021; Jeppesen et al., 2010). Climate warming mostly affects nutrient loading to lakes through changes in the watershed dynamics, e.g., by affecting hydrological patterns, weathering rates and mass fluxes. However, it is unclear under which conditions climate warming leads to anoxia, particularly in temperate and cold
55 environments. This is due to (i) the complexity of factors controlling lake mixing and seasonal stratification (winter or summer), lake morphometry, vegetation and climate, and (ii) the lack of long-term records of anoxia and its drivers (Friedrich et al., 2014). Most studies assessing the impacts of climate warming on primary production, anoxia or algal communities are based on in-situ experiments, observations during short periods of time or model simulations (Salk et al., 2022, Foley et al., 2012; Gilarranz et al., 2022). However, because climate warming and nutrient availability covary in the instrumental period,
60 the different driving factors are hard to disentangle within short observational datasets. A long-term perspective is needed, and lake records provide a convenient solution.

Periods of rapid climate warming in the past can provide empirical information on lake physical and biogeochemical responses to rapid climate warming under pre-anthropogenic conditions, when the confounding effects of anthropogenic eutrophication were absent. In the northern mid and high latitudes, the Late-Glacial period (ca. 18–11 ka cal. BP) provides an ideal setting
65 with rapid high-amplitude warmings and coolings within decades during one Dansgaard-Oeschger Cycle (Rasmussen et al., 2014) to study lake responses under pre-anthropogenic conditions.

Accordingly, our research is driven by the following questions:

- (1) How did lake mixing regimes, nutrient availability, primary production (PP), and anoxia respond to rapid climate change during the Late-Glacial period?
- (2) Can we identify the importance of drivers for PP, anoxia and algal communities through time?
- (3) Were the algal community shifts reversible once the stressor disappeared, and if so, at what time scales?

To answer these questions, we investigate a sediment core from a small kettle hole lake on the Swiss Plateau, Amsoldingensee, using a multiproxy approach. This lake is located adjacent to Gerzensee in an area that responded in extraordinary detail to Late-Glacial climatic changes documented in the North Atlantic domain and Greenland (Eicher, 1987, Lotter et al., 1992, Ammann et al., 2013). Amsoldingensee contains the complete Late-Glacial sediment sequence, including early deglacial anoxic periods (Lotter and Boucherle, 1984).

2 Study site

Amsoldingensee (4°43'N; 07°34'E; 641 m.a.s.l.) is an endorheic, currently eutrophic, small (38 ha; 13 m deep) lake on the shoulder of the Aare valley, located in the Swiss Plateau (Fig. 1b). The kettle hole lake (Lotter and Boucherle, 1984) was formed in a drumlin landscape after the collapse of the Last Glacial Aare glacier (Fabbri et al., 2018). Basal ages of deglacial lakes in the region range between 19.1 and 17.7 ka cal. BP (Rey et al., 2020). A moraine dammed the lake, forming a 2 m high sill (Fig. 1c), which leads into an incised valley. Studying a near-shore core, Lotter and Boucherle (1984) found that the Late-Glacial sediments were preserved except for a hiatus in the Younger Dryas. This hiatus in littoral sediments was interpreted as lake levels >3 m lower than today, suggesting lake level fluctuations in the past. The catchment (4.74 km²) consists of a south-east sloping drumlin field with glacial carbonaceous till on top of Jurassic limestone in the South and Oligocene molasse in the North. Until the 19th century, the lake was surrounded by extended wetlands (Lotter and Boucherle, 1984, Guthruf et al., 2015). Substantial postglacial erosional features are not observed, suggesting that the hydrological catchment remained unchanged. The lake catchment is disconnected from a significant river system; the lake receives water from rain, surface and subsurface runoff. Throughout the Late Glacial (ca. 18–11 ka cal. BP), the vegetation in the catchment developed from a steppe tundra to a pine forest (Rey et al., 2020). Today, agriculture and grasslands are the dominant land use (Guthruf et al., 2015). The lake hosts a suite of algae, including chlorophyceae, bacillariophyceae, chrysophyceae, cryptophyceae, cyanobacteria and anoxygenic bacteria (Guthruf et al., 2015).

The climate today is warm temperate (Cbf) with 9°C annual mean temperature and 19°C in July (MeteoSwiss). In contrast, the Late-Glacial climate was initially very cold and dry, with annual temperatures between 1 and -1°C (Lotter et al., 2012; Eicher, 1995) and July temperatures between 9 and 11°C (Bolland et al., 2020). This time is referred to as the Heinrich Stadial 1, HS1 (>18–14.6 ka cal. BP). At ca. 14.6 ka cal. BP, Dansgaard-Oeschger Event-1 (DOE-1) started with the Bølling warming, leading to an increase in annual temperature of 4–7°C within a few decades (Eicher, 1995). The rapid warming at the onset of

the Bølling was followed by a gradual cooling of $\sim 1.5^{\circ}\text{C}$ throughout the DOE-1 (Bølling/Allerød), which ended with the abrupt onset of the Younger Dryas (12.8–11.8 ka cal. BP) with mean annual temperatures around 3°C and July temperatures around 11°C (Lotter et al. 2000).

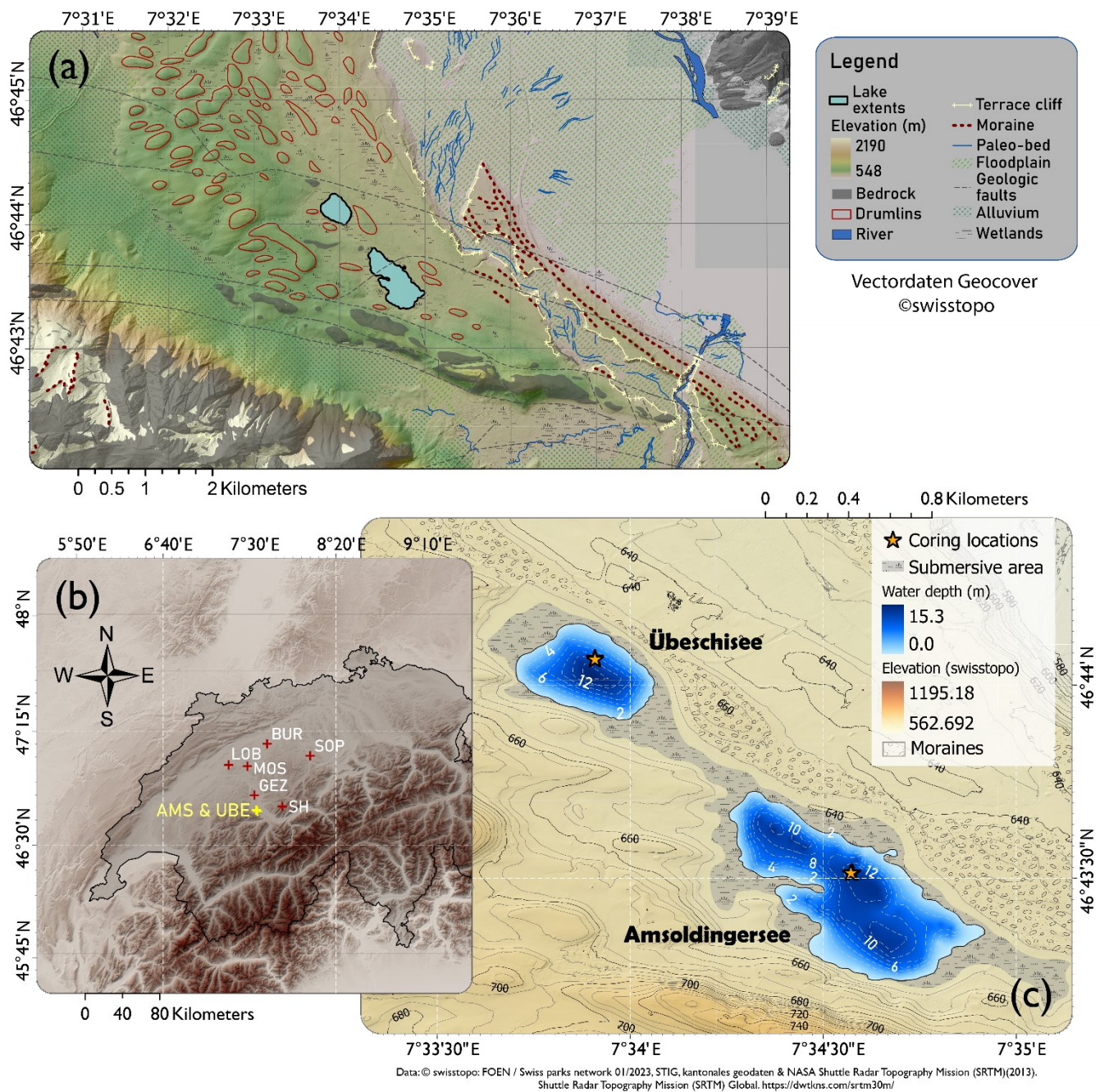


Fig. 1 (a): Geomorphology around Amsoldingensee (drumlins, floodplains, moraines). **(b)** Topographic map (NASA SRTM) of the northwestern Alps with study sites mentioned in the text: SH Sieben Hängste speleothem; GEZ Gerzensee; MOS Moossee; LOB Lobsigensee; BUR Burgäschisee; SOP Soppensee; **(c)** Geomorphological map of the catchment area of Amsoldingensee and Übeschisee with bathymetry.

3 Methods

3.1 Coring, lithology and chronology

110 Parallel and overlapping sediment cores were taken from the basin bottom of Amsoldingensee in October 2022 using a UWITEC piston corer (46°43'30.9"N; 07°34'34.3"E; Fig. 1c). A composite core AMS22-COMP1 was built from segments after stratigraphic correlation (Fig. S1). The lithology was described according to Bos et al. (2012). Smear slides were compared to existing libraries (Myrbo et al., 2011).

The sediments were dated using ¹⁴C dating, pollen biostratigraphy and the Laacher See Tephra (LST, Reinig et al., 2021).

115 Consecutive 1-cm-thick sediment samples were sieved (50, 100, and 200 µm mesh) to separate and taxonomically identify terrestrial plant macrofossils (Table S1). Nine ¹⁴C samples were prepared and measured with the MICADAS-AMS at the University of Bern (Szidat et al., 2014). Samples <0.7 mg C were measured with direct gas injection. ¹⁴C dates were calibrated using the IntCal-20 calibration curve (Reimer et al., 2020). We combined ¹⁴C dates with well-dated regional biostratigraphic markers by comparing pollen profiles in Amsoldingensee with those of Gerzensee and Moossee (Ammann et al., 2013; Rey et al., 2017, 2020). Previously reported ages for biostratigraphic markers (Table S1) were transferred to our core. Pollen was analysed in contiguous 2-cm intervals (Moore et al., 1991) up to the LST. Finally, the combined age-depth relation was modelled using the Bacon package in R studio (version 4.3.2) (Blaauw and Christen, 2011). The chronozones and their ages (Figs. 3, 5, 6, 8 and 9) are taken from Ammann et al. (2013).

3.2 Scanning XRF and hyperspectral imaging

125 XRF elemental composition was measured on clean surfaces of split cores using an ITRAX XRF core scanner at the University of Bern (5 mm resolution, 30 seconds integration time, Cr X-ray tube at 30 kV and 50 mA). For each core, triplicate scans (15 mm long) were taken at the top, middle and bottom of the core to quantify and test the standard error of elements (n = 27). Raw data of Al, Si, K, Ti, Zr, Cu, Ca, Sr, Mn, Fe, and S had a relative standard error of <15% and were considered reproducible and thus used for further analysis. XRF data were summed and normalised to correct for matrix effects (Bertrand et al., 2023), centred and log-transformed (CLR) to correct for the closed-sum problem (Weltje and Tjallingii, 2008, Aitchison, 1982). XRF variables with near zero counts can become extremely noisy after CLR; therefore, the CLR output of Zr and S was replaced with the minimum quantifiable value at intervals where the 10-point moving standard deviation was consistently larger than 0.5.

Hyperspectral Imaging offers a way to reconstruct primary production, hypolimnetic anoxia and compositions of major primary producer groups at unprecedented (µm-scale) resolution on long time scales (Zander et al., 2023). Hyperspectral images (HSI) were taken using a Specim PFD-CL-65-V10E line scan camera in the VNIR spectrum (400-1000 nm; 1.57 nm spectral resolution; 8 Hz; 120 ms exposure). Raw data are corrected with a white BaSO₄ and a dark standard. Data postprocessing follows Butz et al. (2015). Spectral troughs were identified from spectral endmembers, defined as pure pixels of minimal noise bands (dimensionally reduced dataset) (Butz et al., 2015). Relative absorption troughs were identified at

140 667 nm, 844 nm and 619 nm. From these troughs, we calculate Relative Absorption Band Depth (RABD) values (Butz et al., 2015) using formulas and interpretations in Zander et al. (2022):

- RABD667 is interpreted as total green pigments (mostly chlorophylls and coloured diagenetic products, Tchl) and a proxy for aquatic primary production.
- RABD844 traces absorption of bacteriopheophytin *a* (Bphe *a*), a pigment produced by purple sulphur bacteria (PSB) that proliferate at the chemocline and are diagnostic for anoxia reaching the photic zone (Zander et al., 2021).
- RABD619 is related to phycocyanin (Wienhues & Zahajská et al., 2025), a pigment diagnostic for cyanobacteria.

RABD index values (Table S2) were calibrated to absolute pigment concentrations according to Butz et al. (2015), whereby concentrations of pigment extracts were measured using a UV-VIS Spectrophotometer Shimadzu UV-1800 (Figs. S2 and S3). Extinction coefficients of Bphe *a* and Chl *a* in 90% acetone are from Jeffrey and Humphrey (1975). The linear regression models were further evaluated with Root Mean Square Error of Prediction (RMSEP), Cooks distance analysis, leverage plots, and tests of residual normality (Zander et al., 2022). The regression models are significant for RABD667 – Chl *a* ($r = 0.89$, $p < 0.001$, $RMSEP = 21.66 \mu\text{g g}^{-1}_{\text{wet}} \text{ Chl } a$; 13.8%) and for RABD844 – Bphe *a* ($r = 0.83$, $p < 0.001$, $RMSEP = 6.34 \mu\text{g g}^{-1}_{\text{wet}} \text{ Bphe } a$; 16.1%). Currently, no method is available to calibrate the index RABD619 to phycocyanin (Wienhues & Zahajská et al., 2025). Our limit of quantification for RABD844 is $3 \mu\text{g g}^{-1}_{\text{wet}} \text{ Bphe } a$, and for RABD667, $5 \mu\text{g g}^{-1}_{\text{wet}} \text{ Chl } a$. Further details on the calibration are shown in Figs. S2 and S3.

3.3 TC, TN, TS and sequential extraction of P, Mn and Fe

We used CNS, and sequential extraction of sedimentary P, Mn and Fe to diagnose potential chemical feedback during events of hypolimnetic anoxia (Tu et al., 2021). Five to eight milligrams of homogenised freeze-dried sediment were combusted in tin capsules to determine TC, TN and TS with a FlashSmart™ 2000 NCS Elemental Analyzer (ThermoFisher Scientific). TOC was measured by combusting pre-acidified sediment in tin-packed silver capsules (Brodie et al., 2011). TIC was calculated as TC minus TOC. Detection limits were 0.01% of dry sample weight for TC and TN, and 0.05% of dry sample weight for TS. For the sequential extraction of P, Mn and Fe, we used the extraction protocol of Lukkari et al. (2007) with 0.25 g dry sediment to obtain five fractions of P, Mn and Fe. Water content was calculated from the sediment weights before and after freeze-drying. P fractions were interpreted according to Lukkari et al., 2007 while Fe and Mn fractions were interpreted according to Scholtysik et al. (2022): F1 extraction with 0.46M NaCl representing loosely bound, adsorbed and porewater Mn, Fe, and P; F2 extraction with 0.11M bicarbonate-dithionite (BD) yielding the reductive-soluble fraction of FeO_x, MnO_x and P bound in these oxides; F3 extraction with 1M NaOH yielding the rest of the P bound to Fe and Al oxides as well as organic P; F4 extraction with 0.5M HCl targeting carbonate-bound Mn, Fe and P; and F5 combustion at 550 °C and extraction with 1 M HCl for residual Mn, Fe and P. A flowchart of the standardised operation protocol is in Lukkari et al. (2007). The sample and extractant volume ratio was always 1:200 [g:ml] (Lukkari et al., 2007). Extraction batches comprised 16 aliquots, 12 originals, two duplicate samples, one blank, and one reference (NIST2079a, San Joaquin Soil). P, Fe and Mn of all five fractions were measured using ICP-MS (Agilent Series 7600) in 0.159M HNO₃ matrix.

3.4 Analytical analysis of sedimentary pigments

Sedimentary pigments were used to investigate changes in past producer communities (Leavitt & Hodgson, 2001; Bianchi and Canuel, 2011). Pigments were extracted from ~1 ml (~1.2 g) of wet bulk sediment following Lami et al. (2009). The sediment was suspended in 2.5 ml of 100 % HPLC-grade acetone, vortexed (20 sec), sonicated (1 min), centrifuged (3500 rpm, 10 min) and collected in an amber vial. Extraction steps were repeated until the extract looked colourless. The extract was filtered into a 1.5 ml HPLC vial (22- μ m PTFE-syringe filter) and kept dark and cold. Extracts were analysed with Dionex Ultimate 3000 series (Thermo Fisher) high-performance liquid chromatography system with a Diode Array Detector (DAD-3000RS) at 460 nm and 665 nm. Pigment separation was performed using reverse-phase chromatography employing a C18 column (Agilent Omnisphere 5) and a set of eluents following Lami et al. (2004) (Supplementary text S1).

The chromatogram peaks were integrated in Chromeleon 7.2 (Thermo Fisher). Calibrations show that the chromatogram peak area scales linearly with the quantity of a substance; thus, integrated peak areas were calibrated to nmol using pre-determined HPLC-system-specific linear regression coefficients (Table S3). If no specific regression coefficients were available, we applied the linear relationships of β -carotene for carotenoids and the one of chlorophyll *a* for green pigments. Most pigments discussed here were quantified by integrating Gaussian-fitted peaks on the chromatogram. Some exceptions are isorenieratene, car-52.58, lutein, zeaxanthin, α -carotene, β -carotene, and γ -carotene, which overlap significantly. The peaks of these pigments were integrated using a perpendicular drop method (Westerberg, 1969), which results in a higher error.

We also used a non-target approach and named unknown carotenoids according to their retention times (e.g. car-21.2 occurs at 21.2 minutes after injection). We classified green pigments more polar than Chl *a* as pheophorbides-*x.x.x*; green pigments less polar than Chl *a* as pheophytins-*x*; and green pigments less polar than β -carotene as pyropheophytins-*x* (Lami et al., 2009). We are aware that this classification may be incorrect in some specific cases. For example, pheophorbides between 30-45 min could also be bacteriochlorophyll *c*, *d* homologues (Romero-Viana et al., 2010).

Pigments were interpreted using the interpretation keys of Bianchi and Canuel (2011), Schlüter et al. (2006), Lami et al. (2000) and the carotenoid database Yabuzaki (2017) (Table S3). The chlorophyll preservation index ($\text{chl } a / (\text{chl } a + \text{pheophytin } a)$) (CPI) was used as an additional indicator of pigment preservation (Buchanan and Catalan, 2008). For some specific pigments, alternative interpretations were found in the literature; in these cases, references are provided.

3.5 Statistical analyses

Data exploration was performed using principal component analysis (PCA). To differentiate between statistically different lithotypes, Ward's hierarchical clustering was applied to the high-resolution HSI and XRF data (cutoff at the Euclidean distance of 17), the lower resolution P, Mn and Fe, and the HPLC-pigment data sets. As XRF data was centred and log transformed and HSI data was z-scored, the data were normally distributed and could thus be compared in one plot. We verified PCA results and tested for non-linear dependencies by performing non-metric multidimensional scaling (NMDS) to get rid of the "horse-shoe effect" in PCA (Podani and Miklós, 2002).

205 Carotenoids and green pigments were pre-selected using a threshold approach. Pigments not continuously present throughout the core (>9 zero values, $n = 59$) were excluded from further statistical analysis. Throughout the core, 44 carotenoids passed this threshold criterion. Carotenoids were grouped using Ward's hierarchical clustering on the correlation matrix of carotenoids (Kramer and Siegel, 2019). Subdivisions were created when subordinate patterns were observed in multiple pigment time series or when certain subgroups included diagnostic pigments with a specific ecological interpretation. CONISS clustering of the carotenoid dataset follows Grimm (1987); the number of significant clusters was determined using the broken stick model. We performed redundancy analysis (RDA; Legendre, 2012) and Rate of Change RoC analysis (Mottl et al., 2021) on the pigment dataset to determine which independent variables could explain the pigment variance and when the community significantly changed. For RDA (Fig. S9), we used the pollen record from Moossee (Fig. 1b, Rey et al., 2020). To test whether anoxic phases had an irreversible effect on the algal community, we analysed the trajectories of the pigment community data in the eigenvalue space (second and third principal component scores). The Matlab and R codes are available on GitHub (<https://github.com/SJSchouten>).

4 Results and interpretation

4.1 Composite core and chronology

220 The composite core AMS22-COMP1 is 8.74 meters long (Fig. S1). Basal gravel to sandy clastic sediment (8.74–7.65 m) is overlain by 2.65 meters of laminated inorganic silty clay (7.65–5.56 m), followed by 5.56 meters of gyttja (5.56–0.0 m). Here, we focus on the lower core sections 5.7–4.8 m, which span the Late-Glacial and the transition to the Holocene.

The chronology (Fig. 2) is constrained by calibrated ^{14}C AMS ages of nine taxonomically identified terrestrial plant macrofossils (Table S1), three pollen-based biostratigraphic markers (Fig. S4), and the Laacher See Tephra (13,006 \pm 9 yrs BP, Reinig et al., 2021), yielding ages between 14.9 and 10.5 ka cal. BP consistent between the different dating approaches. The modelled age uncertainty at 2σ ranges between 300 and 600 years. Despite continuous sediment sieving, no terrestrial macrofossils were found below 5.43 m sediment depth. Thus, the sediment section >15 ka cal. BP is constrained by the early regional *Betula* rise $\sim 16\pm 0.68$ ka cal. BP (Rey et al., 2020). Accordingly, we estimate the age of the transition between silty clay and fine detrital gyttja (5.55 m sediment depth) to ca. 16.2 ± 1 ka cal. BP. Ages for the initial lake formation in this region date to <19 ka cal. BP (Rey et al., 2020), suggesting that 2.65 m of laminated silty clay at the bottom of the core was deposited in ca. 2–3 kyr, yielding a sediment accumulation rate (SAR) of >1 mm yr^{-1} in the lower part of the core. The SAR between 16 and 10.5 ka cal. BP was remarkably constant and an order of magnitude lower (0.11 mm yr^{-1}).

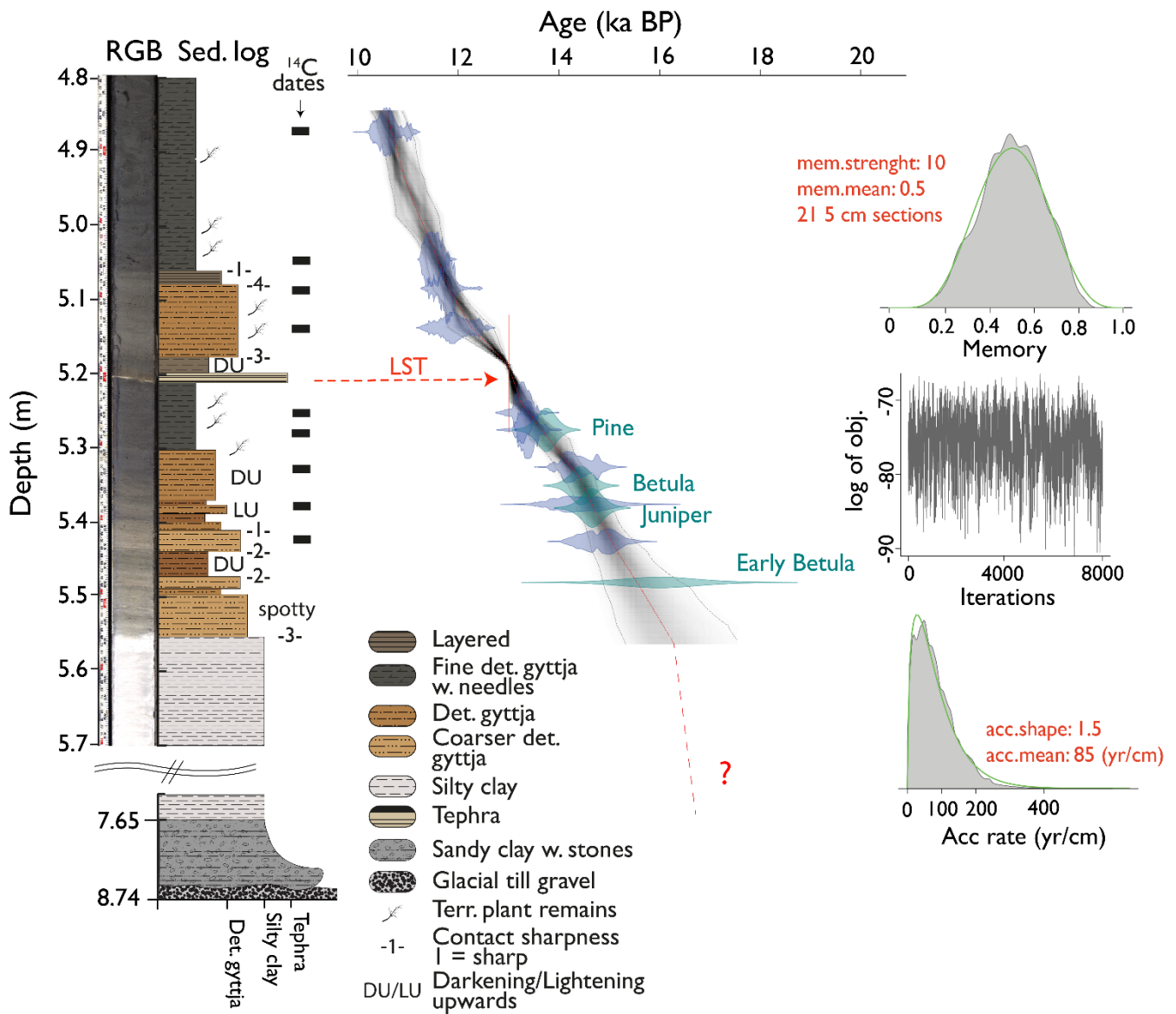


Fig. 2: True colour RGB picture and lithology (left) and age-depth relation of the composite core AMS22-COMP1 (right) of Late-Glacial Amsoldingensee sediments. Green violin plots indicate biostratigraphic tie points, whereas blue violins indicate the distribution of ^{14}C age probabilities. The LST is marked in red. Priors to the Bayesian run are plotted on the right side.

4.2 Lithology and sediment composition

Diagnostic inorganic and organic proxies, PCA time series, and Ward's hierarchical and CONISS-constrained clustering of all selected XRF and HSI proxies are displayed in Fig. 3. The complete XRF dataset is shown in the biplot of Fig. 4 and Fig. S5. Constrained and unconstrained clustering yielded similar results (six distinct clusters), suggesting that changes in the sediment composition (lithotypes) are predominantly stratigraphically constrained.

The PC1 axis (65% of total variance; Fig. 4) separates organic sediment (aquatic primary production; positive) from lithoclastic sediments (erosion, runoff, negative). PC2 (21% of variance) reflects redox and lake mixing conditions, whereby positive PC2 scores represent high Bphe *a* concentration (well-stratified lake with hypolimnetic anoxia), and negative PC2 scores relate to well-mixed oxygenated conditions with sequestration of redox-sensitive metals such as Mn and Cu. The PCA shows signs of non-linear dependency ('horseshoe effect'). Therefore, we performed standardized-euclidian-MDS (Fig. S6), already yielding a decent fit with just one component (at a stress of 0.14). On the two-component MDS (stress of 0.06), we performed Ward's clustering, which annotated clusters similar to those of the PCA; thus, we conclude that our PCA-derived clusters are robust.

Unconstrained clustering of the high-resolution data set (XRF and HSI) revealed six Lithotypes (LT).

Lithotype 1 (LT1, 5.70 m–5.56 m, ~18/~16.2 ka cal. BP; Heinrich Event 1 (H1)) is a light grey (7.5YR5/1 Munsell) inorganic (0.4% C_{org} and 21% water content) homogenous detrital carbonaceous silty clay that contains no plant macrofossils or diatoms and is poorly sorted with most grains being sub-rounded to rounded. The lithotype is elevated in Ca, Sr, Fe, Si, Ti and TIC (4.5–6%) interpreted as high accumulation rates of fine clastic sediments. Total pigment concentrations, indicative of primary production (PP), are very low (Tchl in Fig. 3). We interpret this lithotype as eroded glacial till washed into a young oligotrophic perennial lake.

Lithotype 2 (5.56–5.51 m, ~16.2–15.8 ka cal. BP, H1) is a light brown (10YR4/1 Munsell) heterogenous organic silty clay (3.5% C_{org} and 46% water content) and contains no plant macrofossils or diatoms, and angular to rounded grains. It is elevated in Fe, Ti, and Si. TIC (1%) and Ca, Sr decrease rapidly (Fig. 3). The sediments are enriched in S, and C/N ratios <10 suggest a predominantly aquatic origin of the organic matter (Meyers et al., 1997). The increase in aquatic PP is marked by a moderate increase in green pigments (Tchl), an increase in phycocyanin (cyanobacteria) and high amounts of Bphe *a*, suggesting a chemocline in the photic zone and hypolimnetic anoxia. This lithotype is interpreted as predominantly clastic lacustrine deposition in a stable deglacial landscape with widespread lake stratification and anoxia, oligotrophic conditions, and lower SAR during H1 (Oldest Dryas).

Lithotype 3 (5.51–5.38 m, 15.8–14.7 ka cal. BP, H1) is a light brown (10YR3/2) laminated (1–10 mm) heterogenous detrital gyttja (3.5–8.5% C_{org} and 48–60% water content, 0.1–1.5% TIC), with sparse plant macrofossils and diatoms, and subangular grains. The organic matter content fluctuates with the sediment brightness. Inorganic laminae contain more clastic sediments with sharp contacts and darkening upward (elevated Ca, Sr, Ti, Fe, and Si). Organic laminae contain higher concentrations of CNS, Tchl and phycocyanin; C/N values are <10 (Fig. 3). Bphe *a* concentrations lie around the detection limit except for a distinct local peak around 5.44 m. Generally, LT3 is relatively enriched in Ti, Zr and Fe and depleted in Ca, Sr and TIC (top left quadrant in the PCA, Fig. 4), suggesting that there is a source of siliciclastic sediment that comes from outside the carbonate-dominated catchment. We interpret sediments of LT3 (the latest part of H1) as lacustrine deposits in a deglacial landscape, with reduced erosional influx (lower Ca and TIC), increasing aquatic PP and traces of airborne dust (high Ti and Zr).

275 *Lithotype 4* (LT4, 5.38–5.18 m, and 5.09–5.05 m, 14.7–12.9 ka cal. BP and 11.9–11.7 ka cal. BP, respectively; Bølling/Allerød
 (B/A) except LST and last part of Younger Dryas (YD)) is a dark brown (10YR3/2 Munsell) homogeneous organic detrital
 gyttja (15–28% C_{org} and 72–80% water content, 0.5% TIC) with *Betula* macrofossils, sparse diatoms and rounded grains. LT4
 has low Ti, Fe, and Si and high S and Mn values (Fig. 3). C/N ratios are higher than before and range between 10 and 11. Tchl
 (aquatic PP), Cr_{coh}Cr_{incoh}⁻¹ and PC1 are moderately high. Bphe *a* (PSB, anoxia) concentrations are variable, with local peaks at
 around 5.31 and 5.24 m. Phycocyanin is constantly present, reaches a maximum at 5.23 m, and remains high afterwards. In
 280 the upper section of LT4 (5.09–5.05 m), all pigment concentrations decrease and Bphe *a* gets close to the limit of quantification.
 We interpret sediments of the lower part of LT4 (B/A) as deposits in a stable landscape with relatively lower clastic influx and
 relatively higher aquatic PP. The lake was well mixed with poor development of hypolimnetic anoxia except for two episodes
 at around 5.30 m and 5.22 m sediment depth. The sediments of the upper part of LT4 (end of YD) are interpreted as deposits
 in a cold and dry environment with allochthonous clastic influx and low lake levels.

285 *Lithotype 5* (LT5; 5.21–5.19 m and 5.18–5.09 m, 13.0–11.9 ka cal. BP; LST & Younger Dryas) is a brown (10YR2/2 Munsell)
 homogeneous detrital gyttja with slightly lower OM concentrations than in LT4 (15–25% C_{org} and 71–78% water content),
 abundant diatoms and *Pinus* and *Betula* macrofossils. Grains are mostly sub-rounded and poorly sorted, and the lithotype
 contains low Ca, Sr and TIC (0.7%) but elevated Ti, Fe, Si, K, Zr and S values (Fig. 3). This suggests that, very similar to LT2
 and LT3 (PC2 positive, Fig. 4), the clastic sediment fraction bears a significant proportion of allochthonous sources, potentially
 290 airborne mineral dust. In contrast, erosion of carbonates from the catchment remained limited. S concentrations remain high,
 which is different from the inorganic LT2. Phycocyanin is generally high and reaches two maxima (5.21–5.18 m and 5.14–
 5.10 m). Bphe *a* (PSB, anoxia) and Tchl (aquatic PP) values are highest throughout LT5. We interpret both sections of LT5 as
 lacustrine sediments formed in a dry (low surface erosion in the catchment) and cold environment with high dust/or tephra
 loads, hypolimnetic anoxia, and high aquatic PP.

295 *Lithotype 6* (LT6, 5.05–4.8 m, 11.7–11.3 ka cal. BP; Early Holocene) is a dark brown (10YR2/1 Munsell), homogenous highly
 organic detrital gyttja (30–35% C_{org} and 81–85% water content, 1% TIC) with reduced lithoclastics (Fig. 3). This unit contains
 large terrestrial macrofossils, diatoms and sparse sub-rounded to rounded grains. C/N ratios are relatively high and range from
 10 to 11, comparable to LT4; Tchl (aquatic PP) and phycocyanin (cyanobacteria) remain at levels similar to LT4 (B/A). Bphe
a values are below the limit of quantification, suggesting that the lake was well mixed. LT6 (early Holocene) was deposited
 300 in a stable environment with very low lithoclastic input and high aquatic PP.

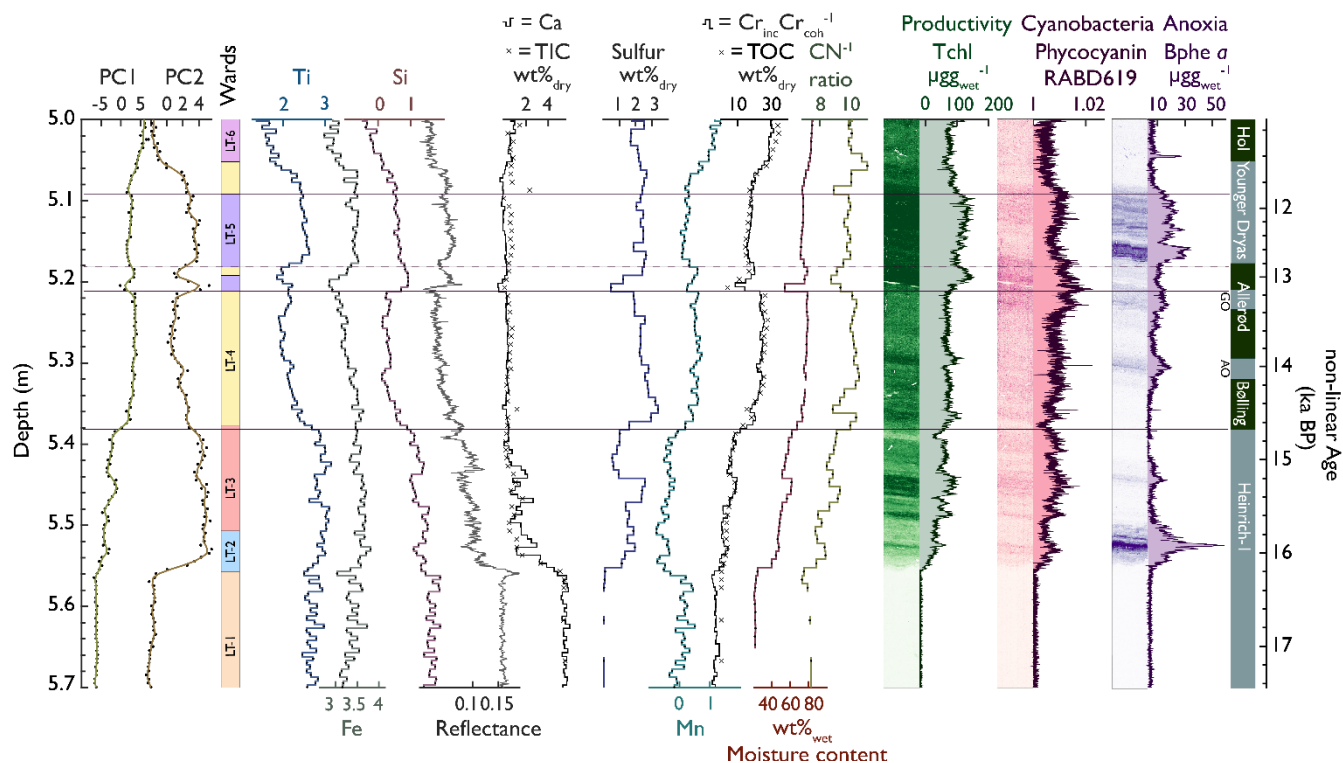


Fig. 3: PC1 and PC2 values (data from Fig. 4), Ward's hierarchical unconstrained and CONISS constrained clustering (horizontal lines), and selected biogeochemical proxies. The hyperspectral data (right) are plotted as intensity maps and time series. The colours of the Lithotypes (LT) are the same as in Fig. 4.

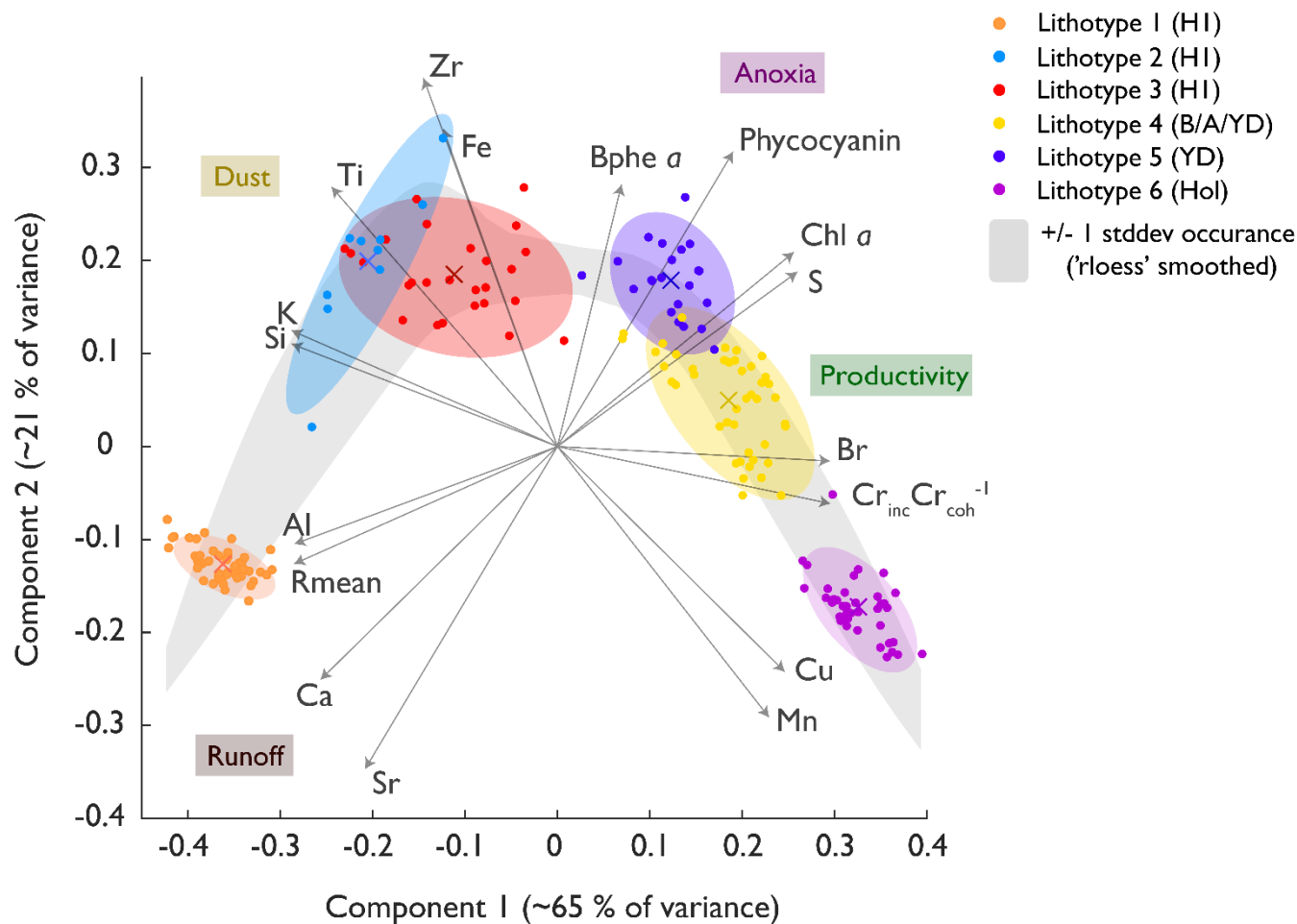


Fig. 4: Principal component plot of the XRF and HSI proxies. Ward's clusters are coloured along their confidence ellipses. The grey band indicates a smoothed depiction of the standard deviation of the PC1 and PC2 data, providing a band of 'common occurrence'. The environmental interpretation of the PCs is indicated in coloured boxes.

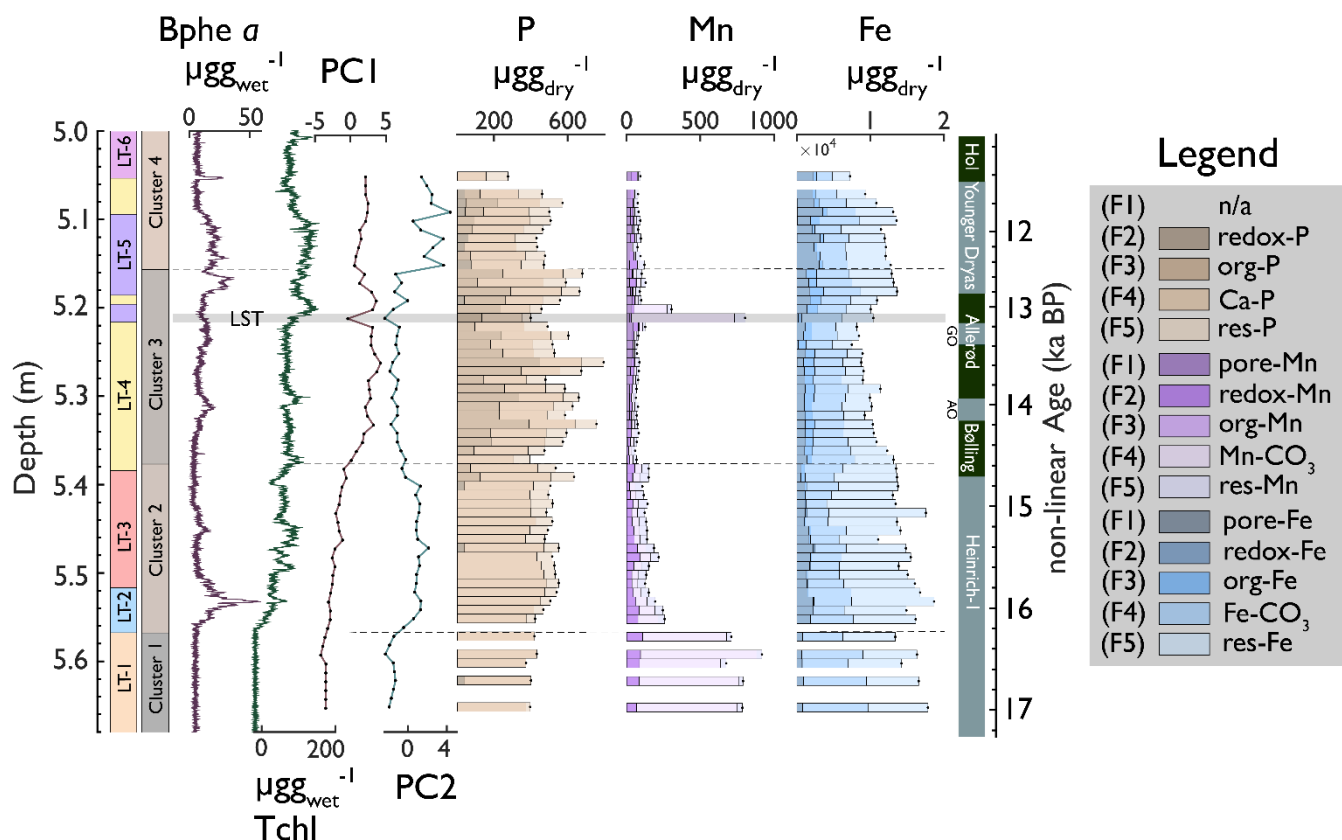


Fig. 5: Down-core stacked bar plots of P, Mn, Fe fractions, PC1,2 and Clusters 1-4 of P, Mn, Fe fractions (data from Fig. S7). Hyperspectral proxies and lithotypes are shown for orientation on the left. Darker colours indicate the redox-sensitive and readily dissolvable fractions of P, Mn and Fe.

4.3 Fractions of P, Mn, and Fe

CONISS and Ward's clustering of Fe, Mn and P fractions revealed four significant clusters (Fig. 5 & S7) with two transitions that align with the lithotype changes (end of LT1 and end of LT2)). The transition from Cluster 3 to Cluster 4) suggests a change in the P, Mn and Fe fractions during the Younger Dryas. The four clusters are ordered along PC1 (48% of total variance), which goes from residual (lithogenic) fractions (PC1 negative) to organic fractions (PC1 positive), and PC2 (19% of total variance) goes along redox conditions (anoxia PC2 positive). The trajectories (Fig. S7, grey arrows) display a trend from catchment processes (16–15 ka cal. BP) with Ca-bound and residual P (F4 and F5) and Fe and Mn oxides, oxyhydroxides and carbonates (F4) and residual Fe and Mn (F5), towards organic-bound fractions (F3, 14–13 ka cal. BP) and elevated redox-sensitive fractions (13–11 ka cal. BP).

Total phosphorous is relatively stable throughout the record ($520 \pm 94 \mu\text{g g}^{-1}_{\text{dry}}$). Ca-bound phosphorous (P-F4) is the dominant fraction, ranging from 31–89% (mean = 63%) in the lower and upper parts of the core (below 5.37 m and above 5.18 m,

corresponding to H1 and YD, respectively), whereas the Ca-P fraction is relatively small (28–55%) in the middle part of the core (B/A). Interestingly, Ca-P covaries with elements attributed to allochthonous siliciclastics from atmospheric dust (Fig. 3B, like Ti $r^2 = 0.92$, $p < 0.001$) and correlates less with elements interpreted as clastic sediments from local runoff like Ca ($r^2 = 0.54$, $p < 0.001$), suggesting that significant proportions of Ca-P, and thus P, are related to allochthonous inorganic dust deposition during cold periods (H1 and YD). The fraction of residual phosphorous (P-F5) is relatively small (mean = 17%) and stable throughout the record.

During the Bølling/Allerød (5.37–5.18 m), P-org (F3) covaries with sediment organic matter TOC ($r^2 = 0.7$, $p < 0.001$). Redox-sensitive P (P-F2) was undetectable in almost all samples throughout the record, suggesting that bioavailable P was minimal and, if present at all, constantly internally recycled, particularly during anoxic periods.

In contrast to P, total Mn varies between 100 and 900 $\mu\text{g g}^{-1}_{\text{dry}}$. Residual Mn is generally low (13–61 $\mu\text{g g}^{-1}_{\text{dry}}$) and covaries with Ti, Zr. Ca-bound Mn (Mn-F4) and redox-sensitive Mn (Mn-F2) have the largest variability. Carbonate-bound Mn occurred in the silty clay of LT-1 and the LST. TIC (carbonate), Ca, Sr, and Mn and Fe carbonates have a similar downcore distribution and, likely, have a common origin. Porewater and organic Mn and Fe (Mn-F1, Fe-F1 and Mn-F3, Fe-F3) occurred in the most organic sections of the record (LT3 and LT4: 5.37–5.05 m) and covary with $\text{Cr}_{\text{inc}}\text{Cr}_{\text{coh}}^{-1}$ and TOC.

The redox-sensitive fraction of Mn was abundant during the H1 and YD phases (< 5.37 m and 5.18–5.05 m). Under conditions of hypolimnetic anoxia (high Bphe α), redox-sensitive Mn (Mn-F2) decreased, suggesting partly reductive dissolution and recycling. Residual Fe-F5 is more abundant than Mn-F5 and mostly elevated during the H1 and Younger Dryas phases (< 5.37 m and 5.18–5.05 m). F4 and total iron concentrations were more stable (800–1800 $\mu\text{g g}^{-1}_{\text{dry}}$).

4.4 Pigment stratigraphy

We identified four significant carotenoid groups (Fig. 6). Group 1: anoxygenic phototrophic bacteria (APB) peak during the early phases of H1, Older and Younger Dryas. Group 2: APBs, diatoms and other silicifiers peak during H1 and the YD. Group 3: purple non-sulphur bacteria, green algae, dinoflagellates and euglenids follow annual temperatures and peak in the Bølling. Group 4: mainly cryptophytes and cyanobacteria are constantly high throughout the Bølling, Allerød and the YD.

CONISS clustering revealed five pigment zones (PZ, Fig. 6) which correspond well to the Lithotypes (summarized in Fig. 8). These were also the phases of significant changes in algal composition as highlighted by RoC analysis (Fig. 8): RoC maxima occurred after the LST at the transition to the YD suggesting that these two events had the largest impact on primary producer communities. Further phases of statistically insignificant change happened mainly during Heinrich-1 and during periods of rapid warming (onsets of Bølling and Holocene).

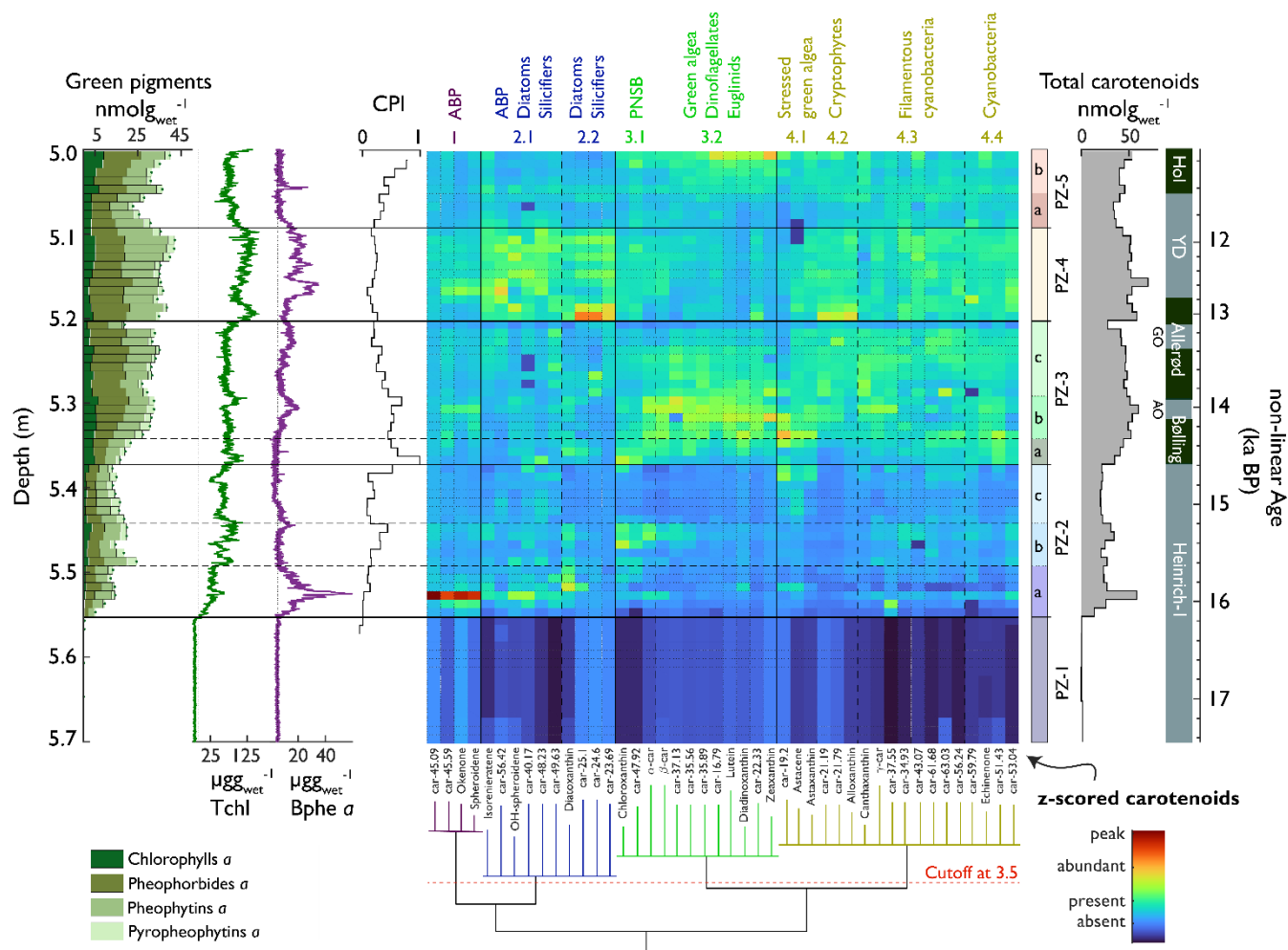


Fig. 6: Down-core concentrations of pigments and HSI together with a heatmap of grouped carotenoids. Left, sums of Chl *a* and diagenetic products (stacked bar graph), HSI indices (for orientation) and CPI. Middle: Heatmap of the z-scores of carotenoids ordered to their statistical correlation into four carotenoid groups (bottom dendrogram) with subdivisions. Right: Pigment zones derived from CONISS clustering with subzones (arbitrary, horizontal dashed lines) and total carotenoid sums (shaded). Pigment concentrations are shown in Fig. S8.

Pigment Zone PZ-1 (below 5.56 m; <16.1 ka cal. BP, corresponding to LT1) contains low amounts of pigments, primarily representing diatoms (Group 2.2) and APB (Group 1), suggesting oligotrophic conditions in a young deglacial landscape (Fig. 6).

PZ-2 (5.56–5.38 m, 16.1–14.7 ka cal. BP, corresponding to LT2 and 3) marks an increase in aquatic production (chlorophylls and carotenoids) and shows a pigment succession with 3 phases (PZ2a, b and c, Fig. 6): initially, APBs (Group 1) dominate with admixtures of carotenoids related to diatoms and other silicifiers (Group 2) and traces of cyanobacteria (Group 4.3). This

pigment assemblage suggests intense and prolonged lake stratification or even meromixis with a chemocline in the photic zone. A minor anoxic phase is also observed later in PZ-2 at around 5.45 m (15.2 ka cal. BP). Subsequently (5.49-5.44 m; PZ-2b), the APB community (Group 1) mostly disappears and is replaced by purple non-sulphur bacteria PNSB (Group 3.1), green algae (Group 3.2) and some cyanobacteria (Group 4.3). PZ-2 ends with a relative decrease in total carotenoids (Fig. 6) except for some specific nutrient-stress-related carotenoids of green algae (Group 4.1); this phase has a low chlorophyll preservation index (CPI), suggesting pigment degradation related to high water clarity and/or shallower water.

PZ-3 (5.38–5.21 m; 14.7–13.1 ka cal. BP, corresponding to LT4) shows a further increase in aquatic PP (total chlorophylls and diagenetic products, total carotenoids). Pigment assemblages are generally diverse (Fig. 6), representing purple non-sulphur bacteria PNSB, green algae, euglenids, (stressed) green algae (Table S3), cryptophytes and cyanobacteria (Groups 3 and 4). Except for the short anoxia event at 5.32 m, APBs are hardly present (Groups 1 and 2.1). At the onset of PZ-3 (5.38 m; 14.7 ka cal. BP; start of Bølling warming), we observe a second succession (PZ-3a; Fig. 6) from astaxanthin (Group 4.1) to chloroxanthin (Group 3.1) to diatoxanthin (Group 2.2) to lutein (Group 3.2) and echinenone (Group 4.3). This suggests a successive shift from nutrient-stressed via nutrient fixing to more favourable growing conditions with abundant pigments and high pigment diversity (PZ-3b). This succession takes ca. 800 years after the onset of the warming. During and after this succession, pheophorbide *a* concentrations increase (absolute and relative to chlorophyll *a*), suggesting simultaneous zooplankton grazing (Table S3). Towards the end of PZ-3 (PZ-3c), a relatively minor community shift occurs from green algae towards more cyanobacteria. PZ-3 ends with the LST.

PZ-4 (5.20–5.10 m; 13.07–11.90 ka cal. BP, corresponding to LT4 and 5) spans the late Allerød and the early YD. Immediately after the LST, the community is dominated by diatoms, other silicifiers, and cryptophytes/dinoflagellates (Groups 2.2 and 4.2, Fig. 6), suggesting silica fertilisation through tephra deposition. Tchl (HSI) and total carotenoids reach maximum levels. Our data shows that the tephra fertilisation effect lasted for several decades. Diatoms and cryptophytes remain abundant in the second part of PZ-4 (corresponding to the YD) (Groups 2.2 and 4.2). Bphe *a* (APB) and carotenoids related to anoxygenic bacteria (Groups 1 and 2.1) return, suggesting strong lake stratification, prolonged hypolimnetic anoxia and a chemocline in the photic zone. PZ-4 also includes many pigments typically produced by (filamentous) cyanobacteria (Groups 4.2, 4.3, and 4.4).

PZ-5 (5.10–5.01 m, 11.90–11.32 ka cal. BP) corresponds to the end of the YD (LT-4) and the Early Holocene (LT-6). During the end of the YD (PZ-5a), all pigment concentrations are relatively low (Fig. 6) and primarily represent cyanobacteria (Group 4.3), non-sulphur bacteria and diatoms (Group 2.1). This drop corresponds to a phase with low CPI values and is possibly linked to enhanced uniform photodegradation. PZ-5b corresponds to the onset of the Holocene, with higher aquatic production dominated by green algae and subordinate cryptophytes, cyanobacteria, and purple non-sulphur bacteria. Group 3.2 gains immediate dominance following the abrupt Holocene warming. The lack of algal succession suggests that nutrient constraints

were less critical at the Holocene's onset than the Bølling's onset. After the onset of the Holocene, pigments are better preserved (increasing CPI).

To observe pigment composition in multivariate space, all extracted pigments (carotenoids and photopigments) are displayed as variables to their second and third principal components in Fig. 7a. PC2 (9% of the variance) and PC3 (7% of the variance) discriminate along taxonomic and ecological communities, which is of interest here. In comparison, PC1 (63% of the variance, Fig. S10) follows total aquatic primary production PC2 separates pigments produced in the epilimnion during stratified conditions (anoxic hypolimnion), cold and dusty phases (positive) from pigments produced during well-mixed, oxic, warm, nutrient-limited phases (negative). PC3 separates (pyro)-pheophytins, indicating photodegradation of chlorophylls from pheophorbides, indicating enzymatic breakdown of chlorophylls, including zooplankton grazing in the epilimnion, essentially separating degradation pathways (Bianchi and Canuel, 2011; Lami et al., 2000). PC3 also provides a distinction between diatoms and PSB. Clustered pigments matching the carotenoid groups are likely produced by the same organisms or in similar environments. Four non-bacterial photopigments (ppb-48.2, py-51.9, py-59.9 and ppb-49.6) occur in the quadrant with anoxic carotenoids. These substances could be homologues of bacteriochlorophyll *b,c,d,f* (Romero-Viana et al., 2010) produced by green pigment-producing APBs.

We analysed pigment-PCA scores (PC2 and PC3) in a trajectory plot (Fig. 7b) to test if Late-Glacial anoxia invoked irreversible changes in the algal composition. Anoxygenic phototrophs dominate the initial algal community. The community develops towards green algae and cyanobacteria during the B/A interstadial, transitions to diatoms during the YD and, finally, ends close to the starting point, suggesting that the overall Late-Glacial trajectory (dashed arrow) left no irreversible compositional imprint. Also, the trajectories through the three main individual anoxic phases (Figs. 7b and 8, purple, red and blue) returned to a comparable state concerning PC2 (taxonomy and ecology). In contrast, individual anoxia trajectories ended up with different PC3 values (degree of degradation), suggesting that, at the end of anoxia event 2, grazing pressure was higher than at the beginning, whereas for anoxic phases 1 and 4, grazing pressure seems to be lower.

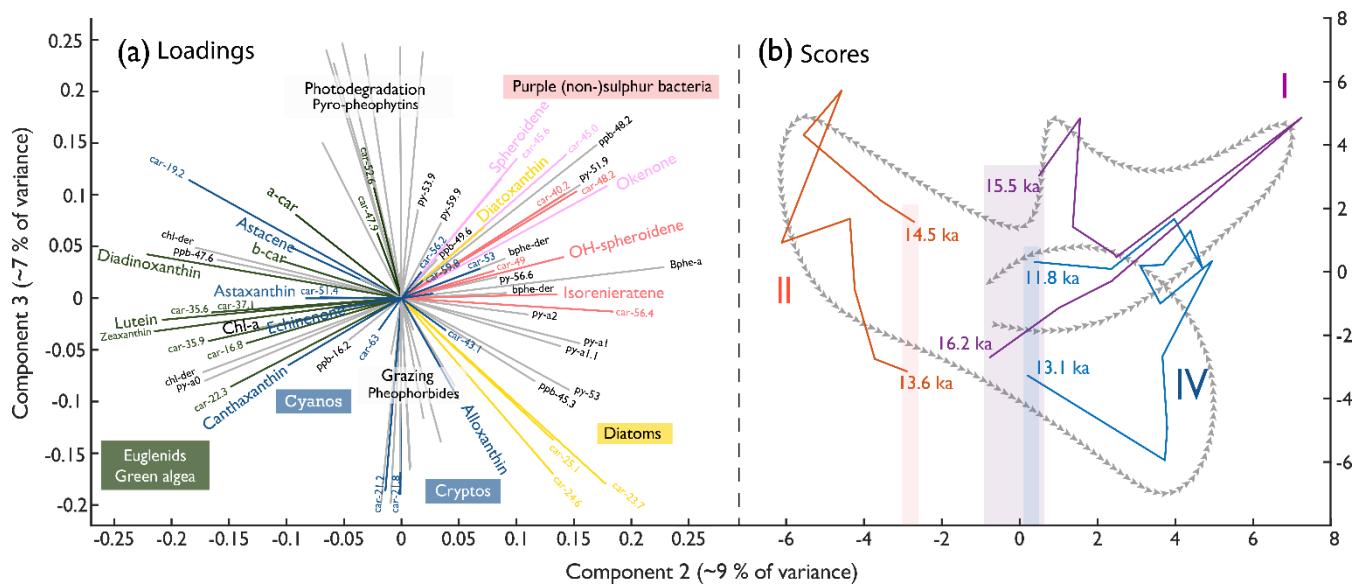


Fig. 7: Principal component loadings (left) separating the algal communities and score trajectories (right) of all extractable pigments. (a) PC2 and PC3 of the pigment data. Carotenoids are coloured according to their statistical grouping (Fig. 6); Photopigments: ppb = pheophorbides; ppy = pyropheophytins; py = pheophytins. (b) Trajectories of the PC2 (9% of variance) and PC3 (7% of variance) scores throughout the three major anoxic phases (I, II, and IV; Fig. 8); shadings indicate starting and ending point range of the individual anoxic phases along PC2. Grey arrows indicate a schematic of the overall trajectory during the Late-Glacial, e.g. the same as for I, II and IV but then covering the whole record.

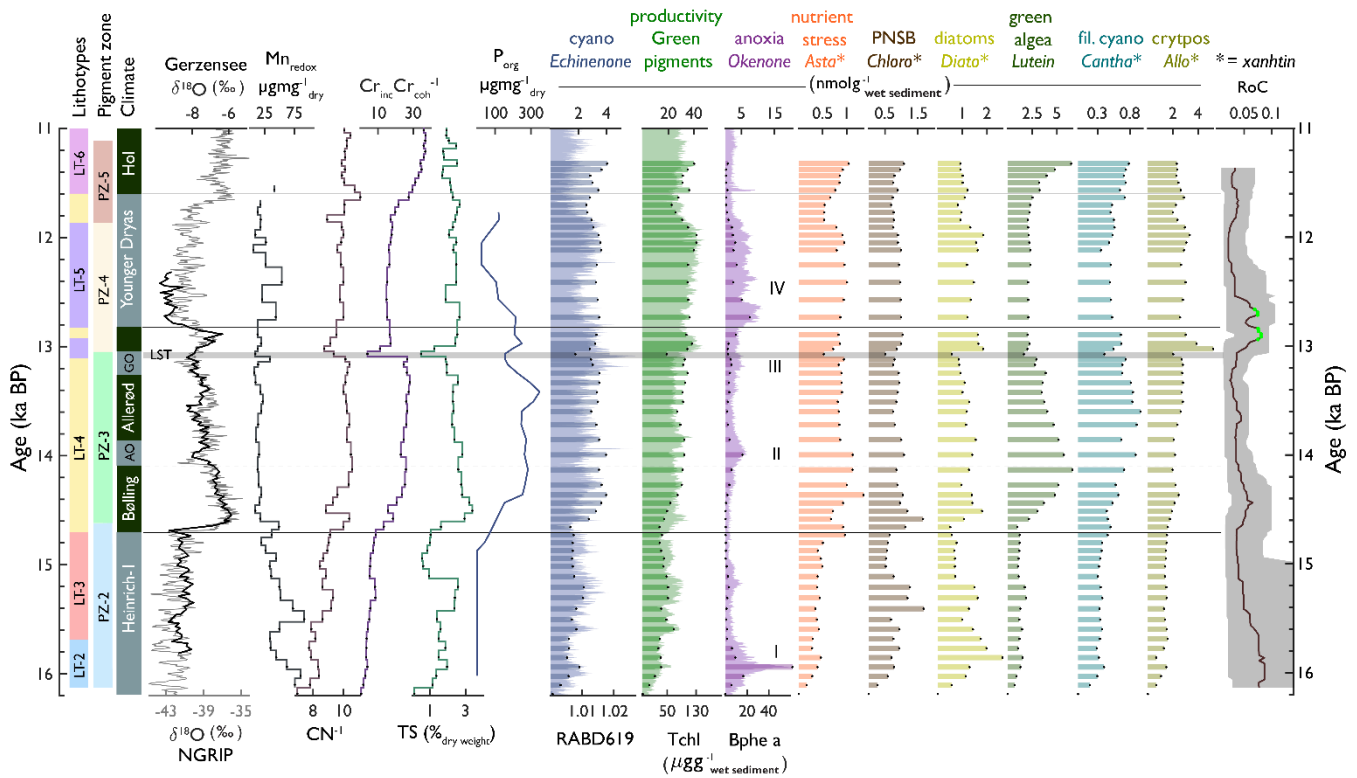


Fig. 8: Compilation of Lithotypes, Pigment Zones, chronostratigraphic zones (with $\delta^{18}\text{O}$ of Gerzensee and NGRIP to illustrate temperature, Ammann et al. 2013), selected geochemical proxies (Mn_{redox} , C/N, Cr_{coh} $\text{Cr}_{\text{incoh}}^{-1}$, TS and P), selected pigments and Rate of Change (of HPLC pigments).

5 Discussion

5.1 Late-Glacial lake evolution in the context of climatic and environmental conditions

In Amsoldingensee, sediment composition reflects aquatic organic matter vs. inorganic matter (PC1 axis, Fig. 4) and two different sources of clastic material, aeolian dust and runoff from the catchment (PC2, Fig. 4). Pigment assemblages are influenced by temperature, lake stratification and oxygen availability, nutrients and degradation processes. In our core (AMS22-COMP1), the lithotypes and pigment zones align stratigraphically (Fig. 8), suggesting that the processes controlling sediment composition and pigment assemblages have a common driver.

Earlier studies from nearby Gerzensee (Eicher, 1987) and other Swiss sites (Lotter et al. 1992) show that environmental changes on the Swiss Plateau responded very closely to large-scale climatic shifts in the North Atlantic domain during the Late-Glacial (Ammann et al., 2013; van Raden et al., 2013). To place our findings in context with the large-scale Late-Glacial paleoclimate evolution, we discuss the development of Amsoldingensee along chronozones (Ammann et al., 2013).

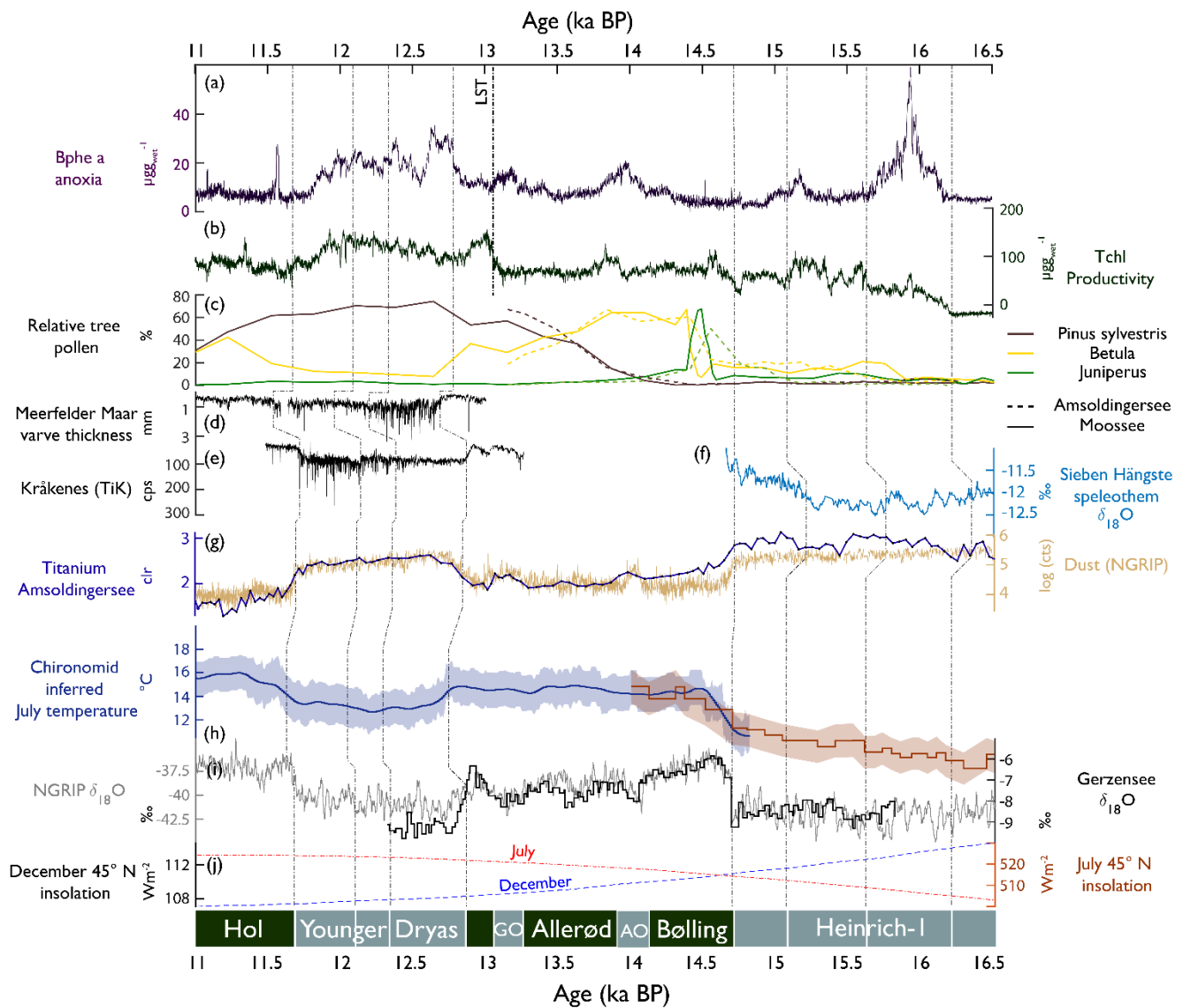


Fig. 9: Comparison of proxy time series from Amsoldingensee (this study) with sites in the North-Atlantic/European domain between 16.5 and 11 ka cal. BP. (a) Bphe a, anoxia (this study); (b) Tchl, primary production (this study); (c) Pollen records from Amsoldingensee (this study) and Moossee (Rey et al., 2020); (d) Meerfelder maar varve thickness (Brauer et al., 2008); (e) Kråkenes TiK representing runoff (Bakke et al., 2009); (f) Sieben Hängste speleothem $\delta^{18}\text{O}$, with higher values representing more northerly flow (Luetscher et al., 2015); (g) log of NGRIP dust counts, and Ti abundance (this study); (h) Chironomid-inferred July temperature from the Alpine stack (blue, Heiri et al., 2015) and Burgäschisee (red, Bolland et al., 2020); (i) $\delta^{18}\text{O}$ of Gerzensee calcite (van Raden et al., 2013) and NGRIP (NGRIP members, 2004); (j) Insolation curves for July (red) and December (blue). Lines indicate synchronous time horizons across sites (shown at the bottom). Bottom: chronozones, AO = Aegelsee Oscillation and GZ = Gerzensee Oscillation.

465 5.1.1 Heinrich Stadial 1 (H1; ~18 - 14.69 ka BP)

Amsoldingensee formed during H1, when retreating glaciers left a depression in the drumlin landscape (Fig. 1a). The sediment record starts with 2.65 m of laminated calcareous silty clay deposited into an early-deglacial oligotrophic perennial lake. Around 16.2 ka cal. BP, the sediment composition shifts to an organic gyttja. This transition marks an abrupt end of silty clay input into the Amsoldingensee basin. The sharp lithological transition can be explained as a decrease in sedimentation rates
470 accompanied by increased organic matter deposition and a substantial reduction in detrital clastic input, suggesting increased landscape stability. No changes in local vegetation composition are observed, and our data are insufficient to conclude on the cause of this lithological change.

During H1, starting at 16.2 ka cal. BP (Fig. 7), anoxygenic phototrophic bacteria (APB) and some cyanobacteria inhabited the lake, indicating hypolimnetic anoxia during the very early phase of the lake development. APB have an advantage over other
475 photosynthetic organisms in light-limited conditions (Karr et al., 2003). In Amsoldingensee, light could have been limited because of suspended solids in deglacial windy environments and/or prolonged winter ice cover. Our results confirm earlier findings of pre-Bølling anoxia in Lobsigersee (Züllig, 1986). Indeed, long ice cover favours lake stratification and anoxia (Klanten et al., 2023), even in oligotrophic conditions.

Around 15.6 ka cal. BP and onward aquatic PP increased (TChl, Fig 9b). Summer season temperatures warmed by about 2°C
480 as reported for the Greater Swiss Plateau (Rey et al., 2020; Bolland et al., 2020; Fig. 9h). This warming is not found in the $\delta^{18}\text{O}$ NGRIP record. Apparently, the summer warming around 15.8 ka cal. BP initiated a simultaneous increase in terrestrial (*Betula*, Fig. 9c; Rey et al., 2020) and aquatic production (mainly green algae and cyanobacteria; lutein and echinenone).

Whereas this regional summer warming persisted (Bolland et al., 2020), aquatic PP dropped in Amsoldingensee after 15.1 ka cal. BP (Fig. 9b), and dust input slightly increased (Ti, Fig. 9g). A trend towards less negative $\delta^{18}\text{O}$ values from the nearby
485 Sieben Hängste speleothem (Fig. 9f) has been interpreted as strengthened northerly winds during that time (Luetscher et al., 2015). The CPI is low, and pyropheophytins are relatively abundant, suggesting extensive photodegradation of pigments (Buchaca & Catalan, 2008). Persistent drought and low lake levels could explain photodegradation during a cold phase within H1. Glacial readvances were documented in the Swiss Alps during that time (Daun, Clavadel/Senders, Ivy-Ochs et al., 2006).

5.1.3 Bølling/Allerød (14.69 - 12.90 ka cal. BP)

In the North-Atlantic domain, the onset of the Bølling (start of DOE-1) shows a very sharp increase in $\delta^{18}\text{O}$ values in Greenland ice cores (Rasmussen et al. 2014). *Juniper* expanded rapidly on the Swiss Plateau, indicating an immediate response of terrestrial plants to the rapid warming that occurred within decades (Lotter et al. 1992). Amsoldingensee became only slightly more productive. Total aquatic production follows chironomid-inferred July temperatures with positive trends rather than the saw-tooth structure of annual temperatures as shown by the NGRIP $\delta^{18}\text{O}$ or $\delta^{18}\text{O}_{\text{CaCO}_3}$ records from Gerzensee (Lotter et al.,
495 2012; Fig. 9i), suggesting that aquatic production mostly responded to warm-season temperatures. Whilst this is true for most algal groups, APB thrive during the short cold and dusty intervals of the Aegelsee and Gerzensee Oscillations when winter ice

cover was prolonged, and hypolimnetic anoxia prevailed (Fig. 9). This supports the interpretation of both cold intervals being predominantly a phenomenon of the winter season cooling that had little impact on summer temperatures (Lotter et al., 2012; Ammann et al., 2013). Apart from these cold intervals, we do not find any indication of lake stratification and hypolimnetic anoxia during the Bølling/Allerød warm phases. This finding is surprising considering warm summer temperatures and closed forest cover (Arboreal Pollen >80%, S4, Lotter et al. 1992), which typically leads to lake stratification and anoxia (Zander et al., 2021). Seemingly, summer thermal stratification and aquatic PP were not strong enough to spark summer anoxia. Significant blooms of silicifying algal groups are noted after the LST deposition (Fig. 8), suggesting a Si fertilisation effect of the tephra in the oligotrophic and possibly Si-limited lake. This effect lasted <100 years and was also observed in oligotrophic Moossee and Lobsigensee on the Swiss Plateau (Makri et al., 2020; Züllig, 1986).

5.1.3 Younger Dryas (12.90 - 11.7 ka cal. BP)

The Younger Dryas (YD) was a cold phase in the North-Atlantic region (Brauer et al., 2008) that was accompanied by reduced Atlantic Meridional Overturning Circulation AMOC (Böhm et al., 2015) and enhanced insolation-driven seasonality in this region (Fig. 9j). In Lobsigensee (Fig. 1b), Züllig (1986) observed extensive winter anoxia, which he related to extended ice cover during very cold winters. Although summer temperatures decreased markedly during the YD (Heiri et al., 2015), total pigment concentrations remained high in Amsoldingensee, even after the fertilising effect of the LST disappeared, suggesting that summer temperature was no longer a controlling factor for algal growth.

The strong response of silicifiers to the LST suggests that the system was Si-limited at the end of the Allerød (before the LST). At the beginning of the YD, green algae (lutein, Fig. 8) decreased, whereas silicifiers (alloxanthin, diatoxanthin) remained high, suggesting that Si fertilisation related to persistently high dust fluxes (Ti, Fig. 9G) played a role. It is unlikely that enhanced P recycling under anoxic conditions stimulated aquatic PP during that time because redox-sensitive P, Fe and Mn were sequestered rather than released (Fig. 5).

In Amsoldingensee, during the YD, we find multiple changes in productivity and anoxia, suggesting that the YD was not a homogenous cold phase but had an internal structure (Pigati and Springer, 2022; Weber et al., 2020). The YD started with ~185 years of low Tchl and high Bphe *a* (Fig. 9A, B), interpreted as a period with reduced epilimnetic production, short summers and long-lasting winter stratification, similar to the findings of Brauer et al. (2008) in Meerfelder Maar. During the second part of the YD, productivity and anoxia covaried, and sequestration of redox-sensitive Fe, Mn, and P increased (transition from Cluster 3 to Cluster 4, Fig. 5). The end of the YD was associated with a drier climate leading to lake-level lowering (Lotter & Boucherle, 1984). Dry conditions at the end of the YD were also found in other European sites (Weber et al., 2020; Brauer et al., 2008), consistent with the idea of gradually northwards shifting storm tracks throughout the Younger Dryas (Bakke et al., 2009, Fig. 9E).

5.1.4 The Late-Glacial dust record

After 16.2 ka cal. BP, the composition of clastic sediments in Lake Amsoldingen changed (PC2, Fig. 4): Ca, Sr and TIC sharply
530 dropped, whereas Ti, K, Si, and Zr remain at high levels, suggesting that there are two different sources of clastic sediments:
one carbonate-dominated fraction (PC2 negative) related to erosion of calcareous glacial deposits in the lake catchment (low
in siliciclastics) and another fraction of siliciclastic material (PC2 positive) likely related to allochthonous aeolian dust. The
elevated and isolated topography of the Amsoldingensee catchment excludes fluvial transport as a potential source of
siliciclastics (Fig. 1a).

535 The interpretation of the Ti, Si and Zr records in Amsoldingensee as aeolian dust is supported by the similarity of Ti to NGRIP
dust (NGRIP members 2004, $R^2_{\text{adj}} = 0.8$, by linear regression, Fig. 9G), showing relatively high values during H1 and the
Younger Dryas (YD) and relatively lower values during the Bølling/Allerød and the Early Holocene. Local dust maxima are
observed in the NGRIP and Amsoldingen sediments also synchronously during the cold episodes of the Aegelsee Oscillation
(AO; 14.1 ka cal. BP) and the Gerzensee Oscillation (GZ; 13.2 ka cal. BP). Whereas NGRIP dust is mainly sourced from
540 Europe and Central Asia (Újvári et al., 2015), a large part of the dust deposited across Europe was sourced from sparsely
vegetated steppes of the English Channel and the North Sea (Rousseau et al., 2014). The similarity of the Amsoldingensee and
the NGRIP dust records supports the view that the same large-scale atmospheric circulation patterns affected the Swiss Plateau
and Greenland (Eicher, 1987; Lotter et al., 1992; Ammann et al., 2013).

Across Europe, aeolian deposits are well documented for the H1, the AO, and Younger Dryas (Hoek et al., 2017). Estimated
545 sedimentation rates for loess deposition range between 0.02 and 0.2 mm yr⁻¹ during Heinrich events across European sites
(Rousseau et al., 2021). Given the lithological composition of the catchment with a predominance of calcareous glacial deposits
over silicate-bearing lithologies and the low sedimentation rates in Amsoldingensee (SAR of 0.1 mm yr⁻¹; Fig. 2), dust fluxes
on the above order of magnitude should be visible. Within Switzerland, the “Etang de la Gruère” peat bog record is, to date,
the only site that describes dust fluxes in the Late-Glacial. Similarly, Ti has been used as a dust proxy (Shotyk et al., 2001).
550 Whereas the “Etang de Gruère” record covers the Holocene (0–14.6 ka cal. BP), the Amsoldingensee record is, to our
knowledge, the first continuous record of aeolian dust covering the Late-Glacial period (16–11 ka cal. BP).

5.2 What drove the algal community composition?

Overall, algal community changes are synchronous with lithotype transitions and phases with high RoC (Fig. 8), which match
555 the transitions of the chrono- and biostratigraphic zones reflecting large-scale climatic variations in the North Atlantic domain
(Ammann et al., 2013). Redundancy analysis indicates that aquatic primary production in Amsoldingensee (e.g., Tchl, total
carotenoids) covaries with TOC and follows predominantly, but not exclusively, temperature and arboreal pollen (RDA, Fig.
S9). Our data reveal that nutrients and lake mixing also played an essential role in shaping primary producer communities.
Several lines of evidence suggest that P, N, and Si in the photic zone were limiting aquatic PP, although they have changed
560 relative importance over time.

Firstly, there is very little phosphorus sequestered throughout the entire record. In contrast to Soppensee (Tu et al., 2021), bioavailable P is barely present in Amsoldingensee (Fig. 5) despite well-mixed and oxic conditions during the more productive Bølling/Allerød, suggesting that P might have been particularly limited. Successions between algal groups provide a second line of evidence for the limitation of nutrients (P, possibly also N). Whereas the climate warming at the beginning of the Bølling was very rapid and instantaneous (Bolland et al., 2020; Heiri et al., 2015; van Raden et al., 2013; Lotter et al., 2012), the response of the pigments (aquatic communities) was gradual, following a succession across ca. 500 years from astaxanthin (end of PZ-2c, Fig. 8) to chloroxanthin (PNSB), diatoxanthin (diatoms), echinenone (cyanobacteria) and to lutein (green algae). This suggests that, at the onset of the Bølling, primary producer communities possibly did not predominantly respond to temperature but rather to nutrient availability. The timing of the algal succession is matched by successive increases in redox-Mn, C/N, S and eventually P_{org} (Fig. 8).

Secondly, nitrogen was likely limited during H1 and the onset of the Bølling. At the onset of H1, carotenoids associated with filamentous cyanobacteria (N-fixing, Thiel et al., 2004) contribute considerably to the total carotenoids. Moreover, phycocyanin and Tchl covary, suggesting that a large share of chlorophyll *a* (Tchl) was produced by cyanobacteria. As mentioned above, the algal response to the Bølling warming was relatively gradual, starting with astaxanthin and chloroxanthin (PNSB). Astaxanthin is a UV-protective carotenoid that *Haematococcus pluvialis* can use to store nutrients, which has been interpreted as N-limitation and light stress (Orosa et al., 2001; Boussiba and Vonshak, 1991). Also, chloroxanthin is a pigment which is produced by purple non-sulphur bacteria of the *Rhodospirillum* or *Rhodobacter* genera, which are known nitrogen-fixers (Albrecht et al., 1997; Keskin et al., 2011). Filamentous N-fixing cyanobacteria (canthaxanthin and echinenone) remained abundant during the Allerød and YD, suggesting that cyanobacteria still had a competitive advantage in N-limited conditions.

Lastly, at the beginning of the Bølling, a shift from silicifiers (diatoxanthin) to green algae (lutein) suggests Si limitation. This coincides with a decrease in dust (Ti) deposition (Fig. 9G). Further, after the substantial Si-fertilisation by the LST (13.05-12.90 ka cal. BP; Fig. 8), we observe a response of silicifiers Fig. 8, while green algae (lutein and Chl *a* and related pigments) and cyanobacteria remained invariant. Blooms of diatoxanthin (diatoms) and alloxanthin (cryptophytes) persisted during the YD, suggesting that Si fertilisation persisted throughout the YD. It is unusual to find signs of aerial silica fertilisation related to the tephra (Züllig, 1986) or dust in lake sediment records because these typically contain substantial siliciclastic fractions (Koffman et al., 2021).

5.3 Ice-induced Anoxia in Late-Glacial Amsoldingensee

Amsoldingensee documents four phases with hypolimnetic anoxia; all of them are related to cold periods: during H1, the Aegelsee Oscillation, the Gerzensee Oscillation and the Younger Dryas. This is consistent with findings from Züllig (1986) in Lobsigensee (Fig. 1b), who documented anoxia during cold periods of the ‘Oldest Dryas’ (H1) and the Younger Dryas and related these to prolonged winter ice cover. Although still little is known about winter limnology (Jansen et al., 2021; Hampton et al., 2017), there is increasing evidence that extensive winter ice cover leads to anoxia in shallow lakes at high latitudes

(Klanten et al., 2023). These conditions likely occurred in Switzerland during the cold phases of the Late-Glacial. Many studies
595 from the Arctic and Antarctica (Schütte et al., 2016; Reuss et al., 2013; Comeau et al., 2012; Rogozin et al., 2009; Karr et al.,
2003) show that APBs and PNSB are well adapted to light limitation under ice cover as they use bacteriochlorophyll *a* which
absorbs light at 550–600 nm where transmittance through ice is maximal (Bolsenga et al., 1991). Pigments used by other
organisms (e.g., Bchl *c*, *e*, *d* and Chl *a*, *b*) absorb light only at the edges of the light spectra transmitted through snow and ice
(<480nm and >630nm; Zander et al., 2023; Stomp et al., 2007).

600 Our results and those of Züllig (1986) are in contrast with previous findings in Längsee (Schmidt et al., 2002) and Soppensee
(Tu et al., 2021). Both lakes developed anoxia during the warm phases of the Late-Glacial and not during the cold phases. The
authors proposed a chemical feedback model in which summer warming leads to high aquatic PP, lake stratification and anoxia,
which prompts reductive dissolution of redox-sensitive metal oxides and recycling of nutrients, thus sustaining high aquatic
PP and hypolimnetic anoxia (Gächter et al., 1988; Nürnberg, 1998). The different behaviours of these four lakes are surprising
605 because they are very similar in terms of climatic and environmental background conditions and show similar morphometric
properties (size and depth). Our current understanding is too limited to provide a sound explanation for this discrepancy.
Amsoldingensee and Lobsigensee also developed anoxia at times of tundra vegetation (during H1) and reduced forest cover
during the YD (Rey et al. 2020), whereas the lake remained well mixed during the Allerød with closed pine forest. This stands
in contrast to many small lakes across Europe that show anoxia during Holocene warm conditions. In such lakes, reduced wind
610 mixing through closed forest covers (Arboreal Pollen >80%) prompted summer stratification with anoxia (Zander et al., 2021).
On the contrary, in Amsoldingensee, the winter ice cover was more important than the closed forest, prompting anoxia during
Late-Glacial conditions. This phenomenon is, however, not sufficiently well understood.

6 Conclusions

This study provides a contextual view of the complex interactions between climate variability (warming and cooling), aquatic
615 primary production and primary producer communities, lake mixing regimes, anoxia and nutrient cycling in a small glacial
lake (Amsoldingensee) on the Swiss Plateau during Late-Glacial times. This period is characterised by rapid and high-
amplitude climatic changes 18-11 ka cal. BP, including Heinrich Stadial-1, the Bølling/Allerød, the Younger Dryas, and the
onset of the Holocene. We hypothesise that the responses of lakes in early deglacial Switzerland can be used as analogies for
modern lakes in the Arctic under rapid warming.

620 In Amsoldingensee, changes in aquatic primary production and algal (pigment) communities are synchronous with changes in
lithotypes, biostratigraphy in the catchment and large-scale climatic changes in the North Atlantic domain. Aquatic PP and
algal communities were driven mainly by summer temperature but strongly modulated by nutrient limitations (P, N, Si)
throughout Late-Glacial times. Anoxic phases changed the algal communities, but these shifts were fully reversible once anoxia
vanished. Noteworthy are differences in the pigment preservation and grazing pressure before and after the anoxia. The first

625 significant increase in aquatic PP is observed during H1, around 16.1 ka cal. BP, i.e. much earlier than the Bølling warming at 14.6 ka cal. BP.

Our record reveals four anoxic phases during Late-Glacial times; all of them occurred under cold periods with prolonged ice cover during H1 (16 ka cal. BP), during the Aegelsee and Gerzensee Oscillations, and the YD. During the warm Bølling/Allerød, the lake remained well mixed. These results contrast with findings from other lakes (Switzerland, Austria),
630 where anoxia occurred during warm periods of the Late-Glacial. This discrepancy is surprising since these lakes are in similar climatic conditions and have similar morphometry, suggesting that very subtle differences may lead to diverse responses of similar lakes to the same climatic forcing. The reasons for this discrepancy are currently poorly understood, but they possibly reflect the very complex responses of small lakes to rapid warming as presently observed in the Arctic.

635 The sediments of Amsoldingensee provide a unique continuous record of dust deposition (Ti, Zr and Si) covering the complete Late-Glacial period (18-11 ka cal. BP). This record very closely matches the NGRIP dust record, confirming earlier findings that both regions (Swiss Plateau and Greenland) are linked through large-scale climate phenomena. Similar to the strong Si-fertilizing effect of the Laacher See Tephra in Amsoldingensee, atmospheric dust also seems to have modulated the primary production of silicifying algae during the Bølling/Allerød and the YD.

640

Data and code availability: pre-processed data is available at Pangaea (<https://doi.pangaea.de/10.1594/PANGAEA.975327>; <https://doi.pangaea.de/10.1594/PANGAEA.975263>; <https://doi.pangaea.de/10.1594/PANGAEA.975261>) code is available at GitHub (<https://github.com/SJSchouten>)

645 *Author contributions:* SS – conceptualisation, formal analysis and investigation, visualisation and code, writing of original draft. PZ - conceptualisation, XRF data curation, formal analysis and investigation, co-supervision. NS – conceptualisation, formal analysis and investigation. AL – HPLC, pigment interpretation. PBK – macrofossil identification. JL – pollen analysis. HV – co-supervision. MG - conceptualised, supervised, interpreted, and contributed to writing the original draft. SS, PZ, MG, NS, and HV commented, SS, PZ, HV, and MG edited, and all co-authors approved the manuscript.

650

Competing interests: None of the authors have competing interests.

Financial support: Swiss National Science Foundation 200020_204220

655 *Acknowledgements:* We thank Willy Tanner for leading the coring campaign and the staff at the Institutes of Geography and Geology for support in the lab. We thank Mr. Wolfgang Hegner for granting us access to the lake and Mr. Ernst for supporting us on the site. LANAT provided the research permission. We further thank Rik Tjallingii for his help processing XRF data and valuable comments on the manuscript.

660 *Review statement:* This paper was reviewed by Pierre Francus, INRS Québec, and an anonymous reviewer.

7 References

- Aitchison, J.: The statistical analysis of compositional data. *Journal of the Royal Statistical Society: Series B (Methodological)*, 44, 139–160, 10.1007/978-94-009-4109-0, 1982
- 665 Ammann, B., van Leeuwen, J. F., van der Knaap, W. O., Lischke, H., Heiri, O., and Tinner, W.: Vegetation responses to rapid warming and to minor climatic fluctuations during the Late-Glacial Interstadial (GI-1) at Gerzensee (Switzerland). *Palaeogeography, Palaeoclimatology, Palaeoecology*, 391, 40–59, 10.1016/j.palaeo.2012.07.010, 2013
- 670 Bakke, J., Lie, Ø., Heegaard, E., Dokken, T., Haug, G. H., Birks, H. H., Dulski, P., and Nilsen, T.: Rapid oceanic and atmospheric changes during the Younger Dryas cold period. *Nature Geoscience*, 2, 202–205, 10.1038/ngeo439, 2009
- Bertrand, S., Tjallingii, R., Kylander, M. E., Wilhelm, B., Roberts, S. J., Arnaud, F., Brown, E., and Bindler, R.: Inorganic geochemistry of lake sediments: A review of analytical techniques and guidelines for data interpretation. *Earth-Science Reviews*, 249, 104639, 10.1016/j.earscirev.2023.104639, 2023
- 675 Bianchi, T. S., and Canuel, E. A.: Photosynthetic Pigments: *Chlorophylls, Carotenoids, and Phycobilins in: Chemical Biomarkers in Aquatic Ecosystems*, edited by: Bianchi, T. S., Canuel, E.A., 221-247, Princeton University Press, <https://doi.org/10.1515/9781400839100>, 2011
- Böhm, E., Lippold, J., Gutjahr, M., Frank, M., Blaser, P., Antz, B., Fohlmeister, J., Frank, N., Andersen, M.B., and Deininger, M.: Strong and deep Atlantic meridional overturning circulation during the last glacial cycle. *Nature*, 517, 73–76, <https://doi.org/10.1038/ngeo439>, 2015
- 680 Bolland, A., Rey, F., Gobet, E., Tinner, W., and Heiri, O.: Summer temperature development 18,000–14,000 cal. BP recorded by a new chironomid record from Burgäschisee, Swiss Plateau. *Quaternary Science Reviews*, 243, 106484, 10.1016/j.quascirev.2020.106484, 2020
- 685 Bos, I. J., Busschers, F. S., and Hoek, W. Z.: Organic-facies determination: a key for understanding facies distribution in the basal peat layer of the Holocene Rhine-Meuse delta, The Netherlands. *Sedimentology*, 59, 676–703, 10.1111/j.1365-3091.2011.01271.x, 2012
- Boussiba, S., and Vonshak, A.: Astaxanthin accumulation in the green alga *Haematococcus pluvialis*. *Plant and cell Physiology*, 32, 1077–1082, 10.1093/oxfordjournals.pcp.a078171, 1991
- Brauer, A., Haug, G. H., Dulski, P., Sigman, D. M., and Negendank, J. F.: An abrupt wind shift in western Europe at the onset of the Younger Dryas cold period. *Nature Geoscience*, 1, 520–523, 10.1038/ngeo263, 2008
- 690 Brodie, C. R., Casford, J. S., Lloyd, J. M., Leng, M. J., Heaton, T. H., Kendrick, C. P., and Yongqiang, Z.: Evidence for bias in C/N, $\delta^{13}\text{C}$ and $\delta^{15}\text{N}$ values of bulk organic matter, and on environmental

- interpretation, from a lake sedimentary sequence by pre-analysis acid treatment methods. *Quaternary Science Reviews*, 30, 3076–3087, 10.1016/j.quascirev.2011.07.003, 2011
- 695 Buchaca, T., and Catalan, J.: On the contribution of phytoplankton and benthic biofilms to the sediment record of marker pigments in high mountain lakes. *Journal of Paleolimnology*, 40, 369–383, 10.1007/s10933-007-9167-1, 2008
- Bush, T., Diao, M., Allen, R. J., Sinnige, R., Muyzer, G., and Huisman, J.: Oxidic-anoxic regime shifts mediated by feedbacks between biogeochemical processes and microbial community dynamics. *Nature Communications*, 8, 789, 10.1038/s41467-017-00912-x, 2017
- 700 Butz, C., Grosjean, M., Fischer, D., Wunderle, S., Tylmann, W., and Rein, B.: Hyperspectral imaging spectroscopy: a promising method for the biogeochemical analysis of lake sediments. *Journal of Applied Remote Sensing*, 9, 096031, 10.1117/1.JRS.9.096031, 2015
- 705 Carey, C. C., Hanson, P. C., Thomas, R. Q., Gerling, A. B., Hounshell, A. G., Lewis, A. S., Lofton, M. E., McClure, R.P., Wander, H. L., Woelmer, W. M., Niederlehner, B. R., and Schreiber M. E.: Anoxia decreases the magnitude of the carbon, nitrogen, and phosphorus sink in freshwaters. *Global Change Biology*, 28, 4861–4881, 10.1002/essoar.10508415.3, 2022
- Eicher, U.: Die spätglazialen sowie die frühpostglazialen Klimaverhältnisse im Bereiche der Alpen: Sauerstoffisotopenkurven kalkhaltiger Sedimente. *Geographica Helvetica*, 42, 99–104, 10.5194/gh-42-99-1987, 1987
- 710 Eicher, U.: Stable oxygen and carbon isotope analyses on lacustrine carbonate sediments. *Problems of Stable Isotopes in Tree-rings, Lake Sediments and Peat-bogs as Climatic Evidence for the Holocene. Paläoklimaforschung. G. Fischer, Stuttgart*, 29–38, 1995
- 715 Fabbri, S. C., Buechi, M. W., Horstmeyer, H., Hilbe, M., Hübscher, C., Schmelzbach, C., Weiss, B., and Anselmetti, F. S.: A subaquatic moraine complex in overdeepened Lake Thun (Switzerland) unravelling the deglaciation history of the Aare Glacier. *Quaternary Science Reviews*, 187, 62–79, 10.1016/j.quascirev.2018.03.010, 2018
- Foley, B., Jones, I. D., Maberly, S. C., and Rippey, B.: Long-term changes in oxygen depletion in a small temperate lake: effects of climate change and eutrophication. *Freshwater Biology*, 57, 278–289, 10.1111/j.1365-2427.2011.02662.x, 2012
- 720 Gächter, R., Meyer, J. S., and Mares, A.: Contribution of bacteria to release and fixation of phosphorus in lake sediments. *Limnology and Oceanography*, 33, 1542–1558, 10.4319/lo.1988.33.6_part_2.1542, 1988
- Gilarranz, L. J., Narwani, A., Odermatt, D., Siber, R., & Dakos, V.: Regime shifts, trends, and variability of lake productivity at a global scale. *Proceedings of the National Academy of Sciences*, 119, e2116413119, 10.1073/pnas.2116413119, 2022
- 725 Grimm, E. C.: CONISS: a FORTRAN 77 program for stratigraphically constrained cluster analysis by the method of incremental sum of squares. *Computers & geosciences*, 13, 13–35, 10.1016/0098-3004(87)90022-7, 1987

- Guthruf, K, Maurer, V., Ryser, R., Zeh, M., and Zweifel, N.: Amsoldingersee, in Zustand der Kleinseen. *Awa Fakten, Bau-, Verkehrs- und Energiedirektion des Kantons Bern*, 35-42, 2015
- 730 Hampton, S. E., Galloway, A. W., Powers, S. M., Ozersky, T., Woo, K. H., Batt, R. D., . . . , and Xenopoulos M. A.: Ecology under lake ice. *Ecology letters*, 20, 98–111, <https://doi.org/10.1111/ele.12699>, 2017
- Heiri, O., Ilyashuk, B., Millet, L., Samartin, S., and Lotter, A. F.: Stacking of discontinuous regional palaeoclimate records: Chironomid-based summer temperatures from the Alpine region. *The Holocene*, 25, 137–149, 10.1177/0959683614556382, 2015
- 735 Hoek, W. Z., Lammertsma, E. I., Bohncke, S. J., Bos, J. A., Bunnik, F., Kasse, C., Schokker, J., and Westerhoff, W.: Lateglacial and early Holocene vegetation development and fluvial system changes in the northern Meuse valley, the Netherlands: a review of palynological data. *Netherlands Journal of Geosciences*, 96, 93–114, 10.1017/njg.2017.4, 2017
- 740 Hupfer, M., and Lewandowski, J.: Oxygen controls the phosphorus release from lake sediments—a long-lasting paradigm in limnology. *International Review of Hydrobiology*, 93, 415–432, 10.1002/iroh.200711054, 2008
- Ivy-Ochs, S., Kerschner, H., Kubik, P. W., and Schlüchter, C.: Glacier response in the European Alps to Heinrich Event 1 cooling: the Gschnitz stadial. *Journal of Quaternary science*, 21, 115–130, 10.1002/jqs.955, 2006
- 745 Jane, S. F., Hansen, G. J., Kraemer, B. M., Leavitt, P. R., Mincer, J. L., North, R. L., . . . , and Rose, K. C.: Widespread deoxygenation of temperate lakes. *Nature*, 594, 66–70, 10.1038/s41586-021-03550-y, 2021
- Jansen, J., MacIntyre, S., Barrett, D. C., Chin, Y.-P., Cortés, A., Forrest, A. L., Hrycik, A. R., Martin, R., McMeans, B. C., Rautio, M., and Schwefel, R.: Winter limnology: how do hydrodynamics and biogeochemistry shape ecosystems under ice? *Journal of Geophysical Research: Biogeosciences*, 126, e2020JG006237, 10.5194/egusphere-egu21-1693, 2021
- 750 Jansen, J., Simpson, G. L., Weyhenmeyer, G. A., Härkönen, L. H., Paterson, A. M., del Giorgio, P. A., and Prairie, Y. T.: Climate-driven deoxygenation of northern lakes. *Nature Climate Change*, 14, 832–838, 10.1038/s41558-024-02058-3, 2024
- 755 Jeffrey, S. T., and Humphrey, G. F.: New spectrophotometric equations for determining chlorophylls a, b, c1 and c2 in higher plants, algae and natural phytoplankton. *Biochemie und physiologie der pflanzen*, 167, 191–194, 10.1016/s0015-3796(17)30778-3, 1975
- Jenny, J.-P., Francus, P., Normandeau, A., Lapointe, F., Perga, M.-E., Ojala, A., Schimmelmänn, A., Zolitschka, B.: Global spread of hypoxia in freshwater ecosystems during the last three centuries is caused by rising local human pressure. *Global change biology*, 22, 1481–1489, 10.1111/gcb.13193, 2016
- 760 Jeppesen, E., Moss, B., Bennion, H., Carvalho, L., DeMeester, L., Feuchtmayr, H., . . . , and Verhoeven, J.T.A.: Interaction of climate change and eutrophication. in: *Climate change impacts on freshwater ecosystems*, edited by: Martin Kernan, Richard W. Battarbee, Brian Moss, Blackwell Publishing Ltd, 119–151, 10.1002/9781444327397.ch6, 2010

- 765 Karr, E. A., Sattley, W. M., Jung, D. O., Madigan, M. T., and Achenbach, L. A.: Remarkable diversity of phototrophic purple bacteria in a permanently frozen Antarctic lake. *Applied and environmental microbiology*, 69, 4910–4914, 10.1128/aem.69.8.4910-4914.2003, 2003
- Klanten, Y., Couture, R.-M., Christoffersen, K. S., Vincent, W. F., and Antoniadou, D.: Oxygen depletion in Arctic lakes: circumpolar trends, biogeochemical processes, and implications of climate change. *Global Biogeochemical Cycles*, 37, e2022GB007616, 10.1029/2022gb007616, 2023
- 770 Koffman, B. G., Yoder, M. F., Methven, T., Hanschka, L., Sears, H. B., Saylor, P. L., and Wallace, K. L.: Glacial dust surpasses both volcanic ash and desert dust in its iron fertilization potential. *Global Biogeochemical Cycles*, 35, e2020GB006821, 10.1029/2020gb006821, 2021
- Kramer, S. J., and Siegel, D. A.: How can phytoplankton pigments be best used to characterize surface ocean phytoplankton groups for ocean color remote sensing algorithms? *Journal of Geophysical Research: Oceans*, 124, 7557–7574, 10.1029/2019jc015604, 2019
- 775 Lami, A., Guilizzoni, P., and Marchetto, A.: High resolution analysis of fossil pigments, carbon, nitrogen and sulphur in the sediment of eight European Alpine lakes: The MOLAR project. *J. Limnol*, 59, 15–28, 10.4081/jlimnol.2000.s1.15, 2000
- Lami, A., Musazzi, S., Marchetto, A., Buchaca, T., Kernan, M., Jeppesen, E., and Guilizzoni, P.: Sedimentary pigments in 308 alpine lakes and their relation to environmental gradients. *Advances in Limnology*, 62, 247–268, 10.1127/advlim/62/2009/247, 2009
- 780 Leavitt, P. R., and Hodgson, D. A.: Sedimentary pigments. in: *Tracking environmental change using lake sediments: Terrestrial, algal, and siliceous indicators*, edited by: John P. Smol, H. John B. Birks, William M. Last, Raymond S. Bradley, Keith Alverson, Springer, Dordrecht, The Netherlands, 295–325, 10.1007/0-306-47668-1_15, 2001
- 785 Legendre, P.: *Numerical ecology*. Elsevier, 10.1016/b978-0-12-409548-9.10595-0, 2012
- Lotter, A. F., Birks, H. J., Eicher, U., Hofmann, W., Schwander, J., and Wick, L.: Younger Dryas and Allerød summer temperatures at Gerzensee (Switzerland) inferred from fossil pollen and cladoceran assemblages. *Palaeogeography, Palaeoclimatology, Palaeoecology*, 159, 349–361, 10.1016/s0031-0182(00)00093-6, 2000
- 790 Lotter, A. F., Eicher, U., Siegenthaler, U., and Birks, H. J.: Late-glacial climatic oscillations as recorded in Swiss lake sediments. *Journal of Quaternary Science*, 7, 187–204, 10.1002/jqs.3390070302, 1992
- Lotter, A. F., Heiri, O., Brooks, S., van Leeuwen, J. F., Eicher, U., & Ammann, B.: Rapid summer temperature changes during Termination 1a: high-resolution multi-proxy climate reconstructions from Gerzensee (Switzerland). *Quaternary Science Reviews*, 36, 103–113, 10.1016/j.quascirev.2010.06.022, 2012
- 795 Lotter, A., and Boucherle, M. M.: A late-glacial and post-glacial history of Amsoldingensee and vicinity, Switzerland. *Schweizerische Zeitschrift für Hydrologie*, 46, 192–209, 10.1007/bf02538061, 1984

- Luetscher, M., Boch, R., Sodemann, H., Spötl, C., Cheng, H., Edwards, R. L., Frisia, S., Hof, F., and Müller, W.:
North Atlantic storm track changes during the Last Glacial Maximum recorded by Alpine speleothems.
800 *Nature Communications*, 6, 6344, 10.1038/ncomms7344, 2015
- Lukkari, K., Hartikainen, H., and Leivuori, M.: Fractionation of sediment phosphorus revisited. I: Fractionation
steps and their biogeochemical basis. *Limnology and Oceanography: Methods*, 5, 433–444,
10.4319/lom.2007.5.433, 2007
- Makri, S., Rey, F., Gobet, E., Gilli, A., Tinner, W., and Grosjean, M.: Early human impact in a 15,000-year high-
805 resolution hyperspectral imaging record of paleoproduction and anoxia from a varved lake in
Switzerland. *Quaternary science reviews*, 239, 106335, 10.1016/j.quascirev.2020.106335, 2020
- Meerhoff, M., Audet, J., Davidson, T. A., De Meester, L., Hilt, S., Kosten, S., Liu, Z., Mazzeo, N., Paerl, H.,
Scheffer, M., and Jeppesen E.: Feedback between climate change and eutrophication: revisiting the allied
810 attack concept and how to strike back. *Inland Waters*, 12, 187–204, 10.1080/20442041.2022.2029317,
2022
- Meyers, P. A.: Organic geochemical proxies of paleoceanographic, paleolimnologic, and paleoclimatic processes.
Organic geochemistry, 27, 213–250, 10.1016/s0146-6380(97)00049-1, 1997
- Moore, P. D., Webb, J. A., & Collison, M. E.: *Pollen analysis*. (Vol. 80). JSTOR, 10.2307/2260877, 1991
- Mottl, O., Grytnes, J.-A., Seddon, A. W., Steinbauer, M. J., Bhatta, K. P., Felde, V. A., Flantua, S.G.A., and Birks,
815 H. J.B.: Rate-of-change analysis in paleoecology revisited: A new approach. *Review of Palaeobotany and
Palynology*, 293, 104483, 10.1016/j.revpalbo.2021.104483, 2021
- Myrbo, A., Morrison, A., and McEwan, R.: Tool for microscopic identification (TMI). LacCore, Available at:
<http://tmi.laccore.umn.edu>, 2011
- North Greenland Ice Core Project members: High-resolution record of Northern Hemisphere climate extending
820 into the last interglacial period. *Nature*, 431, 147–151, 10.1038/nature02805, 2004
- Nürnberg, G.K.: Prediction of annual and seasonal phosphorus concentrations in stratified and polymictic lakes.
Limnology and Oceanography, 43, 1544–1552, 10.4319/lo.1998.43.7.1544, 1998
- Orosa, M., Valero, J. F., Herrero, C., and Abalde, J.: Comparison of the accumulation of astaxanthin in
Haematococcus pluvialis and other green microalgae under N-starvation and high light conditions.
825 *Biotechnology Letters*, 23, 1079–1085, <https://doi.org/10.1023/A:1010510508384>, 2001
- Pigati, J. S., and Springer, K. B.: Hydroclimate response of spring ecosystems to a two-stage Younger Dryas
event in western North America. *Scientific Reports*, 12, 7323, 10.1038/s41598-022-11377-4, 2022
- Podani, J., and Miklós, I.: Resemblance coefficients and the horseshoe effect in principal coordinates analysis.
Ecology, 83, 3331–3343, 10.1890/0012-9658(2002)0833331:rcathe2.0.co;2, 2002
- 830 Rasmussen, S. O., Bigler, M., Blockley, S. P., Blunier, T., Buchardt, S. L., Clausen, H. B., . . . , and Winstrup, M.:
A stratigraphic framework for abrupt climatic changes during the Last Glacial period based on three

synchronized Greenland ice-core records: refining and extending the INTIMATE event stratigraphy. *Quaternary science reviews*, 106, 14–28, 10.1016/j.quascirev.2014.09.007, 2014

- 835 Reimer, P. J., Austin, W. E., Bard, E., Bayliss, A., Blackwell, P. G., Ramsey, C. B., . . . , and Talamo, S.: The IntCal20 Northern Hemisphere Radiocarbon Age Calibration Curve (0–55 cal kBP). *Radiocarbon*, 62, 725–757, 10.1017/RDC.2020.41, 2020
- Reinig, F., Wacker, L., Jöris, O., Oppenheimer, C., Guidobaldi, G., Nievergelt, D., . . . , and Büntgen, U.: Precise date for the Laacher See eruption synchronizes the Younger Dryas. *Nature*, 595, 66–69, 10.1038/s41586-021-03608-x, 2021
- 840 Reuss, N. S., Anderson, N. J., Fritz, S. C., and Simpson, G. L.: Responses of microbial phototrophs to late-Holocene environmental forcing of lakes in south-west Greenland. *Freshwater Biology*, 58, 690–704, <https://doi.org/10.1111/fwb.12073>, 2013
- Rey, F., Gobet, E., Schwörer, C., Hafner, A., Szidat, S., and Tinner, W.: Climate impacts on vegetation and fire dynamics since the last deglaciation at Moossee (Switzerland). *Climate of the Past*, 16, 1347–1367, 10.5194/cp-16-1347-2020, 2020
- 845 Rey, F., Gobet, E., van Leeuwen, J. F., Gilli, A., van Raden, U. J., Hafner, A., Wey, O., Rhiner, J., Schmockler, D., Zünd, J., and Tinner, W.: Vegetational and agricultural dynamics at Burgäschisee (Swiss Plateau) recorded for 18,700 years by multi-proxy evidence from partly varved sediments. *Vegetation History and Archaeobotany*, 26, 571–586, 10.1007/s00334-017-0635-x, 2017
- 850 Richardson, K., Steffen, W., Lucht, W., Bendtsen, J., Cornell, S. E., Donges, J. F., . . . , and Rockström, J.: Earth beyond six of nine planetary boundaries. *Science advances*, 9, eadh2458, 10.1126/sciadv.adh2458, 2023
- Rogozin, D. Y., Zykov, V. V., Chernetsky, M. Y., Degermendzhy, A. G., and Gulati, R. D.: Effect of winter conditions on distributions of anoxic phototrophic bacteria in two meromictic lakes in Siberia, Russia. *Aquatic Ecology*, 43, 661–672, 10.1007/s10452-009-9270-7, 2009
- 855 Romero-Viana, L., Keely, B. J., Camacho, A., Vicente, E., and Miracle, M. R.: Primary production in Lake La Cruz (Spain) over the last four centuries: reconstruction based on sedimentary signal of photosynthetic pigments. *Journal of Paleolimnology*, 43, 771–786, 10.1007/s10933-009-9367-y, 2010
- Rousseau, D.-D., Antoine, P., and Sun, Y.: How dusty was the last glacial maximum over Europe? *Quaternary Science Reviews*, 254, 106775, 10.1016/j.quascirev.2020.106775, 2021
- 860 Rousseau, D.-D., Chauvel, C., Sima, A., Hatté, C., Lagroix, F., Antoine, P., Balkanski, Y., Fuchs, M., Mellet, C., Kageyama, M., Ramstein, G., Lang, A.: European glacial dust deposits: Geochemical constraints on atmospheric dust cycle modeling. *Geophysical Research Letters*, 41, 7666–7674, 10.1002/2014gl061382, 2014
- 865 Salk, K. R., Venkiteswaran, J. J., Couture, R.-M., Higgins, S. N., Paterson, M. J., and Schiff, S. L.: Warming combined with experimental eutrophication intensifies lake phytoplankton blooms. *Limnology and Oceanography*, 67, 147–158, 10.1002/lno.11982, 2022

- Schaller, T., and Wehrli, B.: Geochemical-focusing of manganese in lake sediments—an indicator of deep-water oxygen conditions. *Aquatic Geochemistry*, 2, 359–378, 10.1007/bf00115977, 1996
- 870 Schlüter, L., Lauridsen, T. L., Krogh, G., and Jørgensen, T.: Identification and quantification of phytoplankton groups in lakes using new pigment ratios—a comparison between pigment analysis by HPLC and microscopy. *Freshwater Biology*, 51, 1474–1485, 10.1111/j.1365-2427.2006.01582.x, 2006
- Schmidt, R., Psenner, R., Müller, J., Indinger, P., and Kamenik, C.: Impact of late glacial climate variations on stratification and trophic state of the meromictic lake Längsee (Austria): validation of a conceptual model by multi proxy studies. *Journal of Limnology*, 61, 49–60, 10.4081/jlimnol.2002.49, 2002
- 875 Scholtysik, G., Goldhammer, T., Arz, H. W., Moros, M., Littke, R., and Hupfer, M.: Geochemical focusing and burial of sedimentary iron, manganese, and phosphorus during lake eutrophication. *Limnology and Oceanography*, 67, 768–783, 10.1002/lno.12019, 2022
- 880 Schütte, U. M., Cadieux, S. B., Hemmerich, C., Pratt, L. M., and White, J. R.: Unanticipated geochemical and microbial community structure under seasonal ice cover in a dilute, dimictic Arctic lake. *Frontiers in Microbiology*, 7, 1035, 10.3389/fmicb.2016.01035, 2016
- Shotyk, W., Weiss, D., Kramers, J. D., Frei, R., Cheburkin, A. K., Gloor, M., and Reese, S.: Geochemistry of the peat bog at Etang de la Gruère, Jura Mountains, Switzerland, and its record of atmospheric Pb and lithogenic trace metals (Sc, Ti, Y, Zr, and REE) since 12,370 14C yr BP. *Geochimica et Cosmochimica Acta*, 65, 2337–2360, 10.1016/s0016-7037(01)00586-5, 2001
- 885 Stomp, M., Huisman, J., Stal, L. J., & Matthijs, H. C.: Colorful niches of phototrophic microorganisms shaped by vibrations of the water molecule. *The ISME journal*, 1, 271–282, 10.1038/ismej.2007.59, 2007
- Szidat, S., Salazar, G. A., Vogel, E., Battaglia, M., Wacker, L., Synal, H.-A., and Türler, A.: ¹⁴C analysis and sample preparation at the new Bern Laboratory for the Analysis of Radiocarbon with AMS (LARA). *Radiocarbon*, 56, 561–566, 10.1017/s0033822200049602, 2014
- 890 Thiel, T.: Nitrogen fixation in heterocyst-forming cyanobacteria. In *Genetics and regulation of nitrogen fixation in free-living bacteria*, edited by: W. Klipp, B. Masepohl, J. R. Gallon and W. E. Newton, 73–110, Springer, Dordrecht, the Netherlands, 10.1007/1-4020-2179-8, 2004.
- Tu, L., Gilli, A., Lotter, A. F., Vogel, H., Moyle, M., Boyle, J. F., and Grosjean, M.: The nexus among long-term changes in lake primary productivity, deep-water anoxia, and internal phosphorus loading, explored through analysis of a 15,000-year varved sediment record. *Global and planetary change*, 207, 103643, 10.1016/j.gloplacha.2021.103643, 2021
- 895 Újvári, G., Stevens, T., Svensson, A., Klötzli, U. S., Manning, C., Németh, T., Kovács, J., Sweeney, M.R., Gocke, M., Wiesenberg, G.L.B., Markovic, S.B., and Zech, M.: Two possible source regions for central Greenland last glacial dust. *Geophysical Research Letters*, 42, 10–399, 10.1002/2015gl066153, 2015
- 900 Van Raden, U. J., Colombaroli, D., Gilli, A., Schwander, J., Bernasconi, S. M., van Leeuwen, J., Leuenberger, M., and Eicher, U.: High-resolution late-glacial chronology for the Gerzensee lake record (Switzerland):

$\delta^{18}\text{O}$ correlation between a Gerzensee-stack and NGRIP. *Palaeogeography, Palaeoclimatology, Palaeoecology*, 391, 13–24, 10.1016/j.palaeo.2012.05.017, 2013

- 905 Vinnå, Råman, L., Medhaug, I., Schmid, M., and Bouffard, D.: The vulnerability of lakes to climate change along an altitudinal gradient. *Communications Earth & Environment*, 2, 35, 10.1038/s43247-021-00106-w, 2021
- Weber, J., Bauersachs, T., and Schwark, L.: A multiphasic Younger Dryas cold period recorded in sediments of Lake Steisslingen, SW-Germany: A biomarker perspective. *Quaternary international*, 542, 121–136, 10.1016/j.quaint.2020.03.028, 2020
- 910 Weltje, G. J., and Tjallingii, R.: Calibration of XRF core scanners for quantitative geochemical logging of sediment cores: Theory and application. *Earth and Planetary Science Letters*, 274, 423–438. 10.1016/j.epsl.2008.07.054, 2008
- Weyhenmeyer, G. A., Chukwuka, A. V., Anneville, O., Brookes, J., Carvalho, C. R., Cotner, J. B., . . . , and Zhou, Y.: Global lake health in the Anthropocene: Societal implications and treatment strategies. *Earth's Future*, 12, e2023ef004387, 10.1029/2023ef004387, 2024
- 915 Wienhues, G., Zahajská, P., Schneider, T., Fischer, D., and Grosjean, M.: Direct detection of phycocyanin in sediments by hyperspectral imaging. *J Paleolimnol*, 73, 73–87, <https://doi.org/10.1007/s10933-024-00350-y>, 2025
- Yabuzaki, J.: Carotenoids Database: structures, chemical fingerprints and distribution among organisms. *Database*, bax004 [data base], 10.1093/database/bax004, 2017
- 920 Zander, P. D., Wienhues, G., and Grosjean, M.: Scanning hyperspectral imaging for in situ biogeochemical analysis of lake sediment cores: Review of recent developments. *Journal of imaging*, 8, 58, 10.3390/jimaging8030058, 2022
- Zander, P. D., Wirth, S. B., Gilli, A., Peduzzi, S., and Grosjean, M.: Hyperspectral imaging sediment core scanning tracks high-resolution Holocene variations in (an) oxygenic phototrophic communities at Lake Cadagno, Swiss Alps. *Biogeosciences*, 20, 2221–2235, 10.5194/bg-20-2221-2023, 2023
- 925 Zander, P. D., Żarczyński, M., Vogel, H., Tylmann, W., Wacnik, A., Sanchini, A., and Grosjean, M.: A high-resolution record of Holocene primary productivity and water-column mixing from the varved sediments of Lake Żabińskie, Poland. *Science of the total environment*, 755, 143713, 10.1016/j.scitotenv.2020.143713, 2021
- 930 Züllig, H.: Carotenoids from plankton and photosynthetic bacteria in sediments as indicators of trophic changes in Lake Lobsigen during the last 14000 years. *Hydrobiologia*, 143, 315–319, 10.1007/978-94-009-4047-5_40, 1986

935