

# 1    **The Largest Crop Production Shocks: Magnitude, Causes and Frequency**

2    Florian Ulrich Jehn<sup>1,2,3</sup>, James Mulhall<sup>1</sup>, Simon Blouin<sup>1</sup>, Łukasz G. Gajewski<sup>1</sup>, Nico  
3    Wunderling<sup>3,4,5</sup>

4    <sup>1</sup>Alliance to Feed the Earth in Disasters (ALLFED), Lafayette, CO, USA

5    <sup>2</sup>Societal Dynamics (SoDy), Remote

6    <sup>3</sup>Center for Critical Computational Studies (C<sup>3</sup>S), Goethe University Frankfurt, Frankfurt am Main, Germany

7    <sup>4</sup>Earth Resilience Science Unit, Potsdam Institute for Climate Impact Research (PIK), Member of the Leibniz Association,  
8    Potsdam, Germany

9    <sup>5</sup>High Meadows Environmental Institute, Princeton University, Princeton, NJ, USA

10    *Correspondence to:* Florian Ulrich Jehn (florian@allfed.info) or Nico Wunderling ([wunderling@c3s.uni-frankfurt.de](mailto:wunderling@c3s.uni-frankfurt.de))

11    **Abstract** Food is the foundation of our society. We often take it for granted, but stocks are rarely available for longer than a  
12    year, and food production can be disrupted by catastrophic events, both locally and globally. To highlight such major risks to  
13    the food system, we analyzed FAO crop production data from 1961 to 2023 to find the largest crop production shock for every  
14    country and identify its causes. We show that large crop production shocks regularly happen in all countries. This is most often  
15    driven by climate (especially droughts), but disruptions by other causes like economic disruptions, environmental hazards  
16    (especially storms) and conflict also occur regularly. The global mean of largest country-level shocks averaged -29%, with  
17    African countries experiencing the most extreme collapses (-80% in Botswana), while Asian and Central European nations  
18    faced more moderate largest shocks (-5 to -15%). While global shocks above 5% are rare (occurring once in 63 years),  
19    continent-level shocks of this magnitude happen every 1.8 years on average. These results show that large disruptions to our  
20    food system frequently happen on a local to regional scale and can plausibly happen on a global scale as well. We therefore  
21    argue that more preparation and planning are needed to avoid such global disruptions to food production.

## 22    **1 Introduction**

23    Having enough food available is essential for every society. However, no food is storable forever, and storage is expensive.  
24    As a result, there is always only a very finite amount of food in stock. If production were to stop tomorrow, stocks globally  
25    would only last just under a year, with Africa and parts of Asia having only around six months of food stored (Laio et al.,  
26    2016). Some important staple crops like wheat would even be depleted in two to three months if production ceased in the  
27    months of low stocks and consumption stayed constant (Do et al., 2010). Over the last few decades, however, there has been  
28    a trend towards maintaining somewhat larger food stocks, increasing resilience (Laio et al., 2016; Marchand et al., 2016).

29

30 One safeguard against the depletion of stocks is the global and interconnected food production and trade system that has  
31 developed since the mid-20th century (Ji et al., 2024). In the last few decades, this system has been quite successful in ensuring  
32 food security for a majority of the world (Herre et al., 2017). However, in such complex and connected systems, there is always  
33 the potential for cascading failures, starting from one local shock and rippling outwards (Bernard de Raymond et al., 2021).  
34 Also, the system is highly concentrated among a few key players, like Russia for wheat, the United States for maize, or Brazil  
35 for soy. This concentration of food production has historical roots. As Clapp (2023) demonstrates, capitalism and colonialism  
36 drove specialization in single crops for efficiency and profitability, while also promoting the distribution of the production  
37 system globally, whereby certain regions or countries specialize in producing certain types of goods — grains, fruits, textiles,  
38 etc. This required these countries to then become bulk importers of the goods they did not produce themselves. Post-colonial  
39 countries inherited economies dependent on food imports rather than local production. This has created a system where  
40 disruptions to a few key crops or exporting nations can have cascading global effects, with recent research by Jain (2024)  
41 showing that this concentration also happens on a country level, with certain regions in a given country being responsible for  
42 most of the production and trade.

43

44 There have been a variety of studies to understand the events that might cause such an abrupt loss in food production. One of  
45 the more comprehensive examples is Cottrell et al. (2019), who looked at food production shocks across crops, livestock,  
46 fisheries, and aquaculture and found that the frequency of shocks increases over time, and that the shocks are mainly caused  
47 by climate and geopolitical disruptions. Another way to analyze these global shocks is the concept of Multiple Breadbasket  
48 Failure (MBBF). This term describes the dangers that arise in the food system when several of the main food-producing regions  
49 globally experience a yield shock in parallel (Gaupp et al., 2020; Jahn, 2021).

50

51 More recently, a new term has been introduced for another kind of risk to the food system: Global Catastrophic Food Failure  
52 (GCFF) (Wescombe et al., 2025). This term is meant to describe the gravest risks our food system could face, disruptions so  
53 large that food production would exhaust stocks and lead to widespread famine if not managed well, due to e.g. climate change,  
54 war, volcanoes, or pandemics. A shock of this magnitude entails a significant risk of creating famine on a large scale.

55

56 Such grave shocks have not happened since data collection by the FAO started in 1961. For the time before this, data only exist  
57 for a small subset of countries (Anderson et al., 2023), so it is considerably more uncertain to what extent food production  
58 shocks occurred before that. The most plausible events that might have caused such a global shock in the last century were the  
59 two world wars, but data from that period are patchy. Another historical candidate for a GCFF is the eruption of Mount  
60 Tambora in 1815 and its climatic consequences, but the records of yields from that time are too sparse to be certain  
61 (Brönnimann and Krämer, 2016). Unfortunately, our modern food system is vulnerable to disruptions on global scales by  
62 events like nuclear war (Xia et al., 2022), geomagnetic storms or extreme pandemics (Moersdorf et al., 2024) and large volcanic

eruptions (Cassidy and Mani, 2022). Also, as we further move towards polycrisis, it becomes more likely that several shocks coincide at the same time (Delannoy et al., 2025).

Such extreme risks often seem abstract and distant, making them seem implausible. To address this perception gap, this paper aims to ground future catastrophic food security risks in historical data. To do so, we aggregate all major crops based on their caloric value to have an overall measure of food production. We focus on crops because they make up the majority of calories consumed by humans (>85%), and there is very reliable data available. We aggregate the crops by calories because, without enough calories, you cannot prevent famine. This provides us with a time series (1961 to 2023) of calories produced for all countries, from which we can calculate how much the actual yield differs from the expected yield based on long-term trends in food production.

Our approach builds on previous work, such as Cottrell et al. (2019) and Anderson et al. (2023). However, rather than analyzing climate patterns that might cause shocks like Anderson et al. (2023) or identifying shocks across multiple food sectors like Cottrell et al. (2019), this paper systematically describes the worst crop production shock that each country experienced and why it happened. We believe this unique focus on the largest magnitude shocks highlights the greatest dangers that crop production faces, providing a comprehensive map of actual worst-case vulnerabilities rather than merely describing risk factors in general. This study here complements Cottrell et al. (2019). While the earlier study focussed on how often the food system shows shocks in general, this study here explicitly focuses on how bad these shocks can get and why these most extreme shocks happen.

Our comprehensive shock dataset enables investigation of three key research objectives. First, we aim to quantify the magnitude of the most severe crop production shocks to establish baseline thresholds for extreme events. Second, we aim to analyze temporal trends in the frequency of largest shocks to identify whether extreme events are becoming more or less common over time. Third, we aim to identify and categorize the primary drivers of these production shocks to understand their underlying mechanisms.

## **2 Data and Methods**

### **2.1 Data**

To conduct our analysis, we used food production data provided by the Food and Agriculture Organization of the United Nations (FAO). This dataset covers all major crops and contains data from 1961 to 2023. We used the main crops in each of the main crop types as described by FAO (2024):

- Cereals: Maize, rice, wheat, barley, sorghum
- Sugar crops: Sugar cane, sugar beet

- Vegetables: Tomatoes, onions (including shallots), cucumbers and gherkins, cabbages, eggplants
- Oilcrops: Oil palm fruit, soya beans, rapeseed, seed cotton, coconuts
- Fruit: Bananas, watermelons, apples, grapes, oranges
- Roots and tubers: Potatoes, cassava, sweet potatoes, yams, taro

Using all these crops means we are considering the vast majority of crops produced globally. We aggregate all of these crops based on their caloric value. To stay consistent with FAO data, we also use FAO caloric density estimates (FAO, 2001a). To get the overall caloric production, we multiply the production values of the foods by their calories and sum all calories produced in a given year and country.

We do not differentiate between which of these crops are intended for feed or food, because in a famine situation, we assume that most, if not all, of it would be used for human consumption. We recognize that this does not reflect current food consumption patterns, because several of the crops (like maize or soya beans) are mostly used for feed and only 55% of global crop calories reach humans directly (Cassidy et al., 2013). However, our aim is to quantify crop production shocks, rather than current consumption patterns. During severe food crises, feed is often redirected towards human consumption. For example, there are documented cases of this phenomenon for both World Wars (Collingham, 2012; Offer, 1991) and during the Great Chinese Famine (Meng et al., 2015). Depending on the crop, this might take some time and infrastructure, but it represents a sensible crisis response. Most of the crops we consider here are directly edible by humans. The crops used here, which are likely the most difficult for humans to consume, are seed cotton, rapeseed, and soya beans. To assess whether this changes our findings, we redid the analysis excluding seed cotton, rapeseed and soya beans. The results stay almost exactly the same, and for most countries, the results only change by a percentage point or less. This can also be seen in Figure S1, which is a version of Figure 2 but without those crops. The changes are so small that they are almost not detectable visually. We therefore conduct the analysis with the whole set of crops.

## 2.2 Calculating food shocks

For this analysis, we consider it a food shock if the amount of crops produced in a given year is considerably lower than the amount of crops we would expect for that year. However, to calculate this shock, we must first estimate the expected yield for that year. To do so, we are using a Savitzky-Golay filter (Savitzky and Golay, 1964) as implemented in scipy v1.15.2 (Virtanen et al., 2020).

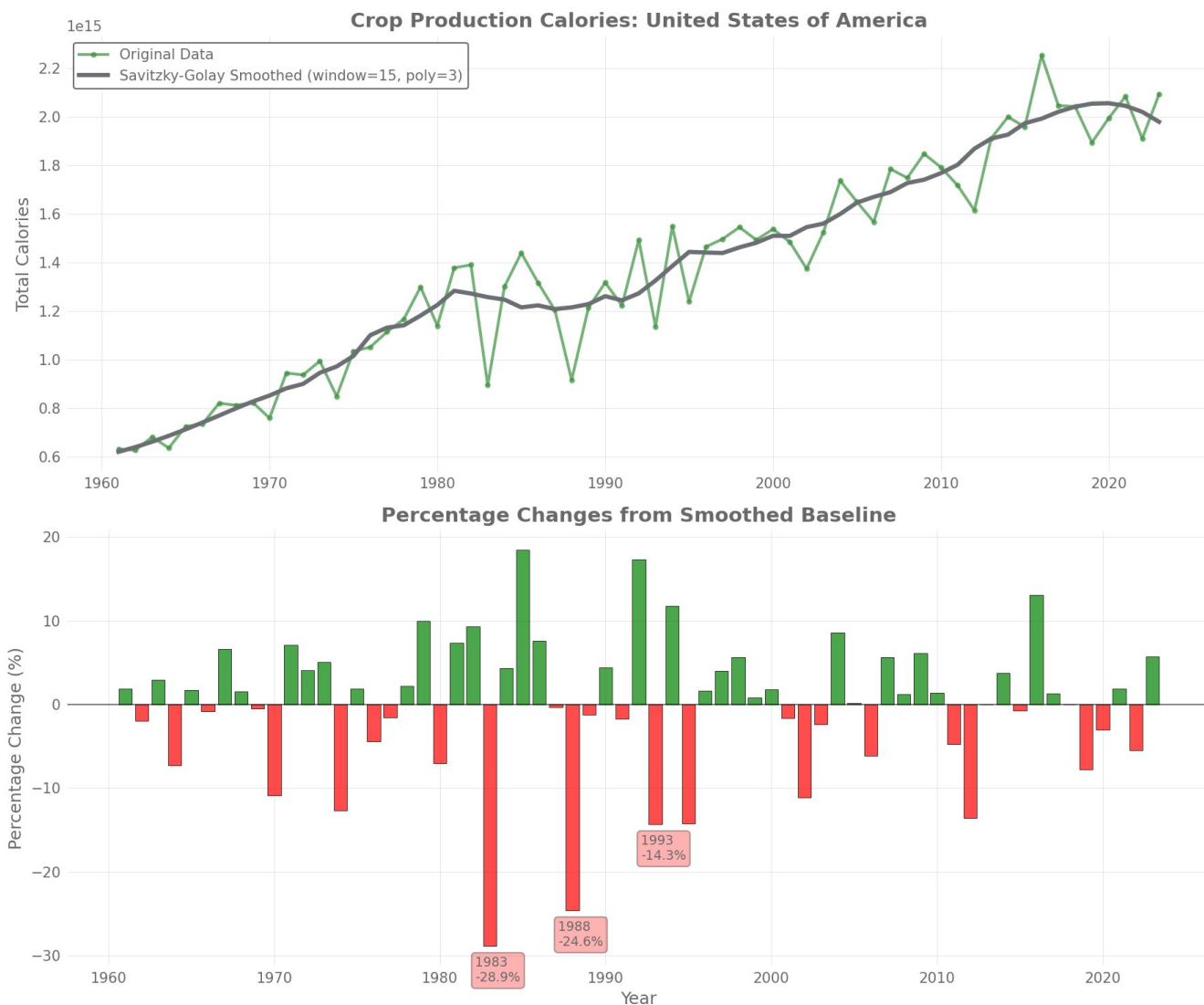
The Savitzky-Golay filter is a smoothing technique that reduces noise in data while preserving important features like peaks and trends. It works by fitting a polynomial to small subsets (a window) of neighboring data points, then using the polynomial to estimate a smoothed value at the center of each subset. At each position, the filter fits the best polynomial curve through the

126 data points within that window, then takes the value of that curve at the center point as the smoothed result. This process  
127 continues across the entire dataset.

128 This process is similar to the food shock calculation in Anderson et al. (2023), who used a Gaussian filter. We chose the  
129 Savitzky-Golay filter because it performs better at the edges of the dataset. We use a window length of 15. This means the 7  
130 years before and after a given year are used to calculate the expected value for that year. We used this window length to make  
131 our approach comparable to Cottrell et al. (2019). Cottrell et al. (2019) considered in their shock calculation the previous 7  
132 years. We used a 3rd order polynomial, as this resulted in an overall smoother estimation. Though ultimately, a Gaussian filter  
133 and the Savitzky-Golay filter deliver very similar results for our dataset and identify similar magnitudes of shocks, as well as  
134 the same years with the largest shocks (Figure S2).

135 For the detection of the largest shocks, we also introduced a conditional constraint. We only count a relative drop in crop  
136 production as a shock if the crop production in the shock year is lower than the previous year. This is to avoid detecting a year  
137 as having a shock, even though the amount of food produced has increased, which can happen if there is a sudden increase in  
138 production in the following years. The additional constraint was added because the initial analysis incorrectly flagged years as  
139 shocks when yields had actually increased from the previous year. However, having more crops than the year before can hardly  
140 be considered a shock.

141 However, our overall analysis is relatively robust against changes in the window size and polyorder, as the overall trend follows  
142 a relatively smooth curve to begin with (see Figure 1 for an example). Smaller windows decrease shock sizes because the  
143 smoothed trend follows the yearly data more closely. Larger window sizes lead to larger shock sizes accordingly. The overall  
144 trends remain very similar because the positions for potential large derivations do not change, even if the individual shock  
145 sizes do. See Figure S3 and S4 for a re-calculation of Figure 1, but with 7 and 21 years for the calculation of the trend line.  
146 This shows that the values slightly change, but in all three cases it highlights the same three years, in the same order, as the  
147 largest shocks in the time series.



**Figure 1: Example of crop calorie production in the United States (1961-2023). Upper plot shows original calorie data in green and smoothed trendline calculated with Savitzky-Golay filter in grey. The lower plot shows the size of the crop production shock calculated with our method. Green represents more calories produced than expected, red represents less calories produced than expected. The three largest shocks are labelled with the year and size of the shock.**

We used both historical and contemporary countries, which slightly inflates shock counts when borders changed—a shock affecting one territory before partition now registers across multiple successor states (e.g. the Soviet Union and its successor states). However, this effect is negligible, and the number of countries stabilized around 1990.

For this analysis, we considered a total of 197 countries. We did not exclude countries with small crop production, as there is no clear cut-off point, and exclusion would have been arbitrary. However, for these small countries, it is more difficult to explore reasons for their crop production shocks, as there is less documentation available, and smaller production numbers are more easily skewed.

## 2.3 Checking the origins of the largest food shocks

To verify if our approach reliably finds the largest food shocks in a country's history, we used Claude 4 Sonnet to search for potential crises in these countries that might have caused the food shocks we had detected (full prompt can be found in the repository of this paper). This provided us with several official sources (e.g. journal articles, FAO reports) that described a crisis in a given year and country. Each search result was verified manually reading through the sources suggested by Claude and confirming whether they described a crisis in the specified country and year specified that could have influenced agriculture on such a scale. While this might produce some false positive results, it is also an approach used by Cottrell et al. (2019) and the magnitude of the events identified fits with the size of the shocks.

The way this search was conducted means Claude was only used to find sources to verify with, but the actual verification was done by humans with independent sources, avoiding the danger of hallucinations and related problems in large language models. If no reasonable source was provided by Claude, we searched for the reason with a normal internet search. If this also did not bring up anything plausible, we sorted this shock into the “Unknown” category. The reason for the shock had to occur in the year of the shock or the year before to be counted. If reliable sources were found, we used those to classify the shock into one of the following categories:

- **Conflict** - wars, civil unrest, territorial disputes
- **Economic** - financial crises, currency devaluation, market collapse
- **Climate** - droughts, extreme temperatures, late cold spells
- **Pest/Disease** - crop diseases, locust invasions, livestock epidemics
- **Policy** - agricultural policy changes, land reforms, trade restrictions
- **Mismanagement** - soil degradation, overexploitation, poor planning
- **Environmental Hazard** - storms, tsunamis, earthquakes, volcanoes
- **Unknown** - insufficient information found

We used these categories, following the approach in Cottrell et al. (2019), but disaggregated some of them to get more fine-grained results. This process allowed us to assign a crisis to almost all of the shocks we detected. Also, many of the sources we used to verify the shocks used phrases like “worst drought year... since the mid-15th century”; Tunisia in 2002 (Ghoneim et al., 2017), “most violent and bloody period of the entire armed confrontation”; Guatemala in 1984 (HRDAG, 1999) or

187 “driest hydrological year on record”; Greece in 1977 (Vasiliades and Tzabiras, 2007). This suggests that our method is able to  
188 detect the worst shock to have occurred in these countries.

189 We categorized shocks by their primary driver while recognizing that most agricultural crises involve multiple interacting  
190 factors. Our classification captures the dominant cause that initiated or most directly drove the production decline. For example,  
191 while economic factors often compound climate shocks, we classified droughts as 'climate' when reduced rainfall was the  
192 primary trigger, even if currency devaluation worsened the impact. This approach provides clarity about initial drivers while  
193 necessarily simplifying complex causal chains. The 'shock' timeframe in our analysis is annual, based on year-to-year  
194 production changes. Multi-year cascading effects—where one year's climate shock leads to mismanagement that causes  
195 another shock—are captured as separate events in our dataset.

196 For some countries where we could not identify a clear cause, the food shocks were either minor or occurred in nations with  
197 low crop production. In these cases, even small absolute declines appeared as major shocks (e.g. Puerto Rico). Additionally,  
198 some countries showed data patterns like maintaining low production for decades, then experiencing sudden jumps that  
199 increased food production by an order of magnitude from one year to the next, with production remaining at this higher level  
200 afterwards (e.g. Oman). These patterns suggest problems with the country-level data rather than flaws in our methodology.

201 The list of the largest food shocks for each country can be found in the repository and in the supplementary materials as a  
202 comma-separated values (CSV) file, complete with yield change, year, category, reason, and source.

## 203 **2.4 Calculating global correlations**

204 In order to investigate the relationships between country-level shocks and global shocks, we calculated the Spearman  
205 correlation coefficient between each country and the rest of the world. This was done to see which countries experience changes  
206 in food production similar to global patterns, and which countries deviate. We chose Spearman over other correlation  
207 coefficients, such as Pearson, because we are interested in whether there is a monotonic relationship between countries (e.g.,  
208 whether countries experience shocks or surpluses at the same time), but not whether this relationship is linear. The rank-based  
209 nature of Spearman correlation also makes it robust to outliers and prevents countries with large production magnitudes from  
210 disproportionately influencing the correlation. The process was done for each country by subtracting the annual crop  
211 production of that country from the world crop production, applying the Savitzky-Golay filter as described in Section 2.2 to  
212 calculate the yield changes for the world minus that country, and then calculating the correlation. This was done to avoid  
213 spurious correlations, since each country's production would otherwise be part of the global numbers.



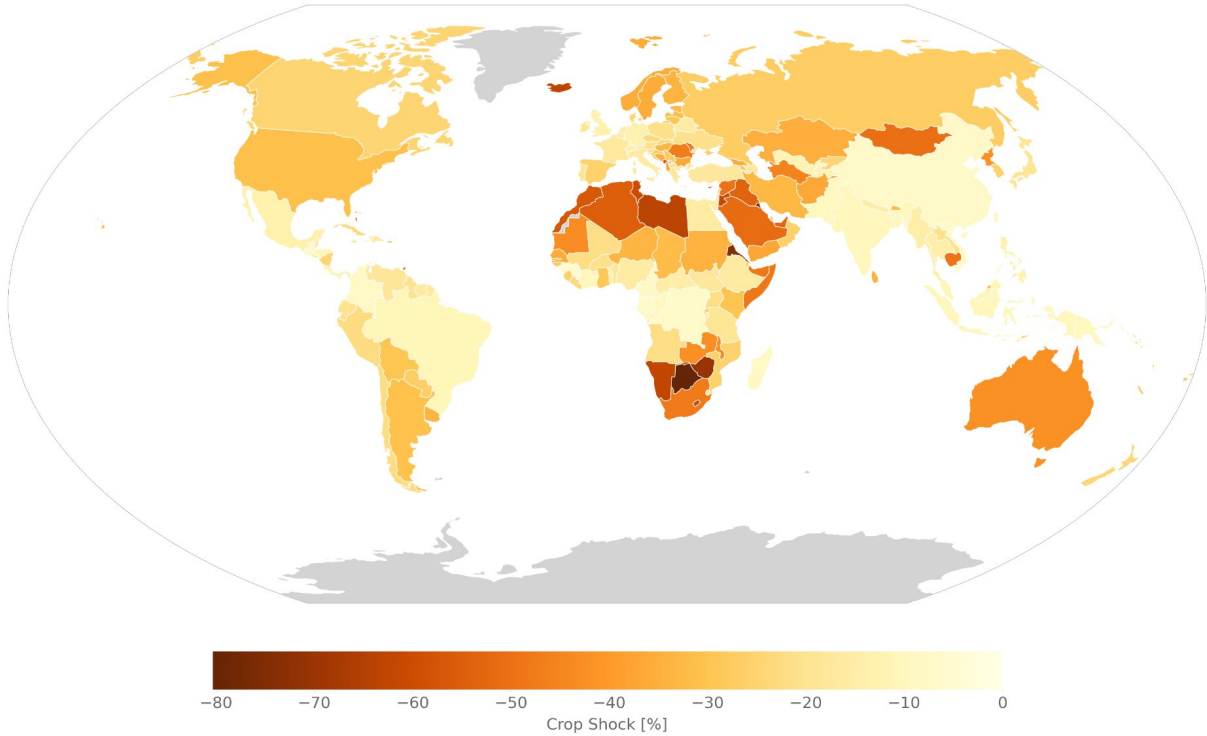
214 **3. Results**

215 **3.1 Magnitude of crop production shocks**

216 The magnitude of the largest crop production shocks varies considerably across countries (Figure 2). Africa stands out with  
217 several nations experiencing extreme production collapses—Zimbabwe reached -70% in 1992, while other Southern African  
218 countries show similarly severe declines exceeding -70%. This geographic concentration of extreme shocks in Southern Africa  
219 suggests regional vulnerability to shared climatic or economic disruptions. North Africa and parts of the Middle East also  
220 display substantial shocks ranging from -40% to -60%, indicating widespread agricultural vulnerability across the continent.  
221 By contrast, countries in Asia and Central Europe typically face more moderate shocks (-5 to -15%), with this being seen in  
222 Southeast Asian nations in particular. This pattern partly reflects the temporal scope of our analysis—China, for instance,  
223 experienced major crop failures shortly before the FAO dataset began in 1961 (Meng et al., 2015).

224 The majority of countries fall between these extremes, with the global mean of the largest shocks averaging approximately -  
225 29%. South America presents an interesting case of relatively mild maximum shocks across most of the continent.

Largest Crop Production Shock by Country (1961-2023)



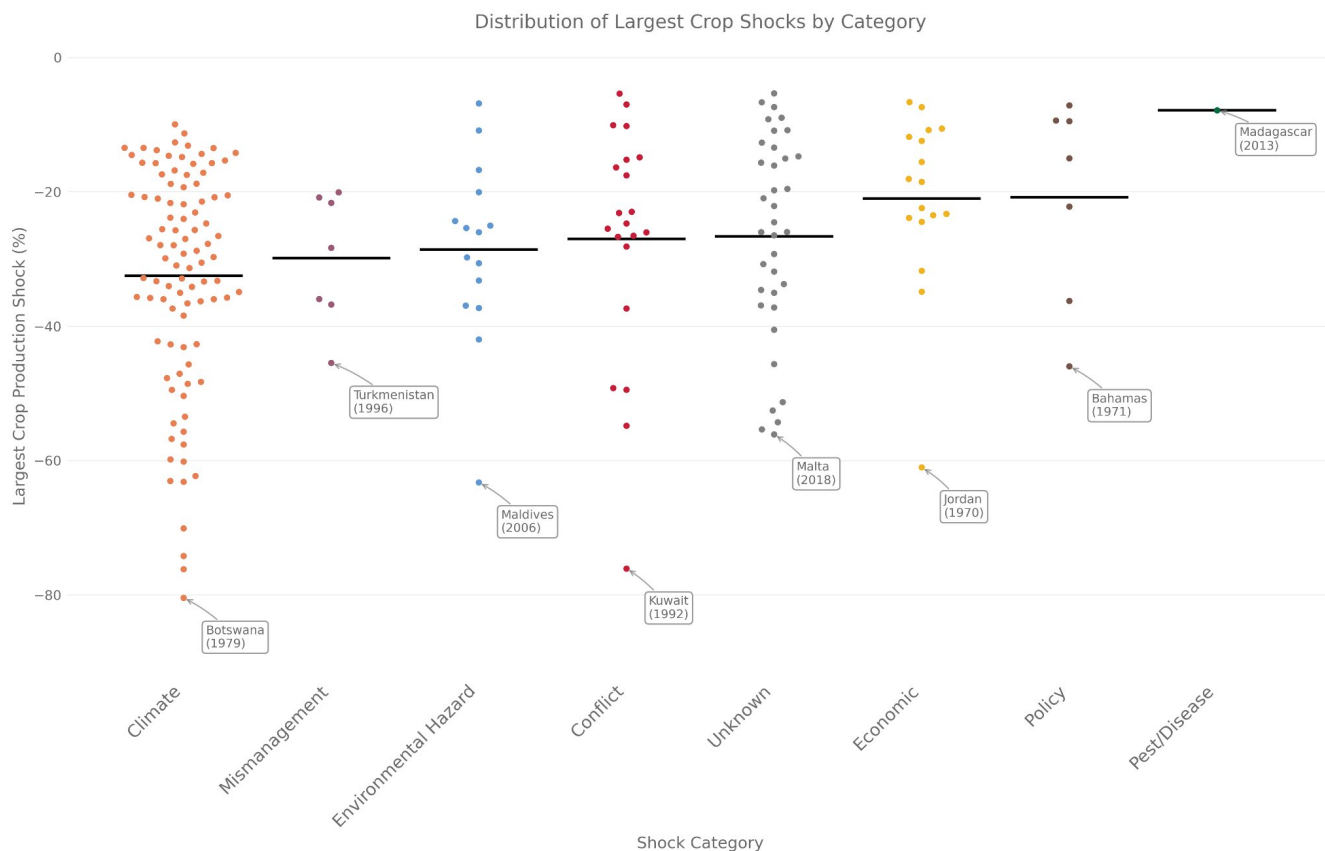
227 **Figure 2: Largest crop production shock in all present-day countries. Darker colors indicate larger shocks. Grey indicates no data.**  
228 **The shocks are calculated as deviations from expected yield in a given year and are based on the combined calories from all assessed**  
229 **crops.**

230 However, the largest crop production shocks differ not only in their geographic distribution, but their magnitude also varies  
231 substantially depending on the underlying cause (Figure 3). Climate-related shocks demonstrate the most severe impacts, with  
232 a mean around -32% but extreme cases reaching -80%—predominantly driven by droughts. This category shows the widest  
233 distribution of impact severity, reflecting the diverse nature of climate hazards, from moderate seasonal variations to  
234 catastrophic multi-year droughts.

235 Human-caused shocks generally result in smaller production declines and show more constrained distributions. Policy  
236 interventions produce the least severe impacts (mean -21%), while economic disruptions show similar severity (mean -21%).  
237 Mismanagement displays a mean of -30% with a relatively tight distribution. Conflict presents moderate average impacts  
238 (mean -27%) but high variability, from minor disruptions to catastrophic losses exceeding -70%.

239 Environmental hazards occupy a middle position with a mean of -29%, though their distribution is more concentrated between  
240 -10% and -40%, primarily caused by tropical storms. The "Unknown" category shows substantial variability (mean -27%),  
241 likely reflecting the diverse mix of unidentified shock types.

242 The distinction between natural and human causes becomes increasingly blurred as anthropogenic climate change intensifies  
243 both drought frequency and tropical storm severity. Having only one data point for pests and diseases makes it difficult to  
244 compare to the other categories, as it could just be a random occurrence. However, as it is smaller than almost any other data  
245 point implies that pests and diseases are not a major factor for the largest shocks. This is likely due to pests and diseases often  
246 being specific to a single crop, while we looked at a large aggregation of crops. Pests and diseases are often one of the largest  
247 sources of crop losses (Savary et al., 2019). However, given that we do not find them here as one of the main causes of the  
248 largest shocks, this implies that they cause damage on a high magnitude but without large fluctuations.

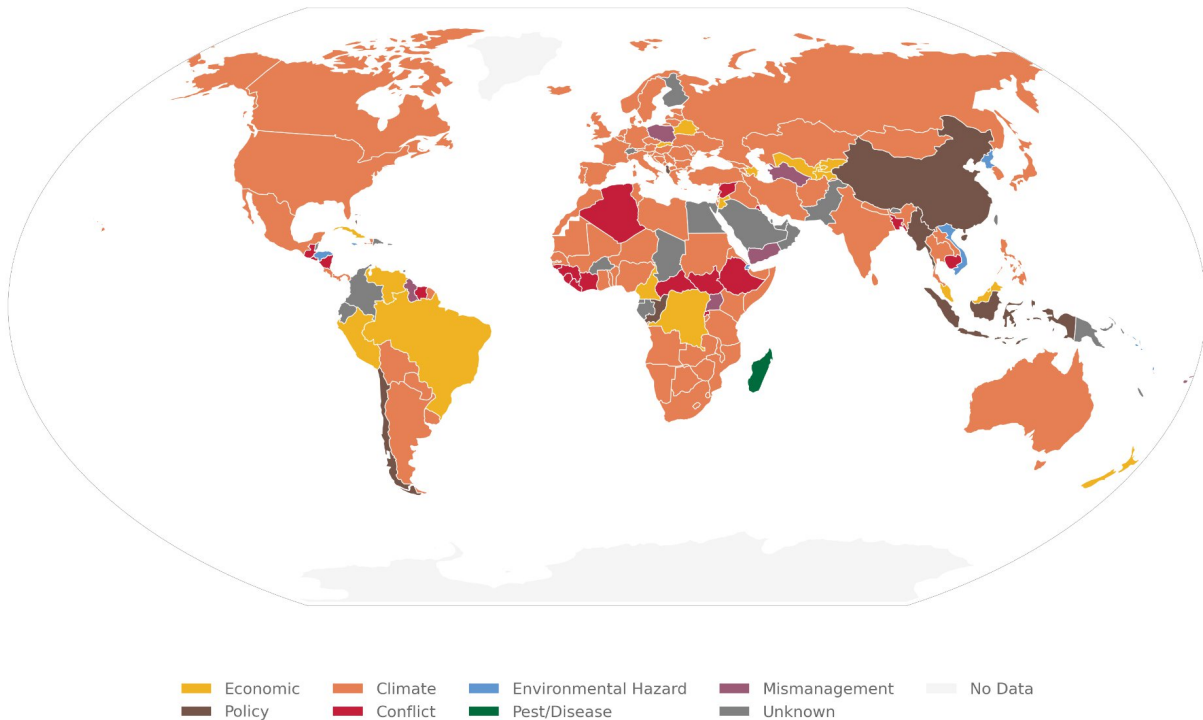


**Figure 3: Swarm plots showing the magnitude of crop production shocks across different cause categories. The black line indicates the mean. Single points show all individual country-level shocks. For each category the largest shock is labelled with year and country it occurred in.**

### 3.2 Geographic patterns of shock types

Crop production shocks show clear spatial patterns across continents, with distinct regional concentrations of different shock types (Figures 4, 5). While most shock causes appear on all continents, certain drivers cluster more heavily in specific regions.

Reason for Largest Crop Production Shock by Country (1961-2023)



256  
257

**Figure 4: Global map showing the main reason the largest crop production shock in a given country happened.**

258  
259  
260  
261

Europe is quite homogenous; climate shocks dominate almost entirely, comprising roughly 70% of all major production disruptions. Most trace back to the devastating 2003 heat wave that brought extreme temperatures across nearly the entire continent (IPCC, 2007). The few exceptions reveal Europe's otherwise stable agricultural systems: Poland's failed agricultural reform in 1980 (Mandel, 1982), or Belarus facing spillover from Russia's 1999 financial crisis (FAO, 1999).

262  
263  
264  
265

In North America all the continent's major economies experienced their largest shocks from droughts—Canada in 2002 (Wheaton et al., 2008), the United States in 1983 (Zipper et al., 2016), and Mexico in 1979 (Simons, 1980) (Figure 4). In Central America small Caribbean nations are mostly affected by substantial environmental hazard impacts like tropical storms (Figure 5).

266  
267  
268  
269  
270

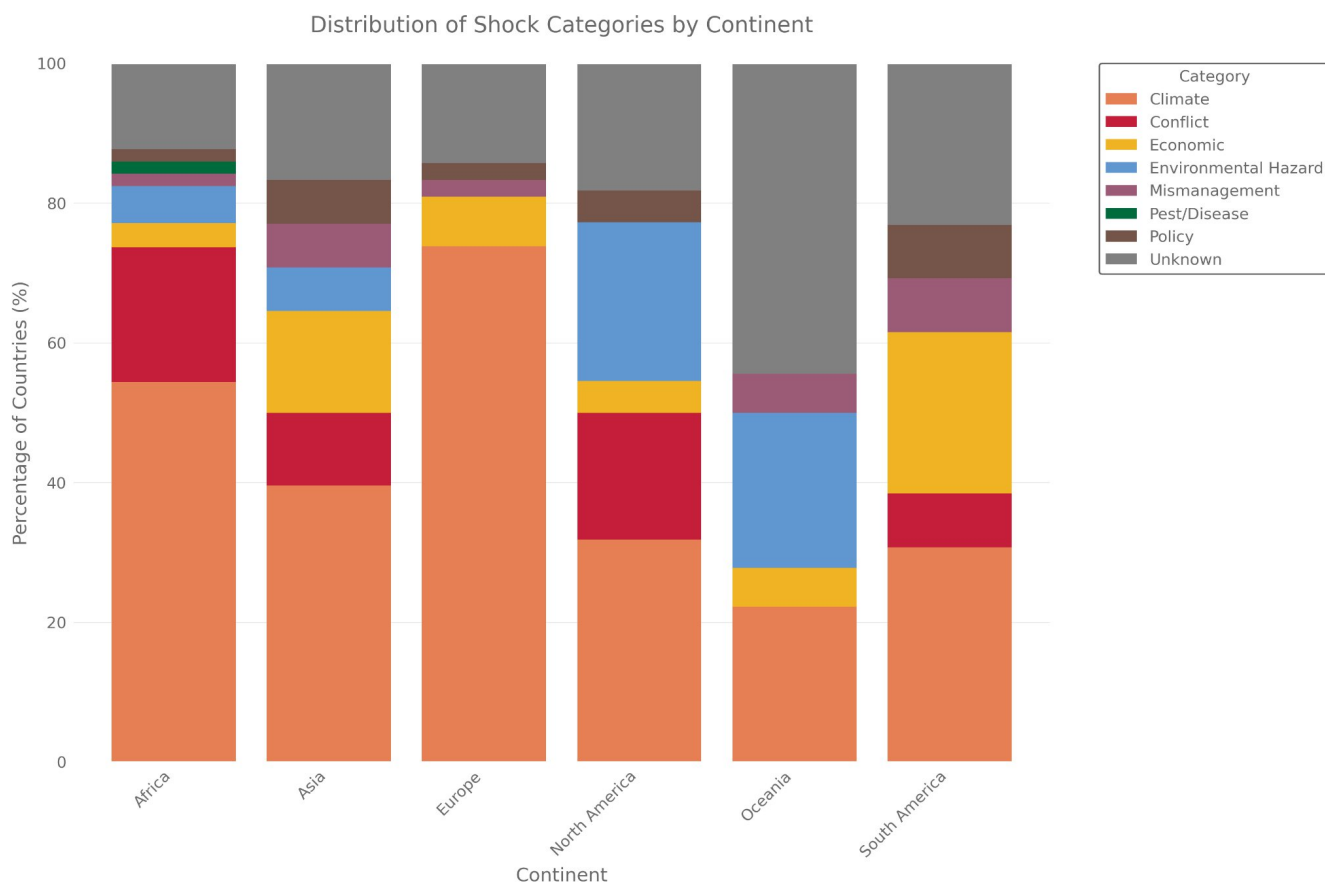
South America shows the highest proportion of economic disruptions among all continents. Brazil faced severe disruption in 1978 from high debt and inflation following oil shocks (Vellutini, 1987), Peru suffered hyperinflation in 1992 due to failed policies and debt burdens (Velazco, 1999), and Venezuela's 1976 focus on oil production came at agriculture's expense (Smith, 2019). Policy-driven shocks are also present, for example Chile's 1973 land reform disrupted production systems (U.S. Central Intelligence Agency, 1972). Conflict appeared in Suriname's 1990 civil war (Reuters, 1991), while climate shocks hit Argentina

271 in 2009 (Sgroi et al., 2021), Bolivia in 1983 (UN Department of Humanitarian Affairs, 1983), Uruguay in 2018 (Weather  
272 Underground, 2018), and Paraguay in 2012 (USDA Foreign Agricultural Service, 2012), all due to drought.

273 Africa also shows a diverse shock distribution, with conflict driving more production disruptions than any other continent.  
274 Civil wars devastated agriculture in Algeria in 1994 (Martinez, 2000), military coups and violence disrupted Guinea in 2009  
275 (UNDP, 2023), and Rwanda's 1994 genocide destroyed agricultural systems as well (FAO, 1996). Despite this conflict  
276 prevalence, Africa also experiences all other shock types. Madagascar's 2013 locust swarms destroyed crops across vast areas  
277 (FAO, 2013), Cameroon's 1987 economic crisis rippled through agriculture (Tambi, 2015), Djibouti was hit by massive floods  
278 in 1989 (UN Department of Humanitarian Affairs, 1989), Congo's 1991 democratization and switch from a more socialist  
279 system likely led to disruption in agriculture (IFES - The International Foundation for Electoral Systems, 1992), and Uganda  
280 faced the agricultural consequences of nearly a decade of mismanagement under Idi Amin, ending in 1979 (Honey and  
281 Ottaway, 1979). Nevertheless, climate—especially drought—remains the primary shock driver, as across all continents.

282 Asia's shock distribution resembles Africa's, but with fewer conflicts and more economic crises. Conflicts that did disrupt  
283 production include Cambodia's 1974 civil war (Defalco, 2014), worsened by US bombing campaigns, and Bangladesh's 1972  
284 post-independence aftermath (Dowlah, 2006). Policy changes created major disruptions when China shifted agricultural  
285 support policies in 2003 (Yu et al., 2018) and Myanmar nationalized rice production in 1966 (Steinberg, 2019). Environmental  
286 hazards struck repeatedly—North Korea faced devastating floods in 1996 for the second consecutive year (FAO, 1997), while  
287 Vietnam endured severe storms in 1978 (Cima and Library of Congress, 1989). As elsewhere, drought-driven climate shocks  
288 dominated, exemplified by India's massive 1987 drought (FAO, 2001b).

289 Oceania's shock patterns prove difficult to assess due to high proportions of unknown causes, likely reflecting both the region's  
290 many small island states and limited data availability. Small agricultural sectors trigger shock detection more frequently, while  
291 these nations' limited resources and global attention make information gathering challenging. Where causes are known, climate  
292 events and environmental hazards—particularly storms—dominate the region's agricultural disruptions.



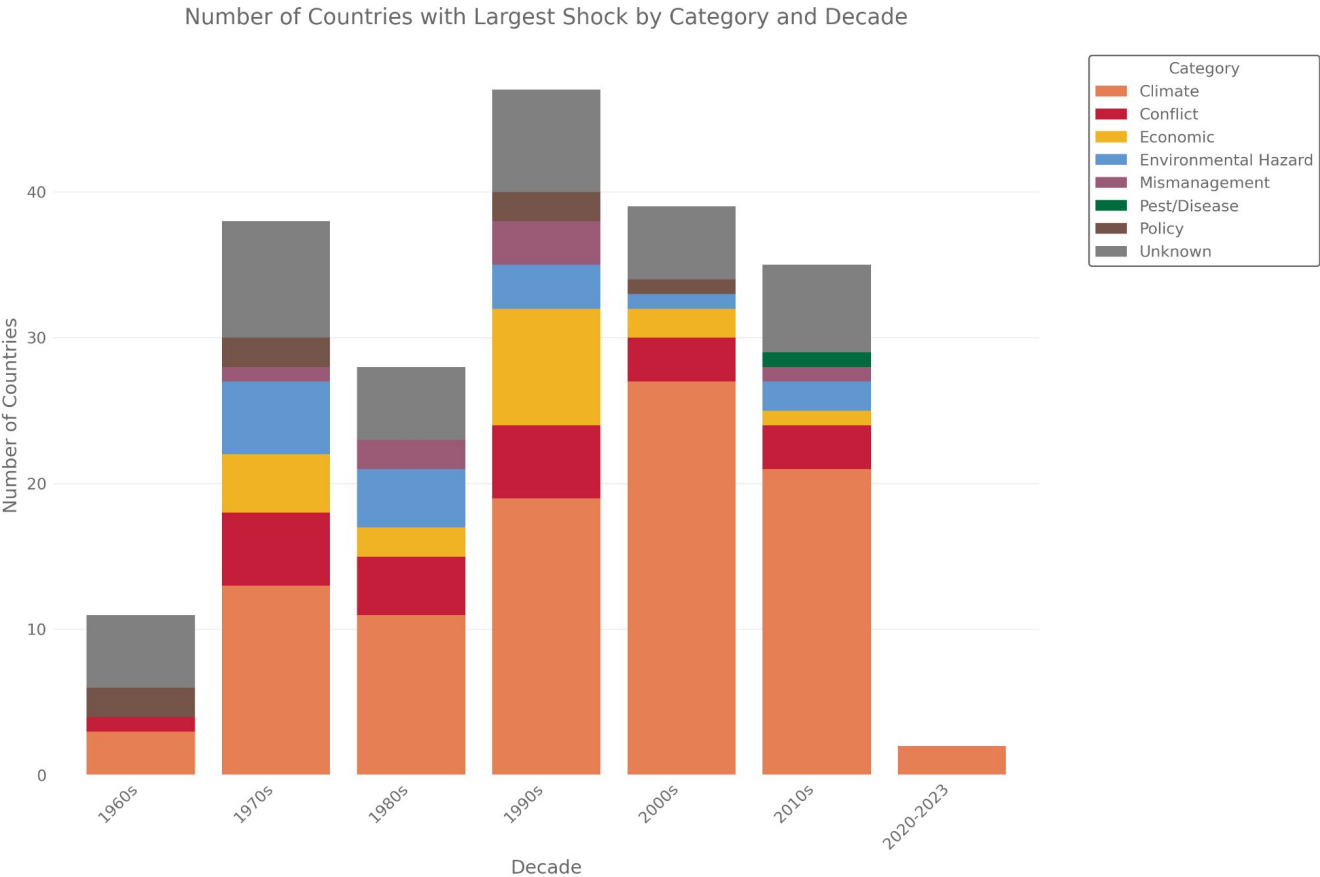
**Figure 5: Relative distribution of the main reasons why the largest crop production shocks happened in a country separated by continent.**

### 3.3 Temporal evolution and frequency distribution

When it comes to the temporal evolution of the largest food shock, we can see some clear patterns (Figure 6). All decades except the 1960s and 2020s have a roughly similar number of shocks. This number is also shaped by how many countries existed at a given point in time, but even when we correct for the number of countries that existed in that decade, the 1970s to 2010s all have 15-25% of the countries that existed experiencing their largest shock in that decade (Figure S5). This means the pattern here remains roughly the same, independent of the number of countries which existed.

The pattern that the first and last decades show a small number of shocks seems to imply that our method is less able to detect shocks at the edges of the time series. However, this effect does not happen if we only use the 1970s to 2010s in our analysis (Figure S6), indicating that this is an actual trend in the data and that, especially the 2020s, have had a surprisingly small number of very large crop shocks. Given the base rate over the other decades, this implies that we can expect many more large crop production shocks in the rest of the decade.

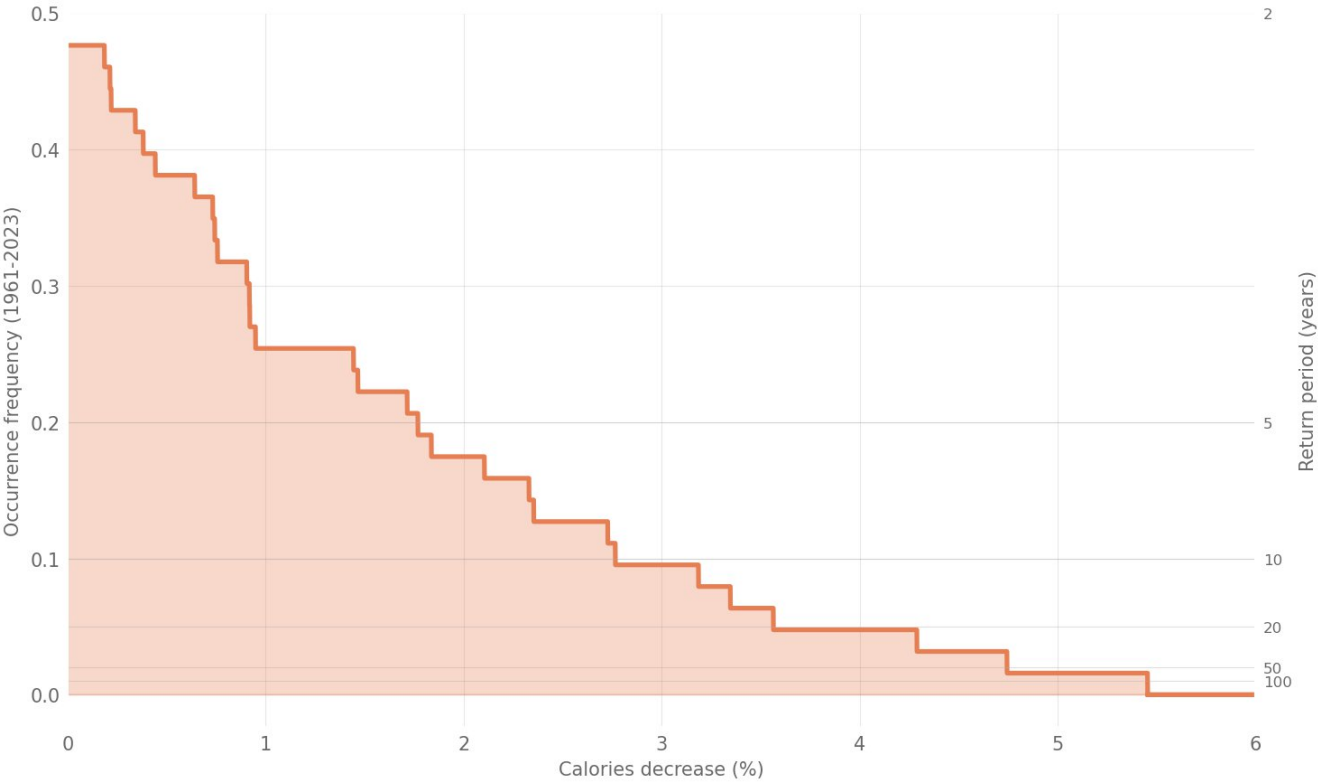
307 The reasons for those largest shocks show that climate-caused crop shocks make up a much larger percentage of cases in the  
308 more recent decades. Climate-related shocks grew from about 25% in the 1960s to 50-60% by the 2000s-2010s. This increase  
309 corresponds with decreases in other categories, including mismanagement and policy failures. Conflict and unknown causes  
310 stay on a similar level throughout, while all other categories tend to become less common over time. The levels of shocks  
311 which could not be attributed to a specific cause are at a similar level as in Cottrell et al. (2019).



312  
313 **Figure 6: Absolute distribution of the main reasons why the largest crop production shocks happened in a country, separated by the**  
314 **decade they occurred in. The overall size of a bar indicates the total amount of the largest shocks for a given country in a given**  
315 **decade. Note that the last bar only consists of the four years 2020-2023 and not the whole decade like the other bars.**

316 We can also look at how the general frequency of the crop shocks varies over the whole time series (Figure 7). This is for  
317 shocks on a global level. We can see that crop production shocks happen on a variety of levels, but on a global scale, the largest  
318 was just over 5.5%. This was in 1988, mainly caused by a severe and widespread drought in the USA. In this year, the  
319 production in the USA declined by 29%, while the USA produced around 20% of all crop calories globally. This highlights  
320 how the whole food system can be affected by shocks in even a single country. The distribution shows a sharp decline in

321 frequency as shock size increases - small shocks of 0-1% happen about 48% of the time, while shocks over 3% occur only  
322 10% of the time, and those exceeding 5% are rare at less than 2%.



323 **Figure 7: Frequency of global-level shocks to overall caloric production. The plot shows how often values of losses are exceeded. For**  
324 **example, shocks of 3% or more have been happening 10% of the time. The second y-axis shows the return period of shocks for a**  
325 **given size.**  
326

327 While shocks exceeding 5% are rare at the global level, occurring only once in our 63-year dataset, they are much more  
328 common at the continent and country level. There were 51 continent-level shocks of 5% or more between 1961 and 2023, with  
329 at least one happening every 1.8 years on average. At the country level, shocks over 5% occurred every single year, amounting  
330 to a total of 2800 shocks.

331

332 **3.4 Global synchronization**

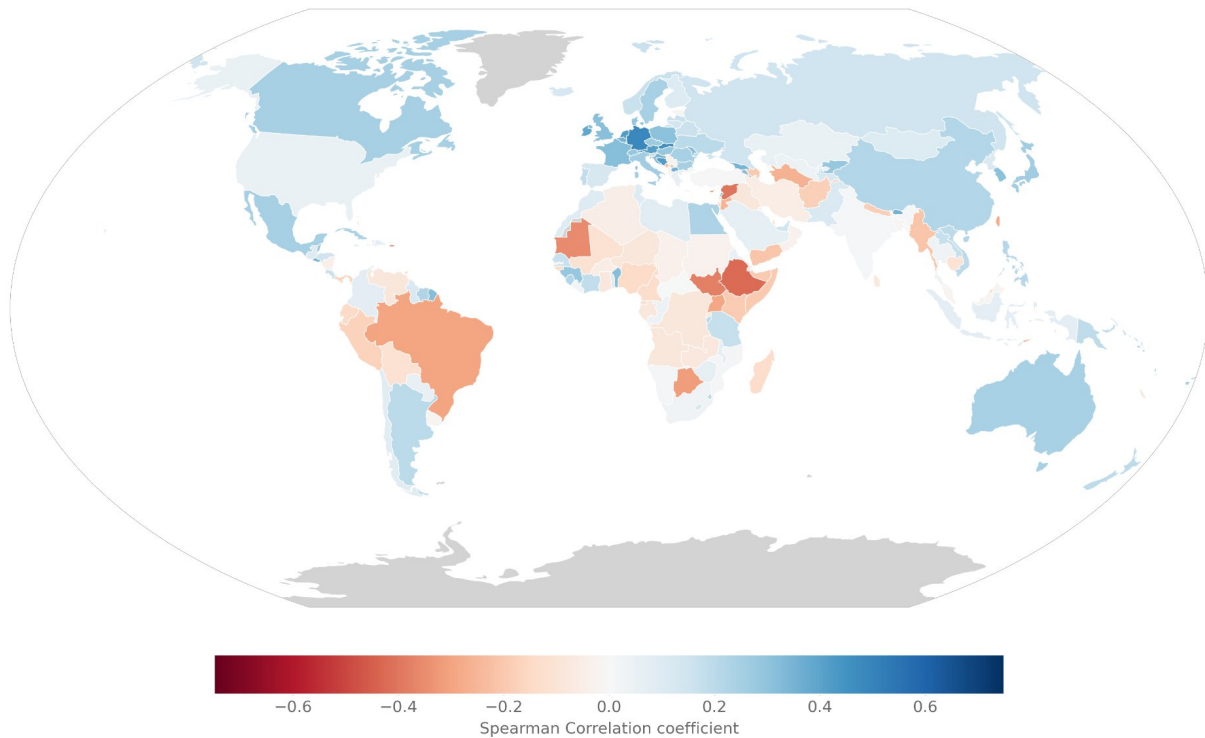
333 From the previous sections, we know that large shocks regularly happen, but also that they usually cancel each other out on a  
334 global level. To understand how this manifests, we also looked at how country-level crop production correlates with global



335 crop production (Figure 8). This shows that there are two groups of countries with opposing production patterns. One group  
336 tends to have high crop production when global production is high and low production when global production is low. The  
337 other group shows the reverse pattern—low production when global production is high and high production when global  
338 production is low. The globally asynchronous countries are most of Africa, parts of the Middle East, Central Asia and the  
339 northern part of South America. The synchronous countries are everyone else. European countries are especially synchronous  
340 with global production. This is likely due to Europe being a major contributor to global crop production, but not having a large  
341 spatial extent. Due to this, if there is a drought in Europe (as for example in 2003), most European countries are affected and  
342 thus also global production to a large extent. The asynchronous countries also all share tropical and subtropical climate zones.

343 The high synchrony observed across North America, Europe, and major Asian producers like China and India suggests these  
344 regions respond similarly to large-scale climate phenomena such as El Niño/La Niña events. This synchrony, while  
345 contributing to global production stability under normal conditions, also implies that extreme events affecting these regions  
346 simultaneously could pose significant risks to global food security. The asynchronous regions, despite often having less stable  
347 individual production, therefore play an important buffering role in the global food system by providing production when  
348 major producing regions experience shortfalls.

349 In addition, many of the most asynchronous countries (like Brazil, Ethiopia, or Syria) have conflict and economic reasons for  
350 their largest crop production shock. This suggests that the asynchronicity might also be due to those countries being disrupted  
351 by internal problems, while the rest of the world did not have these problems on such a scale.



**Figure 8: Correlation of crop production changes between each country and the rest of the world. A positive correlation (blue) means a country's crop production tends to move in the same direction as global production. A negative correlation (red) means the country's production tends to move opposite to global trends.**

These patterns of synchronization mostly stay consistent over time, but there are changes. For example, if we only look at the data from 2003 to 2023 (Figure S7), we can see that Brazil's relatively strong negative correlation becomes positive, while Europe's generally positive correlation and Africa's generally negative correlation persist. This likely reflects changes in agricultural practices and the dominance of certain regions when it comes to crop production.

Much of the synchronicity in global crop production is driven by wheat, which makes up a substantial share of total output (Figure S8). This means wheat's year-to-year variation can overshadow more localized patterns in other crops. For our purposes, this is not a limitation—we aim to understand global crop production as a whole and identify which regions might serve as buffers when others fail. The wheat-driven pattern shifts dominance toward major wheat exporters like Russia and Ukraine, whose production swings carry outsized weight in global totals. The United States, despite being a major wheat producer, shows weaker correlation with global trends. Possibly because its production variability operates independently of the factors driving Eurasian wheat yields, as both continents experience different climate impacts.

## 4. Discussion and conclusion

### 4.1 Climate is the main reason for the worst crop production shocks

Our results clearly show that climate is most often the reason for the largest crop production shock in a given country. This is mostly due to drought, but there are also instances of early frosts and torrential rain. This is concerning, as climate is not only the most common reason for the largest crop production shocks, but it also seems to be increasing over time, likely due to climate change making extreme weather, especially droughts and heatwaves, more likely (Fanzo et al., 2025; Grant et al., 2025). Potentially, climate might also be increasing as a cause as other reasons are getting managed better. For example, conflicts have been decreasing from a peak in the 1980s until around 2010 (Szayna et al., 2017), but have seen a steep uptick since then (Davies et al., 2023). Similarly, since the 1990s, after the fall of the Soviet Union, it might be the case that there are fewer policy and economic-caused crop failures, because most of the world is organized under neoliberal capitalism and no new approaches to organizing society and economics have been tried on a major scale. These two things are not mutually exclusive. It could also be that crises are managed better now, but climate change still makes everything worse.

Another hint that climate overall is the dominant shaping factor can be found in our results around synchronization. For example, East African countries show the strongest negative correlations. This asynchrony likely reflects distinct regional climate drivers, particularly the Indian Ocean Dipole, which can produce rainfall patterns opposite to those affecting other major agricultural regions (Ummenhofer et al., 2009; Zheng et al., 2025).

The earlier food production shock study by Cottrell et al. (2019) also identified climate (and to a lesser extent conflict) as the main driver of disruption in food production. These two drivers may be causally linked. Zhang et al. (2011) showed how climate shocks reduce food production, which in turn triggers famine, conflict, and disease, ultimately leading to population decline. This means climate-driven crop failures can create the conditions for conflict. The prominence of both climate and conflict in our results fits with this pattern of cascading effects in food system disruptions.

All of this seems to apply especially to Europe, where many of the largest food shocks were caused by the 2003 heatwave alone. This, and the generally very high rate of climate-related shocks in Europe, highlight these regions as especially vulnerable to these kinds of shocks. However, European shocks are also often relatively small; this could be due to a more benign European climate or potentially because the agricultural systems there are better equipped to handle shocks.

The geographic patterns in shock magnitude we observe likely reflect not only differences in climate exposure and governance, but also regional crop composition. Southern Africa's extreme shocks occur in maize-dominated systems, where drought sensitivity is approximately twice that of wheat (Daryanto et al., 2016). Europe's wheat-based systems and Asia's flooded paddy rice systems show greater resilience to moderate water stress, though all crops remain vulnerable to severe drought. These crop-specific vulnerabilities interact with regional climate patterns to shape overall shock magnitudes.

**4.2 Large shocks can and do happen**

The results here confirm that very large crop production shocks happen quite regularly, with the median of the largest shocks being around 27%. However, this dramatically varies by region, with African countries experiencing the most extreme collapses (up to -80% in Southern Africa), while Asian and Central European nations typically face more moderate largest shocks (-5 to -15%). This is in contrast to shock frequency patterns — Cottrell et al. (2019) found that crop production losses occur most often in South Asian countries, for example. Global shocks are typically much smaller than this. This does not mean that they cannot reach similar magnitudes. Both the shape of the global shock distribution and our knowledge of history imply that such large shocks can also happen globally. For example, between the start and end of World War 2, global food availability per capita fell by something between 5% (FAO, 1955) to 12% (Collingham, 2012), though exact numbers are hard to come by and the effects were much worse in some locations. This global reduction consisted mostly of countries in Europe losing significant amounts of their production. Their losses often were around 20–40% (FAO, 1955), well within the range of the country-level shocks studied here. Data for World War 1 is much more scarce, but many European countries lost 40% and more of their food production and cut food rations by similar amounts (Offer, 1991). This implies that global shock to the food systems was likely in a similar range as World War 2.

All this means that future global shocks of 5% or more are both possible and plausible. Given the asynchronous nature of global food production, we seem to have some buffer against this. However, this buffer only works as long as the reason for the shock is not global. If there were an event that could hit all countries globally, or multiple distinct causes hitting different regions at the same time, there would be no buffer left. Also, the largest global shocks (e.g. a geomagnetic storm or high altitude electromagnetic pulses disrupting industry and thus agriculture (Moersdorf et al., 2024)) would likely be on top of the natural variability, meaning that if humanity got unlucky and a global shock hit in a year that already had a big share of large shocks, things would be even worse.

Our analysis also shows that climate causes both the most shocks and the most severe shocks. The cause here is mostly droughts, but there are also instances of significant disruptions due to cold spells. Several of the worst shocks that could affect agriculture globally also work via the climate. For example, nuclear winter could potentially decrease global land temperature by around 10°C (Coupe et al., 2019), leading to widespread disruption of food production (Xia et al., 2022). Another climate pathway, likely similar in its effects to nuclear winter, would be a large volcanic eruption (Cassidy and Mani, 2022). Finally, there is preliminary research that indicates that AMOC collapse could also lead to massive disruption of European climate and thus agriculture (Lenton et al., 2023).

### 4.3 The role of trade

Global food production is highly connected and very reliant on trade, with around a quarter of all food being traded internationally (Ji et al., 2024). While trade is generally helpful for food security, it also makes countries vulnerable to disruptions elsewhere (Wang et al., 2023). This is especially a problem in Europe, as it is mainly trading internally, while everybody shares the same climate (Keys et al., 2025). For the largest catastrophes (like large geomagnetic storms or a nuclear war), this could result in many countries losing most of their food imports (Jehn et al., 2024a). Recent modeling by Verschuur et al. (2024) demonstrates how compound 'polycrises' combining multiple shocks can overwhelm the food system's normal adaptive capacity, resulting in consumer price increases of 23–52% across all crops and affecting virtually all countries simultaneously. This shows how the buffering effect of trade becomes less effective during compound, global-scale disruptions.

This can become a problem for all those countries that are not able to produce enough food within their own borders. For example, Stehl et al. (2025) show that many countries are not able to produce the staples of their diet. Especially for starchy staples, those countries that are not able to produce enough on their own show a high overlap with those countries experiencing the largest crop production shocks shown in this study.

However, successful adaptation is possible with international cooperation. Kuhla et al. (2023) showed how the international community managed to limit wheat price spikes after Russia's invasion of Ukraine through brokered agreements allowing Black Sea exports and alternative European river routes, combined with fortunately high global harvests in 2022. However, it cannot be taken for granted that the global stocks will always be full or coordination will always be possible, as the Ukraine war only influenced a small fraction of global food production.

That being said, having sufficient production and trade alone does not necessarily mean that people have enough food to eat. At first glance, South Sudan's largest annual shock of 8.3% in 2017 appears relatively manageable in terms of food production. However, the withholding of food aid as a weapon of war led to a significant famine, with 100,000 facing starvation and over 40% of the country in urgent need of food aid (United Nations World Food Programme, 2017). Recent analysis by Bajaj et al. (2025) demonstrates that trade's stabilizing role varies systematically by income level, mitigating future climate impacts for 60% of low-income countries while aggravating impacts for 53% of high-income countries. Import-dependent lower-income countries often source from regions where climate change may increase production, whereas wealthier nations face amplified risks from climate impacts in their trading partners.

Even in the absence of direct conflict or trade complications, poor management can make food access much worse than any given yield shock. The Great Chinese Famine killed 16.5–45 million people between 1959 and 1961 despite average rural food availability being high enough to prevent severe famine (Meng et al., 2015). Excessive government procurement from rural farmers to urban areas, redirection of labour away from agriculture, and a plethora of other unfortunate policies led to a vast

457 number of unnecessary deaths (Kung and Lin, 2003). The key takeaway from these historical examples is that a future GCFF  
458 could lead to disastrous levels of famine if managed poorly, especially considering how difficult cooperation may be during  
459 a global crisis.

#### 460 **4.4 Preparation is needed**

461 All this aims to highlight that our food system regularly experiences major shocks that can plausibly happen on a global scale  
462 as well. Governments should therefore take such major threats seriously and prepare accordingly. While we have global stocks  
463 of food, these usually only last for 0.5 to 1 year (Laio et al., 2016), meaning that they would not be enough for several-year  
464 shocks like large volcanic eruptions. Therefore, contingency plans are needed:

- 465 ● Currently, very few national risk registers even grapple with global disruptions to the food system. For future risk  
466 assessments, such events should be included and planned for.
- 467 ● Many of the shocks presented here also have the potential to influence each other through time, like a mismanagement  
468 in one year making a drought more difficult to cope with in the next. Future research could explore these interferences  
469 by tracking not only the reasons for the biggest shocks, but all detectable shocks.
- 470 ● Trade partners should be diversified throughout different climate zones to enhance resilience (Keys et al., 2025). This  
471 is especially important, as in the current geopolitical climate, countries are reducing trade in general, while also  
472 preferentially trading with their closest allies (Piñeiro and Piñeiro, 2024). This diversification should also include  
473 countries that are both synchronous and asynchronous to global food production, e.g. trading with both Brazil and  
474 Germany. Similarly, a diversification of crops would also help, as different crops react differently to the same  
475 stressors. As Hertel et al. (2021) emphasize, diversification across crops, landscapes, income sources, and trade  
476 partners represents a fundamental strategy for building food system resilience at multiple scales. However, increased  
477 market integration can encourage production specialization even as it reduces overall risk exposure. Therefore,  
478 policies promoting resilience should consider how production, trade, and household diversification interact to avoid  
479 creating new vulnerabilities.
- 480 ● Even after smaller, local food production shocks, countries quickly resort to export bans to ensure enough food for  
481 their citizens. These are often done much earlier than actually needed, leading to food insecurity, even if enough food  
482 is available globally (Puma et al., 2015). This means trade agreements between countries should explicitly plan out  
483 under what circumstances export bans would be considered.
- 484 ● For some of the catastrophes that could affect the global food system, there is a need to build up alternative food  
485 sources to our present-day agriculture, which would be better suited to lower light/temperature or lower tech available.  
486 García Martínez et al. (2025) provide a systematic framework for resilient foods that could function under different  
487 catastrophic scenarios. This could include seaweed (Jehn et al., 2024b), mass-produced low-tech greenhouses  
488 (Alvarado et al., 2020), sugar from fiber (Throup et al., 2022), or protein from natural gas (García Martínez et al.,  
489 2022).

490 The dataset produced by this study opens several avenues for future research. First, tracking not only the largest shock but all  
491 detectable shocks for each country would reveal how sequential or compound events interact—for instance, whether  
492 mismanagement in one year amplifies vulnerability to drought the next. Second, and perhaps most policy-relevant, would be  
493 systematic case studies tracing each major shock from production loss through to human welfare outcomes. Key questions  
494 include: How did prices respond? Did trade partners maintain exports or impose bans? Which population groups bore the  
495 burden? What interventions (if any) mitigated impacts? Answering these questions would substantially improve our  
496 understanding of food system resilience and the conditions under which production shocks become humanitarian crises.  
497  
498 Ultimately, all of this (and likely more) is needed to make this world secure against large disruptions of food production. We  
499 should start now with preparation, as we still have time.

## 500 **Author contributions**

501 Conceptualization: FUJ, JM, NW  
502 Data curation: FUJ  
503 Formal analysis: FUJ, JM, LGG, SB  
504 Funding acquisition: FUJ  
505 Investigation: FUJ, JM  
506 Methodology: FUJ, JM, LGG, SB  
507 Project administration: FUJ  
508 Software: FUJ, JM, LGG, SB  
509 Supervision: FUJ  
510 Validation: FUJ, SB  
511 Visualization: FUJ, JM, LGG, SB  
512 Writing—original draft: FUJ, JM  
513 Writing—review & editing: FUJ, JM, LGG, SB, NW

## 514 **Data and Code Availability**

515 All code and data used for this study are available in the repository: <https://github.com/allfed/Historical-Food-Shocks> (Jehn  
516 and Mulhall, 2025)

517     **Acknowledgements**

518     We thank the Research Hub community and Zu-Grama for providing the funding that allowed us to conduct this research  
519     project, and Yeshodhara Baskaran for facilitating the connection.

520

521     We are grateful to Daniel Hoyer, David Denkenberger, Michael Hinge and Juan B. García Martínez for helpful comments on  
522     an earlier version of this manuscript.

523

524     We acknowledge the use of artificial intelligence (Claude 4 Sonnet) to assist with sentence-level text revision, coding support,  
525     and accelerating literature searches to identify documented causes of the detected crop production shocks.

526     **Competing interests**

527     All authors declare that they do not have any competing interests.

528     **References**

529     Alvarado, K. A., Mill, A., Pearce, J. M., Vocaet, A., and Denkenberger, D.: Scaling of greenhouse crop production in low  
530     sunlight scenarios, *Science of The Total Environment*, 707, 136012, <https://doi.org/10.1016/j.scitotenv.2019.136012>, 2020.

531     Anderson, W., Baethgen, W., Capitanio, F., Ciais, P., Cook, B. I., Cunha, C. G. R. da, Goddard, L., Schauburger, B., Sonder,  
532     K., Podestá, G., van der Velde, M., and You, L.: Climate variability and simultaneous breadbasket yield shocks as observed  
533     in long-term yield records, *Agricultural and Forest Meteorology*, 331, 109321,  
534     <https://doi.org/10.1016/j.agrformet.2023.109321>, 2023.

535     Bajaj, K., Mehrabi, Z., Kastner, T., Jägermeyr, J., Müller, C., Schwarzmüller, F., Hertel, T. W., and Ramankutty, N.: Current  
536     food trade helps mitigate future climate change impacts in lower-income nations, *PLOS ONE*, 20, e0314722,  
537     <https://doi.org/10.1371/journal.pone.0314722>, 2025.

538     Bernard de Raymond, A., Alpha, A., Ben-Ari, T., Daviron, B., Nesme, T., and Tétart, G.: Systemic risk and food security.  
539     Emerging trends and future avenues for research, *Global Food Security*, 29, 100547,  
540     <https://doi.org/10.1016/j.gfs.2021.100547>, 2021.

541     Brönnimann, S. and Krämer, D.: Tambora and the “Year Without a Summer” of 1816. A Perspective on Earth and Human  
542     Systems Science, CH, <https://doi.org/10.4480/GB2016.G90.01>, 2016.

543     Cassidy, E. S., West, P. C., Gerber, J. S., and Foley, J. A.: Redefining agricultural yields: from tonnes to people nourished  
544     per hectare, *Environ. Res. Lett.*, 8, 034015, <https://doi.org/10.1088/1748-9326/8/3/034015>, 2013.

545     Cassidy, M. and Mani, L.: Huge volcanic eruptions: time to prepare, *Nature*, 608, 469–471, [https://doi.org/10.1038/d41586-](https://doi.org/10.1038/d41586-022-02177-x)  
546     022-02177-x, 2022.

547     Cima, R. J. and Library of Congress (Eds.): Vietnam: a country study, 1st ed., Federal Research Division, Library of  
548     Congress, Washington, D.C, 386 pp., 1989.



- 549 Clapp, J.: Concentration and crises: exploring the deep roots of vulnerability in the global industrial food system, *The*  
550 *Journal of Peasant Studies*, 50, 1–25, <https://doi.org/10.1080/03066150.2022.2129013>, 2023.
- 551 Collingham, L.: *The Taste of War: World War Two and the Battle for Food*, Penguin, London, 672 pp., 2012.
- 552 Cottrell, R. S., Nash, K. L., Halpern, B. S., Remenyi, T. A., Corney, S. P., Fleming, A., Fulton, E. A., Hornborg, S., Johne,  
553 A., Watson, R. A., and Blanchard, J. L.: Food production shocks across land and sea, *Nat Sustain*, 2, 130–137,  
554 <https://doi.org/10.1038/s41893-018-0210-1>, 2019.
- 555 Coupe, J., Bardeen, C. G., Robock, A., and Toon, O. B.: Nuclear Winter Responses to Nuclear War Between the United  
556 States and Russia in the Whole Atmosphere Community Climate Model Version 4 and the Goddard Institute for Space  
557 Studies ModelE, *Journal of Geophysical Research: Atmospheres*, 124, 8522–8543, <https://doi.org/10.1029/2019JD030509>,  
558 2019.
- 559 Daryanto, S., Wang, L., and Jacinthe, P.-A.: Global Synthesis of Drought Effects on Maize and Wheat Production, *PLoS*  
560 *One*, 11, e0156362, <https://doi.org/10.1371/journal.pone.0156362>, 2016.
- 561 Davies, S., Pettersson, T., and Öberg, M.: Organized violence 1989–2022, and the return of conflict between states, *Journal*  
562 *of Peace Research*, 60, 691–708, <https://doi.org/10.1177/00223433231185169>, 2023.
- 563 Defalco, R. C.: Justice and Starvation in Cambodia: The Khmer Rouge Famine – Cambodia Law & Policy Journal, *The*  
564 *Cambodia Law and Policy Journal*, 3, 2014.
- 565 Delannoy, L., Verzier, A., Bastien-Olvera, B. A., Benra, F., Nyström, M., and Jørgensen, P. S.: Dynamics of the polycrisis:  
566 temporal trends, spatial distribution, and co-occurrences of national shocks (1970–2019), *Global Sustainability*, 8, e24,  
567 <https://doi.org/10.1017/sus.2025.10008>, 2025.
- 568 Do, T., Anderson, K., and Brorsen, B. W.: *The World’s wheat supply*, Oklahoma Cooperative Extension Service, 2010.
- 569 Dowlah, C.: The politics and economics of food and famine in Bangladesh in the early 1970s – with special reference to  
570 Amartya Sen’s interpretation of the 1974 famine, *International Journal of Social Welfare*, 15, 344–356,  
571 <https://doi.org/10.1111/j.1468-2397.2006.00448.x>, 2006.
- 572 Fanzo, J., Carducci, B., Louis-Jean, J., Herrero, M., Karl, K., and Rosenzweig, C.: Climate Change, Extreme Weather  
573 Events, Food Security, and Nutrition: Evolving Relationships and Critical Challenges, *Annual Review of Nutrition*,  
574 <https://doi.org/10.1146/annurev-nutr-111324-111252>, 2025.
- 575 FAO: *The State of Food and Agriculture 1955*, Food And Agriculture Organization of the United Nations, Rome, Italy,  
576 1955.
- 577 FAO: Special Report: FAO/WFP Crop and Food Supply Assessment Mission to Rwanda, Food and Agriculture  
578 Organization of the United Nations and World Food Programme, Rome, 1996.
- 579 FAO: Crop and Food Supply Assessment Mission to Democratic People’s Republic of Korea - Democratic People’s  
580 Republic of Korea | ReliefWeb, 1997.
- 581 FAO: *Food Outlook: Europe*, Food and Agriculture Organization of the United Nations, 1999.
- 582 FAO: *Food balance sheets: A handbook*, Food and Agriculture Organization of the United Nations, Rome, Italy, 2001a.

583      FAO: Report of the FAO Asia-Pacific Conference on Early Warning, Prevention, Preparedness and Management of  
584      Disasters in Food and Agriculture, 2001b.

585      FAO: Assessment of the impact of locust damage on crops and pastures in Madagascar - Madagascar | ReliefWeb, 2013.

586      FAO: Agricultural production statistics 2010–2023, 2024.

587      García Martínez, J. B., Pearce, J. M., Throup, J., Cates, J., Lackner, M., and Denkenberger, D. C.: Methane Single Cell  
588      Protein: Potential to Secure a Global Protein Supply Against Catastrophic Food Shocks, *Frontiers in Bioengineering and*  
589      *Biotechnology*, 10, 2022.

590      García Martínez, J. B., Behr, J., Pearce, J., and Denkenberger, D.: Resilient foods for preventing global famine: a review of  
591      food supply interventions for global catastrophic food shocks including nuclear winter and infrastructure collapse, *Critical*  
592      *Reviews in Food Science and Nutrition*, 0, 1–27, <https://doi.org/10.1080/10408398.2024.2431207>, 2025.

593      Gaupp, F., Hall, J., Hochrainer-Stigler, S., and Dadson, S.: Changing risks of simultaneous global breadbasket failure, *Nat.*  
594      *Clim. Chang.*, 10, 54–57, <https://doi.org/10.1038/s41558-019-0600-z>, 2020.

595      Ghoneim, E., Dorofeeva, A., Benedetti, M., Gamble, D., Leonard, L., and AbuBakr, M.: Vegetation Drought Analysis In  
596      Tunisia: A Geospatial Investigation, *HAES*, 1, 1–9, <https://doi.org/10.24966/aes-8780/100002>, 2017.

597      Grant, L., Vanderkelen, I., Gudmundsson, L., Fischer, E., Seneviratne, S. I., and Thiery, W.: Global emergence of  
598      unprecedented lifetime exposure to climate extremes, *Nature*, 641, 374–379, <https://doi.org/10.1038/s41586-025-08907-1>,  
599      2025.

600      Herre, B., Samborska, V., Hasell, J., and Roser, M.: Famines, *Our World in Data*, 2017.

601      Hertel, T., Elouafi, I., Tanticharoen, M., and Ewert, F.: Diversification for enhanced food systems resilience, *Nat Food*, 2,  
602      832–834, <https://doi.org/10.1038/s43016-021-00403-9>, 2021.

603      Honey, M. and Ottaway, D. B.: Idi Amin Squandered the Wealth of Uganda, *The Washington Post*, 29th May, 1979.

604      HRDAG: Guatemala Memory of Silence: Report of the Commission for Historical Clarification Conclusions and  
605      Recommendations, HRDAG - Human Rights Data Analysis Group, 1999.

606      IFES - The International Foundation for Electoral Systems: Elections in Congo: The Winding Road to Democracy, IFES -  
607      The International Foundation for Electoral Systems, 1992.

608      IPCC (Ed.): Climate change 2007: impacts, adaptation and vulnerability : contribution of Working Group II to the fourth  
609      assessment report of the Intergovernmental Panel on Climate Change, Cambridge university press, Cambridge, U.K. New  
610      York, 2007.

611      Jahn, M.: How “Multiple Breadbasket Failure” Became a Policy Issue, *Issues in Science and Technology*, 2021.

612      Jain, S.: Mapping Global Cereal Flow at Subnational Scales Unveils Key Insights for Food Systems Resilience,  
613      <https://doi.org/10.21203/rs.3.rs-5204730/v1>, 4 December 2024.

614      Jehn, F. U. and Mulhall, J.: allfed/Historical-Food-Shocks: First full release, , <https://doi.org/10.5281/ZENODO.16962681>,  
615      2025.

616 Jehn, F. U., Gajewski, Ł. G., Hedlund, J., Arnscheidt, C. W., Xia, L., Wunderling, N., and Denkenberger, D.: Food trade  
617 disruption after global catastrophes, <https://eartharxiv.org/repository/view/7339/>, 29 June 2024a.

618 Jehn, F. U., Dingal, F. J., Mill, A., Harrison, C., Ilin, E., Roleda, M. Y., James, S. C., and Denkenberger, D.: Seaweed as a  
619 resilient food solution after a nuclear war, *Earth's Future*, 12, <https://doi.org/10.1029/2023EF003710>, 2024b.

620 Ji, G., Zhong, H., Feukam Nzudie, H. L., Wang, P., and Tian, P.: The structure, dynamics, and vulnerability of the global  
621 food trade network, *Journal of Cleaner Production*, 434, 140439, <https://doi.org/10.1016/j.jclepro.2023.140439>, 2024.

622 Keys, P. W., Barnes, E. A., Diffenbaugh, N. S., Hertel, T. W., Baldos, U. L. C., and Hedlund, J.: Exposure to compound  
623 climate hazards transmitted via global agricultural trade networks, *Environ. Res. Lett.*, 20, 044039,  
624 <https://doi.org/10.1088/1748-9326/adb86a>, 2025.

625 Kuhla, K., Puma, M., Schewe, J., Kubiczek, P., and Otto, C.: Learning from the international response to the Russian  
626 invasion of Ukraine to avert the next major food crisis, <https://doi.org/10.13140/RG.2.2.30912.00001>, 4 January 2023.

627 Kung, J. K. and Lin, J. Y.: The Causes of China's Great Leap Famine, 1959–1961, *Economic Development and Cultural*  
628 *Change*, 52, 51–73, <https://doi.org/10.1086/380584>, 2003.

629 Laio, F., Ridolfi, L., and D'Odorico, P.: The past and future of food stocks, *Environ. Res. Lett.*, 11, 035010,  
630 <https://doi.org/10.1088/1748-9326/11/3/035010>, 2016.

631 Lenton, T. M., Armstrong McKay, D., Loriani, S., Abrams, J. F., Lade, S. J., Donges, J. F., Milkoreit, M., Powell, T., Smith,  
632 S. R., Zimm, C., Bailey, E., Buxton, J. E., Dyke, J. G., Ghadiali, A., and Laybourn, L.: Global Tipping Points Report 2023,  
633 University of Exeter, 2023.

634 Mandel, E.: The Roots of the Polish Economic Crisis, *International Viewpoint*, 0, 29–34, 1982.

635 Marchand, P., Carr, J. A., Dell'Angelo, J., Fader, M., Gephart, J. A., Kumm, M., Magliocca, N. R., Porkka, M., Puma, M.  
636 J., Ratajczak, Z., Rulli, M. C., Seekell, D. A., Suweis, S., Tavoni, A., and D'Odorico, P.: Reserves and trade jointly  
637 determine exposure to food supply shocks, *Environ. Res. Lett.*, 11, 095009, <https://doi.org/10.1088/1748-9326/11/9/095009>,  
638 2016.

639 Martinez, L.: The Algerian civil war: 1990 - 1998, 1. publ. in the UK., Hurst, London, 265 pp., 2000.

640 Meng, X., Qian, N., and Yared, P.: The Institutional Causes of China's Great Famine, 1959–1961, *The Review of Economic*  
641 *Studies*, 82, 1568–1611, <https://doi.org/10.1093/restud/rdv016>, 2015.

642 Moersdorf, J., Rivers, M., Denkenberger, D., Breuer, L., and Jehn, F. U.: The Fragile State of Industrial Agriculture:  
643 Estimating Crop Yield Reductions in a Global Catastrophic Infrastructure Loss Scenario, *Global Challenges*, 8, 2300206,  
644 <https://doi.org/10.1002/gch2.202300206>, 2024.

645 Offer, A.: The First World War: an agrarian interpretation, 1. issued in paperback (with corr.), Clarendon Press, Oxford, 449  
646 pp., 1991.

647 Piñeiro, M. and Piñeiro, V.: Geopolitical changes and their implications for agricultural trade negotiations, 2024.

648 Puma, M. J., Bose, S., Chon, S. Y., and Cook, B. I.: Assessing the evolving fragility of the global food system, *Environ. Res.*  
649 *Lett.*, 10, 024007, <https://doi.org/10.1088/1748-9326/10/2/024007>, 2015.

650 Reuters: Suriname’s Leader and Rebel Chief Vow to Negotiate Uprising’s End, *The New York Times*, 27th March, 1991.

651 Savary, S., Willocquet, L., Pethybridge, S. J., Esker, P., McRoberts, N., and Nelson, A.: The global burden of pathogens and  
652 pests on major food crops, *Nat Ecol Evol*, 3, 430–439, <https://doi.org/10.1038/s41559-018-0793-y>, 2019.

653 Savitzky, Abraham. and Golay, M. J. E.: Smoothing and Differentiation of Data by Simplified Least Squares Procedures.,  
654 *Anal. Chem.*, 36, 1627–1639, <https://doi.org/10.1021/ac60214a047>, 1964.

655 Sgroi, L. C., Lovino, M. A., Berbery, E. H., and Müller, G. V.: Characteristics of droughts in Argentina’s core crop region,  
656 *Hydrology and Earth System Sciences*, 25, 2475–2490, <https://doi.org/10.5194/hess-25-2475-2021>, 2021.

657 Simons, M.: Mexican Drought, Frost May Increase Migration, *The Washington Post*, 17th January, 1980.

658 Smith, B.: Dutch disease and the oil boom and bust, *Canadian Journal of Economics/Revue canadienne d’économie*, 52,  
659 584–623, <https://doi.org/10.1111/caje.12376>, 2019.

660 Stehl, J., Vonderschmidt, A., Vollmer, S., Alexander, P., and Jaacks, L. M.: Gap between national food production and food-  
661 based dietary guidance highlights lack of national self-sufficiency, *Nat Food*, 6, 571–576, [https://doi.org/10.1038/s43016-](https://doi.org/10.1038/s43016-025-01173-4)  
662 025-01173-4, 2025.

663 Steinberg, D. I.: *Burma’s Road Toward Development: Growth And Ideology Under Military Rule*, Routledge, New York,  
664 256 pp., <https://doi.org/10.4324/9780429048722>, 2019.

665 Szayna, T. S., Watts, S., O’Mahony, A., Frederick, B., and Kavanagh, J.: *What Are the Trends in Armed Conflicts, and*  
666 *What Do They Mean for U.S. Defense Policy?*, 2017.

667 Tambi, M.: Economic Growth, Crisis, and Recovery in Cameroon: A Literature Review, *Journal of Industrial Distribution &*  
668 *Business*, 6, 5–15, <https://doi.org/10.13106/ijidb.2015.vol6.no1.5>, 2015.

669 Throup, J., García Martínez, J. B., Bals, B., Cates, J., Pearce, J. M., and Denkenberger, D. C.: Rapid repurposing of pulp and  
670 paper mills, biorefineries, and breweries for lignocellulosic sugar production in global food catastrophes, *Food and*  
671 *Bioproducts Processing*, 131, 22–39, <https://doi.org/10.1016/j.fbp.2021.10.012>, 2022.

672 Ummenhofer, C. C., England, M. H., McIntosh, P. C., Meyers, G. A., Pook, M. J., Risbey, J. S., Gupta, A. S., and Taschetto,  
673 A. S.: What causes southeast Australia’s worst droughts?, *Geophysical Research Letters*, 36,  
674 <https://doi.org/10.1029/2008GL036801>, 2009.

675 UN Department of Humanitarian Affairs: Bolivia - Drought Aug 1983 UNDRO Situation Reports 1-13 - Bolivia  
676 (Plurinational State of) | ReliefWeb, UN Department of Humanitarian Affairs, 1983.

677 UN Department of Humanitarian Affairs: Djibouti - Floods Apr 1989 UNDRO Situation Reports 1-4 - Djibouti | ReliefWeb,  
678 UN Department of Humanitarian Affairs, 1989.

679 UNDP: Independent Country Programme Evaluation: Guinea, United Nations Development Programme, 2023.

680 United Nations World Food Programme: *Famine Hits Parts Of South Sudan*, 2017.

681 U.S. Central Intelligence Agency: *Allende’s Chile: The Widening Supply-Demand Gap*, U.S. Central Intelligence Agency,  
682 1972.

683 USDA Foreign Agricultural Service: Drought in Paraguay, USDA Foreign Agricultural Service, 2012.

684 Vasiliades, L. and Tzabiras, J.: Evaluation of Climate Change on Drought Impulses in Thessaly, Greece, *European Water*,  
685 17, 2007.

686 Velazco, J.: *Agricultural Production in Peru (1950-1995):: Sources of Growth*, FAO, 1999.

687 Vellutini, R.: *Macroeconomic adjustments, agricultural performance, and income distribution in Brazil since 1973*, United  
688 Nations University Press, 1987.

689 Verschuur, J., Murgatroyd, A., Vittis, Y., Mosnier, A., Obersteiner, M., Godfray, C., and Hall, J.: The impacts of polycrises  
690 on global grain availability and prices, <https://doi.org/10.21203/rs.3.rs-3969801/v1>, 8 March 2024.

691 Virtanen, P., Gommers, R., Oliphant, T. E., Haberland, M., Reddy, T., Cournapeau, D., Burovski, E., Peterson, P.,  
692 Weckesser, W., Bright, J., van der Walt, S. J., Brett, M., Wilson, J., Millman, K. J., Mayorov, N., Nelson, A. R. J., Jones, E.,  
693 Kern, R., Larson, E., Carey, C. J., Polat, İ., Feng, Y., Moore, E. W., VanderPlas, J., Laxalde, D., Perktold, J., Cimrman, R.,  
694 Henriksen, I., Quintero, E. A., Harris, C. R., Archibald, A. M., Ribeiro, A. H., Pedregosa, F., and van Mulbregt, P.: *SciPy*  
695 1.0: fundamental algorithms for scientific computing in Python, *Nat Methods*, 17, 261–272, [https://doi.org/10.1038/s41592-](https://doi.org/10.1038/s41592-019-0686-2)  
696 019-0686-2, 2020.

697 Wang, X., Ma, L., Yan, S., Chen, X., and Growe, A.: Trade for Food Security: The Stability of Global Agricultural Trade  
698 Networks, *Foods*, 12, 271, <https://doi.org/10.3390/foods12020271>, 2023.

699 Weather Underground: Most Expensive Weather Disaster of 2018: a \$3.9 Billion Drought in Argentina and Uruguay, 2018.

700 Wescombe, N. J., Martínez, J. G., Jehn, F. U., Wunderling, N., Tzachor, A., Sandström, V., Cassidy, M., Ainsworth, R., and  
701 Denkenberger, D.: It's time to consider global catastrophic food failures, *Global Food Security*, 46, 100880,  
702 <https://doi.org/10.1016/j.gfs.2025.100880>, 2025.

703 Wheaton, E., Kulshreshtha, S., Wittrock, V., and Koshida, G.: Dry times: hard lessons from the Canadian drought of 2001  
704 and 2002, *Canadian Geographies / Géographies canadiennes*, 52, 241–262, [https://doi.org/10.1111/j.1541-](https://doi.org/10.1111/j.1541-0064.2008.00211.x)  
705 0064.2008.00211.x, 2008.

706 Xia, L., Robock, A., Scherrer, K., Harrison, C. S., Bodirsky, B. L., Weindl, I., Jägermeyr, J., Bardeen, C. G., Toon, O. B.,  
707 and Heneghan, R.: Global food insecurity and famine from reduced crop, marine fishery and livestock production due to  
708 climate disruption from nuclear war soot injection, *Nat Food*, 1–11, <https://doi.org/10.1038/s43016-022-00573-0>, 2022.

709 Yu, C., Huang, X., Chen, H., Huang, G., Ni, S., Wright, J. S., Hall, J., Ciais, P., Zhang, J., Xiao, Y., Sun, Z., Wang, X., and  
710 Yu, L.: Assessing the Impacts of Extreme Agricultural Droughts in China Under Climate and Socioeconomic Changes,  
711 *Earth's Future*, 6, 689–703, <https://doi.org/10.1002/2017EF000768>, 2018.

712 Zhang, D. D., Lee, H. F., Wang, C., Li, B., Pei, Q., Zhang, J., and An, Y.: The causality analysis of climate change and  
713 large-scale human crisis, *Proceedings of the National Academy of Sciences*, 108, 17296–17301,  
714 <https://doi.org/10.1073/pnas.1104268108>, 2011.

715 Zheng, Y., Tam, C.-Y., and Collins, M.: Indian Ocean Dipole Impacts on Eastern African Short Rains Across Observations,  
716 Historical Simulations and Future Projections, *Earth's Future*, 13, e2024EF005219, <https://doi.org/10.1029/2024EF005219>,  
717 2025.

718 Zipper, S. C., Qiu, J., and Kucharik, C. J.: Drought effects on US maize and soybean production: spatiotemporal patterns and

719 historical changes, *Environ. Res. Lett.*, 11, 094021, <https://doi.org/10.1088/1748-9326/11/9/094021>, 2016.