

*Supplement of*

**Historical and future changes and present-day uncertainties of ozone  
in China from CMIP6 models**

Shuai Li et al.

Correspondence to: *Hua Zhang (huazhang@cma.gov.cn)*

*The copyright of individual parts of the supplement might differ from the CC BY 4.0 License.*

## **Contents**

Figure S1 – The Bias in surface O<sub>3</sub> concentrations simulated by CMIP6 models relative to TAP from 2014 to 2023 under different concentrations of PM<sub>2.5</sub> components (including BC, NO<sub>3</sub>, SO<sub>4</sub>, NH<sub>4</sub>, OM) in China

Figures S2 – Changes in the annual mean surface O<sub>3</sub> concentrations for China and sub-regions from 2015–2100, across nine CMIP6 models and MME for the ssp370 scenario.

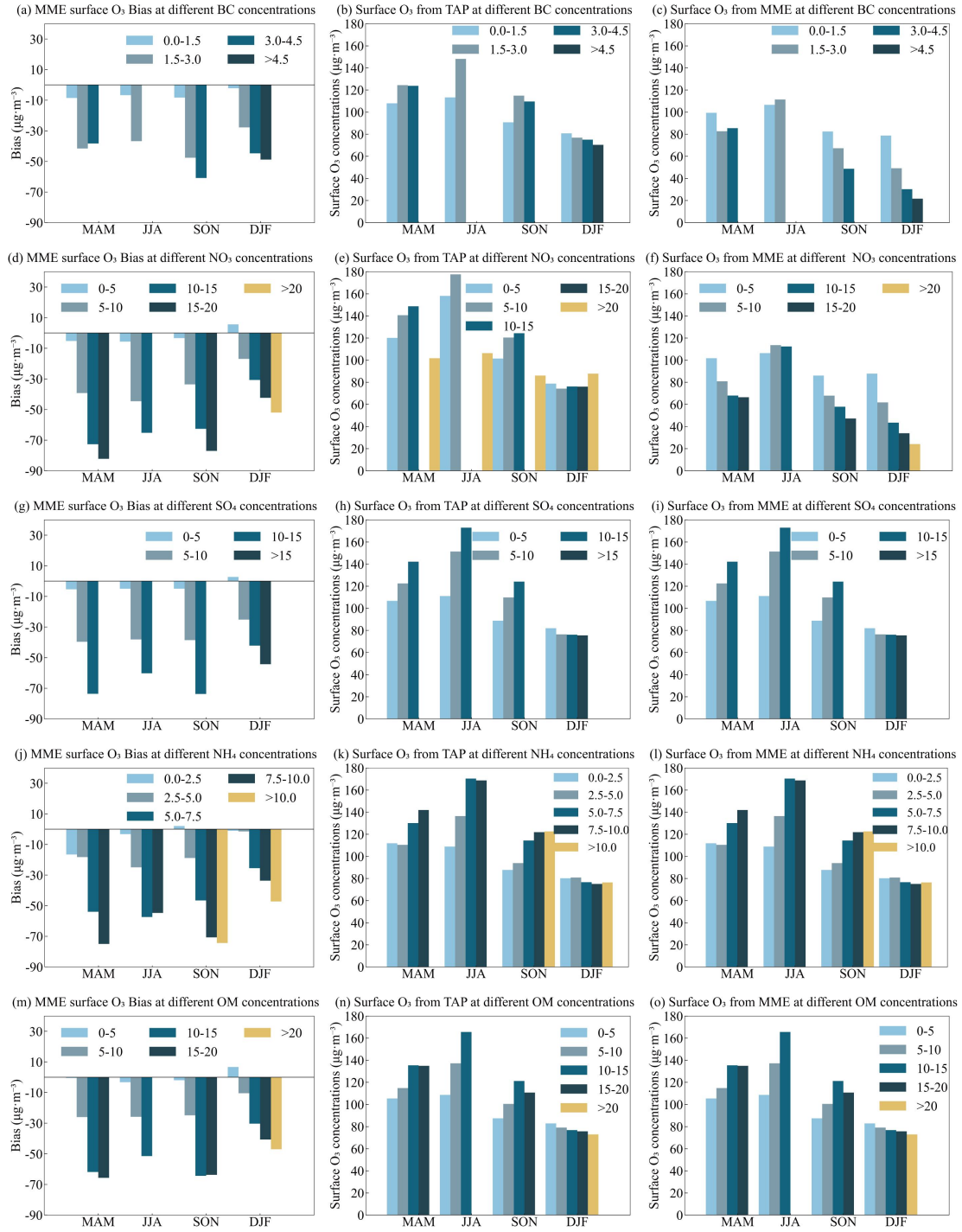
Figures S3 – Changes in the annual mean surface NO<sub>x</sub> concentrations for China and sub-regions from 2015–2100, across nine CMIP6 models and MME for the ssp370 scenario.

Figures S4 – Changes in the annual mean surface CH<sub>4</sub> concentrations for China and sub-regions from 2015–2100, across nine CMIP6 models and MME for the ssp370 scenario.

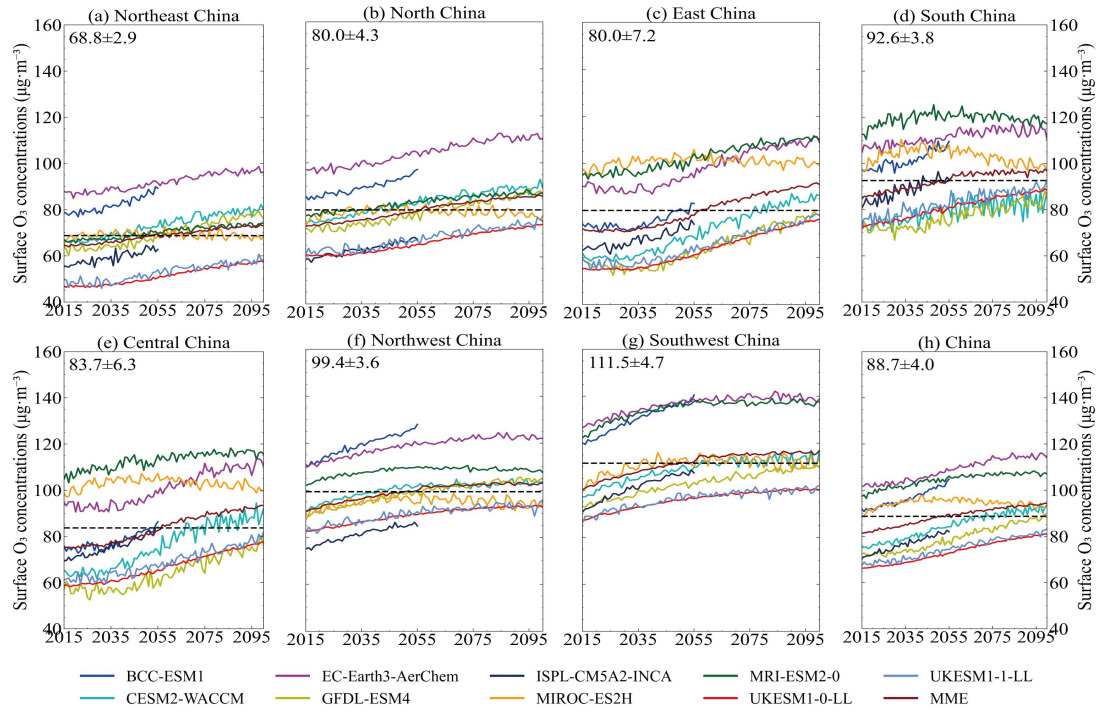
Figures S5 – Changes in the annual total emissions of BVOCs for China and sub-regions from 2015–2100, across nine CMIP6 models and MME for the ssp370 scenario.

Figures S6 – Changes in the annual total emissions of NMVOCs for China and sub-regions from 2015–2100, across nine CMIP6 models and MME for the ssp370 scenario.

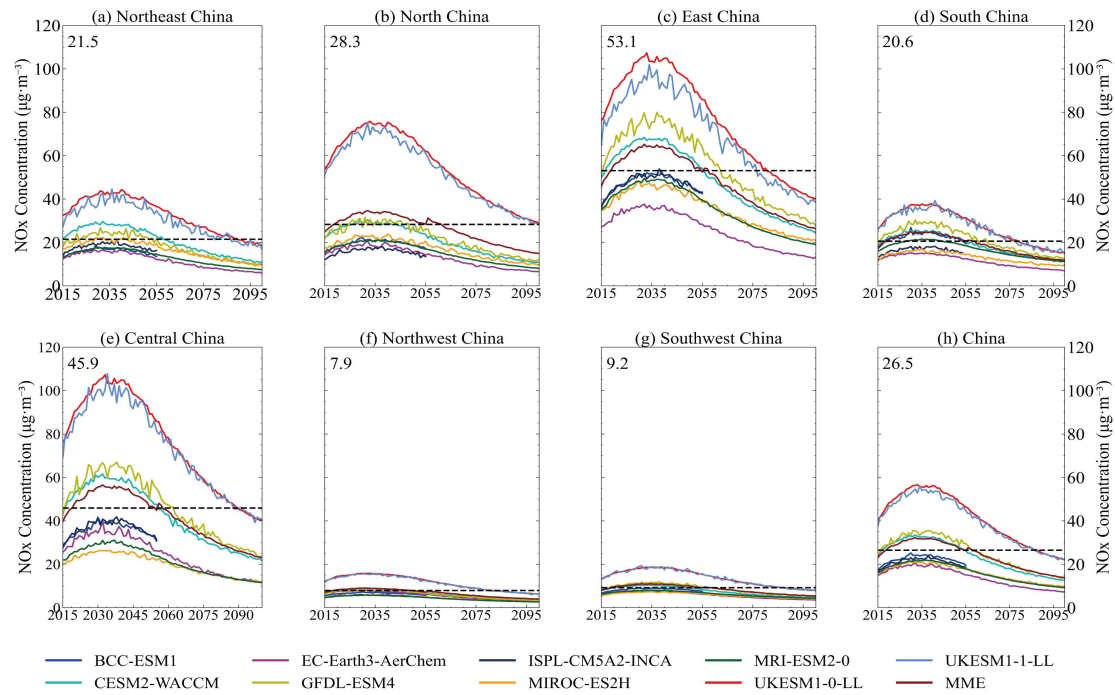
Figures S7 – Changes in the annual mean TAS concentrations for China and sub-regions from 2015–2100, across nine CMIP6 models and MME for the ssp370 scenario.



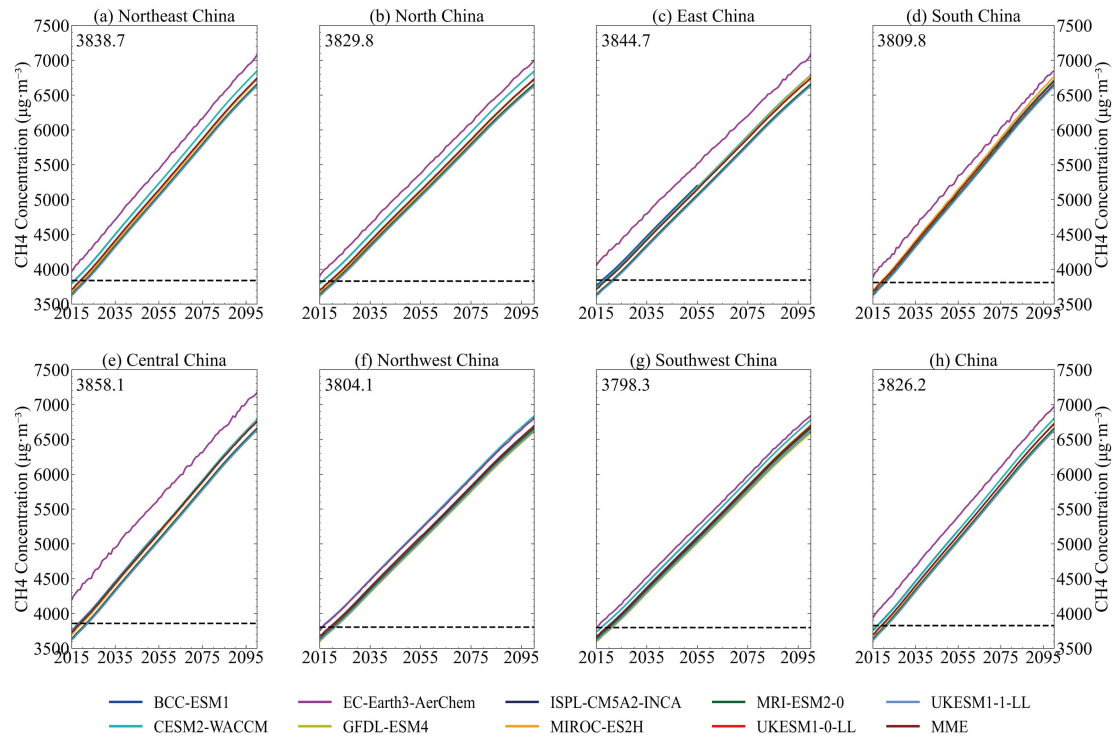
**Figure S1 – The Bias in surface O<sub>3</sub> concentrations simulated by CMIP6 models relative to TAP from 2014 to 2023 under different concentrations of PM<sub>2.5</sub> components (including BC, NO<sub>3</sub>, SO<sub>4</sub>, NH<sub>4</sub>, OM) in China.**



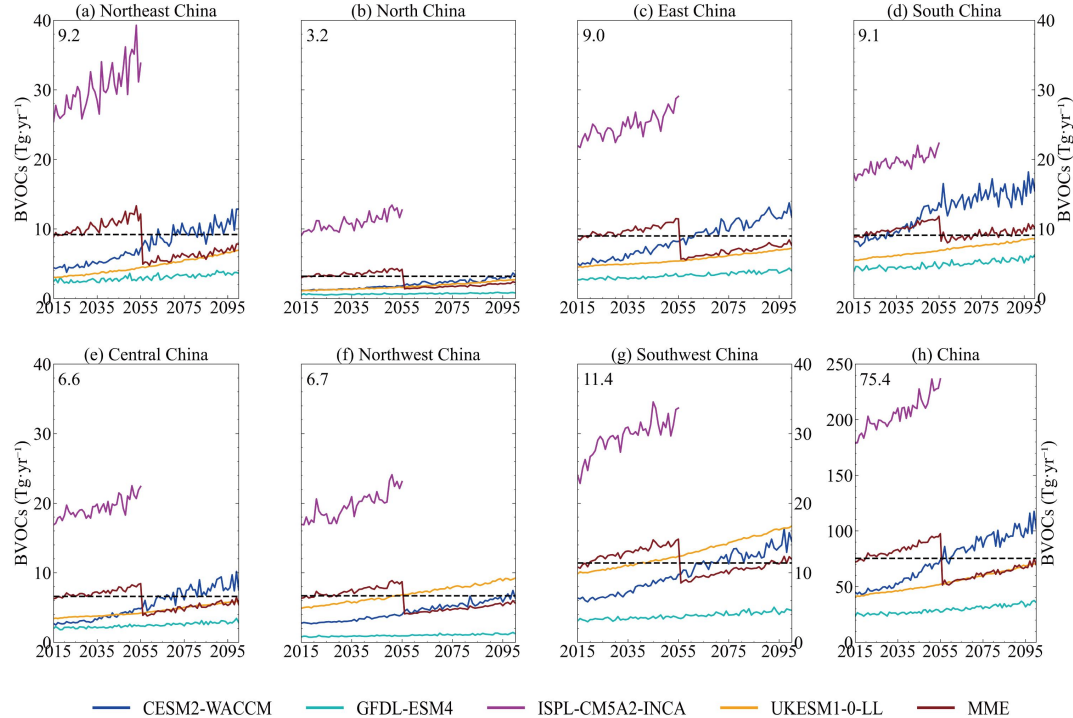
**Figure S2 – Changes in the annual mean surface  $O_3$  concentrations for China and sub-regions from 2015–2100, across nine CMIP6 models and MME for the ssp370 scenario. The black dashed line represents the MME of surface  $O_3$  concentrations for 2015–2100, with the value ( $\pm 1$  SD) shown in the top left of each panel.**



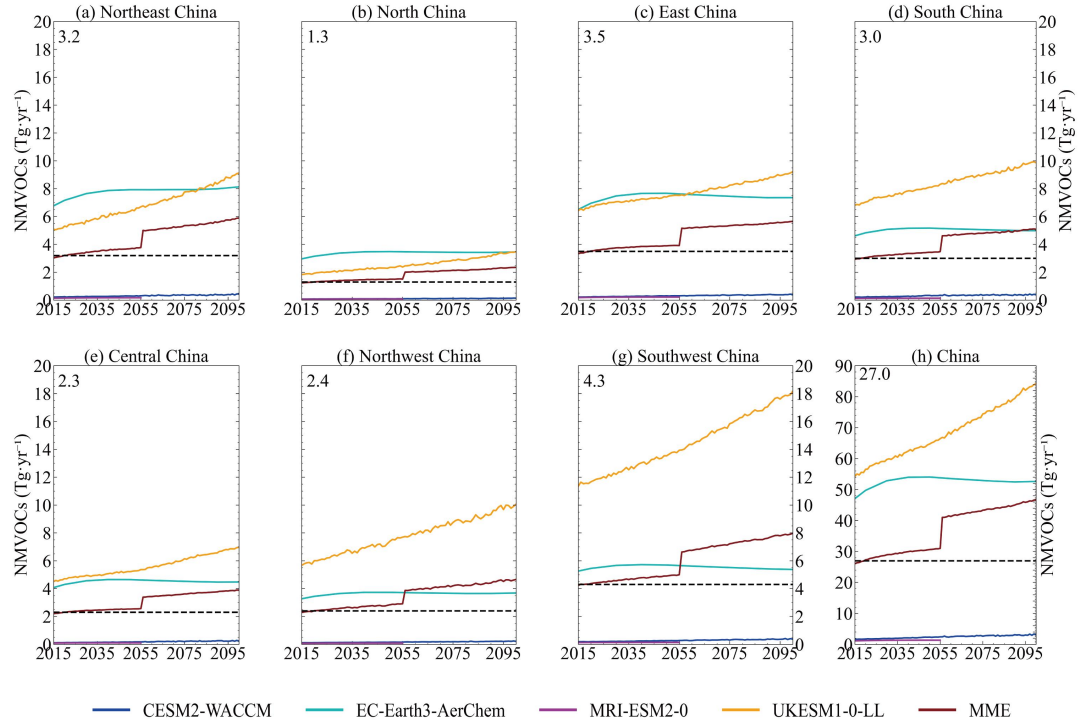
**Figure S3 – Changes in the annual mean surface  $NO_x$  concentrations for China and sub-regions from 2015–2100, across nine CMIP6 models and MME for the ssp370 scenario. The black dashed line represents the MME of surface  $NO_x$  concentrations for 2014–2023, with the value shown in the top left of each panel.**



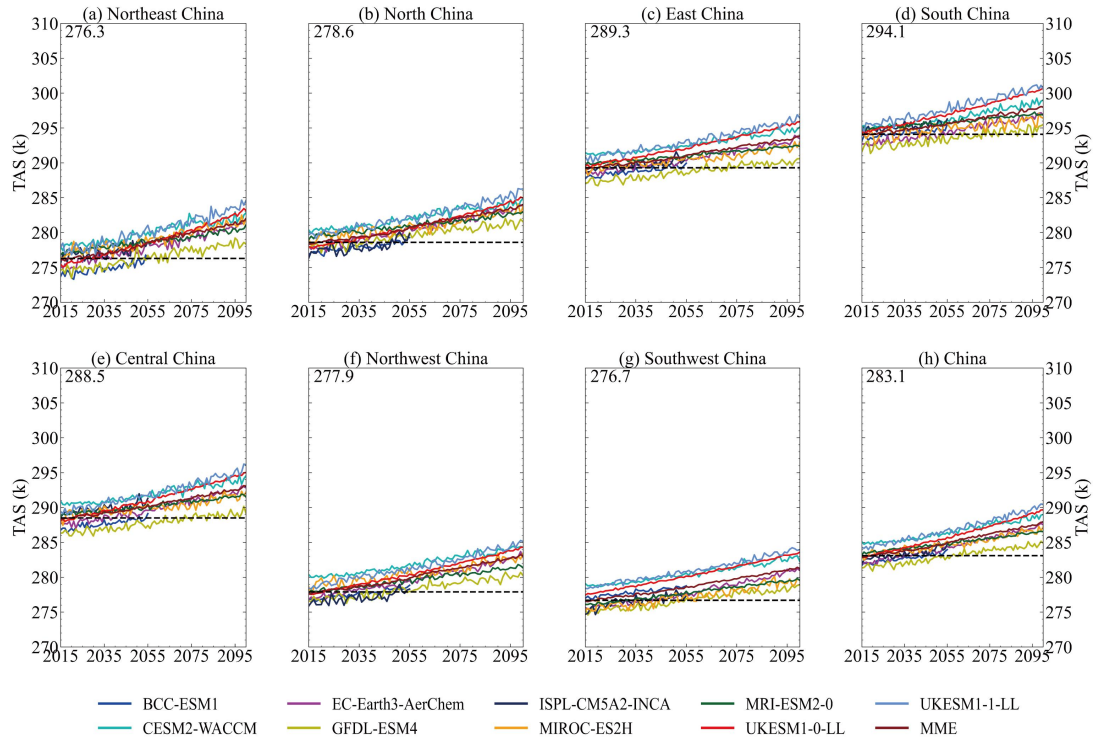
**Figure S4 – Changes in the annual mean surface CH<sub>4</sub> concentrations for China and sub-regions from 2015–2100, across nine CMIP6 models and MME for the ssp370 scenario. The black dashed line represents the MME of surface CH<sub>4</sub> concentrations for 2014–2023, with the value shown in the top left of each panel.**



**Figure S5 – Changes in the annual total emissions of BVOCs for China and sub-regions from 2015–2100, across nine CMIP6 models and MME for the ssp370 scenario. The black dashed line represents the MME of total BVOCs emissions for 2014–2023, with the value shown in the top left of each panel.**



**Figure S6 – Changes in the annual total emissions of NMVOCs for China and sub-regions from 2015–2100, across nine CMIP6 models and MME for the ssp370 scenario. The black dashed line represents the MME of total NMVOCs emissions for 2014–2023, with the value shown in the top left of each panel.**



**Figure S7 – Changes in the annual mean TAS concentrations for China and sub-regions from 2015–2100, across nine CMIP6 models and MME for the ssp370 scenario. The black dashed line represents the MME of surface TAS concentrations for 2014–2023, with the value shown in the top left of each panel.**