

# Newly discovered series of meteorological measurements in SW Greenland (Nuuk) in the period 1806–13

Rajmund Przybylak<sup>1,2</sup>, Andrzej Arażny<sup>1,2</sup>, Przemysław Wyszyński<sup>1,2</sup>, Garima Singh<sup>1</sup>, and Konrad Chmist<sup>1</sup>

5 <sup>1</sup> Faculty of Earth Sciences and Spatial Management, Nicolaus Copernicus University, Toruń, Poland, [rp11@umk.pl](mailto:rp11@umk.pl)

<sup>2</sup> Centre for Climate Change Research, Nicolaus Copernicus University, Toruń, Poland, [cccr@umk.pl](mailto:cccr@umk.pl)

10 Corresponding authors: Garima Singh, [garima.singh@doktorant.umk.pl](mailto:garima.singh@doktorant.umk.pl) & Przemysław Wyszyński, [przemyslaw.wyszynski@umk.pl](mailto:przemyslaw.wyszynski@umk.pl)

**Abstract.** The article presents a description of a newly discovered, unique series of meteorological measurements in SW Greenland (Godthåb [now Nuuk]) from the beginning of the 19<sup>th</sup> century (1 November 1806 to 16 August 1813), for scientific climatological research. The series is the longest available from before 1840, not only for Greenland but also for the entire Arctic. The handwritten meteorological register was found in the archives of the Royal Society in London (MA/154). The meteorological observations were carried out by the German mineralogist Dr Charles Lewis Giesecke. The observations include measurements, taken two to three times per day, of air temperature, atmospheric pressure and wind direction. In addition, the meteorological register briefly describes the weather conditions for each day. In the article, we present a detailed analysis of thermal conditions for the period covered by a complete series of measurements (Aug 1807–Jul 1813). The analysis of air temperature clearly shows that the study period was one of the coldest periods (possibly the coldest) in the past two millennia. A cooling of this severity in the first decades of the 19th century for the study region, encompassing the whole of Greenland and the entire Arctic, has also been previously reconstructed by other scientists using different proxy data and models. Among the available reconstructions that use different proxy data or that use climate models for this purpose, most of the reconstructions of air temperature are almost fully consistent with the available results of meteorological observations for this period.

**Keywords:** Arctic, Greenland, historical climatology, data rescue, climate records, temperature

## 30 1. Introduction

The main aim of historical climatologists in recent decades has been to reconstruct the climate on different spatial scales – from global to regional and local – for the last centuries. For this purpose, documentary evidence is used from before the beginning of regular meteorological observations (Pfister et al., 1999; Brázdil et al., 2005), which is usually taken as the year 1850, except for Africa and the Arctic (for which 1890 is the usual start point) (Brönnimann et al., 2019). One type of very useful information about past weather and climate is an early, irregular, isolated series of meteorological measurements. Recently, an initiative was created to inventory all available data of this type (including existing databases) for the whole world, including the Arctic, and then make it available in digital form (Brönnimann et al., 2019; Lundstad et al., 2023). This activity has found recognition and interest among many scientists and has been called “data rescue activity”. For the Arctic as a whole and for its different regions (Canadian Arctic, Greenland, Svalbard and Novaya Zemlya), a summary of existing meteorological measurements was conducted by Przybylak and Vizi (2005), Vinther et al. (2006), Przybylak

45 et al. (2010, 2016, 2018), and Przybylak and Wyszyński (2017). Queries conducted in many European and Canadian archives and libraries allowed the collection of 118 series of average monthly air temperature values from the years 1801–1920 (for details, see Table I in Przybylak et al. 2010), with the greatest amount dating from after the 1<sup>st</sup> International Polar Year 1882/83. The majority of the gathered series (77.1%) cover periods of less than two years; however,  
50 series of one year or less dominate (58.5%) (Przybylak et al., 2010).

Meteorological data from prior to 1850 are rare and mainly available for Europe and eastern North America (see Fig. 2a in Brönnimann et al. 2019). According to the map presented in this article (Fig. 2a), such a series for Greenland exists only for the south-western coast. Detailed descriptions of the observations available for this time are provided in papers by  
55 Vinther et al. (2006) and, recently, for the late 18<sup>th</sup> century by Demarée et al. (2020), Demarée and Ogilvie (2021) and Przybylak et al. (2024). According to these publications, the oldest series of observations of about one year or more is that for Neu-Herrnhut (now Nuuk) for the period Sep 1767–July 1768. All known meteorological observations made here in the late 18<sup>th</sup> century were usually performed by the Moravian missionaries (for more information about their  
60 activity, see, e.g., Lüdecke (2005), Demarée and Ogilvie (2008), or Demarée et al. (2020). They are usually available in the form of tables with meteorological data. Some have survived and are available in archives in Germany (Moravian Archives Herrnhut), the UK (The Library and Archives of the Royal Society and Moravian Church Archive and Library in London) and the USA (Moravian Archives Bethlehem) (see Demarée and Ogilvie [2008] for more details).  
65 Others have been included in texts of reports, usually prepared for each month of the year, and most often sent annually by ship to Europe (diaries handwritten in English or Old German). The latter sources, which contain only sparse and irregular measurement data relating to only a few parameters, have been assessed in terms of their utility in application to climate studies (particularly for the study of weather extremes in SW Greenland) by Kodzik (2019) and Borm  
70 et al. (2021). Any new data series from the early instrumental period, especially for the Arctic (including Greenland), is very precious for calibrating and reconstructing climate using proxy data from so-called natural archives (ice cores, tree rings, lacustrine sediments, etc.). Vinther et al. (2006) document this fact very clearly, showing a strong correlation (0.6–0.7) between reconstructed SW Greenland winter temperatures and ice-core winter-season proxy. Although  
75 they did extensive work rescuing a large amount of early instrumental data for SW Greenland, they found neither the reportedly oldest meteorological data series for Nuuk, relating to September 1767–July 1768 (see their Fig. 2, where the series starts at 1784), nor the series analysed by us for 1806–13. This latter, entirely new series contains complete data from six

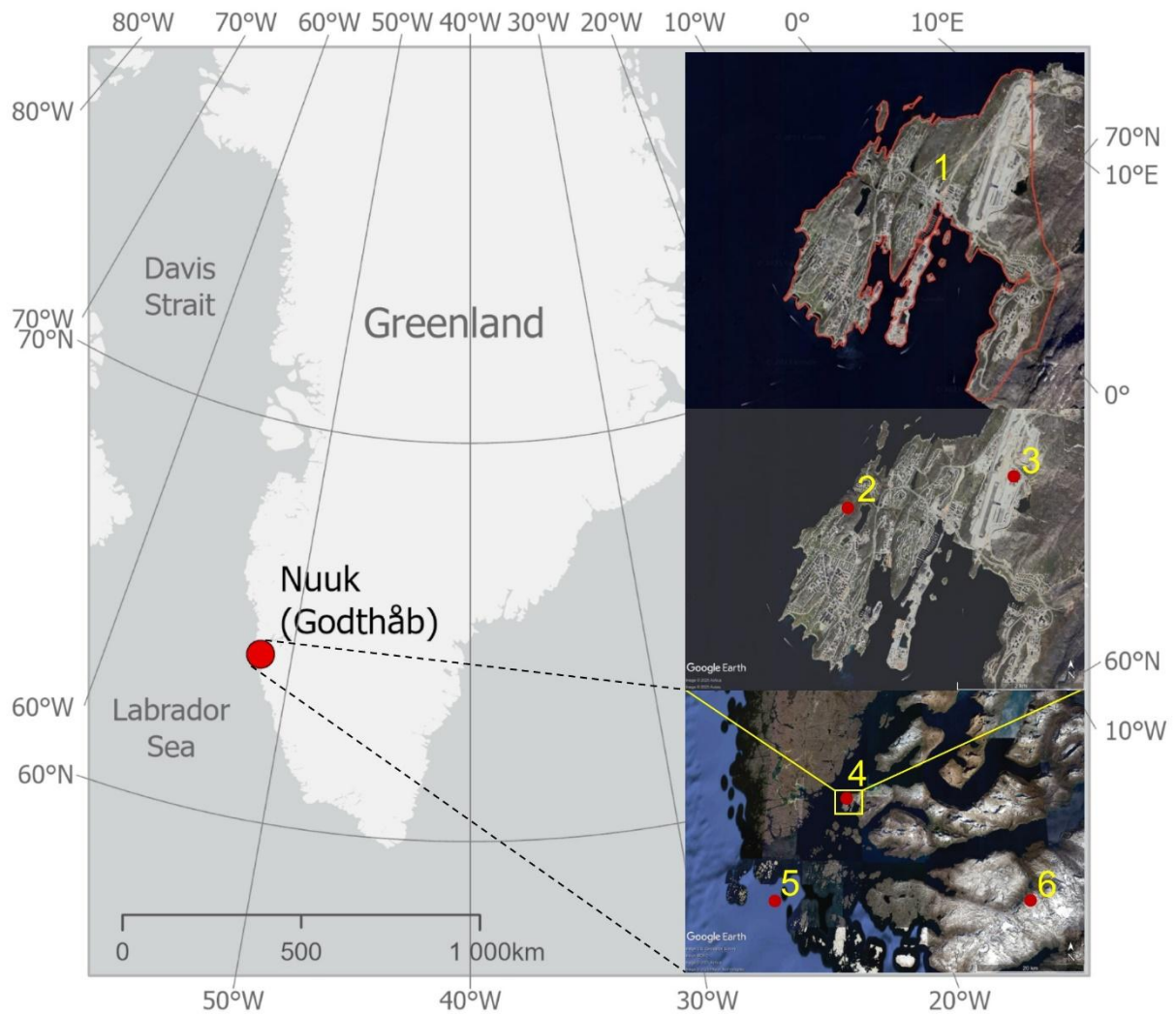
years of observations and is the longest series available for the Arctic (including Greenland) for  
80 the period before 1840. The Arctic is defined as the region after *Atlas Arktiki* (Treshnikov, 1985;  
see also Fig. 1.1 in Przybylak, 2016). For the 1840s and 1850s, we have a continuous series of  
data available for Illulisat (Jacobshavn) (Vinther et al., 2006) and probably also for Lichtenau  
(1843–51) and Neu-Herrnhut (1843–60) according to Table 2 (Lüdecke et al., 2005). To check  
the completeness of the last two series, we need to have access to the so-called Lamont  
85 collections (kept at the Chair of Ecoclimatology at the Technical University of Munich). Despite  
numerous requests, the owner of the collection does not want to make it available to us.

From this brief review of the state of knowledge about early meteorological observations  
available for Greenland, it is clear that many exist. Despite many years of searches for such  
observations by many Danish and UK scientists (Vinther et al., 2006) and by Polish researchers  
90 and climatologists (Przybylak et al., 2010), no one has managed to obtain information about the  
existence of a long-term continuous series of daily and sub-daily meteorological observations  
at Nuuk for the period between 1806 and 1813. While searching the London archives for early  
instrumental meteorological observations by the Moravian Brothers, we happened upon this  
series. Therefore, the main goal of this article is to present this unknown series of observations  
95 to a broader audience of scientists and to present the first results of climate analysis. This  
analysis is limited, however, to a description of conditions and changes in air temperature in  
Nuuk at that time. (Descriptions of other parameters will follow in future publications.) The  
secondary goal is to compare air temperatures in the study period against earlier temperature  
observations from the late 18<sup>th</sup> century (Przybylak et al., 2024) and with later records, including  
100 modern observations from 1991–2020.

## 2. Area, data and methods

The meteorological observations analysed here were made at the beginning of the 19<sup>th</sup> century  
in the territory of present-day Nuuk (Danish name *Godthåb*,  $\varphi = 64^\circ 11' 0.49''$  N,  $\lambda = -51^\circ 43'$   
105  $17.65''$  W; see also Fig. 1), the capital and largest city of Greenland. Currently, they are available  
in the manuscript MA/154 in the Library and Archives of the Royal Society in London. The  
title of the manuscript is: *Meteorological observations at Godthåb [Nuuk], Greenland, by  
Charles Lewis Giesecke*. More details about this source are available at  
[https://catalogues.royalsociety.org/CalmView/Record.aspx?src=CalmView.Catalog&id=MA](https://catalogues.royalsociety.org/CalmView/Record.aspx?src=CalmView.Catalog&id=MA%2f154&pos=1)  
110 [%2f154&pos=1](https://catalogues.royalsociety.org/CalmView/Record.aspx?src=CalmView.Catalog&id=MA%2f154&pos=1). According to the title page of the manuscript and the Royal Society catalogue  
describing the source, the scientist responsible for making them was the German mineralogist

Dr Charles Lewis Giesecke (born Johann Georg Metzler [1761–1833]) (Fig. 2). However, given the numerous biographical accounts of his stay in Greenland (e.g., Monaghan 1993; Jørgensen, 1996; Wyse Jackson, 1996; Whittaker, 2001), there is some doubt as to whether he conducted the meteorological observations alone; he may have had help from the local Inuit community and Moravian missionaries.



**Fig. 1.** Location of historical and contemporary sites of meteorological measurements in SW Greenland. Explanation: 1 – historical site Godthåb (1806–13, the exact location is unknown); 2 – 4250 Nuuk (1991–2020); 3 – 4254 Mittarfik Nuuk (2001–20), 4 – ModE-RA (1806–13), 5 – 20CRv3\_C (1806–13, coastal grid point), 6 – 20CRv3\_T (1806–13, terrestrial grid point). Map data for location of sites: © Google Earth; images © U.S. Geological Survey, © IBCAO, © 2025 Maxar Technologies, © 2025 Airbus and © 2025 Asiaq



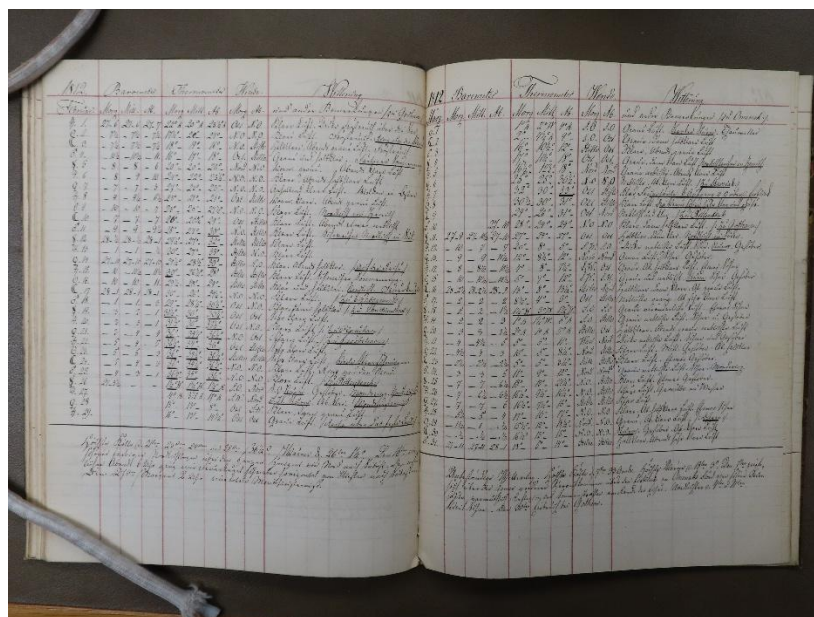
125

**Fig. 2.** Portrait of Sir Charles Lewis Giesecke (1761–1833) painted by the Scottish painter Raeburn in 1817 (after Whittaker, 2001)

Dr Charles Lewis Giesecke arrived at Friederichshaab in Greenland on May 31, 1806 (Whittaker, 2001). The primary purpose of his research visit and stay in SW Greenland, which  
130 was planned to last for one to two years, was to conduct a geological reconnaissance, particularly in search of new minerals. We know that the meteorological observations he began on November 1, 1806, continued regularly until April 1807. From then until August of the same year, the observations were intermittent and irregular. Therefore, he likely carried out most of his geological research from June to October 1806 and then from May to July 1807. There is  
135 also evidence that he conducted studies of minerals in the summers of 1808 and 1809 (Whittaker, 2001); however, these trips were likely shorter. During this time, he organised research expeditions along the south-western coast of Greenland, from Upernavik in the north to Cape Farewell in the south (Whittaker, 2001). To reach these places, he mostly used boats, but also sledges and travelled on foot. Due to the onset of the Napoleonic War in 1807, much  
140 of Europe was occupied by French troops. Thus, Giesecke could not return to Denmark and decided to stay in Greenland until the political situation changed and allowed him to return. This fact likely led to the initiation of systematic meteorological observations, which were conducted over six years (Aug 1807 – Jul 1813), resulting in an almost complete series of observations made three times a day (morning, midday and evening). The data used in this study  
145 were taken from the manuscript MA/154 found in the Archives of the Royal Society in London (Fig. 3). As mentioned above, it is possible that, for these measurements, especially during his exploratory travels, he involved Inuits and (especially) the Moravian missionaries. These latter

were already present in the area and had extensive experience in conducting meteorological observations (see e.g., Demarée and Ogilvie 2008; Przybylak et al., 2024).

150 As Fig. 3 shows, Giesecke conducted measurements and observations of the following meteorological variables: atmospheric pressure (morning and evening), air temperature (morning, midday and evening) and wind direction (morning and evening). The precise times of observations are not given. In addition to the meteorological data available in the meteorological registers, he provided brief descriptions of the weather conditions for each day. 155 At the end of each month, he also included a short summary of the weather conditions (at the bottom of the table of meteorological data). Unfortunately, the register does not provide information about the units used for the measurements or details about the thermometer's exposure. It is assumed that the thermometer was placed on the north-facing wall outside Giesecke's building. However, in the Arctic, where there is polar day during summer months, 160 such placement does not eliminate the influence of solar radiation unless the thermometer is adequately shielded. The detailed location of the place where observations were probably done (whether it was near the sea or at some distance from the sea, its elevation, etc.) is also unknown.



165 **Fig. 3.** Example of a manuscript presenting meteorological observations in Godthåb (1 Feb 1806–16 Aug 1813) (data presented in the manuscript: 1 February 1812 to 31 March 1812, source – The Library and Archives of the Royal Society in London, MA/154)

In the article, we present an analysis limited to air temperature – the most important variable in every climate analysis. All source data were quality-controlled by visual inspection, and no incorrect or suspect data were found. As we wrote earlier, the unit in which air 170 temperature measurements are presented in the meteorological register is not given. To determine which unit was likely used in Giesecke's measurements, we compared his results with

parallel temperature observations available for another location in Godthåb during 1811–12 (Vinther et al., 2006). Based on these, we concluded that temperatures were measured in degrees Celsius. Although the exact times of air temperature measurements are unknown, we calculated mean daily air temperature (MDAT) using a weighted average:  $(T_{\text{morning}} + T_{\text{midday}} + 2 \times T_{\text{evening}}) / 4$ . To assess the probable biases in the calculation of MDATs, we used hourly air temperature data from the Nuuk 4250 station from 2010 to 2020 (Drost Jensen, 2022). We calculated MDATs according to eight different formulas:

$$\begin{aligned} \text{MDAT1} &= (T_1 + T_2 + T_3, \dots, T_{24})/24 & (1) \\ \text{MDAT2} &= (T_6 + T_{12} + T_{18})/3 & (2) \\ \text{MDAT3} &= (T_7 + T_{13} + T_{19})/3 & (3) \\ \text{MDAT4} &= (T_8 + T_{14} + T_{20})/3 & (4) \\ \text{MDAT5} &= (T_8 + T_{14} + 2 \cdot T_{20})/4 & (5) \\ \text{MDAT6} &= (T_8 + T_{14} + 2 \cdot T_{21})/4 & (6) \\ \text{MDAT7} &= (T_6 + T_{12} + 2 \cdot T_{20})/4 & (7) \\ \text{MDAT8} &= (T_6 + T_{12} + 2 \cdot T_{21})/4 & (8) \end{aligned}$$

where MDAT1 is calculated from 24 hourly measurements per day (the “real daily average”).

In the next step, we compared the MDAT1 results against those obtained using all other formulas (MDAT2–MDAT8, which rely on only three measurement times per day) (see Table 1). Analysis shows that, in the cold half-year (Oct–Mar), the maximum bias reaches 0.1 °C, whereas in summer the bias is highest but does not exceed 0.5 °C. The formulas MDAT6, MDAT7, and MDAT8 are closer to MDAT1, with a bias typically of 0.0 °C, except in June, July, and August, when the bias reaches a maximum of 0.2 °C.

**Table 1.** Mean monthly and annual differences in air temperature (°C) between MDATs calculated according to formulas MDAT2–MDAT8 in comparison to the average calculated using the MDAT1 formula

Period	Jan	Feb	Mar	Apr	May	Jun	Jul	Aug	Sep	Oct	Nov	Dec	Year
MDAT2-MDAT1	0.0	0.0	0.1	0.1	0.3	0.3	0.4	0.3	0.1	0.1	0.0	0.0	0.15
MDAT3-MDAT1	0.0	0.1	0.0	0.1	0.3	0.4	0.5	0.3	0.1	0.1	0.1	0.0	0.17
MDAT4-MDAT1	0.0	0.1	0.0	0.2	0.3	0.4	0.5	0.4	0.2	0.1	0.0	0.0	0.18
MDAT5-MDAT1	0.0	0.1	0.0	0.1	0.3	0.4	0.5	0.3	0.2	0.1	0.0	0.0	0.17
MDAT6-MDAT1	0.0	0.1	0.0	0.1	0.1	0.2	0.2	0.1	0.1	0.0	0.0	0.0	0.07
MDAT7-MDAT1	0.0	0.0	0.0	0.0	0.1	0.2	0.2	0.0	0.0	0.0	0.0	0.0	0.06
MDAT8-MDAT1	0.0	0.0	0.0	0.0	0.0	0.0	-0.1	-0.2	-0.1	0.0	0.0	0.0	-0.04
<b>Max bias</b>	<b>0.0</b>	<b>0.1</b>	<b>0.1</b>	<b>0.2</b>	<b>0.3</b>	<b>0.4</b>	<b>0.5</b>	<b>0.4</b>	<b>0.2</b>	<b>0.1</b>	<b>0.1</b>	<b>0.0</b>	<b>0.18</b>

None of the possible biases in air temperature measurements that are associated with the type and accuracy of the thermometer used or its exposure can be estimated due to the lack of relevant information. However, the exposure bias should be minimal or zero for the polar night  
200 due to the absence of solar radiation at such times.

The MDAT values, which are available at <https://doi.org/10.18150/IGYNGV> (Przybylak et al., 2025), were used to calculate standard (monthly, seasonal and annual means) and less-typical climate statistics (indices) such as: 1) day-to-day temperature variability (DDTV); 2) frequency of occurrence of MDAT in 1-degree intervals, including the calculations  
205 of skewness ( $\gamma_1$ ) and kurtosis ( $\gamma_2$ ) of analyzed sets of air temperature using formulas recommended by von Storch and Zwiers (1999); 3) thermal seasons after Baranowski (1968) proposition for polar regions (for details, see Przybylak et al. 2024); 4) thermal roses of wind (relation between wind direction and temperature); and 5) annual air temperature range (ATR) and thermal climate continentality (K) using the following formula proposed by Ewert (1972):

$$210 \quad K = [ATR - (3.81 \cdot \sin\varphi) + 0.1] / (38.39 \cdot \sin\varphi + 7.47) \cdot 100\% \quad (9)$$

where ATR is the annual air temperature range calculated as the difference between the mean temperatures of the warmest and coldest months, and  $\varphi$  is the geographical latitude.

This index considers the dependence of ATR not only on geographical latitude, but also on the percentage of land in a given latitudinal band. The K index changes worldwide from  
215 -1.5% for areas with extreme oceanic climate to more than 140% for the extremely continental part of Eastern Siberia (Ewert, 1997). For more details about the methods used to calculate the statistics mentioned above, see Przybylak et al. (2014, 2024).

The obtained results for the study period were compared against earlier temperature observations from the late 18<sup>th</sup> century (Przybylak et al., 2024) and with later records (Vinther et al., 2006), including modern observations from 1991–2020 (monthly data after Cappelen and Drost Jensen, 2021, and hourly data, based on which daily averages were calculated, after Drost Jensen 2022). However, due to the lack of complete hourly data for the 4250 Nuuk (Fig. 1) station and the inability to calculate daily averages from 24 measurements for the whole period  
220 1991-2020, the gaps in the daily averages were filled using an interpolation method (Nordli et al., 2020) based on data taken from the neighbouring 4254 Mittarfik Nuuk station (for more details see Przybylak et al., 2024, p. 1455).

Comparison of the same years 1807-13 was only possible with data taken from reanalyses: the NOAA/CIRES/DOE 20th Century Reanalysis (V3) (20CRv3) available for 1806–2015 ([https://www.psl.noaa.gov/data/gridded/data.20thC\\_ReanV3.html](https://www.psl.noaa.gov/data/gridded/data.20thC_ReanV3.html), last access 20

230 August 2025) (see also Slivinski et al. 2019, 2021) and the Modern Era Reanalysis for 1421-  
2008 (ModE-RA; Valler et al., 2024) available via ClimeApp (Warren et al. 2024, <https://modera.unibe.ch/climeapp/>, last access 21 August 2025).

### 3. Results

#### 235 3.1. Monthly resolution

Due to the irregularity of meteorological observations between 1 November 1806 and 31 July 1807, we present here an analysis for the period of the regular and complete series of observations, i.e. August 1807 – July 1813 (6 full years). The average yearly temperature for this period, calculated from August to July next year, reached  $-4.3\text{ }^{\circ}\text{C}$ . The mean yearly  
240 temperature in the coldest (1810/11) and warmest (1808/09) years reached  $-6.9\text{ }^{\circ}\text{C}$  and  $-1.8\text{ }^{\circ}\text{C}$ , respectively (Table 2, Fig. 4). In the warmest of the six years, temperatures were higher than the six-year average mainly from December to April, when mean monthly temperatures were even greater than in the contemporary period 1991–2020. Similarly, in the coldest year, very  
245 low winter and spring temperatures also accounted for the significant decrease in the annual mean. On average, in the yearly cycle, the coldest temperature occurred in February ( $-14.4\text{ }^{\circ}\text{C}$ ) and the warmest in July ( $5.3\text{ }^{\circ}\text{C}$ ) (Table 2, Fig. 4). In all analyzed years, the warmest month was always July (except for the first studied year, when it was August), whereas the coldest month occurred in a winter month or in March (Table 2). Year-to-year changes in mean monthly values are clearly most significant in winter and spring months, oscillating from about  $7\text{ }^{\circ}\text{C}$  in January  
250 and February to almost  $10\text{ }^{\circ}\text{C}$  in March. Conversely, the smallest year-to-year variations (indicating the most stable months) occurred in October ( $0.5\text{ }^{\circ}\text{C}$ ) and September ( $1.1\text{ }^{\circ}\text{C}$ ), whereas these variations were slightly greater in the summer months, ranging from  $1.4\text{ }^{\circ}\text{C}$  in August to  $2.7\text{ }^{\circ}\text{C}$  in June (Table 2, Fig. 4).

255

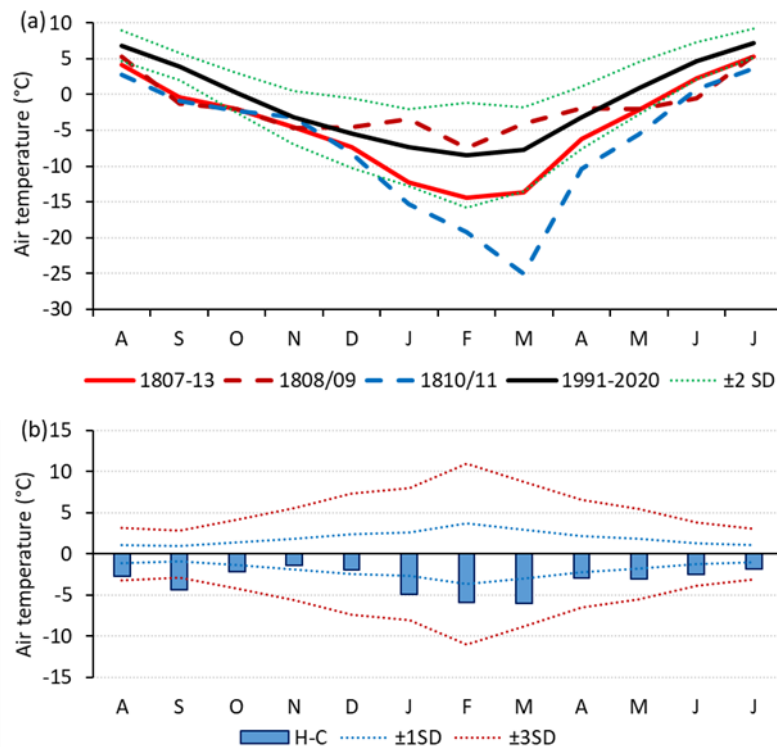
**Table 2.** Mean monthly, seasonal and annual air temperature and variability (SD, DDTV) of MDAT in Nuuk in the historical (1807–13) and contemporary (1991–2020) periods

Period	Aug	Sep	Oct	Nov	Dec	Jan	Feb	Mar	Apr	May	Jun	Jul	DJF	MAM	JJA	SON	Aug-Jul
	<b>Mean temperature (°C)</b>																
1807/08	3.1	-1.6	-2.2	-4.0	-6.6	-19.4	-12.9	-10.7	-6.3	-2.2	0.6	1.5	-13.0	-6.4	1.7	-2.6	-5.0
<u>1808/09</u>	<u>5.3</u>	<u>-1.3</u>	<u>-2.0</u>	<u>-4.7</u>	<u>-4.6</u>	<u>-3.4</u>	<u>-7.5</u>	<u>-4.1</u>	<u>-1.9</u>	<u>-2.0</u>	<u>-0.5</u>	<u>5.5</u>	<u>-5.2</u>	<u>-2.7</u>	<u>3.4</u>	<u>-2.7</u>	<u>-1.8</u>
1809/10	4.1	1.2	-1.2	-2.5	-9.3	-8.3	-9.2	-5.6	-4.3	1.8	3.8	6.6	-8.9	-2.7	4.8	-0.8	-1.9
<i>1810/11</i>	<i>2.8</i>	<i>-0.9</i>	<i>-2.3</i>	<i>-3.2</i>	<i>-8.2</i>	<i>-15.3</i>	<i>-19.2</i>	<i>-25.0</i>	<i>-10.4</i>	<i>-5.6</i>	<i>0.8</i>	<i>3.7</i>	<i>-14.2</i>	<i>-13.7</i>	<i>2.4</i>	<i>-2.1</i>	<i>-6.9</i>
1811/12	4.9	-0.2	-2.2	-9.0	-10.4	-11.7	-25.3	-13.5	-4.6	-1.0	3.0	7.4	-15.8	-6.4	5.1	-3.8	-5.2
1812/13	4.6	-0.3	-2.0	-3.9	-4.8	-15.8	-11.9	-23.3	-9.6	-4.0	5.7	7.4	-10.8	-12.3	5.9	-2.1	-4.8
<b>1807-13</b>	<b>4.1</b>	<b>-0.4</b>	<b>-2.0</b>	<b>-4.5</b>	<b>-7.3</b>	<b>-12.3</b>	<b>-14.4</b>	<b>-13.7</b>	<b>-6.2</b>	<b>-2.2</b>	<b>2.2</b>	<b>5.3</b>	<b>-11.3</b>	<b>-7.4</b>	<b>3.9</b>	<b>-2.3</b>	<b>-4.3</b>
<b>1991-2020</b>	<b>6.8</b>	<b>3.9</b>	<b>0.2</b>	<b>-3.2</b>	<b>-5.4</b>	<b>-7.4</b>	<b>-8.5</b>	<b>-7.6</b>	<b>-3.1</b>	<b>0.9</b>	<b>4.7</b>	<b>7.2</b>	<b>-7.1</b>	<b>-3.3</b>	<b>6.2</b>	<b>0.3</b>	<b>-1.0</b>
1807-1813 – 1991-2020 (diff)	-2.7	-4.3	-2.2	-1.3	-1.9	-4.9	-5.9	-6.1	-3.1	-3.1	-2.5	-1.9	-4.2	-4.1	-2.3	-2.6	-3.3
	<b>SD (°C)</b>																
Period	Aug	Sep	Oct	Nov	Dec	Jan	Feb	Mar	Apr	May	Jun	Jul	DJF	MAM	JJA	SON	Aug-Jul
1807/08	3.5	2.7	3.2	2.8	3.3	7.1	8.4	5.7	7.2	3.3	3.2	3.0	6.2	5.4	3.3	2.9	4.4
<u>1808/09</u>	<u>2.3</u>	<u>2.7</u>	<u>1.6</u>	<u>4.1</u>	<u>3.8</u>	<u>4.3</u>	<u>6.1</u>	<u>3.7</u>	<u>2.4</u>	<u>2.6</u>	<u>1.2</u>	<u>1.5</u>	<u>4.8</u>	<u>2.9</u>	<u>1.7</u>	<u>2.8</u>	<u>3.0</u>
1809/10	1.5	2.1	2.2	3.9	3.4	5.1	6.6	6.2	4.4	2.9	2.2	2.5	5.0	4.5	2.1	2.7	3.6
<i>1810/11</i>	<i>1.4</i>	<i>1.5</i>	<i>2.3</i>	<i>3.0</i>	<i>5.0</i>	<i>5.9</i>	<i>5.7</i>	<i>4.1</i>	<i>4.2</i>	<i>4.5</i>	<i>2.0</i>	<i>3.3</i>	<i>5.5</i>	<i>4.3</i>	<i>2.2</i>	<i>2.3</i>	<i>3.6</i>
1811/12	2.9	2.2	2.5	2.8	5.0	4.8	8.7	9.1	5.0	2.4	3.1	2.5	6.2	5.5	2.8	2.5	4.2

1812/13	2.3	2.4	2.4	3.3	4.6	6.0	4.7	4.3	5.3	2.2	3.8	2.2	5.1	4.0	2.8	2.7	3.6
<b>1807-13</b>	<b>2.3</b>	<b>2.3</b>	<b>2.3</b>	<b>3.3</b>	<b>4.2</b>	<b>5.6</b>	<b>6.7</b>	<b>5.5</b>	<b>4.8</b>	<b>3.0</b>	<b>2.6</b>	<b>2.5</b>	<b>5.5</b>	<b>4.4</b>	<b>2.5</b>	<b>2.6</b>	<b>3.8</b>
<b>1991-2020</b>	<b>2.1</b>	<b>1.9</b>	<b>2.7</b>	<b>3.7</b>	<b>4.8</b>	<b>5.3</b>	<b>7.2</b>	<b>5.8</b>	<b>4.3</b>	<b>3.6</b>	<b>2.5</b>	<b>2.0</b>	<b>5.8</b>	<b>4.6</b>	<b>2.2</b>	<b>2.8</b>	<b>3.8</b>
1807-1813 – 1991-2020 (diff)	0.2	0.4	-0.4	-0.4	-0.6	0.3	-0.5	-0.3	0.5	-0.6	0.1	0.5	-0.3	-0.2	0.3	-0.2	0.0
	<b>DDTV (°C)</b>																
Period	Aug	Sep	Oct	Nov	Dec	Jan	Feb	Mar	Apr	May	Jun	Jul	DJF	MAM	JJA	SON	Aug-Jul
1807/08	1.9	1.3	2.1	1.4	2.4	2.8	3.6	2.8	2.0	1.5	1.8	1.3	2.9	2.1	1.7	1.6	2.1
<u>1808/09</u>	<u>1.4</u>	<u>1.5</u>	<u>1.1</u>	<u>1.9</u>	<u>2.4</u>	<u>2.3</u>	<u>3.4</u>	<u>2.4</u>	<u>1.6</u>	<u>2.0</u>	<u>1.1</u>	<u>1.2</u>	<u>2.7</u>	<u>2.0</u>	<u>1.3</u>	<u>1.5</u>	<u>1.9</u>
1809/10	1.3	1.5	1.5	2.0	2.3	2.8	3.5	1.9	2.4	1.9	1.5	1.5	2.9	2.1	1.4	1.6	2.0
<i>1810/11</i>	<i>1.3</i>	<i>1.0</i>	<i>1.6</i>	<i>2.4</i>	<i>2.9</i>	<i>3.2</i>	<i>2.5</i>	<i>2.3</i>	<i>2.5</i>	<i>2.0</i>	<i>1.5</i>	<i>1.9</i>	<i>2.9</i>	<i>2.3</i>	<i>1.6</i>	<i>1.6</i>	<i>2.1</i>
1811/12	1.4	1.5	1.3	1.9	3.1	3.5	3.4	3.9	2.6	1.4	1.6	2.3	3.3	2.6	1.8	1.6	2.3
1812/13	1.2	1.2	1.2	1.8	2.5	2.8	3.3	2.2	4.0	1.9	2.3	2.0	2.9	2.7	1.8	1.4	2.2
<b>1807-13</b>	<b>1.4</b>	<b>1.3</b>	<b>1.5</b>	<b>1.9</b>	<b>2.6</b>	<b>2.9</b>	<b>3.3</b>	<b>2.6</b>	<b>2.5</b>	<b>1.8</b>	<b>1.6</b>	<b>1.7</b>	<b>2.9</b>	<b>2.3</b>	<b>1.6</b>	<b>1.6</b>	<b>2.1</b>
<b>1991-2020</b>	<b>1.3</b>	<b>1.1</b>	<b>1.4</b>	<b>1.8</b>	<b>2.1</b>	<b>2.3</b>	<b>2.4</b>	<b>2.4</b>	<b>1.8</b>	<b>1.4</b>	<b>1.6</b>	<b>1.6</b>	<b>2.3</b>	<b>1.9</b>	<b>1.5</b>	<b>1.5</b>	<b>1.8</b>
1807-1813 – 1991-2020 (diff)	0.1	0.2	0.1	0.1	0.5	0.6	0.9	0.2	0.7	0.4	0.0	0.1	0.6	0.4	0.1	0.1	0.3

265 Key: SD – standard deviation, DDTV – day-to-day temperature variability, bold font – long-term average, underline – the warmest year, italic – the coldest year

270



**Fig. 4.** a) Annual cycles of air temperature in Nuuk in the study historical period 1807–13, including the warmest (brown dashed line) and the coldest (blue dashed line) years, and in the contemporary period (1991–2020), b) differences between historical and contemporary mean monthly temperature values.

280 Key: SD values were calculated from the series of monthly mean temperatures from the contemporary period 1991–2020.

Reliable information about the thermal continentality of climate in the Arctic, calculated based on instrumental data, is unavailable for the period before 1840 because of the lack of long-term data series. For the first time, we have a six-year series of air temperature observations for Nuuk from the beginning of the 19th century. Based on data from Nuuk from 1991–2020, six-year moving averages of ATR and K were calculated. The calculation errors of these values compared to the 30-year period are small and amount to  $\pm 1.5$  °C and  $\pm 3.5\%$ , respectively. In the study period (1807–13), the mean ATR reached 24.0 °C, while K reached 49.2%. In the contemporary period, these values are 17.3 °C and 33.4%. This indicates that climate continentality in SW Greenland at the beginning of the 19th century was about 15% greater than at present. This difference is mainly accounted for by winter months having been significantly colder in the historical period than at present (see Fig. 4).

290 Statistics were also calculated for each observation time to roughly estimate the changes in air temperature during the day. In line with expectations, the average annual temperature was highest at midday ( $-2.1$  °C) and lowest in the morning ( $-4.8$  °C) (Table S1). At all times of the

day, the warmest month was July, while the coldest was February (midday and morning) or March (evening). In the study period, the highest temperature (18.5 °C) was noted in midday on 16 July 1810, while the lowest (-36.5 °C) occurred in the morning and evening observation times on 21–24 February 1812. Thus, the absolute range of temperature reached as much as 55 °C. The temperature in the historical period in all months was lower than today, in particular in February and March, when the difference reached about 6 °C (Table 2, Fig. 4). On the other hand, this difference was the smallest in November (1.3 °C), as well as in December and July (1.9 °C in both). On average, according to annual averages, the historical period was 3.3 °C colder than today (1991–2020). The warmest (1808/09) and coldest (1810/11) years were also colder than today – by 0.8 °C and 6.9 °C, respectively (Table 2, Fig. 4).

Figure 5 shows the course of monthly average air temperatures in the study period to determine whether the strong eruption (the third largest since 1500) of an unidentified volcano at the end of 1808, and most likely at the beginning of 1809 (Vinther et al. 2006; Timmreck et al., 2021), influenced the air temperature in SW Greenland. A significant cooling in Nuuk occurred from the second winter after the eruption. This cooling occurred mainly in wintertime and persisted until the end of the series, but the greatest was in the expedition year 1810/11. Following the eruption, there was a notable increase in the frequency of calms and winds from the north-east sector, accompanied by a decrease in the number of winds from other directions, particularly those from the south-east and south-west sectors (Fig. 6).

315

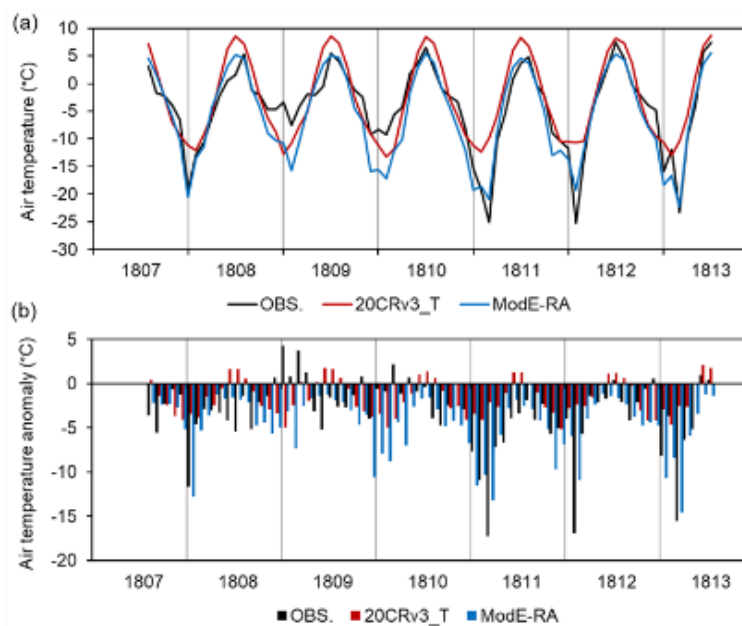
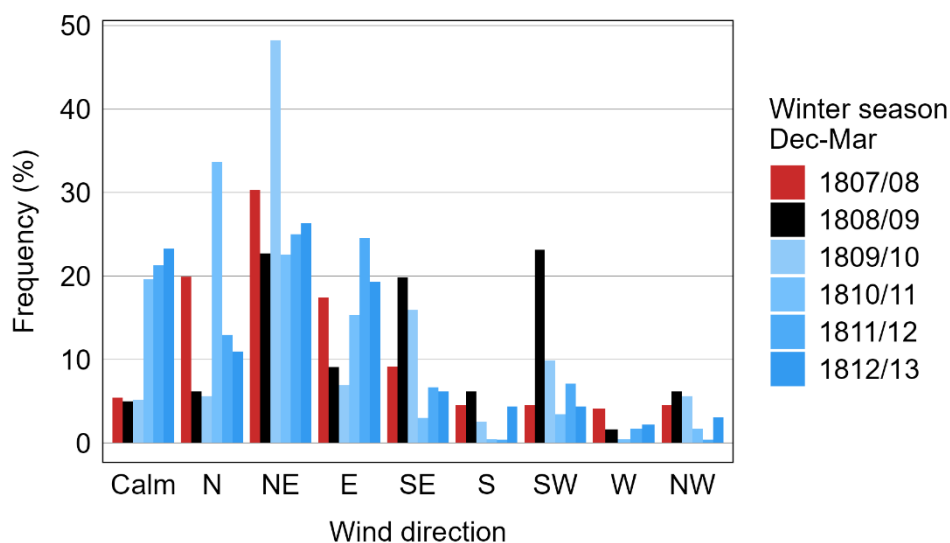


Fig. 5. (a) Time series of mean monthly air temperatures in Nuuk in the period 1807–13 according to different datasets, and (b) their anomalies in reference to the period 1991–2020. A large, unknown, volcanic eruption most likely occurred in early 1809.



320

**Fig. 6.** Frequency of winds in Nuuk in the winter season (Dec – Mar) in particular years of the period 1807–13. In black, the year of the eruption of an unknown volcano

### 3.2. Daily resolution

325

#### 3.2.1. Annual cycle

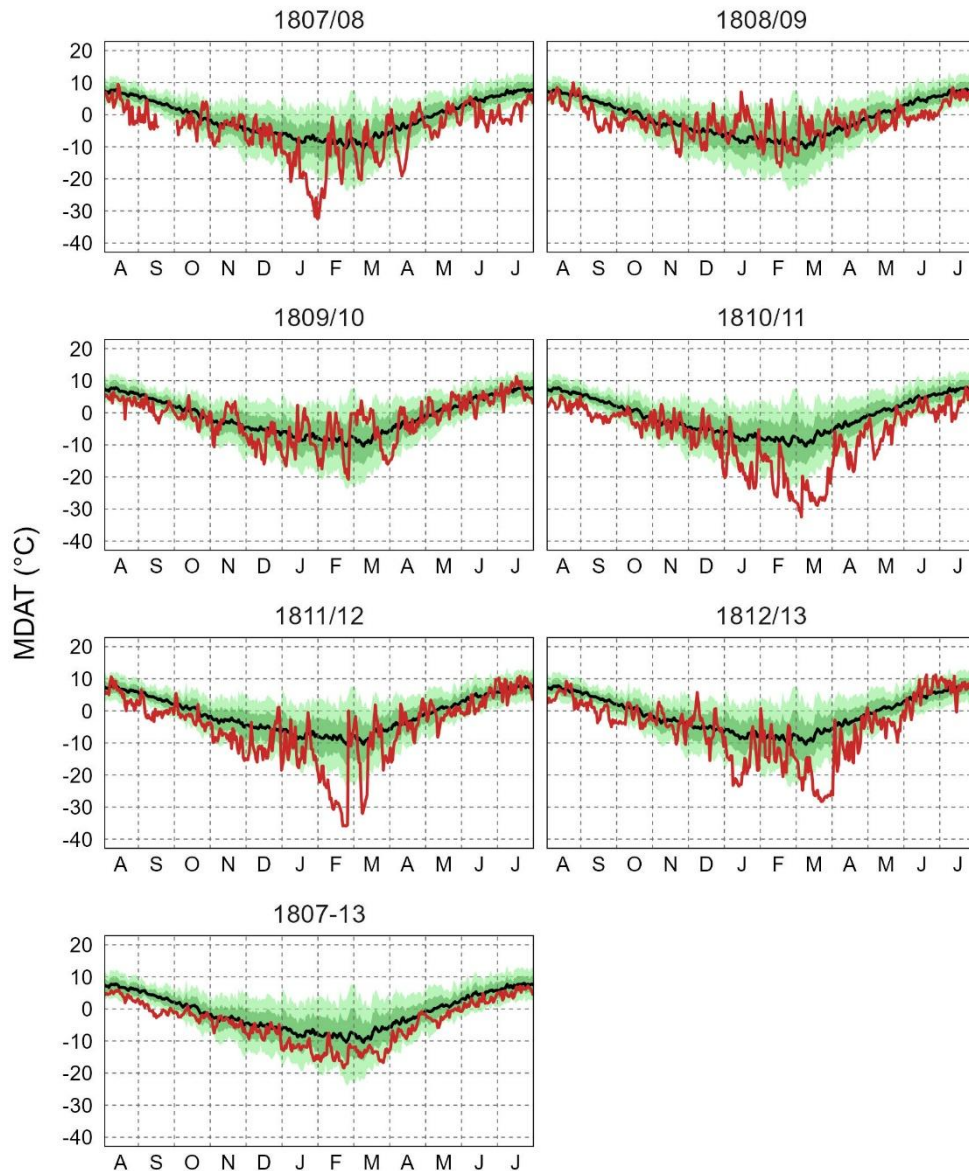
330

Most studies analyzing climate and its changes in various areas of the globe, including the polar regions (including the Arctic), most often use monthly, seasonal and annual data. For many purposes, these are overly generalized data that do not allow for a complete understanding of the wide range of climate features that characterize each area, particularly the extreme phenomena. Therefore, over the last 20 years, we have started using higher-resolution data, i.e. daily and sub-daily, for our analyses of weather and climate in the Arctic (e.g., Przybylak and Vizi 2005; Nordli et al. 2014, 2020; Przybylak et al. 2016, 2018, 2022, 2024; Przybylak & Wszyński, 2017). That is why we also present here some statistics based on this kind of data, and, thanks to that, we present an in-depth analysis of the weather and climate in Nuuk during the study period.

335

Figure 7 presents the annual cycle of air temperature in Nuuk based on MDAT for each study year and the average for the six-year period 1807–13. On average, with few exceptions, MDATs were colder in the historical period than at present. The greatest differences occurred in winter months (Dec–Mar) and September, while the smallest occurred from mid-May to mid-

340 August. For some of the historical years, the picture is different; specifically, some had a greater  
frequency of MDATs that were warmer than today than did other years. Nonetheless, these of  
course occurred more rarely than did days that were colder in the past than at present. The  
MDATs that were most similar to present conditions were noted in the warmest year, i.e.  
1808/09, while MDATs were least similar in the coldest year (1810/11) (Fig. 7). The year  
345 1808/09 was the warmest due to the very high MDATs from mid-December to mid-April, which  
were significantly greater than present MDATs. Conversely, the year 1810/11 was the coldest  
due to a significant, prolonged period of very low MDATs from the beginning of January to the  
start of April. This means that MDAT values in winter and the first half of spring are mainly  
responsible for the mean annual air temperature values, which is a typical pattern for moderate  
350 latitudes, but particularly for polar regions (Przybylak, 2016). MDATs in the historical period  
usually do not exceed 2 SD from the contemporary long-term average MDAT (Fig. 7).



**Fig. 7.** Annual courses of MDAT in Nuuk in historical years (red lines) and 1991–2020 mean (black lines). Dark and light green surfaces indicate  $\pm 1$  SD and  $\pm 2$  SD, respectively, calculated using MDAT from the period 1991–2020 and added and subtracted from the 30-year mean.

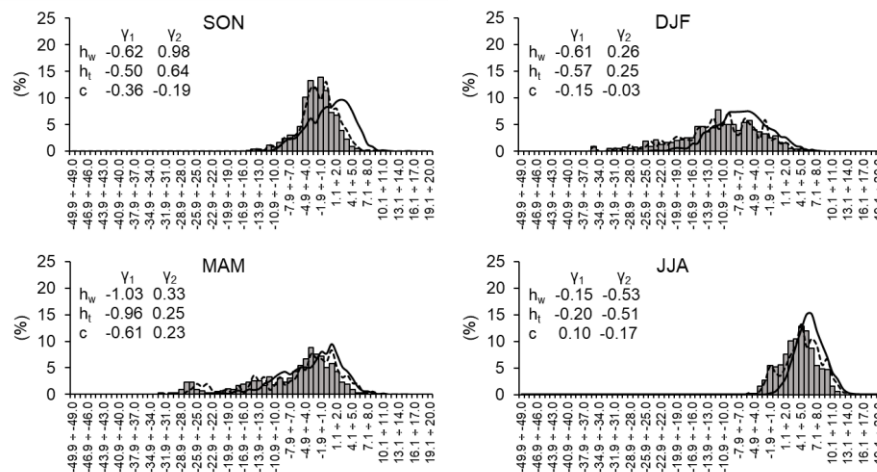
355

360

More precise information about the character of MDAT changes between historical and present times is contained in Fig. 8, which shows relative seasonal frequencies of occurrence of specific MDAT values stratified into one-degree intervals. In all seasons, warmer MDAT values occur clearly more frequently in the contemporary period than in the historical period. The range of the highest-frequency MDAT values frequencies also shifted towards higher values for all seasons. For example, for winters, they shifted from being flatly distributed across a wide range ( $-16^{\circ}\text{C}$  to  $-5^{\circ}\text{C}$ ) to a more narrowly spread range ( $-10^{\circ}\text{C}$  to  $-5^{\circ}\text{C}$ ) comprising with higher frequencies of MDATs (Fig. 8). The shape of MDAT distributions in all seasons and in

365 both historical and contemporary periods are close to normal because both skewness ( $\gamma_1$ ) and kurtosis ( $\gamma_2$ ) are not greater/smaller than  $\pm 1$ , except  $\gamma_1$  in spring in the historical period (1.03). The left-skewed distribution of MDATs is a very characteristic feature of the climate in all seasons in Greenland, except for summer in the contemporary period. Leptokurtic distribution is also a very characteristic feature of MDAT distribution in all seasons (except summer) in the

370 historical period, whereas, in modern times, weak platykurtic distribution ( $\gamma_2 > -0.2$ ) is evident except in spring (Fig. 8).



375 **Fig. 8.** Seasonal (SON, DJF, etc.) relative frequencies of occurrence (in %) of MDAT in historical (bars – weighted mean, dashed lines – simple arithmetic means from three measurement times) and modern (solid lines) sites located in Nuuk 1807–13 and 1991–2020. Values of skewness ( $\gamma_1$ ) and kurtosis ( $\gamma_2$ ) for historical weighted mean ( $h_w$ ), simple arithmetical mean ( $h_t$ ) and contemporary (c) times are also shown.

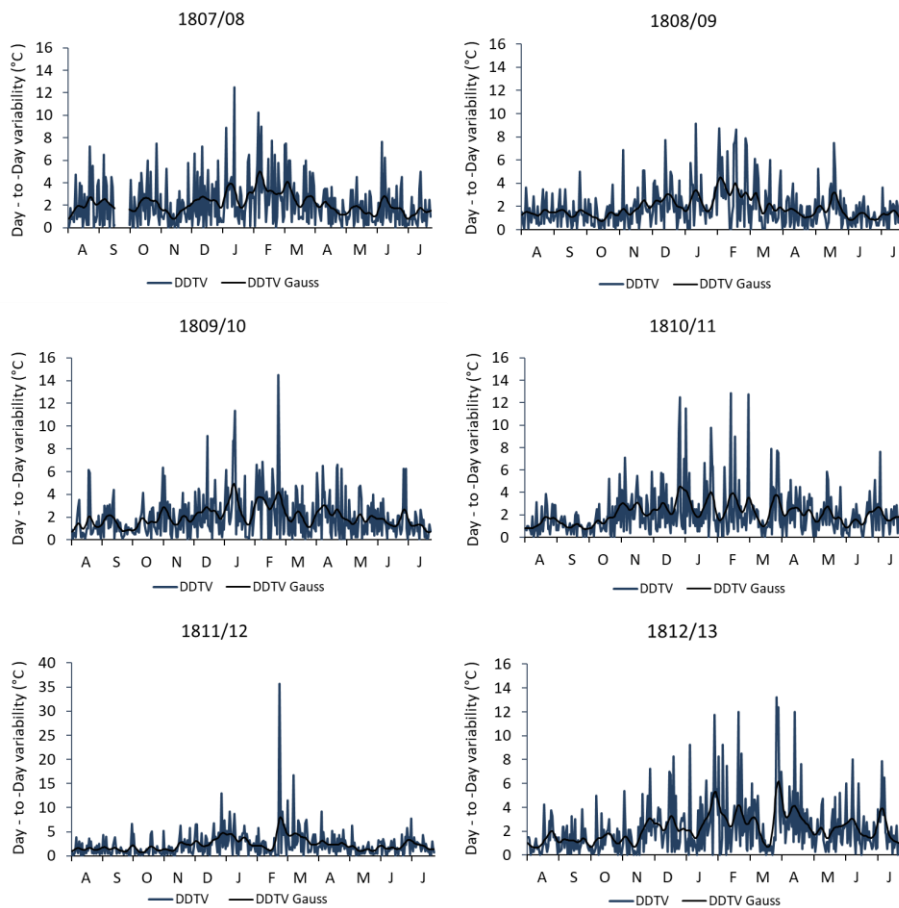
### 3.2.2. Day-to-day temperature variability (DDTV)

Annual courses of DDTV in Nuuk are shown for each of the six historical years for which complete or near-complete data are available for the entire year (Table 3, Fig. 9). Similarly to

380 the climate of the present (Przybylak, 2002) and to the late 18<sup>th</sup> century (Przybylak et al., 2024), the DDTV in the study period was greatest in the cold half-year, but particularly in winter, and lowest usually from May to October, but especially in summer (Fig. 9). In summer, values of DDTV are approximately similar among all historical years, usually not exceeding 5.0 °C. Only on single days do values of DDTV oscillate between 6 and 8 °C. In winter, changes in DDTV

385 are greater than in summer, and their values are also several times greater. In each year except the warmest year (1808/09), there are some spans in which DDTVs exceed 10 °C, but they are less than 15 °C, except one value at the end of February 1812 (see Fig. 9). The change in measured temperature from evening 25 February (orig. 36 °K) to morning of 26 February (orig.

1.5 °W) reached 37.5 °C (MDAT difference 35.6 °C). Under the table of data from February  
 390 1812, Giesecke wrote the following (see Fig. 3): “Hochste Kälte 21sten - 23sten, 24sten und  
 25sten [Februar] 36 ½ °. Wärmer den 26ten – 1 ½ °” [translation, first author: Extremely cold  
 21<sup>st</sup> – 23<sup>rd</sup>, 24<sup>th</sup> and 25<sup>th</sup> [February] -36.5 °C. Warmer the 26th – 1.5 °C.]. February 1812 was  
 exceptionally cold according to the Giesecke measurements. The temperature between 5 and 25  
 February never rose above -20 °C, and between 19 and 25 February, it was constantly below -  
 395 30 °C (see also Figs. 3 and 7). In the days mentioned by Giesecke in his written note (21–25  
 Feb), the temperature oscillated constantly between -34 °C and -36.5 °C (see Fig. 3). It seems  
 to us that, although the entire series of temperatures from Nuuk (1873–2021; data from  
 Meteorologiske Aarbøger 1874–1957 and Drost Jensen 2022) reveals that the maximum MDAT  
 change from one day to the next was of 20.7 °C (from 7 to 8 March 1939), we cannot assume  
 400 that the historical value of 35.6 °C is incorrect.



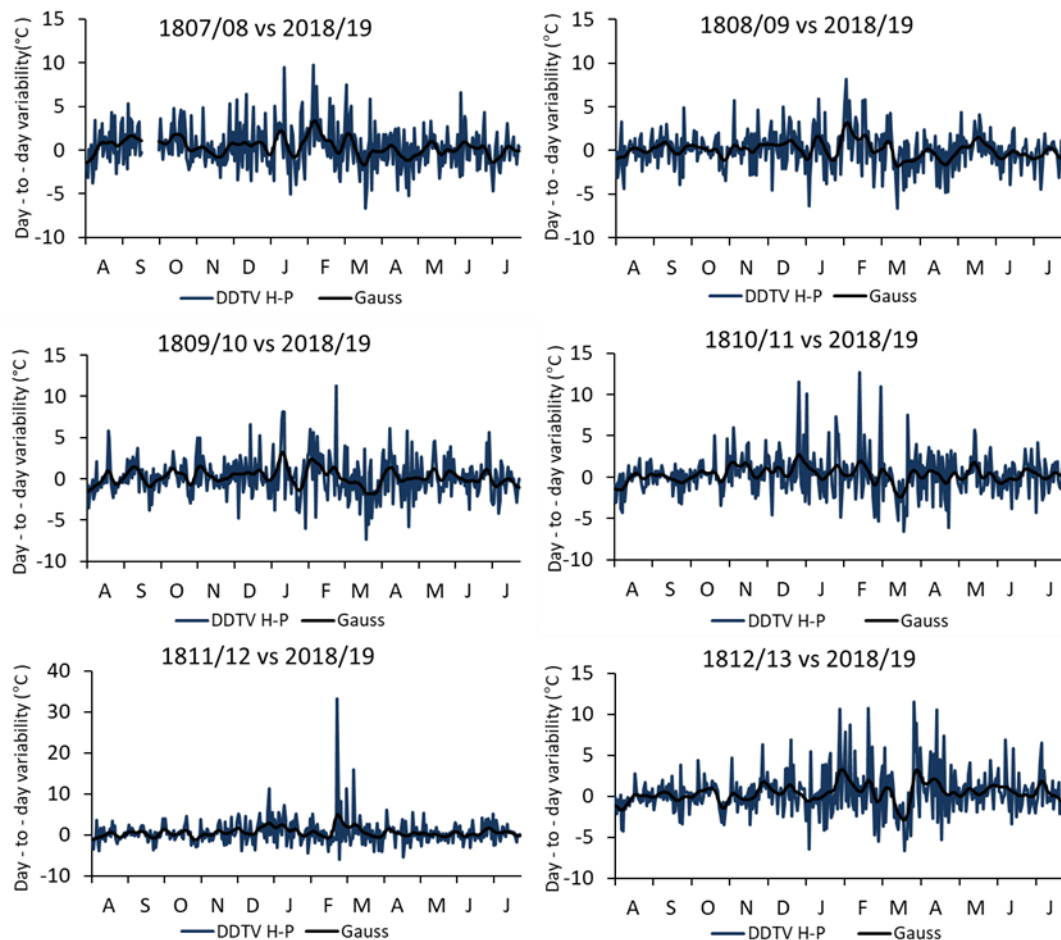
**Fig. 9.** Annual courses of DDTV in Nuuk in historical periods. Individual days (grey) are filtered by a Gaussian low-pass filter (black) with a standard deviation of 3 d in its distribution, corresponding to a rectangular filter of about 10 d.

405 \*In February 1812 the shift from -35.6 °C to 0 °C produced an exceptional DDTV of 35.6 °C, requiring the vertical axis to extend to 40 °C to capture the full variability

The question arises: What could be the reason for such great heating from one day to the next? From the meteorological register, we know that, from the evening of 25 February to the morning of 26 February, the wind direction changed from NE to SE (see Fig. 3). From Fig. 11, it is evident that, in Nuuk in the historical period in winter, such a change of wind direction brought an average warming of about 14 °C. We can only speculate that, during the night, a very strong foehn may have occurred from the area of the Greenland ice sheet, significantly enhancing the effect associated with the mentioned change in direction of air mass inflow.

To compare the DDTV shown in Fig. 9 against the analogous data from contemporary years, two thermally contrasted years from the period 1991–2020 were selected (i.e., the warmest [2018/19] and the coldest [1992/93]). The results presented in Fig. S1 show that the scale of differences between these two years and years taken from the historical period is similar. The average yearly differences in DDTV between years 2018/19 and 1992/93 reached only 0.3 °C, but the highest were in the first year. Therefore, a more detailed comparison of the DDTV in the historical period is shown only for the year 2018/19 (Fig. 10).

The averaged annual DDTVs in Nuuk, during the studied historical years, were usually slightly greater (by 0.1 to 0.5 °C) than in 2018/19. Looking at the annual cycle, it is evident that the greatest positive differences were usually noted between September and March, and the smallest occurred in the rest of the year (see Fig. 10). Such changes in DDTVs are in line with expectations, which are that, in a warmer climate, a decrease in high-frequency temperature variability should be observed (e.g., Karl et al. 1995; Zwiers & Kharin, 1998; Przybylak, 2002).



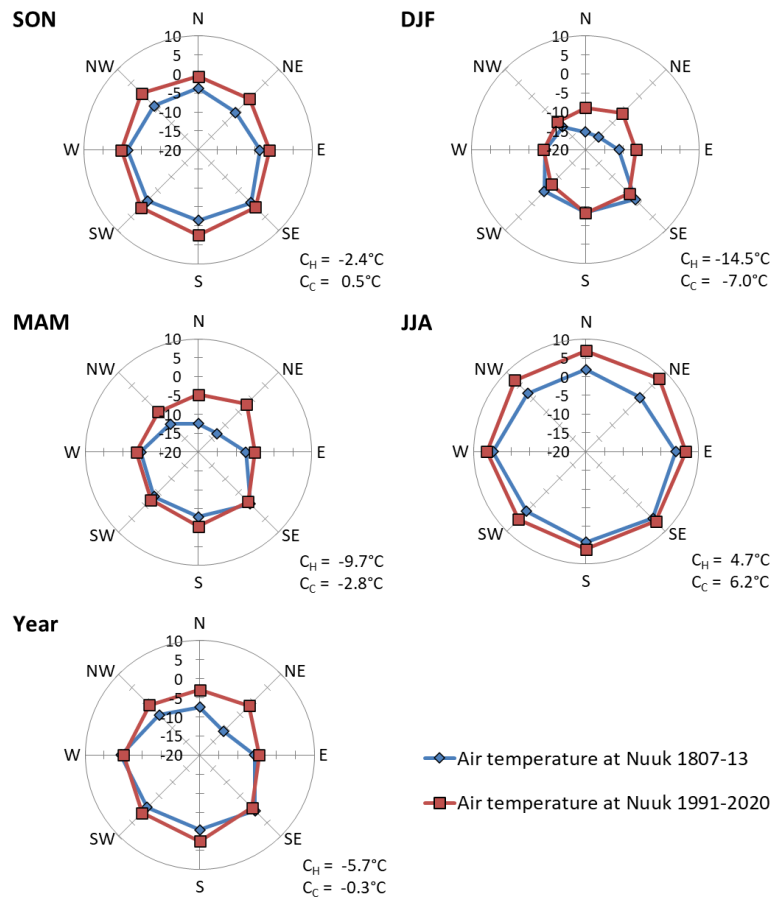
**Fig. 10.** Differences in DDTV in Nuuk between historical and contemporary (2018/19) periods. Individual daily differences (grey) are filtered by a Gaussian low-pass filter (black) with a standard deviation of 3 d in its distribution, corresponding to a rectangular filter of about 10 d.

\*In February 1812 the shift from  $-35.6\text{ }^{\circ}\text{C}$  to  $0\text{ }^{\circ}\text{C}$  produced an exceptional DDTV of  $35.6\text{ }^{\circ}\text{C}$ , requiring the vertical axis to extend to  $40\text{ }^{\circ}\text{C}$  to capture the full variability.

### 3.2.3. Temperature versus wind directions

The analysed series of observations available for the years 1807–13 also contains observations of wind directions. Therefore, we decided to calculate how, on average, wind direction influenced the value of MDATs both in historical and contemporary periods. For this purpose, we use “thermal roses” consisting of eight wind directions. They were constructed for all seasons and for the year (Fig. 11). It is clear that, at present, wind direction influences air temperature in Nuuk significantly less than it did in historical times; the roses are more regular. In historical times, the deviation from circular symmetry of thermal roses is especially great in winter and spring. From historical to present times, the greatest thermal conditions in winter and spring changed for the winds coming from the sector N–NE and also E in winter and NW

in spring (Fig. 11). The explanation of these changes is unknown. However, it is possible that  
 445 one reason is connected with the recession of the Greenland ice sheet and local icefields in the  
 last 200 years surrounding Nuuk from the northern sector. In all seasons, winds from all  
 directions bring warmer air masses at present than in the historical period, except for winds  
 from some southern directions in winter (Fig. 11).



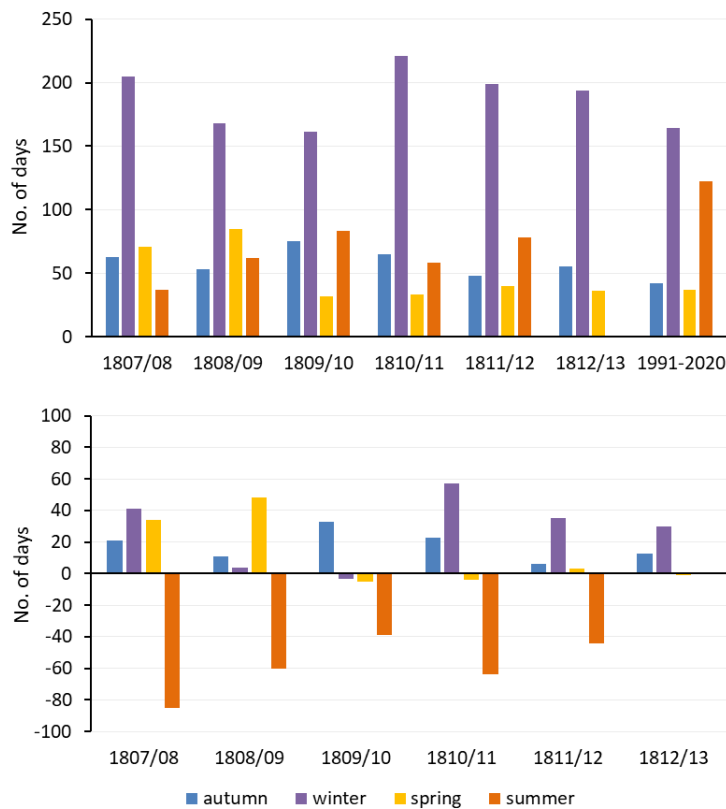
450 **Fig. 11.** Seasonal and yearly thermal roses of wind in Nuuk in the historical (1807–13) and contemporary (1991–  
 2020) periods

### 3.2.4. Thermal seasons

At the moderate latitudes, to distinguish the thermal seasons (winter, spring, summer, and  
 455 autumn), three thresholds are usually used, i.e. 0 °C, 5 °C, and 15 °C. For the Arctic, including  
 Greenland, such thresholds are not appropriate because, as Przybylak et al. (2024) write, “the  
 annual cycle is significantly flatter and less clear than at moderate latitudes and is dominated  
 by the winter, which is much longer than the other seasons” (Przybylak 2016). For this reason,  
 for the polar regions, Baranowski (1968) proposed other criteria to delimit the four standard  
 460 seasons using the thresholds -2.5 °C, 0 °C and 2.5 °C (for details, see Przybylak et al. 2024).

Using this division of the year into seasons has the additional advantage that, in addition to providing information about the value of the average temperature or other weather elements, it makes it possible to study changes in the durations of seasons, as well as their changes in dates of onset and ending. All this information is very important for people's everyday lives and also, for example, for agricultural, economic and tourist activities.

In the historical time, the longest season was winter, varying from 161 days in 1809/10 to 221 days (1810/11), and the shortest was spring (from 32 to 85 days) (Fig. 12). On average, winter lasted 191 days, i.e. more than half of the year. The durations of the other seasons were roughly equal to one another, at 50 days for spring to 64 days for summer. From historical to contemporary times, the duration of summer has increased markedly – on average, by 58 days (Fig. 12). The other seasons showed decreases in duration, ranging from 13 days for spring to 27 days for winter, i.e. each of less than half the scale of the increase in summer duration.



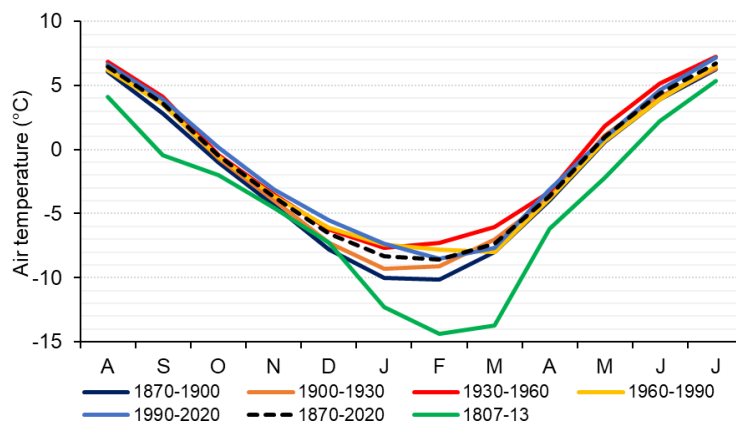
**Fig. 12.** Duration of thermal seasons in Nuuk in the historical (1807–13) and modern (1991–2020) periods (upper figure) and their differences (lower figure). Key: contemporary data were subtracted from historical data.

#### 4. Discussion and conclusions

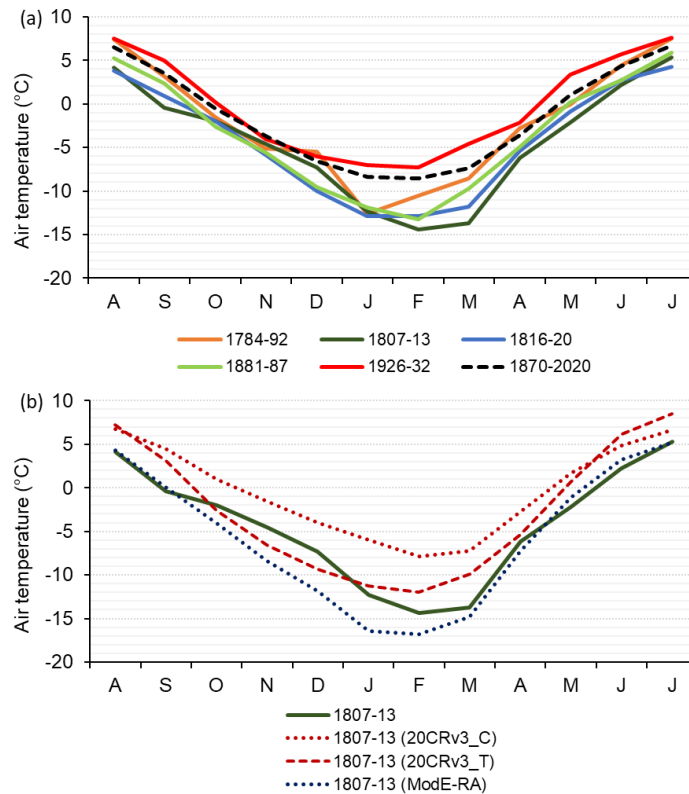
480 This newly discovered series of meteorological measurements in Nuuk (SW Greenland),  
encompassing a complete series of observations from August 1807 to July 1813, is very unique  
and therefore very valuable for the study of climate in this part of the Arctic. Analyses of the  
history of early instrumental meteorological observations, conducted by Przybylak et al. (2010)  
for the entire Arctic and by Vinther et al. (2006) for Greenland, lead to the conclusion that the  
485 presented here series is the longest which exists for the Arctic prior to the 1840s. Its usefulness,  
apart from providing detailed insight into the climatic conditions in SW Greenland at the  
beginning of the 19<sup>th</sup> century, is much broader. The data can be used for the calibration of,  
among others: (i) climate reconstructions based on various proxy data; (ii) climate  
reconstructions based on models; and (iii) climate reconstructions from the NOAA/CIRES/  
490 DOE 20th Century Reanalysis (V3) (20CRv3) available for 1806–2015 (see also Slivinski et al.  
2019, 2021). Slivinski et al. (2021) documented that the 20CRv3 is a good tool for  
reconstructing even extreme weather and climate events, and we therefore plan to use this  
reanalysis to study (in a separate paper) the reason for the described great warming from 25 to  
26 February 1812.

495 Better knowledge about the climate in Greenland at the beginning of the 19<sup>th</sup> century  
can help explain the reasons for very cold spells that have occurred on this island in the past  
millennium. We documented in the Results section that the temperature in the study period was  
considerably lower than in the contemporary period (1991–2020). We also checked how this  
period compares thermally with other available instrumental data (the newest and the oldest).  
500 For this purpose, we calculated 30-year average temperatures (Aug 1870–Jul 1900, Aug 1900–  
Jul 1930, ..., Aug 1990–Jul 2020), starting from the beginning of the available continuous series  
of meteorological measurements in Nuuk since 1866 (Przybylak, 2000; Vinther et al., 2006)  
(Fig. 13). Moreover, in order to have periods that are more comparable in length with the study  
period, we also chose, from the entire mentioned series (1870–2020), two six-year periods  
505 representing the periods that were the warmest (1926–32) and the coldest (1881–87) and  
simultaneously described the range of thermal changes in 1870–2020 (Fig. 14a). For Nuuk, for  
the period before 1870, a complete five-year series of temperature data (1816–20) is also  
available that was gathered by Vinther et al. (2006). We used this series for comparison against  
the thermal state of the period 1807–1813. In addition, we also added a curve to Fig. 14a that  
510 represents the mean yearly cycle of temperature based on data available for the period 1784–92  
(after Przybylak et al. 2024). How the available datasets from reanalyses (20CRv3 and ModE-

RA) reconstruct the surface air temperature is shown in Figs. 5 and 14b. Figs. 13 and 14 clearly indicate that the period under study was extremely cold. It was significantly colder than: i) all 30-year periods; ii) the coldest six-year period in the series 1871–2020; iii) the late 18<sup>th</sup> century; and iv) reconstructed temperature for the period 1807–13 by 20CRv3. The period 1807–13 was also colder (but only slightly) than the five-year period 1816–20. Only the ModE-RA data are significantly colder than the measured data from October to February, while for the remaining months they are similar (Fig. 14b). Vinther et al. (2006) concluded that the decade 1810 was the coldest in the entire record available for Nuuk, i.e. since 1784. They have at their disposal data from the mentioned five-period as well as for the years 1811 and 1812. The data come, however, from another locality than the place of meteorological observations made by Giesecke. A comparison of data for the latter two years (1811 and 1812) presented by Vinther et al. (2006) and in this study is shown in Fig. S2. There is a good coherence between monthly means from June to December, but in the rest of the year, the differences are quite large. The reasons for these are difficult to explain, but they may be connected mainly with the localities of measurement places being different. Probably, the data presented by Vinther et al. (2006) comes from a site located near the coast, while Giesecke's site is assumed to have been located at some distance from the coast and probably also at a higher altitude. Brohan et al. (2010) studied Arctic marine data from the seas surrounding the south part of Greenland in the period 1810–25 and found that this period was also “significantly cooler than that of today”.



**Fig. 13.** Yearly cycle of mean air temperature in Nuuk in the period 1807–13 compared to the mean from the entire series (1870–2020) and means calculated from that series for 30-year periods (data taken from Vinther et al. 2006).



535 **Fig. 14.** Yearly cycle of mean air temperature in Nuuk in the period 1807–13 compared to: a) the mean for 1870–  
 2020 and for various short-term series available since the late 18th century. Explanation: 1784–92 – data after  
 Przybylak et al. (2024); 1816–20 – data after Vinther et al. (2006); Jan 1870–Jul 1990 – data after Vinther et al.  
 (2006); Aug 1990 – 2020 data after Cappelen and Drost Jensen, 2021, and b) the mean for 1807-13 taken from  
 reanalyses: 20CRv3 (C – coastal grid point, T – terrestrial grid point; Slivinski et al., 2019) and ModE-RA (Valler  
 540 et al., 2024)

The question arises as to whether and to what extent this cold period in SW Greenland  
 at the beginning of the 19<sup>th</sup> century is correctly reflected in air temperature reconstructions  
 based on proxy data and computer climate simulations. Unfortunately, in the area of Nuuk, there  
 545 does not exist any series of proxy data of value for the reconstruction of air temperature; the  
 closest according to Kaufmann et al. (2009) and McKay and Kaufmann (2014) is located in  
 Lake Braya Sø, lying about 313 km to the north ( $\varphi= 67^{\circ} 00' N, \lambda= 50^{\circ} 42' W$ ). Lake sediments  
 allow for reconstructing summer temperature only, according to Table 1 in McKay and  
 Kaufman (2014), but the reconstruction is not shown. Further north in the Ilulissat region, there  
 550 are other lakes for which proxy data are available, and it is possible to reconstruct July  
 temperature based on chironomids present in sediments (Axford et al., 2013), which were not  
 included in the paper written by McKay and Kaufman (2014). The temperature reconstructions  
 presented in Axford et al. (2013) are not of sufficient resolution to be used for comparing short-

term temperature changes in the last millennium. Most of the proxy data for Greenland (and the most well-known) comes from the Greenland Ice Sheet. According to the information given in Table 1 (McKay & Kaufman, 2014), ten series of proxy data exist in a PAGES Arctic 2k database published in 2013 by PAGES 2k Consortium. All of them use ice-core data ( $\delta^{18}\text{O}$ ) and allow for the reconstruction of annual mean temperatures. Recently, two series of annual air temperatures for central (Kobashi et al., 2010) and central-northern (Hörhold et al., 2023) Greenland for the last millennium were reconstructed using ice-core data, i.e. isotope ratios of nitrogen ( $^{15}\text{N}/^{14}\text{N}$ ) and argon ( $^{40}\text{Ar}/^{36}\text{Ar}$ ) in air bubbles and  $\delta^{18}\text{O}$ , respectively. According to Kobashi et al. (2010), the beginning of the 19<sup>th</sup> century saw one of the coldest temperatures in the last millennium; lower temperatures were noted only in two short periods in the 18<sup>th</sup> century and in the first half of the 17<sup>th</sup> century. The reconstruction presented in Fig. 1 of Hörhold et al. (2023) shows a picture for central-northern Greenland that differs only slightly. It shows four periods of similar size cooling in the last millennium, including one in the first half of the 19<sup>th</sup> century. It also shows that the mean annual air temperature at the beginning of the 19<sup>th</sup> century was about 3 °C colder than the present time and about 2 °C colder than medieval times. Using instrumental data from Nuuk from the periods 1807–13 and 1991–2020, we found a 3.3 °C increase in annual air temperature from historical to present times. This indicates a very good agreement between the measured and temperatures reconstructed using ice-core data. As we mentioned earlier, such a good correlation ( $r=0.67$  and  $r=0.60$  for the periods 1785–1872 and 1873–1970, respectively) between the extended SW Greenland temperature series and the ice-core was also found by Vinther et al. (2006). Hörhold et al. (2023) found that the Arctic 2k reconstruction after McKay and Kaufman (2014), which represents large parts of the higher Arctic circumpolar region, shows a low correlation over Greenland. Nevertheless, the greatest cooling in the last millennium, according to the Arctic 2k reconstruction, evidently occurred at the beginning of the 19<sup>th</sup> century. This is particularly clear for the revised PAGES 2k Arctic reconstruction (see Fig. 2 in McKay and Kaufman, 2014). According to that reconstruction, the mean annual Arctic air temperature at the beginning of the 19<sup>th</sup> century was about 2 °C colder than at present. Arctic-wide summer-weighted annual temperature reconstructed for the last 400 years by Overpeck et al. (1997, see their Fig. 3) also shows that a great cooling started at the beginning of the 19<sup>th</sup> century but peaked in the 1840s. The temperature at this time was about 1.5 °C colder than in the late 20<sup>th</sup> century. Also, the spatially resolved two-millennium summer (Jun–Aug) temperature reconstructed for the Arctic and sub-Arctic domain (north of 60°N) calculated by Miller et al. (2010) reveals a great cooling in the first half of the 19<sup>th</sup> century, being one of the three coolest episodes in the two millennia analysed. In comparison to the

present, the temperature in the first half of the 19<sup>th</sup> century was about 2 °C colder (see their Fig. 2). This reconstruction is very close to the reconstruction of mean annual air temperatures presented by McKay and Kaufman (2014); the latter, however, shows a cooling that was greater and occurred earlier than in the case of reconstructed summer temperatures (see Fig. 3 in Miller et al. 2018). A two-millennium summer (Jun–Aug) temperature reconstruction over the Arctic and sub-Arctic domain (north of 60°N) is also presented by Werner et al. (2018). They used a set of 44 annually dated temperature-sensitive proxy archives of various types from the PAGES 2k database, revised in 2017. Also, in this reconstruction, a cooling at the beginning of the 19<sup>th</sup> century is evident that is the greatest of the entire 2000 years. Werner et al. (2018) compared their reconstruction with the other six reconstructions published in recent years and found their reconstruction to be very close to that presented in the work of McKay and Kaufman (2014). The summer cooling, however, according to this reconstruction (see Fig. 3 in Werner et al. 2018), was about 0.5 °C smaller than McKay and Kaufman’s reconstruction. Other reconstructions presented by Werner et al. (2018) in their Fig. 3 (i.e., Kaufman et al., 2009; Shi et al., 2012; Hanhijärvi et al., 2013; Tingley & Huybers, 2013) also confirm the occurrence of significant cooling, except the last-cited paper. In conclusion, we can state that the cooling in the first half of the 19<sup>th</sup> century was common throughout the Arctic, including Greenland.

Let us now check how climate models reconstruct this period in Greenland and the Arctic. According to the annual mean surface temperature reconstructed for the Arctic using an ensemble of five simulations performed with a global three-dimensional, atmosphere–sea-ice–ocean model driven by both natural (solar and volcanic) and anthropogenic (increase in greenhouse gas concentrations and tropospheric aerosols) forcings, the last millennium featured four periods of great cooling. These were in the mid-11<sup>th</sup> century, the second halves of the 15<sup>th</sup> and the 17<sup>th</sup> centuries, and the beginning of the 19<sup>th</sup> century (see Fig. 1c in Goose and Renssen, 2003). The last two cooling periods simulated by the model occurred in the years 1670–1700 and 1800–30, when surface temperatures were about 0.5 °C colder than the mean in the Arctic from the period 1000–1850. Another modelling work, presented by Crespin et al. (2013), using the three-dimensional Earth system model of intermediate complexity LOVECLIM forced by changes in solar irradiance, volcanic activity, land use, greenhouse gas concentrations and orbital parameters, also shows a very cold period in the first half of the 19<sup>th</sup> century. This was the coldest period in the entire last millennium. The temperature difference in comparison to present times reached about 1.8 °C. Figure 1.4 in Crespin (2014) shows that simulations of annual mean Arctic temperature in five different GCM models (CCSM4 [USA], GISS-E2-R [USA], IPSL-CM5A-LR [France], MPIESM-P [Germany], and Bcc-csm1-1 [China]) confirm

the existence of cold period in the first half of the 19<sup>th</sup> century, but this was not always found to be the coldest period in the past millennium.

According to investigations conducted by Crespin et al. (2013) and Crespin (2014), the reasons for this great cold period at the beginning of the 19<sup>th</sup> century were mainly intense volcanic activity, in particular in the period 1810–40, and a smaller-scale decrease in solar irradiance connected with the Dalton minimum occurring in 1790–1830 (most intensely in 1797–1827; Silverman & Hayakawa, 2021) as well as changes in land use. Volcanic eruptions were the main reason for the cooling that occurred in the 1810s (in particular, in 1811 and 1817–18), according to Vinther et al. (2006). They connected these two cold spans with eruptions of an unidentified volcano around 1809 and the very well-known eruption of the Tambora volcano in 1815, respectively. Our results, presented in Fig. 5, confirm the existing finding of Vinther et al. (2006), i.e. the existence of very cold temperatures in the first years of the 1810s. According to our data, a cooling occurred after 1809 that was initially small in winter 1809/10 and then significantly greater in the following three winters, 1810/11–1812/13. This cooling is also observed in data from palaeoreanalysis (ModE-RA), but not in the data from the 20th Century Reanalysis (20CRv3). In summer, some cooling is evident only in 1811. As a result, the coldest expedition year after a volcanic eruption in 1809 occurred in 1810/11. Data series presented in Fig. 5 (except 20CRv3) also confirm Schneider et al.'s (2017) finding that, after the 1809 event, temperatures remain low until the Mt. Tambora eruption of 1815. Changes in atmospheric circulation that occurred after this eruption, from a negative to a positive NAO indices in wintertime (see Luterbacher et al., 2002a, b), caused a change in wind directions in SW Greenland, (i.e., domination of winds from the northern sector, see Fig. 6). Positive phase of the NAO cause a significant decrease (3–6 °C) of winter 1810/11 air temperature in the western part of Greenland in contemporary series of data, particularly in its SW part (see Fig. 12 in Przybylak 2000). A similar finding was recently presented by Faust et al. (2025, submitted; see their Fig. 4) for south-west Greenland, based on temperature reconstruction using a high-resolution sedimentary record for the late Holocene. Box (2002), investigating air temperature variability in Greenland from 1873 to 2001, found that the greatest anomalies during this period were also linked to large volcanic eruptions, sea-ice extent, and the NAO. Brohan et al. (2010), analysing marine data extracted from the reports of the noted whaling captain William Scoresby Jr (Greenland Sea) and from the records of a series of Royal Navy expeditions to the Arctic preserved in the UK National Archives, concluded that the cold early-19<sup>th</sup>-century climate was linked with low solar activity and followed a series of large volcanic eruptions.

Summarising the obtained results, we can again underline that the first two decades of the 19th century in the study region, in all of Greenland and on average in the Arctic, were one of the coldest periods in the past two millennia (and possibly the coldest). It is also probable that such a large scale of cooling and its durability are one of the main reasons that almost all available reconstructions of air temperatures using different proxy data or using climate models for this purpose are almost fully consistent with the available meteorological observations for this period. For example, such good correlations between instrumental temperature data and different reconstructions are not observed for analyses encompassing the earlier period (1784–92) for SW Greenland (for details, see Przybylak et al., 2024). The late 18<sup>th</sup> century in SW Greenland and many places in the Arctic was warm, but the warming in this time was not so spectacular as the cooling that occurred in the Arctic at the beginning of the 19<sup>th</sup> century. Also, a good agreement exists concerning the reasons for the cooling of the early 19<sup>th</sup> century in Greenland and the Arctic. The two main reasons underlined by most authors studying this issue are mainly intense volcanic activity and, to a lesser degree, low solar activity connected with the Dalton minimum. In addition, land use changes in mid-latitudes are also mentioned by some researchers. Changes in atmospheric circulations described using the NAO must also be taken into account in the case of SW Greenland's climate.

There are many advantages of instrumental observations in comparison to the possible reconstruction of climate using proxy data and simulations by climate models. Reconstructions are less precise, have smaller resolution and are limited most often to i) only some parts of the year (mainly to summer) and ii) one main climate variable (air temperature). For this reason, searching for new meteorological data series in archives and libraries is extremely important and necessary. It seems that it should still be intensified despite the fact that, for the last approximately 30–40 years, this type of activity has been carried out intensely worldwide. The analysed unique series of meteorological observations for SW Greenland for the period 1807–13 that is presented in this article proves that new data of this type can still be found for various parts of the globe, including the Arctic, where they are many times more valuable than comparable data for moderate latitudes (for which the network of stations is significantly denser). Unfortunately, fewer scientists are involved in this type of data rescue activity for the Arctic at present than in previous times. Most scientists are focused on climate reconstructions based on proxy data and climate model simulations, which is very good, but we should also motivate young scientists to be more interested in the history of the Arctic climate based on early instrumental observations and other documentary evidence.

690 **Data availability.** Datasets of surface air temperature for this research were derived from the following public domain resources:

1. Repository for Open Data (RepOD), Nicolaus Copernicus University Centre for Climate Change Research collection, <https://doi.org/10.18150/IGYNGV>, as cited in Przybylak et al. (2025),
- 695 2. Vinther et al. (2006) and Danish Meteorological Institute (DMI); <https://www.dmi.dk/publikationer/>, as cited in Cappelen and Drost Jensen (2021) and Drost Jensen (2022),
3. Repository for Open Data (RepOD), Nicolaus Copernicus University Centre for Climate Change Research collection, <https://doi.org/10.18150/L1Y21Q> as cited in Singh et al. (2023),
- 700 4. The NOAA/CIRES/DOE 20th Century Reanalysis (V3) (20CRv3), [https://www.psl.noaa.gov/data/gridded/data.20thC\\_ReanV3.html](https://www.psl.noaa.gov/data/gridded/data.20thC_ReanV3.html) (Slivinski et al. 2019)
5. The Modern Era Reanalysis (ModE-RA, Valler et al. 2024) via ClimeApp <https://modera.unibe.ch/climeapp/> (Warren et al. 2024)

705 Data available upon reasonable request from the Department of Meteorology and Climatology, Nicolaus Copernicus University:

1. Photos of Meteorologisk Aarbøger (Danish Meteorological Yearbooks), 1874–1957, Det Danske meteorologiske Institut, København

710

**Acknowledgements.** We express our gratitude to the local Inuit communities on the southwestern coast of Greenland, who probably cooperated with Sir Charles Lewis Giesecke in their lands in the 19<sup>th</sup> century. We also thank archivists for their assistance during our work in the Library and Archives of the Royal Society in London. Support for the Twentieth Century Reanalysis Project version 3 dataset is provided by the U.S. Department of Energy, Office of Science Biological and Environmental Research (BER), by the National Oceanic and Atmospheric Administration Climate Program Office, and by the NOAA Earth System Research Laboratory Physical Sciences Laboratory. Furthermore, we would like to thank the anonymous reviewers for their valuable comments and suggestions, which have significantly

715

720 improved our manuscript.

**Financial support.** This research has been supported by the National Science Centre, Poland (grant-no. 2020/39/B/ST10/00653)

725 **Author contributions.** Study design by RP. Data collection and selection by AA, PW, and RP.  
Data curation by AA, GS, KCh, PW, and RP. Literature review by RP. Statistical analysis and  
visualisation by AA, GS, KCh, PW and RP. Interpretation of results by RP, PW, and AA. RP  
developed the first draft of the manuscript. All the authors contributed to reviewing and editing  
the manuscript. RP and PW contributed to editing and approved the final version of the  
730 manuscript

**Competing interests.** The contact author has declared that none of the authors has any  
competing interests.

### 735 **References**

- Axford, Y., Losee, S., Briner, J. P., Francis, D. R., Langdon, P. G., and Walker, I. R.: Holocene  
temperature history at the western Greenland Ice Sheet margin reconstructed from lake sediments, *Quat.  
Sci. Rev.*, 59, 87–100, <https://doi.org/10.1016/j.quascirev.2012.10.024>, 2013.
- 740 Baranowski, S.: Thermals of the periglacial tundra SW Spitsbergen, *Acta Univ. Wratislaviensis*, 68,  
*Studia Geograficzne X*, Wrocław, Poland, in Polish, 1968.  
Borm, J., Kodzik, J., and Charbit, S.: Producing and communicating natural history in the long 18th  
century: Moravian observations concerning Greenland’s climate in unpublished sources, *Polar Rec.*, 57,  
1–10, <https://doi.org/10.1017/S0032247421000218>, 2021.
- 745 Box, J. E.: Survey of Greenland instrumental temperature records: 1873–2001, *Int. J. Climatol.*, 22,  
1829–1847, <https://doi.org/10.1002/joc.852>, 2002.
- Brázdil, R., Pfister, C., Wanner, H., von Storch, H., and Luterbacher, J.: Historical climatology in Europe  
– the state of the art, *Climatic Change*, 70, 363–430, <https://doi.org/10.1007/s10584-005-5924-1>, 2005.
- 750 Brohan, P., Ward, C., Willetts, G., Wilkinson, C., Allan, R., and Wheeler, D.: Arctic marine climate of  
the early nineteenth century, *Clim. Past*, 6, 315–324, <https://doi.org/10.5194/cp-6-315-2010>, 2010.
- 755 Brönnimann, S., Allan, R., Ashcroft, L., Baer, S., Barriendos, M., Brázdil, R., Brugnara, Y., Brunet, M.,  
Brunetti, M., Chimani, B., Cornes, R., Domínguez-Castro, F., Filipiak, J., Founda, D., Herrera, R. G.,  
Gergis, J., Grab, S., Hannak, L., Huhtamaa, H., Jacobsen, K. S., Jones, P., Jourdain, S., Kiss, A., Lin, K.  
E., Lorrey, A., Lundstad, E., Luterbacher, J., Mauelshagen, F., Maugeri, M., Maughan, N., Moberg, A.,  
Neukom, R., Nicholson, S., Noone, S., Nordli, Ø., Ólafsdóttir, K. B., Pearce, P. R., Pfister, L., Pribyl,  
760 K., Przybylak, R., Pudmenzky, C., Rasol, D., Reichenbach, D., Řezníčková, L., Rodrigo, F. S., Rohr,  
C., Skrynyk, O., Slonosky, V., Thorne, P., Valente, M. A., Vaquero, J. M., Westcott, N. E., Williamson,  
F., and Wyszyński, P.: Unlocking pre-1850 instrumental meteorological records: A global inventory,  
*Bull. Am. Meteorol. Soc.*, 100, ES389–ES413, <https://doi.org/10.1175/BAMS-D-19-0040.1>, 2019.
- 765 Cappelen, J. and Drost Jensen, C.: Climatological Standard Normals 1991–2020 – Greenland, DMI  
Report 21-12, Danish Meteorological Institute, 83 pp.,  
[https://www.dmi.dk/fileadmin/Rapporter/2021/DMI\\_report\\_21\\_12\\_Greenland.pdf](https://www.dmi.dk/fileadmin/Rapporter/2021/DMI_report_21_12_Greenland.pdf), 2021.
- Crespin, E.: Arctic climate variability during the past millennium: combining model simulations and  
770 proxy data, PhD thesis, Université catholique de Louvain, <http://hdl.handle.net/2078.1/150597>, 2014.

- Crespin, E., Goosse, H., Fichefet, T., Mairesse, A., and Sallaz-Damaz, Y.: Arctic climate over the past millennium: Annual and seasonal responses to external forcings, *Holocene*, 23, 321–329, <https://doi.org/10.1177/0959683612463095>, 2013.
- 775 Demarée, G. R. and Ogilvie, A. E. J.: The Moravian missionaries at the Labrador coast and their centuries-long contribution to instrumental meteorological observations, *Climatic Change*, 91, 423–450, <https://doi.org/10.1007/s10584-008-9420-2>, 2008.
- 780 Demarée, G. R. and Ogilvie, A. E. J.: Missionary Activity in Greenland and in Labrador: The Context for Early Meteorological Observations, in: Jenz, F. and Petterson, C. (Eds.), *Legacies of David Cranz's 'Historie von Grönland' (1765)*, Christianities in the Trans-Atlantic World, [https://doi.org/10.1007/978-3-030-63998-3\\_7](https://doi.org/10.1007/978-3-030-63998-3_7), 2021.
- 785 Demarée, G. R., Ogilvie, A. E. J., and Mailier, P.: Early meteorological observations in Greenland and Labrador in the 18th century: a contribution of the Moravian Brethren, in: *Proc. 35th Int. Symp. on the Okhotsk Sea and Polar Oceans*, Mombetsu, Hokkaido, Japan, 35–38, 2020.
- 790 Drost Jensen, C. (Ed.): *Weather Observations from Greenland 1958–2021*, DMI Report 22-08, Danish Meteorological Institute, <https://www.dmi.dk/fileadmin/Rapporter/2022/DMIREp22-08.pdf>, last access: 20 July 2022, 2022.
- Ewert, A.: About calculating thermic continentality of climate, *Przegląd Geograficzny*, 44, 273–328, in Polish, 1972.
- 795 Ewert, A.: Thermic continentality of the climate of the polar regions, *Problemy Klimatologii Polarnej*, 7, 55–64, in Polish, 1997.
- 800 Faust, J., Zhang, Y., Born, A., Dobeneck, T., Schultz, H., Janßen, A., Mukherjee, S., Detlef, H., Seidenkrantz, M-S., Jackson, R., Titschack, J., de Vernal, A., Kucera, M: Persistent influence of the North Atlantic Oscillation on Late Holocene hydroclimate in southwestern Greenland, *Research Square* ISSN 2693-5015, <https://doi.org/10.21203/rs.3.rs-7656605/v1>, 2025.
- 805 Goose, H. and Renssen, H.: Simulating the evolution of the Arctic climate during the last millennium. In *Proceedings Seventh Conference on Polar Meteorology and Oceanography and Joint Symposium on High-Latitude Climate Variations*, American Meteorological Society, Hyannis, MA, USA, 2003.
- 810 Hanhijärvi, S., Tingley, M. P., and Korhola, A.: Pairwise comparisons to reconstruct mean temperature in the Arctic Atlantic Region over the last 2000 years, *Clim. Dyn.*, 41, 2039–2060, <https://doi.org/10.1007/s00382-013-1701-4>, 2013.
- Hörhold, M., Münch, T., Weißbach, S., Kipfstuhl, S., Freitag, J., Sasgen, I., Lohmann, G., Vinther, B., and Laepple, T.: Modern temperatures in central–north Greenland warmest in past millennium, *Nature*, 613, 503–507, <https://doi.org/10.1038/s41586-022-05517-z>, 2023.
- 815 Jørgensen, G.: Charles Lewis Giesecke, Professor of Mineralogy in Dublin: A Fascinating Character in the Geological History of the Faeroe Islands and Greenland, *Irish J. Earth Sci.*, 15, 155–160, <https://www.jstor.org/stable/30002325>, 1996.
- 820 Karl, T. R., Knight, R. W., and Plummer, N.: Trends in high-frequency climate variability in the twentieth century, *Nature*, 377, 217–220, <https://doi.org/10.1038/377217a0>, 1995.

- Kaufman, D. S., Schneider, D. P., McKay, N. P., Ammann, C. M., Bradley, R. S., Briffa, K. R., Miller, G. H., Otto-Bliesner, B. L., Overpeck, J. T., and Vinther, B. M.: Recent warming reverses long-term Arctic cooling, *Science*, 325, 1236–1239, <https://doi.org/10.1126/science.1173983>, 2009.
- 825
- Kobashi, T., Severinghaus, J. P., Barnola, J.-M., Kawamura, K., Carter, T., and Nakaegawa, T.: Persistent multi-decadal Greenland temperature fluctuation through the last millennium, *Climatic Change*, 100, 733–756, <https://doi.org/10.1007/s10584-009-9689-9>, 2010.
- 830
- Kodzík, J.: Moravian Missions in the European Arctic during the Enlightenment: collecting, classifying and communicating knowledge (Greenland, Iceland and Lapland), *Arctic & Antarctic*, 13, 55–71, 2019.
- Lundstad, E., Brugnara, Y., Pappert, D., Kopp, J., Samakinwa, E., Hürzeler, A., Andersson, A., Chimani, B., Cornes, R., Demarée, G., Filipiak, J., Gates, L., Ives, G. L., Jones, J. M., Jourdain, S., Kiss, A., 835 Nicholson, S. E., Przybylak, R., Jones, P., Rousseau, D., Tinz, B., Rodrigo, F. S., Grab, S., Domínguez-Castro, F., Slonosky, V., Cooper, J., Brunet, M., and Brönnimann, S.: The global historical climate database HCLIM, *Sci. Data*, 10, 44, <https://doi.org/10.1038/s41597-022-01919-w>, 2023.
- Luterbacher, J., Xoplaki, E., Dietrich, D., Jones, P.D., Davies, T.D., Portis, D., Gonzalez-Rouco, J.F., 840 von Storch, H., Gyalistras, D., Casty, C., and Wanner, H.: Extending North Atlantic Oscillation Reconstructions Back to 1500. *Atmos. Sci. Lett.*, doi:10.1006/asle.2001.0044, 2002a.
- Luterbacher, J., Xoplaki, E., Dietrich, D., Jones, P.D., Davies, T.D., Portis, D., Gonzalez-Rouco, J.F., 845 von Storch, H., Gyalistras, D., Casty, C., and Wanner, H.: North Atlantic Oscillation Reconstruction. IGBP PAGES/World Data Center A for Paleoclimatology Data Contribution Series #2002-016. NOAA/NGDC Paleoclimatology Program, Boulder CO, USA, 2002b.
- Lüdecke, C.: East meets West. Meteorological observations of the Moravians in Greenland and Labrador since the 18th century, *Hist. Meteorol.*, 2, 123–132, 2005.
- 850
- McKay, N. P. and Kaufman, D. S.: An extended Arctic proxy temperature database for the past 2,000 years, *Sci. Data*, 1, 140026, <https://doi.org/10.1038/sdata.2014.26>, 2014.
- 855
- Meteorologisk Aarbøger (Danish Meteorological Yearbooks), 1874–1957, Det Danske meteorologiske Institut, København.
- Miller, G. H., Brigham-Grette, J., Alley, R. B., Anderson, L., Bauch, H. A., Douglas, M. S. V., Edwards, M. E., Elias, S. A., Finney, B. P., Fitzpatrick, J. J., Funder, S. V., Herbert, T. D., Hinzman, L. D., Kaufman, D. S., MacDonald, G. M., Polyak, L., Robock, A., Serreze, M. C., Smol, J. P., Spielhagen, R., 860 White, J. W. C., Wolfe, A. P., and Wolfe, E. W.: Temperature and precipitation history of the Arctic, *Quat. Sci. Rev.*, 29, 1679–1715, <https://doi.org/10.1016/j.quascirev.2010.03.001>, 2010.
- Monaghan, N. T.: Sir Karl Ludwig Metzler-Giesecke (1761–1833), royal mineralogist, Greenland explorer and museum curator, in: Hoch, E. and Bransten, A. K. (Eds.), Centenary of the present edifice of the Geological Museum: deciphering the natural world and the role of collections and museums, Geologisk Museum, København, 83–86, 1993.
- 865
- Nordli, Ø., Przybylak, R., Ogilvie, A. E. J., and Isaksen, K.: Long-term temperature trends and variability on Spitsbergen: the extended Svalbard Airport temperature series, 1898–2012, *Polar Res.*, 33, 21349, <https://doi.org/10.3402/polar.v33.21349>, 2014.
- 870

- 875 Nordli, Ø., Wyszyński, P., Gjelten, H. M., Isaksen, K., Łupikasza, E., Niedźwiedź, T., and Przybylak, R.: Revisiting the extended Svalbard Airport monthly temperature series, and the compiled corresponding daily series 1898–2018, *Polar Res.*, 39, 3614, <https://doi.org/10.33265/polar.v39.3614>, 2020.
- 880 Overpeck, J., Hughen, K., Hardy, D., Bradley, R., Case, R., Douglas, M., Finney, B., Gajewski, K., Jacoby, G., Jennings, A., Lamoureux, S., Lasca, A., MacDonald, G., Moore, J., Retelle, M., Smith, S., Wolfe, A., and Zielinski, G.: Arctic environmental change of the last four centuries, *Science*, 278, 1251–1256, <https://doi.org/10.1126/science.278.5341.1251>, 1997.
- 885 Pfister, C., Brázdil, R., Glaser, R., Barriendos, M., Camuffo, D., Deutsch, M., Dobrovolny, P., Enzi, S. V., Guidoboni, E., Kotyza, O., Miltzer, S., Rácz, L., and Rodrigo, F. S.: Documentary evidence on climate in sixteenth-century Europe, *Climatic Change*, 43, 55–110, [https://doi.org/10.1007/978-94-015-9259-8\\_3](https://doi.org/10.1007/978-94-015-9259-8_3), 1999.
- 890 Przybylak, R.: Temporal and spatial variation of air temperature over the period of instrumental observations in the Arctic, *Int. J. Climatol.*, 20, 587–614, [https://doi.org/10.1002/\(SICI\)1097-0088\(200005\)20:6<587::AID-JOC480>3.0.CO;2-H](https://doi.org/10.1002/(SICI)1097-0088(200005)20:6<587::AID-JOC480>3.0.CO;2-H), 2000.
- 895 Przybylak, R.: Changes in seasonal and annual high-frequency air temperature variability in the Arctic from 1951–1990, *Int. J. Climatol.*, 22, 1017–1032, <https://doi.org/10.1002/joc.793>, 2002.
- 900 Przybylak, R.: The Climate of the Arctic, 2nd Edn., Springer, Cham, 287 pp., <https://doi.org/10.1007/978-3-319-21696-6>, 2016.
- 905 Przybylak, R., Arażny, A., Nordli, Ø., Finkelnburg, R., Kejna, M., Budzik, T., Migała, K., Sikora, S., Puczko, D., Rymer, K., and Rachlewicz, G.: Spatial distribution of air temperature on Svalbard during 1 year with campaign measurements, *Int. J. Climatol.*, 34, 3702–3719, <https://doi.org/10.1002/joc.3937>, 2014.
- 910 Przybylak, R., Arażny, A., Wyszyński, P., Singh, G., and Chmist, K.: Air temperature data for Godthåb (now Nuuk) in SW Greenland at the beginning of the 19th century (1st Nov 1806 to 16th August 1813), RepOD [data set], <https://doi.org/10.18150/IGYNGV>, 2025.
- 915 Przybylak, R., Singh, G., Wyszyński, P., Arażny, A., and Chmist, K.: Air temperature changes in SW Greenland in the second half of the 18th century, *Clim. Past*, 20, 1451–1470, <https://doi.org/10.5194/cp-20-1451-2024>, 2024.
- 920 Przybylak, R. and Vizi, Z.: Air temperature changes in the Canadian Arctic from the early instrumental period to modern times, *Int. J. Climatol.*, 25, 1507–1522, <https://doi.org/10.1002/joc.1213>, 2005.
- Przybylak, R., Vizi, Z., and Wyszyński, P.: Air temperature changes in the Arctic from 1801 to 1920, *Int. J. Climatol.*, 30, 791–812, <https://doi.org/10.1002/joc.1918>, 2010.
- Przybylak, R. and Wyszyński, P.: Air temperature in Novaya Zemlya Archipelago and Vaygach Island from 1832 to 1920 in the light of early instrumental data, *Int. J. Climatol.*, 37, 3491–3508, <https://doi.org/10.1002/joc.4934>, 2017.
- Przybylak, R., Wyszyński, P., and Arażny, A.: Comparison of Early Twentieth Century Arctic Warming and Contemporary Arctic Warming in the light of daily and sub-daily data, *J. Climate*, 35, 2269–2290, <https://doi.org/10.1175/JCLI-D-21-0162.1>, 2022.

- Przybylak, R., Wyszyński, P., Nordli, Ø., and Strzyżewski, T.: Air temperature changes in Svalbard and the surrounding seas from 1865 to 1920, *Int. J. Climatol.*, 36, 2899–2916, <https://doi.org/10.1002/joc.4527>, 2016.
- 925
- Przybylak, R., Wyszyński, P., and Woźniak, M.: Air temperature conditions in northern Nordaustlandet (NE Svalbard) at the end of World War II, *Int. J. Climatol.*, 38, 2775–2791, <https://doi.org/10.1002/joc.5459>, 2018.
- 930
- Schneider, L., Smerdon, J. E., Pretis, F., Hartl-Meier, C., and Esper, J.: A new archive of large volcanic events over the past millennium derived from reconstructed summer temperatures, *Environ. Res. Lett.*, 12, 094005, <https://doi.org/10.1088/1748-9326/aa7a1b>, 2017.
- Shi, F., Yang, B., Ljungqvist, F. C., and Yang, F.: Multi-proxy reconstruction of Arctic summer temperatures over the past 1400 years, *Clim. Res.*, 54, 113–128, <https://doi.org/10.3354/cr01112>, 2012.
- 935
- Silverman, S. M. and Hayakawa, H.: The Dalton Minimum and John Dalton’s Auroral Observations, *J. Space Weather Space Clim.*, 11, 17, <https://doi.org/10.1051/swsc/2020082>, 2021.
- Singh, G., Chmist, K., Przybylak, R., Wyszyński, P., and Arażny, A.: Air temperature data for SW Greenland in the second half of the 18th century, RepOD [data set], <https://doi.org/10.18150/L1Y21Q>, 2023.
- 940
- Slivinski, L. C., Compo, G. P., Sardeshmukh, P. D., Whitaker, J. S., McColl, C., Allan, R., Brohan, P., Yin, X., Smith, C. A., Spencer, L. J., Vose, R. S., Rohrer, M., Conroy, R. P., Schuster, D. C., Kennedy, J., Ashcroft, L., Brönnimann, S., Brunet, M., Camuffo, D., Cornes, R., Cram, T. A., Domínguez-Castro, F., Freeman, J. E., Gergis, J., Hawkins, E., Jones, P. D., Kubota, H., Lee, T. C., Lorrey, A. M., Luterbacher, J., Mock, C. J., Przybylak, R., Pudmenzky, C., Slonosky, V. C., Tinz, B., Trewin, B., Wang, X. L., Wilkinson, C., Wood, K., and Wyszyński, P.: An Evaluation of the Performance of the Twentieth Century Reanalysis Version 3, *J. Climate*, 34, 1417–1438, <https://doi.org/10.1175/JCLI-D-20-0505.1>, 2021.
- 945
- 950
- Slivinski, L. C., Compo, G. P., Whitaker, J. S., Sardeshmukh, P. D., Giese, B. S., McColl, C., Allan, R., Yin, X., Vose, R., Titchner, H., Kennedy, J., Spencer, L. J., Ashcroft, L., Brönnimann, S., Brunet, M., Camuffo, D., Cornes, R., Cram, T. A., Crouthamel, R., Domínguez-Castro, F., Freeman, J. E., Gergis, J., Hawkins, E., Jones, P. D., Jourdain, S., Kaplan, A., Kubota, H., Le Blancq, F., Lee, T.-C., Lorrey, A., Luterbacher, J., Maugeri, M., Mock, C. J., Moore, G. W. K., Przybylak, R., Pudmenzky, C., Reason, C., Slonosky, V. C., Smith, C., Tinz, B., Trewin, B., Valente, M. A., Wang, X. L., Wilkinson, C., Wood, K., and Wyszyński, P.: Towards a more reliable historical reanalysis: Improvements for version 3 of the Twentieth Century Reanalysis system, *Q. J. R. Meteorol. Soc.*, 145, 2876–2908, <https://doi.org/10.1002/qj.3598>, 2019.
- 955
- 960
- Timmreck, C., Toohey, M., Zanchettin, D., Brönnimann, S., Lundstad, E., and Wilson, R.: The unidentified eruption of 1809: a climatic cold case, *Clim. Past*, 17, 1455–1482, <https://doi.org/10.5194/cp-17-1455-2021>, 2021.
- 965
- Tingley, M. P. and Huybers, P.: Recent temperature extremes at high northern latitudes unprecedented in the past 600 years, *Nature*, 496, 201–205, <https://doi.org/10.1038/nature11969>, 2013.
- Valler, V., Franke, J., Brugnara, Y., Samakinwa, E., Hand, R., Lundstad, E., Burgdorf, A.-M., Lipfert, L., Friedman, A. R., and Brönnimann, S.: ModE-RA: a global monthly paleo-reanalysis of the modern era 1421 to 2008, *Sci. Data*, 11, 36, <https://doi.org/10.1038/s41597-023-02733-8>, 2024.
- 970

Treshnikov AF, ed.: Atlas Arktiki. Glavnoye Upravlenye Geodeziy i Kartografiy: Moscow, 1985.

975 Vinther, B. M., Andersen, K. K., Jones, P. D., Briffa, K. R., and Cappelen, J.: Extending Greenland temperature records into the late eighteenth century, *J. Geophys. Res.*, 111, D11105, <https://doi.org/10.1029/2005JD006810>, 2006.

980 Von Storch, H. and Zwiers, F. W.: *Statistical Analysis in Climate Research*, Cambridge University Press, Cambridge, UK, 484 pp., <https://doi.org/10.1017/CBO9780511612336>, 1999.

985 Warren, R., Bartlome, N. E., Wellinger, N., Franke, J., Hand, R., Brönnimann, S., and Huhtamaa, H.: ClimeApp: data processing tool for monthly, global climate data from the ModE-RA palaeo-reanalysis, 1422 to 2008 CE, *Clim. Past*, 20, 2645–2662, <https://doi.org/10.5194/cp-20-2645-2024>, 2024.

Werner, J. P., Divine, D. V., Ljungqvist, F. C., Nilsen, T., and Francus, P.: Spatio-temporal variability of Arctic summer temperatures over the past 2 millennia, *Clim. Past*, 14, 527–557, <https://doi.org/10.5194/cp-14-527-2018>, 2018.

990 Whittaker, A.: Karl Ludwig Giesecke: His life, performance and achievements, *Mitt. Österr. Miner. Ges.*, 146, 451–479, 2001.

995 Wyse Jackson, P. N.: Sir Charles Lewis Giesecke (1761–1833) and Greenland: A recently discovered mineral collection in Trinity College, Dublin, *Irish J. Earth Sci.*, 15, 161–168, <https://www.jstor.org/stable/30002326>, 1996.

Zwiers, F. W. and Kharin, V. V.: Changes in extremes of the climate simulated by CCC GCM2 under CO<sub>2</sub> doubling, *J. Climate*, 11, 2200–2222, [https://doi.org/10.1175/1520-0442\(1998\)011%3C2200:CITEOT%3E2.0.CO;2](https://doi.org/10.1175/1520-0442(1998)011%3C2200:CITEOT%3E2.0.CO;2).1998.

1000