

# Cross-canyon variability in zooplankton backscattering strength in a river-influenced upwelling area

Macarena Díaz-Astudillo<sup>1,2</sup>, Manuel Castillo<sup>3</sup>, Pedro A. Figueroa<sup>4</sup>, Leonardo R. Castro<sup>2</sup>,  
Ramiro Riquelme-Bugueño<sup>5</sup>, Iván Pérez-Santos<sup>2,6,7</sup>, Oscar Pizarro<sup>8,9,10</sup>, and Gonzalo S. Saldías<sup>1,2</sup>

<sup>1</sup>Departamento de Física, Facultad de Ciencias, Universidad del Bío-Bío, Concepción, Chile

<sup>2</sup>Centro de Investigación Oceanográfica en el Pacífico Sur-Oriental (COPAS COASTAL), Universidad de Concepción, Concepción, Chile

<sup>3</sup>Centro de Observación y Análisis del Océano Costero (COSTAR-UV), Universidad de Valparaíso, Valparaíso, Chile

<sup>4</sup>Department of Earth & Environment, Boston University, Boston, MA, USA

<sup>5</sup>Departamento de Zoología, Facultad de Ciencias Naturales y Oceanográficas, Universidad de Concepción, Concepción, Chile

<sup>6</sup>Centro i-mar, Universidad de los Lagos, Puerto Montt, Chile

<sup>7</sup>Centro de Investigaciones en Ecosistemas de la Patagonia (CIEP), Coyhaique, Chile

<sup>8</sup>Departamento de Geofísica, Universidad de Concepción, Concepción, Chile

<sup>9</sup>Instituto Milenio de Oceanografía, Concepción, Chile

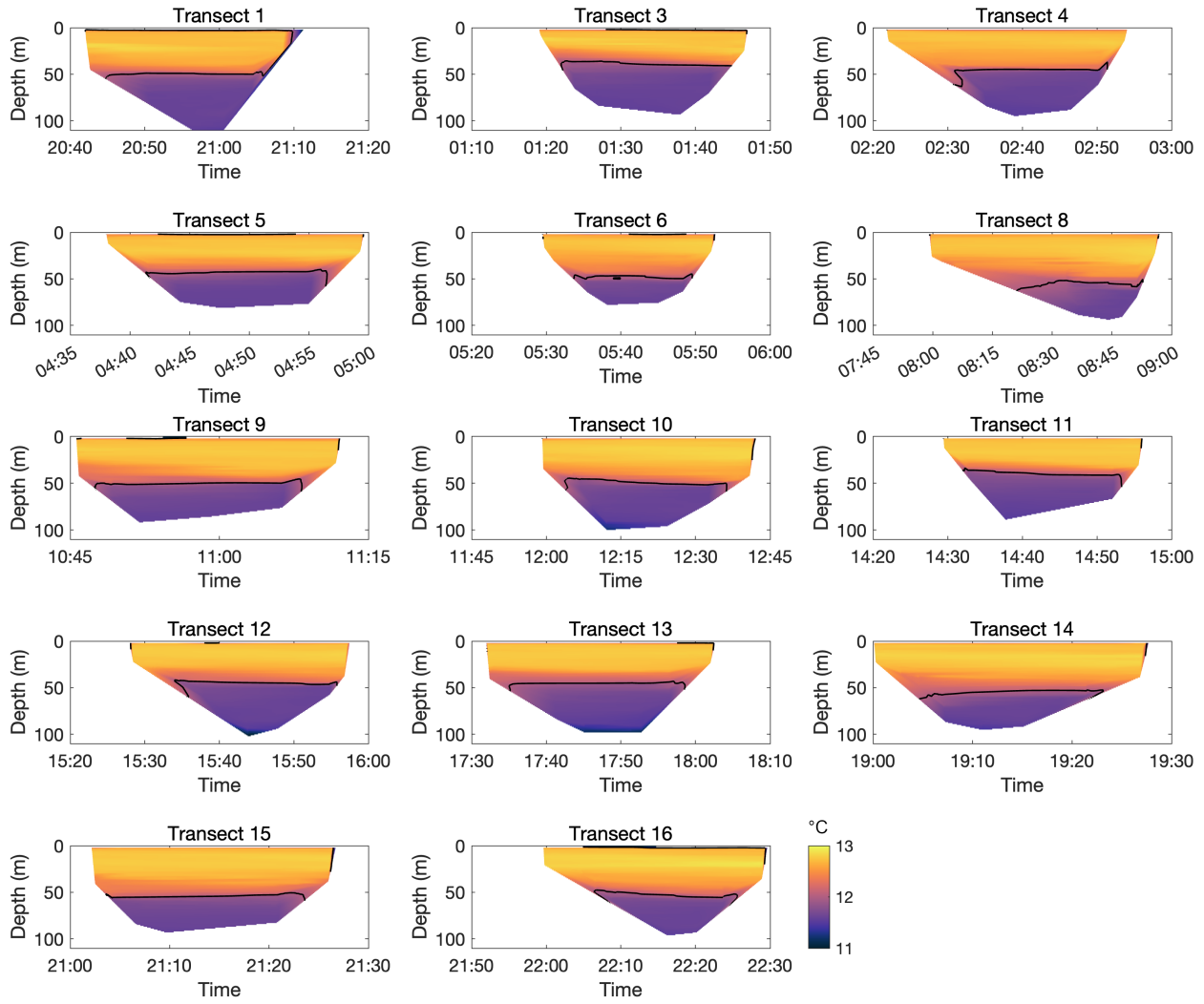
<sup>10</sup>Centro de Instrumentación Oceanográfica (CIO), Universidad de Concepción, Concepción, Chile

**Correspondence:** Macarena Díaz-Astudillo (macarenapaz.da@gmail.com)

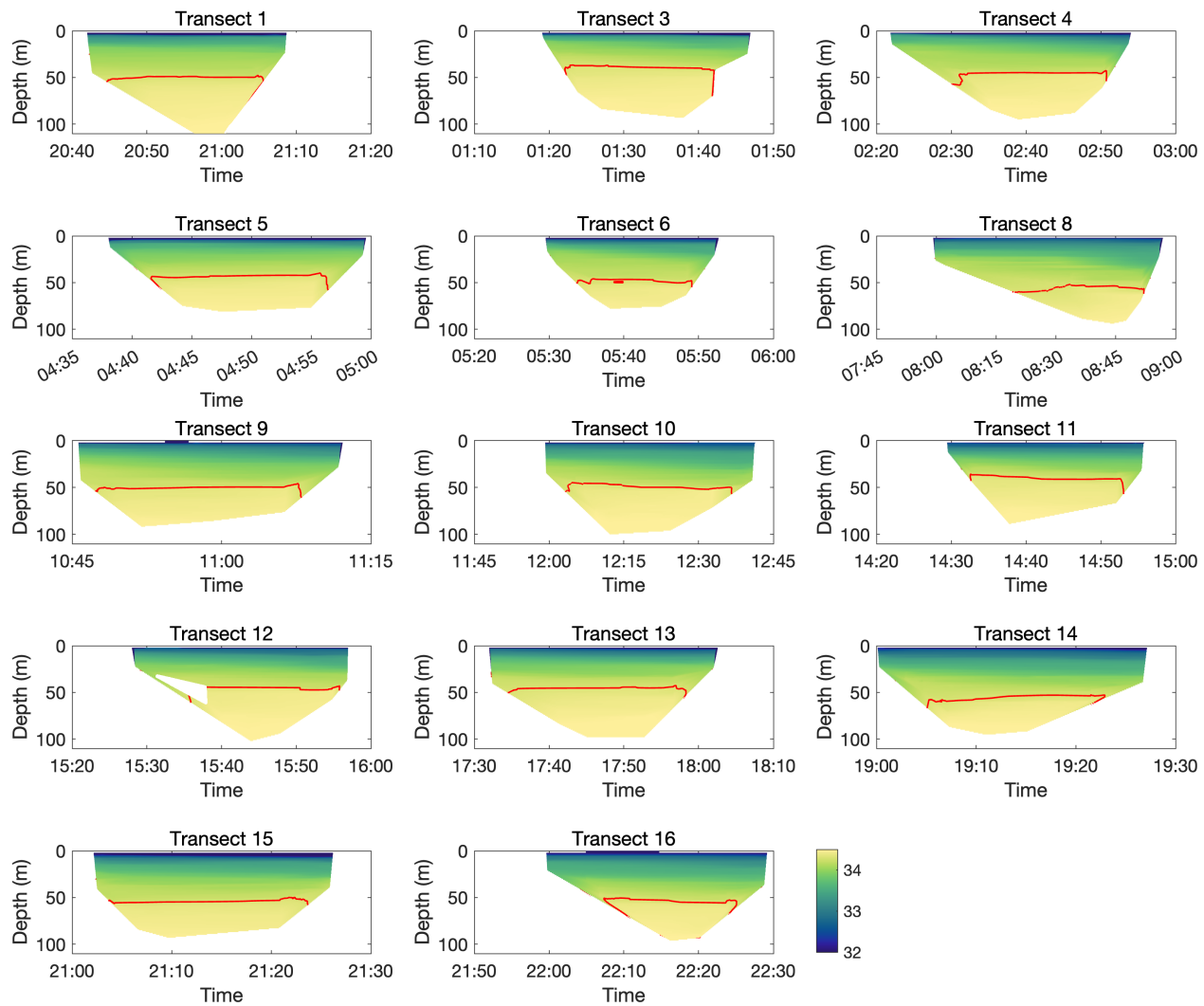
## 1 Supplementary Material

**Table S1.** Details of each of the 16 transects included in the study analyses. The RapidPro CTD was not deployed in 2 transects, outlined below. ET: eastern transect, WT: western transect.

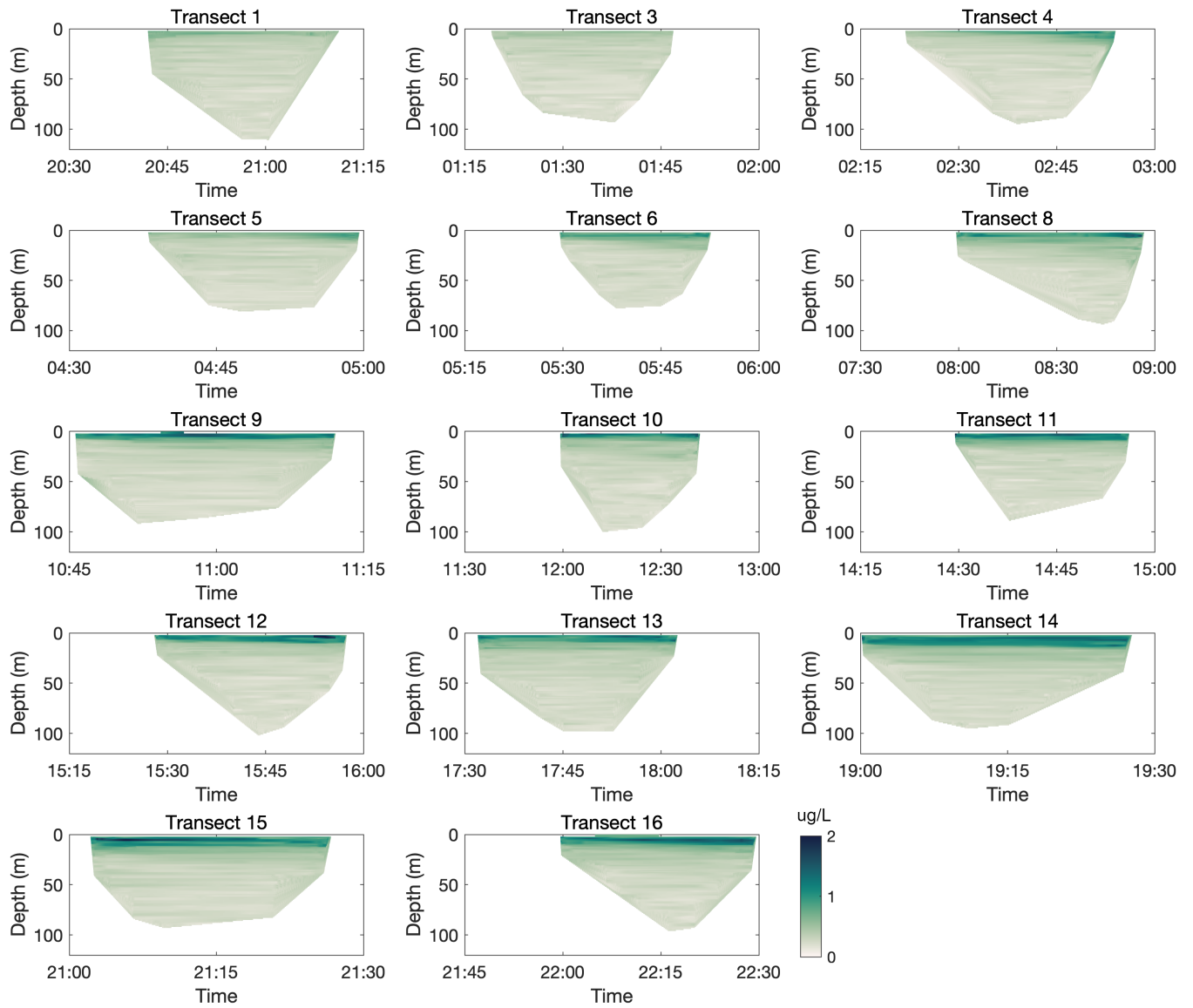
Transect N°	Date	Start Time	Canyon Position	ADCP	CTD
1	27-07-2023	20:45	ET	Yes	Yes
2	27-07-2023	22:00	WT	Yes	No
3	28-07-2023	01:20	ET	Yes	Yes
4	28-07-2023	02:20	WT	Yes	Yes
5	28-07-2023	04:45	ET	Yes	Yes
6	28-07-2023	05:30	WT	Yes	Yes
7	28-07-2023	07:10	ET	Yes	No
8	28-07-2023	08:30	WT	Yes	Yes
9	28-07-2023	10:40	ET	Yes	Yes
10	28-07-2023	12:00	WT	Yes	Yes
11	28-07-2023	14:30	ET	Yes	Yes
12	28-07-2023	15:30	WT	Yes	Yes
13	28-07-2023	17:30	ET	Yes	Yes
14	28-07-2023	19:00	WT	Yes	Yes
15	28-07-2023	21:00	ET	Yes	Yes
16	28-07-2023	22:00	WT	Yes	Yes



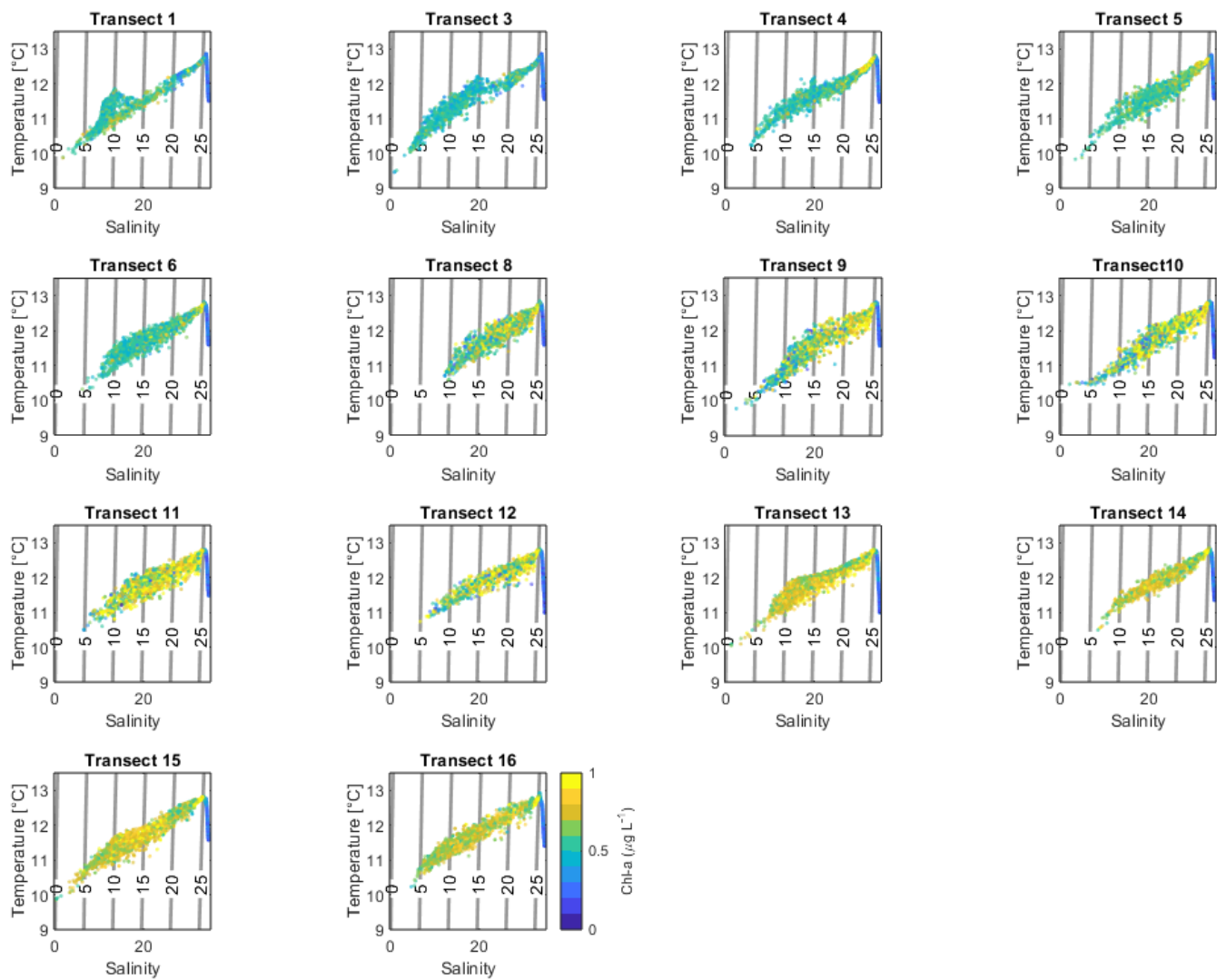
**Figure S1.** Cross-canyon sections of temperature. The 12°C temperature contour is highlighted in black.



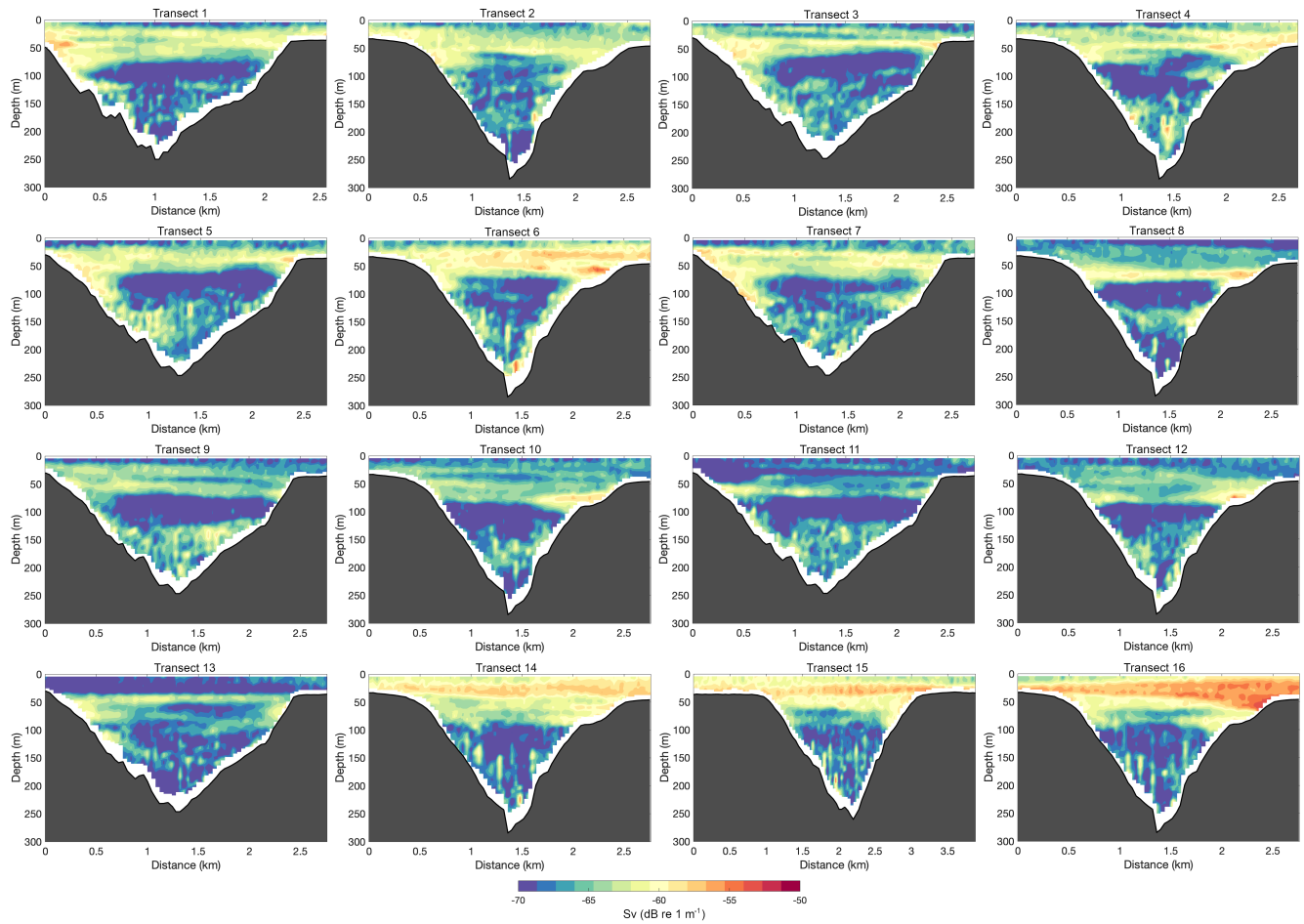
**Figure S2.** Cross-canyon sections of salinity. The 34 salinity contour is highlighted in red.



**Figure S3.** Cross-canyon sections of chlorophyll-a.



**Figure S4.** Temperature-salinity plots for each transect with chlorophyll-a concentration in colors.



**Figure S5.** Cross-canyon sections of the mean volume backscattering strength ( $S_v$ ).