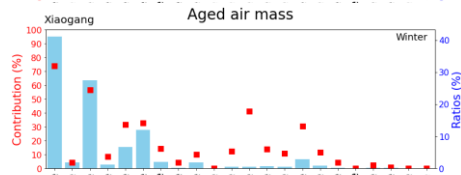
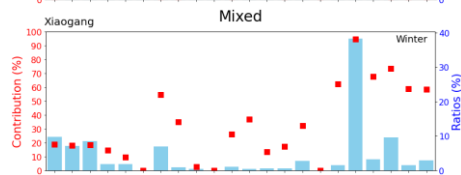
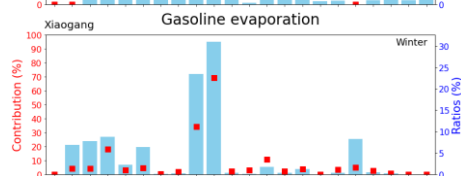
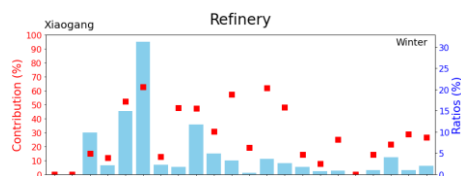
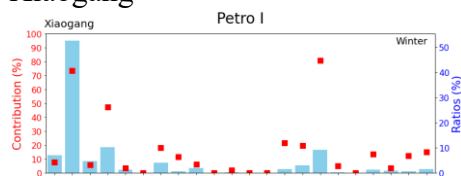
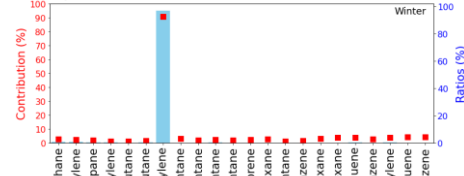
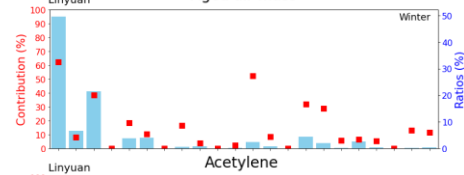
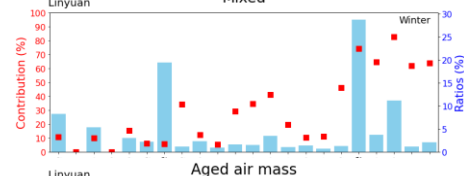
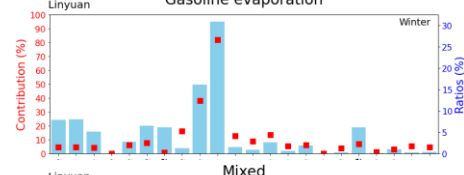
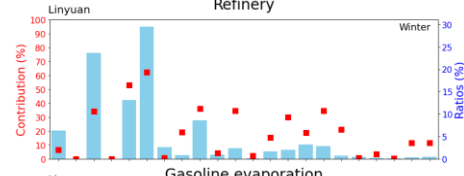
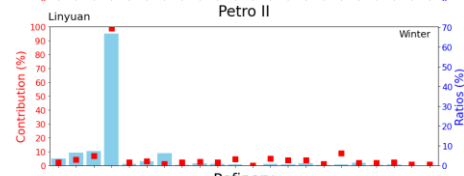
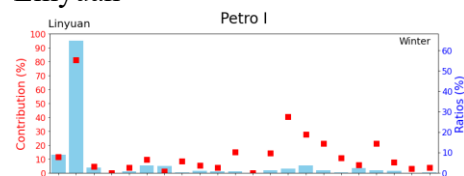


Fig. S1 High-temporal-resolution PAMS data (01/12/2023 – 30/11/2024). Examples of acetylene, ethylene, and benzene species

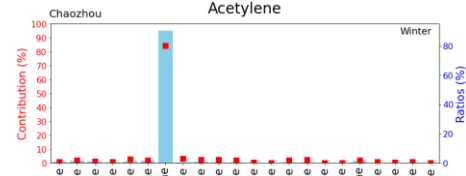
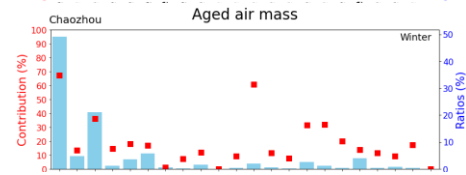
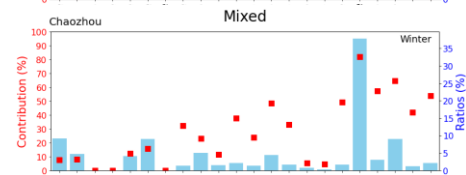
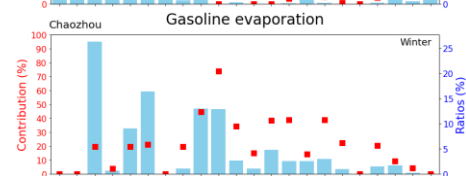
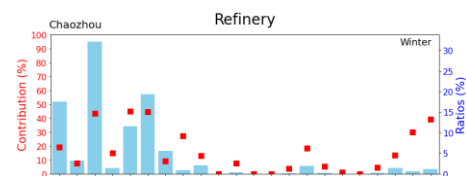
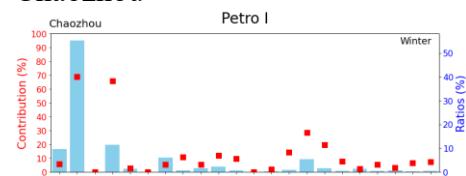
a) Winter
Xiaogang



Linyuan

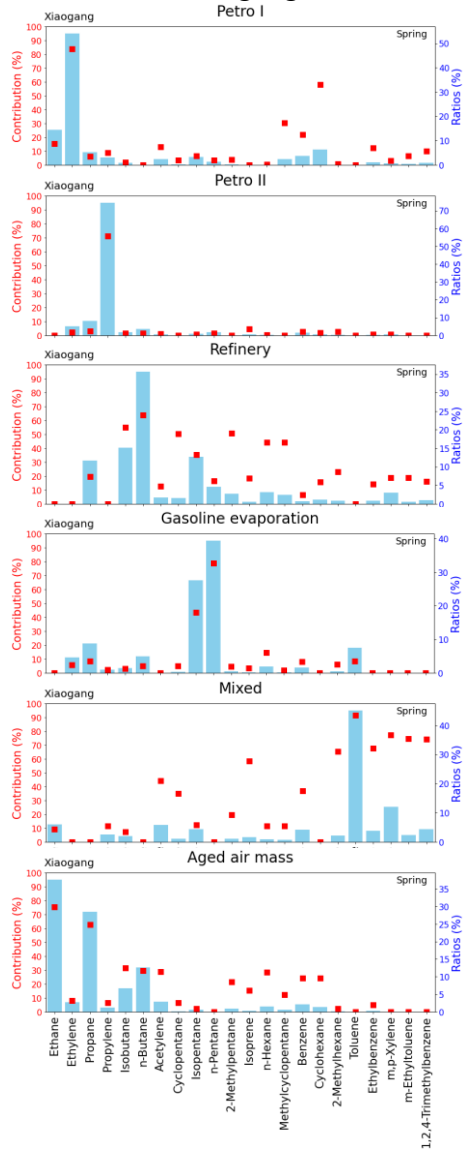


Chaozhou

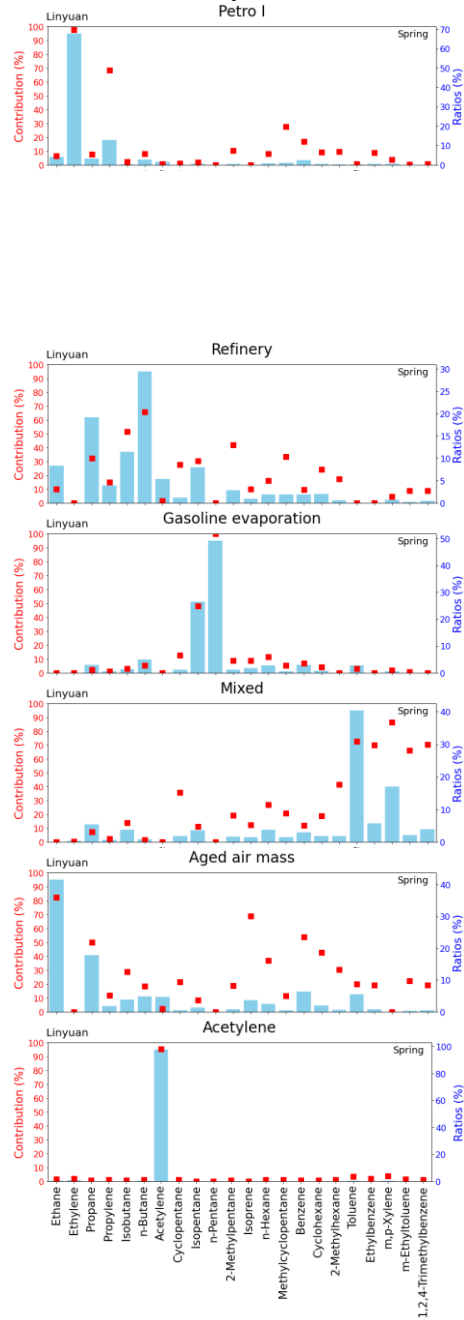


b) Spring

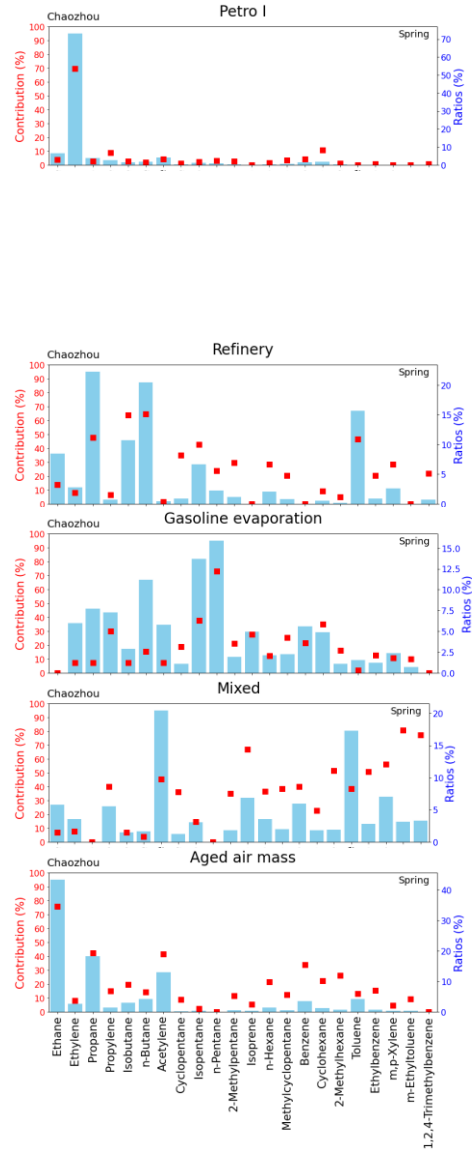
Xiaogang



Linyuan

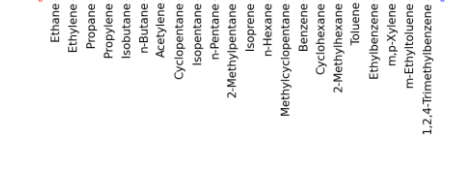
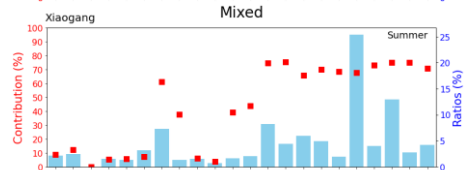
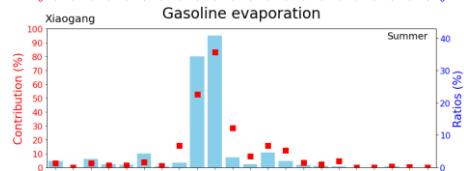
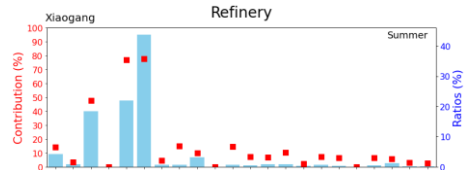
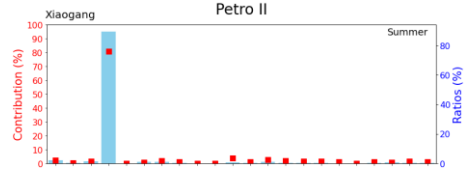
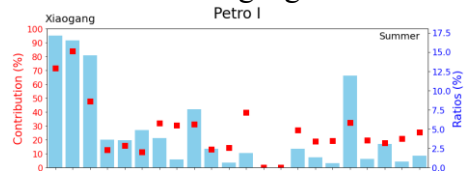


Chaozhou

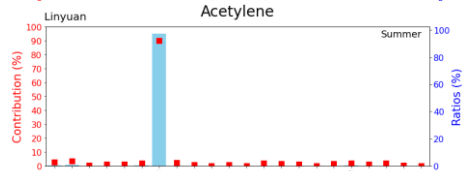
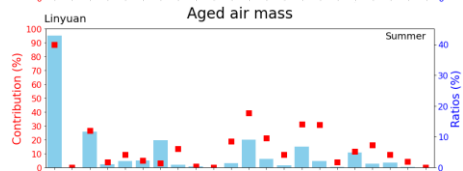
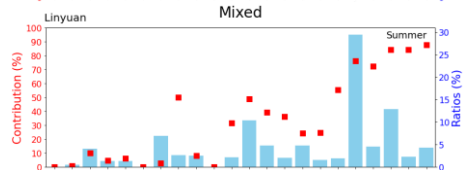
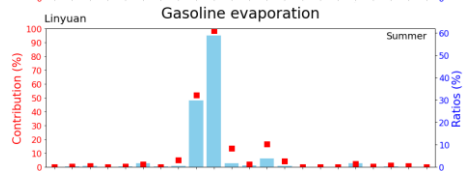
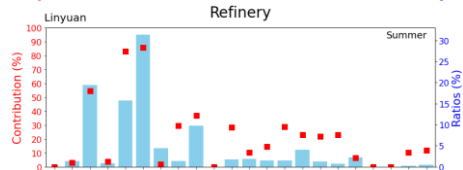
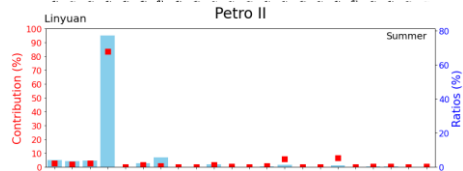
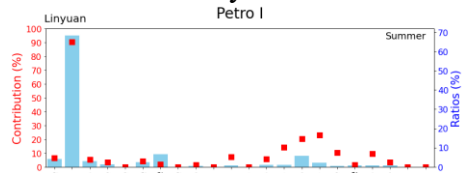


c) Summer

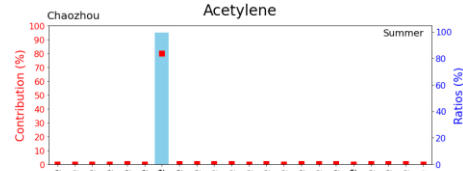
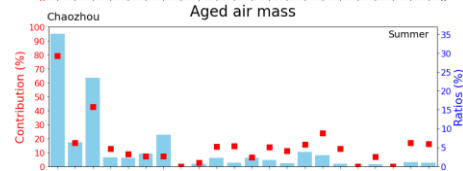
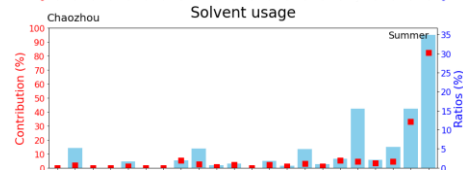
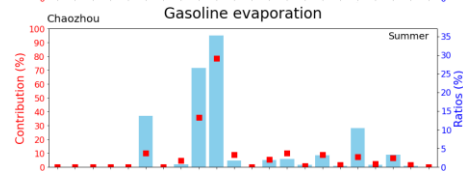
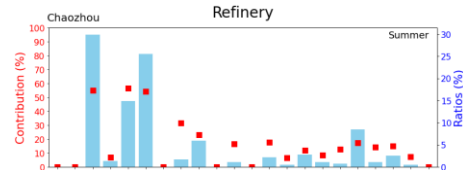
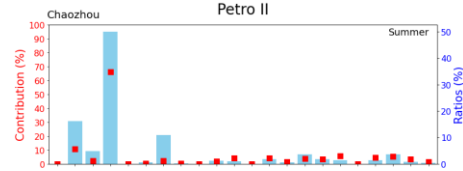
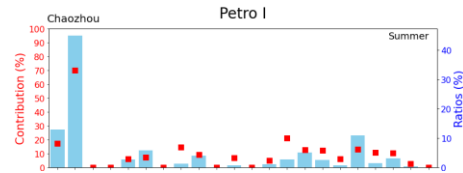
Xiaogang



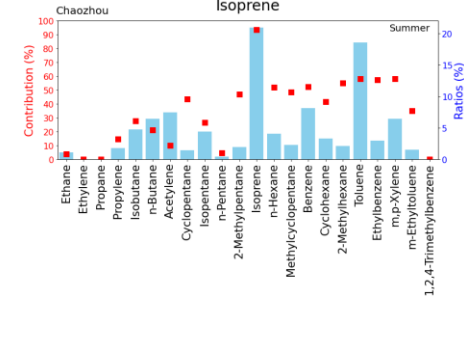
Linyuan



Chaozhou



Chaozhou



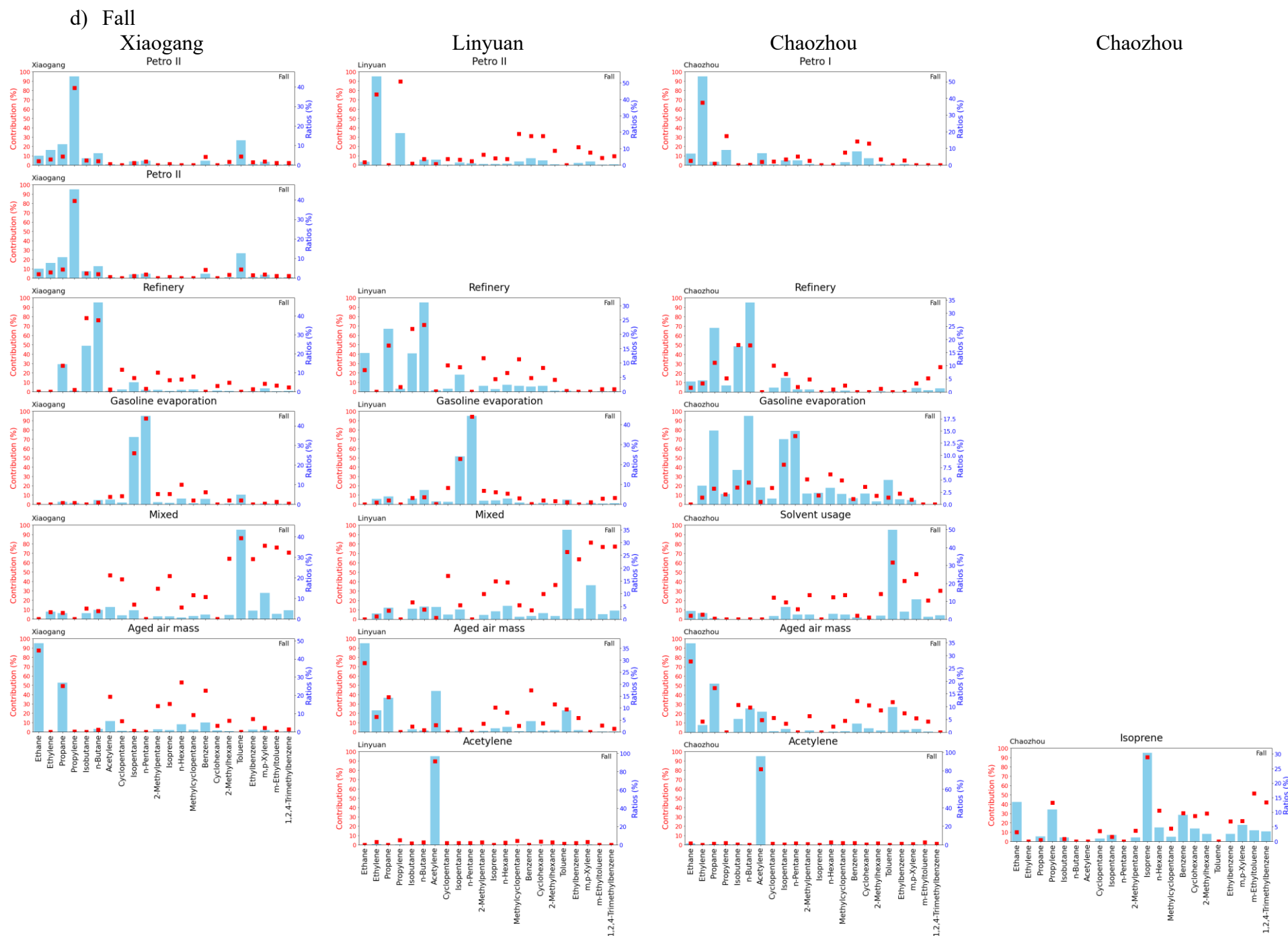


Fig. S2 Details of profile factors at study sites across the seasons: a) winter, b) spring, c) summer, d) fall

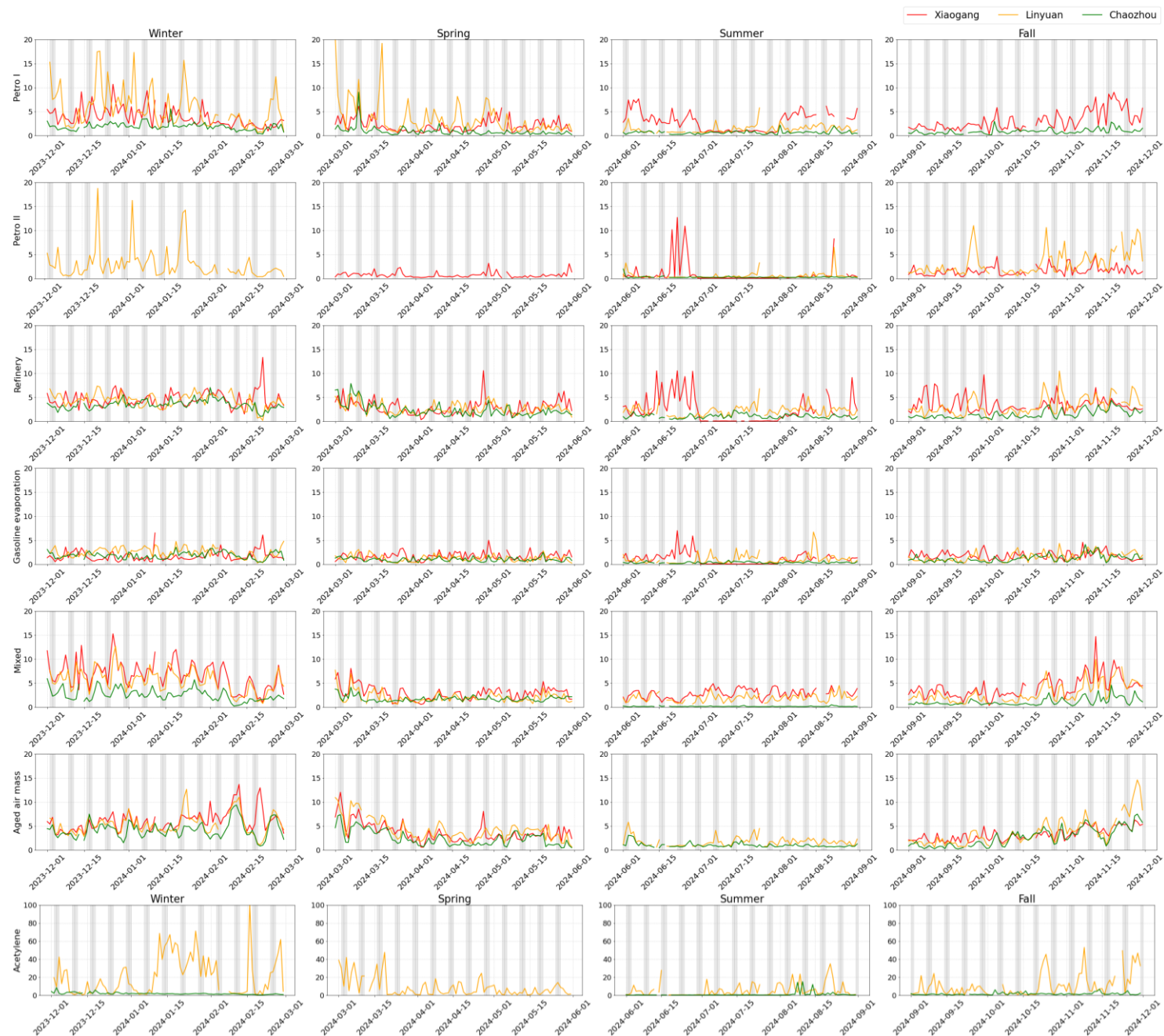


Fig. S3 Seasonal variation of daily mean contributions from PMF-resolved factors. Shaded columns represent weekends.

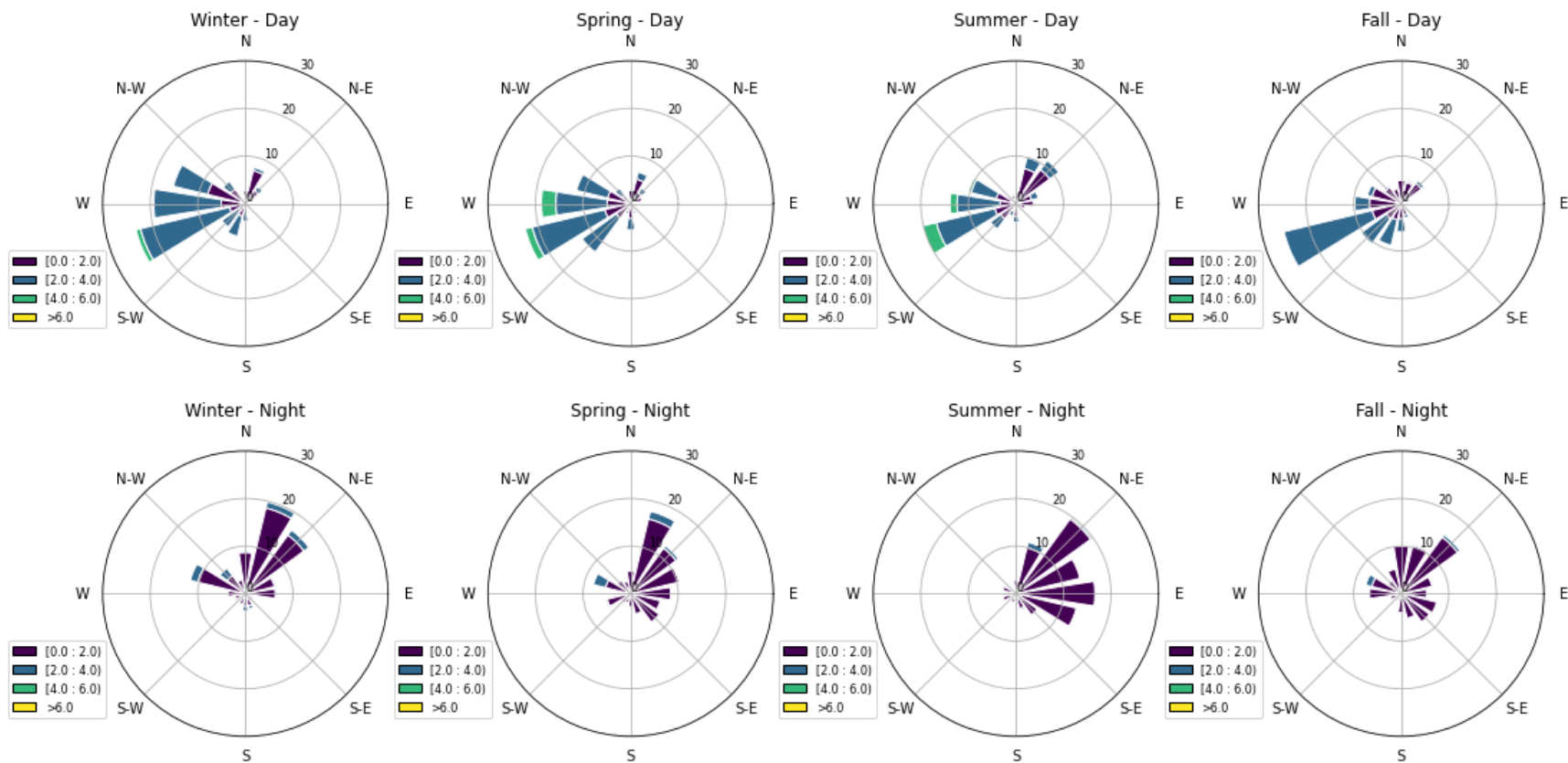


Fig. S4 Day-Night wind profile for aged air mass factor at Chaozhou over the seasons during top 30% high contribution

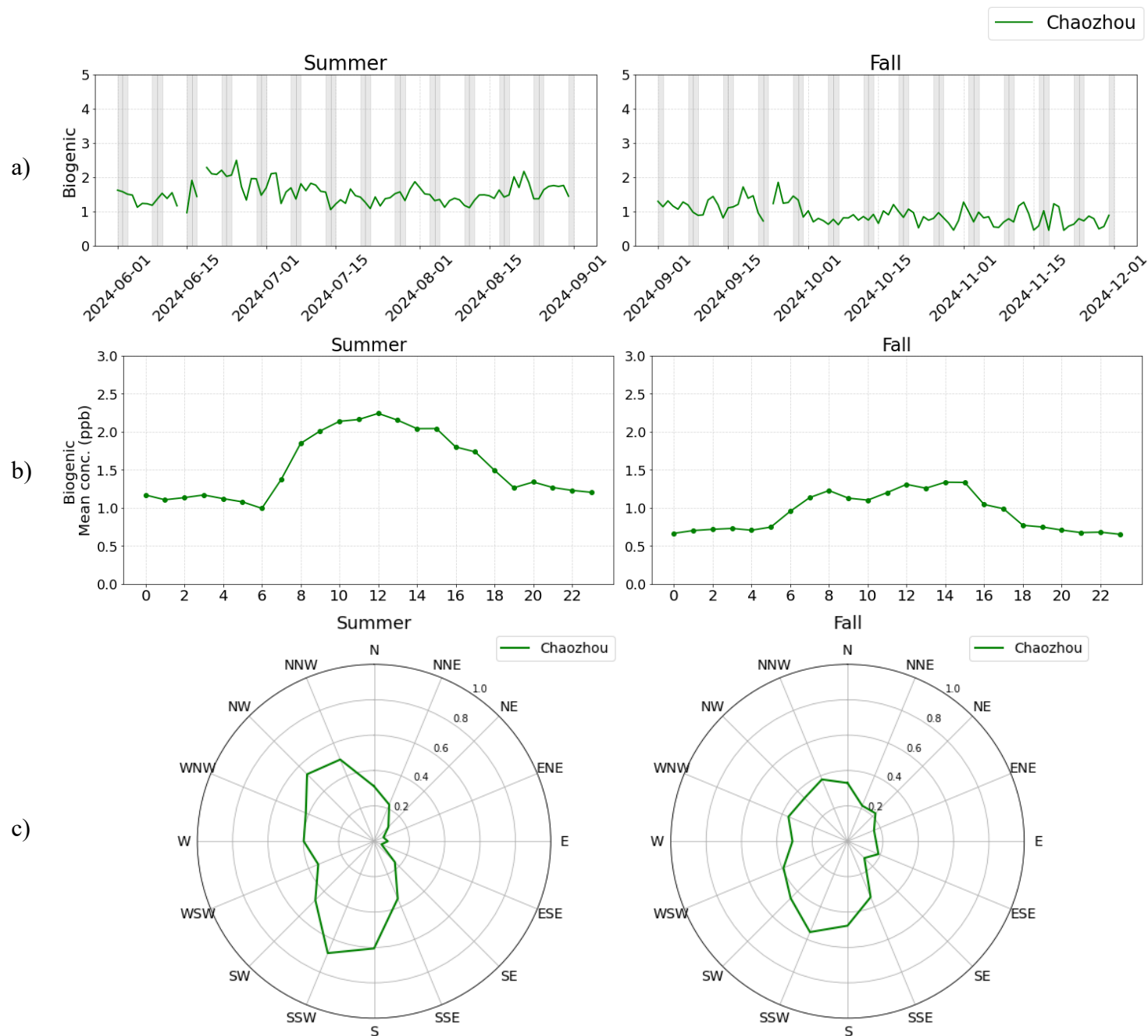


Figure S5: Temporal variation and CPF analysis for biogenic factors over the seasons, a) Timeseries of daily average factor contribution, b) Diurnal variation, and c) CPF analysis

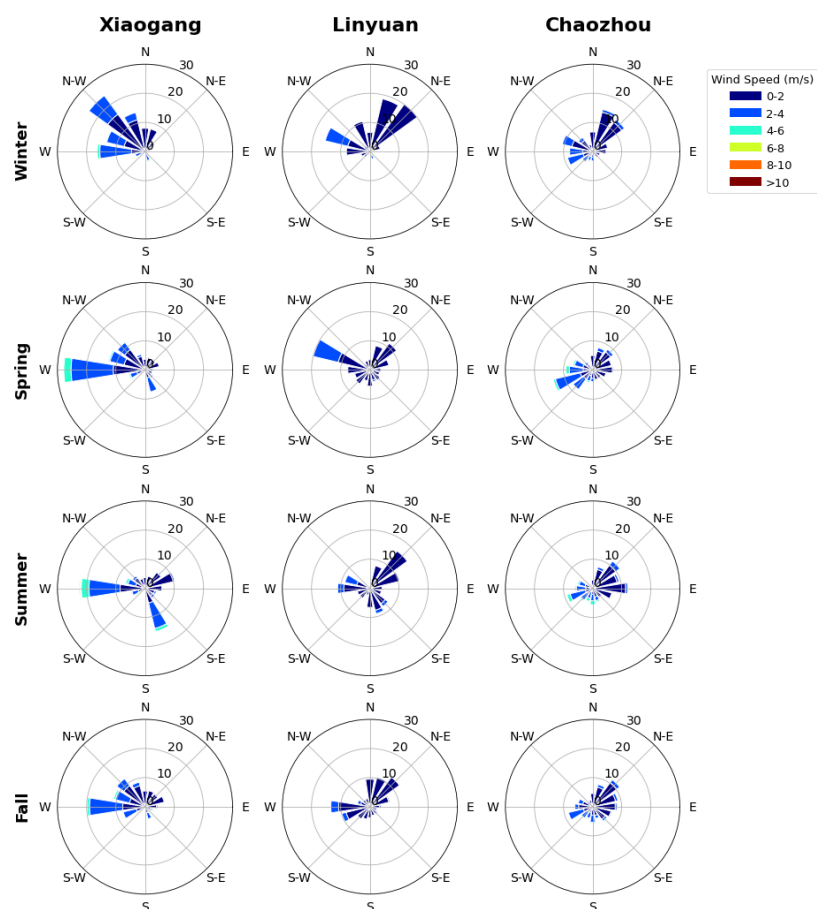


Figure S6: Seasonal wind profile at the three PAMS sites

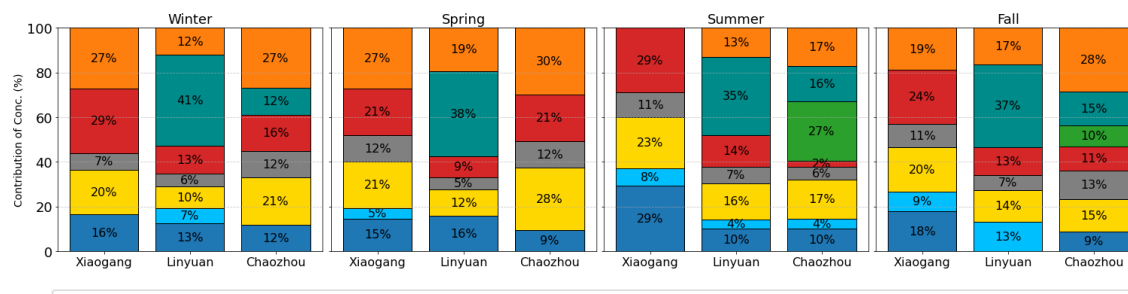


Figure S7: Contribution of concentration from eight resolved source factors. Xiaogang tends to have a relatively balanced influence among mixed, refinery, and aged air mass sources, suggesting complex source-receptor dynamics at this site. This reflects Xiaogang's transitional setting between industrial clusters and transportation hubs, where port activity, on-road emissions, and solvent-use industries intersect, producing overlapping chemical signals captured under the mixed factor.

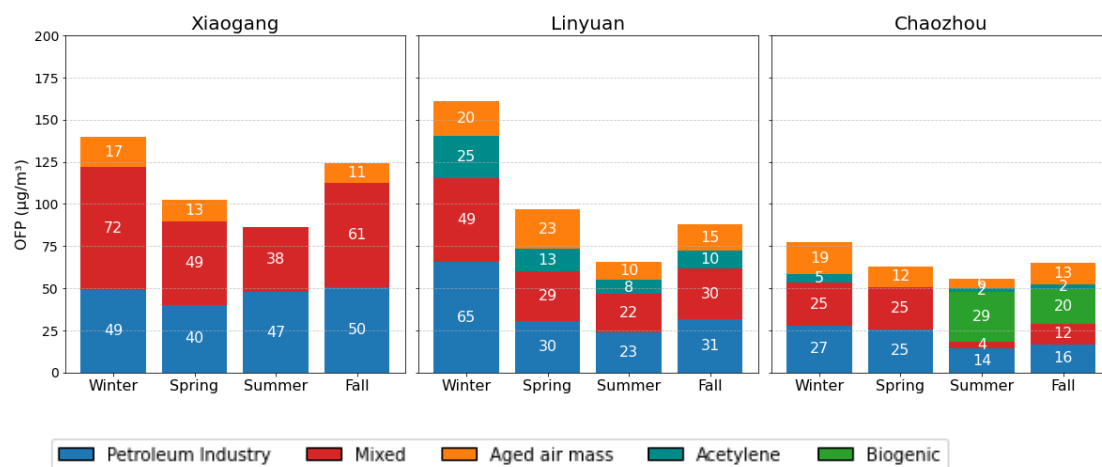


Figure S8: Ozone forming potential in perspective of seasonal variation

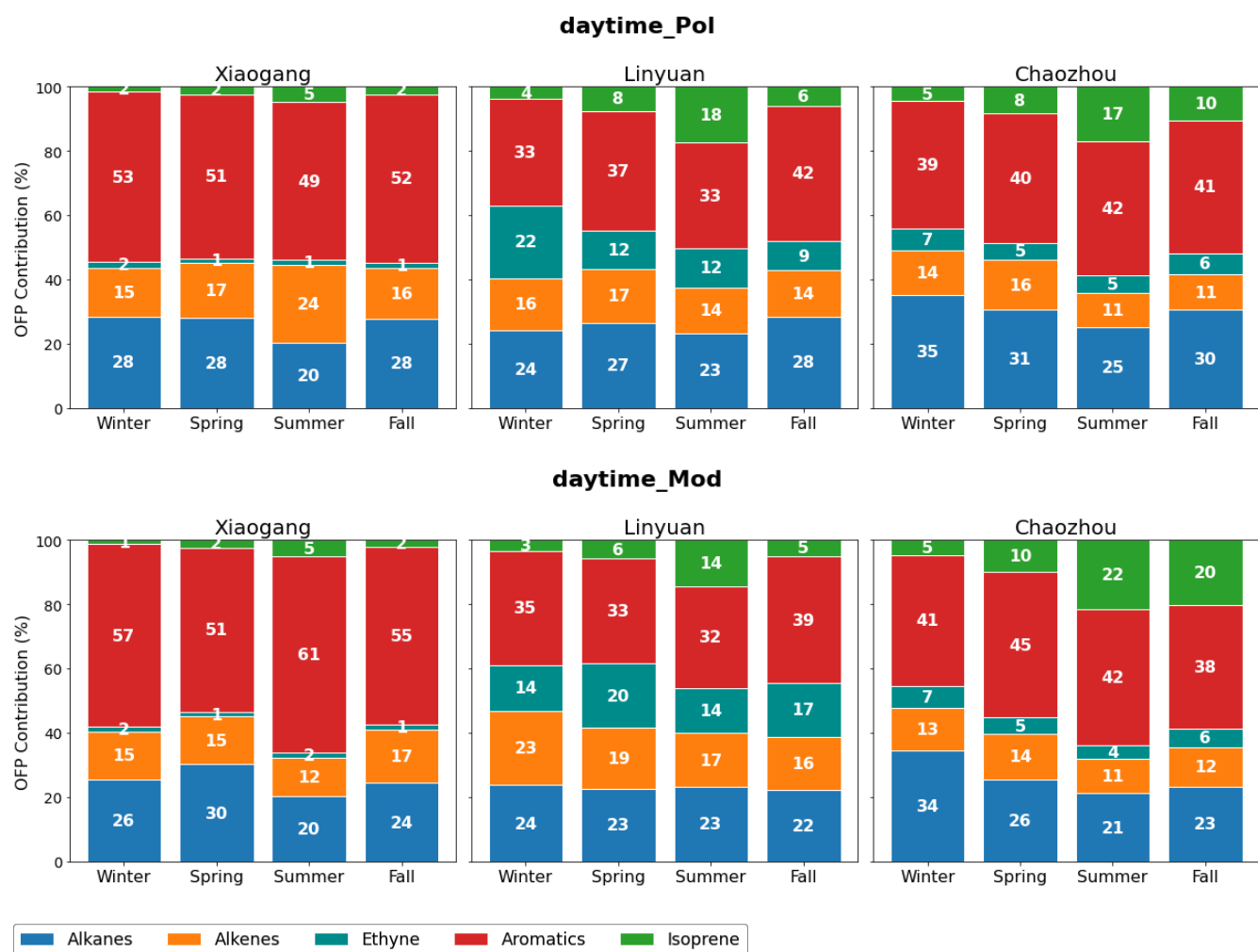


Figure S9: Ozone forming potential in perspective of species group variation during ozone pollution and moderate pollution days