



Biogeochemical Shifts During Arctic Spring: Surfactants in the Sea-Surface Microlayer Reduce CH₄ and N₂O Emissions During the Onset of Sea Ice Melt

5 Lina A. Holthusen^{1,2}, Hermann W. Bange², Thomas H. Badewien¹, Julia C. Muchowski⁶, Tina Santl-Temkiv^{7,8}, Jennie Spicker Schmidt^{7,8}, Oliver Wurl¹, Damian L. Arévalo-Martínez^{2,3,4,5}

¹ Institute for Chemistry and Biology of the Marine Environment, Carl von Ossietzky Universität Oldenburg, Wilhelmshaven, Germany.

10 ² Chemical Oceanography Research Unit, GEOMAR Helmholtz Centre for Ocean Research Kiel, Kiel, Germany.

³ Institute of Geosciences, Kiel University, Kiel, Germany.

⁴ Department of Microbiology, Radboud University, Nijmegen, Netherlands.

⁵ Marine Chemistry Department, Leibniz Institute for Baltic Sea Research Warnemünde, Rostock, Germany.

⁶ Swedish Polar Research Secretariat, Luleå, Sweden.

15 ⁷ Department of Biology, Microbiology, Aarhus University, Aarhus, Denmark.

⁸ Arctic Research Centre, Aarhus University, Aarhus, Denmark.

Correspondence to: Lina A. Holthusen (lina.aleke.holthusen@uol.de)



20 **Abstract.** The sea-surface microlayer (SML) is the less than one millimeter thin interface between the surface
 ocean and the overlying atmosphere and plays a crucial role in sea-air gas exchange processes. However, its role
 for sea-air exchange processes in sea ice-influenced environments such as the Arctic Ocean remains poorly
 understood. Here, we present the first *in situ* measurements of surfactants accumulating in the SML of the Fram
 Strait, coupled with near-surface measurements of the climate-relevant trace gases CH₄ and N₂O. Sampling of the
 25 undisturbed surface ocean was conducted at leads and ice holes during the onset of sea ice melt and an early algal
 bloom between May and June 2023. Our results reveal that the region acted as a minor source of CH₄ and N₂O.
 Nonetheless, the algal bloom stimulated the production of surfactants, which accumulated in the SML of open
 leads, reducing the emissions of CH₄ and N₂O to the atmosphere. These findings highlight the importance of
 resolving short-term surface processes during seasonal transitions and of integrating SML dynamics into
 30 investigating trace gas fluxes in polar regions.

1. Introduction

Climate-relevant gases, such as methane (CH₄) and nitrous oxide (N₂O), are the most abundant greenhouse gases
 in the atmosphere after CO₂ and play an important role in the global climate due to their high global warming
 35 potential (IPCC, 2021). While the ocean acts as a minor source for atmospheric CH₄, it is a major source for N₂O
 (Saunio et al., 2025; Tian et al., 2024). The emission estimates of both gases are subject to significant
 uncertainties, both due to large temporal and spatial variability, and limited data coverage (Weber et al., 2019;
 Yang et al., 2020).

Oceanic CH₄ emissions account for 1–3% of the global CH₄ budget (Saunio et al., 2025). The surface ocean is
 40 typically supersaturated, whereas the deep ocean is in equilibrium or undersaturated with CH₄ relative to the
 atmosphere (Reeburgh, 2007). CH₄ can be released by diffusion from sediments, gas seeps, melting gas hydrates,
 or thawing subsea permafrost (Barnes and Goldberg, 1976; James et al., 2016). CH₄ concentrations can rapidly
 decrease due to microbial anaerobic and aerobic oxidation of CH₄ in sediments and the entire water column,
 respectively (Venetz et al., 2024). Due to this so-called microbial methane filter, a large quantity of CH₄ originating
 45 from the sea floor does not reach the sea surface. Aerobic *in situ* production in the well-oxygenated surface layer
 of the ocean can lead to a supersaturation with CH₄. This production has been reported in several studies, which
 suggest *in situ* production by bacteria during the degradation of organic material (e.g., Repeta et al., 2016),
 particularly during phosphate or nitrate limitation (Damm et al., 2010; Karl et al., 2008). Another source can be
 direct production by phytoplankton (Mao et al., 2024), cyanobacteria (Bižić et al., 2020), and during zooplankton
 50 grazing (Stawarski et al., 2019). A potential abiotic production pathway for CH₄ is the photodegradation of
 chromophoric dissolved organic matter (CDOM), which occurs in the upper meters of the water column (Li et al.,
 2020).

The world's oceans contribute approximately 26–31% of the global N₂O emissions, with high temporal and spatial
 variability (Yang et al., 2020; Tian et al., 2024). Oceanic N₂O is mainly produced by microbial nitrification and
 55 denitrification (Bakker et al., 2014). Nitrification dominates under oxic conditions, while denitrification dominates
 under suboxic or anoxic conditions and accounts for approximately 7–20% of the total production of marine N₂O
 (Bakker et al., 2014; Ji et al., 2018). During nitrification, N₂O is a by-product of ammonia (NH₃) oxidation to
 nitrite (NO₂⁻), which is mainly carried out by ammonia-oxidizing archaea (Löscher et al., 2012) and ammonia-
 oxidizing bacteria (Bakker et al., 2014). Denitrification is the step-wise microbial reduction of nitrate (NO₃⁻) to
 60 dinitrogen (N₂) in O₂-depleted seawater (Bakker et al., 2014). Here, N₂O is an intermediate product, and further
 reduction of N₂O to N₂ is effectively inhibited by the presence of O₂ (Dalsgaard et al., 2014). An abiotic source of



N_2O in the marine environment is the photochemical degradation of nitrite, which can yield higher N_2O production rates than biological processes (Leon-Palmero et al., 2025).

In the Arctic Ocean (AO), measurements of dissolved CH_4 and N_2O concentrations are limited, yet existing
 65 observations reveal pronounced spatial and temporal variability (e.g., Rees et al., 2022). Direct measurements of
 CH_4 sea-air fluxes demonstrate that the Central AO is a small source of atmospheric CH_4 during summer (average
 $3.5 \mu\text{mol m}^{-2} \text{d}^{-1}$, approximately 0.009 Tg yr^{-1}) (Prytherch et al., 2024) compared to global oceanic emissions of 6-
 12 Tg yr^{-1} (Weber et al., 2019). In contrast, shelf regions such as the Laptev Sea (0.83 Tg yr^{-1}), East Siberian Sea
 (0.62 Tg yr^{-1}), and Chukchi Sea (0.03 Tg yr^{-1}) show significantly higher and more variable CH_4 fluxes, with local
 70 peaks of up to $38.5 \mu\text{mol m}^{-2} \text{d}^{-1}$ (Thornton et al., 2020). Suggested sources include the release of CH_4 -enriched
 brine from sea ice (Damm et al., 2015a), *in situ* production via methylotrophic methanogenesis with DMSP
 (dimethylsulfoniopropionate) as a precursor (Damm et al., 2015b), and release from the sea floor (e.g., Cramm et
 al., 2021). Most studies investigating dissolved N_2O in the AO found surface waters near atmospheric equilibrium,
 with a trend of higher emissions in shelf areas compared to the open ocean (Verdugo et al., 2016; Zhan et al., 2021;
 75 Muller et al., 2024). N_2O dynamics in the AO are driven by nitrification and denitrification in sediments and the
 water column, respectively (Fenwick et al., 2017; Kitidis et al., 2010). Sea ice was observed to be undersaturated
 in N_2O (Randall et al., 2012), and its meltwater may dilute surface concentrations (Kitidis et al., 2010; Fenwick et
 al., 2017).

The sea-surface microlayer (SML) describes the less than 1 mm thick boundary layer between the ocean and the
 80 atmosphere (Liss & Duce, 1997) and is characterized by the accumulation of surface-active substances (SAS), so-
 called surfactants (Wurl et al., 2009; Cunliffe et al., 2013). Organic material, mainly derived from phytoplankton
 and bacteria, can accumulate in the SML and create biofilm-like habitats, so-called slicks, with an aggregation of
 microbes and e.g., extracellular polymeric substances (EPS) (Wurl et al., 2016; Žutić et al., 1981). Because SAS-
 enrichment in the SML builds a physico-chemical barrier and influences hydrodynamics, small-scale turbulences,
 85 and wind-wave interactions, it plays a crucial role in sea-air interactions of gases (McKenna and McGillis, 2004;
 Pereira et al., 2016; Mustafa et al., 2020). Studies investigating SAS concentrations in the SML of the AO are
 scarce, but the presence of an SML in lead waters was observed by Knulst et al. (2003).

Data coverage for dissolved CH_4 and N_2O in the AO, including the Fram Strait, is sparse, particularly for the
 spring-summer transition and the onset of sea ice melt. Additionally, the characteristics of the SML in the AO are
 90 highly understudied, despite its high potential for shaping emissions of climate-relevant trace gases. The onset of
 sea ice melt is a key period, as CH_4 and N_2O could accumulate in brine channels within sea ice and subsequently
 escape to the ocean and atmosphere as the ice melts (Damm et al., 2015a; Randall et al., 2012). Additionally, sea
 ice melt triggers significant shifts in hydrographic and biogeochemical conditions, including the development of
 under-ice algal blooms and surface slicks enriched in sea ice-derived organic matter (Assmy et al., 2017; Willis et
 95 al., 2023). These changes have the potential to alter trace gas dynamics substantially. With Arctic warming
 progressing rapidly and accelerating sea ice loss (Huang et al., 2017; Smedsrud et al., 2022), gaining insight into
 these processes is essential for improving predictions of greenhouse gas emissions and their feedbacks in the Arctic
 climate system. In this study, we address this significant knowledge gap by presenting the first observations of
 dissolved CH_4 and N_2O dynamics in open leads and under-ice water, linked to SAS-enrichment in the SML during
 100 the onset of sea ice melt in the Fram Strait in spring and early summer 2023.



2. Methods

2.1 Study Area

The fieldwork was conducted in May and June 2023 on board the Swedish icebreaker (IB) ODEN during the Expedition ARTofMELT23. The study area in the northern Fram Strait, located between Greenland and Svalbard, is exposed to extreme atmospheric warming, with average winter temperatures on Svalbard in recent years more than 7°C warmer compared to the 1970s (Bilt et al., 2019). The Fram Strait is an important gateway for water mass exchange between the AO and the North Atlantic Ocean. Warm and saline Atlantic Water enters the AO via the northward-flowing West Spitsbergen Current (WSC) on the eastern side of the Fram Strait, while colder and fresher Polar Water flows southwards with the East Greenland Current (EGC) on the western side of the Fram Strait (Rudels et al., 2005; Beszczynska-Möller et al., 2012). During the last decades, the warming of the inflowing Atlantic Water into the AO has led to an elevated heat content and sea ice loss and consequently to an increased poleward expansion of the Atlantic Water in the Arctic Seas (Beszczynska-Möller et al., 2012; Smedsrud et al., 2022). Sampling and measurements were conducted at (i) six ice stations on drifting sea ice, (ii) two off-ship stations (accessed by helicopter) near the ice station to access open leads, and (iii) five CTD stations (Fig. 1 & Table 1). The sampling sites were located between the sea ice edge and approximately 130 km away from the ice edge. The first and last sampling stations of this study (10 May and 11 June) were located close to the ice edge (see supplementary, Fig. S1).

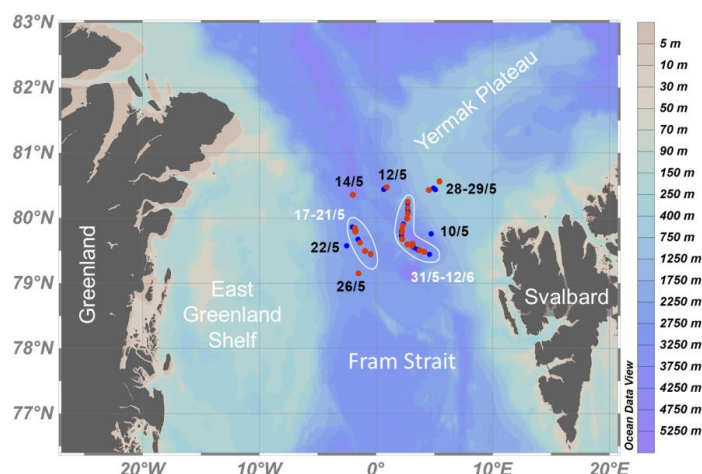


Figure 1: Study area in the Fram Strait between Greenland and Svalbard. White bordered regions indicate IB ODEN's position during the two ice drift stations. Red dots are VMP stations and blue dots are CTD stations.



120

Table 1: Overview of sampling stations and locations, daily mean meteorological conditions (Murto et al., 2024), and chlorophyll concentrations from VMP data (average of the upper 5 m). * = sampled on the Yermak Plateau, ° = sampled at off-ship stations accessed by helicopter.

Day	10 May	18 May	20 May	29 May	1 June	4 June	5 June	6 June	8 June	9 June	11 June
	Drift 1				Drift 2						
Station	CTD1	CTD4	VMP6	VMP 10	VMP12 & CTD8	VMP 15	VMP16 & CTD11	VMP 18	VMP 20	CTD 13	VMP 23
Sampling	CTD	CTD	Lead	Lead	Under Ice + CTD	Under Ice	Lead° + CTD	Under Ice	Lead°	CTD	Under Ice
Water Mass	WSC	EGC	EGC	WSC*	WSC	WSC	WSC	WSC	WSC	WSC	WSC
Air Temp [°C]	-1.56	-5.34	-0.94	-4.14	-5.28	-3.6	-4.21	-2.91	-3.07	-3.52	1.2
Wind speed [m s ⁻¹]	4.9	5.9	6.1	7.9	5	4.8	4.4	3.5	3	4.2	5.4
Solar Radiation [W m ⁻²]	102	262	134	281	349	260	242	335	198	239	138
Chlorophyll [µg L ⁻¹]	< 1	< 1	< 1	2.1	8.3	8.1	10.3	8.1	6.8	11.8	8.1

2.2 Sampling

During both ice and off-ship stations, discrete water samples were collected at a reasonable distance from the ship to minimize its influence on sampling. Water was retrieved either from leads (over the ice edge), or from ice holes, which were manually sawed and maintained during the entire drift stations. Sampling at the leads was always carried out downwind of the lead. Discrete surface water samples for CH₄ and N₂O were collected using a Van-Dorn water sampler (11.100-Van Dorn 2 L, KC Denmark), which was closed right below the surface, capturing the upper 30 cm of the water column. Samples for the entire water column (3–2800 m) were retrieved from Niskin bottles during CTD casts.

2.3 CH₄ and N₂O

Trace gas samples were collected during five CTD casts and eight ice stations (four at leads and four from under-ice water). Samples were obtained bubble-free and in triplicate in 50 mL vials for CH₄ and 20 mL vials for N₂O and sealed air-tight. The samples from the ice and off-ship stations were brought back to the ship within a maximum of two hours after sampling and back on board immediately poisoned with 125 µL (CH₄) and 50 µL (N₂O) saturated aqueous solution of mercury chloride (HgCl₂). Samples from the CTD casts were immediately poisoned after sampling. All samples were stored at room temperature in the dark until analysis at the University of Southern Denmark (Department of Biology, Nordcee) within 12 months after sampling. Both gas concentrations were measured using a static headspace method and gas chromatography (Wilson et al., 2018). The procedure for CH₄ followed the method described in (Holthusen et al., 2025). For N₂O, a Thermo Scientific TRACE 1300 GC with an Electron Capture Detector and a 10 ppm N₂O standard gas (Air Liquide, nitrous oxide N25, Helium N50) for calibration in different volumes (500, 250, 100, 50, 25, and 10 µL) was used. The mean coefficient of variation between triplicate measurements was +/- 5.5% and +/- 2.1% for CH₄ and N₂O, respectively. Please note that the trace gas concentrations from the ice and off-ship stations might be affected by the time delay between sampling and poisoning caused by the transport to the ship. However, due to the cold temperatures during transport, microbial activities most probably were very low and therefore we assume no significant change in the dissolved trace concentrations during the transport.



For the subsequent calculation of concentrations and saturations, the method as described in Holthusen et al. (2025) was used. For N₂O, the solubility equation by Weiss & Price (1980) was used. For the calculation of sea-air fluxes (F), the parametrization of the gas transfer velocities normalized to k_{660} for open water (k_{open}) and for fractional sea ice coverage (k_{SIC}) by Butterworth & Miller (2016) was used:

$$k_{open} = 0.245 U_{10}^2 + 1.3$$

$$k_{SIC} = (1 - SIC) k_{open}$$

The daily mean sea ice coverage (SIC) was retrieved from E.U.-Copernicus Marine Service (2020, <https://doi.org/10.48670/moi-00007>) and the hourly mean wind speed corrected to 10 m (U_{10}) from Prytherch et al. (2024). For each sampling date, the closest available mean daily atmospheric mole fractions of CH₄ and N₂O were obtained from the nearest monitoring site: Zeppelin Station in Ny-Alesund, Svalbard (University of Stockholm Meteorological Institute; NOAA ESRL GML CCGG Group, 2019). The resulting concentrations and sea-air fluxes are summarized in Table 2 (see Section 3.2).

2.4 Hydrographic measurements

During the ice and off-ship stations, hydrographic measurements were performed concurrently with discrete sampling using a Vertical Microstructure Profiler (VMP) (VMP250-IR, Rockland Scientific) equipped with a JAC CT temperature and conductivity sensor (JFE Advantech Co.), an FP07 fast temperature probe (Thermometrics), and a CLTU chlorophyll and turbidity sensor (JFE Advantech Co.). The VMP was manually deployed in ice holes or from leads in free fall down to 500 m and retrieved with an electrical winch. During CTD casts, a rosette equipped with 24 Niskin bottles (12 L each) and a SeaBird 911 CTD probe with dual SeaBird temperature (SBE 3), dual conductivity (SBE 04C), turbidity (WET Labs ECO), and fluorescence (WET Labs ECO-AFL/FL) sensors was deployed. Fluorescence data were used as an indicator of chlorophyll concentrations.

2.5 Surfactants

SAS samples were collected from both the SML and the underlying water (ULW) at 1 m depth. To collect water from the SML, the glass plate technique (Harvey and Burzell, 1972; Cunliffe and Wurl, 2014) was applied. A 40x30 cm glass plate was vertically introduced into the water and slowly removed (approximately 5 cm s⁻¹) (Cunliffe and Wurl, 2014). The SML water adhering to the glass plate was scraped off with a wiper into a sample vial and the process was repeated until a sample volume of approximately 500 mL was collected. From this, one subsample was filtered through a 0.2 µm nucleopore syringe filter into a 50 mL plastic vial and one subsample was filled directly into a second vial. Both were stored in the dark at 4°C and analyzed using alternating voltammetry (VA Stand 747, Metrohm, Switzerland) with a hanging drop mercury electrode (Ćosović and Vojvodić, 1998; Rickard et al., 2019) within 4–6 weeks after sampling. SAS concentrations were determined by the addition of the nonionic surfactant standard solution Triton X-100 (Sigma-Aldrich, Germany) and are therefore expressed as Triton X-100 equivalents (µg Teq L⁻¹) (Sander and Henze, 1997).

Triplicate measurements of 13 samples with very low concentrations (<10 µg Teq L⁻¹) showed a high variation and were therefore excluded. The variation between the triplicate measurements of the remaining samples was on average +/- 10%. Please note that the sea ice edge around the ice holes (with an approximate size of 1 m²) was most likely affecting the concentrations of SAS accumulating in the SML and thus introducing an unknown



185 uncertainty in the measurements. A sample preservation experiment revealed that the time between sampling and
 measurement caused a decrease in SAS concentrations of approximately 5–21% (Fig. S2). We consider all samples
 with SAS concentrations exceeding $200 \mu\text{g Teq L}^{-1}$ as having a reducing effect on the gas transfer velocity
 (Mustaffa et al., 2020) and above $1000 \mu\text{g Teq L}^{-1}$ as slicks (Wurl et al., 2011). Even if SAS concentrations had
 been reduced by 21% because of the time lag between sampling and measurement, the sample classification would
 190 not have changed.

2.6 Community composition analysis, nutrients, and meteorological data

DNA was extracted using the DNeasy PowerSoil Pro Kit (Qiagen) from SML and ULW samples and concentrated
 on polycarbonate filters. Quantification of eukaryotic (18S rRNA) and bacterial (16S rRNA) gene copies by qPCR
 followed Wieber et al. (2025). Details of the laboratory procedure and additional data on microbial abundances
 195 can be found in the supplementary (Fig. S6). Concentrations of inorganic nutrients (NO_x = sum of nitrate and
 nitrite; PO_4^{3-} and NH_4^+) were taken from Rush & Vlahos (2025). Air temperature and wind speed were
 continuously measured at the foremast of IB ODEN (Prytherch et al., 2024) and solar radiation above the bridge
 (Murto et al., 2024).

3. Results

200 3.1 Hydrography and Meteorology

The collected hydrographic data showed clear signs of the EGC and the WSC (Fig. 2). The first sampling and
 measurements of this study (10 May) were conducted closest to Svalbard but off the shelf in the deep waters of
 the Fram Strait (Fig. 1 & Table 1). This water mass can be associated with the WSC. On 12 and 14 May, CTD and
 VMP measurements were conducted in the northern central part of the Fram Strait, marking the transition between
 205 the WSC and the EGC. Between 17 and 21 May (first drift station), the ship drifted southeast with the ice. Here,
 CTD/VMP casts and one ice station sampling were conducted in the waters of the EGC. From 24 to 27 May, a
 storm event occurred with wind speeds of up to 17 m s^{-1} . After a transit to the northeast of the Fram Strait,
 measurements and sampling were continued on 28/29 May on the Yermak Plateau north of Svalbard, in the waters
 of the WSC. Subsequently, the second drift station was established, and sampling was conducted regularly between
 210 31 May and 11 June. A full description of the observed water masses and section plots for salinity and temperature
 for all VMP profiles are in the supplementary (Fig. S3). Recorded air temperatures (Fig. 3) showed a cold phase
 between 11 and 18 May ($< -10^\circ\text{C}$ air temperature), followed by a warmer phase (-8 to 0.4°C) until 10 June.
 Afterwards, the air temperatures rose above 0°C , reaching 1.8°C on 12 June. However, melting of sea ice seemed
 to have started already on 5 June, as slush and meltwater appeared on top of the ice (observed during ice work on
 215 that day).

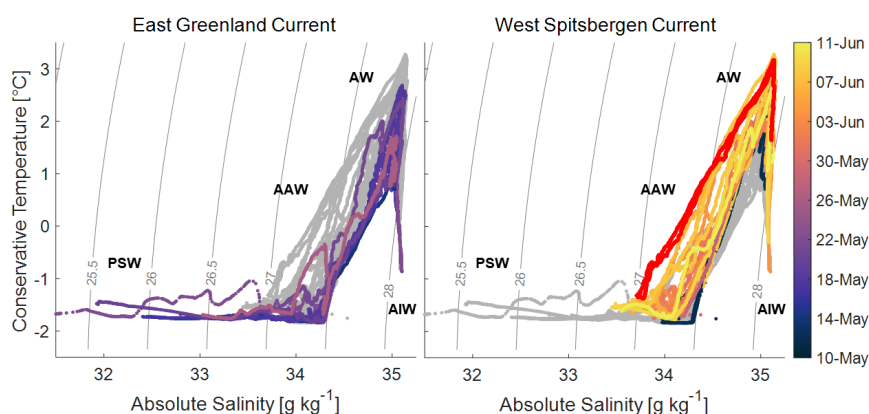


Figure 2: Water mass distribution in the Fram Strait during the study period, identified by absolute salinity, conservative temperature, and density for the EGC (left) and WSC (right), based on all VMP and CTD measurements. Red data points indicate measurements from 5 June. PSW=Polar Surface Water, AW=Atlantic Water, AAW=Arctic Atlantic Water, AIW=Arctic Intermediate Water.

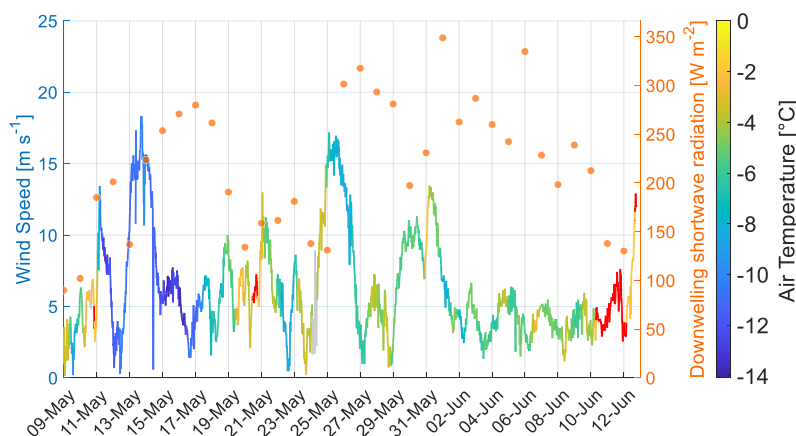


Figure 3: Wind speed, air temperature and downwelling shortwave radiation during the study period. Air temperatures over 0°C are marked in red. Data are from Prytherch et al. (2024) and Murto et al. (2024).

3.2 CH₄ and N₂O

Dissolved surface CH₄ concentrations ranged from 3.7 to 6.0 nmol L⁻¹ with an average of 4.6±0.6 nmol L⁻¹ (mean ± standard deviation), corresponding to an average saturation of 110±14% (Fig. 4a). The highest concentration was measured on 5 June during an off-ship station in a lead, and the lowest on 11 June during an ice station in an ice hole. At the majority of the stations, seawater was oversaturated or close to equilibrium concentration, and thus resulting in emissions of CH₄ from the ocean to the atmosphere. The average F_{SIC} was 0.13±0.38 μmol m⁻² d⁻¹. Dissolved surface N₂O concentrations were above the atmospheric equilibrium concentration throughout this study and ranged from 18.2 to 21.1 nmol L⁻¹ with an average of 19.3±0.9 nmol L⁻¹, corresponding to an average saturation of 112±5% (Fig. 4b). The highest concentration was found in lead waters in the area of the Yermak Plateau (see Fig. 1), and the lowest during the second ice drift in both under-ice and lead water. Overall, N₂O was emitted from the ocean to the atmosphere at all stations with an average F_{SIC} of 0.96±0.99 μmol m⁻² d⁻¹.

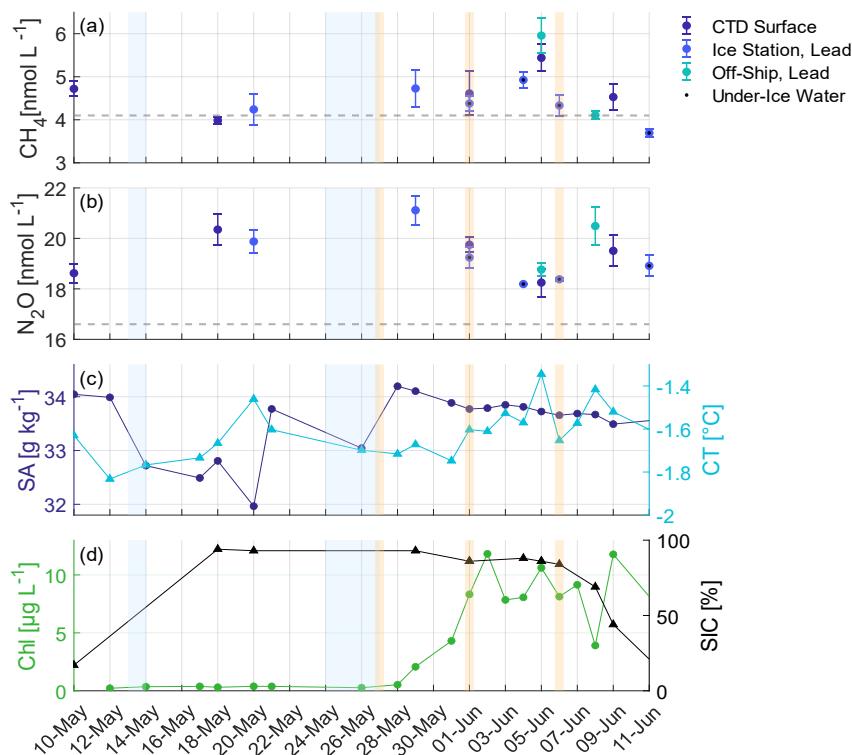


Figure 4: Dissolved a) CH_4 and b) N_2O concentrations of surface samples from CTD, ice and off-ship stations. Dark blue dots indicate CTD surface samples (from 3 m water depth), bright blue dots indicate ice station samples from leads, dots with additional black dot from under-ice water (0.3 m water depth) and cyan dots indicate off-ship lead samples (0.3 m water depth). Error bars show the standard deviation of triplicate measurements of each sample. Grey dashed lines indicate the average equilibrium concentrations of the respective gas during the study. c) Mean value of the upper 5 m for Absolute Salinity (SA) and Conservative Temperature (CT) from VMP casts from 12 May to 11 June and from a CTD cast on 10 May. d) Chlorophyll (Chl, mean of the upper 5 m from VMP data) and Sea Ice Coverage (SIC) from E.U.-Copernicus Marine Service (2020, <https://data.marine.copernicus.eu/-/9a661qmlrm>). Blue shaded areas indicate storm events with wind speed exceeding 15 m s^{-1} , while orange shaded areas highlight days with mean daily solar radiation above 300 W m^{-2} .

230 Table 2: Overview of dissolved CH_4 and N_2O concentrations and comparison of sea-air fluxes considering open water (F_{open}) and sea ice coverage (F_{SIC} , SIC data from E.U.-Copernicus Marine Service, 2020). * = sampled on the Yermak Plateau, **sampled close to the ice edge, ° = off-ship stations.

Day	Position	U_{10} [m s^{-1}]	SIC [%]	Diss. Conc. [nmol L^{-1}]		F_{open} [$\mu\text{mol m}^{-2} \text{d}^{-1}$]		F_{SIC} [$\mu\text{mol m}^{-2} \text{d}^{-1}$]	
				CH_4	N_2O	CH_4	N_2O	CH_4	N_2O
10 May	CTD**	6	17	4.7	18.6	1.28	3.24	1.06	2.69
18 May	CTD	6.4	94	4.0	20.4	-0.66	7.83	-0.04	0.47
20 May	Lead	5.5	93	4.3	19.9	0.05	5.25	0.00	0.37
29 May	Lead*	9.3	93	4.7	21.1	2.94	20.7	0.21	1.45
1 June	Under ice	3.7	86	4.4	19.2	0.22	2.18	0.03	0.31
1 June	CTD	5.2	86	4.6	19.8	0.80	4.64	0.11	0.65
4 June	Under ice	5.6	88	4.9	18.2	1.63	2.03	0.20	0.24
5 June	Lead°	2.6	86	6.0	18.8	1.29	1.19	0.18	0.17
5 June	CTD	4	86	5.4	18.3	1.59	1.36	0.22	0.19
6 June	Under Ice	3.7	84	4.3	18.4	0.17	1.20	0.03	0.19
8 June	Lead°	1.3	69	4.1	20.5	-0.02	1.41	-0.01	0.44
9 June	CTD	5.6	44	4.5	19.5	0.78	4.90	0.44	2.74
11 June	Under ice**	5.4	21	3.7	18.9	-0.96	3.22	-0.76	2.54



3.3 Surfactants

SAS concentrations during this study showed a high variability depending on the sampling site (Fig. 5). Water samples from ice holes (4 June, 6, and 11) showed generally low concentrations with 19–89 $\mu\text{g Teq L}^{-1}$ in the SML, 13–80 $\mu\text{g Teq L}^{-1}$ in the ULW, and 4 out of 12 samples were below the detection limit ($<10 \mu\text{g Teq L}^{-1}$). Lead samples showed higher concentrations and ranged from 39–11788 $\mu\text{g Teq L}^{-1}$ in the SML and from 29–355 $\mu\text{g Teq L}^{-1}$ in the ULW (6 out of 16 samples were below the detection limit). On 5 June, the highest concentrations (11788 $\mu\text{g Teq L}^{-1}$) occurred with strong enrichment in the SML compared to the ULW (below detection limit). The filtered SML sample from this station exhibited a significantly lower concentration of 39 $\mu\text{g Teq L}^{-1}$, representing the highest difference between filtered and unfiltered samples observed in this study. At this station, floating slush ice from the lead surface was collected and showed a SAS concentration of 192 $\mu\text{g Teq L}^{-1}$. The second highest concentration was found in the SML on 29 May (1435 $\mu\text{g Teq L}^{-1}$) in a lead during a wind speed of 10 m s^{-1} . Only on 6 June (ice hole) and 8 June (lead), SAS concentrations in the ULW exceeded those in the SML.

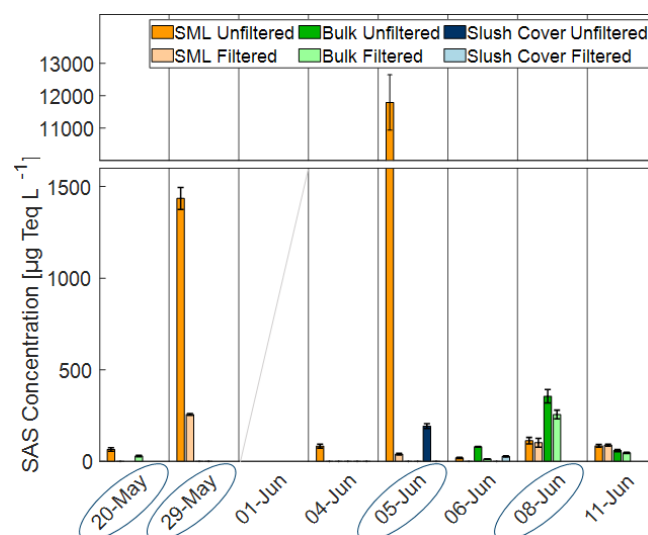


Figure 5: SAS concentrations of filtered and unfiltered samples of SML, ULW, and slush ice at the surface. There is no SAS data available for 1 June. Blue ellipsoids mark open lead samples.

4. Discussion

The water mass distribution during this study showed a pronounced difference between the WSC in the eastern part of the Fram Strait and the EGC in the western part (Fig. 2 & S3). A temporal transition to the onset of sea ice melt and the development of a spring algal bloom was visible as a freshening of surface waters and increasing chlorophyll concentrations (Fig. 4d). Even though the air temperature started to rise above 0°C from 10 June onwards, a transition in hydrographic and biological parameters was already observed after the storm event on 27 May, with the most pronounced changes on 5 June.

4.1 CH_4 and N_2O Dynamics



255 Our results show that the surface waters of the Fram Strait acted as a minor overall source of CH₄ and N₂O during the spring-summer transition and the onset of sea ice melt in 2023 (Fig. 4a & b, Table 2). Outgassing of N₂O occurred throughout the entire sampling period, while CH₄ outgassing was observed at 10 out of 13 stations. Even though the computed sea-air fluxes considered sea ice coverage, some uncertainties remain because SAS enrichment in the SML and the differentiation between ice holes and leads are not included in the parametrization.

260 Complete and partial sea ice cover can significantly influence the gas transfer velocity, primarily due to decreased wind dependency and lower wind fetch near the ice edge (Van Der Loeff et al., 2014; Prytherch & Yelland, 2021). For complete sea ice cover, sea-air fluxes are reduced by approximately 90% (Van Der Loeff et al., 2014) and for open leads by approximately 30% (Prytherch and Yelland, 2021) compared to widely used parametrizations, and a constant gas transfer velocity (k_{660}) of 2.5 cm h⁻¹ (Prytherch et al., 2024) was reported.

265 The parametrization used in our study by Butterworth & Miller (2016) considers the SIC in the area but does not distinguish between lead and under-ice samples. In our study, the resulting difference between F_{open} and F_{SIC} ranged from 17–94%. On average, the sea-air fluxes were reduced by approximately 72% due to sea ice coverage. Particularly for stations with high sea ice coverage (>80% SIC, between 18 May and 6 June), the parametrizations of Butterworth & Miller (2016) (88% reduction in this study) and Van Der Loeff et al. (2014) (90% reduction)

270 showed good agreement. For lower SIC (<80%, 10 May and 8 to 11 June), the average reduction in this study was 33% which is close to the 30% reduction reported by Prytherch & Yelland (2021). Additionally, the k_{660} of 2.5 cm h⁻¹ reported by Prytherch et al. (2024) is in good agreement with the average k_{SIC} in this study of 2.2 cm h⁻¹. However, this value showed high variability between stations with high SIC (on average 0.8 cm h⁻¹) and stations with low SIC (on average 6.7 cm h⁻¹). Since CH₄ and N₂O were subject to the same physical drivers, but negative

275 sea-air fluxes (i.e., uptake) were only observed for CH₄, it is likely that other factors influenced the fluxes.

Another factor influencing the gas transfer velocity is the enrichment of SAS in the SML (e.g., Mustafa et al., 2020; Pereira et al., 2016). On two sampling days (29 May and 5 June), the SML exhibited SAS concentrations >200 µg Teq L⁻¹, which potentially further reduced the gas transfer velocity. Pereira et al. (2016) observed a reduction in gas transfer velocity due to SAS-enrichment by 14–51% in tank experiments, while Mustafa et al.

280 (2020) found a reduction by 23% for SAS concentrations >200 µg Teq L⁻¹ and by 62% in slick conditions (SAS >1000 µg Teq L⁻¹) during *in situ* observation. Both days, 29 May and 5 June, represented slick conditions. However, the sampling location of a lead within sea ice represents a unique setting, distinct from open ocean or coastal environments. For example, as the wind speed during sampling on 29 May was high (approx. 10 m s⁻¹) and sampling was conducted downwind of the lead, a stronger accumulation of SAS at the sampling location compared

285 to the open lead waters further away from the ice edge, and therefore an overestimation of SAS concentrations, is likely. Since all lead samples were collected downwind, a comparison in consideration of the wind speed can still represent trends in SAS concentrations. The wind speed on 5 June was low (approx. 3 m s⁻¹) and therefore a reduction in sea-air flux caused by high concentrations of SAS in the SML likely occurred on this day, but cannot be quantified with the available data.

290 In general, the observed CH₄ and N₂O concentrations were higher than those reported in previous studies from the Fram Strait. The mean CH₄ saturations relative to the atmosphere found in this study (110±14%), are slightly higher than those reported by Rees et al. (2022) in the Fram Strait during July 2018, where the central part of the Fram Strait was close to atmospheric equilibrium while oversaturation of up to 132% was present in the surface waters of the Greenland Shelf (not investigated by the present study). Similarly, N₂O saturations in the present



295 study ($112 \pm 5\%$) are slightly higher than the values found by Rees et al. (2022) (95–107%, with the highest values found on the Greenland Shelf) and Rees et al. (2021) (89%). As these studies were conducted in July and June, respectively, the difference in CH_4 and N_2O saturation could be explained by the reduction of complete sea ice coverage with ongoing sea ice melt, which allows gas exchange between the sea surface and the atmosphere, and by dilution of surface waters with meltwater from sea ice. In a study by Damm et al. (2015b), the ice-free Atlantic Water in the central Fram Strait during July and August 2008 was found to be undersaturated in CH_4 or close to equilibrium, while a surface CH_4 concentration maximum of 9 nmol L^{-1} was observed in the ice-covered and nitrate-limited Polar Water approximately 190 km west of our study area.

4.2 Surface dynamics and the onset of sea ice melt

186 In the EGC, the first sign of meltwater appeared on 20 May, indicated by a drop of $>0.5 \text{ g kg}^{-1}$ in surface salinity and a 0.3°C increase in surface water temperature (Fig. 4c), likely driven by air temperatures rising above 0°C . Despite this, no changes in solar radiation, chlorophyll, or trace gas concentrations were detected. In contrast, within the waters of the WSC, a temporal transition occurred, starting on 28 May. Here, a continuously decreasing trend in surface salinity and a more variable increasing trend of surface water temperatures were observed. Chlorophyll concentrations increased sharply from 28 May to 1 June and stayed high until the end of the study. Both indicates the onset of sea ice melt and an early algal bloom, likely triggered by a period of high downwelling shortwave radiation (26 May to 6 June) and the storm event (24 to 27 May) bringing nutrient-rich waters to the surface (Fig. 3). Inorganic nutrient concentrations (PO_4^{3-} and NO_x , Fig. S4) in surface waters showed a maximum on 27 May and a subsequent decrease during increasing algal growth, reaching concentrations below the detection limit by 1 June for PO_4^{3-} and 5 June for NO_x . Therefore, two regime shifts may have occurred: On 29 May, when the algal bloom began, and on 5 June, when shifts in nutrient, trace gas, and SAS concentrations were observed.

On these two days, an accumulation of SAS was observed in the SML, suggesting increased primary productivity (Castillo et al., 2010). The SML concentrations on 29 May were $1435 \mu\text{g Teq L}^{-1}$, which is within the range of reported values from slick conditions (Wurl et al., 2009). However, the concentration on 5 June ($11788 \mu\text{g Teq L}^{-1}$) exceeded the typically observed values by approximately an order of magnitude. On the same day, the greatest difference between filtered and unfiltered SAS samples was observed, indicating a high proportion of particulate SAS. Several studies conducted in the AO have found an accumulation of particulate organic material in the SML. Particularly, EPS, which can form gel-like biofilms, were found in Arctic SMLs (e.g., Gao et al., 2012). EPS are used as a cryoprotectant and can be produced by, e.g., diatoms within sea ice (Krembs et al., 2002) and dinoflagellates (Guo et al., 2025). The release of EPS has been observed in melt ponds (Galgani et al., 2016), during brine rejection, and algal blooms below ice (Wurl et al., 2011).

The following section discusses the phytoplankton community composition and its potential impact on SAS concentrations. The first maximum in SAS on 29 May coincides with a high relative abundance of dinoflagellates (Fig. 6), possibly producing EPS, which accumulated at the lead side due to the high wind speed of 10 m s^{-1} . On 5 June, the community had shifted to be dominated by the diatom *Mediophyceae*. As diatoms are well documented to be EPS producers in polar oceans (e.g., Krembs et al., 2002), this is likely the reason for the high SAS concentrations on this day. Since the wind speed on this day was low (3 m s^{-1}), less enrichment of the downwind side of the lead compared to 29 May is expected. On 8 June, SAS concentrations were significantly lower, despite a high relative abundance of *Mediophyceae*. This likely resulted from lower chlorophyll concentrations, indicating



reduced phytoplankton biomass and consequently less SAS release (e.g., Ortega-Retuerta et al., 2009). These observations suggest that the high concentrations of SAS during this study may have been caused by the release of EPS, mainly from diatoms and, to a smaller extent, from dinoflagellates, either from melting sea ice or from under-ice algal blooms. Algae of the genus *Phaeocystis* (*Prymnesiophyceae*), which are known to produce gelatinous foams and EPS (e.g., Li et al., 2023), seemed to have a less pronounced influence on SAS concentrations.

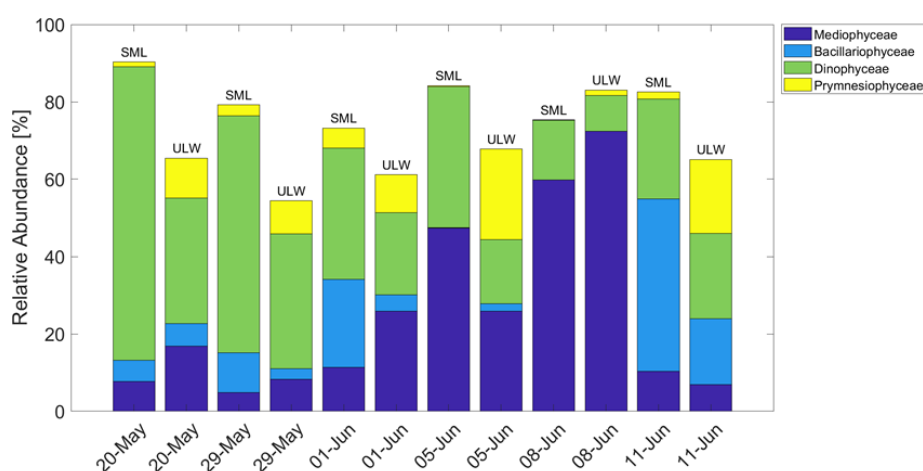


Figure 6: Relative abundance of selected phytoplankton classes over time in the SML and ULW. *Prymnesiophyceae* were dominated by *Phaeocystis*.

Given that the onset of sea ice melt and microbial processes can influence both SAS and trace gas dynamics, we next discuss surface CH_4 and N_2O concentrations along with possible biotic and abiotic sources and sinks. As we lack data on gene expressions, we discuss potential CH_4 and N_2O production/consumption pathways based on nutrient availability and bacterial abundances. On 5 June, the shift in SAS concentrations coincided with changes in surface trace gas concentrations, showing an increase in CH_4 and a decrease in N_2O . As the surface concentrations of both gases show different patterns while exposed to the same physical drivers, different sources and sinks must have been present. As inorganic nutrients were depleted on 5 June, but organic material from the algal bloom was available, a shift in microbial processes to use alternative nutrient sources is likely. For example, pathways such as DMSP degradation (Damm et al., 2008) or methylphosphonate (MPn) cycling (Karl et al., 2008) have been suggested to contribute to CH_4 production. The sharp decrease in CH_4 from 1 to 17 m (Fig. S5) suggests a process that is limited to the upper meters of the water column, possibly linked to sea ice melting. Damm et al. (2015a) proposed that brine within sea ice can be strongly enriched with CH_4 and be released during sea ice formation and during the onset of basal sea ice melting in spring. Other studies have found that sea ice itself is undersaturated in CH_4 and N_2O and that meltwater in general presents a sink of CH_4 and N_2O for surface waters, while brine might be oversaturated (Kitidis et al., 2010; Randall et al., 2012; Fenwick et al., 2017). As sea ice and brine can become suboxic and anoxic, they can provide favorable conditions for both anaerobic methane production and denitrification (Damm et al., 2015a; Rysgaard et al., 2008). However, since measurements of trace gas concentrations in both sea ice and brine solution are unfortunately not available from our study, this explanation remains speculative. The highest N_2O concentrations were detected in the surface waters of the EGC, on the Yermak Plateau, and during the ice drift on 8 June. These maxima coincided with the presence of



360 *Nitrosomonas* and *Shewanella* (Fig. S6), which are potential N₂O producers (Cantera and Stein, 2007; Chen and Wang, 2015). The maximum concentrations occurred on the Yermak Plateau on 29 May, which is consistent with previously reported N₂O enrichment in Arctic shelf areas (e.g., Rees et al., 2022). No widely recognized CH₄-oxidizing bacteria were detected. The observed drop in total bacterial abundance on 5 June may suggest a decrease in microbial CH₄ oxidation potential; however, since data on active gene expression are not available from our study, this is no direct evidence.

5. Conclusion

The results of our study in the Fram Strait during spring 2023 revealed that the first hydrographic signs of the onset of sea ice melt and a spring algae bloom coincided in late May and early June before the air temperatures rose above 0°C. A significant shift in biogeochemical parameters was recorded between 29 May and 1 June, which was likely triggered by a combination of a preceding storm event delivering nutrients to the surface and increased solar radiation. This shift included the accumulation of SAS in the SML, particularly in open leads, likely caused by the excretion of EPS by phytoplankton, dominantly diatoms, during the algal bloom. As leads represent an ice-free area, they exhibit both the potential for higher sea-air gas fluxes and greater uncertainties in estimating these fluxes compared to a complete sea ice cover (e.g., Prytherch et al., 2024). We found that surface concentrations of CH₄ and N₂O exceeded the atmospheric equilibrium in most cases and therefore the Fram Strait acted as a minor source of CH₄ and N₂O during spring 2023. The accumulation of SAS in the SML may have acted as a natural barrier for trace gas emissions due to a reduction in gas transfer velocity. The variability in surface CH₄ and N₂O concentrations was driven by both spatial differences and shifts in surface biogeochemistry. The EGC carried more N₂O than the WSC, while CH₄ concentrations were slightly lower in the EGC. The variability within the WSC was likely caused by shifts in microbial and sea ice melt processes. Our results emphasize the need for future research on sea-air interactions, considering the presence of the SML in sea ice-influenced areas, to better constrain climate-relevant gas fluxes in rapidly changing polar environments.

Surface trace gas concentration measurements directly from the ice-ocean interface in the AO are rare due to the region's remoteness and challenging weather conditions. Therefore, the presented data are important for accurately quantifying near-surface gas gradients, as traditional CTD rosette sampling only accesses depths of around 1–5 m and is affected by ship-related disturbances. To elucidate the underlying mechanisms of the observed processes, a longer sampling period during the melt season, including sea ice and brine sampling, should be conducted, and stable isotope analysis and metatranscriptomics should be used to gain insights into the microbial processes involved in CH₄, N₂O, and SAS dynamics.

390



Data Availability

Data and metadata are available at the Bolin Centre for Climate Research (submitted):

CH₄ and N₂O:

<https://bolin.su.se/data/draft?id=13224>;

395 VMP:

<https://bolin.su.se/data/draft?id=13169&token=MjAyNC0xMS0xNyAxMj00NzowMi4yMTQ1NjkOTcwNDcwMDQ>;

CTD:

400 <https://bolin.su.se/data/draft?id=13232&token=MjAyNC0xMS0xNyAxMj00OS43MDc5MDMgNTUzNjc5NzQ>

Author Contribution

Conceptualization: LAH, JCM. Methodology: LAH, JCM, HWB, DLAM, OW. Investigation: LAH, JCM, JSS.

Resources: OW, HWB, JCM, TST. Data Curation: LAH, JCM, JSS. Formal Analysis: LAH. Visualization:

LAH. Supervision: DLAM, HWB, OW. Funding Acquisition: OW, THB, HWB, DLAM. Writing – Original

405 Draft: LAH. Writing - Review & Editing: All authors.

Competing interests

The authors declare that they have no conflict of interest.

Acknowledgement

410 This work was part of the Early-Career-Scientist program on board the Swedish ice breaker ODEN during the expedition ARTofMELT2023, which was hosted by the Swedish Polar Research Secretariat (SPRS). We would like to thank the crew of ODEN, the co-chief scientists Michael Tjernström and Paul Zieger, and the SPRS-Team for the opportunity of conducting this research and their support. We would like to thank Carolin R. Löscher and Zarah Kofoed (SDU) for conducting trace gas measurements. We acknowledge the use of AI tools (ChatGPT by OpenAI, Claude by Anthropic, and Grammarly) for minor linguistic improvements, such as spelling, grammar, 415 and clarity, but confirm that these tools were not used for content creation or scientific interpretation.

Financial Support

The study was funded by the DFG Priority Program 1158 'Antarctic research and comparative investigations in Arctic ice areas' (project EWARP, grant no. 462668354) Swedish Polar Research Secretariat. TST and JSS would like to gratefully acknowledge funding from The Villum Foundation (23175 and 37435) and The Novo 420 Nordisk Foundation (NNF19OC0056963).

References

- Assmy, P., Fernández-Méndez, M., Duarte, P., Meyer, A., Randelhoff, A., Mundy, C. J., Olsen, L. M., Kauko, H. M., Bailey, A., Chierici, M., Cohen, L., Doulgeris, A. P., Ehn, J. K., Fransson, A., Gerland, S., Hop, H., Hudson, S. R., Hughes, N., Itkin, P., Johnsen, G., King, J. A., Koch, B. P., Koenig, Z., Kwasniewski, S., Laney, S. R., Nicolaus, M., Pavlov, A. K., Polashenski, C. M., Provost, C., Rösel, A., Sandbu, M., Spreen, G., Smedsrud, L. H., Sundfjord, A., Taskjelle, T., Tatarek, A., Wiktor, J., Wagner, P. M., Wold, A., Steen, H., and Granskog, M. A.: Leads in Arctic pack ice enable early phytoplankton blooms below snow-covered sea ice, *Sci. Rep.*, 7, 40850, <https://doi.org/10.1038/srep40850>, 2017.
- 425 Bakker, D. C. E., Bange, H. W., Gruber, N., Johannessen, T., Upstill-Goddard, R. C., Borges, A. V., Delille, B., Löscher, C. R., Naqvi, S. W. A., Omar, A. M., and Santana-Casiano, J. M.: Air-Sea Interactions of Natural Long-Lived Greenhouse Gases (CO₂, N₂O, CH₄) in a Changing Climate, in: *Ocean-atmosphere interactions of gases and particles*, edited by: Liss, P. and Liss, P. S., Springer Open, Heidelberg, 113–169, <https://doi.org/10.1007/978-3-642-25643-1>, 2014.
- 430 Barnes, R. O. and Goldberg, E. D.: Methane production and consumption in anoxic marine sediments, *Geology*, 4, 297, [https://doi.org/10.1130/0091-7613\(1976\)4<297:MPACIA>2.0.CO;2](https://doi.org/10.1130/0091-7613(1976)4<297:MPACIA>2.0.CO;2), 1976.
- Beszczynska-Möller, A., Fahrbach, E., Schauer, U., and Hansen, E.: Variability in Atlantic water temperature and transport at the entrance to the Arctic Ocean, 1997–2010, *ICES J. Mar. Sci.*, 69, 852–863, <https://doi.org/10.1093/icesjms/fss056>, 2012.



- 440 Bilt, W., Bakke, J., Smedsrud, L., Sund, M., Schuler, T., Westermann, S., Wong, W., Sandven, S., Simpson, M., Skogen, M., Pavlova, O., Ravndal, O., Risebrobakken, B., Saloranta, T., Mezghani, A., Nilsen, F., Nilsen, J., Nilsen, I., Kierulf, H., Kohler, J., Li, H., Lutz, J., and Sorteberg, A.: Climate in Svalbard 2100 – a knowledge base for climate adaptation, Nor. Klimaservicesenter, Norwegian Centre for Climate Services Reports, 105 p, 2019.
- 445 Bižić, M., Klintzsch, T., Ionescu, D., Hindiyeh, M. Y., Günthel, M., Muro-Pastor, A. M., Eckert, W., Urich, T., Keppler, F., and Grossart, H.-P.: Aquatic and terrestrial cyanobacteria produce methane, *Sci. Adv.*, 6, eaax5343, <https://doi.org/10.1126/sciadv.aax5343>, 2020.
- Butterworth, B. J. and Miller, S. D.: Air-sea exchange of carbon dioxide in the Southern Ocean and Antarctic marginal ice zone, *Geophys. Res. Lett.*, 43, 7223–7230, <https://doi.org/10.1002/2016GL069581>, 2016.
- 450 Cantera, J. J. L. and Stein, L. Y.: Role of nitrite reductase in the ammonia-oxidizing pathway of *Nitrosomonas europaea*, *Arch. Microbiol.*, 188, 349–354, <https://doi.org/10.1007/s00203-007-0255-4>, 2007.
- Castillo, C. R., Sarmiento, H., Álvarez-Salgado, X. A., Gasol, J. M., and Marraséa, C.: Production of chromophoric dissolved organic matter by marine phytoplankton, *Limnol. Oceanogr.*, 55, 446–454, <https://doi.org/10.4319/lo.2010.55.1.0446>, 2010.
- 455 Chen, Y. and Wang, F.: Insights on nitrate respiration by *Shewanella*, *Front. Mar. Sci.*, 1, <https://doi.org/10.3389/fmars.2014.00080>, 2015.
- Ćosović, B. and Vojvodić, V.: Voltammetric Analysis of Surface Active Substances in Natural Seawater, *Electroanalysis*, 10, 429–434, [https://doi.org/10.1002/\(SICI\)1521-4109\(199805\)10:6<429::AID-ELAN429>3.0.CO;2-7](https://doi.org/10.1002/(SICI)1521-4109(199805)10:6<429::AID-ELAN429>3.0.CO;2-7), 1998.
- 460 Cramm, M. A., Neves, B. D. M., Manning, C. C. M., Oldenburg, T. B. P., Archambault, P., Chakraborty, A., Cyr-Parent, A., Edinger, E. N., Jaggi, A., Mort, A., Tortell, P., and Hubert, C. R. J.: Characterization of marine microbial communities around an Arctic seabed hydrocarbon seep at Scott Inlet, Baffin Bay, *Sci. Total Environ.*, 762, 143961, <https://doi.org/10.1016/j.scitotenv.2020.143961>, 2021.
- Cunliffe, M. and Wurl, O.: Guide to best practices to study the ocean’s surface., Marine Biological Association of the United Kingdom for SCOR, <https://doi.org/10.25607/OBP-1512>, 2014.
- 465 Cunliffe, M., Engel, A., Frka, S., Gašparović, B., Guitart, C., Murrell, J. C., Salter, M., Stolle, C., Upstill-Goddard, R., and Wurl, O.: Sea surface microlayers: A unified physicochemical and biological perspective of the air–ocean interface, *Prog. Oceanogr.*, 109, 104–116, <https://doi.org/10.1016/j.pocean.2012.08.004>, 2013.
- Dalsgaard, T., Stewart, F. J., Thamdrup, B., De Brabandere, L., Revsbech, N. P., Ulloa, O., Canfield, D. E., and DeLong, E. F.: Oxygen at Nanomolar Levels Reversibly Suppresses Process Rates and Gene Expression in Anammox and Denitrification in the Oxygen Minimum Zone off Northern Chile, *mBio*, 5, e01966-14, <https://doi.org/10.1128/mBio.01966-14>, 2014.
- 470 Damm, E., Kiene, R. P., Schwarz, J., Falck, E., and Dieckmann, G.: Methane cycling in Arctic shelf water and its relationship with phytoplankton biomass and DMSP, *Mar. Chem.*, 109, 45–59, <https://doi.org/10.1016/j.marchem.2007.12.003>, 2008.
- 475 Damm, E., Helmke, E., Thoms, S., Schauer, U., Nöthig, E., Bakker, K., and Kiene, R. P.: Methane production in aerobic oligotrophic surface water in the central Arctic Ocean, *Biogeosciences*, 7, 1099–1108, <https://doi.org/10.5194/bg-7-1099-2010>, 2010.
- Damm, E., Rudels, B., Schauer, U., Mau, S., and Dieckmann, G.: Methane excess in Arctic surface water-triggered by sea ice formation and melting, *Sci. Rep.*, 5, 16179, <https://doi.org/10.1038/srep16179>, 2015a.
- 480 Damm, E., Thoms, S., Beszczynska-Möller, A., Nöthig, E. M., and Kattner, G.: Methane excess production in oxygen-rich polar water and a model of cellular conditions for this paradox, *Polar Sci.*, 9, 327–334, <https://doi.org/10.1016/j.polar.2015.05.001>, 2015b.
- European Union-Copernicus Marine Service: Arctic Ocean Physics Reanalysis, <https://doi.org/10.48670/MOI-00007>, 2020.
- 485



- Fenwick, L., Capelle, D., Damm, E., Zimmermann, S., Williams, W. J., Vagle, S., and Tortell, P. D.: Methane and nitrous oxide distributions across the North American Arctic Ocean during summer, 2015, *J. Geophys. Res. Oceans*, 122, 390–412, <https://doi.org/10.1002/2016JC012493>, 2017.
- 490 Galgani, L., Piontek, J., and Engel, A.: Biopolymers form a gelatinous microlayer at the air-sea interface when Arctic sea ice melts, *Sci. Rep.*, 6, 29465, <https://doi.org/10.1038/srep29465>, 2016.
- Gao, Q., Leck, C., Rauschenberg, C., and Matrai, P. A.: On the chemical dynamics of extracellular polysaccharides in the high Arctic surface microlayer, *Ocean Sci.*, 8, 401–418, <https://doi.org/10.5194/os-8-401-2012>, 2012.
- 495 Guo, H., Song, L., Wang, X., Huang, J., Zhang, X., Zhang, Y., Zhu, W., Song, W., Chen, H., Bo, J., Zhang, P., Cao, G., and Luo, Z.: Cold adaptation of harmful dinoflagellate facilitates their poleward colonization: Insights into extracellular polymeric substances and intracellular bio-macromolecules dynamics through in-situ FTIR imaging, *Int. J. Biol. Macromol.*, 309, 143054, <https://doi.org/10.1016/j.ijbiomac.2025.143054>, 2025.
- Harvey, G. W. and Burzell, L. A.: A SIMPLE MICROLAYER METHOD FOR SMALL SAMPLES1, *Limnol. Oceanogr.*, 17, 156–157, <https://doi.org/10.4319/lo.1972.17.1.0156>, 1972.
- 500 Holthausen, L. A., Bange, H. W., Arévalo-Martínez, D. L., Badewien, T. H., Höfer, J., Löscher, C. R., Marín-Arias, C., Meyerjürgens, J., Schlangen, I., and Wurl, O.: Glacial meltwater drives high CH₄ supersaturation in Maxwell Bay, King George Island (Southern Ocean), *Limnol. Oceanogr. Lett.*, 102.70045, <https://doi.org/10.1002/lo2.70045>, 2025.
- 505 Huang, J., Zhang, X., Zhang, Q., Lin, Y., Hao, M., Luo, Y., Zhao, Z., Yao, Y., Chen, X., Wang, L., Nie, S., Yin, Y., Xu, Y., and Zhang, J.: Recently amplified arctic warming has contributed to a continual global warming trend, *Nat. Clim. Change*, 7, 875–879, <https://doi.org/10.1038/s41558-017-0009-5>, 2017.
- James, R. H., Bousquet, P., Bussmann, I., Haeckel, M., Kipfer, R., Leifer, I., Niemann, H., Ostrovsky, I., Piskozub, J., Rehder, G., Treude, T., Vielstädte, L., and Greinert, J.: Effects of climate change on methane emissions from seafloor sediments in the Arctic Ocean: A review, *Limnol. Oceanogr.*, 61, <https://doi.org/10.1002/lno.10307>, 2016.
- 510 Ji, Q., Buitenhuis, E., Suntharalingam, P., Sarmiento, J. L., and Ward, B. B.: Global Nitrous Oxide Production Determined by Oxygen Sensitivity of Nitrification and Denitrification, *Glob. Biogeochem. Cycles*, 32, 1790–1802, <https://doi.org/10.1029/2018GB005887>, 2018.
- 515 Karl, D. M., Beversdorf, L., Björkman, K. M., Church, M. J., Martinez, A., and Delong, E. F.: Aerobic production of methane in the sea, *Nat. Geosci.*, 1, 473–478, <https://doi.org/10.1038/ngeo234>, 2008.
- Keith Bigg, E., Leck, C., and Tranvik, L.: Particulates of the surface microlayer of open water in the central Arctic Ocean in summer, *Mar. Chem.*, 91, 131–141, <https://doi.org/10.1016/j.marchem.2004.06.005>, 2004.
- 520 Kitidis, V., Upstill-Goddard, R. C., and Anderson, L. G.: Methane and nitrous oxide in surface water along the North-West Passage, Arctic Ocean, *Mar. Chem.*, 121, 80–86, <https://doi.org/10.1016/j.marchem.2010.03.006>, 2010.
- Knulst, J. C., Rosenberger, D., Thompson, B., and Paatero, J.: Intensive Sea Surface Microlayer Investigations of Open Leads in the Pack Ice during Arctic Ocean 2001 Expedition, *Langmuir*, 19, 10194–10199, <https://doi.org/10.1021/la035069+>, 2003.
- 525 Krembs, C., Eicken, H., Junge, K., and Deming, J. W.: High concentrations of exopolymeric substances in Arctic winter sea ice: implications for the polar ocean carbon cycle and cryoprotection of diatoms, *Deep Sea Res. Part Oceanogr. Res. Pap.*, 49, 2163–2181, [https://doi.org/10.1016/S0967-0637\(02\)00122-X](https://doi.org/10.1016/S0967-0637(02)00122-X), 2002.
- Leon-Palmero, E., Morales-Baquero, R., Thamdrup, B., Löscher, C., and Reche, I.: Sunlight drives the abiotic formation of nitrous oxide in fresh and marine waters, *Science*, 387, 1198–1203, <https://doi.org/10.1126/science.adq0302>, 2025.



- 530 Li, J., Xu, M., Wang, J., Lan, C., and Lai, J.: Effects of nutrient limitation on cell growth, exopolysaccharide secretion and TEP production of *Phaeocystis globosa*, *Mar. Environ. Res.*, 183, 105801, <https://doi.org/10.1016/j.marenvres.2022.105801>, 2023.
- Li, Y., Fichot, C. G., Geng, L., Scarratt, M. G., and Xie, H.: The Contribution of Methane Photoproduction to the Oceanic Methane Paradox, *Geophys. Res. Lett.*, 47, <https://doi.org/10.1029/2020GL088362>, 2020.
- 535 Liss, P. S. and Duce, R. A. (Eds.): The sea surface and global change, Cambridge University Press, Cambridge ; New York, 519 pp., 1997.
- Löscher, C. R., Kock, A., Könneke, M., LaRoche, J., Bange, H. W., and Schmitz, R. A.: Production of oceanic nitrous oxide by ammonia-oxidizing archaea, *Biogeosciences*, 9, 2419–2429, <https://doi.org/10.5194/bg-9-2419-2012>, 2012.
- 540 Mao, Y., Lin, T., Li, H., He, R., Ye, K., Yu, W., and He, Q.: Aerobic methane production by phytoplankton as an important methane source of aquatic ecosystems: Reconsidering the global methane budget, *Sci. Total Environ.*, 907, 167864, <https://doi.org/10.1016/j.scitotenv.2023.167864>, 2024.
- Matrai, P. A., Tranvik, L., Leck, C., and Knulst, J. C.: Are high Arctic surface microlayers a potential source of aerosol organic precursors?, *Mar. Chem.*, 108, 109–122, <https://doi.org/10.1016/j.marchem.2007.11.001>, 2008.
- 545 McKenna, S. P. and McGillis, W. R.: The role of free-surface turbulence and surfactants in air–water gas transfer, *Int. J. Heat Mass Transf.*, 47, 539–553, <https://doi.org/10.1016/j.ijheatmasstransfer.2003.06.001>, 2004.
- Muller, S., Fripiat, F., Jaccard, S. L., Ponsoni, L., Hölemann, J. A., Martínez-García, A., and Delille, B.: Nitrous oxide dynamics in the Kara Sea, Arctic Ocean, *Front. Mar. Sci.*, 11, 1497360, <https://doi.org/10.3389/fmars.2024.1497360>, 2024.
- 550 Murto, Sonja, Tjernström, Michael, Karalis, Michail, and Prytherch, John: Wind, temperature, relative humidity, surface temperature and radiation from expedition ARTOfMELT, Arctic Ocean, 2023, <https://doi.org/10.17043/ODEN-ARTOFMELT-2023-WEATHER-STATION-1>, 2024.
- Mustaffa, N. I. H., Ribas-Ribas, M., Banko-Kubis, H. M., and Wurl, O.: Global reduction of *in situ* CO₂ transfer velocity by natural surfactants in the sea-surface microlayer, *Proc. R. Soc. Math. Phys. Eng. Sci.*, 476, 20190763, <https://doi.org/10.1098/rspa.2019.0763>, 2020.
- 555 NOAA ESRL GML CCGG Group: Earth System Research Laboratory Carbon Cycle and Greenhouse Gases Group Flask-Air Sample Measurements of N₂O at Global and Regional Background Sites, 1967–Present, <https://doi.org/10.15138/53G1-X417>, 2019.
- Orellana, M. V., Hansell, D. A., Matrai, P. A., and Leck, C.: Marine Polymer-Gels’ Relevance in the Atmosphere as Aerosols and CCN, *Gels*, 7, 185, <https://doi.org/10.3390/gels7040185>, 2021.
- 560 Ortega-Retuerta, E., Reche, I., Pulido-Villena, E., Agustí, S., and Duarte, C. M.: Uncoupled distributions of transparent exopolymer particles (TEP) and dissolved carbohydrates in the Southern Ocean, *Mar. Chem.*, 115, 59–65, <https://doi.org/10.1016/j.marchem.2009.06.004>, 2009.
- Pereira, R., Schneider-Zapp, K., and Upstill-Goddard, R. C.: Surfactant control of gas transfer velocity along an offshore coastal transect: results from a laboratory gas exchange tank, *Biogeosciences*, 13, 3981–3989, <https://doi.org/10.5194/bg-13-3981-2016>, 2016.
- 565 Prytherch, J. and Yelland, M. J.: Wind, Convection and Fetch Dependence of Gas Transfer Velocity in an Arctic Sea-Ice Lead Determined From Eddy Covariance CO₂ Flux Measurements, *Glob. Biogeochem. Cycles*, 35, e2020GB006633, <https://doi.org/10.1029/2020GB006633>, 2021.
- 570 Prytherch, J., Murto, S., Brown, I., Ulfsbo, A., Thornton, B. F., Brüchert, V., Tjernström, M., Hermansson, A. L., Nylund, A. T., and Holthusen, L. A.: Central Arctic Ocean surface–atmosphere exchange of CO₂ and CH₄ constrained by direct measurements, *Biogeosciences*, 21, 671–688, <https://doi.org/10.5194/bg-21-671-2024>, 2024.



- 575 Prytherch, J., Brooks, I., Guy, H., Karalis, M., Murto, S., and Tjernström, M.: Micrometeorological data from icebreaker Oden's foremast during expedition ARTOfMELT, Arctic Ocean, 2023, <https://doi.org/10.17043/ODEN-ARTOFMELT-2023-MICROMET-ODEN-1>, 2024.
- Randall, K., Scarratt, M., Levasseur, M., Michaud, S., Xie, H., and Gosselin, M.: First measurements of nitrous oxide in Arctic sea ice, *J. Geophys. Res. Oceans*, 117, 2011JC007340, <https://doi.org/10.1029/2011JC007340>, 2012.
- 580 Reeburgh, W. S.: Oceanic methane biogeochemistry, *Chem. Rev.*, 107, 486–513, <https://doi.org/10.1021/cr050362v>, 2007.
- Rees, A. P., Brown, I. J., Jayakumar, A., Lessin, G., Somerfield, P. J., and Ward, B. B.: Biological nitrous oxide consumption in oxygenated waters of the high latitude Atlantic Ocean, *Commun. Earth Environ.*, 2, 36, <https://doi.org/10.1038/s43247-021-00104-y>, 2021.
- 585 Rees, A. P., Bange, H. W., Arévalo-Martínez, D. L., Artioli, Y., Ashby, D. M., Brown, I., Campen, H. I., Clark, D. R., Kitidis, V., Lessin, G., Tarran, G. A., and Turley, C.: Nitrous oxide and methane in a changing Arctic Ocean, *Ambio*, 51, 398–410, <https://doi.org/10.1007/s13280-021-01633-8>, 2022.
- Repeta, D. J., Ferrón, S., Sosa, O. A., Johnson, C. G., Repeta, L. D., Acker, M., DeLong, E. F., and Karl, D. M.: Marine methane paradox explained by bacterial degradation of dissolved organic matter, *Nat. Geosci.*, 9, 884–887, <https://doi.org/10.1038/ngeo2837>, 2016.
- Rickard, P. C., Uher, G., Upstill-Goddard, R. C., Frka, S., Mustaffa, N. I. H., Banko-Kubis, H. M., Cvitešić Kušan, A., Gašparović, B., Stolle, C., Wurl, O., and Ribas-Ribas, M.: Reconsideration of seawater surfactant activity analysis based on an inter-laboratory comparison study, *Mar. Chem.*, 208, 103–111, <https://doi.org/10.1016/j.marchem.2018.11.012>, 2019.
- 595 Rudels, B., Björk, G., Nilsson, J., Winsor, P., Lake, I., and Nohr, C.: The interaction between waters from the Arctic Ocean and the Nordic Seas north of Fram Strait and along the East Greenland Current: results from the Arctic Ocean-02 Oden expedition, *J. Mar. Syst.*, 55, 1–30, <https://doi.org/10.1016/j.jmarsys.2004.06.008>, 2005.
- Rush, S.C. and Vlahos, P.: Nutrients in seawater, ice, brine, lead, slush, and under-ice water from expedition ARTOfMELT, Arctic Ocean 2023, <https://doi.org/10.17043/ODEN-ARTOFMELT-2023-NUTRIENTS-1>, 2025.
- 600 Rutgers Van Der Loeff, M. M., Cassar, N., Nicolaus, M., Rabe, B., and Stimac, I.: The influence of sea ice cover on air-sea gas exchange estimated with radon-222 profiles, *J. Geophys. Res. Oceans*, 119, 2735–2751, <https://doi.org/10.1002/2013JC009321>, 2014.
- Rysgaard, S., Glud, R. N., Sej, M. K., Blicher, M. E., and Stahl, H. J.: Denitrification activity and oxygen dynamics in Arctic sea ice, *Polar Biol.*, 31, 527–537, <https://doi.org/10.1007/s00300-007-0384-x>, 2008.
- 605 Sander, S. and Henze, G.: AC-voltammetric determination of the total concentration of nonionic and anionic surfactants in aqueous systems, *Electroanalysis*, 9, 243–246, <https://doi.org/10.1002/elan.1140090311>, 1997.
- Saunois, M., Martinez, A., Poulter, B., Zhang, Z., Raymond, P. A., Regnier, P., Canadell, J. G., Jackson, R. B., Patra, P. K., Bousquet, P., Ciais, P., Dlugokencky, E. J., Lan, X., Allen, G. H., Bastviken, D., Beerling, D. J., Belikov, D. A., Blake, D. R., Castaldi, S., Crippa, M., Deemer, B. R., Dennison, F., Etiope, G., Gedney, N., Höglund-Isaksson, L., Holgersson, M. A., Hopcroft, P. O., Hugelius, G., Ito, A., Jain, A. K., Janardan, R., Johnson, M. S., Kleinen, T., Krummel, P. B., Lauerwald, R., Li, T., Liu, X., McDonald, K. C., Melton, J. R., Mühle, J., Müller, J., Murguía-Flores, F., Niwa, Y., Noce, S., Pan, S., Parker, R. J., Peng, C., Ramonet, M., Riley, W. J., Rocher-Ros, G., Rosentreter, J. A., Sasakawa, M., Segers, A., Smith, S. J., Stanley, E. H., Thanwerdas, J., Tian, H., Tsuruta, A., Tubiello, F. N., Weber, T. S., Van Der Werf, G. R., Worthy, D. E. J., Xi, Y., Yoshida, Y., Zhang, W., Zheng, B., Zhu, Q., Zhu, Q., and Zhuang, Q.: Global Methane Budget 2000–2020, *Earth Syst. Sci. Data*, 17, 1873–1958, <https://doi.org/10.5194/essd-17-1873-2025>, 2025.
- 615 Smedsrud, L. H., Muilwijk, M., Brakstad, A., Madonna, E., Lauvset, S. K., Spensberger, C., Born, A., Eldevik, T., Drange, H., Jeansson, E., Li, C., Olsen, A., Skagseth, Ø., Slater, D. A., Straneo, F., Våge, K., and Årthun, M.: Nordic Seas Heat Loss, Atlantic Inflow, and Arctic Sea Ice Cover Over the Last Century, *Rev. Geophys.*, 60, e2020RG000725, <https://doi.org/10.1029/2020RG000725>, 2022.
- 620



- Stawiarski, B., Otto, S., Thiel, V., Gräwe, U., Loick-Wilde, N., Wittenborn, A. K., Schloemer, S., Wäge, J., Rehder, G., Labrenz, M., Wasmund, N., and Schmale, O.: Controls on zooplankton methane production in the central Baltic Sea, *Biogeosciences*, 16, 1–16, <https://doi.org/10.5194/bg-16-1-2019>, 2019.
- 625 Thornton, B. F., Prytherch, J., Andersson, K., Brooks, I. M., Salisbury, D., Tjernström, M., and Crill, P. M.: Shipborne eddy covariance observations of methane fluxes constrain Arctic sea emissions, *Sci. Adv.*, 6, eaay7934, <https://doi.org/10.1126/sciadv.aay7934>, 2020.
- 630 Tian, H., Pan, N., Thompson, R. L., Canadell, J. G., Suntharalingam, P., Regnier, P., Davidson, E. A., Prather, M., Ciais, P., Muntean, M., Pan, S., Winiwarter, W., Zaehle, S., Zhou, F., Jackson, R. B., Bange, H. W., Berthet, S., Bian, Z., Bianchi, D., Bouwman, A. F., Buitenhuis, E. T., Dutton, G., Hu, M., Ito, A., Jain, A. K., Jeltsch-Thömmes, A., Joos, F., Kou-Giesbrecht, S., Krummel, P. B., Lan, X., Landolfi, A., Lauerwald, R., Li, Y., Lu, C., Maavara, T., Manizza, M., Millet, D. B., Mühle, J., Patra, P. K., Peters, G. P., Qin, X., Raymond, P., Resplandy, L., Rosentreter, J. A., Shi, H., Sun, Q., Tonina, D., Tubiello, F. N., Van Der Werf, G. R., Vuichard, N., Wang, J., Wells, K. C., Western, L. M., Wilson, C., Yang, J., Yao, Y., You, Y., and Zhu, Q.: Global nitrous oxide budget (1980–2020), *Earth Syst. Sci. Data*, 16, 2543–2604, <https://doi.org/10.5194/essd-16-2543-2024>, 2024.
- 635 Venetj, J., Żygadłowska, O. M., Dotsios, N., Wallenius, A. J., van Helmond, N. A. G. M., Lenstra, W. K., Klomp, R., Slomp, C. P., Jetten, M. S. M., and Veraart, A. J.: Seasonal dynamics of the microbial methane filter in the water column of a eutrophic coastal basin, *FEMS Microbiol. Ecol.*, 100, <https://doi.org/10.1093/femsec/fiae007>, 2024.
- 640 Verdugo, J., Damm, E., Snoeijjs, P., Díez, B., and Farías, L.: Climate relevant trace gases (N₂O and CH₄) in the Eurasian Basin (Arctic Ocean), *Deep Sea Res. Part Oceanogr. Res. Pap.*, 117, 84–94, <https://doi.org/10.1016/j.dsr.2016.08.016>, 2016.
- Weber, T., Wiseman, N. A., and Kock, A.: Global ocean methane emissions dominated by shallow coastal waters, *Nat. Commun.*, 10, 4584, <https://doi.org/10.1038/s41467-019-12541-7>, 2019.
- 645 Weiss, R. F. and Price, B. A.: Nitrous oxide solubility in water and seawater, *Mar. Chem.*, 8, 347–359, [https://doi.org/10.1016/0304-4203\(80\)90024-9](https://doi.org/10.1016/0304-4203(80)90024-9), 1980.
- Wieber, C., Jensen, L. Z., Vergeynst, L., Meire, L., Juul-Pedersen, T., Finster, K., and Šantl-Temkiv, T.: Terrestrial runoff is an important source of biological ice-nucleating particles in Arctic marine systems, *Atmospheric Chem. Phys.*, 25, 3327–3346, <https://doi.org/10.5194/acp-25-3327-2025>, 2025.
- 650 Willis, M. D., Lannuzel, D., Else, B., Angot, H., Campbell, K., Crabeck, O., Delille, B., Hayashida, H., Lizotte, M., Loose, B., Meiners, K. M., Miller, L., Moreau, S., Nomura, D., Prytherch, J., Schmale, J., Steiner, N., Tedesco, L., and Thomas, J.: Polar oceans and sea ice in a changing climate, *Elem Sci Anth*, 11, 00056, <https://doi.org/10.1525/elementa.2023.00056>, 2023.
- 655 Wilson, S. T., Bange, H. W., Arévalo-Martínez, D. L., Barnes, J., Borges, A. V., Brown, I., Bullister, J. L., Burgos, M., Capelle, D. W., Casso, M., De La Paz, M., Farías, L., Fenwick, L., Ferrón, S., Garcia, G., Glockzin, M., Karl, D. M., Kock, A., Laperriere, S., Law, C. S., Manning, C. C., Marriner, A., Myllykangas, J.-P., Pohlman, J. W., Rees, A. P., Santoro, A. E., Tortell, P. D., Upstill-Goddard, R. C., Wisegarver, D. P., Zhang, G.-L., and Rehder, G.: An intercomparison of oceanic methane and nitrous oxide measurements, *Biogeosciences*, 15, 5891–5907, <https://doi.org/10.5194/bg-15-5891-2018>, 2018.
- 660 Wurl, O., Miller, L., Röttgers, R., and Vagle, S.: The distribution and fate of surface-active substances in the sea-surface microlayer and water column, *Mar. Chem.*, 115, 1–9, <https://doi.org/10.1016/j.marchem.2009.04.007>, 2009.
- Wurl, O., Miller, L., and Vagle, S.: Production and fate of transparent exopolymer particles in the ocean, *J. Geophys. Res. Oceans*, 116, 2011JC007342, <https://doi.org/10.1029/2011JC007342>, 2011.
- 665 Wurl, O., Stolle, C., Van Thuoc, C., The Thu, P., and Mari, X.: Biofilm-like properties of the sea surface and predicted effects on air–sea CO₂ exchange, *Prog. Oceanogr.*, 144, 15–24, <https://doi.org/10.1016/j.pcean.2016.03.002>, 2016.
- Yang, S., Chang, B. X., Warner, M. J., Weber, T. S., Bourbonnais, A. M., Santoro, A. E., Kock, A., Sonnerup, R. E., Bullister, J. L., Wilson, S. T., and Bianchi, D.: Global reconstruction reduces the uncertainty of oceanic



- 670 nitrous oxide emissions and reveals a vigorous seasonal cycle, *Proc. Natl. Acad. Sci.*, 117, 11954–11960,
<https://doi.org/10.1073/pnas.1921914117>, 2020.
- Zhan, L., Zhang, J., Ouyang, Z., Lei, R., Xu, S., Qi, D., Gao, Z., Sun, H., Li, Y., Wu, M., Liu, J., and Chen, L.:
High-resolution distribution pattern of surface water nitrous oxide along a cruise track from the Okhotsk Sea to
the western Arctic Ocean, *Limnol. Oceanogr.*, 66, <https://doi.org/10.1002/lno.11604>, 2021.
- 675 Žutić, V., Čosović, B., Marčenko, E., Bihari, N., and Kršinić, F.: Surfactant production by marine
phytoplankton, *Mar. Chem.*, 10, 505–520, [https://doi.org/10.1016/0304-4203\(81\)90004-9](https://doi.org/10.1016/0304-4203(81)90004-9), 1981.