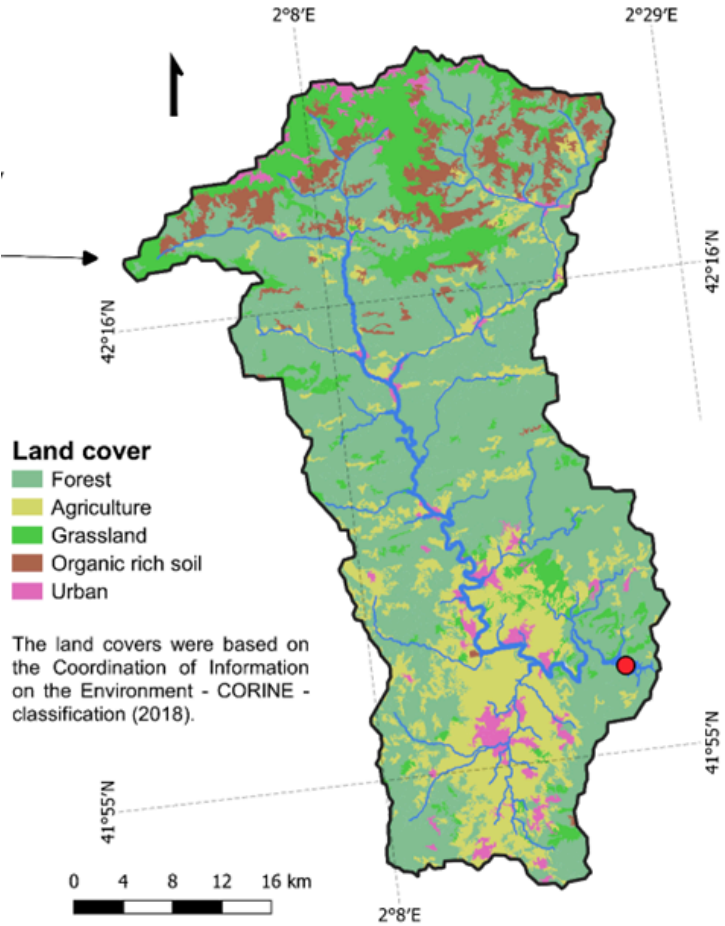


Code	Colour	CODE_18	LAND COVER
111		111	Continuous urban fabric
112		112	Discontinuous urban fabric
121		121	Industrial or commercial units, public services and military installations
131		131	Mineral extraction sites
142		142	Green urban areas
211		211	Non-irrigated arable land
212		212	Permanently irrigated arable land *
231		231	Pastures
242		242	Complex cultivation patterns
243		243	Land principally occupied by agriculture
311		311	Broad-leaved forest
312		312	Coniferous forest
313		313	Mixed forest
321		321	Natural grassland
322		322	Moors and heathland
323		323	Sclerophyllous vegetation*
324		324	Transitional woodland/shrubs
332		332	Bare rock
333		333	Sparsely vegetated areas
511		511	Water courses
512		512	Water bodies

Land cover	% of total area
Organic-rich soil LC	6.3%
Agriculture	18.0%
Grassland	12.3%
Urban	3.8%
Forest	59.2%
Watercourse	0.3%
	100.0%

Sau Reservoir



Coordinate system: EPSG: 4326 - WGS 84