

Sea ice data assimilation in ORAS6

Philip Browne, Eric de Boisseson, Sarah Keeley, Charles Pelletier, and Hao Zuo

European Centre for Medium-Range Weather Forecasts (Reading, United Kingdom. Bonn, Germany. Bologna, Italy)

Correspondence: Philip Browne (philip.browne@ecmwf.int)

Abstract. Accurate weather and climate forecasting relies heavily on the precise modeling of sea ice, a critical component of the Earth's climate system. Sea ice influences global weather patterns, ocean circulation, and the exchange of heat and moisture between the atmosphere and oceans. Initialisation of the sea ice component of global coupled models relies on data assimilation techniques to incorporate information from observations to constrain the system.

5 This study focuses on the development of sea ice data assimilation for ECMWF's latest Ocean Reanalysis System 6 (ORAS6) that includes a multicategory sea ice model. The research addresses the challenge of appropriately distributing sea ice concentration increments across various thickness categories in the model.

Here, we show that using a simple proportional increment splitting method improves the accuracy of sea ice concentration analyses compared to previous approaches. Our findings indicate that adding an additional sea ice-sea water temperature
10 ~~balance~~ physical relationship brings further performance benefits.

These results suggest that the choice of increment distribution strategy significantly impacts the accuracy of sea ice representation in reanalysis systems. The system presented here will form the basis of ECMWF's data assimilation system for numerical weather prediction, as well as the next generation coupled reanalyses.

1 Introduction

15 Numerical Weather Prediction (NWP) models serve as essential tools for forecasting atmospheric conditions, aiding decision-making processes across various sectors. The accuracy of these predictions critically hinges on the fidelity of initial conditions, particularly in regions with complex dynamics such as the polar oceans. Sea ice, a dynamic and sensitive component of these environments, plays a pivotal role in shaping climate and weather patterns by acting as a (thermo)~~dynamical-isolating-cover~~
dynamic insulating barrier between the free ocean and the atmosphere. This paper explores the advancements in sea ice data
20 assimilation within ~~ECMWF's~~ the European Centre for Medium-Range Weather Forecasts' (ECMWF) latest Ocean Reanalysis System 6 (ORAS6).

Since 2018 ECMWF has had a dynamic sea ice model in all operational forecast systems (Keeley and Mogensen, 2018). It has been made possible by introducing the Louvain-la-Neuve Sea Ice Model (LIM2, see Fichefet and Maqueda (1997)) within ECMWF's ocean and ~~sea-ice-sea ice~~ reanalysis system 5 (ORAS5, see Zuo et al. (2019)) and implementing assim-
25 ilation of ~~sea-ice-sea ice~~ concentration (SIC) data. Sea-ice-sea ice assimilation in ORAS5 is conducted with NEMOVAR (NEMO VARIational data assimilation) in its 3DVar-FGAT (First Guess at Appropriate Time) configuration (Mogensen et al.,

2012), by taking a univariate approach, meaning that neither cross-covariance between ~~sea-ice-sea ice~~ state variables and ocean state variables nor covariance between ~~sea-ice-sea ice~~ state variables (e.g between ~~sea-ice-sea ice~~ concentration and thickness) is accounted for. Many other methods have been successfully applied to sea ice assimilation in recent years. Notably ~~Sakov et al. (2012) and Mu et al. (2020)~~ [Sakov et al. \(2012\)](#); [Fritzner et al. \(2019\)](#); [Mu et al. \(2020\)](#) and [Williams et al. \(2023\)](#) applied Ensemble Kalman filter approaches, [Yang et al. \(2014\)](#) implemented a [Singular Evolutive Interpolated Kalman \(SEIK\) filter](#), and Jean-Michel et al. (2021) has applied a Singular Evolutive Extended Kalman (SEEK) filter methodology to sea ice assimilation. Sea ice concentration is a two-sided bounded quantity, and as such many of the traditional variational assumptions of Gaussianity do not hold. Recent work from Cipollone et al. (2023) applies anamorphosis (transformations) to sea ice DA in order to account for such bounded probability density functions, and Wieringa et al. (2023) have carefully considered the impact of boundedness in the context of a range of Ensemble Kalman filter methods.

Other developments on ~~sea-ice-assimilation-including-attempt-to-constrain-sea-ice~~ [sea ice assimilation including attempts to constrain sea ice](#) thickness together with ~~sea-ice-sea ice~~ concentration in the initial condition of coupled forecasts (Blockley and Peterson, 2018; Balan-Sarjini et al., 2020), with some promising results showing good impact for summer ~~sea-ice-sea ice~~ forecasts on the seasonal scale.

In the years since the previous reanalysis at ECMWF was implemented, the sea ice model, which is part of the ~~NEMO~~ [Nucleus for European Modelling of the Ocean \(NEMO\)](#) release, has changed from LIM2 to SI³ (Vancoppenolle et al., 2023) which has some important structural differences that have implications for the data assimilation system. Most crucial is the representation of the subgridscale distribution sea ice thickness, using an ice thickness distribution for which sea ice concentration values need to be initialised. It is no longer sufficient for a single value at a grid point to be generated as an analysis product. Besides the thickness distribution, the updated ~~sea-ice-sea ice~~ model also features significantly more sophisticated physics. The challenge for data assimilation is how best to incorporate observational information of sea ice concentration to initialise and constrain this modern configuration of model.

This paper will discuss the technical developments and scientific choices we have made when developing sea ice data assimilation in the new multcategory sea ice model SI³. We will present the model and final settings used for ORAS6, before justifying these by showing 5 year long experiments comparing other possible configurations. We conclude with some thoughts on future developments and other observational sources which will help constrain the new model's representation of the ice state.

2 SI³ model and multcategory representation of sea ice

There are many developments in ~~the~~-SI³ compared to LIM2, here the differences pertinent to the data assimilation system are highlighted; the largest difference is the way that the heterogeneity of the sea ice is modelled in LIM2 and SI³. For SI³, the model employs an Ice Thickness Distribution (ITD) scheme [Thorndike et al. (1975), Bitz et al. (2001), see also our Figure 1], allowing it to represent subgridscale variations in important processes such as energy exchanges that depend nonlinearly on the thickness of ~~sea-ices~~[sea ice](#). This scheme provides a detailed calculation of the energy balance at the ice surface, considering ice

60 properties, such as albedo and enthalpy, to be specific to each ice category, which is discretized into four vertical layers with a single layer of snow on top. In contrast, LIM2 does not use an ITD scheme, this is parameterized and it represents sea ice with a single ice thickness category, with two vertical layers with a single snow layer, leading to a less detailed portrayal of the associated processes. Additionally SI³ represents the thermodynamic properties of the sea ice differently to LIM2, allowing salinity to vary rather than assuming a fixed ice salinity and uses enthalpy as a prognostic variable rather than temperature ~~as~~
65 ~~in which is used in in LIM2, as a prognostic variable~~. SI³ also benefits from several developments to parametrisation schemes beyond those employed in LIM2, most significantly the formation and evolution of melt ponds. There are also developments in the parameterizations for the albedo of snow-covered, ponded and bare ice surfaces, which dynamically change based on surface conditions. Additionally, the snow scheme also includes a blowing snow parameterization. SI³ uses an Elastic-Viscous-Plastic (EVP) rheology (Bouillon et al., 2009), whereas in contrast, LIM2 employs a Viscous-Plastic (VP) rheology. SI³'s EVP
70 model is a relaxed form of the equations which are able to be solved in a more computationally efficient way than the VP scheme of LIM2.

Overall, SI³ provides a more detailed ~~and accurate~~ representation of sea ice and snow processes compared to LIM2, which results in a more uniform and less complex depiction of these processes. This difference can significantly impact the ~~accuracy~~
of energy balance calculations and the simulation of ice evolution in different environmental conditions.

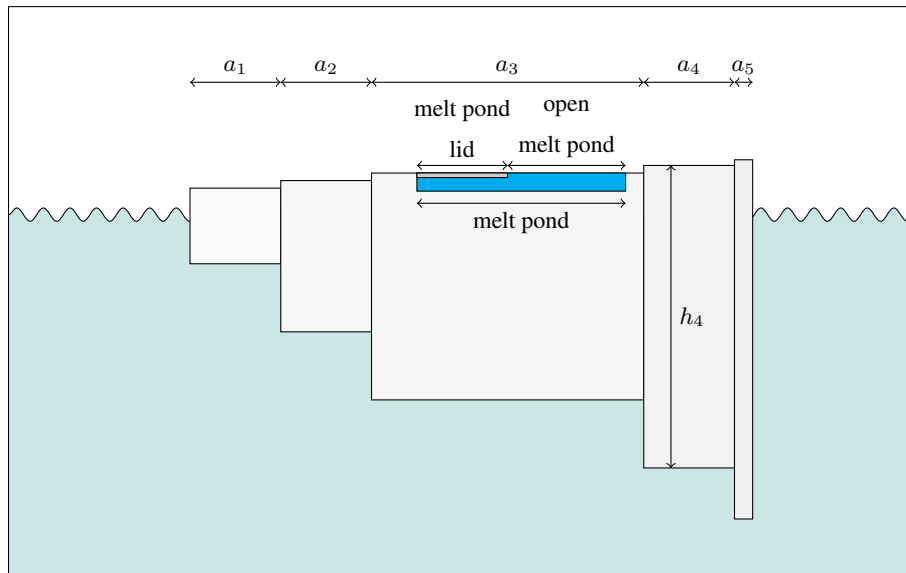


Figure 1. Schematic of SI³ multicategory approach. There are N different ice thickness categories alongside open water in the non-ice covered region of the gridbox. Each ice thickness category has many prognostic variables, for instance melt ponds with lids as shown. Not shown are vertical layers used to have a temperature profile, as well as snow in each category.

75 For ORAS6 SI³ is configured with different ice thickness categories j from 1, the thinnest to $N = 5$, the thickest ice. The thickness category boundaries implemented are 0.45m, 1.13m, 2.14m, and 3.67m, which are the same as the default settings

assuming a 2m mean ice thickness. This means that there is an ice concentration associated with ice with thickness somewhere between 0m and 0.45m, another ice concentration associated with ice of thickness somewhere between 0.45m and 1.13m, and so on.

80 3 Sea ice concentration observations

A number of observation operators have been developed for sea ice observations within SI³. All of the below equations represent a single grid point, and so are computed for each spatial location. The most basic is the grid point total sea ice concentration (SIC), a , where

$$a := \mathcal{H}_{\text{conc}}(x) = \sum_{j=1}^N a_j. \quad (1)$$

85 This total concentration across the categories is equivalent to the average SIC in the grid box. There is an optional feature to include the effect of melt ponds on detectable sea ice concentration:

$$\mathcal{H}_{\text{conc mp}}(x) = \sum_{j=1}^N a_j(1 - p_j) \quad (2)$$

where p_j is the *effective* melt pond fraction in category j .

For ORAS6 we are only actively assimilating sea ice concentration observations using the observation operator given by (1),
90 and we assume that the products we are using have already been corrected for the presence of melt ponds.

~~For production of ORAS6 we have to choose different observations depending on the period. Table ?? summarises these choices, the main being in the satellite era is assimilating L3 sea ice concentration products from the European Organisation for the Exploitation of Meteorological Satellites (EUMETSAT) Ocean and Sea Ice Satellite Application Framework (OSISAF) data in the satellite era. For the pre-satellite period, the choice of observation data source and assimilation configuration~~
95 ~~has not yet been finalised.~~

~~Start date End Date Product 1972-12-11 1977-05-11 ESA SIC CCI Nimbus-5 1978-10-25 2020-12-31 OSI-450-a 2021-01-01 2025-03-15 OSI-430-a 2025-03-16 2025-07-05 OSI-430-a fast track 2025-07-06 OSI-438 fast track Input sea ice concentration observational products by date~~

3.1 Level 3 sea ice concentration observations from OSISAF

100 ~~OSI-450-a is the third version of a reprocessing of sea ice concentration based on SMMR (1978-1987), SSM/I (1987-2008) and SSMIS (2006-2020). Atmospheric data from ERA5 is used in its production. It is a daily level 3 product covering the northern and southern hemispheres. OSI-430-a is an extension of the same processing chain as OSI-450-a, but with input data from SSMIS and ERA5-T atmospheric fields. OSI-430-a has a latency of 16 days, which is not suitable for the continuous production schedule of ORAS6, in which case the fast track version is used as it has a suitable latency of 2 days. The fast track~~
105 ~~product uses atmospheric fields from the ECMWF operational analysis rather than ERA5 or ERA5-T. From July 2025 onwards,~~

~~ORAS6 is ingesting an AMSR2-based SIC product, OSI-438. All of these OSISAF products have a Facilities (OSISAF). In the test period considered in this investigation all the data is from the climate data record OSI-450-a, that has a nominal resolution of 25km.~~

~~Recent data rescue efforts have led to SIC products being generated from NIMBUS-5 in the 1970s (Kolbe et al., 2024; Tonboe et al., 2025). These products, generated by the ESA Climate Change Initiative, are produced on the same grid as the above OSISAF products. Whilst they are slightly noisier, more prone to gaps, and have more patches of missing data than the OSISAF products in more established satellite periods, they still are of sufficient quality to enhance the reanalysis. As the methodology is assuming L3 input, the gaps and missing data are not a concern for the assimilation system.~~

The data is randomly thinned to boxes of 0.25/0.25 degrees. ~~Perturbed~~ The 10 perturbed members of the ORAS6 EDA
115 assimilate perturbed SIC observations. The perturbations are generated by sampling from a database of both analysis and structural errors. The analysis error database is constructed from the differences between ERA5 ensemble members, and the structural error database is constructed from the differences between OSTIA (Good et al., 2020) and ESA SST CCI v2 Merchant et al. (2019) observational datasets.

Full details of observational datasets and the ensemble perturbation strategy will be available in the forthcoming ORAS6 reference paper (Zuo et al., 2026).

4 Multicategory sea ice assimilation methodology

~~We have seen that in~~ In SI^3 the model state is split across multiple sea ice concentration categories. However we have not currently changed the data assimilation system to work natively with each category of ice concentration. Instead, the variational minimisation retains a single category control vector and the challenge is then to consistently apply a single increment to each
125 of the categories.

4.1 Computation of single category increment (NEMOVAR settings)

Unlike the ocean component of ORAS6, the variational scheme used for sea ice concentration retained many of the settings that were in use in ORAS5 without further optimisation. The background error covariance matrix is based on a diffusion operator with a horizontal length scale of 2 degrees, with background error standard deviations a constant 0.05. The observation errors
130 used are also a constant 0.2.

Sea ice concentration is included in a joint minimisation with the ocean, unlike in ORAS5 where L4 sea ice concentration observations were assimilated separately. This means that sea ice concentration is part of the NEMOVAR control vector alongside 3D temperature, salinity, u/v currents, and sea surface height. However there remains no terms in the background error covariance or the NEMOVAR balance operator that couple the sea ice to the ocean state. This was possible as we found in the
135 ORAS6 system, with its revised background error covariance configuration, joint minimisation gave neutral scores compared to separate minimisations. Use of L3 sea ice concentration observations may be playing a role in allowing the joint minimisation as fewer SIC observations could be allowing the minimisation to successfully converge in both ocean and ice states.

4.2 Distribution of single category increment into multicategory model

140 Given an increment that is one value valid within a grid-box of sea ice concentration, how does one choose to assign this to the different thickness categories which make up the total ice within the grid-box?

This is not a ~~well-defined~~ well-defined problem. For example you could choose to add all increments to the thinnest category, or you could fit a fixed distribution to the increments such as a gamma profile. These were indeed trialled but ultimately not used (see results in section 6.1). Noting that sea ice concentration ~~is orthogonal to~~ represents the spatial extent and sea ice thickness ~~;~~ it is desirable that represents the vertical extent of sea ice, ideally, sea ice concentration increments should not
145 change the sea ice thickness.

The strategy we adopt so that ice thickness is not affected by concentration increments is to distribute the increment proportionally to the existing model distribution of ice thickness. For a given ice increment δa , we compute the increment for each category, δa_j as

$$\delta a_j = \frac{a_j}{\sum_{j=1}^N a_j} \delta a. \quad (3)$$

150 In effect means that the increment is distributed in proportion to the existing ice thickness distribution ~~;~~ as in the Rescale the Existing ice thickness Distribution (RED) method of Smith et al. (2016). So if h^{old} is the thickness of the existing ice, then

$$h^{\text{old}} = \frac{\sum_{j=1}^N a_j h_j}{\sum_{j=1}^N a_j}.$$

The new ice thickness is

$$155 \quad h^{\text{new}} = \frac{\sum_{j=1}^N (a_j + \delta a_j) h_j}{\sum_{j=1}^N (a_j + \delta a_j)} = \frac{\sum_{j=1}^N (a_j + \frac{\delta a}{a} a_j) h_j}{\sum_{j=1}^N (a_j + \frac{\delta a}{a} a_j)} = \frac{(1 + \frac{\delta a}{a}) \sum_{j=1}^N a_j h_j}{(1 + \frac{\delta a}{a}) \sum_{j=1}^N a_j} = h^{\text{old}}.$$

Thus this choice of splitting the increment across the different thickness categories does not impact the sea ice thickness. This methodology is only applicable when there is some existing sea ice concentration within the grid box; otherwise there will be a division by 0. Section 4.3.2 covers the special case of adding an increment when no ice exists in the model.

4.3 Application of increments

160 Many sea ice variables are inherently bounded and therefore do not follow the common assumption that errors have a Gaussian distribution. For example, thickness is bounded below by 0, and concentration is bounded below by 0 and above by a constant ≤ 1 .

None of these constraints are applied within the minimisation process of the analysis. Instead, the constraints are respected when the increment is applied to the model. ~~The net result of this is that~~ Consequently, the increments are effectively truncated
165 if they were to take the model state out of bounds.

4.3.1 To existing ice pack

Many SI³ prognostic variables are extensive, meaning that they depend on the size of the system: in our case, the size is the sea ice or snow volume per unit area, which is category-specific. Physically intensive quantities (e.g., ice thickness, ice temperature, melt pond thickness, ice salinity) can then be diagnosed from their extensive counterparts (e.g., respectively ice volume, ice enthalpy, melt pond volume, ice salinity-volume product).

When modifying sea ice concentration we want to ensure that all extensive quantities are updated to reflect the changes in volume, due to the concentration changes. This ensures the conservation of intensive quantities throughout the assimilation. For example, updating the ice enthalpy is needed for preserving the ice at the same temperature as before the assimilation increment.

So for some extensive quantity γ , its value after applying a concentration increment δa_j is

$$\gamma^{\text{new}} = \gamma^{\text{old}} \frac{a_j + \delta a_j}{a_j}. \quad (4)$$

Equation (4) is applied where γ is ice volume, ice enthalpy in each vertical layer, snow volume, snow enthalpy in each vertical layer, the salinity volume product, and ~~meltpond concentrations/volumes/melt pond concentrations, volumes, and~~ lid volumes. Equation (4) is not applied to the sea ice areal age content as this could not be made numerically stable, potentially because sea ice areal age is proportional to concentration, not volume, which is an exception in SI³ ([Vancoppenolle et al., 2023](#)). Moreover, sea ice areal age is a diagnostic-only variable; not updating it therefore leaves the model trajectory unchanged (but decreases the relevancy of the sea ice age diagnostic). Across the 5 thickness categories, 4 thermodynamic ice layers, and single thermodynamic snow layer, this amounts to 55 prognostic fields that need to be updated in line with the increment to concentration.

4.3.2 To open water

Any negative ice increments where there is currently open water are disregarded. This leaves the situation where ice has to be added to open water, and there some choices need to be made. The thickness of the new ice needs to be specified. We choose 0.45m of ice thickness so that it remains entirely within the thinnest ice category (for the specific ice category boundaries we have). This is very similar to the 0.5m ice thickness used in ORAS5 ~~.-The other sea ice properties are set so that the sea ice created by the DA is identical to sea ice that would have thermodynamically formed into the and in~~ [Fichefet and Maqueda \(1997\)](#). ~~The properties of this new sea ice are the same as frazil new ice formed thermodynamically by the model from~~ open water. The salinity of the new ice thus uses the same settings as new ice that the model would form from open water, in our case a varying salinity parameterisation of Vancoppenolle et al. (2005). The new ice enthalpy is set so that it is at the freezing point temperature. In the absence of any other information the snow, ~~meltponds~~ [melt ponds](#), and the age of this new ice are all set to zero.

4.3.3 Ice induced temperature increments

Through the physical processes present in the NEMO/SI³ coupled system, sea ice will only be sustained when, for example, the sea water is cold enough that it will not immediately melt the ice. This is an example of a balance which would typically be approximated within the data assimilation analysis process. In the absence of a full careful implementation of such a balance
200 within NEMOVAR we apply this as a simple post-processing of the output.

In simple terms, where there is a positive ice increment we seek to reduce the sea water temperature, and vice versa. However we have to ensure the relationship does not work in the other direction: a negative sea water temperature increment should not induce a positive sea ice increment, else for example sea ice could be added in tropical regions.

The effect of this ice induced temperature increment is to ensure the ice increment remains in the system and changes the
205 ice state appropriately. It is not immediately counteracted by a potentially inconsistent sea water state which would not support the desired ice state.

The sea water temperature increment δt in the vertical water column z is modified in the following way

$$\delta t'(z) = \delta t(z) - \alpha f(z) \delta a, \tag{5}$$

where $\delta t'$ is the updated sea water temperature increment. α is a positive scalar controlling the magnitude, and $f(z)$ is a
210 normalised vertical profile controlling how deep into the water column the induced increment propagates. We implement a very basic $f(z)$ where it is 1 at the surface and decays linearly to a minimum of 0 at the 12th model level (approximately 19.5m).

4.3.4 Interaction of increments with high order conservative advection scheme

SI³ has a few different advection schemes available, but the one chosen for our configuration was the scheme of Prather (1986).
215 This scheme is designed so that the advection will conserve not only a tracer, but also the first and second order spatial gradients of the tracer. The interaction of this scheme with the addition of data assimilation increments through the Incremental Analysis Update (IAU) can cause problems.

In the IAU process, the increment is added not all at once at the beginning of a model run, but partially at every model timestep. This is beneficial as it reduces initialisation shock and allows the model to dynamically adjust to the new state. This
220 IAU process is by definition non-conservative - some of the 0-order quantities which undergo advection are modified every timestep.

If the values of the tracer itself are changing, then conserving first and second order gradients does not make sense, as those gradients would not be representative of the updated tracers. We found this inconsistency first ~~appearing~~ appeared in the ice salinity fields, where numerical chequerboard patterns appear as in Figure 2. A particular feature of this application is that
225 within the sea ice pack there is almost no diffusion of the salinity spatially. Once the spurious patterns form they remain in the model until the ice pack melts entirely at the effected locations. Such noisy salinity fields affected the surface temperatures and therefore fed through to degraded coupled model performance.

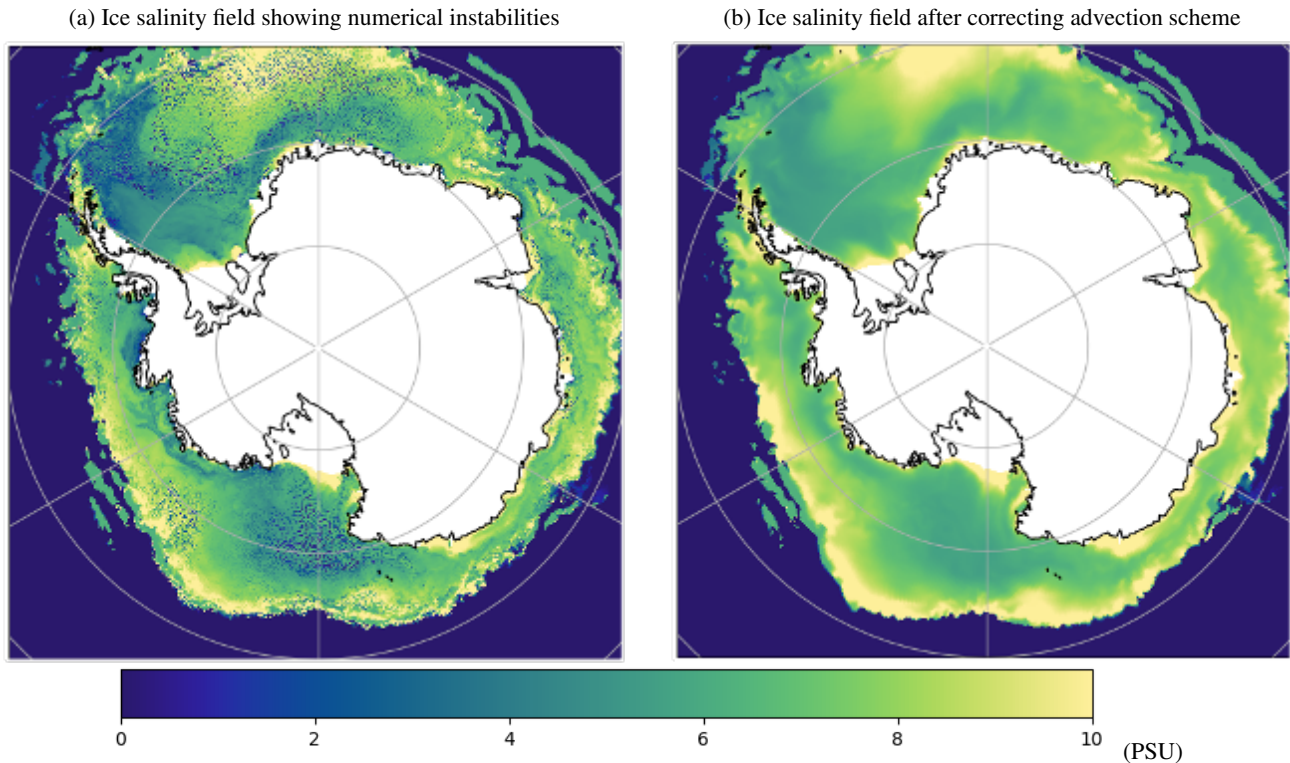


Figure 2. Effect of (not) accounting for the data assimilation increment in the advection scheme used with SI^3 . ~~The~~ In these instantaneous model output fields the numerical noise seen in the left hand plot persists due to the lack of diffusion of salinity within the ice pack.

To mitigate this, we modify the advection scheme so that when IAU is active the spatial gradients are recomputed every model timestep. This ensures the higher order moments are consistent with the new model state, and effectively removes the checkerboard patterns as seen in Figure 2a.

5 Experimental framework

The experiments which we perform are all directly comparable with the production ORAS6 reanalysis. To briefly summarize the ORAS6 system, it uses NEMO v4.0 and the SI^3 sea ice models on the eORCA025 tripolar horizontal grid, which is approximately 27km at the equator and 12km in the Arctic (Bernard et al., 2006). Hourly data from ~~ERASS~~ ERA5 provides the atmospheric forcing. In situ profiles from ARGO, moorings, ships, mammals, and gliders are assimilated alongside satellite altimeter data, L4 SST data, and the previously described sea ice concentration data.

The assimilation system used is NEMOVAR in 3D-Var FGAT mode with a 5 day assimilation window. An Ensemble of Data Assimilations (EDA) is used consisting of one control member ~~is used~~, alongside 10 perturbed members (perturbed observations and forcing). The EDA provides a flow dependent component to the background error variances used in the ocean, as well as

240 flow dependent vertical correlation structures. For an overall description of the system, please see Zuo et al. (2024) and for details of the EDA please see Chrust et al. (2024).

In this paper we show results from deterministic (single member) experiments, using the ORAS6 EDA. Experiments all start from the ORAS6 control on 2010-01-01 and run for a period of 5 years. The deterministic experiments are chosen due to the high computational cost of running a global ocean/sea ice reanalysis for 5 years and is representative due the lack of direct use of the EDA information in the sea ice component of the system.

We perform 3 sets of experiments: the first to assess the impact of distribution strategies of the sea ice increment (see Section 4.2), second to assess the choice of how to add ice to open water (see Section 4.3.2), and finally experiments to assess the impact of inducing temperature increments from the sea ice concentration increment (see Section 4.3.3).

All the experiment share the same control and observational datasets. We have approximately 250,000 sea ice concentration observations per cycle, and the experiments run for 366 cycles over the 5 year period. The standard deviations of the observation departures of the control are globally, $0.098 \text{ m}^2/\text{m}^2$ with a sample size of 9.15×10^7 , in the northern hemisphere $0.130 \text{ m}^2/\text{m}^2$ with a sample size of 3.82×10^7 , and in the southern hemisphere $0.095 \text{ m}^2/\text{m}^2$ with a sample size of 5.32×10^7 .

It should be acknowledged that the observations that we use for assimilation and verification are themselves subject to errors. Results may be different if other sea ice concentration datasets were used, especially in areas of high uncertainty such as the marginal ice zone.

6 Experiments and results

6.1 Single category to multcategory increment distribution

The control, ORAS6, splits its increment by following (3) so that it remains in proportion to the background profile of sea ice concentration across the multiple ice thickness categories at each gridpoint. We run two further experiment with different splitting strategies.

The first where we use the scheme of Peterson et al. (2015) that adds positive increments to the thinnest ice category, and negative increments to the thinnest available category ~~and if~~. If it reaches zero concentration then the scheme progressively removes ice from the next thickest categories.

The other experiment assigns a gamma profile with scale factor 2 to the magnitude of the increments. This follows Abraham et al. (2015), where the pdf of the thickness distribution in terms of h can be expressed in terms of the grid-point mean thickness, \bar{h} , as follows.

$$\text{pdf}(h) = \frac{4h}{\bar{h}^2} \exp\left(-\frac{2h}{\bar{h}}\right).$$

Illustrative density functions following a gamma distribution are shown in Figure 3 for different ice thickness values. To get the increment per category we integrate this function between the lower and upper limits of thickness in each category and then scale by total concentration increment.

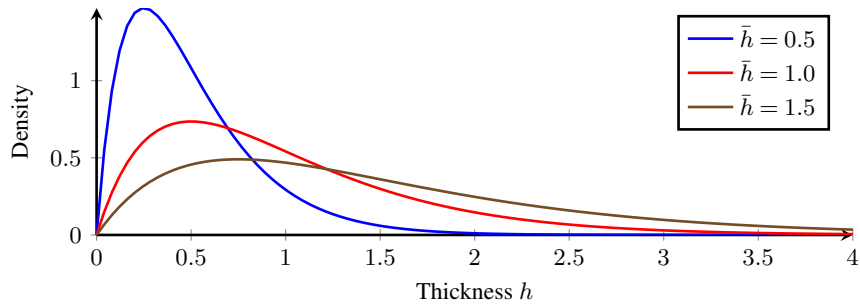


Figure 3. Representative sea ice thickness distributions that follow a gamma distribution for various different mean sea ice thicknesses.

	Global (err)		N. Hemisphere (err)		S. Hemisphere (err)	
Background splitting	100	-	100	-	100	-
Peterson splitting	107.086	0.671375	107.230	1.0463	106.074	1.03685
Gamma splitting	99.2528	0.07462	99.1829	0.130005	99.3014	0.101979

Table 1. SIC o-b standard deviations, normalised by the standard deviation of the control [for the entire 2010–2014 experimental period](#). The second columns, *err*, show the magnitude of a 95% confidence interval. Using the splitting mechanism of Peterson et al. (2015) leads to around 7% degradation in background fits to SIC observations, whereas using a Gamma splitting leads to a 0.75% improvement.

~~The scores shown in Table 1 show~~

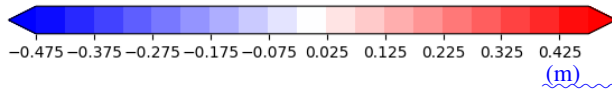
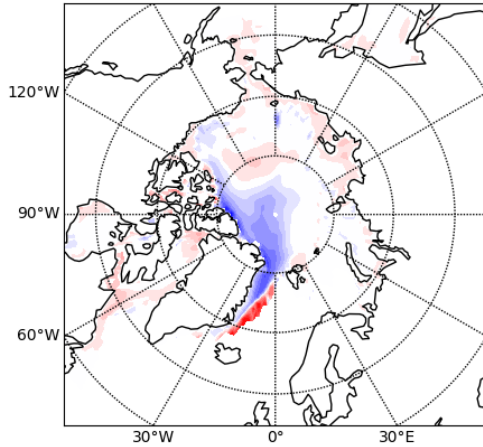
[Table 1 shows](#) that both the gamma splitting and the background splitting of the increment achieve significant improvements over the Peterson splitting, [with corresponding maps shown in Figure 5](#). The Peterson splitting by its nature will thicken the ice pack, as where ice concentration values are high, increments are more likely to be negative than positive. This means that this splitting strategy will be removing the thinnest ice in those regions, thus increasing the grid point average thickness. Whilst this does have some benefit, we chose not to use the increment splitting mechanism to address what are model/forcing biases best corrected at source.

The gamma splitting mechanism does give the best results in terms of concentration, but it has worse thickness performance around the ice edge in the Atlantic sector (Figure 4). The ECMWF NWP system is sensitive to sea ice in this region, and so whilst SIC performance was the best we have chosen to implement the background profile splitting.

6.2 Addition of ice to open water

The control, ORAS6, sets the thickness of new ice to 0.45m, the maximum thickness of the thinnest sea ice category. We run two further experiments, one where we add new ice with a thickness of 0.1m, and another with thickness of 0.225m.

(a) Errors in analysis of sea ice thickness comparing to CS2SMOS merged CryoSat-2 and SMOS ice thickness. Shown is the difference in RMSE using the gamma Peterson splitting compared to background splitting. In red are regions of worse sea ice thickness, which is notable around the ice edge in the Atlantic.



(b) Gamma splitting

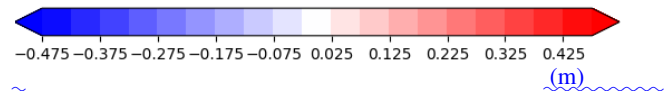
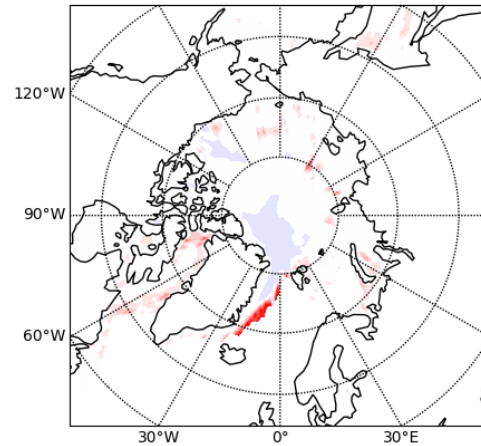


Figure 4. Errors in analysis of sea ice thickness comparing to CS2SMOS merged CryoSat-2 and SMOS ice thickness for the entire 2010–2014 experimental period. Shown is the difference in RMSE using (a) the Peterson splitting, and (b) the Gamma splitting, compared to background splitting. In red are regions of worse sea ice thickness, which is notable around the ice edge in the Atlantic.

	Global (err)		N. Hemisphere (err)		S. Hemisphere (err)	
45cm	100	-	100	-	100	-
22.5cm	100.631	0.0576538	100.333	0.0582571	100.924	0.0938093
10cm	101.182	0.0825902	100.489	0.0648830	101.824	0.144142

Table 2. SIC o-b standard deviations, normalised by the standard deviation of the control for the entire 2010–2014 experimental period. The second columns, *err*, show the magnitude of a 95% confidence interval. Adding ice to open water with only 10cm thickness degrades the o-b fits by up to 1.8% (southern hemisphere) and 22.5cm thick ice degrades by around 0.6% (global).

Table 2 shows the results from assuming different thicknesses of new ice formed by the data assimilation. It shows that adding ice at the upper threshold of the thinnest ice category gives the best performance. Figure 6 highlights that the impact is confined to the ice edge as expected.

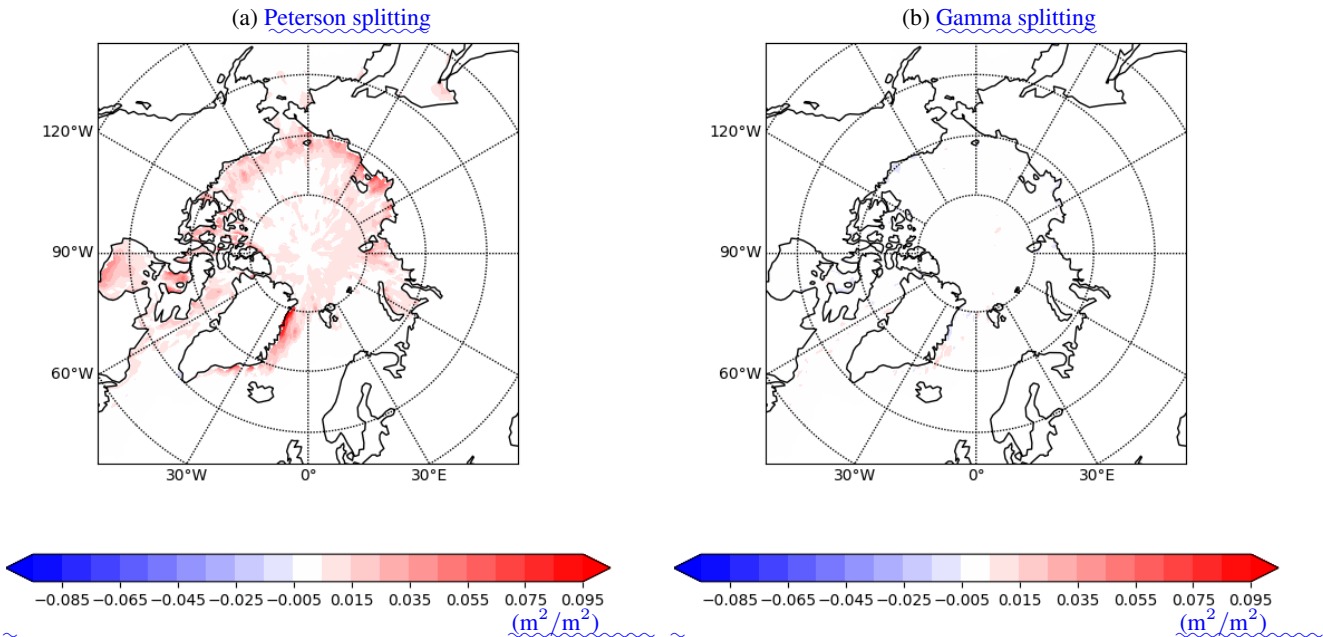


Figure 5. Errors in analysis of sea ice concentration comparing to *ESA CCIv3*. Shown is the difference in RMSE using (a) the Peterson splitting, and (b) the Gamma splitting, compared to background splitting. In red are regions of worse sea ice concentration, which is notable across large areas of the Arctic domain when using Peterson splitting.

6.3 Sea ice–water temperature **balance**physical relationship

290 The control, ORAS6, implements a basic postprocessing **balance**–**physical** relationship between the sea ice increment and the sea water temperature by following (5). For brevity, we will keep the structure of the vertical profile, $f(z)$, fixed and experiment with the magnitude of the induced increment. ORAS6 uses $\alpha = 5\alpha = 5\text{K}$ to define this magnitude. We run two further experiments with $\alpha = 0$ and $\alpha = 2.5\alpha = 0\text{K}$ and $\alpha = 2.5\text{K}$ to assess the impact of this choice. Here we are conservative and do not test larger values than implemented in ORAS6, as the induced temperature increments could be compensating for errors in the forcing and not in the ocean state. The largest impact is seen in the ice edge regions, and verifying significant temperature changes in these regions is challenging given the limited in situ temperature measurements at depth.

295

In a simple linear system, the analysis x_a should be given by the addition of the increment to the background, $x_b + \delta x$. If $x_a - x_b \neq \delta x$, this shows the increment is not having the desired effect on the analysis. Figures 7 and 8 show how, in a single cycle, the inclusion of the ice induced temperature increment allows the effective increment (analysis-background) to better correspond to the minimisation increment.

300

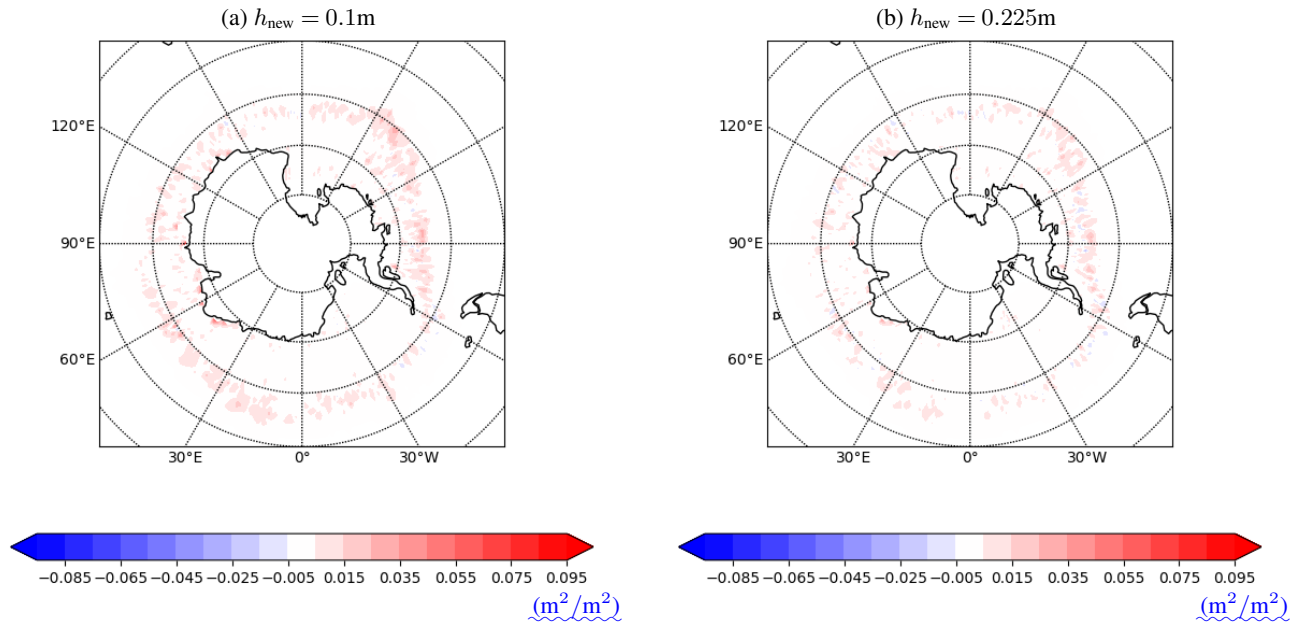


Figure 6. Southern hemisphere SIC o-b RMSE differences compared to using a thickness of new sea ice $h_{\text{new}} = 0.45\text{m}$ [for the entire 2010–2014 experimental period](#). Larger errors are seen around the ice edge when thinner ice is assumed to be missing at open water points.

	Global (err)		N. Hemisphere (err)		S. Hemisphere (err)	
$\alpha = 5$ $\alpha = 5\text{K}$	100	-	100	-	100	-
$\alpha = 2.5$ $\alpha = 2.5\text{K}$	102.466	0.199485	101.746	0.319479	102.793	0.240604
$\alpha = 0$ $\alpha = 0\text{K}$	107.665	0.324827	106.443	0.487622	108.399	0.424248

Table 3. SIC o-b standard deviations, normalised by the standard deviation of the control [for the entire 2010–2014 experimental period](#). The second columns, *err*, show the magnitude of a 95% confidence interval. Having no ice induced temperature increment degrades o-b fits by 7.7% globally, and reducing the magnitude by half degrades the fit by 2.5% globally.

	Global (err)		N. Hemisphere (err)		S. Hemisphere (err)	
$\alpha = 5$ $\alpha = 5\text{K}$	100	-	100	-	100	-
$\alpha = 2.5$ $\alpha = 2.5\text{K}$	104.938	0.263607	104.236	0.360889	105.119	0.298413
$\alpha = 0$ $\alpha = 0\text{K}$	114.485	0.510115	114.024	0.796284	114.386	0.642265

Table 4. As Table 3 but for o-a (analysis) fits to SIC. Having no ice induced temperature increment degrades o-a fit by over 14% globally.

Tables 3 and 4 give details of the performance of different magnitudes of the ice induced temperature increments (α in equation (5)). Figure 9 shows, over the full 5 year test period, that the ice induced temperature increment has a consistently positive impact not just on the ice edge, but also throughout the ice pack.

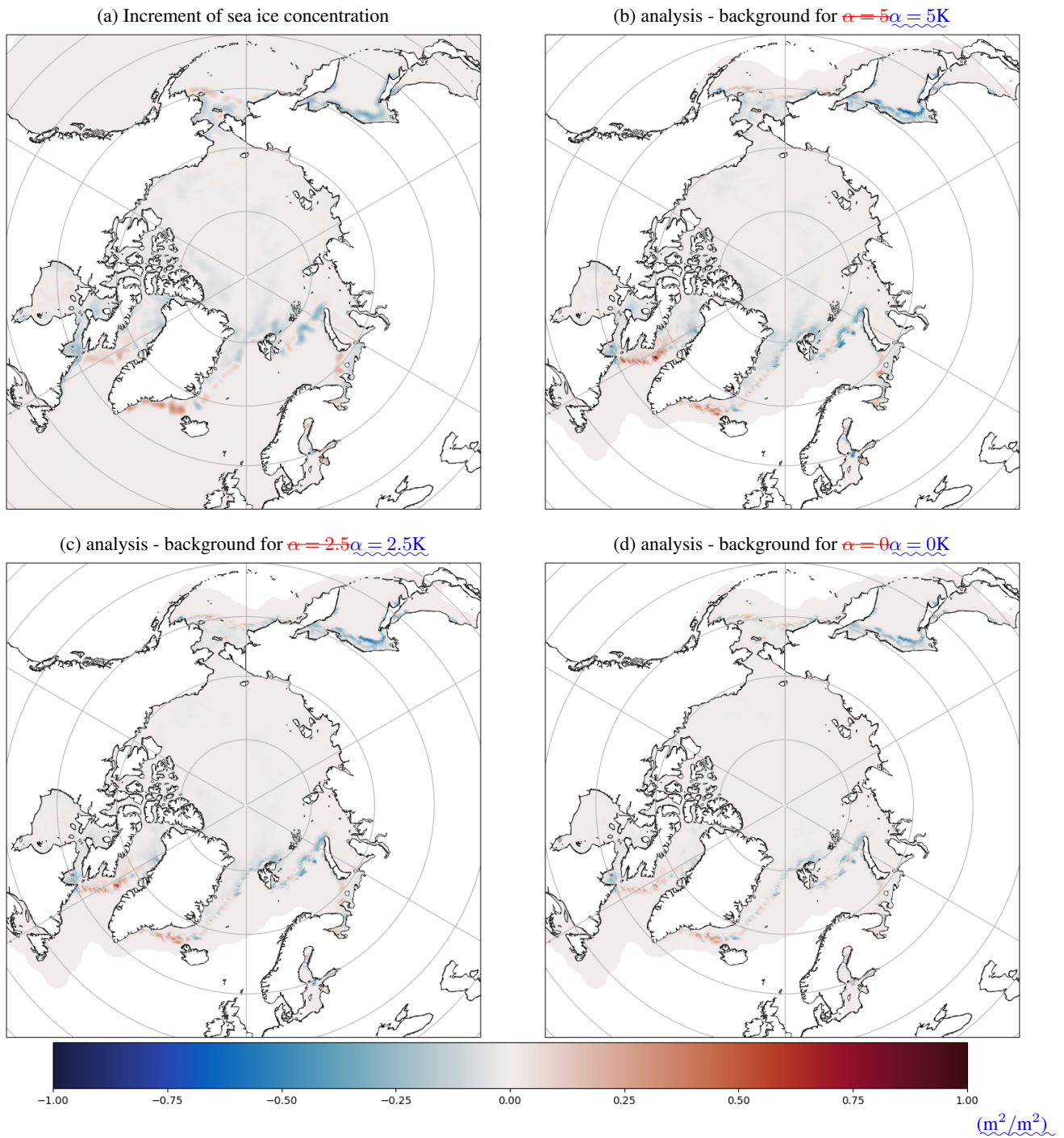


Figure 7. Northern Hemisphere sea ice concentration increment and effective increments for various strengths of the ice induced temperature increment for the first analysis cycle 2010-01-01:2010-01-05

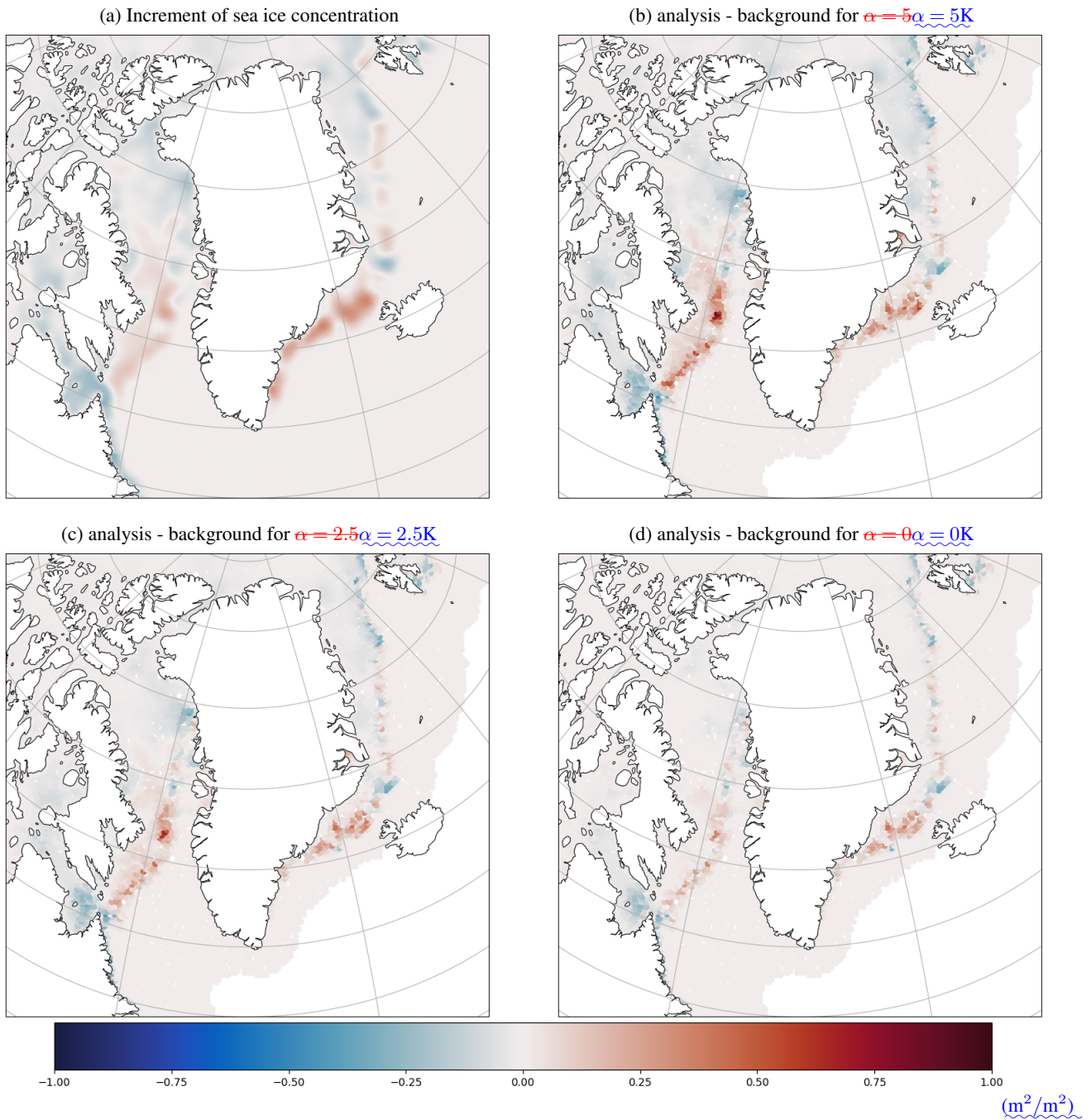


Figure 8. Greenland and Labrador Sea sea-ice concentration increment and effective increments for various strengths of the ice induced temperature increment for the first analysis cycle 2010-01-01:2010-01-05

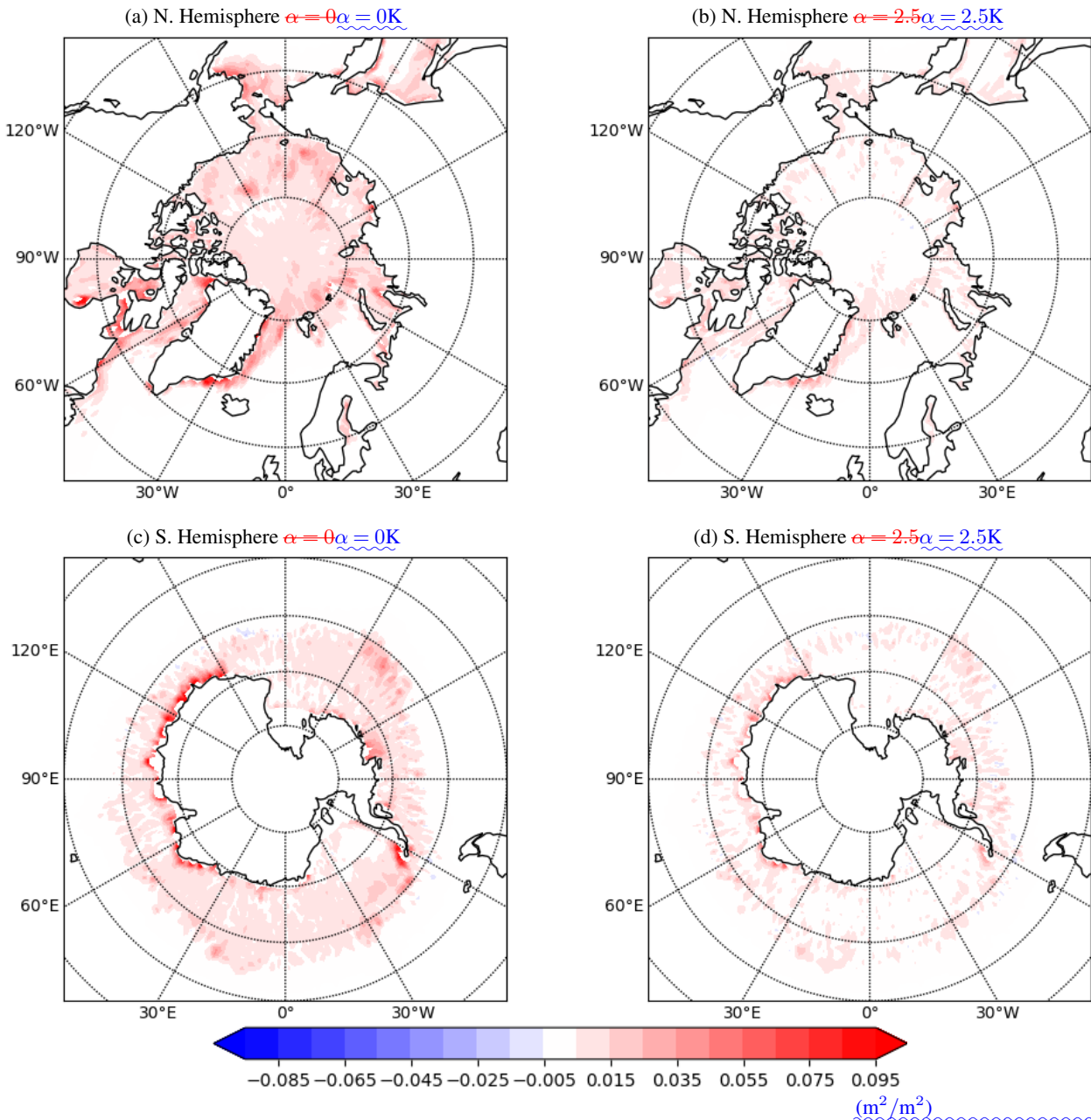


Figure 9. SIC o-b RMSE differences compared to using a magnitude of the ice induced temperature increment given by $\alpha = 5\alpha = 5K$ for the entire 2010–2014 experimental period.

305 7 Conclusions and planned developments

Sea ice concentration is an important ~~dataset~~-quantity to be assimilated into an ocean reanalysis. We have detailed the developments we have made and the configuration used to assimilate sea ice concentration into the multicategory sea ice model SI³ within the ORAS6 reanalysis.

Ice induced temperature increments give the largest impact of all developments. This mechanism is targeting increments to sea ice concentration that are not retained by the model, and so is showing that there are deficiencies in other parts of the system (e.g. ocean and/or atmospheric forcing) that have to be accounted for in order to achieve the desired physically consistent sea ice state.

We have shown that results are highly sensitive to the method used to distribute a single category increment across the multiple prognostic thickness categories of the model. Our choice to keep the increments in proportion to the background profile of ice distribution was shown to perform well, and has the benefit of leaving the sea ice thickness unaffected, by design. There are other methods in the literature for distributing ice increments across thickness categories, such as the Rescaled Forecast Tendencies (RFT) method of Smith et al. (2016). Such methods that estimate what type of model deficiency led to an increment to the sea ice concentration, and apply concentration increments in such a way to counteract them. We leave comparisons against such methods for future investigations.

Future developments for the assimilation into a multicategory sea ice model will focus on including the sea ice concentration of each thickness category directly within the data assimilation control vector. In doing so there is sensitivity to sea ice thickness observations which would allow them to be assimilated. Inter-category relationships/constraints will have to be managed either through the background error covariance or a balance operator, and the best way to do this will be investigated.

Sea ice thickness observations are currently not used in ORAS6, but previous studies at ECMWF (Balan-Sarojini et al., 2020) and elsewhere (Mignac et al., 2022) have shown their potential for improving both the analysis and NWP. However only a relatively short timeseries of suitable data is available (from 2010 onwards from the Cryosat-2/SMOS missions) in the northern hemisphere (snow loading on the Antarctic sea ice is a challenge for retrievals) with gaps due to the presence of summer melt ponds. To use this data in an ocean/sea ice reanalysis smoothly without introducing artificial climate signals will be a challenge, and so considering new extended datasets such as those from Bocquet et al. (2024) could be key. Further the methodology must also be applicable to real time analyses so that NWP and seasonal forecasts can be initialised consistently to reforecasts. Use of datasets that have used machine learning methods to fill the traditional gaps (such as Landy et al. (2022)) would require significant methodological developments to first estimate appropriate error covariances before they could be assimilated. However if sea ice thickness information can be used to its full extent, there is a possibility that the ill-posed problem of distribution of increments across ice thickness categories could become locally well-posed.

The methodology presented here will be used as a baseline for the real time sea ice analysis at ECMWF. Work to optimise the background error covariances settings may be undertaken, in particular to constrain smaller scales, potentially using a hybrid EDA formulation to account for flow dependent errors.

In the near future multicategory sea ice assimilation will be part of the ECMWF coupled NWP system (de Rosnay et al., 2022). In that case the L3 observations assimilated here will be replaced by coupled brightness temperature retrievals (Geer, 2024), hopefully improving the system by improving the timeliness and reliability of the system as a whole.

Data availability. The ORAS6 reanalysis will be publically available via the ECMWF data dissemination services <https://www.ecmwf.int/en/forecasts/datasets/browse-reanalysis-datasets>.

Author contributions. PB designed the methodology within the wider methodology of ORAS6 led by HZ. PB, SK, CP and HZ contributed to the implementation. PB, EB and HZ performed experimentation. All authors contributed to the writing and revisions of the manuscript.

345 *Acknowledgements.* The authors would like to thank the wider ORAS6 team for their technical and scientific support. None of this work would be possible without the generation of observational datasets done at OSISAF, nor the SI³ model development, and in particular we are very grateful for the help of Clément Rousset. Finally thanks go to the reviewers who have greatly contributed to improving the quality of this manuscript.

Competing interests. The authors declare that they have no conflict of interest.

350 References

- Abraham, C., Steiner, N., Monahan, A., and Michel, C.: Effects of subgrid-scale snow thickness variability on radiative transfer in sea ice, *Journal of Geophysical Research: Oceans*, 120, 5597–5614, <https://doi.org/https://doi.org/10.1002/2015JC010741>, 2015.
- Balan-Sarajini, B., Tietsche, S., Mayer, M., Balmaseda, M., Zuo, H., De Rosnay, P., Stockdale, T., and Vitart, F.: Year-round impact of winter sea ice thickness observations on seasonal forecasts, *The Cryosphere Discussions*, 2020, 1–30, 2020.
- 355 Bernard, B., Madec, G., Penduff, T., Molines, J.-M., Treguier, A.-M., Le Sommer, J., Beckmann, A., Biastoch, A., Böning, C., Dengg, J., et al.: Impact of partial steps and momentum advection schemes in a global ocean circulation model at eddy-permitting resolution, *Ocean dynamics*, 56, 543–567, 2006.
- Bitz, C. M., Holland, M. M., Weaver, A. J., and Eby, M.: Simulating the ice-thickness distribution in a coupled climate model, *Journal of Geophysical Research: Oceans*, 106, 2441–2463, <https://doi.org/10.1029/1999jc000113>, 2001.
- 360 Blockley, E. W. and Peterson, K. A.: Improving Met Office seasonal predictions of Arctic sea ice using assimilation of CryoSat-2 thickness, *The Cryosphere*, 12, 3419–3438, 2018.
- Bocquet, M., Fleury, S., Rémy, F., and Piras, F.: Arctic and Antarctic Sea Ice Thickness and Volume Changes From Observations Between 1994 and 2023, *Journal of Geophysical Research: Oceans*, 129, e2023JC020 848, <https://doi.org/https://doi.org/10.1029/2023JC020848>, e2023JC020848 2023JC020848, 2024.
- 365 Bouillon, S., Morales Maqueda, M. Á., Legat, V., and Fichet, T.: An elastic–viscous–plastic sea ice model formulated on Arakawa B and C grids, *Ocean Modelling*, 27, 174–184, <https://doi.org/10.1016/j.ocemod.2009.01.004>, 2009.
- Chrust, M., Weaver, A. T., Browne, P., Zuo, H., and Balmaseda, M. A.: Impact of an Ensemble of Ocean Data Assimilations in ECMWF’s next generation ocean reanalysis system, <https://arxiv.org/abs/2407.04488>, 2024.
- Cipollone, A., Banerjee, D. S., Iovino, D., Aydogdu, A., and Masina, S.: Bivariate sea-ice assimilation for global ocean Analysis/Reanalysis, *EGU sphere*, 2023, 1–23, <https://doi.org/10.5194/egusphere-2023-254>, 2023.
- 370 de Rosnay, P., Browne, P., de Boissésou, E., Fairbairn, D., Hirahara, Y., Ochi, K., Schepers, D., Weston, P., Zuo, H., Alonso-Balmaseda, M., Balsamo, G., Bonavita, M., Borman, N., Brown, A., Chrust, M., Dahoui, M., Chiara, G., English, S., Geer, A., Healy, S., Hersbach, H., Laloyaux, P., Magnusson, L., Massart, S., McNally, A., Pappenberger, F., and Rabier, F.: Coupled data assimilation at ECMWF: current status, challenges and future developments, *Quarterly Journal of the Royal Meteorological Society*, 148, 2672–2702, <https://doi.org/https://doi.org/10.1002/qj.4330>, 2022.
- 375 Fichet, T. and Maqueda, M. M.: Sensitivity of a global sea ice model to the treatment of ice thermodynamics and dynamics, *Journal of Geophysical Research: Oceans*, 102, 12 609–12 646, 1997.
- Fritzner, S., Graverson, R., Christensen, K. H., Rostosky, P., and Wang, K.: Impact of assimilating sea ice concentration, sea ice thickness and snow depth in a coupled ocean–sea ice modelling system, *The Cryosphere*, 13, 491–509, <https://doi.org/10.5194/tc-13-491-2019>, 2019.
- 380 Geer, A. J.: Joint estimation of sea ice and atmospheric state from microwave imagers in operational weather forecasting, *Quarterly Journal of the Royal Meteorological Society*, n/a, <https://doi.org/https://doi.org/10.1002/qj.4797>, 2024.
- Good, S., Fiedler, E., Mao, C., Martin, M. J., Maycock, A., Reid, R., Roberts-Jones, J., Searle, T., Waters, J., While, J., et al.: The current configuration of the OSTIA system for operational production of foundation sea surface temperature and ice concentration analyses, *Remote Sensing*, 12, 720, 2020.

- 385 Jean-Michel, L., Eric, G., Romain, B.-B., Gilles, G., Angélique, M., Marie, D., Clément, B., Mathieu, H., Olivier, L. G., Charly, R., Tony, C., Charles-Emmanuel, T., Florent, G., Giovanni, R., Mounir, B., Yann, D., and Pierre-Yves, L. T.: The Copernicus Global 1/12° Oceanic and Sea Ice GLORYS12 Reanalysis, *Frontiers in Earth Science*, 9, <https://doi.org/10.3389/feart.2021.698876>, 2021.
- Keeley, S. and Mogensen, K.: Dynamic sea ice in the IFS, *ECMWF Newsletter*, pp. 23–29, <https://doi.org/10.21957/4ska25furb>, 2018.
- Kolbe, W. M., Tonboe, R. T., and Stroeve, J.: Mapping of sea ice concentration using the NASA NIMBUS 5 Electrically Scanning Microwave Radiometer data from 1972–1977, *Earth System Science Data*, 16, 1247–1264, <https://doi.org/10.5194/essd-16-1247-2024>, 2024.
- 390 Landy, J. C., Dawson, G. J., Tsamados, M., Bushuk, M., Stroeve, J. C., Howell, S. E., Krumpen, T., Babb, D. G., Komarov, A. S., Heorton, H. D., et al.: A year-round satellite sea-ice thickness record from CryoSat-2, *Nature*, 609, 517–522, 2022.
- Merchant, C. J., Embury, O., Bulgin, C. E., Block, T., Corlett, G. K., Fiedler, E., Good, S. A., Mittaz, J., Rayner, N. A., Berry, D., et al.: Satellite-based time-series of sea-surface temperature since 1981 for climate applications, *Scientific data*, 6, 223, 2019.
- 395 Mignac, D., Martin, M., Fiedler, E., Blockley, E., and Fournier, N.: Improving the Met Office’s Forecast Ocean Assimilation Model (FOAM) with the assimilation of satellite-derived sea-ice thickness data from CryoSat-2 and SMOS in the Arctic, *Quarterly Journal of the Royal Meteorological Society*, 148, 1144–1167, 2022.
- Mogensen, K., Balmaseda, M. A., Weaver, A., et al.: The NEMOVAR ocean data assimilation system as implemented in the ECMWF ocean analysis for System 4, 2012.
- 400 Mu, L., Nerger, L., Tang, Q., Loza, S. N., Sidorenko, D., Wang, Q., Semmler, T., Zampieri, L., Losch, M., and Goessling, H. F.: Toward a data assimilation system for seamless sea ice prediction based on the AWI climate model, *Journal of Advances in Modeling Earth Systems*, 12, e2019MS001937, 2020.
- OSI-430-a: OSI SAF Global sea ice concentration interim climate data record (v3.0, 2022), EUMETSAT Ocean and Sea Ice Satellite Application Facility. Data extracted from OSI SAF FTP server, https://doi.org/10.15770/EUM_SAF_OSI_0014, 2022.
- 405 OSI-438: OSI SAF Global sea ice concentration interim climate data record (AMSR2), release 3, EUMETSAT Ocean and Sea Ice Satellite Application Facility. Data extracted from OSI SAF FTP server, https://doi.org/10.15770/EUM_SAF_OSI_0024, 2025.
- OSI-450-a: OSI SAF Global sea ice concentration climate data record 1978-2020 (v3.0, 2022), EUMETSAT Ocean and Sea Ice Satellite Application Facility. Data extracted from OSI SAF FTP server, https://doi.org/10.15770/EUM_SAF_OSI_0013, 2022.
- Peterson, K. A., Arribas, A., Hewitt, H., Keen, A., Lea, D., and McLaren, A.: Assessing the forecast skill of Arctic sea ice extent in the GloSea4 seasonal prediction system, *Climate Dynamics*, 44, 147–162, 2015.
- 410 Prather, M. J.: Numerical advection by conservation of second-order moments, *Journal of Geophysical Research: Atmospheres*, 91, 6671–6681, 1986.
- Sakov, P., Counillon, F., Bertino, L., Lisæter, K. A., Oke, P. R., and Korablev, A.: TOPAZ4: an ocean-sea ice data assimilation system for the North Atlantic and Arctic, *Ocean Science*, 8, 633–656, <https://doi.org/10.5194/os-8-633-2012>, 2012.
- 415 Smith, G. C., Roy, F., Reszka, M., Surcel Colan, D., He, Z., Deacu, D., Belanger, J.-M., Skachko, S., Liu, Y., Dupont, F., Lemieux, J.-F., Beaudoin, C., Tranchant, B., Dréville, M., Garric, G., Testut, C.-E., Lellouche, J.-M., Pellerin, P., Ritchie, H., Lu, Y., Davidson, F., Buehner, M., Caya, A., and Lajoie, M.: Sea ice forecast verification in the Canadian Global Ice Ocean Prediction System, *Quarterly Journal of the Royal Meteorological Society*, 142, 659–671, <https://doi.org/https://doi.org/10.1002/qj.2555>, 2016.
- Thorndike, A. S., Rothrock, D. A., Maykut, G. A., and Colony, R.: The thickness distribution of sea ice, *Journal of Geophysical Research* (1896-1977), 80, 4501–4513, <https://doi.org/https://doi.org/10.1029/JC080i033p04501>, 1975.
- 420

- Tonboe, R., Tellefsen, E., Kolbe, W., Toudal Pedersen, L., Lavergne, T., Sørensen, A., and Saldo, R.: ESA Sea Ice Climate Change Initiative (Sea_Ice_cci): Nimbus-5 ESMR Sea Ice Concentration, version 1.1, NERC EDS Centre for Environmental Data Analysis, <https://dx.doi.org/10.5285/8978580336864f6d8282656d58771b32>, 2025.
- 425 Vancoppenolle, M., Fichefet, T., and Bitz, C. M.: On the sensitivity of undeformed Arctic sea ice to its vertical salinity profile, *Geophysical Research Letters*, 32, <https://doi.org/https://doi.org/10.1029/2005GL023427>, 2005.
- Vancoppenolle, M., Rousset, C., Blockley, E., Aksenov, Y., Feltham, D., Fichefet, T., Garric, G., Guémas, V., Iovino, D., Keeley, S., Madec, G., Massonnet, F., Ridley, J., Schroeder, D., and Tietsche, S.: SI³, the NEMO Sea Ice Engine, <https://doi.org/10.5281/zenodo.7534900>, 2023.
- 430 Wieringa, M., Riedel, C., Anderson, J., and Bitz, C.: Bounded and categorized: targeting data assimilation for sea ice fractional coverage and non-negative quantities in a single column multi-category sea ice model, *EGUsphere*, 2023, 1–25, <https://doi.org/10.5194/egusphere-2023-2016>, 2023.
- Williams, N., Byrne, N., Feltham, D., Van Leeuwen, P. J., Bannister, R., Schroeder, D., Ridout, A., and Nerger, L.: The effects of assimilating a sub-grid-scale sea ice thickness distribution in a new Arctic sea ice data assimilation system, *The Cryosphere*, 17, 2509–2532, <https://doi.org/10.5194/tc-17-2509-2023>, 2023.
- 435 Yang, Q., Losa, S. N., Losch, M., Tian-Kunze, X., Nerger, L., Liu, J., Kaleschke, L., and Zhang, Z.: Assimilating SMOS sea ice thickness into a coupled ice-ocean model using a local SEIK filter, *Journal of Geophysical Research: Oceans*, 119, 6680–6692, <https://doi.org/https://doi.org/10.1002/2014JC009963>, 2014.
- Zuo, H., Balmaseda, M. A., Tietsche, S., Mogensen, K., and Mayer, M.: The ECMWF operational ensemble reanalysis–analysis system for ocean and sea ice: a description of the system and assessment, *Ocean science*, 15, 779–808, 2019.
- 440 Zuo, H., Alonso-Balmaseda, M., de Boisseson, E., Browne, P., Chrust, M., Keeley, S., Mogensen, K., Pelletier, C., de Rosnay, P., and Takakura, T.: ECMWF’s next ensemble reanalysis system for ocean and sea ice: ORAS6, *ECMWF Newsletter*, pp. 30–36, <https://doi.org/10.21957/hzd5y821lk>, 2024.
- Zuo, H., Balmaseda, M. A., Boisseson, E. D., Browne, P., Chrust, M., Cobb, A., Day, J., Keeley, S., Mogensen, K., Johnson, S., Mayer, M., Pelletier, C., Roberts, C., Rosnay, P. D., Takakura, T., and Tietsche, S.: ORAS6: The new ECMWF ensemble ocean and sea-ice
445 reanalysis-analysis system and impact on coupled forecasts., *Quarterly Journal of the Royal Meteorological Society*, In preparation, 2026.