

# Brief Communication: Daily, gap-free snow cover information based on a combination of NPP VIIRS and MODIS data

Andreas J. Dietz<sup>1</sup>, Sebastian Roessler<sup>1</sup>

<sup>1</sup>German Remote Sensing Data Center (DFD), German Aerospace Center (DLR), Muenchener Strasse 20, 82234 Wessling, Germany

*Correspondence to:* Andreas Dietz (Andreas.Dietz@dlr.de)

**Abstract.** Combining Moderate Resolution Imaging Spectroradiometer (MODIS) and Visible Infrared Imaging Radiometer Suite (VIIRS) snow cover data and applying cloud- and data gap interpolation steps can be utilized to generate daily, gap-free snow cover information. Provided by the German Aerospace Center (DLR) under the name “Global SnowPack”, this product has undergone several improvements, comprising the inclusion of VIIRS, a new threshold for the Normalized Difference Snow index (NDSI), and considerable validation. The Global SnowPack offers unique opportunities for analyzing time series of snow cover data since September 2000 and is freely available for visualization and download from DLRs GeoService.

## 1 Introduction

The German Remote Sensing Data Center (DFD) of DLR has released a globally available, cloud- and gap-free snow cover product in 2015 (Dietz et al., 2015) based on the MODIS Snow Cover Daily L3 Global 500 m SIN Grid product (Hall and Riggs, 2021). Named “Global SnowPack” (GSP) and being made available on the DLR Geoservice<sup>1</sup>, several combination and interpolation steps are applied to the original snow cover product of the National Snow and Ice Data Center (NSIDC) to ensure continuous information about the presence or absence of snow cover throughout the year. The motivation for this development was the need for continuous, gap-free data for the detection of trends in snow cover duration for hydrological studies (Roessler et al., 2021; Vydra et al., 2024) or analyses in the context of animal migration, long-term changes in animal behaviour (Pokrovsky et al., 2024), or even the impact of snow cover change on genetical, evolutionary aspects (Mills et al., 2018; Zimova et al., 2022). An estimate of the snow cover status below clouds is necessary for such studies, even though they come at the price of slightly reduced accuracy when compared to clear-sky conditions (Gafurov and Bárdossy, 2009).

While the initial Global SnowPackGSP product was derived from Aqua and Terra MODIS only, in this communication we present an updated version of this approach, incorporating National Polar-orbiting Partnership (NPP) VIIRS data, resampling the spatial resolution to 371 m, and applying an adjusted Normalized Difference Snow Index (NDSI) threshold for the classification of the binary snow/no snow information that constitutes the output of the processing chain. An extensive accuracy assessment has also been conducted. The difference between GSP and alternative products such as the MODIS gap filled

---

<sup>1</sup> <https://geoservice.dlr.de/web/maps/eoc:gsp:daily>

MOD/MYDD10A1F or the Interactive Multisensor Snow and Ice Mapping System (U.S. National Ice Center, 2004) is the higher spatial resolution (371 m), the combination of both MODIS and the VIIRS sensor data, and the different interpolation of the remaining cloud/data gaps through several steps (see Dietz et al., 2015 for more details).

## 2 Data and Methodology

The snow cover products based on MODIS (MOD10A1/MYD10A1, (Hall and Riggs, 2021)) and NPP VIIRS (Riggs and Hall, 2020) constitute the basis for the daily snow cover information. These datasets come with pre-processed cloud masks, quality layers, and an NDSI layer. Landsat 5, 7, and 8 (Collection 2 Level-2 Tier 1 Surface Reflectance) data was used to calibrate the NDSI threshold to classify binary snow/no snow information and validate the final product. A total of 381 Landsat scenes with snow cover are classified following the procedure described in (Koehler et al., 2022), which is modified based on the final deliverable of the Satellite Snow Product Intercomparison and Evaluation Exercise (SnowPEX) (Ripper et al., 2019), has been prepared. Additionally, the 7.5 arc-second version of the Global Multi-resolution Terrain Elevation Data 2010 (GMTED2010) digital elevation model (DEM), resampled to 12 arc-seconds using bilinear resampling, is used for the processing (Danielson and Gesch, 2011).

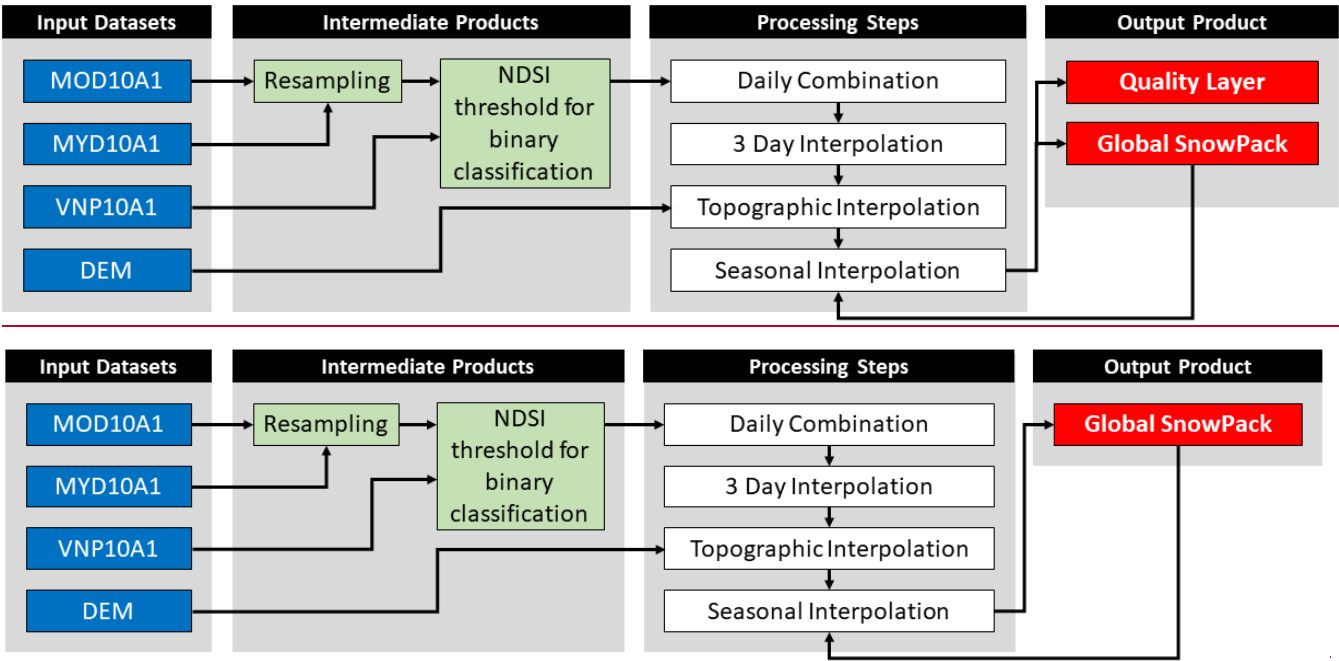


Figure 1: Workflow for the DLR Global SnowPack processing chain

As indicated in the introduction, a gapless, cloud-free, daily, binary snow cover product is desirable for numerous applications and research, leading to the implementation of a workflow has been implemented to completely remove all data gaps through a series of interpolation steps applied to the MODIS and VIIRS snow cover data. These interpolation steps (Figure 1) have

been described by (Dietz et al., 2015; Gafurov and Bárdossy, 2009) and remain the same for the update presented here, with the addition of the daily VIIRS data since 2012 being an exception. Including an additional data source allows for three datasets going into the “Daily Combination” after 2012, increasing the amount of available data but not changing the general concept of the interpolation chain. There are two additional changes to the processing, regarding the spatial resolution and binary snow cover classification.

## 2.1 Adjustment of the NDSI threshold to classify snow

The data sets from MODIS (Terra: MOD10A1; Aqua: MYD10A1) and VIIRS (VNP10A1) consist of the same layers, of which "NDSI\_Snow\_Cover" and "NDSI\_Snow\_Cover\_Basic\_QA" are being used. The latter indicates the quality of the values determined and serves as a first orientation for the composition of the daily snow cover extent based on the combination of all available observations; if the quality values are the same, an empirically determined order of prioritization is used. Because a binary snow cover classification is desired for purposes such as the calculation of snow cover duration or trends, a threshold for the NDSI is required to separate snow-covered ( $\geq 50\%$  Fractional Snow Cover; FSC) and snow-free ( $< 50\%$  FSC) surfaces. The most suitable NDSI has been chosen through comparison with 381 classified Landsat reference scenes (distributed worldwide and covering all ecozones and seasons), by maximizing the F1 value. For MODIS the best NDSI threshold is an average of 0.26 (MOD10A1-~~3000~~) and 0.23 (MYD10A1-~~3000~~) for Aqua and Terra, respectively. For VIIRS (VNP10A1) the best threshold is 0.23.

## 2.2 Resampling of the spatial resolution to 371 m

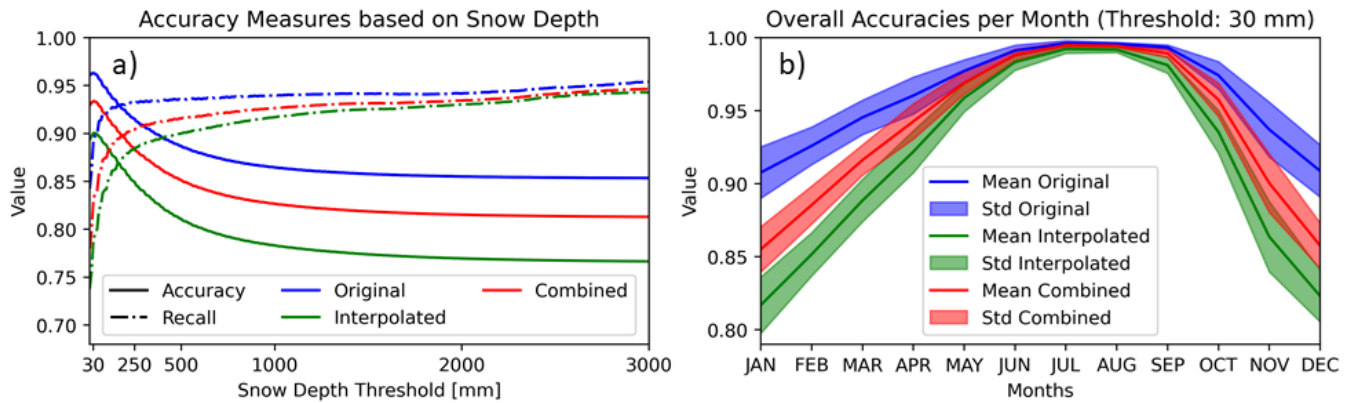
The higher spatial resolution of VIIRS with 12 arc seconds (371 m) compared to MODIS with 15 arc seconds (463 m) made a spatial adjustment of the MODIS scenes necessary. For this purpose, the data of the "NDSI\_Snow\_Cover" layer was divided into a continuous and a discrete part. In the continuous part (less than or equal to 1.0) the new grid was interpolated linearly. For the discrete part (which includes classes such as water, clouds, etc.) the nearest neighbour method was used for interpolation. A comparison with the Landsat reference datasets showed that there was no significant loss of accuracy.

## 2.3 Quality layer generation

The accuracy of the data gap interpolation is mainly driven by the interpolation method and the data gap duration. Extensive tests have been conducted, simulating clouds in otherwise cloud-free sections of snow cover datasets, and removing those clouds again with the GSP algorithm. Analysing the statistics of these tests allowed conclusions about the average impact of the interpolation techniques on the accuracy. For the GSP quality layer, a value is therefore assigned based on the applied interpolation and data gap duration.

### 3 Results and Discussion

The processing chain illustrated in Figure 1, which includes the adjustments described in sections 2.1 and 2.2, leads to a binary, daily snow cover information for the whole globe since September 1<sup>st</sup> 2000 with a spatial resolution of 371 m. All data gaps have been interpolated ~~using applying either alternative sensor data, temporal interpolation, or snow line elevation information~~ ~~one of the processing steps illustrated in~~ Figure 1 ~~and described in~~ (Dietz et al., 2015). Although the accuracy of these steps has been assessed in earlier studies (Dietz et al., 2015; Gafurov and Bárdossy, 2009), the quality has been re-evaluated using the data from 381 Landsat classifications and 50160 globally distributed snow stations from the Global Historical Climatology Network (Menne et al., 2012). This resulted in almost 73 Mio. single measurements (with 33.4 Mio. from interpolated pixels).

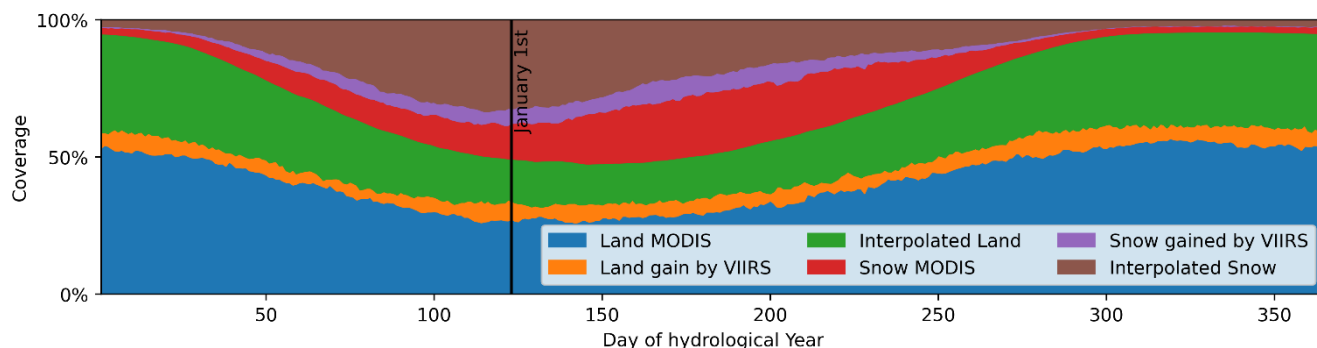


**Figure 2: Original MOD10A1/VIIRS pixels (original), the interpolated pixels (interpolated), and the combined Global SnowPack product (combined) compared to different snow depths (a); Overall accuracy of the original, interpolated, and combined pixels throughout the year, based on station data with 30 mm snow depth threshold (b).**

The challenge for the Landsat comparison is that only those pixels flagged as data gap in MODIS/VIIRS, but cloud-free in Landsat, can be compared to assess the accuracy of the interpolated pixels. The more precise cloud mask as well as the different observation time of Landsat compared to MODIS/VIIRS however allowed for a thorough assessment of almost 1 Mio. Km<sup>2</sup>.

~~The Landsat tiles were distributed all over the globe, covering North and South America, Eurasia, Australia and New Zealand, while also covering different years, seasons, land cover, and elevation zones.~~ The comparison ~~of the GSP~~ with Landsat resulted in an F1 score of 0.94. The comparison with the station data is visualized in Figure 2: The overall accuracy for the interpolated pixels reaches 90% at 30 mm snow depth, and the combined ~~Global SnowPackGSP~~ product reaches values of around 93% (Figure 2a). This accuracy varies throughout the year, with values ranging from 85% to 99% for the dataset combined from the interpolated and original MOD10A1/VIIRS data (at 30 mm snow depth, Figure 2b).

The improvement of adding VIIRS to the processing chain is illustrated in Figure 3: a considerable amount of cloud-free pixels was incorporated into the combination of daily datasets with up to an additional 10.0% (MIN 2.1%, MEAN 5.6%, MAX 10.0%) of land pixels during summer and 8.7% (MIN 0.0%, MEAN 3.3%, MAX 8.7%) of snow pixels during spring.



**Figure 3: Overview of the effect of the added VIIRS data: cloud-free land in MODIS (blue) and VIIRS (orange), interpolated land (green), cloud-free snow in MODIS (red) and VIIRS (purple), interpolated snow (brown). Hydrological year runs from September 1<sup>st</sup> through August 31<sup>st</sup>.**

The initial data sources (MODIS and VIIRS snow cover products) have been assessed multiple times throughout the last decades (e.g. in (Baker and Kilcoyne, 2011; Brubaker et al., 2005; Hall et al., 2002; Hall and Riggs, 2021)), which is why the accuracy of those pixels not flagged as cloud/polar darkness or data gap were only validated with the snow depth station data (Figure 2 a) and b), referred to as “original data”).

## 4 Conclusions

The updated version of the Global SnowPackGSP is processed from three individual daily snow cover datasets (Terra and Aqua MODIS as well as NPP VIIRS) and provides a binary information about the presence or absence of snow for the whole globe. The assessment relying on Landsat data showed that resampling the MODIS 500 m data to 371 m to match VIIRS does not significantly reduce the accuracy, while the interpolation of cloud and polar darkness gaps introduces uncertainties based on the duration of the data gaps. These uncertainties can easily be estimated and included in an uncertainty layer accompanying the GSP product. The accuracy assessment relying on station and Landsat data revealed an F1 score of 0.94 (Maxwell et al., 2021), and an overall accuracy between 85% to 99% (mean 94%). The Global SnowPackGSP product is publicly available on the GeoService of the Earth Observation Center<sup>2</sup>.

*Author contributions.* Conceptualization: AD SR. Data curation: AD SR. Formal analysis: SR. Investigation: AD SR. Writing: AD SR

*Competing interests.* I declare that I have no competing interests

<sup>2</sup> <https://geoservice.dlr.de/web/maps/eoc:gsp:daily>

## References

- Baker, N. and Kilcoyne, H.: Joint Polar Satellite System (JPSS) VIIRS Snow Cover Algorithm Theoretical Basis Document (ATBD) For Public Release, Goddard Space Flight Center, Greenbelt, Maryland, 2011.
- 125 Brubaker, K. L., Pinker, R. T., and Deviatova, E.: Evaluation and Comparison of MODIS and IMS Snow-Cover Estimates for the Continental United States Using Station Data, *Journal of Hydrometeorology*, 6, 1002–1017, <https://doi.org/10.1175/JHM447.1>, 2005.
- Danielson, J. and Gesch, D.: Global multi-resolution terrain elevation data 2010 (GMTED2010): U.S. Geological Survey Open-File Report 2011–1073, 26 p., 2011.
- 130 Dietz, A. J., Kuenzer, C., and Dech, S.: Global SnowPack: a new set of snow cover parameters for studying status and dynamics of the planetary snow cover extent, *Remote Sensing Letters*, 6, 844–853, <https://doi.org/10.1080/2150704X.2015.1084551>, 2015.
- Gafurov, A. and Bárdossy, A.: Cloud removal methodology from MODIS snow cover product, *Hydrology and Earth System Sciences*, 13, 1361–1373, 2009.
- 135 Hall, D. K. and Riggs, G. A.: MODIS/Terra Snow Cover Daily L3 Global 500m SIN Grid, Version 61, <https://doi.org/10.5067/MODIS/MOD10A1.061>, 2021.
- Hall, D. K., Riggs, G. A., Salomonson, V. V., Digirolamo, N. E., and Bayr, K. J.: MODIS snow-cover products, *Remote Sensing of Environment*, 83, 181–194, 2002.
- Koehler, J., Bauer, A., Dietz, A. J., and Kuenzer, C.: Towards Forecasting Future Snow Cover Dynamics in the European Alps—The Potential of Long Optical Remote-Sensing Time Series, *Remote Sensing*, 14, 4461, <https://doi.org/10.3390/rs14184461>, 2022.
- 140 Maxwell, A. E., Warner, T. A., and Guillén, L. A.: Accuracy Assessment in Convolutional Neural Network-Based Deep Learning Remote Sensing Studies—Part 2: Recommendations and Best Practices, *Remote Sensing*, 13, 2591, <https://doi.org/10.3390/rs13132591>, 2021.
- 145 Menne, M. J., Durre, I., Korzeniewski, B., McNeill, S., Thomas, K., Yin, X., Anthony, S., Ray, R., Vose, R. S., Gleason, B. E., and Houston, T. G.: Global Historical Climatology Network - Daily (GHCN-Daily), Version 3, <https://doi.org/10.7289/V5D21VHZ>, 2012.
- Mills, L. S., Bragina, E. V., Kumar, A. V., Zimova, M., Lafferty, D. J. R., Feltner, J., Davis, B. M., Hackländer, K., Alves, P. C., Good, J. M., Melo-Ferreira, J., Dietz, A., Abramov, A. V., Lopatina, N., and Fay, K.: Winter color polymorphisms identify global hot spots for evolutionary rescue from climate change, *Science*, 359, 1033–1036, <https://doi.org/10.1126/science.aan8097>, 2018.
- 150 Pokrovsky, I., Curk, T., Dietz, A., Fufachev, I., Kulikova, O., Rößler, S., and Wikelski, M.: Quick-quick-slow: the foxtrot migration and dynamic non-breeding range of the Arctic raptor, <https://doi.org/10.7554/eLife.87668.3>, 24 September 2024.
- Riggs, G. and Hall, D.: Continuity of MODIS and VIIRS Snow Cover Extent Data Products for Development of an Earth Science Data Record, *Remote Sensing*, 12, 3781, <https://doi.org/10.3390/rs12223781>, 2020.
- 155

Ripper, E., Schwaizer, G., Nagler, T., Metsämäki, S., Törmä, M., Fernandes, R., Crawford, C. J., Painter, T., and Rittger, K.: Guidelines for the Generation of Snow Extent Products from High Resolution Optical Sensors – FINAL Deliverable D8, 58, 2019.

160 Röbber, S., Witt, M. S., Ikonen, J., Brown, I. A., and Dietz, A. J.: Remote Sensing of Snow Cover Variability and Its Influence on the Runoff of Sápmi's Rivers, *Geosciences*, 11, 130, <https://doi.org/10.3390/geosciences11030130>, 2021.

U.S. National Ice Center: IMS Daily Northern Hemisphere Snow and Ice Analysis at 1 km, 4 km, and 24 km Resolutions, Version 1, <https://doi.org/10.7265/N52R3PMC>, 2004.

165 Vydra, C., Dietz, A. J., Roessler, S., and Conrad, C.: The Influence of Snow Cover Variability on the Runoff in Syr Darya Headwater Catchments between 2000 and 2022 Based on the Analysis of Remote Sensing Time Series, *Water*, 16, 1902, <https://doi.org/10.3390/w16131902>, 2024.

Zimova, M., Moberg, D., Mills, L. S., Dietz, A. J., and Angerbjörn, A.: Colour moult phenology and camouflage mismatch in polymorphic populations of Arctic foxes, *Biol. Lett.*, 18, 20220334, <https://doi.org/10.1098/rsbl.2022.0334>, 2022.