

# Linking ~~extreme~~heavy rainfall to suspended sediment fluxes in a deglaciating Alpine catchment

Amalie Skålevåg<sup>1,\*</sup>, Lena Katharina Schmidt<sup>1</sup>, Nele Eggers<sup>1,2,3</sup>, Jana Tjeda Brettin<sup>1</sup>, Oliver Korup<sup>1,4</sup>, and Axel Bronstert<sup>1</sup>

<sup>1</sup>Institute of Environmental Science and Geography, University of Potsdam, Potsdam, Germany

<sup>2</sup>Institute of Physics and Astronomy, University of Potsdam, Potsdam, Germany

<sup>3</sup>Alfred-Wegener-Institute for Polar and Marine Research, Potsdam, Germany

<sup>4</sup>Institute of Geosciences, University of Potsdam, Potsdam, Germany

\*Now at: Norwegian Meteorological Institute, Oslo, Norway

**Correspondence:** Amalie Skålevåg (amalie.skalevag@met.no)

**Abstract.** Sediment transport in high-Alpine environments is undergoing a fundamental shift as glaciers retreat and ~~extreme~~heavy precipitation events become more frequent. Understanding how these changes influence suspended sediment yields (SSY) is critical for predicting future sediment dynamics, water quality, and geomorphic evolution in mountain catchments. This study investigates the role of ~~extreme~~heavy precipitation in driving suspended sediment export in the rapidly deglaciating, nested Alpine catchments of Tumpen-Ötztal and Vent-Rofental in Austria. We examine how precipitation and rainfall intensity, frequency, and duration influence suspended sediment yields and concentrations. Using a 21-year dataset of ~~high-resolution~~hourly 1-km gridded precipitation and a multi-scale detection approach, we identify ~~extreme~~heavy precipitation events and analyse their characteristics and contribution to sediment transport. Events are classified based on their temporal characteristics, distinguishing between sub-daily and long-duration ~~extremes~~heavy precipitation events, and spatial scale, distinguishing between catchment-wide and ~~grid-scale-extremes~~localised heavy precipitation. We also evaluate the influence of precipitation uncertainties. Our findings show a significant increase in the frequency of ~~extreme~~heavy precipitation events and their contribution to annual SSY. Sub-daily ~~extremes~~events, primarily convective summer storms, generate disproportionately high sediment fluxes due to their localized and intense rainfall. Sediment transport during long-duration ~~extremes~~events responds more strongly to increases in event rainfall intensity and totals. Despite an increasing trend in ~~extreme-precipitation-driven~~heavy-precipitation-driven sediment fluxes, annual SSY remains stable in Tumpen-Ötztal but declines in Vent-Rofental, suggesting that ~~extreme-precipitation-driven~~heavy-precipitation-driven transport may partially offset, but not fully replace, glacier-driven sediment supply. As climate projections indicate a continued rise in ~~extreme~~heavy precipitation, particularly at sub-daily scales, Alpine catchments may develop increasingly flashier sediment regimes in the future. However, long-term reductions in glacier-driven sediment supply will likely lead to declining annual sediment yields. These findings highlight the need for continued monitoring and study of changing precipitation dynamics, sediment transport, and paraglacial landscape evolution in high-Alpine environments.

## 1 Introduction

Heavy precipitation is projected to increase in both frequency and intensity with rising global temperatures (Madsen et al., 2014; Vergara-Temprado et al., 2021; Fowler et al., 2021). In high mountain areas like the European Alps, where precipitation patterns are strongly influenced by topography, changes in precipitation are spatially heterogeneous and differ between seasons (Giorgi et al., 2016; Menegoz et al., 2020; Brönnimann et al., 2018). At the same time, the ongoing degradation of the mountain cryosphere, in particular glacier mass loss, alters sediment availability and export over decadal scales (Schmidt et al., 2022, 2023; Zhang et al., 2022b; Delaney and Adhikari, 2020). In combination, these changes to precipitation patterns and the mountain cryosphere have affected hydrological and sediment transport regimes of rivers (Zhang et al., 2023; Kormann et al., 2016) and measurably increased the amount of fluvial sediment exported from some high-mountain areas (Li et al., 2021a; Vergara et al., 2022; Costa et al., 2018; Zhang et al., 2022a; Delaney and Adhikari, 2020; Vergara et al., 2024). Elevated sediment loads in rivers can negatively impact downstream communities, infrastructure, and ecosystems, particularly by altering flood frequencies, degrading water quality, impairing hydro-power production, and disrupting aquatic habitats (Adler et al., 2022; Huss et al., 2017; Scheurer et al., 2009; Li et al., 2022).

Peak fluvial sediment fluxes in mountainous regions are often associated with extreme or heavy precipitation (Skålevåg et al., 2024; Li et al., 2021b; Rainato et al., 2021; Wulf et al., 2012; Himmelstoss et al., 2024; Scorpio et al., 2022). Rainstorms may cause runoff and erosion; slope wash from rainsplash, sheet flow, rill erosion, or gullyng; and trigger mass movements such as debris flows and landslides, thus mobilizing sediment that eventually enters the channel network (Wischmeier and Smith, 1978; Beylich et al., 2017; Scorpio et al., 2022; Hirschberg et al., 2019; Leonarduzzi et al., 2017; Himmelstoss et al., 2024; Rom et al., 2023). Streamflow peaks in response to rainfall also enhance channel erosion via bed incision and bank erosion (Rainato et al., 2021; Scorpio et al., 2022). Another control on sediment dynamics in Alpine catchments during rainstorms is the increase in functional sediment connectivity (Scorpio et al., 2022; Buter et al., 2022; Himmelstoss et al., 2024), which elevates sediment fluxes by better coupling hillslopes to the channel network. Given the projected increases in summer convective rainfall at high elevations in the European Alps (Giorgi et al., 2016; Dallon et al., 2024) and the waning influence of glaciers on annual sediment transport (Schmidt et al., 2023, 2024), the timing and frequency of extreme precipitation are likely to be of increased relevance for fluvial sediment transport in cryospheric basins.

Yet, at least two confounding factors complicate the quantitative assessment of ~~extreme-precipitation-driven~~ heavy-precipitation-driven sediment transport in high mountain areas. First, the scarcity of weather stations and the complex topography of mountainous terrain means that estimates of precipitation at high elevations is associated with high uncertainties, which add to the intrinsically high errors tied to rare events by virtue of extreme-value theory. Second, both glacial processes and deglaciation remain an important, but rarely systematically captured, control on sediment production and transport (Schmidt et al., 2022; Li et al., 2024). Paraglacial landscapes might respond differently to future increases in extreme precipitation than unglaciated basins, because ~~reaches downstream of glaciers~~ proglacial areas exposed by deglaciation host higher amounts of unconsoli-

55 dated sediments and sparse vegetation cover. Furthermore, increases in heavy precipitation could accelerate system-internal paraglacial redistribution of sediments, such as fluvial reworking. Projections suggest that, with the decreasing influence of glaciers (Schmidt et al., 2024) precipitation-driven sediment fluxes could become more dominant, sediment-transport regimes become more flashier and more dependent on erosive rainfall events (Zhang et al., 2022b). Hence, by studying the influence of ~~extreme-heavy~~ precipitation in the current transient state and analysing whether sediment export associated with ~~extreme~~ 60 ~~heavy~~ precipitation is already changing, we may glean important insights about the hydro-geomorphic future of Alpine rivers.

In this study, we employ a multi-scale detection approach based on extreme-value statistics to assemble a catalogue of ~~extreme-heavy~~ precipitation events in a catchment in the Ötztal Alps, Austria. By using an hourly, 1-km gridded precipitation product for catchment-averaged and grid-scale maximum precipitation time series, we identify ~~extreme-heavy~~ precipitation peaks at multiple temporal and spatial scales. Each detected event is quantified in terms of precipitation intensity, duration, sea- 65 sonality, spatio-temporal pattern, and mass of suspended sediment exported from the catchment. We also classify the number of suspended sediment peaks which are associated with heavy, non-heavy, or no precipitation. We wish to understand the response of suspended sediment yield to ~~precipitation-extremes~~heavy precipitation events, by addressing the following objectives:

- to quantify fluvial sediment responses to ~~precipitation-extremes~~heavy precipitation events, including differences between types of ~~precipitation-extremes~~events; and
- 70 – to identify trends in precipitation- and ~~extreme-precipitation-driven~~heavy-precipitation-driven contributions to annual fluvial sediment yield.

## 2 Study area and data

Our study area ~~is covers two nested catchments in~~ the valley of Ötztal in Tyrol, Austria, which is located in the comparatively dry region of the Central Alps relative to the rest of the European Alps (Fig. 1a). The valley has been the focus of several 75 hydrometeorological and glaciological studies and has unique long-term observations (see Strasser et al., 2018).

The two gauging stations used in this study, Tumpen and Vent, are operated by the Hydrographic Service of Tyrol (HD-Tirol). Tumpen station (931 m asl, 46.85797°N, 10.91049°E) is situated on the Ötztaler Ache, a few kilometers upstream of the outlet of Ötztal valley. The Tumpen-Ötztal catchment covers 782.8 km<sup>2</sup> which is most of Ötztal valley and spans almost 3000 m of elevation from 931 to 3772 m asl (Schmidt et al., 2022). Vent station (1891 m asl, 46.85691°N, 10.91093°E) is located in the 80 village of Vent and drains the Rofental valley. The 98 km<sup>2</sup> Vent-Rofental catchment is in the headwaters of Tumpen-Ötztal (Fig. 1c).

About 10% of the catchment is currently glaciated (~~Schmidt et al., 2022; ?~~) ~~but and~~ the glaciated area ~~is rapidly decreasing and the has been rapidly decreasing in recent decades~~ (Tab. 1; Hartl et al., 2025). Furthermore, the current glacier ice volume is projected to be reduced to 4-20% by 2100 (Hanzer et al., 2018) –and may disappear entirely if global warming is not kept 85 below 1.5 degrees (Hartl et al., 2025).

The hydrological regime is dominated by snow and ice melt (~~Strasser et al., 2018; Kormann et al., 2016~~). (Strasser et al., 2018) , with peak streamflow occurring around June in Tumpen-Ötztal and July in Vent-Rofental (Fig. 2). Snowmelt mainly occurs

[between May and July, peaking in June, while glacier melt contribution to streamflow is at its highest from July to August, and lasts until September \(Kormann et al., 2016\).](#) The highest amounts of both precipitation and rainfall [in both catchments](#) occur in the summer months between June and August (Fig. 2). Outside of the main melt season (May-October) little to no rainfall occurs. The timing of peak seasonal flow differs between individual catchments, with a later peak at higher elevations, i.e. in the Vent-Rofental catchment (Fig. 2; Schmidt et al., 2022). The suspended sediment flux is also highest during the summer months and the seasonal cycle is fairly synchronous between the main catchment and the high-elevation sub-catchment Vent-Rofental (Fig. 2; Schmidt et al., 2022). [For a more detailed description of the two catchments' seasonal discharge and suspended sediment, as well as land and snow cover, see Schmidt et al. \(2022\).](#)

## 2.1 Streamflow and suspended sediment [data](#)

The monitoring of riverine sediments in Ötztal is part of Austria's national strategy to assess changes in sediment dynamics due to factors like deglaciation and land-use change (for details, see Lalk et al., 2014). ~~The two gauging stations used in this study, Tumpen and Vent, are operated by the Hydrographic Service of Tyrol (HD-Tirol). Tumpen station (931, 46.85797°N, 10.91049°E) is situated on the Ötztaler Ache, a few kilometers upstream of the outlet of Ötztal valley. The Tumpen-Ötztal catchment covers 785.5 which is most of Ötztal valley and spans almost 3000 of elevation from 931 to 3772 (Schmidt et al., 2022). Vent station (1891, 46.85691°N, 10.91093°E) is located in the village of Vent and drains the Rofental valley. The 98 Vent-Rofental catchment is in the headwaters of Tumpen-Ötztal.~~

Suspended sediment concentrations (SSC) have been monitored since 2006 at both stations [by HD-Tirol](#) using optical infrared turbidity sensors ~~calibrated with manual samples~~. [SSCs are derived from the turbidity measurements, and calibrated with in-situ SSC samples manually taken at the gauge at a variety of flow conditions.](#) At Tumpen, turbidity is continuously monitored throughout the year, while at Vent measurements are paused in winter (November-April) to protect the equipment from damage by ice. Sediment transport is considered negligible during this period (Fig. 2).

For this study we used 15-min time series of streamflow,  $Q_t$ , and ~~SSC~~ [suspended sediment concentration](#),  $SSC_t$ . Time series of suspended sediment flux  $SSF_t$  in [tonnes per time step](#) is calculated by multiplying  $Q_t$  and  $SSC_t$  ~~in each time step~~. These data are available between 2006 and 2022, meaning that data on fluvial sediment transport is only available for 16 of the 21 years of the study period (2004-2024).

## 2.2 Precipitation data

The main precipitation data used in this study are hourly precipitation grids ~~from GeoSphere Austria (GSA) at 1 km resolution~~ which are supplemented by daily and hourly precipitation from [33](#) weather stations in and around Ötztal (Fig. 1b).

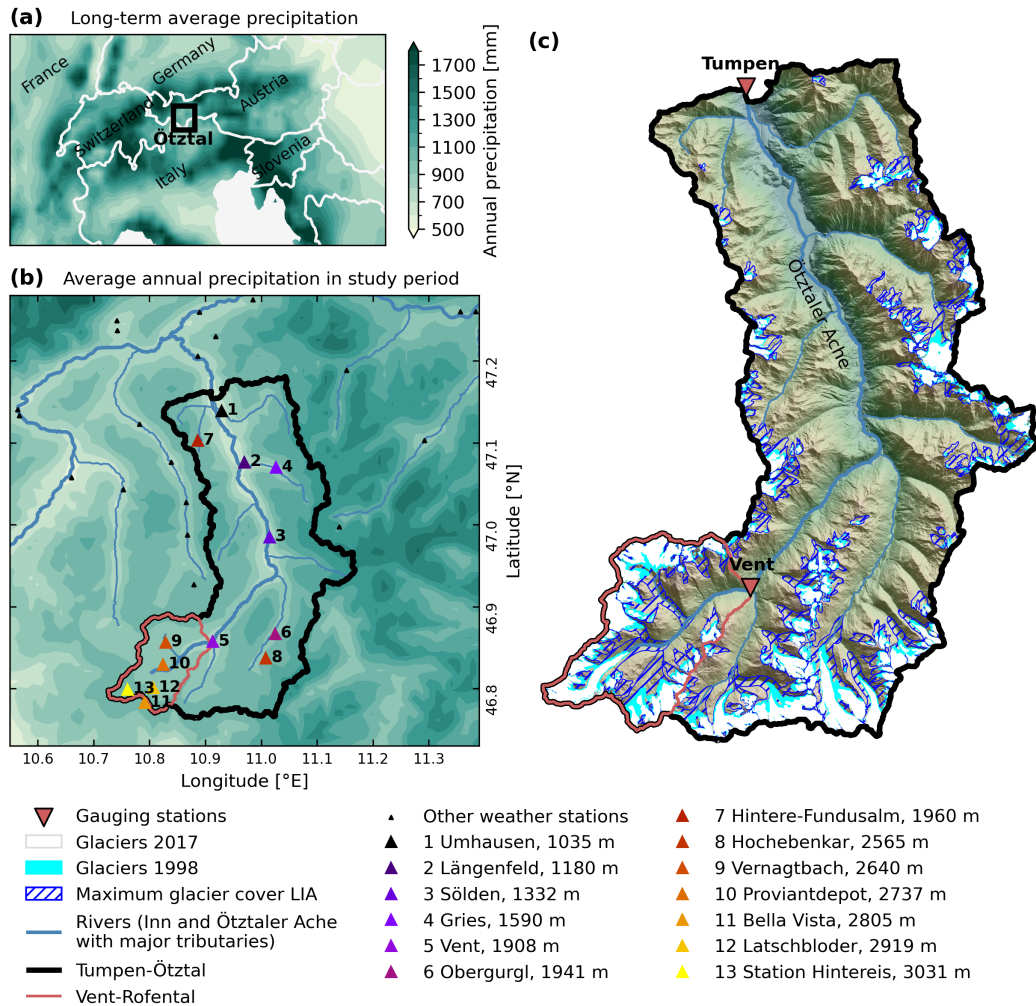
### 2.2.1 INCA

To estimate catchment-wide precipitation and rainfall we used gridded precipitation and temperature data from the analysis product of [GSA GeoSphere Austria's](#) Integrated Nowcasting through Comprehensive Analysis (INCA) system (Haiden et al.,

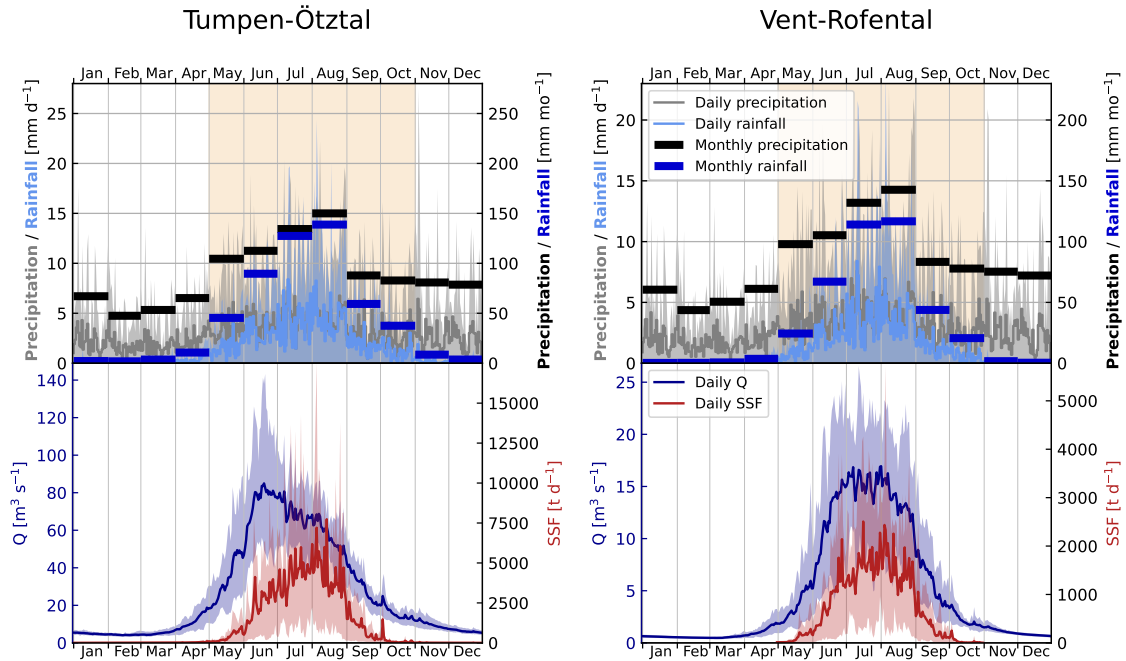
**Table 1.** Catchment area, evolution of the glacier covered area, and land cover in the nested catchments of Vent-Rofental and Tumpen-Ötztal.

	<u>Vent-Rofental</u>	<u>Tumpen-Ötztal</u>
<b><u>Catchment area</u></b>	<u>98.0 km<sup>2</sup></u>	<u>782.8 km<sup>2</sup></u>
<b><u>Glaciated area</u></b>		
<u>Glacier cover LIA<sup>a</sup></u>	<u>26.1 %</u>	<u>63.1 %</u>
<u>Glacier cover 1969<sup>b</sup></u>	<u>17.1 %</u>	<u>43.3 %</u>
<u>Glacier cover 1998<sup>c</sup></u>	<u>14.5 %</u>	<u>38.0 %</u>
<u>Glacier cover 2006<sup>d</sup></u>	<u>12.9 %</u>	<u>34.4 %</u>
<u>Glacier cover 2017<sup>e</sup></u>	<u>10.4 %</u>	<u>28.4 %</u>
<u>Deglaciated LIA to 2017</u>	<u>34.0 km<sup>2</sup></u>	<u>123.1 km<sup>2</sup></u>
<u>Deglaciated 2006 to 2017</u>	<u>6.0 km<sup>2</sup></u>	<u>20.1 km<sup>2</sup></u>
<b><u>Land cover<sup>f</sup></u></b>		
<u>Urban area</u>	<u>0.0 %</u>	<u>0.8 %</u>
<u>Ski slopes</u>	<u>0.2 %</u>	<u>1.3 %</u>
<u>Forest</u>	<u>0.0 %</u>	<u>12.4 %</u>
<u>Shrubs and grasslands</u>	<u>8.1 %</u>	<u>19.6 %</u>
<u>Pastures</u>	<u>0.5 %</u>	<u>2.8 %</u>
<u>Sparsely vegetated</u>	<u>16.7 %</u>	<u>23.0 %</u>
<u>Bare rocks</u>	<u>47.2 %</u>	<u>29.4 %</u>

Calculated from: <sup>a</sup> Austrian Glacier Inventory for the Little Ice Age Maximum (Groß and Patzelt, 2015), <sup>b</sup> Austrian Glacier Inventory 1 (Patzelt, 2015), <sup>c</sup> Austrian Glacier Inventory 2 (Kuhn et al., 2015), <sup>d</sup> Austrian Glacier Inventory 3 (Fischer et al., 2015), <sup>e</sup> Proposed Austrian Glacier Inventory 5 (Helfricht et al., 2024, 2025), <sup>f</sup> CORINE Land Cover 2018 (Copernicus Land Monitoring Service, 2020)



**Figure 1.** Average annual precipitation of the European Alps (a) and the study area, Ötztal (b). Precipitation data (1801-2014) from HISTALP (GeoSphere Austria, 2020) show the drier central Alps, where the Ötztal is located (a). Annual precipitation in Tumpen-Ötztal during the study period (2004-2024) from INCA (GeoSphere Austria, 2024a) ranges between 632 mm at the valley floor to 1223 mm along the eastern catchment boundary (b). Most of the 13 weather stations in the study area are located along the main valley (e.g. Umhausen, Längenfeld and Sölden) or in the Vent-Rofental catchment (e.g. Proviantdepot). Station elevation is given in m asl. The topography of Ötztal is steep with the exception of river plains in the lower half of the central valley (c). Glaciers are concentrated in the Stubai Alps along the catchments eastern border and the Ötztal Alps to the south (c). [The change in glacier covered area from the Little Ice Age \(LIA\) maximum \(Groß and Patzelt, 2015\), to the extent in 1998 \(Kuhn et al., 2015\), and to the most recent mapping in 2017 \(Helfricht et al., 2024, 2025\) highlights the deglaciated areas.](#)



**Figure 2.** Seasonal cycle of precipitation, rainfall, streamflow (Q), and suspended sediment flux (SSF). Top panels show daily (grey lines) and monthly (black horizontal bars) precipitation totals based on data from 2004 to 2024, while daily (light blue lines) and monthly (blue horizontal bars) rainfall totals are averages of 2011-2024 (data described in Sec. 2.2.1) with 10-90% percentile ranges (shaded areas). Bottom panels show 2006-2022 averages (lines) and 10-90% percentile ranges (shaded areas) of daily average Q and total daily SSF (data described in Sec. 2.1). Horizontal bars show average monthly precipitation and rainfall totals. Precipitation follows the same seasonal cycle in both catchments. Little to no rainfall occurs outside of the melt season (May-October; highlighted in yellow). The wettest months both in terms of precipitation and rainfall are the summer months (June-August).

2011; GeoSphere Austria, 2024a). This blended product integrates observations, weather radar, numerical weather prediction (NWP) outputs, and topographical information into hourly-15-min 1-km grids for all of Austria, of which the freely available hourly resolution is used in this study.

125 Precipitation estimates are based on a radar composite from four to five C-band radars supplemented with data from neighbouring countries, and calibrated with rain-gauge measurements from approximately 250 weather stations and elevation effects (Haiden et al., 2011). Observed precipitation is interpolated onto the INCA grid with inverse distance weighting (IDW). Topographical errors in the radar composite is corrected by applying a climatological scaling and spatially rescaling it using the latest observations. Finally, the twice adjusted radar field is combined with the interpolated observations. For temperature estimation, INCA employs a three-dimensional analysis method, in which NWP outputs are adjusted with measured temperatures (see Kann et al., 2009; Haiden et al., 2011). The accuracy of INCA estimates can vary, particularly in complex terrain, with an average error of 50-100% in the 15-minute precipitation grids and 1.0 to 1.5 °C in the temperature grids (Haiden et al., 2011).

130 Hourly INCA precipitation grids from 15 March 2011 to 12 December 2024 (GeoSphere Austria, 2024a) were merged with hourly grids aggregated from 15-min resolution grids from 1 January 2004 to 14 March 2011 to create a unified hourly precipitation dataset from 2004 and 2024. We performed a simple quality check on the unified dataset, removing negative values and checking each time step with grid-scale precipitation  $> 100 \text{ mm h}^{-1}$ . In the latter case, we removed seven time steps where these high precipitation rates were clearly data artefacts.

135 Hourly rainfall grids were estimated by calculating the precipitation phase with the routine from the snow-hydrological model openAMUNDSEN (Hanzer et al., 2024; Strasser et al., 2024) using INCA temperature grids. [This routine assumes that fractions of solid and liquid precipitation are linearly distributed between 100% liquid at 1 °C and 100% solid at 0 °C.](#) The resulting liquid precipitation fraction grids were multiplied with INCA precipitation to obtain hourly rainfall grids. As rainfall estimates rely on temperature grids (GeoSphere Austria, 2024a), which begin on 15 March 2011, [our calculated](#) hourly rainfall  
140 grids are only available for the same time period as temperature (i.e. March 2011 to December 2024).

Hourly time series of catchment-averaged precipitation,  $P_t$ , and grid-scale maximum precipitation,  $I_t$ , for the Ötztal-Tumpen catchment were calculated from INCA precipitation grids by taking the mean and maximum of all grid cells within the catchment for each time step. Similarly, we calculated hourly catchment-averaged rainfall,  $\text{RF}_t$ , by averaging INCA rainfall grids over the Ötztal-Tumpen catchment for each time step.

## 145 2.2.2 [Station data](#) [Weather stations](#)

We collected daily and sub-daily precipitation measurements from [multiple-33](#) weather stations in and around Ötztal (Fig. 1b, Tab. [??-S1, Supplement](#)) of which 13 are located within the study area. Most stations are operated by GSA or the Hydrographic Service of Tyrol (HD-Tirol) and tend to be located at lower elevations on the valley floor. Therefore we supplemented with high-elevation stations from the Department of Geography (UIBK-GEOG) and the Department of Atmospheric and Cryospheric  
150 Sciences (ACINN) at the University of Innsbruck, as well as the Vernagtbach station operated by the Bavarian Academy of Sciences (BADW) (see Strasser et al., 2018; Warscher et al., 2024). The weather stations have varying coverage during the study period ([Appendix](#), Fig. [??S2](#), see Tab. [??-S1 in Supplement](#) for a complete list of weather stations).

Most of the stations have already undergone initial quality checks by the providers in terms of the precipitation data, except for the ACINN stations, which feature raw data. For these stations we performed visual quality checks of all data to remove im-  
155 plausible values. For comparison with the gridded INCA data, we aggregated the measurements to hourly and daily resolution where applicable with the criteria that the aggregation interval must contain at least 90% valid data.

## 3 Methods

### 3.1 Uncertainty analysis of INCA

Gridded precipitation products in mountainous regions have limited accuracy (e.g. Prein and Gobiet, 2017; Zandler et al., 2019; Deng et al., 2024; Slezziak et al., 2023) due to the strong influence of topography on precipitation, an observation bias towards  
160

lower elevations, and challenging conditions for radar (e.g. beam shielding) (Germann et al., 2006). Even in the mountainous parts of the INCA domain (i.e. Austrian Alps), the high density of weather stations is somewhat biased towards elevations below 2000 m asl (Haiden et al., 2011). Taking advantage of the higher density of rain gauges in Ötztal also at high elevations (Strasser et al., 2018; Warscher et al., 2024), we can estimate the uncertainty of hourly and daily INCA precipitation with our  
165 assembled rain gauge data in and around Ötztal (Tab. ??) using four metrics.

The mean error (ME, Eq. 1) and the root-mean squared error (RMSE, Eq. 2) are calculated for each station by comparing the observed precipitation of a station  $x_i^{\text{obs}}$  with the predicted INCA precipitation at the grid cell in which the station is located  $x_i^{\text{INCA}}$

$$\text{ME} = \frac{1}{N} \sum_{i=1}^N (x_i^{\text{INCA}} - x_i^{\text{obs}}) \quad (1)$$

170

$$\text{RMSE} = \sqrt{\frac{1}{N} \sum_{i=1}^N (x_i^{\text{INCA}} - x_i^{\text{obs}})^2} \quad (2)$$

where  $N$  is the total number of time steps indexed by  $i$  with both valid INCA and observation values. The ME indicates whether INCA tends to over- or under-estimate precipitation at the station, whereas the RMSE quantifies the overall error magnitude of INCA (Wilks, 2019).

175 To estimate the ability of INCA to capture the occurrence of precipitation we classified each time step of  $x_i^{\text{obs}}$  and  $x_i^{\text{INCA}}$  into a "precipitation" and "no-precipitation" category, using a threshold of  $0.1 \text{ mm h}^{-1}$  for the hourly data, and  $1 \text{ mm d}^{-1}$  for the daily data. The latter is the definition of a "wet day" commonly used in climate indices (Zhang et al., 2011). Next, we computed contingency tables (see Gold et al., 2019) listing the number of hits (true positives)  $a$ , misses (false negatives)  $b$ , false positives  $c$ , and true negatives  $d$ . From these four possible outcomes we estimated (1) the accuracy (Acc, Eq. 3) and (2)  
180 the frequency bias (FB, Eq. 4) (Wilks, 2019; Gold et al., 2019).

$$\text{Acc} = \frac{a + d}{N} \quad (3)$$

$$\text{FB} = \frac{a + c}{a + b} \quad (4)$$

The Acc is the fraction time steps in which INCA correctly predicts the occurrence of precipitation. The FB quantifies whether  
185 INCA tends to over- or under-estimate the occurrence of precipitation.

### 3.1.1 Annual-based uncertainty analysis

To quantify how uncertainties in INCA precipitation estimates may have changed during the study period, we conducted an annual-based analysis. We calculated RMSE of daily precipitation for each year and station separately. Next, we calculated annual RMSE averages from all available stations within Tumpen-Ötztal. Of particular interest is whether precipitation and heavy

190 precipitation days ( $>10 \text{ mm d}^{-1}$ ) are over- or under-predicted, as this may affect the detection of [precipitation extremes heavy precipitation peaks](#). Hence we also calculated the FB of these two quantities for each year of the study period.

### 3.2 Multi-scale detection of [extreme heavy precipitation events](#)

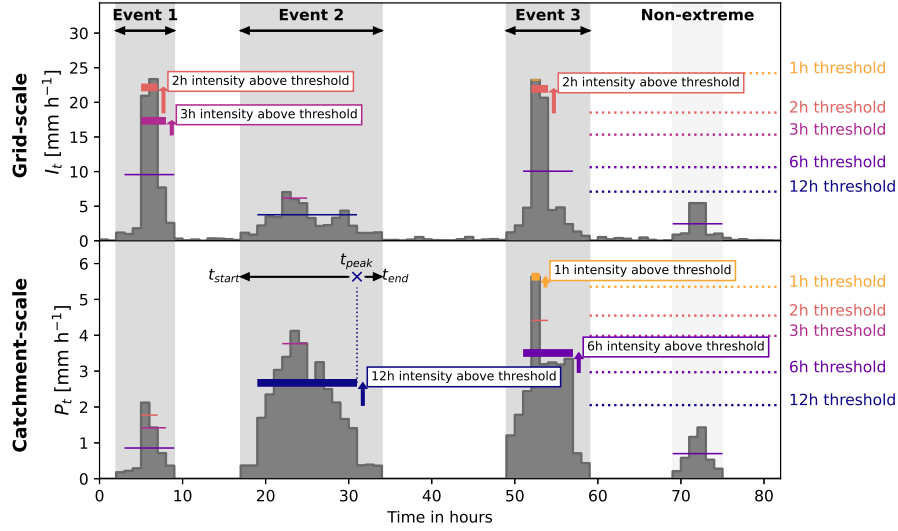
To assemble a catalogue of [extreme heavy precipitation events](#), we devise a multi-scale detection approach based on extreme value statistics that allows for detection of [precipitation extremes heavy precipitation peaks](#) at multiple temporal and spatial scales. We use catchment-averaged,  $P_t$ , and grid-scale maximum precipitation,  $I_t$ , to represent the spatial scales of the [catchment and grid-scale precipitation catchment-wide and localised precipitation respectively](#) (Fig. 3). [Extremes Events](#) in  $P_t$  will tend to represent catchment-wide heavy precipitation such as frontal precipitation. [Extremes](#), [while events](#) in  $I_t$  will track [grid-scale extremes localised heavy precipitation](#), generally convective cells. Using a duration-dependent generalised extreme value (d-GEV) distribution, we estimate intensity-duration-frequency (IDF) curves of  $P_t$  and  $I_t$  during May-October for Tumpen-Ötztal [\(Fig. S3, Supplement\)](#). With the IDF curves we set detection thresholds for each duration, extract peaks, isolate the associated precipitation event, and merge any duplicated or overlapping events. The procedure is described in detail below.

For each of the two time series,  $P_t$  and  $I_t$ , we fit a d-GEV distribution (Koutsoyiannis et al., 1998) which allows us to calculate IDF curves from a single extreme value distribution (see Ulrich et al., 2020; Fauer et al., 2021) reducing the total number of parameters required (Ulrich et al., 2020) [compared to approaches which a GEV to each duration](#). We use the R-package `IDF` (Fauer et al., 2017) with the options allowing multi-scaling and curvature for small durations (see Fauer et al., 2021).

The d-GEV distributions were fitted to annual May-October precipitation block maxima,  $\mathbf{M} = (m_{d_j})$ , using the maximum likelihood method. We calculated  $\mathbf{M}$  for each of the precipitation time series  $P_t$  and  $I_t$ . For each duration  $d$ ,  $\mathbf{M}$  were calculated by applying a  $d$ -moving average to the precipitation time series and extracting the maximum value  $m$  during May-October of each year  $j$ . We considered the durations 1, 2, 3, 6, 12, 24, 48, and 72 h. We restricted  $\mathbf{M}$  to May-October [precipitation](#), when most sediment is exported and rainfall is highest (Fig. 2). Outside of this season precipitation predominantly falls and accumulates as snow and is therefore not relevant for our study. [Furthermore, suspended sediment transport is negligible from November to April](#).

215 Detection thresholds,  $u$ , for each [duration](#)  $d$  and spatial scale (i.e. [grid-scale](#)  $I_t$  or [catchment-scale](#)  $P_t$ ) were set at the [0.8 exceedence-0.2 non-exceedence](#) probability quantile of their respective IDF curves, which corresponds to a return period of 1.25 years. With this choice of  $u$  we should capture the major precipitation events each year for the spatial and temporal scales under consideration and thus ensure a sufficiently large catalogue of [precipitation extremes heavy precipitation events](#).

Next, we detected and isolated [extreme heavy precipitation peaks](#) in the precipitation time series. From  $d$ -moving-averaged  $P_t$  and  $I_t$  we extracted peaks above  $u$  and their timing,  $t_{\text{peak}}$  (Fig. 3) [, explained in detail in figure caption](#). [The peaks were identified using the `get\_extremes` function from `pyextremes` \(Bocharov, 2024\), which applies a declustering procedure to ensure a minimum time window of 24 hours between peaks](#). We detected event peaks for all durations in  $P_t$  but only for



**Figure 3.** Illustration of multi-scale detection of heavy precipitation extremes events (synthetic time series). Extreme-Heavy precipitation peaks above the detection thresholds are detected both on the grid-scale 1-km-scale with the grid-scale maximum precipitation time series  $I_t$  (top) and on the catchment-scale with the catchment-averaged precipitation time series  $P_t$  (bottom). Peaks exceeding the detection thresholds (only sub-daily durations show in this figure) are identified (thick coloured lines with labels and arrows showing threshold exceedance), while those below are ignored (thin coloured lines). From the timing of the detected peak  $t_{\text{peak}}$ , the detection algorithm searches forward and backward in time to identify the start  $t_{\text{start}}$  and end  $t_{\text{end}}$  of the event (grey area). Event 1 shows a case where extreme-heavy precipitation peaks of at two durations were detected from  $I_t$  (grid-scale) but the event was not extreme at the catchment scale. Event 2 has a single extreme-heavy precipitation peak at the catchment-scale. Event 3 has extreme-heavy precipitation peaks both at the grid- and catchment-scale. The non-extreme-precipitation event towards the end of the time series shows a case where precipitation did not exceed the thresholds at any duration and spatial scale and thus judged to be "Non-extreme".

durations  $\leq 24$  h in  $I_t$ , under the assumption that localised heavy precipitation events detected in the grid-scale extremes precipitation time series will generally be convective events that last less than 24 h. For each extreme-

225 For each heavy precipitation peak, we isolated the associated precipitation-event by searching forward and backward in time from  $t_{\text{peak}}$  to identify when it started and stopped raining. The event start time,  $t_{\text{start}}$ , was defined as the first time step before  $t_{\text{peak}}$  that satisfied the criteria

$$\sum_{t=t_{\text{start}}-1}^{t_{\text{start}}+1} P_t < 0.1 \text{ mm h}^{-1} \quad (5)$$

or

$$230 \quad \sum_{t=t_{\text{start}}-1}^{t_{\text{start}}+1} I_t < 1 \text{ mm h}^{-1} \quad (6)$$

depending on in which precipitation time series the ~~extreme-heavy precipitation~~ peak was detected. The event end time,  $t_{\text{end}}$ , was defined as the first time step after  $t_{\text{peak}}$  that satisfied the criteria in Eq. 5 and 6 ( $t_{\text{start}}$  substituted with  $t_{\text{end}}$ ).

~~Many precipitation extremes~~ Given the generous criteria for the detection of heavy precipitation peak, many heavy precipitation events were detected at multiple scales, ~~i.e. meaning~~ these events exceeded ~~the detection thresholds~~ for several durations, or ~~for both were detected both in~~  $P_t$  and  $I_t$ . These events are either duplicates (i.e. same  $t_{\text{start}}$  and  $t_{\text{end}}$ ) or temporally overlapping ~~that we merged iteratively in the following order, and were merged iteratively by passing over the whole collection of detected events several times. The events were selected for merging by different criteria in each merging pass:~~

1. duplicated or overlapping events with peaks for the same duration, detected in both  $P_t$  and  $I_t$ ;
2. events with identical  $t_{\text{end}}$ ;
- 240 3. events with identical  $t_{\text{start}}$ ; and
4. any remaining overlapping events.

~~Overlapping~~ In each pass, overlapping events were merged by updating  $t_{\text{start}}$  and  $t_{\text{end}}$  to the earliest  $t_{\text{start}}$  and the latest  $t_{\text{end}}$ , so that the merged event encompassed the timespan of all events being merged. ~~Each-~~

After the merging, each remaining precipitation event was tagged with the durations and spatial scales at which it was extreme. ~~All detected~~ Finally, all events were manually checked by visually evaluating their accumulated precipitation maps and comparing their time series with station observations. Events with implausible values or precipitation patterns were checked thoroughly and removed if it was judged that the event was a data artefact or mistaken detection, such as precipitation only occurring in a single grid cell.

### 3.3 ~~Event~~ Characterisation and categorisation of heavy precipitation characteristics events

250 For each ~~precipitation extreme~~ heavy precipitation event, we calculate a set of characteristics based on Leonarduzzi et al. (2017), which quantify rainfall and precipitation amounts and intensity (Tab. 2). In addition, we calculated the average precipitation area  $A_{\text{precip}}$  in order to estimate the catchment area affected by a precipitation ~~extreme event~~. We calculated  $A_{\text{precip}}$  by determining the fraction of catchment area receiving  $> 0.1$  mm precipitation for each time step, before averaging over the entire event duration. To give an indication of the moisture conditions in the catchment over the last seven days leading up to the event, we calculated the 7-day normalised antecedent precipitation index, NAPI7, after Heggen (2001).

We further categorised each event according to the spatial and temporal scale of the set of ~~extreme-heavy precipitation~~ peaks detected. An event detected from  $P_t$  or both  $P_t$  and  $I_t$  was categorised as a ~~catchment-scale~~ catchment-wide event, while one detected only from  $I_t$  was categorised as a ~~grid-scale~~ localised event. ~~Sub-daily extremes are events with peaks detected events only have heavy precipitation peaks~~ above 1 to 12 h thresholds. ~~Long-duration extremes are events with at least one extreme peak detected events contain least one heavy precipitation peak~~ above a 24, 48, or 72 h threshold. Hence, the temporal scale does not refer to the overall duration of the precipitation event, i.e.  $D$  in Tab. 2, but the set of ~~extreme peaks detected heavy precipitation peaks detected within the event~~ (Fig. 3).

**Table 2.** Metrics quantifying the characteristics of the extreme-heavy precipitation events

<b>Metric</b>	<b>Description</b>	<b>Equation</b>	<b>Unit</b>
$P_{\text{tot}}$	Total cumulative catchment-averaged precipitation	$P_{\text{tot}} = \sum_{t=t_{\text{start}}}^{t_{\text{end}}} P_t$	mm
$\text{RF}_{\text{tot}}$	Total cumulative catchment-averaged rainfall	$\text{RF}_{\text{tot}} = \sum_{t=t_{\text{start}}}^{t_{\text{end}}} \text{RF}_t$	mm
$D$	Event duration	$D = t_{\text{end}} - t_{\text{start}}$	h
$f_{\text{liquid}}$	Fraction of liquid precipitation	$f_{\text{liquid}} = \frac{\text{RF}_{\text{tot}}}{P_{\text{tot}}}$	-
$I_{\text{max}}$	Maximum intensity of grid-scale maximum precipitation	$I_{\text{max}} = \max\{I_t : t_{\text{start}} \leq t \leq t_{\text{end}}\}$	$\text{mm h}^{-1}$
$P_{\text{max}}$	Maximum intensity of catchment-averaged precipitation	$P_{\text{max}} = \max\{P_t : t_{\text{start}} \leq t \leq t_{\text{end}}\}$	$\text{mm h}^{-1}$
$\text{RF}_{\text{max}}$	Maximum intensity of catchment-averaged rainfall	$\text{RF}_{\text{max}} = \max\{\text{RF}_t : t_{\text{start}} \leq t \leq t_{\text{end}}\}$	$\text{mm h}^{-1}$
$P_{\text{mean}}$	Mean intensity of catchment-averaged precipitation	$P_{\text{mean}} = \frac{P_{\text{tot}}}{D}$	$\text{mm h}^{-1}$
$\text{RF}_{\text{mean}}$	Mean intensity of catchment-averaged rainfall	$\text{RF}_{\text{mean}} = \frac{\text{RF}_{\text{tot}}}{D}$	$\text{mm h}^{-1}$

### 3.3.1 Indicators of snow amount and melt

265 Snow conditions in the catchment during heavy precipitation events were represented using daily 1-km snow water equivalent (SWE) grids from SNOWGRID-CL, a physically based and spatially distributed snow model that simulates snow accumulation and ablation (Olefs et al., 2020). A time series of catchment-averaged snow water equivalent  $\text{SWE}_t$  was calculated by averaging the daily SWE grids over Tumpen-Ötztal between 2004 and 2023. For each event, we calculate the average SWE in the catchment during the period from the first day to the last of the event,  $\text{SWE}_{\text{mean}}$ . In addition, to give an indication of whether snowmelt occurred during each heavy precipitation event, we calculate the difference between the catchment-averaged SWE  
270 on the last day of the event and the day before the event,  $\text{SWE}_{\text{loss}}$ . Both of these indicators are only intended to give a rough estimate of whether the amount of snow in the catchment or snowmelt might have played a role during an event.

### 3.3.2 Uncertainty analysis

To gauge the uncertainty in the precipitation intensity and amount of each detected event, we calculated the RMSE of  $P_{\text{tot}}$  and  $I_{\text{max}}$  for each event. This analysis was based on the 10 stations within Ötztal with hourly precipitation measurements (see Tab. 275 [S1, Supplement](#)). Due to the varying temporal extents of the station data, we first calculated the event-based RMSE for each station then averaged over all stations to obtain one RMSE value for  $P_{\text{tot}}$  and  $I_{\text{max}}$  respectively. This ensures that each station is weighted equally which prevents biasing the estimate towards the lower elevation stations that have more observations.

### 3.4 Fluvial sediment response to **extreme-heavy** precipitation events

To estimate the fluvial sediment response to precipitation events we first delineated hydrological events in  $Q_t$  using local- 280 minima hydrograph separation (Sloto and Crouse, 1996). [This method separates the entire streamflow time series into pulses of river discharge, separated by the local minima which mark the end of recession after one hydrological event and the onset of the next.](#) Following Tsyplenkov et al. (2020) we use a 21-hour search window, which is suitable for Ötztal's [glacial glacially-influenced](#) hydrological regime (Skålevåg et al., 2024), [which ensures that two local minima are separated by at least 10.5 hours.](#)

285 The resulting hydrological event catalogue was compared to the detected **extreme-heavy** precipitation events, matching hydrological events to each [precipitation-extreme-heavy precipitation event](#): All hydrological events that overlap with a precipitation event, i.e. begin or end between  $t_{\text{start}}$  and  $t_{\text{end}}$ , are assigned to that event. We discarded all cases, in which the first matched hydrological event began  $>3$  h before  $t_{\text{start}}$ , or where the last matched hydrological event began  $<1$  h before the end of the precipitation event.

290 The fluvial sediment response window of an **extreme-heavy** precipitation event was defined as the time window from  $t_{\text{start}}$  to the end of the last matched hydrological event  $t_{\text{hydro,end}}$ . For each [precipitation-extreme-heavy precipitation event](#) we calculated the mass of suspended sediment exported, i.e. suspended sediment yield SSY ([in t](#)):

$$\text{SSY} = \sum_{t=t_{\text{start}}}^{t_{\text{hydro,end}}} \text{SSF}_t \quad (7)$$

To take into account the varying event durations we also calculate the average suspended sediment flux [SSF<sub>mean</sub> in t h<sup>-1</sup>](#):

$$295 \text{ SSF}_{\text{mean}} = \text{mean}\{\text{SSF}_t : t_{\text{start}} \leq t \leq t_{\text{hydro,end}}\} \quad (8)$$

[We also](#) [During the melt season, and especially in July and August, the sediment load in the river will be elevated at the onset of an event due to other drivers such as high sub-glacial sediment discharge. To account for this, we also calculated the excess suspended sediment yield SSY<sub>ex</sub> of an event in t. This metric only sums up the SSF in each time step that exceeds the initial SSF at the start of the event:](#)

$$300 \text{ SSY}_{\text{ex}} = \sum_{t=t_{\text{start}}}^{t_{\text{hydro,end}}} \begin{cases} \text{SSF}_t - \text{SSF}_{t_{\text{start}}}, & \text{SSF}_t > \text{SSF}_{t_{\text{start}}}, \\ 0, & \text{otherwise.} \end{cases} \quad (9)$$

Finally, we extracted the peak ~~SSC-concentration and averaged SSC in~~  $\text{mg l}^{-1}$  during the sediment response window of each ~~precipitation-extreme~~ heavy precipitation event:

$$\text{SSC}_{\max} = \max\{\text{SSC}_t : t_{\text{start}} \leq t \leq t_{\text{hydro,end}}\} \quad (10)$$

$$305 \quad \text{SSC}_{\text{mean}} = \text{mean}\{\text{SSC}_t : t_{\text{start}} \leq t \leq t_{\text{hydro,end}}\} \quad (11)$$

### 3.5 Contribution of precipitation-driven events to annual sediment yield

To quantify the contribution of precipitation-driven sediment transport to annual SSY, we conducted an inverse analysis in which we classified all hydrological events based on the associated precipitation. We categorised hydrological events with influence of ~~extreme-heavy~~ precipitation if they matched with ~~precipitation-extremes-heavy precipitation events~~ in Sec. 3.4.

310 Of the remaining hydrological events, those with an average precipitation intensity of  $>0.1 \text{ mm h}^{-1}$  were categorised as ~~non-extreme-non-heavy~~ precipitation and the rest as *no precipitation*.

For each hydrological event we calculated SSY, SSF,  $P_{\text{tot}}$ , and  $\text{RF}_{\text{tot}}$ , substituting  $t_{\text{start}}$  and  $t_{\text{end}}$  with the start and end times of the hydrological event (see Eq. 7-10 and in Tab. 2). Next, we calculated the contribution to annual SSY of each hydrological event under the influence of ~~extreme, non-extreme~~ heavy, non-heavy, and no precipitation. Due to the high inter-  
315 annual variability of annual SSY we also calculated the fraction of annual SSY exported during each precipitation influence event class. Using a Mann-Kendall (MK) test (Kendall, 1970; Mann, 1945) with a 5 % significance level we detected significant annual trends, and estimated their magnitude with ~~Thiel-Sen~~ Thiel-Sen slope (Sen, 1968; Theil, 1950).

### 3.6 Fraction of precipitation-driven suspended sediment spikes

Given the strong influence of melt-driven sediment transport in the study area, not all ~~sediment discharge-hydrological~~ events  
320 with high SSC are linked to (~~extreme-heavy~~) precipitation. In another inverse analysis we extracted hydrological events with high peak SSC and classified them as influenced by ~~extreme, non-extreme,~~ heavy, non-heavy, or no precipitation as in Sec. 3.5. We defined these *suspended sediment spikes* as hydrological events with  $\text{SSC}_{\max}$  above the 90th percentile of  $\text{SSC}_t$ ,  ~~$P_{90}(\text{SSC}_t)$~~   $\text{SSC}_{90}$  after Skålevåg et al. (2024). For both catchments we counted the number of such events affected by either ~~extreme-or~~ non-extreme heavy or non-heavy precipitation.

## 325 4 Results

### 4.1 INCA uncertainty

The uncertainty analysis of daily and hourly INCA precipitation shows that INCA tends to overestimate the precipitation amount with an average ME of  $0.2 \text{ mm d}^{-1}$  and  $0.01 \text{ mm h}^{-1}$  for daily and hourly precipitation respectively. The average RMSE of hourly precipitation is  $0.5 \text{ mm h}^{-1}$  and is unrelated to altitude (Fig. ~~??d, Appendix~~ S4d, Supplement). The RMSE

330 of daily precipitation is 1.0 to 2.5 mm d<sup>-1</sup> at stations below 1750 m asl compared to 1.0 to 6.2 mm d<sup>-1</sup> at higher elevations (Fig. ~~??e~~, ~~AppendixS4c~~, ~~Supplement~~). At both, the hourly and daily scale, the INCA data are highly accurate (Acc>0.9) concerning precipitation up to about 2500 m asl (Fig. ~~??e-f~~, ~~AppendixS4e-f~~, ~~Supplement~~). At higher elevations, this accuracy drops to between 0.8 and 0.9 for precipitation hours and between 0.66 and 0.93 for precipitation days. Overall, the frequency of precipitation hours and days is overestimated by INCA with FB generally above 1 (Fig. ~~??g-h~~, ~~AppendixS4g-h~~, ~~Supplement~~).  
335 However, at three stations, Proviantdepot, Latschbloder, and Station Hintereis, located at high elevations (2737 to 3031 m als) in the inner Rofental, INCA ~~under-predicts~~ ~~underestimates~~ the occurrence of precipitation at both the daily and hourly scale.

## 4.2 ~~Extreme~~ ~~Heavy~~ ~~precipitation~~ event catalogue and characteristics

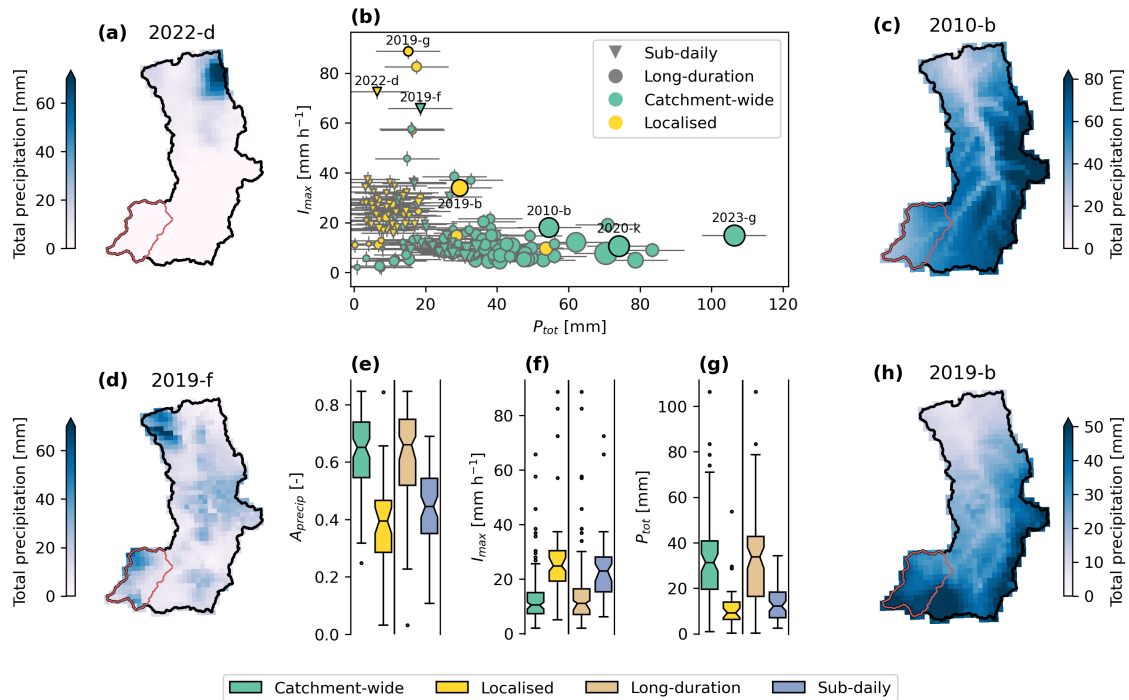
A total of 169 ~~extreme~~ ~~heavy~~ precipitation events were identified with the multi-scale detection approach. Three events were removed during the visual check, as the precipitation maps revealed that only one or two grid cells received very high amounts  
340 of precipitation while neighbouring cells did not receive any and no precipitation was recorded at the weather stations; these events were likely data artefacts ~~-(see Supplement, Fig. S6).~~

Of the 166 events compiled in the final catalogue, 62 were detected from  $I_t$ , 78 from  $P_t$ , and 26 from both time series. Only 41 events (25%) were detected with a single threshold, while the majority ~~were all either extreme~~ ~~contained heavy precipitation peaks~~ at multiple temporal or spatial scales. The events ranged from intense short duration ~~extremes~~ ~~bursts~~ to long-duration  
345 events with high precipitation totals (Fig. 4b). The average event duration was 24 h with the shortest event lasting 5 h and the longest 128 h (5.3 days). The highest  $I_{\max}$  was 88 mm h<sup>-1</sup> with an average of 19 mm h<sup>-1</sup> (2019-g, Fig. 4b). The largest event in terms of precipitation amount recorded a  $P_{\text{tot}}$  of 106 mm (2023-g, Fig. 4b) compared to the highest  $RF_{\text{tot}}$  of 97 mm. On average the total precipitation and rainfall amount was 24 and 16 mm respectively.

The 75 ~~extremes~~ ~~heavy precipitation events~~ detected with sub-daily thresholds ( $\leq 12$  hours) tended to have more intense  
350 precipitation (Fig. 4f) consisting mostly of rainfall (95 % on average). They occurred mainly between June and August, which is when precipitation and rainfall amounts are highest (Fig.2). Two examples of sub-daily ~~extremes~~ ~~heavy precipitation event~~ (Fig. 4a;d) highlight how localised precipitation was, with much the catchment receiving little to no precipitation. The 91 long-duration ~~extremes~~ ~~heavy precipitation event~~ had higher precipitation totals (Fig. 4g) that affected larger areas (Fig. 4e), occurred throughout May-October without any particular seasonality, and with higher fractions of snowfall (45 % on average).

355 The 104 ~~catchment-scale~~ ~~catchment-wide heavy precipitation~~ events had low precipitation intensities (Fig. 4b,f) but affected a larger catchment area (Fig. 4e) with high precipitation totals (Fig. 4g). In contrast, the 62 ~~grid-scale precipitation extremes~~ ~~localised heavy precipitation events~~ affected a smaller catchment area (Fig. 4e), had high  $I_{\max}$  (Fig. 4f), and precipitation totals of mostly <20 mm (Fig. 4g).

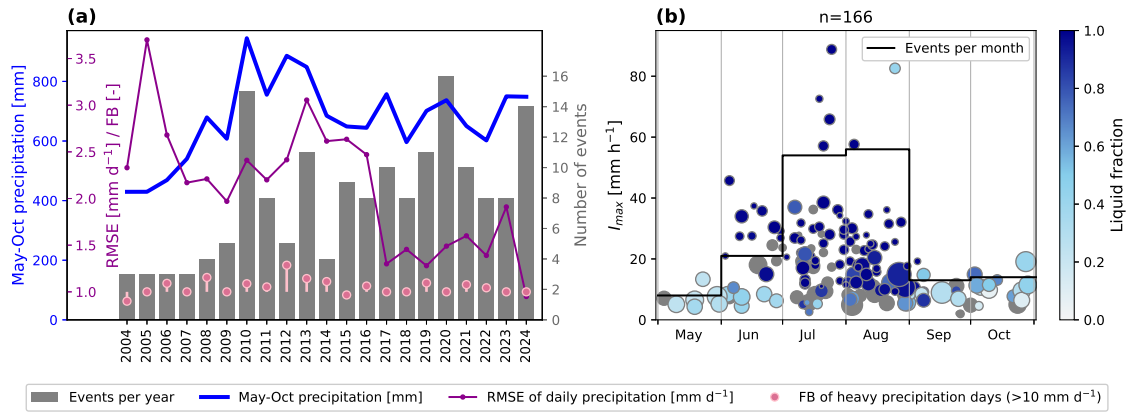
The annual frequency of ~~precipitation extremes~~ ~~heavy precipitation events~~ varied over the study period with events occurring  
360 more frequently towards the end (Fig. 5a), displaying a significant increasing trend (MK-test, 5% significance level). For the first few years of the study period there were 3-5 events per year and in these years May-October precipitation was lower than the latter part of the study period. From 2010 onwards followed a few years with high inter-annual variability in event numbers, varying between 4 and 16 events per year. In the final part of the study period, from 2015 onwards, the annual occurrence of



**Figure 4.** Overview of heavy precipitation extremes events detected with the multi-scale approach (b). Events range from grid-scale-localised events of high intensity to catchment-scale-catchment-wide heavy precipitation events with high precipitation totals. Dot size indicates the duration of events. Error bars show the average RMSE of  $P_{tot}$  and  $I_{max}$  across all events and stations. Total accumulated precipitation maps of selected events (highlighted in b) show examples of a sub-daily, grid-scale-localised event (a), sub-daily, catchment-scale-catchment-wide event (d), long-duration, catchment-scale-catchment-wide event (c), and localised long-duration grid-scale-event (h), in addition to the event with the highest  $P_{tot}$  (2023-g) and  $I_{max}$  (2019-g). Event 2020-k exported a high amount of suspended sediment. Boxplots of average precipitation area (e), peak 1-hour catchment maximum precipitation intensity  $I_{max}$  (f), and total cumulative precipitation  $P_{tot}$  (g) highlight differences between catchment-catchment-wide and grid-scale-localised events (left) and events with-classified as long and short-extreme durations-duration or sub-daily events (right). Boxplot notches are 95% bootstrap confidence intervals for the median based on 1000 randomisations. The whiskers extend from the box to the most distant data point within 1.5 times the inter-quartile range (IQR) from the box.

precipitation extremes-heavy precipitation events was at a higher level with a minimum of 8 events per year. In general, there were more events in years with higher May-October precipitation, with annual event counts and May-October precipitation totals being significantly correlated,  $r = 0.65$ .

Average annual RMSE of daily precipitation was higher in the first half of the study period (median:  $2.4 \text{ mm d}^{-1}$ ) and dropped to a lower level (median:  $1.4 \text{ mm d}^{-1}$ ) between 2016 and 2024 (Fig. 5a). In both periods daily precipitation is overestimated, but with a higher median annual mean error of 0.24 mm in 2004-2016 compared to 0.14 mm from 2017 onwards. Heavy precipitation days with more than  $10 \text{ mm d}^{-1}$  had a tendency to be overpredicted, except in 2004 and 2015 where they were under-predicted. The years with the highest frequency bias are 2007, 2012, 2013, and 2014.



**Figure 5.** Annual (a) and seasonal (b) occurrence of extreme-heavy precipitation events. Number of events per year and May-October precipitation (a) are lower in the first six years of the study period compared to the later years. The annual median RMSE of daily precipitation across all stations within the study area show higher uncertainties in INCA for the first 13 years (a). The frequency bias (FB) of heavy precipitation days in INCA is also higher in the first decade (a). Most heavy precipitation extremes-events occur during July and August (b) when events consist mostly of liquid precipitation. Dot sizes are proportional to the total event precipitation. Grey dots are events with unknown liquid fraction (2004-2010).

About two thirds of precipitation-extremes-heavy precipitation events occurred during the summer months July and August with the lowest occurrences in May, September and October (Fig. 5b). Events with a high liquid fraction, i.e. mainly rainfall, were concentrated in the months June, July and August. Mid-season precipitation-extremes-heavy precipitation events tend to have higher intensities and shorter durations, while events with longer duration and lower intensity occurred evenly throughout the year. Events with higher amounts of snowfall (liquid fraction generally below 0.5) mainly occurred in the colder months of May, June, September and October.

### 4.3 Precipitation characteristics and sediment response

Of all precipitation event characteristics, the three rainfall characteristics show the strongest and consistently positive significant correlation with each of the sediment response variables (Tab. 3). The two characteristics describing, with the exception of peak SSC and total rainfall, which is not significantly correlated. The peak catchment averaged precipitation intensity,  $I_{\max}$  and  $P_{\max}$ , show shows significant but somewhat weaker positive correlation. Event duration with the sediment response variables. The 7-day antecedent precipitation index,  $NAPI_7$ , is not significantly correlated with the sediment response variables, with the exception of peak SSC which is weakly negatively correlated. Event duration,  $D$ , and average precipitation area,  $A_{\text{precip}}$ , are negatively correlated with sediment response magnitude. the sediment response variables. Both  $SWE_{\text{mean}}$ , indicating the amount of snow in the catchment, and  $SWE_{\text{loss}}$ , indicating snowmelt during the heavy precipitation event, are significantly negatively correlated with the sediment response variables. The correlation between  $SSY_{\text{ex}}$  and the precipitation event characteristics does not substantially differ from  $SSY$ .

**Table 3.** Rank correlation coefficients (Spearman) between precipitation event characteristics and  $\log_{10}$ -transformed sediment response variables in Tumpen-Ötztal. Statistical significant correlations (5% significance level) are denoted with an asterisk (\*). The number of heavy precipitation events  $n$  used to calculate the correlation coefficient is indicated in the right-hand column.

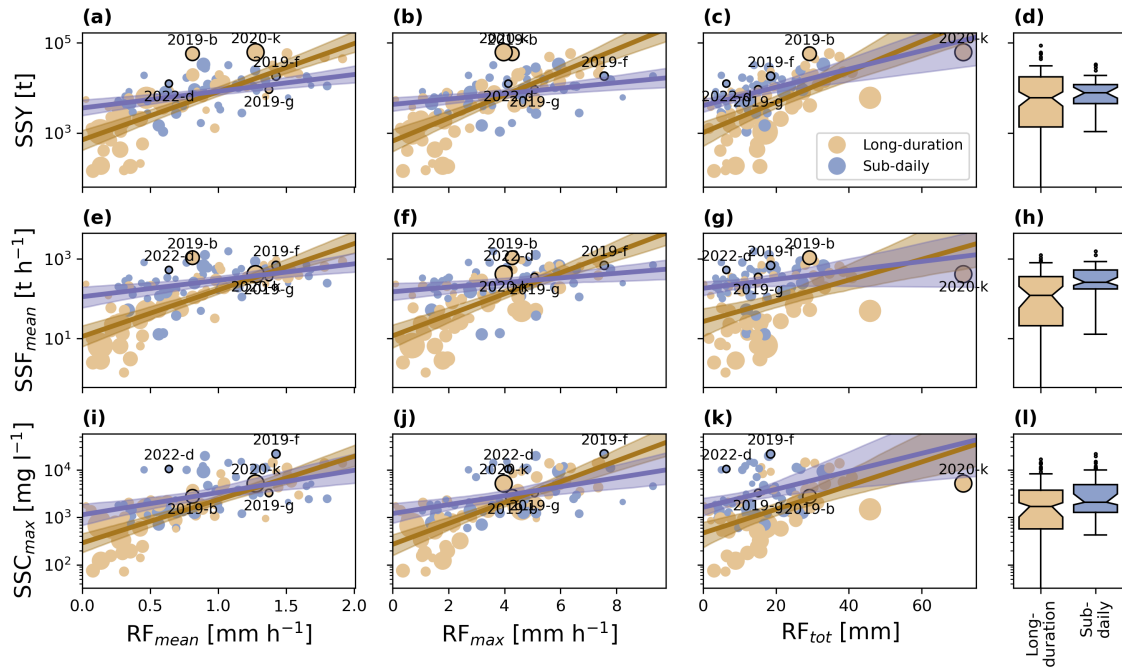
	SSY <sup>a</sup>	SSY <sub>ex</sub> <sup>a</sup>	SSF <sub>mean</sub> <sup>a</sup>	SSC <sub>max</sub> <sup>a</sup>	SSC <sub>mean</sub> <sup>a</sup>	$n$
$P_{\text{tot}}$	0.02	0.0	-0.25*	-0.31*	-0.08	138
$P_{\text{mean}}$	0.29*	0.29*	0.18*	0.12	0.29*	138
$P_{\text{max}}$	0.42*	0.41*	0.27*	0.21*	0.43*	138
$I_{\text{max}}$	0.39	0.47	0.59*	0.58*	0.45*	138
RF <sub>tot</sub>	0.54*	0.53*	0.30*	0.21	0.43*	107
RF <sub>max</sub>	0.68*	0.68*	0.62*	0.55*	0.72*	107
RF <sub>mean</sub>	0.74*	0.71*	0.71*	0.64*	0.74*	107
$D$	-0.12	-0.17	-0.40*	-0.43*	-0.23*	138
$A_{\text{precip}}$	-0.17	-0.23	-0.41*	-0.44*	-0.25	138
NAPI7	-0.11	-0.19	-0.19	-0.22*	-0.14	138
SWE <sub>mean</sub>	-0.40*	-0.43*	-0.41*	-0.52*	-0.51*	138
SWE <sub>loss</sub>	-0.51*	-0.49*	-0.70*	-0.70*	-0.52*	138

<sup>a</sup>  $\log_{10}$ -transformed

The relationship between event rainfall and suspended sediment shows clear differences between sub-daily and long-duration extreme-heavy precipitation events (Fig. 6). The sub-daily extremes-heavy precipitation event have an overall weaker positive relationship with rainfall intensity and amount. The difference is particularly pronounced for RF<sub>max</sub> and SSY and SSF<sub>mean</sub> (Fig. 6b,f). Here, SSY and SSF<sub>mean</sub> markedly increase with rainfall intensity for long-duration extremes-heavy precipitation event, whereas for sub-daily extremes-heavy precipitation event, increases in rainfall intensity barely have an effect. Sub-daily extremes-sub-daily heavy precipitation event overall have higher SSF<sub>mean</sub> compared to long-duration extremes-heavy precipitation event (Fig. 6h) and somewhat although not significantly higher SSC<sub>max</sub> (confidence intervals of medians overlap, Fig. 6l). In terms of total exported suspended sediment mass there is little difference between the two categories of precipitation-extremes-heavy precipitation events, except a larger spread for long-duration extremes-heavy precipitation event (Fig. 6d).

#### 4.4 Contribution of precipitation to annual sediment yield

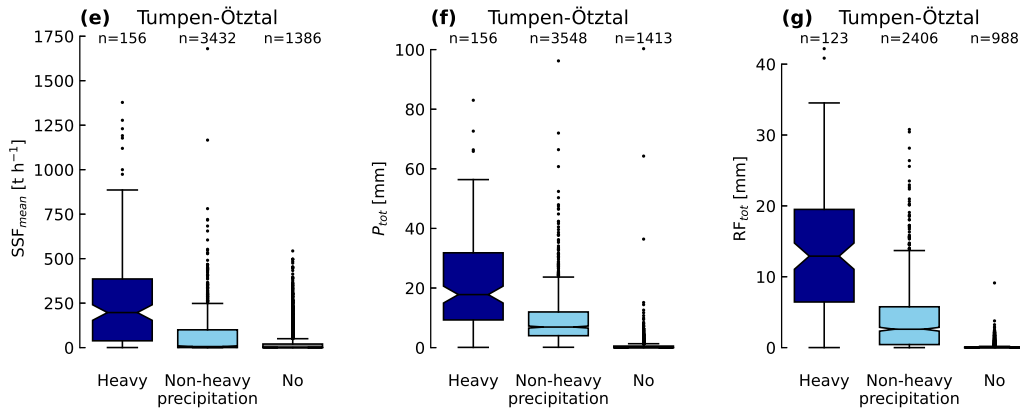
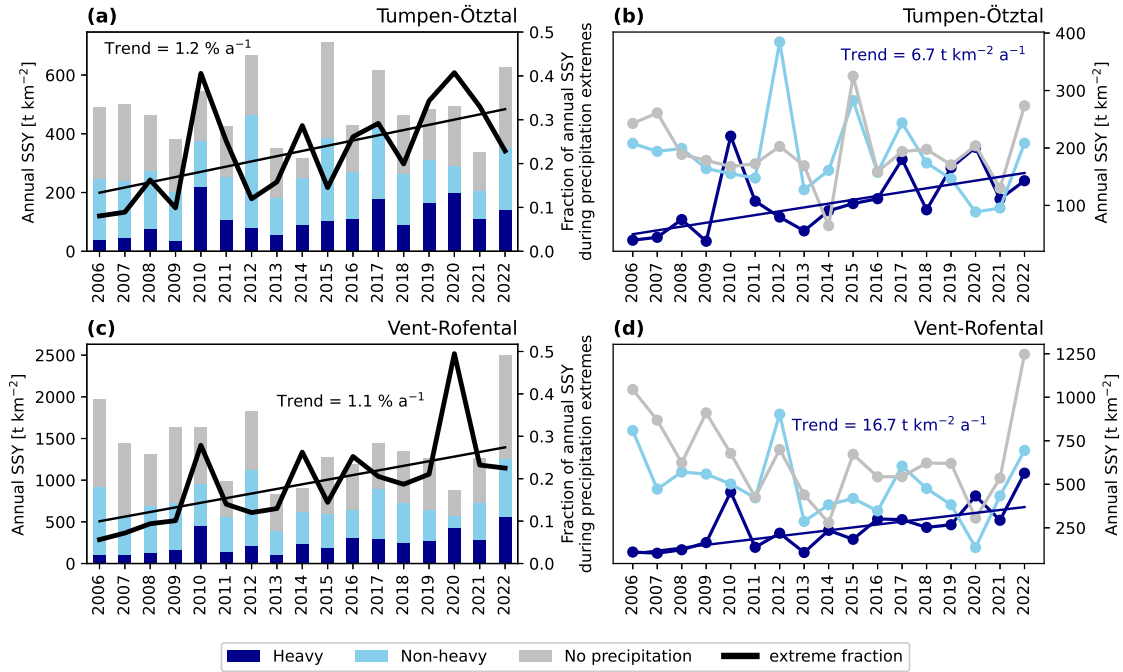
Between 2006 and 2022, both the total mass and the fraction of suspended sediment exported during precipitation-extremes-heavy precipitation events increased significantly in both catchments (Fig. 7a-d). The fraction of annual SSY exported during extreme-heavy precipitation-driven hydrological events increased at about 1 % per year in both catchments (Fig. 7a,c). There are no significant annual trends in suspended sediment exported during hydrological events with non-extreme-non-heavy or no precipitation. Moreover, in both catchments the sediment mass exported outside of precipitation-extremes-heavy precipitation



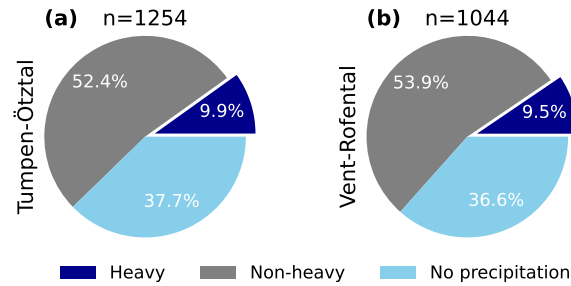
**Figure 6.** Suspended sediment response to heavy precipitation extremes events in Tumpen-Ötztal (109-107 events between 2011-2022) in terms of their mean intensity of catchment-averaged rainfall  $RF_{mean}$  (a,e,i), maximum intensity of catchment-averaged rainfall  $RF_{max}$  (b,f,j), and total cumulative catchment-averaged rainfall  $RF_{tot}$  (c,g,k). There are 58 long-duration and 49 sub-daily heavy precipitation events. Dot size indicates the duration of events. Lines are means from linear regression, and shaded areas are 95% bootstrap confidence intervals based on 1000 randomisations. Labelled events are the same as in Fig. 4. See Fig. 4 for details on boxplot configuration.

405 events (Fig. 7b,d) follows a similar trend to the total annual SSY (Fig. 7a,c). In Tumpen-Ötztal, the sediment mass exported outside of extreme-heavy precipitation events was largely unchanged throughout the 17 years (Fig. 7b). In Vent-Rofental, the contribution of hydrological events associated with non-extreme-non-heavy or no precipitation decreased until 2021, though abruptly increased in 2022 (Fig. 7d).

There is a significant difference between the  $SSF_{mean}$ ,  $P_{tot}$ , and  $RF_{tot}$  of hydrological events associated with extreme;  
 410 non-extreme-heavy, non-heavy and no precipitation (Fig. 7e-g). Those with extreme-heavy precipitation have the highest magnitudes, followed by non-extreme-non-heavy and no precipitation. On average, 23 % of annual suspended sediments were exported during extreme-precipitation events in association with heavy precipitation, compared to 37 % during non-extreme non-heavy precipitation and 40 % during hydrological events without precipitation. The discrepancy between the magnitude and annual contribution of each category is due to the differing event frequencies (Fig. 7e-g). Events influenced by extreme  
 415 heavy precipitation are rarer, thus despite their high  $SSF_{mean}$ , their contribution to annual SSY is lower than the other two categories.



**Figure 7.** Annual suspended sediment yield (SSY) categorised by precipitation type during a hydrological event with the contribution of each type between 2006 and 2022 for Tumpen (a-b) and Vent (c-d). The fraction (thick black lines) and total amount of sediment (colour-coded bars) exported during heavy precipitation extremes events significantly increases between 2006 and 2022. Average suspended sediment flux (e), total precipitation (f), and total rainfall (g) during hydrological events associated with extreme heavy precipitation events, non-extreme non-heavy precipitation ( $P_{\text{mean}} > 0.1 \text{ mm h}^{-1}$ ), and no precipitation ( $P_{\text{mean}} \leq 0.1 \text{ mm h}^{-1}$ ) show significant differences in their magnitude (two-sample Kolmogorov-Smirnov test with 5 % significance level, see Hodges, 1958). The number of hydrological events in each category with valid data is shown above each boxplot.



**Figure 8.** Number of suspended sediment spikes (hydrological events with  $SSC_{max} > P_{90}(SSC_t)$ ,  $SSC_{max} > SSC_{90}$ ) associated with extreme-heavy precipitation events, non-extreme-non-heavy precipitation ( $P_{mean} > 0.1 \text{ mm h}^{-1}$ ), and no precipitation ( $P_{mean} \leq 0.1 \text{ mm h}^{-1}$ ) in Tumpen-Ötztal (a) and Vent-Rofental (b).

#### 4.5 Fraction of precipitation-driven suspended sediment spikes

The results of the inverse analysis showed that only 10 % of the more than 1000 suspended sediment spike events, i.e. hydrological events with  $SSC_{max} > P_{90}(SSC_t)$ , only about 10%  $SSC_{max} > SSC_{90}$ , were associated with extreme-heavy precipitation (Fig. 8). About a third were associated with some, but not extreme-heavy, precipitation (Fig. 8). More than half of the suspended sediment spikes in both catchments were not associated with any precipitation. The pattern was nearly identical for Tumpen-Ötztal and Vent-Rofental.

## 5 Discussion

### 5.1 Uncertainty analysis

#### 425 5.1.1 INCA uncertainty and detection of heavy precipitation extremes events

Our uncertainty analysis found that INCA tends to somewhat overestimate both the occurrence and amount of precipitation, with increasing inaccuracies with elevation. Using a very dense rain-gauge network in southeastern Austria, Ghaemi et al. (2021) also found both over- and underestimation in space of INCA annual and heavy precipitation. They also found higher errors in 2012-2014, which they attribute to the installation of a new radar, and reported an improvement after 2015. We find 430 that INCA uncertainty is higher for the first 13 years of the study period with a marked reduction in 2017, which may also be related to the incorporation of the new radar. Furthermore, INCA tends to underestimate precipitation at the highest-elevation stations in the south-western part of the catchment, where the terrain is enclosed by mountain peaks over 3000 m asl. This underestimation may therefore be caused by radar beam shielding (Germann et al., 2006).

The changes in INCA uncertainties over time may affect the number of heavy precipitation events detected by our threshold-based approach. However, given that before 2017 INCA had higher annual mean errors (i.e. positive bias) and a greater tendency 435 to overpredict heavy precipitation days, it is more likely that errors in INCA inflated the event numbers in INCA during the

first 13 years of the study period ~~are higher than they ought to be. To give an indication of the robustness of the trend, we applied the same detection routine to three GSA stations within or close to Tumpfen-Ötztal (see Supplement). All three stations show a positive trend in the number of events over the study period, although only the trend at Umhausen is significant.~~ Hence, we assume that the significantly positive trend in annual event numbers ~~is not affected by the errors~~ represent a true increase and not an artifact of inhomogeneities in INCA.

Except for the three detected events that were in fact data artefacts, we found no indications that the errors in INCA produced further false positives. All other 166 events were verified as precipitation events recorded at weather stations. Despite uncertainties in the estimated precipitation quantities, as our detection routine relies on thresholds estimated from the INCA data itself and the spatial extent of precipitation, we believe that the uncertainties in INCA hardly affect our detection routine.

Moreover, a combined gridded precipitation product such as INCA has clear advantages: First, complete and consistent spatial coverage with information on areas not covered by weather stations due to the inclusion of radar-based remotely sensed precipitation. Second, a spatial resolution of 1 km and temporal resolution of 1 h, which resolves grid-scale localised, sub-daily extremes heavy precipitation events like convective storms (e.g. event 2022-d, Fig. 4a). The spatio-temporal characteristics of such events could not have been detected with weather stations alone and their rainfall intensities would likely have been underestimated (Schroeder et al., 2018). Furthermore, geomorphological variables ~~are sensitive to small-scale, such as total sediment yield and the area with active erosion and deposition during heavy rainfall events, have been found to be sensitive to~~ changes in rainfall spatial structure (Peleg et al., 2020), ~~which can only be captured by~~ and intensity (Peleg et al., 2020). Such spatio-temporal characterisation of heavy rainfall requires distributed, high-resolution data. Finally, using a dataset with consistent spatio-temporal extent and resolution has advantages over using stations with varying temporal coverage and spatial representativeness. Hence, the detection and characterisation of ~~precipitation extremes~~ heavy precipitation events at multiple spatial scales, as presented in this study, would have been impossible from station data alone and would have missed key precipitation characteristics that are relevant for rainfall erosion and sediment transport processes.

### 5.1.2 Methodological uncertainties in event detection

Our assumption of stationarity in the precipitation time series has important implications, as it may introduce uncertainty into the thresholds used for event detection. By assuming stationarity, we neglect the possibility that the underlying precipitation distribution is shifting (or scaling) over time due to a covariate, such as global mean temperature. Both observation-based and model-based studies suggest that heavy precipitation events in the European Alps are likely to increase with climate warming (Giorgi et al., 2016; Molnar et al., 2015; Dallon et al., 2024; Vergara-Temprado et al., 2021).

Consequently, non-stationarity in ~~extreme precipitation~~ heavy precipitation over time in our study area is likely. If true, this assumption introduces uncertainty into the estimation of the d-GEV. However, two aspects lead us to believe that this is of less concern. First, with a relatively short study period of 21 years, shifts in extreme values will only have limited influence. Second, our primary interest lies in understanding how shifts in ~~extreme~~ heavy precipitation over time affect sediment transport. Many geomorphic processes, such as erosion and sediment transport, respond only when certain thresholds are exceeded. Consequently, adjusting detection thresholds to account for temporal shifts in ~~extreme~~ heavy precipitation would not

necessarily reflect the physical precipitation-driven hydro-geomorphic response in the catchment. Furthermore, the fact that we use multi-scale detection and ~~0.8-exceedence-probability-0.2 non-exceedence-probability~~ to define detection thresholds means that we are quite generous with our definition of "extreme".

## 5.2 Drivers of fluvial sediment export during ~~heavy precipitation extremes events~~

### 475 5.2.1 Importance of distinguishing liquid and solid precipitation

We find a close positive association between rainfall intensities of ~~extreme-heavy~~ precipitation events and their suspended sediment yields, fluxes, ~~mean~~ and peak concentrations. Precipitation phase significantly influences runoff generation, which may explain why we find that precipitation alone has a weaker association with suspended sediment responses compared to liquid precipitation. In the steep, high-altitude terrain of the Alps, precipitation during summer can still fall as snow at higher  
480 catchment elevations. ~~Indeed, many of our detected heavy precipitation events contain some snowfall (Fig. 5b).~~ Distinguishing between rain and snow with elevation is already emphasised in hydrological modelling and flood forecasting (Harbold et al., 2017). Moreover, in high-elevation regions of the Northern Hemisphere, increases in rainfall extremes with climate warming is amplified due to a warming-induced shift from snow to rain, making them hotspots with increasing risk of extreme-rainfall-related hazards (Ombadi et al., 2023). Our results highlight that precipitation phase is an important factor to quantify and  
485 consider when studying sediment transport during ~~extreme-heavy~~ precipitation events in Alpine areas.

### 5.2.2 Sub-daily ~~heavy precipitation extremes events~~ and sediment dynamics

Our analysis shows that, at lower ~~catchment-averaged~~ rainfall intensities, sub-daily ~~precipitation extremes-heavy precipitation events~~ generate higher suspended sediment yields and fluxes ~~compared to than~~ long-duration ones. Sub-daily ~~extremes events also typically~~ affect a smaller catchment area (Fig. 4e) ~~meaning that the precipitation will be more localised resulting in higher,~~  
490 ~~which indicates more localised precipitation. Consequently,~~ local rainfall intensities ~~than the are likely to be substantially higher than indicated by~~ catchment-averaged values. ~~Since erosion rates are sensitive to increases in rainfall intensity (Shen et al., 2016; Nearing et al., 2005), a further indication of this is provided by the timing of~~ sub-daily ~~extremes can induce locally high erosion rates (Battista et al., 2020) producing high event yields even at lower rainfall totals (Fig. 6c). Furthermore, events: because they occur predominantly in summer, convection is likely to play a role, which typically produces localized, high-intensity rainfall.~~

495 ~~Because of the association between erosion rates and rainfall intensity (Berger et al., 2010), locally elevated intensities likely explain why~~ sub-daily ~~extremes are primarily observed during summer, when convective storms dominate. Convective summer storms generate localised events in our Alpine catchment produce higher sediment yields and fluxes even at comparatively low catchment-averaged rainfall intensities. Modelling studies have shown that localised, high-intensity rainfall, which preferentially drives hillslope erosion (Kampf et al., 2016) and increases sediment yields, particularly through rill erosion (Shen et al., 2016)~~  
500 ~~precipitation can induce significantly local surface runoff generation (Bronstert and Bárdossy, 2003) and locally high erosion rates (Battista et al., 2020) and that the area with active erosion and deposition is sensitive to intensification of peak rainfall~~

intensity (Peleg et al., 2020). Higher intensity storms are also associated with higher functional sediment connectivity ~~as shown by~~ (Scorpio et al., 2022), allowing sediment mobilised on hillslopes to efficiently reach channels.

505 ~~During Thus, we attribute the higher sediment fluxes observed at the catchment outlet during sub-daily precipitation extremes; overland flow is most likely generated mainly due to infiltration excess where the rainfall intensity exceeds the infiltration capacity of the surface. Runoff generation due to infiltration excess is highly sensitive to temporal variations in rainfall intensity (Bronstert and Bárdossy, 2003). In particular, short bursts of high-intensity rainfall significantly influence infiltration processes and rainfall-driven erosion (Dunkerley, 2019, 2021b; Bronstert and Bárdossy, 2003). However, such high-intensity rain bursts often cannot be resolved at hourly resolution (Dunkerley, 2019, 2021b). Thus we are unable to verify whether~~  
510 such rain bursts occur during events to intense, localised erosion and efficient sediment transfer from hillslopes to the channel network. Although this erosion is concentrated over a smaller fraction of the catchment, it generates higher sediment fluxes than long-duration events at comparable catchment-averaged rainfall intensities. This capability to induce high erosion rates may also explain why sub-daily extremes in our analysis. Nonetheless, we assume that events produce high event yields even at lower rainfall totals (Fig. 6c).

515 In Tumpen-Ötztal, areas above 2500 m asl have been identified as key sediment source regions, comprising bare rock, sparsely vegetated slopes, and recently deglaciated terrain (Schmidt et al., 2022). During heavy precipitation events, sediment is therefore likely mobilized primarily from these high-elevation source areas and from steep hillslopes, through a combination of splash erosion and overland-flow-driven erosion (Maier et al., 2023). During rainfall events the activation of gullies and streams that normally do not carry flowing water is likely to flush out accumulated sediments. Although infiltration-excess  
520 overland flow is unlikely to be spatially extensive across coarse, well-drained proglacial deposits, localized near-surface runoff and overland flow may still develop in soils with higher silt and clay content during sub-daily extremes with their more localised precipitation exhibit greater temporal intensity variation than long-duration events, making them more likely to generate overland flow and enhance erosion . As Dunkerley (2021a) notes: “Low-intensity rain may be readily absorbed until rainfall ends or until saturation occurs, whilst high-intensity rain may quickly exceed the soil infiltrability, resulting  
525 in surface ponding and integrated downslope overland flow .” events (Bronstert et al., 2023). Such limited source areas can disproportionately contribute to the sediment export, particularly if small channels and ephemeral streams are activated thus rapidly increasing their sediment transport capacity.

Rainfall-driven geomorphic processes such as erosion and sediment transport exhibit threshold behaviours (Peleg et al., 2020). The localised high intensities of sub-daily ~~extremes~~ heavy precipitation event can more readily exceed these thresh-  
530 olds, activating erosion processes and generating significant sediment fluxes. Another relevant process which is also highly threshold-dependent is mass wasting. Certain sub-daily events in our catalogue stand out for their unusually high SSC peaks despite relatively low rainfall intensities (Fig. 6i-j) and most of these were also classified as ~~grid-scale extremes~~ localised heavy precipitation events (Fig. ~~??i-j~~ S9i-j, Supplement). One such event is 2022-d (Fig. 4a), which triggered more than 150 debris flows in the Horlach valley, a sub-catchment of Tumpen-Ötztal (Himmelstoss et al., 2024; Rom et al., 2023). We hypothesise  
535 that these events represent highly localized precipitation triggering intense erosion, sediment mobilisation, and possibly mass wasting, which deposit large sediment pulses into the main channel and result in exceptional SSC peaks at the outlet.

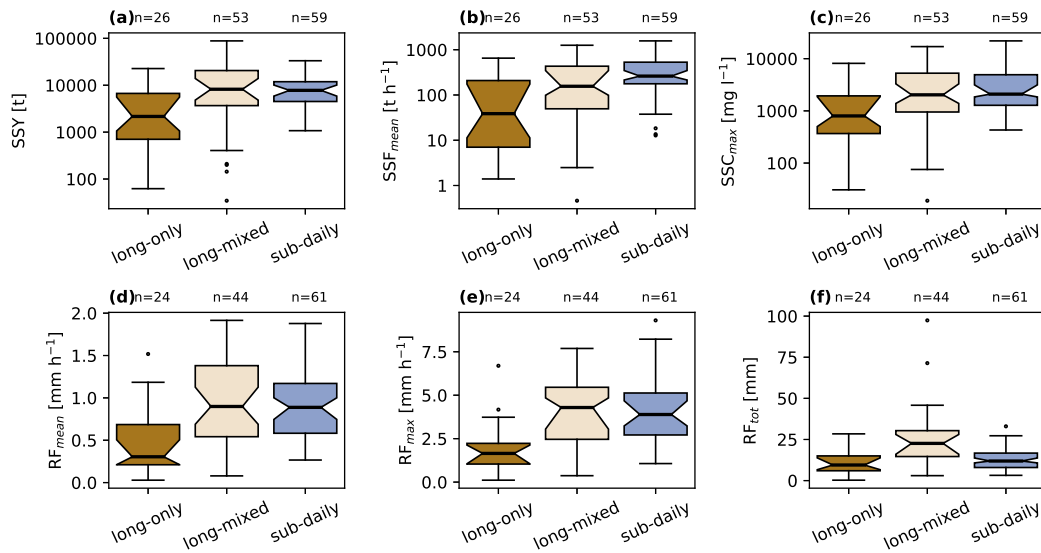
### 5.2.3 Sediment response to long-duration heavy precipitation extremes events

Long-duration ~~precipitation extremes distribute rainfall over extended periods, which generally result in lower average rainfall intensities compared to~~ heavy precipitation events are characterized by lower rainfall intensities that are distributed over longer periods and larger areas than sub-daily ~~extremes~~ heavy precipitation events (Fig. 6). ~~When rainfall intensity remains below the soil's infiltration capacity, surface runoff and associated erosion is 4e; Fig. S14, Supplement). At lower rainfall intensities, erosion is likely to be less widespread, leading to resulting in lower sediment yields. As such~~ Accordingly, many long-duration ~~extremes events~~ may lack the local rainfall intensities required to trigger extensive hillslope erosion or ~~the functional connectivity to transport sediments to the streamsto~~ establish strong functional connectivity between sediment sources and the channel network. However, their ~~high rainfall totals~~ large rainfall amounts (Fig. 4g) can generate high streamflow levels through rapid ~~through~~ runoff concentration, ~~which rather results in promoting~~ in-channel erosion (Kampf et al., 2016; Scorpio et al., 2022)

~~Conversely, as long-duration events progress and the ground becomes increasingly saturated, runoff generation through saturation excess becomes more likely. Saturated conditions can destabilise soils and increase their erodibility (Amézqueta, 1999) and saturation excess overland flow can still cause rill and gully erosion (Kirkbride and Reeves, 1993). This (Scorpio et al., 2022). As these events progress, increasing discharge concentrates flow within the channel network, raising water levels and enhancing bank erosion and the mobilisation of previously deposited sediments. In addition, the broader spatial extent of long-duration precipitation increases the fraction of the catchment contributing sediment, which may explain why some long-duration extremes with high rainfall intensities produce the highest suspended sediment yields (SSY ; Fig. 6a-b) these events produce some of the highest SSY (Fig. 6a-b) and why they increase more sharply with rainfall intensities compared to SSY increases more strongly with rainfall intensity for long-duration events than for~~ sub-daily extremes.

Events characterized by low initial rainfall intensity with a later intensification are likely to play a role in ~~this effect, as these "late-peak" events are associated with higher runoff ratios and peak overland flow rates (Dunkerley, 2021a).~~

~~the sharper increase in the sediment response variables with increasing rainfall intensities for long-duration events.~~ Despite lower, more distributed rainfall intensities, long-duration ~~extremes can exhibit complex intra-event rainfall dynamics, as they may include~~ heavy precipitation events may include such short bursts of high intra-event rainfall rates. Dunkerley (2021a) demonstrated this in Australian data, showing that longer events can produce elevated 30-minute intensity peaks values despite their lower overall intensities. ~~In~~, and that such "late-peak" events are associated with higher runoff ratios and peak overland flow rates. Our study area is a different type of landscape from the one studies by Dunkerley (2021a), and it therefore uncertain ~~whether such effects are relevant in an Alpine setting. However, in~~ our results, the subset of long-duration ~~extremes~~ heavy precipitation event that also contained sub-daily ~~extreme durations exhibited~~ heavy precipitation peaks exhibit markedly higher suspended sediment yields, fluxes, and peak concentrations as well as rainfall intensities and amounts compared to those that were only extreme at durations  $\geq 24$  h (Fig. 9). These *long-mixed* ~~extremes~~ heavy precipitation events also had markedly higher rainfall totals and SSY compared to sub-daily ~~extremes ones~~ (Fig. 9). This suggest that high-intensity rain bursts nested within long-duration ~~extremes~~ heavy precipitation event is a key driver of exported sediment mass. This highlights the benefit



**Figure 9.** Sediment response variables (a-c) and rainfall characteristics (d-f) of heavy precipitation extremes events. Long-duration extremes long-duration heavy precipitation event are divided into two sub-classes: "long-only" events where all extreme durations are  $\geq 24$  h, and "long-mixed" events which also have some extreme durations at the sub-daily scale. See Fig. 4 for details on boxplot configuration.

of our multi-scale detection approach, as the identification of multiple extreme durations allows us to classify such events with complex intra-event rainfall dynamics.

Another key feature of

#### 5.2.4 Other factors influencing sediment response

575 Antecedent precipitation, snow water equivalent in the catchment, and snowmelt during events are all negatively correlated with the sediment response variable (Tab.3). Snowmelt occurs almost exclusively during long-duration extremes is their large spatial extent, which typically affects a broader catchment area compared to sub-daily extremes (Fig. 4e). Consequently, erosion processes can occur over a larger area and for a longer time. Thus even if the erosion is less intense compared to sub-daily extremes, it can result in greater total sediment volumes overall. Thus, while long-duration extremes may lack the intense,

580 localized rainfall bursts that drive erosion in sub-daily events, their broader spatial and longer lasting impact can produce substantial sediment fluxes at the catchment scale precipitation events (Fig. S14l, Supplement), and the indications we have suggest that snow processes do not play a dominant role in controlling suspended sediment response. However, snow is present in the catchment during many heavy precipitation events (Fig. S14k, Supplement). Rainfall occurring during periods of active snowmelt may still influence sediment mobilisation, as soils are likely to be wetter and more erodible under these conditions.

585 Thus, while snow and snowmelt do not appear to directly enhance sediment yields at the event scale, they may indirectly modulate sediment availability and erodibility during combined rain-melt conditions.

### 5.3 Trends in ~~extreme-precipitation-driven~~ heavy-precipitation-driven suspended sediment yields

Over the study period, we observe an increase in the fraction of annual SSY exported during ~~precipitation-extremes~~ heavy precipitation events. Furthermore, the number of ~~precipitation-extremes~~ heavy precipitation events significantly increased. As discussed above, uncertainties in the INCA dataset do not appear to significantly affect the detected number of ~~extreme-heavy~~ precipitation events. Lower ~~numbers-of-precipitation-extremes~~ event numbers in the early study period likely reflect drier-than-average years, such as 2004 and 2006 (Gattermayr et al., 2004, 2006), dominated by isolated convective storms. The significantly increasing trend in the number of ~~precipitation-extremes~~ heavy precipitation events is therefore more likely due to an overall increase in precipitation intensity leading more events to exceed the ~~extreme-heavy~~ precipitation thresholds. While we find no indications of ~~the~~ precipitation or rainfall intensity of ~~extremes~~ heavy precipitation events significantly increasing over the study period, this may be due to the high ~~inter-variability~~ variability of precipitation and the relatively short period we are considering. May-October precipitation in Ötztal calculated from the SPARTACUS dataset (~~?~~) (GeoSphere Austria, 2024c), consisting of spatially interpolated station data (see Hiebl and Frei, 2018), has significantly increased with 2.6 mm per year since 1961 (MK test with 5% significance level). Thus we can at least say that the total precipitation amount during the extended summer season increased during our study period. As ~~extreme-heavy~~ precipitation-driven transport events have significantly higher suspended sediment fluxes (Fig. 7e), a pattern common in mountainous areas (e.g. Li et al., 2021b; Rainato et al., 2021; Wulf et al., 2012; Scorpio et al., 2022; van Hamel et al., 2025), the increasing number of ~~extreme-heavy~~ precipitation events means that the fraction of annual SSY also increases.

In years with a high frequency of ~~precipitation-extremes~~ heavy precipitation events, this effect is especially noticeable. Examples are 2010 and 2020, years in which around 40% of annual SSY were associated with ~~extreme-precipitation-heavy~~ precipitation (Fig. 7a). In 2020, ~~extreme-heavy~~ precipitation events contributed significantly to annual sediment export. For instance, during event 2020-k, persistent rainfall triggered a debris flow in the proglacial area of the Hintereisferner glacier (in Vent-Rofental). A thunderstorm in August (2020-j) and a cold front in October (2020-n) caused additional flooding and mass wasting. Together these three events contributed  $124 \text{ t km}^{-2}$  or 25 % of the annual SSY of 2020. The remaining 13 events contributed 15%. The year 2020 illustrates the cumulative effect of both moderate and severe storms on sediment yields (Wischmeier and Smith, 1978). Notably, the years 2013 and 2019 had the same number of ~~extreme-heavy~~ precipitation events but did not contribute comparable amounts or fractions of annual SSY. This highlights that factors such as annual sediment production and availability play an important role in determining the fraction of ~~extreme-precipitation-driven~~ heavy-precipitation-driven sediment exports, in addition to the annual frequency and intensity of ~~precipitation-extremes~~ heavy precipitation events.

Annual SSYs have remained stable over the study period in Tumpen-Ötztal but show a gradual decline in Vent-Rofental (Fig. 7), excluding extreme melt years such as 2022 (Bayerische Akademie der Wissenschaften, 2025; Voordendag et al., 2023). In Vent-Rofental, peak sediment may already have been passed (Schmidt, 2023), with annual SSY now steadily decreasing as glacier retreat reduces subglacial sediment supply, a trend projected to persist over the long term (Schmidt et al., 2024). In Tumpen-Ötztal, sediment exported during ~~non-extreme-non-heavy~~ or precipitation-free events showed a non-significant decline (Fig. 7b), suggesting that increases in ~~extreme-precipitation-driven~~ heavy-precipitation-driven sediment transport at

larger scales may partially offset reductions in glacier-driven transport. These contrasting trends highlight the influence of different spatial scales of paraglacial adjustments, as the timing of peak sediment and the duration of sediment reworking vary with catchment size and glacier cover (Ballantyne, 2002).

Despite the increasing prominence of ~~extreme-heavy~~ precipitation, only 10% of extreme suspended sediment spikes in Ötztal can be directly attributed to these events, with nearly half occurring without precipitation (Fig. 8). This is consistent with findings showing that high SSC peaks in Alpine catchments can be generated by rainfall, glacier melt, snowmelt and combinations thereof (Skålevåg et al., 2024; van Hamel et al., 2025). Melt processes, due to their frequency, remain the dominant driver of annual SSY (Schmidt et al., 2022; Skålevåg et al., 2024), with the most extreme sediment discharge often arising from a combination of melt- and precipitation-driven processes (Skålevåg et al., 2024; van Hamel et al., 2025).

~~Thus extreme-precipitation-driven sediment~~ Extensive work in glaciated catchments has shown that increased water input to subglacial drainage systems, whether from melt or rainfall, may enhance suspended sediment export (Swift et al., 2005) without necessarily increasing surface erosion. However, during heavy precipitation events increased cloud cover and reduced air temperatures may suppress melt rates and sub-glacial discharge. Consequently, rainfall- and melt-driven sediment production should not be viewed as entirely independent, and heavy-precipitation-driven sediment transport in this study likely ~~have glacial contributions to sediment transport, especially during summer,~~ includes a substantial glacial component, particularly during summer when subglacial sediment discharge is ~~elevated~~ high.

While glacial influences on sediment transport are declining, ~~the projected increase in extreme~~ projected increases in heavy precipitation, particularly at sub-daily scales, remains a critical factor. Conceptual models suggest that rainfall-driven sediment transport will dominate post-deglaciation sediment yield levels (Zhang et al., 2022b). Convective summer precipitation is expected to intensify in the Alps (Giorgi et al., 2016), with an ensemble of 1-km convection-permitting climate models projecting a 20–38% increase in sub-daily (1–24 h) extremes in the Eastern Alps, including Tumpen-Ötztal (Dallan et al., 2024). Our results demonstrate that sub-daily ~~precipitation extremes~~ heavy precipitation events are particularly effective at generating high suspended sediment loads. This is amplified by the abundant unconsolidated sediments in high-elevation landscapes, a legacy of deglaciation, which will remain available for transport until these areas stabilize (Musso et al., 2020; Ballantyne, 2002). While vegetation and soil development will eventually promote stabilisation (Klaar et al., 2015), these processes are temporally variable (Bayle et al., 2023) and can be disrupted by geomorphic disturbances such as rainfall erosion and fluvial reworking of proglacial deposits (Moreau et al., 2008). These dynamics suggest that future sediment regimes in high-elevation catchments like the Ötztal will become flashier, characterised by more frequent and intense rainfall-driven events, but with overall lower annual yields.

## 650 6 Conclusions

This study provides new insights into the interplay between ~~extreme-heavy~~ precipitation, sediment transport, and paraglacial adjustments in high-Alpine environments.

Sub-daily ~~precipitation-extremes~~heavy precipitation events, driven primarily by convective summer storms, are particularly effective at mobilizing sediment due to their localized and intense rainfall, which exceeds erosion and runoff thresholds. Long-  
655 duration ~~precipitation-extremes~~heavy precipitation events, while less intense, affect larger catchment areas and sustain sediment transport over longer timescales, especially when they include sub-daily rainfall bursts.

We observed a significant increase in the frequency of ~~extreme~~heavy precipitation events and their contribution to annual suspended sediment yields (SSY) over the study period. While we find ~~robust~~ evidence of an increasing trend in ~~extreme~~heavy precipitation events, uncertainties in the INCA dataset, such as its tendency to overestimate heavy precipitation, particularly  
660 at higher elevations, may partially influence this trend. However, given the reduction in INCA errors post-2017 and the strong alignment between detected ~~extremes~~heavy precipitation events and station data, these uncertainties likely have a limited effect on our overall findings.

Despite the increases in ~~extreme-precipitation-driven~~heavy-precipitation-driven sediment transport, annual SSY has remained stable in Tumpen-Ötztal but declined in Vent-Rofental, where reduced sediment availability due to glacier retreat  
665 appears to drive long-term declines. This suggests that increases in ~~extreme-precipitation-driven~~heavy-precipitation-driven sediment transport at larger scales may partially offset reductions in glacial-driven transport in less glaciated catchments. However, sediment transport during ~~extreme~~heavy precipitation events is highly dependent on sediment availability, highlighting the role of glacial and paraglacial dynamics in controlling sediment fluxes.

Projections indicate that extreme and heavy precipitation, particularly at sub-daily scales, will intensify in the future due to  
670 climate warming. This, combined with the abundant unconsolidated sediment in deglaciating landscapes, suggests that Alpine catchments like the Ötztal will experience flashier sediment regimes characterized by more frequent and intense rainfall-driven events. However, long-term stabilization of these landscapes will depend on changes in vegetation cover and soil development, processes that are temporally variable and vulnerable to disturbance.

Overall, while the intensification of ~~extreme~~heavy precipitation events is expected to increase the frequency of sediment  
675 transport events, long-term reductions in glacial sediment supply will likely result in declining annual sediment yields. These findings emphasise the need for continued monitoring and refined modelling of sediment transport dynamics under changing climatic and geomorphic conditions in Alpine environments.

*Code and data availability.* The HISTALP dataset with monthly precipitation amounts (GeoSphere Austria, 2020), INCA hourly precipitation and temperature grids (GeoSphere Austria, 2024a), and hourly precipitation data from GeoSphere Austria's weather stations (GeoSphere  
680 Austria, 2024b) are available for download at the GeoSphere Austria Data Hub, <https://data.hub.geosphere.at>. Daily precipitation data from the 15 rain gauges operated by the Hydrographic Service of Tyrol (HD-Tirol) were downloaded from <https://ehyd.gv.at/> (BML, 2024). Precipitation data from Hintere-Fundusalm with 15-min resolution was provided by HD-Tirol upon request. Raw precipitation data from the Vent, Hochebenkar, and Station Hintereis weather stations were downloaded from ACINN (2024). Precipitation data in 10-min resolution from weather stations Latschbloder, Bella Vista, and Proviantdepot operated by Department of Geography - University of Innsbruck (2024).  
685 Processed data, results, and code can be found here: <https://doi.org/10.5281/zenodo.16571983>.

## Appendix A

Weather stations in and around Ötztal with precipitation observations used to evaluate the uncertainty of INCA gridded precipitation. Most stations are operated by GeoSphere Austria (GSA) or the Hydrographic Service of Tyrol (HD-Tirol) with additional stations operated by the Department of Geography (UIBK-GEOG) and the Department of Atmospheric and Cryospheric Sciences (ACINN) at the University of Innsbruck, and the Bavarian Academy of Sciences (BADW). The original data had temporal resolutions ranging from 1-min to daily and has varying temporal extents. For an overview of available data during the study period see Fig. ??.

Name	Operator	Latitude	Longitude	Altitude	Resolution	Extent
Stams	HD-Tirol	47.2744	10.98528	711	daily	1971-2021
Oetz	HD-Tirol	47.2058	10.88611	760	daily	1971-2021
Imst-Oberstadt	HD-Tirol	47.2489	10.74111	860	daily	1971-2021
Ried-im-Oberinntal	HD-Tirol	47.0575	10.66056	895	daily	1971-2021
Jerzens-Ritzenried	HD-Tirol	47.1225	10.78194	1120	daily	1971-2021
Längenfeld	HD-Tirol	47.0763	10.97000	1180	daily	1971-2021
Gries-im-Sellrain	HD-Tirol	47.1886	11.15250	1227	daily	1971-2021
Kaunertal-Vergötschen	HD-Tirol	47.0431	10.75306	1269	daily	1971-2021
St.Leonhard-i.P.	HD-Tirol	47.0761	10.83889	1329	daily	1971-2021
Sölden	HD-Tirol	46.9850	11.01472	1332	daily	1971-2021
Ladis-Neuegg	HD-Tirol	47.0972	10.64889	1426	daily	1971-2021
Gries	HD-Tirol	47.0700	11.02667	1590	daily	1998-2021
Plangeroß	HD-Tirol	46.9875	10.86750	1605	daily	1971-2021
Ochsegarten-Obergut	HD-Tirol	47.2300	10.91861	1695	daily	1971-2021
Hintere-Fundusalm	HD-Tirol	47.1028	10.88611	1960	15-min	2020-2023
Dresdner-Hütte	HD-Tirol	46.9975	11.14000	2290	daily	1979-2021
Innsbruck-Flugplatz		47.2600	11.35667	578	hourly	1992-2024
Innsbruck-Univ	GSA	47.2600	11.38417	578	hourly	1986-2024
Haiming	GSA	47.2597	10.88944	659	hourly	2007-2024
Imst	GSA	47.2369	10.74222	773	hourly	2007-2024
Landeck	GSA	47.1403	10.56361	796	hourly	1993-2024
Neustift-Milders	GSA	47.1028	11.29195	1007	hourly	2004-2024
Umhausen	GSA	47.1392	10.92889	1035	hourly	2003-2024
St-Leonhard-Pitztal	GSA	47.0272	10.86556	1454	hourly	2007-2024
Obergurgl	GSA	46.8670	11.02445	1941	hourly	1999-2024
Pitztaler-Gletscher	GSA	46.9270	10.87917	2863	hourly	1994-2024
Vent	ACInn	46.8583	10.91250	1890	daily	1935-2016
Hochebenkar	ACInn	46.7989	10.91276	1908	1-min	2015-2024
Hintereis	ACInn	46.7989	10.76037	3031	1-min	2020-2023
Proviantdepot	UIBK-GEOG	46.8595	10.82407	2737	10-min	2019-2023
Bella-Vista	UIBK-GEOG	46.7828	10.79138	2805	10-min	2015-2023
Latschbloder	UIBK-GEOG	46.8011	10.80659	2919	10-min	2013-2023
Vernagtbach	BADW	46.8566	10.82847	2640	10-min	2002-2012

Overview of available (blue) and missing data (white) for weather station-observed precipitation at hourly (a) and daily (b) resolution during the study period (2004-2024). Stations are sorted lowest (bottom) to highest (top) elevation.

Intensity-duration-frequency (IDF) curves for catchment-averaged precipitation  $P_t$  and grid-scale maximum precipitation  $I_t$ . Black dots show annual May-October block maxima for each duration. The 0.2 non-exceedence probability (blue line) was the threshold used to detect extreme precipitation events in  $P_t$  and  $I_t$ .

Uncertainty analysis of daily and hourly INCA precipitation when compared with weather station data. Each metric, the mean error (ME), root mean squared error (RMSE), precipitation occurrence accuracy (Acc), and precipitation occurrence frequency bias (FB) is plotted against the altitude of the station. Dot size is proportional to the number of time steps with valid INCA and station value pairs.

720 ~~Suspended sediment response to precipitation extremes in terms of their mean intensity of catchment-averaged rainfall  $RF_{\text{mean}}$  (a,c,i), maximum intensity of catchment-averaged rainfall  $RF_{\text{max}}$  (b,f,j), and total cumulative catchment-averaged rainfall  $RF_{\text{tot}}$  (c,g,k). The increase in sediment response variables with rainfall intensity and totals is similar for both grid-scale extremes and catchment-scale extremes. Lines are means from linear regression, and shaded areas are 95% bootstrap confidence intervals based on 1000 randomisations. Labelled events are the same as in Fig. 4. See Fig. 4 for details on boxplot configuration.~~

725 *Author contributions.* AS and LKS developed the general idea and conceptualised the study, with input from AB and OK. AS and NE processed the station data and performed the uncertainty analysis. AS and JTB calculated the extreme value statistics and the IDF curves. AS detected and analysed the extreme precipitation events and the sediment response. AS prepared the original manuscript draft, including all the figures, and all authors critically reviewed, commented and revised the manuscript.

*Competing interests.* TEXT

*Disclaimer.* TEXT

730 *Acknowledgements.* The authors would like to acknowledge Maik Heistermann for his advice on how to analyse precipitation uncertainty and for the idea to use two time series for the detection, i.e. both catchment-averaged and grid-scale maximum precipitation. The research presented in this article was conducted within the research training group “Natural Hazards and Risks in a Changing World” (NatRiskChange) funded by the Deutsche Forschungsgemeinschaft (DFG; GRK 2043/2). During the writing and revision of the manuscript, ChatGPT assisted in editing existing portions of text.

## 735 **References**

- ACINN: ACINN Weather Station Portal [data set], <https://acinn-data.uibk.ac.at/>, 2024.
- Adler, C., Wester, P., Bhatt, I., Huggel, C., Insarov, G., Morecroft, M., Muccione, V., and Prakash, A.: Cross-Chapter Paper 5: Mountains, in: *Climate Change 2022: Impacts, Adaptation and Vulnerability*, edited by Pörtner, H.-O., Roberts, D., Tignor, M., Poloczanska, E., Mintenbeck, K., Alegría, A., Craig, M., Langsdorf, S., Lösschke, S., Möller, V., Okem, A., and Rama, B., pp. 2273–2318, Cambridge University Press, Cambridge, UK and New York, NY, USA, <https://doi.org/10.1017/9781009325844.022>, 2022.
- 740 Amézketa, E.: Soil Aggregate Stability: A Review, *Journal of Sustainable Agriculture*, 14, 83–151, [https://doi.org/10.1300/J064v14n02\\_08](https://doi.org/10.1300/J064v14n02_08), 1999.
- Ballantyne, C. K.: A general model of paraglacial landscape response, *Holocene*, 12, 371–376, <https://doi.org/10.1191/0959683602hl553fa>, 2002.
- 745 Battista, G., Molnar, P., and Burlando, P.: Modelling impacts of spatially variable erosion drivers on suspended sediment dynamics, *Earth Surface Dynamics*, 8, 619–635, <https://doi.org/10.5194/ESURF-8-619-2020>, 2020.
- Bayerische Akademie der Wissenschaften: Mass balance of the Vernagtferner, <https://geo.badw.de/en/vernagtferner-digital/mass-balance.html>, 2025.
- Bayle, A., Carlson, B. Z., Zimmer, A., Vallée, S., Rabatel, A., Cremonese, E., Filippa, G., Dentant, C., Randin, C., Mainetti, A., Roussel, E., Gascoïn, S., Corenblit, D., and Choler, P.: Local environmental context drives heterogeneity of early succession dynamics in alpine glacier forefields, *Biogeosciences*, 20, 1649–1669, <https://doi.org/10.5194/bg-20-1649-2023>, 2023.
- 750 Berger, C., Schulze, M., Rieke-Zapp, D., and Schlunegger, F.: Rill development and soil erosion: a laboratory study of slope and rainfall intensity, *Earth Surface Processes and Landforms*, 35, 1456–1467, <https://doi.org/10.1002/esp.1989>, 2010.
- Beylich, A. A., Laute, K., and Storms, J. E.: Contemporary suspended sediment dynamics within two partly glacierized mountain drainage basins in western Norway (Erdalen and Bødalen, inner Nordfjord), *Geomorphology*, 287, 126–143, <https://doi.org/10.1016/J.GEOMORPH.2015.12.013>, 2017.
- 755 BML: eHYD [data set], <https://ehyd.gv.at/>, 2024.
- Bocharov, G.: pyextremes 2.3.3, <https://georgebv.github.io/pyextremes>, 2024.
- Brönnimann, S., Rajczak, J., Fischer, E., Raible, C., Rohrer, M., and Schär, C.: Changing seasonality of moderate and extreme precipitation events in the Alps, *Natural Hazards and Earth System Sciences*, 18, 2047–2056, <https://doi.org/10.5194/NHESS-18-2047-2018>, 2018.
- 760 Bronstert, A. and Bárdossy, A.: Uncertainty of runoff modelling at the hillslope scale due to temporal variations of rainfall intensity, *Physics and Chemistry of the Earth, Parts A/B/C*, 28, 283–288, [https://doi.org/10.1016/S1474-7065\(03\)00039-1](https://doi.org/10.1016/S1474-7065(03)00039-1), 2003.
- Bronstert, A., Niehoff, D., and Schiffler, G. R.: Modelling infiltration and infiltration excess: The importance of fast and local processes, *Hydrological Processes*, 37, <https://doi.org/10.1002/hyp.14875>, 2023.
- 765 Buter, A., Heckmann, T., Filisetti, L., Savi, S., Mao, L., Gems, B., and Comiti, F.: Effects of catchment characteristics and hydro-meteorological scenarios on sediment connectivity in glacierised catchments, *Geomorphology*, 402, 108 128, <https://doi.org/10.1016/J.GEOMORPH.2022.108128>, 2022.
- Copernicus Land Monitoring Service: CORINE Land Cover 2018 (raster 100 m) [data set], <https://doi.org/10.2909/960998c1-1870-4e82-8051-6485205ebbac>, 2020.

- 770 Costa, A., Molnar, P., Stutenbecker, L., Bakker, M., Silva, T. A., Schlunegger, F., Lane, S. N., Loizeau, J. L., and Girardclos, S.: Temperature signal in suspended sediment export from an Alpine catchment, *Hydrology and Earth System Sciences*, 22, 509–528, <https://doi.org/10.5194/hess-22-509-2018>, 2018.
- Dallan, E., Marra, F., Fossier, G., Marani, M., and Borga, M.: Dynamical Factors Heavily Modulate the Future Increase of Sub-Daily Extreme Precipitation in the Alpine-Mediterranean Region, *Earth's Future*, 12, e2024EF005 185, <https://doi.org/10.1029/2024EF005185>, 2024.
- 775 Delaney, I. and Adhikari, S.: Increased Subglacial Sediment Discharge in a Warming Climate: Consideration of Ice Dynamics, Glacial Erosion, and Fluvial Sediment Transport, *Geophysical Research Letters*, 47, e2019GL085 672, <https://doi.org/10.1029/2019GL085672>, 2020.
- Deng, Y., Wang, X., Ruan, H., Lin, J., Chen, X., Chen, Y., Duan, W., and Deng, H.: The magnitude and frequency of detected precipitation determine the accuracy performance of precipitation data sets in the high mountains of Asia, *Scientific Reports*, 14, 17 251, <https://doi.org/10.1038/s41598-024-67665-8>, 2024.
- 780 Department of Geography - University of Innsbruck: Continuous meteorological and snow hydrological measurements for 2013-2023 from three automatic weather stations (AWS) in the upper Rofental, Ötztal Alps, Austria [data set], <https://doi.org/10.5880/figeo.2023.037>, 2024.
- Dunkerley, D.: Rainfall intensity bursts and the erosion of soils: An analysis highlighting the need for high temporal resolution rainfall data for research under current and future climates, *Earth Surface Dynamics*, 7, 345–360, <https://doi.org/10.5194/ESURF-7-345-2019>, 2019.
- Dunkerley, D.: Rainfall intensity in geomorphology: Challenges and opportunities, *Progress in Physical Geography: Earth and Environment*, 45, 488–513, <https://doi.org/10.1177/0309133320967893>, 2021a.
- Dunkerley, D.: The importance of incorporating rain intensity profiles in rainfall simulation studies of infiltration, runoff production, soil erosion, and related landsurface processes, *Journal of Hydrology*, 603, 126 834, <https://doi.org/10.1016/j.jhydrol.2021.126834>, 2021b.
- 790 Fauer, F. S., Ulrich, J., and Ritschel, C.: IDF: Estimation and Plotting of IDF Curves, <https://doi.org/10.32614/CRAN.package.IDF>, 2017.
- Fauer, F. S., Ulrich, J., Jurado, O. E., and Rust, H. W.: Flexible and consistent quantile estimation for intensity–duration–frequency curves, *Hydrology and Earth System Sciences*, 25, 6479–6494, <https://doi.org/10.5194/hess-25-6479-2021>, 2021.
- Fischer, A., Seiser, B., Stocker-Waldhuber, M., and Abermann, J.: The Austrian Glacier Inventory GI 3, 2006, in ArcGIS (shapefile) format [data set], <https://doi.org/10.1594/PANGAEA.844985>, 2015.
- 795 Fowler, H. J., Lenderink, G., Prein, A. F., Westra, S., Allan, R. P., Ban, N., Barbero, R., Berg, P., Blenkinsop, S., Do, H. X., Guerreiro, S., Haerter, J. O., Kendon, E. J., Lewis, E., Schaer, C., Sharma, A., Villarini, G., Wasko, C., and Zhang, X.: Anthropogenic intensification of short-duration rainfall extremes, *Nature Reviews Earth & Environment*, 2, 107–122, <https://doi.org/10.1038/s43017-020-00128-6>, 2021.
- Gattermayr, W., Niedertscheider, K., Mair, G., and Felderer, W.: Hydrologische Übersicht Jahr 2004, Tech. rep., Hydrographischer Dienst Tirol, Innsbruck, 2004.
- 800 Gattermayr, W., Niedertscheider, K., Mair, G., and Felderer, W.: Hydrologische Übersicht Jahr 2006, Tech. rep., Hydrographischer Dienst Tirol, Innsbruck, [https://www.tirol.gv.at/fileadmin/themen/umwelt/wasserkreislauf/downloads/hueb2006\\_01.pdf](https://www.tirol.gv.at/fileadmin/themen/umwelt/wasserkreislauf/downloads/hueb2006_01.pdf), 2006.
- GeoSphere Austria: HISTALP - Homogenisierte Stationsdaten und abgeleitete Datensätze [data set], <https://data.hub.geosphere.at/dataset/histalp>, 2020.
- GeoSphere Austria: INCA Stundendaten [data set], <https://doi.org/10.60669/6akt-5p05>, 2024a.
- 805 GeoSphere Austria: Messstationen Stundendaten v2 [data set], <https://doi.org/10.60669/9bdm-yq93>, 2024b.
- GeoSphere Austria: SPARTACUS v2.1 Tagesdaten [data set], <https://doi.org/10.60669/t3d8-cn40>, 2024c.

- Germann, U., Galli, G., Boscacci, M., and Bolliger, M.: Radar precipitation measurement in a mountainous region, *Quarterly Journal of the Royal Meteorological Society*, 132, 1669–1692, <https://doi.org/10.1256/qj.05.190>, 2006.
- 810 Ghaemi, E., Foelsche, U., Kann, A., and Fuchsberger, J.: Evaluation of Integrated Nowcasting through Comprehensive Analysis (INCA) precipitation analysis using a dense rain-gauge network in southeastern Austria, *Hydrology and Earth System Sciences*, 25, 4335–4356, <https://doi.org/10.5194/hess-25-4335-2021>, 2021.
- Giorgi, F., Torma, C., Coppola, E., Ban, N., Schär, C., and Somot, S.: Enhanced summer convective rainfall at Alpine high elevations in response to climate warming, *Nature Geoscience* 2016 9:8, 9, 584–589, <https://doi.org/10.1038/ngeo2761>, 2016.
- 815 Gold, S., White, E., Roeder, W., McAleenan, M., Kabban, C. S., and Ahner, D.: Probabilistic Contingency Tables: An Improvement to Verify Probability Forecasts, *Weather and Forecasting*, 35, 609–621, <https://doi.org/10.1175/WAF-D-19-0116.1>, 2019.
- Groß, G. and Patzelt, G.: The Austrian Glacier Inventory for the Little Ice Age Maximum (GI LIA) in ArcGIS (shapefile) format [data set], <https://doi.org/10.1594/PANGAEA.844987>, 2015.
- Haiden, T., Kann, A., Wittmann, C., Pistotnik, G., Bica, B., and Gruber, C.: The Integrated Nowcasting through Comprehensive Analysis (INCA) System and Its Validation over the Eastern Alpine Region, *Weather and Forecasting*, 26, 166–183, 820 <https://doi.org/10.1175/2010WAF2222451.1>, 2011.
- Hanzer, F., Förster, K., Nemeč, J., and Strasser, U.: Projected cryospheric and hydrological impacts of 21st century climate change in the Ötztal Alps (Austria) simulated using a physically based approach, *Hydrology and Earth System Sciences*, 22, 1593–1614, <https://doi.org/10.5194/HESS-22-1593-2018>, 2018.
- Hanzer, F., Warscher, M., and Strasser, U.: openAMUNDSEN v1.0.0, <https://doi.org/10.5281/zenodo.11859175>, 2024.
- 825 Harpold, A. A., Kaplan, M. L., Klos, P. Z., Link, T., Mcnamara, J. P., Rajagopal, S., Schumer, R., and Steele, C. M.: Rain or snow: hydrologic processes, observations, prediction, and research needs, *Hydrol. Earth Syst. Sci.*, 21, 1–22, <https://doi.org/10.5194/hess-21-1-2017>, 2017.
- Hartl, L., Schmitt, P., Schuster, L., Helfricht, K., Abermann, J., and Maussion, F.: Recent observations and glacier modeling point towards near-complete glacier loss in western Austria (Ötztal and Stubai mountain range) if 1.5 °C is not met, *Cryosphere*, 19, 1431–1452, <https://doi.org/10.5194/TC-19-1431-2025>, 2025.
- 830 Heggen, R. J.: Normalized Antecedent Precipitation Index, *Journal of Hydrologic Engineering*, 6, 377–381, [https://doi.org/10.1061/\(ASCE\)1084-0699\(2001\)6:5\(377\)](https://doi.org/10.1061/(ASCE)1084-0699(2001)6:5(377)), 2001.
- Helfricht, K., Hartl, L., Stocker-Waldhuber, M., Seiser, B., and Fischer, A.: Glacier inventory Ötztal Alps 2017 [data set], <https://doi.org/10.1594/PANGAEA.965798>, 2024.
- Helfricht, K., Hartl, L., Stocker-Waldhuber, M., Seiser, B., and Fischer, A.: Glacier inventory Stubai Alps 2017/2018 [data set], 835 <https://doi.org/10.1594/PANGAEA.965791>, 2025.
- Hiebl, J. and Frei, C.: Daily precipitation grids for Austria since 1961—development and evaluation of a spatial dataset for hydroclimatic monitoring and modelling, *Theoretical and Applied Climatology*, 132, 327–345, <https://doi.org/10.1007/s00704-017-2093-x>, 2018.
- Himmelstoss, T., Haas, F., Becht, M., and Heckmann, T.: Catchment-scale network analysis of functional sediment connectivity during an extreme rainfall event in the Grastal catchment, Austrian Central Alps, *Geomorphology*, 465, 109419, 840 <https://doi.org/10.1016/j.geomorph.2024.109419>, 2024.
- Hirschberg, J., Mcardell, B. W., Badoux, A., and Molnar, P.: Analysis of rainfall and runoff for debris flows at the Illgraben catchment, Switzerland, in: *Debris-flow hazards mitigation: mechanics, monitoring, modeling, and assessment*, edited by Kean, J. W., Coe, J. A., Santi, P. M., and Guillen, B. K., pp. 693–700, Association of Environmental and Engineering Geologists, <https://www.dora.lib4ri.ch/wsl/islandora/object/wsl:21300>, 2019.

- 845 Hodges, J. L.: The significance probability of the Smirnov two-sample test, *Arkiv för Matematik*, 3, 469–486, <https://doi.org/10.1007/BF02589501>, 1958.
- Huss, M., Bookhagen, B., Huggel, C., Jacobsen, D., Bradley, R. S., Clague, J. J., Vuille, M., Buytaert, W., Cayan, D. R., Greenwood, G., Mark, B. G., Milner, A. M., Weingartner, R., and Winder, M.: Toward mountains without permanent snow and ice, *Earth's Future*, 5, 418–435, <https://doi.org/10.1002/2016EF000514>, 2017.
- 850 Kampf, S. K., Brogan, D. J., Schmeer, S., MacDonald, L. H., and Nelson, P. A.: How do geomorphic effects of rainfall vary with storm type and spatial scale in a post-fire landscape?, *Geomorphology*, 273, 39–51, <https://doi.org/10.1016/j.geomorph.2016.08.001>, 2016.
- Kann, A., Wittmann, C., Wang, Y., and Ma, X.: Calibrating 2-m Temperature of Limited-Area Ensemble Forecasts Using High-Resolution Analysis, *Monthly Weather Review*, 137, 3373–3387, <https://doi.org/10.1175/2009MWR2793.1>, 2009.
- Kendall, M. G.: Rank correlation methods, Griffin, 4th edn., ISBN 978-0852641996, 1970.
- 855 Kirkbride, M. and Reeves, A.: Soil erosion caused by low-intensity rainfall in Angus, Scotland, *Applied Geography*, 13, 299–311, [https://doi.org/10.1016/0143-6228\(93\)90034-X](https://doi.org/10.1016/0143-6228(93)90034-X), 1993.
- Klaar, M. J., Kidd, C., Malone, E., Bartlett, R., Pinay, G., Chapin, F. S., and Milner, A.: Vegetation succession in deglaciated landscapes: implications for sediment and landscape stability, *Earth Surface Processes and Landforms*, 40, 1088–1100, <https://doi.org/10.1002/esp.3691>, 2015.
- 860 Kormann, C., Bronstert, A., Francke, T., Recknagel, T., and Graeff, T.: Model-Based Attribution of High-Resolution Streamflow Trends in Two Alpine Basins of Western Austria, *Hydrology*, 3, 7, <https://doi.org/10.3390/hydrology3010007>, 2016.
- Koutsoyiannis, D., Kozonis, D., and Manetas, A.: A mathematical framework for studying rainfall intensity-duration-frequency relationships, *Journal of Hydrology*, 206, 118–135, [https://doi.org/10.1016/S0022-1694\(98\)00097-3](https://doi.org/10.1016/S0022-1694(98)00097-3), 1998.
- Kuhn, M., Lambrecht, A., and Abermann, J.: The Austrian glacier inventory GI 2, 1998, in ArcGIS (shapefile) format [data set], <https://doi.org/10.1594/PANGAEA.844984>, 2015.
- 865 Lalk, P., Haimann, M., and Habersack, H.: Monitoring, Analyse und Interpretation des Schwebstofftransportes an österreichischen Flüssen, *Osterreichische Wasser- und Abfallwirtschaft*, 66, 306–315, <https://doi.org/10.1007/s00506-014-0175-x>, 2014.
- Leonarduzzi, E., Molnar, P., and McArdeil, B. W.: Predictive performance of rainfall thresholds for shallow landslides in Switzerland from gridded daily data, *Water Resources Research*, 53, 6612–6625, <https://doi.org/10.1002/2017WR021044>, 2017.
- 870 Li, D., Lu, X., Overeem, I., Walling, D. E., Syvitski, J., Kettner, A. J., Bookhagen, B., Zhou, Y., and Zhang, T.: Exceptional increases in fluvial sediment fluxes in a warmer and wetter High Mountain Asia, *Science*, 374, 599–603, <https://doi.org/10.1126/science.abi9649>, 2021a.
- Li, D., Overeem, I., Kettner, A. J., Zhou, Y., and Lu, X.: Air Temperature Regulates Erodible Landscape, Water, and Sediment Fluxes in the Permafrost-Dominated Catchment on the Tibetan Plateau, *Water Resources Research*, 57, 1–14, <https://doi.org/10.1029/2020WR028193>, 2021b.
- 875 Li, D., Lu, X., Walling, D. E., Zhang, T., Steiner, J. F., Wasson, R. J., Harrison, S., Nepal, S., Nie, Y., Immerzeel, W. W., Shugar, D. H., Koppes, M., Lane, S., Zeng, Z., Sun, X., Yegorov, A., and Bolch, T.: High Mountain Asia hydropower systems threatened by climate-driven landscape instability, *Nature Geoscience* 2022, pp. 1–11, <https://doi.org/10.1038/s41561-022-00953-y>, 2022.
- Li, D., Zhang, T., Walling, D. E., Lane, S., Bookhagen, B., Tian, S., Overeem, I., Syvitski, J., Kettner, A. J., Park, E., Koppes, M., Schmitt, R.
- 880 J. P., Sun, W., Ni, J., and Ehlers, T. A.: The competing controls of glaciers, precipitation, and vegetation on high-mountain fluvial sediment yields, *Science Advances*, 10, 6196, <https://doi.org/10.1126/sciadv.ads6196>, 2024.

- Madsen, H., Lawrence, D., Lang, M., Martinkova, M., and Kjeldsen, T.: Review of trend analysis and climate change projections of extreme precipitation and floods in Europe, *Journal of Hydrology*, 519, 3634–3650, <https://doi.org/10.1016/j.jhydrol.2014.11.003>, 2014.
- 885 Maier, F., Lustenberger, F., and Van Meerveld, I.: Assessment of plot-scale sediment transport on young moraines in the Swiss Alps using a fluorescent sand tracer, *Hydrology and Earth System Sciences*, 27, 4609–4635, <https://doi.org/10.5194/HESS-27-4609-2023>, 2023.
- Mann, H. B.: Nonparametric Tests Against Trend, *Econometrica*, 13, 245, <https://doi.org/10.2307/1907187>, 1945.
- Menegoz, M., Valla, E., C. Jourdain, N., Blanchet, J., Beaumet, J., Wilhelm, B., Gallée, H., Fettweis, X., Morin, S., and Anquetin, S.: Contrasting seasonal changes in total and intense precipitation in the European Alps from 1903 to 2010, *Hydrology and Earth System Sciences*, 24, 5355–5377, <https://doi.org/10.5194/HESS-24-5355-2020>, 2020.
- 890 Molnar, P., Fatichi, S., Gaál, L., Szolgay, J., and Burlando, P.: Storm type effects on super Clausius-Clapeyron scaling of intense rainstorm properties with air temperature, *Hydrology and Earth System Sciences*, 19, 1753–1766, <https://doi.org/10.5194/HESS-19-1753-2015>, 2015.
- Moreau, M., Mercier, D., Laffly, D., and Roussel, E.: Impacts of recent paraglacial dynamics on plant colonization: A case study on Midtre Lovénbreen foreland, Spitsbergen (79°N), *Geomorphology*, 95, 48–60, <https://doi.org/10.1016/j.geomorph.2006.07.031>, 2008.
- 895 Musso, A., Ketterer, M. E., Greinwald, K., Geitner, C., and Egli, M.: Rapid decrease of soil erosion rates with soil formation and vegetation development in periglacial areas, *Earth Surface Processes and Landforms*, 45, 2824–2839, <https://doi.org/10.1002/esp.4932>, 2020.
- Nearing, M. A., Jetten, V., Baffaut, C., Cerdan, O., Couturier, A., Hernandez, M., Le Bissonnais, Y., Nichols, M. H., Nunes, J. P., Renschler, C. S., Souchère, V., and Van Oost, K.: Modeling response of soil erosion and runoff to changes in precipitation and cover, in: *Catena*, vol. 61, pp. 131–154, ISSN 03418162, <https://doi.org/10.1016/j.catena.2005.03.007>, 2005.
- 900 Olefs, M., Koch, R., Schöner, W., and Marke, T.: Changes in Snow Depth, Snow Cover Duration, and Potential Snow-making Conditions in Austria, 1961–2020—A Model Based Approach, *Atmosphere* 2020, Vol. 11, Page 1330, 11, 1330, <https://doi.org/10.3390/ATMOS11121330>, 2020.
- Ombadi, M., Risser, M. D., Rhoades, A. M., and Varadharajan, C.: A warming-induced reduction in snow fraction amplifies rainfall extremes, *Nature*, 619, 305–310, <https://doi.org/10.1038/s41586-023-06092-7>, 2023.
- 905 Patzelt, G.: The Austrian glacier inventory GI 1, 1969, in ArcGIS (shapefile) format [data set], <https://doi.org/10.1594/PANGAEA.844983>, 2015.
- Peleg, N., Skinner, C., Fatichi, S., and Molnar, P.: Temperature effects on the spatial structure of heavy rainfall modify catchment hydro-morphological response, *Earth Surface Dynamics*, 8, 17–36, <https://doi.org/10.5194/ESURF-8-17-2020>, 2020.
- Prein, A. F. and Gobiet, A.: Impacts of uncertainties in European gridded precipitation observations on regional climate analysis, *International Journal of Climatology*, 37, 305–327, <https://doi.org/10.1002/joc.4706>, 2017.
- 910 Rainato, R., Martini, L., Pellegrini, G., and Picco, L.: Hydrological, geomorphic and sedimentological responses of an alpine basin to a severe weather event (Vaia storm), *Catena*, 207, <https://doi.org/10.1016/j.catena.2021.105600>, 2021.
- Rom, J., Haas, F., Hofmeister, F., Fleischer, F., Altmann, M., Pfeiffer, M., Heckmann, T., and Becht, M.: Analysing the Large-Scale Debris Flow Event in July 2022 in Horlachtal, Austria Using Remote Sensing and Measurement Data, *Geosciences* 2023, Vol. 13, Page 100, 13, 100, <https://doi.org/10.3390/GEOSCIENCES13040100>, 2023.
- 915 Scheurer, K., Alewell, C., Bänninger, D., and Burkhardt-Holm, P.: Climate and land-use changes affecting river sediment and brown trout in alpine countries—a review, *Environmental Science and Pollution Research*, 16, 232–242, <https://doi.org/10.1007/s11356-008-0075-3>, 2009.

- Schmidt, L. K.: Altered hydrological and sediment dynamics in high-alpine areas – Exploring the potential of machine-learning for estimating  
920 past and future changes, Ph.D. thesis, University of Potsdam, Potsdam, <https://doi.org/10.25932/publishup-62330>, 2023.
- Schmidt, L. K., Francke, T., Rottler, E., Blume, T., Schöber, J., and Bronstert, A.: Suspended sediment and discharge dynamics in a glaciated  
alpine environment: identifying crucial areas and time periods on several spatial and temporal scales in the Ötztal, Austria, *Earth Surface  
Dynamics*, 10, 653–669, <https://doi.org/10.5194/esurf-10-653-2022>, 2022.
- Schmidt, L. K., Francke, T., Grosse, P. M., Mayer, C., and Bronstert, A.: Reconstructing five decades of sediment export from two glacier-  
925 ized high-alpine catchments in Tyrol, Austria, using nonparametric regression, *Hydrology and Earth System Sciences*, 27, 1841–1863,  
<https://doi.org/10.5194/hess-27-1841-2023>, 2023.
- Schmidt, L. K., Francke, T., Grosse, P. M., and Bronstert, A.: Projecting sediment export from two highly glacierized alpine catchments  
under climate change: exploring non-parametric regression as an analysis tool, *Hydrology and Earth System Sciences*, 28, 139–161,  
<https://doi.org/10.5194/hess-28-139-2024>, 2024.
- 930 Schroer, K., Kirchengast, G., and Sungmin, O.: Strong Dependence of Extreme Convective Precipitation Intensities on Gauge Network  
Density, *Geophysical Research Letters*, 45, 8253–8263, <https://doi.org/10.1029/2018GL077994>, 2018.
- Scorpio, V., Cavalli, M., Steger, S., Crema, S., Marra, F., Zaramella, M., Borga, M., Marchi, L., and Comiti, F.: Storm characteristics dictate  
sediment dynamics and geomorphic changes in mountain channels: A case study in the Italian Alps, *Geomorphology*, 403, 108 173,  
<https://doi.org/10.1016/J.GEOMORPH.2022.108173>, 2022.
- 935 Sen, P. K.: Estimates of the Regression Coefficient Based on Kendall’s Tau, *Journal of the American Statistical Association*, 63, 1379–1389,  
<https://doi.org/10.1080/01621459.1968.10480934>, 1968.
- Shen, H., Zheng, F., Wen, L., Han, Y., and Hu, W.: Impacts of rainfall intensity and slope gradient on rill erosion processes at loessial  
hillslope, *Soil and Tillage Research*, 155, 429–436, <https://doi.org/10.1016/j.still.2015.09.011>, 2016.
- Skålevåg, A., Korup, O., and Bronstert, A.: Inferring sediment-discharge event types in an Alpine catchment from sub-daily time series,  
940 *Hydrology and Earth System Sciences*, 28, 4771–4796, <https://doi.org/10.5194/hess-28-4771-2024>, 2024.
- Sleziak, P., Jančo, M., Danko, M., Méri, L., and Holko, L.: Accuracy of radar-estimated precipitation in a mountain catchment in Slovakia,  
*Journal of Hydrology and Hydromechanics*, 71, 111–122, <https://doi.org/10.2478/johh-2022-0037>, 2023.
- Sloto, R. A. and Crouse, M. Y.: HYSEP: A Computer Program for Streamflow Hydrograph Separation and Analysis, Tech. rep., U.S.  
Geological Survey, <https://doi.org/10.3133/wri964040>, 1996.
- 945 Strasser, U., Marke, T., Braun, L., Escher-Vetter, H., Juen, I., Kuhn, M., Maussion, F., Mayer, C., Nicholson, L., Niedertscheider, K., Sailer, R.,  
Stötter, J., Weber, M., and Kaser, G.: The Rofental: A high Alpine research basin (1890-3770ma.s.l.) in the Ötztal Alps (Austria) with over  
150 years of hydrometeorological and glaciological observations, *Earth System Science Data*, 10, 151–171, <https://doi.org/10.5194/ESSD-10-151-2018>, 2018.
- Strasser, U., Warscher, M., Rottler, E., and Hanzer, F.: openAMUNDSEN v1.0: an open-source snow-hydrological model for mountain  
950 regions, *Geoscientific Model Development*, 17, 6775–6797, <https://doi.org/10.5194/gmd-17-6775-2024>, 2024.
- Swift, D. A., Nienow, P. W., and Hoey, T. B.: Basal sediment evacuation by subglacial meltwater: suspended sediment transport from Haut  
Glacier d’Arolla, Switzerland, *Earth Surface Processes and Landforms*, 30, 867–883, <https://doi.org/10.1002/ESP.1197>, 2005.
- Theil, H.: A rank-invariant method of linear and polynomial regression analysis, *Proceedings of the Royal Netherlands Academy of Sciences*,  
53, 386–392, 1950.

- 955 Tsyplenkov, A., Vanmaercke, M., Golosov, V., and Chalov, S.: Suspended sediment budget and intra-event sediment dynamics of a small glaciated mountainous catchment in the Northern Caucasus, *Journal of Soils and Sediments*, 20, 3266–3281, <https://doi.org/10.1007/s11368-020-02633-z>, 2020.
- Ulrich, J., Jurado, O. E., Peter, M., Scheibel, M., and Rust, H. W.: Estimating IDF Curves Consistently over Durations with Spatial Covariates, *Water*, 12, 3119, <https://doi.org/10.3390/w12113119>, 2020.
- 960 van Hamel, A., Molnar, P., Janzing, J., and Brunner, M. I.: Suspended sediment concentrations in Alpine rivers: from annual regimes to sub-daily extreme events, <https://doi.org/10.5194/egusphere-2024-3985>, 2025.
- Vergara, I., Garreaud, R., and Ayala, A.: Sharp Increase of Extreme Turbidity Events Due To Deglaciation in the Subtropical Andes, *Journal of Geophysical Research: Earth Surface*, 127, e2021JF006584, <https://doi.org/10.1029/2021JF006584>, 2022.
- Vergara, I., Garreaud, R., Delaney, I., and Ayala, A.: Deglaciation in the subtropical Andes has led to a peak in sediment delivery, *Communications Earth & Environment*, 5, 630, <https://doi.org/10.1038/s43247-024-01815-8>, 2024.
- 965 Vergara-Temprado, J., Ban, N., and Schär, C.: Extreme Sub-Hourly Precipitation Intensities Scale Close to the Clausius–Clapeyron Rate Over Europe, *Geophysical Research Letters*, 48, e2020GL089506, <https://doi.org/10.1029/2020GL089506>, 2021.
- Voordendag, A., Prinz, R., Schuster, L., and Kaser, G.: Brief communication: The Glacier Loss Day as an indicator of a record-breaking negative glacier mass balance in 2022, *The Cryosphere*, 17, 3661–3665, <https://doi.org/10.5194/tc-17-3661-2023>, 2023.
- 970 Warscher, M., Marke, T., Rottler, E., and Strasser, U.: Operational and experimental snow observation systems in the upper Rofental: data from 2017 to 2023, *Earth System Science Data*, 16, 3579–3599, <https://doi.org/10.5194/essd-16-3579-2024>, 2024.
- Wilks, D. S.: *Statistical Methods in the Atmospheric Sciences*, Elsevier, 4th edn., ISBN 9780128158234, <https://doi.org/10.1016/C2017-0-03921-6>, 2019.
- Wischmeier, W. H. and Smith, D. D.: Predicting rainfall erosion losses - a
- 975 }guide to conservation planning, Tech. rep., U.S. Department of Agriculture, Agriculture Handbook No. 537, Washington, D.C., [https://www.ars.usda.gov/ARUserFiles/60600505/RUSLE/AH\\_537%20Predicting%20Rainfall%20Soil%20Losses.pdf](https://www.ars.usda.gov/ARUserFiles/60600505/RUSLE/AH_537%20Predicting%20Rainfall%20Soil%20Losses.pdf), 1978.
- Wulf, H., Bookhagen, B., and Scherler, D.: Climatic and geologic controls on suspended sediment flux in the Sutlej River Valley, western Himalaya, *Hydrology and Earth System Sciences*, 16, 2193–2217, <https://doi.org/10.5194/hess-16-2193-2012>, 2012.
- Zandler, H., Haag, I., and Samimi, C.: Evaluation needs and temporal performance differences of gridded precipitation products in peripheral
- 980 mountain regions, *Scientific Reports*, 9, 15 118, <https://doi.org/10.1038/s41598-019-51666-z>, 2019.
- Zhang, F., Hu, Y., Fan, X., Yu, W., Liu, X., and Jin, Z.: Controls on seasonal erosion behavior and potential increase in sediment evacuation in the warming Tibetan Plateau, *CATENA*, 209, 105 797, <https://doi.org/10.1016/j.catena.2021.105797>, 2022a.
- Zhang, T., Li, D., East, A. E., Walling, D. E., Lane, S., Overeem, I., Beylich, A. A., Koppes, M., and Lu, X.: Warming-driven erosion and sediment transport in cold regions, *Nature Reviews Earth & Environment* 2022, pp. 1–20, <https://doi.org/10.1038/s43017-022-00362-0>,
- 985 2022b.
- Zhang, T., Li, D., East, A. E., Kettner, A. J., Best, J., Ni, J., and Lu, X.: Shifted sediment-transport regimes by climate change and amplified hydrological variability in cryosphere-fed rivers, *Science Advances*, 9, <https://doi.org/10.1126/sciadv.adi5019>, 2023.
- Zhang, X., Alexander, L., Hegerl, G. C., Jones, P., Tank, A. K., Peterson, T. C., Trewin, B., and Zwiers, F. W.: Indices for monitoring changes in extremes based on daily temperature and precipitation data, *WIREs Climate Change*, 2, 851–870, <https://doi.org/10.1002/wcc.147>,
- 990 2011.