

Review Article: The Foundation-Patuxent-Academy ice stream system, Antarctica

Neil Ross¹, Rebecca J. Sanderson¹, Bernd Kulesa^{2,3}, Martin Siegert⁴, Guy J. G. Paxman⁵, Keir A. Nichols⁶, Matthew R. Siegfried⁷, Stewart S. R. Jamieson⁵, Michael J. Bentley⁵, Tom A. Jordan⁸, Christine L. Batchelor¹, David Small⁵, Olaf Eisen^{9,10}, Kate Winter¹¹, Robert G. Bingham¹², S. Louise Callard¹, Rachel Carr¹, Christine F. Dow¹³, Helen A. Fricker¹⁴, Emily Hill¹¹, Benjamin H. Hills⁷, Coen Hofstede^{9,10}, Hafeez Jeofry¹⁵, Felipe Napoleoni¹², Wilson Sauthoff⁷

¹School of Geography, Politics and Sociology, Newcastle University, UK

²School of Biosciences, Geography and Physics, Swansea University, UK

10 ³School of Geography, Planning, and Spatial Sciences, University of Tasmania, Australia

⁴Tremough House, University of Exeter, Penryn, UK

⁵Department of Geography, Durham University, UK

⁶Scottish Universities Environmental Research Centre, East Kilbride, UK

⁷Department of Geophysics, Colorado School of Mines, Golden, USA

15 ⁸British Antarctic Survey, High Cross, Madingley Road, Cambridge, UK

⁹Alfred Wegener Institute Helmholtz Centre for Polar and Marine Research, Bremerhaven, Germany

¹⁰Department of Geosciences, University of Bremen, Bremen, Germany

¹¹Department of Geography and Environmental Sciences, Northumbria University, UK

¹²School of GeoSciences, University of Edinburgh, UK

20 ¹³Department of Geography and Environmental Management, University of Waterloo, Canada

¹⁴Scripps Polar Center, IGPP, Scripps Institution of Oceanography, University of California, San Diego, La Jolla, CA, USA

¹⁵Faculty of Science and Marine Environment, Universiti Malaysia Terengganu, Malaysia

Correspondence to: Neil Ross (neil.ross@newcastle.ac.uk)

Abstract. The Foundation-Patuxent-Academy system (FPAS) is a major Antarctic ice stream system with a global sea level potential of ~3 m. **Draining** both East and West Antarctica, the FPAS has been understudied compared with other major Antarctic ice streams. **We** provide a holistic catchment-scale overview of the FPAS reviewing its glaciological and hydrological systems, its glacial history, and its modelled response to past and future climate change. FPAS may be vulnerable to future change because of: (i) a deep (~2.4 km below sea level) low-gradient retrograde bed that encourages grounding-zone retreat; (ii) a low-gradient ice surface and high tidal range, which are likely to promote flotation of grounded ice and seawater intrusion; (iii) an active and dynamic subglacial hydrological system; (iv) complex ice-meltwater-ocean interactions at the grounding zone; (v) potential for substantive expansion of the across-flow length - and cross sectional area - of the grounding zone; and (vi) susceptibility to ice flow-switching and water piracy. Despite such potential vulnerabilities, existing numerical model simulations of FPAS grounding-zone retreat produce a wide and divergent range of past and future scenarios. Uncertainties in the future response of the FPAS to a warming climate result from poor constraints on its topography and hydrology, processes of ice-ocean interaction, interlinkages with the surrounding ice sheet and ice shelf, **and** a shortage of FPAS-specific modelling experiments. This review outlines and evaluates these critical gaps in our knowledge of the FPAS



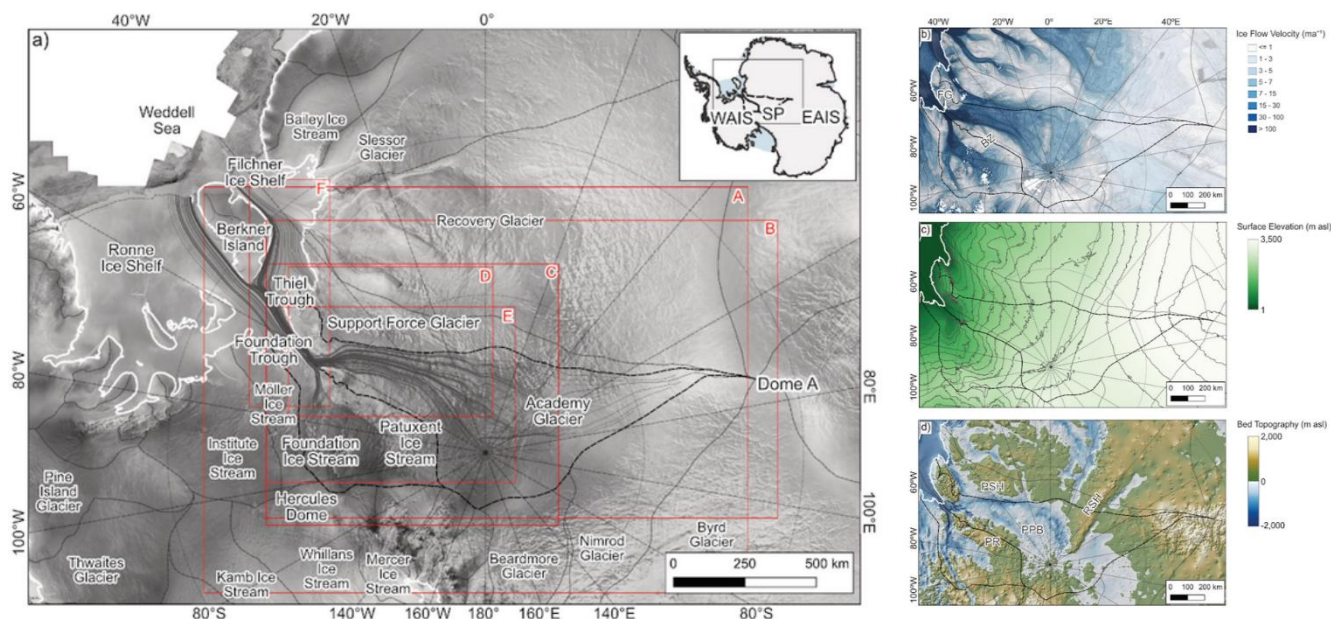
and develops a strategy to address them. This strategy would provide: (i) the first robust and comprehensive evaluation of the FPAS's vulnerability to current and near-future climate forcing; and (ii) improved constraints on projections of the future contribution of the Antarctic Ice Sheet to sea-level rise.

40 **1 Introduction**

The Foundation-Patuxent-Academy system (FPAS) is one of the largest catchments draining the Antarctic Ice Sheet, covering 572,494 km² (Rignot et al., 2019) and extending 1400 km from Dome A to the grounding zone of Filchner-Ronne Ice Shelf (FRIS) (Fig. 1). The FPAS contains an ice volume equivalent to ~3 m of global sea level (Rignot et al., 2019), which is >50% of the total sea level equivalent volume of the West Antarctic Ice Sheet (WAIS) (Fretwell et al., 2013; Morlighem et al., 2020; Pritchard et al., 2025). Between 2009 and 2017, the FPAS's mass balance was broadly in equilibrium, and it delivered an annual mass flux of 42 Gt yr⁻¹ to FRIS, ~2.5 % of the entire Antarctic Ice Sheet mass flux (Rignot et al., 2019). The FPAS flows in two main sub-catchments (Jeofry et al., 2018a), one in each of the WAIS and the East Antarctic Ice Sheet (EAIS) (Fig. 1). Foundation and Patuxent ice streams (WAIS) coalesce to form an enlarged Foundation Ice Stream. Academy Glacier (EAIS) then joins this ice stream, flowing side-by-side in a single ice stream trunk that is often referred to as Foundation Ice Stream. This ice stream then flows into FRIS and around Berkner Island (Fig. 1).

Here, we define the FPAS as all ice flowing through the 'Foundation Ice Stream' flux gate. In mass balance assessments (e.g. Rignot et al., 2019), the two FPAS sub-catchments are separate entities, with Foundation-Patuxent (WAIS) within the wider Ronne mass balance basin (i.e. J-J'') and Academy (EAIS) within the Filchner mass balance basin (i.e. J''-K). Here, we retain a distinction between the FPAS and the adjacent, but separate, Support Force Glacier, which adjoins upper Academy Glacier (Fig. 1) yet has a distinct catchment and flux gate.

The goals of this community review paper are to enhance awareness of the FPAS, evaluate gaps in our knowledge, and pose new research questions, generating a framework to motivate and catalyse future directed research on the FPAS. This is a similar approach to earlier papers for other - at the time - poorly quantified Antarctic glaciers that have steered community attention and driven new understanding of ice sheet systems (e.g. Doake et al., 2001; Vaughan et al., 2001; Scambos et al., 2017). In this first synoptic catchment-scale overview of the FPAS, we compile and synthesise existing research and highlight new advances from the past two decades. We then identify outstanding research questions to be addressed in evaluating the role of the FPAS in broader Antarctic Ice Sheet dynamics and quantifying its potential contribution to future sea-level rise.



65 **Figure 1: Glaciological and topographic setting of the Foundation-Patuxent-Academy ice stream system (FPAS): (a) extent and**
context of the FPAS relative to other ice stream catchments in East and West Antarctica. Backdrop is RADARSAT-1 Antarctic
Mapping Project (RAMP) SAR Image Mosaic of Antarctica (Jezek et al., 2013). Black dashed lines are Ice Sheet Mass Balance Inter-
comparison Exercise (IMBIE) catchments (Mouginot et al., 2017). White line is Bedmap3 grounding zone (Pritchard et al., 2025).
Thin dark grey lines in FPAS are ice flow lines demonstrating the broad ice flow pattern of FPAS from Dome A to the Filchner-
Ronne ice-shelf edge generated from ice velocity data (Mouginot et al., 2019). Inset map shows location of figure 1a in Antarctica;
70 **WAIS = West Antarctic Ice Sheet, EAIS = East Antarctic Ice Sheet, SP = South Pole. Red boxes on 1a show the extents of: Figure 3**
(A), figures 1b and 6a (B), figure 5 (C), figure 7 (D), figures 4 and 9 (E) and figure 8b (F); (b) FPAS ice velocity (Mouginot et al.,
2019); (c) FPAS ice surface elevation at contour intervals of 200 m (Bedmap3) (Pritchard et al., 2025); (d) FPAS bed topography
(Bedmap3) (Pritchard et al., 2025); For b-d the boundary catchment of the FPAS is marked with a dashed black line (Mouginot et
75 **al., 2017) and Bedmap3 grounding zone (white) (Pritchard et al., 2025). Geographic features are: Pensacola-Pole Basin (PPB),**
Patuxent Range (PR), Bottleneck Zone (BZ), Flux Gate (FG), Recovery Subglacial Highlands (RSH) and PolarGAP Subglacial
Highlands (PSH).

2 Justification for new research

Recent insights into the FPAS make it timely to develop a coordinated approach to address new and outstanding research questions. These have been made possible by advancements in data acquisition and techniques to investigate the FPAS, specifically: (i) new geophysical observations over the grounded ice and ice shelf (Rosier et al., 2018; Jeofry et al., 2018b; Paxman et al., 2019) and their integration into ice thickness and bed topography compilations such as Bedmap3 (Frémand et al., 2023; Pritchard et al., 2025); (ii) enhanced computing power and associated advances in numerical model simulations of ice-ocean interactions and subglacial hydrology (e.g. Naughten et al., 2021; Dow et al., 2022); (iii) new remote sensing observations of the sensitive ice-ocean boundary (e.g. Freer et al., 2023); (iv) geological sampling for cosmogenic nuclide dating (e.g. Braddock et al., 2024); and (v) new in-situ oceanographic measurements beneath FRIS (Hattermann et al. 2021). These data have provided five new insights into the FPAS, which provide justification for this review and for future research:



(i) Bed geometry near the grounding zone: The bed of the FPAS grounding zone and trunk provides a preferential pathway for oceanic water to potentially reach deep into the interior of East Antarctica. In the first 100 km upstream of the grounding zone, the FPAS is relatively narrow (~50 km wide) and has a low gradient (~0.005 degrees) retrograde bed that descends from ~1900 m below sea level (b.s.l.) at the grounding zone to a maximum depth of ~2400 m b.s.l. (Jankowski and Drewry, 1981; Jeofry et al, 2018b) (Figs. 1 and 2). Inland, Academy Glacier overlies the Pensacola-Pole Basin (Figs. 1d and 2) (Drewry 1983; Paxman et al., 2019), which is one of East Antarctica's major subglacial marine basins (Morlighem et al., 2020). The connection between the FPAS trunk and the Pensacola-Pole Basin means that a potentially contiguous, and in parts reverse sloping, valley up to 60 km wide extends from the FPAS grounding zone to over 400 km inland (Paxman et al., 2019; Pritchard et al., 2025) (Figs. 1d, 2a and 2h-i). Retrograde bed geometries are assumed to be conducive to unstable grounding-zone retreat because ice flux increases with ice thickness when the bed deepens inland (i.e. the Marine Ice Sheet Instability (MISI) hypothesis (Weertman, 1974; Schoof, 2012)). Indeed, some numerical simulations (e.g. Pollard et al., 2015; Gasson et al., 2016; DeConto and Pollard, 2016; DeConto et al., 2021) show 100s of kms of grounding-zone retreat across the Pensacola-Pole Basin over geological timescales under warm climate scenarios (e.g. driven by Pliocene-like climates). However, other modelling experiments of near-future change over shorter time periods (e.g. Seroussi et al., 2020, 2024) show much more limited grounding-zone retreat.

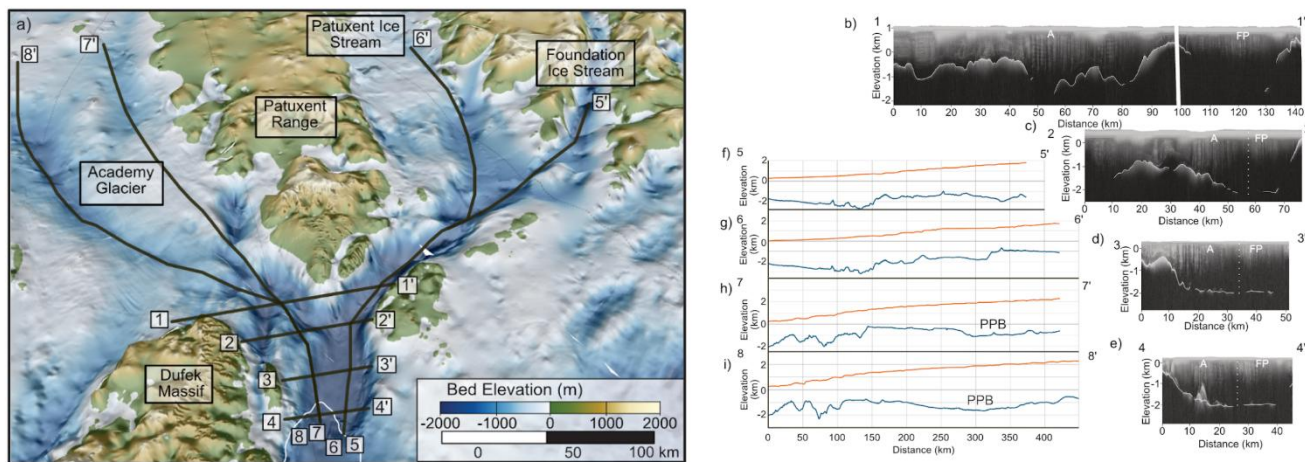
(ii) Ice surface geometry near the grounding zone: Inland of the grounding zone, the FPAS is close to flotation owing to its low-gradient bed and surface geometry (Figs. 2f-i). This makes the grounding zone highly dynamic and sensitive to changes in ice thickness. Under this geometry, moderate ice thinning would translate into significant grounding-zone retreat (Brunt et al., 2011; Batchelor et al., 2023). Over shorter timescales, the Weddell Sea has a large tidal range (up to ~8 m) (Fricker and Padman, 2006; Padman et al., 2018), which facilitates the grounding line to migrate landward and seaward by up to 20 km on each tidal cycle (Brunt et al., 2011; Jeofry et al., 2018a; Dawson and Bamber, 2020; Li et al. 2022b; Freer et al., 2023). Such a high range of tidal motion may result in: (i) vigorous ocean circulation and high rates of basal melting at or seaward of the grounding zone (Lambrecht et al., 1999; Muenner et al., 2018; Adusumilli et al., 2020), influencing grounded ice flow (Rosier et al., 2017; Rosier and Gudmundsson, 2020); (ii) a 'bellowing' effect, as the lightly grounded ice moves vertically on tidal cycles, stirring the cavity waters and increasing melt; and (iii) the intrusion of seawater beneath the grounded ice, which can further enhance melting (Gnot et al., 2024; Bradley and Hewitt, 2024; Fricker et al., 2025).

(iii) Glaciological configuration of the FPAS: The glaciological geometry of the FPAS means that modest grounding-zone retreat of ~50-60 km would increase the across-flow length of the FPAS grounding zone by nearly 60% (i.e. from ~52 to >80 km). This would lead to an increase in the cross sectional area of the FPAS flux gate (compare Figs. 2b-d), likely enhancing ice discharge from both East and West Antarctica. This marked change in the length of the grounding zone and area of the ice flux gate, and the resultant change in boundary conditions at the ocean interface and circulation in the ice-shelf cavity, has potential implications for ice-ocean interactions and rates of ocean-driven melting (Bradley and Hewitt, 2024). A shift from a narrow to a wide flux gate would increase susceptibility of the FPAS to grounding-zone retreat by increasing the rate of ice discharge from both East and West Antarctica (Jamieson et al., 2012; Carr et al., 2013; Gudmundsson et al., 2012; Bunce et

al., 2018; Mas e Braga et al., 2023). Combined with the inherently highly dynamic ice-ocean interactions over tidal cycles and the potential for ice-shelf thinning to reduce ‘tele-buttressing’ by Berkner Island (Fürst et al., 2016; Reese et al., 2018), the FPAS grounding zone may be susceptible to substantive retreat even under minor changes to external forcing. In a scenario where the grounding zone increases in across-flow length, amplification of ocean-ice feedbacks and dynamic FPAS responses may occur (Bradley and Hewitt, 2024).

(iv) Basin location: The geography of the FPAS, which bounds many other ice stream and outlet-glacier catchments (Fig.1), makes it sensitive to, and potentially able to drive, ice-sheet change in other sectors of West and East Antarctica (e.g., changes in West Antarctica may propagate eastwards via the FPAS), with wider-scale ice-dynamical implications. Whillans Ice Stream shares an ice divide with the Foundation Ice Stream catchment at Hercules Dome (Fig. 1), and is thinning up to its ice divide (Smith et al., 2020a). This raises concerns for the potential for ice-flow piracy in this region, as has likely occurred elsewhere in Antarctica over both recent and geological timescales (Alley et al., 1994; Vaughan et al., 2008; Siegert et al., 2013, 2019; McCormack et al., 2023). Furthermore, modelling studies have suggested that a loss of the WAIS would lead to warming and changes in atmospheric circulation in adjacent areas of the EAIS (Steig et al., 2015; Dütsch et al., 2023).

(v) Subglacial hydrology: The FPAS has a highly active, high-discharge subglacial hydrological system that may extend continuously from beyond the South Pole to the FPAS margin (Smith et al., 2009; Jordan et al., 2018; Siegfried and Fricker, 2021; Dow et al., 2022) and is vulnerable to hydrological switching. This hydrological system, which is thought to contain nineteen active subglacial lakes (Smith et al., 2009), the most of any ice stream in Antarctica, has two distinct components deriving from both the WAIS and EAIS (Jeofry et al., 2018a) and plays a significant role in ice dynamics and ice-ocean interactions at the grounding zone (Smith et al., 2009; Jordan et al., 2018; Jeofry et al., 2018a; Dow et al., 2022). Even subtle changes in interior ice-surface slopes could lead to hydrological ‘flow-switching’ (e.g., Wright et al., 2008) between Academy Glacier and Support Force Glacier (Livingstone et al., 2013), with potential ice-dynamic implications (Alley et al., 1994; Carter et al., 2013). Furthermore, the laterally rough grounding zone of the FPAS caused by sub-ice shelf meltwater channels (Fig. 2e) (Jeofry et al., 2018a) will likely result in highly spatially variable slope-dependent grounding zone melt rates (Stanton et al., 2013; Schmidt et al., 2023).



145

150

155

Figure 2: Perspective view of topography and geometry of lower trunk of FPAS, illustrating low ice surface elevation, and extent, size and depth (> 2 km below sea level) of the Foundation-Thiel trough beneath the FPAS trunk. (a) 3D bed topography (Bedmap3, Pritchard et al., 2025) with profile lines shown in subplots b-i. View is into the ice sheet from the grounding zone. Grounding line (Pritchard et al., 2025) is white line; Black lines are approximate locations of radar profiles shown in b-e and topographic profiles in f-i; (b-e) radargrams, with ice thickness picks (white lines) overlain, from the Filchner Ice Shelf System (FISS) survey (profiles 1-4 on 'a') (Nicholls et al., 2024). The bright 'englacial' reflections ~12-16 km along 4-4' represent ice shelf channels; (f-i) Glacier surface (orange) and bed (blue) profile elevations (Bedmap3) for Foundation Ice Stream (profile 5 on 'a'), Patuxent Ice Stream (profile 6 on 'a') and Academy Glacier (profiles 7 & 8 on 'a'). 0 m on x-axes of f-i represents position of Bedmap3 grounding line. On b-e: A = Academy Glacier, FP = Foundation-Patuxent (vertical dashed lines mark boundary between the two flow zones). On h-i: PPB = Pensacola-Pole Basin.

3 Discovery and geophysical exploration of the FPAS since the International Geophysical Year (IGY)

The major components of the FPAS trunk were first sighted during an Argentine flight to the South Pole in 1962, photographed by the U.S. Navy in 1964, and mapped by the U.S. Geological Survey (USGS) in 1968. The original Argentine name for the FPAS trunk was 'Glaciar Bahía Buen Suceso' (Glacier of the Bay of the Good Event), but a USGS map in 1968 formally used the term 'Foundation Ice Stream', which was later widely adopted. Foundation Ice Stream and Academy Glacier were named after the U.S. National Science Foundation (NSF) and National Academy of Sciences (NAS), respectively, whilst Patuxent Ice Stream, and the adjacent Patuxent Range, were named after the U.S. Naval Air Station located at the mouth of the Patuxent River, Maryland (SCAR Composite Gazetteer, 2014).

The first ground-based glaciological and geophysical observations of the FPAS interior catchment were undertaken before the sighting of the trunk, however, during the Commonwealth Trans-Antarctic Expedition (1955–58) that traversed the upper parts of the FPAS catchment (Lister and Pratt, 1959). Seismic soundings of ice thickness at the South Pole were undertaken as part of the U.S. Operation Deep Freeze programme in 1957-58 and by the U.S.S.R. in 1959 (Robin, 1961; Dralkin, 1960). Glaciological and geophysical work was also conducted during the South Pole (1962-63) and South Pole-Queen Maud Land (1964-65, 1965-66 and 1967-68) traverses (Robinson, 1966; Beitzel, 1971; Taylor, 1971; Koerner, 1971). Parts of the Foundation Ice Stream tributary of the FPAS were traversed during, and immediately following, the International Geophysical

170



Year (IGY) of 1957-59 (Bentley et al., 1960; Thiel, 1961). A seismic sounding on an IGY traverse between the Stewart Hills and Sonntag Nunatak revealed a valley more than 1500 m b.s.l. (Thiel, 1961), through which the upper reaches of Foundation Ice Stream is now known to flow (Figs. 1 and 2) (Winter et al., 2018; Mouginot et al., 2019).

The first paper that made explicit reference to the ice streams of the FPAS (Behrendt et al., 1966), refers to “...*an ice stream*
175 *which flows between Neptune and Patuxent Ranges*” (i.e. Academy Glacier), as well as “*another prominent ice stream flows*
into the ice shelf east of the Forrestal Range” (this refers to the distinct, but FPAS-adjointing, Support Force Glacier). Based
on seismic soundings, it was determined that both the FPAS and Support Force Glacier flow through deep troughs (Behrendt
et al., 1966) that continue offshore (Behrendt, 1962), namely the Thiel Trough. A deep basin up to 1000 m b.s.l. between the
Patuxent Range and Thiel Mountains was identified beneath what is now recognised as Patuxent Ice Stream (Behrendt et al.,
180 1966) (Figs. 1 and 2). The first citation to Academy Glacier was Behrendt et al. (1974), although this referred to Foundation
Ice Stream as “*a major unnamed ice stream between the Patuxent Range and the Thiel Mountains....*”. Drewry and Meldrum
(1978) made the first references to the “*Foundation and Patuxent ice streams, which constitute one of the major outlets of the*
southern portion of the west Antarctic ice sheet”.

The pioneering ground and airborne geophysical and glaciological fieldwork campaigns of the 1950s and 1960s were followed
185 by a series of major research programmes that targeted the FPAS, amongst many other systems and regions. During the 1970s,
an international consortium combining the scientific, logistical and technical capabilities of the UK Scott Polar Research
Institute (SPRI), the U.S. NSF and the Technical University of Denmark (TUD) undertook continent-scale aerogeophysical
surveys across Antarctica (Turchetti et al., 2008; Schroeder et al., 2019; Drewry, 2023). During the 1974-75, 1977-78, and
1978-79 Antarctic field seasons, the SPRI-NSF-TUD consortium acquired a series of radio-echo sounding (RES) and
190 aeromagnetic transects separated by between 20 and 50 km over the FPAS and surrounding areas (Drewry and Meldrum, 1978;
Drewry et al., 1980; Jankowski and Drewry, 1981; Behrendt et al., 1981). From these data, it was discovered that: (i) the
Foundation and Patuxent ice streams follow a deep bedrock trench (Drewry and Meldrum, 1978; Jankowski and Drewry,
1981); and (ii) the grounding zone in this area of the Weddell Sea was described as “*an unusual and diffuse boundary*”, with
the ice lightly grounded on soft, water-saturated sediments (Drewry et al., 1980; Jankowski and Drewry, 1981). The surveys
195 also provided the first macro-scale quantification of the ice surface elevation, ice thickness, and subglacial topography of the
area (Drewry et al., 1980; Jankowski and Drewry, 1981), and determined the extent and geophysical properties of the
underlying geology (Jankowski and Drewry, 1981; Behrendt et al., 1981). Integrating this information permitted the first broad-
scale understanding of ice flow dynamics and topography in this part of Antarctica (McIntyre, 1983; 1986).

No further significant research was undertaken on the FPAS until the 1990s when the Alfred Wegener Institute (AWI)
200 undertook an integrated airborne and ground-based geophysical, glaciological and geodetic investigation (the ‘Filchner V
campaign’) along a profile from the front of FRIS, across the ice shelf to the west of Berkner Island, and up a flowline of the
FPAS trunk (Riedel et al., 1995; Lambrecht, 1998; Lambrecht et al., 1999, 2007). The Filchner V campaign was the first to
determine: (i) basal melt rates at the FPAS grounding zone ($>9 \text{ m a}^{-1}$); (ii) a maximum ice thickness of $>2000 \text{ m}$ close to the
FPAS grounding zone; and (iii) that the grounding zone was $\sim 40 \text{ km}$ south of the position mapped by the United States



205 Geological Survey in the 1960s (Lambrecht et al., 1997). Alongside ice core measurements and ice flow observations, the ice thickness data were also used to calculate a mass flux of the system ($51 \text{ km}^3 \text{ a}^{-1}$) (Lambrecht, 1998; Lambrecht et al., 1999) that is within 20% of more recent estimations (e.g. Rignot et al., 2019). In addition, the Filchner V campaign measured the sub-ice shelf bathymetry via seismic observations (Mayer et al., 1995; Lambrecht, 1998).

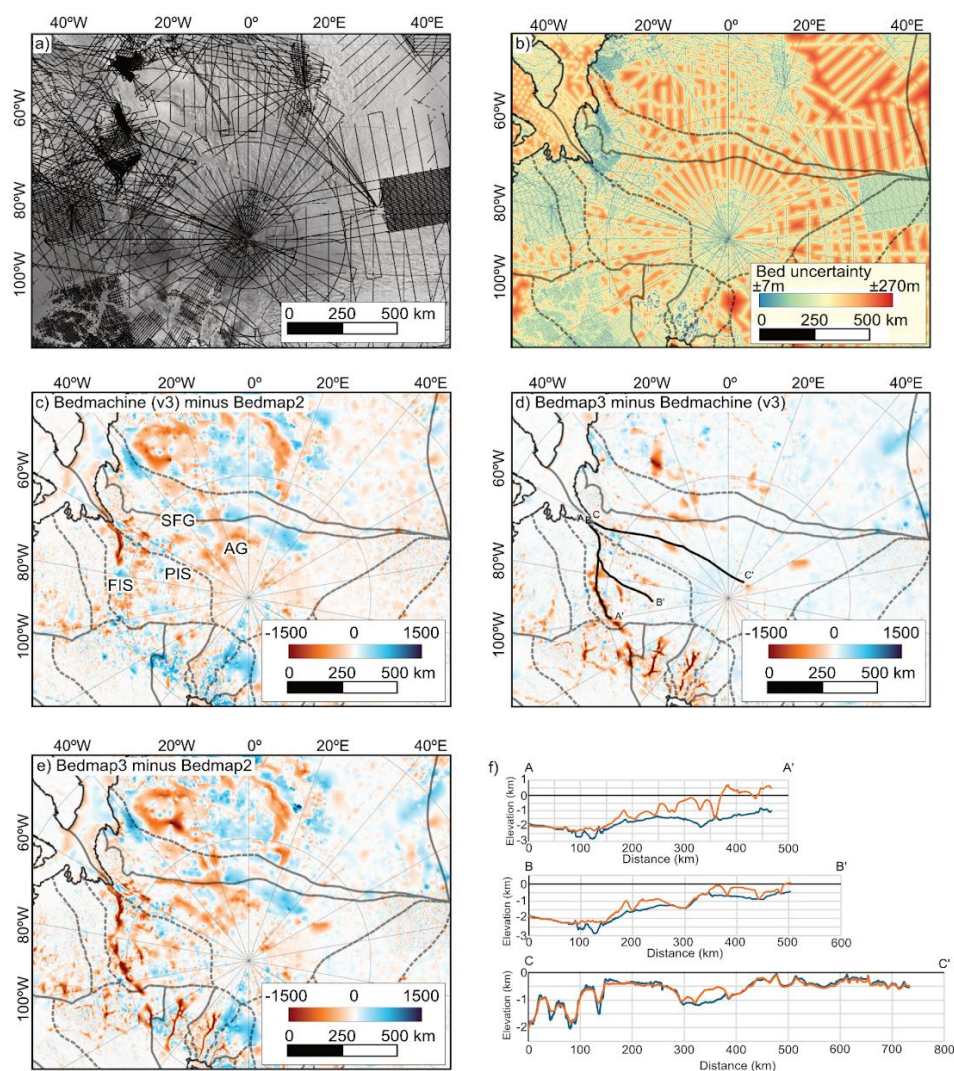
Since the 1990s, radio-echo sounding (RES) data have been acquired over the FPAS, and adjacent Support Force Glacier, 210 during a number of aerogeophysical surveys (Winter et al., 2018; Jeofry et al, 2018a; 2018b, Paxman et al., 2019; Hofstede et al., 2021; MacGregor et al., 2021). These surveys improved our knowledge of the FPAS ice thickness and bed topography between the publication of Bedmap2 (Fretwell et al., 2013), and BedMachine Antarctica (Morlighem et al., 2020) and Bedmap3 (Frémand et al. 2023; Pritchard et al., 2025) (Figs. 3 and 4). However, despite fairly good coverage of RES data across the FPAS (Frémand et al., 2023), many of these surveys were acquired for scientific goals that were not primarily 215 glaciological. For example, the PolarGAP survey (Winter et al., 2018; Paxman et al, 2019) was flown to acquire high-resolution gravity data for global gravity and geoid models. Consequently, much of the existing RES data are not optimised (e.g. in terms of survey line orientation and line-spacing, and aircraft clearance from the ice surface - each of which tend to degrade the quality of englacial and bed radar reflections), to address the important glaciological questions pertaining to the FPAS.

4 Current understanding and recent advances

220 4.1 Subglacial topography and basal boundary conditions: relationship to ice flow

The ~52 km-wide Foundation Trough underlies the FPAS trunk, with the bed at the grounding zone extending to ~2 km below sea level (Figs. 1d and 2) (Jeofry et al., 2018a, 2018b; Morlighem et al., 2020). The bed of the FPAS trunk is smooth in the direction of ice flow, with little evidence, at least based on current observations, of across-valley bedrock highs or topographic narrowings that could encourage grounding-zone stabilisation through increasing basal and lateral drag and reducing mass 225 flow across the grounding zone (Jeofry et al., 2018a, 2018b; Morlighem et al., 2020) (Figs. 2f-g). In contrast, where Academy Glacier joins the FPAS trunk the topography rises inland and is rougher, with a complex of across-glacier ridges, presumed to be bedrock (Figs. 2b-c, 2h, and 4). However, even after full isostatic rebound under ice-free conditions (Paxman et al., 2022), parts of this area, and the ridges, would remain over 1 km below sea level (Figs. 2h and 4). The geomorphology of the bed here is critical for assessing the potential of the FPAS grounding zone to retreat inland. For example, will future (or past) 230 grounding-zone retreat halt here, where the topography is narrow, rough and the slope prograding (though still well below sea level), and the ice flow of Academy Glacier turns sharply by 90 degrees, or could the grounding zone retreat much further inland towards the South Pole? The influence of this higher and rougher topography on ice flow has, so far, only been directly evaluated using 2D flowline models with Bedmap2 data (Huybers et al. 2017). Inverse modelling of ice flow velocities, using BEDMAP (Lythe and Vaughan, 2001), had previously suggested that the higher roughness zone beneath Academy Glacier 235 might continue 200 km further inland (Joughin et al., 2006). However, a derivation of basal roughness based on more recent

regional RES surveying across the region (Fig. 4a) now shows significantly lower roughness - which presents fewer pinning points during grounding-zone retreat - across the parts of Pensacola-Pole Basin closest to the FPAS grounding zone.



240 **Figure 3:** Evolution of the FPAS bed topography data over time demonstrating: (i) remaining uncertainty in bed topography for the
 245 **FPAS** (ii) substantive differences between published bed datasets (i.e. Bedmap2, Bedmap3 and Bedmachine (v3)); and (iii) the impact of manual modification of the Bedmap3 gridded product via ‘streamlines’: a) location of the ice thickness measurements (black lines) used to derive Bedmap3 (Pritchard et al., 2025) underlain by RADARSAT-1 Antarctic Mapping Project (RAMP) SAR Image Mosaic of Antarctica (Jezek et al., 2013); b) Uncertainty in the elevation of the grounded bed (Bedmap3) (Pritchard et al., 2025); Differences in bed DEMs between available products: (c) Bedmachine (v3) minus Bedmap2 (blue indicates that the Bedmachine (V3) bed is higher, red that it is lower), d) Bedmap3 minus Bedmachine (v3). Profile lines for panel ‘f’ (thick black lines) follow Bedmap3 streamlines generated to ‘burn-in’ troughs into the dataset (Pritchard et al., 2025); e) Bedmap3 minus Bedmap2; f) Along-streamline topographic profiles from Bedmap3 (blue) and Bedmachine (v3) (orange) of Foundation Ice Stream (A), Patuxent Ice Stream (B) and Academy Glacier (C). Location of the three profiles is shown in ‘d’. Geographic features are:



250 **Foundation Ice Stream (FIS), Patuxent Ice Stream (PIS), Academy Glacier (AG) and Support Force Glacier (SFG). In ‘b-e’ thick black line is the Bedmap3 grounding line (Pritchard et al., 2025) and the grey dashed lines are the IMBIE mass balance basins (Mouginot et al., 2017).**

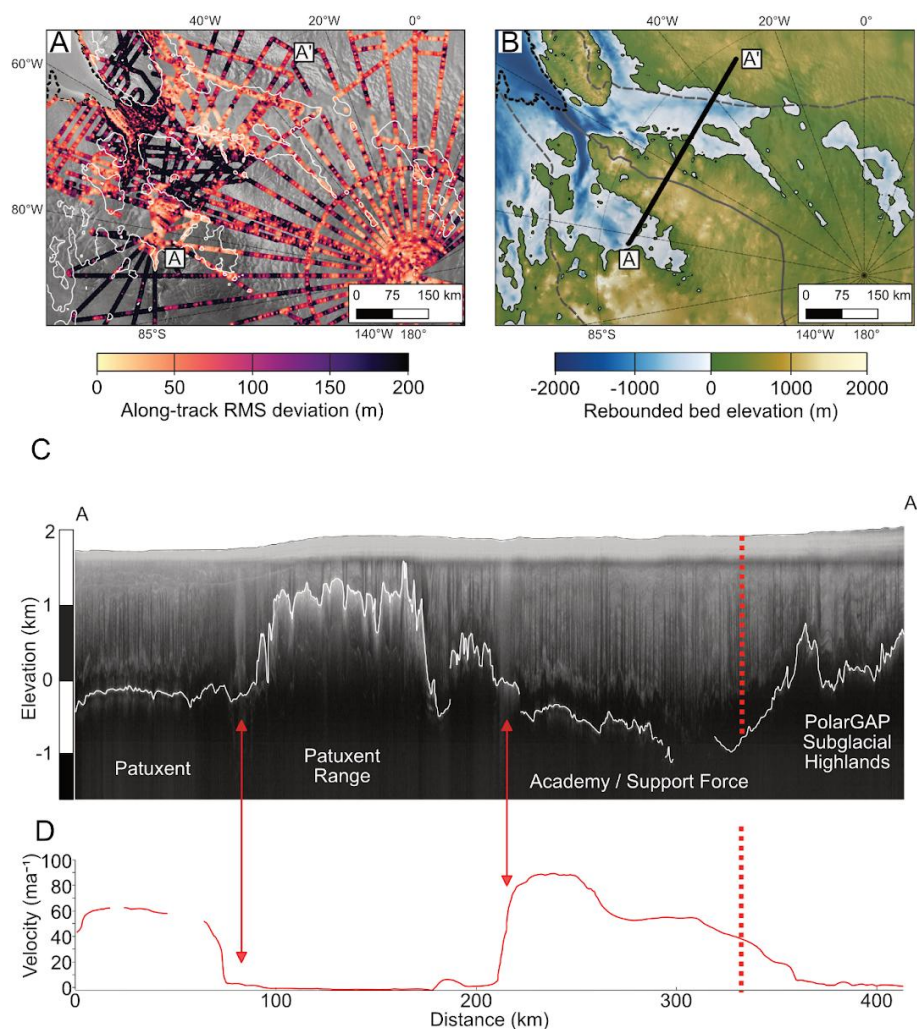
The bed of the FPAS is a complex mosaic of heterogeneous basal conditions (Fig. 4). In addition to inland Academy Glacier, low RES-derived roughness values are characteristic of: (i) the lowermost 175 km of the FPAS trunk (Jeofry et al., 2018a), particularly the Foundation-Patuxent side; and (ii) the basin beneath Patuxent Ice Stream, some 225-300 km inland of the
255 grounding zone (Figs. 4a-b). These two zones, modelled as areas of low basal shear stress (10-12 kPa) (Joughin et al., 2006), are both well below sea level (Behrendt et al., 1966, 1974) and would remain so even under fully ice-free conditions (Paxman et al., 2022) (Figs. 4b). In fact, both of these zones are neatly ‘enveloped’ by the ice-free rebounded sea level contour, as is the lower roughness zone beneath Academy Glacier (Figs. 2 and 4a-b). There are several potential reasons for the lower roughness
260 zones. For example: (i) a thin drape of soft fine-grained marine sediments deposited during periods of more limited glacial extent (Engelhardt and Kamb, 1998; Studinger et al., 2001); or (ii) a smooth bed surface associated with a thicker tectonically-controlled sedimentary basin (Aitken et al., 2023). Both scenarios are likely and not mutually exclusive beneath the FPAS, and warrant future investigation. Given proximity to the present-day grounding zone, the low roughness zone beneath the FPAS trunk (Fig. 4a) (Jeofry et al., 2018a) has the greatest potential to represent marine sediment. If this were to be the case,
265 sediments recovered from this zone could be used to test ideas of Holocene retreat and readvance, or grounding-zone retreat during earlier Quaternary interglacials or even Pliocene retreat. If the FPAS trunk is underlain by marine sediments, then there are potential modern-day ice-dynamical implications: deformable marine sediments can reduce resistance to ice flow at the ice stream bed (Joughin et al., 2006; Diez et al., 2018; Li et al., 2022a) and lead to flow instability (Joughin and Alley, 2011). Similar low roughness subglacial zones, associated with low basal shear stress, are recognised beneath the trunks of other
270 major outlet glaciers in the Weddell Sea, including Institute Ice Stream (Bingham and Siegert 2007; Ross et al., 2012; Siegert et al., 2016), Recovery Glacier (Bell et al., 2007; Diez et al., 2019) and Bailey Ice Stream (Diez et al., 2018). This may suggest a common mechanism of surface formation or emplacement of sediment.

The FPAS bed is characterised predominantly by higher and more variable roughness further inland, particularly up-ice of the fully rebounded 0 m (sea-level) contour (Figs. 4a and 4b) (Bingham and Siegert, 2009). Although this may suggest that soft,
275 deformable sediments are more restricted or absent, modelling of gravity and magnetic data is consistent with the presence of an older sedimentary rock sequence, ~2-3 km thick, beneath the Pensacola-Pole Basin (Paxman et al., 2019; Li et al., 2022a; Aitken et al., 2023). This sedimentary basin thins towards the coast (Paxman et al., 2019) (Fig. 5), tapering out close to where Academy Glacier joins the main FPAS trunk (Figs. 1, 2 and 5).

Across the Pensacola-Pole Basin (average depth of 490 m b.s.l.), the relationship between present-day ‘enhanced’ ice flow and
280 subglacial topography is complex. For example, enhanced ice flow is not always spatially coincident with the deepest parts of the (topographic) basin (Figs. 1 and 4c-d). The Academy Glacier flows relatively fast (up to ~100 m a⁻¹) across the ~1000 m b.s.l. parts of the Pensacola-Pole Basin (Figs. 4c-d). In contrast, the flow of the adjacent Support Force Glacier is currently slower (<~50 m a⁻¹), despite overlying a system of geologically-controlled overdeepened valleys up to at least 1500 m b.s.l.



(Paxman et al., 2019) (Figs. 4c-d). The upper Academy Glacier has two ice flow zones, which may be partly influenced by
285 long-range buttressing from Berkner Island (Fig. 1a) (Reese et al., 2018), with the fastest flow ($\sim 100\text{-}200\text{ m a}^{-1}$) proximal to
the Patuxent Range, despite a shallower (topographic) basin in this area (Paxman et al., 2019) (Figs. 1 and 4c-d). The geometry
of the FPAS ice flow, and its relationship with subglacial topography and basal boundary conditions, is important because of
the potential of the FPAS to dynamically interact with other parts of the ice sheet. The mismatch between fastest flow and
deepest basins in this region may reflect relatively recent changes in flow regime, where recently accelerated ice flow has not
290 had time to erode the expected deep basins.



295 **Figure 4: Roughness and ice-free bed topography beneath lower parts of FPAS. (a) Along-track root mean square deviation of bed elevation within a moving window of 2 km (a proxy for roughness) from PolarGAP, FISS, and Operation IceBridge (Corr et al., 2021; Nicholls et al., 2021; CReSIS 2025; MacGregor et al., 2021) RES profiles, showing smooth (pale yellow) zones beneath parts of Academy Glacier and Patuxent Ice Stream; (b) Rebounded ('ice-free') BedMachine topography of lower FPAS (Morlighem et al.,**

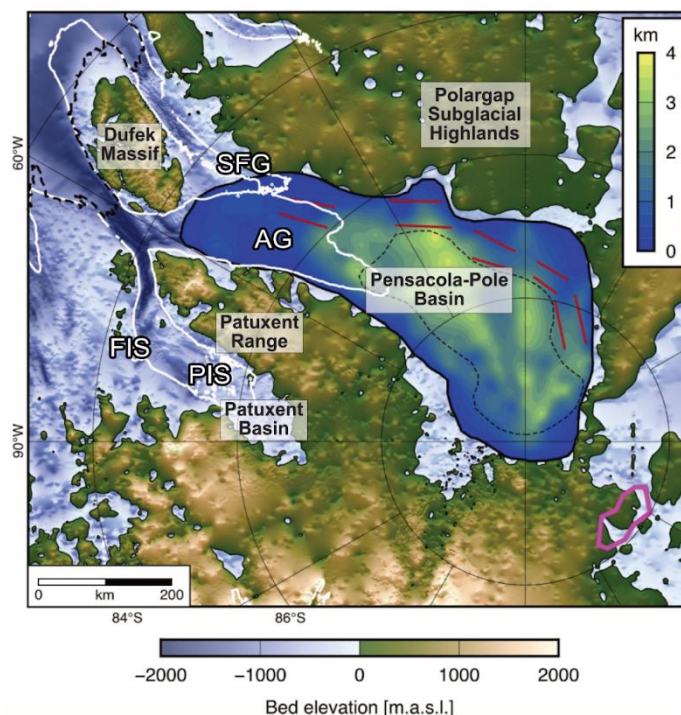


2020; Paxman et al., 2022). The thin white line in ‘a’ and thin black line in ‘b’ are the rebounded 0 m contour. In ‘b’ thick black dashed line is the Bedmap3 grounding line (Pritchard et al., 2025) and the grey dashed and solid lines are the IMBIE mass balance basins (Mouginot et al., 2017). The smoothest bed topography beneath FPAS is located below the 0 m contour for both Academy and Foundation-Patuxent tributaries. These ‘smooth’ zones correspond to the model-derived low basal shear stress zones of Joughin et al. (2006), based solely on the BEDMAP DEM; (c) example radargram, with ice thickness picks overlain, from the PolarGAP survey (profile A-A’ on ‘b’) (Ferraccioli et al., 2021). Ice flow direction is into page; (d) ice velocity (Mouginot et al., 2019) along profile A-A’. Vertical dashed red line on ‘c’ and ‘d’ is the boundary between Academy and Support Force glaciers. Vertical red arrows on ‘c’ and ‘d’ denote the shear margins where Patuxent Ice Stream and Academy Glacier abut the Patuxent Range. These correspond to scattering zones in the overlying radargram.

305 The far-reaching catchment of the FPAS interacts glaciologically, and in some cases hydrologically, with ice stream catchments across East and West Antarctica, including Support Force Glacier, Whillans Ice Stream, Mercer Ice Stream, Möller Ice Stream, Nimrod Glacier and Beardmore Glacier; Fig. 1) (Winter et al., 2018; Yang and Kang, 2022). Potential therefore exists for the FPAS to be sensitive to, and possibly able to drive, glaciological and hydrological change in other sectors of West and East Antarctica. Change in the Ross or Weddell sea sectors of WAIS, or in other large EAIS catchments, could impact the FPAS and vice versa (e.g. Pingree et al., 2011; Steig et al., 2015; Winter et al., 2018). One potential constraint on such change is the basal topography of the upper FPAS catchment. Here, the Foundation and Patuxent troughs, which are narrow and in places above sea level, extend contiguously from the Siple Coast to Filchner-Ronne Ice Shelf (Winter et al., 2018) (Fig. 1). These troughs, which are likely tectonic in origin, are fed by smaller tributary valleys (e.g., beneath Hercules Dome; Hoffman et al., 2023) and continue to steer ice flow through upper Foundation Ice Stream and Patuxent Ice Stream today (Winter et al., 2018). Flow steering means that the orientation of these troughs and the surrounding highlands (Whitmore, Thiel and Horlick mountain blocks) (Jankowski and Drewry 1981) likely limits the potential for WAIS-driven drawdown of the EAIS in the ‘bottleneck’ zone (Fig. 1) between East and West Antarctica (i.e. “*the gap in the Transantarctic Mountains through which the EAIS flows into the WAIS*”; Pingree et al., 2011; Winter et al., 2018). However, significant potential for dynamic glaciological or hydrological change does exist between Academy and Support Force glaciers (see sections 4.2 & 320 5.2).

4.2 Subglacial hydrology, geothermal heat flow, and hydrogeology

Subglacial hydrology: The presence of subglacial lakes (Fig. 6a) and their relation to the initiation of the enhanced flow zones (Fig. 1) of the FPAS has long been recognised (McIntyre, 1983; Siegert et al., 1996; Siegert and Bamber, 2000; Carter et al., 2007). More recently, nineteen hydrologically ‘active’ subglacial lakes concentrated beneath Academy Glacier (though in later publications some of these were classified as ‘Foundation’ lakes) were inferred from ICESat observations (Smith et al., 2009), making the FPAS one of the most hydrologically active ice stream systems in Antarctica. Of particular note, the converging ICESat sampling pattern over Academy Glacier enabled dense sampling of the largest active lake beneath the FPAS (Lake F12; 367 km²), with 174 independent repeat passes between 2003 and 2009. With additional data from the ICESat-2 mission starting in 2018, lake F12 experienced a drainage event between 2009 and 2018 with a >6 m draw down of the ice sheet surface in the centre of the lake (Siegfried and Fricker, 2021) (Figs. 6b-c). The presence and dynamics of subglacial water are important because of their potential to enhance rates of ice flow and melting at the grounding zone.

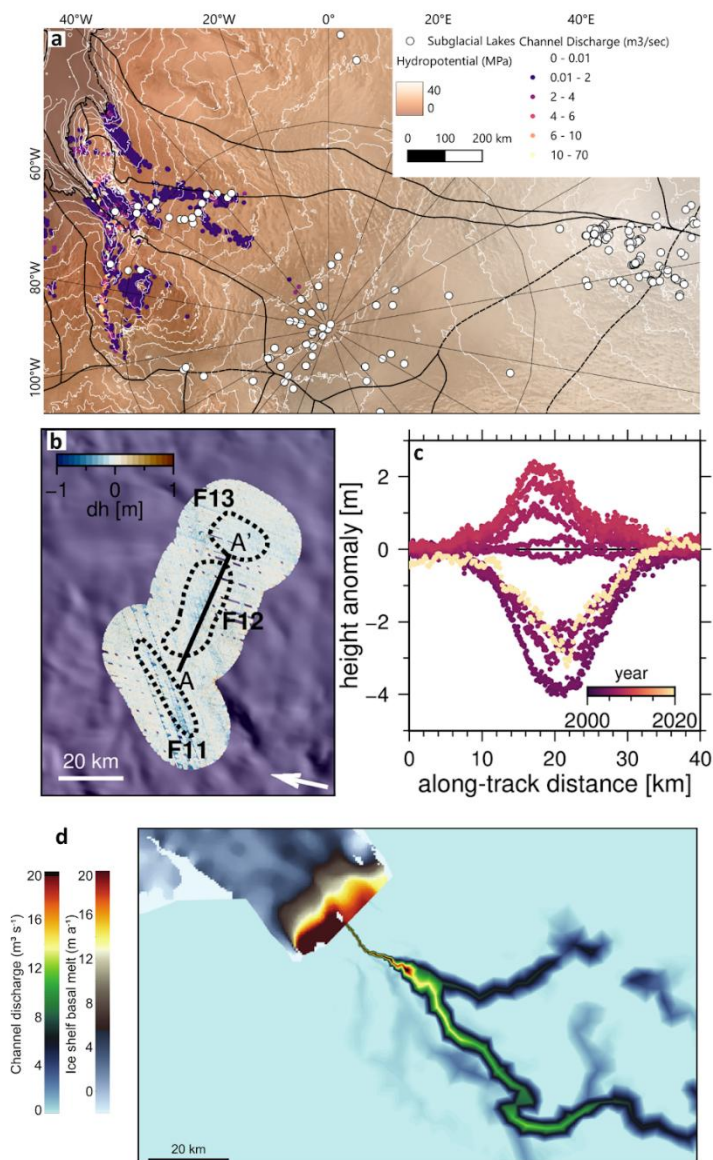


- 335 **Figure 5:** Geological structure of the FPAS catchment. Gravity anomaly modelling indicates that the Pensacola-Pole Basin (PPB) is underlain by a sedimentary basin 2–3 km thick in places (Paxman et al., 2019; see interior colour scale); the potential sedimentary infill within the Patuxent Basin was not analysed in Paxman et al., (2019). The southern part of the PPB (thin black dashed line) is characterised by the largest thicknesses of sedimentary fill and also exhibits topography and high-frequency magnetic anomalies characteristic of Jurassic dolerite sills, which are commonly intruded into Beacon Supergroup sediments (Paxman et al., 2019). Red lines mark a series of deep (1–2 km below sea level) troughs located along the eastern margin of the PPB. Magenta polygon demarcates a zone of basal melting attributed to elevated geothermal heat flux (Jordan et al., 2018). White line marks the 50 m/yr ice-surface velocity contour (Mouginot et al., 2019). Thick black dashed line marks the grounding zone (Rignot et al., 2016). Bed topography is from BedMachine v3 (Morlighem et al., 2020). Outlet glaciers are: Foundation Ice Stream (FIS), Academy Glacier (AG), Patuxent Ice Streams (PIS), Support Force Glacier (SFG).
- 340
- 345 Subglacial lakes are present in the upper FPAS catchment near the South Pole (Siegert et al., 1996; Carter et al., 2007; Peters et al., 2008; Hills et al., 2022; Livingstone et al., 2022) (Fig. 6). The upper Academy Glacier catchment, near Dome A, is characterised by near-bed englacial reflections that have been interpreted as zones of basal freeze-on (‘accretion ice’) (Bell et al., 2011) and ice deformation (Wrona et al., 2018). These features have been attributed to the refreezing of subglacial lakes and other water bodies (Wolovick et al., 2013). Several new lakes in the Gamburtsev Subglacial Mountains were identified in the most recent subglacial lake inventory (Livingstone et al., 2022). If water were released from Academy Glacier’s upper-catchment lakes, and remained liquid rather than refreezing onto the base of the ice, it could influence ice dynamics
- 350

downstream (Siegert and Bamber, 2000). The interior lakes also have the potential to contain isolated life and ancient sediment sequences that may record long-term ice sheet history (Siegert, 2005).

Recent work on the subglacial hydrological system of the FPAS, as well as nearby ice streams including Support Force Glacier, has focused on better understanding the role of subglacial meltwater at the grounding zone (Jeofry et al., 2018a; Dow et al., 2022; Hofstede et al., 2021; Humbert et al., 2022). Meltwater flux from the FPAS grounding zone ($\sim 66 \text{ m}^3\text{s}^{-1}$ Dow et al., 2022; Ehrenfeucht et al., 2025) (Fig. 6d) has been shown in numerical models to impact both grounding-zone melt rates and geometry (Jeofry et al., 2018a). Jeofry et al., (2018a) suggested that subglacial hydrological pathways beneath the FPAS trunk (Fig. 6) are separated into Foundation-Patuxent Ice Stream and Academy Glacier components, without coalescing or interacting. This separation is not a feature of numerical hydrological model runs (Dow et al., 2022) (Fig. 6d), although there is substantial complexity in water routing and basal topography where Academy Glacier joins the FPAS trunk (Figs. 2, 6 and 7b). Separation beneath the trunk could be due to large (100-300 m of relief) flow-parallel bedforms that channel the basal water (Jeofry et al., 2018a; Pritchard et al., 2025) (Figs. 2, 6 and 7b). Where meltwater reaches the FPAS grounding zone (Fig. 6d), the water exits the ice sheet as multiple point sources that initiate upwards incision into the underside of the ice shelf to form a series of very large (>300 m high) basal channels (Fig. 2e) (Le Brocq et al., 2013; Alley et al., 2016, Jeofry et al., 2018a). These sub-glacial and sub-ice shelf channels, which are likely to be strongly influenced by subglacial water flux, are important because they are zones of highly variable melt rates at both the grounding zone and at the ice shelf base (Stanton et al., 2013). Such channels can impact ice shelf integrity (Alley et al., 2016; Dow et al., 2018) and have been shown to undergo rapid dynamic change (Zhuo et., 2025).

Numerical modelling of the entire FPAS (and adjacent areas) with the finite element Glacier Drainage System (GlaDS) model (Dow et al., 2022; Ehrenfeucht et al., 2025) shows that the hydrological system is spatially heterogeneous with dendritically organised channels, some of which may extend inland for up to ~ 450 km and connect to some of the subglacial lakes of Academy Glacier (Figs. 6 and 7). Based on overburden hydraulic potential calculations, but not model results (Dow et al., 2022), the FPAS subglacial hydrological system may be sensitive to water routing switching between Academy Glacier and Support Force Glacier (e.g. Figure 2 of Livingstone et al., 2013). This is because the two glaciers flow parallel to each other for over 700 km in their mid-catchments (Fig. 7a). Relatively small changes in ice surface elevation and morphology (Fig. 7a) could result in water catchment piracy (Wright et al., 2008), with subglacial discharge from the central EAIS routing through Support Force Glacier, rather than Academy Glacier (Fig. 7). Any switching of subglacial water pathways could have implications for ice-dynamic processes (e.g. shear margin migration in the mid- to upper-catchments of the FPAS, and grounding zone ice-ocean interactions for both the FPAS and Support Force Glacier). Several of the current active subglacial lakes (i.e. Academy lakes 12-16, Fig. 7) are located at or near the boundary between Academy Glacier and Support Force Glacier, and some (i.e. Academy 14 and Academy 16) may actually be beneath Support Force Glacier (Fig. 7). As such, water piracy could result in these lakes switching subglacial hydrological catchments.

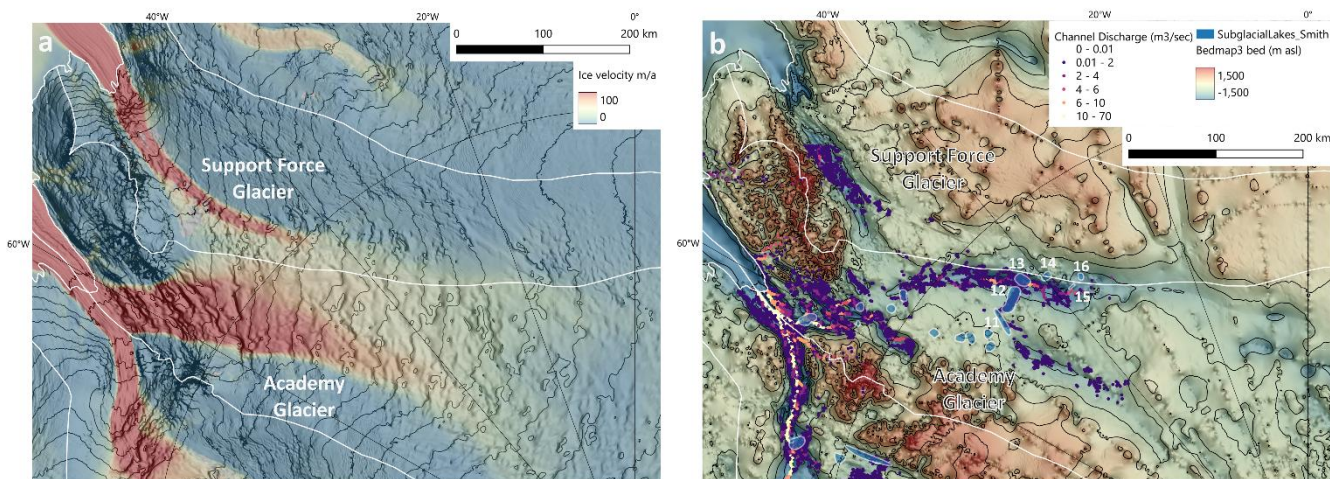


385

390

395

Figure 6: Subglacial hydrology of the FPAS catchment. (a) location of subglacial lakes (Livingstone et al., 2022), underlain by hydropotential surface derived from Bedmap 3 (Pritchard et al., 2025) with contours at 2 MPa intervals, and modelled subglacial channel discharge (Ehrenfeucht et al., 2025). Black lines are Ice Sheet Mass Balance Inter-comparison Exercise (IMBIE) catchments (Mouginot et al., 2017) and Bedmap3 grounding zone (Pritchard et al., 2025); (b) Map of surface-height anomalies for active subglacial lakes F11, F12, F13 (known as Academy 11-13, and location shown on Figure 7b) during 04/2020–06/2020 (Siegfried and Fricker, 2021); (c) Height anomalies along profile A-A' (see 'b') on ICESat Track 0096, including both ICESat and interpolated ICESat-2 data (Siegfried and Fricker, 2021); (d) Ice-shelf melt rates from Cryosat-2 altimetry measurements (Adusumilli et al., 2020) and modelled channel discharge for the FPAS trunk suggesting a single subglacial flowpath and exit point at the FPAS grounding zone (Adapted from Dow et al., 2022).



400 **Figure 7:** Ice catchment boundary zone between Academy and Support Force glaciers showing potential for ice-flow switching (i.e. for Academy to capture part of the Support Force Glacier catchment, or vice versa) and for water piracy due to geometry of both ice surface and bed topography. (a) Ice velocity (Mouginot et al., 2019) overlain on hillshade of Bedmap3 ice surface DEM (Pritchard et al., 2025). Black lines are ice surface contours at 100 m intervals. White lines are Ice Sheet Mass Balance Inter-comparison Exercise (IMBIE) catchments (Mouginot et al., 2017); (b) Bed topography (Pritchard et al., 2025), with contours (black lines) at 500 m intervals overlain by modelled subglacial channel discharge (Ehrenfeucht et al., 2025). White lines are Ice Sheet Mass Balance Inter-comparison Exercise (IMBIE) catchments (Mouginot et al., 2017). Active subglacial lakes (Smith et al., 2009) are shown for the FPAS catchment. Lakes (Academy 12-16) proximal to, or below, the Support Force-Academy 'shear margin' as defined by the IMBIE catchment boundary are labelled. Bed topography in 'b' is transparent with a hillshade of the same bed topography dataset underlying it. This emphasises the ice-penetrating radar survey lines from which the topography dataset was derived, illustrating how poorly constrained the bed topography of the boundary zone between Academy Glacier and Support Force Glacier remains.

410 **Geothermal heat flow:** One potential source of the subglacial water in the FPAS catchment is elevated geothermal heat flow resulting in basal melting (Burton-Johnson et al., 2020; Reading et al., 2022). The head of the Academy Glacier catchment, which is located grid southeast of the South Pole, contains a localised area with a possible elevated geothermal heat flow of $120 \pm 20 \text{ mW m}^{-2}$ (Fig. 5) (Jordan et al., 2018). This is nearly twice the global average of values expected for the East Antarctic craton, and has been attributed to high-heat-producing Precambrian rocks and hydrothermal fluid circulation in a major subglacial fault system (Jordan et al., 2018). Simple hydraulic potential calculations suggest that water produced in this area would route underneath Academy Glacier, through some of the ICESat-identified active subglacial lakes (including Lake F12 (Fig. 6b-c)), and into the FPAS trunk (Jordan et al., 2018). This discovery may indicate that localised geothermally enhanced zones are more prevalent in the East Antarctic craton than previously thought. Given the scale of the FPAS, it is possible that, collectively, such zones produce the significant quantities of subglacial meltwater that have been inferred for this system, with implications for ice geometry and melt rates at the grounding zone (Jeofry et al., 2018a).

420 Ice divide migration from Academy Glacier towards Nimrod Glacier could shift the location of the geothermally-enhanced zone at the head of the Academy Glacier catchment into the Nimrod or Beardmore catchments. This would reduce subglacial



water flux through the FPAS (Jordan et al., 2018). Such potential dynamic change is not without precedence. The potential for large-scale switching of hydrological flow paths, driven by even small changes in ice sheet surface elevation, has been identified elsewhere in East Antarctica (Wright et al., 2008; McCormack et al., 2023), as has ice flow reorganisation of ice sheet interiors (Siegert et al., 2004; Franke et al., 2022). Observed rates of modern-day dynamic summit migration at Dome C are in the order of 100 m a^{-1} (Vittuari et al., 2025).

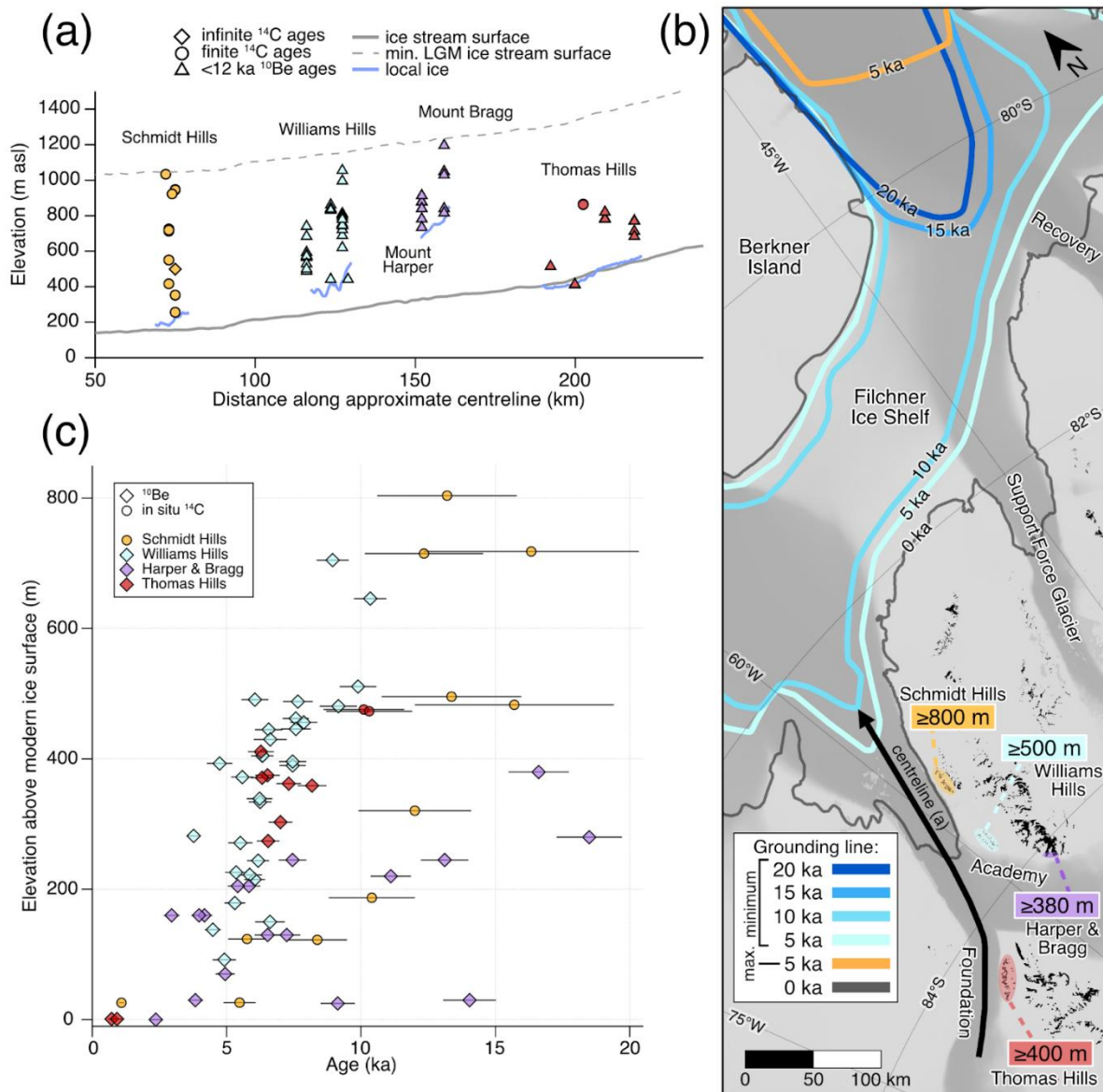
Hydrogeology: Subglacial sedimentary rocks beneath the Pensacola-Pole Basin and upper catchment of the FPAS (Fig. 5) (Paxman et al., 2019; Li et al., 2022a; Aitken et al., 2023) are likely to be unfrozen, due to geothermal heating and the pressure of the overlying ice (Pattyn, 2010). Therefore, dependent on the permeability and porosity of the sedimentary sequence, the FPAS represents a potentially vast reservoir of subglacial groundwater (Person et al., 2007; 2012; Siegert et al., 2018) similar to that inferred under Whillans Ice Stream (Gustafson et al., 2022). Low basal shear stress values beneath parts of Patuxent Ice Stream (Joughin et al., 2006) may also indicate water-saturated sediments or an aquifer at the bed. During interglacial periods, such as the present Holocene, ice unloading can create hydraulic gradients that exfiltrate groundwater from the sedimentary rock reservoir to the ice sheet base, where it will have at least three complementary effects that may enhance ice flow (e.g. Robel et al., 2023). First, the water itself will serve to fuel basal lubrication and elevated subglacial water pressure (Christoffersen et al., 2014; Siegert et al., 2018; Gustafson et al., 2022). Second, the flow of groundwater is an efficient mechanism to cause advective heat transport in addition to conduction from depth towards the ice sheet base (Gooch et al., 2016; Kulesa et al., 2019), facilitating further melting. Third, growing evidence now suggests that groundwater may constitute a major fraction of basal outflow across the grounding zone (Uemura et al., 2011; Null et al., 2019; Foley et al., 2019), potentially enhancing ice-shelf basal melting in this dynamically sensitive region. One uncertainty regarding groundwater exfiltration is the loading history of the interior FPAS catchment. Whilst the downstream parts of the FPAS have undergone ice unloading since the Last Glacial Maximum (LGM) (Bentley et al., 2017; Balco et al., 2016) (see section 4.3), accumulation records from ice cores and shallow radar data suggests that interior parts of the catchment may have thickened in response to a smaller ice sheet and increased accumulation in the Holocene (Lilien et al., 2018). Along with potential late-Holocene grounding-zone readvance of the margin (Bradley et al., 2015; Kingslake et al., 2018), this thickening would not be conducive to unloading-driven exfiltration in the FPAS catchment.

4.3 LGM-present glacial history

Previous reconstructions of glacial history in the southern Weddell Sea presented two contrasting scenarios of LGM ice extent: a minimum scenario with a restricted grounding zone located east of Berkner Island (Fig. 8), and a maximum scenario with a grounding zone near the shelf break (cf. Hillenbrand et al., 2014; Siegert et al., 2019). Little is known about the detailed bathymetry of the Weddell Sea continental shelf seaward of FRIS owing to the nearly perennial sea ice in the southern Weddell Sea, which precludes systematic marine survey access (Hillenbrand et al., 2014). However, seafloor glacial landforms indicate that grounded ice extended to the continental shelf break along the eastern Antarctic Peninsula at the LGM suggesting that this may also have been the case seaward of Ronne Ice Shelf (Ó Cofaigh et al., 2014). More recent cosmogenic nuclide analyses



using in situ ^{14}C analysis of rock samples from the Shackleton Range is consistent with the more advanced/thicker scenario rather than the minimum extent scenario (Nichols et al., 2019; cf Scenario B of Hillenbrand et al., 2014). However, an embayment in the ice shelf, implying more restricted ice extent in Filchner Trough, is a persistent feature in some numerical models of ice sheet history in the Weddell Sea. Such models also exhibit significant variations in ice thickness between simulations (e.g., Pittard et al., 2022), suggesting that processes and/or boundary conditions are not well understood or represented. As a result, the detailed configuration of the maximum LGM extent and thickness of the FPAS remain an open question.





465 **Figure 8: Cosmogenic nuclide exposure ages and ice surface elevation from around the FPAS trunk. (a) Exposure ages projected onto an elevation profile along an approximate centreline of the Foundation Ice Stream. (b) Centreline location, minimum LGM ice thickness constraints interpreted from the exposure ages, and former grounding zone positions. (c) Exposure ages from samples collected from nunataks adjacent to the Foundation Ice Stream. Elevation data for ice surfaces (a) are sourced from the Reference Elevation Model of Antarctica (REMA; Howat et al., 2019). Note that local ice margins in (a) are highly simplified and the minimum LGM surface is the modern surface profile with the elevation increased above present to the elevation of the highest elevation, post-LGM exposure age. Palaeo grounding zone positions are the inferred minimum (scenario A, blue) and maximum (scenario B, orange) positions of Hillenbrand et al. (2014). The modern (2011) grounding zone position and ice velocities (grey shading) are sourced from the MEASUREs program V2 (Rignot et al., 2016, 2017). Ice velocities are used to highlight ice streams (darker grey is faster ice). Exposure ages in (a) and (c) are collated from the Informal Cosmogenic-nuclide Exposure-age Database (ICE-D; <https://version2.ice-d.org/antarctica/>) and originally sourced from Balco et al. (2016), Bentley et al. (2017), and Nichols et al. (2019). Ages in ICE-D are calculated using the online exposure age calculators formerly known as the CRONUS Earth online calculators (<http://hess.ess.washington.edu>; Balco et al., 2008) with the “primary” production rate calibration data set (Borchers et al., 2016) and the “LSDn” scaling method for neutrons, protons, and muons (Lifton et al., 2014; Balco, 2017). Infinite *in situ* ^{14}C ages in (a) indicate continuous exposure for at least ~30 kyr. Panels (a) and (b) are modified from Nichols et al. (2019).**

480 Knowledge of the post-LGM glacial history of the lower parts of the FPAS (Fig. 8b) has been improved by cosmogenic surface exposure dating constraints on ice thickness and the timing and rate of ice-surface thinning from mountains adjacent to the FPAS trunk (Balco et al., 2016; Bentley et al., 2017; Nichols et al., 2019). Initial ^{10}Be cosmogenic nuclide exposure ages in the Pensacola Mountains and Patuxent Range were indicative of: (i) LGM ice sheet surface elevations up to 500 m above present (Balco et al., 2016); and (ii) progressive thinning of the FPAS between 10 and 2.5 ka BP, by which time ice surface elevations comparable to the present day were reached (Bentley et al., 2017). However, more recent analysis using the short-lived cosmogenic nuclide *in situ* ^{14}C indicated that the FPAS trunk was at least 800 m thicker than present in the Schmidt Hills and Pensacola Mountains at the LGM (Nichols et al., 2019) (Fig. 8), and confirmed that there was major thinning of the FPAS in the Early Holocene. An ice core record from Skytrain Ice Rise at the southern edge of Ronne Ice Shelf records a decrease in ice surface elevation of ~450 m from 8.2 to 8 ka and ice-shelf retreat between 7.7 and 7.3 ka (Grieman et al., 2024). This is consistent with both the magnitude and timing of ice thinning recorded by exposure ages adjacent to the FPAS.

485 The cosmogenic nuclide data indicate ice surface elevations were approaching present-day levels by c. 2.5 ka (Fig. 8c), and therefore allow for continued thinning beyond present in the late Holocene followed by subsequent thickening (Bentley et al., 2017). Were this thinning and thickening to have occurred, then retreat (inland of present) and subsequent readvance of the grounding zone would also have occurred (Johnson et al., 2022). Indeed, this scenario has been proposed for ice stream outlets in this part of the southern Weddell Sea based on a range of glaciological, geological and solid earth deformation evidence (Siegert et al., 2013; Bradley et al., 2015; Bentley et al., 2017; Kingslake et al., 2018; Siegert et al., 2019). Existing above-ice cosmogenic nuclide data cannot, however, unequivocally demonstrate thinning and subsequent thickening of ice in response to grounding-zone migration (Whitehouse et al., 2017; Bentley et al., 2017; Siegert et al., 2019). Instead, measurements of cosmogenic nuclide concentrations (specifically *in situ* ^{14}C , see Nichols (2022)) in subglacial bedrock, rather than in above-ice samples, are needed to reveal if the FPAS was thinner than present in the late-Holocene (see Balco et al., 2023). Modelling experiments have simulated Holocene retreat-readvance for the FPAS (e.g., Kingslake et al., 2018; Pittard et al., 2022), but generally produce a modern-day grounding zone more advanced than observations, potentially due to model grid resolution



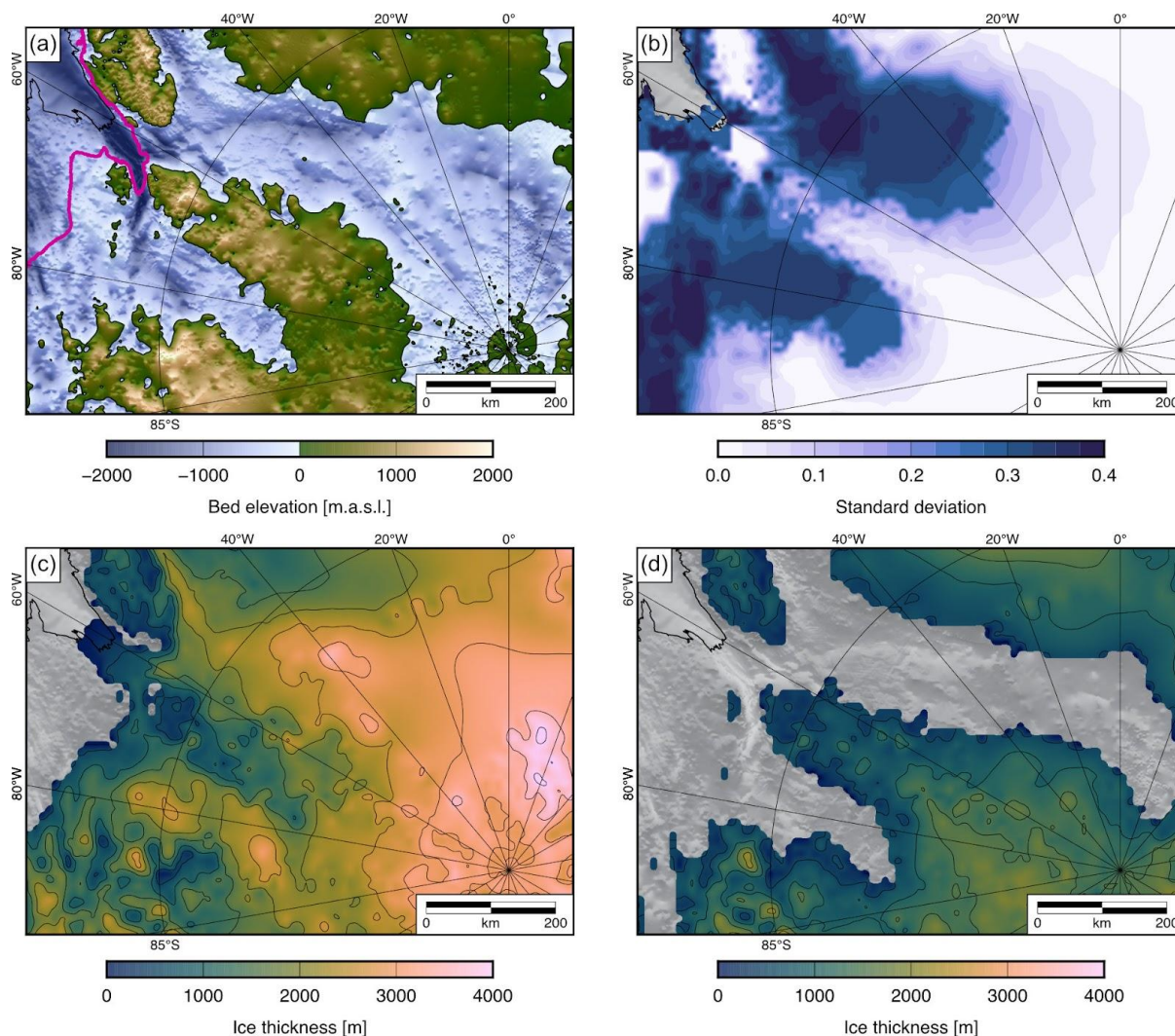
failing to accurately capture the narrow width of the FPAS trunk. The post-LGM, and particularly the late-Holocene, history of the FPAS has important implications for its future evolution. Specifically, a late-Holocene retreat would imply that the
505 grounding zone could retreat landward of its current position under conditions similar to present-day.

Several alternative, observationally based approaches have been used to reconstruct other aspects of the glacial history of the FPAS, including changes in ice-flow velocity and surface accumulation. Analysis of RES-derived englacial layering and numerical modelling has suggested, for example, that major post-LGM changes in the pattern and rate of enhanced ice flow occurred in the upper Academy Glacier catchment around the South Pole and Titan Dome (Bingham et al., 2007; Beem et al.,
510 2018, 2021). Analysis of englacial layering between Dome A and the South Pole has revealed widespread layer drawdown around the South Pole that could be attributable to past flow dynamics or higher surface accumulation rates (Sanderson et al., 2024). During the Holocene, the direction of ice flow near the South Pole and the spatial pattern of accumulation have remained unchanged, although an estimated 15% increase in ice speed since 10.1 ka has been suggested (Lilien et al., 2018). This speed-up has been interpreted as reflecting a steepening or thickening of the ice-sheet interior at the head of Academy Glacier since
515 the LGM (Lilien et al., 2018).

4.4 Numerical modelling – the response of the FPAS to past and future climate change

The FPAS has been subject to numerous numerical ice-sheet modelling experiments, across a range of spatial (i.e. continental, regional, FPAS-specific) and temporal scales (e.g. Pliocene, Last Interglacial, next 100-200 years). Whilst a detailed assessment of the various simulations that have resulted is beyond the scope of this review, we provide an overview of the
520 categories of modelling efforts undertaken and a summary of the range of scenarios resulting from the model simulations.

Simulations of particularly warm (Pliocene) climates on the Antarctic Ice Sheet suggest that the grounding zone of Academy Glacier may have retreated as far inland as the South Pole (~700 km inland from the current grounding zone), accompanied by extensive retreat of Patuxent Ice Stream (DeConto and Pollard, 2016; DeConto et al., 2021; Hanna et al., 2024) (Fig. 9d). However, such extensive retreat is only observed in simulations from one model that incorporates Marine Ice-Cliff Instability
525 (MICI) and melt-driven hydrofracturing processes (Pollard et al., 2015; DeConto and Pollard, 2016; DeConto et al., 2021) (Figs. 9c and 9d). The likelihood and significance of MICI and related processes in contributing to rapid retreat in the ‘real world’, however, are still under debate (e.g., Morlighem et al., 2024). In contrast to models of extreme ‘Pliocene’ warmth, simulations of last interglacial ice-sheet change (e.g. Sutter et al., 2016; DeConto and Pollard, 2016; DeConto et al., 2021; Golledge et al., 2021) are not characterised by retreat inland of the FPAS trunk (Hanna et al., 2024), even if they do incorporate
530 MICI processes (DeConto et al., 2021).



535 **Figure 9: Numerical ice-sheet modelling of past and future FPAS retreat. (a) Potential 2300 CE grounding zone position (magenta line) under RCP8.5 climate forcing from ice-sheet model simulations (Hill et al., 2021) using a high-impact, low-likelihood combination of input parameters. Present-day bed topography (Morlighem et al., 2020) is shown for reference. (b) Standard deviation of the percentage ice thickness change across a multi-model ensemble from the Antarctic BUttrressing Model Intercomparison Project (ABUMIP); simulations are run for 500 model-years, with high melt rates applied beneath ice shelves to force rapid loss and debuttressing (Sun et al., 2020). (c) Simulated ice thickness during the warmth of the Pliocene (DeConto et al., 2021); marine ice-sheet instability feedbacks are incorporated, but marine ice-cliff failure physics are switched off. (d) Simulated ice thickness during the warmth of the Pliocene (DeConto et al., 2021), with marine ice-cliff failure physics switched on. Modelled grounding zone position in c and d are indicated by the boundary between the grey and thickness-coloured parts of these subplots. Modern-day grounding zone position in a-d indicated by black line (Rignot et al., 2016).**

540

Over shorter timescales, future ice-sheet model simulations suggest that the potential sea-level contribution of the FPAS over the next 200-500 years is likely to be more limited even than that of other large marine-based catchments elsewhere in the EAIS (e.g. Aurora, and Wilkes subglacial basins). For example, ice sheet-scale and regional (i.e. Weddell Sea sector) model

545



experiments (e.g. Wright et al., 2014; Cornford et al., 2015; Ritz et al., 2015; Seroussi et al., 2020; DeConto et al., 2021; Hill et al., 2021; Johnson et al., 2023; Seroussi et al., 2024; Hill et al., 2024) suggest that the FPAS is unlikely to undergo substantive grounding-zone retreat over the next 100-300 years (e.g. Figs 9a and 9b). In these models, grounding-zone retreat is predominantly limited to the FPAS trunk only (i.e. the zone before the Foundation-Patuxent and Academy tributaries become decoupled). However, model results and projected retreat rates could vary depending on specific model choices, for example the form of the basal sliding law, and the way in which sub-shelf melt rates are imposed in stand-alone ice sheet models, both of which are known sources of uncertainty in future projections (Ritz et al., 2015; Seroussi et al., 2020; 2024).

Future glaciological change may not be fully captured in existing numerical model simulations however. The FPAS may evolve differently because: (i) current numerical ice sheet models are poorly constrained (e.g. Steig et al., 2015; Bradley and Hewitt, 2024); (ii) major potential retreat has been simulated for FPAS-adjacent ice streams between 2100-2200 (e.g. Wright et al., 2014; Cornford et al., 2015; Seroussi et al., 2020; DeConto et al., 2021; Hill et al., 2021); and (iii) thinning of FRIS may reduce overall buttressing of grounded ice (Reese et al., 2018) impacting the FPAS in unanticipated ways. FPAS-specific factors may also increase uncertainties in model outputs. First, the steep, prograde basal topography up-ice from the confluence of Academy Glacier and Foundation-Patuxent Ice Stream in Foundation Trough (Fig. 2) (Huybers et al., 2017) has been poorly constrained in observations and poorly resolved in some model experiments, particularly those that simulate the whole ice sheet and are accordingly low-resolution. Secondly, the narrow FPAS trunk (Fig. 2), situated within the Foundation-Thiel Trough (Jeofry et al., 2018a), results in high lateral shear stresses that may not be fully resolved in lower resolution numerical models (Jamieson et al., 2012; Gudmundsson, 2013; Mas e Braga et al., 2023). Thirdly, the poorly constrained potential long-range buttressing effects of Berkner Island (Fürst et al., 2016; Reese et al., 2018), may not be characterised in all models (Fig. 1). Finally, many of the existing simulations (e.g. DeConto et al., 2021) were run using the Bedmap2 basal topography (Fretwell et al., 2013), which did not include the more recently acquired PolarGAP, Operation IceBridge and FISS RES data (Paxman et al., 2019; Morlighem et al., 2020; Frémand et al., 2023) and only coarsely resolved sub-ice shelf bathymetry. Indeed, we note substantive topographic differences between Bedmap3 and Bedmachine for the FPAS catchment (Fig. 3).

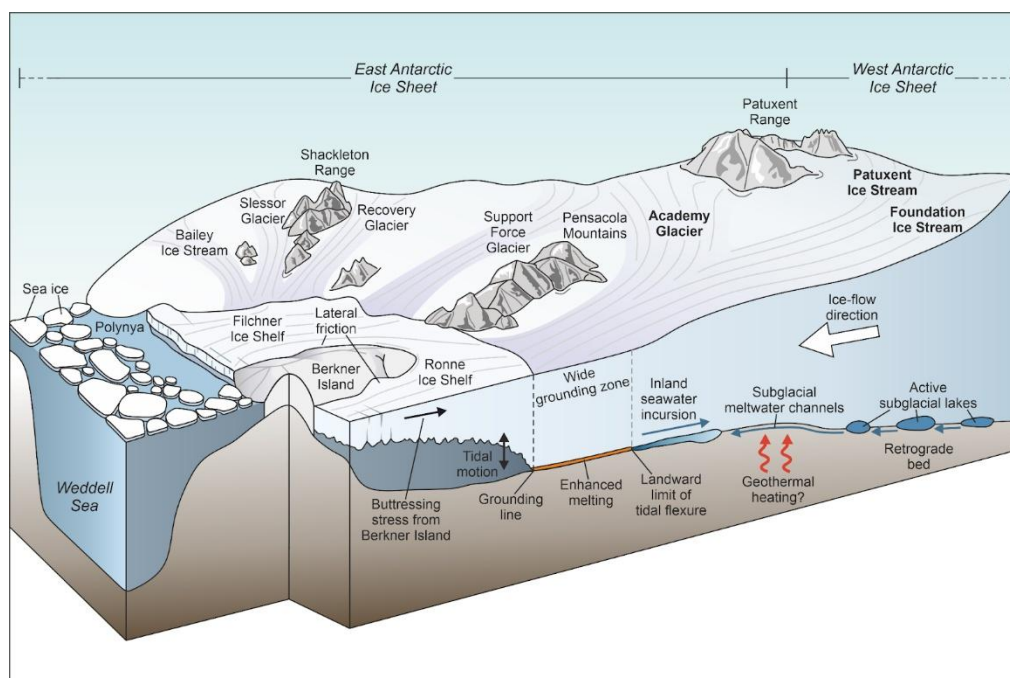
In addition to other sources of uncertainty, numerical ice sheet model experiments vary depending on resolution and due to uncertainties in bed topography. For example, Antarctic-wide warm climate model runs (e.g. for the Pliocene) using 5-20 km resolution model experiments generate deglaciation into the Pensacola-Pole Basin, whilst model runs at 40 km resolution do not (Pollard et al., 2015), potentially because the topographic complexity of the FPAS (Fig. 2) is poorly resolved at low resolution. Only two FPAS-specific models exist to date. These simulate 2D flowlines up either Foundation Ice Stream (Whitehouse et al., 2017) or Academy Glacier (Huybers et al., 2017) only, and are therefore naturally limited in diagnostic and prognostic capabilities. In an ideal scenario, all modelling experiments would be undertaken using the most up-to-date topography at high resolution, with sub-km adaptive-mesh resolution near the grounding zone (e.g. Hill et al., 2021; 2024) and other regions of high stress gradients. Recent advances in ice-sheet-wide models have partly addressed this issue, by using fully coupled atmosphere-ocean-ice approaches with model resolutions of 4-8 km and higher-resolution adaptive grids (e.g. Pelle et al., 2020; Naughten et al., 2021). Sensitivity studies on the specific FPAS area are required to evaluate and understand



580 which factors are critical for accurately modelling this system. Such approaches (see Siegert et al., 2020), which have already
been used for modelling experiments in other catchments, can overcome these issues. In particular, such experiments would
benefit from integrating existing and/or new observations and measurements of the FPAS and the offshore ice shelf. As it is
more robust for model grids to be constrained by direct observations of bed topography than interpolated data (see Pritchard
et al., 2025), acquiring new measurements so that bed topography resolution better approximates the resolution of current-
585 generation numerical models would further help to improve modelling of the FPAS response to change.

5 Future research directions

It is clear that the unique topographic and hydrological characteristics of the FPAS that may enhance its vulnerability to future
climate, glaciological, and oceanographic change (Fig. 10) remain poorly characterised. Here, we outline a series of priorities
for future glaciological research on the FPAS. These priorities are organised within three overarching research headings: (1)
590 targeted activities to characterise basal boundary conditions and dynamic processes of the FPAS; (2) how does the FPAS
interact with other ice streams and outlet glaciers in East and West Antarctica? and (3) what is the sensitivity of the FPAS to
external forcing?



595 **Figure 10: Visualisation of the Foundation Patuxent Academy System (FPAS), showing its pattern of ice flow, landscape setting, and subglacial and grounding zone processes. Also shown is the FPAS's relationship to surrounding outlet glaciers in the Weddell Sea sector, the Filchner-Ronne Ice Shelf (including the grounded Berkner Island), the Southern Ocean, and major mountain ranges. Note that the visualisation is not true to scale, with some features exaggerated relative to others for display purposes.**



5.1 Targeted activities to characterise basal boundary conditions and dynamic processes

600 We do not currently know: (i) why the FPAS grounding zone is positioned where it is, and whether the system is ‘in balance’;
(ii) what the current conditions are at the FPAS grounding zone; (iii) what the physical properties of the FPAS ice and
subglacial materials (e.g. rheology, anisotropy etc.) are; and (iv) what the configuration and character of the FPAS’s
hydrological system is.

To address these unknowns requires four targeted activities:

605 **(1) Improved characterisation of the basal topography of the FPAS.** New airborne geophysical surveys of the FPAS catchment,
deploying innovative approaches such as swath imaging radar (e.g. Holschuh et al., 2020; Hoffman et al., 2023, Carter et al.,
in review), are required to obtain the 10s to 100s of meter resolution required for ice-sheet modelling, particularly of the
present, and likely future (e.g. Seroussi et al., 2024; Hill et al., 2024) (Fig. 9), grounding zone. There is an urgent need for
specific RES surveys of the Academy-Support Force boundary (Fig. 7) and the Foundation-Patuxent catchment (Figs. 1 and
610 2) of the FPAS. The design of these new surveys must prioritise glaciological needs by considering, for example, the survey
targets, survey line orientation, height above ice surface etc. In this regard, we highlight the statement made by the BedMachine
consortium - “...we recommend flight tracks perpendicular to the flow direction to maximize constraints on ice flux, especially
upstream of Academy and Support Force glaciers...” (Morlighem et al., 2020);

(2) Determination of the physical properties of the FPAS bed (any Quaternary-age sediments and the underlying geology) and
615 **how they might influence present and future ice dynamics** (Diez et al., 2018). Given the importance of correctly parameterising
basal drag in ice-sheet models (Ritz et al., 2015; Law et al., 2023), the lack of geophysical or direct constraints on bed properties
(e.g. presence or absence of water, soft vs hard bed, bed roughness etc.) and underlying geology, as well as how they spatially
vary, is a significant gap in our understanding of the FPAS. The priority must be the geophysical characterisation and direct
sampling of the smooth low basal shear stress zones: (i) beneath the FPAS trunk (e.g. sampling upstream of the ~20 km wide
620 (along-flow) tidally influenced grounding zone, between the hard rock landforms noted by Jeofry et al. (2018a)); (ii) beneath
Patuxent Ice Stream; and (iii) in the low-to-medium roughness parts of the Pensacola-Pole Basin beneath Academy Glacier
(Figs. 2 and 4);

(3) Assessment of how the large-scale and highly active subglacial hydrological system of the FPAS functions, what the
potential sources of basal water draining through Academy Glacier are, and how this water influences FPAS ice flow and
625 **dynamics and grounding zone ice-ocean-meltwater processes** (Jordan et al., 2018; Dow et al., 2022; Jeofry et al., 2018a). An
important component of this work is to constrain the basal thermal state (Dawson et al., 2022) of the FPAS catchment. This is
a significant uncertainty at present, although localised geophysical constraints (Hills et al., 2022; Fudge et al., 2023) exist. We
also need to understand the processes that control hydrologically-driven ice surface change, monitor and quantify in high
temporal and spatial resolution how water flows in and out of active lakes (Siegfried and Fricker, 2021), and determine the
630 impact subglacial lake filling and drainage has on ice flow (Stearns et al., 2008; Livingstone et al., 2022) and on grounding
zone processes and melt rates (Gourmelen et al., 2025; Horgan et al., 2025; Zhou et al., 2025);



(4) Observations of ice-ocean interaction at the grounding zone Given the large outflux of water from the FPAS (Jeofry et al., 2018a) and the site-specific oceanographic conditions we can expect, it is critical that we undertake airborne and detailed in-situ glaciological and oceanographic observations in the FPAS grounding zone to constrain the subglacial water flux, cavity geometry, oceanographic circulation and conditions, and the rate of melt (Davis et al., 2023; Schmidt et al., 2023). As the flat ice surface and bed geometry and high tidal range of the FPAS grounding zone are likely to drive the incursion of seawater inland of the grounded ice margin, these observations should also focus on characterising how saltwater influx, and its interaction with subglacial meltwater (Horgan et al., 2025; Zhou et al., 2025) may influence melt rates, the flow of lightly grounded ice, and the basal hydrological system (Robel et al., 2022; Rignot et al., 2024; Bradley and Hewitt, 2024). Seawater intrusion could be an important, large-scale process for the FPAS that is likely to change dynamically (Zhou et al., 2025) in response to any future grounding-zone retreat and/or decoupling of Foundation and Patuxent ice streams from Academy Glacier.

5.2 How does the FPAS interact with other ice streams and outlet glaciers in East and West Antarctica?

The FPAS's far-reaching catchment, which bounds a large number of ice-stream catchments, makes it sensitive to, and potentially able to drive, ice-sheet change in other sectors of West and East Antarctica, including FRIS (Pingree et al., 2011; Steig et al., 2015; Reese et al., 2018; Winter et al., 2018). Academy and Support Force glaciers flow side-by-side for hundreds of kilometres (Figs. 1 and 7), raising questions about the interactions between these two East Antarctic outlet glaciers. Given the morphology of the ice surface and bed topography, the current ice flow pattern (section 4.1), and the subglacial hydrological system (section 4.2) (Figs. 1, 2, 6 and 7), the boundary between these glaciers is likely to be susceptible to ice flow-switching (Conway et al., 2002; Dowdeswell et al., 2006; Siegert et al., 2013; Winter et al., 2015; Selley et al., 2025) and subglacial water piracy (Alley et al., 1994; Vaughan et al., 2008; McCormack et al., 2023). However, the potential for, and consequences of, flow-switching in this region have not been fully explored. It is important to know, for example, whether ice flow-switching or water piracy between Academy Glacier and Support Force Glacier has happened in the past (e.g. since the LGM) or can happen in the future, particularly given the influence of tele-buttressing on the FPAS (Reese et al., 2018). Before assessing the potential for future change, or evidence for past change, however, it is critical to determine the current geometry of the FPAS, its spatial context (i.e. relative to other outlet glaciers of East and West Antarctica) and how it interacts with other ice streams and outlet glaciers.

Two research questions arise from existing knowledge: (i) what is the nature (i.e. englacial fabric, bed topography and conditions) of the current boundary between the FPAS and Support Force Glacier, and what controls its position? and (ii) is there potential for flow-migration and water piracy between Academy Glacier and Support Force Glacier? The contemporary ice flow boundary between Academy and Support Force glaciers can be defined from remote sensing-derived ice flow measurements (Mouginot et al., 2019), although even small changes to ice surface geometry could cause flow direction change over short timescales (Fig. 7). Assessing whether this boundary has changed in the past, or has the potential to change in the future, needs (preferably swath imaging) RES for improved bed topography (e.g. Franke et al., 2020; Carter et al., 2025) and



665 the characterisation, analysis and deciphering of englacial layering and structure, including ice crystal fabric (e.g. Young et al., 2021; Jordan et al., 2022; Franke et al., 2022; Gerber et al., 2023; Jansen et al., 2024). Before new data are acquired, analysis of the englacial structure and layers, and ‘radioglaciological artefacts’ (Young et al., 2021) from existing RES data (e.g. PolarGAP, OiB, SPRI-NSF-TUD etc) should be performed. These existing datasets have not yet been used to evaluate the nature and stability of the current position of the Academy-Support Force boundary, and thus the possibility that it could
670 migrate.

We advocate that the approach deployed at the North East Greenland Ice Stream in Greenland - i.e. acquisition of high-resolution RES targeting the shear margins of the glacier, with analysis of englacial layers and basal ice structures (Ross et al., 2020; Franke et al., 2022; Gerber et al., 2023; Jansen et al., 2024), as well as high-resolution bed topography (Carter et al., 2025) - would be appropriate for the FPAS. These data should be integrated with acquisition of polarimetric airborne (AWI
675 UWB and BAS PASIN2) or ground-based radar (ApRES) and seismic measurements for ice fabric anisotropy (Brisbourne et al., 2019), which can influence ice viscosity. An outstanding uncertainty is whether the subglacial hydrological catchments of Support Force and Academy glaciers align directly with the ice flow catchments. Current datasets (see Fig. 7) suggest that the ice flow and subglacial water flow catchments may be non-aligned. For example, some reported ‘Academy Glacier’ active subglacial lakes (i.e. A14 and A16) could be located beneath Support Force Glacier instead. A similar mismatch between ice
680 flow and hydrological catchments has been proposed for Pine Island and Thwaites glaciers in West Antarctica (Napoleoni et al., 2020). We need to confirm whether this is the case for the FPAS, as any model investigation of the potential for future hydrological flow-switching requires that the current boundaries of the Support Force and Academy hydrological catchments are determined accurately. Any such offset between ice flow and hydrological catchments poses challenges for running coupled hydrology-ice dynamical models.

685 **5.3 What is the sensitivity of the FPAS to external forcing?**

Five sub-questions arise from considering the sensitivity of the FPAS to changes in external forcing (i.e. oceanographic and/or atmospheric changes) and internal dynamic feedbacks: (1) Is the FPAS susceptible to future sustained retreat via MISI, and over what timescale(s)? (2) Is the FPAS beginning to show evidence of change, or is it likely to change, on societally relevant timescales (i.e. next 100-500 years)? (3) Is there evidence for past ice-sheet retreat (or readvance) of the FPAS, and when did
690 this retreat (or readvance) occur? (4) How might ocean conditions, ice-shelf thickness, hydrology, surface mass balance (SMB), and grounding zone geometry change over the coming centuries, impacting the FPAS? and (5) Could changes to other parts of the Antarctic Ice Sheet lead to glaciological change in the FPAS (and vice versa)? Addressing these questions requires the following strategy:

(1) To determine the susceptibility of the FPAS to sustained retreat via MISI in the foreseeable future (i.e. next 100-500 years),
695 high-resolution, adaptive-grid, catchment-scale numerical modelling of the FPAS with up-to-date bed topography (e.g. Siegert et al., 2020; Hill et al., 2021, 2024) is required (Fig. 9). Similar model simulations have been performed for the Aurora Basin (Sun et al., 2016; Pelle et al., 2020), with model resolutions in those experiments sufficiently high to capture the narrow,



700 complex, and in places prograde, bed topography of the FPAS trunk up to 200 km up-ice of the current grounding zone (Huybers et al., 2017) (Figs. 2 and 10). In addition to the ability to model changes to ocean cavity circulation in a grounding-zone retreat scenario, such experiments will require assessment of the role that the basal boundary conditions (i.e. recent marine sediments vs. older sedimentary basins) (Fig. 4) could play in controlling ice flow (Diez et al., 2018) and grounding-zone retreat (Ritz et al., 2015), given their role in determining basal friction. Improved, catchment-specific, high-resolution modelling of Last Interglacial and Pliocene scenarios are also required, as has been performed for the Wilkes and Aurora basins (e.g. Mengel and Levermann, 2014; Aitken et al., 2016);

705 **(2)** Determination of FPAS surface change can be achieved through ongoing monitoring and analysis of satellite remote sensing data. This should especially address whether the FPAS trunk is undergoing surface lowering/flattening, and whether any change is persistent or the result of short-term changes. Although a low-magnitude surface-lowering signature over the FPAS trunk may be apparent between ICESat (2003-2009) and ICESat-2 (2019) (Smith et al., 2020a; Stokes et al., 2022), this could be the result of a short-term fluctuation in SMB rather than pervasive dynamic thinning. Ongoing long-term monitoring of the
710 FPAS with currently operational satellite altimeters (e.g. ICESat-2, Cryosat-2, Sentinel-3) and those on upcoming missions (e.g. CRISTAL, NISAR) is required. Accurate interpretation of satellite-measured changes will require additional ground-truthing and calibration of SMB, as there are currently few field constraints on snow accumulation in the entire FPAS catchment (Lister and Pratt, 1959; Mayewski et al., 2005; Medley and Thomas, 2019; Noël et al., 2023). Furthermore, SMB across the FPAS catchment is spatially variable, with higher accumulation rates over the Foundation-Patuxent sub-catchment
715 than over Academy Glacier (Noël et al., 2023).

(3) To determine the geological retreat history of the FPAS requires geophysical characterisation, recovery and analysis of subglacial, sub-ice shelf and offshore materials (e.g. Kingslake et al., 2018; Spector et al., 2018; Siegert et al., 2019; Venturelli et al., 2020, 2023; Boeckmann et al., 2021; Johnson et al., 2022; Balco et al., 2023), and advances in the experimental design, resolution, input data etc. of ice-sheet models used to reconstruct post-LGM ice evolution (e.g. Whitehouse et al., 2017; Kingslake et al., 2018; Pittard et al., 2022). These will enable us to assess whether the FPAS underwent grounding-zone retreat
720 and readvance during the late-Holocene, as has been postulated in the Weddell Sea (Bradley et al., 2015; Kingslake et al., 2018; Siegert et al., 2019). Sampling of subglacial sediments and bedrock in the Pensacola Mountains has recently been undertaken, with the goal of addressing this unknown (Braddock et al., 2024; Small et al., 2024). Re-investigation of existing RES data is required to test the idea that fast ice flow extended to the South Pole region at some point since the LGM (Bingham
725 et al., 2007; Beem et al., 2018). Existing RES data have not yet been fully explored to test this idea, although the stratigraphy in PolarGAP data from around the South Pole suggests extensive englacial layer drawdown (Sanderson et al., 2024). Acquisition of new RES data from airborne and/or ground-based surveys, designed specifically to test this hypothesis, is needed.

(4) Evaluating how the FPAS will evolve in a future scenario of grounding-zone retreat requires direct multi-year observations
730 and monitoring of ice-ocean-hydrology interactions (Humbert et al., 2022; Freer et al., 2023; Davis et al., 2023; Schmidt et al., 2023) at, and near, the FPAS grounding zone (Fig. 10). In addition, oceanographic and glaciological constraints on the wider

FRIS and its ice-shelf cavity (e.g. Smith et al., 2020b; Jordan et al., 2020) are required. At present, numerical models used to project future change are hampered by the lack of observational constraints on ocean circulation, water properties, cavity geometry and melt rates immediately beyond the FPAS grounding zone, as well as subglacial channel geometry and temporal activity upstream of the grounded ice margin (Fig. 10). Whilst we can assume that some ocean processes observed elsewhere in Antarctica (e.g. at Pine Island and Thwaites glaciers (Davis et al., 2023; Schmidt et al., 2023)) are transferable to the FPAS, the site-specific processes occurring at and proximal to the FPAS grounding zone are not well-known (e.g. in association with the large, tidally driven grounding-zone fluctuations, high subglacial meltwater flux, and cavity and ocean circulation pattern beneath FRIS). The application of coupled ice-ocean model simulations (e.g. Naughten et al., 2021), constrained where possible by direct observations, to the FPAS will help to overcome these issues, but will require improved geophysical characterisation of the ice shelf cavity (e.g. Smith et al., 2020b; Hofstede et al., 2021; Scott et al., 2023).

(5) There are two approaches to identifying whether changes in other parts of the ice sheet can lead to changes in the FPAS, or vice versa. The first is exploring evidence for past change, either from the ice itself (e.g. Fahnestock et al., 2000; Bingham et al., 2007; Fudge et al., 2023, Hills et al., 2025) or from the subglacial or offshore sediments and geomorphology that have been previously deposited and formed by the ice sheet (e.g. Agrios et al., 2021; Smith et al., 2020b). We know from other ice sheets (e.g. the palaeo Laurentide Ice Sheet) that ice divides can migrate as ice streams thin and change their flow patterns (and vice-versa) (Margold et al., 2015; Stokes et al., 2016). Numerical simulations exploring how the FPAS catchment may have evolved since the LGM (e.g. Whitehouse et al., 2017; Lilien et al., 2018), or perhaps over even longer timescales, should enable us to evaluate the ability of its flow components to change (e.g. for ice stream margins or ice divides to migrate, for fast flowing ice to slow, or for the ice surface profile to steepen) (Retzlaff and Bentley, 1993; Siegert et al., 2004; Lilien et al., 2018; Khan et al., 2022; Grinsted et al., 2022). The second approach is to use numerical modelling to explore how the FPAS may change in the future, how it has changed in the past, and what factors it is particularly sensitive to (e.g. changes to ice surface elevation and the routing and nature of basal hydrology). This will enable us to evaluate how such FPAS-specific changes may impact the ice sheet more widely, or how changes in the rest of the ice sheet might impact the FPAS (e.g. Livingstone et al., 2013; Steig et al., 2015; Winter et al., 2018). To be meaningful, such simulations will require improved bed topography (Figs. 2d and 3) and knowledge of the current hydrological system (Figs. 6, 7 and 10), as well as further modern-day observations of SMB (Medley and Thomas, 2019; Lenearts et al., 2019; Studinger et al., 2020), and more robust projections for how forcings such as SMB (e.g. Noël et al., 2023) and oceanography (e.g. Hellmer et al., 2012) will evolve over the coming centuries.

760 6 Conclusions

This state-of-knowledge review of the Foundation-Patuxent-Academy system (FPAS) has assessed what is presently known about: (i) the influence of subglacial topography and bed conditions on ice flow; (ii) the subglacial hydrological system; (iii) the LGM-to-present glacial history; and (iv) existing numerical modelling experiments. Our review has identified multiple



765 ‘unknowns’ and potential vulnerabilities to climatic, oceanographic and glaciological change that result from the FPAS’s
unique topographic and hydrological setting (Fig. 10).

The vulnerability of the FPAS to substantive ice mass loss driven by MISI across the Pensacola-Pole Basin (Fig. 9) is
important, yet not well known. The low-gradient, retrograde bed slope of the FPAS (Fig. 2), together with regions of low bed
roughness (Fig. 4), suggest it is certainly possible that future climate and ocean-driven forcing could instigate grounding-zone
770 retreat across the Pensacola-Pole Basin as far inland as the South Pole (Fig. 9). This would drive major change to both the East
and West Antarctic ice sheets. Given the severe glaciological and sea-level implications of such a scenario, quantifying its
likelihood is a priority for investigation.

Existing numerical simulations of the FPAS (Fig. 9) cover a wide range of climate and ocean forcings, timeframes and model
physics, yet have often used now out-of-date bed topography (i.e. Bedmap1 or Bedmap2) that differs considerably from the
true topography (Jeofry et al., 2018b) (Fig. 3), leading to simulations that differ from glaciological reality (Jeofry et al., 2019).
775 Part of the challenge in modelling the FPAS is that the details of this system (i.e. its specific bed topography, basal hydrology
and ice-ocean interactions across a broad zone of lightly grounded ice) (Fig. 10) are integral to performing robust model
simulations yet remain only loosely characterised and quantified at present. Furthermore, in addition to the FPAS-specific
issue of poorly-known boundary conditions there is the general issue that many small-scale processes are not currently
effectively resolved in continental-scale ice-sheet models running at horizontal resolutions of 10s of km. Critically, we do not
780 yet fully understand the consequences of any potential grounding-zone retreat along the FPAS trunk, and the likely resulting
decoupling of the Foundation-Patuxent and Academy Glacier grounding zones. Retreat could nearly double the across-flow
length of the grounding zone (Fig. 2), leading to an accordingly larger surface area of the FPAS interacting with the ocean.
Continental-scale models do not effectively resolve the topography of the 50 km-wide FPAS trunk, and we have few constraints
on ocean conditions, ice-shelf cavity geometry, and ice-ocean-hydrological interactions near, and at, the FPAS grounding zone
785 (Fig. 10). It is possible, for example, that retreat and across-flow lengthening of the grounding zone could lead to a reduced
role for seawater intrusion beneath grounded ice (as the surface slope of Academy Glacier would presumably steepen as its
bed rises over higher inland topography, limiting the range of tidal flexure inland of the grounding lines). This would reduce
the melt rate at the grounding zone, despite an increase in the cross sectional area of ice flow subjected to submarine melt. It
is such complexity and process interplay that need to be better constrained and quantified.

790 Addressing the unknowns and potential vulnerabilities highlighted in this synthesis will require a dedicated research focus on
the FPAS catchment in the following ways. First, there should be a focus on better exploiting existing and forthcoming datasets
and observations from the FPAS and FRIS, and on exploring ways to improve and enhance ice-sheet modelling of the FPAS
catchment. The goal of this initial phase of research should be to begin an assessment of the questions posed in this review,
enabling the identification of priorities for future field-oriented data campaigns in the FPAS catchment, and on FRIS, leading
795 to a second phase of research activity. Because of the remoteness of the FPAS, and the scale of the FPAS catchment, future
field campaigns require a large-scale and multi-national approach, akin to that undertaken for the International Thwaites



Glacier Collaboration (Scambos et al., 2017). The forthcoming Antarctica InSync (2027-2030) and International Polar Year (2032-2033) provide opportunities to catalyse this research.

800 Numerical models (Fig. 9) will play an essential role in how we can address the research questions posed here. Comprehensive and focused high-resolution numerical modelling of the FPAS catchment, and the adjacent Support Force Glacier, is essential to address the unknowns we have identified, as well as to identify a priority order for the field observations and measurements we require. This paper has identified an array of possible observational targets (Fig. 10). However, the cost and logistical constraints associated with fieldwork in the FPAS region means that careful assessment and evaluation of priorities are needed to effectively undertake the data-constrained modelling necessary to determine how the FPAS has responded, and might
805 respond, to a warmer world.

As a final point, glaciological change to the FPAS will have knock-on consequences for wider ice sheet modification in both East and West Antarctica. A catchment-scale, and potentially continent-wide, perspective and approach to ice sheet geophysical surveying, and modelling, is thus required to better comprehend how the ice sheet is likely to evolve under a variety of warming scenarios.

810 **Code availability**

No bespoke code was created for the development of this manuscript.

Data availability

All data are available as figures within this manuscript were generated using openly available datasets referenced in the figure captions.

815 **Author contribution**

NR, MJS and BK conceived the idea for the review paper. NR, RJS, MJS, BK wrote the manuscript, with substantive additional contributions from MB, SSRJ, GJGP, DS, KN, MRS, OE. Figures created for this manuscript, and not previously published, were conceived and created by NR, BS, KN, GJGP, CD, and CB. All authors reviewed the manuscript, providing comments, edits and feedback on draft versions.

820 **Competing interests**

The authors declare that they have no conflict of interest.



Acknowledgements

For the purpose of open access, the author has applied a Creative Commons Attribution (CC BY) licence to any Author Accepted Manuscript version arising from this submission. The following research grants and studentships underpinned this work: (i) UK Natural Environment Research Council (NERC) grants NE/S006621/1 and NE/R010838/1 (BK); (ii) UK NERC grants NE/F014260/1, NE/F014252/1, and NE/F014228/1 (MB); (iii) UK NERC IAPETUS DTP studentship NE/L002590/1 and Royal Society University Research Fellowship award number UR/R1\241308 (GJGP); (iv) Canada Research Chairs Program (950-231237) and NSERC RGPIN-03761-2017 (CD); (v) UK NERC ONEPlanet DTP studentship NE/S007512/1 (RJS); (vi) National Science Foundation OPP grant 1542936 (KN); (vii) NASA grants 80NSSC21K0912 & 80NSSC24K0169 (MRS & WS); (viii) NERC Independent Research Fellowship NE/T011963/1 (DS); (ix) NERC NE/Y000129/1 (EH); (x) NERC NE/S006613/1 (RGB); (xi) NASA 80NSSC23K0934 (HF); (xii) NSF 2317927 (BH); (xiii) NERC NE/G013071/1 (MJS). NR acknowledges internal Newcastle University funding from the Humanities and Social Sciences bid preparation fund and the School of Geography Politics and Sociology visiting professor scheme (supporting a visit from MRS). We are very grateful to: (i) Keith Nicholl and Pippa Whitehouse for comments on an early draft of this manuscript: (ii) The NERC UK Polar Data Centre (UK PDC), ESA, NSIDC and CReSIS for openly available datasets used here; (iii) QGIS and Quantarctica for the support of figure creation and easy access to data resources. We acknowledge the use of data and/or data products from CReSIS generated with support from the University of Kansas, NASA Operation IceBridge grant NNX16AH54G, NSF grants ACI-1443054, OPP-1739003, and IIS-1838230, Lilly Endowment Incorporated, and Indiana METACyt Initiative. This work has been inspired by multiple SCAR Research Scientific Programmes and Action Groups, including AntArchitecture, RINGS, SCAR-INSTANT, Bedmap and Groundwater. NR would like to thank multiple seminar audiences (UK and International Glaciological Society) for providing a testing ground for ideas, as well as inspiration for driving this review forward.

References

- Adusumilli, S., Fricker, H. A., Medley, B., Padman, L., and Siegfried, M. R.: Interannual variations in meltwater input to the Southern Ocean from Antarctic ice shelves, *Nat. Geosci.*, 13, 616–620, <https://doi.org/10.1038/s41561-020-0616-z>, 2020.
- Agrios, L. M., Licht, K. J., Williams, T., Hemming, S. R., Welch, L., and Mickey, J. L.: Detrital geochronology and lithologic signatures of Weddell Sea Embayment ice streams, Antarctica—Implications for subglacial geology and ice sheet history, *GSA Bull.*, 134, 1895–1915, <https://doi.org/10.1130/B36117.1>, 2021.
- Alley, K. E., Scambos, T. A., Siegfried, M. R., and Fricker, H. A.: Impacts of warm water on Antarctic ice shelf stability through basal channel formation, *Nat. Geosci.*, 9, 290–293, <https://doi.org/10.1038/ngeo2675>, 2016.



- Alley, R. B., Anandakrishnan, S., Bentley, C. R., and Lord, N.: A water-piracy hypothesis for the stagnation of Ice Stream C, Antarctica, *Ann. Glaciol.*, 20, 187–194, <https://doi.org/10.3189/1994AoG20-1-187-194>, 1994.
- Aitken, A. R. A., Kulesa, B., Schroeder, D., Jordan, T. A., Whittaker, J. M., Anandakrishnan, S., Dawson, E. J., Wiens, D. A., Eisen, O., and Siegert, M. J.: Antarctic Sedimentary Basins and Their Influence on Ice-Sheet Dynamics, *Rev. Geophys.*, 855 61, e2021RG000767, <https://doi.org/10.1029/2021RG000767>, 2023.
- Aitken, A. R. A., Roberts, J. L., van Ommen, T. D., Young, D. A., Golledge, N. R., Greenbaum, J. S., Blankenship, D. D., and Siegert, M. J.: Repeated large-scale retreat and advance of Totten Glacier indicated by inland bed erosion, *Nature*, 533, 385–389, <https://doi.org/10.1038/nature17447>, 2016.
- Balco, G., Brown, N., Nichols, K., Venturelli, R. A., Adams, J., Braddock, S., Campbell, S., Goehring, B., Johnson, J. S., 860 Rood, D. H., Wilcken, K., Hal, B., and Woodward, J.: Reversible ice sheet thinning in the Amundsen Sea Embayment during the Late Holocene, *The Cryosphere*, 17, 1787–1801, <https://doi.org/10.5194/tc-17-1787-2023>, 2023.
- Balco, G.: Production rate calculations for cosmic-ray-muon-produced ^{10}Be and ^{26}Al benchmarked against geological calibration data, *Quat. Geochronol.*, 39, 150–173, <https://doi.org/10.1016/j.quageo.2017.02.001>, 2017.
- Balco, G., Todd, C., Huybers, K., Campbell, S., Vermeulen, M., Hegland, M., Goehring, B. M., and Hillebrand, T. R.: 865 Cosmogenic-nuclide exposure ages from the Pensacola Mountains adjacent to the Foundation Ice Stream, Antarctica, *Am. J. Sci.*, 316, 542–577, <https://doi.org/10.2475/06.2016.02>, 2016.
- Balco, G., Stone, J. O., Lifton, N. A., and Dunai, T. J.: A complete and easily accessible means of calculating surface exposure ages or erosion rates from ^{10}Be and ^{26}Al measurements, *Quat. Geochronol.*, 3, 174–195, <https://doi.org/10.1016/j.quageo.2007.12.001>, 2008.
- 870 Batchelor, C. L., Christie, F. D. W., Ottesen, D., Montelli, A., Evans, J., Dowdeswell, E. K., Bjarnadóttir, L. R., and Dowdeswell, J. A.: Rapid, buoyancy-driven ice-sheet retreat of hundreds of metres per day, *Nature*, 617, 105–110, <https://doi.org/10.1038/s41586-023-05876-1>, 2023.
- Beem, L. H., Young, D. A., Greenbaum, J. S., Blankenship, D. D., Cavitte, M. G. P., Guo, J., and Bo, S.: Aerogeophysical characterization of Titan Dome, East Antarctica, and potential as an ice core target, *The Cryosphere*, 15, 1719–1730, 875 <https://doi.org/10.5194/tc-15-1719-2021>, 2021.
- Beem, L. H., Cavitte, M. G. P., Blankenship, D. D., Carter, S. P., Young, D. A., Muldoon, G. R., Jackson, C. S., and Siegert, M. J.: Ice-flow reorganization within the East Antarctic Ice Sheet deep interior, in: *Exploration of Subsurface Antarctica:*



Uncovering Past Changes and Modern Processes, edited by: Siegert, M. J., Jamieson, S. S. R., and White, D. A., Geol. Soc. Lond. Spec. Publ., 461, 35–47, <https://doi.org/10.1144/SP461.14>, 2018.

880 Behrendt, J. C., Drewry, D. J., Jankowski, E., and Grim, M. S.: Aeromagnetic and radio echo ice-sounding measurements over the Dufek Intrusion, Antarctica, *J. Geophys. Res.*, 86, 3014–3020, <https://doi.org/10.1029/JB086iB04p03014>, 1981.

Behrendt, J. C., Henderson, J. R., Meister, L., and Rambo, W. L.: Geophysical investigations of the Pensacola Mountains and adjacent glacierized areas of Antarctica, *Geol. Surv. Prof. Pap.*, 844, United States Government Printing Office, Washington, 1974.

885 Behrendt, J. C., Meister, L., and Henderson, J. R.: Airborne Geophysical Study in the Pensacola Mountains of Antarctica, *Science*, 153, 1373–1376, <https://doi.org/10.1126/science.153.3742.1373>, 1966.

Behrendt, J. C.: Geophysical and glaciological studies in the Filchner Ice Shelf Area of Antarctica, *J. Geophys. Res.*, 67, 221–234, <https://doi.org/10.1029/JZ067i001p00221>, 1962.

Beitzel, J. E.: Geophysical exploration in Queen Maud Land, Antarctica, in: *Antarctic Snow and Ice Studies II*, edited by: 890 Crary, A. P., *Antarct. Res. Ser.*, 16, American Geophysical Union, Washington, D.C., 39–88, <https://doi.org/10.1029/AR016>, 1971.

Bell, R. E., Ferraccioli, F., Creyts, T. T., Braaten, D., Corr, H., Das, I., Damaske, D., Frearson, N., Jordan, T., Rose, K., Studinger, M., and Wolowick, M.: Widespread persistent thickening of the East Antarctic Ice Sheet by freezing from the base, *Science*, 331, 1592–1595, <https://doi.org/10.1126/science.1200109>, 2011.

895 Bell, R. E., Studinger, M., Shuman, C. A., Fahnestock, M. A., and Joughin, I.: Large subglacial lakes in East Antarctica at the onset of fast-flowing ice streams, *Nature*, 445, 904–907, <https://doi.org/10.1038/nature05554>, 2007.

Bentley, C., Crary, A. P., Ostenso, N. A., and Thiel, E. C.: Structure of West Antarctica: The results of United States IGY oversnow traverses reveal the nature of a large portion of ice-covered Antarctica, *Science*, 131, 131–136, <https://doi.org/10.1126/science.131.3394.131>, 1960.

900 Bentley, M. J., Hein, A. S., Sugden, D. E., Whitehouse, P. L., Shanks, R., Xu, S., and Freeman, S. P. H. T.: Deglacial history of the Pensacola Mountains, Antarctica from glacial geomorphology and cosmogenic nuclide surface exposure dating, *Quat. Sci. Rev.*, 158, 58–76, <https://doi.org/10.1016/j.quascirev.2016.09.028>, 2017.

Bingham, R. G., and Siegert, M. J.: Quantifying subglacial bed roughness in Antarctica: implications for ice-sheet dynamics and history, *Quat. Sci. Rev.*, 28, 223–236, <https://doi.org/10.1016/j.quascirev.2008.10.014>, 2009.



- 905 Bingham, R. G., and Siegert, M. J.: Radar-derived roughness characterization of Institute and Möller Ice Streams, West Antarctica: comparison with Siple Coast ice streams, *Geophys. Res. Lett.*, 34, L21504, <https://doi.org/10.1029/2007GL031483>, 2007.
- Bingham, R. G., Siegert, M. J., Young, D. A., and Blankenship, D. D.: Organized flow from the South Pole to the Filchner-Ronne Ice Shelf: An assessment of balance velocities in interior East Antarctica using radio echo sounding data, *J. Geophys. Res.*, 112, F03S26, <https://doi.org/10.1029/2006JF000556>, 2007.
- 910 Boeckmann, G. V., Gibson, C. J., Kuhl, T. W., Moravec, E., Johnson, J. A., Meulemans, Z., and Slawny, K.: Adaptation of the Winkie Drill for subglacial bedrock sampling, *Ann. Glaciol.*, 62, 109–117, <https://doi.org/10.1017/aog.2020.73>, 2021.
- Borchers, B., Marrero, S., Balco, G., Caffee, M., Goehring, B., Lifton, N., Nishiizumi, K., Phillips, F., Schaefer, J., and Stone, J.: Geological calibration of spallation production rates in the CRONUS-Earth project, *Quat. Geochronol.*, 31, 188–198, <https://doi.org/10.1016/j.quageo.2015.01.009>, 2016.
- 915 Braddock, S., Venturelli, R. A., Nichols, K., Moravec, E., Boeckmann, G. V., Campbell, S., Balco, G., Ackert, R., Small, D., Johnson, J. S., Dunbar, N., Woodward, J., Mukhopadhyay, S., and Goehring, B.: Lessons learned from shallow subglacial bedrock drilling campaigns in Antarctica, *Ann. Glaciol.*, 65, e18, <https://doi.org/10.1017/aog.2024.12>, 2024.
- Bradley, A. T., and Hewitt, I. J.: Tipping point in ice-sheet grounding-zone melting due to ocean water intrusion, *Nat. Geosci.*, 17, 631–637, <https://doi.org/10.1038/s41561-024-01465-7>, 2024.
- 920 Bradley, S. L., Hindmarsh, R. C. A., Whitehouse, P. L., Bentley, M. J., and King, M. A.: Low post-glacial rebound rates in the Weddell Sea due to Late Holocene ice-sheet readvance, *Earth Planet. Sci. Lett.*, 413, 79–89, <https://doi.org/10.1016/j.epsl.2014.12.039>, 2015.
- Brisbourne, A. M., Martin, C., Smith, A. M., Baird, A. F., Kendall, J. M., and Kingslake, J.: Constraining recent ice flow history at Korff Ice Rise, West Antarctica, using radar and seismic measurements of ice fabric, *J. Geophys. Res. Earth Surf.*, 124, 175–194, <https://doi.org/10.1029/2018JF004776>, 2019.
- 925 Brunt, K. M., Fricker, H. A., and Padman, L.: Analysis of ice plains of the Filchner–Ronne Ice Shelf, Antarctica, using ICESat laser altimetry, *J. Glaciol.*, 57, 965–975, <https://doi.org/10.3189/002214311798043753>, 2011.
- Bunce, C., Carr, J. R., Nienow, P. W., Ross, N., and Killick, R.: Ice front change of marine-terminating outlet glaciers in northwest and southeast Greenland during the 21st century, *J. Glaciol.*, 64, 523–535, <https://doi.org/10.1017/jog.2018.44>, 2018.



- Burton-Johnson, A., Dziadek, R., and Martin, C.: Review article: Geothermal heat flow in Antarctica: current and future directions, *The Cryosphere*, 14, 3843–3873, <https://doi.org/10.5194/tc-14-3843-2020>, 2020.
- 935 Carr, J. R., Vieli, A., and Stokes, C.: Influence of sea ice decline, atmospheric warming, and glacier width on marine-terminating outlet glacier behavior in northwest Greenland at seasonal to interannual timescales, *J. Geophys. Res. Earth Surf.*, 118, 1210–1226, <https://doi.org/10.1002/jgrf.20088>, 2013.
- Carter, C. M., Franke, S., Jansen, D., Stokes, C. R., Helm, V., Paden, J., and Eisen, O.: Formation of mega-scale glacial lineations far inland beneath the onset of the Northeast Greenland Ice Stream, *EGUsphere* [preprint], <https://doi.org/10.5194/egusphere-2025-1743>, 2025.
- 940 Carter, S. P., Fricker, H. A., and Siegfried, M. R.: Evidence of rapid subglacial water piracy under Whillans Ice Stream, West Antarctica, *J. Glaciol.*, 59, 1147–1162, <https://doi.org/10.3189/2013JoG13J085>, 2013.
- Carter, S. P., Blankenship, D. D., Peters, M. E., Young, D. A., Holt, J. W., and Morse, D. L.: Radar-based subglacial lake classification in Antarctica, *Geochem. Geophys. Geosyst.*, 8, Q03016, <https://doi.org/10.1029/2006GC001408>, 2007.
- 945 Christoffersen, P., Bougamont, M., Carter, S. P., Fricker, H. A., and Tulaczyk, S.: Significant groundwater contribution to Antarctic ice streams hydrologic budget, *Geophys. Res. Lett.*, 41, 2003–2010, <https://doi.org/10.1002/2014GL059250>, 2014.
- Conway, H., Catania, G., Raymond, C. F., Gades, A. M., Scambos, T. A., and Engelhardt, H.: Switch of flow direction in an Antarctic ice stream, *Nature*, 419, 465–467, <https://doi.org/10.1038/nature01081>, 2002.
- 950 Cornford, S. L., Martin, D. F., Payne, A. J., Ng, E. G., Le Brocq, A. M., Gladstone, R. M., Edwards, T. L., Shannon, S. R., Agosta, C., van den Broeke, M. R., Hellmer, H. H., Krinner, G., Ligtenberg, S. R. M., Timmermann, R., and Vaughan, D. G.: Century-scale simulations of the response of the West Antarctic Ice Sheet to a warming climate, *The Cryosphere*, 9, 1579–1600, <https://doi.org/10.5194/tc-9-1579-2015>, 2015.
- Corr, H., Ferraccioli, F., Forsberg, R., Jordan, T., Kohler, J., Matsuoka, K., Olesen, A., and Robinson, C.: Processed bed elevation picks from the POLARGAP radar survey across the Pensacola-Pole Basin (2015/2016) (Version 1.0), NERC EDS UK Polar Data Centre [data set], <https://doi.org/10.5285/d55e87dd-a74d-4182-be99-93ab805103ab>, 2021.
- 955 CReSIS: Radar Depth Sounder Data, Lawrence, Kansas, USA, Digital Media, <http://data.cresis.ku.edu/>, 2025.
- Davis, P. E. D., Nicholls, K. W., Holland, D. M., Schmidt, B. E., Washam, P., Riverman, K. L., Arthern, R. J., Vaňková, I., Eayrs, C., Smith, J. A., Anker, P. G., Mullen, A. D., Dichek, D., Lawrence, J. D., Meister, M. M., Clyne, E., Basinski-Ferris, A., Rignot, E., Queste, B. Y., Boehme, L., Heywood, K. J., Anandakrishnan, S., and Makinson, K.: Suppressed basal melting in the eastern Thwaites Glacier grounding zone, *Nature*, 614, 479–485, <https://doi.org/10.1038/s41586-022-05586-0>, 2023.



- 960 Dawson, E. J., Schroeder, D. M., Chu, W., Mantelli, E., and Seroussi, H.: Ice mass loss sensitivity to the Antarctic ice sheet basal thermal state, *Nat. Commun.*, 13, 4957, <https://doi.org/10.1038/s41467-022-32632-2>, 2022.
- Dawson, G. J., and Bamber, J. L.: Measuring the location and width of the Antarctic grounding zone using CryoSat-2, *The Cryosphere*, 14, 2071–2086, <https://doi.org/10.5194/tc-14-2071-2020>, 2020.
- DeConto, R. M., Pollard, D., Alley, R. B., Velicogna, I., Gasson, E., Gomez, N., Sadai, S., Condrón, A., Gilford, D. M., Ashe,
965 E. L., Kopp, R. E., Dawei, L., and Dutton, A.: The Paris Climate Agreement and future sea-level rise from Antarctica, *Nature*, 593, 83–89, <https://doi.org/10.1038/s41586-021-03427-0>, 2021.
- DeConto, R., and Pollard, D.: Contribution of Antarctica to past and future sea-level rise, *Nature*, 531, 591–597, <https://doi.org/10.1038/nature17145>, 2016.
- Diez, A., Matsuoka, K., Jordan, T. A., Kohler, J., Ferraccioli, F., Corr, H. F., Olesen, A. V., Forsberg, R., and Casal, T. G.:
970 Patchy lakes and topographic origin for fast flow in the Recovery Glacier System, East Antarctica, *J. Geophys. Res. Earth Surf.*, 124, 287–304, <https://doi.org/10.1029/2018JF004799>, 2019.
- Diez, A., Matsuoka, K., Ferraccioli, F., Jordan, T. A., Corr, H. F., Kohler, J., Olesen, A. V., and Forsberg, R.: Basal settings control fast ice flow in the Recovery/Slessor/Bailey Region, East Antarctica, *Geophys. Res. Lett.*, 45, 2706–2715, <https://doi.org/10.1002/2017GL076601>, 2018.
- 975 Doake, C. S. M., Corr, H. F. J., Jenkins, A., Makinson, K., Nicholls, K. W., Nath, C., Smith, A. M., and Vaughan, D. G.: Rutford Ice Stream, Antarctica, in: *The West Antarctic Ice Sheet: Behavior and Environment*, edited by: Alley, R. B. and Bindschadler, R. A., *Antarct. Res. Ser.*, 77, American Geophysical Union, 221–235, <https://doi.org/10.1029/AR077>, 2001.
- Dow, C. F., Ross, N., Jeffry, H., Sui, K., and Siegert, M. J.: Antarctic basal environment shaped by high-pressure flow through a subglacial river system, *Nat. Geosci.*, 15, 892–898, <https://doi.org/10.1038/s41561-022-01059-1>, 2022.
- 980 Dow, C. F., Lee, W. S., Greenbaum, J., Greene, C. A., Blankenship, D. D., Poinar, K., Forrest, A. L., Young, D. A., and Zappa, C. J.: Basal channels drive active surface hydrology and transverse ice shelf fracture, *Sci. Adv.*, 4, eaao7212, <https://doi.org/10.1126/sciadv.aao7212>, 2018.
- Dowdeswell, J. A., Ottesen, D., and Rise, L.: Flow switching and large-scale deposition by ice streams draining former ice sheets, *Geology*, 34, 313–316, <https://doi.org/10.1130/G22253.1>, 2006.
- 985 Dralkin, A. G.: To the South Pole, *Priroda*, 10, 27–34, 1960.



- Drewry, D. J.: *The Land Beneath the Ice: The Pioneering Years of Radar Exploration in Antarctica*, Princeton University Press, 464 pp., 2023.
- Drewry, D. J.: *Antarctica: Glaciological and geophysical folio*, edited by Drewry, D. J., Scott Polar Research Institute, University of Cambridge, Cambridge, 18 pp, 1983.
- 990 Drewry, D. J., Meldrum, D. T., and Jankowski, E.: Radio echo and magnetic sounding of the Antarctic Ice Sheet, 1978–79, *Polar Rec.*, 20, 43–57, <https://doi.org/10.1017/S0032247400002916>, 1980.
- Drewry, D. J., and Meldrum, D. T.: Antarctic airborne radio echo sounding 1977-78, *Polar Rec.*, 19, 267–278, <https://doi.org/10.1017/S0032247400018271>, 1978.
- Dütsch, M., Steig, E. J., Blossey, P. N., and Pauling, A. G.: Response of water isotopes in precipitation to a collapse of the
995 West Antarctic Ice Sheet in high-resolution simulations with the Weather Research and Forecasting Model, *J. Climate*, 36, 5417–5430, <https://doi.org/10.1175/JCLI-D-22-0647.1>, 2023.
- Ehrenfeucht, S., Dow, C., McArthur, K., Morlighem, M., and McCormack, F. S.: Antarctic wide subglacial hydrology modeling, *Geophys. Res. Lett.*, 52, e2024GL111386, <https://doi.org/10.1029/2024GL111386>, 2025.
- Engelhardt, H., and Kamb, B.: Basal sliding of Ice Stream B, West Antarctica, *J. Glaciol.*, 44, 223–230,
1000 <https://doi.org/10.3189/S0022143000002562> , 1998.
- Fahnestock, M. A., Scambos, T. A., Bindschadler, R. A., and Kvaran, G.: A millennium of variable ice flow recorded by the Ross Ice Shelf, Antarctica, *J. Glaciol.*, 46, 652–664, <https://doi.org/10.3189/172756500781832693>, 2000.
- Ferraccioli, F., Forsberg, R., Matsuoka, K., Olesen, A., Jordan, T., Corr, H., Robinson, C., and Kohler, J.: Processed airborne radio-echo sounding data from the POLARGAP survey covering the South Pole, and Foundation and Recovery Glaciers, East
1005 Antarctica (2015/2016) (Version 1.0) [Data set], NERC EDS UK Polar Data Centre, <https://doi.org/10.5285/e8a29fa7-a245-4a04-8b56-098defa134b9>, 2021.
- Foley, N., Tulaczyk, S. M., Grombacher, D., Doran, P. T., Mikucki, J., Myers, K. F., Foged, N., Dugan, H., Auken, E., and Virginia, R.: Evidence for pathways of concentrated submarine groundwater discharge in East Antarctica from helicopter-borne electrical resistivity measurements, *Hydrology*, 6, 54, <https://doi.org/10.3390/hydrology6020054>, 2019.
- 1010 Franke, S., Bons, P. D., Westhoff, J., Weikusat, I., Binder, T., Streng, K., Steinghage, D., Helm, V., Eisen, O., Paden, J. D., Eagles, G., and Jansen, D.: Holocene ice-stream shutdown and drainage basin reconfiguration in northeast Greenland, *Nat. Geosci.*, 15, 995–1001, <https://doi.org/10.1038/s41561-022-01082-2>, 2022.

1015 Franke, S., Jansen, D., Beyer, S., Neckel, N., Binder, T., Paden, J., and Eisen, O.: Complex basal conditions and their influence on ice flow at the onset of the Northeast Greenland Ice Stream, *J. Geophys. Res. Earth Surf.*, 126, e2020JF005689, <https://doi.org/10.1029/2020JF005689>, 2020.

Freer, B., Marsh, I. D., Hogg, A. E., Fricker, H. A., and Padman, L.: Modes of Antarctic tidal grounding line migration revealed by Ice, Cloud, and land Elevation Satellite-2 (ICESat-2) laser altimetry, *The Cryosphere*, 17, 4079–4101, <https://doi.org/10.5194/tc-17-4079-2023>, 2023.

1020 Frémand, A. C., Fretwell, P., Bodart, J. A., Pritchard, H. D., Aitken, A., Bamber, J. L., Bell, R., Bianchi, C., Bingham, R. G., Blankenship, D. D., Casassa, G., Catania, G., Christianson, K., Conway, H., Corr, H. F. J., Cui, X., Damaske, D., Damm, V., Drews, R., Eagles, G., Eisermann, H., Eisen, O., Ferraccioli, F., Field, E., Forsberg, R., Franke, S., Fujita, S., Gim, Y., Goel, V., Gogineni, S. P., Greenbaum, J., Hills, B., Hindmarsh, R. C. A., Hoffman, A. O., Holmlund, P., Holschuh, N., Holt, J. W., Horlings, A. N., Humbert, A., Jacobel, R. W., Jansen, D., Jenkins, A., Jordan, T., Jokat, W., King, E., Kohler, J., Krabill, W., Kusk Gillespie, M., Langley, K., Lee, J., Leitchenkov, G., Leuschen, C., Luyendyk, B., MacGregor, J., MacKie, E., Matsuoka, 1025 K., Morlighem, M., Mouginot, J., Nische, F. O., Nogi, Y., Nost, O. A., Pattyn, F., Paden, J., Popov, S. V., Rignot, E., Rippin, D. M., Rivera, A., Roberts, J., Ross, N., Ruppel, A., Schroeder, D. M., Siegert, M. J., Smith, A. M., Steinhage, D., Studinger, M., Sun, B., Tabacco, I., Tinto, K., Urbini, S., Vaughan, D., Welch, B. C., Wilson, D. S., Young, D. A., and Zirizzotti, A.: Antarctic Bedmap data: Findable, Accessible, Interoperable, and Reuseable (FAIR) sharing of 60 years of ice bed, surface, and thickness data, *Earth Syst. Sci. Data*, 15, 2695–2710, <https://doi.org/10.5194/essd-15-2695-2023>, 2023

1030 Fretwell, P., Pritchard, H. D., Vaughan, D. G., Bamber, J. L., Barrand, N. E., Bell, R., Bianchi, C., Bingham, R. G., Blankenship, D. D., Casassa, G., Catania, G., Callens, D., Conway, H., Cook, A. J., Corr, H. F. J., Damaske, D., Damm, V., Ferraccioli, F., Forsberg, R., Fujita, S., Gim, Y., Gogineni, P., Griggs, J. A., Hindmarsh, R. C. A., Holmlund, P., Holt, J. W., Jacobel, R. W., Jenkins, A., Jokat, W., Jordan, T., King, E. C., Kohler, J., Krabill, W., Riger-Kusk, M., Langley, K. A., Leitchenkov, G., Leuschen, C., Luyendyk, B. P., Matsuoka, K., Mouginot, J., Nitsche, F. O., Nogi, Y., Nost, O. A., Popov, S. 1035 V., Rignot, E., Rippin, D. M., Rivera, A., Roberts, J., Ross, N., Siegert, M. J., Smith, A. M., Steinhage, D., Studinger, M., Sun, B., Tinto, B. K., Welch, B. C., Wilson, D., Young, D. A., Xiangbin, C., and Zirizzotti, A.: Bedmap2: improved ice bed, surface and thickness datasets for Antarctica, *The Cryosphere*, 7, 375–393, <https://doi.org/10.5194/tc-7-375-2013>, 2013.

Fricker, H. A., Galton-Fenzi, B. K., Walker, C. C., Freer, B. I. D., Padman, L., and DeConto, R.: Antarctica in 2025: Drivers of deep uncertainty in projected ice loss, *Science*, 387, 601–609, <https://doi.org/10.1126/science.adt9619>, 2025.

1040 Fricker, H. A., and Padman, L.: Ice shelf grounding zone structure from ICESat laser altimetry, *Geophys. Res. Lett.*, 33, L15502, <https://doi.org/10.1029/2006GL026907>, 2006.

Fürst, J., Durand, G., Gillet-Chaulet, F., Tavard, L., Rankl, M., Braun, M., and Gagliardini, O.: The safety band of Antarctic ice shelves, *Nat. Clim. Change*, 6, 479–482, <https://doi.org/10.1038/nclimate2912>, 2016.

1045 Fudge, T. J., Hills, B. H., Horlings, A. N., Holschuh, N., Christian, J. E., Davidge, L., Hoffman, A., O'Connor, G. K., Christianson, K., and Steig, E. J.: A site for deep ice coring at West Hercules Dome: results from ground-based geophysics and modeling, *J. Glaciol.*, 69, 538–550, <https://doi.org/10.1017/jog.2022.80>, 2023.

Gasson, E., DeConto, R. M., Pollard, D., and Levy, R. H.: Dynamic Antarctic ice sheet during the early to mid-Miocene, *Proc. Natl. Acad. Sci. U.S.A.*, 113, 3459–3464, <https://doi.org/10.1073/pnas.1516130113>, 2016.

1050 Gerber, T. A., Lilien, D. A., Rathmann, N. M., Franke, S., Young, T. J., Valero-Delgado, F., Ershadi, M. R., Drews, R., Zeising, O., Humbert, A., Stoll, N., Weikusat, I., Grinsted, A., Hvidberg, C. S., Jansen, D., Miller, H., Helm, V., Steinhage, D., O'Neill, C., Paden, J., Gogineni, S. P., Dahl-Jense, D., and Eisen, O.: Crystal orientation fabric anisotropy causes directional hardening of the Northeast Greenland Ice Stream, *Nat. Commun.*, 14, 2653, <https://doi.org/10.1038/s41467-023-38139-8>, 2023.

1055 Golledge, N. R., Clark, P. U., He, F., Dutton, A., Turney, C. S. M., Fogwill, C. J., Naish, T. R., Levy, R. H., McKay, R. M., Lowry, D. P., Bertler, N. A. N., Dunbar, G. B., and Carlson, A. E.: Retreat of the Antarctic Ice Sheet during the Last Interglaciation and implications for future change, *Geophys. Res. Lett.*, 48, e2021GL094513, <https://doi.org/10.1029/2021GL094513>, 2021.

Gooch, B. T., Young, D. A., and Blankenship, D. D.: Potential groundwater and heterogeneous heat source contributions to ice sheet dynamics in critical submarine basins of East Antarctica, *Geochem. Geophys. Geosyst.*, 17, 395–409, <https://doi.org/10.1002/2015GC006117>, 2016.

1060 Gourmelen, N., Jakob, L., Holland, P. R., Dutrieux, P., Goldberg, D., Bevan, S., Luckman, A., and Malczyk, G.: The influence of subglacial lake discharge on Thwaites Glacier ice-shelf melting and grounding-line retreat, *Nat. Commun.*, 16, 2272, <https://doi.org/10.1038/s41467-025-57417-1>, 2025.

1065 Grieman, M. M., Nehrbass-Ahles, C., Hoffmann, H. M., Bauska, T. K., King, A. C. F., Mulvaney, R., Rhodes, R. H., Rowell, I. F., Thomas, E. R., and Wolff, E.: Abrupt Holocene ice loss due to thinning and ungrounding in the Weddell Sea Embayment, *Nat. Geosci.*, 17, 227–232, <https://doi.org/10.1038/s41561-024-01375-8>, 2024.

Grinsted, A., Hvidberg, C. S., Lilien, D. A., Rathmann, N. M., Karlsson, N. B., Gerber, T., Kjær, H. A., Vallelonga, P., and Dahl-Jensen, D.: Accelerating ice flow at the onset of the Northeast Greenland Ice Stream, *Nat. Commun.*, 13, 5589, <https://doi.org/10.1038/s41467-022-32999-2>, 2022.



1070 Gudmundsson, G. H.: Ice-shelf buttressing and the stability of marine ice sheets, *The Cryosphere*, 7, 647–655,
<https://doi.org/10.5194/tc-7-647-2013>, 2013.

Gudmundsson, G. H., Krug, J., Durand, G., Favier, L., and Gagliardini, O.: The stability of grounding lines on retrograde slopes, *The Cryosphere*, 6, 1497–1505, <https://doi.org/10.5194/tc-6-1497-2012>, 2012.

1075 Gustafson, C. D., Key, K., Siegfried, M. R., Winberry, J. P., Fricker, H. A., Venturelli, R. A., and Michaud, A. B.: A dynamic saline groundwater system mapped beneath an Antarctic ice stream, *Science*, 376, 640–644,
<https://doi.org/10.1126/science.abm3301>, 2022.

1080 Hanna, E., Topál, D., Box, J. E., Buzzard, S., Christie, F. D. W., Hvidberg, C., Morlighem, M., De Santis, L., Silvano, A., Colleoni, F., Sasgen, I., Banwell, A. F., van den Broeke, M. R., DeConto, R., De Rydt, J., Golzer, H., Gossart, A., Gudmundsson, G. H., Lindbäck, K., Miles, B., Mottram, R., Pattyn, F., Reese, R., Rignot, E., Srivastava, A., Sun, S., Toller, J., Tuckett, P., and Ultee, L.: Short- and long-term variability of the Antarctic and Greenland ice sheets, *Nat. Rev. Earth Environ.*, 5, 193–210, <https://doi.org/10.1038/s43017-023-00509-7>, 2024.

Hattermann, T., Nicholls, K. W., Hellmer, H. H., Davis, P. E. D., Janout, M. A., Østerhus, S., Schlosser, E., Rohardt, G., and Kanzow, T.: Observed interannual changes beneath Filchner-Ronne Ice Shelf linked to large-scale atmospheric circulation, *Nat. Commun.*, 12, 2961, <https://doi.org/10.1038/s41467-021-23131-x>, 2021.

1085 Hellmer, H. H., Kauker, F., Timmermann, R., Determann, J., and Rae, J.: Twenty-first-century warming of a large Antarctic ice-shelf cavity by a redirected coastal current, *Nature*, 485, 225–228, <https://doi.org/10.1038/nature11064>, 2012.

Hill, E., Gudmundsson, G.H., and Chandler, D.M.: Ocean warming as a trigger for irreversible retreat of the Antarctic ice sheet, *Nat. Clim. Change*, 14, 1165–1171, <https://doi.org/10.1038/s41558-024-02134-8>, 2024.

1090 Hill, E. A., Rosier, S. H. R., Gudmundsson, G. H., and Collins, M.: Quantifying the potential future contribution to global mean sea level from the Filchner–Ronne basin, *Antarctica, The Cryosphere*, 15, 4675–4702, <https://doi.org/10.5194/tc-15-4675-2021>, 2021.

Hills, B. H., Holschuh, N., Hoffman, A. O., Horlings, A. N., Erwin, E., Kirkpatrick, L. R., et al.: Radar-derived crystal orientation fabric suggests dynamic stability at the summit of Hercules Dome, *J. Geophys. Res. Earth Surf.*, 130, e2023JF007588, <https://doi.org/10.1029/2023JF007588>, 2025.

1095 Hills, B. H., Christianson, K., Hoffman, A. O., Fudge, T. J., Holschuh, N., Kahle, E. C., Conway, H., Christian, J. E., Horlings, A. N., O'Connor, G. K., and Steig, E. J.: Geophysics and thermodynamics at South Pole Lake indicate stability and a regionally thawed bed, *Geophys. Res. Lett.*, 49, e2021GL096218, <https://doi.org/10.1029/2021GL096218>, 2022.



- 1100 Hillenbrand, C.D., Bentley, M.J., Stollendorf, T.D., Hein, A.S., Kuhn, G., Graham, A.G.C., Fogwill, C.J., Kristoffersen, Y., Smith, J.A., Anderson, J.B., Larter, R.D., Melles, M., Hodgson, D.A., Mulvaney, R., and Sugden, D.E.: Reconstruction of changes in the Weddell Sea sector of the Antarctic Ice Sheet since the Last Glacial Maximum, *Quat. Sci. Rev.*, 100, 111–136, <https://doi.org/10.1016/j.quascirev.2013.07.020>, 2014.
- Hofstede, C., Beyer, S., Corr, H., Eisen, O., Hattermann, T., Helm, V., Neckel, N., Smith, E.C., Steinhage, D., Zeising, O., and Humbert, A.: Evidence for a grounding line fan at the onset of a basal channel under the ice shelf of Support Force Glacier, Antarctica, revealed by reflection seismics, *The Cryosphere*, 15, 1517–1535, <https://doi.org/10.5194/tc-15-1517-2021>, 2021.
- 1105 Holschuh, N., Christianson, K., Paden, J., Alley, R.B., Anandakrishnan, S.: Linking postglacial landscapes to glacier dynamics using swath radar at Thwaites Glacier, Antarctica, *Geology*, 48, 268–272, <https://doi.org/10.1130/G46772.1>, 2020.
- Hoffman, A.O., Holschuh, N., Mueller, M., Paden, J., Muto, A., Ariho, G., Brigham, C., Christian, J.E., Davidge, L., Heitmann, E., Hills, B., Horlings, A., Morey, S., O’Connor, G., Fudge, T.J., Steig, E.J., and Christianson, K.: Scars of tectonism promote ice-sheet nucleation from Hercules Dome into West Antarctica, *Nat. Geosci.*, 16, 1005–1013, <https://doi.org/10.1038/s41561-023-01265-5>, 2023.
- 1110 Horgan, H., Stewart, C., Stevens, C., Dunbar, G., Balfort, L., Schmidt, B.E., Washam, P., Werder, M.A., Mandeno, D., Marschalek, J., Hulbe, C., Holschuh, N., Levy, R., Hurwitz, B., Jendersie, S., Johnson, K., Lawrence, J., Morgenstern, R., Mullen, A.D., Quartini, E., Sauthoff, W., Siegfried, M., Still, H., Thorpe-Loversuch, S., van de Fliert, T., Venturelli, R., and Whiteford, A.: A West Antarctic grounding-zone environment shaped by episodic water flow, *Nat. Geosci.*, 18, 389–395, <https://doi.org/10.1038/s41561-025-01687-3>, 2025.
- 1115 Howat, I.M., Porter, C., Smith, B.E., Noh, M.-J., and Morin, P.: The Reference Elevation Model of Antarctica, *Cryosphere*, 13, 665–674, <https://doi.org/10.5194/tc-13-665-2019>, 2019.
- 1120 Humbert, A., Christmann, J., Corr, H.F., Helm, V., Höyns, L.-S., Hofstede, C., Müller, R., Neckel, N., Nicholls, K.W., Schultz, T., Steinhage, D., Wolovick, M., and Zeising, O.: On the evolution of an ice shelf melt channel at the base of Filchner Ice Shelf, from observations and viscoelastic modelling, *Cryosphere*, 16, 4107–4139, <https://doi.org/10.5194/tc-16-4107-2022>, 2022.
- Huybers, K., Roe, G., and Conway, H.: Basal topographic controls on the stability of the West Antarctic ice sheet: lessons from Foundation Ice Stream, *Ann. Glaciol.*, 58, 193–198, <https://doi.org/10.1017/aog.2017.9>, 2017.
- Jamieson, S.S.R., Vieli, A., Livingstone, S.J., Ó Cofaigh, C., Stokes, C., Hillenbrand, C.-D., Dowdeswell, J.A.: Ice-stream stability on a reverse bed slope, *Nat. Geosci.*, 5, 799–802, <https://doi.org/10.1038/ngeo1600>, 2012.



- 1125 Jankowski, E.J. and, Drewry, D.J.: The structure of West Antarctica from geophysical studies, *Nature*, 291, 17–21, <https://doi.org/10.1038/291017a0>, 1981.
- Jansen, D., Franke, S., Bauer, C.C., Binder, T., Dahl-Jensen, D., Eichler, J., Eisen, O., Hu, Y., Kerch, J., Llorens, M.-G., Miller, H., Neckel, N., Paden, J., de Riese, T., Sachau, T., Stoll, N., Weikusat, I., Wilhelms, F., Zhang, Y., and Bons, P.D.: Shear margins in upper half of Northeast Greenland Ice Stream were established two millennia ago, *Nat. Commun.*, 15, 1193, <https://doi.org/10.1038/s41467-024-45021-8>, 2024.
- 1130
- Jeofry, H., Ross, N., and Siegert, M.J.: Comparing numerical ice-sheet model output with radio-echo sounding measurements in the Weddell Sea sector of West Antarctica, *Ann. Glaciol.*, 81, 1–10, <https://doi.org/10.1017/aog.2019.39>, 2019.
- Jeofry, H., Ross, N., Le Brocq, A., Graham, A.G.C., Li, J., Gogineni, P., Morlighem, M., Jordan, T., and Siegert, M.J.: Hard rock landforms generate 130 km ice shelf channels through water focusing in basal corrugations, *Nat. Commun.*, 9, 4576, <https://doi.org/10.1038/s41467-018-06679-z>, 2018a.
- 1135
- Jeofry, H., Ross, N., Corr, H.F.J., Li, J., Morlighem, M., Gogineni, P., and Siegert, M.J.: A new bed elevation model for the Weddell Sea sector of the West Antarctic Ice Sheet, *Earth Syst. Sci. Data*, 10, 711–725, <https://doi.org/10.5194/essd-10-711-2018>, 2018b.
- Jezeq, K.C., Curlander, J.C., Carsey, F., Wales, C., and Barry, R.G.: RAMP AMM-1 SAR Image Mosaic of Antarctica, Boulder, CO, USA, NSIDC, accessed 8 July 2025, <http://dx.doi.org/10.5067/8af4zrpuls4h>, 2013.
- 1140
- Johnson, A., Aschwanden, A., Albrecht, T., and Hock, R.: Range of 21st century ice mass changes in the Filchner-Ronne region of Antarctica, *J. Glaciol.*, 69, 1203–1213, <https://doi.org/10.1017/jog.2023.10>, 2023.
- Johnson, J.S., Venturelli, R.A., Balco, G., Allen, C.S., Braddock, S., Campbell, S., Goehring, B.M., Hall, B.L., Neff, P.D., Nichols, K.A., Rood, D.H., Thomas, E.R., and Woodward, J.: Review article: Existing and potential evidence for Holocene grounding-line retreat and readvance in Antarctica, *Cryosphere*, 16, 1543–1562, <https://doi.org/10.5194/tc-16-1543-2022>, 2022.
- 1145
- Jordan, T.A., Porter, D., Tinto, K., Millan, R., Muto, A., Hogan, K., Larter, R.D., Graham, A.G.C., and Paden, J.D.: New gravity-derived bathymetry for the Thwaites, Crosson, and Dotson ice shelves revealing two ice shelf populations, *Cryosphere*, 14, 2869–2882, <https://doi.org/10.5194/tc-14-2869-2020>, 2020.
- 1150
- Jordan, T.A., Martin, C., Ferraccioli, F., Matsuoka, K., Corr, H., Forsberg, R., Olesen, A., and Siegert, M.: Anomalously high geothermal flux near the South Pole, *Sci. Rep.*, 8, 16785, <https://doi.org/10.1038/s41598-018-35182-0>, 2018.



- Jordan, T.M., Martin, C., Brisbourne, A.M., Schroeder, D.M., and Smith, A.M.: Radar characterization of ice crystal orientation fabric and anisotropic viscosity within an Antarctic ice stream, *J. Geophys. Res. Earth Surf.*, 127, e2022JF006673, <https://doi.org/10.1029/2022JF006673>, 2022.
- 1155 Joughin, I., and Alley, R.B.: Stability of the West Antarctic ice sheet in a warming world, *Nat. Geosci.*, 4, 506–513, <https://doi.org/10.1038/ngeo1194>, 2011.
- Joughin, I., Bamber, J.L., Scambos, T., Tulaczyk, S., Fahnestock, M., and MacAyeal, D.R.: Integrating satellite observations with modelling: basal shear stress of the Filchner-Ronne ice streams, Antarctica, *Philos. Trans. R. Soc. A*, 364, 1795–1814, <https://doi.org/10.1098/rsta.2006.1799>, 2006.
- 1160 Khan, S.A., Choi, Y., Morlighem, M., Rignot, E., Helm, V., Humbert, A., Mougintot, J., Millan, R., Kjær, K.H., and Bjørk, A.A.: Extensive inland thinning and speed-up of Northeast Greenland Ice Stream, *Nature*, 611, 727–732, <https://doi.org/10.1038/s41586-022-05301-z>, 2022.
- Kingslake, J., Scherer, R.P., Albrecht, T., Coenen, J., Powell, R.D., Reese, R., Stansell, N.D., Tulaczyk, S., Wearing, M.G., and Whitehouse, P.L.: Extensive retreat and re-advance of the West Antarctic Ice Sheet during the Holocene, *Nature*, 558, 430–434, <https://doi.org/10.1038/s41586-018-0208-x>, 2018.
- 1165 Koerner, R.M.: A stratigraphic method of determining the snow accumulation rate at Plateau Station, Antarctica, and application to South Pole-Queen Maud Land Traverse 2, 1965–66, in *Antarctic Snow and Ice Studies II*, edited by: Crary, A.P., *Antarctic Res. Ser.*, 16, 225–238, AGU, Washington, D.C., 1971.
- Kulesa, B., Key, K., Thompson, S., and Siegert, M.: Heat and groundwater transport between the Antarctic Ice Sheet and subglacial sedimentary basins from electromagnetic geophysical measurements, *SEG Tech. Program Exp. Abstr.*, 2019, 4819–4823, <https://doi.org/10.1190/segam2019-3215566.1>, 2019.
- Lambrecht, A., Sandhäger, H., Vaughan, D.G., and Mayer, C.: New ice thickness maps of Filchner–Ronne Ice Shelf, Antarctica, with specific focus on grounding lines and marine ice, *Antarct. Sci.*, 19, 521–532, <https://doi.org/10.1017/S0954102007000661>, 2007.
- 1175 Lambrecht, A., Mayer, C., Oerter, H., and Nixdorf, U.: Investigations of the mass balance of the southeastern Ronne Ice Shelf, Antarctica, *Ann. Glaciol.*, 29, 250–254, <https://doi.org/10.3189/172756499781820996>, 1999.
- Lambrecht, A.: Investigations on mass balance and dynamics of the Ronne Ice Shelf, Antarctica, *Ber. Polarforsch.*, 265, ISSN 0176–5027, 1998.



- 1180 Law, R., Christoffersen, P., Mackie, E., Cook, S., Haseloff, M., and Gagliardini, O.: Complex motion of Greenland Ice Sheet outlet glaciers with basal temperate ice, *Sci. Adv.*, 9, eabq5180, <https://doi.org/10.1126/sciadv.abq5180>, 2023.
- Le Brocq, A., Ross, N., Griggs, J.A., Bingham, R.G., Corr, H.F.J., Ferraccioli, F., Jenkins, A., Jordan, T.A., Payne, A.J., Rippin, D.M., and Siegert, M.J.: Evidence from ice shelves for channelized meltwater flow beneath the Antarctic Ice Sheet, *Nat. Geosci.*, 6, 945–948, <https://doi.org/10.1038/ngeo1977>, 2013.
- 1185 Lenaerts, J.T.M., Medley, B., van den Broeke, M.R., and Wouters, B.: Observing and modeling ice sheet surface mass balance, *Rev. Geophys.*, 57, 376–420, <https://doi.org/10.1029/2018RG000622>, 2019.
- Li, L., Aitken, A.R.A., Lindsay, M.D., and Kulesa, B.: Sedimentary basins reduce stability of Antarctic ice streams through groundwater feedbacks, *Nat. Geosci.*, 15, 645–650, <https://doi.org/10.1038/s41561-022-00992-5>, 2022a.
- Li, T., Dawson, G.J., Chuter, S.J., and Bamber, J.L.: A high-resolution Antarctic grounding zone product from ICESat-2 laser altimetry, *Earth Syst. Sci. Data*, 14, 535–557, <https://doi.org/10.5194/essd-14-535-2022>, 2022b.
- 1190 Lifton, N., Sato, T., and Dunai, T.J.: Scaling in situ cosmogenic nuclide production rates using analytical approximations to atmospheric cosmic-ray fluxes, *Earth Planet. Sci. Lett.*, 386, 149–160, <https://doi.org/10.1016/j.epsl.2013.10.052>, 2014.
- Lilien, D.A., Fudge, T.J., Koutnik, M.R., Conway, H., Osterberg, E.C., Ferris, D.G., Waddington, E.D., and Stevens, C.M.: Holocene ice-flow speedup in the vicinity of the South Pole, *Geophys. Res. Lett.*, 45, 6557–6565, <https://doi.org/10.1029/2018GL078253>, 2018.
- 1195 Lister, H., and Pratt, G.: Geophysical investigations of the Commonwealth Trans-Antarctic Expedition, *Geogr. J.*, 125, 343–354, <https://doi.org/10.2307/1791117>, 1959.
- 1200 Livingstone, S.J., Li, Y., Rutishauser, A., Sanderson, R.J., Winter, K., Mikucki, J.A., Björnsson, H., Bowling, J.S., Chu, W., Dow, C.F., Fricker, H.A., McMillan, M., Ng, F.S.L., Ross, N., Siegert, M.J., Siegfried, M., and Sole, A.J.: Subglacial lakes and their changing role in a warming climate, *Nat. Rev. Earth Environ.*, 3, 106–124, <https://doi.org/10.1038/s43017-021-00246-9>, 2022.
- Livingstone, S.J., Clark, C.D., Woodward, J., and Kingslake, J.: Potential subglacial lake locations and meltwater drainage pathways beneath the Antarctic and Greenland ice sheets, *Cryosphere*, 7, 1721–1740, <https://doi.org/10.5194/tc-7-1721-2013>, 2013.
- 1205 Lythe, M.B. and Vaughan, D.G.: BEDMAP: A new ice thickness and subglacial topographic model of Antarctica, *Journal of Geophysical Research: Solid Earth*, 106, 11335–11351, 11335–11351, 2001



- MacGregor, J.A., Boisert, L.N., Medley, B., Petty, A.A., Harbeck, J.P., Bell, R.E., Blair, J.B., Blanchard-Wrigglesworth, E., Buckley, E.M., Christianson, M.S., Cochran, J.R., Csathó, B.M., De Marco, E.L., Dominguez, R.T., Fahnestock, M.A., Farrell, S.L., Gogineni, S.P., Greenbaum, J.S., Hansen, C.M., Hofton, M.A., Holt, J.W., Jezek, K.C., Koenig, L.S., Kurtz, N.T., Kwok, R., Larsen, C.F., Leuschen, C.J., Locke, C.D., Manizade, S.S., Martin, S., Neumann, T.A., Nowicki, S.M.J., Paden, J.D.,
1210 Richter-Menge, J.A., Rignot, E., Rodríguez-Morales, R., Siegfried, N.R., Smith, B.E., Sonntag, J.G., Studinger, M., Tinto, K.J., Truffer, M., Wagner, T.P., Woods, J.E., Young, D.A., and Yungel, J.K.: The scientific legacy of NASA's Operation IceBridge, *Rev. Geophys.*, 59, e2020RG000712, <https://doi.org/10.1029/2020RG000712>, 2021.
- McCormack, F.S., Roberts, J.L., Kulesa, B., Aitken, A., Dow, C.F., Bird, L., Galton-Fenzi, B.K., Hochmuth, K., Jones, R.S., Mackintosh, A.N., and McArthur, K.: Assessing the potential for ice flow piracy between Totten and Vanderford glaciers, East
1215 Antarctica, *Cryosphere*, 17, 4559–4569, <https://doi.org/10.5194/tc-17-4549-2023>, 2023.
- McIntyre, N.F.: Discharge of ice into the Filchner-Ronne ice shelves, in: Filchner-Ronne Ice Shelf Programme, Report 3, edited by: Kohlen, H., Alfred-Wegener Inst. Polar Mar. Res., Bremerhaven, 47–51, 1986.
- McIntyre, N.F.: The topography and flow of the Antarctic Ice Sheet, PhD thesis, University of Cambridge, 197 pp., <https://doi.org/10.17863/CAM.14156>, 1983.
- 1220 Margold, M., Stokes, C.R., and Clark, C.D.: Ice streams in the Laurentide Ice Sheet: Identification, characteristics and comparison to modern ice sheets, *Earth Sci. Rev.*, 143, 117–146, <https://doi.org/10.1016/j.earscirev.2015.01.011>, 2015.
- Mas e Braga, M., Jones, R.S., Bernaldes, J., Andersen, J.L., Fredin, O., Morlighem, M., Koester, A.J., Lifton, N.A., Harbor, J.M., Suganuma, Y., Glasser, N.F., Rogozhina, I., and Stroeven, A.P.: A thicker Antarctic ice stream during the mid-Pliocene warm period, *Commun. Earth Environ.*, 4, 321, <https://doi.org/10.1038/s43247-023-00983-3>, 2023.
- 1225 Mayer, C., Lambrecht, A., and Oerter, H.: Glaciological investigations on the Foundation Ice Stream, in: Filchner-Ronne Ice Shelf Programme Report No. 9, edited by: Oerter, H., Alfred-Wegener-Institute for Polar and Marine Research, Bremerhaven, 57–63, 1995.
- Mayewski, P.A., Frezzotti, M., Bertler, N., van Ommen, T., Hamilton, G., Jacka, T.H., Welch, B., Frey, M., Dahe, Q., Jiawen, R., Simões, J., Family, M., Oerter, H., Nishio, F., Isaksson, E., Mulvaney, R., Holmlund, P., Lipenkov, V., and Goodwin, I.:
1230 The International Trans-Antarctic Scientific Expedition (ITASE): an overview, *Ann. Glaciol.*, 41, 180–185, <https://doi.org/10.3189/172756405781813159>, 2005.
- Medley, B., and Thomas, E.R.: Increased snowfall over the Antarctic Ice Sheet mitigated twentieth-century sea-level rise, *Nat. Clim. Change*, 9, 34–39, <https://doi.org/10.1038/s41558-018-0356-x>, 2019.



- Mengel, M., and Levermann, A.: Ice plug prevents irreversible discharge from East Antarctica, *Nat. Clim. Change*, 4, 451–455, <https://doi.org/10.1038/nclimate2226>, 2014.
- Morlighem, M., Goldberg, D., Barnes, J.M., Basis, J.N., Benn, D.I., Crawford, A.J., Gudmundsson, G.H., and Seroussi, H.: The West Antarctic Ice Sheet may not be vulnerable to marine ice cliff instability during the 21st century, *Sci. Adv.*, 10, eado7794, <https://doi.org/10.1126/sciadv.ado7794>, 2024.
- Morlighem, M., Rignot, E., Binder, T., Blankenship, D., Drews, R., Eagles, G., Eisen, O., Ferraccioli, F., Forsberg, R., Fretwell, P., Goel, V., Greenbaum, J.S., Gudmundsson, H., Guo, J., Helm, V., Hofstede, C., Howat, I., Humbert, A., Jokat, W., Karlsson, N.B., Sang Lee, W., Matsuoka, K., Millan, R., Mouginot, J., Paden, J., Pattyn, F., Roberts, J., Rosier, S., Ruppel, A., Seroussi, H., Smith, E.C., Steinhage, D., Bo, S., van den Broeke, M., van Ommen, T.D., van Wessem, M., and Young, D.A.: Deep glacial troughs and stabilizing ridges unveiled beneath the margins of the Antarctic ice sheet, *Nat. Geosci.*, 13, 132–137, <https://doi.org/10.1038/s41561-019-0510-8>, 2020.
- Mouginot, J., Rignot, E., and Scheuchl, B.: Continent-wide interferometric SAR phase mapping of Antarctic ice velocity, *Geophys. Res. Lett.*, 46, 9710–9718, <https://doi.org/10.1029/2019GL083826>, 2019.
- Mouginot, J., Scheuchl, B., and Rignot, E.: MEASUREs Antarctic Boundaries for IPY 2007-2009 from Satellite Radar (NSIDC-0709, Version 2) [Data set], Boulder, CO, NASA NSIDC DAAC, <https://doi.org/10.5067/AXE4121732AD>, accessed 03-06-2025, 2017.
- Mueller, R.D., Hattermann, T., Howard, S.L., and Padman, L.: Tidal influences on a future evolution of the Filchner–Ronne Ice Shelf cavity in the Weddell Sea, Antarctica, *Cryosphere*, 12, 453–476, <https://doi.org/10.5194/tc-12-453-2018>, 2018.
- Napoleoni, F., Jamieson, S.S.R., Ross, N., Bentley, M.J., Rivera, A., Smith, A.M., Siegert, M.J., Paxman, G.J.G., Gacitua, G., Uribe, J.A., Zamora, R., Brisbourne, A.M., and Vaughan, D.G.: Subglacial lakes and hydrology across the Ellsworth Subglacial Highlands, West Antarctica, *Cryosphere*, 14, 4507–4524, <https://doi.org/10.5194/tc-14-4507-2020>, 2020.
- Naughten, K., De Rydt, J., Rosier, S.H.R., Jenkins, A., Holland, P.R., and Ridley, J.K.: Two-timescale response of a large Antarctic ice shelf to climate change, *Nat. Commun.*, 12, 1991, <https://doi.org/10.1038/s41467-021-22259-0>, 2021.
- Noël, B., van Wessem, J.M., Wouters, B., Trusel, L., Lhermitte, S., and van den Broeke, M.R.: Higher Antarctic ice sheet accumulation and surface melt rates revealed at 2 km resolution, *Nat. Commun.*, 14, 7949, <https://doi.org/10.1038/s41467-023-43584-6>, 2023.



- 1260 Nicholls, K., Robinson, C., Corr, H., and Jordan, T.: Processed bed elevation picks from airborne radar depth sounding from the FISS 2015 survey covering the Foundation Ice Stream and the Filchner Ice Shelf system (2015/2016) (Version 1.0) [Data set], NERC EDS UK Polar Data Centre, <https://doi.org/10.5285/144CEB0D-9D76-4A39-AA01-7B94AC80FAC9>, 2021.
- Nicholls, K., Robinson, C., Corr, H., Jordan, T., and Bodart, J.: Processed airborne radio-echo sounding data from the FISS 2015 survey covering the Foundation Ice Stream, Bungenstock Ice Rise and the Filchner Ice Shelf system, West Antarctica
1265 (2015/2016) (Version 2.0) [Data set], NERC EDS UK Polar Data Centre, <https://doi.org/10.5285/ef482413-623b-4e71-a054-d394fc28ed54>, 2024.
- Nichols, K.A.: A decade of in situ cosmogenic ^{14}C in Antarctica, *Ann. Glaciol.*, 63, 67–72, <https://doi.org/10.1017/aog.2023.13>, 2022.
- Nichols, K.A., Goehring, B.M., Balco, G., Johnson, J., Hein, A.S., and Todd, C.: New Last Glacial Maximum ice thickness
1270 constraints for the Weddell Sea Embayment, Antarctica, *Cryosphere*, 13, 2935–2951, <https://doi.org/10.5194/tc-13-2935-2019> 2019.
- Null, K.A., Corbett, D.R., Crenshaw, J., Peterson, R.N., Peterson, L.E., and Lyons, W.B.: Groundwater discharge to the western Antarctic coastal ocean, *Polar Res.*, 38, <https://doi.org/10.33265/polar.v38.3497>, 2019.
- Ó Cofaigh, C., Davies, B.J., Livingstone, S.J., Smith, J.A., Johnson, J.A., Hocking, E., Hodgson, D.A., Anderson, J.B., Bentley,
1275 M.J., Canals, M., Domack, E., Dowdeswell, J.A., Evans, J., Glasser, N.F., Hillenbrand, C.-D., Larter, R.D., Roberts, S.J., and Simms, A.R.: Reconstruction of ice-sheet changes in the Antarctic Peninsula since the Last Glacial Maximum, *Quat. Sci. Rev.*, 100, 87–110, <https://doi.org/10.1016/j.quascirev.2014.06.023>, 2014.
- Padman, L., Siegfried, M.R., and Fricker, H.A.: Ocean tide influences on the Antarctic and Greenland ice sheets, *Rev. Geophys.*, 56, 142–184, <https://doi.org/10.1002/2016RG000546>, 2018.
- 1280 Pattyn, F.: Antarctic subglacial conditions inferred from a hybrid ice sheet/ice stream model, *Earth Planet. Sci. Lett.*, 295, 451–461, <https://doi.org/10.1016/j.epsl.2010.04.025>, 2010.
- Paxman, G.J.G., Austermann, J., and Hollyday, A.: Total isostatic response to the complete unloading of the Greenland and Antarctic ice sheets, *Sci. Rep.*, 12, 11399, <https://doi.org/10.1038/s41598-022-15440-y>, 2022.
- Paxman, G.J.G., Jamieson, S.S.R., Ferraccioli, F., Jordan, T.A., Bentley, M.J., Ross, N., Forsberg, R., Matsuoka, K., Steinhage,
1285 D., Eagles, G., and Casal, T.G.: Subglacial geology and geomorphology of the Pensacola-Pole Basin, East Antarctica, *Geochem. Geophys. Geosyst.*, 20, 2786–2807, <https://doi.org/10.1029/2018GC008126>, 2019.



- Pelle, T., Morlighem, M., and McCormack, F.S.: Aurora Basin, the weak underbelly of East Antarctica, *Geophys. Res. Lett.*, 47, e2019GL086821, <https://doi.org/10.1029/2019GL086821>, 2020.
- Person, M., Bense, V., Cohen, D., and Banerjee, A.: Models of ice-sheet hydrogeologic interactions: a review, *Geofluids*, 12, 58–78, <https://doi.org/10.1111/j.1468-8123.2011.00360.x>, 2012.
- Person, M., McIntosh, J., Bense, V., and Remenda, V.H.: Pleistocene hydrology of North America: The role of ice sheets in reorganizing groundwater flow systems, *Rev. Geophys.*, 45, RG3007, <https://doi.org/10.1029/2006RG000206>, 2007.
- Peters, L.E., Anandkrishnan, S., Holland, C.W., Horgan, H.J., Blankenship, D.D., and Voigt, D.E.: Seismic detection of a subglacial lake near the South Pole, Antarctica, *Geophys. Res. Lett.*, 35, L23501, <https://doi.org/10.1029/2008GL035704>, 2008.
- Pingree, K., Lurie, M., and Hughes, T.: Is the East Antarctic ice sheet stable?, *Quat. Res.*, 75, 417–429, <https://doi.org/10.1016/j.yqres.2010.12.001>, 2011.
- Pittard, M.L., Whitehouse, P.L., Bentley, M.J., and Small, D.: An ensemble of Antarctic deglacial simulations constrained by geological observations, *Quat. Sci. Rev.*, 298, 107800, <https://doi.org/10.1016/j.quascirev.2022.107800>, 2022.
- Pollard, D., DeConto, R.M., and Alley, R.B.: Potential Antarctic ice sheet retreat driven by hydrofracturing and ice cliff failure, *Earth Planet. Sci. Lett.*, 412, 112–121, <https://doi.org/10.1016/j.epsl.2014.12.035>, 2015.
- Pritchard, H.D., Fretwell, P., Frémand, A.C., Bodart, J.A., Kirkham, J.D., Aitken, A., Bamber, J., Bell, R., Bianchi, C., Bingham, R.G., Blankenship, D.D., Casassa, G., Christianson, K., Conway, H., Corr, H.F.J., Xiangbin, C., Damaske, D., Damm, V., Dorschel, B., Drews, R., Eagles, G., Eisen, O., Eisermann, H., Ferraccioli, F., Field, E., Forsberg, R., Franke, S., Goel, V., Gogineni, S.P., Greenbaum, J., Hills, B., Hindmarsh, R.C.A., Hoffman, A.O., Holschuh, N., Holt, J.W., Humbert, A., Jacobel, R.W., Jansen, D., Jenkins, A., Jokat, W., Jong, L., Jordan, T.A., King, E.C., Kohler, J., Krabill, W., Maton, J., Kusk Gillespie, M., Langley, K., Lee, J., Leitchenkov, G., Leuschen, C., Luyendyk, B., MacGregor, J., MacKie, E., Moholdt, G., Matsuoka, K., Morlighem, M., Mouginot, J., Nitsche, F.O., Nost, O.A., Paden, J., Pattyn, F., Popov, S., Rignot, E., Rippin, D.M., Rivera, A., Roberts, J.L., Ross, N., Ruppel, A., Schroeder, D.M., Siegert, M.J., Smith, A.M., Steinhage, D., Studinger, M., Sun, B., Tabacco, I., Tinto, K.J., Urbini, S., Vaughan, D.G., Wilson, D.S., Young, D.A., and Zirizzotti, A.: Bedmap3 updated ice bed, surface and thickness gridded datasets for Antarctica, *Sci. Data*, 12, 414, <https://doi.org/10.1038/s41597-025-04672-y>, 2025.
- Reading, A.M., Stål, T., Halpin, J.A., Lösing, M., Ebbing, J., Shen, W., McCormack, F.S., Siddoway, C.S., and Hasterok, D.: Antarctic geothermal heat flow and its implications for tectonics and ice sheets, *Nat. Rev. Earth Environ.*, 3, 814–831, <https://doi.org/10.1038/s43017-022-00348-y>, 2022.



- Reese, R., Gudmundsson, G.H., Levermann, A., and Winkelmann, R.: The far reach of ice-shelf thinning in Antarctica, *Nat. Clim. Chang.*, 8, 53–57, <https://doi.org/10.1038/s41558-017-0020-x>, 2018.
- Retzlaff, R., and Bentley, C.R.: Timing of stagnation of Ice Stream C, West Antarctica, from short-pulse radar studies of buried surface crevasses, *J. Glaciol.*, 39, 553–561, <https://doi.org/10.3189/S0022143000016440>, 1993.
- 1320 Riedel, B., Karsten, A., Ritter, B., and Niemeier, W.: Geodetic fieldwork along the Foundation Ice Stream, In: Oerter, H. (Ed.) *Filchner-Ronne Ice Shelf Programm (FRISP), Report No. 9*, Alfred-Wegener-Institut für Polar- und Meeresforschung, Bremerhaven, 31–38, 1995.
- Rignot, E., Ciraci, E., Scheuchl, B., Tolpekin, V., Wollersheim, M., and Dow, C.: Widespread seawater intrusions beneath the grounded ice of Thwaites Glacier, West Antarctica, *Proc. Natl. Acad. Sci. USA*, 121, e2404766121, 1325 <https://doi.org/10.1073/pnas.2404766121>, 2024.
- Rignot, E., Mouginot, J., Scheuchl, B., van den Broeke, M., van Wessem, M.J., and Morlighem, M.: Four decades of Antarctic Ice Sheet mass balance from 1979–2017, *Proc. Natl. Acad. Sci. USA*, 116, 1095–1103, <https://doi.org/10.1073/pnas.1812883116>, 2019.
- Rignot, E., Mouginot, J., and Scheuchl, B.: MEaSUREs InSAR-Based Antarctica Ice Velocity Map, Version 2 [Data set], 1330 NASA Natl. Snow Ice Data Cent. Distrib. Active Arch. Cent., Boulder, CO, <https://doi.org/10.5067/D7GK8F5J8M8R>, 2017.
- Rignot, E., Mouginot, J., and Scheuchl, B.: MEaSUREs Antarctic Grounding Line from Differential Satellite Radar Interferometry (NSIDC-0498, Version 2) [Data set], NASA Natl. Snow Ice Data Cent. Distrib. Active Arch. Cent., Boulder, CO, <https://doi.org/10.5067/IKBWW4RYHF1Q>, 2016.
- Ritz, C., Edwards, T.L., Durand, G., Payne, A.J., Peyaud, V., and Hindmarsh, R.C.A.: Potential sea-level rise from Antarctic ice-sheet instability constrained by observations, *Nature*, 528, 115–118, <https://doi.org/10.1038/nature16147>, 2015. 1335
- Robel, A.A., Sim, S.J., Meyer, C., Siegfried, M.R., and Gustafson, C.D.: Contemporary ice sheet thinning drives subglacial groundwater exfiltration with potential feedbacks on glacier flow, *Sci. Adv.*, 9, eadh3693, <https://doi.org/10.1126/sciadv.adh3693>, 2023.
- Robel, A.A., Wilson, E., and Seroussi, H.: Layered seawater intrusion and melt under grounded ice, *Cryosphere*, 16, 451–469, 1340 <https://doi.org/10.5194/tc-16-451-2022>, 2022.
- Robin, G. de Q.: Trans-Antarctic Expedition 1955–58, *Nature*, 189, 781–782, 1961.



- Robinson, E.S.: On the relationship of ice-surface topography to bed topography on the South Polar Plateau, *J. Glaciol.*, 6, 43–54, <https://doi.org/10.3189/S0022143000019055>, 1966.
- 1345 Rosier, S.H.R. and Gudmundsson, G.H.: Exploring mechanisms responsible for tidal modulation in flow of the Filchner–Ronne Ice Shelf, *Cryosphere*, 14, 17–37, <https://doi.org/10.5194/tc-14-17-2020>, 2020.
- Rosier, S.H.R., Hofstede, C., Brisbourne, A.M., Hattermann, T., Nicholls, K.W., Davis, P.E.D., Anker, P.G.D., Hillenbrand, C.-D., Smooth, A.M., and Corr, H.F.J.: A new bathymetry for the southeastern Filchner-Ronne Ice Shelf: Implications for modern oceanographic processes and glacial history, *J. Geophys. Res. Oceans*, 123, 4610–4623, <https://doi.org/10.1029/2018JC013982>, 2018.
- 1350 Rosier, S.H.R., Gudmundsson, G.H., King, M.A., Nicholls, K.W., Makinson, K., and Corr, H.F.J.: Strong tidal variations in ice flow observed across the entire Ronne Ice Shelf and adjoining ice streams, *Earth Syst. Sci. Data*, 9, 849–860, <https://doi.org/10.5194/essd-9-849-2017>, 2017.
- Ross, N., Corr, H., and Siegert, M.: Large-scale englacial folding and deep-ice stratigraphy within the West Antarctic Ice Sheet, *Cryosphere*, 14, 2103–2114, <https://doi.org/10.5194/tc-14-2103-2020>, 2020.
- 1355 Ross, N., Bingham, R.G., Corr, H.F.J., Ferraccioli, F., Jordan, T.A., Le Brocq, A., Rippin, D.M., Young, D., Blankenship, D.D., and Siegert, M.J.: Steep reverse bed slope at the grounding line of the Weddell Sea sector in West Antarctica, *Nat. Geosci.*, 5, 393–396, <https://doi.org/10.1038/ngeo1468>, 2012.
- Sanderson, R.J., Ross, N., Winter, K., Bingham, R.G., Callard, S.L., Jordan, T.A., and Young, D.A.: Dated radar-stratigraphy between Dome A and South Pole, East Antarctica: old ice potential and ice sheet history, *J. Glaciol.*, 70, e74, <https://doi.org/10.1017/jog.2024.60>, 2024.
- 1360 Scambos, T.A., Bell, R.E., Alley, R.B., Anandakrishnan, S., Bromwich, D.H., Brunt, K., Christianson, K., Creyts, T., Das, S.B., DeConto, R., Dutrieux, P., Fricker, H.A., Holland, D., MacGregor, J., Medley, B., Nicolas, J.P., Pollard, D., Siegfried, M.R., Smith, A.M., Steig, E.J., Trusel, L.D., Vaughan, D.G., and Yager, P.L.: How much, how fast?: A science review and outlook for research on the instability of Antarctica’s Thwaites Glacier in the 21st century, *Glob. Planet. Change*, 153, 16–34, <https://doi.org/10.1016/j.gloplacha.2017.04.008>, 2017.
- 1365 Secretariat SCAR: Composite Gazetteer of Antarctica, Scientific Committee on Antarctic Research, GCMD Metadata (http://gcmd.nasa.gov/records/SCAR_Gazetteer.html), 1992 (updated 2014).
- Schoof, C.: Marine ice sheet stability, *J. Fluid Mech.*, 698, 62–72, <https://doi.org/10.1017/jfm.2012.43>, 2012.



- Schmidt, B.E., Washam, P., Davis, P.E.D., Nicholls, K.W., Holland, D.M., Lawrence, J.D., Roverman, K.L., Smith, J.A.,
1370 Spears, A., Dichek, D.J.G., Mullen, A.D., Clyne, E., Yeager, B., Anker, P., Meister, M.R., Hurwitz, B.C., Quartinin, E.S.,
Bryson, F.E., Basinski-Ferris, A., Thomas, C., Wake, J., Vaughan, D.G., Anandkrishnan, S., Rignot, E., Paden, J., and
Makinson, K.: Heterogeneous melting near the Thwaites Glacier grounding line, *Nature*, 614, 471–478,
<https://doi.org/10.1038/s41586-022-05691-0>, 2023.
- Schroeder, D.M., Dowdeswell, J.A., Siegert, M.J., Bingham, R.G., Chu, W., MacKie, E.J., Siegfried, M.R., Vega, K.I.,
1375 Emmons, J.R., and Winstein, K.: Multidecadal observations of the Antarctic ice sheet from restored analog radar records, *Proc.*
Natl. Acad. Sci. USA, 116, 18867–18873, <https://doi.org/10.1073/pnas.1821646116>, 2019.
- Scott, W.I., Kramer, S.C., Holland, P.R., Nicholls, K.W., Siegert, M.J., and Piggott, M.D.: Towards a fully unstructured ocean
model for ice shelf cavity environments: model development and verification using the Firedrake finite element framework,
Ocean Model., 182, 102178, <https://doi.org/10.1016/j.ocemod.2023.102178>, 2023.
- 1380 Selley, H.L., Hogg, A.E., Davison, B.J., Dutrioux, P., and Slater, T.: Speed-up, slowdown, and redirection of ice flow on
neighbouring ice streams in the Pope, Smith, and Kohler region of West Antarctica, *Cryosphere*, 19, 1725–1738,
<https://doi.org/10.5194/tc-19-1725-2025>, 2025.
- Seroussi, H., Pelle, T., Lipscomb, W.H., Abe-Ouchi, A., Albrecht, T., Alvarez-Solas, J., Asay-Davis, X., Barre, J.-B., Berends,
C.J., Bernales, J., Blasco, J., Caillet, J., Chandler, D.M., Coulon, V., Cullather, R., Dumas, C., Galton-Fenzi, B., Garbe, J.,
1385 Gillet-Chaulet, F., Gladstone, R., Goelzer, H., Golledge, N., Greve, R., Gudmundsson, G.H., Han, H.K., Hillebrand, T.R.,
Hoffman, M.J., Huybrechts, P., Jourdain, N.C., Close, A.K., Langebroek, P.M., Leguy, G.R., Lowry, D.P., Mathiot, P.,
Montoya, M., Morlighem, M., Nowicki, S., Pattyn, F., Paynes, A.J., Quiquet, A., Reese, R., Robinson, A., Sarasate, L., Simon,
E.G., Sun, S., Twarog, J.P., Trusel, L.D., Urruty, B., Van Breedam, J., van de Wal, R.S.W., Wang, Y., Zhao, C., and Zwinger,
T.: Evolution of the Antarctic Ice Sheet Over the Next Three Centuries From an ISMIP6 Model Ensemble, *Earth's Future*, 12,
1390 e2024EF004561, <https://doi.org/10.1029/2024EF004561>, 2024.
- Seroussi, H., Nowicki, S., Payne, A.J., Goelzer, H., Lipscomb, W.H., Abe-Ouchi, A., Agosta, C., Albrecht, T., Asay-Davis,
X., Barthel, A., Calov, R., Cullather, R., Dumas, C., Galton-Fenzi, B.K., Gladstone, R., Golledge, N.R., Gregory, J.M., Greve,
R., Hattermann, T., Hoffman, M.J., Humbert, A., Huybrechts, P., Jourdain, N.C., Kleiner, T., Larour, E., Leguy, G.R., Lowry,
D.P., Little, C.M., Morlighem, M., Pattyn, F., Pelle, T., Procs, S.F., Quiquet, A., Reese, R., Schegel, N.-J., Shepherd, A.,
1395 Simon, E., Smith, R.S., Straneo, F., Sun, S., Trusel, L.D., Breedam, J.V., van de Wal, R.S.W., Winkelmann, R., Zhao, C.,
Zhang, T., and Zwinger, T.: ISMIP6 Antarctica: a multi-model ensemble of the Antarctic ice sheet evolution over the 21st
century, *Cryosphere*, 14, 3033–3070, <https://doi.org/10.5194/tc-14-3033-2020>, 2020.



- Siegert, M.J., Alley, R.B., Rignot, E., Englander, J., and Corell, R.: 21st Century sea-level rise could exceed IPCC predictions for strong-warming futures, *One Earth*, 3, 691–703, <https://doi.org/10.1016/j.oneear.2020.11.002>, 2020.
- 1400 Siegert, M.J., Kingslake, J., Ross, N., Whitehouse, P.L., Woodward, J., Jamieson, S.S.R., Bentley, M.J., Winter, K., Wearing, M., Hein, A.S., Jeofry, H., and Sugden, D.E.: Major Ice Sheet Change in the Weddell Sea Sector of West Antarctica Over the Last 5,000 Years, *Rev. Geophys.*, 57, 1197–1223, <https://doi.org/10.1029/2019RG000651>, 2019.
- Siegert, M.J., Kulesa, B., Bougamont, M., Christoffersen, P., Key, K., Andersen, K.R., Booth, A.D., and Smith, A.M.: Antarctic subglacial groundwater: a concept paper on its measurement and potential influence on ice flow, in: *Exploration of Subsurface Antarctica: Uncovering Past Changes and Modern Processes*, edited by: Siegert, M.J., Jamieson, S.S.R., and White, D.A., *Geol. Soc. Lond. Spec. Publ.*, 461, 197–213, <https://doi.org/10.1144/SP461.15>, 2018.
- 1405 Siegert, M.J., Ross, N., Li, J., Schroeder, D.M., Rippin, D., Ashmore, D., Bingham, R., and Gogineni, P.: Subglacial controls on the flow of Institute Ice Stream, West Antarctica, *Ann. Glaciol.*, 57, 19–24, <https://doi.org/10.1017/aog.2016.17>, 2016.
- Siegert, M.J., Ross, N., Corr, H., Kingslake, J., and Hindmarsh, R.: Late Holocene ice-flow reconfiguration in the Weddell Sea sector of West Antarctica, *Quat. Sci. Rev.*, 78, 98–107, <https://doi.org/10.1016/j.quascirev.2013.08.003>, 2013.
- 1410 Siegert, M.J.: Lakes beneath the ice sheet: The occurrence, analysis & future exploration of Lake Vostok & other Antarctic subglacial lakes, *Annu. Rev. Earth Planet. Sci.*, 33, 215–245, <https://doi.org/10.1146/annurev.earth.33.092203.122725>, 2005.
- Siegert, M.J., Welch, B., Morse, D., Vieli, A., Blankenship, D.D., Joughin, I., King, E.C., Leysinger Vieli, G.J.M.C., Payne, A.J., and Jacobel, R.: Ice flow direction change in interior West Antarctica, *Science*, 305, 1948–1951, <https://doi.org/10.1126/science.1101072>, 2004.
- 1415 Siegert, M.J. and Bamber, J.L.: Subglacial water at the heads of Antarctic ice-stream tributaries, *J. Glaciol.*, 46, 702–703, <https://doi.org/10.3189/172756500781832783>, 2000.
- Siegert, M.J., Dowdeswell, J.A., Gorman, M.R., and McIntyre, N.F.: An inventory of Antarctic sub-glacial lakes, *Antarct. Sci.*, 8, 281–286, <https://doi.org/10.1017/S0954102096000405>, 1996.
- 1420 Siegfried, M.R. and Fricker, H.A.: Illuminating Active Subglacial Lake Processes With ICESat-2 Laser Altimetry, *Geophys. Res. Lett.*, 48, e2020GL091089, <https://doi.org/10.1029/2020GL091089>, 2021.
- Small, D., Smedley, R., Dunai, T., Lees, T., Trabucatti, S., and Boeckmann, G.: New geological constraints on Holocene retreat-readvance of the West Antarctic Ice Sheet in the Weddell Sea Embayment, EGU General Assembly 2024, Vienna, Austria, 14–19 Apr 2024, EGU24-12136, <https://doi.org/10.5194/egusphere-egu24-12136>, 2024.



- 1425 Smith, B.E., Fricker, H.A., Gardner, A.S., Medley, B., Nilsson, J., Paolo, F.S., Holschuh, N., Adusumilli, S., Brunt, K., Csathó, B., Harbeck, K., Markus, T., Neumann, T., Siegfried, M.R., and Zwally, H.J.: Pervasive ice sheet mass loss reflects competing ocean and atmosphere processes, *Science*, 368, 1239–1242, <https://doi.org/10.1126/science.aaz5845>, 2020a.
- Smith, B.E., Fricker, H.A., Joughin, I.R., and Tulaczyk, S.: An inventory of active subglacial lakes in Antarctica detected by ICESat (2003–2008), *J. Glaciol.*, 55, 573–595, <https://doi.org/10.3189/002214309789470879>, 2009.
- 1430 Smith, E.C., Hattermann, T., Kuhn, G., Gaedicke, C., Berger, S., Drews, R., et al.: Detailed seismic bathymetry beneath Ekström Ice Shelf, Antarctica: Implications for glacial history and ice-ocean interaction, *Geophys. Res. Lett.*, 47, e2019GL086187, <https://doi.org/10.1029/2019GL086187>, 2020b.
- Spector, P., Stone, J., Pollard, D., Hillebrand, T., Lewis, C., and Gombiner, J.: West Antarctic sites for subglacial drilling to test for past ice-sheet collapse, *Cryosphere*, 12, 2741–2757, <https://doi.org/10.5194/tc-12-2741-2018>, 2018.
- 1435 Stanton, T.P., Shaw, W.J., Truffer, M., Corr, H.F.J., Peters, L.E., Riverman, K.L., Bindschadler, R., Holland, D.M., and Anandakrishnan, S.: Channelized ice melting in the ocean boundary layer beneath Pine Island Glacier, Antarctica, *Science*, 341, 1236–1239, <https://doi.org/10.1126/science.1239373>, 2013.
- Stearns, L.A., Smith, B.E., and Hamilton, G.S.: Increased flow speed on a large East Antarctic outlet glacier caused by subglacial floods, *Nat. Geosci.*, 1, 827–832, <https://doi.org/10.1038/ngeo356>, 2008.
- 1440 Steig, E.J., Huybers, K., Singh, H.A., Steiger, N.J., Ding, Q., Frierson, D.M.W., Popp, T., and White, J.W.C.: Influence of West Antarctic Ice Sheet collapse on Antarctic surface climate, *Geophys. Res. Lett.*, 42, 4862–4868, <https://doi.org/10.1002/2015GL063861>, 2015.
- Stokes, C.R., Abram, N.J., Bentley, M.J., Edwards, T.L., England, M.H., Foppert, A., Jamieson, S.S.R., Jones, R.S., King, M.A., Lenarts, J.T.M., Medley, B., Miles, B.W.J., Paxman, G.J.G., Ritz, C., van de Flierdt, T., and Whitehouse, P.L.: Response of the East Antarctic Ice Sheet to past and future climate change, *Nature*, 608, 275–286, <https://doi.org/10.1038/s41586-022-04946-0>, 2022.
- 1445 Stokes, C.R., Margold, M., Clark, C.D., and Tarasov, L.: Ice stream activity scaled to ice sheet volume during Laurentide Ice Sheet deglaciation, *Nature*, 530, 322–326, <https://doi.org/10.1038/nature16947>, 2016.
- Studinger, M., Medley, B.C., Brunt, K.M., Casey, K.A., Kurtz, N.T., Manizade, S.S., Neumann, T.A., and Overly, T.B.:
1450 Temporal and spatial variability in surface roughness and accumulation rate around 88°S from repeat airborne geophysical surveys, *Cryosphere*, 14, 3287–3308, <https://doi.org/10.5194/tc-14-3287-2020>, 2020.



- Studinger, M., Bell, R.E., Blankenship, D.D., Finn, C.A., Arko, R.A., Morse, D.L., and Joughin, I.: Subglacial sediments: A regional geological template for ice flow in West Antarctica, *Geophys. Res. Lett.*, 28, 3493–3496, <https://doi.org/10.1029/2000GL011788>, 2001.
- 1455 Sun, S., Pattyn, F., Simon, E.G., Albrecht, T., Cornford, S., Calov, R., Dumas, C., Gilet-Chaulet, F., Goelzer, H., Gollledge, N.R., Greve, R., Hoffman, M.J., Humbert, A., Kazmierczak, E., Kleiner, T., Leguy, G.R., Lipscomb, W.H., Martin, D., Morlighem, M., Nowicki, S., Pollard, D., Price, S., Quiquet, A., Seroussi, H., Schlemm, T., Sutter, J., van de Wal, R.S.W., Winkelmann, R., Zhang, T.: Antarctic ice sheet response to sudden and sustained ice-shelf collapse (ABUMIP), *J. Glaciol.*, 66, 891–904, <https://doi.org/10.1017/jog.2020.67>, 2020.
- 1460 Sun, S., Cornford, S.L., Gwyther, D.E., Gladstone, R.M., Galton-Fenzi, B.K., Zhao, L., and Moore, J.C.: Impact of ocean forcing on the Aurora Basin in the 21st and 22nd centuries, *Ann. Glaciol.*, 57, 79–86, <https://doi.org/10.1017/aog.2016.27>, 2016.
- Sutter, J., Gierz, P., Grosfeld, K., Thoma, M., and Lohmann, G.: Ocean temperature thresholds for Last Interglacial West Antarctic Ice Sheet collapse, *Geophys. Res. Lett.*, 43, 2675–2682, <https://doi.org/10.1002/2016GL067818>, 2016.
- 1465 Taylor, L.D.: Glaciological studies on the South Pole Traverse 1962–1963, In: *Antarctic Snow and Ice Studies II*, edited by: Crary, A.P., *Antarc. Res. Ser.*, 16, 209–224, American Geophys. Union, Washington, D.C., <https://doi.org/10.1029/AR016p0209>, 1971.
- Thiel, E.: Antarctica, one continent or two?, *Polar Rec.*, 10, 335–348, <https://doi.org/10.1017/S0032247400051457>, 1961.
- Turchetti, S., Dean, K., Naylor, S., and Siegert, M.: Accidents and opportunities: a history of the radio echo-sounding of Antarctica, 1958–79, *Br. J. Hist. Sci.*, 41, 417–444, <https://doi.org/10.1017/S0007087408000903>, 2008.
- Uemura, T., Taniguchi, M., and Shibuya, K.: Submarine groundwater discharge in Lützow-Holm Bay, Antarctica, *Geophys. Res. Lett.*, 38, L08402, <https://doi.org/10.1029/2010GL046394>, 2011.
- Vaughan, D.G., Corr, H.F.J., Smith, A.M., Pritchard, H.D., and Shepherd, A.: Flow-switching and water piracy between Rutford Ice Stream and Carlson Inlet, West Antarctica, *J. Glaciol.*, 184, 41–48, <https://doi.org/10.3189/002214308784409125>, 1475 2008.
- Vaughan, D.G., Smith, A.M., Corr, H.J., Jenkins, A., Bentley, C.R., Stenoien, M.D., Jacobs, S.S., Kellogg, T.B., Rignot, E., and Lucchitta, B.K.: A review of Pine Island Glacier, West Antarctica: hypotheses of instability vs. observations of change,



- In: Alley, R.B., and Bindshadler, R.A. (eds) *The West Antarctic Ice Sheet: Behavior and Environment*, Antarct. Res. Ser., 77, 237–256, Amer. Geophys. Union., 2001.
- 1480 Venturelli, R.A., Boehman, B., Davis, C., Hawkings, J.R., Johnston, S.E., Gustafson, C.D., Michaud, A.B., Mosbeux, C., Siegfried, M.R., Vick-Majors, T.J., Galy, V., Spencer, R.G.M., Warny, S., Christner, B.C., Fricker, H.A., Harwood, D.M., Leventer, A., Priscu, J.C., Rosenheim, B.E., and SALSA Science Team: Constraints on the timing and extent of deglacial grounding line retreat in West Antarctica, *AGU Adv.*, 4, e2022AV000846, <https://doi.org/10.1029/2022AV000846>, 2023.
- Venturelli, R.A., Siegfried, M.R., Roush, K., Li, W., Burnett, J., Zook, R., Fricker, H.A., Priscu, J., Leventer, A., and
1485 Rosenheim, B.: Mid-Holocene Grounding Line Retreat and Readvance at Whillans Ice Stream, West Antarctica, *Geophys. Res. Lett.*, 47, e2020GL088476, <https://doi.org/10.1029/2020GL088476>, 2020.
- Vittuari, L., Zanutta, A., Gandolfi, S., Martelli, L., Ritz, C., Urbini, S., and Frezzotti, M.: Decadal migration of Dome C inferred by Global Navigation Satellite System measurements, *J. Glaciol.*, 1–48, <https://doi.org/10.1017/jog.2025.28>, 2025.
- Weertman, J.: Stability of the junction of an ice sheet and an ice shelf, *J. Glaciol.*, 13, 3–11,
1490 <https://doi.org/10.3189/S0022143000023327>, 1974.
- Whitehouse, P.L., Bentley, M.J., Vieli, A., Jamieson, S.R., Hein, A.S., and Sugden, D.E.: Controls on Last Glacial Maximum ice extent in the Weddell Sea embayment, Antarctica, *J. Geophys. Res. Earth Surf.*, 122, 371–397, <https://doi.org/10.1002/2016JF004121>, 2017.
- Winter, K., Ross, N., Ferraccioli, F., Jordan, T.A., Corr, H.F.J., Forsberg, R., Matsuoka, K., Olesen, A.V., and Casal, T.G.:
1495 Topographic steering of enhanced ice flow at the bottleneck between East and West Antarctica, *Geophys. Res. Lett.*, 45, 4899–4907, <https://doi.org/10.1029/2018GL077504>, 2018.
- Winter, K., Woodward, J., Ross, N., Dunning, S.A., Bingham, R.G., Corr, H.F.J., and Siegert, M.J.: Airborne radar evidence for tributary flow switching in Institute Ice Stream, West Antarctica: Implications for ice sheet configuration and dynamics, *J. Geophys. Res. Earth Surf.*, 120, 1611–1625, <https://doi.org/10.1002/2015JF003518>, 2015.
- 1500 Wolovick, M.J., Bell, R.E., Creyts, T.T., and Frearson, N.: Identification and control of subglacial water networks under Dome A, Antarctica, *J. Geophys. Res. Earth Surf.*, 118, 140–154, <https://doi.org/10.1029/2012JF002555>, 2013.
- Wright, A.P., Le Brocq, A.M., Cornford, S.L., Bingham, R.G., Corr, H.F.J., Ferraccioli, F., Jordan, T.A., Payne, A.J., Rippin, D.M., Ross, N., Siegert, M.J. Sensitivity of the Weddell Sea sector ice streams to sub-shelf melting and surface accumulation. *The Cryosphere*, 8, 2119–2134, <https://doi.org/10.5194/tc-8-2119-2014>, 2014.



- 1505 Wright, A.P., Siegert, M.J., Le Brocq, A., and Gore, D.: High sensitivity of subglacial hydrological pathways in Antarctica to small ice sheet changes, *Geophys. Res. Lett.*, 35, L17504, <https://doi.org/10.1029/2008GL034937>, 2008.
- Wrona, T., Wolovick, M.J., Ferraccioli, F., Corr, H., Jordan, T., and Siegert, M.J.: Position and variability of complex structures in the central East Antarctic Ice Sheet, in: *Exploration of Subsurface Antarctica: Uncovering Past Changes and Modern Processes*, edited by: Siegert, M.J., Jamieson, S.S.R., and White, D.A., *Geol. Soc. Lond., Spec. Publ.*, 461, 113–129, 1510 <https://doi.org/10.1144/SP461.15>, 2018.
- Yang, Z. and Kang, Z.: Antarctic-scale ice flow lines map generation and basin delineation, *Remote Sens.*, 14, 1958, <https://doi.org/10.3390/rs14091958>, 2022.
- Young, T.J., Schroeder, D.M., Jordan, T.M., Christoffersen, P., Tulaczyk, A.M., Culberg, R., and Bienert, N.L.: Inferring ice fabric from birefringence loss in airborne radargrams: application to the eastern shear margin of Thwaites Glacier, West 1515 Antarctica, *J. Geophys. Res. Earth Surf.*, 126, e2020JF006023, <https://doi.org/10.1029/2020JF006023>, 2021.
- Zhou, Y., Franke, S., Kleiner, T., Drews, R., Humbert, A., Jansen, D., Steinhage, D., and Eisen, O.: Reactivation of a subglacial channel around the grounding zone of Roi Baudouin Ice Shelf, Antarctica, *Geophys. Res. Lett.*, 52, e2024GL112476, <https://doi.org/10.1029/2024GL112476>, 2025.